

1 - BEDROOM

TYPE A1

TOWER 16

UNIT

#03-01 to #29-01

TOWER 18

UNIT

#03-11 to #29-11

#03-13 to #29-13

TYPE A1-R

TOWER 16

UNIT

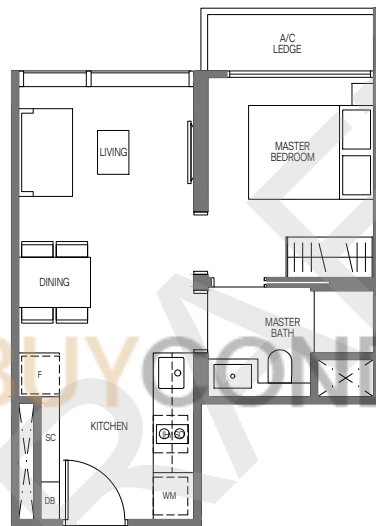
#30-01

TOWER 18

UNIT

#30-11

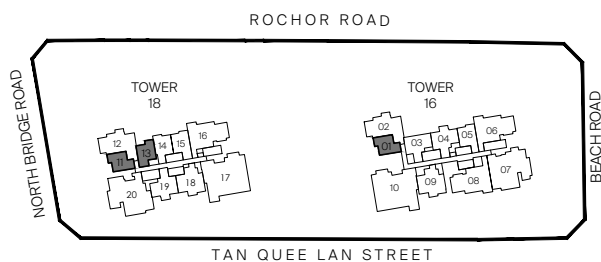
#30-13



LEGEND (where applicable):

F - Fridge	SO - Combi Steam Oven	D - Dryer
IH - Induction Hob	CO - Convectional Oven	DB - Distribution Board
GH - Gas Hob	WCH - Wine Chiller	SC - Shoe Cabinet
WM - Washer cum Dryer	W - Washer	

All plans are subjected to amendments as may be approved by the relevant authorities.
 Floor areas are approximate measurements and are subjected to final survey.
 BP Approval No. A1720-00019-2019-BP01 dated 23/11/2020



KEY PLAN



2 - BEDROOM

TYPE B3

TOWER 16

UNIT

#04-09 to #29-09

TOWER 18

UNIT

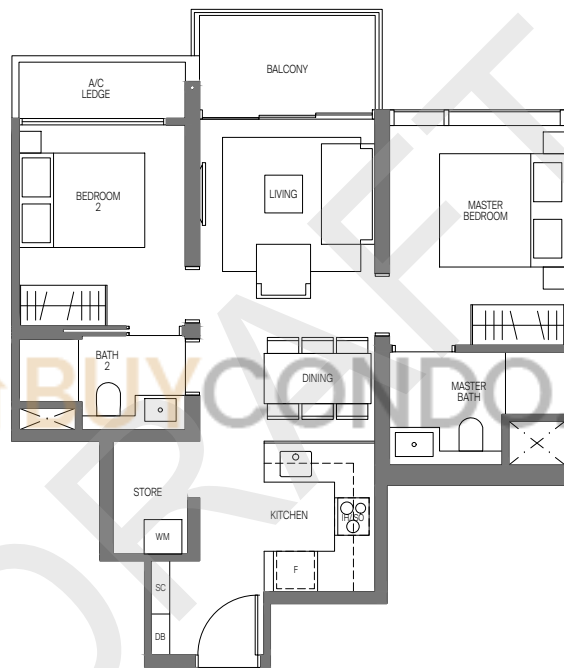
#04-18 to #29-18

TYPE B3-R

TOWER 16

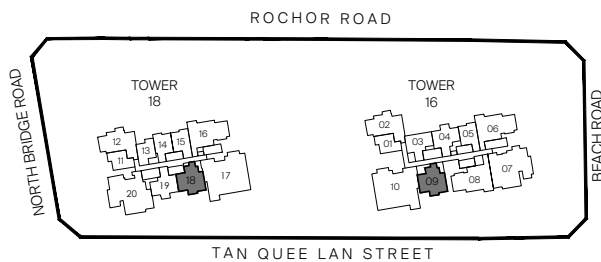
UNIT

#30-09



LEGEND (where applicable):

F - Fridge	SO - Combi Steam Oven	D - Dryer
IH - Induction Hob	CO - Convectional Oven	DB - Distribution Board
GH - Gas Hob	WCH - Wine Chiller	SC - Shoe Cabinet
WM - Washer cum Dryer	W - Washer	



All plans are subjected to amendments as may be approved by the relevant authorities.
 Floor areas are approximate measurements and are subjected to final survey.
 BP Approval No. A1720-00019-2019-BP01 dated 23/11/2020

KEY PLAN



3 - BEDROOM

TYPE C2

TOWER 16

UNIT

#04-06 to #29-06

TOWER 18

UNIT

#04-16 to #29-16

TYPE C2-R

TOWER 16

UNIT

#30-06

TOWER 18

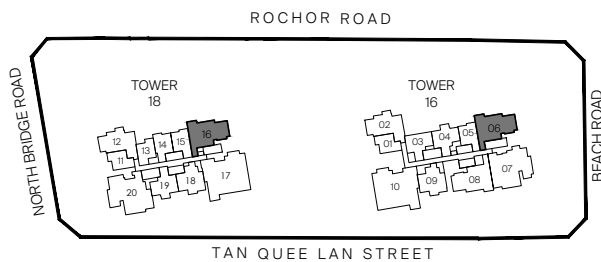
UNIT

#30-16



LEGEND (where applicable) :

F - Fridge	SO - Combi Steam Oven	D - Dryer
IH - Induction Hob	CO - Convectional Oven	DB - Distribution Board
GH - Gas Hob	WCH - Wine Chiller	SC - Shoe Cabinet
WM - Washer cum Dryer	W - Washer	



All plans are subjected to amendments as may be approved by the relevant authorities.
 Floor areas are approximate measurements and are subjected to final survey.
 BP Approval No. A1720-00019-2019-BP01 dated 23/11/2020

KEY PLAN



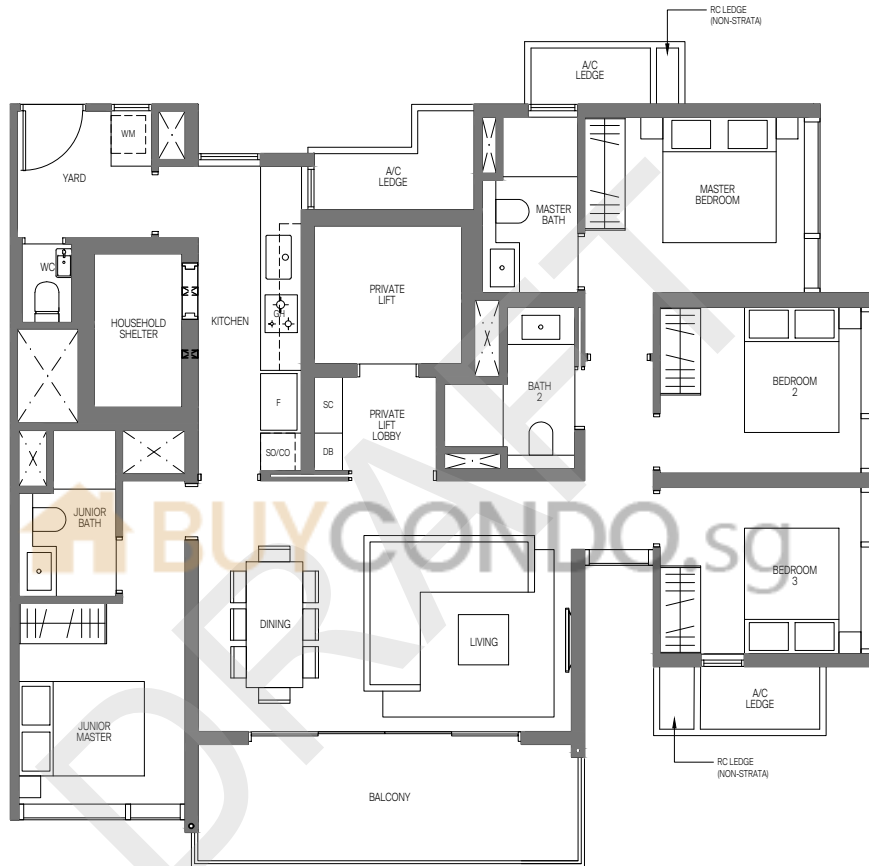
4 - BEDROOM

TYPE D1(PL)

TOWER 16

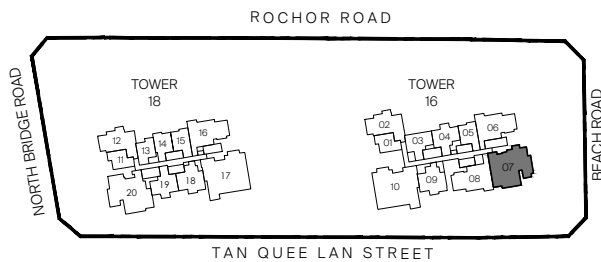
UNIT

#04-07 to #29-07



LEGEND (where applicable) :

F - Fridge	SO - Steam Oven	D - Dryer
IH - Induction Hob	CO - Convectional Oven	DB - Distribution Board
GH - Gas Hob	WCH - Wine Chiller	SC - Shoe Cabinet
WM - Washer cum Dryer	W - Washer	



All plans are subjected to amendments as may be approved by the relevant authorities.
 Floor areas are approximate measurements and are subjected to final survey.
 BP Approval No. A1720-00019-2019-BP01 dated 23/11/2020

KEY PLAN



4 - BEDROOM PREMIUM

TYPE D3P(PL)

TOWER 16

UNIT

#04-10* to #29-10*

TOWER 18

UNIT

#04-17 to #29-17

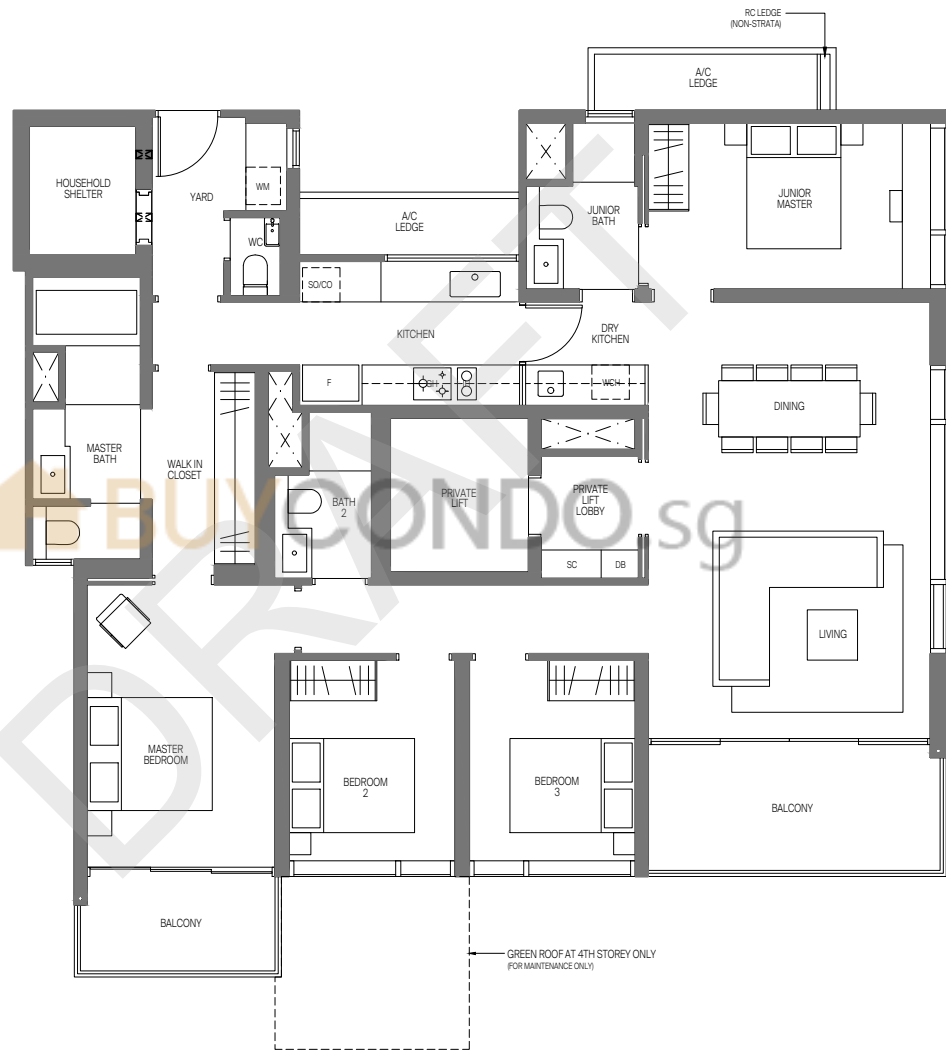
TYPE D3P-R(PL)

TOWER 16

UNIT

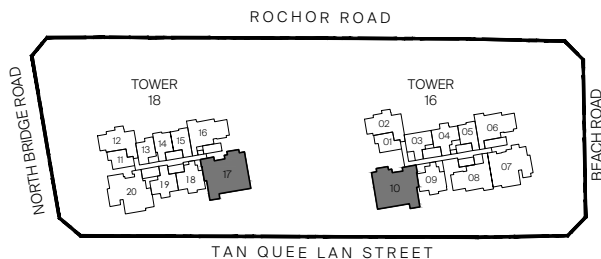
#30-10*

* MIRROR IMAGE



LEGEND (where applicable):

F - Fridge	SO - Steam Oven	D - Dryer
IH - Induction Hob	CO - Convectional Oven	DB - Distribution Board
GH - Gas Hob	WCH - Wine Chiller	SC - Shoe Cabinet
WM - Washer cum Dryer	W - Washer	



All plans are subjected to amendments as may be approved by the relevant authorities.
 Floor areas are approximate measurements and are subjected to final survey.
 BP Approval No. A1720-00019-2019-BP01 dated 23/11/2020

KEY PLAN

