

TYPE 1A

1 bdrm

48 sq m

#06-03

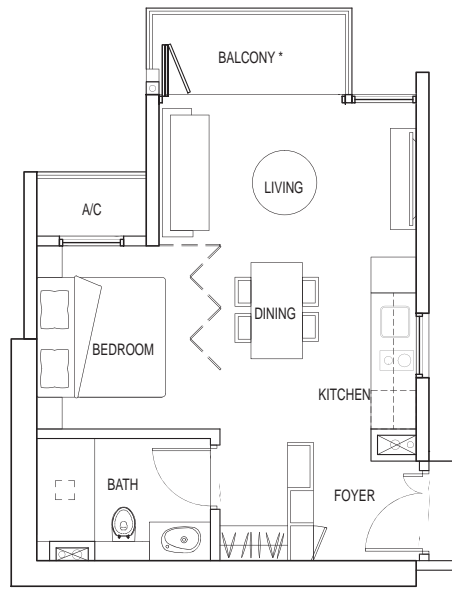
#07-04 – #23-04

#25-04 – #29-04

#06-05

#07-06 – #23-06

#25-06 – #29-06



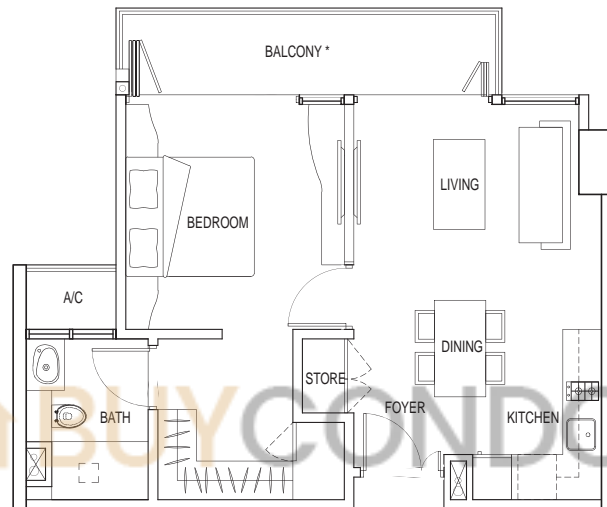
TYPE 1B

1 bdrm

61 sq m

#03-04

#04-04



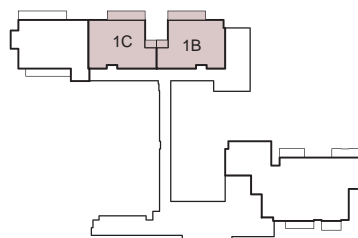
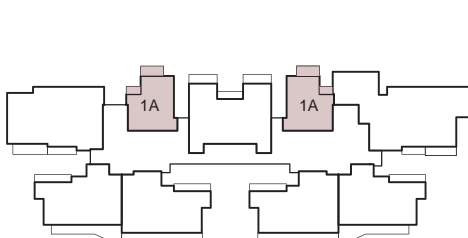
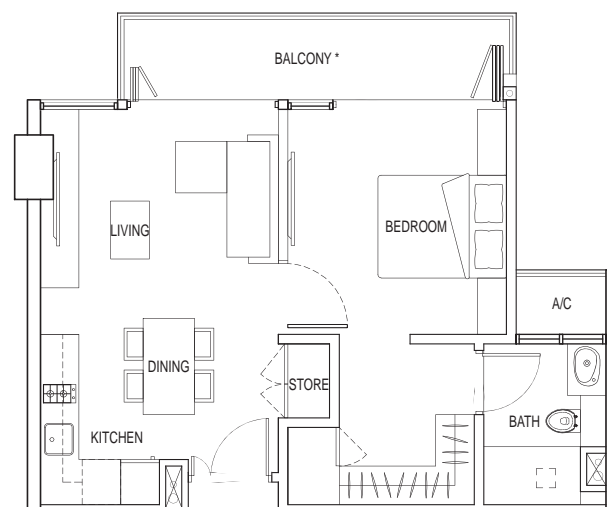
TYPE 1C

1 bdrm

61 sq m

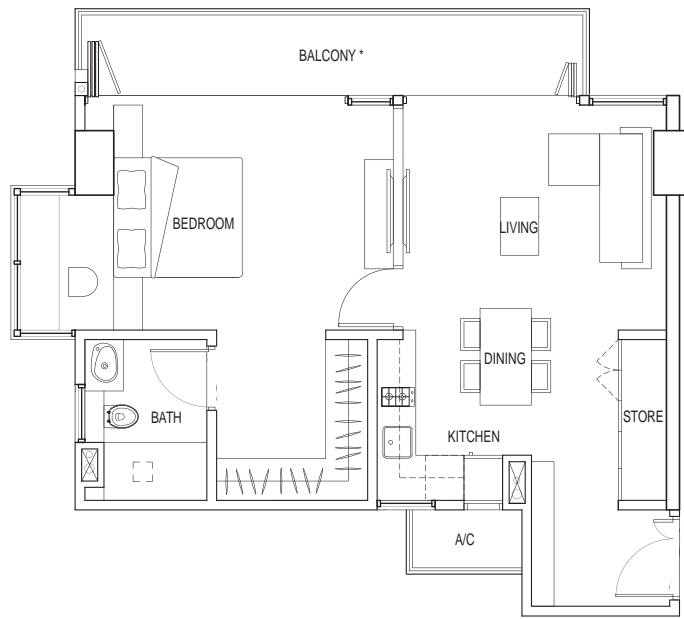
#03-03

#04-03



Note: Unit area includes balcony, yard, AC ledge and/or void where applicable. All plans are subject to amendments as approved by the relevant authorities.

*The balcony shall not be enclosed. Only approved balcony screens are to be used. For an illustration of the approved balcony screen, please refer to page 33 of this brochure."



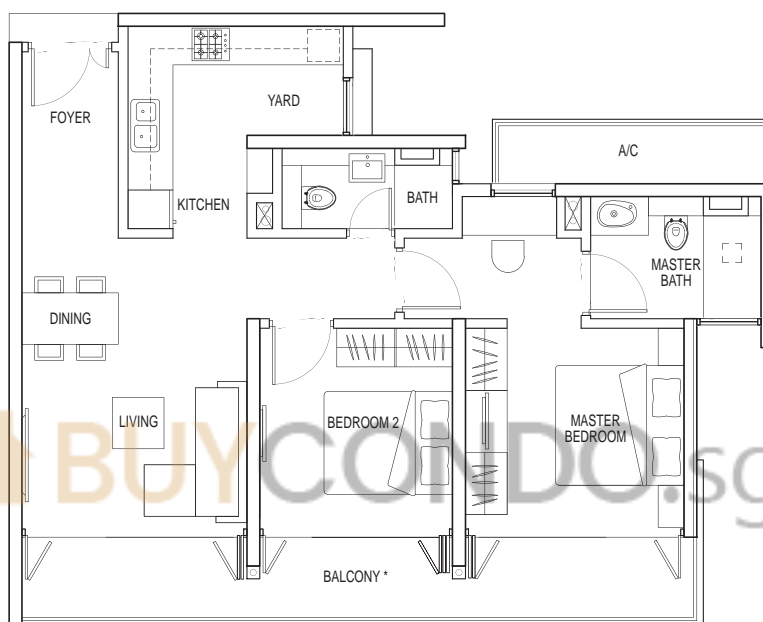
TYPE 1D

1 bdrm

77 sq m

#03-02

#04-02



TYPE 2A-1

2 bdrm

93 sq m

#06-01 – #11-01

#13-01 – #17-01

#19-01 – #23-01

#25-01 – #28-01

#06-07

#07-09 – #08-09

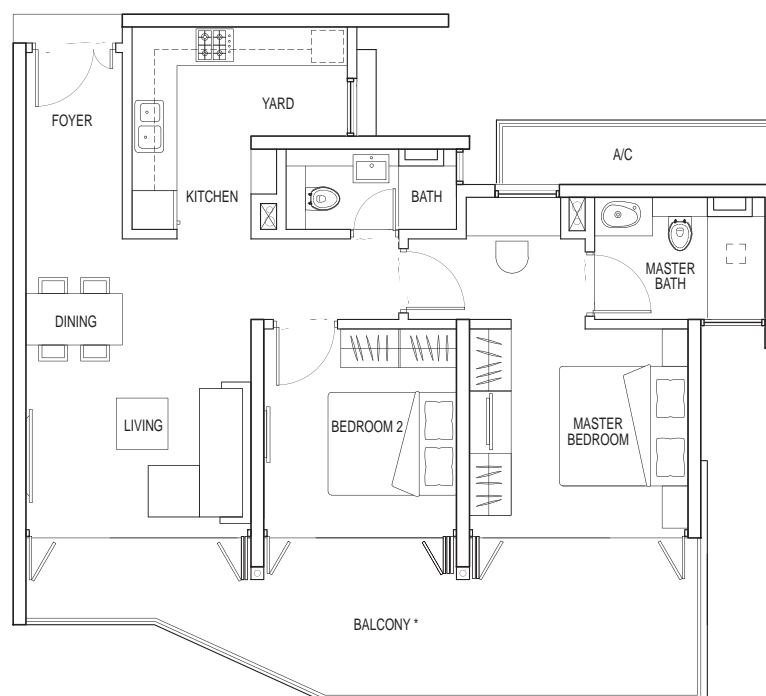
#10-09 – #14-09

#16-09 – #20-09

#22-09 – #23-09

#25-09

#27-09 – #29-09



TYPE 2A-2

2 bdrm

101 sq m

#12-01

#18-01

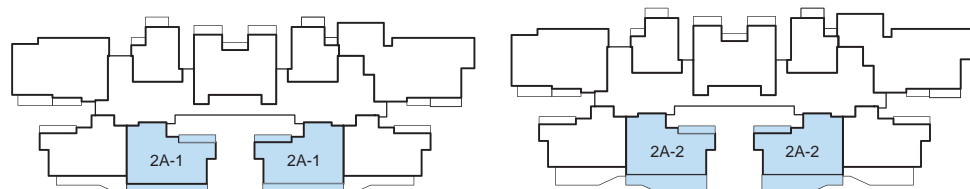
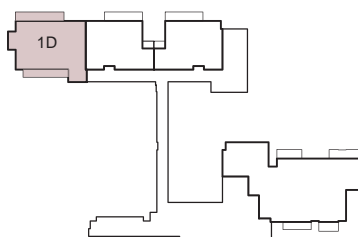
#29-01

#09-09

#15-09

#21-09

#26-09



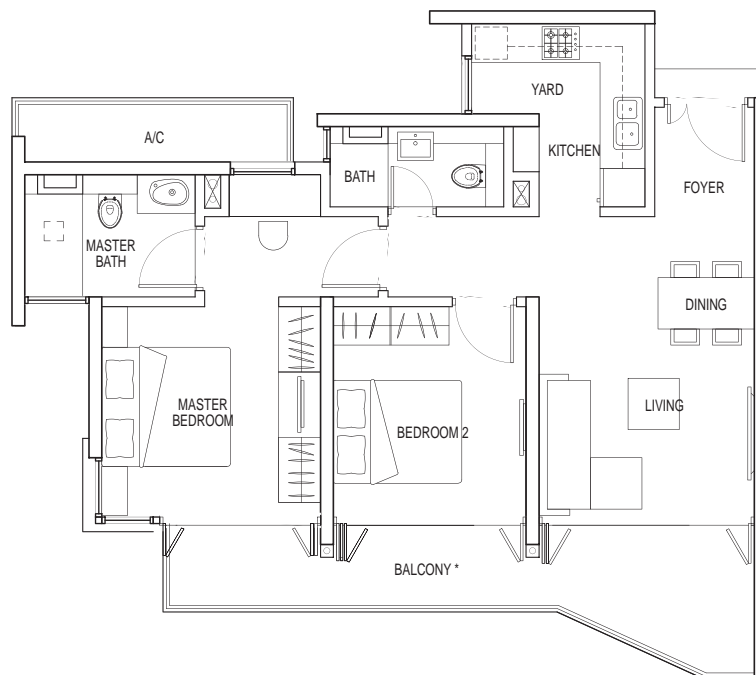
Note: Unit area includes balcony, yard, AC ledge and/or void where applicable. All plans are subject to amendments as approved by the relevant authorities.
 The balcony shall not be enclosed. Only approved balcony screens are to be used. For an illustration of the approved balcony screen, please refer to page 33 of this brochure.

TYPE 2B-1

2 bdrm

89 sq m

- #06-02 – #08-02
- #10-02 – #14-02
- #16-02 – #20-02
- #22-02 – #23-02
- #25-02
- #06-06
- #07-08 – #11-08
- #13-08 – #17-08
- #19-08 – #23-08
- #25-08

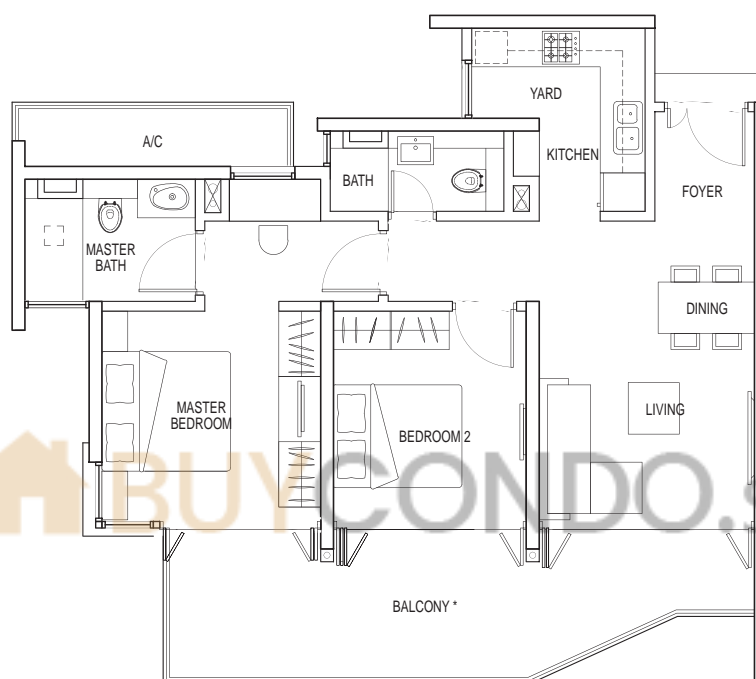


TYPE 2B-2

2 bdrm

94 sq m

- #09-02
- #15-02
- #21-02
- #12-08
- #18-08

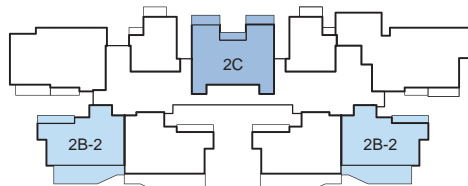
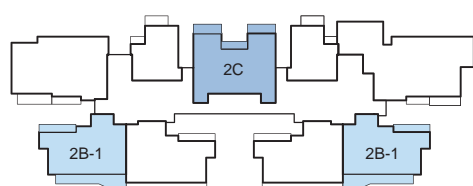
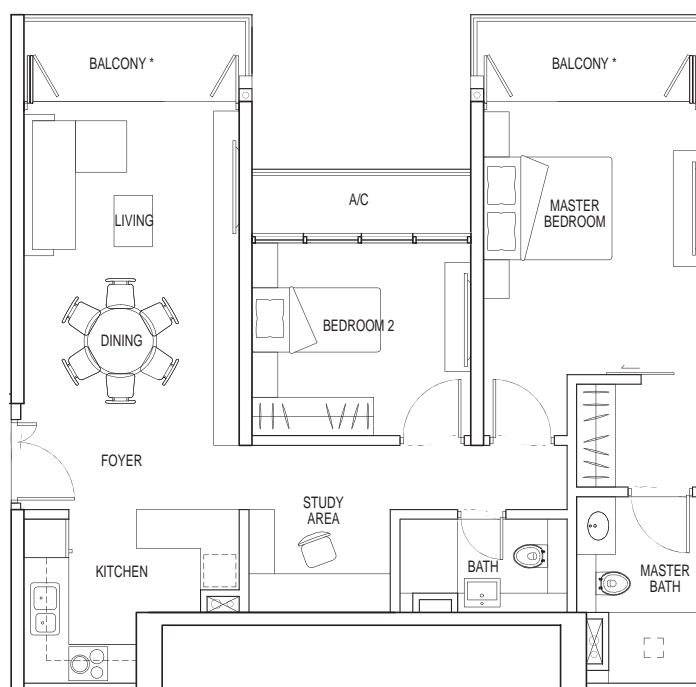


TYPE 2C

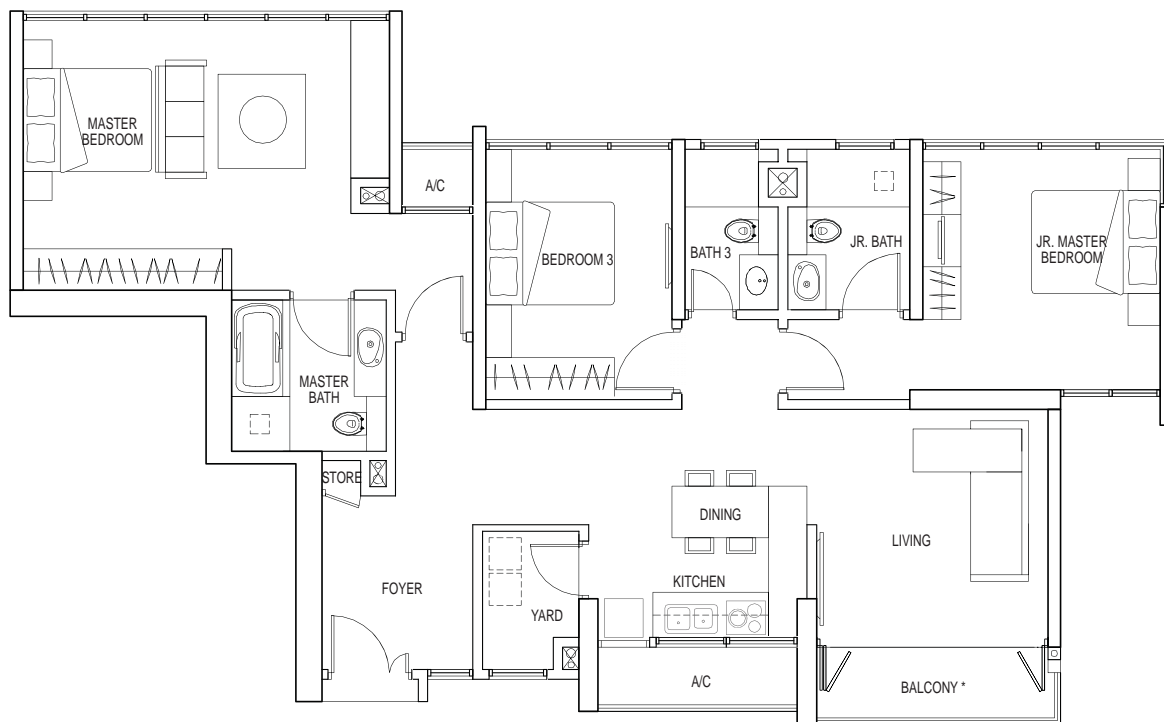
2 + Study

96 sq m

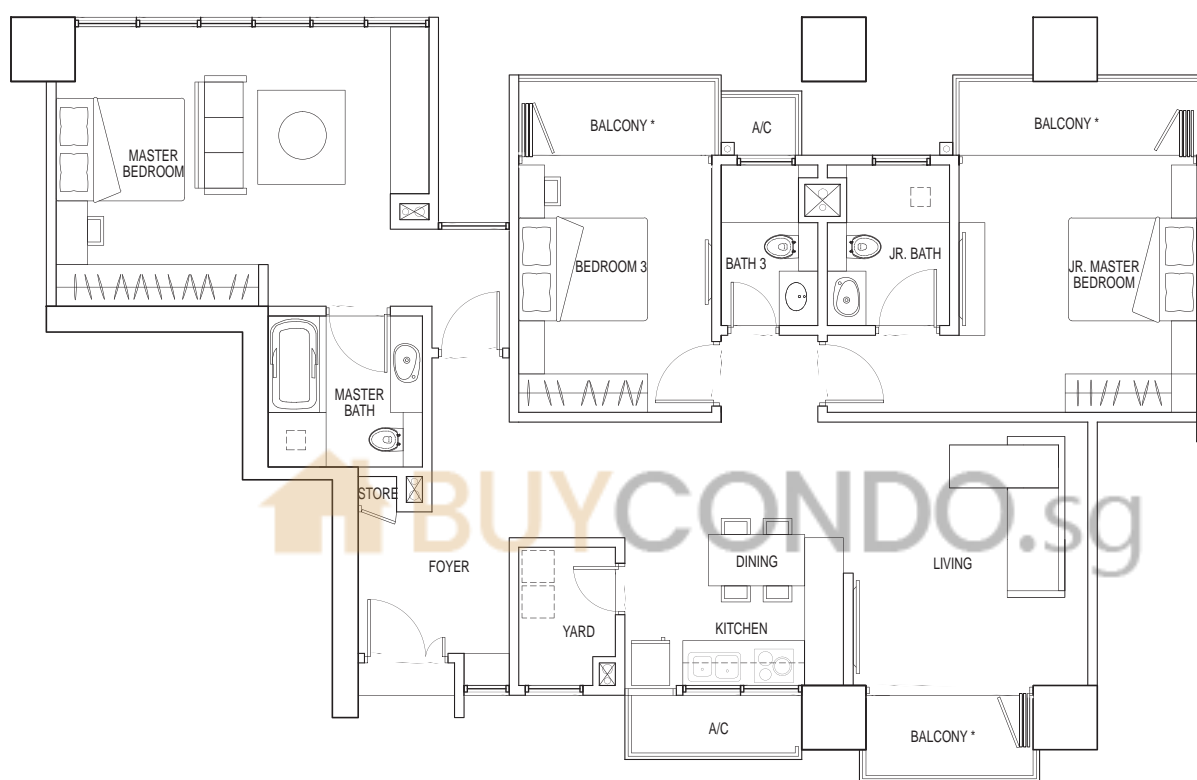
- #06-04
- #07-05 – #23-05
- #25-05 – #29-05



Note: Unit area includes balcony, yard, AC ledge and/or void where applicable. All plans are subject to amendments as approved by the relevant authorities.
 * "The balcony shall not be enclosed. Only approved balcony screens are to be used. For an illustration of the approved balcony screen, please refer to page 33 of this brochure."

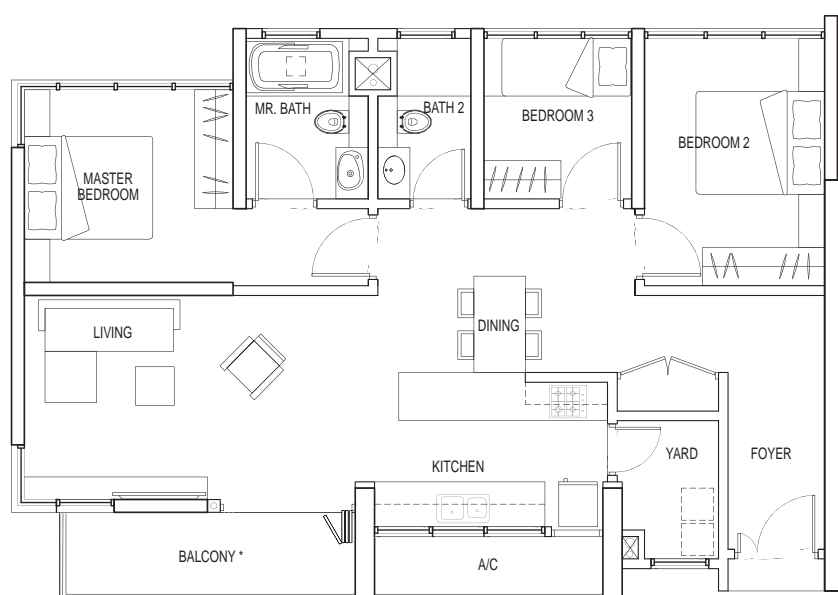


TYPE 3A
 3 bdrm (Dual Key)
 133 sq m
 #07-07 – #23-07
 #25-07 – #29-07

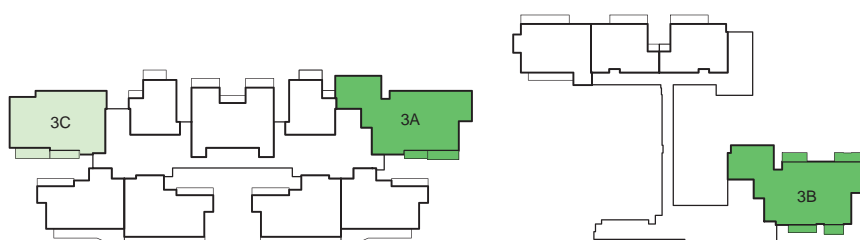


TYPE 3B
 3 bdrm (Dual Key)
 146 sq m
 #03-01
 #04-01

BUYCONDO.sg



TYPE 3C
 3 bdrm
 106 sq m
 #07-03 – #23-03
 #25-03 – #29-03



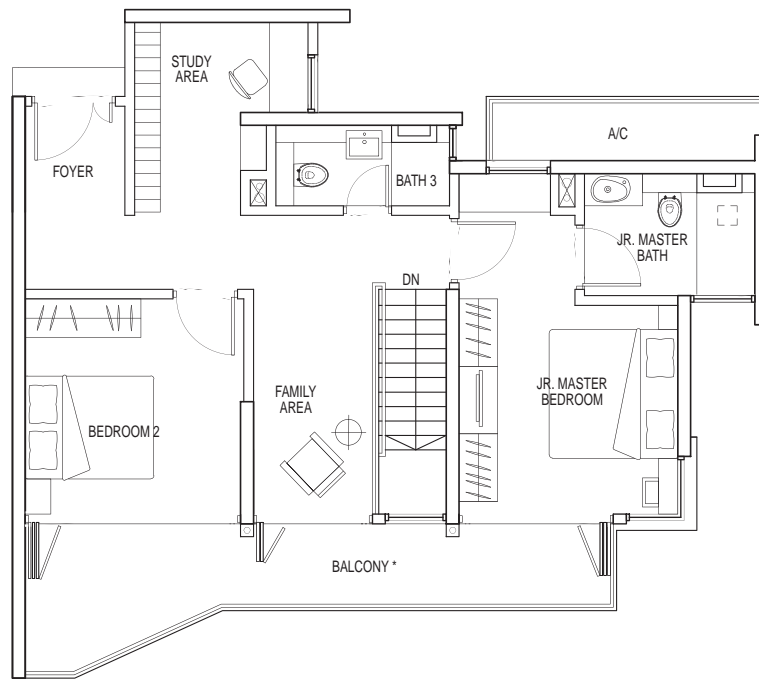
Note: Unit area includes balcony, yard, AC ledge and/or void where applicable. All plans are subject to amendments as approved by the relevant authorities.
 *The balcony shall not be enclosed. Only approved balcony screens are to be used. For an illustration of the approved balcony screen, please refer to page 33 of this brochure."

TYPE 4A-1

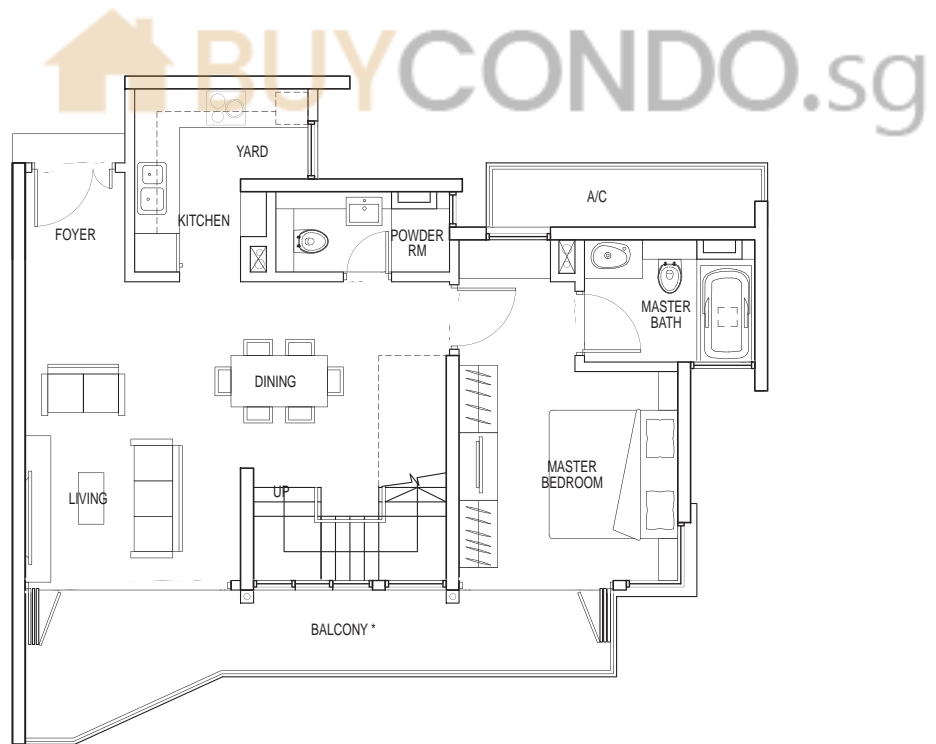
3 + Study + Family

178 sq m

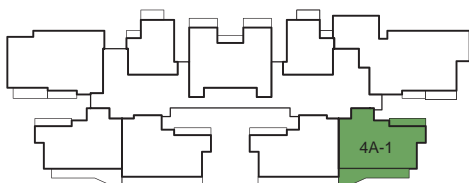
#26-08



upper floor



lower floor



Note: Unit area includes balcony, yard, AC ledge and/or void where applicable. All plans are subject to amendments as approved by the relevant authorities.

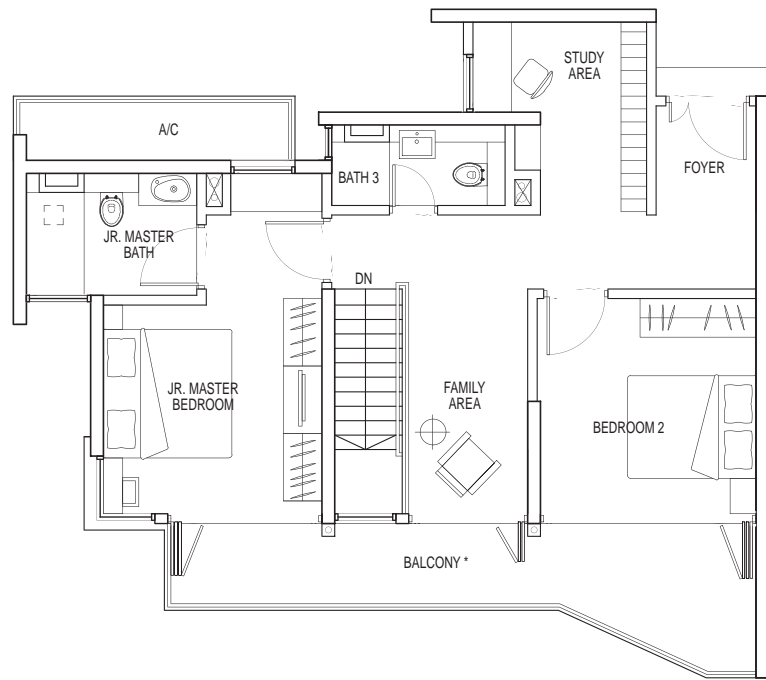
*The balcony shall not be enclosed. Only approved balcony screens are to be used. For an illustration of the approved balcony screen, please refer to page 33 of this brochure."

TYPE 4A-2

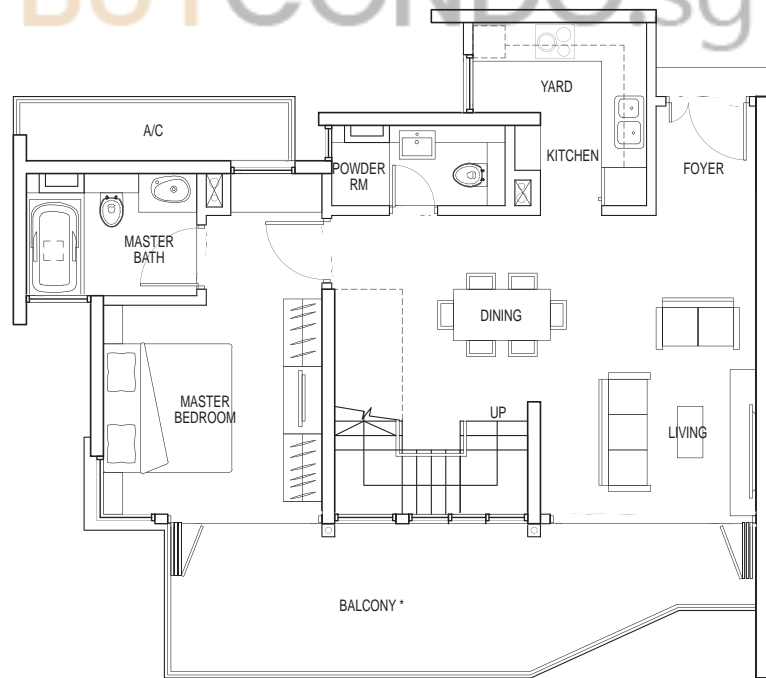
3 + Study + Family

183 sq m

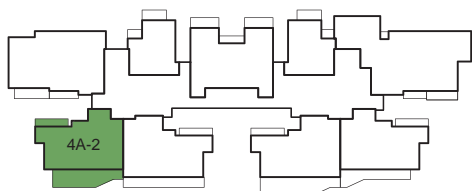
#26-02



upper floor



lower floor



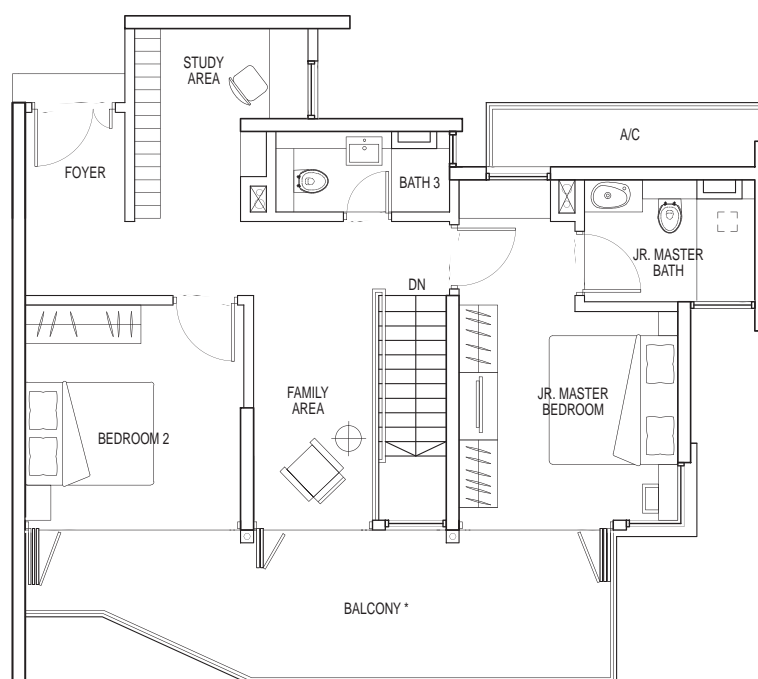
Note: Unit area includes balcony, yard, AC ledge and/or void where applicable. All plans are subject to amendments as approved by the relevant authorities.
* "The balcony shall not be enclosed. Only approved balcony screens are to be used. For an illustration of the approved balcony screen, please refer to page 33 of this brochure."

TYPE 4A-3

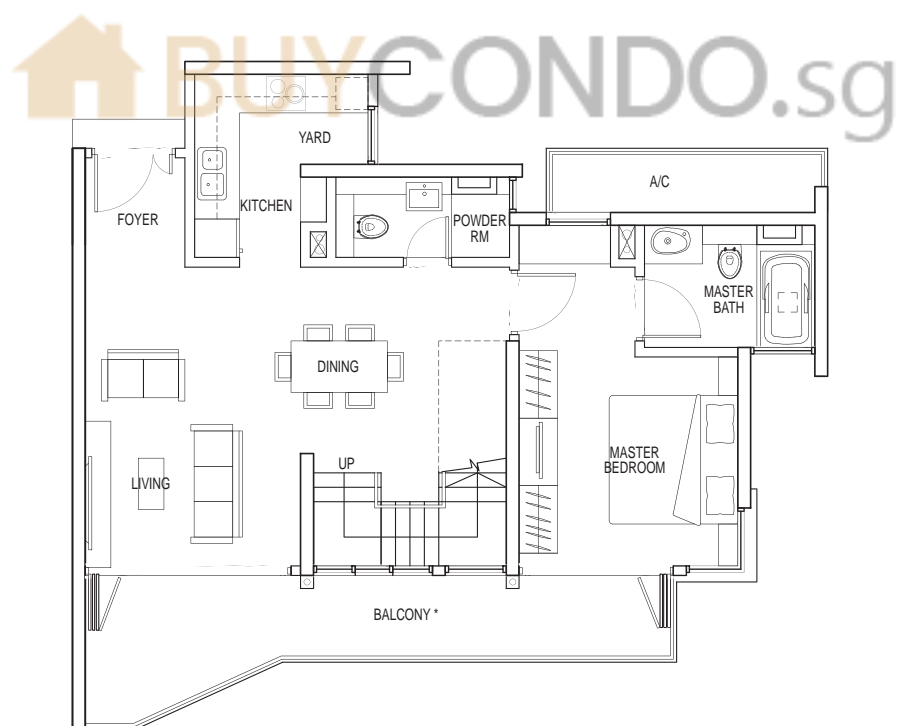
3 + Study + Family

183 sq m

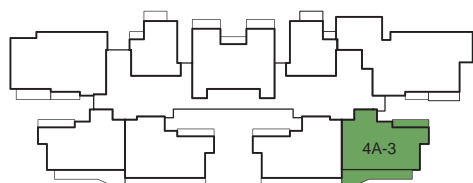
#28-08



upper floor



lower floor



Note: Unit area includes balcony, yard, AC ledge and/or void where applicable. All plans are subject to amendments as approved by the relevant authorities.

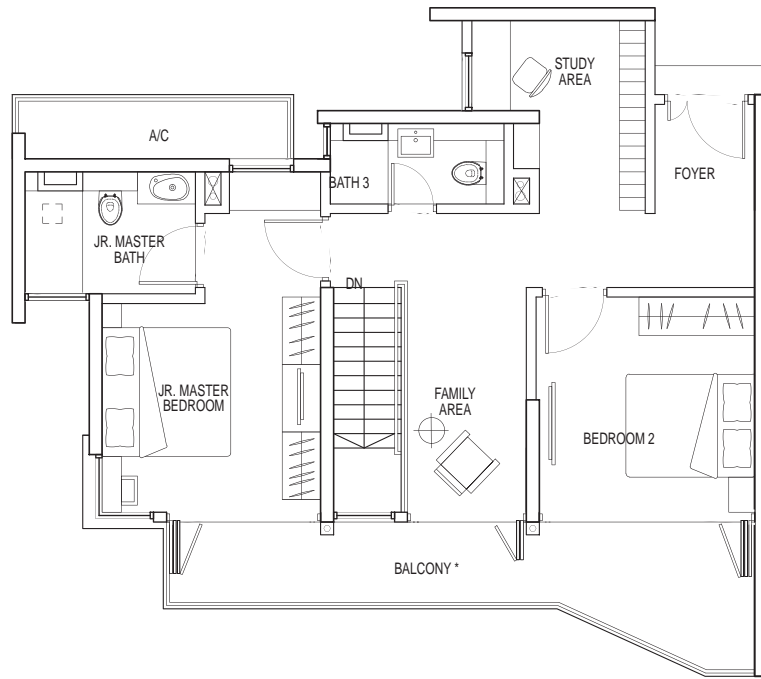
* The balcony shall not be enclosed. Only approved balcony screens are to be used. For an illustration of the approved balcony screen, please refer to page 33 of this brochure."

TYPE 4A-4

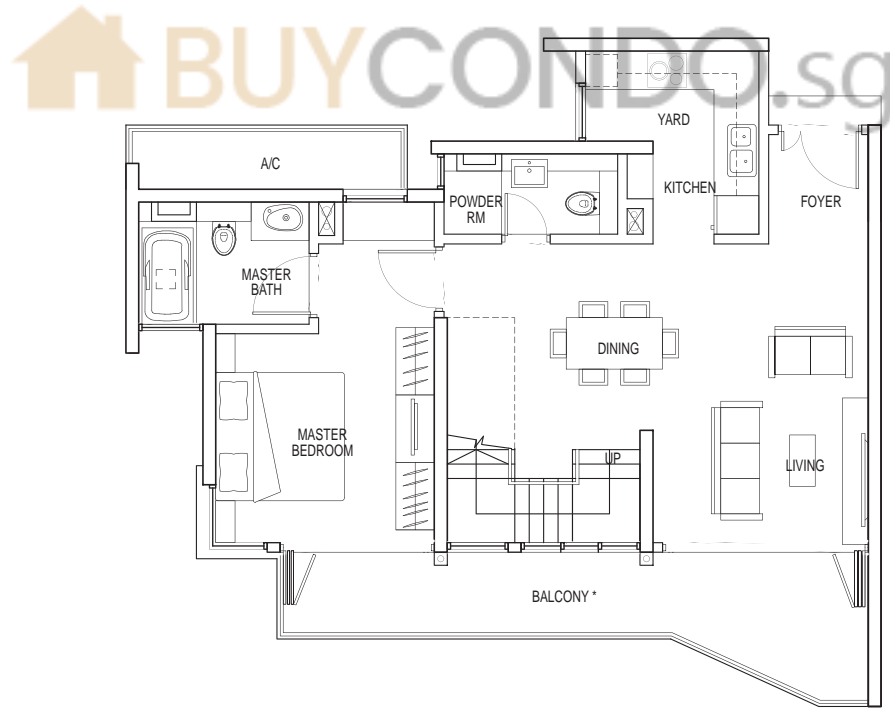
3 + Study + Family

178 sq m

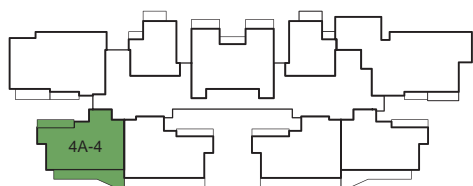
#28-02



upper floor



lower floor



Note: Unit area includes balcony, yard, AC ledge and/or void where applicable. All plans are subject to amendments as approved by the relevant authorities.
* "The balcony shall not be enclosed. Only approved balcony screens are to be used. For an illustration of the approved balcony screen, please refer to page 33 of this brochure."