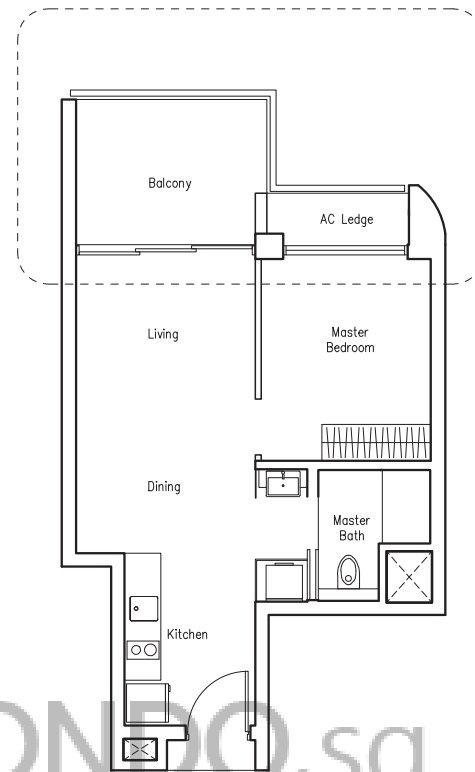


SUITES

1 BEDROOM



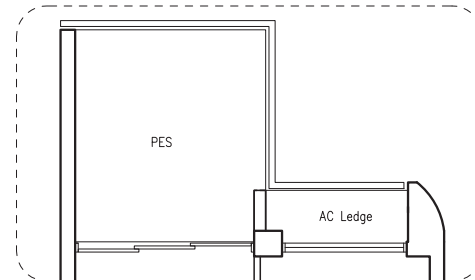
BUYCONDO.sg

Type A1

52 sq m | 560 sq ft

#02-03 TO #16-03

#02-39 TO #16-39

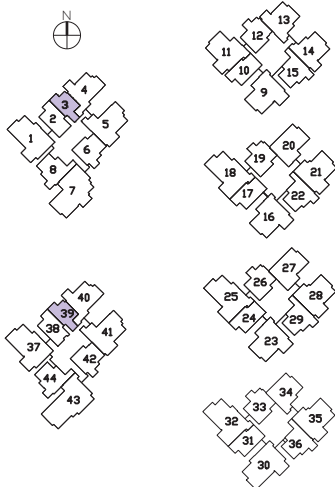


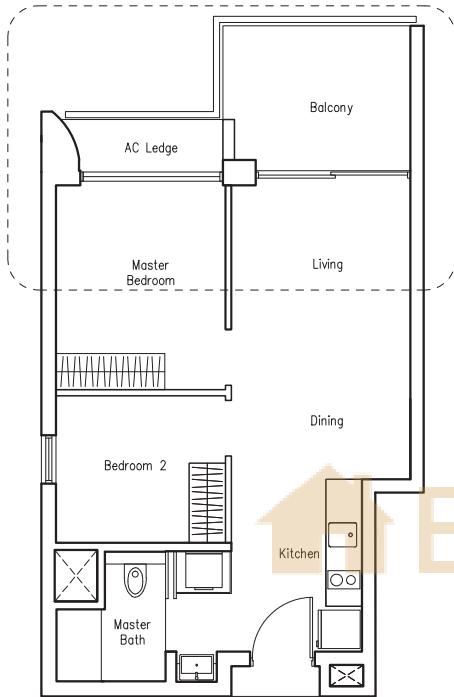
Type A1-P

55 sq m | 592 sq ft

(including PES of 12 sq m / 129 sq ft)

#01-03





Type B1

59 sq m | 635 sq ft

#02-10 TO #16-10

#02-17 TO #16-17

#02-24 TO #16-24

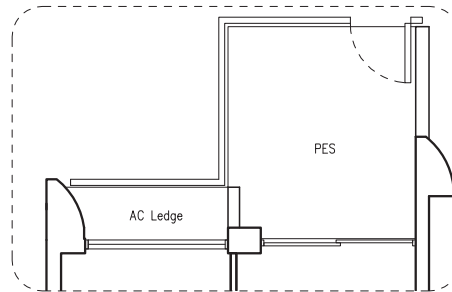
#02-31 TO #16-31

Type B1a

59 sq m | 635 sq ft

#02-02 TO #16-02

#02-38 TO #16-38

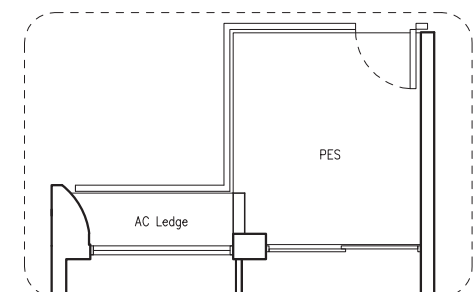


TYPE B1-Pa

63 sq m | 678 sq ft

(including PES of 12 sq m/ 129 sq ft)

#01-10



TYPE B1-Pb

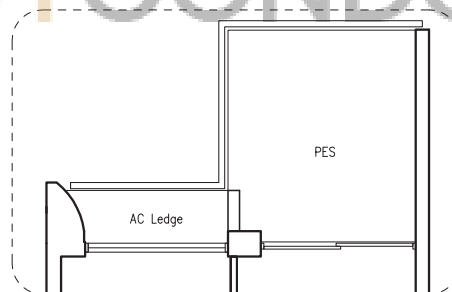
63 sq m | 678 sq ft

(including PES of 12 sq m/ 129 sq ft)

#01-17

#01-24

#01-31



TYPE B1a-Pb

63 sq m | 678 sq ft

(including PES of 12 sq m/ 129 sq ft)

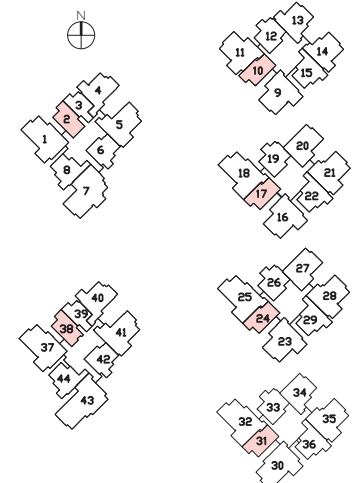
#01-38

TYPE B1a-Pa

63 sq m | 678 sq ft

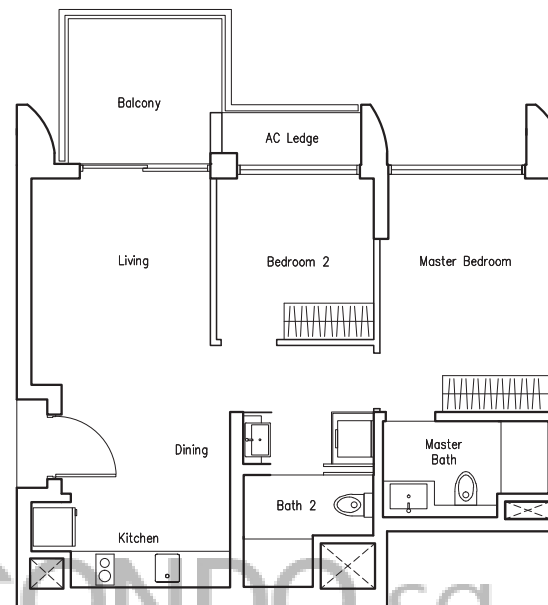
(including PES of 12 sq m/ 129 sq ft)

#01-02



SUITES

2 BEDROOM

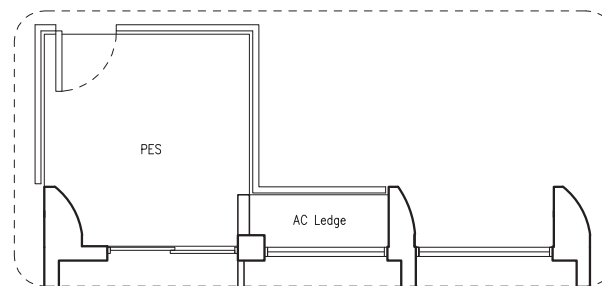


Type B2

67 sq m | 721 sq ft

#02-06 TO #16-06

#02-42 TO #16-42



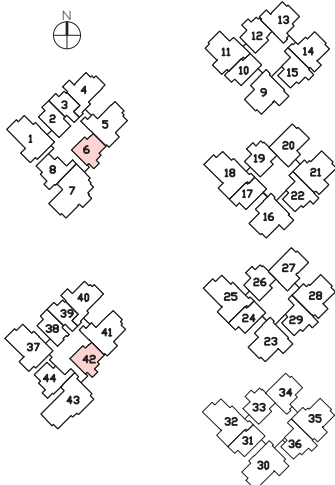
TYPE B2-P

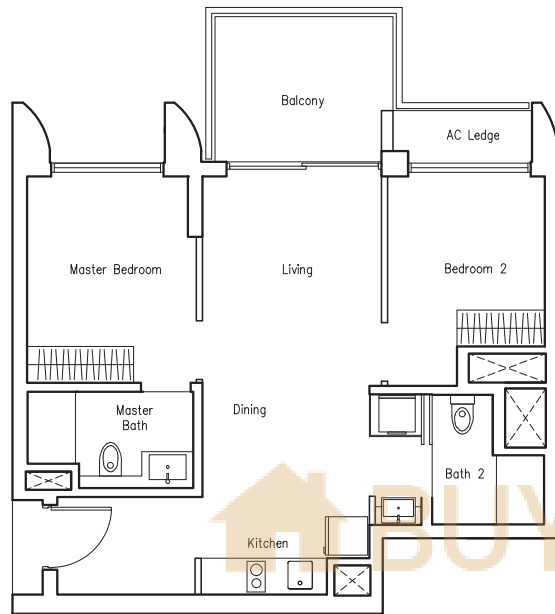
72 sq m | 775 sq ft

(including PES of 12 sq m/ 129 sq ft)

#01-06

#01-42





Type B3

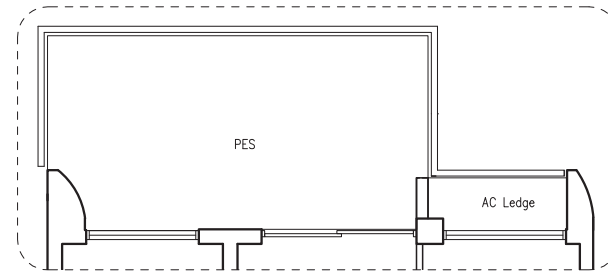
68 sq m | 732 sq ft

#02-12 TO #16-12

#02-19 TO #16-19

#02-26 TO #16-26

#02-33 TO #16-33

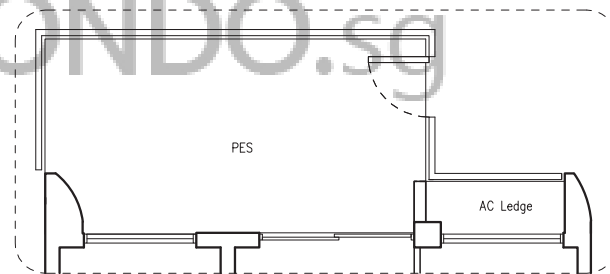


TYPE B3-Pa

81 sq m | 872 sq ft

(including PES of 21 sq m/ 226 sq ft)

#01-12



TYPE B3-Pb

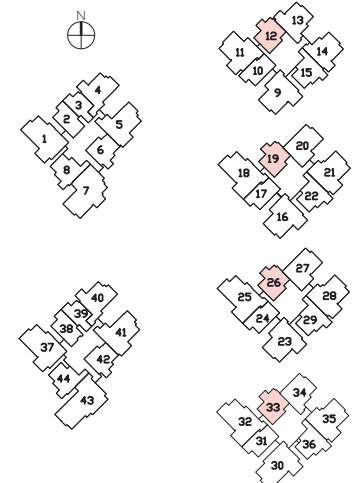
81 sq m | 872 sq ft

(including PES of 21 sq m/ 226 sq ft)

#01-19

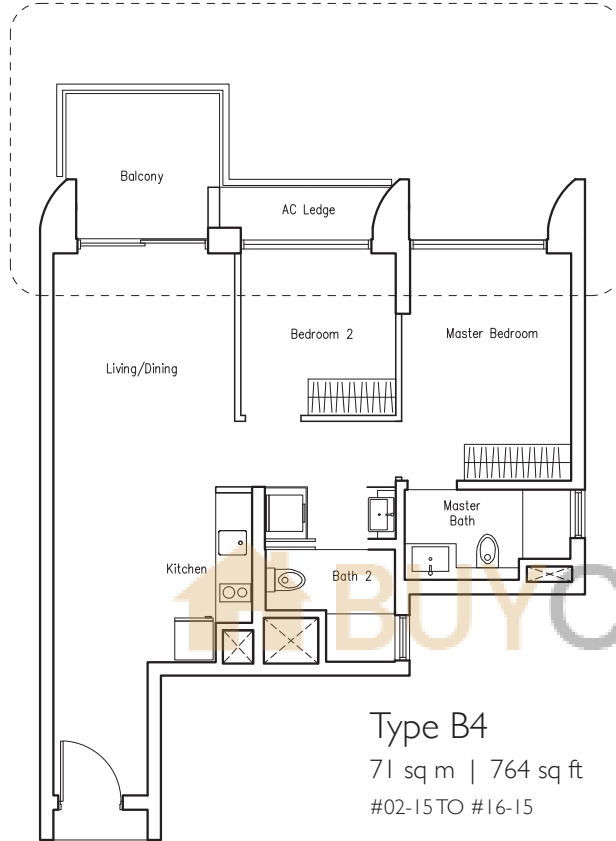
#01-26

#01-33



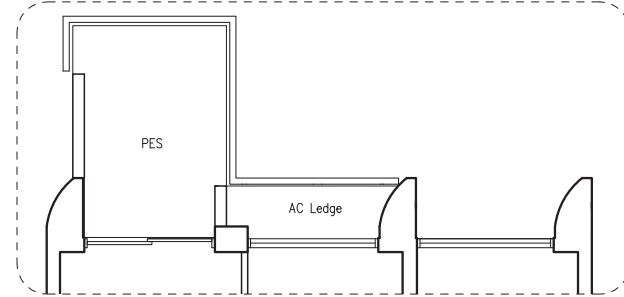
SUITES

2 BEDROOM

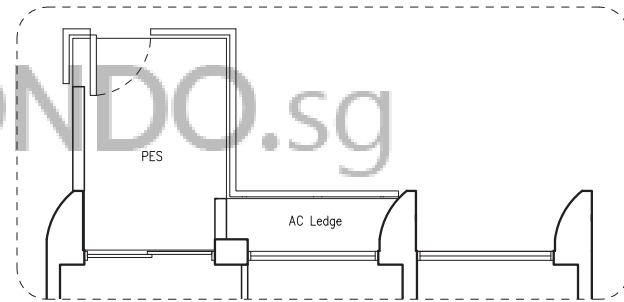


Type B4
71 sq m | 764 sq ft
#02-15 TO #16-15

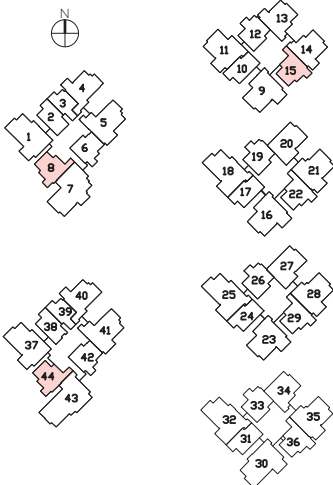
Type B4b
71 sq m | 764 sq ft
#02-08 TO #16-08
#02-44 TO #16-44

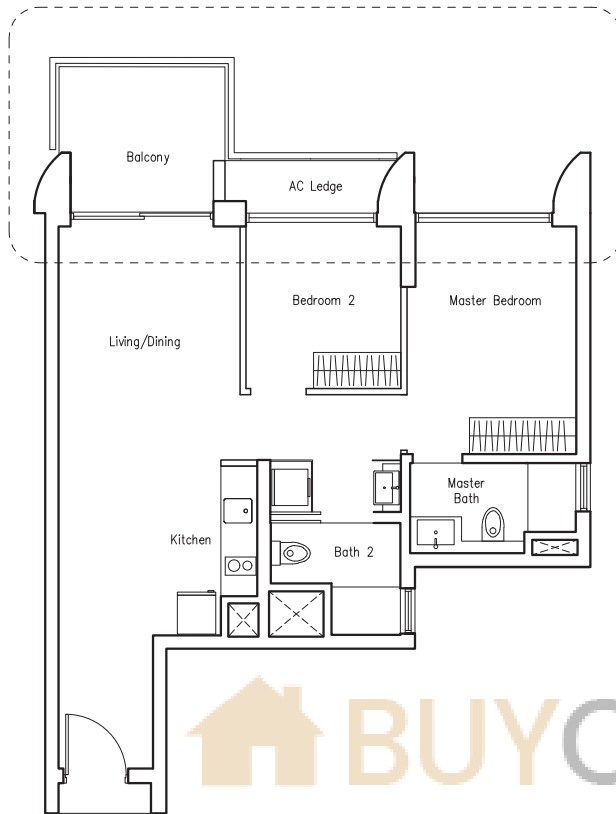


TYPE B4-P
75 sq m | 807 sq ft
(including PES of 9 sq m/ 97 sq ft)
#01-15



TYPE B4b-P
75 sq m | 807 sq ft
(including PES of 9 sq m/ 97 sq ft)
#01-08
#01-44





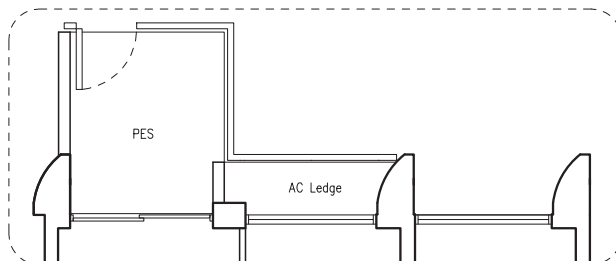
TYPE B4a

72 sq m | 775 sq ft

#02-22 TO #16-22

#02-29 TO #16-29

#02-36 TO #16-36



TYPE B4a-P

75 sq m | 807 sq ft

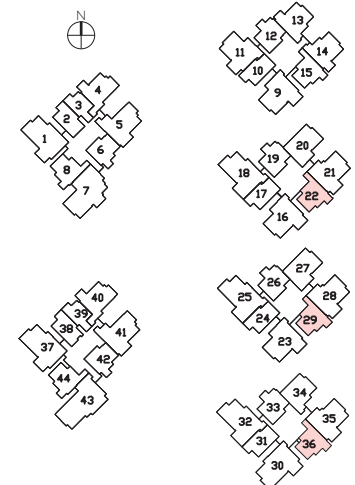
(including PES of 9 sq m/ 97 sq ft)

#01-22

#01-29

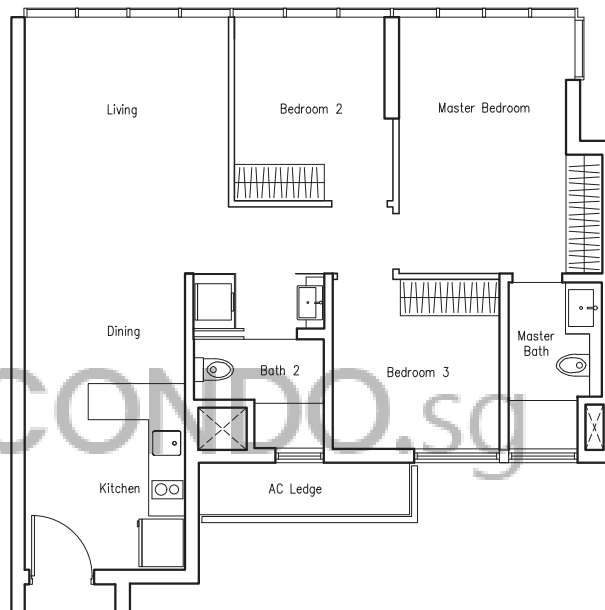
#01-36

 BUYCONDO.sg



SUITES

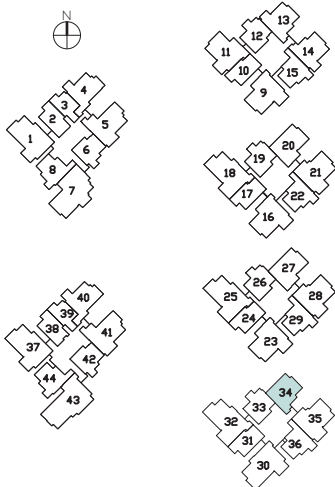
3 BEDROOM

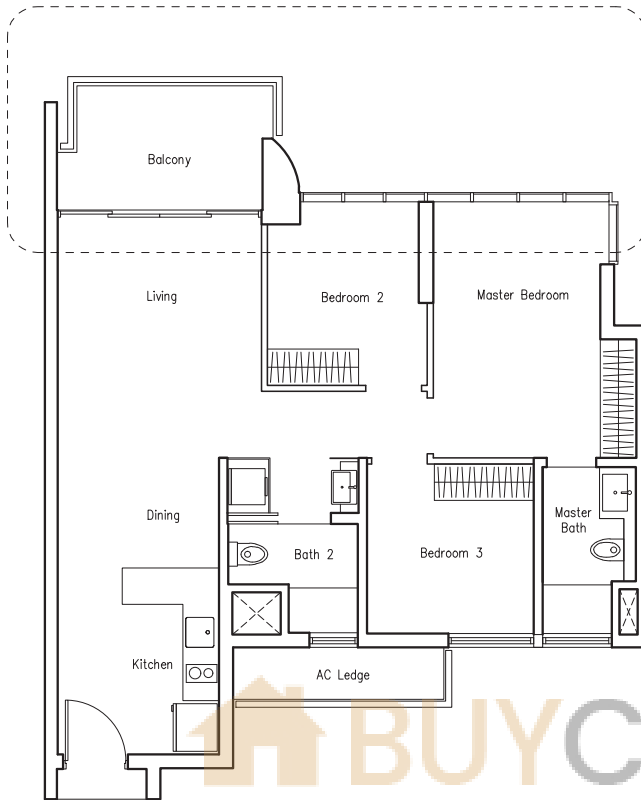


TYPE CI

81 sq m | 872 sq ft

#02-34 TO #16-34

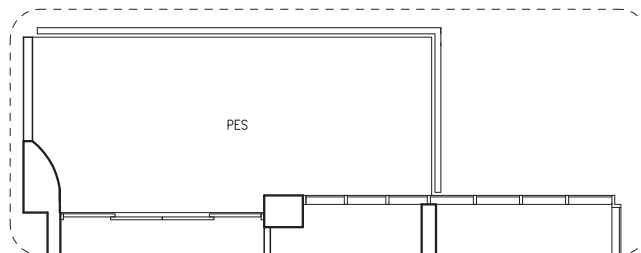




TYPE C1a

87 sq m | 936 sq ft

#02-14 TO #16-14

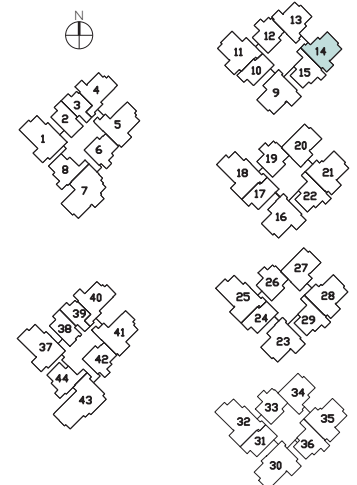


TYPE C1a-P

99 sq m | 1066 sq ft

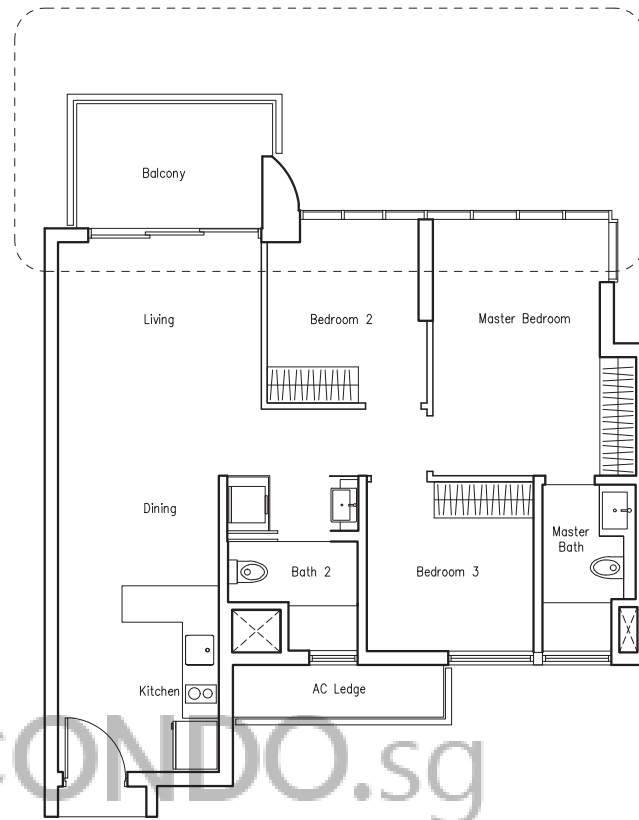
(including PES of 20 sq m / 215 sq ft)

#01-14



SUITES

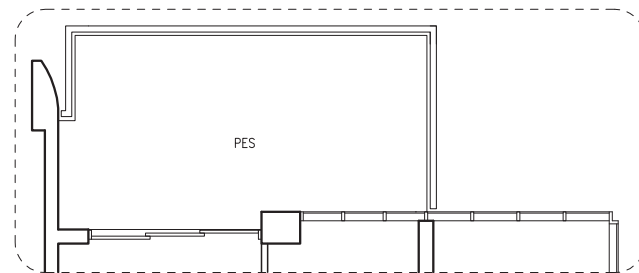
3 BEDROOM



TYPE C1b

88 sq m | 947 sq ft

#02-13 TO #16-13

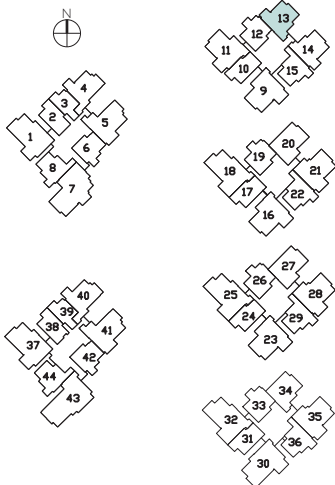


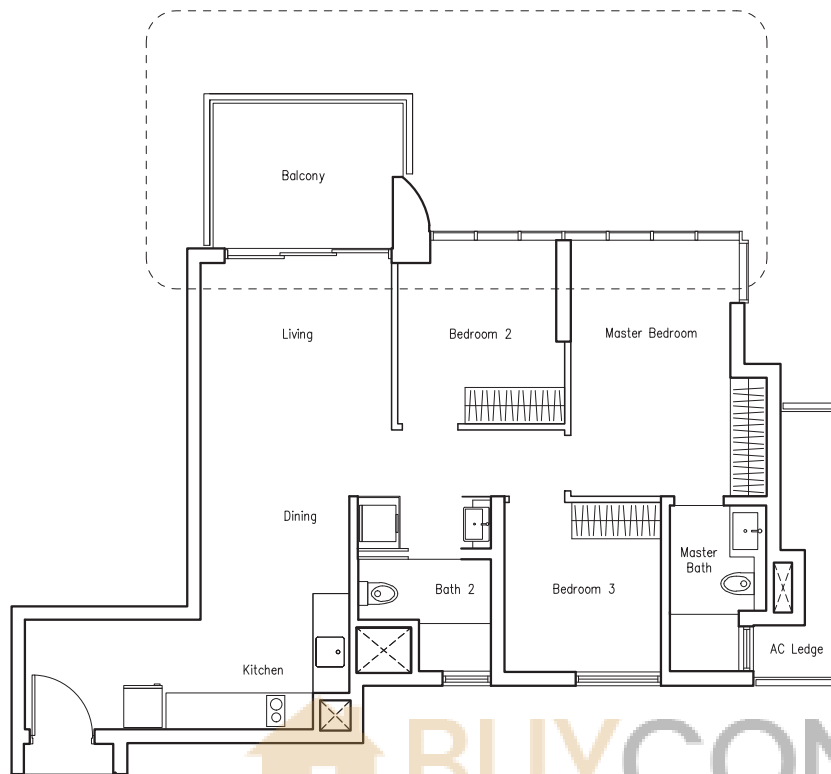
TYPE C1b-P

100 sq m | 1076 sq ft

(including PES of 20 sq m / 215 sq ft)

#01-13



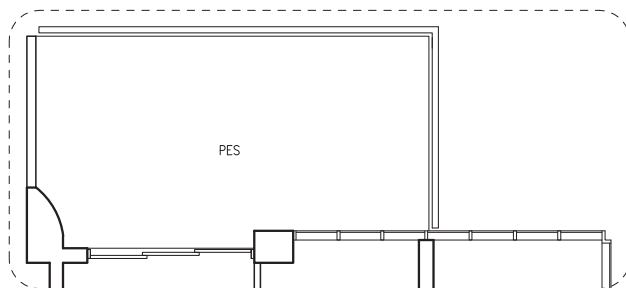


TYPE C2

90 sq m | 969 sq ft

#02-04 TO #16-04

#02-40 TO #16-40

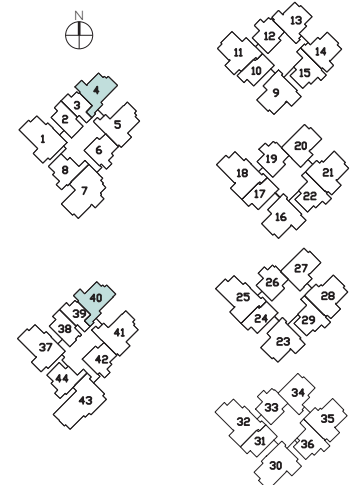


TYPE C2-P

103 sq m | 1109 sq ft

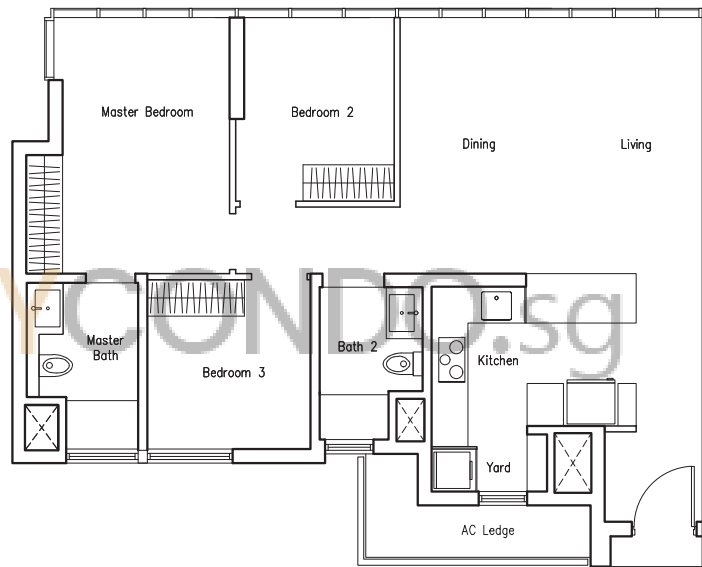
(including PES of 23 sq m/ 248 sq ft)

#01-04



SUITES

3 BEDROOM

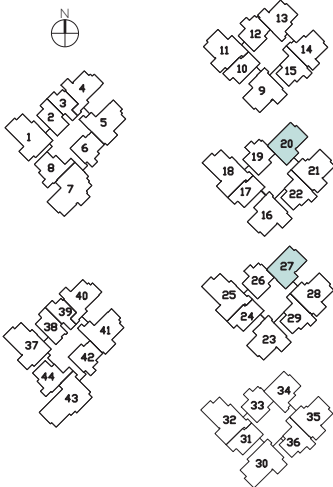


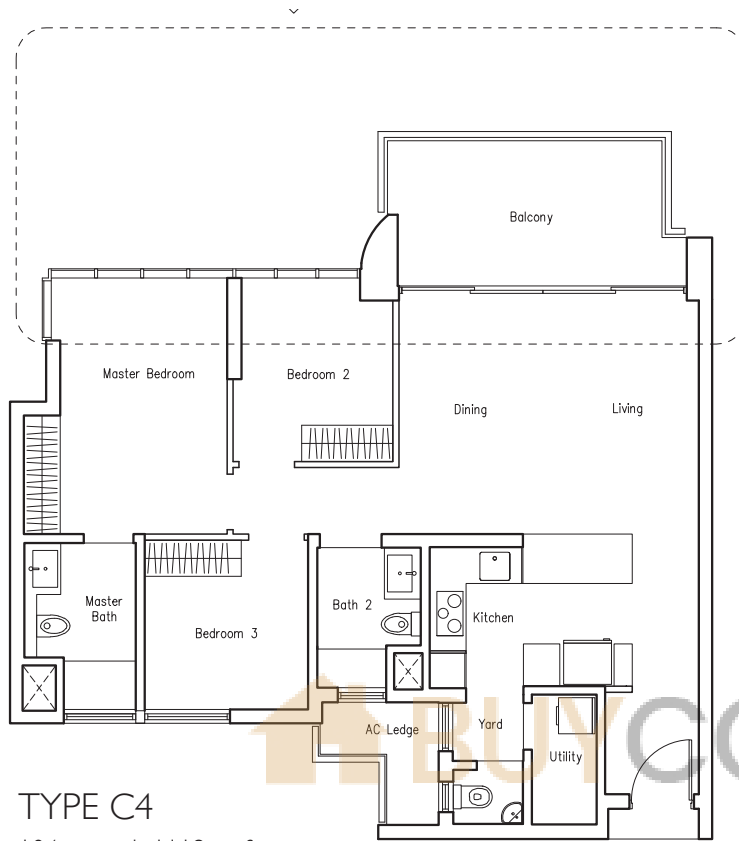
TYPE C3

92 sq m | 990 sq ft

#02-20 TO #16-20

#02-27 TO #16-27





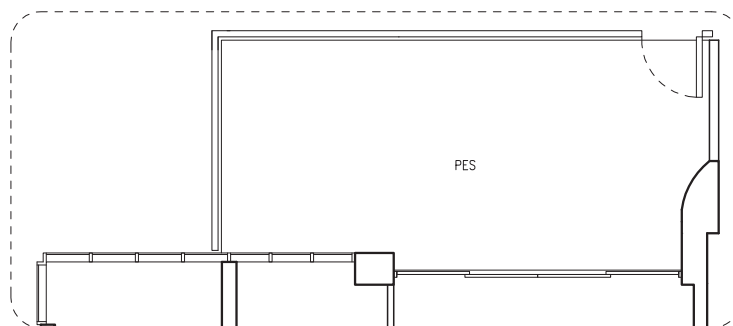
TYPE C4

104 sq m | 1119 sq ft

#02-21 TO #15-21

#02-28 TO #15-28

#02-35 TO #15-35



TYPE C4-P

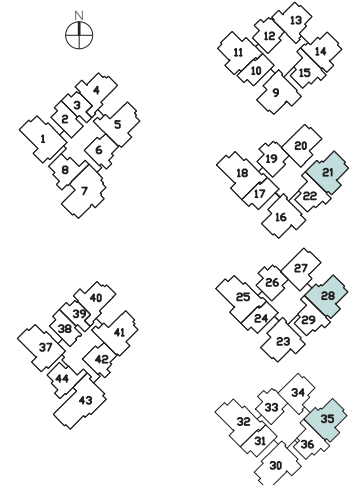
123 sq m | 1324 sq ft

(including PES of 31 sq m/ 334 sq ft)

#01-21

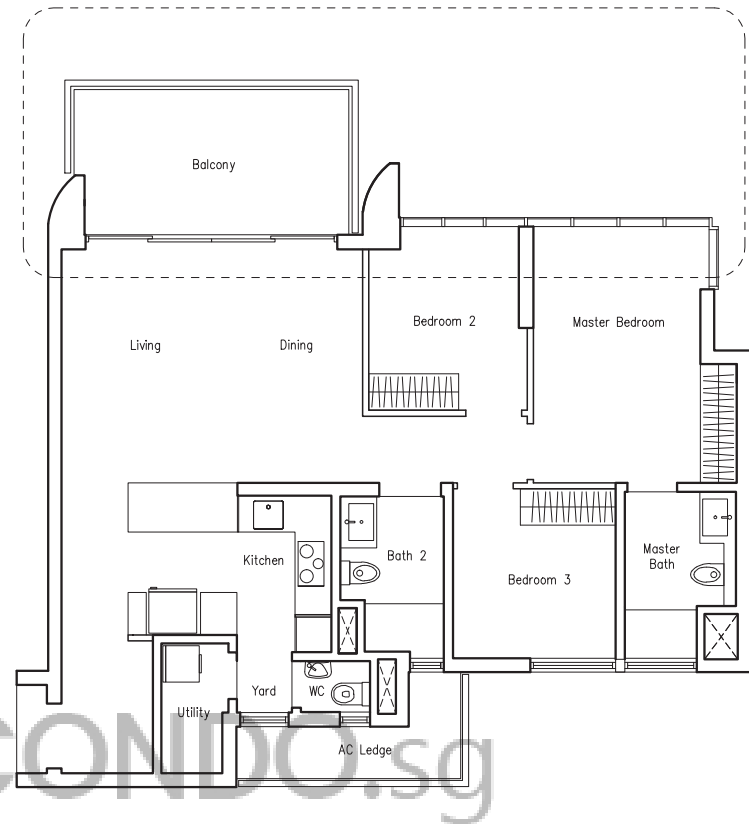
#01-28

#01-35



SUITES

3 BEDROOM



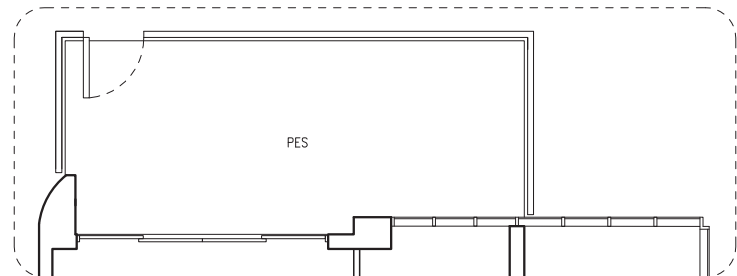
TYPE C5

106 sq m | 1141 sq ft

#02-09 TO #16-09

#02-16 TO #16-16

#02-23 TO #16-23



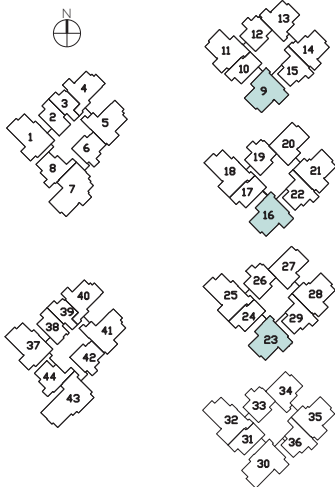
TYPE C5-P

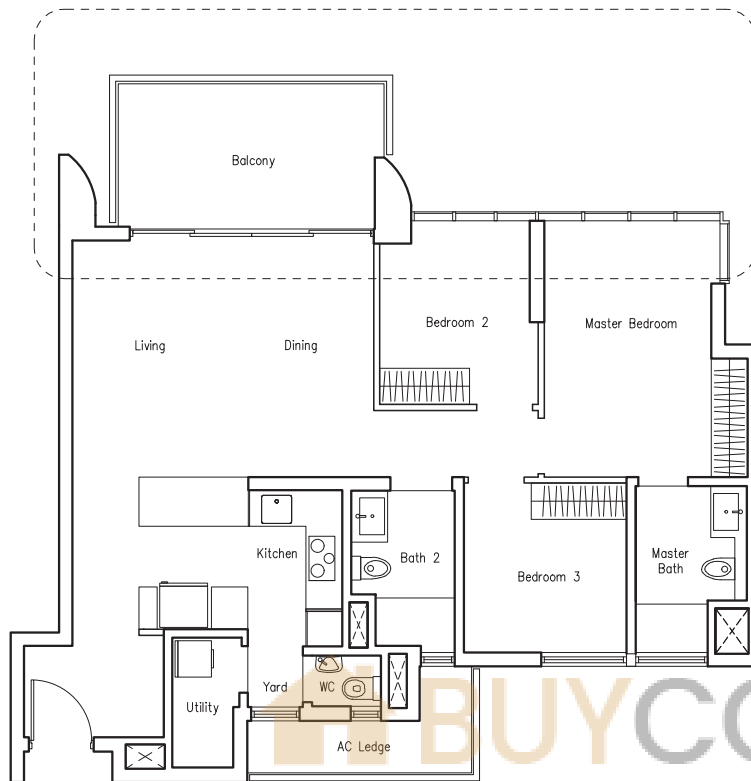
119 sq m | 1281 sq ft

(including PES of 25 sq m / 269 sq ft)

#01-16

#01-23

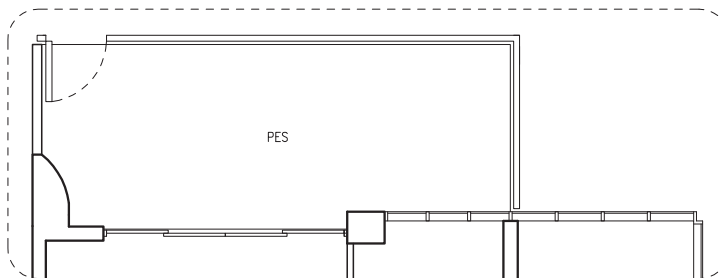




TYPE C6

106 sq m | 1141 sq ft

#02-11 TO #16-11

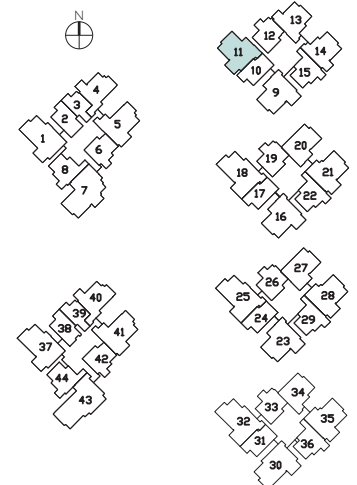


TYPE C6-P

119 sq m | 1281 sq ft

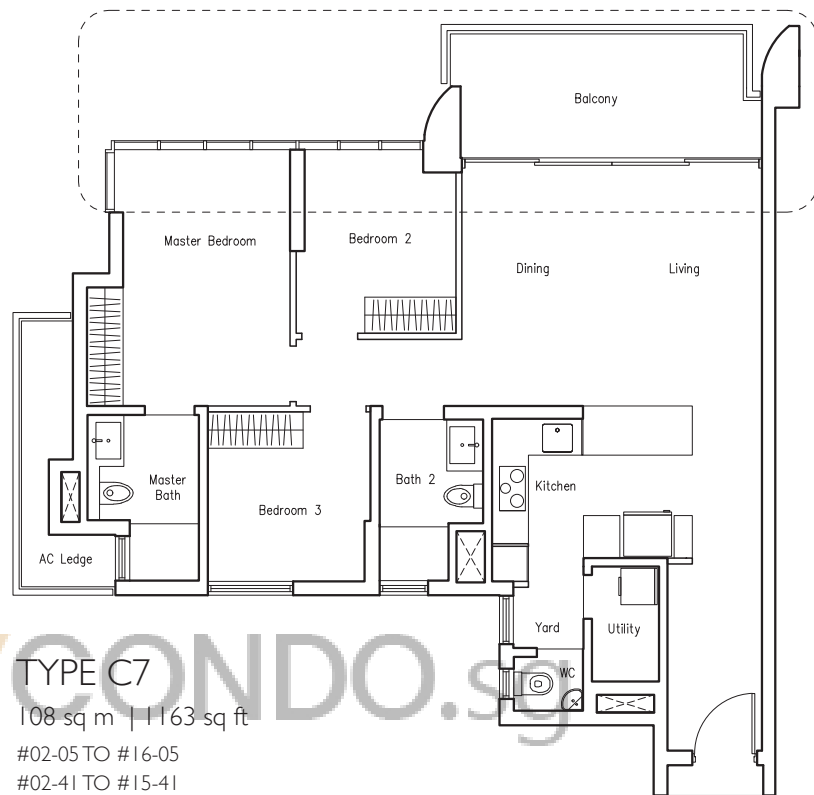
(including PES of 24 sq m / 258 sq ft)

#01-11



SUITES

3 BEDROOM

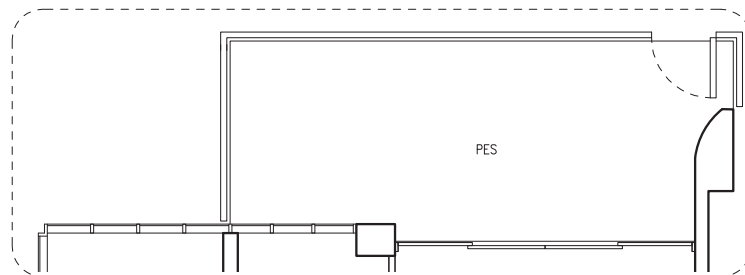
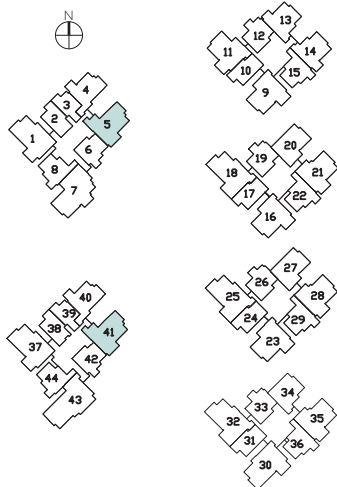


TYPE C7

108 sq m | 1163 sq ft

#02-05 TO #16-05

#02-41 TO #15-41



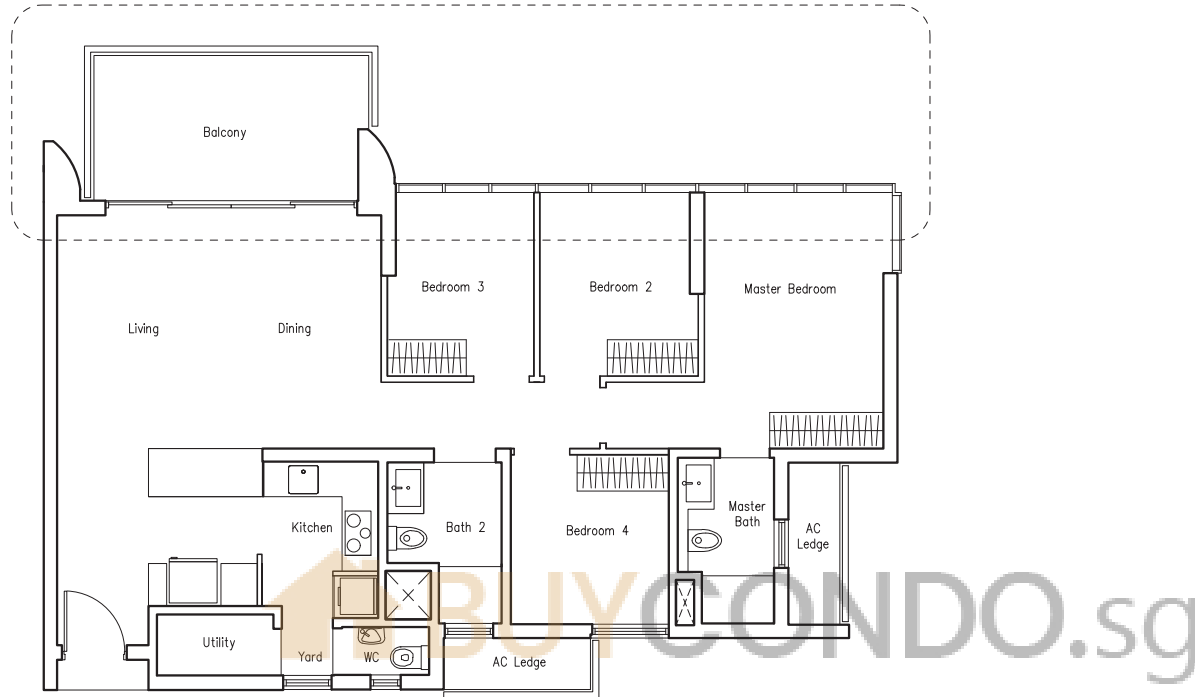
TYPE C7-P

123 sq m | 1324 sq ft

(including PES of 27 sq m/ 291 sq ft)

#01-05

#01-41

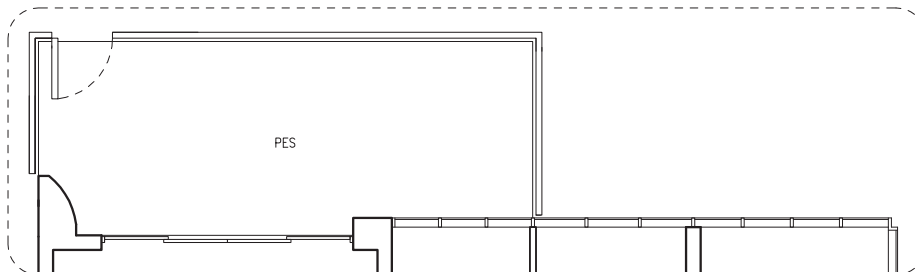


TYPE D1

118 sq m | 1270 sq ft

#03-01 TO #15-01

#02-37 TO #15-37

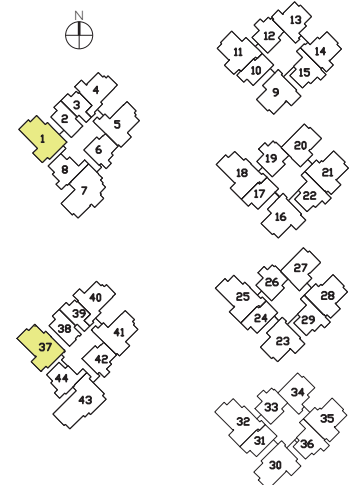


TYPE D1-P

133 sq m | 1432 sq ft

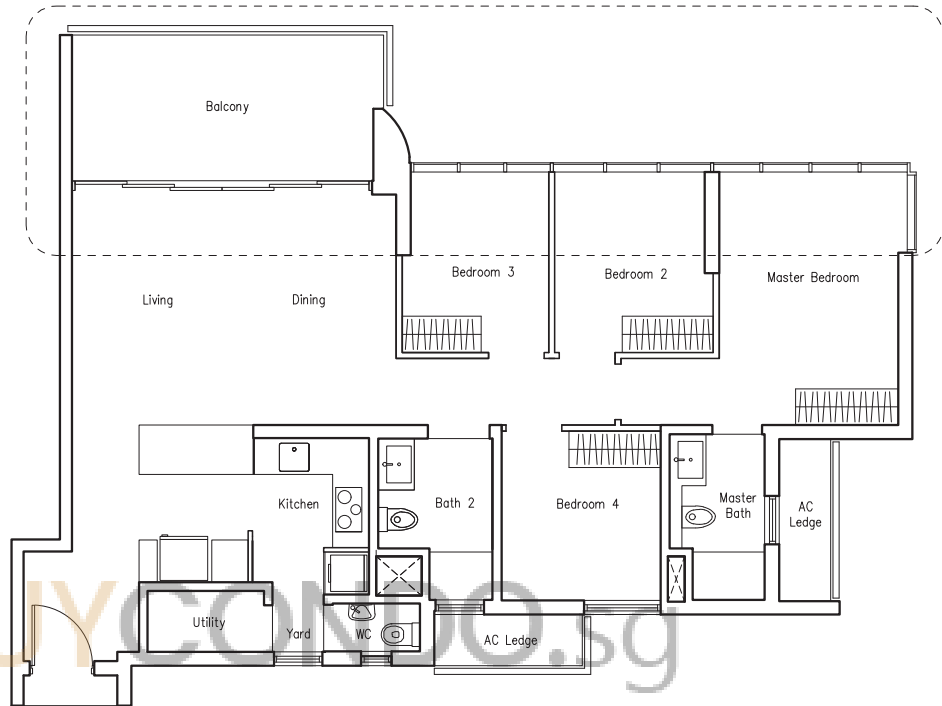
(including PES of 27 sq m / 291 sq ft)

#01-37



SUITES

4 BEDROOM



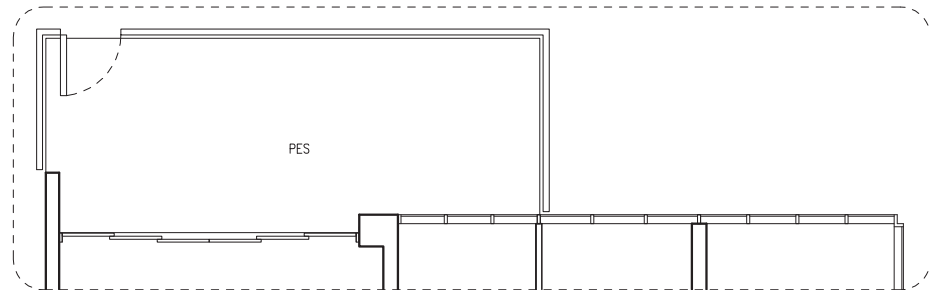
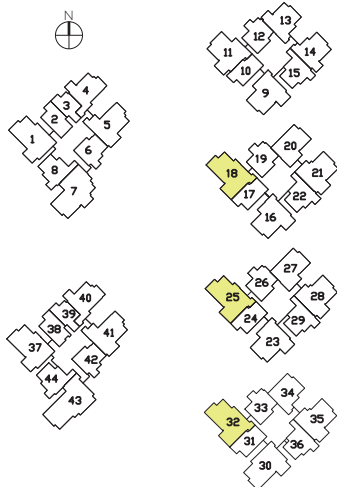
TYPE D2

121 sq m | 1302 sq ft

#02-18 TO #15-18

#02-25 TO #15-25

#02-32 TO #15-32



TYPE D2-P

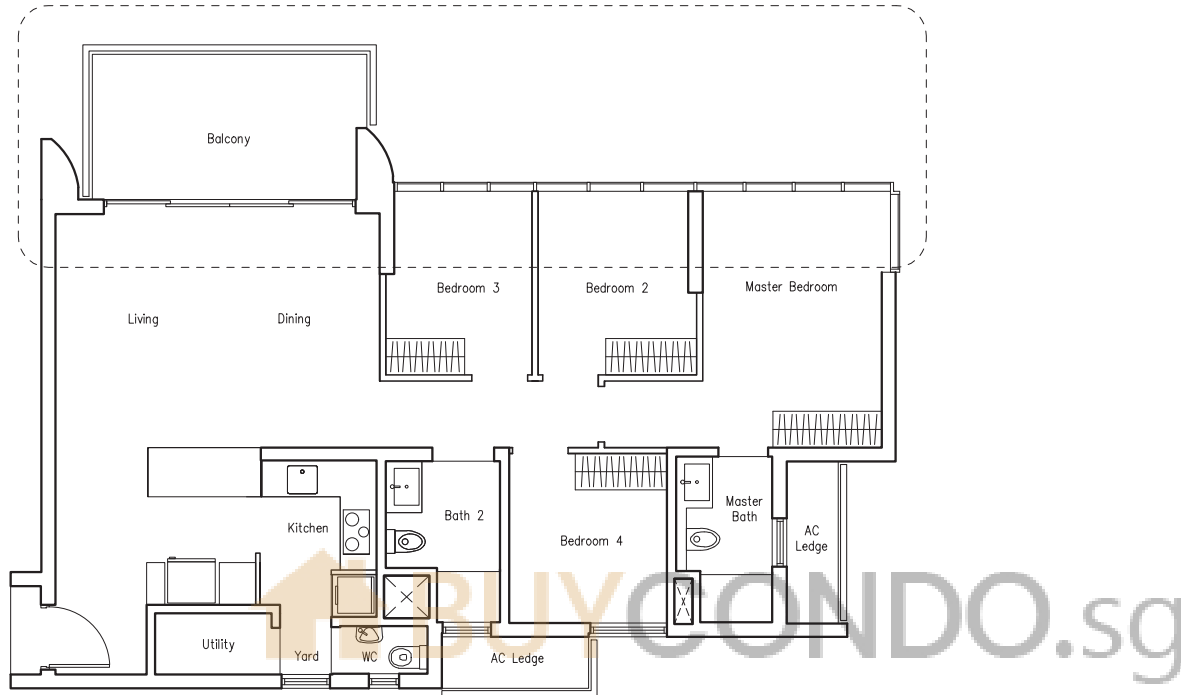
136 sq m | 1464 sq ft

(including PES of 29 sq m / 312 sq ft)

#01-18

#01-25

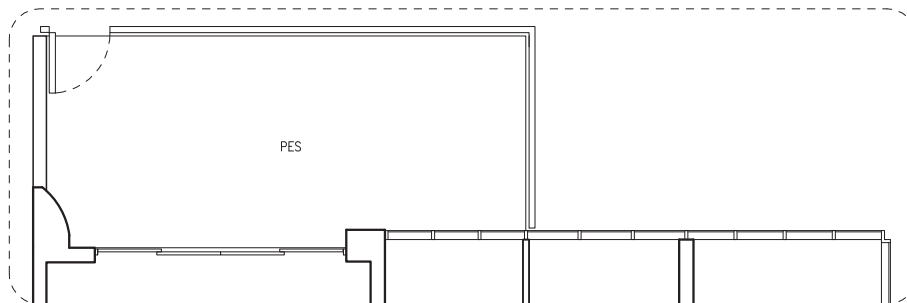
#01-32



TYPE D3

119 sq m | 1281 sq ft

#02-30 TO #15-30

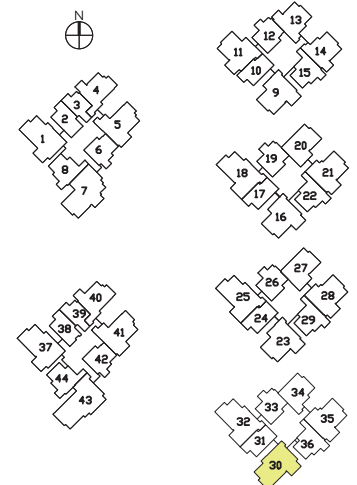


TYPE D3-P

134 sq m | 1442 sq ft

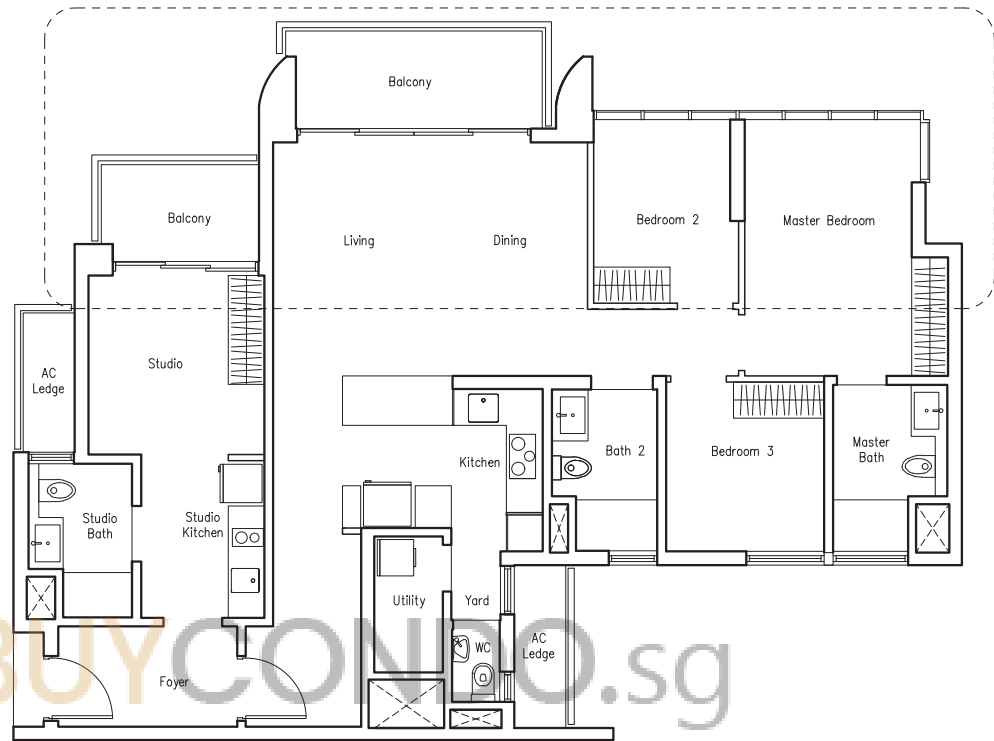
(including PES of 27 sq m / 291 sq ft)

#01-30



SUITES

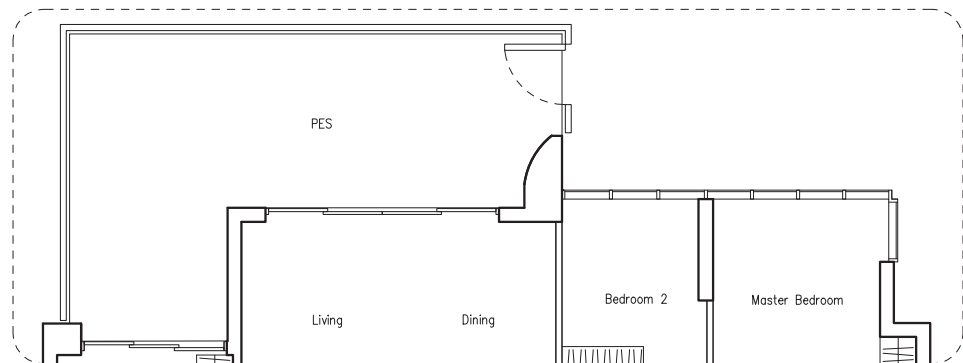
4 BEDROOM (DUAL-KEY)



TYPE D4

137 sq m | 1475 sq ft

#02-07 TO #16-07

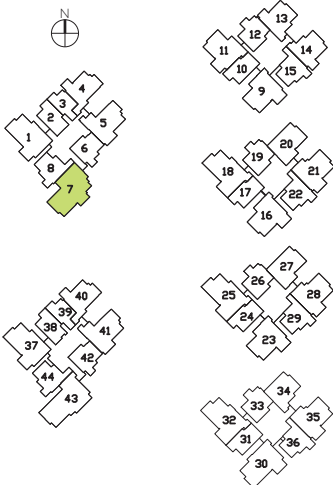


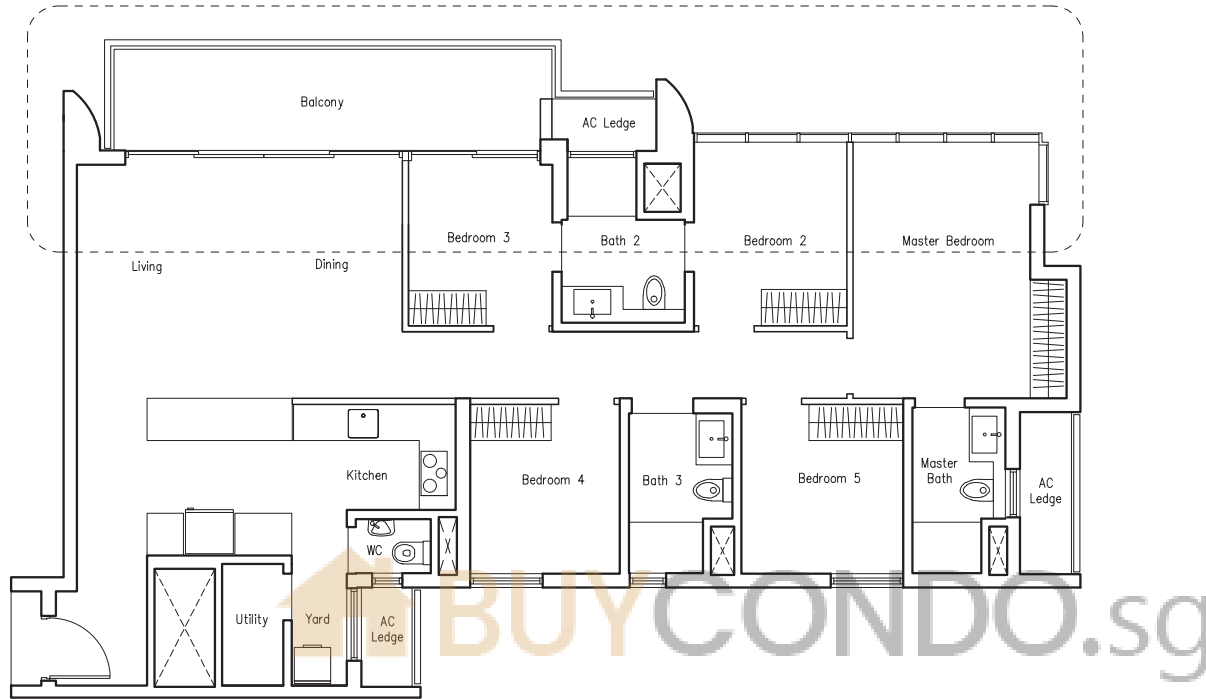
TYPE D4-P

155 sq m | 1668 sq ft

(including PES of 31 sq m / 334 sq ft)

#01-07

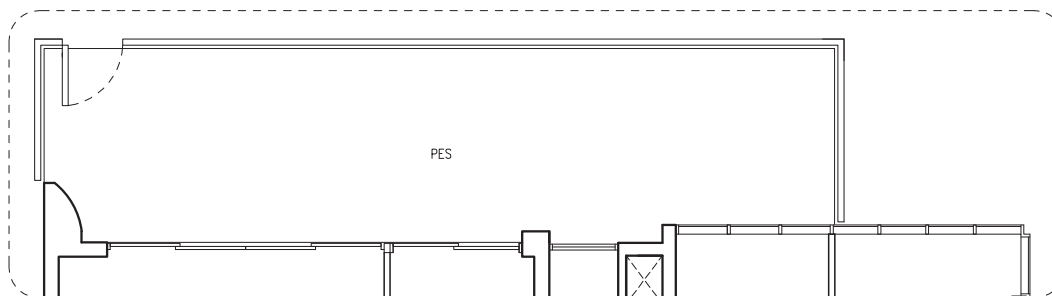




TYPE EI

142 sq m | 1528 sq ft

#02-43 TO #15-43

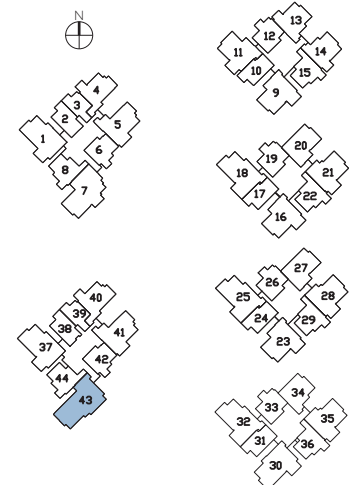


TYPE EI-P

173 sq m | 1862 sq ft

(including PES of 47 sq m/ 506 sq ft)

#01-43



PENTHOUSE

4 BEDROOM

Type PH1

184 sq m | 1981 sq ft

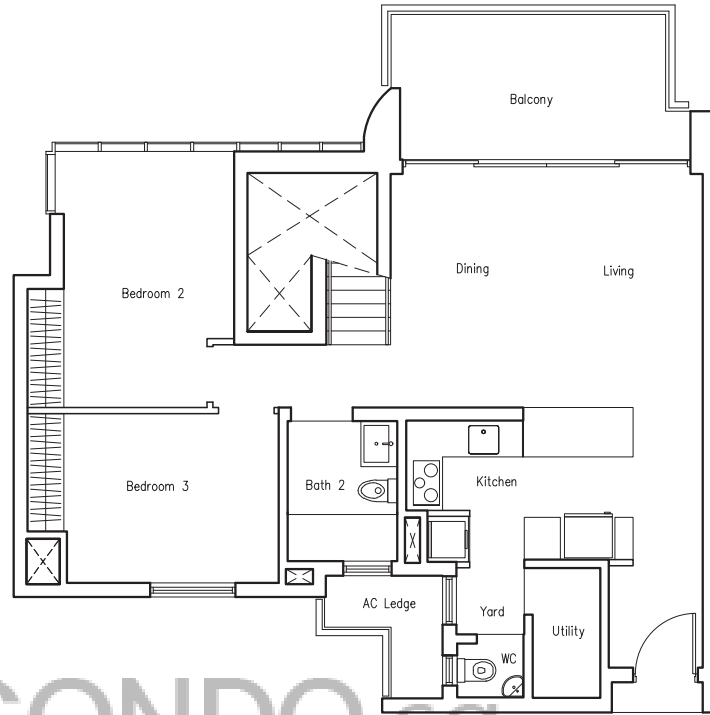
(including Roof Terrace of 17 sq m/ 183 sq ft)

#16-21

#16-28

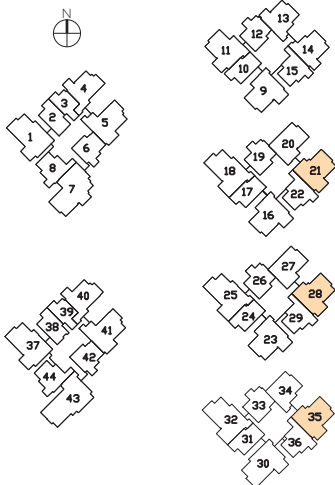
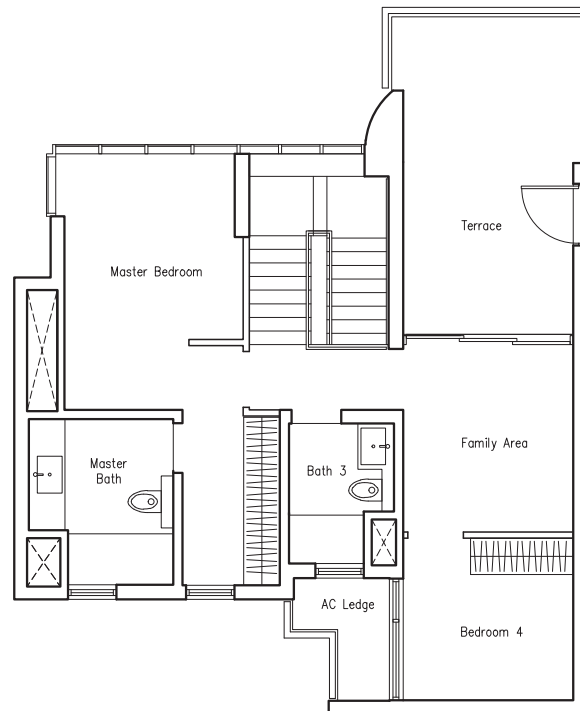
#16-35

(Lower)



 BUYCONDO.sg

(Upper)



PENTHOUSE

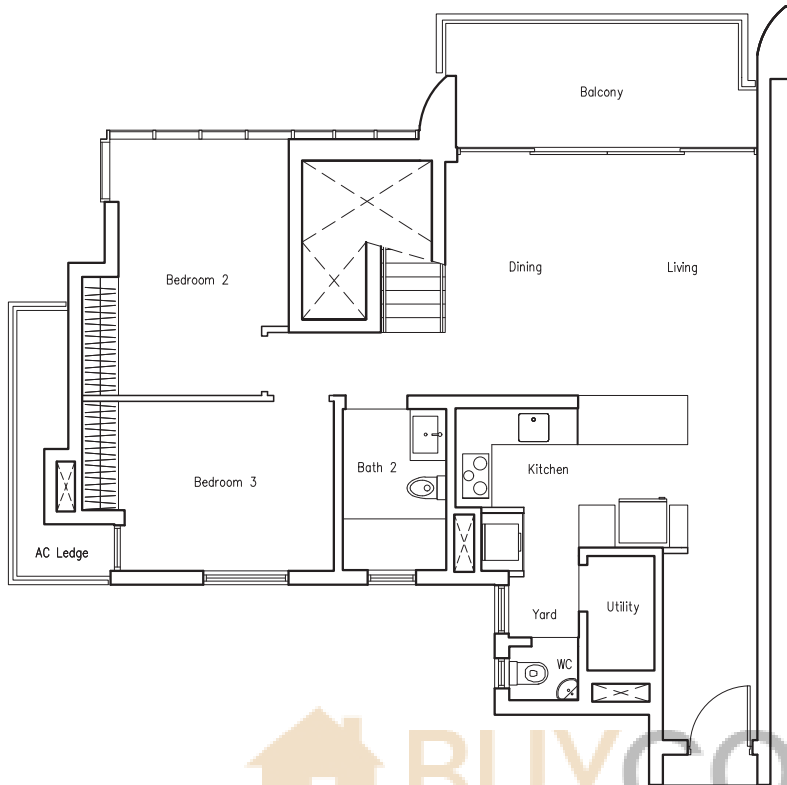
4 BEDROOM

Type PH2

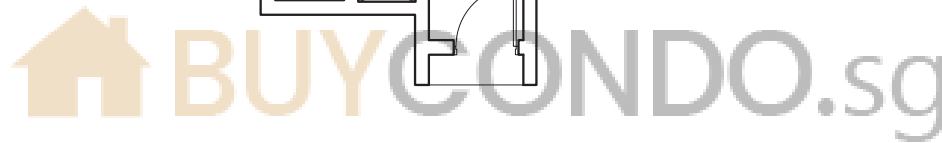
191 sq m | 2056 sq ft

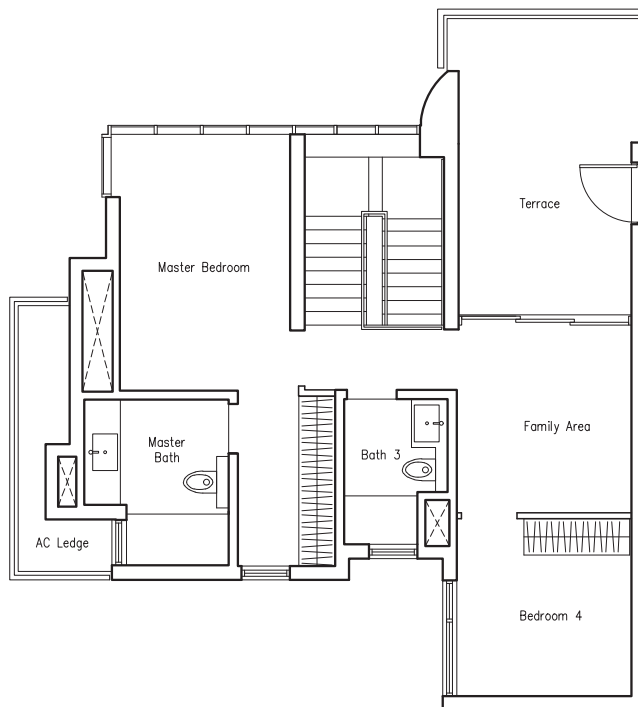
(including Roof Terrace of 16 sq m/ 172 sq ft)

#16-41

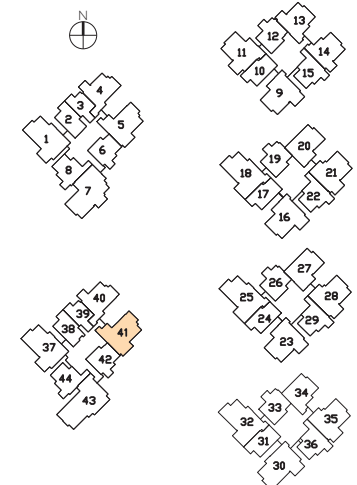


(Lower)

BUY CONDO.sg



(Upper)



PENTHOUSE

4 BEDROOM + STUDY

Type PH3

211 sq m | 2271 sq ft

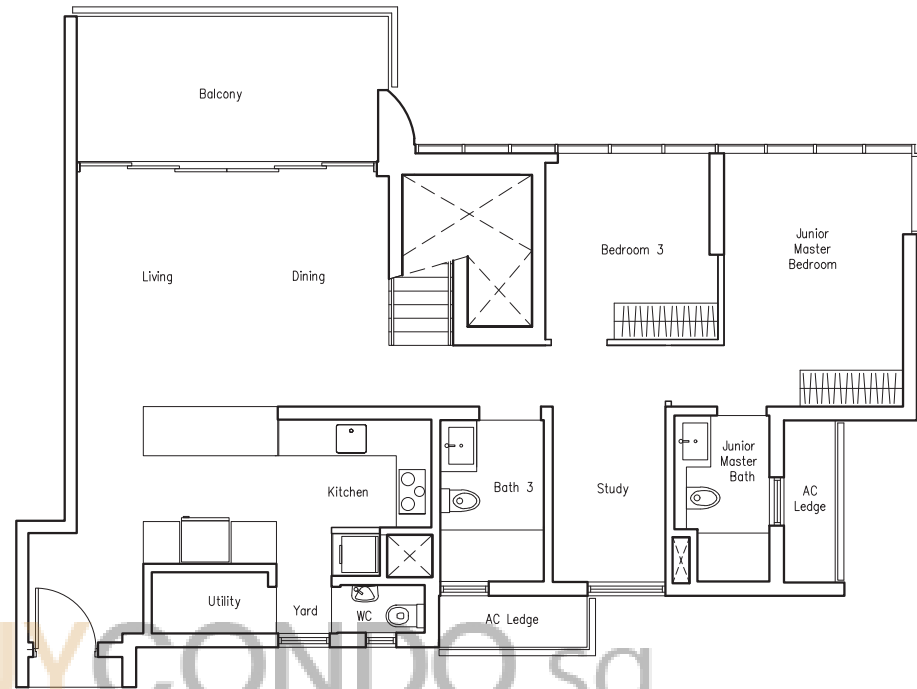
(including Roof Terrace of 21 sq m / 226 sq ft)

#16-18

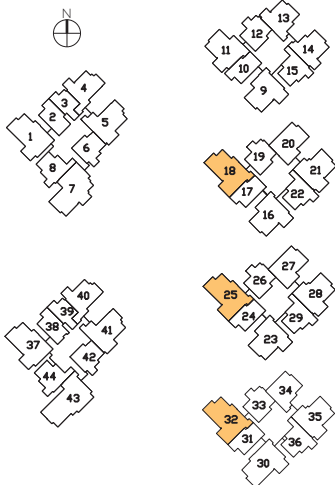
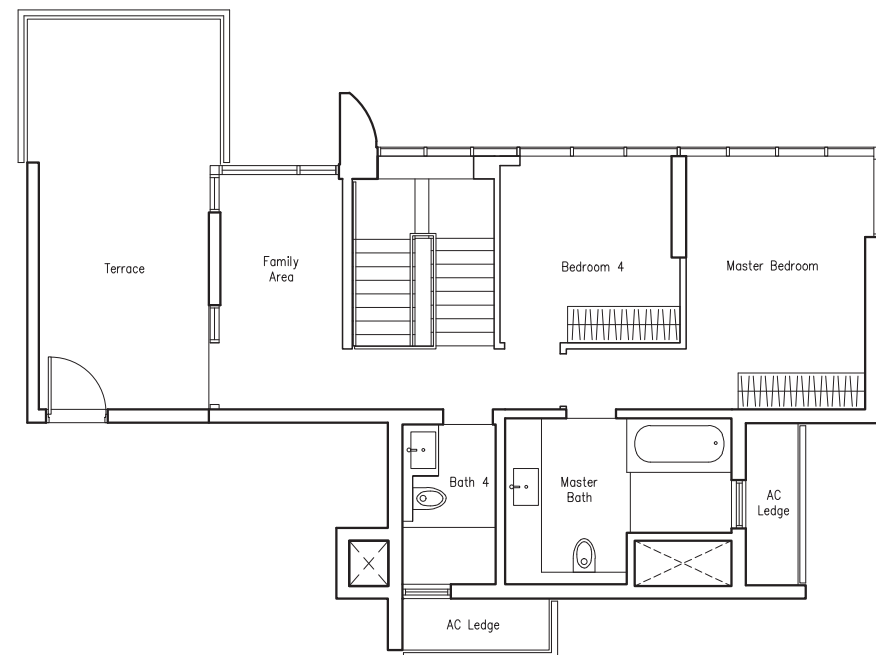
#16-25

#16-32

(Lower)



(Upper)



BUY CONDO.sg

PENTHOUSE

4 BEDROOM + STUDY



(Lower)

Type PH4

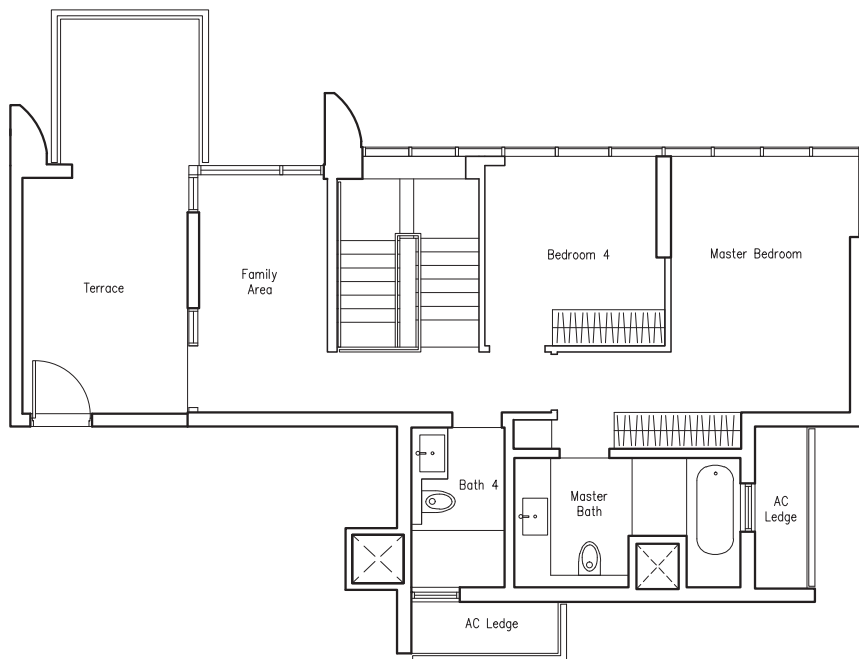
207 sq m | 2228 sq ft

(including Roof Terrace of 19 sq m/ 205 sq ft)

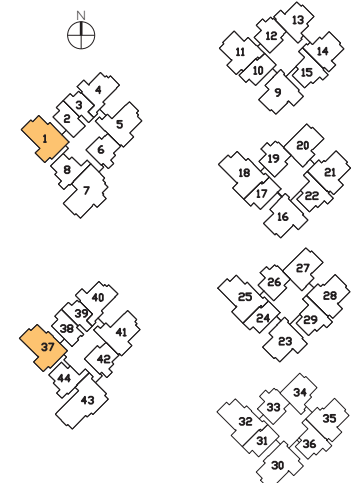
#16-01

#16-37

BUYCONDO.sg



(Upper)



PENTHOUSE

4 BEDROOM + STUDY

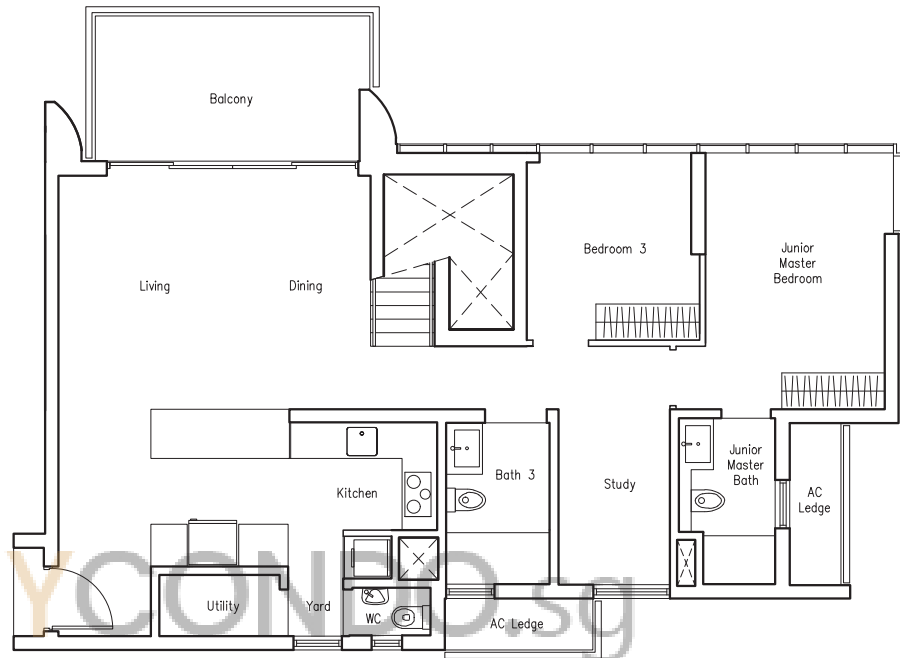
Type PH5

208 sq m | 2239 sq ft

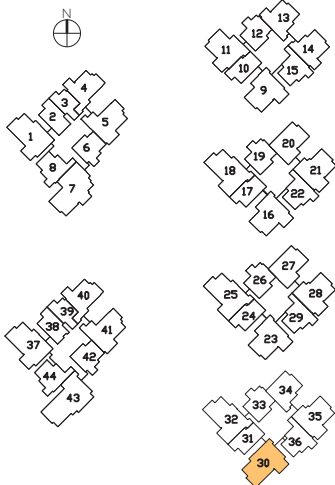
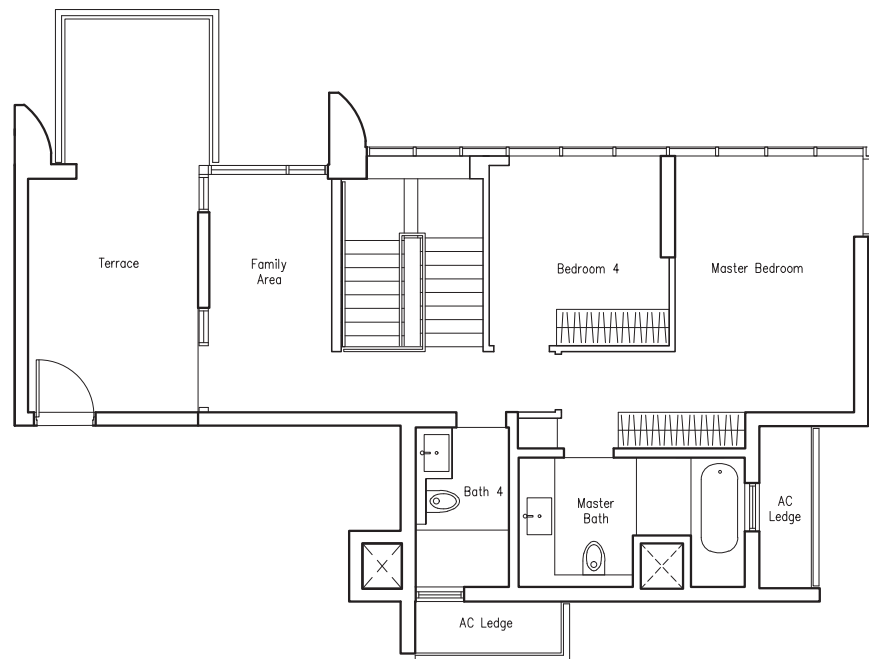
(including Roof Terrace of 19 sq m/ 205 sq ft)

#16-30

(Lower)



(Upper)



PENTHOUSE

5 BEDROOM

Type PH6

249 sq m | 2680 sq ft

(including Roof Terrace of 26 sq m/ 280 sq ft)

#16-43

