

6th - 13th & 15th - 24th STOREY SITE PLAN



28th STOREY SITE PLAN



25th - 27th STOREY SITE PLAN



SCHEMATIC DIAGRAM

LEVEL	STACK	01	02	03	04	05	06	07	08
28		PH2	PH3 (#28-03)				PH1 (#28-06)		
27		C3P	B4S	C2P (#27-03)		C1	B6DK (#27-06)		
26		C3P	B4S	C2P (#26-03)		C1	B6DK (#26-06)		
25		C3P	B4S	C2P (#25-03)		C1	B6DK (#25-06)		
24		B5S	B4S	B1	A1	C1	B3	A2	B2
23		B5S	B4S	B1	A1	C1	B3	A2	B2
22		B5S	B4S	B1	A1	C1	B3	A2	B2
21		B5S	B4S	B1	A1	C1	B3	A2	B2
20		B5S	B4S	B1	A1	C1	B3	A2	B2
19		B5S	B4S	B1	A1	C1	B3	A2	B2
18		B5S	B4S	B1	A1	C1	B3	A2	B2
17		B5S	B4S	B1	A1	C1	B3	A2	B2
16		B5S	B4S	B1	A1	C1	B3	A2	B2
15		B5S	B4S	B1	A1	C1	B3	A2	B2
14		FACILITIES DECK (HIGH CEILING)							
13		B5S	B4S	B1	A1	C1	B3	A2	B2
12		B5S	B4S	B1	A1	C1	B3	A2	B2
11		B5S	B4S	B1	A1	C1	B3	A2	B2
10		B5S	B4S	B1	A1	C1	B3	A2	B2
09		B5S	B4S	B1	A1	C1	B3	A2	B2
08		B5S	B4S	B1	A1	C1	B3	A2	B2
07		B5S	B4S	B1	A1	C1	B3	A2	B2
06		B5S	B4S	B1	A1	C1	B3	A2	B2
05		FACILITIES DECK (HIGH CEILING)							
04		MULTI-STOREY CARPARK							
03		MULTI-STOREY CARPARK							
02		MULTI-STOREY CARPARK							
01		DROP OFF / MAIN ACCESS							

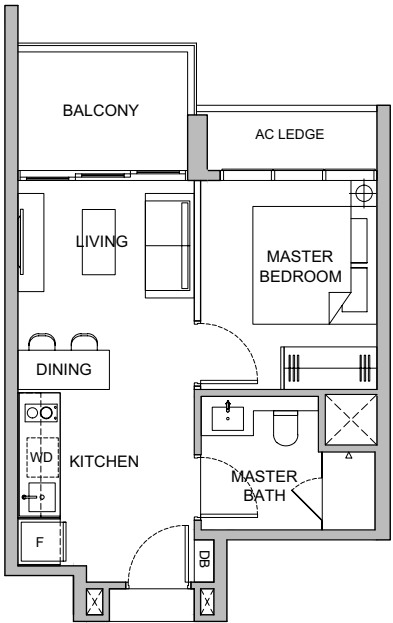
- UNIT TYPE
- 1 BEDROOM
- A1
- A2
- 2 BEDROOM
- B1
- B2
- B3
- 2 BEDROOM + STUDY
- B4S
- B5S
- 2 + 1 BEDROOM (DUAL KEY)
- B6DK
- 3 BEDROOM
- C1
- 3 BEDROOM (PREMIUM)
- C2P
- C3P
- PENTHOUSE
- 2 + 1 BEDROOM (DUAL KEY)
- PH1
- PENTHOUSE
- 3 BEDROOM
- PH2
- PENTHOUSE
- 4 BEDROOM + FAMILY + STUDY
- PH3

VERTICUS

1 BEDROOM

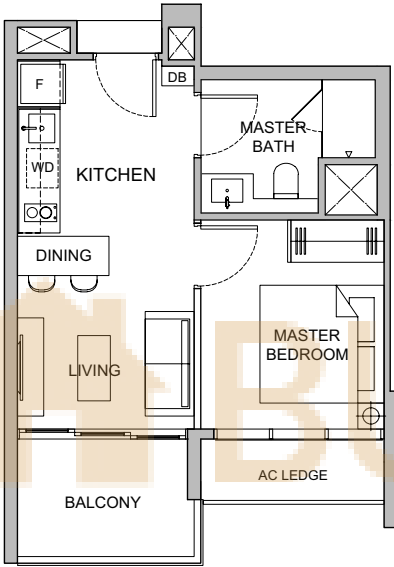
Type A1

#06-04 to #13-04  
#15-04 to #24-04  
43 sq.m | 463 sq.ft



Type A2

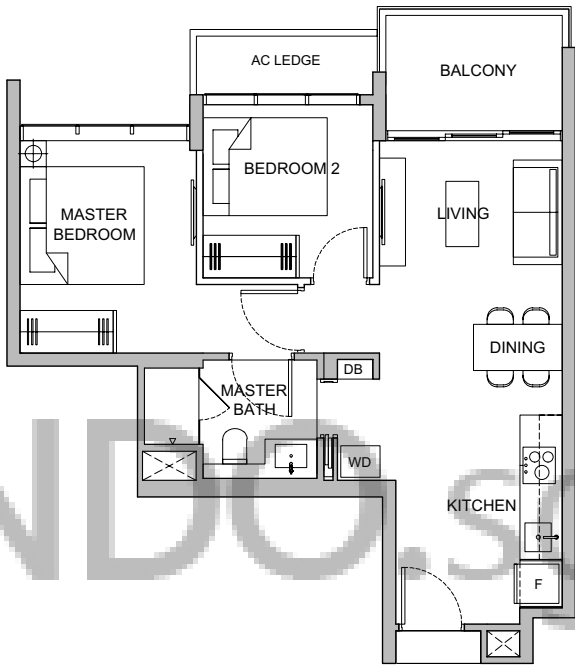
#06-07 to #13-07  
#15-07 to #24-07  
41 sq.m | 441 sq.ft



2 BEDROOM

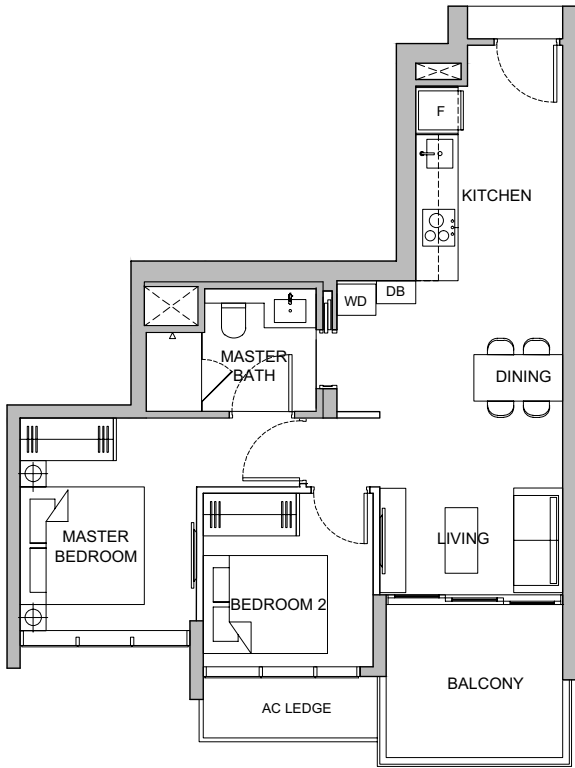
Type B1

#06-03 to #13-03  
#15-03 to #24-03  
59 sq.m | 635 sq.ft

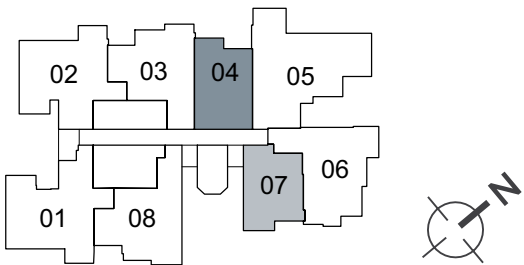


Type B2

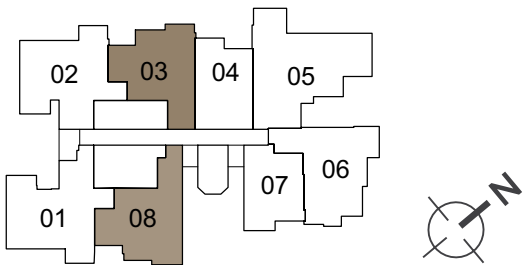
#06-08 to #13-08  
#15-08 to #24-08  
63 sq.m | 678 sq.ft



Plans are not to scale and subject to any changes as may be required or approved by the relevant authorities and do not form part of an offer or contract. All floor areas indicated are inclusive of AC Ledge, Balcony and Strata Void where applicable. All floor areas are estimates only and subject to final survey. The balcony shall not be enclosed unless with the approved balcony screen. For an illustration of the approved balcony screen, please refer to Annexure 1 of this brochure.



Plans are not to scale and subject to any changes as may be required or approved by the relevant authorities and do not form part of an offer or contract. All floor areas indicated are inclusive of AC Ledge, Balcony and Strata Void where applicable. All floor areas are estimates only and subject to final survey. The balcony shall not be enclosed unless with the approved balcony screen. For an illustration of the approved balcony screen, please refer to Annexure 1 of this brochure.

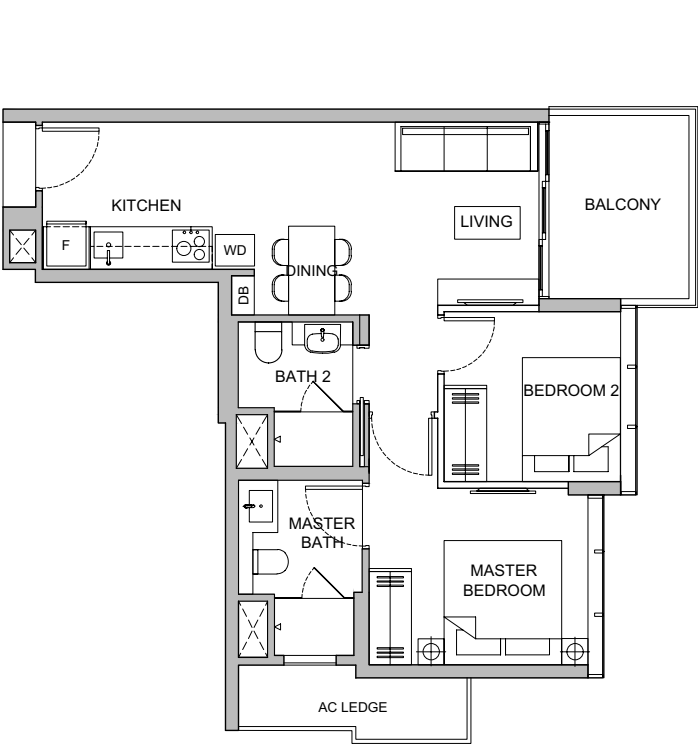




2 BEDROOM

Type B3

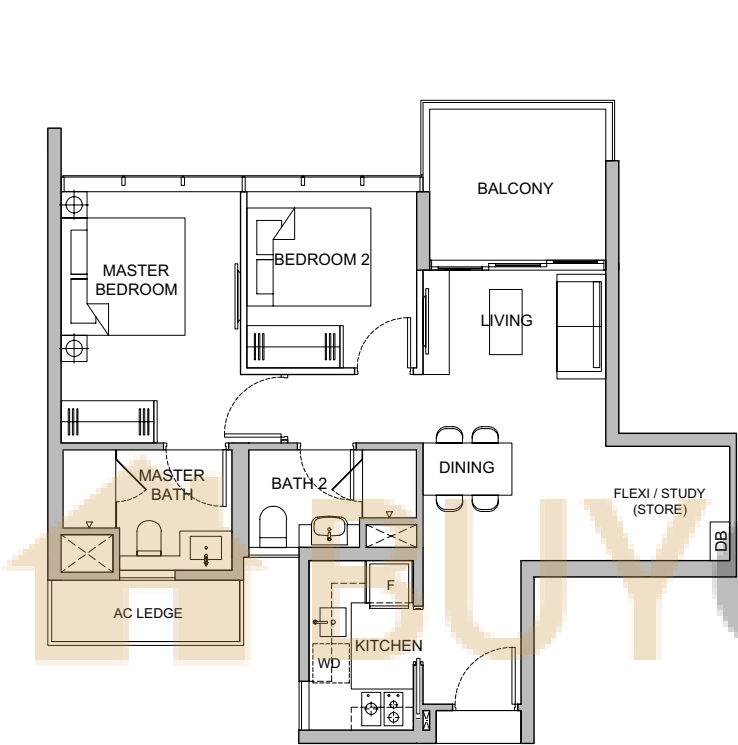
#06-06 to #13-06  
#15-06 to #24-06  
65 sq.m | 700 sq.ft



2 BEDROOM + STUDY

Type B4S

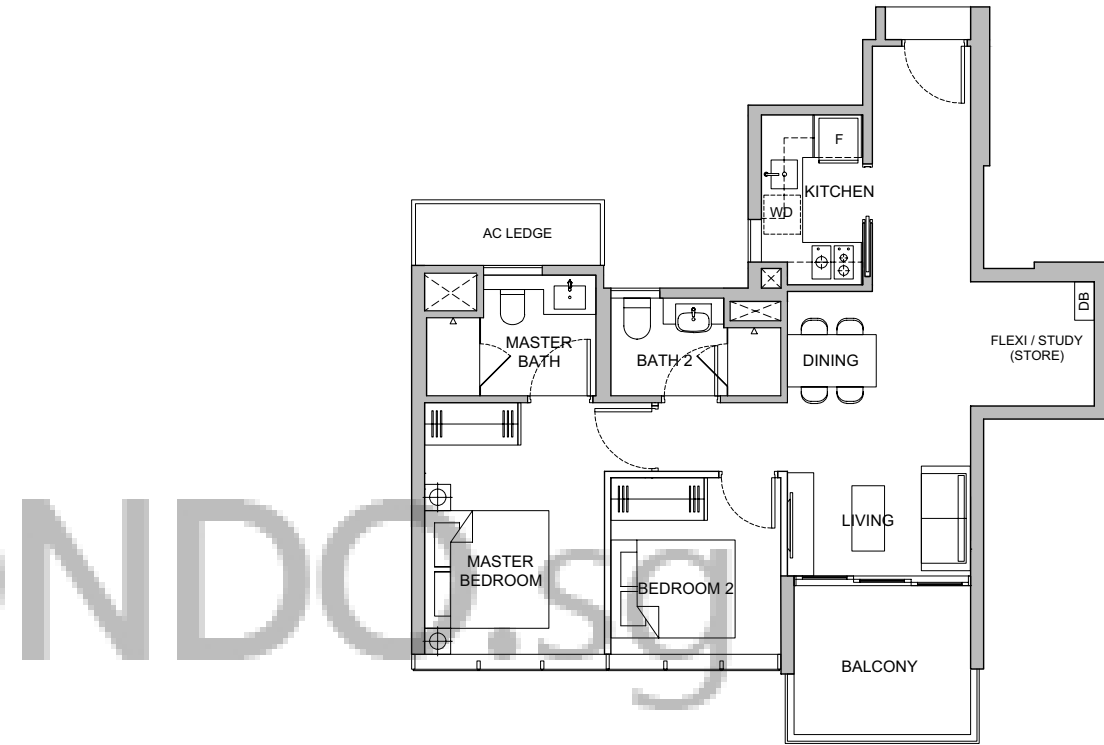
#06-02 to #13-02  
#15-02 to #27-02  
70 sq.m | 753 sq.ft



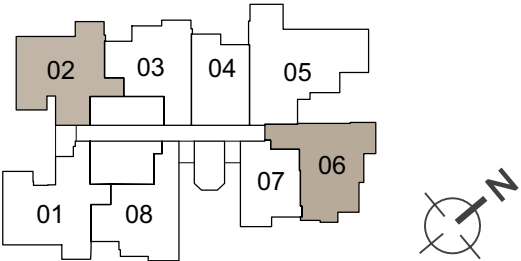
2 BEDROOM + STUDY

Type B5S

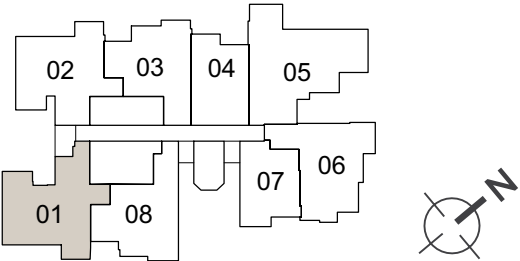
#06-01 to #13-01  
#15-01 to #24-01  
72 sq.m | 775 sq.ft



Plans are not to scale and subject to any changes as may be required or approved by the relevant authorities and do not form part of an offer or contract. All floor areas indicated are inclusive of AC Ledge, Balcony and Strata Void where applicable. All floor areas are estimates only and subject to final survey. The balcony shall not be enclosed unless with the approved balcony screen. For an illustration of the approved balcony screen, please refer to Annexure 1 of this brochure.

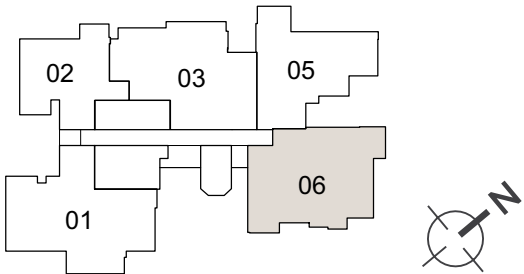
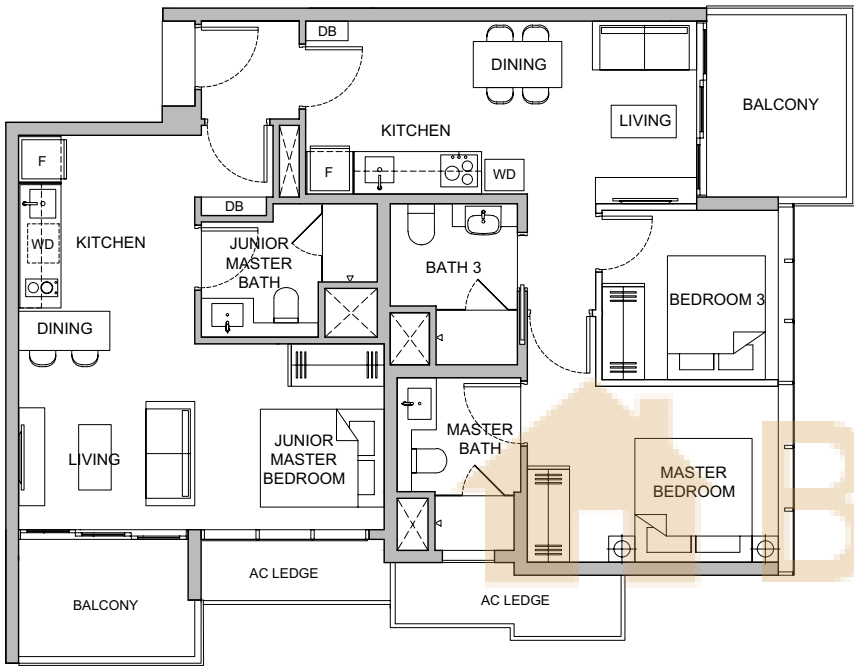


Plans are not to scale and subject to any changes as may be required or approved by the relevant authorities and do not form part of an offer or contract. All floor areas indicated are inclusive of AC Ledge, Balcony and Strata Void where applicable. All floor areas are estimates only and subject to final survey. The balcony shall not be enclosed unless with the approved balcony screen. For an illustration of the approved balcony screen, please refer to Annexure 1 of this brochure.



2 + 1 BEDROOM (DUAL KEY)

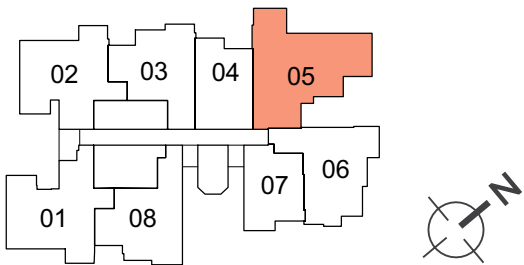
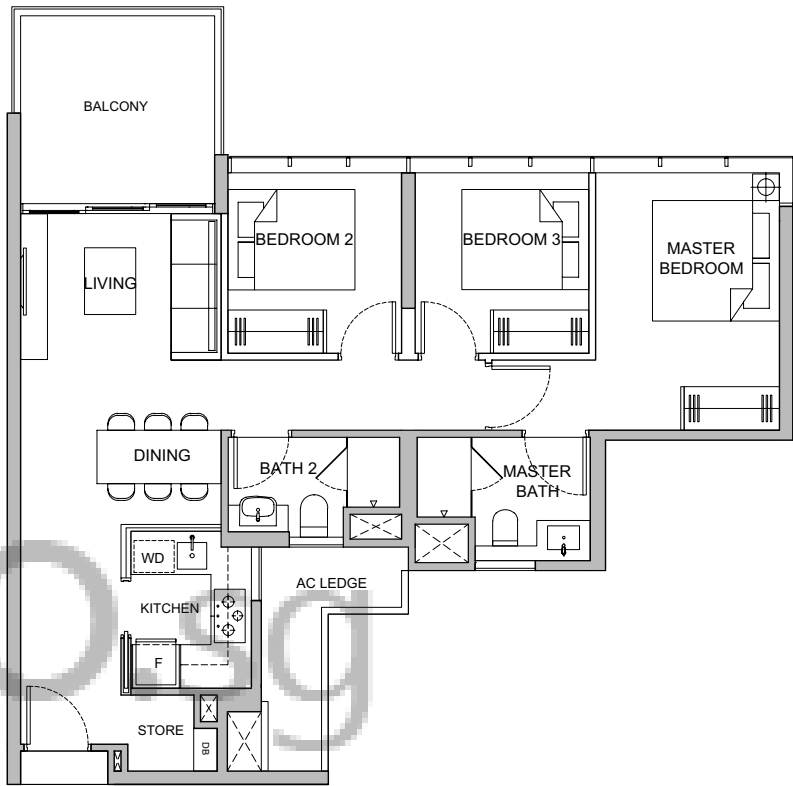
Type B6DK  
#25-06 to #27-06  
108 sq.m | 1163 sq.ft



Plans are not to scale and subject to any changes as may be required or approved by the relevant authorities and do not form part of an offer or contract. All floor areas indicated are inclusive of AC Ledge, Balcony and Strata Void where applicable. All floor areas are estimates only and subject to final survey. The balcony shall not be enclosed unless with the approved balcony screen. For an illustration of the approved balcony screen, please refer to Annexure 1 of this brochure.

3 BEDROOM

Type C1  
#06-05 to #13-05  
#15-05 to #27-05  
87 sq.m | 936 sq.ft

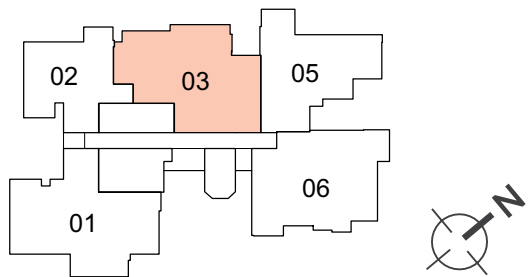
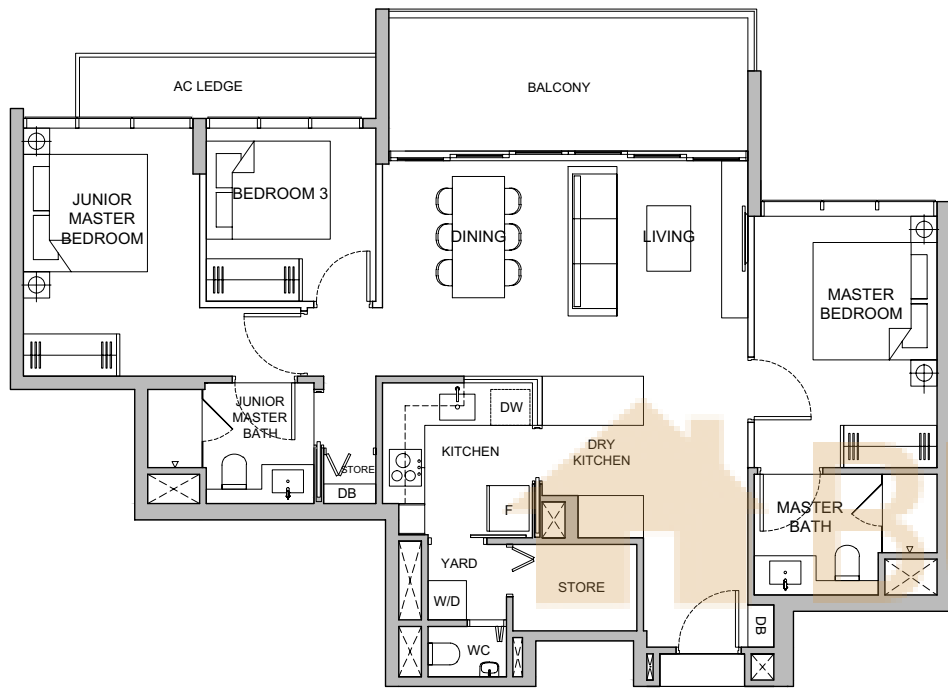


Plans are not to scale and subject to any changes as may be required or approved by the relevant authorities and do not form part of an offer or contract. All floor areas indicated are inclusive of AC Ledge, Balcony and Strata Void where applicable. All floor areas are estimates only and subject to final survey. The balcony shall not be enclosed unless with the approved balcony screen. For an illustration of the approved balcony screen, please refer to Annexure 1 of this brochure.

3 BEDROOM (PREMIUM)

Type C2P

#25-03 to #27-03  
107 sq.m | 1152 sq.ft

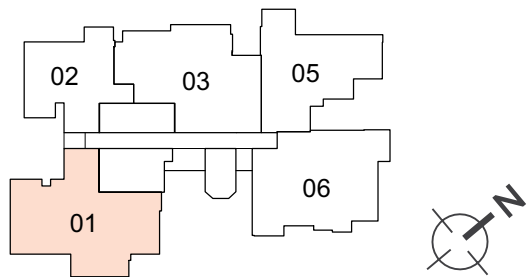
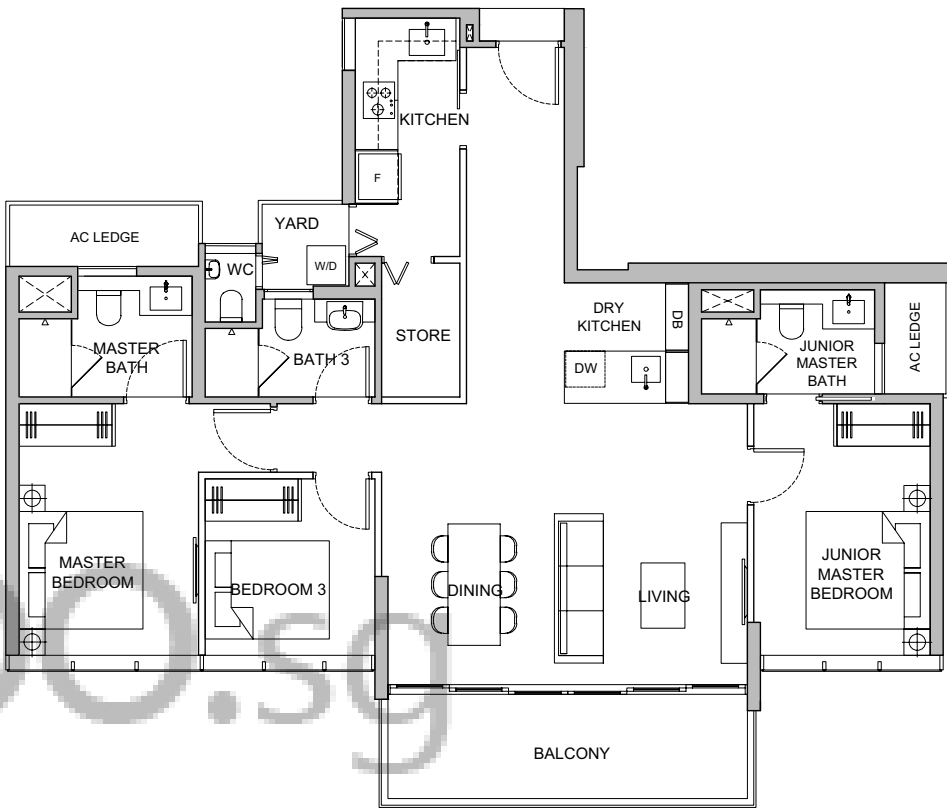


Plans are not to scale and subject to any changes as may be required or approved by the relevant authorities and do not form part of an offer or contract. All floor areas indicated are inclusive of AC Ledge, Balcony and Strata Void where applicable. All floor areas are estimates only and subject to final survey. The balcony shall not be enclosed unless with the approved balcony screen. For an illustration of the approved balcony screen, please refer to Annexure 1 of this brochure.

3 BEDROOM (PREMIUM)

Type C3P

#25-01 to #27-01  
116 sq.m | 1249 sq.ft

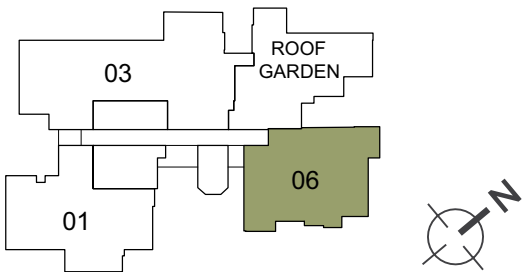
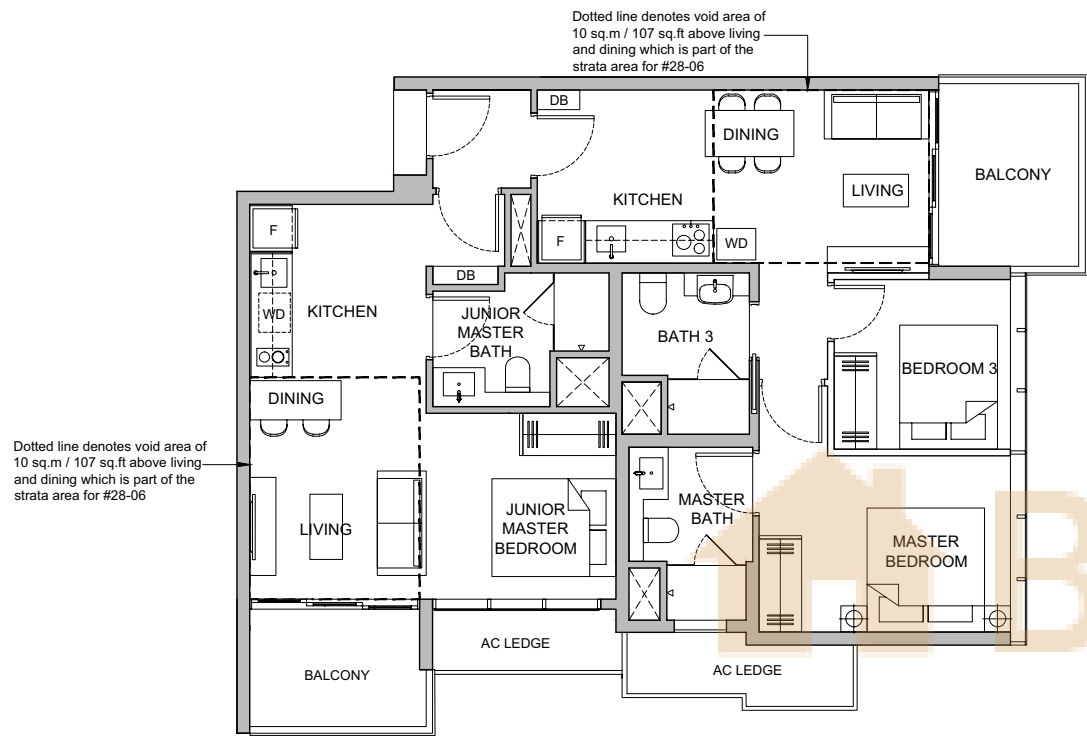


Plans are not to scale and subject to any changes as may be required or approved by the relevant authorities and do not form part of an offer or contract. All floor areas indicated are inclusive of AC Ledge, Balcony and Strata Void where applicable. All floor areas are estimates only and subject to final survey. The balcony shall not be enclosed unless with the approved balcony screen. For an illustration of the approved balcony screen, please refer to Annexure 1 of this brochure.

PENTHOUSE  
2 + 1 BEDROOM (DUAL KEY)

Type PH1

#28-06  
128 sq.m | 1378 sq.ft  
[incl. void 20 sq.m | 214 sq.ft]

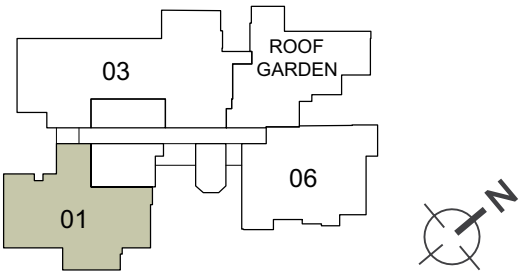
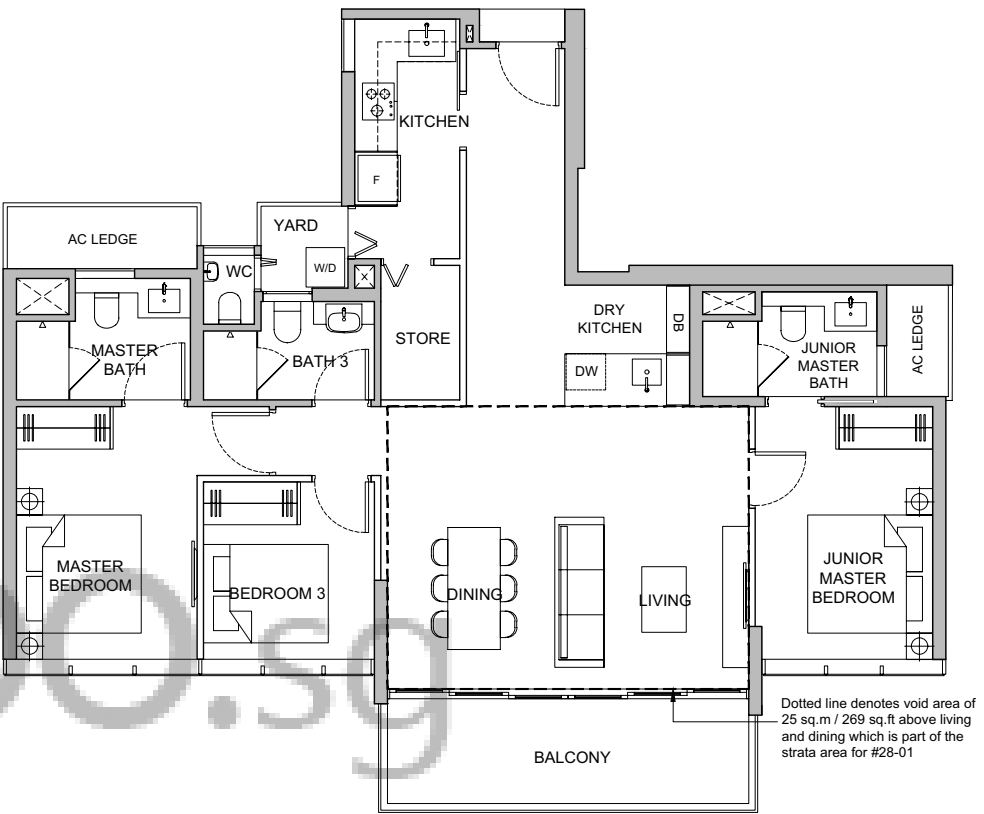


Plans are not to scale and subject to any changes as may be required or approved by the relevant authorities and do not form part of an offer or contract. All floor areas indicated are inclusive of AC Ledge, Balcony and Strata Void where applicable. All floor areas are estimates only and subject to final survey. The balcony shall not be enclosed unless with the approved balcony screen. For an illustration of the approved balcony screen, please refer to Annexure 1 of this brochure.

PENTHOUSE  
3 BEDROOM

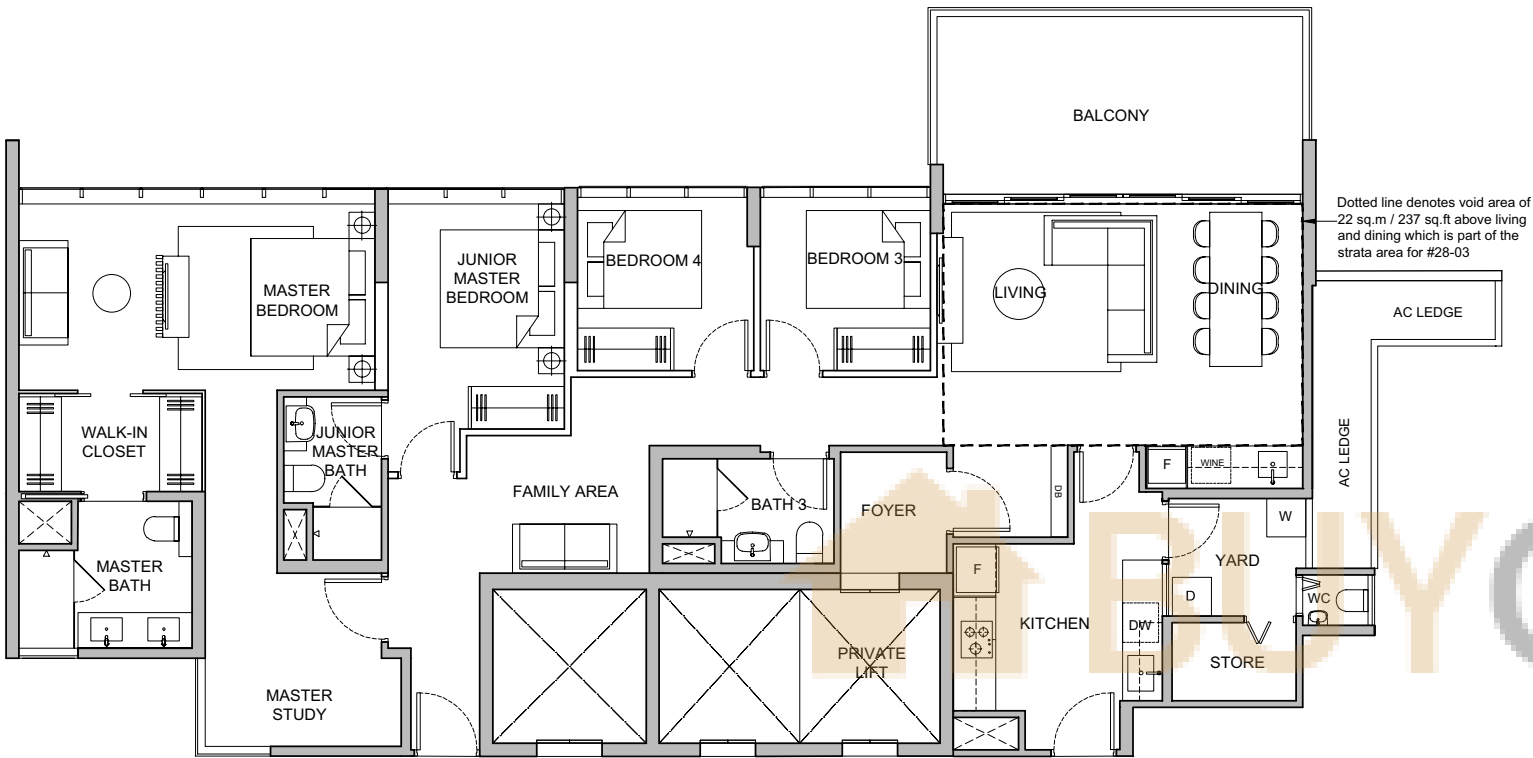
Type PH2

#28-01  
141 sq.m | 1518 sq.ft  
[incl. void 25 sq.m | 269 sq.ft]



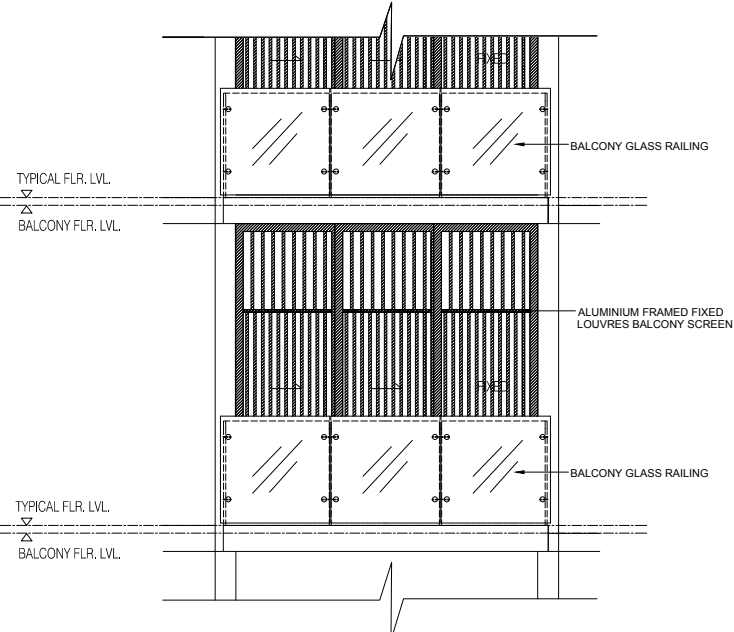
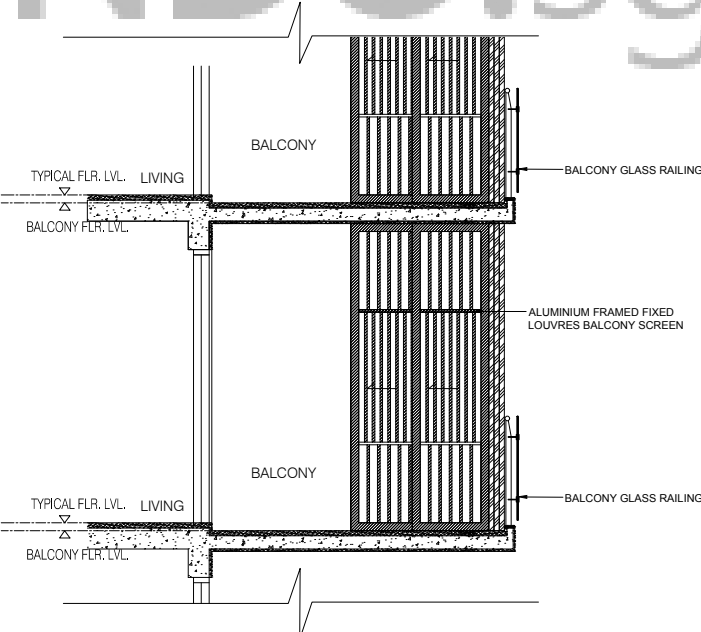
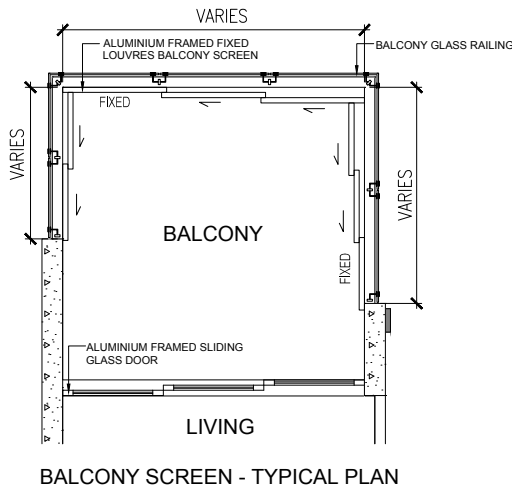
Plans are not to scale and subject to any changes as may be required or approved by the relevant authorities and do not form part of an offer or contract. All floor areas indicated are inclusive of AC Ledge, Balcony and Strata Void where applicable. All floor areas are estimates only and subject to final survey. The balcony shall not be enclosed unless with the approved balcony screen. For an illustration of the approved balcony screen, please refer to Annexure 1 of this brochure.

PENTHOUSE  
4 BEDROOM + FAMILY + STUDY  
Type PH3  
#28-03  
190 sq.m | 2045 sq.ft  
[incl. void 22 sq.m | 237 sq.ft]



APPROVED BALCONY SCREEN DESIGN (ANNEXURE 1)

- 1. The balconies shall not be enclosed unless with the approved screen.  
For illustration of the approved balcony screen, please refer to the illustration.
- 2. Screen design is provided for aesthetic uniformity of the estate.
- 3. The purchaser is required to refer to the Management (MCST) for any additional details.
- 4. Material to be of aluminium with powder coated finish to match the colour of aluminium door/window frame.
- 5. Fixing detail by the purchaser's contractor, and fixing shall not damage waterproofing of existing structure.
- 6. This drawing is for reference only. The purchaser shall verify all dimensions prior to commencement of work.
- 7. Drawings are not to scale, and shall not be regarded as a representation of fact.
- 8. The cost of the screen and installation shall be borne by the purchaser.
- 9. Balcony screen shall allow natural ventilation at all times when the screens are fully closed.



Plans are not to scale and subject to any changes as may be required or approved by the relevant authorities and do not form part of an offer or contract. All floor areas indicated are inclusive of AC Ledge, Balcony and Strata Void where applicable. All floor areas are estimates only and subject to final survey. The balcony shall not be enclosed unless with the approved balcony screen. For an illustration of the approved balcony screen, please refer to Annexure 1 of this brochure.

