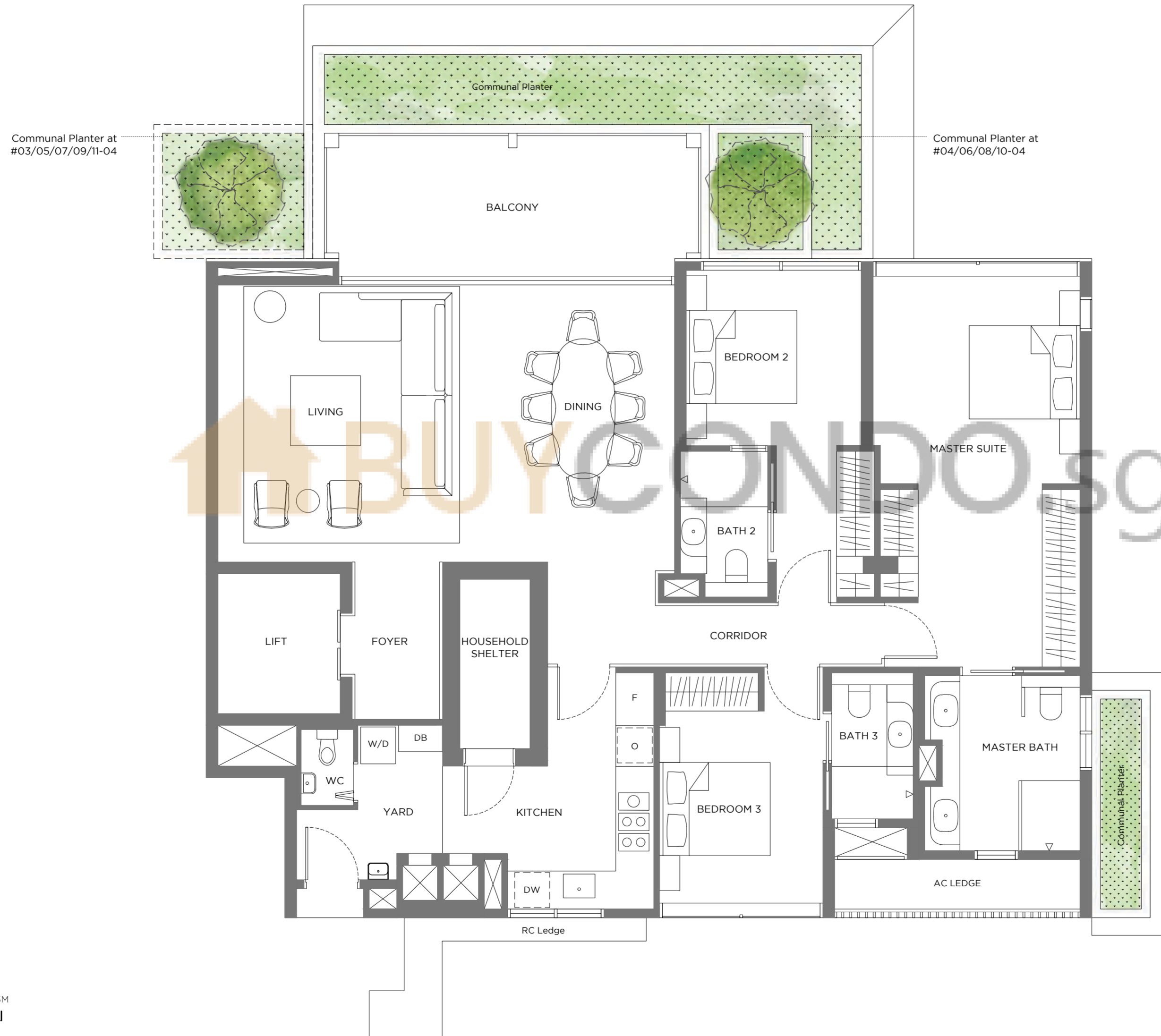
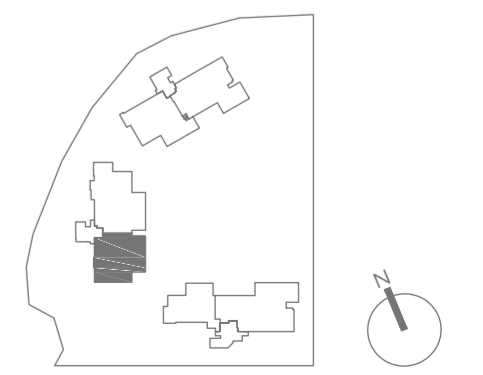


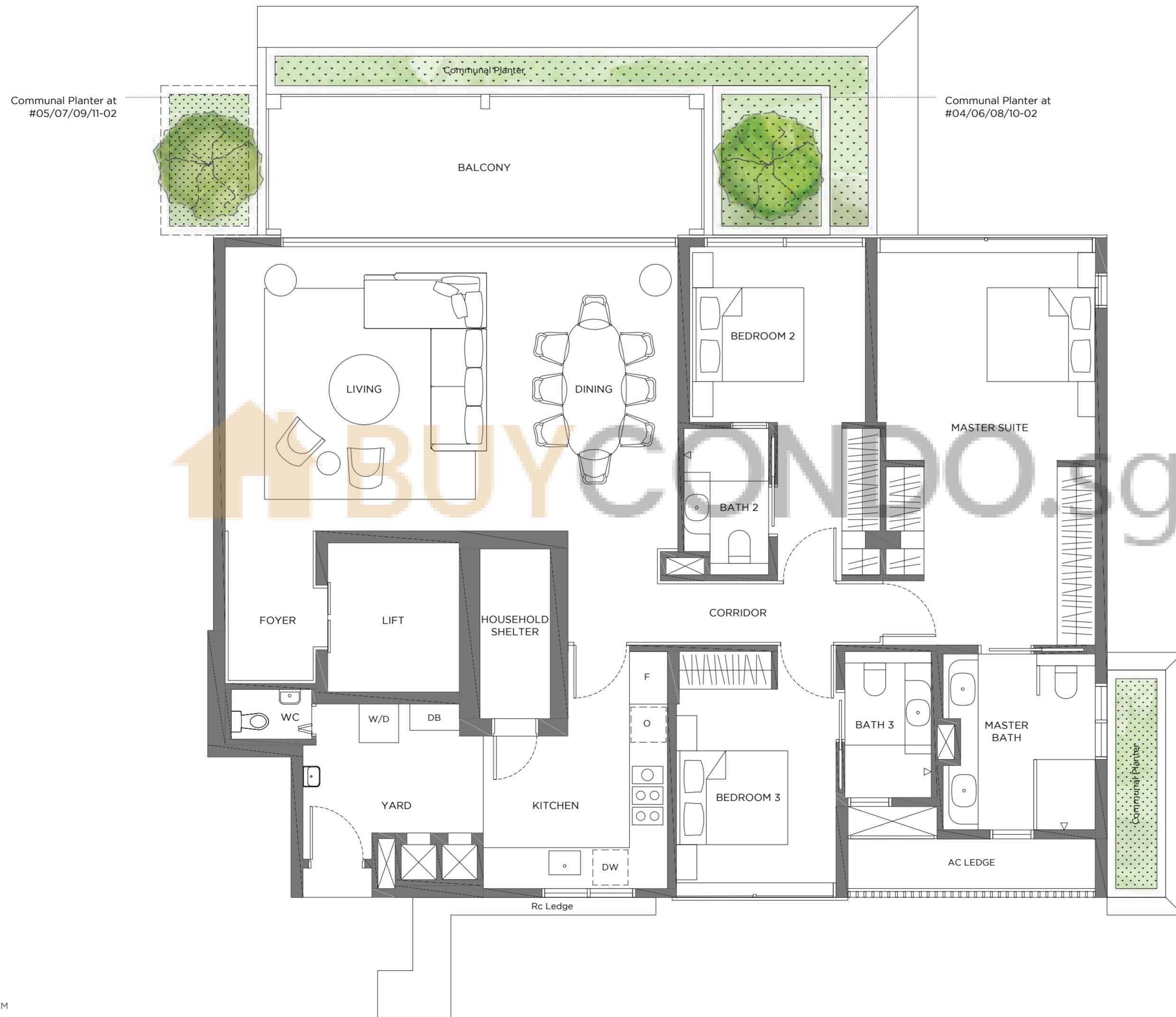
Tower 2
 3-Bedroom
 Type 3BR-a
 167 sqm / 1,798 sqft
 Unit #03-04 to 11-04



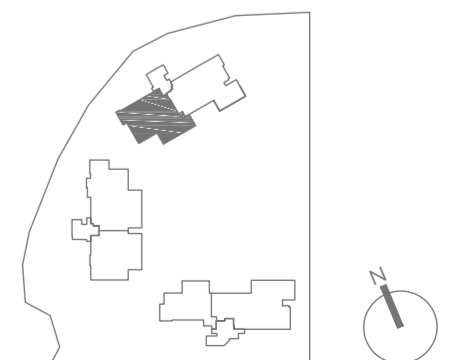
Plans are subject to change/amendments as may be required and/or approved by the Developer and/or the relevant authorities and do not form part of any offer or contract.



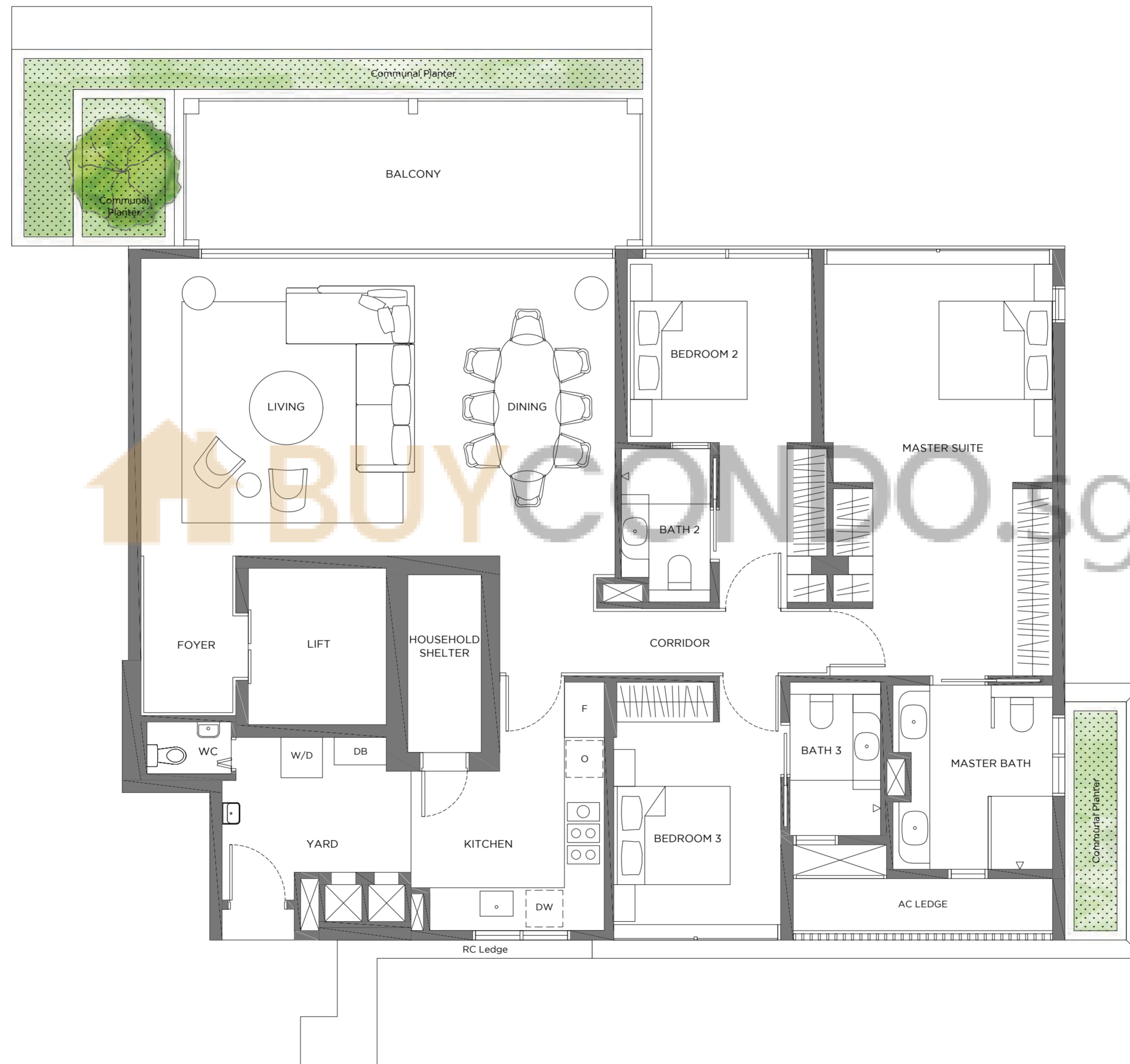
Tower 3
3-Bedroom
Type 3BR-b
173 sqm / 1,862 sqft
Unit #04-02 to 11-02



Plans are subject to change/amendments as may be required and/or approved by the Developer and/or the relevant authorities and do not form part of any offer or contract.



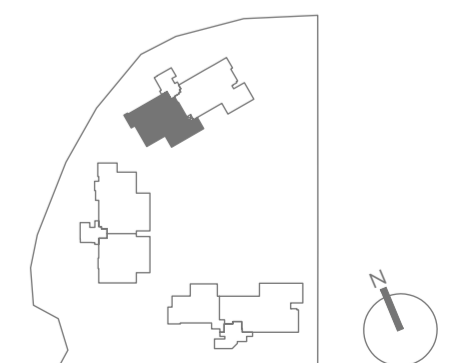
Tower 3
3-Bedroom
Type 3BR-b1
173 sqm / 1,862 sqft
Unit #03-02



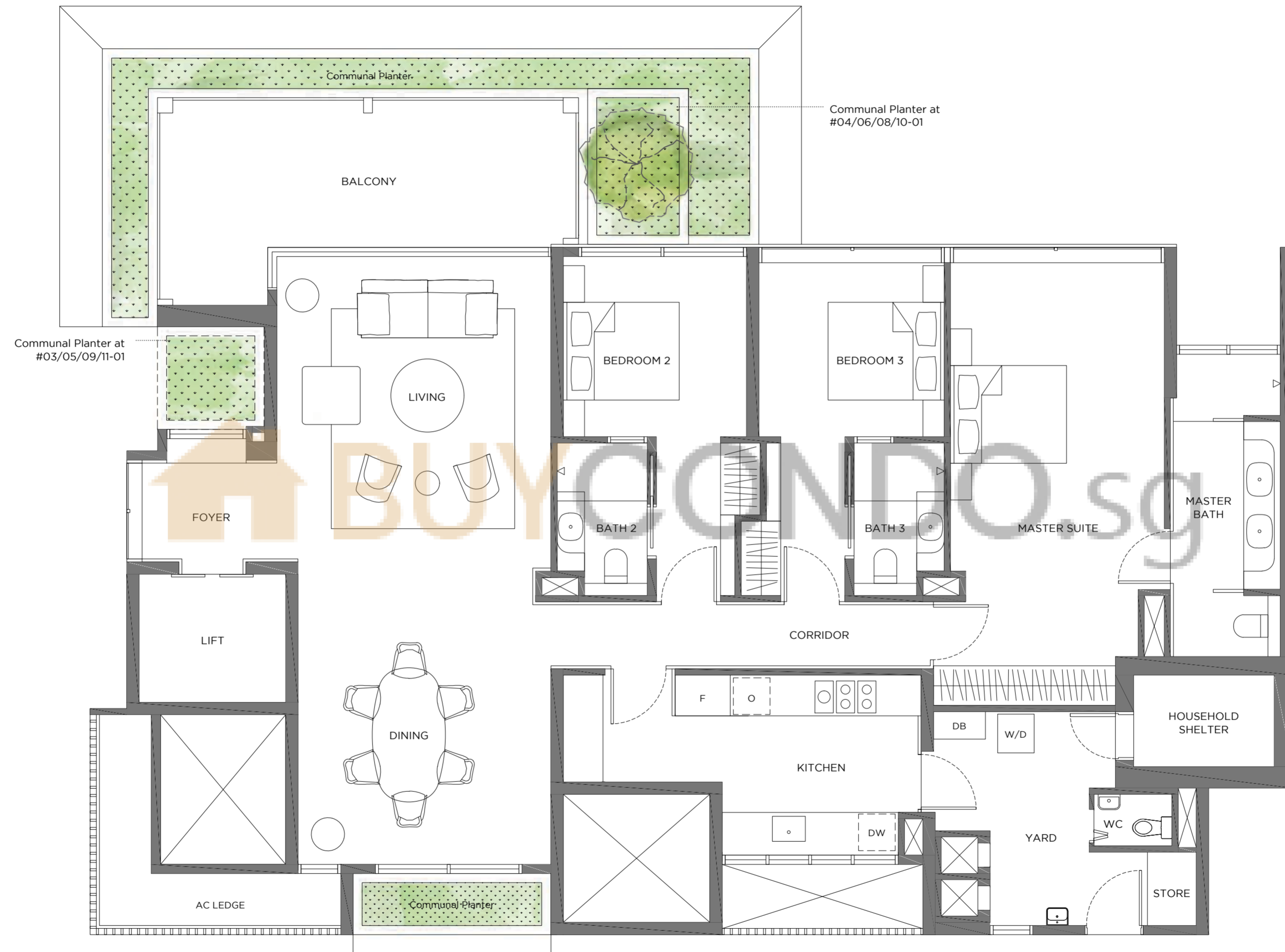
BUY CONDO.SG

0 1 5M

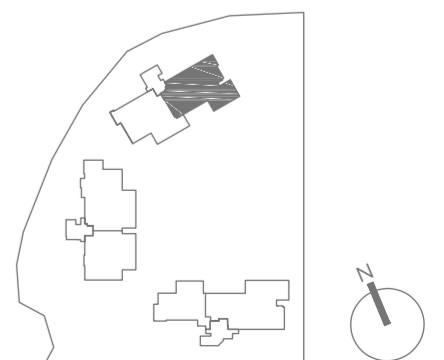
Plans are subject to change/amendments as may be required and/or approved by the Developer and/or the relevant authorities and do not form part of any offer or contract.



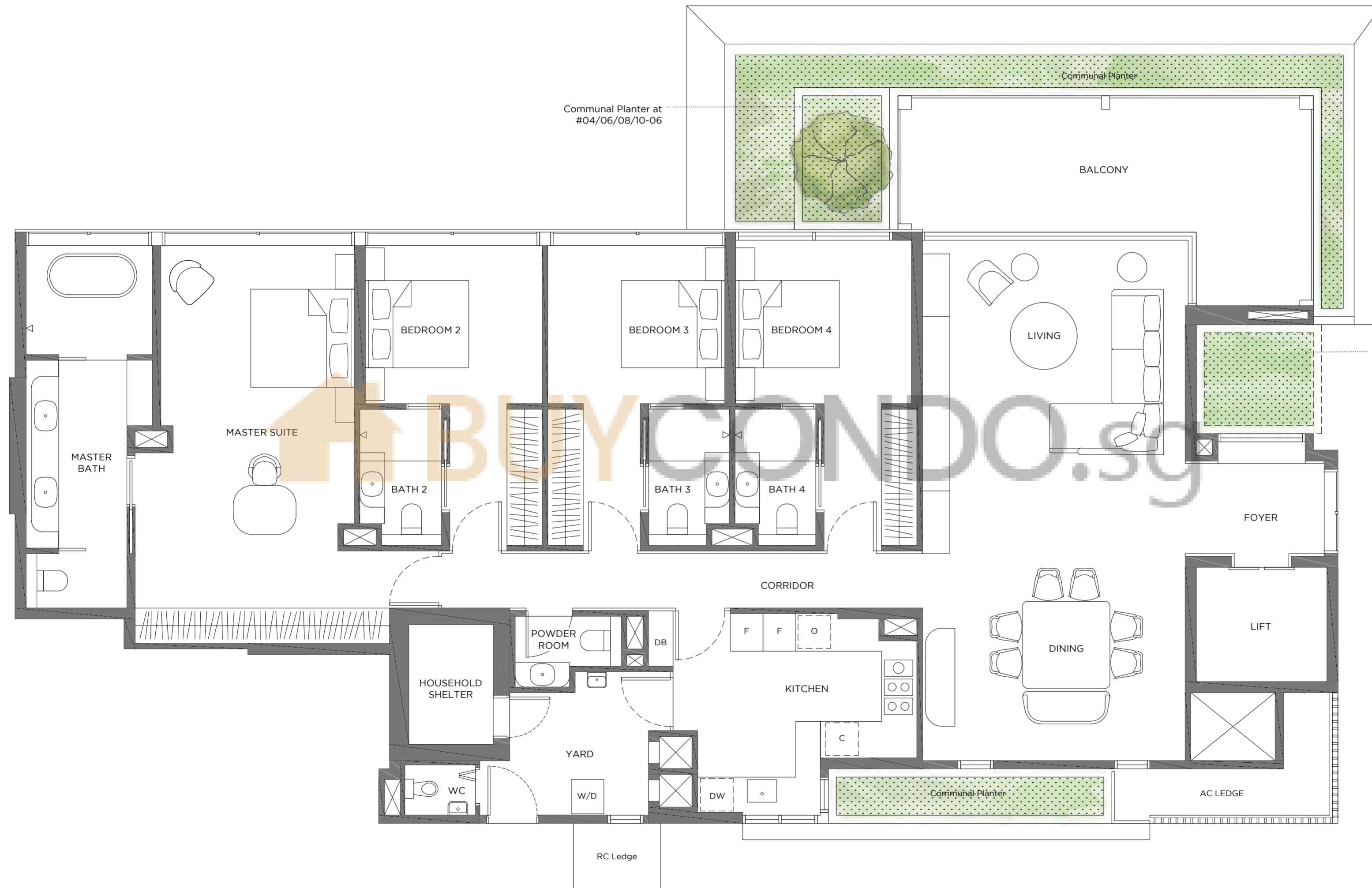
Tower 3
 3-Bedroom
 Type 3BR-c
 190 sqm / 2045 sqft
 Unit #03-01 to 11-01



Plans are subject to change/amendments as may be required and/or approved by the Developer and/or the relevant authorities and do not form part of any offer or contract.



Tower 1
 4-Bedroom
 Type 4BR-a
 232 sqm / 2,497 sqft
 Unit #04-06 to 11-06

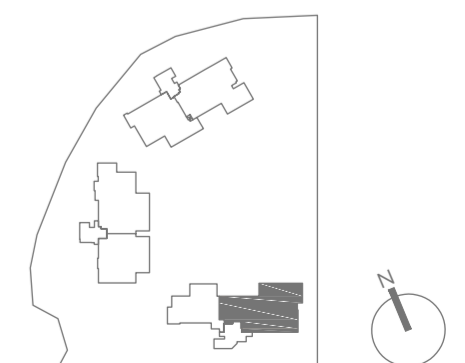


Communal Planter at #04/06/08/10-06

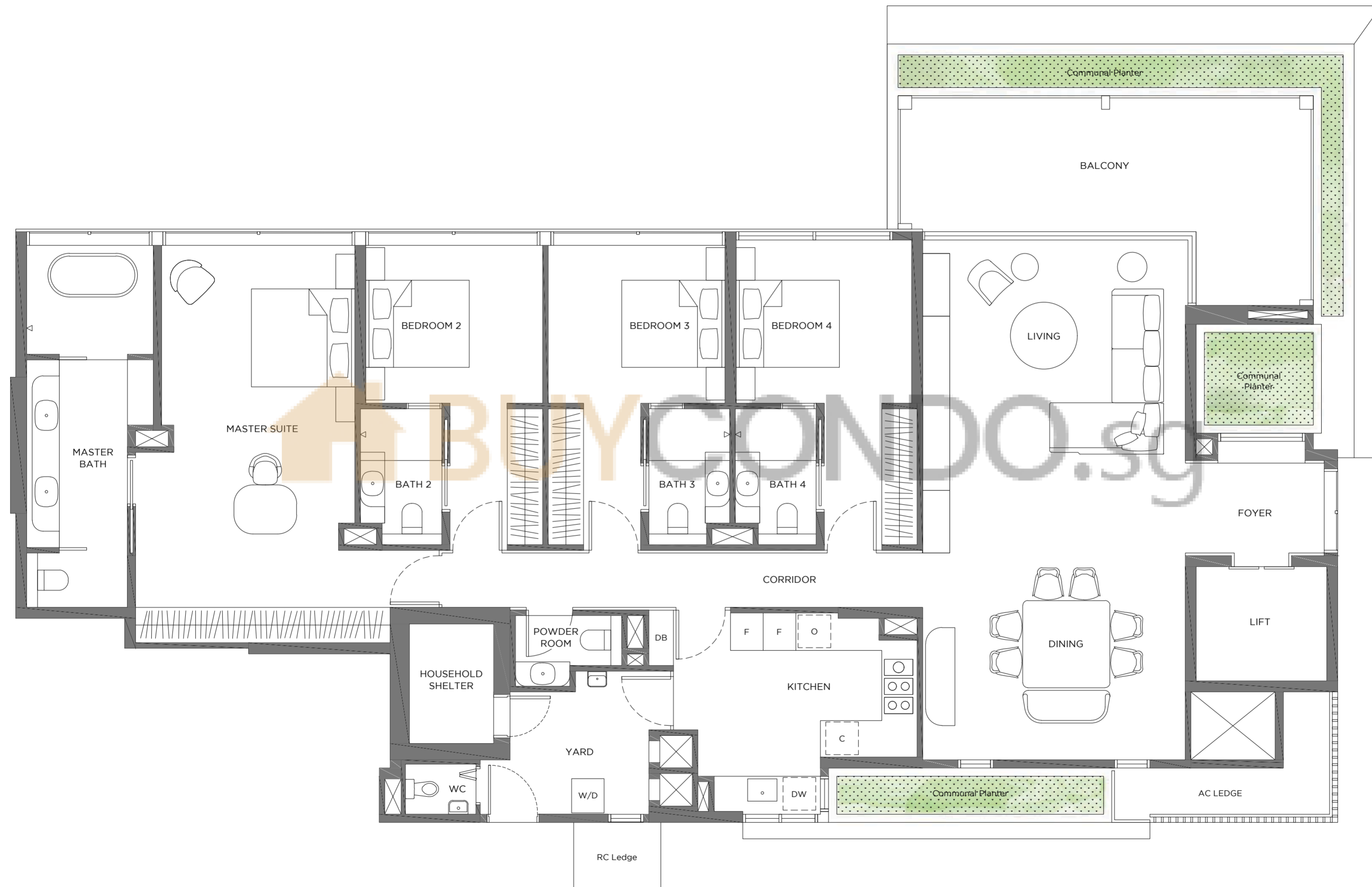
Communal Planter at #05/07/09/11-06

0 1 5M

Plans are subject to change/amendments as may be required and/or approved by the Developer and/or the relevant authorities and do not form part of any offer or contract.

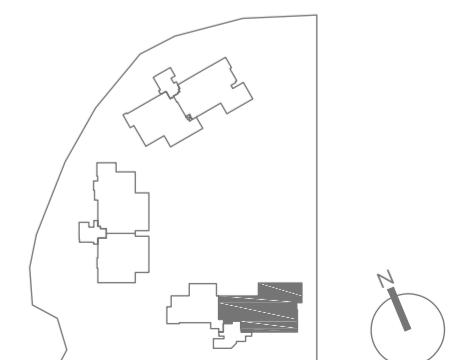


Tower 1
4-Bedroom
Type 4BR-a1
232 sqm / 2,497 sqft
Unit #03-06

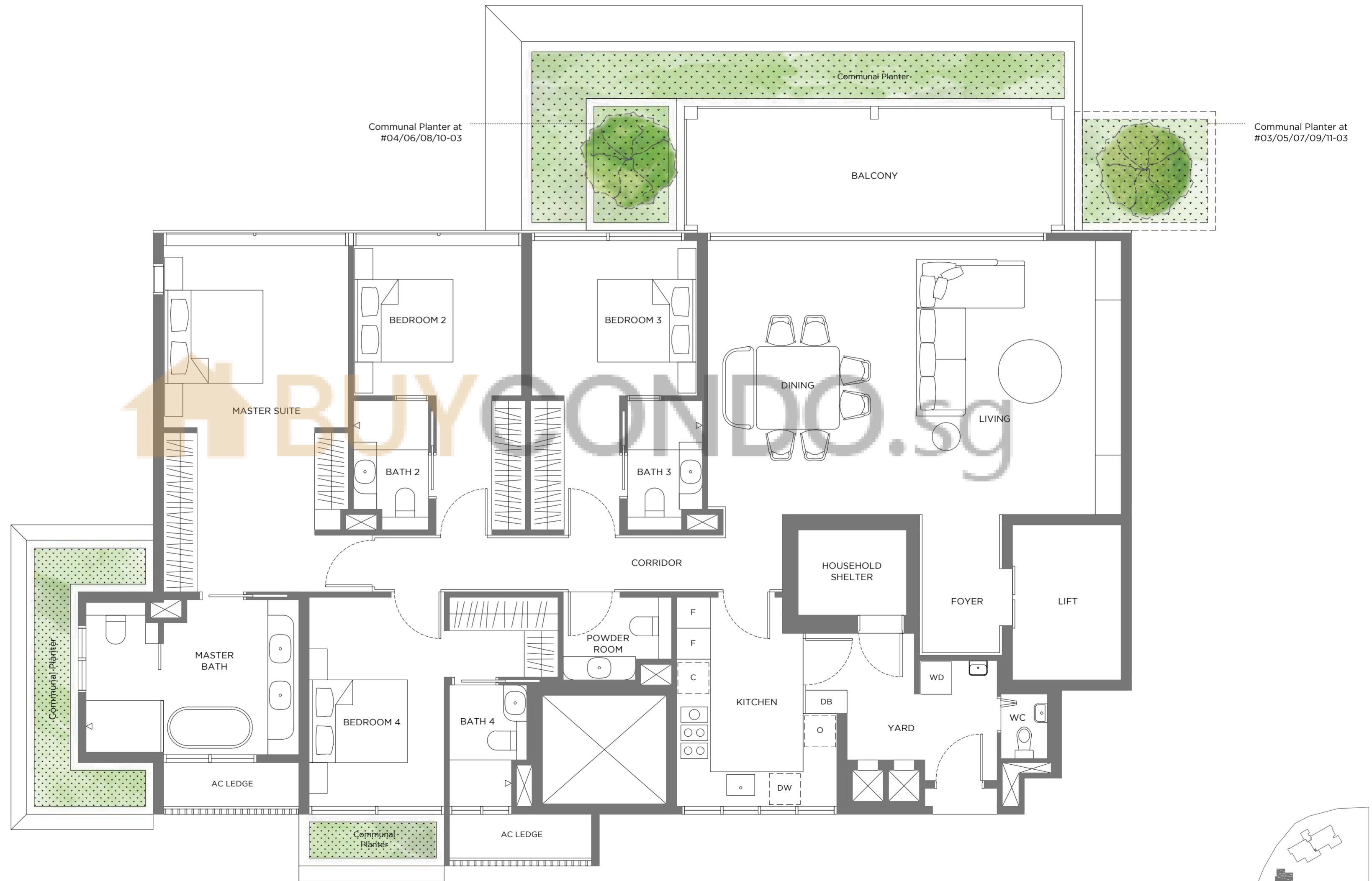


0 1 5M

Plans are subject to change/amendments as may be required and/or approved by the Developer and/or the relevant authorities and do not form part of any offer or contract.



Tower 2
 4 Bedroom
 Type 4BR-b
 214 sqm / 2,303 sqft
 Unit #03-03 to 11-03

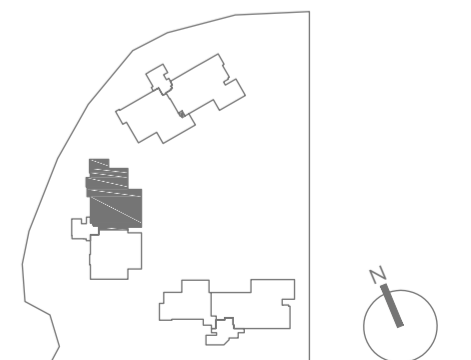


Communal Planter at #04/06/08/10-03

Communal Planter at #03/05/07/09/11-03



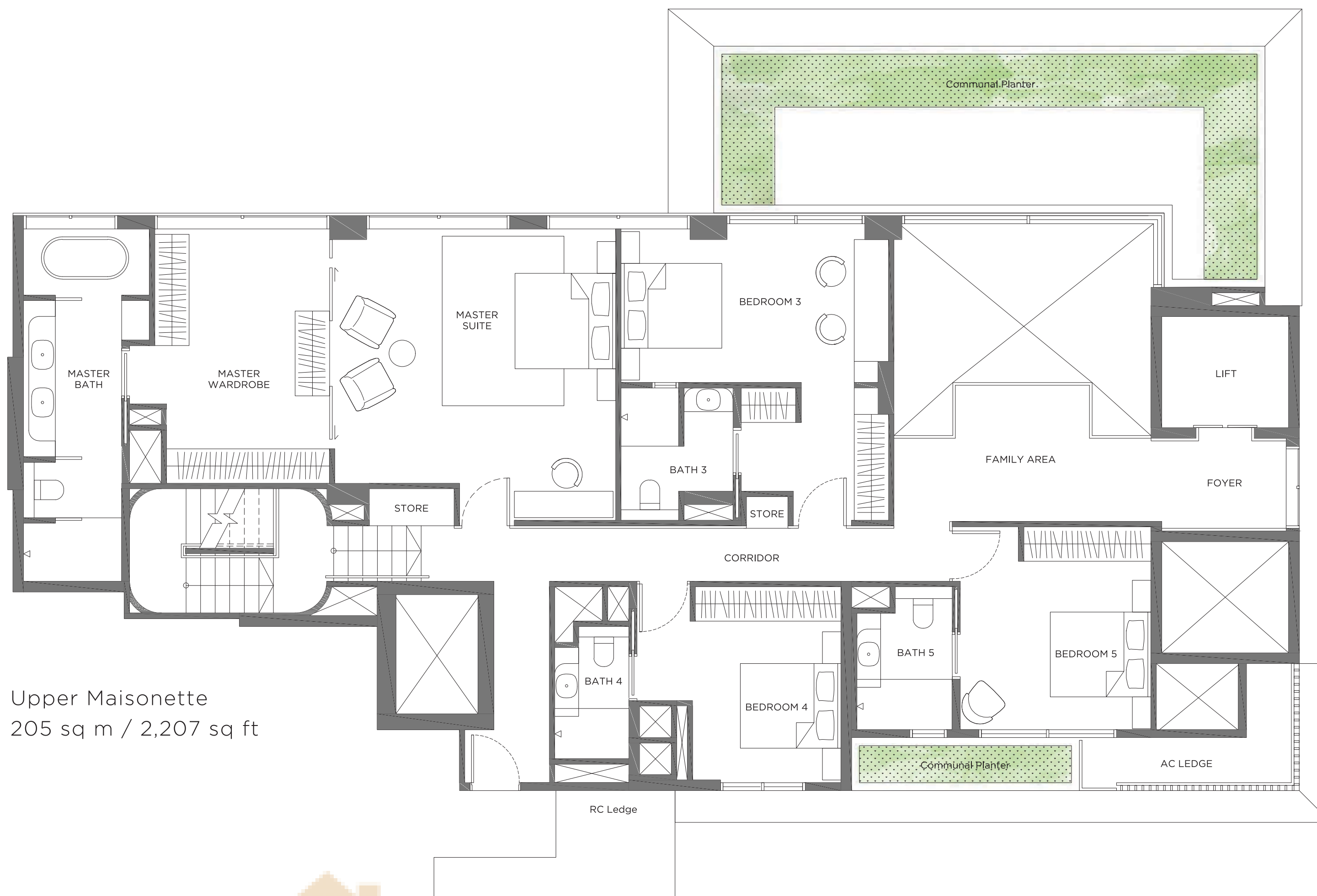
Plans are subject to change/amendments as may be required and/or approved by the Developer and/or the relevant authorities and do not form part of any offer or contract.



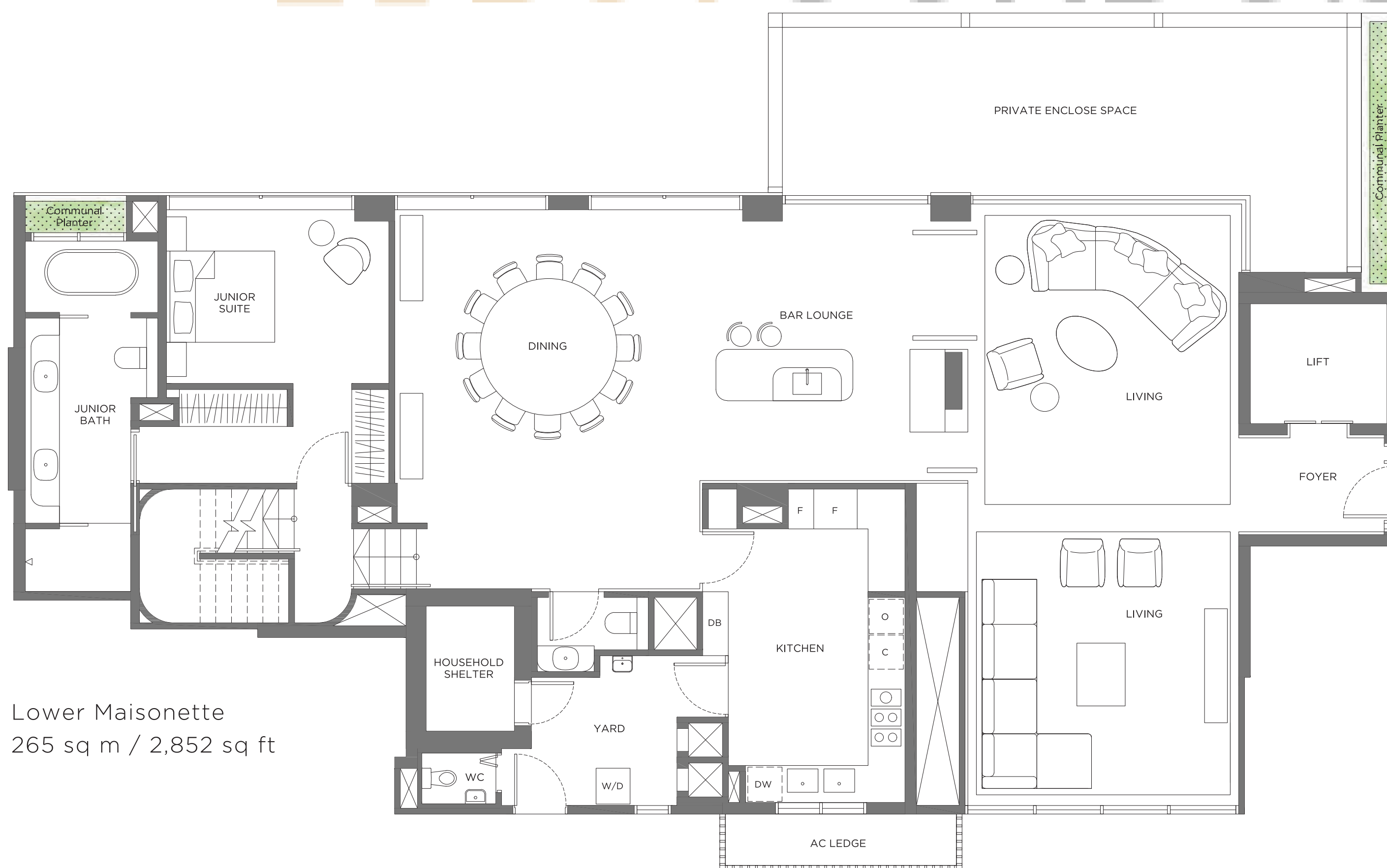
15 Holland Hill

Tower 1
Maisonette
Type M1

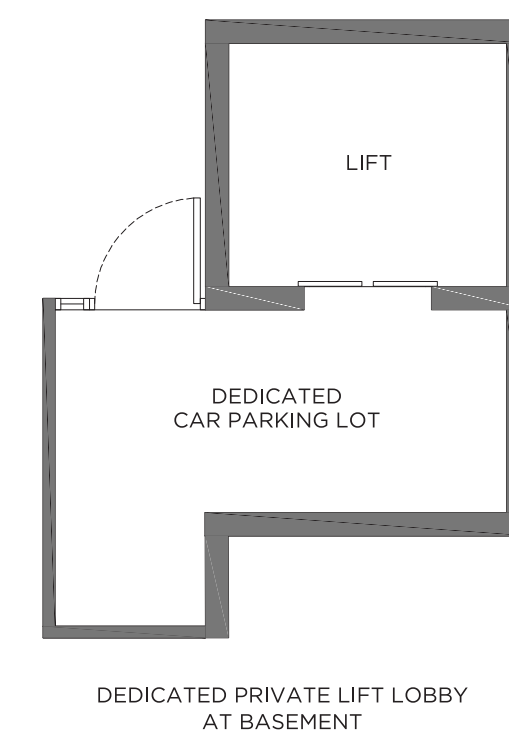
470 sq m / 5,059 sq ft
Unit #01-06



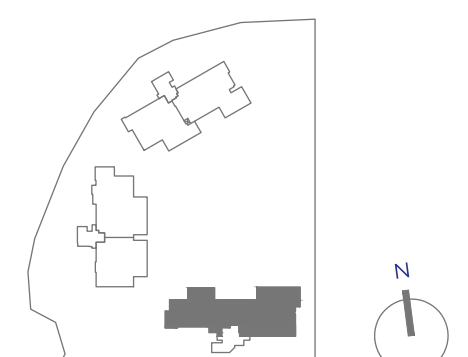
Upper Maisonette
205 sq m / 2,207 sq ft



Lower Maisonette
265 sq m / 2,852 sq ft



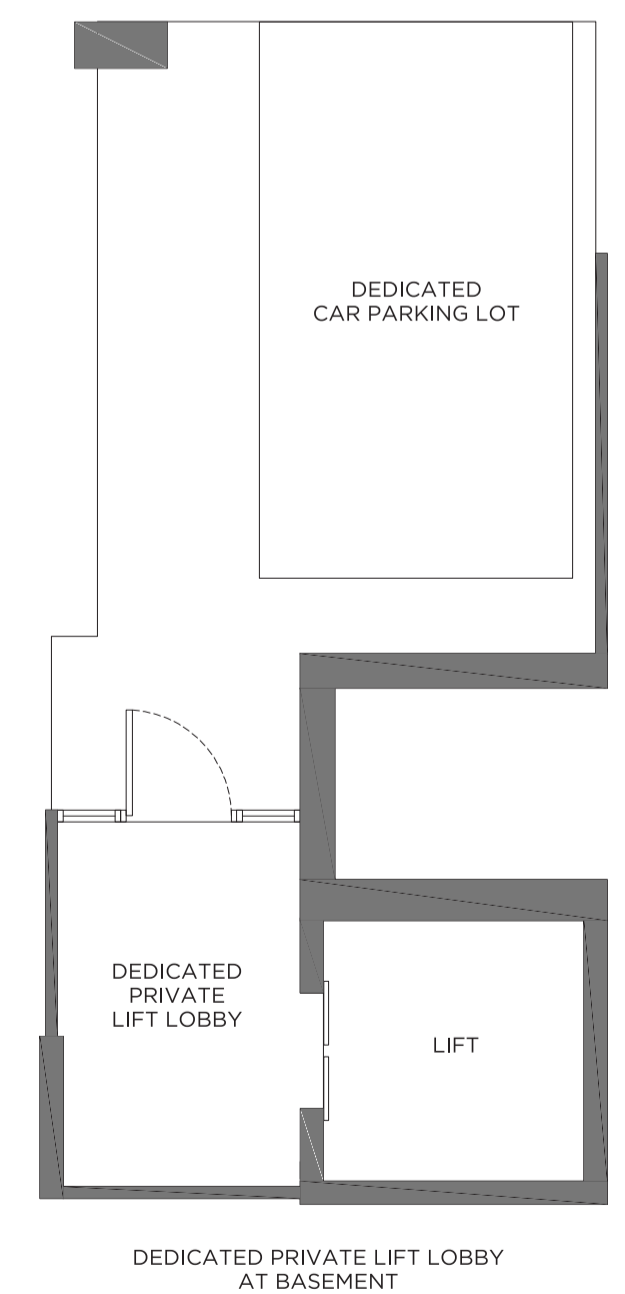
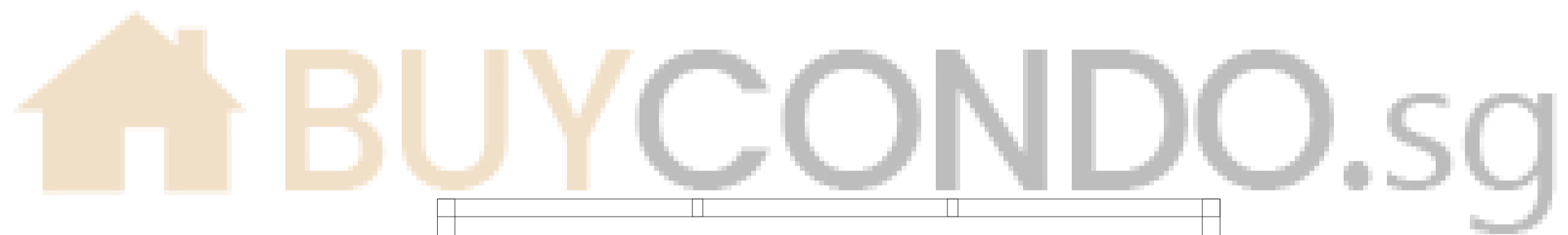
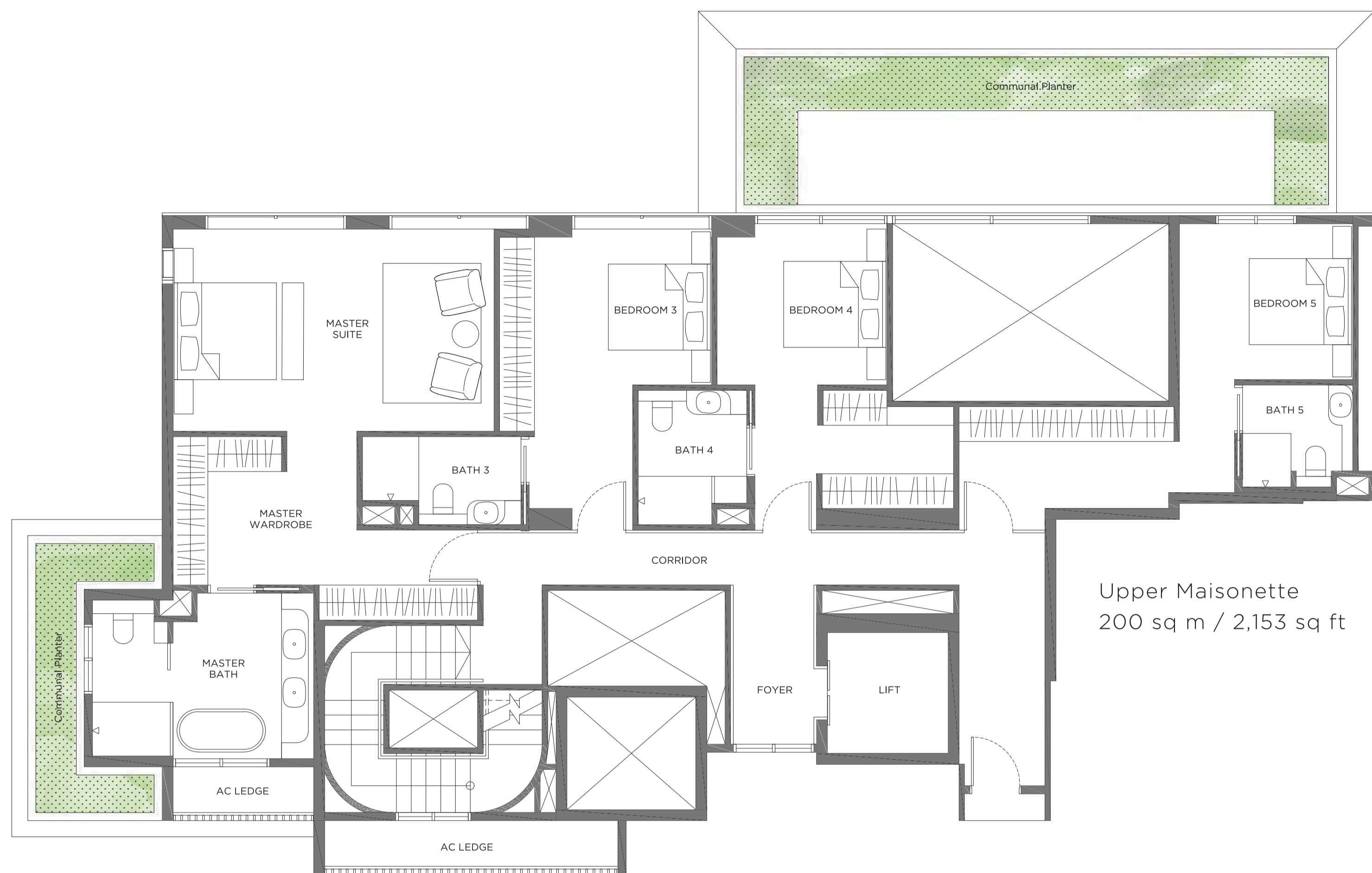
Plans are subject to change/amendments as may be required and/or approved by the Developer and/or the relevant authorities and do not form part of any offer or contract.



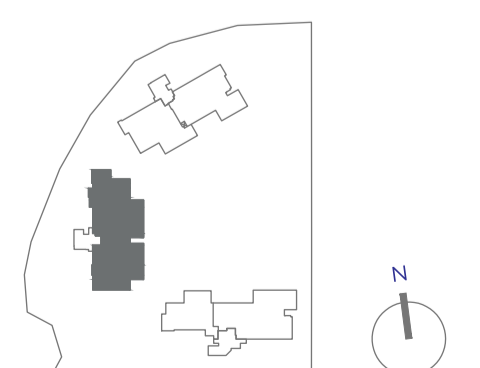
15 Holland Hill

Tower 2
Maisonette
Type M2

485 sq m 5,221 sq ft
Unit #01-03

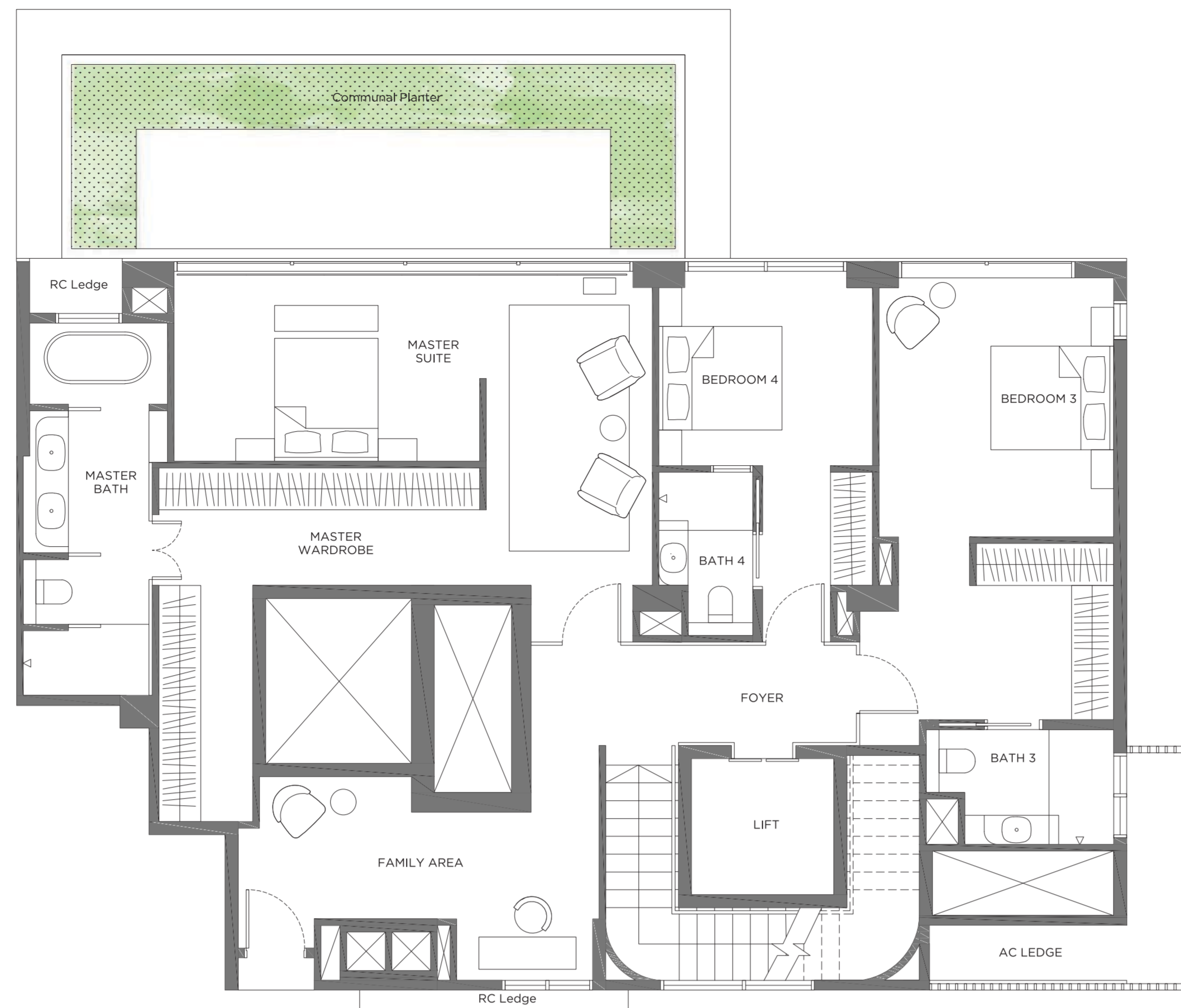


Plans are subject to change/amendments as may be required and/or approved by the Developer and/or the relevant authorities and do not form part of any offer or contract.



15 Holland Hill

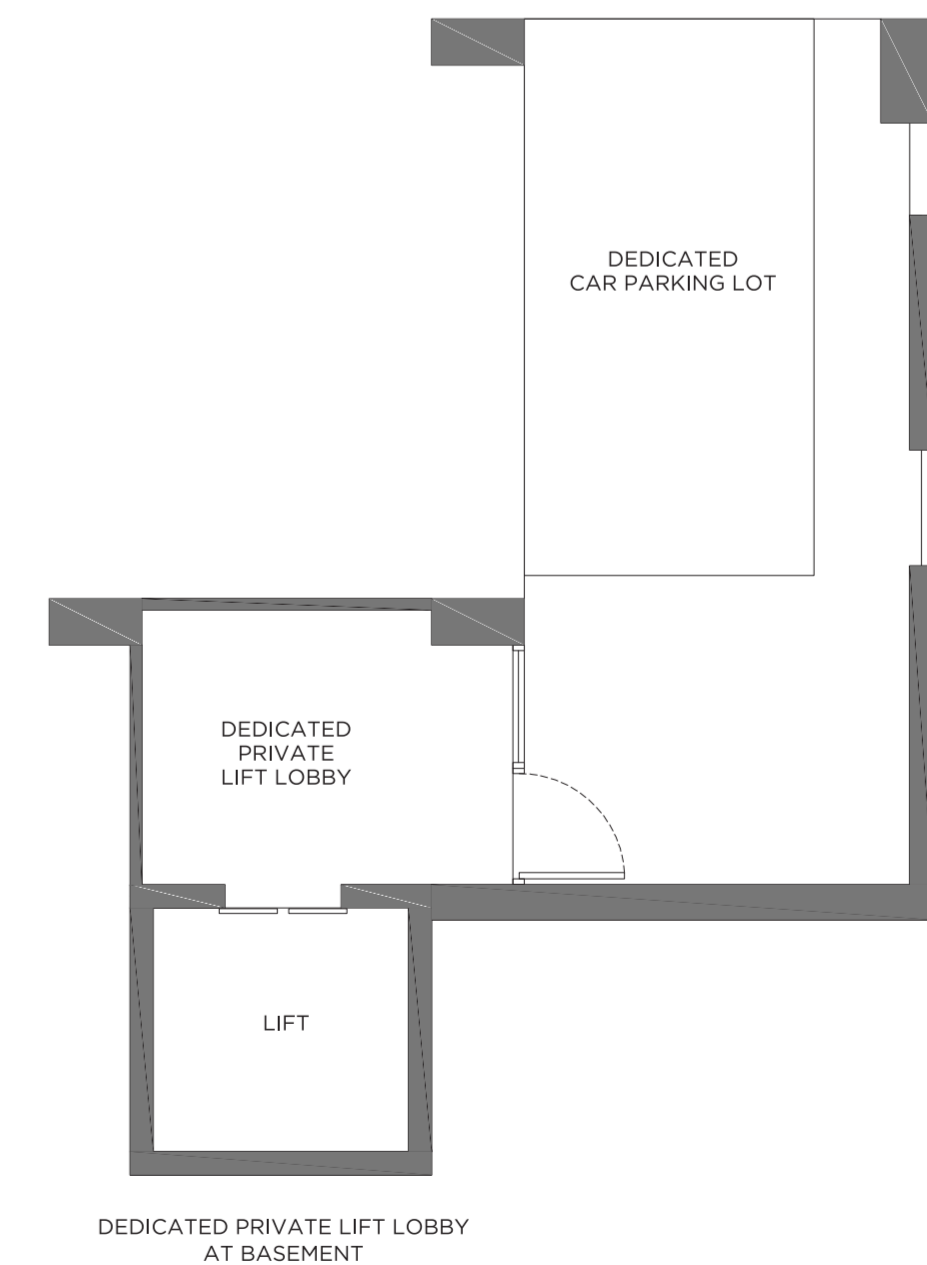
Tower 3
Maisonette
Type M3
422 sq m / 4,542 sq ft
Unit 01-02



Upper Maisonette
159 sq m / 1,711 sq ft



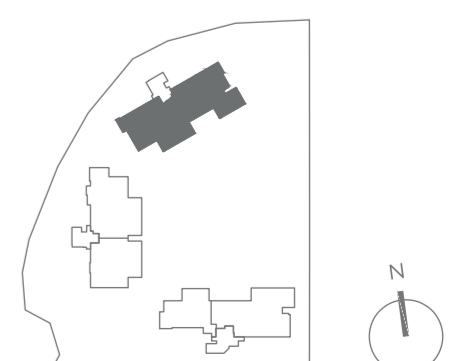
Lower Maisonette
263 sq m / 2,831 sq ft



DEDICATED PRIVATE LIFT LOBBY
AT BASEMENT



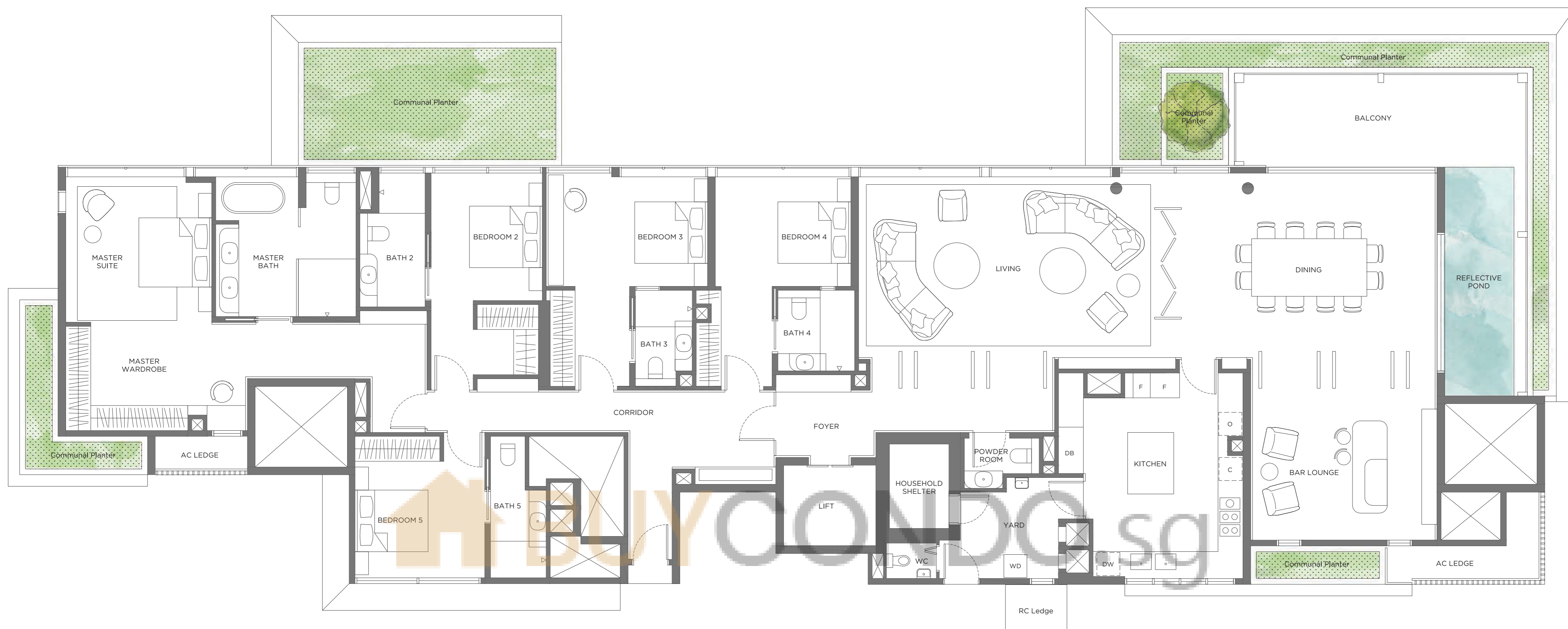
Plans are subject to change/amendments as may be required and/or approved by the Developer and/or the relevant authorities and do not form part of any offer or contract.



15 Holland Hill

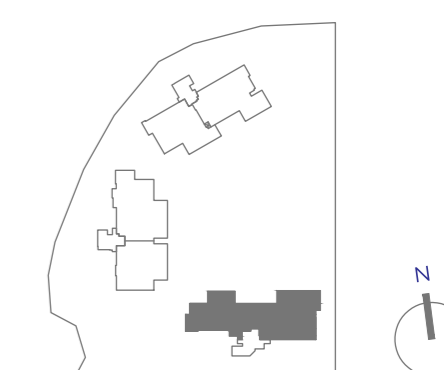
Tower 1
Penthouse
Type P1

477 sq m / 5,134 sq ft
Unit #12-05



0 1 5M

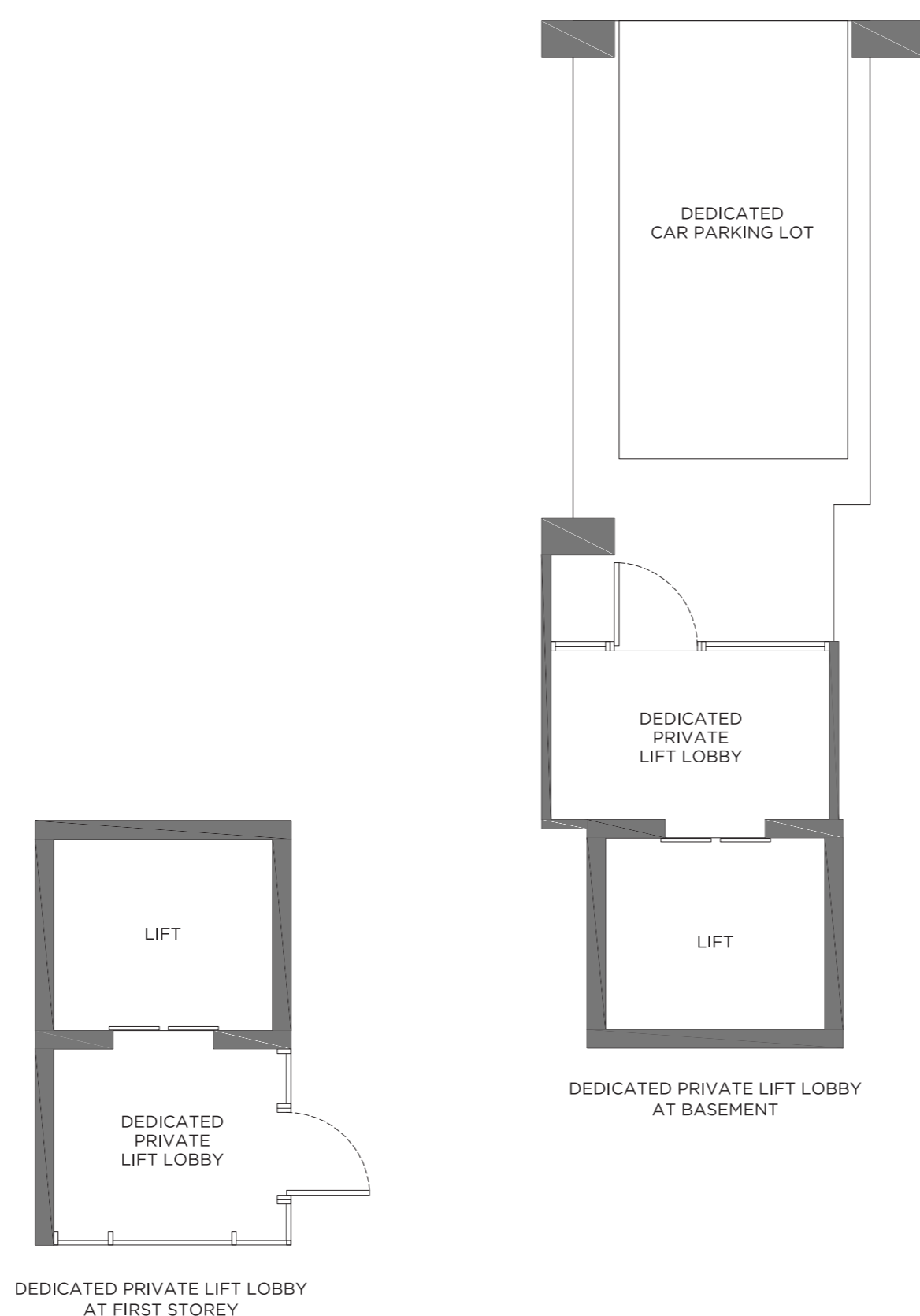
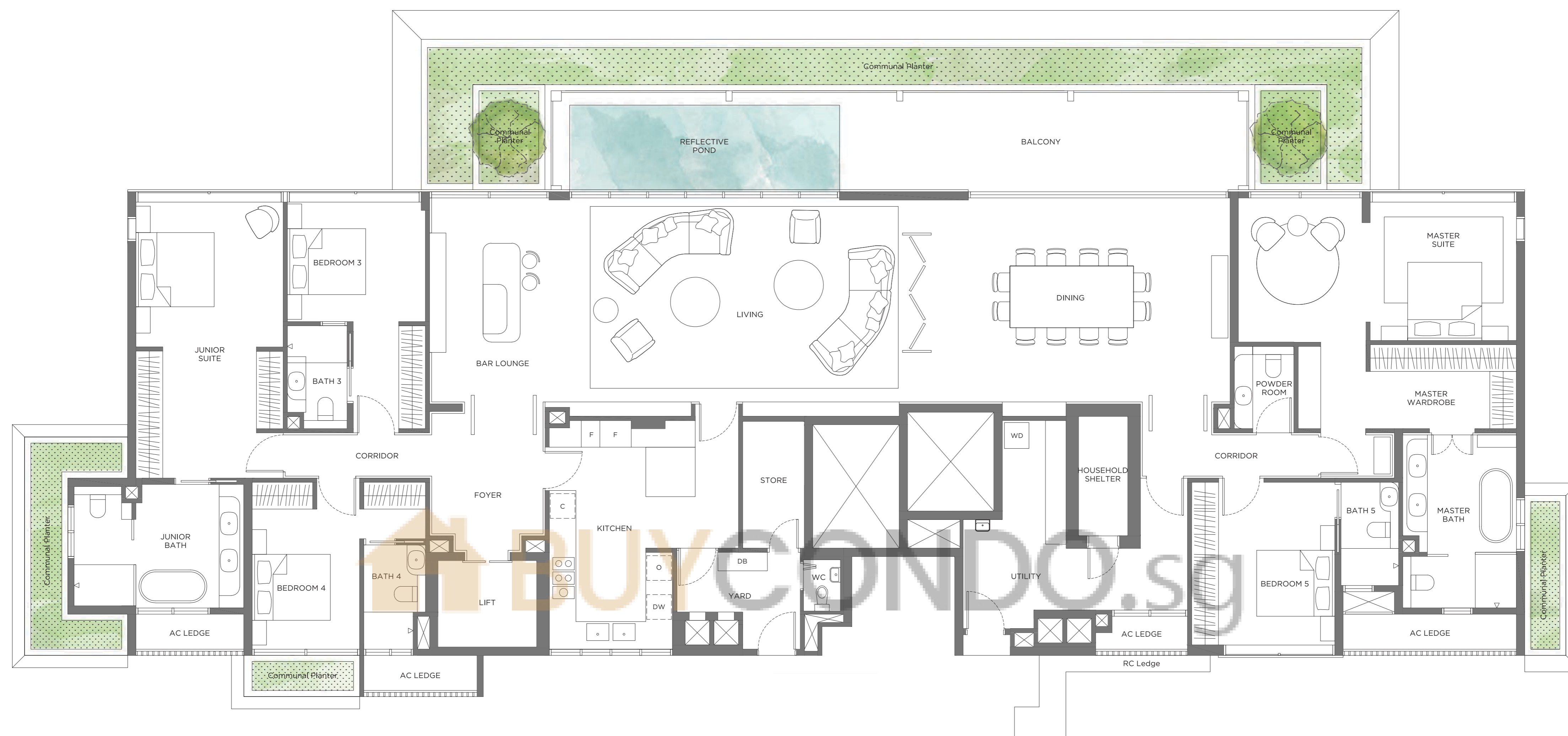
Plans are subject to change/amendments as may be required and/or approved by the Developer and/or the relevant authorities and do not form part of any offer or contract.



15 Holland Hill

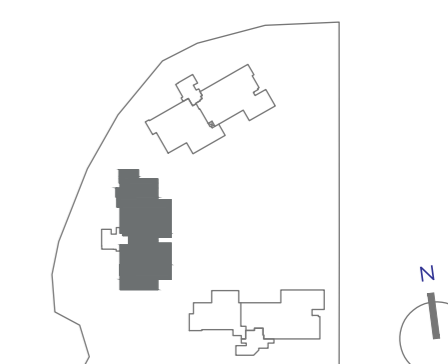
Tower 2
Penthouse
Type P2

504 sq m / 5,425 sq ft
Unit #12-03



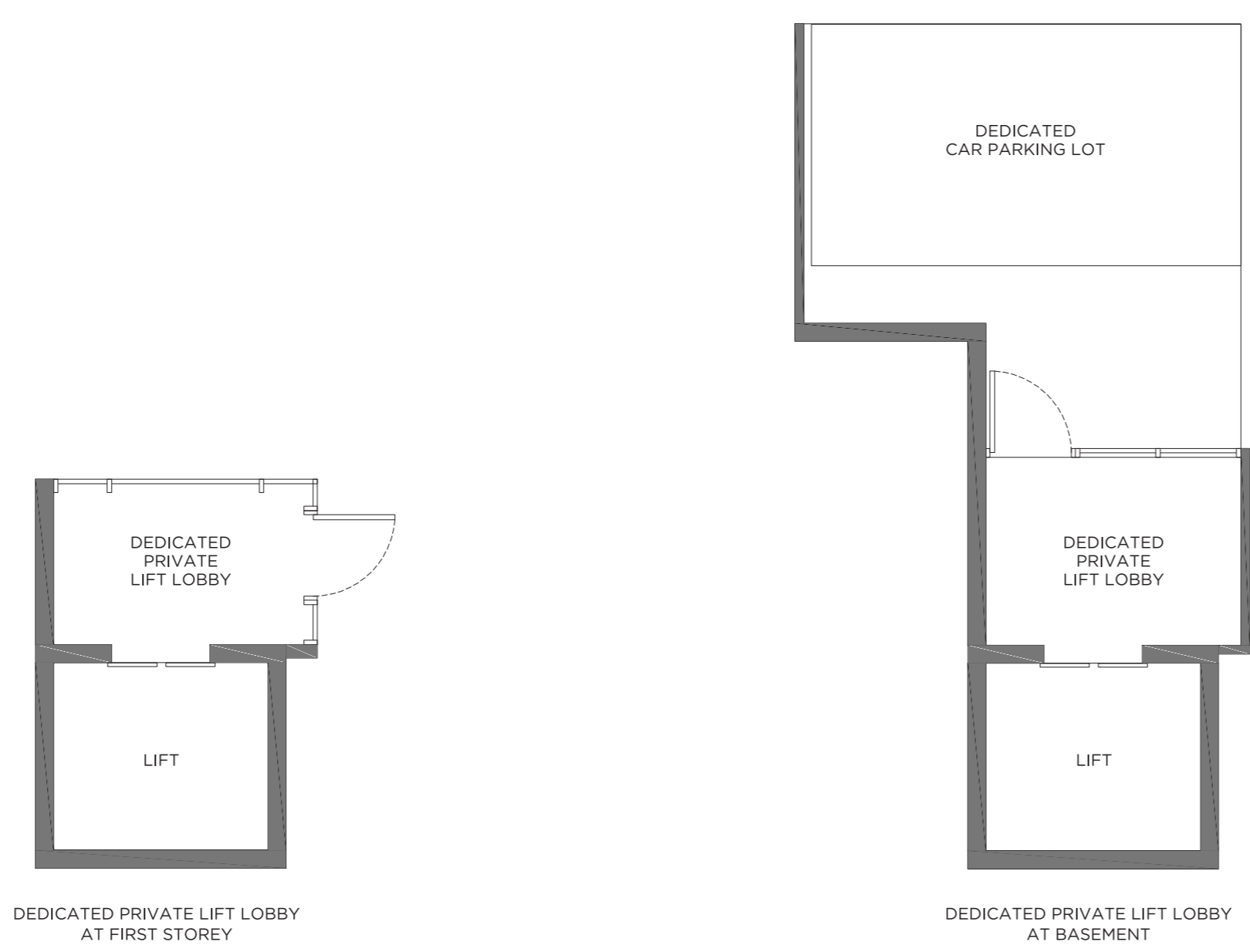
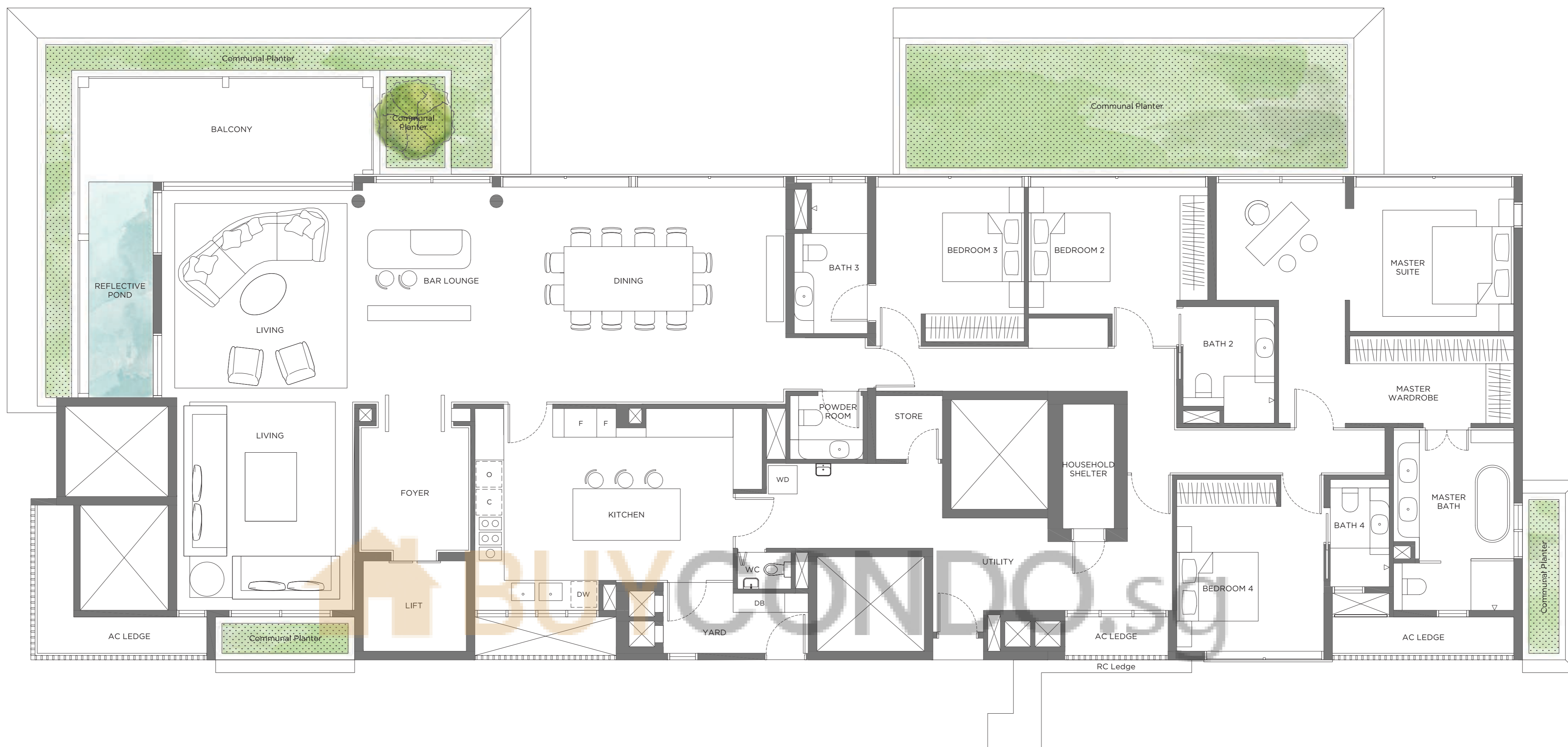
0 1 5M

Plans are subject to change/amendments as may be required and/or approved by the Developer and/or the relevant authorities and do not form part of any offer or contract.



15 Holland Hill

Tower 3
Penthouse
Type P3
462 sq m / 4,973 sq ft
Unit #12-01



Plans are subject to change/amendments as may be required and/or approved by the Developer and/or the relevant authorities and do not form part of any offer or contract.

