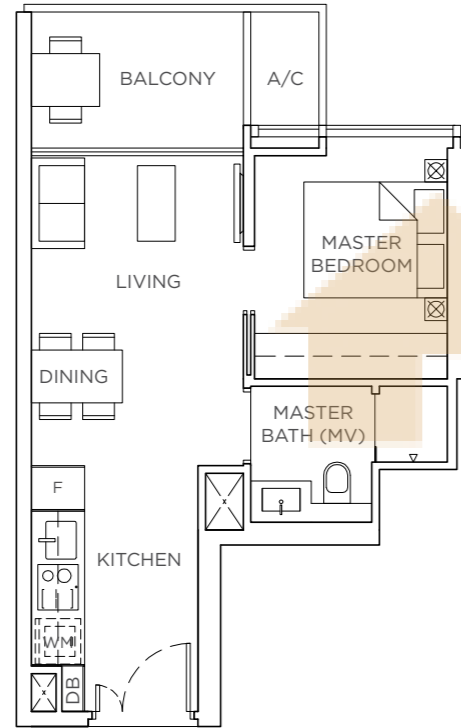
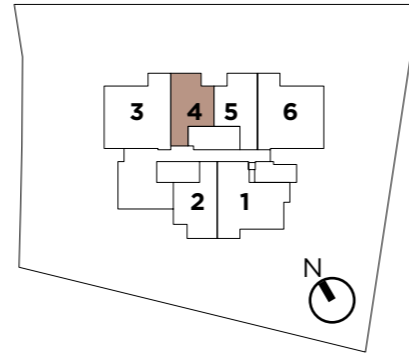


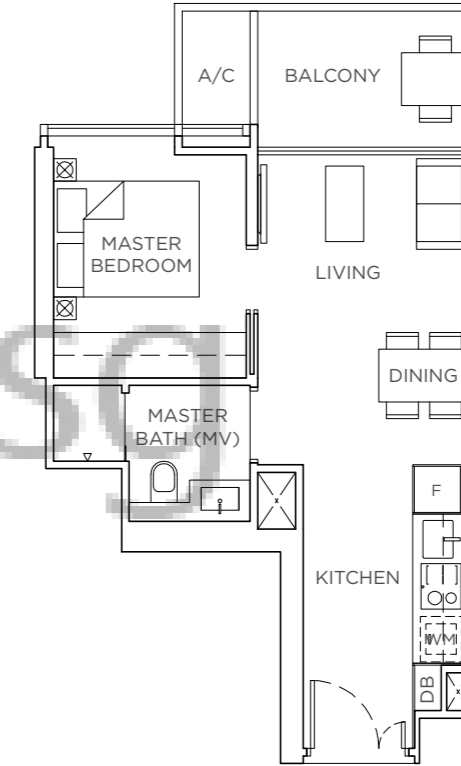
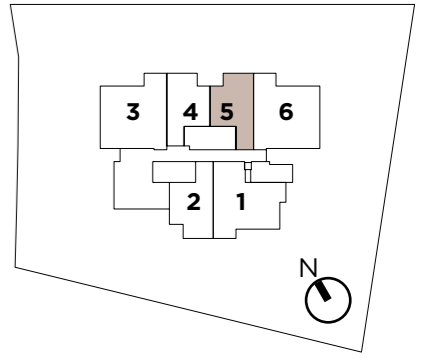
**A1 - 42 SQ M | 452 SQ FT**

#03-04 - #06-04  
#08-04 - #13-04  
#15-04 - #19-04



**A2 - 43 SQ M | 463 SQ FT**

#03-05 - #06-05  
#08-05 - #13-05  
#15-05 - #19-05



A/C - Air-Conditioning Ledge | DB - Distribution Board | F - Fridge | MV - Mechanical Vent | WC - Water Closet | WM - Washing Machine

Area includes A/C ledge, balcony, PES, roof terrace and void (where applicable). Orientation and facings will differ depending on the unit you are purchasing (please refer to the key plan). All plans are not to scale and subject to changes as may be required by relevant authorities. All floor areas are estimated and subjected to final survey.

A/C - Air-Conditioning Ledge | DB - Distribution Board | F - Fridge | MV - Mechanical Vent | WC - Water Closet | WM - Washing Machine

Area includes A/C ledge, balcony, PES, roof terrace and void (where applicable). Orientation and facings will differ depending on the unit you are purchasing (please refer to the key plan). All plans are not to scale and subject to changes as may be required by relevant authorities. All floor areas are estimated and subjected to final survey.

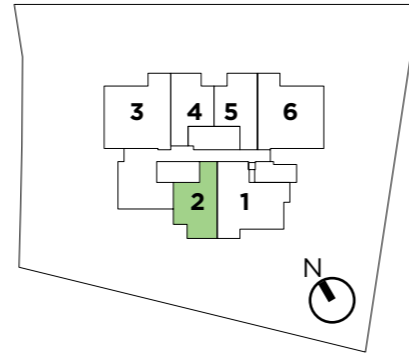
**A3 - 44 SQ M | 474 SQ FT**

#03-02 - #06-02  
#08-02 - #13-02



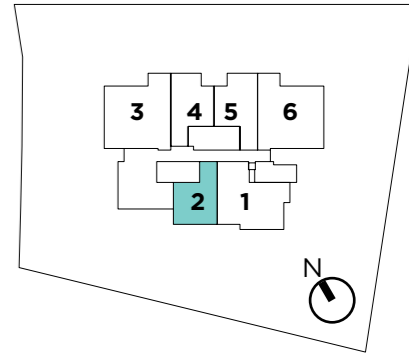
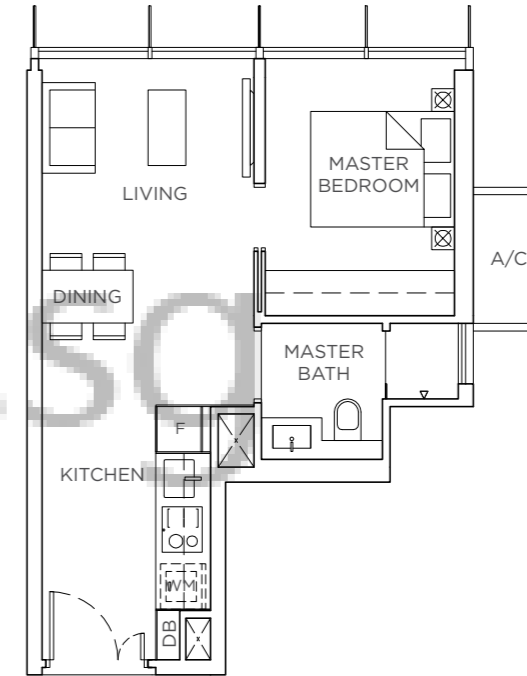
**A3a - 44 SQ M | 474 SQ FT**

#15-02 - #17-02



**A4 - 39 SQ M | 420 SQ FT**

#18-02



A/C - Air-Conditioning Ledge | DB - Distribution Board | F - Fridge | MV - Mechanical Vent | WC - Water Closet | WM - Washing Machine

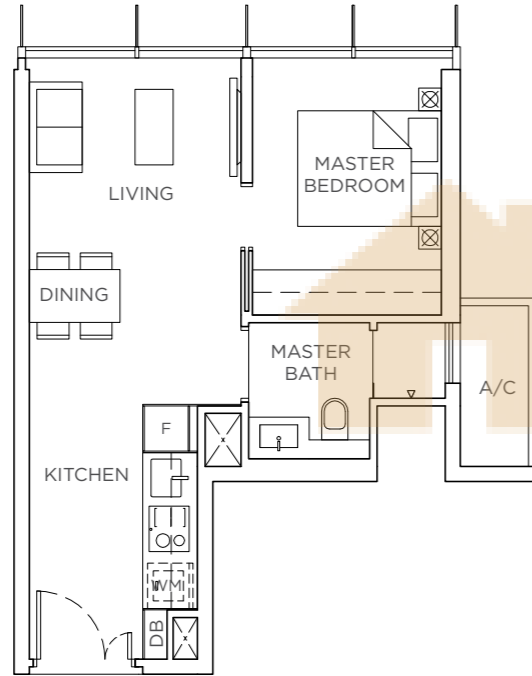
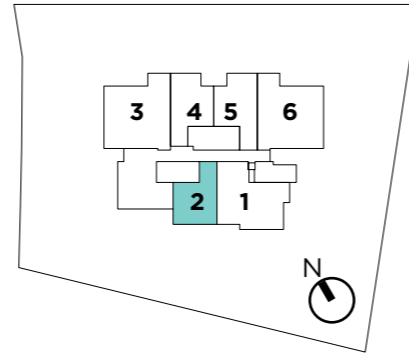
Area includes A/C ledge, balcony, PES, roof terrace and void (where applicable). Orientation and facings will differ depending on the unit you are purchasing (please refer to the key plan). All plans are not to scale and subject to changes as may be required by relevant authorities. All floor areas are estimated and subjected to final survey.

A/C - Air-Conditioning Ledge | DB - Distribution Board | F - Fridge | MV - Mechanical Vent | WC - Water Closet | WM - Washing Machine

Area includes A/C ledge, balcony, PES, roof terrace and void (where applicable). Orientation and facings will differ depending on the unit you are purchasing (please refer to the key plan). All plans are not to scale and subject to changes as may be required by relevant authorities. All floor areas are estimated and subjected to final survey.

**A4a - 39 SQ M | 420 SQ FT**

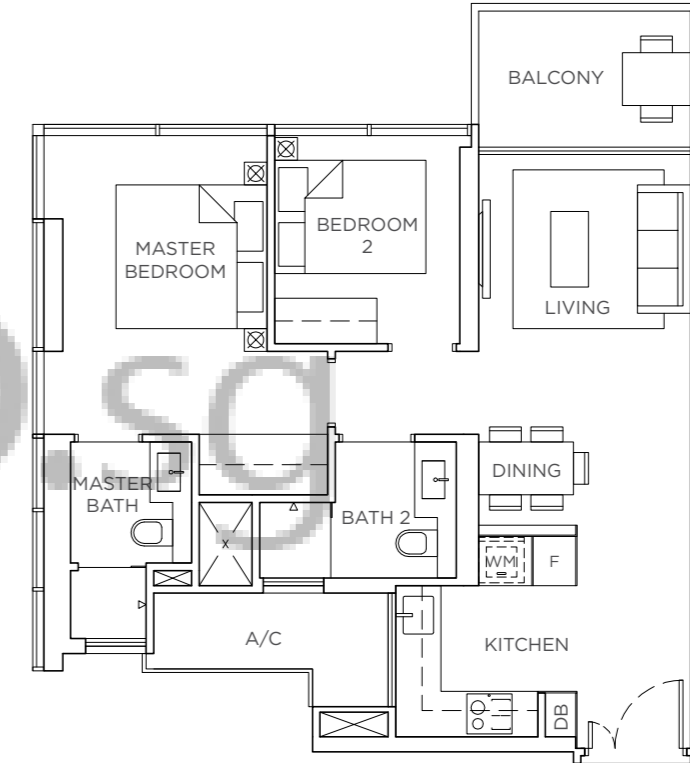
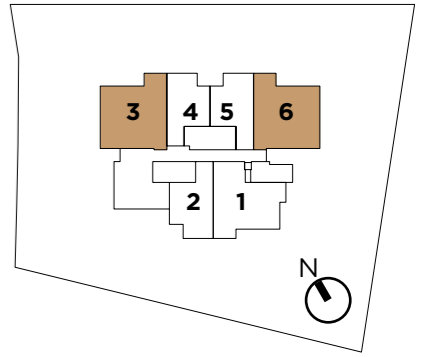
#19-02



**B1 - 71 SQ M | 764 SQ FT**

#03-03 - #06-03  
#08-03 - #13-03  
#15-03 - #19-03

#03-06 - #06-06 (Mirror)  
#08-06 - #13-06 (Mirror)  
#15-06 - #19-06 (Mirror)



A/C - Air-Conditioning Ledge | DB - Distribution Board | F - Fridge | MV - Mechanical Vent | WC - Water Closet | WM - Washing Machine

Area includes A/C ledge, balcony, PES, roof terrace and void (where applicable). Orientation and facings will differ depending on the unit you are purchasing (please refer to the key plan). All plans are not to scale and subject to changes as may be required by relevant authorities. All floor areas are estimated and subjected to final survey.

A/C - Air-Conditioning Ledge | DB - Distribution Board | F - Fridge | MV - Mechanical Vent | WC - Water Closet | WM - Washing Machine

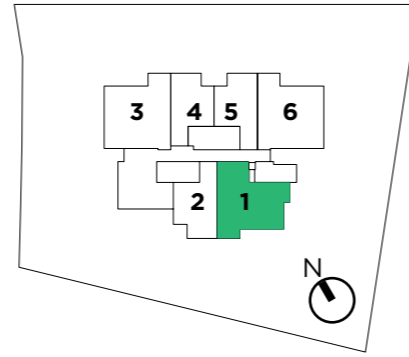
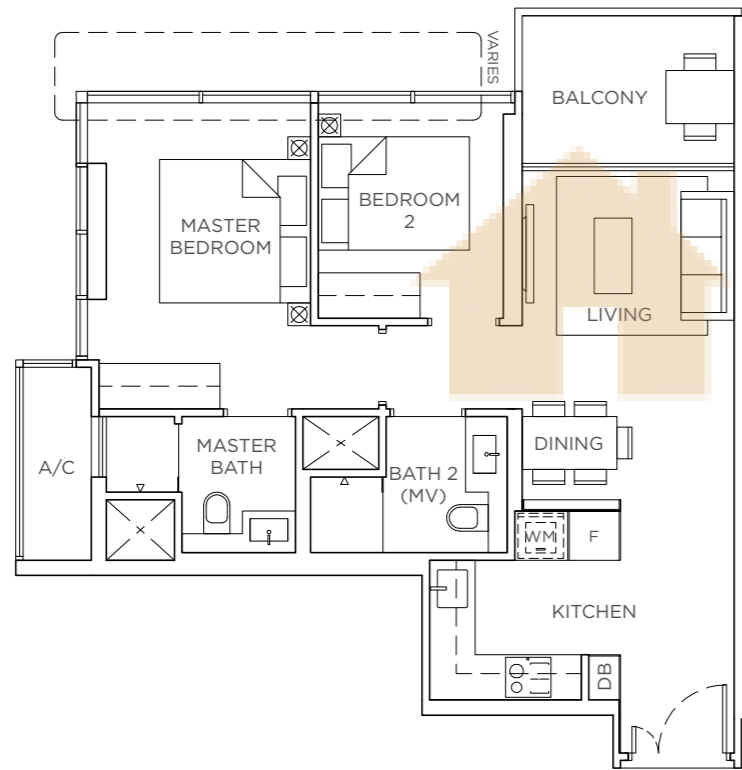
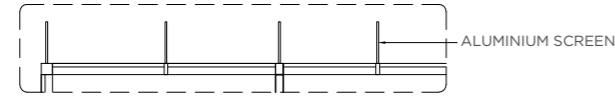
Area includes A/C ledge, balcony, PES, roof terrace and void (where applicable). Orientation and facings will differ depending on the unit you are purchasing (please refer to the key plan). All plans are not to scale and subject to changes as may be required by relevant authorities. All floor areas are estimated and subjected to final survey.

**B2 - 68 SQ M | 732 SQ FT**

#03-01 - #06-01  
#08-01 - #13-01

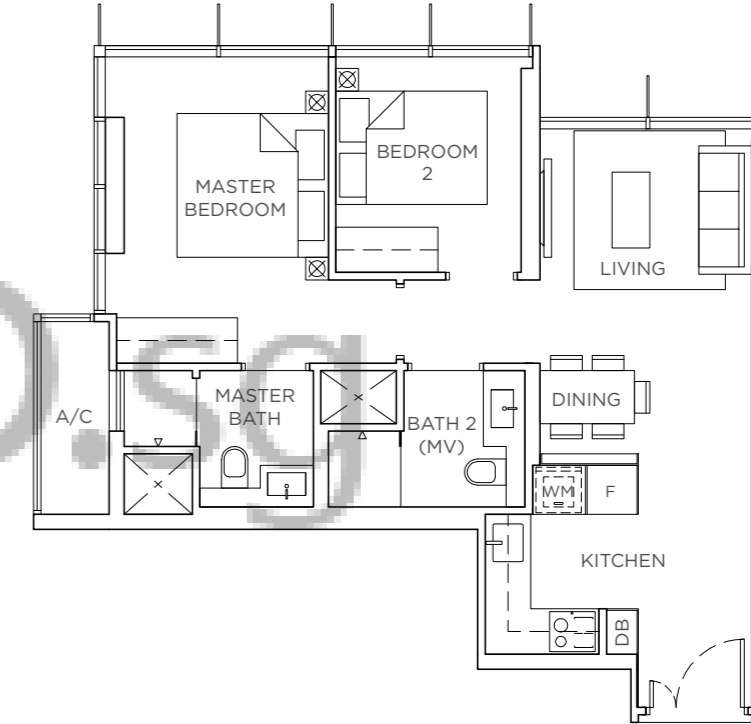
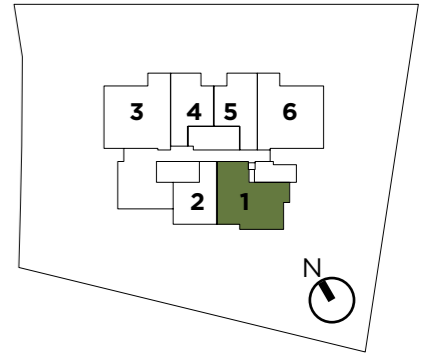
**B2a - 68 SQ M | 732 SQ FT**

#15-01 - #17-01



**B3 - 61 SQ M | 657 SQ FT**

#18-01 - #19-01



A/C - Air-Conditioning Ledge | DB - Distribution Board | F - Fridge | MV - Mechanical Vent | WC - Water Closet | WM - Washing Machine

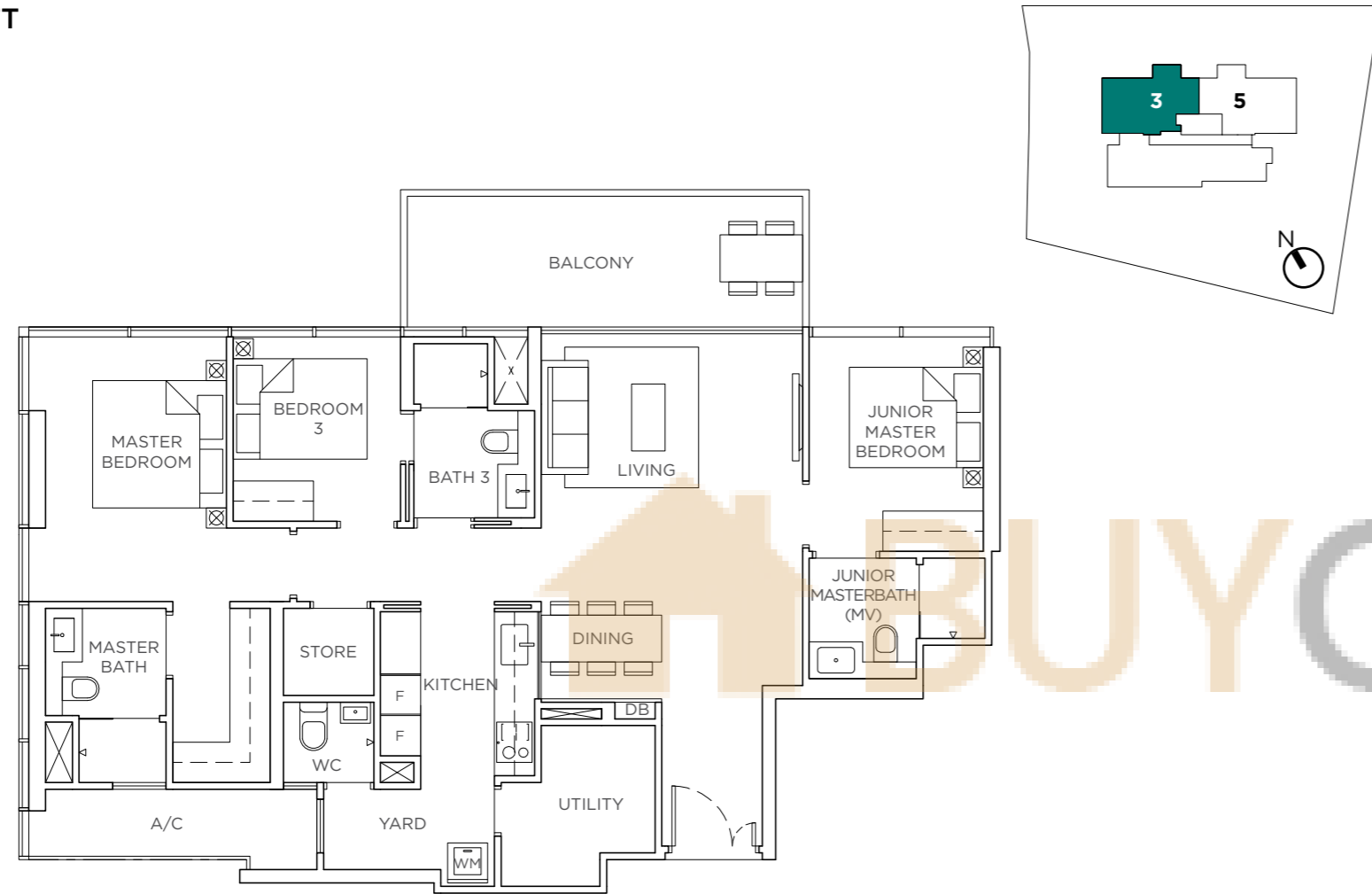
Area includes A/C ledge, balcony, PES, roof terrace and void (where applicable). Orientation and facings will differ depending on the unit you are purchasing (please refer to the key plan). All plans are not to scale and subject to changes as may be required by relevant authorities. All floor areas are estimated and subjected to final survey.

A/C - Air-Conditioning Ledge | DB - Distribution Board | F - Fridge | MV - Mechanical Vent | WC - Water Closet | WM - Washing Machine

Area includes A/C ledge, balcony, PES, roof terrace and void (where applicable). Orientation and facings will differ depending on the unit you are purchasing (please refer to the key plan). All plans are not to scale and subject to changes as may be required by relevant authorities. All floor areas are estimated and subjected to final survey.

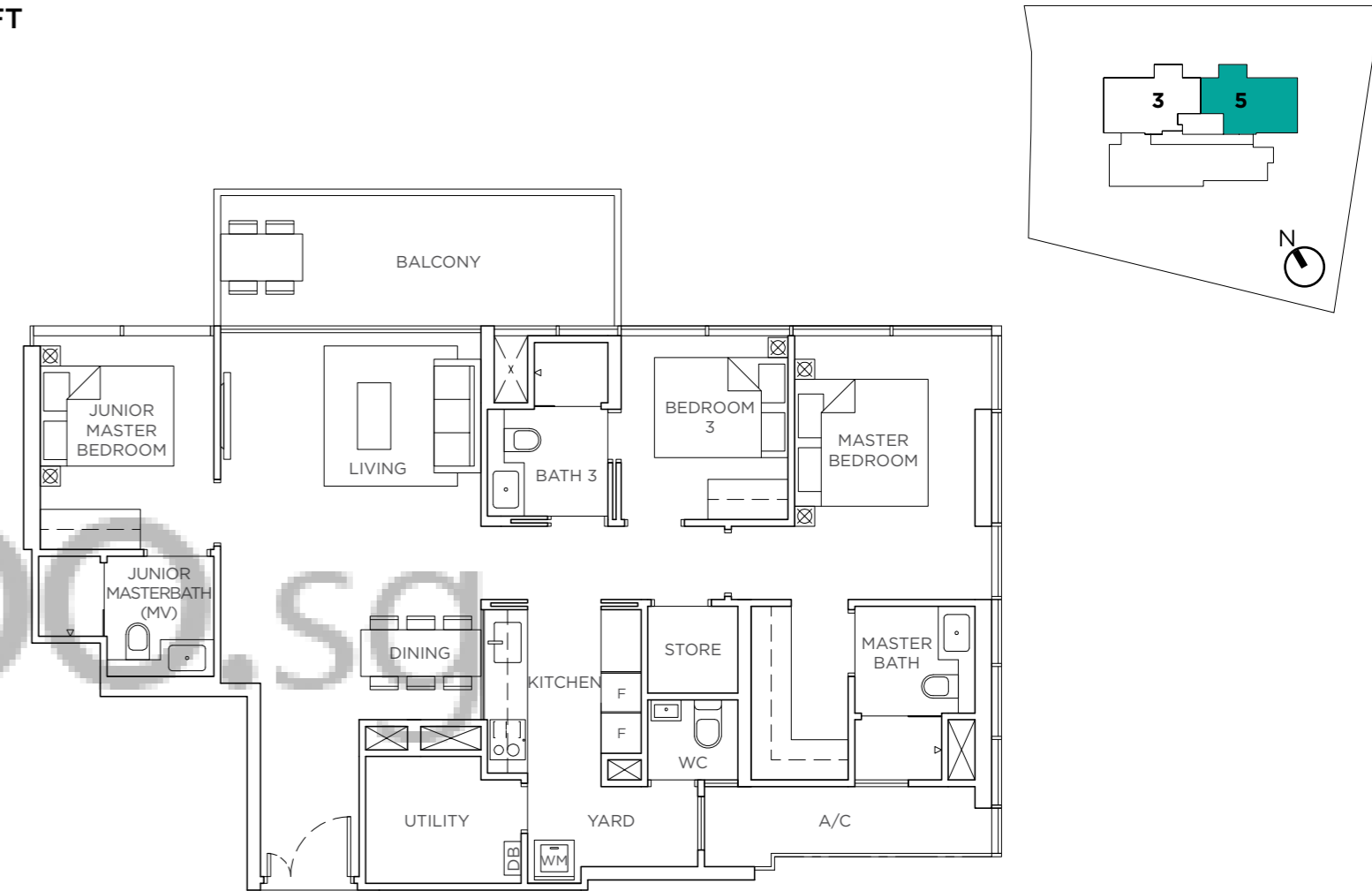
**C1 - 118 SQ M | 1,270 SQ FT**

#21-03 - #23-03



**C2 - 119 SQ M | 1,281 SQ FT**

#21-05 - #23-05



A/C - Air-Conditioning Ledge | DB - Distribution Board | F - Fridge | MV - Mechanical Vent | WC - Water Closet | WM - Washing Machine

Area includes A/C ledge, balcony, PES, roof terrace and void (where applicable). Orientation and facings will differ depending on the unit you are purchasing (please refer to the key plan). All plans are not to scale and subject to changes as may be required by relevant authorities. All floor areas are estimated and subjected to final survey.

A/C - Air-Conditioning Ledge | DB - Distribution Board | F - Fridge | MV - Mechanical Vent | WC - Water Closet | WM - Washing Machine

Area includes A/C ledge, balcony, PES, roof terrace and void (where applicable). Orientation and facings will differ depending on the unit you are purchasing (please refer to the key plan). All plans are not to scale and subject to changes as may be required by relevant authorities. All floor areas are estimated and subjected to final survey.