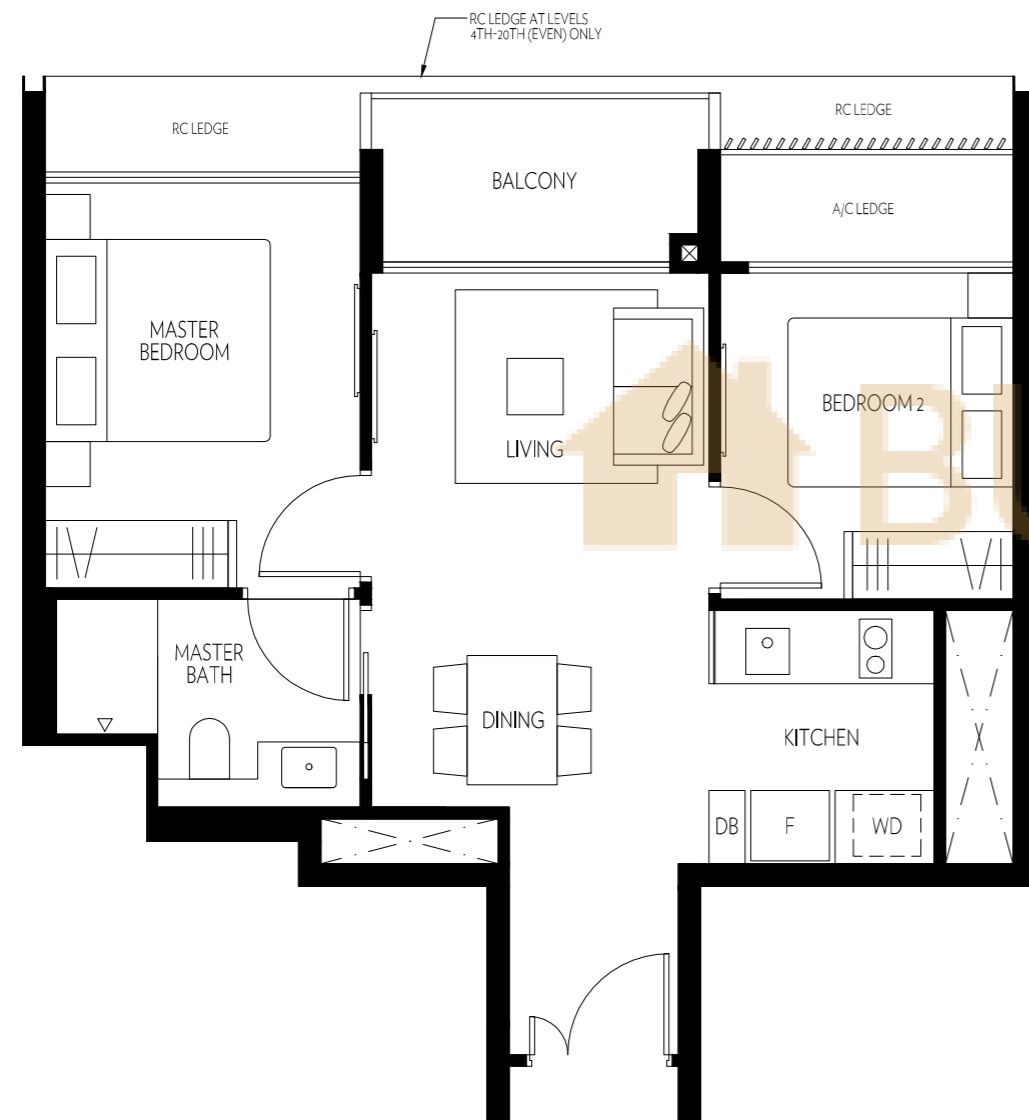


2-BEDROOM ◇ TYPE A

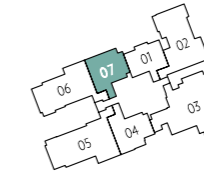
614 SQFT

#02-01 TO #20-01



AMBER45

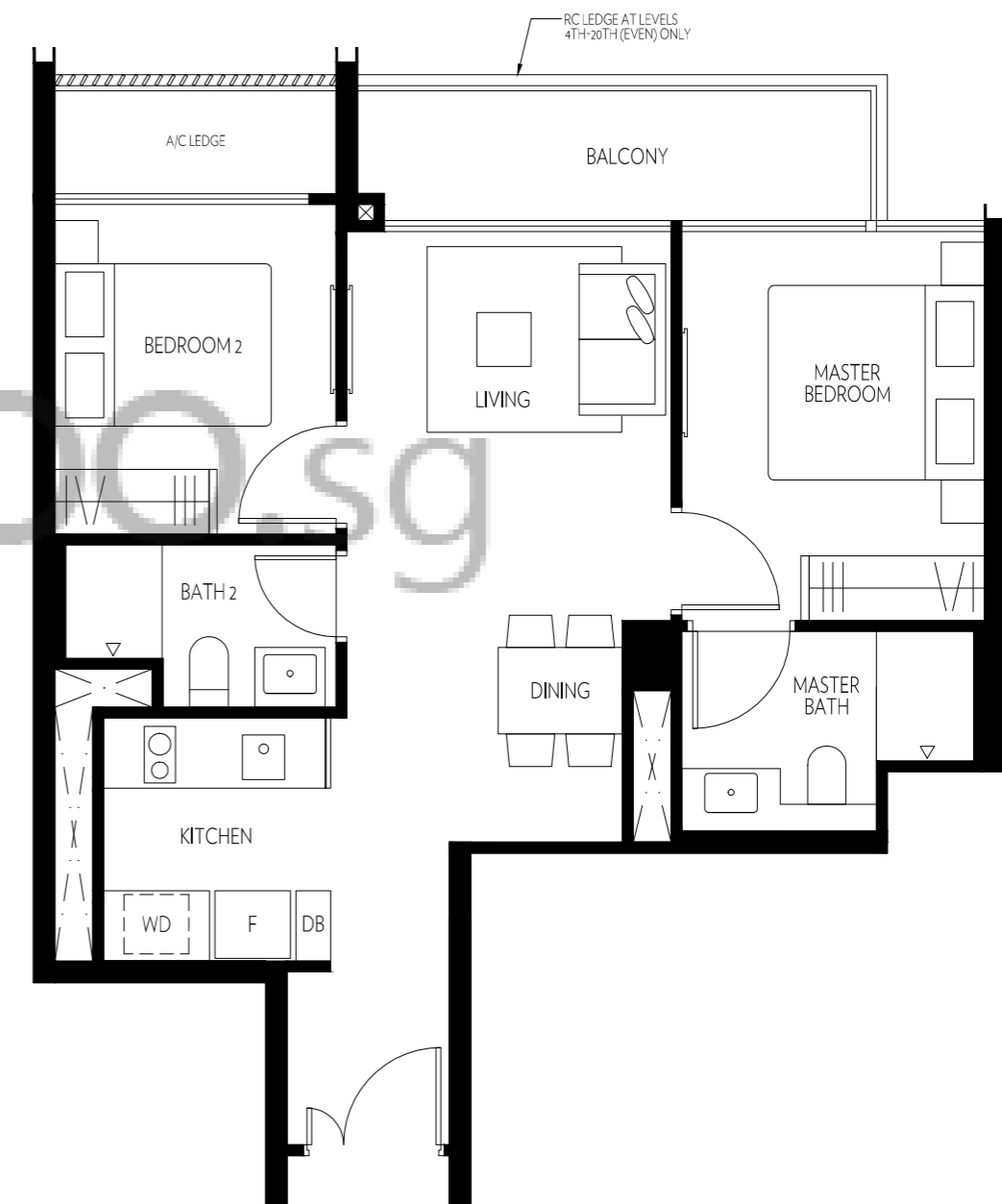
NOTE: AREA INCLUDES A/C LEDGE, BALCONY, PES, PRIVATE ROOF TERRACE AND VOID (WHERE APPLICABLE). THE ABOVE PLANS AND ILLUSTRATIONS ARE SUBJECT TO CHANGES AS MAYBE REQUIRED BY THE RELEVANT AUTHORITIES. AREAS ARE ESTIMATES ONLY AND ARE SUBJECT TO FINAL SURVEY. THE BALCONY, PES, AND PRIVATE ROOF TERRACE SHALL NOT BE ENCLOSED UNLESS WITH THE APPROVED SCREEN. FOR AN ILLUSTRATION OF THE APPROVED BALCONY SCREEN, PLEASE REFER TO THE DIAGRAM ANNEXED HERETO AS 'ANNEXURE 1'.



2-BEDROOM PREMIUM ◇ TYPE B1

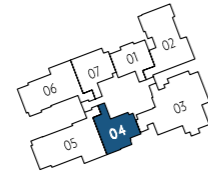
700 SQFT

#02-07 TO #20-07



AMBER45

NOTE: AREA INCLUDES A/C LEDGE, BALCONY, PES, PRIVATE ROOF TERRACE AND VOID (WHERE APPLICABLE). THE ABOVE PLANS AND ILLUSTRATIONS ARE SUBJECT TO CHANGES AS MAYBE REQUIRED BY THE RELEVANT AUTHORITIES. AREAS ARE ESTIMATES ONLY AND ARE SUBJECT TO FINAL SURVEY. THE BALCONY, PES, AND PRIVATE ROOF TERRACE SHALL NOT BE ENCLOSED UNLESS WITH THE APPROVED SCREEN. FOR AN ILLUSTRATION OF THE APPROVED BALCONY SCREEN, PLEASE REFER TO THE DIAGRAM ANNEXED HERETO AS 'ANNEXURE 1'.



2-BEDROOM PREMIUM ◇ TYPE B2

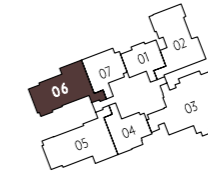
732 SQFT

#02-04 TO #20-04



AMBER45

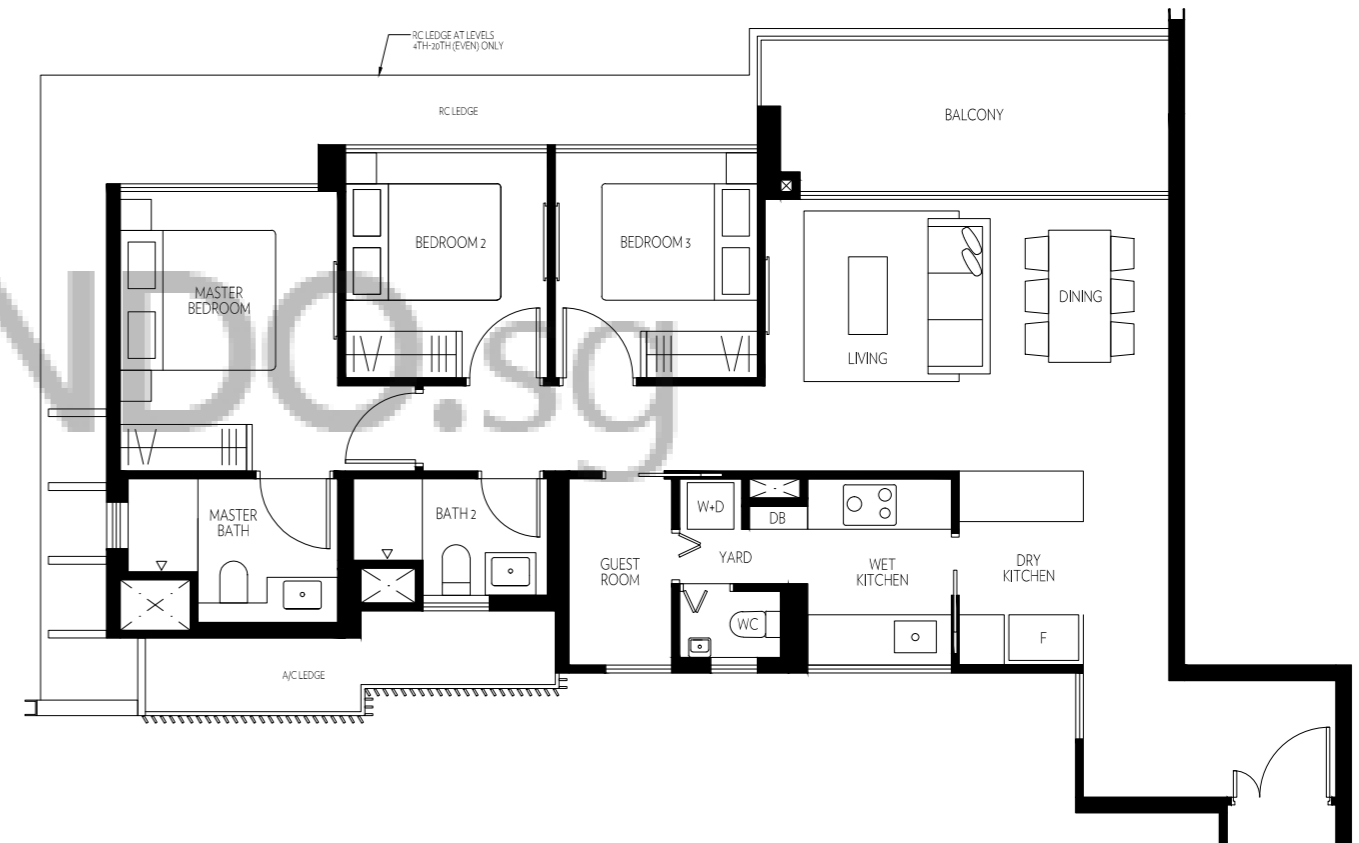
NOTE: AREA INCLUDES A/C LEDGE, BALCONY, PES, PRIVATE ROOF TERRACE AND VOID (WHERE APPLICABLE). THE ABOVE PLANS AND ILLUSTRATIONS ARE SUBJECT TO CHANGES AS MAYBE REQUIRED BY THE RELEVANT AUTHORITIES. AREAS ARE ESTIMATES ONLY AND ARE SUBJECT TO FINAL SURVEY. THE BALCONY, PES, AND PRIVATE ROOF TERRACE SHALL NOT BE ENCLOSED UNLESS WITH THE APPROVED SCREEN. FOR AN ILLUSTRATION OF THE APPROVED BALCONY SCREEN, PLEASE REFER TO THE DIAGRAM ANNEXED HERETO AS 'ANNEXURE 1'.



3-BEDROOM + GUEST ROOM ◇ TYPE C1

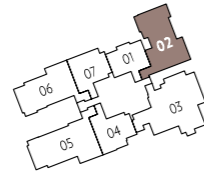
1130 SQFT

#02-06 TO #20-06



AMBER45

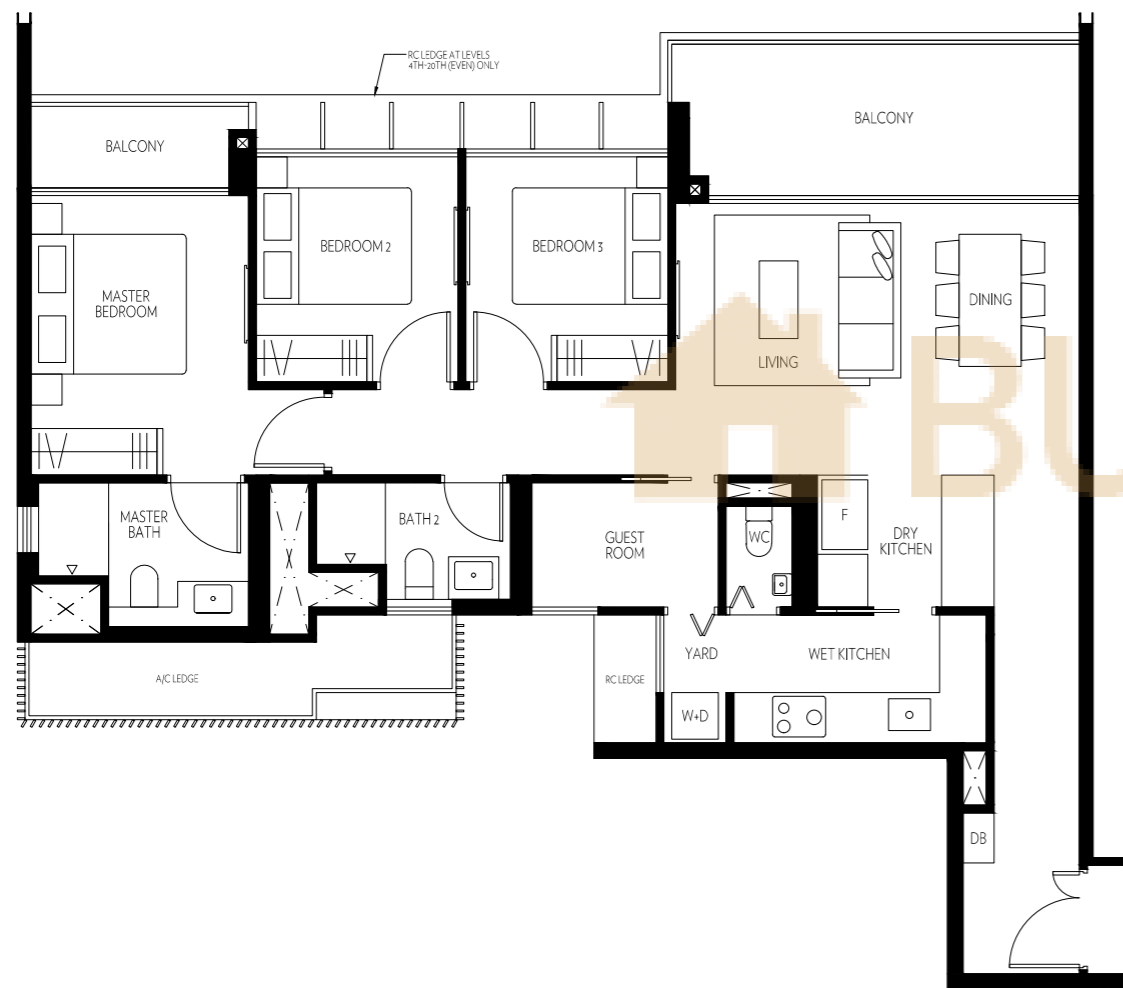
NOTE: AREA INCLUDES A/C LEDGE, BALCONY, PES, PRIVATE ROOF TERRACE AND VOID (WHERE APPLICABLE). THE ABOVE PLANS AND ILLUSTRATIONS ARE SUBJECT TO CHANGES AS MAYBE REQUIRED BY THE RELEVANT AUTHORITIES. AREAS ARE ESTIMATES ONLY AND ARE SUBJECT TO FINAL SURVEY. THE BALCONY, PES, AND PRIVATE ROOF TERRACE SHALL NOT BE ENCLOSED UNLESS WITH THE APPROVED SCREEN. FOR AN ILLUSTRATION OF THE APPROVED BALCONY SCREEN, PLEASE REFER TO THE DIAGRAM ANNEXED HERETO AS 'ANNEXURE 1'.



### 3-BEDROOM + GUEST ROOM ◇ TYPE C2

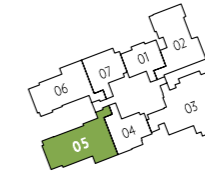
1184 SQFT

#02-02 TO #20-02



AMBER<sub>45</sub>

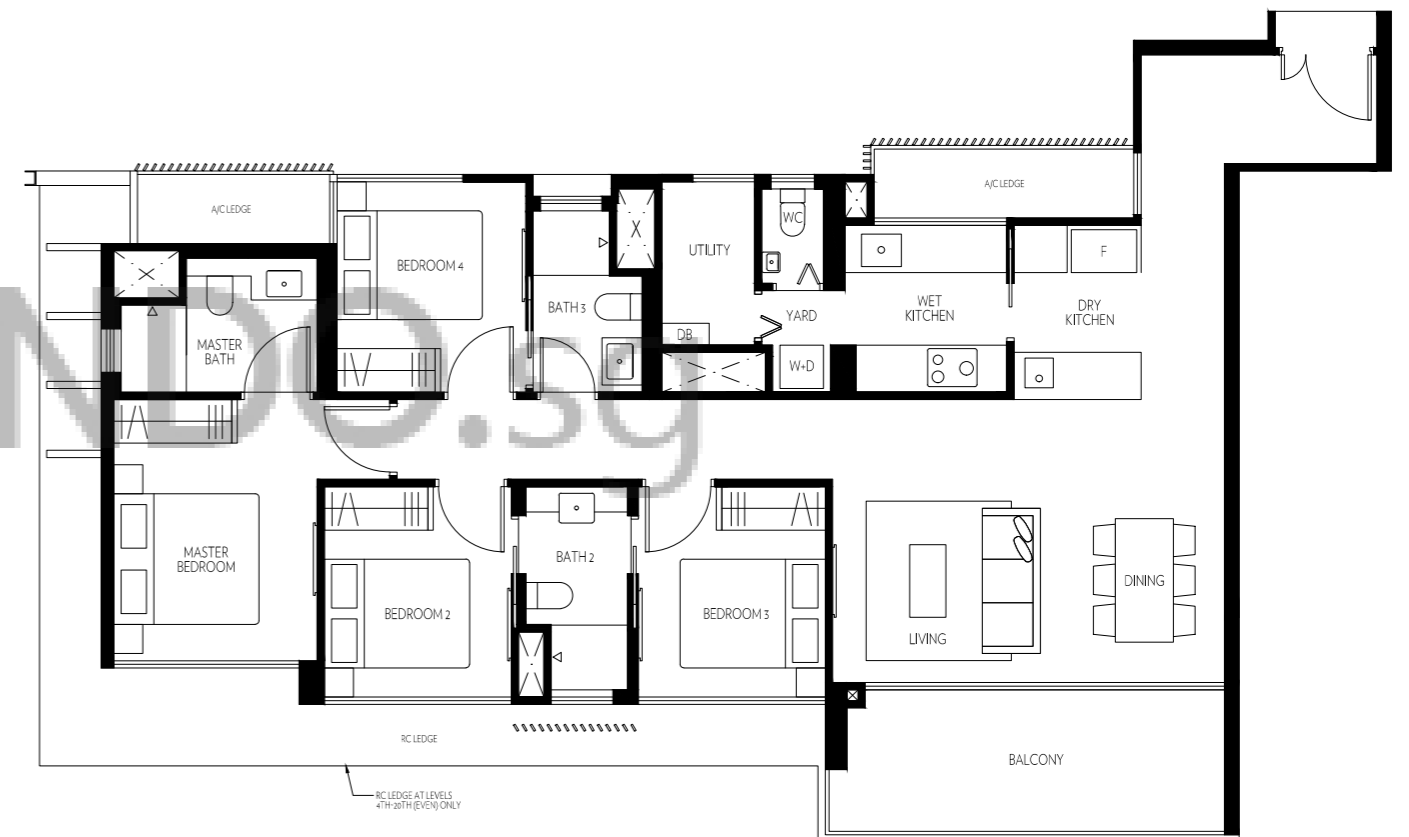
NOTE: AREA INCLUDES A/C LEDGE, BALCONY, PES, PRIVATE ROOF TERRACE AND VOID (WHERE APPLICABLE). THE ABOVE PLANS AND ILLUSTRATIONS ARE SUBJECT TO CHANGES AS MAYBE REQUIRED BY THE RELEVANT AUTHORITIES. AREAS ARE ESTIMATES ONLY AND ARE SUBJECT TO FINAL SURVEY. THE BALCONY, PES, AND PRIVATE ROOF TERRACE SHALL NOT BE ENCLOSED UNLESS WITH THE APPROVED SCREEN. FOR AN ILLUSTRATION OF THE APPROVED BALCONY SCREEN, PLEASE REFER TO THE DIAGRAM ANNEXED HERETO AS 'ANNEXURE 1'.



### 4-BEDROOM ◇ TYPE D

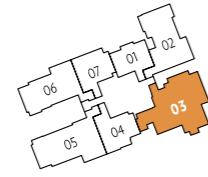
1346 SQFT

#03-05 TO #20-05



AMBER<sub>45</sub>

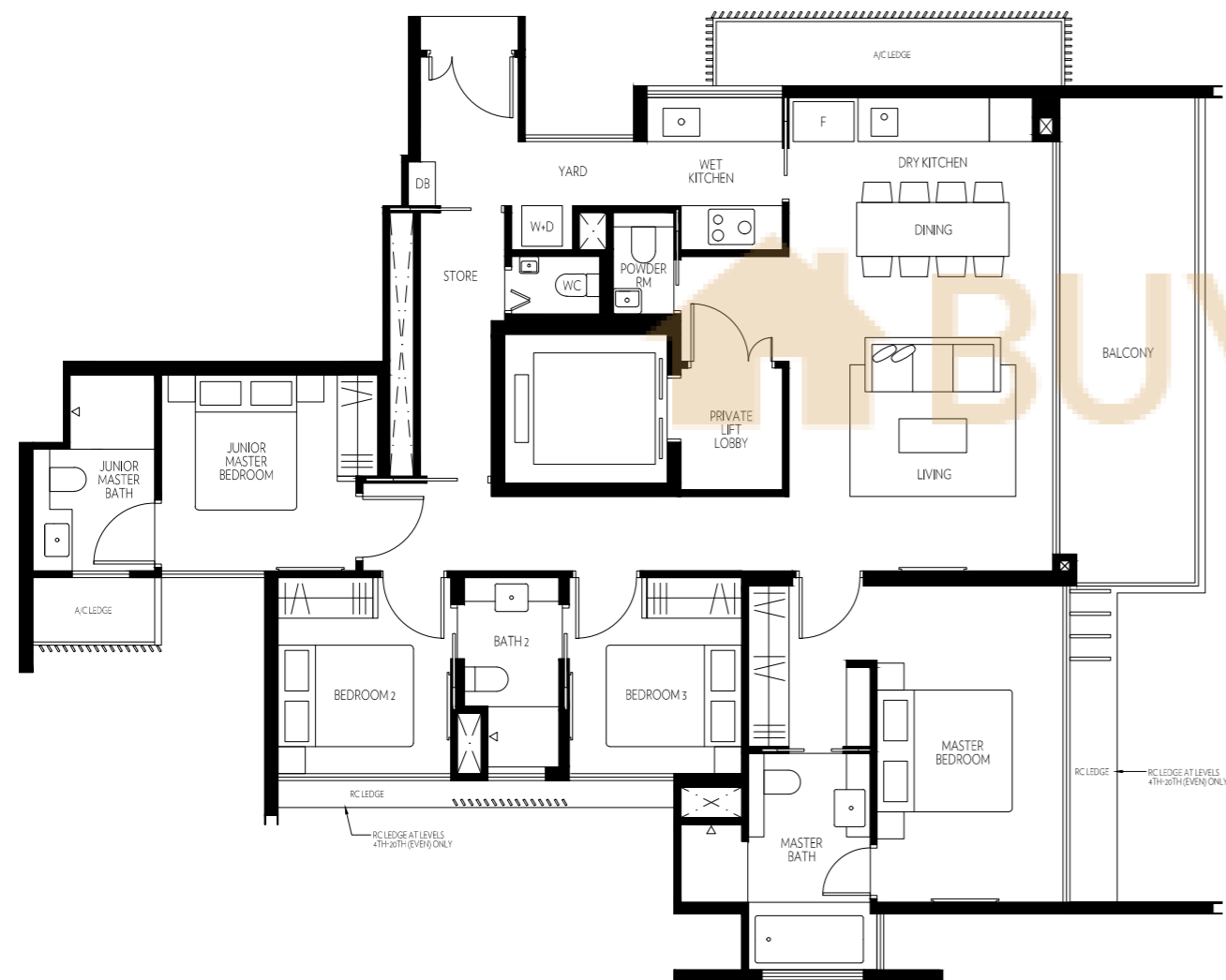
NOTE: AREA INCLUDES A/C LEDGE, BALCONY, PES, PRIVATE ROOF TERRACE AND VOID (WHERE APPLICABLE). THE ABOVE PLANS AND ILLUSTRATIONS ARE SUBJECT TO CHANGES AS MAYBE REQUIRED BY THE RELEVANT AUTHORITIES. AREAS ARE ESTIMATES ONLY AND ARE SUBJECT TO FINAL SURVEY. THE BALCONY, PES, AND PRIVATE ROOF TERRACE SHALL NOT BE ENCLOSED UNLESS WITH THE APPROVED SCREEN. FOR AN ILLUSTRATION OF THE APPROVED BALCONY SCREEN, PLEASE REFER TO THE DIAGRAM ANNEXED HERETO AS 'ANNEXURE 1'.



## 4-BEDROOM PREMIUM ◇ TYPE E

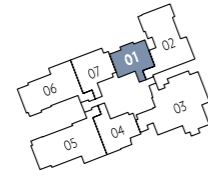
1593 SQFT

#02-03 TO #20-03



AMBER<sub>45</sub>

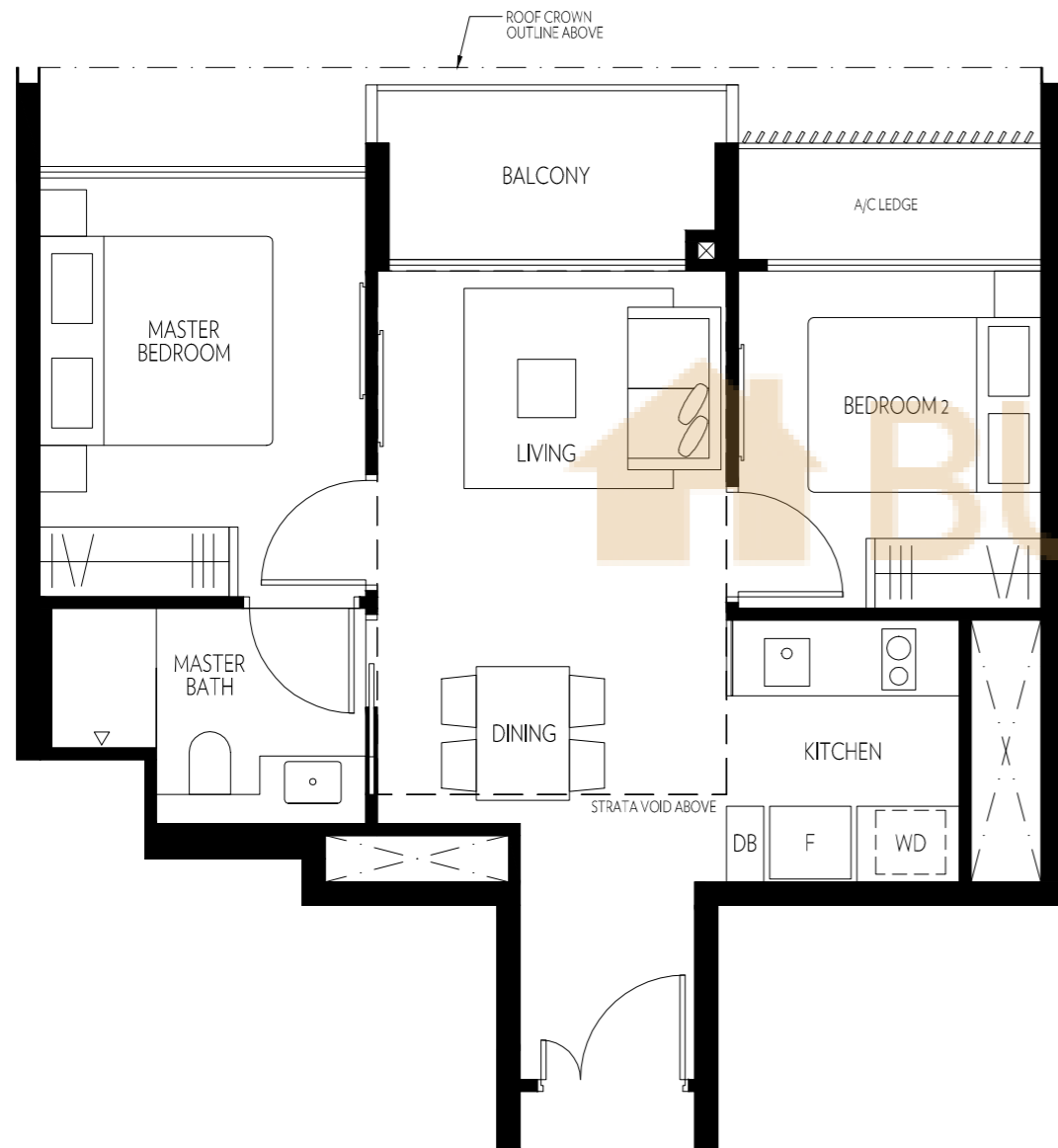
NOTE: AREA INCLUDES A/C LEDGE, BALCONY, PES, PRIVATE ROOF TERRACE AND VOID (WHERE APPLICABLE). THE ABOVE PLANS AND ILLUSTRATIONS ARE SUBJECT TO CHANGES AS MAYBE REQUIRED BY THE RELEVANT AUTHORITIES. AREAS ARE ESTIMATES ONLY AND ARE SUBJECT TO FINAL SURVEY. THE BALCONY, PES, AND PRIVATE ROOF TERRACE SHALL NOT BE ENCLOSED UNLESS WITH THE APPROVED SCREEN. FOR AN ILLUSTRATION OF THE APPROVED BALCONY SCREEN, PLEASE REFER TO THE DIAGRAM ANNEXED HERETO AS 'ANNEXURE 1'.



2-BEDROOM ◇ TYPE AP

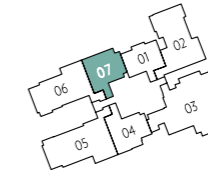
764 SQFT

#21-01



AMBER45

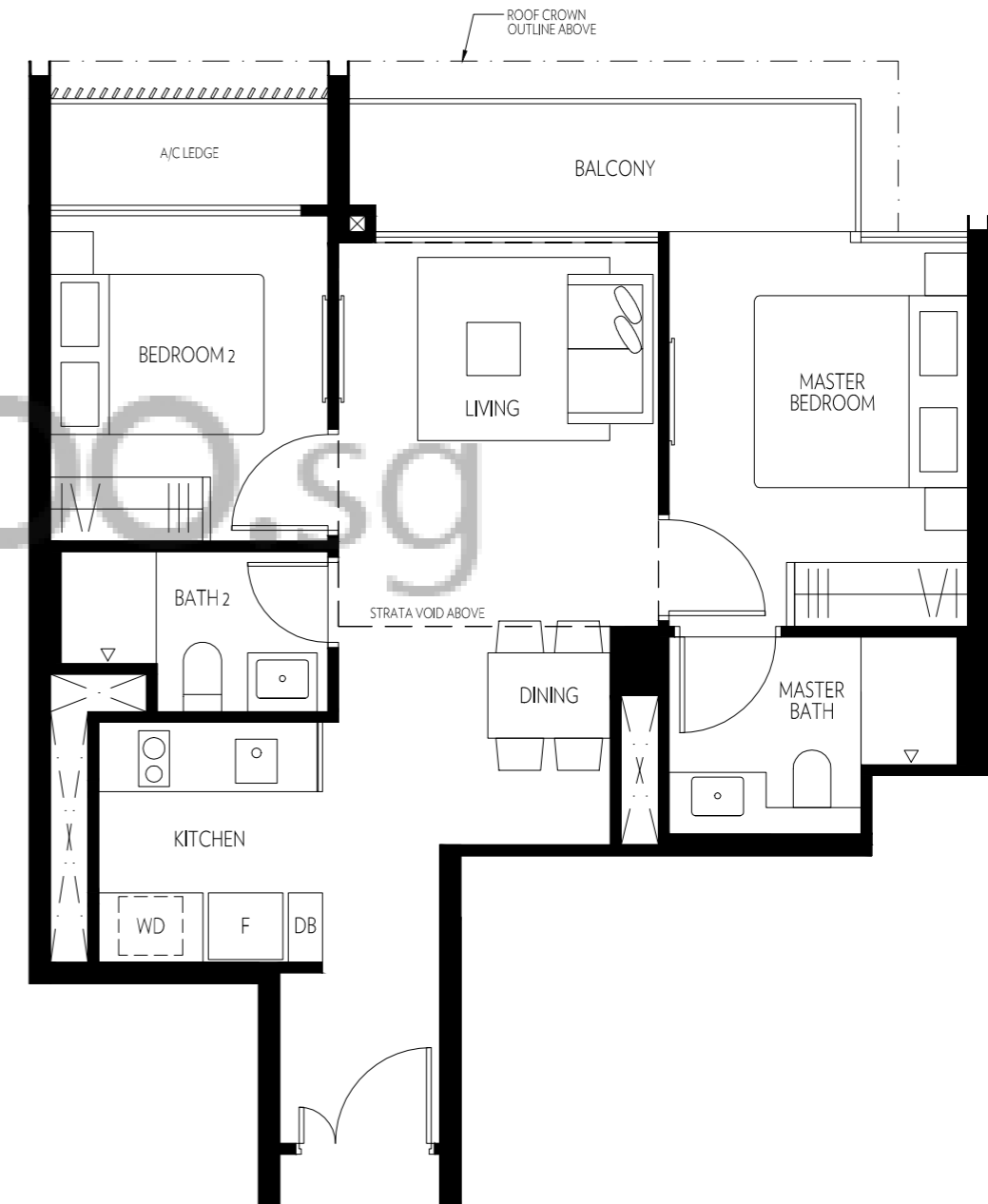
NOTE: AREA INCLUDES A/C LEDGE, BALCONY, PES, PRIVATE ROOF TERRACE AND VOID (WHERE APPLICABLE). THE ABOVE PLANS AND ILLUSTRATIONS ARE SUBJECT TO CHANGES AS MAYBE REQUIRED BY THE RELEVANT AUTHORITIES. AREAS ARE ESTIMATES ONLY AND ARE SUBJECT TO FINAL SURVEY. THE BALCONY, PES, AND PRIVATE ROOF TERRACE SHALL NOT BE ENCLOSED UNLESS WITH THE APPROVED SCREEN. FOR AN ILLUSTRATION OF THE APPROVED BALCONY SCREEN, PLEASE REFER TO THE DIAGRAM ANNEXED HERETO AS 'ANNEXURE 1'.



2-BEDROOM PREMIUM ◇ TYPE B1P

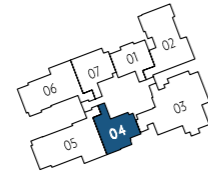
829 SQFT

#21-07



AMBER45

NOTE: AREA INCLUDES A/C LEDGE, BALCONY, PES, PRIVATE ROOF TERRACE AND VOID (WHERE APPLICABLE). THE ABOVE PLANS AND ILLUSTRATIONS ARE SUBJECT TO CHANGES AS MAYBE REQUIRED BY THE RELEVANT AUTHORITIES. AREAS ARE ESTIMATES ONLY AND ARE SUBJECT TO FINAL SURVEY. THE BALCONY, PES, AND PRIVATE ROOF TERRACE SHALL NOT BE ENCLOSED UNLESS WITH THE APPROVED SCREEN. FOR AN ILLUSTRATION OF THE APPROVED BALCONY SCREEN, PLEASE REFER TO THE DIAGRAM ANNEXED HERETO AS 'ANNEXURE 1'.



2-BEDROOM PREMIUM ◇ TYPE B2P

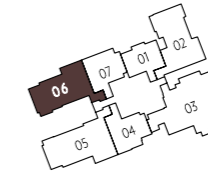
872 SQFT

#21-04



AMBER45

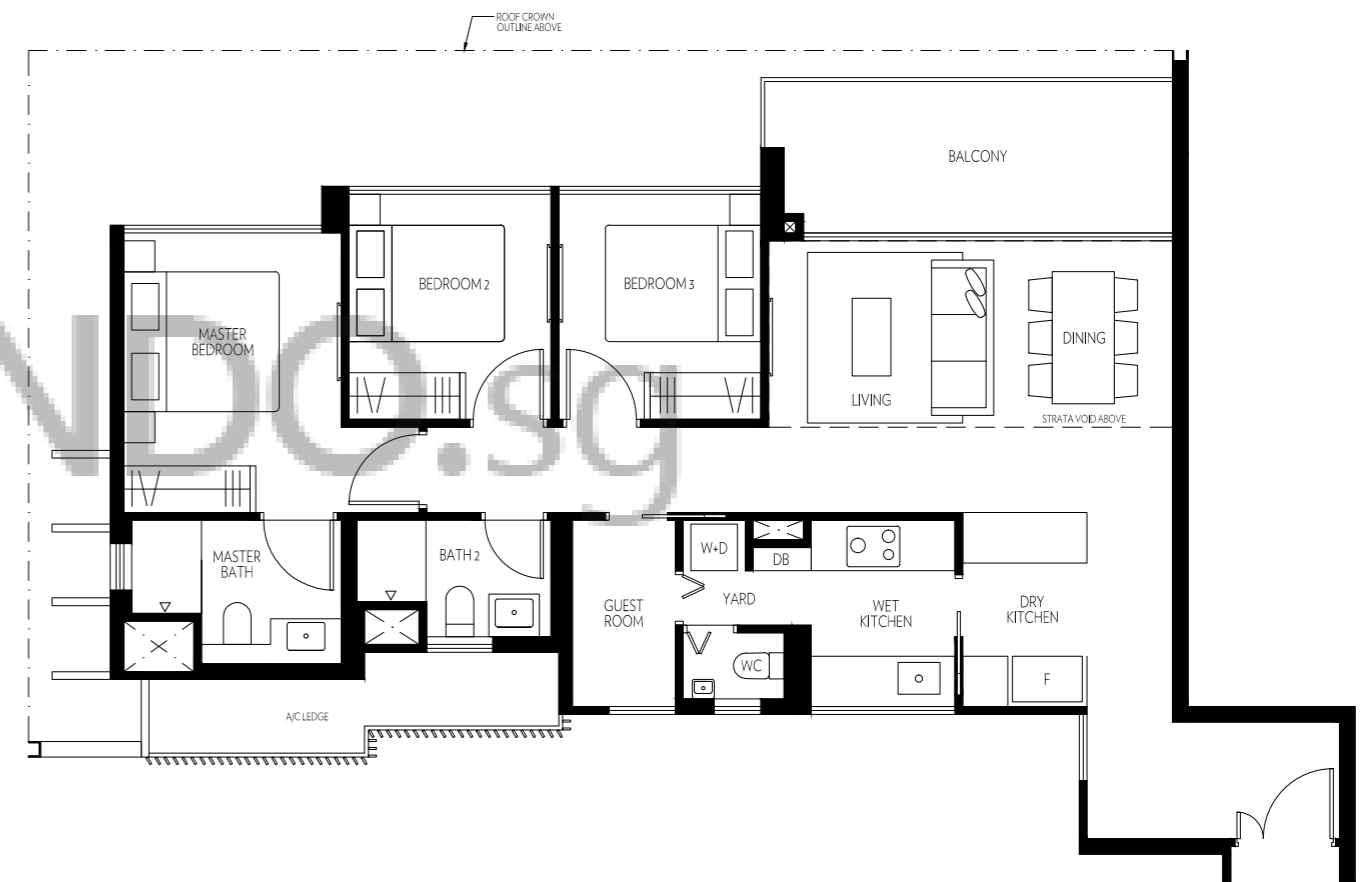
NOTE: AREA INCLUDES A/C LEDGE, BALCONY, PES, PRIVATE ROOF TERRACE AND VOID (WHERE APPLICABLE). THE ABOVE PLANS AND ILLUSTRATIONS ARE SUBJECT TO CHANGES AS MAYBE REQUIRED BY THE RELEVANT AUTHORITIES. AREAS ARE ESTIMATES ONLY AND ARE SUBJECT TO FINAL SURVEY. THE BALCONY, PES, AND PRIVATE ROOF TERRACE SHALL NOT BE ENCLOSED UNLESS WITH THE APPROVED SCREEN. FOR AN ILLUSTRATION OF THE APPROVED BALCONY SCREEN, PLEASE REFER TO THE DIAGRAM ANNEXED HERETO AS 'ANNEXURE 1'.



3-BEDROOM + GUEST ROOM ◇ TYPE C1P

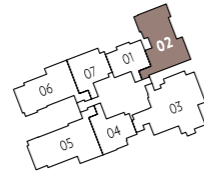
1270 SQFT

#21-06



AMBER45

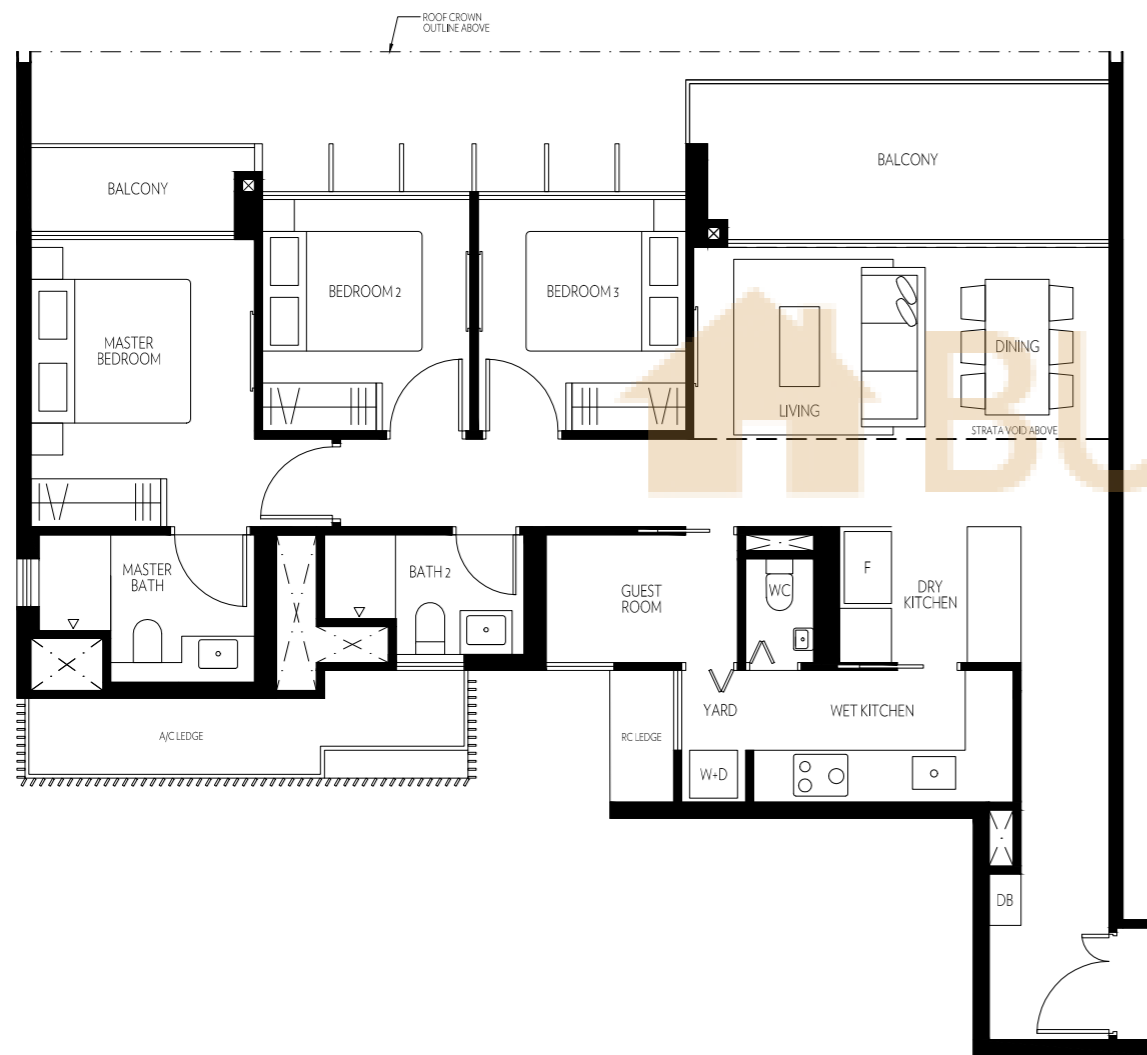
NOTE: AREA INCLUDES A/C LEDGE, BALCONY, PES, PRIVATE ROOF TERRACE AND VOID (WHERE APPLICABLE). THE ABOVE PLANS AND ILLUSTRATIONS ARE SUBJECT TO CHANGES AS MAYBE REQUIRED BY THE RELEVANT AUTHORITIES. AREAS ARE ESTIMATES ONLY AND ARE SUBJECT TO FINAL SURVEY. THE BALCONY, PES, AND PRIVATE ROOF TERRACE SHALL NOT BE ENCLOSED UNLESS WITH THE APPROVED SCREEN. FOR AN ILLUSTRATION OF THE APPROVED BALCONY SCREEN, PLEASE REFER TO THE DIAGRAM ANNEXED HERETO AS 'ANNEXURE 1'.



3-BEDROOM + GUEST ROOM ◇ TYPE C2P

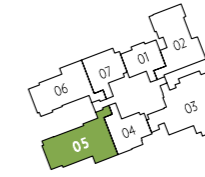
1324 SQFT

#21-02



AMBER<sub>45</sub>

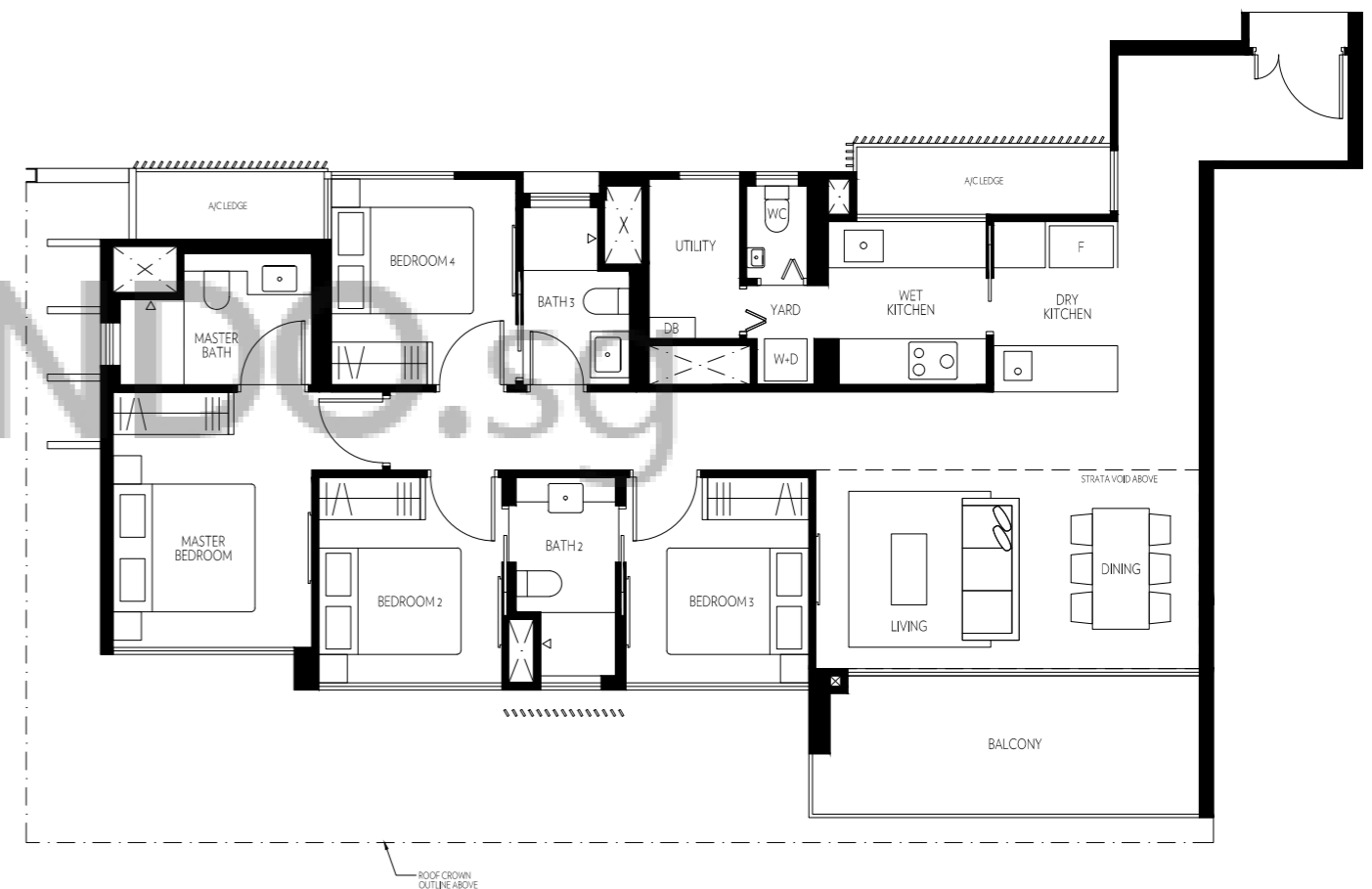
NOTE: AREA INCLUDES A/C LEDGE, BALCONY, PES, PRIVATE ROOF TERRACE AND VOID (WHERE APPLICABLE). THE ABOVE PLANS AND ILLUSTRATIONS ARE SUBJECT TO CHANGES AS MAYBE REQUIRED BY THE RELEVANT AUTHORITIES. AREAS ARE ESTIMATES ONLY AND ARE SUBJECT TO FINAL SURVEY. THE BALCONY, PES, AND PRIVATE ROOF TERRACE SHALL NOT BE ENCLOSED UNLESS WITH THE APPROVED SCREEN. FOR AN ILLUSTRATION OF THE APPROVED BALCONY SCREEN, PLEASE REFER TO THE DIAGRAM ANNEXED HERETO AS 'ANNEXURE 1'.



4-BEDROOM ◇ TYPE DP

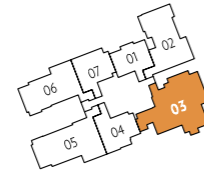
1518 SQFT

#21-05



AMBER<sub>45</sub>

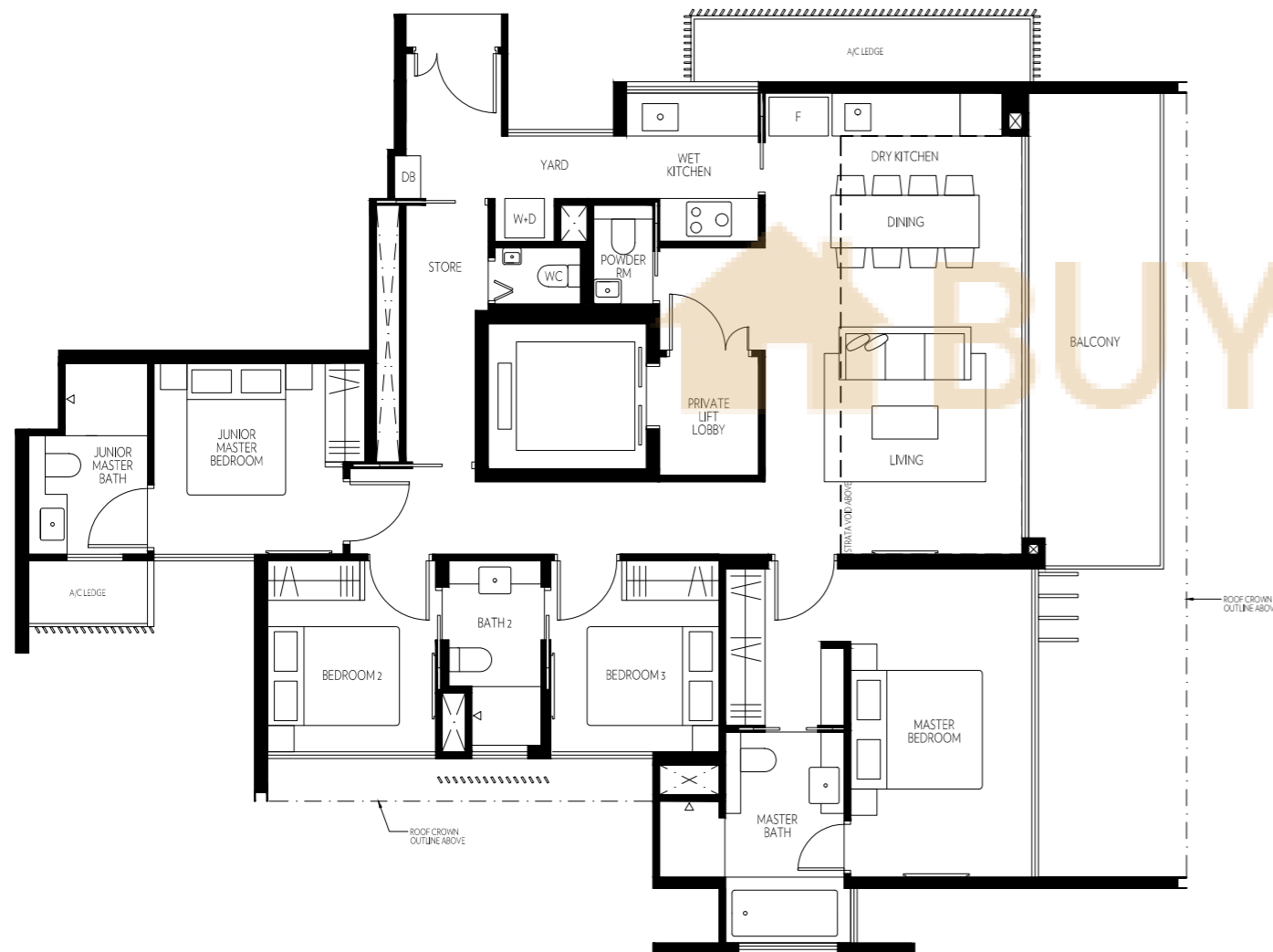
NOTE: AREA INCLUDES A/C LEDGE, BALCONY, PES, PRIVATE ROOF TERRACE AND VOID (WHERE APPLICABLE). THE ABOVE PLANS AND ILLUSTRATIONS ARE SUBJECT TO CHANGES AS MAYBE REQUIRED BY THE RELEVANT AUTHORITIES. AREAS ARE ESTIMATES ONLY AND ARE SUBJECT TO FINAL SURVEY. THE BALCONY, PES, AND PRIVATE ROOF TERRACE SHALL NOT BE ENCLOSED UNLESS WITH THE APPROVED SCREEN. FOR AN ILLUSTRATION OF THE APPROVED BALCONY SCREEN, PLEASE REFER TO THE DIAGRAM ANNEXED HERETO AS 'ANNEXURE 1'.



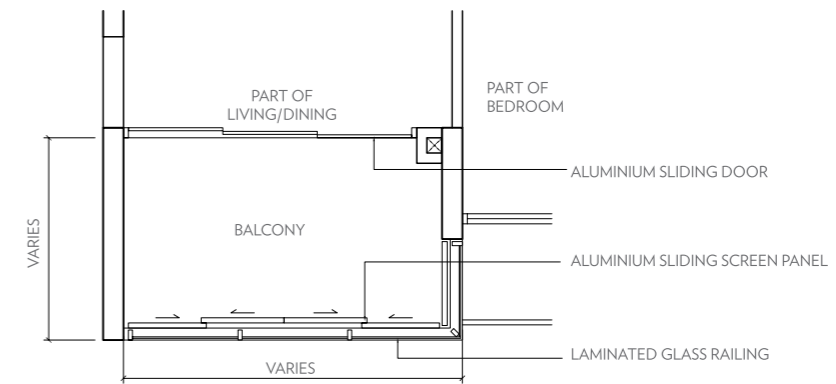
4-BEDROOM PREMIUM ◇ TYPE EP

1798 SQFT

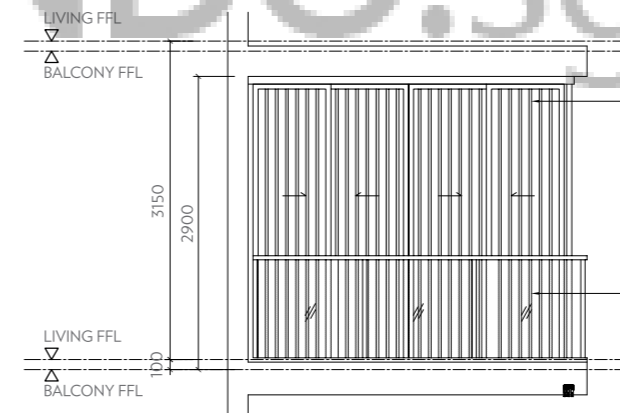
#21-03



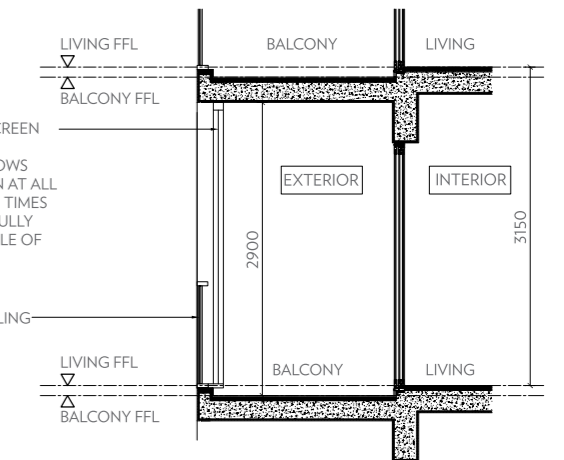
ANNEXURE 1



TYPICAL RETRACTABLE BALCONY SCREEN - PLAN



TYPICAL RETRACTABLE BALCONY SCREEN - ELEVATION



TYPICAL RETRACTABLE BALCONY SCREEN - SECTION

AMBER45

AMBER45

NOTE: AREA INCLUDES A/C LEDGE, BALCONY, PES, PRIVATE ROOF TERRACE AND VOID (WHERE APPLICABLE). THE ABOVE PLANS AND ILLUSTRATIONS ARE SUBJECT TO CHANGES AS MAYBE REQUIRED BY THE RELEVANT AUTHORITIES. AREAS ARE ESTIMATES ONLY AND ARE SUBJECT TO FINAL SURVEY. THE BALCONY, PES, AND PRIVATE ROOF TERRACE SHALL NOT BE ENCLOSED UNLESS WITH THE APPROVED SCREEN. FOR AN ILLUSTRATION OF THE APPROVED BALCONY SCREEN, PLEASE REFER TO THE DIAGRAM ANNEXED HERETO AS 'ANNEXURE 1'.

NOTE: THE COST OF THE SCREEN AND INSTALLATION SHALL BE BORNE BY THE PURCHASER. ACTUAL PROFILE OF SCREEN SUBJECT TO MANUFACTURER'S DETAIL. THE PROPOSED BALCONY SCREEN ALLOWS NATURAL VENTILATION AT ALL TIMES (INCLUDING THE TIMES WHEN THE SCREEN IS FULLY CLOSED).