

1-Bedroom

1-Bedroom

TYPE (1)a

#03-37 to #17-37,
#02-40* to #17-40*,
#02-41 to #17-41,
#03-44* to #17-44*

43 sqm

Incl A/C Ledge 1 sqm
& Balcony 6 sqm

TYPE (1)a1

#02-37, #01-40*,
#01-41, #02-44*

51 sqm

Incl A/C Ledge 1 sqm
& PES 14 sqm

TYPE (1)a2

#18-37, #18-40*,
#18-41, #18-44*

43 sqm

Incl A/C Ledge 1 sqm
& Open balcony 6 sqm

TYPE (1)b

#02-39 to #17-39

41 sqm

Incl A/C Ledge 1 sqm
& Balcony 4 sqm

TYPE (1)b1

#01-39

48 sqm

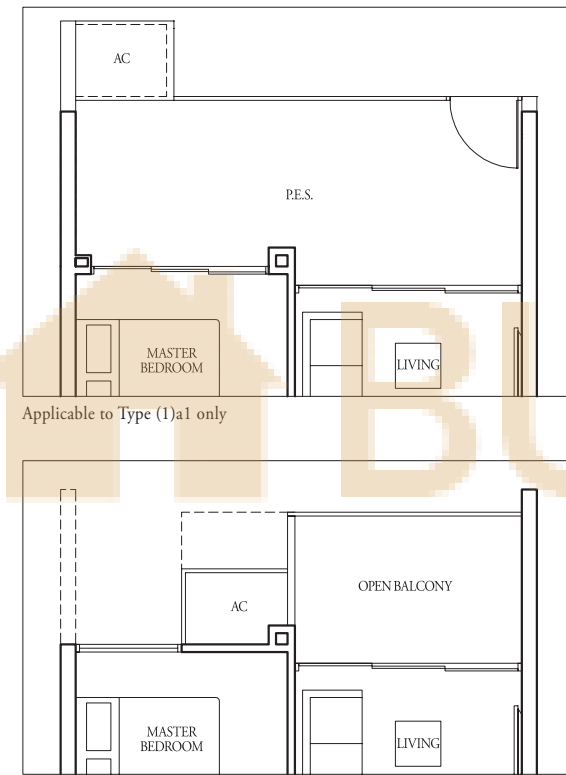
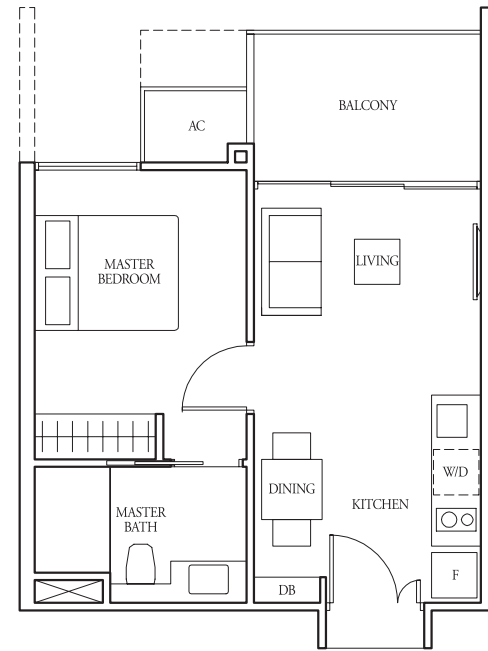
Incl A/C Ledge 1 sqm
& PES 11 sqm

TYPE (1)b2

#18-39

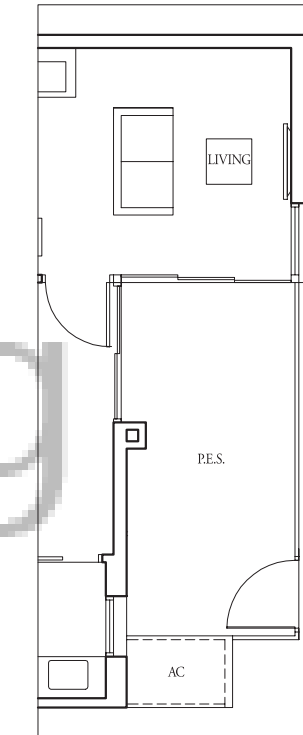
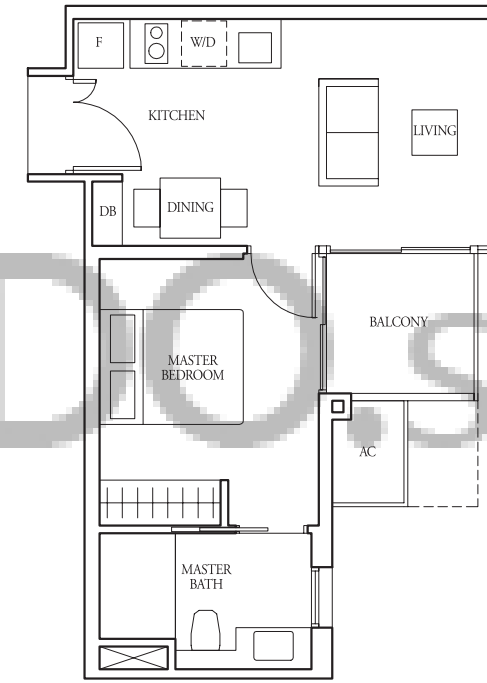
41 sqm

Incl A/C Ledge 1 sqm
& Open balcony 4 sqm

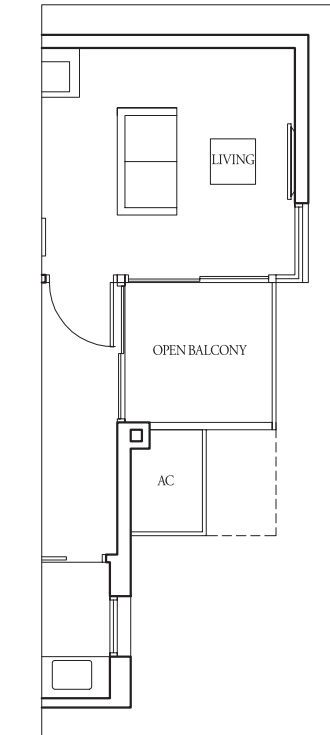


Applicable to Type (1)a1 only

Applicable to Type (1)a2 only



Applicable to Type (1)b1 only

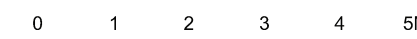
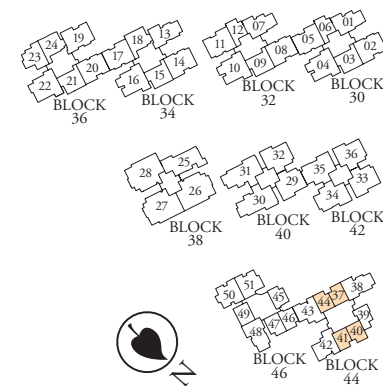


Applicable to Type (1)b2 only



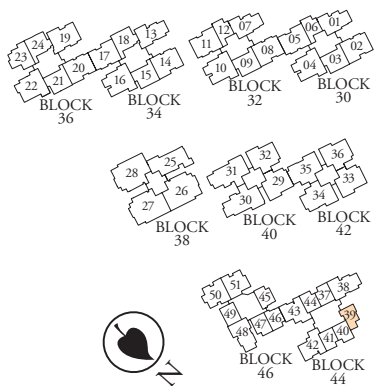
LEGEND:
F - Fridge DB - Distribution Board WC - Water Closet W/D - Washer cum Dryer W - Washer D - Dryer AC - Aircon Ledge

All plans are subject to change as may be required or approved by the relevant authorities. Indicated floor areas are approximate and are subject to final survey. *Units with mirror image.



LEGEND:
F - Fridge DB - Distribution Board WC - Water Closet W/D - Washer cum Dryer W - Washer D - Dryer AC - Aircon Ledge

All plans are subject to change as may be required or approved by the relevant authorities. Indicated floor areas are approximate and are subject to final survey. *Units with mirror image.



1-Bedroom

1-Bedroom

TYPE (1)c

#02-49 to #16-49

46 sqm

Incl A/C Ledge 1 sqm
& Balcony 5 sqm

TYPE (1)c1

#01-49

59 sqm

Incl A/C Ledge 1 sqm
& PES 18 sqm

TYPE (1)c2

#17-49

46 sqm

Incl A/C Ledge 1 sqm
& Open balcony 5 sqm

TYPE (1)d

#02-45 to #16-45,
#02-46* to #16-46*,
#02-47 to #16-47

43 sqm

Incl A/C Ledge 1 sqm
& Balcony 5 sqm

TYPE (1)d1

#01-46*, #01-47

52 sqm

Incl A/C Ledge 1 sqm
& PES 14 sqm

TYPE (1)d1(a)

#01-45

52 sqm

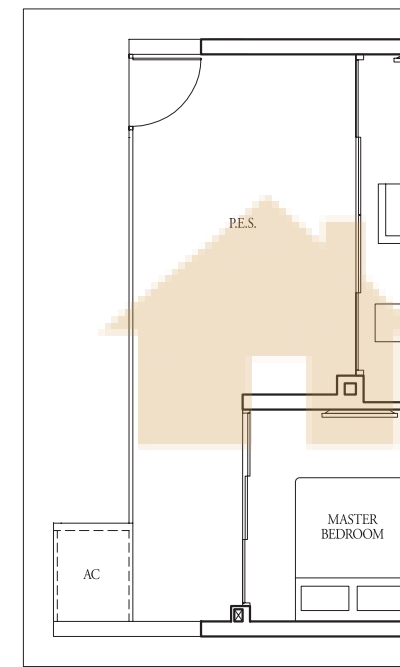
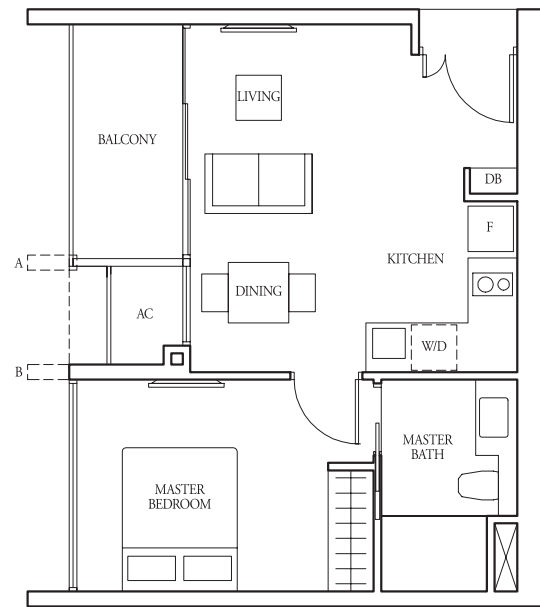
Incl A/C Ledge 1 sqm
& PES 14 sqm

TYPE (1)d2

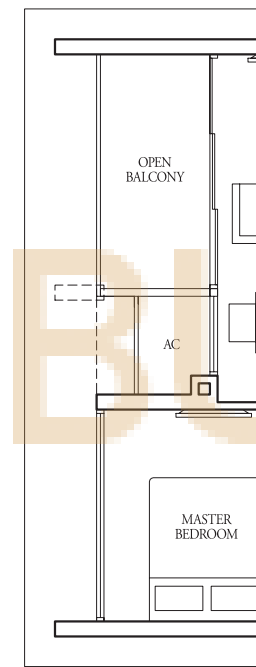
#17-45, #17-46*,
#17-47

43 sqm

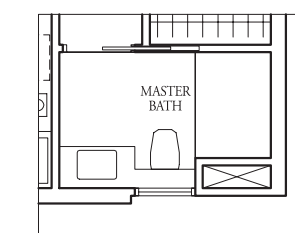
Incl A/C Ledge 1 sqm
& Open balcony 5 sqm



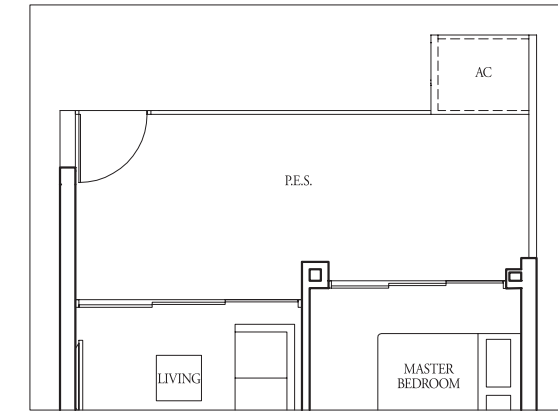
Applicable to Type (1)c1 only



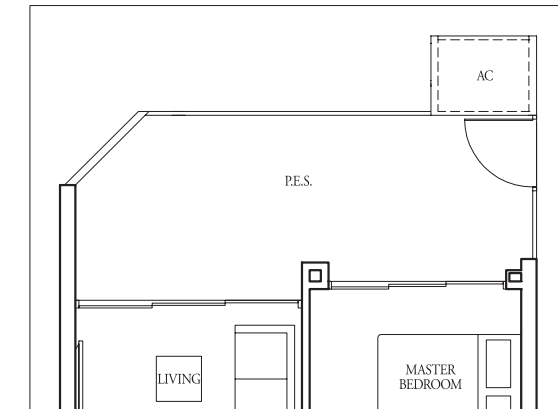
Applicable to Type (1)c2 only



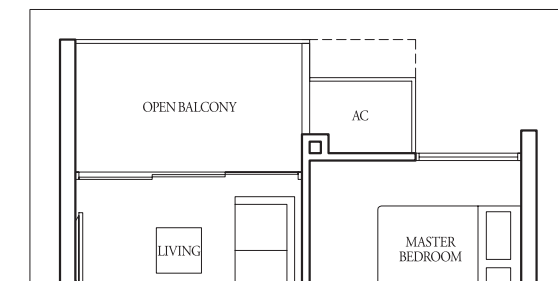
Applicable to stack 46 only



Applicable to Type (1)d1 only



Applicable to Type (1)d1(a) only



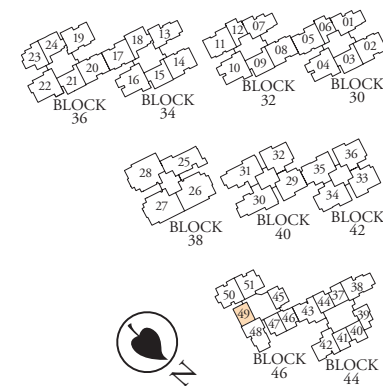
Applicable to Type (1)d2 only

Fins at levels:
(A) 05, 09 & 13
(B) 02, 06, 10 & 14
(A&B) 03, 04, 07, 08, 11, 12, 15 & 16



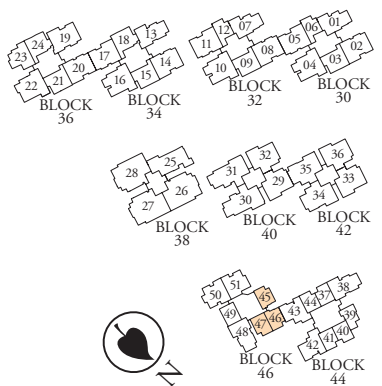
LEGEND:
F - Fridge DB - Distribution Board WC - Water Closet W/D - Washer cum Dryer W - Washer D - Dryer AC - Aircon Ledge

All plans are subject to change as may be required or approved by the relevant authorities. Indicated floor areas are approximate and are subject to final survey. *Units with mirror image.



LEGEND:
F - Fridge DB - Distribution Board WC - Water Closet W/D - Washer cum Dryer W - Washer D - Dryer AC - Aircon Ledge

All plans are subject to change as may be required or approved by the relevant authorities. Indicated floor areas are approximate and are subject to final survey. *Units with mirror image.



1-Bedroom

2-Bedroom

TYPE (1)e

#03-06 to #16-06,
#02-12 to #16-12
46 sqm
Incl A/C Ledge 1 sqm
& Balcony 6 sqm

TYPE (1)e1

#02-06, #01-12
55 sqm
Incl A/C Ledge 1 sqm
& PES 14 sqm

TYPE (1)e2

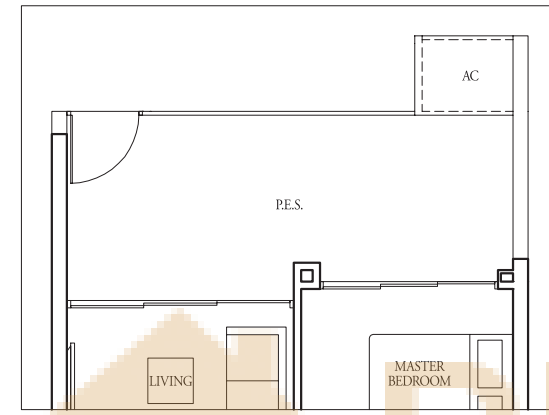
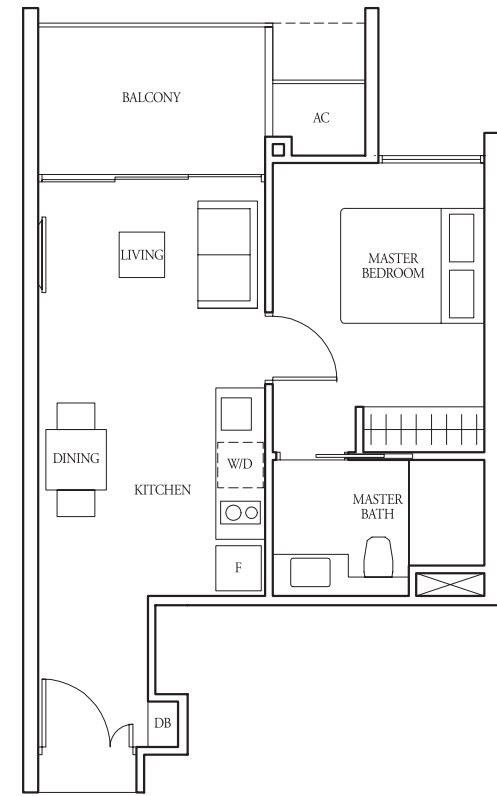
#17-06, #17-12
46 sqm
Incl A/C Ledge 1 sqm
& Open balcony 6 sqm

TYPE (2)a

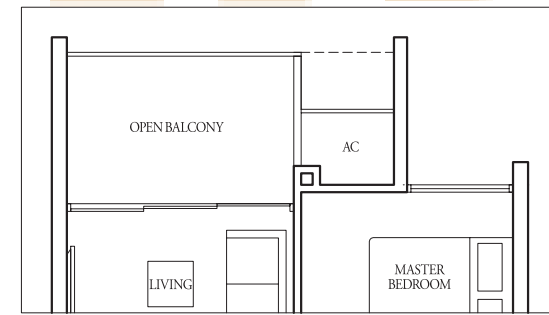
#02-51 to #16-51
69 sqm
Incl A/C Ledge 2 sqm
& Balcony 6 sqm

TYPE (2)a1

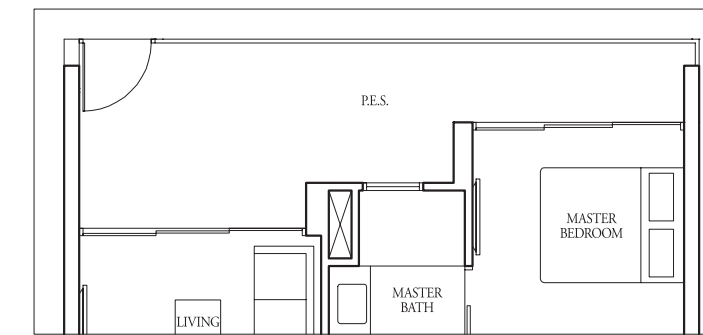
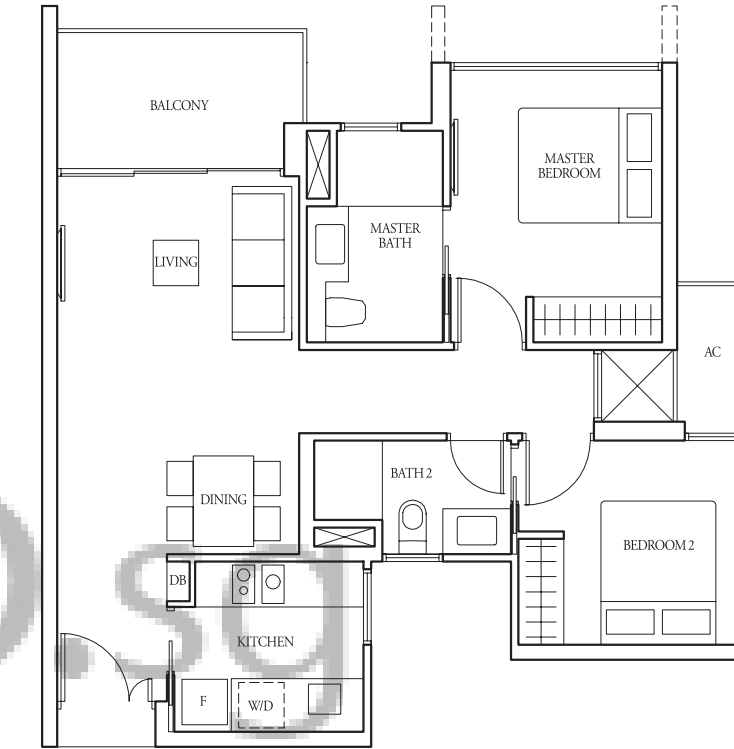
#01-51
78 sqm
Incl A/C Ledge 2 sqm
& PES 15 sqm



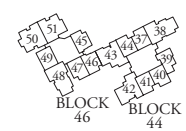
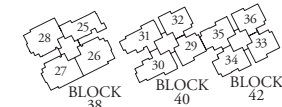
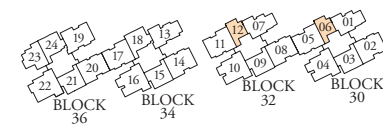
Applicable to Type (1)e1 only



Applicable to Type (1)e2 only

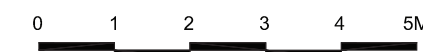


Applicable to Type (2)a1 only



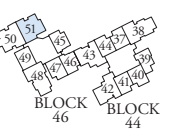
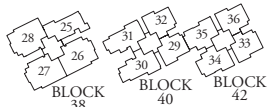
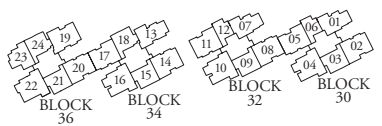
LEGEND:
F - Fridge DB - Distribution Board WC - Water Closet W/D - Washer cum Dryer W - Washer D - Dryer AC - Aircon Ledge

All plans are subject to change as may be required or approved by the relevant authorities. Indicated floor areas are approximate and are subject to final survey. *Units with mirror image.



LEGEND:
F - Fridge DB - Distribution Board WC - Water Closet W/D - Washer cum Dryer W - Washer D - Dryer AC - Aircon Ledge

All plans are subject to change as may be required or approved by the relevant authorities. Indicated floor areas are approximate and are subject to final survey. *Units with mirror image.



2-Bedroom

2-Bedroom

TYPE (2)b

#02-03 to #16-03,
#02-09 to #16-09,
#02-15 to #16-15,
#02-21 to #16-21

67 sqm

Incl A/C Ledge 2 sqm
& Balcony 6 sqm

TYPE (2)b1

#01-03, #01-09,
#01-15, #01-21

82 sqm

Incl A/C Ledge 2 sqm
& PES 20 sqm

TYPE (2)b2

#17-03, #17-09,
#17-15, #17-21

67 sqm

Incl A/C Ledge 2 sqm
& Open balcony 6 sqm

TYPE (2)c

#02-18 to #16-18,
#02-24 to #16-24

68 sqm

Incl A/C Ledge 2 sqm
& Balcony 6 sqm

TYPE (2)c1

#01-18, #01-24

83 sqm

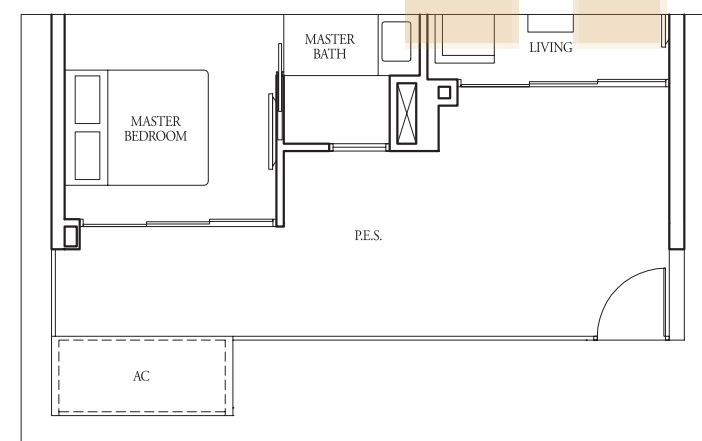
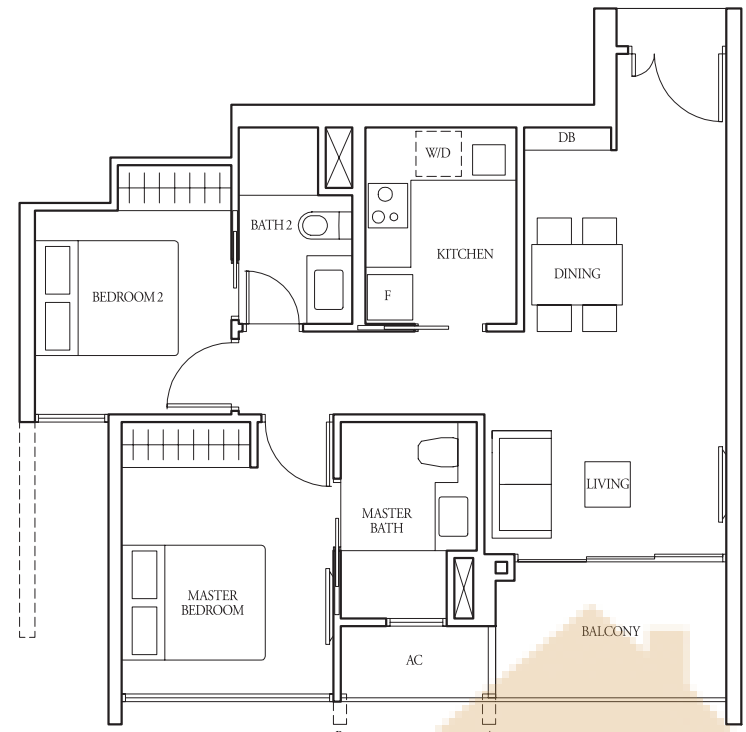
Incl A/C Ledge 2 sqm
& PES 20 sqm

TYPE (2)c2

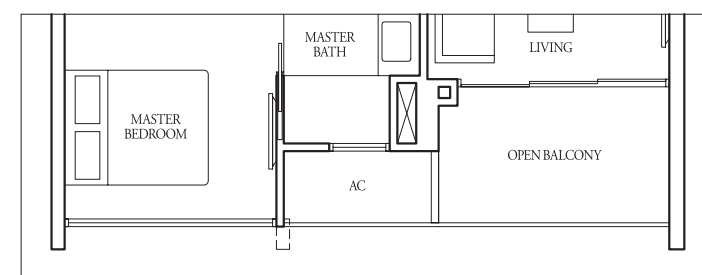
#17-18, #17-24

68 sqm

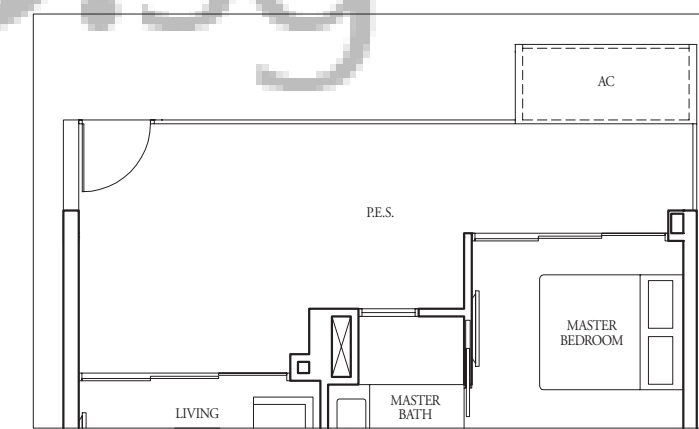
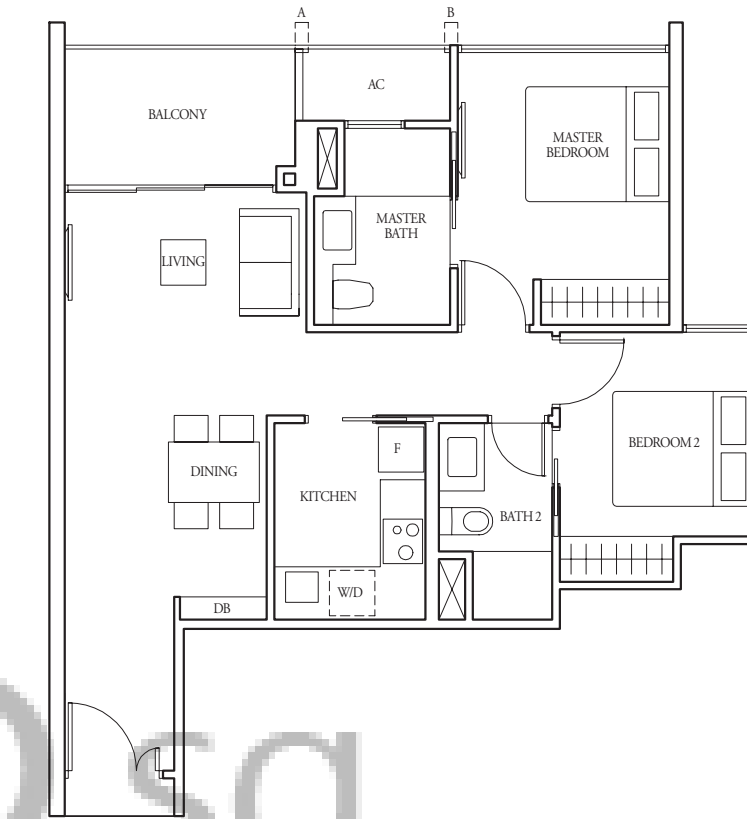
Incl A/C Ledge 2 sqm
& Open balcony 6 sqm



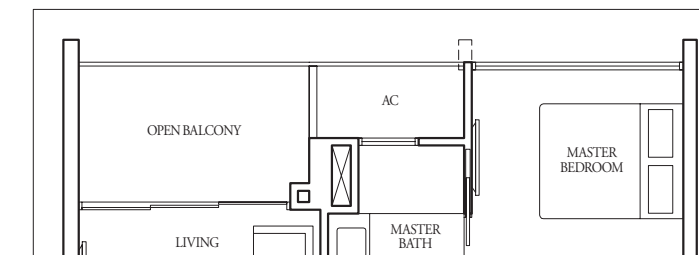
Applicable to Type (2)b1 only



Applicable to Type (2)b2 only



Applicable to Type (2)c1 only



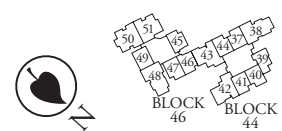
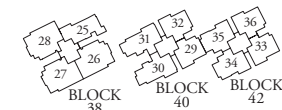
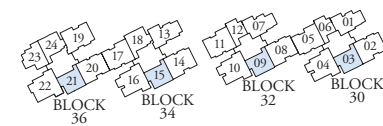
Applicable to Type (2)c2 only

Fins at levels:
(A) 02, 06, 10 & 14
(B) 05, 09 & 13
(A&B) 03, 04, 07, 08, 11, 12, 15 & 16

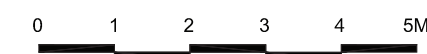


LEGEND:
F - Fridge DB - Distribution Board WC - Water Closet W/D - Washer cum Dryer W - Washer D - Dryer AC - Aircon Ledge

All plans are subject to change as may be required or approved by the relevant authorities. Indicated floor areas are approximate and are subject to final survey. *Units with mirror image.

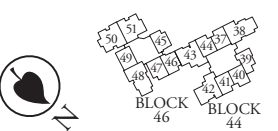
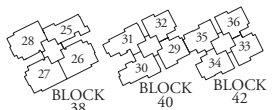
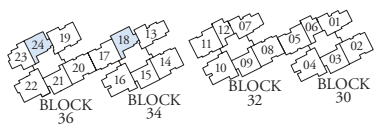


Fins at levels:
(A) 02, 06, 10 & 14
(B) 05, 09 & 13
(A&B) 03, 04, 07, 08, 11, 12, 15 & 16



LEGEND:
F - Fridge DB - Distribution Board WC - Water Closet W/D - Washer cum Dryer W - Washer D - Dryer AC - Aircon Ledge

All plans are subject to change as may be required or approved by the relevant authorities. Indicated floor areas are approximate and are subject to final survey. *Units with mirror image.



2-Bedroom

2+1-Bedroom

TYPE (2)d

#02-23 to #16-23
71 sqm
Incl A/C Ledge 2 sqm
& Balcony 6 sqm

TYPE (2)d1

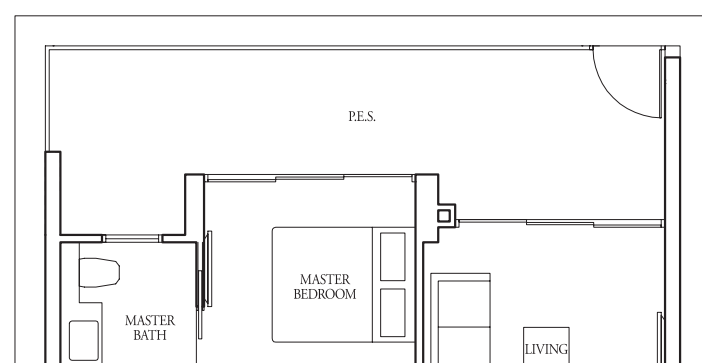
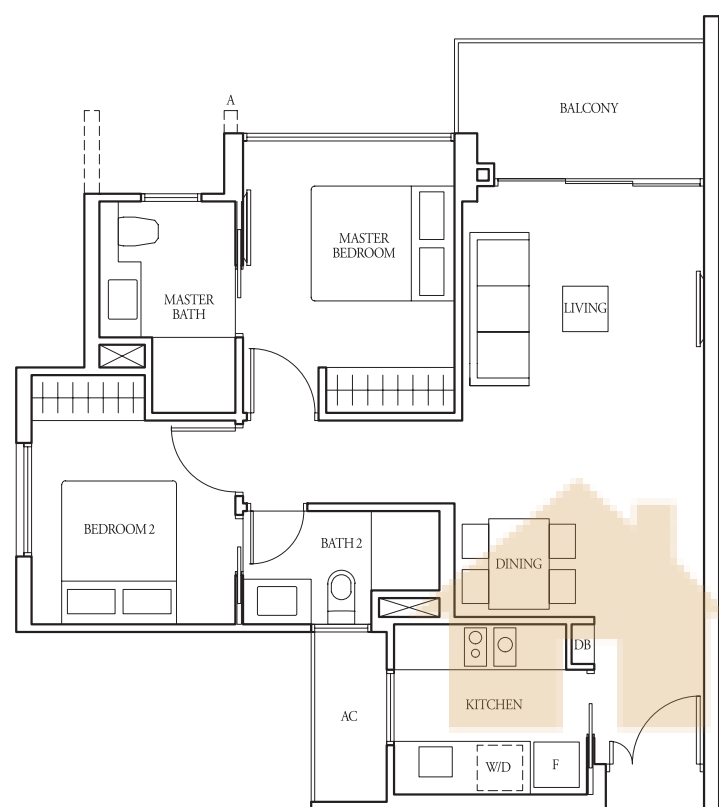
#01-23
82 sqm
Incl A/C Ledge 2 sqm
& PES 17 sqm

TYPE (2+1)a

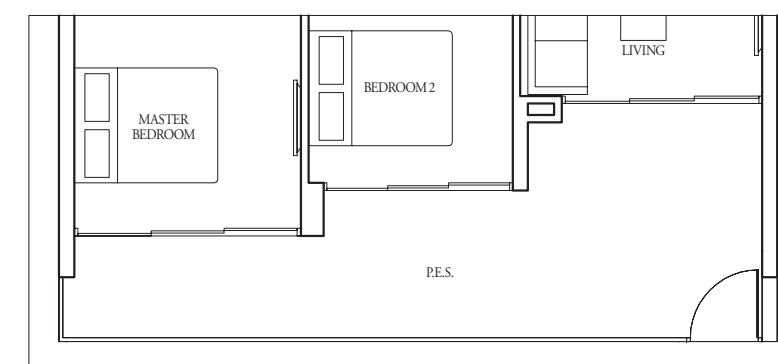
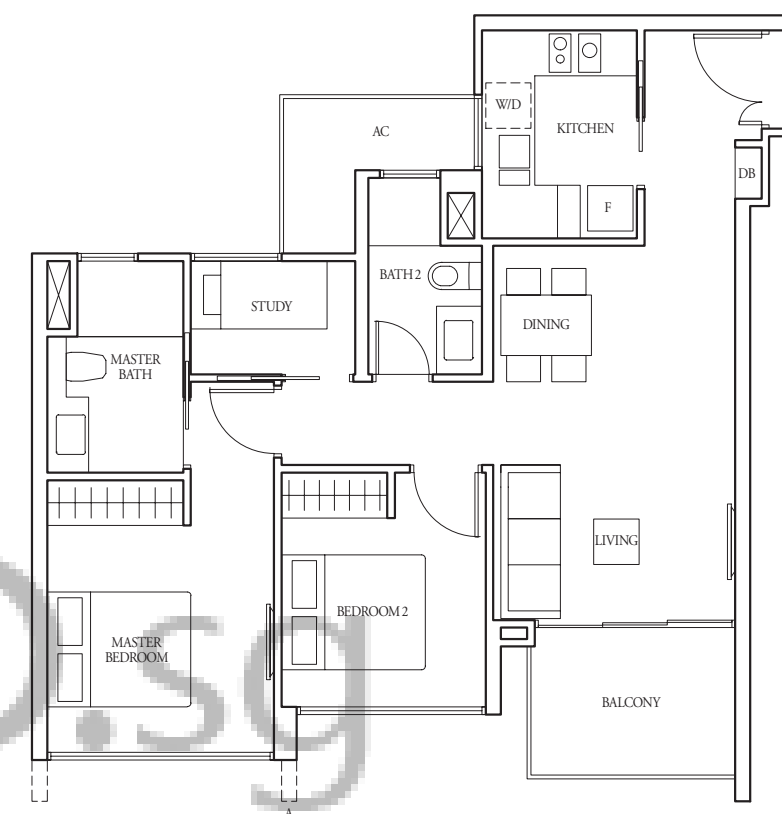
#02-42 to #17-42,
#03-43* to #17-43*
77 sqm
Incl A/C Ledge 4 sqm
& Balcony 6 sqm

TYPE (2+1)a1

#01-42, #02-43*
92 sqm
Incl A/C Ledge 4 sqm
& PES 20 sqm



Applicable to Type (2)d1 only



Applicable to Type (2+1)a1 only

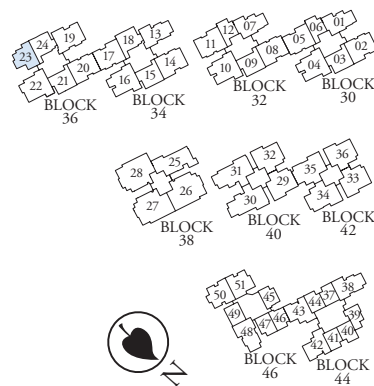
BUYCONDO.SG

Fin at levels:
(A) 03, 04, 05, 07, 08, 09, 11, 12, 13, 15, 16



LEGEND:
F - Fridge DB - Distribution Board WC - Water Closet W/D - Washer cum Dryer W - Washer D - Dryer AC - Aircon Ledge

All plans are subject to change as may be required or approved by the relevant authorities. Indicated floor areas are approximate and are subject to final survey. *Units with mirror image.

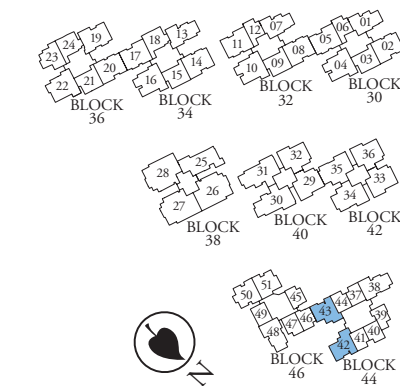


Fin at levels:
(A) 02, 04, 05, 06, 08, 09, 10, 12, 13, 14, 16, 17



LEGEND:
F - Fridge DB - Distribution Board WC - Water Closet W/D - Washer cum Dryer W - Washer D - Dryer AC - Aircon Ledge

All plans are subject to change as may be required or approved by the relevant authorities. Indicated floor areas are approximate and are subject to final survey. *Units with mirror image.



2+1-Bedroom

2+1-Bedroom

TYPE (2+1)a2

#18-42, #18-43*
 125 sqm
 Incl A/C Ledge 4 sqm, Open balcony 6 sqm,
 Private roof terrace 24 sqm & Strata void 7 sqm

TYPE (2+1)b

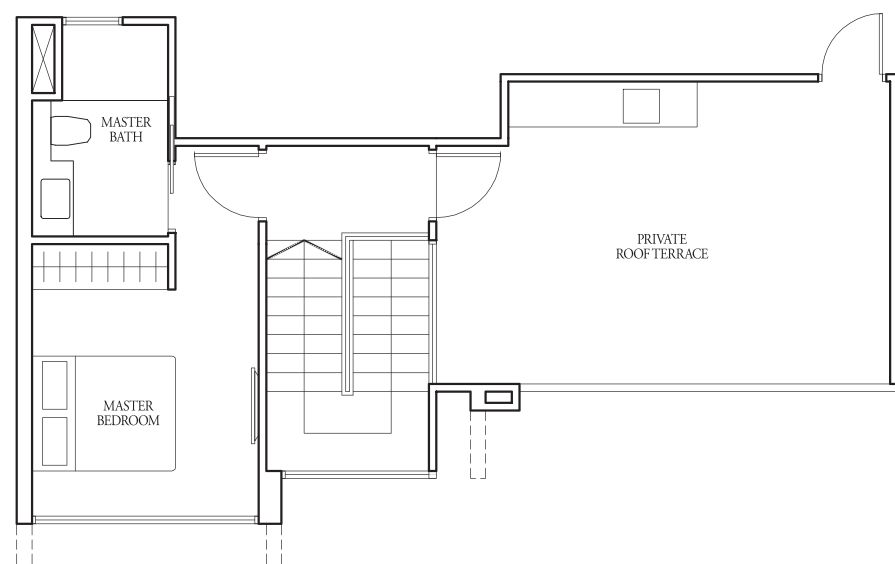
#03-38 to #17-38,
 #02-48* to #16-48*
 79 sqm
 Incl A/C Ledge 4 sqm
 & Balcony 10 sqm

TYPE (2+1)b1

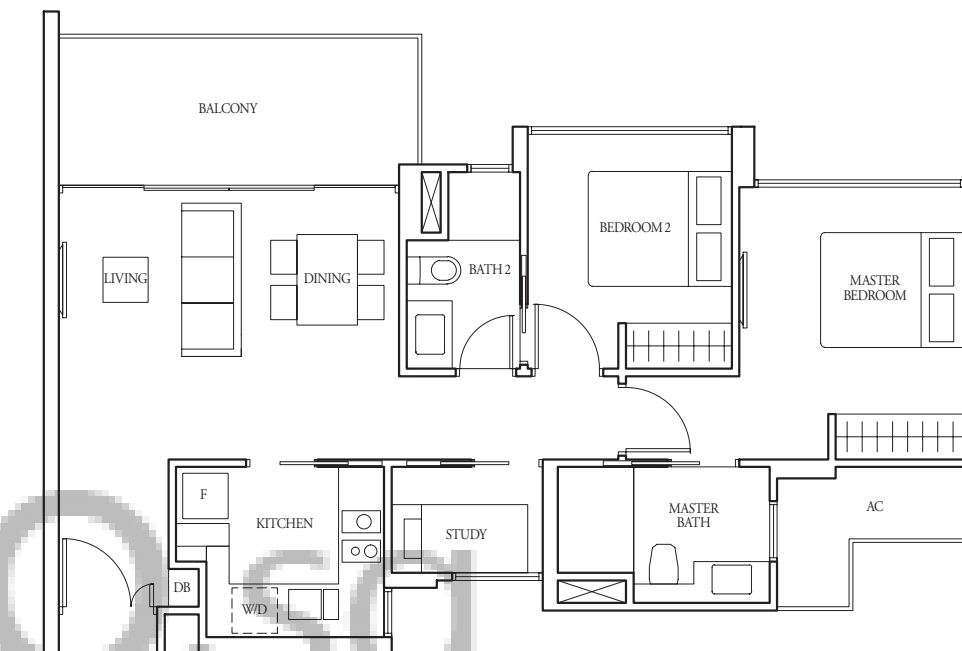
#02-38, #01-48*
 90 sqm
 Incl A/C Ledge 4 sqm
 & PES 20 sqm



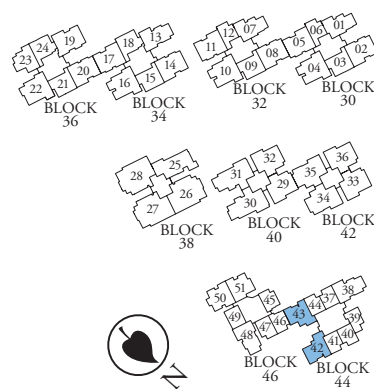
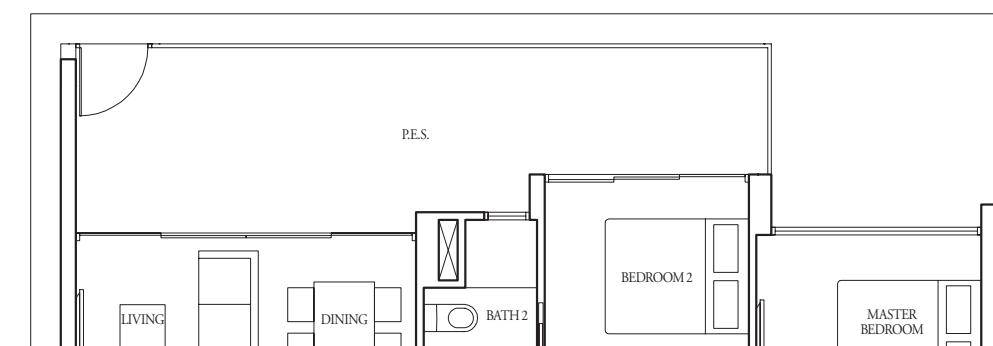
LOWER STOREY



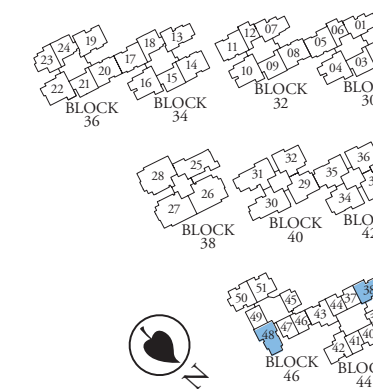
UPPER STOREY



Applicable to Type (2+1)b1 only



LEGEND:
 F - Fridge DB - Distribution Board WC - Water Closet W/D - Washer cum Dryer W - Washer D - Dryer AC - Aircon Ledge
 All plans are subject to change as may be required or approved by the relevant authorities. Indicated floor areas are approximate and are subject to final survey. *Units with mirror image.



LEGEND:
 F - Fridge DB - Distribution Board WC - Water Closet W/D - Washer cum Dryer W - Washer D - Dryer AC - Aircon Ledge
 All plans are subject to change as may be required or approved by the relevant authorities. Indicated floor areas are approximate and are subject to final survey. *Units with mirror image.

2+1-Bedroom

2+1-Bedroom

TYPE (2+1)b2

#18-38, #17-48*

128 sqm

Incl A/C Ledge 4 sqm, Open balcony 10 sqm,
Private roof terrace 25 sqm & Strata void 7 sqm

TYPE (2+1)c

#02-50 to #16-50

77 sqm

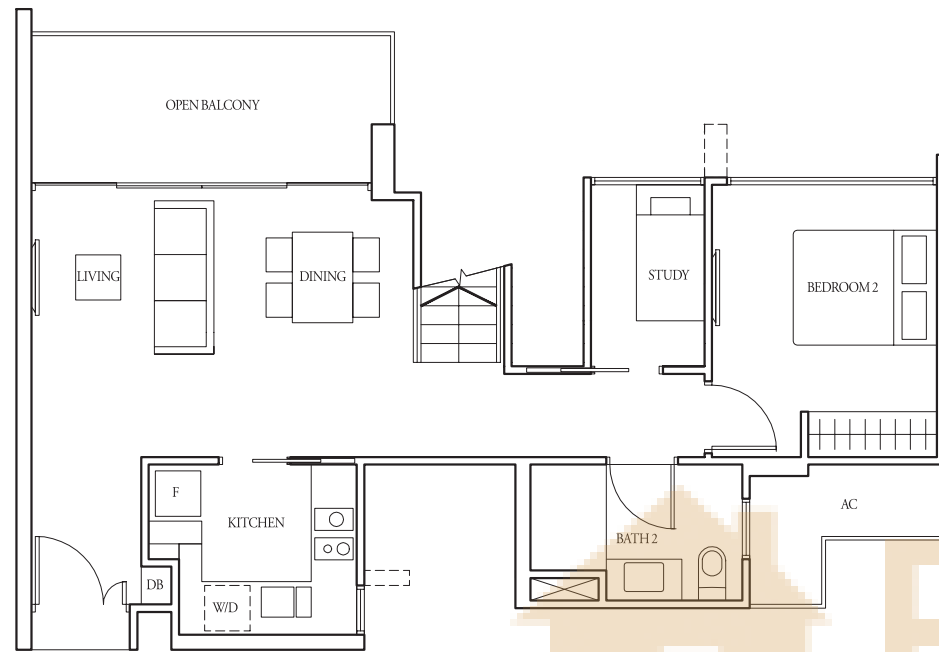
Incl A/C Ledge 4 sqm
& Balcony 6 sqm

TYPE (2+1)c1

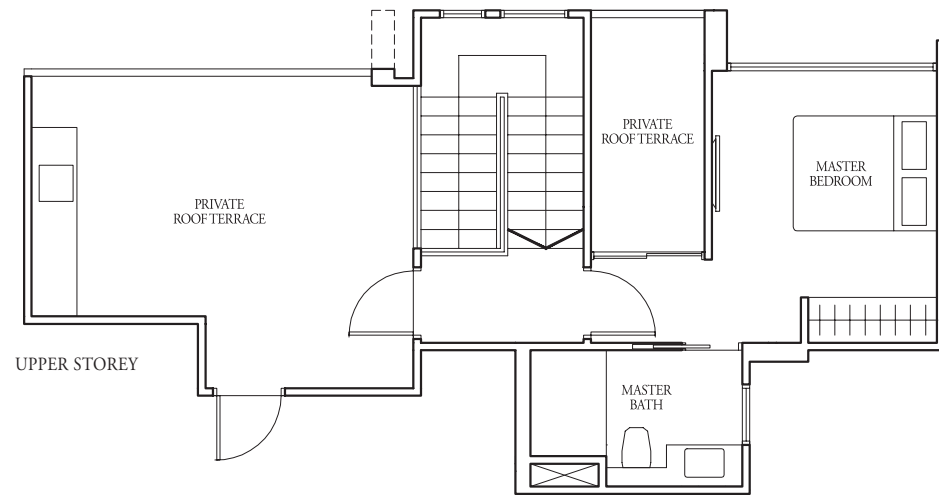
#01-50

87 sqm

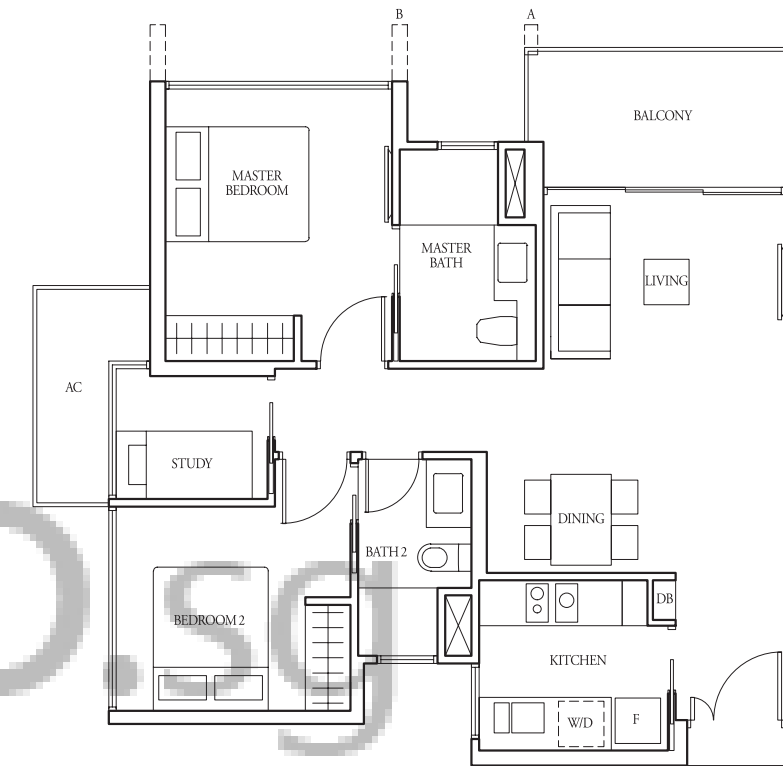
Incl A/C Ledge 4 sqm
& PES 15 sqm



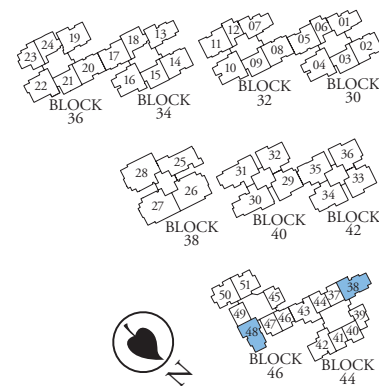
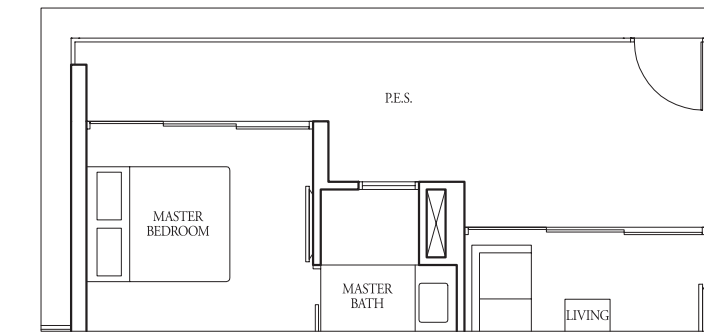
LOWER STOREY



UPPER STOREY



Applicable to Type (2+1)c1 only

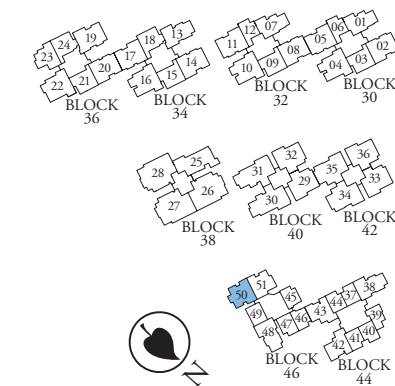


Fins at levels:
(A) 02, 06, 10 & 14
(B) 05, 09 & 13
(A&B) 03, 04, 07, 08, 11, 12, 15 & 16



LEGEND:
F - Fridge DB - Distribution Board WC - Water Closet W/D - Washer cum Dryer W - Washer D - Dryer AC - Aircon Ledge

All plans are subject to change as may be required or approved by the relevant authorities. Indicated floor areas are approximate and are subject to final survey. *Units with mirror image.



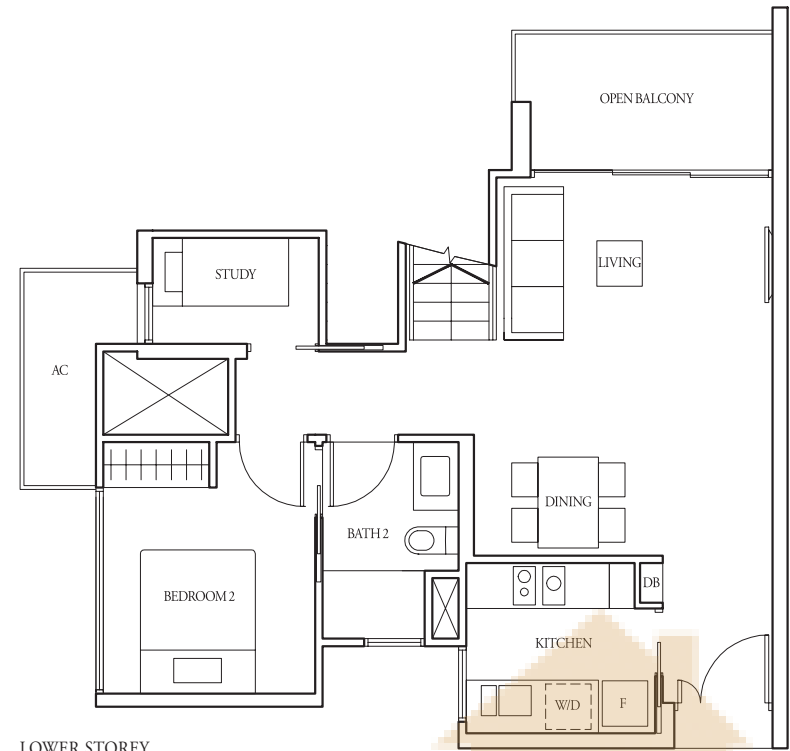
LEGEND:
F - Fridge DB - Distribution Board WC - Water Closet W/D - Washer cum Dryer W - Washer D - Dryer AC - Aircon Ledge

All plans are subject to change as may be required or approved by the relevant authorities. Indicated floor areas are approximate and are subject to final survey. *Units with mirror image.

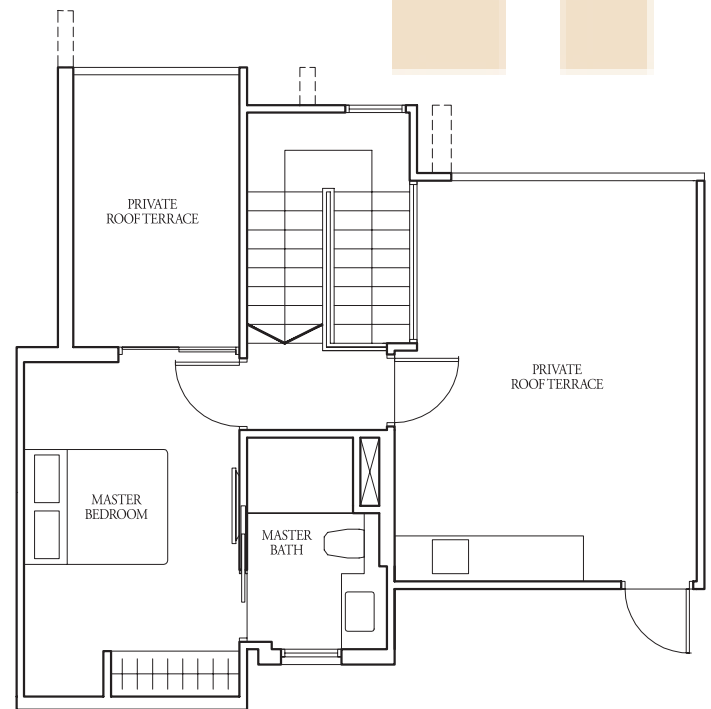
2+1-Bedroom

TYPE (2+1)c2

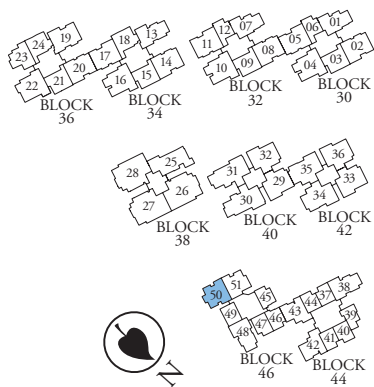
#17-50
129 sqm
Incl A/C Ledge 4 sqm, Open balcony 6 sqm,
Private roof terrace 30 sqm & Strata void 7 sqm



LOWER STOREY



UPPER STOREY



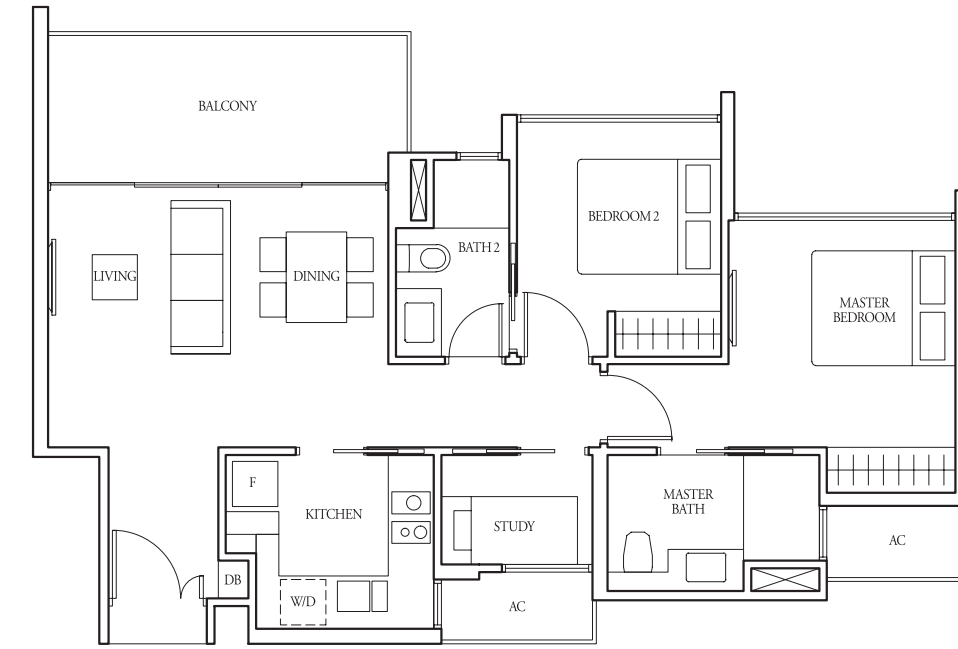
LEGEND:
F - Fridge DB - Distribution Board WC - Water Closet W/D - Washer cum Dryer W - Washer D - Dryer AC - Aircon Ledge

All plans are subject to change as may be required or approved by the relevant authorities. Indicated floor areas are approximate and are subject to final survey. *Units with mirror image.

2+1-Bedroom

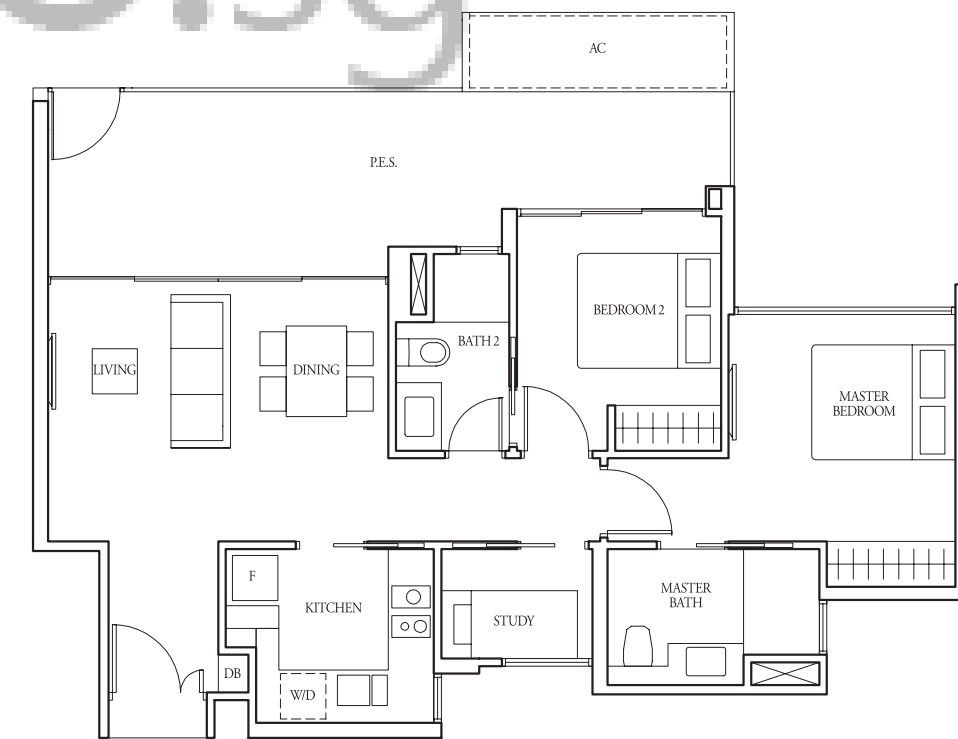
TYPE (2+1)d

#03-01 to #16-01,
#02-07 to #16-07
79 sqm
Incl A/C Ledge 4 sqm
& Balcony 10 sqm



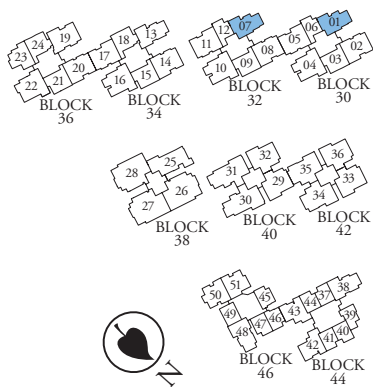
TYPE (2+1)d1

#02-01, #01-07
88 sqm
Incl A/C Ledge 4 sqm
& PES 19 sqm



LEGEND:
F - Fridge DB - Distribution Board WC - Water Closet W/D - Washer cum Dryer W - Washer D - Dryer AC - Aircon Ledge

All plans are subject to change as may be required or approved by the relevant authorities. Indicated floor areas are approximate and are subject to final survey. *Units with mirror image.



2+1-Bedroom

2+1-Bedroom

TYPE (2+1)d2

#17-01, #17-07

130 sqm

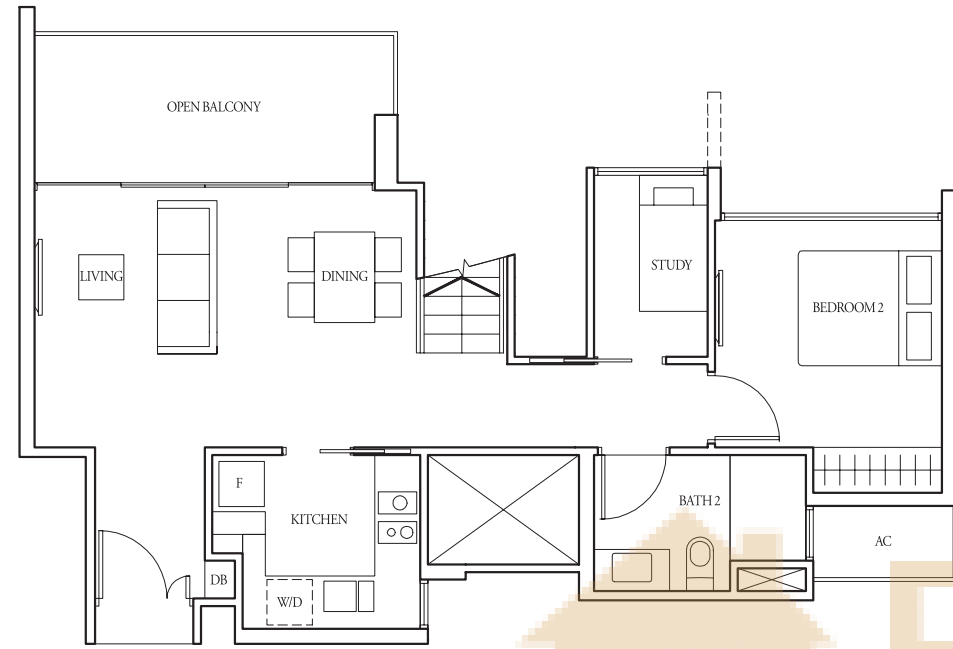
Incl A/C Ledge 4 sqm, Open balcony 10 sqm,
Private roof terrace 27 sqm & Strata void 7 sqm

TYPE (2+1)e

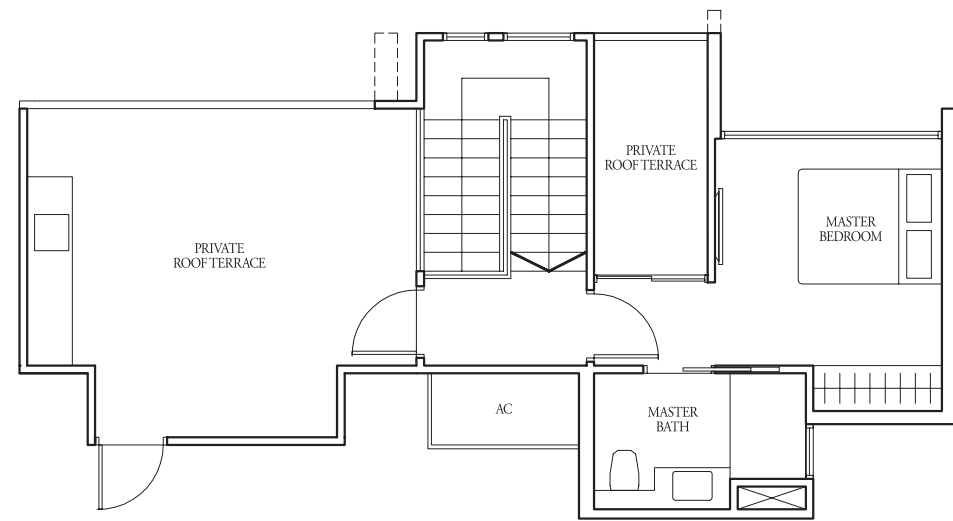
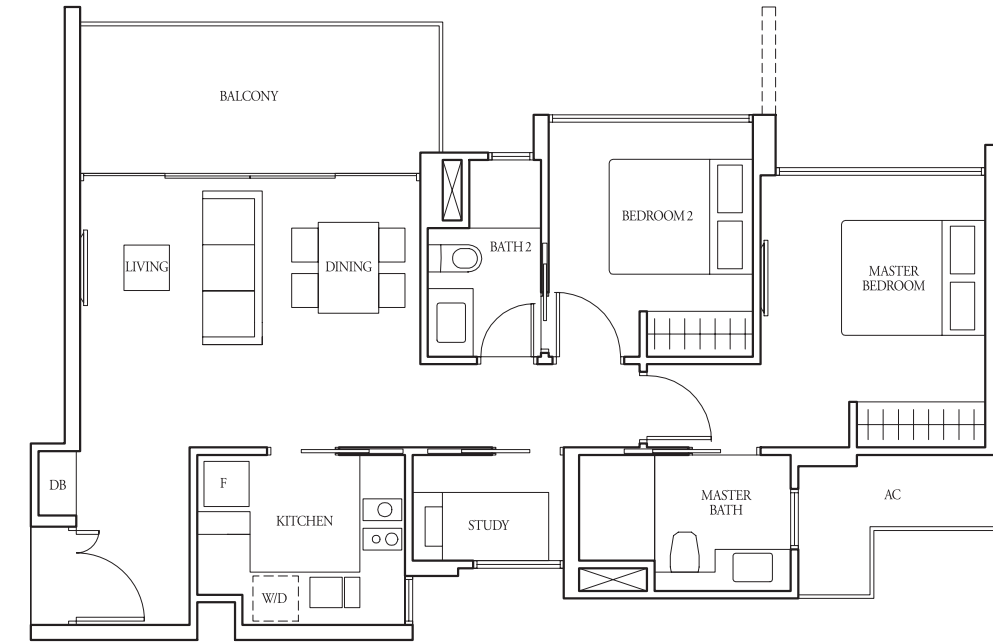
#02-13 to #16-13

80 sqm

Incl A/C Ledge 4 sqm
& Balcony 10 sqm



LOWER STOREY



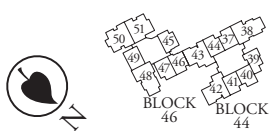
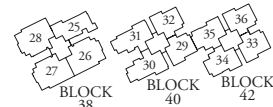
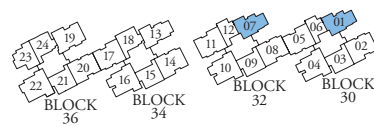
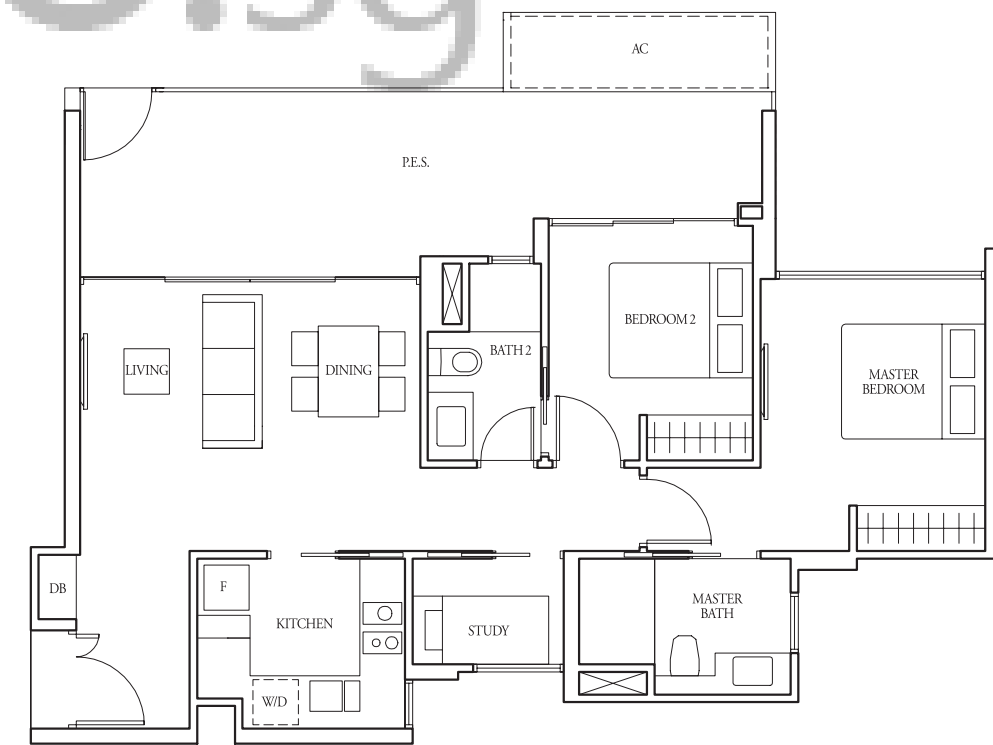
UPPER STOREY

TYPE (2+1)e1

#01-13

91 sqm

Incl A/C Ledge 4 sqm
& PES 20 sqm



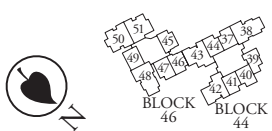
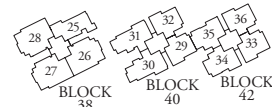
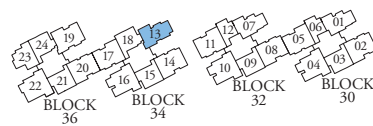
LEGEND:
F - Fridge DB - Distribution Board WC - Water Closet W/D - Washer cum Dryer W - Washer D - Dryer AC - Aircon Ledge

All plans are subject to change as may be required or approved by the relevant authorities. Indicated floor areas are approximate and are subject to final survey. *Units with mirror image.



LEGEND:
F - Fridge DB - Distribution Board WC - Water Closet W/D - Washer cum Dryer W - Washer D - Dryer AC - Aircon Ledge

All plans are subject to change as may be required or approved by the relevant authorities. Indicated floor areas are approximate and are subject to final survey. *Units with mirror image.



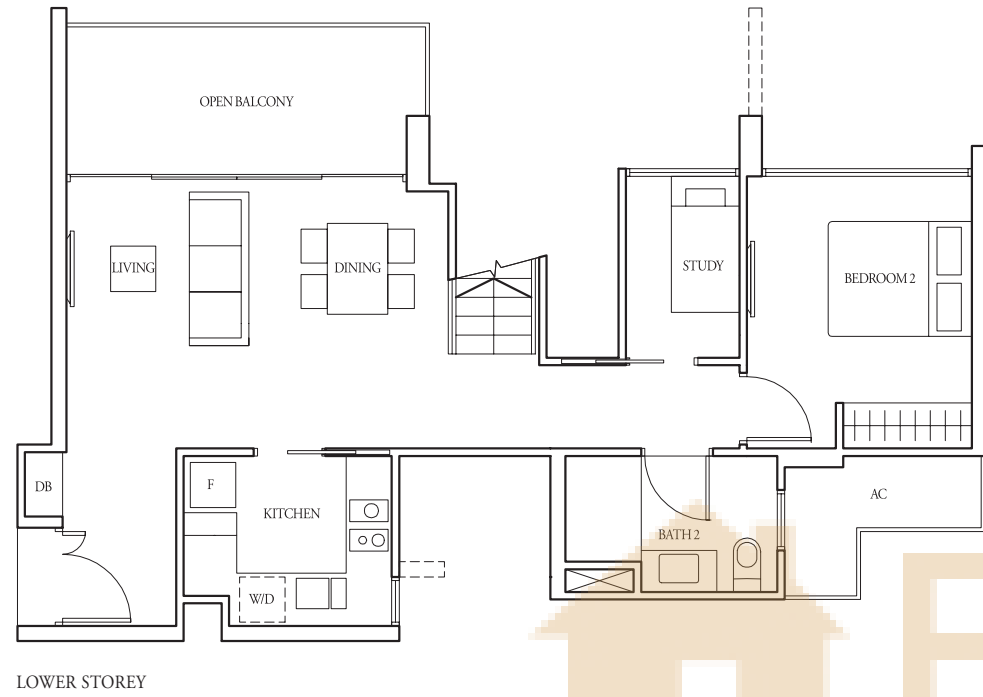
2+1-Bedroom

TYPE (2+1)e2

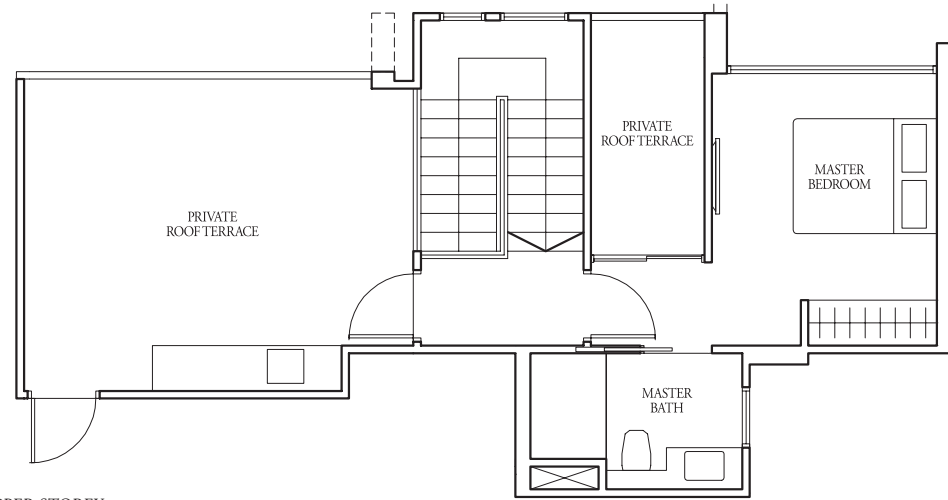
#17-13

131 sqm

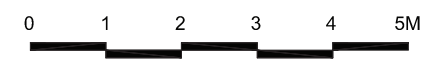
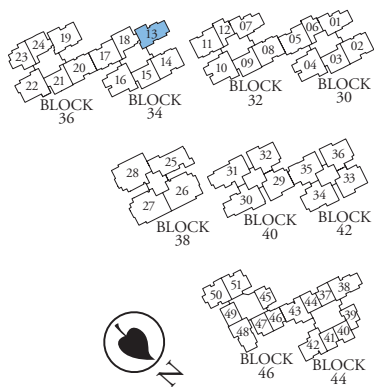
Incl A/C Ledge 4 sqm, Open balcony 10 sqm,
Private roof terrace 27 sqm & Strata void 7 sqm



LOWER STOREY



UPPER STOREY



LEGEND:
F - Fridge DB - Distribution Board WC - Water Closet W/D - Washer cum Dryer W - Washer D - Dryer AC - Aircon Ledge

All plans are subject to change as may be required or approved by the relevant authorities. Indicated floor areas are approximate and are subject to final survey. *Units with mirror image.

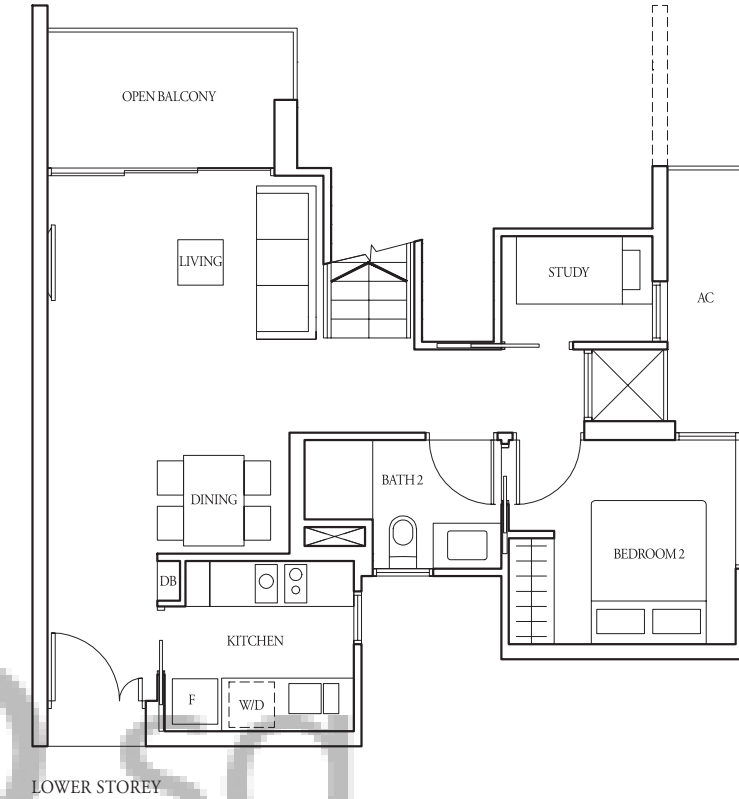
2+1-Bedroom

TYPE (2+1)f2

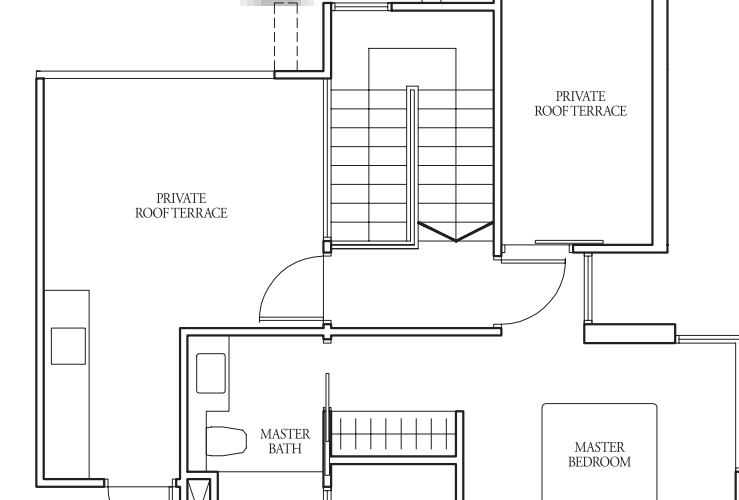
#17-51

122 sqm

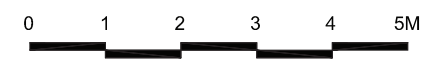
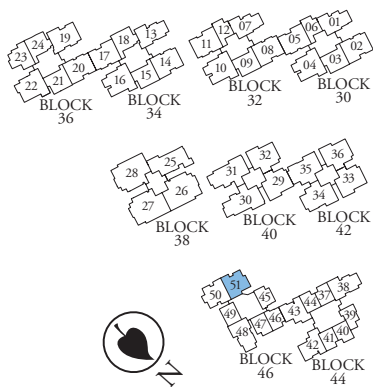
Incl A/C Ledge 4 sqm, Open balcony 6 sqm,
Private roof terrace 25 sqm & Strata void 7 sqm



LOWER STOREY



UPPER STOREY



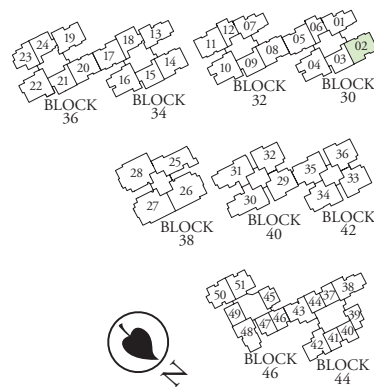
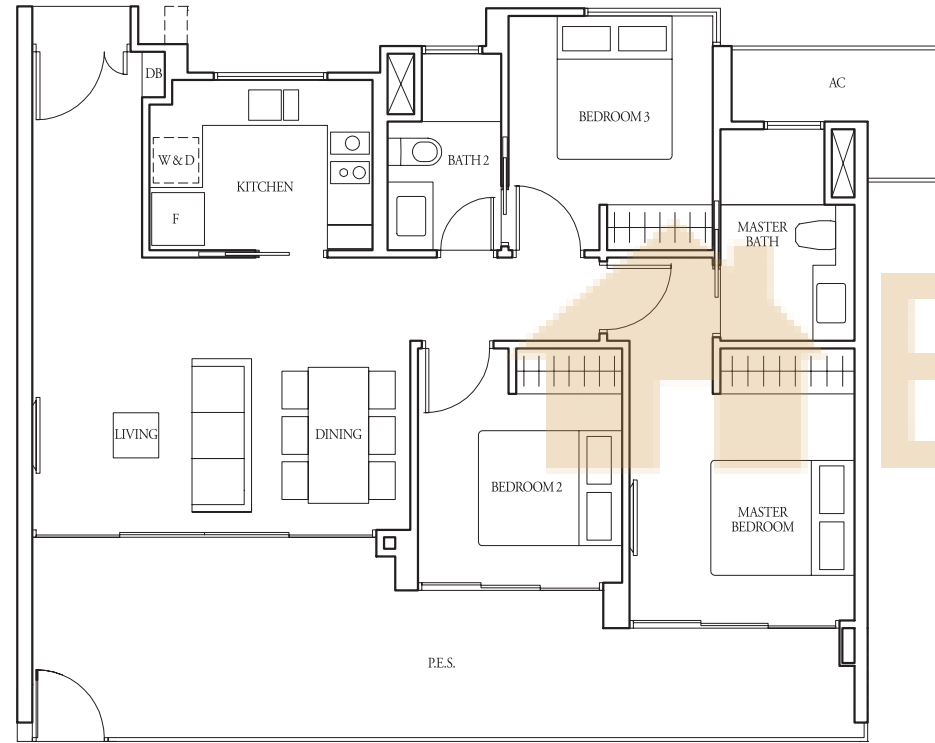
LEGEND:
F - Fridge DB - Distribution Board WC - Water Closet W/D - Washer cum Dryer W - Washer D - Dryer AC - Aircon Ledge

All plans are subject to change as may be required or approved by the relevant authorities. Indicated floor areas are approximate and are subject to final survey. *Units with mirror image.

3-Bedroom

TYPE (3)a1(a)

#01-02
104 sqm
Incl A/C Ledge 5 sqm
& PES 24 sqm

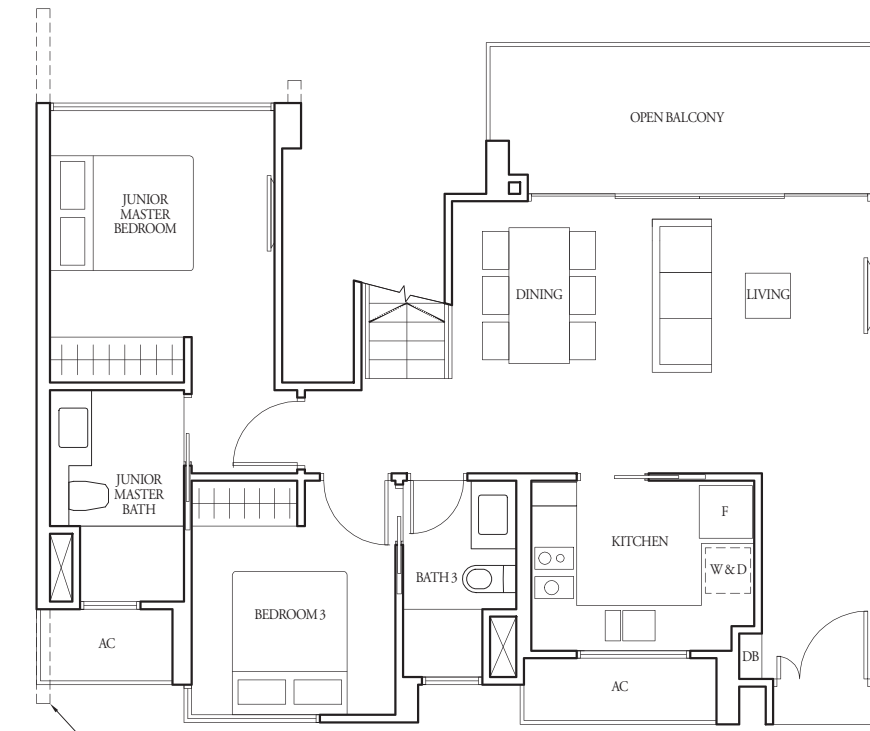


LEGEND:
F - Fridge DB - Distribution Board WC - Water Closet W/D - Washer cum Dryer W - Washer D - Dryer AC - Aircon Ledge
All plans are subject to change as may be required or approved by the relevant authorities. Indicated floor areas are approximate and are subject to final survey. *Units with mirror image.

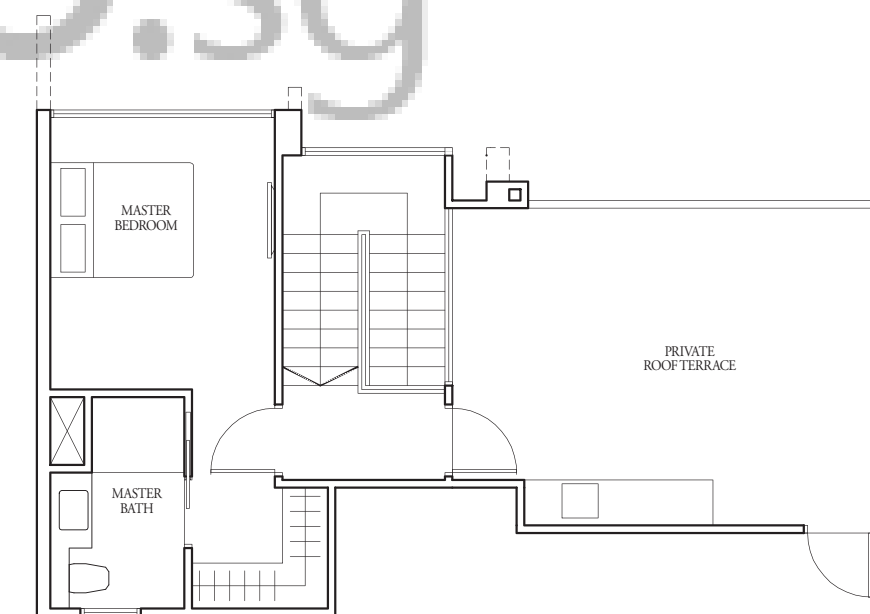
3-Bedroom

TYPE (3)a2

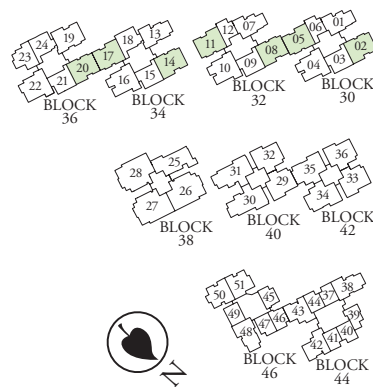
#17-02, #17-05,
#17-08, #17-11,
#17-14, #17-17,
#17-20
145 sqm
Incl A/C Ledge 4 sqm, Open balcony 10 sqm,
Private roof terrace 24 sqm & Strata void 7 sqm



LOWER STOREY



UPPER STOREY



LEGEND:
F - Fridge DB - Distribution Board WC - Water Closet W/D - Washer cum Dryer W - Washer D - Dryer AC - Aircon Ledge
All plans are subject to change as may be required or approved by the relevant authorities. Indicated floor areas are approximate and are subject to final survey. *Units with mirror image.

3-Bedroom

3-Bedroom

TYPE (3)b

#02-19 to #16-19

91 sqm

Incl A/C Ledge 4 sqm
& Balcony 10 sqm

TYPE (3)b1

#01-19

105 sqm

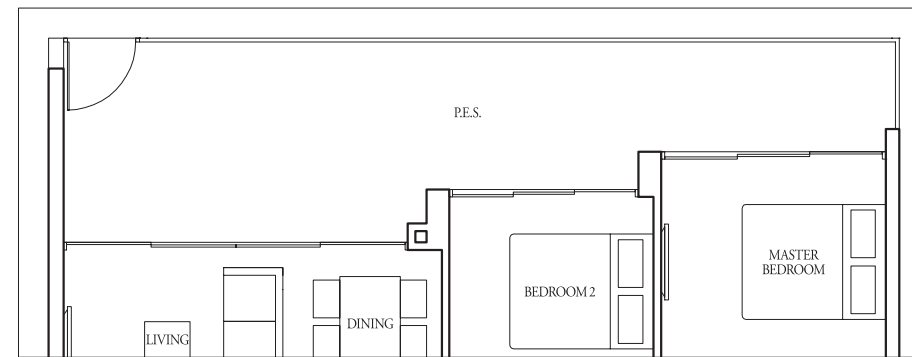
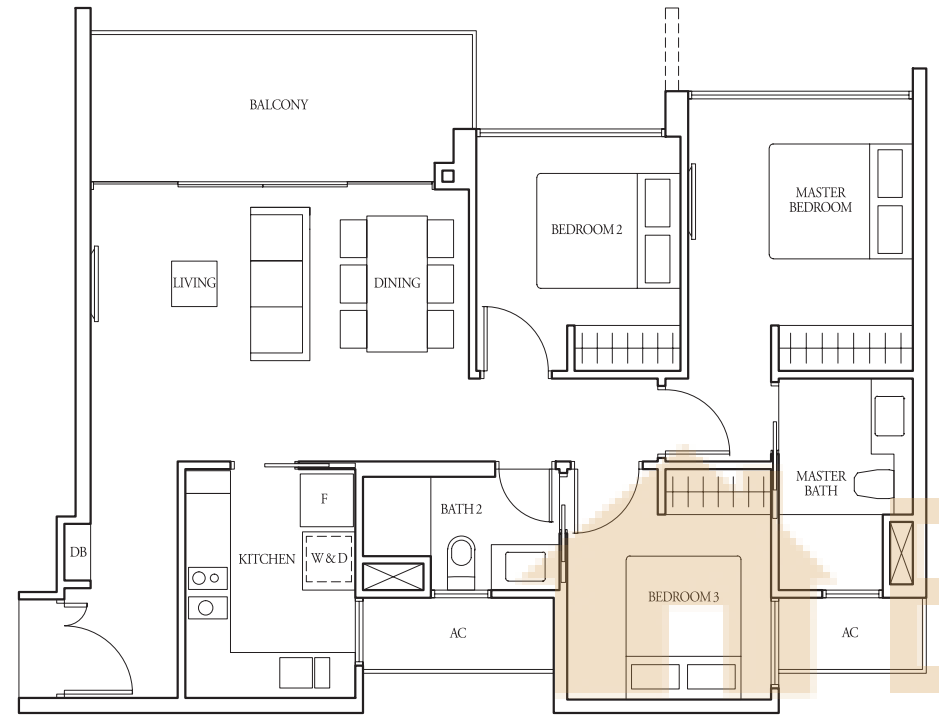
Incl A/C Ledge 4 sqm
& PES 24 sqm

TYPE (3)b2

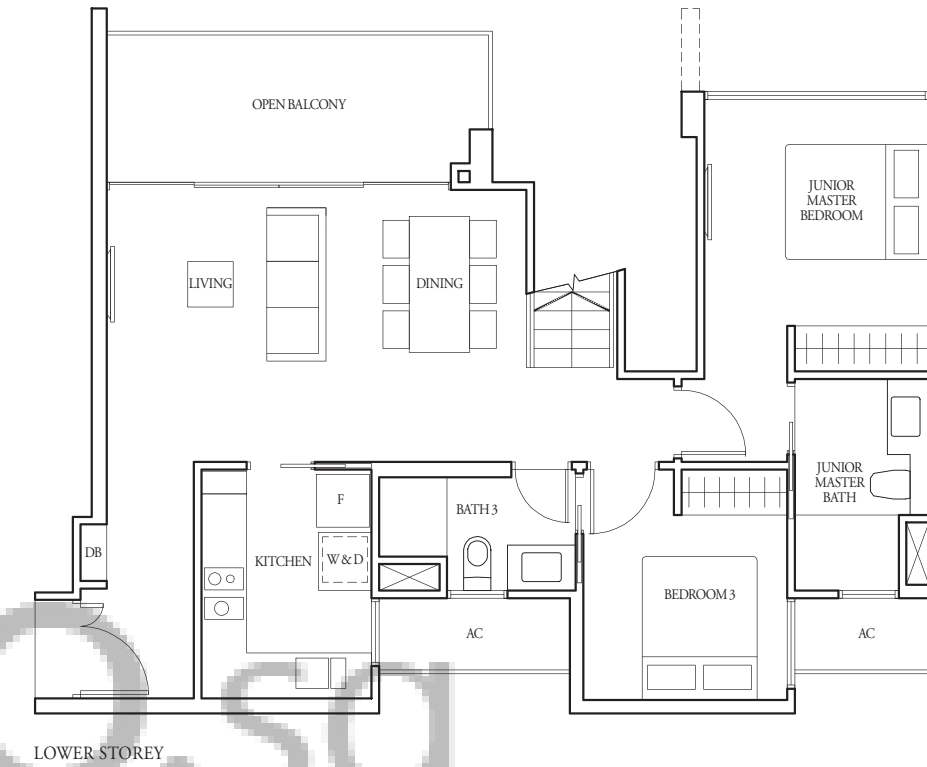
#17-19

147 sqm

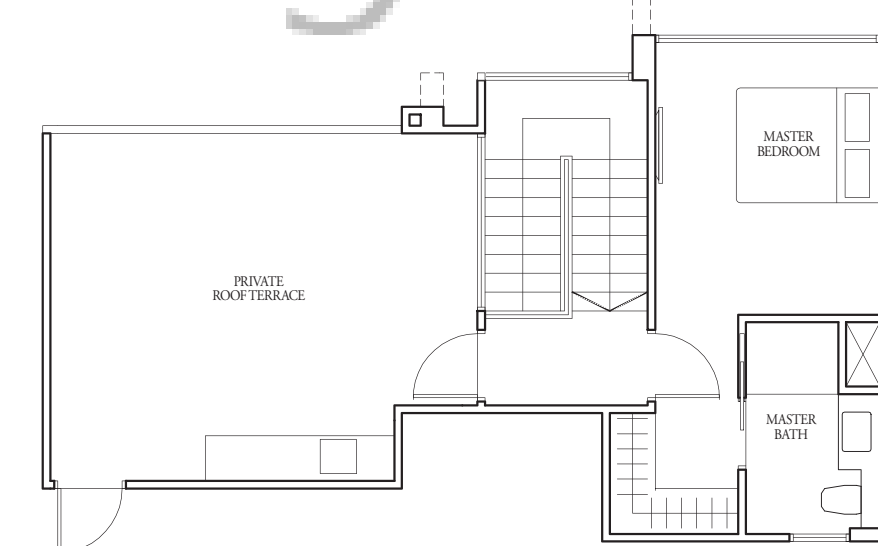
Incl A/C Ledge 4 sqm, Open balcony 10 sqm,
Private roof terrace 26 sqm & Strata void 7 sqm



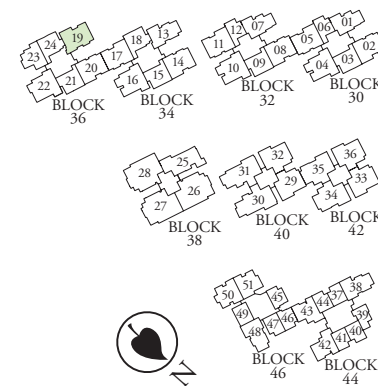
Applicable to Type (3)b1 only



LOWER STOREY

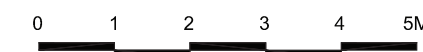


UPPER STOREY



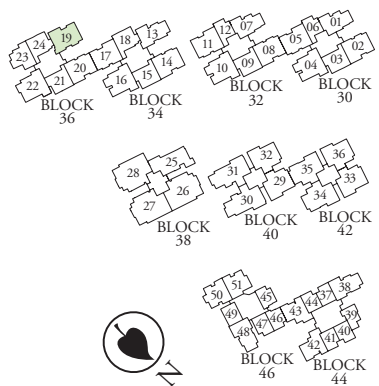
LEGEND:
F - Fridge DB - Distribution Board WC - Water Closet W/D - Washer cum Dryer W - Washer D - Dryer AC - Aircon Ledge

All plans are subject to change as may be required or approved by the relevant authorities. Indicated floor areas are approximate and are subject to final survey. *Units with mirror image.



LEGEND:
F - Fridge DB - Distribution Board WC - Water Closet W/D - Washer cum Dryer W - Washer D - Dryer AC - Aircon Ledge

All plans are subject to change as may be required or approved by the relevant authorities. Indicated floor areas are approximate and are subject to final survey. *Units with mirror image.



3-Bedroom with Yard

TYPE (3y)a

#02-32 to #16-32,
#02-36 to #16-36
96 sqm
Incl A/C Ledge 5 sqm
& Balcony 10 sqm

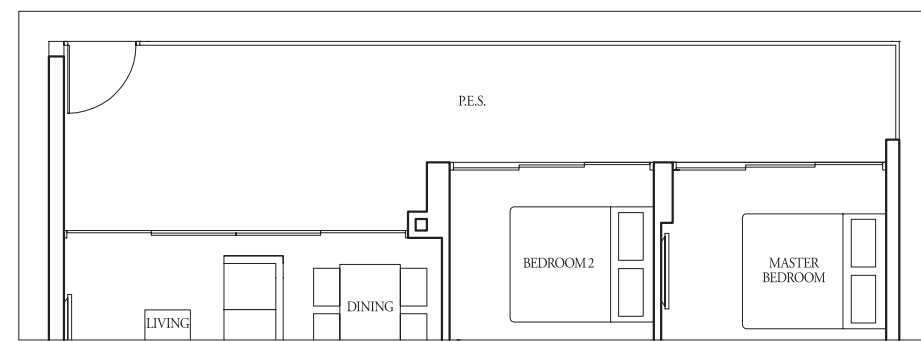
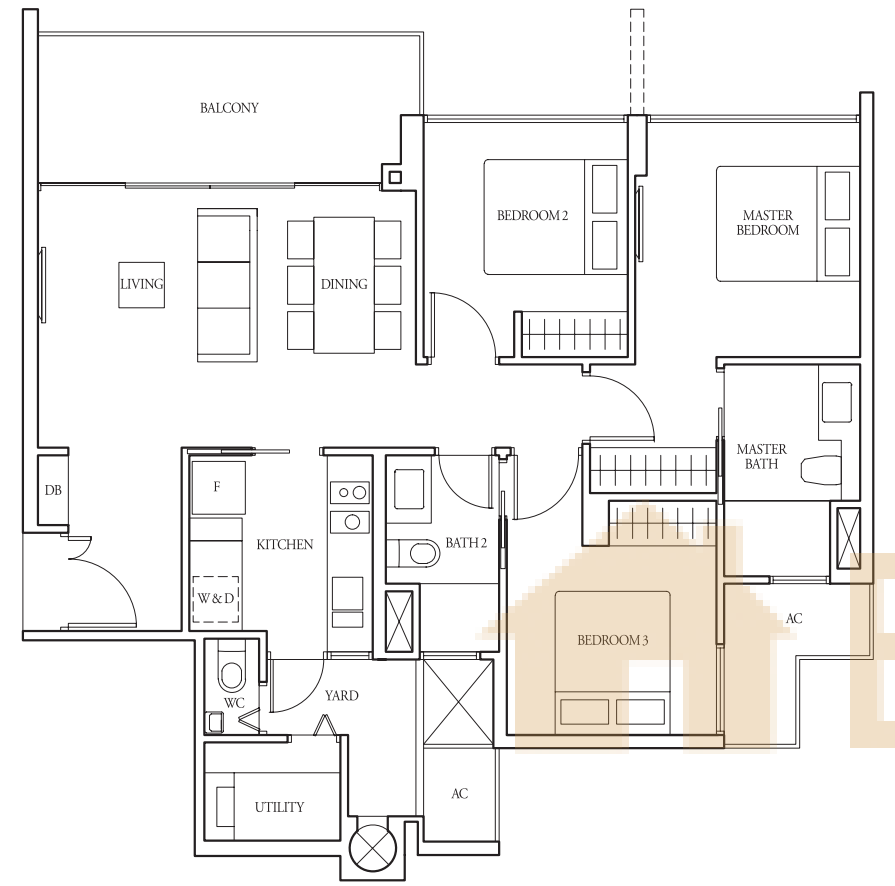
TYPE (3y)a1

#01-32, #01-36
108 sqm
Incl A/C Ledge 5 sqm
& PES 22 sqm

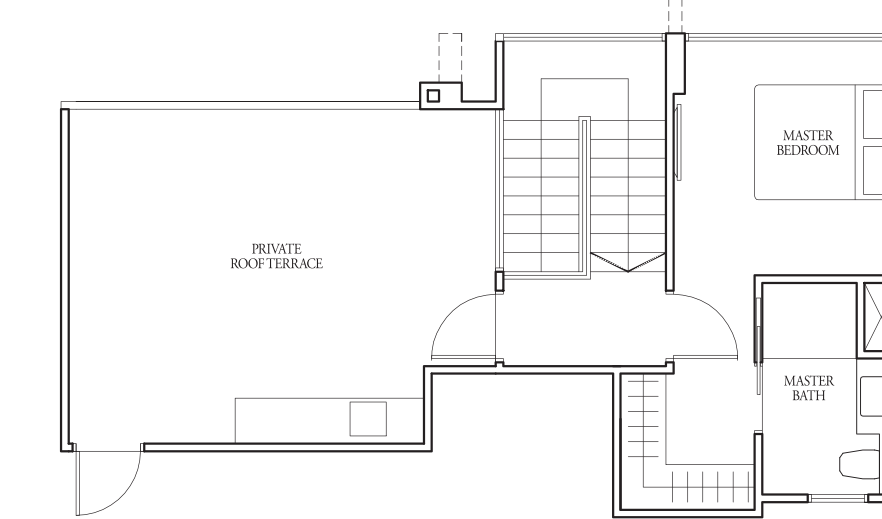
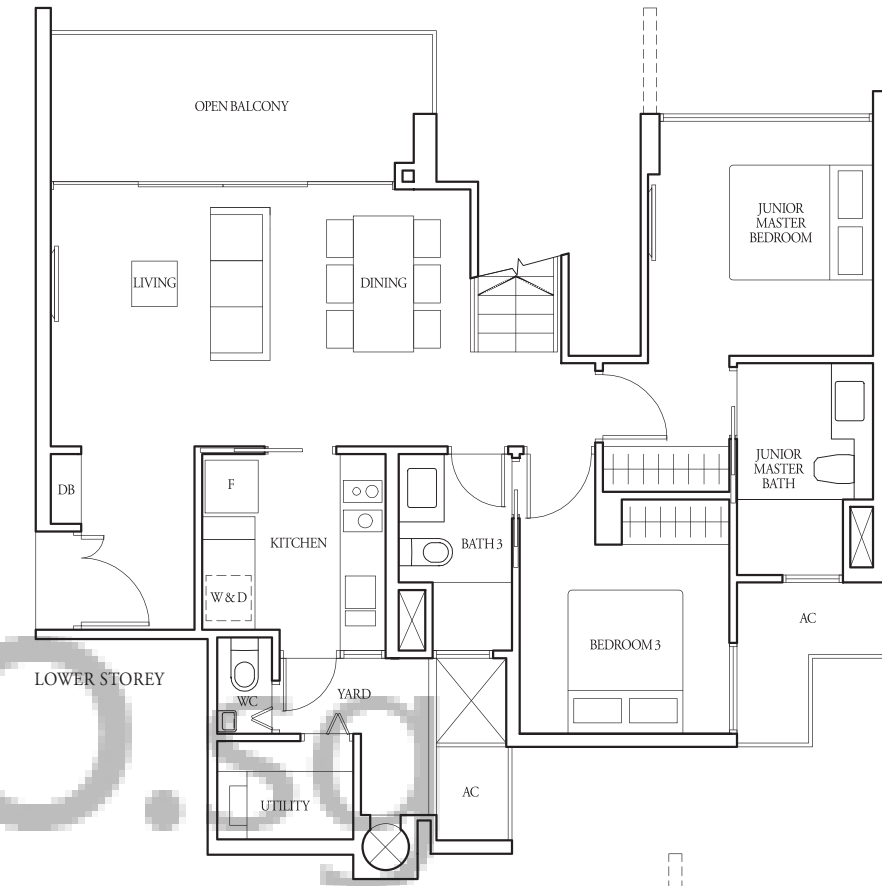
TYPE (3y)a2

#17-32, #17-36
151 sqm
Incl A/C Ledge 5 sqm, Open balcony 10 sqm,
Private roof terrace 25 sqm & Strata void 7 sqm

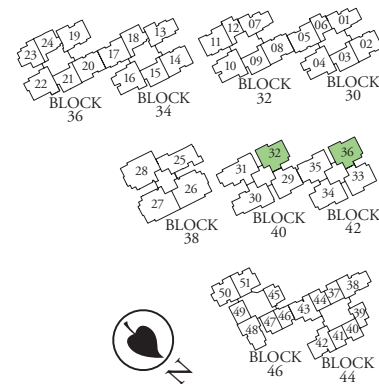
3-Bedroom with Yard



Applicable to Type (3y)a1 only

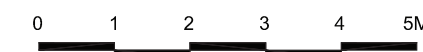


UPPER STOREY



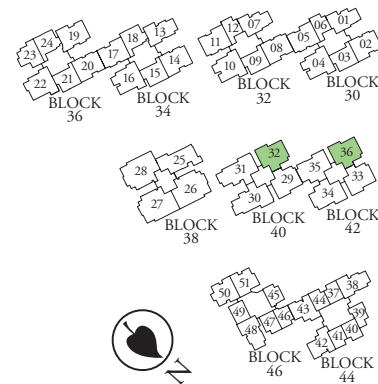
LEGEND:
F - Fridge DB - Distribution Board WC - Water Closet W/D - Washer cum Dryer W - Washer D - Dryer AC - Aircon Ledge

All plans are subject to change as may be required or approved by the relevant authorities. Indicated floor areas are approximate and are subject to final survey. *Units with mirror image.



LEGEND:
F - Fridge DB - Distribution Board WC - Water Closet W/D - Washer cum Dryer W - Washer D - Dryer AC - Aircon Ledge

All plans are subject to change as may be required or approved by the relevant authorities. Indicated floor areas are approximate and are subject to final survey. *Units with mirror image.



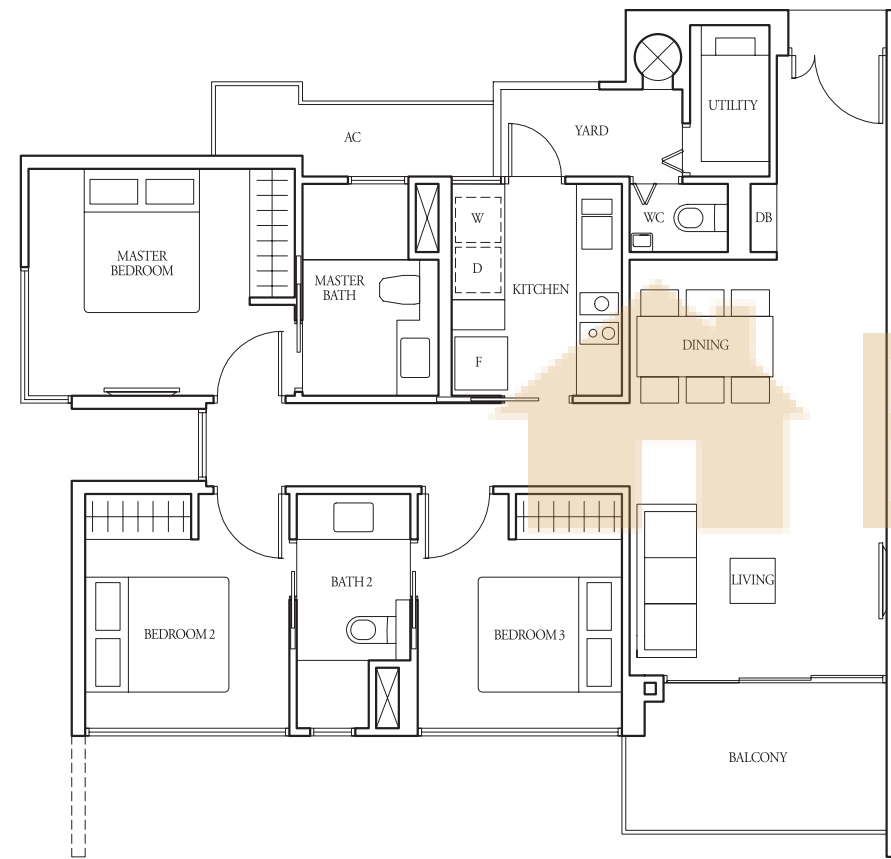
3-Bedroom with Yard

TYPE (3y)b

#02-04 to #16-04,
#02-10 to #16-10,
#02-16 to #16-16,
#02-22 to #16-22

97 sqm

Incl A/C Ledge 4 sqm
& Balcony 7 sqm

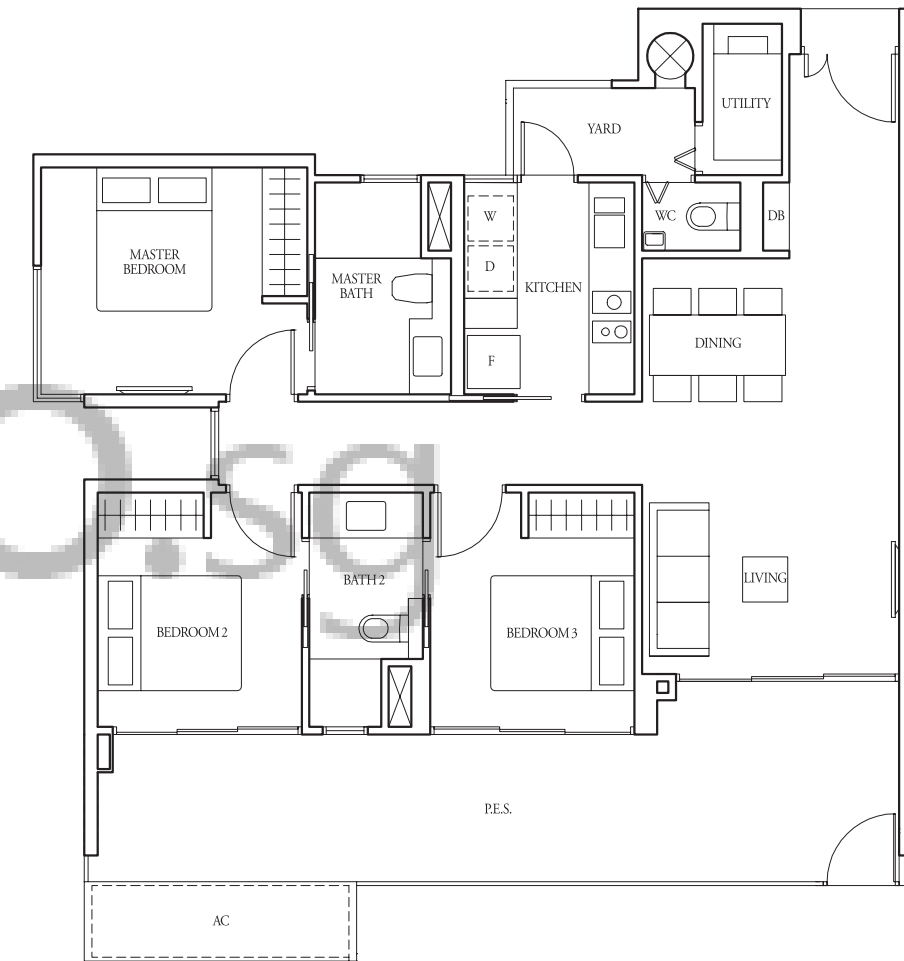


TYPE (3y)b1

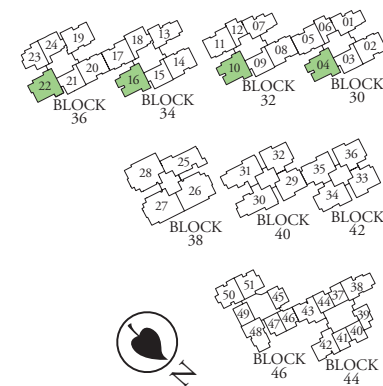
#01-04, #01-10,
#01-16, #01-22

114 sqm

Incl A/C Ledge 4 sqm
& PES 24 sqm



3-Bedroom with Yard



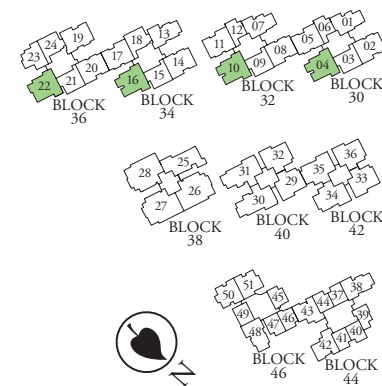
LEGEND:
F - Fridge DB - Distribution Board WC - Water Closet W/D - Washer cum Dryer W - Washer D - Dryer AC - Aircon Ledge

All plans are subject to change as may be required or approved by the relevant authorities. Indicated floor areas are approximate and are subject to final survey. *Units with mirror image.



LEGEND:
F - Fridge DB - Distribution Board WC - Water Closet W/D - Washer cum Dryer W - Washer D - Dryer AC - Aircon Ledge

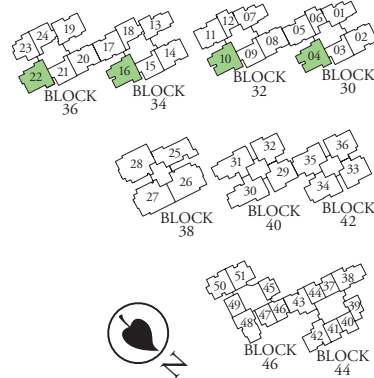
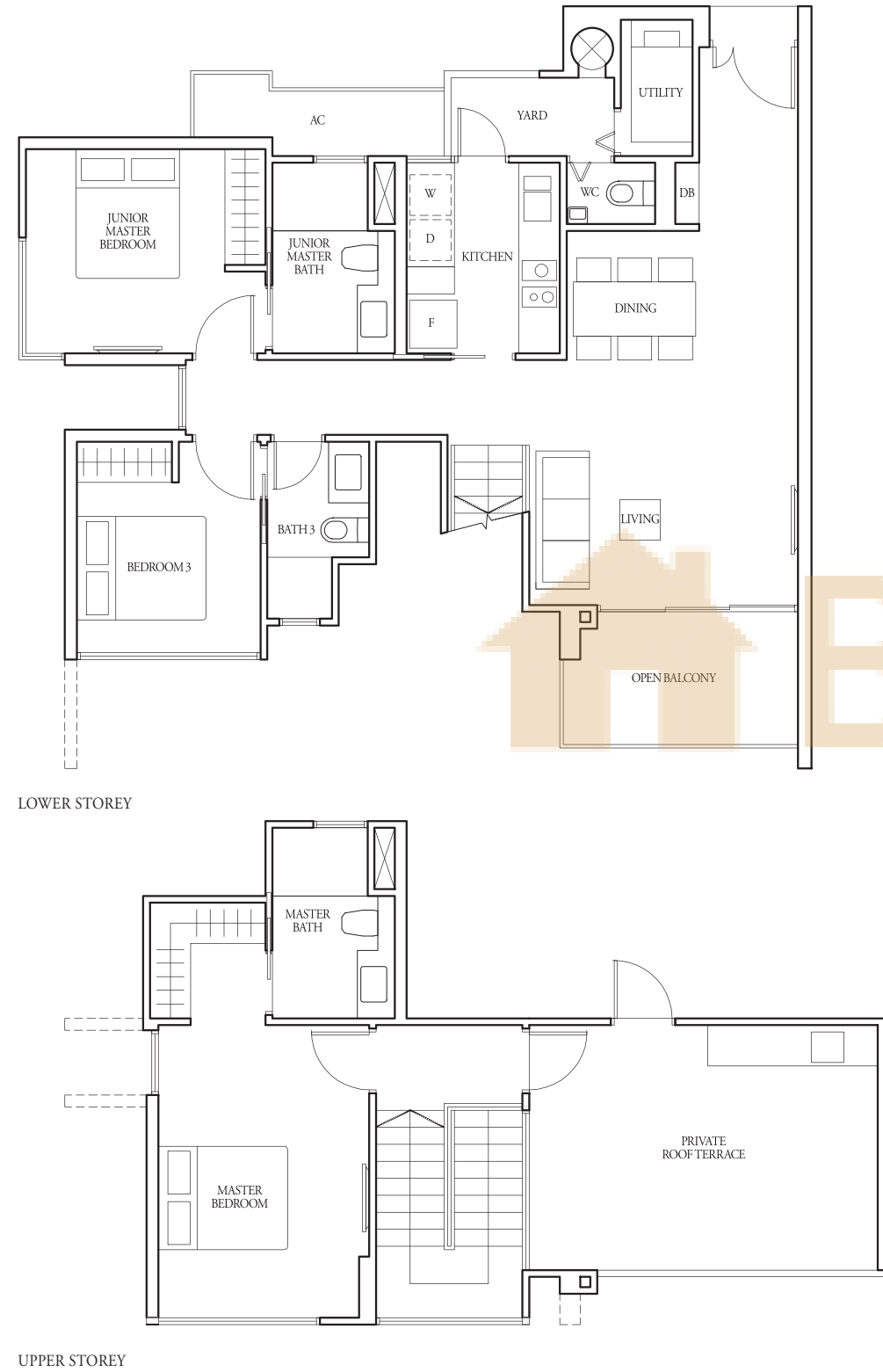
All plans are subject to change as may be required or approved by the relevant authorities. Indicated floor areas are approximate and are subject to final survey. *Units with mirror image.



3-Bedroom with Yard

TYPE (3y)b2

#17-04, #17-10,
#17-16, #17-22
148 sqm
96 sqm - Incl A/C Ledge 4 sqm, Open balcony 7 sqm,
Private roof terrace 19 sqm & Strata void 7 sqm

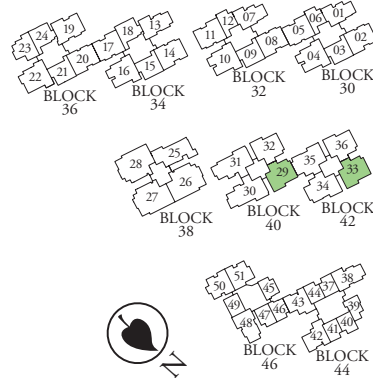
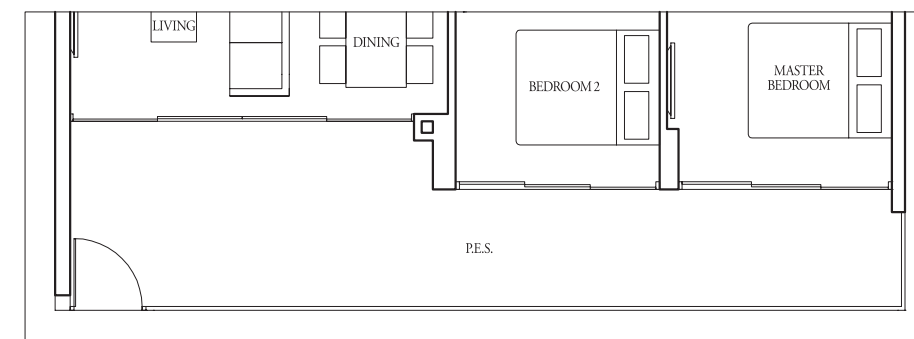
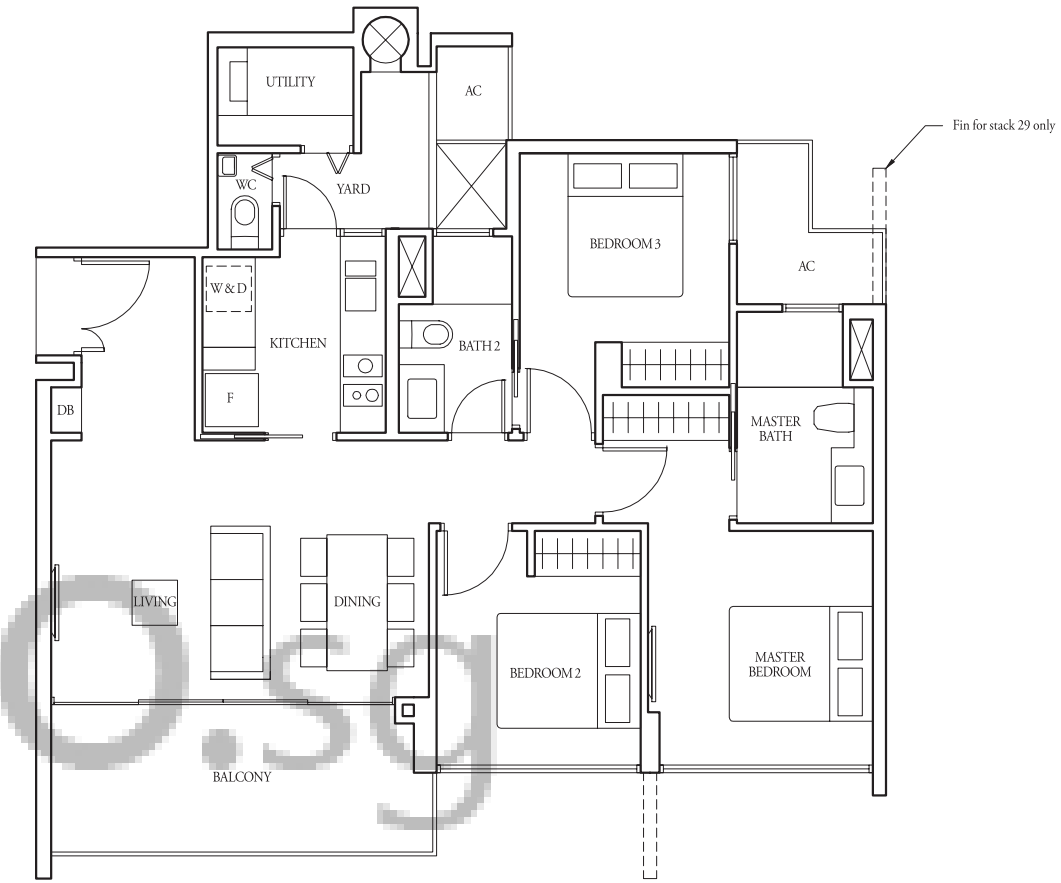


LEGEND:
F - Fridge DB - Distribution Board WC - Water Closet W/D - Washer cum Dryer W - Washer D - Dryer AC - Aircon Ledge
All plans are subject to change as may be required or approved by the relevant authorities. Indicated floor areas are approximate and are subject to final survey. *Units with mirror image.

3-Bedroom with Yard

TYPE (3y)c

#02-29 to #16-29,
#02-33 to #16-33
96 sqm
Incl A/C Ledge 5 sqm
& Balcony 10 sqm

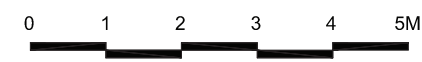
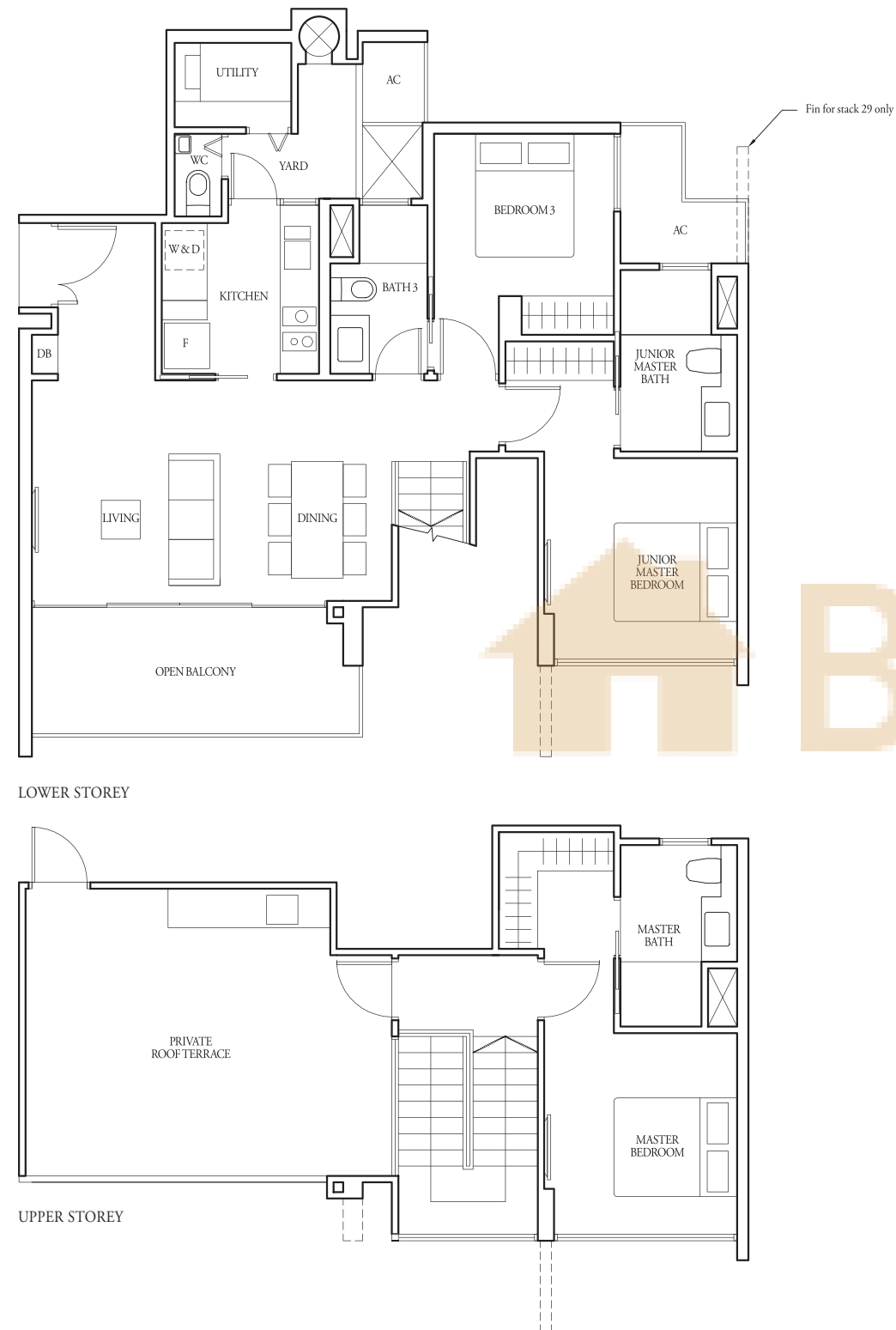


LEGEND:
F - Fridge DB - Distribution Board WC - Water Closet W/D - Washer cum Dryer W - Washer D - Dryer AC - Aircon Ledge
All plans are subject to change as may be required or approved by the relevant authorities. Indicated floor areas are approximate and are subject to final survey. *Units with mirror image.

3-Bedroom with Yard

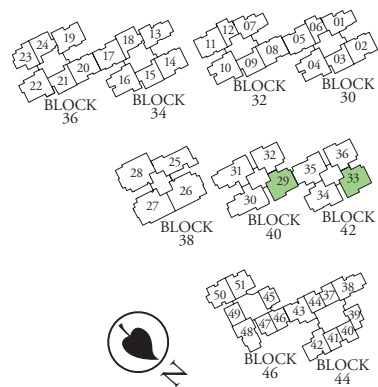
TYPE (3y)c2

#17-29, #17-33
 150 sqm
 Incl A/C Ledge 5 sqm, Open balcony 10 sqm,
 Private roof terrace 25 sqm & Strata void 7 sqm



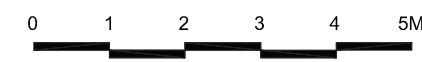
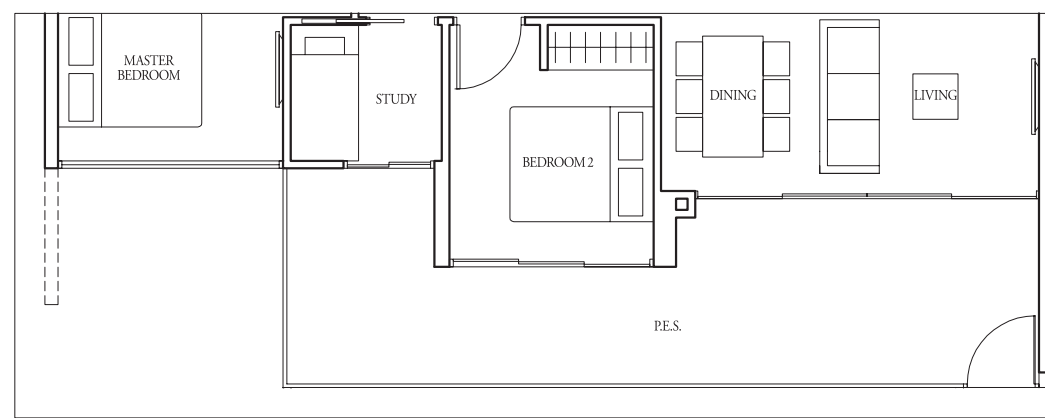
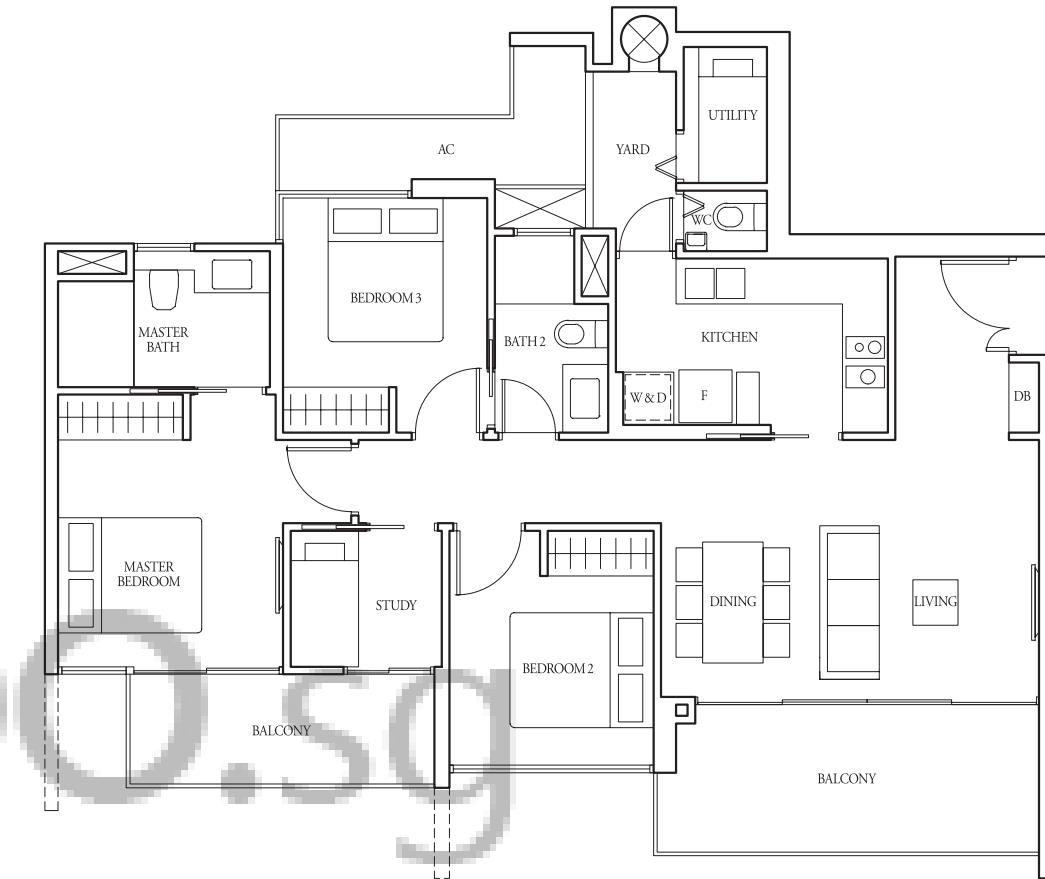
LEGEND:
 F - Fridge DB - Distribution Board WC - Water Closet W/D - Washer cum Dryer W - Washer D - Dryer AC - Aircon Ledge

All plans are subject to change as may be required or approved by the relevant authorities. Indicated floor areas are approximate and are subject to final survey. *Units with mirror image.



TYPE (3+1)a

#02-34 to #16-34,
 #02-35* to #16-35*
 109 sqm
 Incl A/C Ledge 5 sqm
 & Balcony 17 sqm



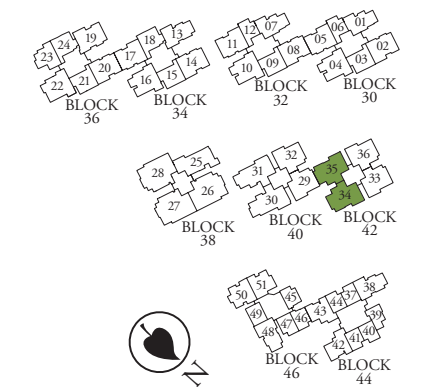
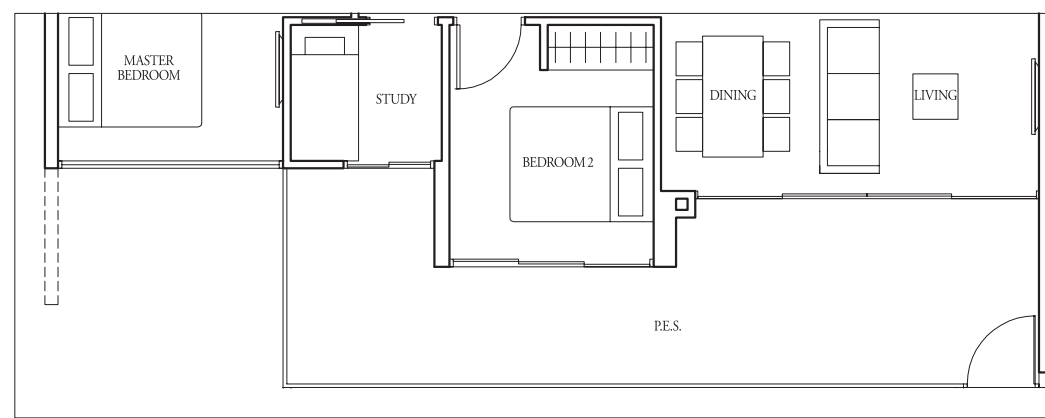
LEGEND:
 F - Fridge DB - Distribution Board WC - Water Closet W/D - Washer cum Dryer W - Washer D - Dryer AC - Aircon Ledge

All plans are subject to change as may be required or approved by the relevant authorities. Indicated floor areas are approximate and are subject to final survey. *Units with mirror image.

3+1-Bedroom

TYPE (3+1)a1

#01-34, #01-35*
 116 sqm
 Incl A/C Ledge 5 sqm
 & PES 23 sqm



LEGEND:
 F - Fridge DB - Distribution Board WC - Water Closet W/D - Washer cum Dryer W - Washer D - Dryer AC - Aircon Ledge

All plans are subject to change as may be required or approved by the relevant authorities. Indicated floor areas are approximate and are subject to final survey. *Units with mirror image.

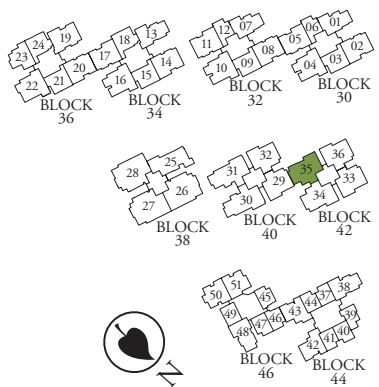
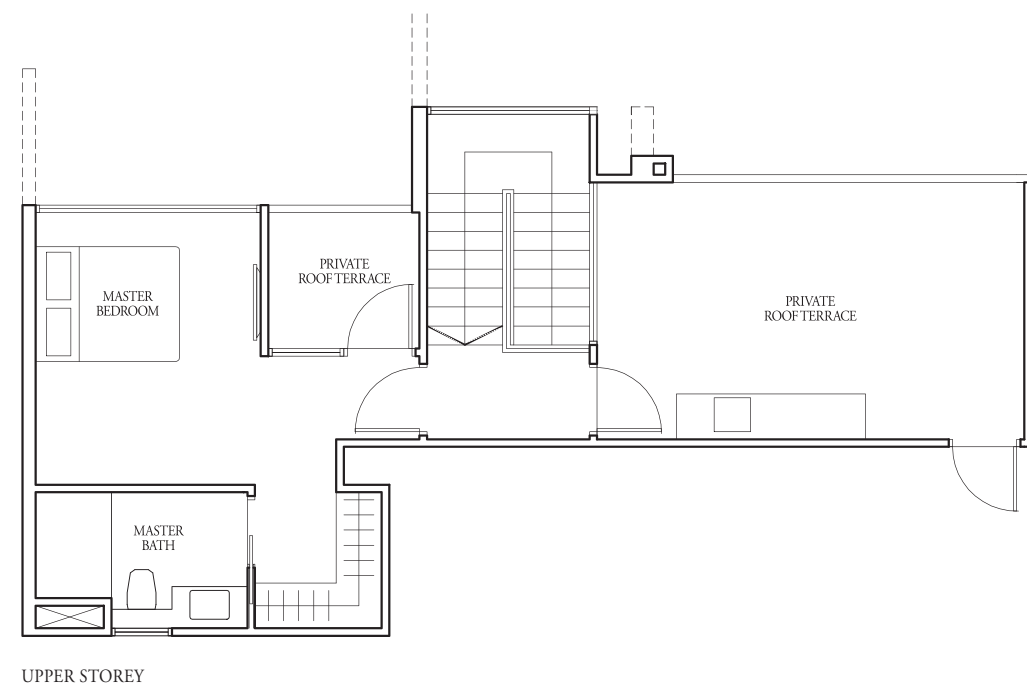
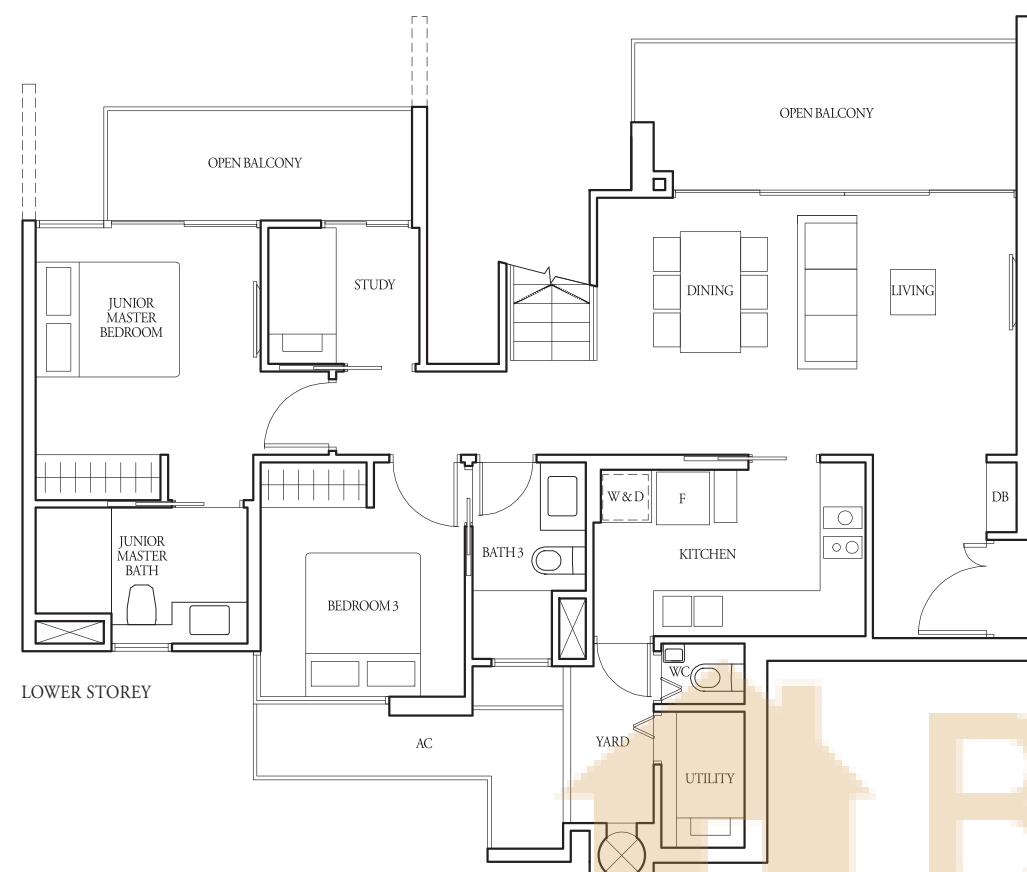
3+1-Bedroom

TYPE (3+1)a2

#17-35

166 sqm

Incl A/C Ledge 5 sqm, Open balcony 16 sqm,
Private roof terrace 24 sqm & Strata void 7 sqm



LEGEND:
F - Fridge DB - Distribution Board WC - Water Closet W/D - Washer cum Dryer W - Washer D - Dryer AC - Aircon Ledge

All plans are subject to change as may be required or approved by the relevant authorities. Indicated floor areas are approximate and are subject to final survey. *Units with mirror image.

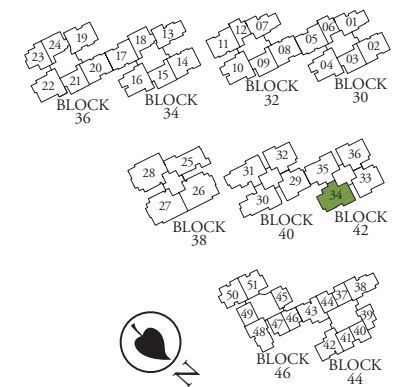
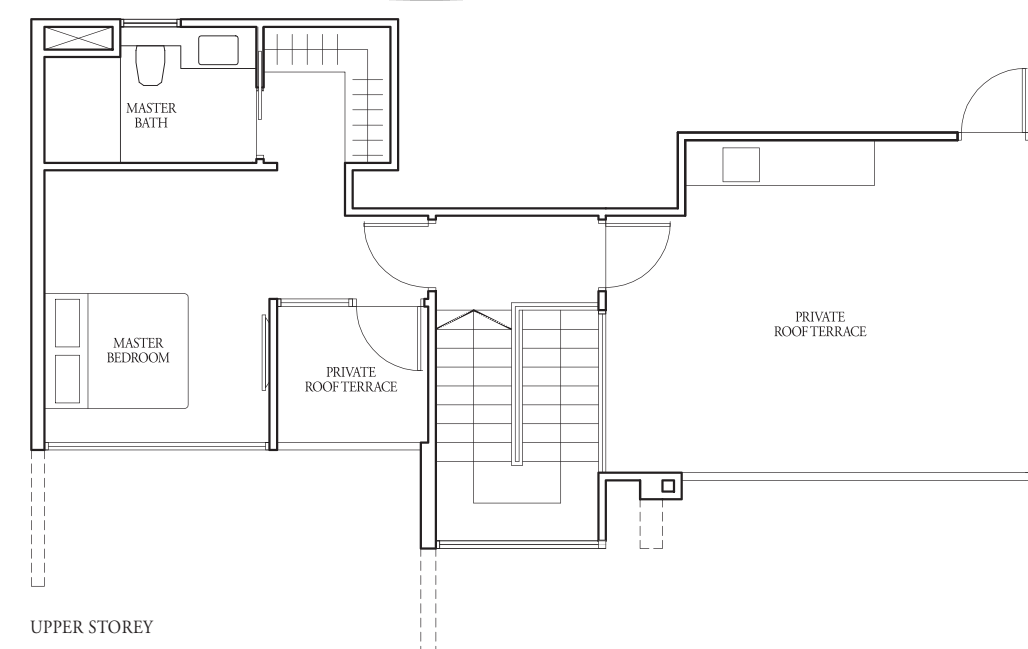
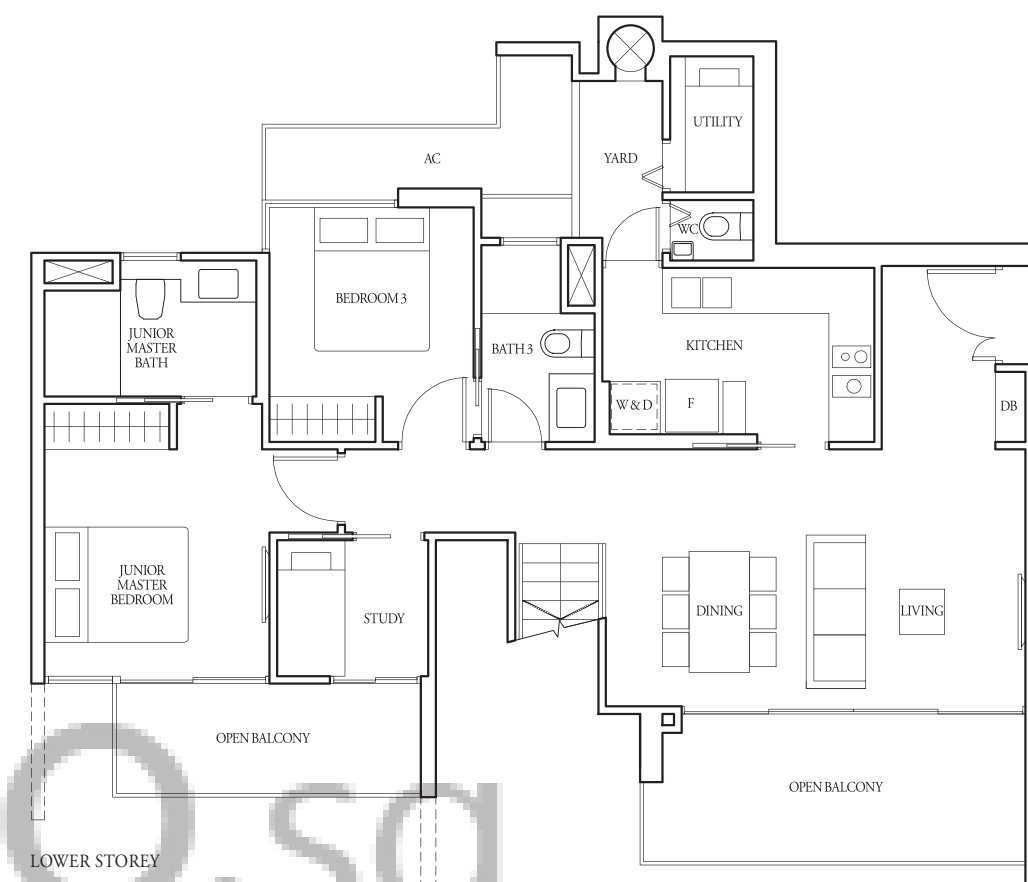
3+1-Bedroom

TYPE (3+1)a2(a)

#17-34

171 sqm

Incl A/C Ledge 5 sqm, Open balcony 16 sqm,
Private roof terrace 29 sqm & Strata void 7 sqm



LEGEND:
F - Fridge DB - Distribution Board WC - Water Closet W/D - Washer cum Dryer W - Washer D - Dryer AC - Aircon Ledge

All plans are subject to change as may be required or approved by the relevant authorities. Indicated floor areas are approximate and are subject to final survey. *Units with mirror image.

3+1-Bedroom

3+1-Bedroom

TYPE (3+1)b

#02-25 to #16-25

108 sqm

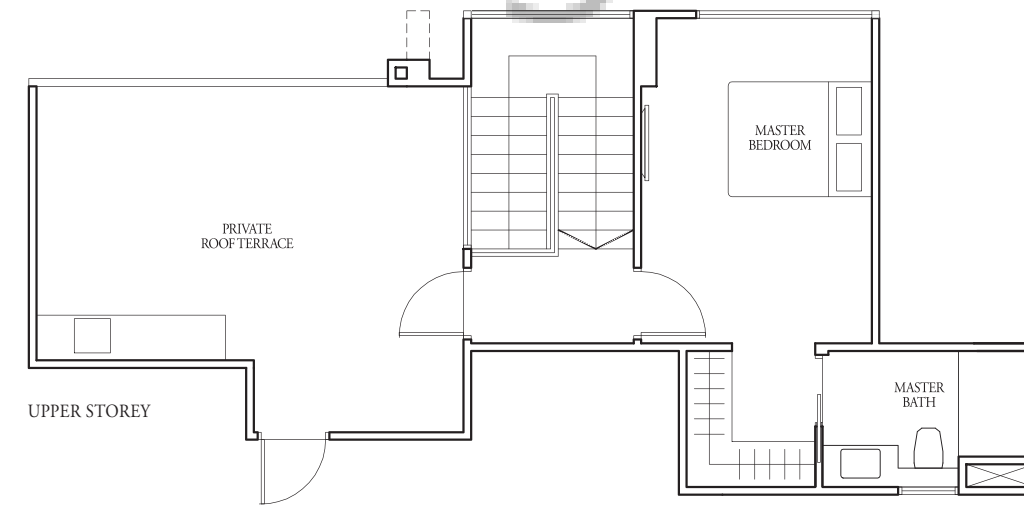
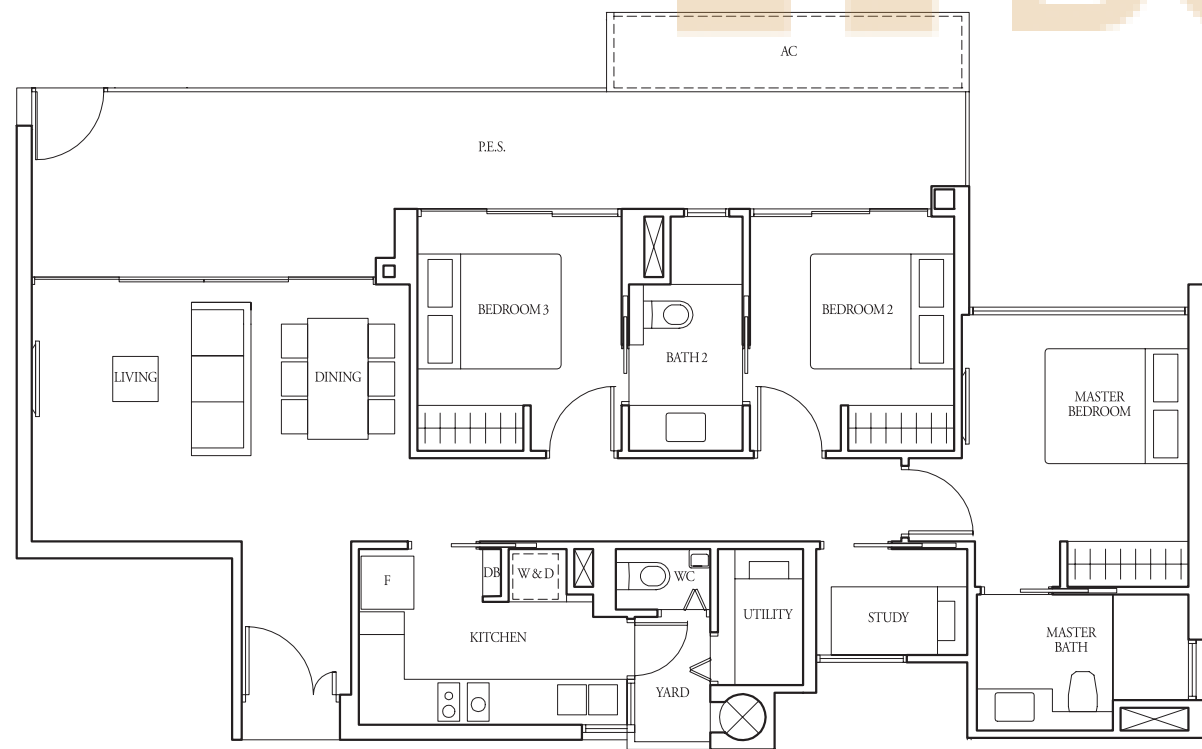
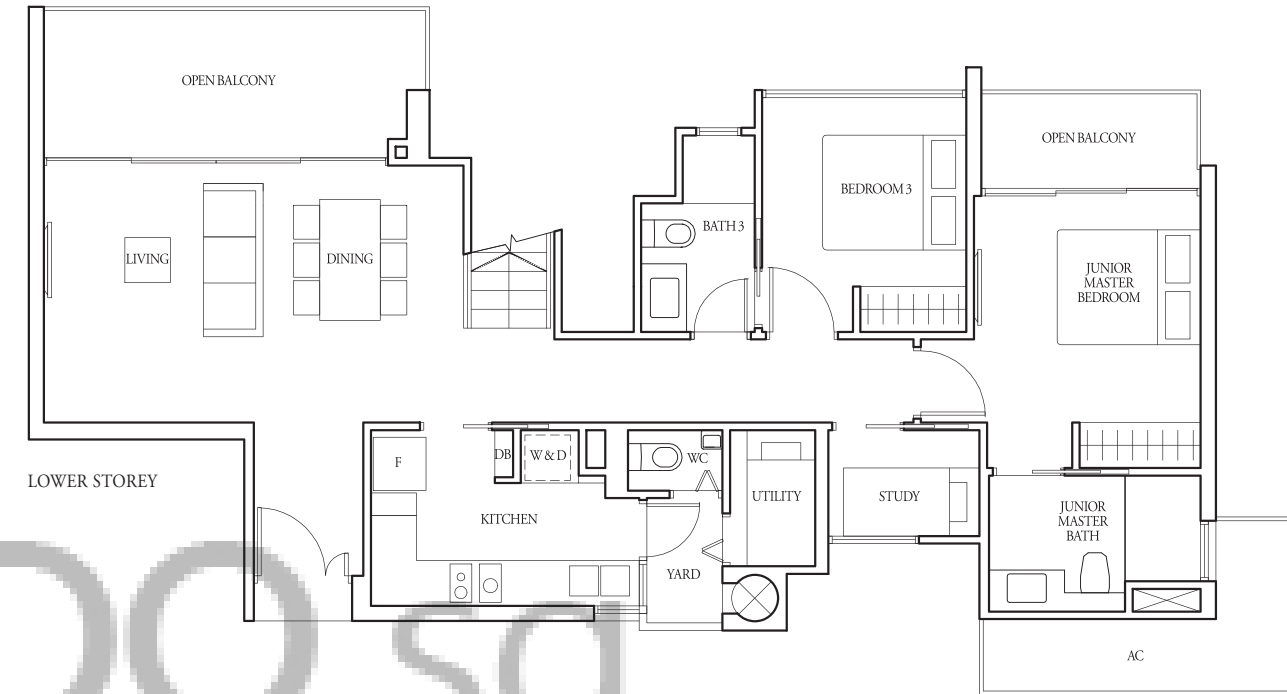
Incl A/C Ledge 6 sqm
& Balcony 14 sqm

TYPE (3+1)b2

#17-25

163 sqm

Incl A/C Ledge 6 sqm, Open balcony 14 sqm,
Private roof terrace 24 sqm & Strata void 7 sqm

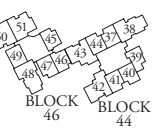
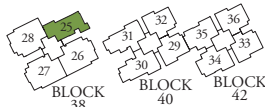
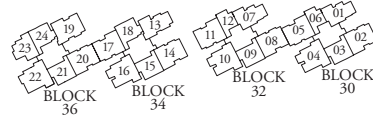
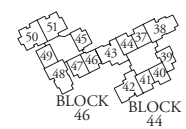
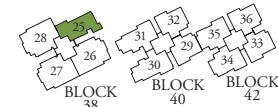
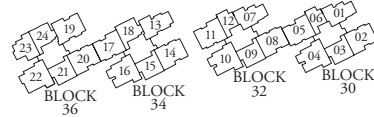


TYPE (3+1)b1

#01-25

117 sqm

Incl A/C Ledge 5 sqm
& PES 24 sqm



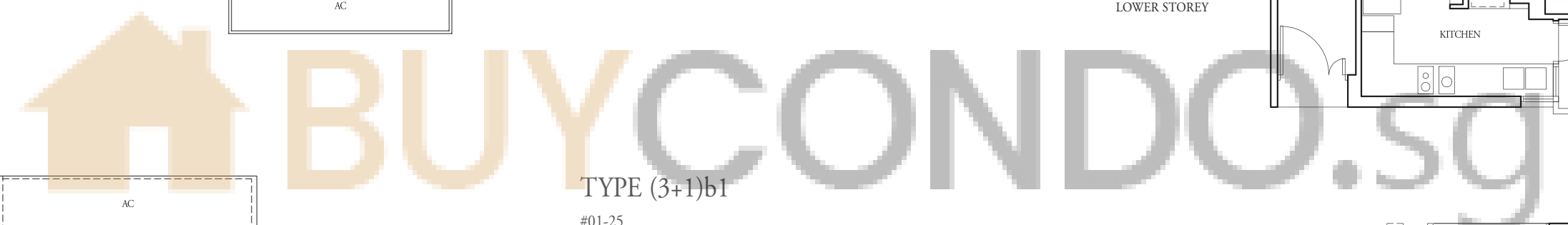
LEGEND:
F - Fridge DB - Distribution Board WC - Water Closet W/D - Washer cum Dryer W - Washer D - Dryer AC - Aircon Ledge

All plans are subject to change as may be required or approved by the relevant authorities. Indicated floor areas are approximate and are subject to final survey. *Units with mirror image.



LEGEND:
F - Fridge DB - Distribution Board WC - Water Closet W/D - Washer cum Dryer W - Washer D - Dryer AC - Aircon Ledge

All plans are subject to change as may be required or approved by the relevant authorities. Indicated floor areas are approximate and are subject to final survey. *Units with mirror image.



4-Bedroom

TYPE (4)a

#02-30 to #16-30,
#02-31* to #16-31*
121 sqm
Incl A/C Ledge 5 sqm
& Balcony 11 sqm

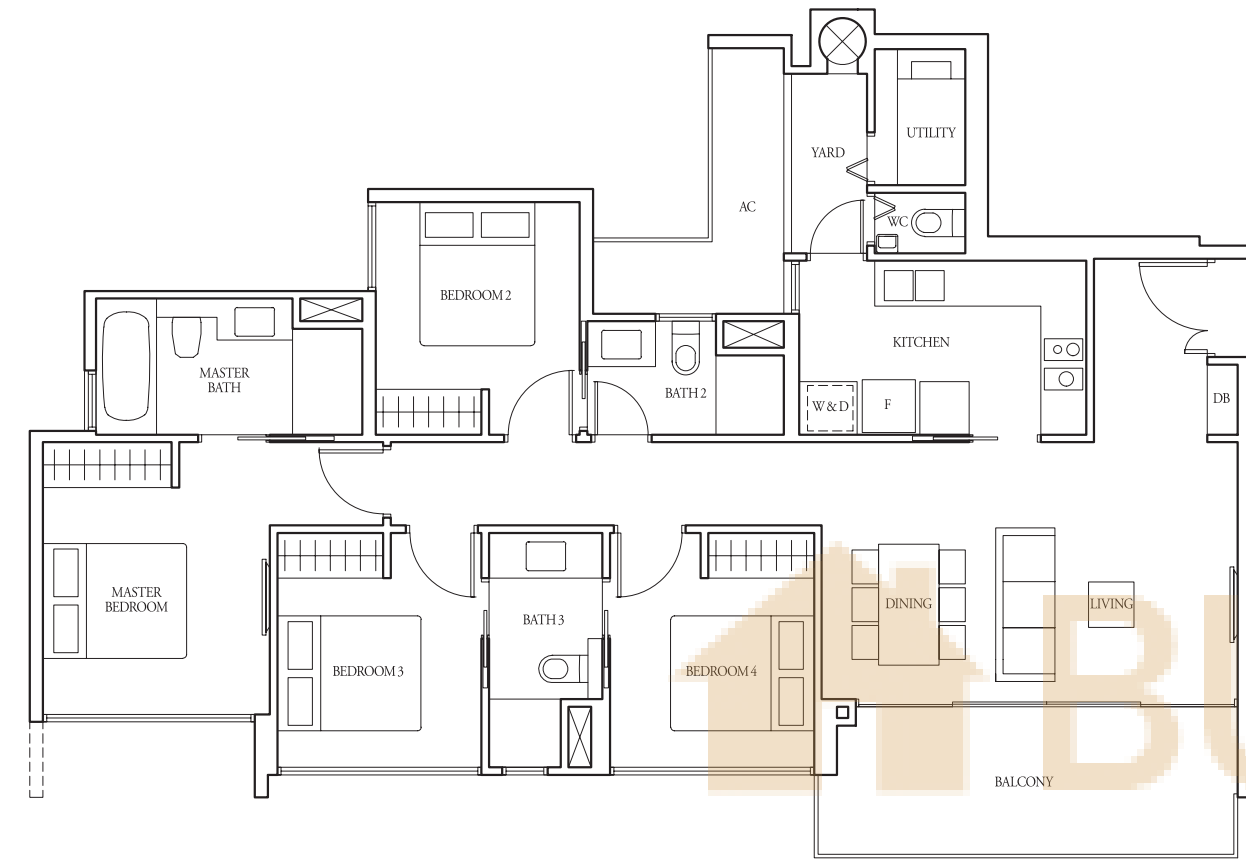
TYPE (4)a1

#01-30, #01-31*
136 sqm
Incl A/C Ledge 5 sqm
& PES 25 sqm

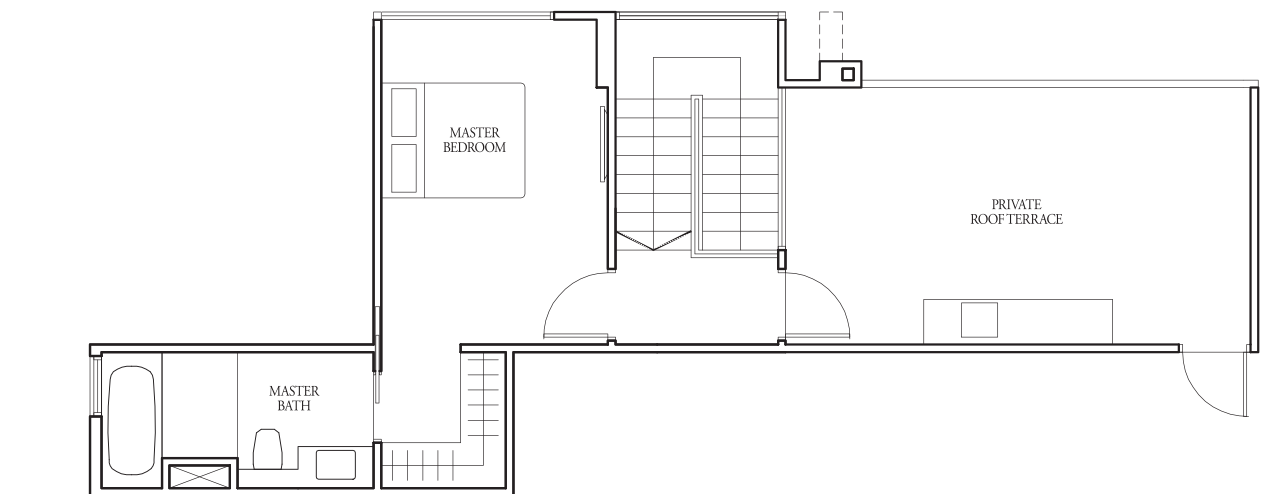
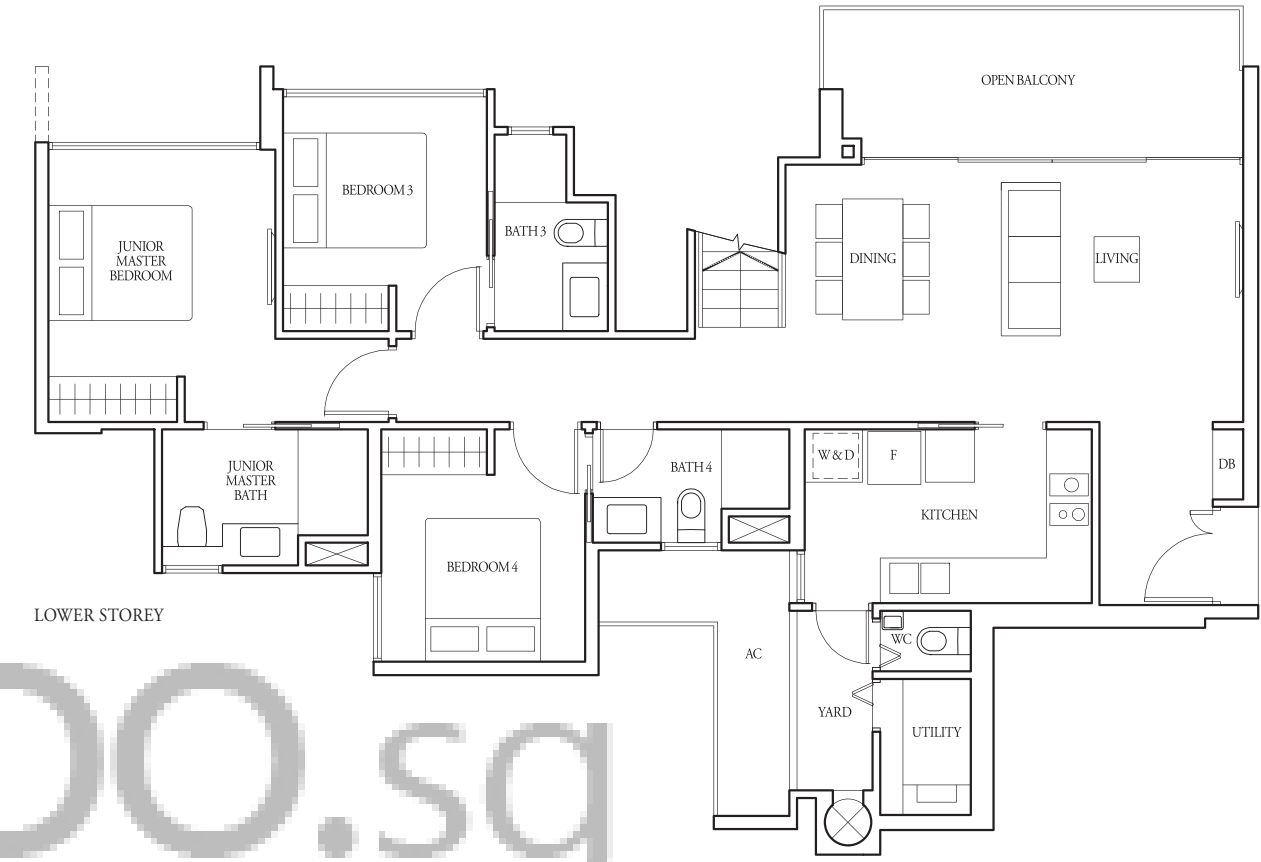
TYPE (4)a2

#17-31
173 sqm
Incl A/C Ledge 5 sqm, Open balcony 11 sqm,
Private roof terrace 22 sqm & Strata void 7 sqm

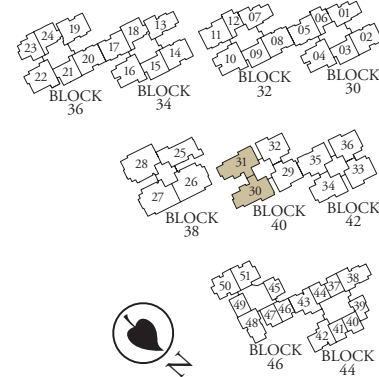
4-Bedroom



Applicable to Type (4)a1 only

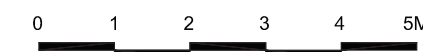


UPPER STOREY



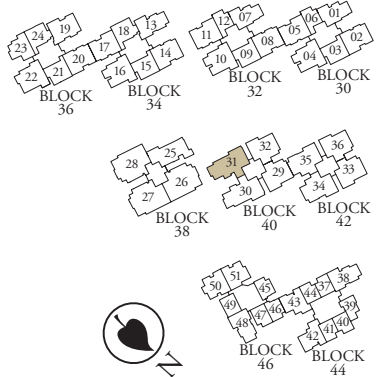
LEGEND:
F - Fridge DB - Distribution Board WC - Water Closet W/D - Washer cum Dryer W - Washer D - Dryer AC - Aircon Ledge

All plans are subject to change as may be required or approved by the relevant authorities. Indicated floor areas are approximate and are subject to final survey. *Units with mirror image.



LEGEND:
F - Fridge DB - Distribution Board WC - Water Closet W/D - Washer cum Dryer W - Washer D - Dryer AC - Aircon Ledge

All plans are subject to change as may be required or approved by the relevant authorities. Indicated floor areas are approximate and are subject to final survey. *Units with mirror image.



4-Bedroom

Dual Key

TYPE (4)a2(a)

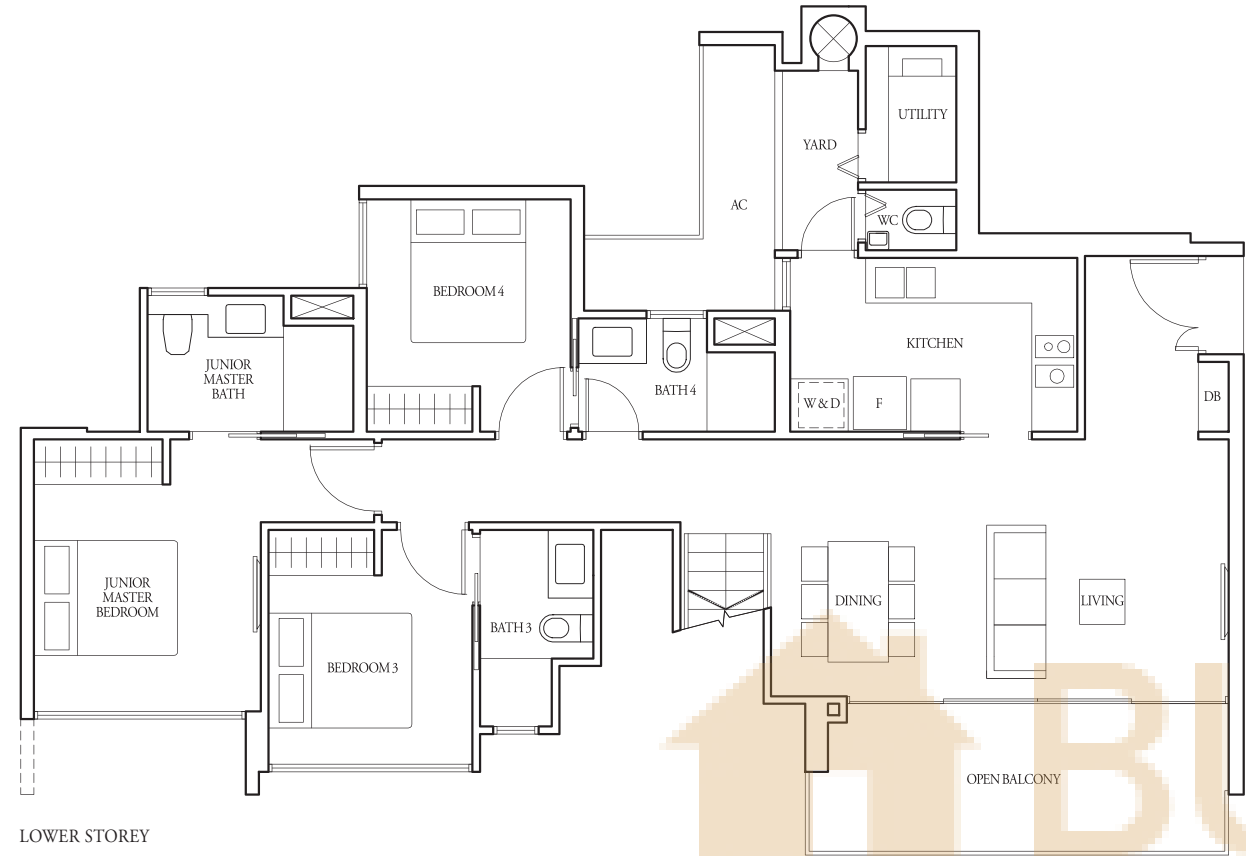
#17-30
 179 sqm
 Incl A/C Ledge 5 sqm, Open balcony 11 sqm,
 Private roof terrace 27 sqm & Strata void 7 sqm

TYPE (D)a

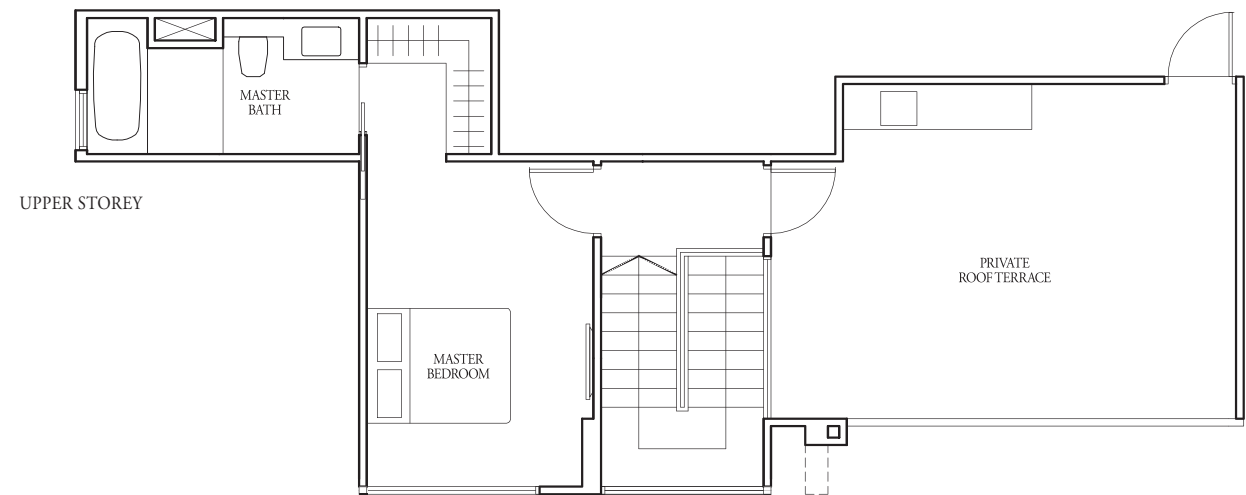
#02-26 to #16-26,
 #02-27* to #16-27*,
 #02-28 to #16-28
 144 sqm
 Incl A/C Ledge 7 sqm
 & Balcony 19 sqm

TYPE (D)a1

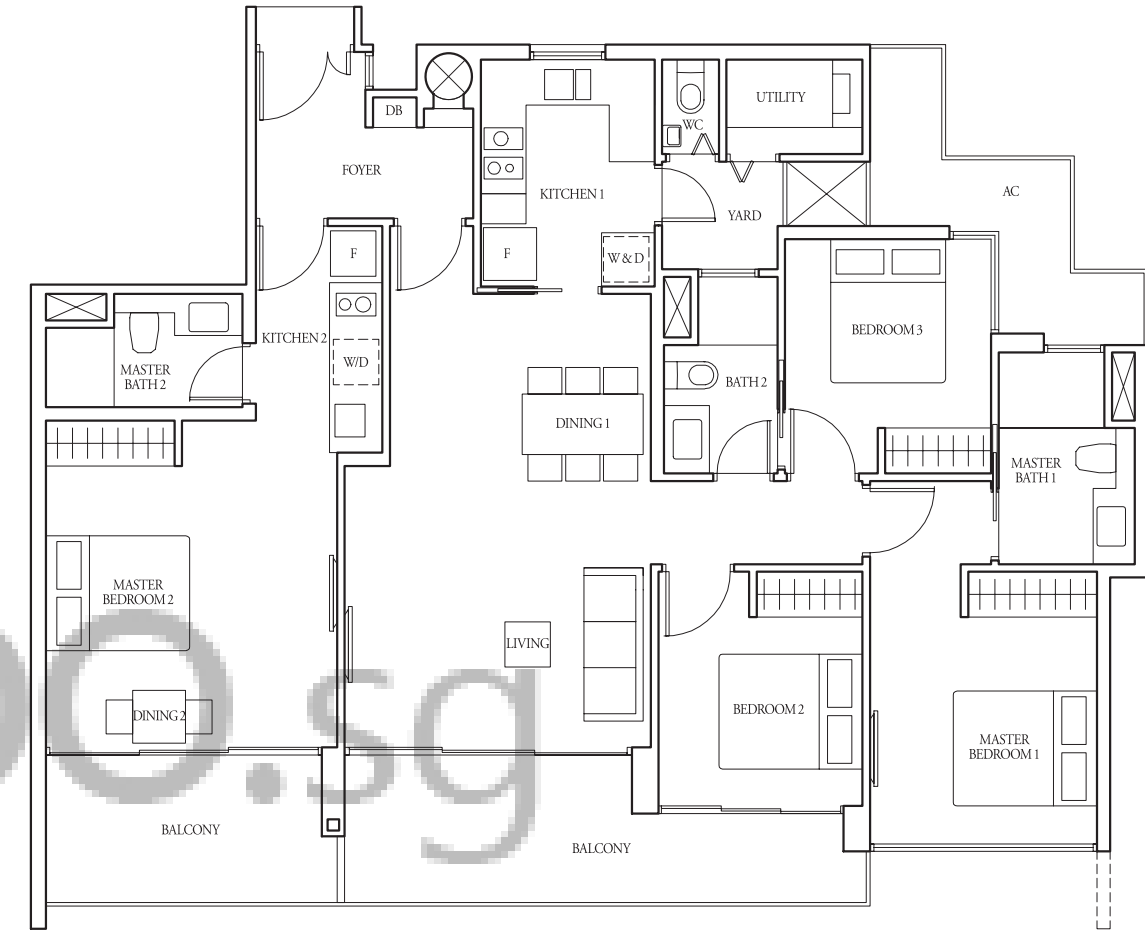
#01-26, #01-27*,
 #01-28
 154 sqm
 Incl A/C Ledge 8 sqm
 & PES 28 sqm



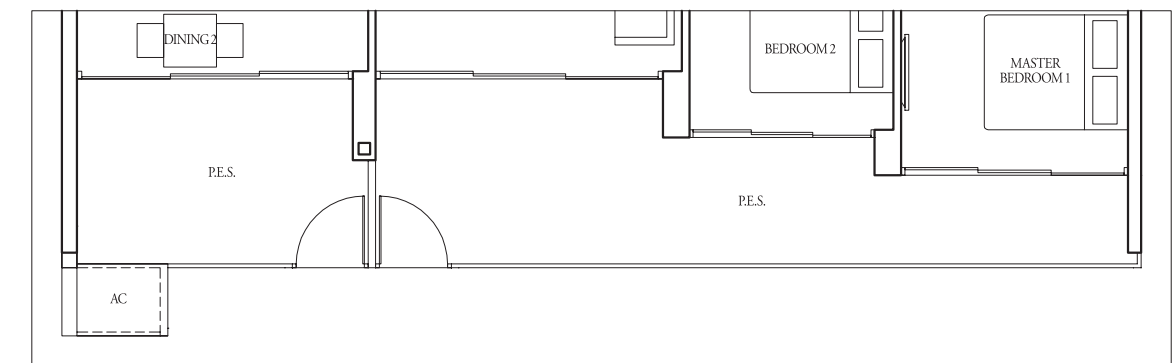
LOWER STOREY



UPPER STOREY

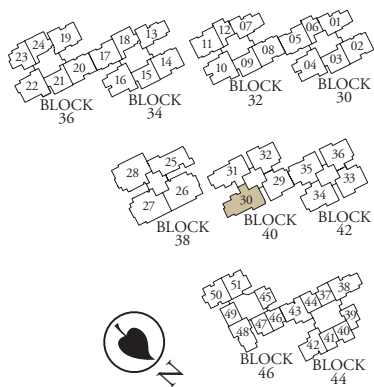


Applicable to Type (D)a1 only



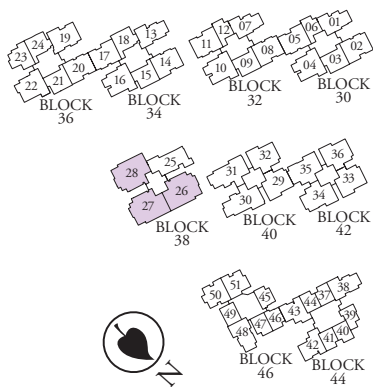
LEGEND:
 F - Fridge DB - Distribution Board WC - Water Closet W/D - Washer cum Dryer W - Washer D - Dryer AC - Aircon Ledge

All plans are subject to change as may be required or approved by the relevant authorities. Indicated floor areas are approximate and are subject to final survey. *Units with mirror image.



LEGEND:
 F - Fridge DB - Distribution Board WC - Water Closet W/D - Washer cum Dryer W - Washer D - Dryer AC - Aircon Ledge

All plans are subject to change as may be required or approved by the relevant authorities. Indicated floor areas are approximate and are subject to final survey. *Units with mirror image.



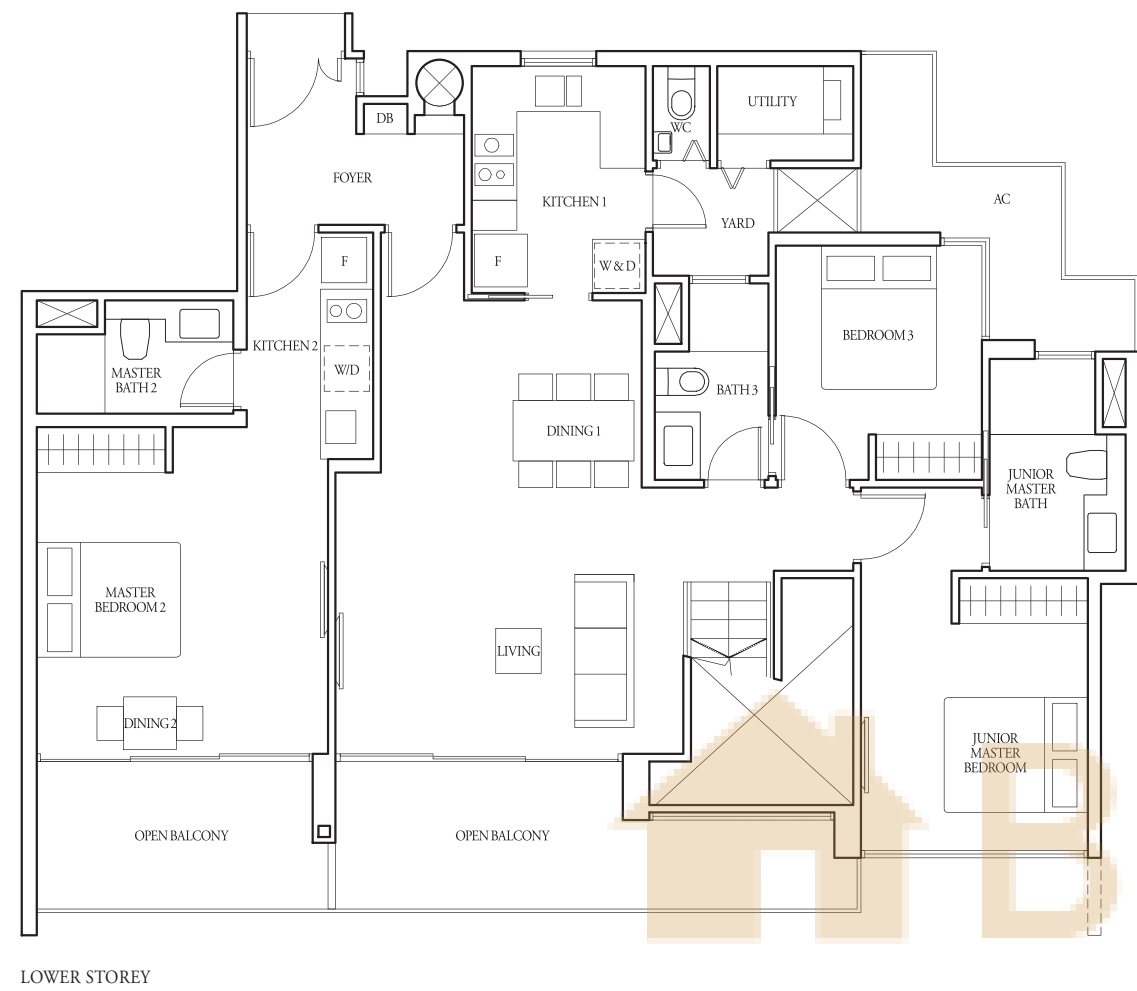
Dual Key

TYPE (D)a2

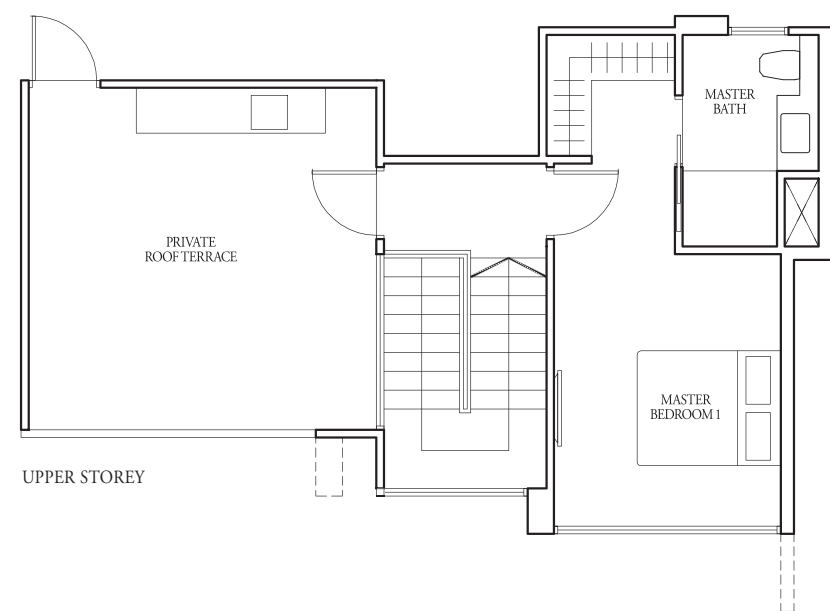
#17-26, #17-27*, #17-28

197 sqm

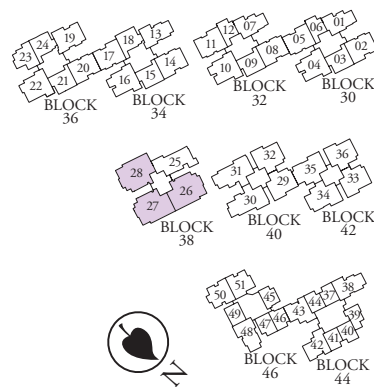
Incl A/C Ledge 7 sqm, Open balcony 19 sqm,
Private roof terrace 22 sqm & Strata void 7 sqm



LOWER STOREY



UPPER STOREY



LEGEND:
F - Fridge DB - Distribution Board WC - Water Closet W/D - Washer cum Dryer W - Washer D - Dryer AC - Aircon Ledge

All plans are subject to change as may be required or approved by the relevant authorities. Indicated floor areas are approximate and are subject to final survey. *Units with mirror image.

SPECIFICATIONS

1) FOUNDATION

Reinforced concrete footings and/or cast in-situ bored piles and/or driven pre-cast reinforced concrete piles in accordance with Singapore Standard CP 4 : 2003.

2) SUPERSTRUCTURE

Cast in-situ and/or precast reinforced concrete structure using Grade 35 to 50 concrete manufactured from cement complying with Singapore Standard SS 26 and steel reinforcement bars and/or strands complying with Singapore Standard SS 2 and/or Singapore Standard SS 475.

3) WALLS

- (a) External wall – In-situ and/or pre-cast reinforced concrete wall and/or masonry wall.
- (b) Internal wall – Masonry and/or reinforced concrete and/or lightweight concrete panels and/or pre-cast wall panels and/or dry wall partition system.

4) ROOF

Reinforced concrete flat roof with heat insulation and waterproofing system.

5) CEILING

(a) **Apartment Unit**
Skim coat and/or ceiling boards with emulsion paint to living, dining, bedrooms, study, kitchen, yard, balcony, PES, baths, wc, utility, foyer, passageway and internal staircase, where applicable.

(b) Common Areas

- (i) Skim coat and/or ceiling boards with emulsion paint to lift lobbies, corridor, function rooms, reading room, gymnasium, handicapped toilets, changing rooms and toilets.
- (ii) Skim coat and/or ceiling boards with emulsion paint to staircase, carpark and driveway.

6) FINISHES

(A) WALL FINISHES

(a) **Apartment Unit – Internal** (finishes provided up to false ceiling level and exposed areas only).

For all unit types:

- (i) Plaster and/or skim coat with emulsion paint to living, dining, bedrooms, study, foyer, passageway, utility, yard and internal staircase, where applicable.
- (ii) Natural stone and/or homogenous and/or ceramic and/or porcelain tiles to master bath and junior master bath, where applicable.
- (iii) Homogenous and/or ceramic and/or porcelain tiles to bath 2, bath 3 and bath 4, where applicable.
- (iv) Homogenous and/or ceramic and/or porcelain tiles to kitchen and wc, where applicable.

(b) Apartment Unit – External

- (i) Plaster and/or skim coat with emulsion/spray textured paint to balcony, open balcony, PES and private roof terrace, where applicable.
- (ii) Laminated glass parapet with stainless steel and/or aluminium railing to balcony, open balcony and private roof terrace, where applicable.
- (iii) Glass parapet with stainless steel and/or aluminium railing to PES, where applicable.

(c) Common Areas - Internal

- (i) Agglomerated marble and/or natural stone and/or homogenous and/or ceramic and/or porcelain tiles and/or plaster and/or skim coat with emulsion and/or textured paint and/or laminated paneling to lift lobbies.
- (ii) Plaster and/or skim coat with emulsion and/or textured paint to passageways, function rooms, gymnasium and reading room.
- (iii) Homogenous and/or ceramic and/or porcelain and/or mosaic tiles to changing rooms, toilets and handicapped toilet.
- (iv) Plaster and/or skim coat with emulsion paint to carpark, corridor and staircase.

(d) Common Areas - External

- (i) Natural stone and/or homogenous and/or ceramic and/or porcelain tiles and/or pebble wash finish and/or plaster and/or skim coat with emulsion and/or spray textured paint to wall.
- (ii) Natural stone and/or homogenous and/or ceramic and/or porcelain tiles and/or pebble wash finish to water feature.

(B) FLOOR FINISHES

(a) Apartment Unit

- (i) Agglomerated marble tiles with matching skirting to living, dining, foyer, passageway and internal staircase, where applicable.
- (ii) Agglomerated marble tiles to kitchen (for all unit types (1) and unit types (2)b, (2)b1, (2)b2, (2)c, (2)c1 & (2)c2 only) and kitchen 2 (for all unit types (D) only).
- (iii) Homogenous and/or ceramic and/or porcelain tiles to kitchen (for all unit types except item ii above)
- (iv) Solid timber flooring with matching skirting to bedrooms and study, where applicable.
- (v) Homogenous and/or ceramic and/or porcelain tiles to baths, wc, utility and yard, where applicable.
- (vi) Homogenous and/or ceramic and/or porcelain tiles with matching skirting to balcony, open balcony, PES and private roof terrace, where applicable.

(b) Common Areas – Internal

- (i) Natural stone and/or agglomerated marble and/or homogenous and/or ceramic and/or porcelain tiles with matching skirting to lift lobbies at basements and 1st storey.
- (ii) Homogenous and/or ceramic and/or porcelain tiles with matching skirting to other common lift lobbies.
- (iii) Carpet and/or natural stone and/or agglomerated marble and/or homogenous and/or ceramic and/or porcelain tiles to function rooms and reading room.
- (iv) Reconstituted timber flooring and/or vinyl flooring and/or carpet to gymnasium.
- (v) Homogenous and/or ceramic and/or porcelain tiles to changing rooms, toilets and handicapped toilets.

(c) Common Areas – External

- (i) Reconstituted timber strip and/or natural stone and/or homogenous and/or ceramic and/or reconstituted stone tiles and/or pebble wash finishes to pool decks, open deck, walkway, linkway and footpath.
- (ii) Ceramic tiles and/or mosaic tiles to lap pools, hydrotherapy spa, children's splash pool, dip pool and hot tub.
- (iii) Natural stone and/or homogenous and/or ceramic and/or porcelain tiles and/or pebble wash finish to water feature and ecology ponds.
- (iv) Natural stone and/or homogenous and/or ceramic tiles and/or pebble wash and/or reconstituted timber to communal outdoor pavilions.
- (v) Reconstituted rubber flooring to children's play agora.
- (vi) Reconstituted timber strip and/or natural stone and/or homogenous and/or ceramic tiles to outdoor fitness stations.

7) WINDOWS

Aluminium framed windows with minimum 6mm thick clear and/or tinted glass, where applicable.

(a) Casement window and/or fixed panel to all bedrooms

(b) Top-hung window and/or fixed panel to all baths, except:

- (i) No window provision to master bath (for unit types (1)a, (1)a1, (1)a2, (1)c, (1)c1, (1)c2, (1)e, (1)e1 & (1)e2 only).
- (ii) No window provision to master bath 2 (for all unit types (D) only).
- (iii) No window provision to bath 2 (for unit types (2)b, (2)b1, (2)b2, (2)c, (2)c1 & (2)c2 only).
- (iv) Casement window and/or fixed panel to master bath (for unit types (2+1)b, (2+1)b1, (2+1)d, (2+1)e, (3)a, (3)a1(a) & (3+1)b only).
- (v) Casement window and/or fixed panel to junior master bath (for unit types (3)a2 & (3+1)b2 only).
- (vi) Casement window and/or fixed panel to bath 2 (for unit types (2+1)a, (2+1)a1, (2+1)b2, (2+1)d2 & (2+1)e2 only)

(c) Casement window and/or fixed panel to study, where applicable.

(d) Casement window and/or fixed panel to foyer (for all unit types (D) only).

(e) Casement and/or fixed panel to kitchen, except:

- (i) No window provision to kitchen (for all unit types (1) and unit types (2)b, (2)b1, (2)b2, (2)c, (2)c1, (2)c2, (3+1)a, (3+1)a1, (3+1)a2 & (3+1)a2(a) only)
- (ii) No window provision to kitchen 2 (for all unit types (D) only).
- (iii) Glass louvered and/or fixed panel window to kitchen (for unit types (3y)a, (3y)a1, (3y)a2, (3y)c, (3y)c1 & (3y)c2 only)
- (iv) Casement and/or glass louvered window and/or fixed panel to kitchen (for unit types (3+1)b, (3+1)b1 & (3+1)b2 only)

(f) Casement window and/or fixed panel to internal staircase (for unit types (2+1)a2, (2+1)b2, (2+1)c2, (2+1)d2, (2+1)e2, (2+1)f2, (2+1)g2, (3)a2, (3)b2, (3y)a2, (3y)b2, (3y)c2, (3+1)a2, (3+1)a2(a), (3+1)b2, (4)a2, (4)a2(a) & (D)a2 only).

8) DOORS

- (a) Fire-rated solid timber swing doors to unit main entrance.
- (b) Hollow core timber swing door to bedrooms.
- (c) Hollow core timber sliding door to all baths, except:
 - (i) Hollow core swing and sliding door to bath 2 (for unit types (2)a, (2)a1, (2)b, (2)b1, (2)b2, (2)c, (2)c1, (2)c2, (2)d, (2)d1, (2+1)b, (2+1)b1, (2+1)c, (2+1)c1, (2+1)c2, (2+1)d, (2+1)d1, (2+1)e, (2+1)e1, (2+1)f2, (2+1)g2, (3)a, (3)a1, (3)a1(a), (3)b, (3)b1, (3y)a, (3y)a1, (3y)c, (3y)c1, (3+1)a, (3+1)a1, (4)a, (4)a1, (D)a & (D)a1 only), bath 3 (for unit types (3)a2, (3)b2, (3y)a2, (3y)b2, (3y)c2, (3+1)a2, (3+1)a2(a), (3+1)b2 & (D)a2 only) and bath 4 (for unit type (4)a2 & (4)a2(a) only)
 - (ii) Hollow core swing door to bath 2 (for unit types (2+1)a, (2+1)a1, (2+1)b2, (2+1)d2 & (2+1)e2 only) and master bath 2 (for all unit types (D) only).
- (d) Hollow core timber sliding door to study, where applicable.
- (e) Hollow core timber swing door from main entrance to living 1 & living 2 (for all unit types (D) only).
- (f) Timber framed glass sliding door to kitchen (except for all unit types (1) and kitchen 2 of all unit types (D) only)
- (g) Aluminium framed glass swing door with top hung window to yard, where applicable.
- (h) Slide-and-fold door panel with top hung window to wc and utility, where applicable.
- (i) Aluminium framed glass sliding door to balcony, open balcony and PES, where applicable.
- (j) Aluminium framed glass swing and/or sliding door to private roof terrace, where applicable.
- (k) Good quality locksets and ironmongery to be provided.

9) SANITARY FITTINGS

- (a) Master Bath (for all unit types except unit types (4) only) 1 solid surface vanity top with 1 wash basin with basin mixer, 1 mirror, 1 towel rail, 1 shower compartment with 1 shower mixer, 1 hand shower and 1 overhead shower rose, 1 water closet and 1 toilet paper holder
- (b) Master Bath (for all unit types (4) only) 1 solid surface vanity top with 1 wash basin with basin mixer, 1 mirror, 1 towel rail, 1 shower compartment with 1 shower mixer, 1 hand shower and 1 overhead shower holder and 1 long bath with bath mixer and hand shower
- (c) Junior Master Bath (where applicable) 1 solid surface vanity top with 1 wash basin with basin mixer, 1 mirror, 1 towel rail, 1 shower compartment with 1 shower mixer and hand shower, 1 water closet, 1 toilet paper holder
- (d) Bath 2, 3 & 4 (where applicable) 1 solid surface vanity top with 1 wash basin with basin mixer, 1 mirror, 1 towel rail, 1 shower compartment with 1 shower mixer and hand shower, 1 water closet and 1 toilet paper holder
- (e) WC (where applicable) 1 wash basin with tap, 1 shower mixer with hand shower, 1 towel hook, 1 water closet and 1 toilet paper holder
- (f) Balcony, Yard, PES, Private Roof Terrace (where applicable) 1 bib tap

10) ELECTRICAL INSTALLATION

- (a) All units shall be cable TV ready.
- (b) Electrical wiring below false ceiling within the apartments shall generally be concealed where possible.
- (c) Electrical wiring above false ceiling shall be in exposed tray, conduits and/or trunking.

Electrical Provision	Ceiling Lighting Point	13A SSO Power Point	Bell Chime Point
Unit Type			
(1)a, (1)a1, (1)a2, (1)b, (1)b1, (1)b2, (1)c, (1)c1, (1)c2, (1)d, (1)d1, (1)d1(a), (1)d2, (1)e, (1)e1, (1)e2	6	14	1
(2)a, (2)a1, (2)b, (2)b1, (2)b2, (2)c, (2)c1, (2)c2, (2)d, (2)d1	10	17	1
(2+1)a, (2+1)a1, (2+1)b, (2+1)b1, (2+1)c, (2+1)c1, (2+1)d, (2+1)d1, (2+1)e, (2+1)e1	11	20	1
(2+1)a2, (2+1)b2, (2+1)c2, (2+1)d2, (2+1)e2, (2+1)f2, (2+1)g2	16	21	1
(3)a, (3)a1, (3)a1(a), (3)b, (3)b1	13	22	1
(3)a2, (3)b2	17	23	1
(3y)a, (3y)a1, (3y)b, (3y)b1, (3y)c, (3y)c1	13	22	1
(3y)a2, (3y)b2, (3y)c2	17	23	1
(3+1)a, (3+1)a1, (3+1)b, (3+1)b1	14	24	1
(3+1)a2, (3+1)a2(a), (3+1)b2	21	26	1
(4)a, (4)a1	16	25	1
(4)a2, (4)a2(a)	24	27	1
(D)a, (D)a1	18	32	1
(D)a2	26	34	1