

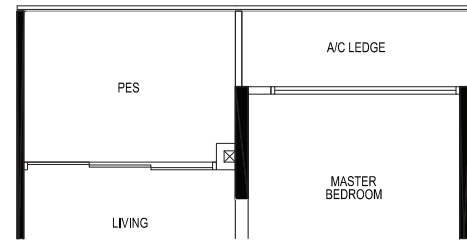
1 - BEDROOM

TYPE A1a-p

50 sq m / 538 sq ft
 INCLUSIVE OF 6 SQ M PES & 3 SQ M A/C LEDGE
 CEILING HEIGHT AT LIVING / DINING,
 AND BEDROOM IS APPROXIMATELY 4.3 M

TOWER 11M

UNIT
 #01-64



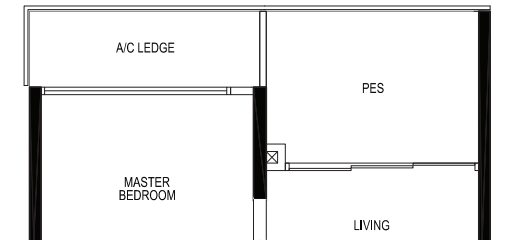
1 - BEDROOM

TYPE A1b-P

51 sq m / 549 sq ft
 INCLUSIVE OF 6 SQ M PES & 3 SQ M A/C LEDGE
 CEILING HEIGHT AT LIVING / DINING,
 AND BEDROOM IS APPROXIMATELY 4.3 M

TOWER 11M

UNIT
 #01-65



1 - BEDROOM

TYPE A1a

50 sq m / 538 sq ft
 INCLUSIVE OF 6 SQ M BALCONY & 3 SQ M A/C LEDGE
 5TH STOREY ONLY: CEILING HEIGHT AT LIVING / DINING,
 AND BEDROOM IS APPROXIMATELY 4.3 M

TOWER 11M

UNIT
 #02-64 TO #05-64



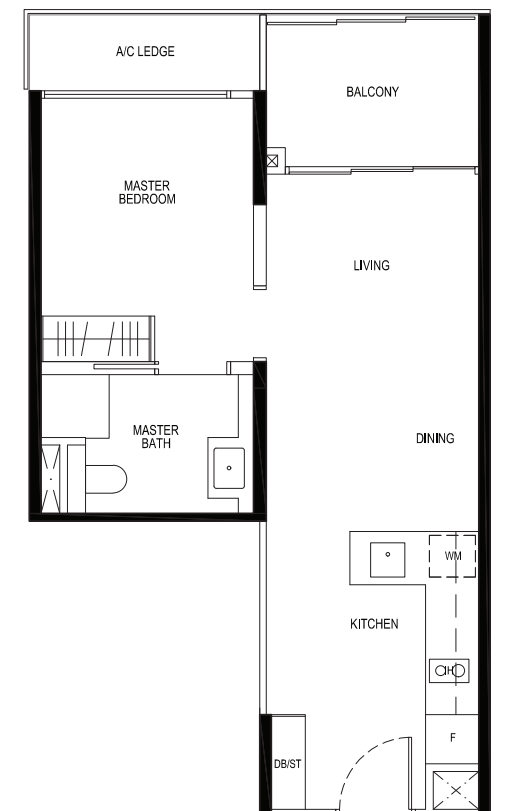
1 - BEDROOM

TYPE A1b

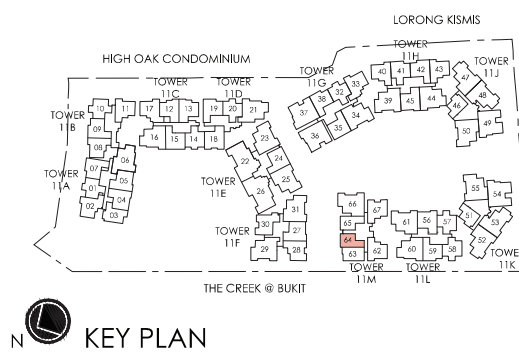
51 sq m / 549 sq ft
 INCLUSIVE OF 6 SQ M BALCONY & 3 SQ M A/C LEDGE
 5TH STOREY ONLY: CEILING HEIGHT AT LIVING / DINING,
 AND BEDROOM IS APPROXIMATELY 4.3 M

TOWER 11M

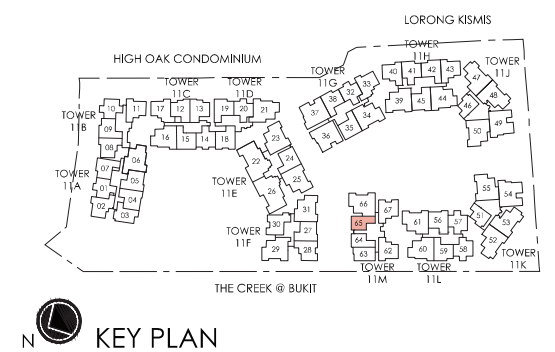
UNIT
 #02-65 TO #05-65



LEGEND:
 F - FRIDGE GH - GAS HOB WC - WATER CLOSET
 WM - WASHER CUM DRYER ST - STORAGE A/C - AIR CONDITIONER
 IH - INDUCTION HOB DB - DISTRIBUTION BOARD PES - PRIVATE ENCLOSED SPACE



LEGEND:
 F - FRIDGE GH - GAS HOB WC - WATER CLOSET
 WM - WASHER CUM DRYER ST - STORAGE A/C - AIR CONDITIONER
 IH - INDUCTION HOB DB - DISTRIBUTION BOARD PES - PRIVATE ENCLOSED SPACE



AREA INCLUDES A/C LEDGE, BALCONY, PES AND VOID AREA WHERE APPLICABLE. SOME UNITS ARE MIRROR IMAGES OF THE APARTMENT PLANS SHOWN IN THE BROCHURE. PLEASE REFER TO KEY PLANS FOR ORIENTATION. ALL PLANS ARE SUBJECT TO CHANGE AS MAY BE APPROVED BY THE RELEVANT AUTHORITIES. ALL FLOOR AREAS ARE APPROXIMATE MEASUREMENTS ONLY AND ARE SUBJECT TO FINAL SURVEY. BP APPROVAL NO. A1839-00012-2017-BP01 DATED 14/06/2018

AREA INCLUDES A/C LEDGE, BALCONY, PES AND VOID AREA WHERE APPLICABLE. SOME UNITS ARE MIRROR IMAGES OF THE APARTMENT PLANS SHOWN IN THE BROCHURE. PLEASE REFER TO KEY PLANS FOR ORIENTATION. ALL PLANS ARE SUBJECT TO CHANGE AS MAY BE APPROVED BY THE RELEVANT AUTHORITIES. ALL FLOOR AREAS ARE APPROXIMATE MEASUREMENTS ONLY AND ARE SUBJECT TO FINAL SURVEY. BP APPROVAL NO. A1839-00012-2017-BP01 DATED 14/06/2018

1 - BEDROOM

TYPE A1C-P

48 sq m / 517 sq ft
 INCLUSIVE OF 6 SQ M PES & 3 SQ M A/C LEDGE

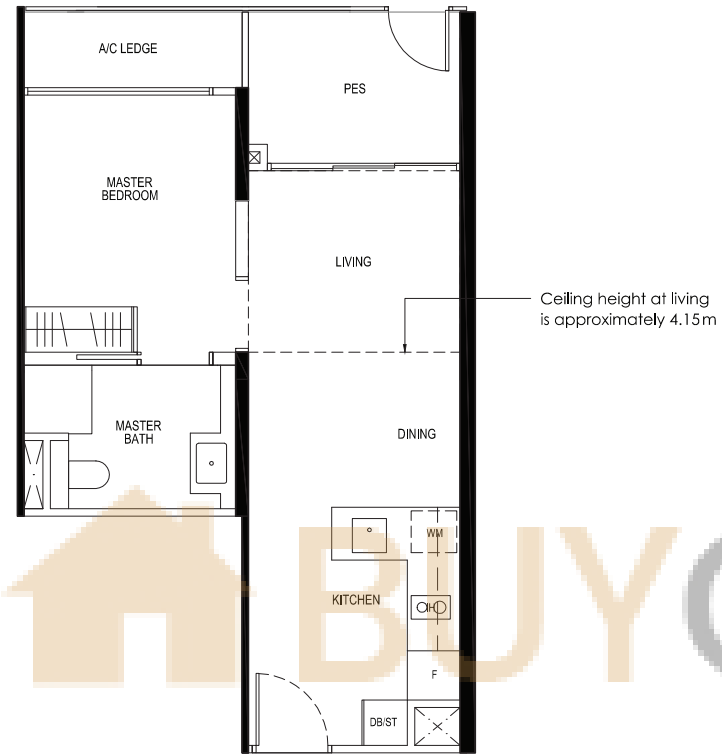
CEILING HEIGHT AT LIVING AND BEDROOM IS APPROXIMATELY 4.15 M

CEILING HEIGHT AT DINING IS APPROXIMATELY 3.20 M

TOWER 11H & 11L

UNIT
 #01-45*
 #01-56

* MIRROR IMAGE



1 - BEDROOM

TYPE A2-P

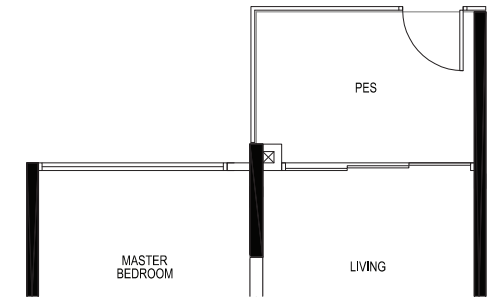
52 sq m / 560sq ft
 INCLUSIVE OF 6 SQ M PES & 4 SQ M A/C LEDGE

CEILING HEIGHT AT LIVING / DINING, BEDROOM AND STUDY IS APPROXIMATELY 4.3 M

TOWER 11J & 11K

UNIT
 #01-46*
 #01-51

* MIRROR IMAGE



1 - BEDROOM

TYPE A2

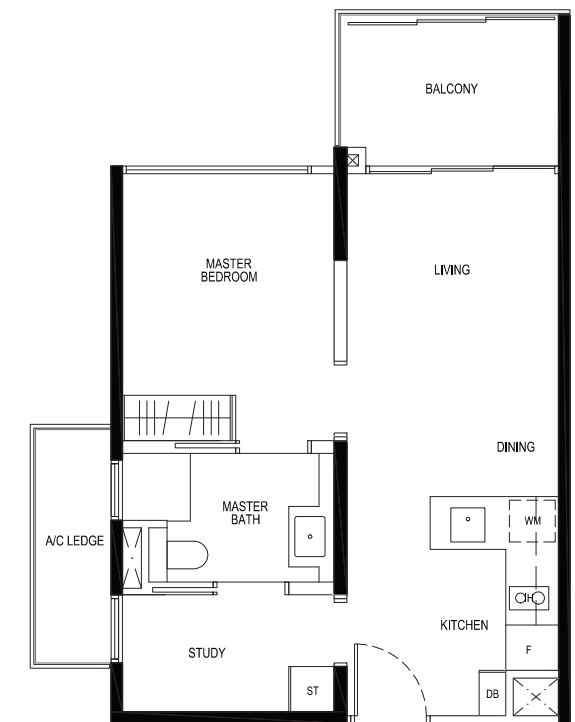
52 sq m / 560 sq ft
 INCLUSIVE OF 6 SQ M BALCONY & 4 SQ M A/C LEDGE

5TH STOREY ONLY: CEILING HEIGHT AT LIVING / DINING, BEDROOM AND STUDY IS APPROXIMATELY 4.3 M

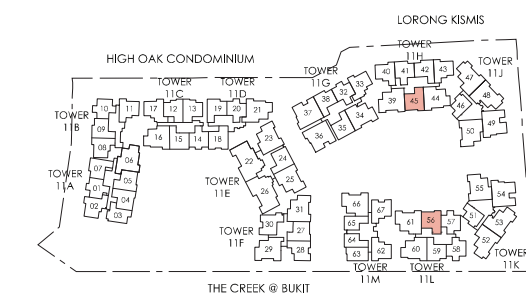
TOWER 11J & 11K

UNIT
 #02-46 TO #05-46*
 #02-51 TO #05-51

* MIRROR IMAGE



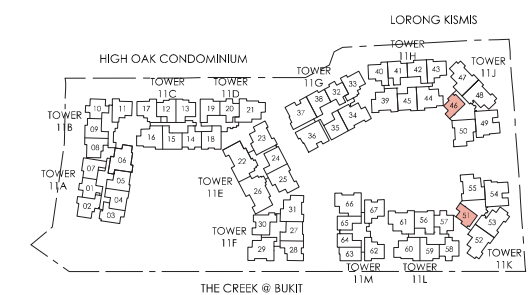
LEGEND:
 F - FRIDGE GH - GAS HOB WC - WATER CLOSET
 WM - WASHER CUM DRYER ST - STORAGE A/C - AIR CONDITIONER
 IH - INDUCTION HOB DB - DISTRIBUTION BOARD PES - PRIVATE ENCLOSED SPACE



KEY PLAN



LEGEND:
 F - FRIDGE GH - GAS HOB WC - WATER CLOSET
 WM - WASHER CUM DRYER ST - STORAGE A/C - AIR CONDITIONER
 IH - INDUCTION HOB DB - DISTRIBUTION BOARD PES - PRIVATE ENCLOSED SPACE



KEY PLAN

AREA INCLUDES A/C LEDGE, BALCONY, PES AND VOID AREA WHERE APPLICABLE. SOME UNITS ARE MIRROR IMAGES OF THE APARTMENT PLANS SHOWN IN THE BROCHURE. PLEASE REFER TO KEY PLANS FOR ORIENTATION. ALL PLANS ARE SUBJECT TO CHANGE AS MAY BE APPROVED BY THE RELEVANT AUTHORITIES. ALL FLOOR AREAS ARE APPROXIMATE MEASUREMENTS ONLY AND ARE SUBJECT TO FINAL SURVEY. BP APPROVAL NO. A1839-00012-2017-BP01 DATED 14/06/2018

AREA INCLUDES A/C LEDGE, BALCONY, PES AND VOID AREA WHERE APPLICABLE. SOME UNITS ARE MIRROR IMAGES OF THE APARTMENT PLANS SHOWN IN THE BROCHURE. PLEASE REFER TO KEY PLANS FOR ORIENTATION. ALL PLANS ARE SUBJECT TO CHANGE AS MAY BE APPROVED BY THE RELEVANT AUTHORITIES. ALL FLOOR AREAS ARE APPROXIMATE MEASUREMENTS ONLY AND ARE SUBJECT TO FINAL SURVEY. BP APPROVAL NO. A1839-00012-2017-BP01 DATED 14/06/2018

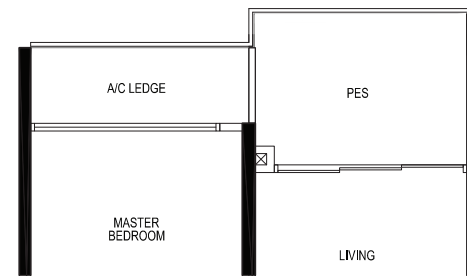
2 - BEDROOM TYPE B1a-P

56 sq m / 603 sq ft
INCLUSIVE OF 6 SQ M PES & 3 SQ M A/C LEDGE

CEILING HEIGHT AT LIVING / DINING,
AND BEDROOM IS APPROXIMATELY 4.3 M

TOWER 11M

UNIT
#01-63



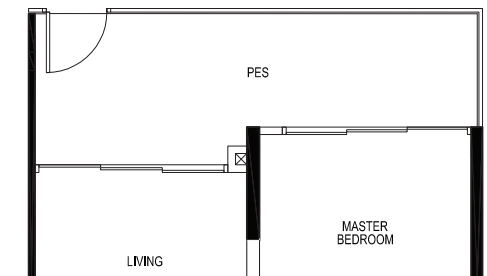
2 - BEDROOM TYPE B1b-P

67 sq m / 721 sq ft
INCLUSIVE OF 11 SQ M PES & 4 SQ M A/C LEDGE

CEILING HEIGHT AT LIVING / DINING,
AND BEDROOM IS APPROXIMATELY 4.3 M

TOWER 11A

UNIT
#01-03



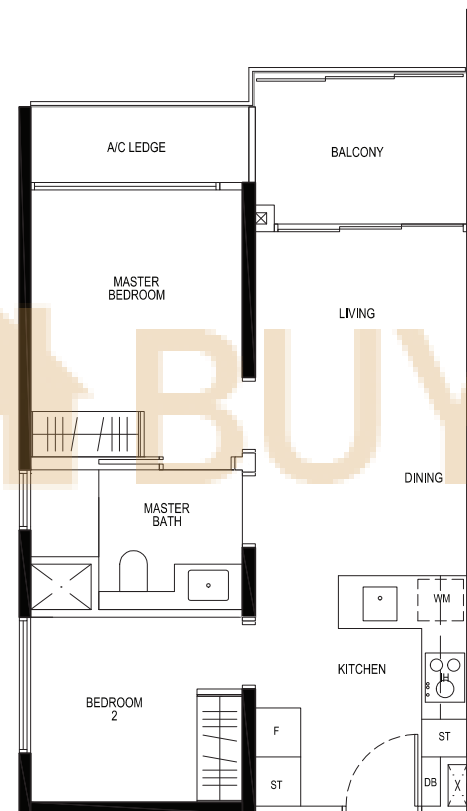
2 - BEDROOM TYPE B1a

56 sq m / 603 sq ft
INCLUSIVE OF 6 SQ M BALCONY & 3 SQ M A/C LEDGE

5TH STOREY ONLY: CEILING HEIGHT AT LIVING / DINING,
AND BEDROOM IS APPROXIMATELY 4.3 M

TOWER 11M

UNIT
#02-63 TO #05-63



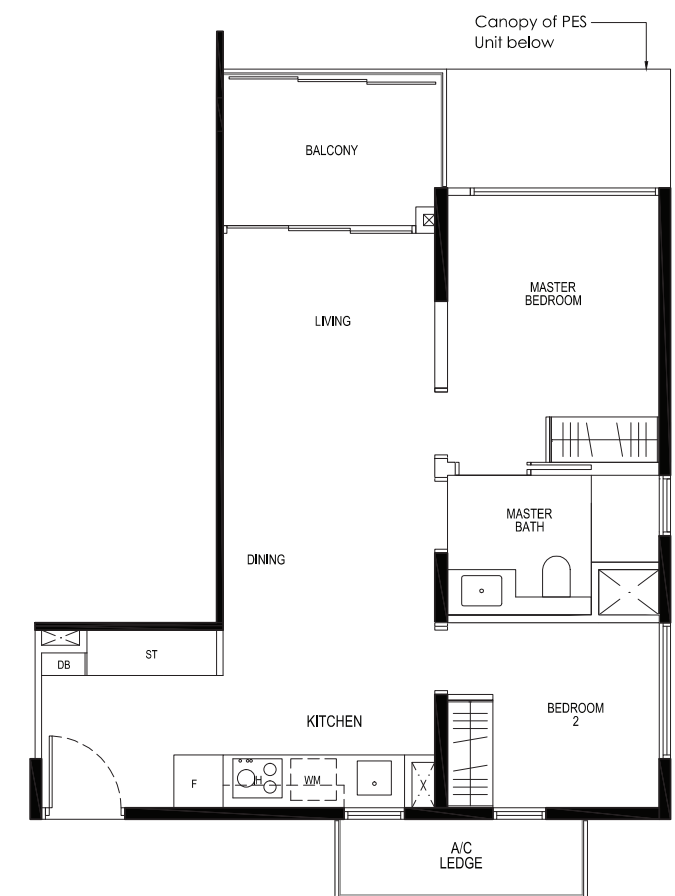
2 - BEDROOM TYPE B1b

63 sq m / 678 sq ft
INCLUSIVE OF 6 SQ M BALCONY & 4 SQ M A/C LEDGE

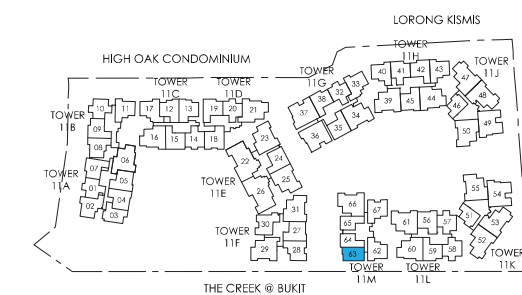
5TH STOREY ONLY: CEILING HEIGHT AT LIVING / DINING,
AND BEDROOM IS APPROXIMATELY 4.3 M

TOWER 11A

UNIT
#02-03 TO #05-03



LEGEND:
F - FRIDGE GH - GAS HOB WC - WATER CLOSET
WM - WASHER CUM DRYER ST - STORAGE A/C - AIR CONDITIONER
IH - INDUCTION HOB DB - DISTRIBUTION BOARD PES - PRIVATE ENCLOSED SPACE

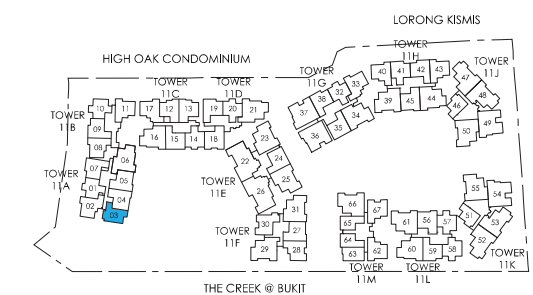


KEY PLAN

AREA INCLUDES A/C LEDGE, BALCONY, PES AND VOID AREA WHERE APPLICABLE. SOME UNITS ARE MIRROR IMAGES OF THE APARTMENT PLANS SHOWN IN THE BROCHURE. PLEASE REFER TO KEY PLANS FOR ORIENTATION. ALL PLANS ARE SUBJECT TO CHANGE AS MAY BE APPROVED BY THE RELEVANT AUTHORITIES. ALL FLOOR AREAS ARE APPROXIMATE MEASUREMENTS ONLY AND ARE SUBJECT TO FINAL SURVEY. BP APPROVAL NO. A1839-00012-2017-BP01 DATED 14/06/2018



LEGEND:
F - FRIDGE GH - GAS HOB WC - WATER CLOSET
WM - WASHER CUM DRYER ST - STORAGE A/C - AIR CONDITIONER
IH - INDUCTION HOB DB - DISTRIBUTION BOARD PES - PRIVATE ENCLOSED SPACE



KEY PLAN

AREA INCLUDES A/C LEDGE, BALCONY, PES AND VOID AREA WHERE APPLICABLE. SOME UNITS ARE MIRROR IMAGES OF THE APARTMENT PLANS SHOWN IN THE BROCHURE. PLEASE REFER TO KEY PLANS FOR ORIENTATION. ALL PLANS ARE SUBJECT TO CHANGE AS MAY BE APPROVED BY THE RELEVANT AUTHORITIES. ALL FLOOR AREAS ARE APPROXIMATE MEASUREMENTS ONLY AND ARE SUBJECT TO FINAL SURVEY. BP APPROVAL NO. A1839-00012-2017-BP01 DATED 14/06/2018

2 - BEDROOM

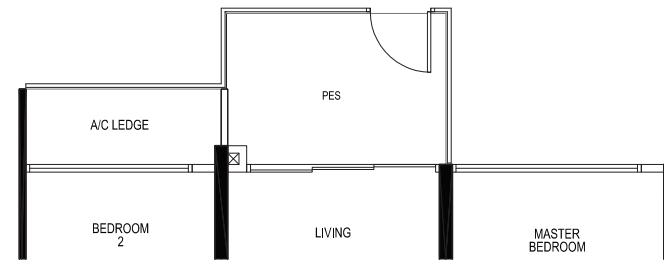
TYPE B2a-P

62 sq m / 667 sq ft
INCLUSIVE OF 6 SQ M PES & 3 SQ M A/C LEDGE

CEILING HEIGHT AT LIVING / DINING,
AND BEDROOM IS APPROXIMATELY 4.3 M

TOWER 11D & 11G

UNIT
#01-20
#01-32



2 - BEDROOM

TYPE B2b-P1

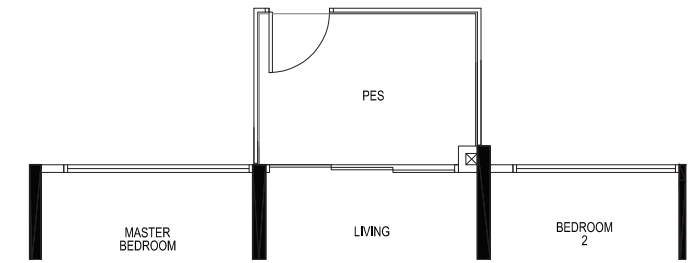
63 sq m / 678 sq ft
INCLUSIVE OF 6 SQ M PES & 3 SQ M A/C LEDGE

CEILING HEIGHT AT LIVING / DINING,
AND BEDROOM IS APPROXIMATELY 4.3 M

TOWER 11L

UNIT
#01-57*
#01-58

*MIRROR IMAGE



2 - BEDROOM

TYPE B2a

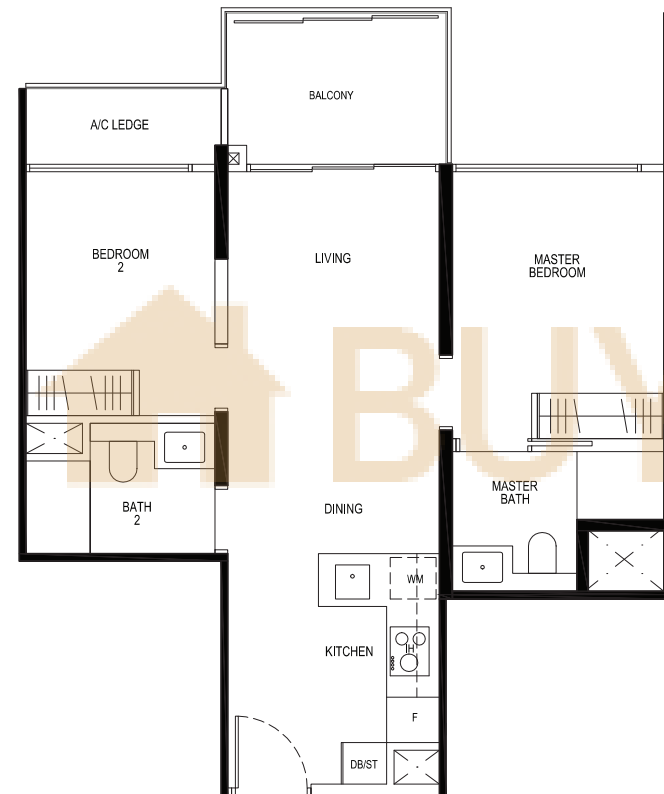
62 sq m / 667 sq ft
INCLUSIVE OF 6 SQ M BALCONY & 3 SQ M A/C LEDGE

5TH STOREY ONLY: CEILING HEIGHT AT LIVING / DINING,
AND BEDROOM IS APPROXIMATELY 4.3 M

TOWER 11A, 11D & 11G

UNIT
#03-01 TO #05-01*
#02-20 TO #05-20
#02-32 TO #05-32

*MIRROR IMAGE



2 - BEDROOM

TYPE B2b-P2

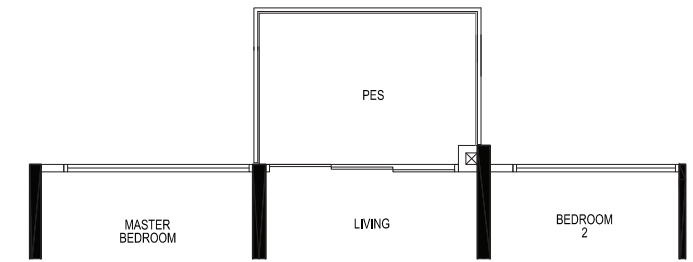
63 sq m / 678 sq ft
INCLUSIVE OF 6 SQ M PES & 3 SQ M A/C LEDGE

CEILING HEIGHT AT LIVING / DINING,
AND BEDROOM IS APPROXIMATELY 4.3 M

TOWER 11B

UNIT
#01-10*

*MIRROR IMAGE



2 - BEDROOM

TYPE B2b

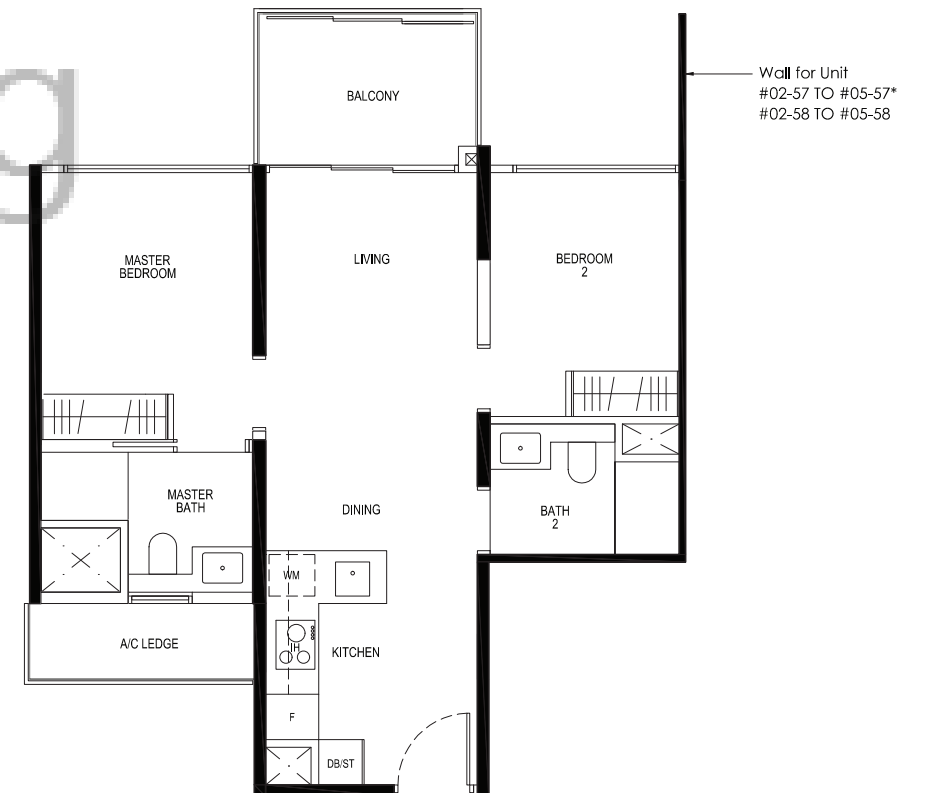
63 sq m / 678 sq ft
INCLUSIVE OF 6 SQ M BALCONY & 3 SQ M A/C LEDGE

5TH STOREY ONLY: CEILING HEIGHT AT LIVING / DINING,
AND BEDROOM IS APPROXIMATELY 4.3 M

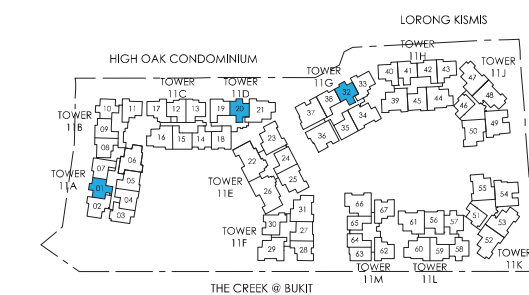
TOWER 11B & 11L

UNIT
#02-10 TO #05-10*
#02-57 TO #05-57*
#02-58 TO #05-58

*MIRROR IMAGE



LEGEND:
F - FRIDGE GH - GAS HOB WC - WATER CLOSET
WM - WASHER CUM DRYER ST - STORAGE A/C - AIR CONDITIONER
IH - INDUCTION HOB DB - DISTRIBUTION BOARD PES - PRIVATE ENCLOSED SPACE

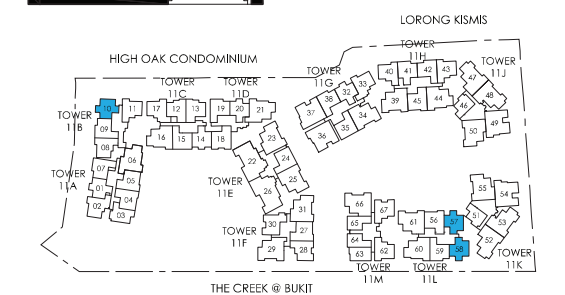


KEY PLAN

AREA INCLUDES A/C LEDGE, BALCONY, PES AND VOID AREA WHERE APPLICABLE. SOME UNITS ARE MIRROR IMAGES OF THE APARTMENT PLANS SHOWN IN THE BROCHURE. PLEASE REFER TO KEY PLANS FOR ORIENTATION. ALL PLANS ARE SUBJECT TO CHANGE AS MAY BE APPROVED BY THE RELEVANT AUTHORITIES. ALL FLOOR AREAS ARE APPROXIMATE MEASUREMENTS ONLY AND ARE SUBJECT TO FINAL SURVEY. BP APPROVAL NO. A1839-00012-2017-BP01 DATED 14/06/2018



LEGEND:
F - FRIDGE GH - GAS HOB WC - WATER CLOSET
WM - WASHER CUM DRYER ST - STORAGE A/C - AIR CONDITIONER
IH - INDUCTION HOB DB - DISTRIBUTION BOARD PES - PRIVATE ENCLOSED SPACE



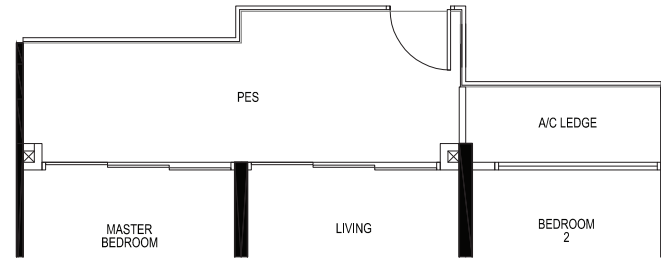
KEY PLAN

AREA INCLUDES A/C LEDGE, BALCONY, PES AND VOID AREA WHERE APPLICABLE. SOME UNITS ARE MIRROR IMAGES OF THE APARTMENT PLANS SHOWN IN THE BROCHURE. PLEASE REFER TO KEY PLANS FOR ORIENTATION. ALL PLANS ARE SUBJECT TO CHANGE AS MAY BE APPROVED BY THE RELEVANT AUTHORITIES. ALL FLOOR AREAS ARE APPROXIMATE MEASUREMENTS ONLY AND ARE SUBJECT TO FINAL SURVEY. BP APPROVAL NO. A1839-00012-2017-BP01 DATED 14/06/2018

2 - BEDROOM TYPE B2c-P

67 sq m / 721 sq ft
INCLUSIVE OF 11 SQ M PES & 3 SQ M A/C LEDGE
CEILING HEIGHT AT LIVING / DINING,
AND BEDROOM IS APPROXIMATELY 4.3 M

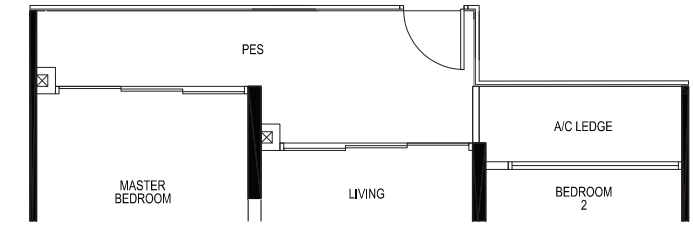
TOWER 11C
UNIT
#01-14



2 - BEDROOM TYPE B3-P

67 sq m / 721 sq ft
INCLUSIVE OF 8 SQ M PES & 3 SQ M A/C LEDGE
CEILING HEIGHT AT LIVING / DINING,
AND BEDROOM IS APPROXIMATELY 4.3 M

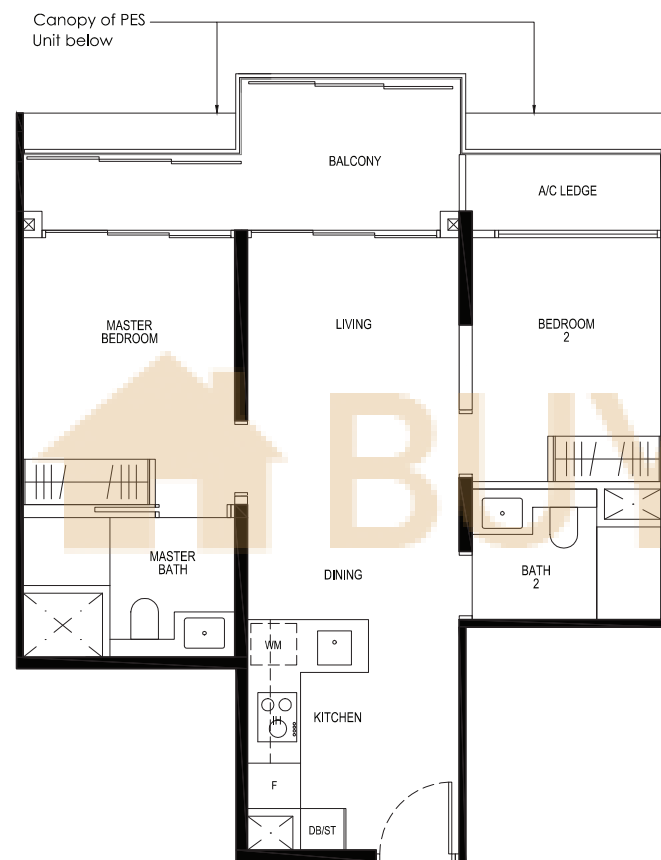
TOWER 11H
UNIT
#01-41



2 - BEDROOM TYPE B2c

65 sq m / 700 sq ft
INCLUSIVE OF 9 SQ M BALCONY & 3 SQ M A/C LEDGE
5TH STOREY ONLY: CEILING HEIGHT AT LIVING / DINING,
AND BEDROOM IS APPROXIMATELY 4.3 M

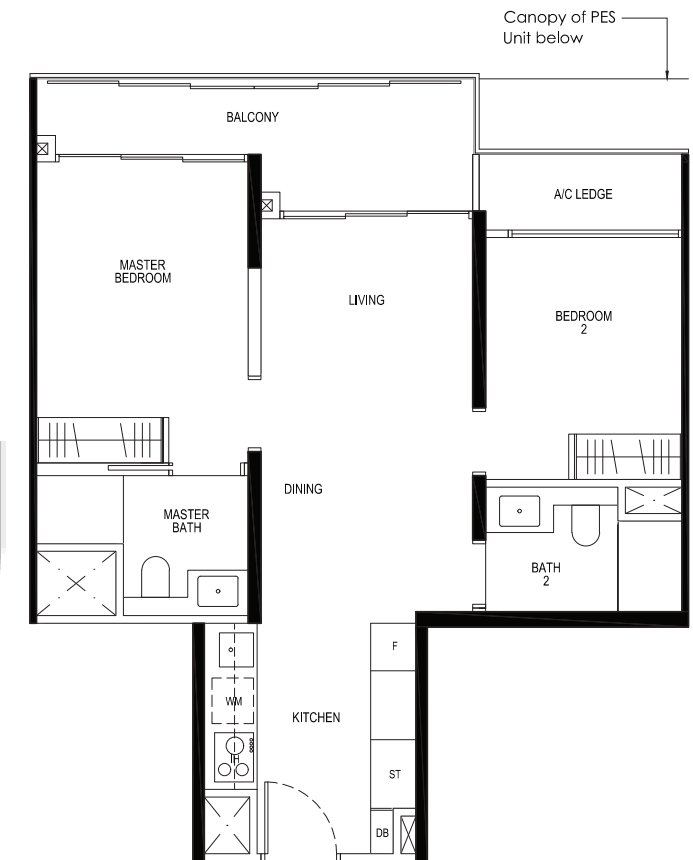
TOWER 11C
UNIT
#02-14 TO #05-14



2 - BEDROOM TYPE B3

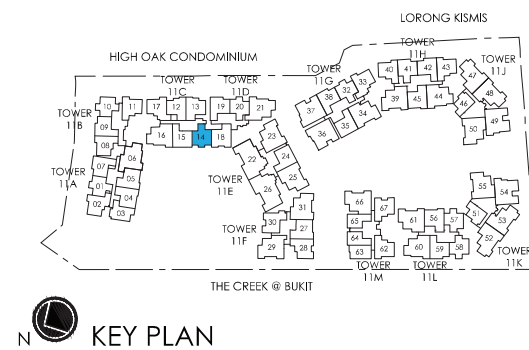
67 sq m / 721 sq ft
INCLUSIVE OF 8 SQ M BALCONY & 3 SQ M A/C LEDGE
5TH STOREY ONLY: CEILING HEIGHT AT LIVING / DINING,
AND BEDROOM IS APPROXIMATELY 4.3 M

TOWER 11H
UNIT
#02-41 TO #05-41



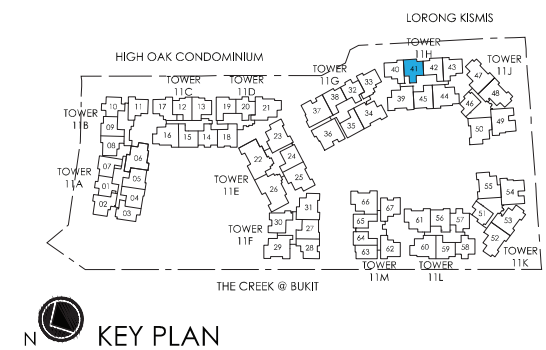
0 1 3 5M

LEGEND:
F - FRIDGE GH - GAS HOB WC - WATER CLOSET
WM - WASHER CUM DRYER ST - STORAGE A/C - AIR CONDITIONER
IH - INDUCTION HOB DB - DISTRIBUTION BOARD PES - PRIVATE ENCLOSED SPACE



0 1 3 5M

LEGEND:
F - FRIDGE GH - GAS HOB WC - WATER CLOSET
WM - WASHER CUM DRYER ST - STORAGE A/C - AIR CONDITIONER
IH - INDUCTION HOB DB - DISTRIBUTION BOARD PES - PRIVATE ENCLOSED SPACE



2 - BEDROOM TYPE B4a-P

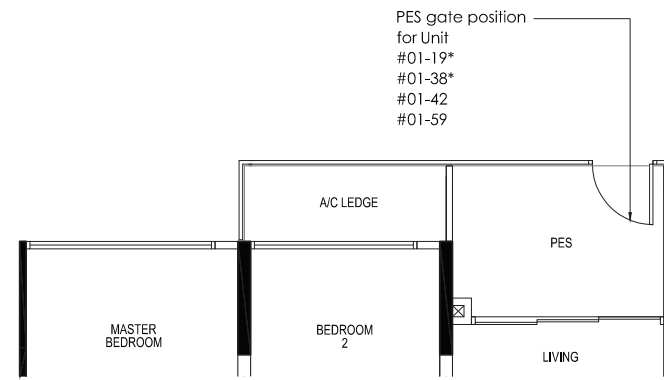
66 sq m / 710 sq ft
INCLUSIVE OF 6 SQ M PES & 3 SQ M A/C LEDGE

CEILING HEIGHT AT LIVING / DINING,
AND BEDROOM IS APPROXIMATELY 4.3 M

TOWER 11B, 11D, 11G, 11H & 11L

UNIT
#01-09*
#01-19*
#01-38*
#01-42
#01-59

*MIRROR IMAGE



2 - BEDROOM TYPE B4a

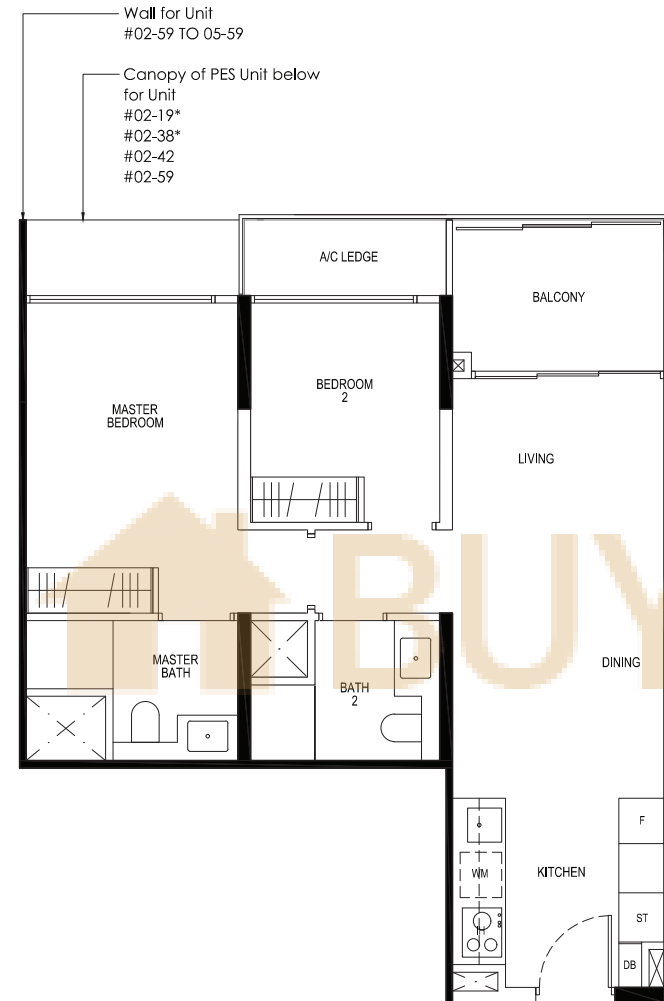
66 sq m / 710 sq ft
INCLUSIVE OF 6 SQ M BALCONY & 3 SQ M A/C LEDGE

5TH STOREY ONLY: CEILING HEIGHT AT LIVING / DINING,
AND BEDROOM IS APPROXIMATELY 4.3 M

TOWER 11A, 11B, 11D, 11G, 11H & 11L

UNIT
#03-07 TO #05-07
#02-09 TO #05-09*
#02-19 TO #05-19*
#02-38 TO #05-38*
#02-42 TO #05-42
#02-59 TO #05-59

*MIRROR IMAGE



2 - BEDROOM TYPE B4b-P

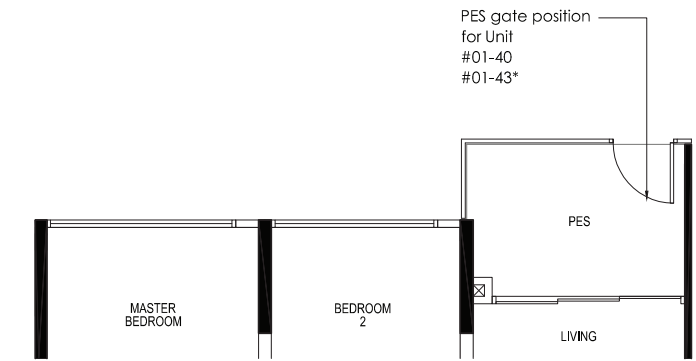
66 sq m / 710 sq ft
INCLUSIVE OF 6 SQ M PES & 3 SQ M A/C LEDGE

CEILING HEIGHT AT LIVING / DINING,
AND BEDROOM IS APPROXIMATELY 4.3 M

TOWER 11B & 11H

UNIT
#01-08
#01-40
#01-43*

*MIRROR IMAGE



2 - BEDROOM TYPE B4b

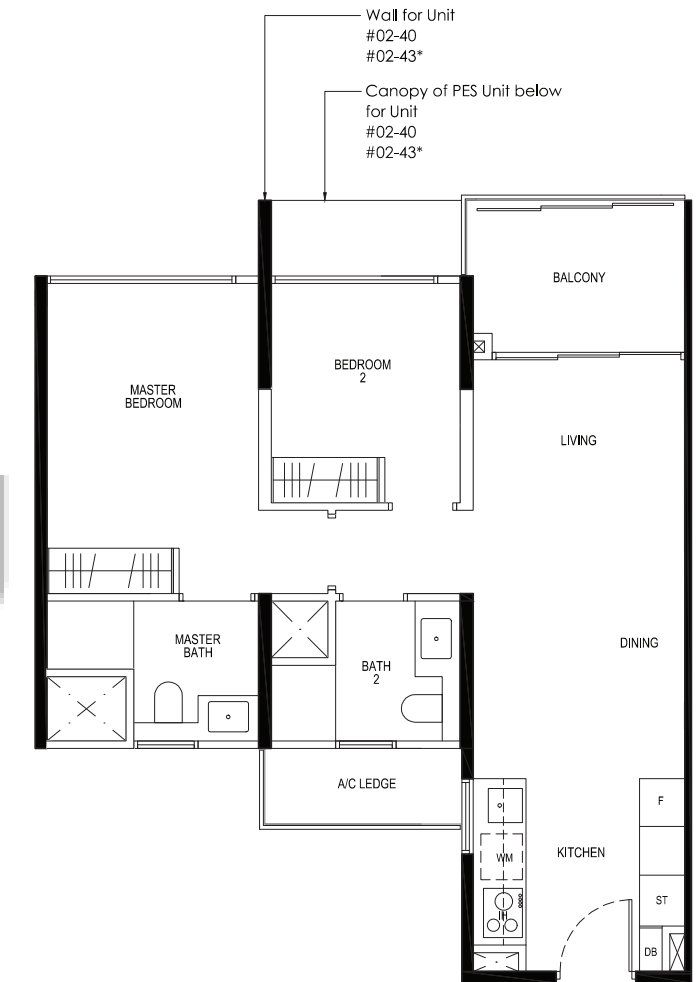
66 sq m / 710 sq ft
INCLUSIVE OF 6 SQ M BALCONY & 3 SQ M A/C LEDGE

5TH STOREY ONLY: CEILING HEIGHT AT LIVING / DINING,
AND BEDROOM IS APPROXIMATELY 4.3 M

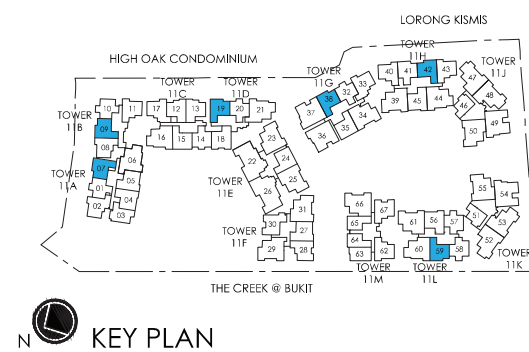
TOWER 11B & 11H

UNIT
#02-08 TO #05-08
#02-40 TO #05-40
#02-43 TO #05-43*

*MIRROR IMAGE



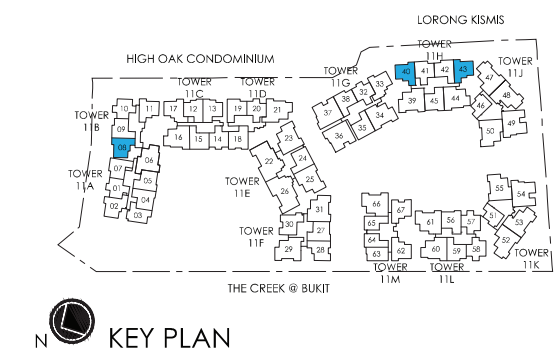
LEGEND:
F - FRIDGE
WM - WASHER CUM DRYER
IH - INDUCTION HOB
GH - GAS HOB
ST - STORAGE
DB - DISTRIBUTION BOARD
WC - WATER CLOSET
A/C - AIR CONDITIONER
PES - PRIVATE ENCLOSED SPACE



AREA INCLUDES A/C LEDGE, BALCONY, PES AND VOID AREA WHERE APPLICABLE. SOME UNITS ARE MIRROR IMAGES OF THE APARTMENT PLANS SHOWN IN THE BROCHURE. PLEASE REFER TO KEY PLANS FOR ORIENTATION. ALL PLANS ARE SUBJECT TO CHANGE AS MAY BE APPROVED BY THE RELEVANT AUTHORITIES. ALL FLOOR AREAS ARE APPROXIMATE MEASUREMENTS ONLY AND ARE SUBJECT TO FINAL SURVEY. BP APPROVAL NO. A1839-00012-2017-BP01 DATED 14/06/2018



LEGEND:
F - FRIDGE
WM - WASHER CUM DRYER
IH - INDUCTION HOB
GH - GAS HOB
ST - STORAGE
DB - DISTRIBUTION BOARD
WC - WATER CLOSET
A/C - AIR CONDITIONER
PES - PRIVATE ENCLOSED SPACE



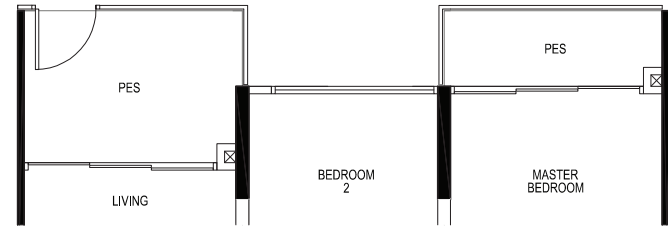
AREA INCLUDES A/C LEDGE, BALCONY, PES AND VOID AREA WHERE APPLICABLE. SOME UNITS ARE MIRROR IMAGES OF THE APARTMENT PLANS SHOWN IN THE BROCHURE. PLEASE REFER TO KEY PLANS FOR ORIENTATION. ALL PLANS ARE SUBJECT TO CHANGE AS MAY BE APPROVED BY THE RELEVANT AUTHORITIES. ALL FLOOR AREAS ARE APPROXIMATE MEASUREMENTS ONLY AND ARE SUBJECT TO FINAL SURVEY. BP APPROVAL NO. A1839-00012-2017-BP01 DATED 14/06/2018

2 - BEDROOM TYPE B4c-P

69 sq m / 743 sq ft
INCLUSIVE OF 9 SQ M PES & 3 SQ M A/C LEDGE
CEILING HEIGHT AT LIVING / DINING,
AND BEDROOM IS APPROXIMATELY 4.3 M

TOWER 11F

UNIT
#01-28



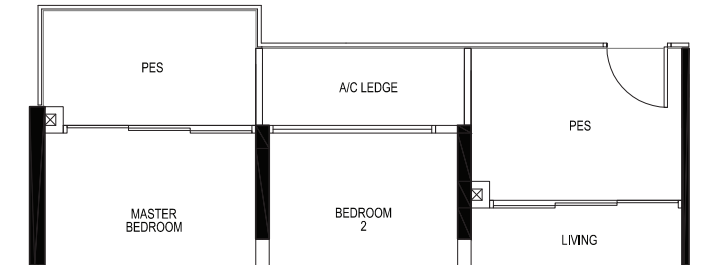
2 - BEDROOM TYPE B4d-P

70 sq m / 753 sq ft
INCLUSIVE OF 11 SQ M PES & 3 SQ M A/C LEDGE
CEILING HEIGHT AT LIVING / DINING,
AND BEDROOM IS APPROXIMATELY 4.3 M

TOWER 11C, 11E & 11G

UNIT
#01-15
#01-24
#01-35*

*MIRROR IMAGE

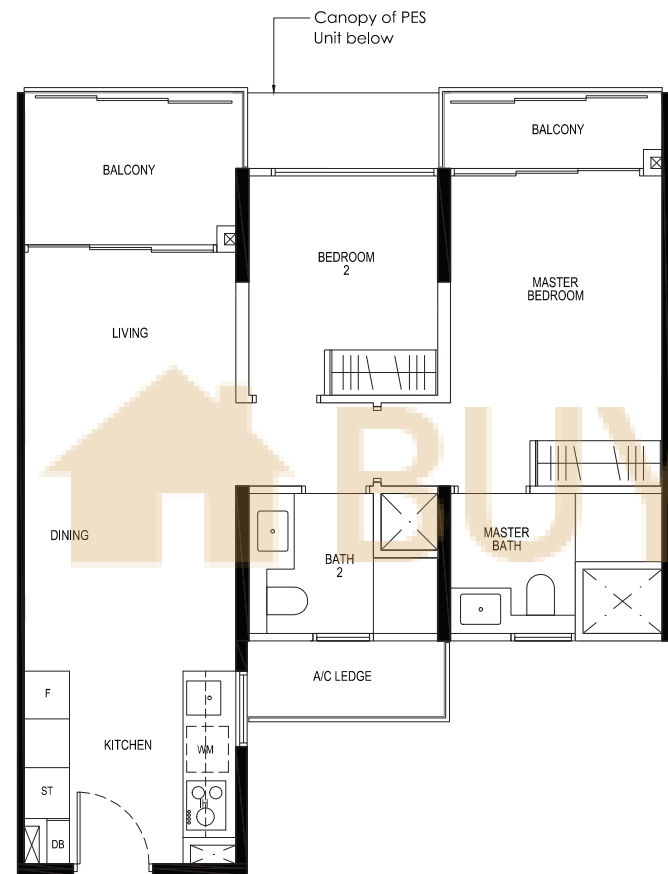


2 - BEDROOM TYPE B4c

69 sq m / 743 sq ft
INCLUSIVE OF 9 SQ M BALCONY & 3 SQ M A/C LEDGE
5TH STOREY ONLY: CEILING HEIGHT AT LIVING / DINING,
AND BEDROOM IS APPROXIMATELY 4.3 M

TOWER 11F

UNIT
#02-28 TO #05-28



2 - BEDROOM TYPE B4d

69 sq m / 743 sq ft
INCLUSIVE OF 9 SQ M BALCONY & 3 SQ M A/C LEDGE
5TH STOREY ONLY: CEILING HEIGHT AT LIVING / DINING,
AND BEDROOM IS APPROXIMATELY 4.3 M

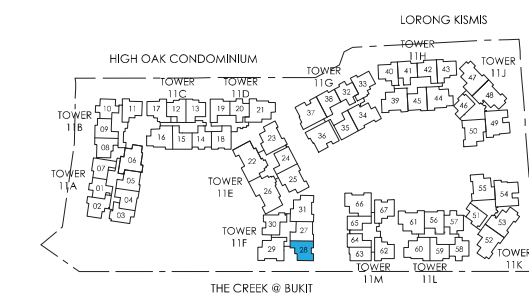
TOWER 11C, 11E & 11G

UNIT
#02-15 TO #05-15
#02-24 TO #05-24
#02-35 TO #05-35*

*MIRROR IMAGE



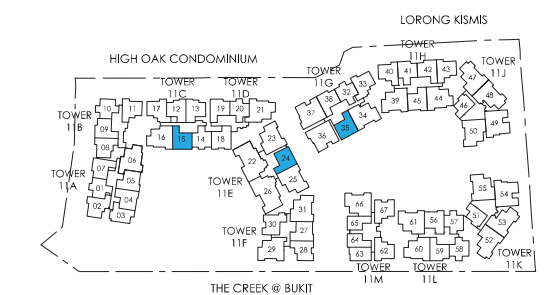
LEGEND:
F - FRIDGE GH - GAS HOB WC - WATER CLOSET
WM - WASHER CUM DRYER ST - STORAGE A/C - AIR CONDITIONER
IH - INDUCTION HOB DB - DISTRIBUTION BOARD PES - PRIVATE ENCLOSED SPACE



KEY PLAN



LEGEND:
F - FRIDGE GH - GAS HOB WC - WATER CLOSET
WM - WASHER CUM DRYER ST - STORAGE A/C - AIR CONDITIONER
IH - INDUCTION HOB DB - DISTRIBUTION BOARD PES - PRIVATE ENCLOSED SPACE



KEY PLAN

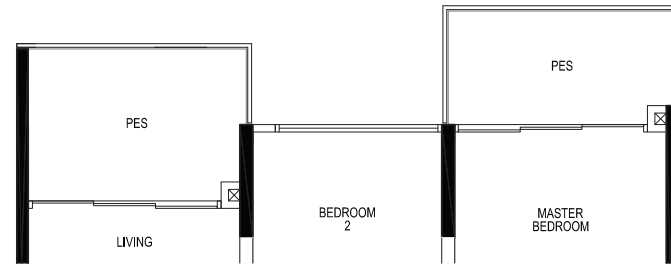
2 - BEDROOM TYPE B4e-P1

71 sq m / 764 sq ft
INCLUSIVE OF 11 SQ M PES & 3 SQ M A/C LEDGE

CEILING HEIGHT AT LIVING / DINING,
AND BEDROOM IS APPROXIMATELY 4.3 M

TOWER 11M

UNIT
#01-67



2 - BEDROOM TYPE B4e-P2

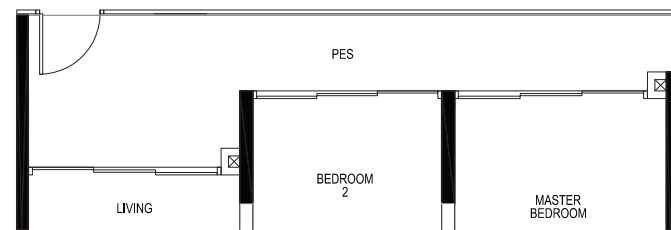
72 sq m / 775 sq ft
INCLUSIVE OF 12 SQ M PES & 3 SQ M A/C LEDGE

CEILING HEIGHT AT LIVING / DINING,
AND BEDROOM IS APPROXIMATELY 4.3 M

TOWER 11B & 11M

UNIT
#01-11
#01-62*

*MIRROR IMAGE



2 - BEDROOM TYPE B4e

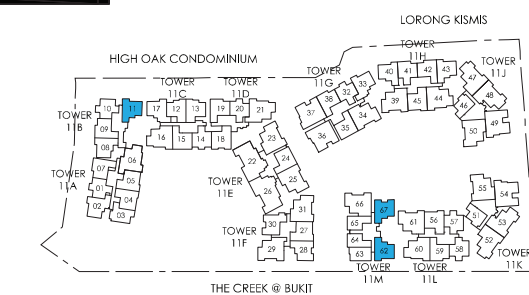
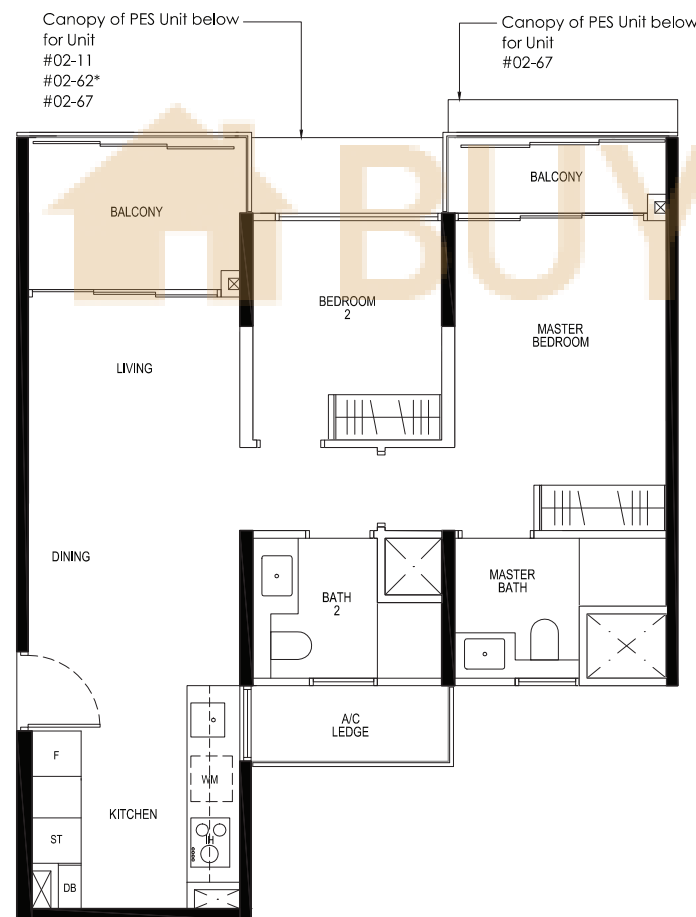
69 sq m / 743 sq ft
INCLUSIVE OF 9 SQ M BALCONY & 3 SQ M A/C LEDGE

5TH STOREY ONLY: CEILING HEIGHT AT LIVING / DINING,
AND BEDROOM IS APPROXIMATELY 4.3 M

TOWER 11B & 11M

UNIT
#02-11 TO #05-11
#02-62 TO #05-62*
#02-67 TO #05-67

*MIRROR IMAGE



KEY PLAN



LEGEND:
F - FRIDGE GH - GAS HOB WC - WATER CLOSET
WM - WASHER CUM DRYER ST - STORAGE A/C - AIR CONDITIONER
IH - INDUCTION HOB DB - DISTRIBUTION BOARD PES - PRIVATE ENCLOSED SPACE

AREA INCLUDES A/C LEDGE, BALCONY, PES AND VOID AREA WHERE APPLICABLE. SOME UNITS ARE MIRROR IMAGES OF THE APARTMENT PLANS SHOWN IN THE BROCHURE. PLEASE REFER TO KEY PLANS FOR ORIENTATION. ALL PLANS ARE SUBJECT TO CHANGE AS MAY BE APPROVED BY THE RELEVANT AUTHORITIES. ALL FLOOR AREAS ARE APPROXIMATE MEASUREMENTS ONLY AND ARE SUBJECT TO FINAL SURVEY.
BP APPROVAL NO. A1839-00012-2017-BP01 DATED 14/06/2018

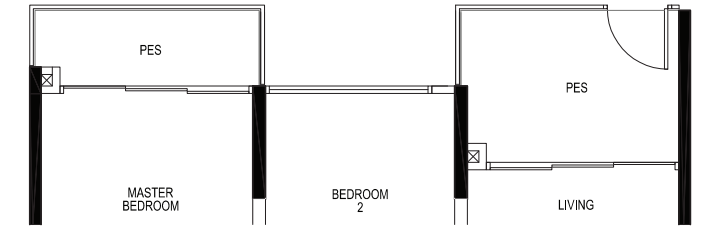
2 - BEDROOM TYPE B4f-P

69 sq m / 743 sq ft
INCLUSIVE OF 9 SQ M PES & 3 SQ M A/C LEDGE

CEILING HEIGHT AT LIVING / DINING,
AND BEDROOM IS APPROXIMATELY 4.3 M

TOWER 11F

UNIT
#01-30



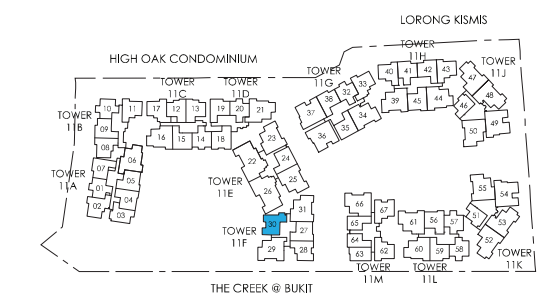
2 - BEDROOM TYPE B4f

71 sq m / 764 sq ft
INCLUSIVE OF 11 SQ M BALCONY & 3 SQ M A/C LEDGE

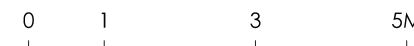
5TH STOREY ONLY: CEILING HEIGHT AT LIVING / DINING,
AND BEDROOM IS APPROXIMATELY 4.3 M

TOWER 11F

UNIT
#02-30 TO #05-30



KEY PLAN



LEGEND:
F - FRIDGE GH - GAS HOB WC - WATER CLOSET
WM - WASHER CUM DRYER ST - STORAGE A/C - AIR CONDITIONER
IH - INDUCTION HOB DB - DISTRIBUTION BOARD PES - PRIVATE ENCLOSED SPACE

AREA INCLUDES A/C LEDGE, BALCONY, PES AND VOID AREA WHERE APPLICABLE. SOME UNITS ARE MIRROR IMAGES OF THE APARTMENT PLANS SHOWN IN THE BROCHURE. PLEASE REFER TO KEY PLANS FOR ORIENTATION. ALL PLANS ARE SUBJECT TO CHANGE AS MAY BE APPROVED BY THE RELEVANT AUTHORITIES. ALL FLOOR AREAS ARE APPROXIMATE MEASUREMENTS ONLY AND ARE SUBJECT TO FINAL SURVEY.
BP APPROVAL NO. A1839-00012-2017-BP01 DATED 14/06/2018

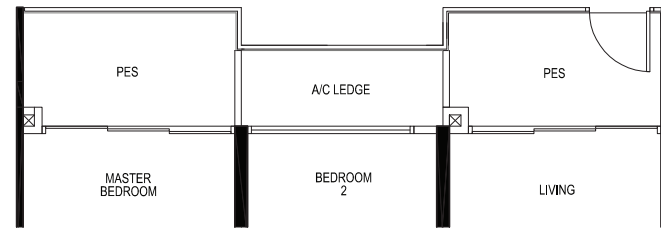
2 - BEDROOM TYPE B5a-P

73 sq m / 786 sq ft
INCLUSIVE OF 9 SQ M PES & 3 SQ M A/C LEDGE
CEILING HEIGHT AT LIVING / DINING,
BEDROOM AND STUDY IS APPROXIMATELY 4.3 M

TOWER 11A, 11D & 11F

UNIT
#01-04*
#01-05
#01-18*
#01-27

*MIRROR IMAGE

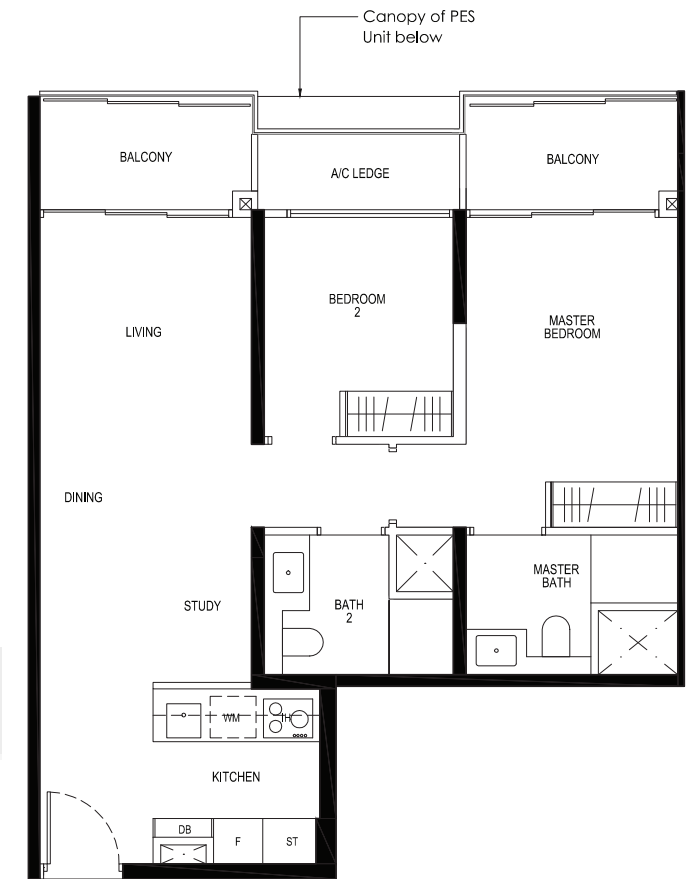


2 - BEDROOM TYPE B5b

73 sq m / 786 sq ft
INCLUSIVE OF 9 SQ M BALCONY & 3 SQ M A/C LEDGE
5TH STOREY ONLY: CEILING HEIGHT AT LIVING / DINING,
BEDROOM AND STUDY IS APPROXIMATELY 4.3 M

TOWER 11D

UNIT
#02-18 TO #05-18



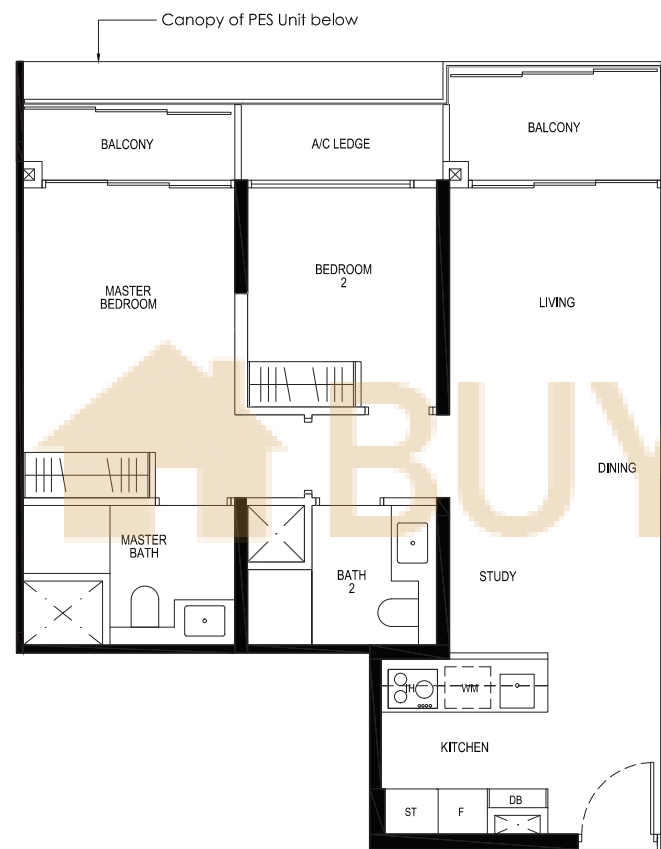
2 - BEDROOM TYPE B5a

72 sq m / 775 sq ft
INCLUSIVE OF 8 SQ M BALCONY & 3 SQ M A/C LEDGE
5TH STOREY ONLY: CEILING HEIGHT AT LIVING / DINING,
BEDROOM AND STUDY IS APPROXIMATELY 4.3 M

TOWER 11A, 11F, 11H & 11L

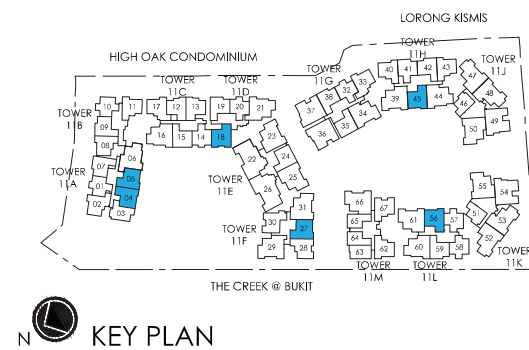
UNIT
#02-04 TO #05-04*
#02-05 TO #05-05
#02-27 TO #05-27
#02-45 TO #05-45*
#02-56 TO #05-56

*MIRROR IMAGE



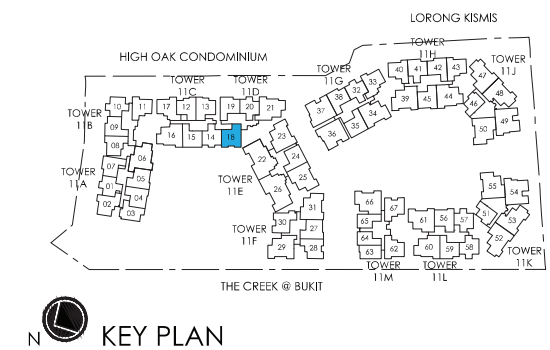
0 1 3 5M

LEGEND:
F - FRIDGE GH - GAS HOB WC - WATER CLOSET
WM - WASHER CUM DRYER ST - STORAGE A/C - AIR CONDITIONER
IH - INDUCTION HOB DB - DISTRIBUTION BOARD PES - PRIVATE ENCLOSED SPACE



0 1 3 5M

LEGEND:
F - FRIDGE GH - GAS HOB WC - WATER CLOSET
WM - WASHER CUM DRYER ST - STORAGE A/C - AIR CONDITIONER
IH - INDUCTION HOB DB - DISTRIBUTION BOARD PES - PRIVATE ENCLOSED SPACE



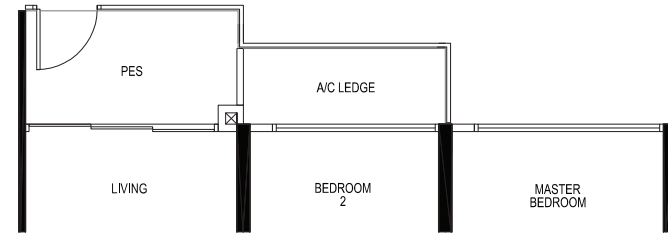
2 - BEDROOM TYPE B5c-P

69 sq m / 743 sq ft
INCLUSIVE OF 5 SQ M PES & 3 SQ M A/C LEDGE.
CEILING HEIGHT AT LIVING / DINING,
BEDROOM AND STUDY IS APPROXIMATELY 4.3 M

TOWER 11C

UNIT
#01-12*
#01-13

*MIRROR IMAGE



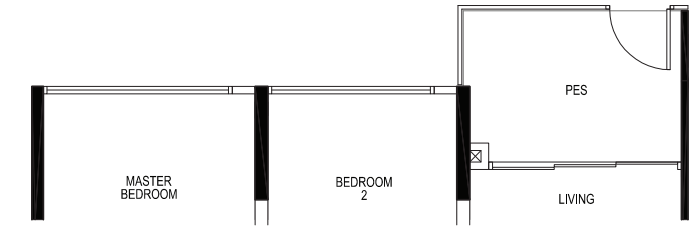
2 - BEDROOM TYPE B6-P

72 sq m / 775 sq ft
INCLUSIVE OF 6 SQ M PES & 4 SQ M A/C LEDGE
CEILING HEIGHT AT LIVING / DINING,
BEDROOM AND STUDY IS APPROXIMATELY 4.3 M

TOWER 11C & 11G

UNIT
#01-17
#01-33*

*MIRROR IMAGE



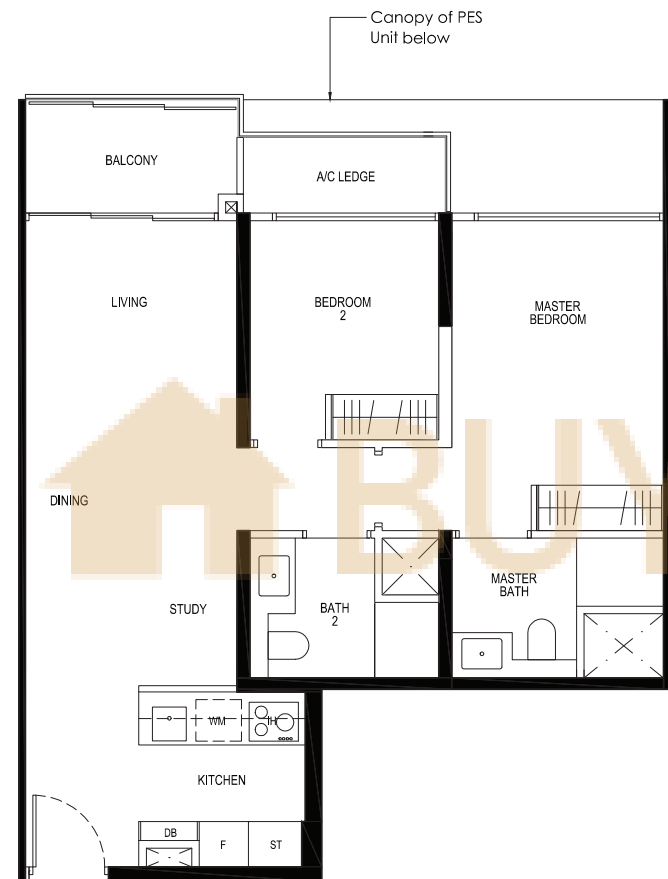
2 - BEDROOM TYPE B5c

69 sq m / 743 sq ft
INCLUSIVE OF 5 SQ M BALCONY & 3 SQ M AC LEDGE.
5TH STOREY ONLY: CEILING HEIGHT AT LIVING / DINING,
BEDROOM AND STUDY IS APPROXIMATELY 4.3 M

TOWER 11C

UNIT
#02-12 TO #05-12*
#02-13 TO #05-13

*MIRROR IMAGE



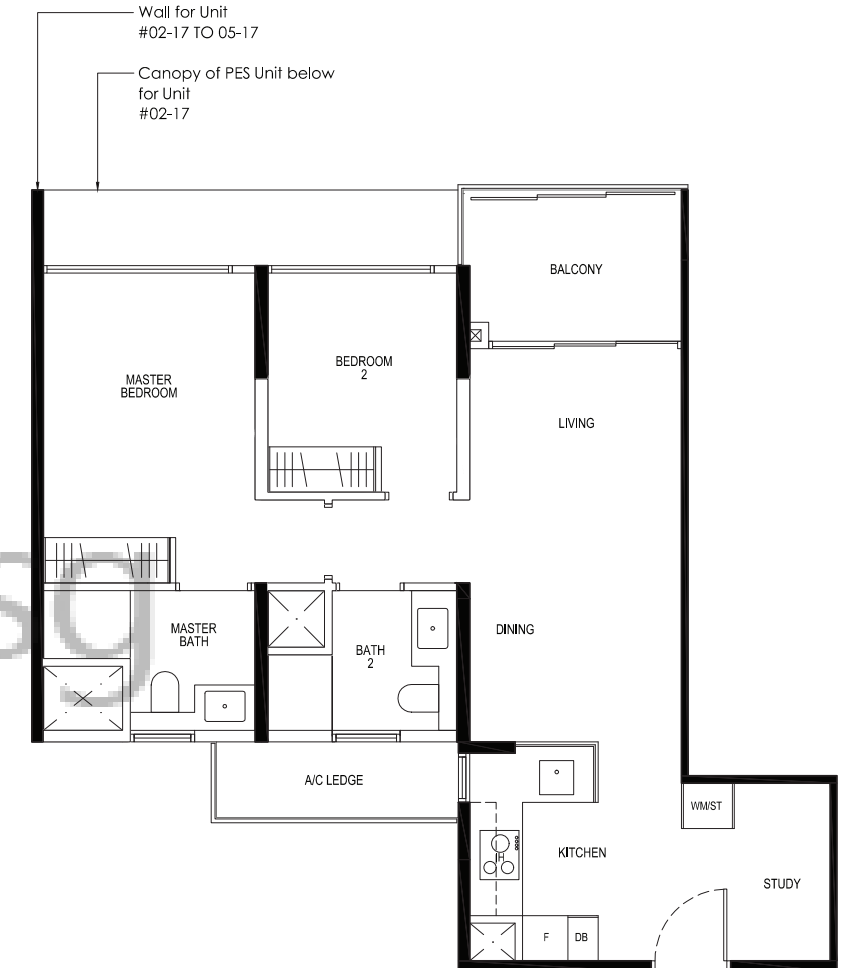
2 - BEDROOM TYPE B6

72 sq m / 775 sq ft
INCLUSIVE OF 6 SQ M BALCONY & 4 SQ M A/C LEDGE
5TH STOREY ONLY: CEILING HEIGHT AT LIVING / DINING,
BEDROOM AND STUDY IS APPROXIMATELY 4.3 M

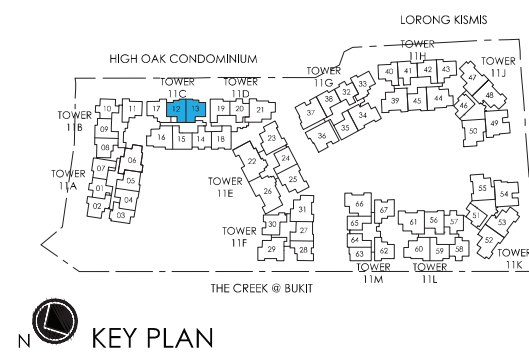
TOWER 11A, 11C & 11G

UNIT
#03-02 TO #05-02
#02-17 TO #05-17
#02-33 TO #05-33*

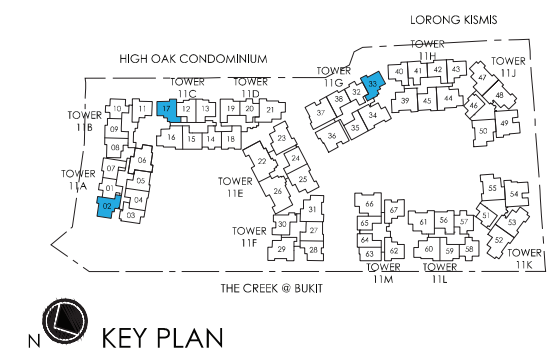
*MIRROR IMAGE



LEGEND:
F - FRIDGE GH - GAS HOB WC - WATER CLOSET
WM - WASHER CUM DRYER ST - STORAGE A/C - AIR CONDITIONER
IH - INDUCTION HOB DB - DISTRIBUTION BOARD PES - PRIVATE ENCLOSED SPACE



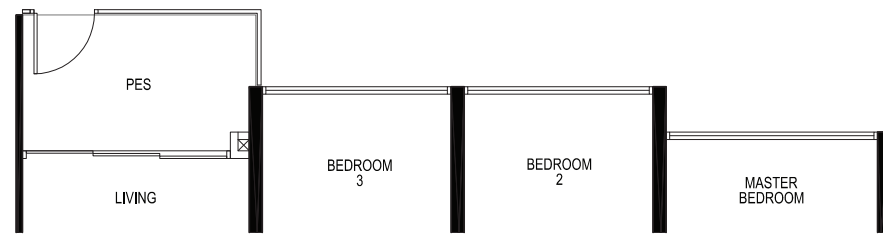
LEGEND:
F - FRIDGE GH - GAS HOB WC - WATER CLOSET
WM - WASHER CUM DRYER ST - STORAGE A/C - AIR CONDITIONER
IH - INDUCTION HOB DB - DISTRIBUTION BOARD PES - PRIVATE ENCLOSED SPACE



3 - BEDROOM TYPE C1a-P1

93 sq m / 1001 sq ft
 INCLUSIVE OF 6 SQ M PES & 7 SQ M A/C LEDGE
 CEILING HEIGHT AT LIVING / DINING,
 BEDROOM AND STUDY IS APPROXIMATELY 4.3 M
 TOWER 11L

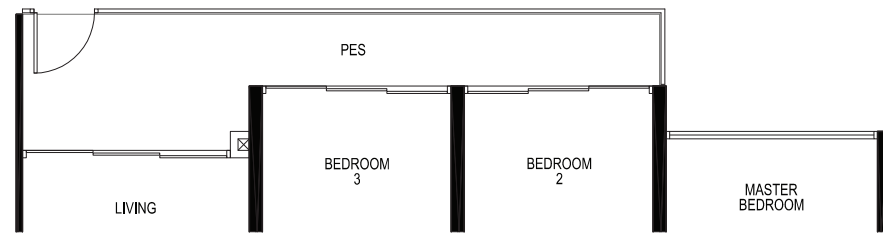
UNIT
 #01-60



3 - BEDROOM TYPE C1a-P2

99 sq m / 1066 sq ft
 INCLUSIVE OF 11 SQ M PES & 7 SQ M A/C LEDGE
 CEILING HEIGHT AT LIVING / DINING,
 BEDROOM AND STUDY IS APPROXIMATELY 4.3 M
 TOWER 11C

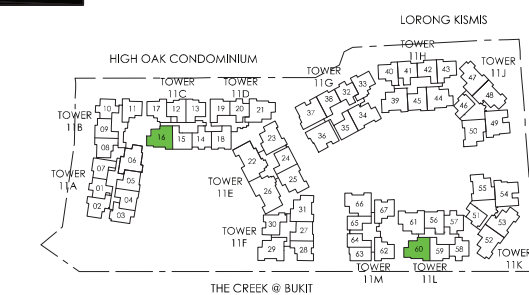
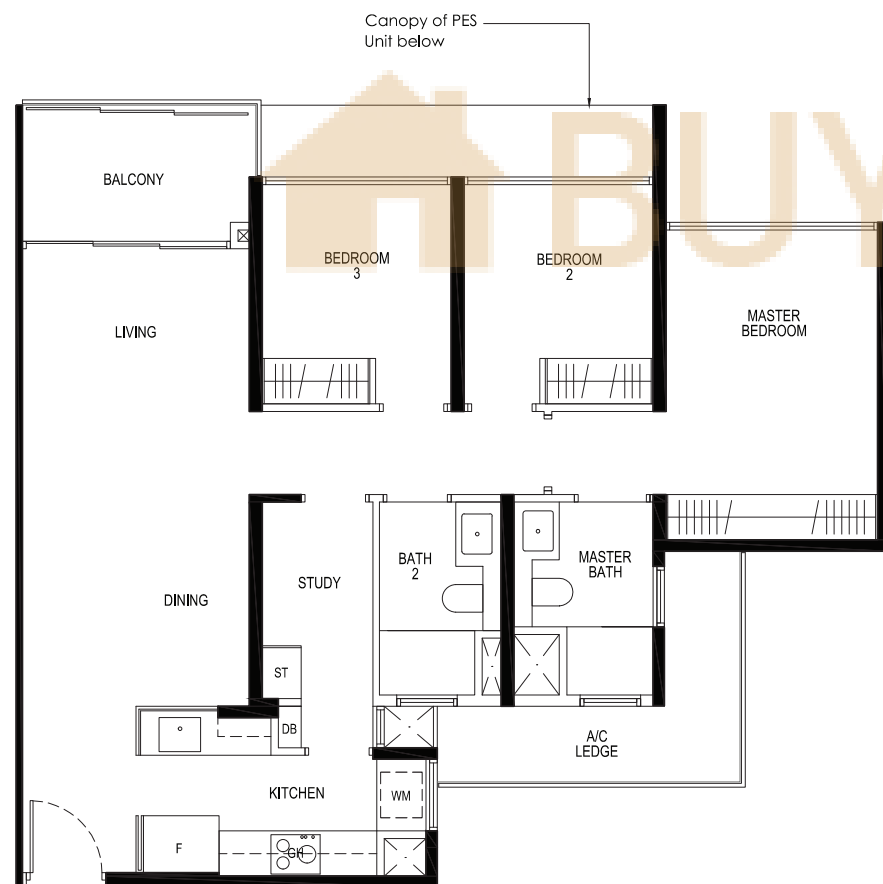
UNIT
 #01-16



3 - BEDROOM TYPE C1a

93 sq m / 1001 sq ft
 INCLUSIVE OF 6 SQ M BALCONY & 7 SQ M A/C LEDGE
 5TH STOREY ONLY: CEILING HEIGHT AT LIVING / DINING,
 BEDROOM AND STUDY IS APPROXIMATELY 4.3 M
 TOWER 11C & 11L

UNIT
 #02-16 TO #05-16
 #02-60 TO #05-60



LEGEND:
 F - FRIDGE GH - GAS HOB WC - WATER CLOSET
 WM - WASHER CUM DRYER ST - STORAGE A/C - AIR CONDITIONER
 IH - INDUCTION HOB DB - DISTRIBUTION BOARD PES - PRIVATE ENCLOSED SPACE

KEY PLAN

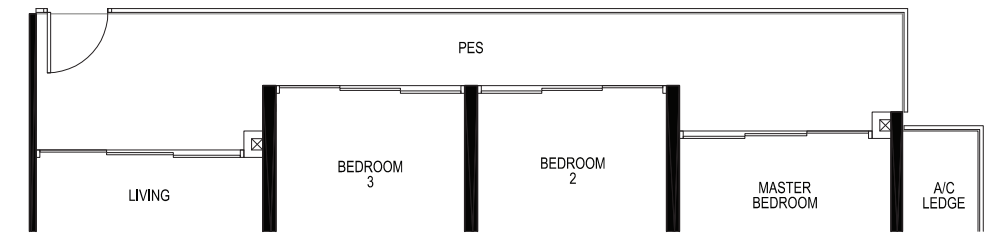
AREA INCLUDES A/C LEDGE, BALCONY, PES AND VOID AREA WHERE APPLICABLE. SOME UNITS ARE MIRROR IMAGES OF THE APARTMENT PLANS SHOWN IN THE BROCHURE. PLEASE REFER TO KEY PLANS FOR ORIENTATION. ALL PLANS ARE SUBJECT TO CHANGE AS MAY BE APPROVED BY THE RELEVANT AUTHORITIES. ALL FLOOR AREAS ARE APPROXIMATE MEASUREMENTS ONLY AND ARE SUBJECT TO FINAL SURVEY. BP APPROVAL NO. A1839-00012-2017-BP01 DATED 14/06/2018

3 - BEDROOM TYPE C1b-P

103 sq m / 1109 sq ft
 INCLUSIVE OF 16 SQ M PES & 7 SQ M A/C LEDGE
 CEILING HEIGHT AT LIVING / DINING,
 BEDROOM AND STUDY IS APPROXIMATELY 4.3 M
 TOWER 11J & 11K

UNIT
 #01-47*
 #01-48
 #01-52
 #01-53*

*MIRROR IMAGE

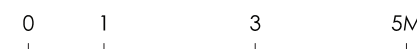
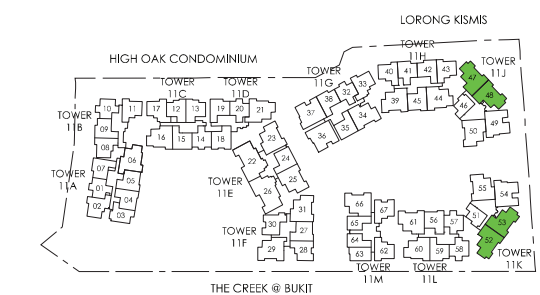


3 - BEDROOM TYPE C1b

98 sq m / 1055 sq ft
 INCLUSIVE OF 11 SQ M BALCONY & 7 SQ M A/C LEDGE
 5TH STOREY ONLY: CEILING HEIGHT AT LIVING / DINING,
 BEDROOM AND STUDY IS APPROXIMATELY 4.3 M
 TOWER 11J & 11K

UNIT
 #02-47 TO #05-47*
 #02-48 TO #05-48
 #02-52 TO #05-52
 #02-53 TO #05-53*

*MIRROR IMAGE



LEGEND:
 F - FRIDGE GH - GAS HOB WC - WATER CLOSET
 WM - WASHER CUM DRYER ST - STORAGE A/C - AIR CONDITIONER
 IH - INDUCTION HOB DB - DISTRIBUTION BOARD PES - PRIVATE ENCLOSED SPACE

KEY PLAN

AREA INCLUDES A/C LEDGE, BALCONY, PES AND VOID AREA WHERE APPLICABLE. SOME UNITS ARE MIRROR IMAGES OF THE APARTMENT PLANS SHOWN IN THE BROCHURE. PLEASE REFER TO KEY PLANS FOR ORIENTATION. ALL PLANS ARE SUBJECT TO CHANGE AS MAY BE APPROVED BY THE RELEVANT AUTHORITIES. ALL FLOOR AREAS ARE APPROXIMATE MEASUREMENTS ONLY AND ARE SUBJECT TO FINAL SURVEY. BP APPROVAL NO. A1839-00012-2017-BP01 DATED 14/06/2018

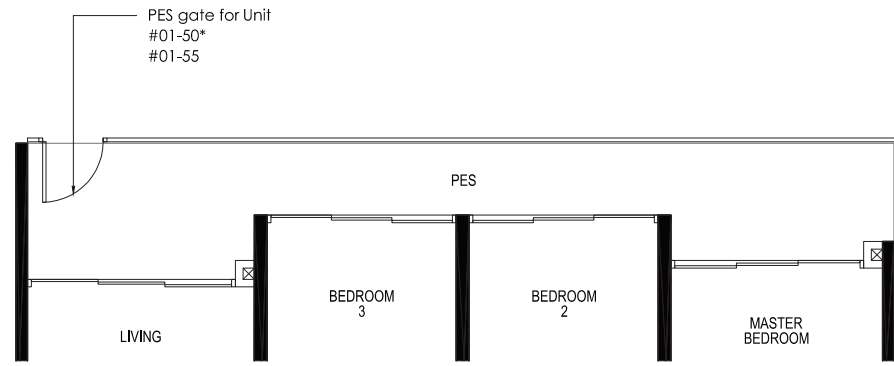
3 - BEDROOM TYPE C1c-P

104 sq m / 1119 sq ft
INCLUSIVE OF 16 SQ M PES & 7 SQ M A/C LEDGE
CEILING HEIGHT AT LIVING / DINING,
BEDROOM AND STUDY IS APPROXIMATELY 4.3 M

TOWER 11J, 11K & 11M

UNIT
#01-50*
#01-55
#01-66*

*MIRROR IMAGE



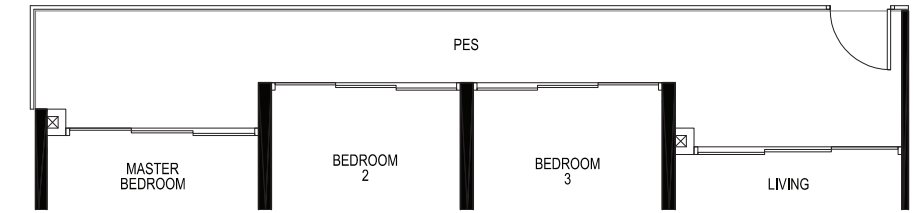
3 - BEDROOM TYPE C1d-P

104 sq m / 1119 sq ft
INCLUSIVE OF 16 SQ M PES & 7 SQ M A/C LEDGE
CEILING HEIGHT AT LIVING / DINING,
BEDROOM AND STUDY IS APPROXIMATELY 4.3 M

TOWER 11E, 11F, 11G, 11H & 11L

UNIT
#01-23
#01-31
#01-34
#01-39*
#01-61

*MIRROR IMAGE



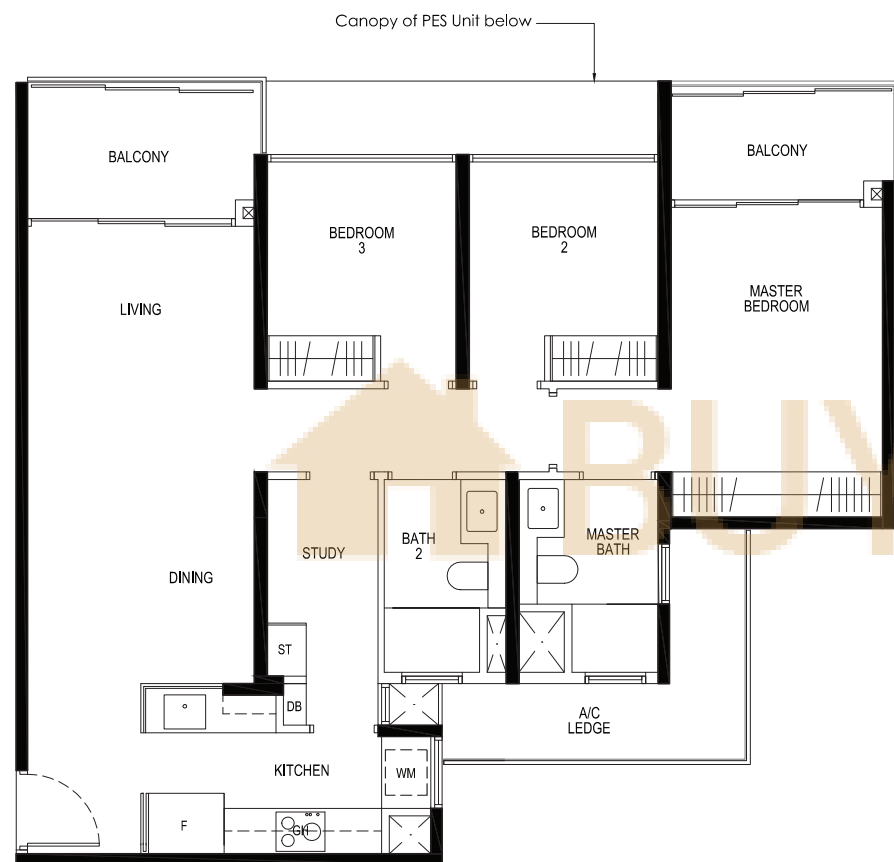
3 - BEDROOM TYPE C1c

98 sq m / 1055 sq ft
INCLUSIVE OF 10 SQ M BALCONY & 7 SQ M A/C LEDGE
5TH STOREY ONLY: CEILING HEIGHT AT LIVING / DINING,
BEDROOM AND STUDY IS APPROXIMATELY 4.3 M

TOWER 11J, 11K & 11M

UNIT
#02-50 TO #05-50*
#02-55 TO #05-55
#02-66 TO #05-66*

*MIRROR IMAGE



3 - BEDROOM TYPE C1d

98 sq m / 1055 sq ft
INCLUSIVE OF 11 SQ M BALCONY & 7 SQ M A/C LEDGE
5TH STOREY ONLY: CEILING HEIGHT AT LIVING / DINING,
BEDROOM AND STUDY IS APPROXIMATELY 4.3 M

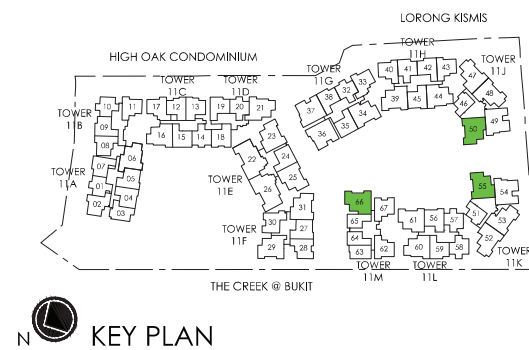
TOWER 11E, 11F, 11G, 11H & 11L

UNIT
#02-23 TO #05-23
#02-25 TO #05-25*
#02-31 TO #05-31
#02-34 TO #05-34
#02-39 TO #05-39*
#02-61 TO #05-61

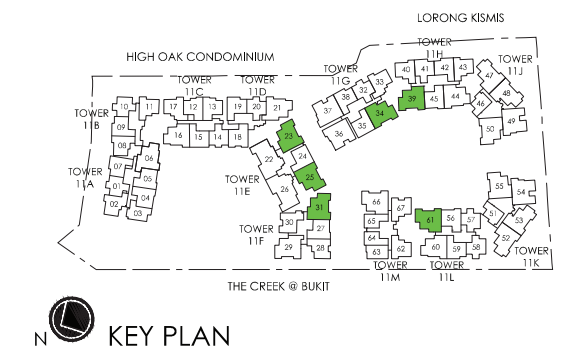
*MIRROR IMAGE



- LEGEND:
- F - FRIDGE
 - WM - WASHER CUM DRYER
 - IH - INDUCTION HOB
 - GH - GAS HOB
 - ST - STORAGE
 - DB - DISTRIBUTION BOARD
 - WC - WATER CLOSET
 - A/C - AIR CONDITIONER
 - PES - PRIVATE ENCLOSED SPACE



- LEGEND:
- F - FRIDGE
 - WM - WASHER CUM DRYER
 - IH - INDUCTION HOB
 - GH - GAS HOB
 - ST - STORAGE
 - DB - DISTRIBUTION BOARD
 - WC - WATER CLOSET
 - A/C - AIR CONDITIONER
 - PES - PRIVATE ENCLOSED SPACE



AREA INCLUDES A/C LEDGE, BALCONY, PES AND VOID AREA WHERE APPLICABLE. SOME UNITS ARE MIRROR IMAGES OF THE APARTMENT PLANS SHOWN IN THE BROCHURE. PLEASE REFER TO KEY PLANS FOR ORIENTATION. ALL PLANS ARE SUBJECT TO CHANGE AS MAY BE APPROVED BY THE RELEVANT AUTHORITIES. ALL FLOOR AREAS ARE APPROXIMATE MEASUREMENTS ONLY AND ARE SUBJECT TO FINAL SURVEY. BP APPROVAL NO. A1839-00012-2017-BP01 DATED 14/06/2018

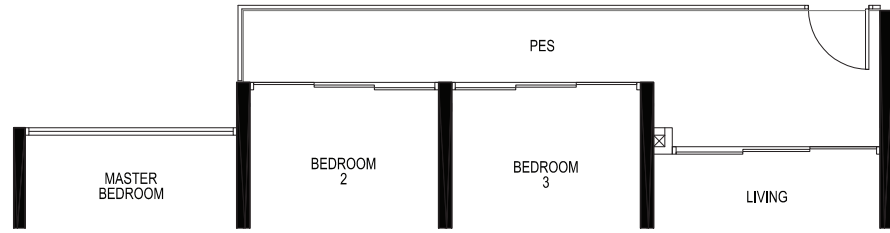
AREA INCLUDES A/C LEDGE, BALCONY, PES AND VOID AREA WHERE APPLICABLE. SOME UNITS ARE MIRROR IMAGES OF THE APARTMENT PLANS SHOWN IN THE BROCHURE. PLEASE REFER TO KEY PLANS FOR ORIENTATION. ALL PLANS ARE SUBJECT TO CHANGE AS MAY BE APPROVED BY THE RELEVANT AUTHORITIES. ALL FLOOR AREAS ARE APPROXIMATE MEASUREMENTS ONLY AND ARE SUBJECT TO FINAL SURVEY. BP APPROVAL NO. A1839-00012-2017-BP01 DATED 14/06/2018

3 - BEDROOM TYPE C2-P

98 sq m / 1055 sq ft
 INCLUSIVE OF 11 SQ M PES & 7 SQ M A/C LEDGE
 CEILING HEIGHT AT LIVING / DINING,
 AND BEDROOM IS APPROXIMATELY 4.3 M

TOWER 11H

UNIT
 #01-44



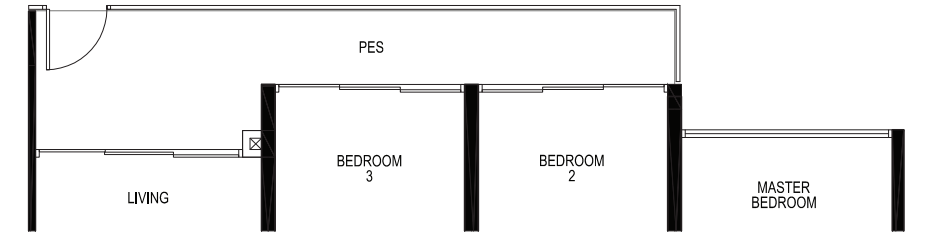
3 - BEDROOM TYPE C3a-P

103 sq m / 1109 sq ft
 INCLUSIVE OF 11 SQ M PES & 7 SQ M A/C LEDGE
 CEILING HEIGHT AT LIVING / DINING,
 BEDROOM AND STUDY IS APPROXIMATELY 4.3 M

TOWER 11A & 11D

UNIT
 #01-06*
 #01-21

*MIRROR IMAGE

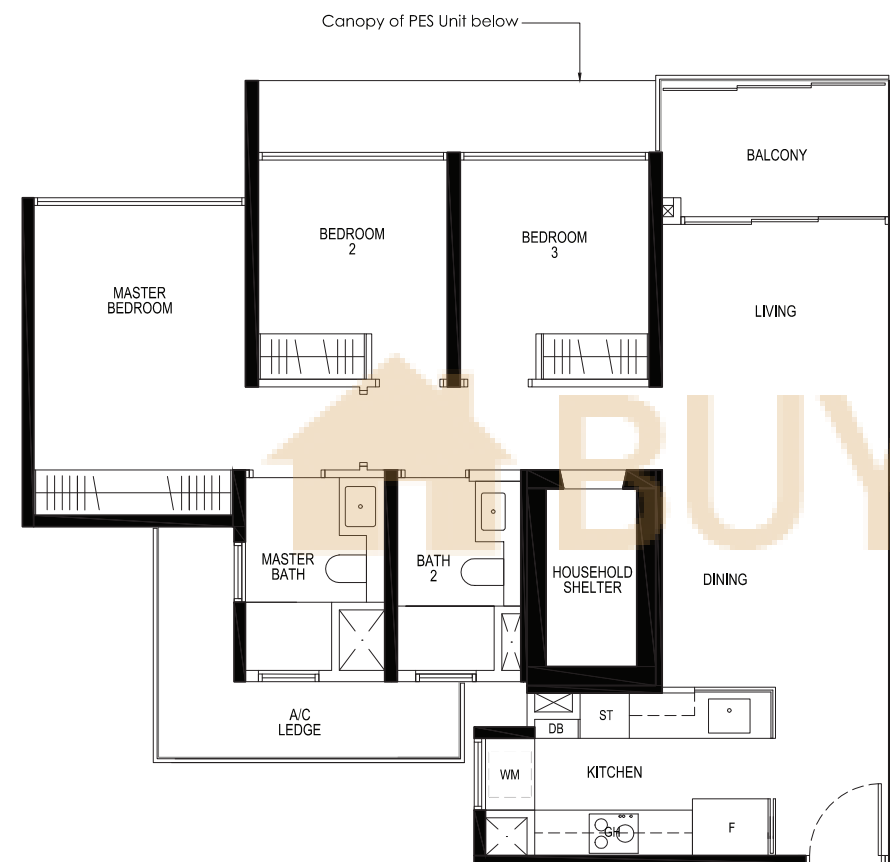


3 - BEDROOM TYPE C2

93 sq m / 1001 sq ft
 INCLUSIVE OF 6 SQ M BALCONY & 7 SQ M A/C LEDGE
 5TH STOREY ONLY: CEILING HEIGHT AT LIVING / DINING
 AND BEDROOM IS APPROXIMATELY 4.3 M

TOWER 11H

UNIT
 #02-44 TO #05-44



3 - BEDROOM TYPE C3a

97 sq m / 1044 sq ft
 INCLUSIVE OF 6 SQ M BALCONY & 7 SQ M A/C LEDGE
 5TH STOREY ONLY: CEILING HEIGHT AT LIVING / DINING,
 BEDROOM AND STUDY IS APPROXIMATELY 4.3 M

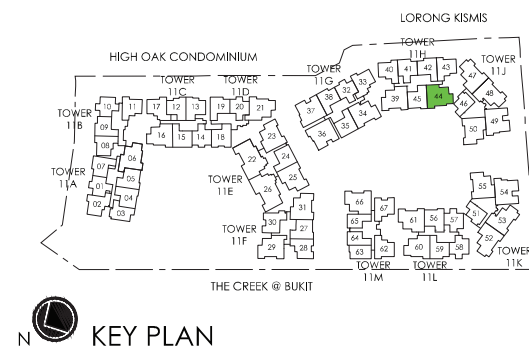
TOWER 11A & 11D

UNIT
 #02-06 TO #05-06*
 #02-21 TO #05-21

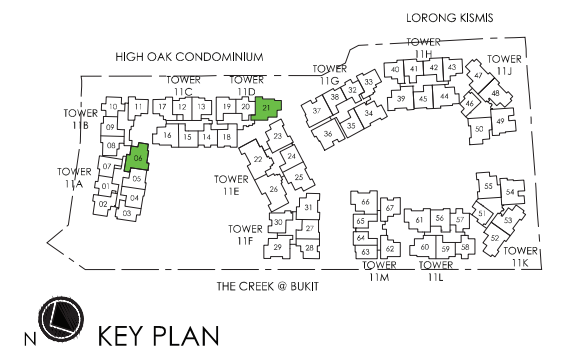
*MIRROR IMAGE



- LEGEND:
- F - FRIDGE
 - WM - WASHER CUM DRYER
 - IH - INDUCTION HOB
 - GH - GAS HOB
 - ST - STORAGE
 - DB - DISTRIBUTION BOARD
 - WC - WATER CLOSET
 - A/C - AIR CONDITIONER
 - PES - PRIVATE ENCLOSED SPACE



- LEGEND:
- F - FRIDGE
 - WM - WASHER CUM DRYER
 - IH - INDUCTION HOB
 - GH - GAS HOB
 - ST - STORAGE
 - DB - DISTRIBUTION BOARD
 - WC - WATER CLOSET
 - A/C - AIR CONDITIONER
 - PES - PRIVATE ENCLOSED SPACE



AREA INCLUDES A/C LEDGE, BALCONY, PES AND VOID AREA WHERE APPLICABLE. SOME UNITS ARE MIRROR IMAGES OF THE APARTMENT PLANS SHOWN IN THE BROCHURE. PLEASE REFER TO KEY PLANS FOR ORIENTATION. ALL PLANS ARE SUBJECT TO CHANGE AS MAY BE APPROVED BY THE RELEVANT AUTHORITIES. ALL FLOOR AREAS ARE APPROXIMATE MEASUREMENTS ONLY AND ARE SUBJECT TO FINAL SURVEY. BP APPROVAL NO. A1839-00012-2017-BP01 DATED 14/06/2018

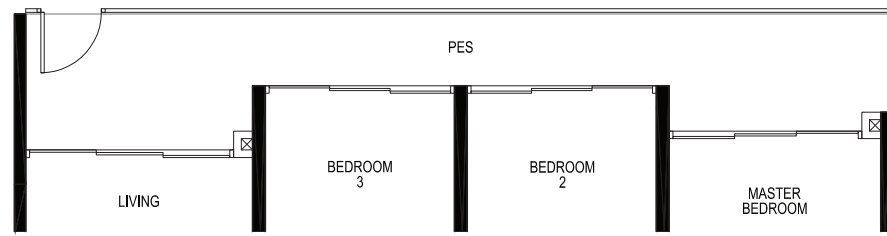
AREA INCLUDES A/C LEDGE, BALCONY, PES AND VOID AREA WHERE APPLICABLE. SOME UNITS ARE MIRROR IMAGES OF THE APARTMENT PLANS SHOWN IN THE BROCHURE. PLEASE REFER TO KEY PLANS FOR ORIENTATION. ALL PLANS ARE SUBJECT TO CHANGE AS MAY BE APPROVED BY THE RELEVANT AUTHORITIES. ALL FLOOR AREAS ARE APPROXIMATE MEASUREMENTS ONLY AND ARE SUBJECT TO FINAL SURVEY. BP APPROVAL NO. A1839-00012-2017-BP01 DATED 14/06/2018

3 - BEDROOM TYPE C3b-P

106 sq m / 1141 sq ft
INCLUSIVE OF 16 SQ M PES & 7 SQ M A/C LEDGE
CEILING HEIGHT AT LIVING / DINING,
BEDROOM AND STUDY IS APPROXIMATELY 4.3 M

TOWER 11F

UNIT
#01-29



3 - BEDROOM TYPE C4-P

107 sq m / 1152 sq ft
INCLUSIVE OF 15 SQ M PES & 6 SQ M A/C LEDGE
CEILING HEIGHT AT LIVING / DINING,
BEDROOM AND STUDY IS APPROXIMATELY 4.3 M

TOWER 11J & 11K

UNIT
#01-49*
#01-54

*MIRROR IMAGE

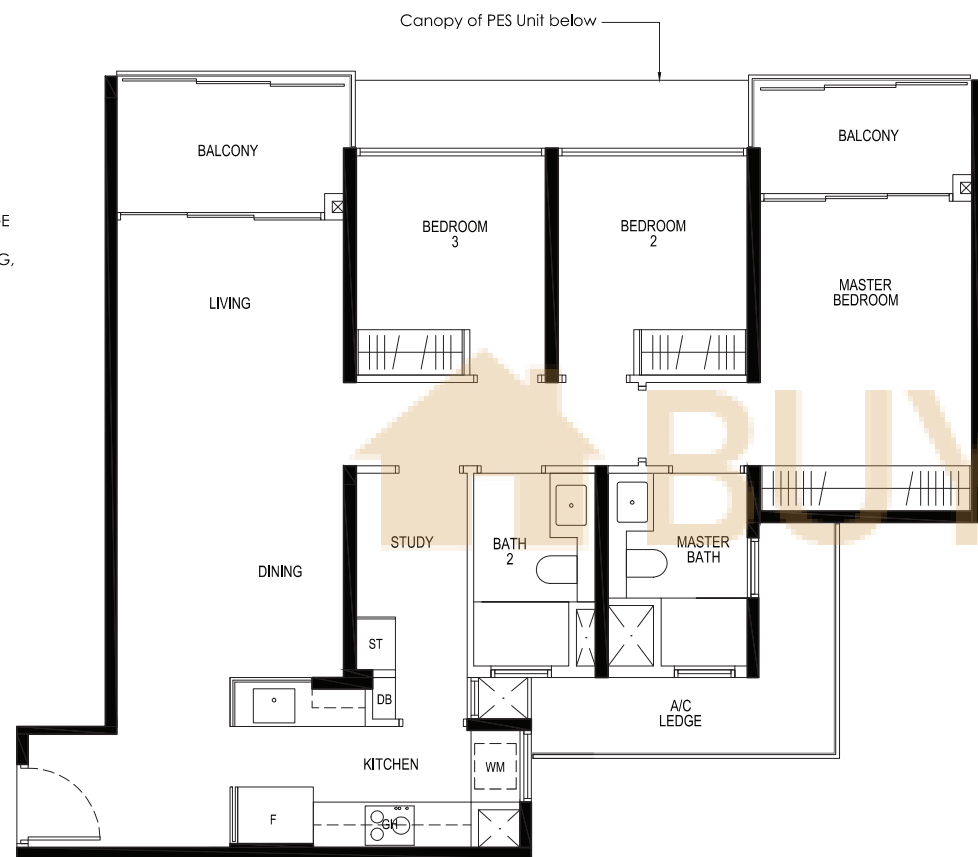


3 - BEDROOM TYPE C3b

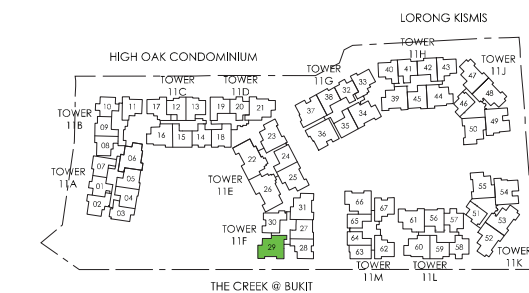
100 sq m / 1076 sq ft
INCLUSIVE OF 11 SQ M BALCONY & 7 SQ M A/C LEDGE
5TH STOREY ONLY: CEILING HEIGHT AT LIVING / DINING,
BEDROOM AND STUDY IS APPROXIMATELY 4.3 M

TOWER 11F

UNIT
#02-29 TO #05-29



- LEGEND:
- F - FRIDGE
 - WM - WASHER CUM DRYER
 - IH - INDUCTION HOB
 - GH - GAS HOB
 - ST - STORAGE
 - DB - DISTRIBUTION BOARD
 - WC - WATER CLOSET
 - A/C - AIR CONDITIONER
 - PES - PRIVATE ENCLOSED SPACE

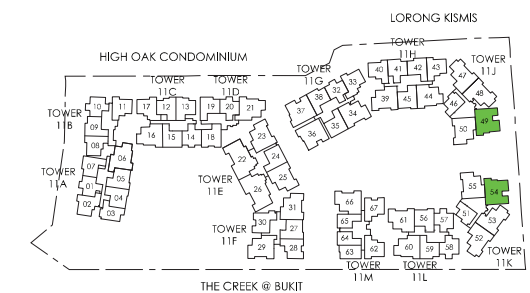


KEY PLAN

AREA INCLUDES A/C LEDGE, BALCONY, PES AND VOID AREA WHERE APPLICABLE. SOME UNITS ARE MIRROR IMAGES OF THE APARTMENT PLANS SHOWN IN THE BROCHURE. PLEASE REFER TO KEY PLANS FOR ORIENTATION. ALL PLANS ARE SUBJECT TO CHANGE AS MAY BE APPROVED BY THE RELEVANT AUTHORITIES. ALL FLOOR AREAS ARE APPROXIMATE MEASUREMENTS ONLY AND ARE SUBJECT TO FINAL SURVEY. BP APPROVAL NO. A1839-00012-2017-BP01 DATED 14/06/2018



- LEGEND:
- F - FRIDGE
 - WM - WASHER CUM DRYER
 - IH - INDUCTION HOB
 - GH - GAS HOB
 - ST - STORAGE
 - DB - DISTRIBUTION BOARD
 - WC - WATER CLOSET
 - A/C - AIR CONDITIONER
 - PES - PRIVATE ENCLOSED SPACE



KEY PLAN

AREA INCLUDES A/C LEDGE, BALCONY, PES AND VOID AREA WHERE APPLICABLE. SOME UNITS ARE MIRROR IMAGES OF THE APARTMENT PLANS SHOWN IN THE BROCHURE. PLEASE REFER TO KEY PLANS FOR ORIENTATION. ALL PLANS ARE SUBJECT TO CHANGE AS MAY BE APPROVED BY THE RELEVANT AUTHORITIES. ALL FLOOR AREAS ARE APPROXIMATE MEASUREMENTS ONLY AND ARE SUBJECT TO FINAL SURVEY. BP APPROVAL NO. A1839-00012-2017-BP01 DATED 14/06/2018

3 - BEDROOM TYPE C4

104 sq m / 1119 sq ft
INCLUSIVE OF 12 SQ M BALCONY & 6 SQ M A/C LEDGE

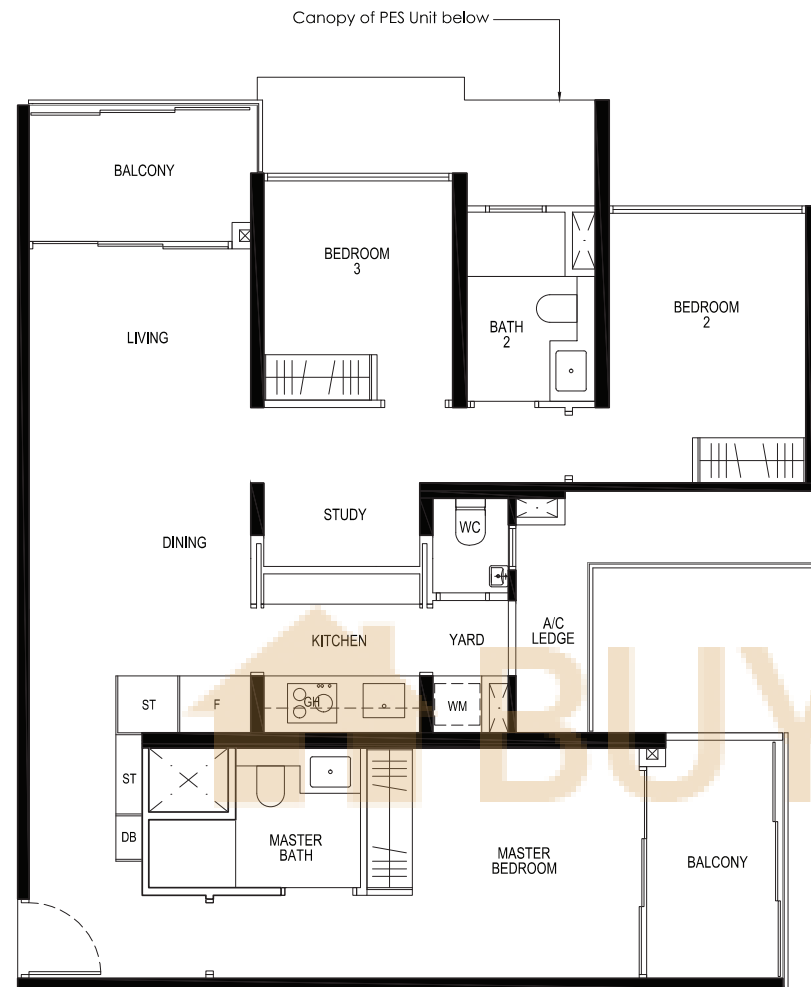
5TH STOREY ONLY: CEILING HEIGHT AT LIVING / DINING,
BEDROOM AND STUDY IS APPROXIMATELY 4.3 M

TOWER 11J & 11K

UNIT

#02-49 TO #05-49*
#02-54 TO #05-54

*MIRROR IMAGE



3 - BEDROOM TYPE C5-P

116 sq m / 1249 sq ft
INCLUSIVE OF 20 SQ M PES & 6 SQ M A/C LEDGE

CEILING HEIGHT AT LIVING / DINING,
AND BEDROOM IS APPROXIMATELY 4.3 M

TOWER 11G

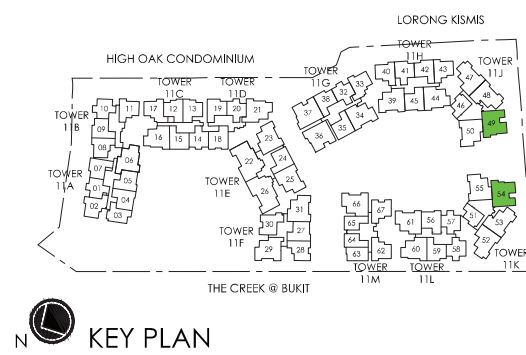
UNIT

#01-36*
#01-37

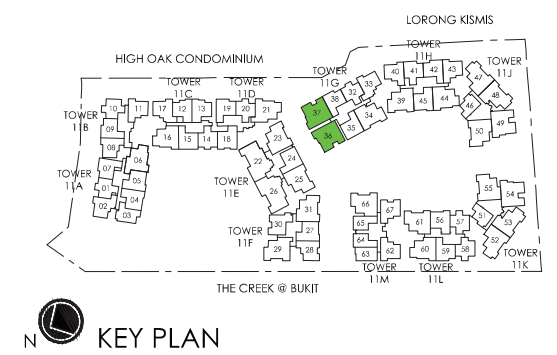
*MIRROR IMAGE



LEGEND:
F - FRIDGE GH - GAS HOB WC - WATER CLOSET
WM - WASHER CUM DRYER ST - STORAGE A/C - AIR CONDITIONER
IH - INDUCTION HOB DB - DISTRIBUTION BOARD PES - PRIVATE ENCLOSED SPACE



LEGEND:
F - FRIDGE GH - GAS HOB WC - WATER CLOSET
WM - WASHER CUM DRYER ST - STORAGE A/C - AIR CONDITIONER
IH - INDUCTION HOB DB - DISTRIBUTION BOARD PES - PRIVATE ENCLOSED SPACE



3 - BEDROOM TYPE C5

112 sq m / 1206 sq ft
INCLUSIVE OF 15 SQ M BALCONY & 6 SQ M A/C LEDGE

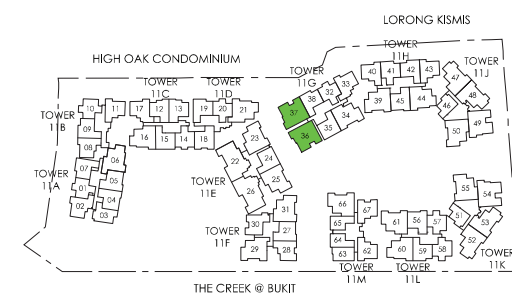
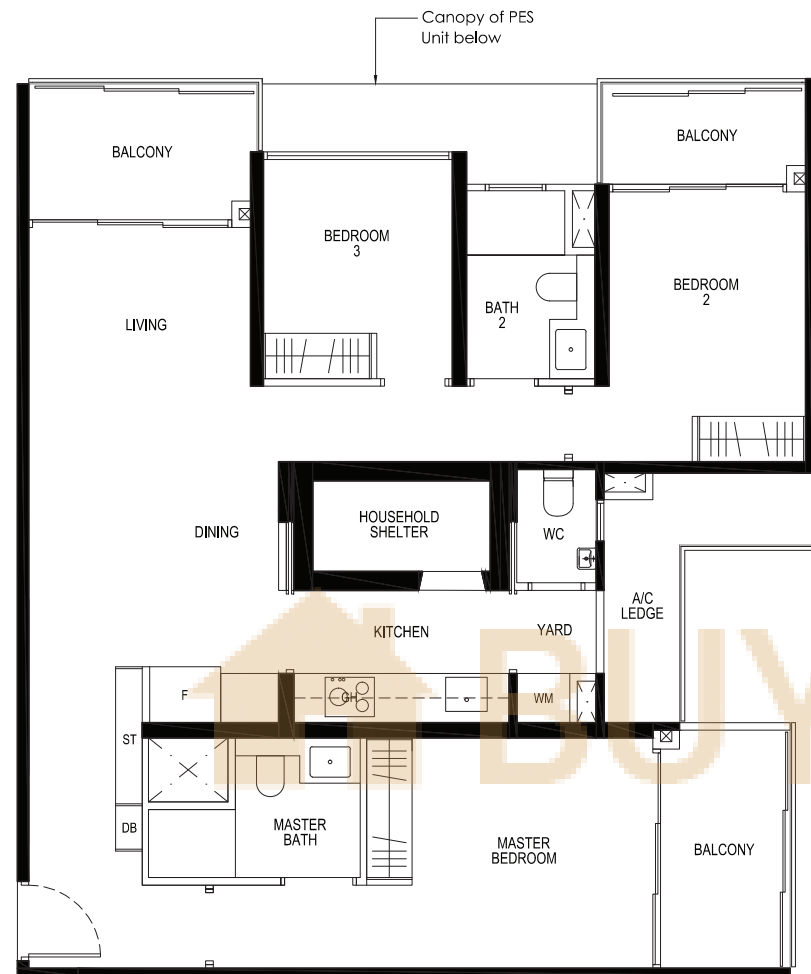
5TH STOREY ONLY: CEILING HEIGHT AT LIVING / DINING,
AND BEDROOM IS APPROXIMATELY 4.3 M

TOWER 11G

UNIT

#02-36 TO #05-36*
#02-37 TO #05-37

*MIRROR IMAGE



KEY PLAN



LEGEND:
F - FRIDGE GH - GAS HOB WC - WATER CLOSET
WM - WASHER CUM DRYER ST - STORAGE A/C - AIR CONDITIONER
IH - INDUCTION HOB DB - DISTRIBUTION BOARD PES - PRIVATE ENCLOSED SPACE

AREA INCLUDES A/C LEDGE, BALCONY, PES AND VOID AREA WHERE APPLICABLE. SOME UNITS ARE MIRROR IMAGES OF THE APARTMENT PLANS SHOWN IN THE BROCHURE. PLEASE REFER TO KEY PLANS FOR ORIENTATION. ALL PLANS ARE SUBJECT TO CHANGE AS MAY BE APPROVED BY THE RELEVANT AUTHORITIES. ALL FLOOR AREAS ARE APPROXIMATE MEASUREMENTS ONLY AND ARE SUBJECT TO FINAL SURVEY. BP APPROVAL NO. A1839-00012-2017-BP01 DATED 14/06/2018

4 - BEDROOM TYPE D1-P

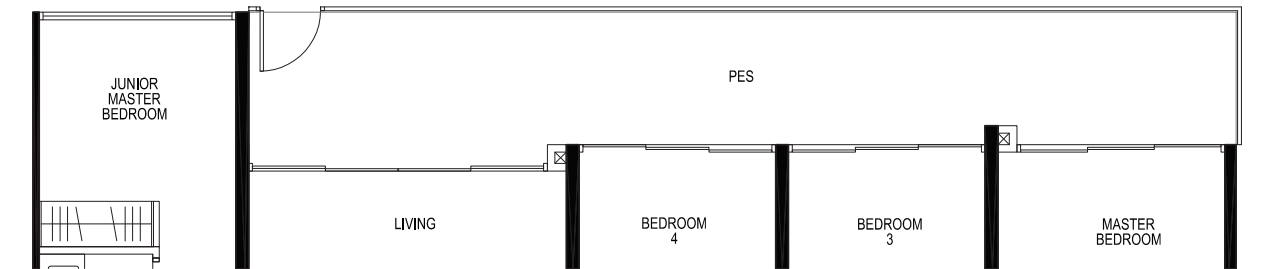
148 sq m / 1593 sq ft
INCLUSIVE OF 25 SQ M PES & 6 SQ M A/C LEDGE

CEILING HEIGHT AT LIVING / DINING,
AND BEDROOM IS APPROXIMATELY 4.3 M

TOWER 11E

UNIT

#01-22



4 - BEDROOM TYPE D1

138 sq m / 1485 sq ft
INCLUSIVE OF 14 SQ M BALCONY & 6 SQ M A/C LEDGE

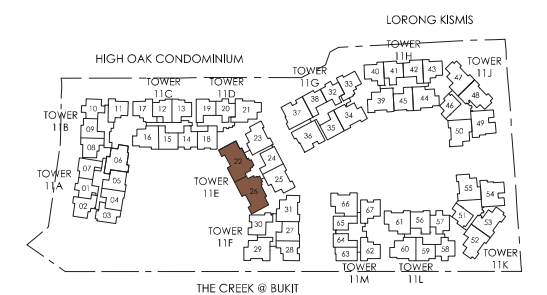
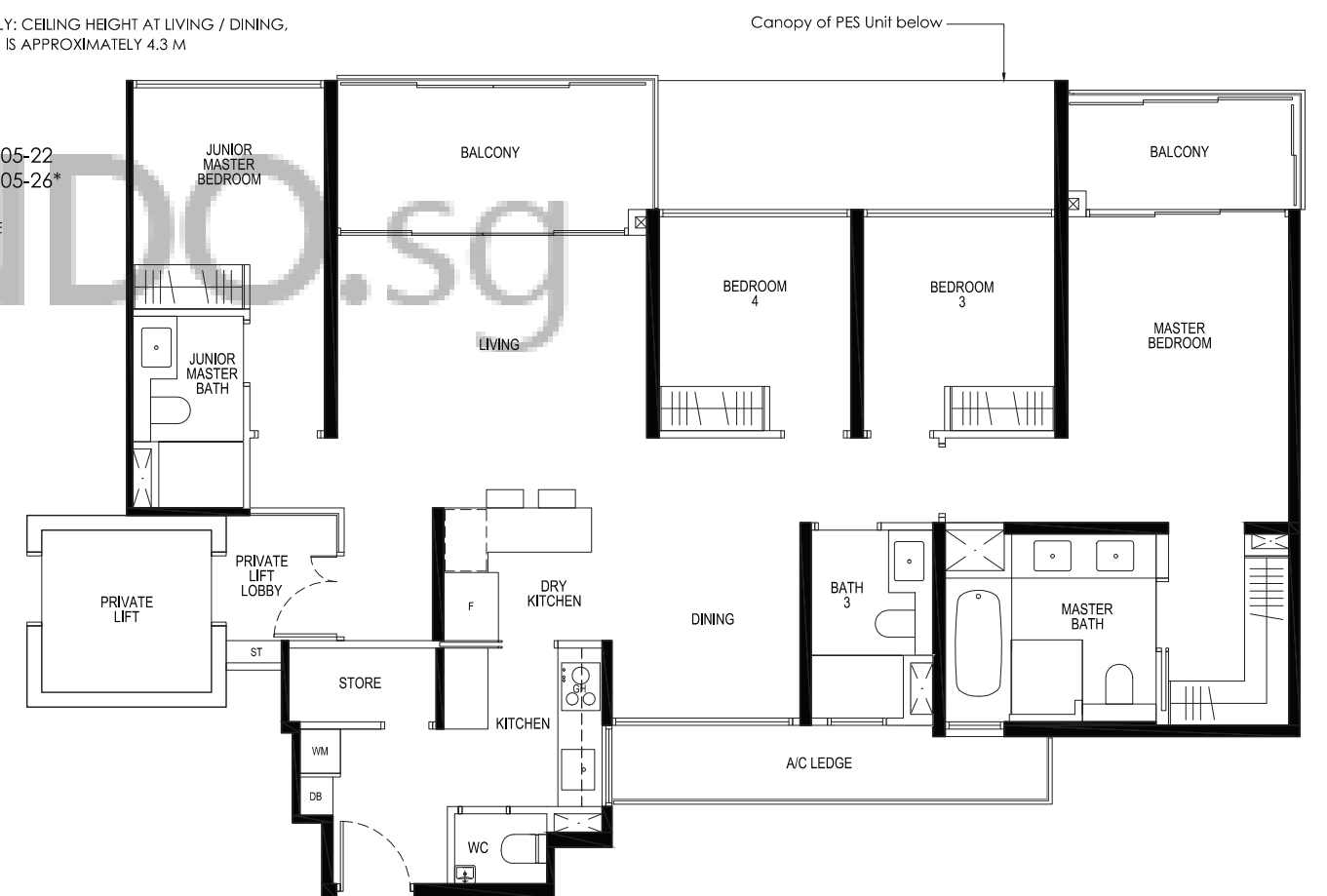
5TH STOREY ONLY: CEILING HEIGHT AT LIVING / DINING,
AND BEDROOM IS APPROXIMATELY 4.3 M

TOWER 11E

UNIT

#02-22 TO #05-22
#02-26 TO #05-26*

*MIRROR IMAGE



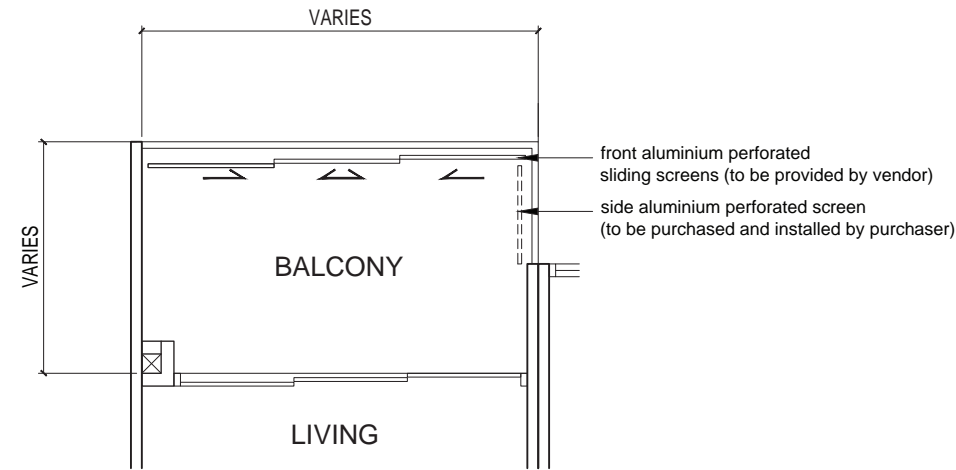
KEY PLAN



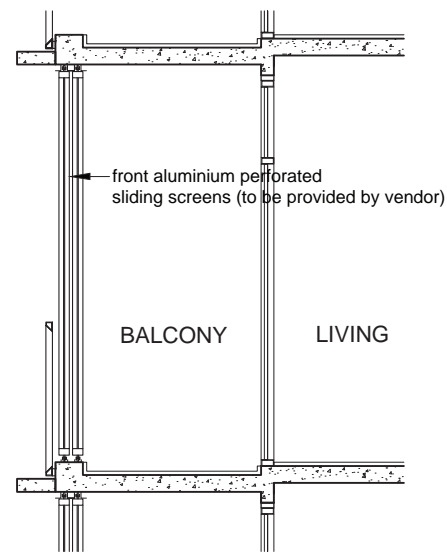
LEGEND:
F - FRIDGE GH - GAS HOB WC - WATER CLOSET
WM - WASHER CUM DRYER ST - STORAGE A/C - AIR CONDITIONER
IH - INDUCTION HOB DB - DISTRIBUTION BOARD PES - PRIVATE ENCLOSED SPACE

AREA INCLUDES A/C LEDGE, BALCONY, PES AND VOID AREA WHERE APPLICABLE. SOME UNITS ARE MIRROR IMAGES OF THE APARTMENT PLANS SHOWN IN THE BROCHURE. PLEASE REFER TO KEY PLANS FOR ORIENTATION. ALL PLANS ARE SUBJECT TO CHANGE AS MAY BE APPROVED BY THE RELEVANT AUTHORITIES. ALL FLOOR AREAS ARE APPROXIMATE MEASUREMENTS ONLY AND ARE SUBJECT TO FINAL SURVEY. BP APPROVAL NO. A1839-00012-2017-BP01 DATED 14/06/2018

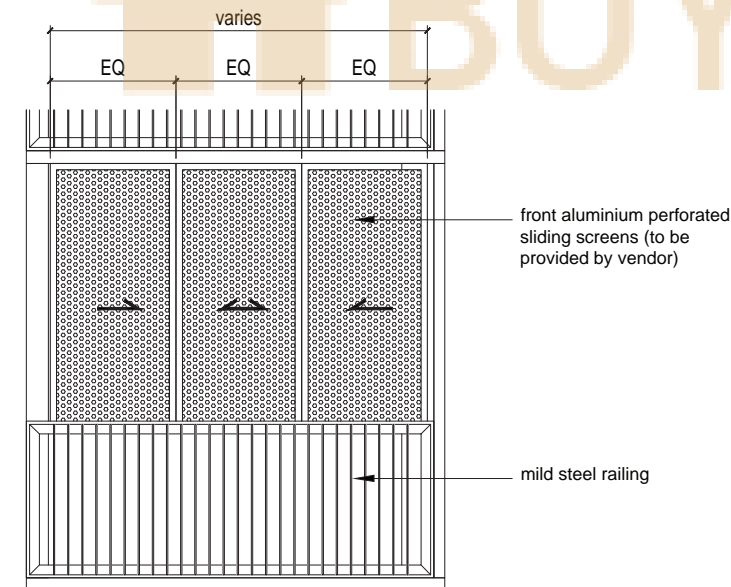
APPROVED ALUMINIUM PERFORATED SLIDING SCREEN FOR BALCONY



SLIDING BALCONY SCREEN - SECTION



SLIDING BALCONY SCREEN - SECTION



SLIDING BALCONY SCREEN - ELEVATION

NOTE:

1. THE BALCONY SHALL NOT BE ENCLOSED UNLESS WITH APPROVED BALCONY SCREEN.

Specifications of the Building

(Subject to the amendments set out in the Second Schedule of the Sale and Purchase Agreement)

1. **FOUNDATION**
Pre-cast piles and/or reinforced concrete piles and/or footings and/or non-suspended slabs on grade
2. **SUPERSTRUCTURE**
Pre-cast and/or cast-in-situ reinforced concrete and/or prefabricated and prefinished volumetric construction (PPVC) reinforced concrete and/or steel structures
3. **WALLS**
 - a. External Walls: Reinforced concrete wall and/or lightweight precision blockwall and/or precast panels
 - b. Internal Walls: Reinforced concrete wall and/or lightweight precision blockwall and/or drywall partition and/or precast panels and/or aggregate wall and/or lightweight concrete panel/drywall
4. **ROOF**
Flat roof: Reinforced concrete roof with waterproofing and with or without insulation
5. **CEILING**
 - a. Apartment Unit Ceiling Height: Refer to Floor to Ceiling Height Schedule for details
General notes: Ceiling Height - floor finish level to underside of slab/ceiling where applicable (in m)
Bulkheads at 2.4m and / or 2.8m where applicable.
 - b. Apartment Unit Ceiling Finishes: Skim coat with emulsion paint and/or plaster board with emulsion paint and/or moisture resistant board with emulsion paint and /or box-ups with emulsion paint at designated areas (where applicable)
 - c. Apartment Unit Ceiling Finishes at PES (1st storey unit) and balcony (5th storey unit): Metal canopy and/or skim coat with emulsion paint and/or plaster board with emulsion paint and/or moisture resistant board with emulsion paint and/or box-ups with emulsion paint at designated areas (where applicable)
6. **FINISHES**
 - a. **Wall (Apartment Units)**
 - i. Private Lift Lobby, Living, Dining, Bedrooms, Study, Yard, Store, Household Shelter: Emulsion paint finish
 - ii. Bathrooms, WC: Tiles finish
 - iii. Kitchen, Dry Kitchen: Emulsion paint finish and/or tiles finish
 - iv. Private Enclosed Space (PES), Balcony, A/C Ledge: Exterior paint finish
 - b. **Wall (Common Area - Internal)**
 - i. All Lift Lobbies: Stone and/or tiles and/or laminate finish on appropriate backing material and/or emulsion paint finish
 - ii. Common Corridors, Staircases, and Staircase Storey Shelters: Tiles and/or emulsion paint finish
 - iii. Changing Rooms and Handicap / Family Toilet: Tiles and/or emulsion paint finish
 - c. **Wall (Common Areas - External)**
 - i. All External Walls: Exterior paint finish with spray texture coating and/or non-spray texture coating on exposed surface only.

Notes:

 - All wall finishes are provided up to false ceiling level and on exposed areas only
 - No tiles behind all cabinets, kitchen cabinets, vanity / mirror cabinets, mirror or above false ceiling
 - Wall surface above false ceiling level will be left in its original bare condition
 - d. **Floor (Apartment Units)**
 - i. Bedrooms, Study (where applicable): Engineered timber flooring
 - ii. Private Lift Lobby, Living, Dining, Kitchen, Dry Kitchen: Marble tiles or Compressed Marble tiles
 - iii. Bathrooms, Yard, WC, Store, Private Enclosed Space (PES), Balcony, Household Shelter (HS): Tiles
 - iv. A/C Ledge: Cement sand screed finish
 - e. **Floor (Common Areas)**
 - i. All Lift Lobbies: Stone and/or tiles
 - ii. Common Corridors, Staircases, and Staircase Storey Shelters: Stone and/or tiles and/or cement sand screed with nosing tiles

Notes:

 - All floor finishes are to exposed surface area only
7. **WINDOWS**
Aluminium-framed windows tinted glass and/or clear glass and/or laminated glass and/or frosted glass and/or tempered glass
Minimum thickness of glass: 6mm
8. **DOORS**
 - a. Unit Main Entrance to Common Lobby: Approved fire-rated timber swing door
 - b. Private Lift Lobby, where applicable: Aluminium-frame with glass infill swing door and/or aluminium swing door
 - c. Living, Dining, Master Bedroom to Private Enclosed Space (PES) / Balcony: Aluminium-framed sliding glass door
 - d. Bedrooms, Bathrooms: Hollow core timber swing door and/or sliding door
 - e. Enclosed Study (A2, A2-P, C1a, C1a-P1, C1a-P2, C1b, C1b-P, C1c, C1c-P, C1d, C1d-P, C3a, C3a-P, C3b & C3b-P) where applicable: Hollow core timber swing door
 - f. Kitchen, where applicable: Timber-framed with glass infill sliding/swing door and/or frameless glass sliding door and/or hollow core timber sliding/swing door
 - g. Kitchen to Yard, where applicable: Hollow core timber sliding/swing door
 - h. WC, where applicable: Aluminium-framed slide and fold door
 - i. Store, where applicable: Aluminium-framed slide and fold door
 - j. Private Enclosed Space (PES), where applicable: Aluminium-framed swing glass and/or mild steel low gate
 - k. Household Shelter: Approved fire-rated blast door

Good quality locksets and ironmongery to be provided to all doors. All glass doors to be of tinted and/or clear glass (where applicable). Minimum thickness of glass: 6mm
9. **SANITARY FITTINGS**
 - a. **Master Bath, Junior Master Bath**
 - 1 shower cubicle and 1 shower mixer set complete with overhead shower
 - 1 vanity cabinet complete with 2 basins and mixers (Type D1 and Type D1-P only)
 - 1 vanity cabinet complete with 1 basin and mixer
 - 1 wall-mounted water closet
 - 1 toilet paper holder
 - 1 towel rail or 2 robe hooks
 - 1 mirror cabinet
 - 1 built-in bath tub complete with shower mixer, spout and hand shower (Type D1 and D1-P only)
 - b. **Common Bath**
 - 1 shower cubicle and 1 shower mixer set
 - 1 vanity cabinet complete with basin and mixer
 - 1 wall-mounted water closet
 - 1 toilet paper holder
 - 1 towel rail or 2 robe hooks
 - 1 mirror cabinet