

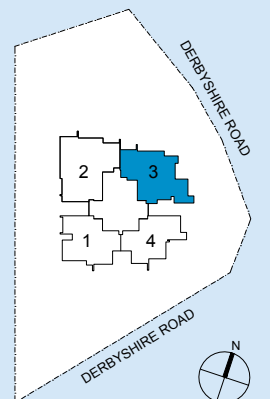
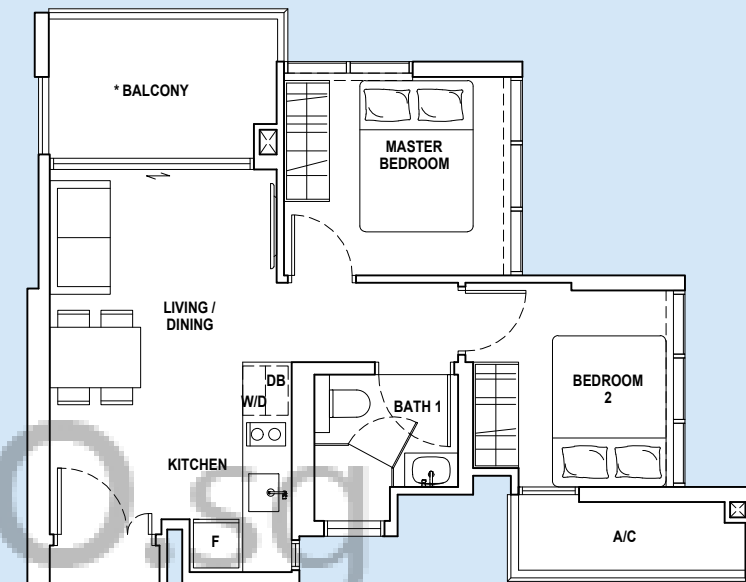
DIGRAMMATIC CHART

- Type A
2-Bedroom
- Type B
2-Bedroom + Guest Room
- Type C
3-Bedroom + Guest Room

UNIT / FLOOR	01	02	03	04
ROOF				
19	A3 61 sq.m	C 87 sq.m	B 74 sq.m	A2 55 sq.m
18	A3 61 sq.m	C 87 sq.m	B 74 sq.m	A2 55 sq.m
17	A3 61 sq.m	C 87 sq.m	B 74 sq.m	A2 55 sq.m
16	A3 61 sq.m	C 87 sq.m	B 74 sq.m	A2 55 sq.m
15	A3 61 sq.m	C 87 sq.m	B 74 sq.m	A2 55 sq.m
14	A3 61 sq.m	C 87 sq.m	B 74 sq.m	A2 55 sq.m
13	A3 61 sq.m	C 87 sq.m	B 74 sq.m	A2 55 sq.m
12	A3 61 sq.m	C 87 sq.m	B 74 sq.m	A2 55 sq.m
11	A3 61 sq.m	C 87 sq.m	B 74 sq.m	A2 55 sq.m
10	A3 61 sq.m	C 87 sq.m	B 74 sq.m	A2 55 sq.m
09	A3 61 sq.m	C 87 sq.m	B 74 sq.m	A2 55 sq.m
08	A3 61 sq.m	C 87 sq.m	B 74 sq.m	A2 55 sq.m
07	A3 61 sq.m	C 87 sq.m	B 74 sq.m	A2 55 sq.m
06	A3 61 sq.m	C 87 sq.m	B 74 sq.m	A2 55 sq.m
05	A3 61 sq.m	C 87 sq.m	B 74 sq.m	A2 55 sq.m
04	A3 61 sq.m	C 87 sq.m	B 74 sq.m	A2 55 sq.m
03	A3 61 sq.m	C 87 sq.m	B 74 sq.m	A2 55 sq.m
02	A3 61 sq.m		A1 52 sq.m	A2 55 sq.m
01	COMMUNAL FACILITIES / DROP-OFF			
BASEMENT 1	CAR PARK			
BASEMENT 2	CAR PARK			
BASEMENT 2A	CAR PARK			

TYPE A1 2 BEDROOM

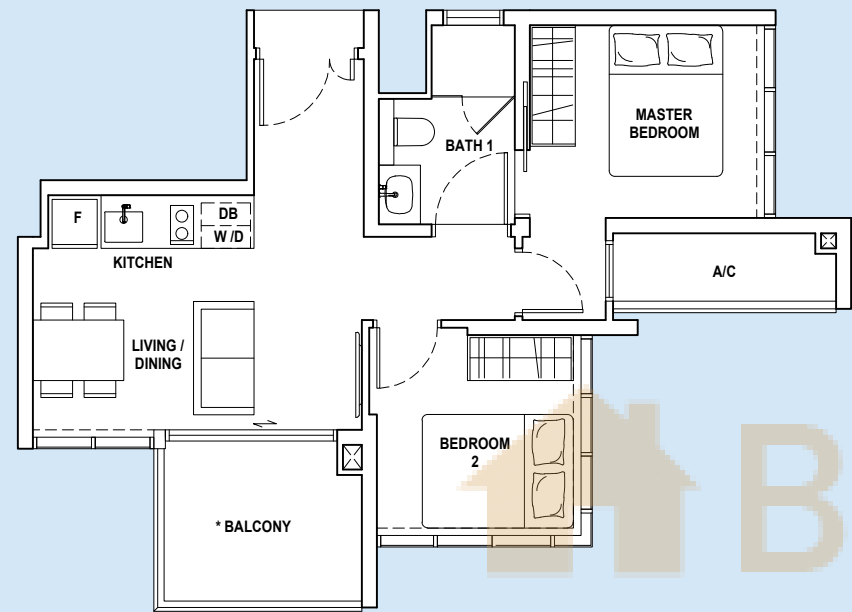
52 sq.m
#02-03



All floor areas indicated are inclusive of AC Ledge, Balcony and Strata Void where applicable. All floor areas are estimate only and subject to final survey. All floorplans are subject to changes as may be required or approved by the relevant authorities.
*The balcony shall not be enclosed. Only approved balcony screens are to be used. For an illustration of the approved balcony screen, please refer to page 54 of this Brochure.

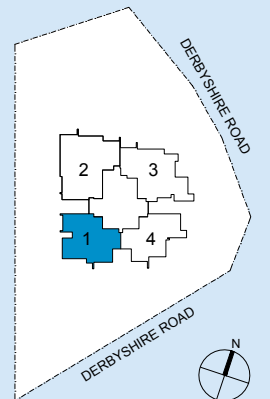
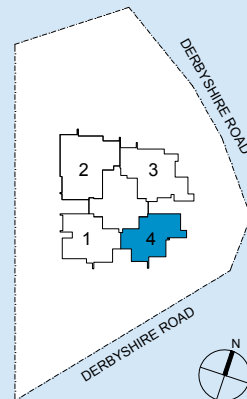
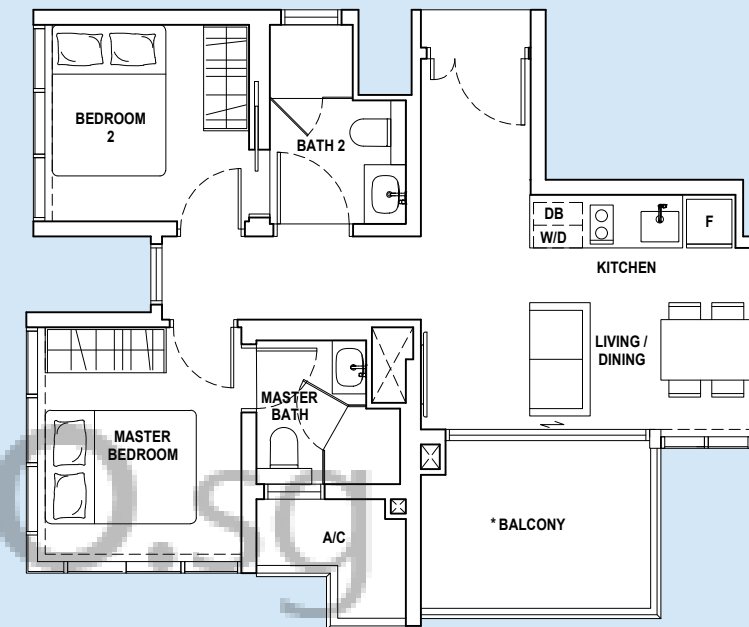
TYPE A2 2 BEDROOM

55 sq.m
#02-04 to #19-04



TYPE A3 2 BEDROOM

61 sq.m
#02-01 to #19-01

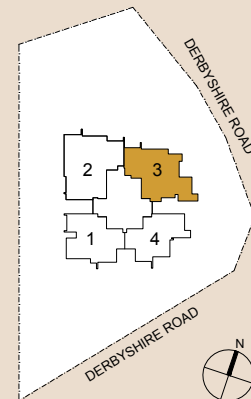
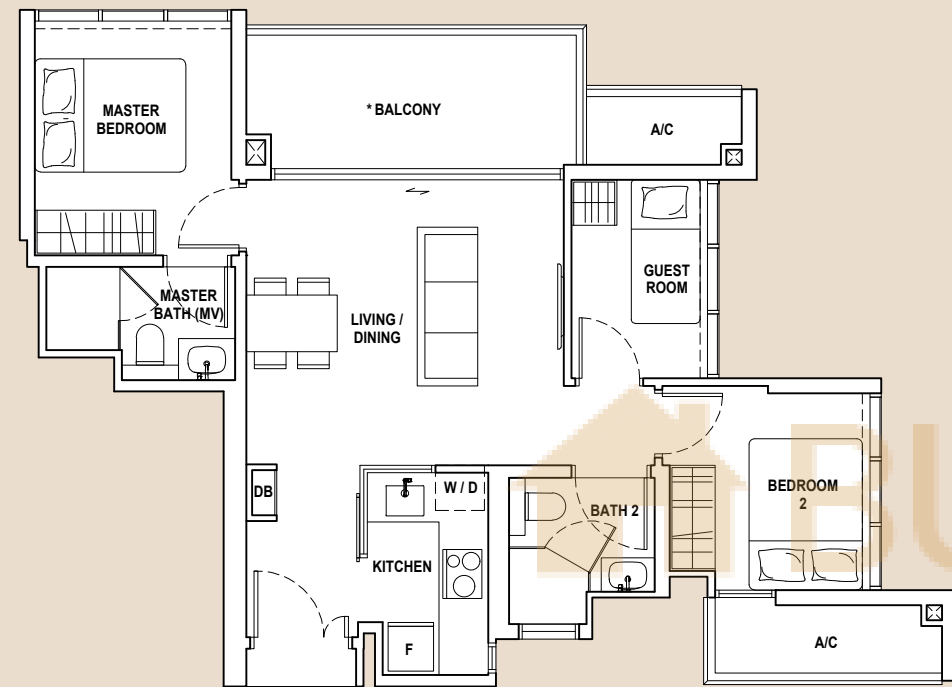


All floor areas indicated are inclusive of AC Ledge, Balcony and Strata Void where applicable. All floor areas are estimate only and subject to final survey. All floorplans are subject to changes as may be required or approved by the relevant authorities.
*The balcony shall not be enclosed. Only approved balcony screens are to be used. For an illustration of the approved balcony screen, please refer to page 54 of this Brochure.

All floor areas indicated are inclusive of AC Ledge, Balcony and Strata Void where applicable. All floor areas are estimate only and subject to final survey. All floorplans are subject to changes as may be required or approved by the relevant authorities.
*The balcony shall not be enclosed. Only approved balcony screens are to be used. For an illustration of the approved balcony screen, please refer to page 54 of this Brochure.

TYPE B 2 BEDROOM + GUEST

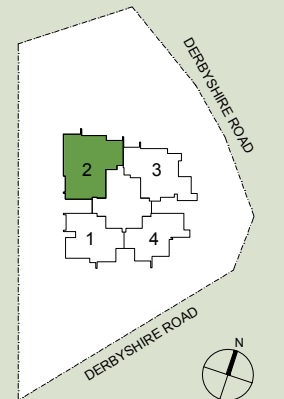
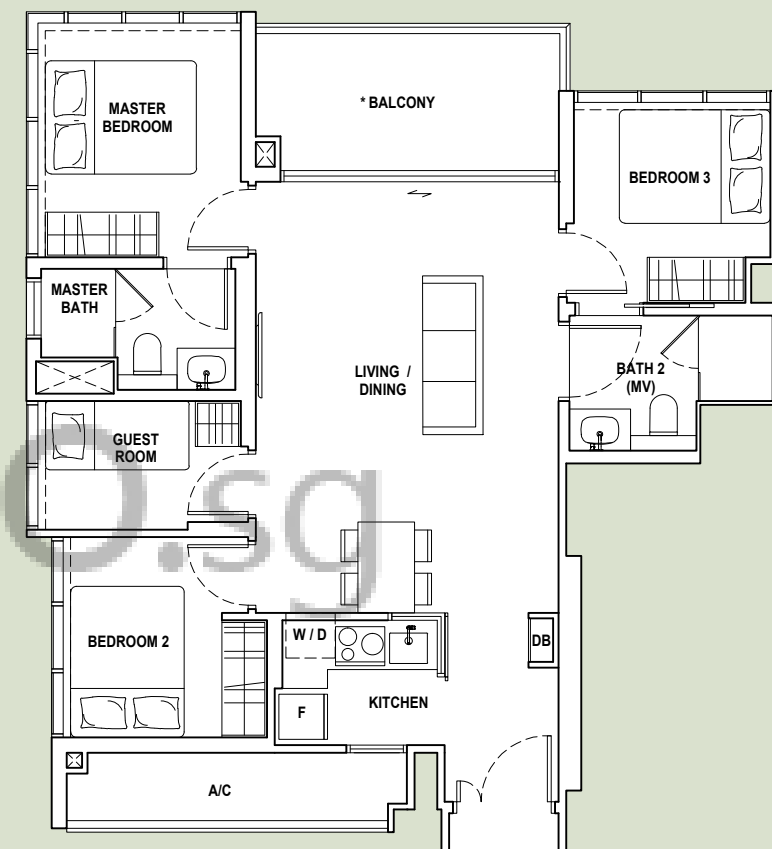
74 sq.m
#03-03 to #19-03



All floor areas indicated are inclusive of AC Ledge, Balcony and Strata Void where applicable. All floor areas are estimate only and subject to final survey. All floorplans are subject to changes as may be required or approved by the relevant authorities.
*The balcony shall not be enclosed. Only approved balcony screens are to be used. For an illustration of the approved balcony screen, please refer to page 54 of this Brochure.

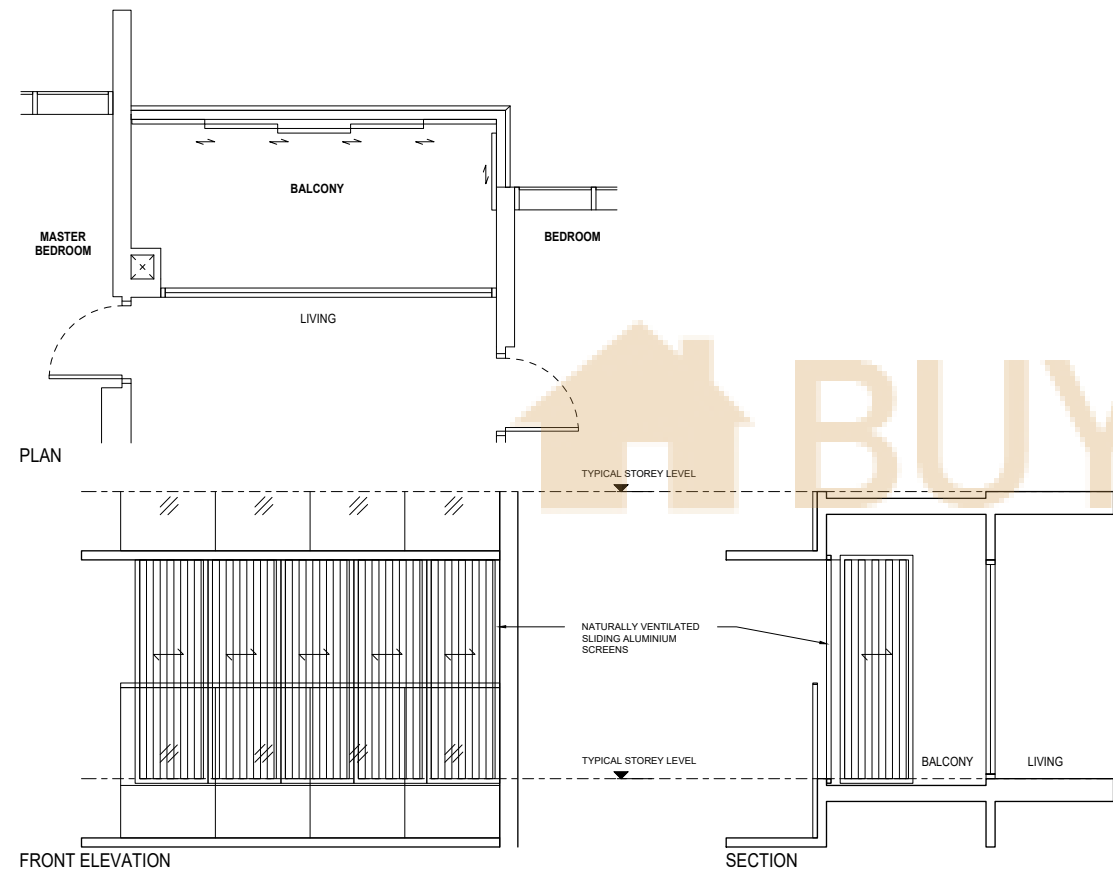
TYPE C 3 BEDROOM + GUEST

87 sq.m
#03-02 to #19-02



All floor areas indicated are inclusive of AC Ledge, Balcony and Strata Void where applicable. All floor areas are estimate only and subject to final survey. All floorplans are subject to changes as may be required or approved by the relevant authorities.
*The balcony shall not be enclosed. Only approved balcony screens are to be used. For an illustration of the approved balcony screen, please refer to page 54 of this Brochure.

BALCONY SCREEN DETAIL



Note:
 This drawing is for reference only. The screen design is provided for aesthetic uniformity of the development. Materials are to be aluminium with powder coated finish. Fixing details are by contractor, and fixing shall not damage the existing water proofing and structure. Owner shall verify all dimensions prior to fabrication and commencement of work. Drawings are not to scale. The cost of screen and installation shall be borne by the owner.

A PREMIER DEVELOPMENT BY ROXY-PACIFIC HOLDINGS LIMITED

Roxy-Pacific Holdings Limited (“the Group”) is an established property and hospitality corporation with an Asia-Pacific focus and a track record dating back to May 1967. Listed on the SGX Mainboard since 12 March 2008, the Group is engaged primarily in the development and sale of residential and commercial properties (“Property Development”), Hotel ownership and other investment properties in Asia-Pacific (“Hotel Ownership and Property Investment”), including the ownership of Grand Mercure Singapore Roxy. Since 2013, the three main arms – Property Development, Property Investment and Hotel Ownership have extended their reach beyond Singapore, to countries such as Malaysia, Australia, Thailand, Japan and Maldives.

SINGAPORE

120 Grange



Arena Residences



Harbour View Gardens

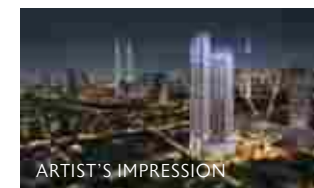


The Navian

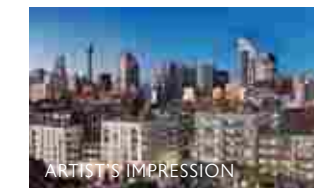


OVERSEAS

Wisma Infinitum, Malaysia



West End Residences, Australia



Noku, Maldives



Noku, Kyoto

