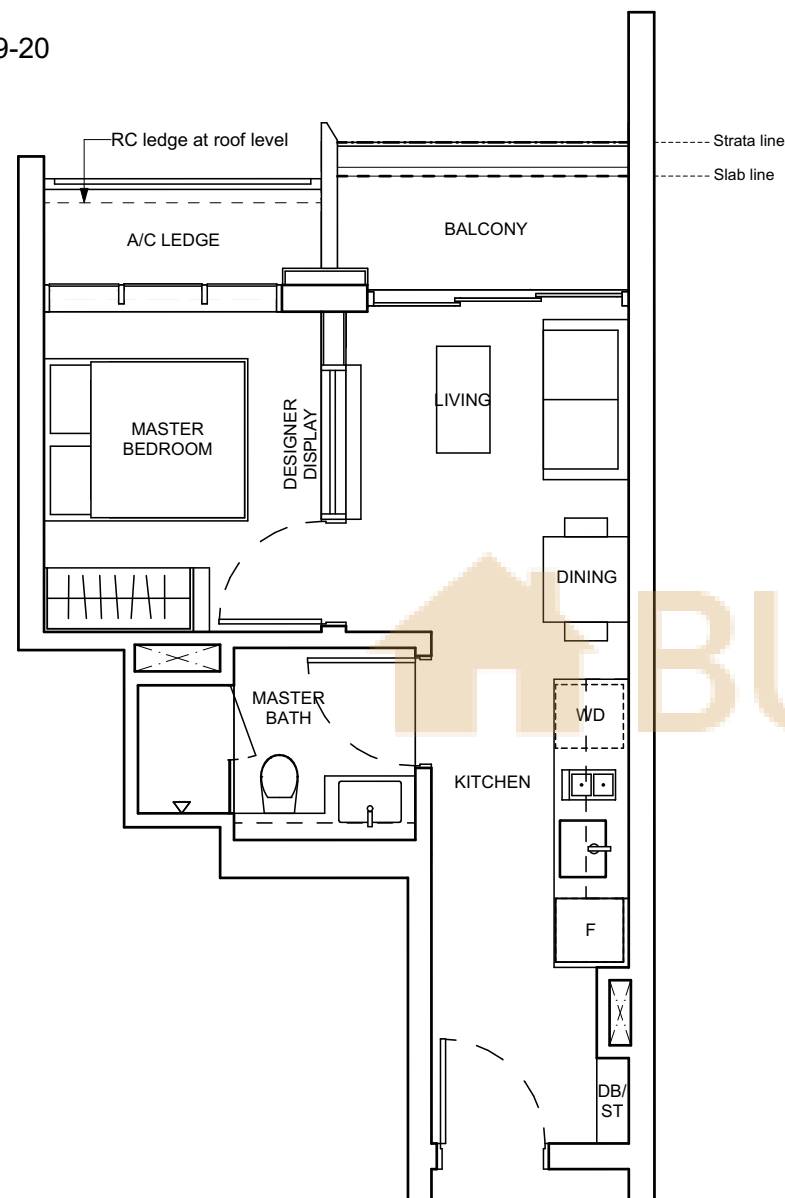


1 - BEDROOM

TYPE A1

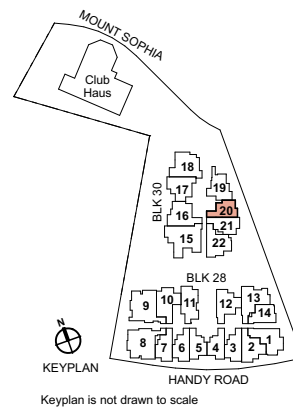
42 sq m / 452 sq ft

BLK 30: #04-20 to #09-20



0 0.5 1 2 3 5m

Area includes air-con (A/C) ledge, balcony, private enclosed space (PES), and void (where applicable). Some units are mirror images of the apartment plans shown in the brochure. Orientation and facing may differ depending on the unit you are purchasing (please refer to the key plan). All plans are approximate measurements only and are subject to government re-survey. The balcony shall not be enclosed unless with the approved balcony screen. For an illustration of the approved balcony screen and balcony railing, please refer to the diagram annexed hereto as "Annexure A".

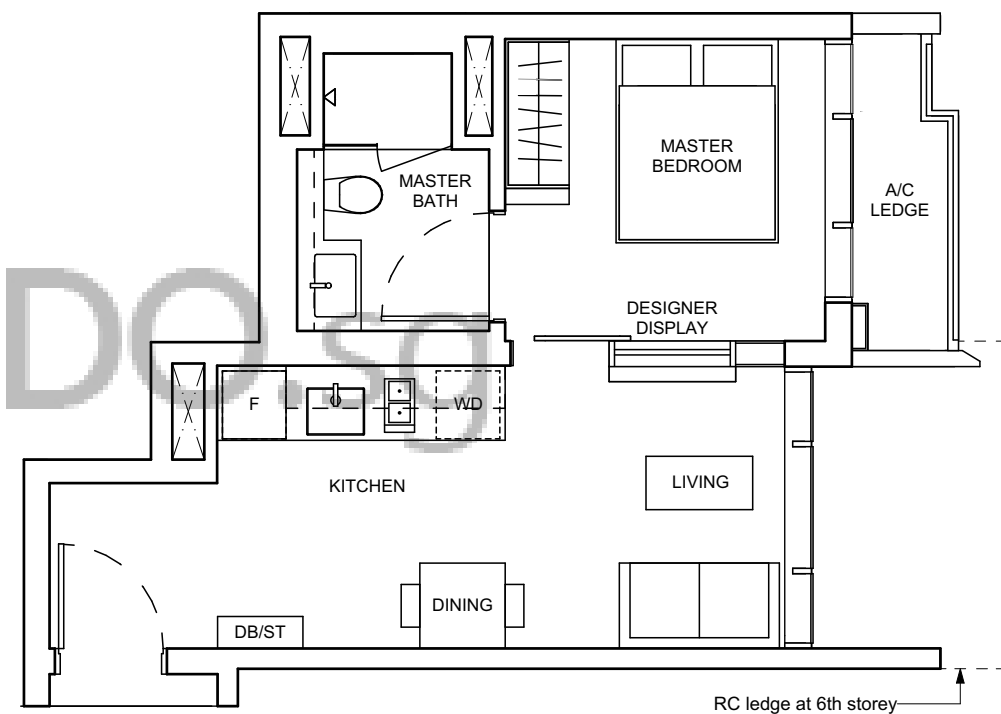


1 - BEDROOM

TYPE A2a

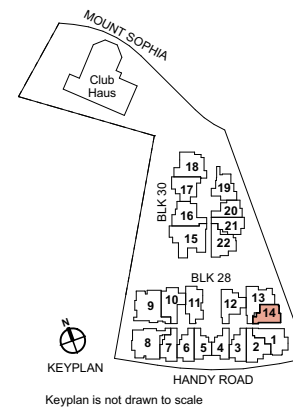
39 sq m / 420 sq ft

BLK 28: #03-14 to #05-14



0 0.5 1 2 3 5m

Area includes air-con (A/C) ledge, balcony, private enclosed space (PES), and void (where applicable). Some units are mirror images of the apartment plans shown in the brochure. Orientation and facing may differ depending on the unit you are purchasing (please refer to the key plan). All plans are approximate measurements only and are subject to government re-survey. The balcony shall not be enclosed unless with the approved balcony screen. For an illustration of the approved balcony screen and balcony railing, please refer to the diagram annexed hereto as "Annexure A".



1 - BEDROOM

TYPE A2b

44 sq m / 474 sq ft

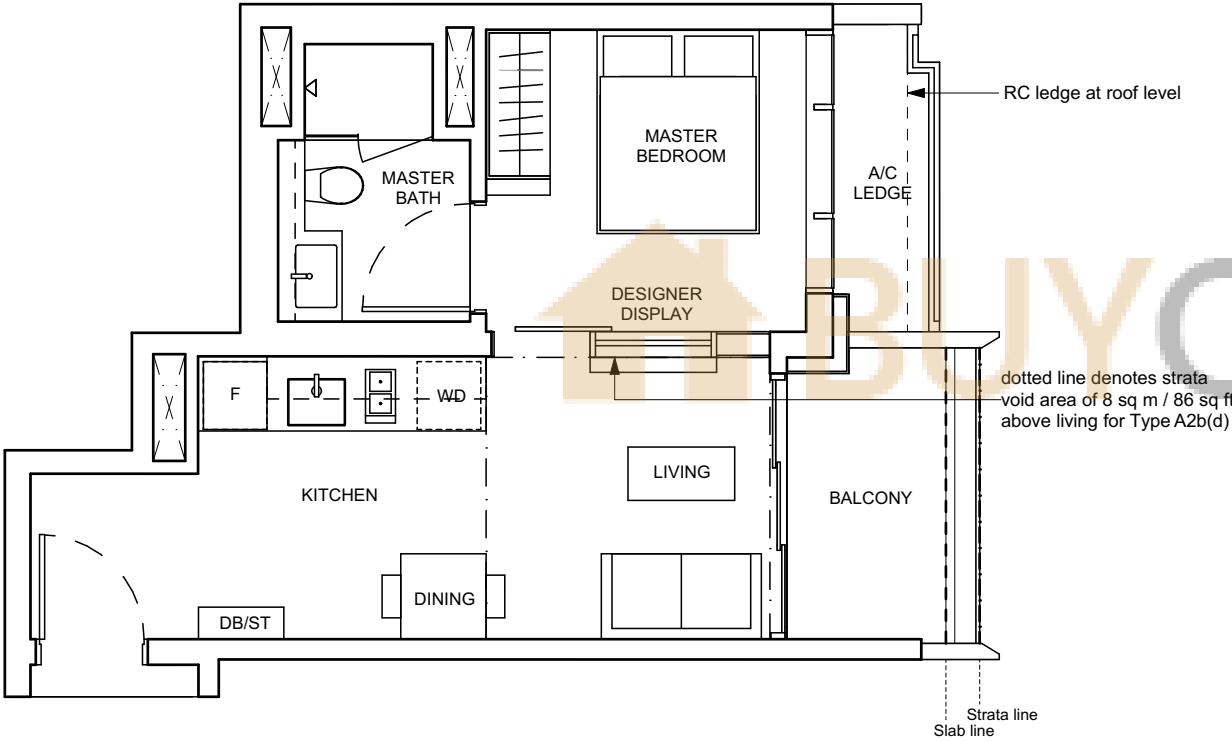
BLK 28: #06-14 to #11-14

TYPE A2b(d)

52 sq m / 560 sq ft

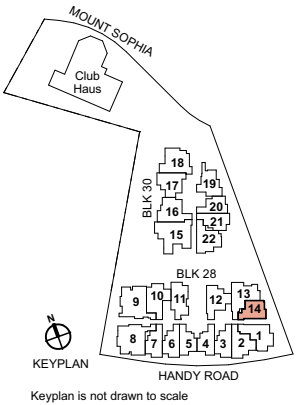
Including strata void area of 8 sqm / 86 sqft above living.
Approximate 5.03 m floor to ceiling height at living.

BLK 28: #12-14



0 0.5 1 2 3 5m

Area includes air-con (A/C) ledge, balcony, private enclosed space (PES), and void (where applicable). Some units are mirror images of the apartment plans shown in the brochure. Orientation and facing may differ depending on the unit you are purchasing (please refer to the key plan). All plans are approximate measurements only and are subject to government re-survey. The balcony shall not be enclosed unless with the approved balcony screen. For an illustration of the approved balcony screen and balcony railing, please refer to the diagram annexed hereto as "Annexure A".

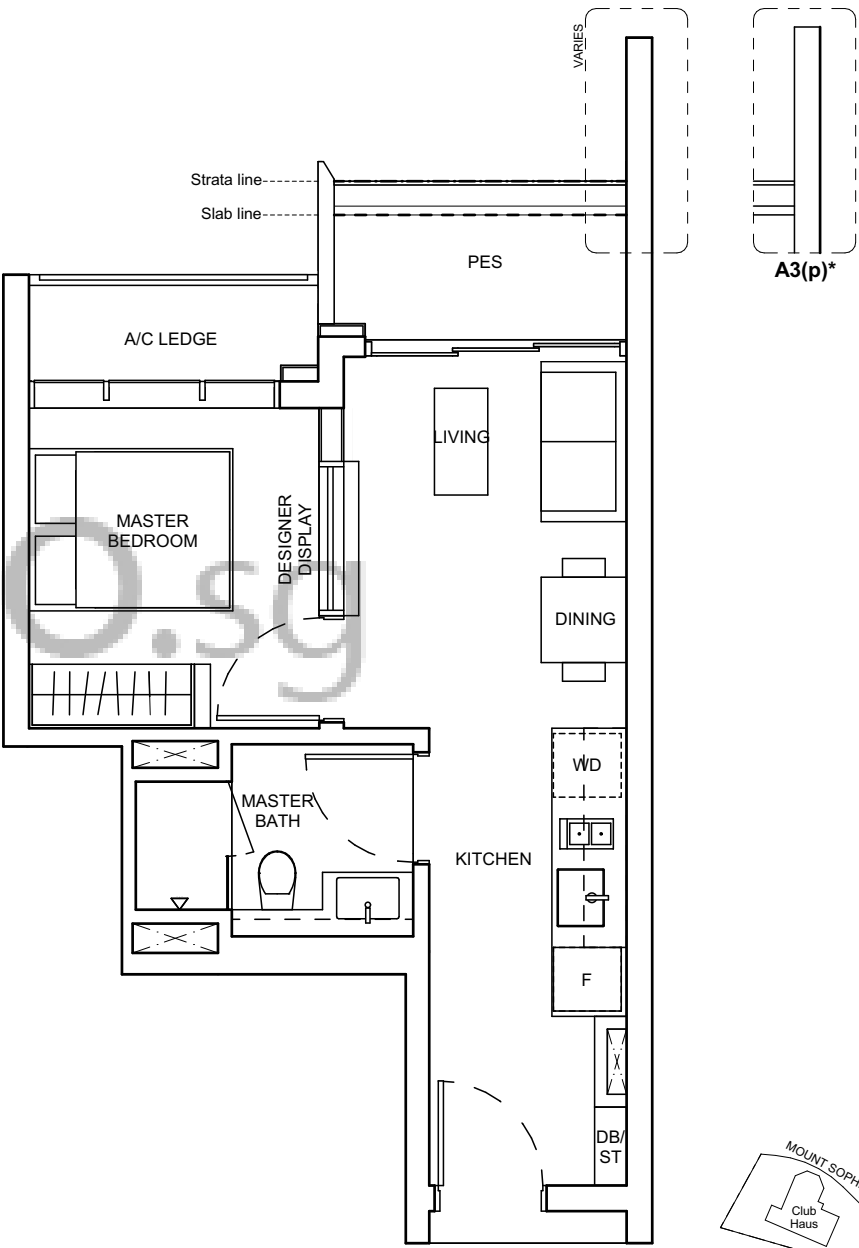


1 - BEDROOM

TYPE A3(p)

43 sq m / 463 sq ft

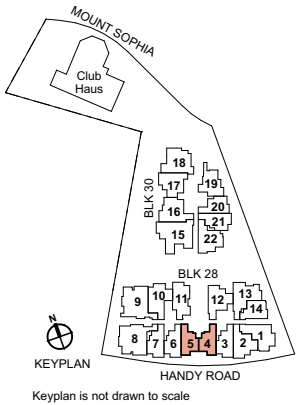
BLK 28: #03-04*, #03-05



*Mirror Image

0 0.5 1 2 3 5m

Area includes air-con (A/C) ledge, balcony, private enclosed space (PES), and void (where applicable). Some units are mirror images of the apartment plans shown in the brochure. Orientation and facing may differ depending on the unit you are purchasing (please refer to the key plan). All plans are approximate measurements only and are subject to government re-survey. The balcony shall not be enclosed unless with the approved balcony screen. For an illustration of the approved balcony screen and balcony railing, please refer to the diagram annexed hereto as "Annexure A".

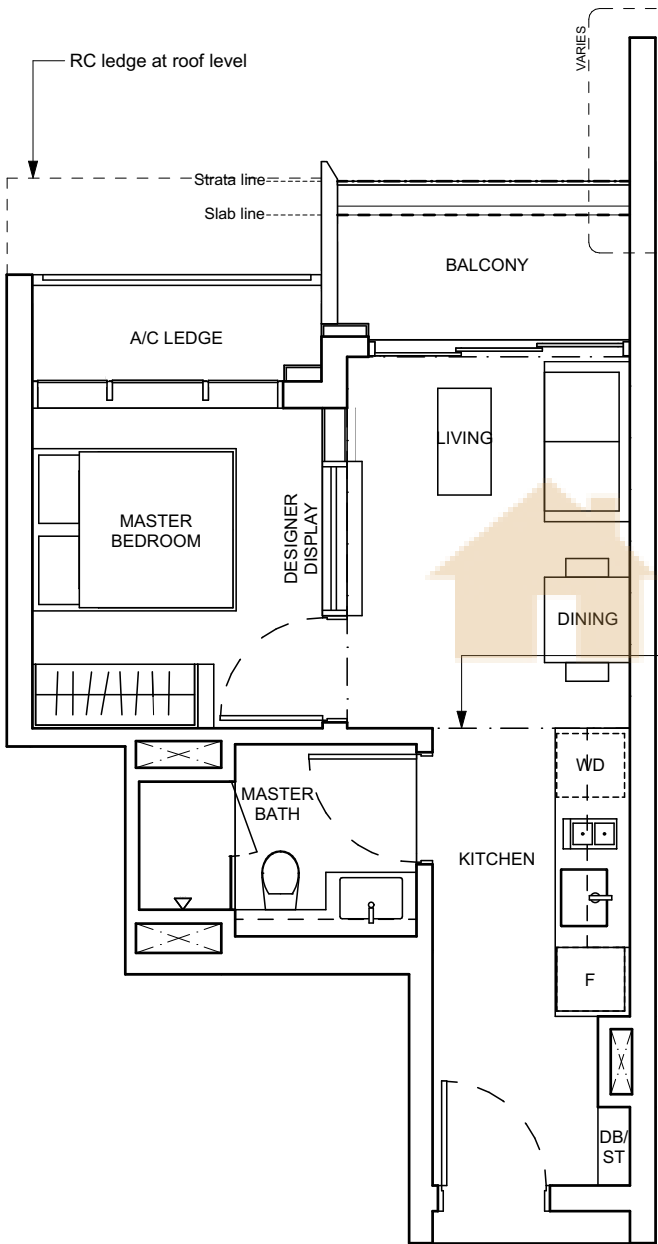


1 - BEDROOM

TYPE A3

43 sq m / 463 sq ft

BLK 28: #04-04* to #11-04*,
#04-05 to #11-05

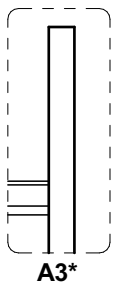


TYPE A3(d)

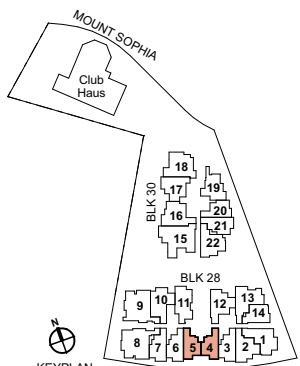
53 sq m / 570 sq ft

Including strata void area of 10 sqm / 108 sqft above living and dining.
Approximate 5.03 m floor to ceiling height at living and dining.

BLK 28: #12-04*, #12-05



dotted line denotes strata
void area of 10 sq m / 108
sq ft above living and dining
for Type A3(d)



Keyplan is not drawn to scale



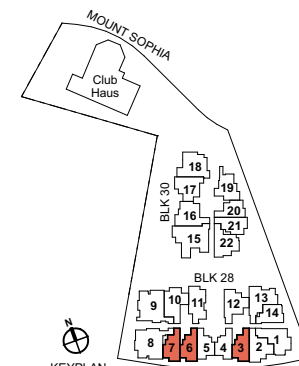
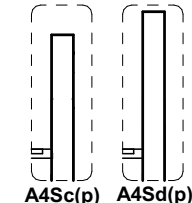
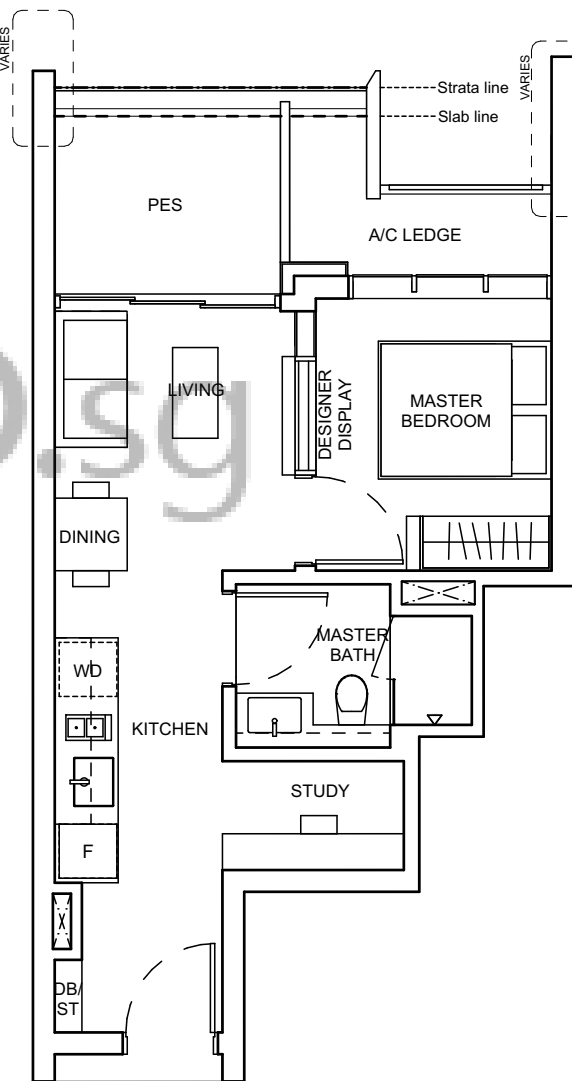
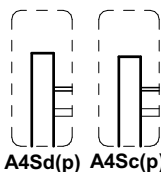
*Mirror Image
Area includes air-con (A/C) ledge, balcony, private enclosed space (PES), and void (where applicable).
Some units are mirror images of the apartment plans shown in the brochure. Orientation and facing may
differ depending on the unit you are purchasing (please refer to the key plan). All plans are approximate
measurements only and are subject to government re-survey. The balcony shall not be enclosed unless
with the approved balcony screen. For an illustration of the approved balcony screen and balcony railing,
please refer to the diagram annexed hereto as "Annexure A".

1 - BEDROOM + STUDY

TYPE A4Sb/c/d(p)

48 sq m / 517 sq ft

BLK 28:
A4Sb(p): #03-07
A4Sc(p): #03-06
A4Sd(p): #03-03



Keyplan is not drawn to scale



Area includes air-con (A/C) ledge, balcony, private enclosed space (PES), and void (where applicable).
Some units are mirror images of the apartment plans shown in the brochure. Orientation and facing may
differ depending on the unit you are purchasing (please refer to the key plan). All plans are approximate
measurements only and are subject to government re-survey. The balcony shall not be enclosed unless
with the approved balcony screen. For an illustration of the approved balcony screen and balcony railing,
please refer to the diagram annexed hereto as "Annexure A".

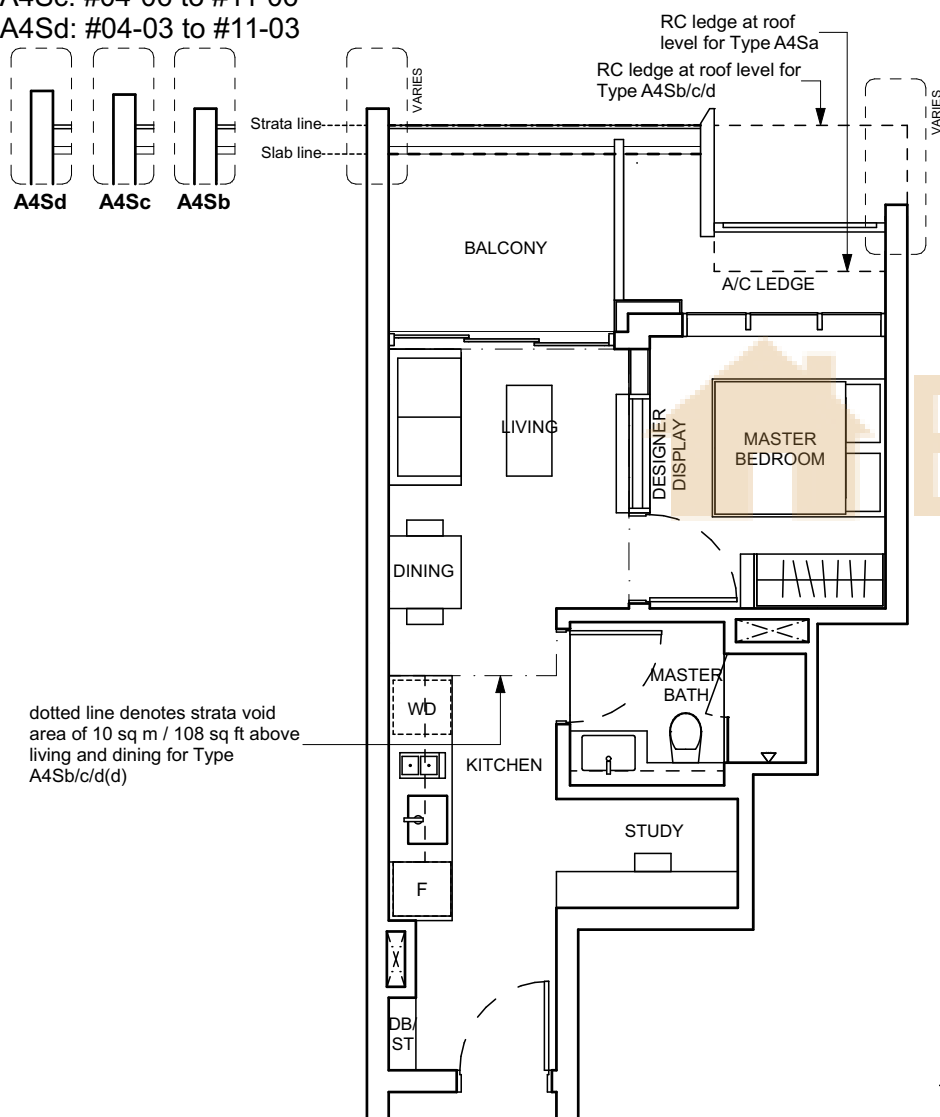
1 - BEDROOM + STUDY

TYPE A4Sa/b/c/d

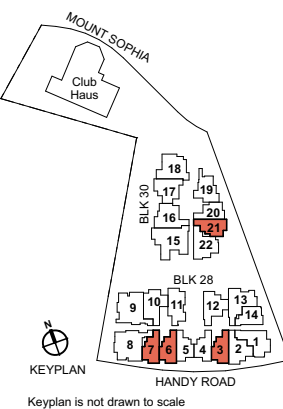
48 sq m / 517 sq ft

BLK 30:
A4Sa: #04-21 to #09-21

BLK 28:
A4Sb: #04-07 to #11-07
A4Sc: #04-06 to #11-06
A4Sd: #04-03 to #11-03



Area includes air-con (A/C) ledge, balcony, private enclosed space (PES), and void (where applicable). Some units are mirror images of the apartment plans shown in the brochure. Orientation and facing may differ depending on the unit you are purchasing (please refer to the key plan). All plans are approximate measurements only and are subject to government re-survey. The balcony shall not be enclosed unless with the approved balcony screen. For an illustration of the approved balcony screen and balcony railing, please refer to the diagram annexed hereto as "Annexure A".

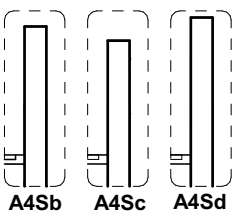


TYPE A4Sb/c/d(d)

58 sq m / 624 sq ft

Including strata void area of 10 sqm / 108 sqft above living and dining.
Approximate 5.03 m floor to ceiling height at living and dining.

BLK 28:
A4Sb(d): #12-07
A4Sc(d): #12-06
A4Sd(d): #12-03

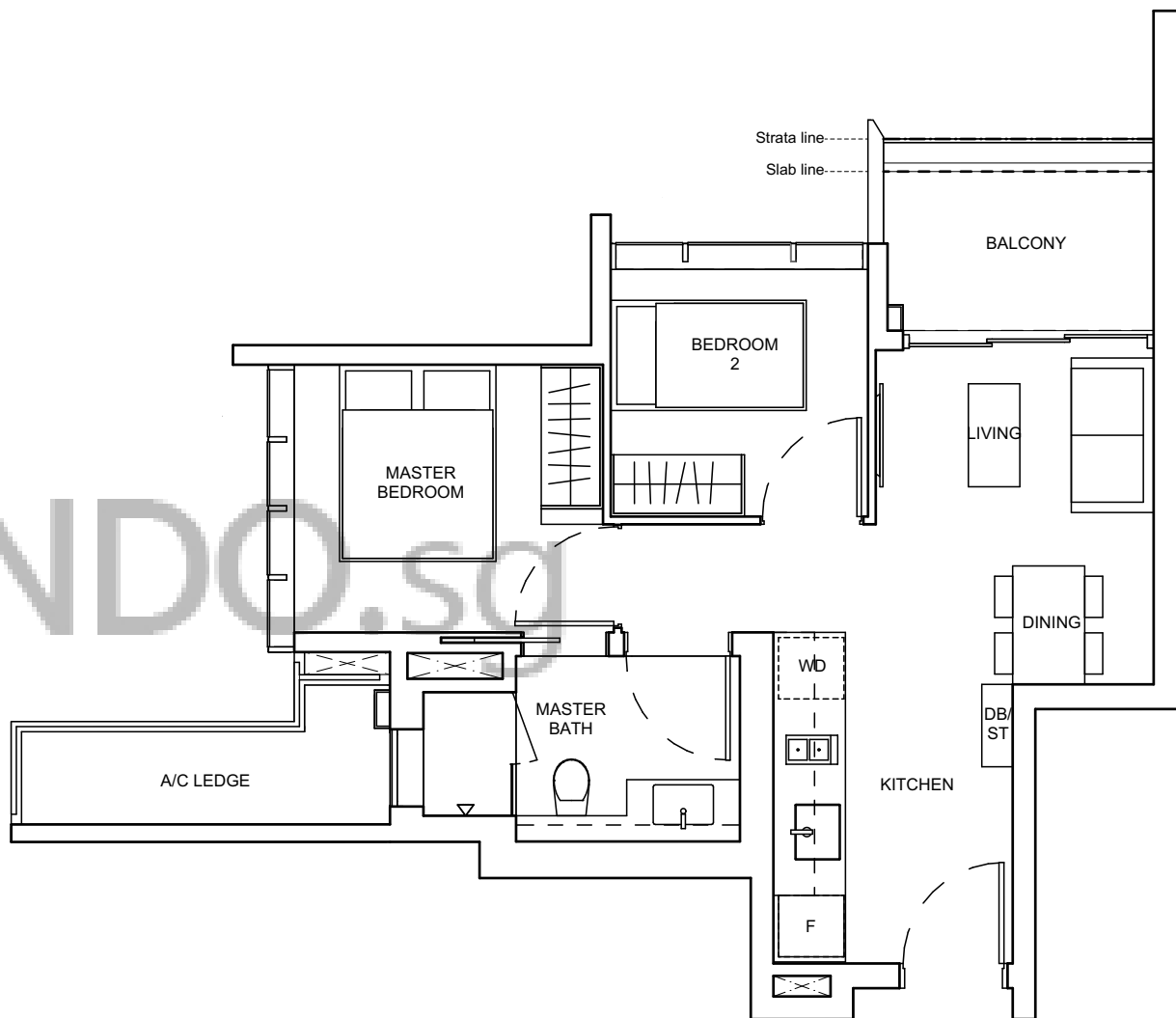


2 - BEDROOM

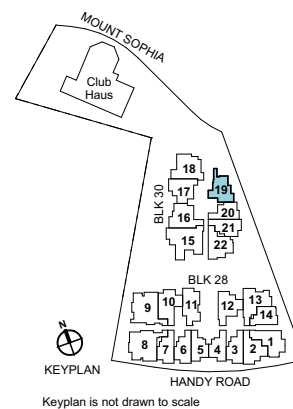
TYPE B1

55 sq m / 592 sq ft

BLK 30: #04-19 to #09-19



Area includes air-con (A/C) ledge, balcony, private enclosed space (PES), and void (where applicable). Some units are mirror images of the apartment plans shown in the brochure. Orientation and facing may differ depending on the unit you are purchasing (please refer to the key plan). All plans are approximate measurements only and are subject to government re-survey. The balcony shall not be enclosed unless with the approved balcony screen. For an illustration of the approved balcony screen and balcony railing, please refer to the diagram annexed hereto as "Annexure A".

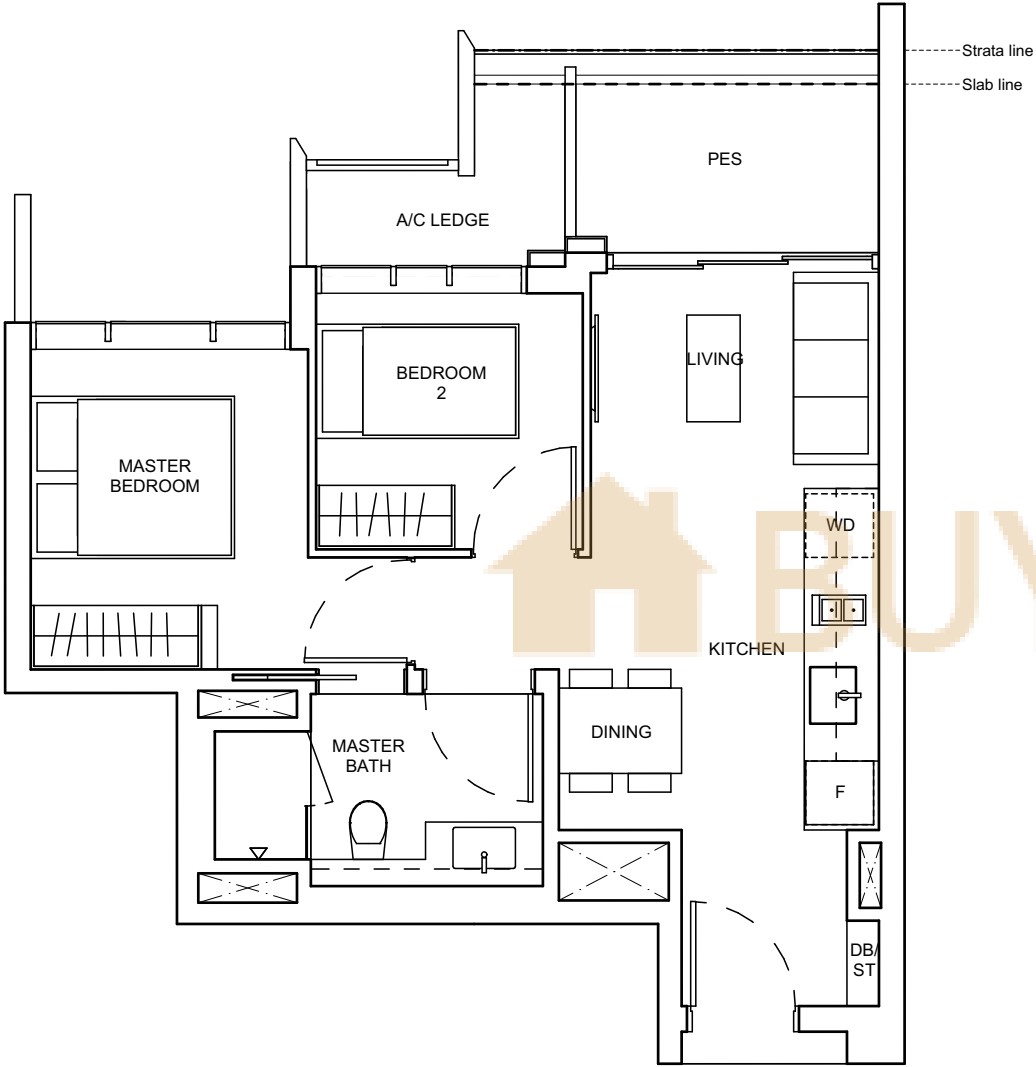


2 - BEDROOM

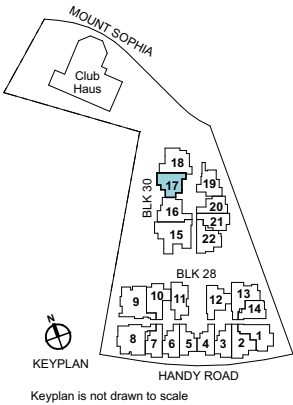
TYPE B2(p)

56 sq m / 603 sq ft

BLK 30: #04-17



Area includes air-con (A/C) ledge, balcony, private enclosed space (PES), and void (where applicable). Some units are mirror images of the apartment plans shown in the brochure. Orientation and facing may differ depending on the unit you are purchasing (please refer to the key plan). All plans are approximate measurements only and are subject to government re-survey. The balcony shall not be enclosed unless with the approved balcony screen. For an illustration of the approved balcony screen and balcony railing, please refer to the diagram annexed hereto as "Annexure A".

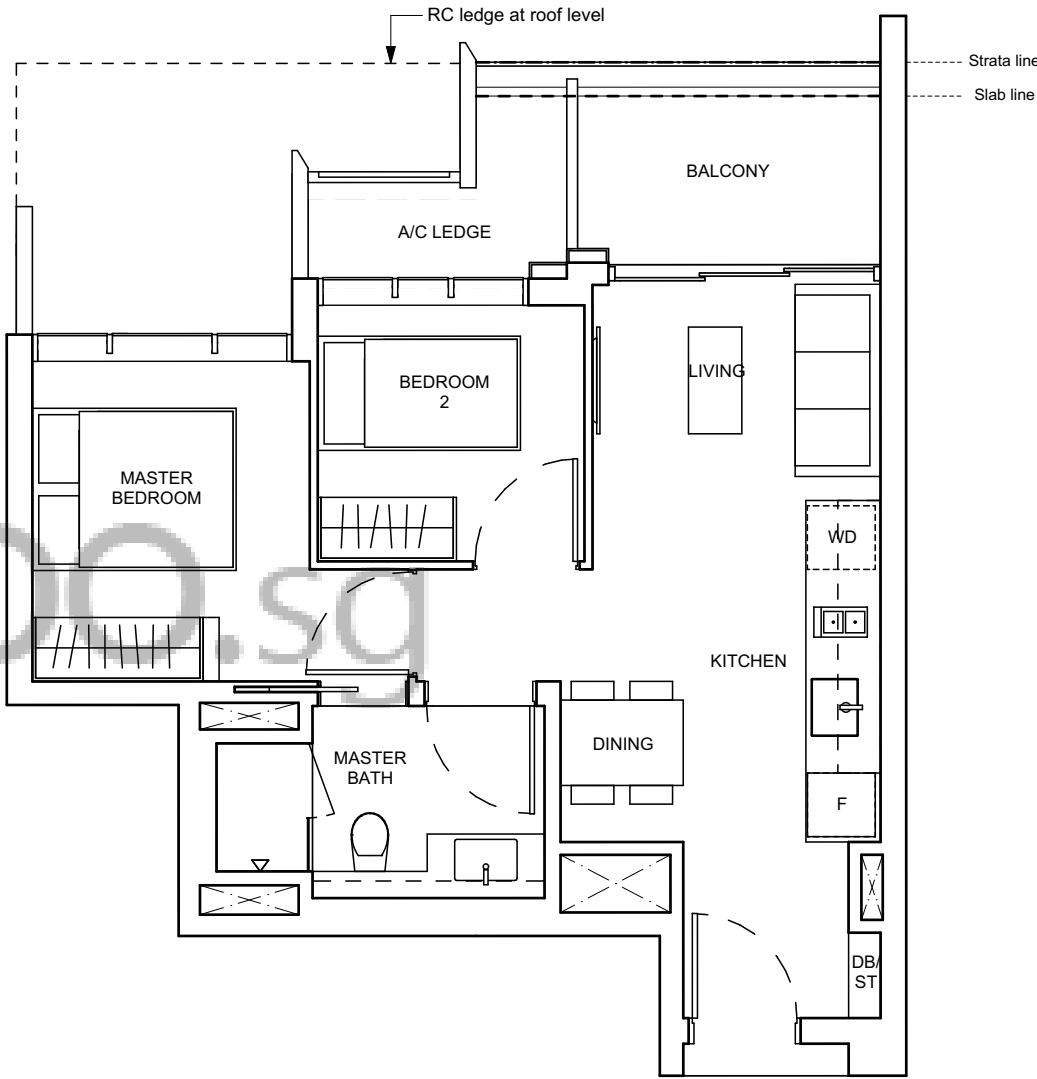


2 - BEDROOM

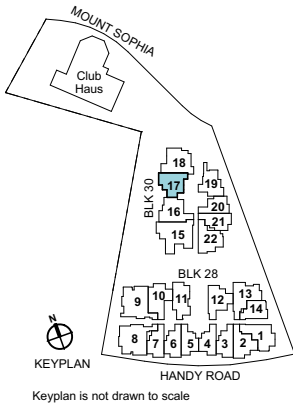
TYPE B2

56 sq m / 603 sq ft

BLK 30: #05-17 to #09-17



Area includes air-con (A/C) ledge, balcony, private enclosed space (PES), and void (where applicable). Some units are mirror images of the apartment plans shown in the brochure. Orientation and facing may differ depending on the unit you are purchasing (please refer to the key plan). All plans are approximate measurements only and are subject to government re-survey. The balcony shall not be enclosed unless with the approved balcony screen. For an illustration of the approved balcony screen and balcony railing, please refer to the diagram annexed hereto as "Annexure A".



2 - BEDROOM

TYPE B3(p)

57 sq m / 614 sq ft

BLK 28: #03-11

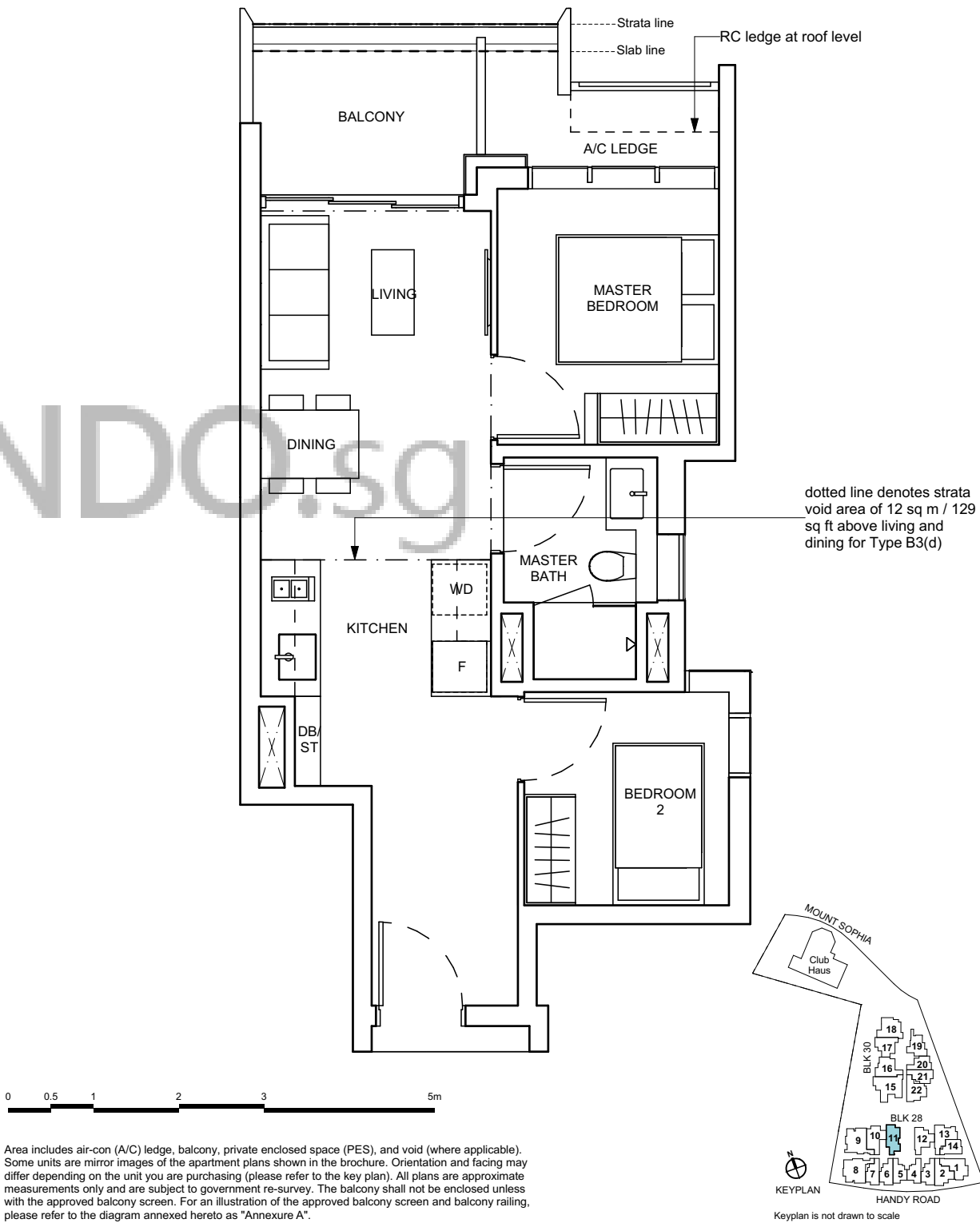


2 - BEDROOM

TYPE B3

57 sq m / 614 sq ft

BLK 28: #04-11 to #11-11

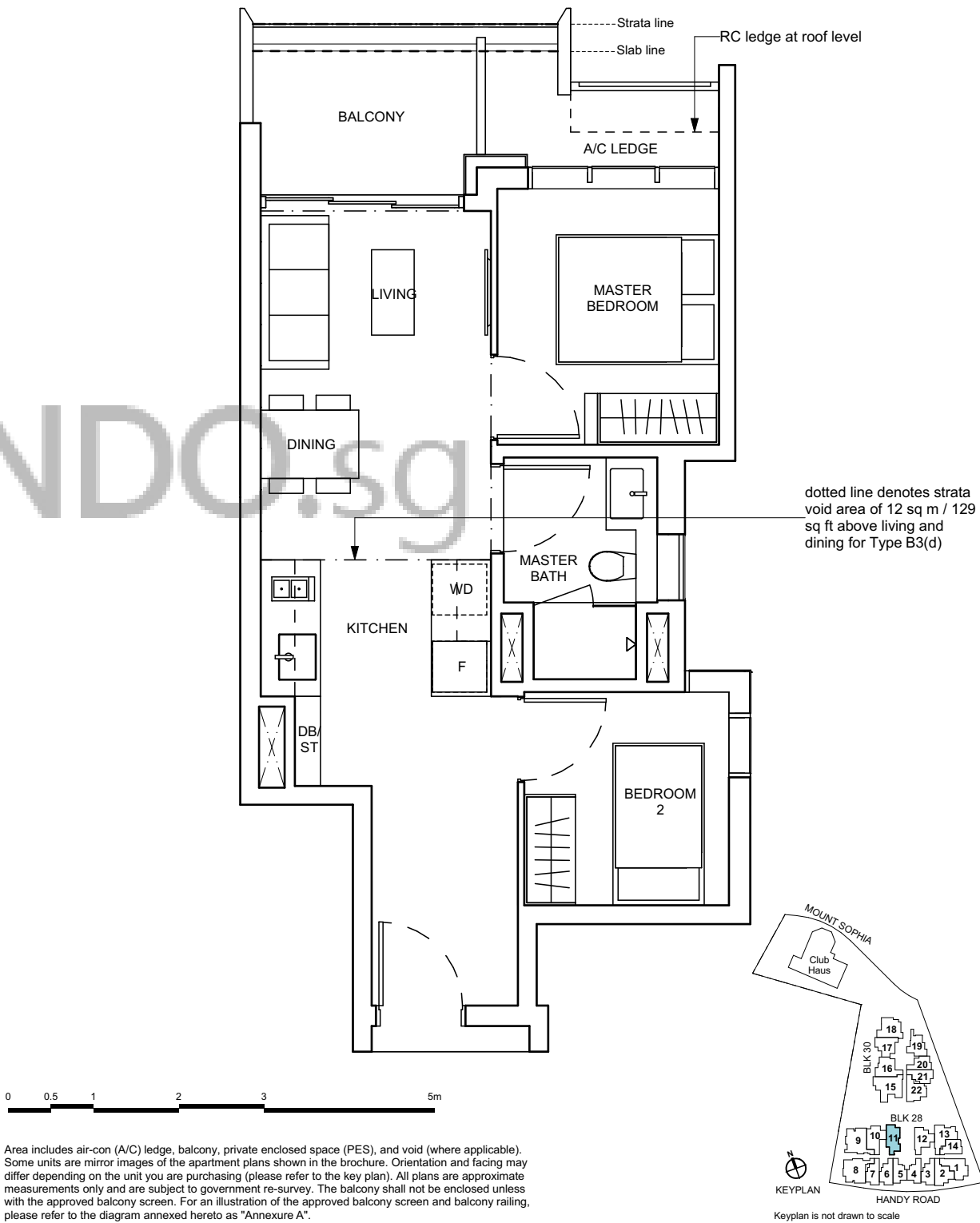


TYPE B3(d)

69 sq m / 743 sq ft

Including strata void area of 12 sqm / 129 sqft above living and dining.
Approximate 5.03 m floor to ceiling height at living and dining.

BLK 28: #12-11

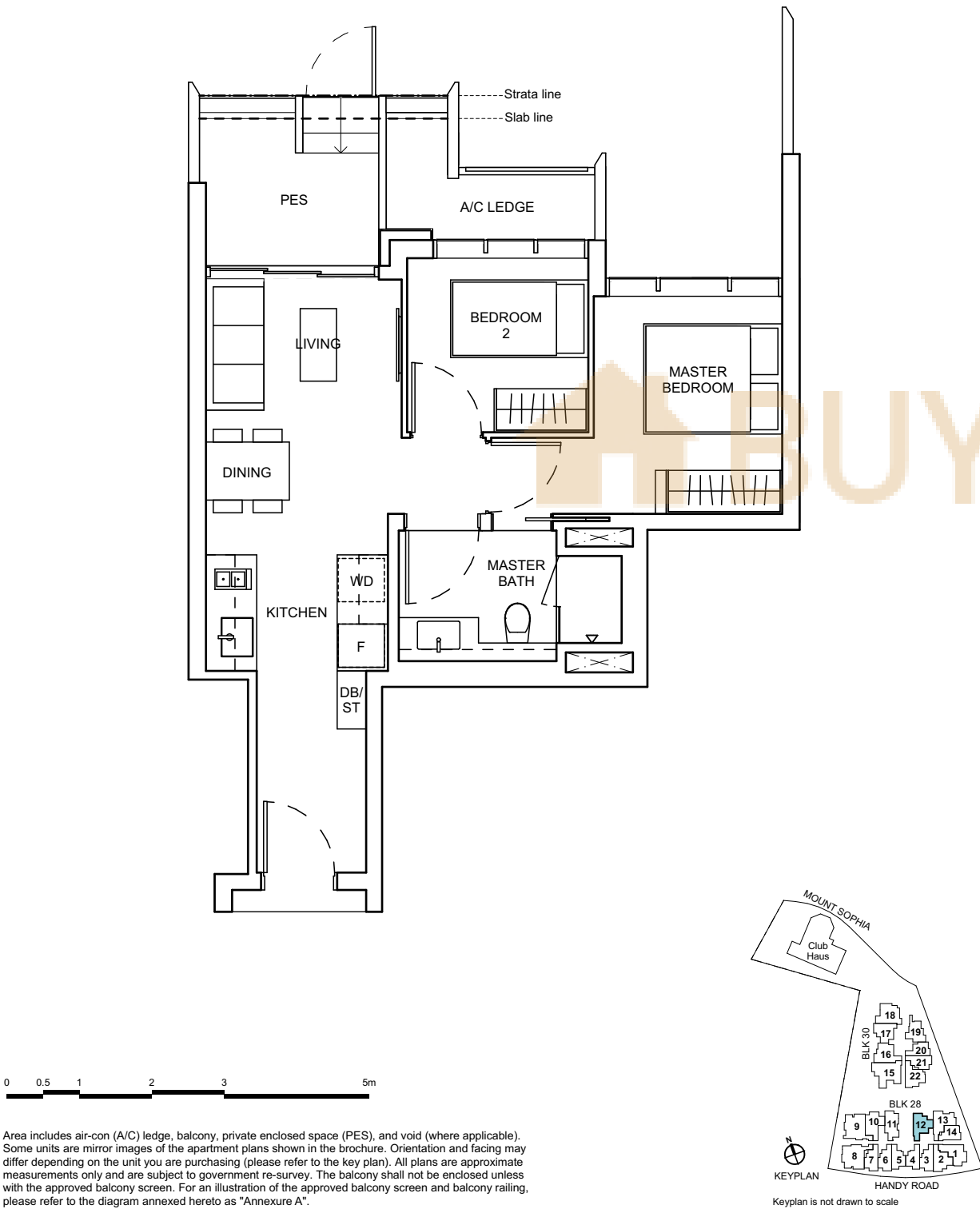


2 - BEDROOM

TYPE B4(p)

58 sq m / 624 sq ft

BLK 28: #03-12

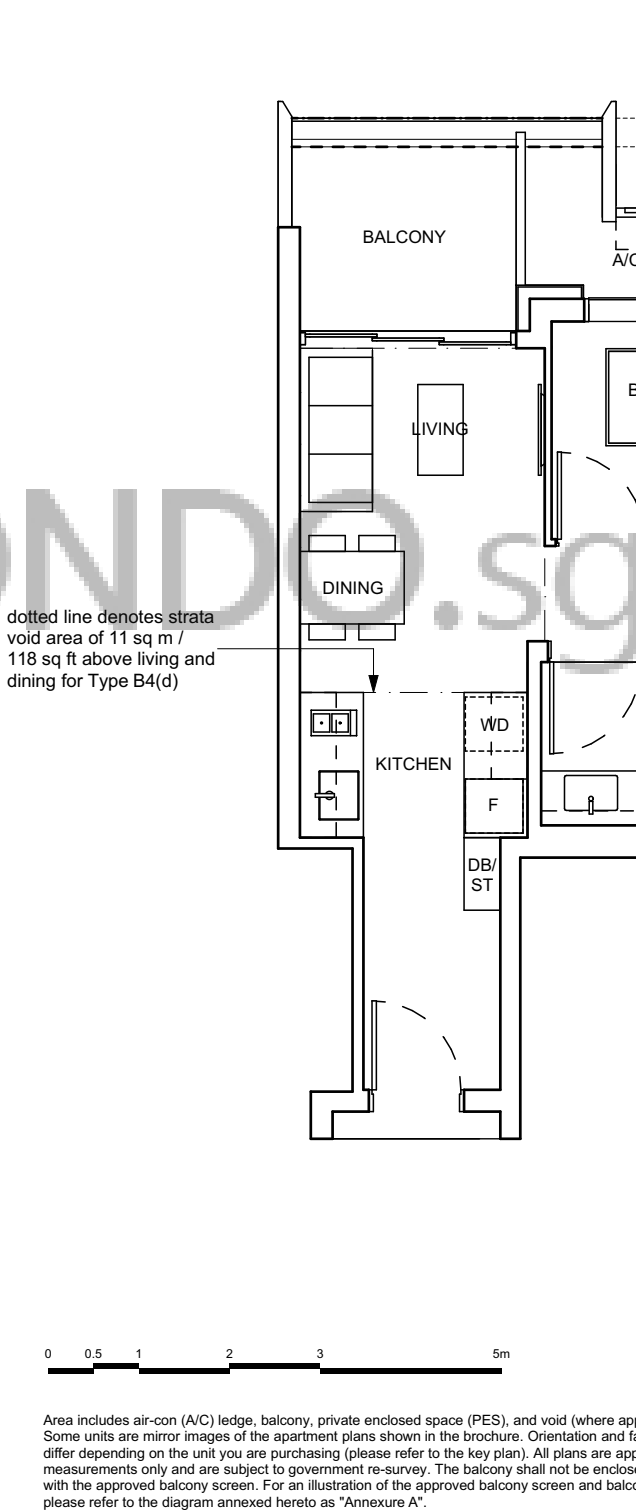


2 - BEDROOM

TYPE B4

58 sq m / 624 sq ft

BLK 28: #04-12 to #11-12

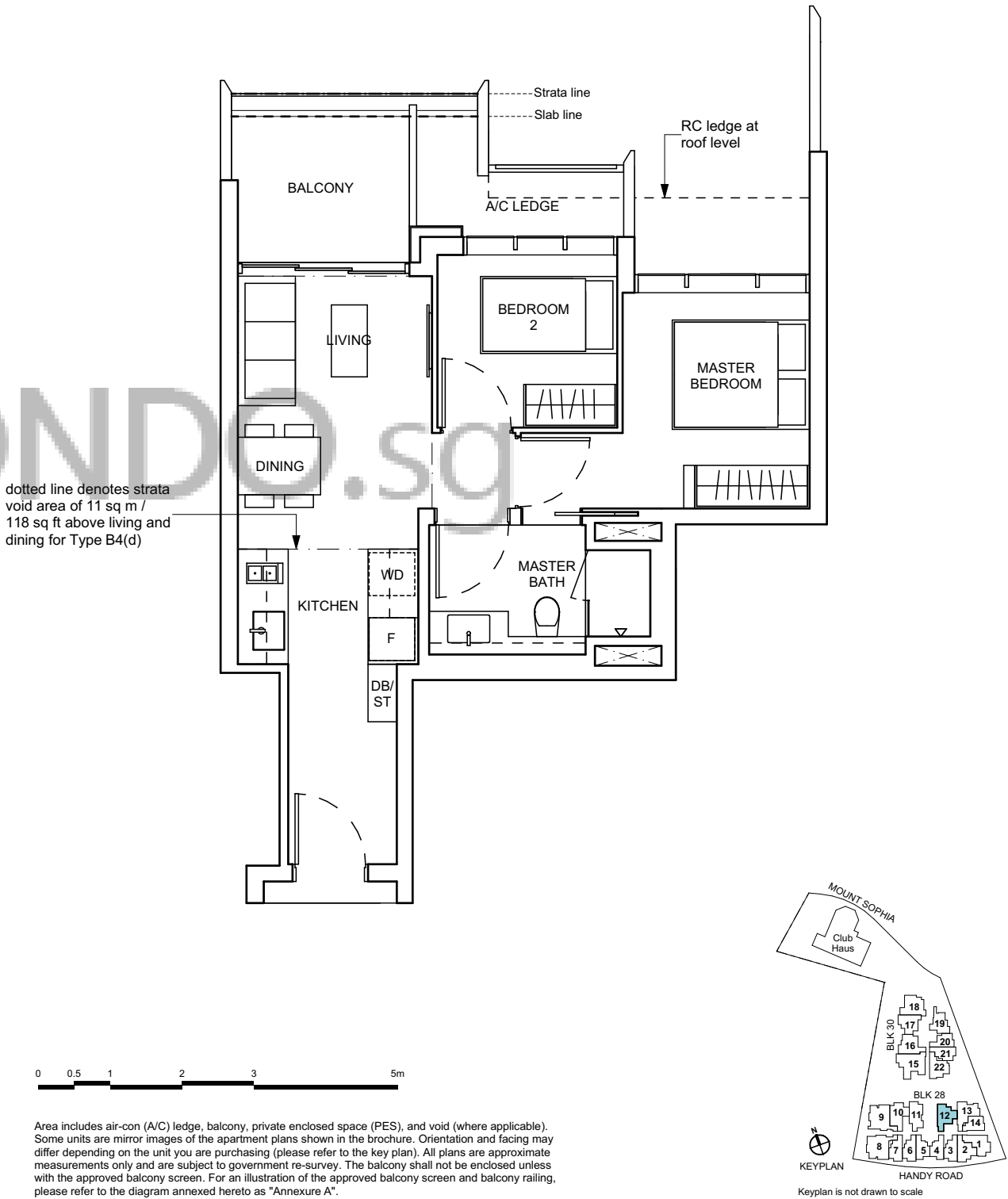


TYPE B4(d)

69 sq m / 743 sq ft

Including strata void area of 11 sqm / 118 sqft above living and dining.
Approximate 5.03 m floor to ceiling height at living and dining.

BLK 28: #12-12

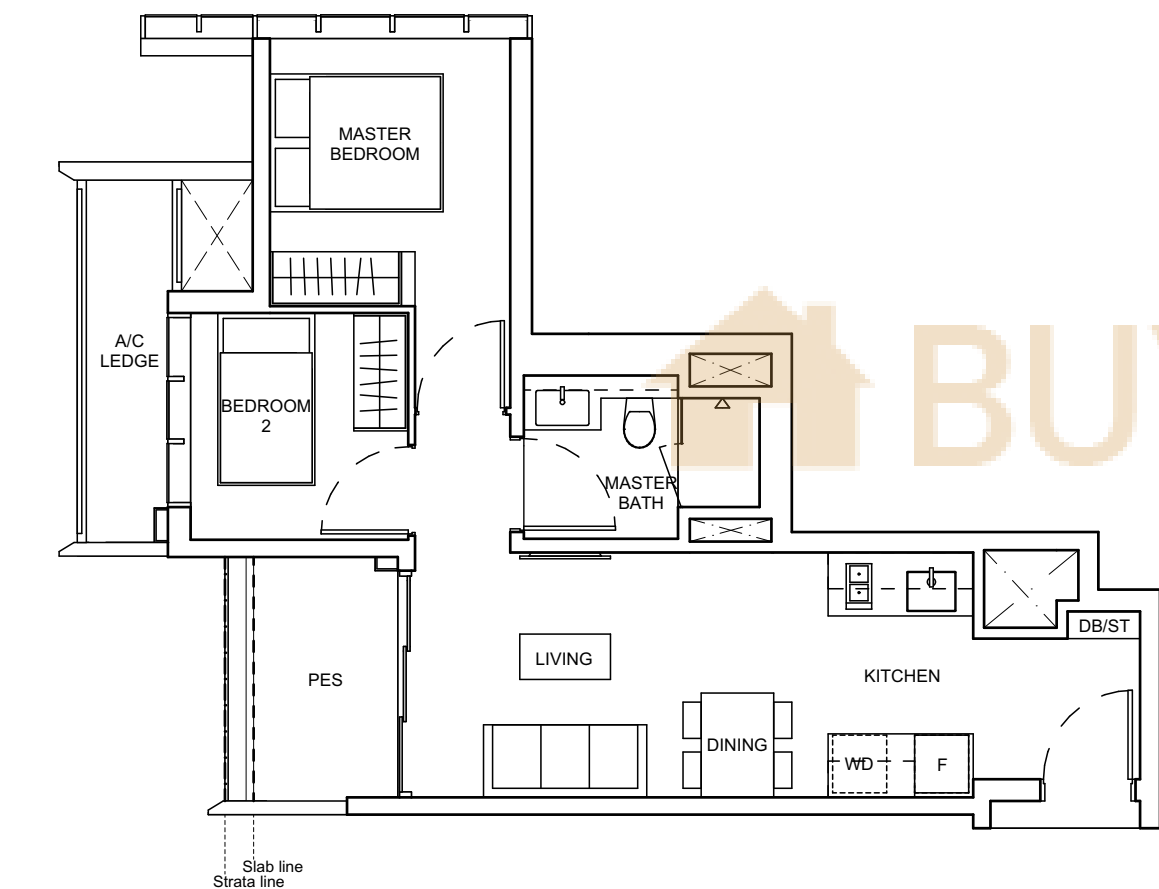


2 - BEDROOM

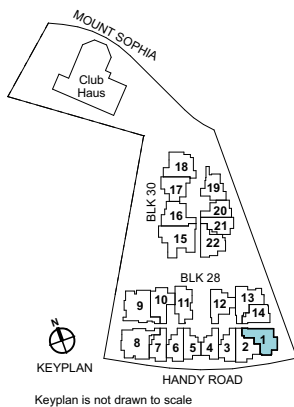
TYPE B5(p)

58 sq m / 624 sq ft

BLK 28: #03-01



Area includes air-con (A/C) ledge, balcony, private enclosed space (PES), and void (where applicable). Some units are mirror images of the apartment plans shown in the brochure. Orientation and facing may differ depending on the unit you are purchasing (please refer to the key plan). All plans are approximate measurements only and are subject to government re-survey. The balcony shall not be enclosed unless with the approved balcony screen. For an illustration of the approved balcony screen and balcony railing, please refer to the diagram annexed hereto as "Annexure A".

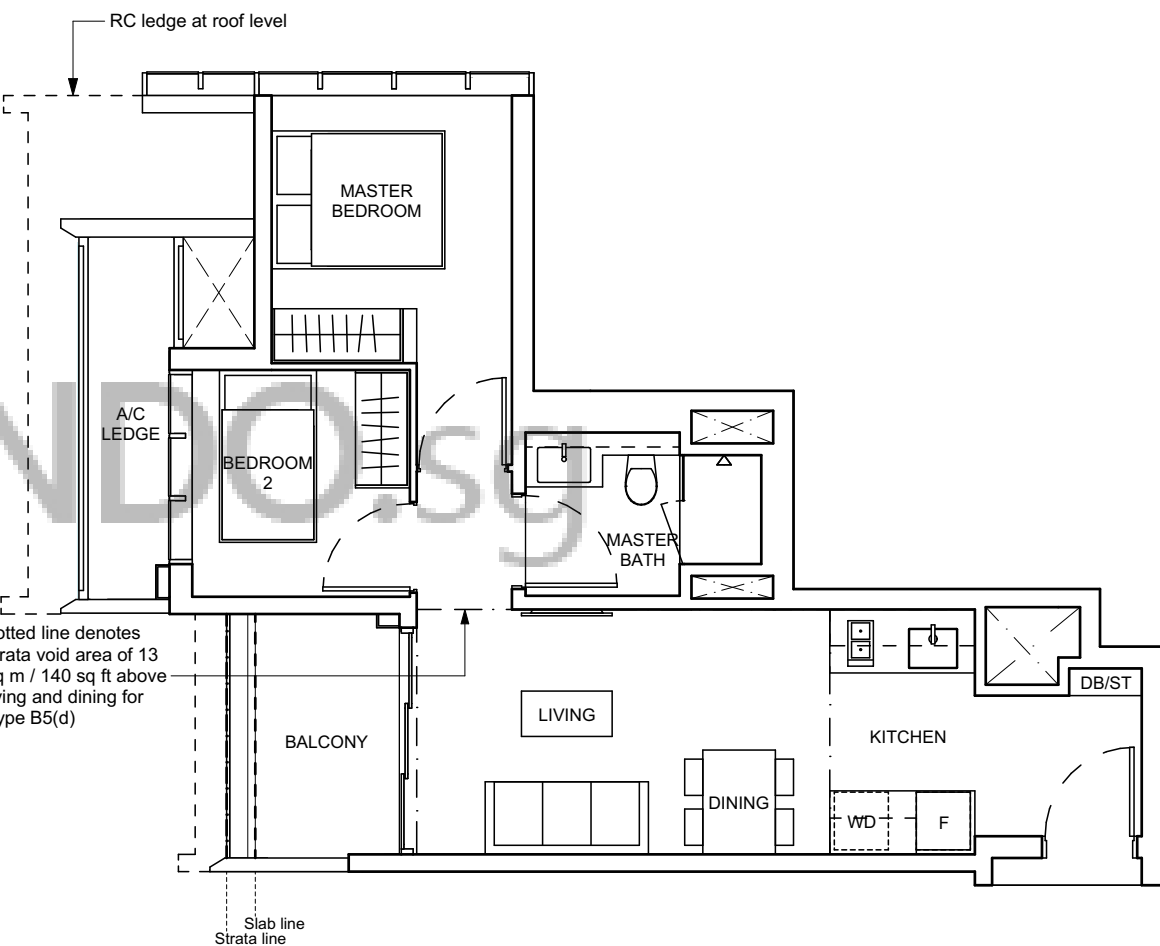


2 - BEDROOM

TYPE B5

58 sq m / 624 sq ft

BLK 28: #04-01 to #11-01



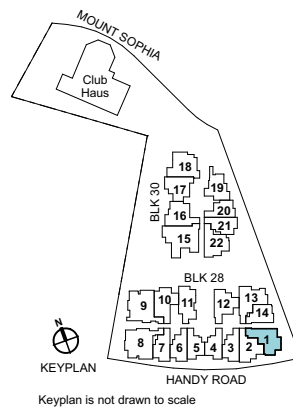
Area includes air-con (A/C) ledge, balcony, private enclosed space (PES), and void (where applicable). Some units are mirror images of the apartment plans shown in the brochure. Orientation and facing may differ depending on the unit you are purchasing (please refer to the key plan). All plans are approximate measurements only and are subject to government re-survey. The balcony shall not be enclosed unless with the approved balcony screen. For an illustration of the approved balcony screen and balcony railing, please refer to the diagram annexed hereto as "Annexure A".

TYPE B5(d)

71 sq m / 764 sq ft

Including strata void area of 13 sqm / 140 sqft above living and dining.
Approximate 5.03 m floor to ceiling height at living and dining.

BLK 28: #12-01

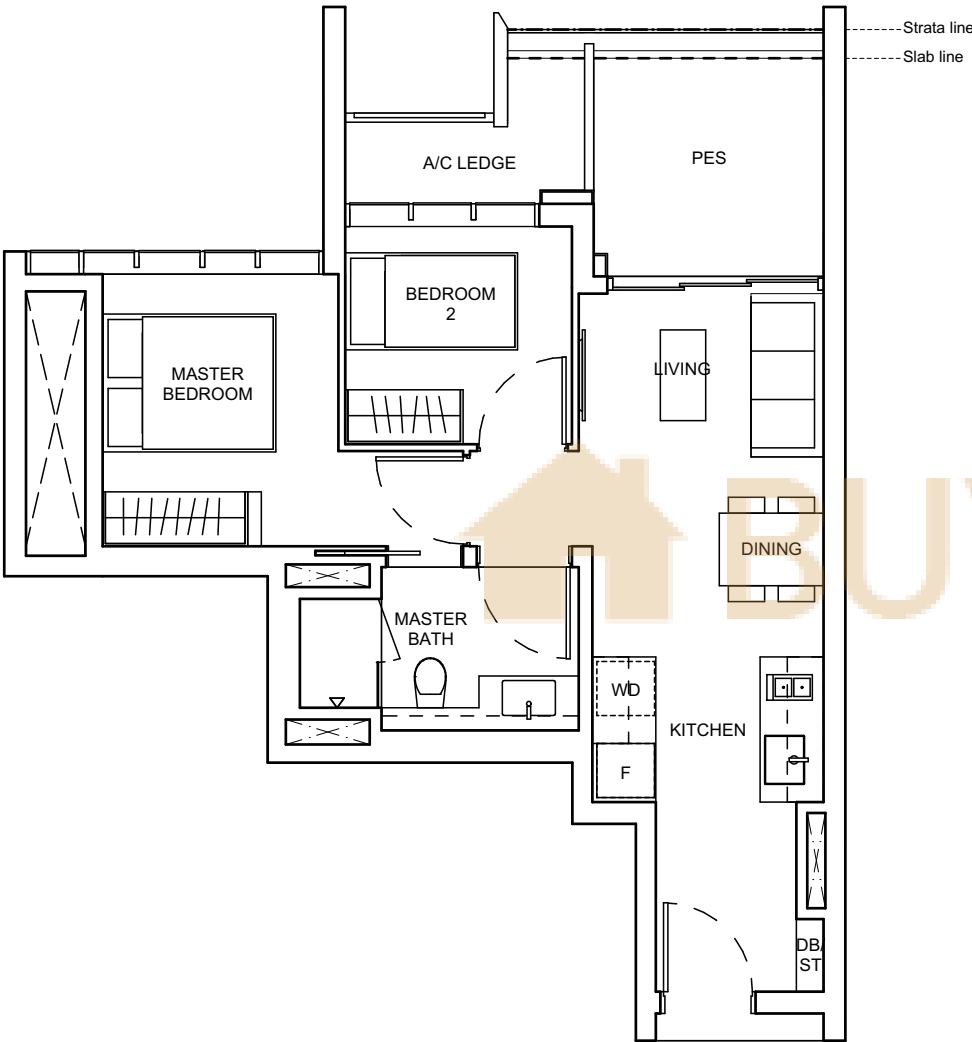


2 - BEDROOM

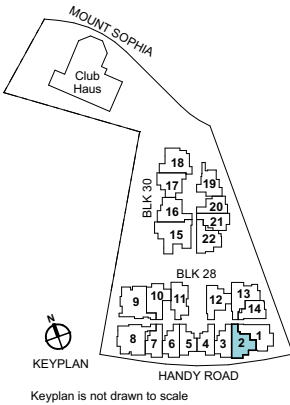
TYPE B6(p)

59 sq m / 635 sq ft

BLK 28: #03-02



Area includes air-con (A/C) ledge, balcony, private enclosed space (PES), and void (where applicable). Some units are mirror images of the apartment plans shown in the brochure. Orientation and facing may differ depending on the unit you are purchasing (please refer to the key plan). All plans are approximate measurements only and are subject to government re-survey. The balcony shall not be enclosed unless with the approved balcony screen. For an illustration of the approved balcony screen and balcony railing, please refer to the diagram annexed hereto as "Annexure A".

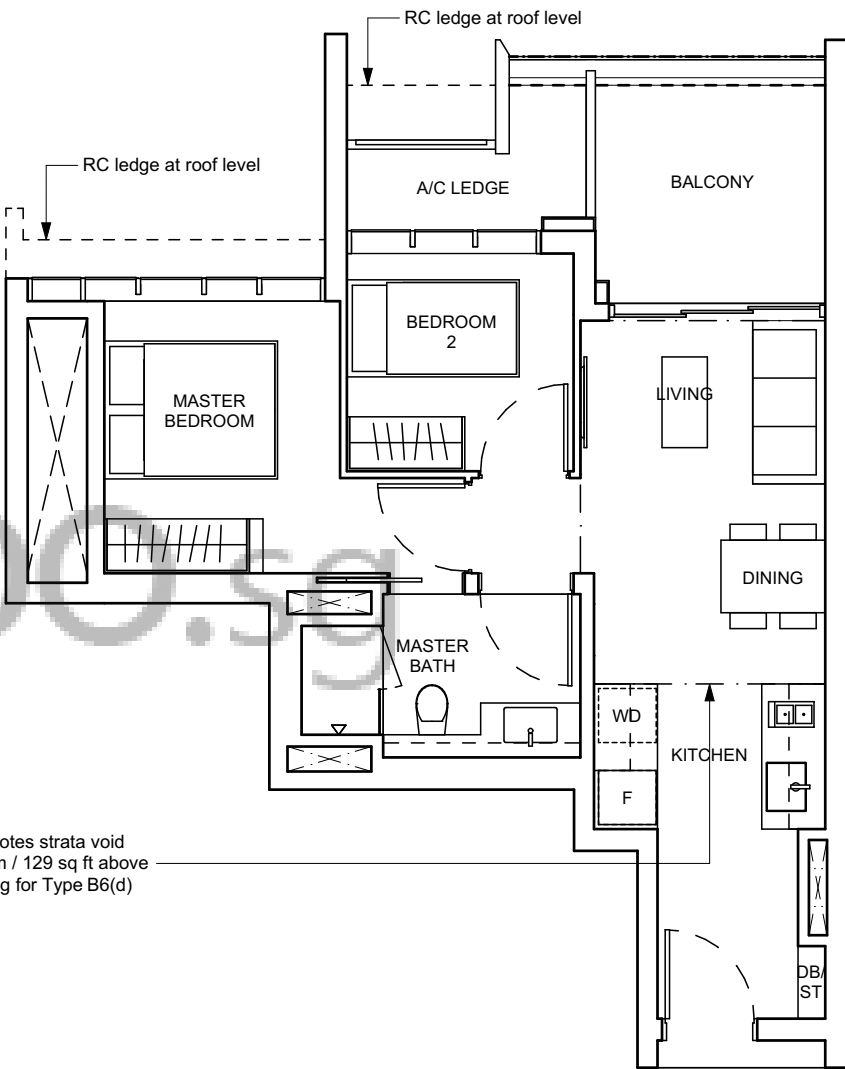


2 - BEDROOM

TYPE B6

59 sq m / 635 sq ft

BLK 28: #04-02 to #11-02



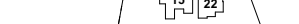
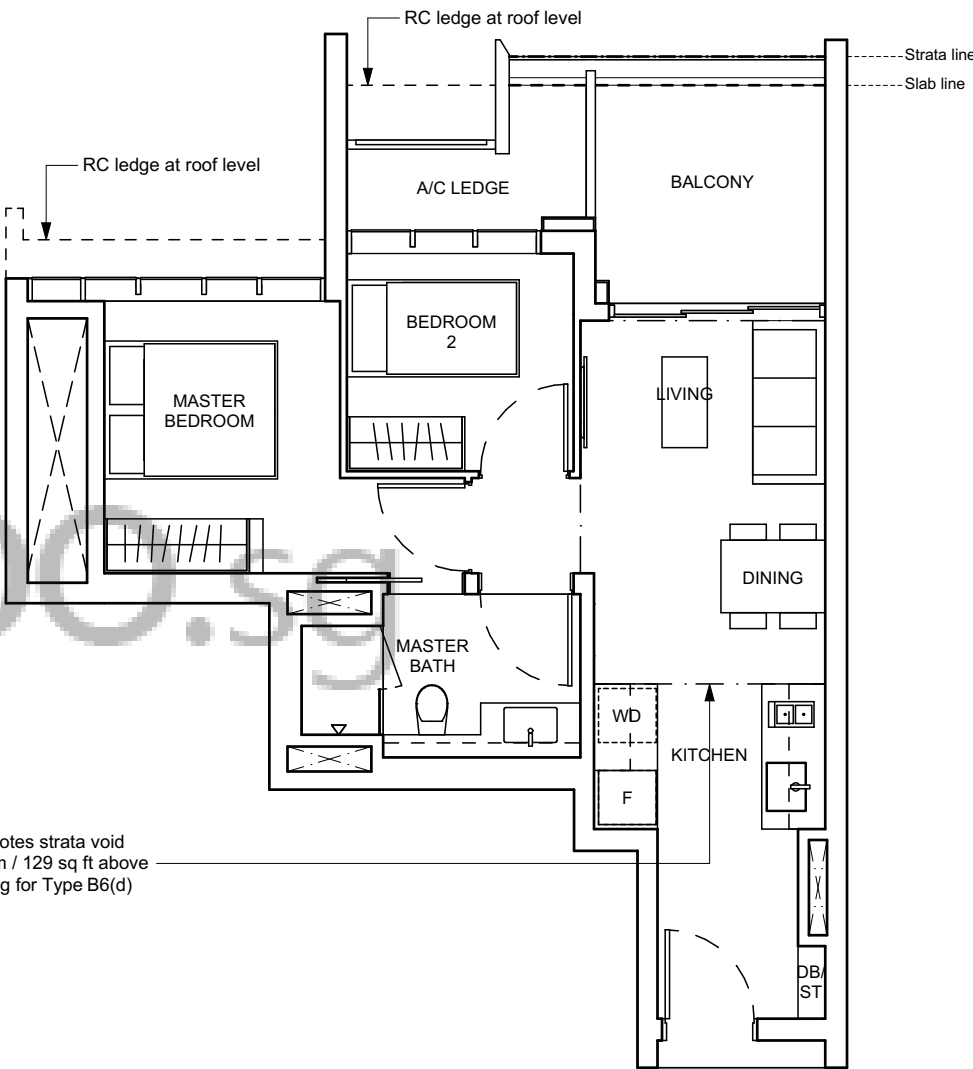
Area includes air-con (A/C) ledge, balcony, private enclosed space (PES), and void (where applicable). Some units are mirror images of the apartment plans shown in the brochure. Orientation and facing may differ depending on the unit you are purchasing (please refer to the key plan). All plans are approximate measurements only and are subject to government re-survey. The balcony shall not be enclosed unless with the approved balcony screen. For an illustration of the approved balcony screen and balcony railing, please refer to the diagram annexed hereto as "Annexure A".

TYPE B6(d)

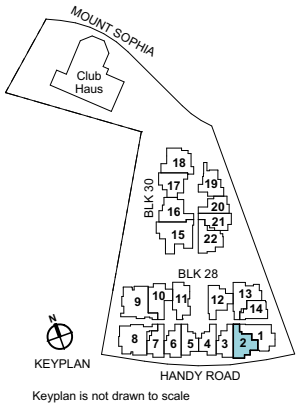
71 sq m / 764 sq ft

Including strata void area of 12 sqm / 129 sqft above living and dining.
Approximate 5.03 m floor to ceiling height at living and dining.

BLK 28: #12-02



Area includes air-con (A/C) ledge, balcony, private enclosed space (PES), and void (where applicable). Some units are mirror images of the apartment plans shown in the brochure. Orientation and facing may differ depending on the unit you are purchasing (please refer to the key plan). All plans are approximate measurements only and are subject to government re-survey. The balcony shall not be enclosed unless with the approved balcony screen. For an illustration of the approved balcony screen and balcony railing, please refer to the diagram annexed hereto as "Annexure A".

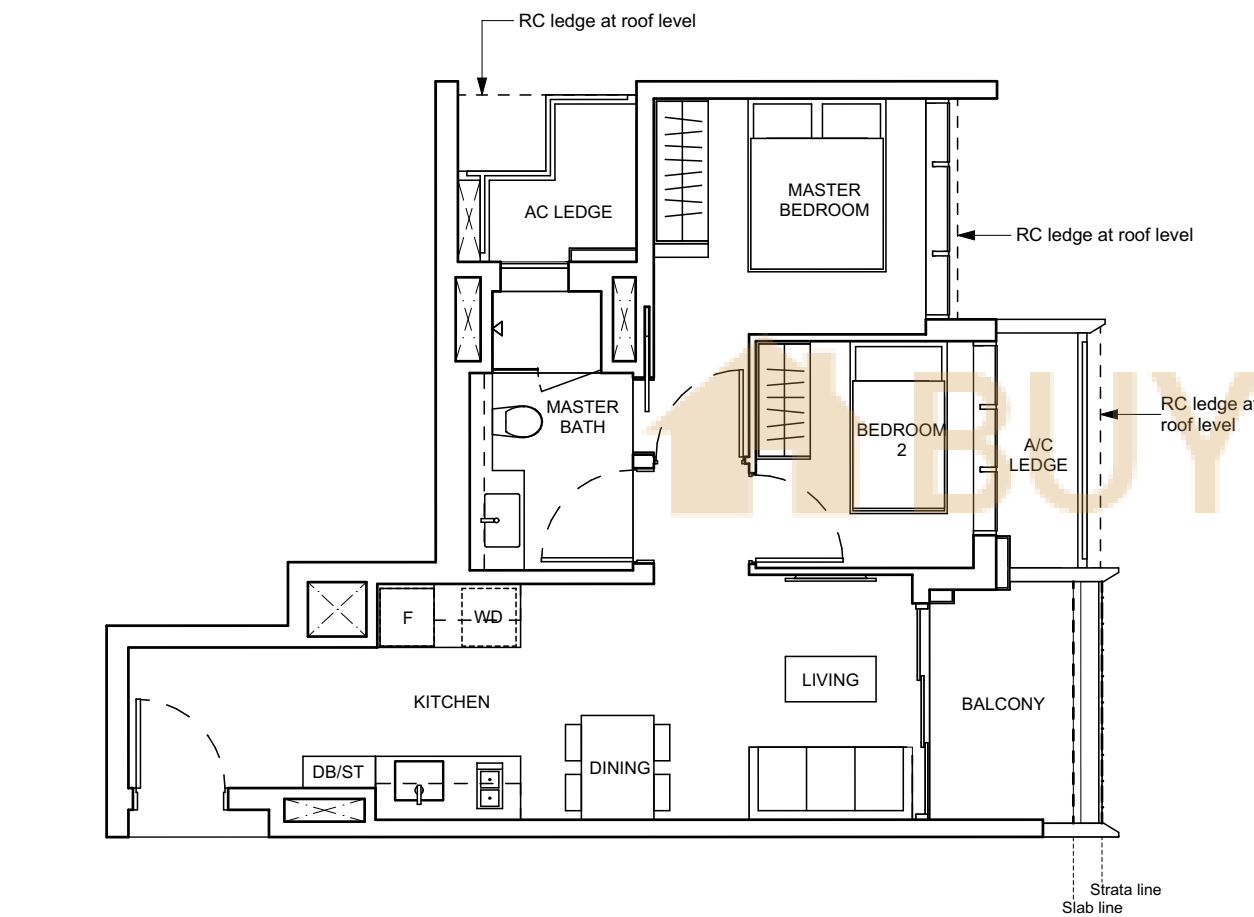


2 - BEDROOM

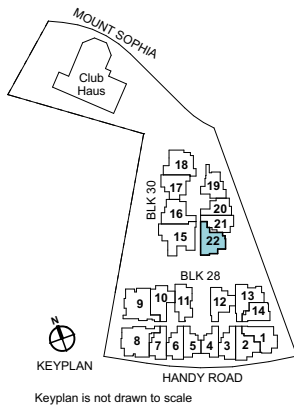
TYPE B7

60 sq m / 646 sq ft

BLK 30: #04-22 to #09-22



Area includes air-con (A/C) ledge, balcony, private enclosed space (PES), and void (where applicable). Some units are mirror images of the apartment plans shown in the brochure. Orientation and facing may differ depending on the unit you are purchasing (please refer to the key plan). All plans are approximate measurements only and are subject to government re-survey. The balcony shall not be enclosed unless with the approved balcony screen. For an illustration of the approved balcony screen and balcony railing, please refer to the diagram annexed hereto as "Annexure A".

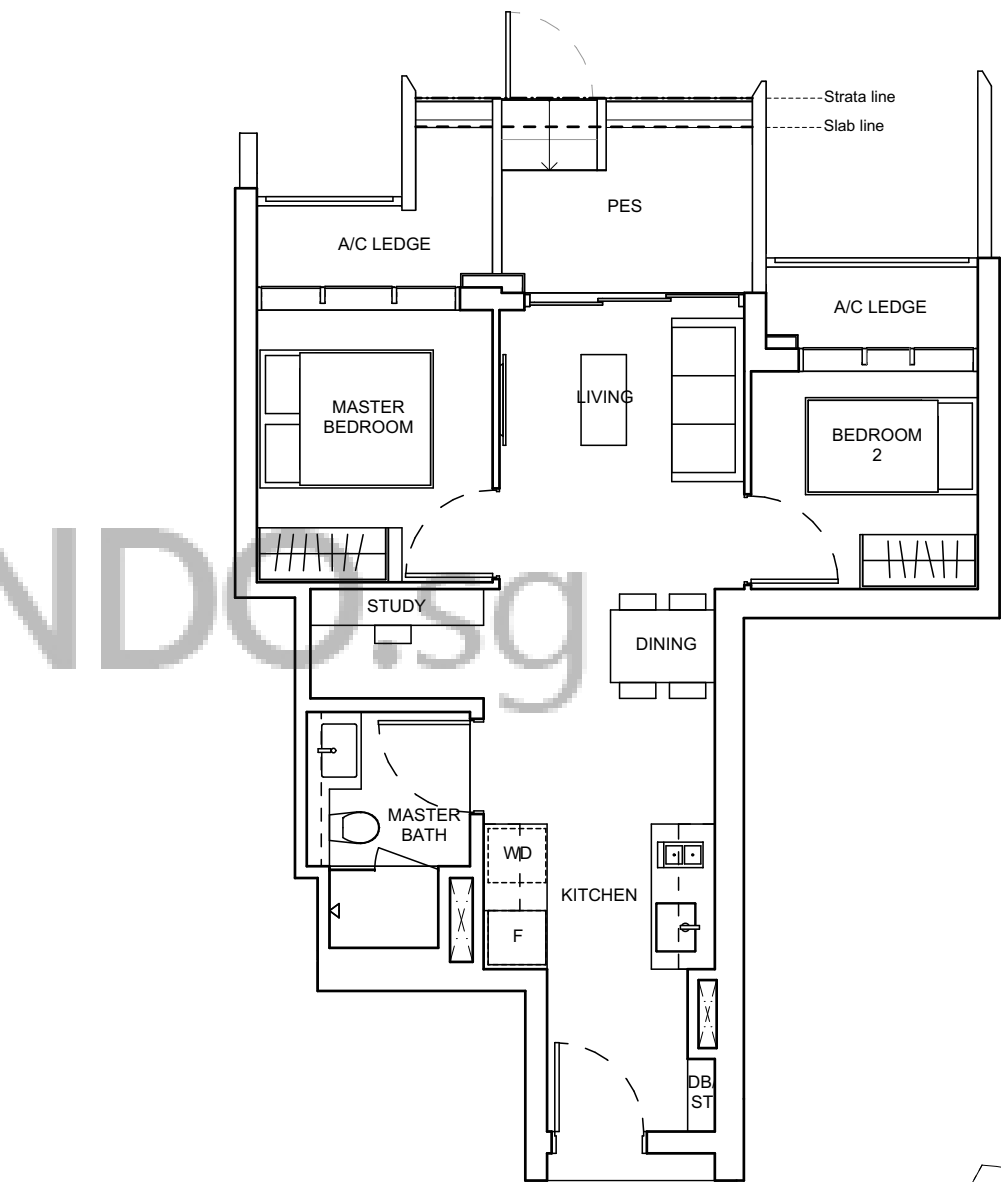


2 - BEDROOM + STUDY

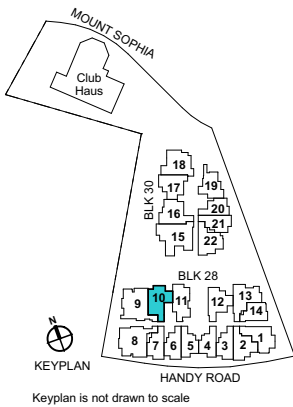
TYPE B8S(p)

63 sq m / 678 sq ft

BLK 28: #03-10



Area includes air-con (A/C) ledge, balcony, private enclosed space (PES), and void (where applicable). Some units are mirror images of the apartment plans shown in the brochure. Orientation and facing may differ depending on the unit you are purchasing (please refer to the key plan). All plans are approximate measurements only and are subject to government re-survey. The balcony shall not be enclosed unless with the approved balcony screen. For an illustration of the approved balcony screen and balcony railing, please refer to the diagram annexed hereto as "Annexure A".

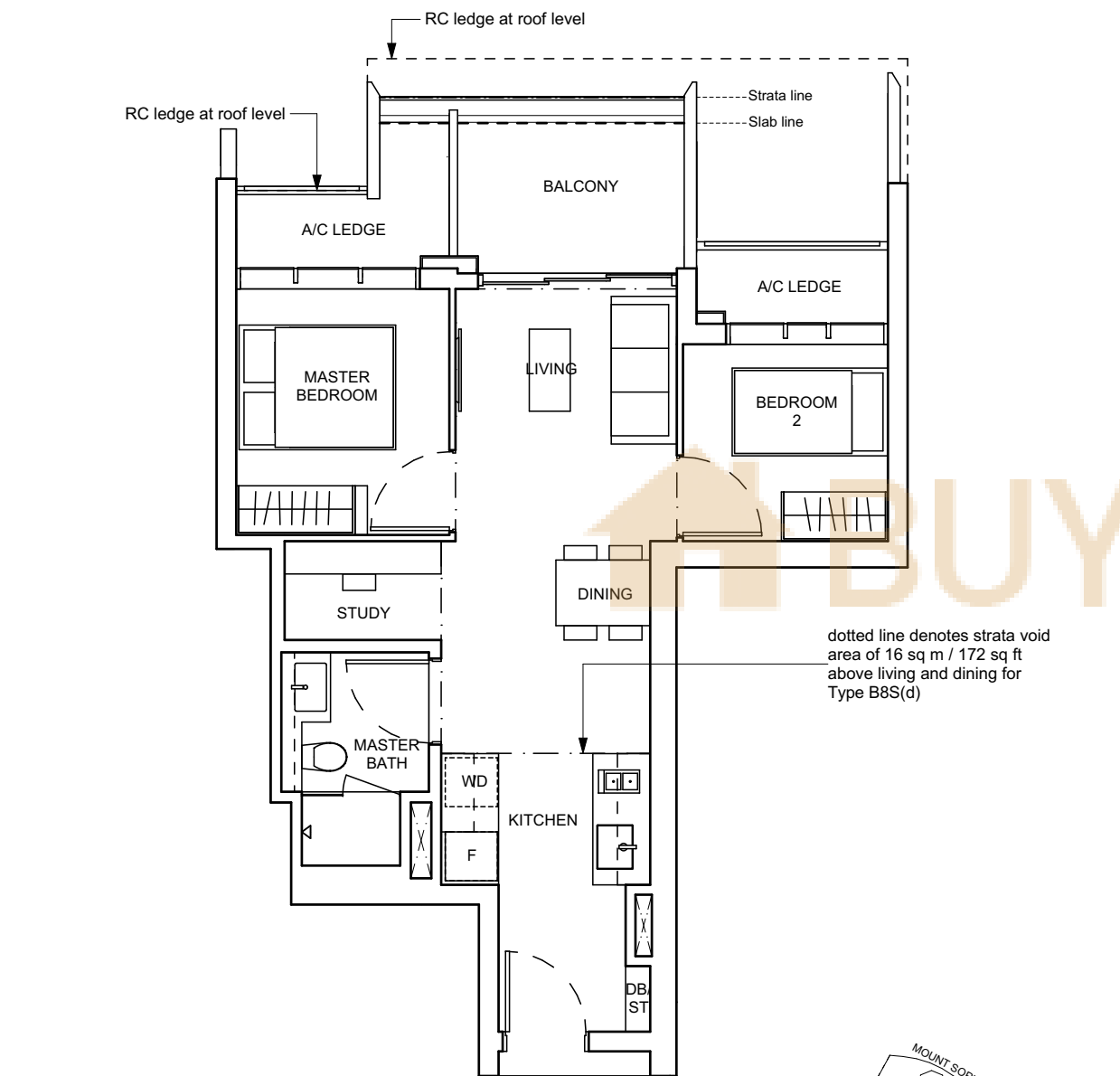


2 - BEDROOM + STUDY

TYPE B8S

63 sq m / 678 sq ft

BLK 28: #04-10 to #11-10



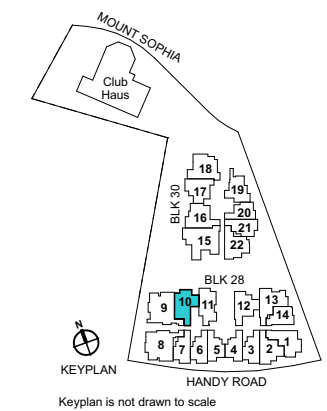
Area includes air-con (A/C) ledge, balcony, private enclosed space (PES), and void (where applicable). Some units are mirror images of the apartment plans shown in the brochure. Orientation and facing may differ depending on the unit you are purchasing (please refer to the key plan). All plans are approximate measurements only and are subject to government re-survey. The balcony shall not be enclosed unless with the approved balcony screen. For an illustration of the approved balcony screen and balcony railing, please refer to the diagram annexed hereto as "Annexure A".

TYPE B8S(d)

79 sq m / 850 sq ft

Including strata void area of 16 sqm / 172 sqft above living and dining.
Approximate 5.03 m floor to ceiling height at living and dining.

BLK 28: #12-10



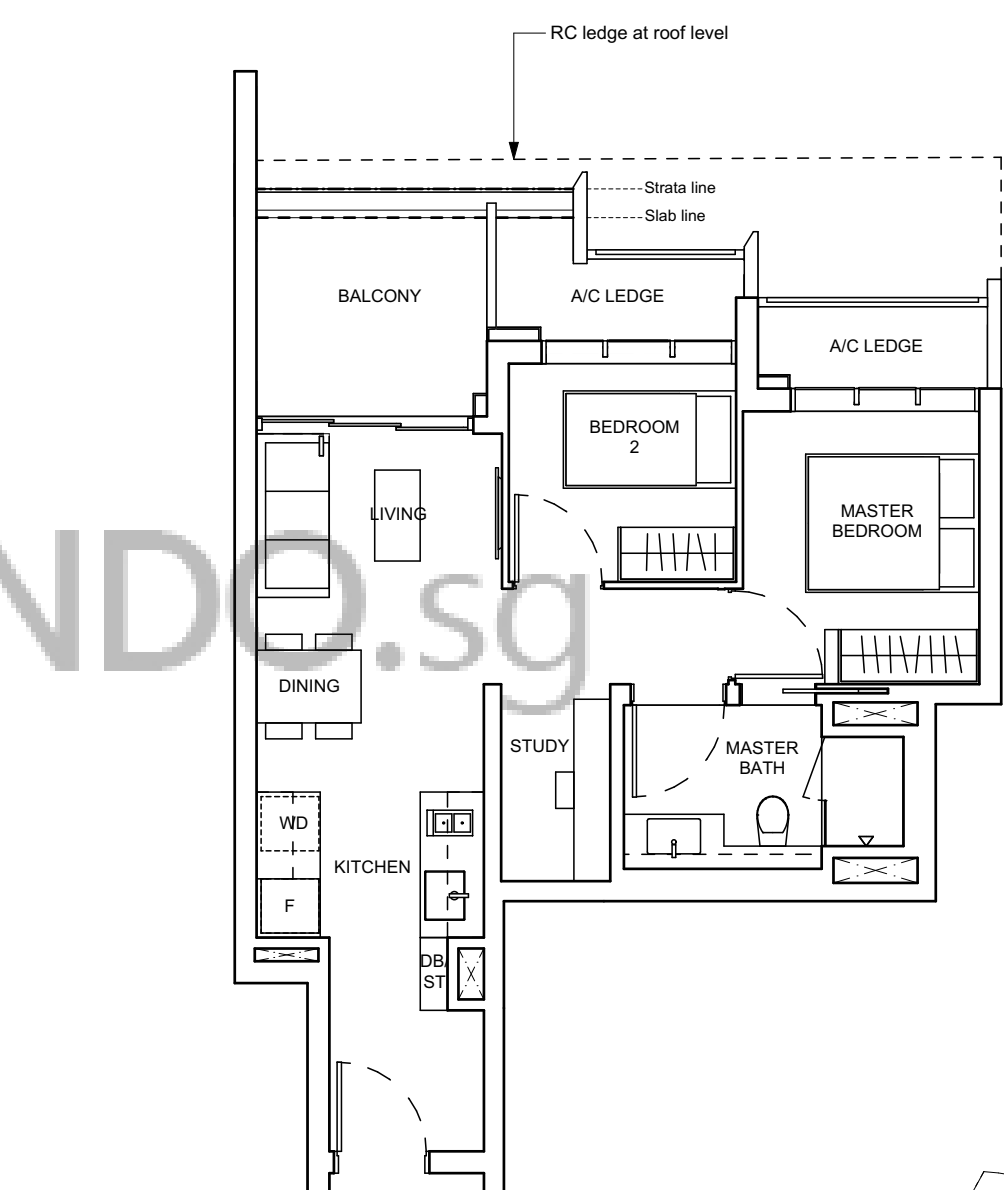
KEYPLAN
Keyplan is not drawn to scale

2 - BEDROOM + STUDY

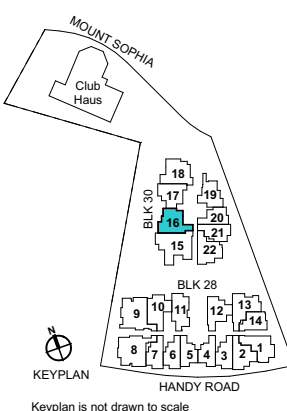
TYPE B9S

64 sq m / 689 sq ft

BLK 30: #04-16 to #09-16



Area includes air-con (A/C) ledge, balcony, private enclosed space (PES), and void (where applicable). Some units are mirror images of the apartment plans shown in the brochure. Orientation and facing may differ depending on the unit you are purchasing (please refer to the key plan). All plans are approximate measurements only and are subject to government re-survey. The balcony shall not be enclosed unless with the approved balcony screen. For an illustration of the approved balcony screen and balcony railing, please refer to the diagram annexed hereto as "Annexure A".



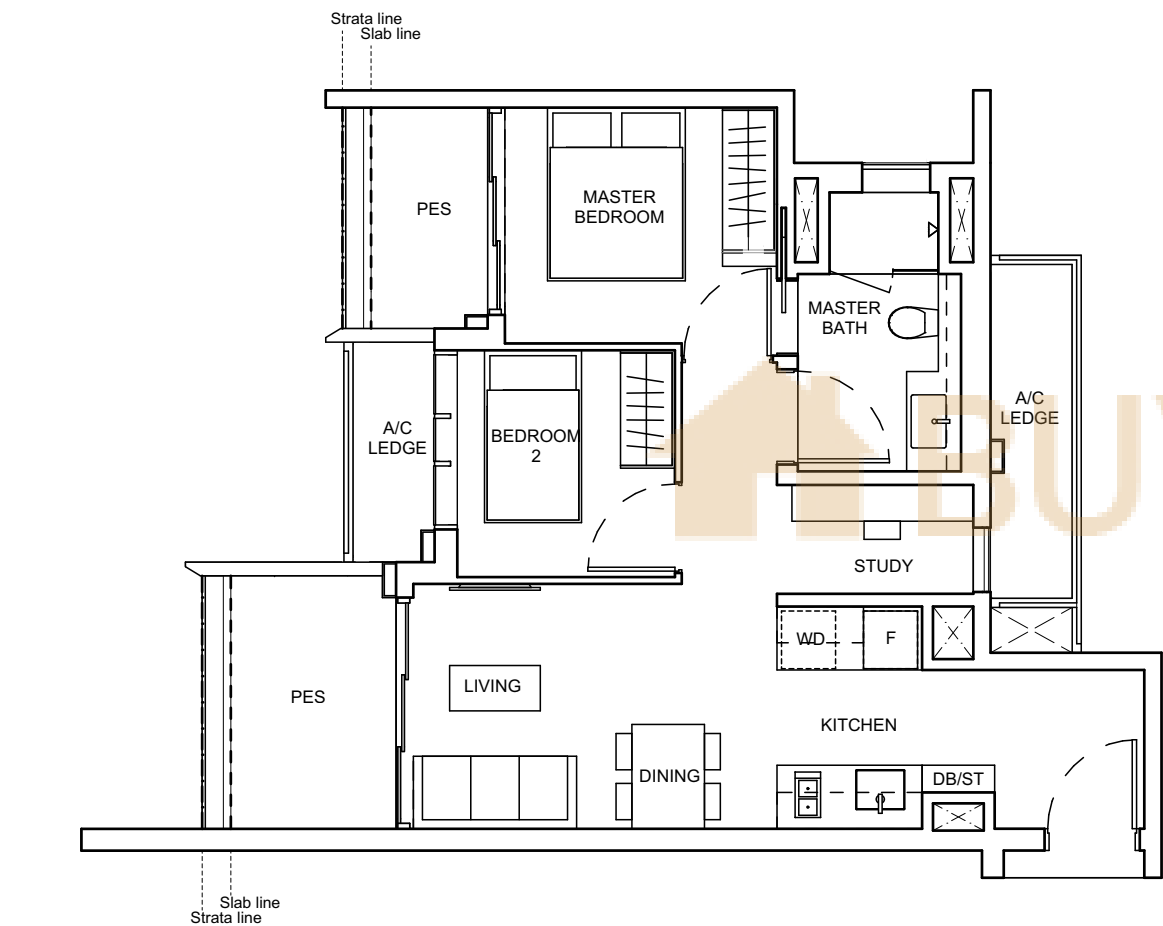
KEYPLAN
Keyplan is not drawn to scale

2 - BEDROOM + STUDY

TYPE B10S(p)

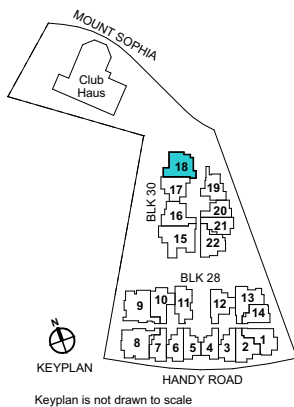
68 sq m / 732 sq ft

BLK 30: #04-18



0 0.5 1 2 3 5m

Area includes air-con (A/C) ledge, balcony, private enclosed space (PES), and void (where applicable). Some units are mirror images of the apartment plans shown in the brochure. Orientation and facing may differ depending on the unit you are purchasing (please refer to the key plan). All plans are approximate measurements only and are subject to government re-survey. The balcony shall not be enclosed unless with the approved balcony screen. For an illustration of the approved balcony screen and balcony railing, please refer to the diagram annexed hereto as "Annexure A".

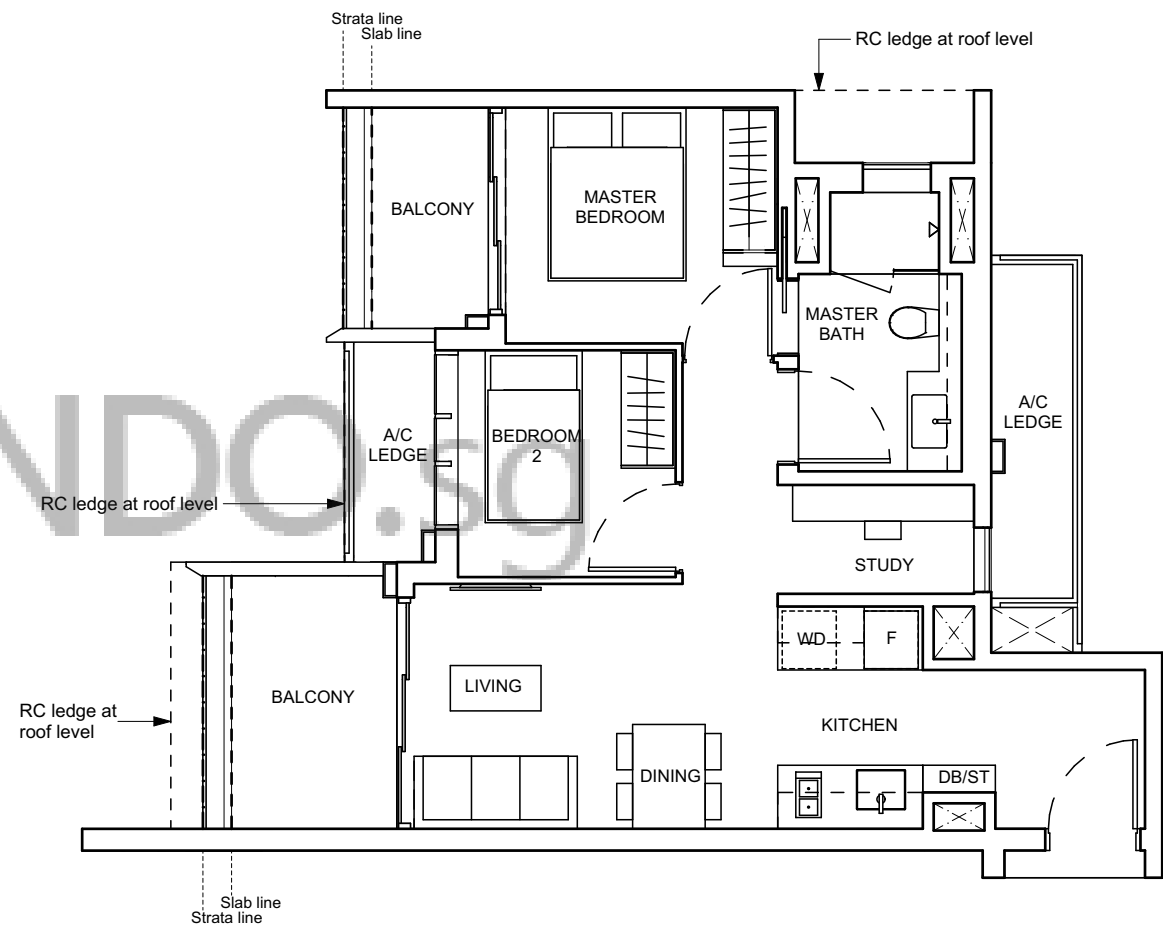


2 - BEDROOM + STUDY

TYPE B10S

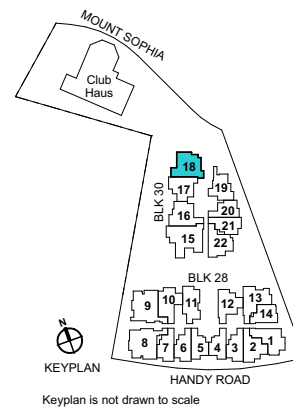
68 sq m / 732 sq ft

BLK 30: #05-18 to #09-18



0 0.5 1 2 3 5m

Area includes air-con (A/C) ledge, balcony, private enclosed space (PES), and void (where applicable). Some units are mirror images of the apartment plans shown in the brochure. Orientation and facing may differ depending on the unit you are purchasing (please refer to the key plan). All plans are approximate measurements only and are subject to government re-survey. The balcony shall not be enclosed unless with the approved balcony screen. For an illustration of the approved balcony screen and balcony railing, please refer to the diagram annexed hereto as "Annexure A".

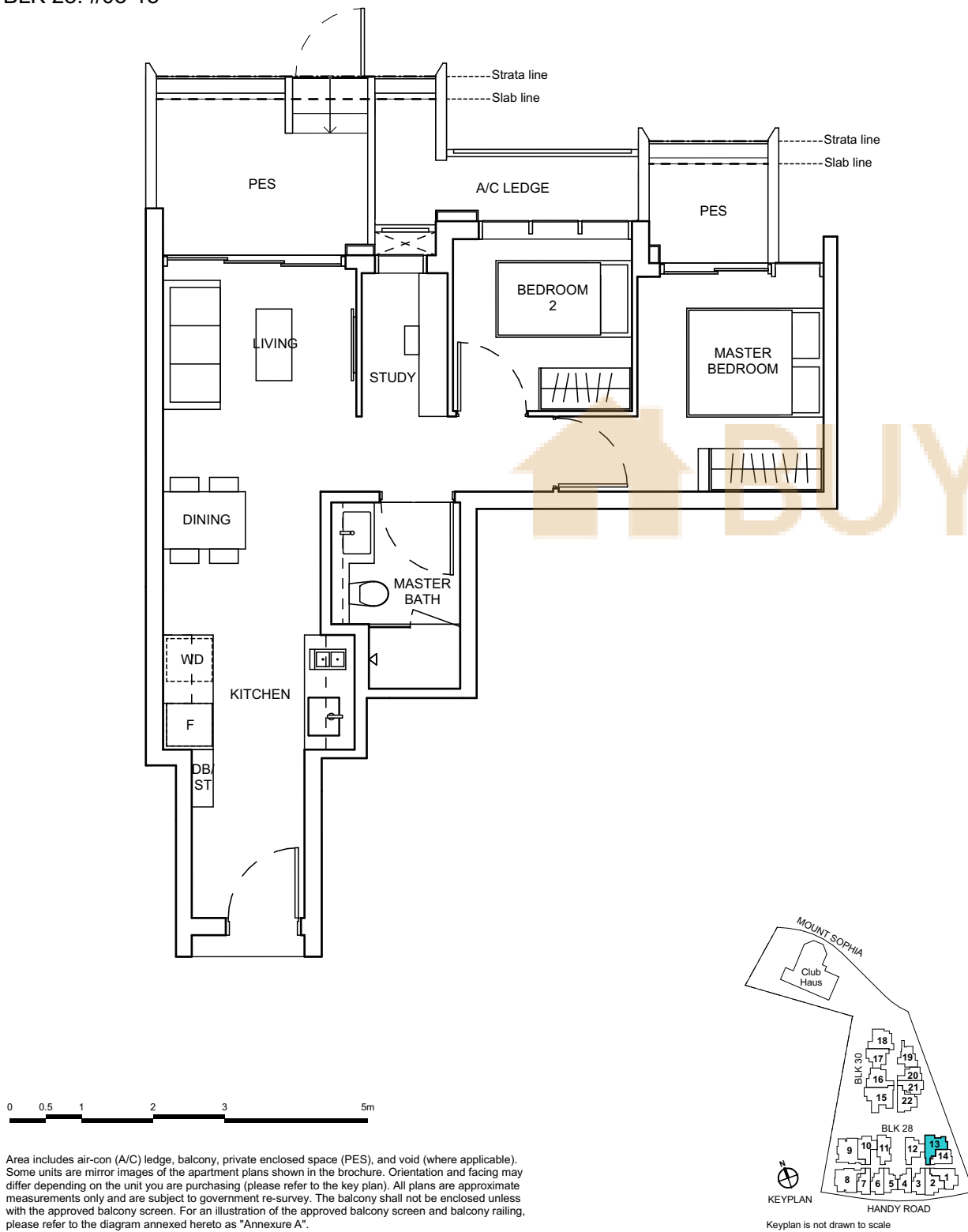


2 - BEDROOM + STUDY

TYPE B11S(p)

69 sq m / 743 sq ft

BLK 28: #03-13

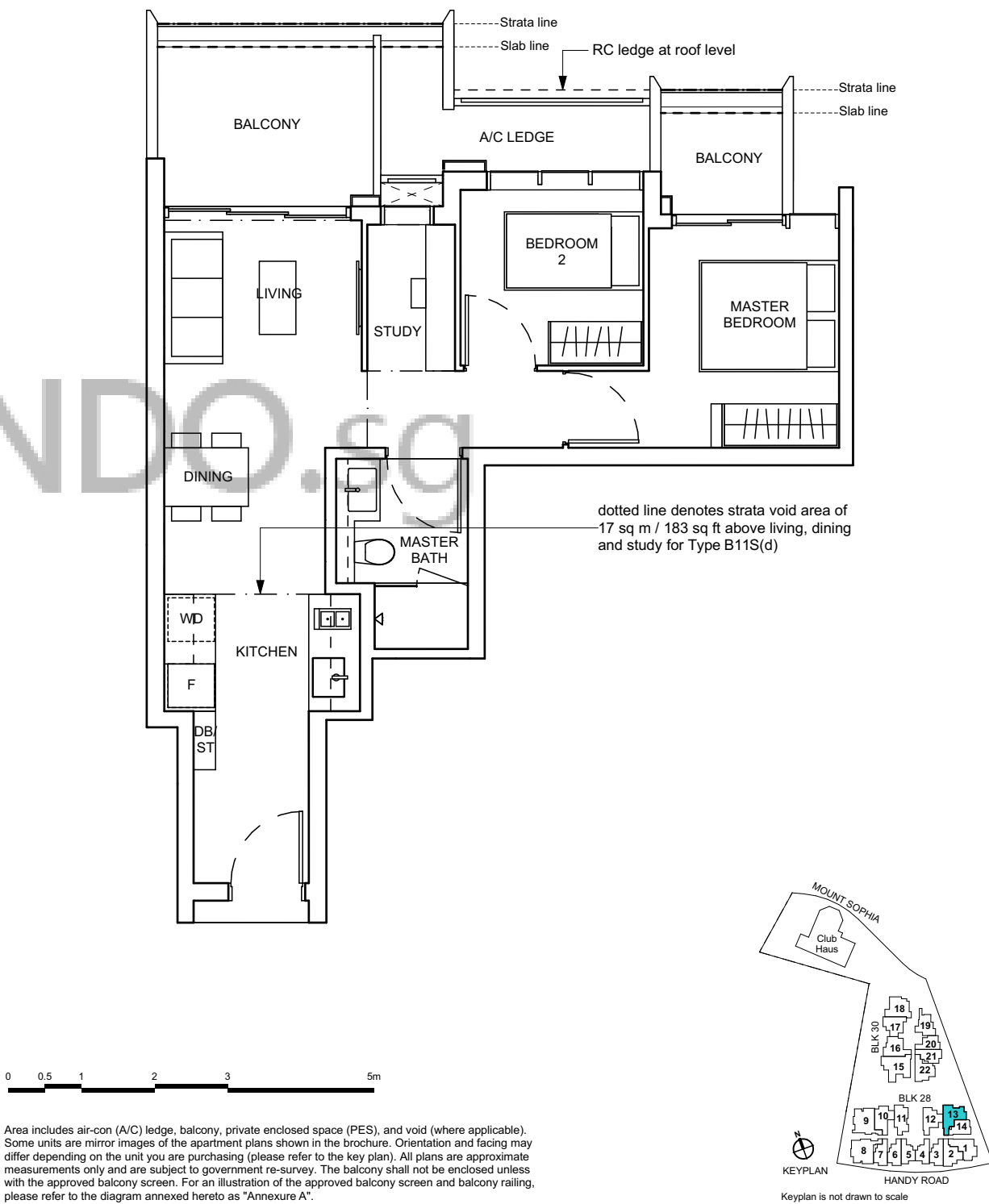


2 - BEDROOM + STUDY

TYPE B11S

69 sq m / 743 sq ft

BLK 28: #04-13 to #11-13



TYPE B11S(d)

86 sq m / 926 sq ft

Including strata void area of 17 sqm / 183 sqft above living, dining, and study.
Approximate 5.03 m floor to ceiling height at living, dining, and study.

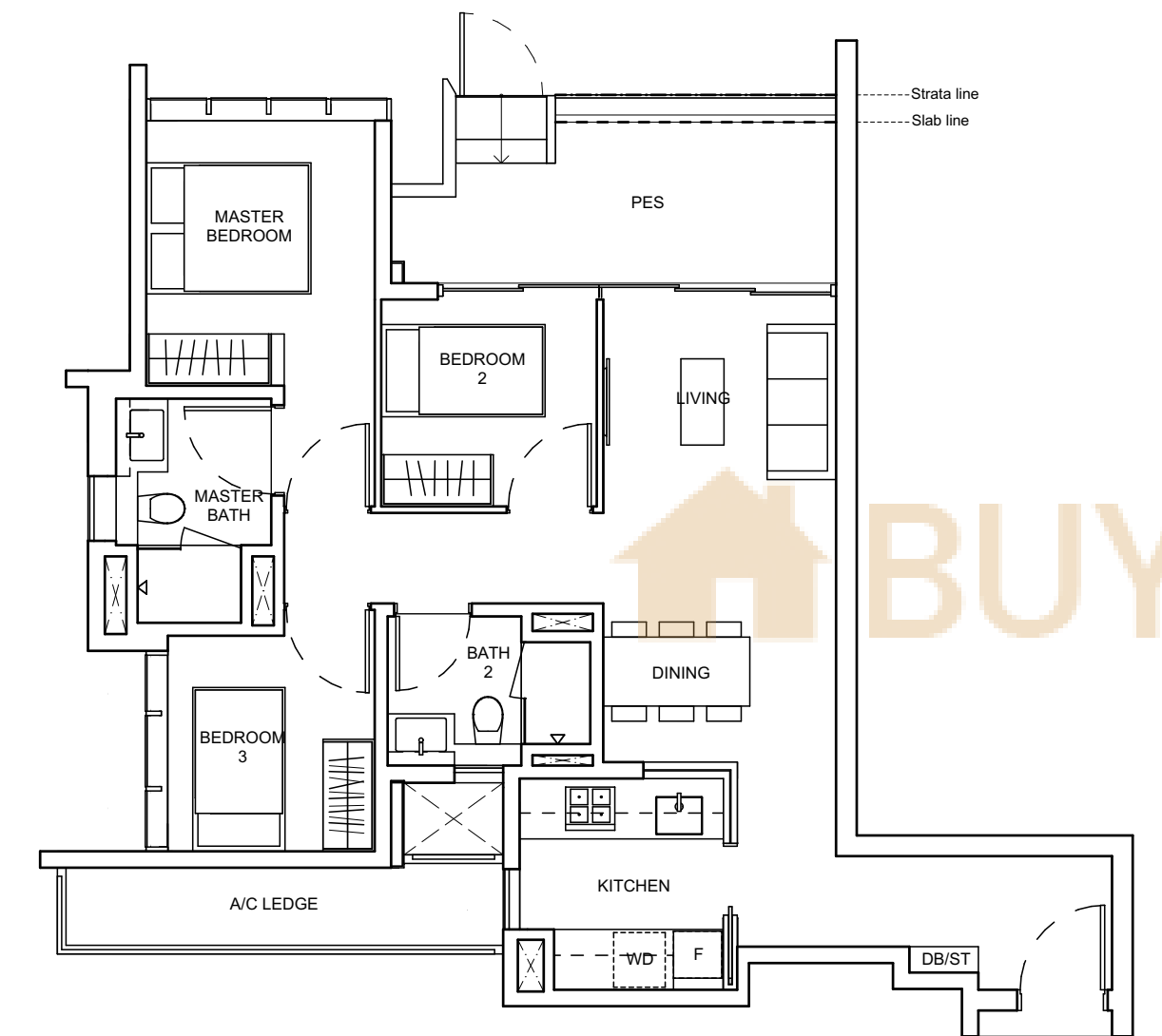
BLK 28: #12-13

3 - BEDROOM

TYPE C1(p)

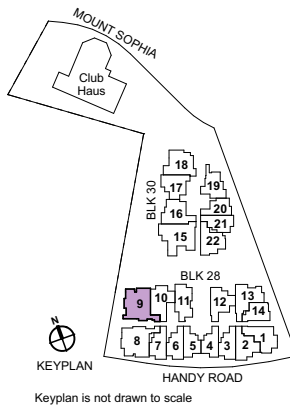
88 sq m / 947 sq ft

BLK 28: #03-09



0 0.5 1 2 3 5m

Area includes air-con (A/C) ledge, balcony, private enclosed space (PES), and void (where applicable). Some units are mirror images of the apartment plans shown in the brochure. Orientation and facing may differ depending on the unit you are purchasing (please refer to the key plan). All plans are approximate measurements only and are subject to government re-survey. The balcony shall not be enclosed unless with the approved balcony screen. For an illustration of the approved balcony screen and balcony railing, please refer to the diagram annexed hereto as "Annexure A".

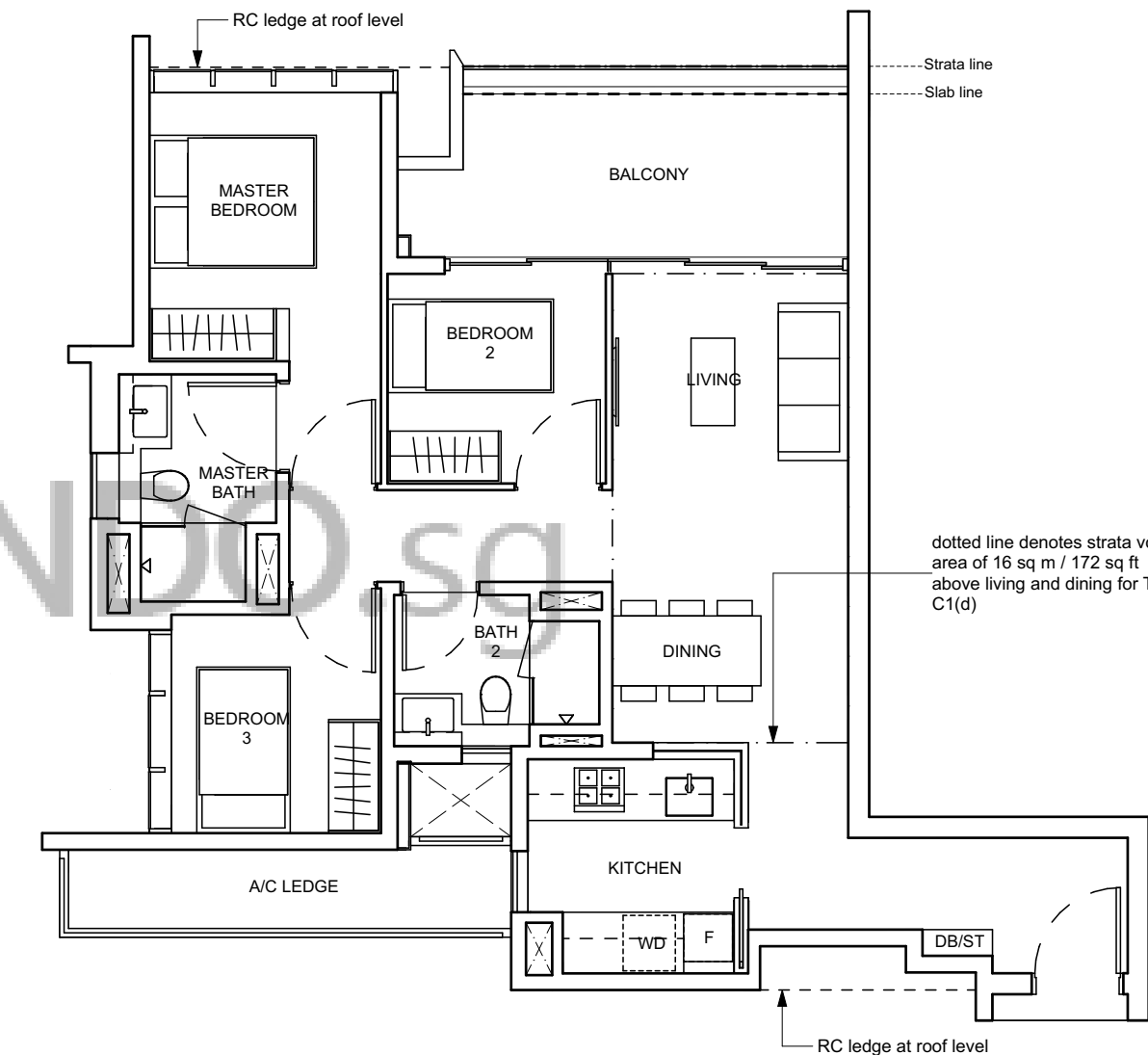


3 - BEDROOM

TYPE C1

88 sq m / 947 sq ft

BLK 28: #04-09 to #11-09



0 0.5 1 2 3 5m

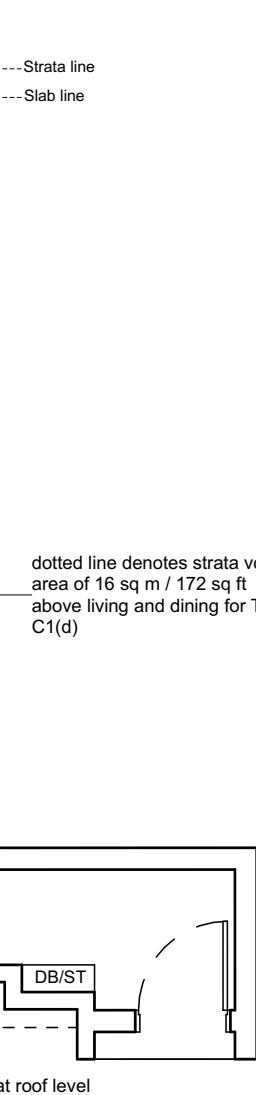
Area includes air-con (A/C) ledge, balcony, private enclosed space (PES), and void (where applicable). Some units are mirror images of the apartment plans shown in the brochure. Orientation and facing may differ depending on the unit you are purchasing (please refer to the key plan). All plans are approximate measurements only and are subject to government re-survey. The balcony shall not be enclosed unless with the approved balcony screen. For an illustration of the approved balcony screen and balcony railing, please refer to the diagram annexed hereto as "Annexure A".

TYPE C1(d)

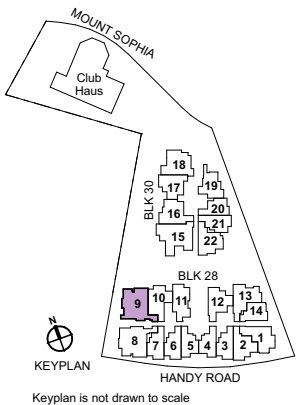
104 sq m / 1119 sq ft

Including strata void area of 16 sqm / 172 sqft above living and dining.
Approximate 5.03 m floor to ceiling height at living and dining.

BLK 28: #12-09



dotted line denotes strata void area of 16 sq m / 172 sq ft above living and dining for Type C1(d)

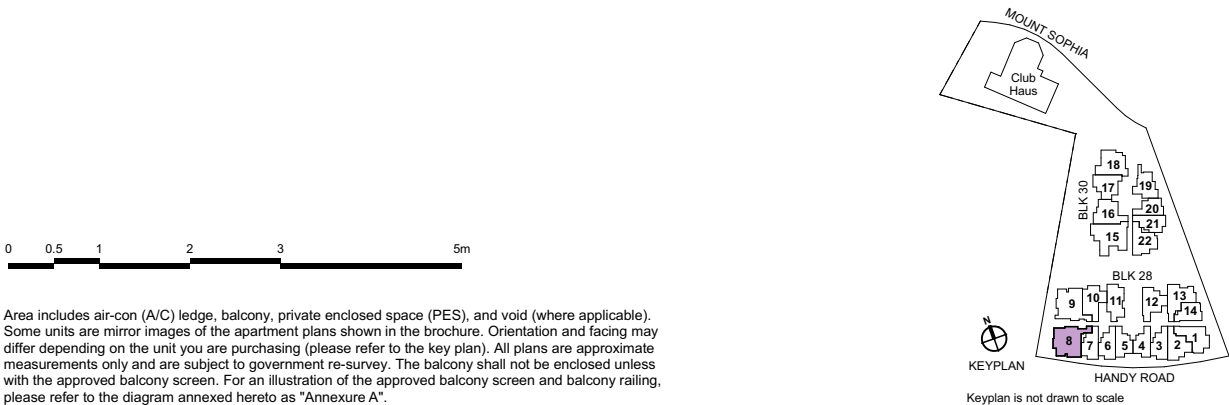
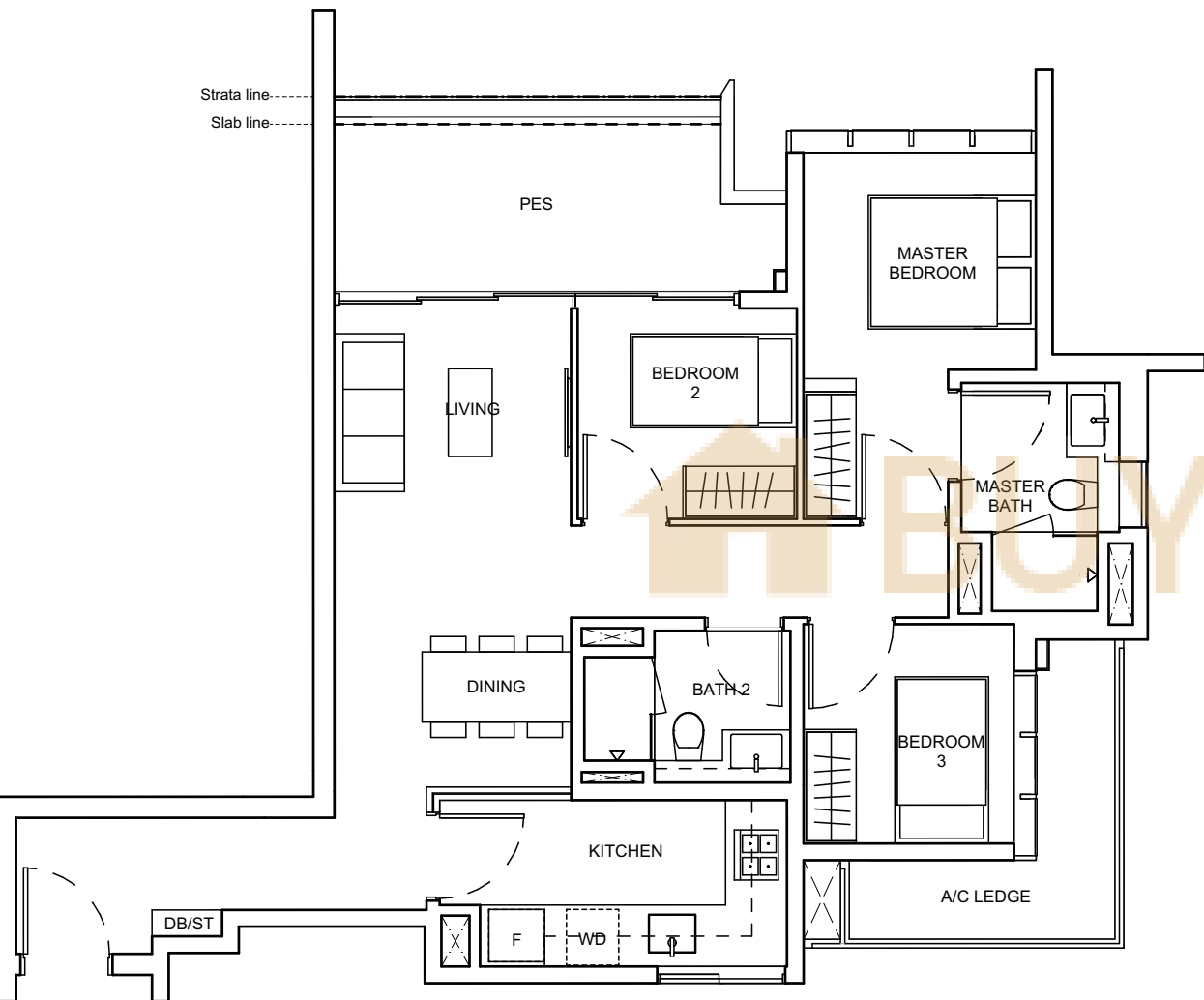


3 - BEDROOM

TYPE C2(p)

90 sq m / 969 sq ft

BLK 28: #03-08



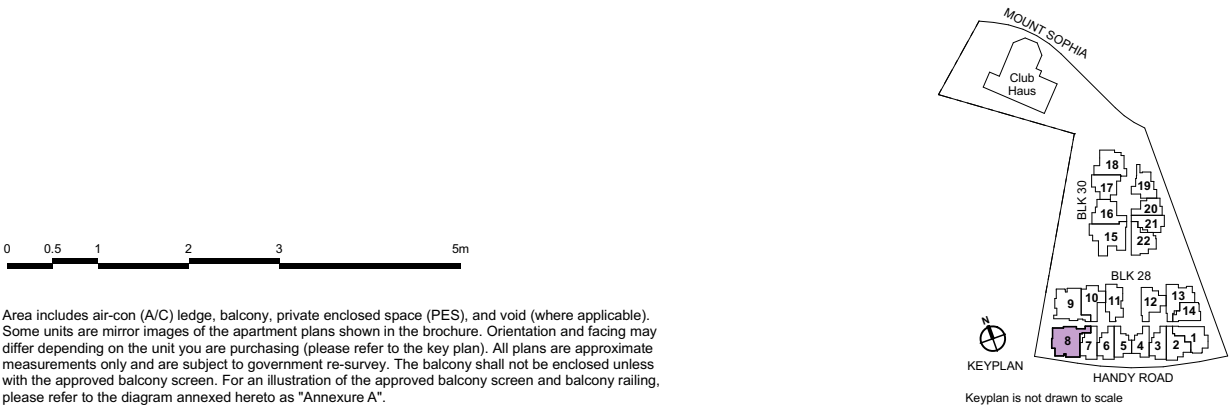
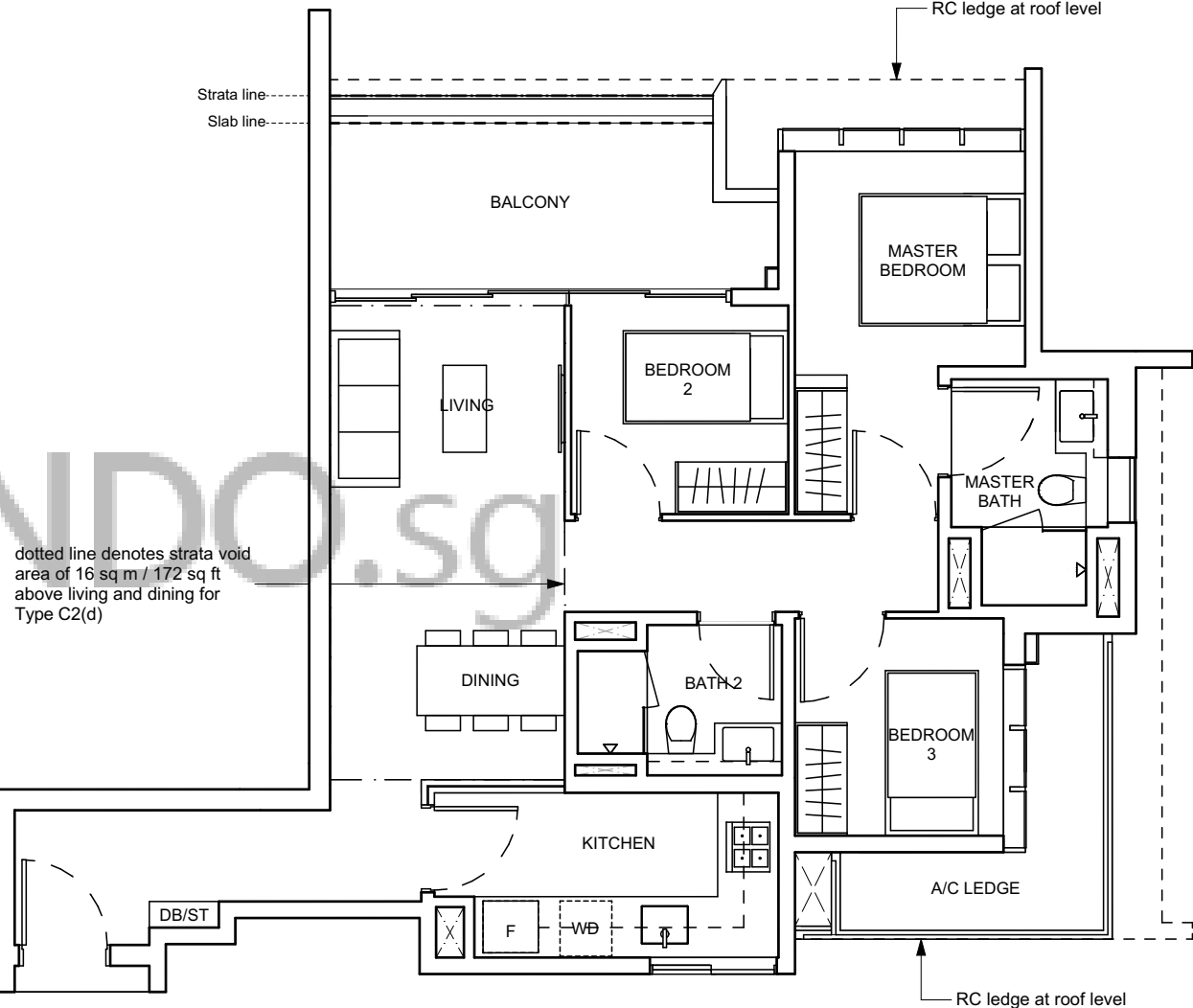
Area includes air-con (A/C) ledge, balcony, private enclosed space (PES), and void (where applicable). Some units are mirror images of the apartment plans shown in the brochure. Orientation and facing may differ depending on the unit you are purchasing (please refer to the key plan). All plans are approximate measurements only and are subject to government re-survey. The balcony shall not be enclosed unless with the approved balcony screen. For an illustration of the approved balcony screen and balcony railing, please refer to the diagram annexed hereto as "Annexure A".

3 - BEDROOM

TYPE C2

90 sq m / 969 sq ft

BLK 28: #04-08 to #11-08



Area includes air-con (A/C) ledge, balcony, private enclosed space (PES), and void (where applicable). Some units are mirror images of the apartment plans shown in the brochure. Orientation and facing may differ depending on the unit you are purchasing (please refer to the key plan). All plans are approximate measurements only and are subject to government re-survey. The balcony shall not be enclosed unless with the approved balcony screen. For an illustration of the approved balcony screen and balcony railing, please refer to the diagram annexed hereto as "Annexure A".

TYPE C2(d)

106 sq m / 1141 sq ft

Including strata void area of 16 sqm / 172 sqft above living and dining.
Approximate 5.03 m floor to ceiling height at living and dining.

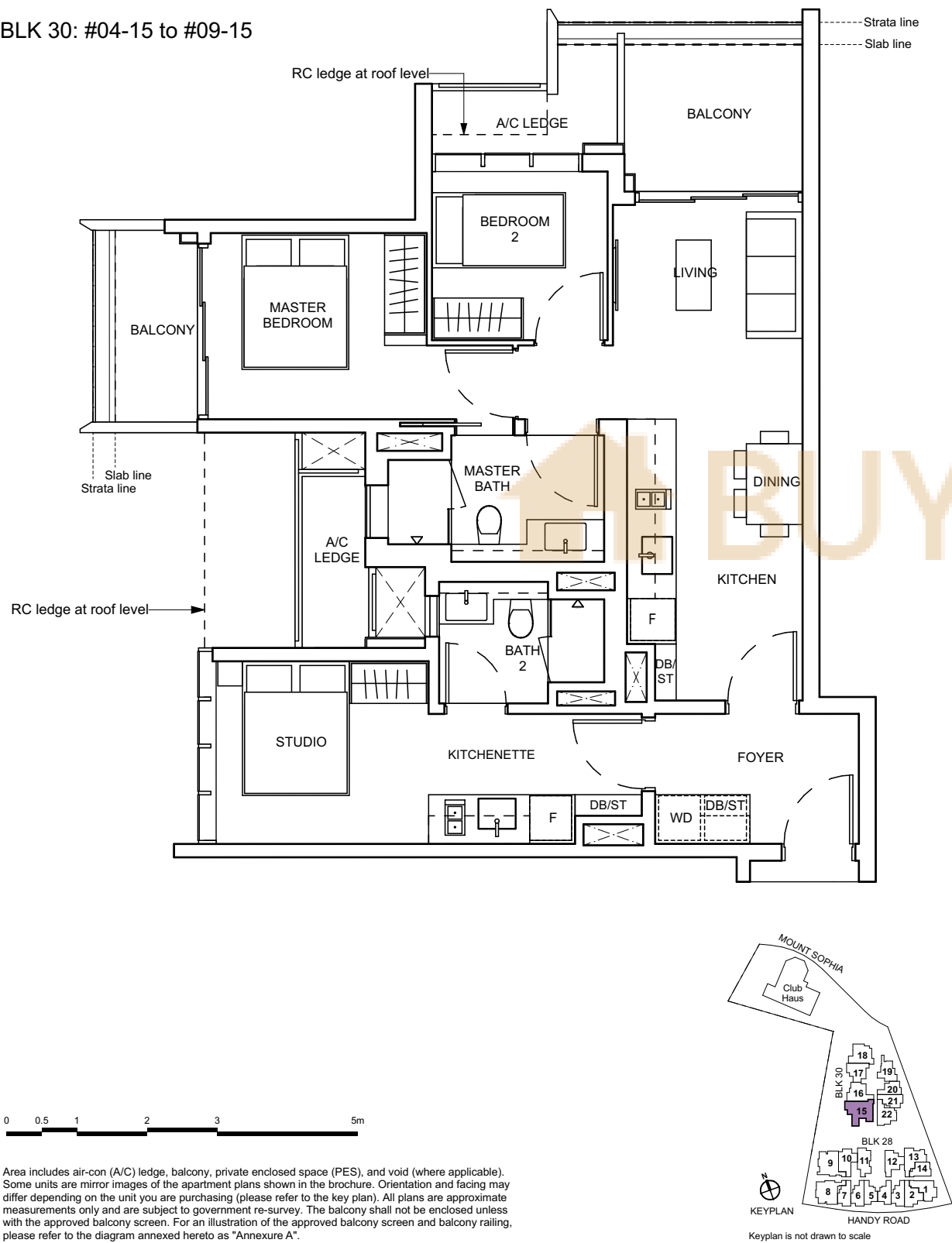
BLK 28: #12-08

3 - BEDROOM DUAL KEY

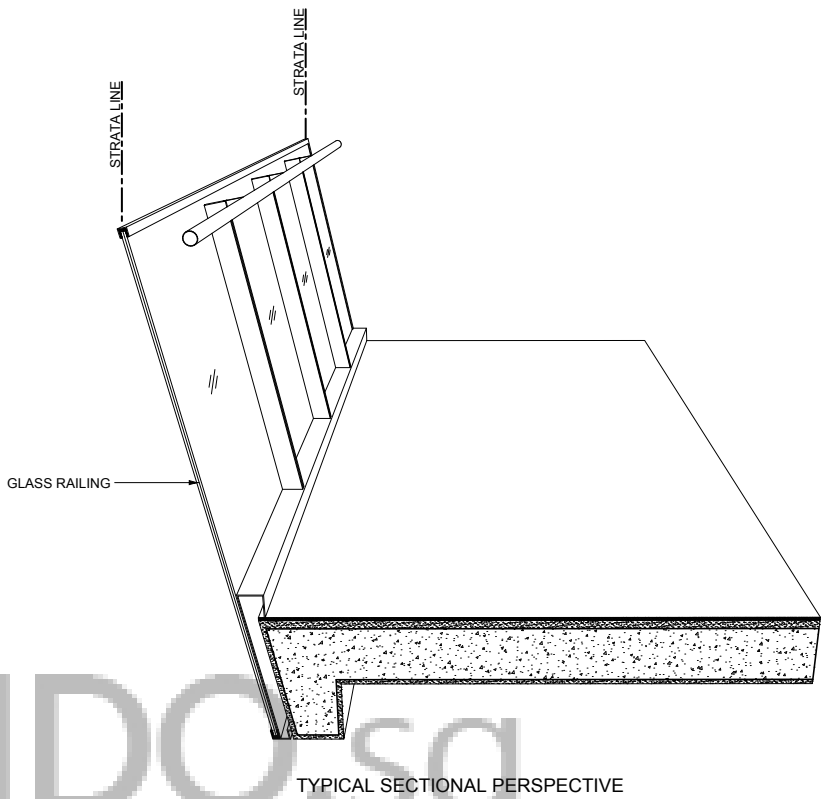
TYPE C3DK

91 sq m / 980 sq ft

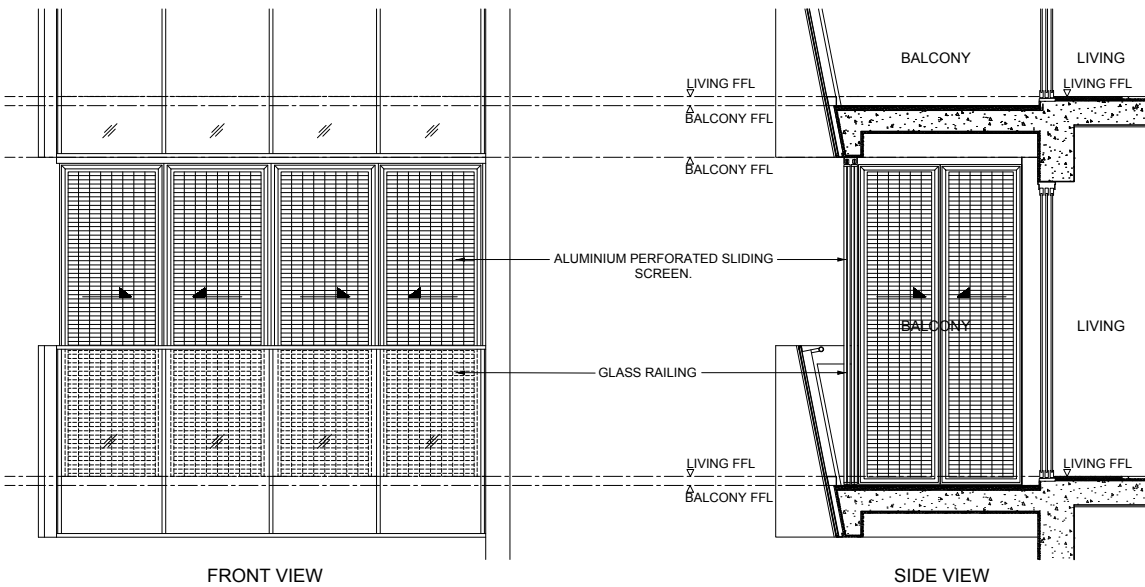
BLK 30: #04-15 to #09-15



APPROVED BALCONY RAILING



APPROVED BALCONY SCREEN



Note:
The balcony shall not be enclosed unless with the approved balcony screen as shown above. The cost of the screen and installation shall be borne by the purchaser.