



Artist's Impression

JERVOIS PRIVÉ

1 BEDROOM + STUDY

TYPE A1

51 SQ.M. / 549 SQ.FT.
(include 5 SQ.M. PES/Balcony, 3 SQ.M. A/C Ledge)

UNIT

01-04 (A1-G)



02-04, 03-04



F = Fridge
WM = Washer and Dryer
DB = Distribution Board
IH = Induction Hob
O = Oven

The balcony shall not be enclosed. Only balcony screens are to be used. For an illustration of the approved balcony screen, please refer to Page 12-13 of this brochure.

All plans are subjected to amendments as may be approved by the relevant authorities. Floor areas are approximate measurements and are subjected to final survey. Building Plan no: A1840-01705-2017 BP03 Date: 05 November 2019

0 1M 3M 5M



1 BEDROOM + STUDY DELUXE

TYPE A2-G

59 SQ.M. / 635 SQ.FT.

(include 7 SQ.M. PES. 3 SQ.M. A/C Ledge)

UNIT

01-01



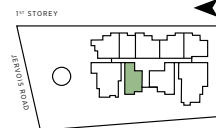
BUYCONDO.SG

F = Fridge
WM = Washer and Dryer
DB = Distribution Board
IH = Induction Hob
O = Oven

The balcony shall not be enclosed. Only balcony screens are to be used. For an illustration of the approved balcony screen, please refer to Page 12-13 of this brochure.

All plans are subjected to amendments as may be approved by the relevant authorities. Floor areas are approximate measurements and are subjected to final survey. Building Plan no: A1840-01705-2017 BP03 Date: 05 November 2019

0 1M 3M 5M



2 BEDROOM

TYPE B1

68 SQ.M. / 732 SQ.FT.

(include 9 SQ.M. PES/ Balcony, 3 SQ.M. A/C Ledge)

UNIT

01-03 (B1-G)



02-03, 03-03



F = Fridge
WM = Washer and Dryer
DB = Distribution Board
IH = Induction Hob
O = Oven

The balcony shall not be enclosed. Only balcony screens are to be used. For an illustration of the approved balcony screen, please refer to Page 12-13 of this brochure.

All plans are subjected to amendments as may be approved by the relevant authorities. Floor areas are approximate measurements and are subjected to final survey. Building Plan no: A1840-01705-2017 BP03 Date: 05 November 2019

0 1M 3M 5M



JERVOIS PRIVÉ

2 BEDROOM

TYPE B2

65 SQ.M. / 700 SQ.FT.

(include 6 SQ.M. PES/ Balcony, 3 SQ.M. A/C Ledge)

UNIT

01-05 (B2-G)



02-05, 03-05, 04-05, 05-05



0 1M 3M 5M



F = Fridge
WM = Washer and Dryer
DB = Distribution Board
IH = Induction Hob
O = Oven

The balcony shall not be enclosed. Only balcony screens are to be used. For an illustration of the approved balcony screen, please refer to Page 12-13 of this brochure.

All plans are subjected to amendments as may be approved by the relevant authorities. Floor areas are approximate measurements and are subjected to final survey. Building Plan no: A1840-01705-2017 BP03 Date: 05 November 2019

JERVOIS PRIVÉ

2 BEDROOM

TYPE B3

64 SQ.M. / 689 SQ.FT.

(include 6 SQ.M. PES/ Balcony, 3 SQ.M. A/C Ledge)

UNIT

01-06 (B3-G)



02-06, 03-06, 04-06, 05-06



0 1M 3M 5M



F = Fridge
WM = Washer and Dryer
DB = Distribution Board
IH = Induction Hob
O = Oven

The balcony shall not be enclosed. Only balcony screens are to be used. For an illustration of the approved balcony screen, please refer to Page 12-13 of this brochure.

All plans are subjected to amendments as may be approved by the relevant authorities. Floor areas are approximate measurements and are subjected to final survey. Building Plan no: A1840-01705-2017 BP03 Date: 05 November 2019

JERVOIS PRIVÉ

2 BEDROOM

TYPE B4

66 SQ.M. / 710 SQ.FT.

(include 6 SQ.M. PES/ Balcony, 3 SQ.M. A/C Ledge)

UNIT

01-07 (B4-G)



02-07, 03-07, 04-07, 05-07



0 1M 3M 5M



F = Fridge
WM = Washer and Dryer
DB = Distribution Board
IH = Induction Hob
O = Oven

The balcony shall not be enclosed. Only balcony screens are to be used. For an illustration of the approved balcony screen, please refer to Page 12-13 of this brochure.

All plans are subjected to amendments as may be approved by the relevant authorities. Floor areas are approximate measurements and are subjected to final survey. Building Plan no: A1840-01705-2017 BP03 Date: 05 November 2019

JERVOIS PRIVÉ

2 BEDROOM + STUDY

TYPE B5S

75 SQ.M. / 807 SQ.FT.

(include 7 SQ.M. PES/ Balcony, 3 SQ.M. A/C Ledge)

UNIT

01-09 (B5S-G)



02-09, 03-09, 04-09, 05-09



0 1M 3M 5M



F = Fridge
WM = Washer and Dryer
DB = Distribution Board
IH = Induction Hob
O = Oven

The balcony shall not be enclosed. Only balcony screens are to be used. For an illustration of the approved balcony screen, please refer to Page 12-13 of this brochure.

All plans are subjected to amendments as may be approved by the relevant authorities. Floor areas are approximate measurements and are subjected to final survey. Building Plan no: A1840-01705-2017 BP03 Date: 05 November 2019

2 BEDROOM + STUDY

TYPE B6S

75 SQ.M. / 807 SQ.FT.

(include 7 SQ.M. Balcony, 3 SQ.M. A/C Ledge)

UNIT

02-01, 03-01, 04-01, 05-01



0 1M 3M 5M



F = Fridge
WM = Washer and Dryer
DB = Distribution Board
IH = Induction Hob
O = Oven

The balcony shall not be enclosed. Only balcony screens are to be used. For an illustration of the approved balcony screen, please refer to Page 12-13 of this brochure.

All plans are subjected to amendments as may be approved by the relevant authorities. Floor areas are approximate measurements and are subjected to final survey. Building Plan no: A1840-01705-2017 BP03 Date: 05 November 2019

3 BEDROOM CLASSIC

TYPE C1

103 SQ.M. / 1109 SQ.FT.

(include 8 SQ.M. PES/ Balcony, 6 SQ.M. A/C Ledge)

UNIT

01-02 (C1-G)



02-02, 03-02, 04-02, 05-02



0 1M 3M 5M



F = Fridge
WM = Washer and Dryer
DB = Distribution Board
GH = Gas Hob
O = Oven
DW = Dish Washer

The balcony shall not be enclosed. Only balcony screens are to be used. For an illustration of the approved balcony screen, please refer to Page 12-13 of this brochure.

All plans are subjected to amendments as may be approved by the relevant authorities. Floor areas are approximate measurements and are subjected to final survey. Building Plan no: A1840-01705-2017 BP03 Date: 05 November 2019

3 BEDROOM DELUXE

TYPE D1

129 SQ.M. / 1389 SQ.FT.

(include 17 SQ.M. PES/ Balcony, 9 SQ.M. A/C Ledge)

UNIT

01-08 (D1-G)



02-08, 03-08, 04-08, 05-08

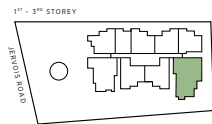


F = Fridge
WM = Washer and Dryer
DB = Distribution Board
GH = Gas Hob
O = Oven
SO = Steam Oven
W = Wine Chiller
DW = Dish Washer

The balcony shall not be enclosed. Only balcony screens are to be used. For an illustration of the approved balcony screen, please refer to Page 12-13 of this brochure.

All plans are subjected to amendments as may be approved by the relevant authorities. Floor areas are approximate measurements and are subjected to final survey. Building Plan no: A1840-01705-2017 BP03 Date: 05 November 2019

0 1M 3M 5M



4 BEDROOM

TYPE E1

136 SQ.M. / 1464 SQ.FT.

(include 14 SQ.M. Balcony, 6 SQ.M. A/C Ledge)

UNIT

04-03, 05-03 (E1)



F = Fridge
WM = Washer and Dryer
DB = Distribution Board
IH = Induction Hob
O = Oven
DW = Dish Washer
SO = Steam Oven
W = Wine Chiller

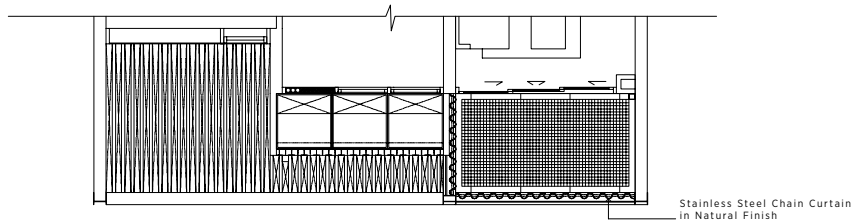
The balcony shall not be enclosed. Only balcony screens are to be used. For an illustration of the approved balcony screen, please refer to Page 12-13 of this brochure.

All plans are subjected to amendments as may be approved by the relevant authorities. Floor areas are approximate measurements and are subjected to final survey. Building Plan no: A1840-01705-2017 BP03 Date: 05 November 2019

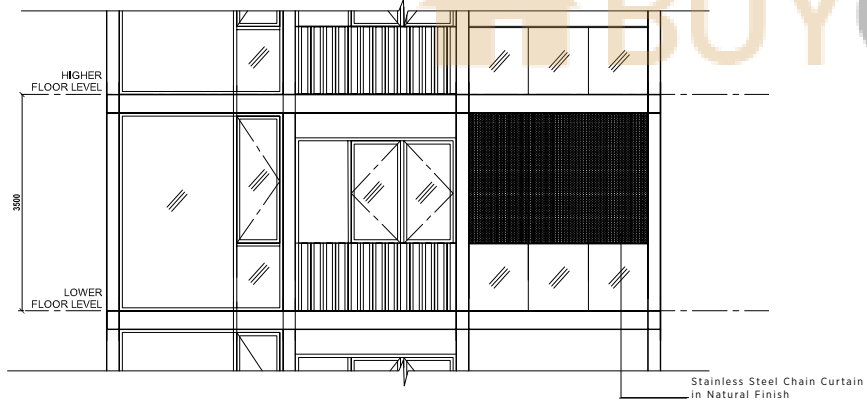
0 1M 3M 5M



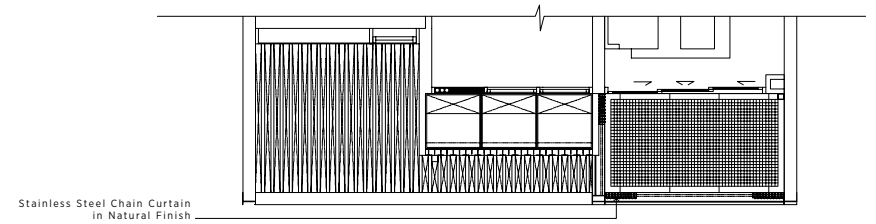
Plan
Balcony / PES Screen (Fully Close)



Elevation
Balcony / PES Screen (Fully Close)



Plan
Balcony / PES Screen (Fully Open)



Elevation
Balcony / PES Screen (Fully Open)

