

1 Bedroom

TYPE A1

43 sq m | 463 sq ft
#05-05 to #39-05

TYPE A1a

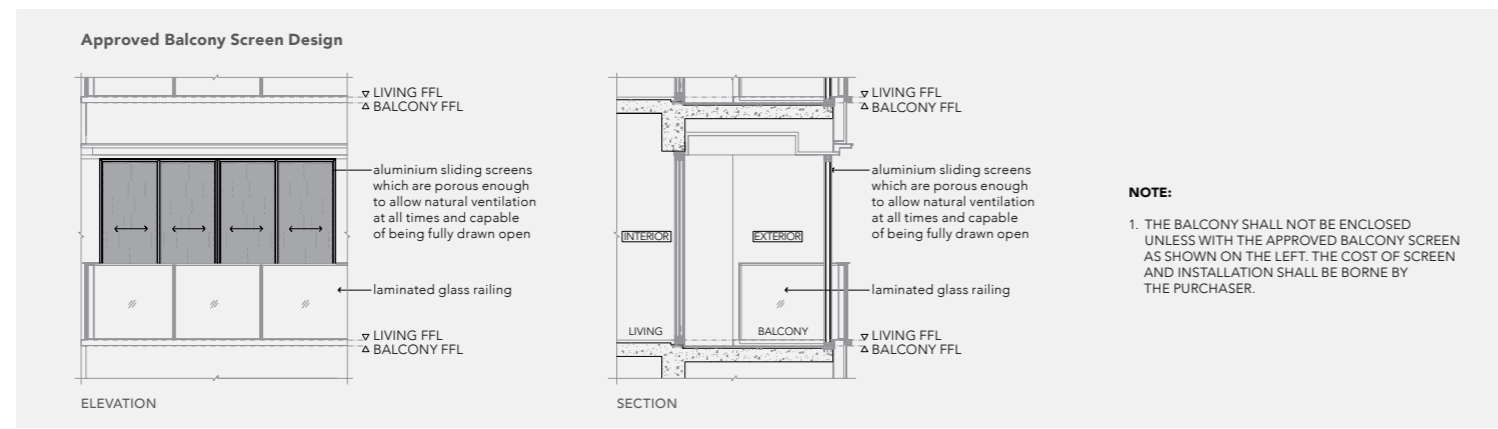
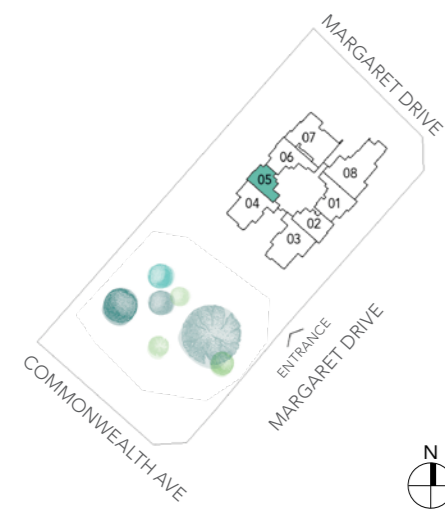
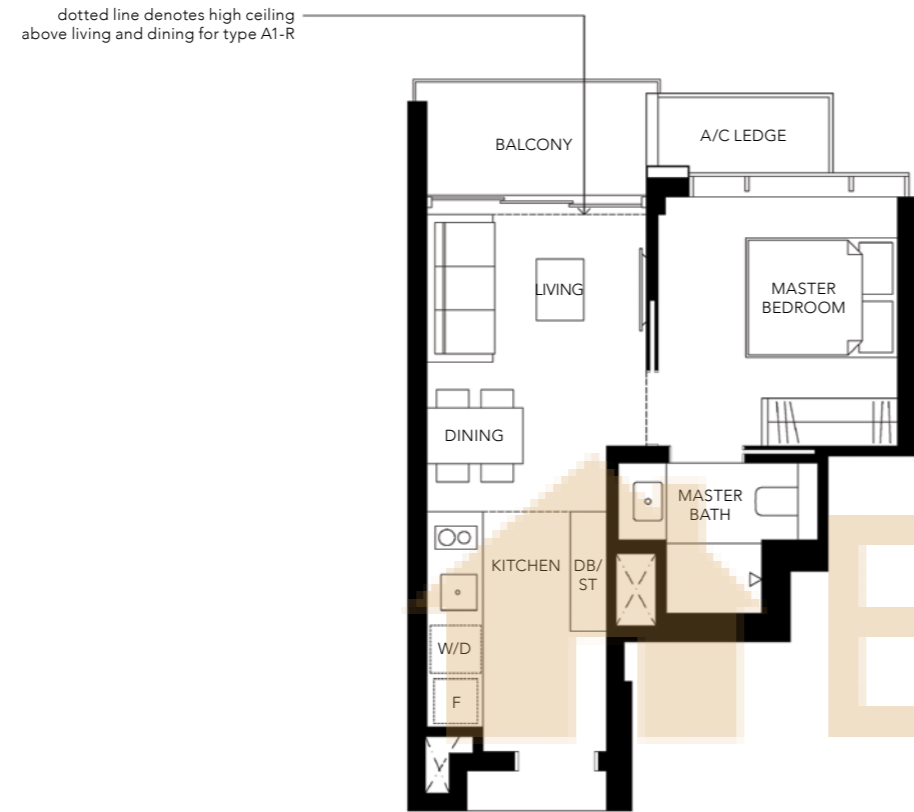
43 sq m | 463 sq ft
#02-05 to #04-05

unit adjacent to terrace lounge

TYPE A1-R

53 sq m | 570 sq ft
#40-05

incl. of 10 sq m / 108 sq ft
void area (high ceiling)
above living & dining.



NOTE:

1. THE BALCONY SHALL NOT BE ENCLOSED UNLESS WITH THE APPROVED BALCONY SCREEN AS SHOWN ON THE LEFT. THE COST OF SCREEN AND INSTALLATION SHALL BE BORNE BY THE PURCHASER.

AREA INCLUDES A/C LEDGE, BALCONY AND VOID AREA (HIGH CEILING). THE PLANS ARE SUBJECT TO CHANGE AS MAY BE REQUIRED OR APPROVED BY THE RELEVANT AUTHORITIES. AREAS ARE APPROXIMATE MEASUREMENTS ONLY AND ARE SUBJECT TO FINAL SURVEY. PLANS ARE NOT DRAWN TO SCALE AND DO NOT FORM PART OF THE CONTRACT.

1 Bedroom + Study

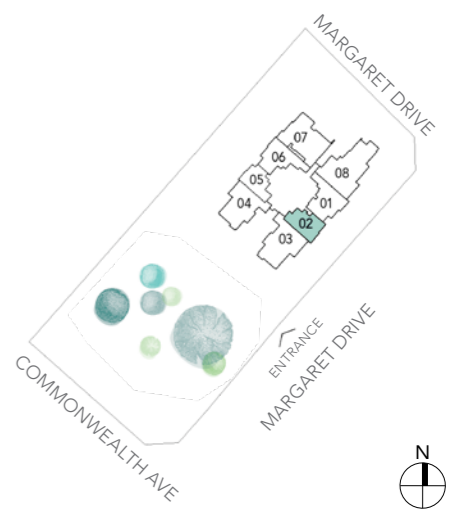
TYPE A2

49 sq m | 527 sq ft
#02-02 to #39-02

TYPE A2-R

59 sq m | 635 sq ft
#40-02

incl. of 10 sq m / 108 sq ft
void area (high ceiling)
above living & dining.



AREA INCLUDES A/C LEDGE, BALCONY AND VOID AREA (HIGH CEILING). THE PLANS ARE SUBJECT TO CHANGE AS MAY BE REQUIRED OR APPROVED BY THE RELEVANT AUTHORITIES. AREAS ARE APPROXIMATE MEASUREMENTS ONLY AND ARE SUBJECT TO FINAL SURVEY. PLANS ARE NOT DRAWN TO SCALE AND DO NOT FORM PART OF THE CONTRACT.

2 Bedroom

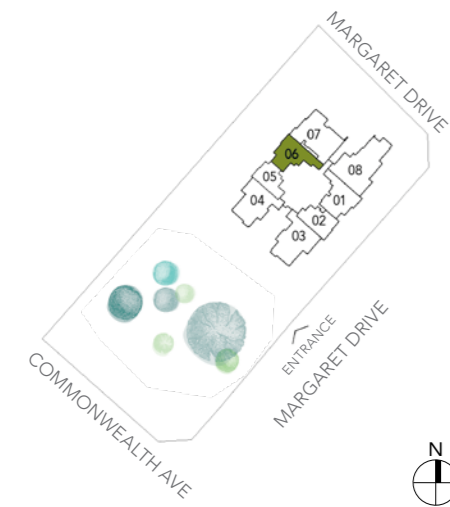
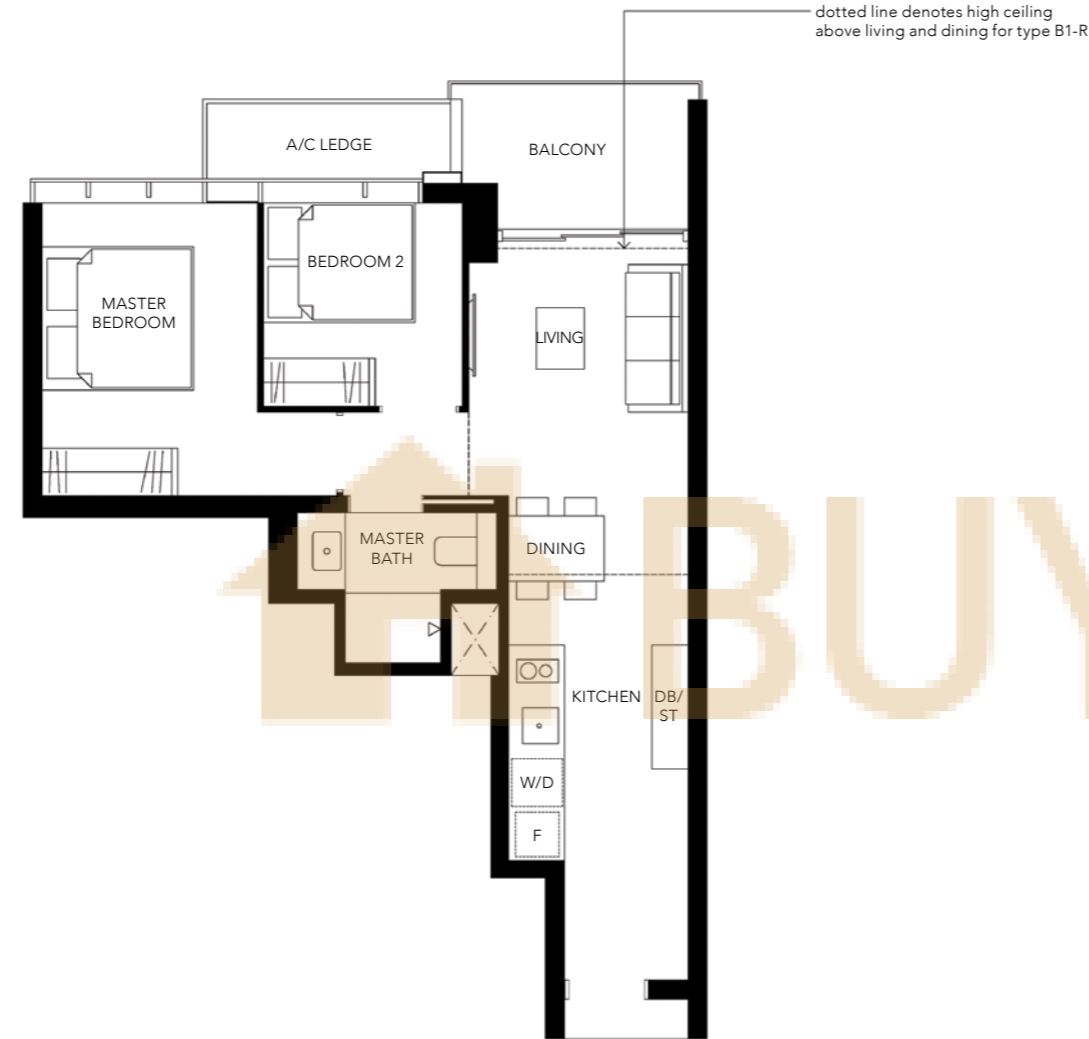
TYPE B1

61 sq m | 657 sq ft
#02-06 to #39-06

TYPE B1-R

72 sq m | 775 sq ft
#40-06

incl. of 11 sq m / 118 sq ft
void area (high ceiling)
above living & dining.



AREA INCLUDES A/C LEDGE, BALCONY AND VOID AREA (HIGH CEILING). THE PLANS ARE SUBJECT TO CHANGE AS MAY BE REQUIRED OR APPROVED BY THE RELEVANT AUTHORITIES. AREAS ARE APPROXIMATE MEASUREMENTS ONLY AND ARE SUBJECT TO FINAL SURVEY. PLANS ARE NOT DRAWN TO SCALE AND DO NOT FORM PART OF THE CONTRACT.

2 Bedroom

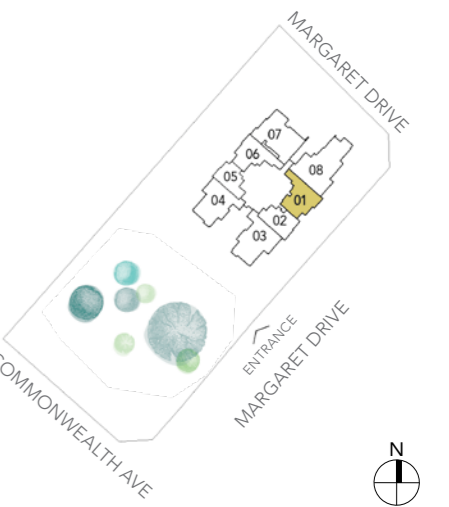
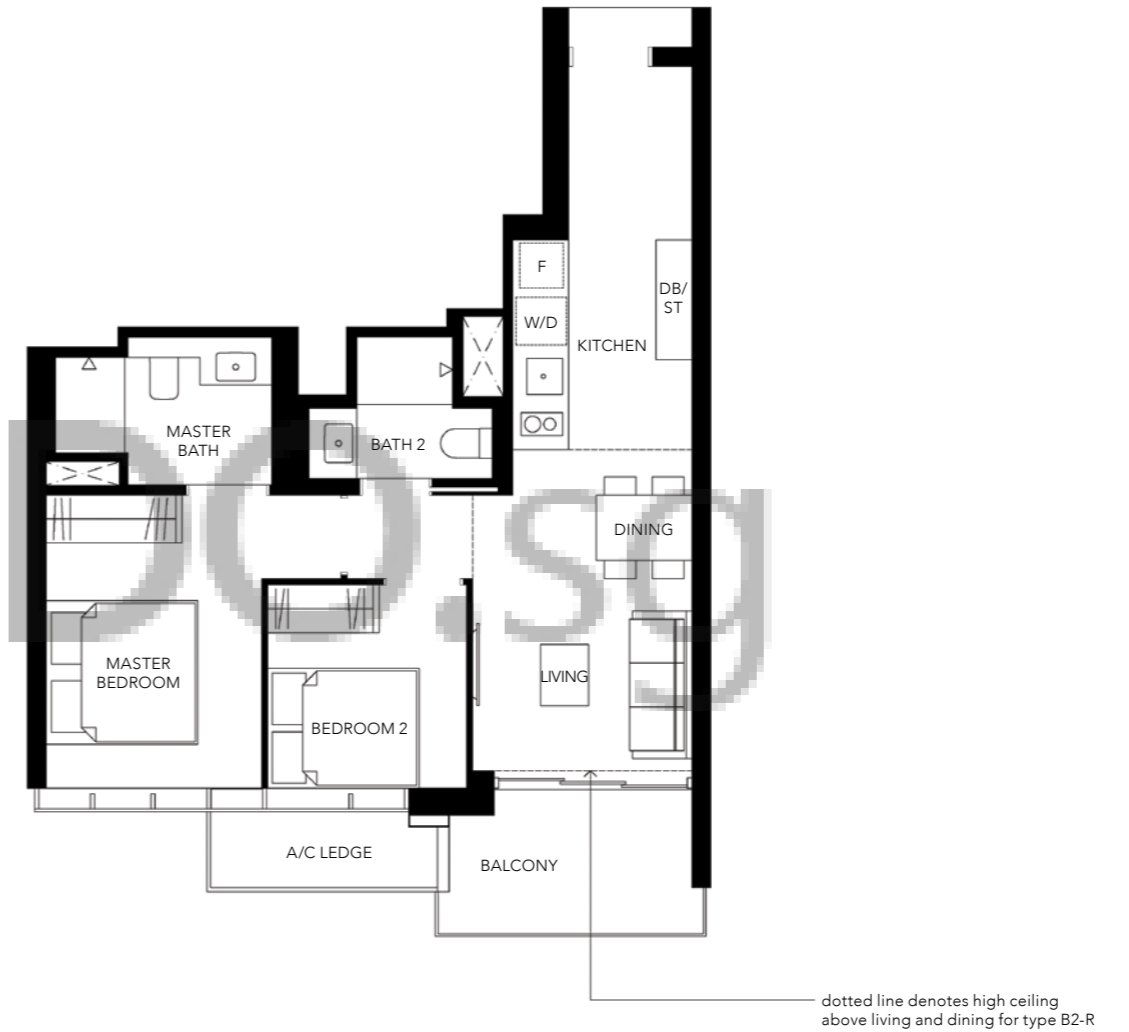
TYPE B2

65 sq m | 700 sq ft
#02-01 to #39-01

TYPE B2-R

76 sq m | 818 sq ft
#40-01

incl. of 11 sq m / 118 sq ft
void area (high ceiling)
above living & dining.



AREA INCLUDES A/C LEDGE, BALCONY AND VOID AREA (HIGH CEILING). THE PLANS ARE SUBJECT TO CHANGE AS MAY BE REQUIRED OR APPROVED BY THE RELEVANT AUTHORITIES. AREAS ARE APPROXIMATE MEASUREMENTS ONLY AND ARE SUBJECT TO FINAL SURVEY. PLANS ARE NOT DRAWN TO SCALE AND DO NOT FORM PART OF THE CONTRACT.

2 Bedroom + Study

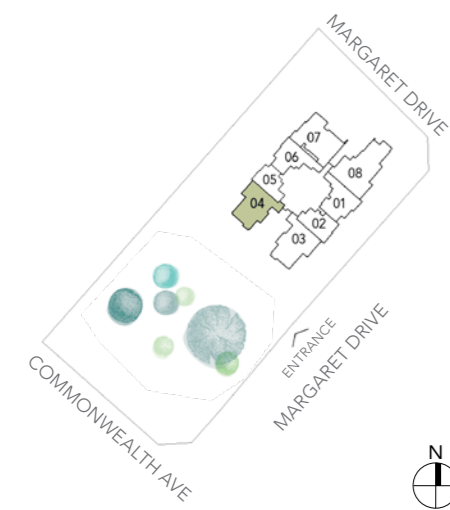
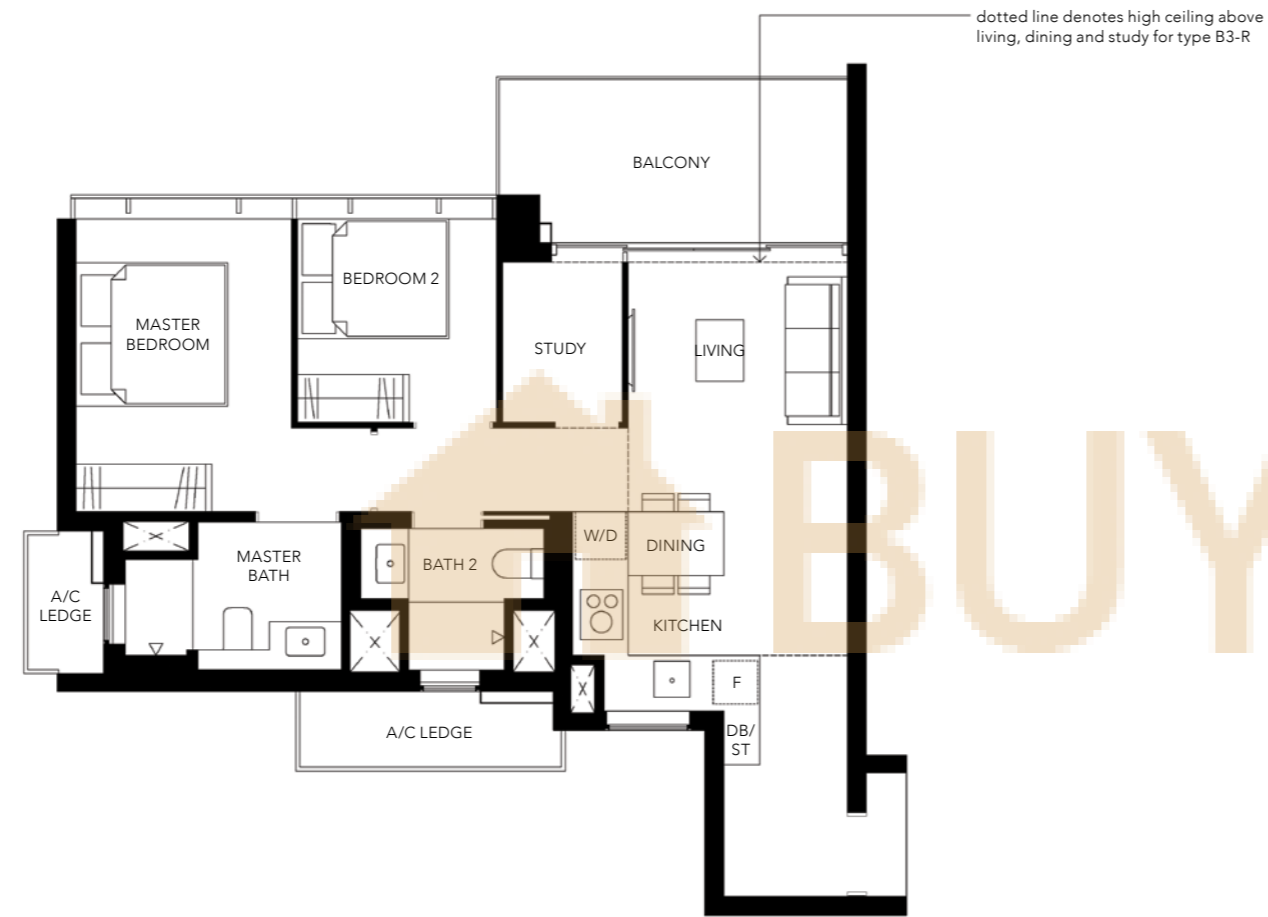
TYPE B3

77 sq m | 829 sq ft
#05-04 to #39-04

TYPE B3-R

95 sq m | 1023 sq ft
#40-04

incl. of 18 sq m / 194 sq ft
void area (high ceiling)
above living, dining & study.



AREA INCLUDES A/C LEDGE, BALCONY AND VOID AREA (HIGH CEILING). THE PLANS ARE SUBJECT TO CHANGE AS MAY BE REQUIRED OR APPROVED BY THE RELEVANT AUTHORITIES. AREAS ARE APPROXIMATE MEASUREMENTS ONLY AND ARE SUBJECT TO FINAL SURVEY. PLANS ARE NOT DRAWN TO SCALE AND DO NOT FORM PART OF THE CONTRACT.

3 Bedroom

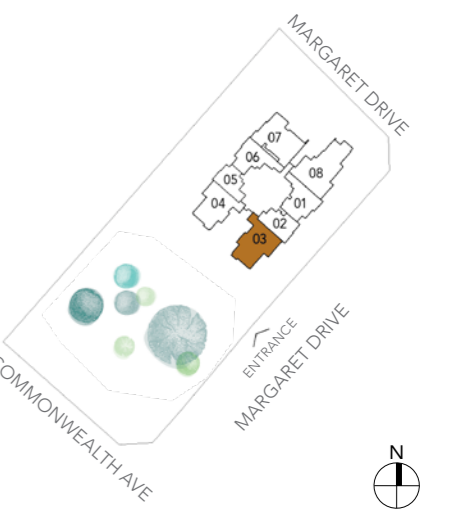
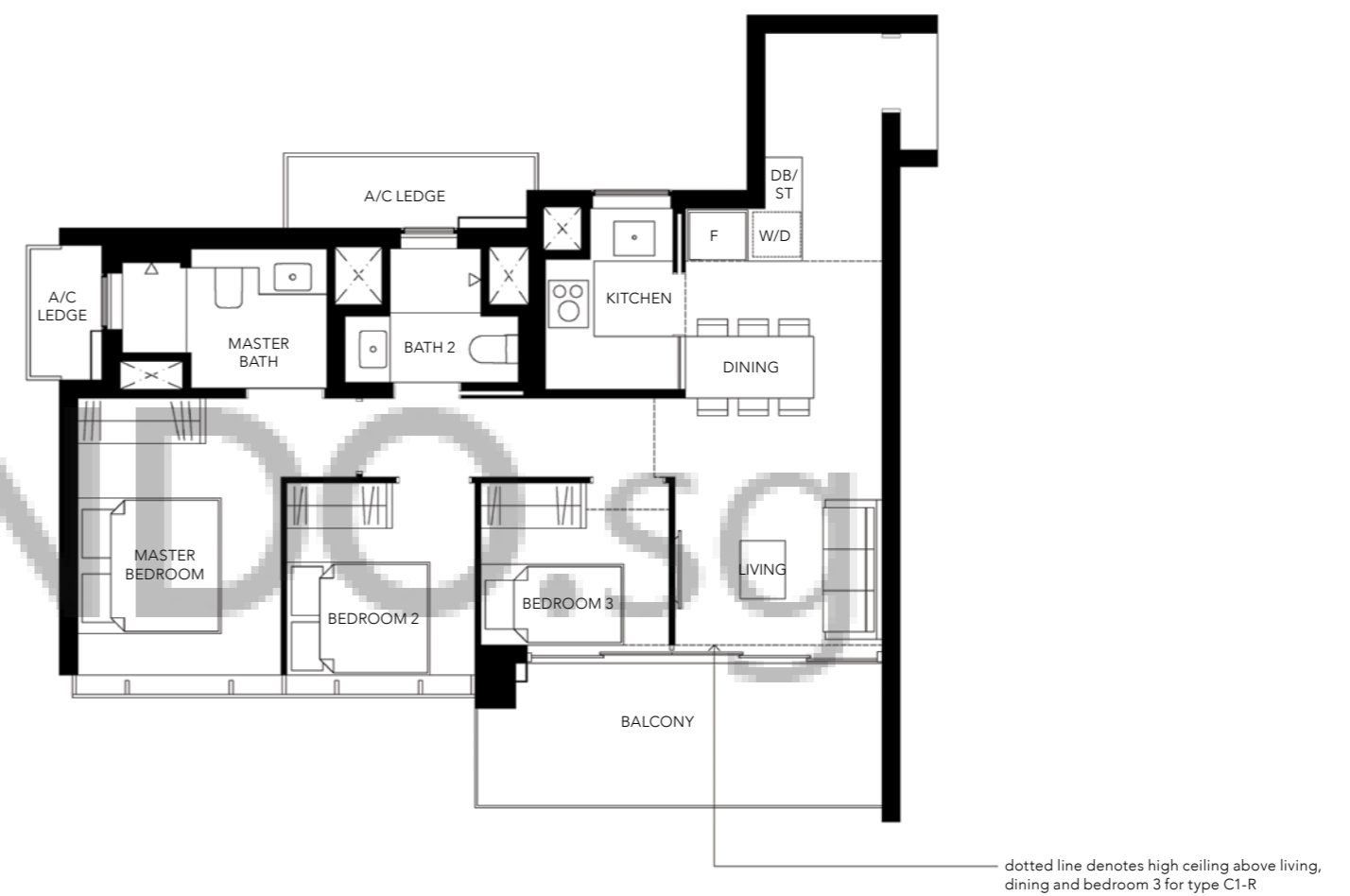
TYPE C1

85 sq m | 915 sq ft
#02-03 to #39-03

TYPE C1-R

106 sq m | 1141 sq ft
#40-03

incl. of 21 sq m / 226 sq ft
void area (high ceiling)
above living, dining & bedroom 3.



AREA INCLUDES A/C LEDGE, BALCONY AND VOID AREA (HIGH CEILING). THE PLANS ARE SUBJECT TO CHANGE AS MAY BE REQUIRED OR APPROVED BY THE RELEVANT AUTHORITIES. AREAS ARE APPROXIMATE MEASUREMENTS ONLY AND ARE SUBJECT TO FINAL SURVEY. PLANS ARE NOT DRAWN TO SCALE AND DO NOT FORM PART OF THE CONTRACT.

3 Bedroom

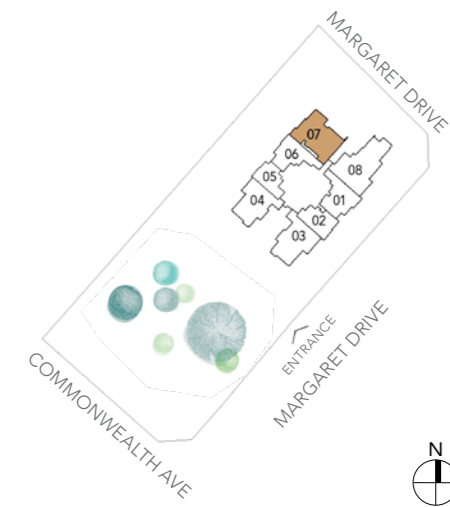
TYPE C2

90 sq m | 969 sq ft
#02-07 to #39-07

TYPE C2-R

105 sq m | 1130 sq ft
#40-07

incl. of 15 sq m / 161 sq ft
void area (high ceiling)
above living & dining.



AREA INCLUDES A/C LEDGE, BALCONY AND VOID AREA (HIGH CEILING). THE PLANS ARE SUBJECT TO CHANGE AS MAY BE REQUIRED OR APPROVED BY THE RELEVANT AUTHORITIES. AREAS ARE APPROXIMATE MEASUREMENTS ONLY AND ARE SUBJECT TO FINAL SURVEY. PLANS ARE NOT DRAWN TO SCALE AND DO NOT FORM PART OF THE CONTRACT.

4 Bedroom + Utility

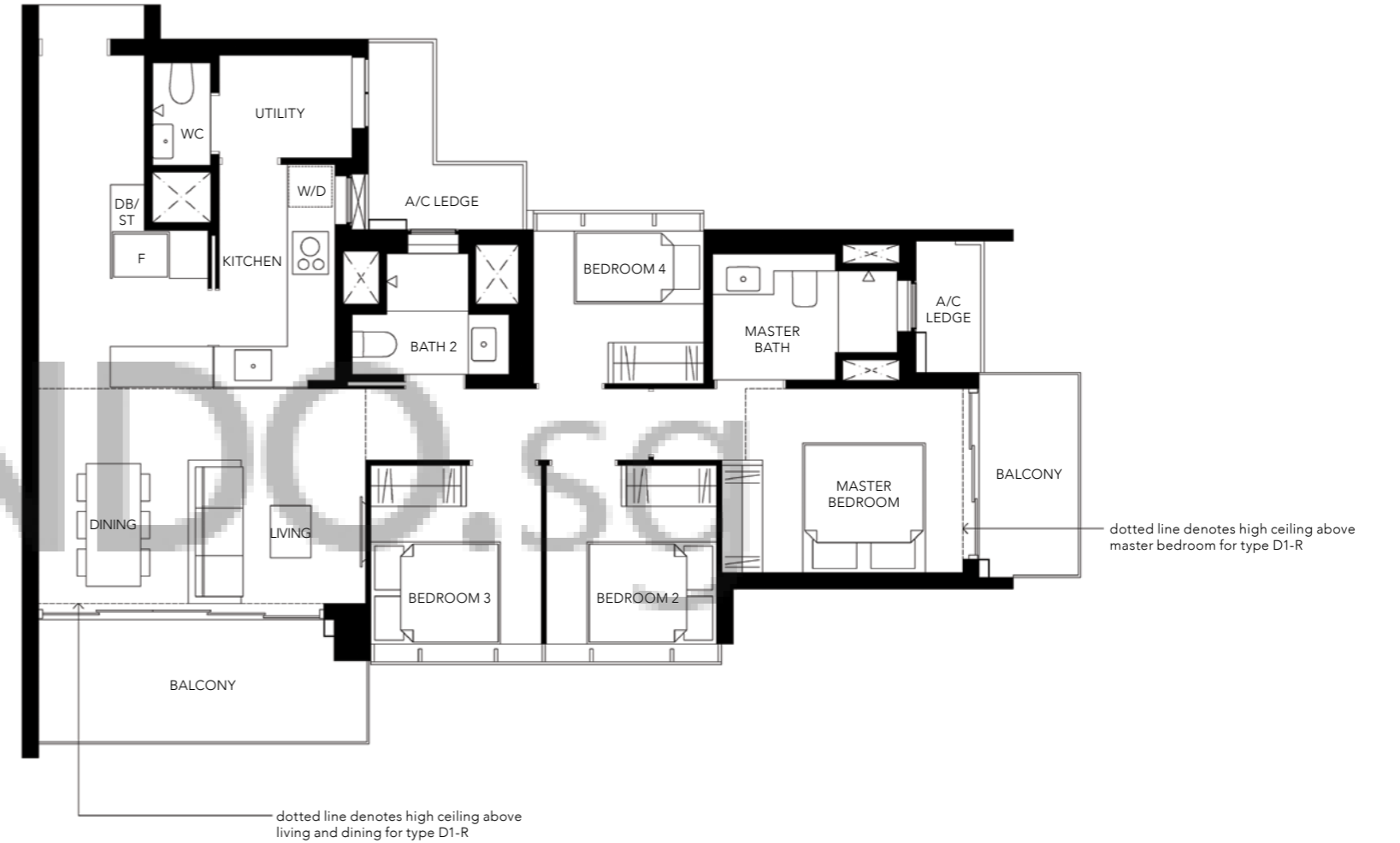
TYPE D1

110 sq m | 1184 sq ft
#02-08 to #39-08

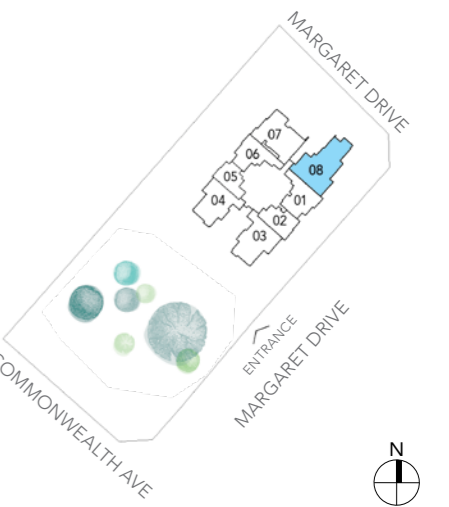
TYPE D1-R

136 sq m | 1464 sq ft
#40-08

incl. of 26 sq m / 280 sq ft
void area (high ceiling)
above master bedroom,
living & dining.



dotted line denotes high ceiling above master bedroom for type D1-R



AREA INCLUDES A/C LEDGE, BALCONY AND VOID AREA (HIGH CEILING). THE PLANS ARE SUBJECT TO CHANGE AS MAY BE REQUIRED OR APPROVED BY THE RELEVANT AUTHORITIES. AREAS ARE APPROXIMATE MEASUREMENTS ONLY AND ARE SUBJECT TO FINAL SURVEY. PLANS ARE NOT DRAWN TO SCALE AND DO NOT FORM PART OF THE CONTRACT.