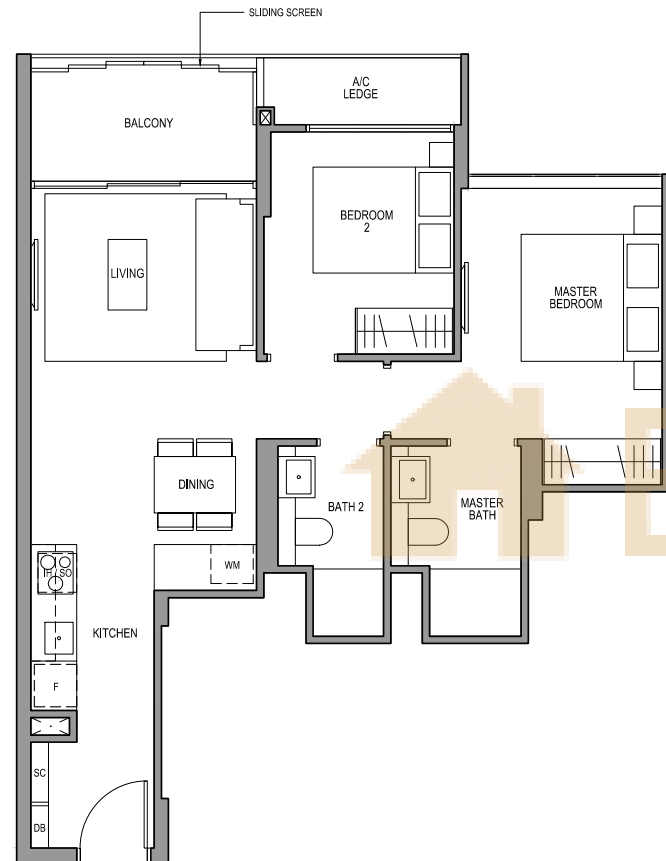


# 2 BEDROOM TYPE B1

71 SQM / 764 SQFT  
INCLUSIVE OF 6 SQM BALCONY & 3 SQM AC LEDGE

## TOWER 10

UNIT  
#02-09 TO #29-09  
#02-10\* TO #29-10\*  
#02-14\* TO #29-14\*  
\* MIRROR IMAGE

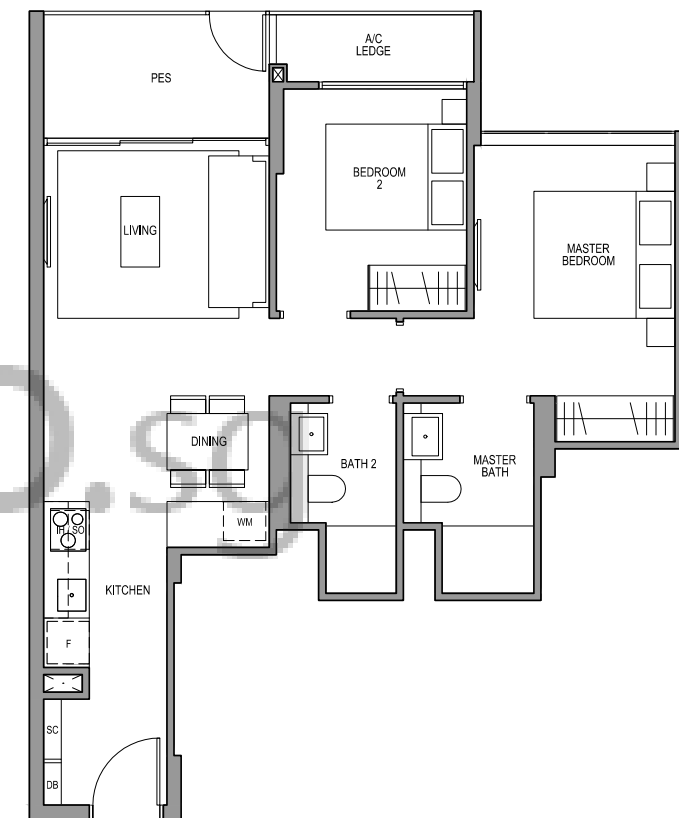


# 2 BEDROOM TYPE B1-G

71 SQM / 764 SQFT  
INCLUSIVE OF 6 SQM PES & 3 SQM AC LEDGE

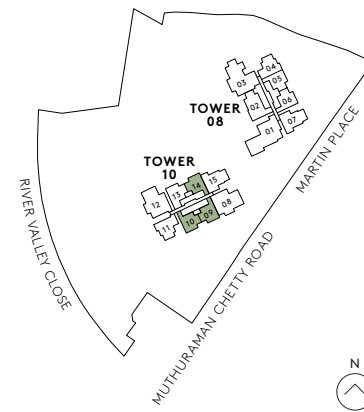
## TOWER 10

UNIT  
#01-09  
#01-10\*  
#01-14\*  
\* MIRROR IMAGE



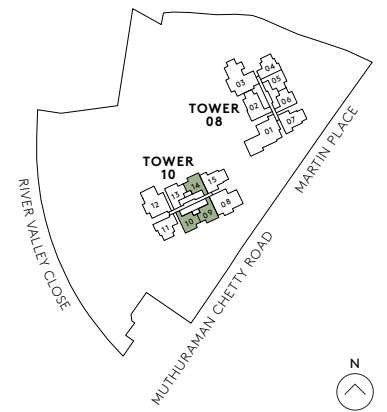
- |    |               |     |                  |    |                    |
|----|---------------|-----|------------------|----|--------------------|
| F  | FRIDGE        | SC  | SHOE CABINET     | WD | WARMER DRAWER      |
| DW | DISHWASHER    | WCH | WINE CHILLER     | CO | CONVENTIONAL OVEN  |
| IH | INDUCTION HOB | WM  | WASHER CUM DRYER | DB | DISTRIBUTION BOARD |
| GH | GAS HOB       | SO  | STEAM OVEN       |    |                    |

All plans are subjected to amendments as may be approved by the relevant authorities. Floor areas are approximate measurements and are subjected to final survey. BP approval number: A1709-00014-2016-BP01 dated: 4 May 2017.



- |    |               |     |                  |    |                    |
|----|---------------|-----|------------------|----|--------------------|
| F  | FRIDGE        | SC  | SHOE CABINET     | WD | WARMER DRAWER      |
| DW | DISHWASHER    | WCH | WINE CHILLER     | CO | CONVENTIONAL OVEN  |
| IH | INDUCTION HOB | WM  | WASHER CUM DRYER | DB | DISTRIBUTION BOARD |
| GH | GAS HOB       | SO  | STEAM OVEN       |    |                    |

All plans are subjected to amendments as may be approved by the relevant authorities. Floor areas are approximate measurements and are subjected to final survey. BP approval number: A1709-00014-2016-BP01 dated: 4 May 2017.

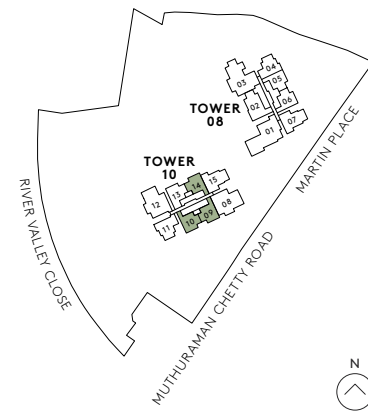
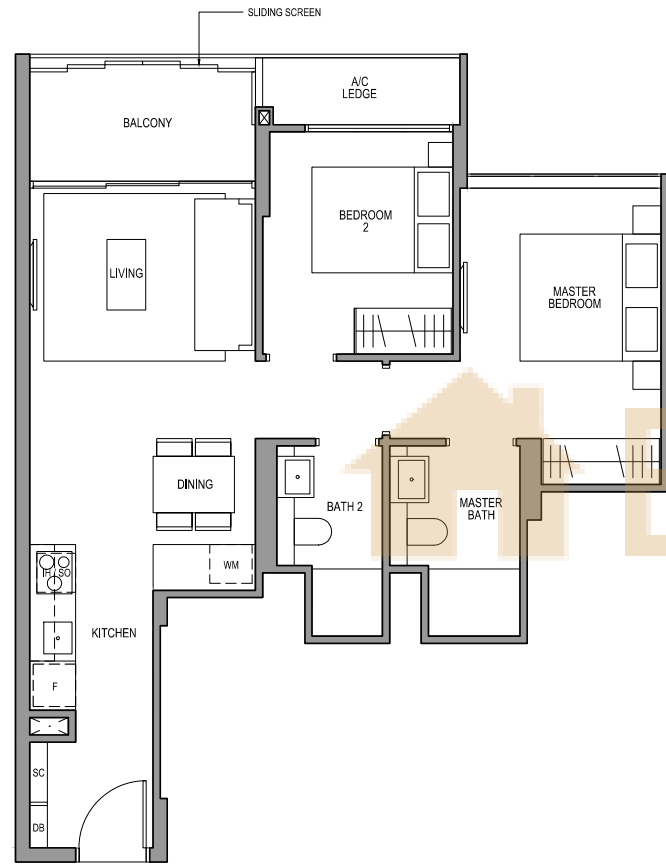


# 2 BEDROOM TYPE B1-R

71 SQM / 764 SQFT  
INCLUSIVE OF 6 SQM BALCONY & 3 SQM AC LEDGE

## TOWER 10

UNIT  
#30-09  
#30-10\*  
#30-14\*  
\* MIRROR IMAGE



- |    |               |     |                  |    |                    |
|----|---------------|-----|------------------|----|--------------------|
| F  | FRIDGE        | SC  | SHOE CABINET     | WD | WARMER DRAWER      |
| DW | DISHWASHER    | WCH | WINE CHILLER     | CO | CONVENTIONAL OVEN  |
| IH | INDUCTION HOB | WM  | WASHER CUM DRYER | DB | DISTRIBUTION BOARD |
| GH | GAS HOB       | SO  | STEAM OVEN       |    |                    |

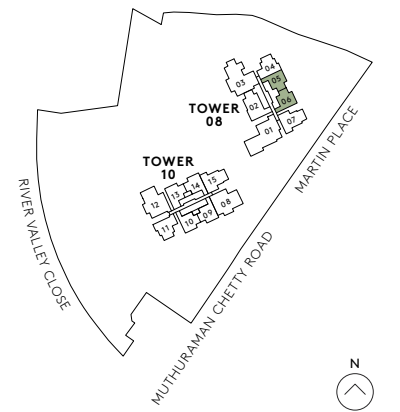
All plans are subjected to amendments as may be approved by the relevant authorities. Floor areas are approximate measurements and are subjected to final survey. BP approval number: A1709-00014-2016-BP01 dated: 4 May 2017.

# 2 BEDROOM TYPE B1a

71 SQM / 764 SQFT  
INCLUSIVE OF 6 SQM BALCONY & 3 SQM AC LEDGE

## TOWER 08

UNIT  
#02-05 TO #29-05  
#02-06\* TO #29-06\*  
\* MIRROR IMAGE



- |    |               |     |                  |    |                    |
|----|---------------|-----|------------------|----|--------------------|
| F  | FRIDGE        | SC  | SHOE CABINET     | WD | WARMER DRAWER      |
| DW | DISHWASHER    | WCH | WINE CHILLER     | CO | CONVENTIONAL OVEN  |
| IH | INDUCTION HOB | WM  | WASHER CUM DRYER | DB | DISTRIBUTION BOARD |
| GH | GAS HOB       | SO  | STEAM OVEN       |    |                    |

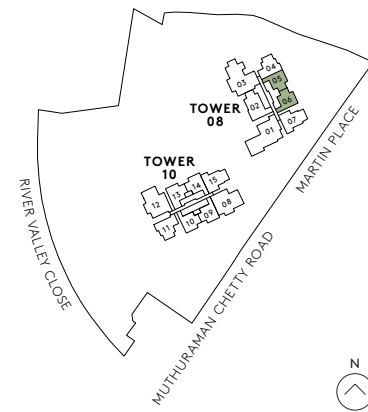
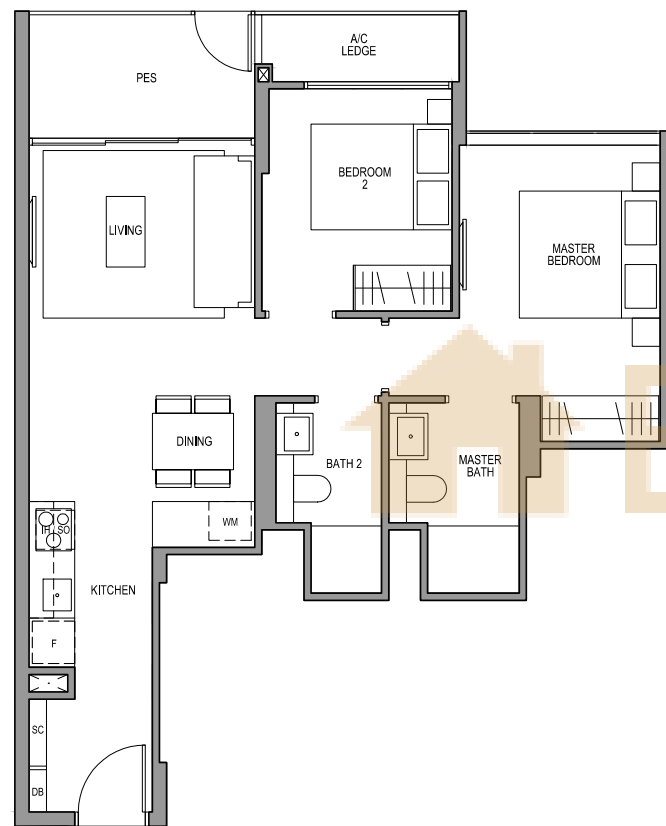
All plans are subjected to amendments as may be approved by the relevant authorities. Floor areas are approximate measurements and are subjected to final survey. BP approval number: A1709-00014-2016-BP01 dated: 4 May 2017.

# 2 BEDROOM TYPE B1a-G

71 SQM / 764 SQFT  
INCLUSIVE OF 6 SQM PES & 3 SQM AC LEDGE

## TOWER 08

UNIT  
#01-05  
#01-06\*  
\* MIRROR IMAGE



- |    |               |     |                  |    |                    |
|----|---------------|-----|------------------|----|--------------------|
| F  | FRIDGE        | SC  | SHOE CABINET     | WD | WARMER DRAWER      |
| DW | DISHWASHER    | WCH | WINE CHILLER     | CO | CONVENTIONAL OVEN  |
| IH | INDUCTION HOB | WM  | WASHER CUM DRYER | DB | DISTRIBUTION BOARD |
| GH | GAS HOB       | SO  | STEAM OVEN       |    |                    |

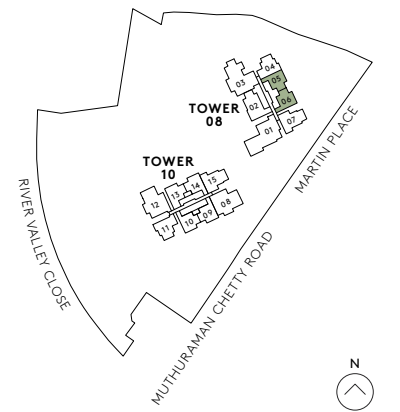
All plans are subjected to amendments as may be approved by the relevant authorities. Floor areas are approximate measurements and are subjected to final survey. BP approval number: A1709-00014-2016-BP01 dated: 4 May 2017.

# 2 BEDROOM TYPE B1a-R

71 SQM / 764 SQFT  
INCLUSIVE OF 6 SQM BALCONY & 3 SQM AC LEDGE

## TOWER 08

UNIT  
#30-05  
#30-06\*  
\* MIRROR IMAGE



- |    |               |     |                  |    |                    |
|----|---------------|-----|------------------|----|--------------------|
| F  | FRIDGE        | SC  | SHOE CABINET     | WD | WARMER DRAWER      |
| DW | DISHWASHER    | WCH | WINE CHILLER     | CO | CONVENTIONAL OVEN  |
| IH | INDUCTION HOB | WM  | WASHER CUM DRYER | DB | DISTRIBUTION BOARD |
| GH | GAS HOB       | SO  | STEAM OVEN       |    |                    |

All plans are subjected to amendments as may be approved by the relevant authorities. Floor areas are approximate measurements and are subjected to final survey. BP approval number: A1709-00014-2016-BP01 dated: 4 May 2017.

# 2 BEDROOM + STUDY TYPE B2S

79 SQM / 850 SQFT  
INCLUSIVE OF 7 SQM BALCONY & 3 SQM AC LEDGE

TOWER 10

UNIT  
#02-13 TO #29-13



# 2 BEDROOM + STUDY TYPE B2S-G

79 SQM / 850 SQFT  
INCLUSIVE OF 7 SQM PES & 3 SQM AC LEDGE

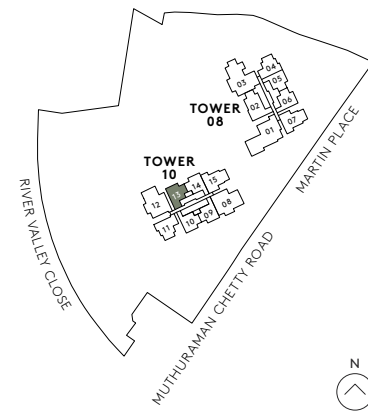
TOWER 10

UNIT  
#01-13



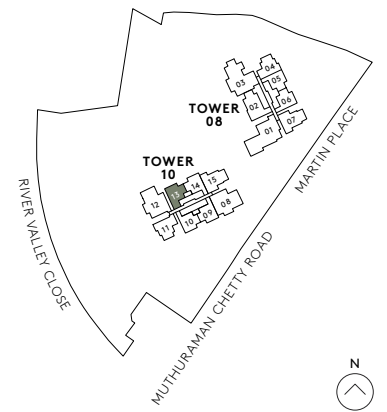
- |    |               |     |                  |    |                    |
|----|---------------|-----|------------------|----|--------------------|
| F  | FRIDGE        | SC  | SHOE CABINET     | WD | WARMER DRAWER      |
| DW | DISHWASHER    | WCH | WINE CHILLER     | CO | CONVENTIONAL OVEN  |
| IH | INDUCTION HOB | WM  | WASHER CUM DRYER | DB | DISTRIBUTION BOARD |
| GH | GAS HOB       | SO  | STEAM OVEN       |    |                    |

All plans are subjected to amendments as may be approved by the relevant authorities. Floor areas are approximate measurements and are subjected to final survey. BP approval number: A1709-00014-2016-BP01 dated: 4 May 2017.



- |    |               |     |                  |    |                    |
|----|---------------|-----|------------------|----|--------------------|
| F  | FRIDGE        | SC  | SHOE CABINET     | WD | WARMER DRAWER      |
| DW | DISHWASHER    | WCH | WINE CHILLER     | CO | CONVENTIONAL OVEN  |
| IH | INDUCTION HOB | WM  | WASHER CUM DRYER | DB | DISTRIBUTION BOARD |
| GH | GAS HOB       | SO  | STEAM OVEN       |    |                    |

All plans are subjected to amendments as may be approved by the relevant authorities. Floor areas are approximate measurements and are subjected to final survey. BP approval number: A1709-00014-2016-BP01 dated: 4 May 2017.



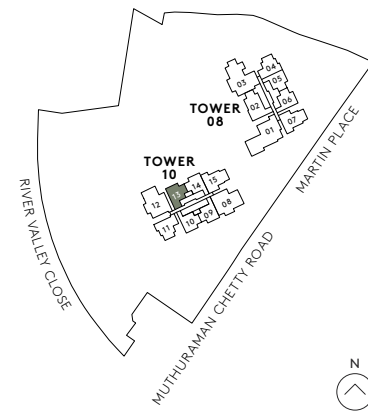
# 2 BEDROOM + STUDY

## TYPE B2S-R

79 SQM / 850 SQFT  
 INCLUSIVE OF 7 SQM BALCONY & 3 SQM AC LEDGE

TOWER 10

UNIT  
 #30-13



- |    |               |     |                  |    |                    |
|----|---------------|-----|------------------|----|--------------------|
| F  | FRIDGE        | SC  | SHOE CABINET     | WD | WARMER DRAWER      |
| DW | DISHWASHER    | WCH | WINE CHILLER     | CO | CONVENTIONAL OVEN  |
| IH | INDUCTION HOB | WM  | WASHER CUM DRYER | DB | DISTRIBUTION BOARD |
| GH | GAS HOB       | SO  | STEAM OVEN       |    |                    |

All plans are subjected to amendments as may be approved by the relevant authorities. Floor areas are approximate measurements and are subjected to final survey. BP approval number: A1709-00014-2016-BP01 dated: 4 May 2017.

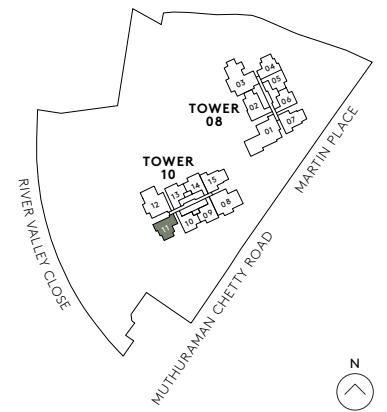
# 2 BEDROOM + STUDY

## TYPE B3S

82 SQM / 883 SQFT  
 INCLUSIVE OF 6 SQM BALCONY & 5 SQM AC LEDGE

TOWER 10

UNIT  
 #02-11 to #29-11



- |    |               |     |                  |    |                    |
|----|---------------|-----|------------------|----|--------------------|
| F  | FRIDGE        | SC  | SHOE CABINET     | WD | WARMER DRAWER      |
| DW | DISHWASHER    | WCH | WINE CHILLER     | CO | CONVENTIONAL OVEN  |
| IH | INDUCTION HOB | WM  | WASHER CUM DRYER | DB | DISTRIBUTION BOARD |
| GH | GAS HOB       | SO  | STEAM OVEN       |    |                    |

All plans are subjected to amendments as may be approved by the relevant authorities. Floor areas are approximate measurements and are subjected to final survey. BP approval number: A1709-00014-2016-BP01 dated: 4 May 2017.

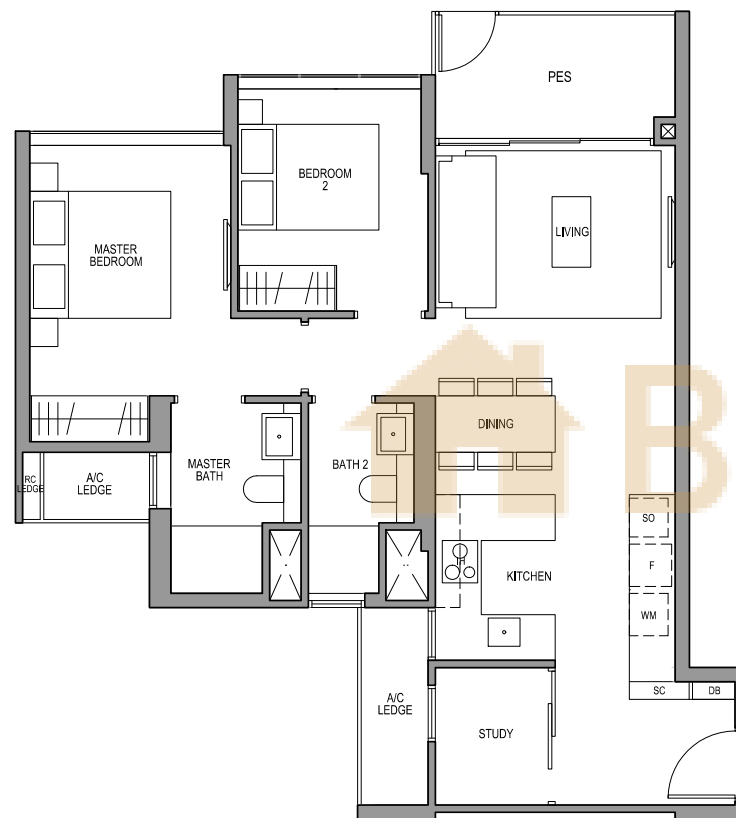
# 2 BEDROOM + STUDY

## TYPE B3S-G

82 SQM / 883 SQFT  
 INCLUSIVE OF 6 SQM PES & 5 SQM AC LEDGE

TOWER 10

UNIT  
 #01-11



# 2 BEDROOM + STUDY

## TYPE B3S-R

82 SQM / 883 SQFT  
 INCLUSIVE OF 6 SQM BALCONY & 5 SQM AC LEDGE

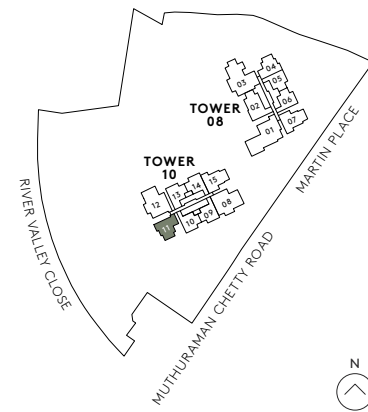
TOWER 10

UNIT  
 #30-11



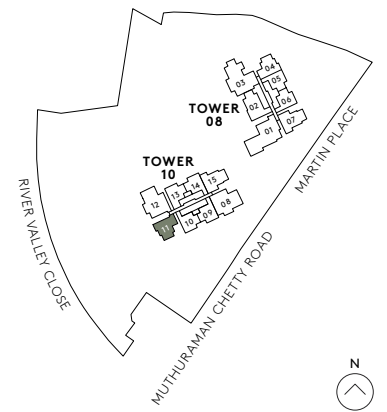
- |    |               |     |                  |    |                    |
|----|---------------|-----|------------------|----|--------------------|
| F  | FRIDGE        | SC  | SHOE CABINET     | WD | WARMER DRAWER      |
| DW | DISHWASHER    | WCH | WINE CHILLER     | CO | CONVENTIONAL OVEN  |
| IH | INDUCTION HOB | WM  | WASHER CUM DRYER | DB | DISTRIBUTION BOARD |
| GH | GAS HOB       | SO  | STEAM OVEN       |    |                    |

All plans are subjected to amendments as may be approved by the relevant authorities. Floor areas are approximate measurements and are subjected to final survey. BP approval number: A1709-00014-2016-BP01 dated: 4 May 2017.



- |    |               |     |                  |    |                    |
|----|---------------|-----|------------------|----|--------------------|
| F  | FRIDGE        | SC  | SHOE CABINET     | WD | WARMER DRAWER      |
| DW | DISHWASHER    | WCH | WINE CHILLER     | CO | CONVENTIONAL OVEN  |
| IH | INDUCTION HOB | WM  | WASHER CUM DRYER | DB | DISTRIBUTION BOARD |
| GH | GAS HOB       | SO  | STEAM OVEN       |    |                    |

All plans are subjected to amendments as may be approved by the relevant authorities. Floor areas are approximate measurements and are subjected to final survey. BP approval number: A1709-00014-2016-BP01 dated: 4 May 2017.

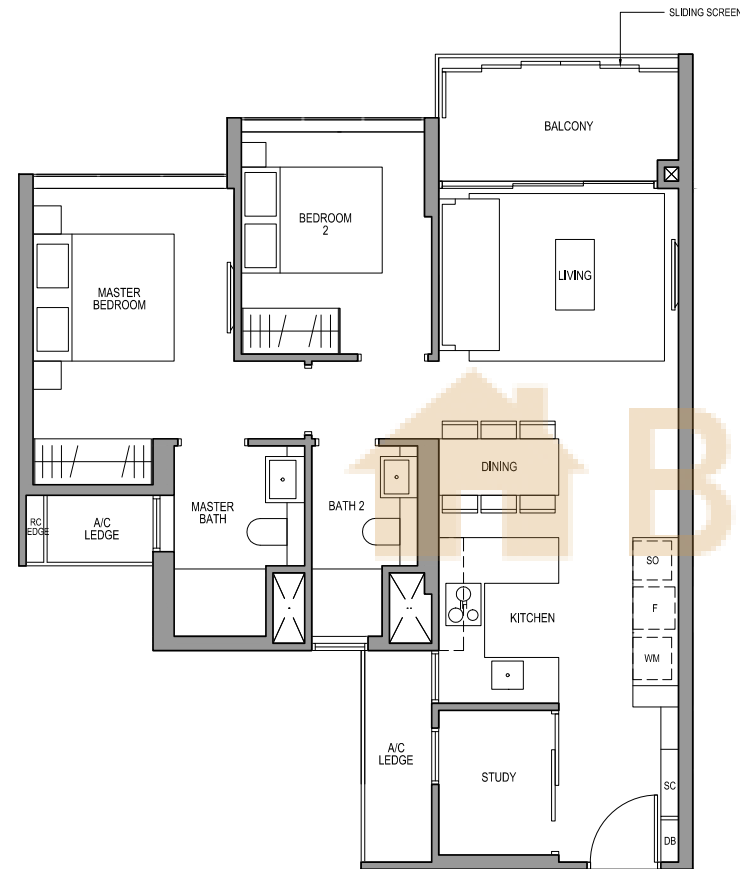


# 2 BEDROOM + STUDY TYPE B4S

81 SQM / 872 SQFT  
INCLUSIVE OF 6 SQM BALCONY & 5 SQM AC LEDGE

TOWER 08

UNIT  
#02-04 TO #29-04



# 2 BEDROOM + STUDY TYPE B4S-G

81 SQM / 872 SQFT  
INCLUSIVE OF 6 SQM PES & 5 SQM AC LEDGE

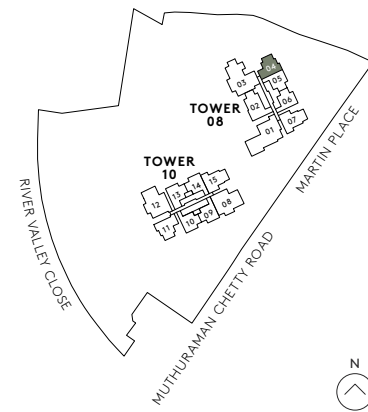
TOWER 08

UNIT  
#01-04



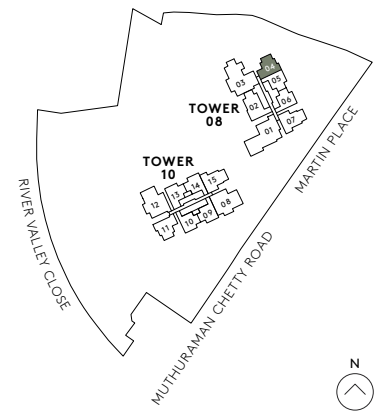
- |    |               |     |                  |    |                    |
|----|---------------|-----|------------------|----|--------------------|
| F  | FRIDGE        | SC  | SHOE CABINET     | WD | WARMER DRAWER      |
| DW | DISHWASHER    | WCH | WINE CHILLER     | CO | CONVENTIONAL OVEN  |
| IH | INDUCTION HOB | WM  | WASHER CUM DRYER | DB | DISTRIBUTION BOARD |
| GH | GAS HOB       | SO  | STEAM OVEN       |    |                    |

All plans are subjected to amendments as may be approved by the relevant authorities. Floor areas are approximate measurements and are subjected to final survey. BP approval number: A1709-00014-2016-BP01 dated: 4 May 2017.



- |    |               |     |                  |    |                    |
|----|---------------|-----|------------------|----|--------------------|
| F  | FRIDGE        | SC  | SHOE CABINET     | WD | WARMER DRAWER      |
| DW | DISHWASHER    | WCH | WINE CHILLER     | CO | CONVENTIONAL OVEN  |
| IH | INDUCTION HOB | WM  | WASHER CUM DRYER | DB | DISTRIBUTION BOARD |
| GH | GAS HOB       | SO  | STEAM OVEN       |    |                    |

All plans are subjected to amendments as may be approved by the relevant authorities. Floor areas are approximate measurements and are subjected to final survey. BP approval number: A1709-00014-2016-BP01 dated: 4 May 2017.

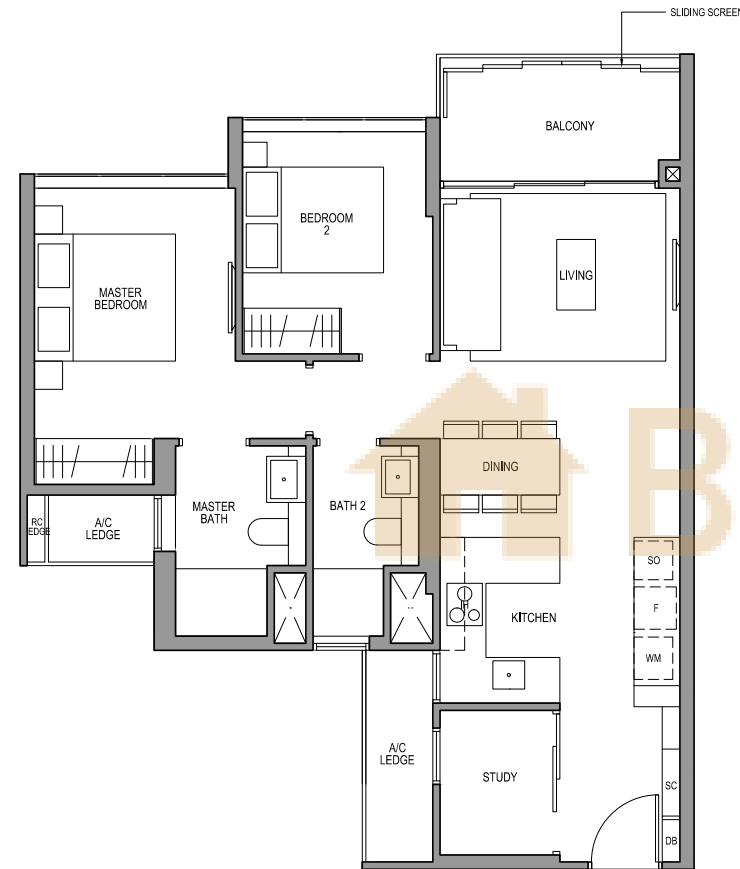


# 2 BEDROOM + STUDY TYPE B4S-R

81 SQM / 872 SQFT  
INCLUSIVE OF 6 SQM BALCONY & 5 SQM AC LEDGE

TOWER 08

UNIT  
#30-04



BUYCONDO.SG

# 3 BEDROOM TYPE C1

94 SQM / 1012 SQFT  
INCLUSIVE OF 7 SQM BALCONY & 5 SQM AC LEDGE

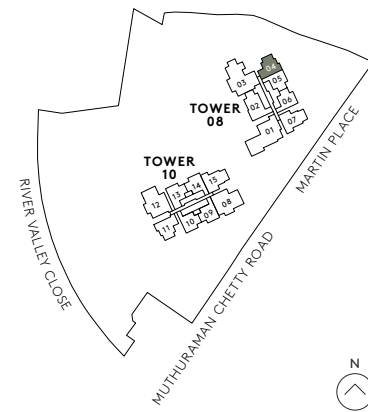
TOWER 10

UNIT  
#02-15 TO #29-15



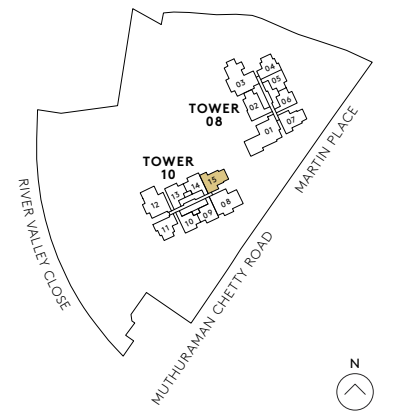
- |    |               |     |                  |    |                    |
|----|---------------|-----|------------------|----|--------------------|
| F  | FRIDGE        | SC  | SHOE CABINET     | WD | WARMER DRAWER      |
| DW | DISHWASHER    | WCH | WINE CHILLER     | CO | CONVENTIONAL OVEN  |
| IH | INDUCTION HOB | WM  | WASHER CUM DRYER | DB | DISTRIBUTION BOARD |
| GH | GAS HOB       | SO  | STEAM OVEN       |    |                    |

All plans are subjected to amendments as may be approved by the relevant authorities. Floor areas are approximate measurements and are subjected to final survey. BP approval number: A1709-00014-2016-BP01 dated: 4 May 2017.



- |    |               |     |                  |    |                    |
|----|---------------|-----|------------------|----|--------------------|
| F  | FRIDGE        | SC  | SHOE CABINET     | WD | WARMER DRAWER      |
| DW | DISHWASHER    | WCH | WINE CHILLER     | CO | CONVENTIONAL OVEN  |
| IH | INDUCTION HOB | WM  | WASHER CUM DRYER | DB | DISTRIBUTION BOARD |
| GH | GAS HOB       | SO  | STEAM OVEN       |    |                    |

All plans are subjected to amendments as may be approved by the relevant authorities. Floor areas are approximate measurements and are subjected to final survey. BP approval number: A1709-00014-2016-BP01 dated: 4 May 2017.



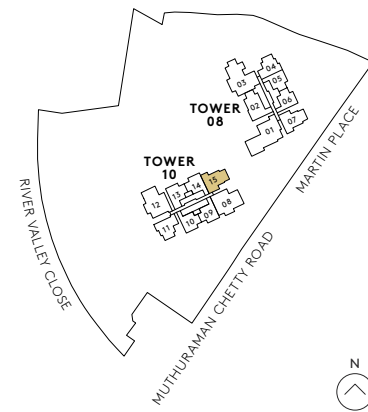


# 3 BEDROOM TYPE C1-G

94 SQM / 1012 SQFT  
INCLUSIVE OF 7 SQM PES & 5 SQM AC LEDGE

TOWER 10

UNIT  
#01-15



- |    |               |     |                  |    |                    |
|----|---------------|-----|------------------|----|--------------------|
| F  | FRIDGE        | SC  | SHOE CABINET     | WD | WARMER DRAWER      |
| DW | DISHWASHER    | WCH | WINE CHILLER     | CO | CONVENTIONAL OVEN  |
| IH | INDUCTION HOB | WM  | WASHER CUM DRYER | DB | DISTRIBUTION BOARD |
| GH | GAS HOB       | SO  | STEAM OVEN       |    |                    |

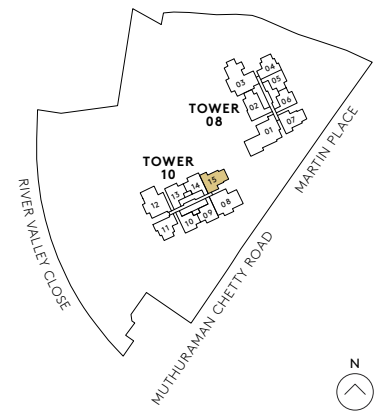
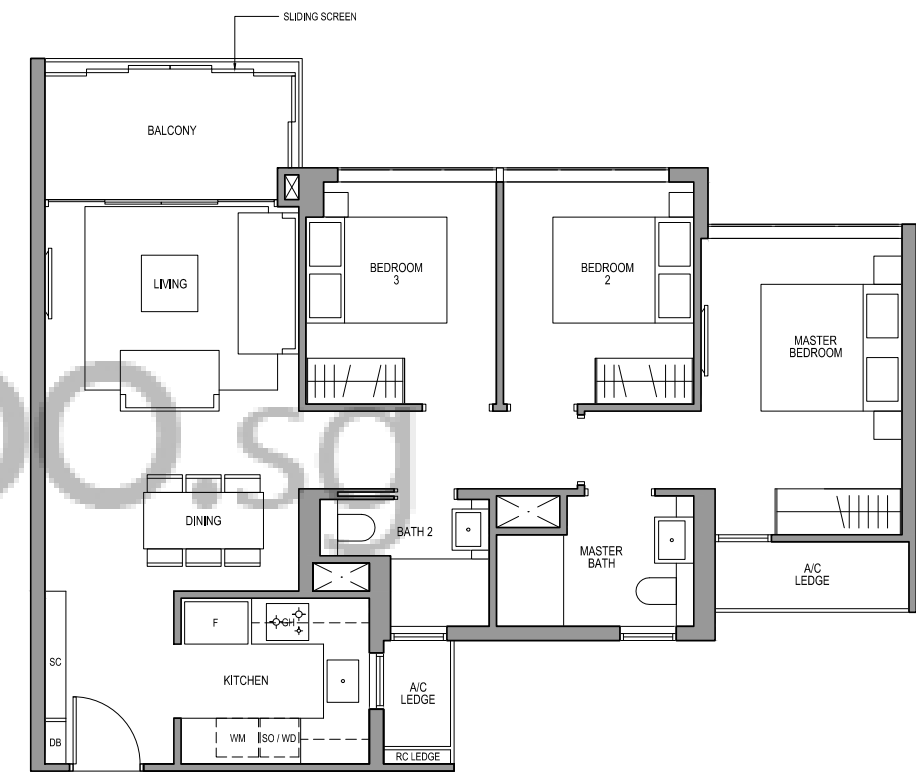
All plans are subjected to amendments as may be approved by the relevant authorities. Floor areas are approximate measurements and are subjected to final survey. BP approval number: A1709-00014-2016-BP01 dated: 4 May 2017.

# 3 BEDROOM TYPE C1-R

94 SQM / 1012 SQFT  
INCLUSIVE OF 7 SQM BALCONY & 5 SQM AC LEDGE

TOWER 10

UNIT  
#30-15



- |    |               |     |                  |    |                    |
|----|---------------|-----|------------------|----|--------------------|
| F  | FRIDGE        | SC  | SHOE CABINET     | WD | WARMER DRAWER      |
| DW | DISHWASHER    | WCH | WINE CHILLER     | CO | CONVENTIONAL OVEN  |
| IH | INDUCTION HOB | WM  | WASHER CUM DRYER | DB | DISTRIBUTION BOARD |
| GH | GAS HOB       | SO  | STEAM OVEN       |    |                    |

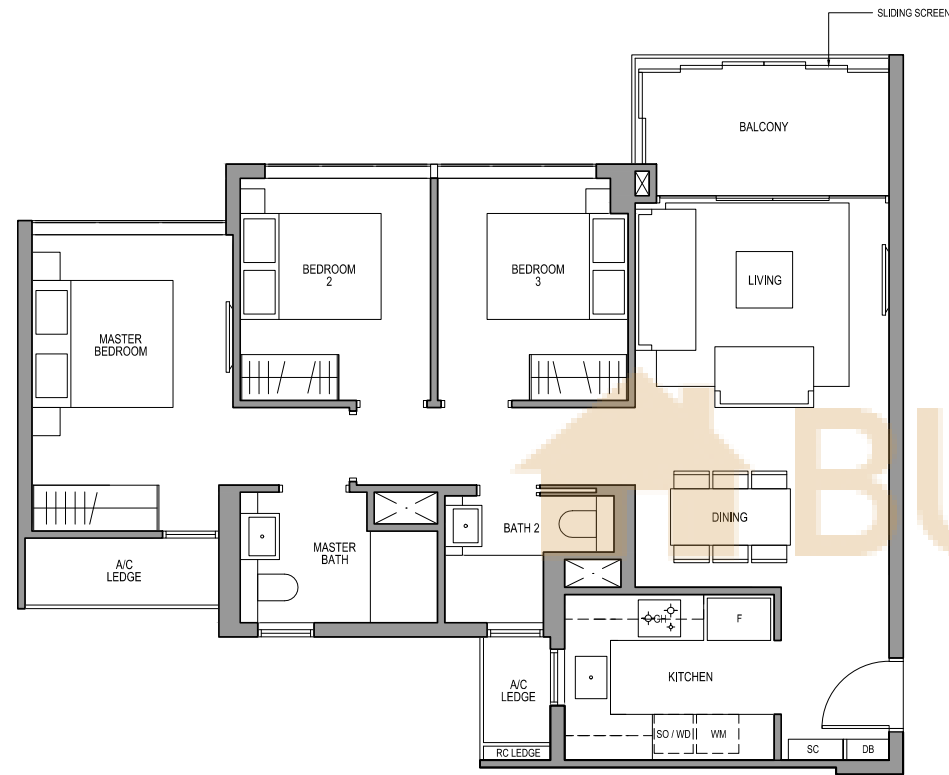
All plans are subjected to amendments as may be approved by the relevant authorities. Floor areas are approximate measurements and are subjected to final survey. BP approval number: A1709-00014-2016-BP01 dated: 4 May 2017.

# 3 BEDROOM TYPE C2

94 SQM / 1012 SQFT  
INCLUSIVE OF 7 SQM BALCONY & 5 SQM AC LEDGE

TOWER 08

UNIT  
#02-07 To #29-07

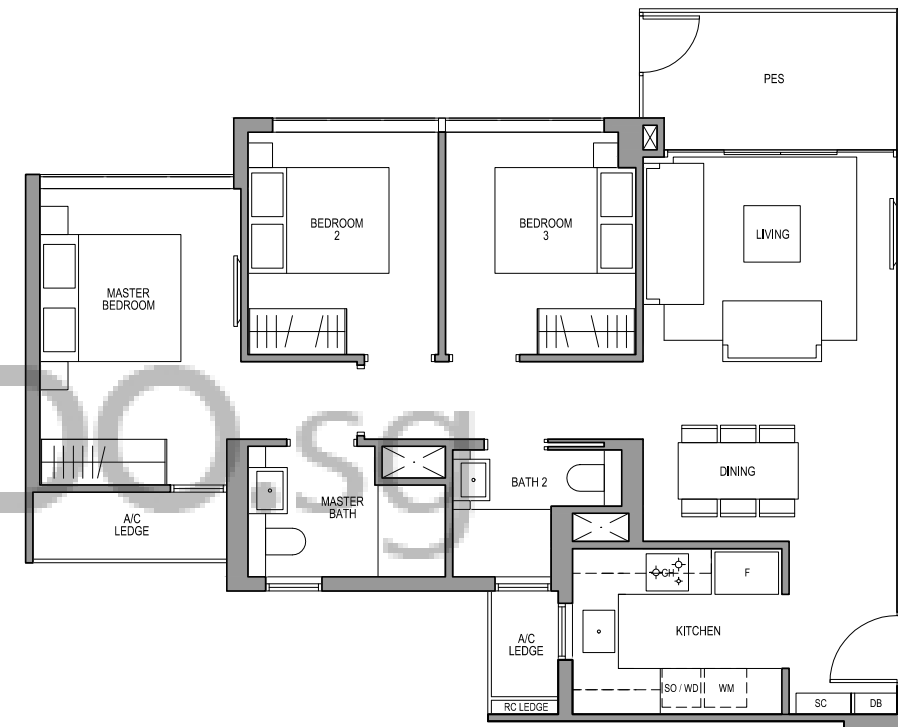


# 3 BEDROOM TYPE C2-G

94 SQM / 1012 SQFT  
INCLUSIVE OF 7 SQM PES & 5 SQM AC LEDGE

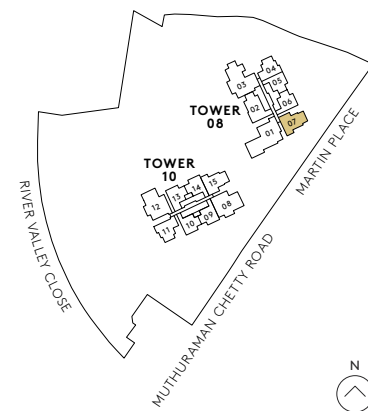
TOWER 08

UNIT  
#01-07



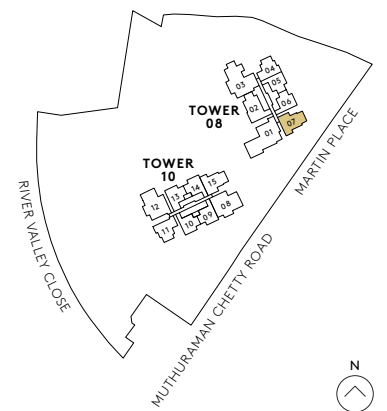
- |    |               |     |                  |    |                    |
|----|---------------|-----|------------------|----|--------------------|
| F  | FRIDGE        | SC  | SHOE CABINET     | WD | WARMER DRAWER      |
| DW | DISHWASHER    | WCH | WINE CHILLER     | CO | CONVENTIONAL OVEN  |
| IH | INDUCTION HOB | WM  | WASHER CUM DRYER | DB | DISTRIBUTION BOARD |
| GH | GAS HOB       | SO  | STEAM OVEN       |    |                    |

All plans are subjected to amendments as may be approved by the relevant authorities. Floor areas are approximate measurements and are subjected to final survey. BP approval number: A1709-00014-2016-BP01 dated: 4 May 2017.



- |    |               |     |                  |    |                    |
|----|---------------|-----|------------------|----|--------------------|
| F  | FRIDGE        | SC  | SHOE CABINET     | WD | WARMER DRAWER      |
| DW | DISHWASHER    | WCH | WINE CHILLER     | CO | CONVENTIONAL OVEN  |
| IH | INDUCTION HOB | WM  | WASHER CUM DRYER | DB | DISTRIBUTION BOARD |
| GH | GAS HOB       | SO  | STEAM OVEN       |    |                    |

All plans are subjected to amendments as may be approved by the relevant authorities. Floor areas are approximate measurements and are subjected to final survey. BP approval number: A1709-00014-2016-BP01 dated: 4 May 2017.

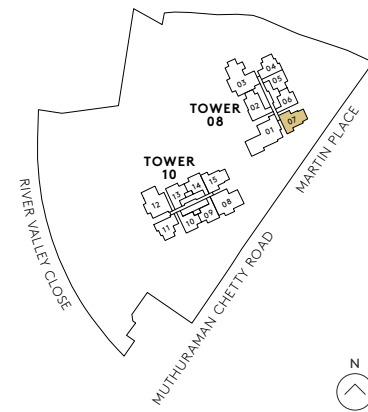
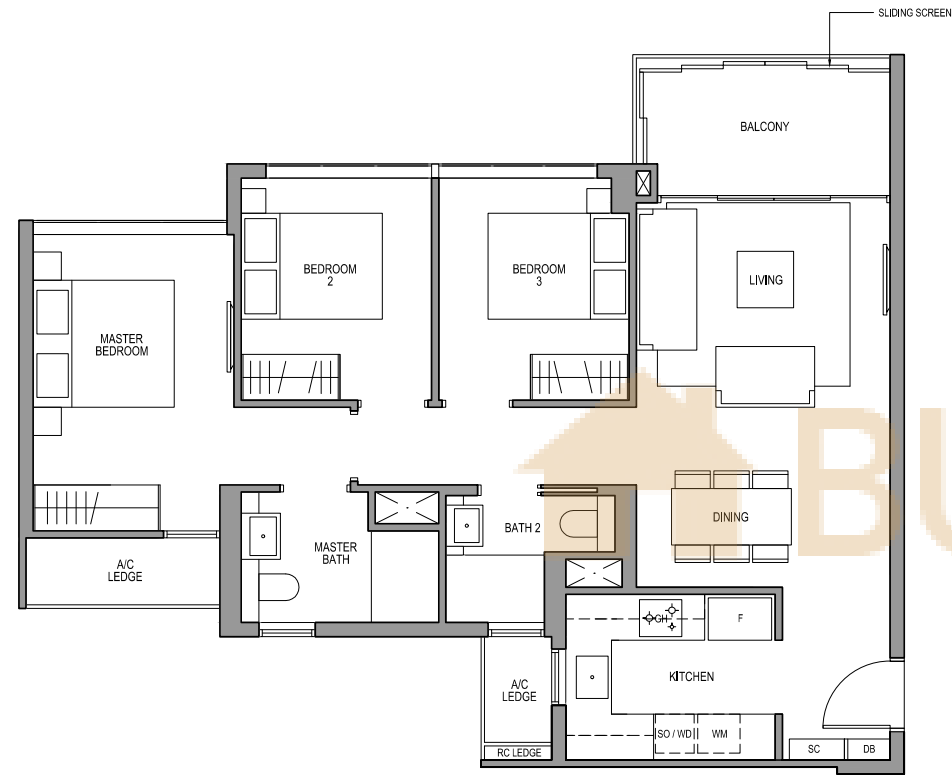


# 3 BEDROOM TYPE C2-R

94 SQM / 1012 SQFT  
INCLUSIVE OF 7 SQM BALCONY & 5 SQM AC LEDGE

TOWER 08

UNIT  
#30-07



- |    |               |     |                  |    |                    |
|----|---------------|-----|------------------|----|--------------------|
| F  | FRIDGE        | SC  | SHOE CABINET     | WD | WARMER DRAWER      |
| DW | DISHWASHER    | WCH | WINE CHILLER     | CO | CONVENTIONAL OVEN  |
| IH | INDUCTION HOB | WM  | WASHER CUM DRYER | DB | DISTRIBUTION BOARD |
| GH | GAS HOB       | SO  | STEAM OVEN       |    |                    |

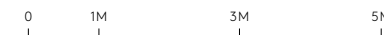
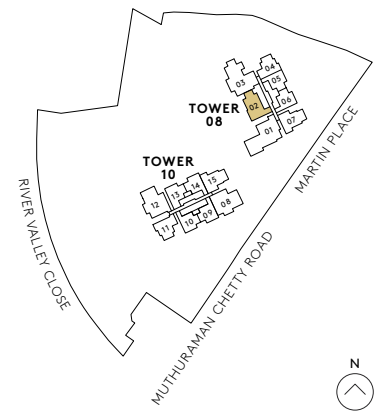
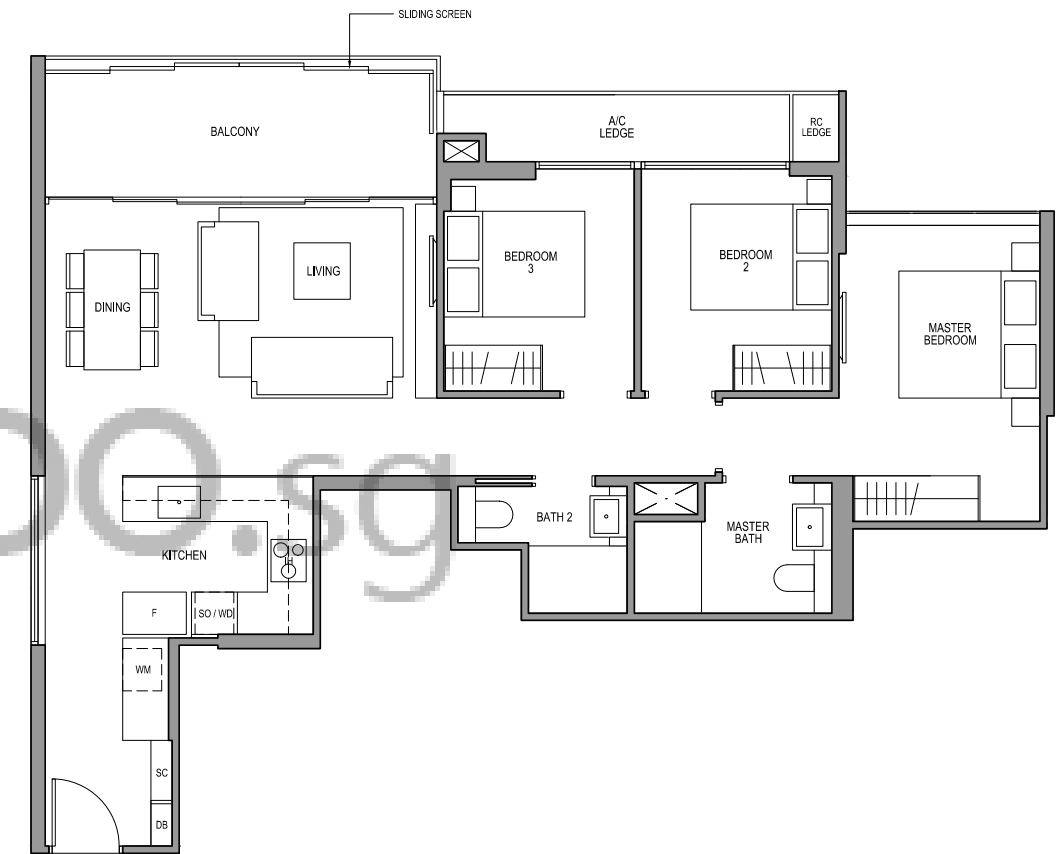
All plans are subjected to amendments as may be approved by the relevant authorities. Floor areas are approximate measurements and are subjected to final survey. BP approval number: A1709-00014-2016-BP01 dated: 4 May 2017.

# 3 BEDROOM TYPE C3

101 SQM / 1087 SQFT  
INCLUSIVE OF 12 SQM BALCONY & 5 SQM AC LEDGE

TOWER 08

UNIT  
#02-02 TO #29-02



- |    |               |     |                  |    |                    |
|----|---------------|-----|------------------|----|--------------------|
| F  | FRIDGE        | SC  | SHOE CABINET     | WD | WARMER DRAWER      |
| DW | DISHWASHER    | WCH | WINE CHILLER     | CO | CONVENTIONAL OVEN  |
| IH | INDUCTION HOB | WM  | WASHER CUM DRYER | DB | DISTRIBUTION BOARD |
| GH | GAS HOB       | SO  | STEAM OVEN       |    |                    |

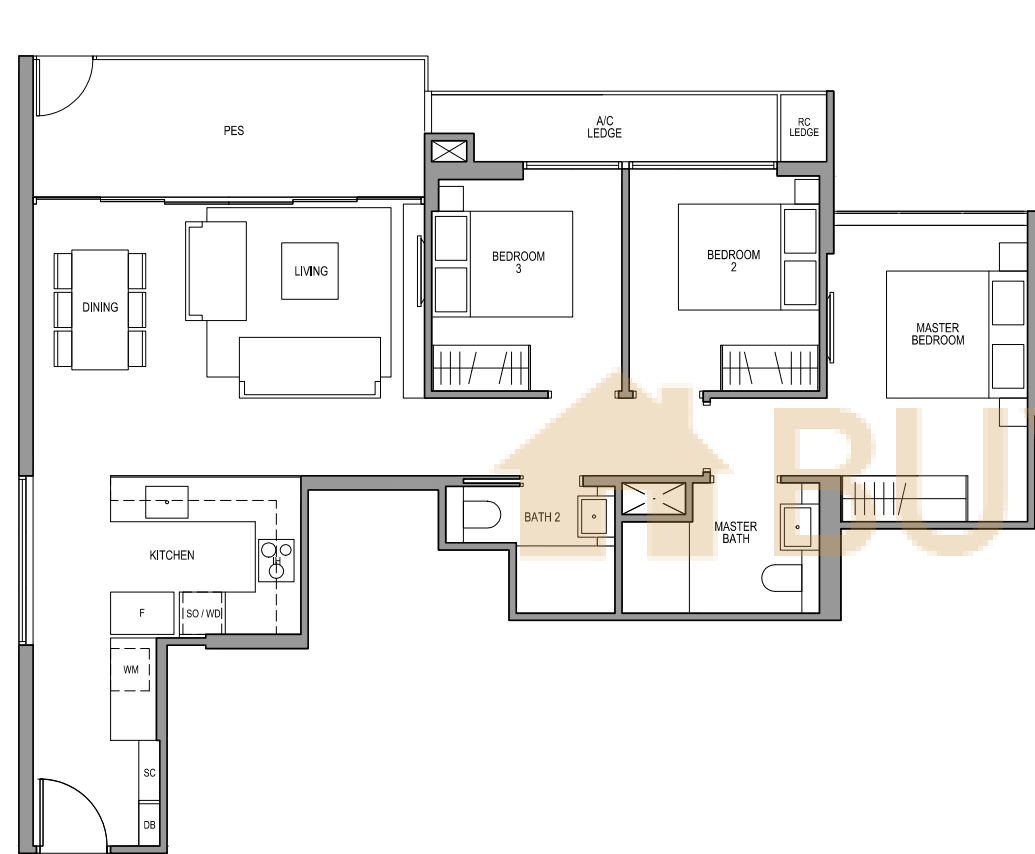
All plans are subjected to amendments as may be approved by the relevant authorities. Floor areas are approximate measurements and are subjected to final survey. BP approval number: A1709-00014-2016-BP01 dated: 4 May 2017.

# 3 BEDROOM TYPE C3-G

101 SQM / 1087 SQFT  
INCLUSIVE OF 12 SQM PES & 5 SQM AC LEDGE

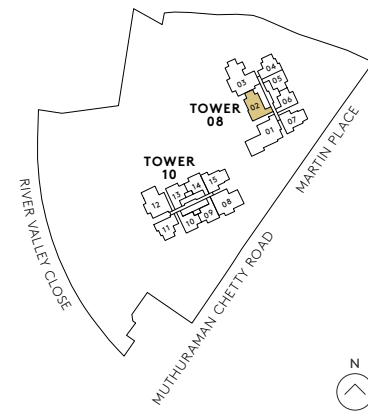
TOWER 08

UNIT  
#01-02



- |    |               |     |                  |    |                    |
|----|---------------|-----|------------------|----|--------------------|
| F  | FRIDGE        | SC  | SHOE CABINET     | WD | WARMER DRAWER      |
| DW | DISHWASHER    | WCH | WINE CHILLER     | CO | CONVENTIONAL OVEN  |
| IH | INDUCTION HOB | WM  | WASHER CUM DRYER | DB | DISTRIBUTION BOARD |
| GH | GAS HOB       | SO  | STEAM OVEN       |    |                    |

All plans are subjected to amendments as may be approved by the relevant authorities. Floor areas are approximate measurements and are subjected to final survey. BP approval number: A1709-00014-2016-BP01 dated: 4 May 2017.

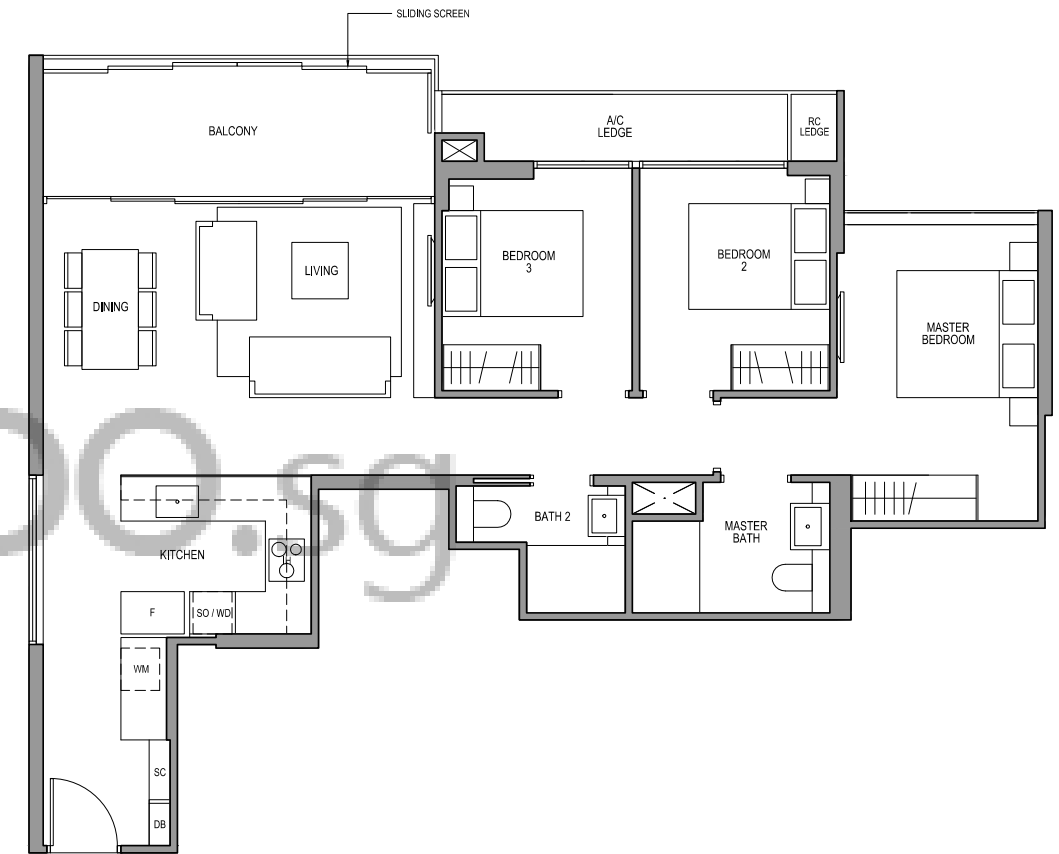


# 3 BEDROOM TYPE C3-R

101 SQM / 1087 SQFT  
INCLUSIVE OF 12 SQM BALCONY & 5 SQM AC LEDGE

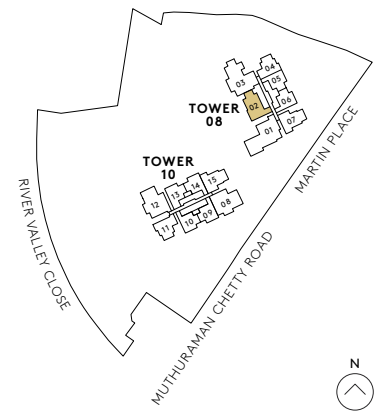
TOWER 08

UNIT  
#30-02



- |    |               |     |                  |    |                    |
|----|---------------|-----|------------------|----|--------------------|
| F  | FRIDGE        | SC  | SHOE CABINET     | WD | WARMER DRAWER      |
| DW | DISHWASHER    | WCH | WINE CHILLER     | CO | CONVENTIONAL OVEN  |
| IH | INDUCTION HOB | WM  | WASHER CUM DRYER | DB | DISTRIBUTION BOARD |
| GH | GAS HOB       | SO  | STEAM OVEN       |    |                    |

All plans are subjected to amendments as may be approved by the relevant authorities. Floor areas are approximate measurements and are subjected to final survey. BP approval number: A1709-00014-2016-BP01 dated: 4 May 2017.



# 3 BEDROOM PREMIUM TYPE C4(PL)

132 SQM / 1421 SQFT  
INCLUSIVE OF 14 SQM BALCONY & 5 SQM AC LEDGE

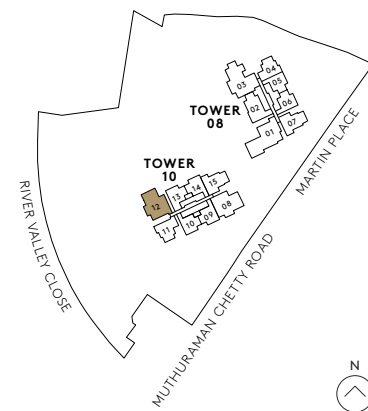
TOWER 10

UNIT  
#02-12 TO #29-12



- |    |               |     |                  |    |                    |
|----|---------------|-----|------------------|----|--------------------|
| F  | FRIDGE        | SC  | SHOE CABINET     | WD | WARMER DRAWER      |
| DW | DISHWASHER    | WCH | WINE CHILLER     | CO | CONVENTIONAL OVEN  |
| IH | INDUCTION HOB | WM  | WASHER CUM DRYER | DB | DISTRIBUTION BOARD |
| GH | GAS HOB       | SO  | STEAM OVEN       |    |                    |

All plans are subjected to amendments as may be approved by the relevant authorities. Floor areas are approximate measurements and are subjected to final survey. BP approval number: A1709-00014-2016-BP01 dated: 4 May 2017.



# 3 BEDROOM PREMIUM TYPE C4-G

124 SQM / 1335 SQFT  
INCLUSIVE OF 10 SQM PES & 6 SQM AC LEDGE

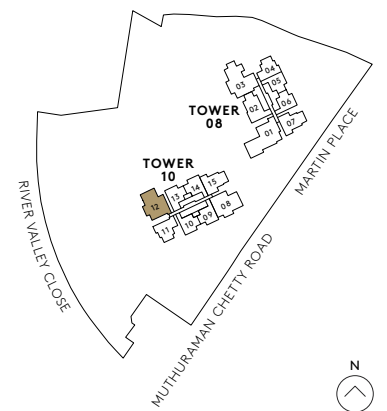
TOWER 10

UNIT  
#01-12



- |    |               |     |                  |    |                    |
|----|---------------|-----|------------------|----|--------------------|
| F  | FRIDGE        | SC  | SHOE CABINET     | WD | WARMER DRAWER      |
| DW | DISHWASHER    | WCH | WINE CHILLER     | CO | CONVENTIONAL OVEN  |
| IH | INDUCTION HOB | WM  | WASHER CUM DRYER | DB | DISTRIBUTION BOARD |
| GH | GAS HOB       | SO  | STEAM OVEN       |    |                    |

All plans are subjected to amendments as may be approved by the relevant authorities. Floor areas are approximate measurements and are subjected to final survey. BP approval number: A1709-00014-2016-BP01 dated: 4 May 2017.



# 3 BEDROOM PREMIUM TYPE C4-R(PL)

132 SQM / 1421 SQFT  
INCLUSIVE OF 14 SQM BALCONY & 5 SQM AC LEDGE

TOWER 10

UNIT  
#30-12

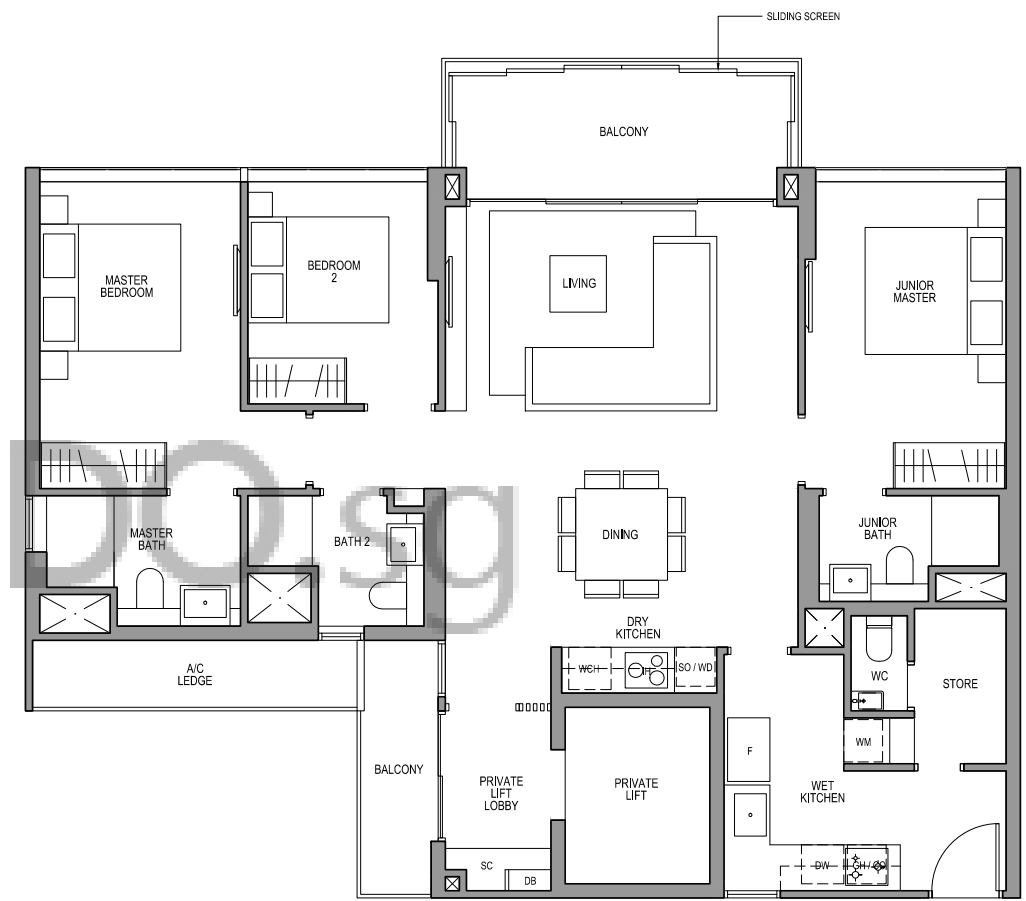


# 3 BEDROOM PREMIUM TYPE C5(PL)

130 SQM / 1399 SQFT  
INCLUSIVE OF 14 SQM BALCONY & 5 SQM AC LEDGE

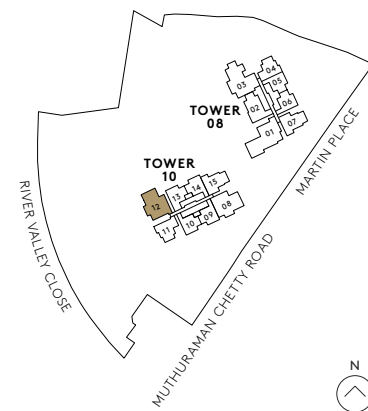
TOWER 10

UNIT  
#02-08 TO #29-08



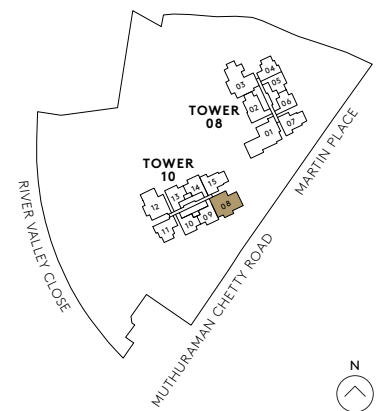
- |    |               |     |                  |    |                    |
|----|---------------|-----|------------------|----|--------------------|
| F  | FRIDGE        | SC  | SHOE CABINET     | WD | WARMER DRAWER      |
| DW | DISHWASHER    | WCH | WINE CHILLER     | CO | CONVENTIONAL OVEN  |
| IH | INDUCTION HOB | WM  | WASHER CUM DRYER | DB | DISTRIBUTION BOARD |
| GH | GAS HOB       | SO  | STEAM OVEN       |    |                    |

All plans are subjected to amendments as may be approved by the relevant authorities. Floor areas are approximate measurements and are subjected to final survey. BP approval number: A1709-00014-2016-BP01 dated: 4 May 2017.



- |    |               |     |                  |    |                    |
|----|---------------|-----|------------------|----|--------------------|
| F  | FRIDGE        | SC  | SHOE CABINET     | WD | WARMER DRAWER      |
| DW | DISHWASHER    | WCH | WINE CHILLER     | CO | CONVENTIONAL OVEN  |
| IH | INDUCTION HOB | WM  | WASHER CUM DRYER | DB | DISTRIBUTION BOARD |
| GH | GAS HOB       | SO  | STEAM OVEN       |    |                    |

All plans are subjected to amendments as may be approved by the relevant authorities. Floor areas are approximate measurements and are subjected to final survey. BP approval number: A1709-00014-2016-BP01 dated: 4 May 2017.



# 3 BEDROOM PREMIUM TYPE C5-G

123 SQM / 1324 SQFT  
INCLUSIVE OF 10 SQM PES & 6 SQM AC LEDGE

TOWER 10

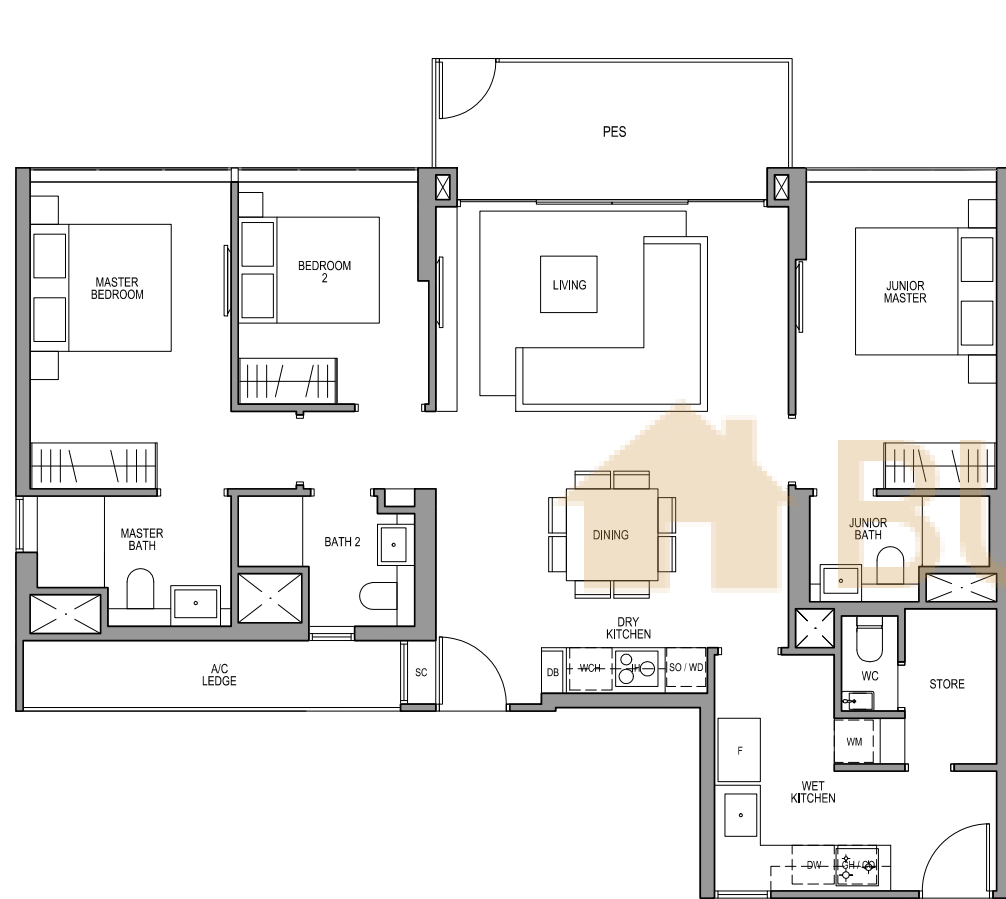
UNIT  
#01-08

# 3 BEDROOM PREMIUM TYPE C5-R(PL)

130 SQM / 1399 SQFT  
INCLUSIVE OF 14 SQM BALCONY & 5 SQM AC LEDGE

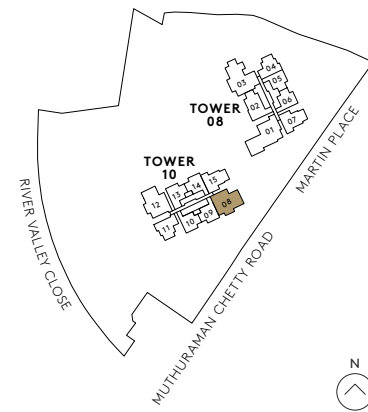
TOWER 10

UNIT  
#30-08



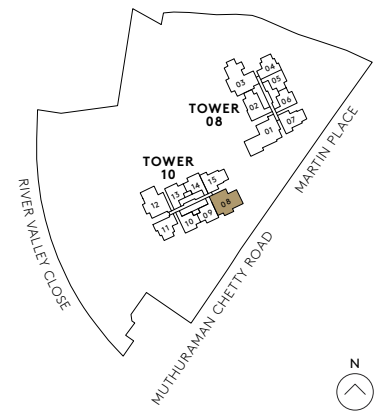
- |    |               |     |                  |    |                    |
|----|---------------|-----|------------------|----|--------------------|
| F  | FRIDGE        | SC  | SHOE CABINET     | WD | WARMER DRAWER      |
| DW | DISHWASHER    | WCH | WINE CHILLER     | CO | CONVENTIONAL OVEN  |
| IH | INDUCTION HOB | WM  | WASHER CUM DRYER | DB | DISTRIBUTION BOARD |
| GH | GAS HOB       | SO  | STEAM OVEN       |    |                    |

All plans are subjected to amendments as may be approved by the relevant authorities. Floor areas are approximate measurements and are subjected to final survey. BP approval number: A1709-00014-2016-BP01 dated: 4 May 2017.



- |    |               |     |                  |    |                    |
|----|---------------|-----|------------------|----|--------------------|
| F  | FRIDGE        | SC  | SHOE CABINET     | WD | WARMER DRAWER      |
| DW | DISHWASHER    | WCH | WINE CHILLER     | CO | CONVENTIONAL OVEN  |
| IH | INDUCTION HOB | WM  | WASHER CUM DRYER | DB | DISTRIBUTION BOARD |
| GH | GAS HOB       | SO  | STEAM OVEN       |    |                    |

All plans are subjected to amendments as may be approved by the relevant authorities. Floor areas are approximate measurements and are subjected to final survey. BP approval number: A1709-00014-2016-BP01 dated: 4 May 2017.



# 4 BEDROOM PREMIUM TYPE D1(PL)

161 SQM / 1733 SQFT  
INCLUSIVE OF 15 SQM BALCONY & 8 SQM AC LEDGE

TOWER 08

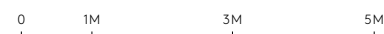
UNIT  
#02-03 to #29-03

# 4 BEDROOM PREMIUM TYPE D1-G(PL)

158 SQM / 1701 SQFT  
INCLUSIVE OF 15 SQM PES & 7 SQM AC LEDGE

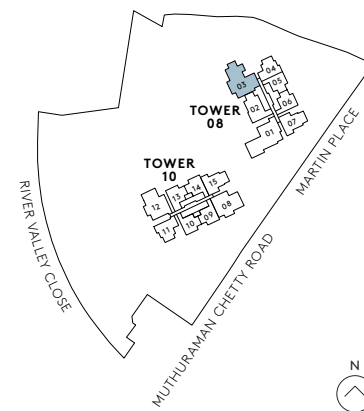
TOWER 08

UNIT  
#01-03



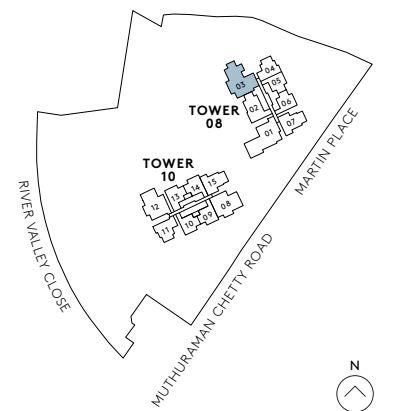
- |    |               |     |                  |    |                    |
|----|---------------|-----|------------------|----|--------------------|
| F  | FRIDGE        | SC  | SHOE CABINET     | WD | WARMER DRAWER      |
| DW | DISHWASHER    | WCH | WINE CHILLER     | CO | CONVENTIONAL OVEN  |
| IH | INDUCTION HOB | WM  | WASHER CUM DRYER | DB | DISTRIBUTION BOARD |
| GH | GAS HOB       | SO  | STEAM OVEN       |    |                    |

All plans are subjected to amendments as may be approved by the relevant authorities. Floor areas are approximate measurements and are subjected to final survey. BP approval number: A1709-00014-2016-BP01 dated: 4 May 2017.



- |    |               |     |                  |    |                    |
|----|---------------|-----|------------------|----|--------------------|
| F  | FRIDGE        | SC  | SHOE CABINET     | WD | WARMER DRAWER      |
| DW | DISHWASHER    | WCH | WINE CHILLER     | CO | CONVENTIONAL OVEN  |
| IH | INDUCTION HOB | WM  | WASHER CUM DRYER | DB | DISTRIBUTION BOARD |
| GH | GAS HOB       | SO  | STEAM OVEN       |    |                    |

All plans are subjected to amendments as may be approved by the relevant authorities. Floor areas are approximate measurements and are subjected to final survey. BP approval number: A1709-00014-2016-BP01 dated: 4 May 2017.



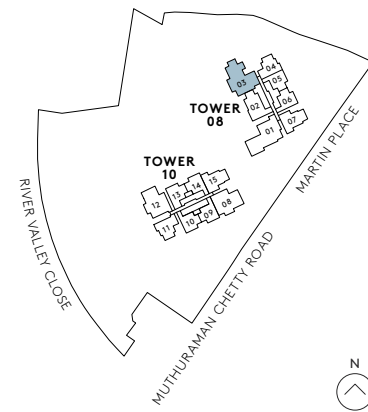


# 4 BEDROOM PREMIUM TYPE D1-R(PL)

161 SQM / 1733 SQFT  
INCLUSIVE OF 15 SQM BALCONY & 8 SQM AC LEDGE

TOWER 08

UNIT  
#30-03



- |    |               |     |                  |    |                    |
|----|---------------|-----|------------------|----|--------------------|
| F  | FRIDGE        | SC  | SHOE CABINET     | WD | WARMER DRAWER      |
| DW | DISHWASHER    | WCH | WINE CHILLER     | CO | CONVENTIONAL OVEN  |
| IH | INDUCTION HOB | WM  | WASHER CUM DRYER | DB | DISTRIBUTION BOARD |
| GH | GAS HOB       | SO  | STEAM OVEN       |    |                    |

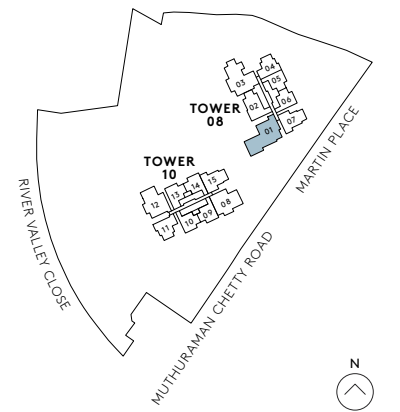
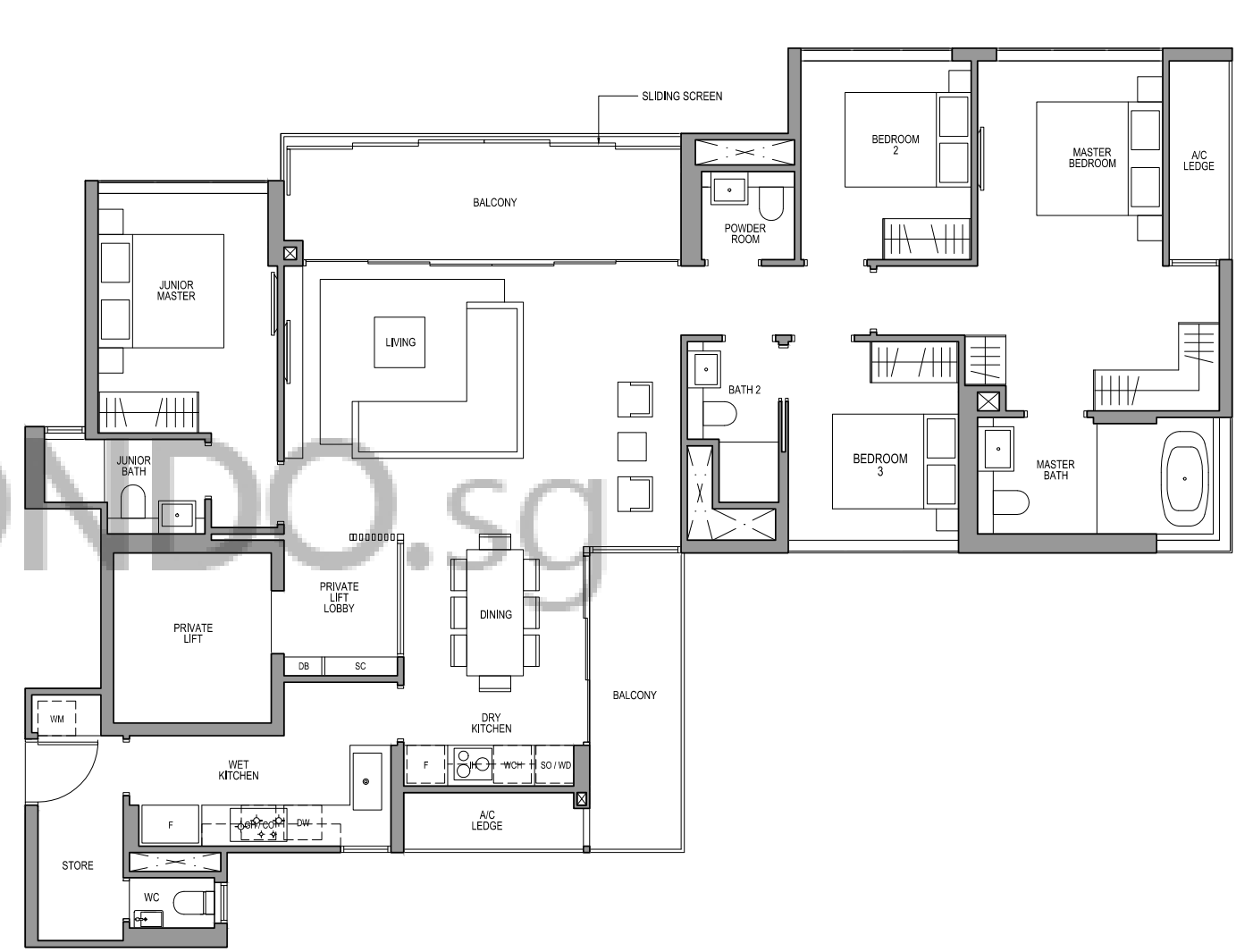
All plans are subjected to amendments as may be approved by the relevant authorities. Floor areas are approximate measurements and are subjected to final survey. BP approval number: A1709-00014-2016-BP01 dated: 4 May 2017.

# 4 BEDROOM PREMIUM TYPE D2(PL)

167 SQM / 1798 SQFT  
INCLUSIVE OF 20 SQM BALCONY & 6 SQM AC LEDGE

TOWER 08

UNIT  
#02-01 TO #29-01



- |    |               |     |                  |    |                    |
|----|---------------|-----|------------------|----|--------------------|
| F  | FRIDGE        | SC  | SHOE CABINET     | WD | WARMER DRAWER      |
| DW | DISHWASHER    | WCH | WINE CHILLER     | CO | CONVENTIONAL OVEN  |
| IH | INDUCTION HOB | WM  | WASHER CUM DRYER | DB | DISTRIBUTION BOARD |
| GH | GAS HOB       | SO  | STEAM OVEN       |    |                    |

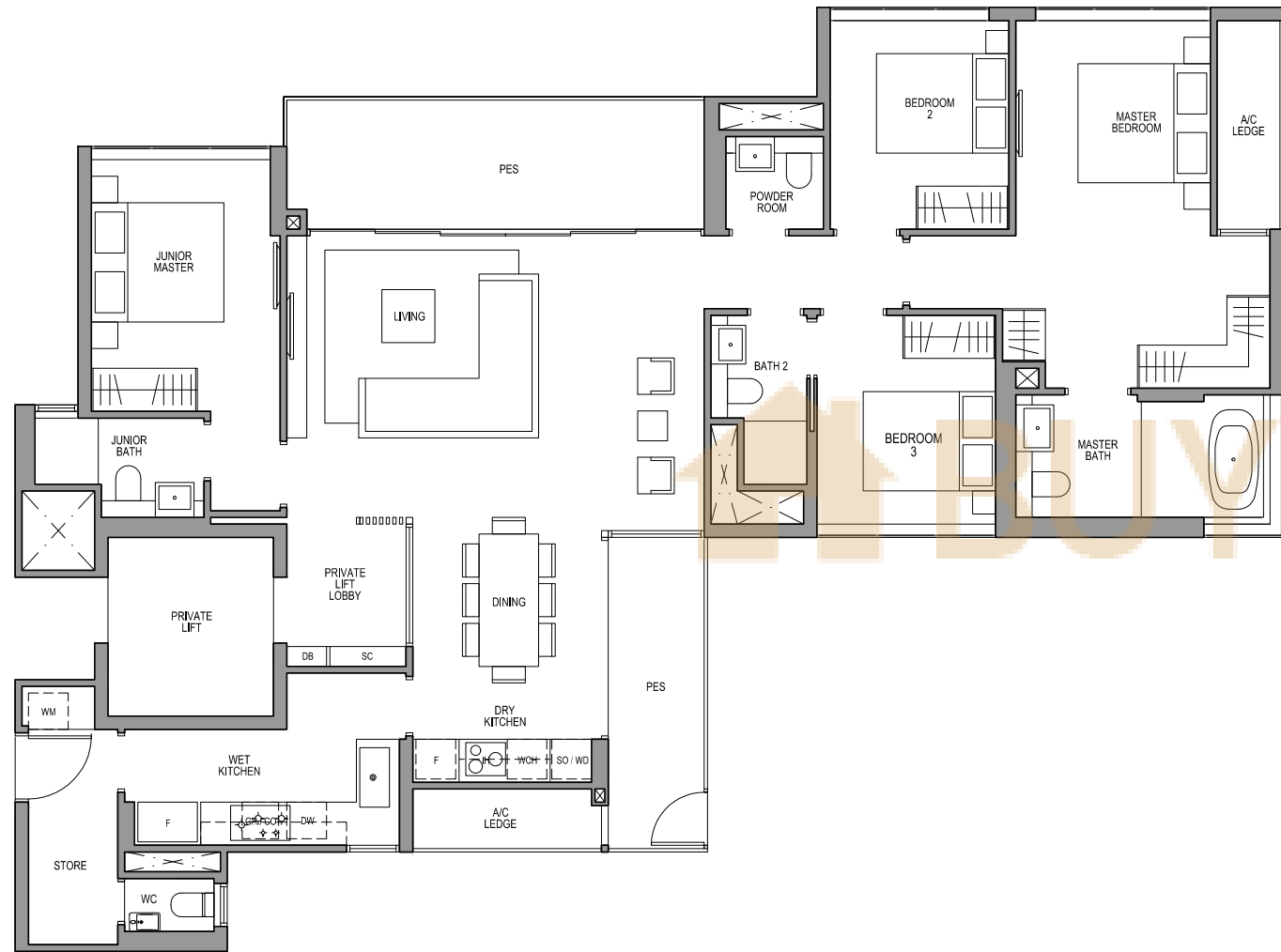
All plans are subjected to amendments as may be approved by the relevant authorities. Floor areas are approximate measurements and are subjected to final survey. BP approval number: A1709-00014-2016-BP01 dated: 4 May 2017.

# 4 BEDROOM PREMIUM TYPE D2-G(PL)

167 SQM / 1798 SQFT  
INCLUSIVE OF 20 SQM PES & 6 SQM AC LEDGE

TOWER 08

UNIT  
#01-01

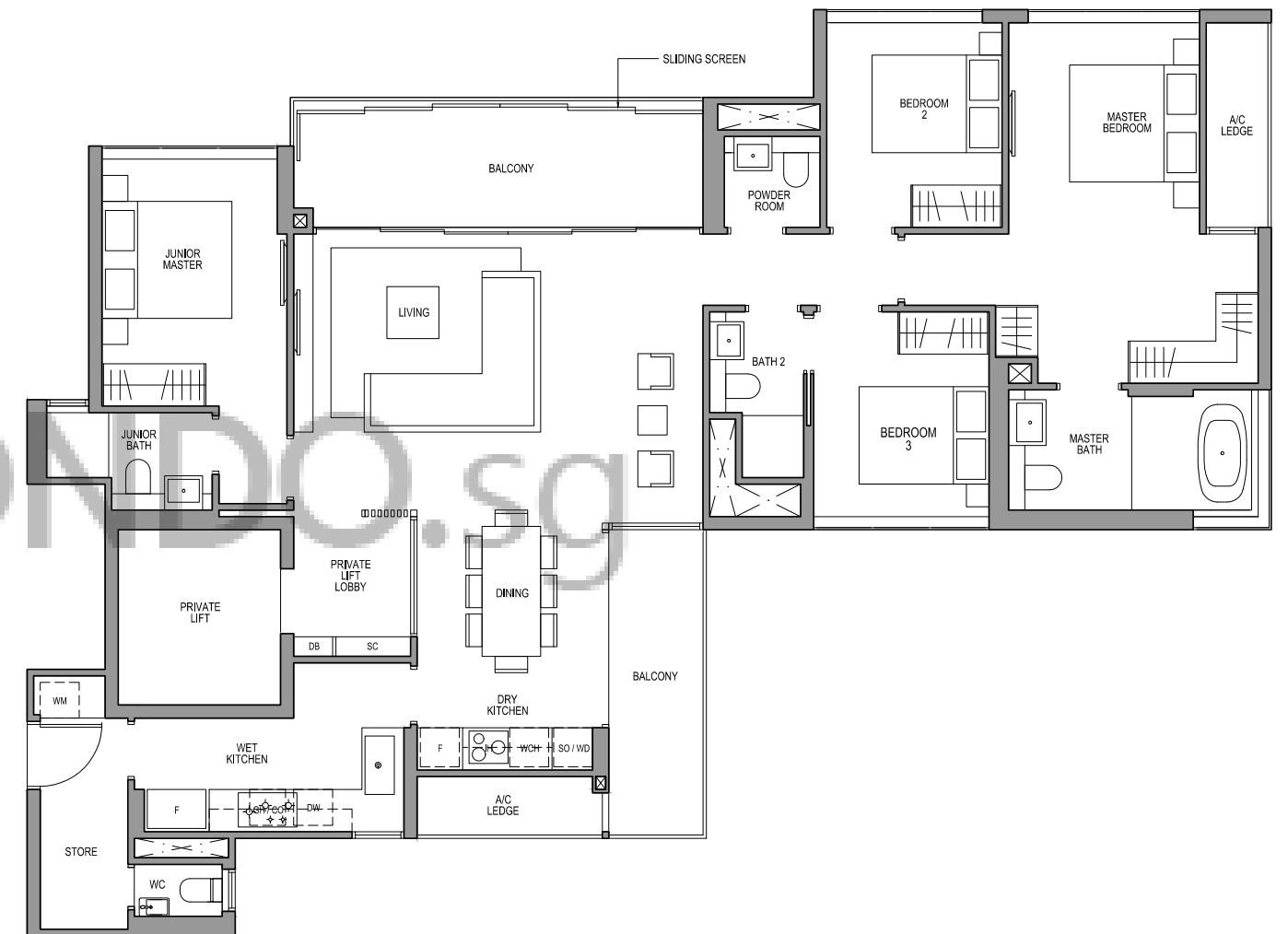


# 4 BEDROOM PREMIUM TYPE D2-R(PL)

167 SQM / 1798 SQFT  
INCLUSIVE OF 20 SQM BALCONY & 6 SQM AC LEDGE

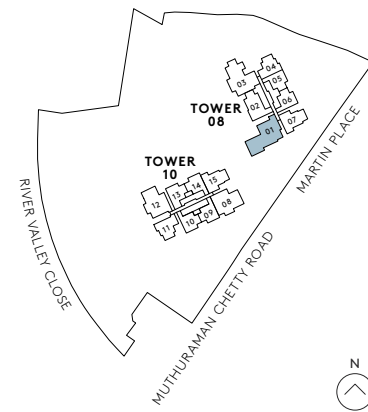
TOWER 08

UNIT  
#30-01



- |    |               |     |                  |    |                    |
|----|---------------|-----|------------------|----|--------------------|
| F  | FRIDGE        | SC  | SHOE CABINET     | WD | WARMER DRAWER      |
| DW | DISHWASHER    | WCH | WINE CHILLER     | CO | CONVENTIONAL OVEN  |
| IH | INDUCTION HOB | WM  | WASHER CUM DRYER | DB | DISTRIBUTION BOARD |
| GH | GAS HOB       | SO  | STEAM OVEN       |    |                    |

All plans are subjected to amendments as may be approved by the relevant authorities. Floor areas are approximate measurements and are subjected to final survey. BP approval number: A1709-00014-2016-BP01 dated: 4 May 2017.



- |    |               |     |                  |    |                    |
|----|---------------|-----|------------------|----|--------------------|
| F  | FRIDGE        | SC  | SHOE CABINET     | WD | WARMER DRAWER      |
| DW | DISHWASHER    | WCH | WINE CHILLER     | CO | CONVENTIONAL OVEN  |
| IH | INDUCTION HOB | WM  | WASHER CUM DRYER | DB | DISTRIBUTION BOARD |
| GH | GAS HOB       | SO  | STEAM OVEN       |    |                    |

All plans are subjected to amendments as may be approved by the relevant authorities. Floor areas are approximate measurements and are subjected to final survey. BP approval number: A1709-00014-2016-BP01 dated: 4 May 2017.

