

Diagrammatic Chart

2 RIFLE RANGE ROAD (S588373)

Flr/Unit	1	2	3	4	5	6	7	8	9	10	11
8	CP1H	A3H	BS1H	BS1H	C1H	B2H	B1H	A2H	A2H	A1H	D1H
7	CP1	A3	BS1	BS1	C1	B2	B1	A2	A2	A1	D1
6	CP1	A3	BS1	BS1	C1	B2	B1	A2	A2	A1	D1
5	CP1	A3	BS1	BS1	C1	B2	B1	A2	A2	A1	D1
4	CP1	A3	BS1	BS1	C1	B2	B1	A2	A2	A1	D1
3	CP1	A3	BS1	BS1	C1	B2	B1	A2	A2	A1	D1
2	CP1	A3	BS1	BS1	C1	B2	B1	A2	A2	A1	D1
1	CP1 (PES)	A3 (PES)	BS1 (PES)	BS1 (PES)		B2 (PES)	B1 (PES)	A2 (PES)		B3 (PES)	D1 (PES)

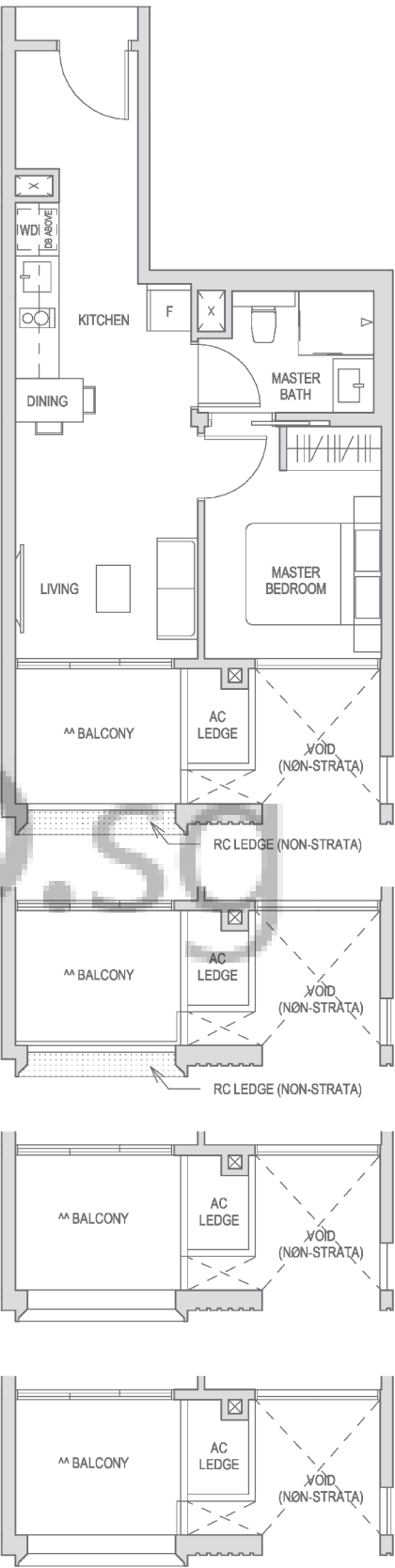
6 RIFLE RANGE ROAD (S588375)

Flr/Unit	12	13	14	15	16	17	18	19	20	21	22
8	C1H	BS1H	BS1H	A3H	CP1H	D1H	A1H	A2H	A2H	B1H	B2H
7	C1	BS1	BS1	A3	CP1	D1	A1	A2	A2	B1	B2
6	C1	BS1	BS1	A3	CP1	D1	A1	A2	A2	B1	B2
5	C1	BS1	BS1	A3	CP1	D1	A1	A2	A2	B1	B2
4	C1	BS1	BS1	A3	CP1	D1	A1	A2	A2	B1	B2
3	C1	BS1	BS1	A3	CP1	D1	A1	A2	A2	B1	B2
2	C1	BS1	BS1	A3	CP1	D1	A1	A2	A2	B1	B2
1		BS1 (PES)	BS1 (PES)	A3 (PES)		D1 (PES)	B3 (PES)		A2 (PES)	B1 (PES)	B2 (PES)

- 1-Bedroom
- 2-Bedroom
- 2-Bedroom + Study
- 3-Bedroom
- 3-Bedroom Premium
- 4-Bedroom

1-Bedroom

TYPE A1  
48 SQM / 517 SQFT  
Block 6 #03-18 to #07-18

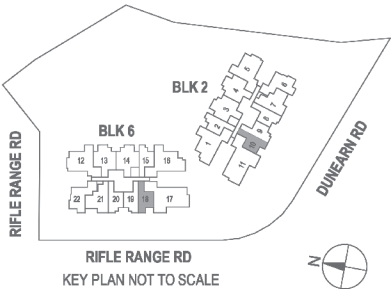


TYPE A1  
48 SQM / 517 SQFT  
Block 2 #03-10\* to #07-10\*  
\* MIRROR IMAGE

TYPE A1  
48 SQM / 517 SQFT  
Block 6 #02-18

TYPE A1  
48 SQM / 517 SQFT  
Block 2 #02-10\*  
\* MIRROR IMAGE

<sup>A</sup> The PES shall not be enclosed.  
<sup>AA</sup> The balcony shall not be enclosed.  
Only approved balcony screens are to be used. For an illustration of the approved balcony screen, please refer to the diagram annexed here to as "Annexure 1".  
Areas include AC Ledge, Balcony, PES, and Strata Void Area (where applicable). Orientations and facings will differ depending on the unit you are purchasing, please refer to the key plan. Plans are not drawn to scale and subject to change as may be required or approved by the relevant authorities. All areas are estimates only and are subject to final survey.



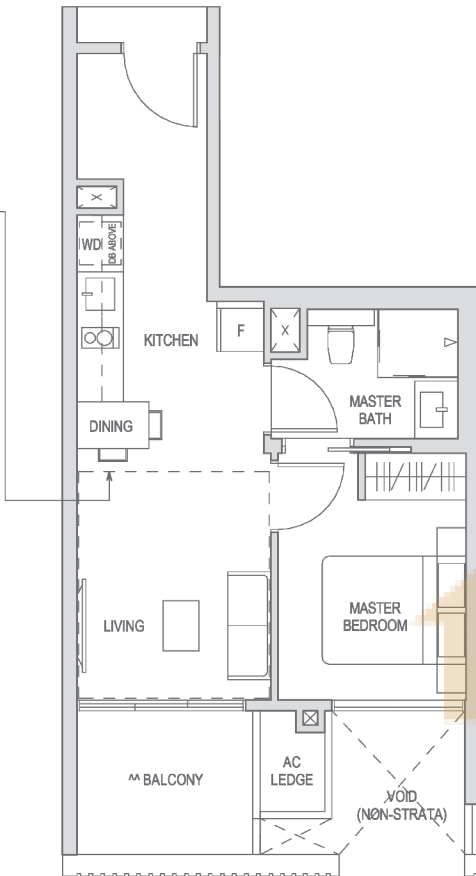
# 1-Bedroom

## TYPE A1H

58 SQM / 624 SQFT \*\*

\*\* AREA IS INCLUSIVE OF STRATA VOID AREA ABOVE LIVING AS PER DOTTED LINE.

Block 6 #08-18



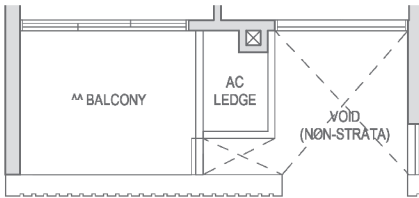
## TYPE A1H

58 SQM / 624 SQFT \*\*

\*\* AREA IS INCLUSIVE OF STRATA VOID AREA ABOVE LIVING AS PER DOTTED LINE.

Block 2 #08-10\*

\* MIRROR IMAGE



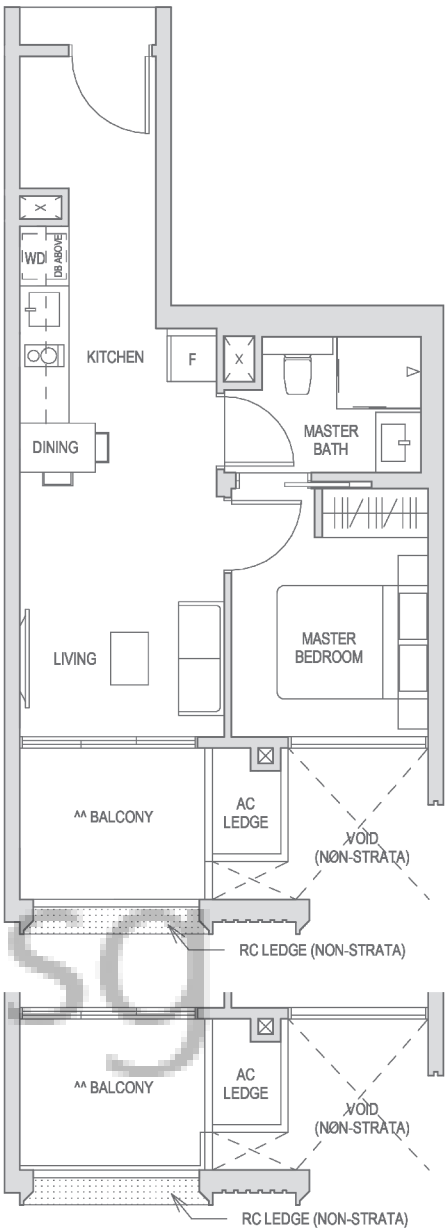
## TYPE A2

48 SQM / 517 SQFT

Block 6 #03-19\* to #07-19\*

Block 6 #03-20 to #07-20

\* MIRROR IMAGE



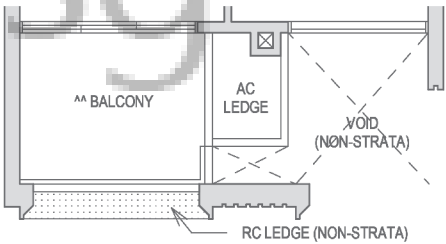
## TYPE A2

48 SQM / 517 SQFT

Block 2 #03-08\* to #07-08\*

Block 2 #03-09 to #07-09

\* MIRROR IMAGE

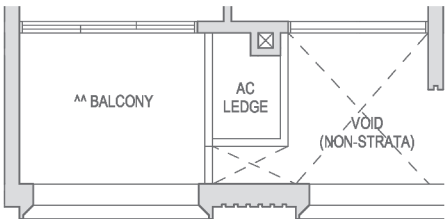


## TYPE A2

48 SQM / 517 SQFT

Block 6 #02-19\*, #02-20

\* MIRROR IMAGE

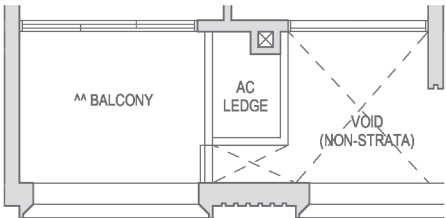


## TYPE A2

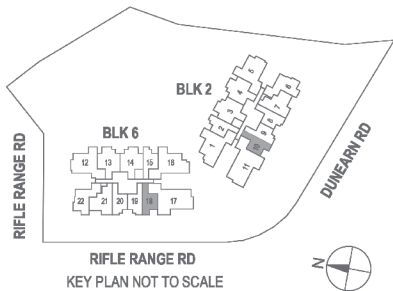
48 SQM / 517 SQFT

Block 2 #02-08\*, #02-09

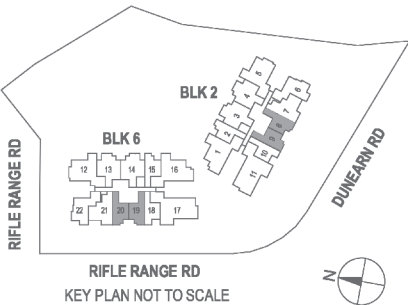
\* MIRROR IMAGE



^ The PES shall not be enclosed.  
^^ The balcony shall not be enclosed.  
Only approved balcony screens are to be used. For an illustration of the approved balcony screen, please refer to the diagram annexed here to as "Annexure 1".  
Areas include AC Ledge, Balcony, PES, and Strata Void Area (where applicable). Orientations and facings will differ depending on the unit you are purchasing, please refer to the key plan. Plans are not drawn to scale and subject to change as may be required or approved by the relevant authorities. All areas are estimates only and are subject to final survey.



^ The PES shall not be enclosed.  
^^ The balcony shall not be enclosed.  
Only approved balcony screens are to be used. For an illustration of the approved balcony screen, please refer to the diagram annexed here to as "Annexure 1".  
Areas include AC Ledge, Balcony, PES, and Strata Void Area (where applicable). Orientations and facings will differ depending on the unit you are purchasing, please refer to the key plan. Plans are not drawn to scale and subject to change as may be required or approved by the relevant authorities. All areas are estimates only and are subject to final survey.



# 1-Bedroom

# 1-Bedroom

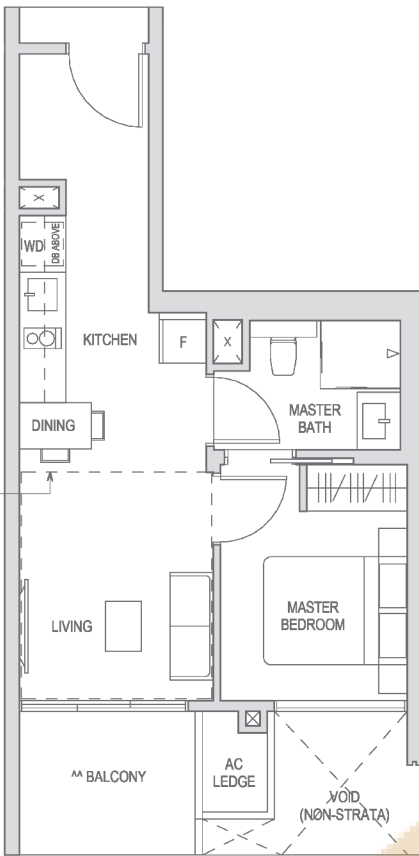
## TYPE A2H

58 SQM / 624 SQFT \*\*

\*\* AREA OF INCLUSIVE OF STRATA VOID AREA ABOVE LIVING AS PER DOTTED LINE.

Block 6 #08-19\*, #08-20

\* MIRROR IMAGE



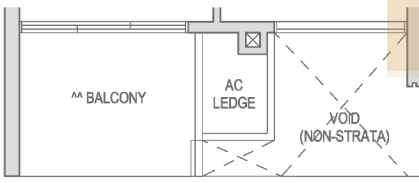
## TYPE A2H

58 SQM / 624 SQFT \*\*

\*\* AREA OF INCLUSIVE OF STRATA VOID AREA ABOVE LIVING AS PER DOTTED LINE.

Block 2 #08-08\*, #08-09

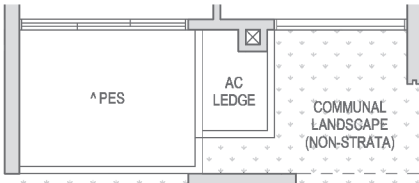
\* MIRROR IMAGE



## TYPE A2 (PES)

48 SQM / 517 SQFT

Block 6 #01-20

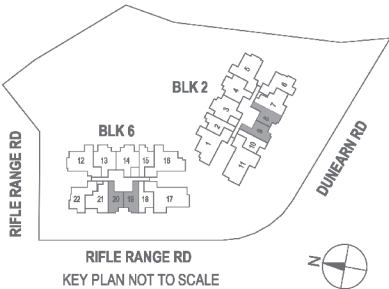
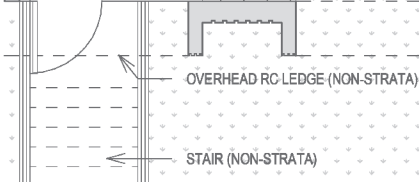
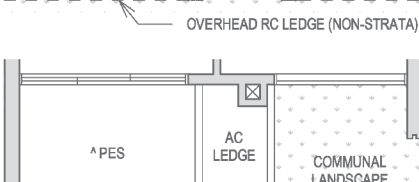


## TYPE A2 (PES)

48 SQM / 517 SQFT

Block 2 #01-08\*

\* MIRROR IMAGE



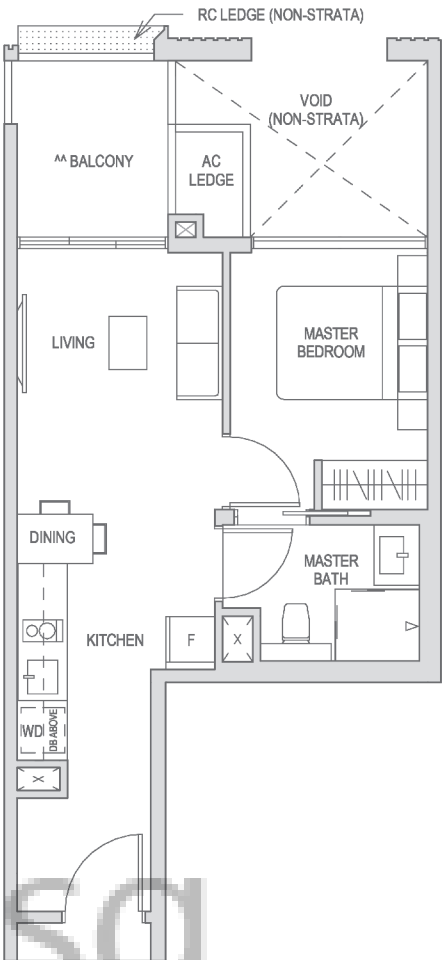
## TYPE A3

47 SQM / 506 SQFT

Block 2 #03-02\* to #07-02\*

Block 6 #03-15 to #07-15

\* MIRROR IMAGE



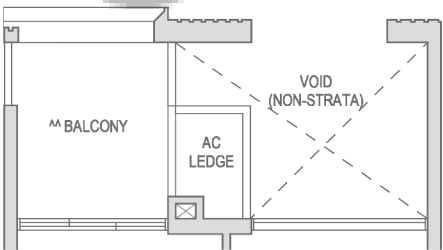
## TYPE A3

47 SQM / 506 SQFT

Block 2 #02-02\*

Block 6 #02-15

\* MIRROR IMAGE



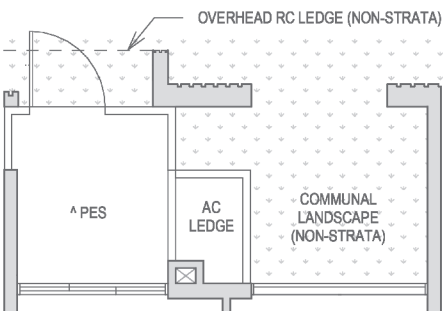
## TYPE A3 (PES)

47 SQM / 506 SQFT

Block 2 #01-02\*

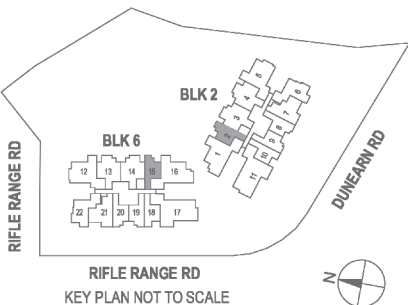
Block 6 #01-15

\* MIRROR IMAGE



# 1-Bedroom

^ The PES shall not be enclosed.  
^^ The balcony shall not be enclosed.  
Only approved balcony screens are to be used. For an illustration of the approved balcony screen, please refer to the diagram annexed here to as "Annexure 1".  
Areas include AC Ledge, Balcony, PES, and Strata Void Area (where applicable). Orientations and facings will differ depending on the unit you are purchasing, please refer to the key plan. Plans are not drawn to scale and subject to change as may be required or approved by the relevant authorities. All areas are estimates only and are subject to final survey.



1-Bedroom

2-Bedroom

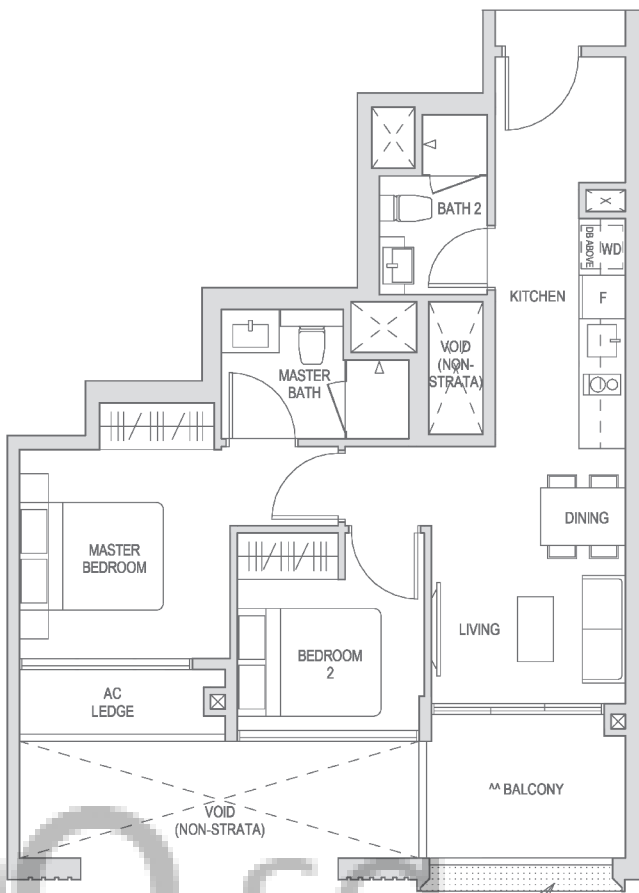
TYPE A3H

59 SQM / 635 SQFT \*\*  
\*\* AREA IS INCLUSIVE OF STRATA VOID AREA ABOVE LIVING AND DINING AS PER DOTTED LINE.  
Block 2 #08-02\*  
Block 6 #08-15  
\* MIRROR IMAGE



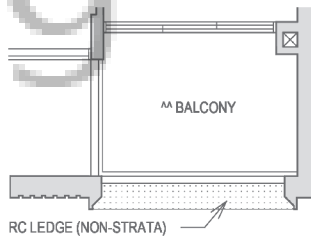
TYPE B1

64 SQM / 689 SQFT  
Block 6 #03-21 to #07-21



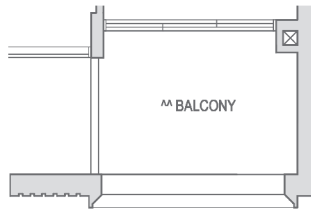
TYPE B1

64 SQM / 689 SQFT  
Block 2 #03-07\* to #07-07\*  
\* MIRROR IMAGE



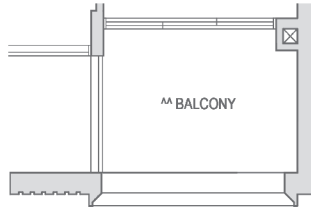
TYPE B1

64 SQM / 689 SQFT  
Block 6 #02-21

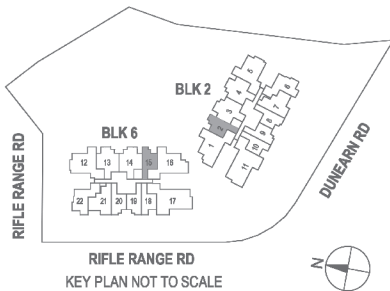


TYPE B1

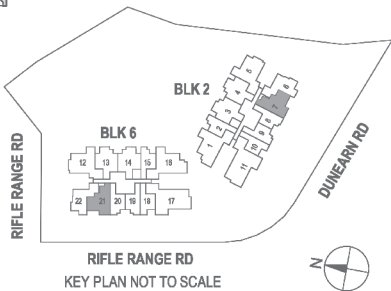
64 SQM / 689 SQFT  
Block 2 #02-07\*  
\* MIRROR IMAGE



<sup>A</sup> The PES shall not be enclosed.  
<sup>AA</sup> The balcony shall not be enclosed.  
Only approved balcony screens are to be used. For an illustration of the approved balcony screen, please refer to the diagram annexed here to as "Annexure 1".  
Areas include AC Ledge, Balcony, PES, and Strata Void Area (where applicable). Orientations and facings will differ depending on the unit you are purchasing, please refer to the key plan. Plans are not drawn to scale and subject to change as may be required or approved by the relevant authorities. All areas are estimates only and are subject to final survey.



<sup>A</sup> The PES shall not be enclosed.  
<sup>AA</sup> The balcony shall not be enclosed.  
Only approved balcony screens are to be used. For an illustration of the approved balcony screen, please refer to the diagram annexed here to as "Annexure 1".  
Areas include AC Ledge, Balcony, PES, and Strata Void Area (where applicable). Orientations and facings will differ depending on the unit you are purchasing, please refer to the key plan. Plans are not drawn to scale and subject to change as may be required or approved by the relevant authorities. All areas are estimates only and are subject to final survey.



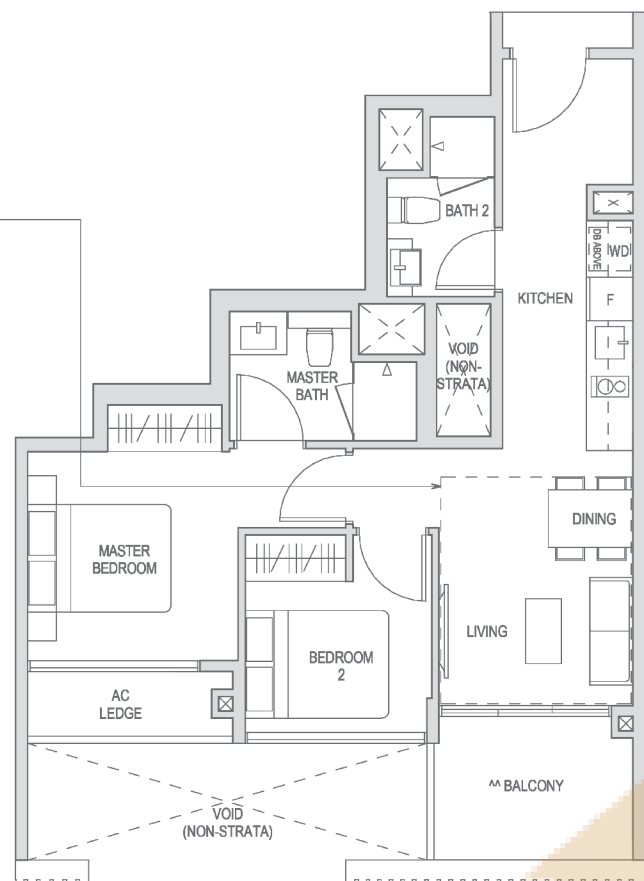
## 2-Bedroom

### TYPE B1H

74 SQM / 797 SQFT \*\*

\*\* AREA IS INCLUSIVE OF STRATA VOID AREA ABOVE LIVING AND DINING AS PER DOTTED LINE.

Block 6 #08-21



### TYPE B1H

74 SQM / 797 SQFT \*\*

\*\* AREA IS INCLUSIVE OF STRATA VOID AREA ABOVE LIVING AND DINING AS PER DOTTED LINE.

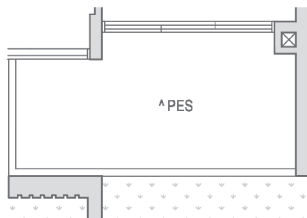
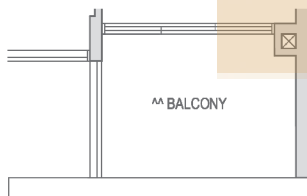
Block 2 #08-07\*

\* MIRROR IMAGE

### TYPE B1 (PES)

65 SQM / 700 SQFT

Block 6 #01-21

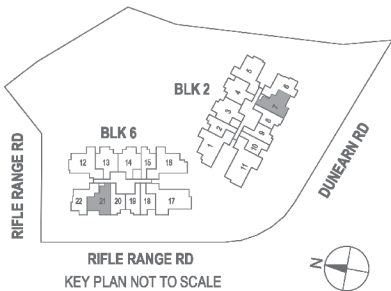
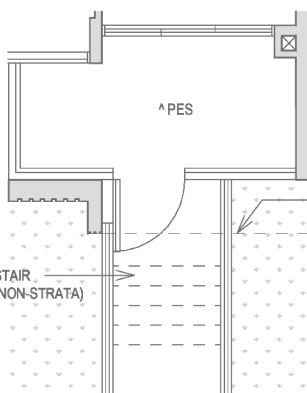


### TYPE B1 (PES)

65 SQM / 700 SQFT

Block 2 #01-07\*

\* MIRROR IMAGE



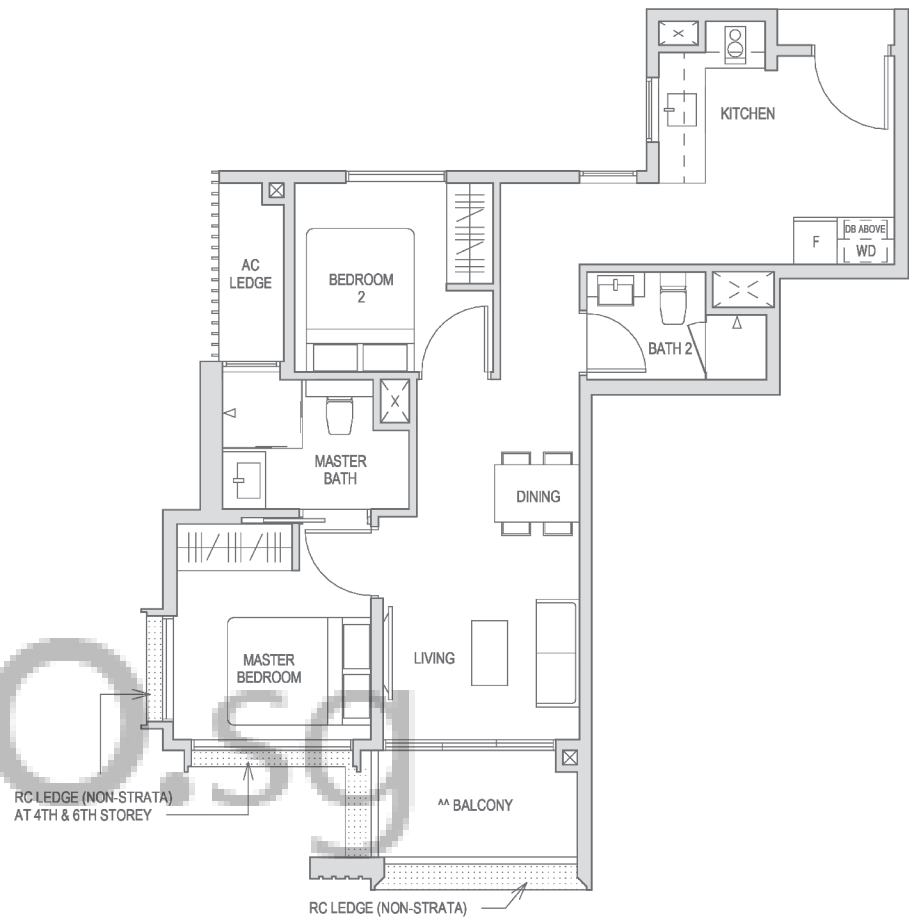
^ The PES shall not be enclosed.  
^^ The balcony shall not be enclosed.  
Only approved balcony screens are to be used. For an illustration of the approved balcony screen, please refer to the diagram annexed here to as "Annexure 1".  
Areas include AC Ledge, Balcony, PES, and Strata Void Area (where applicable). Orientations and facings will differ depending on the unit you are purchasing, please refer to the key plan. Plans are not drawn to scale and subject to change as may be required or approved by the relevant authorities. All areas are estimates only and are subject to final survey.

## 2-Bedroom

### TYPE B2

67 SQM / 721 SQFT

Block 6 #03-22 to #07-22



### TYPE B2

67 SQM / 721 SQFT

Block 2 #03-06\* to #07-06\*

\* MIRROR IMAGE

### TYPE B2

67 SQM / 721 SQFT

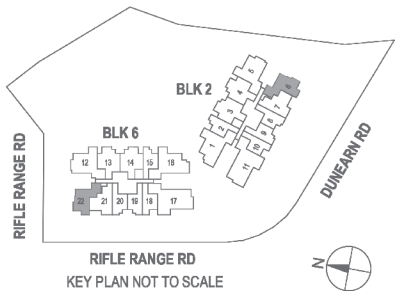
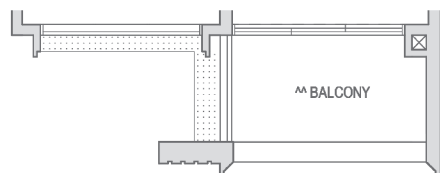
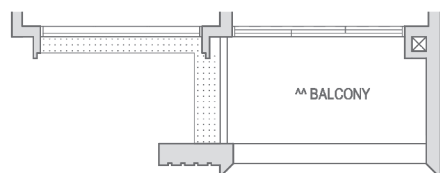
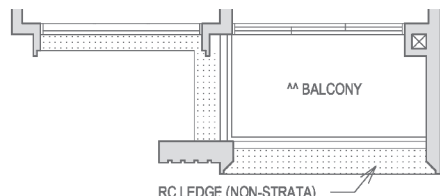
Block 6 #02-22

### TYPE B2

67 SQM / 721 SQFT

Block 2 #02-06\*

\* MIRROR IMAGE



^ The PES shall not be enclosed.  
^^ The balcony shall not be enclosed.  
Only approved balcony screens are to be used. For an illustration of the approved balcony screen, please refer to the diagram annexed here to as "Annexure 1".  
Areas include AC Ledge, Balcony, PES, and Strata Void Area (where applicable). Orientations and facings will differ depending on the unit you are purchasing, please refer to the key plan. Plans are not drawn to scale and subject to change as may be required or approved by the relevant authorities. All areas are estimates only and are subject to final survey.

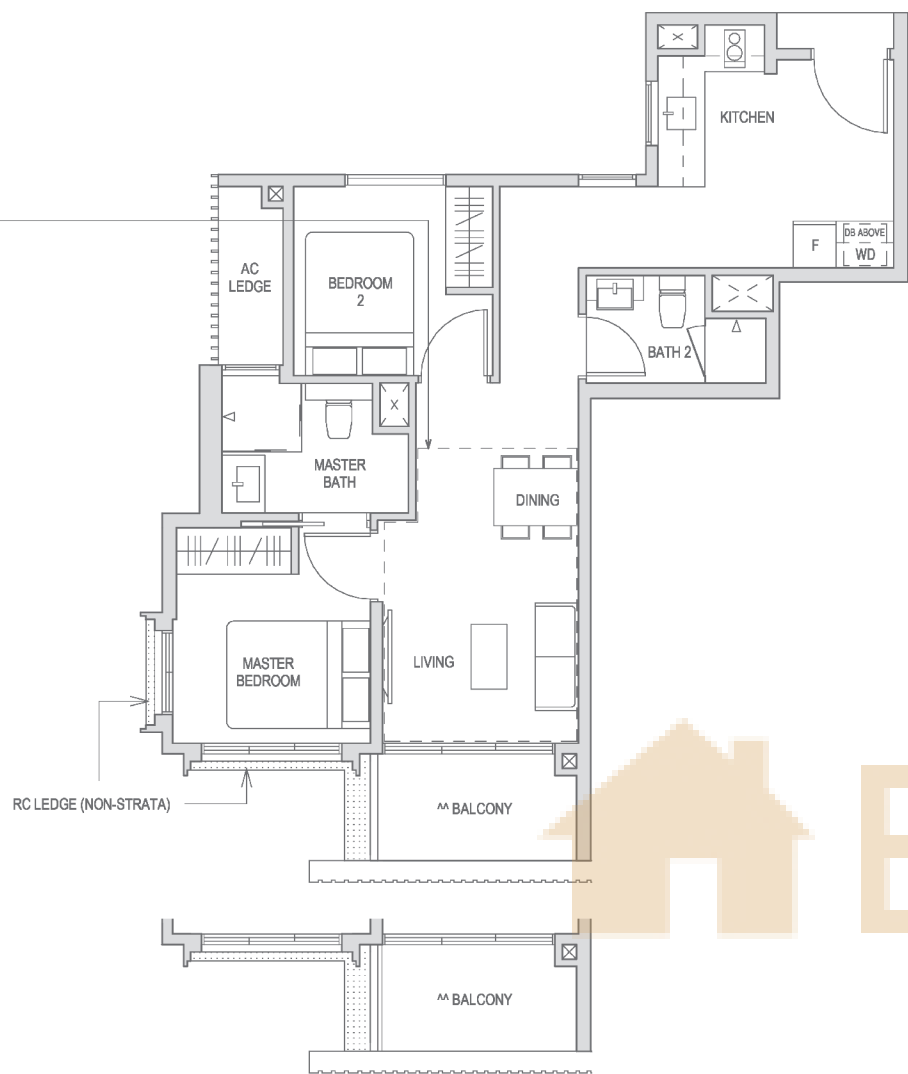
## 2-Bedroom

### TYPE B2H

79 SQM / 850 SQFT \*\*

\*\* AREA IS INCLUSIVE OF STRATA VOID AREA ABOVE LIVING AND DINING AS PER DOTTED LINE.

Block 6 #08-22



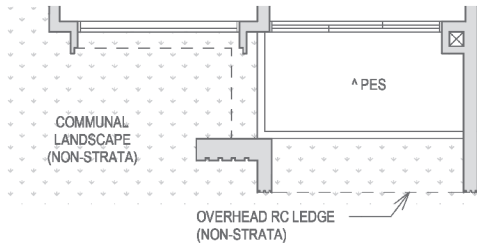
### TYPE B2H

79 SQM / 850 SQFT \*\*

\*\* AREA IS INCLUSIVE OF STRATA VOID AREA ABOVE LIVING AND DINING AS PER DOTTED LINE.

Block 2 #08-06\*

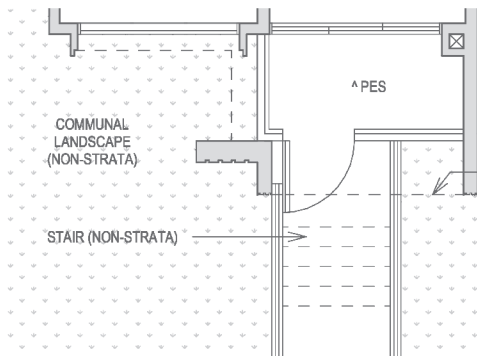
\* MIRROR IMAGE



### TYPE B2 (PES)

66 SQM / 710 SQFT

Block 6 #01-22

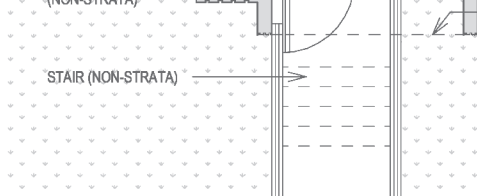


### TYPE B2 (PES)

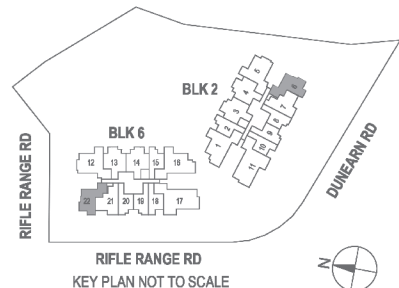
66 SQM / 710 SQFT

Block 2 #01-06\*

\* MIRROR IMAGE



^ The PES shall not be enclosed.  
^^ The balcony shall not be enclosed.  
Only approved balcony screens are to be used. For an illustration of the approved balcony screen, please refer to the diagram annexed here to as "Annexure 1".  
Areas include AC Ledge, Balcony, PES, and Strata Void Area (where applicable). Orientations and facings will differ depending on the unit you are purchasing, please refer to the key plan. Plans are not drawn to scale and subject to change as may be required or approved by the relevant authorities. All areas are estimates only and are subject to final survey.

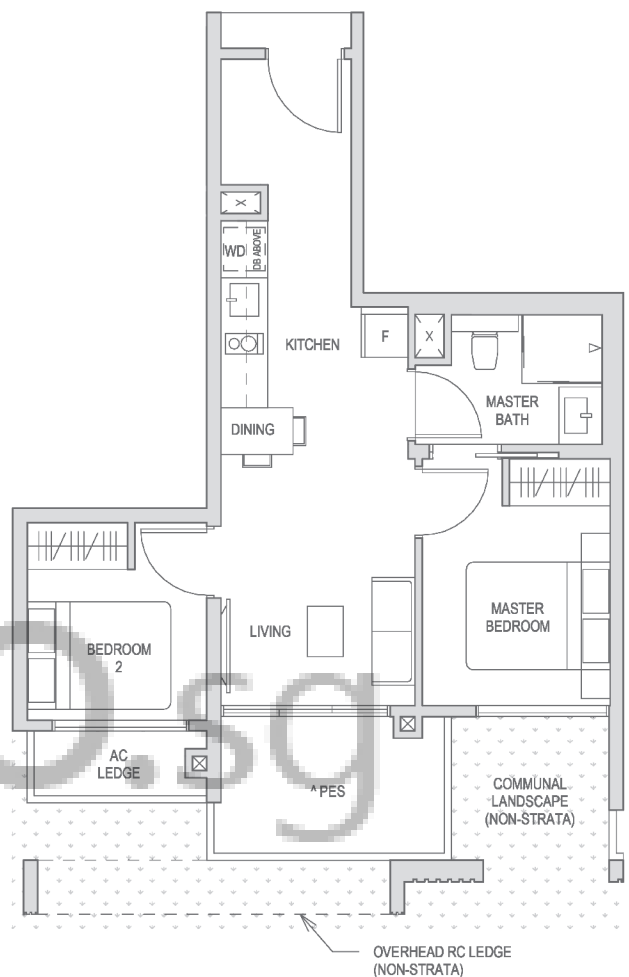


## 2-Bedroom

### TYPE B3 (PES)

58 SQM / 624 SQFT

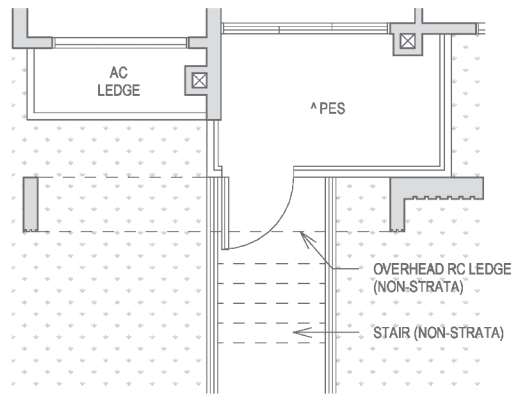
Block 6 #01-18



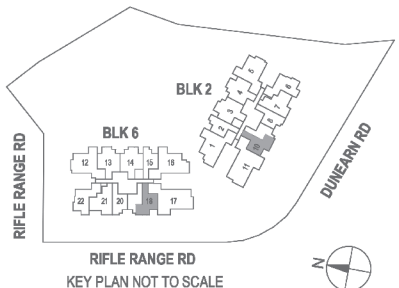
### TYPE B3 (PES)

58 SQM / 624 SQFT

Block 2 #01-10\*



^ The PES shall not be enclosed.  
^^ The balcony shall not be enclosed.  
Only approved balcony screens are to be used. For an illustration of the approved balcony screen, please refer to the diagram annexed here to as "Annexure 1".  
Areas include AC Ledge, Balcony, PES, and Strata Void Area (where applicable). Orientations and facings will differ depending on the unit you are purchasing, please refer to the key plan. Plans are not drawn to scale and subject to change as may be required or approved by the relevant authorities. All areas are estimates only and are subject to final survey.



## 2-Bedroom + Study

### TYPE BS1

75 SQM / 807 SQFT

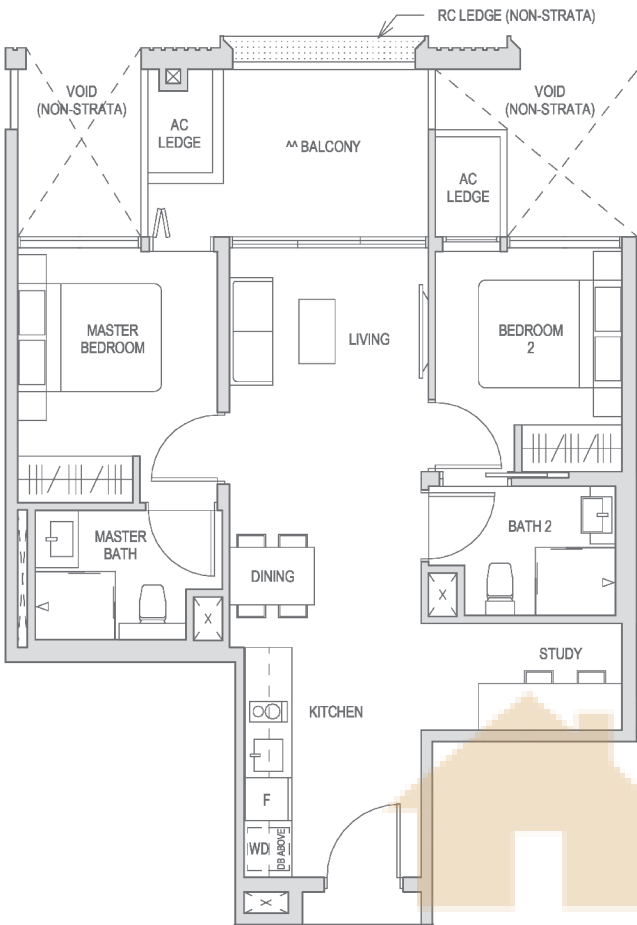
Block 2 #03-03 to #07-03

Block 2 #03-04\* to #07-04\*

Block 6 #03-13 to #07-13

Block 6 #03-14\* to #07-14\*

\* MIRROR IMAGE



### TYPE BS1

75 SQM / 807 SQFT

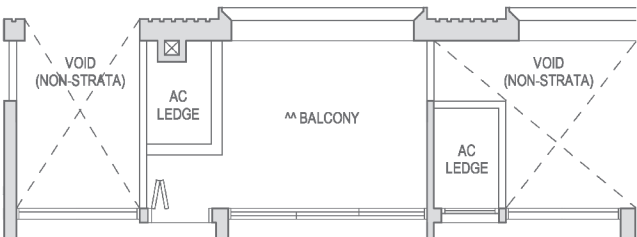
Block 2 #02-03

Block 2 #02-04\*

Block 6 #02-13

Block 6 #02-14\*

\* MIRROR IMAGE



### TYPE BS1 (PES)

74 SQM / 797 SQFT

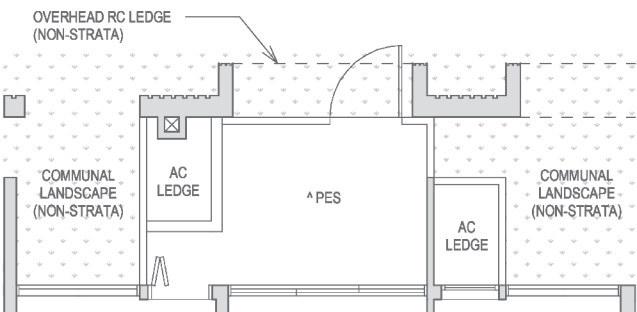
Block 2 #01-03

Block 2 #01-04\*

Block 6 #01-13

Block 6 #01-14\*

\* MIRROR IMAGE

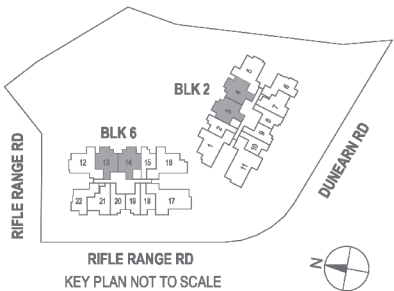


^ The PES shall not be enclosed.

^^ The balcony shall not be enclosed.

Only approved balcony screens are to be used. For an illustration of the approved balcony screen, please refer to the diagram annexed here to as "Annexure 1".

Areas include AC Ledge, Balcony, PES, and Strata Void Area (where applicable). Orientations and facings will differ depending on the unit you are purchasing, please refer to the key plan. Plans are not drawn to scale and subject to change as may be required or approved by the relevant authorities. All areas are estimates only and are subject to final survey.



### TYPE BS1H

90 SQM / 969 SQFT \*\*

\*\* AREA IS INCLUSIVE OF STRATA VOID AREA ABOVE LIVING AND DINING AS PER DOTTED LINE.

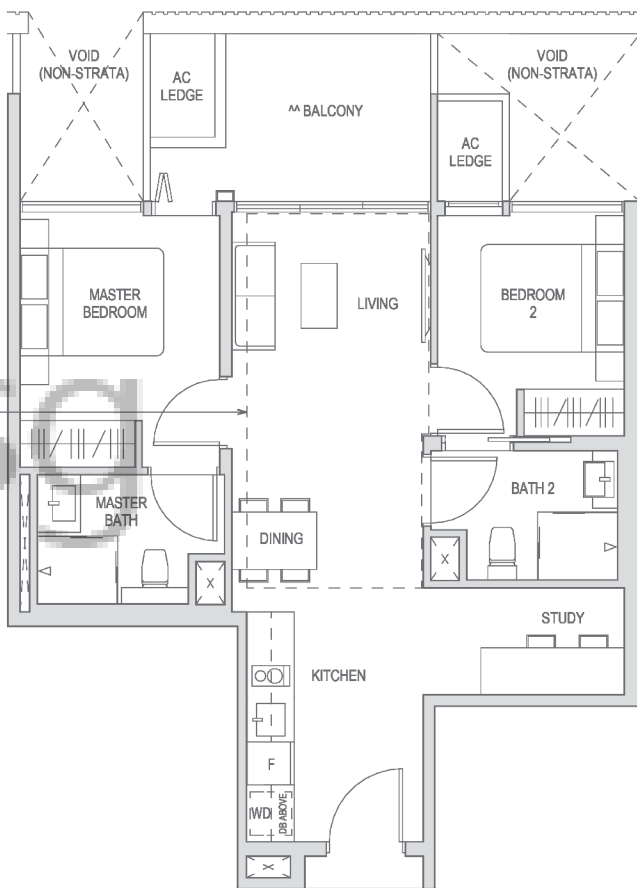
Block 2 #08-03

Block 2 #08-04\*

Block 6 #08-13

Block 6 #08-14\*

\* MIRROR IMAGE

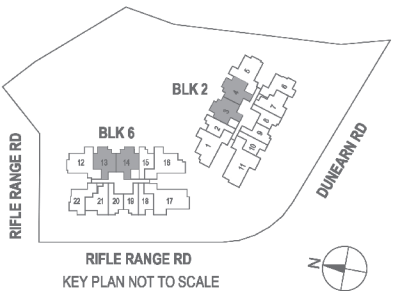


^ The PES shall not be enclosed.

^^ The balcony shall not be enclosed.

Only approved balcony screens are to be used. For an illustration of the approved balcony screen, please refer to the diagram annexed here to as "Annexure 1".

Areas include AC Ledge, Balcony, PES, and Strata Void Area (where applicable). Orientations and facings will differ depending on the unit you are purchasing, please refer to the key plan. Plans are not drawn to scale and subject to change as may be required or approved by the relevant authorities. All areas are estimates only and are subject to final survey.

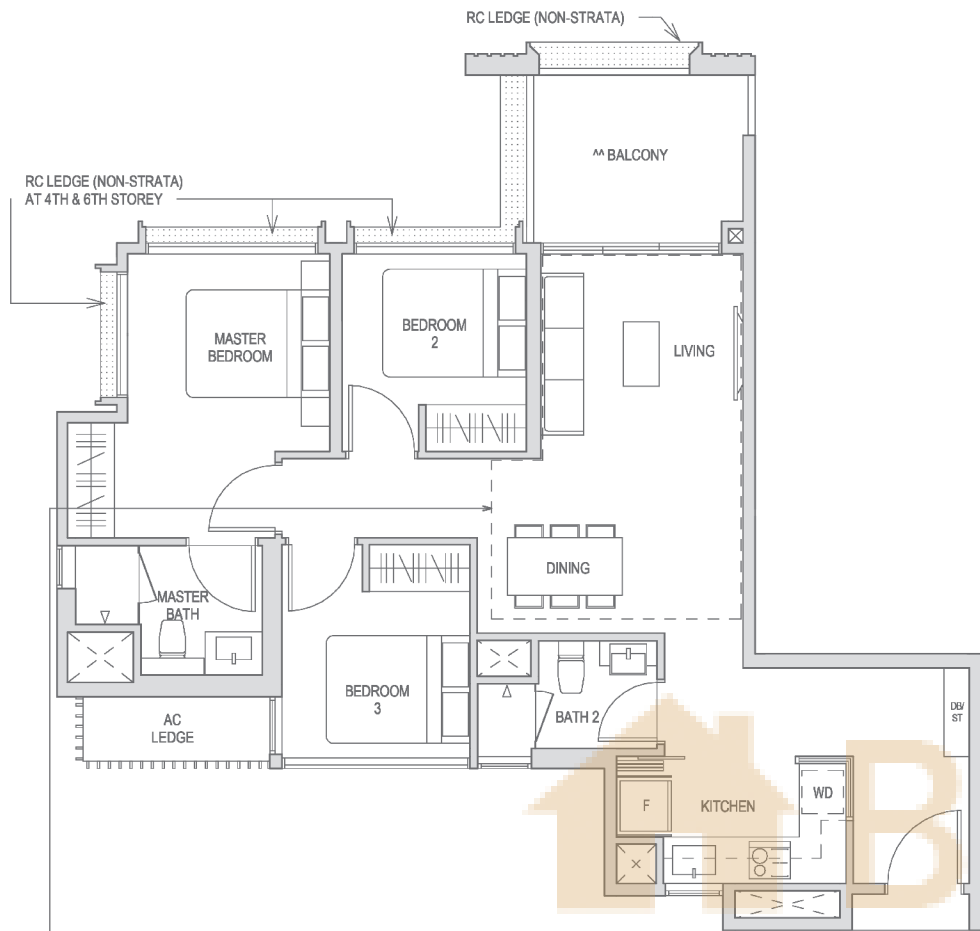




## 3-Bedroom

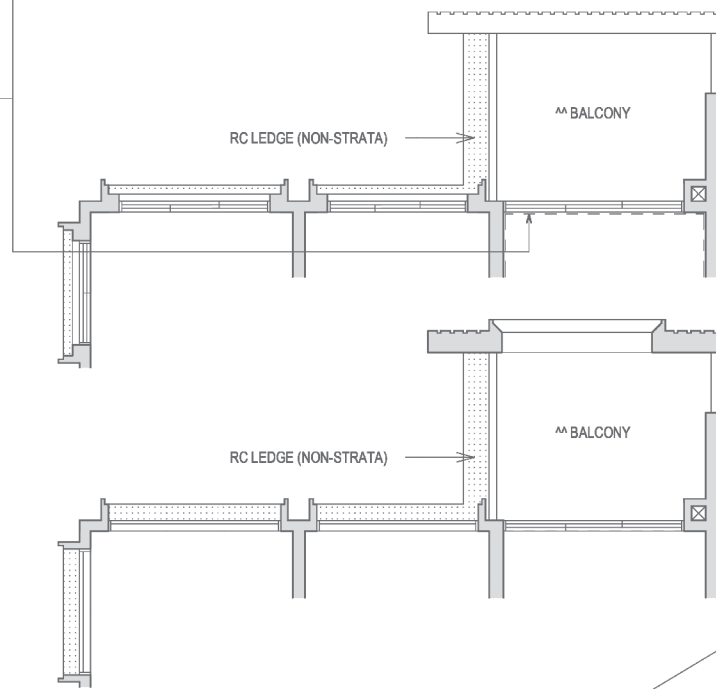
### TYPE C1

89 SQM / 958 SQFT  
Block 2 #03-05\* to #07-05\*  
Block 6 #03-12 to #07-12  
\* MIRROR IMAGE



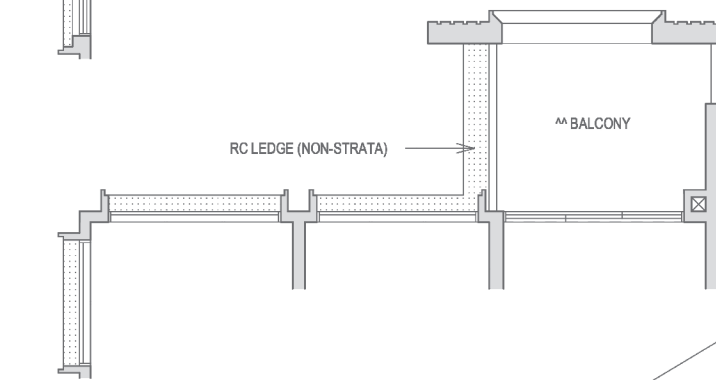
### TYPE C1H

106 SQM / 1141 SQFT \*\*  
\*\* AREA IS INCLUSIVE OF STRATA VOID AREA ABOVE LIVING AND DINING AS PER DOTTED LINE.  
Block 2 #08-05\*  
Block 6 #08-12  
\* MIRROR IMAGE



### TYPE C1

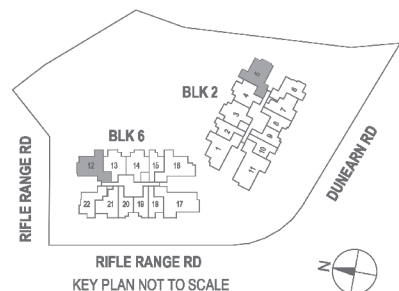
89 SQM / 958 SQFT  
Block 2 #02-05\*  
Block 6 #02-12  
\* MIRROR IMAGE



ST Storage Cabinet

^ The PES shall not be enclosed.  
^^ The balcony shall not be enclosed.  
Only approved balcony screens are to be used. For an illustration of the approved balcony screen, please refer to the diagram annexed here to as "Annexure 1".

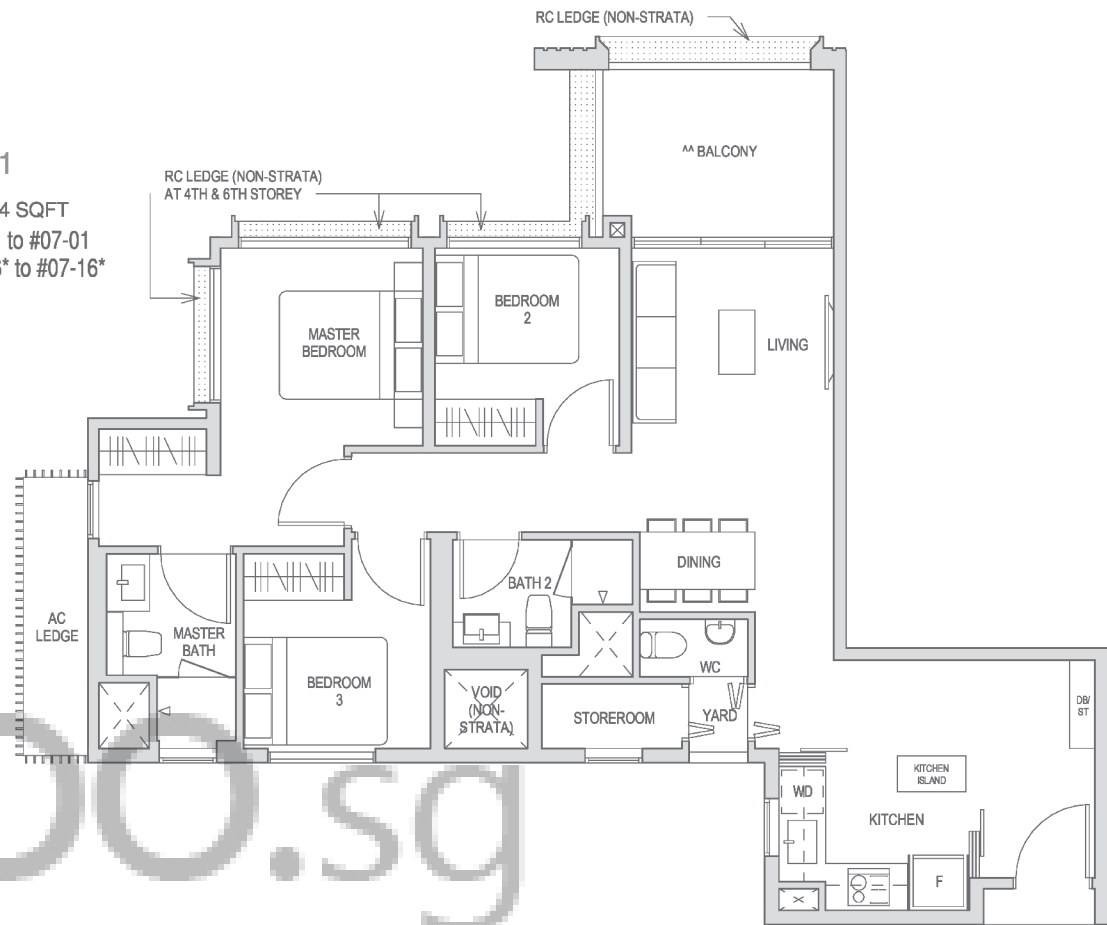
Areas include AC Ledge, Balcony, PES, and Strata Void Area (where applicable). Orientations and facings will differ depending on the unit you are purchasing, please refer to the key plan. Plans are not drawn to scale and subject to change as may be required or approved by the relevant authorities. All areas are estimates only and are subject to final survey.



## 3-Bedroom Premium

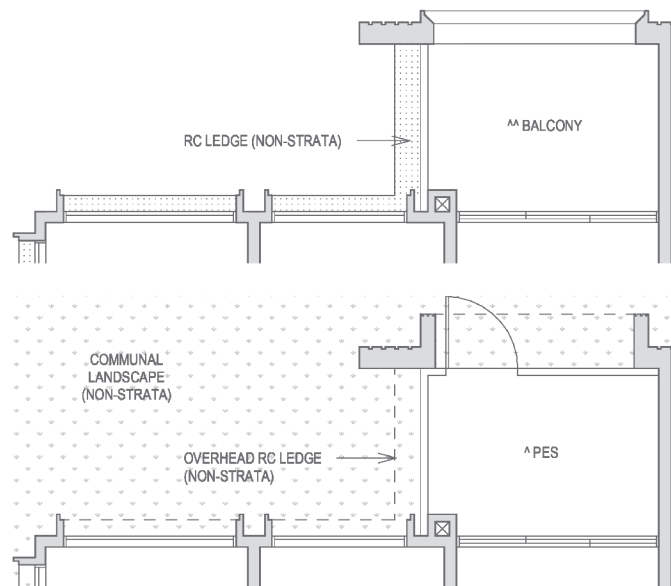
### TYPE CP1

97 SQM / 1044 SQFT  
Block 2 #03-01 to #07-01  
Block 6 #03-16\* to #07-16\*  
\* MIRROR IMAGE



### TYPE CP1

97 SQM / 1044 SQFT  
Block 2 #02-01  
Block 6 #02-16\*  
\* MIRROR IMAGE



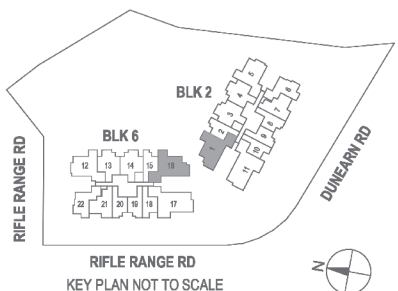
### TYPE CP1 (PES)

96 SQM / 1033 SQFT  
Block 2 #01-01

ST Storage Cabinet

^ The PES shall not be enclosed.  
^^ The balcony shall not be enclosed.  
Only approved balcony screens are to be used. For an illustration of the approved balcony screen, please refer to the diagram annexed here to as "Annexure 1".

Areas include AC Ledge, Balcony, PES, and Strata Void Area (where applicable). Orientations and facings will differ depending on the unit you are purchasing, please refer to the key plan. Plans are not drawn to scale and subject to change as may be required or approved by the relevant authorities. All areas are estimates only and are subject to final survey.





### 3-Bedroom Premium

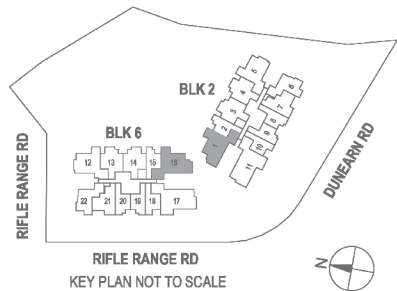
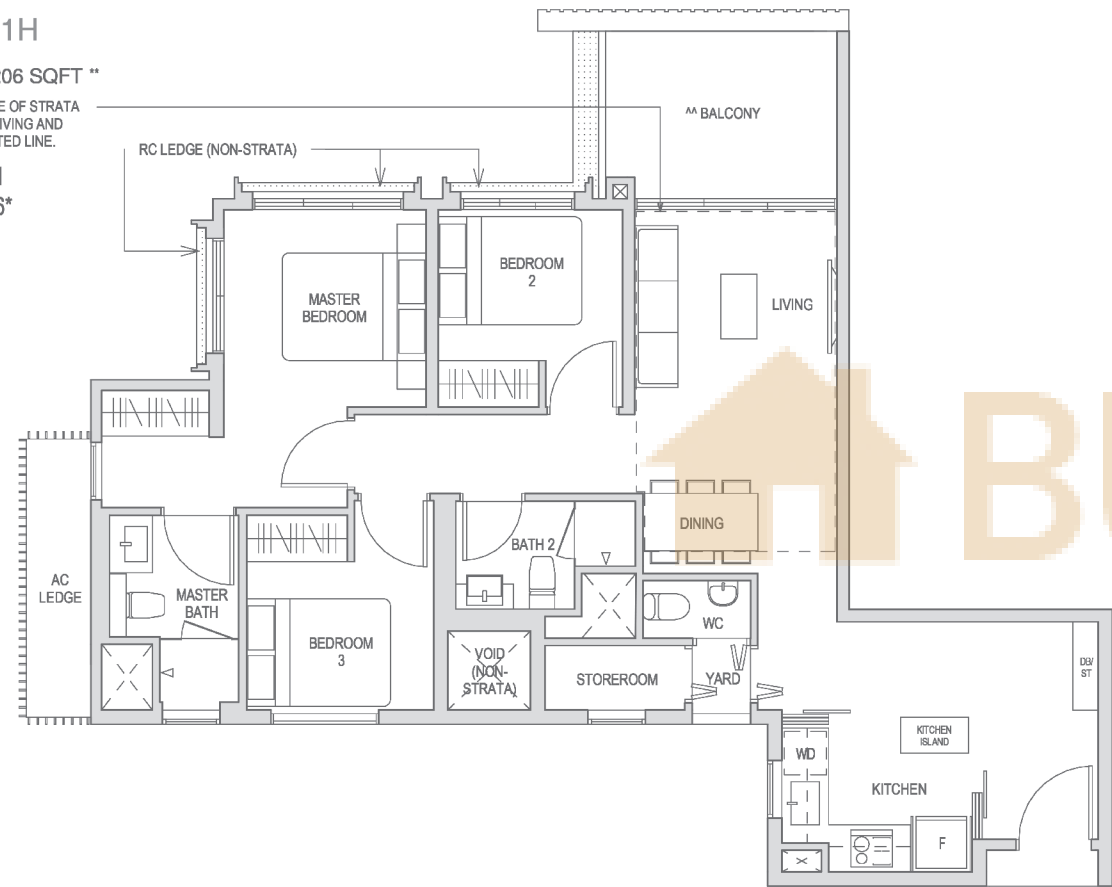
#### TYPE CP1H

112 SQM / 1206 SQFT \*\*

\*\* AREA IS INCLUSIVE OF STRATA VOID AREA ABOVE LIVING AND DINING AS PER DOTTED LINE.

Block 2 #08-01  
Block 6 #08-16\*

\* MIRROR IMAGE



ST Storage Cabinet

^ The PES shall not be enclosed.

^^ The balcony shall not be enclosed.

Only approved balcony screens are to be used. For an illustration of the approved balcony screen, please refer to the diagram annexed here to as "Annexure 1".

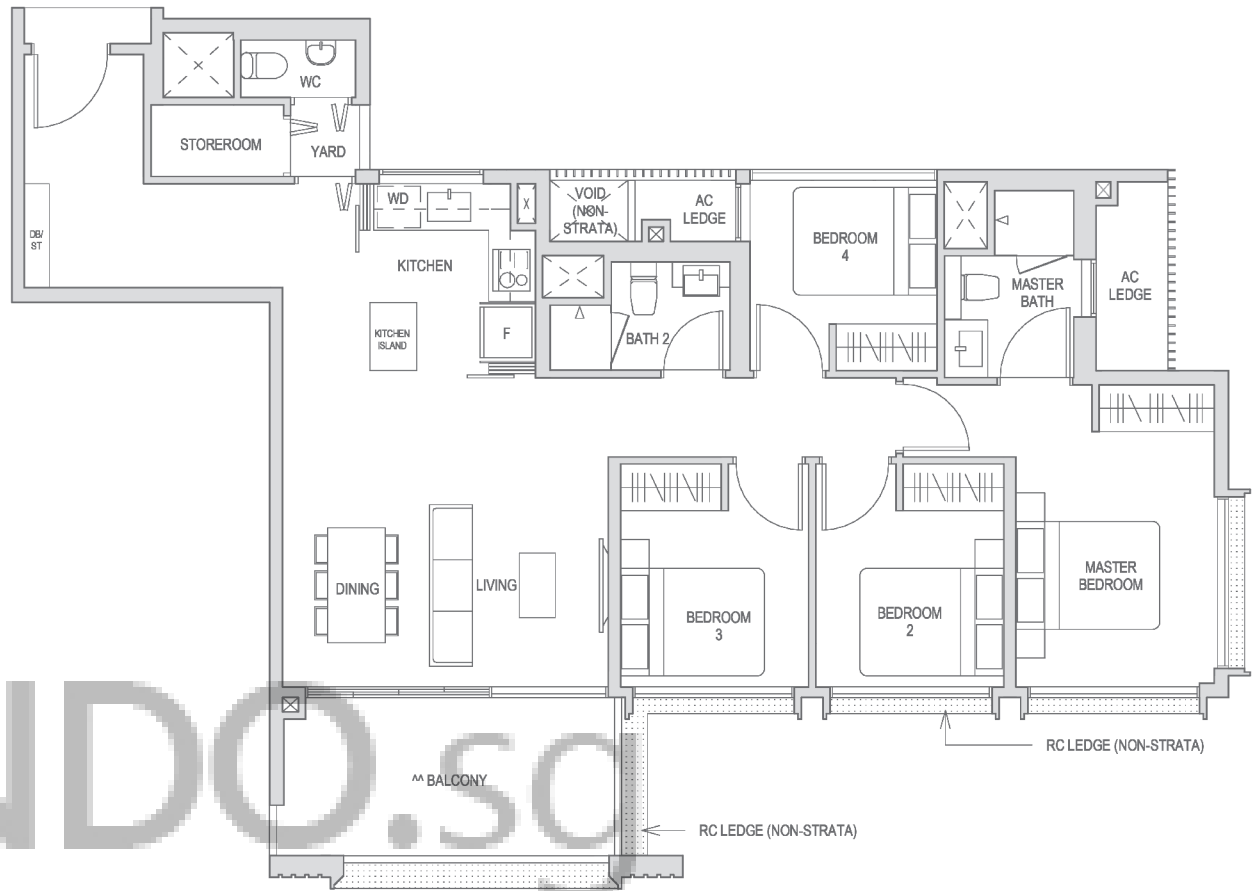
Areas include AC Ledge, Balcony, PES, and Strata Void Area (where applicable). Orientations and facings will differ depending on the unit you are purchasing, please refer to the key plan. Plans are not drawn to scale and subject to change as may be required or approved by the relevant authorities. All areas are estimates only and are subject to final survey.

### 4-Bedroom

#### TYPE D1

120 SQM / 1292 SQFT

Block 6 #03-17 to #07-17

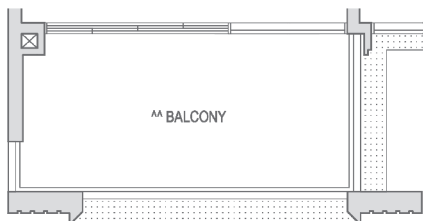


#### TYPE D1

120 SQM / 1292 SQFT

Block 2 #03-11\* to #07-11\*

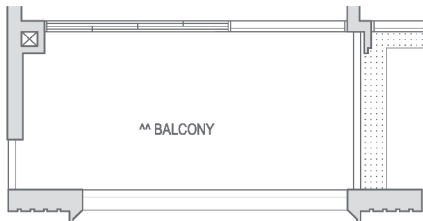
\* MIRROR IMAGE



#### TYPE D1

120 SQM / 1292 SQFT

Block 6 #02-17

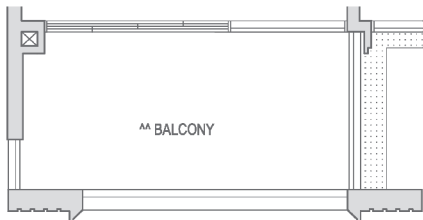


#### TYPE D1

120 SQM / 1292 SQFT

Block 2 #02-11\*

\* MIRROR IMAGE



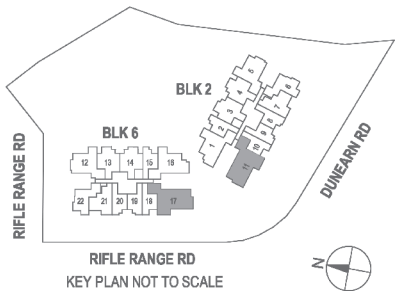
ST Storage Cabinet

^ The PES shall not be enclosed.

^^ The balcony shall not be enclosed.

Only approved balcony screens are to be used. For an illustration of the approved balcony screen, please refer to the diagram annexed here to as "Annexure 1".

Areas include AC Ledge, Balcony, PES, and Strata Void Area (where applicable). Orientations and facings will differ depending on the unit you are purchasing, please refer to the key plan. Plans are not drawn to scale and subject to change as may be required or approved by the relevant authorities. All areas are estimates only and are subject to final survey.

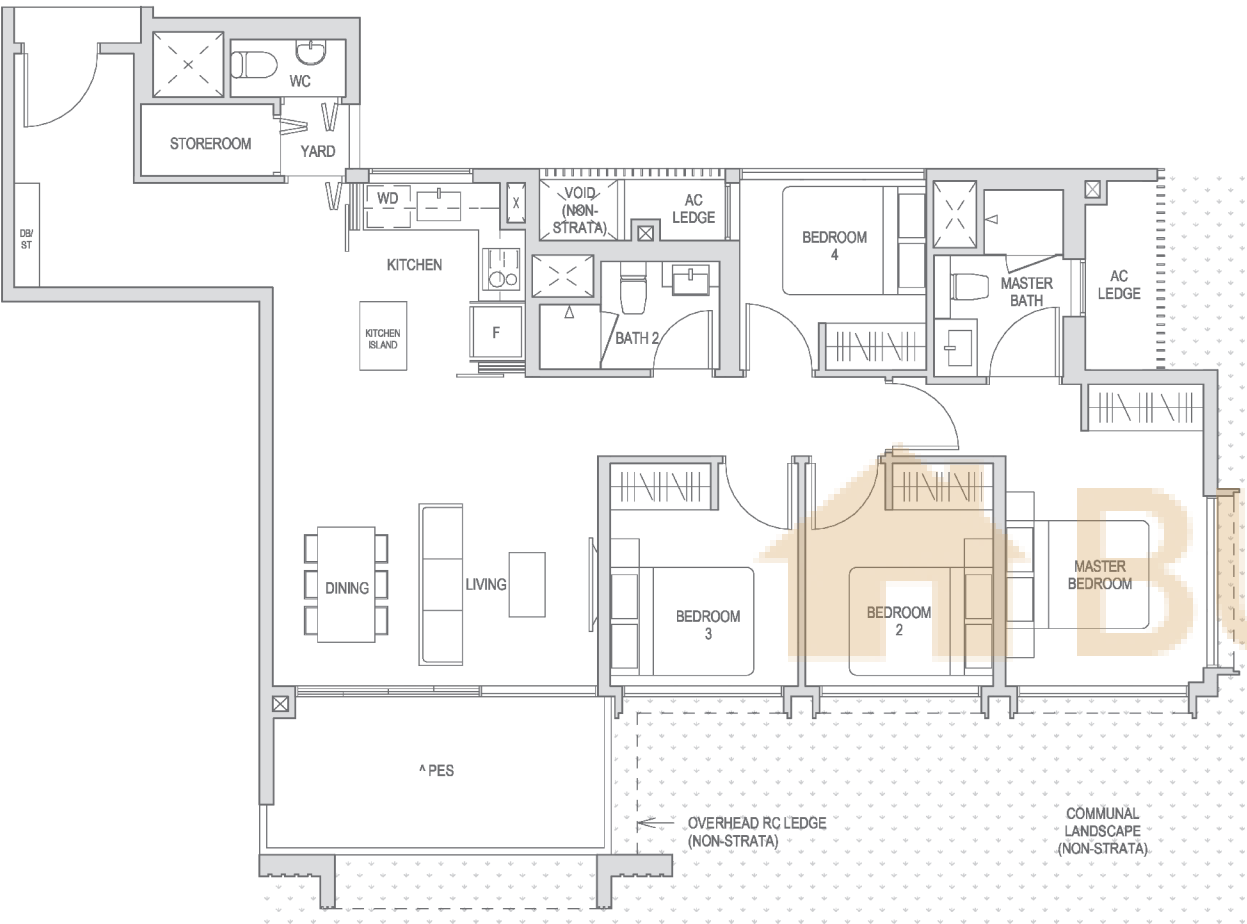


4-Bedroom

4-Bedroom

TYPE D1 (PES)

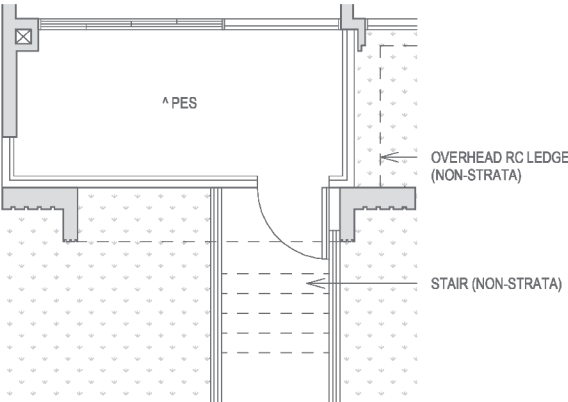
119 SQM / 1281 SQFT  
Block 6 #01-17



TYPE D1 (PES)

119 SQM / 1281 SQFT  
Block 2 #01-11\*

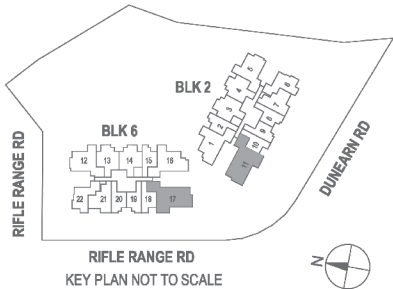
\* MIRROR IMAGE



ST Storage Cabinet

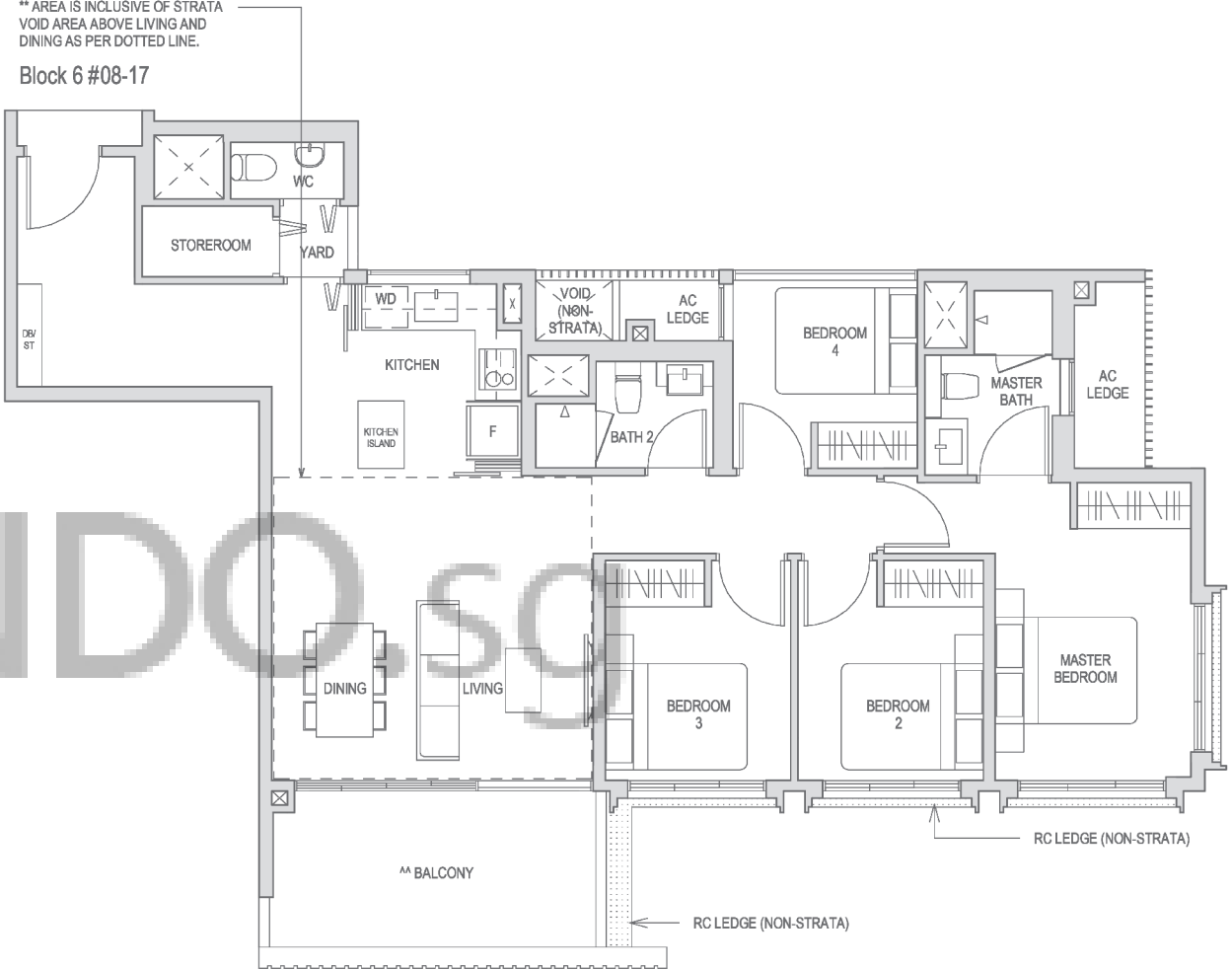
^ The PES shall not be enclosed.  
^^ The balcony shall not be enclosed.  
Only approved balcony screens are to be used. For an illustration of the approved balcony screen, please refer to the diagram annexed here to as "Annexure 1".

Areas include AC Ledge, Balcony, PES, and Strata Void Area (where applicable). Orientations and facings will differ depending on the unit you are purchasing, please refer to the key plan. Plans are not drawn to scale and subject to change as may be required or approved by the relevant authorities. All areas are estimates only and are subject to final survey.



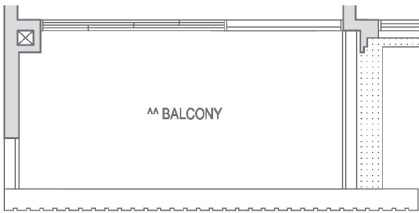
TYPE D1H

141 SQM / 1518 SQFT \*\*  
\*\* AREA IS INCLUSIVE OF STRATA  
VOID AREA ABOVE LIVING AND  
DINING AS PER DOTTED LINE.  
Block 6 #08-17



TYPE D1H

141 SQM / 1518 SQFT \*\*  
\*\* AREA IS INCLUSIVE OF STRATA  
VOID AREA ABOVE LIVING AND  
DINING AS PER DOTTED LINE.  
Block 2 #08-11\*  
\* MIRROR IMAGE



ST Storage Cabinet

^ The PES shall not be enclosed.  
^^ The balcony shall not be enclosed.  
Only approved balcony screens are to be used. For an illustration of the approved balcony screen, please refer to the diagram annexed here to as "Annexure 1".

Areas include AC Ledge, Balcony, PES, and Strata Void Area (where applicable). Orientations and facings will differ depending on the unit you are purchasing, please refer to the key plan. Plans are not drawn to scale and subject to change as may be required or approved by the relevant authorities. All areas are estimates only and are subject to final survey.

