

ONE
BEDROOM SUITE

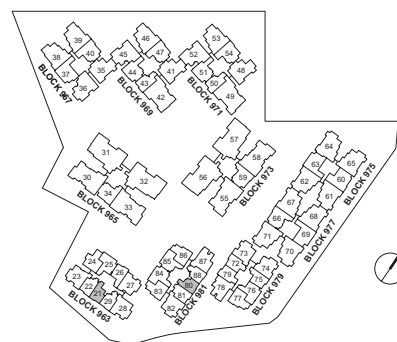
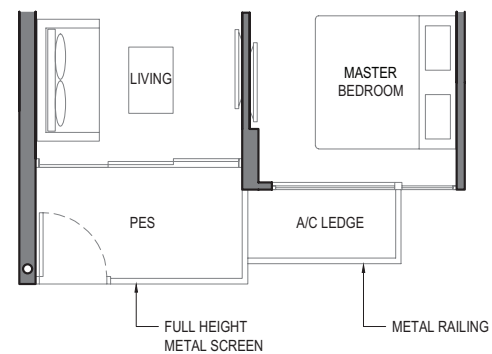
TYPE 1B1

AREA : 42 sq m
(includes 2 sq m a/c ledge, 5 sq m balcony)
UNITS : #03-21 to #05-21
#04-80 to #05-80



TYPE 1B1-P

AREA : 42 sq m
(includes 2 sq m a/c ledge, 5 sq m PES)
UNITS : #03-80



NOTE:

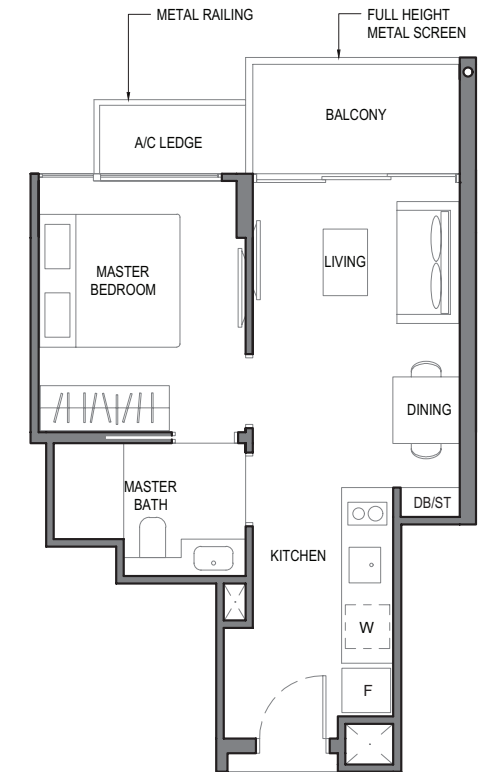
Plans are subject to change/amendments as may be required and/or approved by the Developer and/or the relevant authorities and do not form part of any offer or contract. These are not drawn to scale and are for the purpose of visual presentation only.

The balcony shall not be enclosed. Only approved balcony screens are to be used. For an illustration of the approved balcony screen, please refer to **APPROVED BALCONY SCREEN DESIGN** page of this brochure.

ONE
BEDROOM SUITE

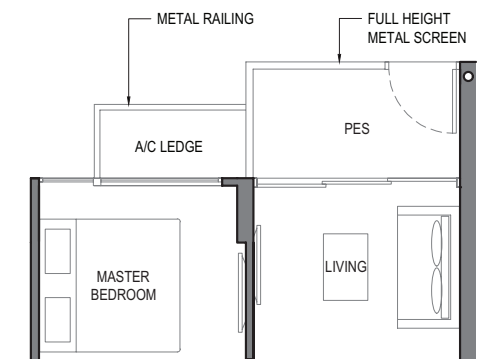
TYPE 1B2

AREA : 44 sq m
(includes 2 sq m a/c ledge, 5 sq m balcony)
UNITS : #04-72 to #05-72
#04-79* to #05-79*



TYPE 1B2-P

AREA : 44 sq m
(includes 2 sq m a/c ledge, 5 sq m PES)
UNITS : #03-72
#03-79*

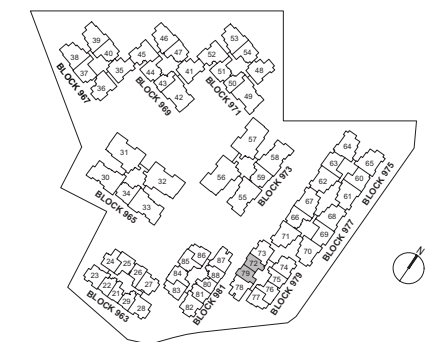


NOTE:

* Mirror Image

Plans are subject to change/amendments as may be required and/or approved by the Developer and/or the relevant authorities and do not form part of any offer or contract. These are not drawn to scale and are for the purpose of visual presentation only.

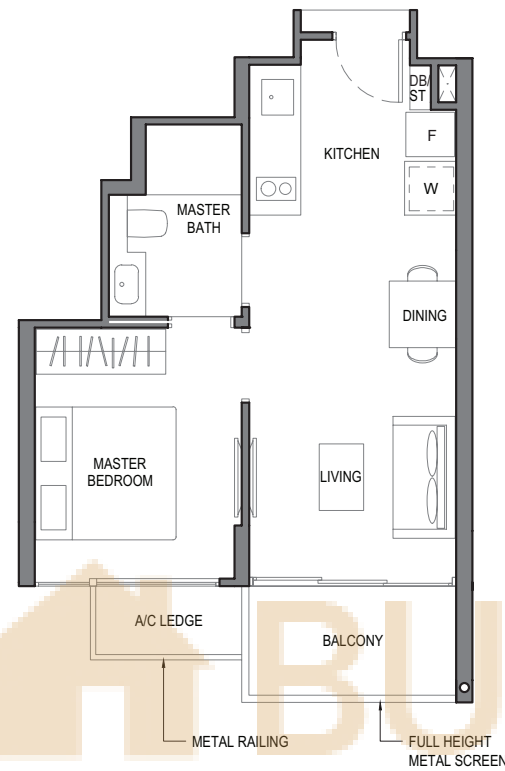
The balcony shall not be enclosed. Only approved balcony screens are to be used. For an illustration of the approved balcony screen, please refer to **APPROVED BALCONY SCREEN DESIGN** page of this brochure.



ONE
BEDROOM SUITE

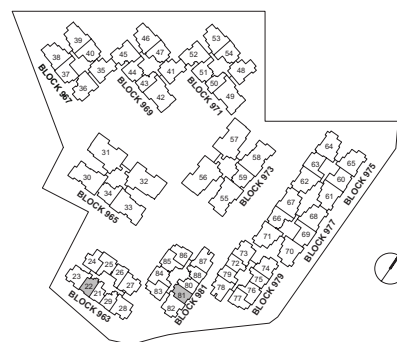
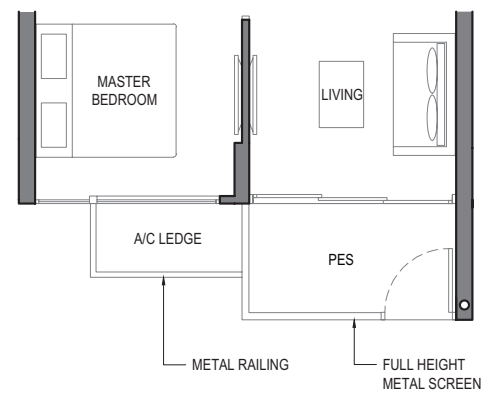
TYPE 1B3

AREA : 44 sq m
(includes 2 sq m a/c ledge, 5 sq m balcony)
UNITS : #03-22 to #05-22
#04-81 to #05-81



TYPE 1B3 - P

AREA : 44 sq m
(includes 2 sq m a/c ledge, 5 sq m PES)
UNITS : #03-81



NOTE:

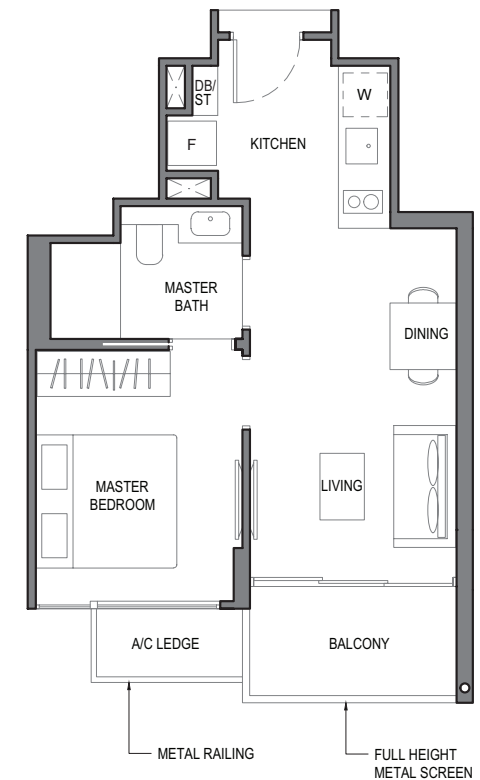
Plans are subject to change/amendments as may be required and/or approved by the Developer and/or the relevant authorities and do not form part of any offer or contract. These are not drawn to scale and are for the purpose of visual presentation only.

The balcony shall not be enclosed. Only approved balcony screens are to be used. For an illustration of the approved balcony screen, please refer to **APPROVED BALCONY SCREEN DESIGN** page of this brochure.

ONE
BEDROOM SUITE

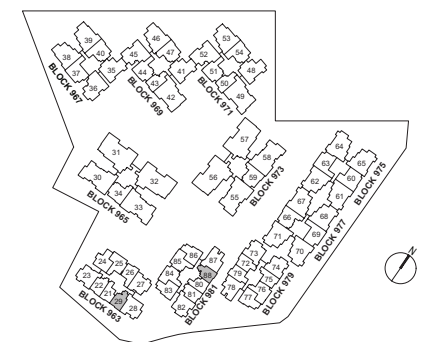
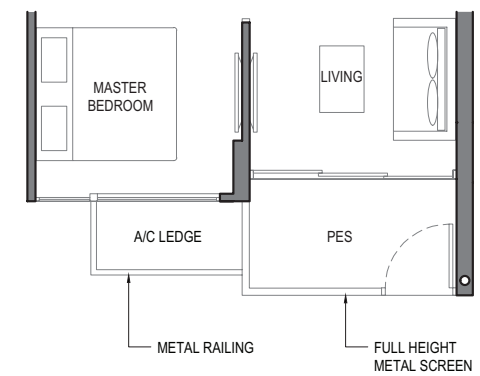
TYPE 1B4

AREA : 44 sq m
(includes 2 sq m a/c ledge, 5 sq m balcony)
UNITS : #03-29 to #05-29
#04-88 to #05-88



TYPE 1B4 - P

AREA : 44 sq m
(includes 2 sq m a/c ledge, 5 sq m PES)
UNITS : #03-88



NOTE:

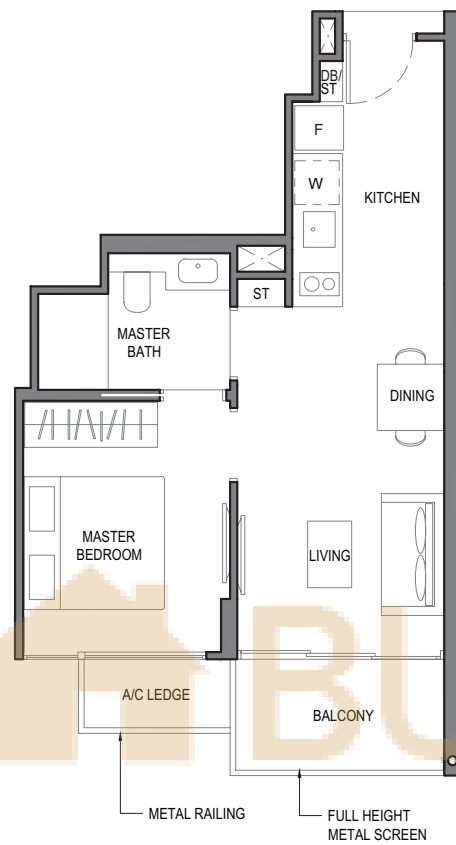
Plans are subject to change/amendments as may be required and/or approved by the Developer and/or the relevant authorities and do not form part of any offer or contract. These are not drawn to scale and are for the purpose of visual presentation only.

The balcony shall not be enclosed. Only approved balcony screens are to be used. For an illustration of the approved balcony screen, please refer to **APPROVED BALCONY SCREEN DESIGN** page of this brochure.

ONE BEDROOM SUITE

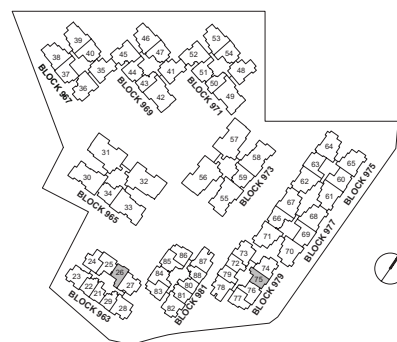
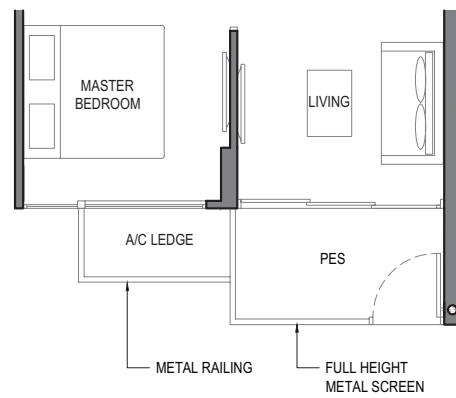
TYPE 1B5

AREA : 45 sq m
(includes 2 sq m a/c ledge, 5 sq m balcony)
UNITS : #04-26* to #05-26*
#03-75 to #05-75



TYPE 1B5 - P

AREA : 45 sqm
(includes 2 sq m a/c ledge, 5 sq m PES)
UNITS : #03-26*



NOTE:
* Mirror Image

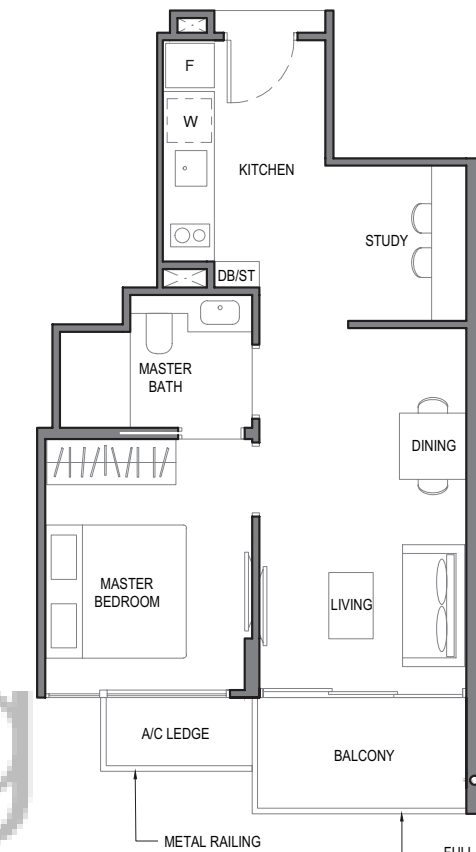
Plans are subject to change/amendments as may be required and/or approved by the Developer and/or the relevant authorities and do not form part of any offer or contract. These are not drawn to scale and are for the purpose of visual presentation only.

The balcony shall not be enclosed. Only approved balcony screens are to be used. For an illustration of the approved balcony screen, please refer to **APPROVED BALCONY SCREEN DESIGN** page of this brochure.

ONE BEDROOM+STUDY

TYPE 1S1

AREA : 51 sq m
(includes 2 sq m a/c ledge, 5 sq m balcony)
UNITS : #02-43, #03-43, #05-43
#02-50, #03-50, #05-50

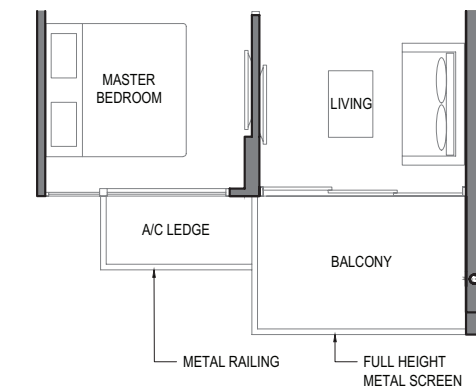


FULL HEIGHT METAL SCREEN
APPLICABLE TO:
03-43
03-50

GLASS RAILING
APPLICABLE TO:
02-43, # 05-43
02-50, # 05-50

TYPE 1S1a

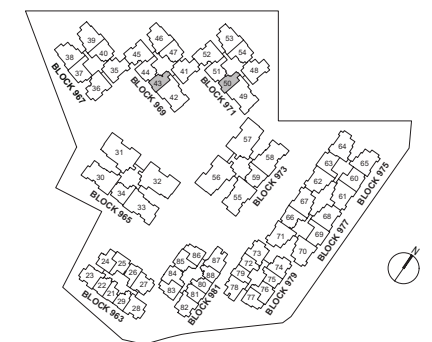
AREA : 52 sq m
(includes 2 sq m a/c ledge, 6 sq m balcony)
UNITS : #04-43
#04-50



NOTE:

Plans are subject to change/amendments as may be required and/or approved by the Developer and/or the relevant authorities and do not form part of any offer or contract. These are not drawn to scale and are for the purpose of visual presentation only.

The balcony shall not be enclosed. Only approved balcony screens are to be used. For an illustration of the approved balcony screen, please refer to **APPROVED BALCONY SCREEN DESIGN** page of this brochure.

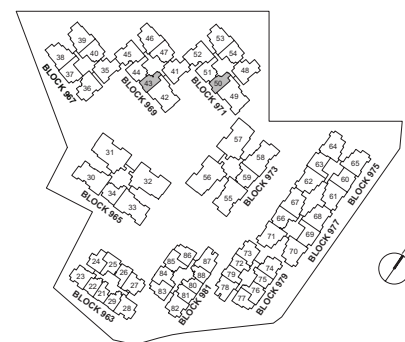
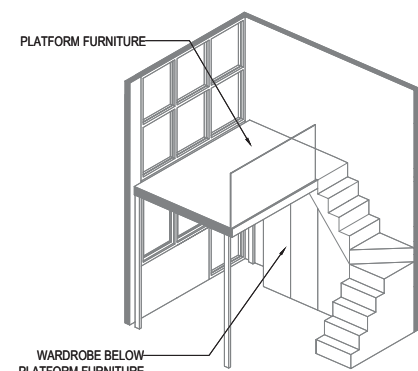
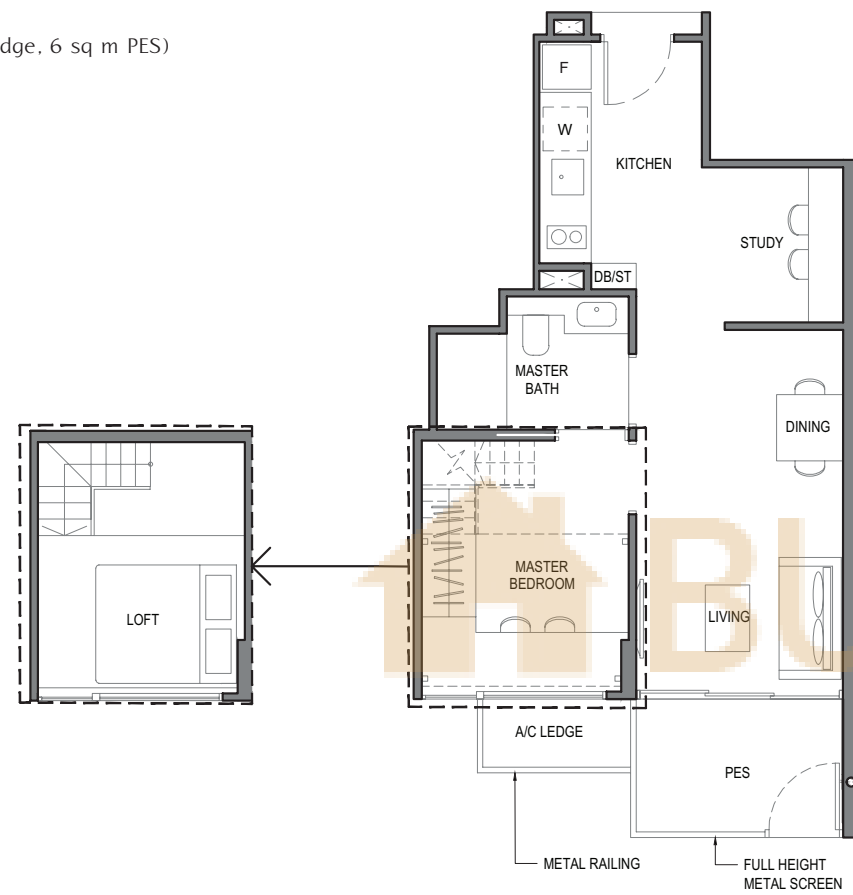


ONE BEDROOM+STUDY

TYPE 1S1b - G

AREA : 52 sq m
(includes 2 sq m a/c ledge, 6 sq m PES)

UNITS : #01-43
#01-50



NOTE:
** Isometric views have excluded railing drawings for the steps

Plans are subject to change/amendments as may be required and/or approved by the Developer and/or the relevant authorities and do not form part of any offer or contract. These are not drawn to scale and are for the purpose of visual presentation only.

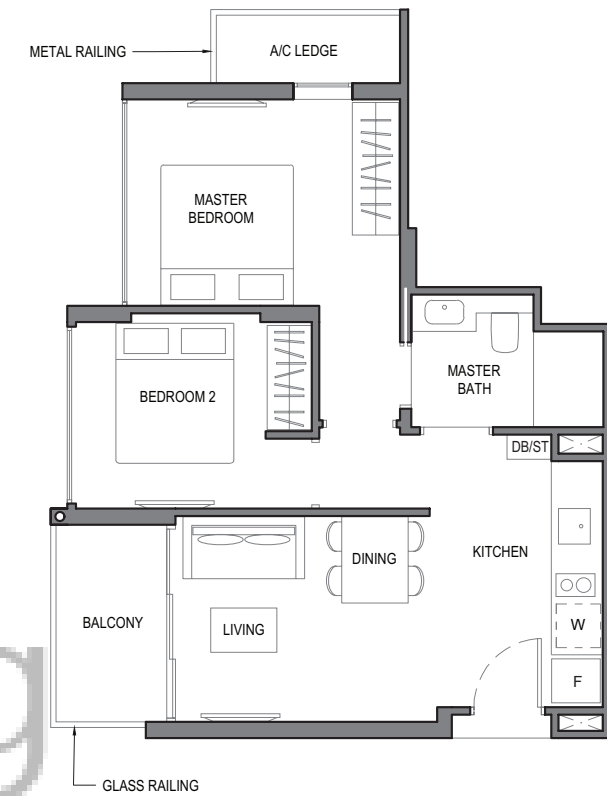
The balcony shall not be enclosed. Only approved balcony screens are to be used. For an illustration of the approved balcony screen, please refer to **APPROVED BALCONY SCREEN DESIGN** page of this brochure.

TWO BEDROOM CLASSIC

TYPE 2C1

AREA : 57 sq m
(includes 3 sq m a/c ledge, 5 sq m balcony)

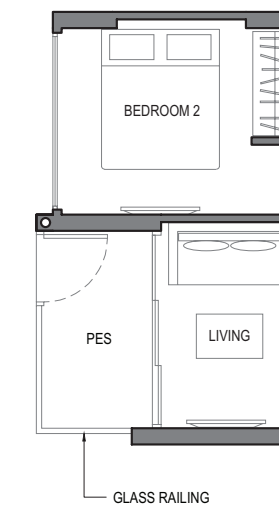
UNITS : #03-77* to #05-77*
#04-83 to #05-83
#03-86* to #05-86*



TYPE 2C1-P

AREA : 57 sq m
(includes 3 sq m a/c ledge, 5 sq m PES)

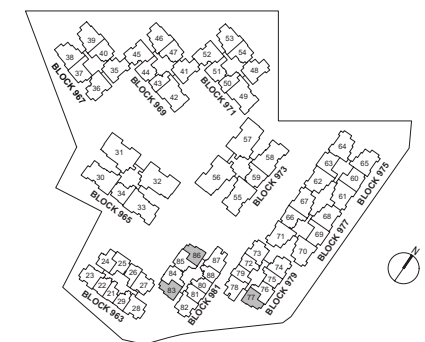
UNITS : #03-83



NOTE:
* Mirror Image

Plans are subject to change/amendments as may be required and/or approved by the Developer and/or the relevant authorities and do not form part of any offer or contract. These are not drawn to scale and are for the purpose of visual presentation only.

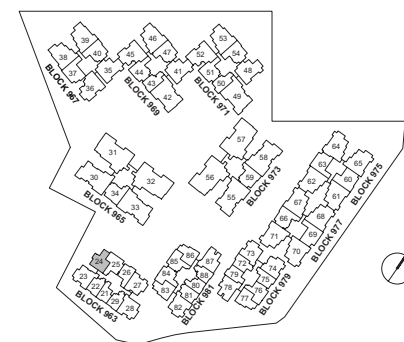
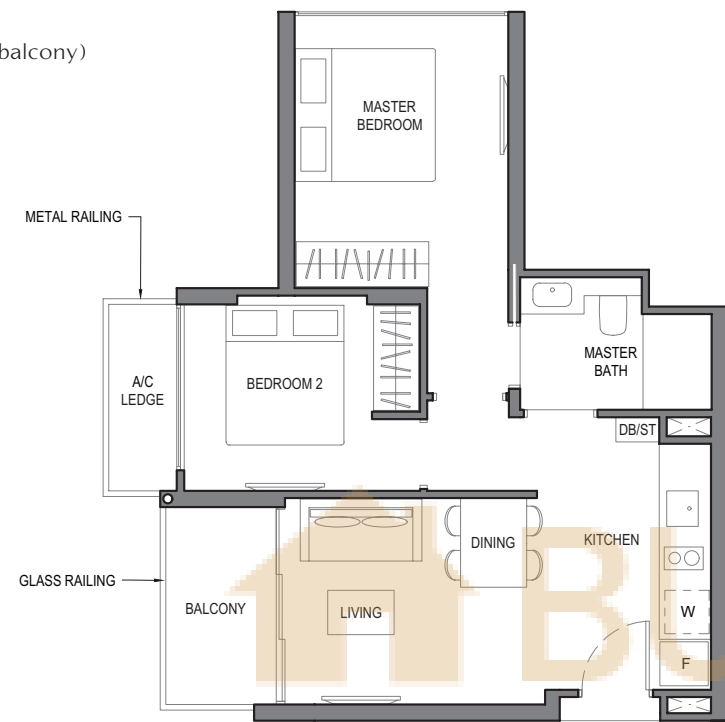
The balcony shall not be enclosed. Only approved balcony screens are to be used. For an illustration of the approved balcony screen, please refer to **APPROVED BALCONY SCREEN DESIGN** page of this brochure.



TWO
BEDROOM CLASSIC

TYPE 2C2

AREA : 57 sq m
(includes 3 sq m a/c ledge, 5 sq m balcony)
UNITS : #03-24 to #05-24



NOTE:

Plans are subject to change/amendments as may be required and/or approved by the Developer and/or the relevant authorities and do not form part of any offer or contract. These are not drawn to scale and are for the purpose of visual presentation only.

The balcony shall not be enclosed. Only approved balcony screens are to be used. For an illustration of the approved balcony screen, please refer to **APPROVED BALCONY SCREEN DESIGN** page of this brochure.

TWO
BEDROOM CLASSIC

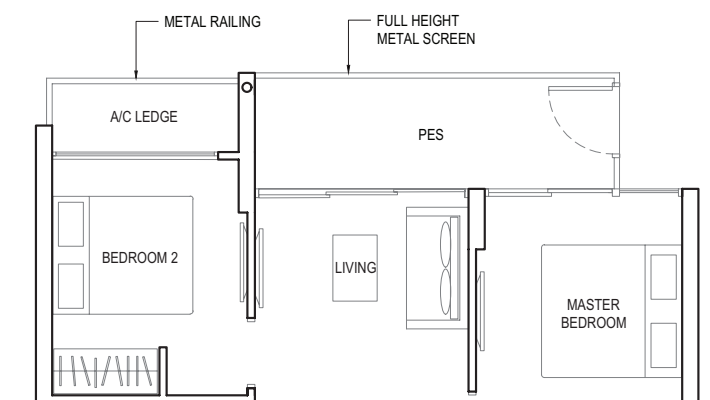
TYPE 2C3

AREA : 61 sq m
(includes 3 sq m a/c ledge, 8 sq m balcony)
UNITS : #04-25 to #05-25
#03-76* to #05-76*
#04-84 to #05-84
#04-85* to #05-85*



TYPE 2C3-P

AREA : 61 sq m
(includes 3 sq m a/c ledge, 8 sq m PES)
UNITS : #03-25
#03-84
#03-85*

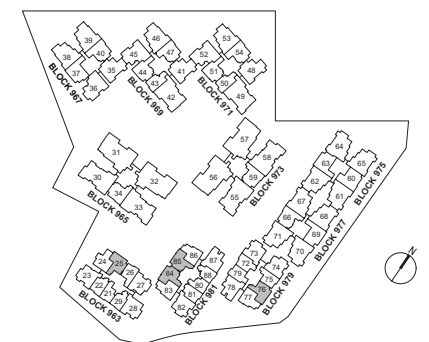


NOTE:

* Mirror Image

Plans are subject to change/amendments as may be required and/or approved by the Developer and/or the relevant authorities and do not form part of any offer or contract. These are not drawn to scale and are for the purpose of visual presentation only.

The balcony shall not be enclosed. Only approved balcony screens are to be used. For an illustration of the approved balcony screen, please refer to **APPROVED BALCONY SCREEN DESIGN** page of this brochure.

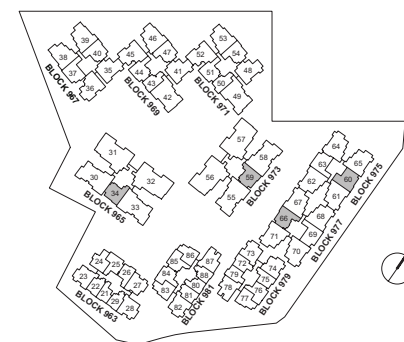
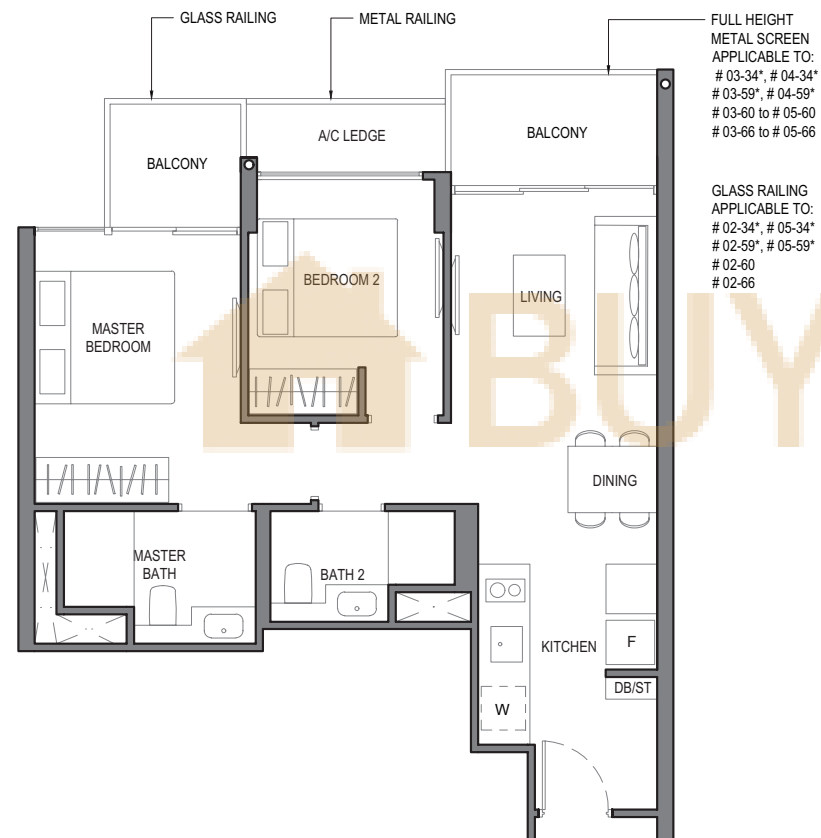


TWO
BEDROOM DELUXE

TYPE 2D1

AREA : 67 sq m
(includes 3 sq m a/c ledge, 8 sq m balcony)

UNITS : #02-34* to #05-34*
#02-59* to #05-59*
#02-60 to #05-60
#02-66 to #05-66



NOTE:
* Mirror Image

Plans are subject to change/amendments as may be required and/or approved by the Developer and/or the relevant authorities and do not form part of any offer or contract. These are not drawn to scale and are for the purpose of visual presentation only.

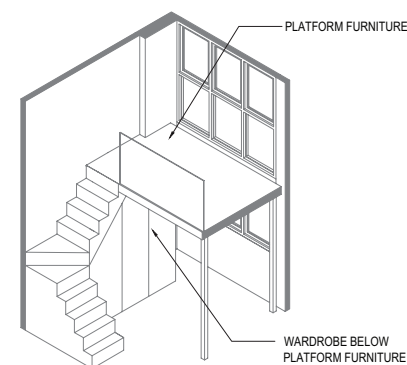
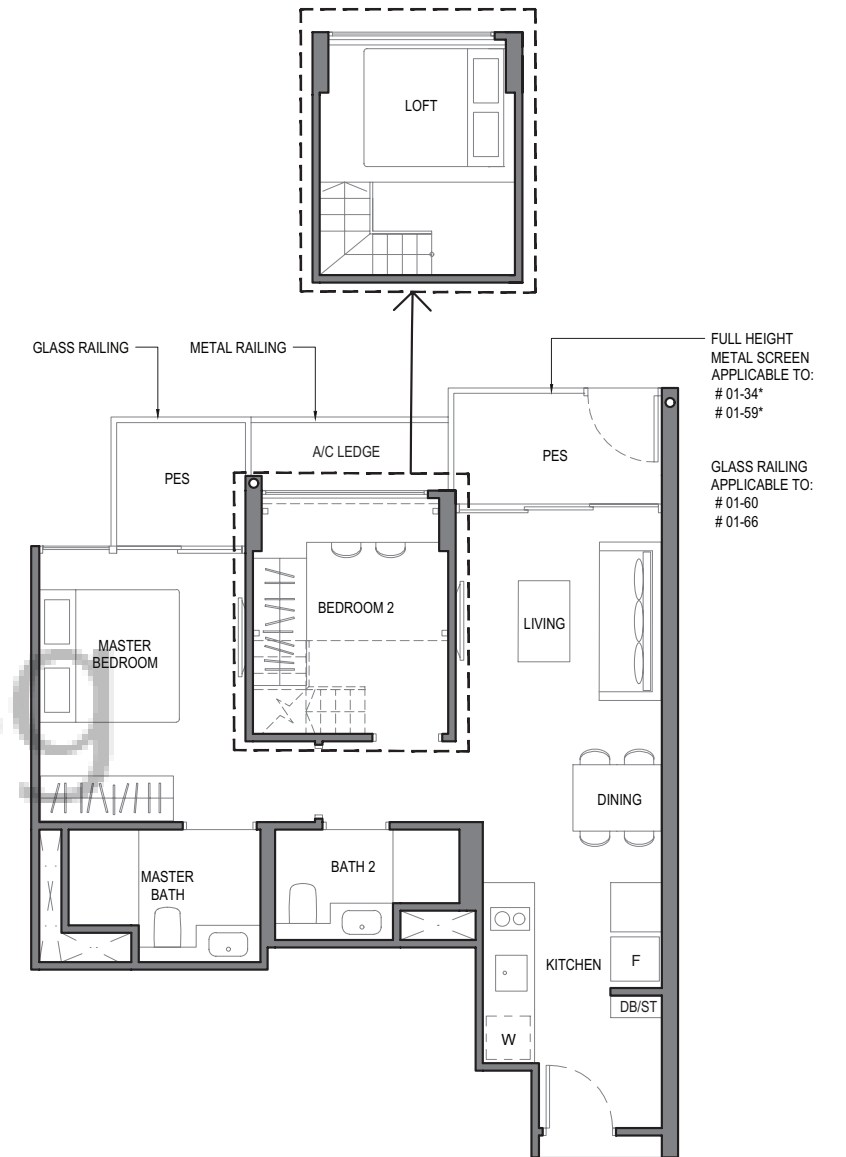
The balcony shall not be enclosed. Only approved balcony screens are to be used. For an illustration of the approved balcony screen, please refer to **APPROVED BALCONY SCREEN DESIGN** page of this brochure.

TWO
BEDROOM DELUXE

TYPE 2D1a-G

AREA : 67 sq m
(includes 3 sq m a/c ledge, 8 sq m PES)

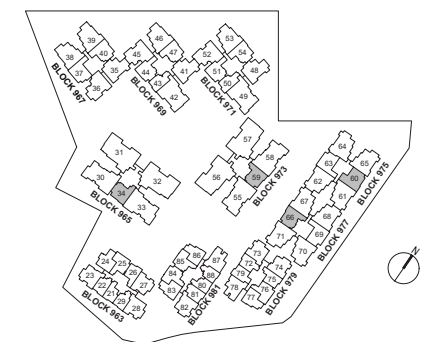
UNITS : #01-34*
#01-59*
#01-60
#01-66



ISOMETRIC VIEW**

NOTE:
* Mirror Image
** Isometric views have excluded railing drawings for the steps.
Plans are subject to change/amendments as may be required and/or approved by the Developer and/or the relevant authorities and do not form part of any offer or contract. These are not drawn to scale and are for the purpose of visual presentation only.

The balcony shall not be enclosed. Only approved balcony screens are to be used. For an illustration of the approved balcony screen, please refer to **APPROVED BALCONY SCREEN DESIGN** page of this brochure.

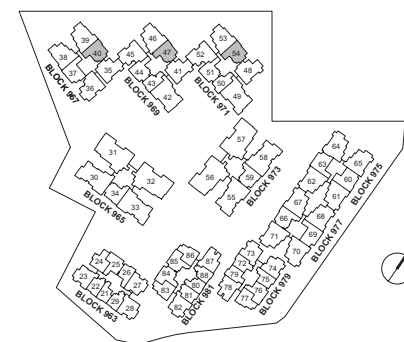
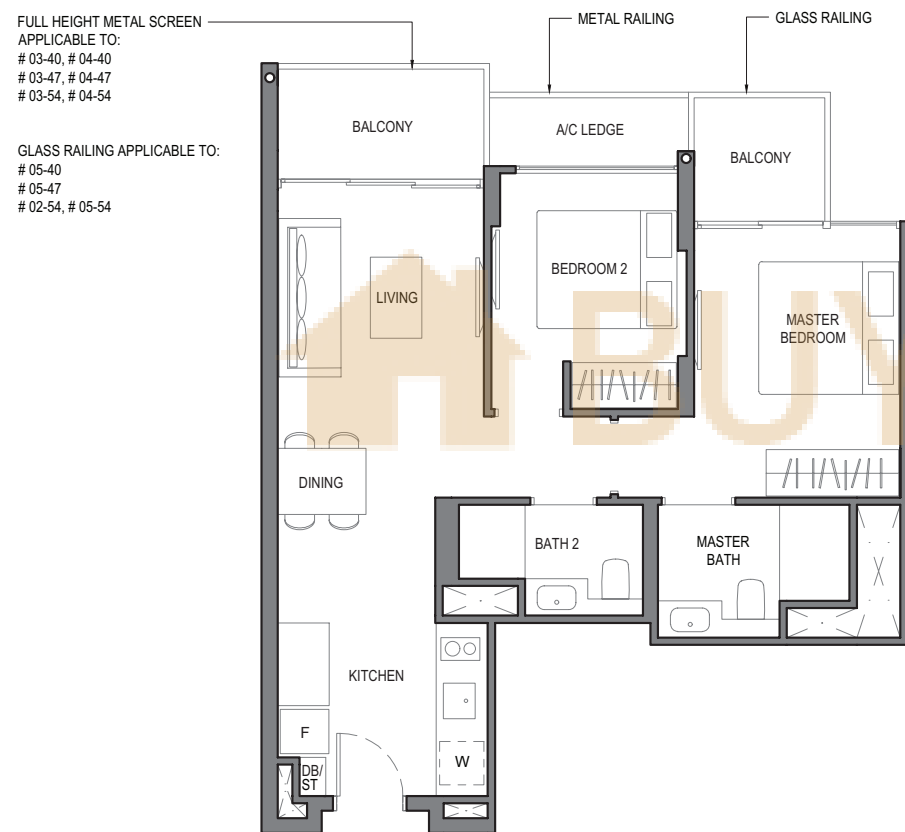


TWO
BEDROOM DELUXE

TYPE 2 D 2

AREA : 68 sq m
(includes 3 sq m a/c ledge, 8 sq m balcony)

UNITS : #03-40 to #05-40
#03-47 to #05-47
#02-54 to #05-54



NOTE:
* Mirror Image

Plans are subject to change/amendments as may be required and/or approved by the Developer and/or the relevant authorities and do not form part of any offer or contract. These are not drawn to scale and are for the purpose of visual presentation only.

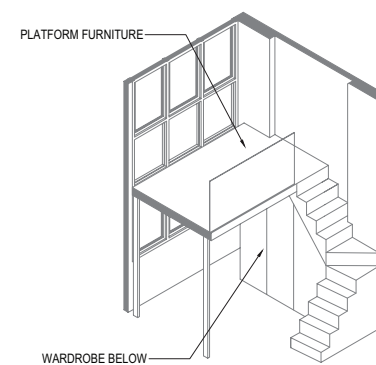
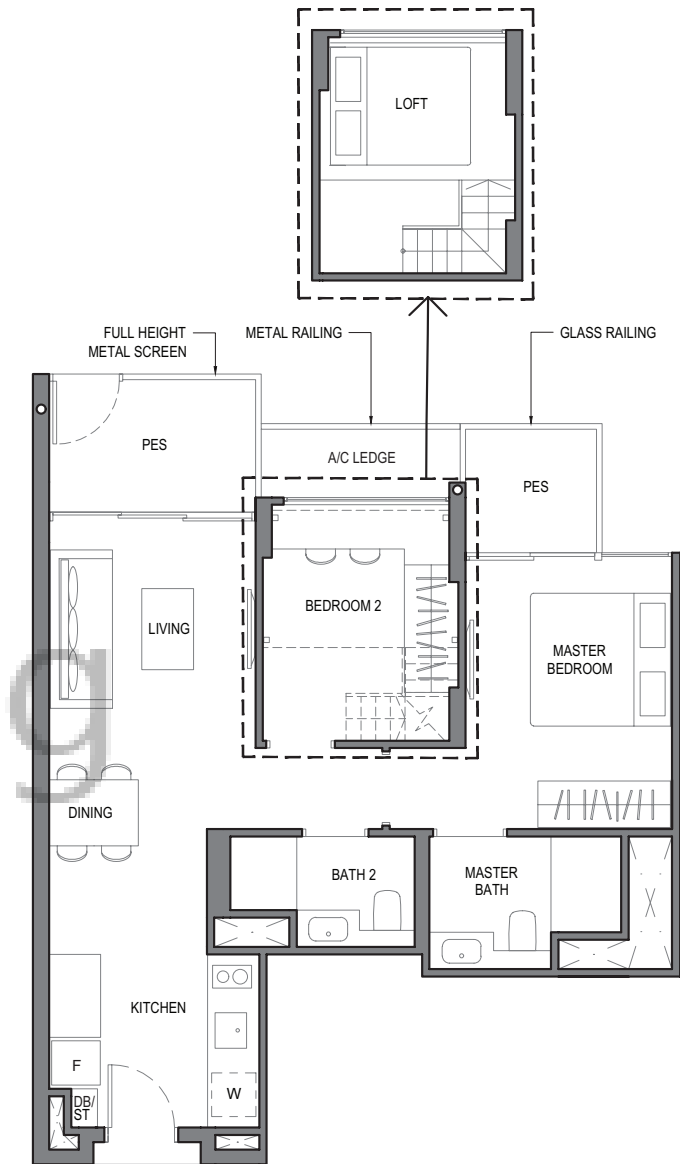
The balcony shall not be enclosed. Only approved balcony screens are to be used. For an illustration of the approved balcony screen, please refer to **APPROVED BALCONY SCREEN DESIGN** page of this brochure.

TWO
BEDROOM DELUXE

TYPE 2 D 2 a - G

AREA : 69 sq m
(includes 3 sq m a/c ledge, 9 sq m PES)

UNITS : #01-40
#01-47
#01-54

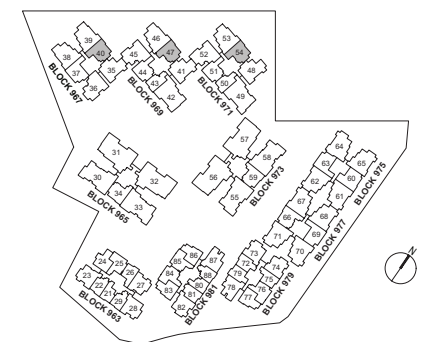


ISOMETRIC VIEW**

NOTE:
** Isometric views have excluded railing drawings for the steps

Plans are subject to change/amendments as may be required and/or approved by the Developer and/or the relevant authorities and do not form part of any offer or contract. These are not drawn to scale and are for the purpose of visual presentation only.

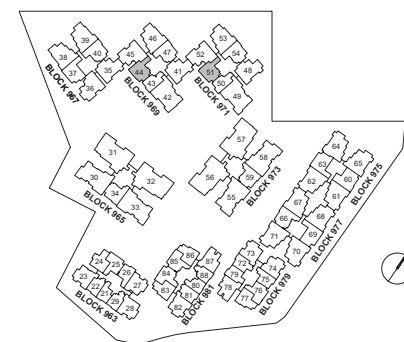
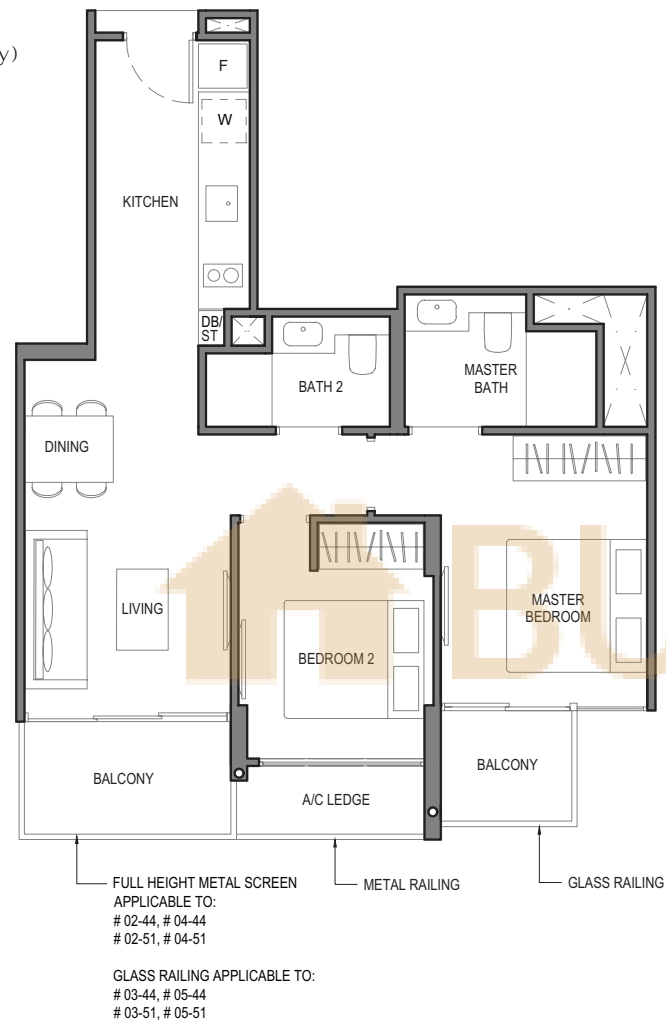
The balcony shall not be enclosed. Only approved balcony screens are to be used. For an illustration of the approved balcony screen, please refer to **APPROVED BALCONY SCREEN DESIGN** page of this brochure.



TWO
BEDROOM DELUXE

TYPE 2 D 3

AREA : 68 sq m
(includes 3 sq m a/c ledge, 8 sq m balcony)
UNITS : #02-44 to #05-44
#02-51 to #05-51



NOTE:

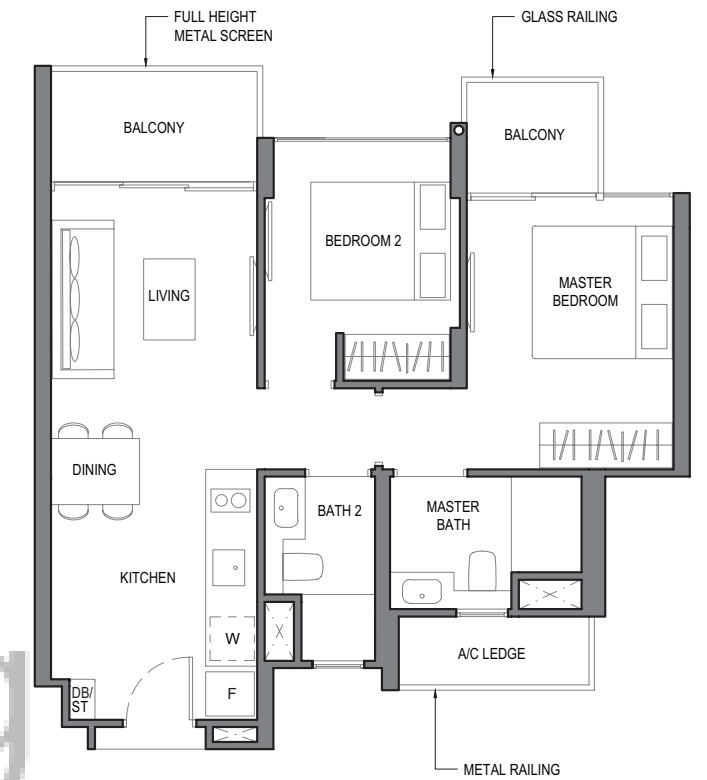
Plans are subject to change/amendments as may be required and/or approved by the Developer and/or the relevant authorities and do not form part of any offer or contract. These are not drawn to scale and are for the purpose of visual presentation only.

The balcony shall not be enclosed. Only approved balcony screens are to be used. For an illustration of the approved balcony screen, please refer to **APPROVED BALCONY SCREEN DESIGN** page of this brochure.

TWO
BEDROOM DELUXE

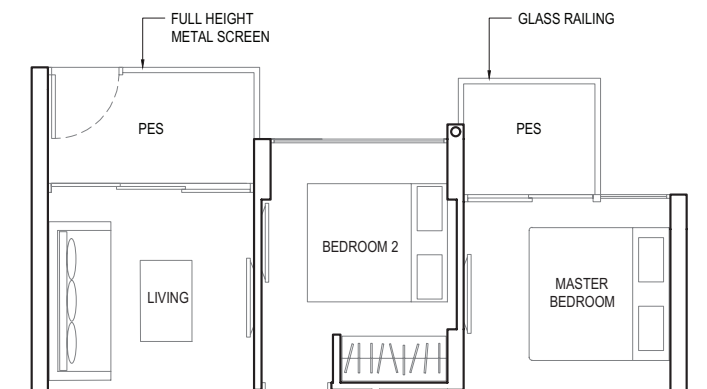
TYPE 2 D 4

AREA : 65 sq m
(includes 3 sq m a/c ledge, 8 sq m balcony)
UNITS : #04-27 to #05-27
#03-74* to #05-74*



TYPE 2 D 4 - P

AREA : 65 sq m
(includes 3 sq m a/c ledge, 8 sq m PES)
UNITS : #03-27

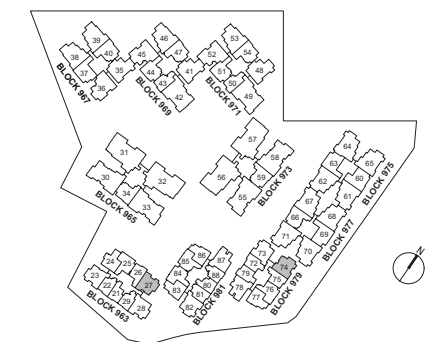


NOTE:

* Mirror Image

Plans are subject to change/amendments as may be required and/or approved by the Developer and/or the relevant authorities and do not form part of any offer or contract. These are not drawn to scale and are for the purpose of visual presentation only.

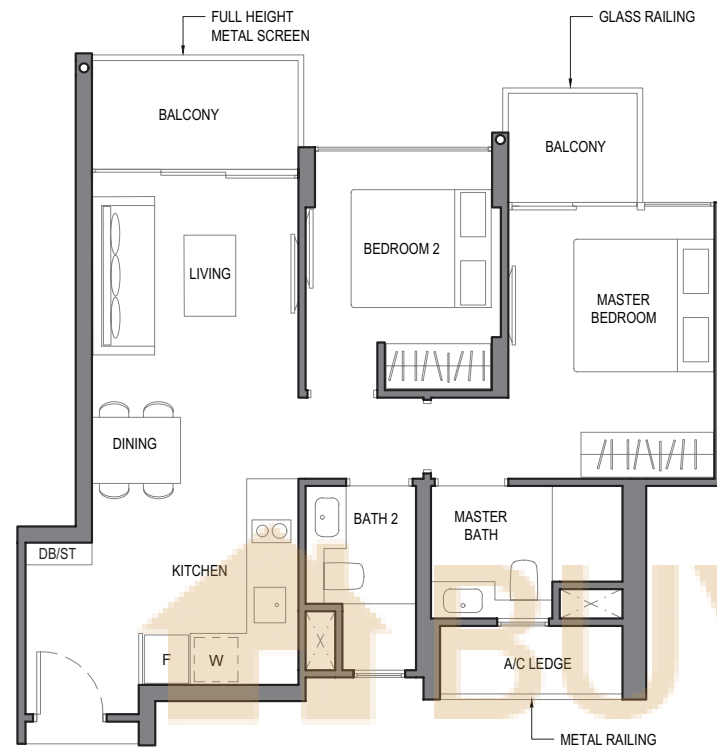
The balcony shall not be enclosed. Only approved balcony screens are to be used. For an illustration of the approved balcony screen, please refer to **APPROVED BALCONY SCREEN DESIGN** page of this brochure.



TWO BEDROOM DELUXE

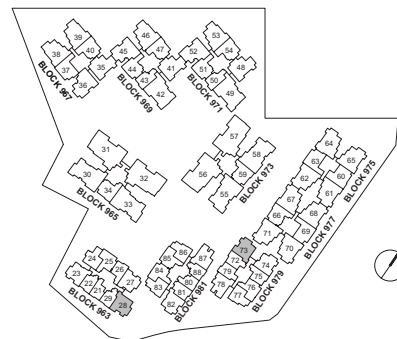
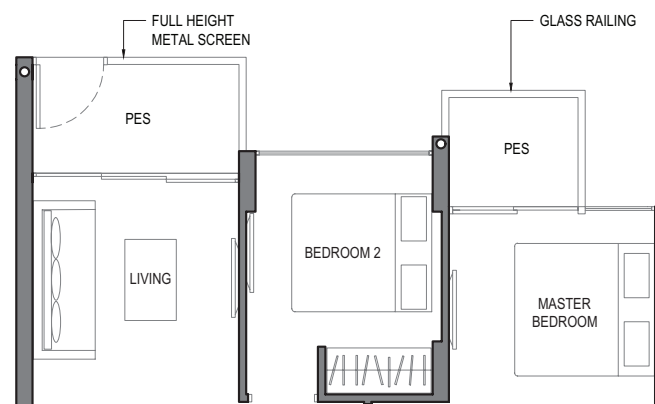
TYPE 2D5

AREA : 67 sq m
(includes 3 sq m a/c ledge, 8 sq m balcony)
UNITS : #03-28* to #05-28*
#04-73 to #05-73



TYPE 2D5-P

AREA : 67 sq m
(includes 3 sq m a/c ledge, 8 sq m PES)
UNITS : #03-73



NOTE:
* Mirror Image

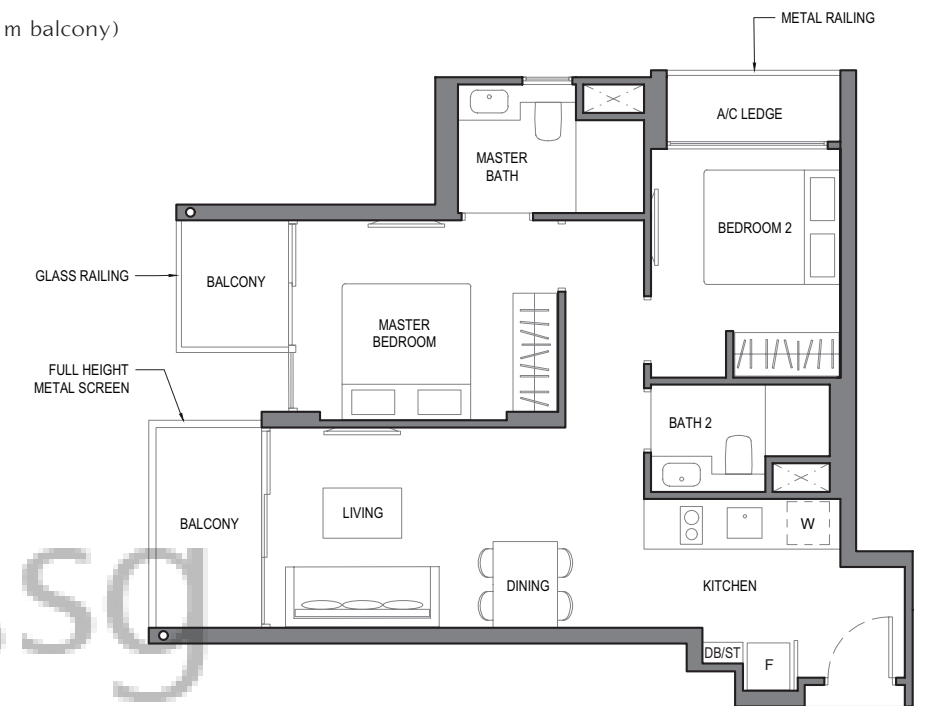
Plans are subject to change/amendments as may be required and/or approved by the Developer and/or the relevant authorities and do not form part of any offer or contract. These are not drawn to scale and are for the purpose of visual presentation only.

The balcony shall not be enclosed. Only approved balcony screens are to be used. For an illustration of the approved balcony screen, please refer to **APPROVED BALCONY SCREEN DESIGN** page of this brochure.

TWO BEDROOM DELUXE

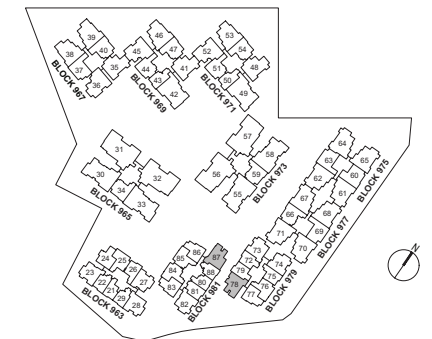
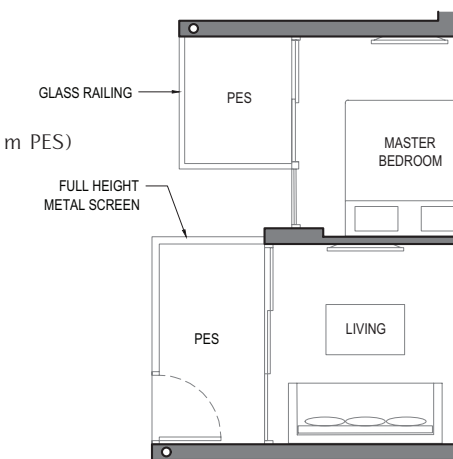
TYPE 2D6

AREA : 68 sq m
(includes 3 sq m a/c ledge, 8 sq m balcony)
UNITS : #04-78 to #05-78
#04-87 to #05-87



TYPE 2D6-P

AREA : 68 sq m
(includes 3 sq m a/c ledge, 8 sq m PES)
UNITS : #03-78
#03-87



NOTE:

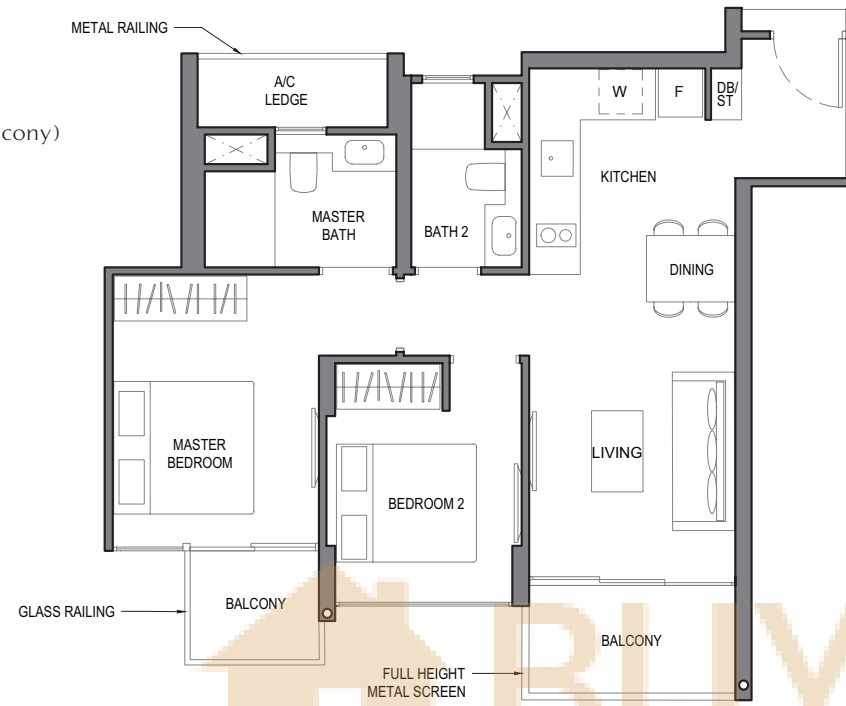
Plans are subject to change/amendments as may be required and/or approved by the Developer and/or the relevant authorities and do not form part of any offer or contract. These are not drawn to scale and are for the purpose of visual presentation only.

The balcony shall not be enclosed. Only approved balcony screens are to be used. For an illustration of the approved balcony screen, please refer to **APPROVED BALCONY SCREEN DESIGN** page of this brochure.

TWO
BEDROOM DELUXE

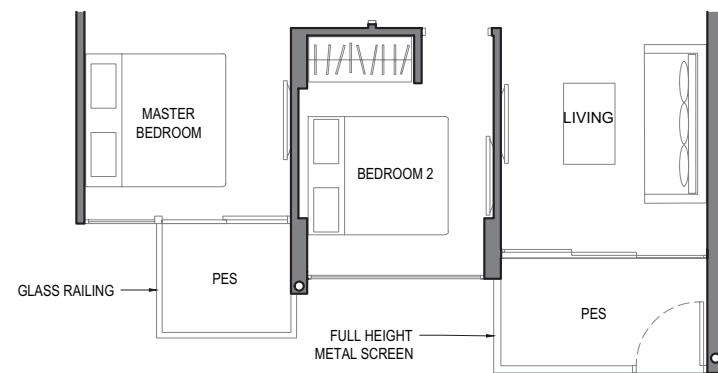
TYPE 2D7

AREA : 68 sq m
(includes 3 sq m a/c ledge, 8 sq m balcony)
UNITS : #03-23 to #05-23
#04-82 to #05-82



TYPE 2D7-P

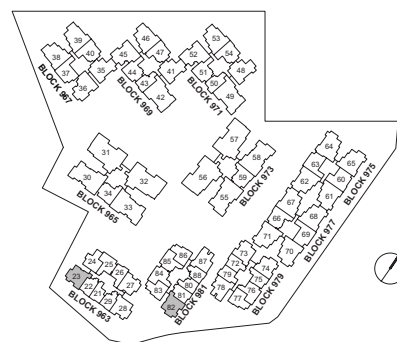
AREA : 68sqm
(includes 3 sq m a/c ledge, 8 sq m PES)
UNITS : #03-82



NOTE:

Plans are subject to change/amendments as may be required and/or approved by the Developer and/or the relevant authorities and do not form part of any offer or contract. These are not drawn to scale and are for the purpose of visual presentation only.

The balcony shall not be enclosed. Only approved balcony screens are to be used. For an illustration of the approved balcony screen, please refer to **APPROVED BALCONY SCREEN DESIGN** page of this brochure.



TWO
BEDROOM DELUXE

TYPE 2D8

AREA : 71 sq m
(includes 3 sq m a/c ledge, 7 sq m balcony)
UNITS : #02-37* to #05-37*
#03-63 to #05-63
#02-69 to #05-69



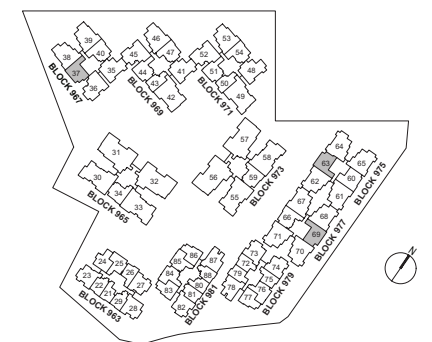
FULL HEIGHT METAL SCREEN
APPLICABLE TO:
02-37*, # 04-37*
03-63 to # 05-63
02-69 to # 05-69
GLASS RAILING APPLICABLE TO:
03-37*, # 05-37*

NOTE:

* Mirror Image

Plans are subject to change/amendments as may be required and/or approved by the Developer and/or the relevant authorities and do not form part of any offer or contract. These are not drawn to scale and are for the purpose of visual presentation only.

The balcony shall not be enclosed. Only approved balcony screens are to be used. For an illustration of the approved balcony screen, please refer to **APPROVED BALCONY SCREEN DESIGN** page of this brochure.

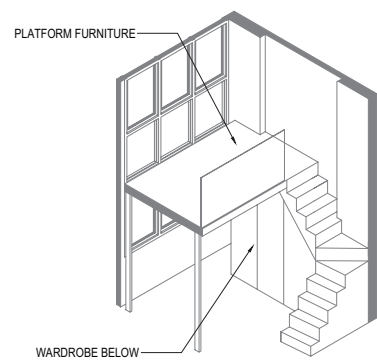
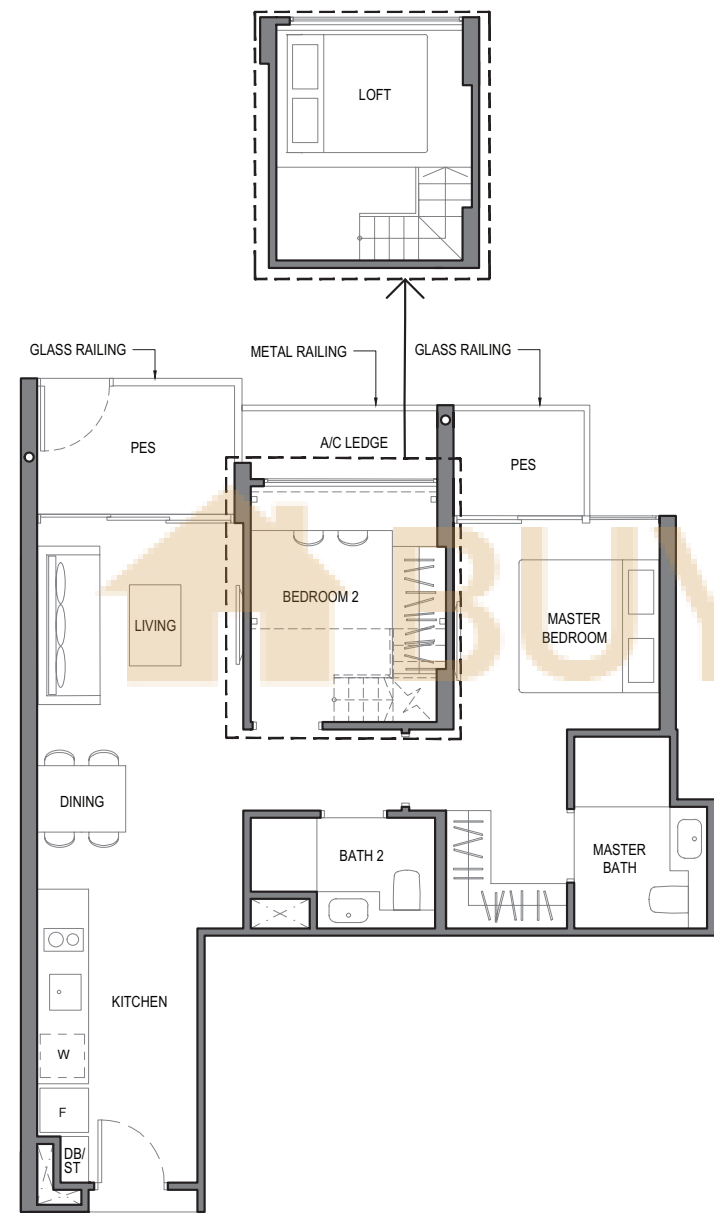


TWO BEDROOM DELUXE

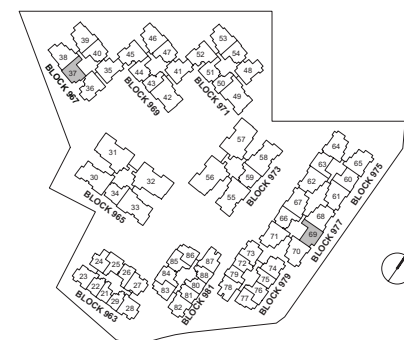
TYPE 2D8a-G

AREA : 72 sq m
(includes 3 sq m a/c ledge, 8 sq m PES)

UNITS : #01-37*
#01-69



ISOMETRIC VIEW**



NOTE:

* Mirror Image
** Isometric views have excluded railing drawings for the steps
Plans are subject to change/amendments as may be required and/or approved by the Developer and/or the relevant authorities and do not form part of any offer or contract. These are not drawn to scale and are for the purpose of visual presentation only.

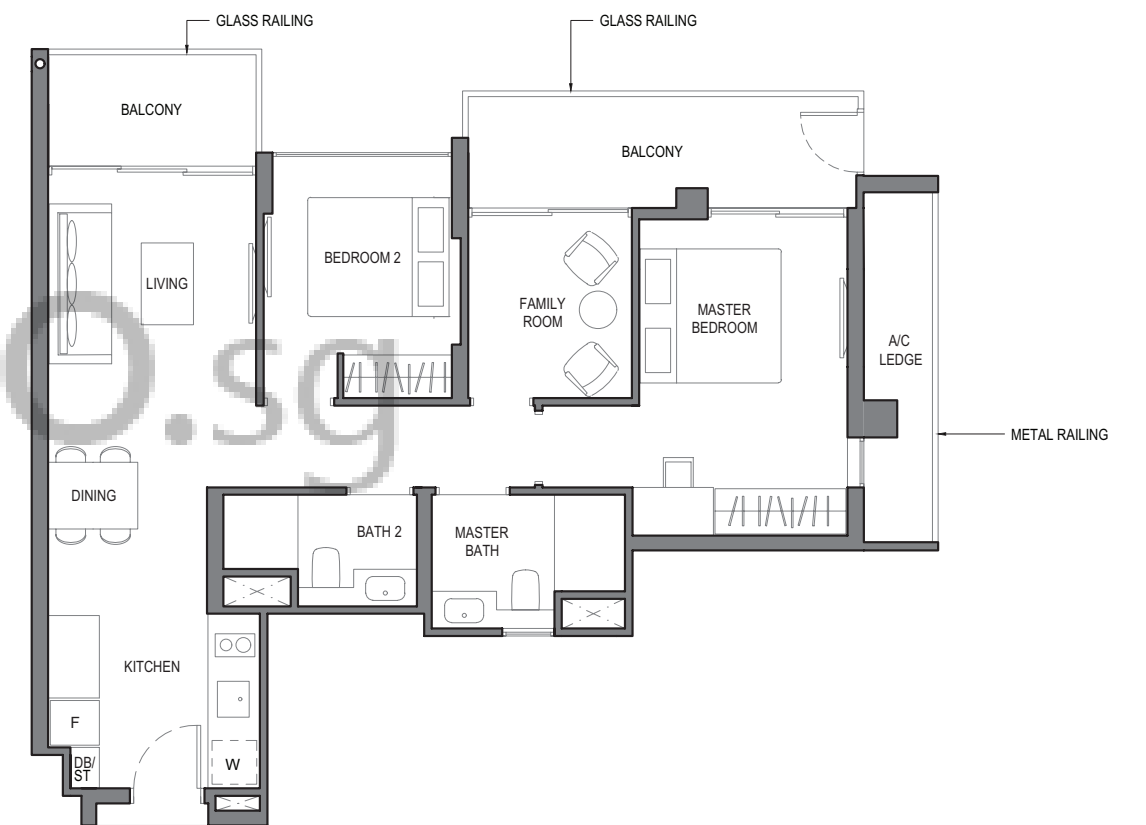
The balcony shall not be enclosed. Only approved balcony screens are to be used. For an illustration of the approved balcony screen, please refer to **APPROVED BALCONY SCREEN DESIGN** page of this brochure.

TWO BEDROOM PREMIUM

TYPE 2P

AREA : 86 sq m
(includes 5 sq m a/c ledge, 13 sq m balcony)

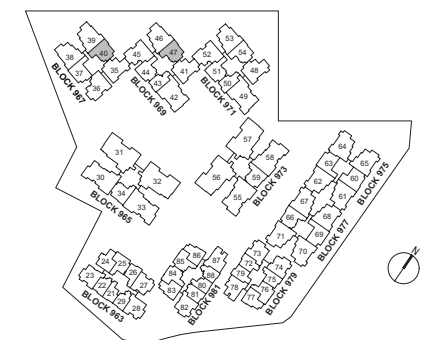
UNITS : #02-40
#02-47



NOTE:

Plans are subject to change/amendments as may be required and/or approved by the Developer and/or the relevant authorities and do not form part of any offer or contract. These are not drawn to scale and are for the purpose of visual presentation only.

The balcony shall not be enclosed. Only approved balcony screens are to be used. For an illustration of the approved balcony screen, please refer to **APPROVED BALCONY SCREEN DESIGN** page of this brochure.

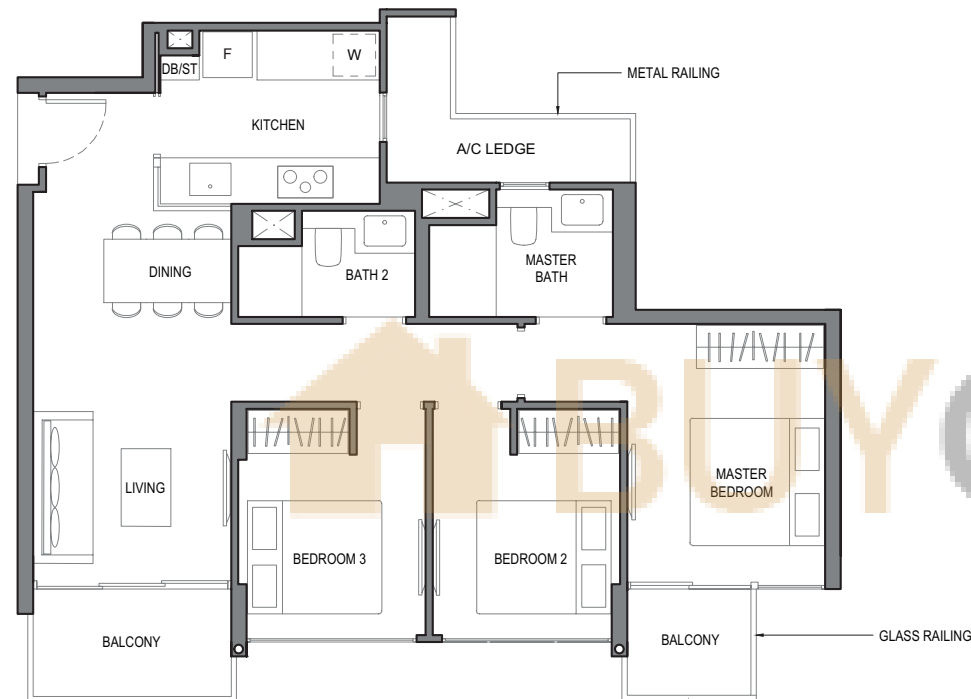


THREE BEDROOM CLASSIC

TYPE 3C1

AREA : 85 sq m
(includes 5 sq m a/c ledge, 8 sq m balcony)

UNITS : #03-35 to #05-35
#03-41 to #05-41
#02-48 to #05-48



FULL HEIGHT METAL SCREEN
APPLICABLE TO:
#03-35 to #04-35
#03-41 to #04-41
#03-48 to #04-48

GLASS RAILING APPLICABLE TO:
#05-35
#05-41
#02-48, #05-48

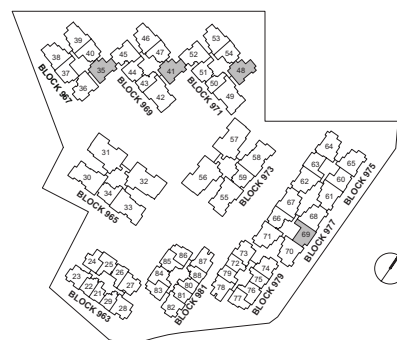
FULL HEIGHT METAL SCREEN
APPLICABLE TO:
#04-35
#04-41
#03-48 to #04-48

GLASS RAILING APPLICABLE TO:
#03-35, #05-35
#03-41, #05-41
#02-48, #05-48

NOTE:
* Mirror Image

Plans are subject to change/amendments as may be required and/or approved by the Developer and/or the relevant authorities and do not form part of any offer or contract. These are not drawn to scale and are for the purpose of visual presentation only.

The balcony shall not be enclosed. Only approved balcony screens are to be used. For an illustration of the approved balcony screen, please refer to **APPROVED BALCONY SCREEN DESIGN** page of this brochure.

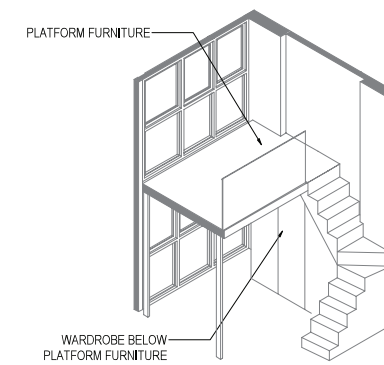
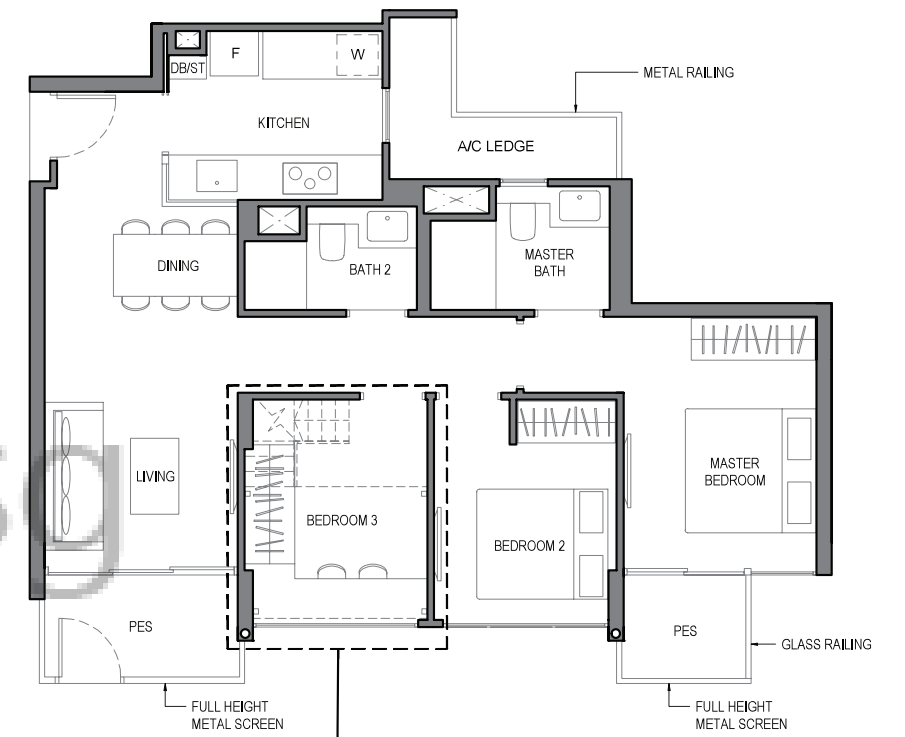


THREE BEDROOM CLASSIC

TYPE 3C1a-G

AREA : 85 sq m
(includes 5 sq m a/c ledge, 8 sq m PES)

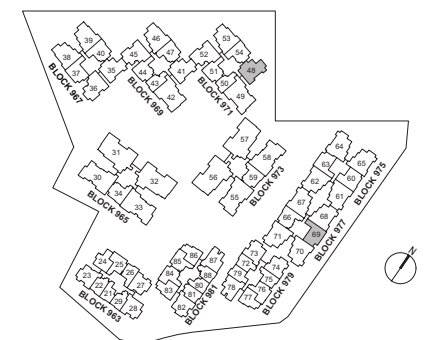
UNITS : #01-48



NOTE:
** Isometric views have excluded railing drawings for the steps

Plans are subject to change/amendments as may be required and/or approved by the Developer and/or the relevant authorities and do not form part of any offer or contract. These are not drawn to scale and are for the purpose of visual presentation only.

The balcony shall not be enclosed. Only approved balcony screens are to be used. For an illustration of the approved balcony screen, please refer to **APPROVED BALCONY SCREEN DESIGN** page of this brochure.

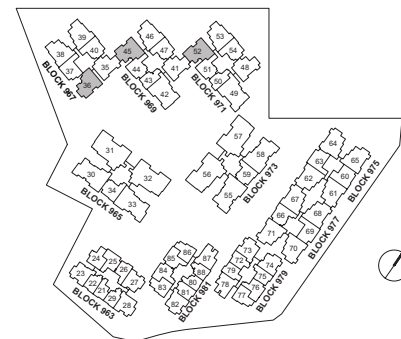
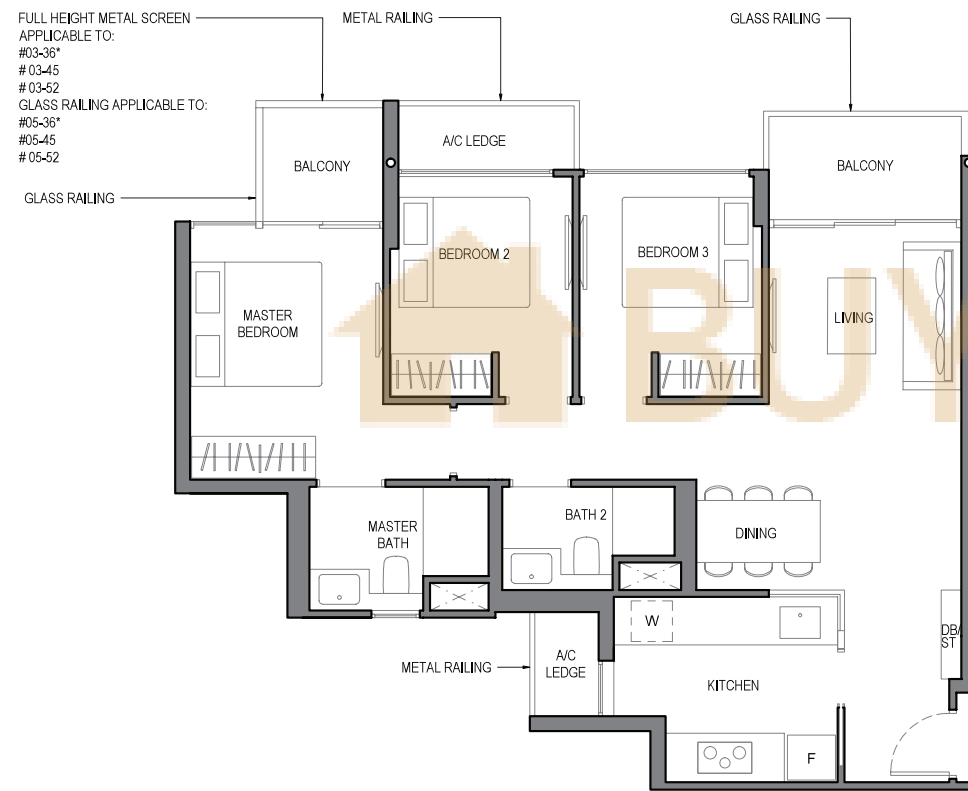


THREE
BEDROOM CLASSIC

TYPE 3C2

AREA : 90 sq m
(includes 5 sq m a/c ledge, 8 sq m balcony)

UNITS : #03-36*, #05-36*
#03-45, #05-45
#03-52, #05-52



NOTE:
* Mirror Image

Plans are subject to change/amendments as may be required and/or approved by the Developer and/or the relevant authorities and do not form part of any offer or contract. These are not drawn to scale and are for the purpose of visual presentation only.

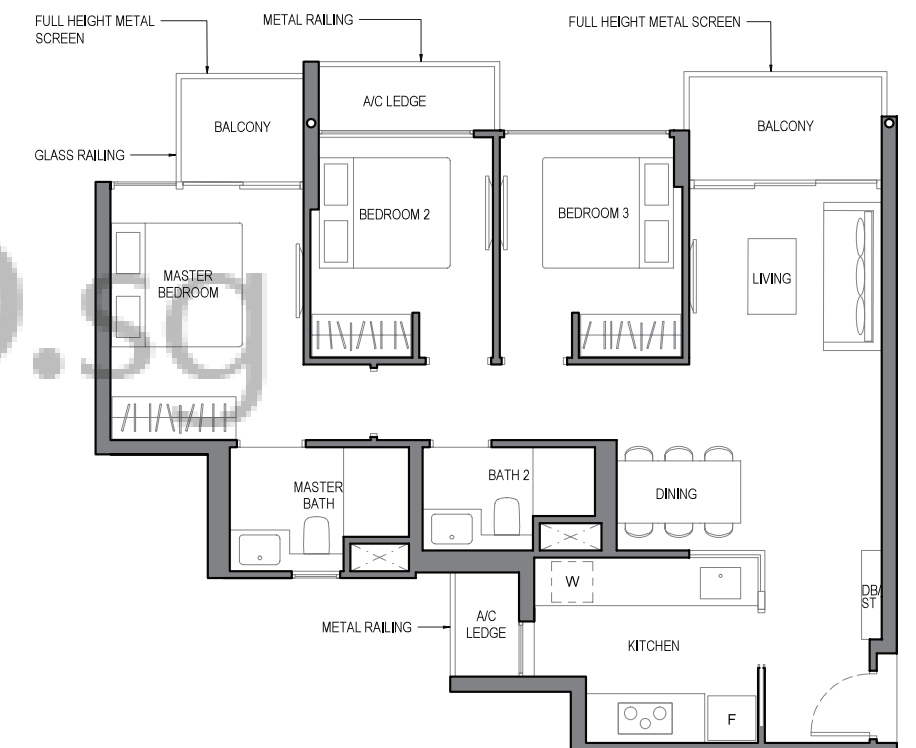
The balcony shall not be enclosed. Only approved balcony screens are to be used. For an illustration of the approved balcony screen, please refer to **APPROVED BALCONY SCREEN DESIGN** page of this brochure.

THREE
BEDROOM CLASSIC

TYPE 3C2a

AREA : 90 sq m
(includes 5 sq m a/c ledge, 8 sq m balcony)

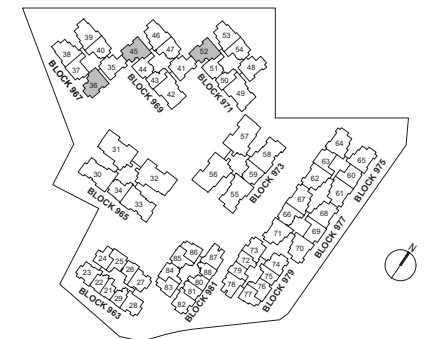
UNITS : #02-36*, #04-36*
#02-45, #04-45
#02-52, #04-52



NOTE:
* Mirror Image

Plans are subject to change/amendments as may be required and/or approved by the Developer and/or the relevant authorities and do not form part of any offer or contract. These are not drawn to scale and are for the purpose of visual presentation only.

The balcony shall not be enclosed. Only approved balcony screens are to be used. For an illustration of the approved balcony screen, please refer to **APPROVED BALCONY SCREEN DESIGN** page of this brochure.

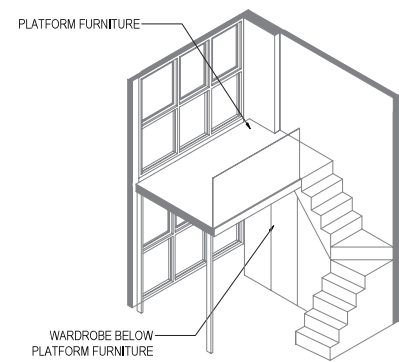
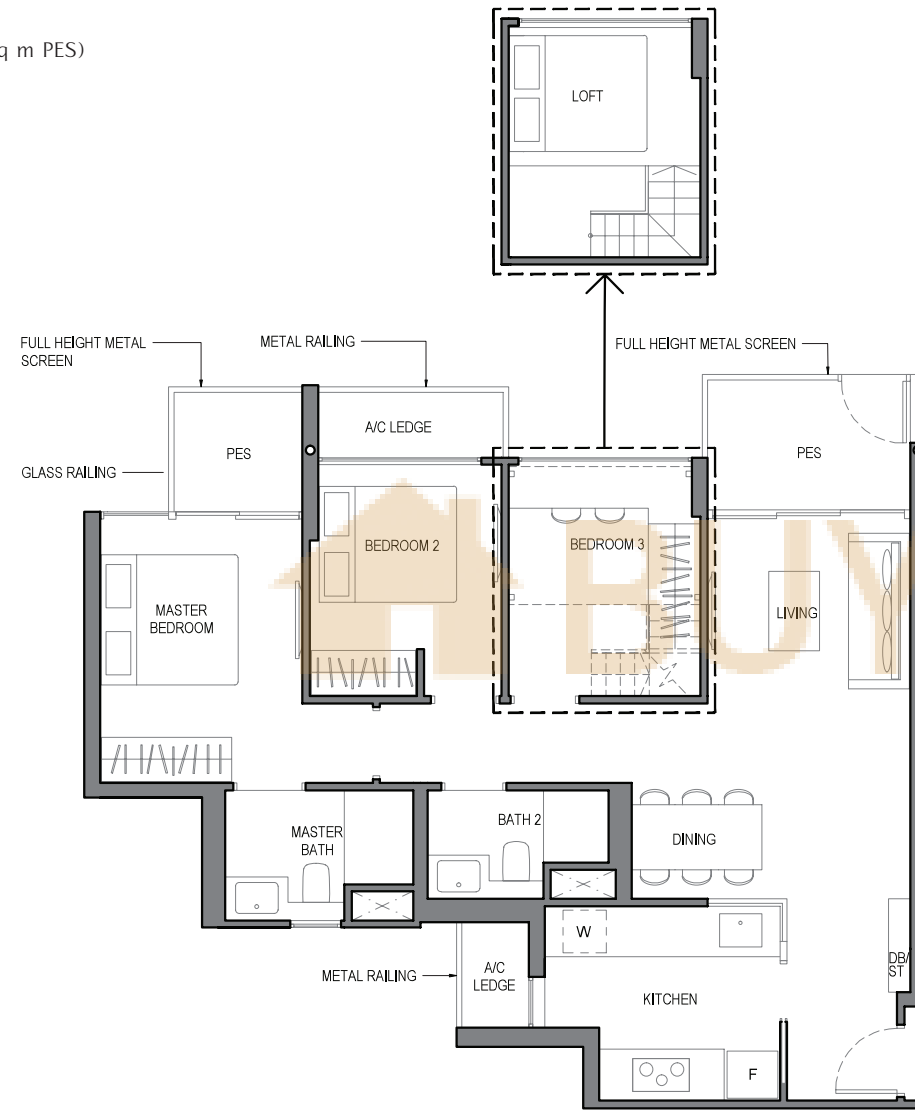


THREE BEDROOM CLASSIC

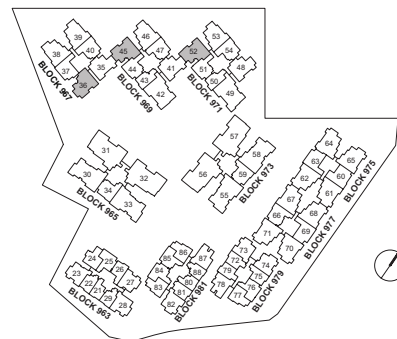
TYPE 3C2b-G

AREA : 91 sq m
(includes 5 sq m a/c ledge, 9 sq m PES)

UNITS : #01-36*
#01-45
#01-52



ISOMETRIC VIEW**



NOTE:
* Mirror Image
** Isometric views have excluded railing drawings for the steps
Plans are subject to change/amendments as may be required and/or approved by the Developer and/or the relevant authorities and do not form part of any offer or contract. These are not drawn to scale and are for the purpose of visual presentation only.

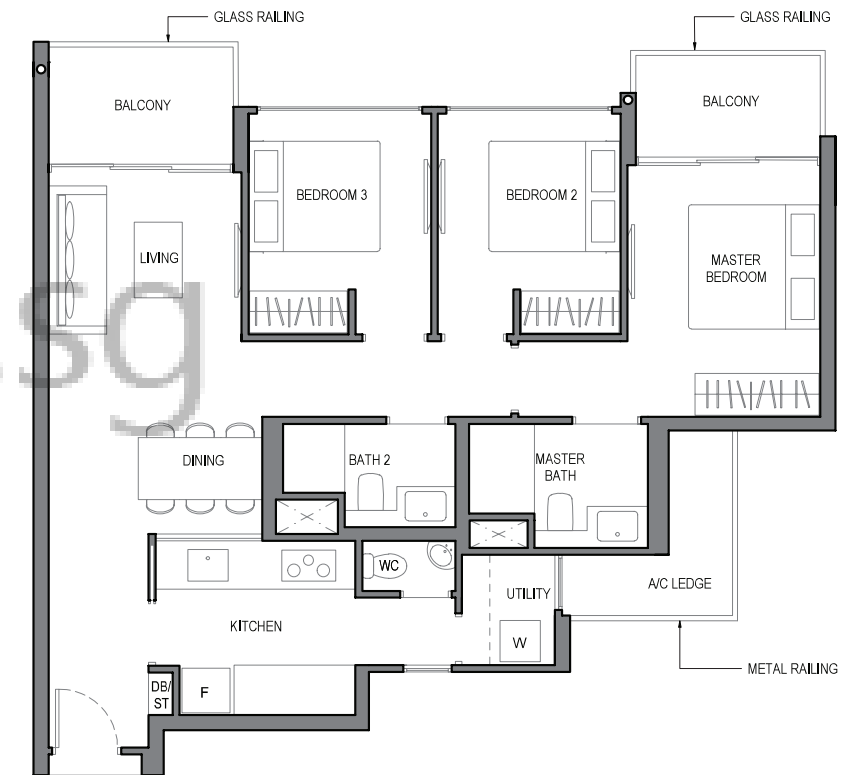
The balcony shall not be enclosed. Only approved balcony screens are to be used. For an illustration of the approved balcony screen, please refer to **APPROVED BALCONY SCREEN DESIGN** page of this brochure.

THREE BEDROOM DELUXE

TYPE 3D1

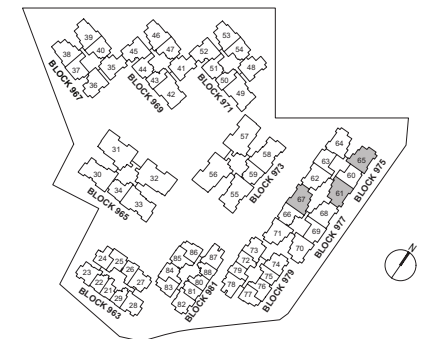
AREA : 95 sq m
(includes 5 sq m a/c ledge, 10 sq m balcony)

UNITS : #02-61
#02-65*
#02-67



NOTE:
* Mirror Image
Plans are subject to change/amendments as may be required and/or approved by the Developer and/or the relevant authorities and do not form part of any offer or contract. These are not drawn to scale and are for the purpose of visual presentation only.

The balcony shall not be enclosed. Only approved balcony screens are to be used. For an illustration of the approved balcony screen, please refer to **APPROVED BALCONY SCREEN DESIGN** page of this brochure.

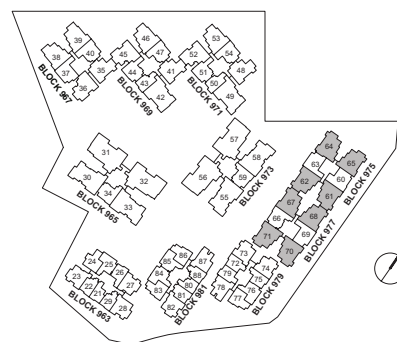


THREE
BEDROOM DELUXE

TYPE 3D1a

AREA : 93 sq m
(includes 5 sq m a/c ledge, 8 sq m balcony)

UNITS : #03-61 to #05-61 #03-67 to #05-67
#03-62* to #05-62* #02-68* to #05-68*
#03-64 to #05-64 #02-70 to #05-70
#03-65* to #05-65* #03-71* to #05-71*



NOTE:
* Mirror Image

Plans are subject to change/amendments as may be required and/or approved by the Developer and/or the relevant authorities and do not form part of any offer or contract. These are not drawn to scale and are for the purpose of visual presentation only.

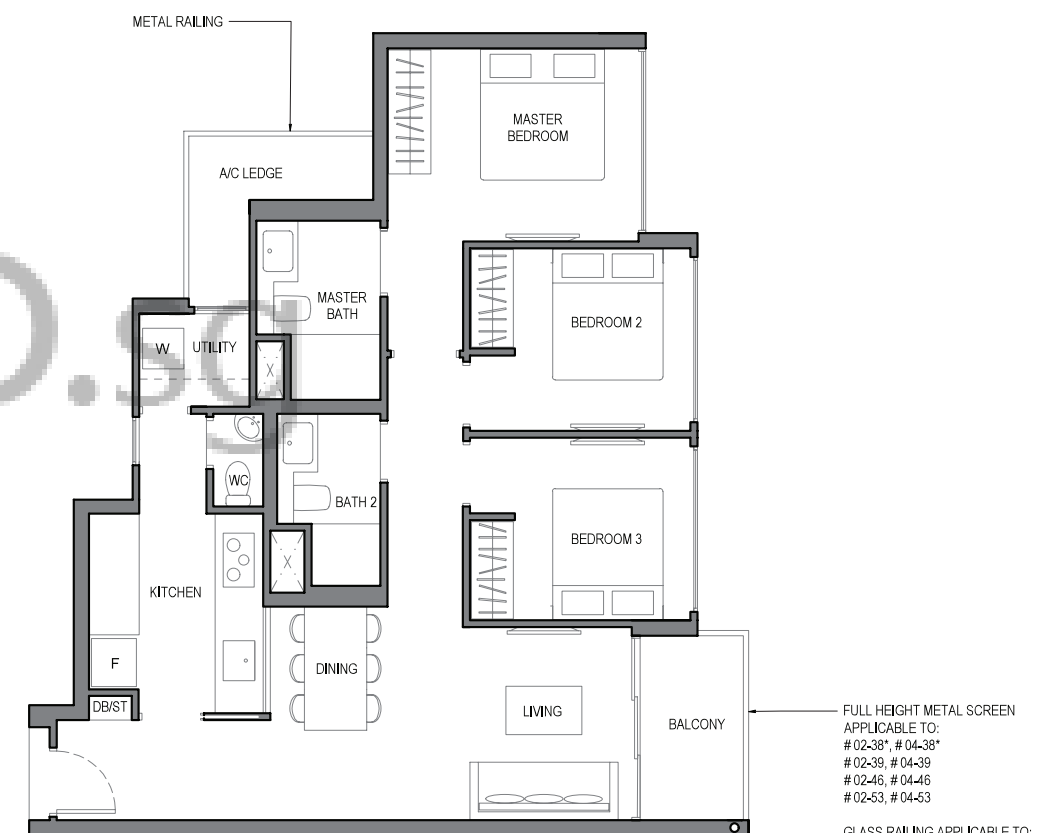
The balcony shall not be enclosed. Only approved balcony screens are to be used. For an illustration of the approved balcony screen, please refer to **APPROVED BALCONY SCREEN DESIGN** page of this brochure.

THREE
BEDROOM DELUXE

TYPE 3D1b

AREA : 90 sq m
(includes 5 sq m a/c ledge, 5 sq m balcony)

UNITS : #02-38* to #05-38*
#02-39 to #05-39
#02-46 to #05-46
#02-53 to #05-53



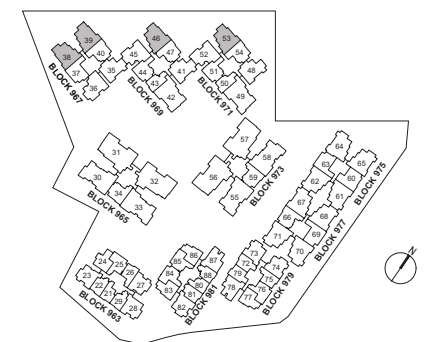
FULL HEIGHT METAL SCREEN APPLICABLE TO:
#02-38*, #04-38*
#02-39, #04-39
#02-46, #04-46
#02-53, #04-53

GLASS RAILING APPLICABLE TO:
#03-38*, #05-38*
#03-39, #05-39
#03-46, #05-46
#03-53, #05-53

NOTE:
* Mirror Image

Plans are subject to change/amendments as may be required and/or approved by the Developer and/or the relevant authorities and do not form part of any offer or contract. These are not drawn to scale and are for the purpose of visual presentation only.

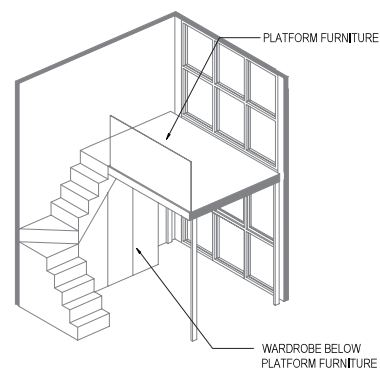
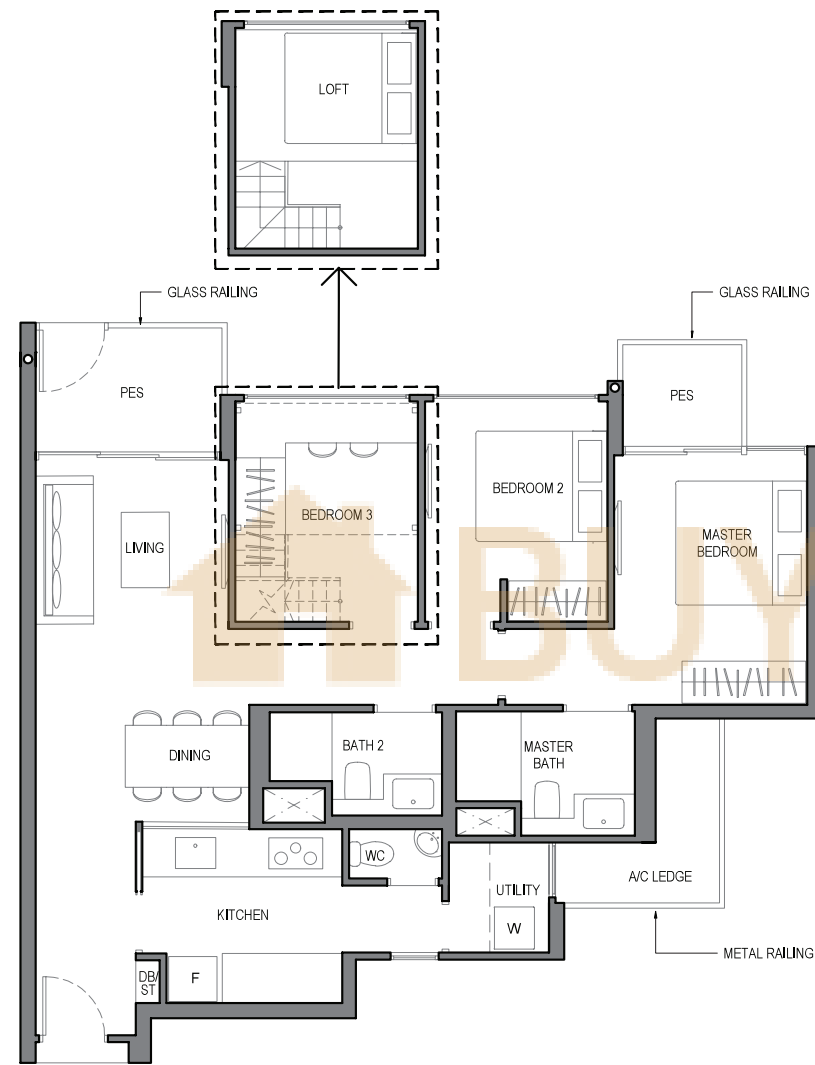
The balcony shall not be enclosed. Only approved balcony screens are to be used. For an illustration of the approved balcony screen, please refer to **APPROVED BALCONY SCREEN DESIGN** page of this brochure.



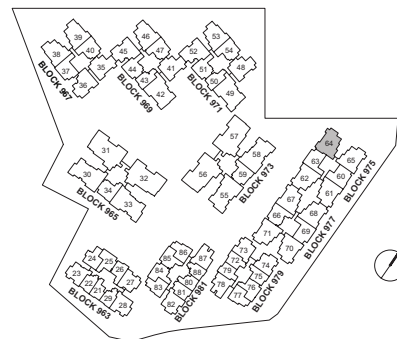
THREE BEDROOM DELUXE

TYPE 3D1c-G

AREA : 94 sq m
(includes 5 sq m a/c ledge, 8 sq m PES)
UNITS : #01-64



ISOMETRIC VIEW**



NOTE:
** Isometric views have excluded railing drawings for the steps

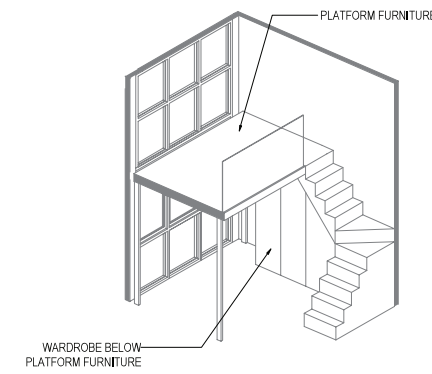
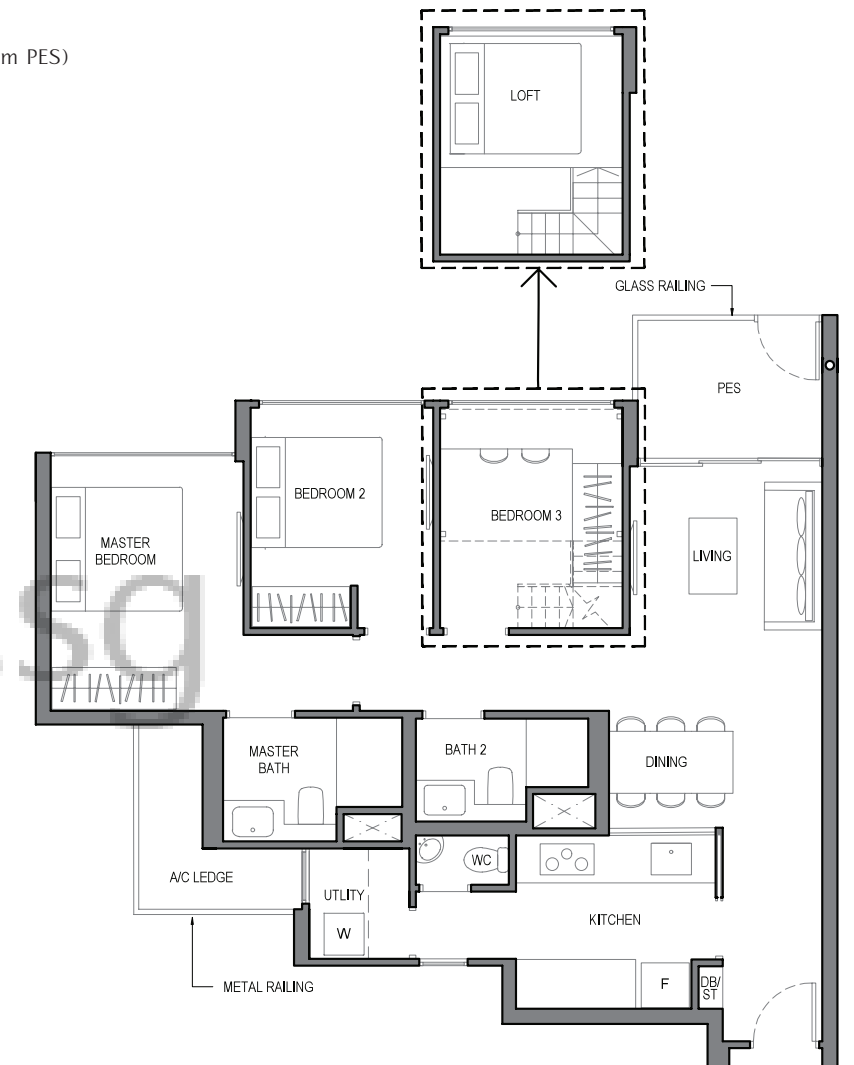
Plans are subject to change/amendments as may be required and/or approved by the Developer and/or the relevant authorities and do not form part of any offer or contract. These are not drawn to scale and are for the purpose of visual presentation only.

The balcony shall not be enclosed. Only approved balcony screens are to be used. For an illustration of the approved balcony screen, please refer to **APPROVED BALCONY SCREEN DESIGN** page of this brochure.

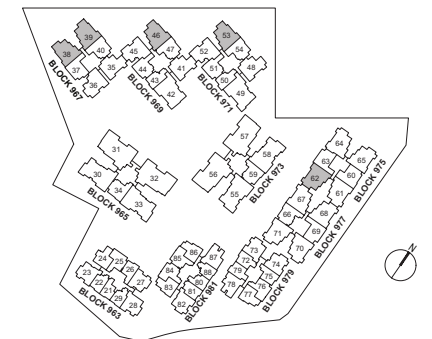
THREE BEDROOM DELUXE

TYPE 3D1d-G

AREA : 92 sq m
(includes 5 sq m a/c ledge, 6 sq m PES)
UNITS : #01-38*
#01-39
#01-46
#01-53
#01-62



ISOMETRIC VIEW**



NOTE:
* Mirror Image
** Isometric views have excluded railing drawings for the steps

Plans are subject to change/amendments as may be required and/or approved by the Developer and/or the relevant authorities and do not form part of any offer or contract. These are not drawn to scale and are for the purpose of visual presentation only.

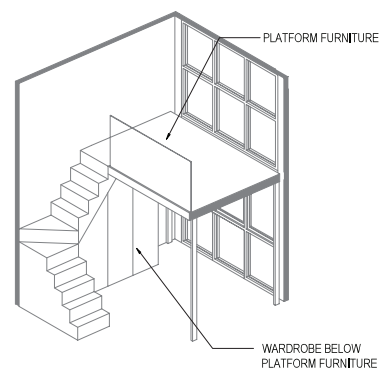
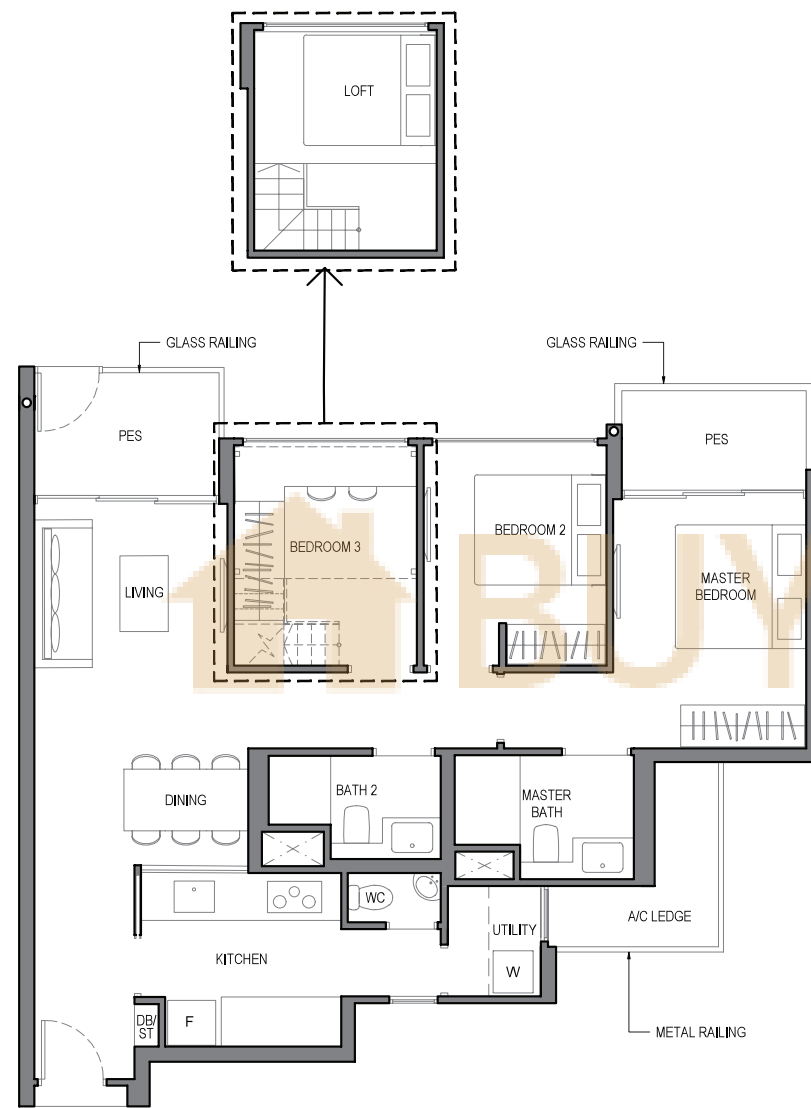
The balcony shall not be enclosed. Only approved balcony screens are to be used. For an illustration of the approved balcony screen, please refer to **APPROVED BALCONY SCREEN DESIGN** page of this brochure.

THREE BEDROOM DELUXE

TYPE 3D1e-G

AREA : 96 sq m
(includes 5 sq m a/c ledge, 10 sq m PES)

UNITS : #01-61
#01-65*
#01-67
#01-68*



NOTE:
* Mirror Image
** Isometric views have excluded railing drawings for the steps
Plans are subject to change/amendments as may be required and/or approved by the Developer and/or the relevant authorities and do not form part of any offer or contract. These are not drawn to scale and are for the purpose of visual presentation only.

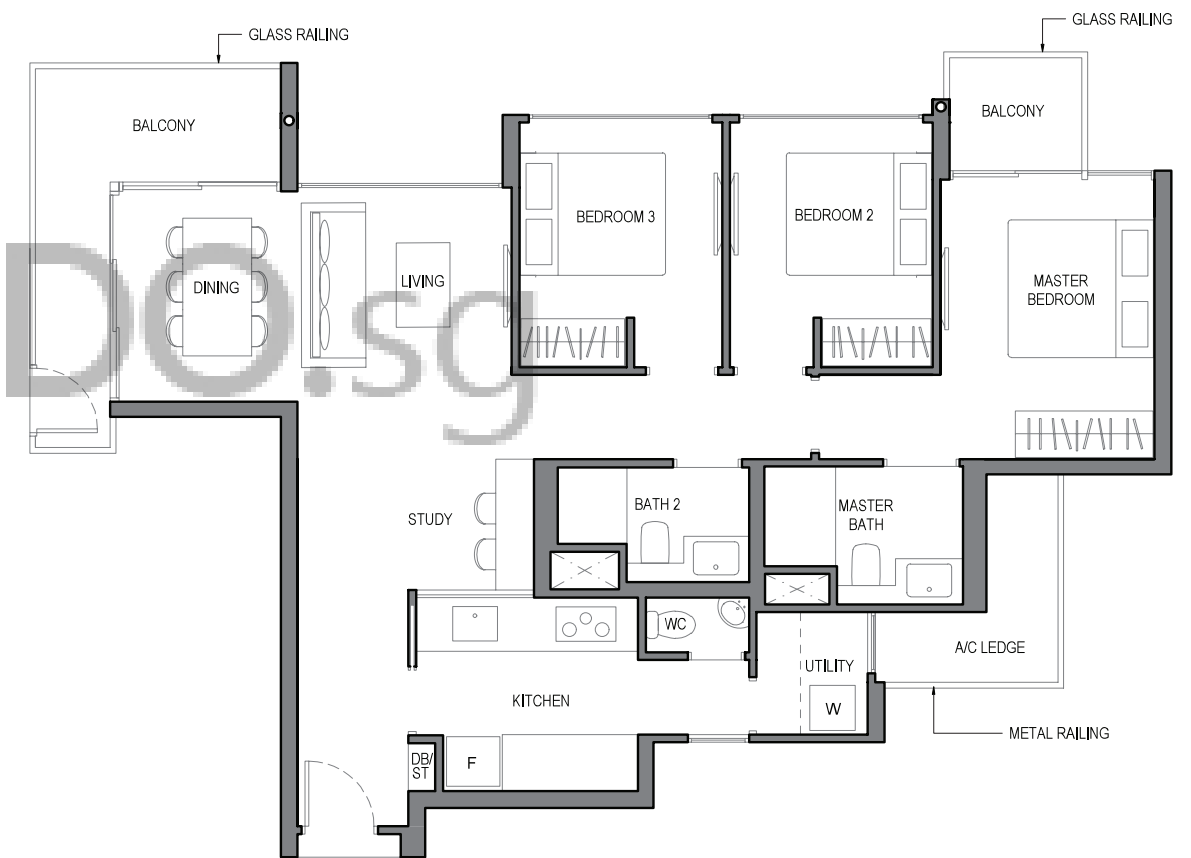
The balcony shall not be enclosed. Only approved balcony screens are to be used. For an illustration of the approved balcony screen, please refer to **APPROVED BALCONY SCREEN DESIGN** page of this brochure.

THREE BEDROOM+STUDY

TYPE 3S

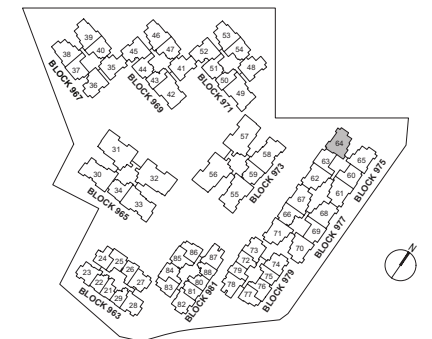
AREA : 105 sq m
(includes 5 sq m a/c ledge, 12 sq m balcony)

UNITS : #02-64



NOTE:
Plans are subject to change/amendments as may be required and/or approved by the Developer and/or the relevant authorities and do not form part of any offer or contract. These are not drawn to scale and are for the purpose of visual presentation only.

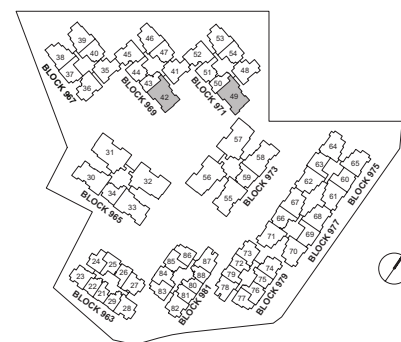
The balcony shall not be enclosed. Only approved balcony screens are to be used. For an illustration of the approved balcony screen, please refer to **APPROVED BALCONY SCREEN DESIGN** page of this brochure.



FOUR BEDROOM CLASSIC

TYPE 4C1

AREA : 119 sq m
(includes 6 sq m a/c ledge, 12 sq m balcony)
UNITS : #05-42
#05-49



NOTE:

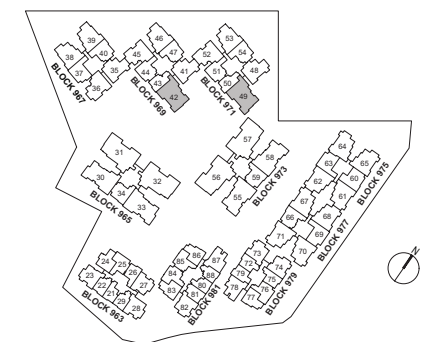
Plans are subject to change/amendments as may be required and/or approved by the Developer and/or the relevant authorities and do not form part of any offer or contract. These are not drawn to scale and are for the purpose of visual presentation only.

The balcony shall not be enclosed. Only approved balcony screens are to be used. For an illustration of the approved balcony screen, please refer to **APPROVED BALCONY SCREEN DESIGN** page of this brochure.

FOUR BEDROOM CLASSIC

TYPE 4C1a

AREA : 120 sq m
(includes 6 sq m a/c ledge, 13 sq m balcony)
UNITS : #02-42 to #04-42
#02-49 to #04-49



NOTE:

Plans are subject to change/amendments as may be required and/or approved by the Developer and/or the relevant authorities and do not form part of any offer or contract. These are not drawn to scale and are for the purpose of visual presentation only.

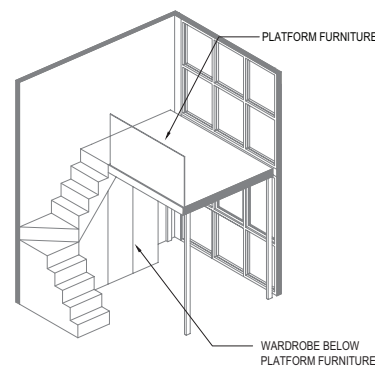
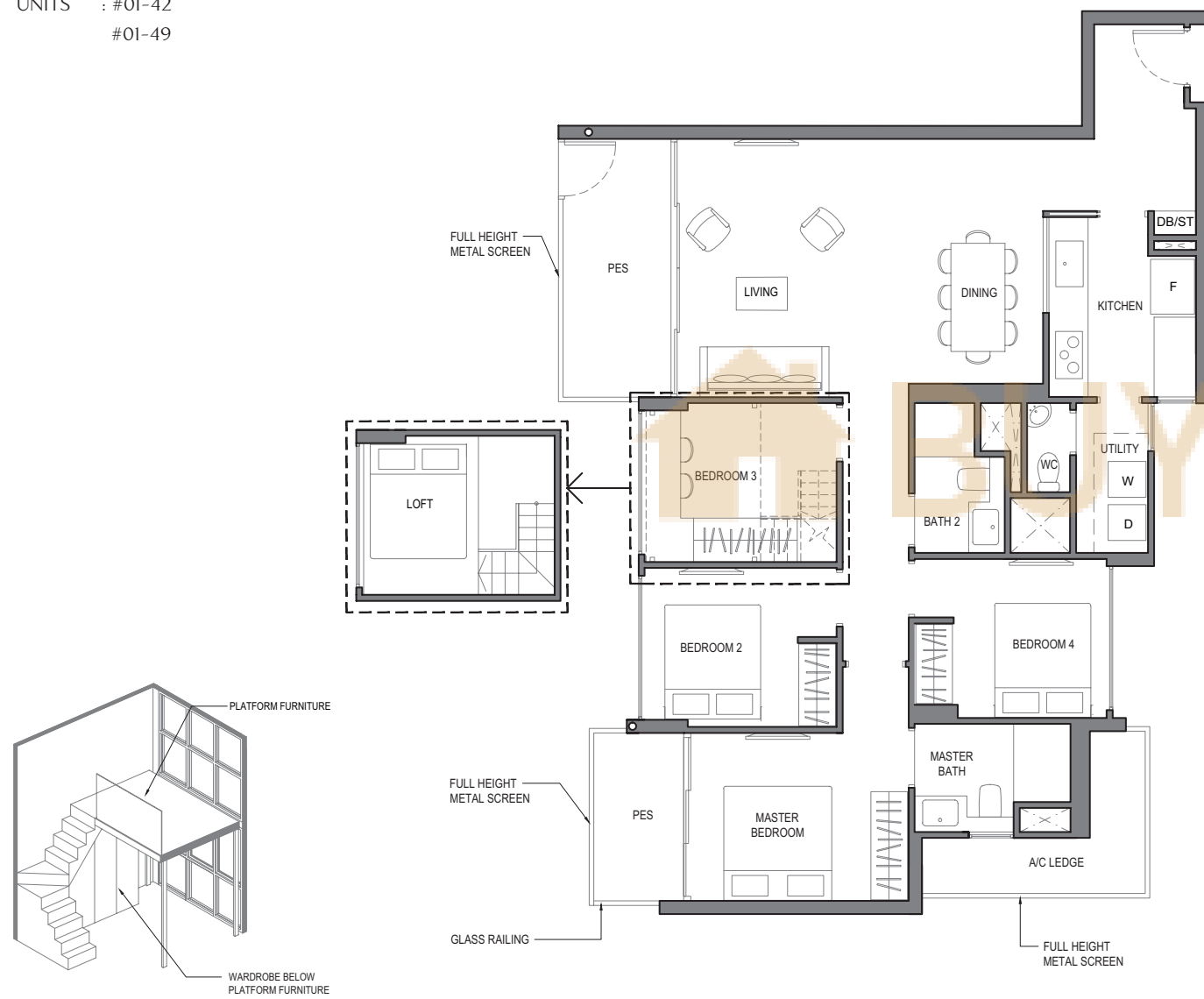
The balcony shall not be enclosed. Only approved balcony screens are to be used. For an illustration of the approved balcony screen, please refer to **APPROVED BALCONY SCREEN DESIGN** page of this brochure.

FOUR BEDROOM CLASSIC

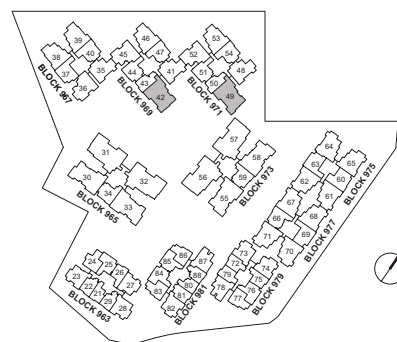
TYPE 4C1b-G

AREA : 121 sq m
(includes 6 sq m a/c ledge, 13 sq m PES)

UNITS : #01-42
#01-49



ISOMETRIC VIEW**



NOTE:
** Isometric views have excluded railing drawings for the steps

Plans are subject to change/amendments as may be required and/or approved by the Developer and/or the relevant authorities and do not form part of any offer or contract. These are not drawn to scale and are for the purpose of visual presentation only.

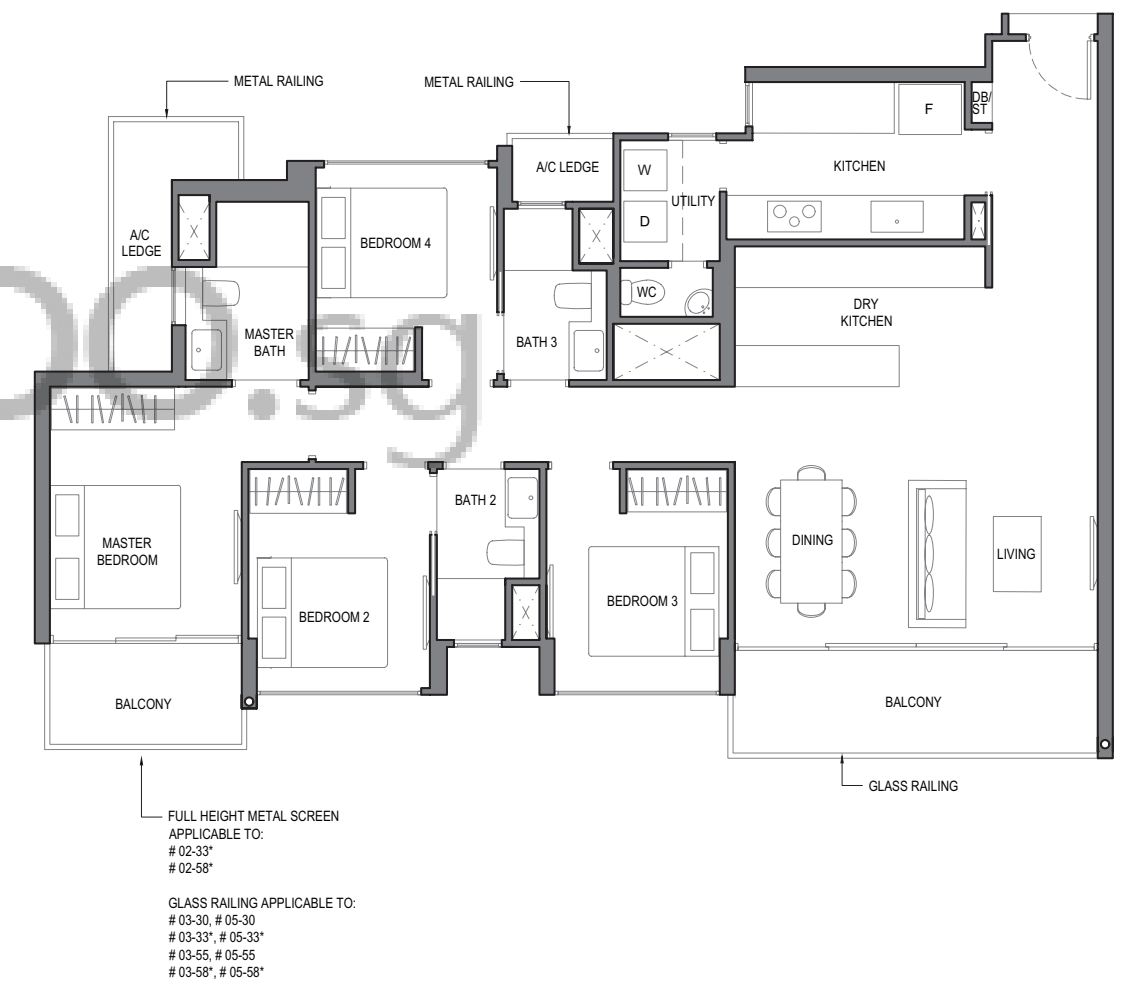
The balcony shall not be enclosed. Only approved balcony screens are to be used. For an illustration of the approved balcony screen, please refer to **APPROVED BALCONY SCREEN DESIGN** page of this brochure.

FOUR BEDROOM DELUXE

TYPE 4D1

AREA : 131 sq m
(includes 7 sq m a/c ledge, 13 sq m balcony)

UNITS : #03-30, #05-30
#02-33*, #03-33*, #05-33*
#03-55, #05-55
#02-58*, #03-58*, #05-58*



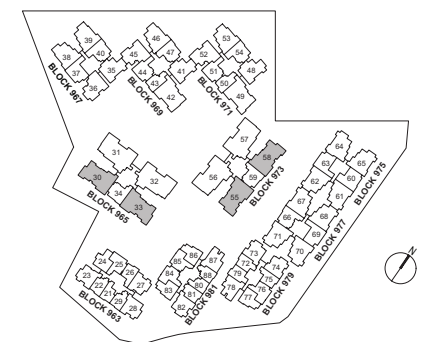
FULL HEIGHT METAL SCREEN
APPLICABLE TO:
#02-33*
#02-58*

GLASS RAILING APPLICABLE TO:
#03-30, #05-30
#03-33*, #05-33*
#03-55, #05-55
#03-58*, #05-58*

NOTE:
* Mirror Image

Plans are subject to change/amendments as may be required and/or approved by the Developer and/or the relevant authorities and do not form part of any offer or contract. These are not drawn to scale and are for the purpose of visual presentation only.

The balcony shall not be enclosed. Only approved balcony screens are to be used. For an illustration of the approved balcony screen, please refer to **APPROVED BALCONY SCREEN DESIGN** page of this brochure.

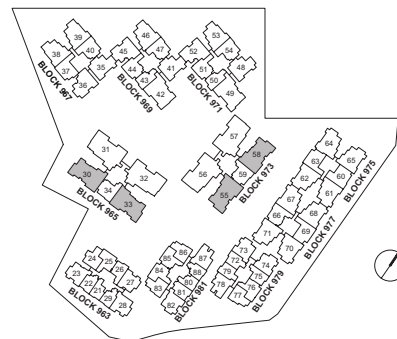
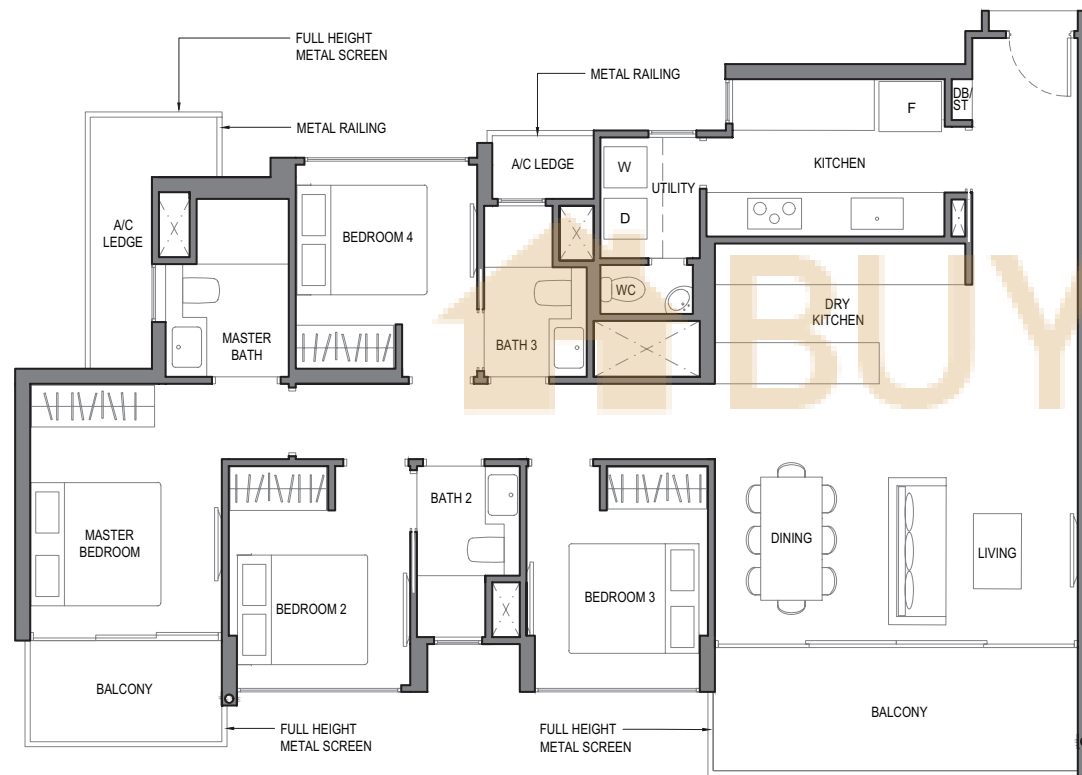


FOUR BEDROOM DELUXE

TYPE 4D1a

AREA : 132 sq m
(includes 7 sq m a/c ledge, 15 sq m balcony)

UNITS : #02-30, #04-30
#04-33*
#02-55, #04-55
#04-58*



NOTE:
* Mirror Image

Plans are subject to change/amendments as may be required and/or approved by the Developer and/or the relevant authorities and do not form part of any offer or contract. These are not drawn to scale and are for the purpose of visual presentation only.

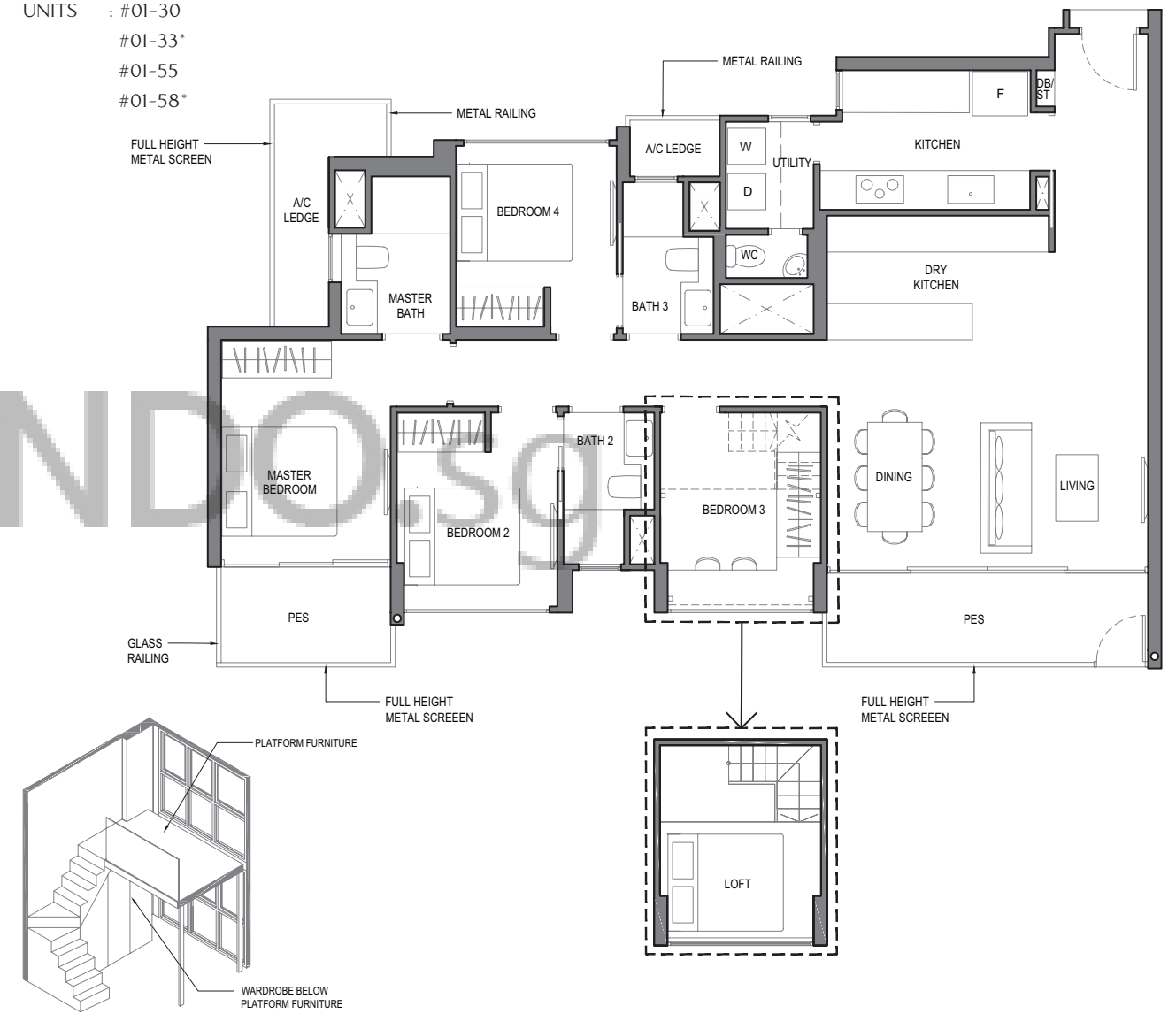
The balcony shall not be enclosed. Only approved balcony screens are to be used. For an illustration of the approved balcony screen, please refer to **APPROVED BALCONY SCREEN DESIGN** page of this brochure.

FOUR BEDROOM DELUXE

TYPE 4D1b-G

AREA : 131 sq m
(includes 7 sq m a/c ledge, 14 sq m PES)

UNITS : #01-30
#01-33*
#01-55
#01-58*



ISOMETRIC VIEW**

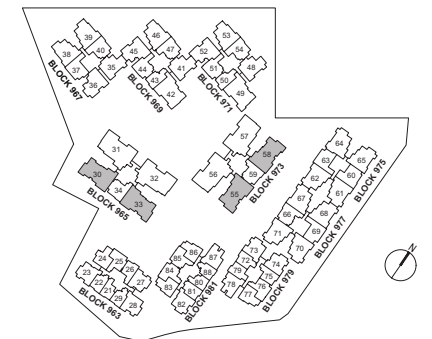
NOTE:

* Mirror Image

** Isometric views have excluded railing drawings for the steps

Plans are subject to change/amendments as may be required and/or approved by the Developer and/or the relevant authorities and do not form part of any offer or contract. These are not drawn to scale and are for the purpose of visual presentation only.

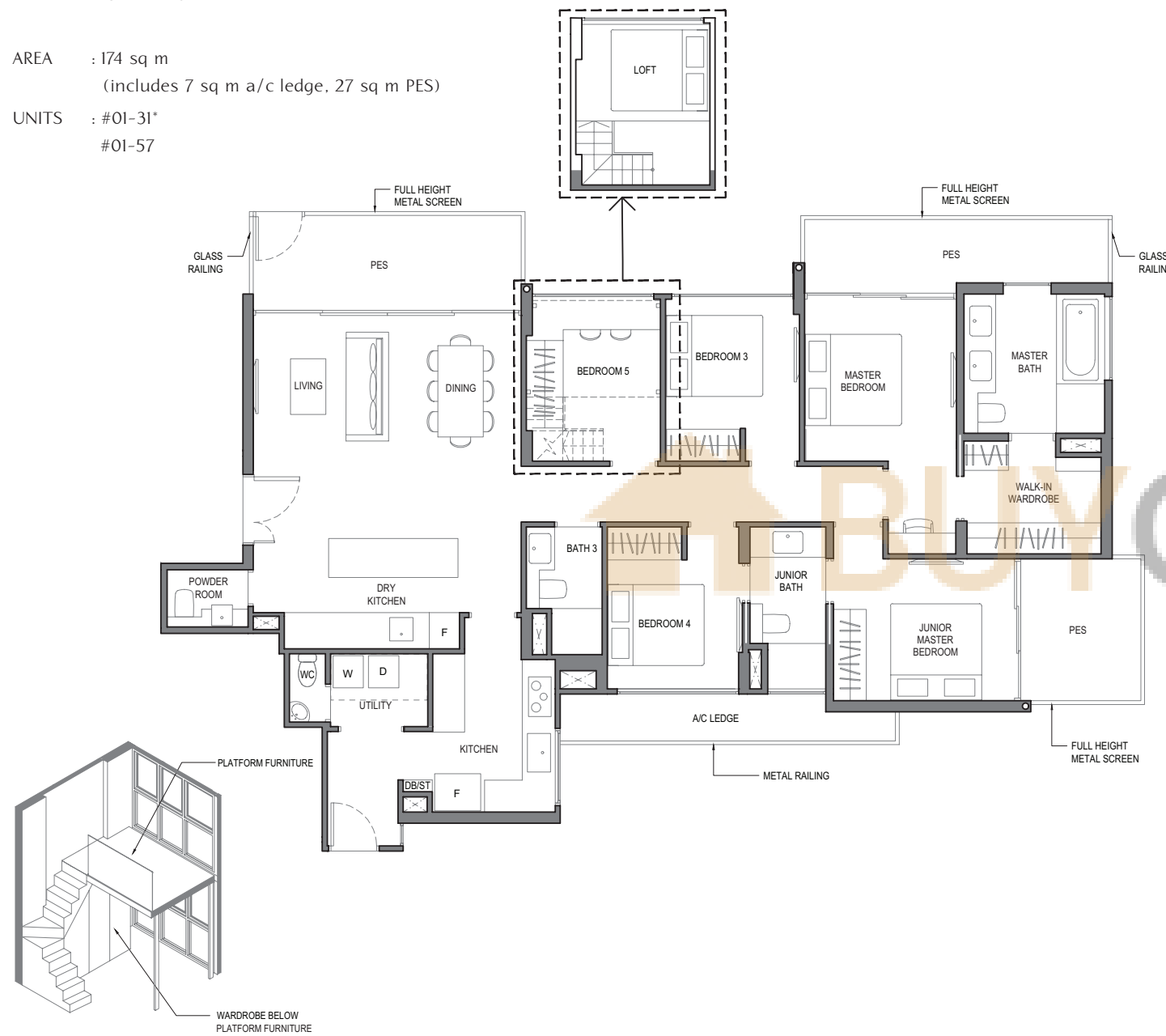
The balcony shall not be enclosed. Only approved balcony screens are to be used. For an illustration of the approved balcony screen, please refer to **APPROVED BALCONY SCREEN DESIGN** page of this brochure.



FIVE
BEDROOM LUXURY

TYPE 5L1-G

AREA : 174 sq m
(includes 7 sq m a/c ledge, 27 sq m PES)
UNITS : #01-31*
#01-57



ISOMETRIC VIEW**



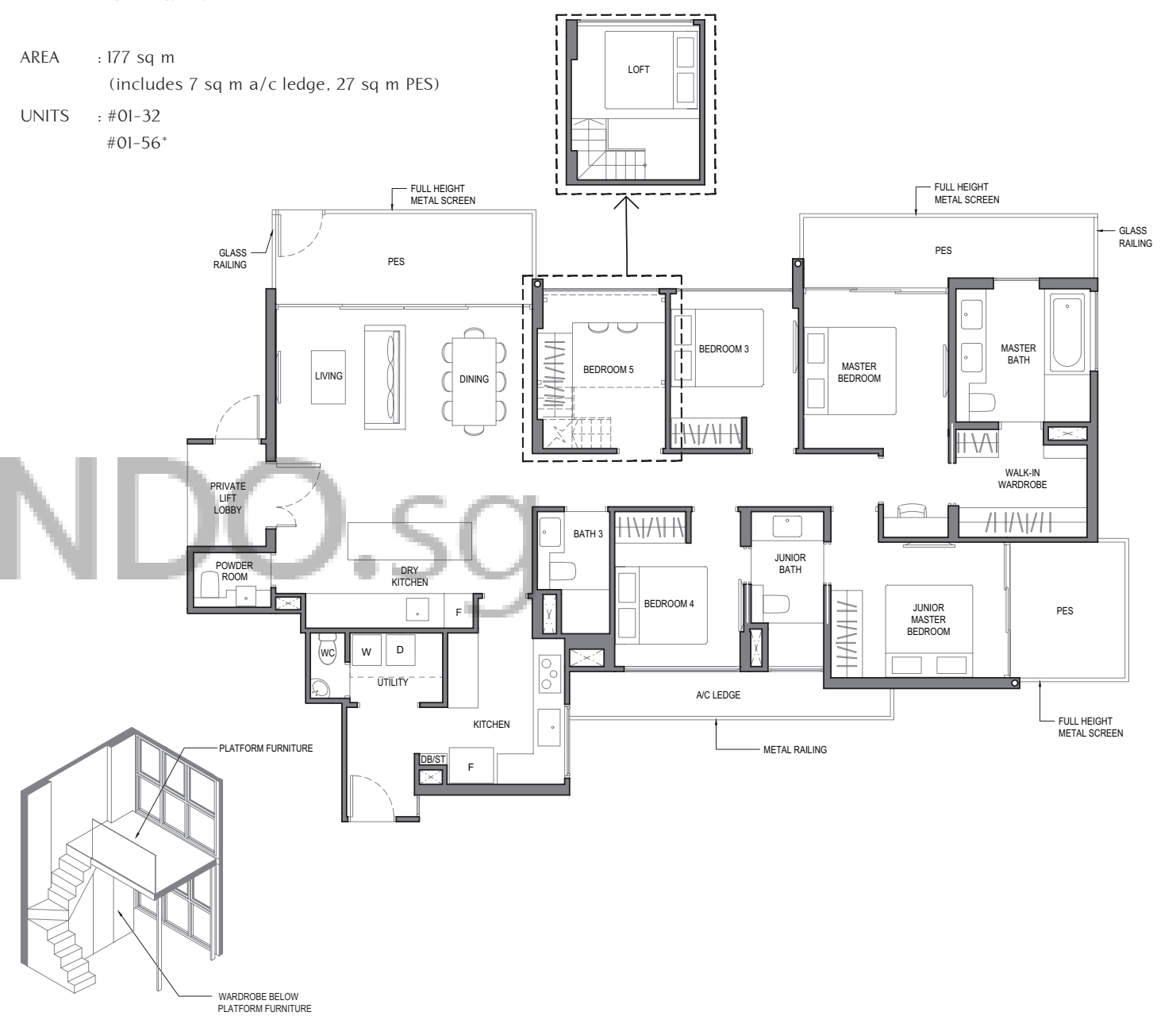
NOTE:
* Mirror Image
** Isometric views have excluded railing drawings for the steps
Plans are subject to change/amendments as may be required and/or approved by the Developer and/or the relevant authorities and do not form part of any offer or contract. These are not drawn to scale and are for the purpose of visual presentation only.

The balcony shall not be enclosed. Only approved balcony screens are to be used. For an illustration of the approved balcony screen, please refer to **APPROVED BALCONY SCREEN DESIGN** page of this brochure.

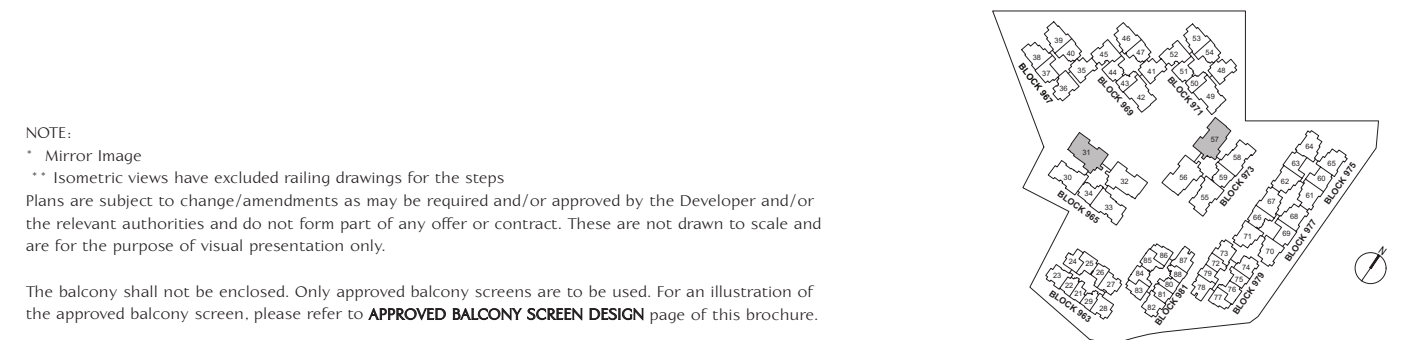
FIVE
BEDROOM LUXURY

TYPE 5L1a-G

AREA : 177 sq m
(includes 7 sq m a/c ledge, 27 sq m PES)
UNITS : #01-32
#01-56*



ISOMETRIC VIEW**



NOTE:
* Mirror Image
** Isometric views have excluded railing drawings for the steps
Plans are subject to change/amendments as may be required and/or approved by the Developer and/or the relevant authorities and do not form part of any offer or contract. These are not drawn to scale and are for the purpose of visual presentation only.

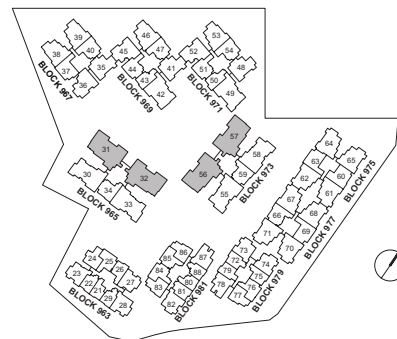
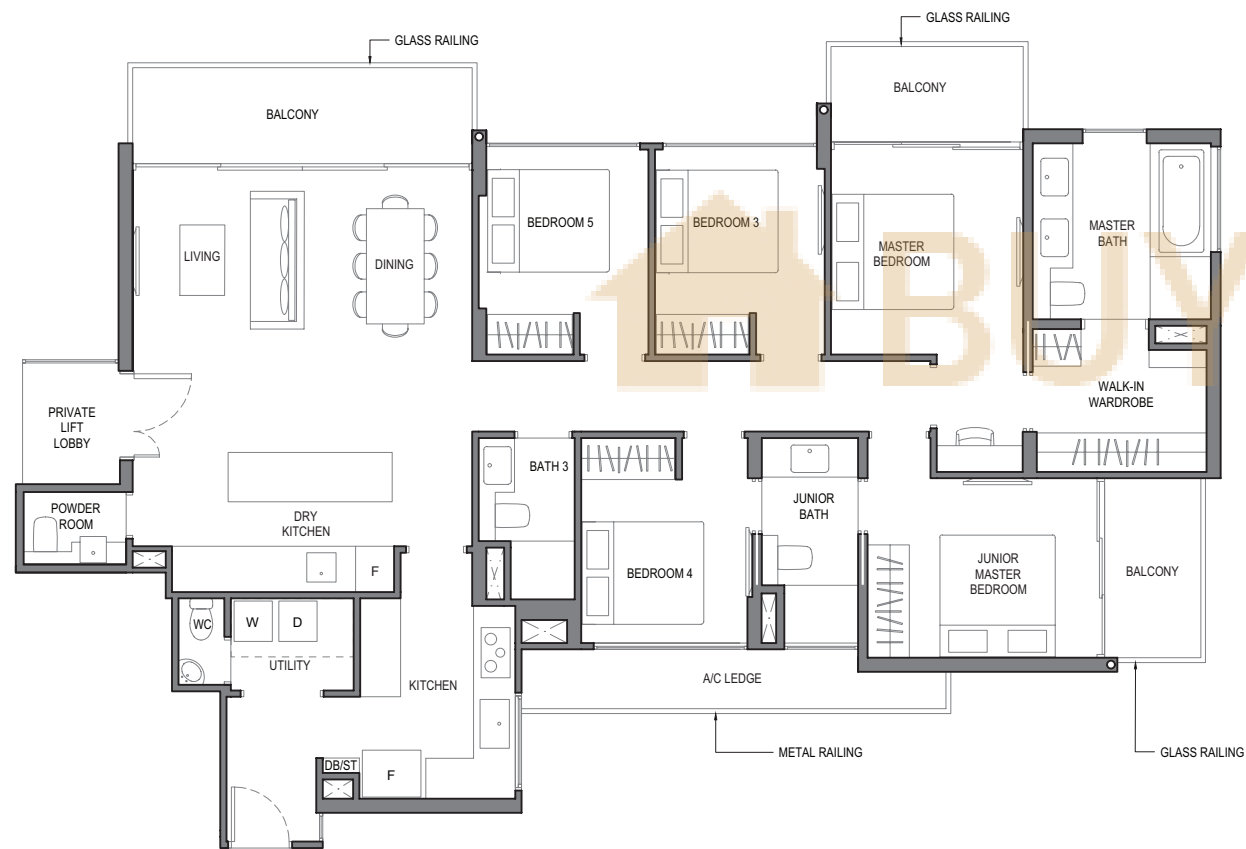
The balcony shall not be enclosed. Only approved balcony screens are to be used. For an illustration of the approved balcony screen, please refer to **APPROVED BALCONY SCREEN DESIGN** page of this brochure.

FIVE
BEDROOM LUXURY

TYPE 5L2

AREA : 168 sq m
(includes 7 sq m a/c ledge, 18 sq m balcony)

UNITS : #05-31*
#05-32
#05-56*
#05-57



NOTE:
* Mirror Image

Plans are subject to change/amendments as may be required and/or approved by the Developer and/or the relevant authorities and do not form part of any offer or contract. These are not drawn to scale and are for the purpose of visual presentation only.

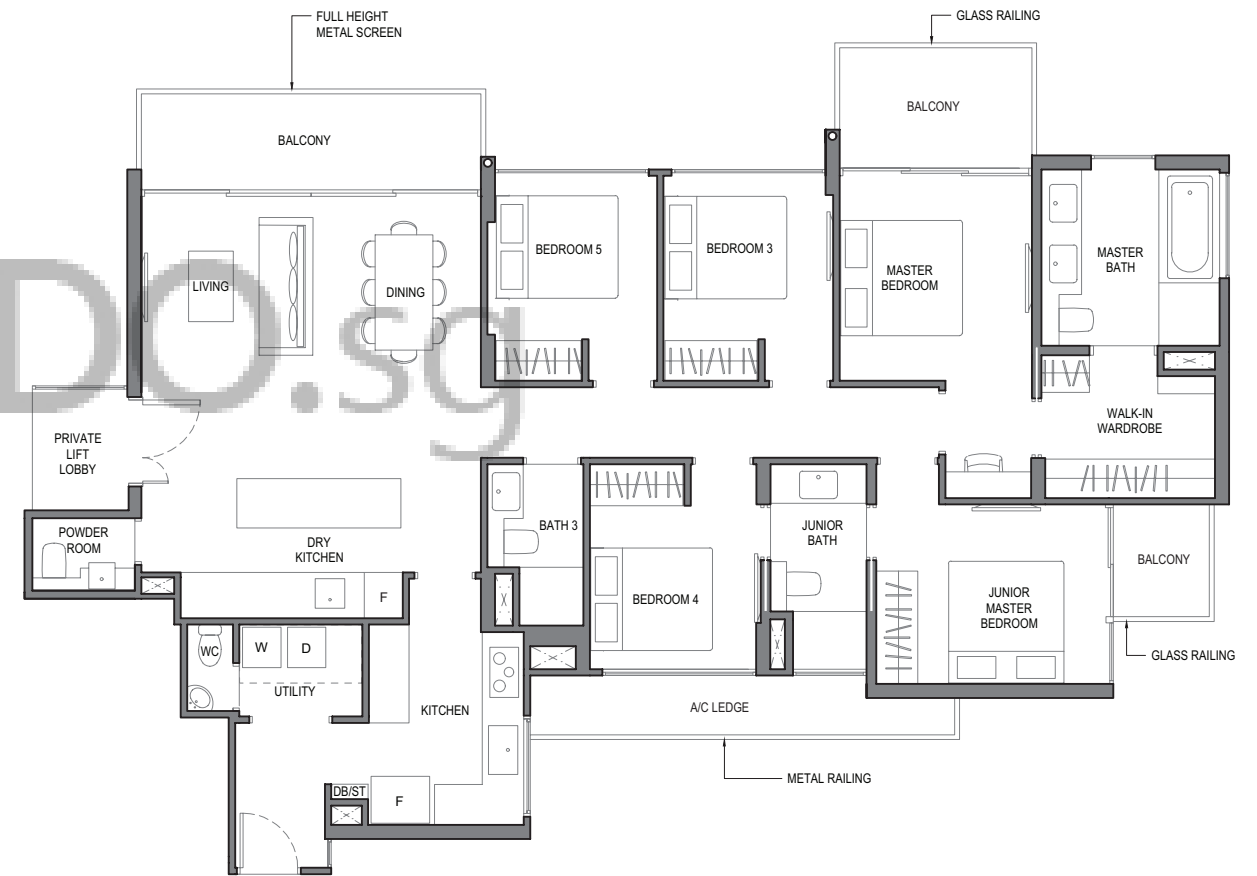
The balcony shall not be enclosed. Only approved balcony screens are to be used. For an illustration of the approved balcony screen, please refer to **APPROVED BALCONY SCREEN DESIGN** page of this brochure.

FIVE
BEDROOM LUXURY

TYPE 5L2 a

AREA : 168 sq m
(includes 7 sq m a/c ledge, 18 sq m balcony)

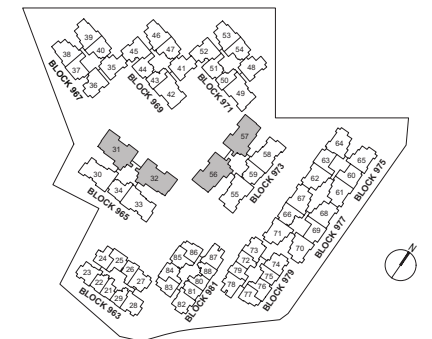
UNITS : #04-31*
#02-32
#04-56*
#02-57



NOTE:
* Mirror Image

Plans are subject to change/amendments as may be required and/or approved by the Developer and/or the relevant authorities and do not form part of any offer or contract. These are not drawn to scale and are for the purpose of visual presentation only.

The balcony shall not be enclosed. Only approved balcony screens are to be used. For an illustration of the approved balcony screen, please refer to **APPROVED BALCONY SCREEN DESIGN** page of this brochure.

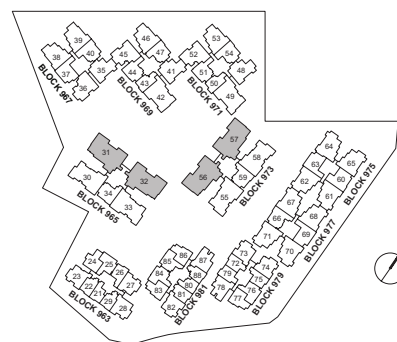
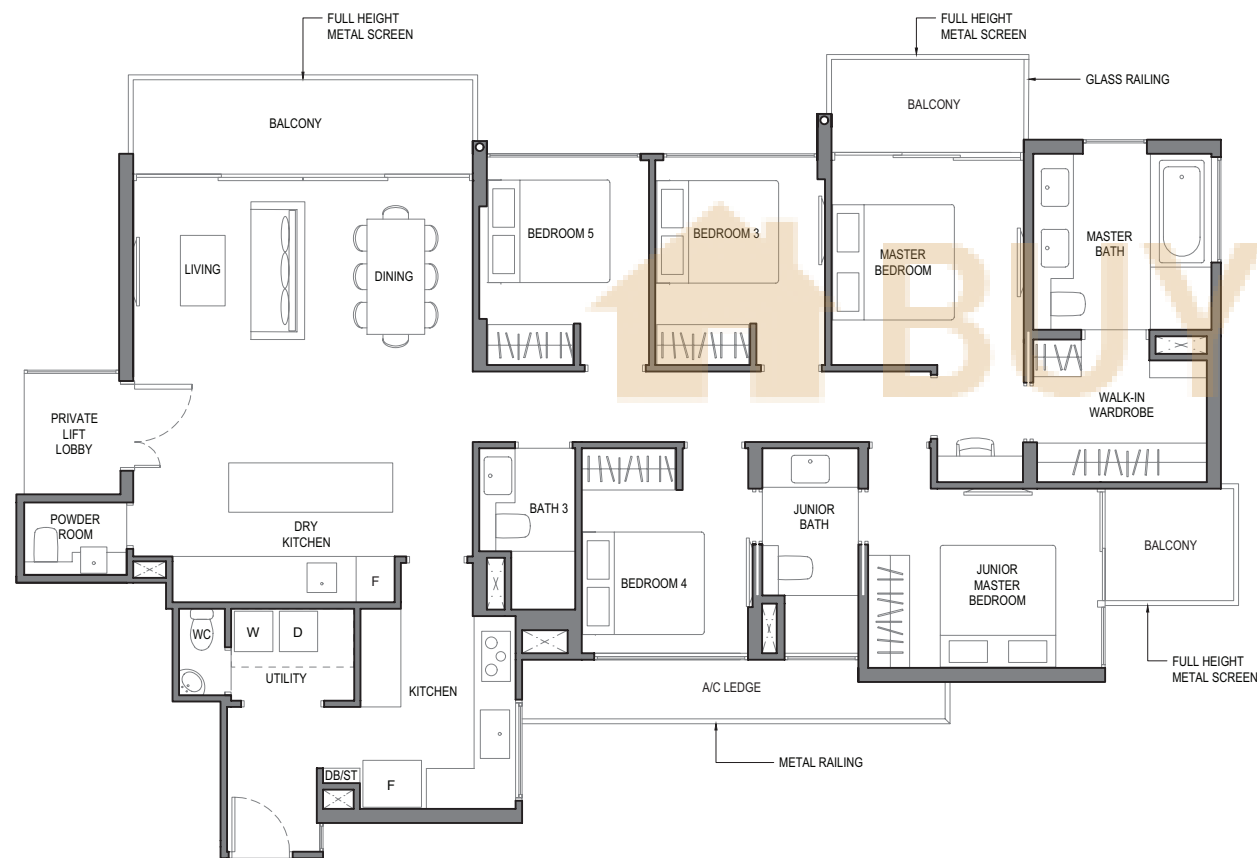


FIVE
BEDROOM LUXURY

TYPE 5L2b

AREA : 168 sq m
(includes 7 sq m a/c ledge, 18 sq m balcony)

UNITS : #03-31*
#04-32
#03-56*
#04-57



NOTE:
* Mirror Image

Plans are subject to change/amendments as may be required and/or approved by the Developer and/or the relevant authorities and do not form part of any offer or contract. These are not drawn to scale and are for the purpose of visual presentation only.

The balcony shall not be enclosed. Only approved balcony screens are to be used. For an illustration of the approved balcony screen, please refer to **APPROVED BALCONY SCREEN DESIGN** page of this brochure.

FIVE
BEDROOM LUXURY

TYPE 5L2c

AREA : 169 sq m
(includes 7 sq m a/c ledge, 19 sq m balcony)

UNITS : #02-31*
#03-32
#02-56*
#03-57



NOTE:
* Mirror Image

Plans are subject to change/amendments as may be required and/or approved by the Developer and/or the relevant authorities and do not form part of any offer or contract. These are not drawn to scale and are for the purpose of visual presentation only.

The balcony shall not be enclosed. Only approved balcony screens are to be used. For an illustration of the approved balcony screen, please refer to **APPROVED BALCONY SCREEN DESIGN** page of this brochure.

