

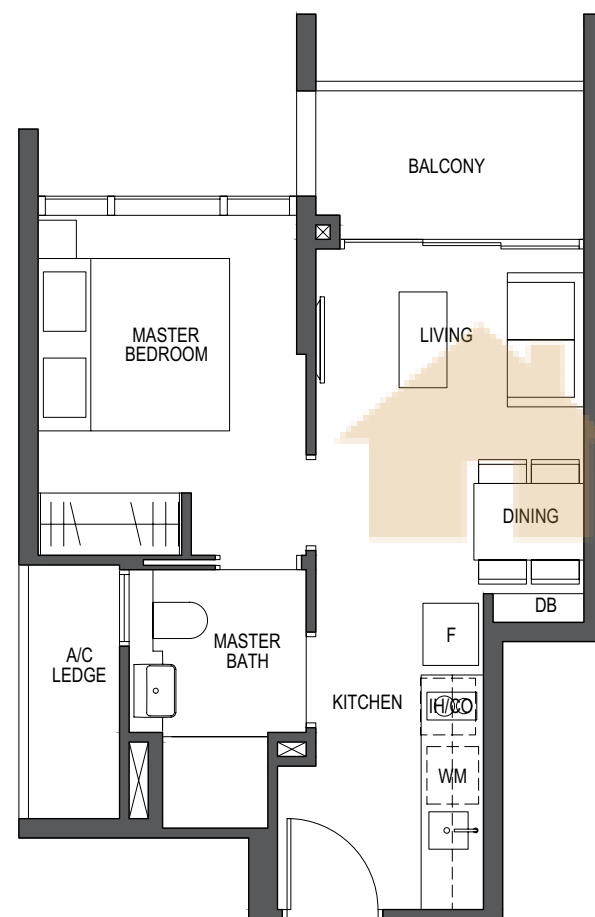
# 1-Bedroom

## TYPE A1

43 sq m / 463 sq ft

#02-06 to #29-06  
 #06-12 to #29-12  
 \*#02-05 to #29-05  
 \*#06-11 to #29-11

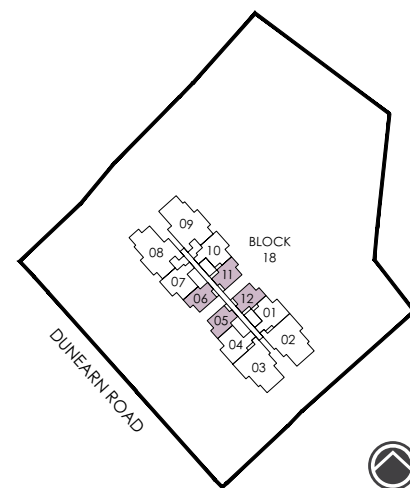
\*Mirror image



**LEGEND:**  
 F - Fridge  
 D - Dryer  
 IH - Induction Hob  
 DW - Dishwasher  
 GH - Gas Hob  
 DB - Distribution Board  
 WM - Washer cum Dryer  
 CO - Conventional Oven  
 W - Washer

All plans are subjected to amendments as may be approved by the relevant authorities. Floor areas are approximate measurements and are subjected to final survey. BP Approval No. A1720-00009-2018-BP01 dated 26/08/2019

BUYCONDOS.SG



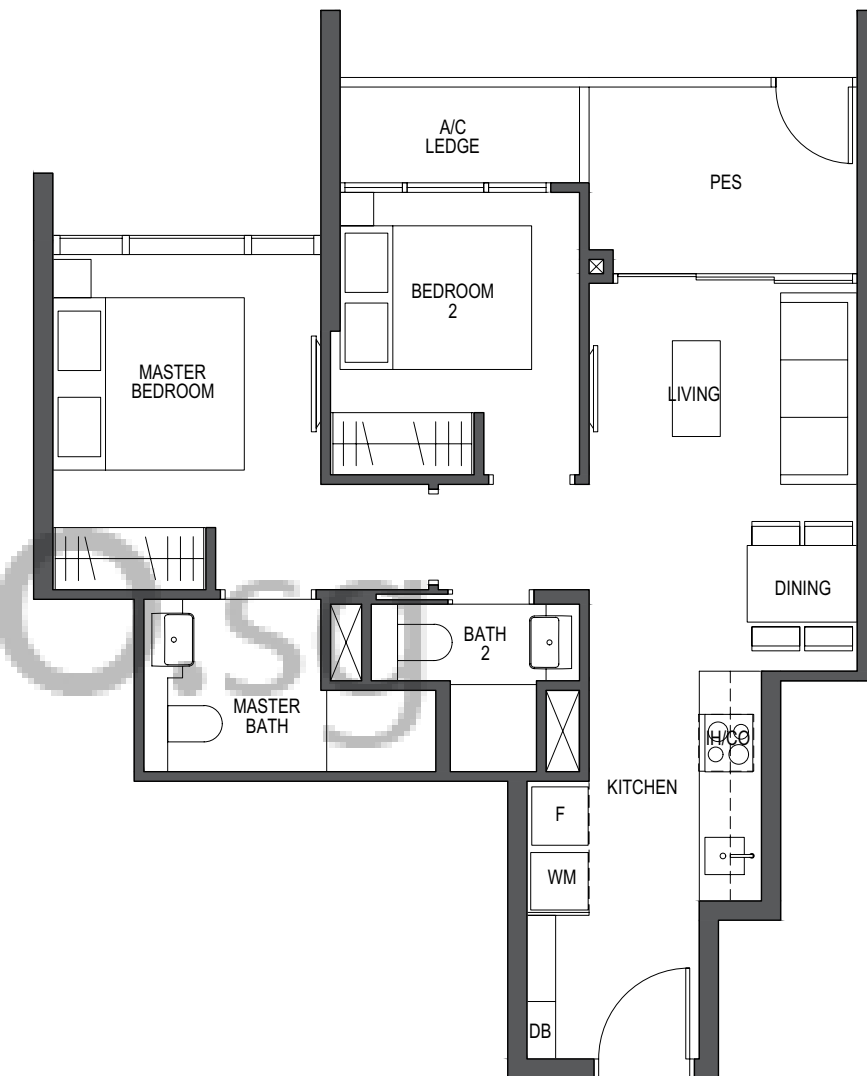
# 2-Bedroom

## TYPE B1-P

62 sq m / 667 sq ft

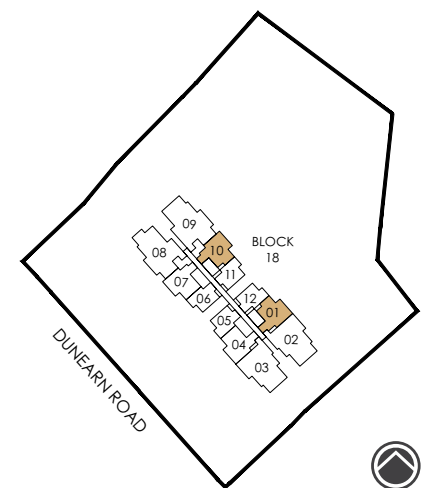
#02-01  
 \*#02-10

\*Mirror image



**LEGEND:**  
 F - Fridge  
 D - Dryer  
 IH - Induction Hob  
 DW - Dishwasher  
 GH - Gas Hob  
 DB - Distribution Board  
 WM - Washer cum Dryer  
 CO - Conventional Oven  
 W - Washer

All plans are subjected to amendments as may be approved by the relevant authorities. Floor areas are approximate measurements and are subjected to final survey. BP Approval No. A1720-00009-2018-BP01 dated 26/08/2019



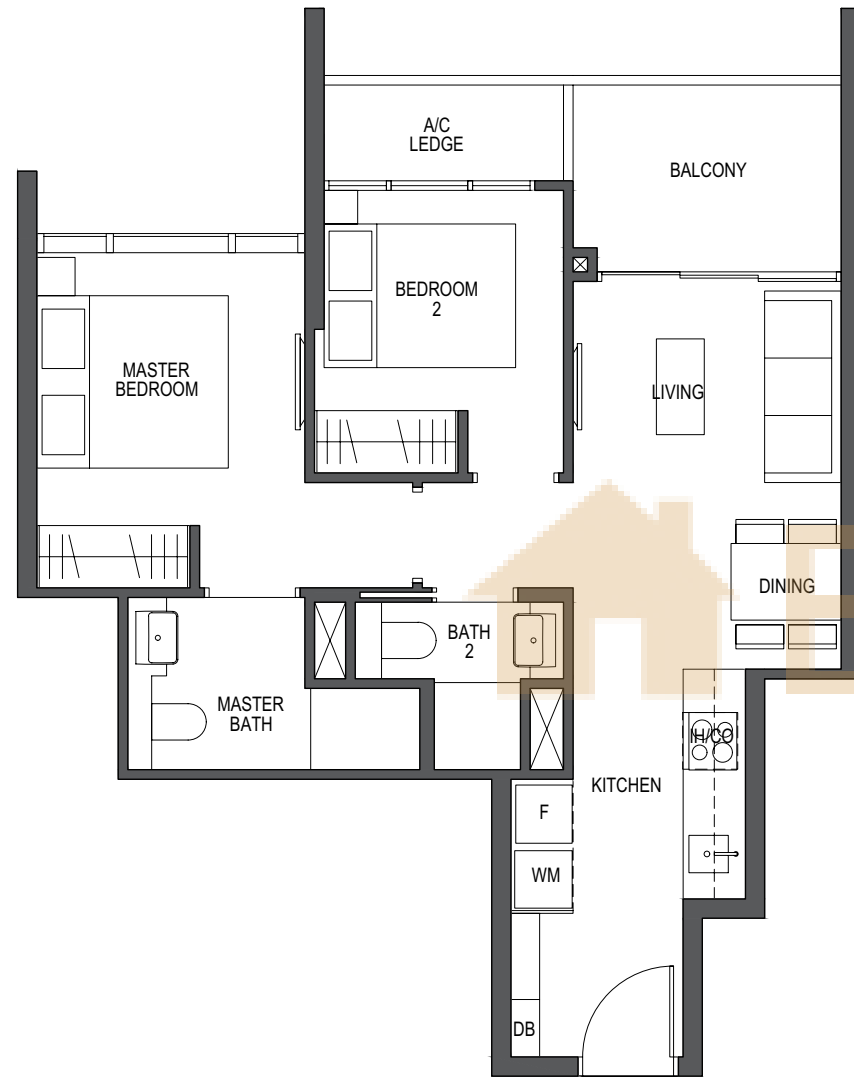
# 2-Bedroom

## TYPE B1

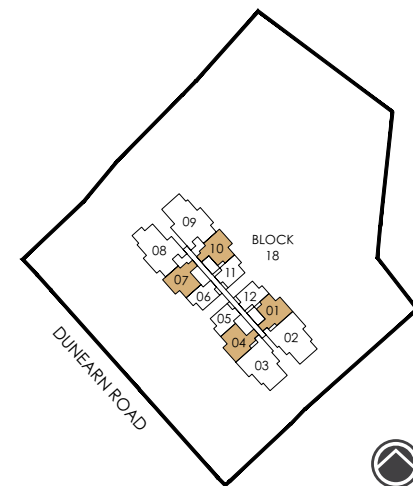
62 sq m / 667 sq ft

#02-07 to #29-07  
 #03-01 to #29-01  
 \*#02-04 to #29-04  
 \*#03-10 to #29-10

\*Mirror image



**LEGEND:**  
 F - Fridge  
 D - Dryer  
 IH - Induction Hob  
 DW - Dishwasher  
 GH - Gas Hob  
 DB - Distribution Board  
 WM - Washer cum Dryer  
 CO - Conventional Oven  
 W - Washer



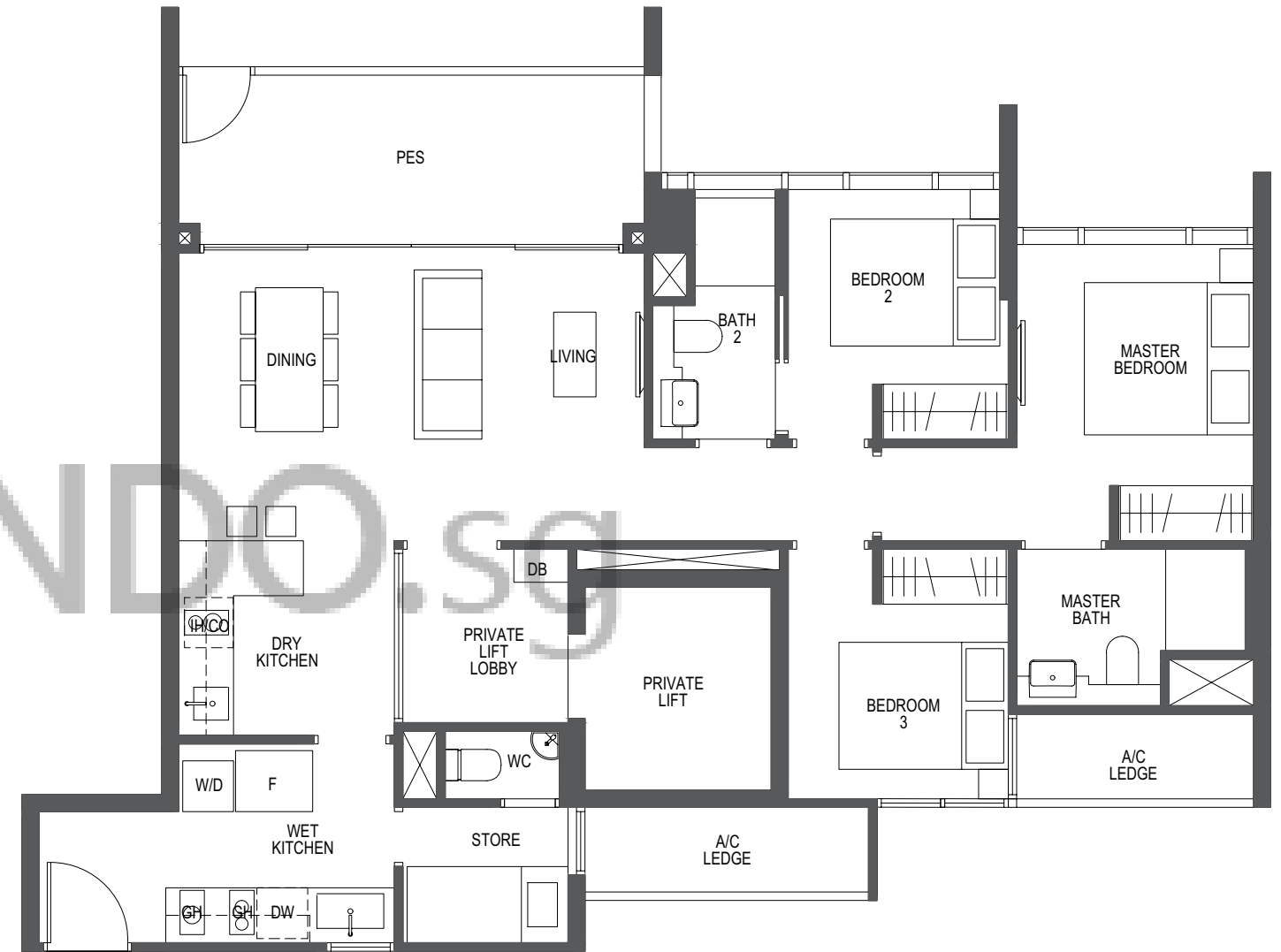
All plans are subjected to amendments as may be approved by the relevant authorities. Floor areas are approximate measurements and are subjected to final survey. BP Approval No. A1720-00009-2018-BP01 dated 26/08/2019

# 3-Bedroom

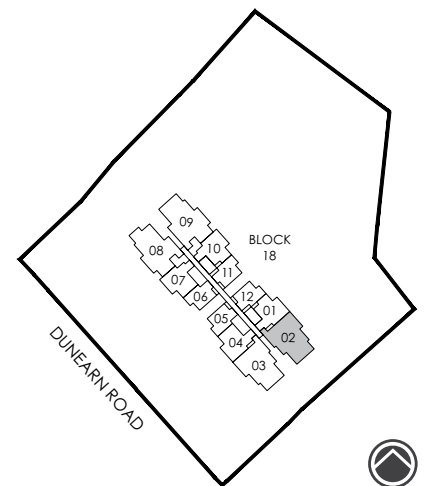
## TYPE C1-P

108 sq m / 1163 sq ft

#02-02



**LEGEND:**  
 F - Fridge  
 D - Dryer  
 IH - Induction Hob  
 DW - Dishwasher  
 GH - Gas Hob  
 DB - Distribution Board  
 WM - Washer cum Dryer  
 CO - Conventional Oven  
 W - Washer



All plans are subjected to amendments as may be approved by the relevant authorities. Floor areas are approximate measurements and are subjected to final survey. BP Approval No. A1720-00009-2018-BP01 dated 26/08/2019

# 3-Bedroom

## TYPE C1

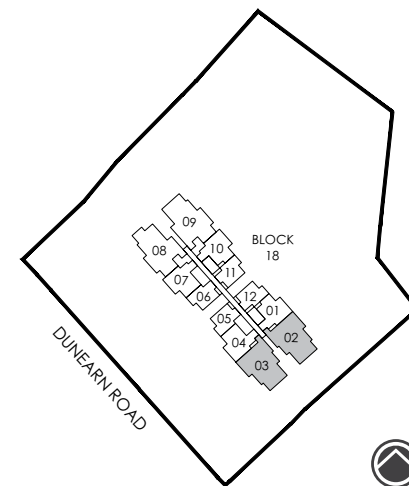
108 sq m / 1163 sq ft

#03-02 to #29-02  
\*#02-03 to #29-03

\*Mirror image



**LEGEND:**  
 F - Fridge  
 D - Dryer  
 IH - Induction Hob  
 DW - Dishwasher  
 GH - Gas Hob  
 DB - Distribution Board  
 WM - Washer cum Dryer  
 CO - Conventional Oven  
 W - Washer



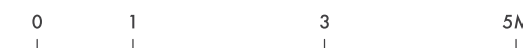
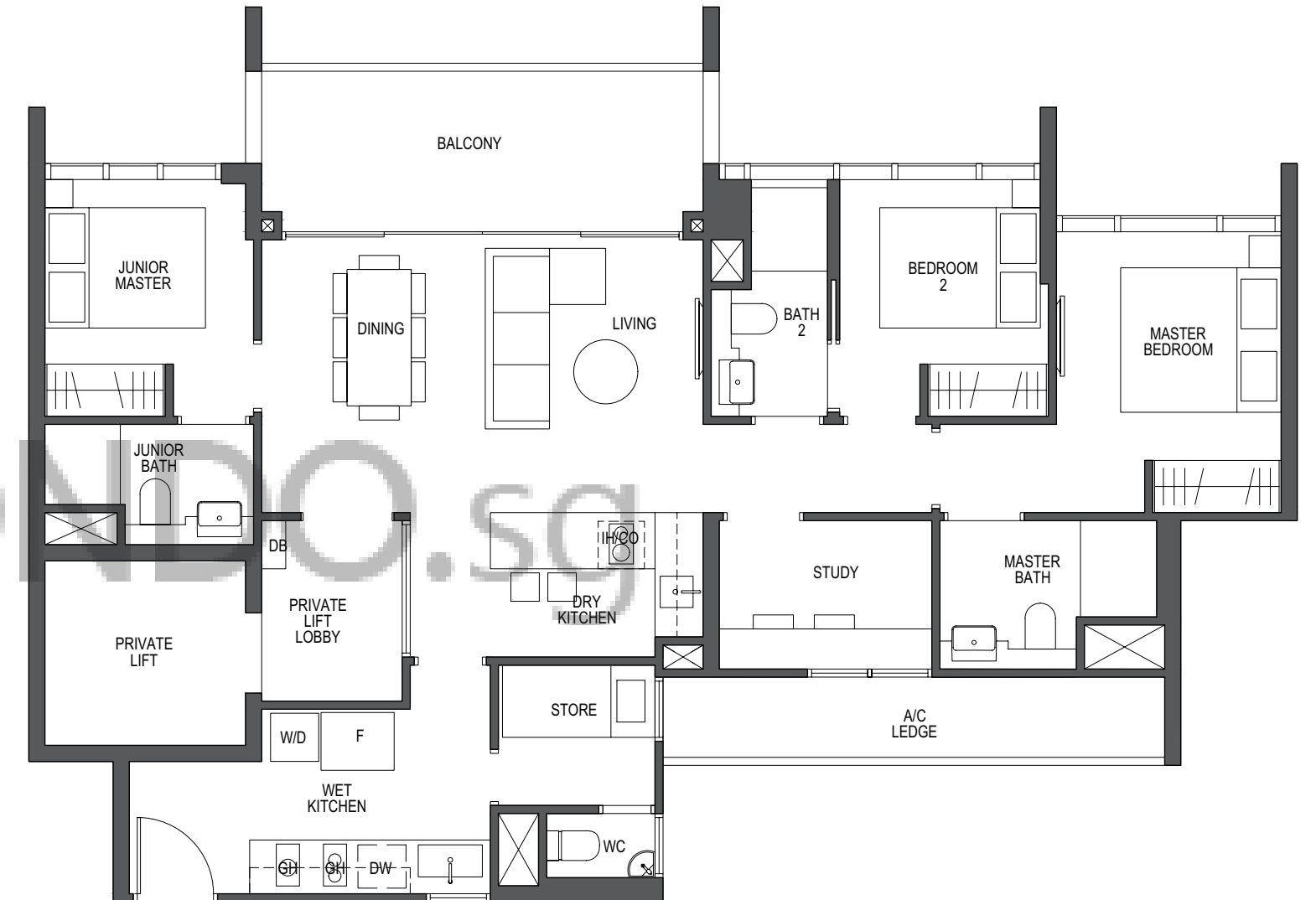
All plans are subjected to amendments as may be approved by the relevant authorities. Floor areas are approximate measurements and are subjected to final survey. BP Approval No. A1720-00009-2018-BP01 dated 26/08/2019

# 3-Bedroom + Study

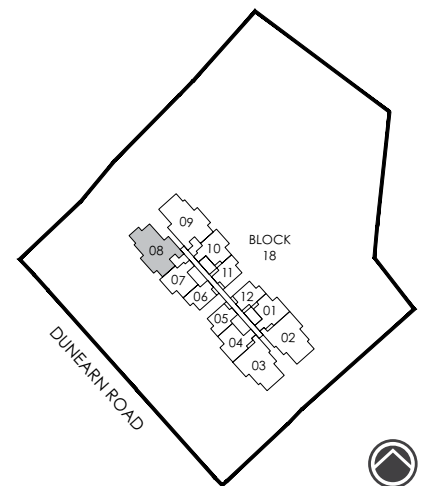
## TYPE C2

119 sq m / 1281 sq ft

#02-08 to #29-08



**LEGEND:**  
 F - Fridge  
 D - Dryer  
 IH - Induction Hob  
 DW - Dishwasher  
 GH - Gas Hob  
 DB - Distribution Board  
 WM - Washer cum Dryer  
 CO - Conventional Oven  
 W - Washer



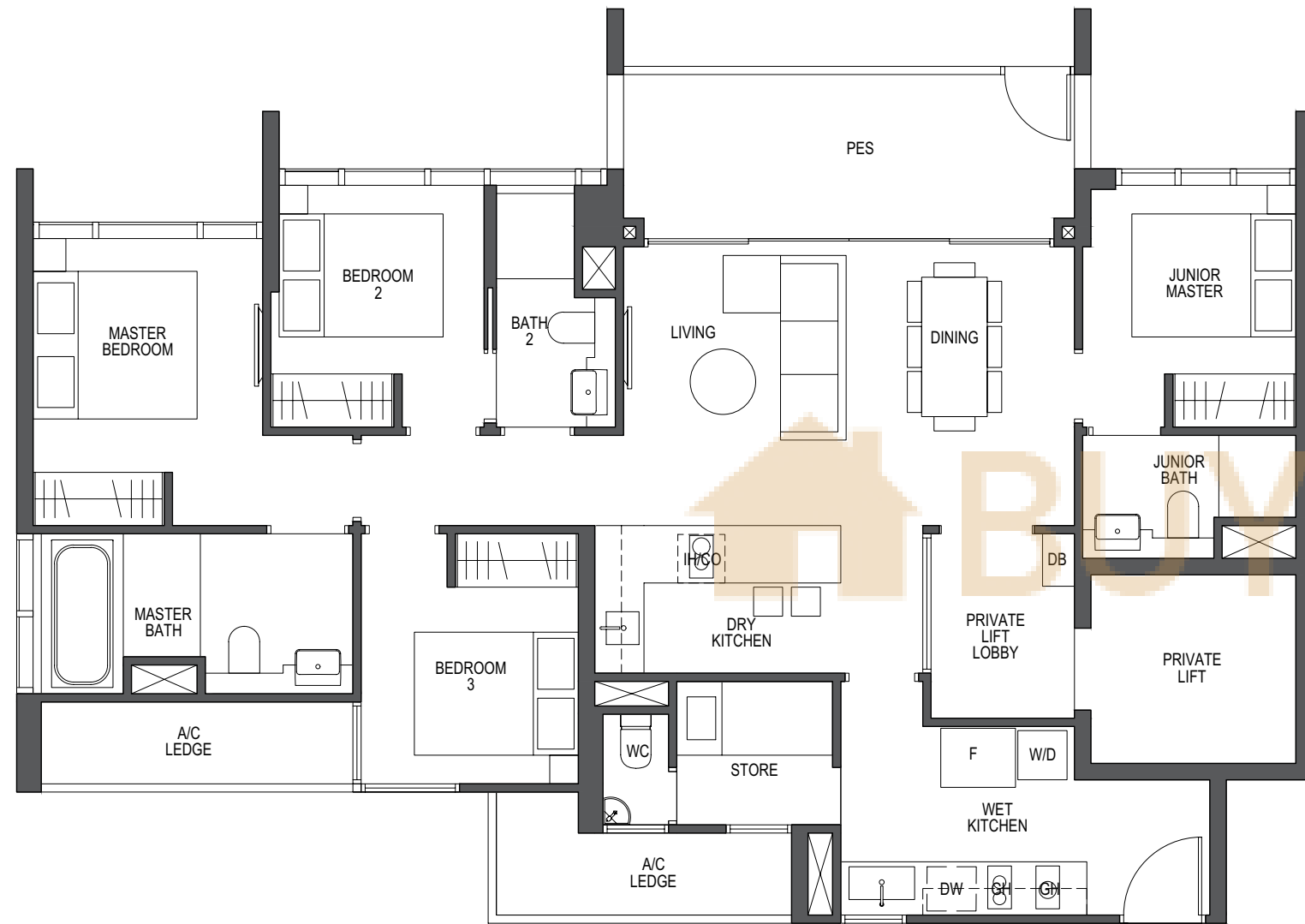
All plans are subjected to amendments as may be approved by the relevant authorities. Floor areas are approximate measurements and are subjected to final survey. BP Approval No. A1720-00009-2018-BP01 dated 26/08/2019

# 4-Bedroom

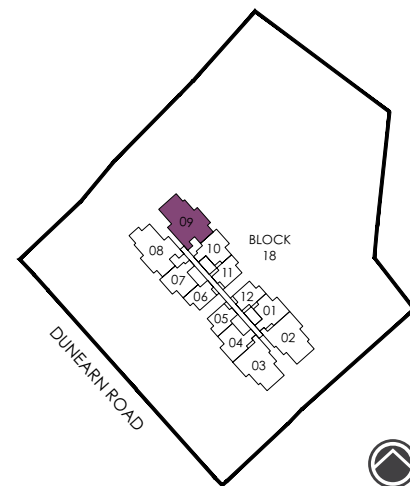
## TYPE D1-P

129 sq m / 1389 sq ft

#02-09



**LEGEND:**  
 F - Fridge  
 D - Dryer  
 IH - Induction Hob  
 DW - Dishwasher  
 GH - Gas Hob  
 DB - Distribution Board  
 WM - Washer cum Dryer  
 CO - Conventional Oven  
 W - Washer



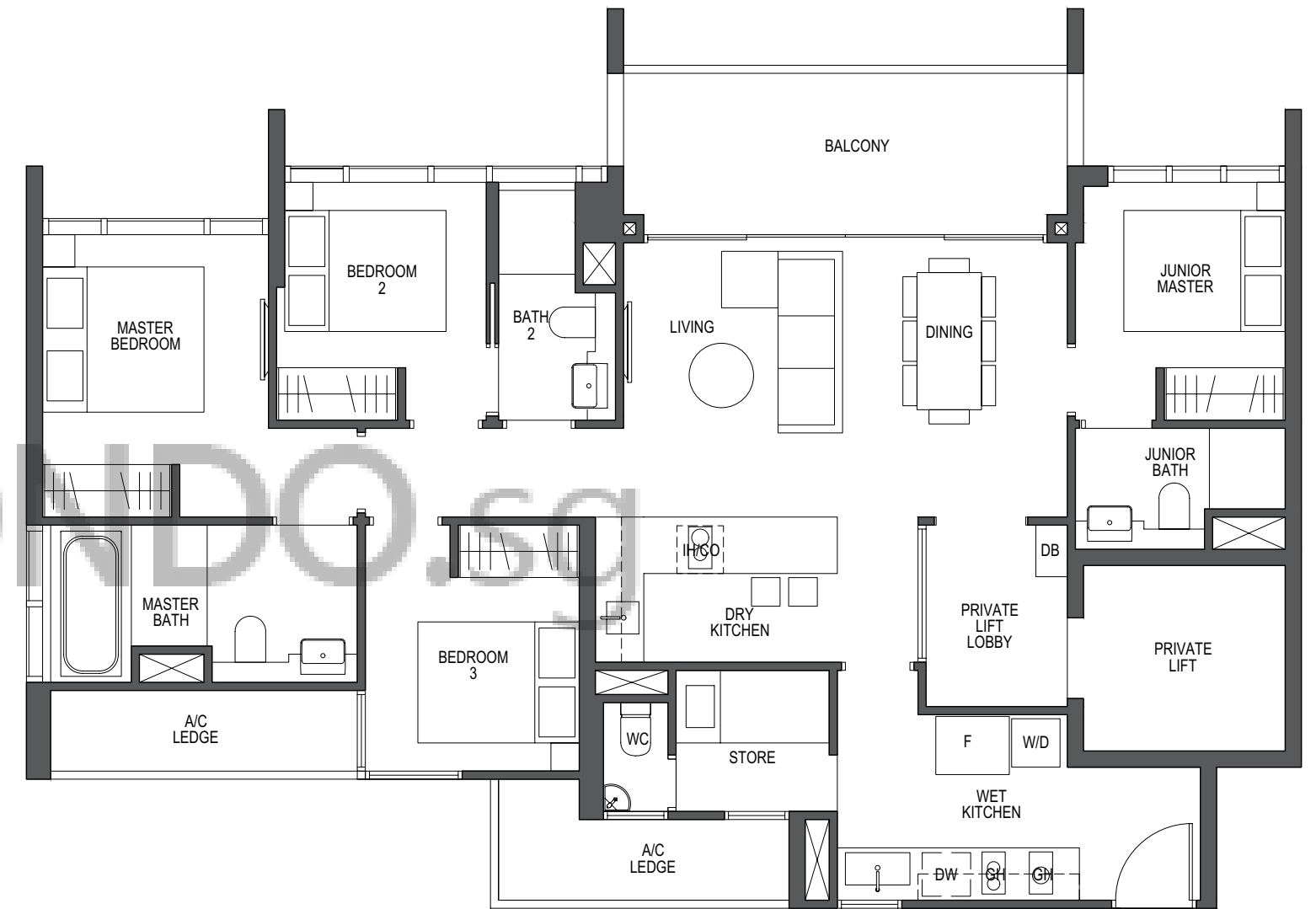
All plans are subjected to amendments as may be approved by the relevant authorities. Floor areas are approximate measurements and are subjected to final survey. BP Approval No. A1720-00009-2018-BP01 dated 26/08/2019

# 4-Bedroom

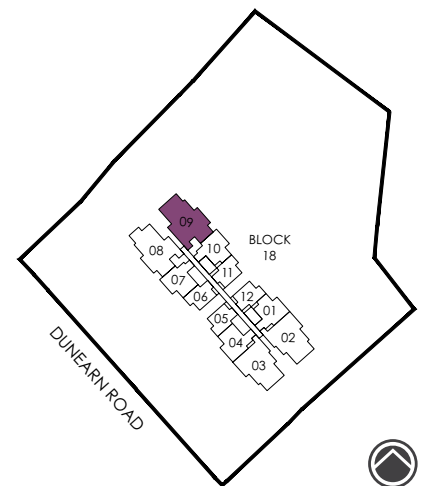
## TYPE D1

128 sq m / 1378 sq ft

#03-09 to #29-09



**LEGEND:**  
 F - Fridge  
 D - Dryer  
 IH - Induction Hob  
 DW - Dishwasher  
 GH - Gas Hob  
 DB - Distribution Board  
 WM - Washer cum Dryer  
 CO - Conventional Oven  
 W - Washer



All plans are subjected to amendments as may be approved by the relevant authorities. Floor areas are approximate measurements and are subjected to final survey. BP Approval No. A1720-00009-2018-BP01 dated 26/08/2019

# Penthouse

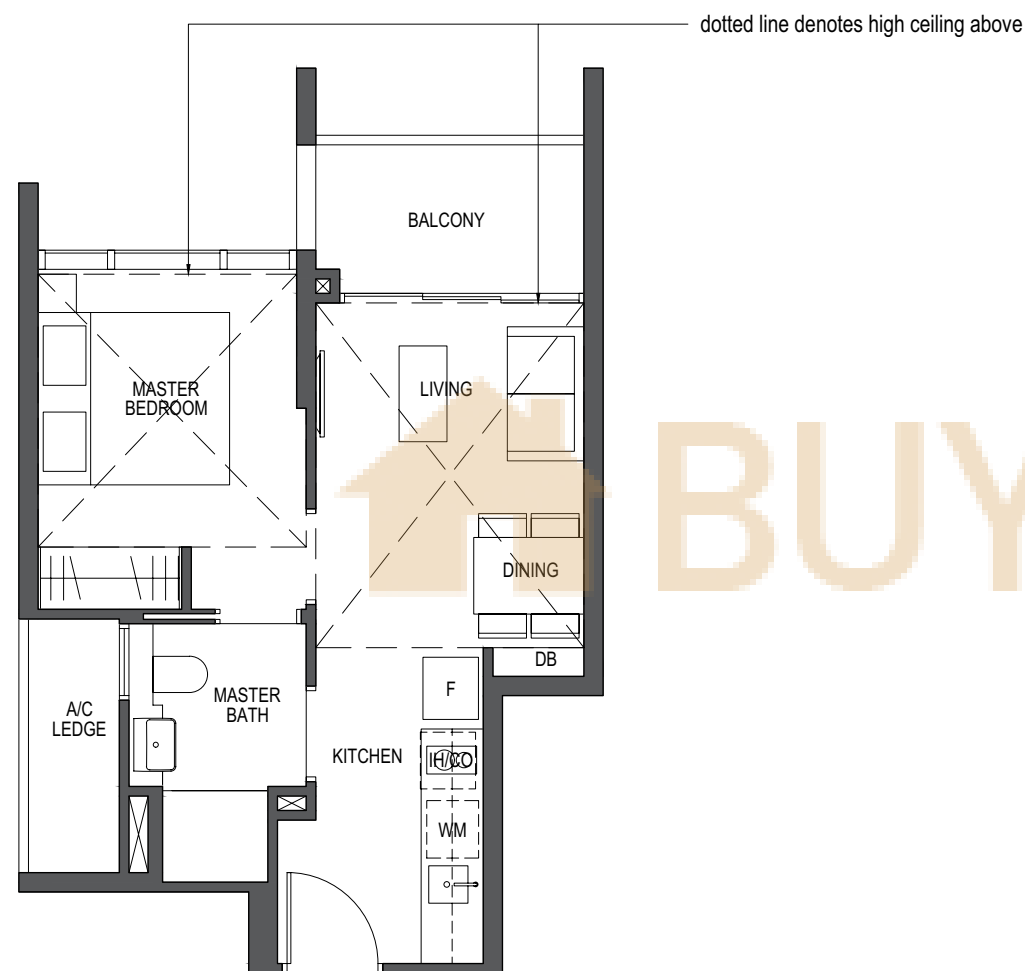
## TYPE PH-1

### 1-Bedroom

43 sq m / 463 sq ft

#30-06 & #30-12  
\*#30-05 & #30-11

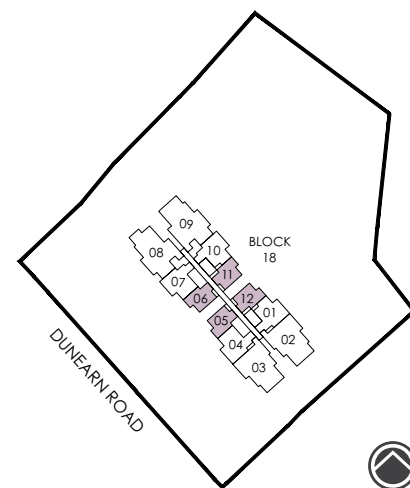
\*Mirror image



**LEGEND:**  
 F - Fridge  
 D - Dryer  
 IH - Induction Hob  
 DW - Dishwasher  
 GH - Gas Hob  
 DB - Distribution Board  
 WM - Washer cum Dryer  
 CO - Conventional Oven  
 W - Washer

All plans are subjected to amendments as may be approved by the relevant authorities. Floor areas are approximate measurements and are subjected to final survey. BP Approval No. A1720-00009-2018-BP01 dated 26/08/2019

BUYCONDOS.SG



# Penthouse

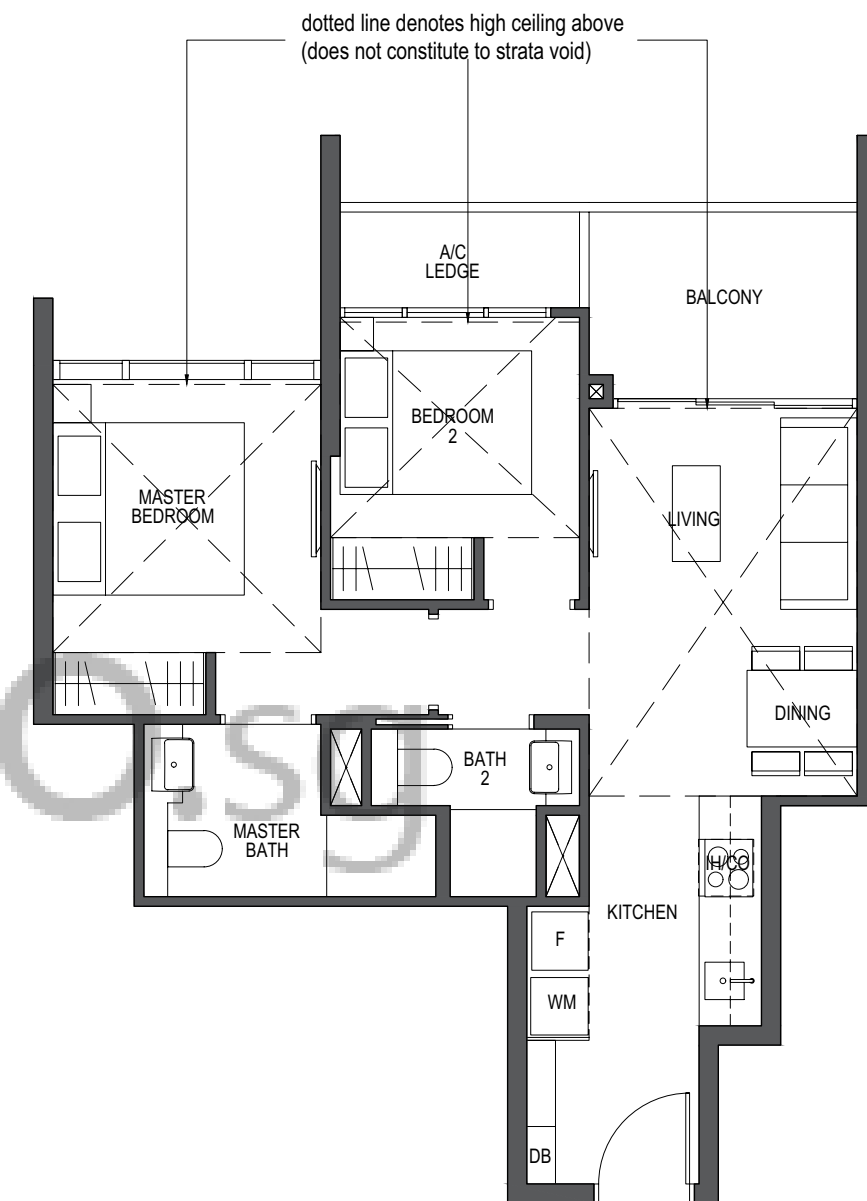
## TYPE PH-2

### 2-Bedroom

62 sq m / 667 sq ft

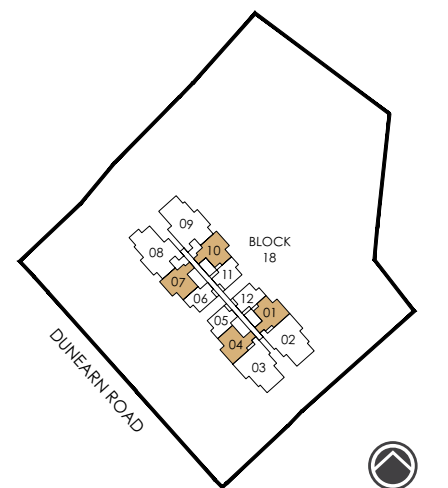
#30-01 & #30-07  
\*#30-10 & #30-04

\*Mirror image



**LEGEND:**  
 F - Fridge  
 D - Dryer  
 IH - Induction Hob  
 DW - Dishwasher  
 GH - Gas Hob  
 DB - Distribution Board  
 WM - Washer cum Dryer  
 CO - Conventional Oven  
 W - Washer

All plans are subjected to amendments as may be approved by the relevant authorities. Floor areas are approximate measurements and are subjected to final survey. BP Approval No. A1720-00009-2018-BP01 dated 26/08/2019



# Penthouse

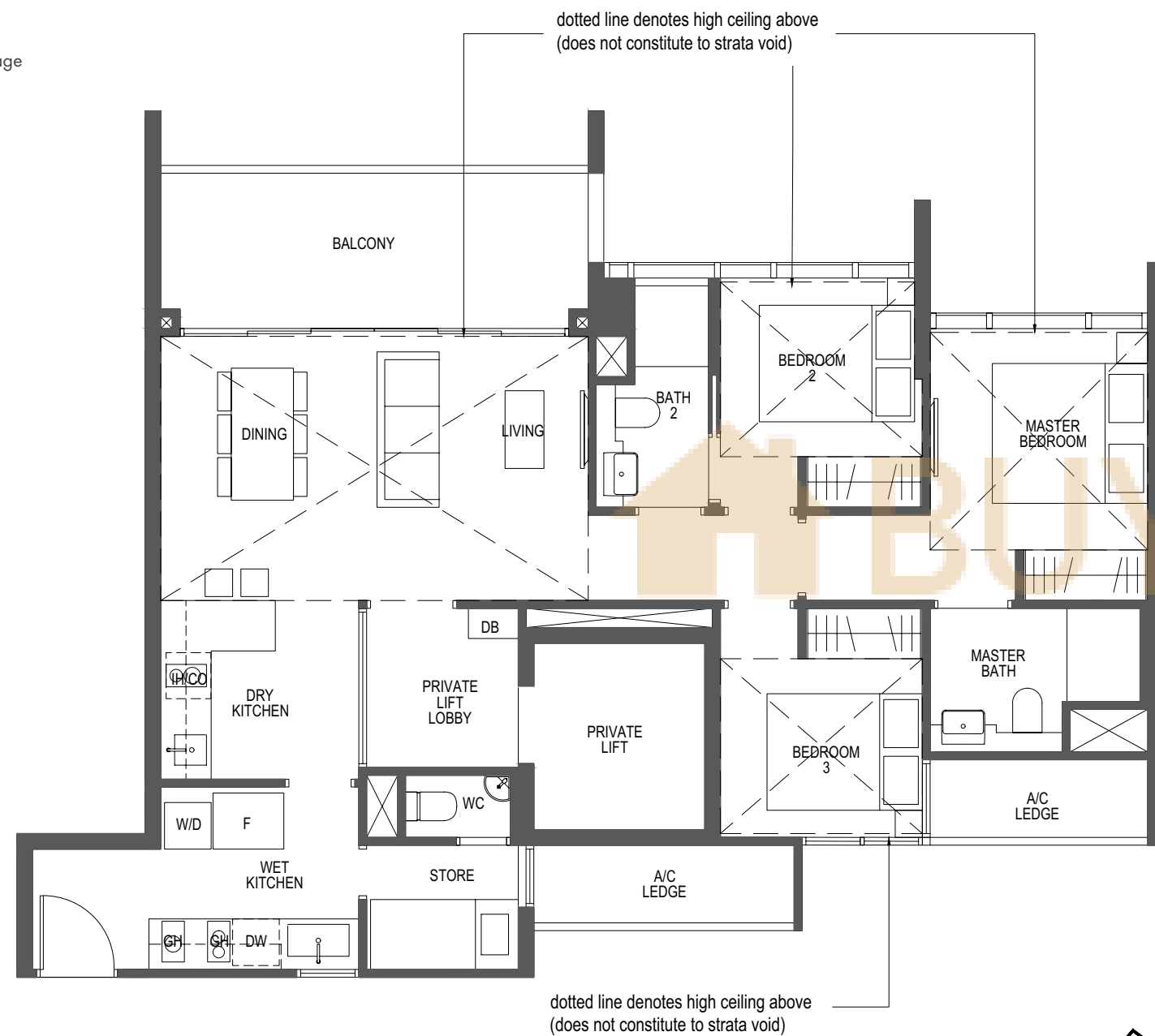
## TYPE PH-3

### 3-Bedroom

108 sq m / 1163 sq ft

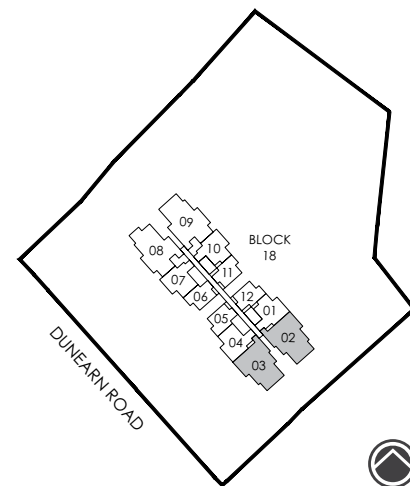
#30-02  
\*#30-03

\*Mirror image



**LEGEND:**  
F - Fridge  
D - Dryer  
IH - Induction Hob  
DW - Dishwasher  
GH - Gas Hob  
DB - Distribution Board  
WM - Washer cum Dryer  
CO - Conventional Oven  
W - Washer

All plans are subjected to amendments as may be approved by the relevant authorities. Floor areas are approximate measurements and are subjected to final survey. BP Approval No. A1720-00009-2018-BP01 dated 26/08/2019



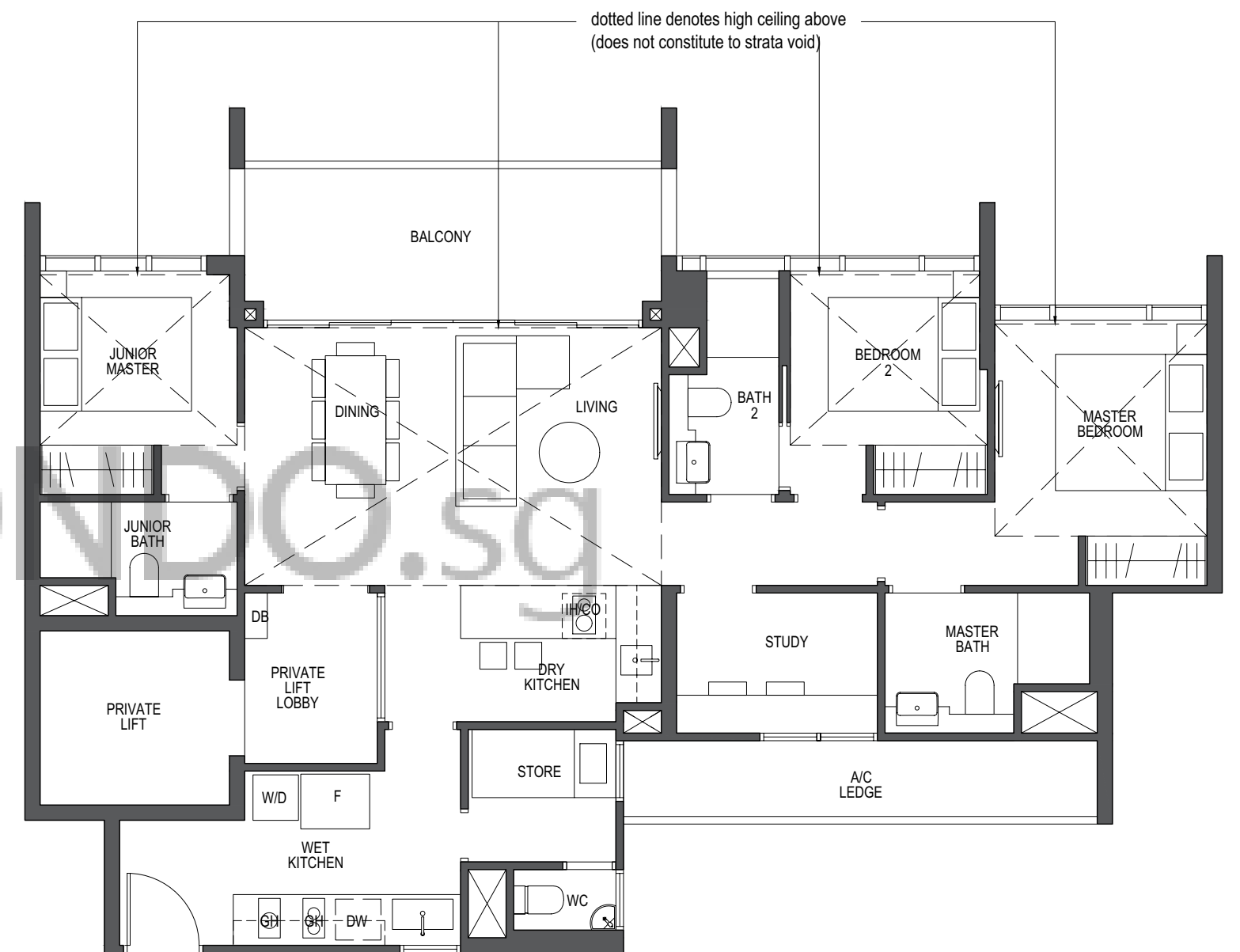
# Penthouse

## TYPE PH-4

### 3-Bedroom+Study

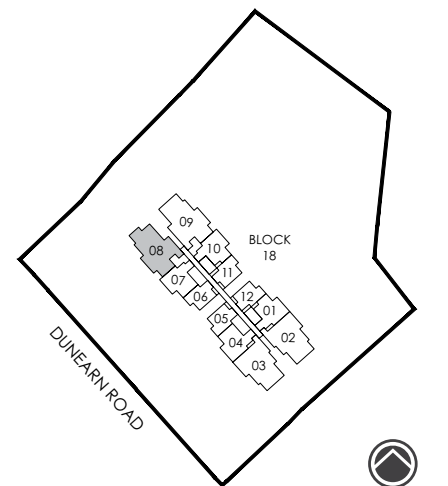
119 sq m / 1281 sq ft

#30-08



**LEGEND:**  
F - Fridge  
D - Dryer  
IH - Induction Hob  
DW - Dishwasher  
GH - Gas Hob  
DB - Distribution Board  
WM - Washer cum Dryer  
CO - Conventional Oven  
W - Washer

All plans are subjected to amendments as may be approved by the relevant authorities. Floor areas are approximate measurements and are subjected to final survey. BP Approval No. A1720-00009-2018-BP01 dated 26/08/2019



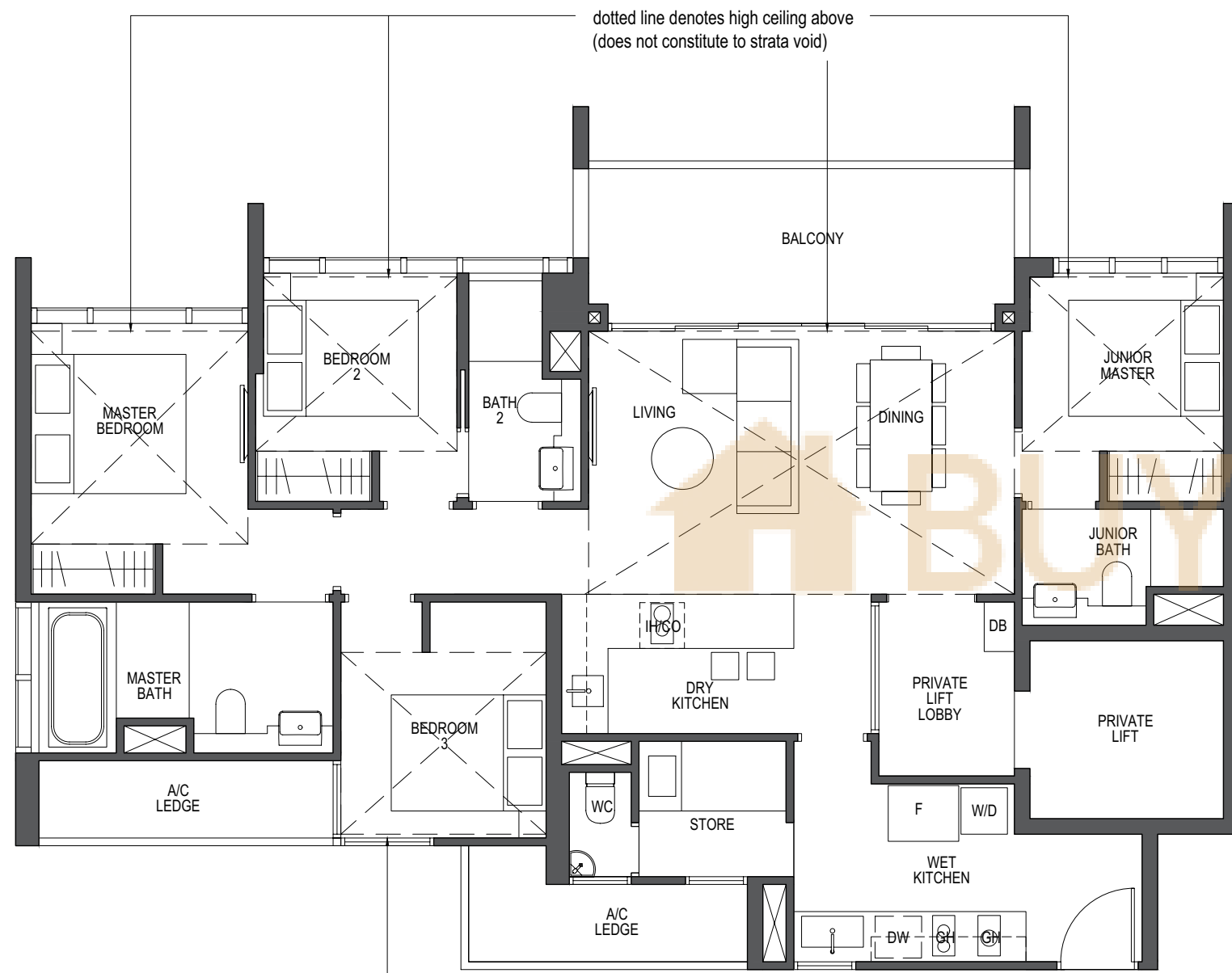
# Penthouse

## TYPE PH-5

### 4-Bedroom

128 sq m / 1378 sq ft

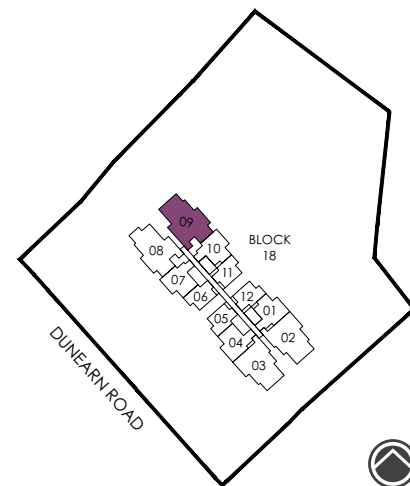
#30-09



dotted line denotes high ceiling above  
(does not constitute to strata void)



<b>LEGEND:</b>	DW - Dishwasher	WM - Washer cum Dryer
F - Fridge	GH - Gas Hob	CO - Conventional Oven
D - Dryer	DB - Distribution Board	W - Washer
IH - Induction Hob		



All plans are subjected to amendments as may be approved by the relevant authorities. Floor areas are approximate measurements and are subjected to final survey. BP Approval No. A1720-00009-2018-BP01 dated 26/08/2019

# Corporate Profile



EL Development Pte Ltd first started as a business unit within one of Singapore's leading builders, Evan Lim & Co. Pte Ltd, before its inception as a separate company in June 2007.

The company has developed more than 3,000 homes in Singapore, including Illuminaire on Devonshire, Parc Centennial in Kampong Java Road, Symphony Suites in Yishun and Parc Riviera in West Coast Vale.

Come late 2021, the company will usher in its first hotel development — the first Pullman Hotel in Singapore, managed by Accor. Located at Hill Street, this luxurious 10-storey business hotel comprises 350 rooms with outstanding facilities.

In recognition of its emphasis on quality, design and sustainability, EL Development has won prestigious awards such as FIABCI Singapore Property Awards (2018 & 2019), Asia Pacific Property Awards (2018 – 2019), Asia Property Awards Singapore (2017), BCA Asia Top Ten Developers Award (2016 & 2017), BCA Green Mark Award (2016 & 2018), SME One Asia Awards (2013) and Enterprise 50 Awards (2012).



SkySuites 17



La Fiesta



Parc Riviera



Symphony Suites