

1-BEDROOM

TYPE A1

45 SQM / 484 SQFT

BLK 20

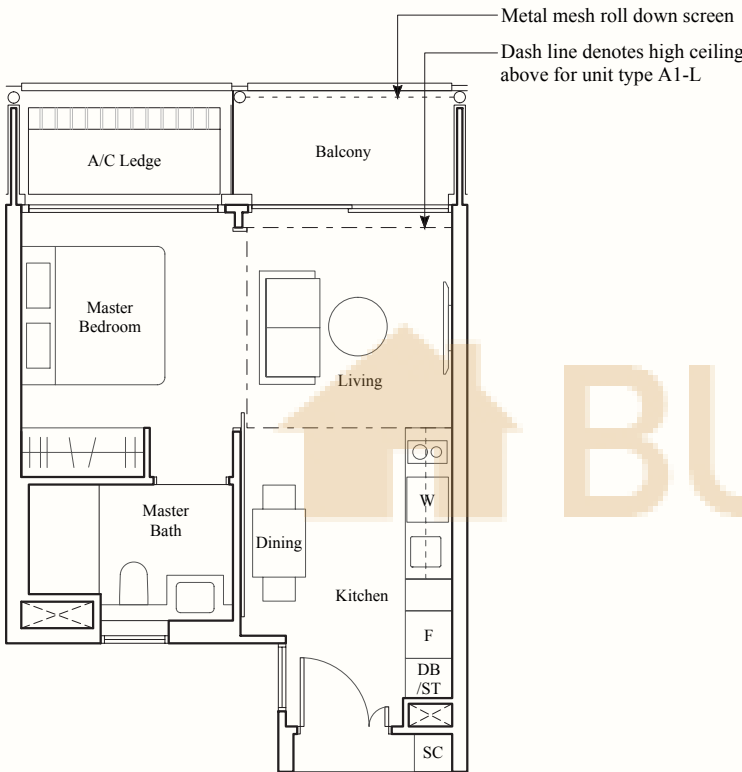
#02-53* to #05-53*
#03-54 to #04-54

TYPE A1-L

53 SQM / 570 SQFT

BLK 20

#05-54

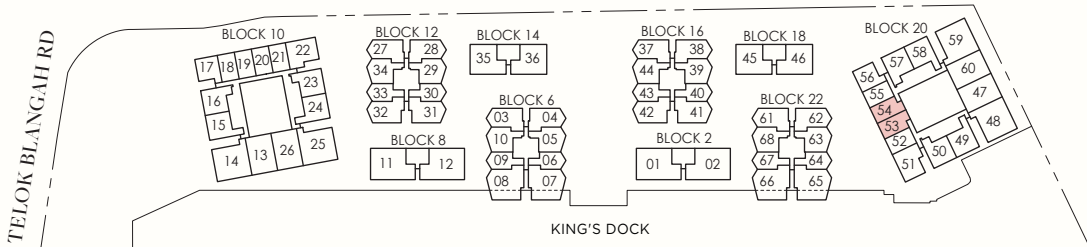


0.5 1 2 3 5m

HARBOURFRONT AVE

F: Fridge
W: Washing Machine-cum-Dryer
DB: Distribution Board
SC: Shoe Cabinet
ST: Storage

* Denotes mirror image



AREA INCLUDES AIR-CON (A/C) LEDGE, BALCONY, PRIVATE ENCLOSED SPACE (PES) AND STRATA VOID AREA WHERE APPLICABLE. SOME UNITS ARE MIRROR IMAGES OF THE PLAN SHOWN IN THE BROCHURE. PLEASE REFER TO THE KEY PLAN FOR ORIENTATION. THE PLANS ARE SUBJECT TO CHANGE AS MAY BE REQUIRED BY THE RELEVANT AUTHORITIES. ALL MEASUREMENTS ARE APPROXIMATE ONLY AND ARE SUBJECT TO GOVERNMENT RE-SURVEY. THE BALCONY SHALL NOT BE ENCLOSED UNLESS WITH THE APPROVED BALCONY SCREEN.

1-BEDROOM

TYPE A1a

45 SQM / 484 SQFT

BLK 10

#02-18
#06-18
#08-18
#10-18

TYPE A1b

45 SQM / 484 SQFT

BLK 10

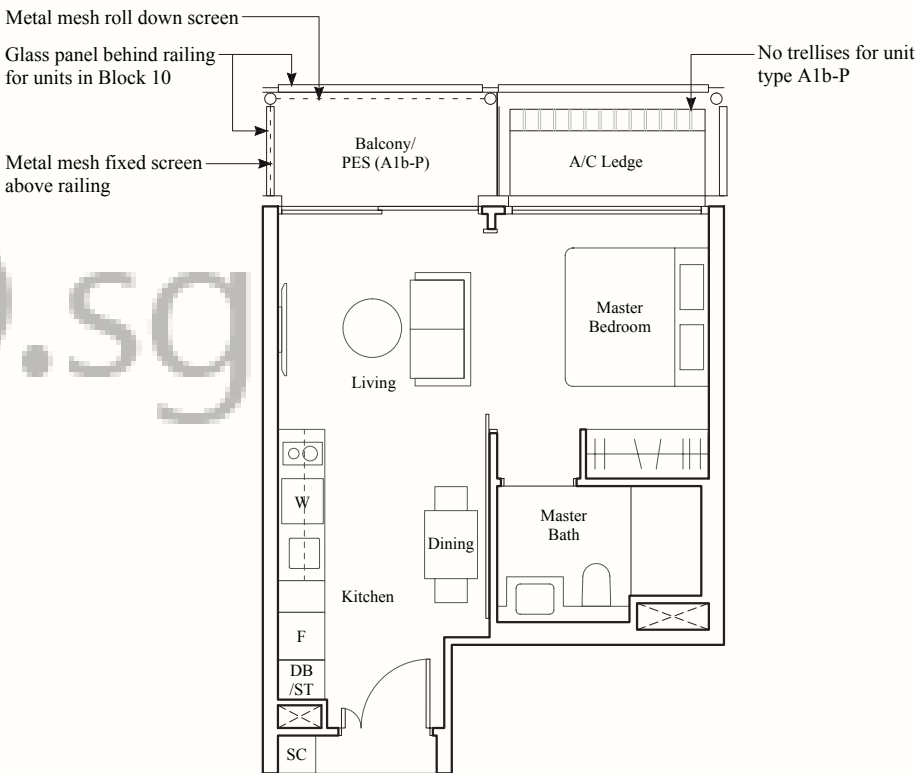
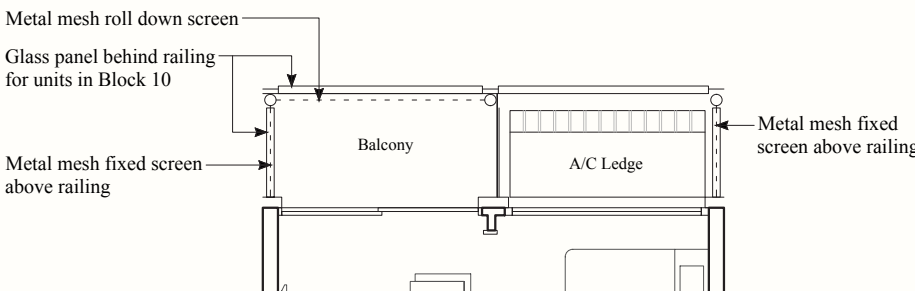
#03-21
#05-21
#07-21
#09-21

TYPE A1b-P

45 SQM / 484 SQFT

BLK 10

#01-21

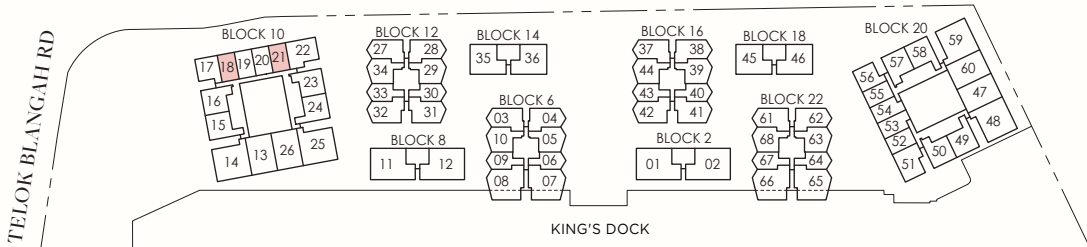


0.5 1 2 3 5m

HARBOURFRONT AVE

F: Fridge
W: Washing Machine-cum-Dryer
DB: Distribution Board
SC: Shoe Cabinet
ST: Storage

* Denotes mirror image



AREA INCLUDES AIR-CON (A/C) LEDGE, BALCONY, PRIVATE ENCLOSED SPACE (PES) AND STRATA VOID AREA WHERE APPLICABLE. SOME UNITS ARE MIRROR IMAGES OF THE PLAN SHOWN IN THE BROCHURE. PLEASE REFER TO THE KEY PLAN FOR ORIENTATION. THE PLANS ARE SUBJECT TO CHANGE AS MAY BE REQUIRED BY THE RELEVANT AUTHORITIES. ALL MEASUREMENTS ARE APPROXIMATE ONLY AND ARE SUBJECT TO GOVERNMENT RE-SURVEY. THE BALCONY SHALL NOT BE ENCLOSED UNLESS WITH THE APPROVED BALCONY SCREEN.

1-BEDROOM

TYPE A1c

45 SQM / 484 SQFT

BLK 10
#02-20 #08-20
#04-20 #10-20
#06-20

TYPE A1d

45 SQM / 484 SQFT

BLK 20
#02-52 to #05-52

TYPE A1d-P

45 SQM / 484 SQFT

BLK 20
#01-52

TYPE A1e

45 SQM / 484 SQFT

BLK 10 **BLK 20**
#07-19* #03-55
#09-19* #04-55

TYPE A1e-P

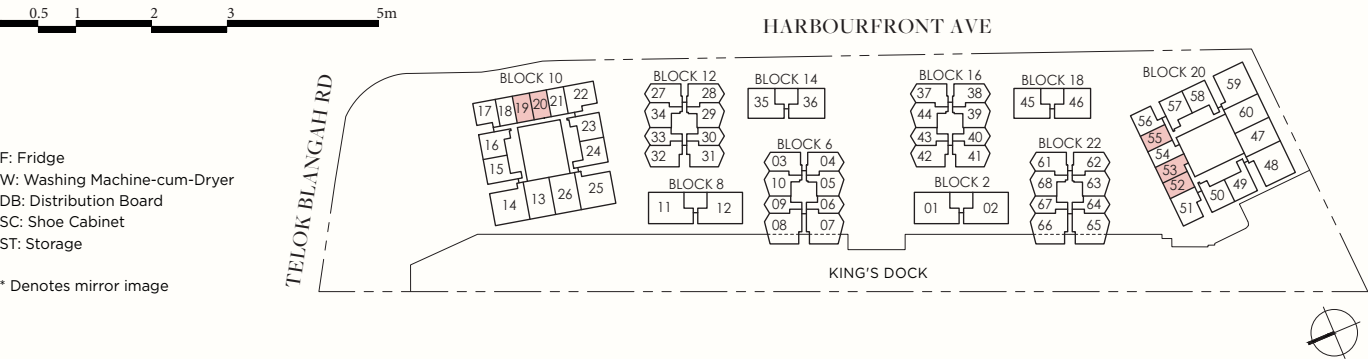
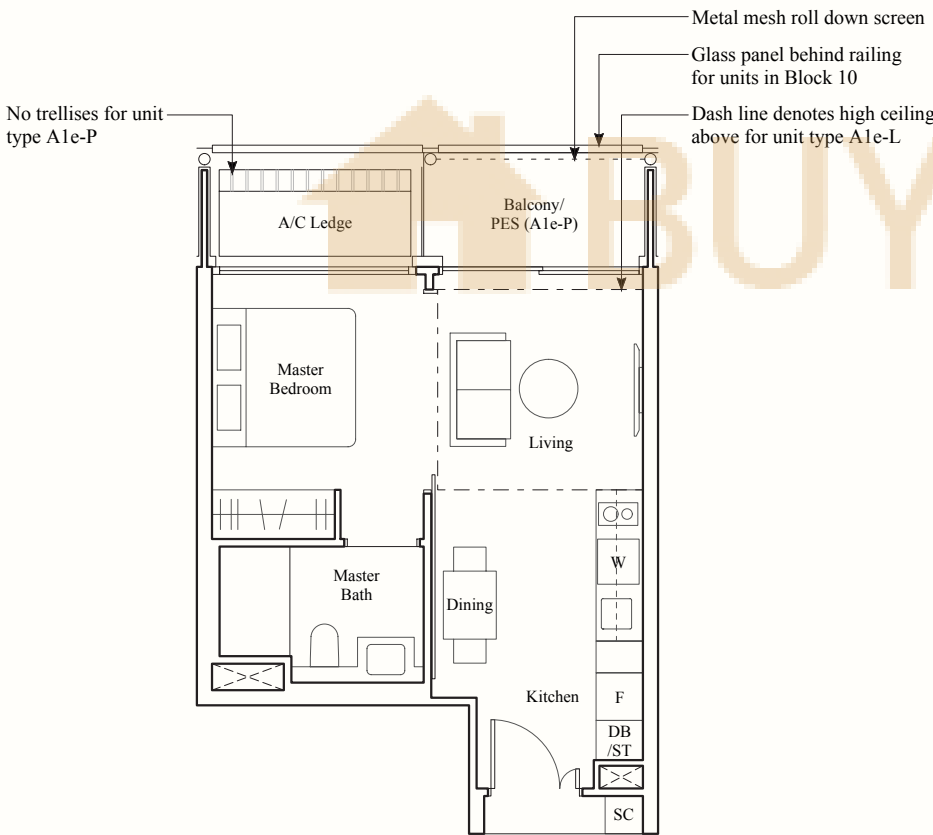
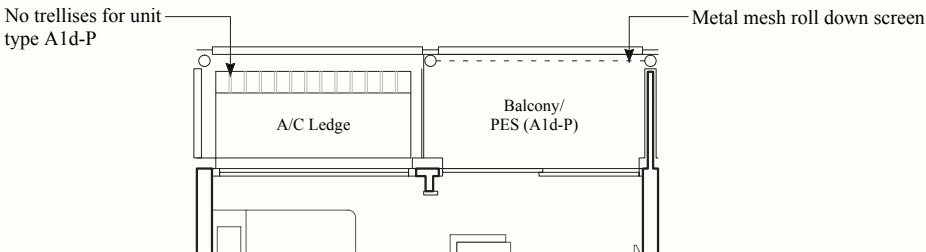
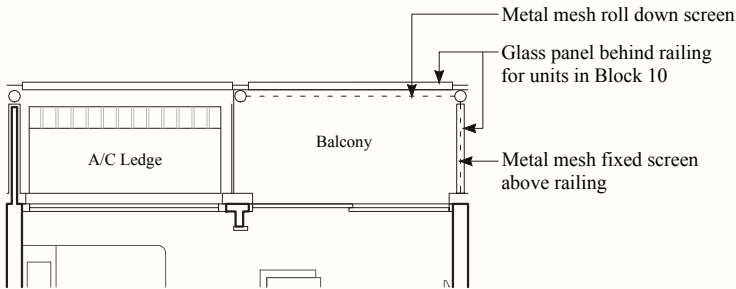
45 SQM / 484 SQFT

BLK 10 **BLK 20**
#01-19* #01-53*

TYPE A1e-L

53 SQM / 570 SQFT

BLK 20
#05-55



AREA INCLUDES AIR-CON (A/C) LEDGE, BALCONY, PRIVATE ENCLOSED SPACE (PES) AND STRATA VOID AREA WHERE APPLICABLE. SOME UNITS ARE MIRROR IMAGES OF THE PLAN SHOWN IN THE BROCHURE. PLEASE REFER TO THE KEY PLAN FOR ORIENTATION. THE PLANS ARE SUBJECT TO CHANGE AS MAY BE REQUIRED BY THE RELEVANT AUTHORITIES. ALL MEASUREMENTS ARE APPROXIMATE ONLY AND ARE SUBJECT TO GOVERNMENT RE-SURVEY. THE BALCONY SHALL NOT BE ENCLOSED UNLESS WITH THE APPROVED BALCONY SCREEN.

1-BEDROOM

TYPE A1f

45 SQM / 484 SQFT

BLK 10 **BLK 20**
#07-17 #03-56*
#09-17 #04-56*

TYPE A1f-P

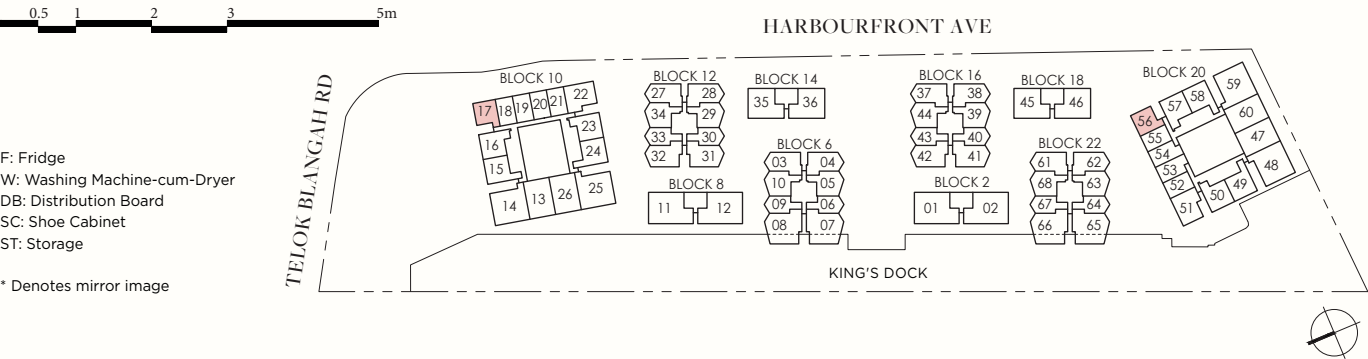
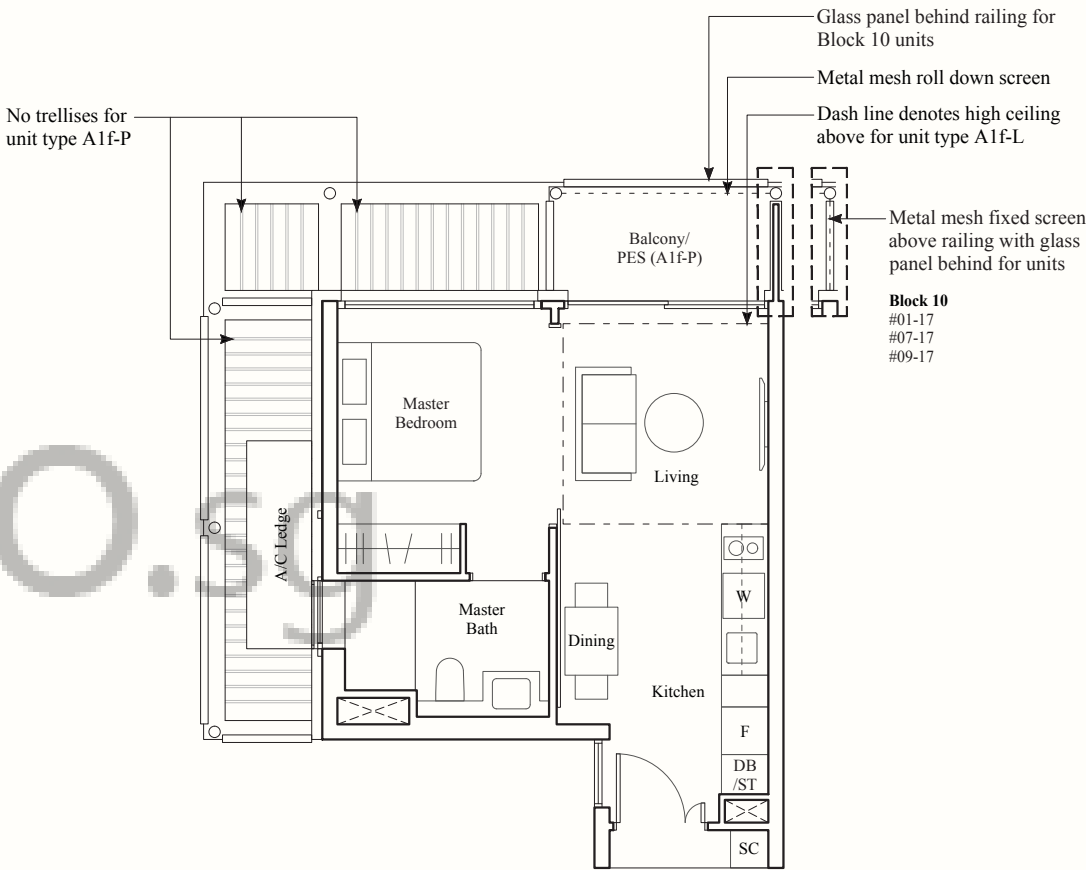
45 SQM / 484 SQFT

BLK 10
#01-17

TYPE A1f-L

53 SQM / 570 SQFT

BLK 20
#05-56*



AREA INCLUDES AIR-CON (A/C) LEDGE, BALCONY, PRIVATE ENCLOSED SPACE (PES) AND STRATA VOID AREA WHERE APPLICABLE. SOME UNITS ARE MIRROR IMAGES OF THE PLAN SHOWN IN THE BROCHURE. PLEASE REFER TO THE KEY PLAN FOR ORIENTATION. THE PLANS ARE SUBJECT TO CHANGE AS MAY BE REQUIRED BY THE RELEVANT AUTHORITIES. ALL MEASUREMENTS ARE APPROXIMATE ONLY AND ARE SUBJECT TO GOVERNMENT RE-SURVEY. THE BALCONY SHALL NOT BE ENCLOSED UNLESS WITH THE APPROVED BALCONY SCREEN.

1-BEDROOM

TYPE A1g

40 SQM / 431 SQFT

BLK 10
#02-21
#04-21
#06-21
#08-21
#10-21

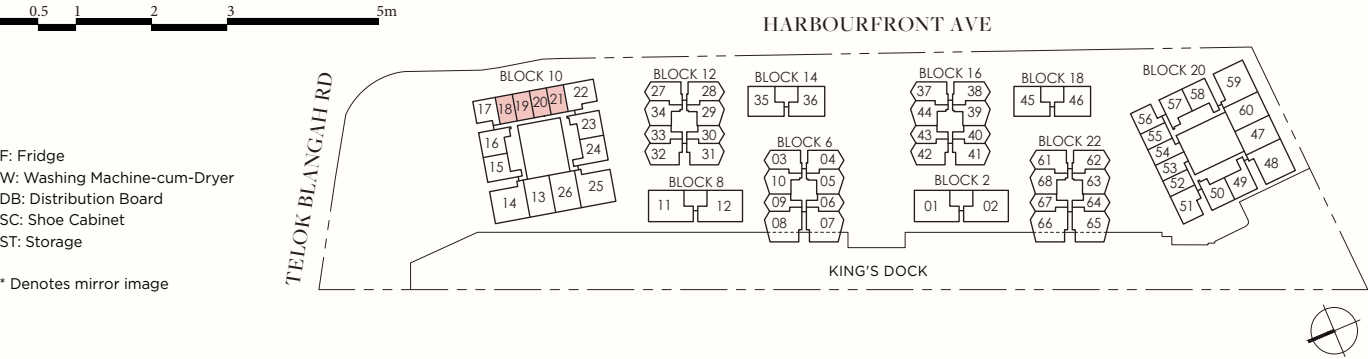
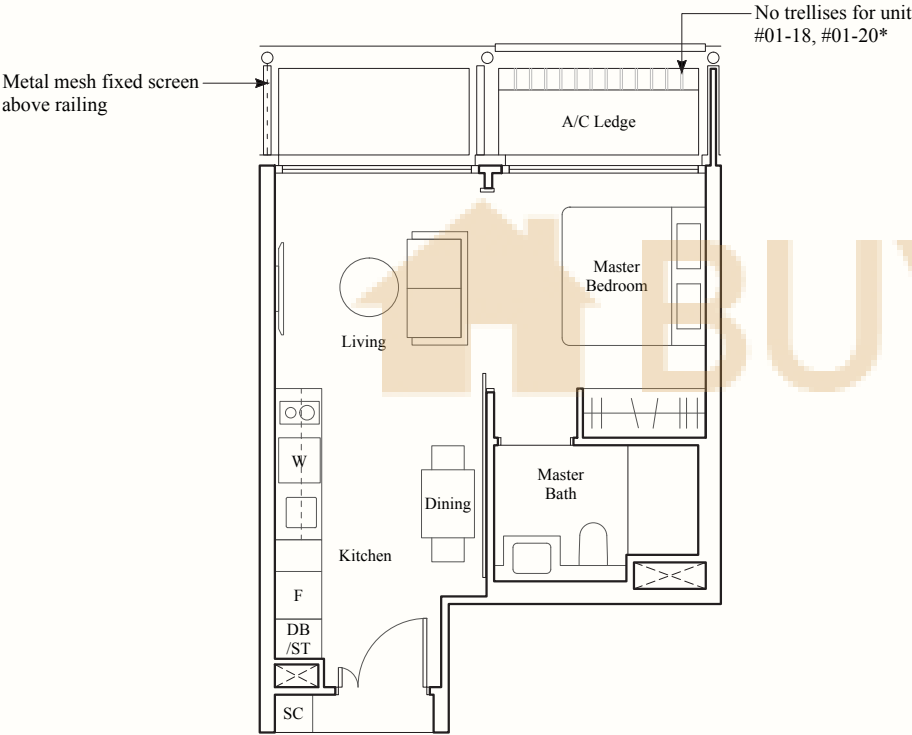
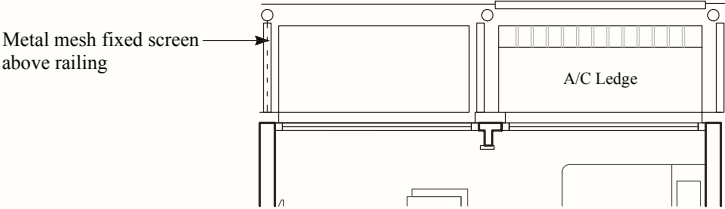
TYPE A1h

40 SQM / 431 SQFT

BLK 10
#01-18
#07-18
#09-18

#02-19
#06-19
#08-19
#10-19

#01-20*
#03-20*
#05-20*
#07-20*
#09-20*



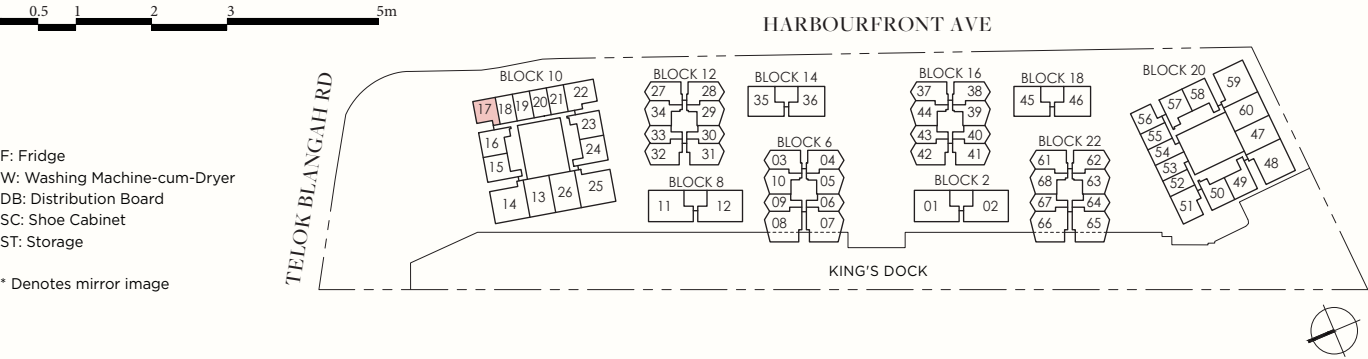
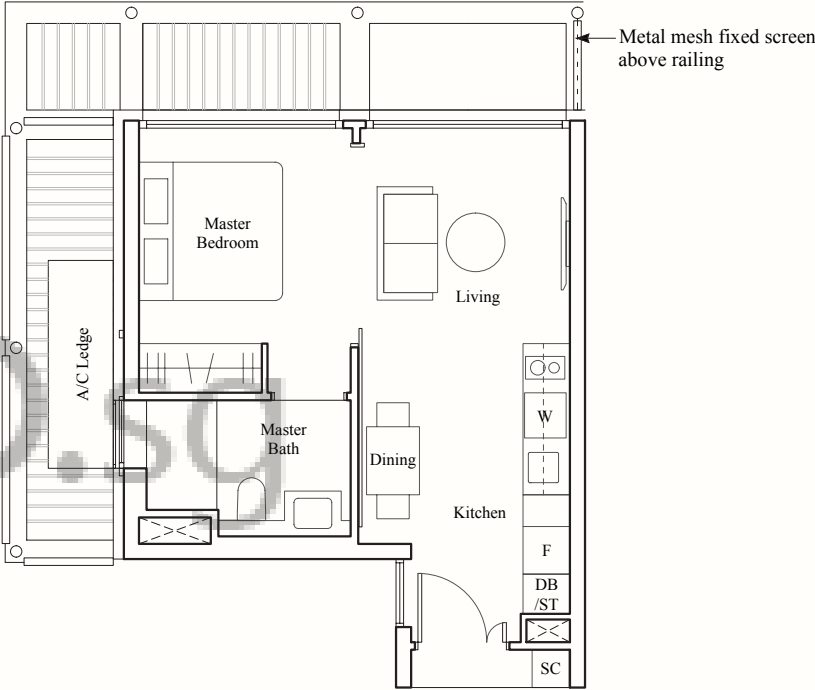
AREA INCLUDES AIR-CON (A/C) LEDGE, BALCONY, PRIVATE ENCLOSED SPACE (PES) AND STRATA VOID AREA WHERE APPLICABLE. SOME UNITS ARE MIRROR IMAGES OF THE PLAN SHOWN IN THE BROCHURE. PLEASE REFER TO THE KEY PLAN FOR ORIENTATION. THE PLANS ARE SUBJECT TO CHANGE AS MAY BE REQUIRED BY THE RELEVANT AUTHORITIES. ALL MEASUREMENTS ARE APPROXIMATE ONLY AND ARE SUBJECT TO GOVERNMENT RE-SURVEY. THE BALCONY SHALL NOT BE ENCLOSED UNLESS WITH THE APPROVED BALCONY SCREEN.

1-BEDROOM

TYPE A1j

40 SQM / 431 SQFT

BLK 10
#02-17
#06-17
#08-17
#10-17



AREA INCLUDES AIR-CON (A/C) LEDGE, BALCONY, PRIVATE ENCLOSED SPACE (PES) AND STRATA VOID AREA WHERE APPLICABLE. SOME UNITS ARE MIRROR IMAGES OF THE PLAN SHOWN IN THE BROCHURE. PLEASE REFER TO THE KEY PLAN FOR ORIENTATION. THE PLANS ARE SUBJECT TO CHANGE AS MAY BE REQUIRED BY THE RELEVANT AUTHORITIES. ALL MEASUREMENTS ARE APPROXIMATE ONLY AND ARE SUBJECT TO GOVERNMENT RE-SURVEY. THE BALCONY SHALL NOT BE ENCLOSED UNLESS WITH THE APPROVED BALCONY SCREEN.

1-BEDROOM

TYPE A2

50 SQM / 538 SQFT

BLK 6

#03-06 to #08-06
#03-09* to #08-09*

BLK 12

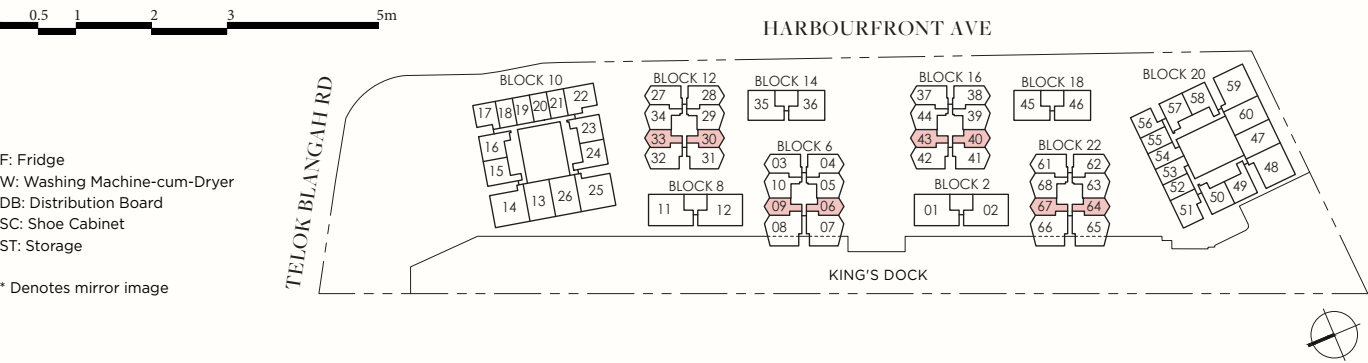
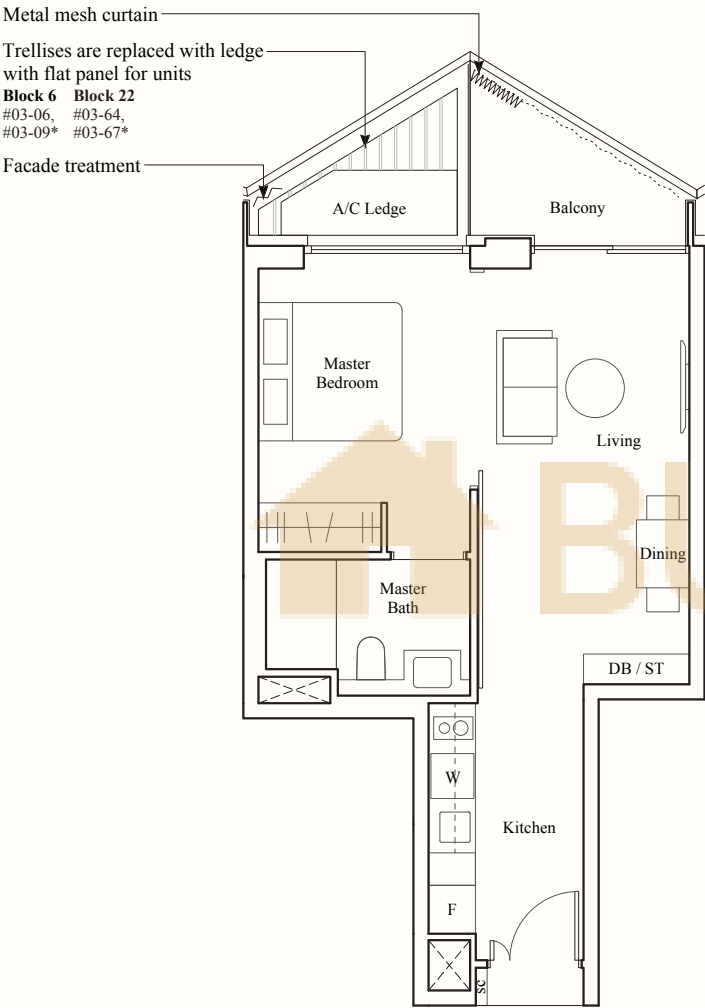
#04-30 to #08-30
#04-33* to #08-33*

BLK 16

#04-40 to #08-40
#04-43* to #08-43*

BLK 22

#03-64 to #07-64
#03-67* to #07-67*



AREA INCLUDES AIR-CON (A/C) LEDGE, BALCONY, PRIVATE ENCLOSED SPACE (PES) AND STRATA VOID AREA WHERE APPLICABLE. SOME UNITS ARE MIRROR IMAGES OF THE PLAN SHOWN IN THE BROCHURE. PLEASE REFER TO THE KEY PLAN FOR ORIENTATION. THE PLANS ARE SUBJECT TO CHANGE AS MAY BE REQUIRED BY THE RELEVANT AUTHORITIES. ALL MEASUREMENTS ARE APPROXIMATE ONLY AND ARE SUBJECT TO GOVERNMENT RE-SURVEY. THE BALCONY SHALL NOT BE ENCLOSED UNLESS WITH THE APPROVED BALCONY SCREEN.

1-BEDROOM

TYPE A3

55 SQM / 592 SQFT

BLK 12

#02-30 to #03-30
#02-33* to #03-33*

BLK 16

#02-40 to #03-40
#02-43* to #03-43*

TYPE A3-P

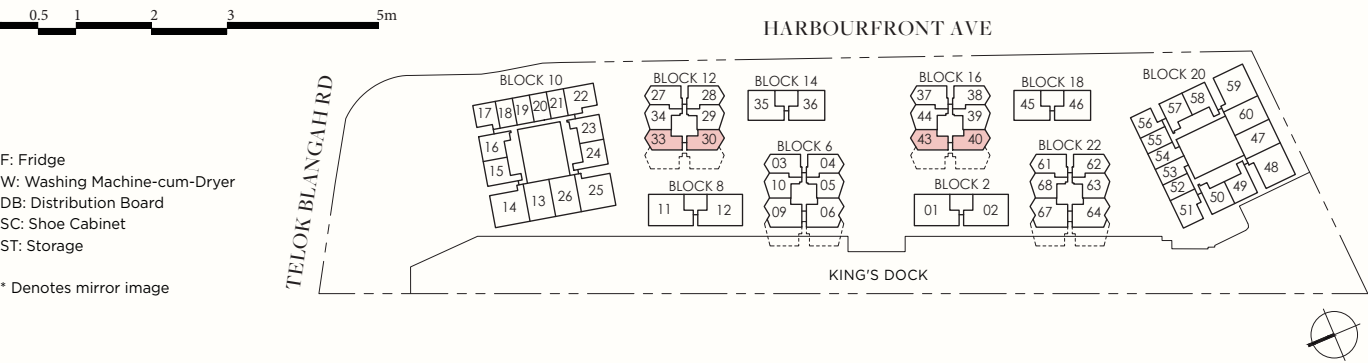
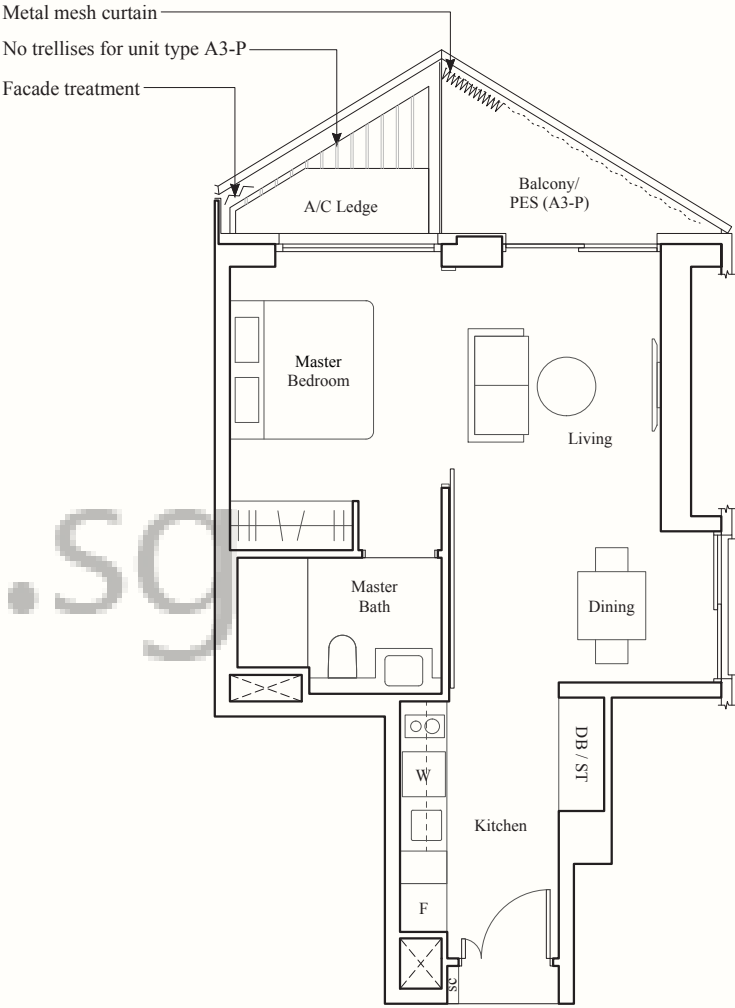
55 SQM / 592 SQFT

BLK 12

#01-30

BLK 16

#01-40



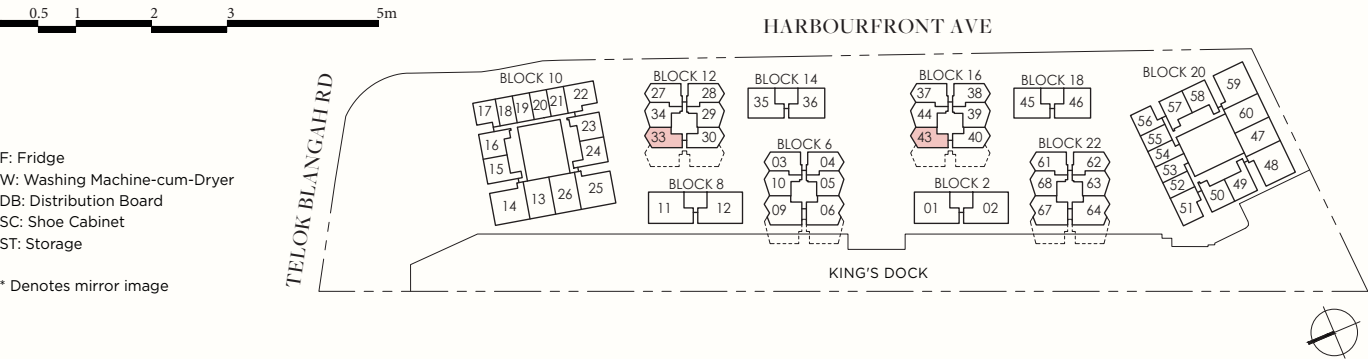
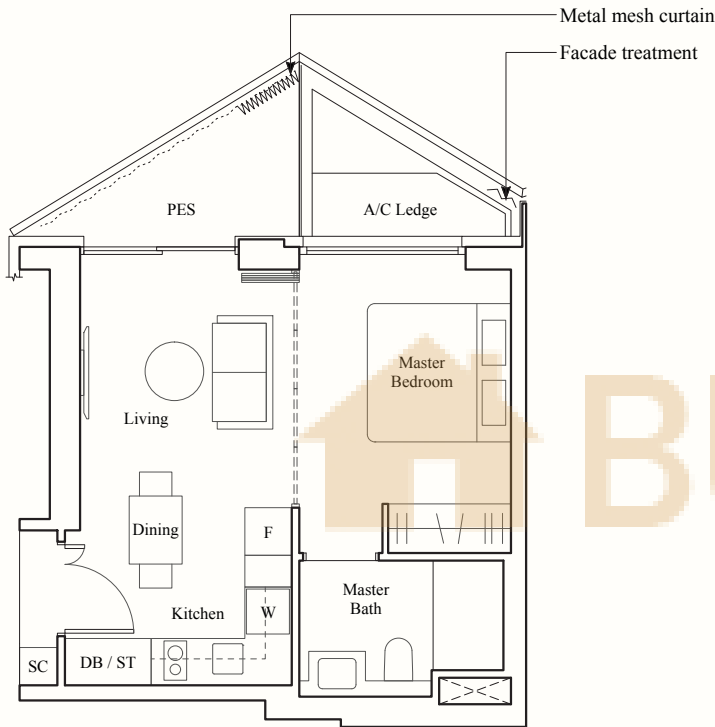
AREA INCLUDES AIR-CON (A/C) LEDGE, BALCONY, PRIVATE ENCLOSED SPACE (PES) AND STRATA VOID AREA WHERE APPLICABLE. SOME UNITS ARE MIRROR IMAGES OF THE PLAN SHOWN IN THE BROCHURE. PLEASE REFER TO THE KEY PLAN FOR ORIENTATION. THE PLANS ARE SUBJECT TO CHANGE AS MAY BE REQUIRED BY THE RELEVANT AUTHORITIES. ALL MEASUREMENTS ARE APPROXIMATE ONLY AND ARE SUBJECT TO GOVERNMENT RE-SURVEY. THE BALCONY SHALL NOT BE ENCLOSED UNLESS WITH THE APPROVED BALCONY SCREEN.

1-BEDROOM

TYPE A4-P
45 SQM / 484 SQFT

BLK 12
#01-33

BLK 16
#01-43



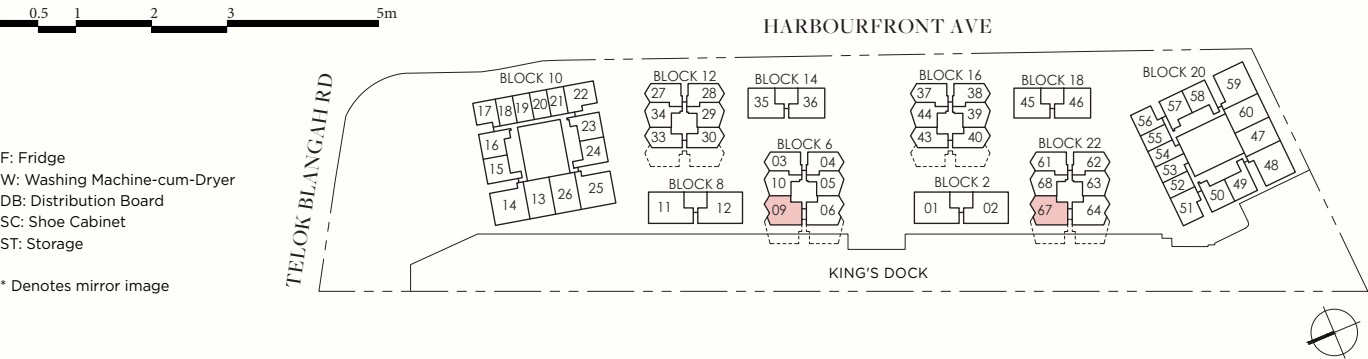
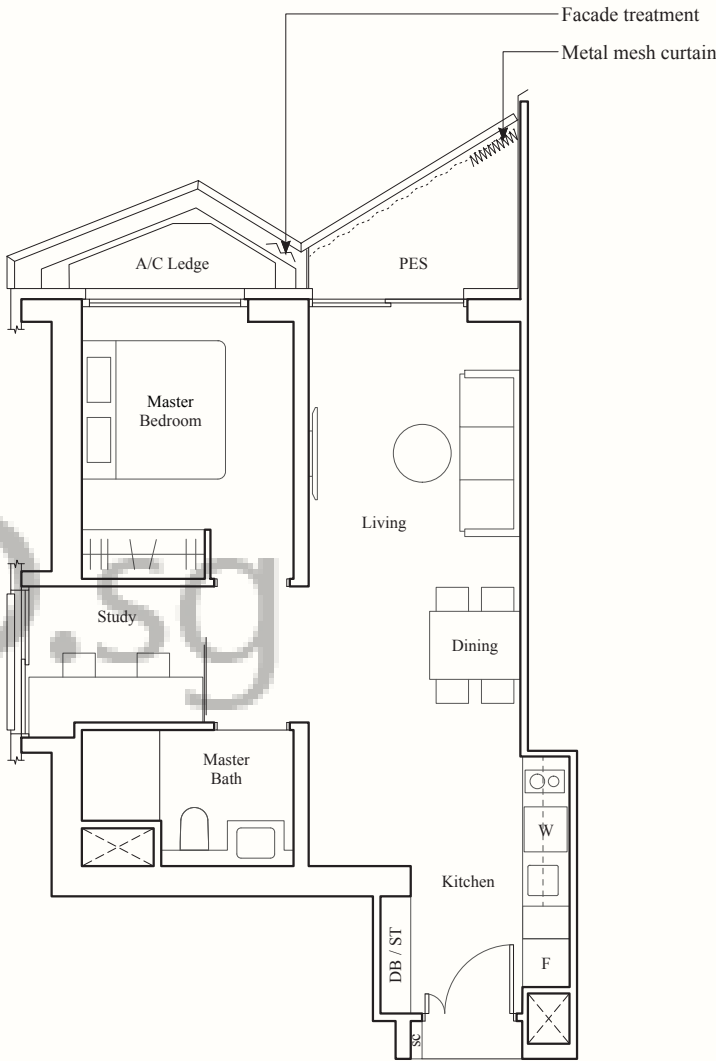
AREA INCLUDES AIR-CON (A/C) LEDGE, BALCONY, PRIVATE ENCLOSED SPACE (PES) AND STRATA VOID AREA WHERE APPLICABLE. SOME UNITS ARE MIRROR IMAGES OF THE PLAN SHOWN IN THE BROCHURE. PLEASE REFER TO THE KEY PLAN FOR ORIENTATION. THE PLANS ARE SUBJECT TO CHANGE AS MAY BE REQUIRED BY THE RELEVANT AUTHORITIES. ALL MEASUREMENTS ARE APPROXIMATE ONLY AND ARE SUBJECT TO GOVERNMENT RE-SURVEY. THE BALCONY SHALL NOT BE ENCLOSED UNLESS WITH THE APPROVED BALCONY SCREEN.

1-BEDROOM + STUDY

TYPE AS1-P
61 SQM / 657 SQFT

BLK 6
#01-09

BLK 22
#01-67



AREA INCLUDES AIR-CON (A/C) LEDGE, BALCONY, PRIVATE ENCLOSED SPACE (PES) AND STRATA VOID AREA WHERE APPLICABLE. SOME UNITS ARE MIRROR IMAGES OF THE PLAN SHOWN IN THE BROCHURE. PLEASE REFER TO THE KEY PLAN FOR ORIENTATION. THE PLANS ARE SUBJECT TO CHANGE AS MAY BE REQUIRED BY THE RELEVANT AUTHORITIES. ALL MEASUREMENTS ARE APPROXIMATE ONLY AND ARE SUBJECT TO GOVERNMENT RE-SURVEY. THE BALCONY SHALL NOT BE ENCLOSED UNLESS WITH THE APPROVED BALCONY SCREEN.

2-BEDROOM

TYPE B1a
63 SQM / 678 SQFT

BLK 10
#01-15 to #10-15

TYPE B1
68 SQM / 732 SQFT

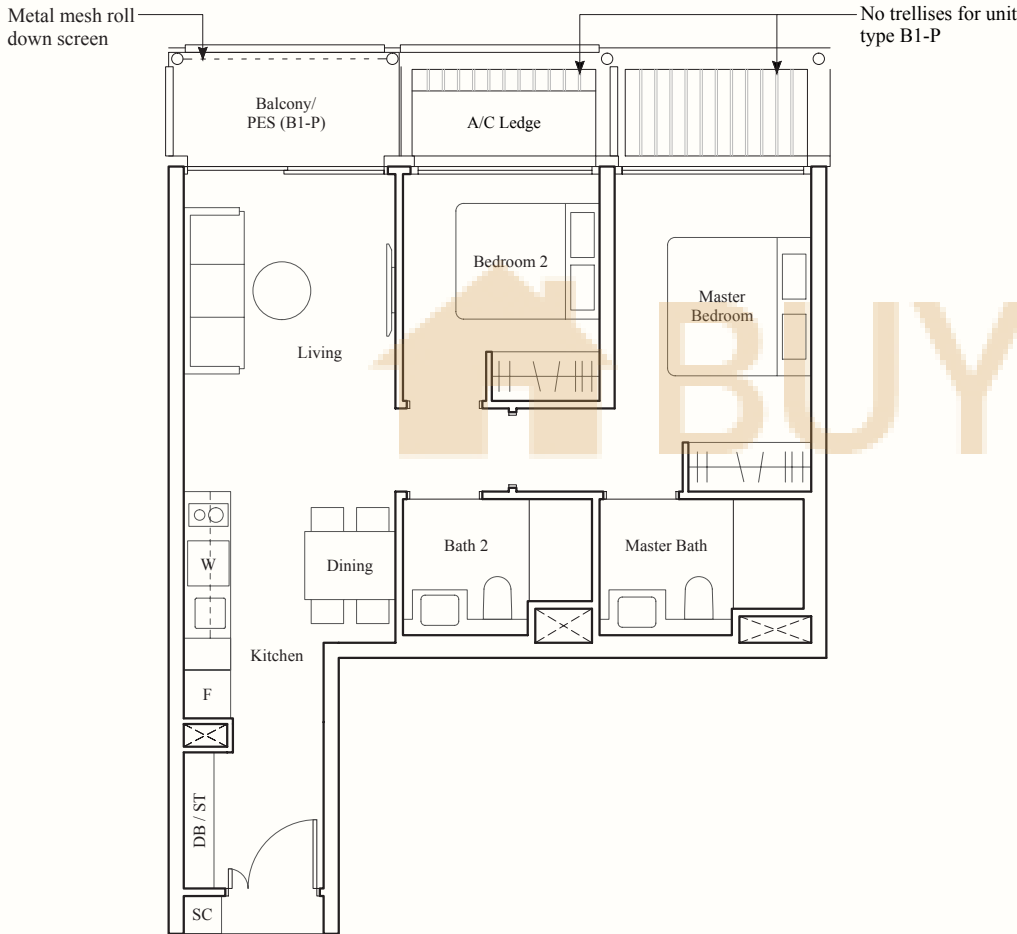
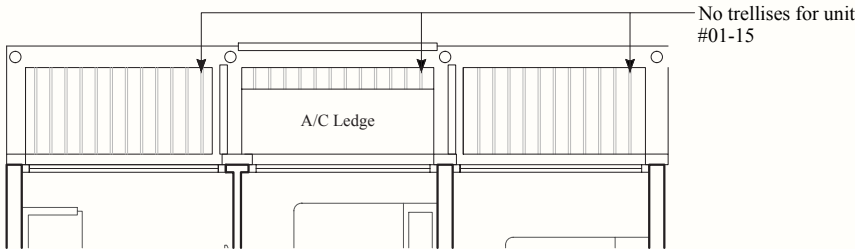
BLK 10
#02-24* to #10-24*

BLK 20
#02-49 to #05-49
#02-58* to #05-58*

TYPE B1-P
68 SQM / 732 SQFT

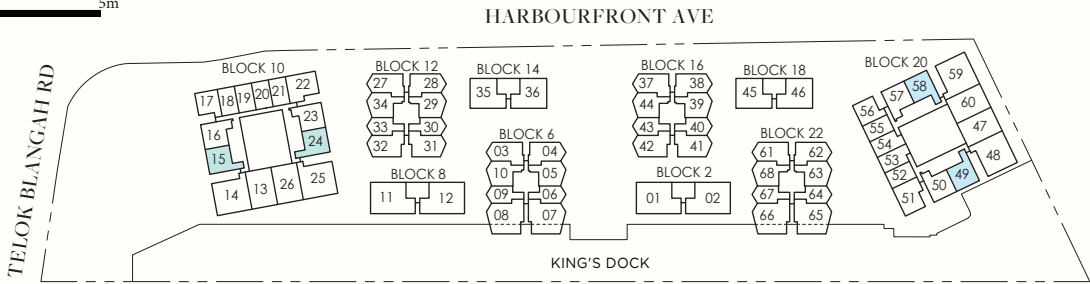
BLK 10
#01-24*

BLK 20
#01-49, #01-58*



F: Fridge
W: Washing Machine-cum-Dryer
DB: Distribution Board
SC: Shoe Cabinet
ST: Storage

* Denotes mirror image



AREA INCLUDES AIR-CON (A/C) LEDGE, BALCONY, PRIVATE ENCLOSED SPACE (PES) AND STRATA VOID AREA WHERE APPLICABLE. SOME UNITS ARE MIRROR IMAGES OF THE PLAN SHOWN IN THE BROCHURE. PLEASE REFER TO THE KEY PLAN FOR ORIENTATION. THE PLANS ARE SUBJECT TO CHANGE AS MAY BE REQUIRED BY THE RELEVANT AUTHORITIES. ALL MEASUREMENTS ARE APPROXIMATE ONLY AND ARE SUBJECT TO GOVERNMENT RE-SURVEY. THE BALCONY SHALL NOT BE ENCLOSED UNLESS WITH THE APPROVED BALCONY SCREEN.

2-BEDROOM

TYPE B2a
64 SQM / 689 SQFT

BLK 10
#01-16 to #10-16

TYPE B2b
69 SQM / 743 SQFT

BLK 20
#02-57*

TYPE B2b-P
69 SQM / 743 SQFT

BLK 20
#01-57*

TYPE B2
69 SQM / 743 SQFT

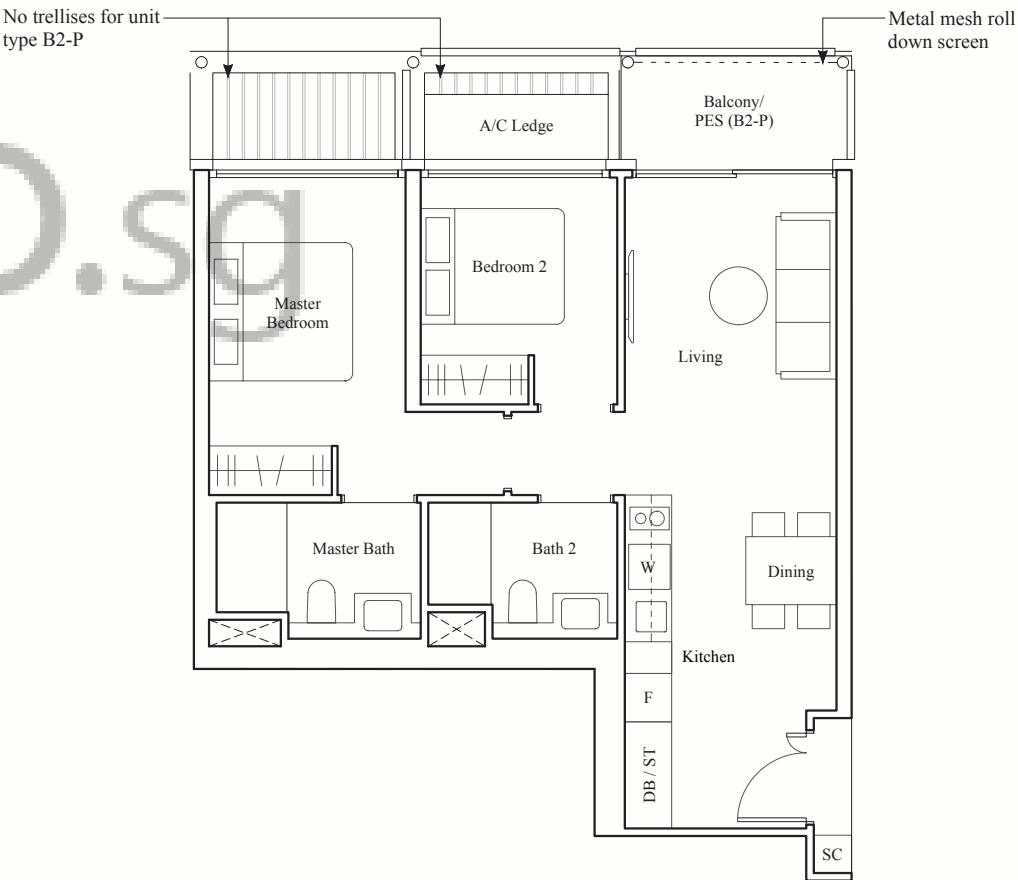
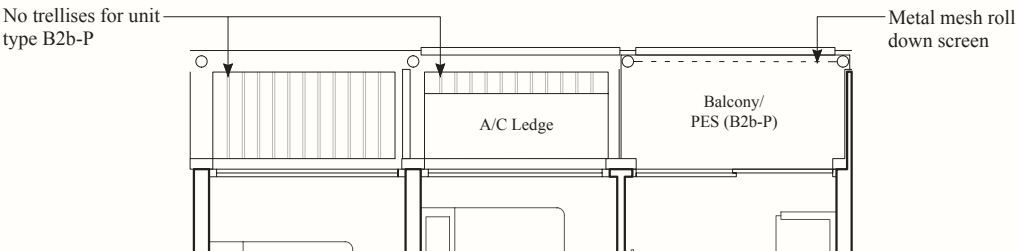
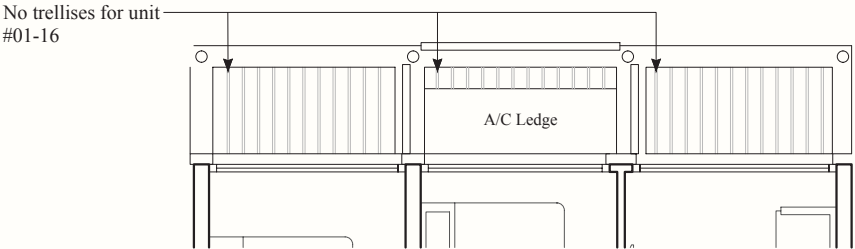
BLK 10
#02-23* to #10-23*

BLK 20
#02-50 to #05-50
#03-57* to #05-57*

TYPE B2-P
69 SQM / 743 SQFT

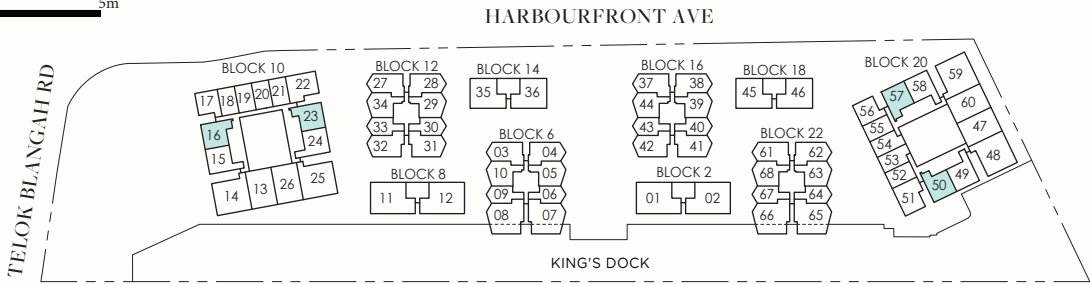
BLK 10
#01-23*

BLK 20
#01-50



F: Fridge
W: Washing Machine-cum-Dryer
DB: Distribution Board
SC: Shoe Cabinet
ST: Storage

* Denotes mirror image



AREA INCLUDES AIR-CON (A/C) LEDGE, BALCONY, PRIVATE ENCLOSED SPACE (PES) AND STRATA VOID AREA WHERE APPLICABLE. SOME UNITS ARE MIRROR IMAGES OF THE PLAN SHOWN IN THE BROCHURE. PLEASE REFER TO THE KEY PLAN FOR ORIENTATION. THE PLANS ARE SUBJECT TO CHANGE AS MAY BE REQUIRED BY THE RELEVANT AUTHORITIES. ALL MEASUREMENTS ARE APPROXIMATE ONLY AND ARE SUBJECT TO GOVERNMENT RE-SURVEY. THE BALCONY SHALL NOT BE ENCLOSED UNLESS WITH THE APPROVED BALCONY SCREEN.

2-BEDROOM

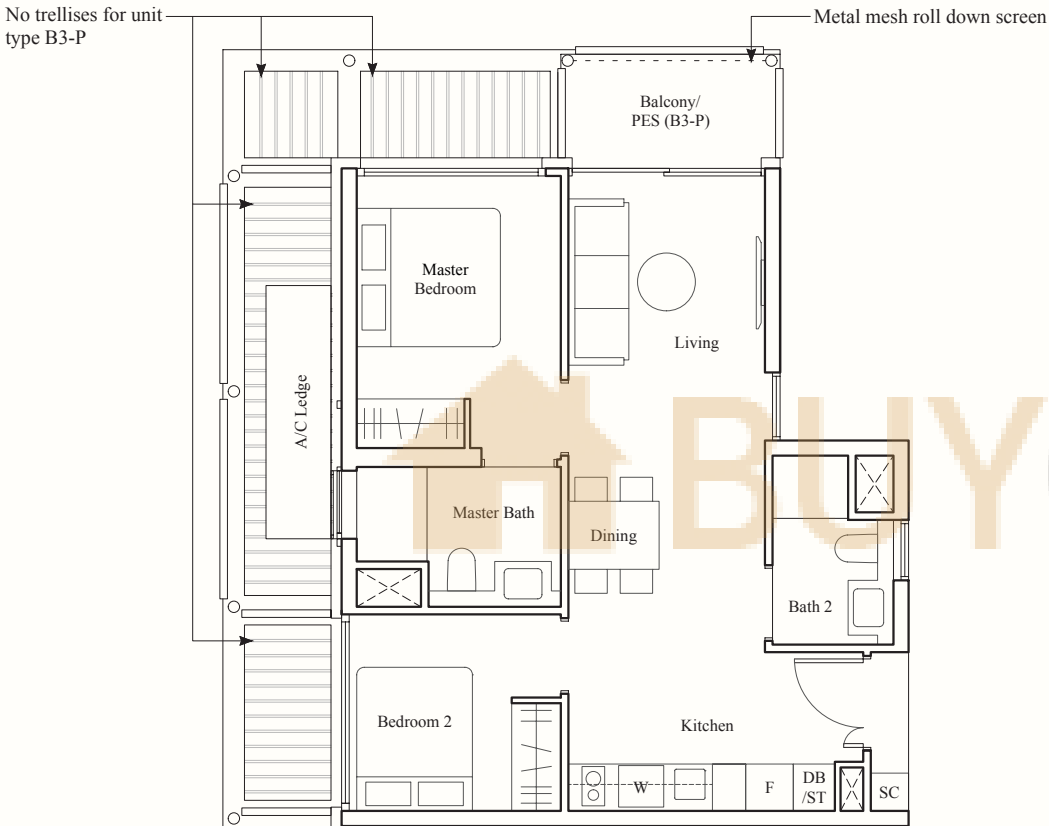
TYPE B₃
64 SQM / 689 SQFT

BLK 10
#02-22 to #10-22

BLK 20
#02-51* to #05-51*

TYPE B₃-P
64 SQM / 689 SQFT

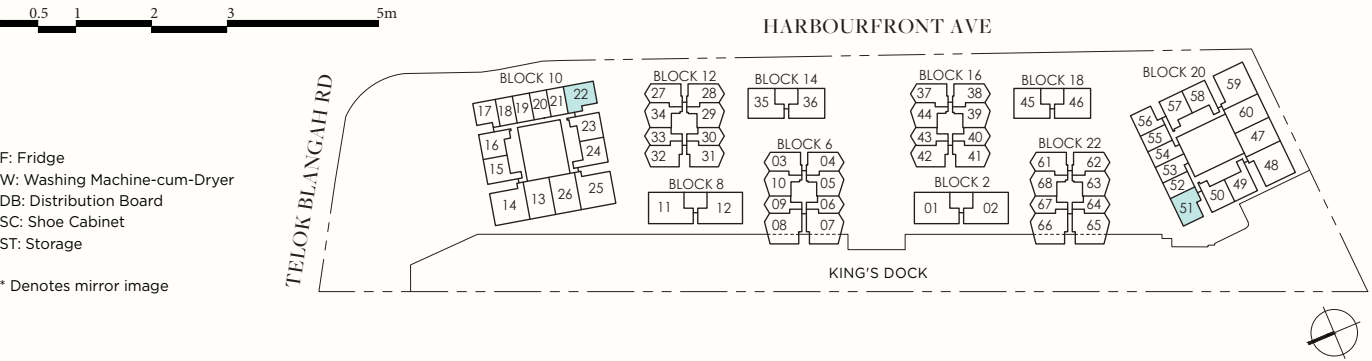
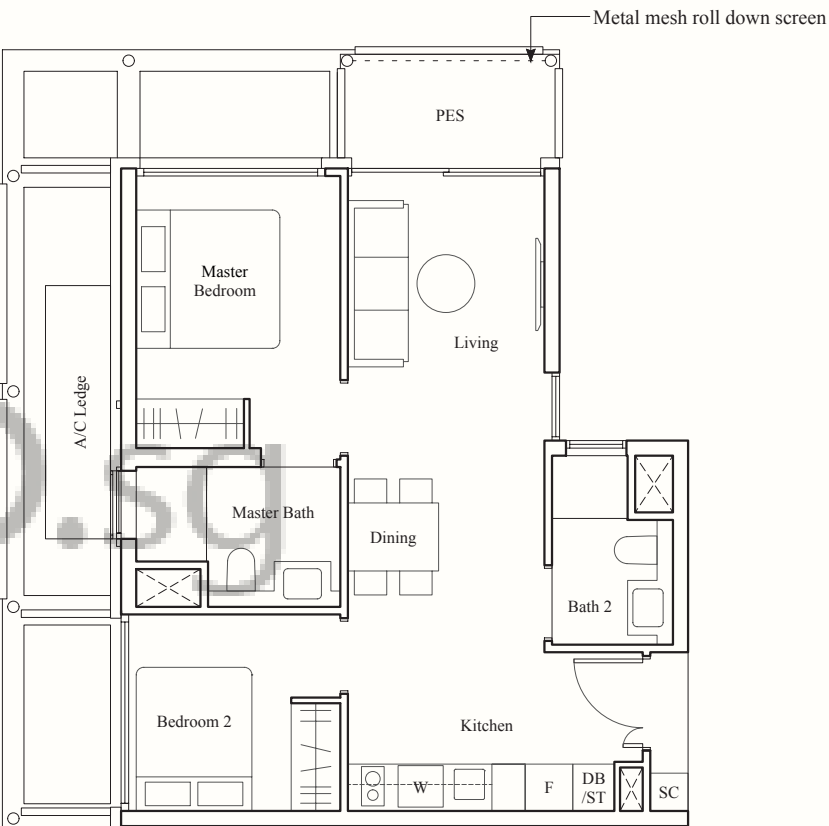
BLK 20
#01-51*



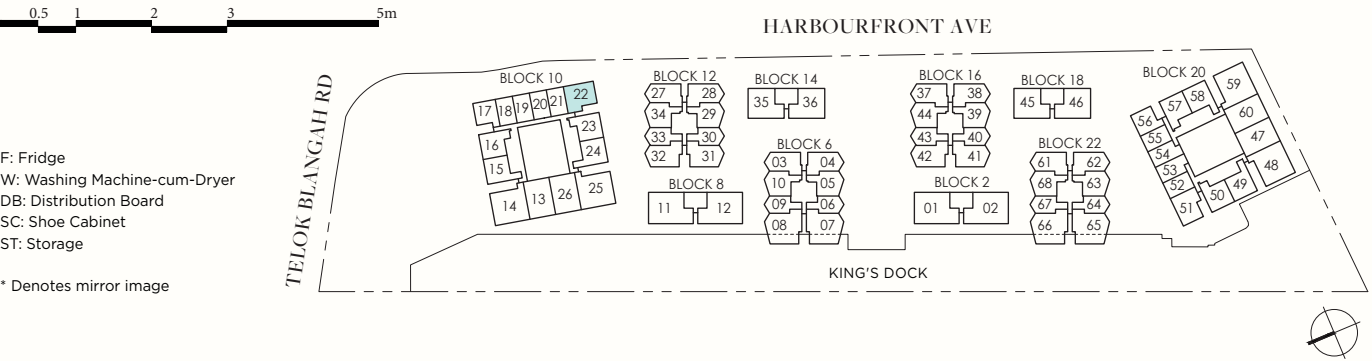
2-BEDROOM

TYPE B_{3a}-P
64 SQM / 689 SQFT

BLK 10
#01-22



AREA INCLUDES AIR-CON (A/C) LEDGE, BALCONY, PRIVATE ENCLOSED SPACE (PES) AND STRATA VOID AREA WHERE APPLICABLE. SOME UNITS ARE MIRROR IMAGES OF THE PLAN SHOWN IN THE BROCHURE. PLEASE REFER TO THE KEY PLAN FOR ORIENTATION. THE PLANS ARE SUBJECT TO CHANGE AS MAY BE REQUIRED BY THE RELEVANT AUTHORITIES. ALL MEASUREMENTS ARE APPROXIMATE ONLY AND ARE SUBJECT TO GOVERNMENT RE-SURVEY. THE BALCONY SHALL NOT BE ENCLOSED UNLESS WITH THE APPROVED BALCONY SCREEN.



AREA INCLUDES AIR-CON (A/C) LEDGE, BALCONY, PRIVATE ENCLOSED SPACE (PES) AND STRATA VOID AREA WHERE APPLICABLE. SOME UNITS ARE MIRROR IMAGES OF THE PLAN SHOWN IN THE BROCHURE. PLEASE REFER TO THE KEY PLAN FOR ORIENTATION. THE PLANS ARE SUBJECT TO CHANGE AS MAY BE REQUIRED BY THE RELEVANT AUTHORITIES. ALL MEASUREMENTS ARE APPROXIMATE ONLY AND ARE SUBJECT TO GOVERNMENT RE-SURVEY. THE BALCONY SHALL NOT BE ENCLOSED UNLESS WITH THE APPROVED BALCONY SCREEN.

2-BEDROOM

TYPE B4

71 SQM / 764 SQFT

BLK 6
#02-05 to #08-05

BLK 12
#02-29 to #08-29

BLK 16
#02-39 to #08-39

BLK 22
#02-63 to #07-63

TYPE B4-P

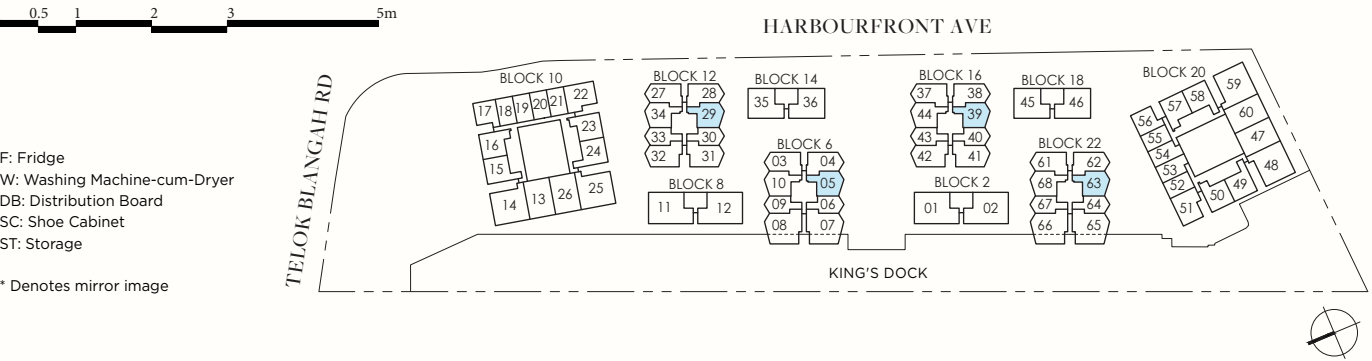
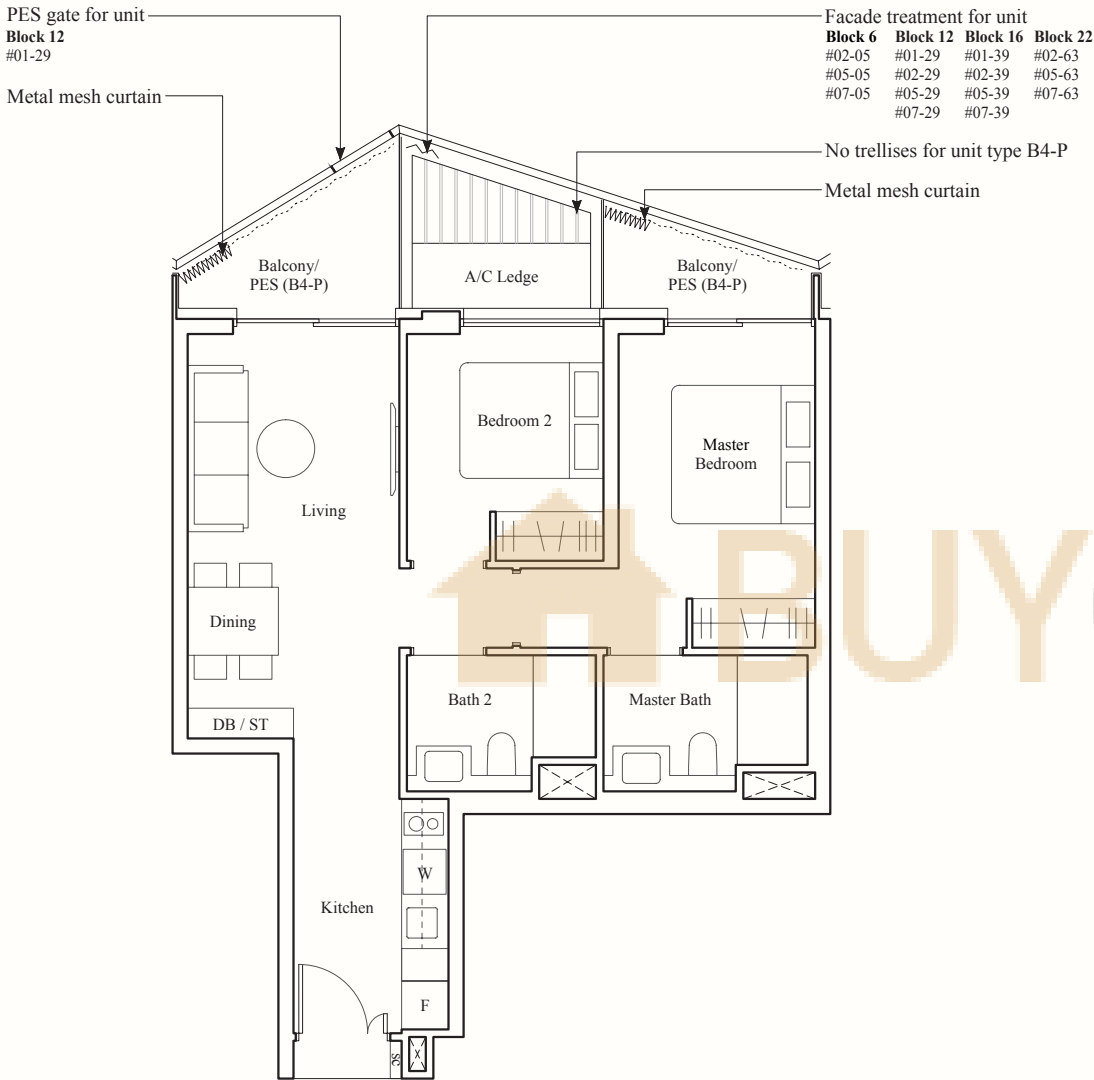
71 SQM / 764 SQFT

BLK 6
#01-05

BLK 12
#01-29

BLK 16
#01-39

BLK 22
#01-63



AREA INCLUDES AIR-CON (A/C) LEDGE, BALCONY, PRIVATE ENCLOSED SPACE (PES) AND STRATA VOID AREA WHERE APPLICABLE. SOME UNITS ARE MIRROR IMAGES OF THE PLAN SHOWN IN THE BROCHURE. PLEASE REFER TO THE KEY PLAN FOR ORIENTATION. THE PLANS ARE SUBJECT TO CHANGE AS MAY BE REQUIRED BY THE RELEVANT AUTHORITIES. ALL MEASUREMENTS ARE APPROXIMATE ONLY AND ARE SUBJECT TO GOVERNMENT RE-SURVEY. THE BALCONY SHALL NOT BE ENCLOSED UNLESS WITH THE APPROVED BALCONY SCREEN.

2-BEDROOM

TYPE B5

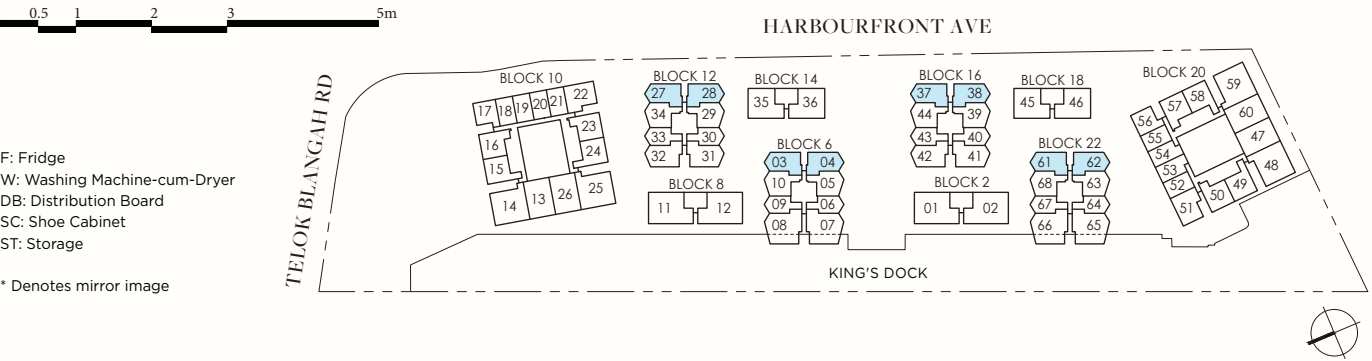
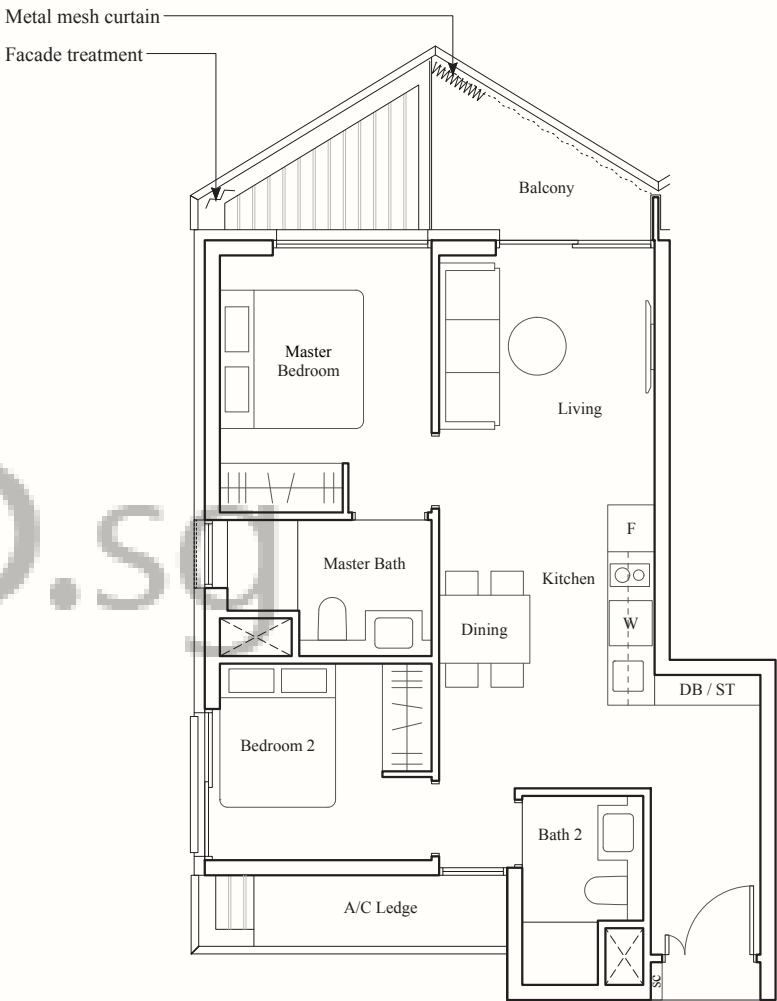
67 SQM / 721 SQFT

BLK 6
#02-03* to #08-03*
#02-04 to #08-04

BLK 12
#02-27* to #08-27*
#02-28 to #08-28

BLK 16
#02-37* to #08-37*
#02-38 to #08-38

BLK 22
#02-61* to #07-61*
#02-62 to #07-62



AREA INCLUDES AIR-CON (A/C) LEDGE, BALCONY, PRIVATE ENCLOSED SPACE (PES) AND STRATA VOID AREA WHERE APPLICABLE. SOME UNITS ARE MIRROR IMAGES OF THE PLAN SHOWN IN THE BROCHURE. PLEASE REFER TO THE KEY PLAN FOR ORIENTATION. THE PLANS ARE SUBJECT TO CHANGE AS MAY BE REQUIRED BY THE RELEVANT AUTHORITIES. ALL MEASUREMENTS ARE APPROXIMATE ONLY AND ARE SUBJECT TO GOVERNMENT RE-SURVEY. THE BALCONY SHALL NOT BE ENCLOSED UNLESS WITH THE APPROVED BALCONY SCREEN.

2-BEDROOM

TYPE B5-P

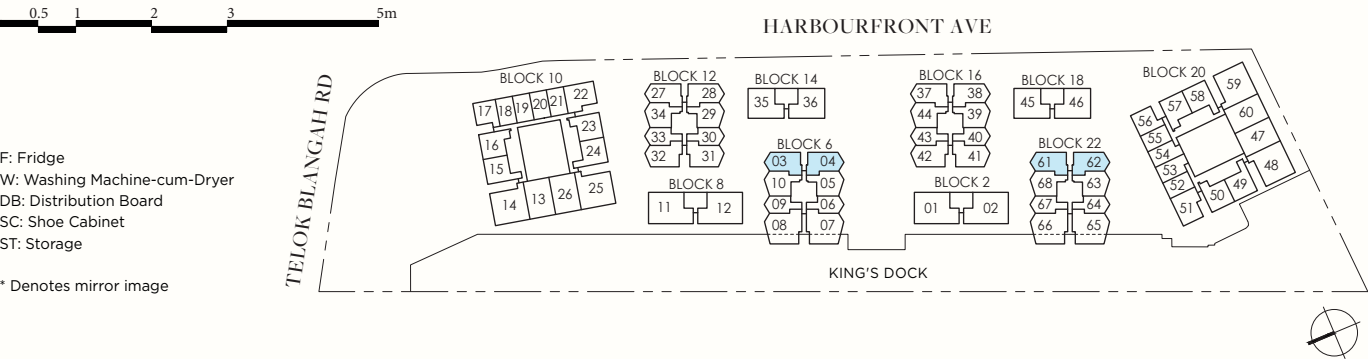
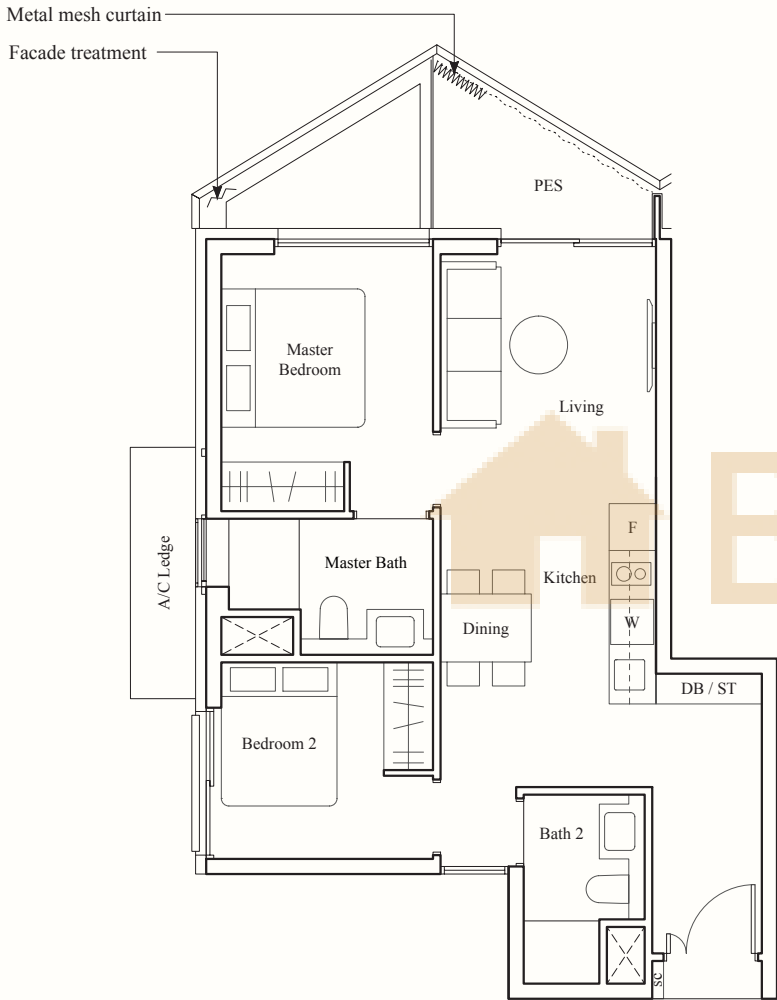
67 SQM / 721 SQFT

BLK 6

#01-03*, #01-04

BLK 22

#01-61*, #01-62



AREA INCLUDES AIR-CON (A/C) LEDGE, BALCONY, PRIVATE ENCLOSED SPACE (PES) AND STRATA VOID AREA WHERE APPLICABLE. SOME UNITS ARE MIRROR IMAGES OF THE PLAN SHOWN IN THE BROCHURE. PLEASE REFER TO THE KEY PLAN FOR ORIENTATION. THE PLANS ARE SUBJECT TO CHANGE AS MAY BE REQUIRED BY THE RELEVANT AUTHORITIES. ALL MEASUREMENTS ARE APPROXIMATE ONLY AND ARE SUBJECT TO GOVERNMENT RE-SURVEY. THE BALCONY SHALL NOT BE ENCLOSED UNLESS WITH THE APPROVED BALCONY SCREEN.

2-BEDROOM

TYPE B6

70 SQM / 753 SQFT

BLK 6

#02-10 to #08-10

BLK 12

#02-34 to #08-34

BLK 16

#02-44 to #08-44

BLK 22

#02-68 to #07-68

TYPE B6-P

70 SQM / 753 SQFT

BLK 6

#01-10

BLK 12

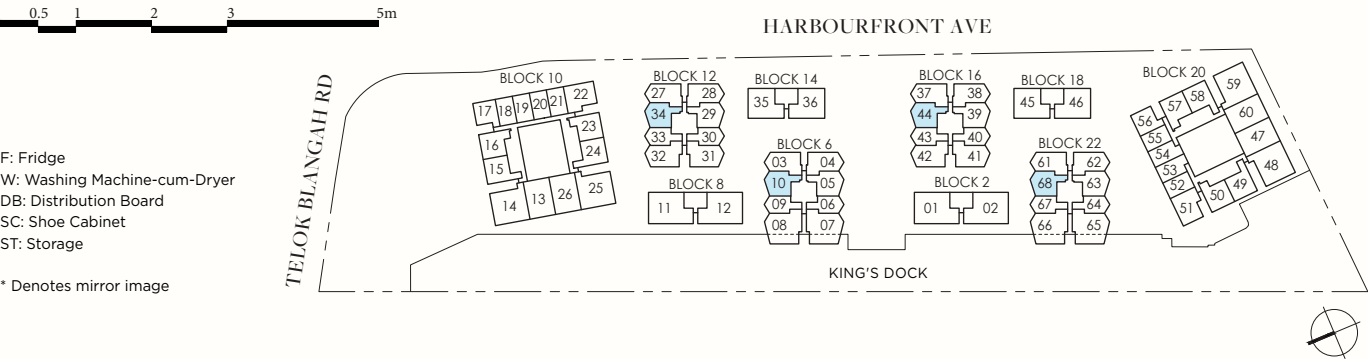
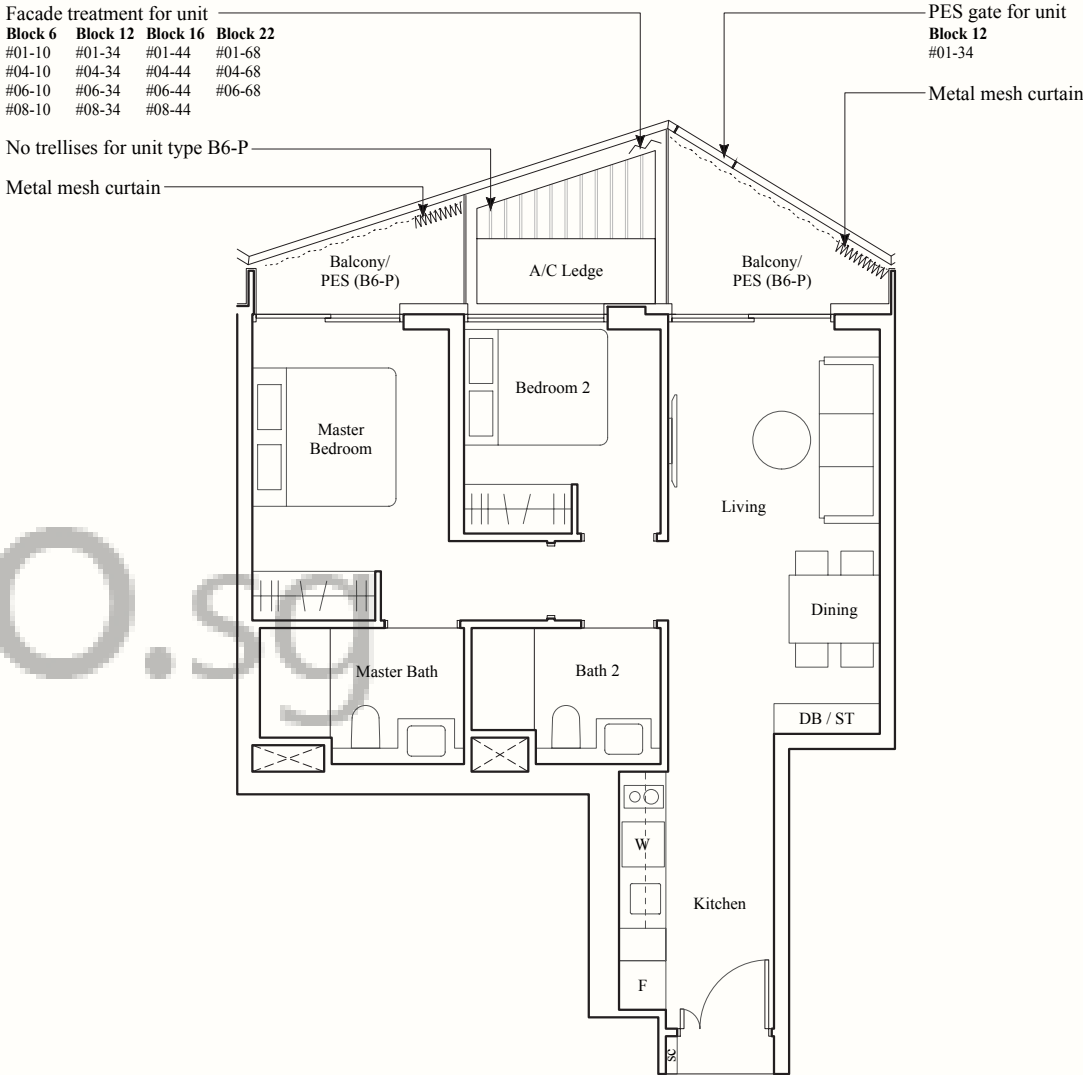
#01-34

BLK 16

#01-44

BLK 22

#01-68



AREA INCLUDES AIR-CON (A/C) LEDGE, BALCONY, PRIVATE ENCLOSED SPACE (PES) AND STRATA VOID AREA WHERE APPLICABLE. SOME UNITS ARE MIRROR IMAGES OF THE PLAN SHOWN IN THE BROCHURE. PLEASE REFER TO THE KEY PLAN FOR ORIENTATION. THE PLANS ARE SUBJECT TO CHANGE AS MAY BE REQUIRED BY THE RELEVANT AUTHORITIES. ALL MEASUREMENTS ARE APPROXIMATE ONLY AND ARE SUBJECT TO GOVERNMENT RE-SURVEY. THE BALCONY SHALL NOT BE ENCLOSED UNLESS WITH THE APPROVED BALCONY SCREEN.

2-BEDROOM + STUDY

TYPE BS1

83 SQM / 893 SQFT

BLK 6
#02-06, #02-09*

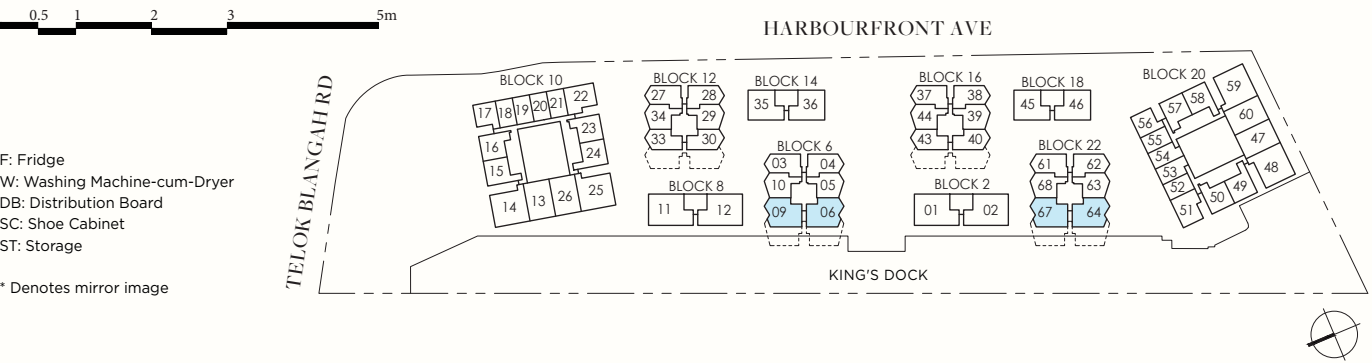
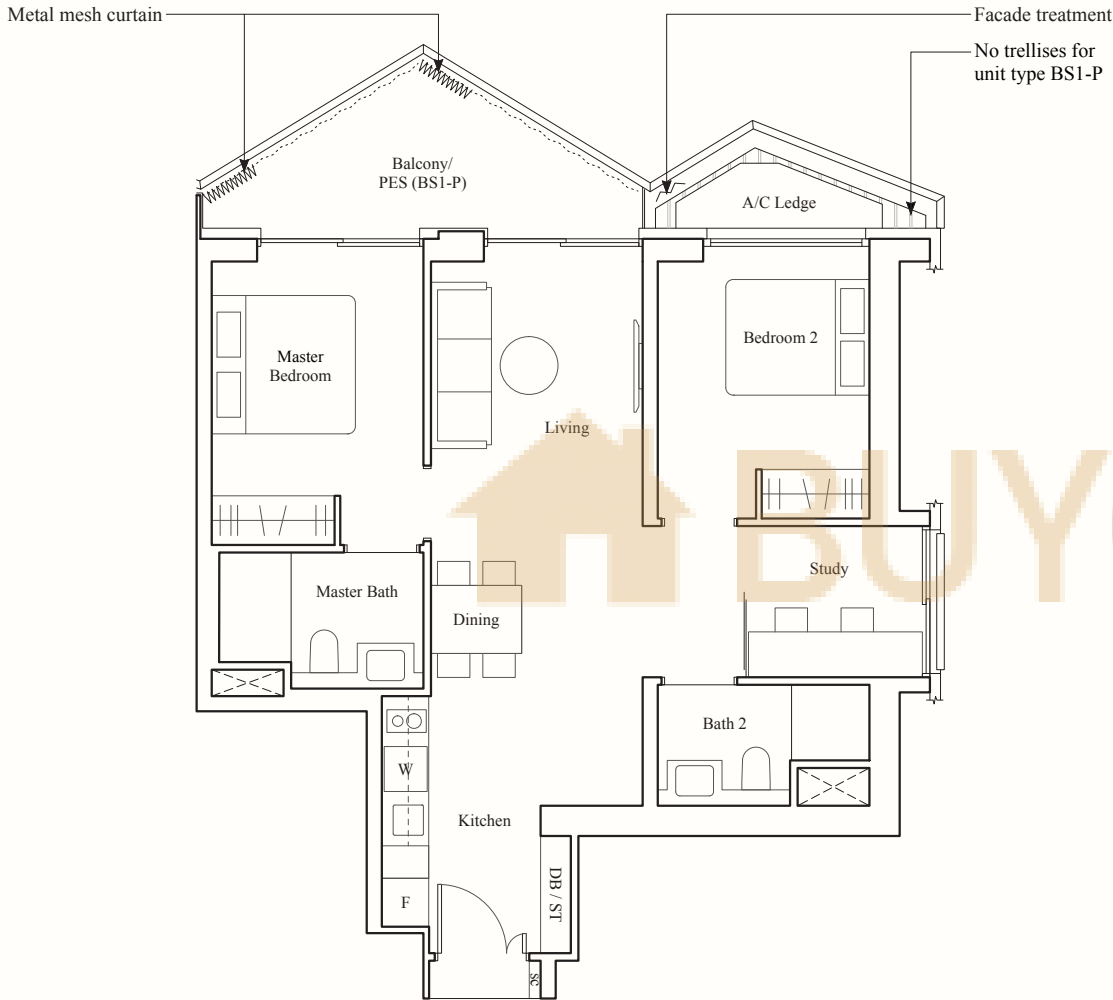
BLK 22
#02-64, #02-67*

TYPE BS1-P

83 SQM / 893 SQFT

BLK 6
#01-06

BLK 22
#01-64



AREA INCLUDES AIR-CON (A/C) LEDGE, BALCONY, PRIVATE ENCLOSED SPACE (PES) AND STRATA VOID AREA WHERE APPLICABLE. SOME UNITS ARE MIRROR IMAGES OF THE PLAN SHOWN IN THE BROCHURE. PLEASE REFER TO THE KEY PLAN FOR ORIENTATION. THE PLANS ARE SUBJECT TO CHANGE AS MAY BE REQUIRED BY THE RELEVANT AUTHORITIES. ALL MEASUREMENTS ARE APPROXIMATE ONLY AND ARE SUBJECT TO GOVERNMENT RE-SURVEY. THE BALCONY SHALL NOT BE ENCLOSED UNLESS WITH THE APPROVED BALCONY SCREEN.

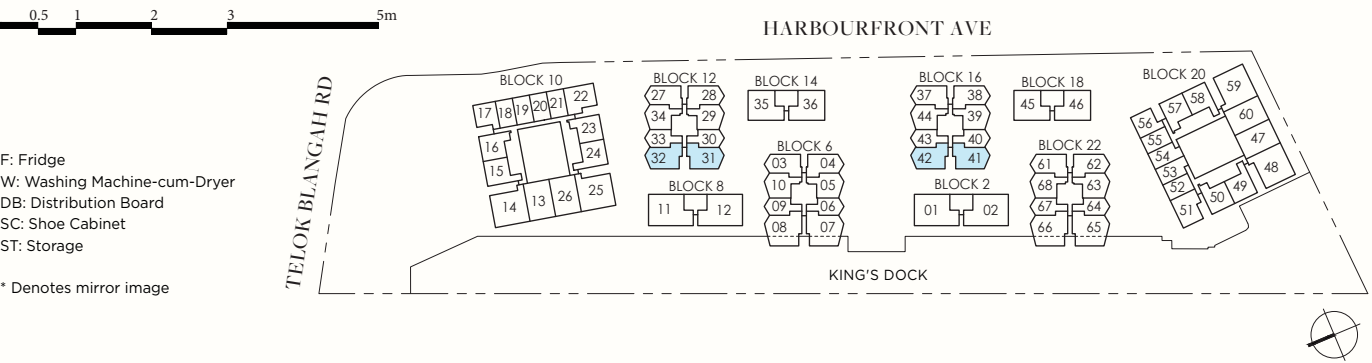
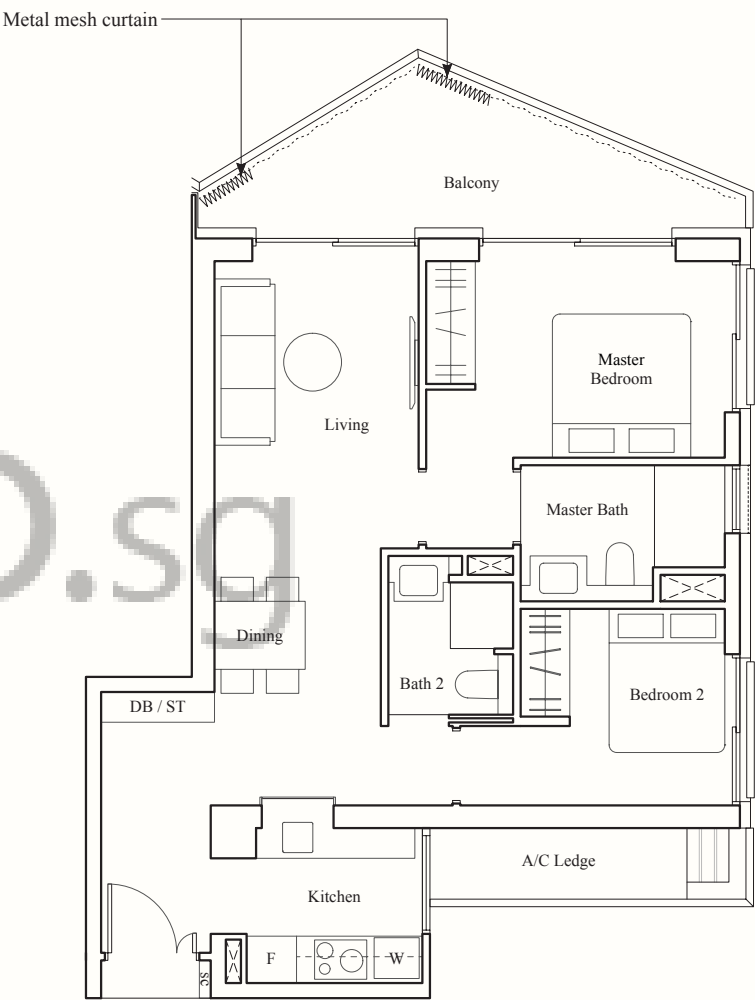
2-BEDROOM PREMIUM

TYPE BP1

82 SQM / 883 SQFT

BLK 12
#04-31 to #08-31
#04-32* to #08-32*

BLK 16
#04-41 to #08-41
#04-42* to #08-42*



AREA INCLUDES AIR-CON (A/C) LEDGE, BALCONY, PRIVATE ENCLOSED SPACE (PES) AND STRATA VOID AREA WHERE APPLICABLE. SOME UNITS ARE MIRROR IMAGES OF THE PLAN SHOWN IN THE BROCHURE. PLEASE REFER TO THE KEY PLAN FOR ORIENTATION. THE PLANS ARE SUBJECT TO CHANGE AS MAY BE REQUIRED BY THE RELEVANT AUTHORITIES. ALL MEASUREMENTS ARE APPROXIMATE ONLY AND ARE SUBJECT TO GOVERNMENT RE-SURVEY. THE BALCONY SHALL NOT BE ENCLOSED UNLESS WITH THE APPROVED BALCONY SCREEN.

2-BEDROOM VILLA

TYPE BV1

91 SQM / 980 SQFT

BLK 14
#02-35, #02-36*

BLK 18
#02-45, #02-46*

TYPE BV1-P

91 SQM / 980 SQFT

BLK 14
#01-36*

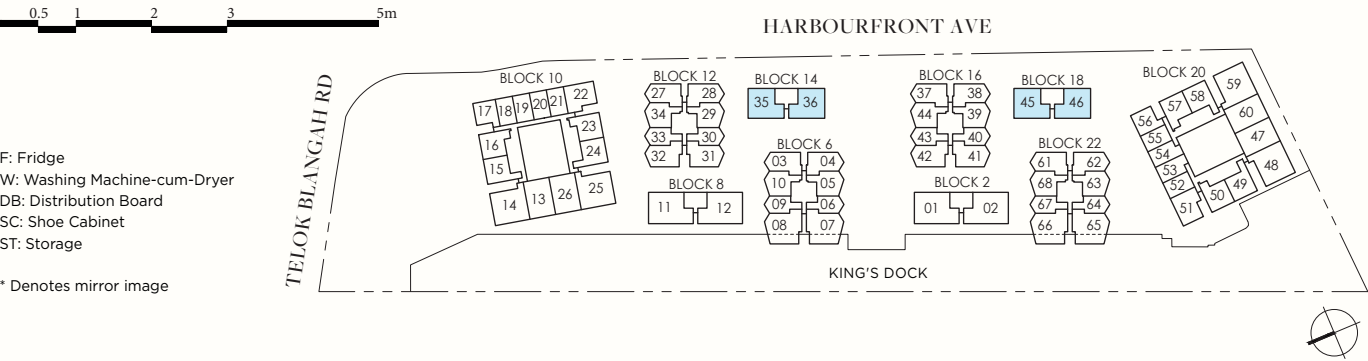
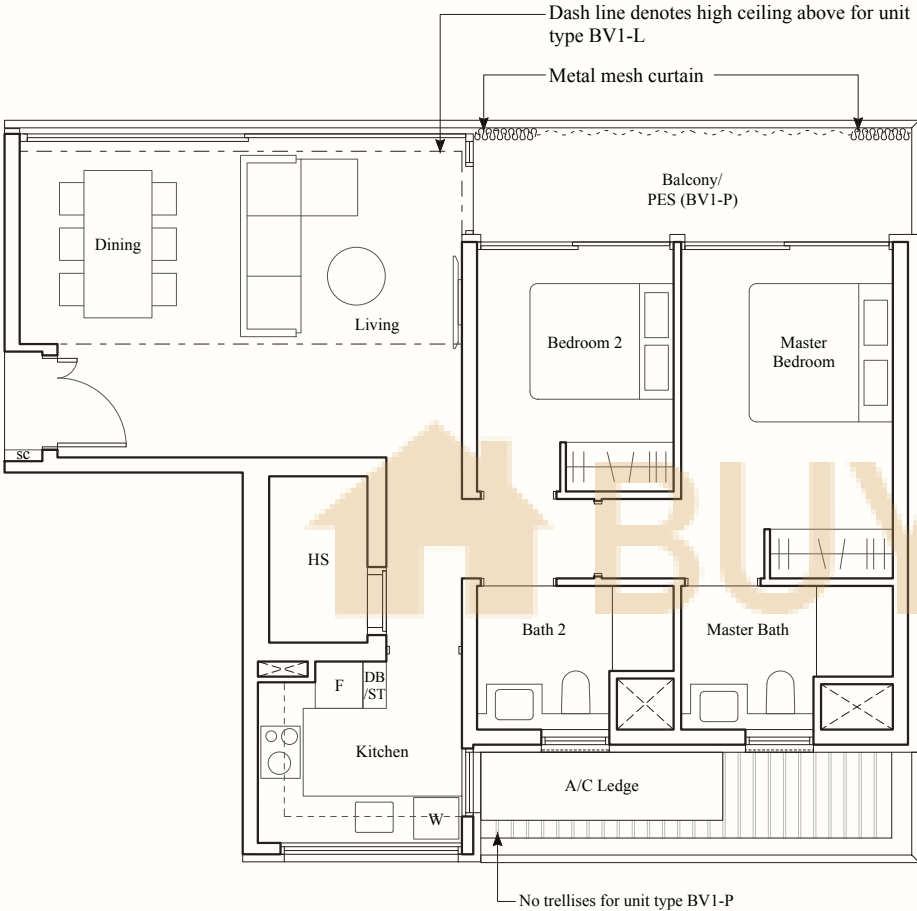
BLK 18
#01-46*

TYPE BV1-L

108 SQM / 1163 SQFT

BLK 14
#03-35, #03-36*

BLK 18
#03-45, #03-46*



AREA INCLUDES AIR-CON (A/C) LEDGE, BALCONY, PRIVATE ENCLOSED SPACE (PES) AND STRATA VOID AREA WHERE APPLICABLE. SOME UNITS ARE MIRROR IMAGES OF THE PLAN SHOWN IN THE BROCHURE. PLEASE REFER TO THE KEY PLAN FOR ORIENTATION. THE PLANS ARE SUBJECT TO CHANGE AS MAY BE REQUIRED BY THE RELEVANT AUTHORITIES. ALL MEASUREMENTS ARE APPROXIMATE ONLY AND ARE SUBJECT TO GOVERNMENT RE-SURVEY. THE BALCONY SHALL NOT BE ENCLOSED UNLESS WITH THE APPROVED BALCONY SCREEN.

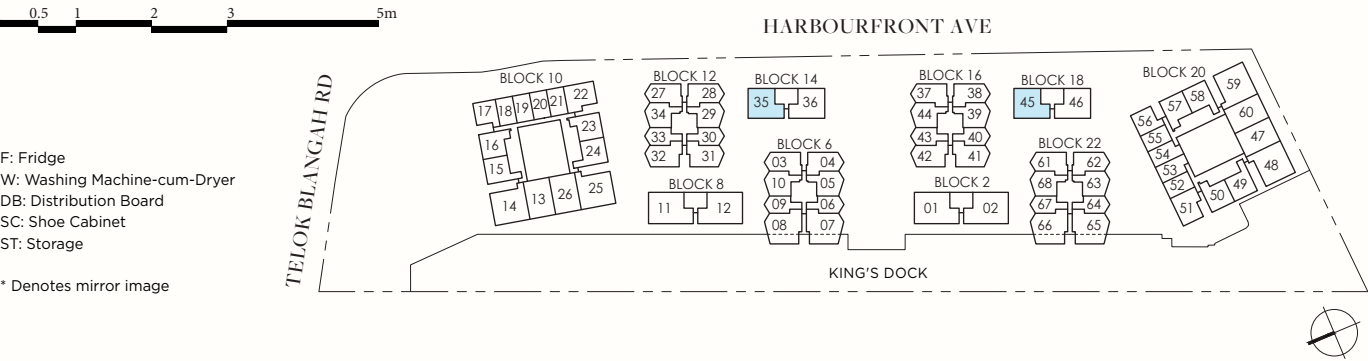
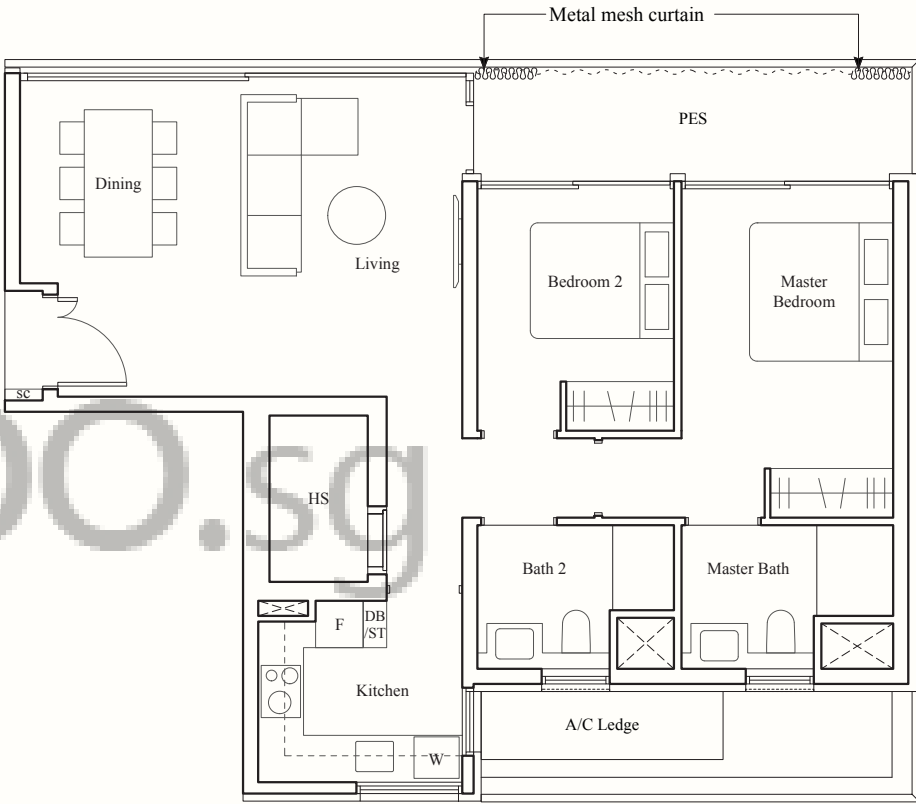
2-BEDROOM VILLA

TYPE BV1a-P

91 SQM / 980 SQFT

BLK 14
#01-35

BLK 18
#01-45



AREA INCLUDES AIR-CON (A/C) LEDGE, BALCONY, PRIVATE ENCLOSED SPACE (PES) AND STRATA VOID AREA WHERE APPLICABLE. SOME UNITS ARE MIRROR IMAGES OF THE PLAN SHOWN IN THE BROCHURE. PLEASE REFER TO THE KEY PLAN FOR ORIENTATION. THE PLANS ARE SUBJECT TO CHANGE AS MAY BE REQUIRED BY THE RELEVANT AUTHORITIES. ALL MEASUREMENTS ARE APPROXIMATE ONLY AND ARE SUBJECT TO GOVERNMENT RE-SURVEY. THE BALCONY SHALL NOT BE ENCLOSED UNLESS WITH THE APPROVED BALCONY SCREEN.

3-BEDROOM + STUDY

TYPE CS1

100 SQM / 1076 SQFT

BLK 10
#02-13 to #05-13,
#09-13 to #10-13
#03-26* to #10-26*

BLK 20
#02-47 to #04-47
#02-60* to #04-60*

TYPE CS1-P

100 SQM / 1076 SQFT

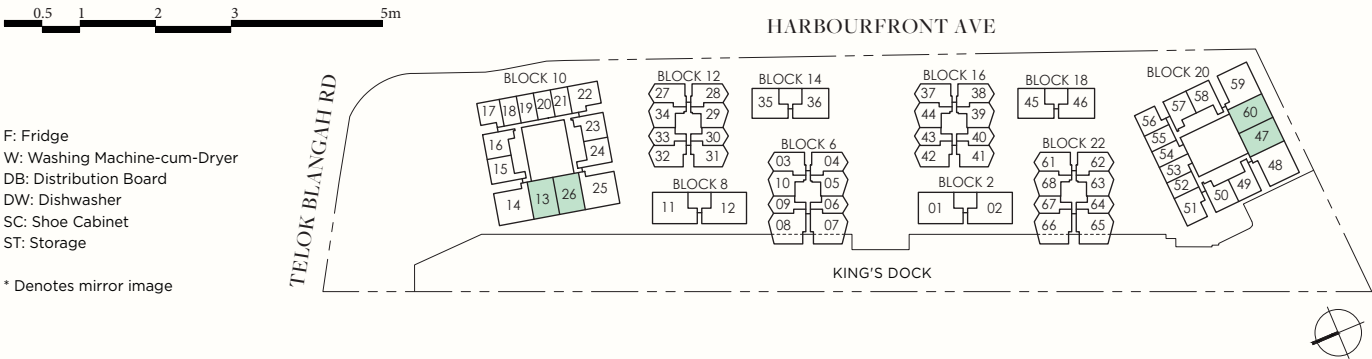
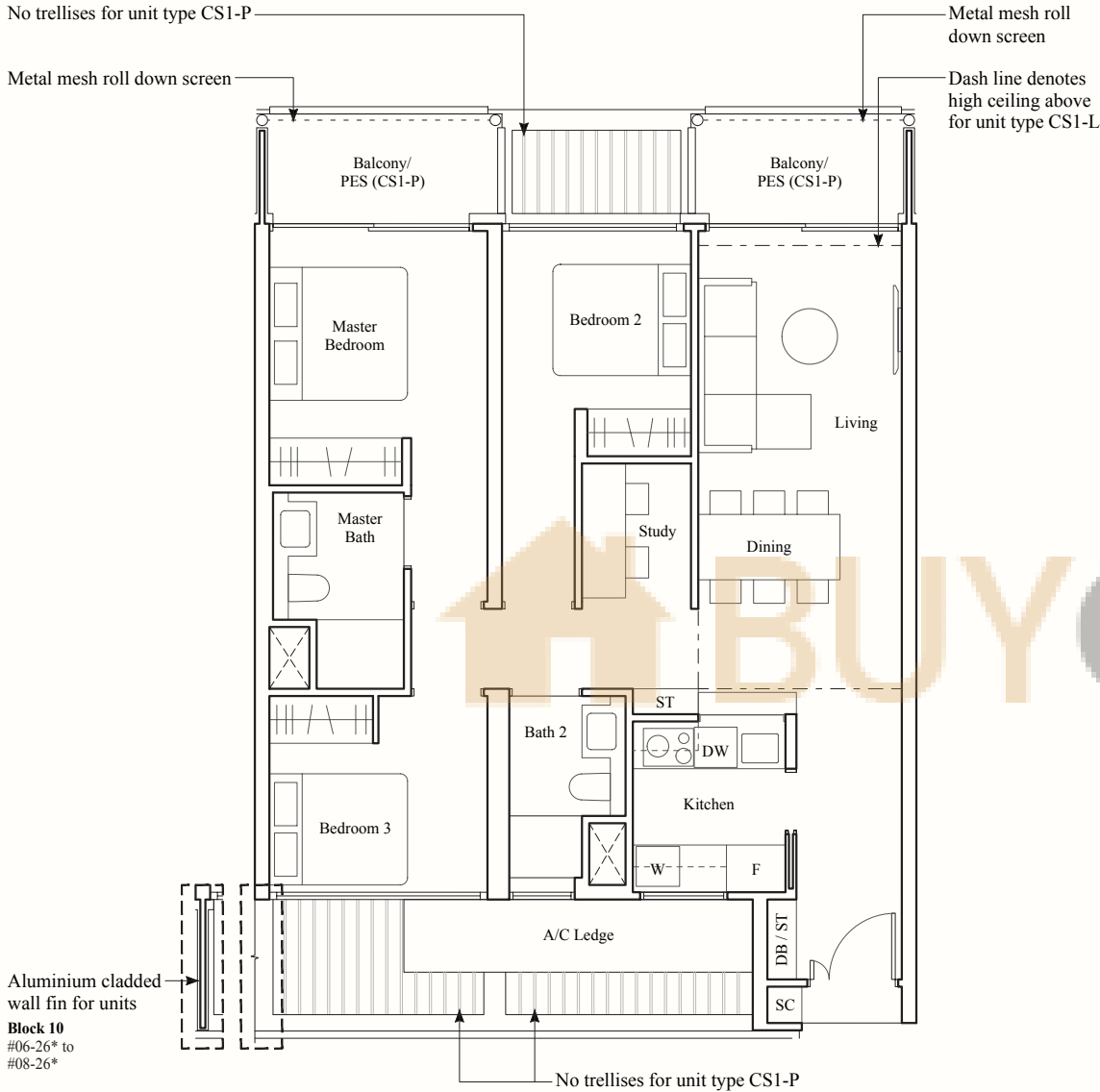
BLK 10
#01-13

BLK 20
#01-47, #01-60*

TYPE CS1-L

119 SQM / 1281 SQFT

BLK 20
#05-47, #05-60*



AREA INCLUDES AIR-CON (A/C) LEDGE, BALCONY, PRIVATE ENCLOSED SPACE (PES) AND STRATA VOID AREA WHERE APPLICABLE. SOME UNITS ARE MIRROR IMAGES OF THE PLAN SHOWN IN THE BROCHURE. PLEASE REFER TO THE KEY PLAN FOR ORIENTATION. THE PLANS ARE SUBJECT TO CHANGE AS MAY BE REQUIRED BY THE RELEVANT AUTHORITIES. ALL MEASUREMENTS ARE APPROXIMATE ONLY AND ARE SUBJECT TO GOVERNMENT RE-SURVEY. THE BALCONY SHALL NOT BE ENCLOSED UNLESS WITH THE APPROVED BALCONY SCREEN.

3-BEDROOM PREMIUM

TYPE CP1

113 SQM / 1216 SQFT

BLK 10
#02-14 to #05-14,
#09-14 to #10-14
#03-25* to #10-25*

BLK 20
#02-48 to #04-48
#02-59* to #04-59*

TYPE CP1-P

113 SQM / 1216 SQFT

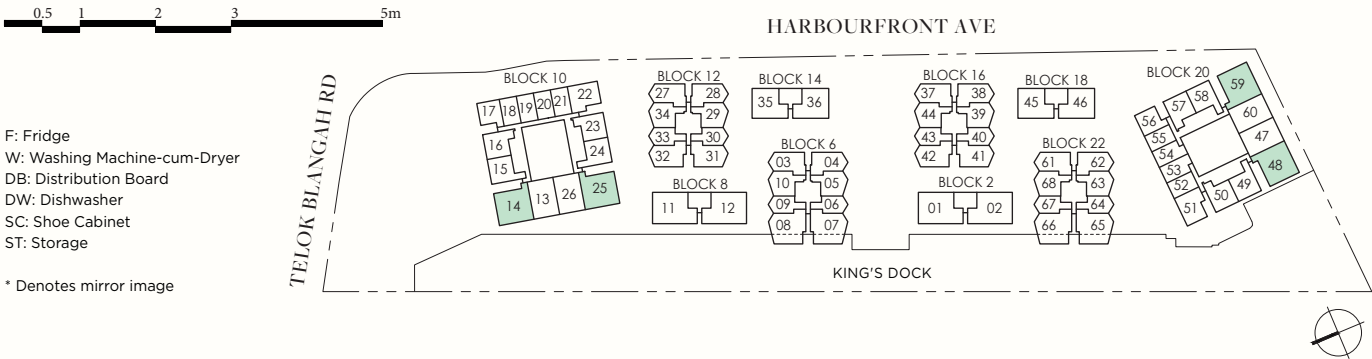
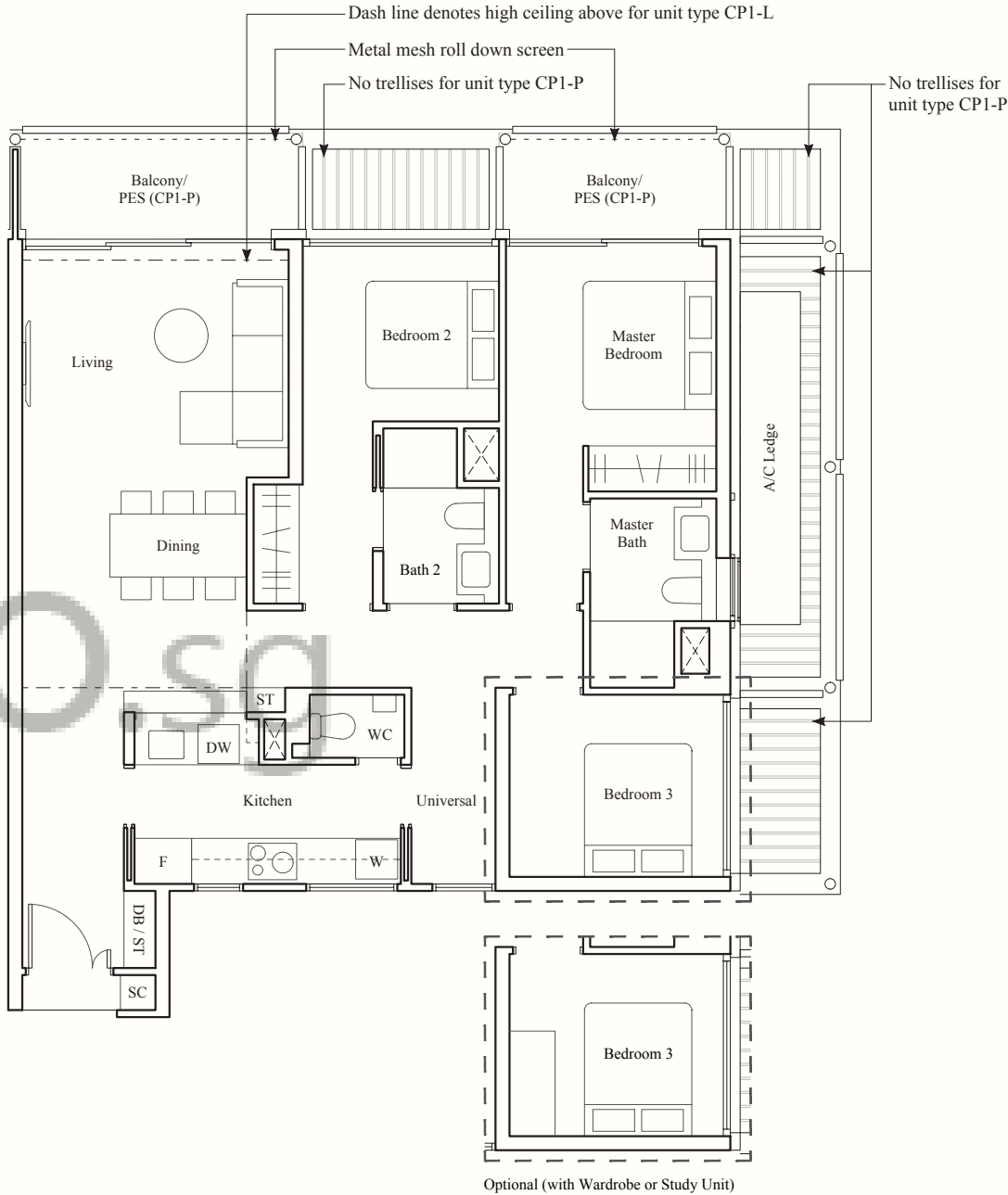
BLK 10
#01-14

BLK 20
#01-48, #01-59*

TYPE CP1-L

136 SQM / 1464 SQFT

BLK 20
#05-48, #05-59*



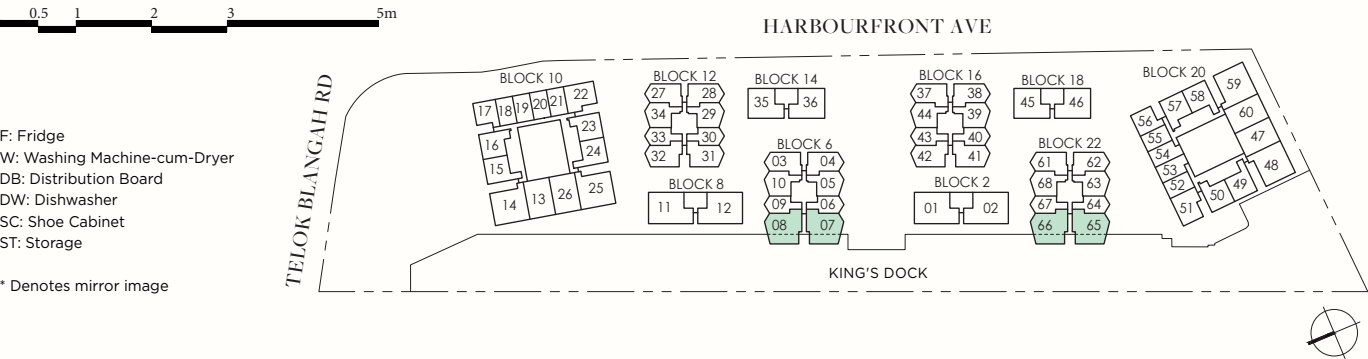
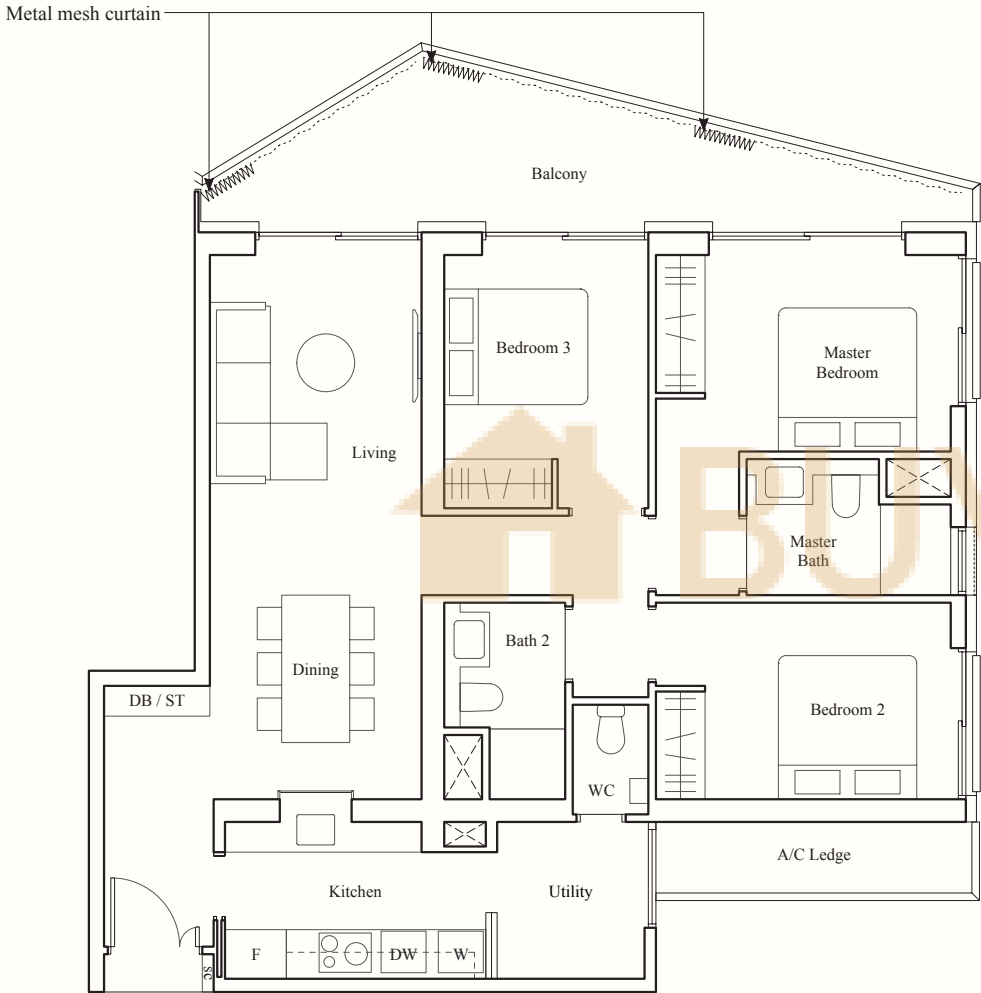
AREA INCLUDES AIR-CON (A/C) LEDGE, BALCONY, PRIVATE ENCLOSED SPACE (PES) AND STRATA VOID AREA WHERE APPLICABLE. SOME UNITS ARE MIRROR IMAGES OF THE PLAN SHOWN IN THE BROCHURE. PLEASE REFER TO THE KEY PLAN FOR ORIENTATION. THE PLANS ARE SUBJECT TO CHANGE AS MAY BE REQUIRED BY THE RELEVANT AUTHORITIES. ALL MEASUREMENTS ARE APPROXIMATE ONLY AND ARE SUBJECT TO GOVERNMENT RE-SURVEY. THE BALCONY SHALL NOT BE ENCLOSED UNLESS WITH THE APPROVED BALCONY SCREEN.

3-BEDROOM PREMIUM

TYPE CP2
116 SQM / 1249 SQFT

BLK 6
#03-07 to #08-07
#03-08* to #08-08*

BLK 22
#03-65 to #07-65
#03-66* to #07-66*



AREA INCLUDES AIR-CON (A/C) LEDGE, BALCONY, PRIVATE ENCLOSED SPACE (PES) AND STRATA VOID AREA WHERE APPLICABLE. SOME UNITS ARE MIRROR IMAGES OF THE PLAN SHOWN IN THE BROCHURE. PLEASE REFER TO THE KEY PLAN FOR ORIENTATION. THE PLANS ARE SUBJECT TO CHANGE AS MAY BE REQUIRED BY THE RELEVANT AUTHORITIES. ALL MEASUREMENTS ARE APPROXIMATE ONLY AND ARE SUBJECT TO GOVERNMENT RE-SURVEY. THE BALCONY SHALL NOT BE ENCLOSED UNLESS WITH THE APPROVED BALCONY SCREEN.

3-BEDROOM VILLA

TYPE CV1-P
125 SQM / 1345 SQFT

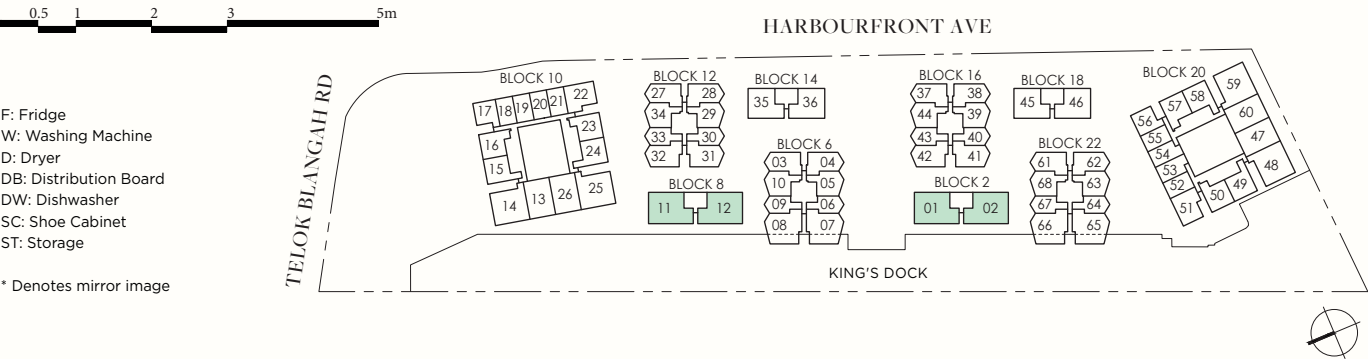
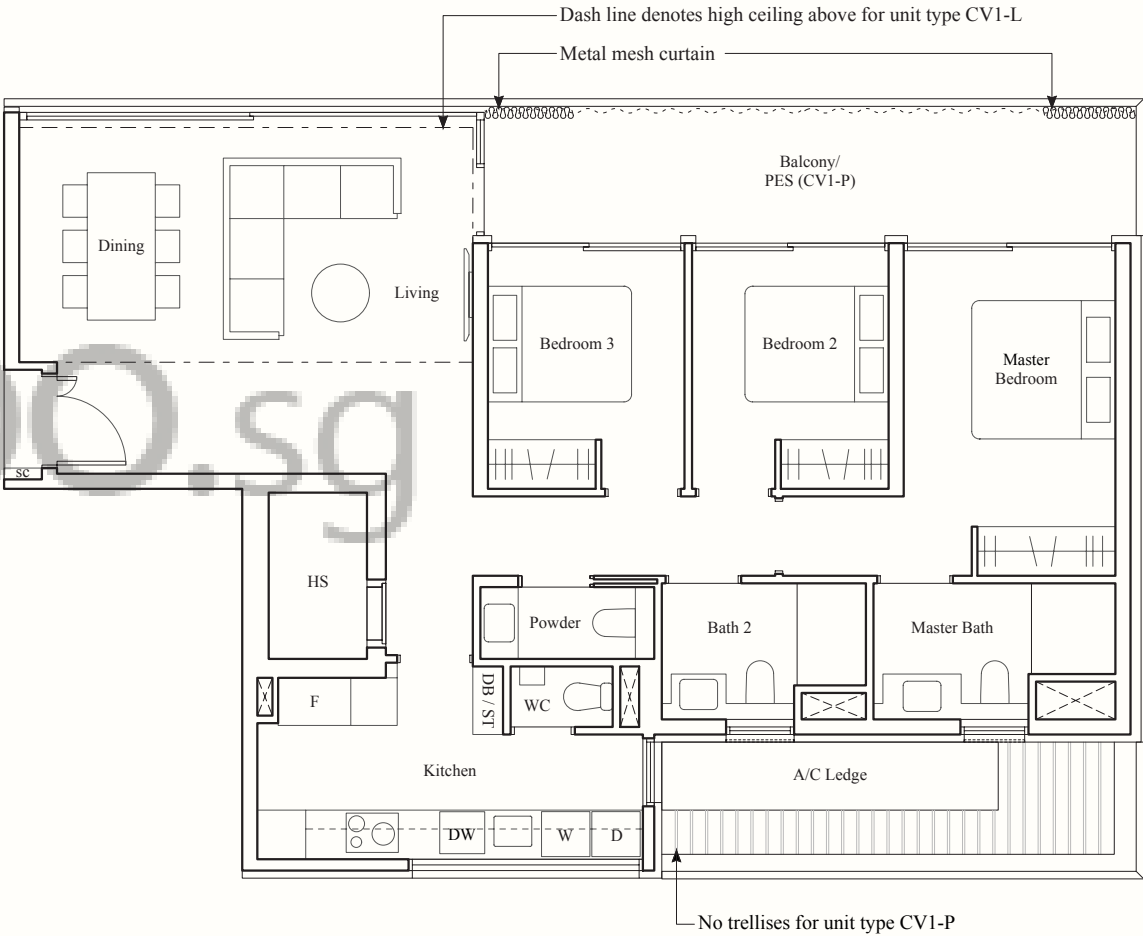
BLK 2
#01-01, #01-02*

BLK 8
#01-11, #01-12*

TYPE CV1-L
146 SQM / 1572 SQFT

BLK 2
#02-01, #02-02*

BLK 8
#02-11, #02-12*



AREA INCLUDES AIR-CON (A/C) LEDGE, BALCONY, PRIVATE ENCLOSED SPACE (PES) AND STRATA VOID AREA WHERE APPLICABLE. SOME UNITS ARE MIRROR IMAGES OF THE PLAN SHOWN IN THE BROCHURE. PLEASE REFER TO THE KEY PLAN FOR ORIENTATION. THE PLANS ARE SUBJECT TO CHANGE AS MAY BE REQUIRED BY THE RELEVANT AUTHORITIES. ALL MEASUREMENTS ARE APPROXIMATE ONLY AND ARE SUBJECT TO GOVERNMENT RE-SURVEY. THE BALCONY SHALL NOT BE ENCLOSED UNLESS WITH THE APPROVED BALCONY SCREEN.