

TYPE A1

TYPE A1-R\*

45 SQM / 484 SQFT

INCLUSIVE OF 4 SQM BALCONY & 2 SQM AC LEDGE

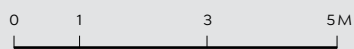
#02-01 TO #24-01

\*#25-01

## UNIT TYPE 1 BEDROOM

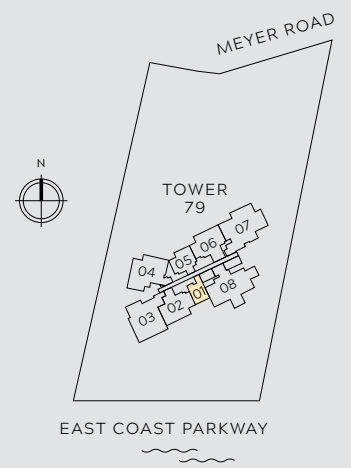


BUYCONDO.sg



<b>F</b> FRIDGE	<b>WCH</b> WINE CHILLER	<b>DB</b> DISTRIBUTION BOARD
<b>D</b> DRYER	<b>GH</b> GAS HOB	<b>CO</b> CONVECTIONAL OVEN
<b>IH</b> INDUCTION HOB	<b>WM</b> WASHER CUM DRYER	<b>VD</b> VACUUM DRAWER
<b>SC</b> SHOE CABINET	<b>SO</b> COMBI STEAM OVEN	<b>W</b> WASHER

All plans are subject to amendments as may be approved by the relevant authorities.  
Floor areas are approximate measurements and are subjected to final survey.



## TYPE B1

64 SQM / 689 SQFT

INCLUSIVE OF 6 SQM BALCONY & 3 SQM AC LEDGE

#02-05 TO #24-05

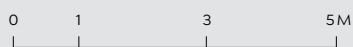
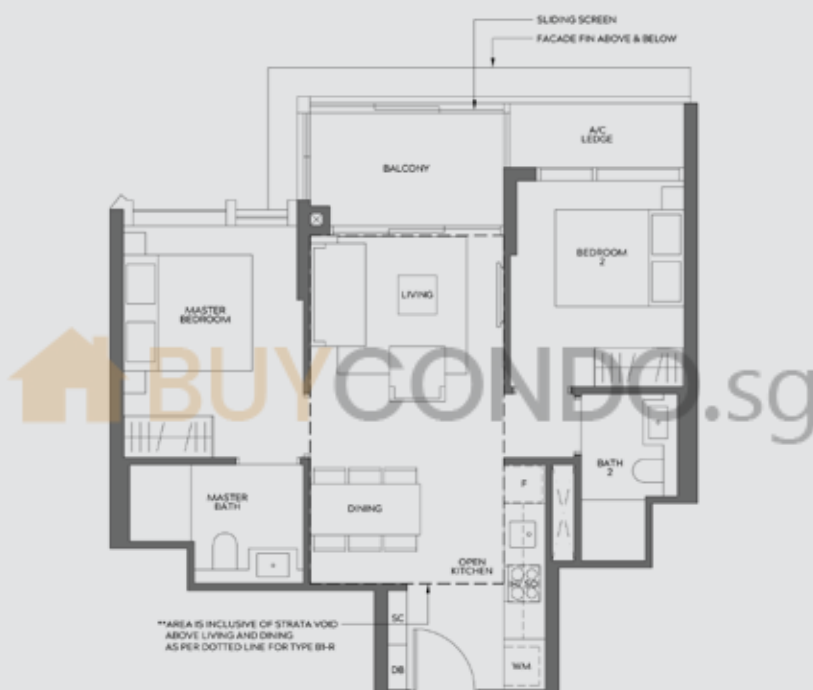
## TYPE B1-R

82 SQM / 883 SQFT\*\*

INCLUSIVE OF 6 SQM BALCONY, 3 SQM AC LEDGE  
& 18 SQM STRATA VOID

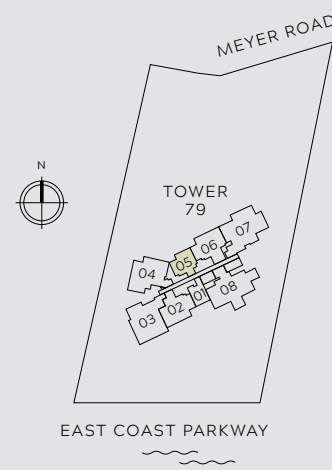
#25-05

# UNIT TYPE 2 BEDROOM



<b>F</b> FRIDGE	<b>WCH</b> WINE CHILLER	<b>DB</b> DISTRIBUTION BOARD
<b>D</b> DRYER	<b>GH</b> GAS HOB	<b>CO</b> CONVECTIONAL OVEN
<b>IH</b> INDUCTION HOB	<b>WM</b> WASHER CUM DRYER	<b>VD</b> VACUUM DRAWER
<b>SC</b> SHOE CABINET	<b>SO</b> COMBI STEAM OVEN	<b>W</b> WASHER

All plans are subject to amendments as may be approved by the relevant authorities.  
Floor areas are approximate measurements and are subjected to final survey.



## TYPE C1

103 SQM / 1109 SQFT

INCLUSIVE OF 12 SQM BALCONY & 6 SQM AC LEDGE

#02-06 TO #24-06

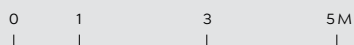
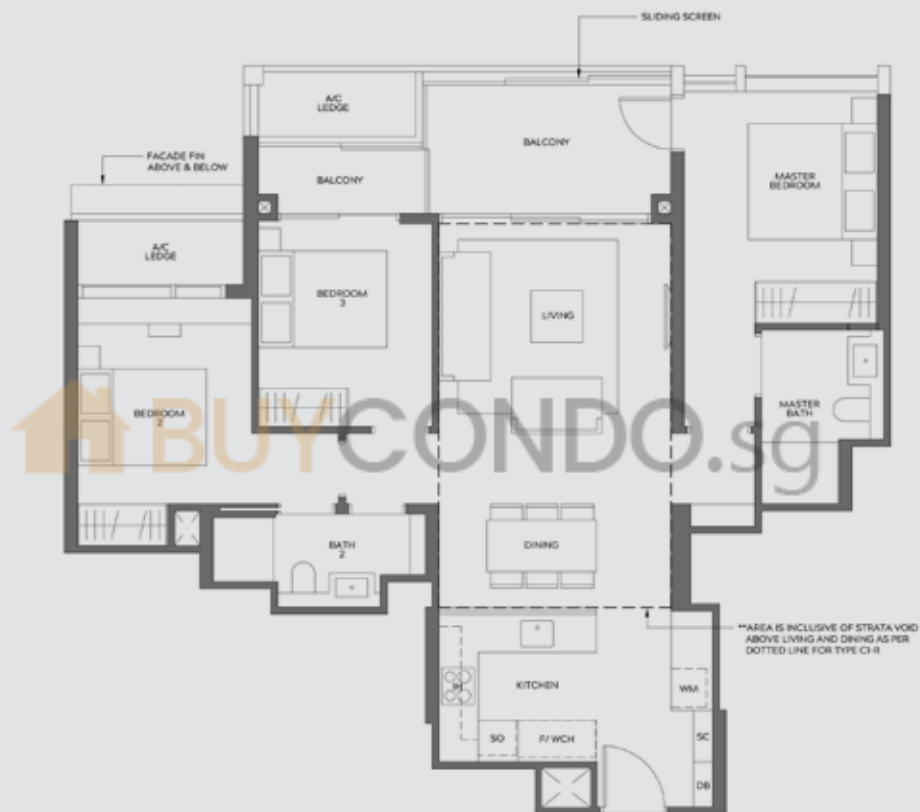
## TYPE C1-R

126 SQM / 1356 SQFT\*\*

INCLUSIVE OF 12 SQM BALCONY, 6 SQM AC LEDGE  
& 23 SQM STRATA VOID

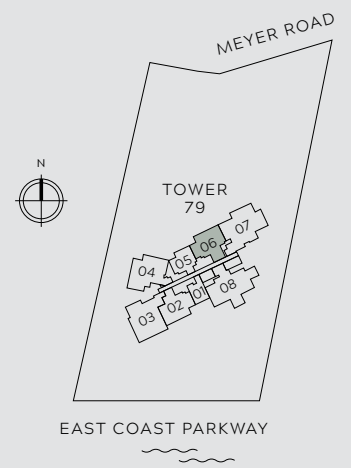
#25-06

# UNIT TYPE 3 BEDROOM



<b>F</b> FRIDGE	<b>WCH</b> WINE CHILLER	<b>DB</b> DISTRIBUTION BOARD
<b>D</b> DRYER	<b>GH</b> GAS HOB	<b>CO</b> CONVECTIONAL OVEN
<b>IH</b> INDUCTION HOB	<b>WM</b> WASHER CUM DRYER	<b>VD</b> VACUUM DRAWER
<b>SC</b> SHOE CABINET	<b>SO</b> COMBI STEAM OVEN	<b>W</b> WASHER

All plans are subject to amendments as may be approved by the relevant authorities.  
Floor areas are approximate measurements and are subjected to final survey.



**TYPE C2**  
**103 SQM / 1109 SQFT**  
 INCLUSIVE OF 12 SQM BALCONY & 6 SQM AC LEDGE  
 #02-02 TO #24-02

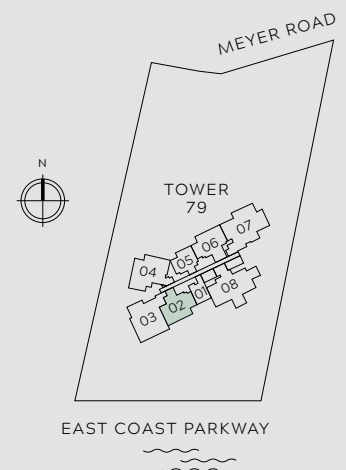
**TYPE C2-R**  
**129 SQM / 1389 SQFT\*\***  
 INCLUSIVE OF 12 SQM BALCONY, 6 SQM AC LEDGE  
 & 26 SQM STRATA VOID  
 #25-02

UNIT TYPE  
**3 BEDROOM**



- |                         |                            |                              |
|-------------------------|----------------------------|------------------------------|
| <b>F</b> FRIDGE         | <b>WCH</b> WINE CHILLER    | <b>DB</b> DISTRIBUTION BOARD |
| <b>D</b> DRYER          | <b>GH</b> GAS HOB          | <b>CO</b> CONVECTIONAL OVEN  |
| <b>IH</b> INDUCTION HOB | <b>WM</b> WASHER CUM DRYER | <b>VD</b> VACUUM DRAWER      |
| <b>SC</b> SHOE CABINET  | <b>SO</b> COMBI STEAM OVEN | <b>W</b> WASHER              |

All plans are subject to amendments as may be approved by the relevant authorities.  
 Floor areas are approximate measurements and are subjected to final survey.



## TYPE C3 (PL)

130 SQM / 1399 SQFT

INCLUSIVE OF 15 SQM BALCONY & 7 SQM AC LEDGE

#02-04 TO #24-04

## TYPE C3-R (PL)

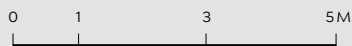
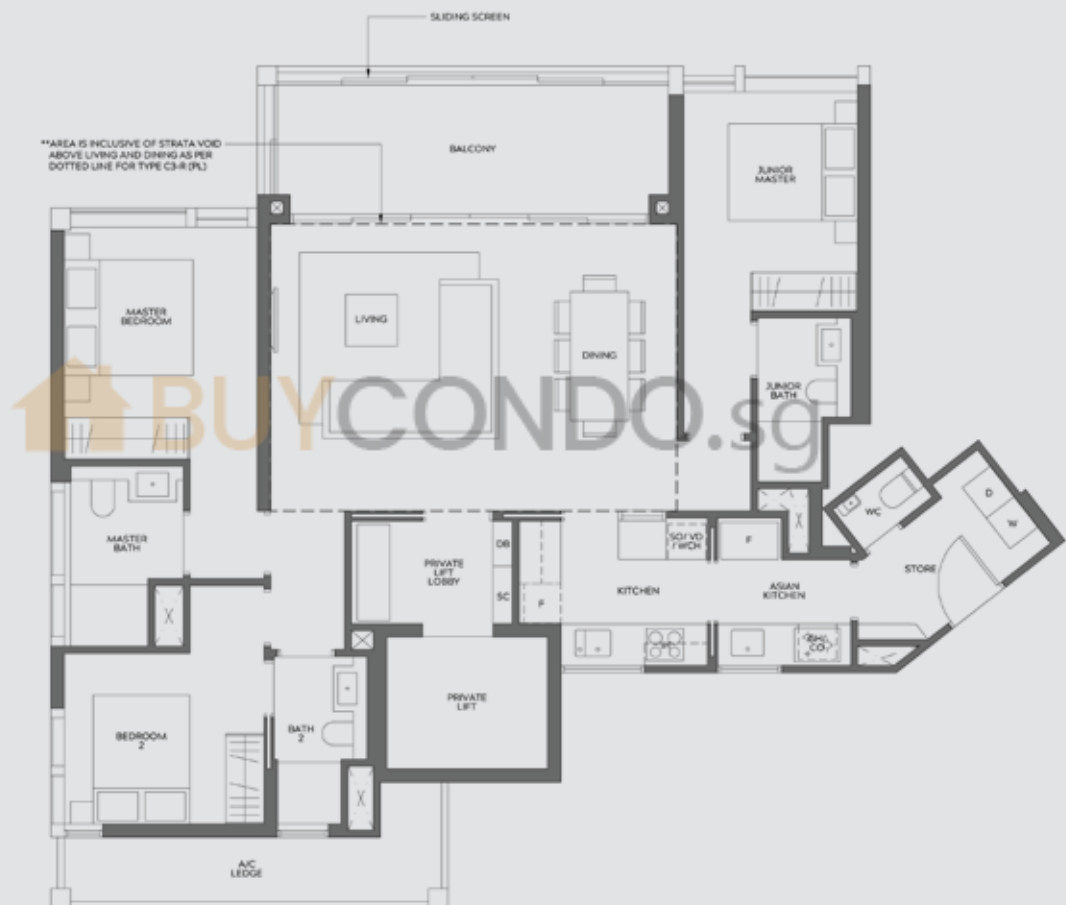
160 SQM / 1722 SQFT\*\*

INCLUSIVE OF 15 SQM BALCONY, 7 SQM AC LEDGE  
& 30 SQM STRATA VOID

#25-04

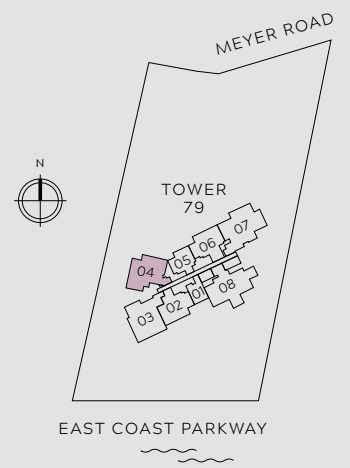
UNIT TYPE

# 3 BEDROOM PREMIUM



F	FRIDGE	WCH	WINE CHILLER	DB	DISTRIBUTION BOARD
D	DRYER	GH	GAS HOB	CO	CONVECTIONAL OVEN
IH	INDUCTION HOB	WM	WASHER CUM DRYER	VD	VACUUM DRAWER
SC	SHOE CABINET	SO	COMBI STEAM OVEN	W	WASHER

All plans are subject to amendments as may be approved by the relevant authorities.  
Floor areas are approximate measurements and are subjected to final survey.



TYPE C4 (PL)

139 SQM / 1496 SQFT

INCLUSIVE OF 10 SQM BALCONY & 8 SQM AC LEDGE

#02-03 TO #24-03

TYPE C4-R (PL)

170 SQM / 1830 SQFT\*\*

INCLUSIVE OF 10 SQM BALCONY, 8 SQM AC LEDGE  
& 31 SQM STRATA VOID

#25-03

UNIT TYPE

3 BEDROOM PREMIUM

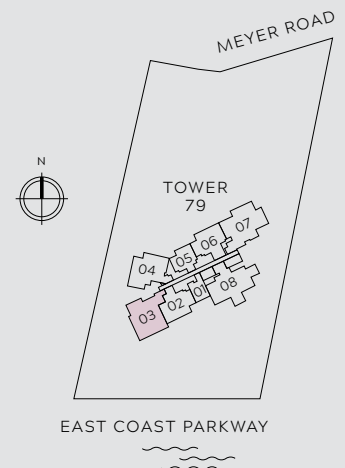


\*\*AREA IS INCLUSIVE OF STRATA VOID ABOVE LIVING AND DINING AS PER DOTTED LINE FOR TYPE C4-R(PL)



- |                         |                            |                              |
|-------------------------|----------------------------|------------------------------|
| <b>F</b> FRIDGE         | <b>WCH</b> WINE CHILLER    | <b>DB</b> DISTRIBUTION BOARD |
| <b>D</b> DRYER          | <b>GH</b> GAS HOB          | <b>CO</b> CONVECTIONAL OVEN  |
| <b>IH</b> INDUCTION HOB | <b>WM</b> WASHER CUM DRYER | <b>VD</b> VACUUM DRAWER      |
| <b>SC</b> SHOE CABINET  | <b>SO</b> COMBI STEAM OVEN | <b>W</b> WASHER              |

All plans are subject to amendments as may be approved by the relevant authorities.  
Floor areas are approximate measurements and are subjected to final survey.



## TYPE D1 (PL)

160 SQM / 1722 SQFT

INCLUSIVE OF 22 SQM BALCONY & 8 SQM AC LEDGE

#02-08 TO #24-08

## TYPE D1-R (PL)

195 SQM / 2099 SQFT\*\*

INCLUSIVE OF 22 SQM BALCONY, 8 SQM AC LEDGE  
& 35 SQM STRATA VOID

#25-08

UNIT TYPE

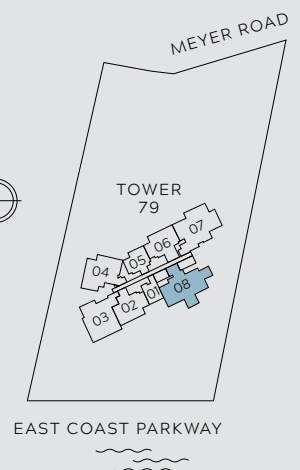
# 4 BEDROOM PREMIUM



0 1 3 5M

F	FRIDGE	WCH	WINE CHILLER	DB	DISTRIBUTION BOARD
D	DRYER	GH	GAS HOB	CO	CONVECTIONAL OVEN
IH	INDUCTION HOB	WM	WASHER CUM DRYER	VD	VACUUM DRAWER
SC	SHOE CABINET	SO	COMBI STEAM OVEN	W	WASHER

All plans are subject to amendments as may be approved by the relevant authorities.  
Floor areas are approximate measurements and are subjected to final survey.



TYPE D2 (PL)

164 SQM / 1765 SQFT

INCLUSIVE OF 20 SQM BALCONY & 8 SQM AC LEDGE

#02-07 TO #24-07

TYPE D2-R (PL)

199 SQM / 2142 SQFT\*\*

INCLUSIVE OF 20 SQM BALCONY, 8 SQM AC LEDGE  
& 35 SQM STRATA VOID

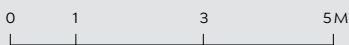
#25-07

UNIT TYPE

4 BEDROOM PREMIUM



\*\*AREA IS INCLUSIVE OF STRATA VOID ABOVE LIVING AND DINING AS PER DOTTED LINE FOR TYPE D2-R (PL)



- |    |               |     |                  |    |                    |
|----|---------------|-----|------------------|----|--------------------|
| F  | FRIDGE        | WCH | WINE CHILLER     | DB | DISTRIBUTION BOARD |
| D  | DRYER         | GH  | GAS HOB          | CO | CONVECTIONAL OVEN  |
| IH | INDUCTION HOB | WM  | WASHER CUM DRYER | VD | VACUUM DRAWER      |
| SC | SHOE CABINET  | SO  | COMBI STEAM OVEN | W  | WASHER             |

All plans are subject to amendments as may be approved by the relevant authorities.  
Floor areas are approximate measurements and are subjected to final survey.

