

1 BEDROOM

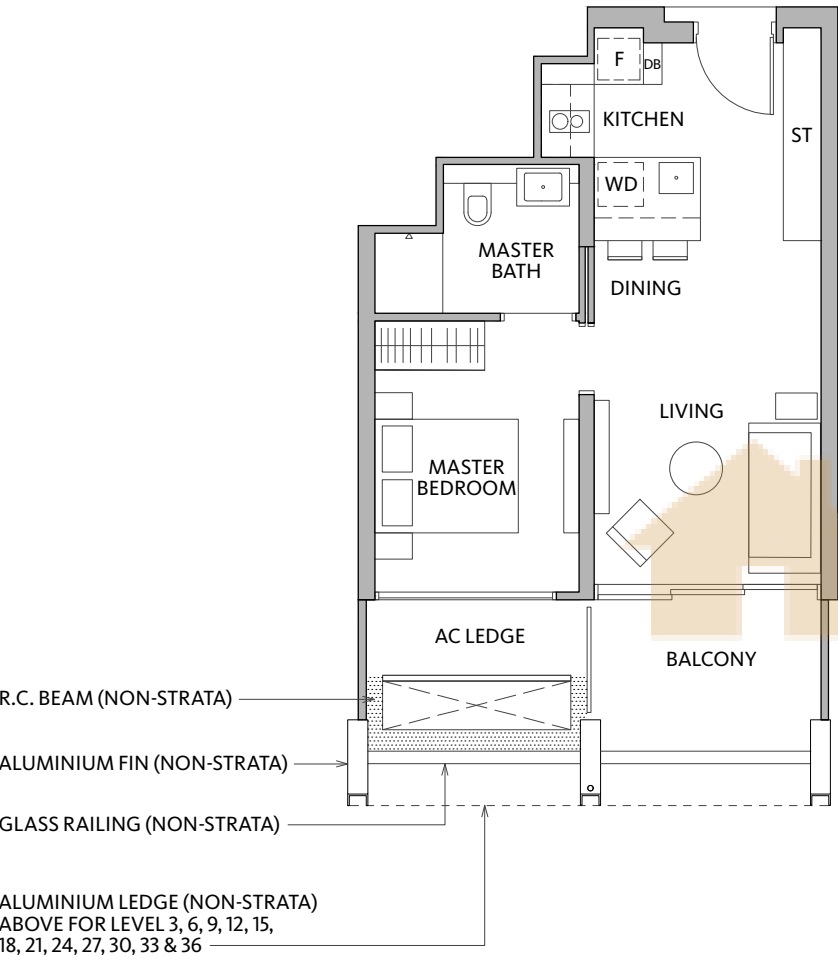
52 sqm / 560 sqft

TYPE A1-1

#02-09 to #35-09

TYPE A1-1(h)

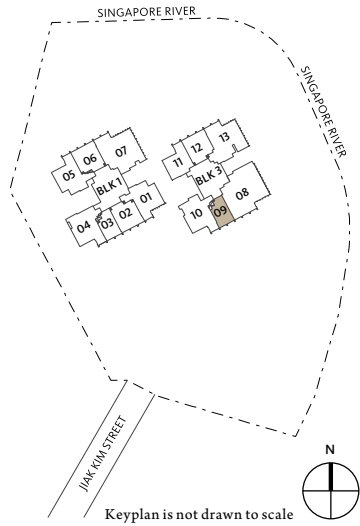
#36-09 (High Ceiling)



LEGEND:

- DB – Distribution Board
- WD – Washer cum Dryer
- ST – Storage
- F – Fridge
- AC Ledge – Air Conditioner Ledge
- R.C. Beam – Reinforced Concrete Beam
- Wall not allowed to be hacked or altered (including by way of drilling) (Refer to the clause pertaining to PPVC in the S&P documents)
- Void Space (Non-strata)
- Rainwater Downpipe Shaft Space

Area includes air conditioner (A/C) ledge, balcony and strata void area where applicable. The above plans are subject to change as may be approved by the relevant authorities. All floor plans are approximate measurements only and are subject to government re-survey. The balcony shall not be enclosed unless with the approved balcony screen. The installation and cost of the screen shall be borne by the purchaser. For an illustration of the approved balcony screen, please refer to the diagram annexed hereto as 'Annexure A'.



1 BEDROOM

52 sqm / 560 sqft

TYPE A1-2

#02-03 to #35-03

TYPE A1-2(h)

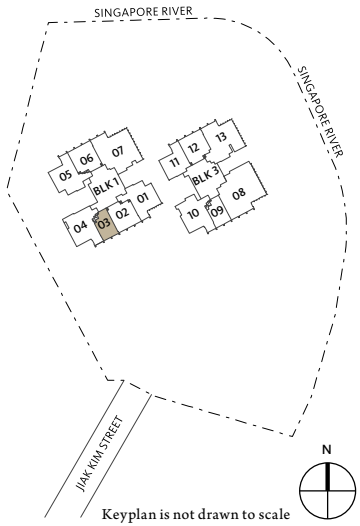
#36-03 (High Ceiling)



LEGEND:

- DB – Distribution Board
- WD – Washer cum Dryer
- ST – Storage
- F – Fridge
- AC Ledge – Air Conditioner Ledge
- R.C. Beam – Reinforced Concrete Beam
- Wall not allowed to be hacked or altered (including by way of drilling) (Refer to the clause pertaining to PPVC in the S&P documents)
- Void Space (Non-strata)
- Rainwater Downpipe Shaft Space

Area includes air conditioner (A/C) ledge, balcony and strata void area where applicable. The above plans are subject to change as may be approved by the relevant authorities. All floor plans are approximate measurements only and are subject to government re-survey. The balcony shall not be enclosed unless with the approved balcony screen. The installation and cost of the screen shall be borne by the purchaser. For an illustration of the approved balcony screen, please refer to the diagram annexed hereto as 'Annexure A'.



2 BEDROOM

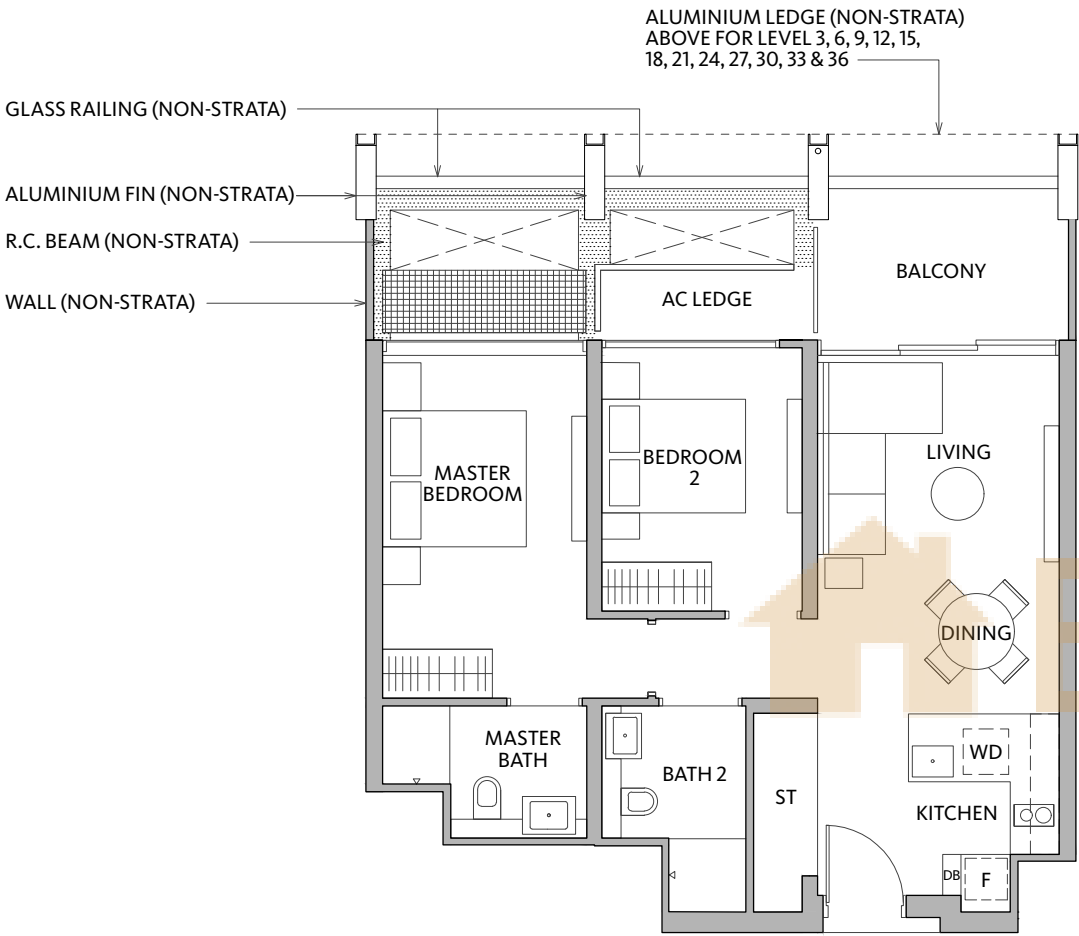
76 sqm / 818 sqft

TYPE B1-1

#02-06 to #35-06

TYPE B1-1(h)

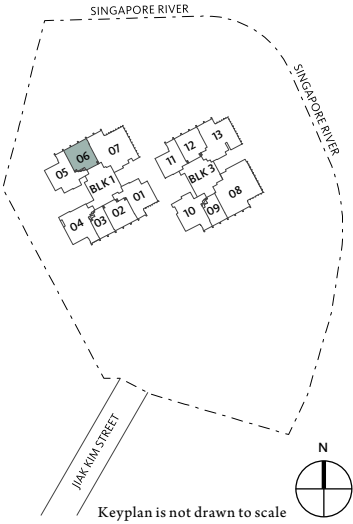
#36-06 (High Ceiling)



LEGEND:

- DB – Distribution Board  
WD – Washer cum Dryer  
ST – Storage  
F – Fridge  
AC Ledge – Air Conditioner Ledge  
R.C. Beam – Reinforced Concrete Beam
- Wall not allowed to be hacked or altered (including by way of drilling)  
(Refer to the clause pertaining to PPVC in the S&P documents)
- Void Space (Non-strata)
- Rainwater Downpipe Shaft Space
- Maintenance Mesh (Non-strata)

Area includes air conditioner (A/C) ledge, balcony and strata void area where applicable. The above plans are subject to change as may be approved by the relevant authorities. All floor plans are approximate measurements only and are subject to government re-survey. The balcony shall not be enclosed unless with the approved balcony screen. The installation and cost of the screen shall be borne by the purchaser. For an illustration of the approved balcony screen, please refer to the diagram annexed hereto as 'Annexure A'.



2 BEDROOM

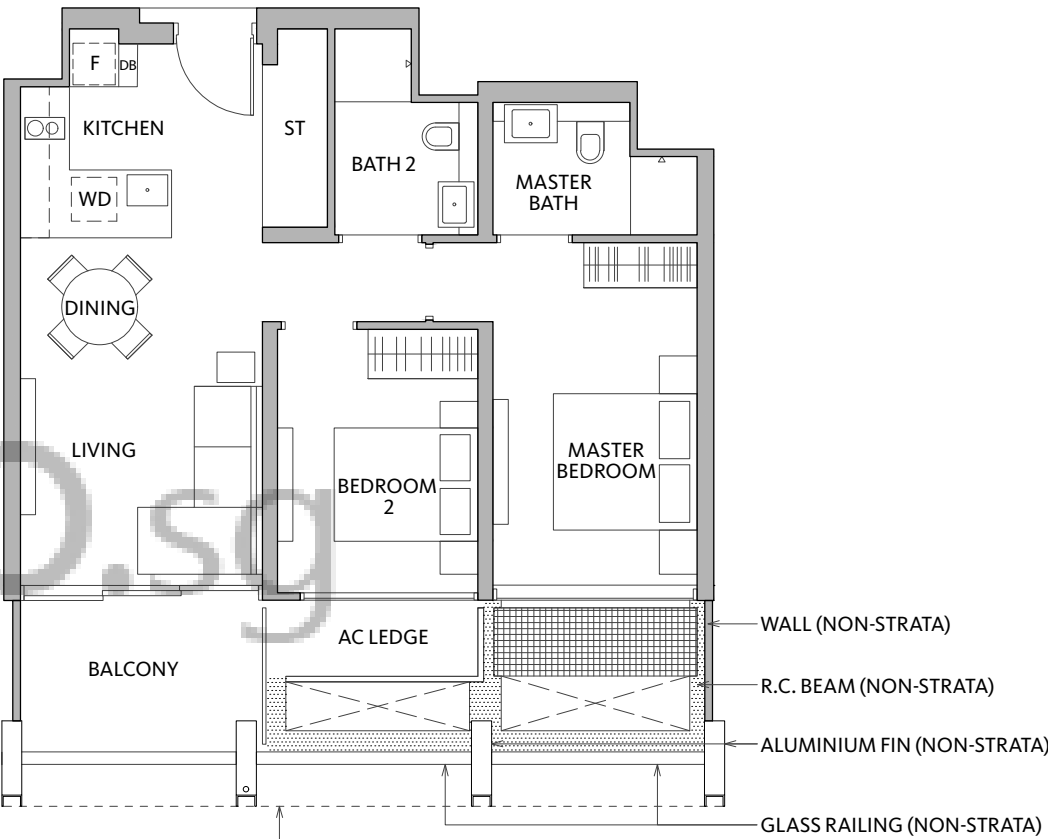
76 sqm / 818 sqft

TYPE B1-2

#02-02 to #35-02

TYPE B1-2(h)

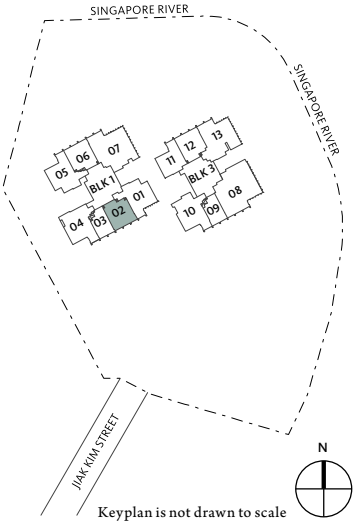
#36-02 (High Ceiling)



LEGEND:

- DB – Distribution Board  
WD – Washer cum Dryer  
ST – Storage  
F – Fridge  
AC Ledge – Air Conditioner Ledge  
R.C. Beam – Reinforced Concrete Beam
- Wall not allowed to be hacked or altered (including by way of drilling)  
(Refer to the clause pertaining to PPVC in the S&P documents)
- Void Space (Non-strata)
- Rainwater Downpipe Shaft Space
- Maintenance Mesh (Non-strata)

Area includes air conditioner (A/C) ledge, balcony and strata void area where applicable. The above plans are subject to change as may be approved by the relevant authorities. All floor plans are approximate measurements only and are subject to government re-survey. The balcony shall not be enclosed unless with the approved balcony screen. The installation and cost of the screen shall be borne by the purchaser. For an illustration of the approved balcony screen, please refer to the diagram annexed hereto as 'Annexure A'.



2 BEDROOM

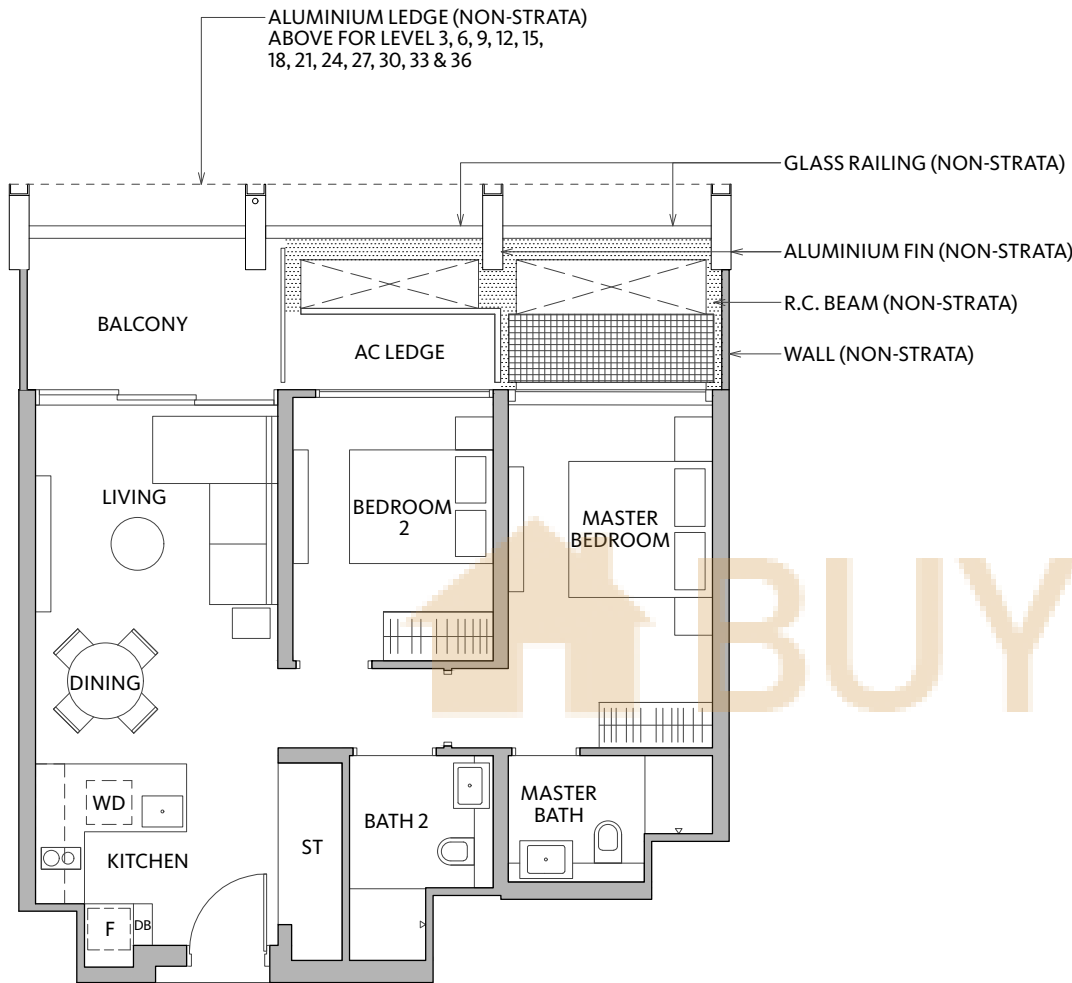
76 sqm / 818 sqft

TYPE B1-3

#02-12 to #35-12

TYPE B1-3(h)

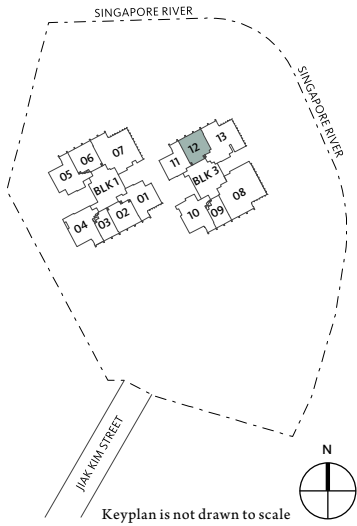
#36-12 (High Ceiling)



LEGEND:

- DB – Distribution Board
- WD – Washer cum Dryer
- ST – Storage
- F – Fridge
- AC Ledge – Air Conditioner Ledge
- R.C. Beam – Reinforced Concrete Beam
- Wall not allowed to be hacked or altered (including by way of drilling) (Refer to the clause pertaining to PPVC in the S&P documents)
- Void Space (Non-strata)
- Rainwater Downpipe Shaft Space
- Maintenance Mesh (Non-strata)

Area includes air conditioner (A/C) ledge, balcony and strata void area where applicable. The above plans are subject to change as may be approved by the relevant authorities. All floor plans are approximate measurements only and are subject to government re-survey. The balcony shall not be enclosed unless with the approved balcony screen. The installation and cost of the screen shall be borne by the purchaser. For an illustration of the approved balcony screen, please refer to the diagram annexed hereto as 'Annexure A'.



2 BEDROOM

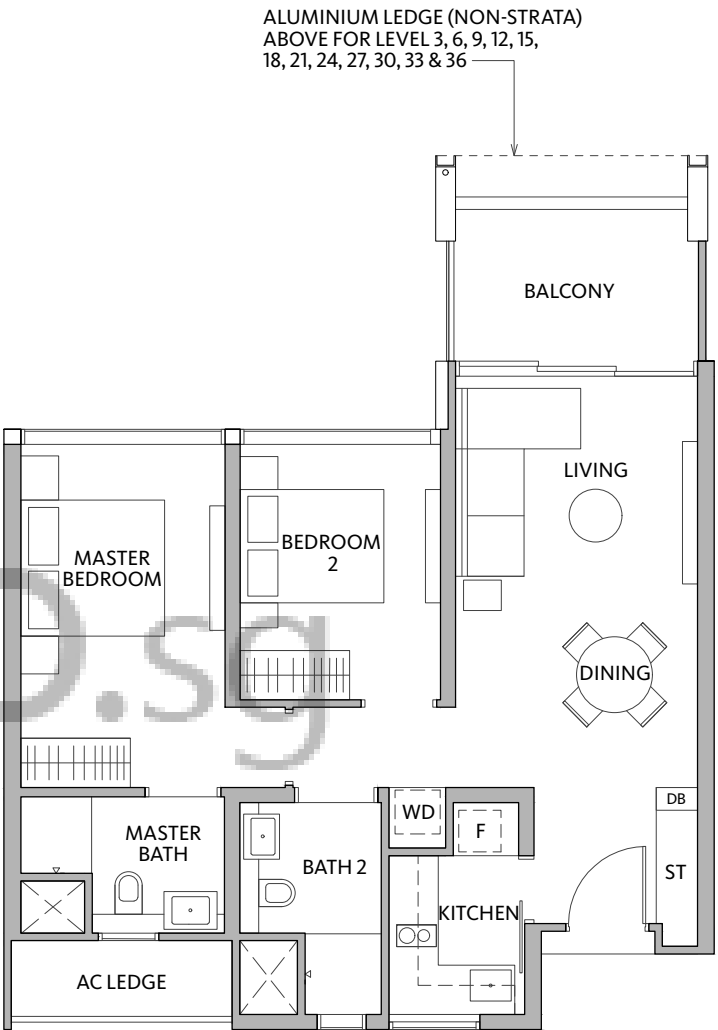
78 sqm / 840 sqft

TYPE B2

#02-11 to #35-11

TYPE B2(h)

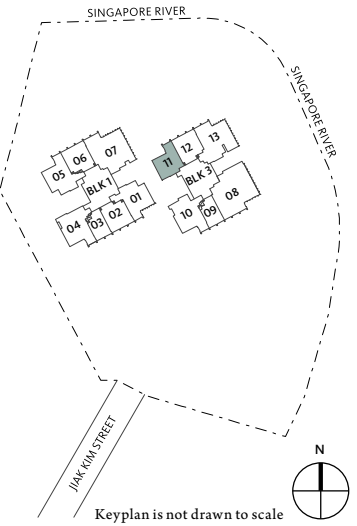
#36-11 (High Ceiling)



LEGEND:

- DB – Distribution Board
- WD – Washer cum Dryer
- ST – Storage
- F – Fridge
- AC Ledge – Air Conditioner Ledge
- Wall not allowed to be hacked or altered (including by way of drilling) (Refer to the clause pertaining to PPVC in the S&P documents)
- Void Space (Non-strata)
- Rainwater Downpipe Shaft Space

Area includes air conditioner (A/C) ledge, balcony and strata void area where applicable. The above plans are subject to change as may be approved by the relevant authorities. All floor plans are approximate measurements only and are subject to government re-survey. The balcony shall not be enclosed unless with the approved balcony screen. The installation and cost of the screen shall be borne by the purchaser. For an illustration of the approved balcony screen, please refer to the diagram annexed hereto as 'Annexure A'.



3 BEDROOM

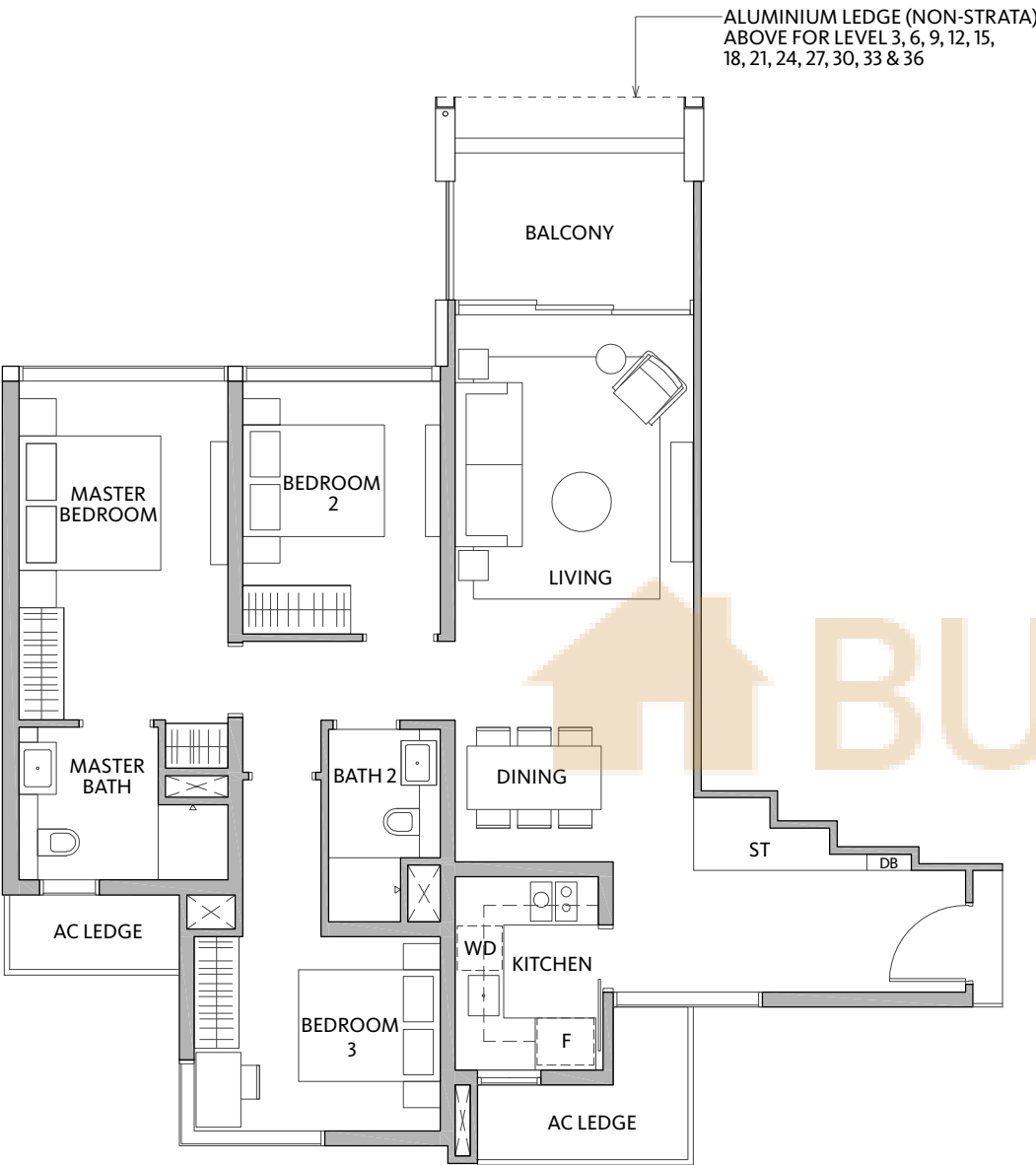
109 sqm / 1173 sqft

TYPE C1-1

#02-05 to #35-05

TYPE C1-1(h)

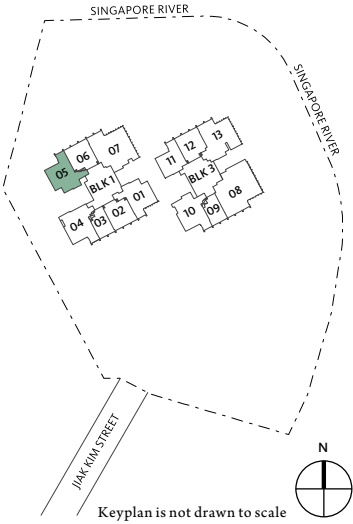
#36-05 (High Ceiling)



LEGEND:

- DB – Distribution Board
- WD – Washer cum Dryer
- ST – Storage
- F – Fridge
- AC Ledge – Air Conditioner Ledge
- Wall not allowed to be hacked or altered (including by way of drilling) (Refer to the clause pertaining to PPVC in the S&P documents)
- Void Space (Non-strata)
- Rainwater Downpipe Shaft Space

Area includes air conditioner (A/C) ledge, balcony and strata void area where applicable. The above plans are subject to change as may be approved by the relevant authorities. All floor plans are approximate measurements only and are subject to government re-survey. The balcony shall not be enclosed unless with the approved balcony screen. The installation and cost of the screen shall be borne by the purchaser. For an illustration of the approved balcony screen, please refer to the diagram annexed hereto as 'Annexure A'.



3 BEDROOM

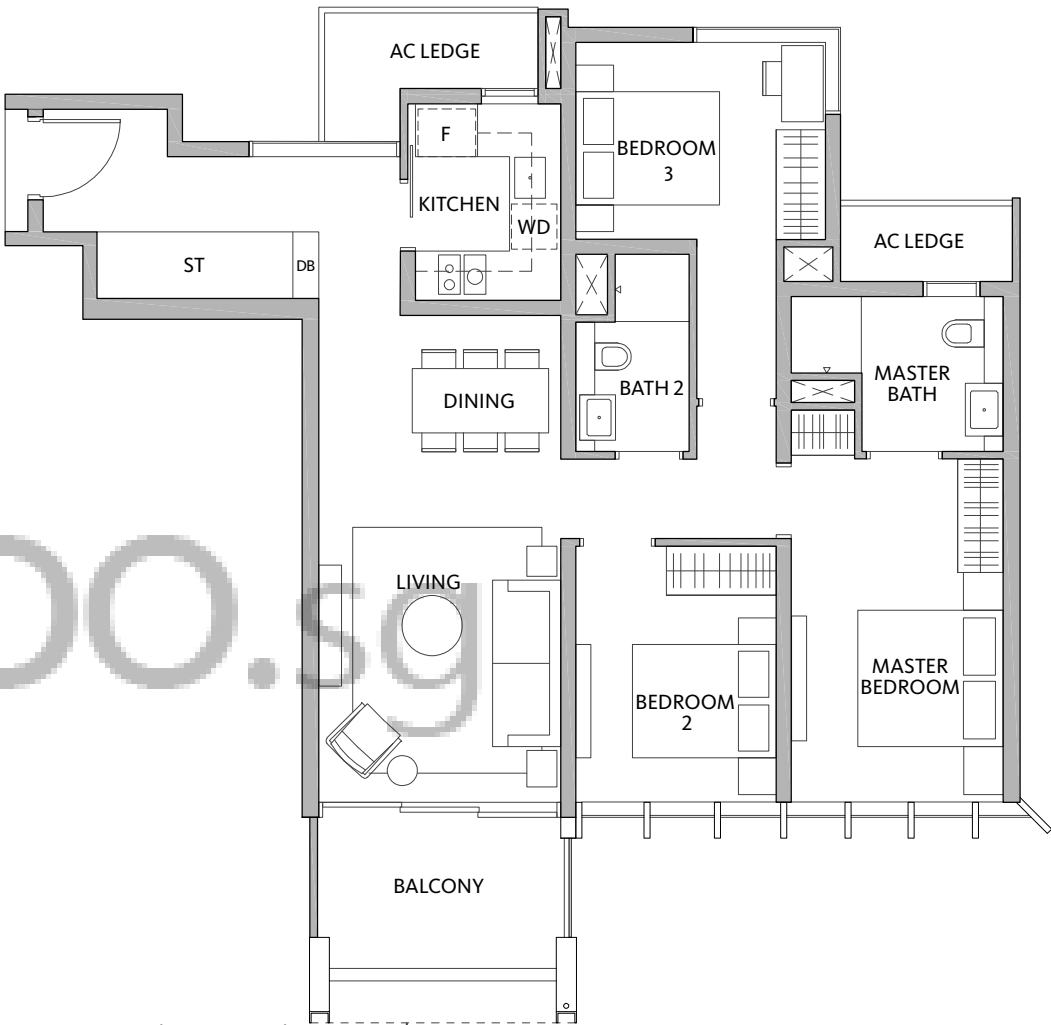
106 sqm / 1141 sqft

TYPE C1-2

#02-01 to #35-01

TYPE C1-2(h)

#36-01 (High Ceiling)



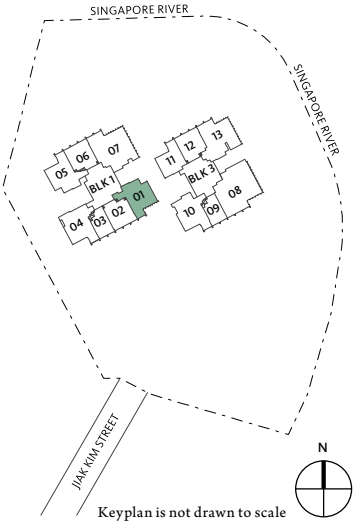
ALUMINIUM LEDGE (NON-STRATA)  
ABOVE FOR LEVEL 3, 6, 9, 12, 15,  
18, 21, 24, 27, 30, 33 & 36



LEGEND:

- DB – Distribution Board
- WD – Washer cum Dryer
- ST – Storage
- F – Fridge
- AC Ledge – Air Conditioner Ledge
- Wall not allowed to be hacked or altered (including by way of drilling) (Refer to the clause pertaining to PPVC in the S&P documents)
- Void Space (Non-strata)
- Rainwater Downpipe Shaft Space

Area includes air conditioner (A/C) ledge, balcony and strata void area where applicable. The above plans are subject to change as may be approved by the relevant authorities. All floor plans are approximate measurements only and are subject to government re-survey. The balcony shall not be enclosed unless with the approved balcony screen. The installation and cost of the screen shall be borne by the purchaser. For an illustration of the approved balcony screen, please refer to the diagram annexed hereto as 'Annexure A'.



3 BEDROOM

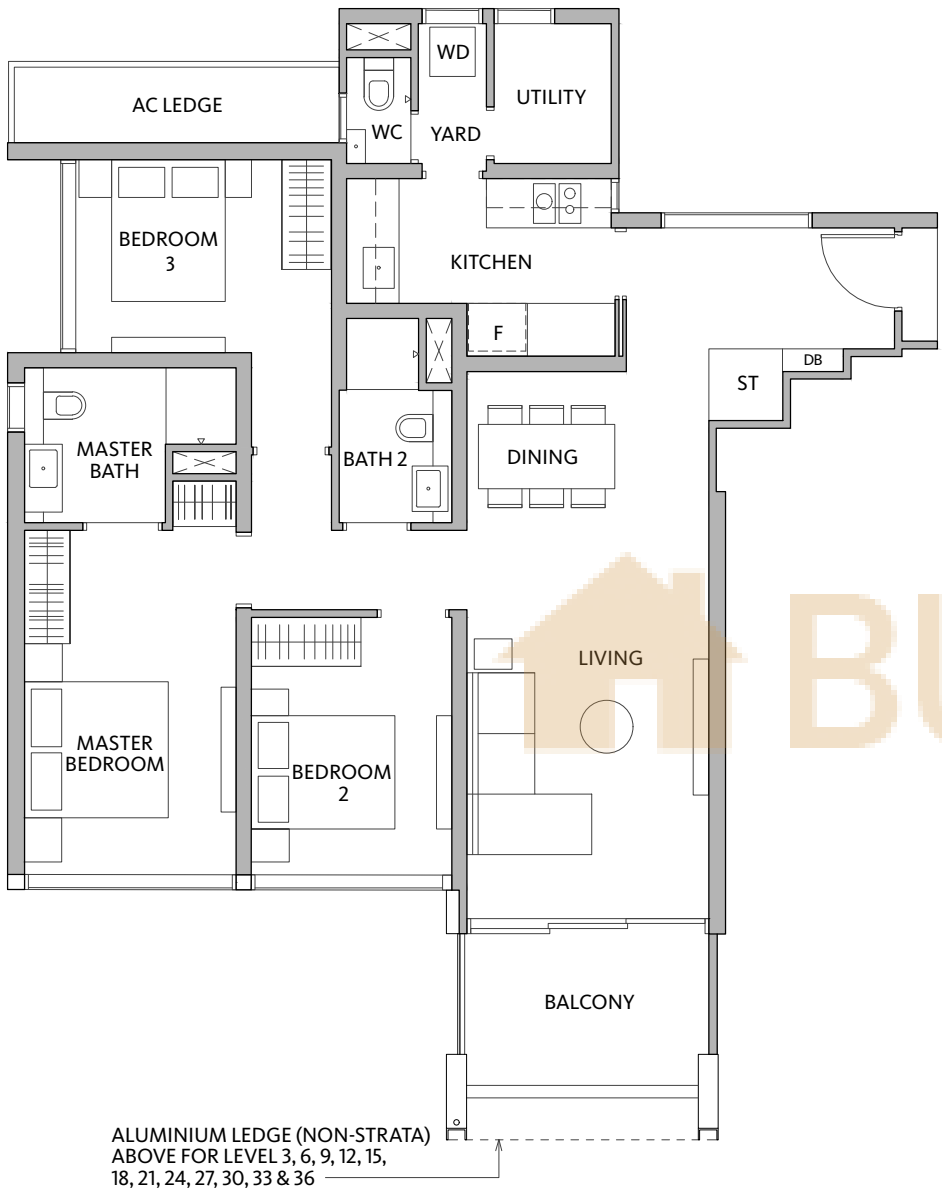
113 sqm / 1216 sqft

TYPE C2-1

#02-10 to #35-10

TYPE C2-1(h)

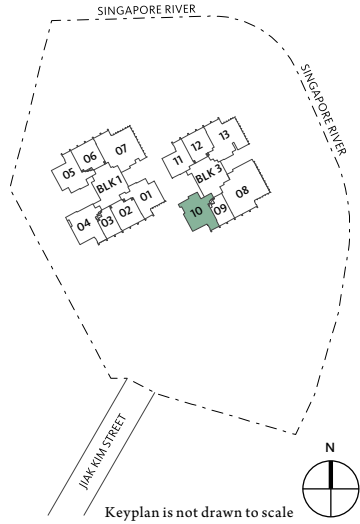
#36-10 (High Ceiling)



LEGEND:

- DB – Distribution Board
- WD – Washer cum Dryer
- ST – Storage
- F – Fridge
- AC Ledge – Air Conditioner Ledge
- Wall not allowed to be hacked or altered (including by way of drilling) (Refer to the clause pertaining to PPVC in the S&P documents)
- Void Space (Non-strata)
- Rainwater Downpipe Shaft Space

Area includes air conditioner (A/C) ledge, balcony and strata void area where applicable. The above plans are subject to change as may be approved by the relevant authorities. All floor plans are approximate measurements only and are subject to government re-survey. The balcony shall not be enclosed unless with the approved balcony screen. The installation and cost of the screen shall be borne by the purchaser. For an illustration of the approved balcony screen, please refer to the diagram annexed hereto as 'Annexure A'.



3 BEDROOM

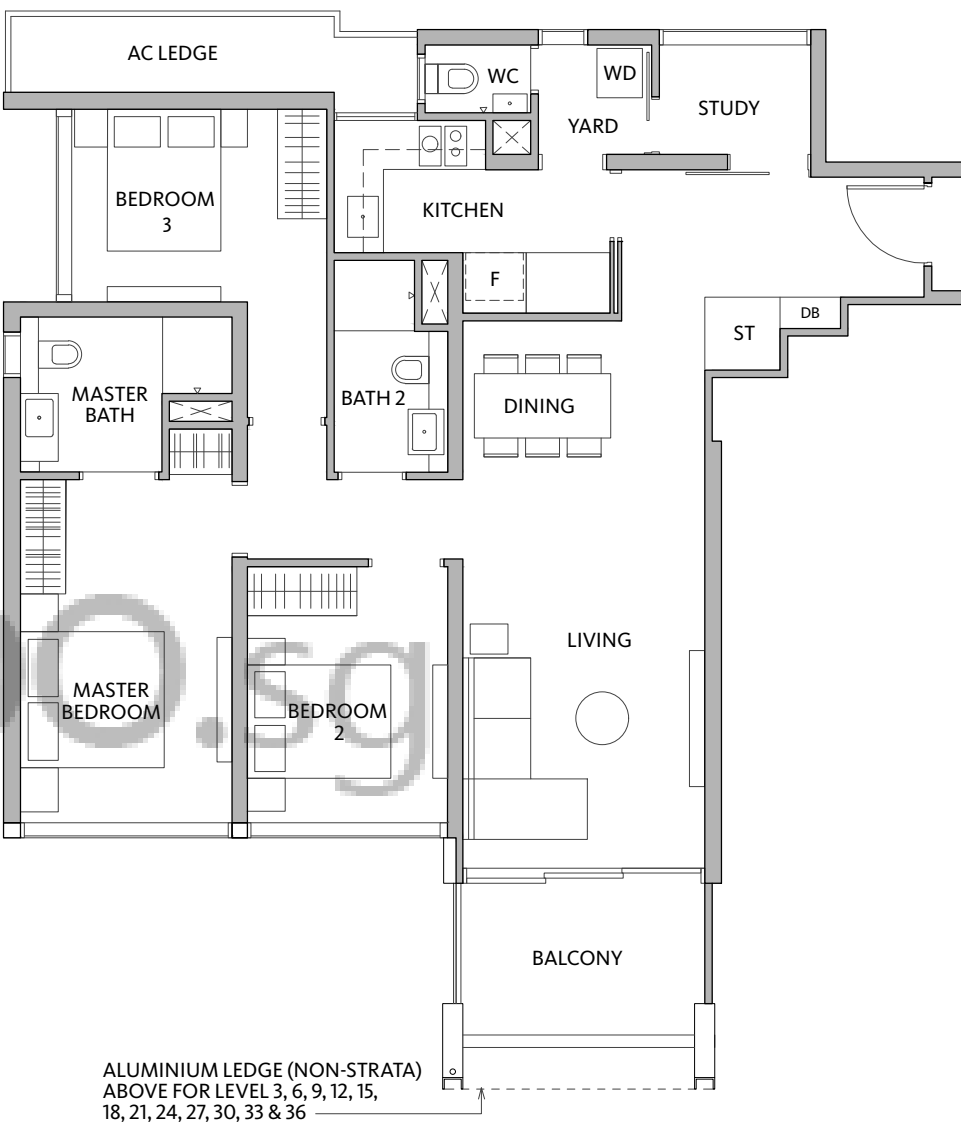
116 sqm / 1249 sqft

TYPE C2-2

#02-04 to #35-04

TYPE C2-2(h)

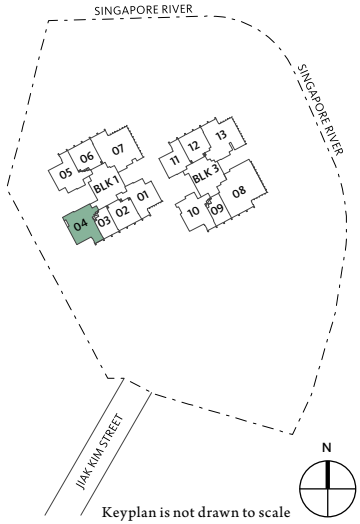
#36-04 (High Ceiling)



LEGEND:

- DB – Distribution Board
- WD – Washer cum Dryer
- ST – Storage
- F – Fridge
- AC Ledge – Air Conditioner Ledge
- Wall not allowed to be hacked or altered (including by way of drilling) (Refer to the clause pertaining to PPVC in the S&P documents)
- Void Space (Non-strata)
- Rainwater Downpipe Shaft Space

Area includes air conditioner (A/C) ledge, balcony and strata void area where applicable. The above plans are subject to change as may be approved by the relevant authorities. All floor plans are approximate measurements only and are subject to government re-survey. The balcony shall not be enclosed unless with the approved balcony screen. The installation and cost of the screen shall be borne by the purchaser. For an illustration of the approved balcony screen, please refer to the diagram annexed hereto as 'Annexure A'.



3 BEDROOM

140 sqm / 1507 sqft

TYPE C3

#02-13 to #35-13

TYPE C3(h)

#36-13 (High Ceiling)



LEGEND:

- DB – Distribution Board

W/D – Washing Machine and Dryer

ST – Storage

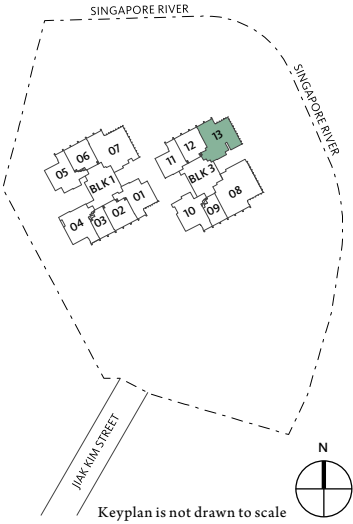
F – Fridge

AC Ledge – Air Conditioner Ledge
- Wall not allowed to be hacked or altered (including by way of drilling)  
(Refer to the clause pertaining to PPVC in the S&P documents)

Void Space (Non-strata)

Rainwater Downpipe Shaft Space

Area includes air conditioner (A/C) ledge, balcony and strata void area where applicable. The above plans are subject to change as may be approved by the relevant authorities. All floor plans are approximate measurements only and are subject to government re-survey. The balcony shall not be enclosed unless with the approved balcony screen. The installation and cost of the screen shall be borne by the purchaser. For an illustration of the approved balcony screen, please refer to the diagram annexed hereto as 'Annexure A'.



TYPE C3

#02-13 to #35-13

TYPE C3(h)

#36-13 (High Ceiling)



3 BEDROOM

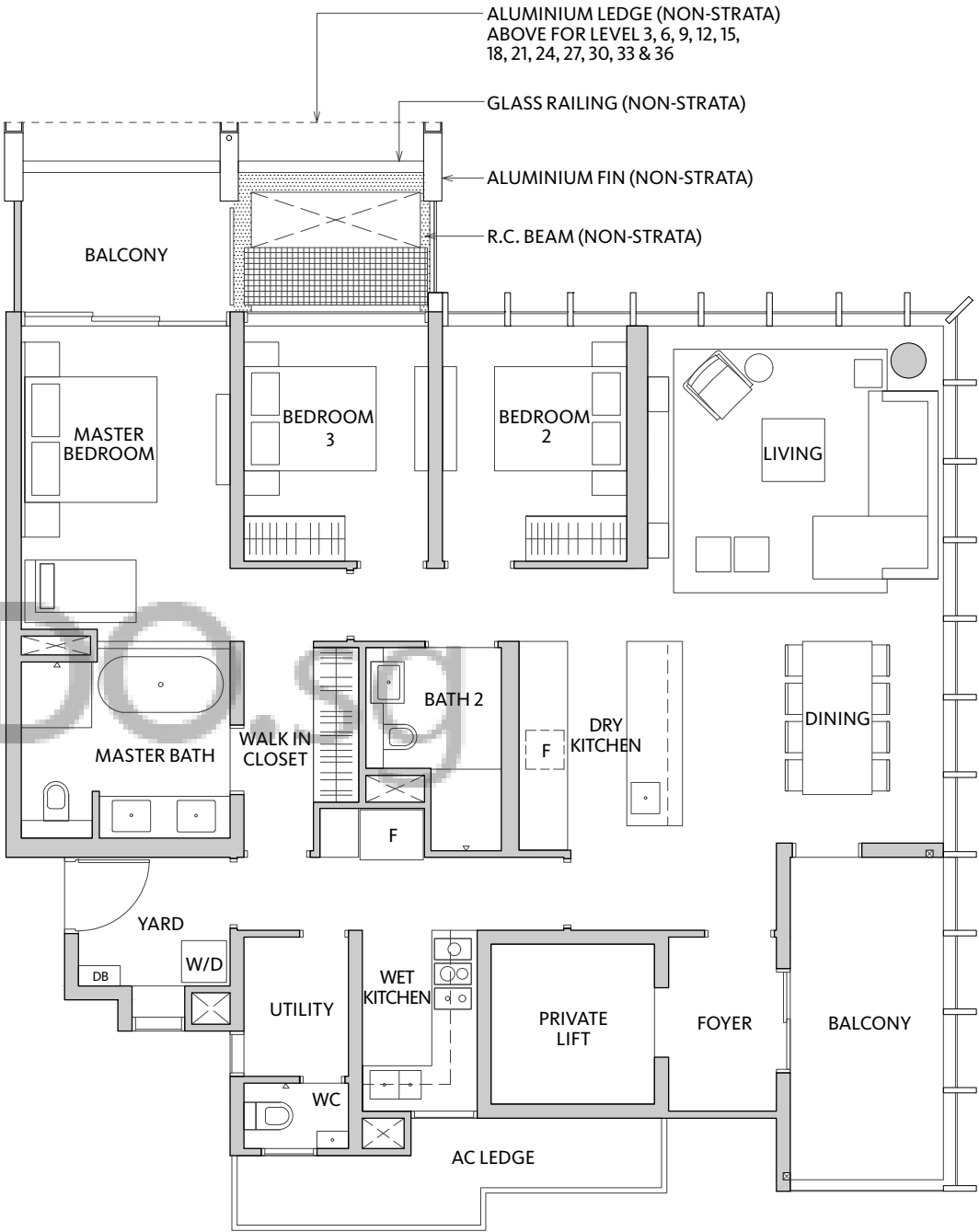
159 sqm / 1711 sqft

TYPE C4

#02-07 to #35-07

TYPE C4(h)

#36-07 (High Ceiling)



LEGEND:

- DB – Distribution Board

W/D – Washing Machine and Dryer

ST – Storage

F – Fridge

AC Ledge – Air Conditioner Ledge

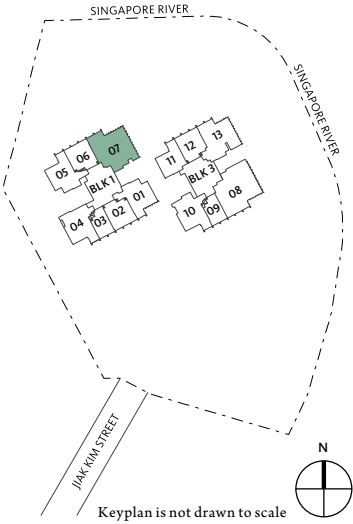
R.C. Beam – Reinforced Concrete Beam
- Wall not allowed to be hacked or altered (including by way of drilling) (Refer to the clause pertaining to PPVC in the S&P documents)

Void Space (Non-strata)

Rainwater Downpipe Shaft Space

Maintenance Mesh (Non-strata)

Area includes air conditioner (A/C) ledge, balcony and strata void area where applicable. The above plans are subject to change as may be approved by the relevant authorities. All floor plans are approximate measurements only and are subject to government re-survey. The balcony shall not be enclosed unless with the approved balcony screen. The installation and cost of the screen shall be borne by the purchaser. For an illustration of the approved balcony screen, please refer to the diagram annexed hereto as 'Annexure A'.



TYPE C4

#02-07 to #35-07

TYPE C4(h)

#36-07 (High Ceiling)

4 BEDROOM

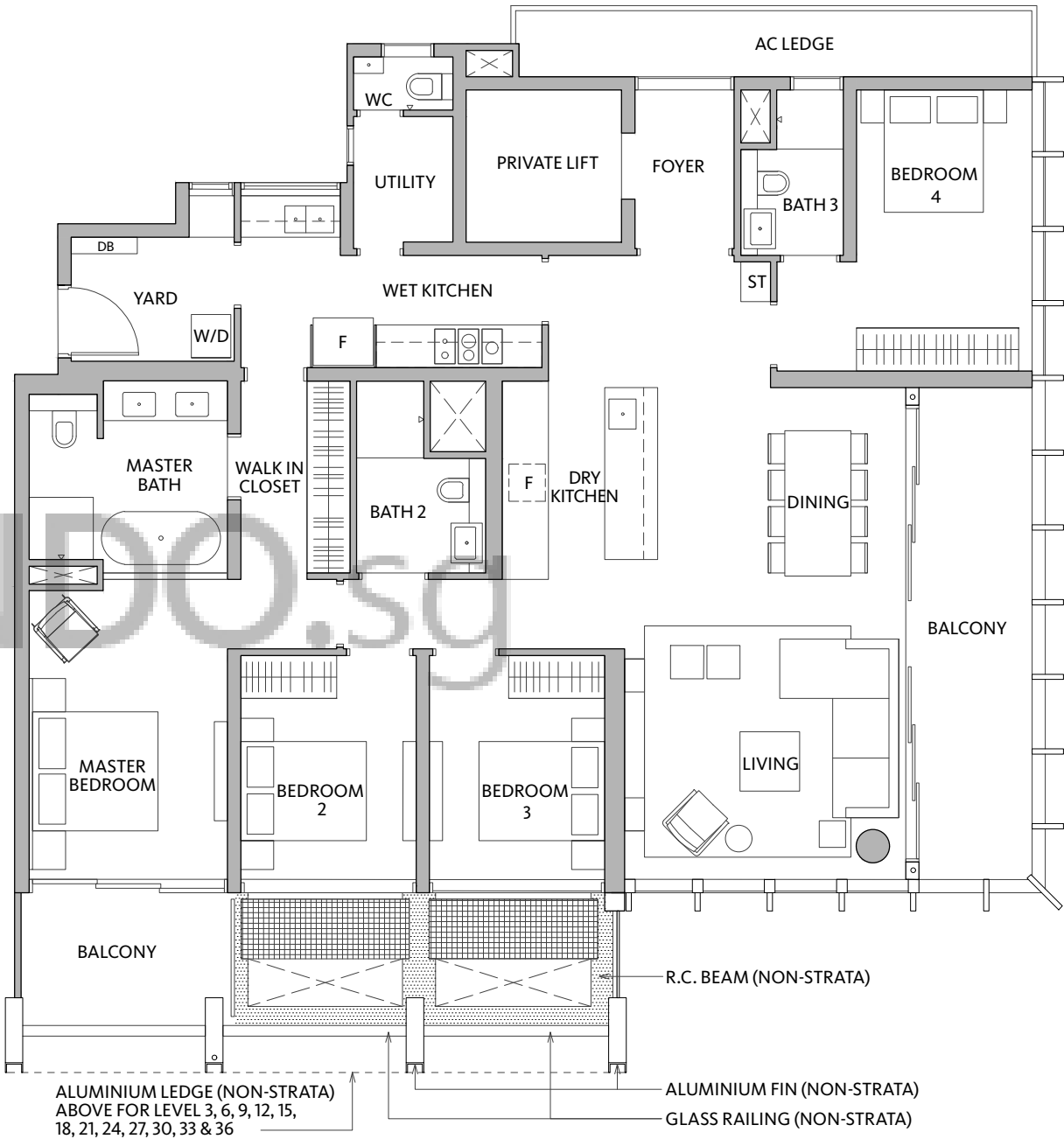
186 sqm / 2002 sqft

TYPE D1

#02-08 to #35-08

TYPE D1(h)

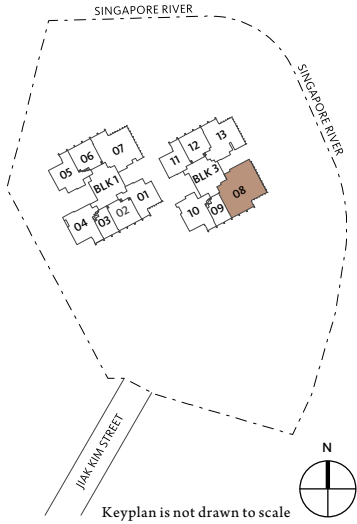
#36-08 (High Ceiling)



LEGEND:

- DB – Distribution Board
- W/D – Washing Machine and Dryer
- ST – Storage
- F – Fridge
- AC Ledge – Air Conditioner Ledge
- R.C. Beam – Reinforced Concrete Beam
- Wall not allowed to be hacked or altered (including by way of drilling) (Refer to the clause pertaining to PPVC in the S&P documents)
- Void Space (Non-strata)
- Rainwater Downpipe Shaft Space
- Maintenance Mesh (Non-strata)

Area includes air conditioner (A/C) ledge, balcony and strata void area where applicable. The above plans are subject to change as may be approved by the relevant authorities. All floor plans are approximate measurements only and are subject to government re-survey. The balcony shall not be enclosed unless with the approved balcony screen. The installation and cost of the screen shall be borne by the purchaser. For an illustration of the approved balcony screen, please refer to the diagram annexed hereto as 'Annexure A'.



TYPE D1

#02-08 to #35-08

TYPE D1(h)

#36-08 (High Ceiling)

