

2-BEDROOM

TYPE A
41 sqm

#02-06 to #21-06
#02-07 to #21-07 (Mirror Image)

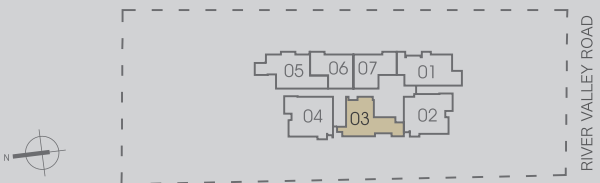
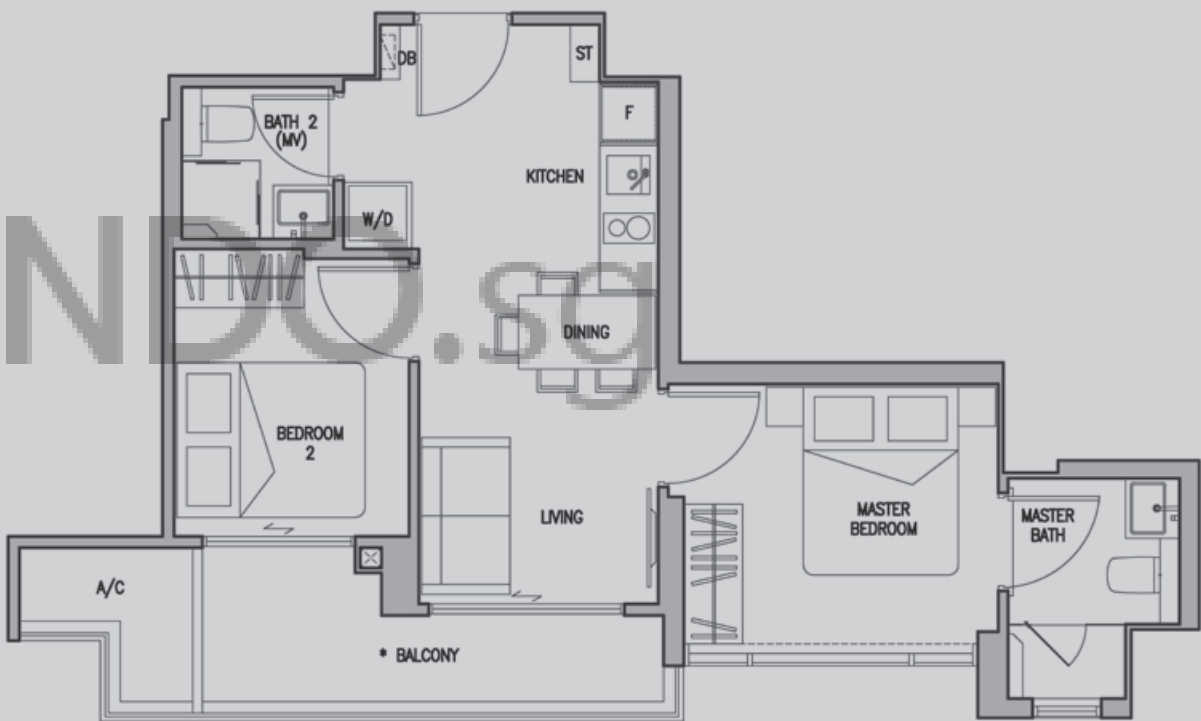


All plans are subjected to amendments as approved by the relevant authorities. Floor areas are approximate measurements and are subject to final survey. Plans are not drawn to scale and do not form part of the contract.
* The balcony shall not be enclosed. Only approved balcony screens are to be used. For an illustration of the approved balcony screen, please refer to Annexure 1 Balcony Screen Detail of this brochure.

2-BEDROOM PREMIUM

TYPE B1
53 sqm

#02-03 to #21-03



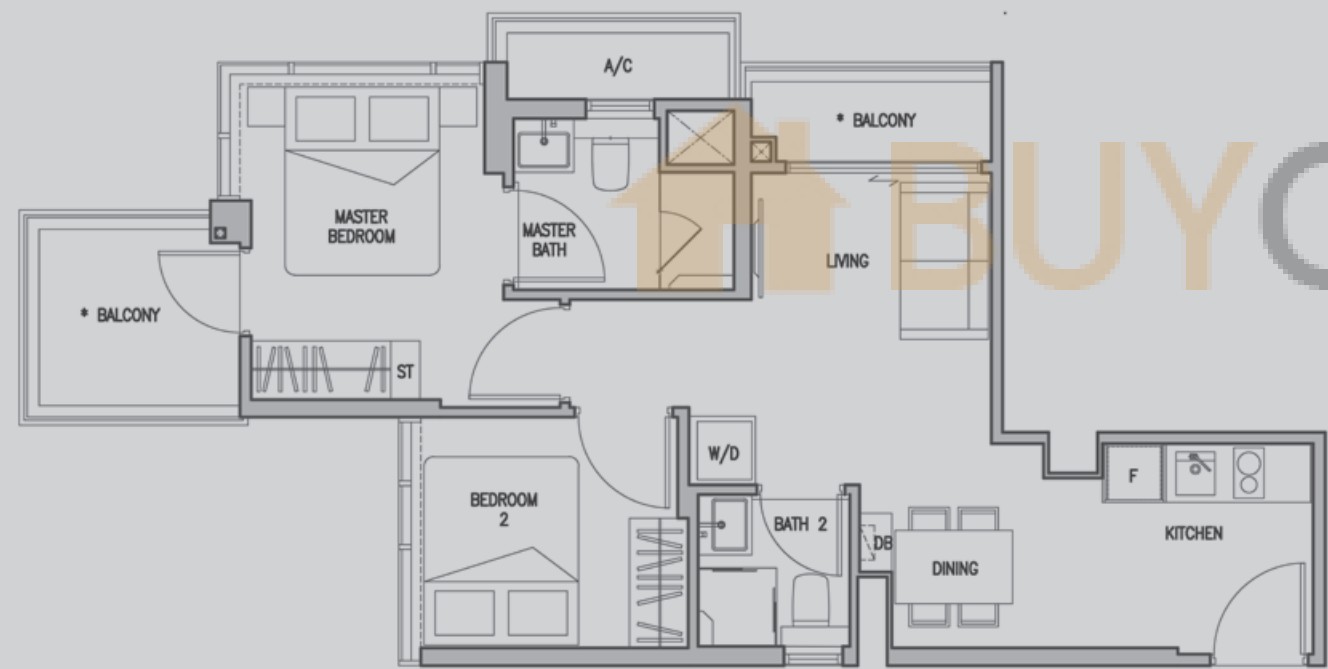
All plans are subjected to amendments as approved by the relevant authorities. Floor areas are approximate measurements and are subject to final survey. Plans are not drawn to scale and do not form part of the contract.
* The balcony shall not be enclosed. Only approved balcony screens are to be used. For an illustration of the approved balcony screen, please refer to Annexure 1 Balcony Screen Detail of this brochure.

2-BEDROOM PREMIUM

TYPE B2

56 sqm

#02-05 to #21-05



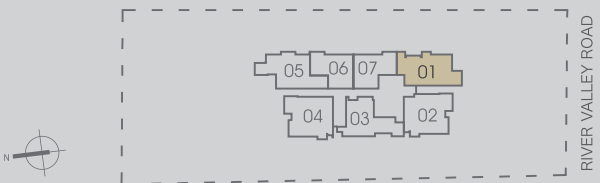
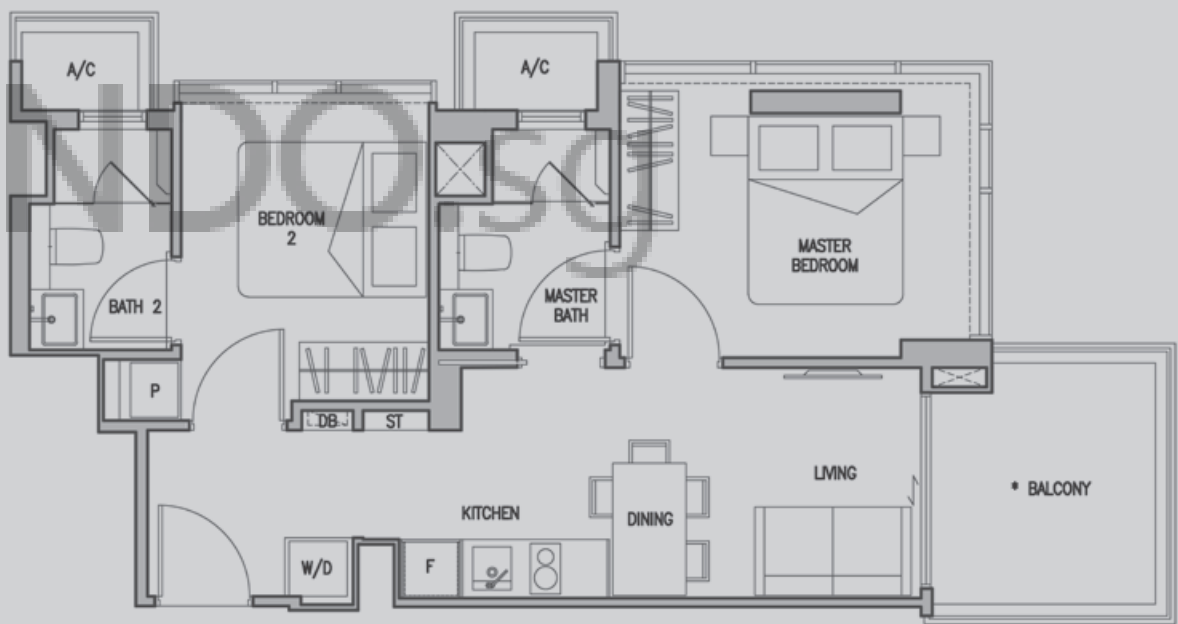
All plans are subjected to amendments as approved by the relevant authorities. Floor areas are approximate measurements and are subject to final survey. Plans are not drawn to scale and do not form part of the contract.
* The balcony shall not be enclosed. Only approved balcony screens are to be used. For an illustration of the approved balcony screen, please refer to Annexure 1 Balcony Screen Detail of this brochure.

2-BEDROOM PREMIUM

TYPE B3

58 sqm

#02-01 to #21-01

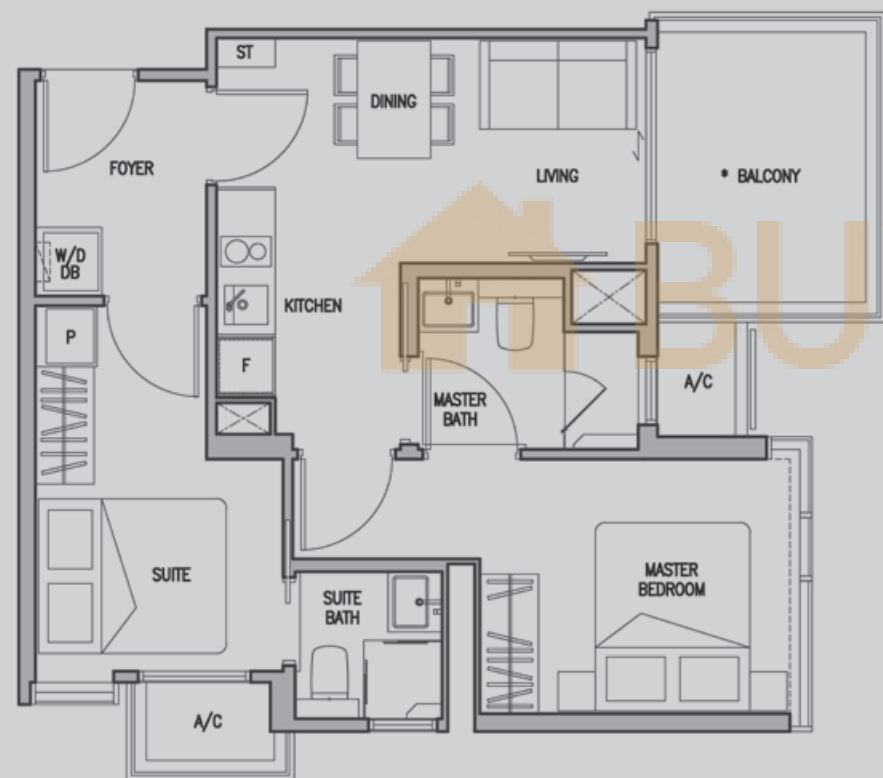


All plans are subjected to amendments as approved by the relevant authorities. Floor areas are approximate measurements and are subject to final survey. Plans are not drawn to scale and do not form part of the contract.
* The balcony shall not be enclosed. Only approved balcony screens are to be used. For an illustration of the approved balcony screen, please refer to Annexure 1 Balcony Screen Detail of this brochure.

2-BEDROOM DUAL-KEY

TYPE C1
58 sqm

#02-02 to #21-02

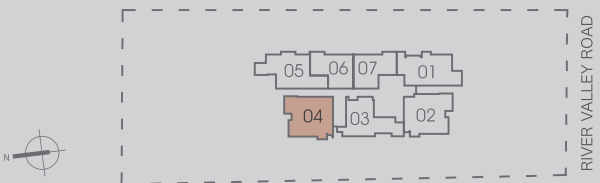
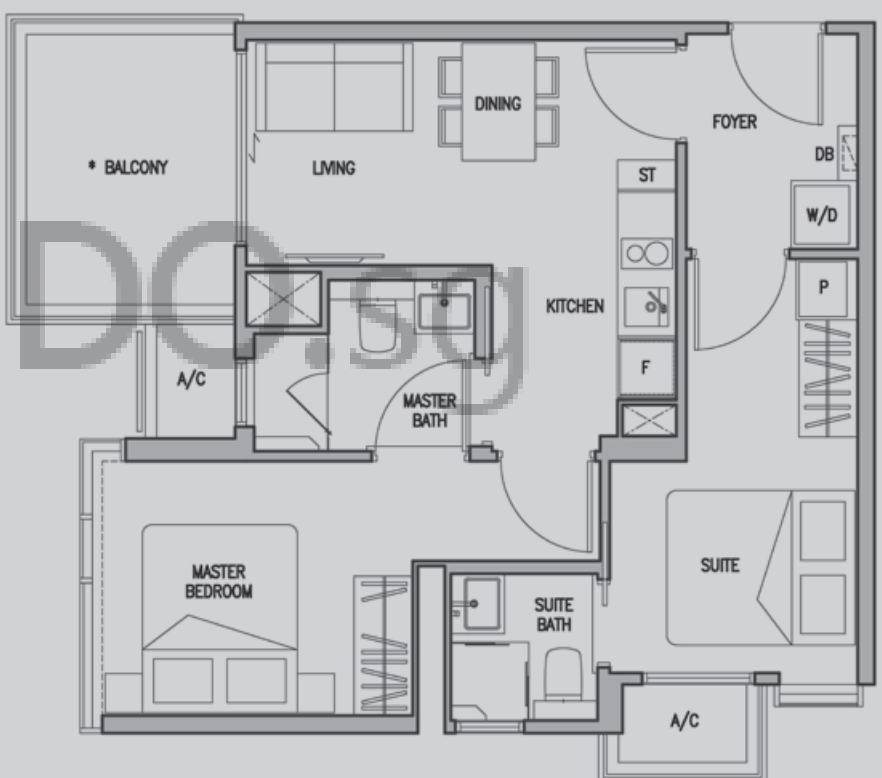


All plans are subjected to amendments as approved by the relevant authorities. Floor areas are approximate measurements and are subject to final survey. Plans are not drawn to scale and do not form part of the contract.
* The balcony shall not be enclosed. Only approved balcony screens are to be used. For an illustration of the approved balcony screen, please refer to Annexure 1 Balcony Screen Detail of this brochure.

2-BEDROOM DUAL-KEY

TYPE C2
59 sqm

#02-04 to #21-04



All plans are subjected to amendments as approved by the relevant authorities. Floor areas are approximate measurements and are subject to final survey. Plans are not drawn to scale and do not form part of the contract.
* The balcony shall not be enclosed. Only approved balcony screens are to be used. For an illustration of the approved balcony screen, please refer to Annexure 1 Balcony Screen Detail of this brochure.