



I-BEDROOM

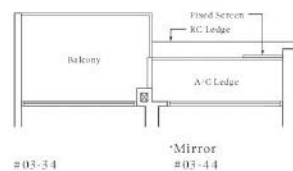
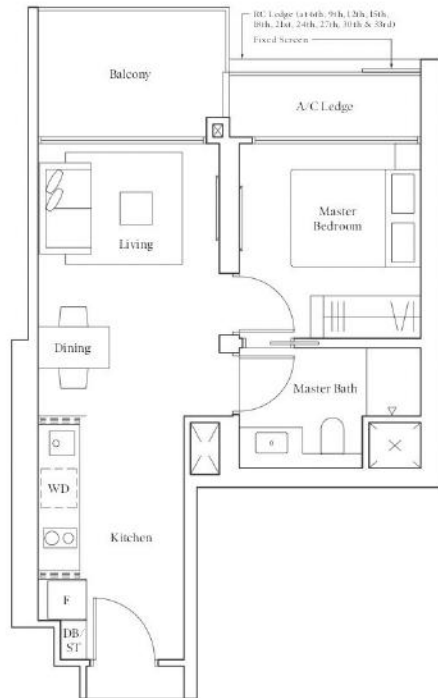
Artist's Impression

I-BEDROOM

Type A1 | 49 sqm | 527 sqft

#04-34 to #18-34
#20-34 to #35-34

*Mirror
#04-44 to #18-44
#20-44 to #35-44



#03-34

*Mirror
#03-44

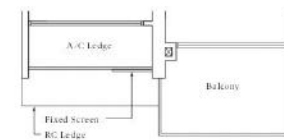
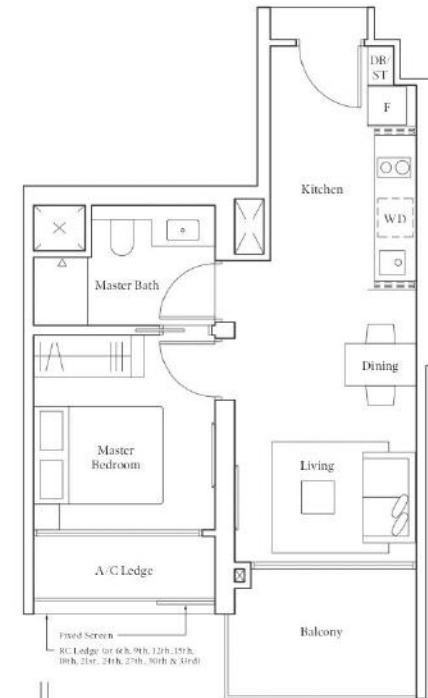
Note: Area includes A/C ledge, balcony, pos, private roof terrace and void (where applicable). RC ledge is not part of unit area. The above plans and illustrations are subject to changes as may be required by the relevant authorities. Areas are estimates only and are subject to final survey. The balcony, pos, and private roof terrace shall not be enclosed unless with the approved screen. For an illustration of the approved balcony screen, please refer to the diagram annexed herein as "Screencase".

I-BEDROOM

Type A2 | 49 sqm | 527 sqft

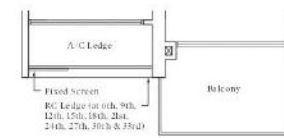
#04-29 to #05-29
#09-29 to #11-29
#15-29 to #17-29
#21-29 to #23-29
#27-29 to #29-29
#33-29 to #35-29

*Mirror
#04-39 to #05-39
#09-39 to #11-39
#15-39 to #17-39
#21-39 to #23-39
#27-39 to #29-39
#33-39 to #35-39



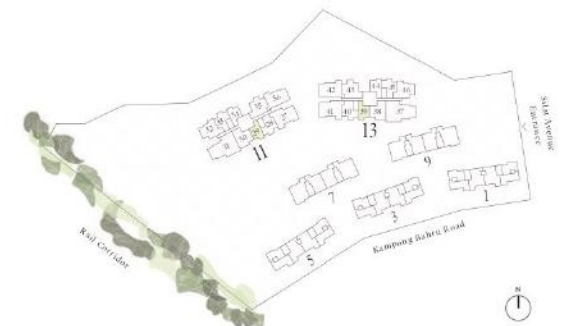
#03-29

*Mirror
#03-39



#06-29 to #08-29
#12-29 to #14-29
#18-29
#20-29
#24-29 to #26-29
#30-29 to #32-29

*Mirror
#06-39 to #08-39
#12-39 to #14-39
#18-39
#20-39
#24-39 to #26-39
#30-39 to #32-39



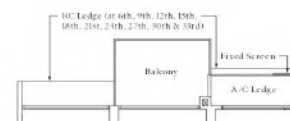
Note: Area includes A/C ledge, balcony, pos, private roof terrace and void (where applicable). RC ledge is not part of unit area. The above plans and illustrations are subject to changes as may be required by the relevant authorities. Areas are estimates only and are subject to final survey. The balcony, pos, and private roof terrace shall not be enclosed unless with the approved screen. For an illustration of the approved balcony screen, please refer to the diagram annexed herein as "Screencase".



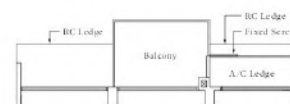
2-BEDROOM

Type B1 | 61 sqm | 657 sqft

#04-33 to #05-33	*Mirror
#09-33 to #11-33	#04-45 to #05-45
#15-33 to #17-33	#09-45 to #11-45
#21-33 to #23-33	#15-45 to #17-45
#27-33 to #29-33	#21-45 to #23-45
#33-33 to #35-33	#27-45 to #29-45
	#33-45 to #35-45



#06-33 to #08-33	*Mirror
#12-33 to #14-33	#06-45 to #08-45
#18-33	#12-45 to #14-45
#20-33	#18-45
#24-33 to #26-33	#20-45
#30-33 to #32-33	#24-45 to #26-45
	#30-45 to #32-45



#03-33	*Mirror
	#03-45

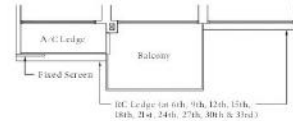
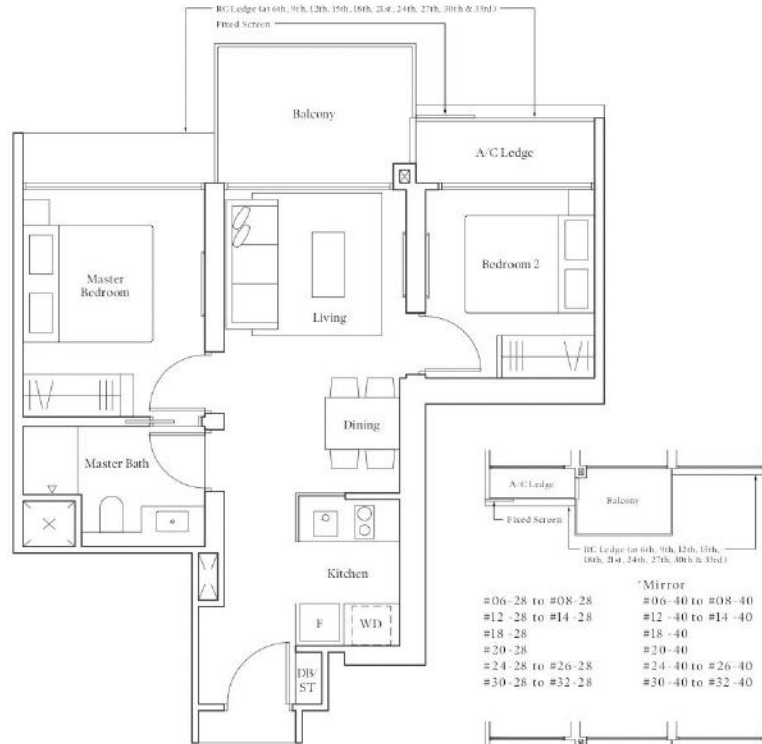


Note: Area includes A/C ledge, balcony, pos, and private roof terrace and void (where applicable). BC ledge is not part of unit area. The above plans and illustrations are subject to changes as may be required by the relevant authorities. Areas are estimates only and are subject to final survey. The balcony, pos, and private roof terrace shall not be enclosed unless with the approved screen. For an illustration of the approved balcony screen, please refer to the diagram annexed herein as "Screening".

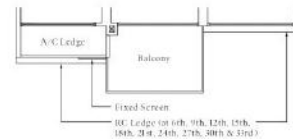
2-BEDROOM

Type B1 | 61 sqm | 657 sqft

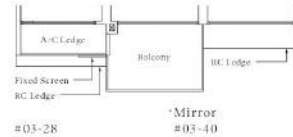
*Mirror
 #04-33 to #05-33
 #09-33 to #11-33
 #15-33 to #17-33
 #21-33 to #23-33
 #27-33 to #29-33
 #33-33 to #35-33
 #04-45 to #05-45
 #09-45 to #11-45
 #15-45 to #17-45
 #21-45 to #23-45
 #27-45 to #29-45
 #33-45 to #35-45



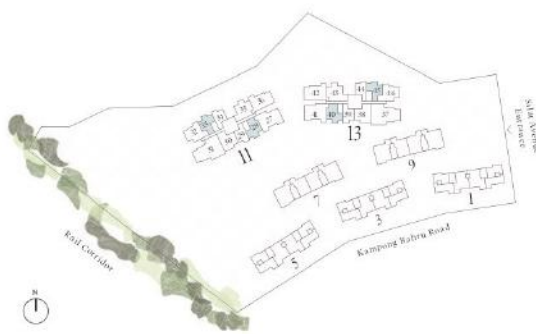
*Mirror
 #06-28 to #08-28
 #12-28 to #14-28
 #18-28
 #20-28
 #24-28 to #26-28
 #30-28 to #32-28
 #06-40 to #08-40
 #12-40 to #14-40
 #18-40
 #20-40
 #24-40 to #26-40
 #30-40 to #32-40



*Mirror
 #04-28 to #05-28
 #09-28 to #11-28
 #15-28 to #17-28
 #21-28 to #23-28
 #27-28 to #29-28
 #33-28 to #35-28
 #04-40 to #05-40
 #09-40 to #11-40
 #15-40 to #17-40
 #21-40 to #23-40
 #27-40 to #29-40
 #33-40 to #35-40



*Mirror
 #03-28
 #03-40

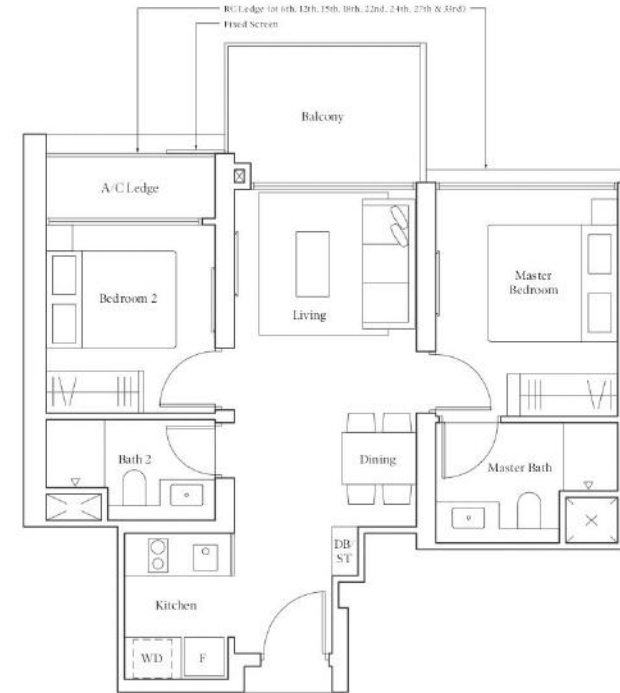


Note: Area includes A/C ledge, balcony, pos, private not terrace and void (where applicable). RC ledge is not part of strata area. The above plans and illustrations are subject to changes as may be required by the relevant authorities. Areas are estimates only and are subject to final survey. The balcony, pos, and private not terrace shall not be enclosed unless with the approved screen. For an illustration of the approved balcony screen, please refer to the diagram annexed herein as "Screening".

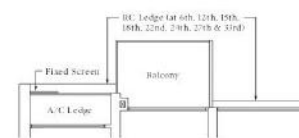
2-BEDROOM PREMIUM

Type BP1 | 64 sqm | 689 sqft

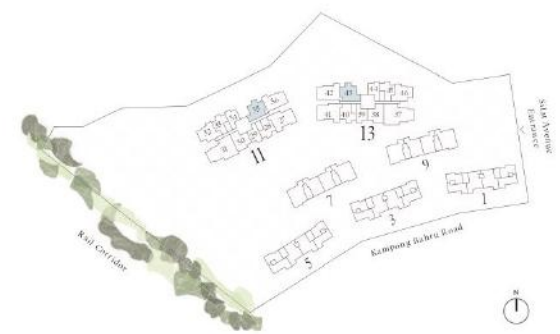
*Mirror
 #04-35 to #05-35
 #15-35 to #17-35
 #22-35 to #23-35
 #27-35 to #29-35
 #33-35 to #35-35
 #04-43 to #05-43
 #15-43 to #17-43
 #22-43 to #23-43
 #27-43 to #29-43
 #33-43 to #35-43



#03-35



*Mirror
 #06-35 to #08-35
 #12-35 to #14-35
 #18-35
 #24-35 to #26-35
 #06-43 to #08-43
 #12-43 to #14-43
 #18-43
 #24-43 to #26-43



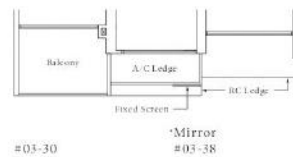
Note: Area includes A/C ledge, balcony, pos, private not terrace and void (where applicable). RC ledge is not part of strata area. The above plans and illustrations are subject to changes as may be required by the relevant authorities. Areas are estimates only and are subject to final survey. The balcony, pos, and private not terrace shall not be enclosed unless with the approved screen. For an illustration of the approved balcony screen, please refer to the diagram annexed herein as "Screening".

2-BEDROOM PREMIUM

● Type BP2 | 67 sqm | 721 sqft

#04-30 to #13-30
#17-30 to #18-30
#20-30 to #23-30
#27-30 to #35-30

*Mirror
#04-38 to #13-38
#17-38 to #18-38
#20-38 to #23-38
#27-38 to #35-38



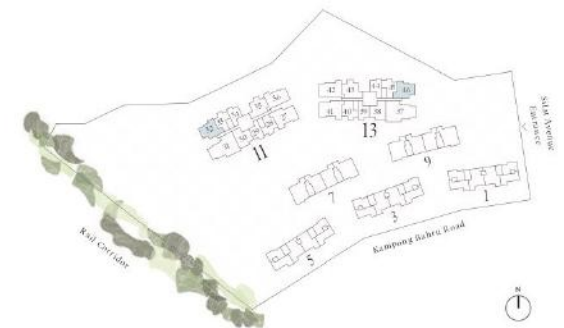
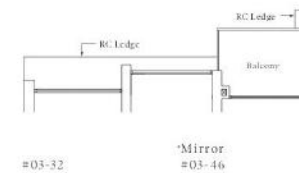
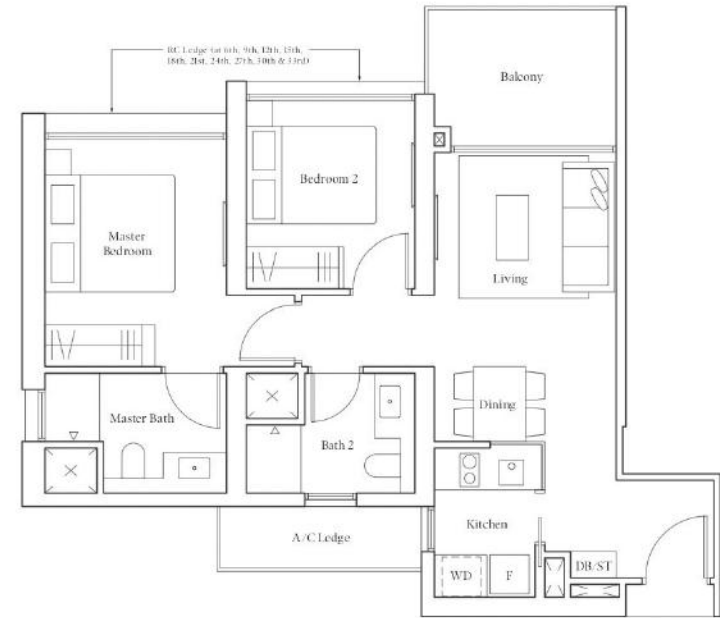
Note: Area includes A/C ledge, balcony, pos, private not terrace and void (where applicable). RC Ledge is not part of unit area. The above plans and illustrations are subject to changes as may be required by the relevant authorities. Areas are estimates only and are subject to final survey. The balcony, pos, and private not terrace shall not be enclosed unless with the approved screen. For an illustration of the approved balcony screen, please refer to the diagram annexed herein as "Screencase".

2-BEDROOM PREMIUM

● Type BP3 | 68 sqm | 732 sqft

#04-32 to #18-32
#20-32 to #35-32

*Mirror
#04-46 to #18-46
#20-46 to #35-46



Note: Area includes A/C ledge, balcony, pos, private not terrace and void (where applicable). RC Ledge is not part of unit area. The above plans and illustrations are subject to changes as may be required by the relevant authorities. Areas are estimates only and are subject to final survey. The balcony, pos, and private not terrace shall not be enclosed unless with the approved screen. For an illustration of the approved balcony screen, please refer to the diagram annexed herein as "Screencase".



4-BEDROOM

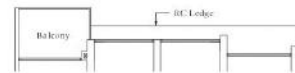
Artis / Inspira

3-BEDROOM

● Type C1 | 88 sqm | 947 sqft

#04-36 to #18-36
#20-36 to #35-36

*Mirror
#04-42 to #18-42
#20-42 to #35-42



#03-36

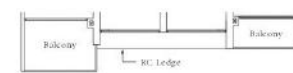
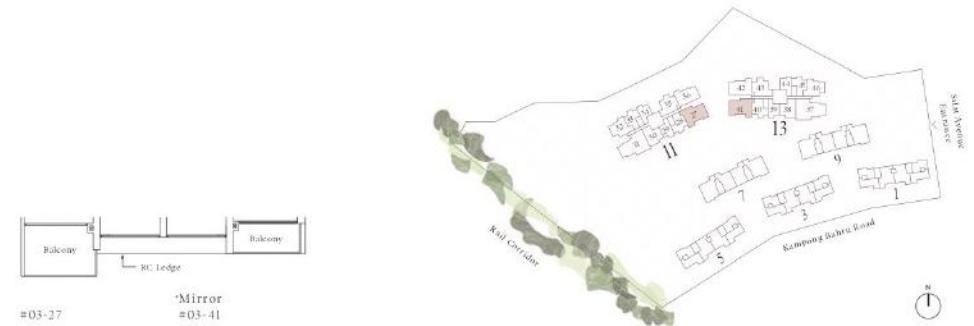
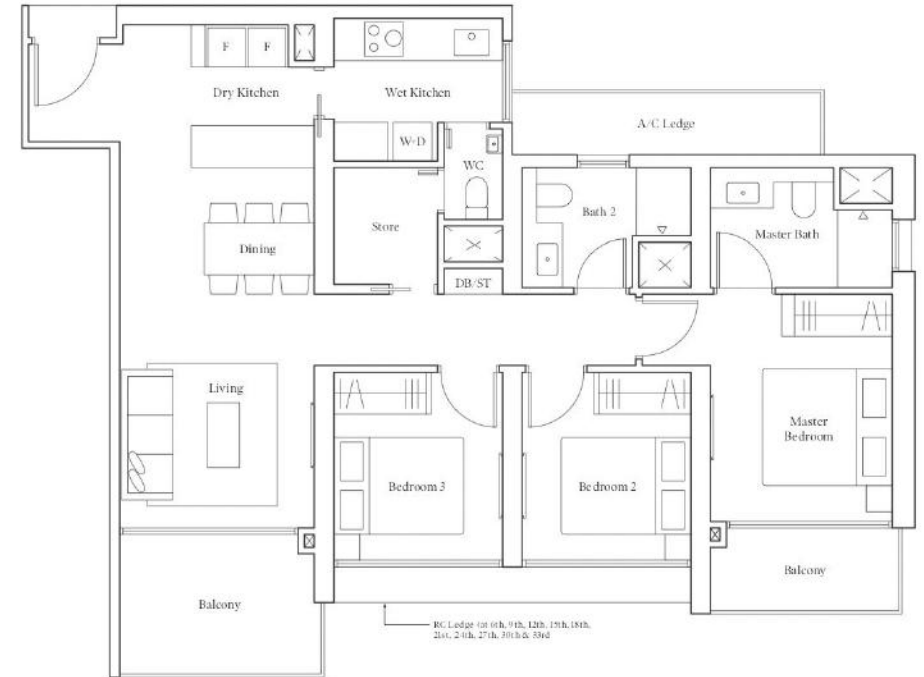
Note: Area includes A/C ledge, balcony, pos, private not terrace and void (where applicable). RC Ledge is not part of unit area. The above plans and illustrations are subject to changes as may be required by the relevant authorities. Areas are estimates only and are subject to final survey. The balcony, pos, and private not terrace shall not be enclosed unless with the approved screen. For an illustration of the approved balcony screen, please refer to the diagram annexed herein as "Screencase".

3-BEDROOM PREMIUM

● Type CP1 | 103 sqm | 1109 sqft

#04-27 to #18-27
#20-27 to #35-27

*Mirror
#04-41 to #18-41
#20-41 to #35-41



#03-27

*Mirror
#03-41

Note: Area includes A/C ledge, balcony, pos, private not terrace and void (where applicable). RC Ledge is not part of unit area. The above plans and illustrations are subject to changes as may be required by the relevant authorities. Areas are estimates only and are subject to final survey. The balcony, pos, and private not terrace shall not be enclosed unless with the approved screen. For an illustration of the approved balcony screen, please refer to the diagram annexed herein as "Screencase".



4-BEDROOM

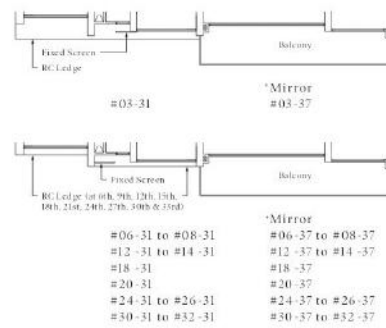
Artist's Impression

4-BEDROOM PREMIUM

Type DPl | 139 sqm | 1496 sqft

#04-31 to #05-31
#09-31 to #11-31
#15-31 to #17-31
#21-31 to #23-31
#27-31 to #29-31
#33-31 to #35-31

*Mirror
#04-37 to #05-37
#09-37 to #11-37
#15-37 to #17-37
#21-37 to #23-37
#27-37 to #29-37
#33-37 to #35-37



Note: Area includes A/C ledge, balcony, private terrace and void where applicable. BC ledge is not part of unit area. The above plan and illustration are subject to changes as may be required by the relevant authorities. Area are estimates only and are subject to final survey. The balcony, pool, and private road terrace shall not be enclosed unless with the approved screen. For an illustration of the approved balcony screen, please refer to the diagram annexed herein as "Annexure 1".

HERITAGE COLLECTION

AVENUE SOUTH
RESIDENCE

THE LIVE | WORK SUITES

Meticulously researched and restored under the care of a conservation consultant, these heritage buildings have been revitalised to align with the modern aesthetics of Avenue South Residence.

Elements such as the chevron-shaped canopies, fish scale vents and chimneys have been renewed with a special focus on colour schemes that represent local heritage buildings.



Artist's Impression

HERITAGE COLLECTION AT A GLANCE



7

Unit/ Floor	19	20	21	22
4	CC1	BC1	BC1	CC1
3	CC1	BC1	BC1	CC1
2	CC1	BC1	BC1	CC1
1	CC1-G	BC1-G	BC1-G	CC1-G

9

Unit/ Floor	23	24	25	26
4	CC1	BC1	BC1	CC1
3	CC1	BC1	BC1	CC1
2	CC1	BC1	BC1	CC1
1	CC1-G	BC1-G	BC1-G	CC1-G

5

Unit/ Floor	13	14	15	16	17	18
4	AC2	AC1	BC2	BC2	AC2	AC1
3	AC2	AC1	BC2	BC2	AC2	AC1
2	AC2	AC1	BC2	BC2	AC2	AC1
1	Commercial Shops					

3

Unit/ Floor	7	8	9	10	11	12
4	AC2	AC1	BC2	BC2	AC2	AC1
3	AC2	AC1	BC2	BC2	AC2	AC1
2	AC2	AC1	BC2	BC2	AC2	AC1
1	Commercial Shops			Childcare Centre		

1

Unit/ Floor	1	2	3	4	5	6
4	AC2	AC1	BC2	BC2	AC2	AC1
3	AC2	AC1	BC2	BC2	AC2	AC1
2	AC2	AC1	BC2	BC2	AC2	AC1
1	Childcare Centre					
B	Childcare Centre					



Bedroom	Type	Area
1-Bedroom Classic	AC1	44 sqm 474 sqft
	AC2	46 sqm 495 sqft
2-Bedroom Classic	BC1	75 sqm 807 sqft
2-Bedroom Classic Premium	BC1-G	61 sqm 657 sqft
	BC2	75 sqm 807 sqft
3-Bedroom Classic Premium	CC1-G	88 sqm 947 sqft
	CC1	93 sqm 1001 sqft



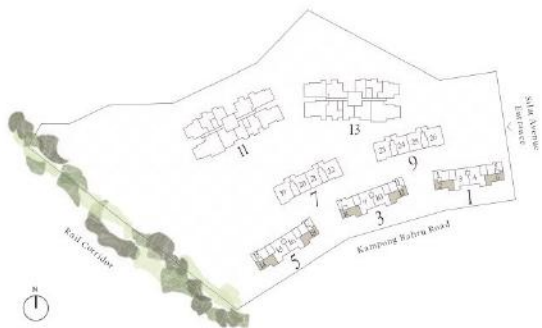
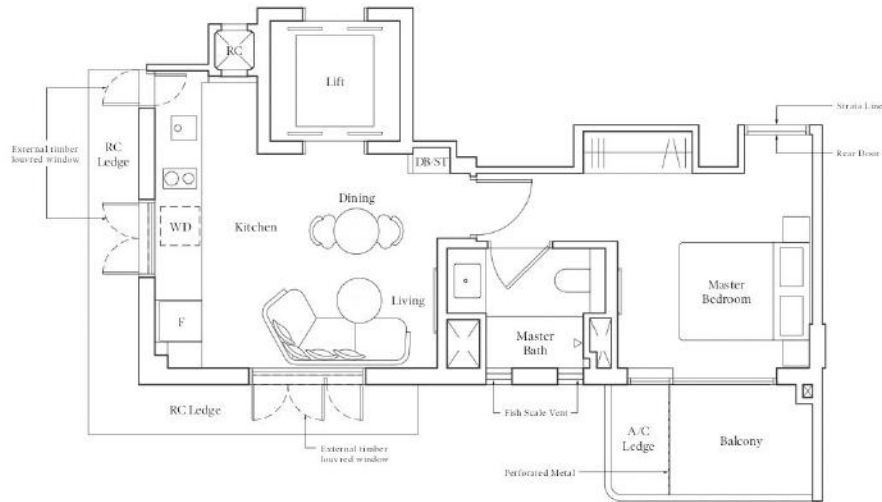
3-BEDROOM

Artistic Impression

I-BEDROOM CLASSIC

● Type AC1 | 44 sqm | 474 sqft

#02-02 to #04-02
 #02-08 to #04-08
 #02-14 to #04-14
 *Mirror
 #02-06 to #04-06
 #02-12 to #04-12
 #02-18 to #04-18

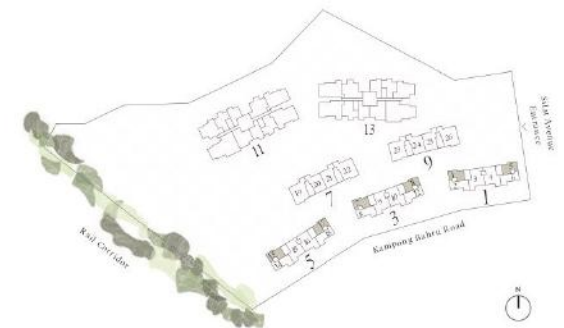


Note: Area includes A/C ledge, balcony, pos, private roof terrace and void (where applicable). RC ledge is not part of strata area. The above plans and illustrations are subject to changes as may be required by the relevant authorities. Areas are estimates only and are subject to final survey. The balcony, pos, and private roof terrace shall not be enclosed unless with the approved screen. For an illustration of the approved balcony screen, please refer to the diagram annexed herein as "Annexure I".

I-BEDROOM CLASSIC

● Type AC2 | 46 sqm | 495 sqft

#02-01 to #04-01
 #02-07 to #04-07
 #02-13 to #04-13
 *Mirror
 #02-05 to #04-05
 #02-11 to #04-11
 #02-17 to #04-17



Note: Area includes A/C ledge, balcony, pos, private roof terrace and void (where applicable). RC ledge is not part of strata area. The above plans and illustrations are subject to changes as may be required by the relevant authorities. Areas are estimates only and are subject to final survey. The balcony, pos, and private roof terrace shall not be enclosed unless with the approved screen. For an illustration of the approved balcony screen, please refer to the diagram annexed herein as "Annexure I".



3-BEDROOM

Artist's Impression

2-BEDROOM CLASSIC

● Type BC1 | 75 sqm | 807 sqft

#02-20 to #04-20
#02-21 to #04-21
#02-24 to #04-24

*Mirror
#02-21 to #04-21
#02-25 to #04-25



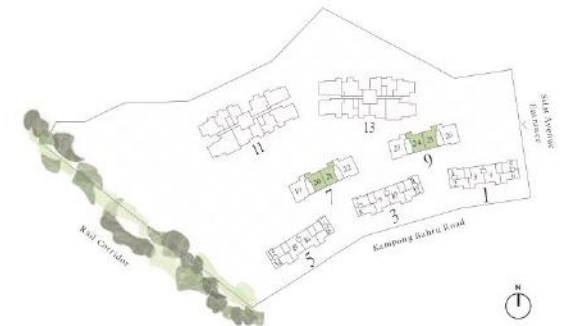
Note: Area includes A/C ledge, balcony, pos, private roof terrace and void where applicable. RC ledge is not part of strata area. The above plans and illustrations are subject to changes as may be required by the relevant authorities. Areas are estimates only and are subject to final survey. The balcony, pos, and private roof terrace shall not be enclosed unless with the approved screen. For an illustration of the approved balcony screen, please refer to the diagram annexed herein as "Screening".

2-BEDROOM CLASSIC

● Type BC1-G | 61 sqm | 657 sqft

#01-20
#01-24

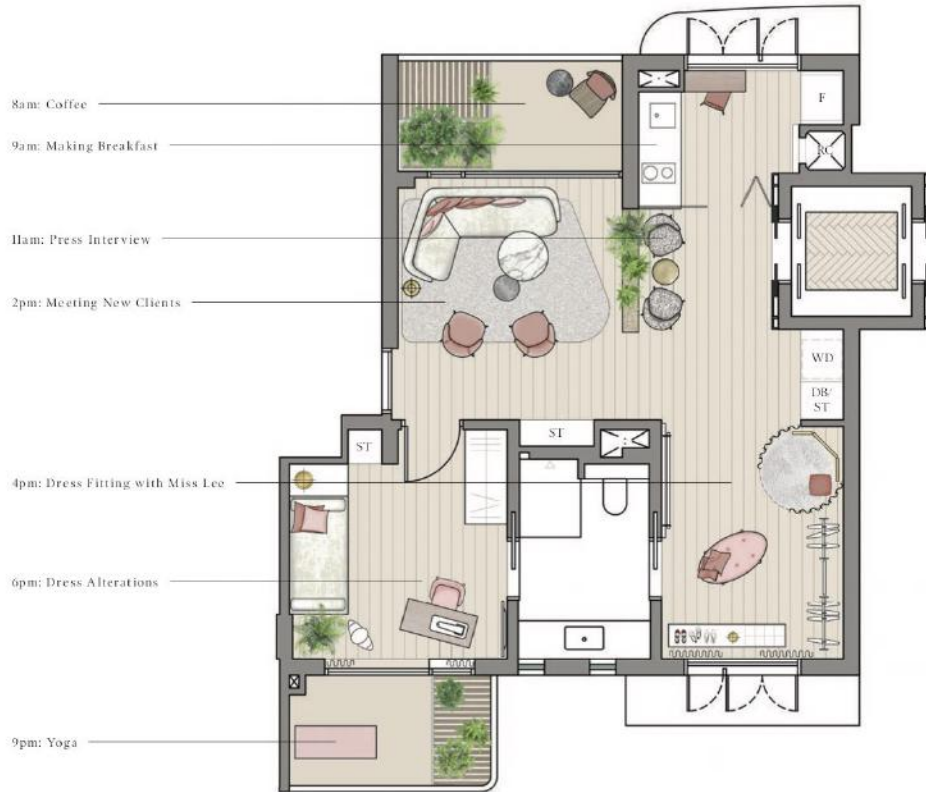
*Mirror
#01-21
#01-25



Note: Area includes A/C ledge, balcony, pos, private roof terrace and void where applicable. RC ledge is not part of strata area. The above plans and illustrations are subject to changes as may be required by the relevant authorities. Areas are estimates only and are subject to final survey. The balcony, pos, and private roof terrace shall not be enclosed unless with the approved screen. For an illustration of the approved balcony screen, please refer to the diagram annexed herein as "Screening".

WORK | LIVE PLAN

Luxury living or home office, these spaces can be customised to suit all your needs.



For details on permitted usage, please refer to <https://www.singapore.gov.sg/Corporate/Qualities/Home-Business/Home-Office/Scheme/Folder/Permitted-Non-Permitted-Businesses>.

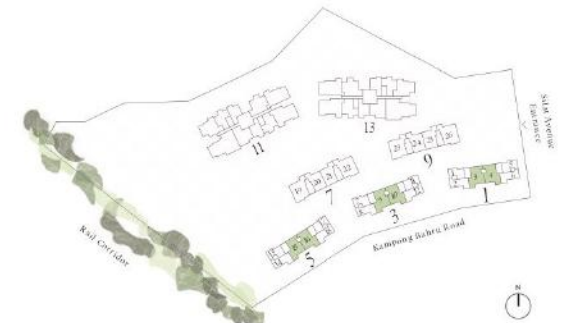


2-BEDROOM CLASSIC PREMIUM

Type BC2 | 75 sqm | 807 sqft

*Mirror
 #02-03 to #04-03
 #02-04 to #04-04
 #02-09 to #04-09
 #02-10 to #04-10
 #02-15 to #04-15
 #02-16 to #04-16

TYPICAL PLAN



*Note: Area includes A/C ledge, balcony, pos, private roof terrace and void (where applicable). RC ledge is not part of unit area. The above plans and illustrations are subject to changes as may be required by the relevant authorities. Areas are estimates only and are subject to final survey. The balcony, pos, and private roof terrace shall not be enclosed unless with the approved screen. For an illustration of the approved balcony screen, please refer to the diagram annexed herein as "Screening".

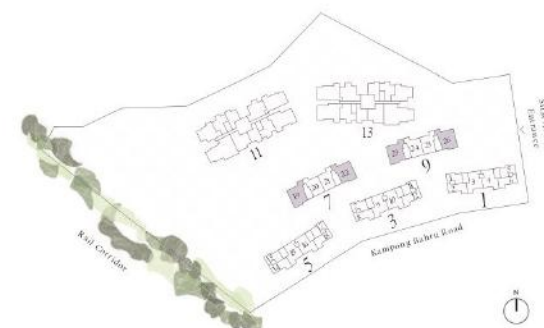
This spacious layout presents opportunities to design a living or work area that's perfectly in tune with your future plans.



	*Mirror
#02-19 to #04-19	#02-22 to #04-22
#02-23 to #04-23	#02-26 to #04-26

The floor plan shows a 3-bedroom apartment with the following layout and features:

- Bedrooms:** Bedroom 2, Bedroom 3, and Master Bedroom.
- Bathrooms:** Bath 2 and Master Bath.
- Kitchen:** Includes a fish scale vent with fixed glass behind it, a fish scale vent, a refrigerator (F), and a sink.
- Dining:** Features a round table with four chairs.
- Living:** Includes a sofa and a coffee table.
- Balcony:** Located off the living area, featuring a rear door, strata line, and a lift.
- Other Features:** Perforated Metal, A/C Ledge, RC Ledge, External timber insulated window, and a Lift.



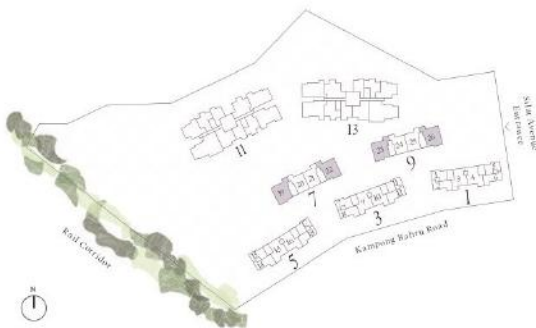
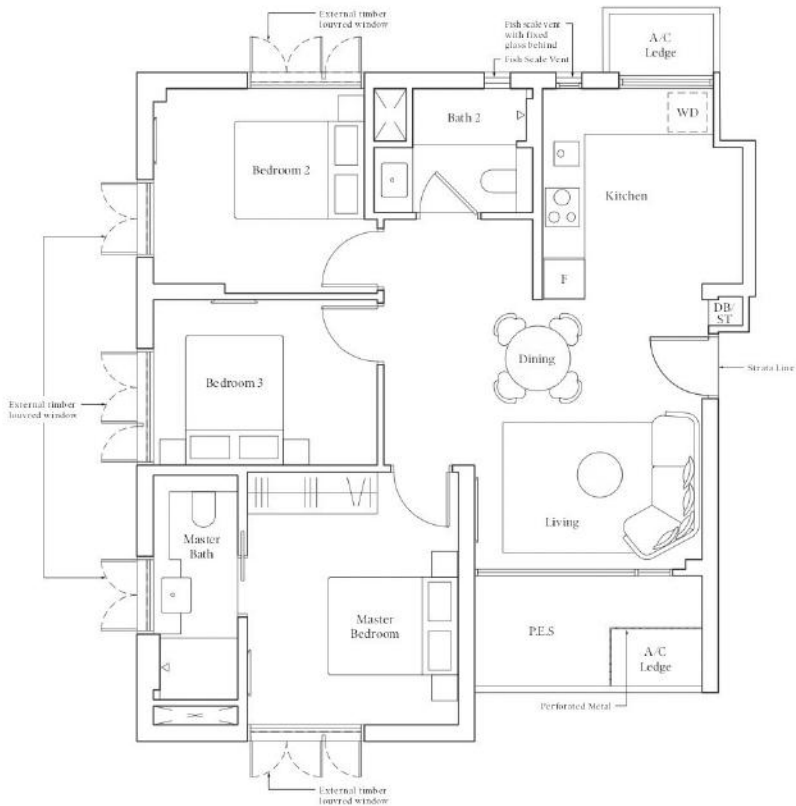
Note: Area includes A-C ledge, balcony, pool, private roof terrace and laid (where applicable). B-C ledge is not part of siting area. The above plans and illustrations are subject to changes as may be required by the relevant authorities. Areas are estimates only and are subject to final survey. The balcony, pool, and private roof terrace shall not be enclosed unless with the approved screen. For an illustration of the approved balcony screen, please refer to the diagram annexed hereto as "Annexure C".

3-BEDROOM CLASSIC PREMIUM

● Type CCI-G | 88 sqm | 947 sqft

#01-19
#01-23

*Mirror
#01-22
#01-26

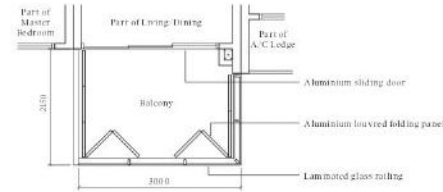


Note: Area includes A/C ledge, balcony, pet, private interference and void where applicable. A/C ledge is not part of strata unit. The above plan and illustration are subject to changes as may be required by the relevant authorities. Area are estimates only and are subject to final survey. The balcony, pet, and private not fence shall not be enclosed unless with the approved screen. For an illustration of the approved balcony screen, please refer to the diagram annexed herein as "Annexure I".

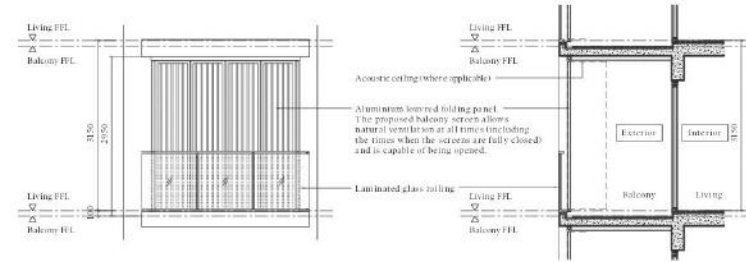
ANNEXURE I

TYPICAL RETRACTABLE BALCONY SCREEN

Applicable for tower block units only.



PLAN

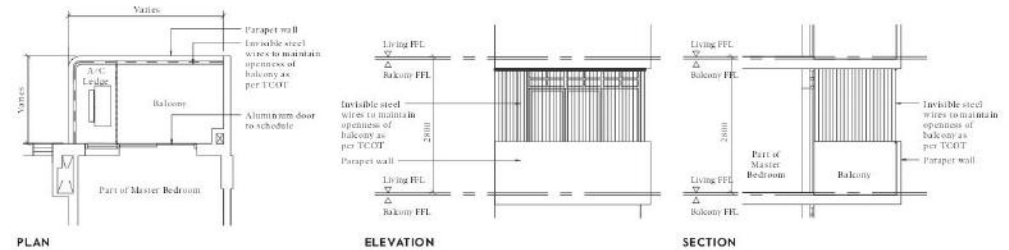


ELEVATION

SECTION

TYPICAL BALCONY SCREEN (INVISIBLE GRILLES)

Applicable for conserved building units only.



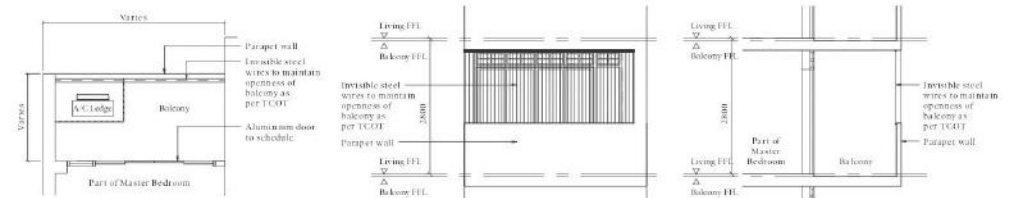
PLAN

ELEVATION

SECTION

TYPICAL BALCONY SCREEN (INVISIBLE GRILLES)

Applicable for conserved building units only.



PLAN

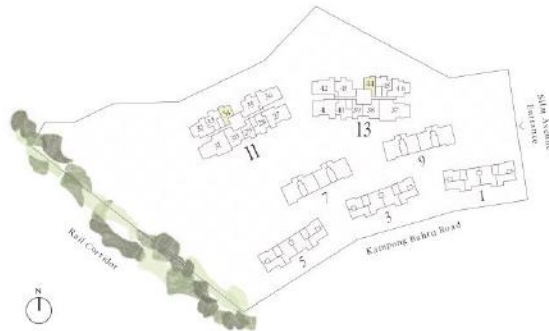
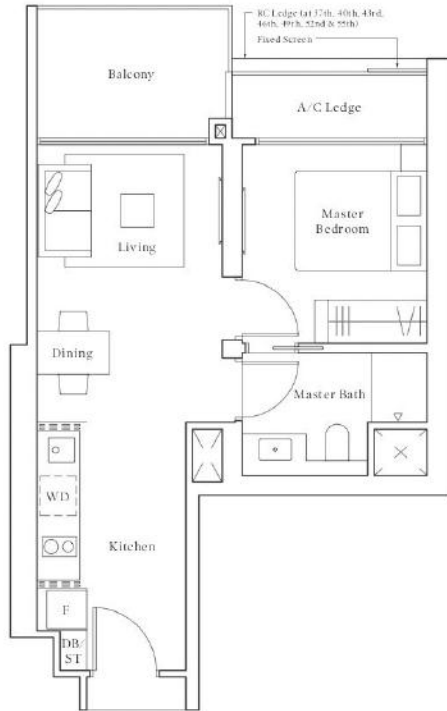
ELEVATION

SECTION

I-BEDROOM

Type A1 | 49 sqm | 527 sqft

#37-34 to #56-34
*Mirror
#37-44 to #56-44

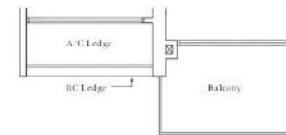
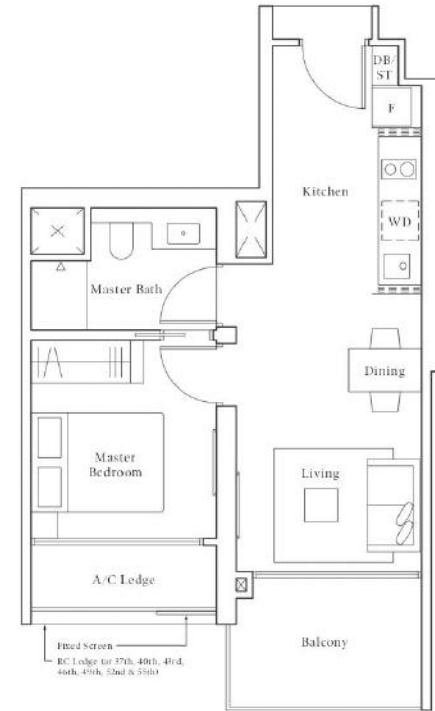


Note: Area includes A/C ledge, balcony, pos, private roof terrace and wind (where applicable). RC ledge is not part of unit area. The above plans and illustrations are subject to changes as may be required by the relevant authorities. Areas are estimates only and are subject to final survey. The balcony, pos, and private roof terrace shall not be enclosed unless with the approved screen. For an illustration of the approved balcony screen, please refer to the diagram attached hereto as "Screening I".

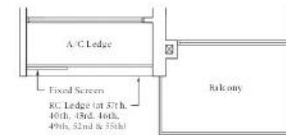
I-BEDROOM

Type A2 | 49 sqm | 527 sqft

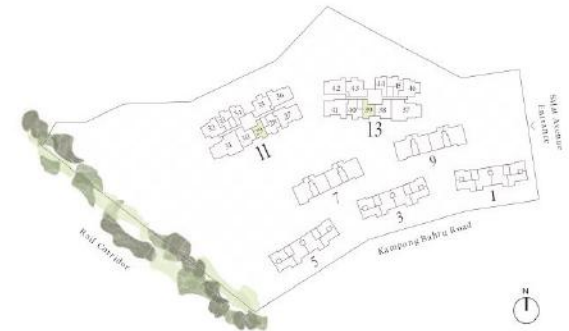
#40-29 to #42-29
#46-29 to #48-29
#52-29 to #54-29
*Mirror
#40-39 to #42-39
#46-39 to #48-39
#52-39 to #54-39



#55-29
*Mirror
#55-39



#37-29 to #39-29
#43-29 to #45-29
#49-29 to #51-29
*Mirror
#37-39 to #39-39
#43-39 to #45-39
#49-39 to #51-39

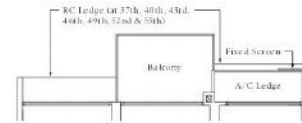


Note: Area includes A/C ledge, balcony, pos, private roof terrace and wind (where applicable). RC ledge is not part of unit area. The above plans and illustrations are subject to changes as may be required by the relevant authorities. Areas are estimates only and are subject to final survey. The balcony, pos, and private roof terrace shall not be enclosed unless with the approved screen. For an illustration of the approved balcony screen, please refer to the diagram attached hereto as "Screening I".

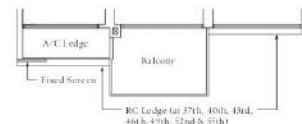
2-BEDROOM

● Type B1 | 6l sqm | 657 sqft

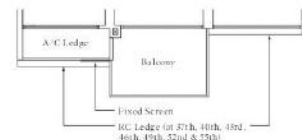
	*Mirror
#40-33 to #42-33	#40-45 to #42-45
#46-33 to #48-33	#46-45 to #48-45
#52-33 to #54-33	#52-45 to #54-45



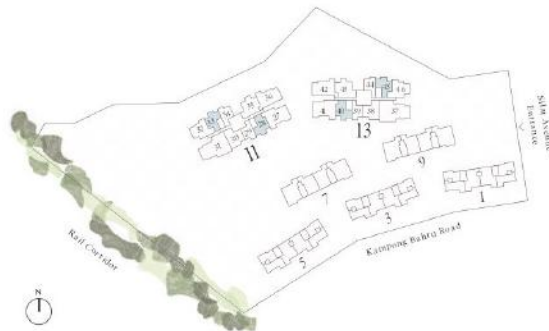
	*Mirror
#37-33 to #39-33	#37-45 to #39-45
#43-33 to #45-33	#43-45 to #45-45
#49-33 to #51-33	#49-45 to #51-45
#55-33 to #56-33	#55-45 to #56-45



	*Mirror
#37-28 to #39-28	#37-40 to #39-40
#43-28 to #45-28	#43-40 to #45-40
#49-28 to #51-28	#49-40 to #51-40
#55-28 to #56-28	#55-40 to #56-40



	Mirror
#40-28 to #42-28	#40-40 to #42-40
#46-28 to #48-28	#46-40 to #48-40
#52-28 to #54-28	#52-40 to #54-40

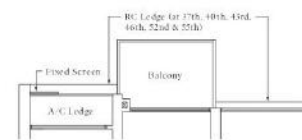
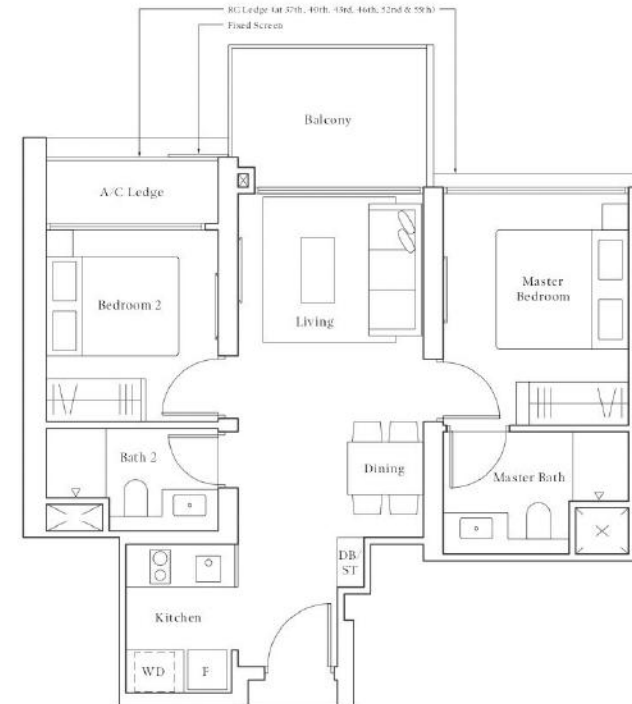


Note: Area includes A/C ledge, balcony, porch, private roof terrace and void (where applicable). RC ledge is not part of strata area. The above plans and illustrations are subject to changes as may be required by the relevant authorities. Areas are estimates only and are subject to final survey. The balcony, porch, and private roof terrace shall not be enclosed unless with the approved screen. For an illustration of the approved balcony screen, please refer to the diagram annexed hereto as "Screening Plan".

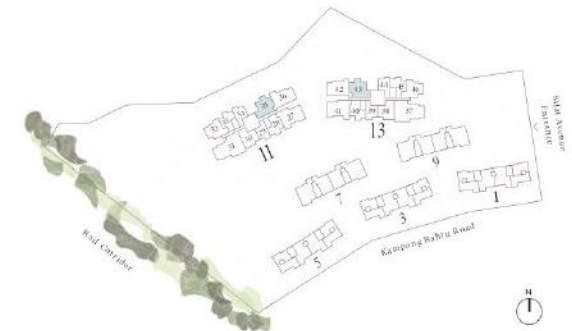
2-BEDROOM PREMIUM

● Type BPl | 64 sqm | 689 sqft

	*Mirror
#40-35 to #42-35	#40-43 to #42-43
#46-35 to #48-35	#46-43 to #48-43
#52-35 to #54-35	#52-43 to #54-43



	*Mirror
#37-35 to #39-35	#37-43 to #39-43
#43-35 to #45-35	#43-43 to #45-43
#55-35 to #56-35	#55-43 to #56-43



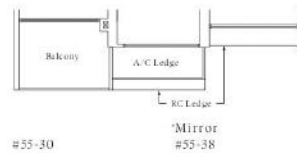
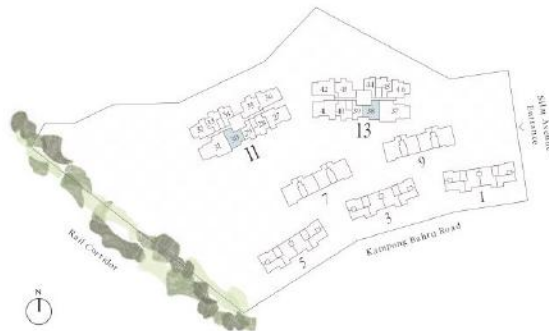
Note: Area includes A/C ledge, balcony, pos, private roof terrace and void (where applicable). IBC ledge is not part of strata area. The above plans and illustrations are subject to changes as may be required by the relevant authorities. Areas are estimates only and are subject to final survey. The balcony, pos, and private roof terrace shall not be enclosed unless with the approved screen. For an illustration of the approved balcony screen, please refer to the diagram annexed hereto as 'Annexure F'.

2-BEDROOM PREMIUM

● Type BP2 | 67 sqm | 721 sqft

#37-30 to #43-30
#47-30 to #51-30

*Mirror
#37-38 to #43-38
#47-38 to #51-38



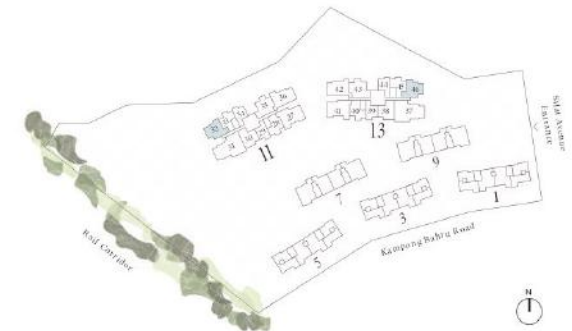
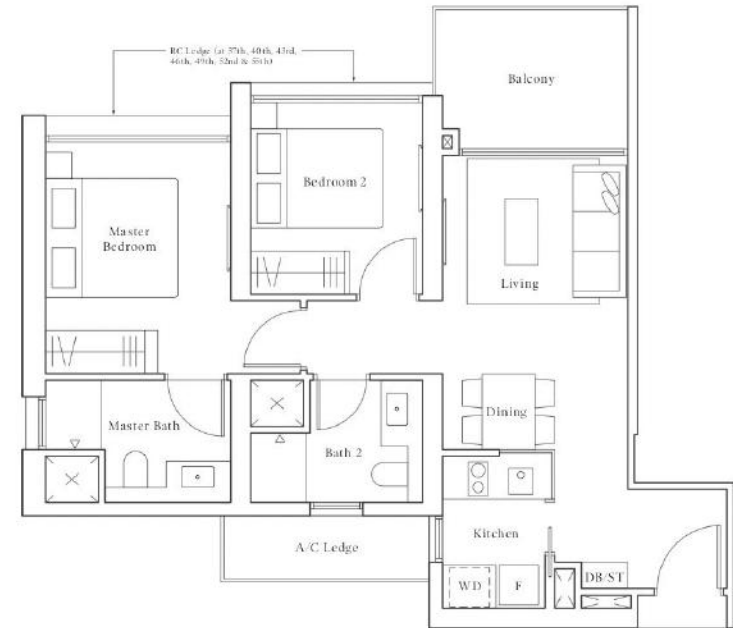
Note: Area includes A/C Ledge, balcony, pos, private roof terrace and wind turbine applicable. RC Ledge is not part of gross area. The above plans and illustrations are subject to changes as may be required by the relevant authorities. Areas are estimates only and are subject to final survey. The balcony, pos, and private roof terrace shall not be enclosed unless with the approved screen. For an illustration of the approved balcony screen, please refer to the diagram attached hereto as "Screening".

2-BEDROOM PREMIUM

● Type BP3 | 68 sqm | 732 sqft

#37-32 to #55-32

*Mirror
#37-46 to #55-46

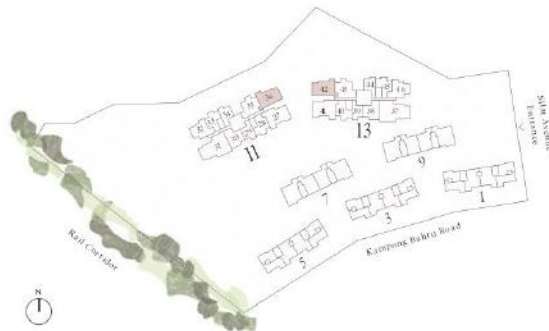
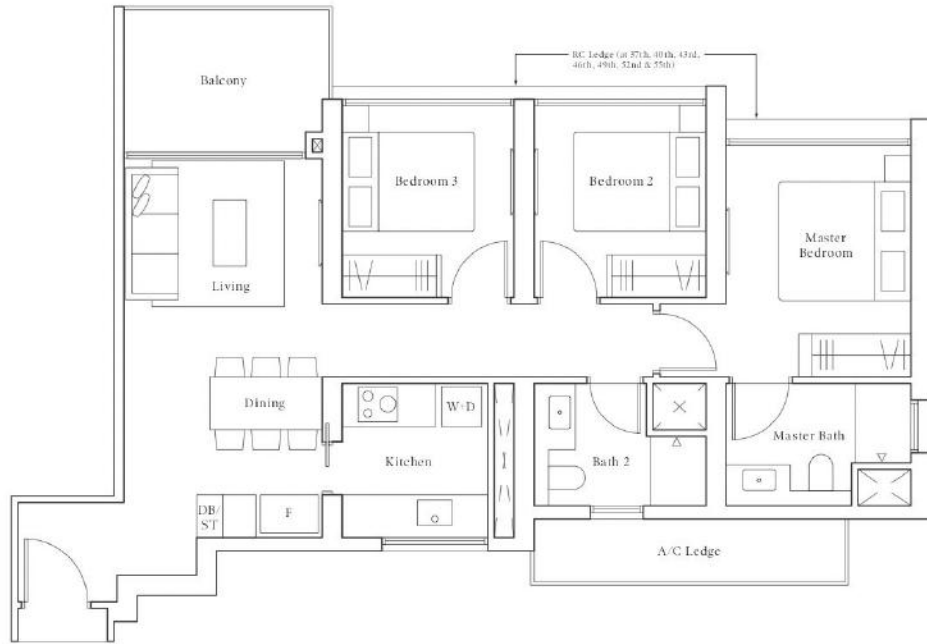


Note: Area includes A/C Ledge, balcony, pos, private roof terrace and wind turbine applicable. RC Ledge is not part of gross area. The above plans and illustrations are subject to changes as may be required by the relevant authorities. Areas are estimates only and are subject to final survey. The balcony, pos, and private roof terrace shall not be enclosed unless with the approved screen. For an illustration of the approved balcony screen, please refer to the diagram attached hereto as "Screening".

3-BEDROOM

● Type C1 | 88 sqm | 947 sqft

*Mirror
#37-36 to #55-36
#37-42 to #55-42

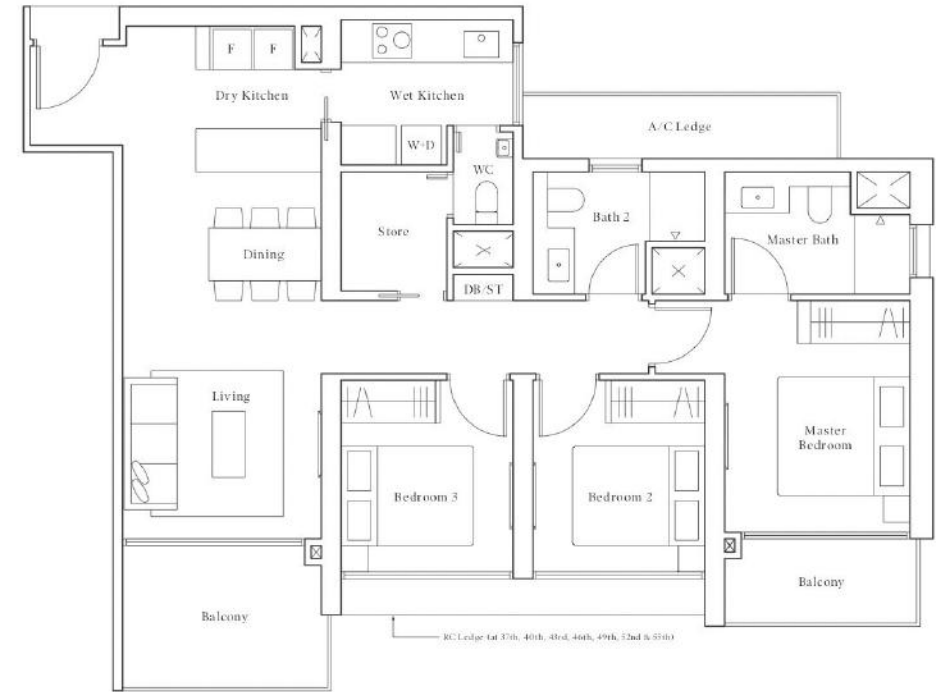


Note: Area includes A/C ledge, balcony, pos, private roof terrace and void (where applicable). RC ledge is not part of unit area. The above plans and illustrations are subject to changes as may be required by the relevant authorities. Areas are estimates only and are subject to final survey. The balcony, pos, and private roof terrace shall not be enclosed unless with the approved screen. For an illustration of the approved balcony screen, please refer to the diagram attached hereto as "Screening".

3-BEDROOM PREMIUM

● Type CP1 | 103 sqm | 1109 sqft

*Mirror
#37-27 to #55-27
#37-41 to #55-41



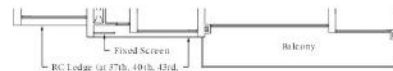
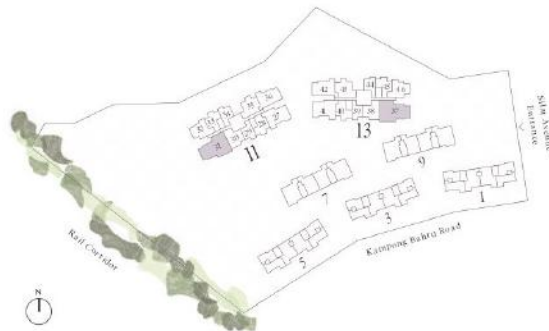
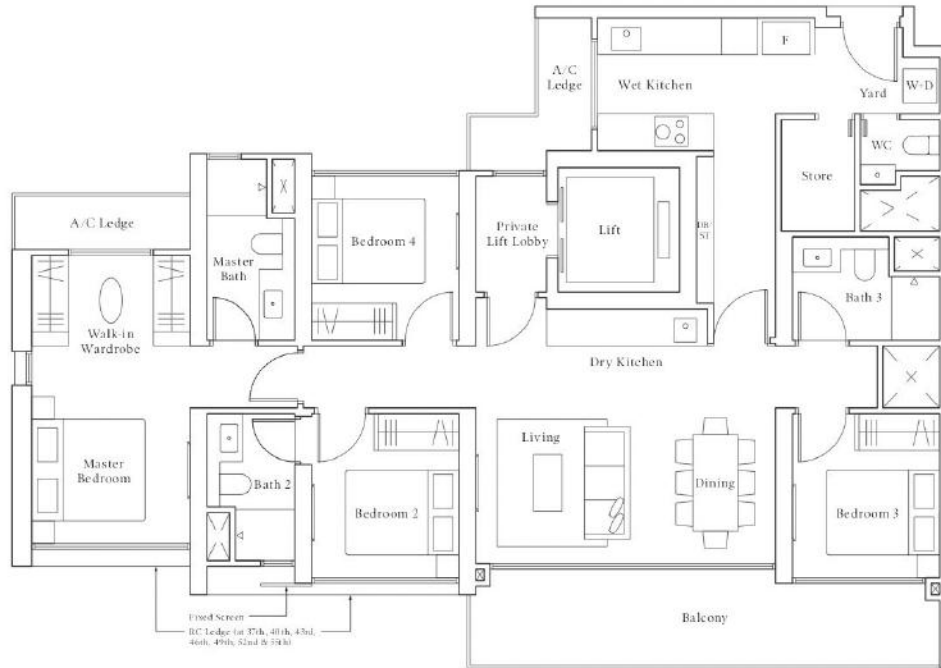
Note: Area includes A/C ledge, balcony, pos, private roof terrace and void (where applicable). RC ledge is not part of unit area. The above plans and illustrations are subject to changes as may be required by the relevant authorities. Areas are estimates only and are subject to final survey. The balcony, pos, and private roof terrace shall not be enclosed unless with the approved screen. For an illustration of the approved balcony screen, please refer to the diagram attached hereto as "Screening".

4-BEDROOM PREMIUM

Type DP1 | 139 sqm | 1496 sqft

#40-31 to #42-31
#46-31 to #48-31
#52-31 to #54-31

*Mirror
#40-37 to #42-37
#46-37 to #48-37
#52-37 to #54-37



*Mirror
#37-31 to #39-31
#43-31 to #45-31
#49-31 to #51-31
#55-31

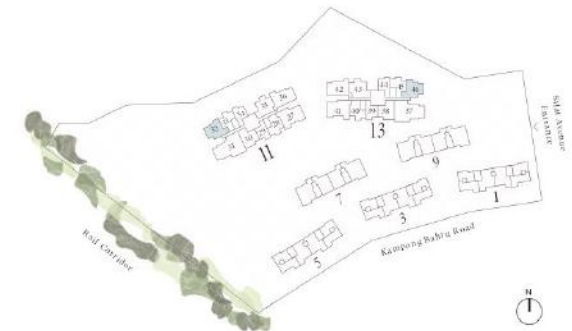
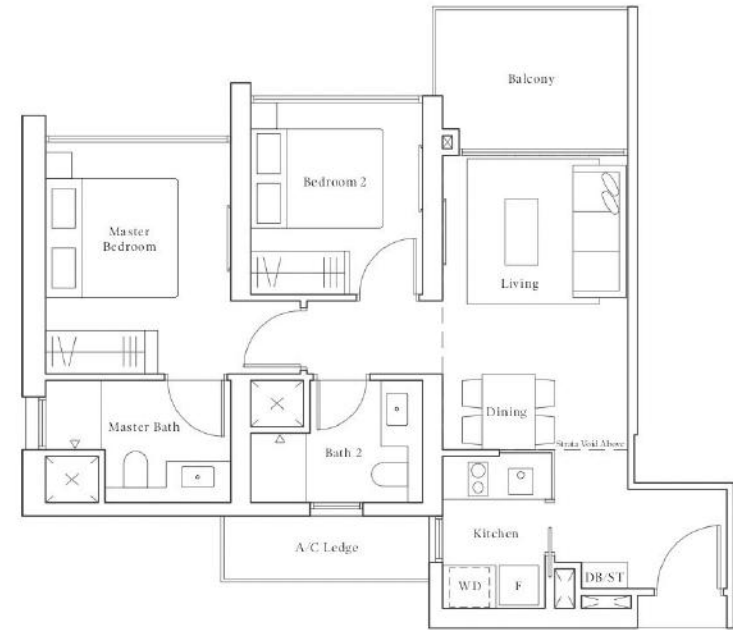
Note: Area includes A/C ledge, balcony, pos, private roof terrace and road (where applicable). RC ledge is not part of unit area. The above plans and illustrations are subject to changes as may be required by the relevant authorities. Areas are estimates only and are subject to final survey. The balcony, pos, and private roof terrace shall not be enclosed unless with the approved screen. For an illustration of the approved balcony screen, please refer to the diagram attached hereto as "Screening".

2-BEDROOM PREMIUM

Type BP3-PH | 82 sqm | 883 sqft

#56-32

*Mirror
#56-46



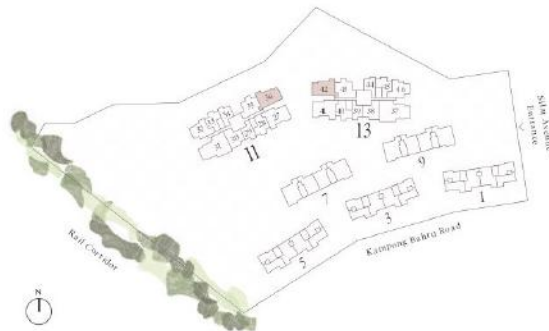
Note: Area includes A/C ledge, balcony, pos, private roof terrace and road (where applicable). RC ledge is not part of unit area. The above plans and illustrations are subject to changes as may be required by the relevant authorities. Areas are estimates only and are subject to final survey. The balcony, pos, and private roof terrace shall not be enclosed unless with the approved screen. For an illustration of the approved balcony screen, please refer to the diagram attached hereto as "Screening".

3-BEDROOM

Type C1-PH | 104 sqm | 1120 sqft

#56-36

*Mirror
#56-42



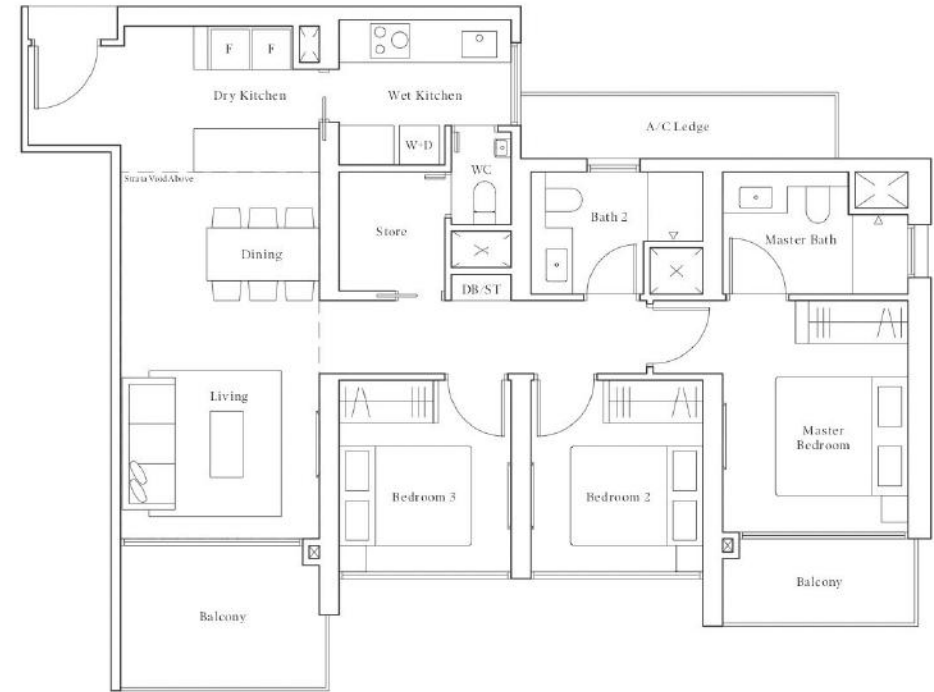
Note: Area includes A/C ledge, balcony, pos, private roof terrace and void (where applicable). BE ledge is not part of unit area. The above plans and illustrations are subject to changes as may be required by the relevant authorities. Areas are estimates only and are subject to final survey. The balcony, pos, and private roof terrace shall not be enclosed unless with the approved screen. For an illustration of the approved balcony screen, please refer to the diagram attached hereto as "Screening".

3-BEDROOM PREMIUM

Type CP1-PH | 121 sqm | 1302 sqft

#56-27

*Mirror
#56-41



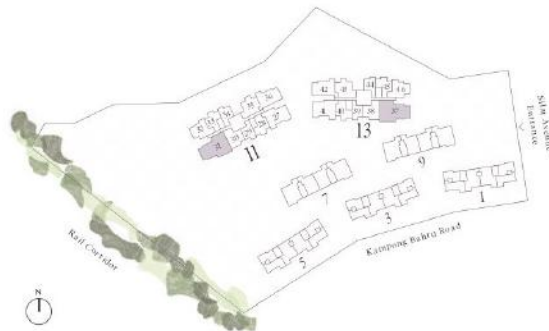
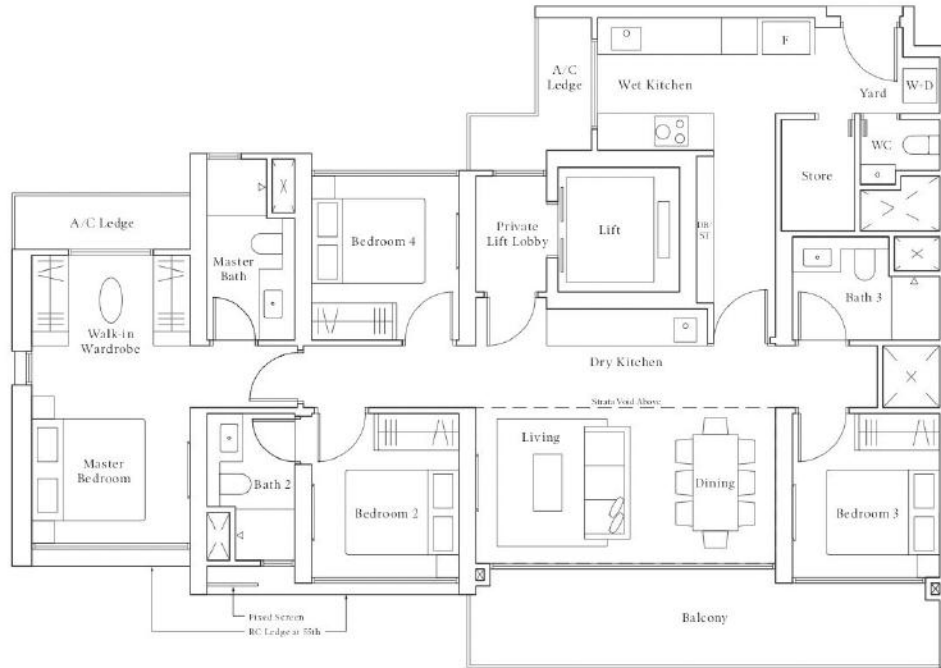
Note: Area includes A/C ledge, balcony, pos, private roof terrace and void (where applicable). BE ledge is not part of unit area. The above plans and illustrations are subject to changes as may be required by the relevant authorities. Areas are estimates only and are subject to final survey. The balcony, pos, and private roof terrace shall not be enclosed unless with the approved screen. For an illustration of the approved balcony screen, please refer to the diagram attached hereto as "Screening".

4-BEDROOM PREMIUM

● Type DP1-PH | 155 sqm | 1668 sqft

#56-31

*Mirror
#56-37

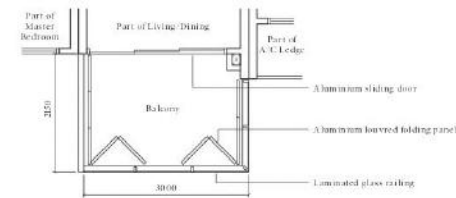


Note: Area includes A/C ledge, balcony, pos, private roof terrace and void (where applicable). BC ledge is not part of unit area. The above plans and illustrations are subject to change as may be required by the relevant authorities. Areas are estimates only and are subject to final survey. The balcony, pos, and private roof terrace shall not be enclosed unless with the approved screen. For an illustration of the approved balcony screen, please refer to the diagram attached hereto as "Annexure I".

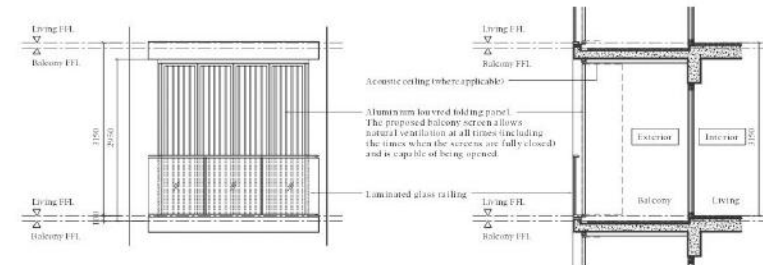
ANNEXURE I

TYPICAL RETRACTABLE BALCONY SCREEN

Applicable for tower block units only.



PLAN



ELEVATION

SECTION