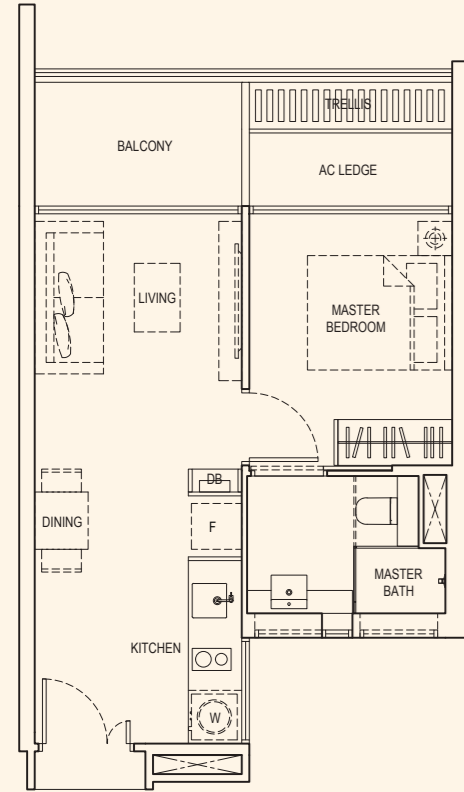


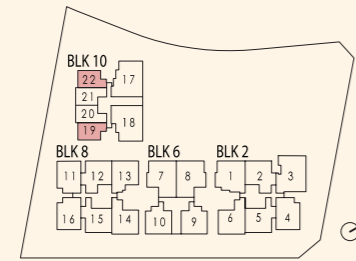
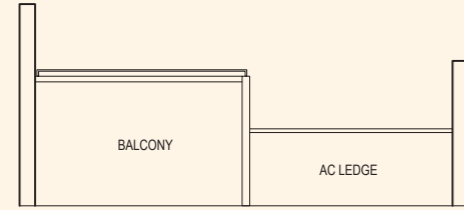
Type A1

1 Bedroom
Area: 485 sqft
4 Units

#02-19, #02-22'



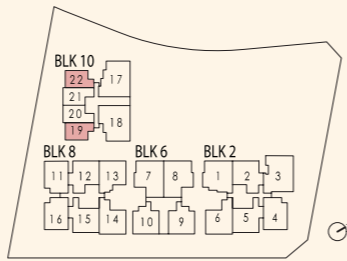
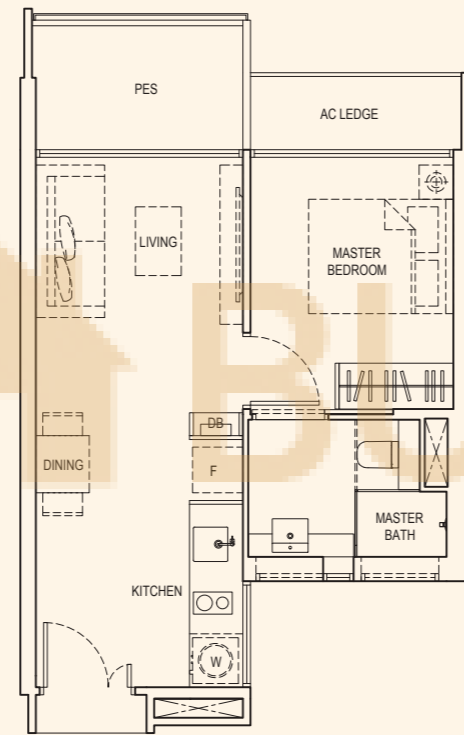
#03-19, #03-22'



Type A1G

1 Bedroom (Ground level & High Ceiling)
Area: 485 sqft
2 Units

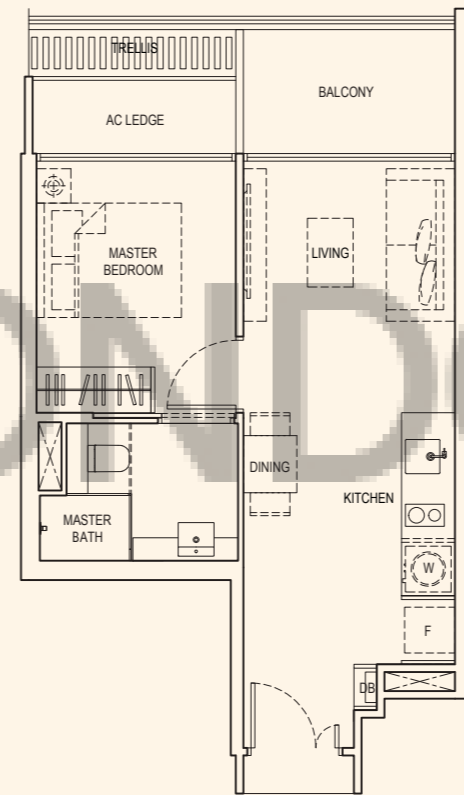
#01-19, #01-22



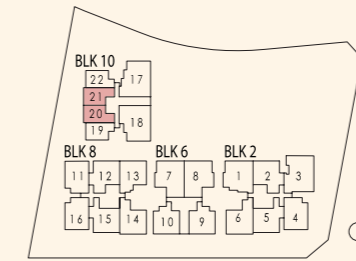
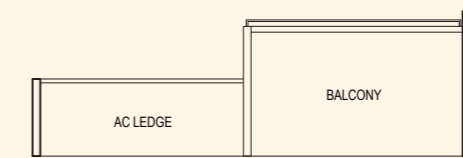
Type A2

1 Bedroom
Area: 496 sqft
4 Units

#02-20', #02-21



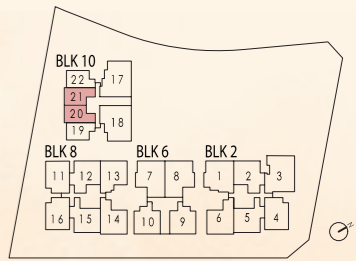
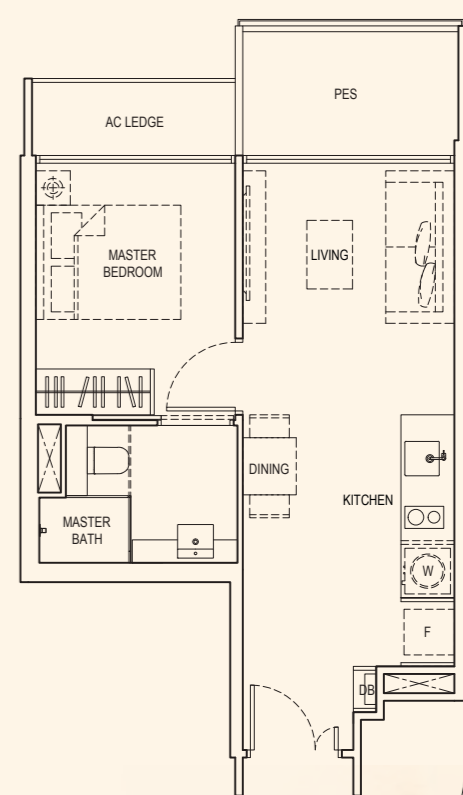
#03-20', #03-21



Type A2G

1 Bedroom (Ground level & High Ceiling)
Area: 496 sqft
2 Units

#01-20', #01-21



¹Mirror Image

Area includes A/C ledge, balcony and PES (where applicable). The above plans and illustrations are subject to changes as maybe required by the relevant authorities. Areas are estimates only and are subject to final survey. The balcony and PES shall not be enclosed unless with the approved screen. For an illustration of the approved balcony screen, please refer to the diagram annexed hereto as "annexure 1".

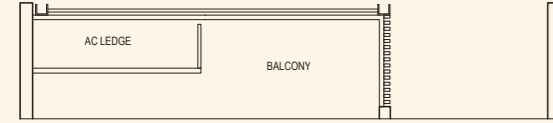
¹Mirror Image

Area includes A/C ledge, balcony and PES (where applicable). The above plans and illustrations are subject to changes as maybe required by the relevant authorities. Areas are estimates only and are subject to final survey. The balcony and PES shall not be enclosed unless with the approved screen. For an illustration of the approved balcony screen, please refer to the diagram annexed hereto as "annexure 1".

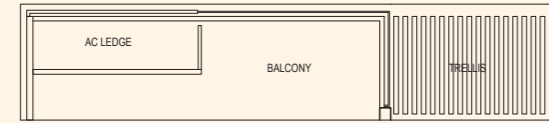
Type B1

2 Bedroom
Area: 732 sqft
12 Units

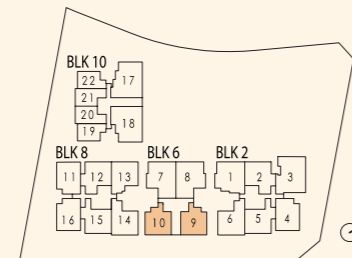
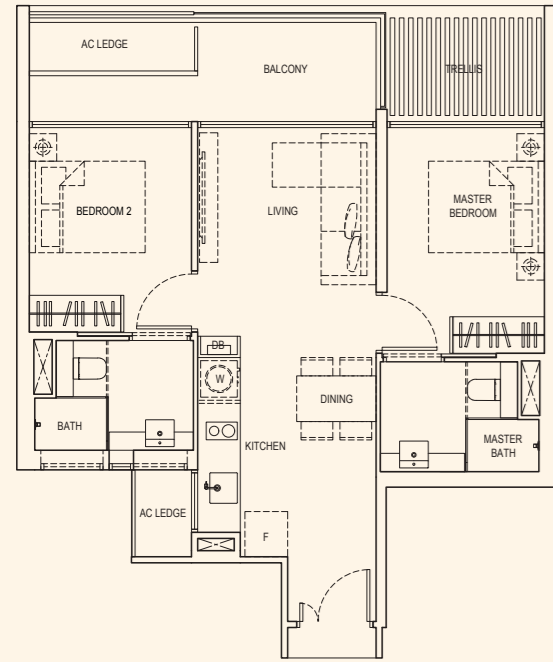
#03-09, #03-10'
#06-09, #06-10'
#07-09, #07-10'



#04-09, #04-10'



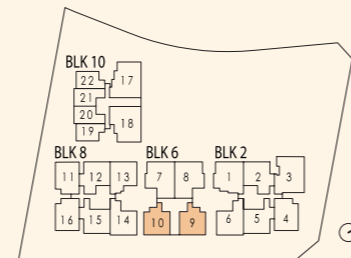
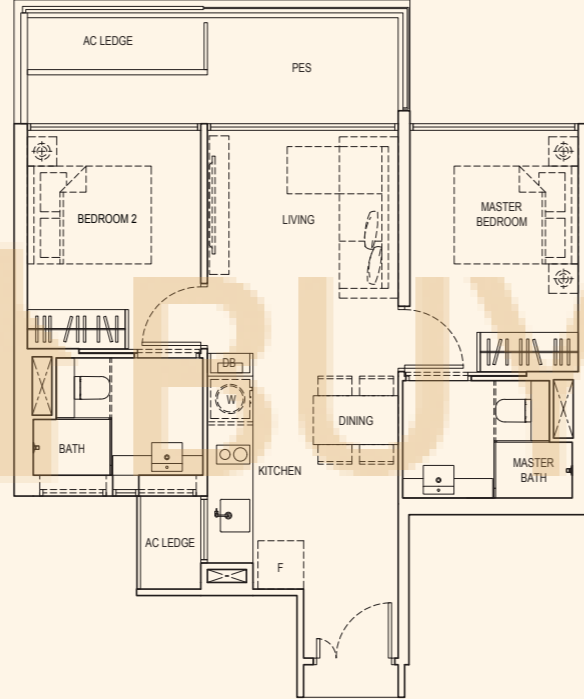
#02-09, #02-10'
#05-09, #05-10'



Type B1G

2 Bedroom (Ground level & High Ceiling)
Area: 732 sqft
2 Units

#01-09, #01-10'



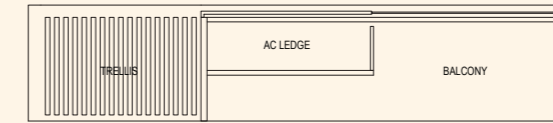
Type B2

2 Bedroom
Area: 765 sqft
18 Units

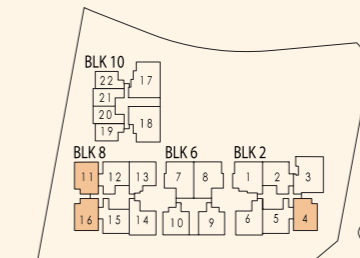
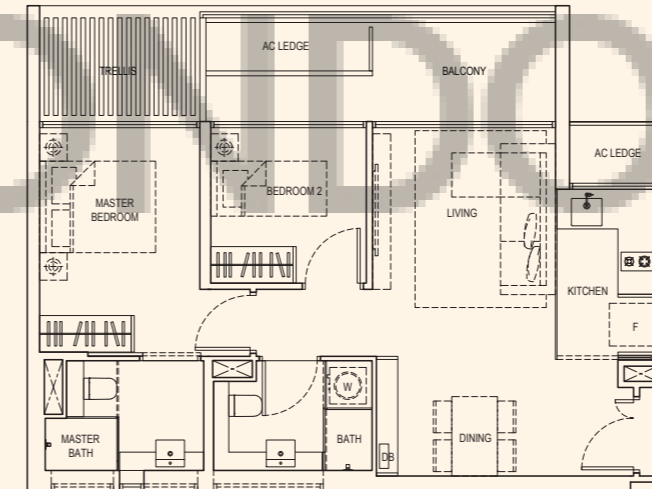
#03-04', #03-11', #03-16
#06-04', #06-11', #06-16
#07-04', #07-11', #07-16



#04-04', #04-11', #04-16



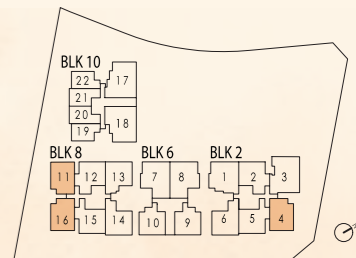
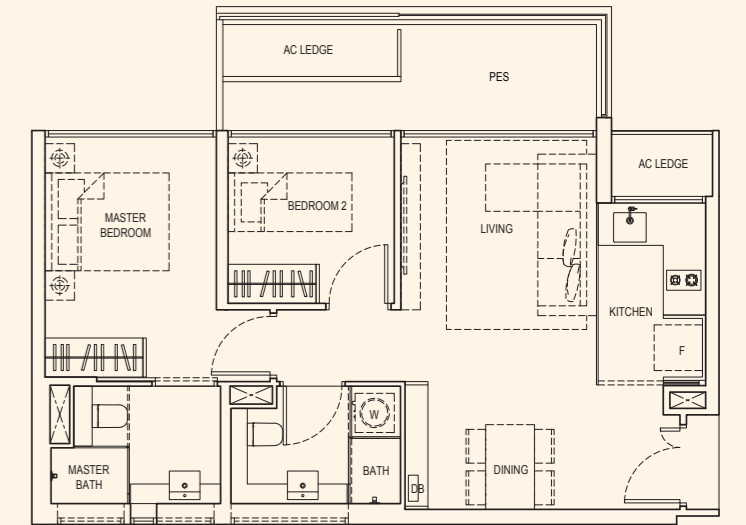
#02-04', #02-11', #02-16
#05-04', #05-11', #05-16



Type B2G

2 Bedroom (Ground level & High Ceiling)
Area: 765 sqft
3 Units

#01-04', #01-11', #01-16



¹Mirror Image

Area includes A/C ledge, balcony and PES (where applicable). The above plans and illustrations are subject to changes as maybe required by the relevant authorities. Areas are estimates only and are subject to final survey. The balcony and PES shall not be enclosed unless with the approved screen. For an illustration of the approved balcony screen, please refer to the diagram annexed hereto as "annexure 1".

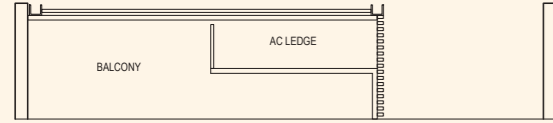
¹Mirror Image

Area includes A/C ledge, balcony and PES (where applicable). The above plans and illustrations are subject to changes as maybe required by the relevant authorities. Areas are estimates only and are subject to final survey. The balcony and PES shall not be enclosed unless with the approved screen. For an illustration of the approved balcony screen, please refer to the diagram annexed hereto as "annexure 1".

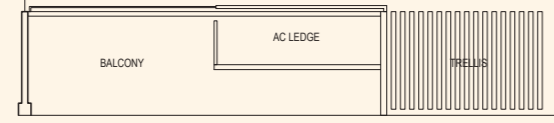
Type B3

2 Bedroom
Area: 776 sqft
6 Units

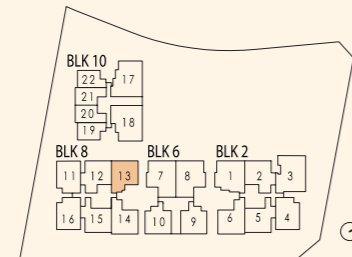
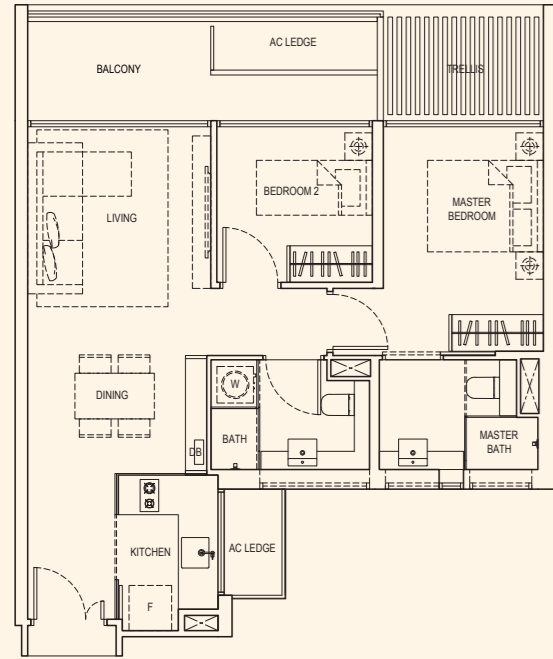
#03-13
#06-13
#07-13



#04-13



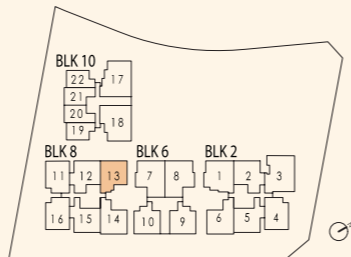
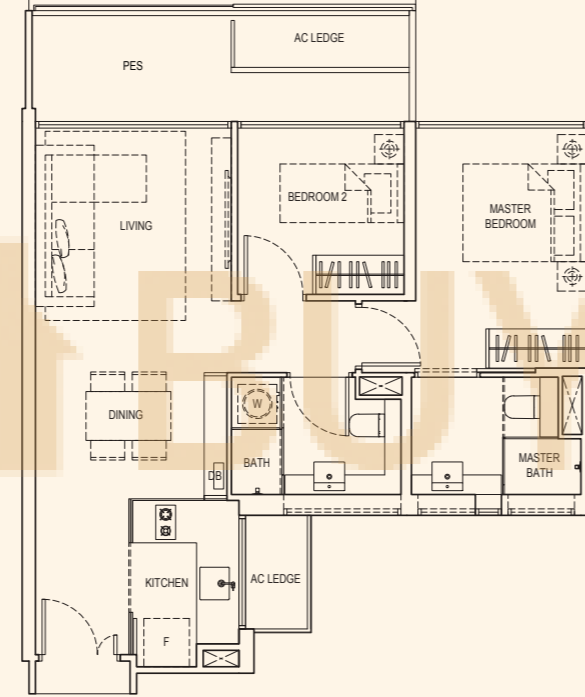
#02-13
#05-13



Type B3G

2 Bedroom (Ground level & High Ceiling)
Area: 776 sqft
1 Unit

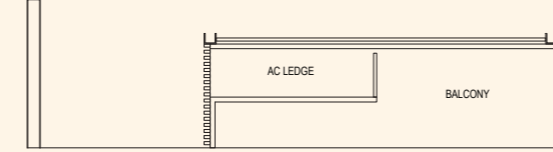
#01-13



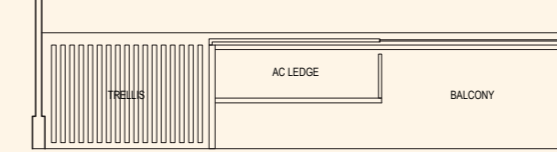
Type B4

2 Bedroom
Area: 797 sqft
12 Units

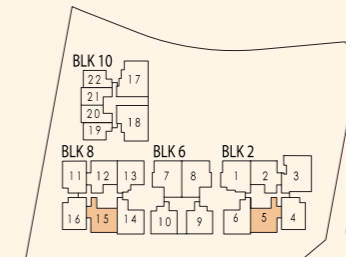
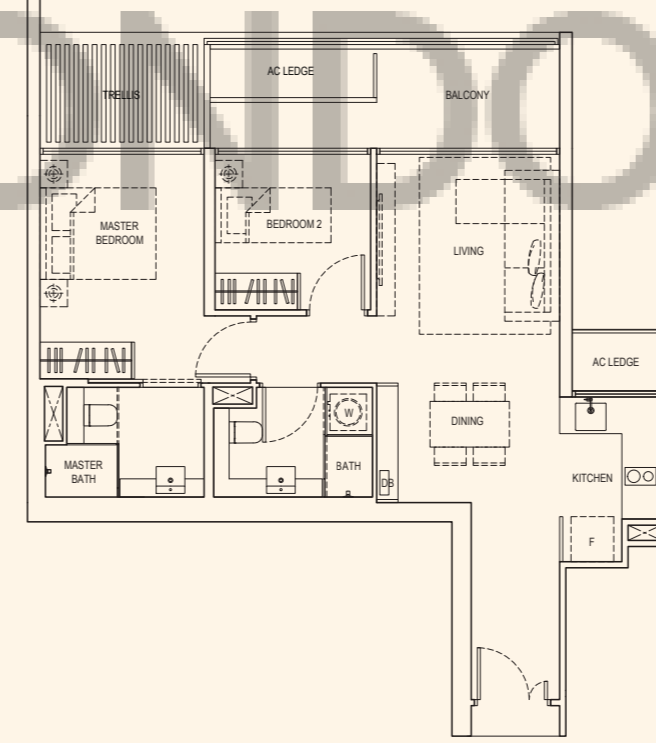
#03-05', #03-15
#06-05', #06-15
#07-05', #07-15



#04-05', #04-15



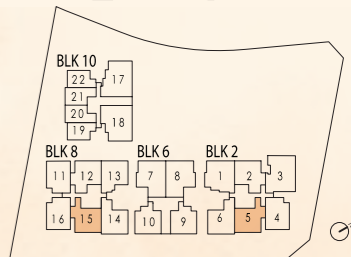
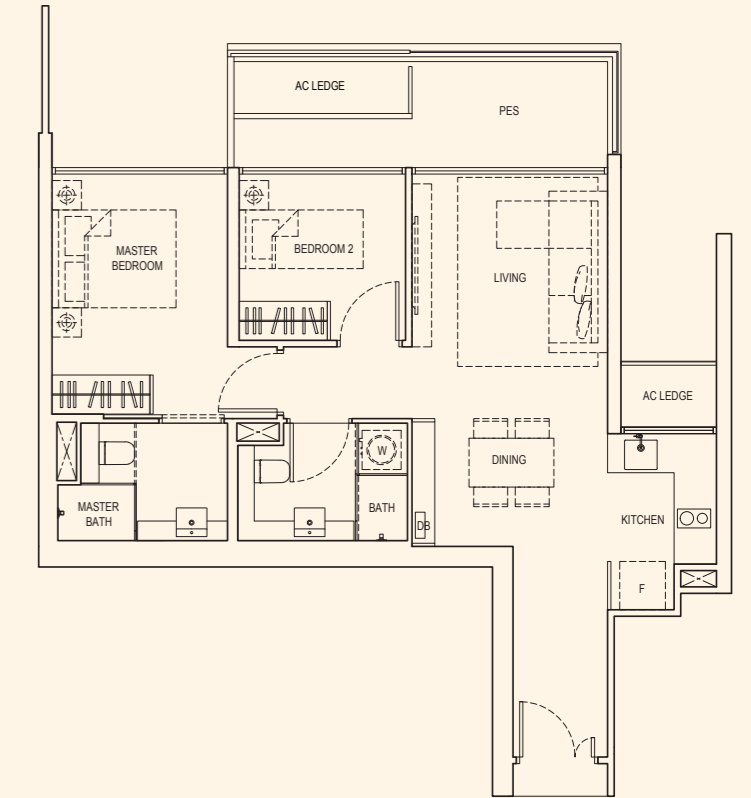
#02-05', #02-15
#05-05', #05-15



Type B4G

2 Bedroom (Ground level & High Ceiling)
Area: 797 sqft
2 Units

#01-05', #01-15



Area includes A/C ledge, balcony and PES (where applicable). The above plans and illustrations are subject to changes as maybe required by the relevant authorities. Areas are estimates only and are subject to final survey. The balcony and PES shall not be enclosed unless with the approved screen. For an illustration of the approved balcony screen, please refer to the diagram annexed hereto as "annexure 1".

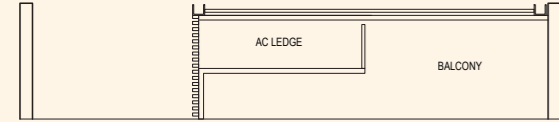
*Mirror Image

Area includes A/C ledge, balcony and PES (where applicable). The above plans and illustrations are subject to changes as maybe required by the relevant authorities. Areas are estimates only and are subject to final survey. The balcony and PES shall not be enclosed unless with the approved screen. For an illustration of the approved balcony screen, please refer to the diagram annexed hereto as "annexure 1".

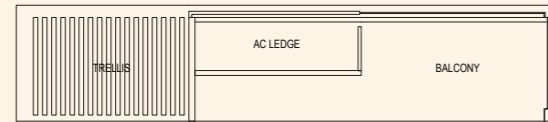
Type B5

2 Bedroom
Area: 797 sqft
12 Units

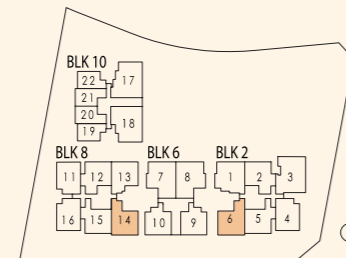
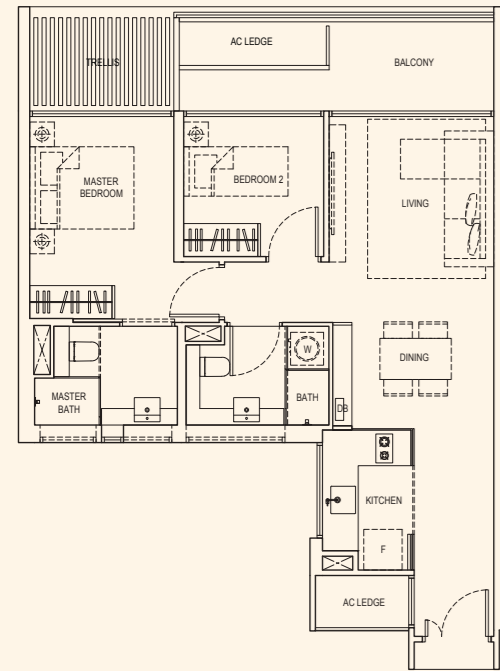
#03-06', #03-14
#06-06', #06-14
#07-06', #07-14



#04-06', #04-14



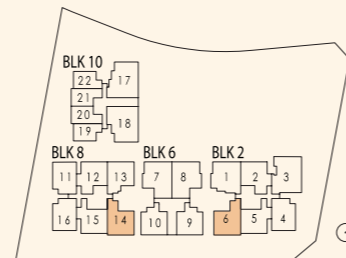
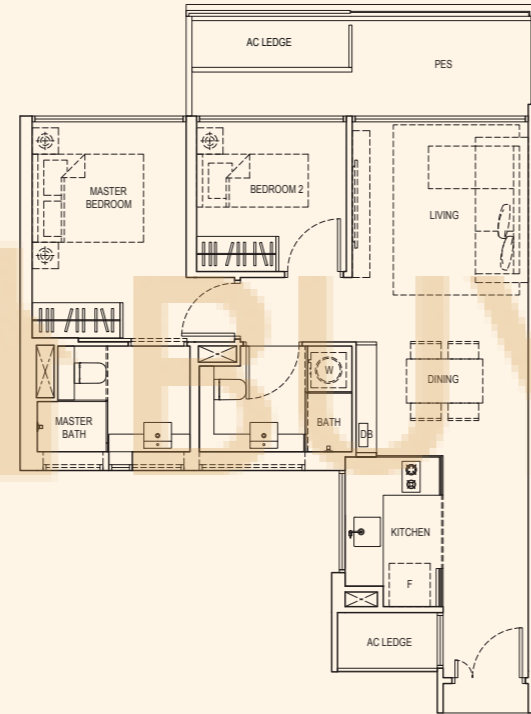
#02-06', #02-14
#05-06', #05-14



Type B5G

2 Bedroom (Ground level & High Ceiling)
Area: 797 sqft
2 Units

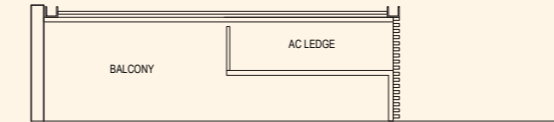
#01-06', #01-14



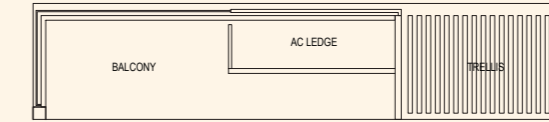
Type B6S

2 Bedroom + Study
Area: 808 sqft
12 Units

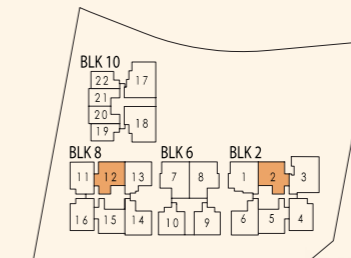
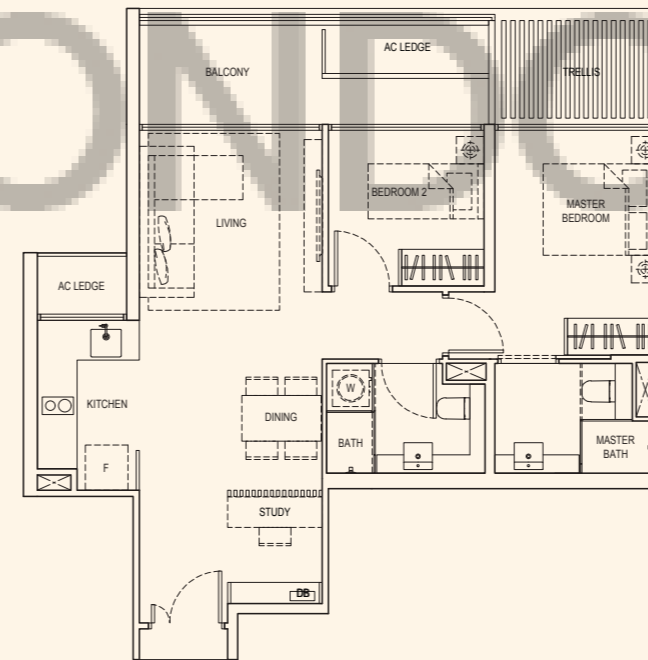
#03-02', #03-12
#06-02', #06-12
#07-02', #07-12



#04-02', #04-12



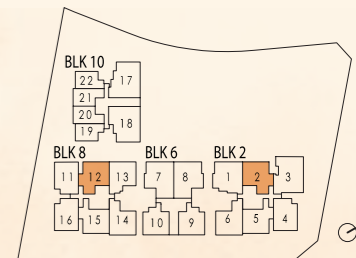
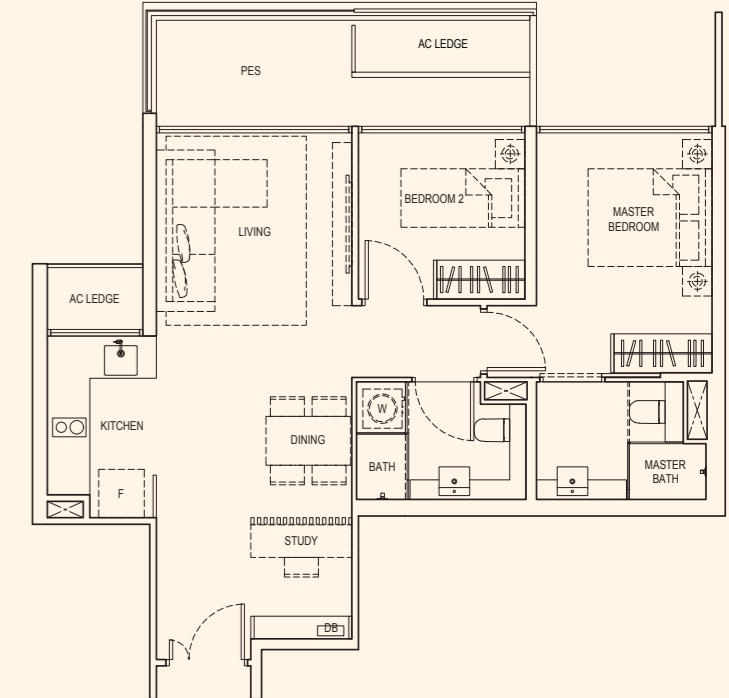
#02-02', #02-12
#05-02', #05-12



Type B6SG

2 Bedroom + Study (Ground level & High Ceiling)
Area: 808 sqft
2 Units

#01-02', #01-12



¹Mirror Image

Area includes A/C ledge, balcony and PES (where applicable). The above plans and illustrations are subject to changes as maybe required by the relevant authorities. Areas are estimates only and are subject to final survey. The balcony and PES shall not be enclosed unless with the approved screen. For an illustration of the approved balcony screen, please refer to the diagram annexed hereto as "annexure 1".

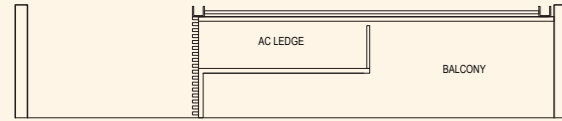
¹Mirror Image

Area includes A/C ledge, balcony and PES (where applicable). The above plans and illustrations are subject to changes as maybe required by the relevant authorities. Areas are estimates only and are subject to final survey. The balcony and PES shall not be enclosed unless with the approved screen. For an illustration of the approved balcony screen, please refer to the diagram annexed hereto as "annexure 1".

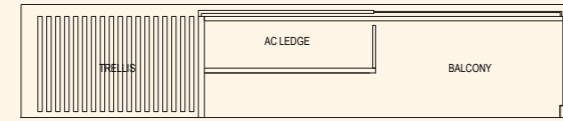
Type C1

3 Bedroom
Area: 915 sqft
6 Units

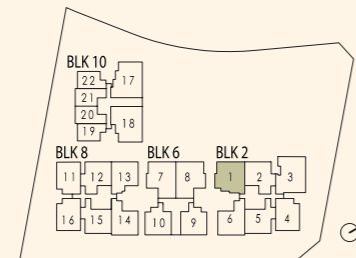
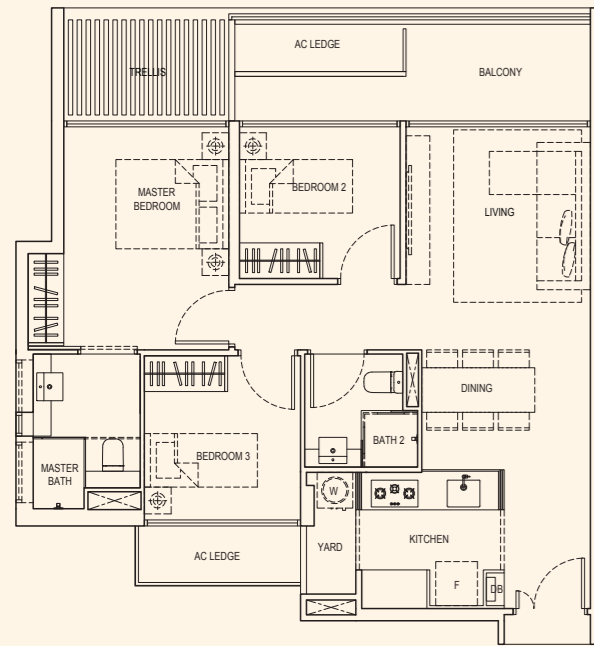
#03-01
#06-01
#07-01



#04-01



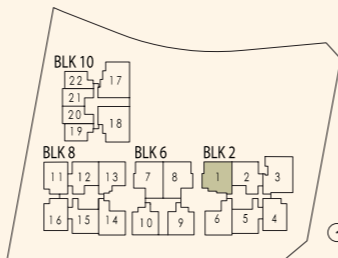
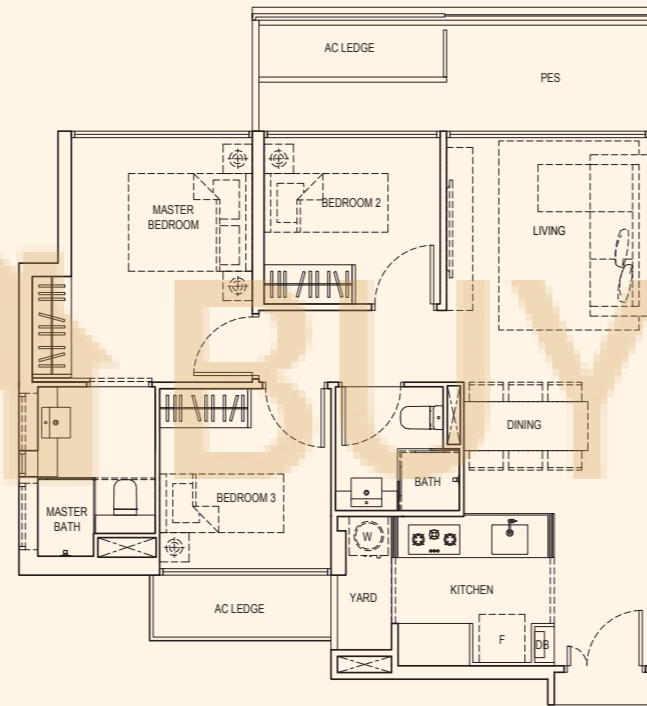
#02-01
#05-01



Type C1G

3 Bedroom (Ground level & High Ceiling)
Area: 915 sqft
1 Unit

#01-01



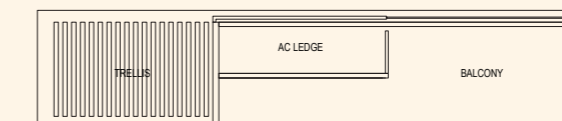
Type C2

3 Bedroom
Area: 937 sqft
12 Units

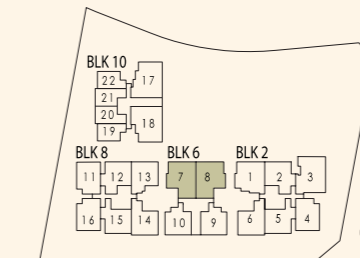
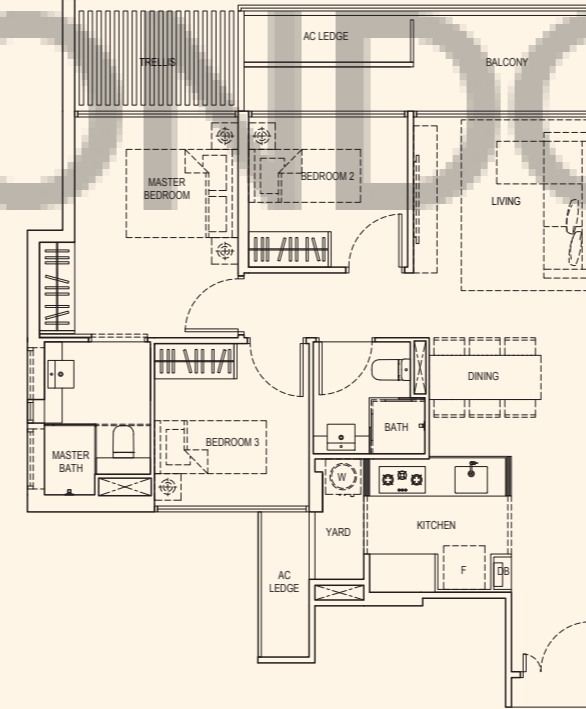
#03-07, #03-08'
#06-07, #06-08'
#07-07, #07-08'



#04-07, #04-08'



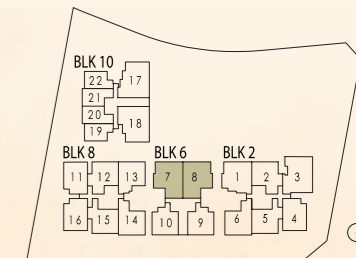
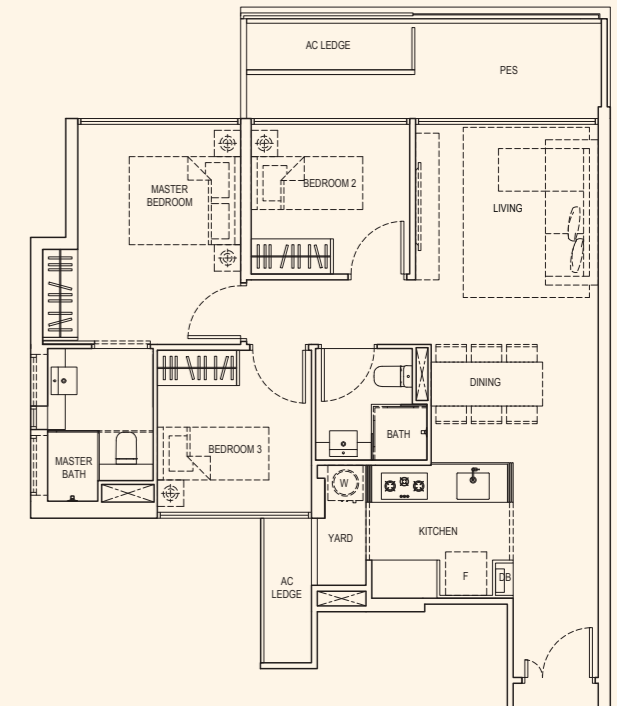
#02-07, #02-08'
#05-07, #05-08'



Type C2G

3 Bedroom (Ground level & High Ceiling)
Area: 937 sqft
2 Units

#01-07, #01-08'



Area includes A/C ledge, balcony and PES (where applicable). The above plans and illustrations are subject to changes as maybe required by the relevant authorities. Areas are estimates only and are subject to final survey. The balcony and PES shall not be enclosed unless with the approved screen. For an illustration of the approved balcony screen, please refer to the diagram annexed hereto as "annexure 1".

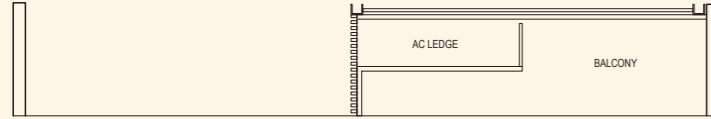
*Mirror Image

Area includes A/C ledge, balcony and PES (where applicable). The above plans and illustrations are subject to changes as maybe required by the relevant authorities. Areas are estimates only and are subject to final survey. The balcony and PES shall not be enclosed unless with the approved screen. For an illustration of the approved balcony screen, please refer to the diagram annexed hereto as "annexure 1".

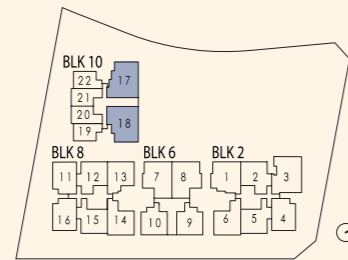
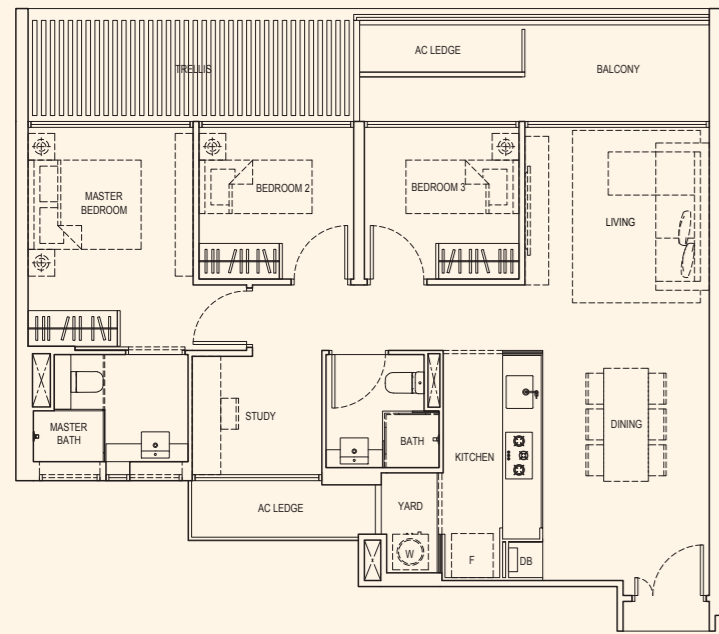
Type C3S

3 Bedroom + Study
 Area: 1023 sqft
 4 Units

#03-17, #03-18¹



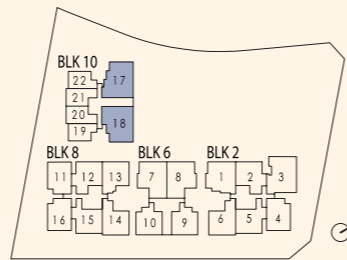
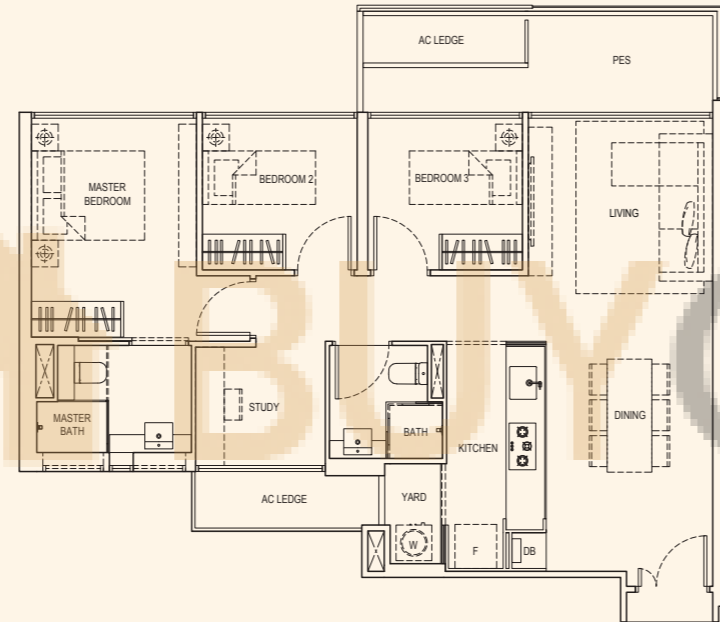
#02-17, #02-18¹



Type C3SG

3 Bedroom + Study (Ground level & High Ceiling)
 Area: 1023 sqft
 2 Units

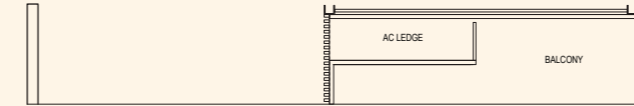
#01-17, #01-18¹



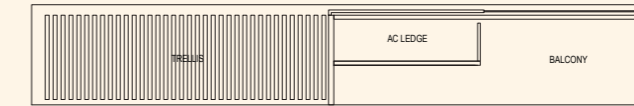
Type C4S

3 Bedroom + Study
 Area: 1034 sqft
 6 Units

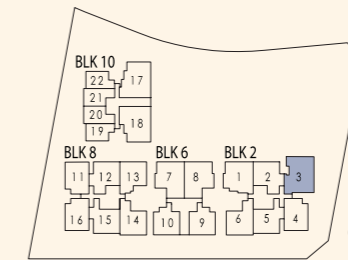
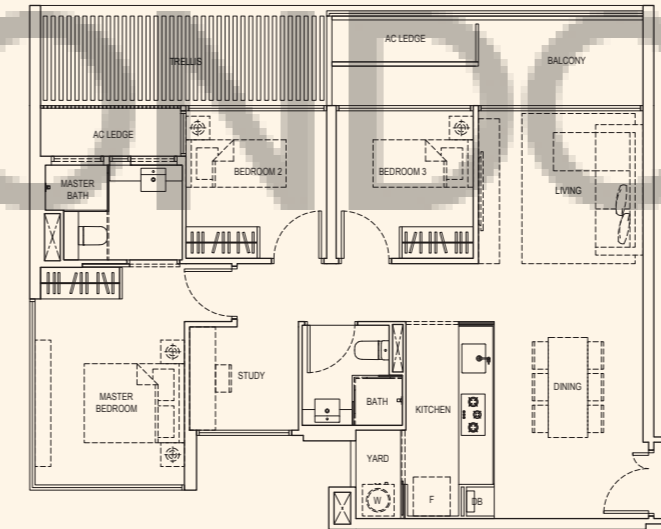
#03-03
 #06-03
 #07-03



#04-03



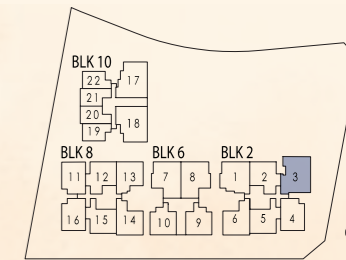
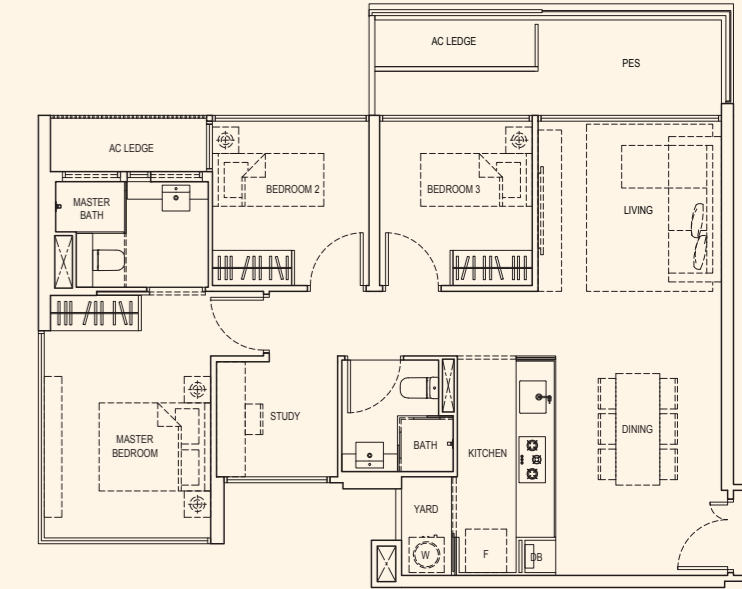
#02-03
 #05-03



Type C4SG

3 Bedroom + Study (Ground level & High Ceiling)
 Area: 1034 sqft
 1 Unit

#01-03



¹Mirror Image

Area includes A/C ledge, balcony and PES (where applicable). The above plans and illustrations are subject to changes as maybe required by the relevant authorities. Areas are estimates only and are subject to final survey. The balcony and PES shall not be enclosed unless with the approved screen. For an illustration of the approved balcony screen, please refer to the diagram annexed hereto as "annexure 1".

Area includes A/C ledge, balcony and PES (where applicable). The above plans and illustrations are subject to changes as maybe required by the relevant authorities. Areas are estimates only and are subject to final survey. The balcony and PES shall not be enclosed unless with the approved screen. For an illustration of the approved balcony screen, please refer to the diagram annexed hereto as "annexure 1".