

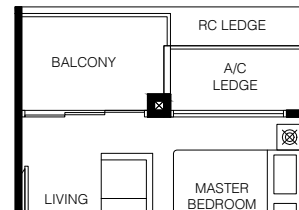
Studio + Study

1-Bedroom + Study

Type A1

40 sq.m. / 431 sq.ft.

BLK 2	BLK 10	BLK 12
#06-02	#06-27	#06-36
#09-02	#09-27	#09-36
#12-02	#12-27	#12-36
#15-02	#15-27	#15-36

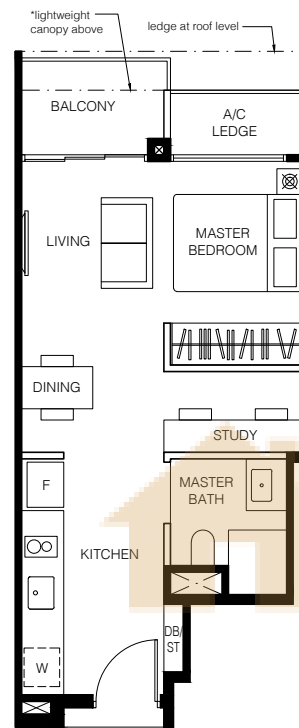


Type A1

40 sq.m. / 431 sq.ft.

BLK 2	BLK 10	BLK 12
#07-02	#07-27	#07-36
#08-02	#08-27	#08-36
#10-02	#10-27	#10-36
#11-02	#11-27	#11-36
#13-02	#13-27	#13-36
#14-02	#14-27	#14-36
#16-02*	#16-27*	#16-36*

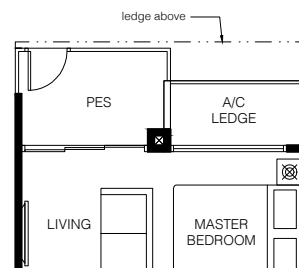
*Note: Units with lightweight canopy over balcony



Type A1P

40 sq.m. / 431 sq.ft.

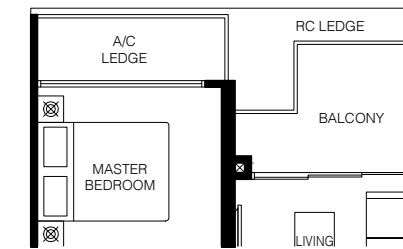
BLK 2	BLK 10	BLK 12
#05-02	#05-27	#05-36



Type A2

46 sq.m. / 495 sq.ft.

BLK 2	BLK 10	BLK 12
#06-01	#06-26	#06-35
#09-01	#09-26	#09-35
#12-01	#12-26	#12-35
#15-01	#15-26	#15-35



MIRRORED

BLK 2	BLK 6	BLK 8
#06-09	#06-17	#06-25
#09-09	#09-17	#09-25
#12-09	#12-17	#12-25
#15-09	#15-17	#15-25

BLK 10	BLK 12
#06-34	#06-43
#09-34	#09-43
#12-34	#12-43
#15-34	#15-43

Type A2

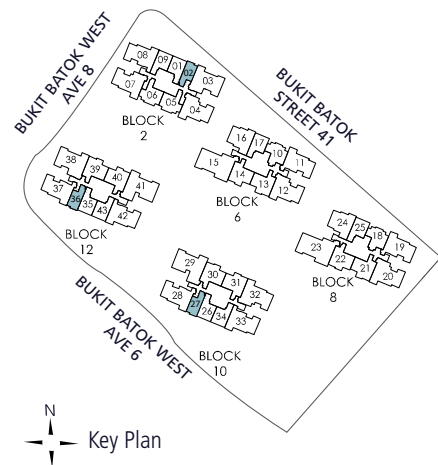
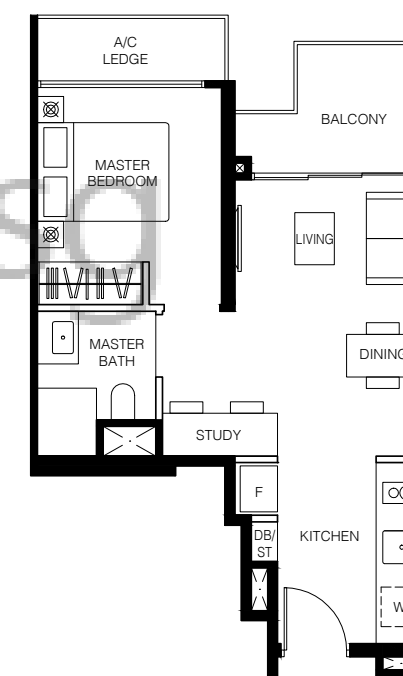
46 sq.m. / 495 sq.ft.

BLK 2	BLK 10	BLK 12
#07-01	#07-26	#07-35
#08-01	#08-26	#08-35
#10-01	#10-26	#10-35
#11-01	#11-26	#11-35
#13-01	#13-26	#13-35
#14-01	#14-26	#14-35

MIRRORED

BLK 2	BLK 6	BLK 8
#07-09	#07-17	#07-25
#08-09	#08-17	#08-25
#10-09	#10-17	#10-25
#11-09	#11-17	#11-25
#13-09	#13-17	#13-25
#14-09	#14-17	#14-25

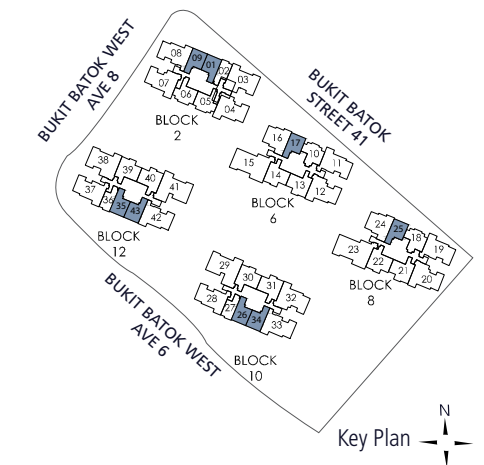
BLK 10	BLK 12
#07-34	#07-43
#08-34	#08-43
#10-34	#10-43
#11-34	#11-43
#13-34	#13-43
#14-34	#14-43



Key Plan

LEGEND
 DB/ST: Distribution Board/Store F: Fridge
 W: Washer cum Dryer WC: Water Closet
 Wall not to be hacked/alterd (including by way of drilling)

The above plans and illustration are subject to change as may be required or approved by the relevant authorities. All areas stated herein include PES (private enclosed space), balcony, A/C ledge and void where applicable. All areas and measurements stated herein are approximate and subject to adjustment on final survey. Please refer to the key plan for orientation.



Key Plan

LEGEND
 DB/ST: Distribution Board/Store F: Fridge
 W: Washer cum Dryer WC: Water Closet
 Wall not to be hacked/alterd (including by way of drilling)

The above plans and illustration are subject to change as may be required or approved by the relevant authorities. All areas stated herein include PES (private enclosed space), balcony, A/C ledge and void where applicable. All areas and measurements stated herein are approximate and subject to adjustment on final survey. Please refer to the key plan for orientation.

1-Bedroom + Study

Type A2P

46 sq.m. / 495 sq.ft.

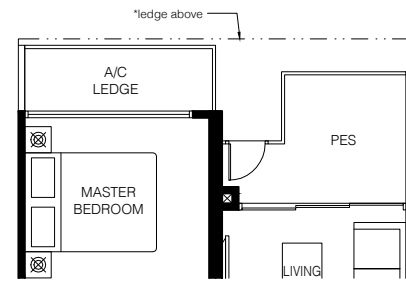
BLK 2 #05-01
BLK 10 #05-26
BLK 12 #05-35

MIRRORED

BLK 2 #05-09*
BLK 6 #05-17*
BLK 8 #05-25*

BLK 10 #05-34*
BLK 12 #05-43*

*Note: Units with ledge above A/C ledge and PES



Type A2L

57 sq.m. / 614 sq.ft.

Including strata void area of 10.8 sq.m. / 116 sq.ft. above living and dining. Approximate 4.5m floor to ceiling height at living and dining.

BLK 2 #16-01
BLK 10 #16-26
BLK 12 #16-35

MIRRORED

BLK 2 #16-09*
BLK 6 #16-17*
BLK 8 #16-25*

BLK 10 #16-34*
BLK 12 #16-43*

*Note: Units with ledge at roof level



BUYCONDO

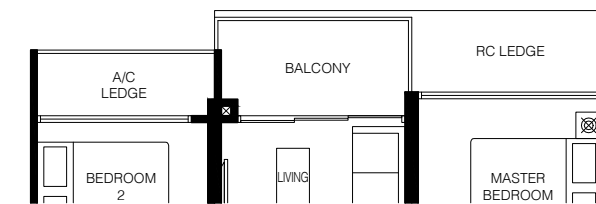
DOTTED LINE DENOTES STRATA VOID AREA OF 10.8 SQ.M. / 116 SQ.FT. ABOVE LIVING AND DINING

2-Bedroom

Type B1

55 sq.m. / 592 sq.ft.

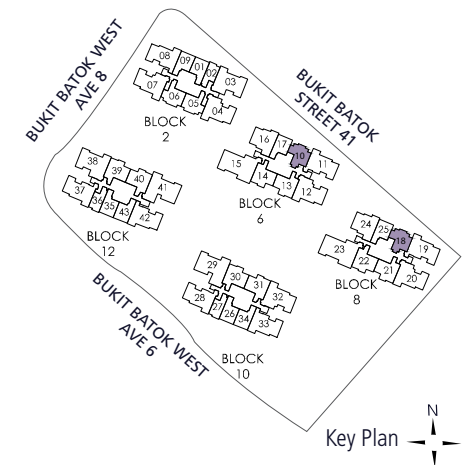
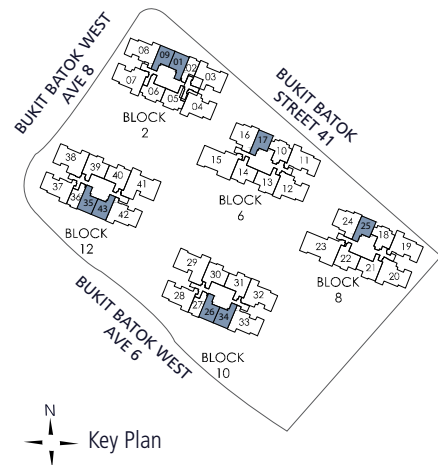
BLK 6 #06-10
BLK 8 #06-18
 #09-10
 #12-10
 #15-10



Type B1

55 sq.m. / 592 sq.ft.

BLK 6 #07-10
BLK 8 #07-18
 #08-10
 #10-10
 #11-10
 #13-10
 #14-10



LEGEND
 DB/ST: Distribution Board/Store
 W: Washer cum Dryer
 F: Fridge
 WC: Water Closet
 Wall not to be hacked/alterd (including by way of drilling)

LEGEND
 DB/ST: Distribution Board/Store
 W: Washer cum Dryer
 F: Fridge
 WC: Water Closet
 Wall not to be hacked/alterd (including by way of drilling)

The above plans and illustration are subject to change as may be required or approved by the relevant authorities. All areas stated herein include PES (private enclosed space), balcony, A/C ledge and void where applicable. All areas and measurements stated herein are approximate and subject to adjustment on final survey. Please refer to the key plan for orientation.

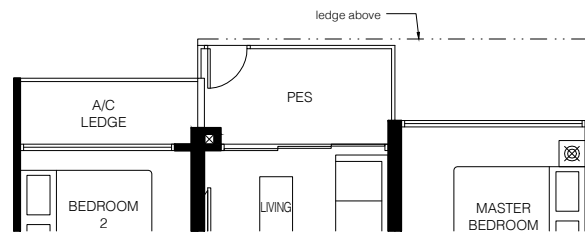
The above plans and illustration are subject to change as may be required or approved by the relevant authorities. All areas stated herein include PES (private enclosed space), balcony, A/C ledge and void where applicable. All areas and measurements stated herein are approximate and subject to adjustment on final survey. Please refer to the key plan for orientation.

2-Bedroom

Type B1P

55 sq.m. / 592 sq.ft.

BLK 6 **BLK 8**
#05-10 #05-18

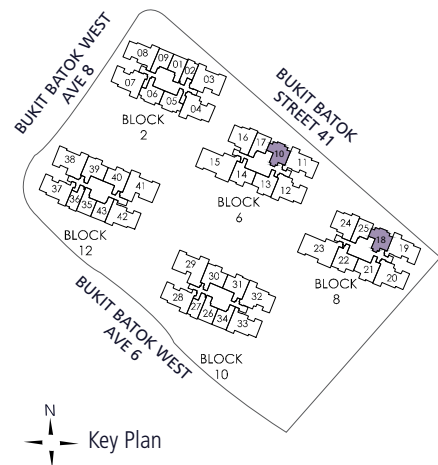
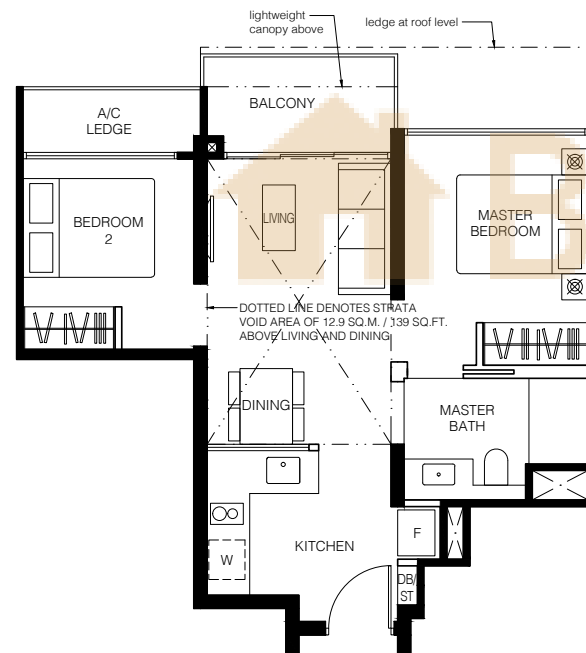


Type B1L

68 sq.m. / 732 sq.ft.

Including strata void area of 12.9 sq.m. / 139 sq.ft. above living and dining. Approximate 4.5m floor to ceiling height at living and dining.

BLK 6 **BLK 8**
#16-10 #16-18



LEGEND

DB/ST: Distribution Board/Store F: Fridge Wall not to be hacked/altered (including by way of drilling)
W: Washer cum Dryer WC: Water Closet



Key Plan

The above plans and illustration are subject to change as may be required or approved by the relevant authorities. All areas stated herein include PES (private enclosed space), balcony, A/C ledge and void where applicable. All areas and measurements stated herein are approximate and subject to adjustment on final survey. Please refer to the key plan for orientation.

2-Bedroom

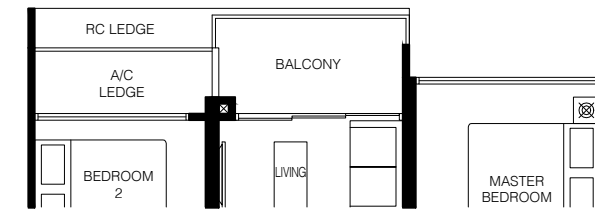
Type B2

57 sq.m. / 614 sq.ft.

BLK 2
#06-05
#09-05
#12-05
#15-05

MIRRORED

BLK 2
#06-06
#09-06
#12-06
#15-06



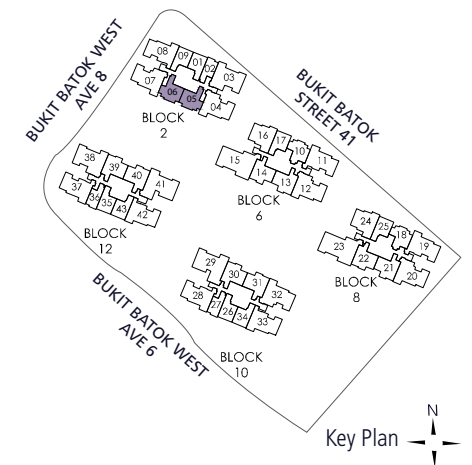
Type B2

57 sq.m. / 614 sq.ft.

BLK 2
#07-05
#08-05
#10-05
#11-05
#13-05
#14-05

MIRRORED

BLK 2
#07-06
#08-06
#10-06
#11-06
#13-06
#14-06



LEGEND

DB/ST: Distribution Board/Store F: Fridge Wall not to be hacked/altered (including by way of drilling)
W: Washer cum Dryer WC: Water Closet



Key Plan

The above plans and illustration are subject to change as may be required or approved by the relevant authorities. All areas stated herein include PES (private enclosed space), balcony, A/C ledge and void where applicable. All areas and measurements stated herein are approximate and subject to adjustment on final survey. Please refer to the key plan for orientation.

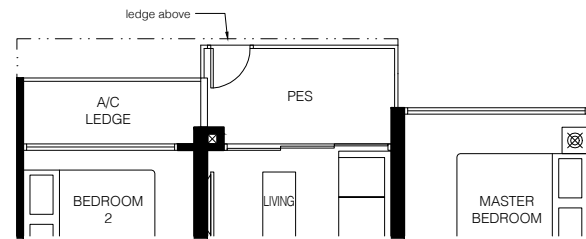
2-Bedroom

Type B2P

57 sq.m. / 614 sq.ft.

BLK 2
#05-05

MIRRORED
BLK 2
#05-06



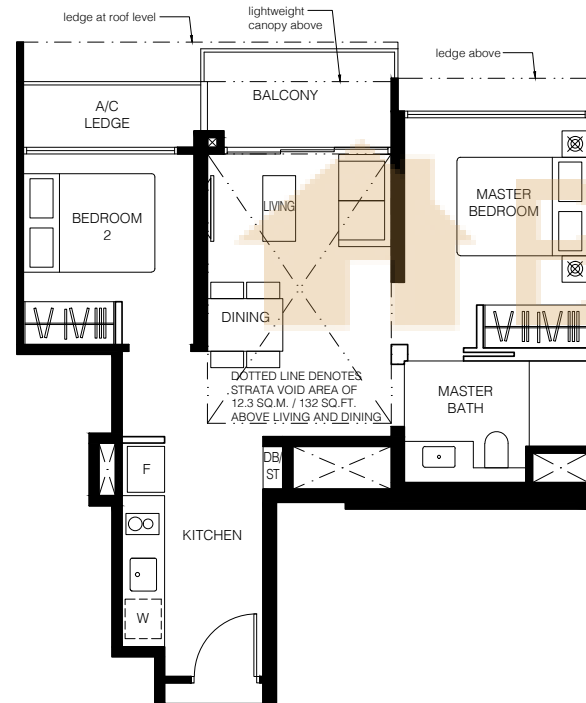
Type B2L

69 sq.m. / 743 sq.ft.

Including strata void area of 12.3 sq.m. / 132 sq.ft. above living and dining. Approximate 4.5m floor to ceiling height at living and dining.

BLK 2
#16-05

MIRRORED
BLK 2
#16-06



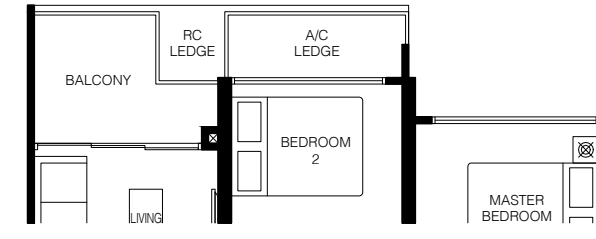
2-Bedroom Premium

Type B3

65 sq.m. / 700 sq.ft.

BLK 10 **BLK 12**
#06-30 #06-39
#09-30 #09-39
#12-30 #12-39
#15-30 #15-39

MIRRORED
BLK 8 **BLK 10** **BLK 12**
#06-22 #06-31 #06-40
#09-22 #09-31 #09-40
#12-22 #12-31 #12-40
#15-22 #15-31 #15-40

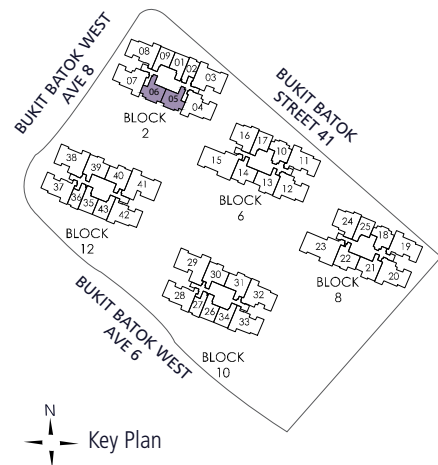
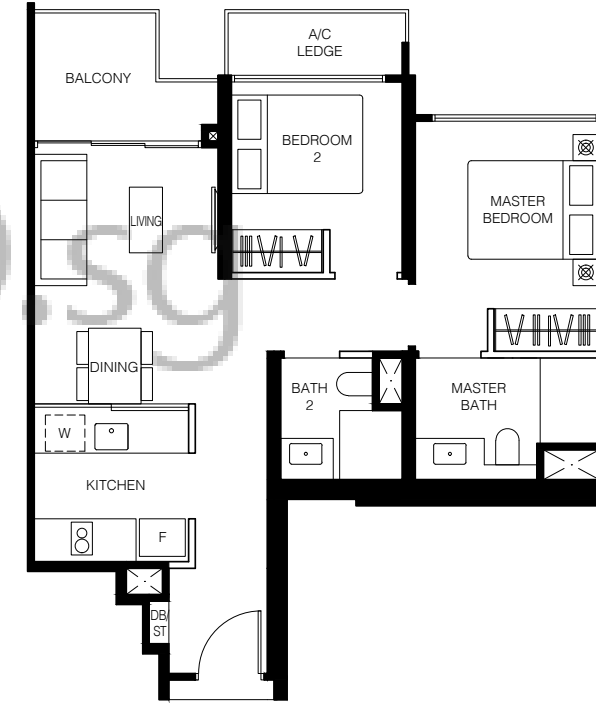


Type B3

65 sq.m. / 700 sq.ft.

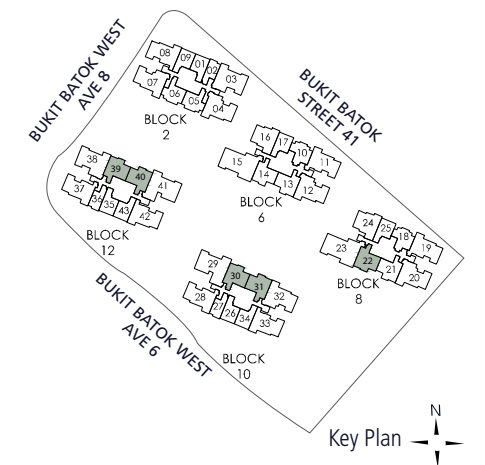
BLK 10 **BLK 12**
#07-30 #07-39
#08-30 #08-39
#10-30 #10-39
#11-30 #11-39
#13-30 #13-39
#14-30 #14-39

MIRRORED
BLK 8 **BLK 10** **BLK 12**
#07-22 #07-31 #07-40
#08-22 #08-31 #08-40
#10-22 #10-31 #10-40
#11-22 #11-31 #11-40
#13-22 #13-31 #13-40
#14-22 #14-31 #14-40



LEGEND
DB/ST: Distribution Board/Store F: Fridge
W: Washer cum Dryer WC: Water Closet
Wall not to be hacked/alterd (including by way of drilling)

The above plans and illustration are subject to change as may be required or approved by the relevant authorities. All areas stated herein include PES (private enclosed space), balcony, A/C ledge and void where applicable. All areas and measurements stated herein are approximate and subject to adjustment on final survey. Please refer to the key plan for orientation.



LEGEND
DB/ST: Distribution Board/Store F: Fridge
W: Washer cum Dryer WC: Water Closet
Wall not to be hacked/alterd (including by way of drilling)

The above plans and illustration are subject to change as may be required or approved by the relevant authorities. All areas stated herein include PES (private enclosed space), balcony, A/C ledge and void where applicable. All areas and measurements stated herein are approximate and subject to adjustment on final survey. Please refer to the key plan for orientation.

2-Bedroom Premium

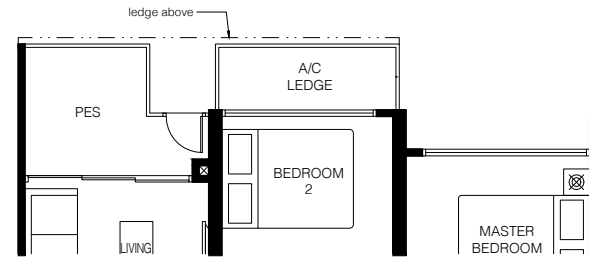
Type B3P

65 sq.m. / 700 sq.ft.

BLK 10 **BLK 12**
#05-30 #05-39

MIRRORED

BLK 8 **BLK 10** **BLK 12**
#05-22 #05-31 #05-40



Type B3L

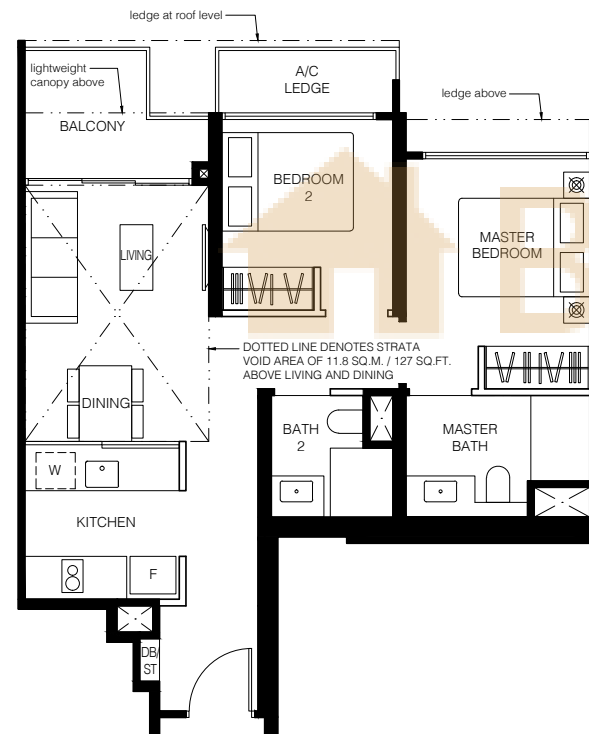
77 sq.m. / 829 sq.ft.

Including strata void area of 11.8 sq.m. / 127 sq.ft. above living and dining. Approximate 4.5m floor to ceiling height at living and dining.

BLK 10 **BLK 12**
#16-30 #16-39

MIRRORED

BLK 8 **BLK 10** **BLK 12**
#16-22 #16-31 #16-40



2-Bedroom Deluxe + Study

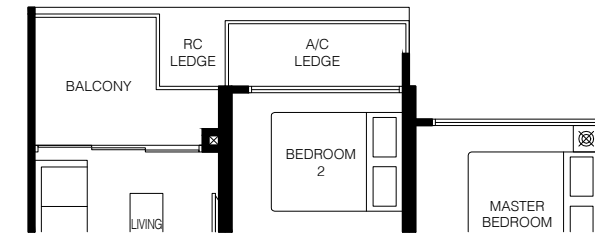
Type B4

66 sq.m. / 710 sq.ft.

BLK 6 **BLK 8**
#06-13 #06-21
#09-13 #09-21
#12-13 #12-21
#15-13 #15-21

MIRRORED

BLK 6
#06-14
#09-14
#12-14
#15-14



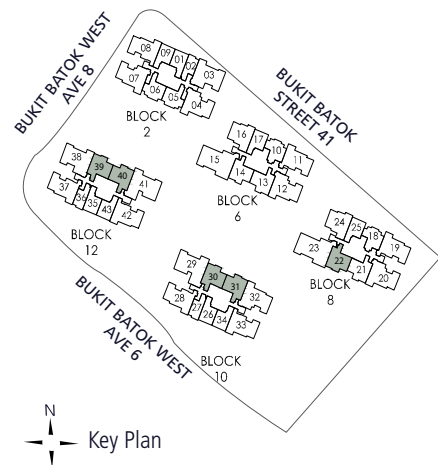
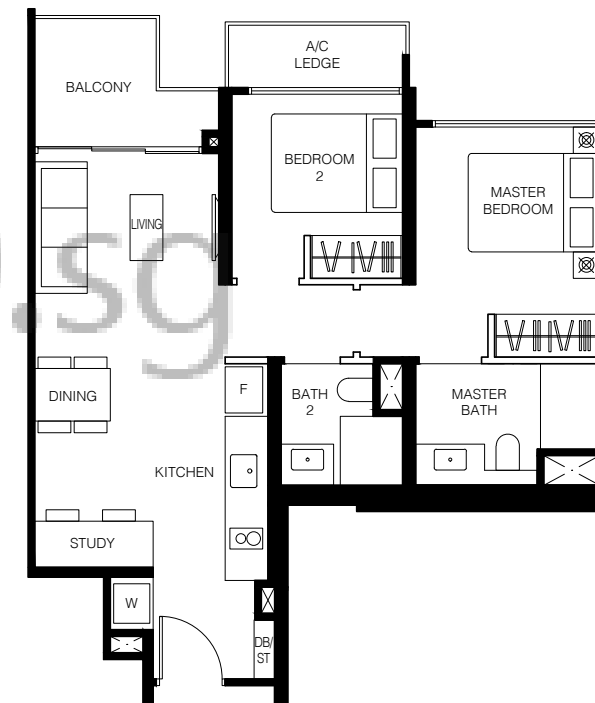
Type B4

66 sq.m. / 710 sq.ft.

BLK 6 **BLK 8**
#07-13 #07-21
#08-13 #08-21
#10-13 #10-21
#11-13 #11-21
#13-13 #13-21
#14-13 #14-21

MIRRORED

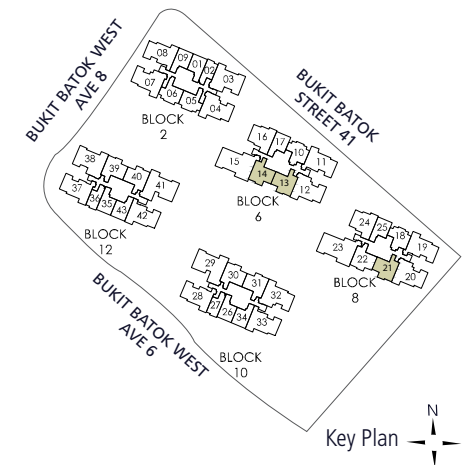
BLK 6
#07-14
#08-14
#10-14
#11-14
#13-14
#14-14



Key Plan

LEGEND

DB/ST: Distribution Board/Store
W: Washer cum Dryer
F: Fridge
WC: Water Closet
Wall not to be hacked/alterd (including by way of drilling)



Key Plan

LEGEND

DB/ST: Distribution Board/Store
W: Washer cum Dryer
F: Fridge
WC: Water Closet
Wall not to be hacked/alterd (including by way of drilling)

The above plans and illustration are subject to change as may be required or approved by the relevant authorities. All areas stated herein include PES (private enclosed space), balcony, A/C ledge and void where applicable. All areas and measurements stated herein are approximate and subject to adjustment on final survey. Please refer to the key plan for orientation.

The above plans and illustration are subject to change as may be required or approved by the relevant authorities. All areas stated herein include PES (private enclosed space), balcony, A/C ledge and void where applicable. All areas and measurements stated herein are approximate and subject to adjustment on final survey. Please refer to the key plan for orientation.

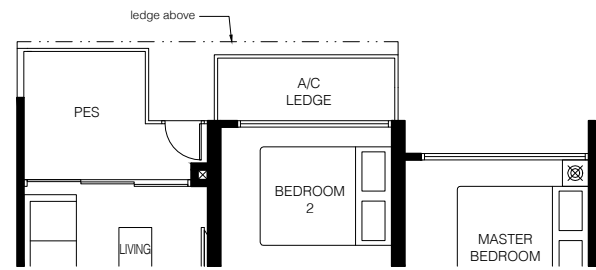
2-Bedroom Deluxe + Study

Type B4P

66 sq.m. / 710 sq.ft.

BLK 6 **BLK 8**
#05-13 #05-21

MIRRORED
BLK 6
#05-14



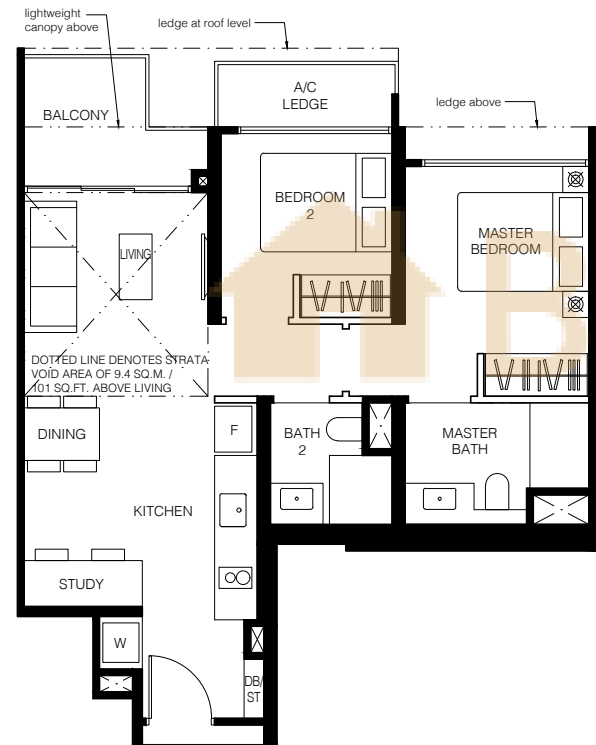
Type B4L

75 sq.m. / 807 sq.ft.

Including strata void area of 9.4 sq.m. / 101 sq.ft. above living. Approximate 4.5m floor to ceiling height at living.

BLK 6 **BLK 8**
#16-13 #16-21

MIRRORED
BLK 6
#16-14

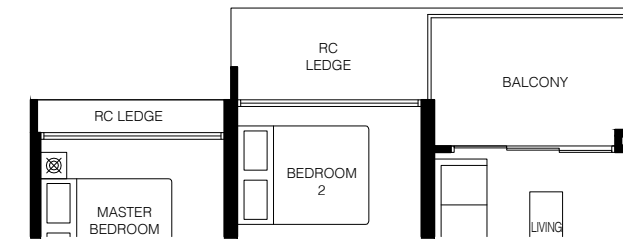


3-Bedroom

Type C1

76 sq.m. / 818 sq.ft.

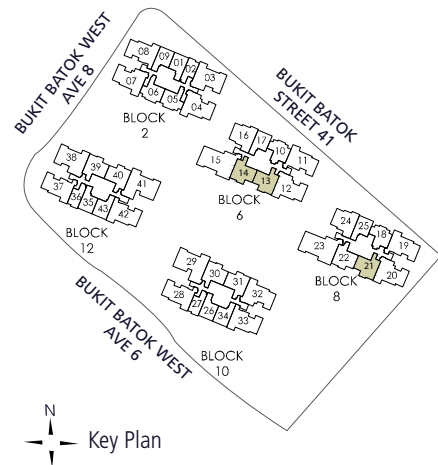
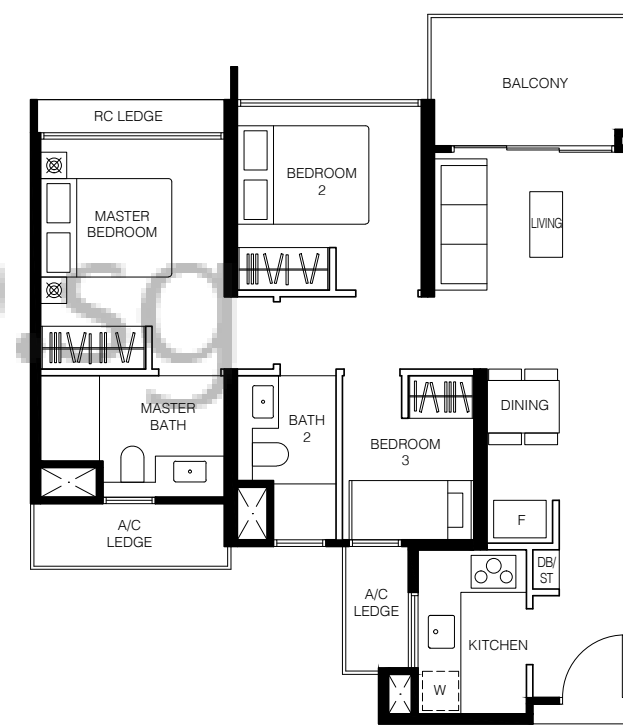
BLK 6 **BLK 8**
#06-16 #06-24
#09-16 #09-24
#12-16 #12-24
#15-16 #15-24



Type C1

76 sq.m. / 818 sq.ft.

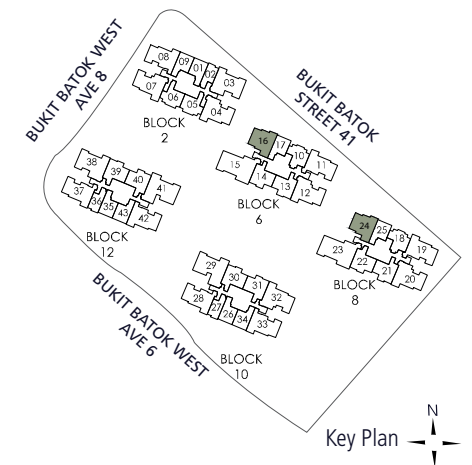
BLK 6 **BLK 8**
#07-16 #07-24
#08-16 #08-24
#10-16 #10-24
#11-16 #11-24
#13-16 #13-24
#14-16 #14-24



LEGEND

DB/ST: Distribution Board/Store
W: Washer cum Dryer
F: Fridge
WC: Water Closet
Wall not to be hacked/altered (including by way of drilling)

The above plans and illustration are subject to change as may be required or approved by the relevant authorities. All areas stated herein include PES (private enclosed space), balcony, A/C ledge and void where applicable. All areas and measurements stated herein are approximate and subject to adjustment on final survey. Please refer to the key plan for orientation.



LEGEND

DB/ST: Distribution Board/Store
W: Washer cum Dryer
F: Fridge
WC: Water Closet
Wall not to be hacked/altered (including by way of drilling)

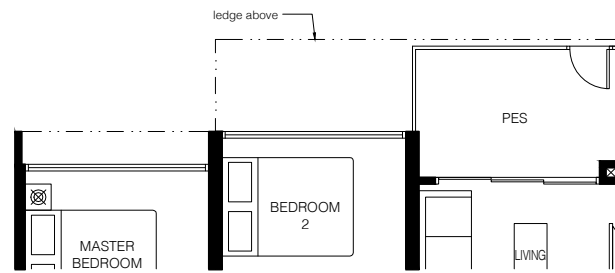
The above plans and illustration are subject to change as may be required or approved by the relevant authorities. All areas stated herein include PES (private enclosed space), balcony, A/C ledge and void where applicable. All areas and measurements stated herein are approximate and subject to adjustment on final survey. Please refer to the key plan for orientation.

3-Bedroom

Type C1P

76 sq.m. / 818 sq.ft.

BLK 6 **BLK 8**
#05-16 #05-24

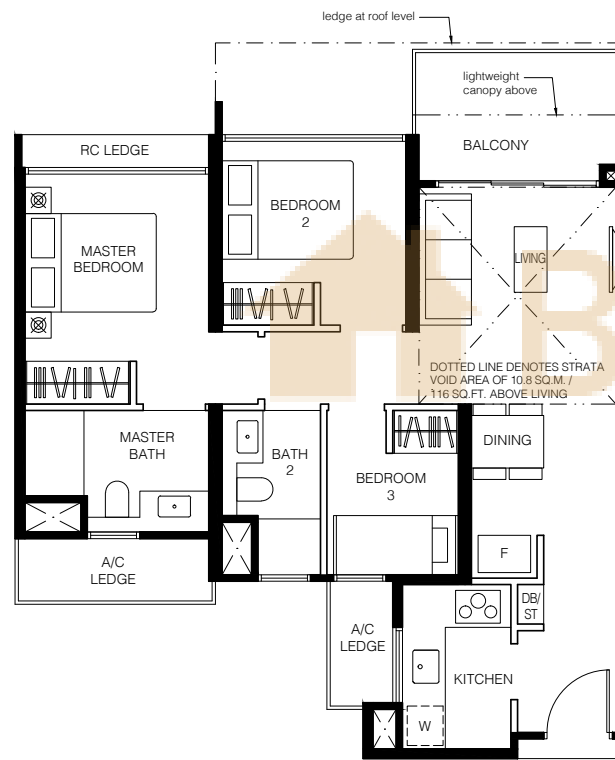


Type C1L

87 sq.m. / 936 sq.ft.

Including strata void area of 10.8 sq.m. / 116 sq.ft. above living. Approximate 4.5m floor to ceiling height at living.

BLK 6 **BLK 8**
#16-16 #16-24



BUYCONDO.SG

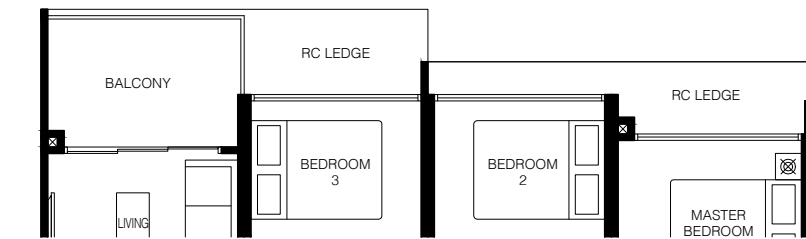
3-Bedroom Suite

Type C2

82 sq.m. / 883 sq.ft.

BLK 6 **BLK 8**
#06-11 #06-19
#09-11 #09-19

BLK 10 **BLK 12**
#06-28 #06-37
#09-28 #09-37



Type C2

82 sq.m. / 883 sq.ft.

BLK 6 **BLK 8**
#07-11 #07-19
#08-11 #08-19
#10-11 #10-19

BLK 10 **BLK 12**
#07-28 #07-37
#08-28 #08-37
#10-28 #10-37

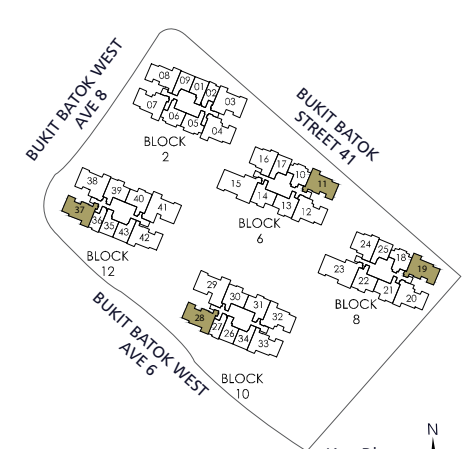
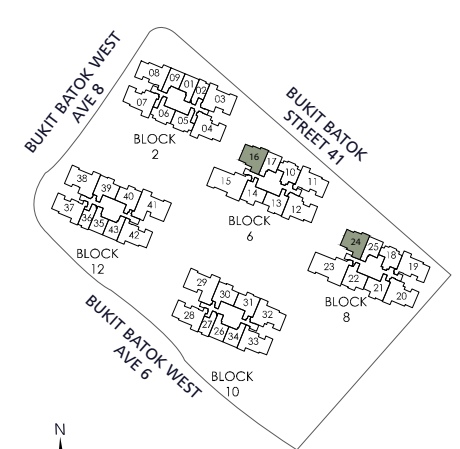
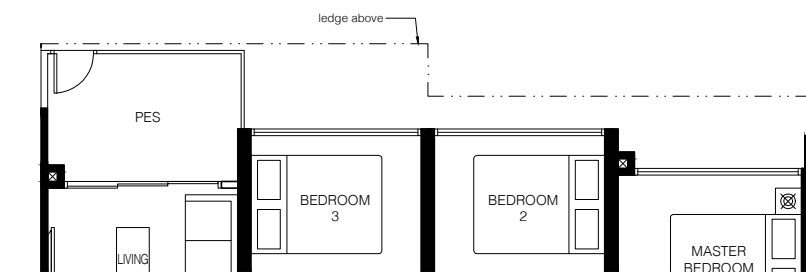


Type C2P

82 sq.m. / 883 sq.ft.

BLK 6 **BLK 8**
#05-11 #05-19

BLK 10 **BLK 12**
#05-28 #05-37



LEGEND
DB/ST: Distribution Board/Store F: Fridge Wall not to be hacked/altered (including by way of drilling)
W: Washer cum Dryer WC: Water Closet

LEGEND
DB/ST: Distribution Board/Store F: Fridge Wall not to be hacked/altered (including by way of drilling)
W: Washer cum Dryer WC: Water Closet

The above plans and illustration are subject to change as may be required or approved by the relevant authorities. All areas stated herein include PES (private enclosed space), balcony, A/C ledge and void where applicable. All areas and measurements stated herein are approximate and subject to adjustment on final survey. Please refer to the key plan for orientation.

The above plans and illustration are subject to change as may be required or approved by the relevant authorities. All areas stated herein include PES (private enclosed space), balcony, A/C ledge and void where applicable. All areas and measurements stated herein are approximate and subject to adjustment on final survey. Please refer to the key plan for orientation.

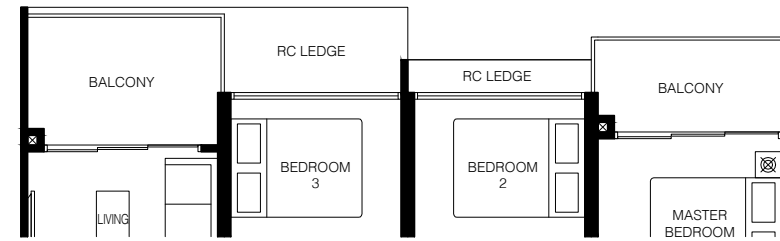
3-Bedroom Premium

Type C3

87 sq.m. / 936 sq.ft.

BLK 6 **BLK 8**
 #12-11 #12-19
 #15-11 #15-19

BLK 10 **BLK 12**
 #12-28 #12-37
 #15-28 #15-37

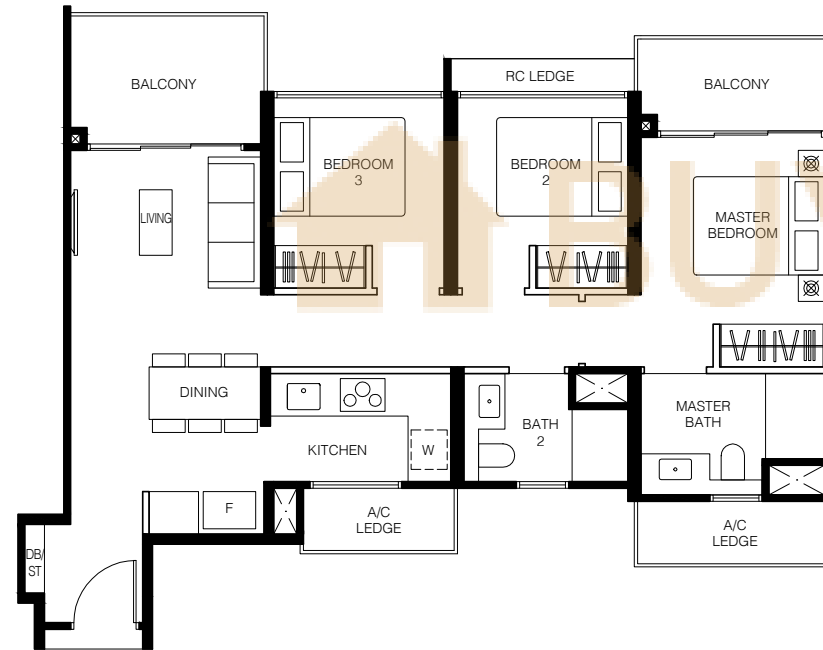


Type C3

87 sq.m. / 936 sq.ft.

BLK 6 **BLK 8**
 #11-11 #11-19
 #13-11 #13-19
 #14-11 #14-19

BLK 10 **BLK 12**
 #11-28 #11-37
 #13-28 #13-37
 #14-28 #14-37



3-Bedroom Premium

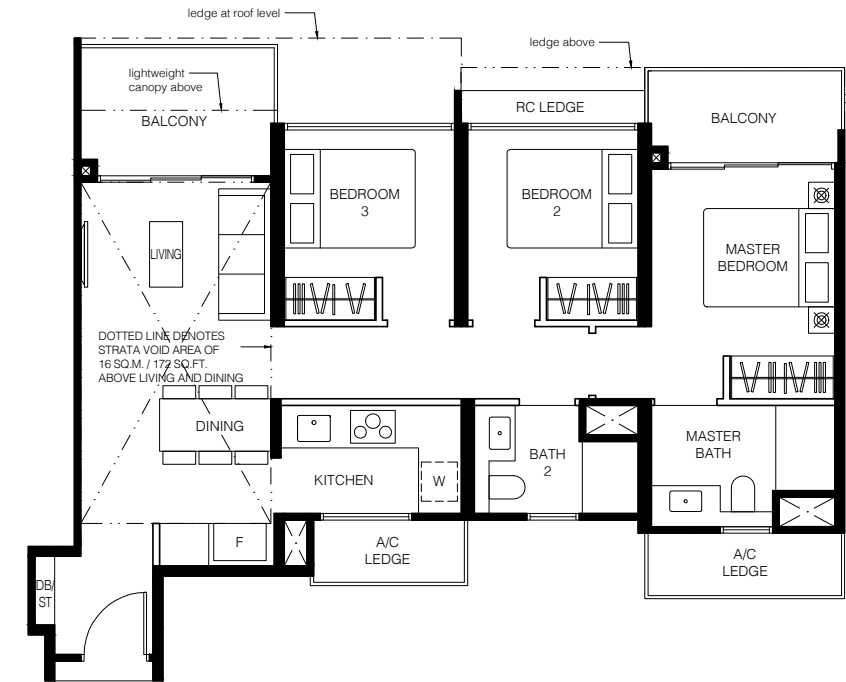
Type C3L

103 sq.m. / 1109 sq.ft.

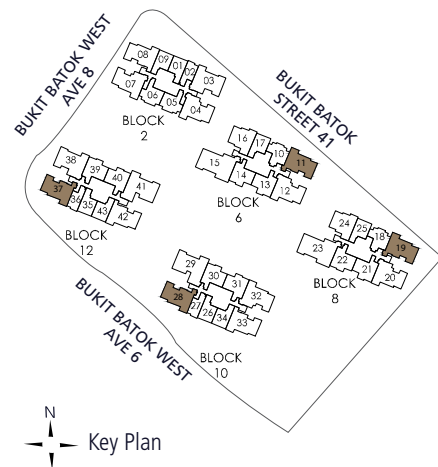
Including strata void area of 16.0 sq.m. / 172 sq.ft. above living and dining. Approximate 4.5m floor to ceiling height at living and dining.

BLK 6 **BLK 8**
 #16-11 #16-19

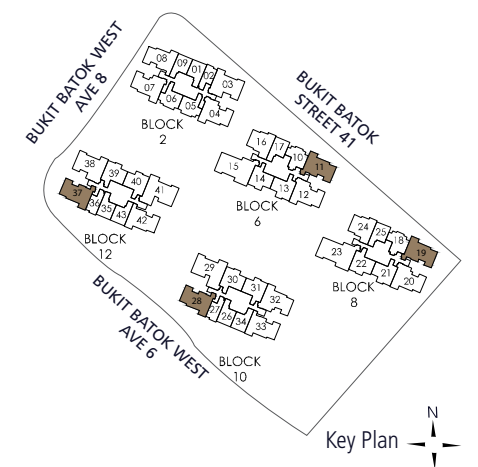
BLK 10 **BLK 12**
 #16-28 #16-37



BUY CONDO.sg



LEGEND
 DB/ST: Distribution Board/Store F: Fridge Wall not to be hacked/altered (including by way of drilling)
 W: Washer cum Dryer WC: Water Closet



LEGEND
 DB/ST: Distribution Board/Store F: Fridge Wall not to be hacked/altered (including by way of drilling)
 W: Washer cum Dryer WC: Water Closet

The above plans and illustration are subject to change as may be required or approved by the relevant authorities. All areas stated herein include PES (private enclosed space), balcony, A/C ledge and void where applicable. All areas and measurements stated herein are approximate and subject to adjustment on final survey. Please refer to the key plan for orientation.

The above plans and illustration are subject to change as may be required or approved by the relevant authorities. All areas stated herein include PES (private enclosed space), balcony, A/C ledge and void where applicable. All areas and measurements stated herein are approximate and subject to adjustment on final survey. Please refer to the key plan for orientation.

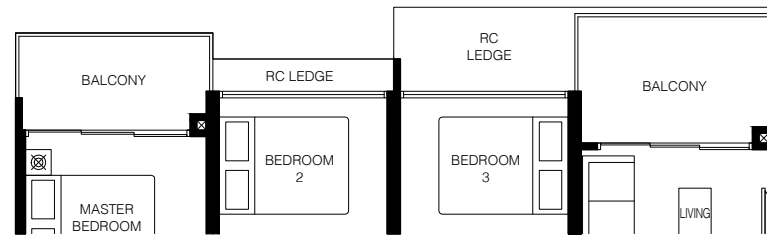
3-Bedroom Premium

Type C4

87 sq.m. / 936 sq.ft.

BLK 2 #06-08
BLK 10 #06-33
 #09-08 #09-33
 #12-08 #12-33
 #15-08 #15-33

BLK 12
 #06-42
 #09-42
 #12-42
 #15-42

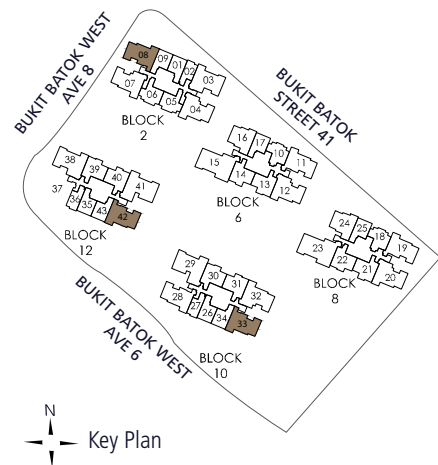
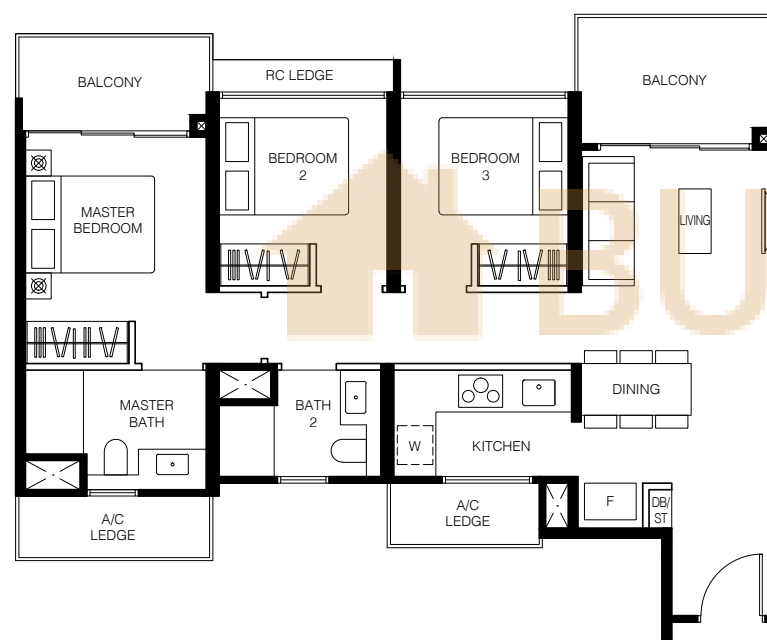


Type C4

87 sq.m. / 936 sq.ft.

BLK 2 #07-08
BLK 10 #07-33
 #08-08 #08-33
 #10-08 #10-33
 #11-08 #11-33
 #13-08 #13-33
 #14-08 #14-33

BLK 12
 #07-42
 #08-42
 #10-42
 #11-42
 #13-42
 #14-42



LEGEND
 DB/ST: Distribution Board/Store
 W: Washer cum Dryer
 F: Fridge
 WC: Water Closet
 Wall not to be hacked/alterd (including by way of drilling)

The above plans and illustration are subject to change as may be required or approved by the relevant authorities. All areas stated herein include PES (private enclosed space), balcony, A/C ledge and void where applicable. All areas and measurements stated herein are approximate and subject to adjustment on final survey. Please refer to the key plan for orientation.

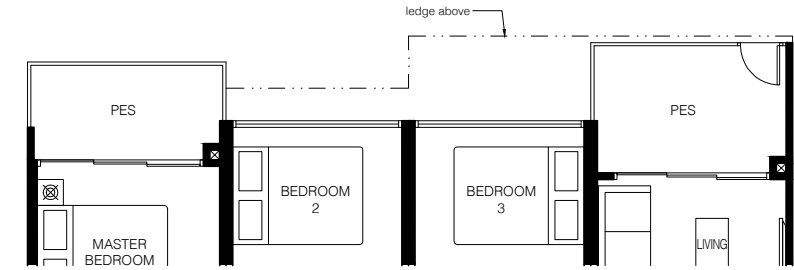
3-Bedroom Premium

Type C4P

87 sq.m. / 936 sq.ft.

BLK 2 #05-08
BLK 10 #05-33

BLK 12
 #05-42



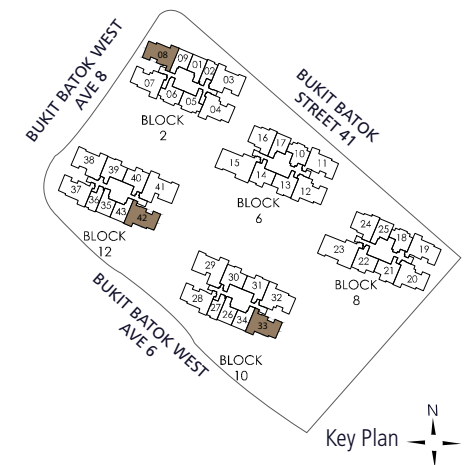
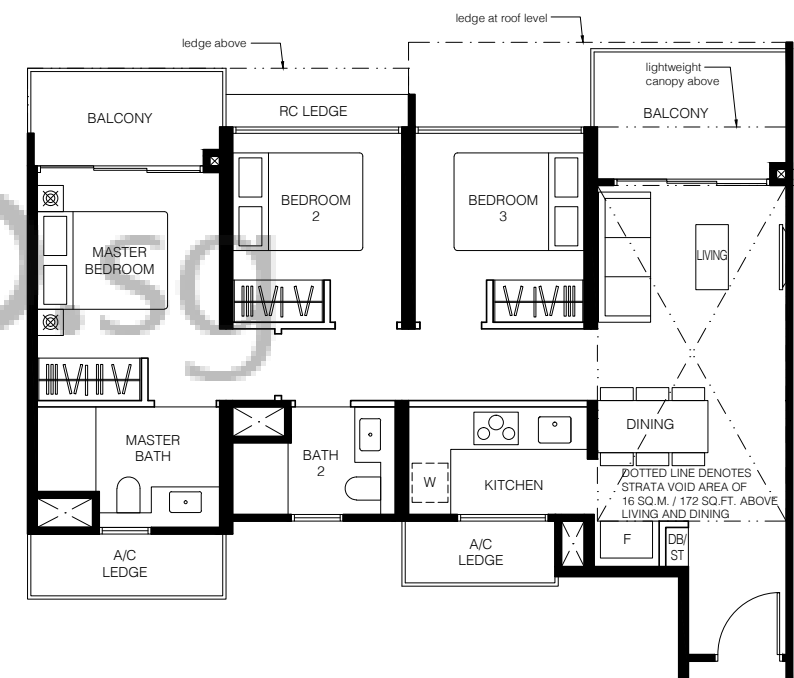
Type C4L

103 sq.m. / 1109 sq.ft.

Including strata void area of 16 sq.m. / 172 sq.ft. above living and dining. Approximate 4.5m floor to ceiling height at living and dining.

BLK 2 #16-08
BLK 10 #16-33

BLK 12
 #16-42



LEGEND
 DB/ST: Distribution Board/Store
 W: Washer cum Dryer
 F: Fridge
 WC: Water Closet
 Wall not to be hacked/alterd (including by way of drilling)

The above plans and illustration are subject to change as may be required or approved by the relevant authorities. All areas stated herein include PES (private enclosed space), balcony, A/C ledge and void where applicable. All areas and measurements stated herein are approximate and subject to adjustment on final survey. Please refer to the key plan for orientation.

3-Bedroom Deluxe

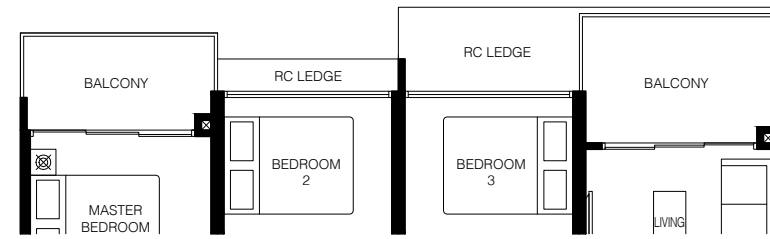
Type C5

91 sq.m. / 980 sq.ft.

BLK 2	BLK 6	BLK 8
#06-04	#06-12	#06-20
#09-04	#09-12	#09-20
#12-04	#12-12	#12-20
#15-04	#15-12	#15-20

MIRRORED

BLK 2	BLK 10
#06-07	#06-32
#09-07	#09-32
#12-07	#12-32
#15-07	#15-32



Type C5

91 sq.m. / 980 sq.ft.

BLK 2	BLK 6	BLK 8
#07-04	#07-12	#07-20
#08-04	#08-12	#08-20
#10-04	#10-12	#10-20
#11-04	#11-12	#11-20
#13-04	#13-12	#13-20
#14-04	#14-12	#14-20

MIRRORED

BLK 2	BLK 10
#07-07	#07-32
#08-07	#08-32
#10-07	#10-32
#11-07	#11-32
#13-07	#13-32
#14-07	#14-32



3-Bedroom Deluxe

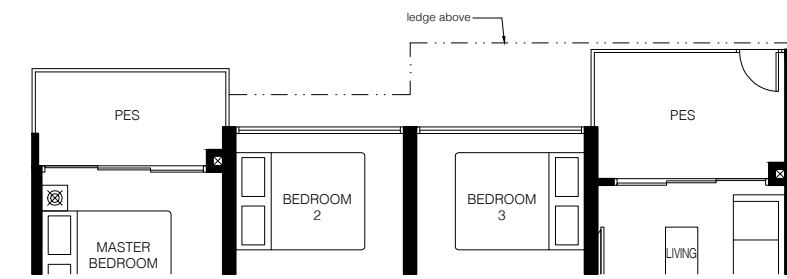
Type C5P

91 sq.m. / 980 sq.ft.

BLK 2	BLK 6	BLK 8
#05-04	#05-12	#05-20

MIRRORED

BLK 2	BLK 10
#05-07	#05-32



Type C5L

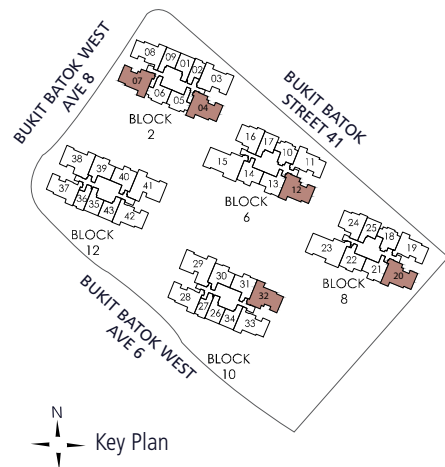
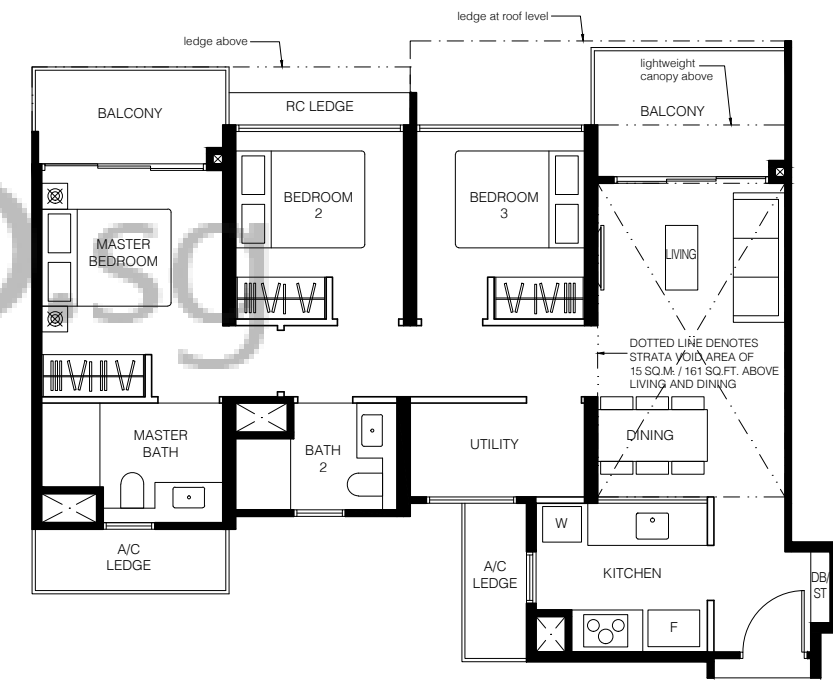
106 sq.m. / 1141 sq.ft.

Including strata void area of 15 sq.m. / 161 sq.ft. above living and dining. Approximate 4.5m floor to ceiling height at living and dining.

BLK 2	BLK 6	BLK 8
#16-04	#16-12	#16-20

MIRRORED

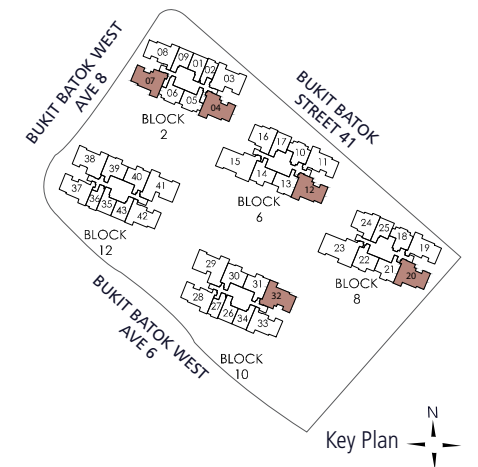
BLK 2	BLK 10
#16-07	#16-32



LEGEND

DB/ST: Distribution Board/Store
 W: Washer cum Dryer
 F: Fridge
 WC: Water Closet
 Wall not to be hacked/alterd (including by way of drilling)

The above plans and illustration are subject to change as may be required or approved by the relevant authorities. All areas stated herein include PES (private enclosed space), balcony, A/C ledge and void where applicable. All areas and measurements stated herein are approximate and subject to adjustment on final survey. Please refer to the key plan for orientation.



LEGEND

DB/ST: Distribution Board/Store
 W: Washer cum Dryer
 F: Fridge
 WC: Water Closet
 Wall not to be hacked/alterd (including by way of drilling)

The above plans and illustration are subject to change as may be required or approved by the relevant authorities. All areas stated herein include PES (private enclosed space), balcony, A/C ledge and void where applicable. All areas and measurements stated herein are approximate and subject to adjustment on final survey. Please refer to the key plan for orientation.

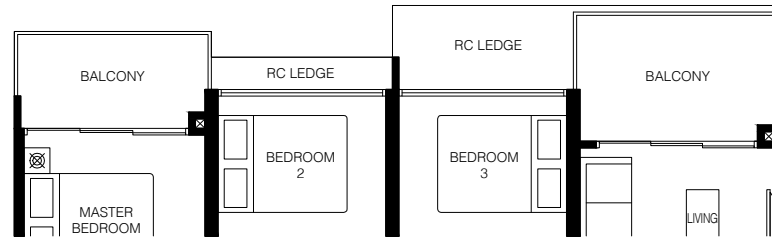
3-Bedroom Deluxe

Type C6

95 sq.m. / 1023 sq.ft.

BLK 12
#06-38
#09-38
#12-38
#15-38

MIRRORED
BLK 2
#06-03
#09-03
#12-03
#15-03

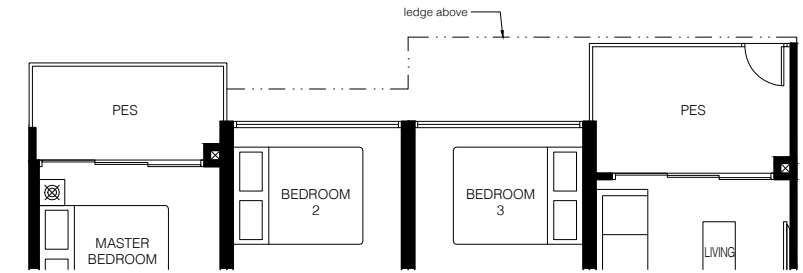


3-Bedroom Deluxe

Type C6P

95 sq.m. / 1023 sq.ft.

BLK 12
#05-38
BLK 2
#05-03

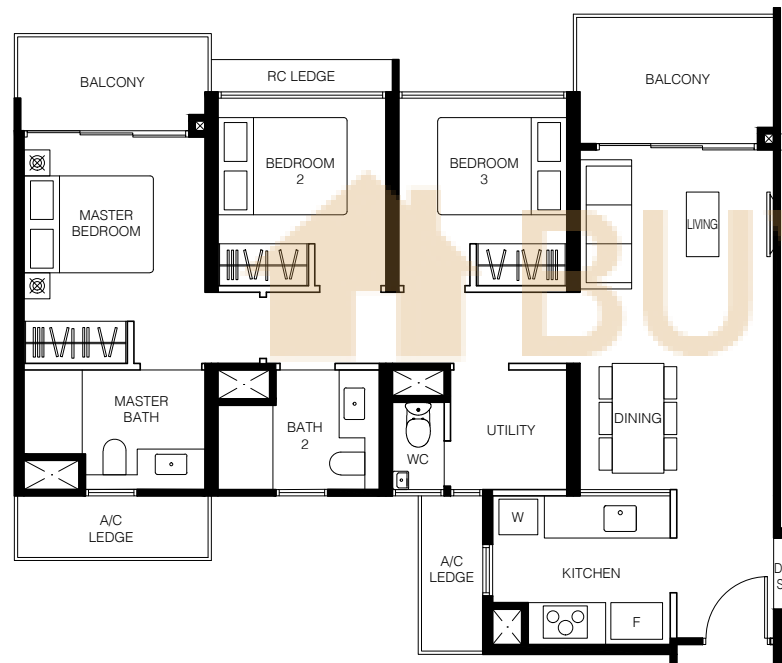


Type C6

95 sq.m. / 1023 sq.ft.

BLK 12
#07-38
#08-38
#10-38
#11-38
#13-38
#14-38

MIRRORED
BLK 2
#07-03
#08-03
#10-03
#11-03
#13-03
#14-03

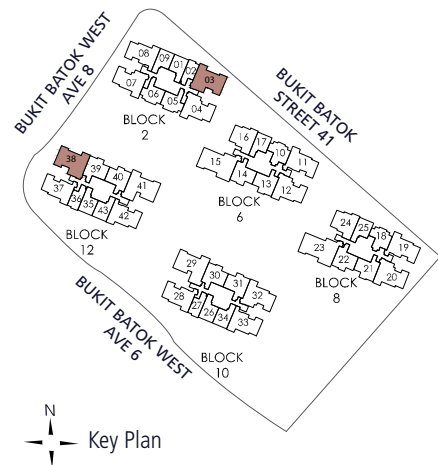
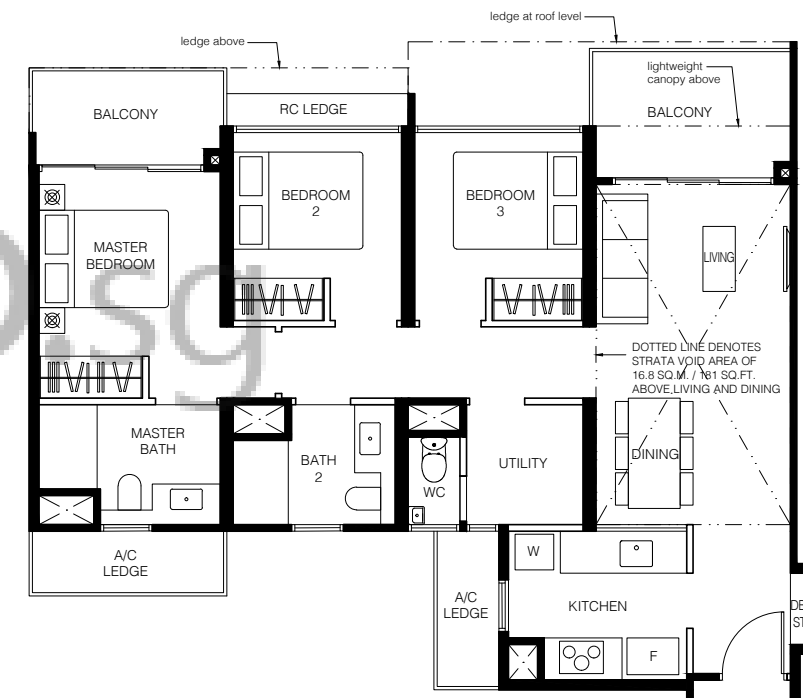


Type C6L

112 sq.m. / 1206 sq.ft.

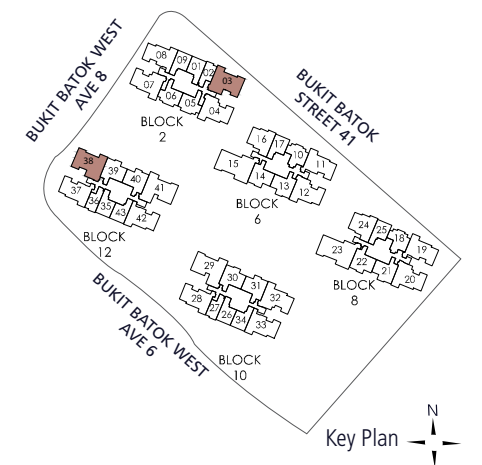
Including strata void area of 16.8 sq.m. / 181 sq.ft. above living and dining. Approximate 4.5m floor to ceiling height at living and dining.

BLK 12
#16-38
MIRRORED
BLK 2
#16-03



LEGEND
DB/ST: Distribution Board/Store
W: Washer cum Dryer
F: Fridge
WC: Water Closet
Wall not to be hacked/alterd (including by way of drilling)

The above plans and illustration are subject to change as may be required or approved by the relevant authorities. All areas stated herein include PES (private enclosed space), balcony, A/C ledge and void where applicable. All areas and measurements stated herein are approximate and subject to adjustment on final survey. Please refer to the key plan for orientation.



LEGEND
DB/ST: Distribution Board/Store
W: Washer cum Dryer
F: Fridge
WC: Water Closet
Wall not to be hacked/alterd (including by way of drilling)

The above plans and illustration are subject to change as may be required or approved by the relevant authorities. All areas stated herein include PES (private enclosed space), balcony, A/C ledge and void where applicable. All areas and measurements stated herein are approximate and subject to adjustment on final survey. Please refer to the key plan for orientation.

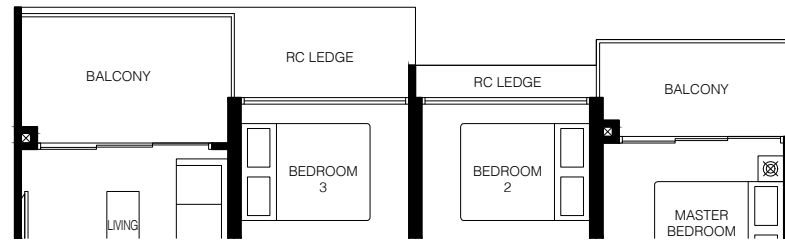
4-Bedroom + Study

Type D1

105 sq.m. / 1130 sq.ft.

BLK 12
#06-41
#09-41
#12-41
#15-41

MIRRORED
BLK 10
#06-29
#09-29
#12-29
#15-29



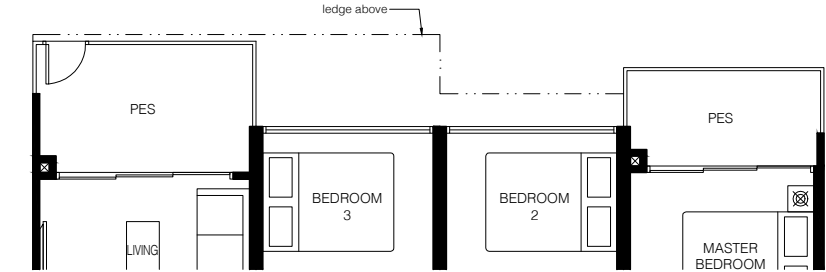
4-Bedroom + Study

Type D1P

105 sq.m. / 1130 sq.ft.

BLK 12
#05-41

MIRRORED
BLK 10
#05-29



Type D1

105 sq.m. / 1130 sq.ft.

BLK 12
#07-41
#08-41
#10-41
#11-41
#13-41
#14-41

MIRRORED
BLK 10
#07-29
#08-29
#10-29
#11-29
#13-29
#14-29



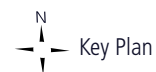
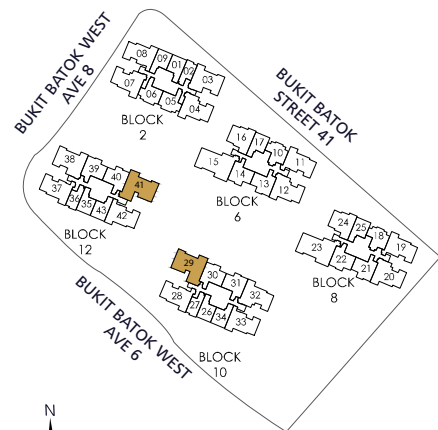
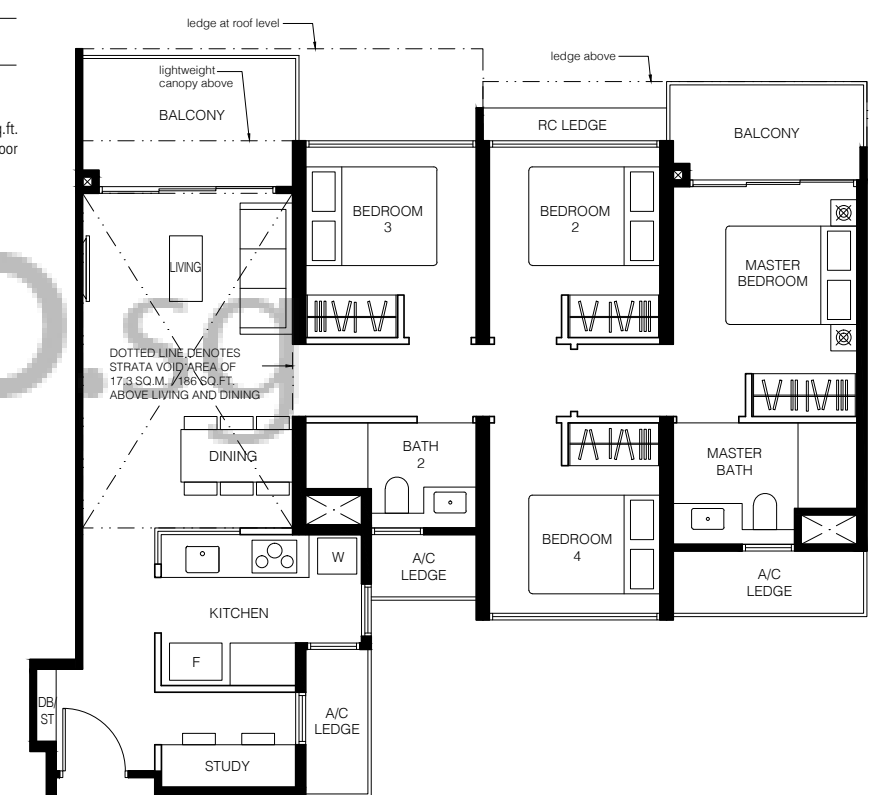
Type D1L

122 sq.m. / 1313 sq.ft.

Including strata void area of 17.3 sq.m. / 186 sq.ft. above living and dining. Approximate 4.5m floor to ceiling height at living and dining.

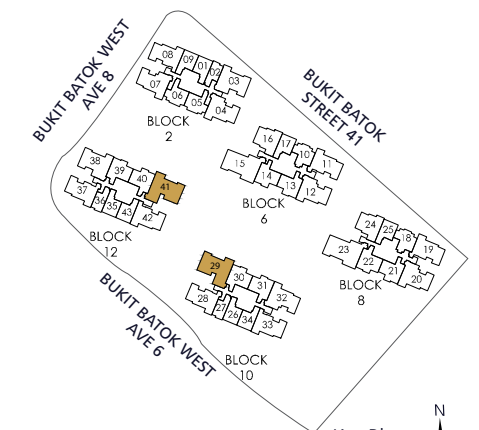
BLK 12
#16-41

MIRRORED
BLK 10
#16-29



LEGEND
DB/ST: Distribution Board/Store
W: Washer cum Dryer
F: Fridge
WC: Water Closet
Wall not to be hacked/alterd (including by way of drilling)

The above plans and illustration are subject to change as may be required or approved by the relevant authorities. All areas stated herein include PES (private enclosed space), balcony, A/C ledge and void where applicable. All areas and measurements stated herein are approximate and subject to adjustment on final survey. Please refer to the key plan for orientation.



LEGEND
DB/ST: Distribution Board/Store
W: Washer cum Dryer
F: Fridge
WC: Water Closet
Wall not to be hacked/alterd (including by way of drilling)

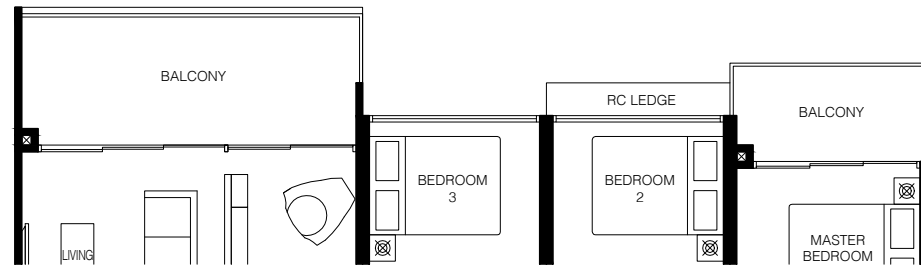
The above plans and illustration are subject to change as may be required or approved by the relevant authorities. All areas stated herein include PES (private enclosed space), balcony, A/C ledge and void where applicable. All areas and measurements stated herein are approximate and subject to adjustment on final survey. Please refer to the key plan for orientation.

4-Bedroom Deluxe

Type D2

122 sq.m. / 1313 sq.ft.

BLK 6	BLK 8
#06-15	#06-23
#09-15	#09-23
#12-15	#12-23
#15-15	#15-23

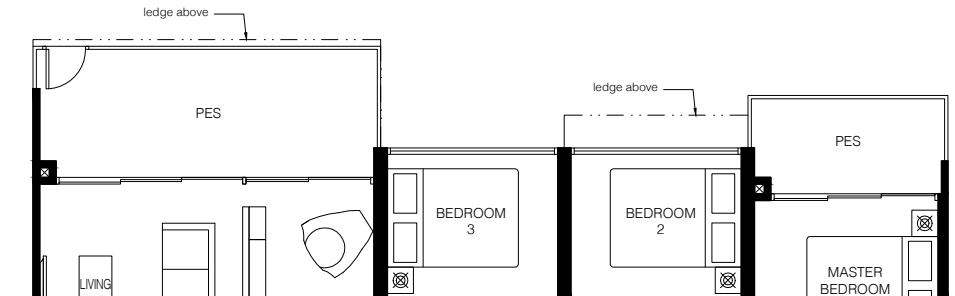


4-Bedroom Deluxe

Type D2P

122 sq.m. / 1313 sq.ft.

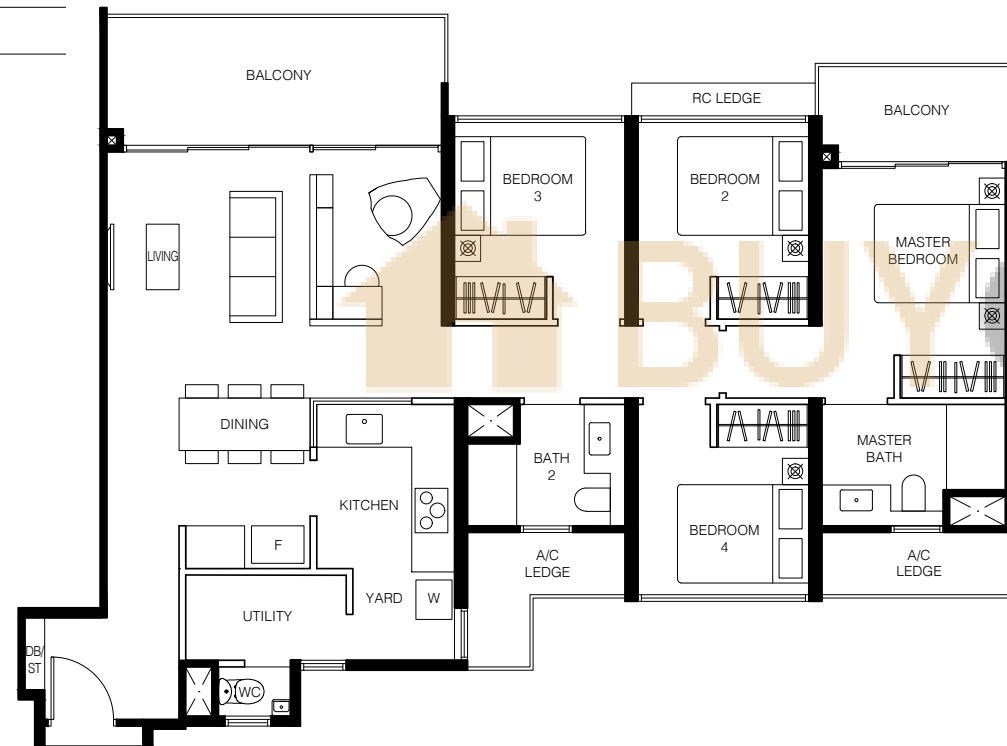
BLK 6	BLK 8
#05-15	#05-23



Type D2

122 sq.m. / 1313 sq.ft.

BLK 6	BLK 8
#07-15	#07-23
#08-15	#08-23
#10-15	#10-23
#11-15	#11-23
#13-15	#13-23
#14-15	#14-23

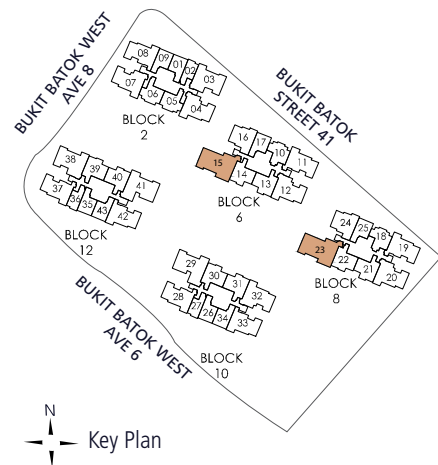
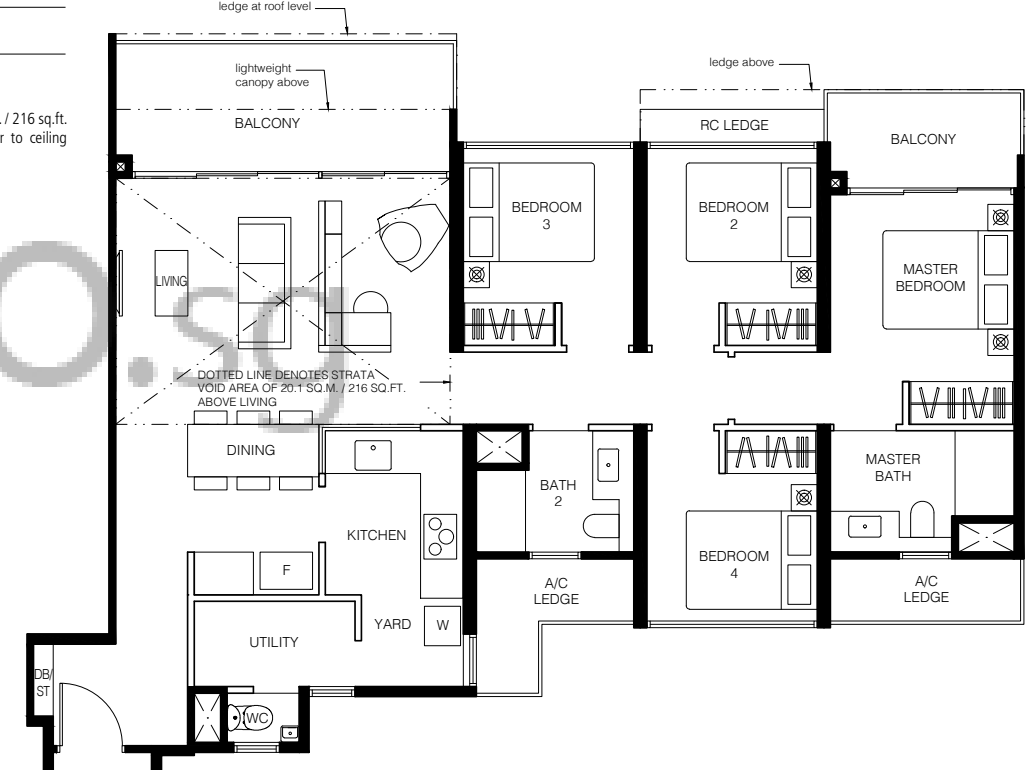


Type D2L

142 sq.m. / 1528 sq.ft.

Including strata void area of 20.1 sq.m. / 216 sq.ft. above living. Approximate 4.5m floor to ceiling height at living.

BLK 6	BLK 8
#16-15	#16-23

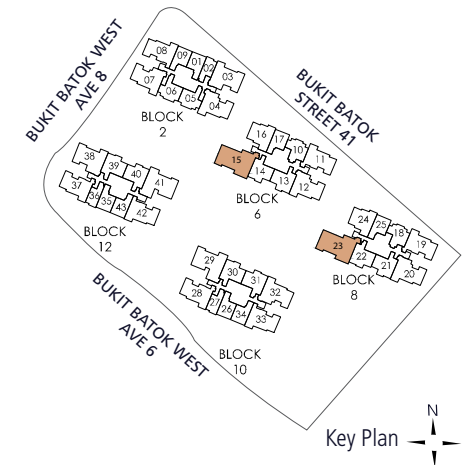


Key Plan

LEGEND

DB/ST: Distribution Board/Store
 W: Washer cum Dryer
 F: Fridge
 WC: Water Closet
 Wall not to be hacked/altered (including by way of drilling)

The above plans and illustration are subject to change as may be required or approved by the relevant authorities. All areas stated herein include PES (private enclosed space), balcony, A/C ledge and void where applicable. All areas and measurements stated herein are approximate and subject to adjustment on final survey. Please refer to the key plan for orientation.



Key Plan

LEGEND

DB/ST: Distribution Board/Store
 W: Washer cum Dryer
 F: Fridge
 WC: Water Closet
 Wall not to be hacked/altered (including by way of drilling)

The above plans and illustration are subject to change as may be required or approved by the relevant authorities. All areas stated herein include PES (private enclosed space), balcony, A/C ledge and void where applicable. All areas and measurements stated herein are approximate and subject to adjustment on final survey. Please refer to the key plan for orientation.