

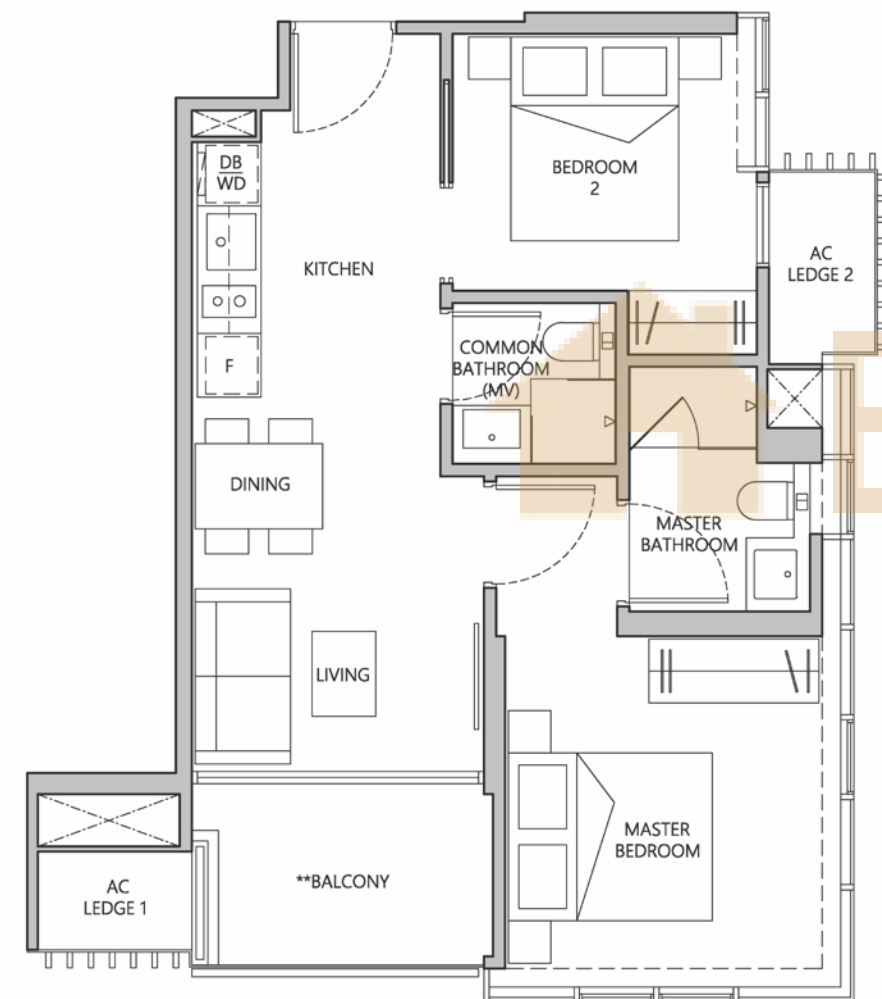
2 - BEDROOM

2 - BEDROOM

TYPE A

57 sqm | 614 sqft

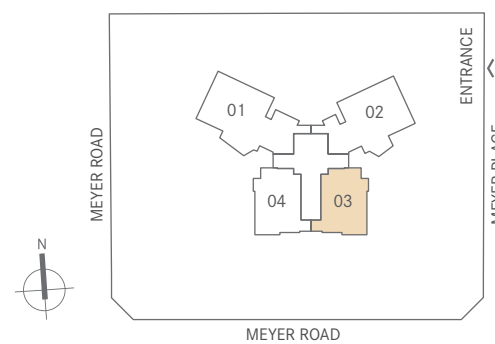
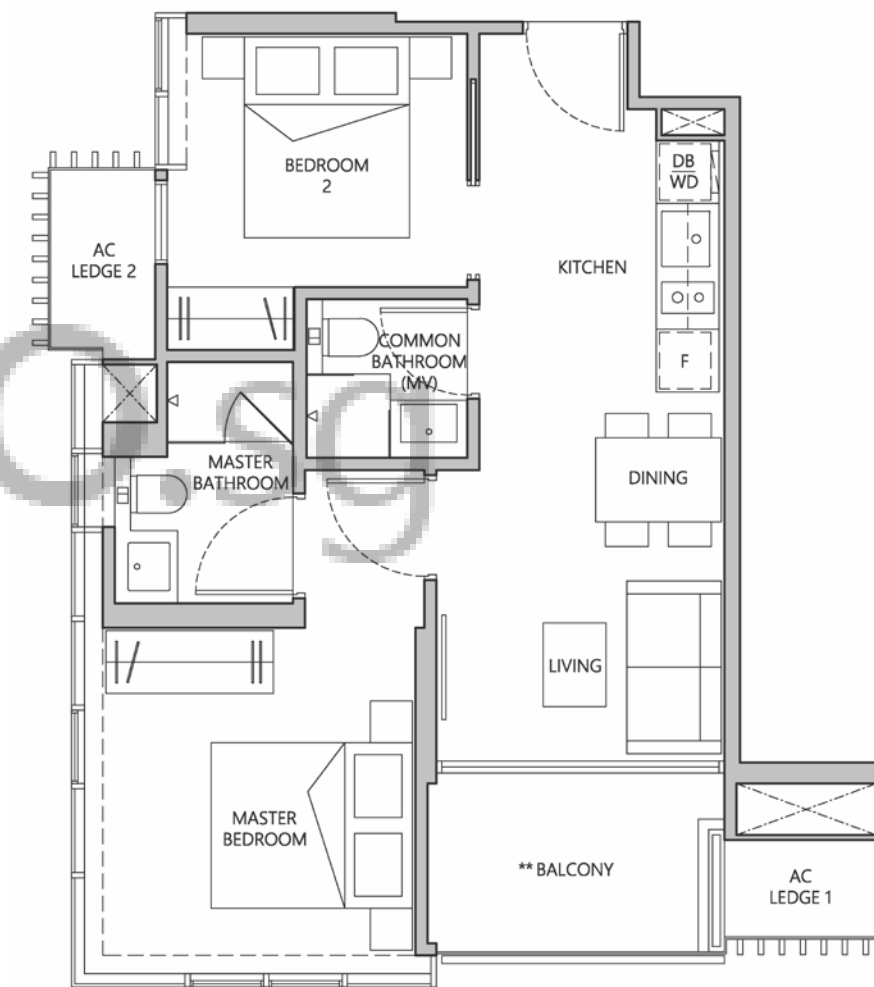
#04-03 to #18-03
#19-03 (high ceiling)



TYPE A1

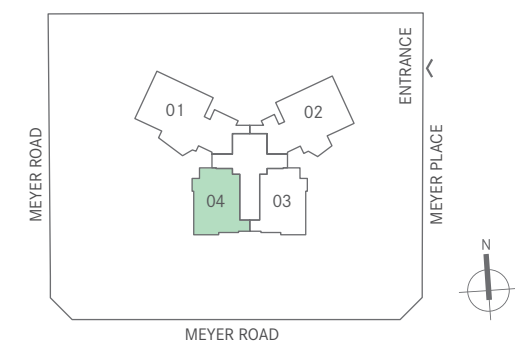
57 sqm | 614 sqft

#04-04 to #18-04
#19-04 (high ceiling)



**The balcony shall not be enclosed unless with the URA approved balcony screen. For an illustration of the approved balcony screen, please refer to page XX of this brochure.

Areas include A/C ledge, balcony, bay window, planter, private roof terrace and strata void area (where applicable). Orientations and facings will differ depending on the unit you are purchasing, please refer to the key plan. Plans are not drawn to sale and subject to change as may be required or approved by the relevant authorities. All areas are estimates only and are subject to final survey.



**The balcony shall not be enclosed unless with the URA approved balcony screen. For an illustration of the approved balcony screen, please refer to page XX of this brochure.

Areas include A/C ledge, balcony, bay window, planter, private roof terrace and strata void area (where applicable). Orientations and facings will differ depending on the unit you are purchasing, please refer to the key plan. Plans are not drawn to sale and subject to change as may be required or approved by the relevant authorities. All areas are estimates only and are subject to final survey.

3 - BEDROOM

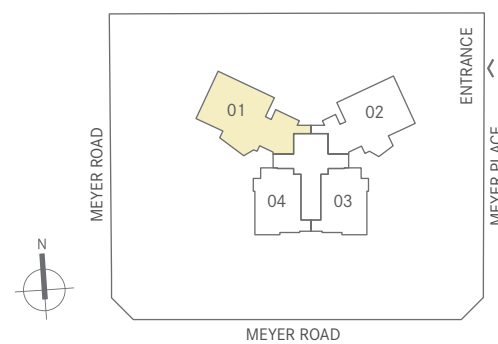
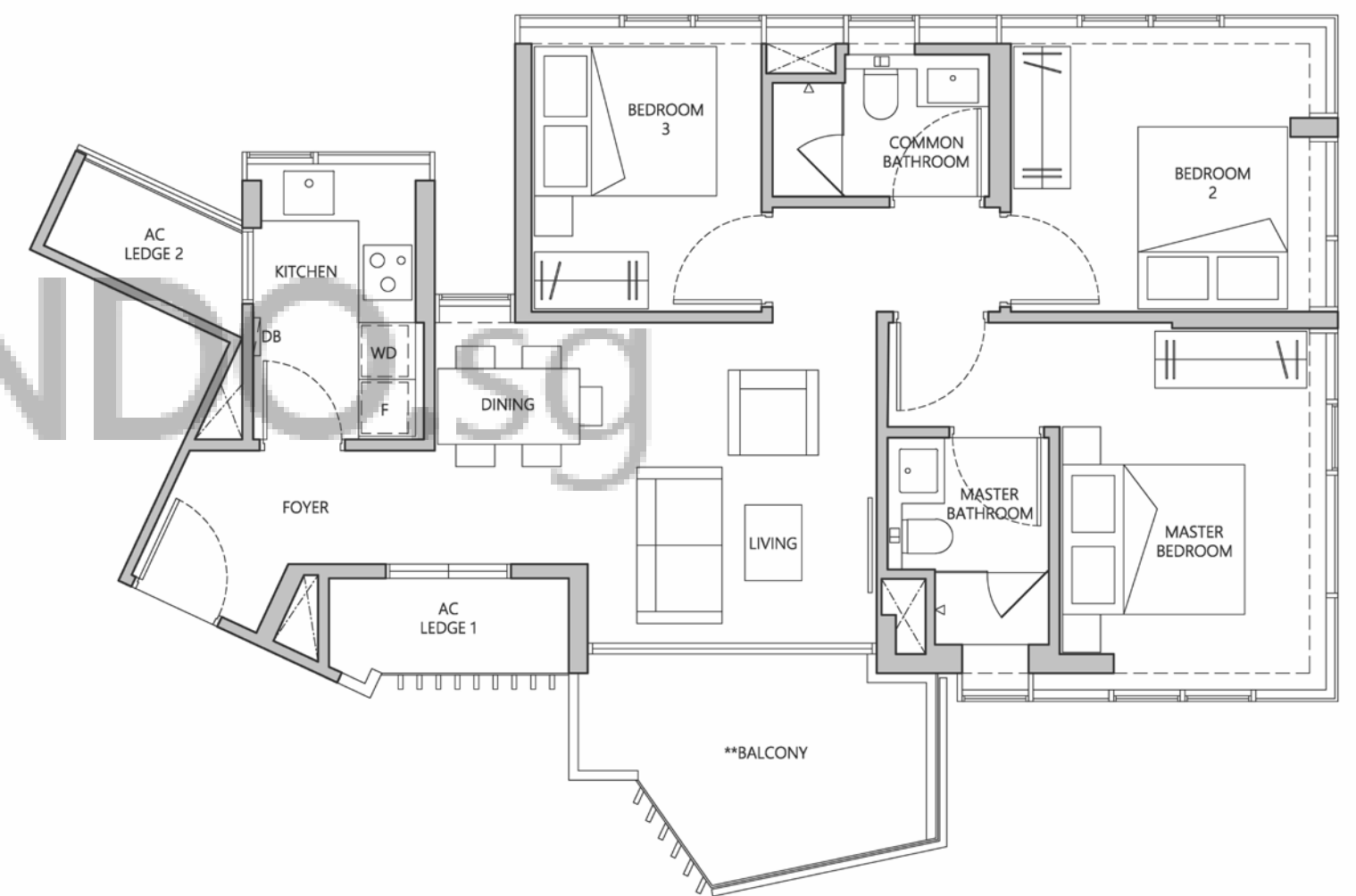
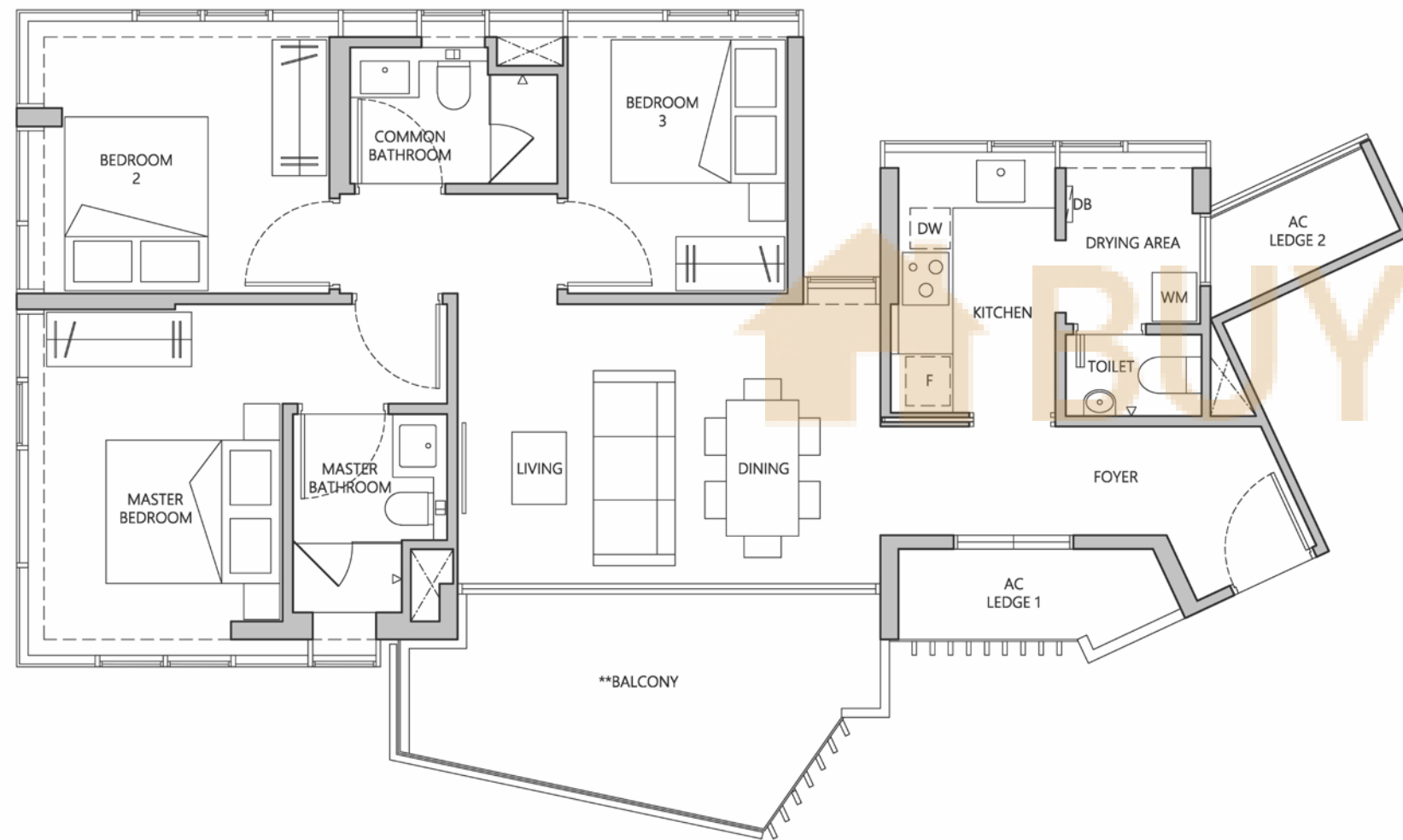
3 - BEDROOM

TYPE B
96 sqm | 1,033 sqft

#03-01 to #18-01
#19-01 (high ceiling)

TYPE C
85 sqm | 915 sqft

#03-02 to #18-02
#19-02 (high ceiling)



**The balcony shall not be enclosed unless with the URA approved balcony screen. For an illustration of the approved balcony screen, please refer to page XX of this brochure.

Areas include A/C ledge, balcony, bay window, planter, private roof terrace and strata void area (where applicable). Orientations and facings will differ depending on the unit you are purchasing, please refer to the key plan. Plans are not drawn to sale and subject to change as may be required or approved by the relevant authorities. All areas are estimates only and are subject to final survey.



**The balcony shall not be enclosed unless with the URA approved balcony screen. For an illustration of the approved balcony screen, please refer to page XX of this brochure.

Areas include A/C ledge, balcony, bay window, planter, private roof terrace and strata void area (where applicable). Orientations and facings will differ depending on the unit you are purchasing, please refer to the key plan. Plans are not drawn to sale and subject to change as may be required or approved by the relevant authorities. All areas are estimates only and are subject to final survey.