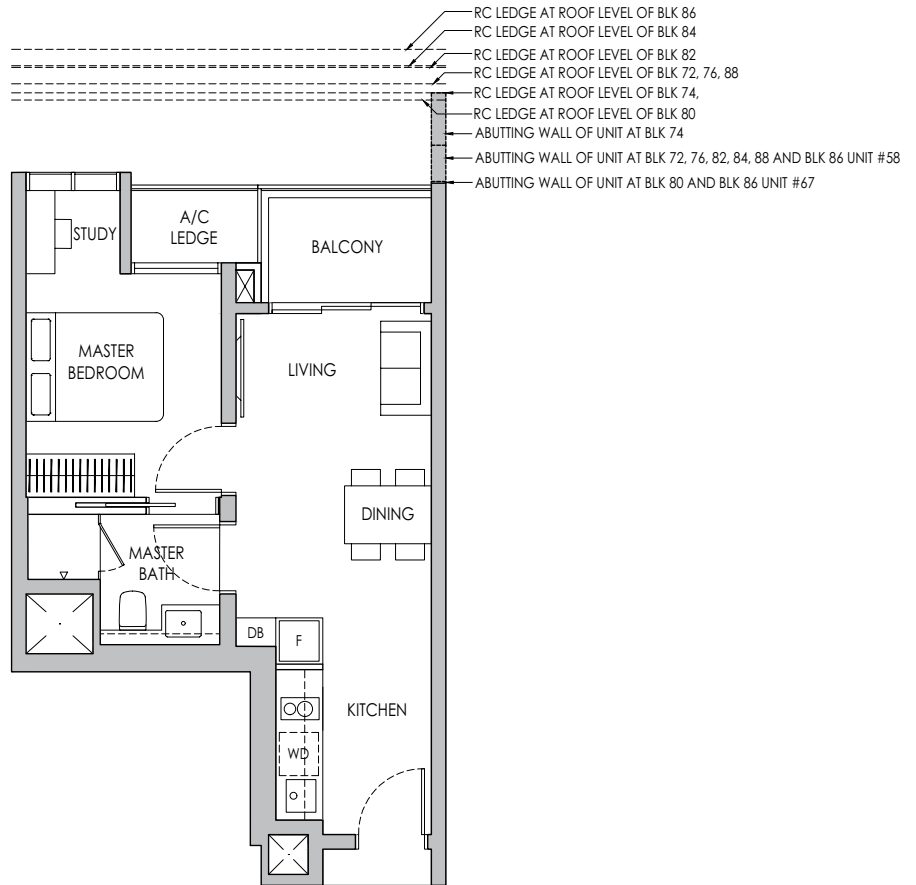


1-BEDROOM + STUDY

Type A1S

44 sq m / 474 sq ft

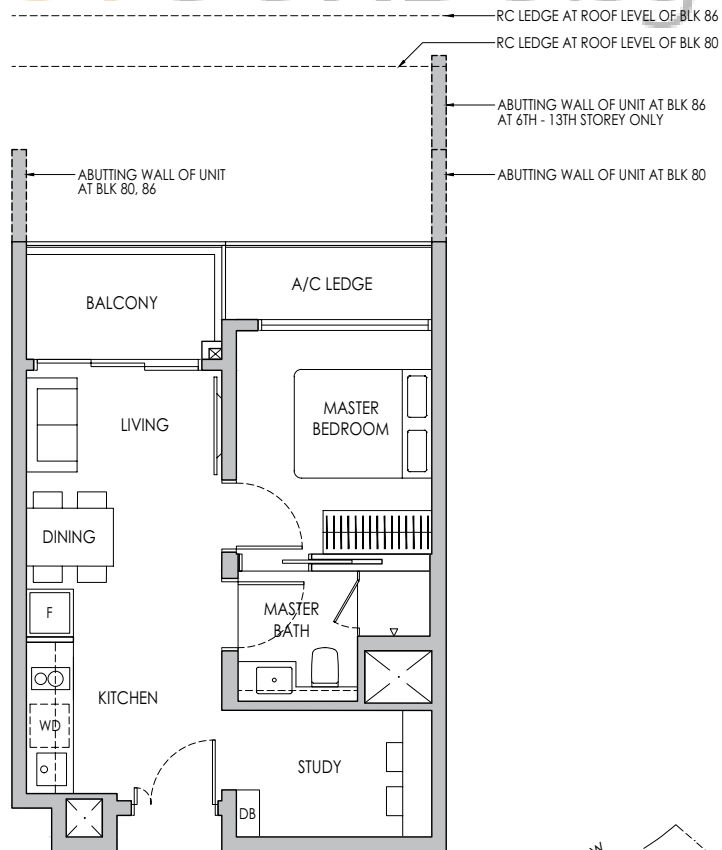
- BLK 72 #05-08* - # 11-08*
- BLK 74 #05-09 - #11-09 / #05-16* - #11-16*
- BLK 76 #05-17 - #12-17
- BLK 80 #05-40* - #13-40*
- BLK 82 #05-48* - #13-48*
- BLK 84 #05-56* - #13-56*
- BLK 86 #05-58 - #13-58 / #05-67* - #13-67*
- BLK 88 #05-75* - #11-75*



Type A3S

47 sq m / 506 sq ft

- BLK 80 #05-39 - #13-39
- BLK 86 #05-66* - #13-66*



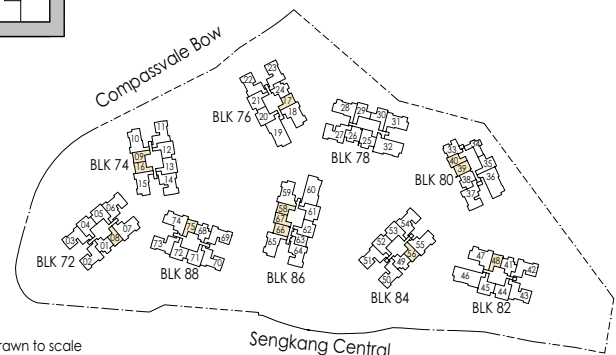
* Mirror Image



Area includes air-con (A/C) ledge, private enclosed space (PES), balcony and strata void area where applicable. Some units are mirror images of the apartment plans shown in the brochure. Please refer to the keyplan for orientation. The plans are subject to change as may be approved by relevant authorities. All floor plans are approximate measurements only and are subject to government re-survey. The balcony shall not be enclosed unless with the approved balcony screen.



Keyplan is not drawn to scale

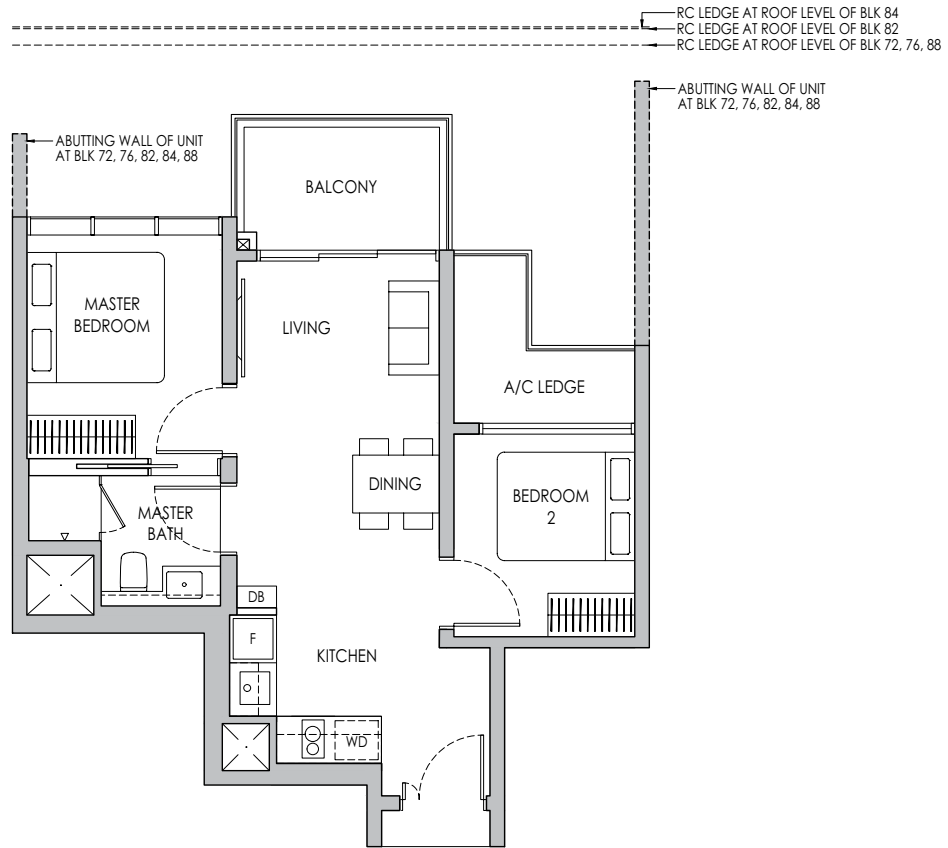


2-BEDROOM

Type B1

58 sq m / 624 sq ft

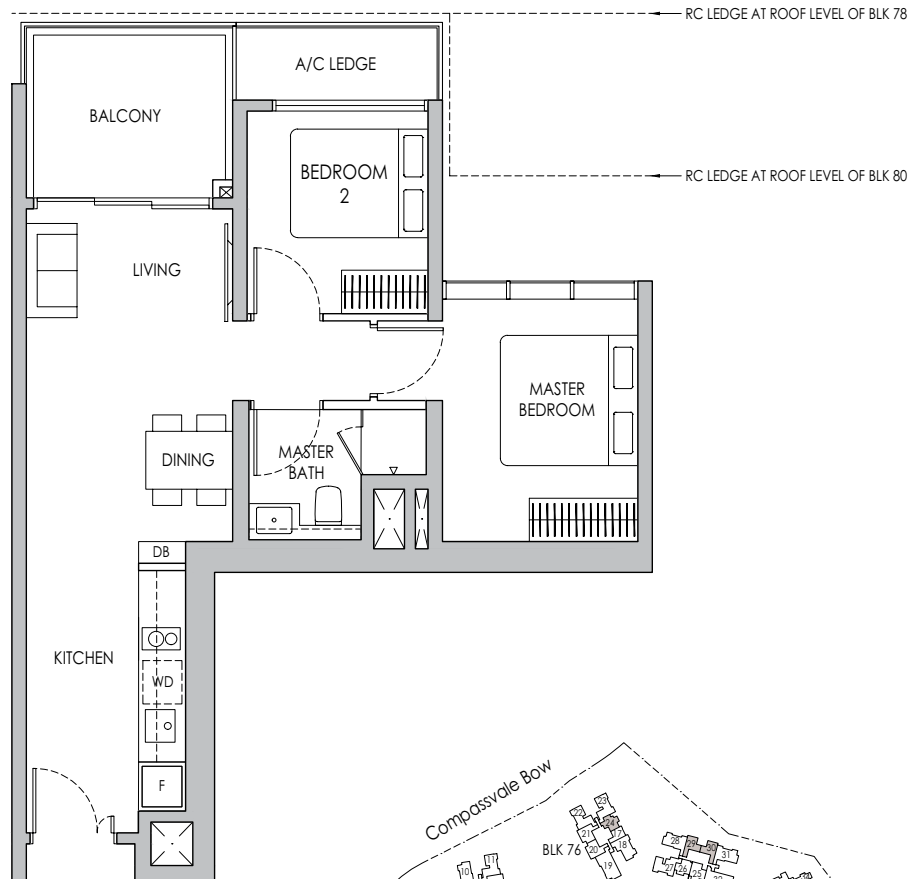
- BLK 72 #05-01 - #11-01
- BLK 76 #05-24* - #12-24*
- BLK 82 #05-41 - #13-41
- BLK 84 #05-49 - #13-49
- BLK 88 #05-68 - #11-68



Type B2

63 sq m / 678 sq ft

- BLK 78 #05-29 - #13-29, #05-30* - #13-30*
- BLK 80 #05-35* - #13-35*



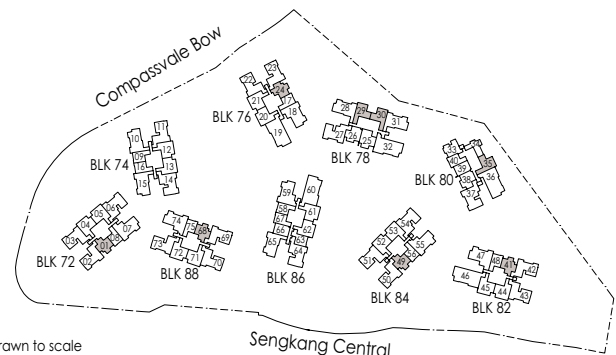
* Mirror Image



Area includes air-con (A/C) ledge, private enclosed space (PES), balcony and strata void area where applicable. Some units are mirror images of the apartment plans shown in the brochure. Please refer to the keyplan for orientation. The plans are subject to change as may be approved by relevant authorities. All floor plans are approximate measurements only and are subject to government re-survey. The balcony shall not be enclosed unless with the approved balcony screen.



Keyplan is not drawn to scale

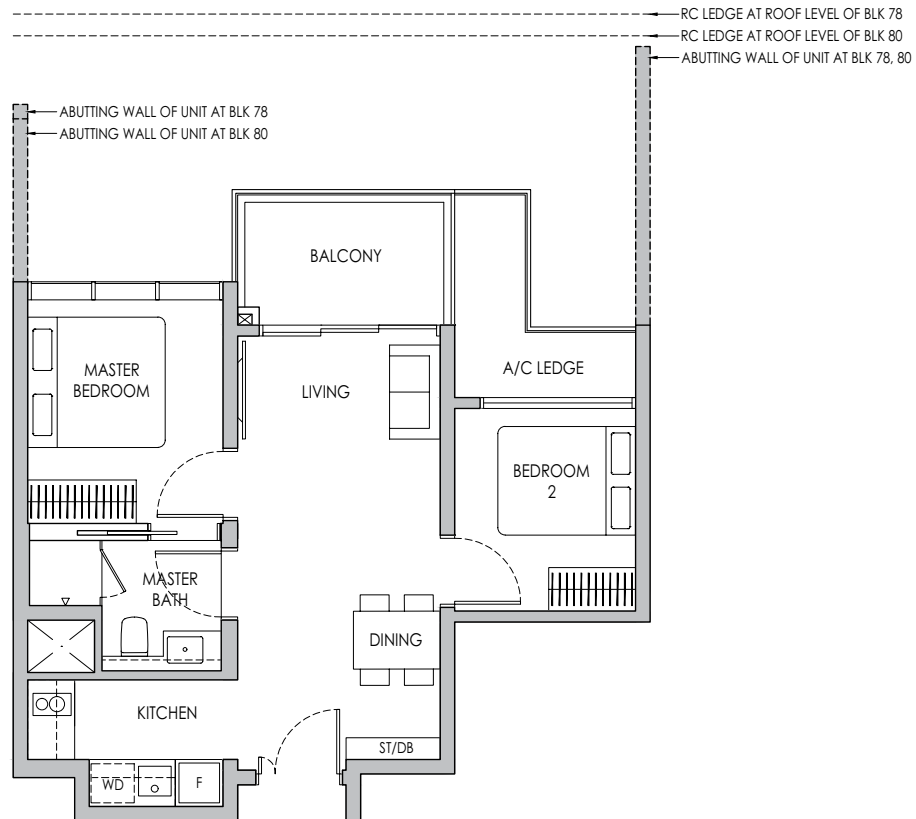


2-BEDROOM

Type B3

58 sq m / 624 sq ft

BLK 78 #05-26 - #13-26
BLK 80 #05-38* - #13-38*

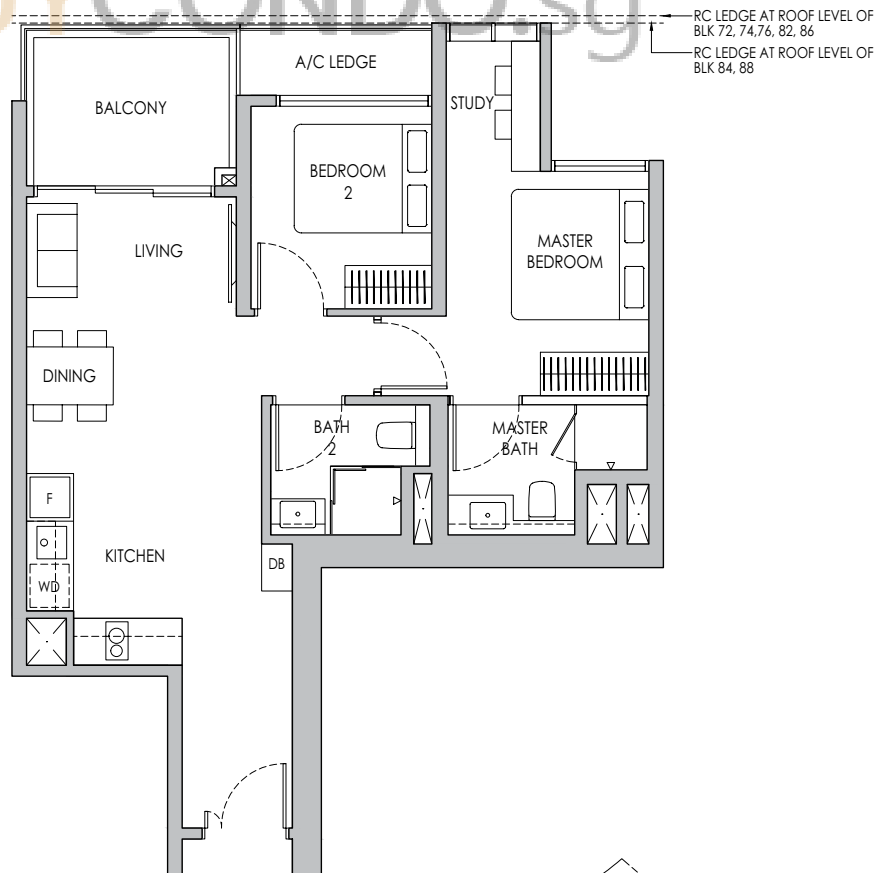


2-BEDROOM PREMIUM + STUDY

Type B5PS

71 sq m / 764 sq ft

BLK 72 #05-04 - #11-04, #05-05* - #11-05*
BLK 74 #05-12 - #11-12, #05-13* - #11-13*
BLK 76 #05-20 - #12-20, #05-21* - #12-21*
BLK 82 #05-44 - #13-44, #05-45* - #13-45*
BLK 84 #05-52 - #13-52, #05-53* - #13-53*
BLK 86 #05-61 - #13-61, #05-62* - #13-62*
BLK 88 #05-71 - #11-71, #05-72* - #11-72*



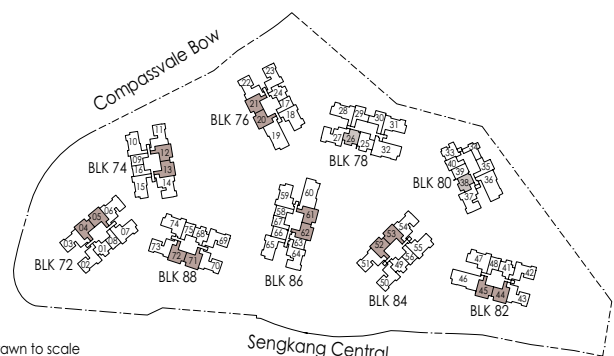
* Mirror Image



Area includes air-con (A/C) ledge, private enclosed space (PES), balcony and strata void area where applicable. Some units are mirror images of the apartment plans shown in the brochure. Please refer to the keyplan for orientation. The plans are subject to change as may be approved by relevant authorities. All floor plans are approximate measurements only and are subject to government re-survey. The balcony shall not be enclosed unless with the approved balcony screen.



Keyplan is not drawn to scale

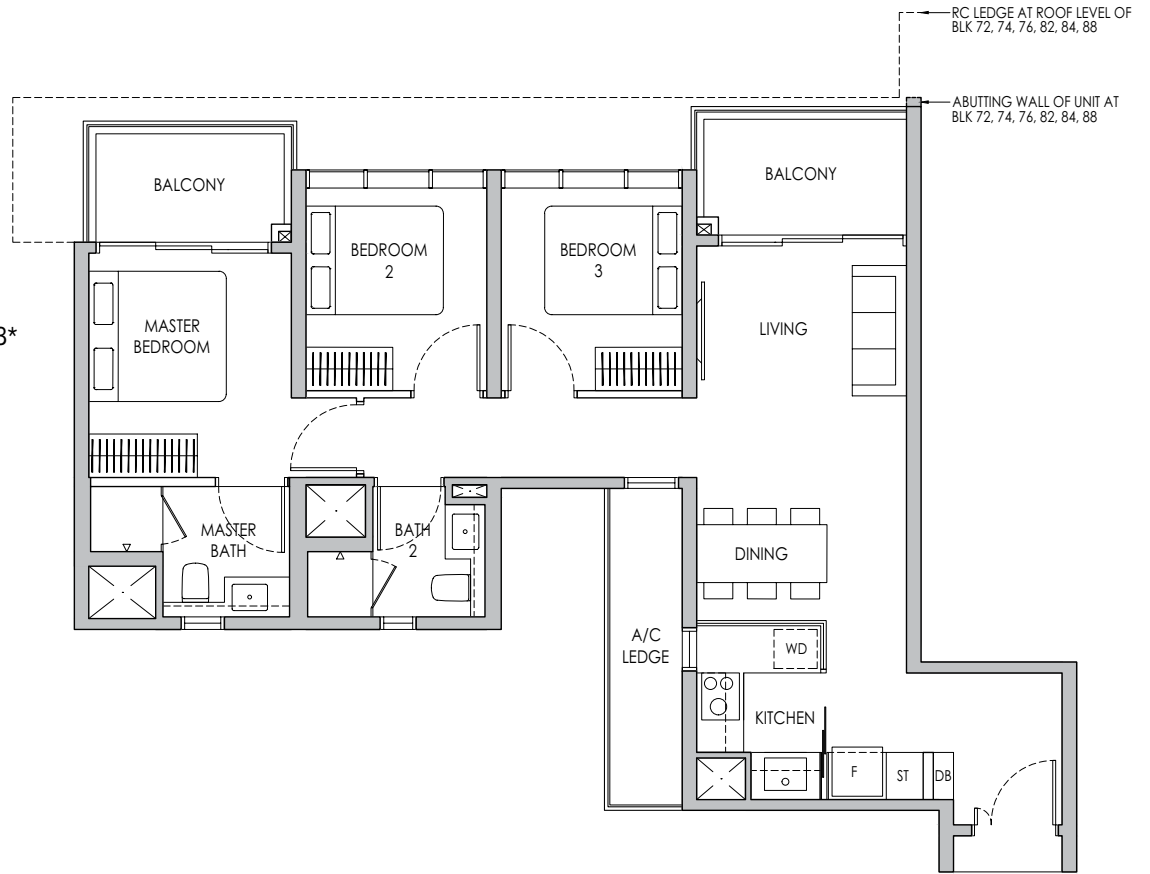


3-BEDROOM

Type C1

87 sq m / 936 sq ft

- BLK 72 #05-03 - #11-03
- BLK 74 #05-11 - #11-11
- BLK 76 #05-22* - #12-22*
- BLK 82 #05-43 - #13-43
- BLK 84 #06-51 - #13-51
- BLK 88 #05-70 - #11-70, #05-73* - #11-73*



Type C2

87 sq m / 936 sq ft

- BLK 74 #05-10* - #11-10*, #05-15 - #11-15
- BLK 78 #05-28 - #13-28, #05-31* - #13-31*



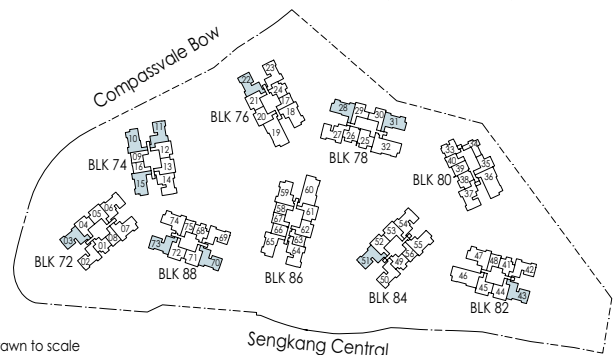
* Mirror Image



Area includes air-con (A/C) ledge, private enclosed space (PES), balcony and strata void area where applicable. Some units are mirror images of the apartment plans shown in the brochure. Please refer to the keyplan for orientation. The plans are subject to change as may be approved by relevant authorities. All floor plans are approximate measurements only and are subject to government re-survey. The balcony shall not be enclosed unless with the approved balcony screen.



Keyplan is not drawn to scale

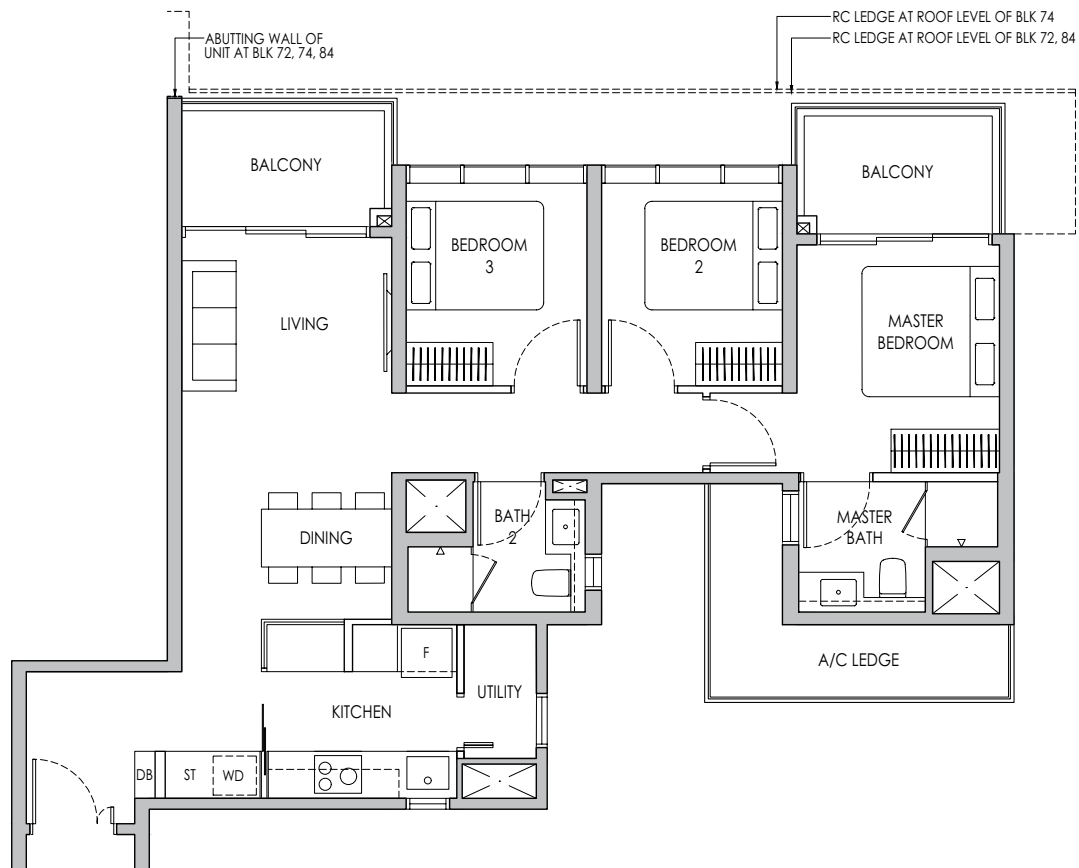


3-BEDROOM PREMIUM

Type C3P

95 sq m / 1023 sq ft

- BLK 72 #05-06 - #11-06
- BLK 74 #05-14 - #11-14
- BLK 84 #05-54 - #13-54

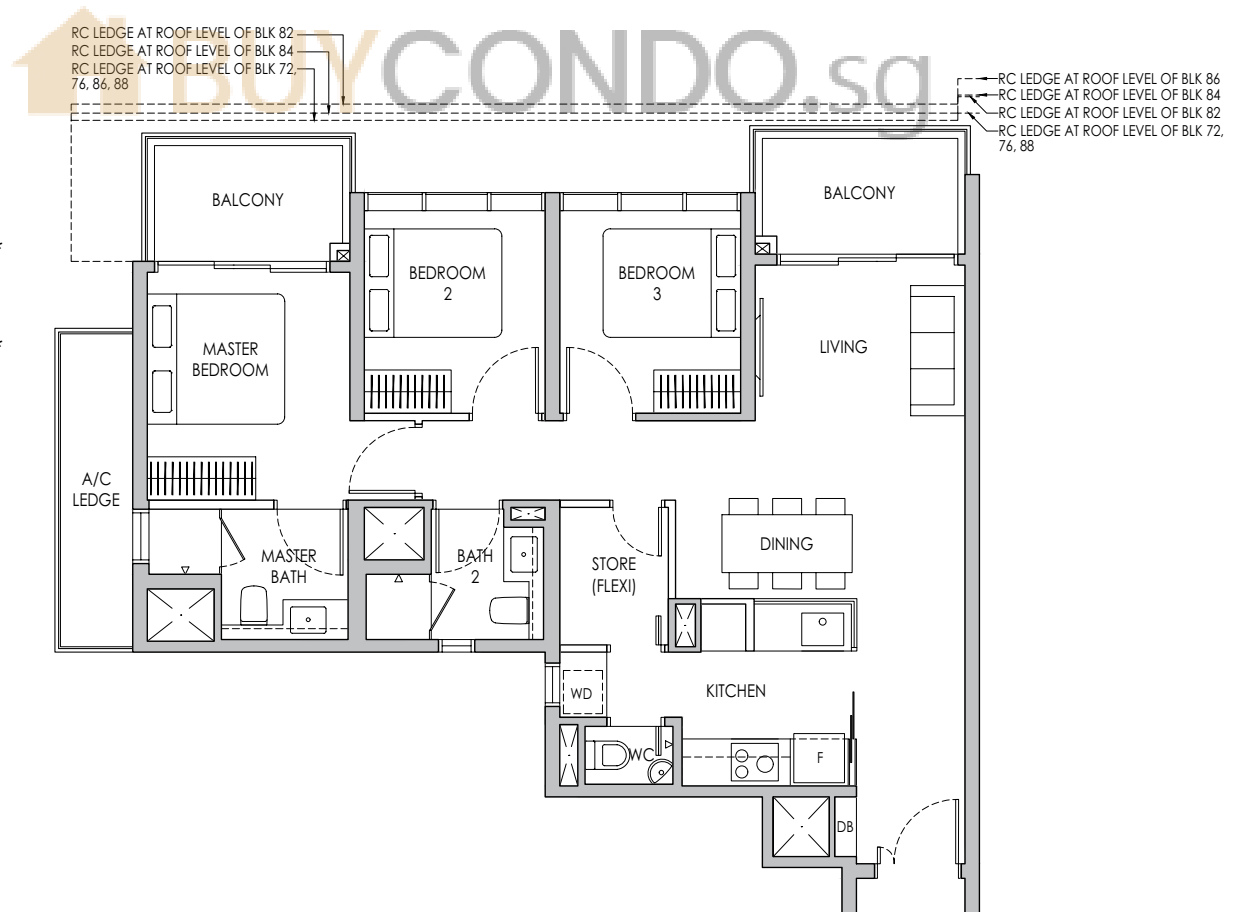


3-BEDROOM PREMIUM + FLEXI

Type C5PF

94 sq m / 1012 sq ft

- BLK 72 #05-07 - #11-07
- BLK 76 #05-18* - #12-18*
- BLK 82 #05-47 - #13-47
- BLK 84 #05-55 - #13-55
- BLK 86 #05-59* - #13-59*
- BLK 88 #05-74 - #11-74



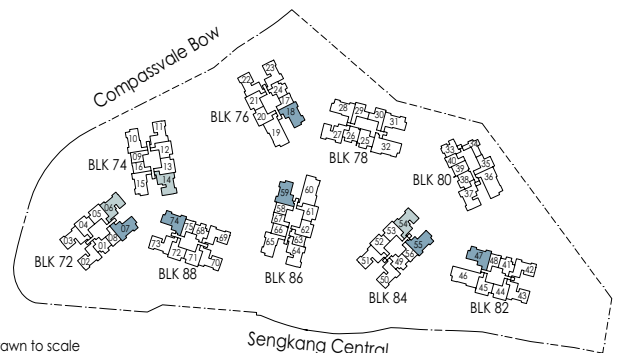
* Mirror Image



Area includes air-con (A/C) ledge, private enclosed space (PES), balcony and strata void area where applicable. Some units are mirror images of the apartment plans shown in the brochure. Please refer to the keyplan for orientation. The plans are subject to change as may be approved by relevant authorities. All floor plans are approximate measurements only and are subject to government re-survey. The balcony shall not be enclosed unless with the approved balcony screen.



Keyplan is not drawn to scale



4-BEDROOM PREMIUM + FLEXI

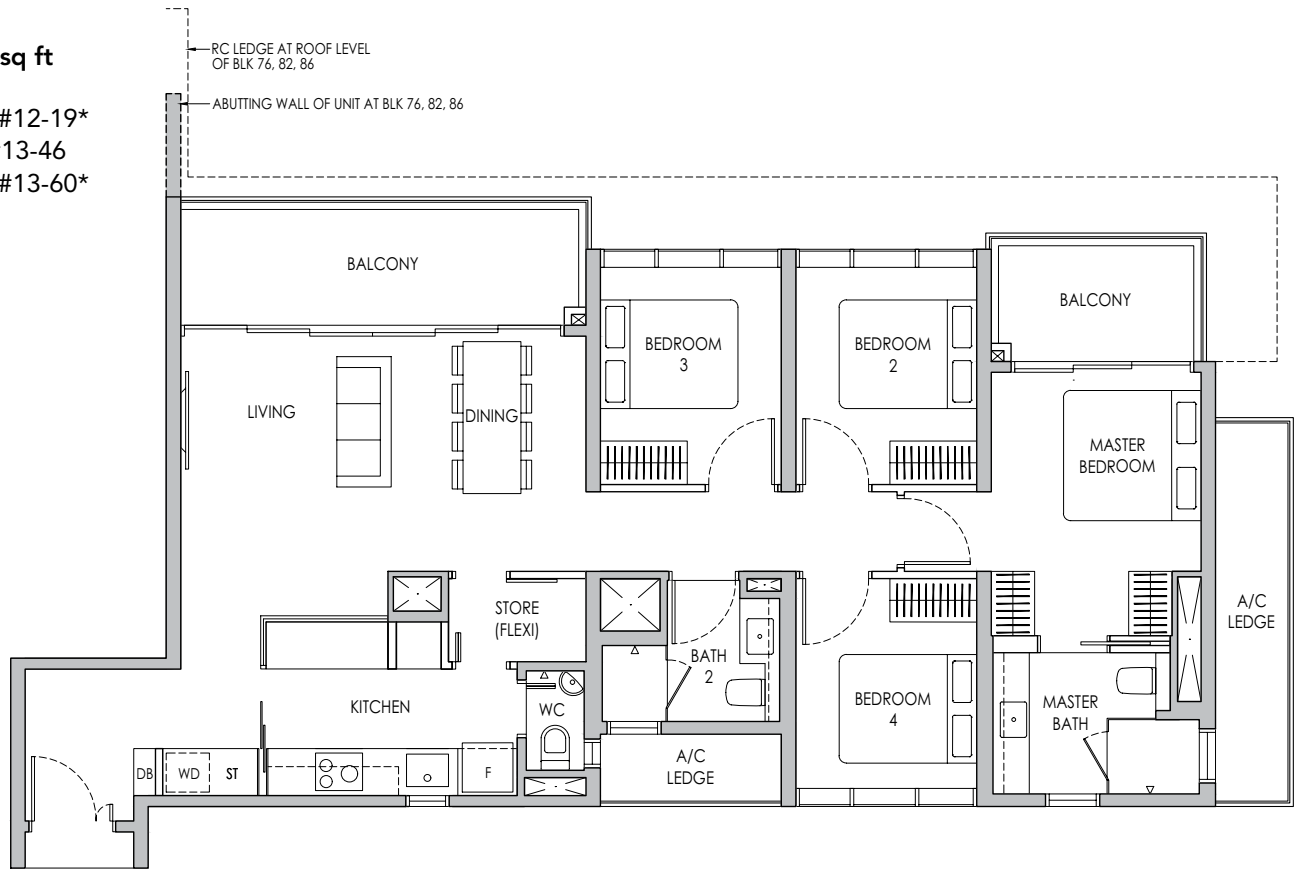
Type D1PF

123 sq m / 1324 sq ft

BLK 76 #05-19* - #12-19*

BLK 82 #05-46 - #13-46

BLK 86 #05-60* - #13-60*

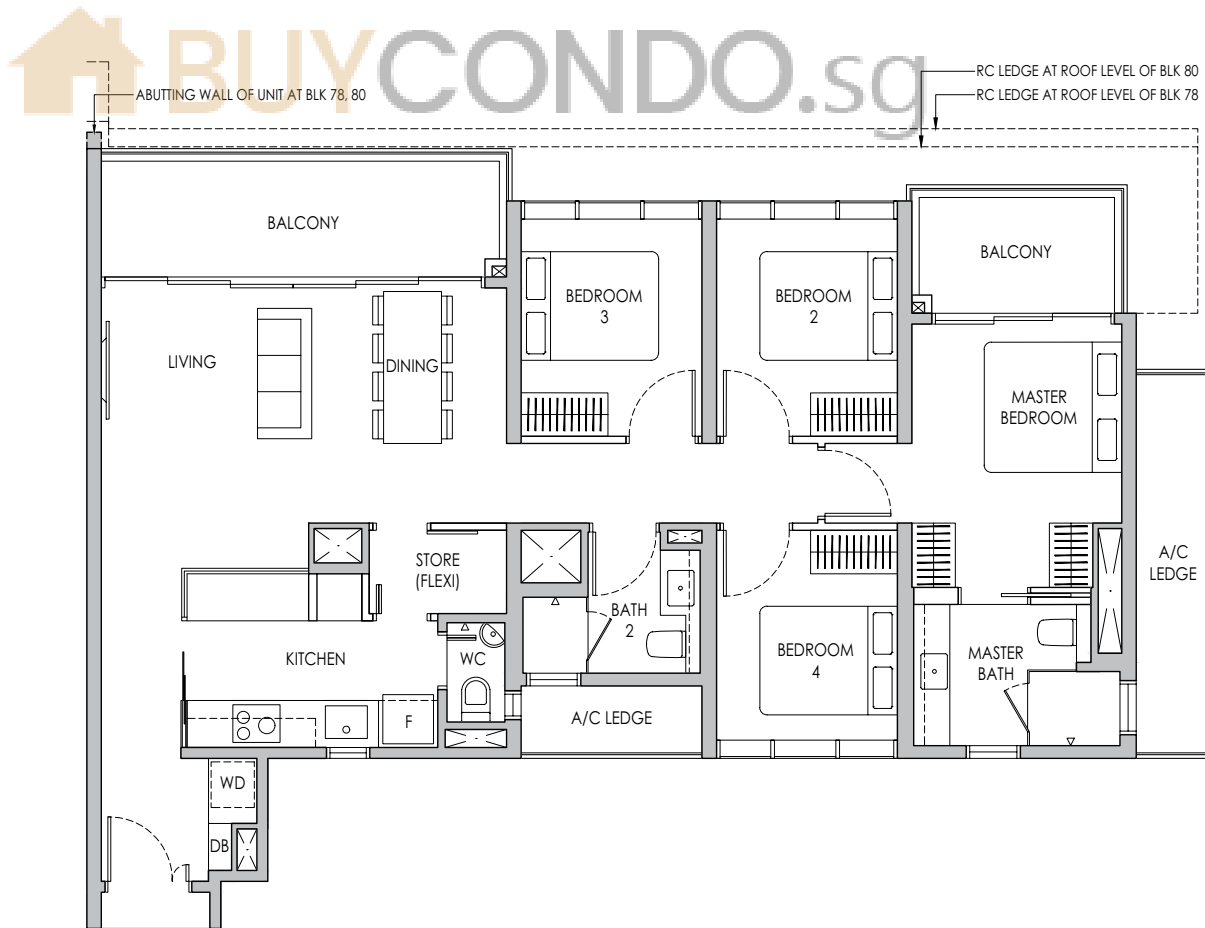


Type D2PF

122 sq m / 1313 sq ft

BLK 78 #05-32* - #13-32*

BLK 80 #05-36 - #13-36



* Mirror Image



Area includes air-con (A/C) ledge, private enclosed space (PES), balcony and strata void area where applicable. Some units are mirror images of the apartment plans shown in the brochure. Please refer to the keyplan for orientation. The plans are subject to change as may be approved by relevant authorities. All floor plans are approximate measurements only and are subject to government re-survey. The balcony shall not be enclosed unless with the approved balcony screen.



Keyplan is not drawn to scale

