

SCHEMATIC DIAGRAM

ROOF	1	2	3	4	5	6	7	8	9	10	11
39	B4	A2	A1	B2	A4	B5	C2	B1	B3	A3	C1
38	B4	A2	A1	B2	A4	B5	C2	B1	B3	A3	C1
37	B4	A2	A1	B2	A4	B5	C2	B1	B3	A3	C1
36	B4	A2	A1	B2	A4	B5	C2	B1	B3	A3	C1
35	B4	A2	A1	B2	A4	B5	C2	B1	B3	A3	C1
LEVEL 34											
33	B4	A2	A1	B2	A4	B5	C2	B1	B3	A3	C1
32	B4	A2	A1	B2	A4	B5	C2	B1	B3	A3	C1
31	B4	A2	A1	B2	A4	B5	C2	B1	B3	A3	C1
30	B4	A2	A1	B2	A4	B5	C2	B1	B3	A3	C1
29	B4	A2	A1	B2	A4	B5	C2	B1	B3	A3	C1
28	B4	A2	A1	B2	A4	B5	C2	B1	B3	A3	C1
27	B4	A2	A1	B2	A4	B5	C2	B1	B3	A3	C1
26	B4	A2	A1	B2	A4	B5	C2	B1	B3	A3	C1
25	B4	A2	A1	B2	A4	B5	C2	B1	B3	A3	C1
24	B4	A2	A1	B2	A4	B5	C2	B1	B3	A3	C1
23	B4	A2	A1	B2	A4	B5	C2	B1	B3	A3	C1
22	B4	A2	A1	B2	A4	B5	C2	B1	B3	A3	C1
21	B4	A2	A1	B2	A4	B5	C2	B1	B3	A3	C1
20	B4	A2	A1	B2	A4	B5	C2	B1	B3	A3	C1
19	B4	A2	A1	B2	A4	B5	C2	B1	B3	A3	C1
18	B4	A2	A1	B2	A4	B5	C2	B1	B3	A3	C1
17	B4	A2	A1	B2	A4	B5	C2	B1	B3	A3	C1
16	B4	A2	A1	B2	A4	B5	C2	B1	B3	A3	C1
15	B4	A2	A1	B2	A4	B5	C2	B1	B3	A3	C1
LEVEL 14											
13	B4	A2	A1	B2	A4	B5	C2	B1	B3	A3	C1
12	B4	A2	A1	B2	A4	B5	C2	B1	B3	A3	C1
11	B4	A2	A1	B2	A4	B5	C2	B1	B3	A3	C1
10	B4	A2	A1	B2	A4	B5	C2	B1	B3	A3	C1
9	B4	A2	A1	B2	A4	B5	C2	B1	B3	A3	C1
8	B4	A2	A1	B2	A4	B5	C2	B1	B3	A3	C1
7	B4	A2	A1	B2	A4	B5	C2	B1	B3	A3	C1
6	B4	A2	A1	B2	A4	B5	C2	B1	B3	A3	C1
5	B4	A2	A1	B2	A4	B5	C2	B1	B3	A3	C1
4	B4	A2	A1	B2	A4	B5	C2	B1	B3	A3	C1
3	B4	A2	A1	B2	A4	B5	C2	B1	B3	A3	C1
2	B4	A2	A1	B2	A4	B5	C2	B1	B3	A3	C1
LEVEL 1											
B1 CAR PARK											
B2 CAR PARK											
B3 CAR PARK											

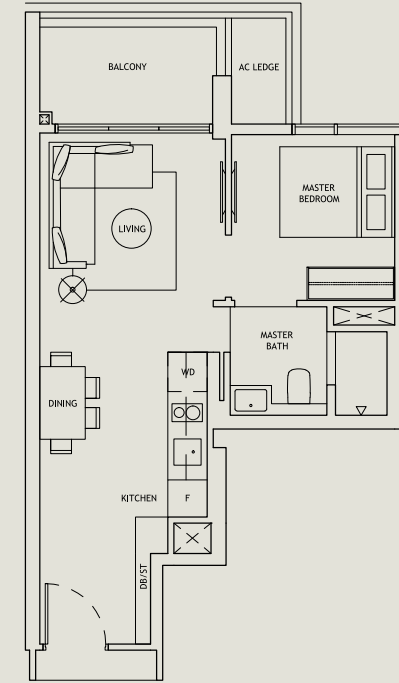
LEGEND

 1-BEDROOM	 2-BEDROOM	 3-BEDROOM
---	---	---

TYPE A1 1-BEDROOM

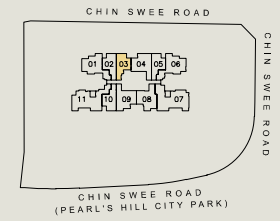
48 SQM | 517 SQFT

#02-03 to #13-03
#15-03 to #33-03
#35-03 to #39-03



0 1 2 4 M

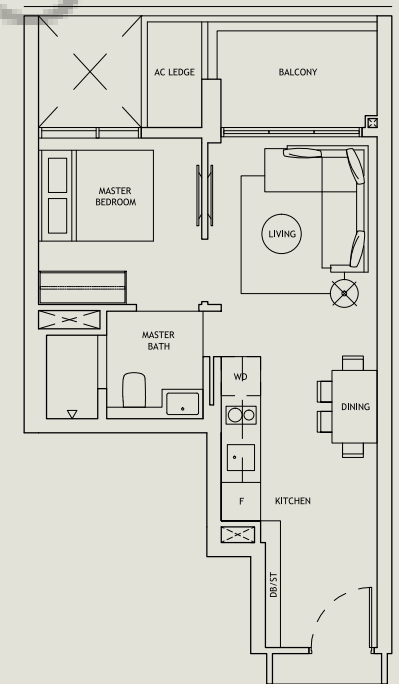
KEY PLAN
KEY PLAN IS NOT DRAWN TO SCALE.



TYPE A2 1-BEDROOM

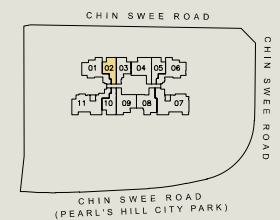
46 SQM | 495 SQFT

#02-02 to #13-02
#15-02 to #33-02
#35-02 to #39-02



0 1 2 4 M

KEY PLAN
KEY PLAN IS NOT DRAWN TO SCALE.

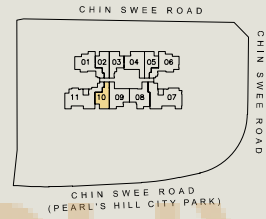
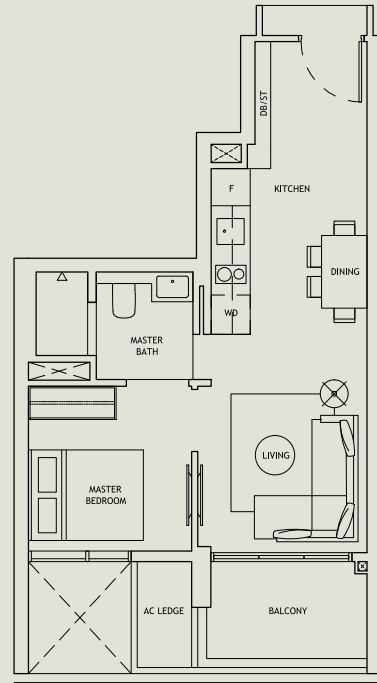


Area includes air-con (A/C) ledge, balcony, private lift lobby and other strata areas where applicable. The plans are subjected to changes as may be approved by relevant authorities. All areas are approximate measurements only and are subjected to final survey. The balcony shall not be enclosed unless with the approved balcony screen as illustrated in this brochure. Loose furniture are for illustration only and are not provided.

TYPE A3 1-BEDROOM

46 SQM | 495 SQFT

#02-10 to #13-10
#15-10 to #33-10
#35-10 to #39-10

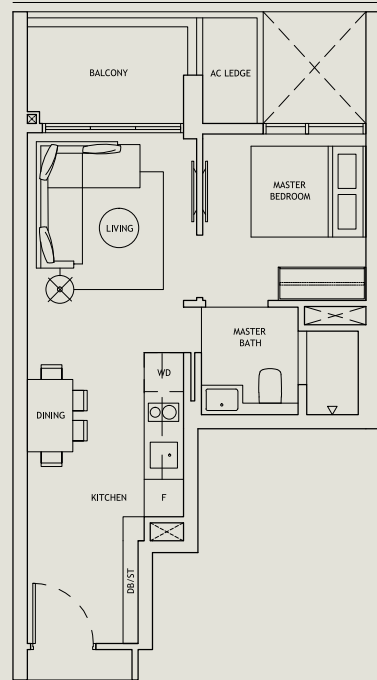


KEY PLAN
KEY PLAN IS NOT DRAWN TO SCALE.

TYPE A4 1-BEDROOM

46 SQM | 495 SQFT

#02-05 to #13-05
#15-05 to #33-05
#35-05 to #39-05



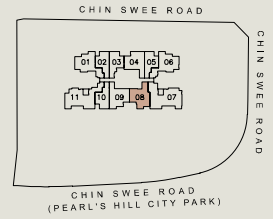
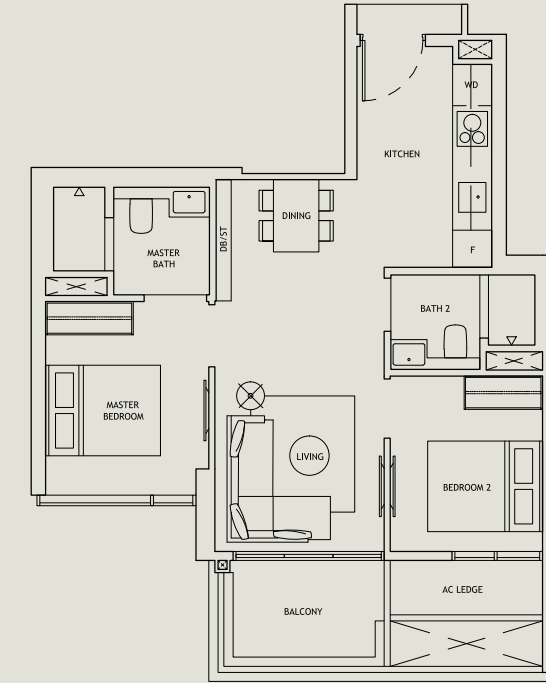
KEY PLAN
KEY PLAN IS NOT DRAWN TO SCALE.

Area includes air-con (A/C) ledge, balcony, private lift lobby and other strata areas where applicable. The plans are subjected to changes as may be approved by relevant authorities. All areas are approximate measurements only and are subjected to final survey. The balcony shall not be enclosed unless with the approved balcony screen as illustrated in this brochure. Loose furniture are for illustration only and are not provided.

TYPE B1 2-BEDROOM (STANDARD)

63 SQM | 678 SQFT

#02-08 to #13-08
#15-08 to #33-08
#35-08 to #39-08

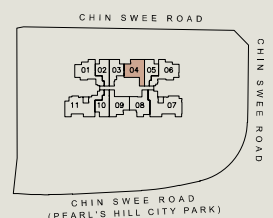
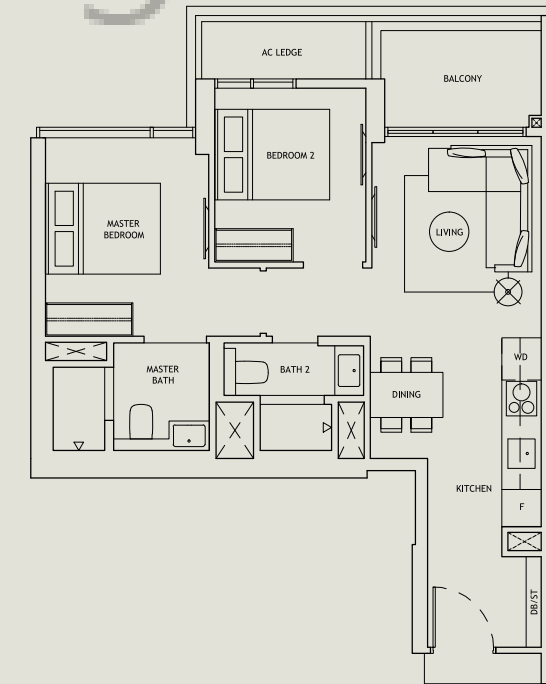


KEY PLAN
KEY PLAN IS NOT DRAWN TO SCALE.

TYPE B2 2-BEDROOM (STANDARD)

63 SQM | 678 SQFT

#02-04 to #13-04
#15-04 to #33-04
#35-04 to #39-04



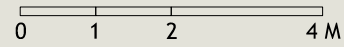
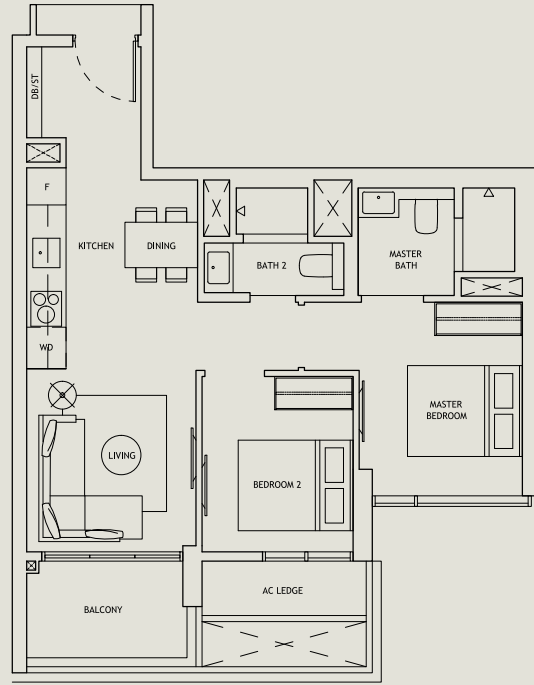
KEY PLAN
KEY PLAN IS NOT DRAWN TO SCALE.

Area includes air-con (A/C) ledge, balcony, private lift lobby and other strata areas where applicable. The plans are subjected to changes as may be approved by relevant authorities. All areas are approximate measurements only and are subjected to final survey. The balcony shall not be enclosed unless with the approved balcony screen as illustrated in this brochure. Loose furniture are for illustration only and are not provided.

TYPE B3 2-BEDROOM (STANDARD)

63 SQM | 678 SQFT

#02-09 to #13-09
#15-09 to #33-09
#35-09 to #39-09



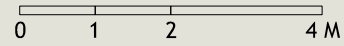
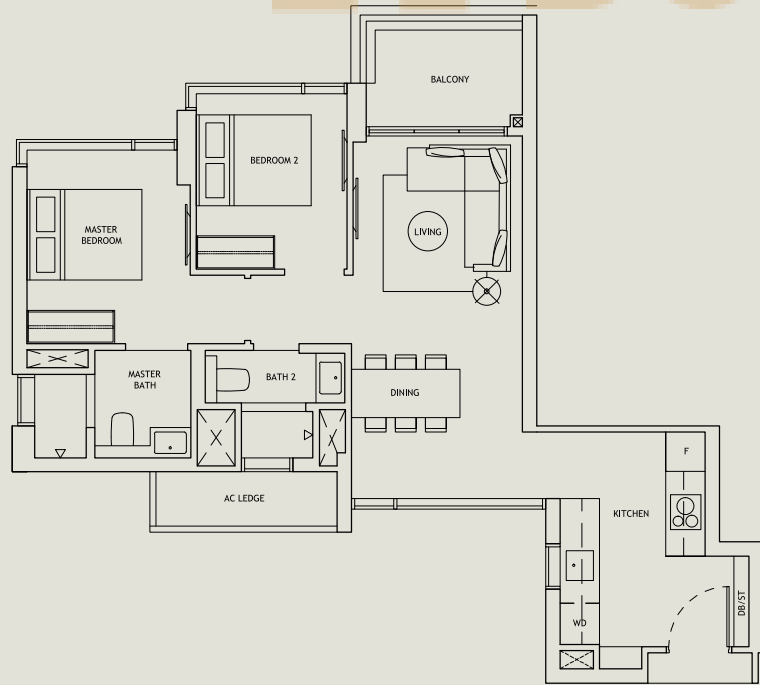
KEY PLAN
KEY PLAN IS NOT DRAWN TO SCALE.



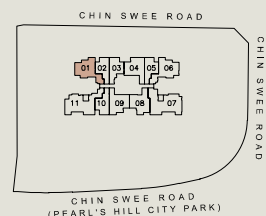
TYPE B4 2-BEDROOM (DELUXE)

71 SQM | 764 SQFT

#02-01 to #13-01
#15-01 to #33-01
#35-01 to #39-01



KEY PLAN
KEY PLAN IS NOT DRAWN TO SCALE.

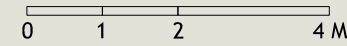
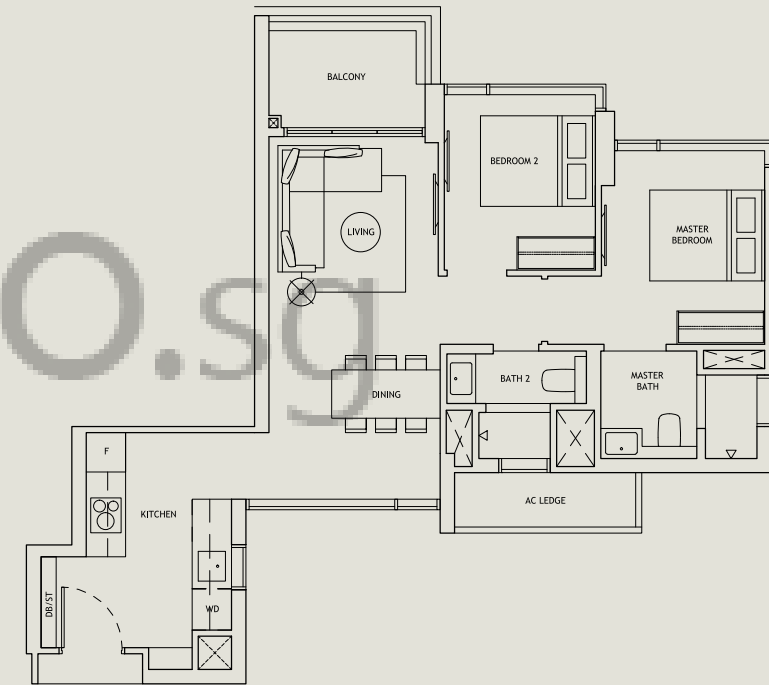


Area includes air-con (A/C) ledge, balcony, private lift lobby and other strata areas where applicable. The plans are subjected to changes as may be approved by relevant authorities. All areas are approximate measurements only and are subjected to final survey. The balcony shall not be enclosed unless with the approved balcony screen as illustrated in this brochure. Loose furniture are for illustration only and are not provided.

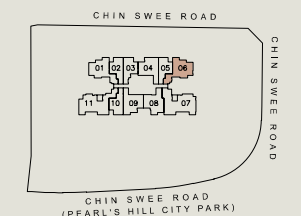
TYPE B5 2-BEDROOM (DELUXE)

70 SQM | 753 SQFT

#02-06 to #13-06
#15-06 to #33-06
#35-06 to #39-06



KEY PLAN
KEY PLAN IS NOT DRAWN TO SCALE.



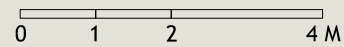
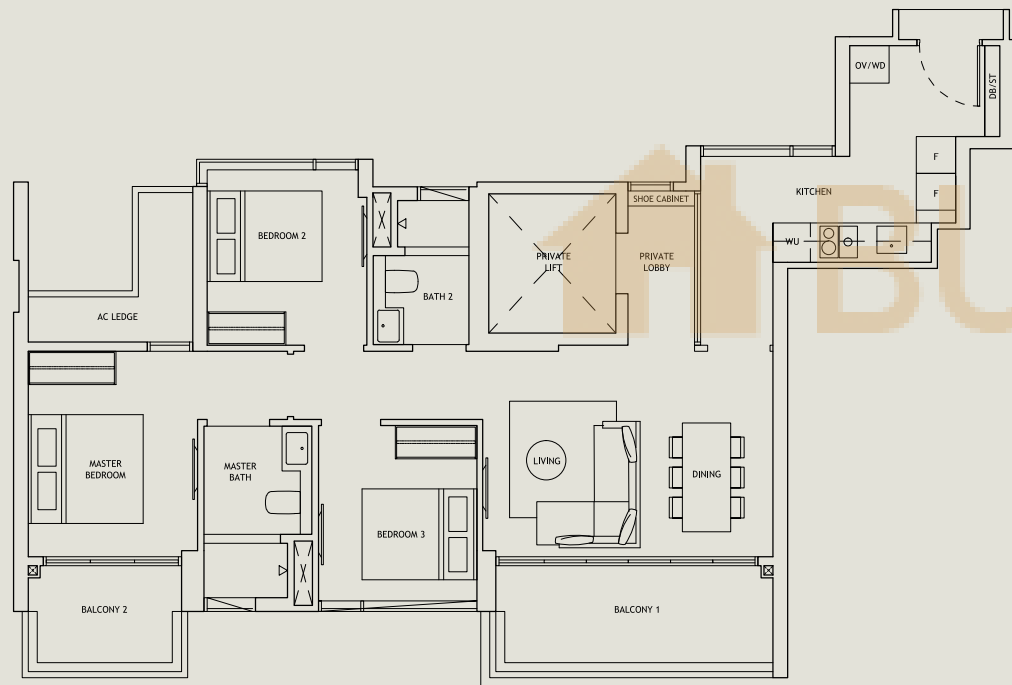
Area includes air-con (A/C) ledge, balcony, private lift lobby and other strata areas where applicable. The plans are subjected to changes as may be approved by relevant authorities. All areas are approximate measurements only and are subjected to final survey. The balcony shall not be enclosed unless with the approved balcony screen as illustrated in this brochure. Loose furniture are for illustration only and are not provided.

TYPE C1

3-BEDROOM (COMPACT)

100 SQM | 1076 SQFT

#02-11 to #13-11
#15-11 to #33-11
#35-11 to #39-11



Area includes air-con (A/C) ledge, balcony, private lift lobby and other strata areas where applicable. The plans are subjected to changes as may be approved by relevant authorities. All areas are approximate measurements only and are subjected to final survey. The balcony shall not be enclosed unless with the approved balcony screen as illustrated in this brochure. Loose furniture are for illustration only and are not provided.

KEY PLAN
KEY PLAN IS NOT DRAWN TO SCALE.

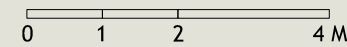
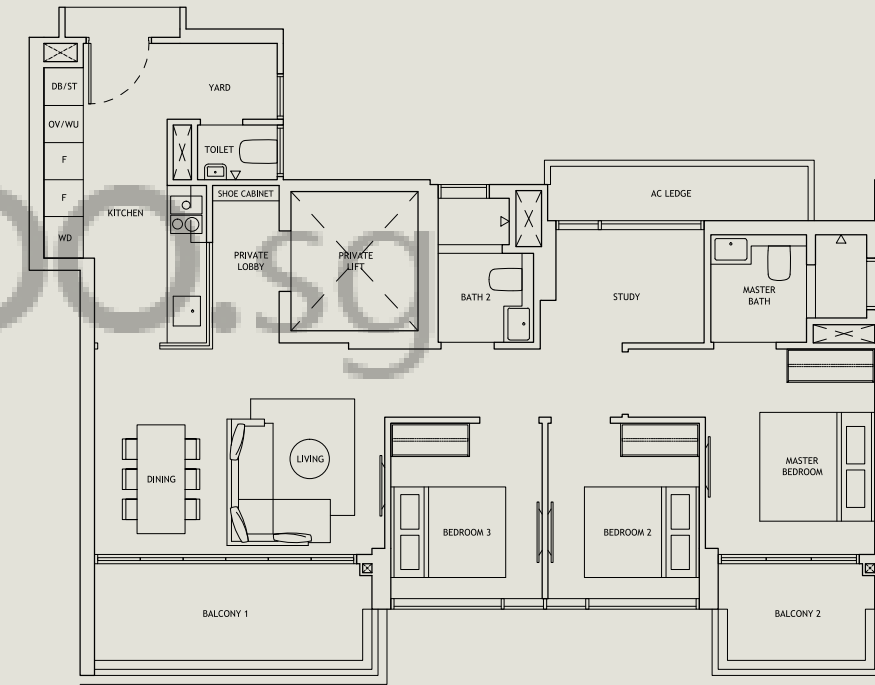


TYPE C2

3-BEDROOM (STANDARD)

106 SQM | 1141 SQFT

#02-07 to #13-07
#15-07 to #33-07
#35-07 to #39-07

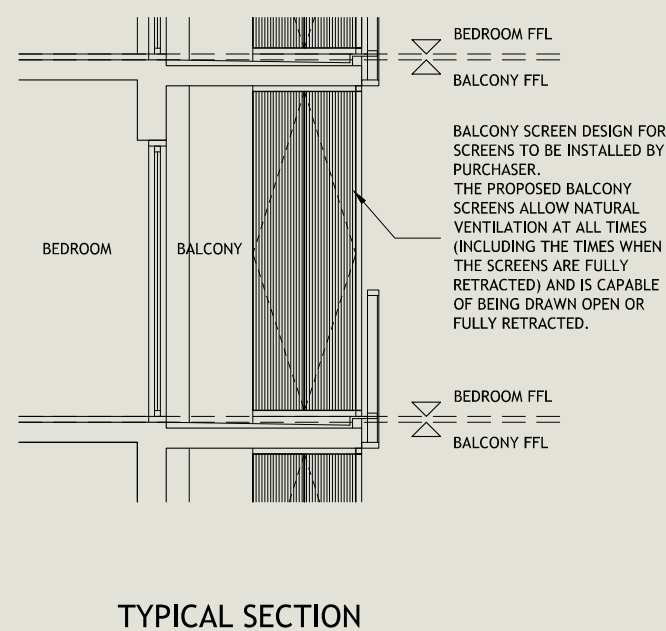
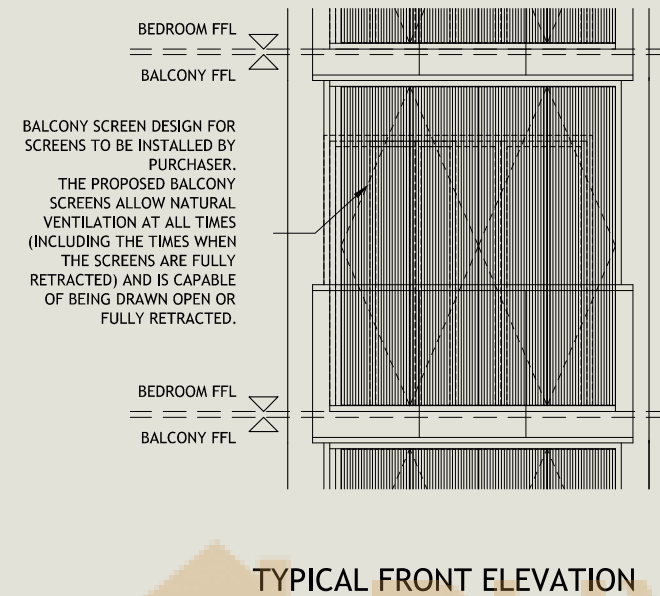
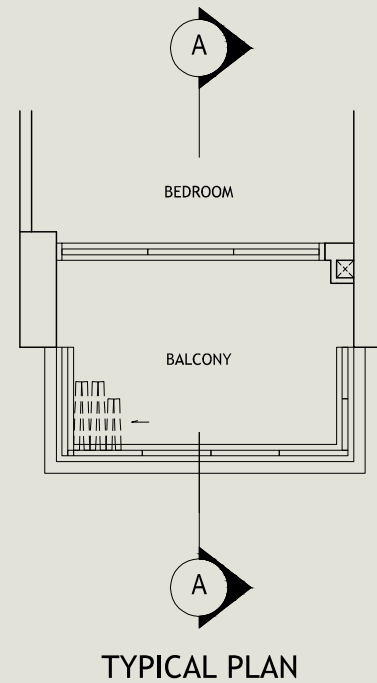


Area includes air-con (A/C) ledge, balcony, private lift lobby and other strata areas where applicable. The plans are subjected to changes as may be approved by relevant authorities. All areas are approximate measurements only and are subjected to final survey. The balcony shall not be enclosed unless with the approved balcony screen as illustrated in this brochure. Loose furniture are for illustration only and are not provided.

KEY PLAN
KEY PLAN IS NOT DRAWN TO SCALE.



BALCONY SCREEN



NOTE: The balcony shall not be enclosed unless with the approved balcony screen as shown above and is to be installed at owner's own cost.

DEVELOPER PROFILES



MCC Singapore is a subsidiary of Metallurgical Corporation of China Ltd which is a Fortune Global 500 company listed in Hong Kong and Shanghai. With main businesses in urban development and management, property development, project management as well as construction, MCC Singapore has been actively involved in transforming the cityscape of Singapore through various notable projects such as Universal Studios Singapore, Resorts World Sentosa, Keppel Distripark and Singapore Expo. In addition, MCC Singapore has also developed and/or project managed several executive condominiums and private condominiums. They include The Alps Residences, Queens Peak, The Canopy, The Nautical, Canberra Residences, One Canberra, Forestville, The Poiz Residences and The Poiz Centre, as well as The Santorini.



SSLE Development Pte. Ltd. is the property development arm of Sin Soon Lee Group. Over the years, the Group has been involved in several residential and industrial projects, thereby establishing a strong track record in property development. The Group's ethos is to continuously seek to perfect its craft with the ultimate objective of always delivering a quality product.



ZACD Group Limited ("ZACD") is an integrated asset manager listed in Hong Kong. Headquartered in Singapore, ZACD specialises in wealth management with core competencies in real estate acquisition and project management, investment management, property and facilities management, as well as financial advisory services across Asia Pacific. As of December 2019, ZACD has managed more than \$550 million in total equity funds as asset under management (AUM), with an asset portfolio size of approximately S\$10 billion. ZACD has jointly invested and managed over 37 multi-class real estate projects across Asia Pacific. Some of these projects include Northstar @ AMK, Flo Residence, Woodlands Industrial Xchange, Parc Centros, Le Quest, Frontier Industrial Park in Johor Bahru, The Sebel West Perth Aire Apartments and a three-storey office building in Melbourne.