

1-Bedroom

1-Bedroom + Ensuite Study

TYPE A1(p)

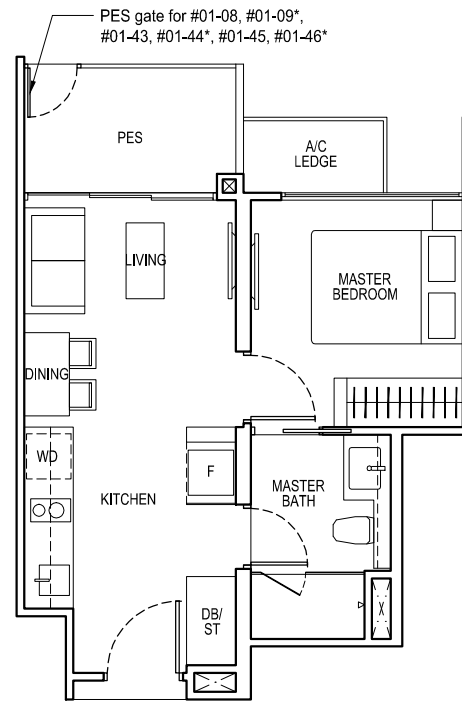
41 sq m / 441 sq ft

BLK 51

#01-06, #01-07*, #01-08, #01-09*

BLK 61

#01-43, #01-44*, #01-45, #01-46*



TYPE A2S(p)

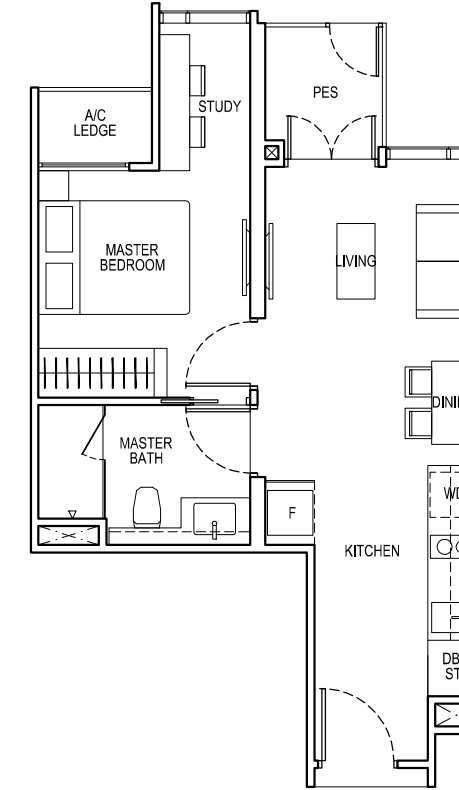
44 sq m / 474 sq ft

BLK 51

#01-01, #01-02*, #01-13

BLK 61

#01-38, #01-39*



TYPE A1

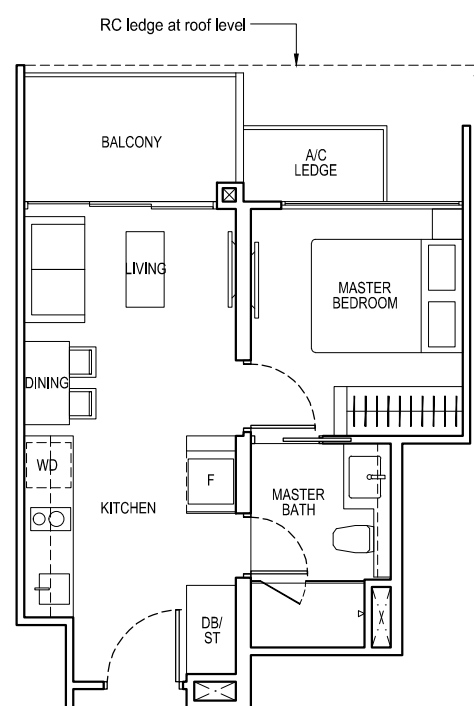
41 sq m / 441 sq ft

BLK 51

#02-06 to #15-06, #02-07* to #15-07*, #02-08 to #15-08, #02-09* to #15-09*

BLK 61

#02-43 to #15-43, #02-44* to #15-44*, #02-45 to #15-45, #02-46* to #15-46*



TYPE A2S

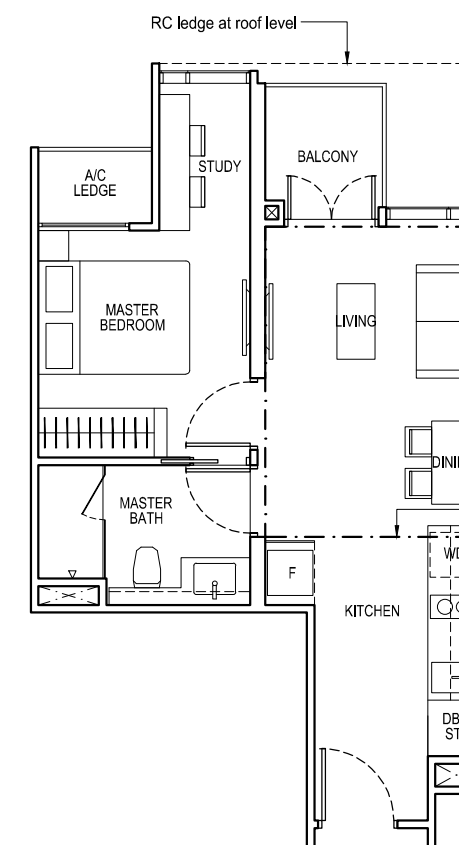
44 sq m / 474 sq ft

BLK 51

#02-01 to #14-01, #02-02* to #14-02*, #02-13 to #14-13

BLK 61

#02-38 to #14-38, #02-39* to #14-39*, #02-50 to #14-50



TYPE A2S(d)

56 sq m / 603 sq ft

including strata void area of 12 sq m / 129 sq ft above living and dining
Approximate 4.4 m floor to ceiling height at living and dining

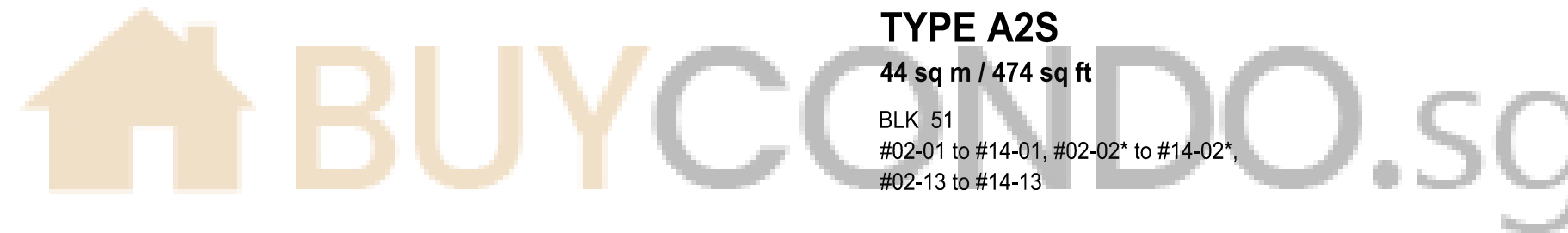
BLK 51

#15-01, #15-02*, #15-13

BLK 61

#15-38, #15-39*, #15-50

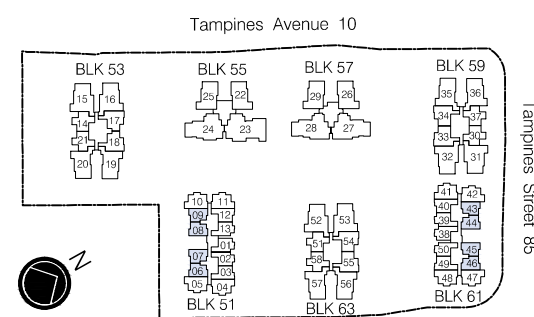
dotted line denotes strata void area of 12 sq m / 129 sq ft above living and dining for Type A2S(d)



*Mirror Image



Area includes air-con (A/C) ledge, private enclosed space (PES), balcony and strata void area where applicable. Some units are mirror images of the apartment plans shown in the brochure. Please refer to the key plan for orientation. The plans are subject to change as may be approved by relevant authorities. All floor plans are approximate measurements only and are subject to government re-survey. The balcony shall not be enclosed unless with the approved balcony screen. For an illustration of the approved balcony screen, please refer to the diagram annexed hereto as "Annexure A".



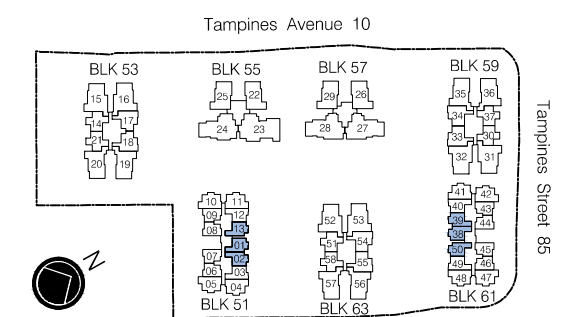
KEY PLAN
(Typical Storey)

Keyplan is not drawn to scale

*Mirror Image



Area includes air-con (A/C) ledge, private enclosed space (PES), balcony and strata void area where applicable. Some units are mirror images of the apartment plans shown in the brochure. Please refer to the key plan for orientation. The plans are subject to change as may be approved by relevant authorities. All floor plans are approximate measurements only and are subject to government re-survey. The balcony shall not be enclosed unless with the approved balcony screen. For an illustration of the approved balcony screen, please refer to the diagram annexed hereto as "Annexure A".



KEY PLAN
(Typical Storey)

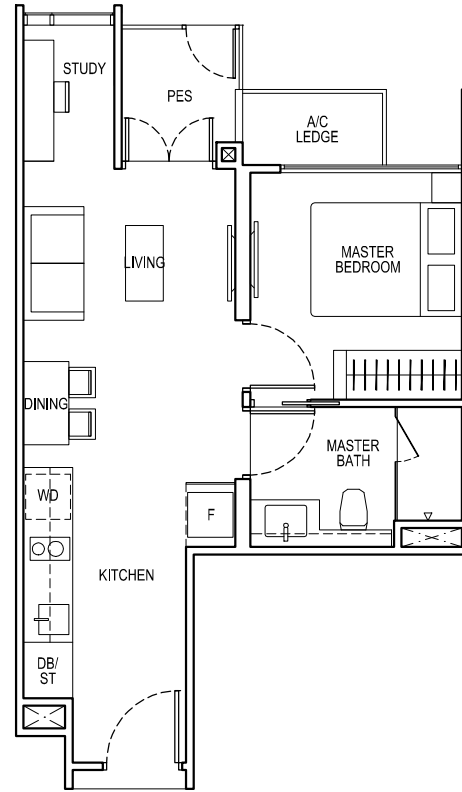
Keyplan is not drawn to scale

TYPE A3S(p)

44 sq m / 474 sq ft

BLK 51
#01-03*, #01-12

BLK 61
#01-40*, #01-49

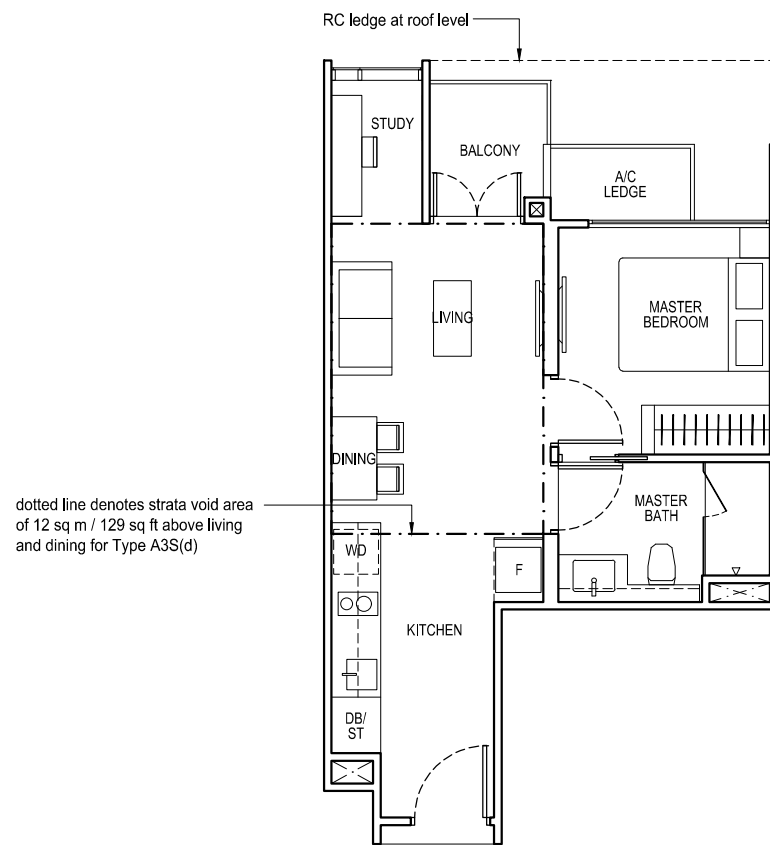


TYPE A3S

44 sq m / 474 sq ft

BLK 51
#02-03* to #14-03*, #02-12 to #14-12

BLK 61
#02-40* to #14-40*, #02-49 to #14-49



*Mirror Image



Area includes air-con (A/C) ledge, private enclosed space (PES), balcony and strata void area where applicable. Some units are mirror images of the apartment plans shown in the brochure. Please refer to the key plan for orientation. The plans are subject to change as may be approved by relevant authorities. All floor plans are approximate measurements only and are subject to government re-survey. The balcony shall not be enclosed unless with the approved balcony screen. For an illustration of the approved balcony screen, please refer to the diagram annexed hereto as "Annexure A".

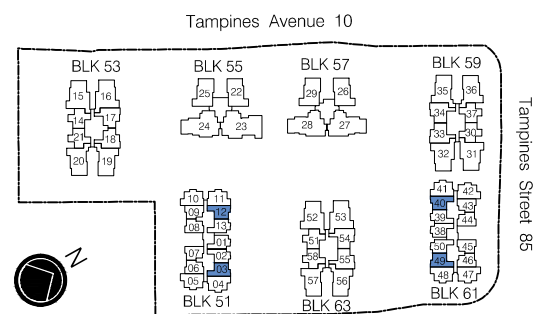
TYPE A3S(d)

56 sq m / 603 sq ft

including strata void area of 12 sq m / 129 sq ft above living and dining
Approximate 4.4 m floor to ceiling height at living and dining

BLK 51
#15-03*, #15-12

BLK 61
#15-40*, #15-49



KEY PLAN
(Typical Storey)

Keyplan is not drawn to scale

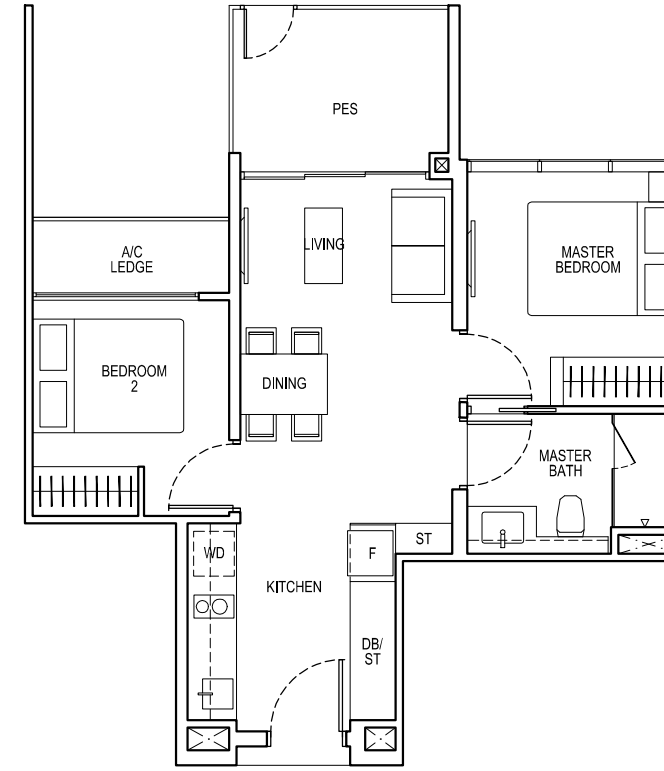
TYPE B1(p)

56 sq m / 603 sq ft

BLK 53
#01-14*, #01-21

BLK 59
#01-30*, #01-37

BLK 63
#01-51*, #01-58



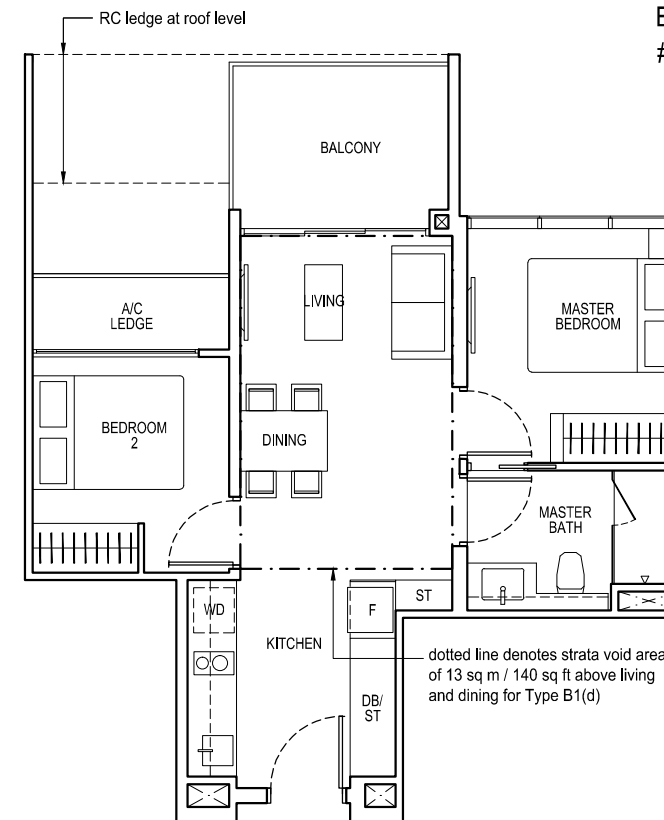
TYPE B1

56 sq m / 603 sq ft

BLK 53
#02-14* to #14-14*, #02-21 to #14-21

BLK 59
#02-30* to #14-30*, #02-37 to #14-37

BLK 63
#02-51* to #14-51*, #02-58 to #14-58



*Mirror Image



Area includes air-con (A/C) ledge, private enclosed space (PES), balcony and strata void area where applicable. Some units are mirror images of the apartment plans shown in the brochure. Please refer to the key plan for orientation. The plans are subject to change as may be approved by relevant authorities. All floor plans are approximate measurements only and are subject to government re-survey. The balcony shall not be enclosed unless with the approved balcony screen. For an illustration of the approved balcony screen, please refer to the diagram annexed hereto as "Annexure A".

TYPE B1(d)

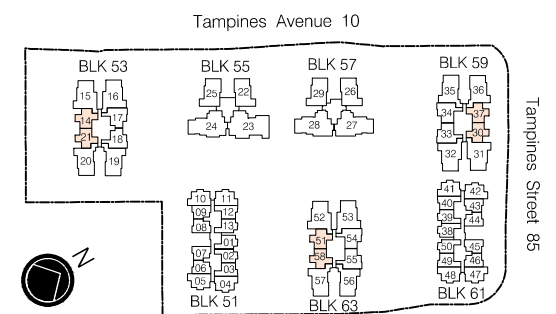
69 sq m / 743 sq ft

including strata void area of 13 sq m / 140 sq ft above living and dining
Approximate 4.4 m floor to ceiling height at living and dining

BLK 53
#15-14*, #15-21

BLK 59
#15-30*, #15-37

BLK 63
#15-51*, #15-58



KEY PLAN
(Typical Storey)

Keyplan is not drawn to scale

2-Bedroom

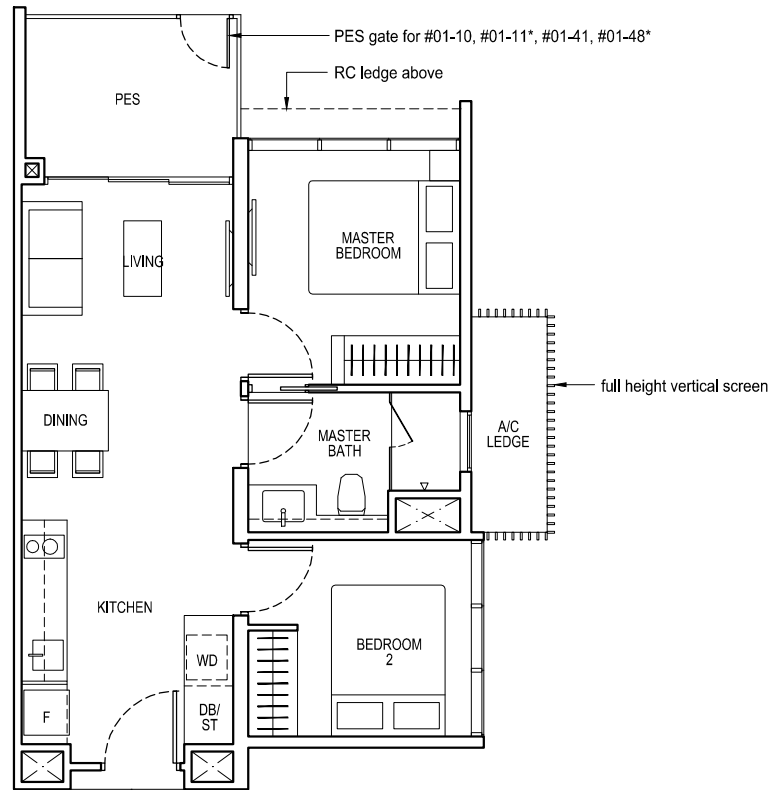
2-Bedroom + Study

TYPE B2(p)

56 sq m / 603 sq ft

BLK 51
#01-10, #01-11*

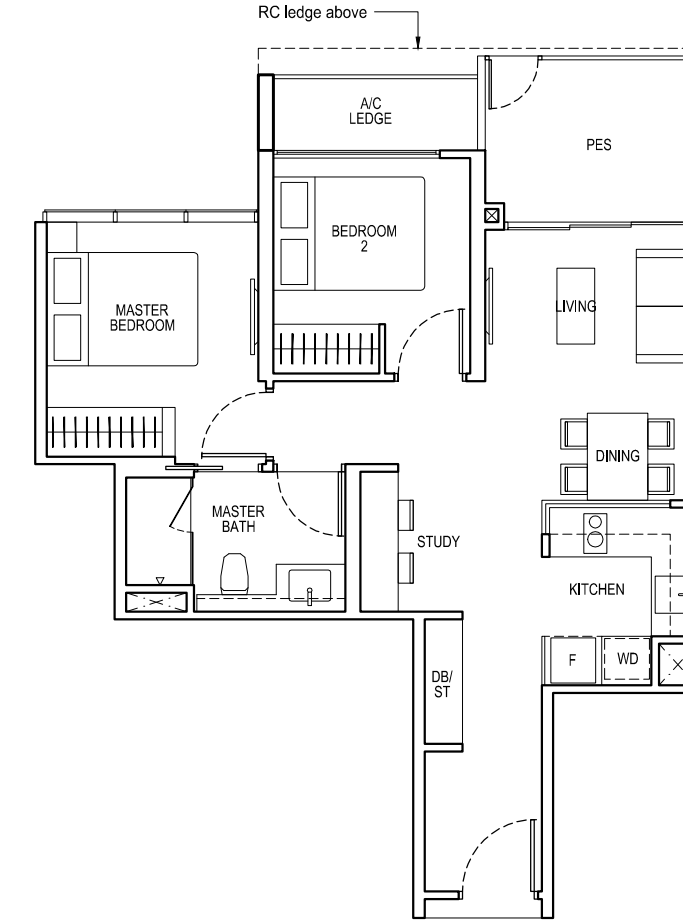
BLK 61
#01-41, #01-42*, #01-47, #01-48*



TYPE B3S(p)

64 sq m / 689 sq ft

BLK 53
#01-18



TYPE B2

56 sq m / 603 sq ft

BLK 51
#03-04 to #14-04, #03-05* to #14-05*,
#02-10 to #14-10, #02-11* to #14-11*

BLK 61
#02-41 to #14-41, #02-42* to #14-42*,
#02-47 to #14-47, #02-48* to #14-48*

TYPE B2(d)

69 sq m / 743 sq ft

including strata void area of 13 sq m / 140 sq ft above living and dining
Approximate 4.4 m floor to ceiling height at living and dining

BLK 51
#15-04, #15-05*, #15-10, #15-11*

BLK 61
#15-41, #15-42*, #15-47, #15-48*

TYPE B3S

64 sq m / 689 sq ft

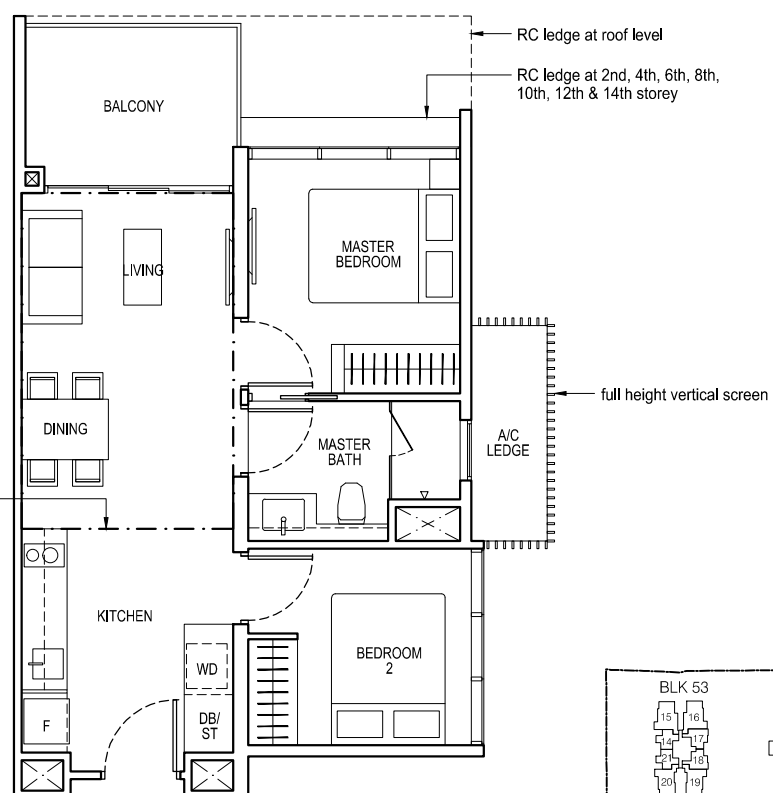
BLK 53
#02-17* to #14-17*, #02-18 to #14-18

TYPE B3S(d)

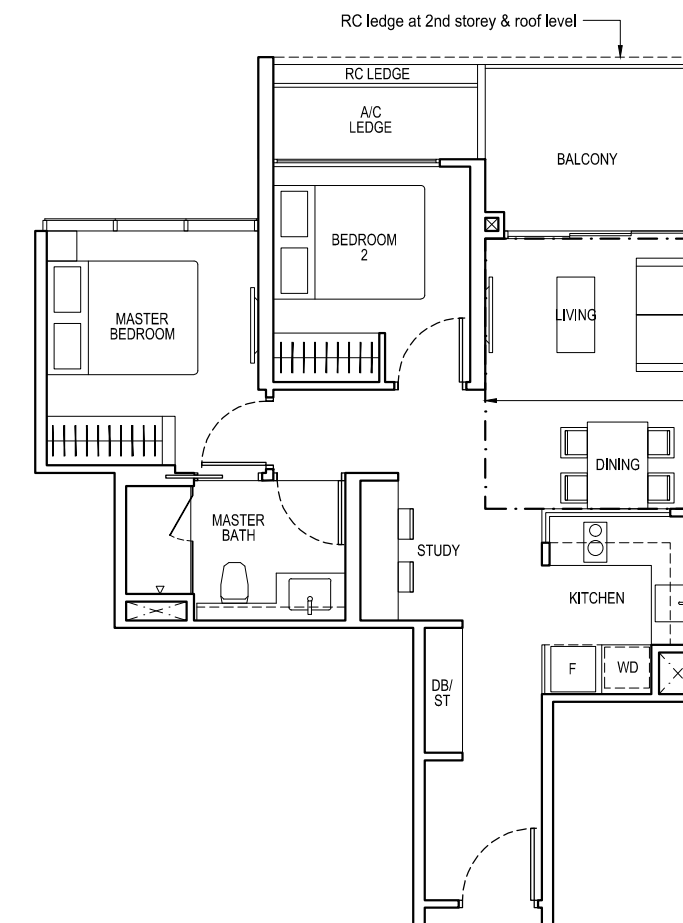
75 sq m / 807 sq ft

including strata void area of 11 sq m / 118 sq ft above living and dining
Approximate 4.4 m floor to ceiling height at living and dining

BLK 53
#15-17*, #15-18



dotted line denotes strata void area of 13 sq m / 140 sq ft above living and dining for Type B2(d)

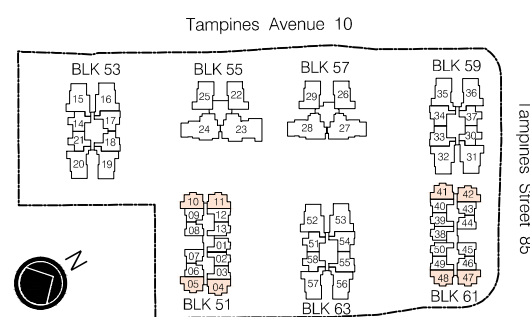


dotted line denotes strata void area of 11 sq m / 118 sq ft above living and dining for Type B3S(d)

*Mirror Image



Area includes air-con (A/C) ledge, private enclosed space (PES), balcony and strata void area where applicable. Some units are mirror images of the apartment plans shown in the brochure. Please refer to the key plan for orientation. The plans are subject to change as may be approved by relevant authorities. All floor plans are approximate measurements only and are subject to government re-survey. The balcony shall not be enclosed unless with the approved balcony screen. For an illustration of the approved balcony screen, please refer to the diagram annexed hereto as "Annexure A".



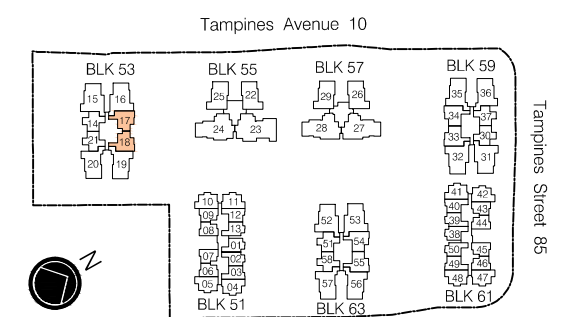
KEY PLAN
(Typical Storey)

Keyplan is not drawn to scale

*Mirror Image



Area includes air-con (A/C) ledge, private enclosed spaces (PES), balcony and strata void area where applicable. Some units are mirror images of the apartment plans shown in the brochure. Please refer to the key plan for orientation. The plans are subject to change as may be approved by relevant authorities. All floor plans are approximate measurements only and are subject to government re-survey. The balcony shall not be enclosed unless with the approved balcony screen. For an illustration of the approved balcony screen, please refer to the diagram annexed hereto as "Annexure A".



KEY PLAN
(Typical Storey)

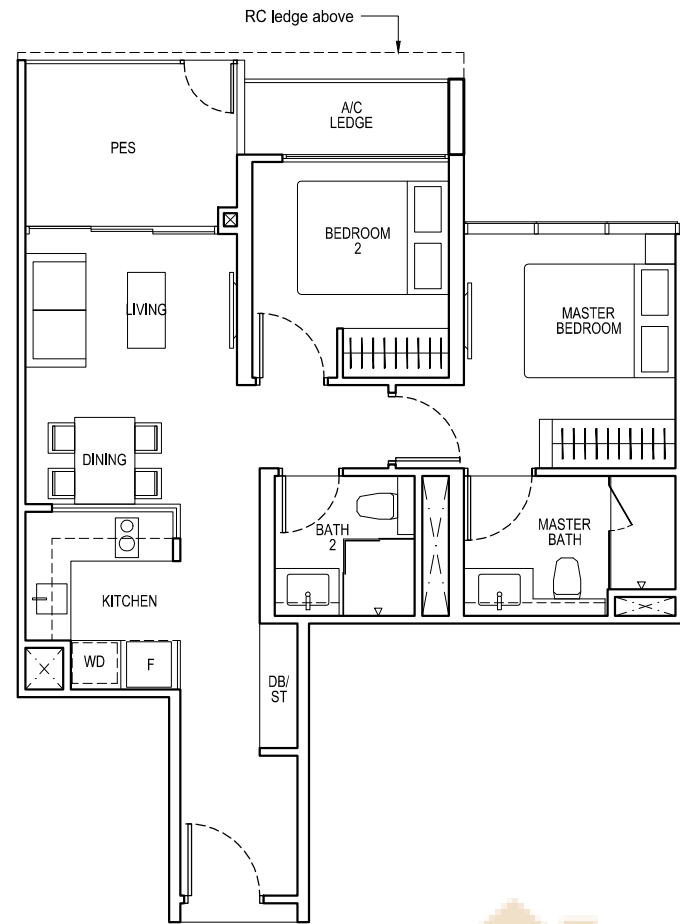
Keyplan is not drawn to scale

TYPE B4P(p)

65 sq m / 700 sq ft

BLK 59
#01-34*

BLK 63
#01-54, #01-55*

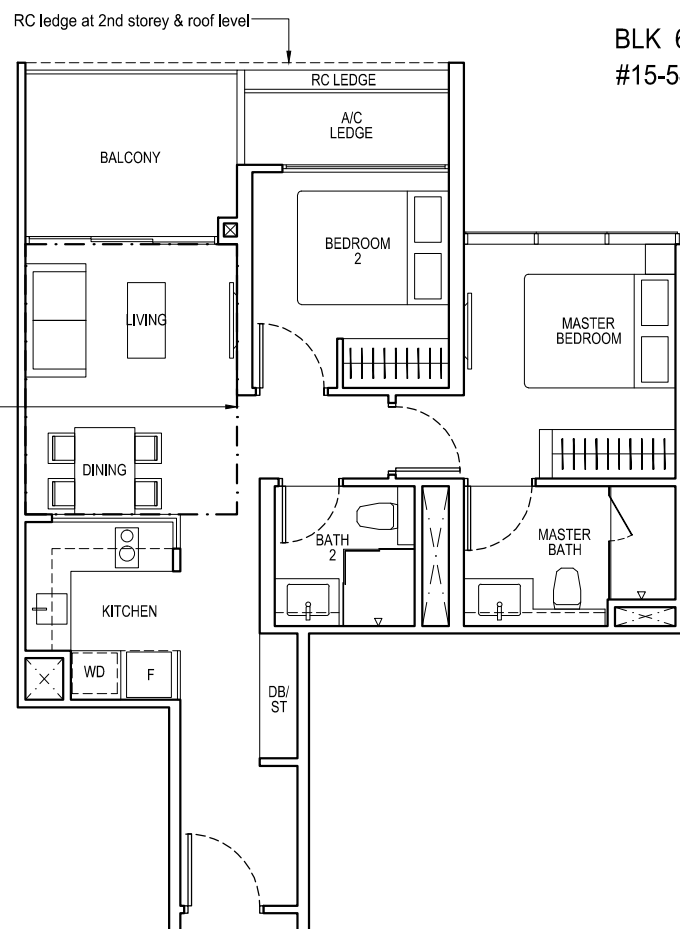


TYPE B4P

65 sq m / 700 sq ft

BLK 59
#02-33 to #14-33, #02-34* to #14-34*

BLK 63
#02-54 to #14-54, #02-55* to #14-55*



dotted line denotes strata void area of 11 sq m / 118 sq ft above living and dining for Type B4P(d)

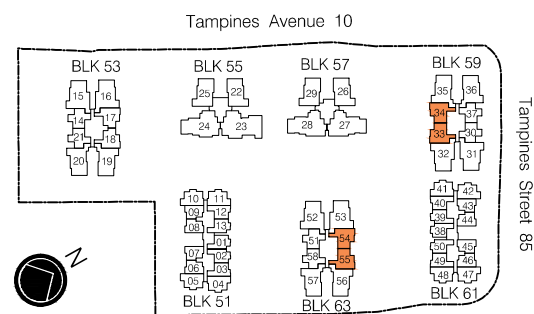
TYPE B4P(d)

76 sq m / 818 sq ft

including strata void area of 11 sq m / 118 sq ft above living and dining
Approximate 4.4 m floor to ceiling height at living and dining

BLK 59
#15-33, #15-34*

BLK 63
#15-54, #15-55*



KEY PLAN
(Typical Storey)

Keyplan is not drawn to scale

*Mirror Image



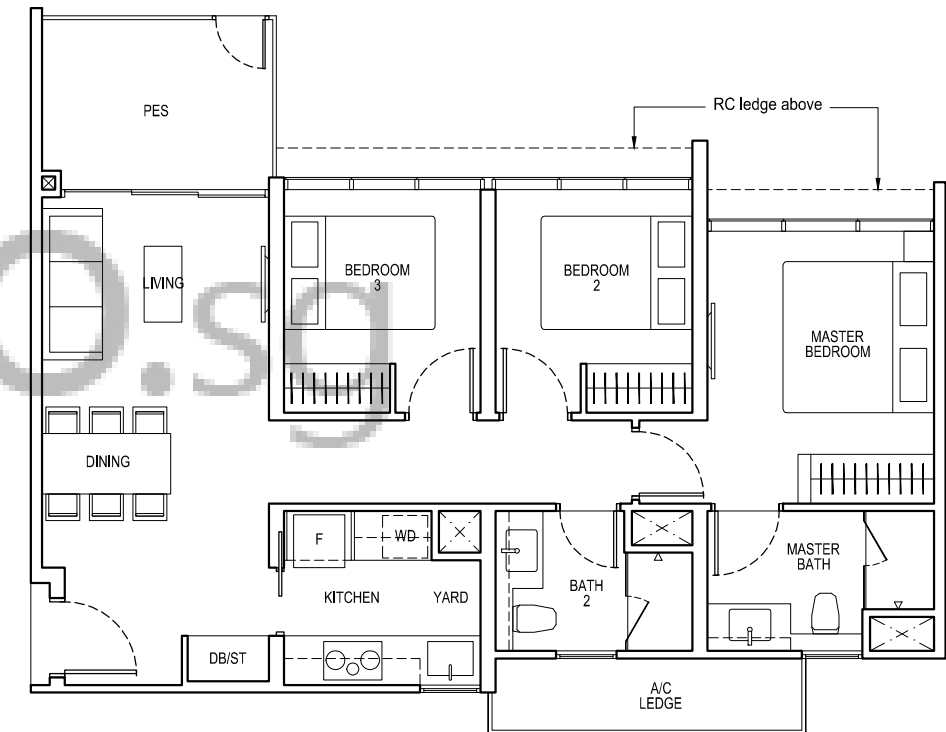
Area includes air-con (A/C) ledge, private enclosed space (PES), balcony and strata void area where applicable. Some units are mirror images of the apartment plans shown in the brochure. Please refer to the key plan for orientation. The plans are subject to change as may be approved by relevant authorities. All floor plans are approximate measurements only and are subject to government re-survey. The balcony shall not be enclosed unless with the approved balcony screen. For an illustration of the approved balcony screen, please refer to the diagram annexed hereto as "Annexure A".

TYPE C1(p)

86 sq m / 926 sq ft

BLK 55
#01-22*, #01-25

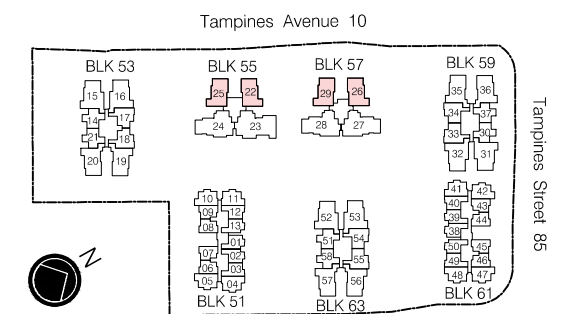
BLK 57
#01-26*, #01-29



*Mirror Image



Area includes air-con (A/C) ledge, private enclosed space (PES), balcony and strata void area where applicable. Some units are mirror images of the apartment plans shown in the brochure. Please refer to the key plan for orientation. The plans are subject to change as may be approved by relevant authorities. All floor plans are approximate measurements only and are subject to government re-survey. The balcony shall not be enclosed unless with the approved balcony screen. For an illustration of the approved balcony screen, please refer to the diagram annexed hereto as "Annexure A".



KEY PLAN
(Typical Storey)

Keyplan is not drawn to scale

TYPE C1

86 sq m / 926 sq ft

BLK 55

#02-22* to #14-22*, #02-25 to #14-25

BLK 57

#02-26* to #14-26*, #02-29 to #14-29

TYPE C1(d)

102 sq m / 1098 sq ft

including strata void area of 16 sq m / 172 sq ft above living and dining
Approximate 4.4 m floor to ceiling height at living and dining

BLK 55

#15-22*, #15-25

BLK 57

#15-26*, #15-29

TYPE C2(p)

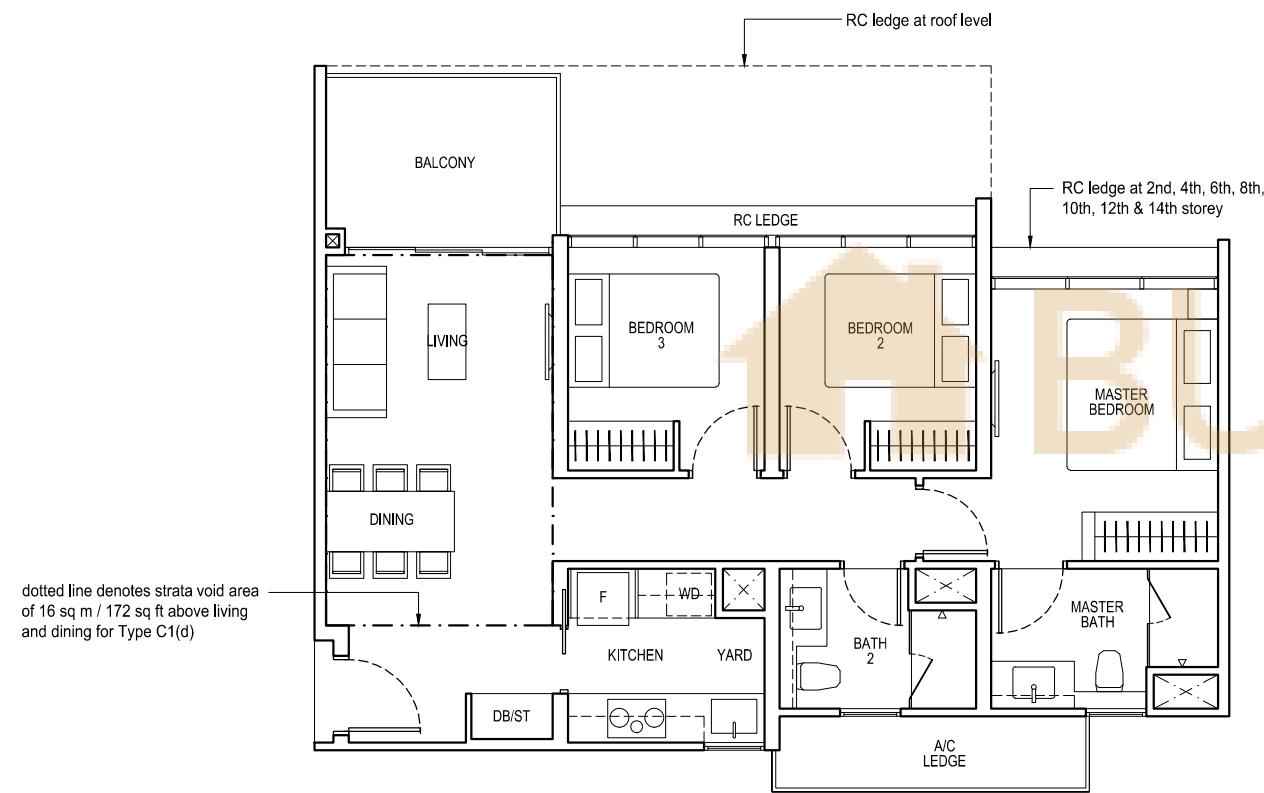
92 sq m / 990 sq ft

BLK 53

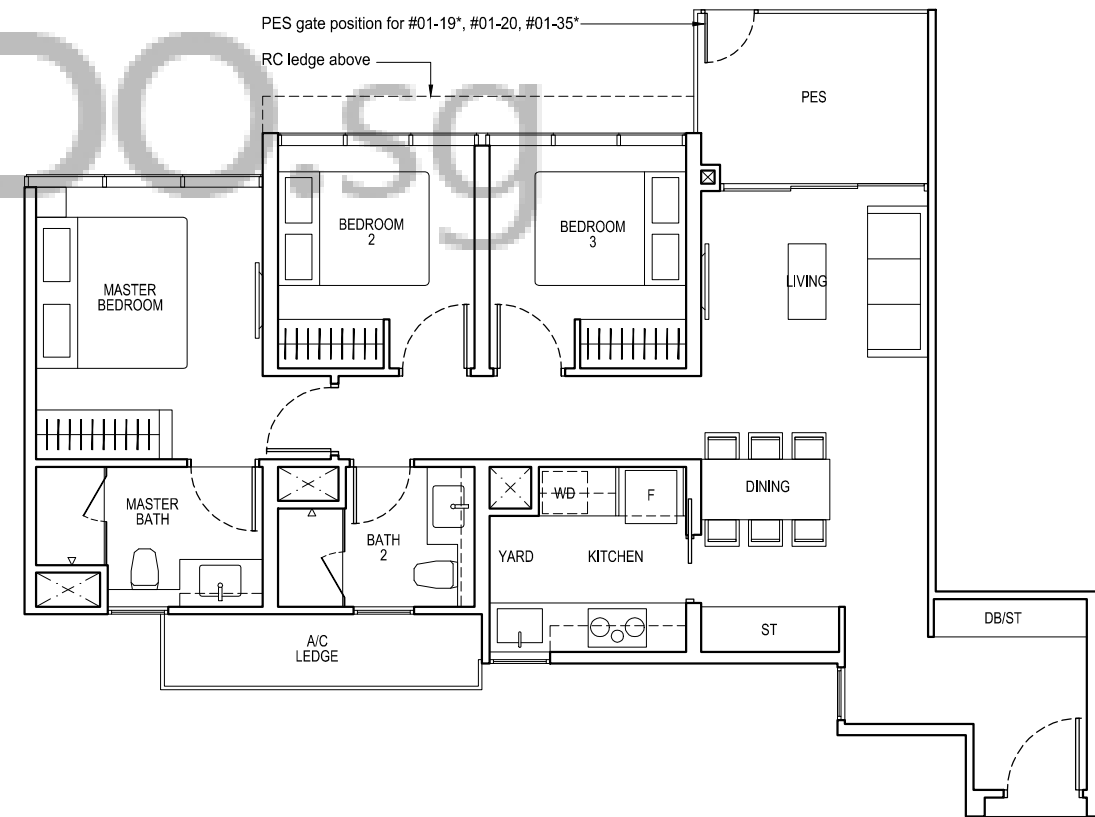
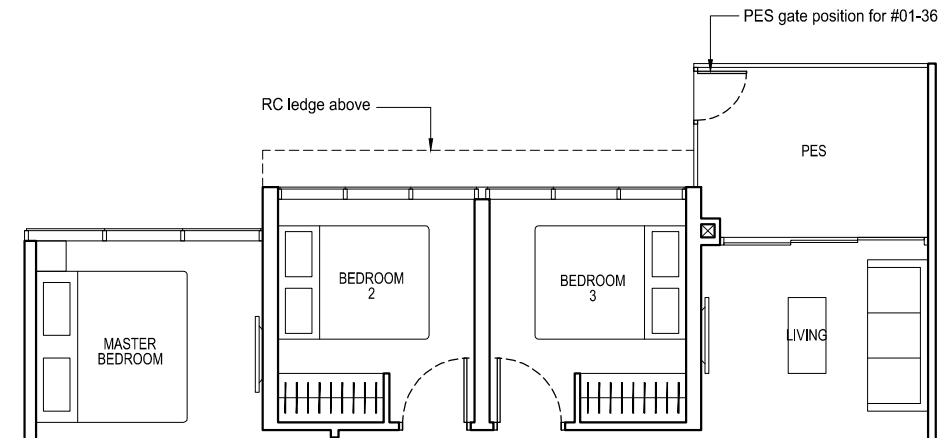
#01-19*, #01-20

BLK 59

#01-35*, #01-36



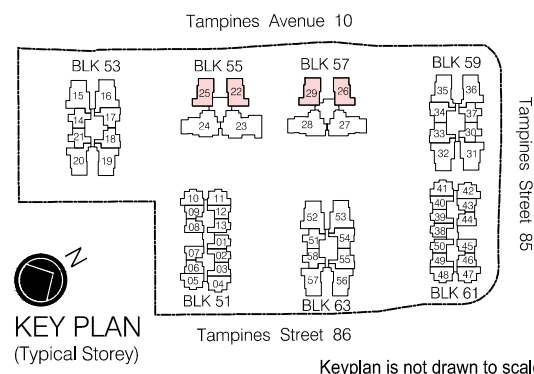
dotted line denotes strata void area of 16 sq m / 172 sq ft above living and dining for Type C1(d)



*Mirror Image



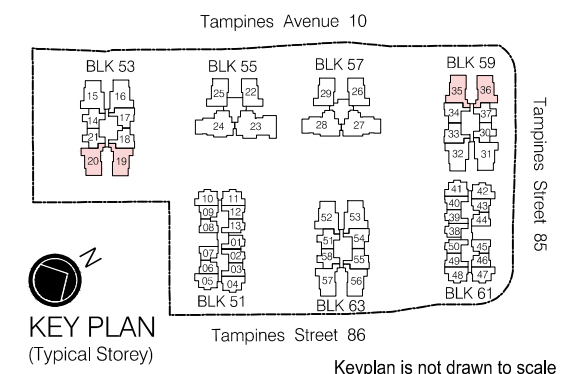
Area includes air-con (A/C) ledge, private enclosed space (PES), balcony and strata void area where applicable. Some units are mirror images of the apartment plans shown in the brochure. Please refer to the key plan for orientation. The plans are subject to change as may be approved by relevant authorities. All floor plans are approximate measurements only and are subject to government re-survey. The balcony shall not be enclosed unless with the approved balcony screen. For an illustration of the approved balcony screen, please refer to the diagram annexed hereto as "Annexure A".



*Mirror Image



Area includes air-con (A/C) ledge, private enclosed space (PES), balcony and strata void area where applicable. Some units are mirror images of the apartment plans shown in the brochure. Please refer to the key plan for orientation. The plans are subject to change as may be approved by relevant authorities. All floor plans are approximate measurements only and are subject to government re-survey. The balcony shall not be enclosed unless with the approved balcony screen. For an illustration of the approved balcony screen, please refer to the diagram annexed hereto as "Annexure A".



3-Bedroom

3-Bedroom Premium + Flexi

TYPE C2

92 sq m / 990 sq ft

BLK 53
#02-19* to #14-19*, #02-20 to #14-20

BLK 59
#02-35* to #14-35*, #02-36 to #14-36

BLK 63
#02-56* to #14-56*, #02-57 to #14-57

TYPE C2(d)

109 sq m / 1173 sq ft

including strata void area of 17 sq m / 183 sq ft above living and dining
Approximate 4.4 m floor to ceiling height at living and dining

BLK 53
#15-19*, #15-20

BLK 59
#15-35*, #15-36

BLK 63
#15-56*, #15-57

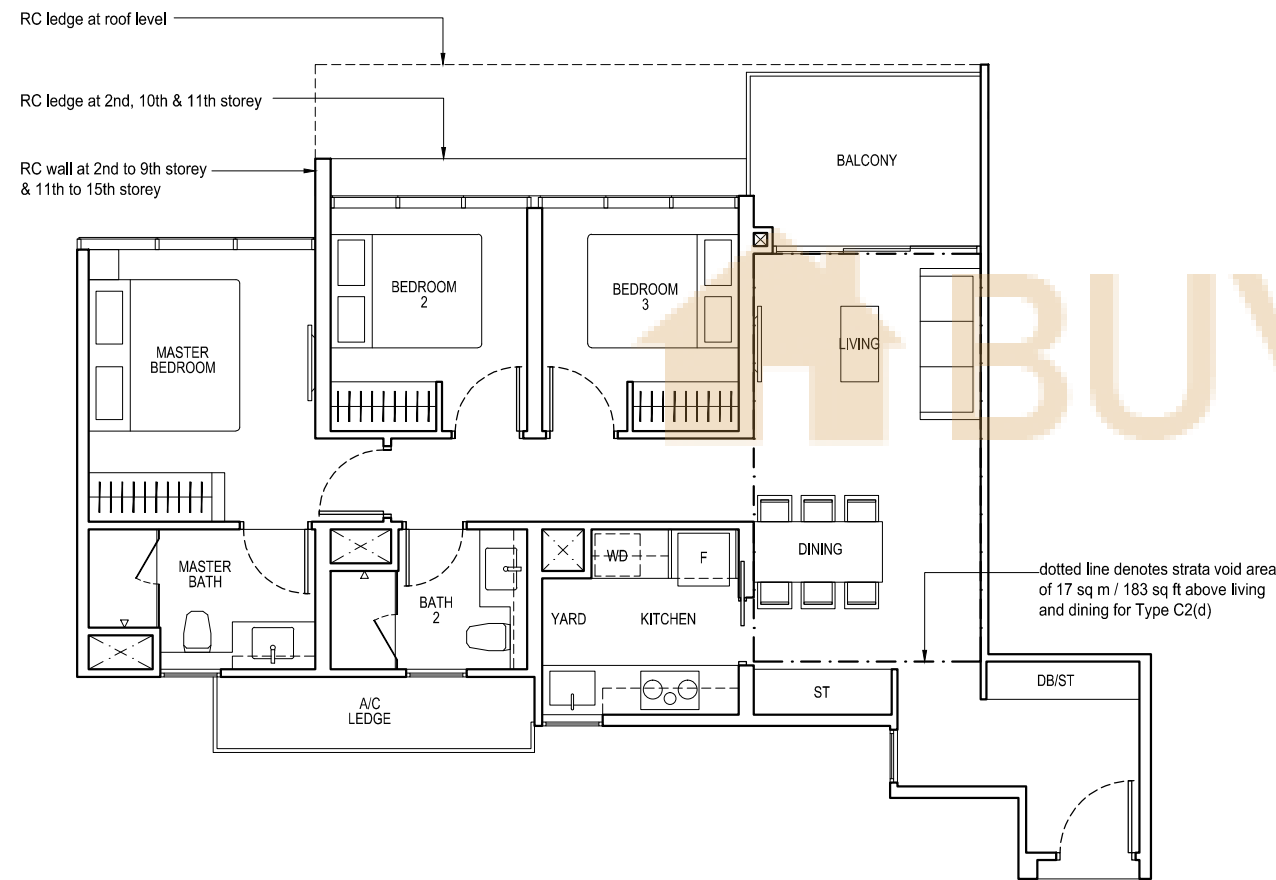
TYPE C3P(p)

105 sq m / 1130 sq ft

BLK 53
#01-15*, #01-16

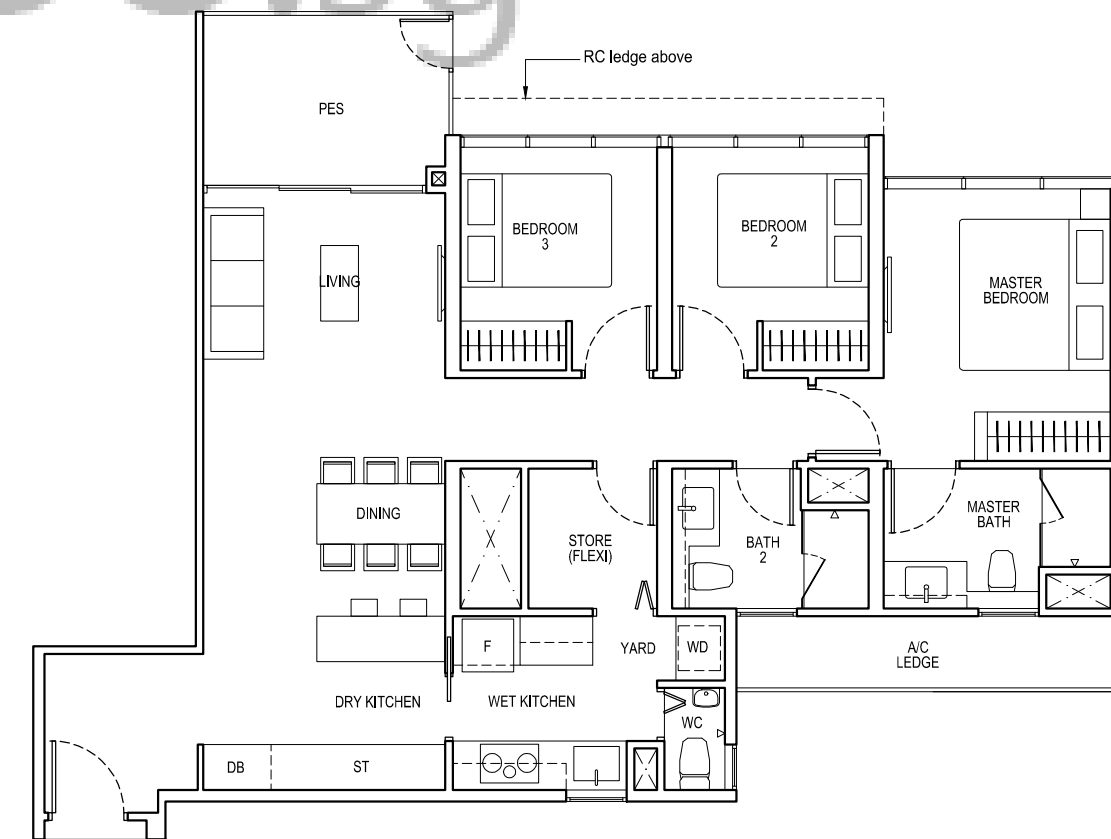
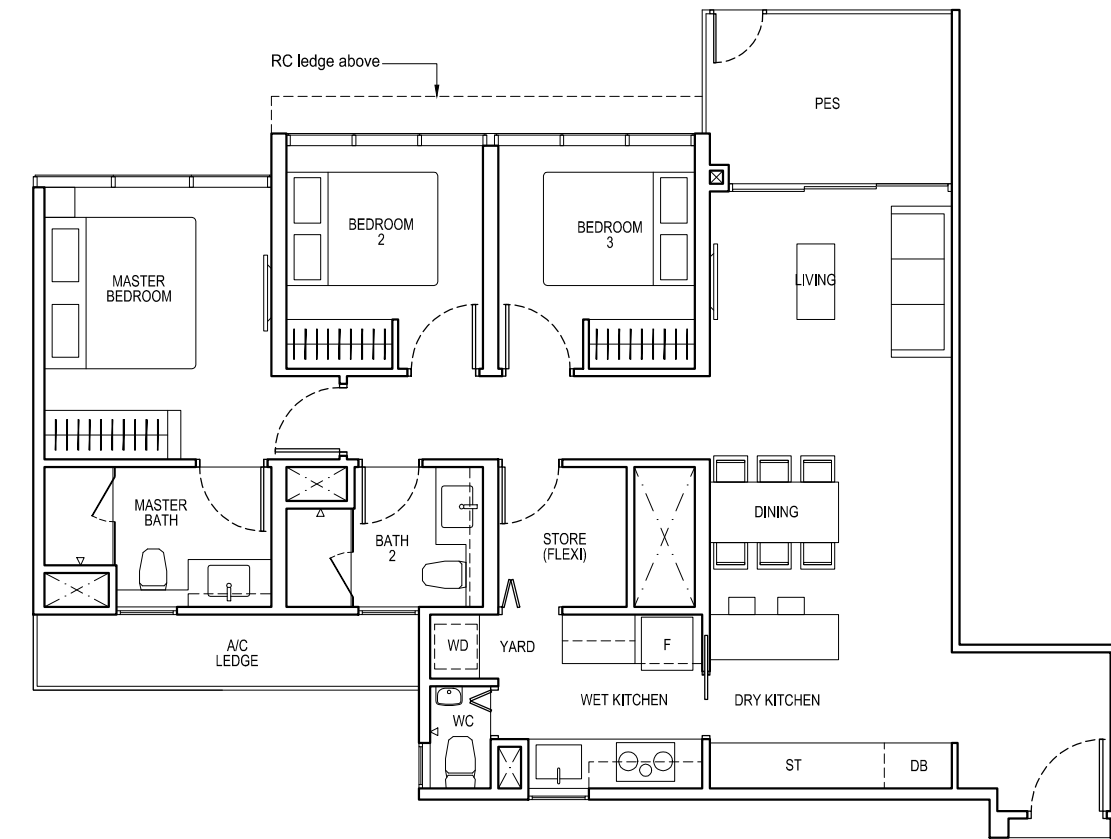
BLK 59
#01-32

BLK 63
#01-52*, #01-53



dotted line denotes strata void area of 17 sq m / 183 sq ft above living and dining for Type C2(d)

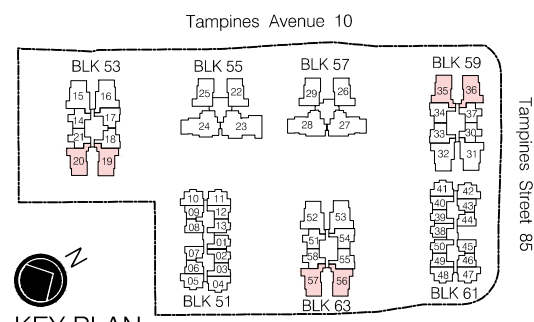
BLK 59
#01-31



*Mirror Image



Area includes air-con (A/C) ledge, private enclosed space (PES), balcony and strata void area where applicable. Some units are mirror images of the apartment plans shown in the brochure. Please refer to the key plan for orientation. The plans are subject to change as may be approved by relevant authorities. All floor plans are approximate measurements only and are subject to government re-survey. The balcony shall not be enclosed unless with the approved balcony screen. For an illustration of the approved balcony screen, please refer to the diagram annexed hereto as "Annexure A".



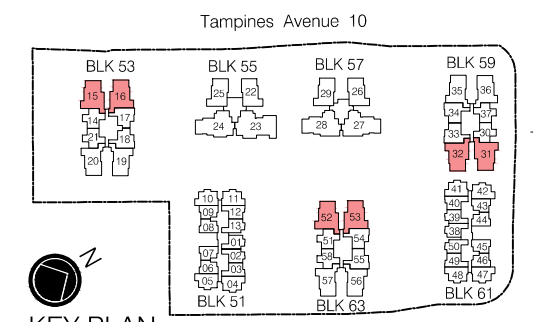
KEY PLAN
(Typical Storey)

Keyplan is not drawn to scale

*Mirror Image



Area includes air-con (A/C) ledge, private enclosed space (PES), balcony and strata void area where applicable. Some units are mirror images of the apartment plans shown in the brochure. Please refer to the key plan for orientation. The plans are subject to change as may be approved by relevant authorities. All floor plans are approximate measurements only and are subject to government re-survey. The balcony shall not be enclosed unless with the approved balcony screen. For an illustration of the approved balcony screen, please refer to the diagram annexed hereto as "Annexure A".



KEY PLAN
(Typical Storey)

Keyplan is not drawn to scale

TYPE C3P

105 sq m / 1130 sq ft

BLK 53
#02-15* to #14-15*, #02-16 to #14-16

BLK 59
#02-31* to #14-31*, #02-32 to #14-32

BLK 63
#02-52* to #14-52*, #02-53 to #14-53

TYPE C3P(d)

125 sq m / 1346 sq ft

including strata void area of 20 sq m / 215 sq ft above living and dining
Approximate 4.4 m floor to ceiling height at living and dining

BLK 53
#15-15*, #15-16

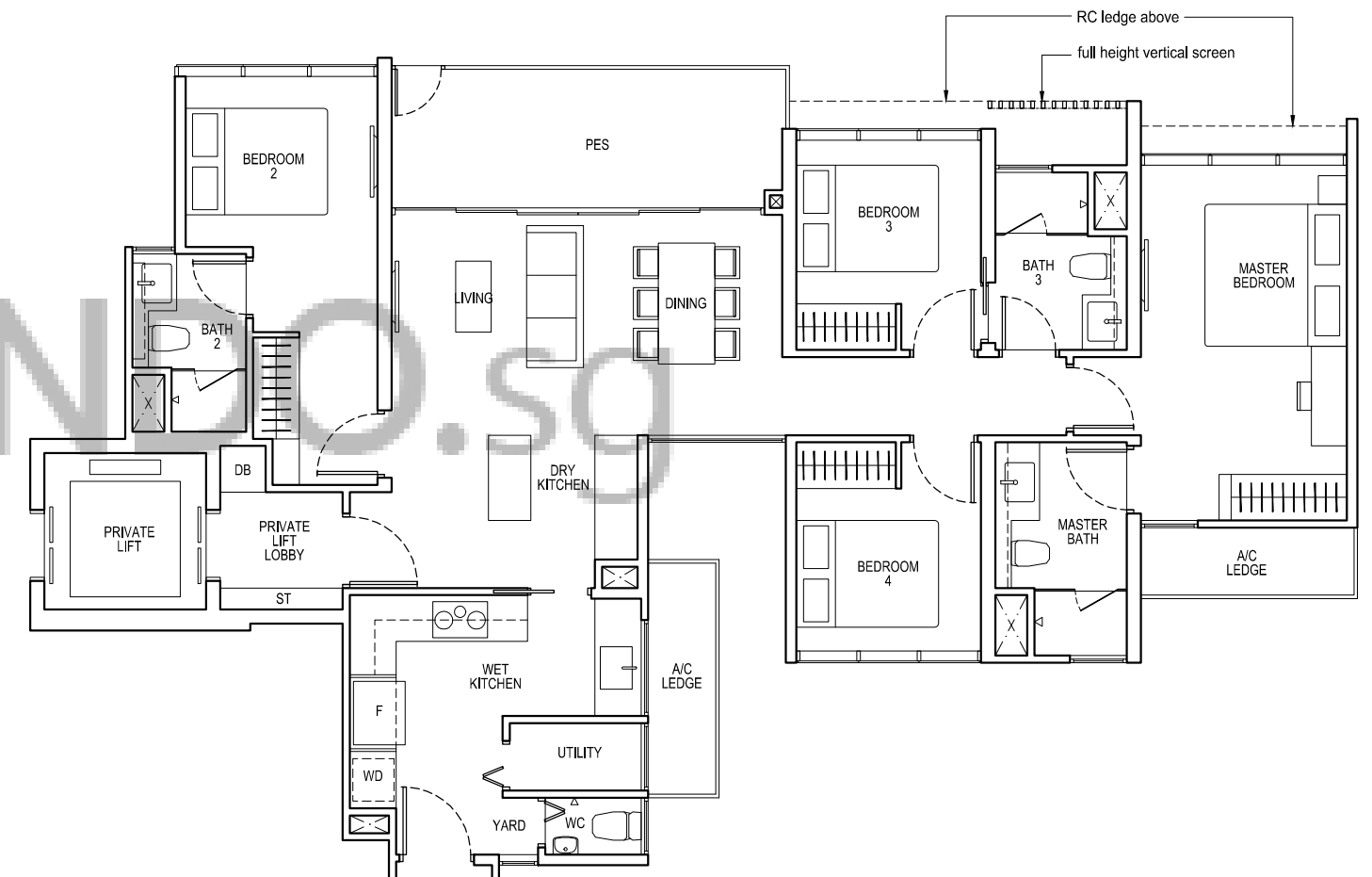
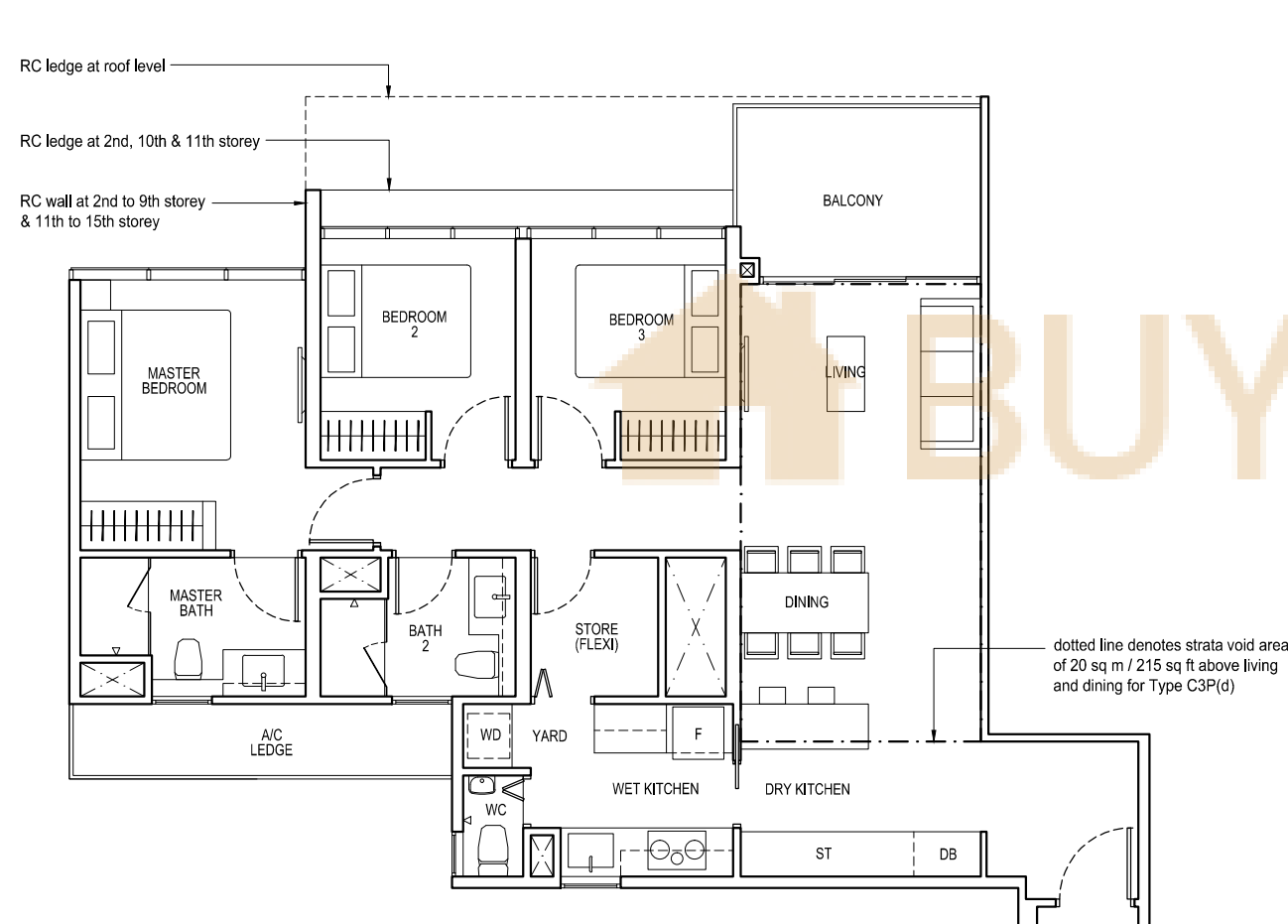
BLK 59
#15-31*, #15-32

BLK 63
#15-52*, #15-53

TYPE D1(p)

133 sq m / 1432 sq ft

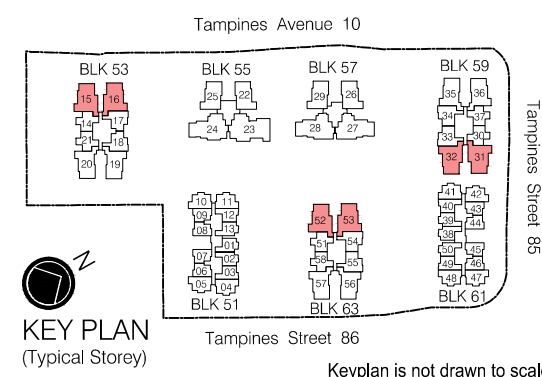
BLK 57
#01-27*, #01-28



*Mirror Image



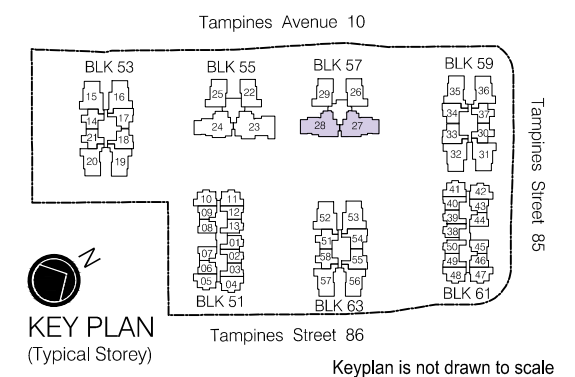
Area includes air-con (A/C) ledge, private enclosed space (PES), balcony and strata void area where applicable. Some units are mirror images of the apartment plans shown in the brochure. Please refer to the key plan for orientation. The plans are subject to change as may be approved by relevant authorities. All floor plans are approximate measurements only and are subject to government re-survey. The balcony shall not be enclosed unless with the approved balcony screen. For an illustration of the approved balcony screen, please refer to the diagram annexed hereto as "Annexure A".



*Mirror Image



Area includes air-con (A/C) ledge, private enclosed space (PES), balcony and strata void area where applicable. Some units are mirror images of the apartment plans shown in the brochure. Please refer to the key plan for orientation. The plans are subject to change as may be approved by relevant authorities. All floor plans are approximate measurements only and are subject to government re-survey. The balcony shall not be enclosed unless with the approved balcony screen. For an illustration of the approved balcony screen, please refer to the diagram annexed hereto as "Annexure A".



TYPE D1

133 sq m / 1432 sq ft

BLK 57

#02-27* to #14-27*, #02-28 to #14-28

TYPE D1(d)

150 sq m / 1615 sq ft

including strata void area of 17 sq m / 183 sq ft above living and dining
Approximate 4.4 m floor to ceiling height at living and dining

BLK 57

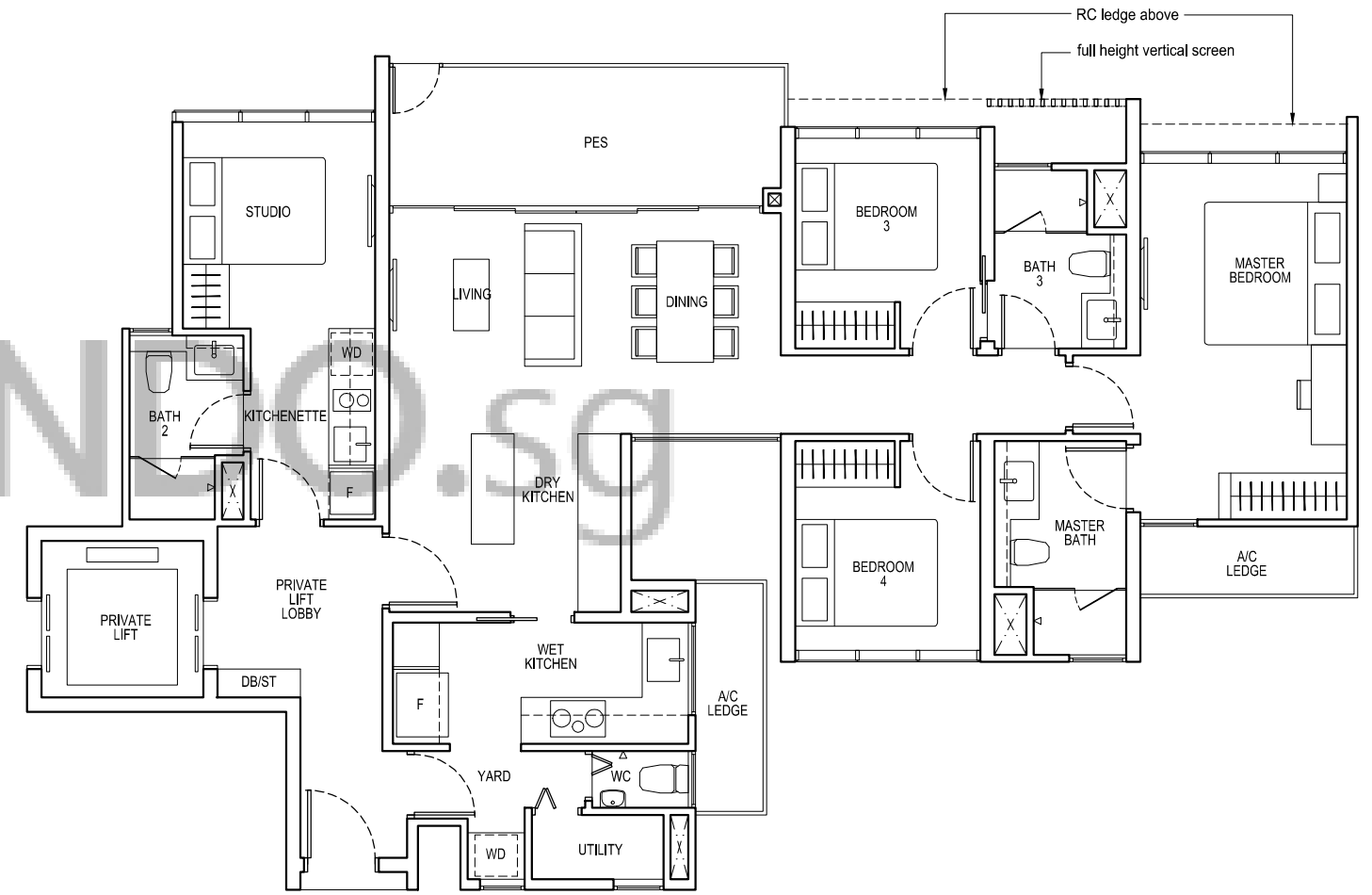
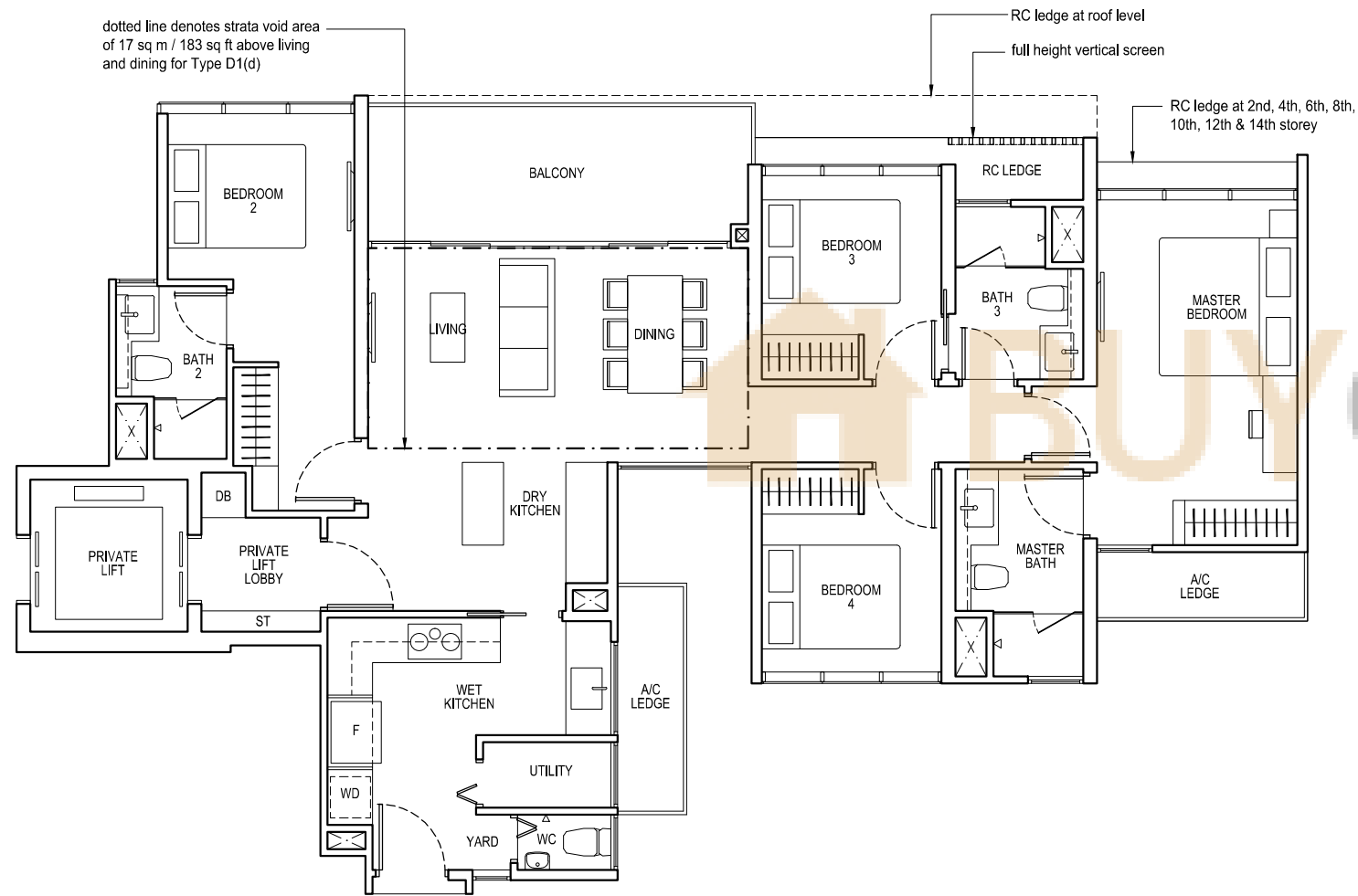
#15-27*, #15-28

TYPE D2DK(p)

138 sq m / 1485 sq ft

BLK 55

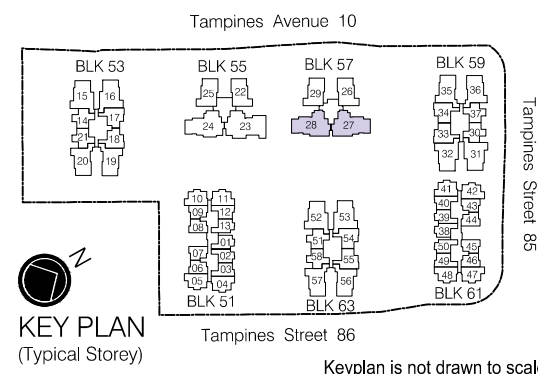
#01-24



*Mirror Image



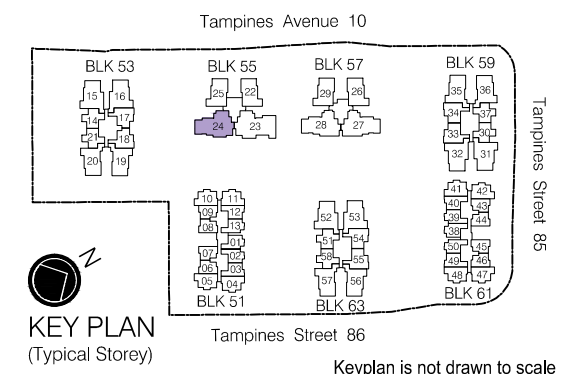
Area includes air-con (A/C) ledge, private enclosed space (PES), balcony and strata void area where applicable. Some units are mirror images of the apartment plans shown in the brochure. Please refer to the key plan for orientation. The plans are subject to change as may be approved by relevant authorities. All floor plans are approximate measurements only and are subject to government re-survey. The balcony shall not be enclosed unless with the approved balcony screen. For an illustration of the approved balcony screen, please refer to the diagram annexed hereto as "Annexure A".



*Mirror Image



Area includes air-con (A/C) ledge, private enclosed spaces (PES), balcony and strata void area where applicable. Some units are mirror images of the apartment plans shown in the brochure. Please refer to the key plan for orientation. The plans are subject to change as may be approved by relevant authorities. All floor plans are approximate measurements only and are subject to government re-survey. The balcony shall not be enclosed unless with the approved balcony screen. For an illustration of the approved balcony screen, please refer to the diagram annexed hereto as "Annexure A".



4-Bedroom Dual-key

5-Bedroom Dual-key + Study

TYPE D2DK

138 sq m / 1485 sq ft

BLK 55

#02-24 to #14-24

TYPE D2DK(d)

155 sq m / 1668 sq ft

including strata void area of 17 sq m / 183 sq ft above living and dining
Approximate 4.4 m floor to ceiling height at living and dining

BLK 55

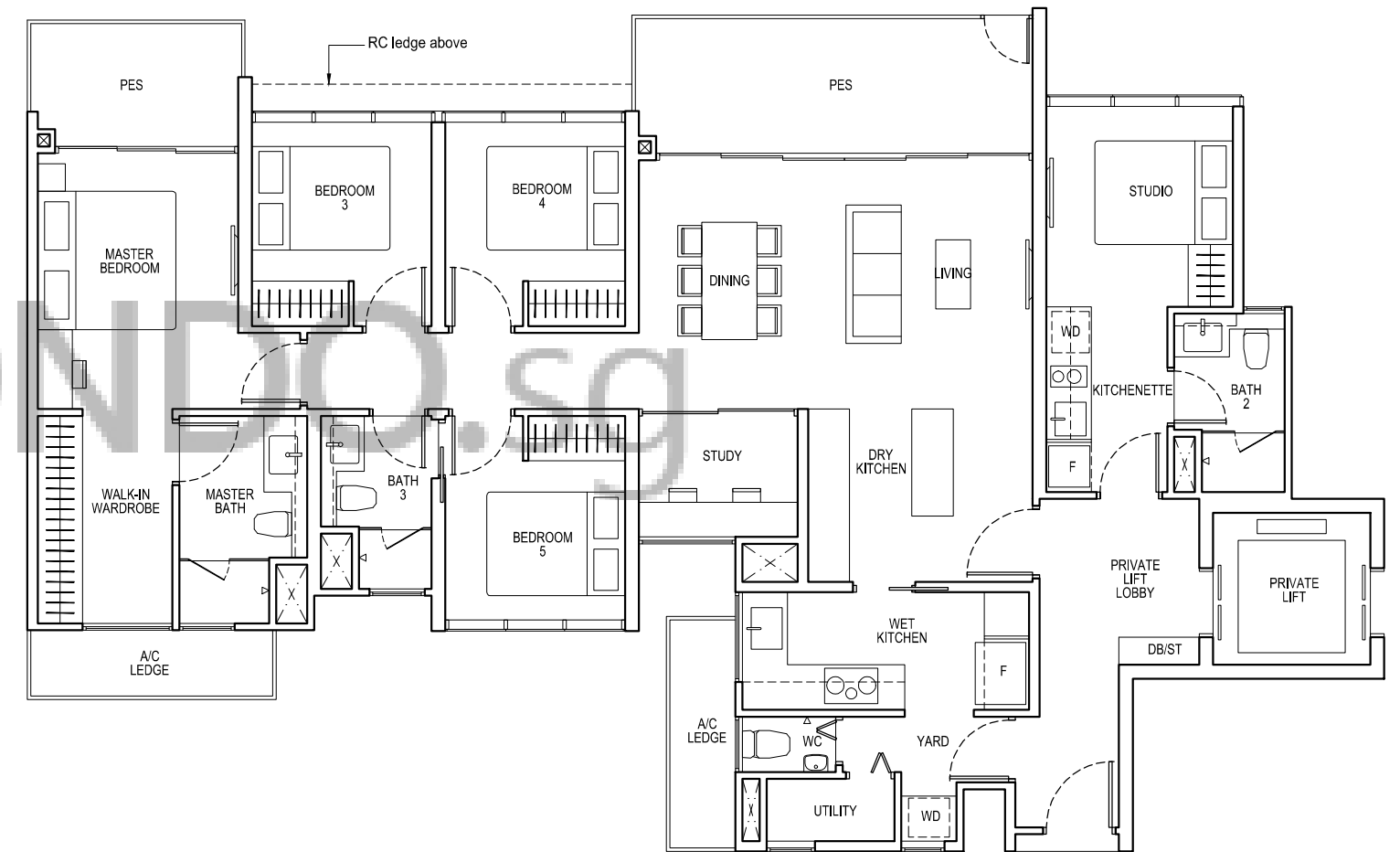
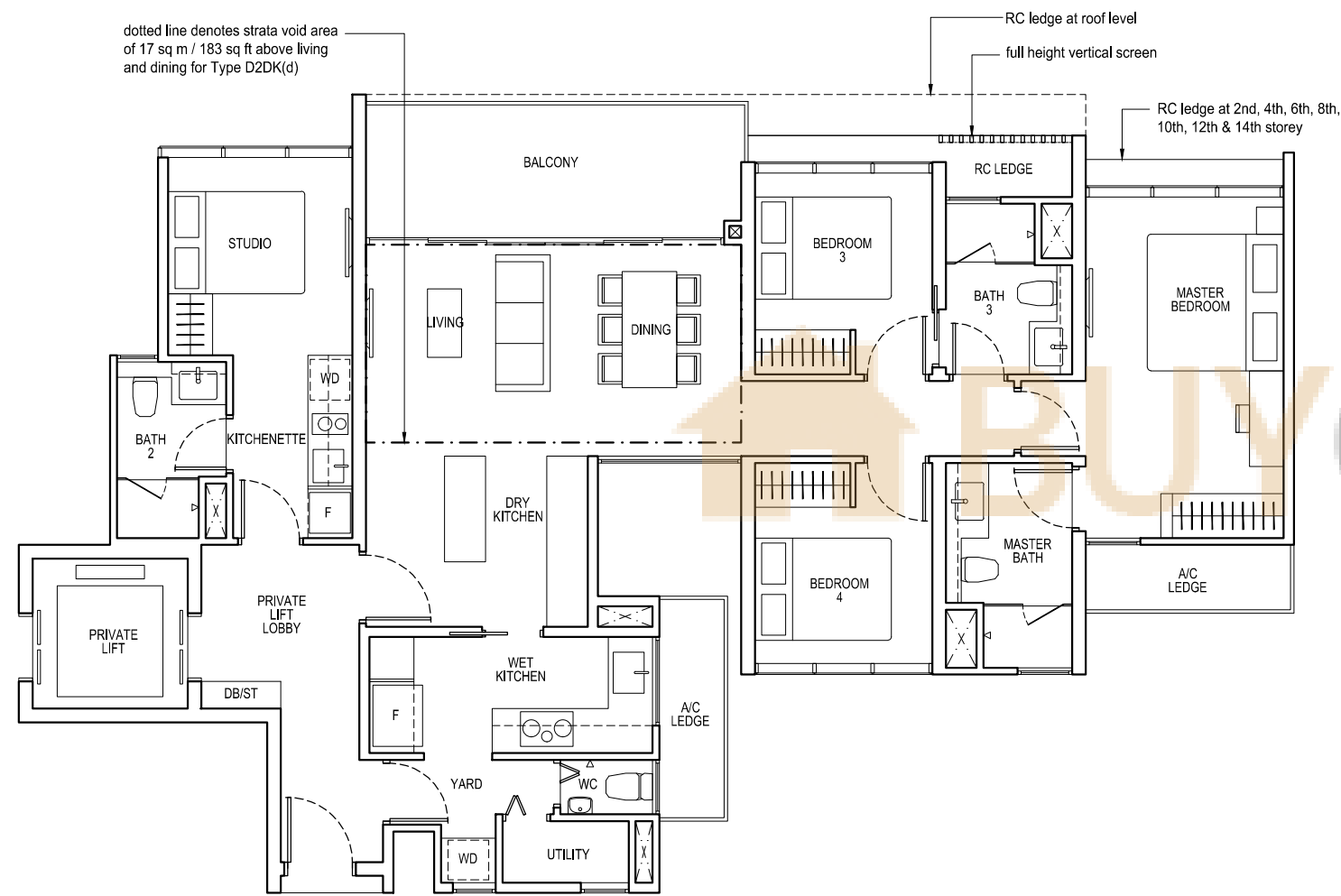
#15-24

TYPE E1DKS(p)

164 sq m / 1765 sq ft

BLK 55

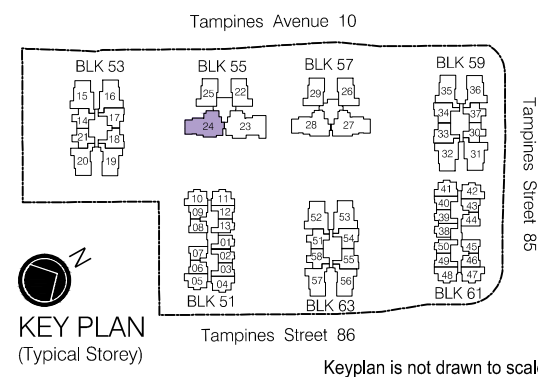
#01-23



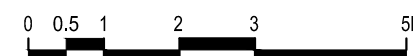
*Mirror Image



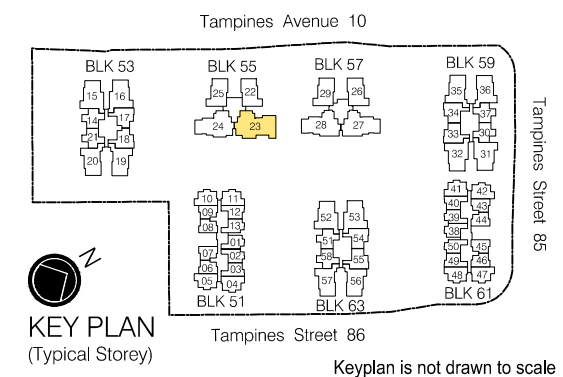
Area includes air-con (A/C) ledge, private enclosed space (PES), balcony and strata void area where applicable. Some units are mirror images of the apartment plans shown in the brochure. Please refer to the key plan for orientation. The plans are subject to change as may be approved by relevant authorities. All floor plans are approximate measurements only and are subject to government re-survey. The balcony shall not be enclosed unless with the approved balcony screen. For an illustration of the approved balcony screen, please refer to the diagram annexed hereto as "Annexure A".



*Mirror Image



Area includes air-con (A/C) ledge, private enclosed space (PES), balcony and strata void area where applicable. Some units are mirror images of the apartment plans shown in the brochure. Please refer to the key plan for orientation. The plans are subject to change as may be approved by relevant authorities. All floor plans are approximate measurements only and are subject to government re-survey. The balcony shall not be enclosed unless with the approved balcony screen. For an illustration of the approved balcony screen, please refer to the diagram annexed hereto as "Annexure A".



TYPE E1DKS

164 sq m / 1765 sq ft

BLK 55

#02-23 to #14-23

TYPE E1DKS(d)

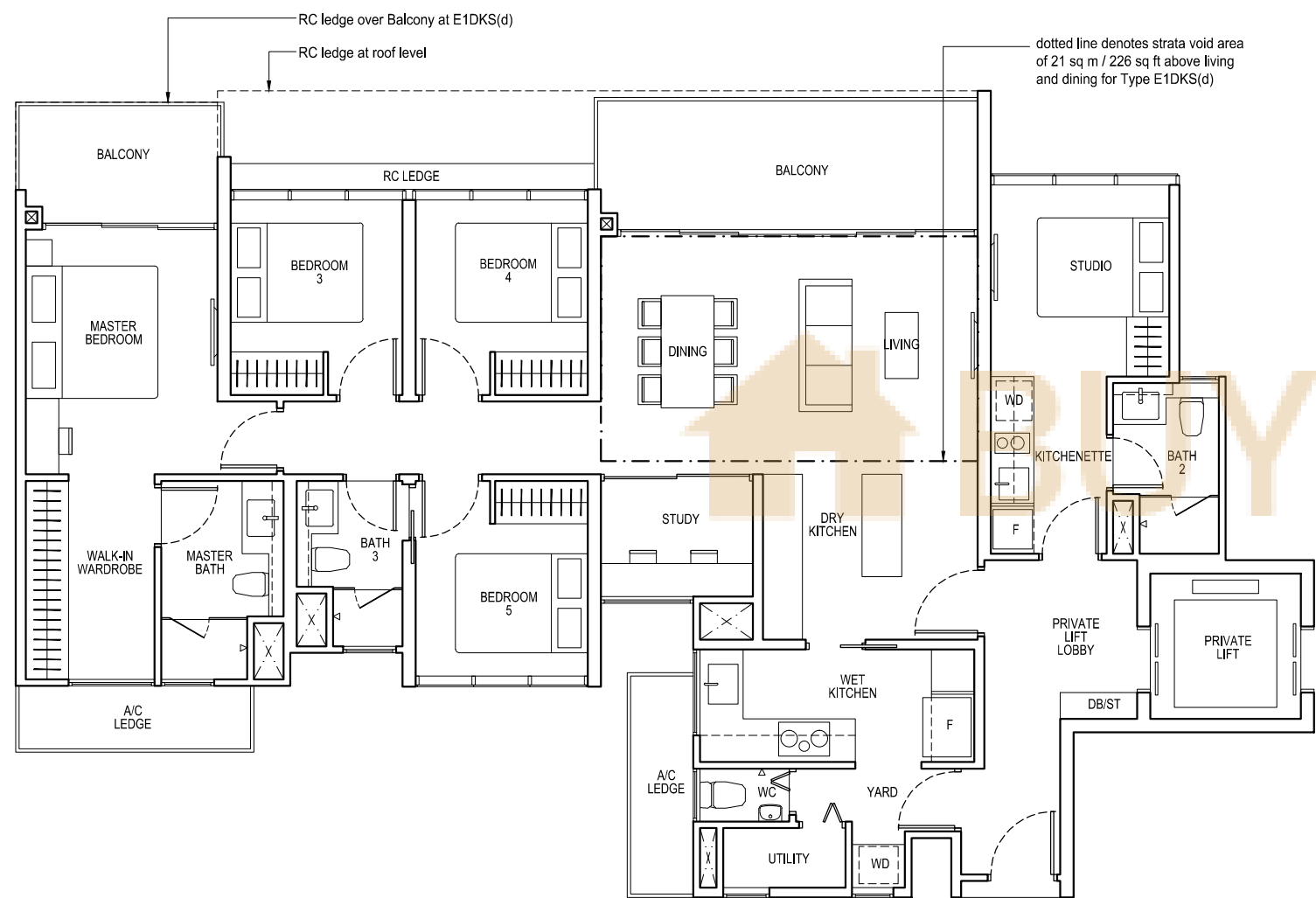
185 sq m / 1991 sq ft

including strata void area of 21 sq m / 226 sq ft above living and dining
Approximate 4.4 m floor to ceiling height at living and dining

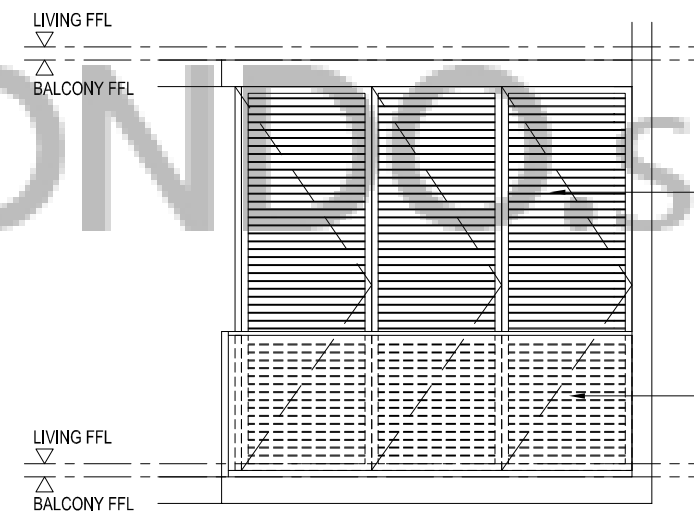
BLK 55

#15-23

ANNEXURE A



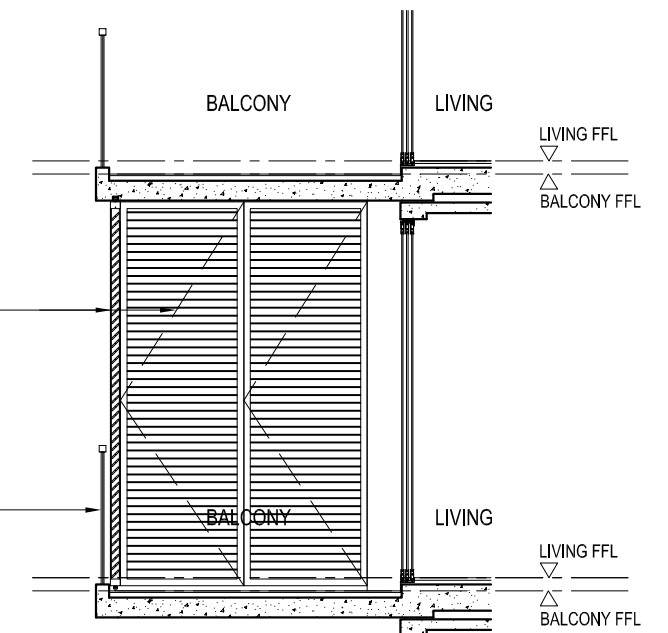
Approved Typical Balcony Screen



Front View

Aluminium Louvred Bi-Fold Panel. The Proposed balcony screens allow natural ventilation at all times (including the times when the screens are fully retracted) and is capable of being drawn open or fully retracted.

Glass railing

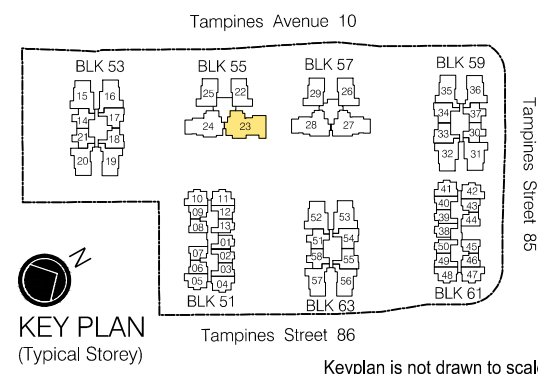


Side View

*Mirror Image



Area includes air-con (A/C) ledge, private enclosed space (PES), balcony and strata void area where applicable. Some units are mirror images of the apartment plans shown in the brochure. Please refer to the key plan for orientation. The plans are subject to change as may be approved by relevant authorities. All floor plans are approximate measurements only and are subject to government re-survey. The balcony shall not be enclosed unless with the approved balcony screen. For an illustration of the approved balcony screen, please refer to the diagram annexed hereto as "Annexure A".



KEY PLAN
(Typical Storey)

Keyplan is not drawn to scale

Note:

The balcony shall not be enclosed unless with the approved typical balcony screen as shown above. The cost of screen and installation shall be borne by the Purchaser.