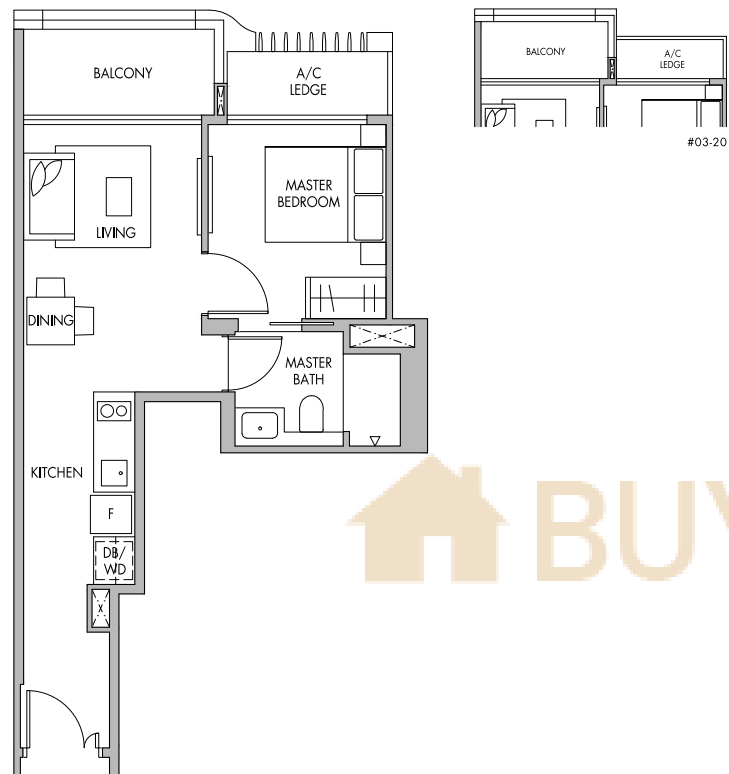


# 1-Bedroom

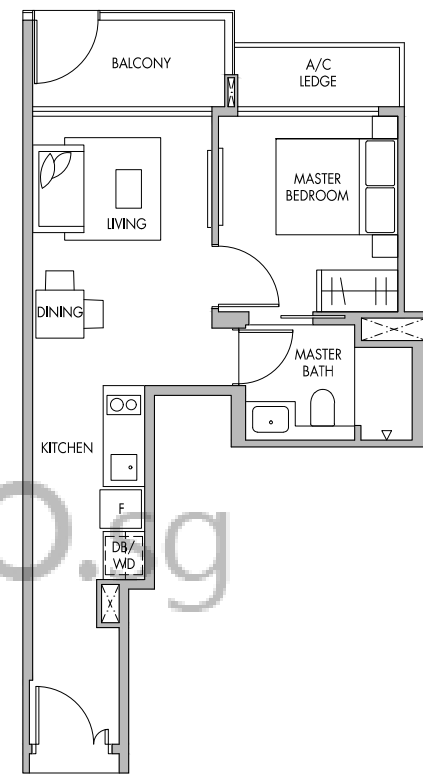
TYPE A2



TOWER BLOCK

# 1-Bedroom

TYPE A2P



TOWER BLOCK

## Block 60

#04-04 to #07-04

#10-04 to #19-04

#04-05 to #07-05 (Mirrored)

#10-05 to #19-05 (Mirrored)

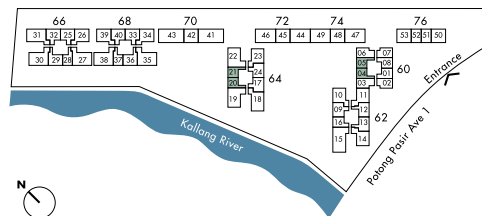
## Block 64

#03-20

#04-20 to #20-20

#04-21 to #20-21 (Mirrored)

46 sq.m. | 495 sq.ft.



Area includes A/C ledge, balconies and void (if applicable). The above plans and illustrations are subject to changes as may be required by the relevant authorities. Areas are estimates only and are subject to final survey. The balcony shall not be enclosed unless with the approved screen. For an illustration of the approved balcony screen, please refer to the diagram annexed hereto as 'Annexure 1'.

## Block 60

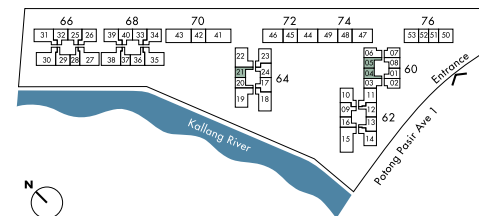
#03-04

(Mirrored) #03-05

## Block 64

(Mirrored) #03-21

46 sq.m. | 495 sq.ft.

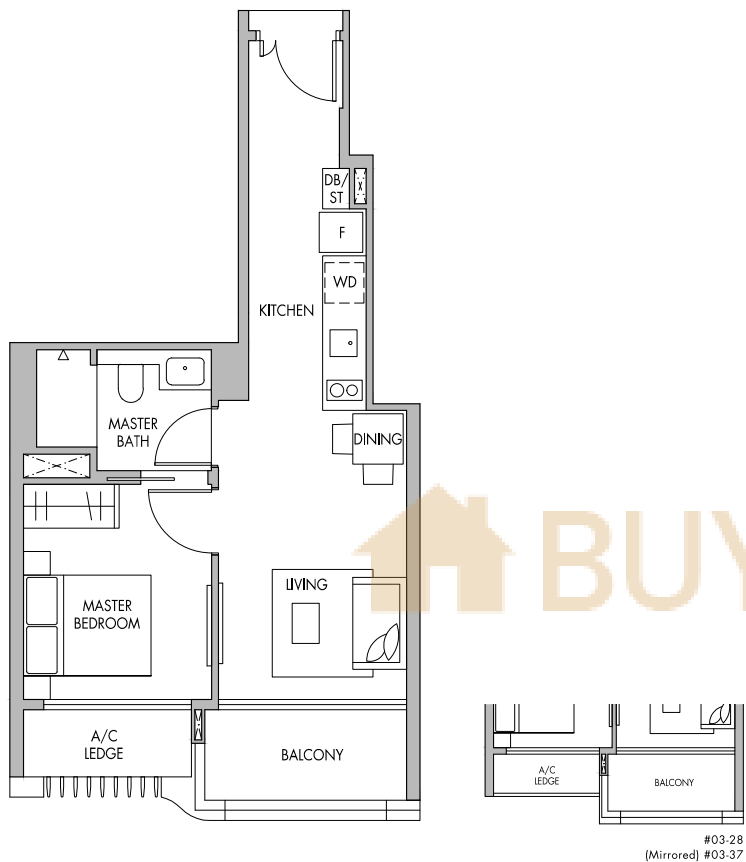


Area includes A/C ledge, balconies and void (if applicable). The above plans and illustrations are subject to changes as may be required by the relevant authorities. Areas are estimates only and are subject to final survey. The balcony shall not be enclosed unless with the approved screen. For an illustration of the approved balcony screen, please refer to the diagram annexed hereto as 'Annexure 1'.

## 1-Bedroom

TYPE A3

TOWER BLOCK



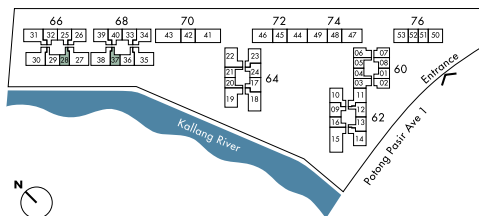
### Block 66

#03-28  
#04-28 to #20-28

### Block 68

#03-37 (Mirrored)  
#04-37 to #20-37 (Mirrored)

46 sq.m. | 495 sq.ft.

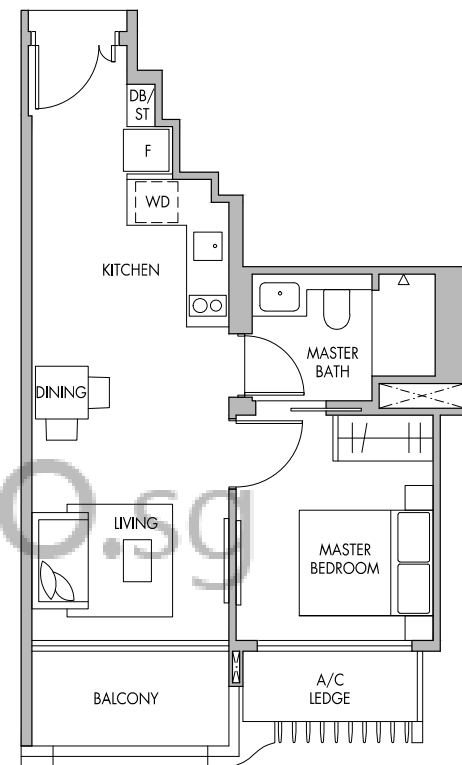


Area includes A/C ledge, balconies and void (if applicable). The above plans and illustrations are subject to changes as may be required by the relevant authorities. Areas are estimates only and are subject to final survey. The balcony shall not be enclosed unless with the approved screen. For an illustration of the approved balcony screen, please refer to the diagram annexed hereto as 'Annexure 1'.

## 1-Bedroom

TYPE A4

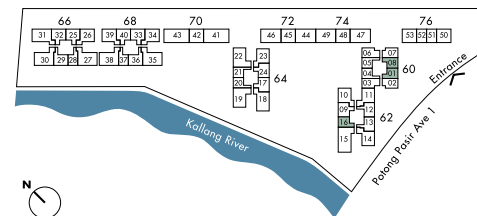
TOWER BLOCK



**Block 60**  
#04-01 to #19-01  
(Mirrored) #04-08 to #19-08

**Block 62**  
(Mirrored) #04-16 to #19-16

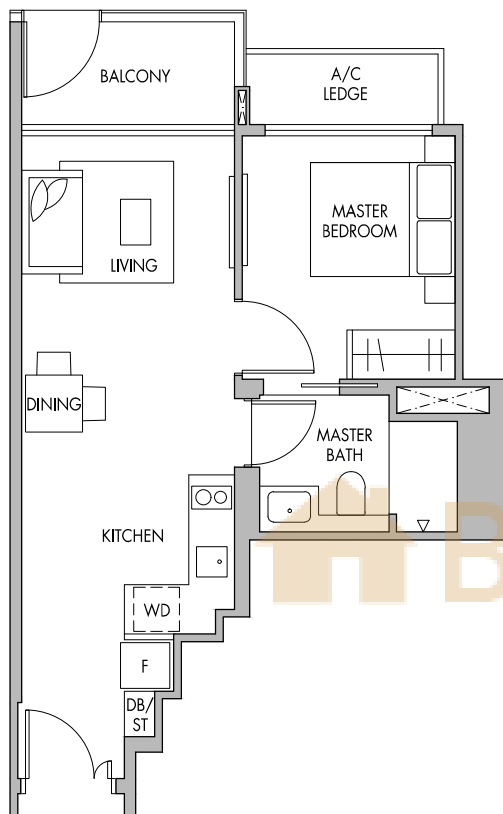
47sq.m. | 506 sq.ft.



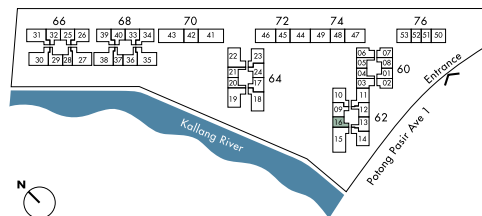
Area includes A/C ledge, balconies and void (if applicable). The above plans and illustrations are subject to changes as may be required by the relevant authorities. Areas are estimates only and are subject to final survey. The balcony shall not be enclosed unless with the approved screen. For an illustration of the approved balcony screen, please refer to the diagram annexed hereto as 'Annexure 1'.

## 1-Bedroom

TYPE A4P



TOWER BLOCK



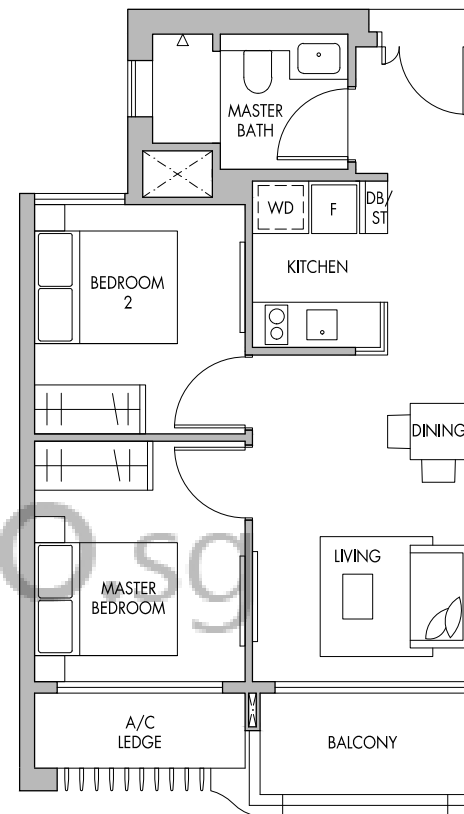
**Block 62**  
#03-16

47sq.m. | 506 sq.ft.

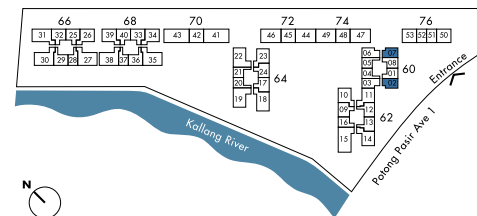
Area includes A/C ledge, balconies and void (if applicable). The above plans and illustrations are subject to changes as may be required by the relevant authorities. Areas are estimates only and are subject to final survey. The balcony shall not be enclosed unless with the approved screen. For an illustration of the approved balcony screen, please refer to the diagram annexed hereto as 'Annexure 1'.

## 2-Bedroom

TYPE B1



TOWER BLOCK



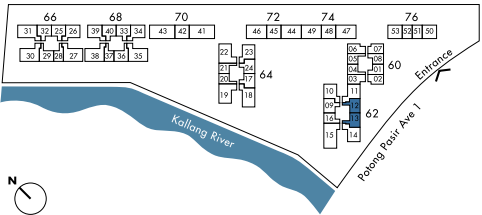
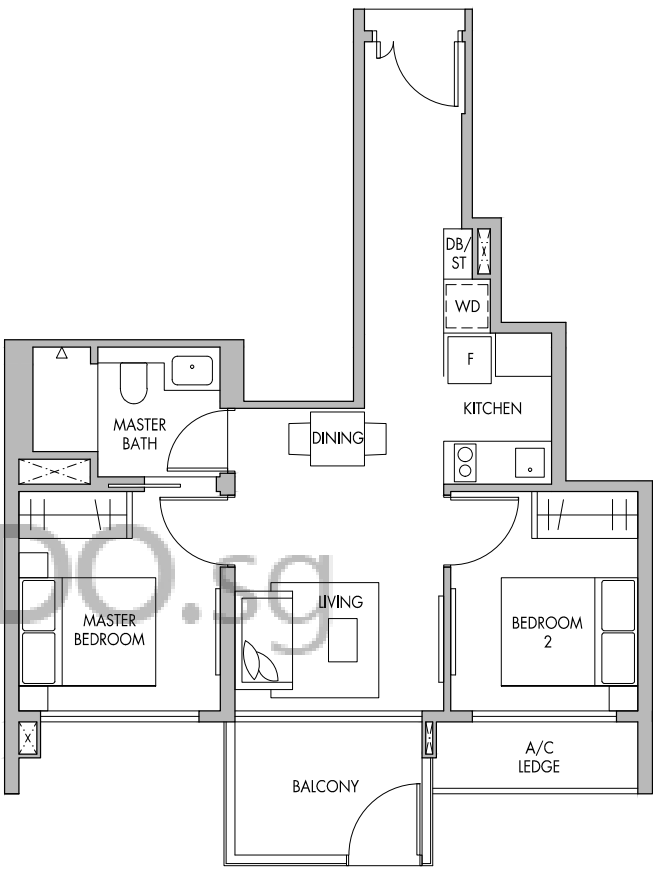
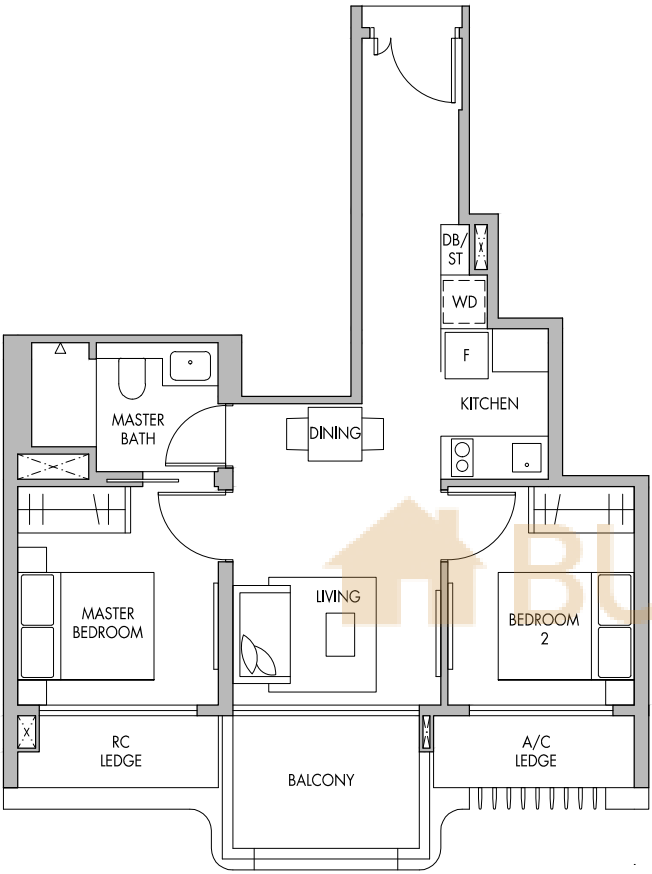
**Block 60**  
#04-02 to #19-02  
(Mirrored) #04-07 to #19-07

57 sq.m. | 614 sq.ft.

Area includes A/C ledge, balconies and void (if applicable). The above plans and illustrations are subject to changes as may be required by the relevant authorities. Areas are estimates only and are subject to final survey. The balcony shall not be enclosed unless with the approved screen. For an illustration of the approved balcony screen, please refer to the diagram annexed hereto as 'Annexure 1'.

**2-Bedroom**  
TYPE B2

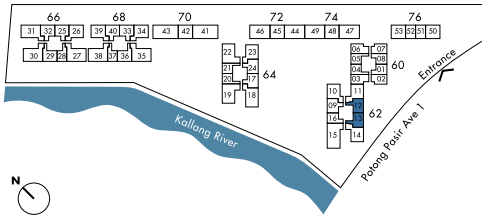
**2-Bedroom**  
TYPE B2P



**Block 62**  
#04-12 to #07-12  
#10-12 to #19-12  
#04-13 to #19-13 (Mirrored)

58 sq.m. | 624 sq.ft.

Area includes A/C ledge, balconies and void (if applicable). The above plans and illustrations are subject to changes as may be required by the relevant authorities. Areas are estimates only and are subject to final survey. The balcony shall not be enclosed unless with the approved screen. For an illustration of the approved balcony screen, please refer to the diagram annexed hereto as 'Annexure 1'.



**Block 62**  
#03-12  
(Mirrored) #03-13

58 sq.m. | 624 sq.ft.

Area includes A/C ledge, balconies and void (if applicable). The above plans and illustrations are subject to changes as may be required by the relevant authorities. Areas are estimates only and are subject to final survey. The balcony shall not be enclosed unless with the approved screen. For an illustration of the approved balcony screen, please refer to the diagram annexed hereto as 'Annexure 1'.

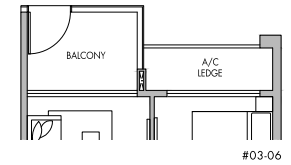
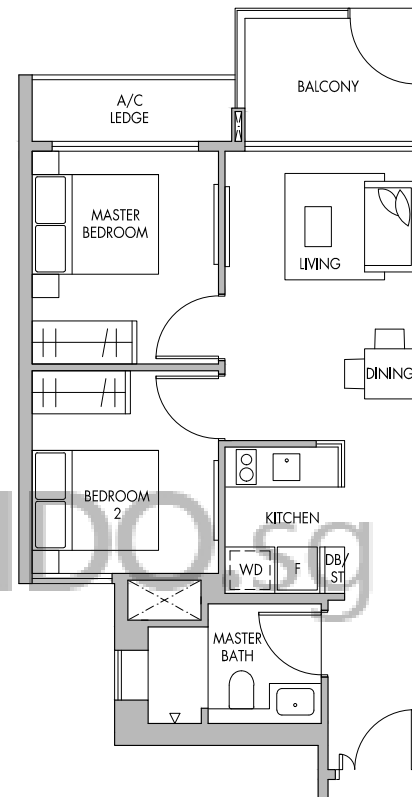
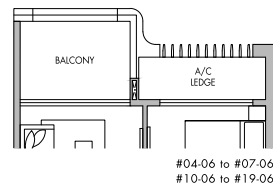
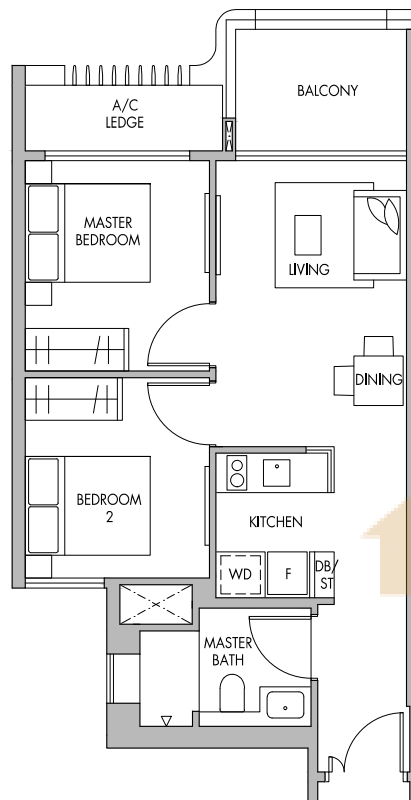


## 2-Bedroom

TYPE B3

## 2-Bedroom

TYPE B3P



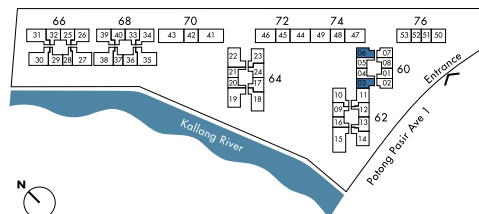
TOWER BLOCK

TOWER BLOCK

### Block 60

#04-03 to #07-03  
#10-03 to #19-03  
#04-06 to #07-06  
#10-06 to #19-06

60 sq.m. | 646 sq.ft.

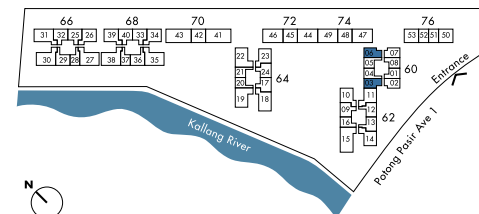


Area includes A/C ledge, balconies and void (if applicable). The above plans and illustrations are subject to changes as may be required by the relevant authorities. Areas are estimates only and are subject to final survey. The balcony shall not be enclosed unless with the approved screen. For an illustration of the approved balcony screen, please refer to the diagram annexed hereto as 'Annexure 1'.

### Block 60

#03-03  
#03-06

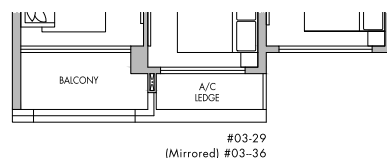
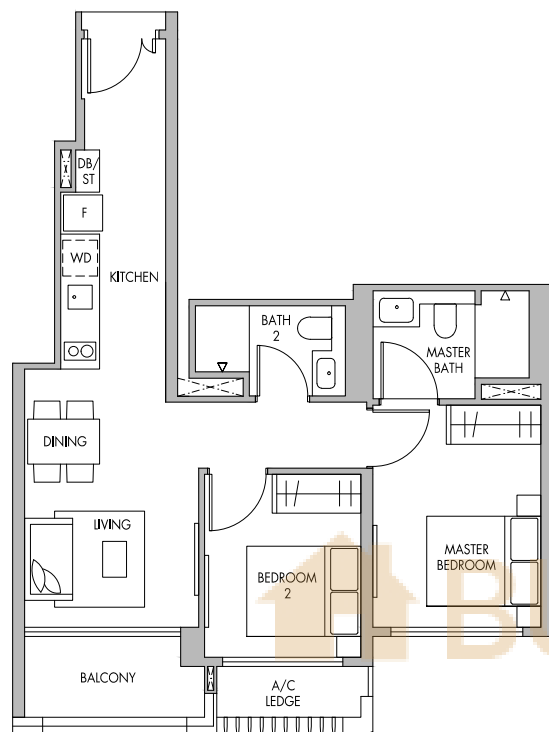
60 sq.m. | 646 sq.ft.



Area includes A/C ledge, balconies and void (if applicable). The above plans and illustrations are subject to changes as may be required by the relevant authorities. Areas are estimates only and are subject to final survey. The balcony shall not be enclosed unless with the approved screen. For an illustration of the approved balcony screen, please refer to the diagram annexed hereto as 'Annexure 1'.

## 2-Bedroom Premium

TYPE B5



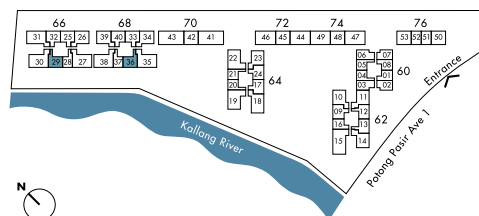
### Block 66

#03-29  
#04-29 to #20-29

### Block 68

#03-36 (Mirrored)  
#04-36 to #20-36 (Mirrored)

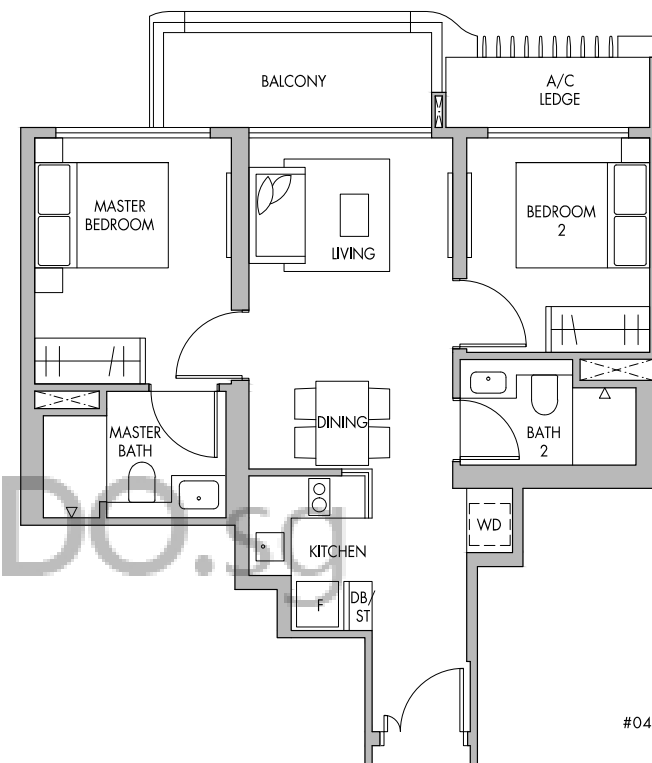
64 sq.m. | 689 sq.ft.



Area includes A/C ledge, balconies and void (if applicable). The above plans and illustrations are subject to changes as may be required by the relevant authorities. Areas are estimates only and are subject to final survey. The balcony shall not be enclosed unless with the approved screen. For an illustration of the approved balcony screen, please refer to the diagram annexed hereto as 'Annexure 1'.

## 2-Bedroom Premium

TYPE B6



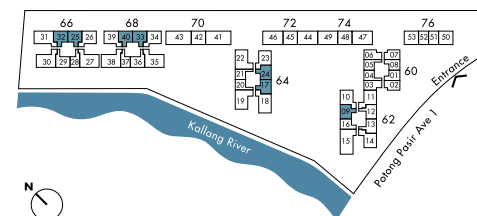
**Block 62**  
#04-09 to #19-09

**Block 64**  
#04-17 to #20-17  
(Mirrored) #04-24 to #07-24  
(Mirrored) #10-24 to #20-24

**Block 66**  
#04-25 to #07-25  
#10-25 to #20-25  
(Mirrored) #04-32 to #07-32  
(Mirrored) #10-32 to #20-32

**Block 68**  
#04-33 to #07-33  
#10-33 to #20-33  
(Mirrored) #04-40 to #07-40  
(Mirrored) #10-40 to #20-40

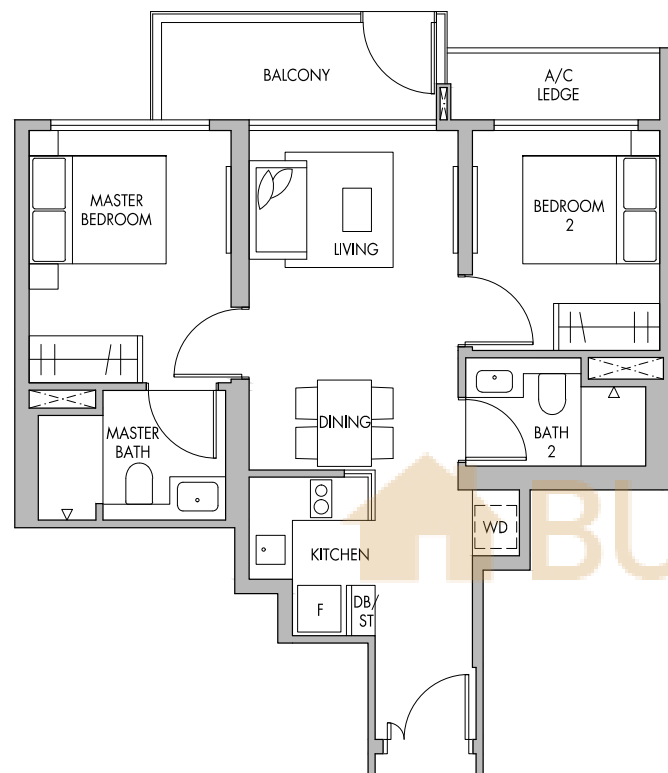
65 sq.m. | 700 sq.ft.



Area includes A/C ledge, balconies and void (if applicable). The above plans and illustrations are subject to changes as may be required by the relevant authorities. Areas are estimates only and are subject to final survey. The balcony shall not be enclosed unless with the approved screen. For an illustration of the approved balcony screen, please refer to the diagram annexed hereto as 'Annexure 1'.

## 2-Bedroom Premium

TYPE B6P



### Block 62

#03-09

### Block 64

#03-17

#03-24 (Mirrored)

### Block 66

#03-25

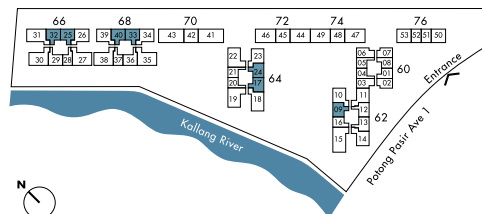
#03-32 (Mirrored)

### Block 68

#03-33

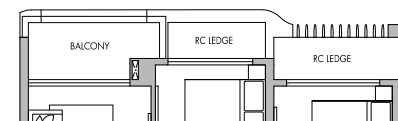
#03-40 (Mirrored)

65 sq.m. | 700 sq.ft.



## 2-Bedroom Premium

TYPE B7



#10-26 (Mirrored) #10-23  
#10-34 (Mirrored) #10-39



### Block 62

#04-10 to #19-10

### Block 64

(Mirrored) #04-23 to #07-23

(Mirrored) #10-23

(Mirrored) #11-23 to #20-23

### Block 66

#04-26 to #07-26

#10-26

#11-26 to #20-26

### Block 68

#04-34 to #07-34

#10-34

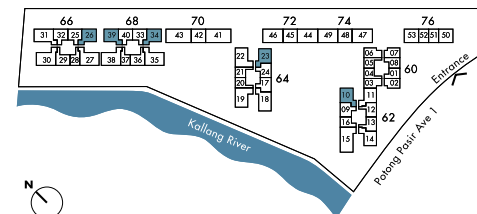
#11-34 to #20-34

(Mirrored) #04-39 to #07-39

(Mirrored) #10-39

(Mirrored) #11-39 to #20-39

69 sq.m. | 743 sq.ft.

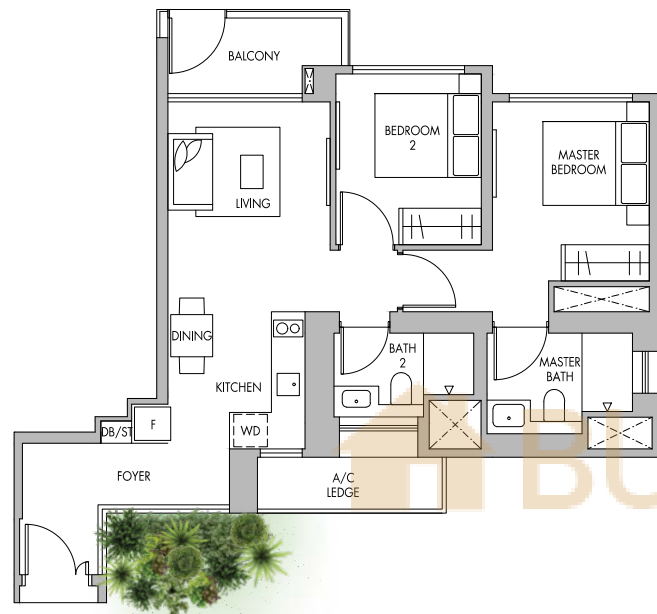


Area includes A/C ledge, balconies and void (if applicable). The above plans and illustrations are subject to changes as may be required by the relevant authorities. Areas are estimates only and are subject to final survey. The balcony shall not be enclosed unless with the approved screen. For an illustration of the approved balcony screen, please refer to the diagram annexed hereto as 'Annexure 1'.

Area includes A/C ledge, balconies and void (if applicable). The above plans and illustrations are subject to changes as may be required by the relevant authorities. Areas are estimates only and are subject to final survey. The balcony shall not be enclosed unless with the approved screen. For an illustration of the approved balcony screen, please refer to the diagram annexed hereto as 'Annexure 1'.

## 2-Bedroom Premium

TYPE B7P



TOWER BLOCK

### Block 62

#03-10

### Block 64

#03-23 (Mirrored)

### Block 66

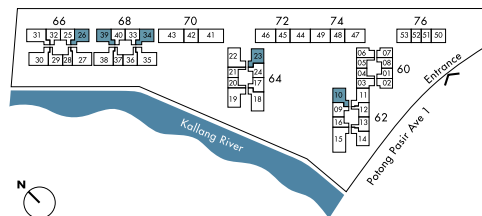
#03-26

### Block 68

#03-34

#03-39 (Mirrored)

69 sq.m. | 743 sq.ft.



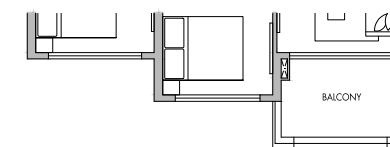
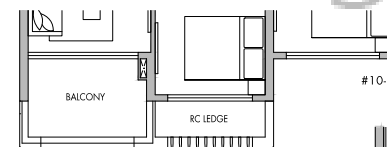
Area includes A/C ledge, balconies and void (if applicable). The above plans and illustrations are subject to changes as may be required by the relevant authorities. Areas are estimates only and are subject to final survey. The balcony shall not be enclosed unless with the approved screen. For an illustration of the approved balcony screen, please refer to the diagram annexed hereto as 'Annexure 1'.

## 2-Bedroom Premium

TYPE B8



TOWER BLOCK



#03-14

### Block 62

#04-11 to #07-11

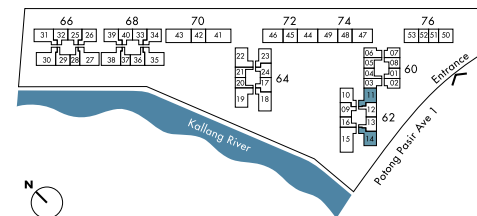
#10-11

#11-11 to #19-11

(Mirrored) #03-14

(Mirrored) #04-14 to #19-14

70 sq.m. | 753 sq.ft.



Area includes A/C ledge, balconies and void (if applicable). The above plans and illustrations are subject to changes as may be required by the relevant authorities. Areas are estimates only and are subject to final survey. The balcony shall not be enclosed unless with the approved screen. For an illustration of the approved balcony screen, please refer to the diagram annexed hereto as 'Annexure 1'.

## 2-Bedroom Premium

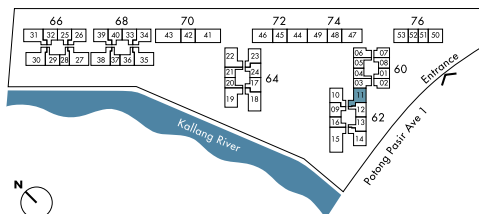
TYPE B8P



TOWER BLOCK

**Block 62**  
#03-11

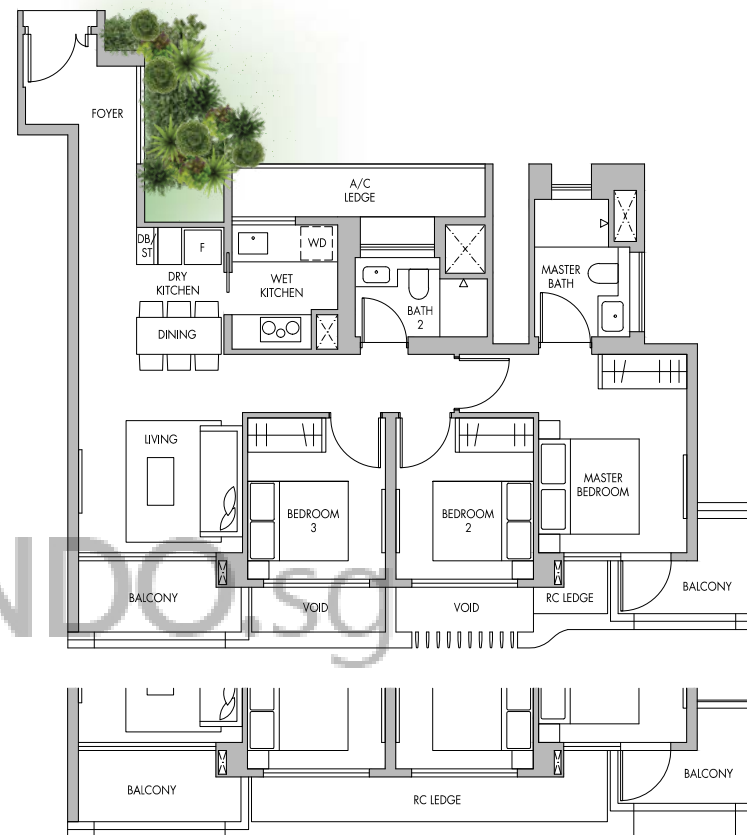
70 sq.m. | 753 sq.ft.



Area includes A/C ledge, balconies and void (if applicable). The above plans and illustrations are subject to changes as may be required by the relevant authorities. Areas are estimates only and are subject to final survey. The balcony shall not be enclosed unless with the approved screen. For an illustration of the approved balcony screen, please refer to the diagram annexed hereto as 'Annexure 1'.

## 3-Bedroom

TYPE C1



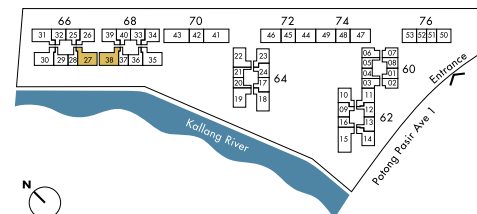
TOWER BLOCK

#03-27  
(Mirrored) #03-38

**Block 66**  
#03-27  
#04-27 to #20-27

**Block 68**  
(Mirrored) #03-38  
(Mirrored) #04-38 to #20-38

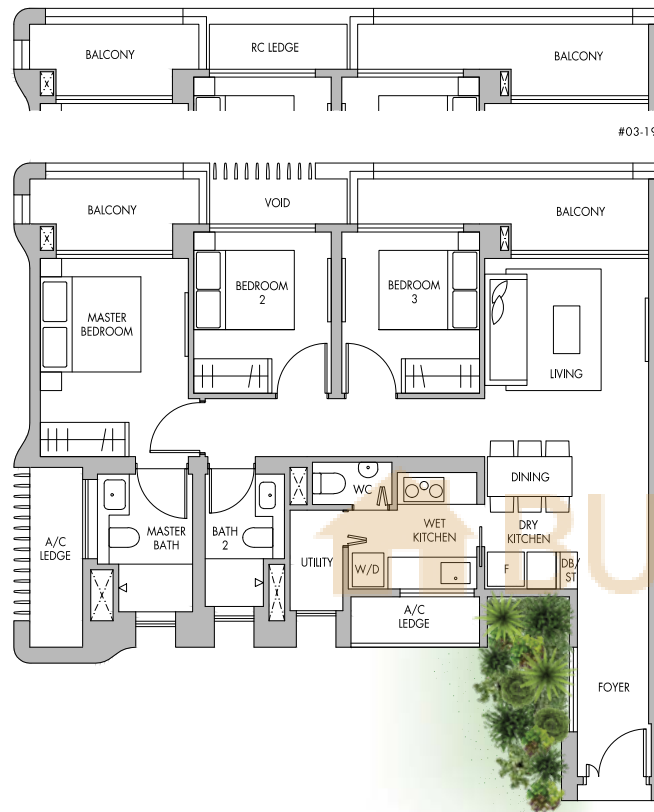
94 sq.m. | 1,012 sq.ft.



Area includes A/C ledge, balconies and void (if applicable). The above plans and illustrations are subject to changes as may be required by the relevant authorities. Areas are estimates only and are subject to final survey. The balcony shall not be enclosed unless with the approved screen. For an illustration of the approved balcony screen, please refer to the diagram annexed hereto as 'Annexure 1'.

## 3-Bedroom Premium

TYPE C3

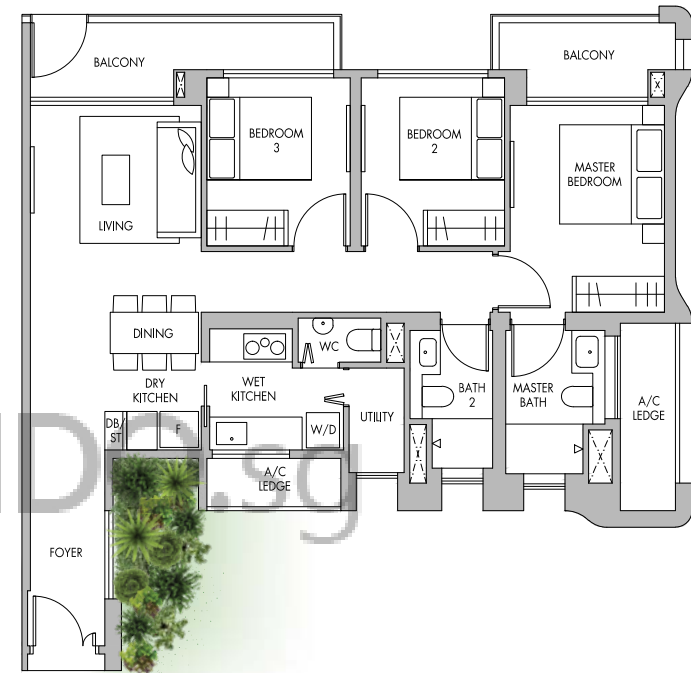


#03-19

TOWER BLOCK

## 3-Bedroom Premium

TYPE C3P



TOWER BLOCK

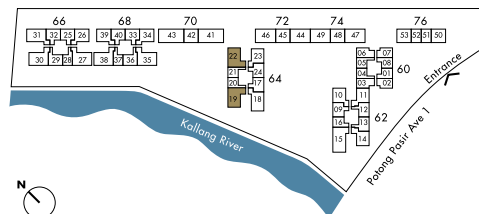
### Block 64

#03-19

#04-19 to #20-19

#04-22 to #20-22 (Mirrored)

102 sq.m. | 1,098 sq.ft.

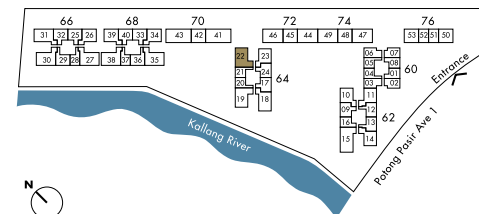


Area includes A/C ledge, balconies and void (if applicable). The above plans and illustrations are subject to changes as may be required by the relevant authorities. Areas are estimates only and are subject to final survey. The balcony shall not be enclosed unless with the approved screen. For an illustration of the approved balcony screen, please refer to the diagram annexed hereto as 'Annexure 1'.

### Block 64

#03-22

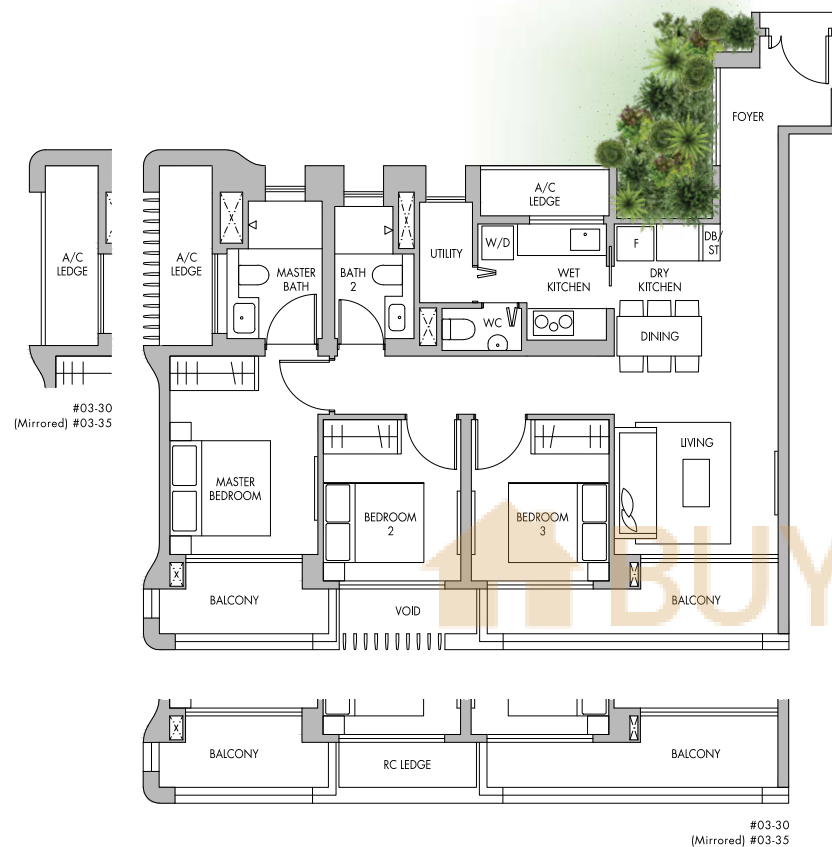
102 sq.m. | 1,098 sq.ft.



Area includes A/C ledge, balconies and void (if applicable). The above plans and illustrations are subject to changes as may be required by the relevant authorities. Areas are estimates only and are subject to final survey. The balcony shall not be enclosed unless with the approved screen. For an illustration of the approved balcony screen, please refer to the diagram annexed hereto as 'Annexure 1'.

## 3-Bedroom Premium

TYPE C4



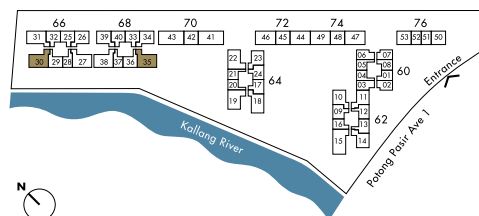
### Block 66

#03-30  
#04-30 to #20-30

### Block 68

#03-35 (Mirrored)  
#04-35 to #20-35 (Mirrored)

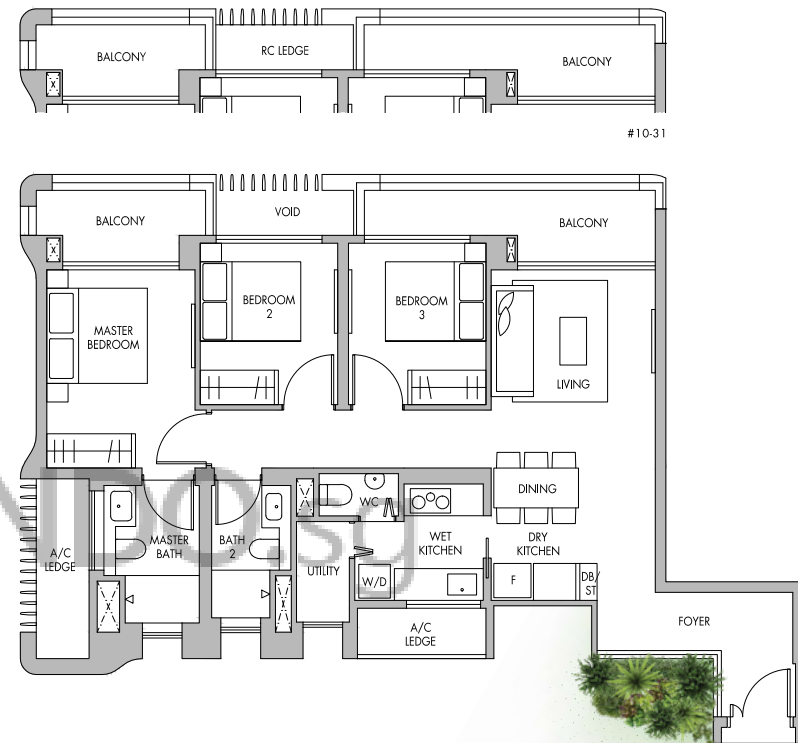
102 sq.m. | 1,098 sq.ft.



Area includes A/C ledge, balconies and void (if applicable). The above plans and illustrations are subject to changes as may be required by the relevant authorities. Areas are estimates only and are subject to final survey. The balcony shall not be enclosed unless with the approved screen. For an illustration of the approved balcony screen, please refer to the diagram annexed hereto as 'Annexure 1'.

## 3-Bedroom Premium

TYPE C5



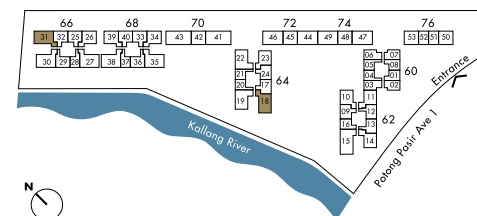
### Block 64

(Mirrored) #04-18 to #20-18

### Block 66

#04-31 to #07-31  
#10-31  
#11-31 to #20-31

103 sq.m. | 1,109 sq.ft.



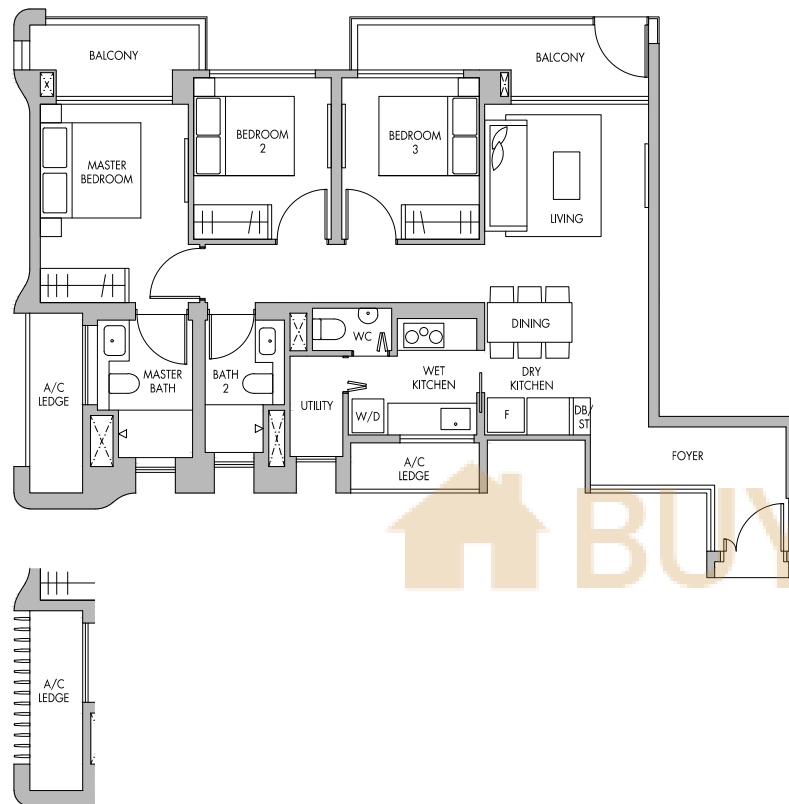
Area includes A/C ledge, balconies and void (if applicable). The above plans and illustrations are subject to changes as may be required by the relevant authorities. Areas are estimates only and are subject to final survey. The balcony shall not be enclosed unless with the approved screen. For an illustration of the approved balcony screen, please refer to the diagram annexed hereto as 'Annexure 1'.

## 3-Bedroom Premium

TYPE C5P

## 4-Bedroom

TYPE D2



[Mirrored] #03-18



TOWER BLOCK

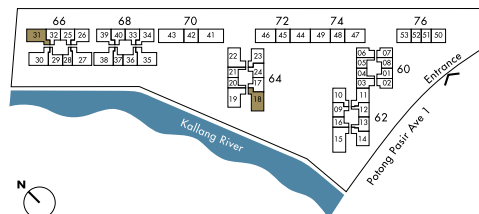
### Block 64

#03-18 (Mirrored)

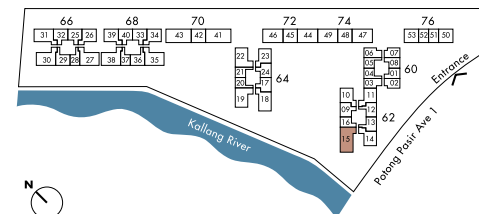
### Block 66

#03-31

103 sq.m. | 1,109 sq.ft.



Area includes A/C ledge, balconies and void (if applicable). The above plans and illustrations are subject to changes as may be required by the relevant authorities. Areas are estimates only and are subject to final survey. The balcony shall not be enclosed unless with the approved screen. For an illustration of the approved balcony screen, please refer to the diagram annexed hereto as 'Annexure 1'.



### Block 62

#04-15 to #19-15

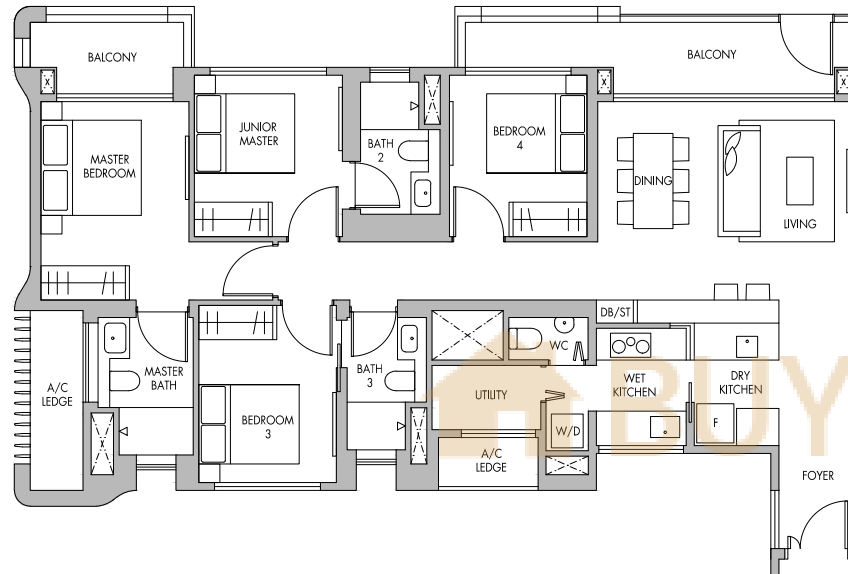
128 sq.m. | 1,378 sq.ft.

Area includes A/C ledge, balconies and void (if applicable). The above plans and illustrations are subject to changes as may be required by the relevant authorities. Areas are estimates only and are subject to final survey. The balcony shall not be enclosed unless with the approved screen. For an illustration of the approved balcony screen, please refer to the diagram annexed hereto as 'Annexure 1'.



## 4-Bedroom

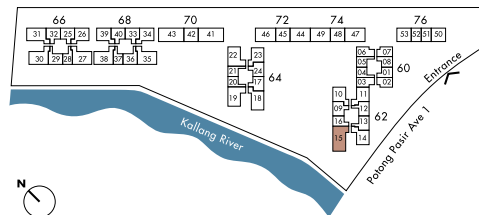
TYPE D2P



TOWER BLOCK

**Block 62**  
#03-15

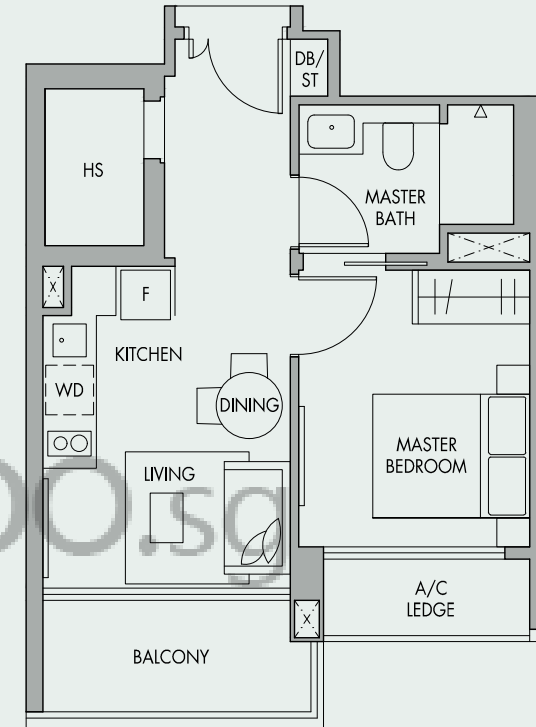
128 sq.m. | 1,378 sq.ft.



Area includes A/C ledge, balconies and void (if applicable). The above plans and illustrations are subject to changes as may be required by the relevant authorities. Areas are estimates only and are subject to final survey. The balcony shall not be enclosed unless with the approved screen. For an illustration of the approved balcony screen, please refer to the diagram annexed hereto as 'Annexure 1'.

## 1-Bedroom

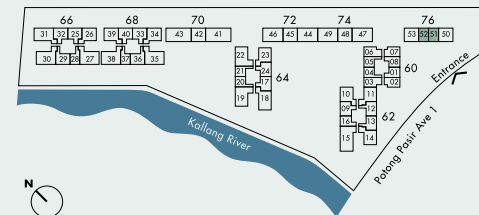
TYPE A1



GARDEN BLOCK

**Block 76**  
#04-51 to #07-51  
(Mirrored) #04-52 to #07-52

45 sq.m. | 484 sq.ft.

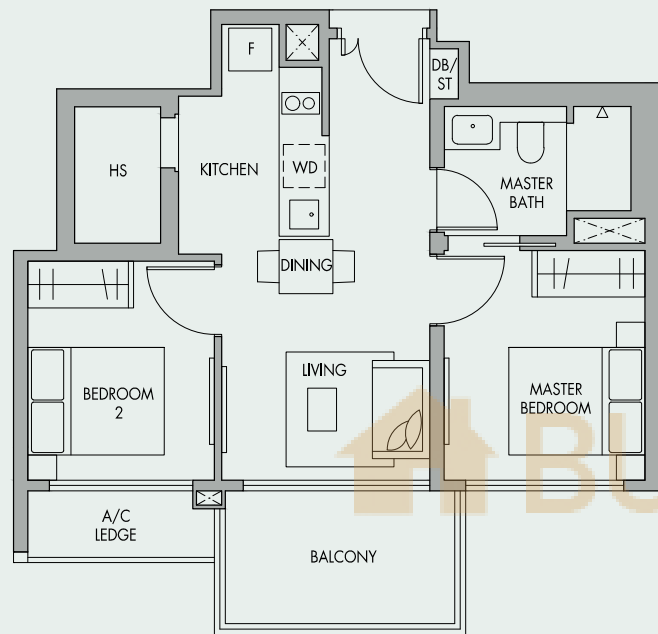


Area includes A/C ledge, balconies and void (if applicable). The above plans and illustrations are subject to changes as may be required by the relevant authorities. Areas are estimates only and are subject to final survey. The balcony shall not be enclosed unless with the approved screen. For an illustration of the approved balcony screen, please refer to the diagram annexed hereto as 'Annexure 1'.

## 2-Bedroom

TYPE B4

GARDEN BLOCK



### Block 70

#04-42 to #07-42

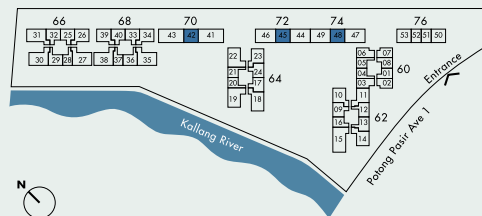
### Block 72

#04-45 to #07-45

### Block 74

#04-48 to #07-48 (Mirrored)

59 sq.m. | 635 sq.ft.

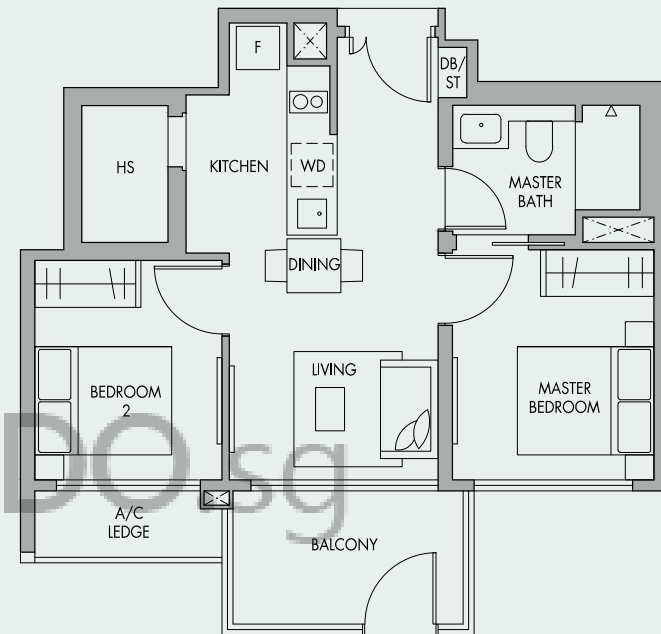


Area includes A/C ledge, balconies and void (if applicable). The above plans and illustrations are subject to changes as may be required by the relevant authorities. Areas are estimates only and are subject to final survey. The balcony shall not be enclosed unless with the approved screen. For an illustration of the approved balcony screen, please refer to the diagram annexed hereto as 'Annexure 1'.

## 2-Bedroom

TYPE B4P

GARDEN BLOCK



### Block 70

#03-42

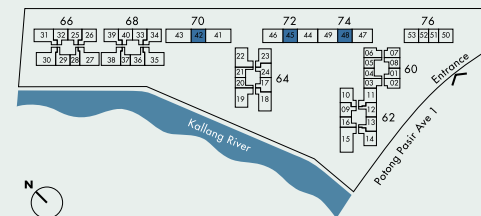
### Block 72

#03-45

### Block 74

(Mirrored) #03-48

59 sq.m. | 635 sq.ft.



Area includes A/C ledge, balconies and void (if applicable). The above plans and illustrations are subject to changes as may be required by the relevant authorities. Areas are estimates only and are subject to final survey. The balcony shall not be enclosed unless with the approved screen. For an illustration of the approved balcony screen, please refer to the diagram annexed hereto as 'Annexure 1'.

## 2-Bedroom Premium

TYPE B9



GARDEN BLOCK

## 3-Bedroom Premium

TYPE C2



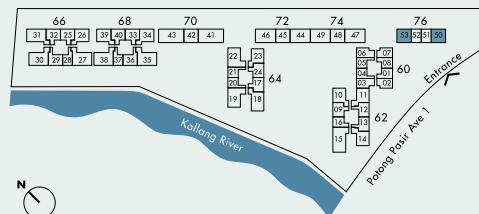
GARDEN BLOCK

### Block 76

#04-50 to #07-50

#04-53 to #07-53 (Mirrored)

74 sq.m. | 797 sq.ft.

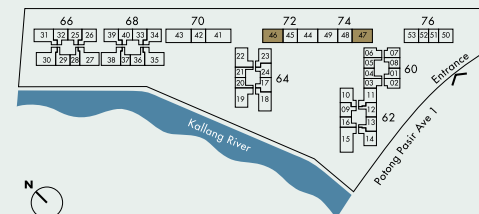


Area includes A/C ledge, balconies and void (if applicable). The above plans and illustrations are subject to changes as may be required by the relevant authorities. Areas are estimates only and are subject to final survey. The balcony shall not be enclosed unless with the approved screen. For an illustration of the approved balcony screen, please refer to the diagram annexed hereto as 'Annexure 1'.

**Block 72**  
#04-46 to #07-46

**Block 74**  
(Mirrored) #04-47 to #07-47

98 sq.m. | 1,055 sq.ft.

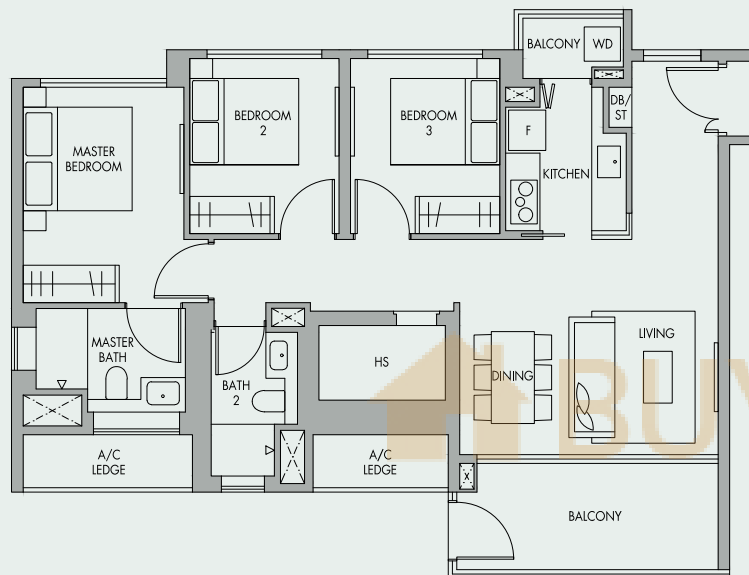


Area includes A/C ledge, balconies and void (if applicable). The above plans and illustrations are subject to changes as may be required by the relevant authorities. Areas are estimates only and are subject to final survey. The balcony shall not be enclosed unless with the approved screen. For an illustration of the approved balcony screen, please refer to the diagram annexed hereto as 'Annexure 1'.

## 3-Bedroom Premium

TYPE C2P

GARDEN BLOCK



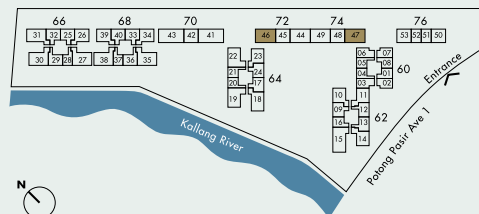
Block 72

#03-46

Block 74

#03-47 (Mirrored)

98 sq.m. | 1,055 sq.ft.



Area includes A/C ledge, balconies and void (if applicable). The above plans and illustrations are subject to changes as may be required by the relevant authorities. Areas are estimates only and are subject to final survey. The balcony shall not be enclosed unless with the approved screen. For an illustration of the approved balcony screen, please refer to the diagram annexed hereto as 'Annexure 1'.

## 3-Bedroom Premium

TYPE C6

GARDEN BLOCK



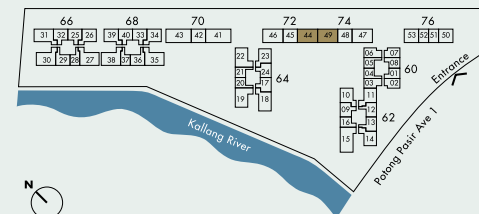
Block 72

#04-44 to #07-44

Block 74

(Mirrored) #04-49 to #07-49

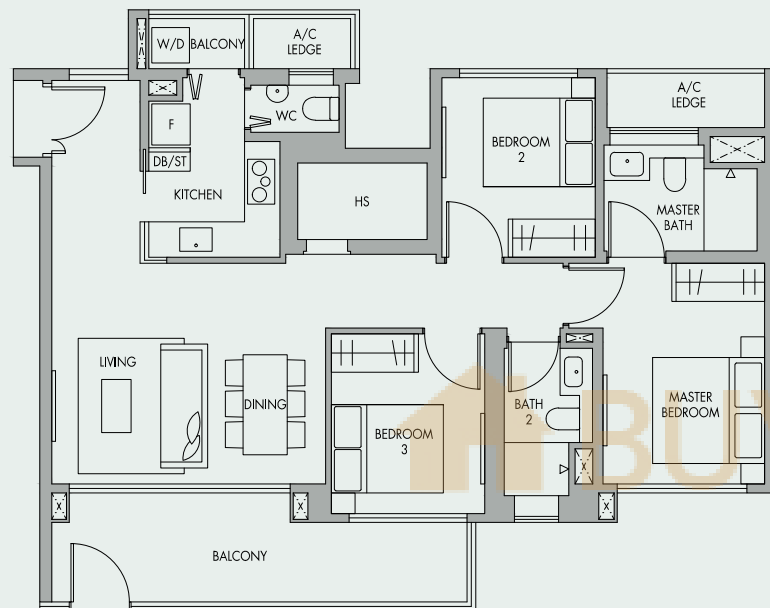
102 sq.m. | 1,098 sq.ft.



Area includes A/C ledge, balconies and void (if applicable). The above plans and illustrations are subject to changes as may be required by the relevant authorities. Areas are estimates only and are subject to final survey. The balcony shall not be enclosed unless with the approved screen. For an illustration of the approved balcony screen, please refer to the diagram annexed hereto as 'Annexure 1'.

## 3-Bedroom Premium

TYPE C6P



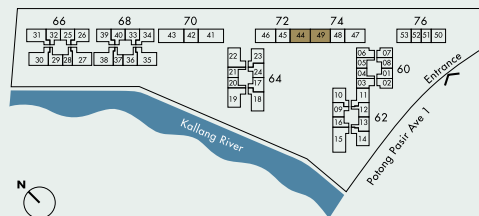
**Block 72**

#03-44

**Block 74**

#03-49 (Mirrored)

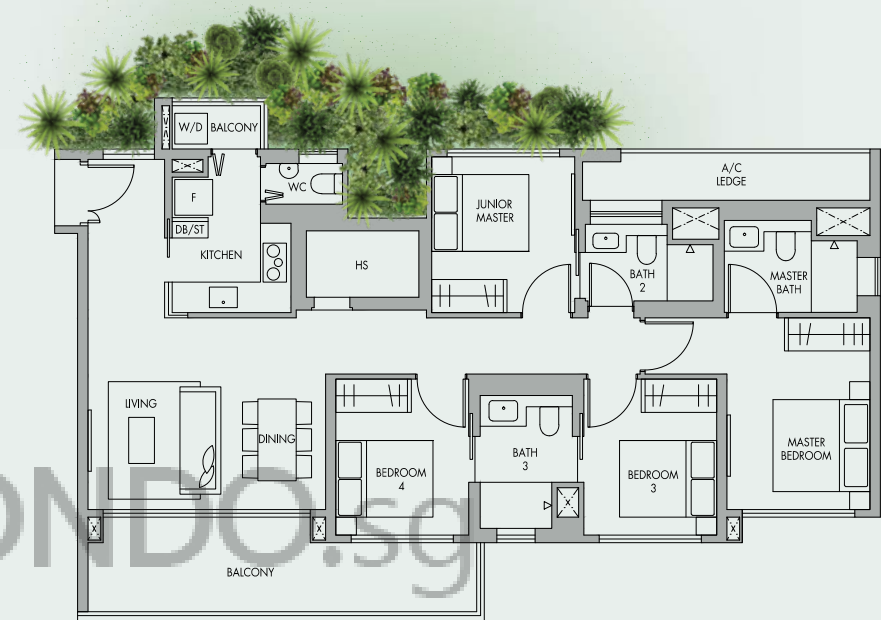
102 sq.m. | 1,098 sq.ft.



Area includes A/C ledge, balconies and void (if applicable). The above plans and illustrations are subject to changes as may be required by the relevant authorities. Areas are estimates only and are subject to final survey. The balcony shall not be enclosed unless with the approved screen. For an illustration of the approved balcony screen, please refer to the diagram annexed hereto as 'Annexure 1'.

## 4-Bedroom Premium

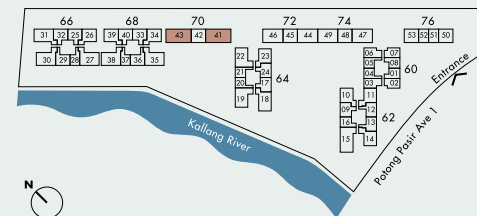
TYPE D1



**Block 70**

#04-41 to #07-41  
(Mirrored) #04-43 to #07-43

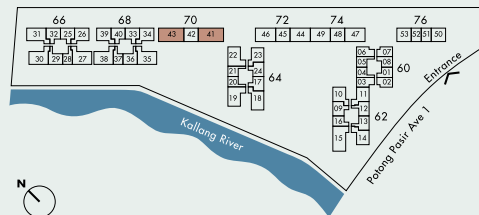
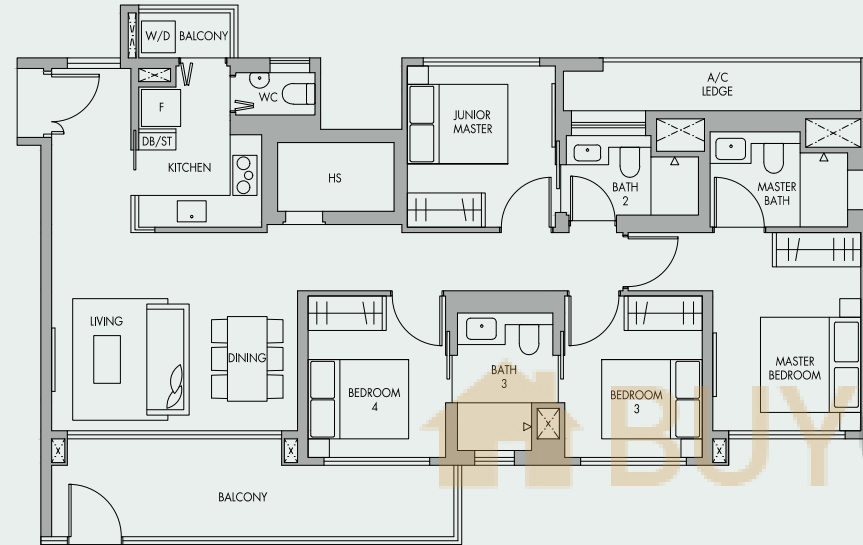
124 sq.m. | 1,335 sq.ft.



Area includes A/C ledge, balconies and void (if applicable). The above plans and illustrations are subject to changes as may be required by the relevant authorities. Areas are estimates only and are subject to final survey. The balcony shall not be enclosed unless with the approved screen. For an illustration of the approved balcony screen, please refer to the diagram annexed hereto as 'Annexure 1'.

## 4-Bedroom

TYPE D1P



### Block 70

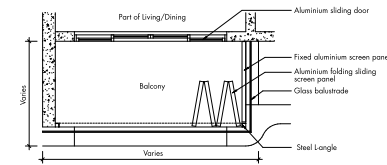
#03-41

#03-43 (Mirrored)

124 sq.m. | 1,335 sq.ft.

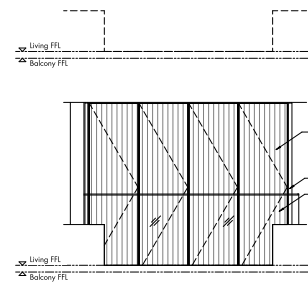
Area includes A/C ledge, balconies and void (if applicable). The above plans and illustrations are subject to changes as may be required by the relevant authorities. Areas are estimates only and are subject to final survey. The balcony shall not be enclosed unless with the approved screen. For an illustration of the approved balcony screen, please refer to the diagram annexed hereto as 'Annexure 1'.

## Annexure 1



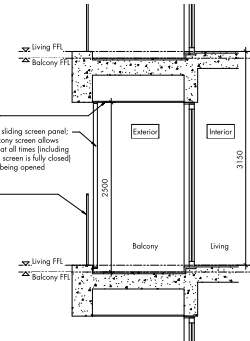
### Tower Block

Typical Retractable Balcony Screen - Plan



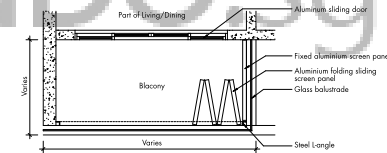
### Tower Block

Typical Retractable Balcony Screen - Elevation



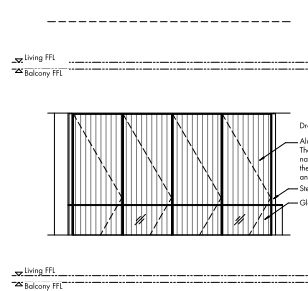
### Tower Block

Typical Retractable Balcony Screen - Section



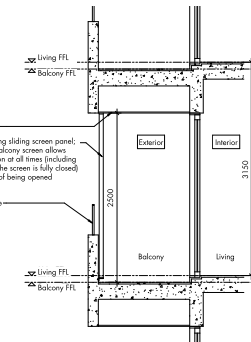
### Garden Block

Typical Retractable Balcony Screen - Plan



### Garden Block

Typical Retractable Balcony Screen - Elevation



### Garden Block

Typical Retractable Balcony Screen - Section

Note: The cost of the screen and installation shall be borne by the Purchaser. Actual profile of the screen is subjected to manufacturer's detail. The proposed balcony screen allows natural ventilation at all times (including the times when the screen is fully closed).