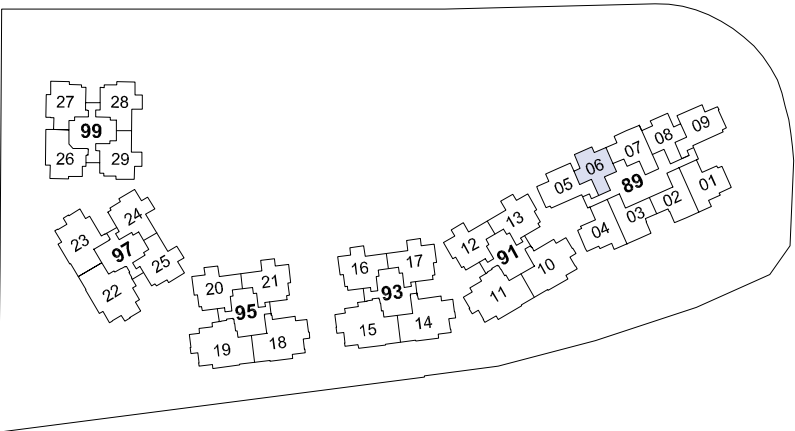
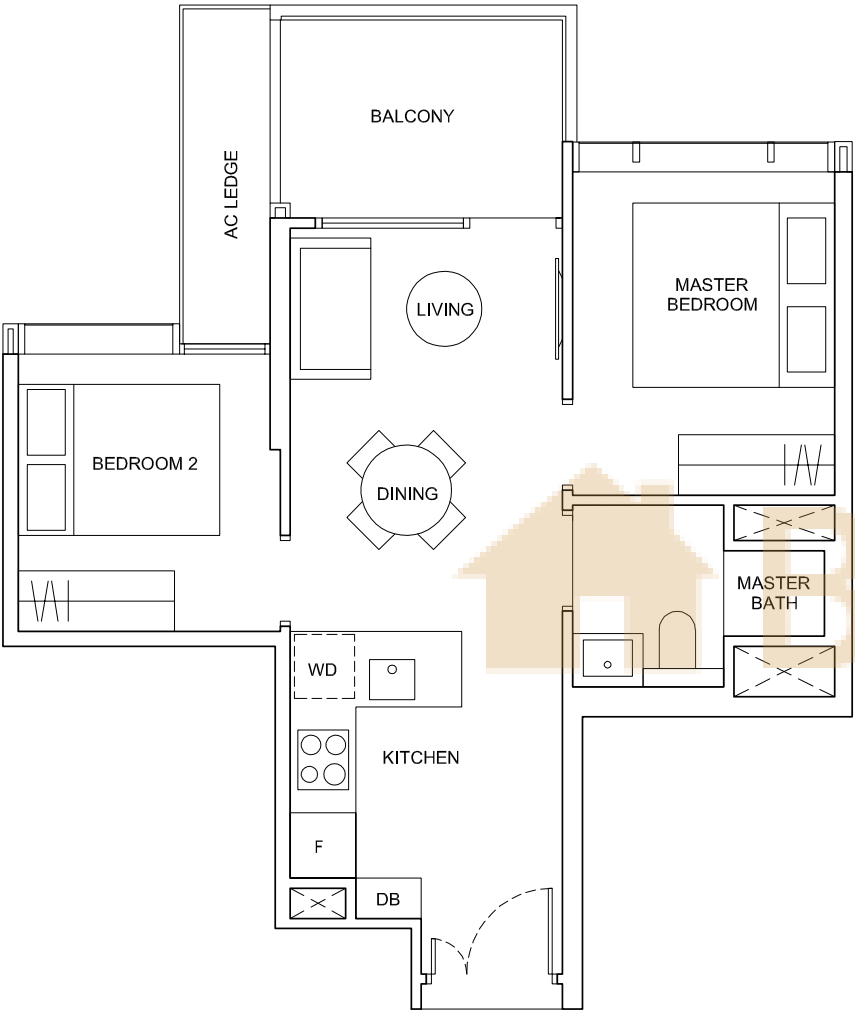




2 - B E D R O O M S U I T E

TYPE A1

53 sqm / 570 sqft
#02-06 to #12-06



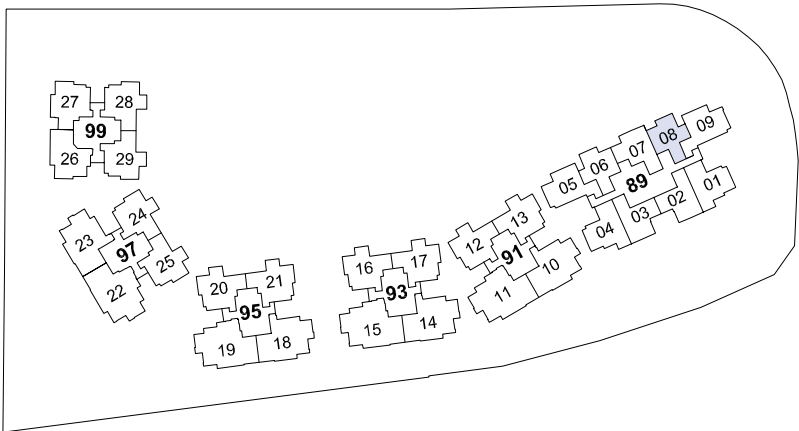
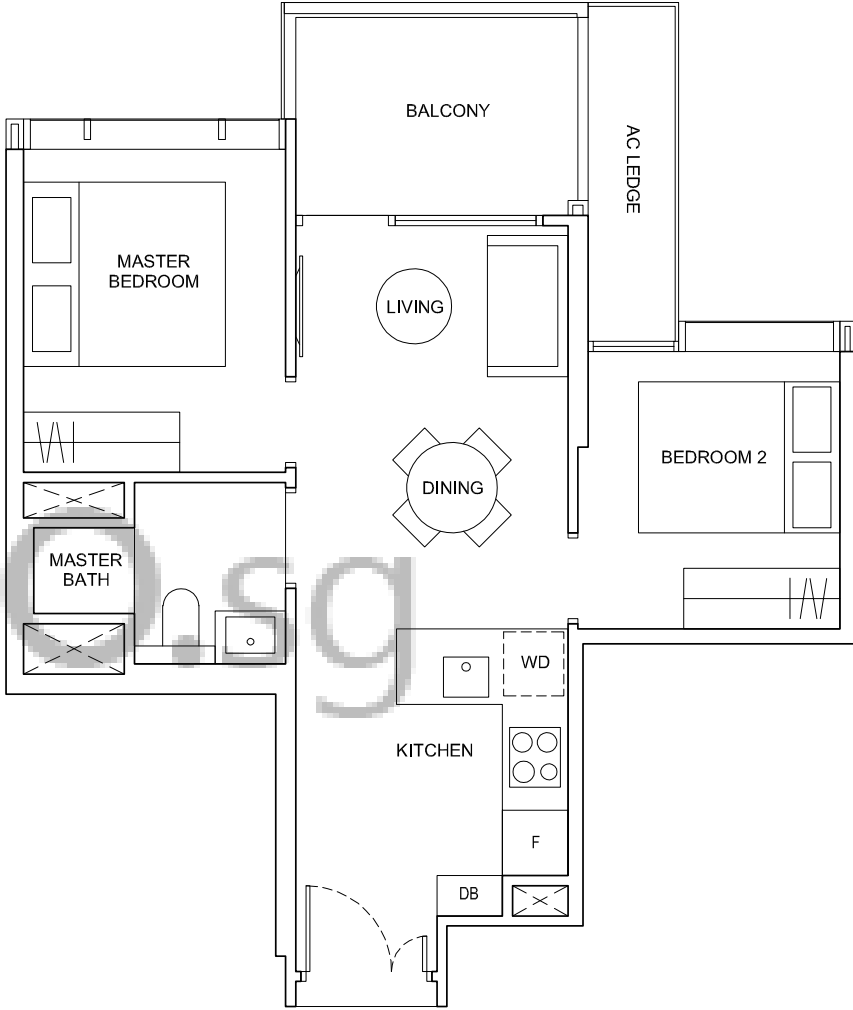
The plans are subjected to change as may required or approved by the relevant authorities. Areas are estimates only and subject to final survey. Plans are not drawn to scale and do not form part of the contract.



2 - B E D R O O M S U I T E

TYPE A2

53 sqm / 570 sqft
#02-08 to #12-08



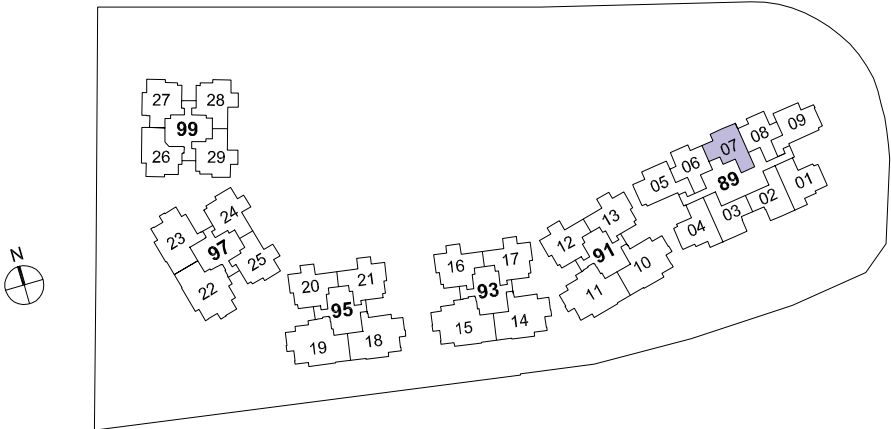
The plans are subjected to change as may required or approved by the relevant authorities. Areas are estimates only and subject to final survey. Plans are not drawn to scale and do not form part of the contract.



2 - B E D R O O M S E L E C T

TYPE B1

56 sqm / 603 sqft
#02-07 to #12-07



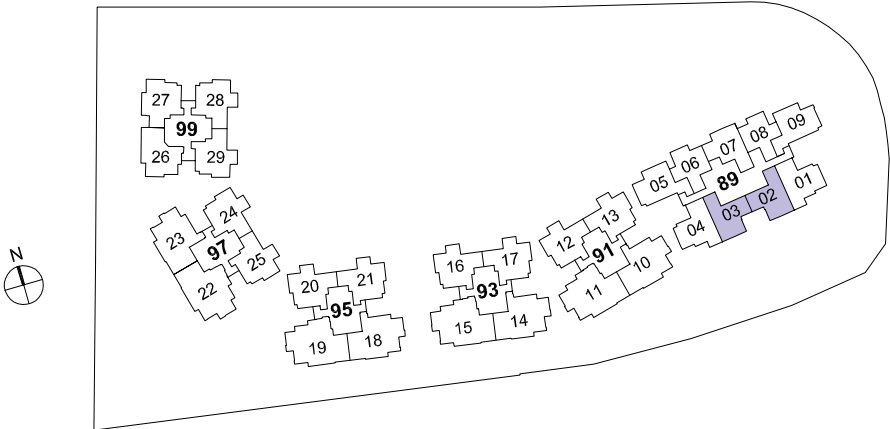
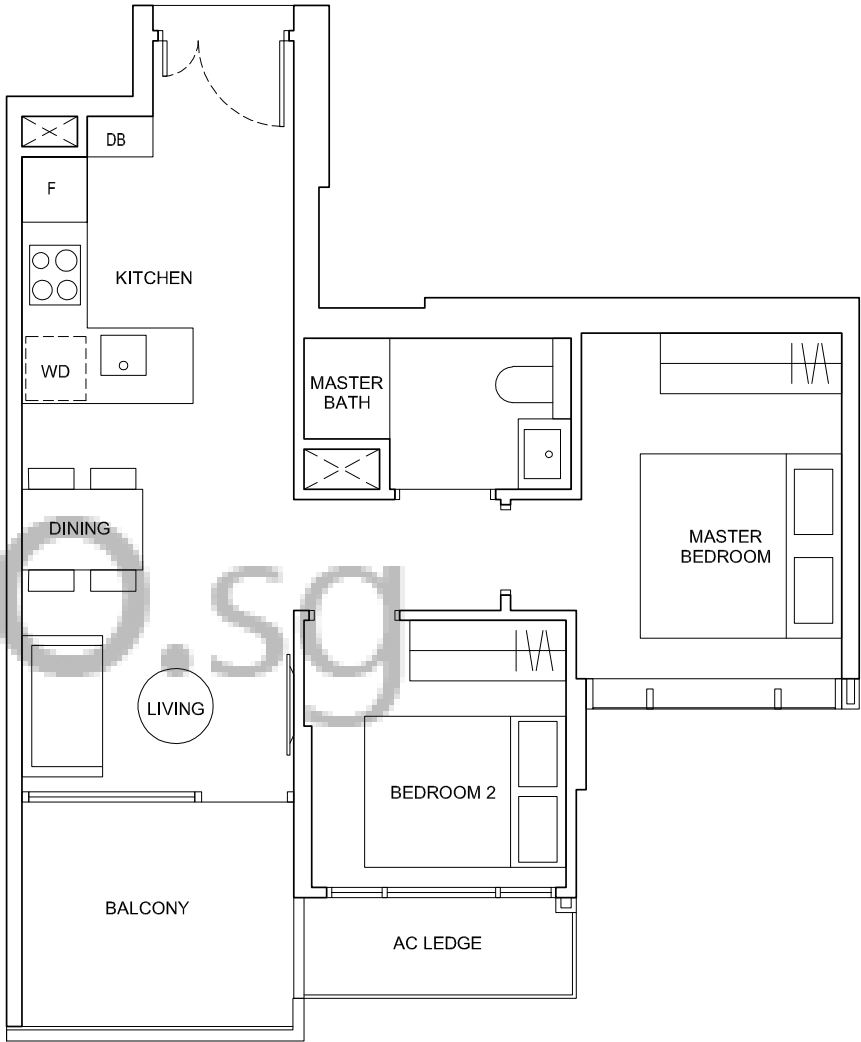
The plans are subjected to change as may required or approved by the relevant authorities. Areas are estimates only and subject to final survey. Plans are not drawn to scale and do not form part of the contract.



2 - B E D R O O M S E L E C T

TYPE B2

57 sqm / 614 sqft
#02-02 to #12-02*
#02-03 to #12-03
* Mirror Unit



The plans are subjected to change as may required or approved by the relevant authorities. Areas are estimates only and subject to final survey. Plans are not drawn to scale and do not form part of the contract.



2 - BED ROOM CLASSIC

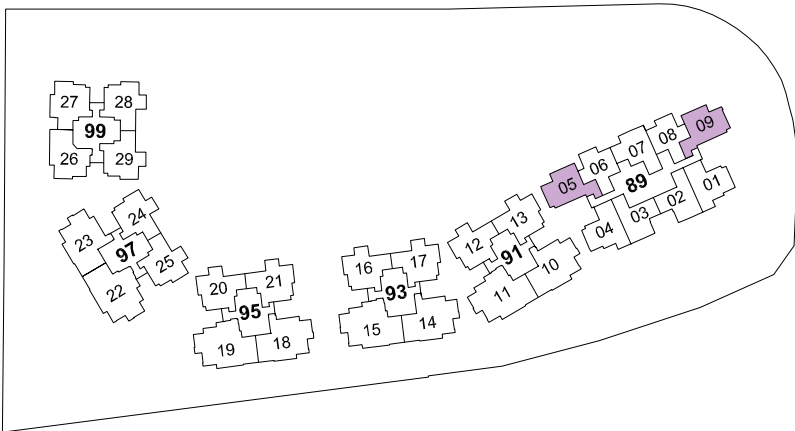
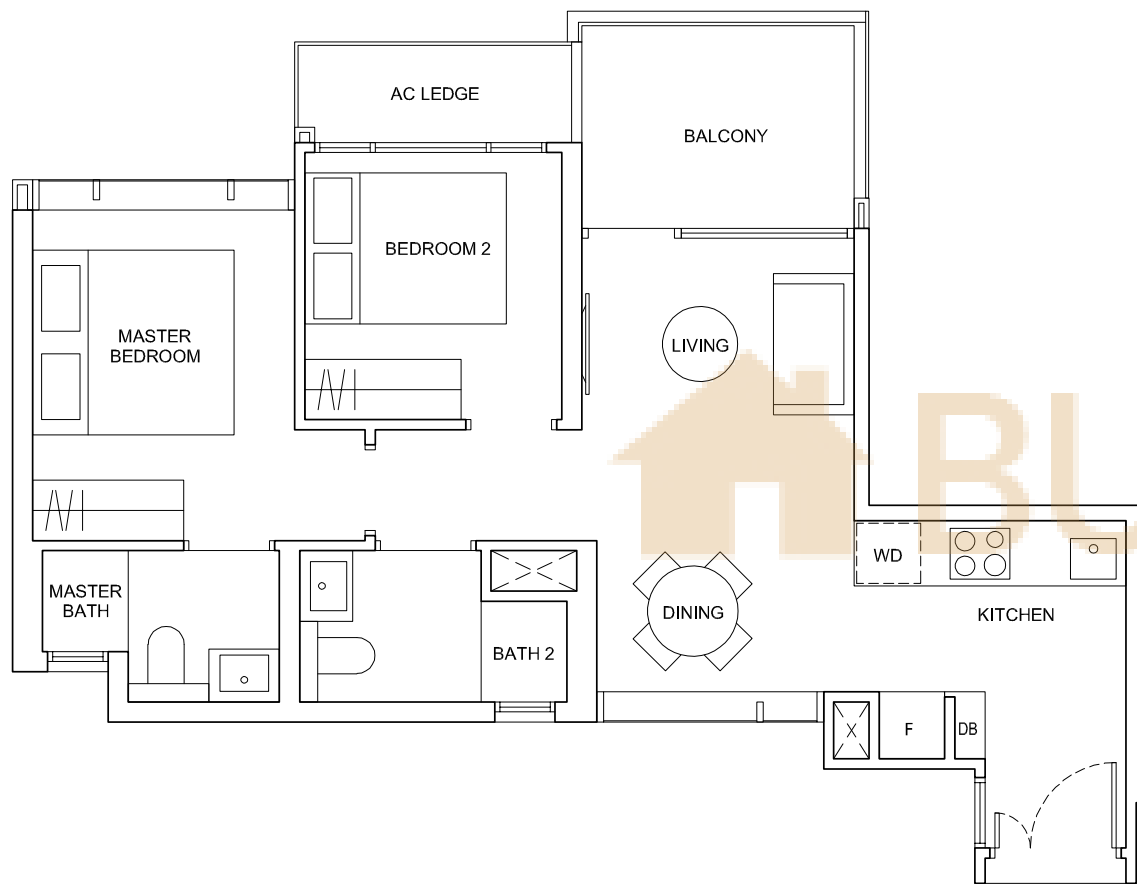
TYPE C1

61 sqm / 657 sqft

#02-05 to #12-05

#02-09 to #12-09*

* Mirror Unit



The plans are subjected to change as may required or approved by the relevant authorities. Areas are estimates only and subject to final survey. Plans are not drawn to scale and do not form part of the contract.



2 - BED ROOM CLASSIC

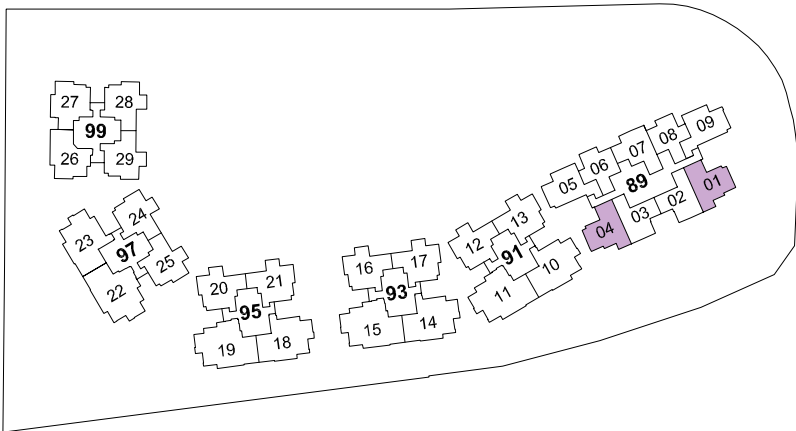
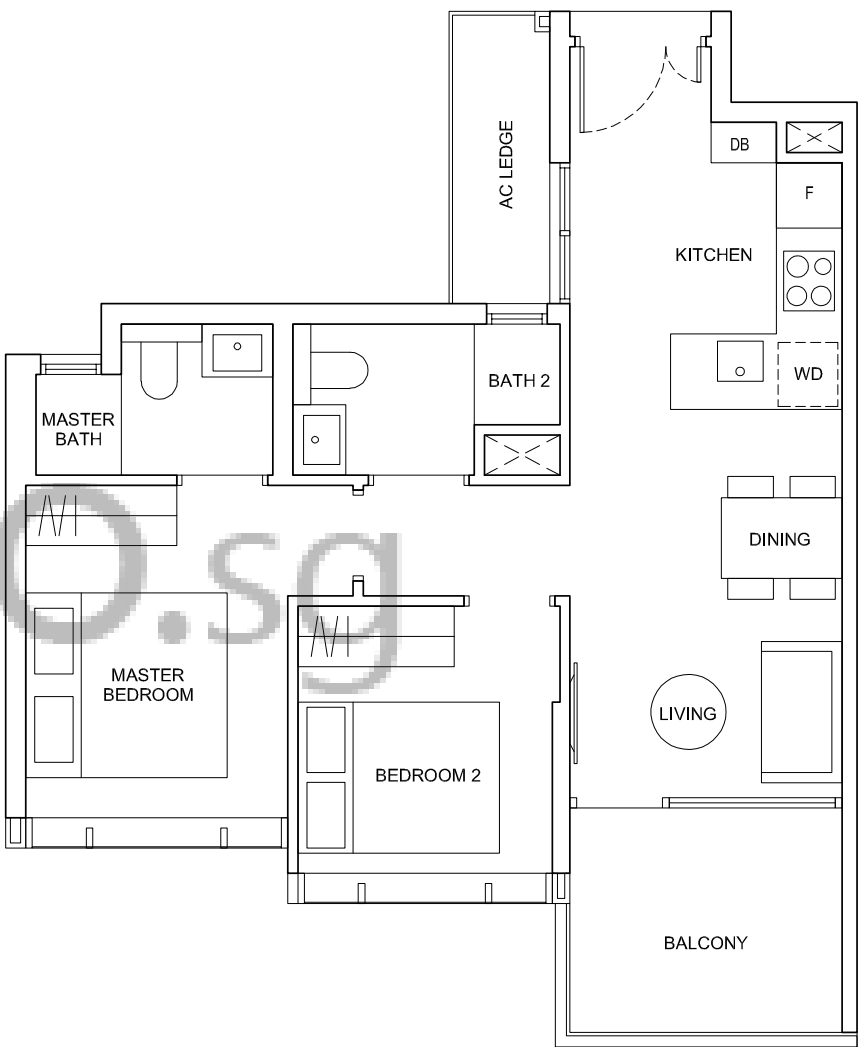
TYPE C2

61 sqm / 657 sqft

#02-01 to #12-01*

#02-04 to #12-04

* Mirror Unit



The plans are subjected to change as may required or approved by the relevant authorities. Areas are estimates only and subject to final survey. Plans are not drawn to scale and do not form part of the contract.

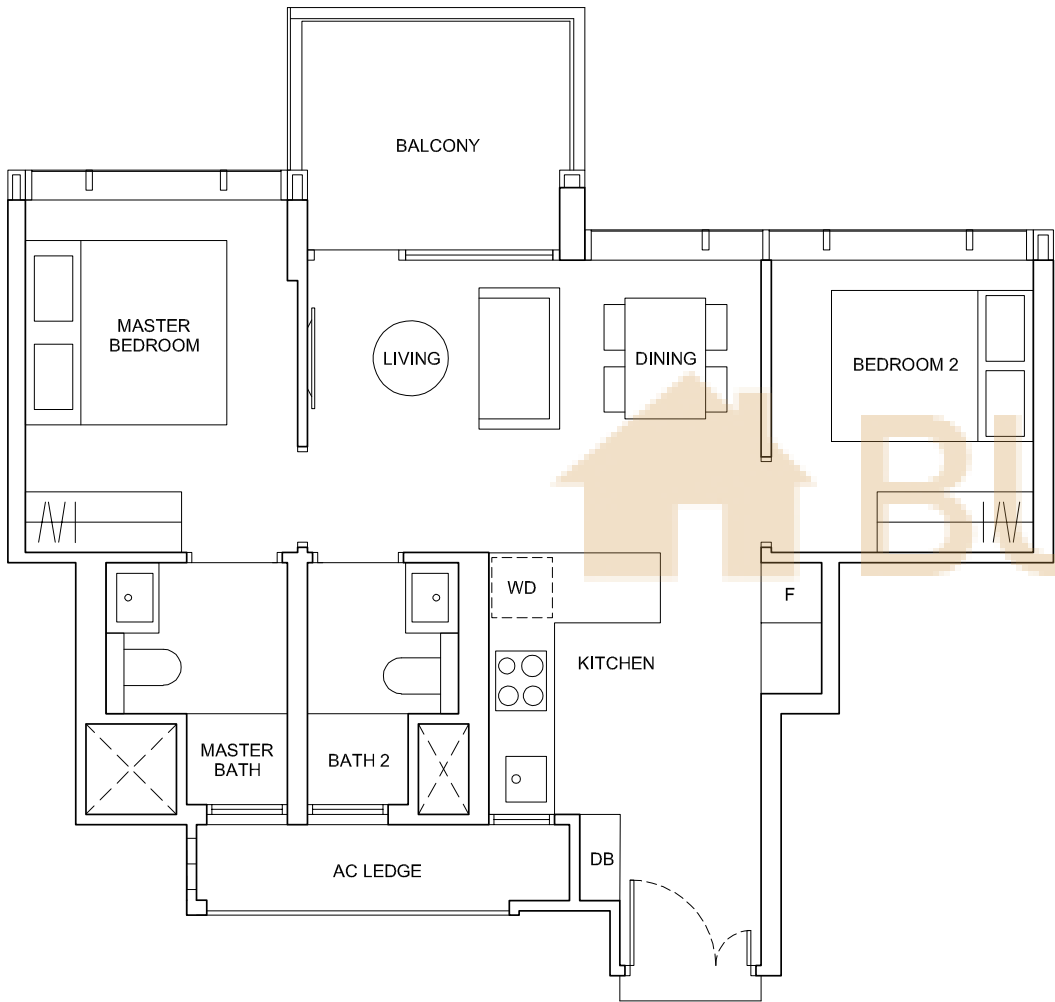
2 - BED ROOM DELUXE

TYPE D1

65 sqm / 700 sqft

- #02-12 to #12-12
- #02-13 to #12-13*
- #02-16 to #12-16
- #02-17 to #12-17*
- #02-20 to #12-20
- #02-21 to #12-21*
- #02-24 to #12-24
- #02-25 to #12-25*
- #02-28 to #12-28
- #02-29 to #12-29*

* Mirror Unit



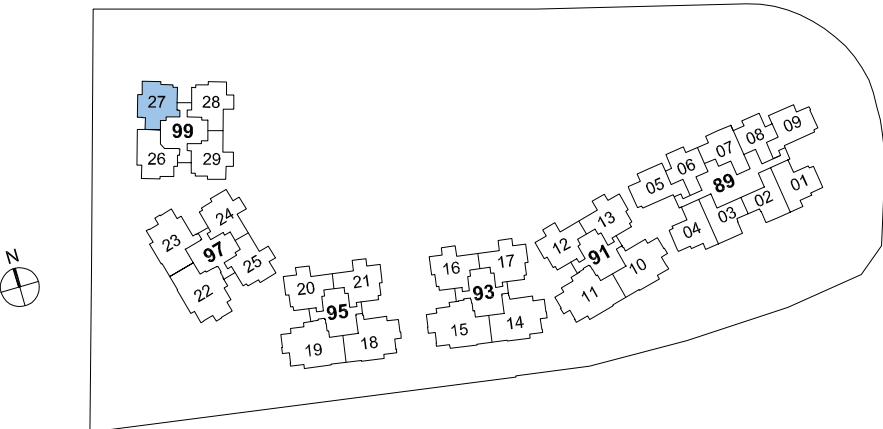
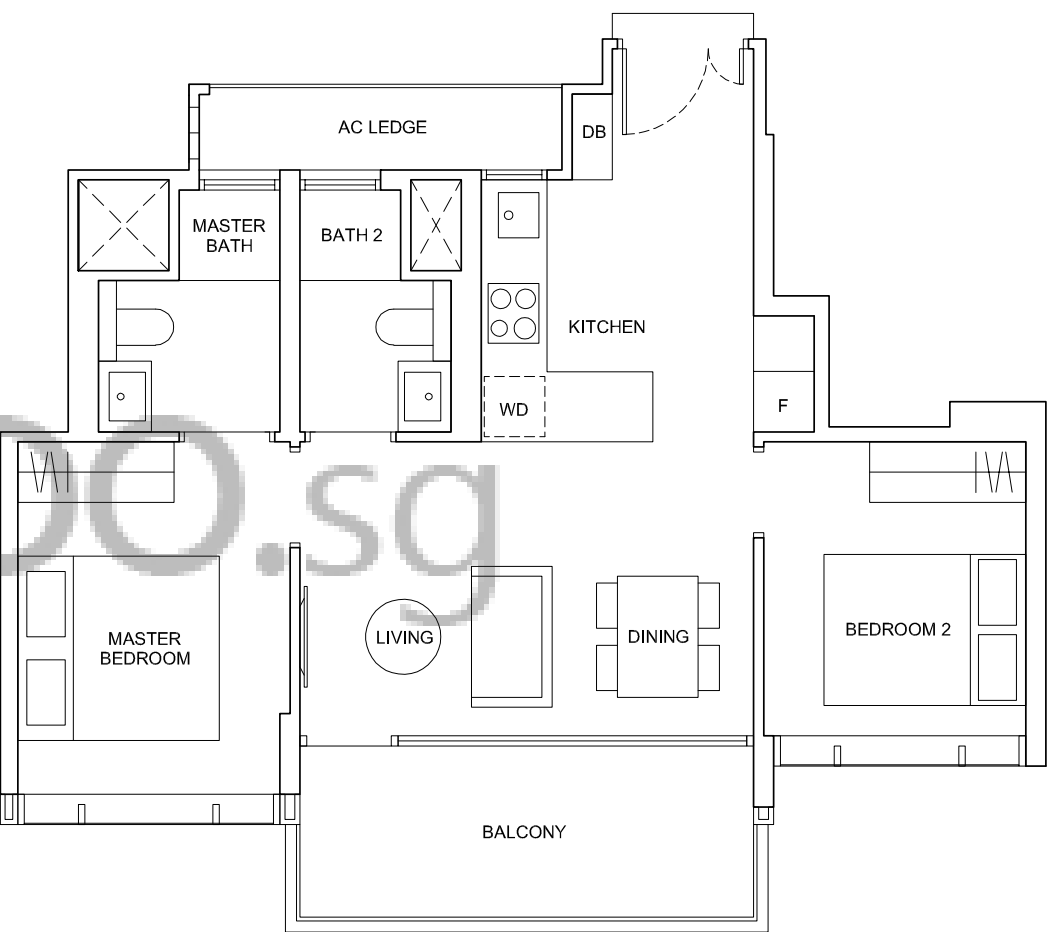
The plans are subjected to change as may required or approved by the relevant authorities. Areas are estimates only and subject to final survey. Plans are not drawn to scale and do not form part of the contract.

2 - BED ROOM DELUXE

TYPE D2

66 sqm / 710 sqft

#02-27 to #12-27



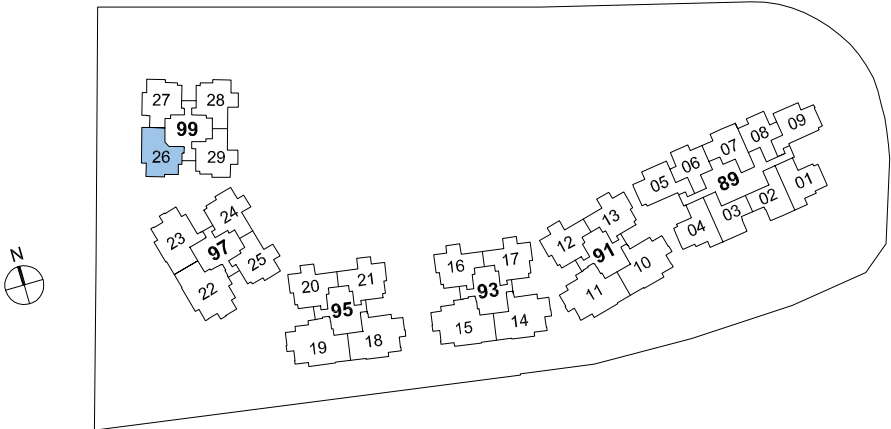
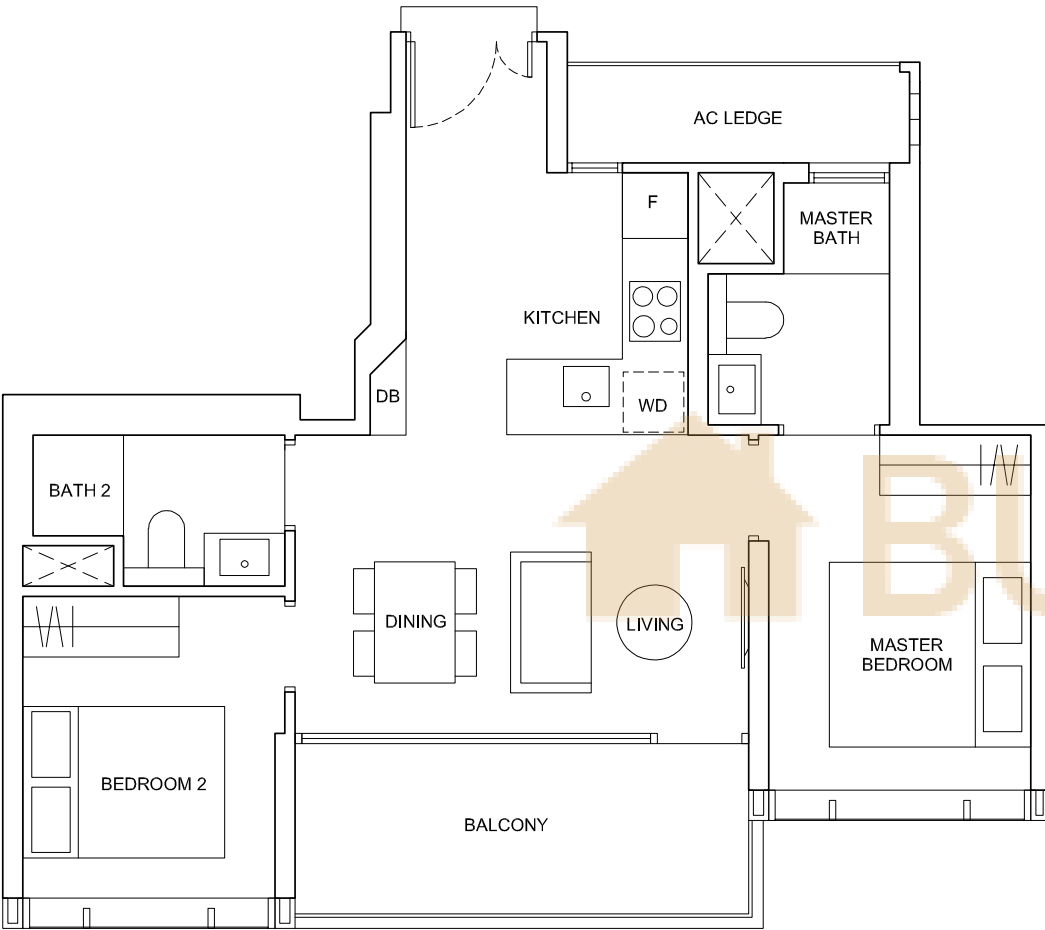
The plans are subjected to change as may required or approved by the relevant authorities. Areas are estimates only and subject to final survey. Plans are not drawn to scale and do not form part of the contract.



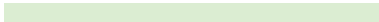
2 - BEDROOM DELUXE

TYPE D3

67 sqm / 721 sqft
#02-26 to #12-26



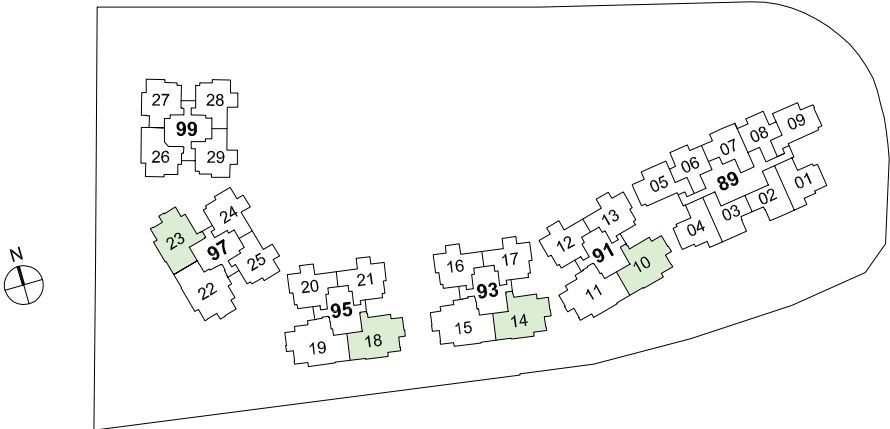
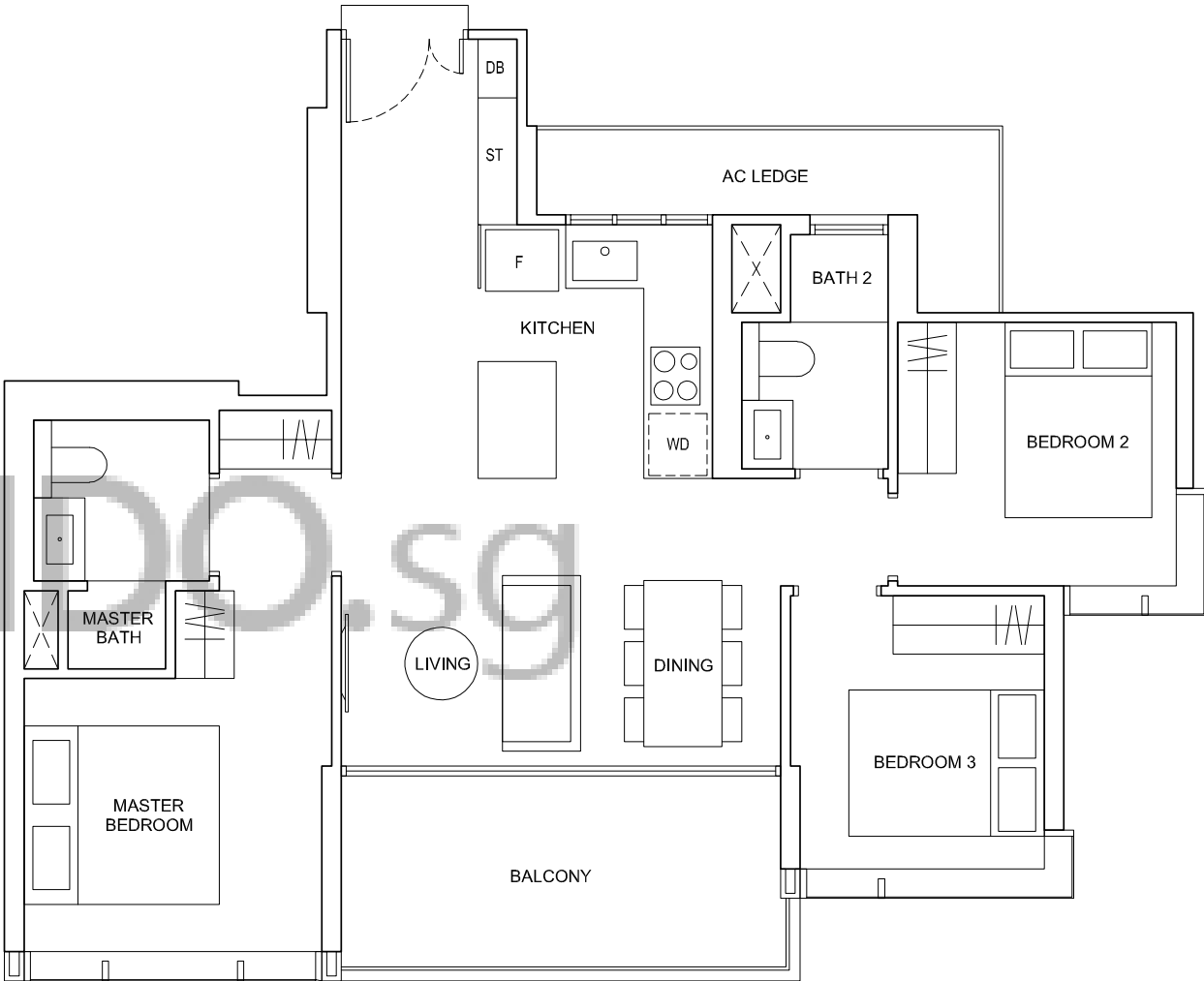
The plans are subjected to change as may required or approved by the relevant authorities. Areas are estimates only and subject to final survey. Plans are not drawn to scale and do not form part of the contract.



3 - BEDROOM DELUXE

TYPE E

87 sqm / 936 sqft
#02-10 to #12-10
#02-14 to #12-14
#02-18 to #12-18
#02-23 to #12-23*
* Mirror Unit



The plans are subjected to change as may required or approved by the relevant authorities. Areas are estimates only and subject to final survey. Plans are not drawn to scale and do not form part of the contract.

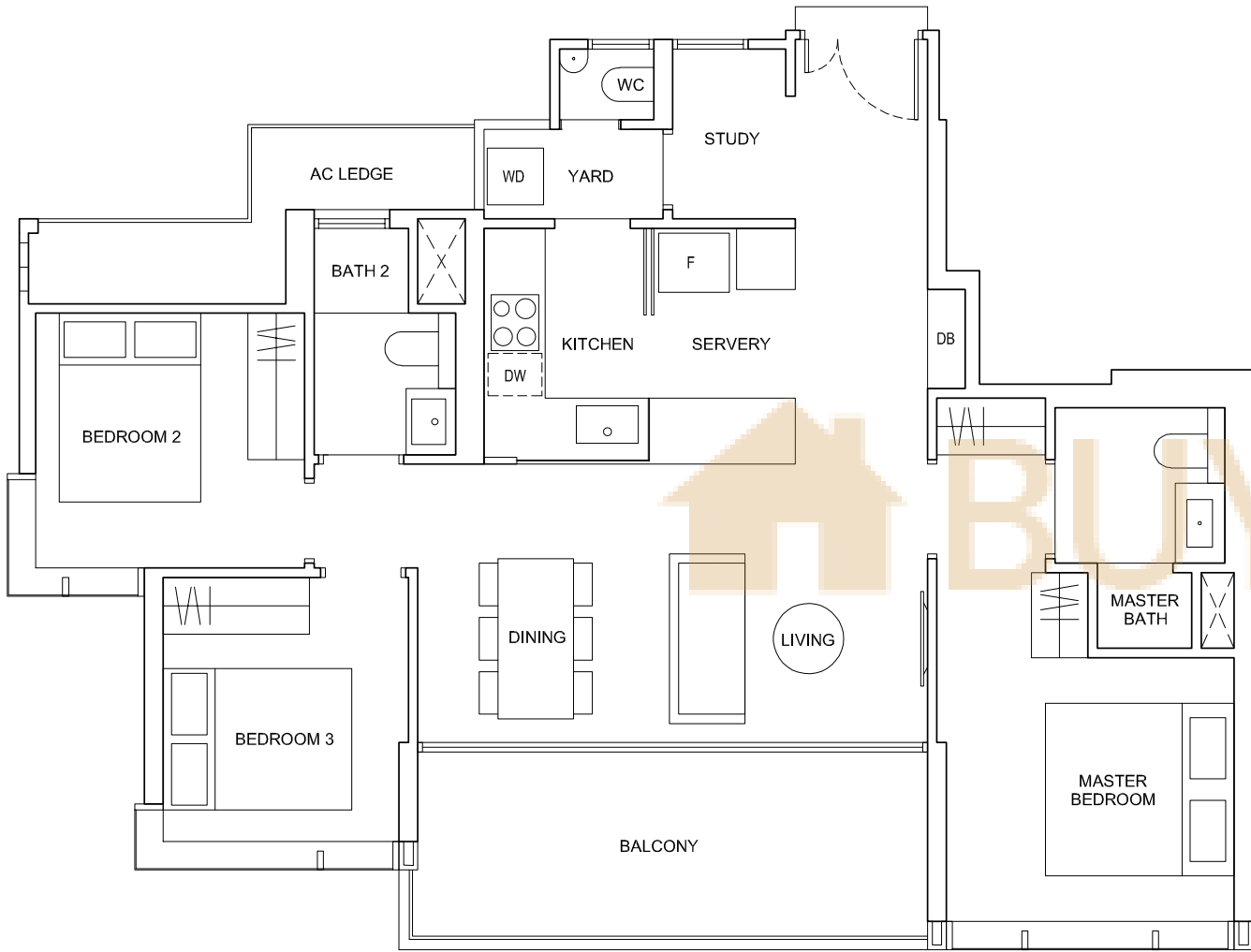
3 - BED ROOM + STUDY DELUXE

TYPE F

98 sqm / 1,055 sqft

- #02-11 to #12-11
- #02-15 to #12-15
- #02-19 to #12-19
- #02-22 to #12-22*

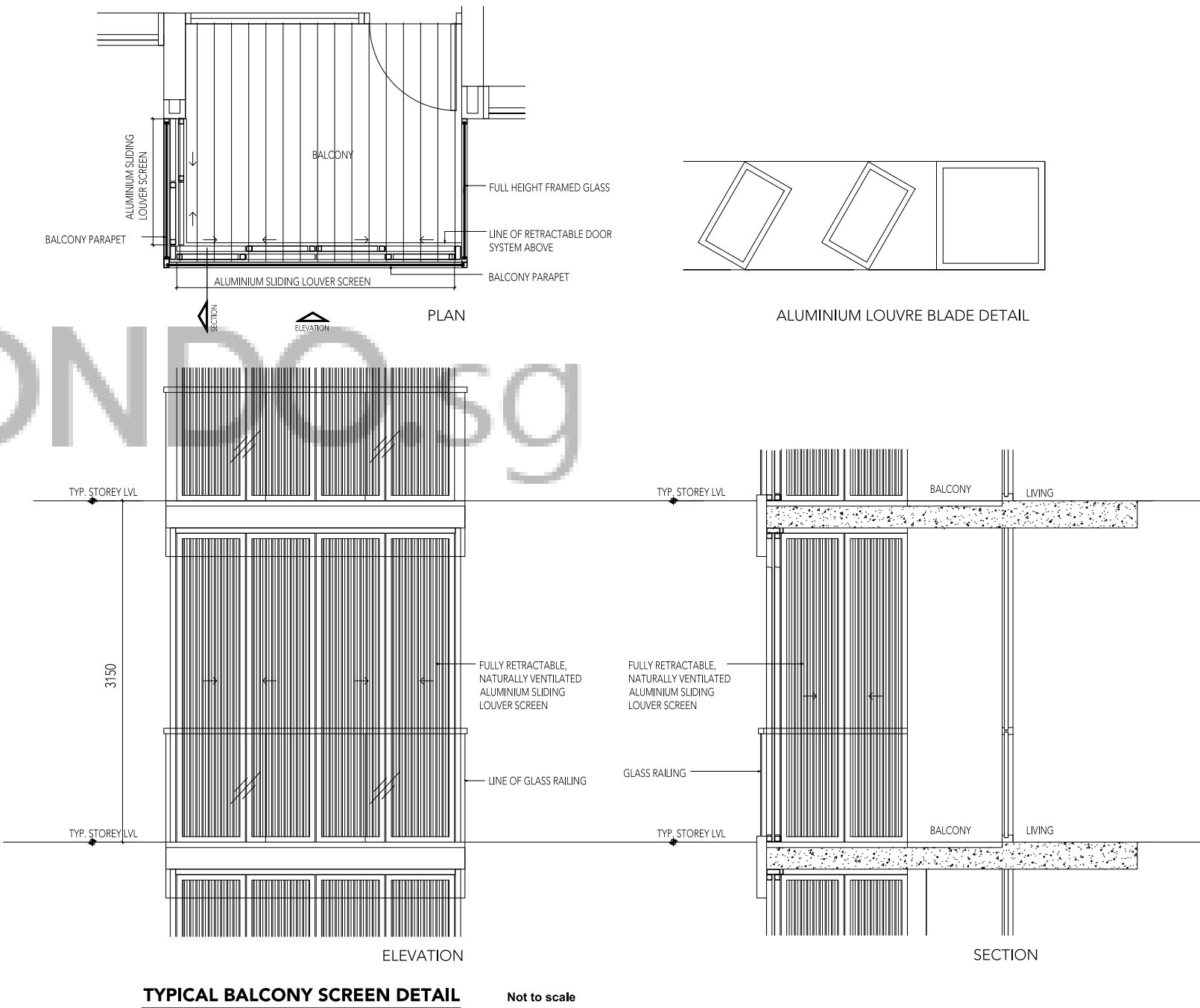
* Mirror Unit



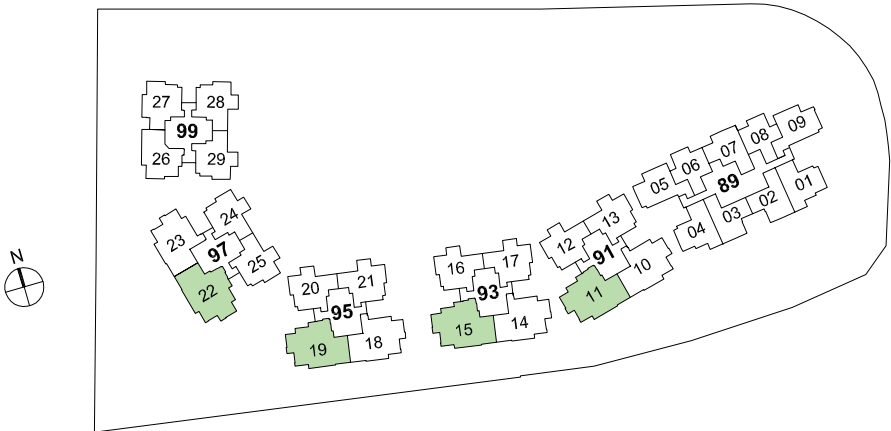
BUYCONDO.SG

BALCONY SCREEN

The balcony shall not be enclosed unless with the approved balcony screen. For an illustration of the approved balcony screen, please see below:-



TYPICAL BALCONY SCREEN DETAIL Not to scale



The plans are subjected to change as may required or approved by the relevant authorities. Areas are estimates only and subject to final survey. Plans are not drawn to scale and do not form part of the contract.

*This drawing is for reference only. The screen design is provided for aesthetic uniformity of the development. Materials to be of aluminum with powder coated finish. Total free opening for screen shall not be less than 50% of the panel. Fixing detail by contractor, and fixing shall not damage waterproofing or existing structure. The installation and cost of the screen shall be borne by the Purchaser. The Purchaser shall verify all dimensions prior to commencement of work. Drawing not to scale, and none can be regarded as representation of fact. The Purchaser is required to refer to the Management for any additional details.