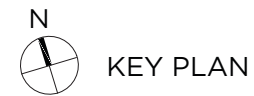
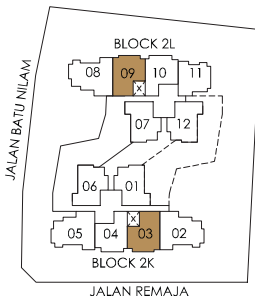
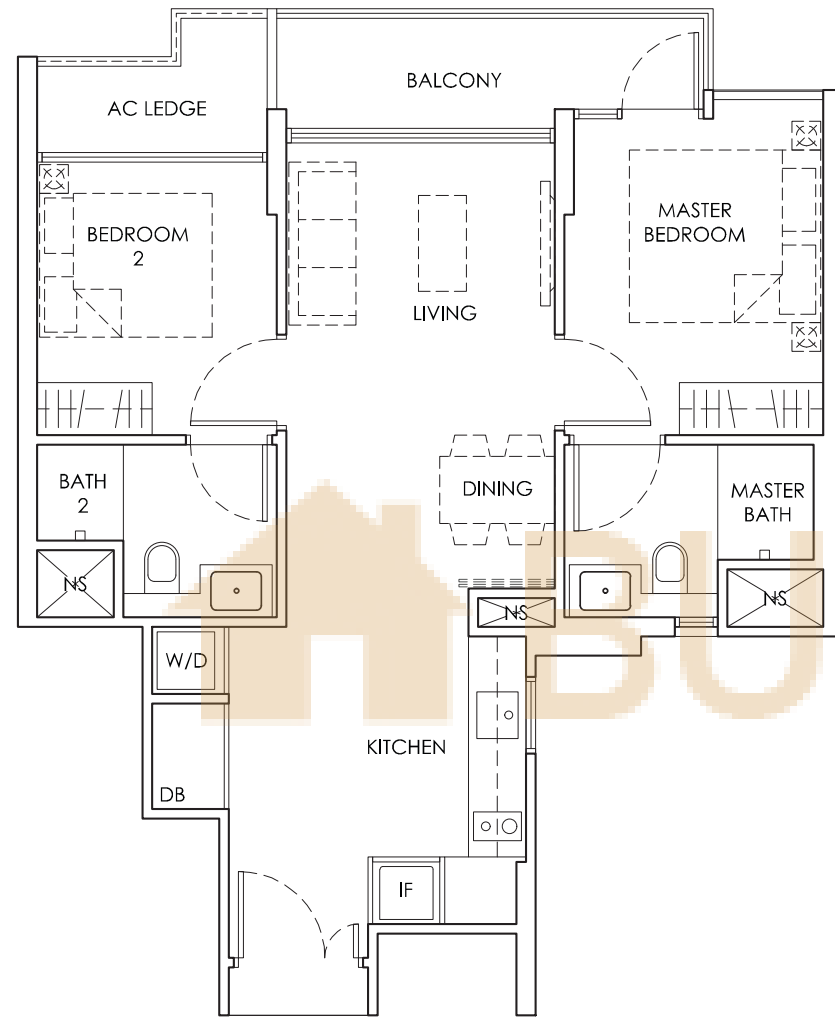


# TYPE A1

2 Bedroom

Area: 64 sq m / 689 sq ft  
18 Units

#02-03 to #10-03,  
#02-09 to #10-09



LEGEND:  
DB : DISTRIBUTION BOARD    AC LEDGE : AIR-CONDITIONER LEDGE    W : WASHING MACHINE  
D : DRYER    IF : INTEGRATED FRIDGE    NS : NON-STRATA AREA

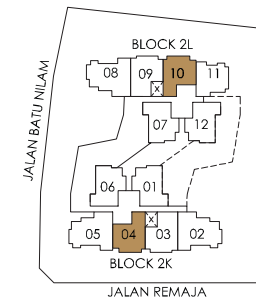
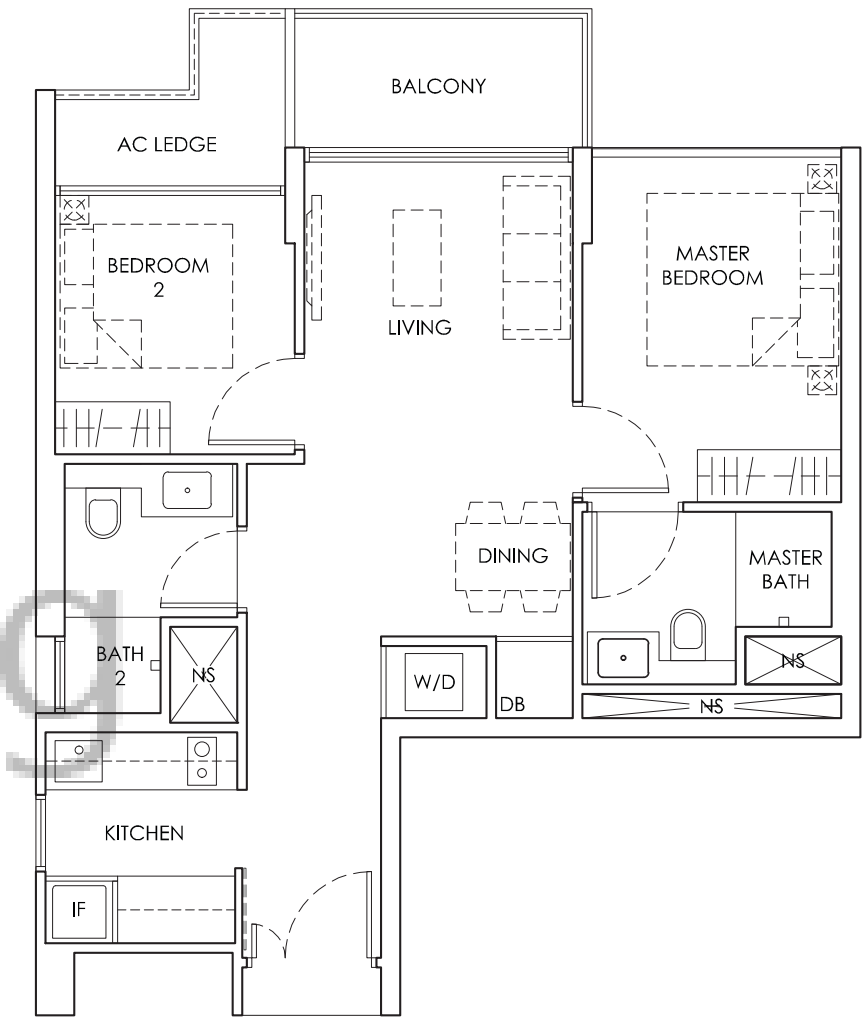
Area includes A/C ledge, balcony, PES (where applicable). The above plans and illustrations are subject to change as may be required by the relevant authorities. Areas are estimates only and are subject to final survey. The balcony and PES shall not be enclosed unless with the approved screen. For an illustration of the approved balcony screen, please refer to the diagram annexed hereto as "Annexure 1".

# TYPE A2

2 Bedroom

Area: 65 sq m / 700 sq ft  
18 Units

#02-04 to #10-04,  
#02-10 to #10-10



LEGEND:  
DB : DISTRIBUTION BOARD    AC LEDGE : AIR-CONDITIONER LEDGE    W : WASHING MACHINE  
D : DRYER    IF : INTEGRATED FRIDGE    NS : NON-STRATA AREA

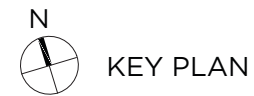
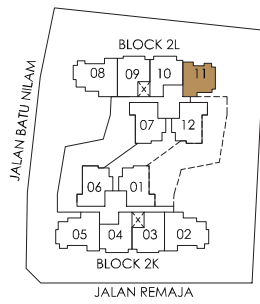
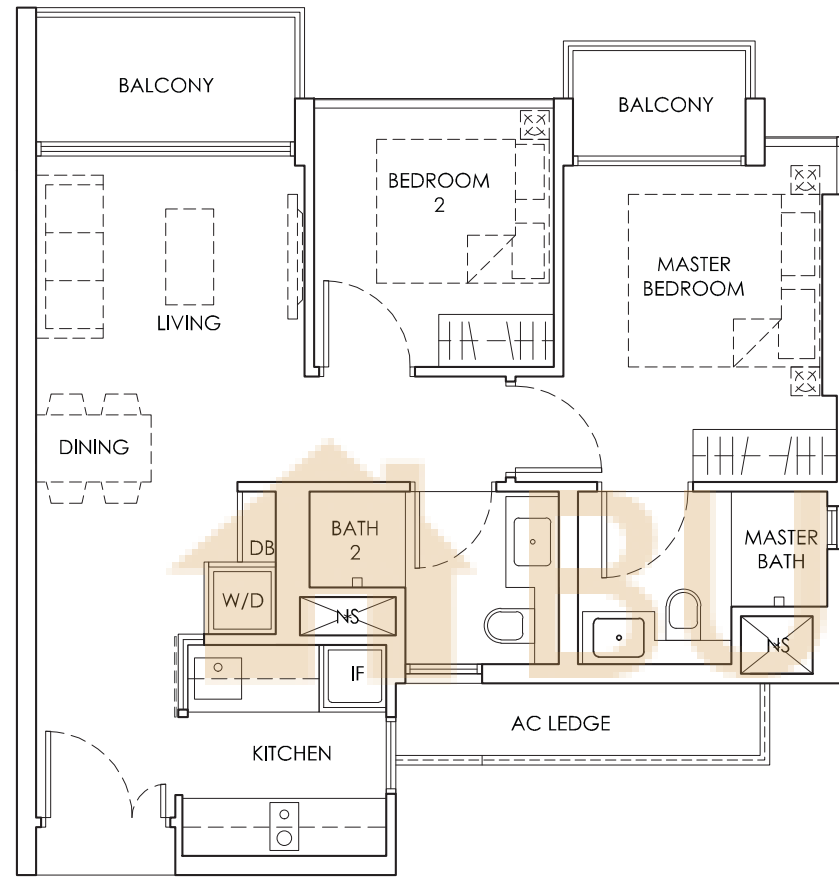
Area includes A/C ledge, balcony, PES (where applicable). The above plans and illustrations are subject to change as may be required by the relevant authorities. Areas are estimates only and are subject to final survey. The balcony and PES shall not be enclosed unless with the approved screen. For an illustration of the approved balcony screen, please refer to the diagram annexed hereto as "Annexure 1".

# TYPE A3

2 Bedroom

Area: 65 sq m / 700 sq ft  
9 Units

#02-11 to #10-11



LEGEND:  
DB : DISTRIBUTION BOARD    AC LEDGE : AIR-CONDITIONER LEDGE    W : WASHING MACHINE  
D : DRYER    IF : INTEGRATED FRIDGE    NS : NON-STRATA AREA

Area includes A/C ledge, balcony, PES (where applicable). The above plans and illustrations are subject to change as may be required by the relevant authorities. Areas are estimates only and are subject to final survey. The balcony and PES shall not be enclosed unless with the approved screen. For an illustration of the approved balcony screen, please refer to the diagram annexed hereto as "Annexure 1".

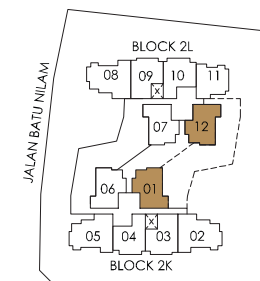
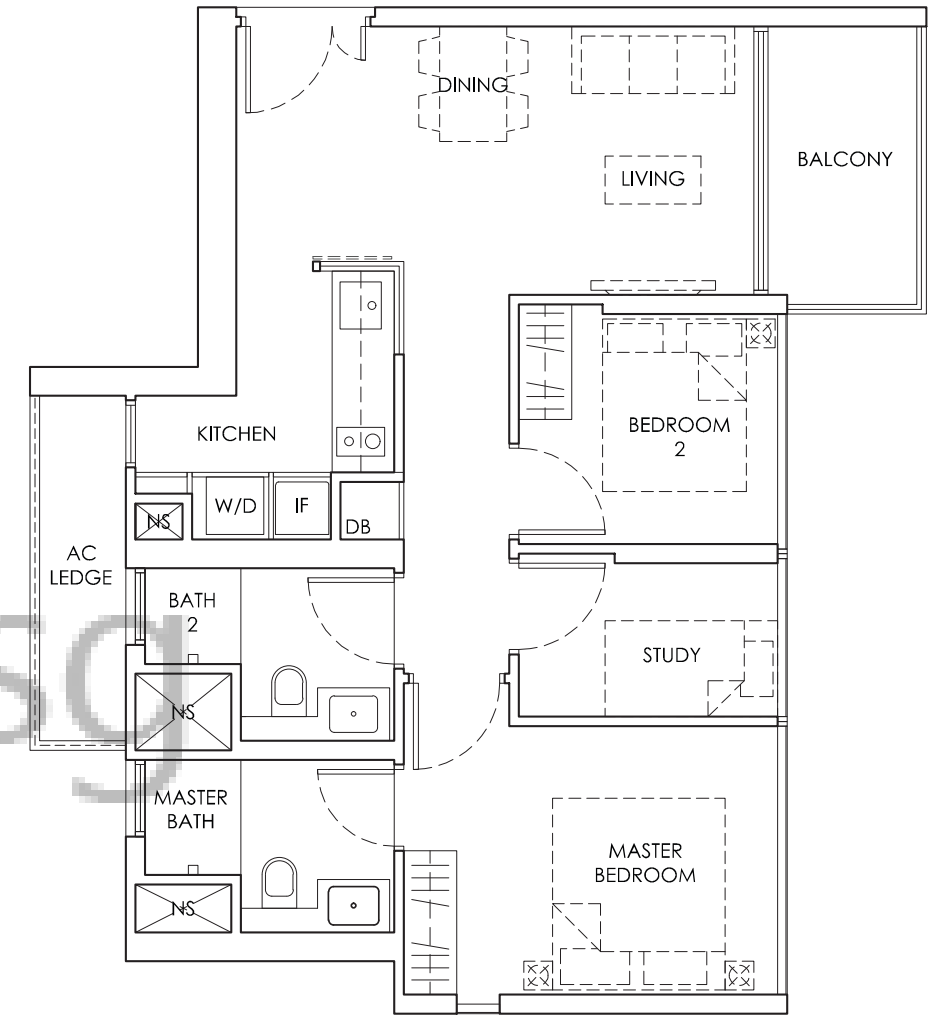
# TYPE A4

2 Bedroom + Study

Area: 72 sq m / 776 sq ft  
18 Units

#03-06, #05-06, #07-06, #09-06,  
#02-12, #04-12, #06-12, #08-12, #10-12

Mirror Units  
#02-01, #04-01, #06-01, #08-01, #10-01,  
#03-07, #05-07, #07-07, #09-07



LEGEND:  
DB : DISTRIBUTION BOARD    AC LEDGE : AIR-CONDITIONER LEDGE    W : WASHING MACHINE  
D : DRYER    IF : INTEGRATED FRIDGE    NS : NON-STRATA AREA

Area includes A/C ledge, balcony, PES (where applicable). The above plans and illustrations are subject to change as may be required by the relevant authorities. Areas are estimates only and are subject to final survey. The balcony and PES shall not be enclosed unless with the approved screen. For an illustration of the approved balcony screen, please refer to the diagram annexed hereto as "Annexure 1".

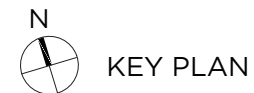
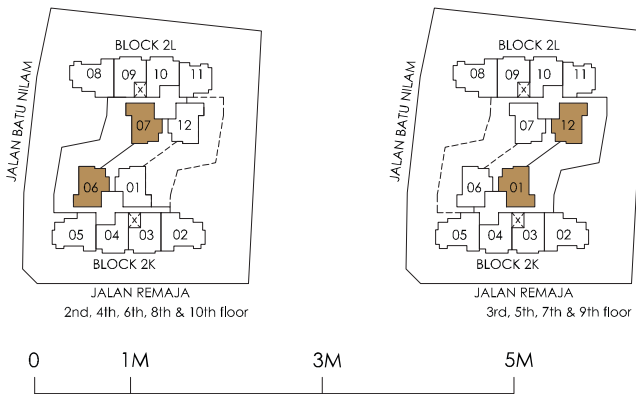
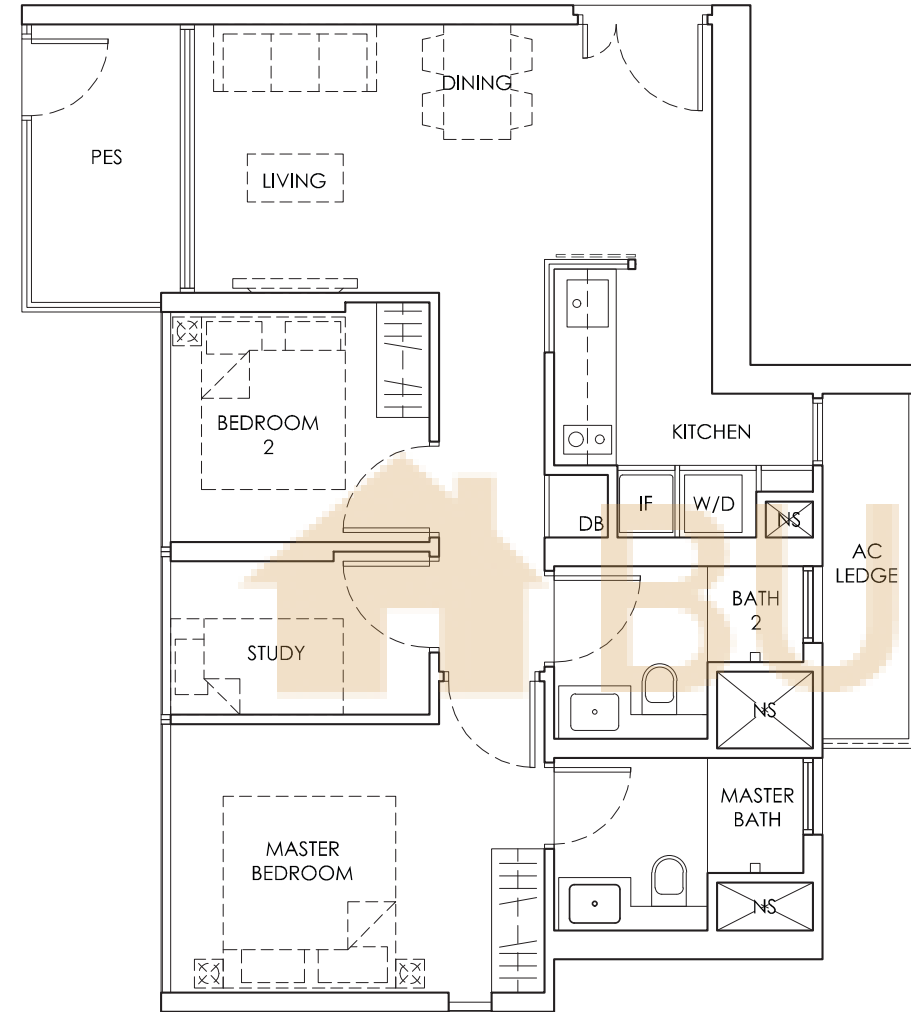
# TYPE A4-P

2 Bedroom + Study

Area: 72 sq m / 776 sq ft  
18 Units

#03-01, #05-01, #07-01, #09-01,  
#02-07, #04-07, #06-07, #08-07,  
#10-07

Mirror Units  
#02-06, #04-06, #06-06, #08-06,  
#10-06,  
#03-12, #05-12, #07-12, #09-12



LEGEND:  
DB : DISTRIBUTION BOARD AC LEDGE : AIR-CONDITIONER LEDGE W : WASHING MACHINE D : DRYER  
IF : INTEGRATED FRIDGE PES : PRIVATE ENCLOSED SPACE NS : NON-STRATA AREA

Area includes A/C ledge, balcony, PES (where applicable). The above plans and illustrations are subject to change as may be required by the relevant authorities. Areas are estimates only and are subject to final survey. The balcony and PES shall not be enclosed unless with the approved screen. For an illustration of the approved balcony screen, please refer to the diagram annexed hereto as "Annexure 1".

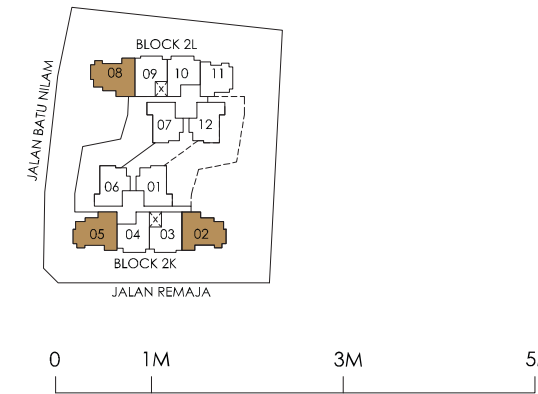
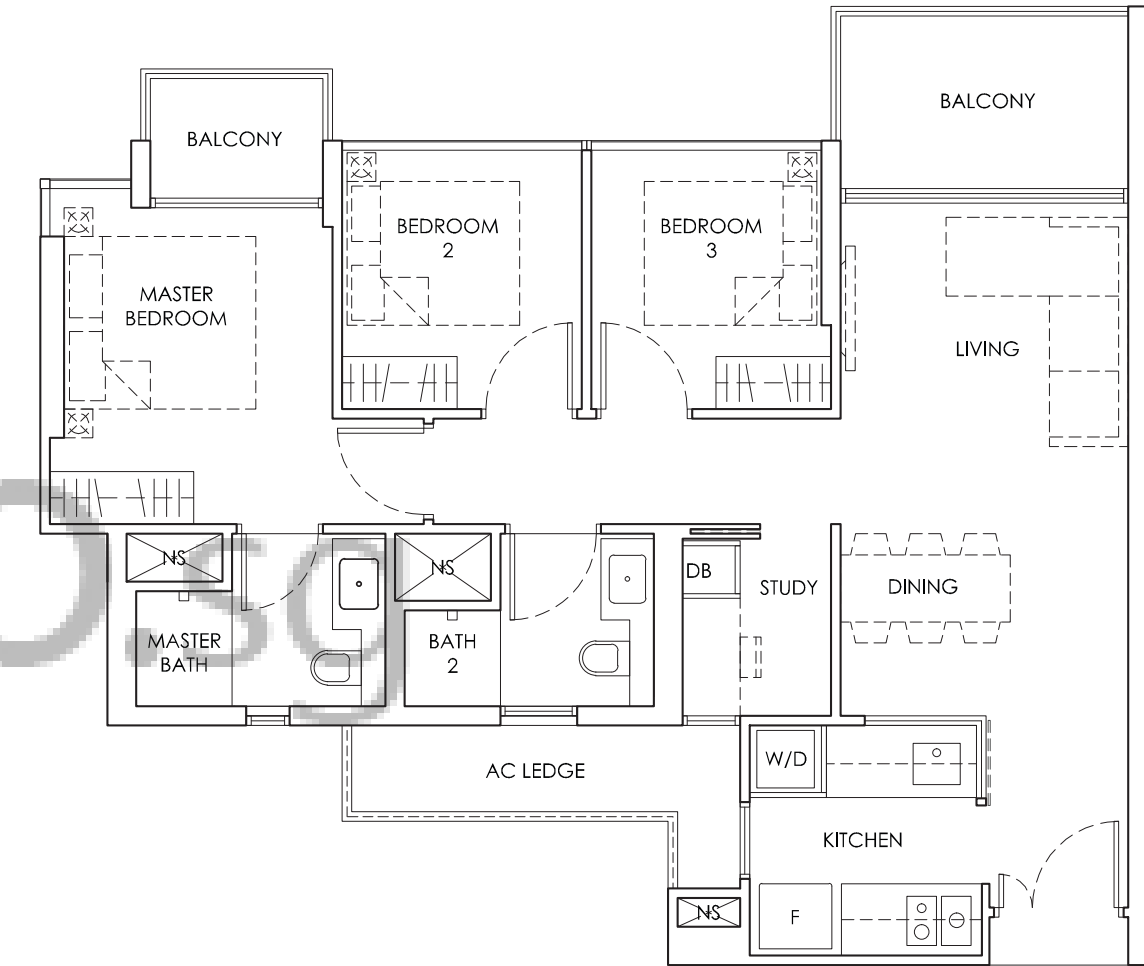
# TYPE B1

3 Bedroom + Study

Area: 88 sq m / 948 sq ft  
27 Units

#02-02 to #10-02,  
#02-08 to #10-08

Mirror Units  
#02-05 to #10-05



LEGEND:  
DB : DISTRIBUTION BOARD AC LEDGE : AIR-CONDITIONER LEDGE W : WASHING MACHINE  
D : DRYER F : FRIDGE NS : NON-STRATA AREA

Area includes A/C ledge, balcony, PES (where applicable). The above plans and illustrations are subject to change as may be required by the relevant authorities. Areas are estimates only and are subject to final survey. The balcony and PES shall not be enclosed unless with the approved screen. For an illustration of the approved balcony screen, please refer to the diagram annexed hereto as "Annexure 1".