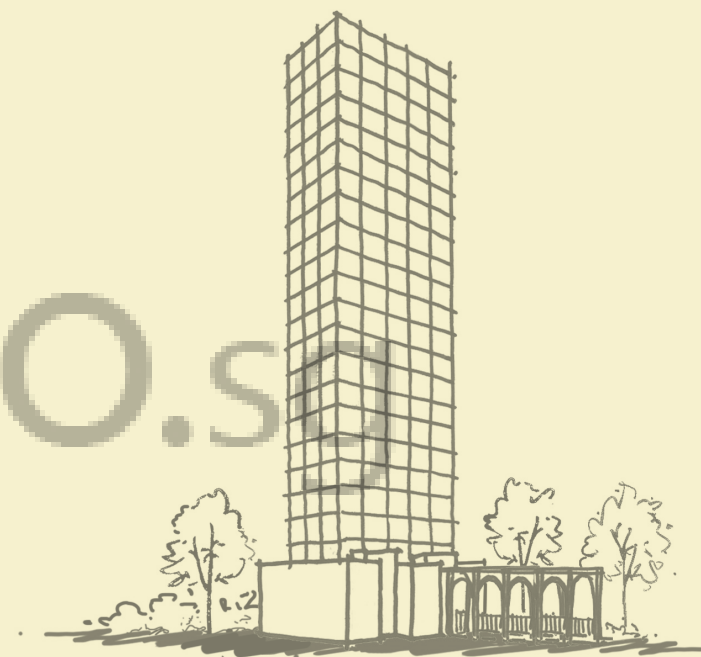


UNIT DISTRIBUTION CHART

UNIT	01	02	03	04	05	06
18 TH STOREY		C1P			C2P	C3P
17 TH STOREY	B1	B2	C4P		B3	B4
16 TH STOREY	B1	C1	A(m)	A	C2	C3
15 TH STOREY	B1	C1a	A(m)	A	C2a	C3a
14 TH STOREY	SKY TERRACE					
13 TH STOREY	B1	B2	A(m)	A	B3	B4
12 TH STOREY	B1	C1	A(m)	A	C2	C3
11 TH STOREY	B1	B2	A(m)	A	B3	B4
10 TH STOREY	B1	C1	A(m)	A	C2	C3
9 TH STOREY	B1	B2	A(m)	A	B3	B4
8 TH STOREY	B1	C1	A(m)	A	C2	C3
7 TH STOREY	B1	B2	A(m)	A	B3	B4
6 TH STOREY	B1	C1	A(m)	A	C2	C3
5 TH STOREY	B1	B2	A(m)	A	B3	B4
4 TH STOREY	B1	C1	A(m)	A	C2	C3
3 RD STOREY	B1	B2	A(m)	A	B3	B4
2 ND STOREY	B1	C1	A(m)	A	C2	C3

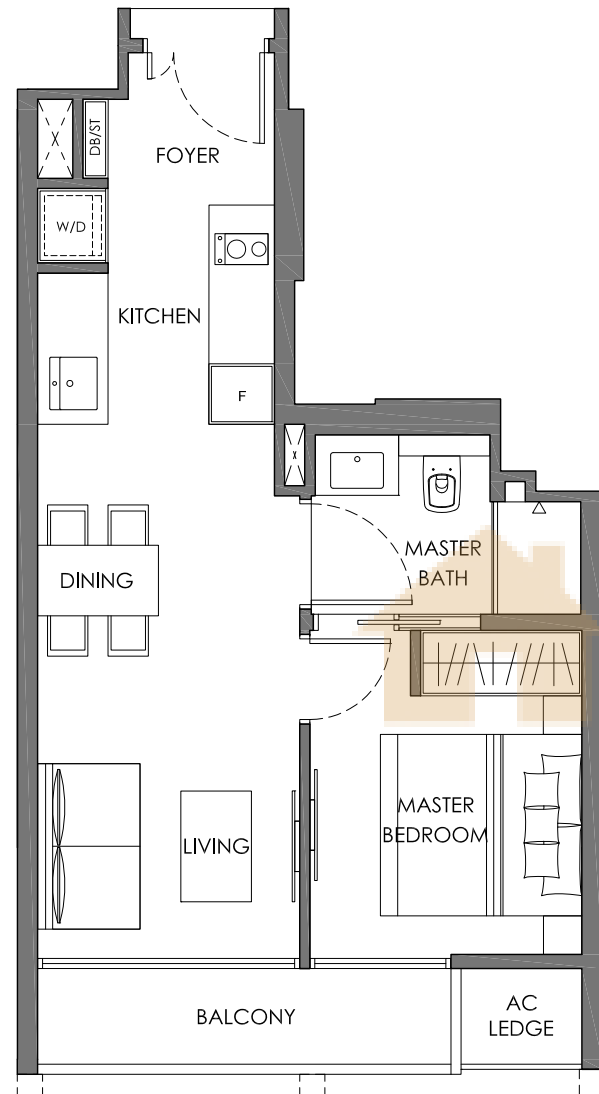
● 1 Bedroom
 ● 2 Bedroom
 ● 3 Bedroom



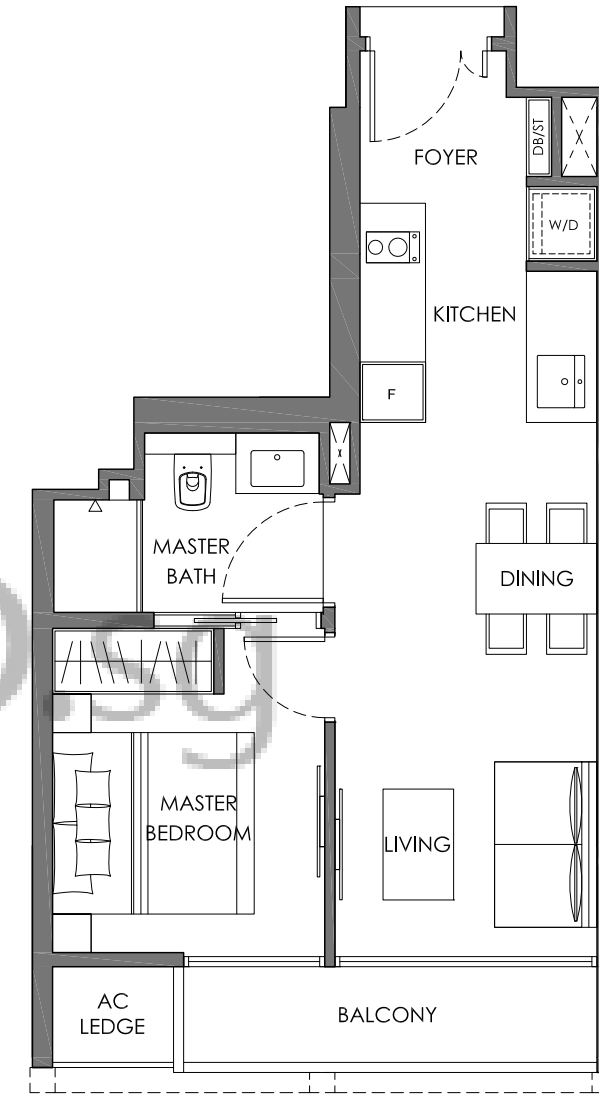
Unit Plans

1-Bedroom

TYPE A
1 BEDROOM

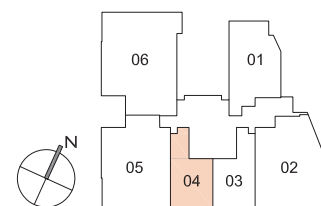


TYPE A(m)
1 BEDROOM

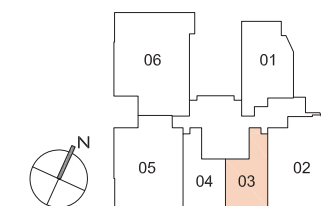


BUYCONDO

Area	45 sq m / 484 sq ft
Units	#02-04 to #13-04 #15-04 to #16-04



Area	45 sq m / 484 sq ft
Units	#02-03 to #13-03 #15-03 to #16-03



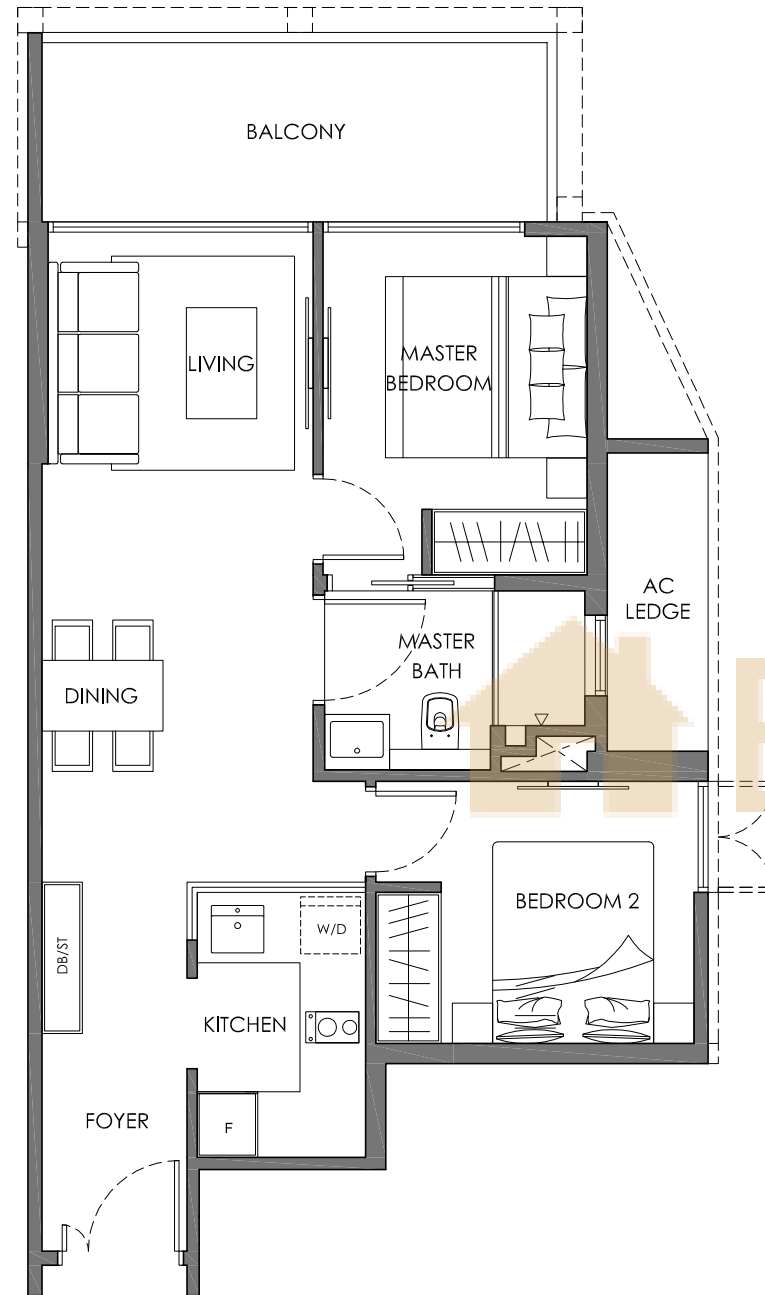
 BUYCONDO.S



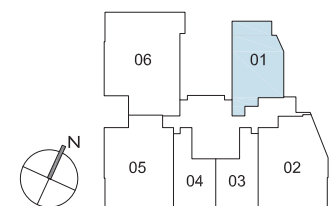
Unit Plans

2-Bedroom

TYPE B1
2 BEDROOM



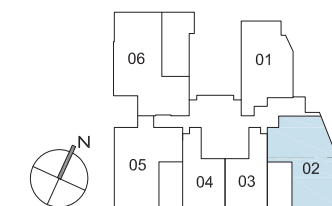
Area	67 sq m / 721 sq ft
Units	#02-01 to #13-01 #15-01 to #17-01



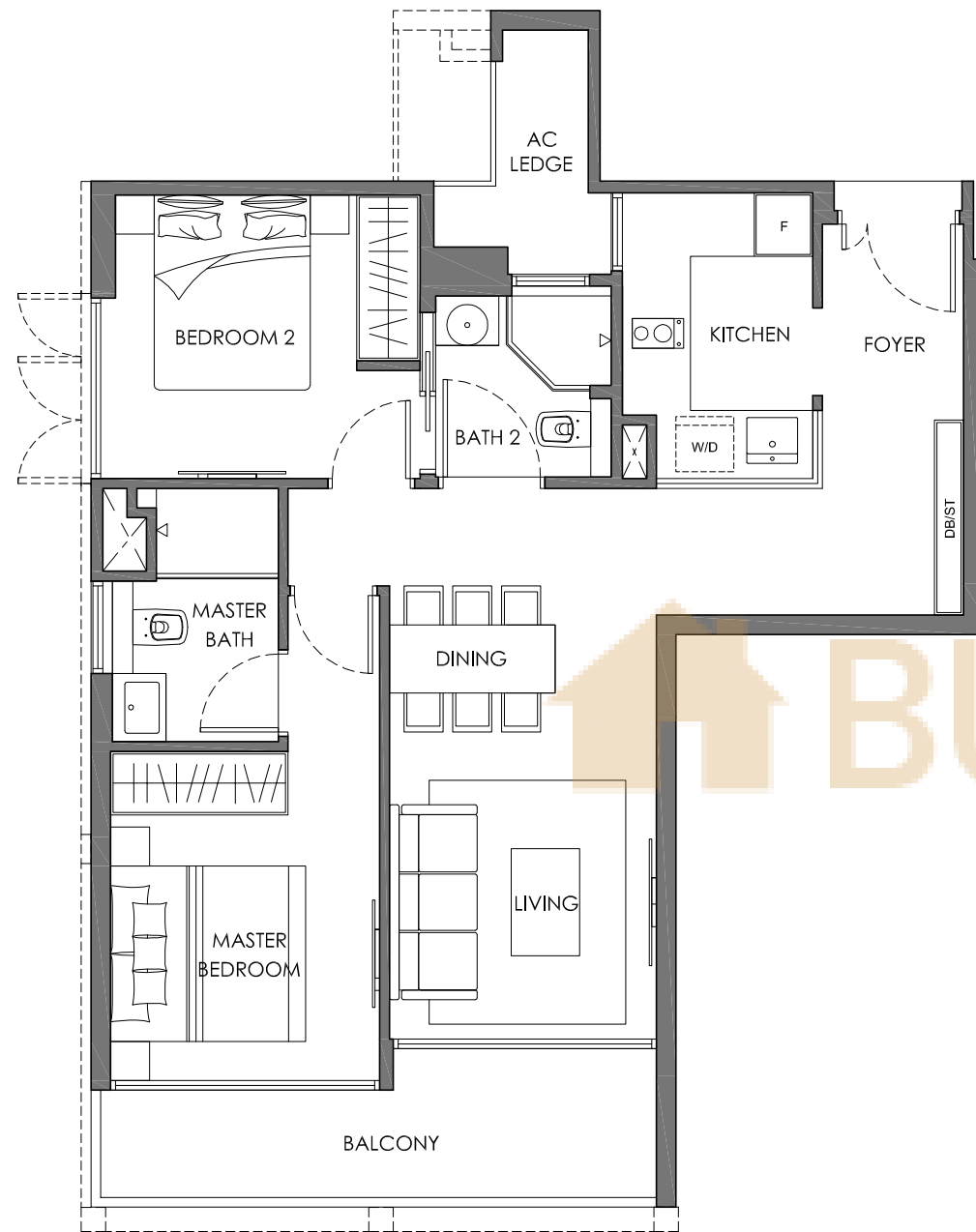
TYPE B2
2 BEDROOM



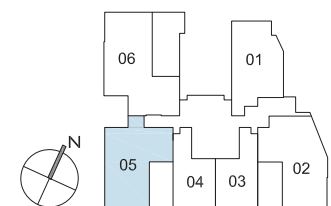
Area	76 sq m / 818 sq ft
Units	#03-02, #05-02, #07-02, #09-02 #11-02, #13-02, #17-02



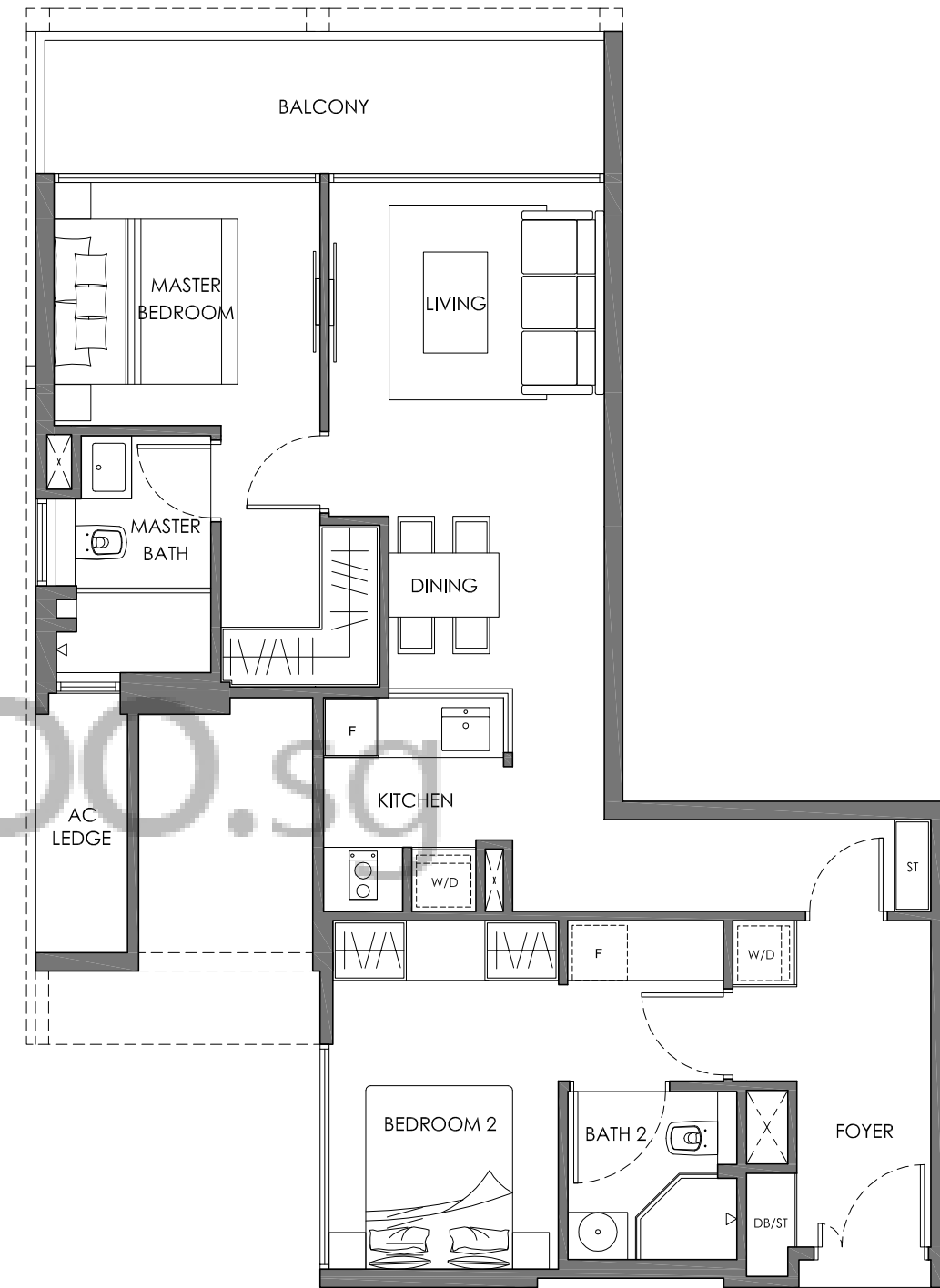
TYPE B3
2 BEDROOM



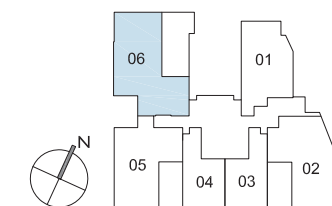
Area 76 sq m / 818 sq ft
Units #03-05, #05-05, #07-05, #09-05
#11-05, #13-05, #17-05



TYPE B4
2 BEDROOM



Area 85 sq m / 915 sq ft
Units #03-06, #05-06, #07-06, #09-06
#11-06, #13-06, #17-06



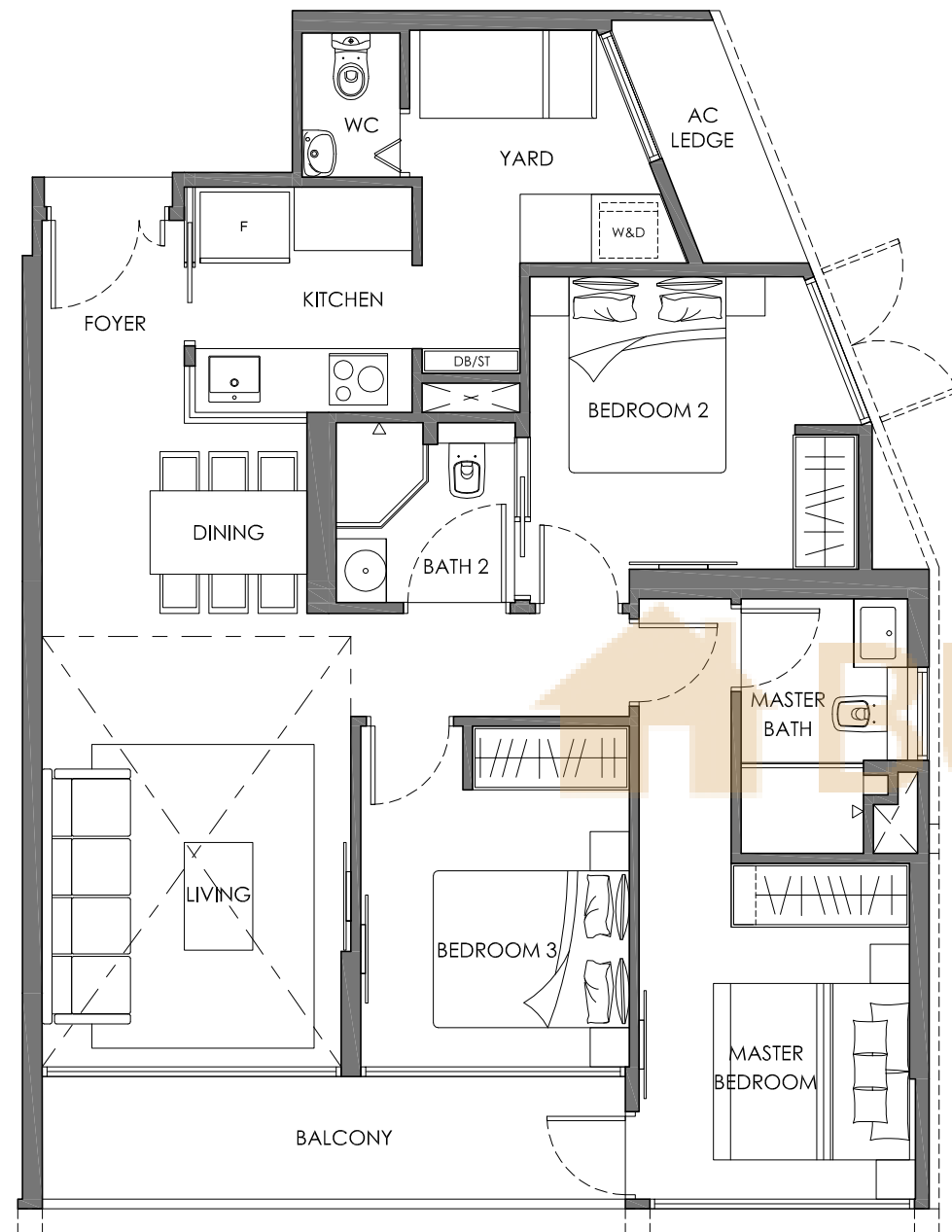
 BUYCONDO.S



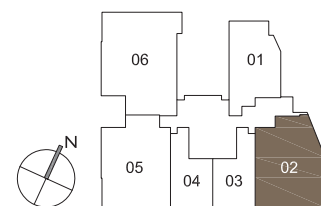
Unit Plans

3-Bedroom

TYPE C1
3 BEDROOM

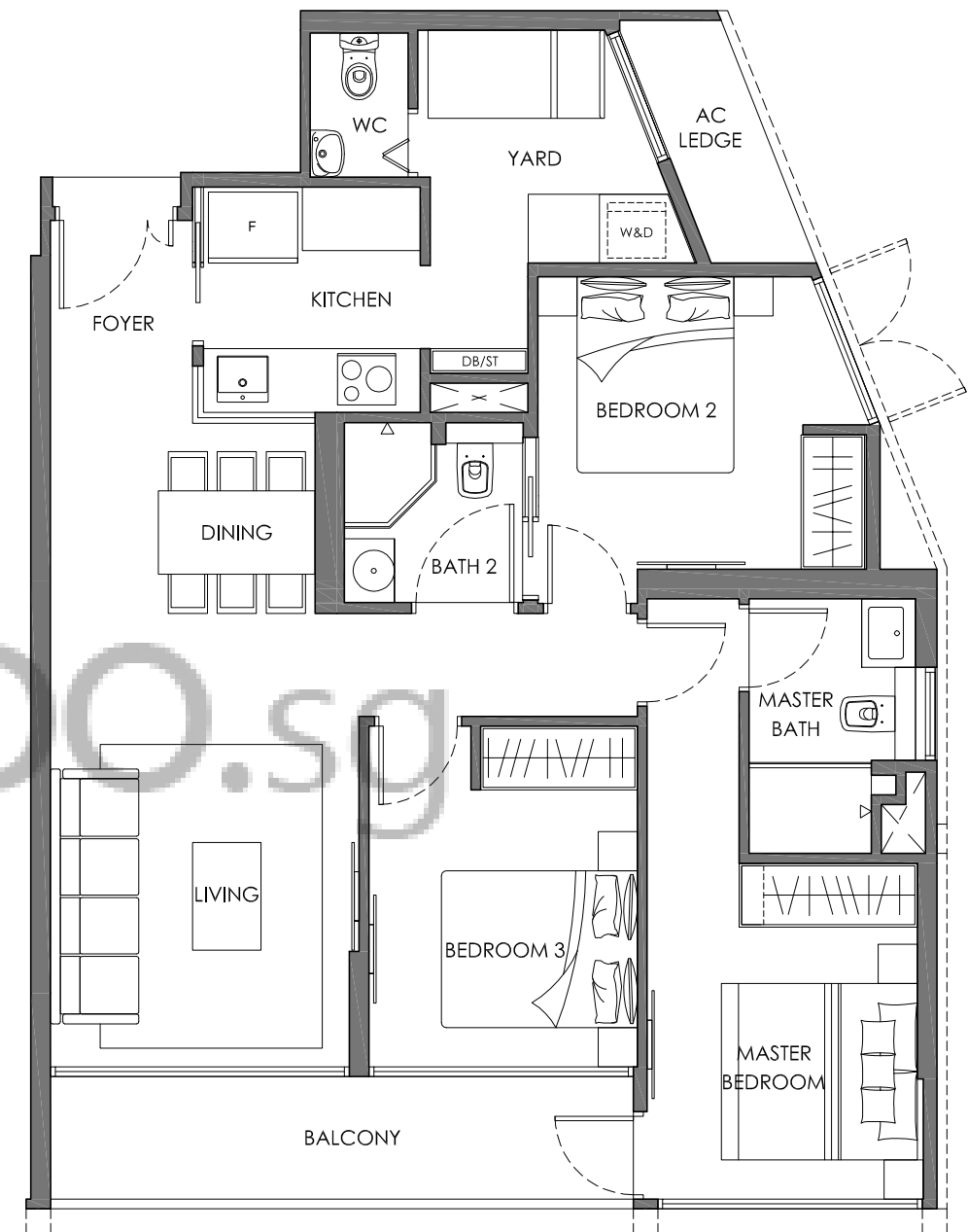


Area	113 sq m / 1216 sq ft
Units	#02-02, #04-02, #06-02, #08-02 #10-02, #12-02, #16-02

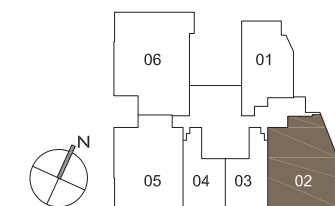


Area includes a/c ledge, balconies and void where applicable. Areas are estimates only and are subject to final survey. Plans are not to scale and subject to changes as may be required by the relevant authorities. The balconies shall not be enclosed unless with approved screen. For an illustration of the approved balcony screen, please refer to the diagram annexed hereto as "Annexure".

TYPE C1a
3 BEDROOM

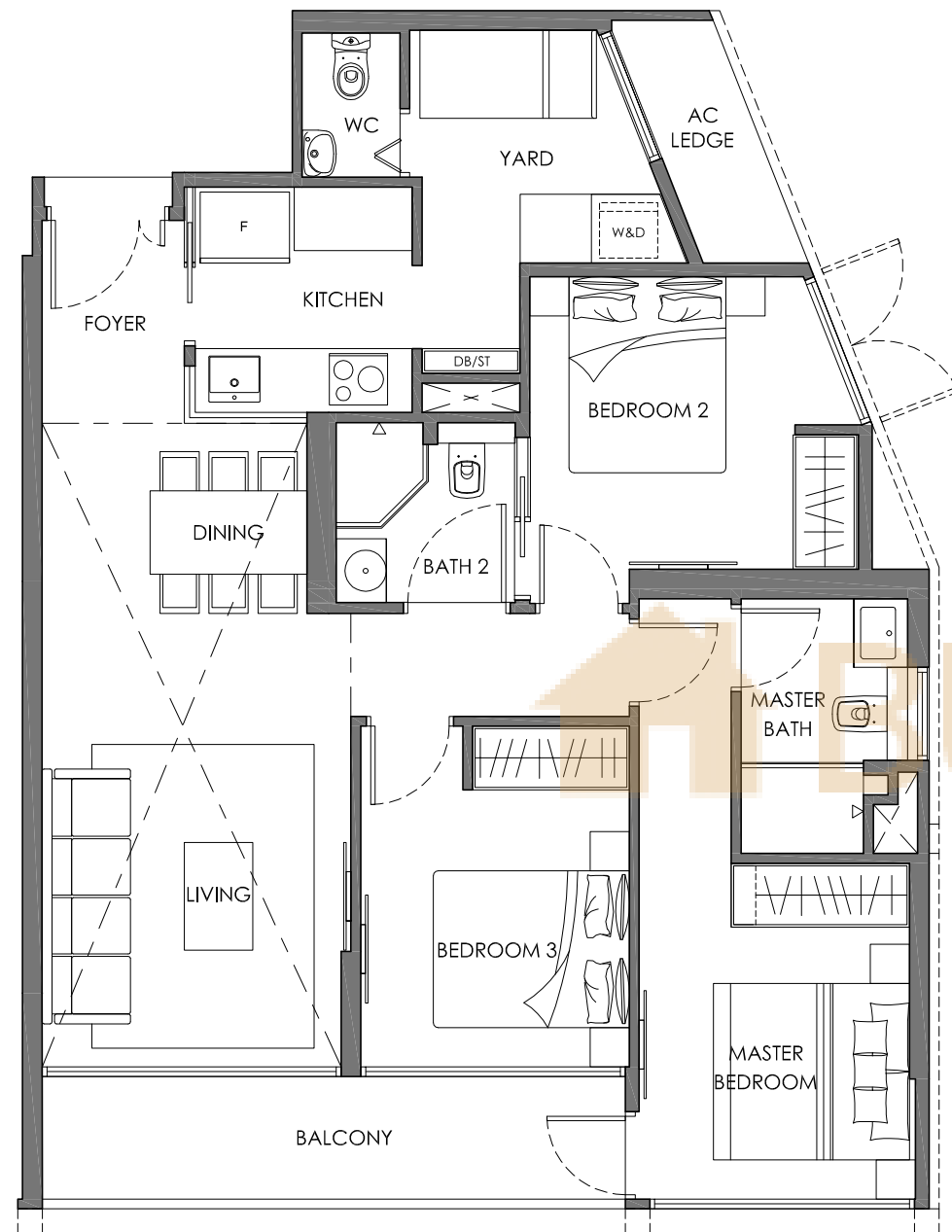


Area	98 sq m / 1055 sq ft
Units	#15-02

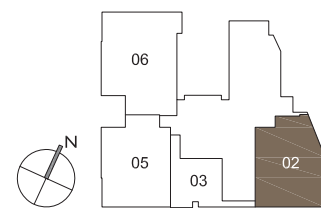


Area includes a/c ledge, balconies and void where applicable. Areas are estimates only and are subject to final survey. Plans are not to scale and subject to changes as may be required by the relevant authorities. The balconies shall not be enclosed unless with approved screen. For an illustration of the approved balcony screen, please refer to the diagram annexed hereto as "Annexure".

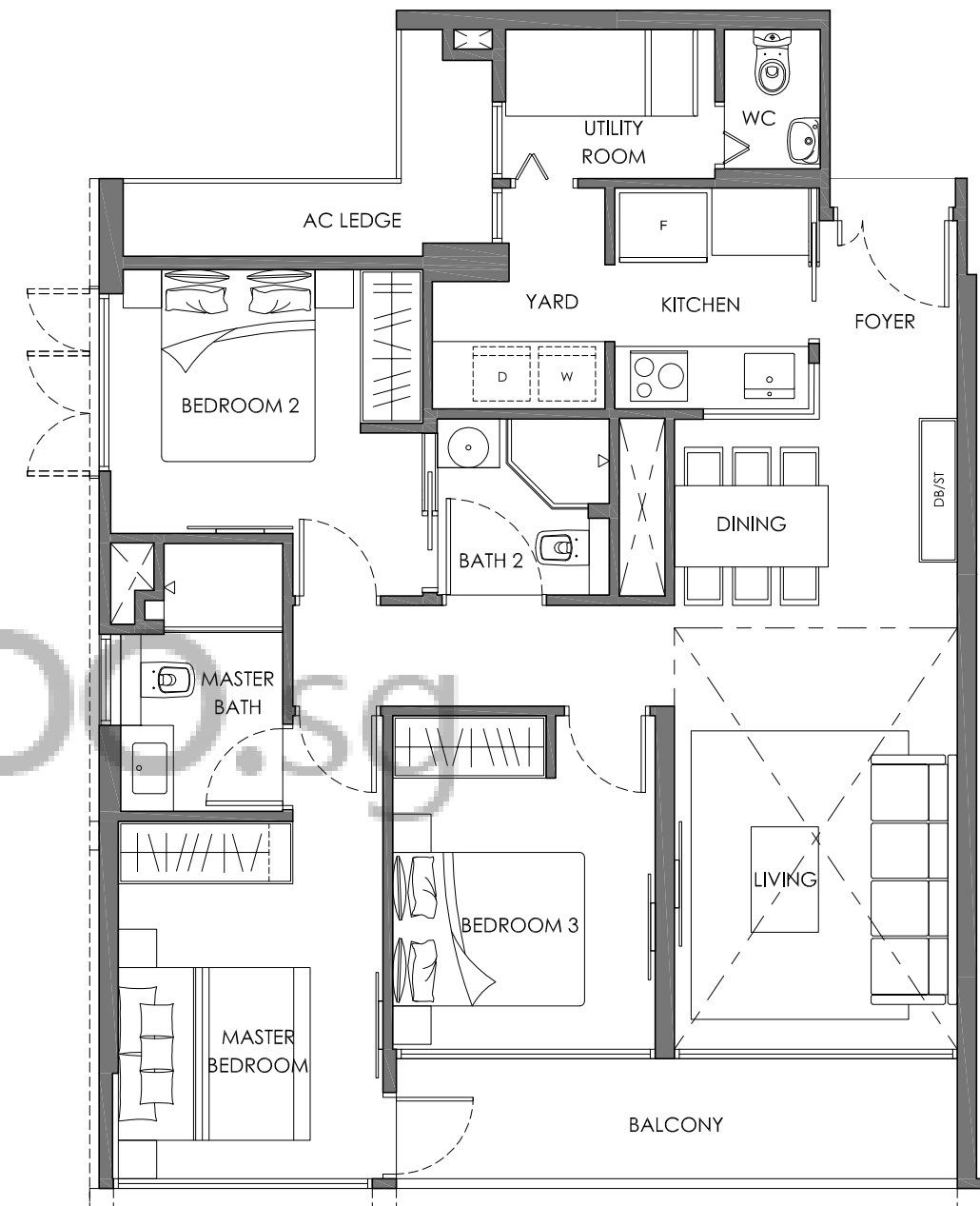
TYPE C1P
3 BEDROOM



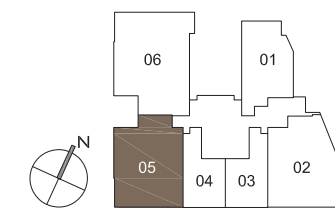
Area 119 sq m / 1281 sq ft
Units #18-02



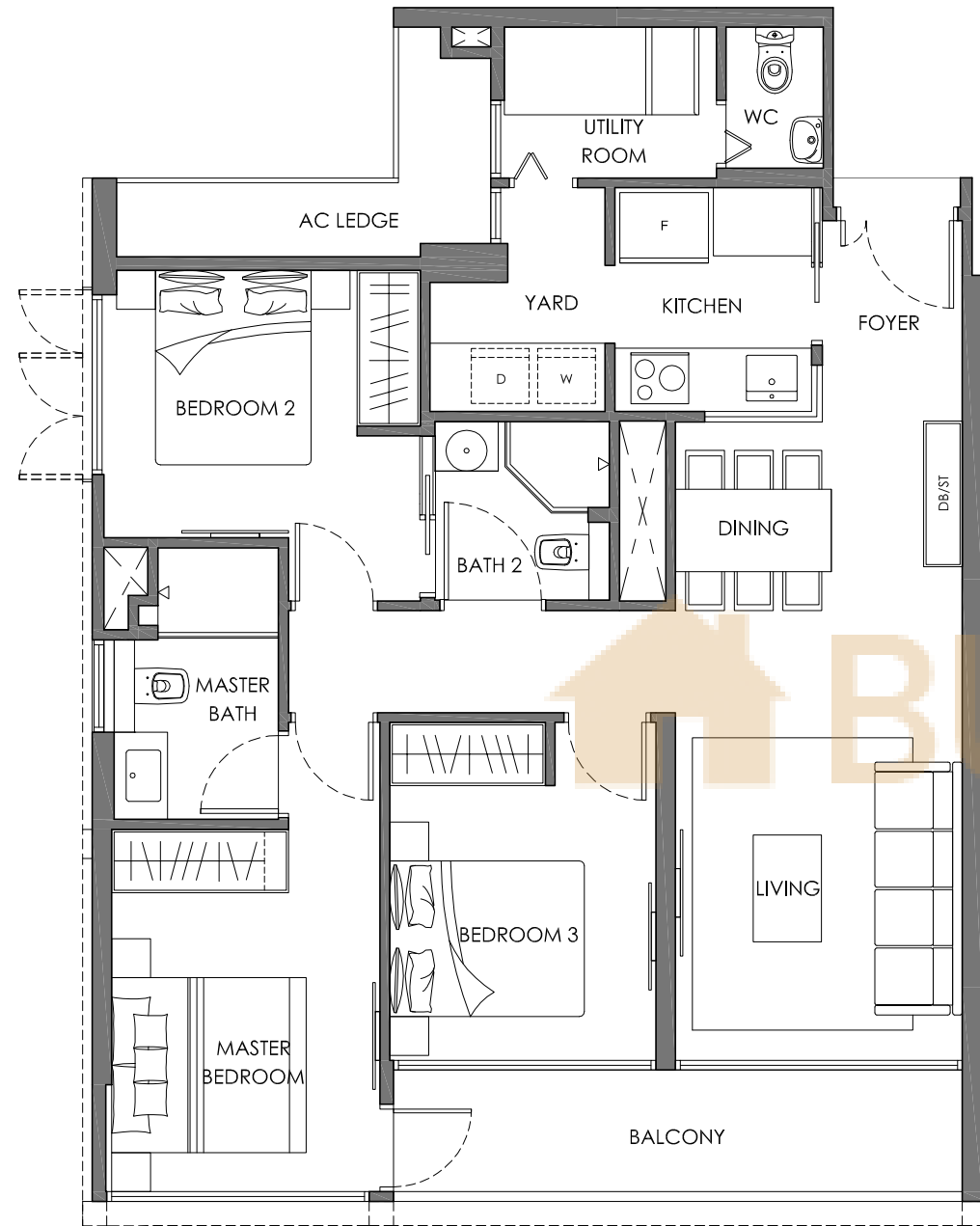
TYPE C2
3 BEDROOM



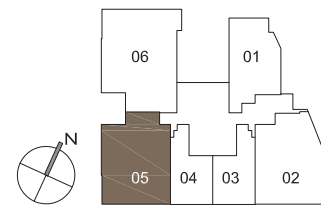
Area 113 sq m / 1216 sq ft
Units #02-05, #04-05, #06-05, #08-05
#10-05, #12-05, #16-05



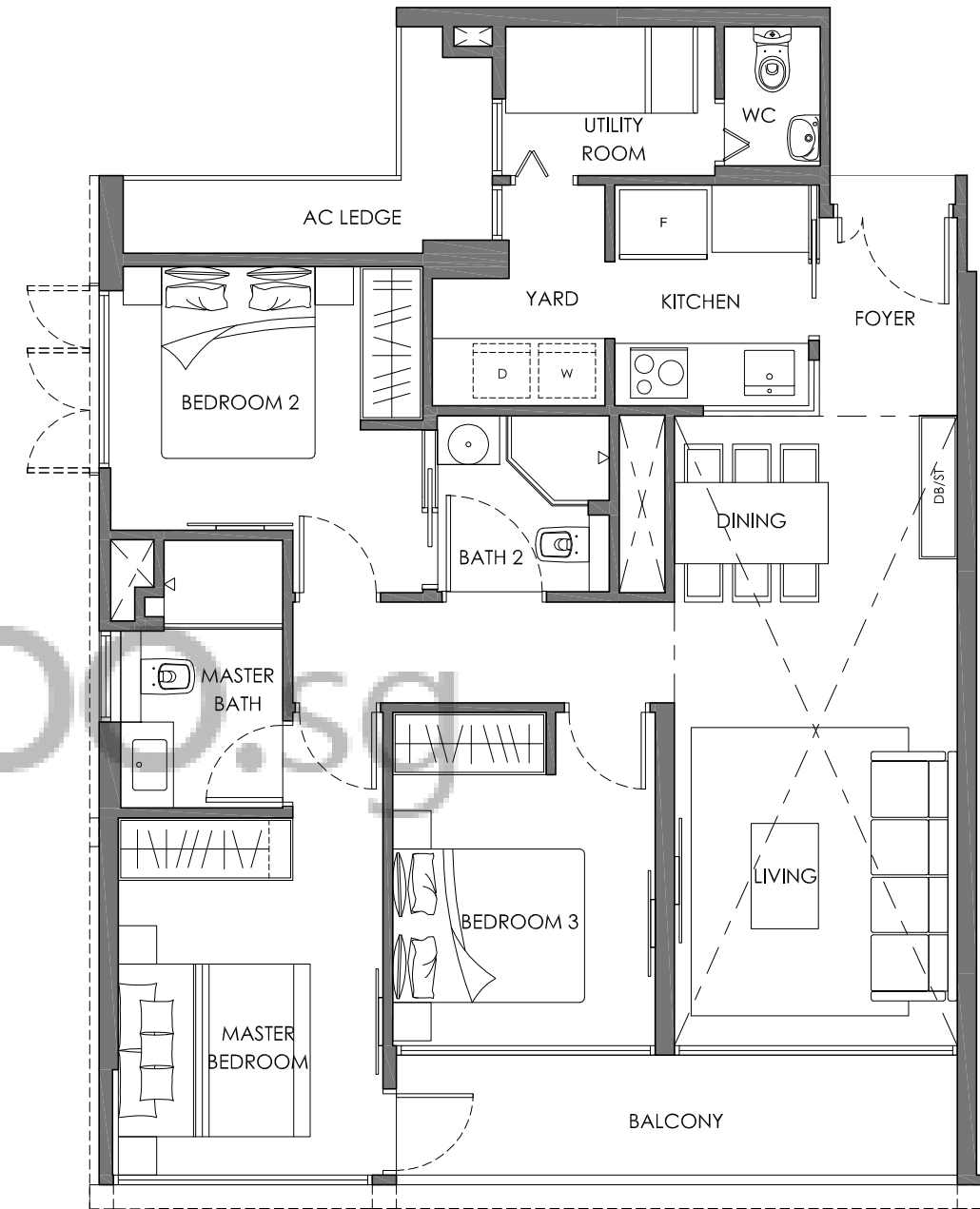
TYPE C2a
3 BEDROOM



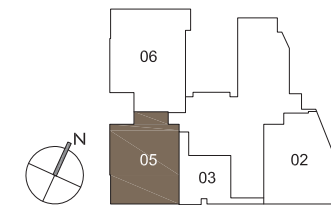
Area 99 sq m / 1066 sq ft
Units #15-05



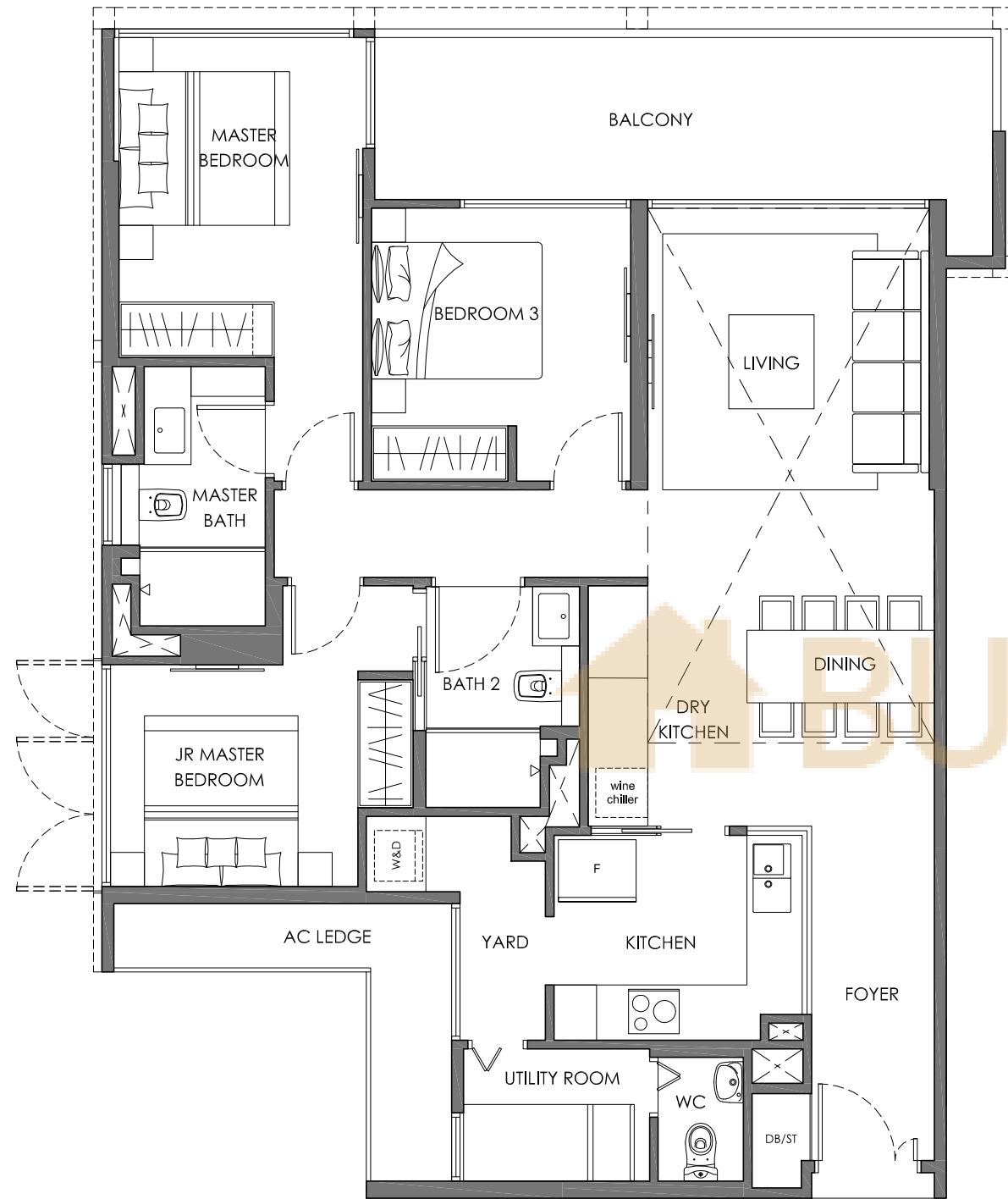
TYPE C2P
3 BEDROOM



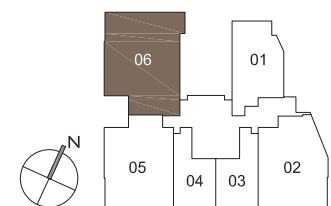
Area 120 sq m / 1292 sq ft
Units #18-05



TYPE C3
3 BEDROOM

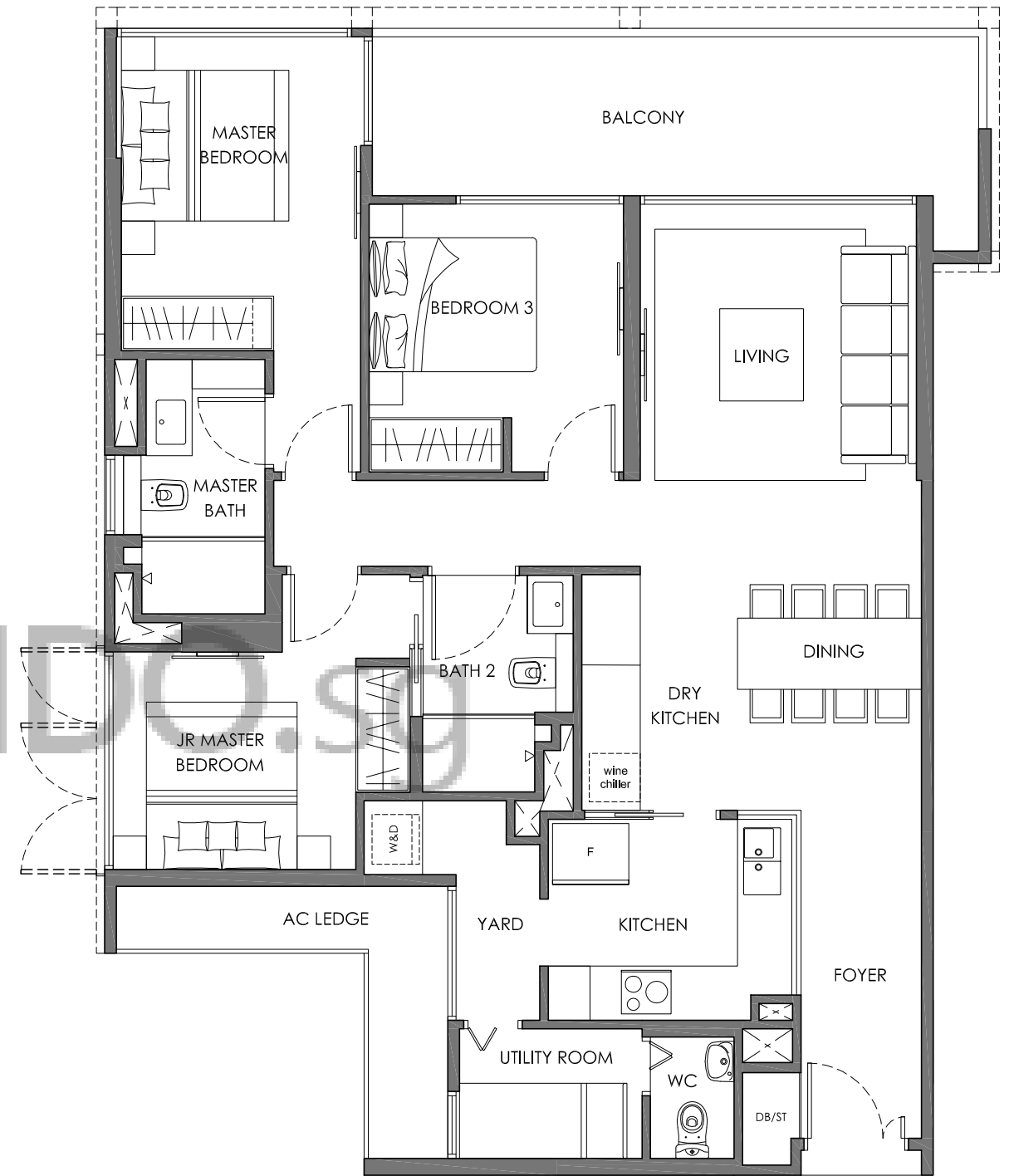


Area 147 sq m / 1582 sq ft
 Units #02-06, #04-06, #06-06, #08-06
 #10-06, #12-06, #16-06

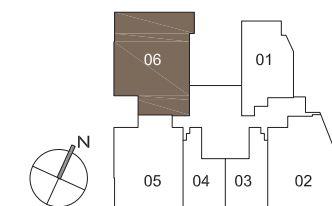


Area includes a/c ledge, balconies and void where applicable. Areas are estimates only and are subject to final survey. Plans are not to scale and subject to changes as may be required by the relevant authorities. The balconies shall not be enclosed unless with approved screen. For an illustration of the approved balcony screen, please refer to the diagram annexed hereto as "Annexure".

TYPE C3a
3 BEDROOM



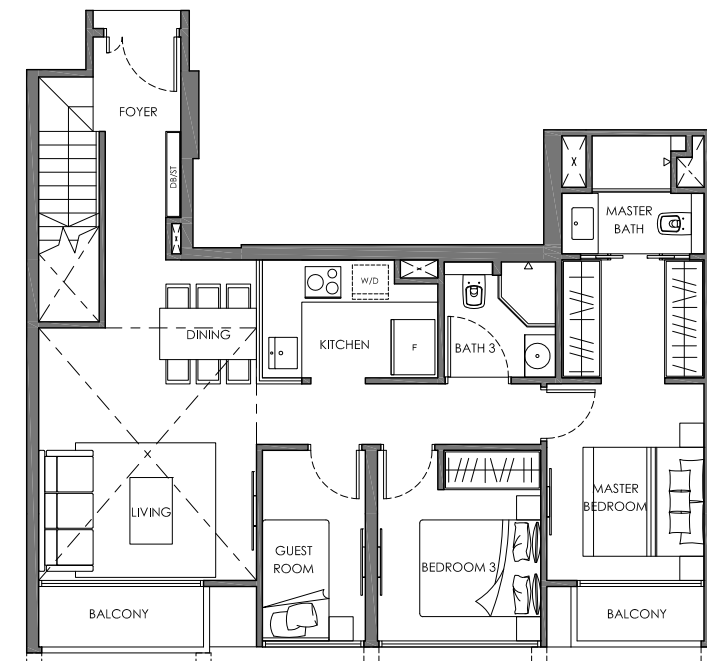
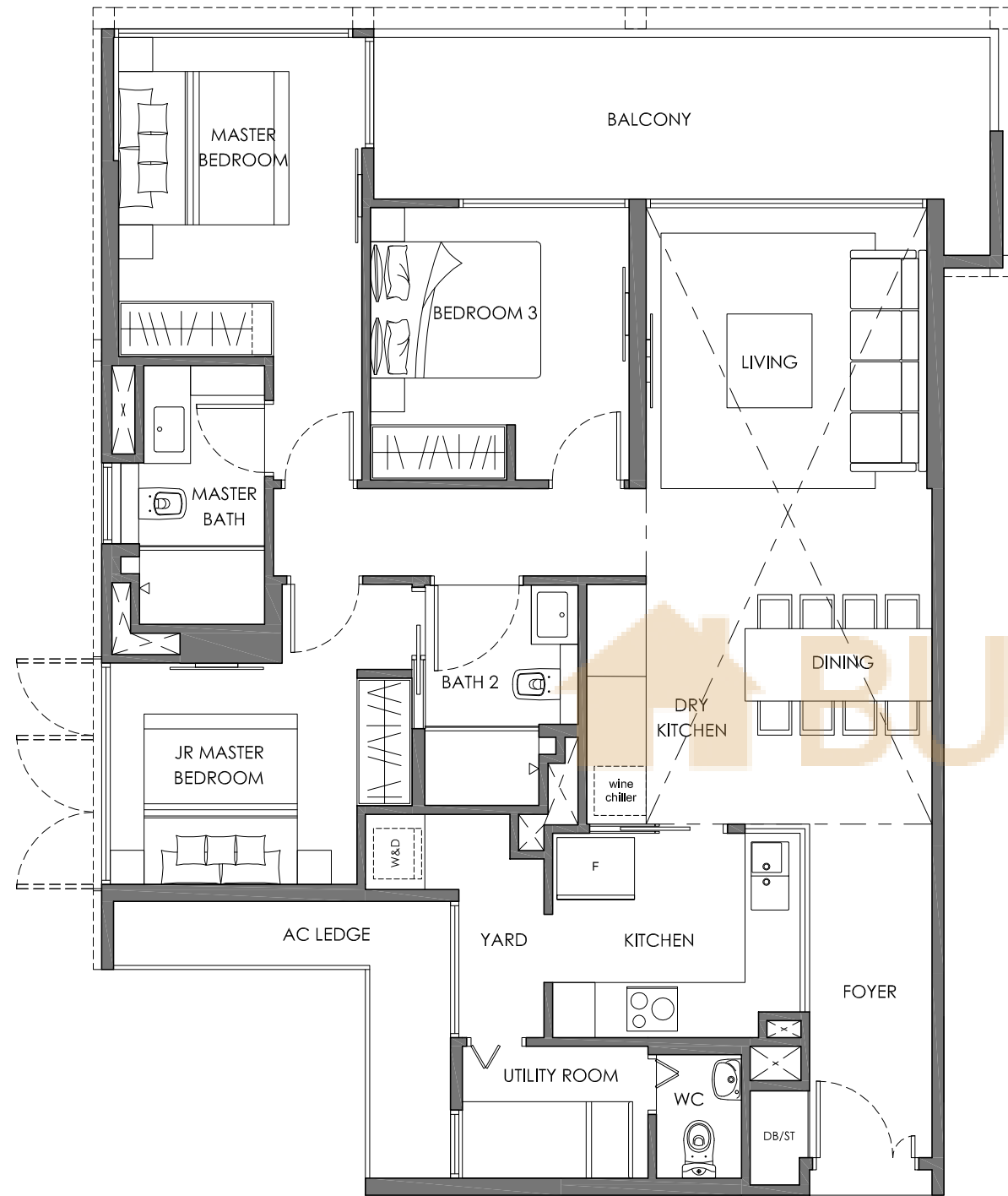
Area 124 sq m / 1335 sq ft
 Units #15-06



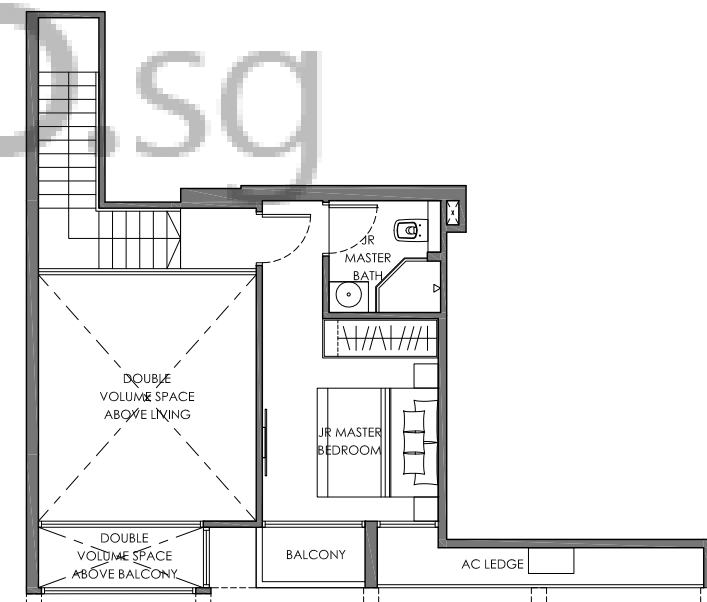
Area includes a/c ledge, balconies and void where applicable. Areas are estimates only and are subject to final survey. Plans are not to scale and subject to changes as may be required by the relevant authorities. The balconies shall not be enclosed unless with approved screen. For an illustration of the approved balcony screen, please refer to the diagram annexed hereto as "Annexure".

TYPE C3P
3 BEDROOM

TYPE C4P
3 BEDROOM + GUEST

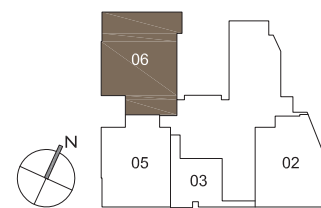


LOWER STOREY



UPPER STOREY

Area 150 sq m / 1615 sq ft
Units #18-06



Area 130 sq m / 1399 sq ft
Units #17-03

