

UNIT DISTRIBUTION

BLOCK 2 WOODLEIGH LANE S(357685)

UNIT FLR	1	2	3	4	5	6	7	8
15	2D1-PH	4C2-PH	3D2-PH	2D1-PH	2D1-PH	3D1-PH	3D1a-PH	2DK1-PH
14	2D1	4C2	3D2	2D1	2D1	3D1	3D1a	2DK1
13	2D1	4C2	3D2	2D1	2D1	3D1	3D1a	2DK1
12	2D1	4C2	3D2	2D1	2D1	3D1	3D1a	2DK1
11	2D1	4C2	3D2	2D1	2D1	3D1	3D1a	2DK1
10	2D1	4C2	3D2	2D1	2D1	3D1	3D1a	2DK1
9	2D1	4C2	3D2	2D1	2D1	3D1	3D1a	2DK1
8	2D1	4C2	3D2	2D1	2D1	3D1	3D1a	2DK1
7	2D1	4C2	3D2	2D1	2D1	3D1	3D1a	2DK1
6	2D1	4C2	3D2	2D1	2D1	3D1	3D1a	2DK1
5	2D1	4C2	3D2	2D1	2D1	3D1	3D1a	2DK1
4	2D1	4C2	3D2	2D1	2D1	3D1	3D1a	2DK1
3	2D1	4C2	3D2	2D1	2D1	3D1	3D1a	2DK1
2	2D1	4C2	3D2	2D1			3D1a	2DK1
1	2D1-G	4C2-G	3D2-G	2D1-G			3D1a-G	2DK1-G
LOWER 1ST CARPARK								
B1 CARPARK								

BLOCK 4 WOODLEIGH LANE S(357686)

UNIT FLR	9	10	11	12	13	14	15	16
15	2C1-PH	3C2-PH	3C2-PH	2D1-PH	2D1-PH	3C2-PH	3C2-PH	2C1-PH
14	2C1	3C2	3C2	2D1	2D1	3C2	3C2	2C1
13	2C1	3C2	3C2	2D1	2D1	3C2	3C2	2C1
12	2C1	3C2	3C2	2D1	2D1	3C2	3C2	2C1
11	2C1	3C2	3C2	2D1	2D1	3C2	3C2	2C1
10	2C1	3C2	3C2	2D1	2D1	3C2	3C2	2C1
9	2C1	3C2	3C2	2D1	2D1	3C2	3C2	2C1
8	2C1	3C2	3C2	2D1	2D1	3C2	3C2	2C1
7	2C1	3C2	3C2	2D1	2D1	3C2	3C2	2C1
6	2C1	3C2	3C2	2D1	2D1	3C2	3C2	2C1
5	2C1	3C2	3C2	2D1	2D1	3C2	3C2	2C1
4	2C1	3C2	3C2	2D1	2D1	3C2	3C2	2C1
3	2C1	3C2	3C2	2D1	2D1	3C2	3C2	2C1
2	2C1	3C2	3C2	2D1	2D1	3C2	3C2	2C1
1		3C2-G	3C2-G	2D1-G	2D1-G	3C2-G	3C2-G	2C1-G
LOWER 1ST CARPARK								
B1 CARPARK								

BLOCK 6 WOODLEIGH LANE S(357687)

UNIT FLR	17	18	19	20	21	22	23	24
15	1B1-PH	2C4-PH	4D1-PH	2D1-PH	2D1-PH	4C1-PH	3C1-PH	1B2-PH
14	1B1	2C4	4D1	2D1	2D1	4C1	3C1	1B2
13	1B1	2C4	4D1	2D1	2D1	4C1	3C1	1B2
12	1B1	2C4	4D1	2D1	2D1	4C1	3C1	1B2
11	1B1	2C4	4D1	2D1	2D1	4C1	3C1	1B2
10	1B1	2C4	4D1	2D1	2D1	4C1	3C1	1B2
9	1B1	2C4	4D1	2D1	2D1	4C1	3C1	1B2
8	1B1	2C4	4D1	2D1	2D1	4C1	3C1	1B2
7	1B1	2C4	4D1	2D1	2D1	4C1	3C1	1B2
6	1B1	2C4	4D1	2D1	2D1	4C1	3C1	1B2
5	1B1	2C4	4D1	2D1	2D1	4C1	3C1	1B2
4	1B1	2C4	4D1	2D1	2D1	4C1	3C1	1B2
3	1B1	2C4	4D1	2D1	2D1	4C1	3C1	1B2
2	1B1	2C4	4D1	2D1	2D1	4C1	3C1	1B2
1		2C4-G	4D1-G	2D1-G	2D1-G	4C1-G	3C1-G	1B2-G
LOWER 1ST CARPARK								

BLOCK 8 WOODLEIGH LANE S(357688)

UNIT FLR	25	26	27	28	29	30	31	32	33	34	35	36	37	38	39	40
14	1S1-PH	2C3-PH	2C3-PH	1B1-PH	1B1-PH	1B1-PH	1B1-PH	1B1-PH	1B1-PH	1B1-PH	3C1a-PH	3D2a-PH	1B1-PH	2S1-PH	2S1-PH	1B1-PH
13	1S1	2C3	2C3	1B1	1B1	1B1	1B1	1B1	1B1	1B1	3C1a	3D2a	1B1	2S1	2S1	1B1
12	1S1	2C3	2C3	1B1	1B1	1B1	1B1	1B1	1B1	1B1	3C1a	3D2a	1B1	2S1	2S1	1B1
11	1S1	2C3	2C3	1B1	1B1	1B1	1B1	1B1	1B1	1B1	3C1a	3D2a	1B1	2S1	2S1	1B1
10	1S1	2C3	2C3	1B1	1B1	1B1	1B1	1B1	1B1	1B1	3C1a	3D2a	1B1	2S1	2S1	1B1
9	1S1	2C3	2C3	1B1	1B1	1B1	1B1	1B1	1B1	1B1	3C1a	3D2a	1B1	2S1	2S1	1B1
8	1S1	2C3	2C3	1B1	1B1	1B1	1B1	1B1	1B1	1B1	3C1a	3D2a	1B1	2S1	2S1	1B1
7	1S1	2C3	2C3	1B1	1B1	1B1	1B1	1B1	1B1	1B1	3C1a	3D2a	1B1	2S1	2S1	1B1
6	1S1	2C3	2C3	1B1	1B1	1B1	1B1	1B1	1B1	1B1	3C1a	3D2a	1B1	2S1	2S1	1B1
5	1S1	2C3	2C3	1B1	1B1	1B1	1B1	1B1	1B1	1B1	3C1a	3D2a	1B1	2S1	2S1	1B1
4	1S1	2C3	2C3	1B1	1B1	1B1	1B1	1B1	1B1	1B1	3C1a	3D2a	1B1	2S1	2S1	1B1
3	1S1	2C3	2C3	1B1	1B1	1B1	1B1	1B1	1B1	1B1	3C1a	3D2a	1B1	2S1	2S1	1B1
2	1S1	2C3	2C3	1B1	1B1	1B1	1B1	1B1	1B1	1B1	3C1a	3D2a	1B1	2S1	2S1	1B1
1	1S1-G	2C3-G	2C3-G		1B1a-G	1B1a-G	1B1a-G	1B1a-G	1B1a-G		3C1a-G	3D2a-G	1B1-G	2S1-G	2S1-G	1B1-G
1ST STOREY CARPARK																

LEGEND

- 1-BEDROOM SUITE
- 1-BEDROOM + STUDY
- 2-BEDROOM CLASSIC
- 2-BEDROOM DELUXE
- 2-BEDROOM + STUDY
- 2-BEDROOM DUAL KEY
- 3-BEDROOM CLASSIC
- 3-BEDROOM DELUXE
- 4-BEDROOM CLASSIC
- 4-BEDROOM DELUXE
- 5-BEDROOM LUXURY

BLOCK 10 WOODLEIGH LANE S(357657)

UNIT FLR	41	42	43	44	45	46	47	48
14	2D2-PH	3C2-PH	3D2b-PH	2C2-PH	2C2-PH	3C2-PH	5L1-PH	2C1-PH
13	2D2	3C2	3D2b	2C2	2C2	3C2	5L1	2C1
12	2D2	3C2	3D2b	2C2	2C2	3C2	5L1	2C1
11	2D2	3C2	3D2b	2C2	2C2	3C2	5L1	2C1
10	2D2	3C2	3D2b	2C2	2C2	3C2	5L1	2C1
9	2D2	3C2	3D2b	2C2	2C2	3C2	5L1	2C1
8	2D2	3C2	3D2b	2C2	2C2	3C2	5L1	2C1
7	2D2	3C2	3D2b	2C2	2C2	3C2	5L1	2C1
6	2D2	3C2	3D2b	2C2	2C2	3C2	5L1	2C1
5	2D2	3C2	3D2b	2C2	2C2	3C2	5L1	2C1
4	2D2	3C2	3D2b	2C2	2C2	3C2	5L1	2C1
3	2D2	3C2	3D2b	2C2	2C2	3C2	5L1	2C1
2	2D2	3C2	3D2b	2C2	2C2	3C2	5L1	2C1
1	2D2-G	3C2-G	3D2b-G		2C2-G	3C2-G	5L1-G	2C1-G
1ST STOREY CARPARK								

BLOCK 12 WOODLEIGH LANE S(357658)

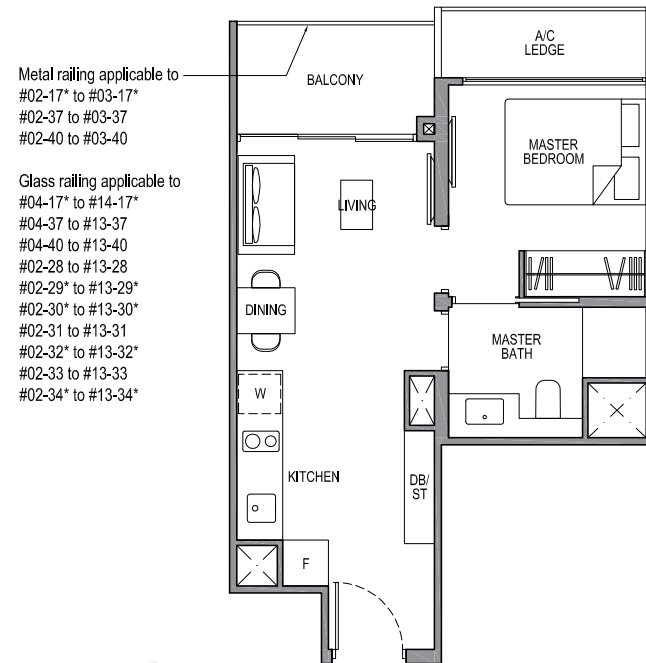
UNIT FLR	49	50	51	52	53	54	55	56
15	2C1-PH	5L1-PH	3C2-PH	2C2-PH	2C2-PH	3C2-PH	4D2-PH	2D2-PH
14	2C1	5L1	3C2	2C2	2C2	3C2	4D2	2D2
13	2C1	5L1	3C2	2C2	2C2	3C2	4D2	2D2
12	2C1	5L1	3C2	2C2	2C2	3C2	4D2	2D2
11	2C1	5L1	3C2	2C2	2C2	3C2	4D2	2D2
10	2C1	5L1	3C2	2C2	2C2	3C2	4D2	2D2
9	2C1	5L1	3C2	2C2	2C2	3C2	4D2	2D2
8	2C1	5L1	3C2	2C2	2C2	3C2	4D2	2D2
7	2C1	5L1	3C2	2C2	2C2	3C2	4D2	2D2
6	2C1	5L1	3C2	2C2	2C2	3C2	4D2	2D2
5	2C1	5L1	3C2	2C2	2C2	3C2	4D2	2D2
4	2C1	5L1	3C2	2C2	2C2	3C2	4D2	2D2
3	2C1	5L1	3C2	2C2	2C2	3C2	4D2	2D2
2	2C1	5L1	3C2	2C2	2C2	3C2	4D2	2D2
1	2C1-G	5L1-G	3C2-G	2C2-G			4D2-G	2D2-G
LOWER 1ST CARPARK								

1-BEDROOM SUITE

TYPE 1B1

Area: 43 sq m (include 3 sq m a/c ledge, 5 sq m balcony)

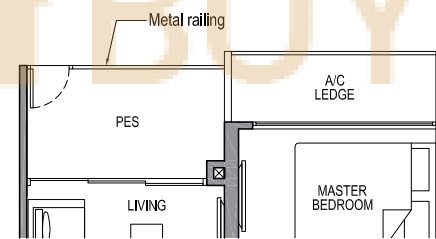
Unit(s): #02-17* to #14-17*
 #02-28 to #13-28
 #02-29* to #13-29*
 #02-30* to #13-30*
 #02-31 to #13-31
 #02-32* to #13-32*
 #02-33 to #13-33
 #02-34* to #13-34*
 #02-37 to #13-37
 #02-40 to #13-40



TYPE 1B1-G

Area: 43 sq m (include 3 sq m a/c ledge, 5 sq m PES)

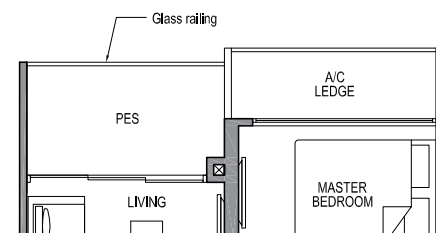
Unit(s): #01-37
 #01-40



TYPE 1B1a-G

Area: 43 sq m (include 3 sq m a/c ledge, 5 sq m PES)

Unit(s): #01-29* #01-32*
 #01-30* #01-33
 #01-31

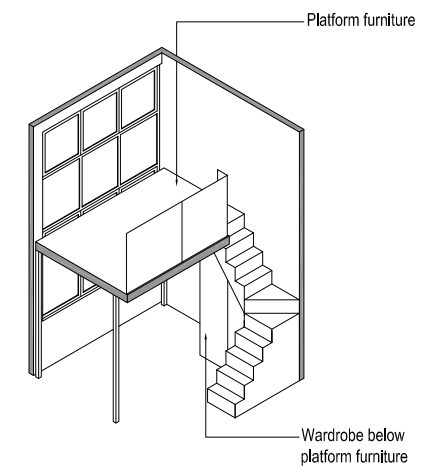
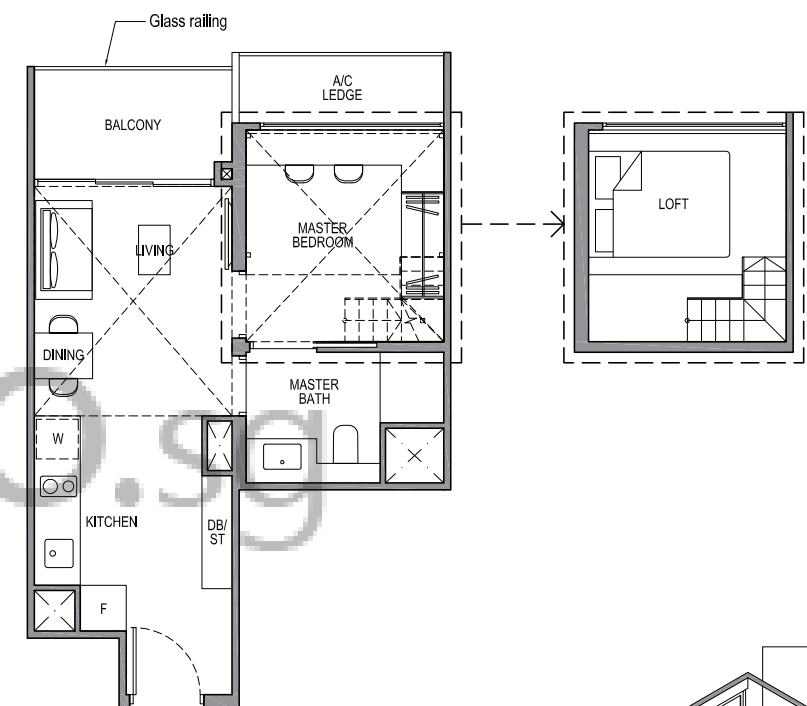


1-BEDROOM SUITE

TYPE 1B1-PH

Area: 62 sq m (include 3 sq m a/c ledge, 5 sq m balcony, 19 sq m void*)

Unit(s): #15-17*
 #14-28
 #14-29*
 #14-30*
 #14-31
 #14-32*
 #14-33
 #14-34*
 #14-37
 #14-40



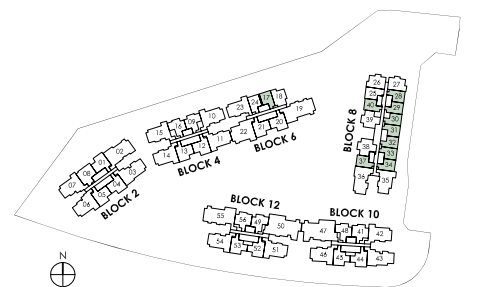
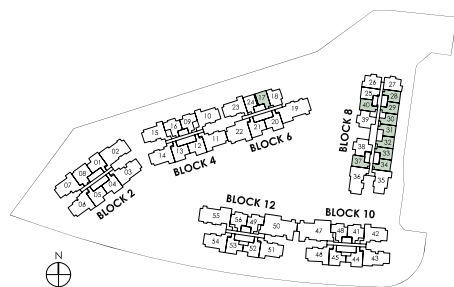
ISOMETRIC VIEW**

NOTE:
 * Mirror Image

Plans are subject to change/amendments as may be required and/or approved by the Developer and/or the relevant authorities and do not form part of any offer or contract. These are not drawn to scale and are for the purpose of visual presentation only.

NOTE:

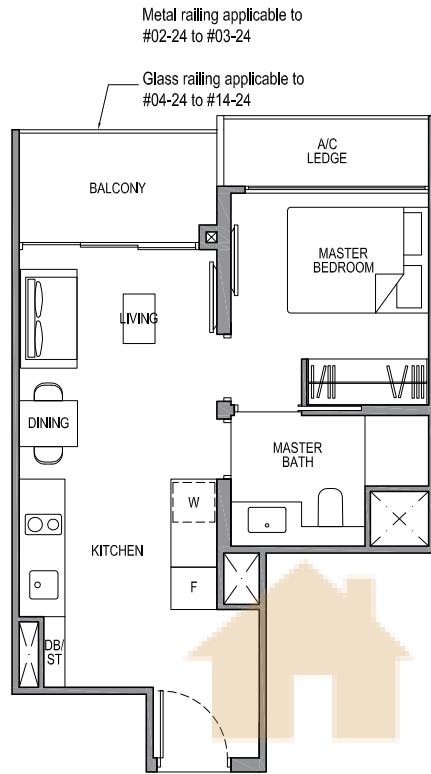
* Mirror image
 ** Isometric views have excluded railing drawings for the steps
 * There shall be no addition of floor slab within the void over Living and Dining areas
 Plans are subject to change/amendments as may be required and/or approved by the Developer and/or the relevant authorities and do not form part of any offer or contract. These are not drawn to scale and are for the purpose of visual presentation only.



1-BEDROOM SUITE

TYPE 1B2

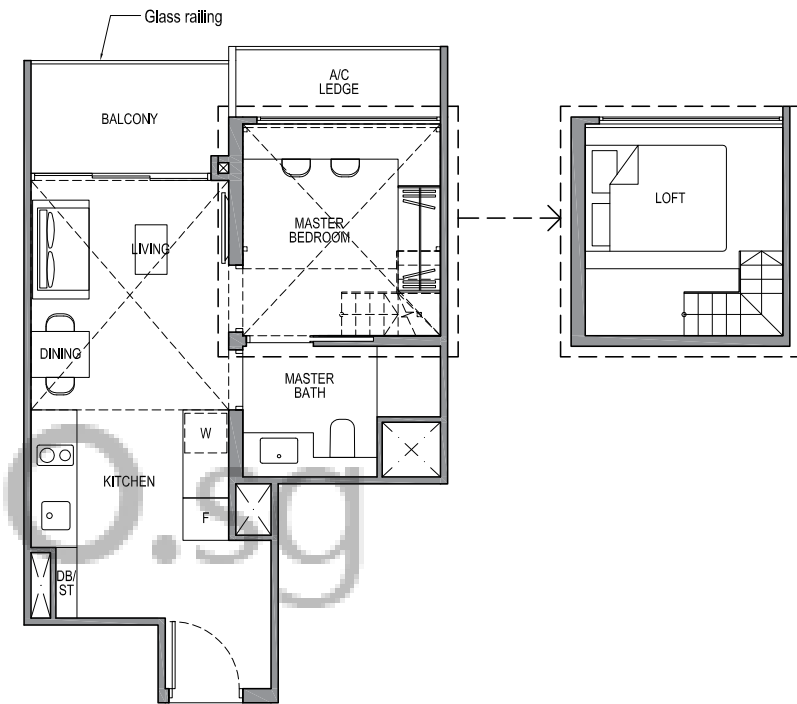
Area: 43 sq m (include 3 sq m a/c ledge, 5 sq m balcony)
Unit(s): #02-24 to #14-24



1-BEDROOM SUITE

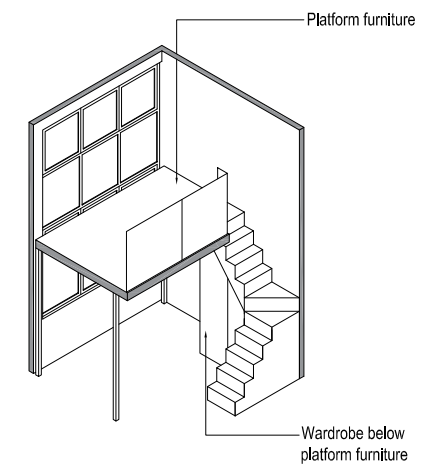
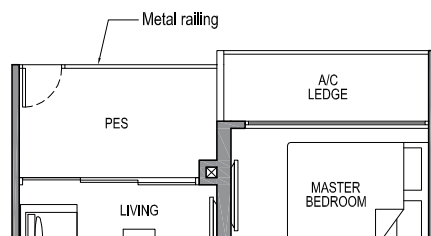
TYPE 1B2-PH

Area: 62 sq m (include 3 sq m a/c ledge, 5 sq m balcony, 19 sq m void*)
Unit(s): #15-24

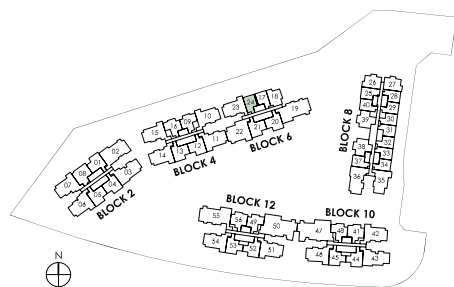


TYPE 1B2-G

Area: 43 sq m (include 3 sq m a/c ledge, 5 sq m PES)
Unit(s): #01-24



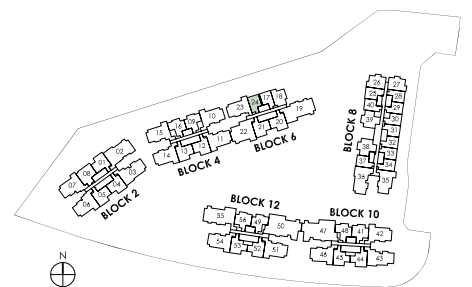
ISOMETRIC VIEW**



Plans are subject to change/amendments as may be required and/or approved by the Developer and/or the relevant authorities and do not form part of any offer or contract. These are not drawn to scale and are for the purpose of visual presentation only.

NOTE:

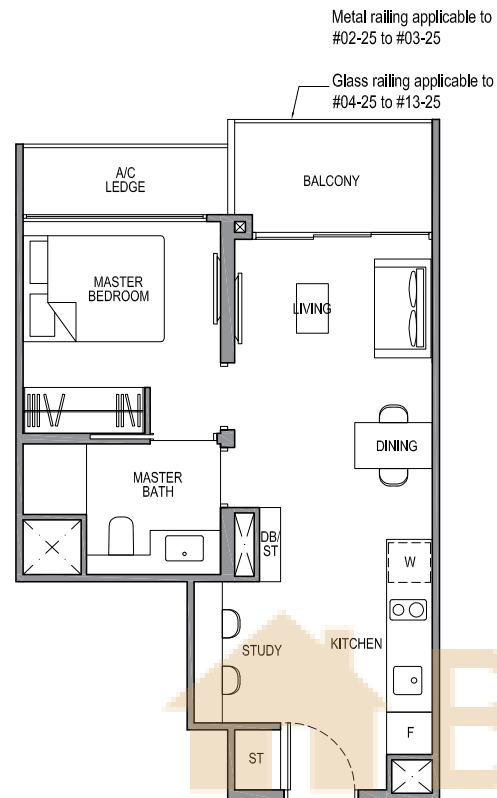
** Isometric views have excluded railing drawings for the steps
* There shall be no addition of floor slab within the void over Living and Dining areas
Plans are subject to change/amendments as may be required and/or approved by the Developer and/or the relevant authorities and do not form part of any offer or contract. These are not drawn to scale and are for the purpose of visual presentation only.



1-BEDROOM + STUDY

TYPE 1S1

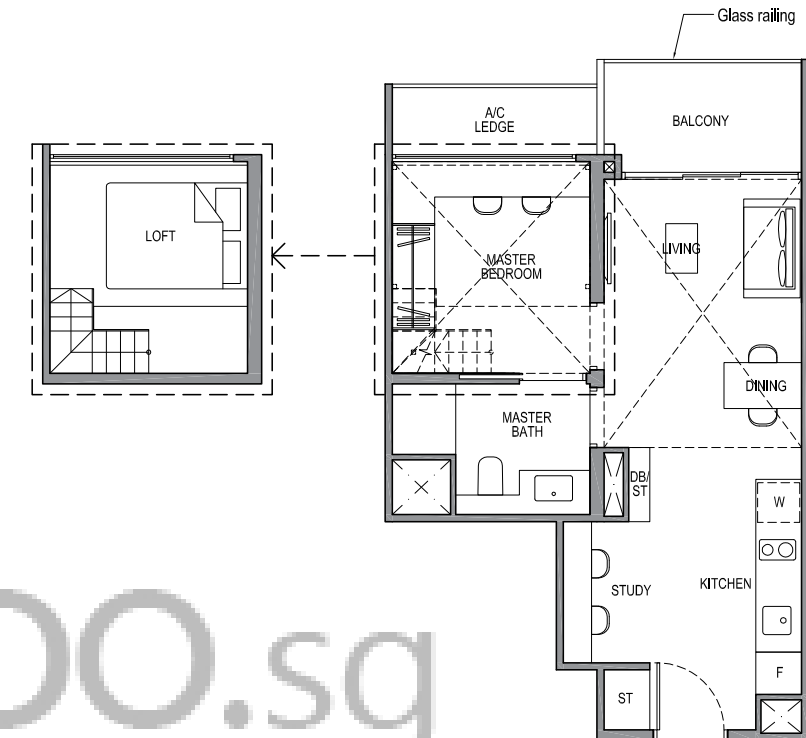
Area: 47 sq m (include 3 sq m a/c ledge, 5 sq m balcony)
Unit(s): #02-25 to #13-25



1-BEDROOM + STUDY

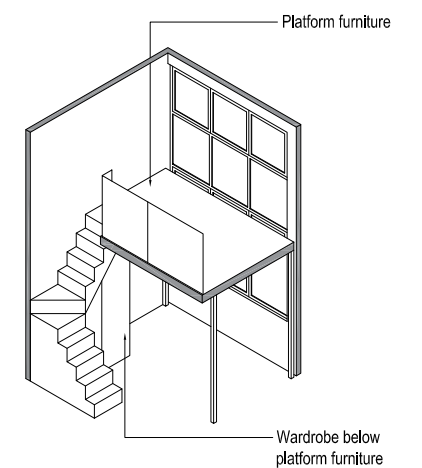
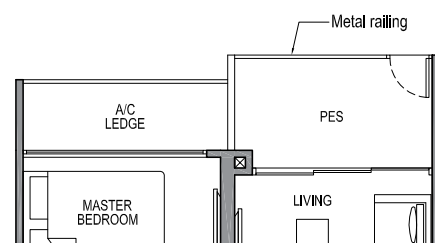
TYPE 1S1-PH

Area: 68 sq m (include 3 sq m a/c ledge, 5 sq m balcony, 21 sq m void*)
Unit(s): #14-25

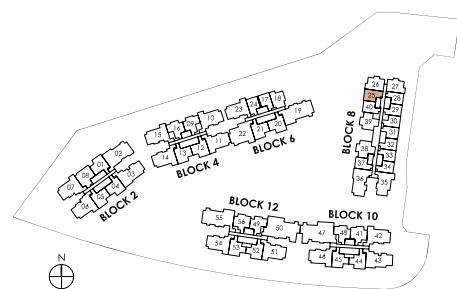


TYPE 1S1-G

Area: 47 sq m (include 3 sq m a/c ledge, 5 sq m PES)
Unit(s): #01-25



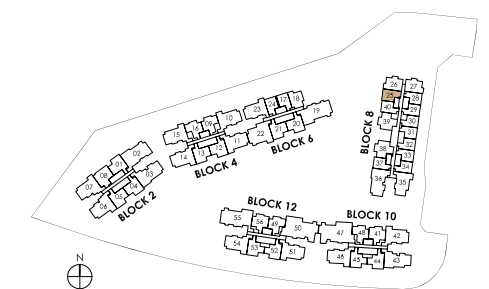
ISOMETRIC VIEW**



Plans are subject to change/amendments as may be required and/or approved by the Developer and/or the relevant authorities and do not form part of any offer or contract. These are not drawn to scale and are for the purpose of visual presentation only.

NOTE:

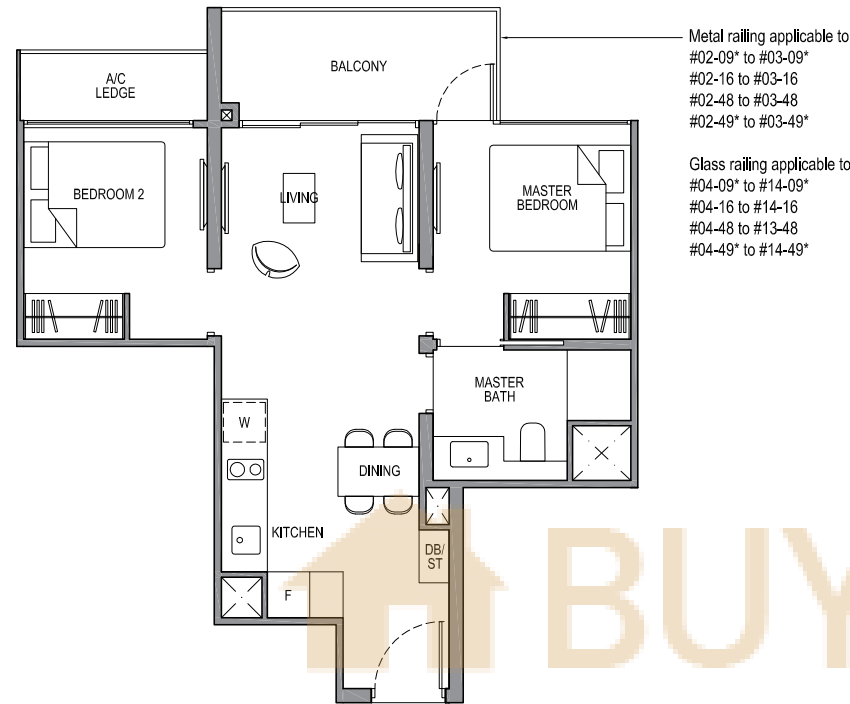
** Isometric views have excluded railing drawings for the steps
* There shall be no addition of floor slab within the void over Living and Dining areas
Plans are subject to change/amendments as may be required and/or approved by the Developer and/or the relevant authorities and do not form part of any offer or contract. These are not drawn to scale and are for the purpose of visual presentation only.



2-BEDROOM CLASSIC

TYPE 2C1

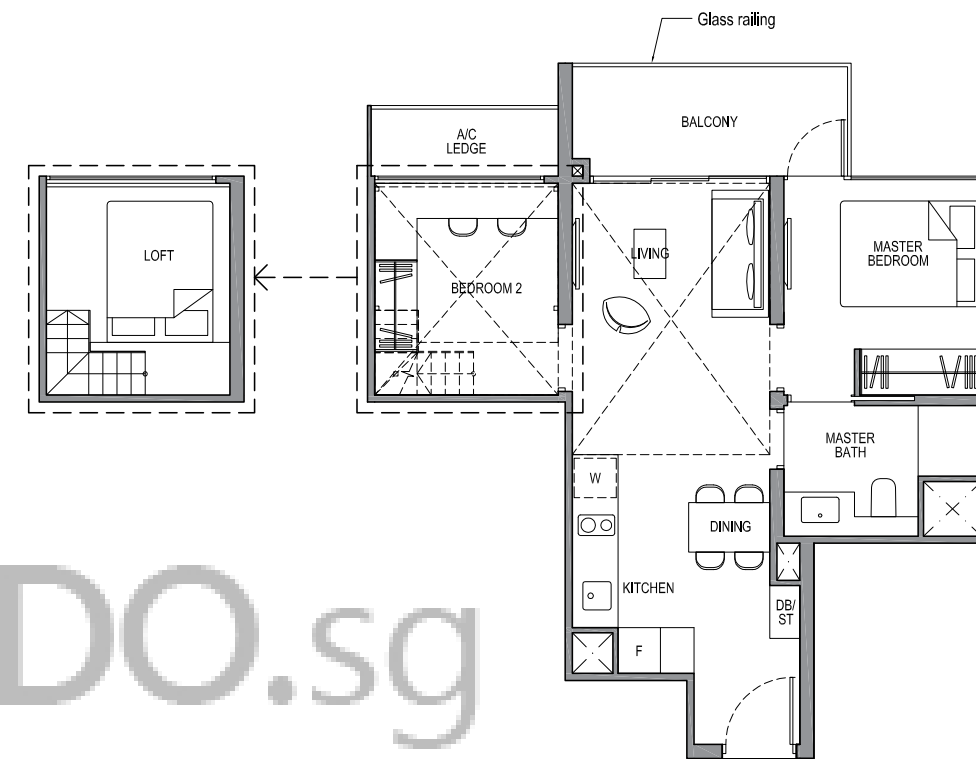
Area: 56 sq m (include 3 sq m a/c ledge, 6 sq m balcony)
 Unit(s): #02-09* to #14-09*
 #02-16 to #14-16
 #02-48 to #13-48
 #02-49* to #14-49*



2-BEDROOM CLASSIC

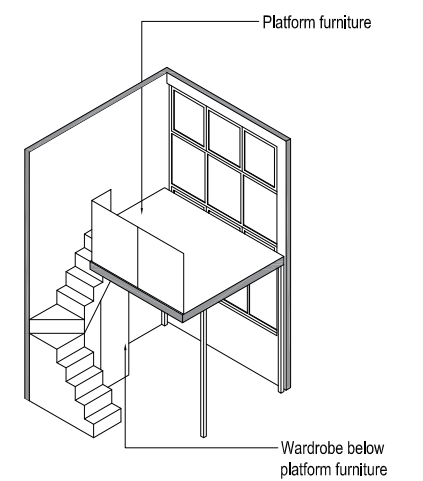
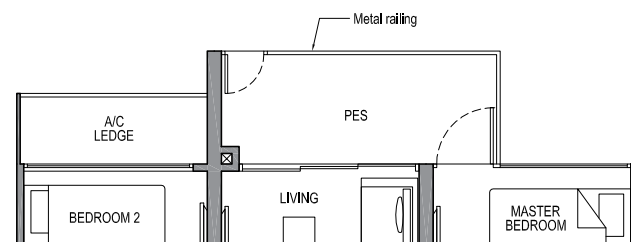
TYPE 2C1-PH

Area: 76 sq m (include 3 sq m a/c ledge, 6 sq m balcony, 20 sq m void*)
 Unit(s): #15-09*
 #15-16
 #14-48
 #15-49*

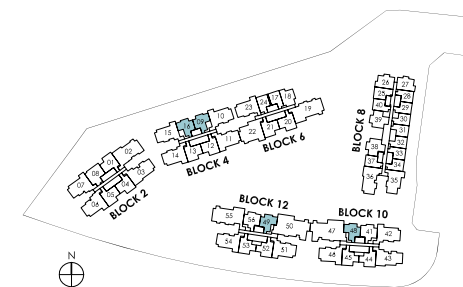


TYPE 2C1-G

Area: 56 sq m (include 3 sq m a/c ledge, 6 sq m PES)
 Unit(s): #01-16
 #01-48
 #01-49*



ISOMETRIC VIEW**

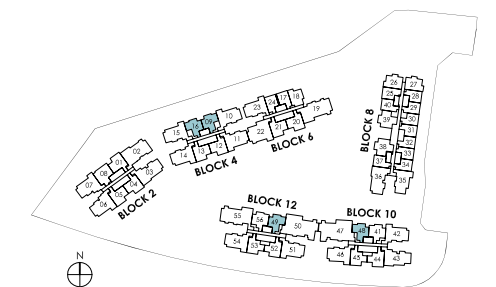


NOTE:
 * Mirror Image

Plans are subject to change/amendments as may be required and/or approved by the Developer and/or the relevant authorities and do not form part of any offer or contract. These are not drawn to scale and are for the purpose of visual presentation only.

NOTE:

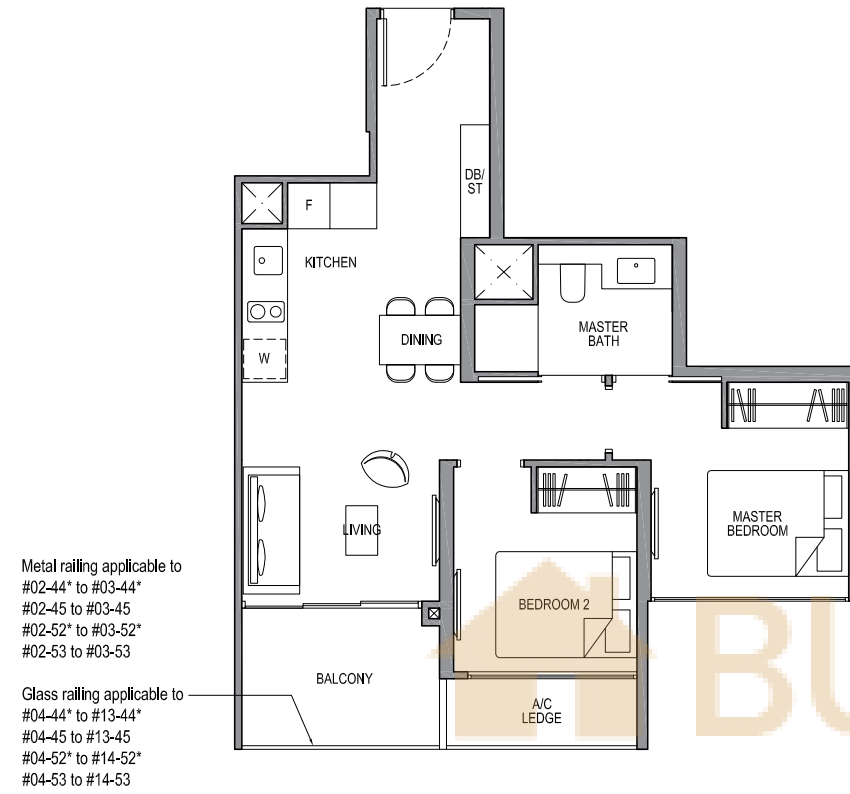
* Mirror image
 ** Isometric views have excluded railing drawings for the steps
 * There shall be no addition of floor slab within the void over Living and Dining areas
 Plans are subject to change/amendments as may be required and/or approved by the Developer and/or the relevant authorities and do not form part of any offer or contract. These are not drawn to scale and are for the purpose of visual presentation only.



2-BEDROOM CLASSIC

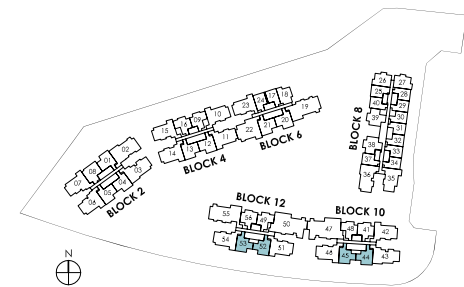
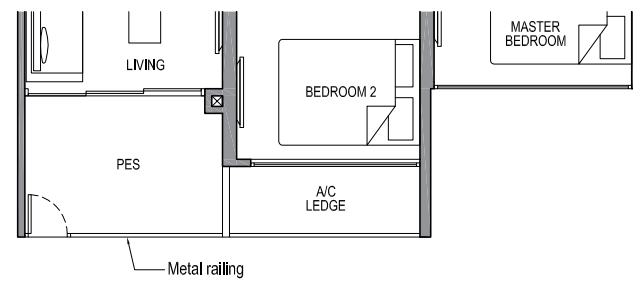
TYPE 2C2

Area: 59 sq m (include 3 sq m a/c ledge, 6 sq m balcony)
 Unit(s): #02-44* to #13-44*
 #02-45 to #13-45
 #02-52* to #14-52*
 #02-53 to #14-53



TYPE 2C2-G

Area: 59 sq m (include 3 sq m a/c ledge, 6 sq m PES)
 Unit(s): #01-45
 #01-52*



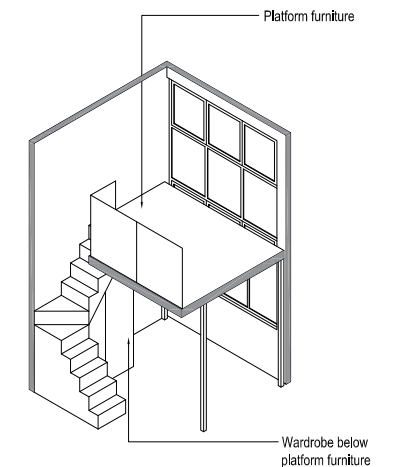
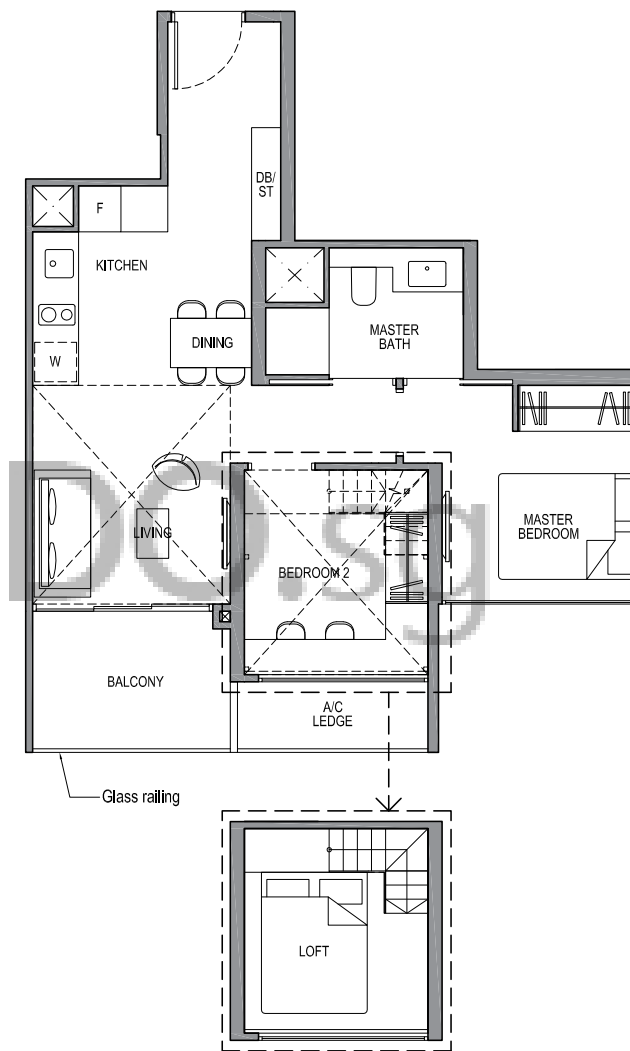
NOTE:
 * Mirror Image

Plans are subject to change/amendments as may be required and/or approved by the Developer and/or the relevant authorities and do not form part of any offer or contract. These are not drawn to scale and are for the purpose of visual presentation only.

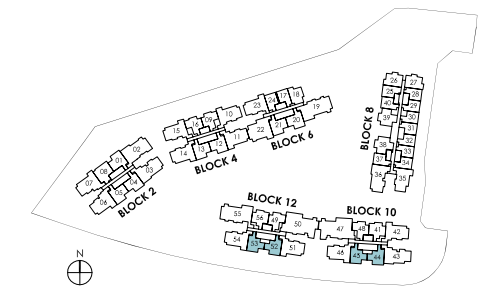
2-BEDROOM CLASSIC

TYPE 2C2-PH

Area: 77 sq m (include 3 sq m a/c ledge, 6 sq m balcony, 18 sq m void*)
 Unit(s): #14-44*
 #14-45
 #15-52*
 #15-53



ISOMETRIC VIEW**



NOTE:

* Mirror image

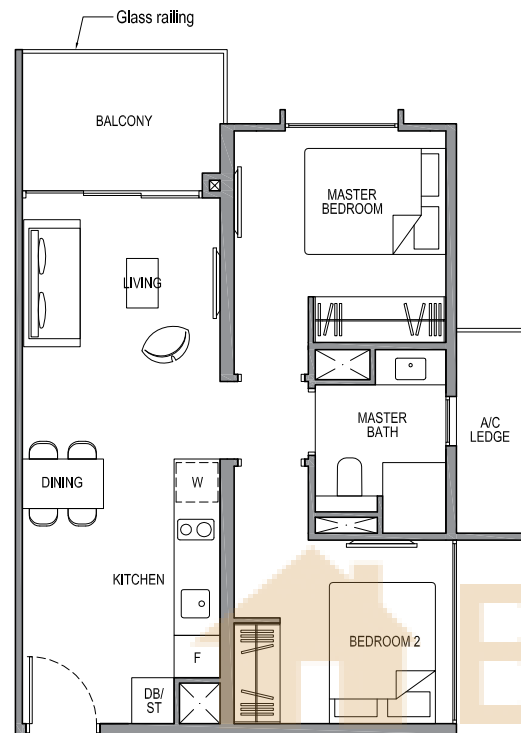
** Isometric views have excluded railing drawings for the steps

* There shall be no addition of floor slab within the void over Living and Dining areas
 Plans are subject to change/amendments as may be required and/or approved by the Developer and/or the relevant authorities and do not form part of any offer or contract. These are not drawn to scale and are for the purpose of visual presentation only.

2-BEDROOM CLASSIC

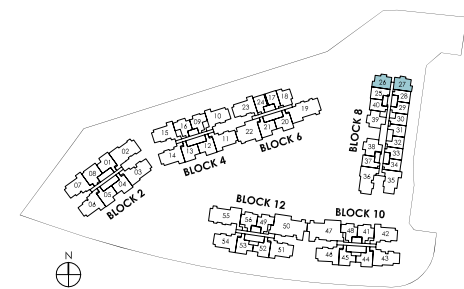
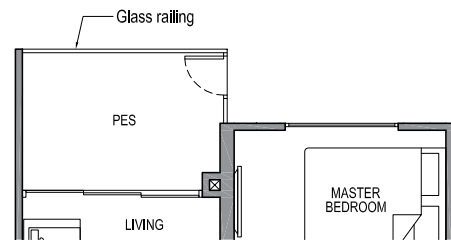
TYPE 2C3

Area: 58 sq m (include 3 sq m a/c ledge, 6 sq m balcony)
 Unit(s): #02-26 to #13-26
 #02-27* to #13-27*



TYPE 2C3-G

Area: 58 sq m (include 3 sq m a/c ledge, 6 sq m PES)
 Unit(s): #01-26
 #01-27*



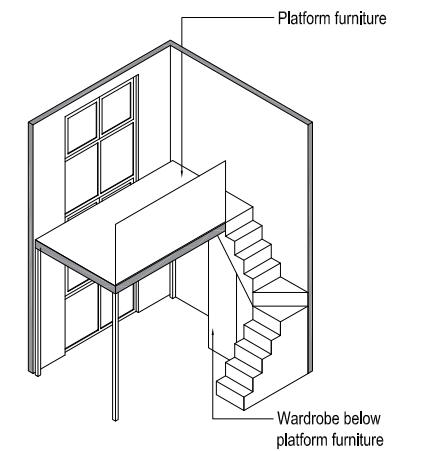
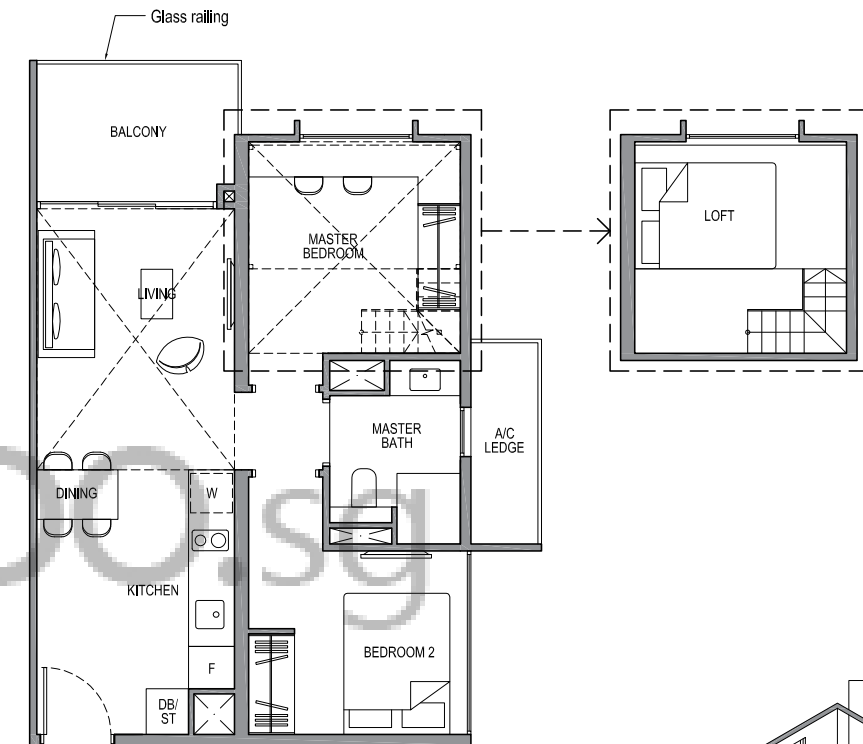
NOTE:
 * Mirror Image

Plans are subject to change/amendments as may be required and/or approved by the Developer and/or the relevant authorities and do not form part of any offer or contract. These are not drawn to scale and are for the purpose of visual presentation only.

2-BEDROOM CLASSIC

TYPE 2C3-PH

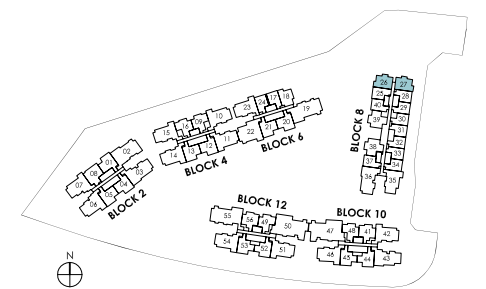
Area: 79 sq m (include 3 sq m a/c ledge, 6 sq m balcony, 21 sq m void*)
 Unit(s): #14-26
 #14-27*



ISOMETRIC VIEW**

NOTE:

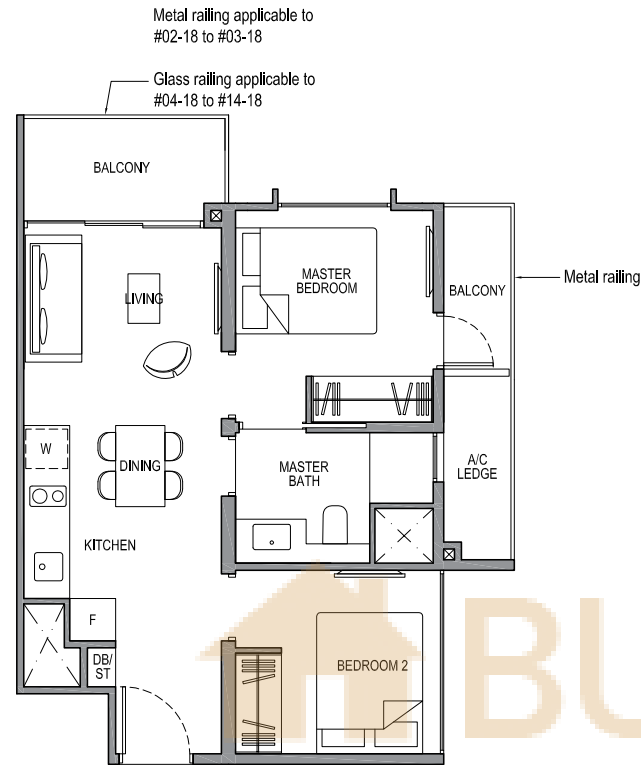
* Mirror image
 ** Isometric views have excluded railing drawings for the steps
 * There shall be no addition of floor slab within the void over Living and Dining areas
 Plans are subject to change/amendments as may be required and/or approved by the Developer and/or the relevant authorities and do not form part of any offer or contract. These are not drawn to scale and are for the purpose of visual presentation only.



2-BEDROOM CLASSIC

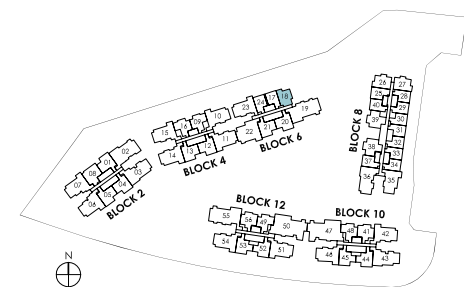
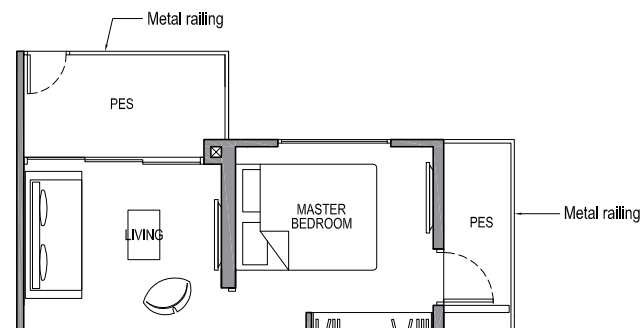
TYPE 2C4

Area: 53 sq m (include 3 sq m a/c ledge, 7 sq m balcony)
Unit(s): #02-18 to #14-18



TYPE 2C4-G

Area: 53 sq m (include 3 sq m a/c ledge, 7 sq m PES)
Unit(s): #01-18

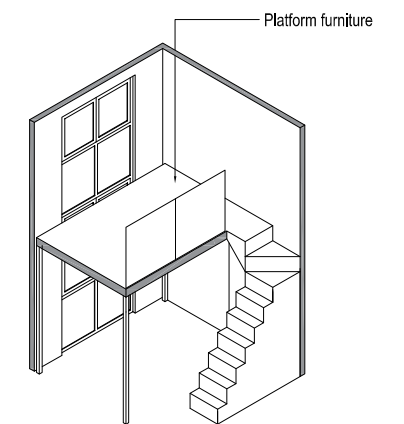
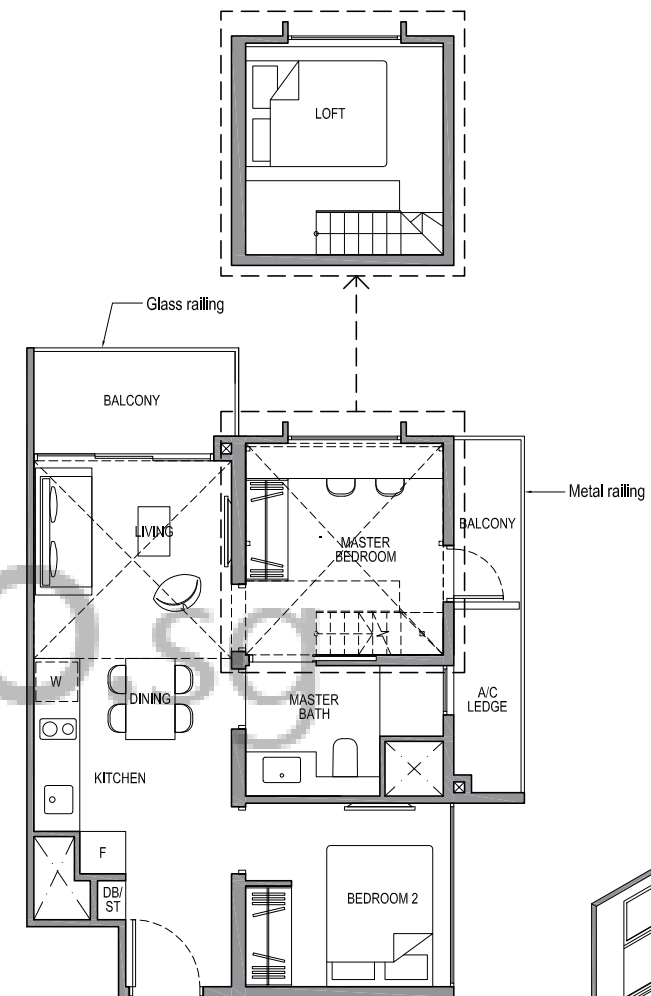


Plans are subject to change/amendments as may be required and/or approved by the Developer and/or the relevant authorities and do not form part of any offer or contract. These are not drawn to scale and are for the purpose of visual presentation only.

2-BEDROOM CLASSIC

TYPE 2C4-PH

Area: 71 sq m (include 3 sq m a/c ledge, 7 sq m balcony, 18 sq m void*)
Unit(s): #15-18

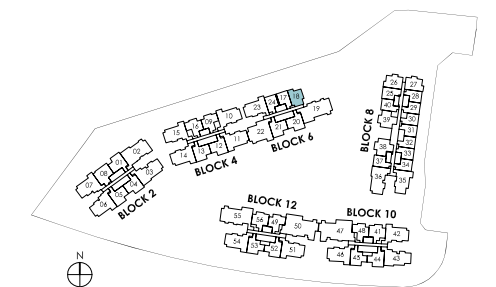


ISOMETRIC VIEW**

NOTE:

** Isometric views have excluded railing drawings for the steps

* There shall be no addition of floor slab within the void over Living and Dining areas
Plans are subject to change/amendments as may be required and/or approved by the Developer and/or the relevant authorities and do not form part of any offer or contract. These are not drawn to scale and are for the purpose of visual presentation only.

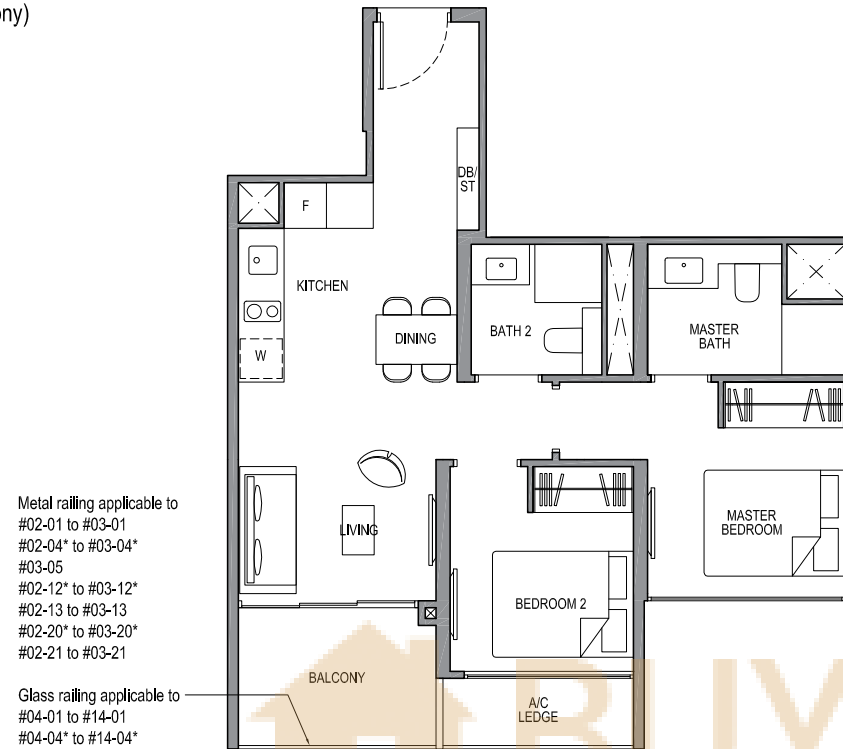


2-BEDROOM DELUXE

TYPE 2D1

Area: 63 sq m (include 3 sq m a/c ledge, 6 sq m balcony)

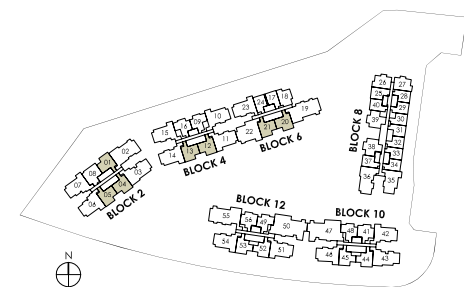
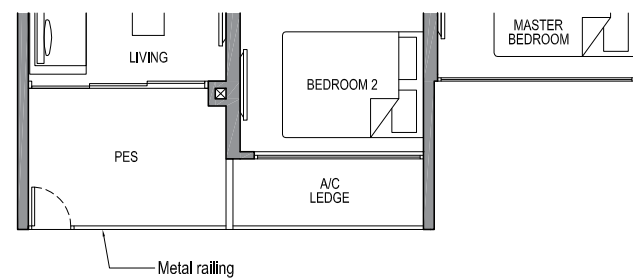
Unit(s): #02-01 to #14-01
 #02-04* to #14-04*
 #03-05 to #14-05
 #02-12* to #14-12*
 #02-13 to #14-13
 #02-20* to #14-20*
 #02-21 to #14-21



TYPE 2D1-G

Area: 63 sq m (include 3 sq m a/c ledge, 6 sq m PES)

Unit(s): #01-01
 #01-04*
 #01-12*
 #01-13
 #01-20*
 #01-21



NOTE:
 * Mirror Image

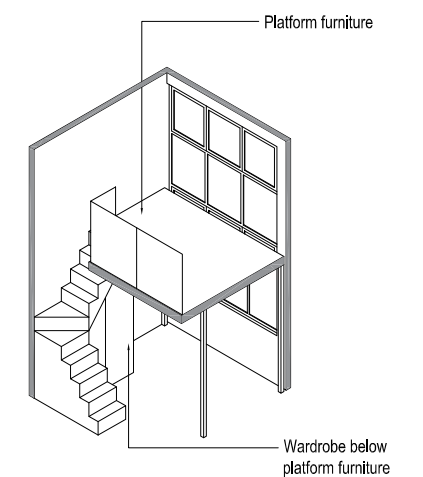
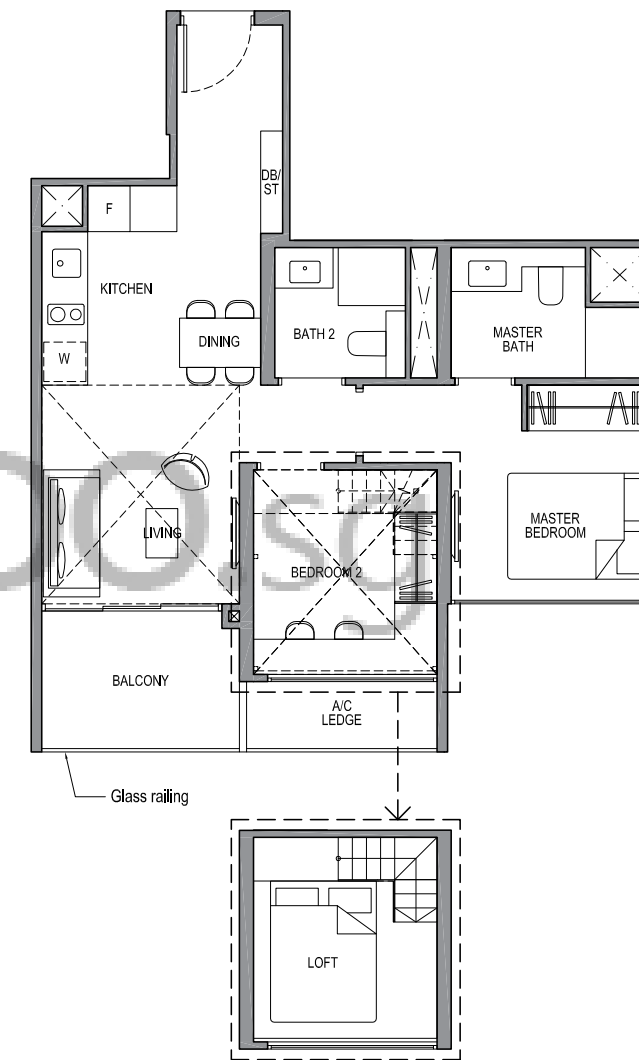
Plans are subject to change/amendments as may be required and/or approved by the Developer and/or the relevant authorities and do not form part of any offer or contract. These are not drawn to scale and are for the purpose of visual presentation only.

2-BEDROOM DELUXE

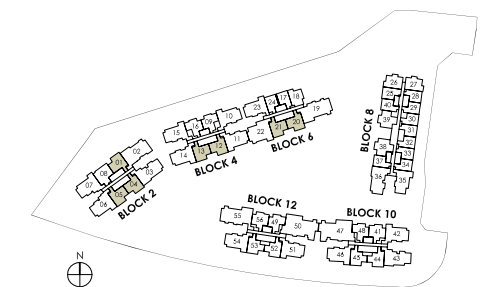
TYPE 2D1-PH

Area: 81 sq m (include 3 sq m a/c ledge, 6 sq m balcony, 18 sq m void*)

Unit(s): #15-01
 #15-04*
 #15-05
 #15-12*
 #15-13
 #15-20*
 #15-21



ISOMETRIC VIEW**



NOTE:

* Mirror image

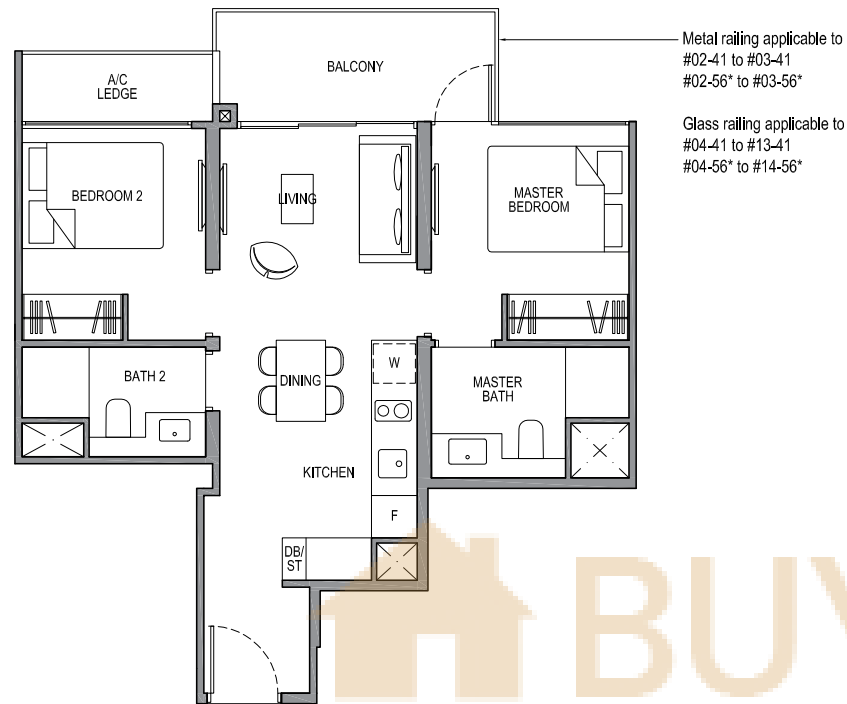
** Isometric views have excluded railing drawings for the steps

* There shall be no addition of floor slab within the void over Living and Dining areas
 Plans are subject to change/amendments as may be required and/or approved by the Developer and/or the relevant authorities and do not form part of any offer or contract. These are not drawn to scale and are for the purpose of visual presentation only.

2-BEDROOM DELUXE

TYPE 2D2

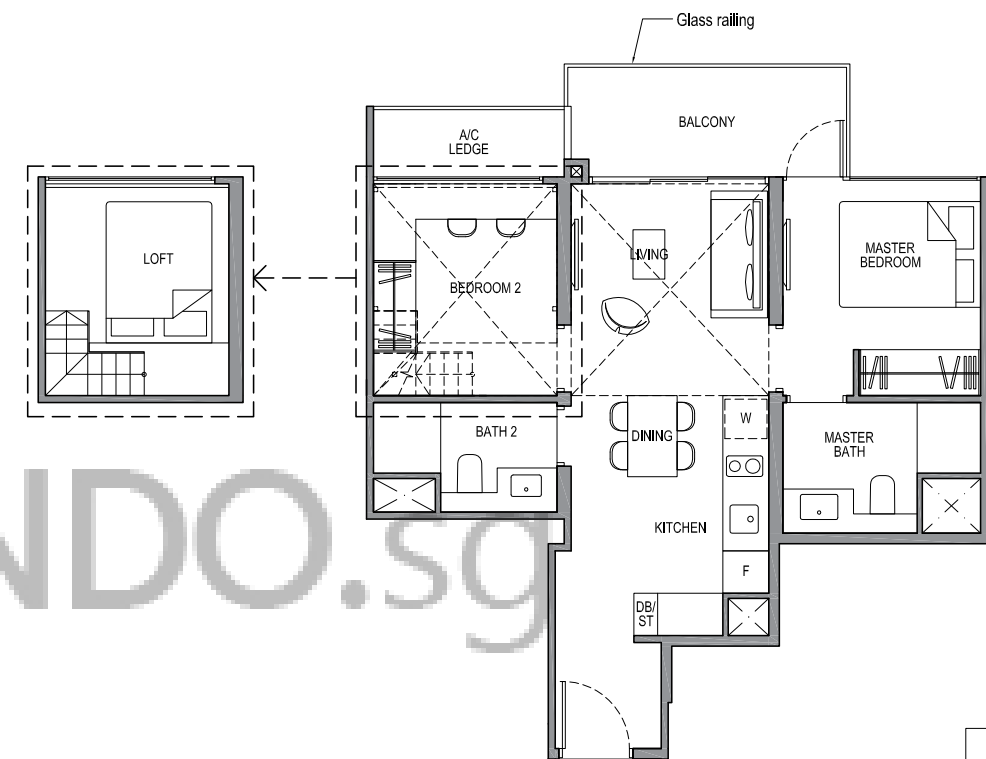
Area: 59 sq m (include 3 sq m a/c ledge, 6 sq m balcony)
 Unit(s): #02-41 to #13-41
 #02-56* to #14-56*



2-BEDROOM DELUXE

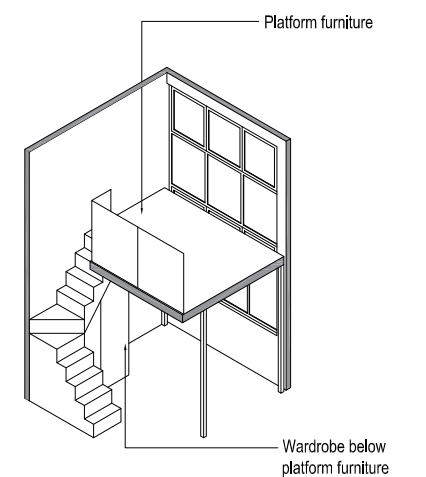
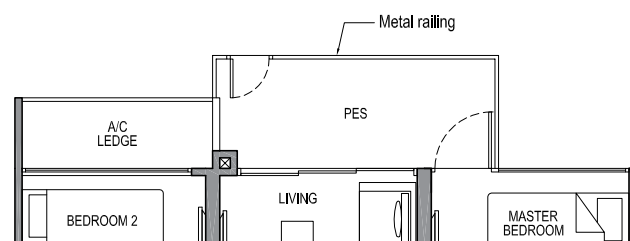
TYPE 2D2-PH

Area: 77 sq m (include 3 sq m a/c ledge, 6 sq m balcony, 18 sq m void*)
 Unit(s): #14-41
 #15-56*

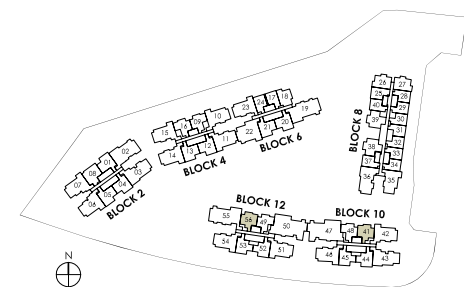


TYPE 2D2-G

Area: 59 sq m (include 3 sq m a/c ledge, 6 sq m PES)
 Unit(s): #01-41
 #01-56*



ISOMETRIC VIEW**

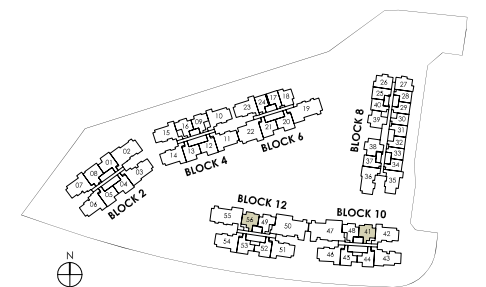


NOTE:
 * Mirror Image

Plans are subject to change/amendments as may be required and/or approved by the Developer and/or the relevant authorities and do not form part of any offer or contract. These are not drawn to scale and are for the purpose of visual presentation only.

NOTE:

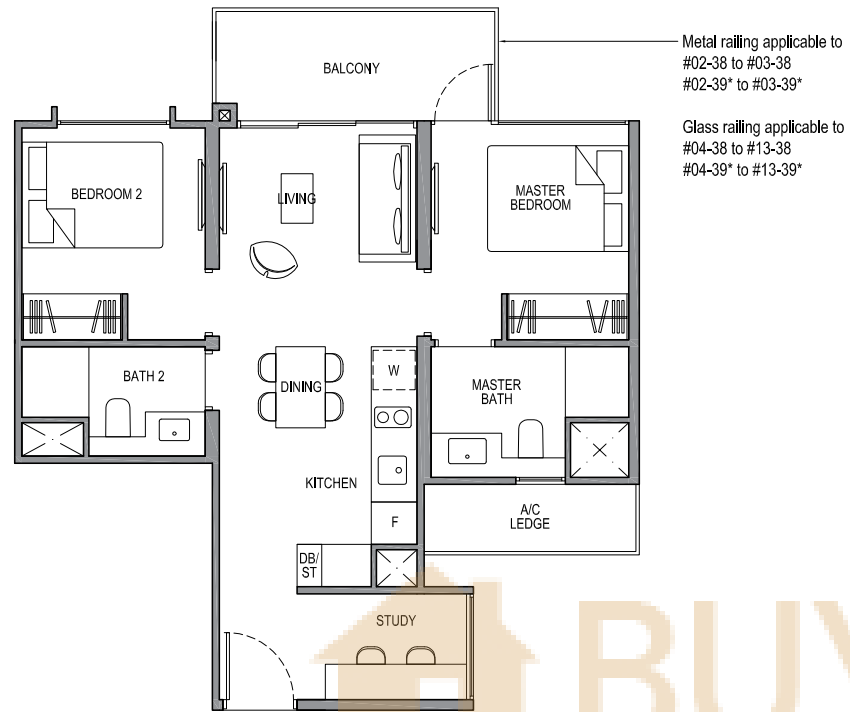
* Mirror image
 ** Isometric views have excluded railing drawings for the steps
 * There shall be no addition of floor slab within the void over Living and Dining areas
 Plans are subject to change/amendments as may be required and/or approved by the Developer and/or the relevant authorities and do not form part of any offer or contract. These are not drawn to scale and are for the purpose of visual presentation only.



2-BEDROOM + STUDY

TYPE 2S1

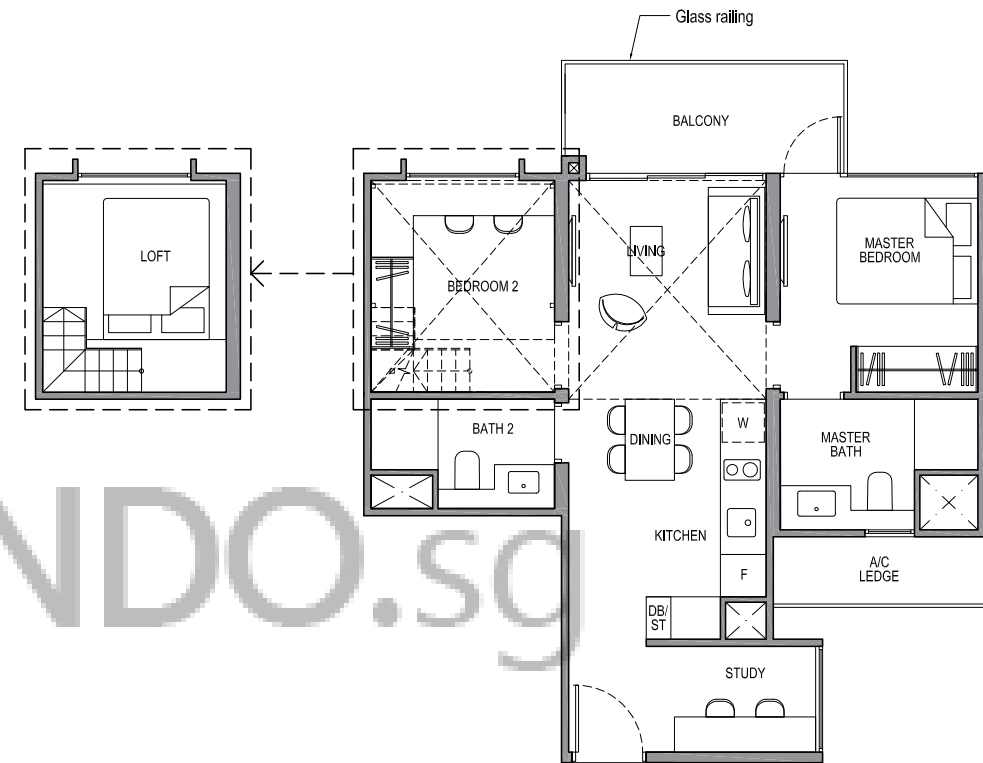
Area: 62 sq m (include 3 sq m a/c ledge, 6 sq m balcony)
 Unit(s): #02-38 to #13-38
 #02-39* to #13-39*



2-BEDROOM + STUDY

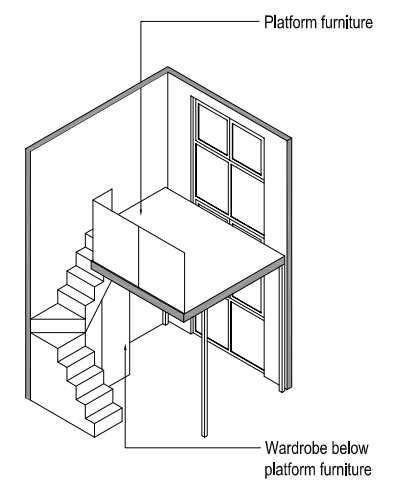
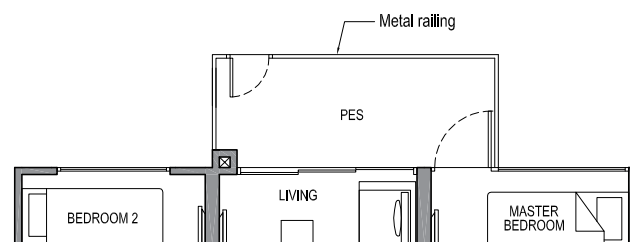
TYPE 2S1-PH

Area: 80 sq m (include 3 sq m a/c ledge, 6 sq m balcony, 18 sq m void*)
 Unit(s): #14-38
 #14-39*

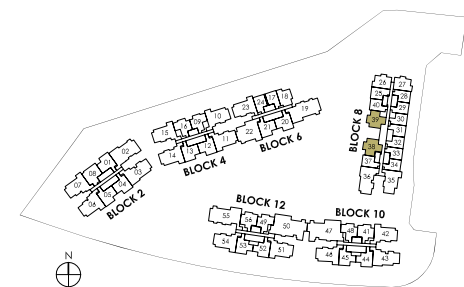


TYPE 2S1-G

Area: 62 sq m (include 3 sq m a/c ledge, 6 sq m PES)
 Unit(s): #01-38
 #01-39*



ISOMETRIC VIEW**

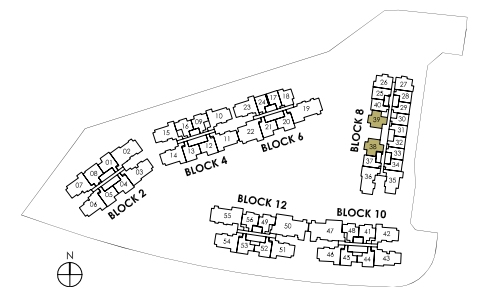


NOTE:
 * Mirror Image

Plans are subject to change/amendments as may be required and/or approved by the Developer and/or the relevant authorities and do not form part of any offer or contract. These are not drawn to scale and are for the purpose of visual presentation only.

NOTE:

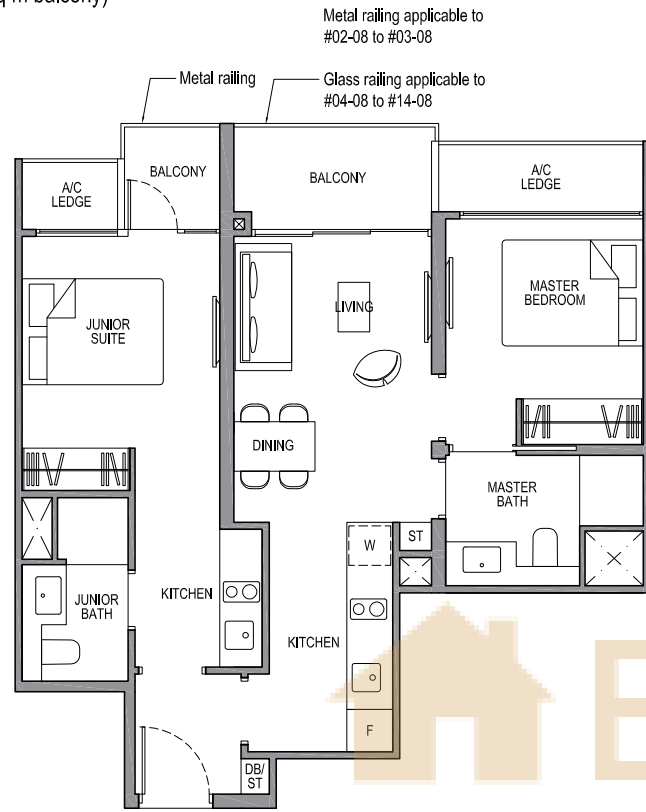
* Mirror image
 ** Isometric views have excluded railing drawings for the steps
 * There shall be no addition of floor slab within the void over Living and Dining areas
 Plans are subject to change/amendments as may be required and/or approved by the Developer and/or the relevant authorities and do not form part of any offer or contract. These are not drawn to scale and are for the purpose of visual presentation only.



2-BEDROOM DUAL KEY

TYPE 2DK1

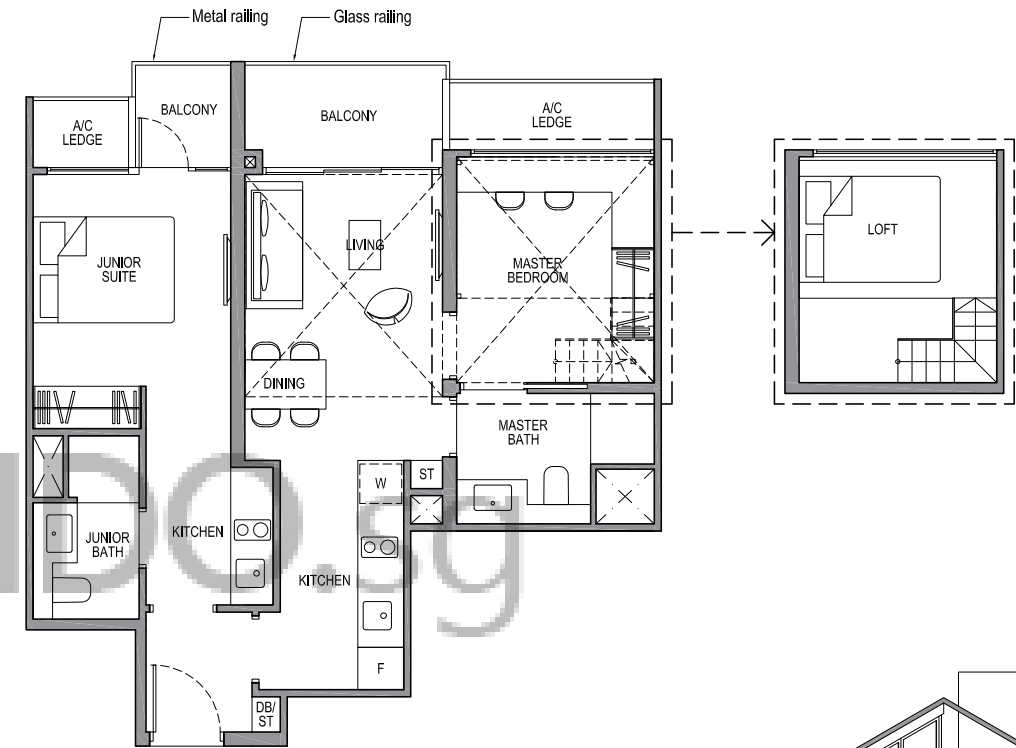
Area: 69 sq m (include 5 sq m a/c ledge, 7 sq m balcony)
 Unit(s): #02-08 to #14-08



2-BEDROOM DUAL KEY

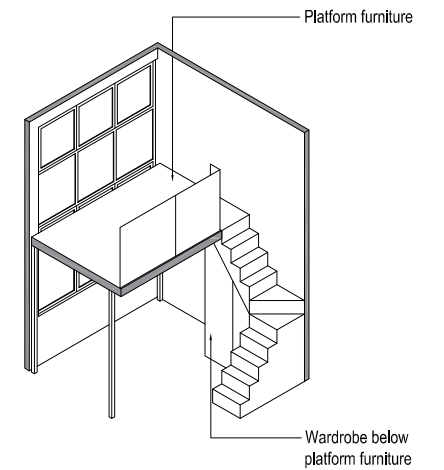
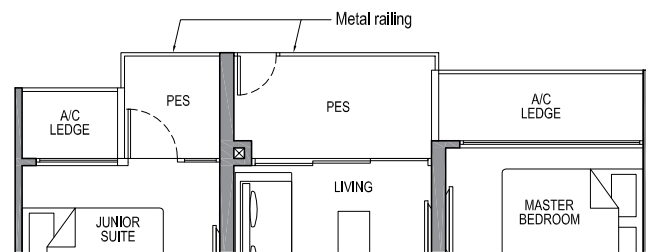
TYPE 2DK1-PH

Area: 89 sq m (include 5 sq m a/c ledge, 7 sq m balcony, 20 sq m void*)
 Unit(s): #15-08

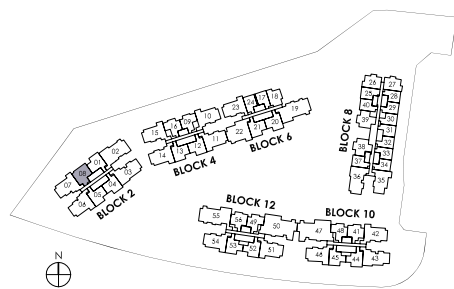


TYPE 2DK1-G

Area: 69 sq m (include 5 sq m a/c ledge, 7 sq m PES)
 Unit(s): #01-08



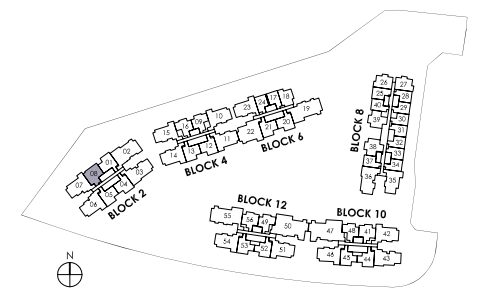
ISOMETRIC VIEW**



Plans are subject to change/amendments as may be required and/or approved by the Developer and/or the relevant authorities and do not form part of any offer or contract. These are not drawn to scale and are for the purpose of visual presentation only.

NOTE:

** Isometric views have excluded railing drawings for the steps
 * There shall be no addition of floor slab within the void over Living and Dining areas
 Plans are subject to change/amendments as may be required and/or approved by the Developer and/or the relevant authorities and do not form part of any offer or contract. These are not drawn to scale and are for the purpose of visual presentation only.



3-BEDROOM CLASSIC

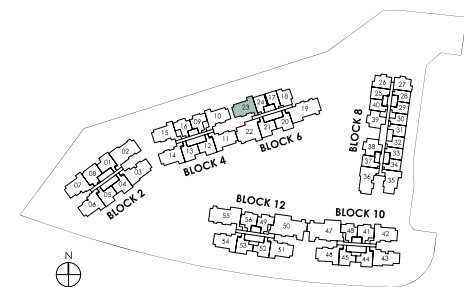
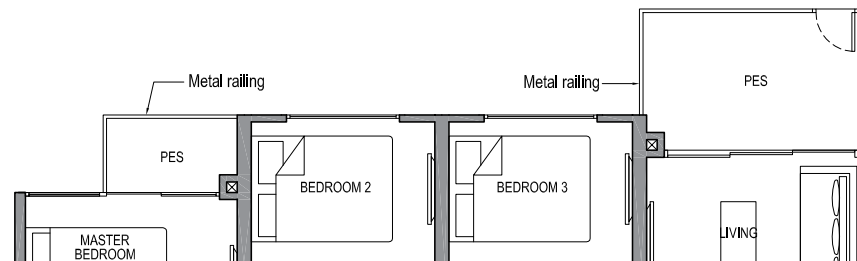
TYPE 3C1

Area: 87 sq m (include 5 sq m a/c ledge, 8 sq m balcony)
 Unit(s): #02-23 to #14-23



TYPE 3C1-G

Area: 87 sq m (include 5 sq m a/c ledge, 8 sq m PES)
 Unit(s): #01-23

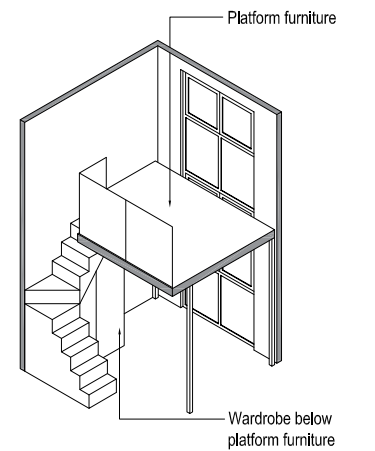
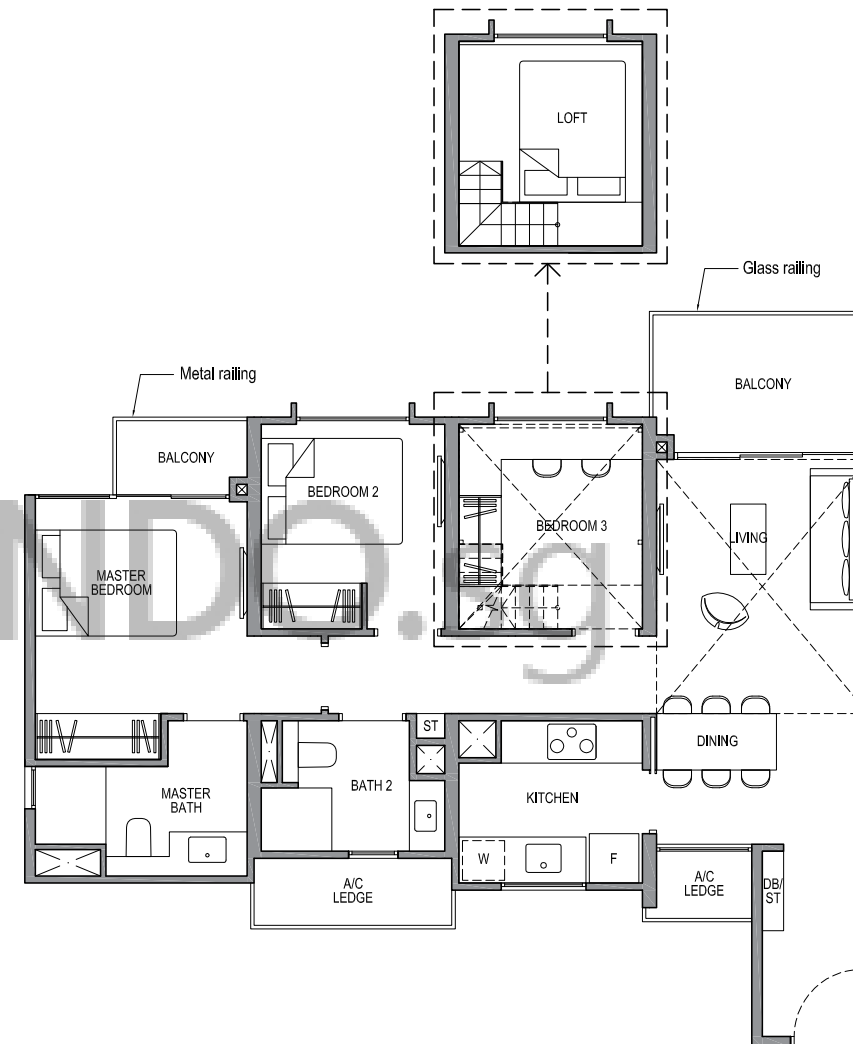


Plans are subject to change/amendments as may be required and/or approved by the Developer and/or the relevant authorities and do not form part of any offer or contract. These are not drawn to scale and are for the purpose of visual presentation only.

3-BEDROOM CLASSIC

TYPE 3C1-PH

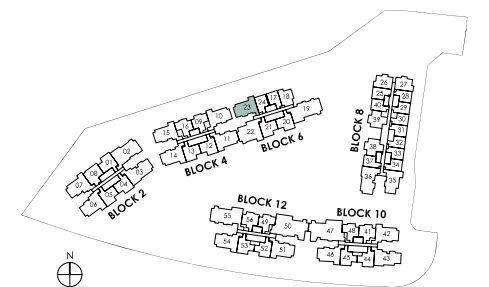
Area: 107 sq m (include 5 sq m a/c ledge, 8 sq m balcony, 20 sq m void*)
 Unit(s): #15-23



ISOMETRIC VIEW**

NOTE:

** Isometric views have excluded railing drawings for the steps
 * There shall be no addition of floor slab within the void over Living and Dining areas
 Plans are subject to change/amendments as may be required and/or approved by the Developer and/or the relevant authorities and do not form part of any offer or contract. These are not drawn to scale and are for the purpose of visual presentation only.

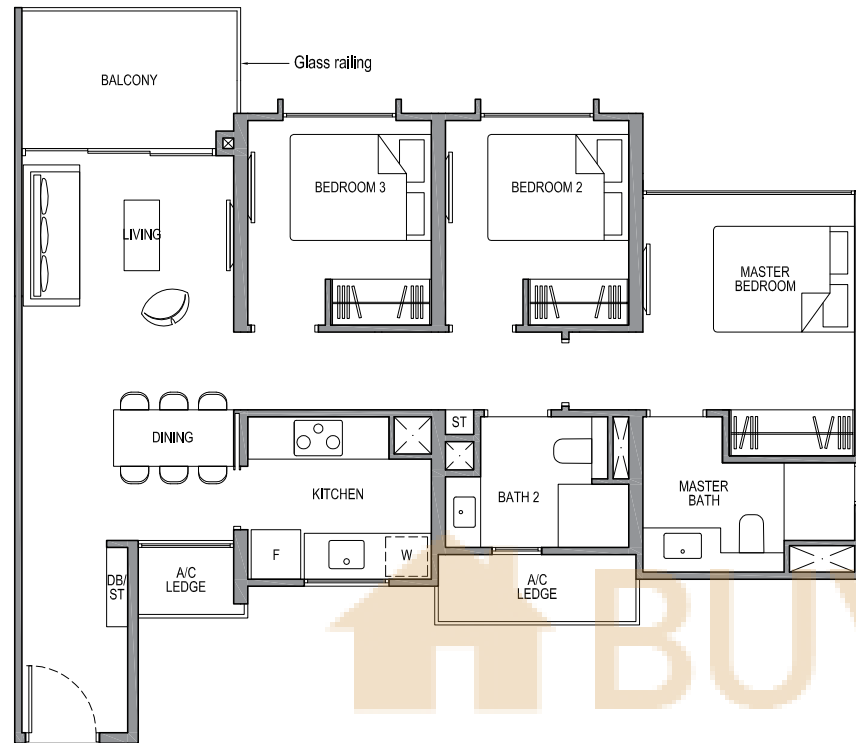


3-BEDROOM CLASSIC

3-BEDROOM CLASSIC

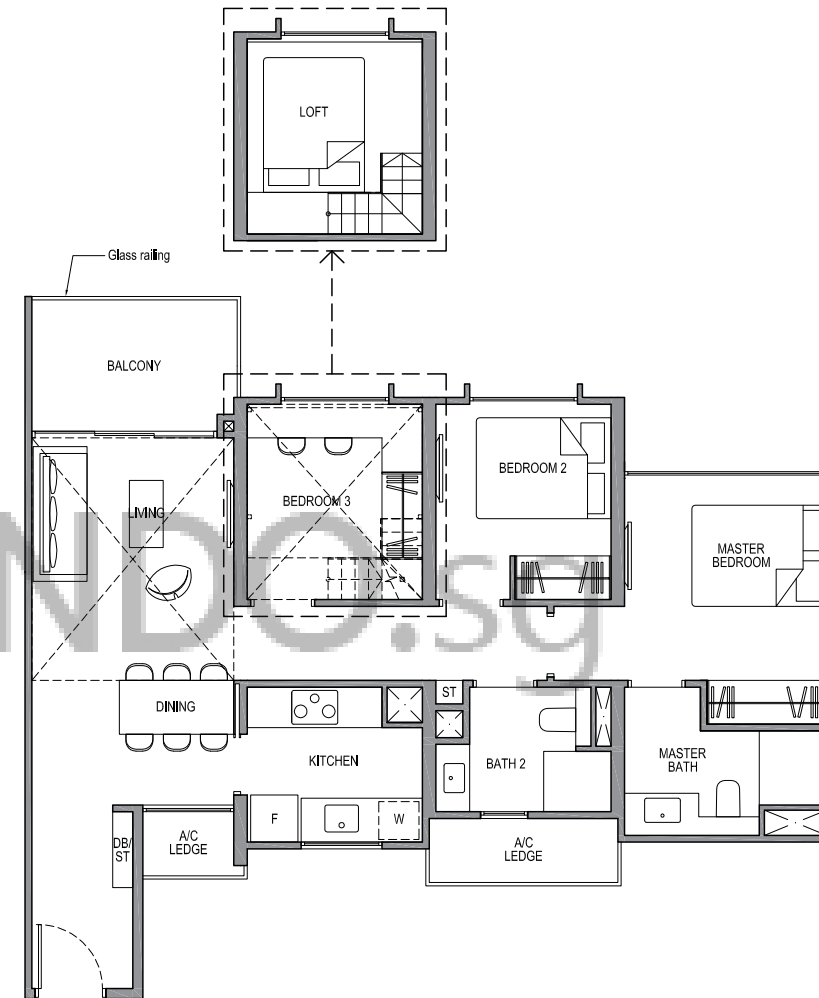
TYPE 3C1a

Area: 85 sq m (include 5 sq m a/c ledge, 6 sq m balcony)
Unit(s): #02-35 to #13-35



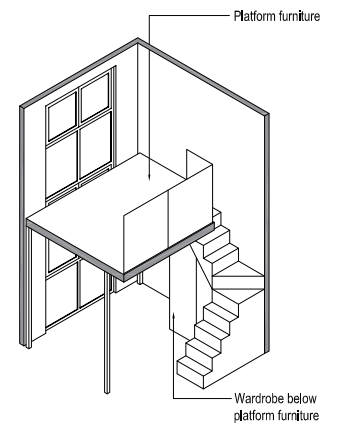
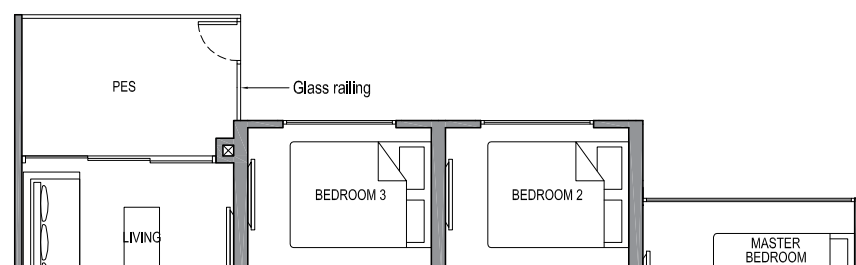
TYPE 3C1a-PH

Area: 105 sq m (include 5 sq m a/c ledge, 6 sq m balcony, 20 sq m void*)
Unit(s): #14-35

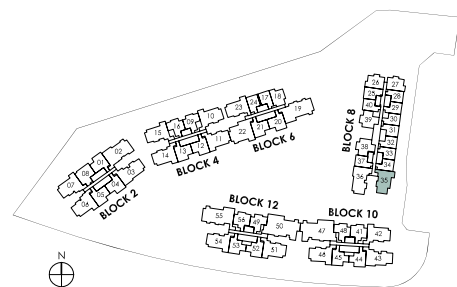


TYPE 3C1a-G

Area: 85 sq m (include 5 sq m a/c ledge, 6 sq m PES)
Unit(s): #01-35



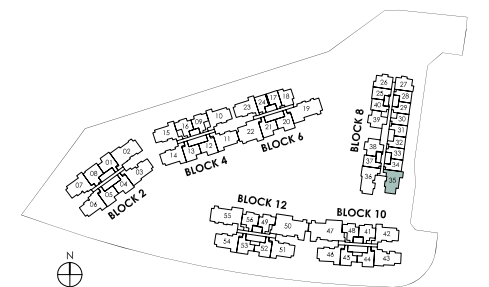
ISOMETRIC VIEW**



Plans are subject to change/amendments as may be required and/or approved by the Developer and/or the relevant authorities and do not form part of any offer or contract. These are not drawn to scale and are for the purpose of visual presentation only.

NOTE:

** Isometric views have excluded railing drawings for the steps
* There shall be no addition of floor slab within the void over Living and Dining areas
Plans are subject to change/amendments as may be required and/or approved by the Developer and/or the relevant authorities and do not form part of any offer or contract. These are not drawn to scale and are for the purpose of visual presentation only.

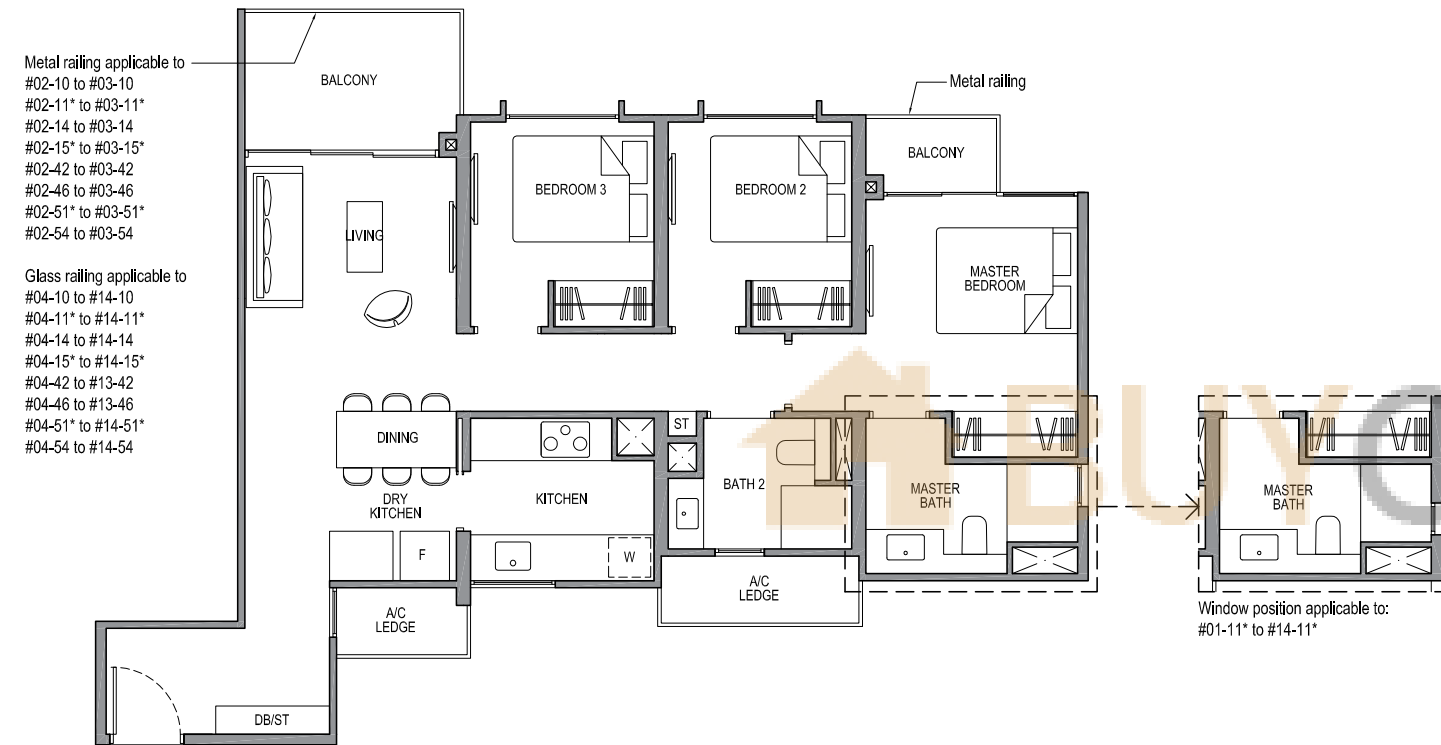


3-BEDROOM CLASSIC

TYPE 3C2

Area: 91 sq m (include 5 sq m a/c ledge, 8 sq m balcony)

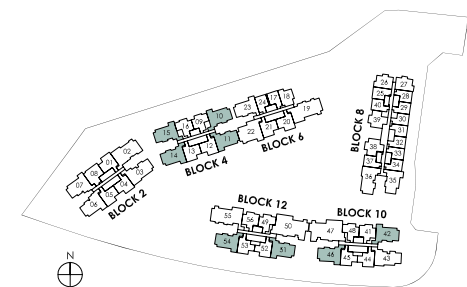
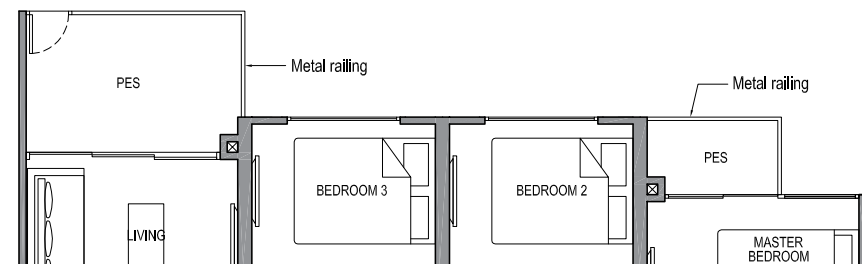
Unit(s): #02-10 to #14-10
 #02-11* to #14-11*
 #02-14 to #14-14
 #02-15* to #14-15*
 #02-42 to #13-42
 #02-46 to #13-46
 #02-51* to #14-51*
 #02-54 to #14-54



TYPE 3C2-G

Area: 91 sq m (include 5 sq m a/c ledge, 8 sq m PES)

Unit(s): #01-10
 #01-11*
 #01-14
 #01-15*
 #01-42
 #01-46
 #01-51*



NOTE:
 * Mirror Image

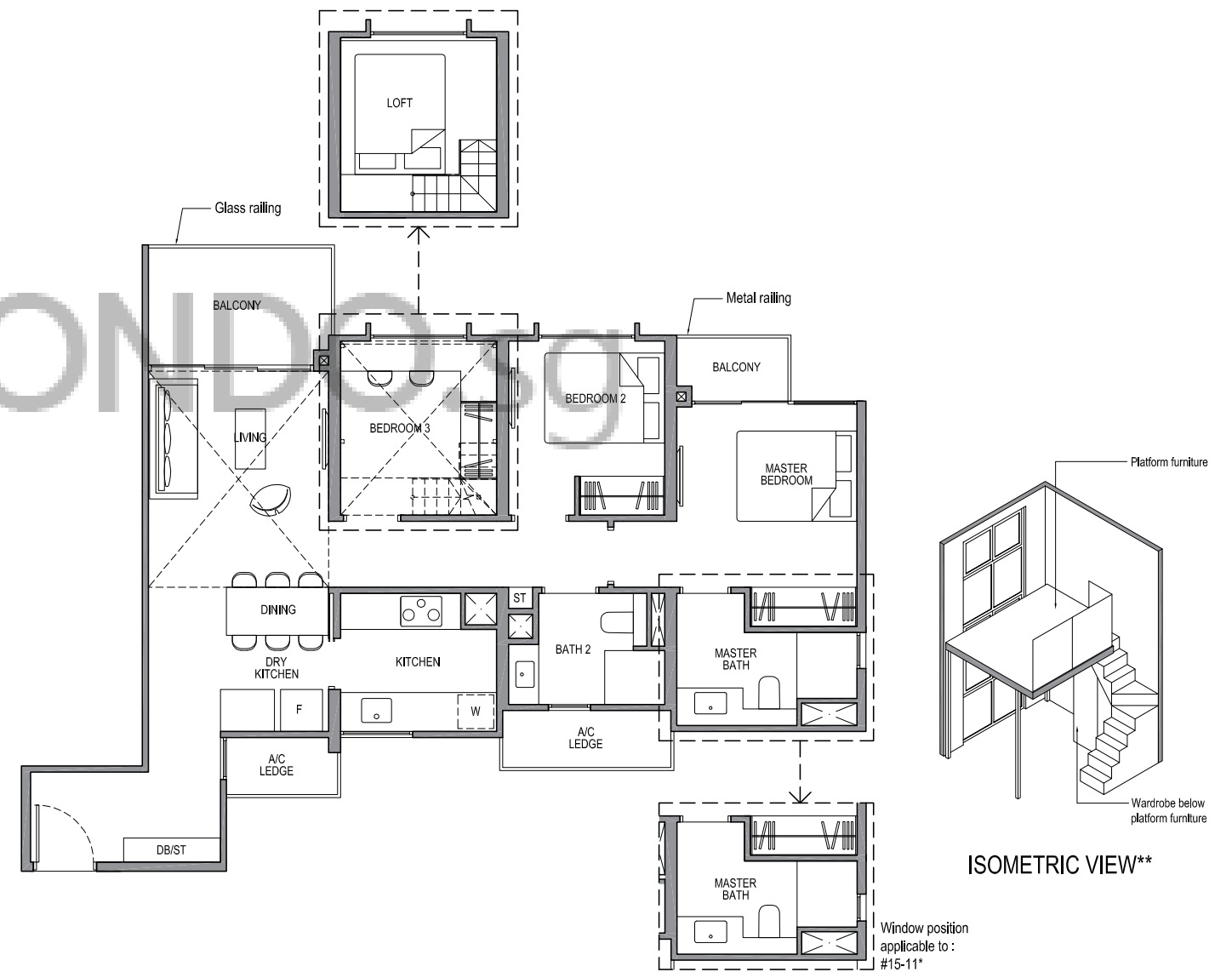
Plans are subject to change/amendments as may be required and/or approved by the Developer and/or the relevant authorities and do not form part of any offer or contract. These are not drawn to scale and are for the purpose of visual presentation only.

3-BEDROOM CLASSIC

TYPE 3C2-PH

Area: 111 sq m (include 5 sq m a/c ledge, 8 sq m balcony, 20 sq m void*)

Unit(s): #15-10
 #15-11*
 #15-14
 #15-15*
 #14-42
 #14-46
 #15-51*
 #15-54

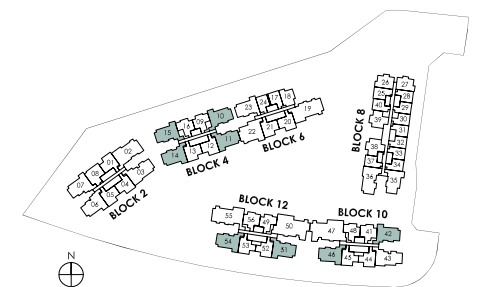


NOTE:

* Mirror image

** Isometric views have excluded railing drawings for the steps

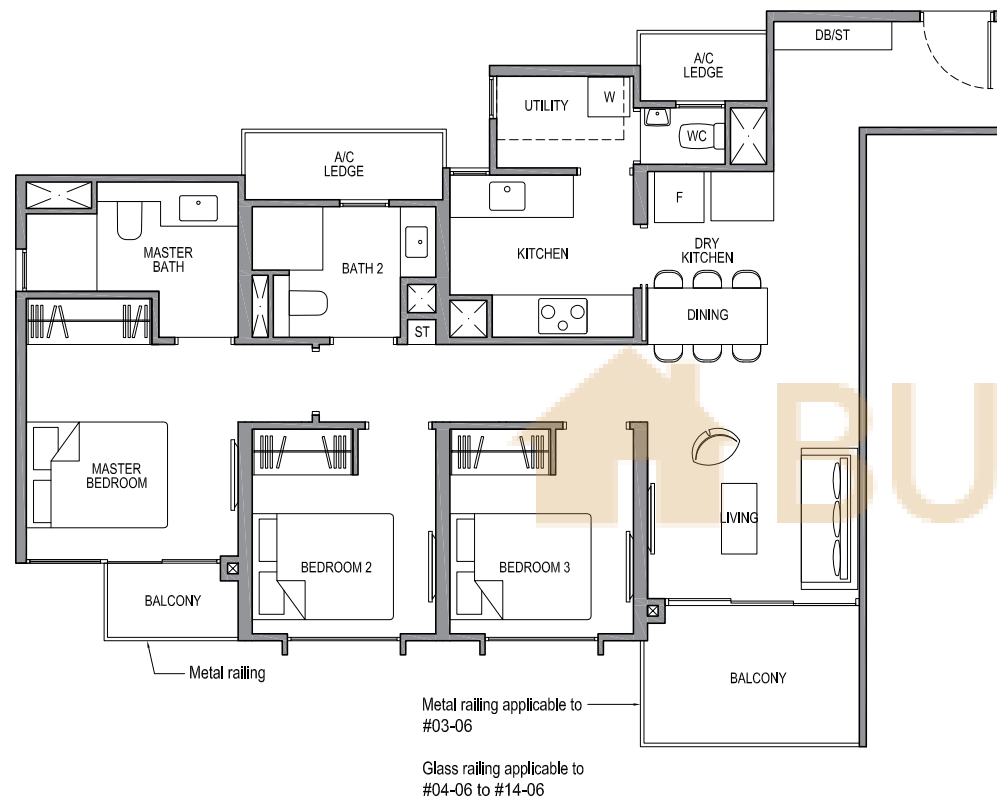
* There shall be no addition of floor slab within the void over Living and Dining areas
 Plans are subject to change/amendments as may be required and/or approved by the Developer and/or the relevant authorities and do not form part of any offer or contract. These are not drawn to scale and are for the purpose of visual presentation only.



3-BEDROOM DELUXE

TYPE 3D1

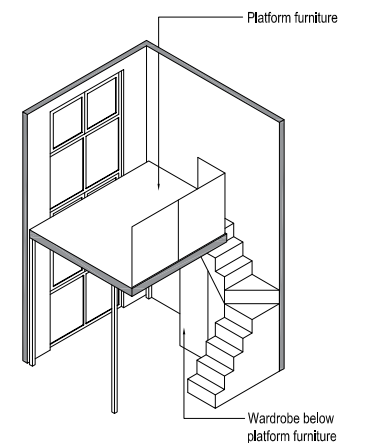
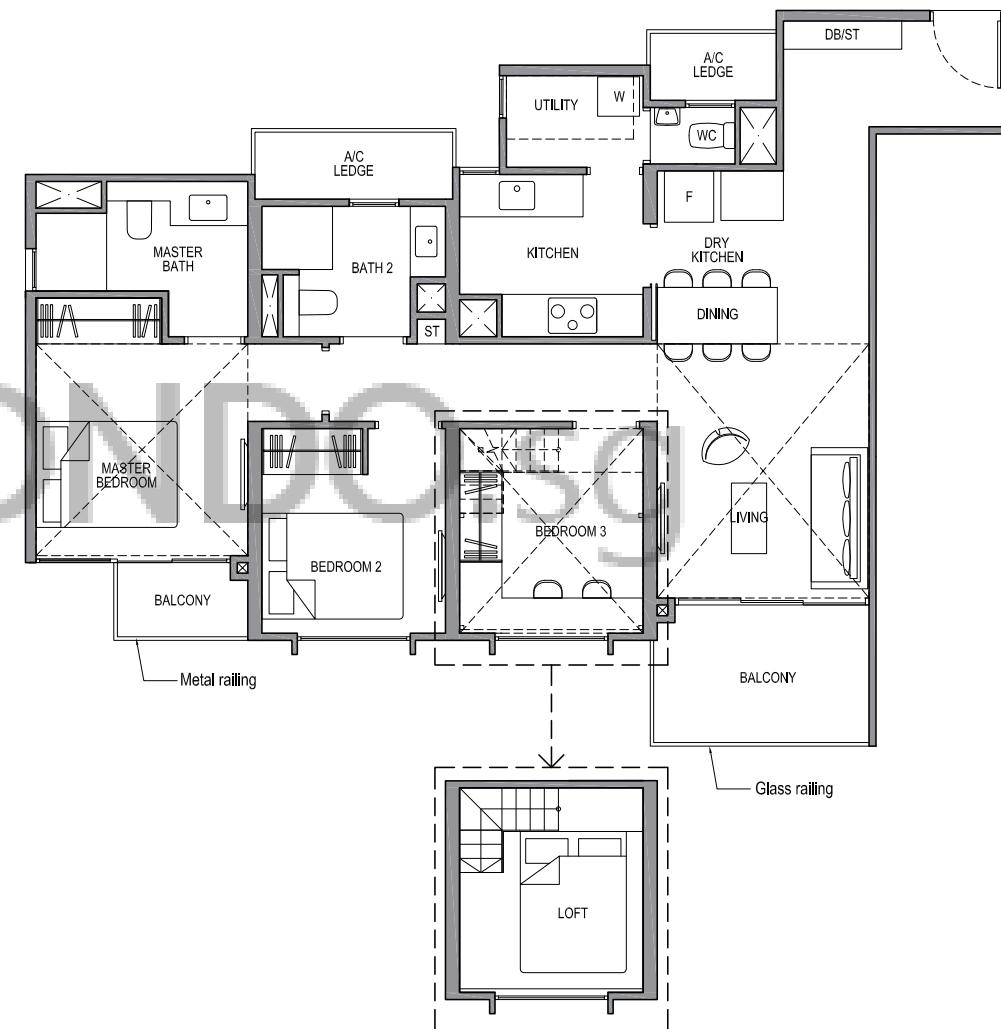
Area: 95 sq m (include 5 sq m a/c ledge, 8 sq m balcony)
 Unit(s): #03-06 to #14-06



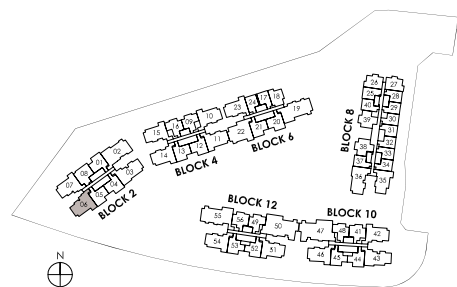
3-BEDROOM DELUXE

TYPE 3D1-PH

Area: 125 sq m (include 5 sq m a/c ledge, 8 sq m balcony, 30 sq m void*)
 Unit(s): #15-06



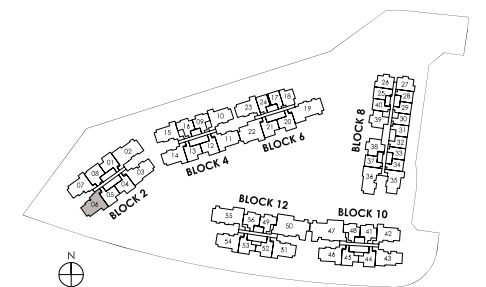
ISOMETRIC VIEW**



Plans are subject to change/amendments as may be required and/or approved by the Developer and/or the relevant authorities and do not form part of any offer or contract. These are not drawn to scale and are for the purpose of visual presentation only.

NOTE:

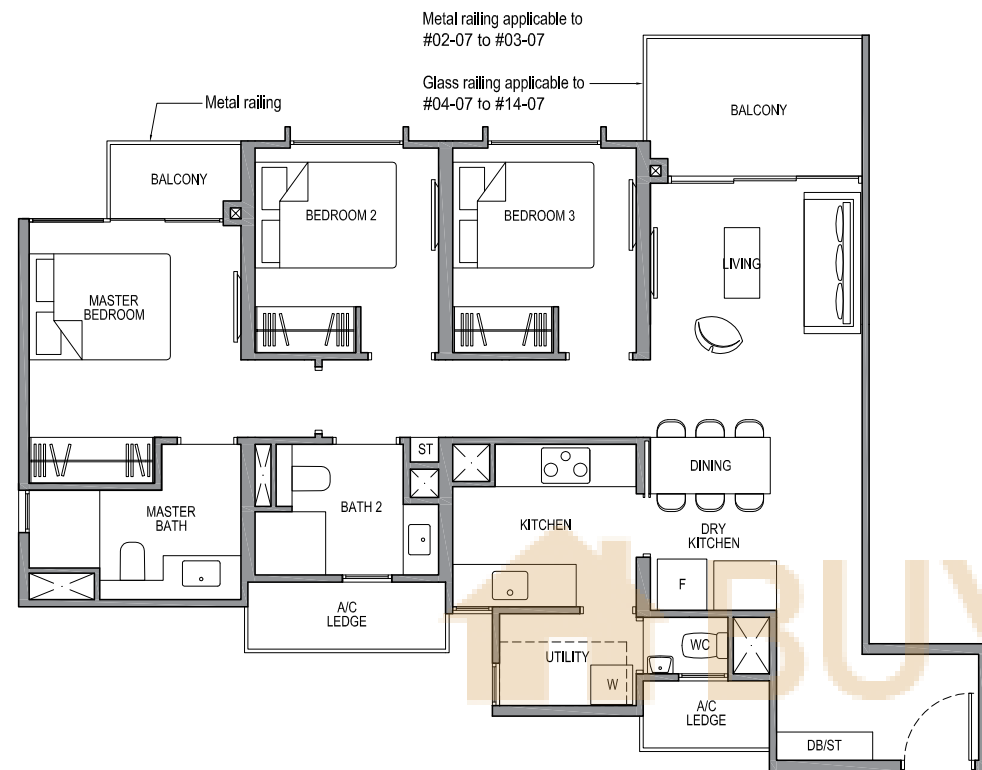
** Isometric views have excluded railing drawings for the steps
 * There shall be no addition of floor slab within the void over Living and Dining areas
 Plans are subject to change/amendments as may be required and/or approved by the Developer and/or the relevant authorities and do not form part of any offer or contract. These are not drawn to scale and are for the purpose of visual presentation only.



3-BEDROOM DELUXE

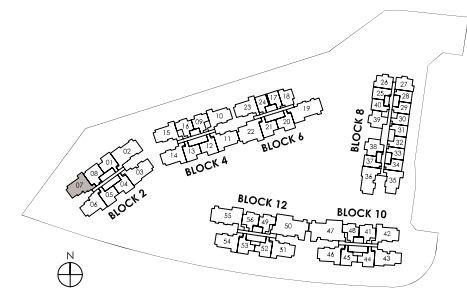
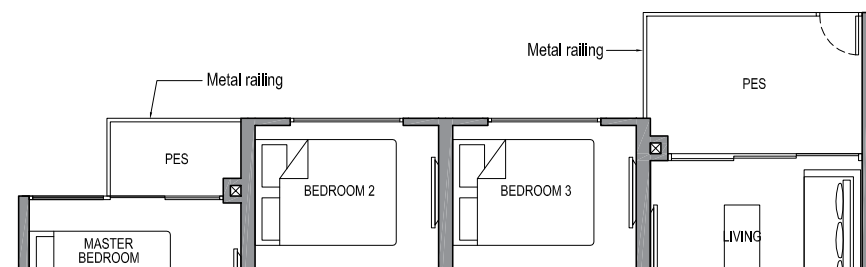
TYPE 3D1a

Area: 94 sq m (include 5 sq m a/c ledge, 8 sq m balcony)
Unit(s): #02-07 to #14-07



TYPE 3D1a-G

Area: 94 sq m (include 5 sq m a/c ledge, 8 sq m PES)
Unit(s): #01-07

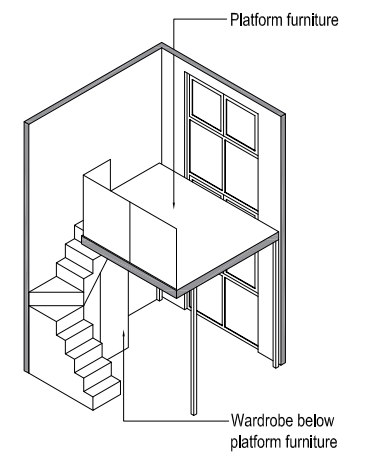
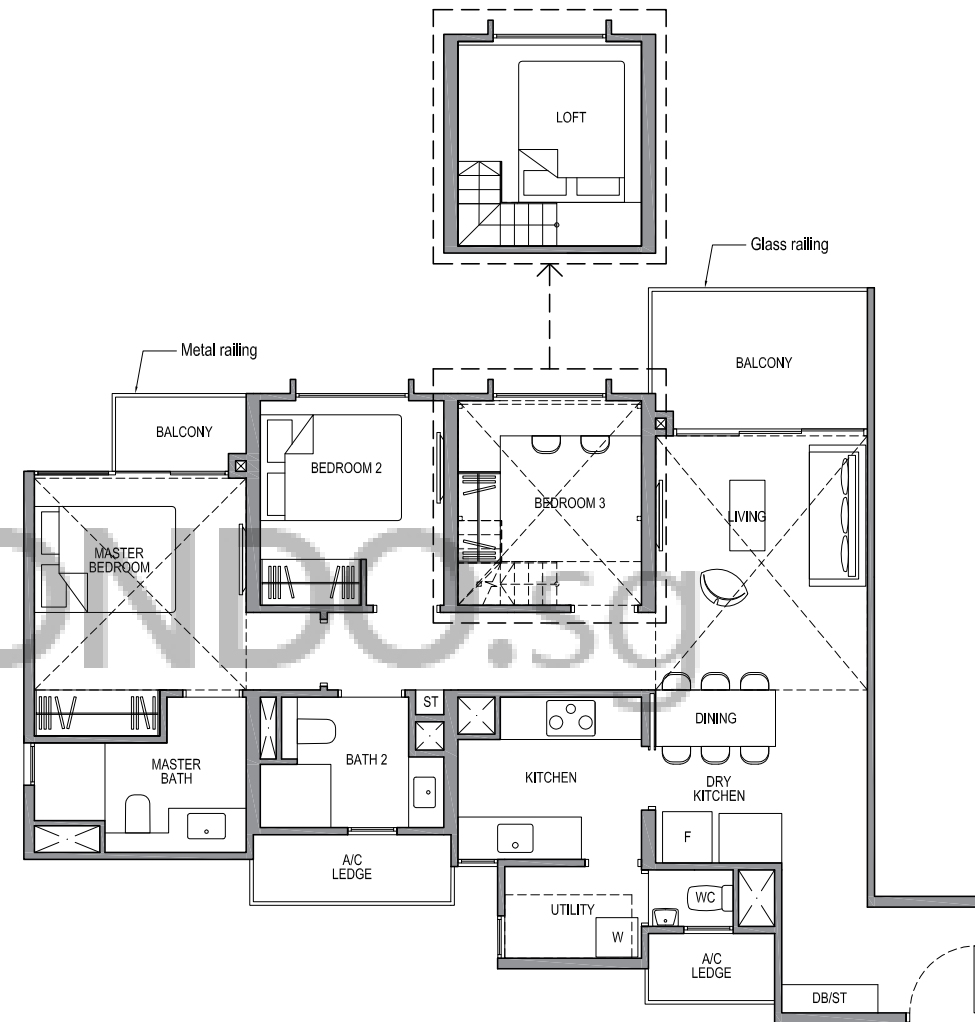


Plans are subject to change/amendments as may be required and/or approved by the Developer and/or the relevant authorities and do not form part of any offer or contract. These are not drawn to scale and are for the purpose of visual presentation only.

3-BEDROOM DELUXE

TYPE 3D1a-PH

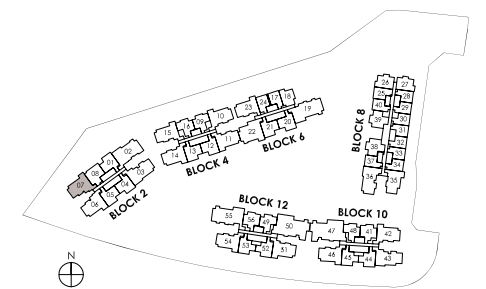
Area: 124 sq m (include 5 sq m a/c ledge, 8 sq m balcony, 30 sq m void*)
Unit(s): #15-07



ISOMETRIC VIEW**

NOTE:

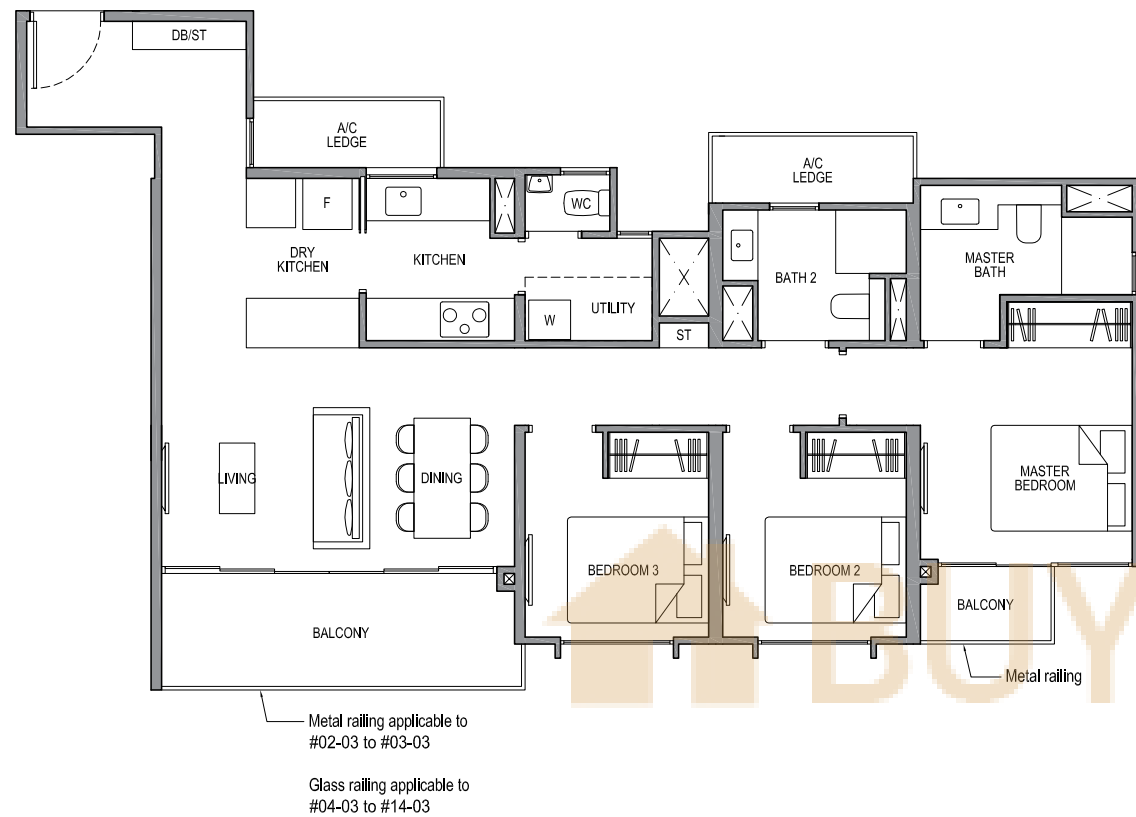
** Isometric views have excluded railing drawings for the steps
* There shall be no addition of floor slab within the void over Living and Dining areas
Plans are subject to change/amendments as may be required and/or approved by the Developer and/or the relevant authorities and do not form part of any offer or contract. These are not drawn to scale and are for the purpose of visual presentation only.



3-BEDROOM DELUXE

TYPE 3D2

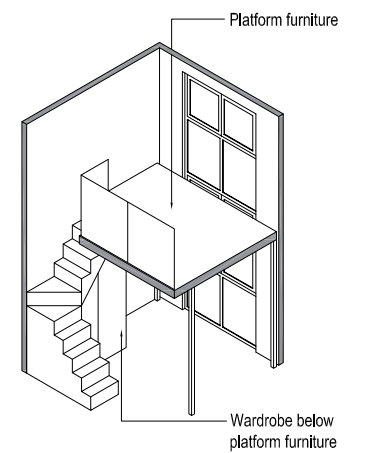
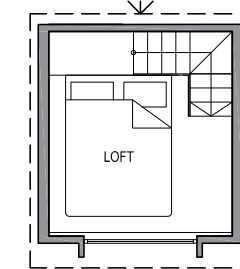
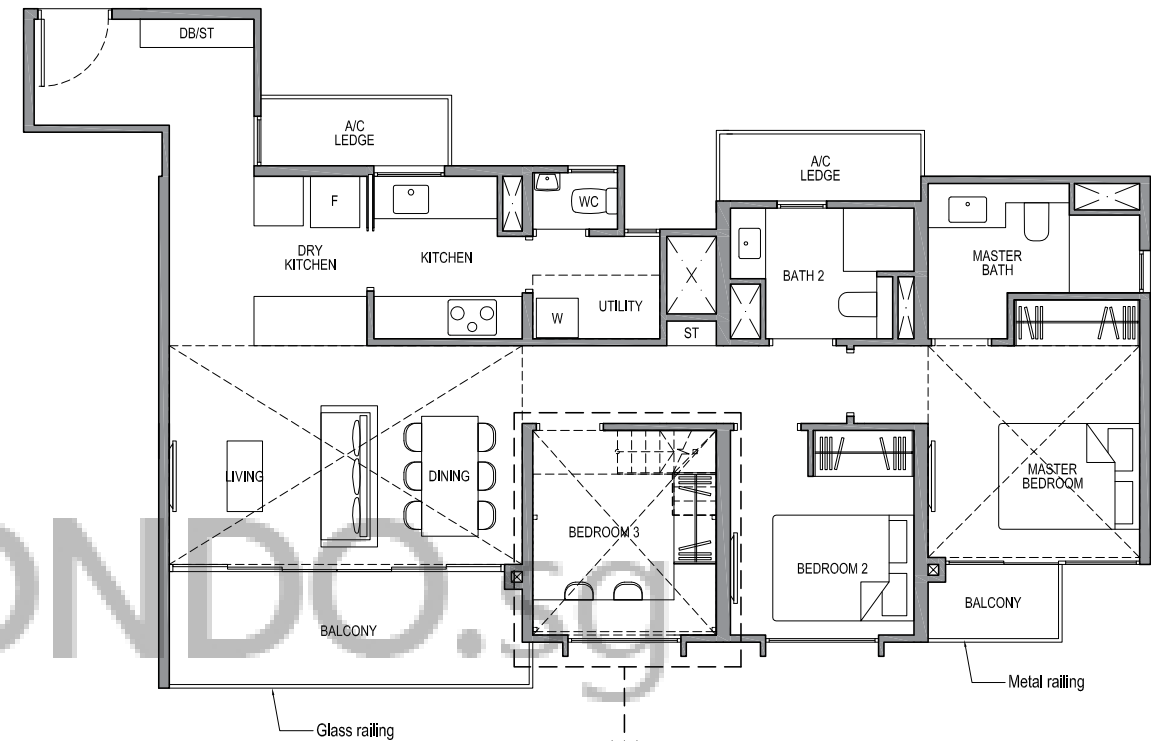
Area: 101 sq m (include 6 sq m a/c ledge, 11 sq m balcony)
 Unit(s): #02-03 to #14-03



3-BEDROOM DELUXE

TYPE 3D2-PH

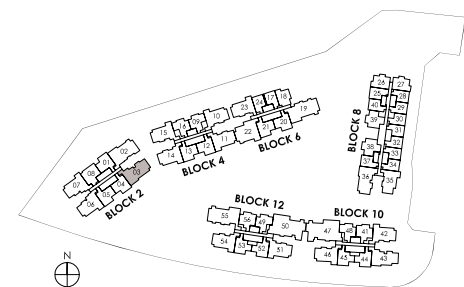
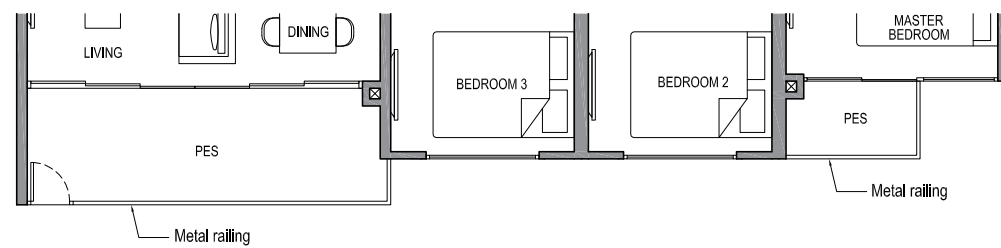
Area: 136 sq m (include 6 sq m a/c ledge, 11 sq m balcony, 35 sq m void*)
 Unit(s): #15-03



ISOMETRIC VIEW**

TYPE 3D2-G

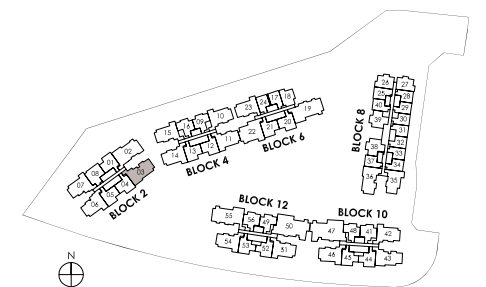
Area: 101 sq m (include 6 sq m a/c ledge, 11 sq m PES)
 Unit(s): #01-03



Plans are subject to change/amendments as may be required and/or approved by the Developer and/or the relevant authorities and do not form part of any offer or contract. These are not drawn to scale and are for the purpose of visual presentation only.

NOTE:

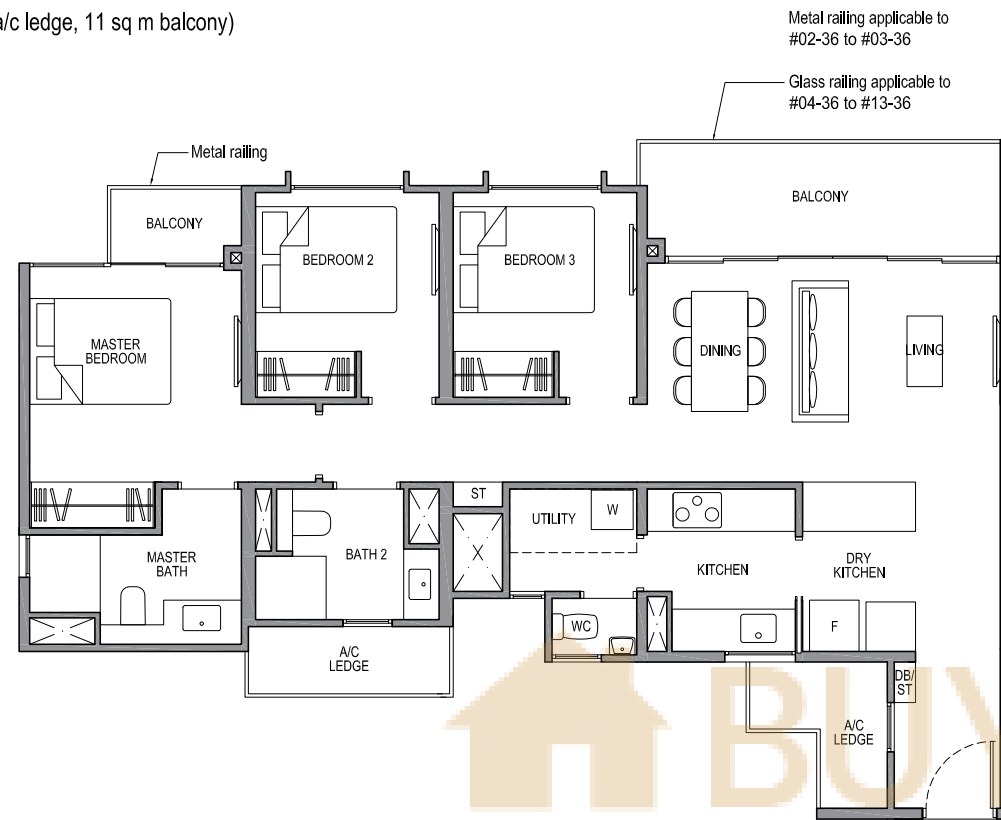
** Isometric views have excluded railing drawings for the steps
 * There shall be no addition of floor slab within the void over Living and Dining areas
 Plans are subject to change/amendments as may be required and/or approved by the Developer and/or the relevant authorities and do not form part of any offer or contract. These are not drawn to scale and are for the purpose of visual presentation only.



3-BEDROOM DELUXE

TYPE 3D2a

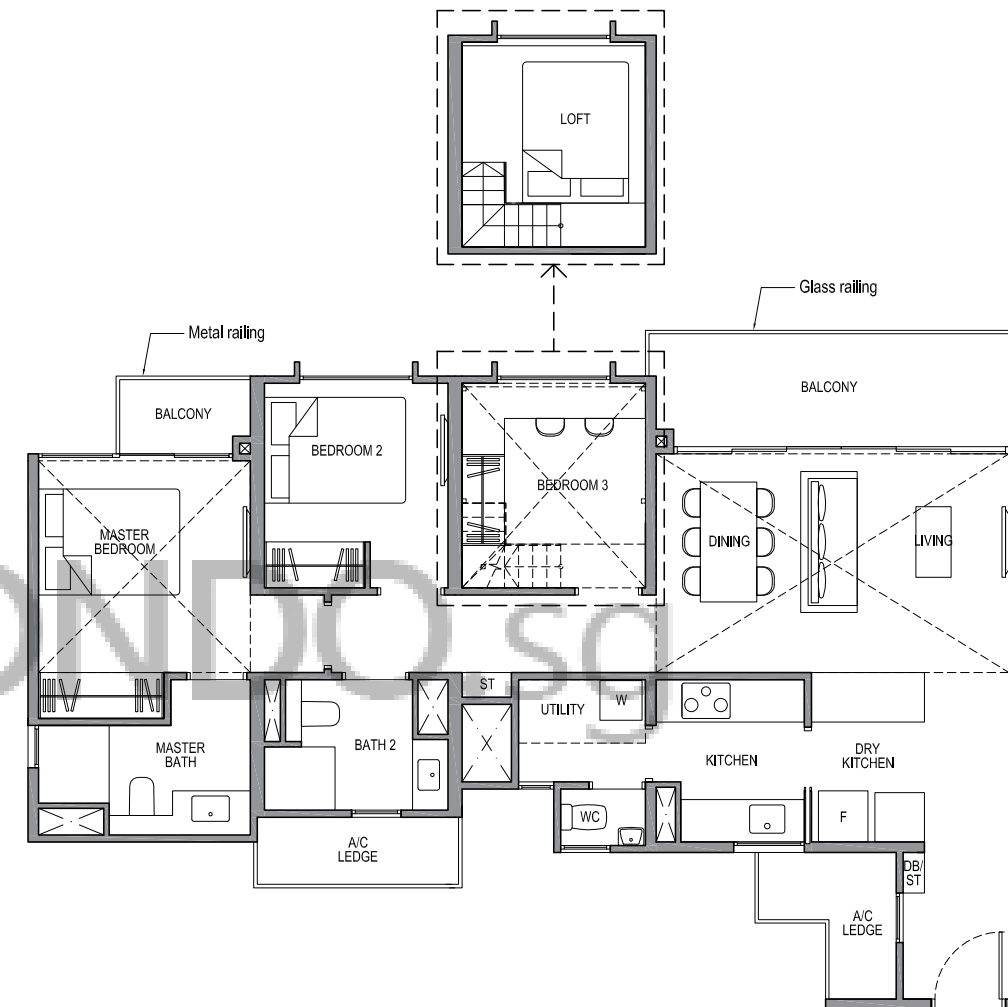
Area: 99 sq m (include 7 sq m a/c ledge, 11 sq m balcony)
 Unit(s): #02-36 to #13-36



3-BEDROOM DELUXE

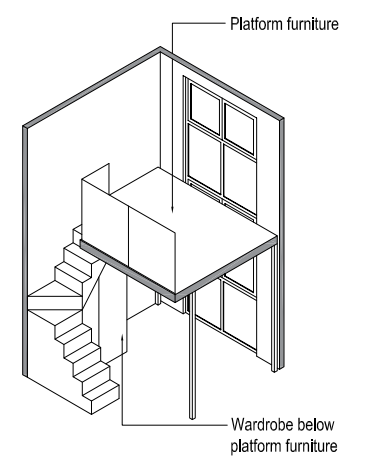
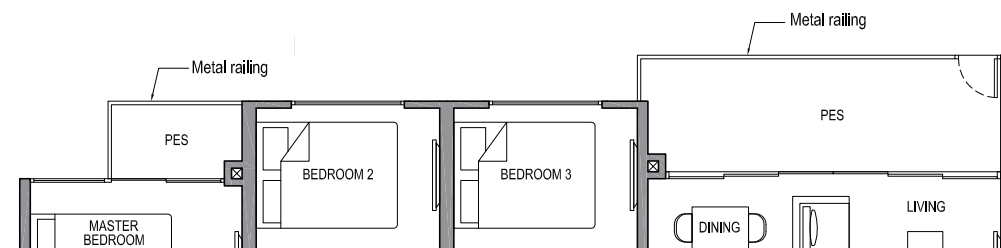
TYPE 3D2a-PH

Area: 134 sq m (include 7 sq m a/c ledge, 11 sq m balcony, 35 sq m void*)
 Unit(s): #14-36

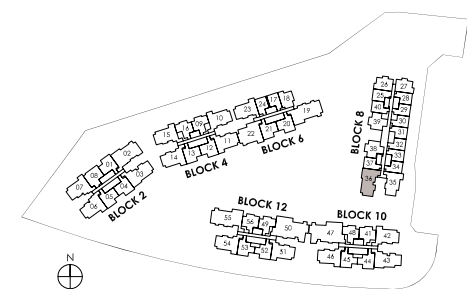


TYPE 3D2a-G

Area: 99 sq m (include 7 sq m a/c ledge, 11 sq m PES)
 Unit(s): #01-36



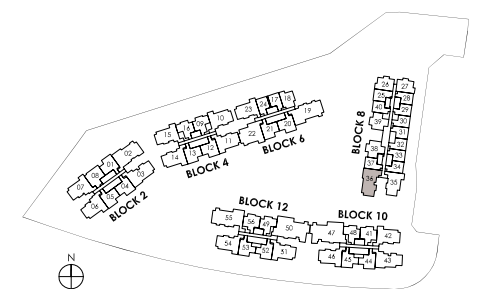
ISOMETRIC VIEW**



are subject to change/amendments as may be required and/or approved by the per and/or the relevant authorities and do not form part of any offer or contract. are not drawn to scale and are for the purpose of visual presentation only.

NOTE:

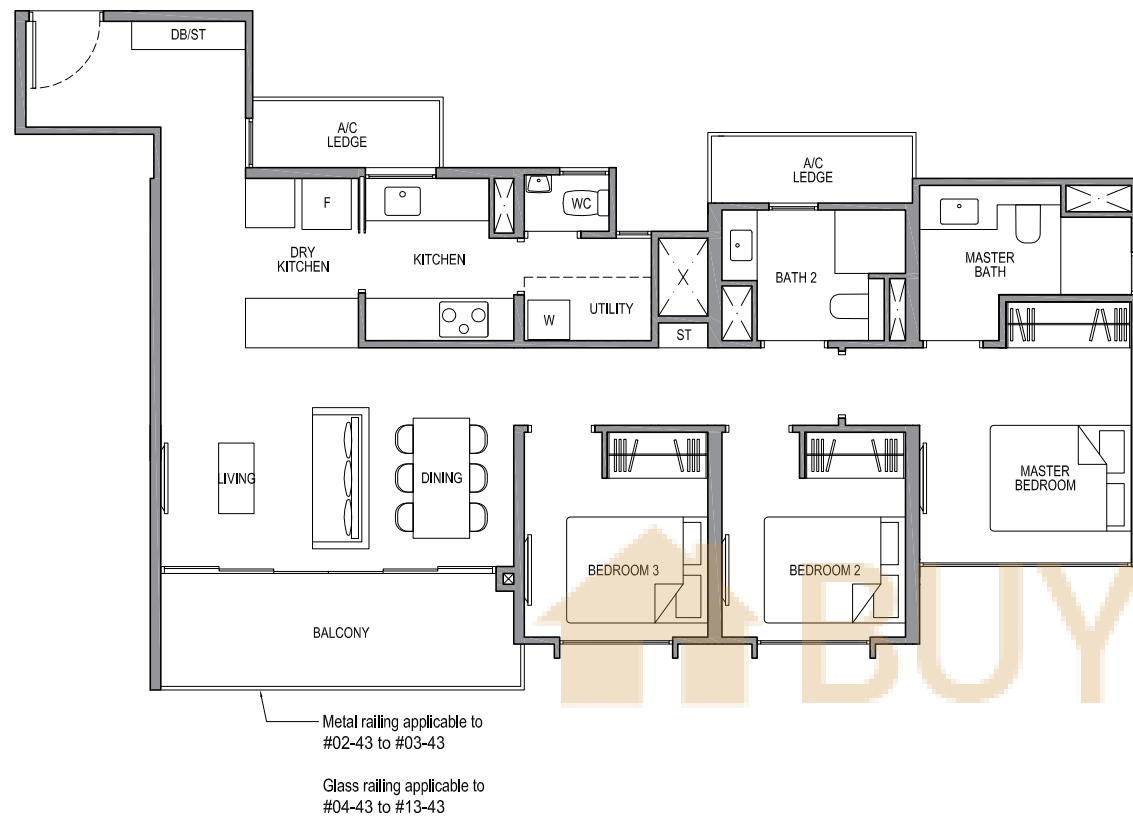
** Isometric views have excluded railing drawings for the steps
 * There shall be no addition of floor slab within the void over Living and Dining areas
 Plans are subject to change/amendments as may be required and/or approved by the Developer and/or the relevant authorities and do not form part of any offer or contract. These are not drawn to scale and are for the purpose of visual presentation only.



3-BEDROOM DELUXE

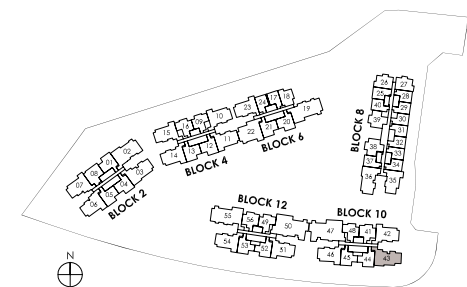
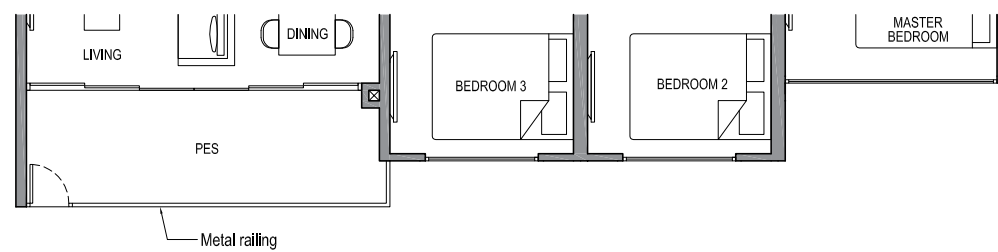
TYPE 3D2b

Area: 99 sq m (include 6 sq m a/c ledge, 9 sq m balcony)
 Unit(s): #02-43 to #13-43



TYPE 3D2b-G

Area: 99 sq m (include 6 sq m a/c ledge, 9 sq m PES)
 Unit(s): #01-43

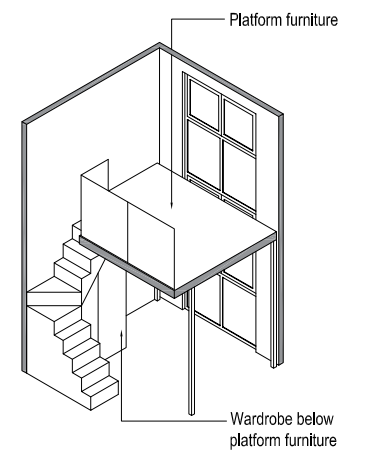
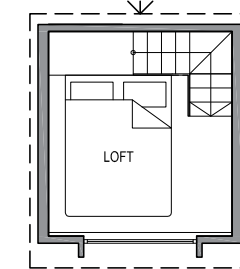
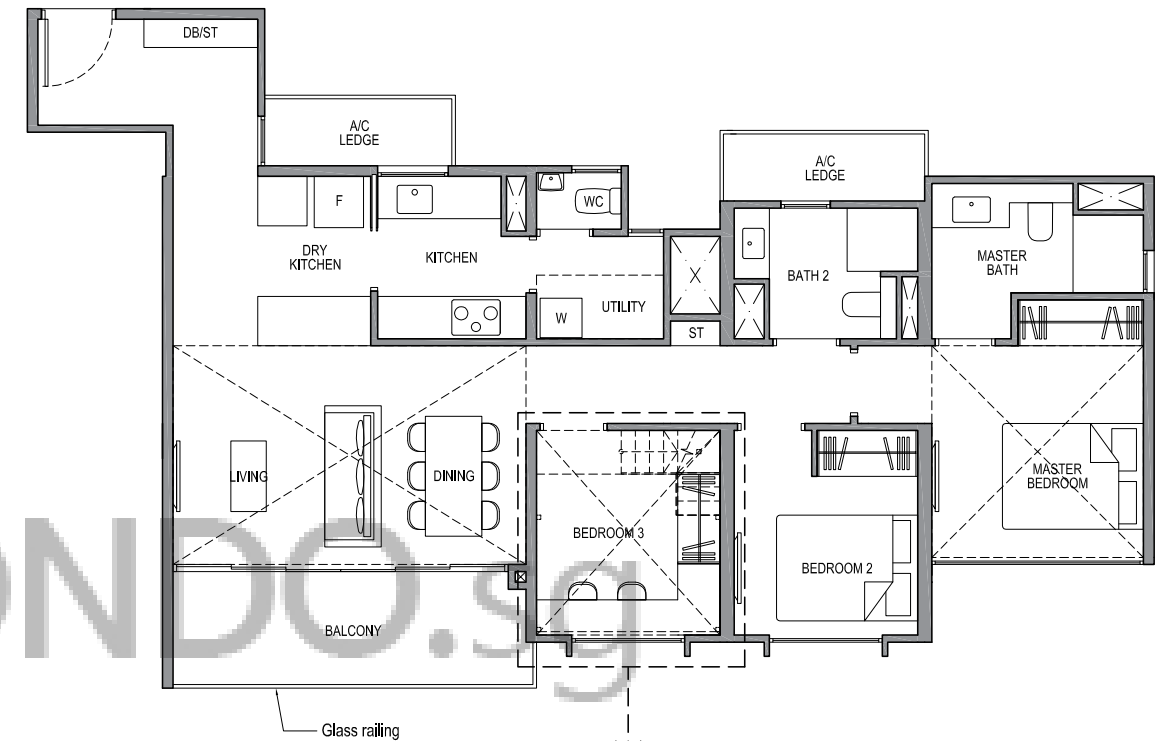


Plans are subject to change/amendments as may be required and/or approved by the Developer and/or the relevant authorities and do not form part of any offer or contract. These are not drawn to scale and are for the purpose of visual presentation only.

3-BEDROOM DELUXE

TYPE 3D2b-PH

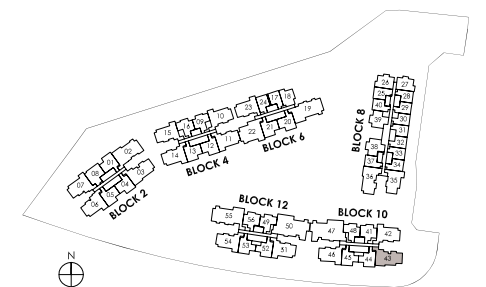
Area: 134 sq m (include 6 sq m a/c ledge, 9 sq m balcony, 35 sq m void*)
 Unit(s): #14-43



ISOMETRIC VIEW**

NOTE:

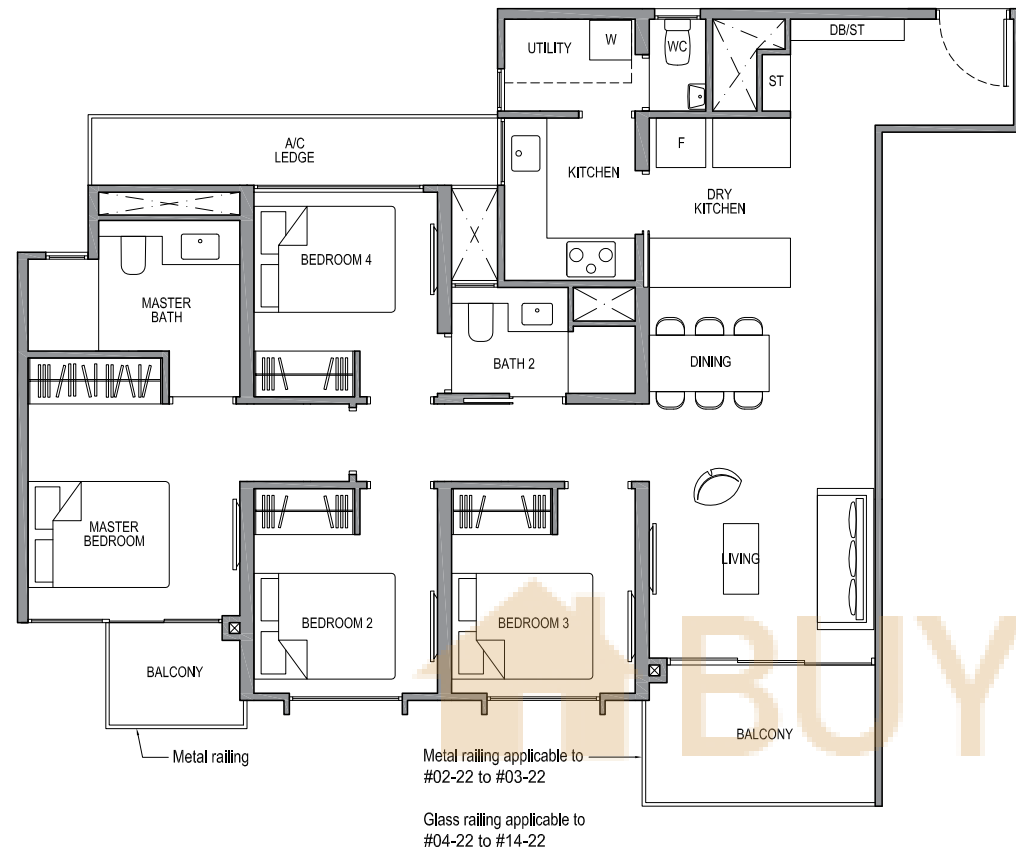
** Isometric views have excluded railing drawings for the steps
 * There shall be no addition of floor slab within the void over Living and Dining areas
 Plans are subject to change/amendments as may be required and/or approved by the Developer and/or the relevant authorities and do not form part of any offer or contract. These are not drawn to scale and are for the purpose of visual presentation only.



4-BEDROOM CLASSIC

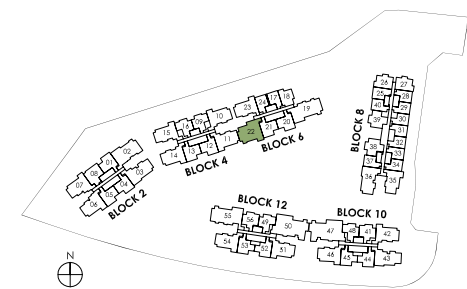
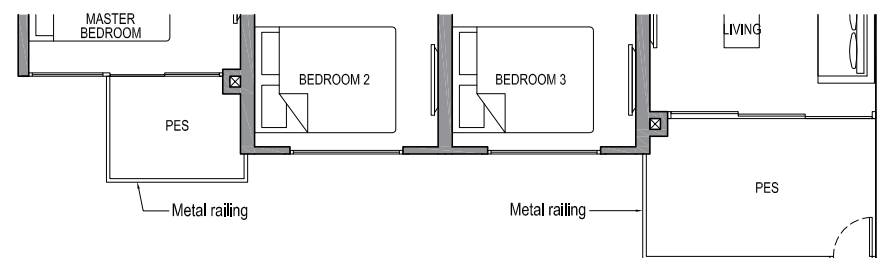
TYPE 4C1

Area: 110 sq m (include 6 sq m a/c ledge, 10 sq m balcony)
 Unit(s): #02-22 to #14-22



TYPE 4C1-G

Area: 110 sq m (include 6 sq m a/c ledge, 10 sq m PES)
 Unit(s): #01-22

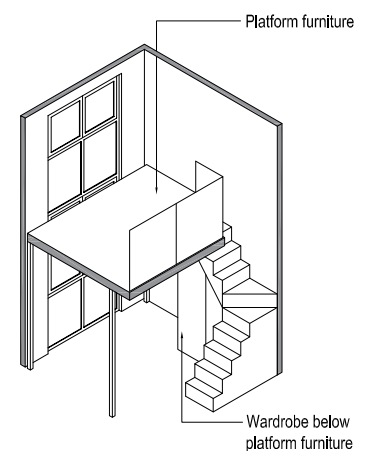
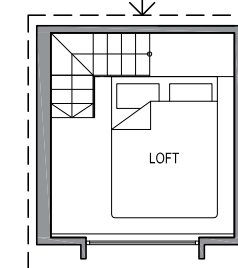
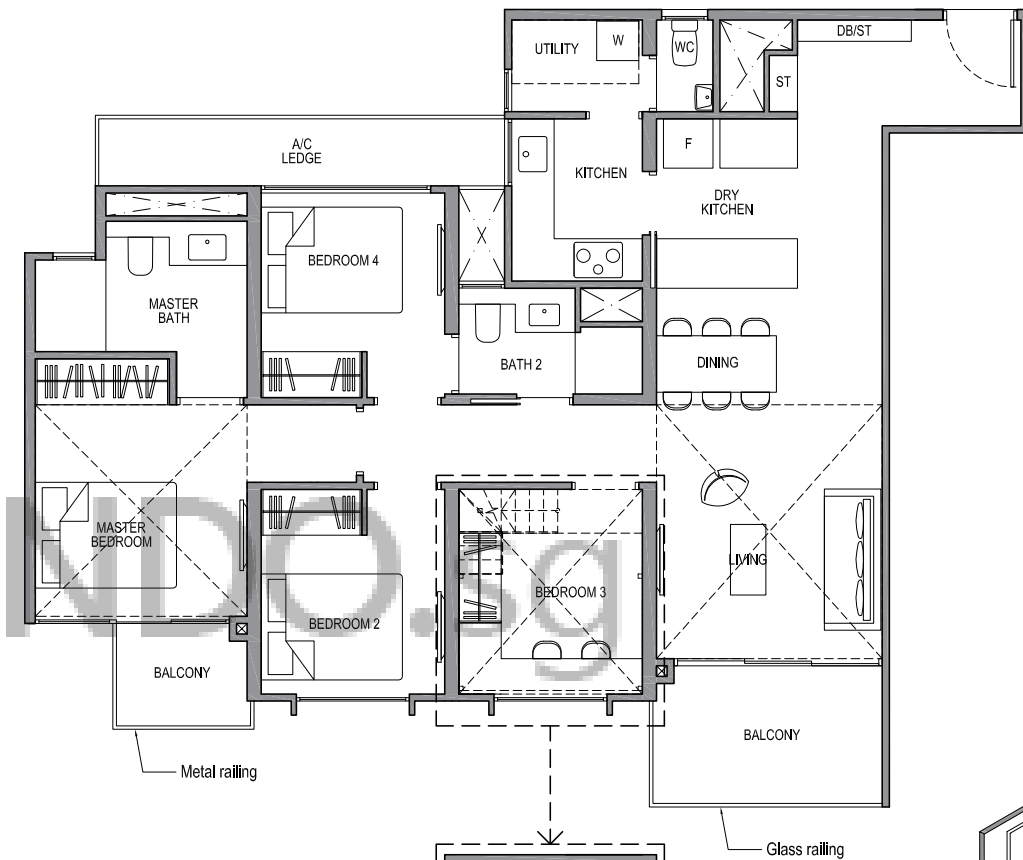


Plans are subject to change/amendments as may be required and/or approved by the Developer and/or the relevant authorities and do not form part of any offer or contract. These are not drawn to scale and are for the purpose of visual presentation only.

4-BEDROOM CLASSIC

TYPE 4C1-PH

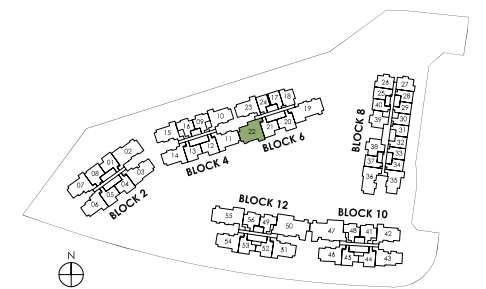
Area: 141 sq m (include 6 sq m a/c ledge, 10 sq m balcony, 31 sq m void*)
 Unit(s): #15-22



ISOMETRIC VIEW**

NOTE:

** Isometric views have excluded railing drawings for the steps
 * There shall be no addition of floor slab within the void over Living and Dining areas
 Plans are subject to change/amendments as may be required and/or approved by the Developer and/or the relevant authorities and do not form part of any offer or contract. These are not drawn to scale and are for the purpose of visual presentation only.



4-BEDROOM CLASSIC

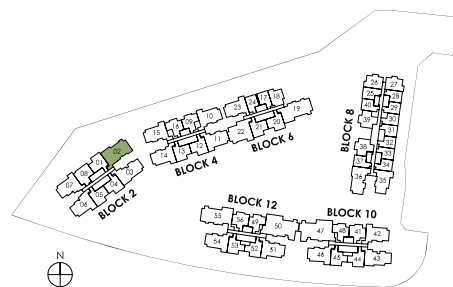
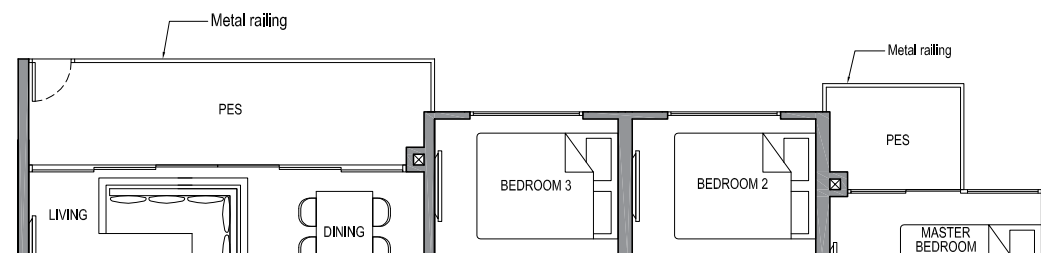
TYPE 4C2

Area: 116 sq m (include 7 sq m a/c ledge, 12 sq m balcony)
 Unit(s): #02-02 to #14-02



TYPE 4C2-G

Area: 116 sq m (include 7 sq m a/c ledge, 12 sq m PES)
 Unit(s): #01-02

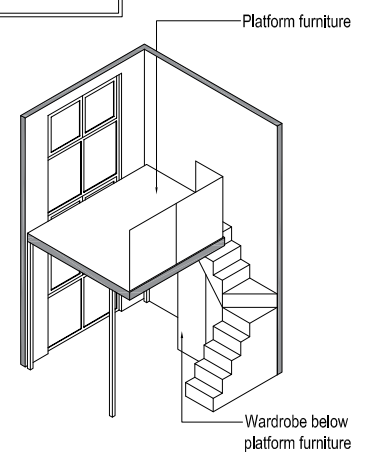
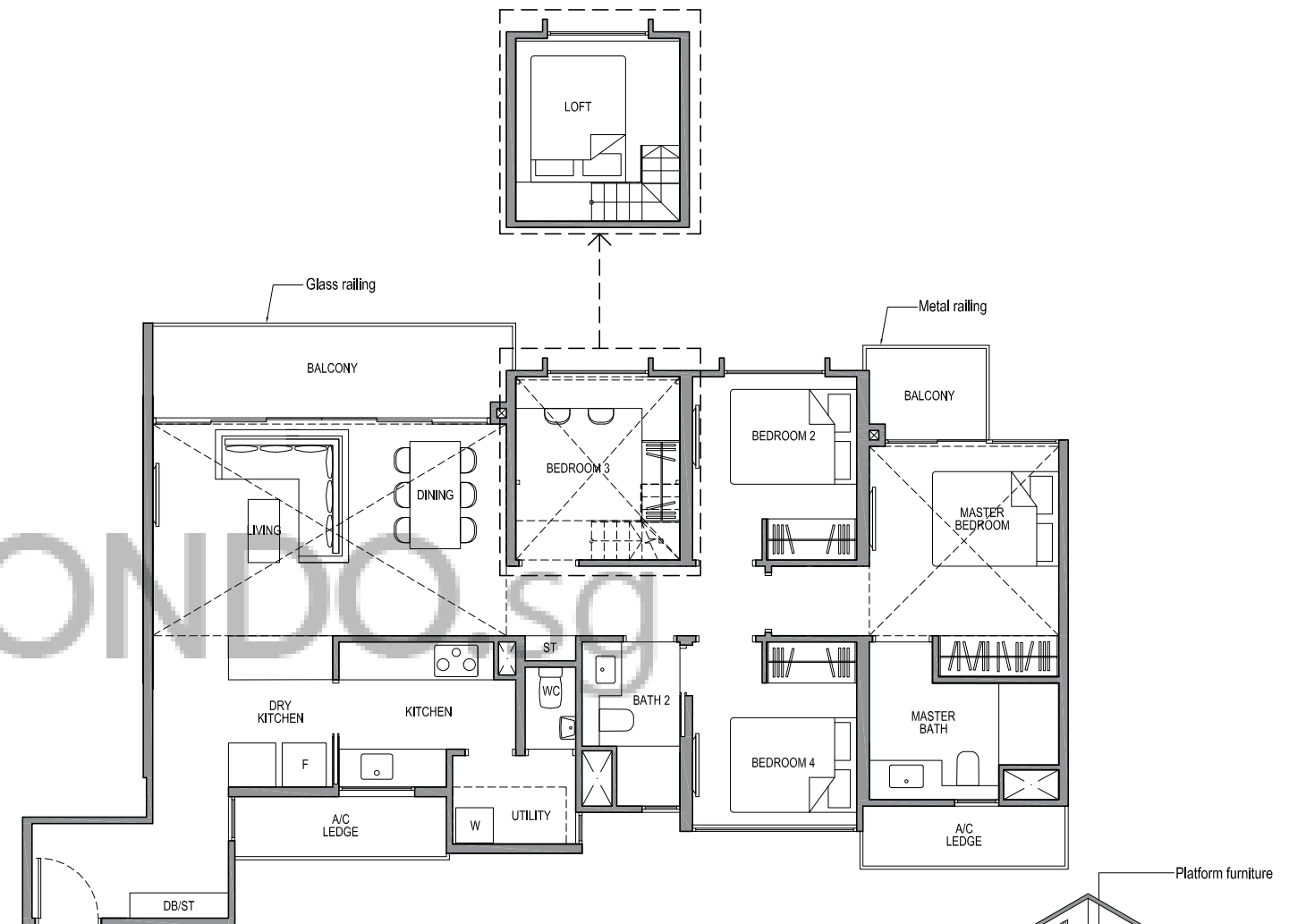


Plans are subject to change/amendments as may be required and/or approved by the Developer and/or the relevant authorities and do not form part of any offer or contract. These are not drawn to scale and are for the purpose of visual presentation only.

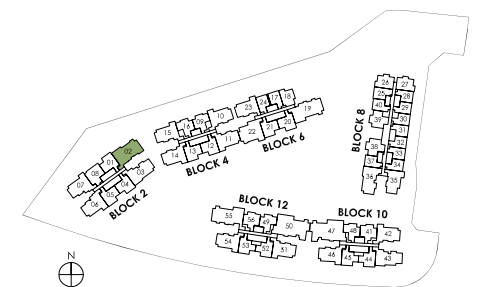
4-BEDROOM CLASSIC

TYPE 4C2-PH

Area: 154 sq m (include 7 sq m a/c ledge, 12 sq m balcony, 38 sq m void*)
 Unit(s): #15-02



ISOMETRIC VIEW**



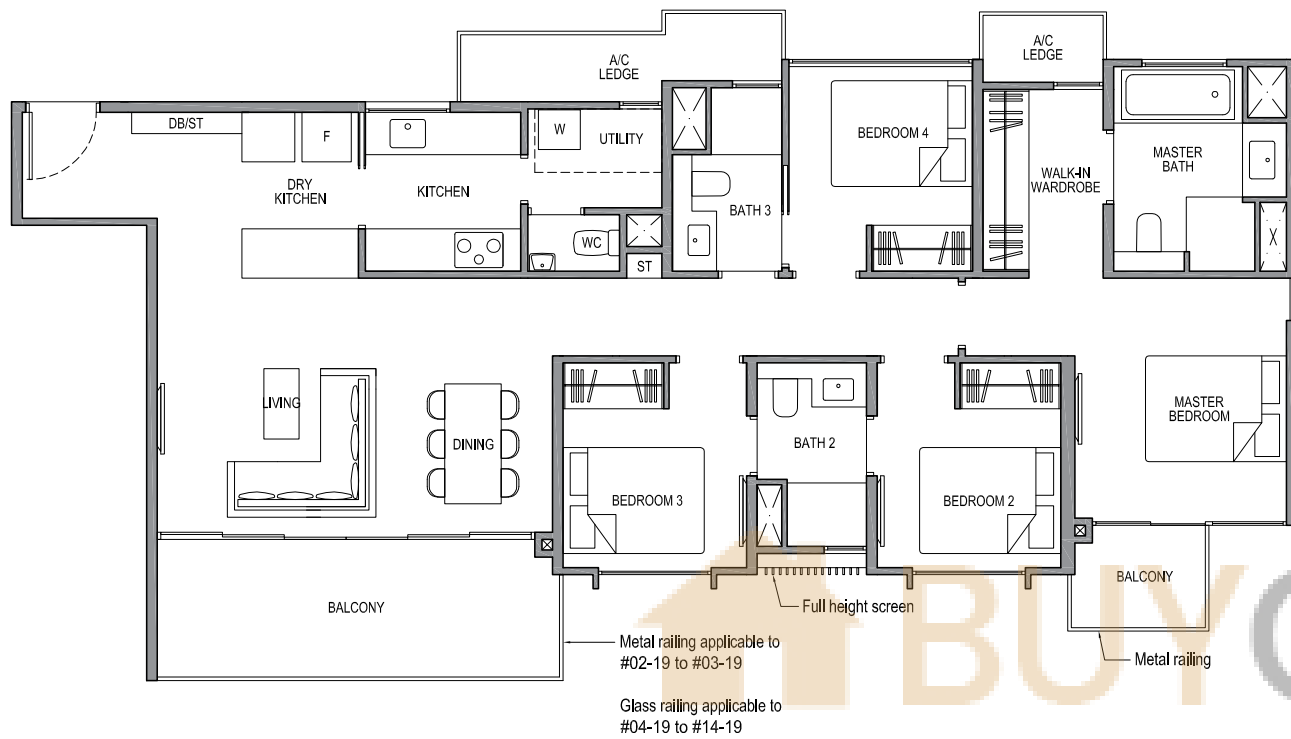
NOTE:

** Isometric views have excluded railing drawings for the steps
 * There shall be no addition of floor slab within the void over Living and Dining areas
 Plans are subject to change/amendments as may be required and/or approved by the Developer and/or the relevant authorities and do not form part of any offer or contract. These are not drawn to scale and are for the purpose of visual presentation only.

4-BEDROOM DELUXE

TYPE 4D1

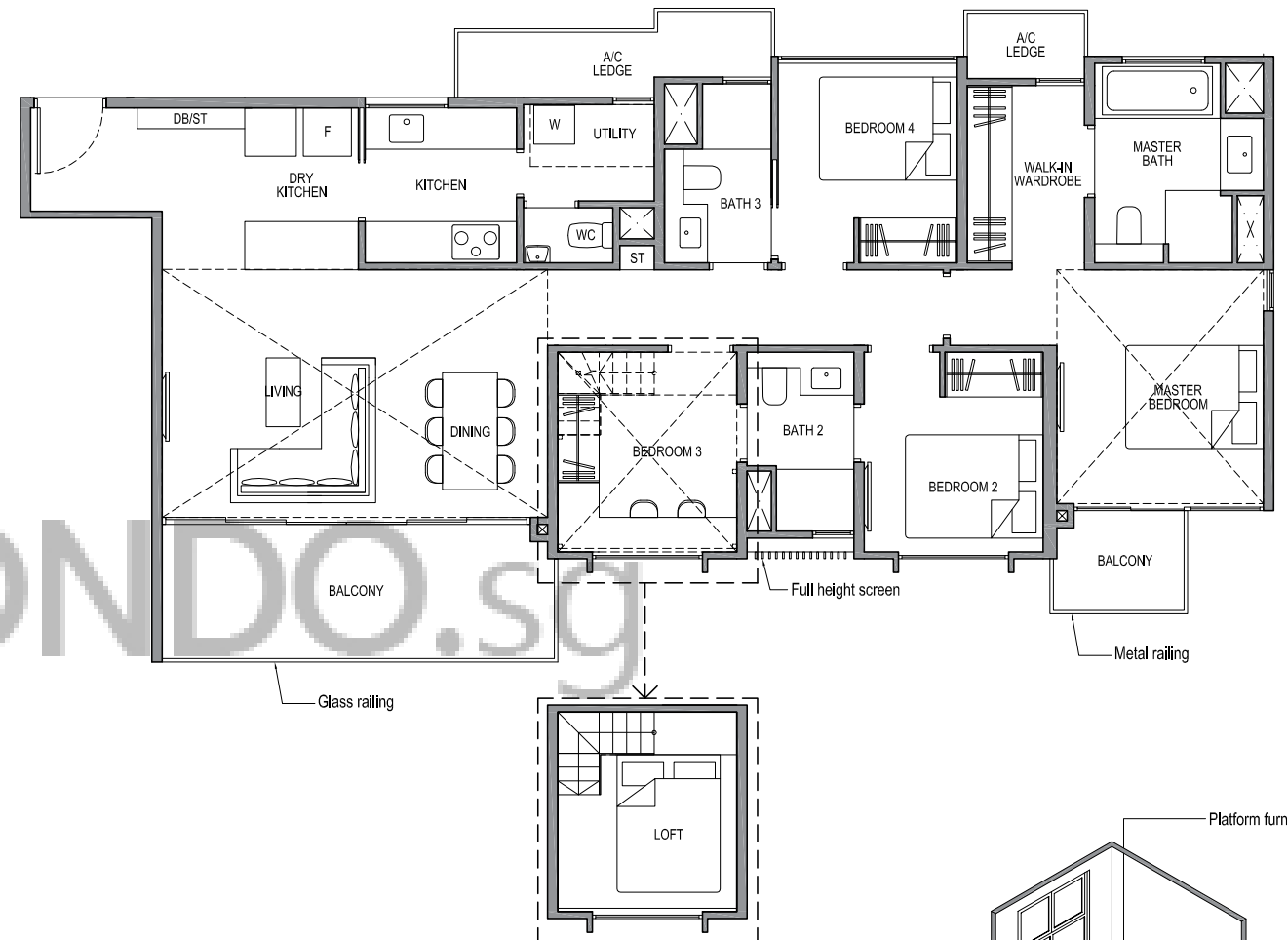
Area: 127 sq m (include 7 sq m a/c ledge, 15 sq m balcony)
Unit(s): #02-19 to #14-19



4-BEDROOM DELUXE

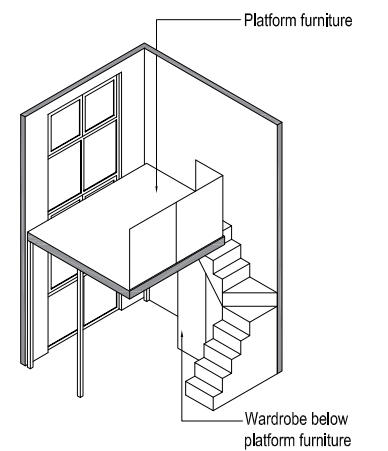
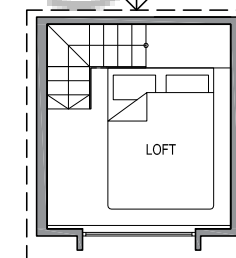
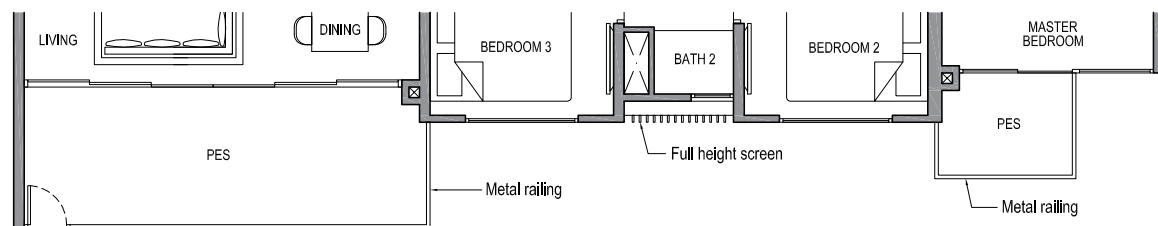
TYPE 4D1-PH

Area: 168 sq m (include 7 sq m a/c ledge, 15 sq m balcony, 41 sq m void*)
Unit(s): #15-19

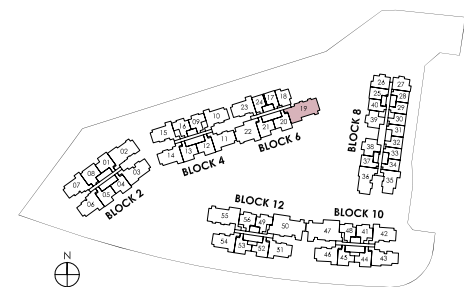


TYPE 4D1-G

Area: 127 sq m (include 7 sq m a/c ledge, 15 sq m PES)
Unit(s): #01-19



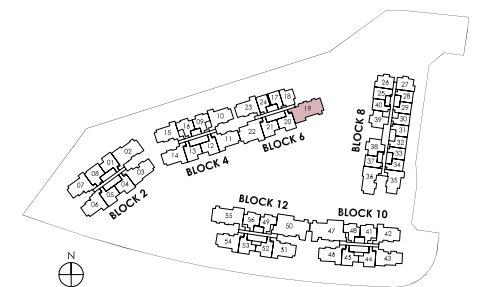
ISOMETRIC VIEW**



Plans are subject to change/amendments as may be required and/or approved by the Developer and/or the relevant authorities and do not form part of any offer or contract. These are not drawn to scale and are for the purpose of visual presentation only.

NOTE:

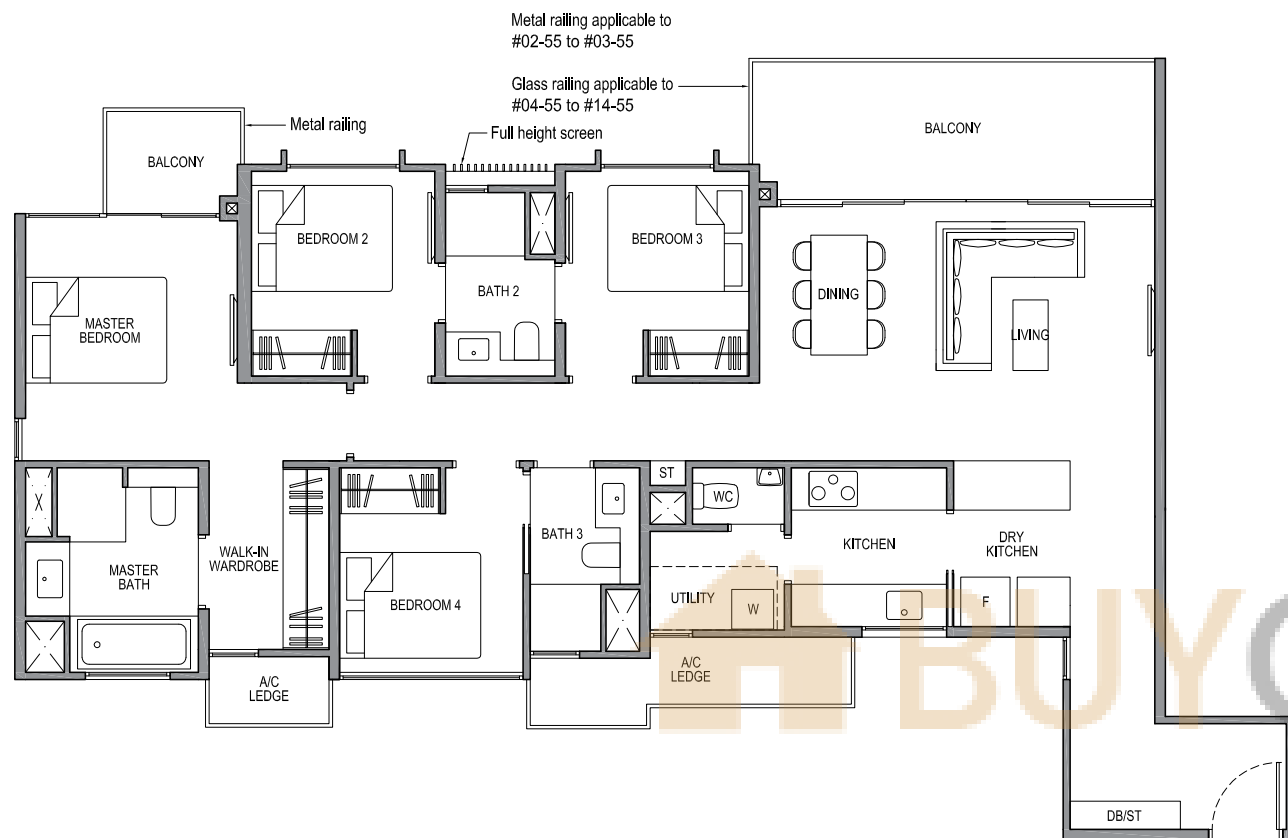
** Isometric views have excluded railing drawings for the steps
* There shall be no addition of floor slab within the void over Living and Dining areas
Plans are subject to change/amendments as may be required and/or approved by the Developer and/or the relevant authorities and do not form part of any offer or contract. These are not drawn to scale and are for the purpose of visual presentation only.



4-BEDROOM DELUXE

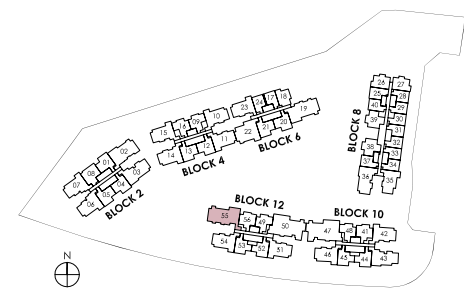
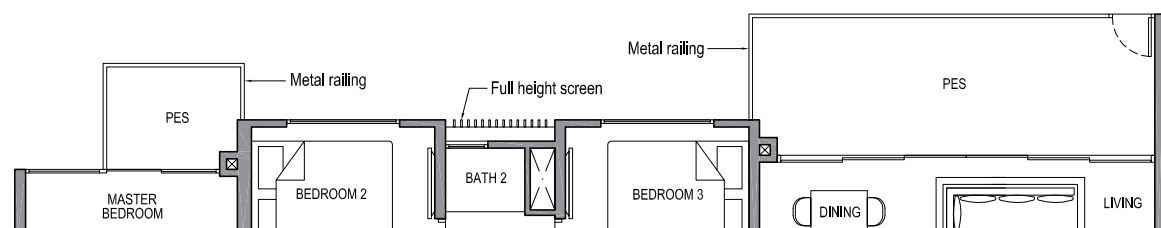
TYPE 4D2

Area: 131 sq m (include 7 sq m a/c ledge, 15 sq m balcony)
Unit(s): #02-55 to #14-55



TYPE 4D2-G

Area: 131 sq m (include 7 sq m a/c ledge, 15 sq m PES)
Unit(s): #01-55

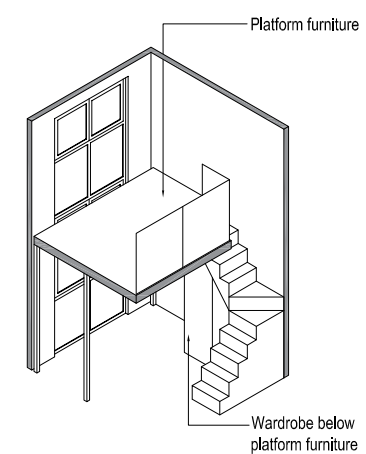
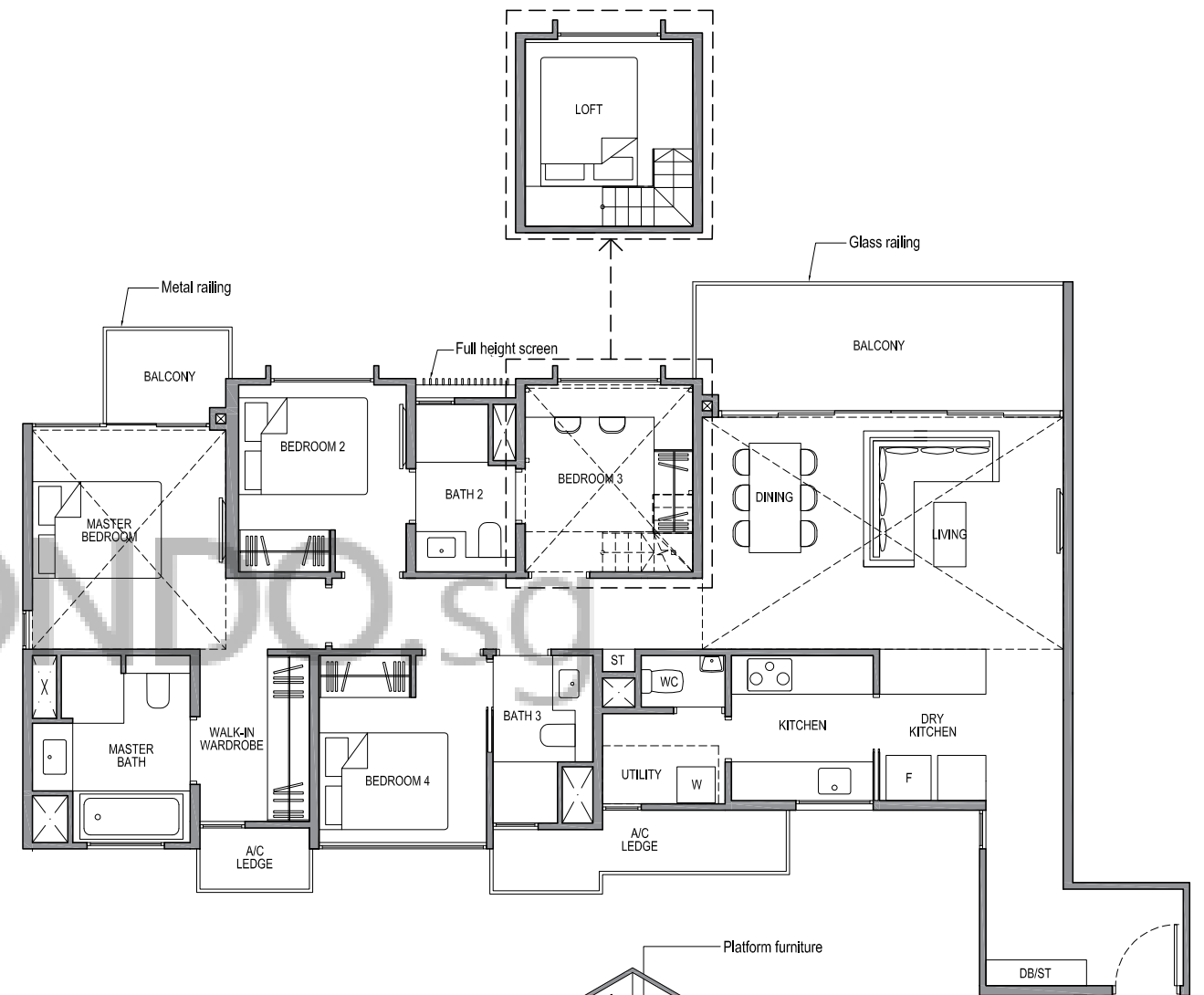


Plans are subject to change/amendments as may be required and/or approved by the Developer and/or the relevant authorities and do not form part of any offer or contract. These are not drawn to scale and are for the purpose of visual presentation only.

4-BEDROOM DELUXE

TYPE 4D2-PH

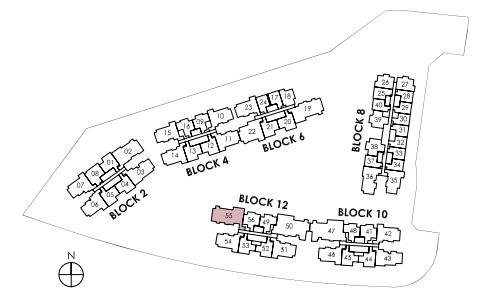
Area: 172 sq m (include 7 sq m a/c ledge, 15 sq m balcony, 41 sq m void*)
Unit(s): #15-55



ISOMETRIC VIEW**

NOTE:

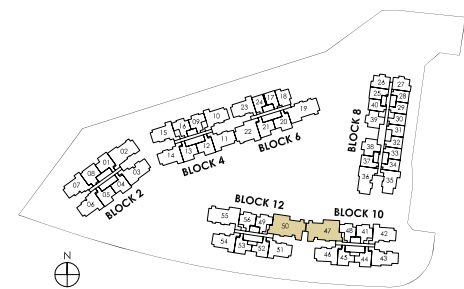
** Isometric views have excluded railing drawings for the steps
* There shall be no addition of floor slab within the void over Living and Dining areas
Plans are subject to change/amendments as may be required and/or approved by the Developer and/or the relevant authorities and do not form part of any offer or contract. These are not drawn to scale and are for the purpose of visual presentation only.



5-BEDROOM LUXURY

TYPE 5L1

Area: 159 sq m (include 8 sq m a/c ledge, 15 sq m balcony)
 Unit(s): #02-47 to #13-47
 #02-50* to #14-50*



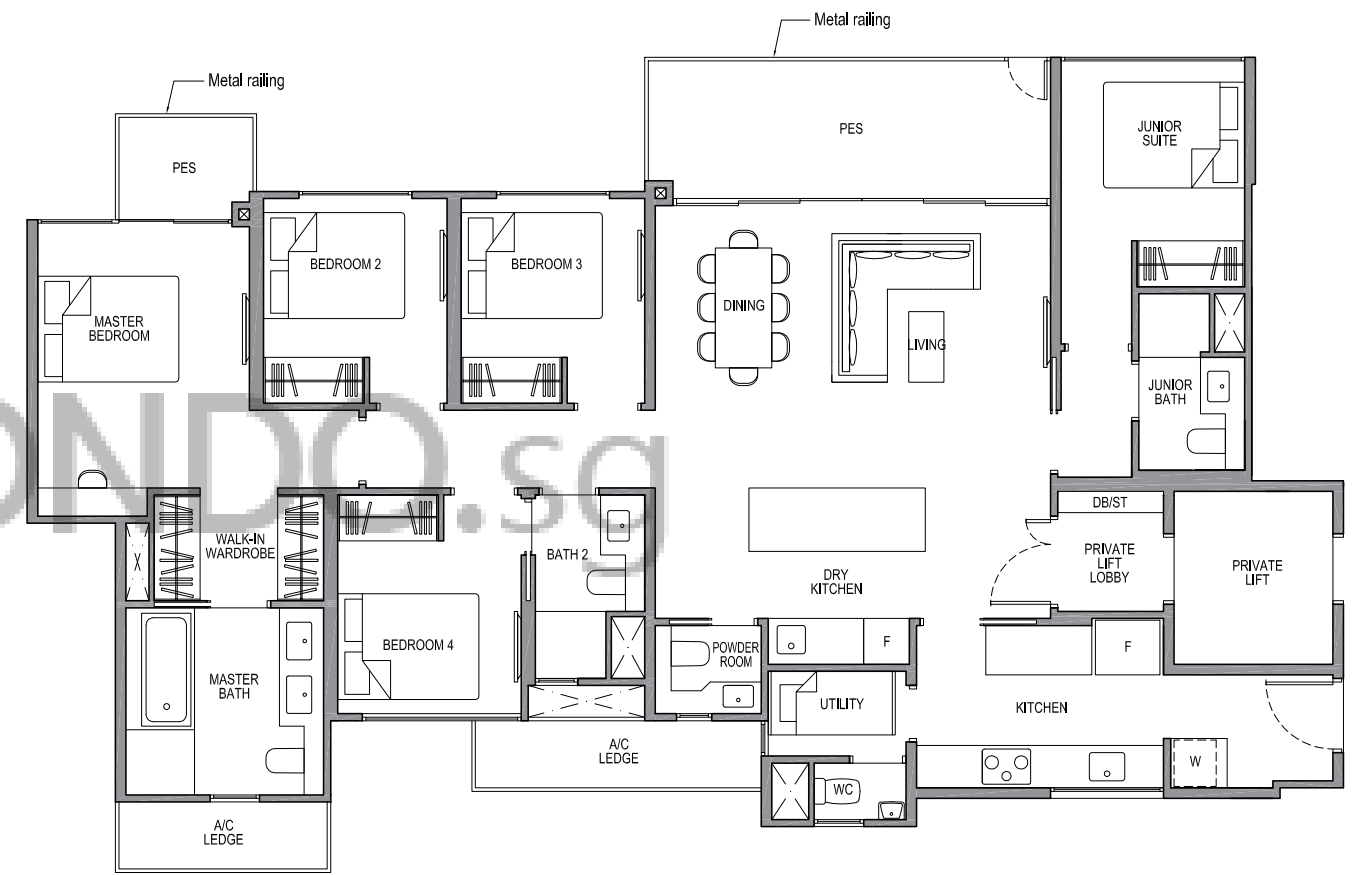
NOTE:
 * Mirror Image

Plans are subject to change/amendments as may be required and/or approved by the Developer and/or the relevant authorities and do not form part of any offer or contract. These are not drawn to scale and are for the purpose of visual presentation only.

5-BEDROOM LUXURY

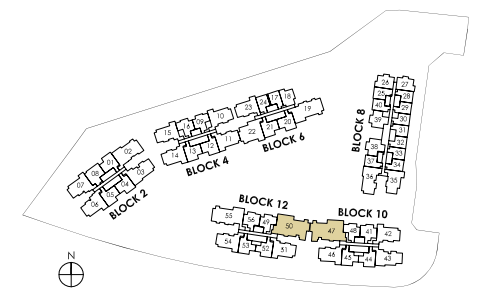
TYPE 5L1-G

Area: 158 sq m (include 8 sq m a/c ledge, 15 sq m PES)
 Unit(s): #01-47
 #01-50*



NOTE:
 * Mirror Image

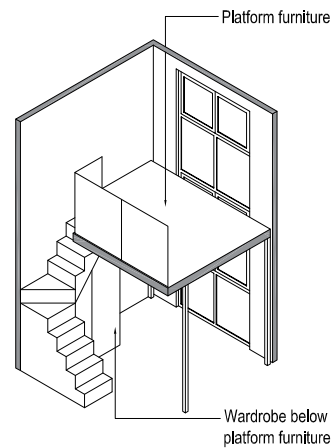
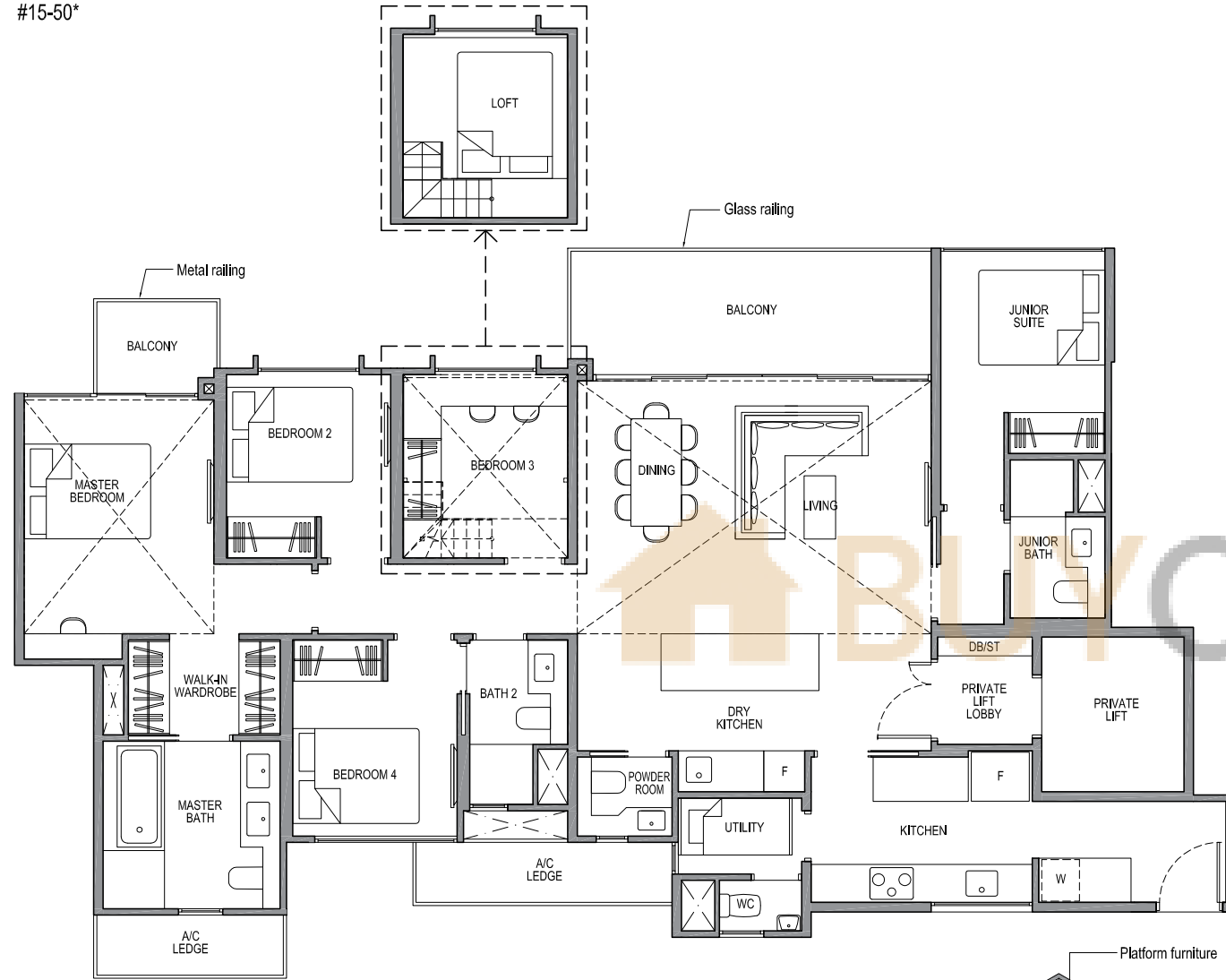
Plans are subject to change/amendments as may be required and/or approved by the Developer and/or the relevant authorities and do not form part of any offer or contract. These are not drawn to scale and are for the purpose of visual presentation only.



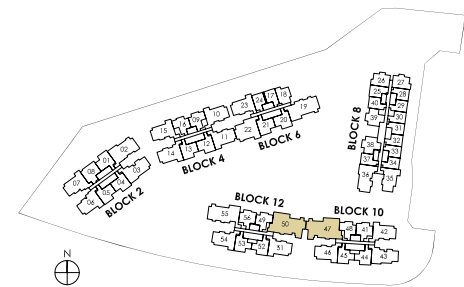
5-BEDROOM LUXURY

TYPE 5L1-PH

Area: 203 sq m (include 8 sq m a/c ledge, 15 sq m balcony, 44 sq m void*)
 Unit(s): #14-47
 #15-50*

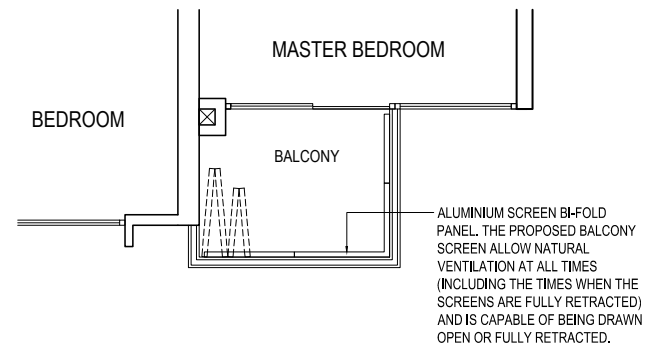


ISOMETRIC VIEW**

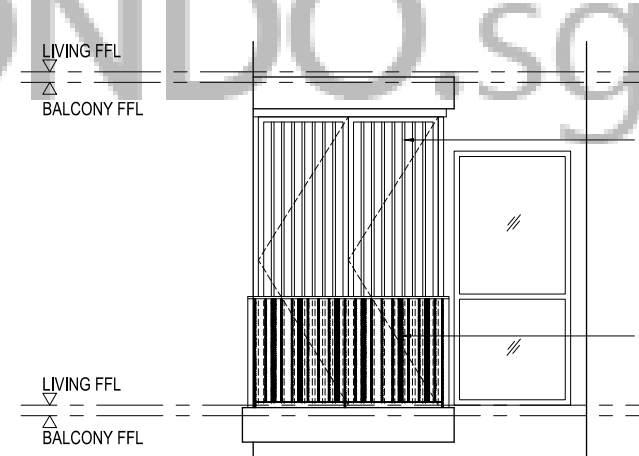


NOTE:
 * Mirror image
 ** Isometric views have excluded railing drawings for the steps
 * There shall be no addition of floor slab within the void over Living and Dining areas
 Plans are subject to change/amendments as may be required and/or approved by the Developer and/or the relevant authorities and do not form part of any offer or contract. These are not drawn to scale and are for the purpose of visual presentation only.

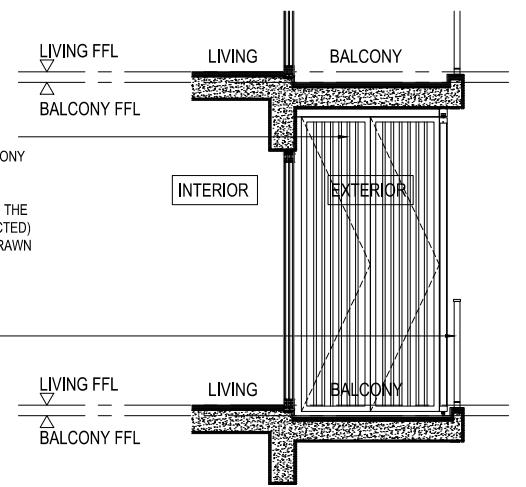
APPROVED BALCONY SCREEN DESIGN



TYPICAL RETRACTABLE BALCONY SCREEN - PLAN



ELEVATION



SECTION

ALUMINIUM SCREEN BI-FOLD PANEL. THE PROPOSED BALCONY SCREEN ALLOW NATURAL VENTILATION AT ALL TIMES (INCLUDING THE TIMES WHEN THE SCREENS ARE FULLY RETRACTED) AND IS CAPABLE OF BEING DRAWN OPEN OR FULLY RETRACTED.

METAL RAILING