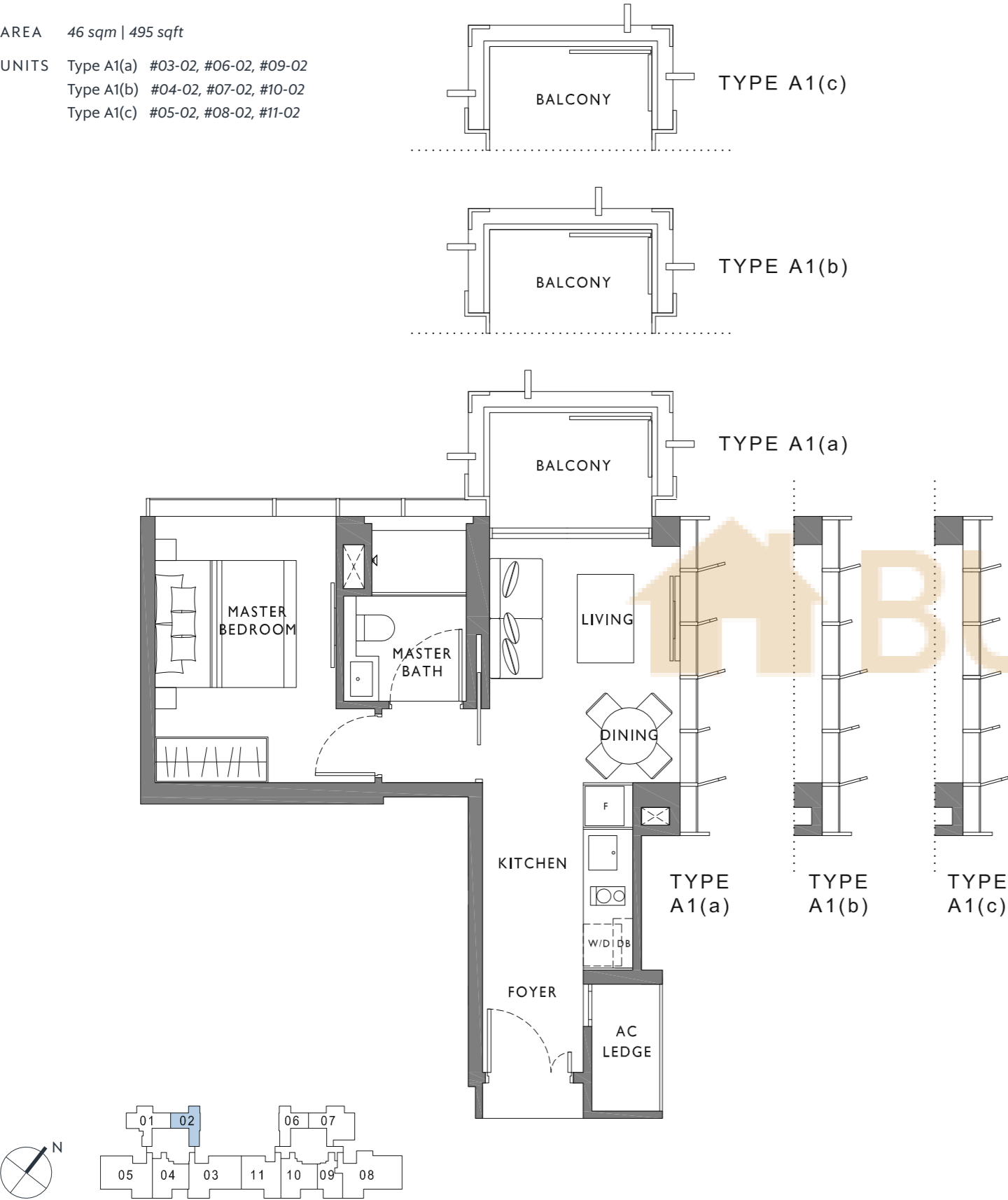


TYPE A1  
1 BEDROOM

AREA 46 sqm | 495 sqft  
UNITS Type A1(a) #03-02, #06-02, #09-02  
Type A1(b) #04-02, #07-02, #10-02  
Type A1(c) #05-02, #08-02, #11-02



AREA INCLUDES A/C LEDGE, BALCONIES AND VOID WHERE APPLICABLE. AREAS ARE ESTIMATES ONLY AND ARE SUBJECT TO FINAL SURVEY. PLANS ARE NOT TO SCALE AND SUBJECT TO CHANGES AS MAY BE REQUIRED BY THE RELEVANT AUTHORITIES. THE BALCONIES SHALL NOT BE ENCLOSED UNLESS WITH APPROVED SCREEN. FOR AN ILLUSTRATION OF THE APPROVED BALCONY SCREEN, PLEASE REFER TO THE DIAGRAM ANNEXED HERETO AS "ANNEXURE".

TYPE A1P  
1 BEDROOM

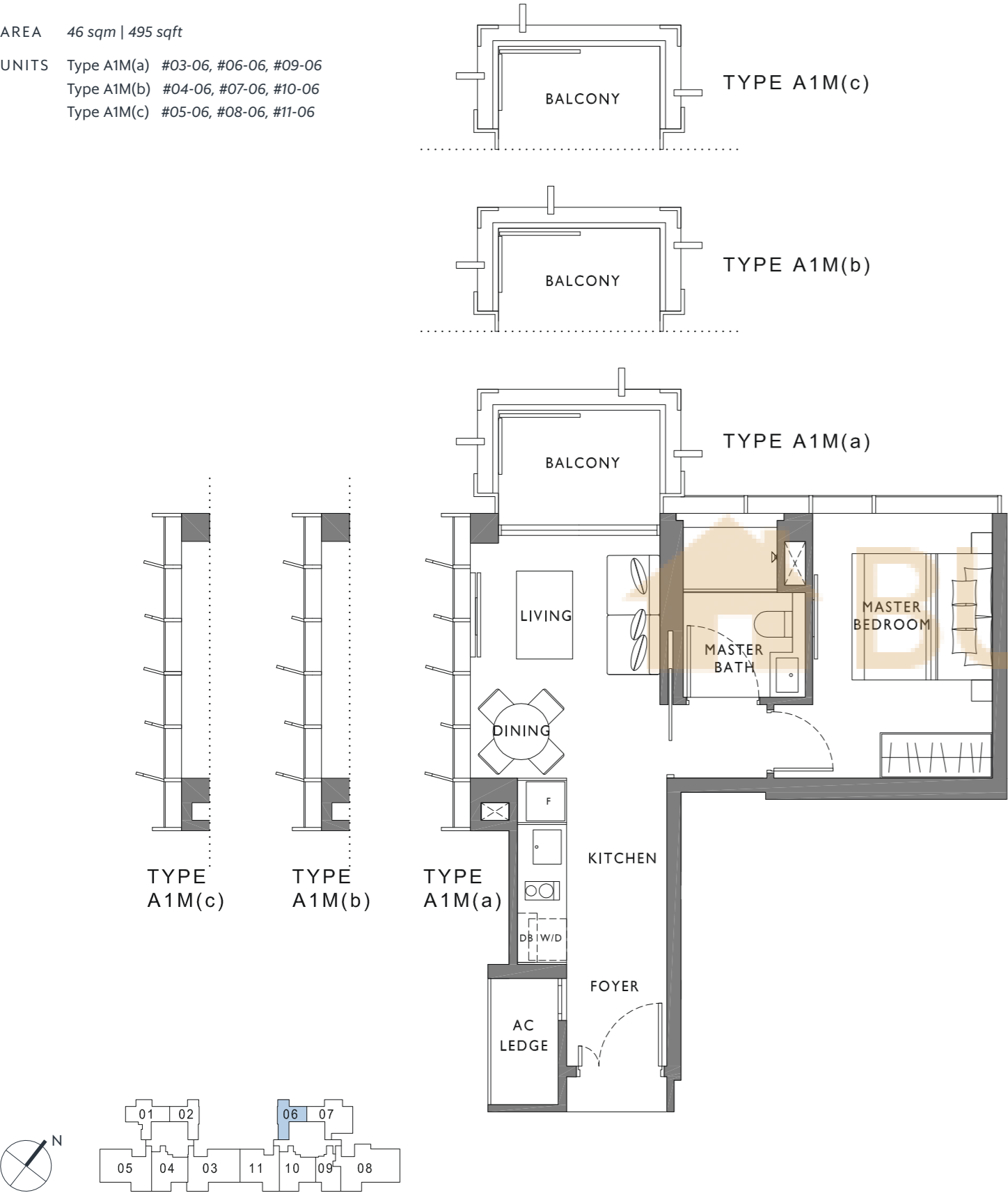
AREA 56 sqm | 603 sqft  
UNITS #12-02



AREA INCLUDES A/C LEDGE, BALCONIES AND VOID WHERE APPLICABLE. AREAS ARE ESTIMATES ONLY AND ARE SUBJECT TO FINAL SURVEY. PLANS ARE NOT TO SCALE AND SUBJECT TO CHANGES AS MAY BE REQUIRED BY THE RELEVANT AUTHORITIES. THE BALCONIES SHALL NOT BE ENCLOSED UNLESS WITH APPROVED SCREEN. FOR AN ILLUSTRATION OF THE APPROVED BALCONY SCREEN, PLEASE REFER TO THE DIAGRAM ANNEXED HERETO AS "ANNEXURE".

TYPE A1 (M)  
1 BEDROOM

AREA 46 sqm | 495 sqft  
UNITS Type A1M(a) #03-06, #06-06, #09-06  
Type A1M(b) #04-06, #07-06, #10-06  
Type A1M(c) #05-06, #08-06, #11-06



AREA INCLUDES A/C LEDGE, BALCONIES AND VOID WHERE APPLICABLE. AREAS ARE ESTIMATES ONLY AND ARE SUBJECT TO FINAL SURVEY. PLANS ARE NOT TO SCALE AND SUBJECT TO CHANGES AS MAY BE REQUIRED BY THE RELEVANT AUTHORITIES. THE BALCONIES SHALL NOT BE ENCLOSED UNLESS WITH APPROVED SCREEN. FOR AN ILLUSTRATION OF THE APPROVED BALCONY SCREEN, PLEASE REFER TO THE DIAGRAM ANNEXED HERETO AS "ANNEXURE".

TYPE A1P (M)  
1 BEDROOM

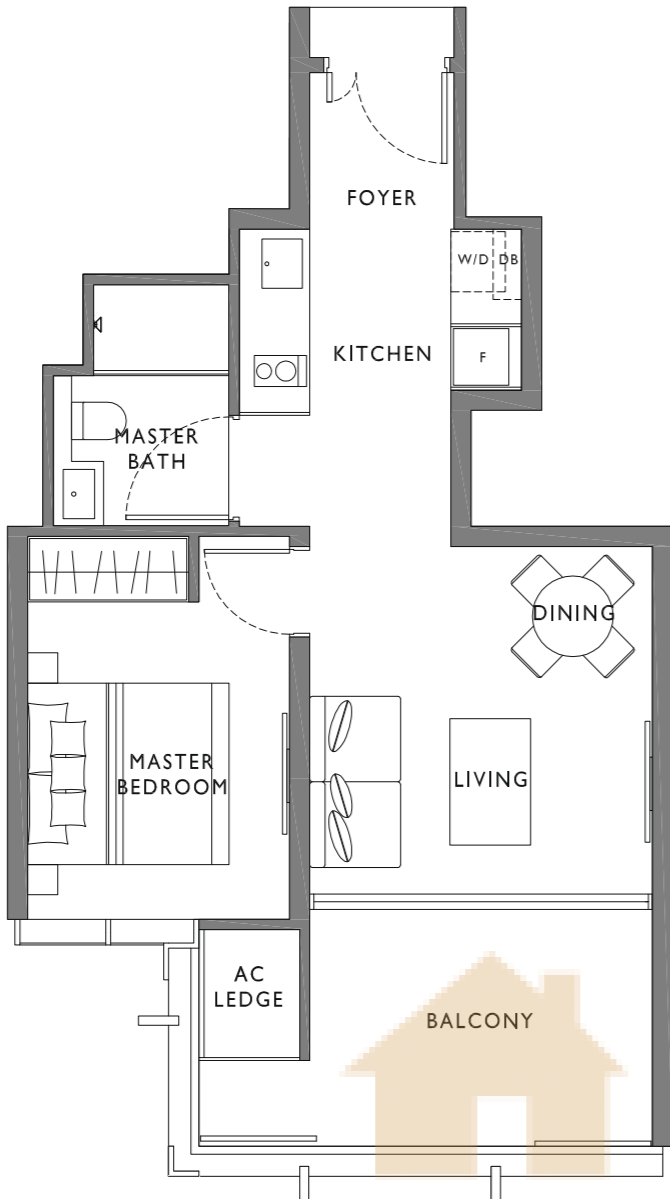
AREA 56 sqm | 603 sqft  
UNITS #12-06



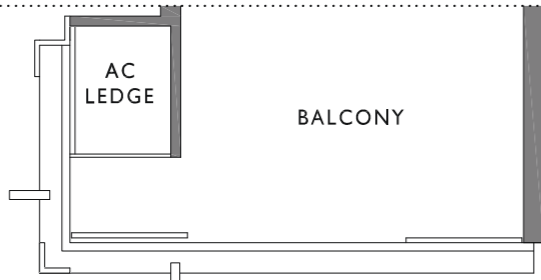
AREA INCLUDES A/C LEDGE, BALCONIES AND VOID WHERE APPLICABLE. AREAS ARE ESTIMATES ONLY AND ARE SUBJECT TO FINAL SURVEY. PLANS ARE NOT TO SCALE AND SUBJECT TO CHANGES AS MAY BE REQUIRED BY THE RELEVANT AUTHORITIES. THE BALCONIES SHALL NOT BE ENCLOSED UNLESS WITH APPROVED SCREEN. FOR AN ILLUSTRATION OF THE APPROVED BALCONY SCREEN, PLEASE REFER TO THE DIAGRAM ANNEXED HERETO AS "ANNEXURE".

TYPE A2  
1 BEDROOM

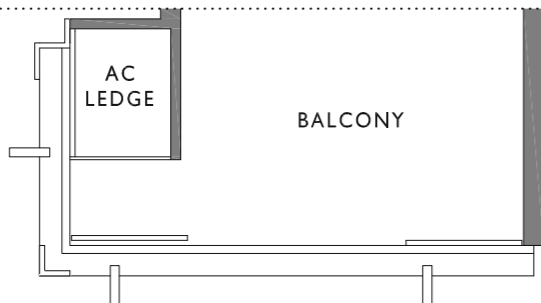
AREA 51 sqm | 549 sqft  
UNITS Type A2(a) #03-09, #06-09, #09-09  
Type A2(b) #04-09, #07-09, #10-09  
Type A2(c) #02-09, #05-09, #08-09, #11-09



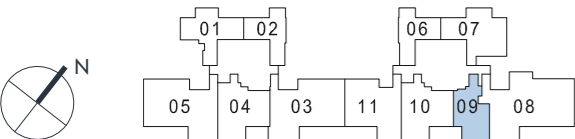
TYPE A2(a)



TYPE A2(b)



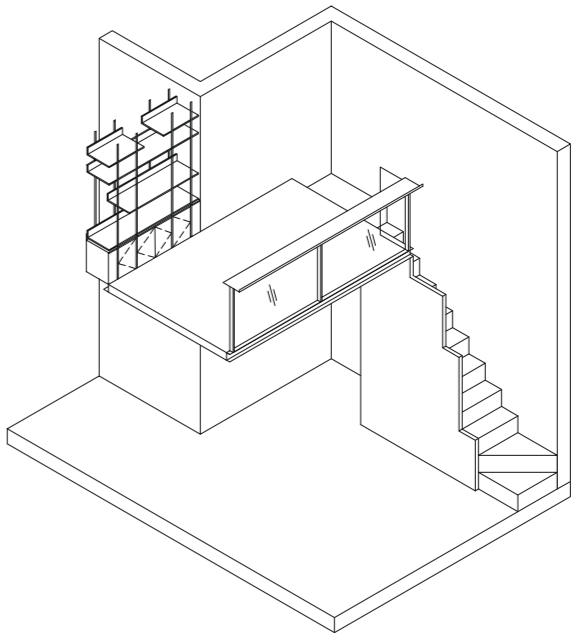
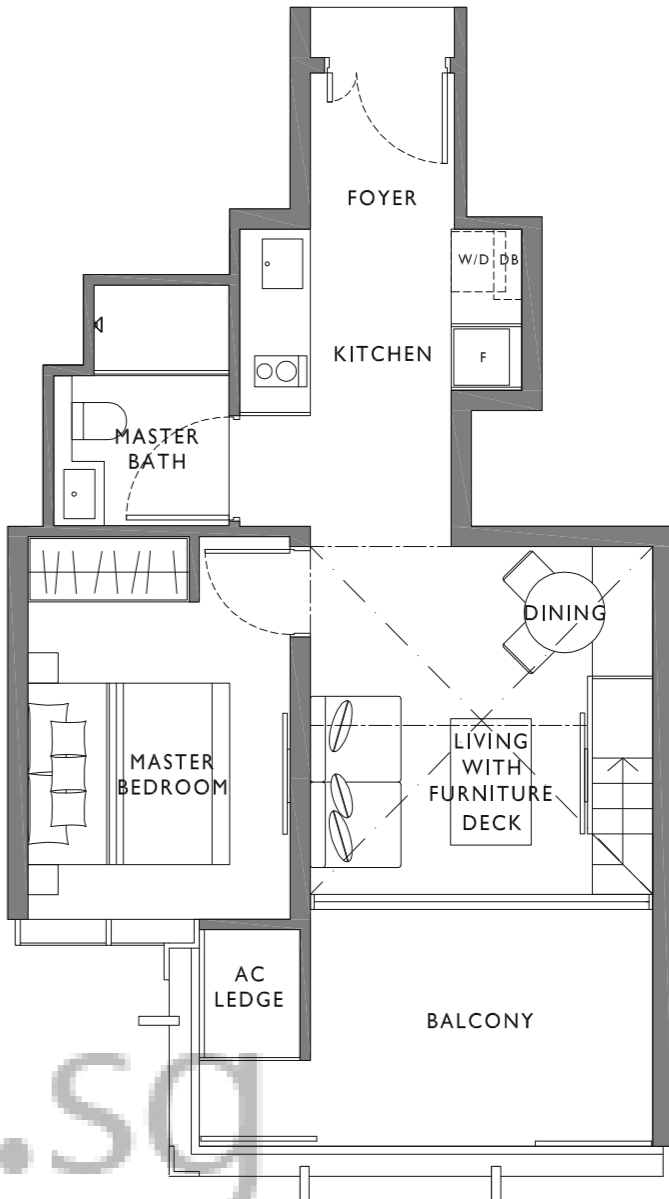
TYPE A2(c)



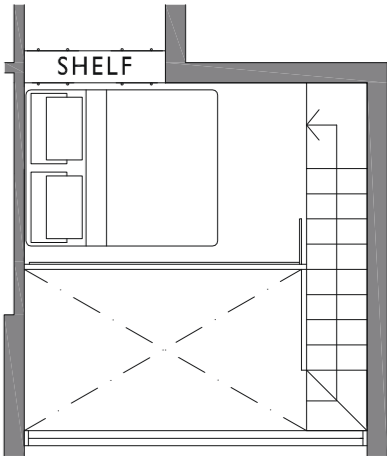
AREA INCLUDES A/C LEDGE, BALCONIES AND VOID WHERE APPLICABLE. AREAS ARE ESTIMATES ONLY AND ARE SUBJECT TO FINAL SURVEY. PLANS ARE NOT TO SCALE AND SUBJECT TO CHANGES AS MAY BE REQUIRED BY THE RELEVANT AUTHORITIES. THE BALCONIES SHALL NOT BE ENCLOSED UNLESS WITH APPROVED SCREEN. FOR AN ILLUSTRATION OF THE APPROVED BALCONY SCREEN, PLEASE REFER TO THE DIAGRAM ANNEXED HERETO AS "ANNEXURE".

TYPE A2P  
1 BEDROOM

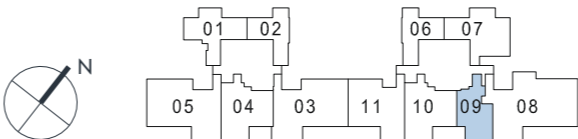
AREA 64 sqm | 689 sqft  
UNITS #12-09



ISOMETRIC VIEW



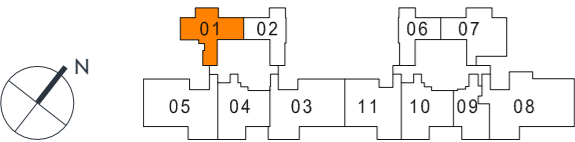
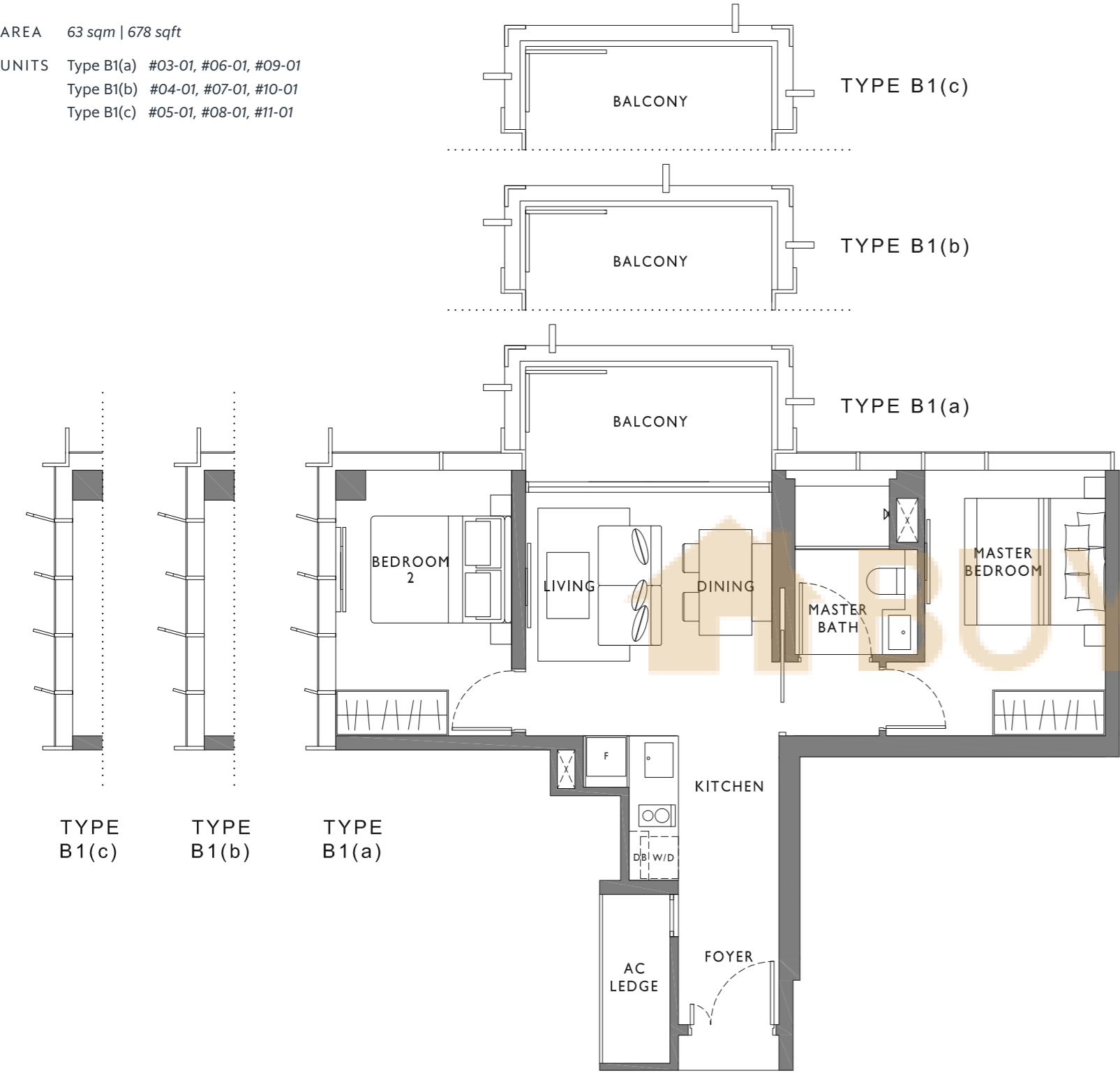
FURNITURE DECK



AREA INCLUDES A/C LEDGE, BALCONIES AND VOID WHERE APPLICABLE. AREAS ARE ESTIMATES ONLY AND ARE SUBJECT TO FINAL SURVEY. PLANS ARE NOT TO SCALE AND SUBJECT TO CHANGES AS MAY BE REQUIRED BY THE RELEVANT AUTHORITIES. THE BALCONIES SHALL NOT BE ENCLOSED UNLESS WITH APPROVED SCREEN. FOR AN ILLUSTRATION OF THE APPROVED BALCONY SCREEN, PLEASE REFER TO THE DIAGRAM ANNEXED HERETO AS "ANNEXURE".

TYPE B1  
2 BEDROOM

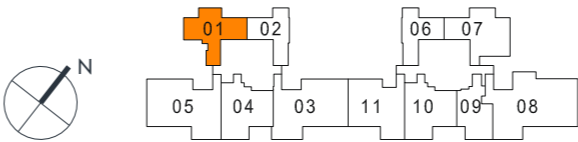
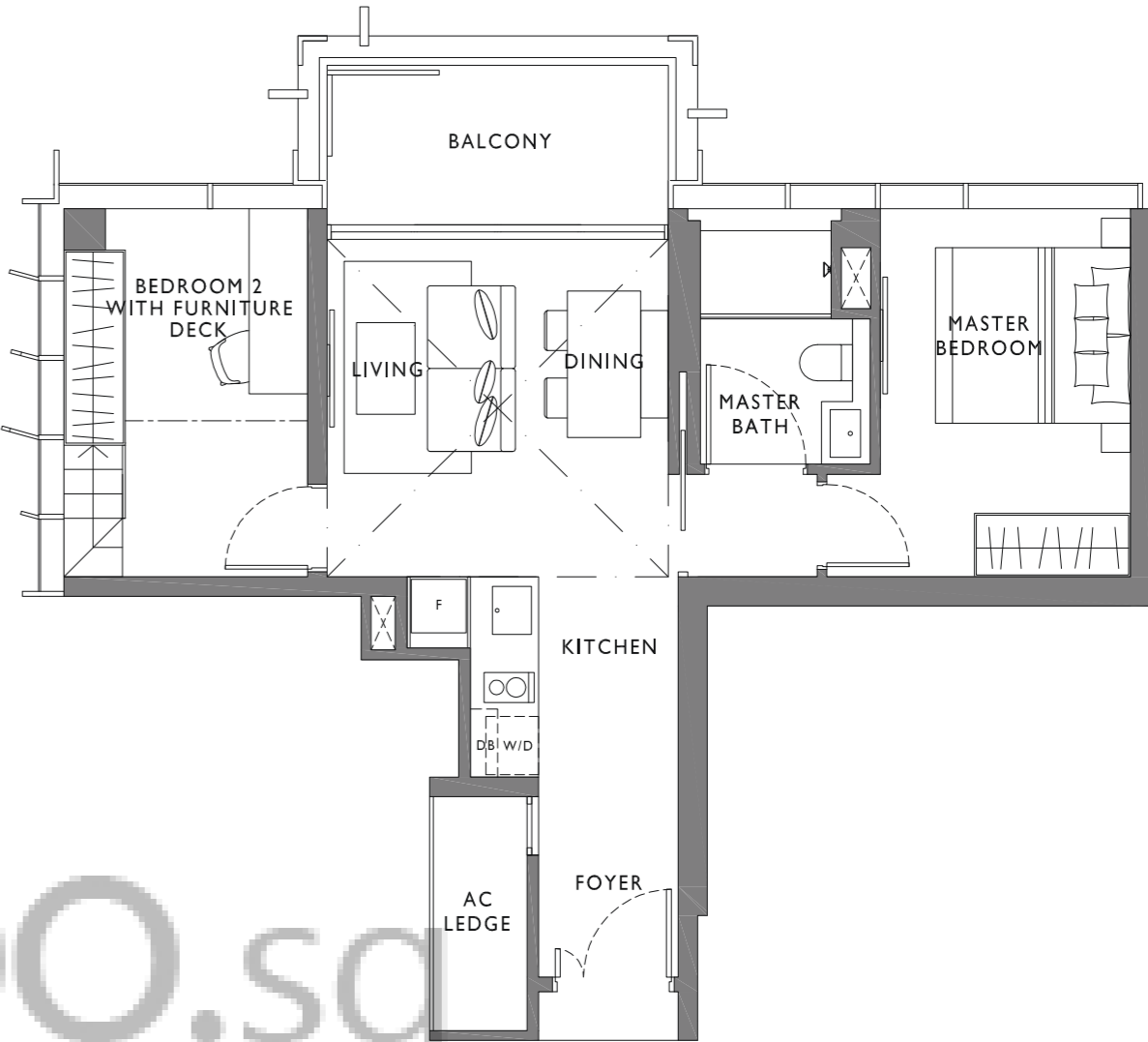
AREA 63 sqm | 678 sqft  
UNITS Type B1(a) #03-01, #06-01, #09-01  
Type B1(b) #04-01, #07-01, #10-01  
Type B1(c) #05-01, #08-01, #11-01



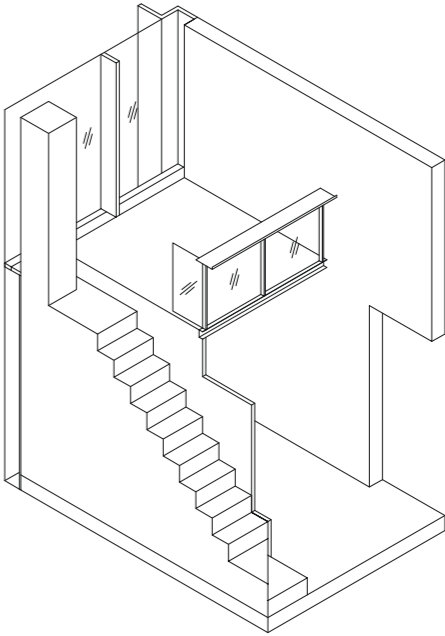
AREA INCLUDES A/C LEDGE, BALCONIES AND VOID WHERE APPLICABLE. AREAS ARE ESTIMATES ONLY AND ARE SUBJECT TO FINAL SURVEY. PLANS ARE NOT TO SCALE AND SUBJECT TO CHANGES AS MAY BE REQUIRED BY THE RELEVANT AUTHORITIES. THE BALCONIES SHALL NOT BE ENCLOSED UNLESS WITH APPROVED SCREEN. FOR AN ILLUSTRATION OF THE APPROVED BALCONY SCREEN, PLEASE REFER TO THE DIAGRAM ANNEXED HERETO AS "ANNEXURE".

TYPE B1P  
2 BEDROOM

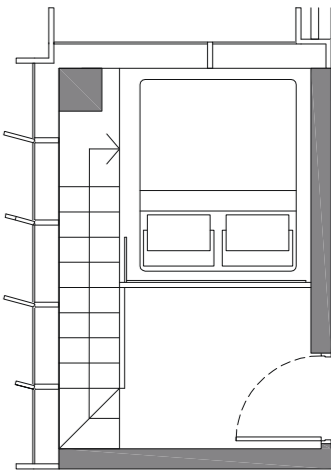
AREA 76 sqm | 818 sqft  
UNITS #12-01



AREA INCLUDES A/C LEDGE, BALCONIES AND VOID WHERE APPLICABLE. AREAS ARE ESTIMATES ONLY AND ARE SUBJECT TO FINAL SURVEY. PLANS ARE NOT TO SCALE AND SUBJECT TO CHANGES AS MAY BE REQUIRED BY THE RELEVANT AUTHORITIES. THE BALCONIES SHALL NOT BE ENCLOSED UNLESS WITH APPROVED SCREEN. FOR AN ILLUSTRATION OF THE APPROVED BALCONY SCREEN, PLEASE REFER TO THE DIAGRAM ANNEXED HERETO AS "ANNEXURE".



ISOMETRIC VIEW



FURNITURE DECK

TYPE B2  
2 BEDROOM

AREA 72 sqm | 775 sqft  
UNITS Type B2(a) #03-07, #06-07, #09-07  
Type B2(b) #04-07, #07-07, #10-07  
Type B2(c) #05-07, #08-07, #11-07



AREA INCLUDES A/C LEDGE, BALCONIES AND VOID WHERE APPLICABLE. AREAS ARE ESTIMATES ONLY AND ARE SUBJECT TO FINAL SURVEY. PLANS ARE NOT TO SCALE AND SUBJECT TO CHANGES AS MAY BE REQUIRED BY THE RELEVANT AUTHORITIES. THE BALCONIES SHALL NOT BE ENCLOSED UNLESS WITH APPROVED SCREEN. FOR AN ILLUSTRATION OF THE APPROVED BALCONY SCREEN, PLEASE REFER TO THE DIAGRAM ANNEXED HERETO AS "ANNEXURE".

TYPE B2P  
2 BEDROOM

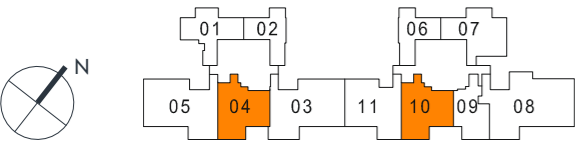
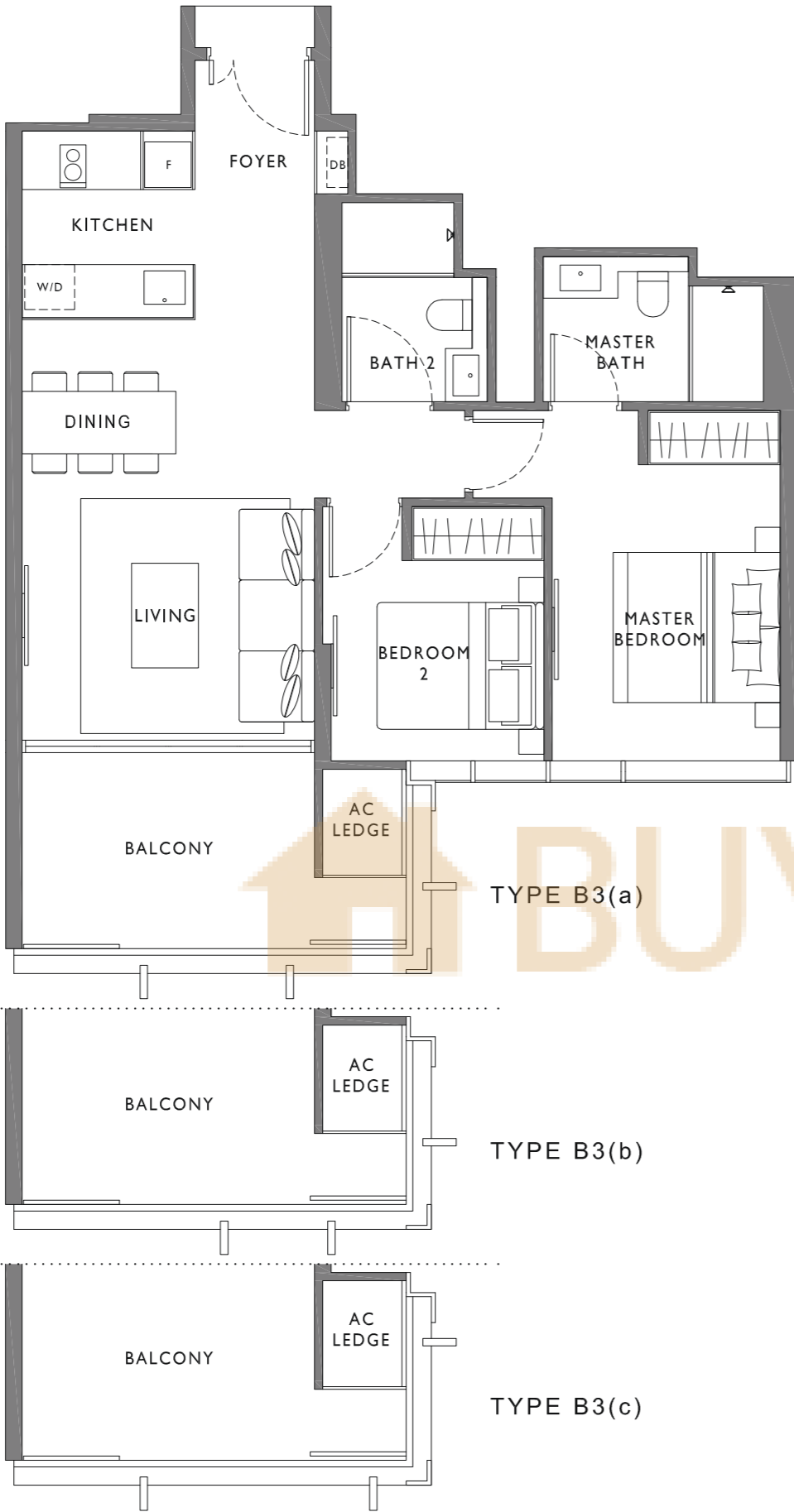
AREA 87 sqm | 936 sqft  
UNITS #12-07



AREA INCLUDES A/C LEDGE, BALCONIES AND VOID WHERE APPLICABLE. AREAS ARE ESTIMATES ONLY AND ARE SUBJECT TO FINAL SURVEY. PLANS ARE NOT TO SCALE AND SUBJECT TO CHANGES AS MAY BE REQUIRED BY THE RELEVANT AUTHORITIES. THE BALCONIES SHALL NOT BE ENCLOSED UNLESS WITH APPROVED SCREEN. FOR AN ILLUSTRATION OF THE APPROVED BALCONY SCREEN, PLEASE REFER TO THE DIAGRAM ANNEXED HERETO AS "ANNEXURE".

TYPE B3  
2 BEDROOM

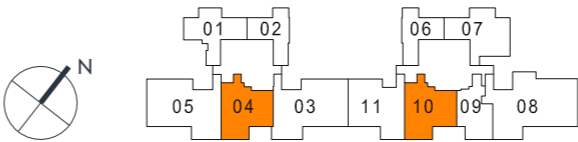
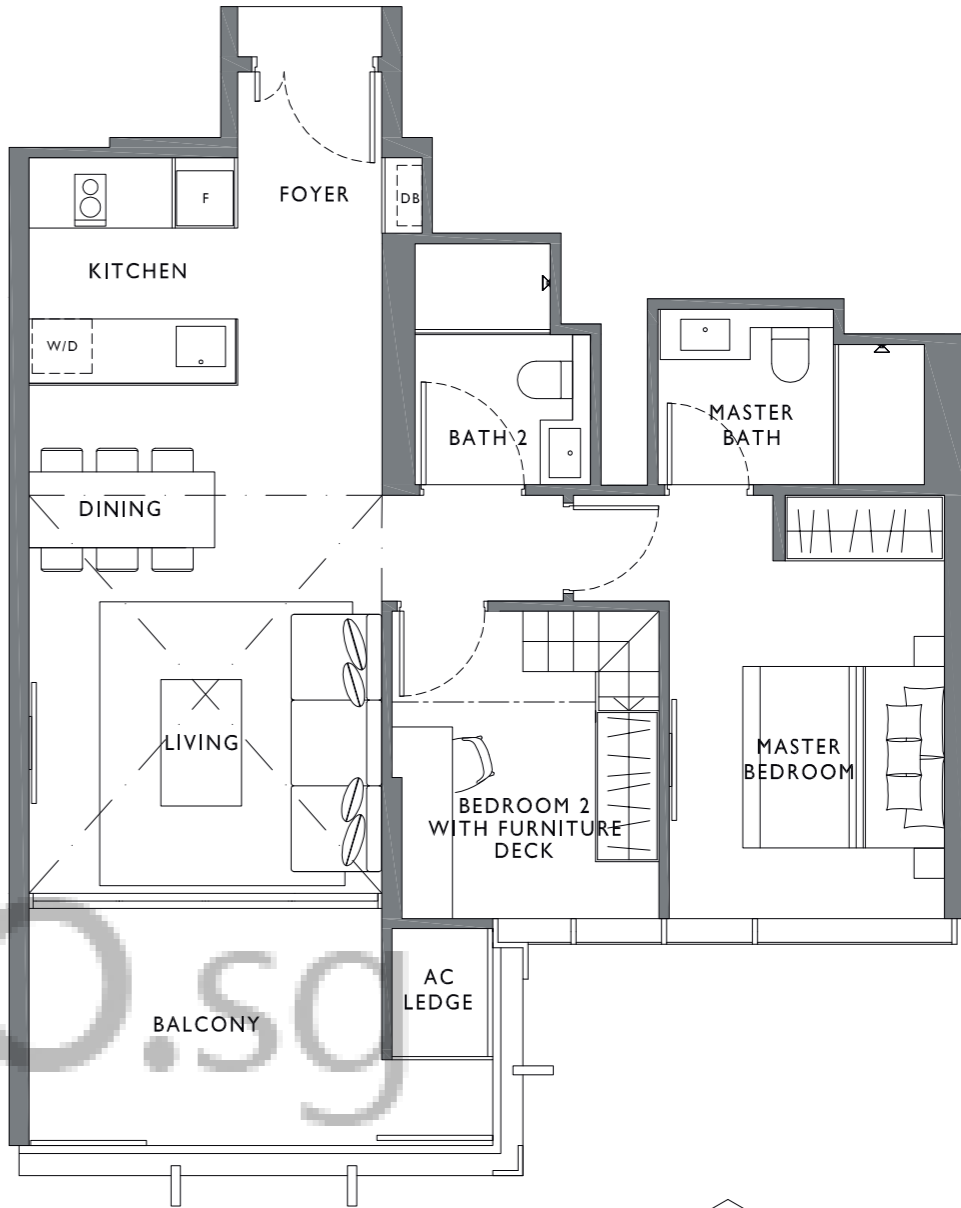
- AREA 76 sqm | 818 sqft
- UNITS Type B3(a) #03-04, #06-04, #09-04  
#03-10, #06-10, #09-10
- Type B3(b) #04-04, #07-04, #10-04  
#04-10, #07-10, #10-10
- Type B3(c) #02-04, #05-04, #08-04, #11-04  
#02-10, #05-10, #08-10, #11-10



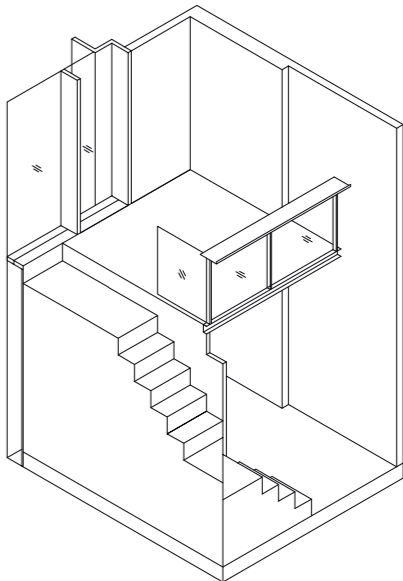
AREA INCLUDES A/C LEDGE, BALCONIES AND VOID WHERE APPLICABLE. AREAS ARE ESTIMATES ONLY AND ARE SUBJECT TO FINAL SURVEY. PLANS ARE NOT TO SCALE AND SUBJECT TO CHANGES AS MAY BE REQUIRED BY THE RELEVANT AUTHORITIES. THE BALCONIES SHALL NOT BE ENCLOSED UNLESS WITH APPROVED SCREEN. FOR AN ILLUSTRATION OF THE APPROVED BALCONY SCREEN, PLEASE REFER TO THE DIAGRAM ANNEXED HERETO AS "ANNEXURE".

TYPE B3P  
2 BEDROOM

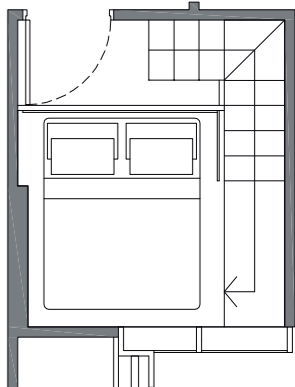
- AREA 91 sqm | 980 sqft
- UNITS #12-04, #12-10



AREA INCLUDES A/C LEDGE, BALCONIES AND VOID WHERE APPLICABLE. AREAS ARE ESTIMATES ONLY AND ARE SUBJECT TO FINAL SURVEY. PLANS ARE NOT TO SCALE AND SUBJECT TO CHANGES AS MAY BE REQUIRED BY THE RELEVANT AUTHORITIES. THE BALCONIES SHALL NOT BE ENCLOSED UNLESS WITH APPROVED SCREEN. FOR AN ILLUSTRATION OF THE APPROVED BALCONY SCREEN, PLEASE REFER TO THE DIAGRAM ANNEXED HERETO AS "ANNEXURE".



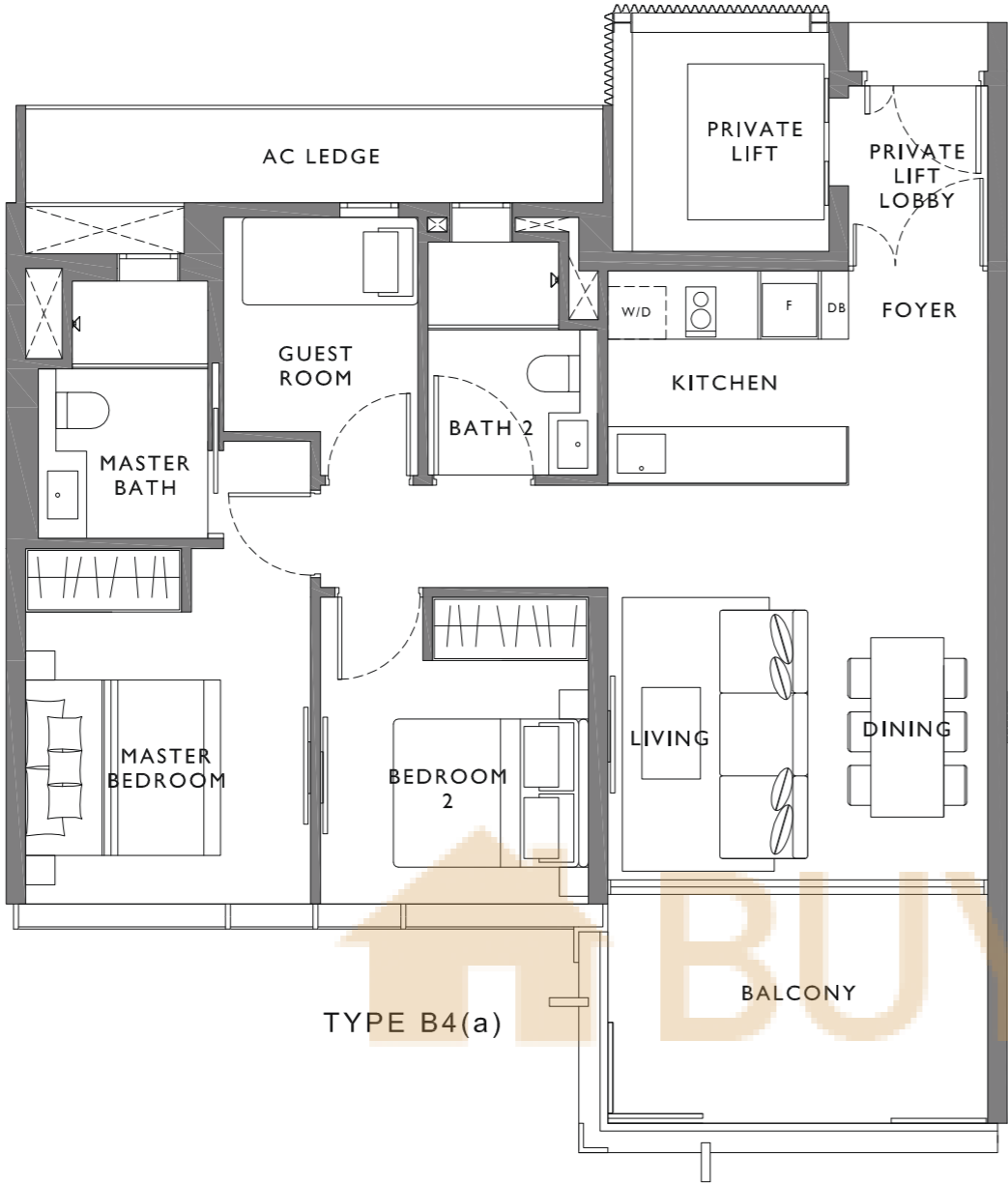
ISOMETRIC VIEW



FURNITURE DECK

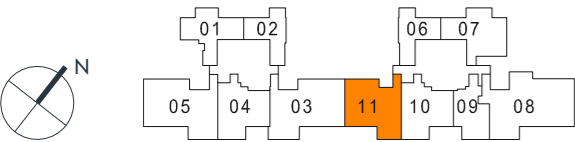
TYPE B4  
2 BEDROOM + GUEST

AREA 88 sqm | 947 sqft  
UNITS Type B4(a) #03-11, #06-11, #09-11  
Type B4(b) #04-11, #07-11, #10-11  
Type B4(c) #02-11, #05-11, #08-11, #11-11



TYPE B4(b)

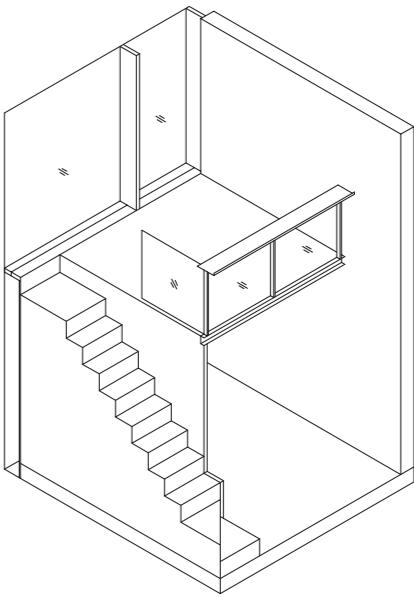
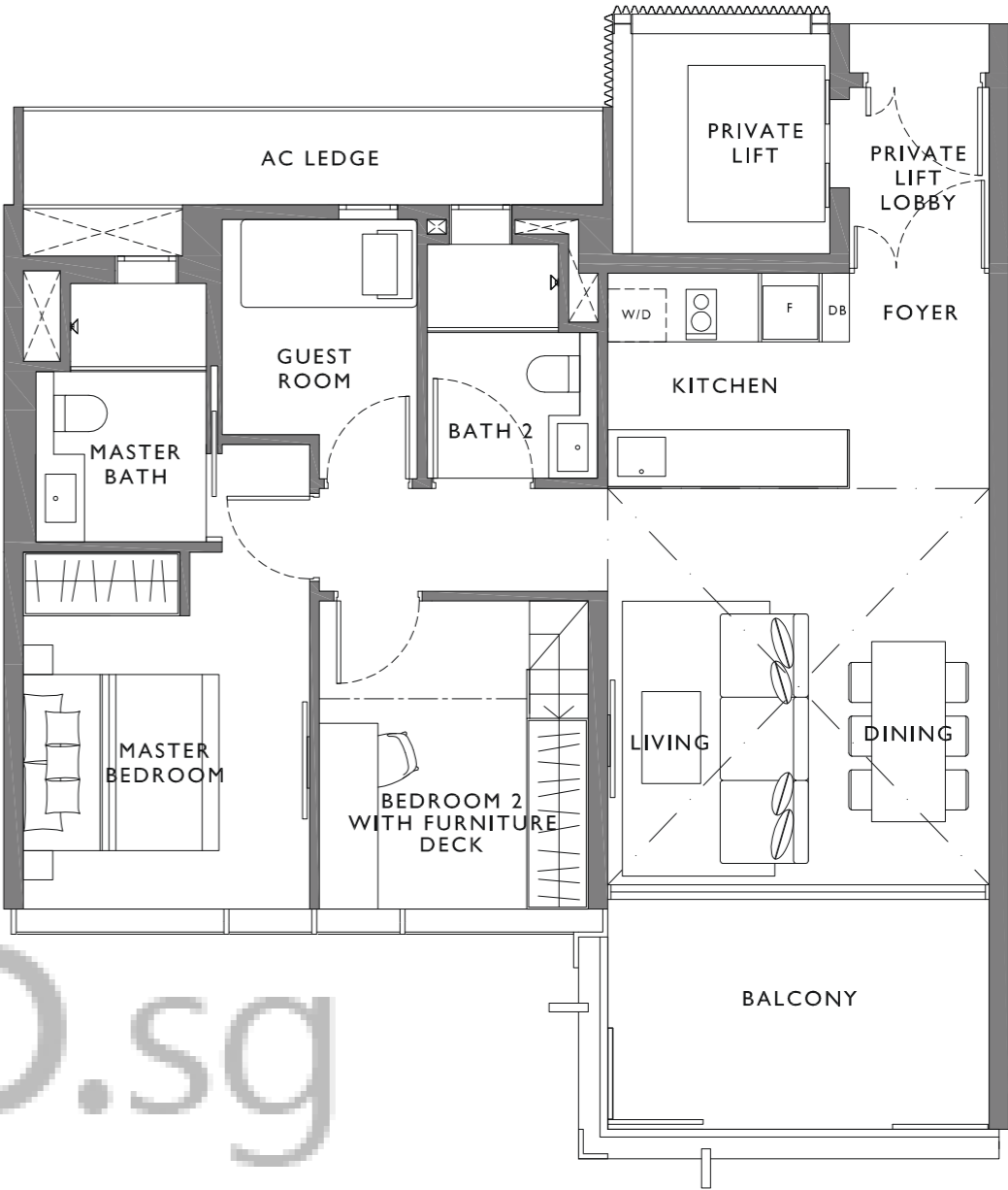
TYPE B4(c)



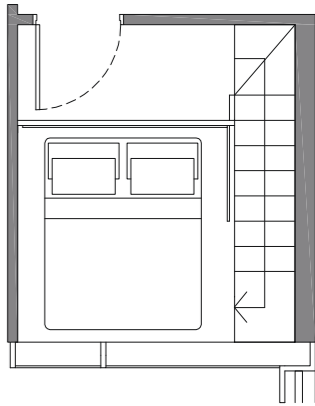
AREA INCLUDES A/C LEDGE, BALCONIES AND VOID WHERE APPLICABLE. AREAS ARE ESTIMATES ONLY AND ARE SUBJECT TO FINAL SURVEY. PLANS ARE NOT TO SCALE AND SUBJECT TO CHANGES AS MAY BE REQUIRED BY THE RELEVANT AUTHORITIES. THE BALCONIES SHALL NOT BE ENCLOSED UNLESS WITH APPROVED SCREEN. FOR AN ILLUSTRATION OF THE APPROVED BALCONY SCREEN, PLEASE REFER TO THE DIAGRAM ANNEXED HERETO AS "ANNEXURE".

TYPE B4P  
2 BEDROOM + GUEST

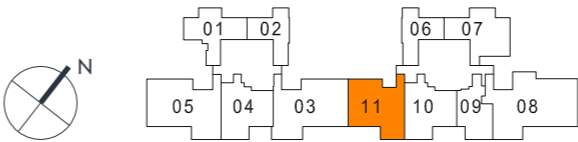
AREA 105 sqm | 1130 sqft  
UNITS #12-11



ISOMETRIC VIEW



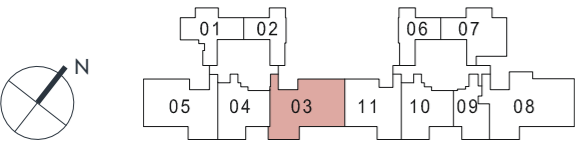
FURNITURE DECK



AREA INCLUDES A/C LEDGE, BALCONIES AND VOID WHERE APPLICABLE. AREAS ARE ESTIMATES ONLY AND ARE SUBJECT TO FINAL SURVEY. PLANS ARE NOT TO SCALE AND SUBJECT TO CHANGES AS MAY BE REQUIRED BY THE RELEVANT AUTHORITIES. THE BALCONIES SHALL NOT BE ENCLOSED UNLESS WITH APPROVED SCREEN. FOR AN ILLUSTRATION OF THE APPROVED BALCONY SCREEN, PLEASE REFER TO THE DIAGRAM ANNEXED HERETO AS "ANNEXURE".

TYPE C1  
3 BEDROOM

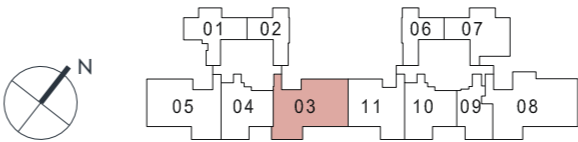
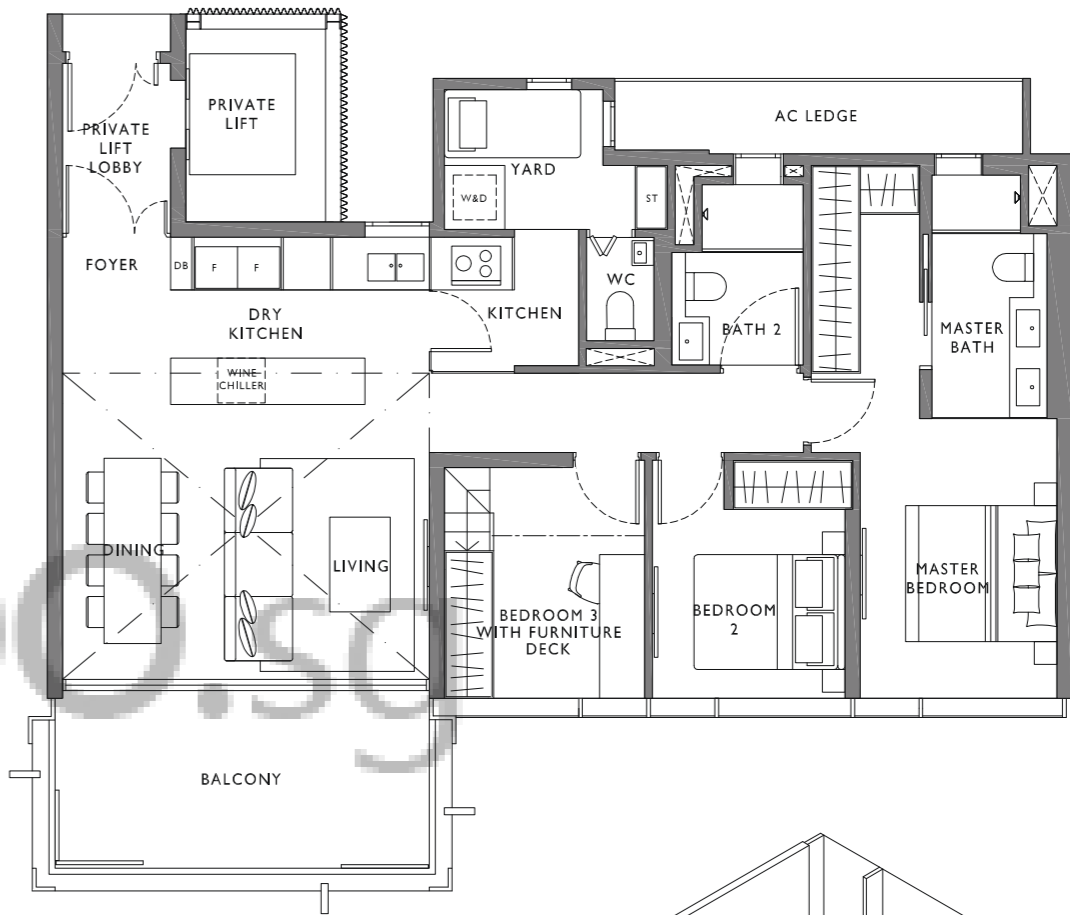
AREA 116 sqm | 1249 sqft  
UNITS Type C1(a) #03-03, #06-03, #09-03  
Type C1(b) #04-03, #07-03, #10-03  
Type C1(c) #02-03, #05-03, #08-03, #11-03



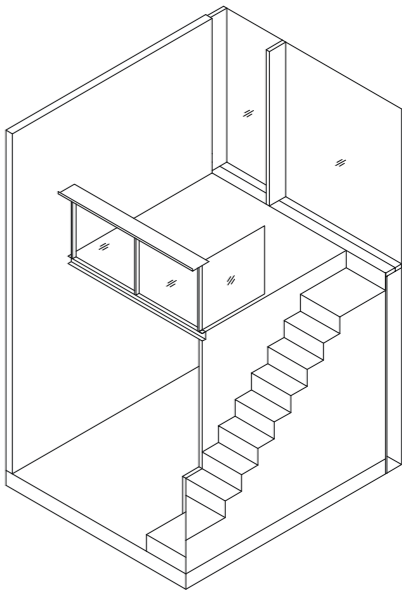
AREA INCLUDES A/C LEDGE, BALCONIES AND VOID WHERE APPLICABLE. AREAS ARE ESTIMATES ONLY AND ARE SUBJECT TO FINAL SURVEY. PLANS ARE NOT TO SCALE AND SUBJECT TO CHANGES AS MAY BE REQUIRED BY THE RELEVANT AUTHORITIES. THE BALCONIES SHALL NOT BE ENCLOSED UNLESS WITH APPROVED SCREEN. FOR AN ILLUSTRATION OF THE APPROVED BALCONY SCREEN, PLEASE REFER TO THE DIAGRAM ANNEXED HERETO AS "ANNEXURE".

TYPE C1P  
3 BEDROOM

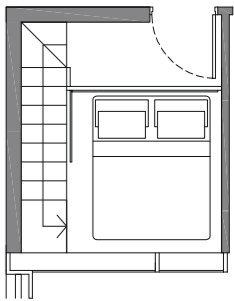
AREA 137 sqm | 1475 sqft  
UNITS #12-03



AREA INCLUDES A/C LEDGE, BALCONIES AND VOID WHERE APPLICABLE. AREAS ARE ESTIMATES ONLY AND ARE SUBJECT TO FINAL SURVEY. PLANS ARE NOT TO SCALE AND SUBJECT TO CHANGES AS MAY BE REQUIRED BY THE RELEVANT AUTHORITIES. THE BALCONIES SHALL NOT BE ENCLOSED UNLESS WITH APPROVED SCREEN. FOR AN ILLUSTRATION OF THE APPROVED BALCONY SCREEN, PLEASE REFER TO THE DIAGRAM ANNEXED HERETO AS "ANNEXURE".



ISOMETRIC VIEW



FURNITURE DECK

TYPE C2  
3 BEDROOM

AREA 116 sqm | 1249 sqft

UNITS Type C2(a) #03-05, #06-05, #09-05  
Type C2(b) #04-05, #07-05, #10-05  
Type C2(c) #02-05, #05-05, #08-05, #11-05



AREA INCLUDES A/C LEDGE, BALCONIES AND VOID WHERE APPLICABLE. AREAS ARE ESTIMATES ONLY AND ARE SUBJECT TO FINAL SURVEY. PLANS ARE NOT TO SCALE AND SUBJECT TO CHANGES AS MAY BE REQUIRED BY THE RELEVANT AUTHORITIES. THE BALCONIES SHALL NOT BE ENCLOSED UNLESS WITH APPROVED SCREEN. FOR AN ILLUSTRATION OF THE APPROVED BALCONY SCREEN, PLEASE REFER TO THE DIAGRAM ANNEXED HERETO AS "ANNEXURE".

TYPE C2P  
3 BEDROOM

AREA 137 sqm | 1475 sqft

UNITS #12-05



AREA INCLUDES A/C LEDGE, BALCONIES AND VOID WHERE APPLICABLE. AREAS ARE ESTIMATES ONLY AND ARE SUBJECT TO FINAL SURVEY. PLANS ARE NOT TO SCALE AND SUBJECT TO CHANGES AS MAY BE REQUIRED BY THE RELEVANT AUTHORITIES. THE BALCONIES SHALL NOT BE ENCLOSED UNLESS WITH APPROVED SCREEN. FOR AN ILLUSTRATION OF THE APPROVED BALCONY SCREEN, PLEASE REFER TO THE DIAGRAM ANNEXED HERETO AS "ANNEXURE".

TYPE D  
4 BEDROOM

AREA 146 sqm | 1572 sqft  
UNITS Type D(a) #03-08, #06-08, #09-08  
Type D(b) #04-08, #07-08, #10-08  
Type D(c) #02-08, #05-08, #08-08, #11-08



AREA INCLUDES A/C LEDGE, BALCONIES AND VOID WHERE APPLICABLE. AREAS ARE ESTIMATES ONLY AND ARE SUBJECT TO FINAL SURVEY. PLANS ARE NOT TO SCALE AND SUBJECT TO CHANGES AS MAY BE REQUIRED BY THE RELEVANT AUTHORITIES. THE BALCONIES SHALL NOT BE ENCLOSED UNLESS WITH APPROVED SCREEN. FOR AN ILLUSTRATION OF THE APPROVED BALCONY SCREEN, PLEASE REFER TO THE DIAGRAM ANNEXED HERETO AS "ANNEXURE".

TYPE DP  
4 BEDROOM

AREA 167 sqm | 1798 sqft  
UNITS #12-08



AREA INCLUDES A/C LEDGE, BALCONIES AND VOID WHERE APPLICABLE. AREAS ARE ESTIMATES ONLY AND ARE SUBJECT TO FINAL SURVEY. PLANS ARE NOT TO SCALE AND SUBJECT TO CHANGES AS MAY BE REQUIRED BY THE RELEVANT AUTHORITIES. THE BALCONIES SHALL NOT BE ENCLOSED UNLESS WITH APPROVED SCREEN. FOR AN ILLUSTRATION OF THE APPROVED BALCONY SCREEN, PLEASE REFER TO THE DIAGRAM ANNEXED HERETO AS "ANNEXURE".

