

1-BEDROOM CLASSIC

TYPE 1A

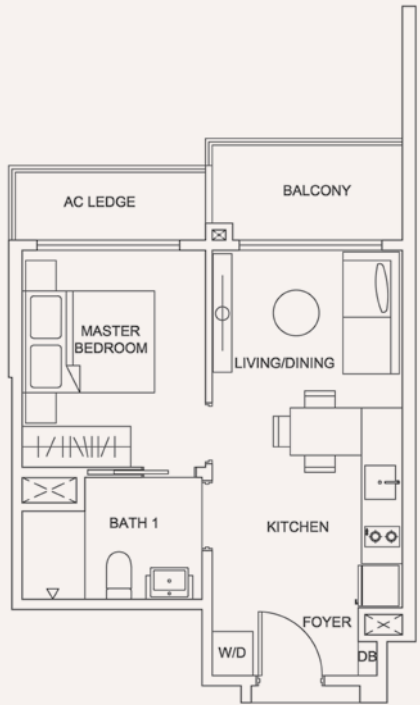
Area 42 sqm / 452 sqft

BLOCK 205

Unit #02-04 to #12-04

BLOCK 207

Unit #02-14 to #12-14

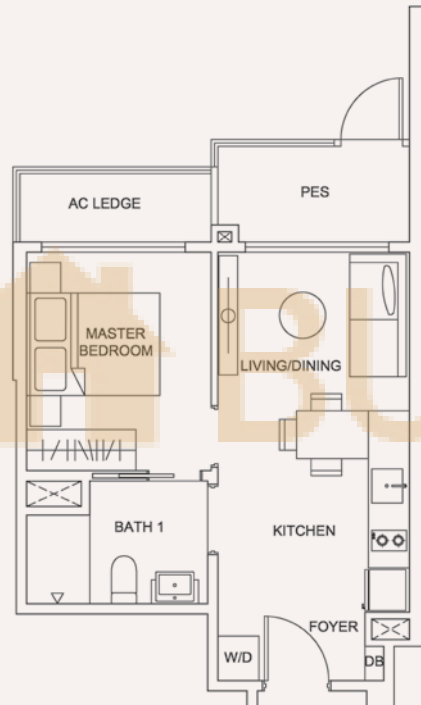


TYPE 1Ap

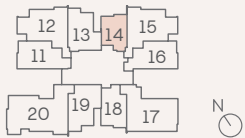
Area 42 sqm / 452 sqft

BLOCK 207

Unit #01-14

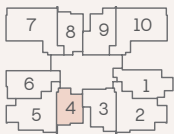


Block 205 Level 2 To 12
Block 207 Level 3 To 12

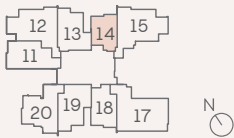


BLOCK 207

BLOCK 205

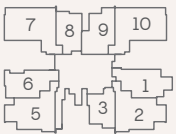


Block 205 Level 1
Block 207 Level 1 To 2



BLOCK 207

BLOCK 205



Unit Plans Disclaimer: Areas include A/C ledges, balconies, private enclosed spaces, private roof terraces and strata void areas where applicable. Areas are estimates only and are subject to final survey. Plans are not to scale and subject to changes as may be required or approved by the relevant authorities. Plans do not form part of the Sales and Purchase Agreement.

1-BEDROOM PREMIUM

TYPE 1B

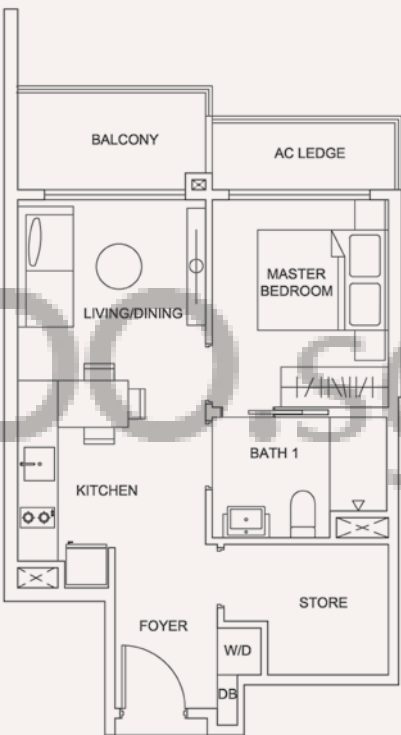
Area 48 sqm / 517 sqft

BLOCK 205

Unit #02-08 to #12-08

BLOCK 207

Unit #02-18 to #12-18



TYPE 1Bp

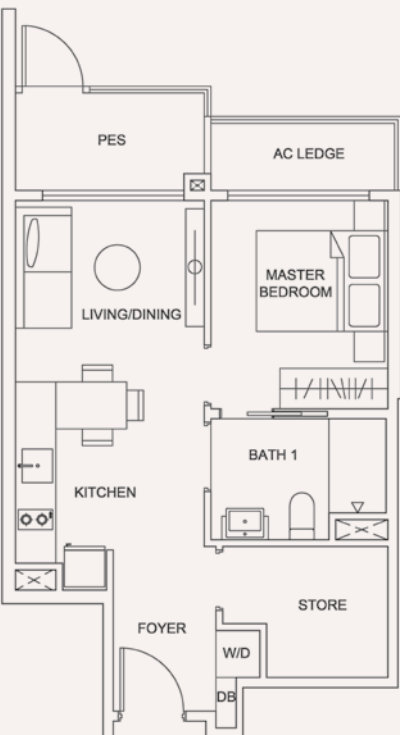
Area 48 sqm / 517 sqft

BLOCK 205

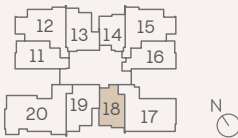
Unit #01-08

BLOCK 207

Unit #01-18

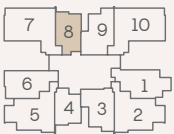


Block 205 Level 2 To 12
Block 207 Level 3 To 12

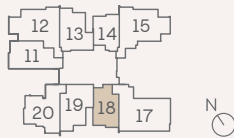


BLOCK 207

BLOCK 205

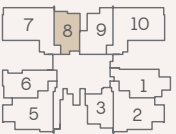


Block 205 Level 1
Block 207 Level 1 To 2



BLOCK 207

BLOCK 205



Unit Plans Disclaimer: Areas include A/C ledges, balconies, private enclosed spaces, private roof terraces and strata void areas where applicable. Areas are estimates only and are subject to final survey. Plans are not to scale and subject to changes as may be required or approved by the relevant authorities. Plans do not form part of the Sales and Purchase Agreement.

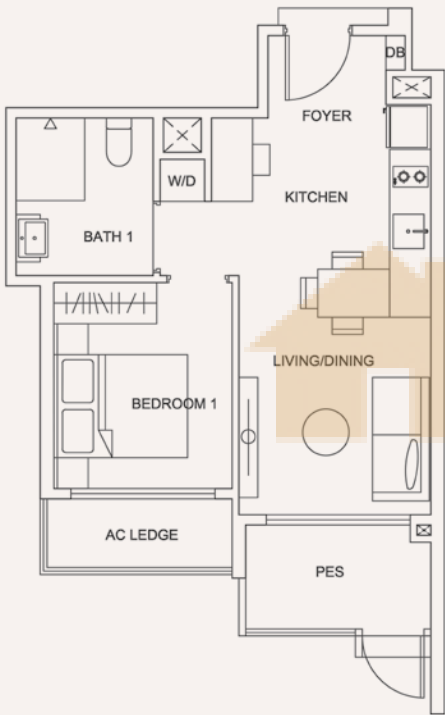
1-BEDROOM PREMIUM

TYPE 1Cp

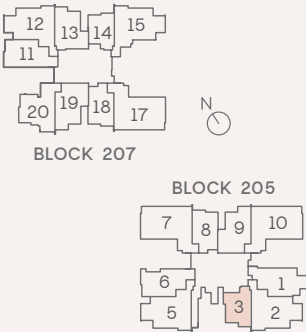
Area 45 sqm / 484 sqft

BLOCK 205

Unit #01-03



Block 205 Level 1
Block 207 Level 1 To 2



Unit Plans Disclaimer: Areas include A/C ledges, balconies, private enclosed spaces, private roof terraces and strata void areas where applicable. Areas are estimates only and are subject to final survey. Plans are not to scale and subject to changes as may be required or approved by the relevant authorities. Plans do not form part of the Sales and Purchase Agreement.

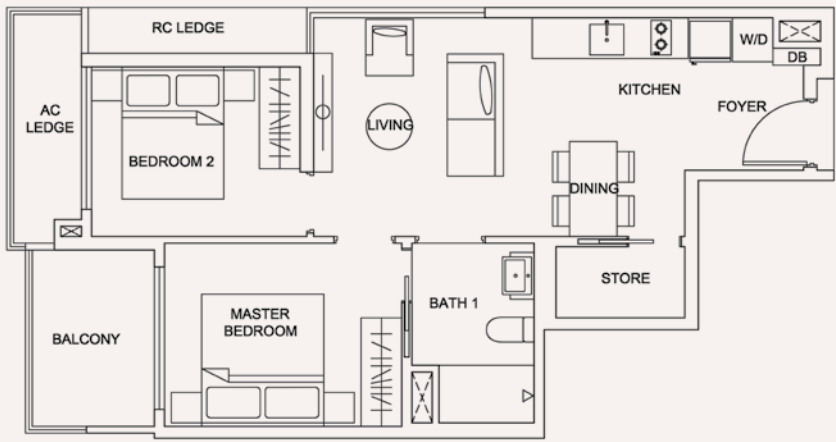
2-BEDROOM COMPACT

TYPE 2A

Area 60 sqm / 646 sqft

BLOCK 205

Unit #02-06 to #12-06



TYPE 2AP

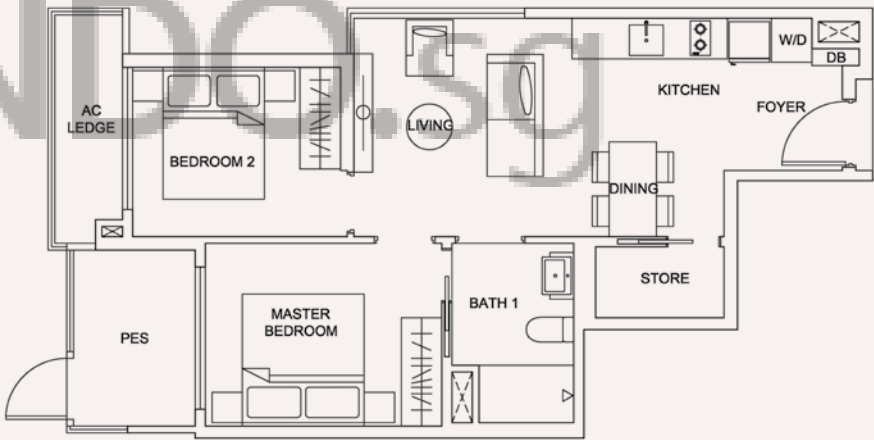
Area 60 sqm / 646 sqft

BLOCK 205

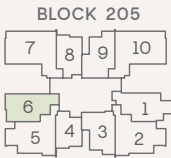
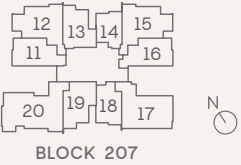
Unit #01-06

BLOCK 207

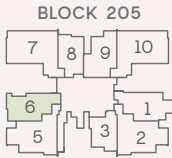
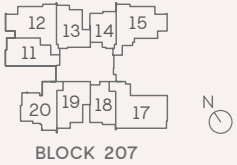
Unit #01-11



Block 205 Level 2 To 12
Block 207 Level 3 To 12



Block 205 Level 1
Block 207 Level 1 To 2



Unit Plans Disclaimer: Areas include A/C ledges, balconies, private enclosed spaces, private roof terraces and strata void areas where applicable. Areas are estimates only and are subject to final survey. Plans are not to scale and subject to changes as may be required or approved by the relevant authorities. Plans do not form part of the Sales and Purchase Agreement.

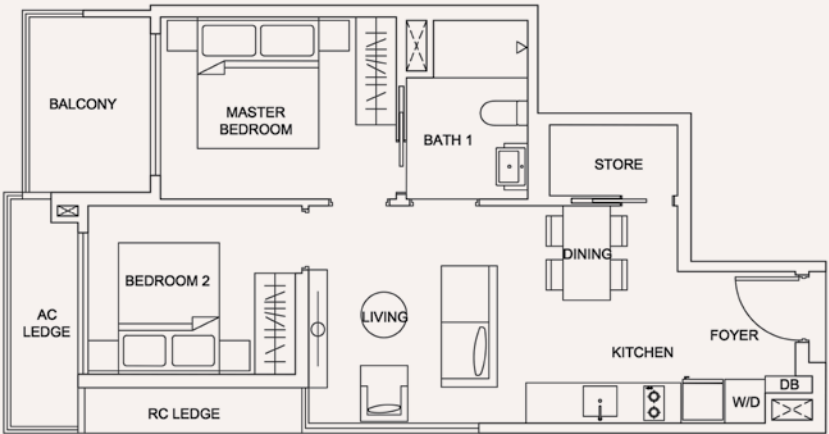
2-BEDROOM COMPACT

TYPE 2A (m)

Area 60 sqm / 646 sqft

BLOCK 207

Unit #02-11 to #12-11

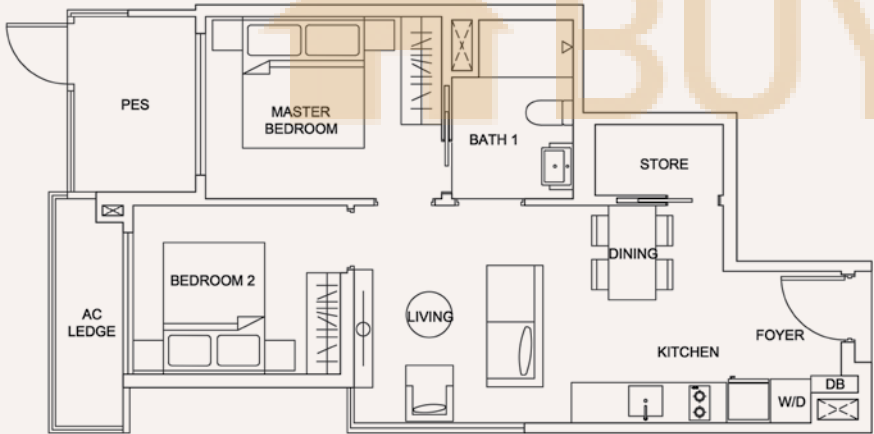


TYPE 2Ap (m)

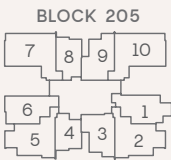
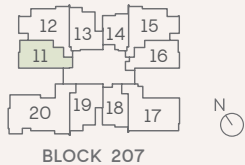
Area 60 sqm / 646 sqft

BLOCK 207

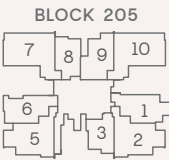
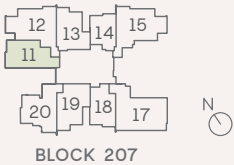
Unit #01-11



Block 205 Level 2 To 12
Block 207 Level 3 To 12



Block 205 Level 1
Block 207 Level 1 To 2



Unit Plans Disclaimer: Areas include A/C ledges, balconies, private enclosed spaces, private roof terraces and strata void areas where applicable. Areas are estimates only and are subject to final survey. Plans are not to scale and subject to changes as may be required or approved by the relevant authorities. Plans do not form part of the Sales and Purchase Agreement.

2-BEDROOM COMPACT

TYPE 2B

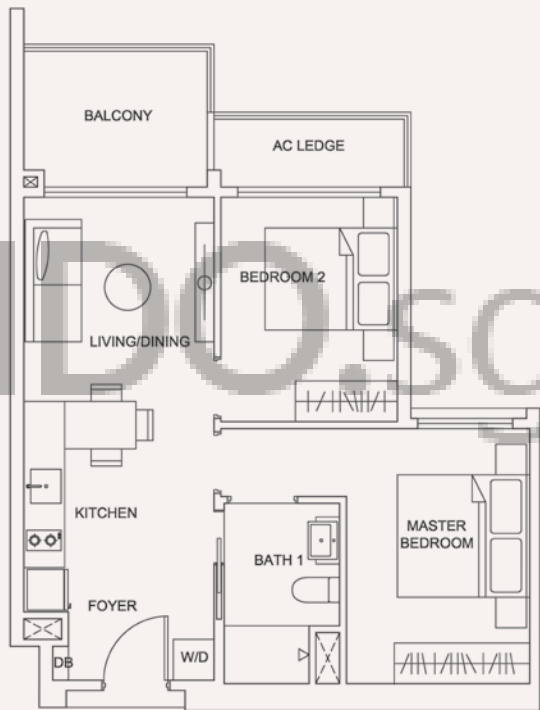
Area 58 sqm / 624 sqft

BLOCK 205

Unit #02-03 to #12-03

BLOCK 207

Unit #02-13 to #12-13

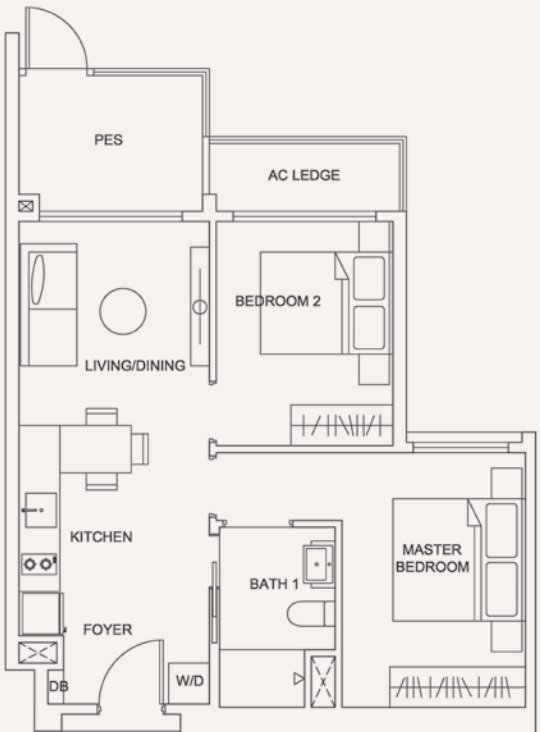


TYPE 2Bp

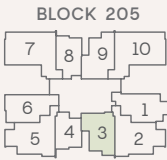
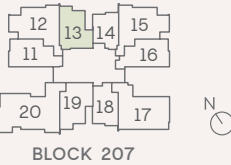
Area 58 sqm / 624 sqft

BLOCK 207

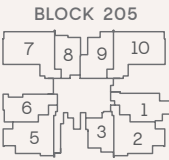
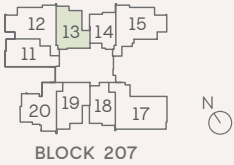
Unit #01-13



Block 205 Level 2 To 12
Block 207 Level 3 To 12



Block 205 Level 1
Block 207 Level 1 To 2



Unit Plans Disclaimer: Areas include A/C ledges, balconies, private enclosed spaces, private roof terraces and strata void areas where applicable. Areas are estimates only and are subject to final survey. Plans are not to scale and subject to changes as may be required or approved by the relevant authorities. Plans do not form part of the Sales and Purchase Agreement.

2-BEDROOM COMPACT

TYPE 2C

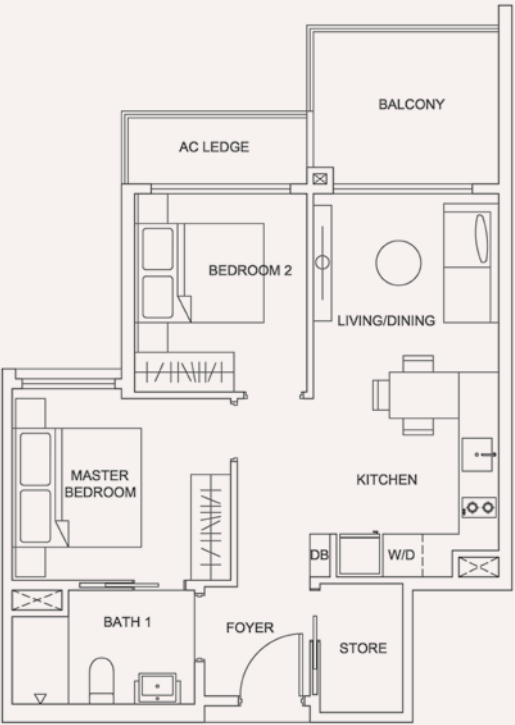
Area 61 sqm / 657 sqft

BLOCK 205

Unit #02-09 to #12-09

BLOCK 207

Unit #02-19 to #12-19



TYPE 2Cp

Area 61 sqm / 657 sqft

BLOCK 205

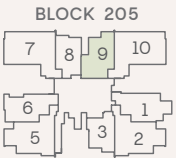
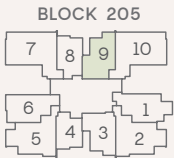
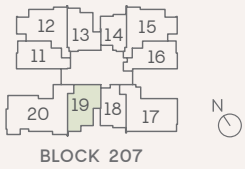
Unit #01-09

BLOCK 207

Unit #01-19



Block 205 Level 2 To 12
Block 207 Level 3 To 12



Unit Plans Disclaimer: Areas include A/C ledges, balconies, private enclosed spaces, private roof terraces and strata void areas where applicable. Areas are estimates only and are subject to final survey. Plans are not to scale and subject to changes as may be required or approved by the relevant authorities. Plans do not form part of the Sales and Purchase Agreement.

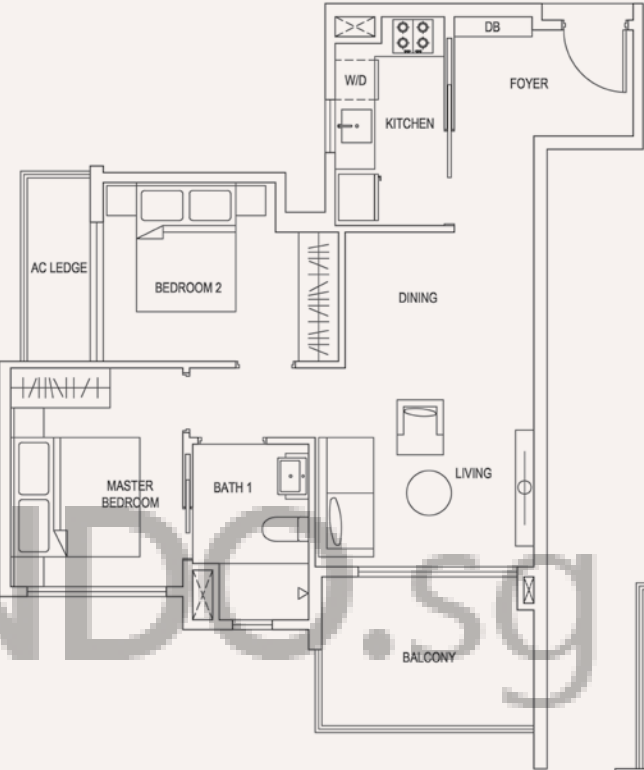
2-BEDROOM STANDARD

TYPE 2D

Area 67 sqm / 721 sqft

BLOCK 207

Unit #02-20

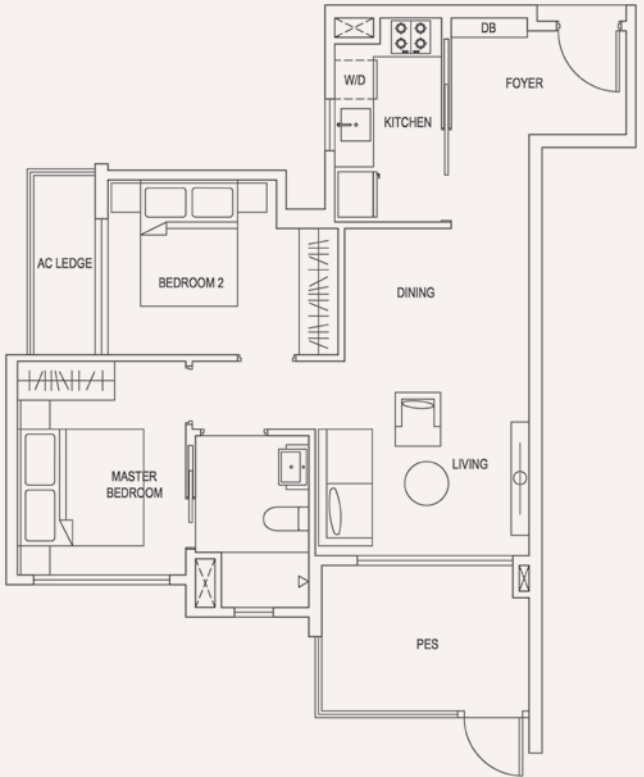


TYPE 2Dp

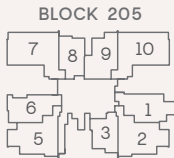
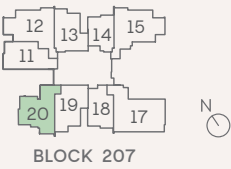
Area 67 sqm / 721 sqft

BLOCK 207

Unit #01-20



Block 205 Level 1
Block 207 Level 1 To 2



Unit Plans Disclaimer: Areas include A/C ledges, balconies, private enclosed spaces, private roof terraces and strata void areas where applicable. Areas are estimates only and are subject to final survey. Plans are not to scale and subject to changes as may be required or approved by the relevant authorities. Plans do not form part of the Sales and Purchase Agreement.

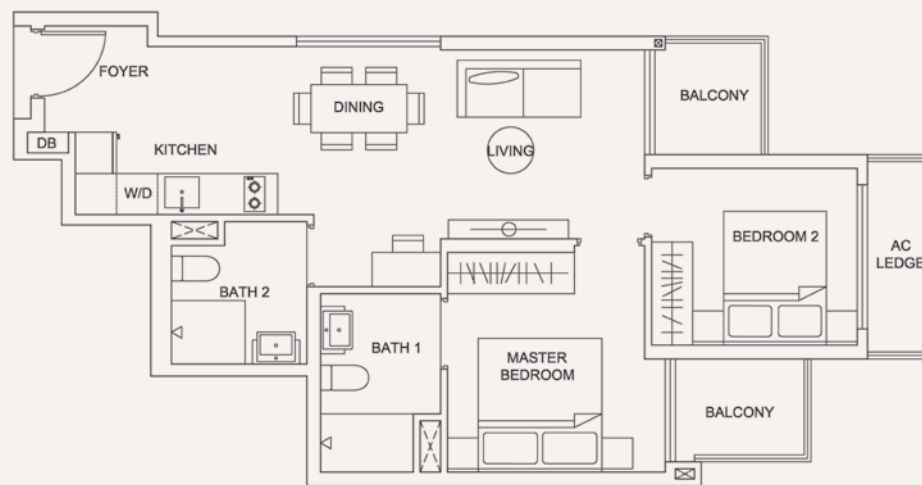
2-BEDROOM STANDARD

TYPE 2E

Area 60 sqm / 646 sqft

BLOCK 205

Unit #02-01 to #12-01

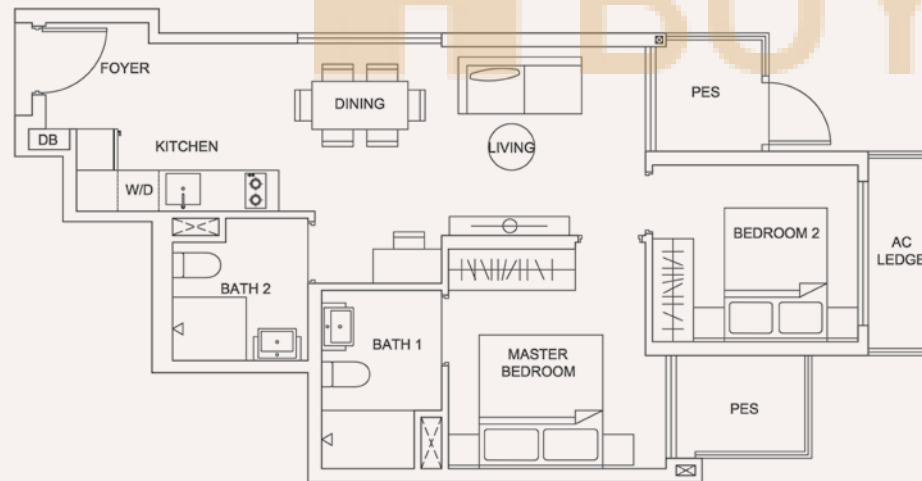


TYPE 2Ep

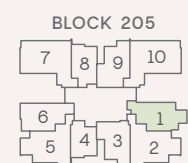
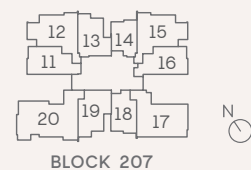
Area 60 sqm / 646 sqft

BLOCK 205

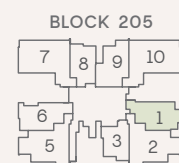
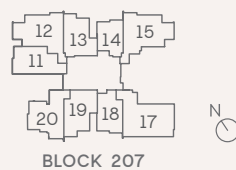
Unit #01-01



Block 205 Level 2 To 12
Block 207 Level 3 To 12



Block 205 Level 1
Block 207 Level 1 To 2



Unit Plans Disclaimer: Areas include A/C ledges, balconies, private enclosed spaces, private roof terraces and strata void areas where applicable. Areas are estimates only and are subject to final survey. Plans are not to scale and subject to changes as may be required or approved by the relevant authorities. Plans do not form part of the Sales and Purchase Agreement.

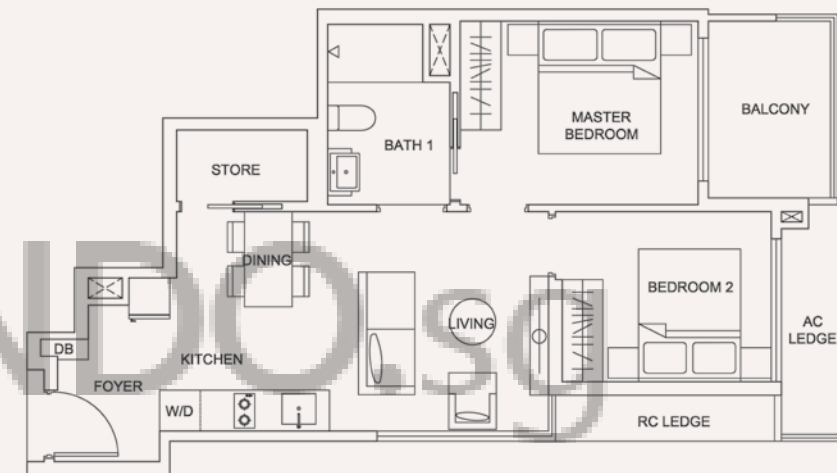
2-BEDROOM STANDARD

TYPE 2F

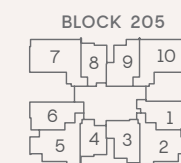
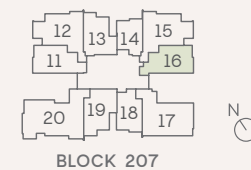
Area 60 sqm / 646 sqft

BLOCK 207

Unit #03-16 to #12-16



Block 205 Level 2 To 12
Block 207 Level 3 To 12



Unit Plans Disclaimer: Areas include A/C ledges, balconies, private enclosed spaces, private roof terraces and strata void areas where applicable. Areas are estimates only and are subject to final survey. Plans are not to scale and subject to changes as may be required or approved by the relevant authorities. Plans do not form part of the Sales and Purchase Agreement.

3-BEDROOM COMPACT

TYPE 3A

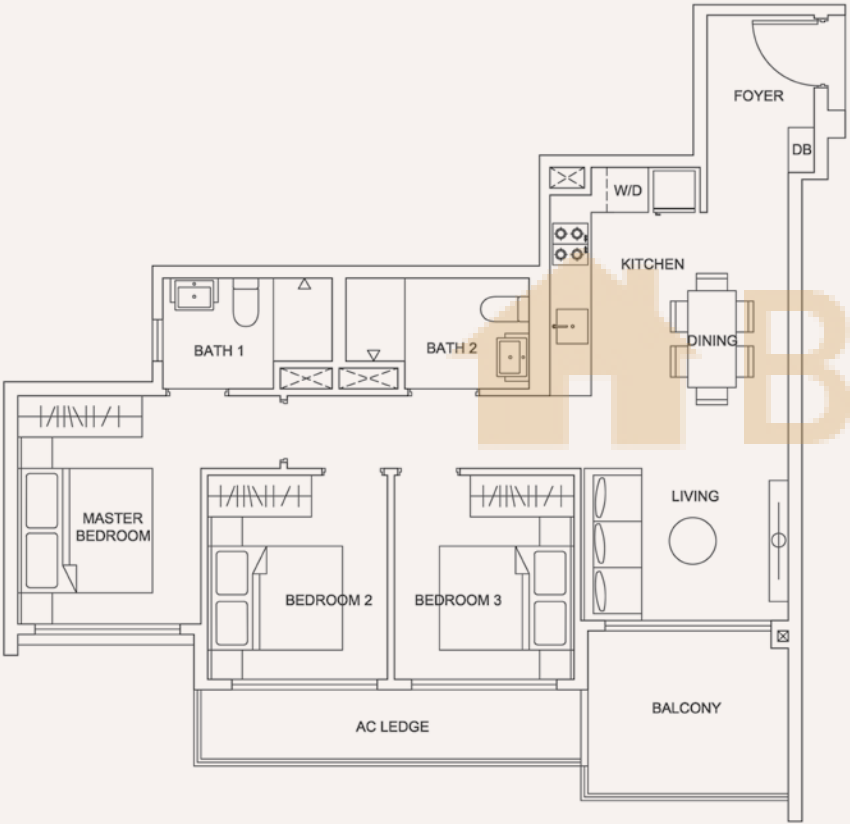
Area 82 sqm / 883 sqft

BLOCK 205

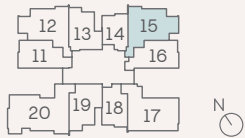
Unit #02-05 to #12-05

BLOCK 207

Unit #02-15 to #12-15

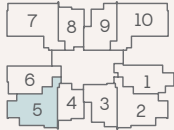


Block 205 Level 2 To 12
Block 207 Level 3 To 12

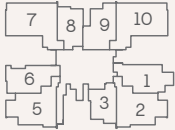


BLOCK 207

BLOCK 205



BLOCK 205



Unit Plans Disclaimer: Areas include A/C ledges, balconies, private enclosed spaces, private roof terraces and strata void areas where applicable. Areas are estimates only and are subject to final survey. Plans are not to scale and subject to changes as may be required or approved by the relevant authorities. Plans do not form part of the Sales and Purchase Agreement.

3-BEDROOM COMPACT

TYPE 3Ap

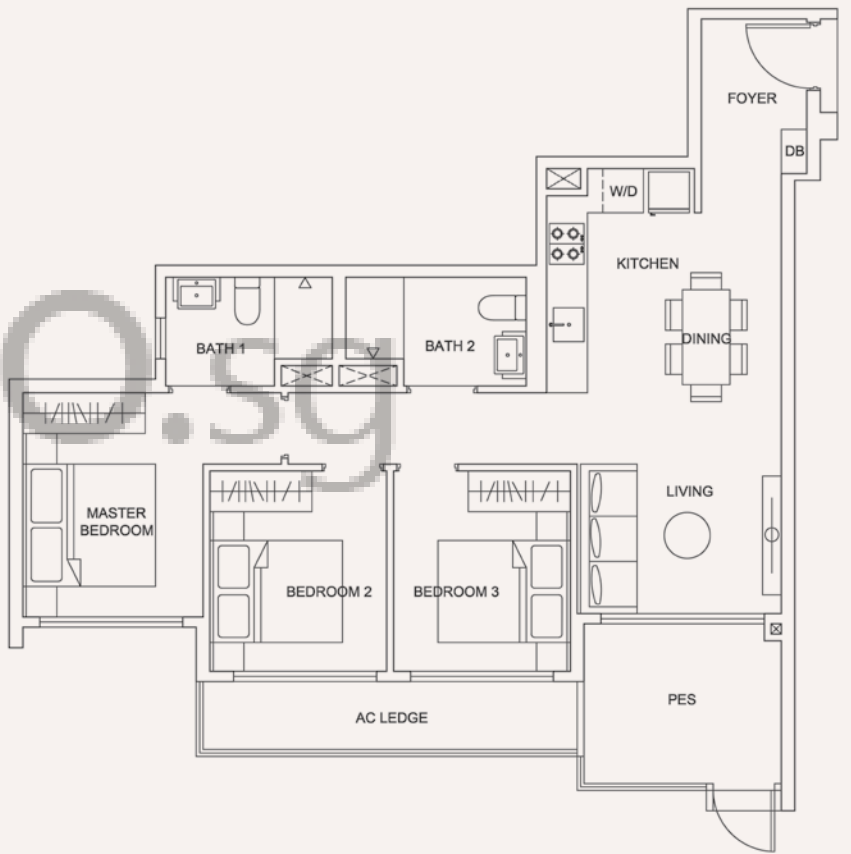
Area 82 sqm / 883 sqft

BLOCK 205

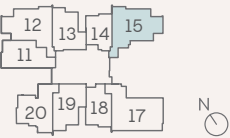
Unit #01-05

BLOCK 207

Unit #01-15

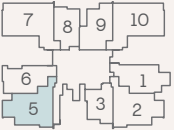


Block 205 Level 1
Block 207 Level 1 To 2



BLOCK 207

BLOCK 205



Unit Plans Disclaimer: Areas include A/C ledges, balconies, private enclosed spaces, private roof terraces and strata void areas where applicable. Areas are estimates only and are subject to final survey. Plans are not to scale and subject to changes as may be required or approved by the relevant authorities. Plans do not form part of the Sales and Purchase Agreement.

3-BEDROOM COMPACT

TYPE 3A (m)

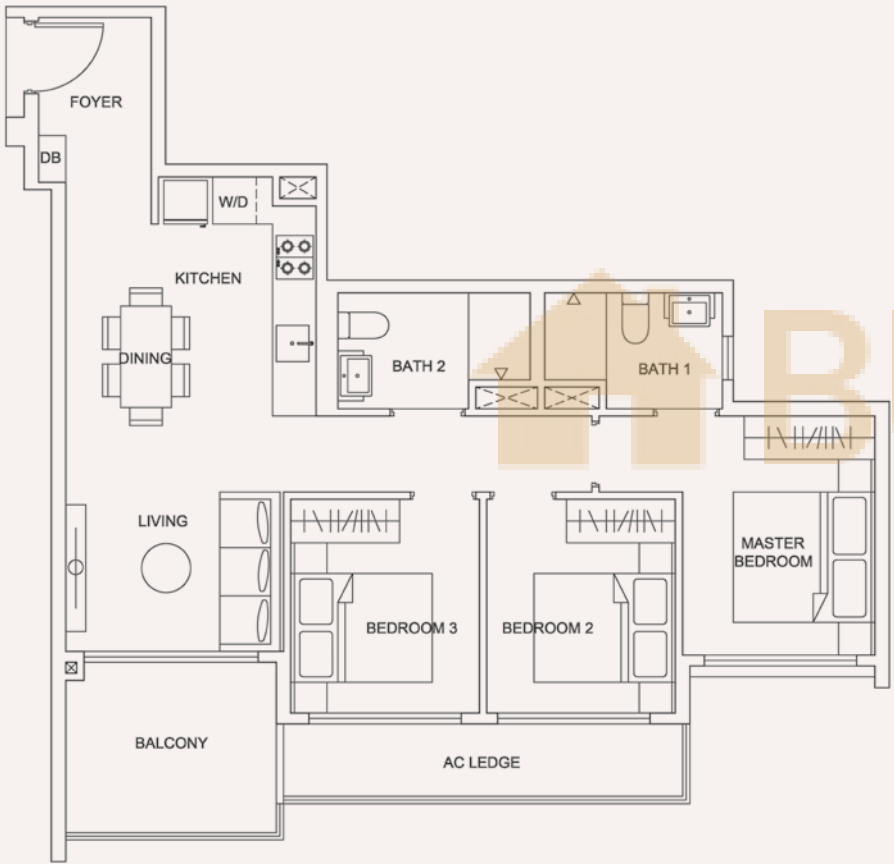
Area 82 sqm / 883 sqft

BLOCK 205

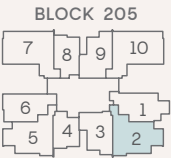
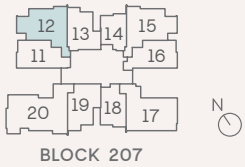
Unit #02-02 to #12-02

BLOCK 207

Unit #02-12 to #12-12



Block 205 Level 2 To 12
Block 207 Level 3 To 12



Unit Plans Disclaimer: Areas include A/C ledges, balconies, private enclosed spaces, private roof terraces and strata void areas where applicable. Areas are estimates only and are subject to final survey. Plans are not to scale and subject to changes as may be required or approved by the relevant authorities. Plans do not form part of the Sales and Purchase Agreement.

3-BEDROOM COMPACT

TYPE 3Ap (m)

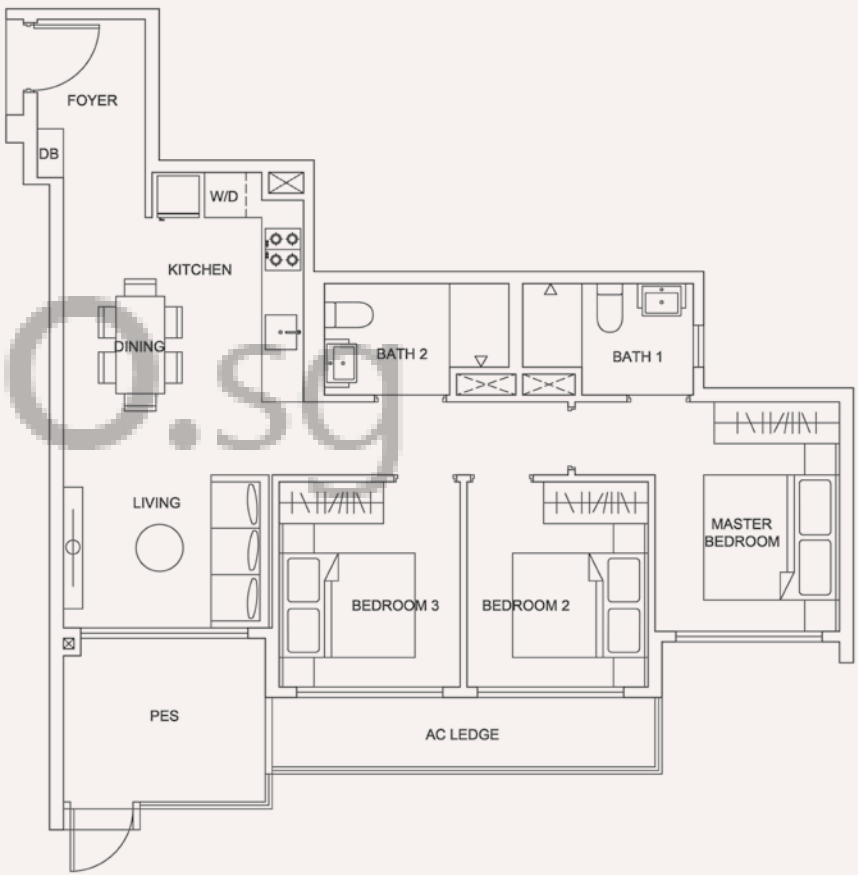
Area 82 sqm / 883 sqft

BLOCK 205

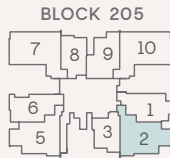
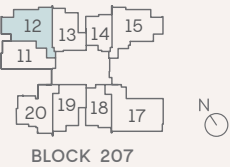
Unit #01-02

BLOCK 207

Unit #01-12



Block 205 Level 1
Block 207 Level 1 To 2



Unit Plans Disclaimer: Areas include A/C ledges, balconies, private enclosed spaces, private roof terraces and strata void areas where applicable. Areas are estimates only and are subject to final survey. Plans are not to scale and subject to changes as may be required or approved by the relevant authorities. Plans do not form part of the Sales and Purchase Agreement.

3-BEDROOM COMPACT

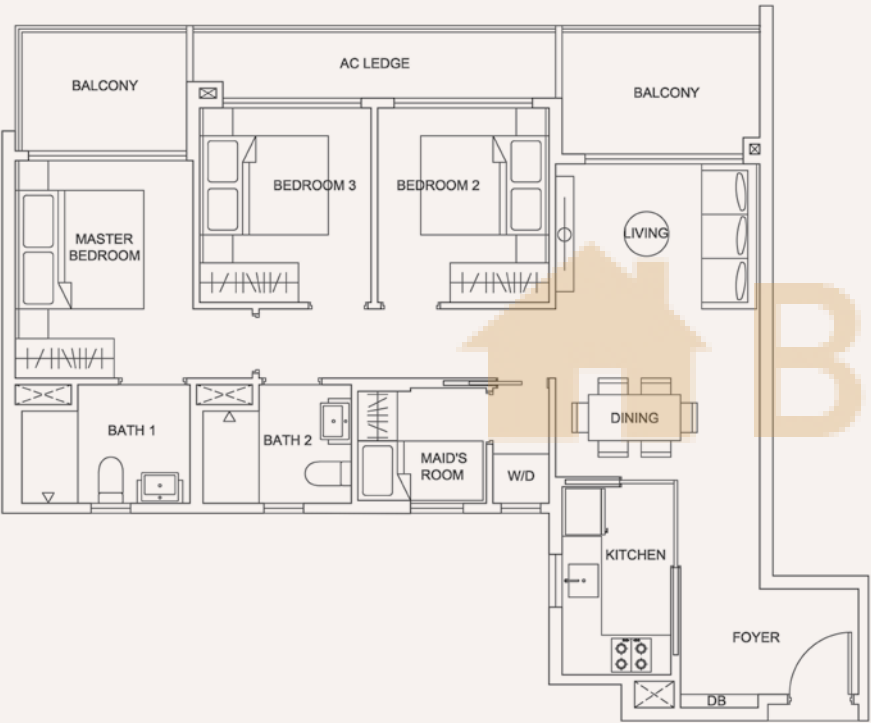
TYPE 3B

Area 94 sqm / 1,012 sqft

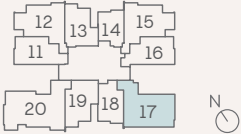
BLOCK 205

Unit #02-07 to #12-07

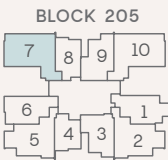
Unit #02-10 to #12-10



Block 205 Level 2 To 12
Block 207 Level 3 To 12



BLOCK 207



Unit Plans Disclaimer: Areas include A/C ledges, balconies, private enclosed spaces, private roof terraces and strata void areas where applicable. Areas are estimates only and are subject to final survey. Plans are not to scale and subject to changes as may be required or approved by the relevant authorities. Plans do not form part of the Sales and Purchase Agreement.

3-BEDROOM COMPACT

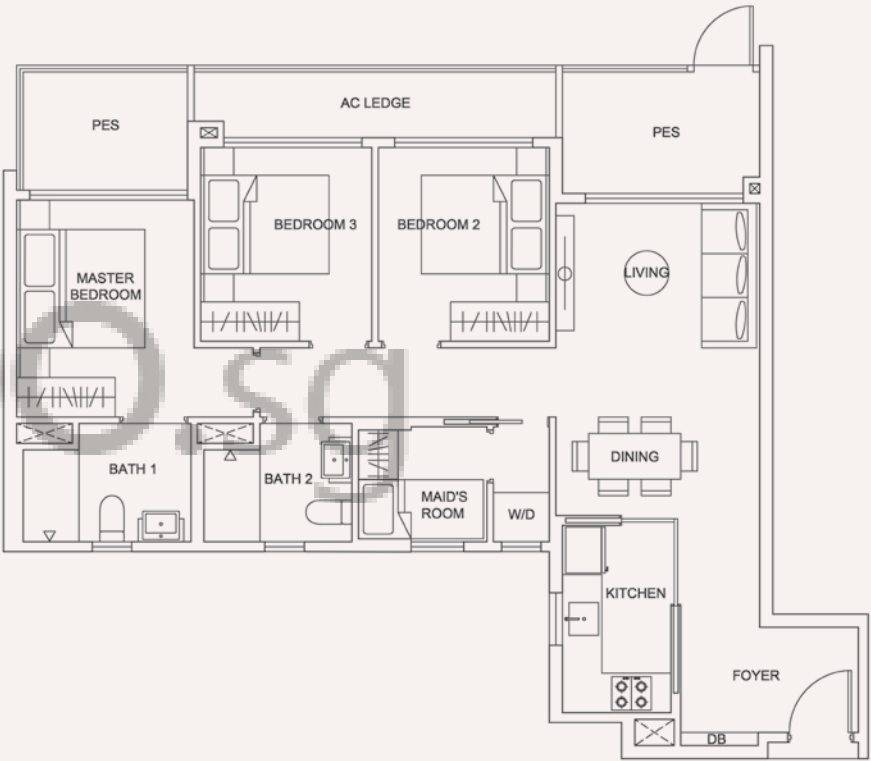
TYPE 3Bp

Area 94 sqm / 1,012 sqft

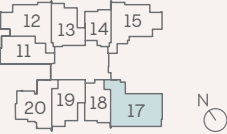
BLOCK 205

Unit #01-07

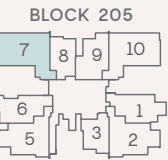
Unit #01-10



Block 205 Level 1
Block 207 Level 1 To 2



BLOCK 207



Unit Plans Disclaimer: Areas include A/C ledges, balconies, private enclosed spaces, private roof terraces and strata void areas where applicable. Areas are estimates only and are subject to final survey. Plans are not to scale and subject to changes as may be required or approved by the relevant authorities. Plans do not form part of the Sales and Purchase Agreement.

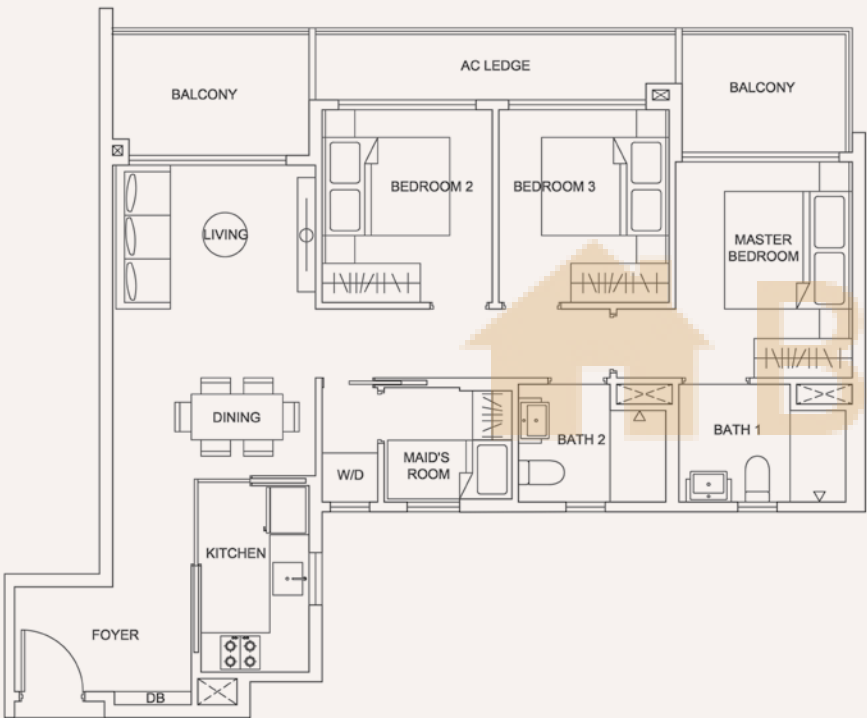
3-BEDROOM COMPACT

TYPE 3B (m)

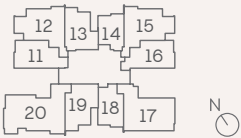
Area 94 sqm / 1,012 sqft

BLOCK 205

Unit #02-17 to #12-17

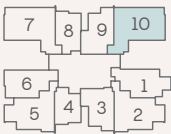


Block 205 Level 2 To 12
Block 207 Level 3 To 12



BLOCK 207

BLOCK 205



Unit Plans Disclaimer: Areas include A/C ledges, balconies, private enclosed spaces, private roof terraces and strata void areas where applicable. Areas are estimates only and are subject to final survey. Plans are not to scale and subject to changes as may be required or approved by the relevant authorities. Plans do not form part of the Sales and Purchase Agreement.

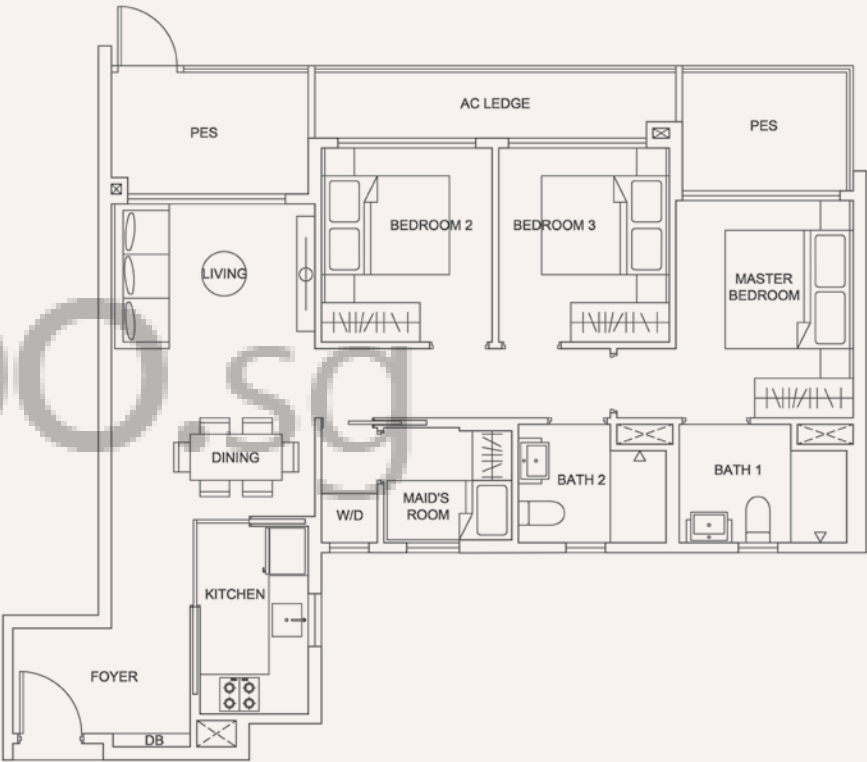
3-BEDROOM COMPACT

TYPE 3Bp (m)

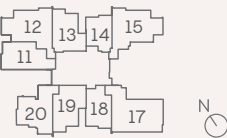
Area 94 sqm / 1,012 sqft

BLOCK 205

Unit #01-10

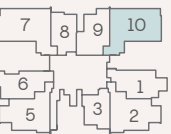


Block 205 Level 1
Block 207 Level 1 To 2



BLOCK 207

BLOCK 205



Unit Plans Disclaimer: Areas include A/C ledges, balconies, private enclosed spaces, private roof terraces and strata void areas where applicable. Areas are estimates only and are subject to final survey. Plans are not to scale and subject to changes as may be required or approved by the relevant authorities. Plans do not form part of the Sales and Purchase Agreement.

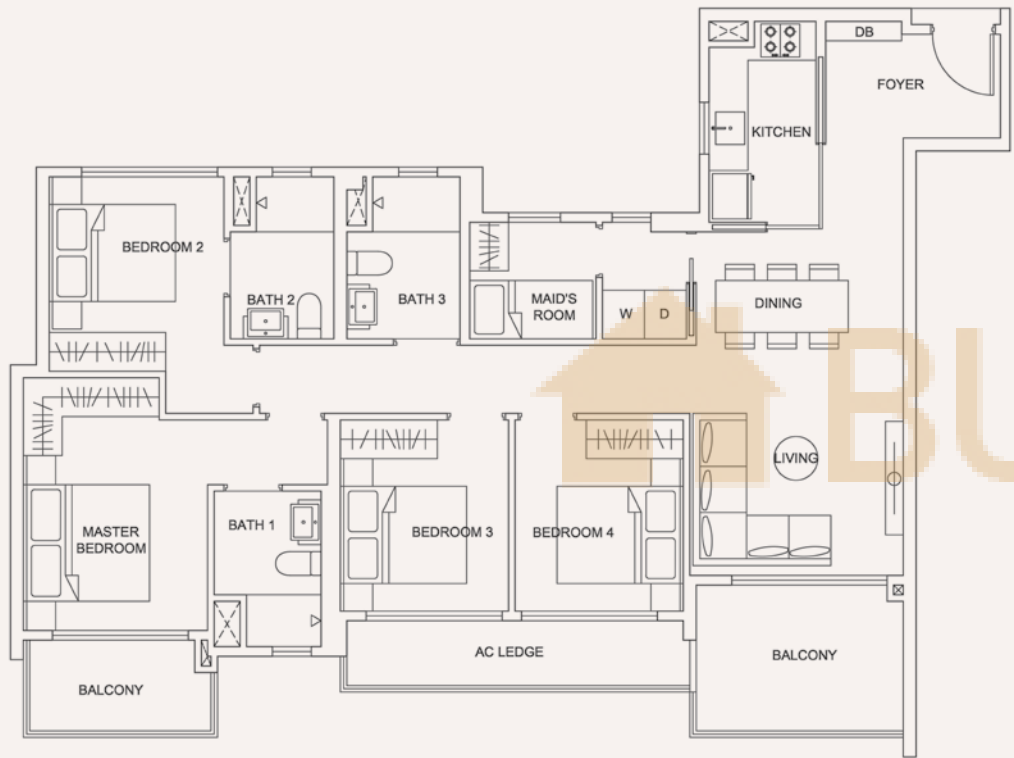
4 - BEDROOM PREMIUM

TYPE 4A

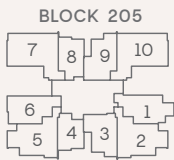
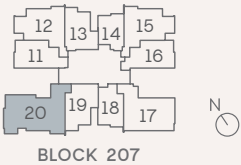
Area 118 sqm / 1,270 sqft

BLOCK 207

Unit #03-20 to #12-20



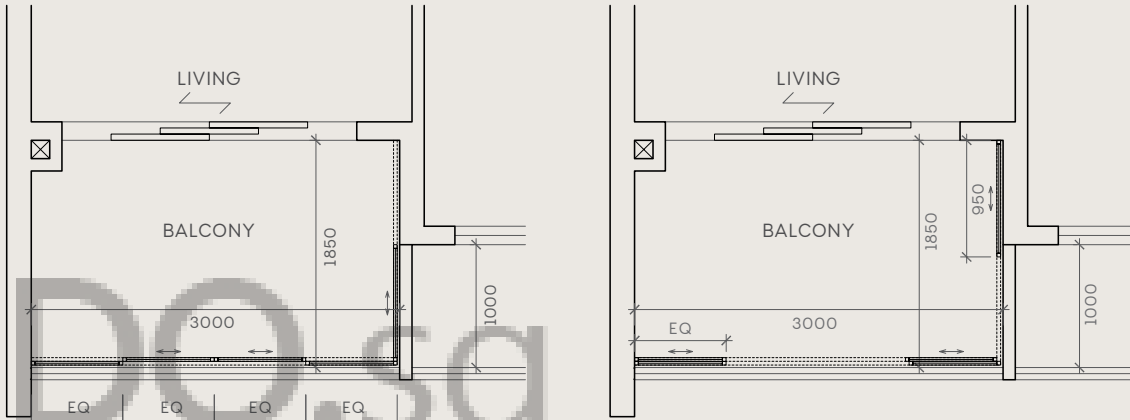
Block 205 Level 2 To 12
Block 207 Level 3 To 12



Unit Plans Disclaimer: Areas include A/C ledges, balconies, private enclosed spaces, private roof terraces and strata void areas where applicable. Areas are estimates only and are subject to final survey. Plans are not to scale and subject to changes as may be required or approved by the relevant authorities. Plans do not form part of the Sales and Purchase Agreement.

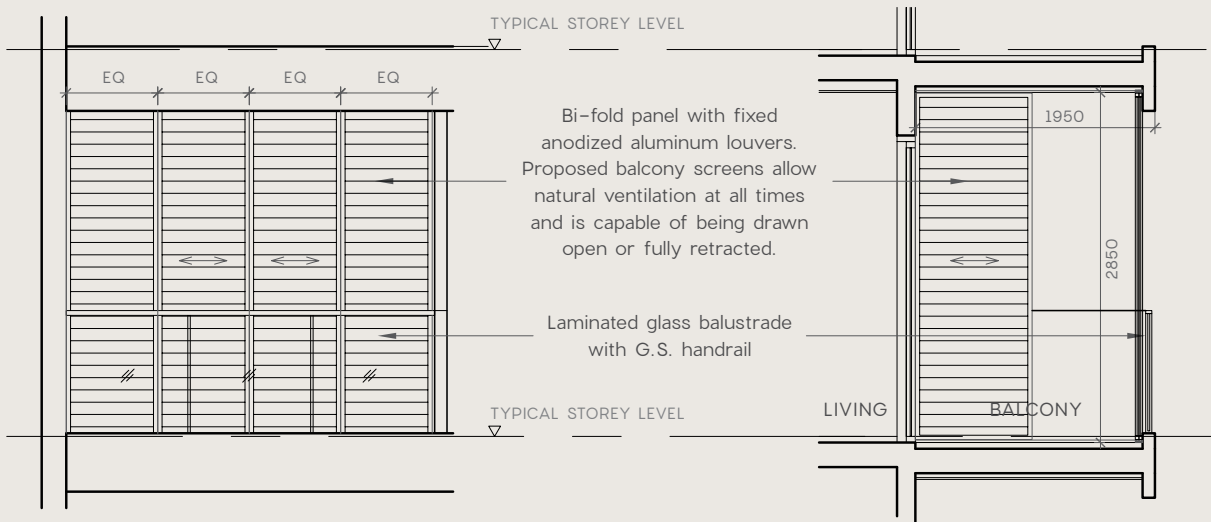
TYPICAL SLIDEABLE
BALCONY SCREEN DETAIL

ANNEXURE 1



PLAN - FULLY CLOSED

PLAN - FULLY OPEN



FRONT ELEVATION

SECTION

Balcony Screen Disclaimer: Balconies shall not be enclosed unless with the approved balcony screen. The drawings below are not to scale and are a typical illustration for reference only. Actual profile of screens subject to manufacturer's detail. Purchasers may refer to the Management Corporation for additional details. Fixing detail to be drawn up by specialist contractor, and fixing shall not damage waterproofing or existing structures. The balcony screen will not be provided. The cost of the screen and installation shall be borne by the Purchaser. The proposed balcony screen allows natural ventilation within the balcony at all times (including times when the screen is fully closed) and is capable of being opened.