



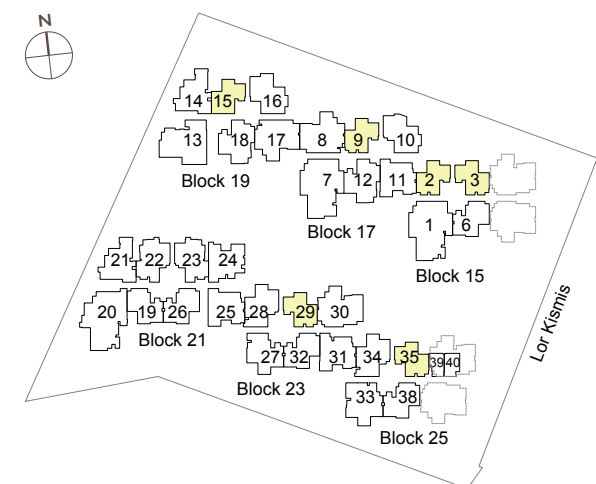
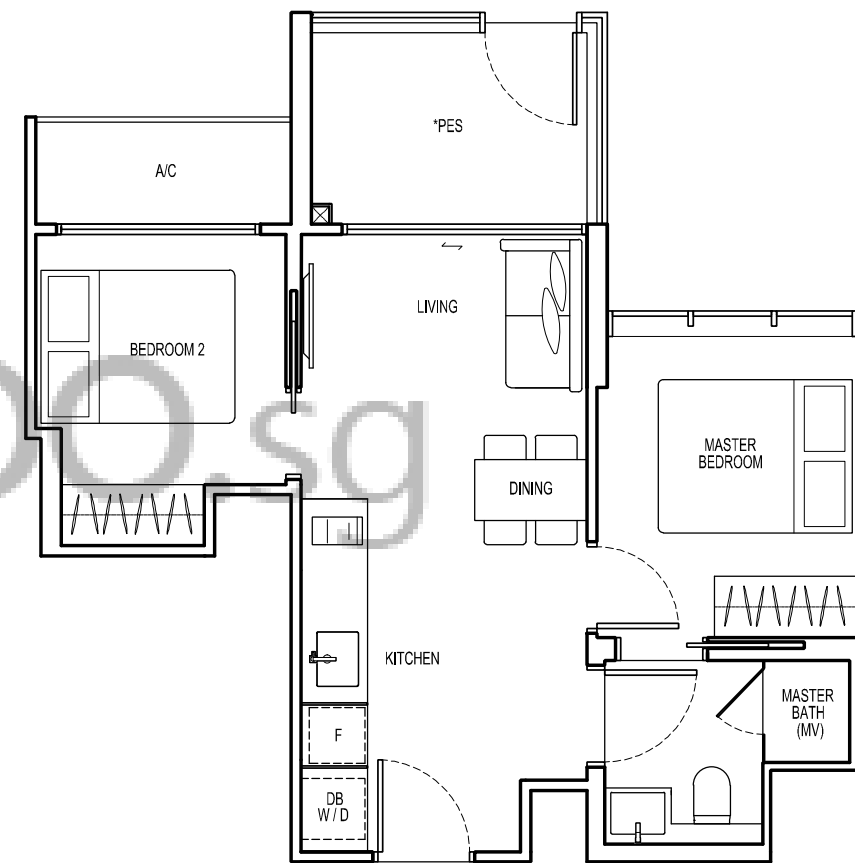
where relationships bloom
in living spaces

2-bedroom

TYPE AI-G

48 sqm

- Block 15 #01-02 (Mirror)
#01-03
- Block 17 #01-09 (Mirror)
- Block 19 #01-15 (Mirror)
- Block 23 #01-29
- Block 25 #01-35



All floor areas indicated are inclusive of AC Ledge and PES/Balcony. All floor areas are estimates only and subject to final survey. All floor plans are subject to changes that may be required or approved by the relevant authorities. *The PES/balcony shall not be enclosed. Only approved PES/balcony screens are to be used. For an illustration of the approved PES/balcony screen, please refer to page 45 of this Brochure.

2-bedroom premium

TYPE BI-G

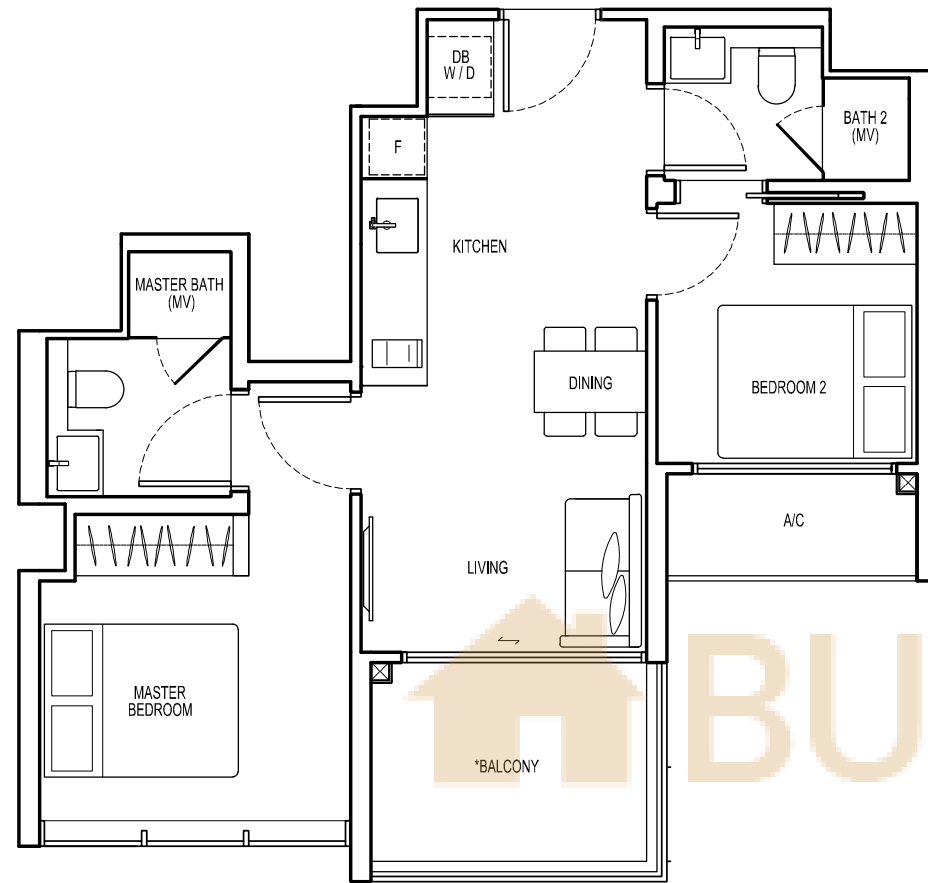
55 sqm

Block 15 #01-06
 Block 21 #01-19** (Mirror)
 #01-26**
 Block 23 #01-32
 Block 25 #01-38

TYPE BI

55 sqm

Block 15 #02-06 to #05-06
 Block 21 #02-19 to #05-19 (Mirror)
 #02-26 to #05-26
 Block 23 #02-32 to #05-32
 Block 25 #02-38 to #05-38

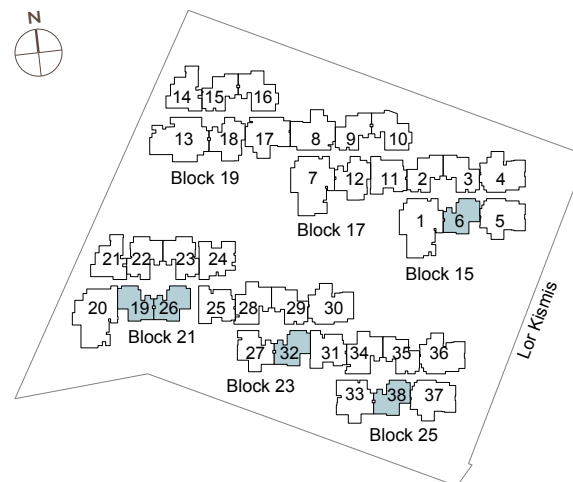
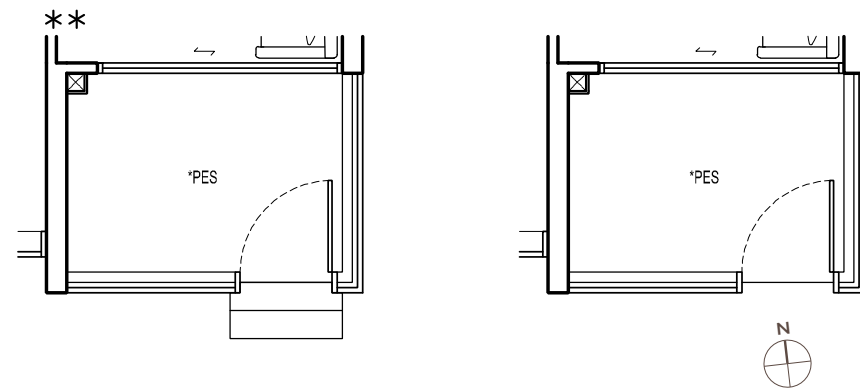
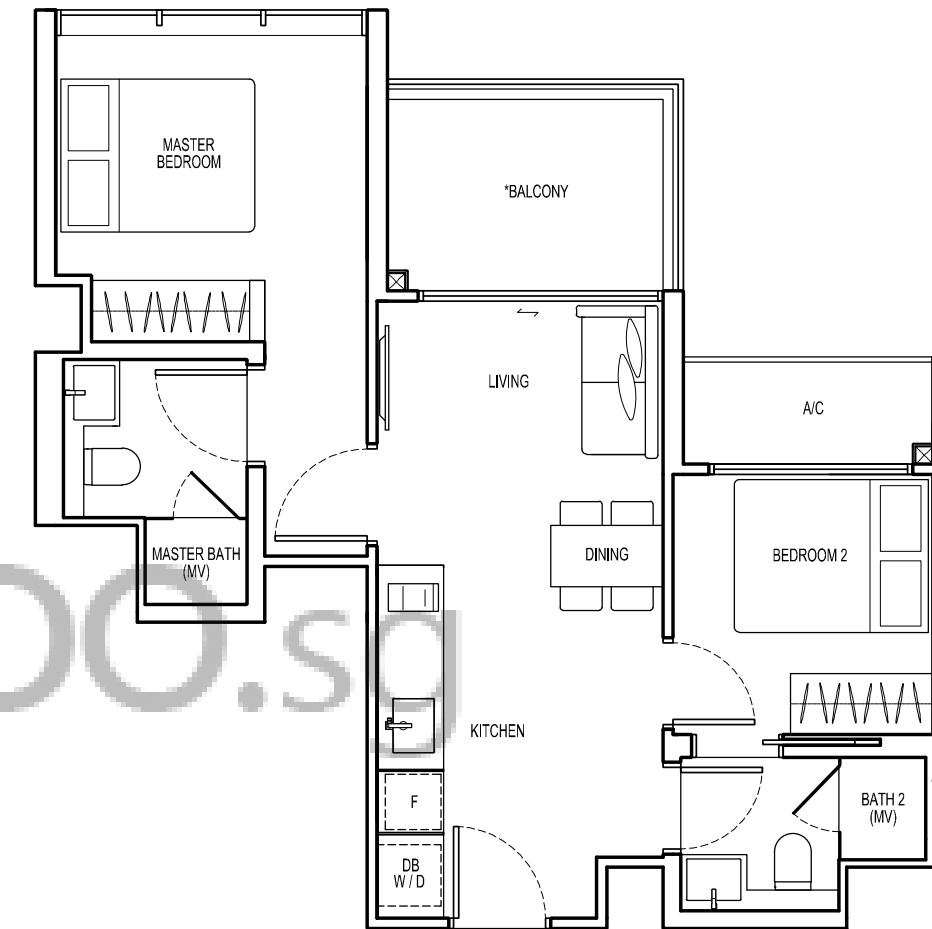


2-bedroom premium

TYPE B2

56 sqm

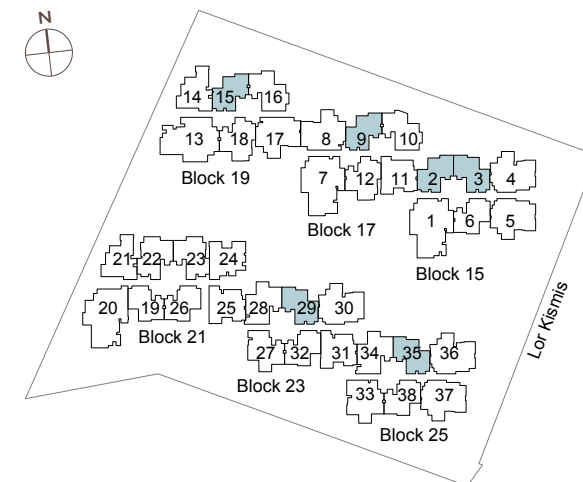
Block 15 #02-02 to #05-02 (Mirror)
 #02-03 to #05-03
 Block 17 #02-09 to #05-09 (Mirror)
 Block 19 #02-15 to #05-15 (Mirror)
 Block 23 #02-29 to #05-29
 Block 25 #02-35 to #05-35



All floor areas indicated are inclusive of AC Ledge and PES/Balcony. All floor areas are estimates only and subject to final survey. All floor plans are subject to changes that may be required or approved by the relevant authorities. *The PES/balcony shall not be enclosed. Only approved PES/balcony screens are to be used. For an illustration of the approved PES/balcony screen, please refer to page 45 of this Brochure.

BUYCONDO.SG

All floor areas indicated are inclusive of AC Ledge and PES/Balcony. All floor areas are estimates only and subject to final survey. All floor plans are subject to changes that may be required or approved by the relevant authorities. *The PES/balcony shall not be enclosed. Only approved PES/balcony screens are to be used. For an illustration of the approved PES/balcony screen, please refer to page 45 of this Brochure.



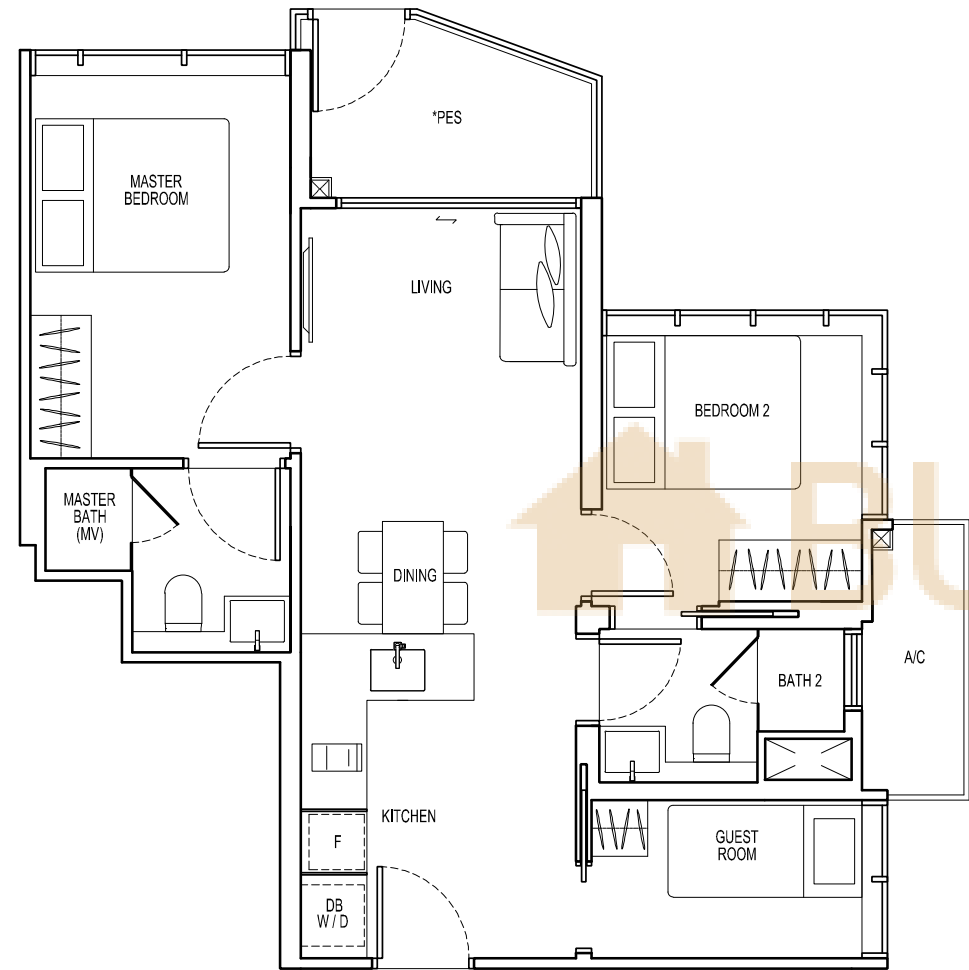
where bonds are tight knit
and kinship abounds



Type C8
Impression Only

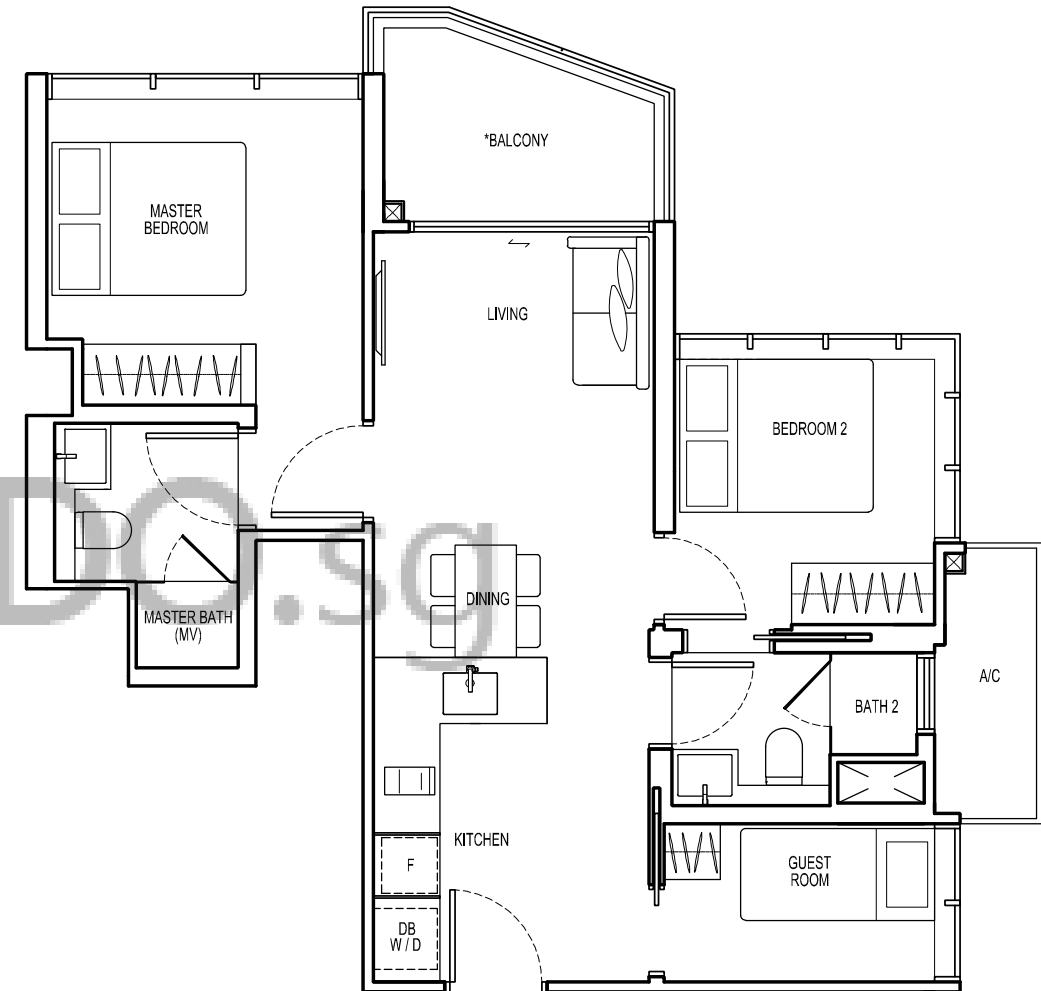
2-bedroom + guest

TYPE C1a-G
62 sqm
Block 17 #01-10

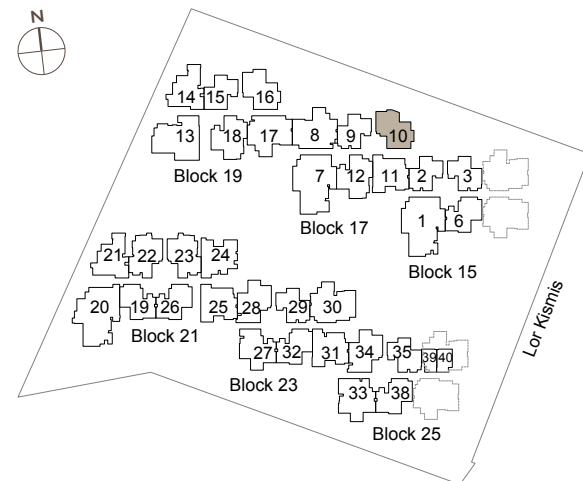


2-bedroom + guest

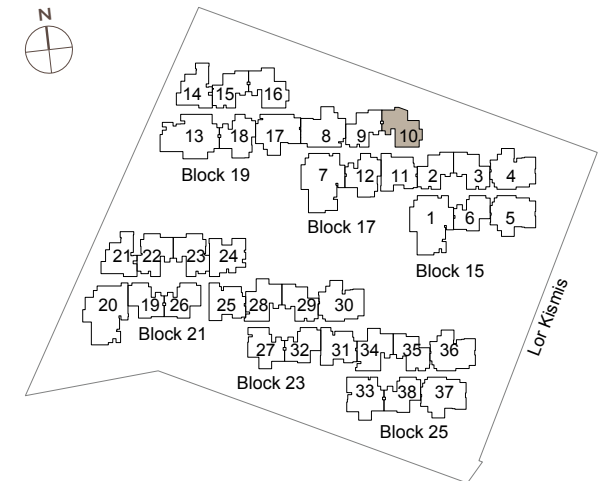
TYPE C1
64 sqm
Block 17 #02-10 to #05-10



All floor areas indicated are inclusive of AC Ledge and PES/Balcony. All floor areas are estimates only and subject to final survey. All floor plans are subject to changes that may be required or approved by the relevant authorities. *The PES/balcony shall not be enclosed. Only approved PES/balcony screens are to be used. For an illustration of the approved PES/balcony screen, please refer to page 45 of this Brochure.



All floor areas indicated are inclusive of AC Ledge and PES/Balcony. All floor areas are estimates only and subject to final survey. All floor plans are subject to changes that may be required or approved by the relevant authorities. *The PES/balcony shall not be enclosed. Only approved PES/balcony screens are to be used. For an illustration of the approved PES/balcony screen, please refer to page 45 of this Brochure.

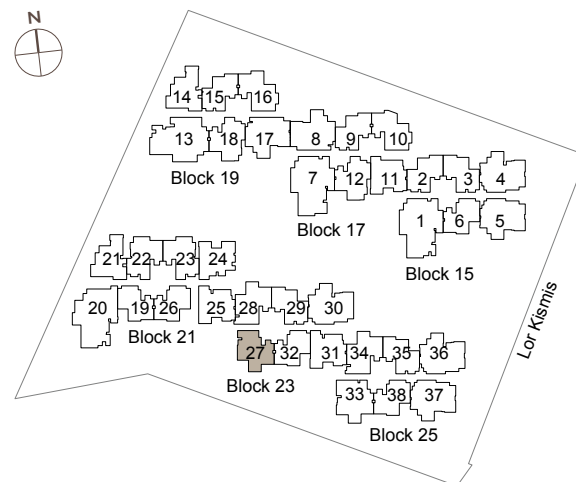
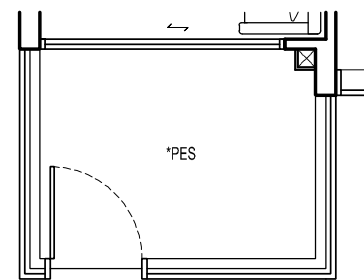
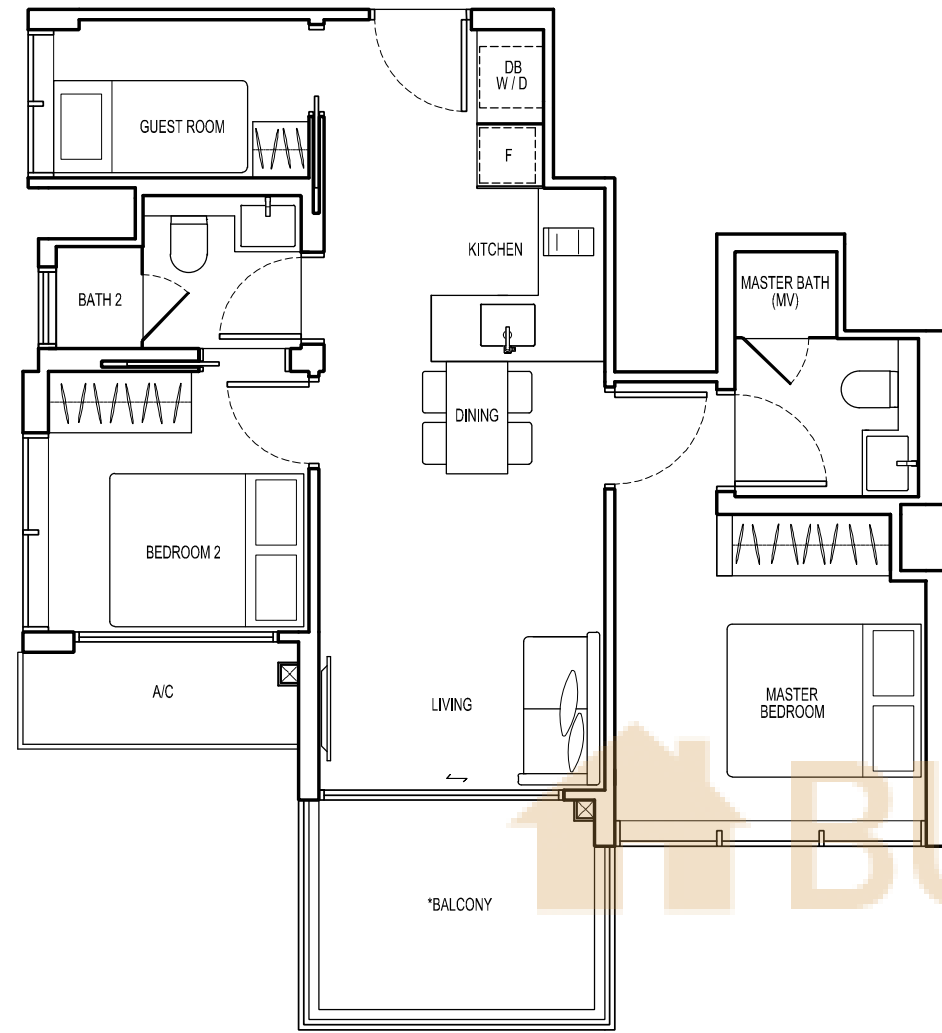


2-bedroom + guest

TYPE C2-G

64 sqm

Block 23 #01-27



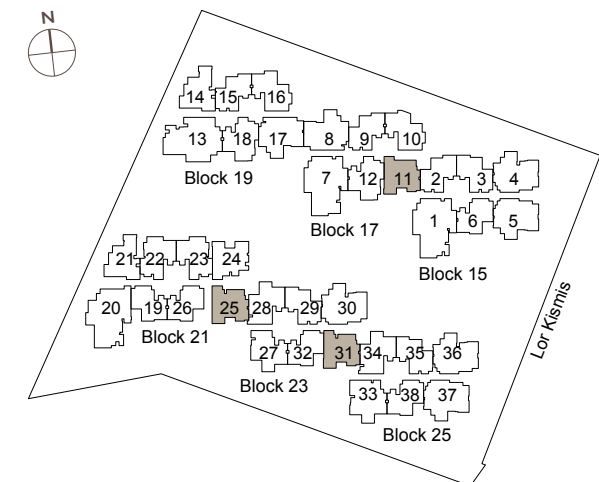
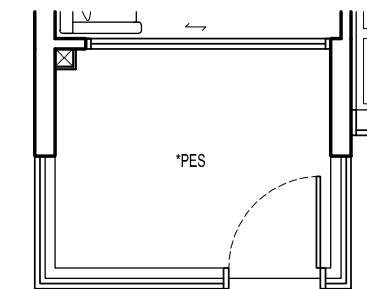
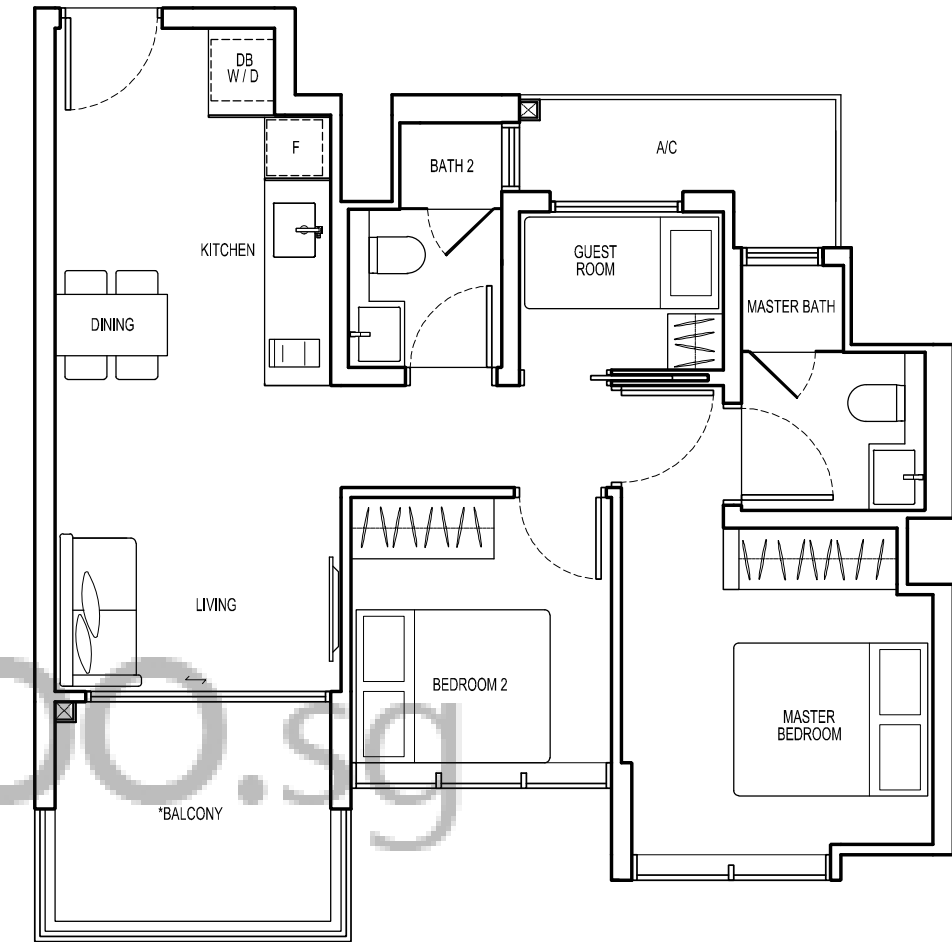
All floor areas indicated are inclusive of AC Ledge and PES/Balcony. All floor areas are estimates only and subject to final survey. All floor plans are subject to changes that may be required or approved by the relevant authorities. *The PES/balcony shall not be enclosed. Only approved PES/balcony screens are to be used. For an illustration of the approved PES/balcony screen, please refer to page 45 of this Brochure.

2-bedroom + guest

TYPE C3-G

65 sqm

Block 17 #01-11
Block 21 #01-25
Block 23 #01-31



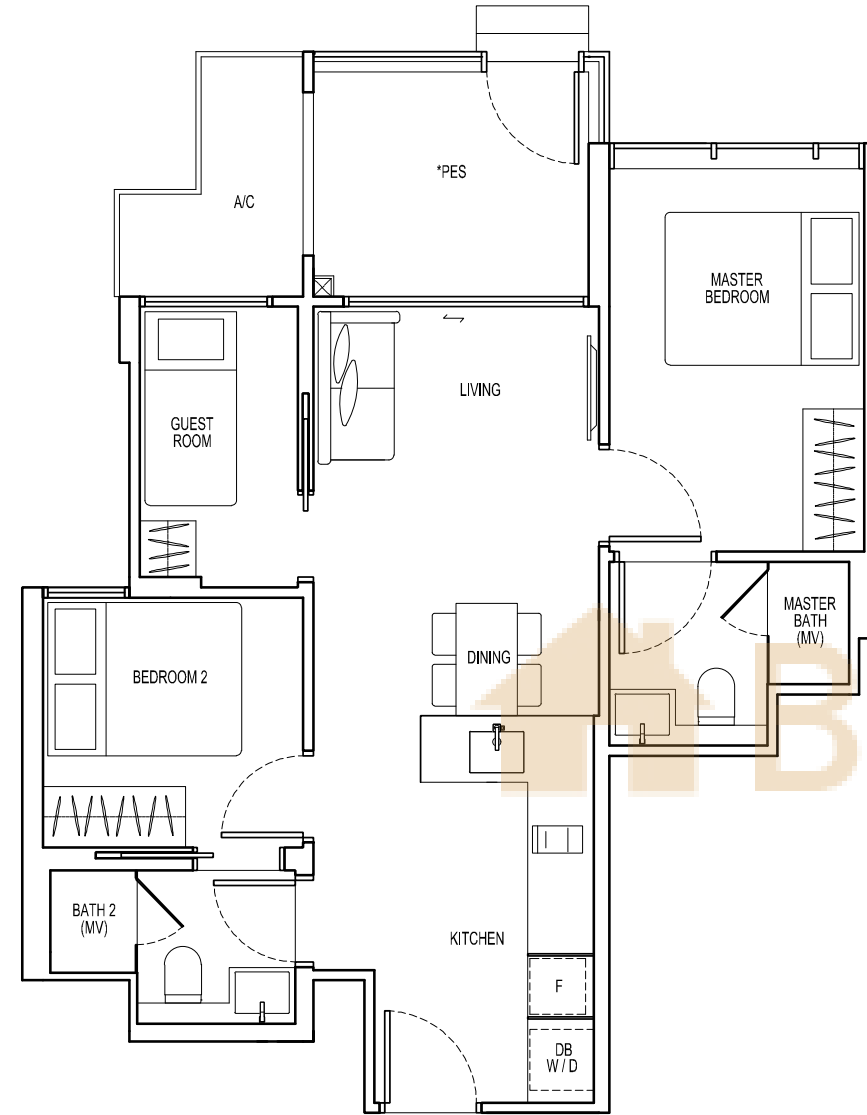
All floor areas indicated are inclusive of AC Ledge and PES/Balcony. All floor areas are estimates only and subject to final survey. All floor plans are subject to changes that may be required or approved by the relevant authorities. *The PES/balcony shall not be enclosed. Only approved PES/balcony screens are to be used. For an illustration of the approved PES/balcony screen, please refer to page 45 of this Brochure.

2-bedroom + guest

TYPE C4a-G

64 sqm

Block 21 #01-22
#01-23 (Mirror)

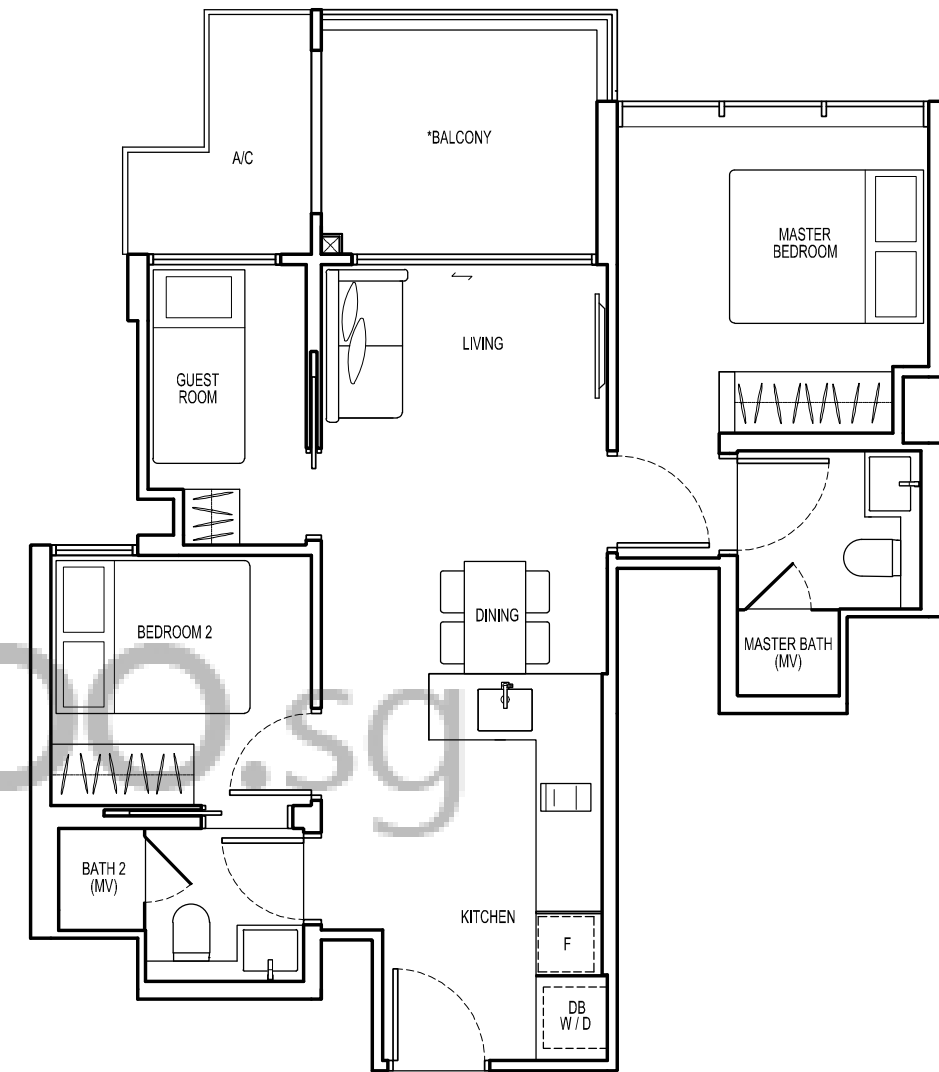


2-bedroom + guest

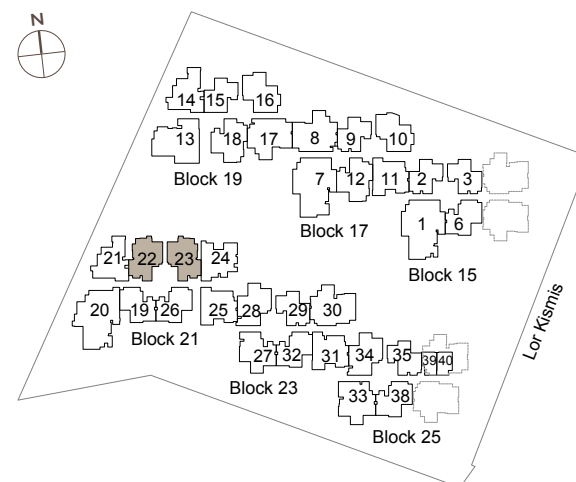
TYPE C4

65 sqm

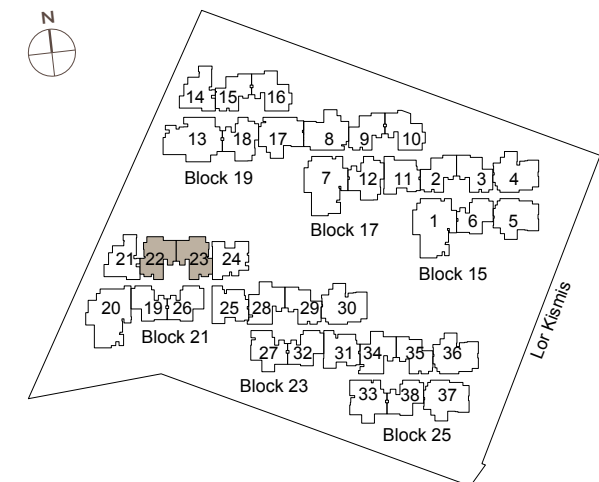
Block 21 #02-22 to #05-22
#02-23 to #05-23 (Mirror)



All floor areas indicated are inclusive of AC Ledge and PES/Balcony. All floor areas are estimates only and subject to final survey. All floor plans are subject to changes that may be required or approved by the relevant authorities. *The PES/balcony shall not be enclosed. Only approved PES/balcony screens are to be used. For an illustration of the approved PES/balcony screen, please refer to page 45 of this Brochure.

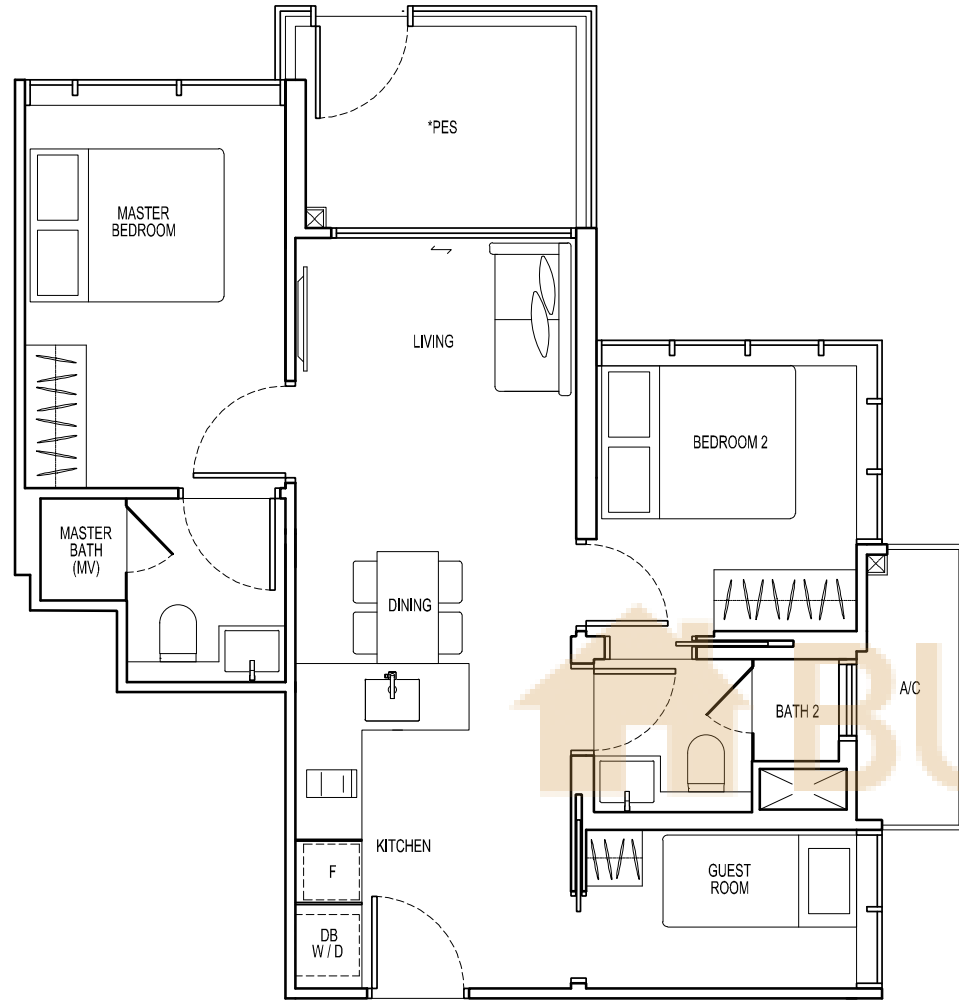


All floor areas indicated are inclusive of AC Ledge and PES/Balcony. All floor areas are estimates only and subject to final survey. All floor plans are subject to changes that may be required or approved by the relevant authorities. *The PES/balcony shall not be enclosed. Only approved PES/balcony screens are to be used. For an illustration of the approved PES/balcony screen, please refer to page 45 of this Brochure.



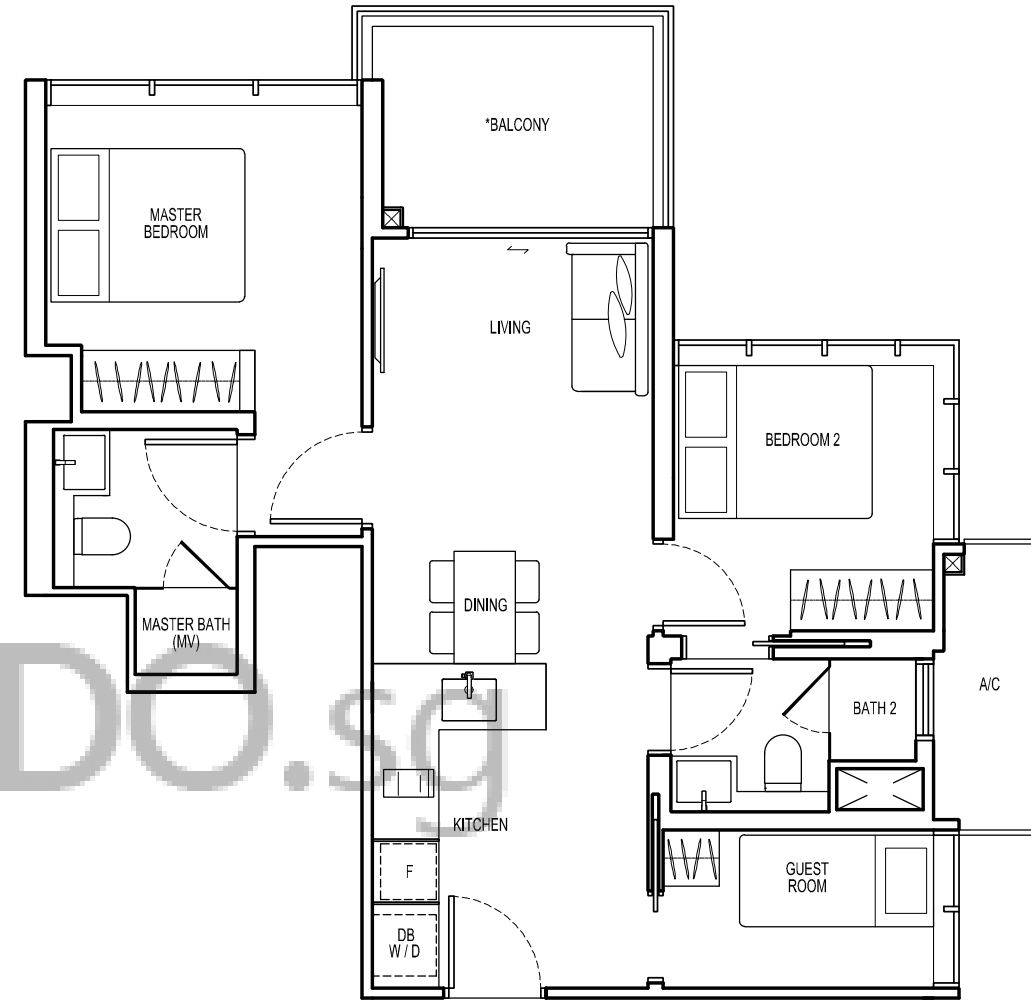
2-bedroom + guest

TYPE C5a-G
64 sqm
Block 19 #01-16

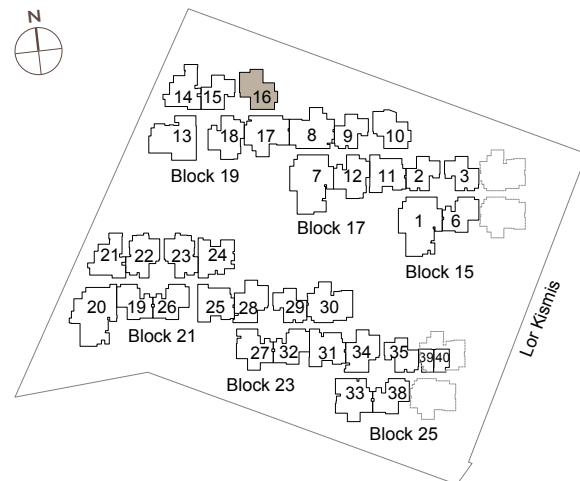


2-bedroom + guest

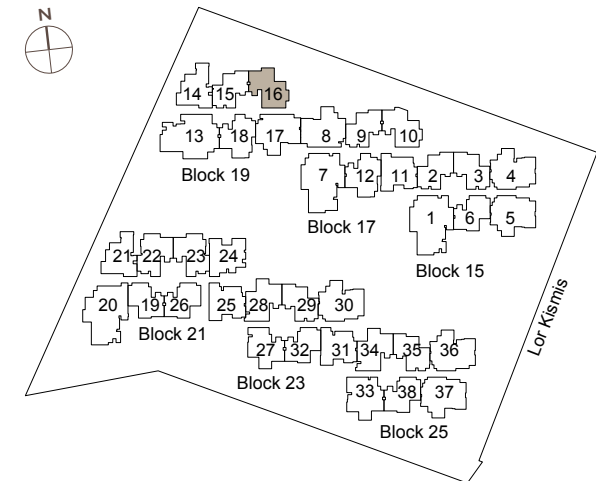
TYPE C5
65 sqm
Block 19 #02-16 to #05-16



All floor areas indicated are inclusive of AC Ledge and PES/Balcony. All floor areas are estimates only and subject to final survey. All floor plans are subject to changes that may be required or approved by the relevant authorities. *The PES/balcony shall not be enclosed. Only approved PES/balcony screens are to be used. For an illustration of the approved PES/balcony screen, please refer to page 45 of this Brochure.



All floor areas indicated are inclusive of AC Ledge and PES/Balcony. All floor areas are estimates only and subject to final survey. All floor plans are subject to changes that may be required or approved by the relevant authorities. *The PES/balcony shall not be enclosed. Only approved PES/balcony screens are to be used. For an illustration of the approved PES/balcony screen, please refer to page 45 of this Brochure.



2-bedroom + guest

TYPE C6-G

65 sqm

Block 17 #01-12

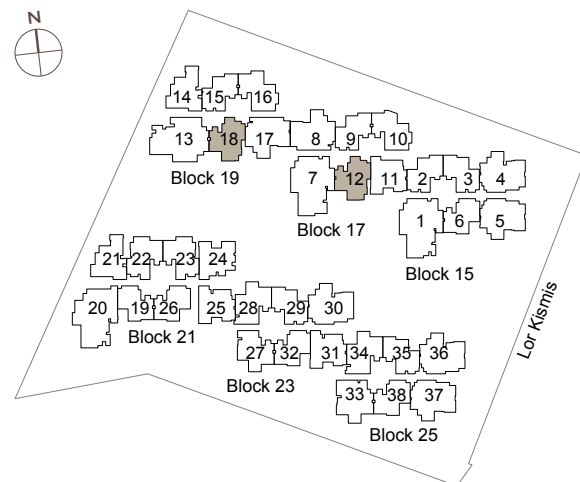
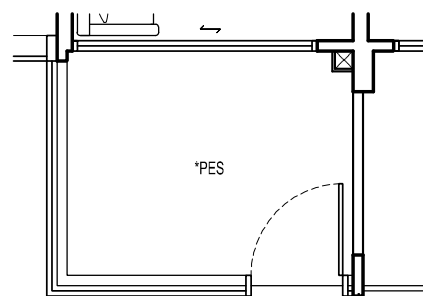
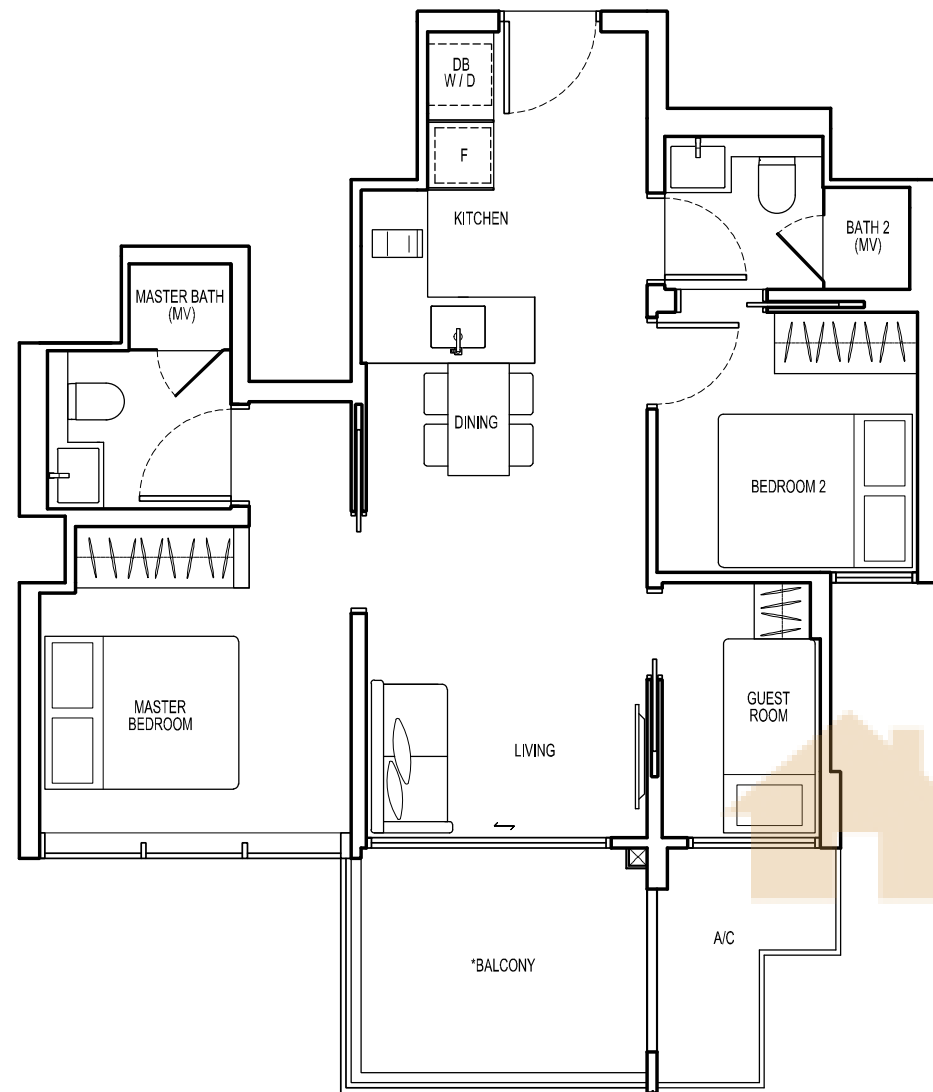
Block 19 #01-18

TYPE C6

65 sqm

Block 17 #02-12 to #05-12

Block 19 #02-18 to #05-18



All floor areas indicated are inclusive of AC Ledge and PES/Balcony. All floor areas are estimates only and subject to final survey. All floor plans are subject to changes as may be required or approved by the relevant authorities. *The PES/balcony shall not be enclosed. Only approved PES/balcony screens are to be used. For an illustration of the approved PES/balcony screen, please refer to page 45 of this Brochure.

2-bedroom + guest

TYPE C7-G

65 sqm

Block 19 #01-14

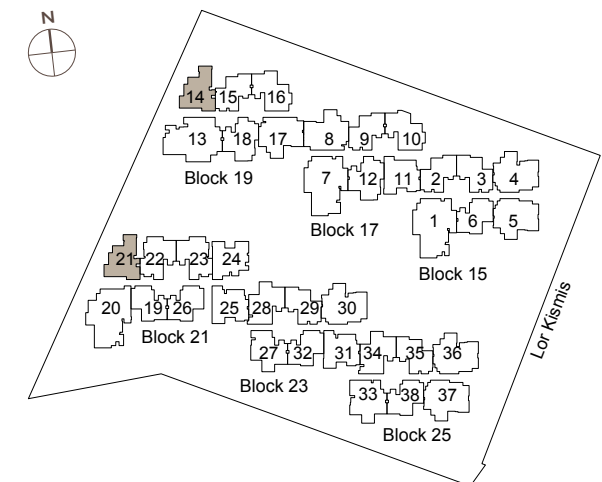
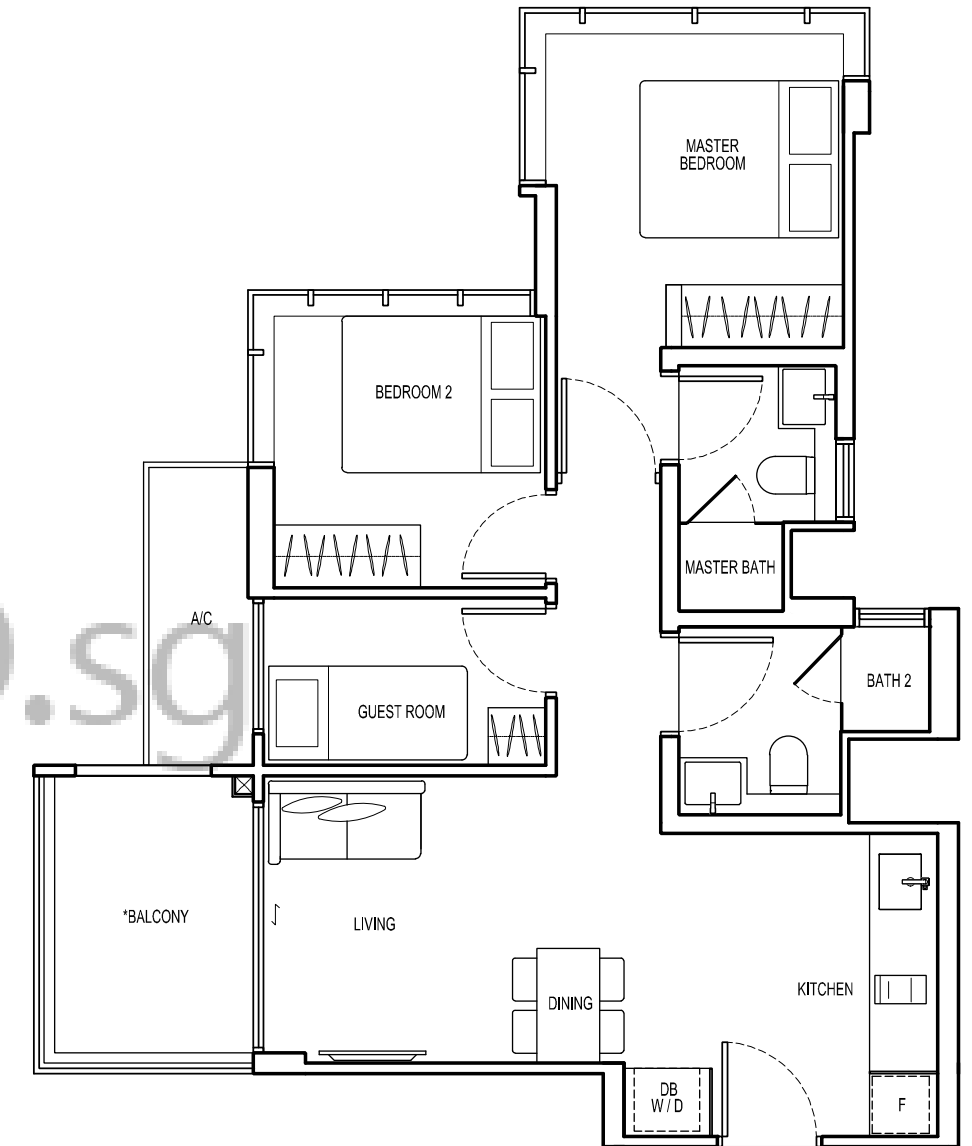
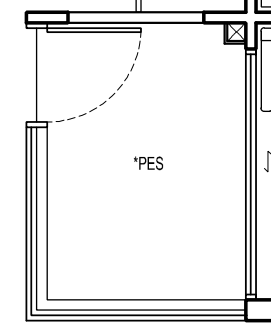
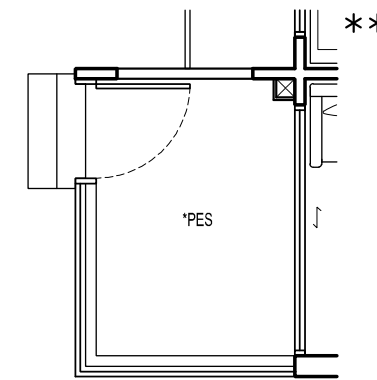
Block 21 #01-21**

TYPE C7

65 sqm

Block 19 #02-14 to #05-14

Block 21 #02-21 to #05-21



All floor areas indicated are inclusive of AC Ledge and PES/Balcony. All floor areas are estimates only and subject to final survey. All floor plans are subject to changes as may be required or approved by the relevant authorities. *The PES/balcony shall not be enclosed. Only approved PES/balcony screens are to be used. For an illustration of the approved PES/balcony screen, please refer to page 45 of this Brochure.



Type C8 Kitchen Impression Only

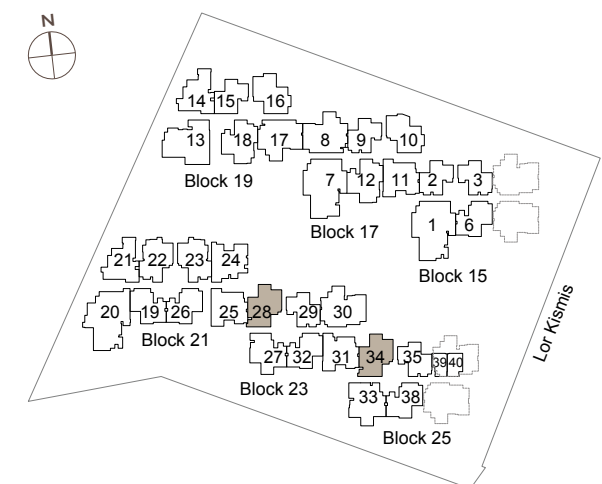
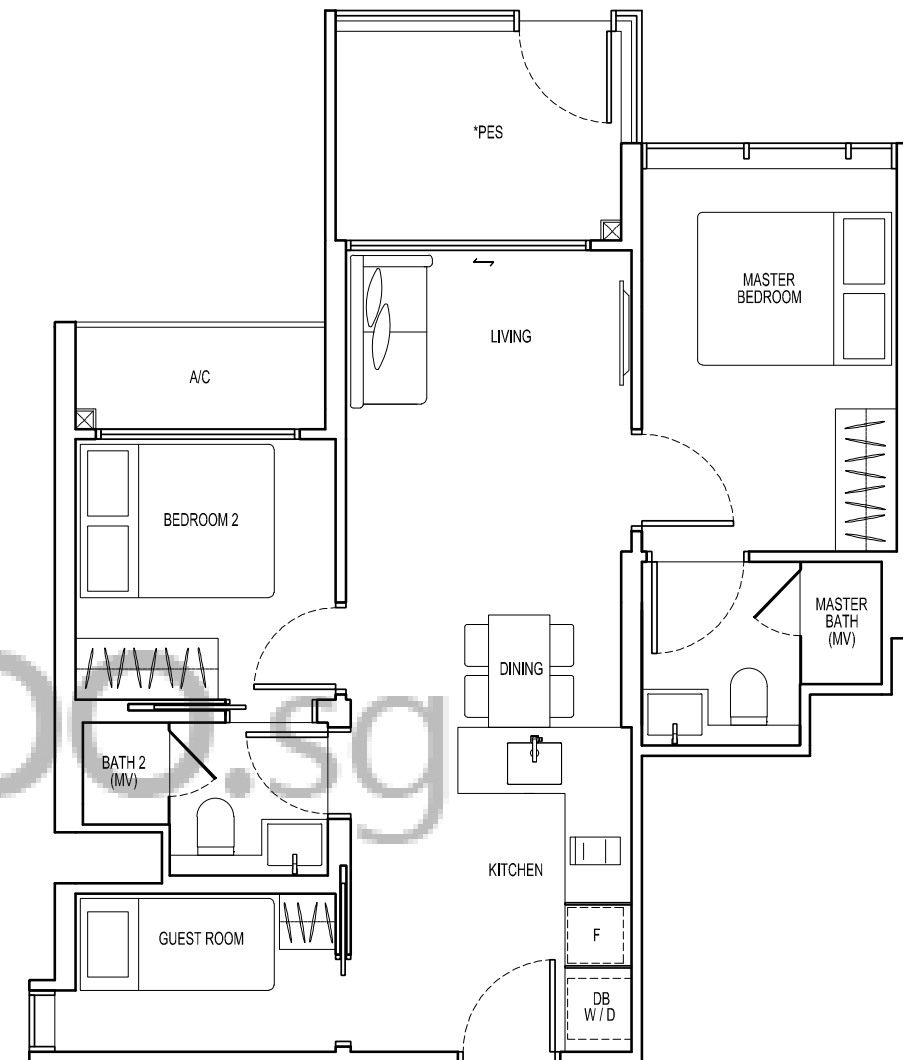
2-bedroom + guest

TYPE C8a-G

64 sqm

Block 23 #01-28

Block 25 #01-34



All floor areas indicated are inclusive of AC Ledge and PES/Balcony. All floor areas are estimates only and subject to final survey. All floor plans are subject to changes that may be required or approved by the relevant authorities. *The PES/balcony shall not be enclosed. Only approved PES/balcony screens are to be used. For an illustration of the approved PES/balcony screen, please refer to page 45 of this Brochure.

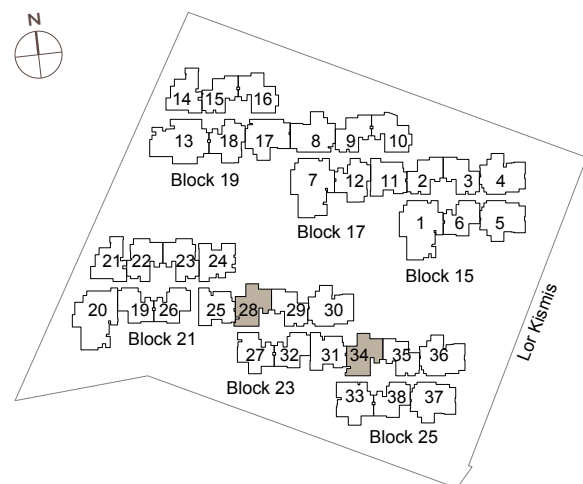
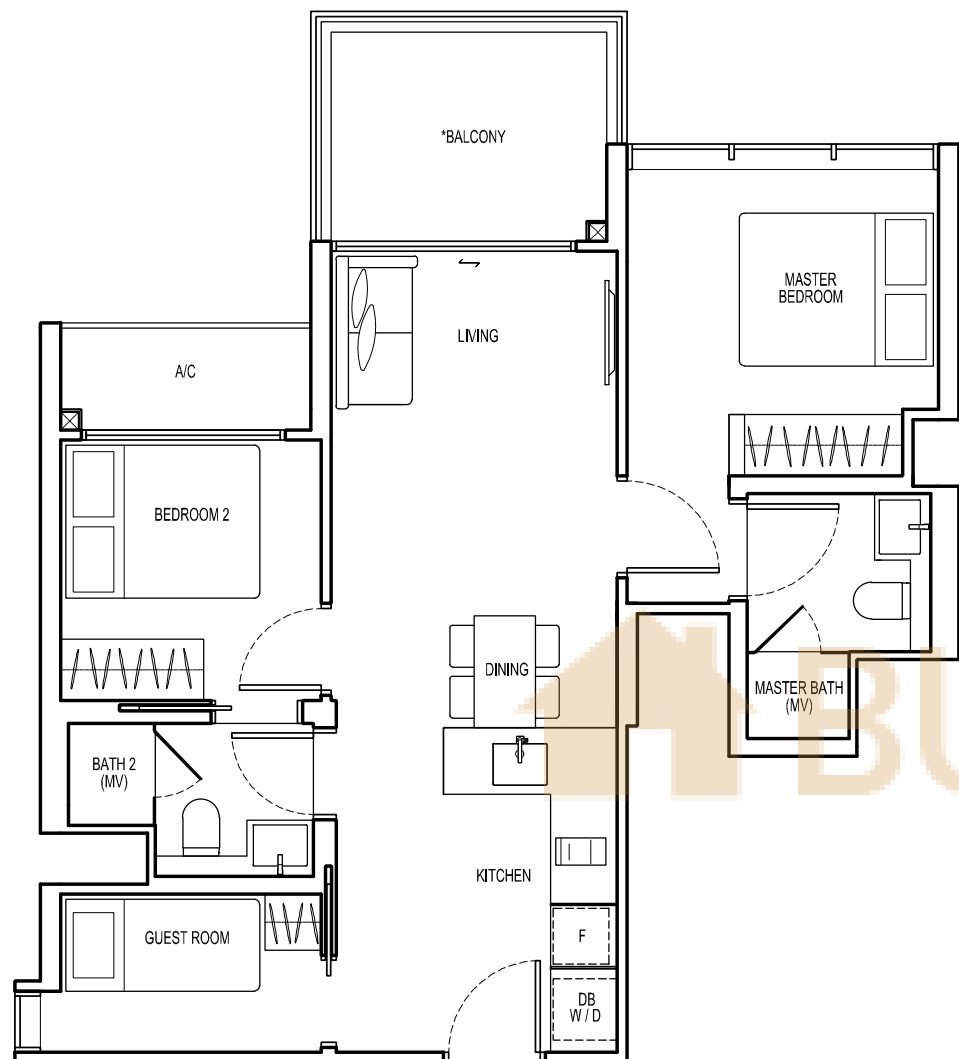
2-bedroom + guest

TYPE C8

66 sqm

Block 23 #02-28 to #05-28

Block 25 #02-34 to #05-34



All floor areas indicated are inclusive of AC Ledge and PES/Balcony. All floor areas are estimates only and subject to final survey. All floor plans are subject to changes that may be required or approved by the relevant authorities. *The PES/balcony shall not be enclosed. Only approved PES/balcony screens are to be used. For an illustration of the approved PES/balcony screen, please refer to page 45 of this Brochure.

2-bedroom + guest

TYPE C9-G

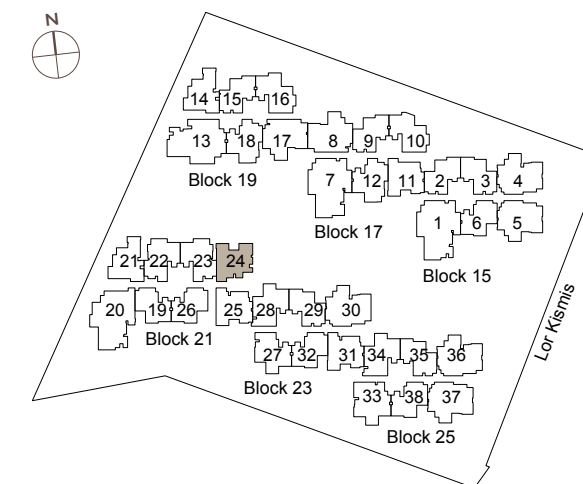
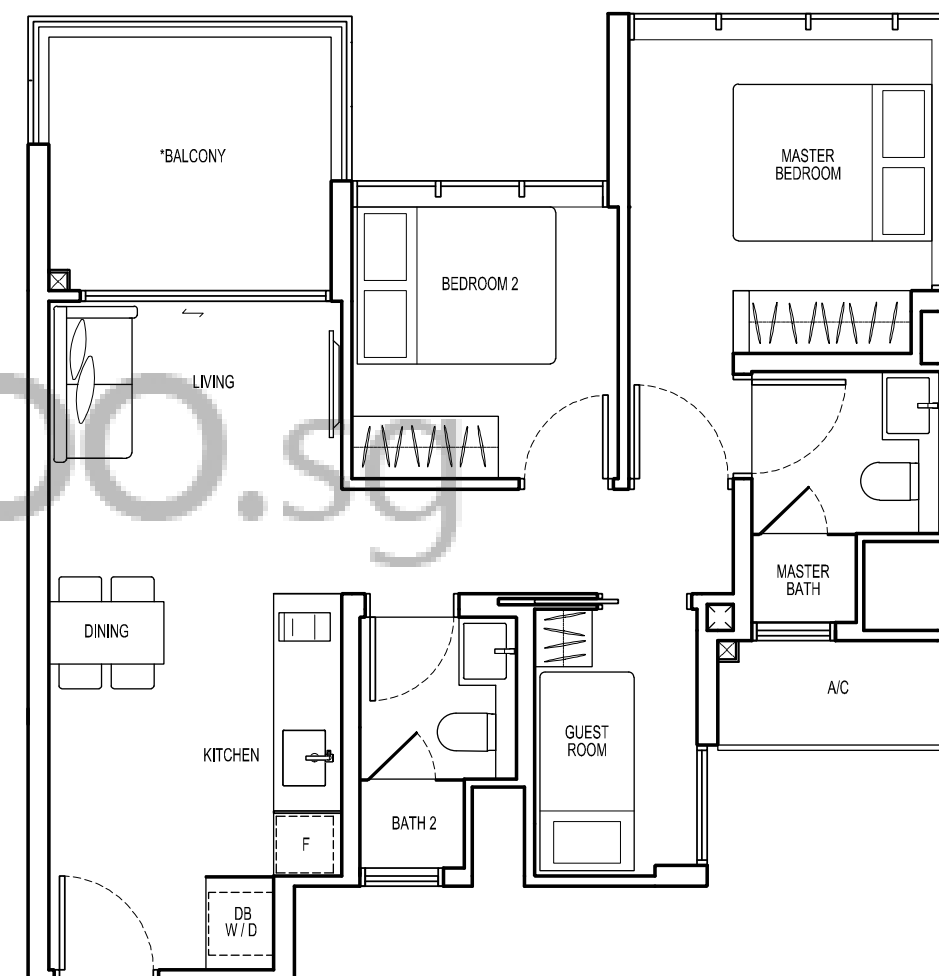
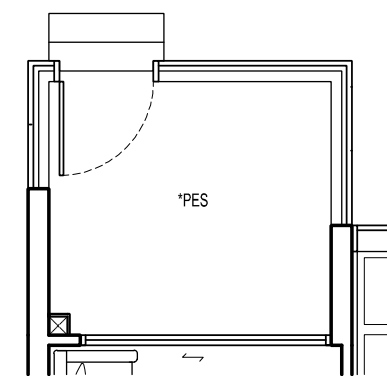
66 sqm

Block 21 #01-24

TYPE C9

66 sqm

Block 21 #02-24 to #05-24



All floor areas indicated are inclusive of AC Ledge and PES/Balcony. All floor areas are estimates only and subject to final survey. All floor plans are subject to changes that may be required or approved by the relevant authorities. *The PES/balcony shall not be enclosed. Only approved PES/balcony screens are to be used. For an illustration of the approved PES/balcony screen, please refer to page 45 of this Brochure.



Impression Only



where home means
having room to grow

BUYCONDO.SG

3-bedroom

TYPE DI-G

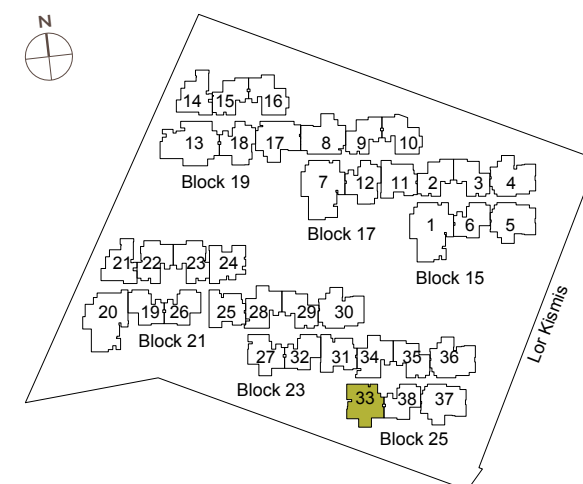
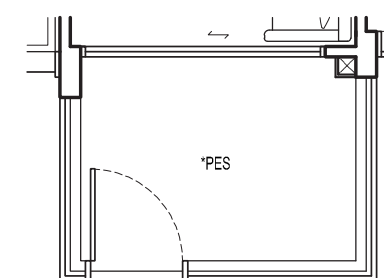
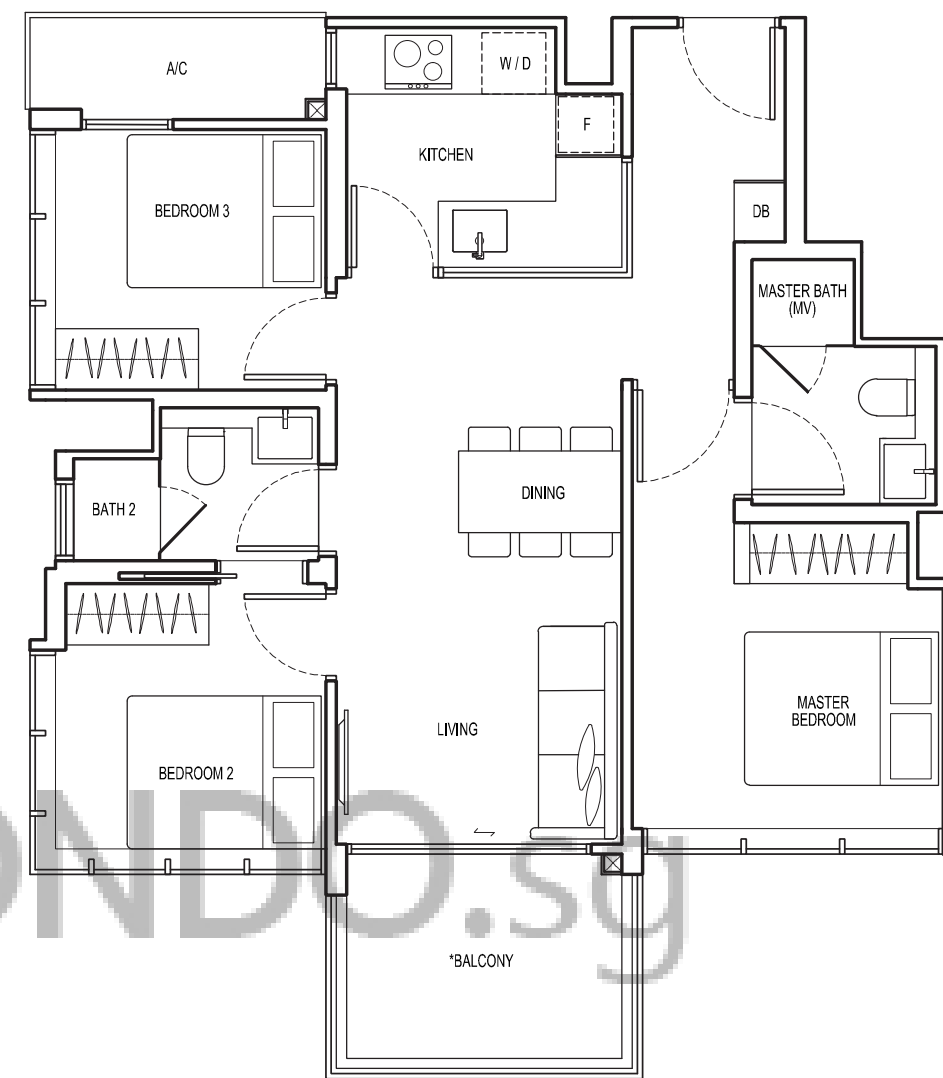
75 sqm

Block 25 #01-33

TYPE DI

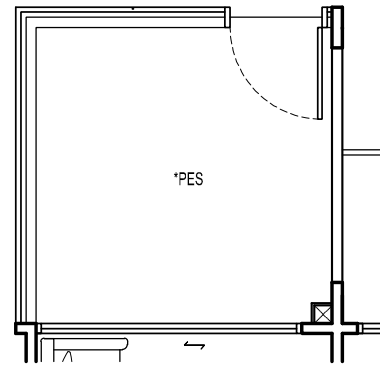
75 sqm

Block 25 #02-33 to #05-33



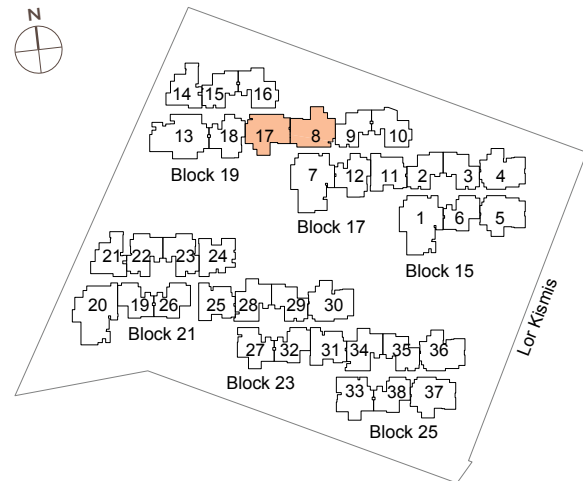
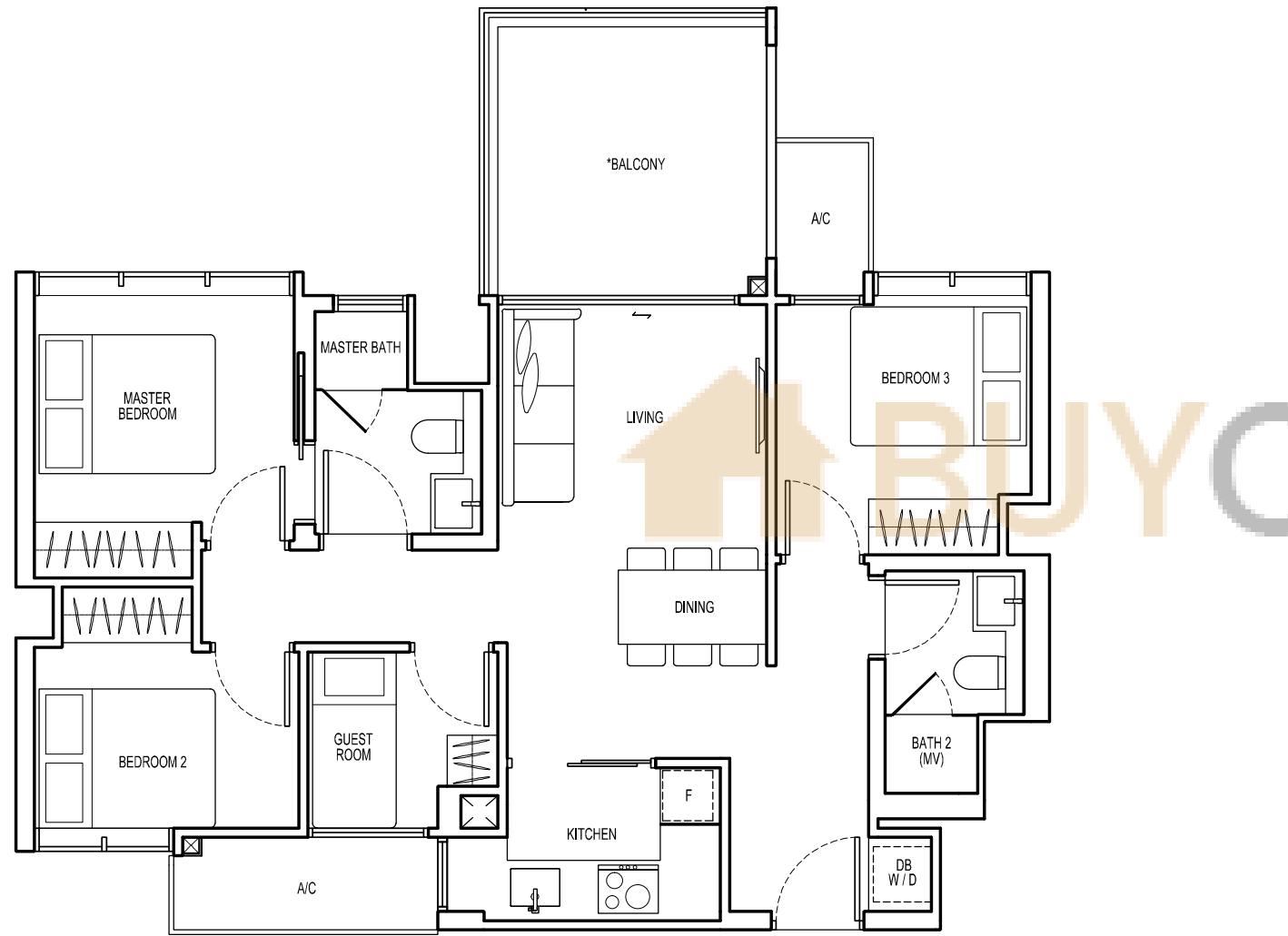
All floor areas indicated are inclusive of AC Ledge and PES/Balcony. All floor areas are estimates only and subject to final survey. All floor plans are subject to changes and may be required or approved by the relevant authorities. *The PES/balcony shall not be enclosed. Only approved PES/balcony screens are to be used. For an illustration of the approved PES/balcony screen, please refer to page 45 of this Brochure.

3-bedroom + guest



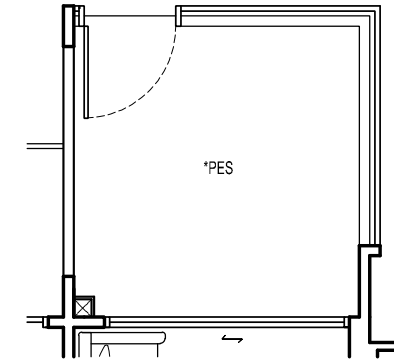
TYPE E1-G
82 sqm
Block 17 #01-08
Block 19 #01-17

TYPE E1
82 sqm
Block 17 #02-08 to #05-08
Block 19 #02-17 to #05-17



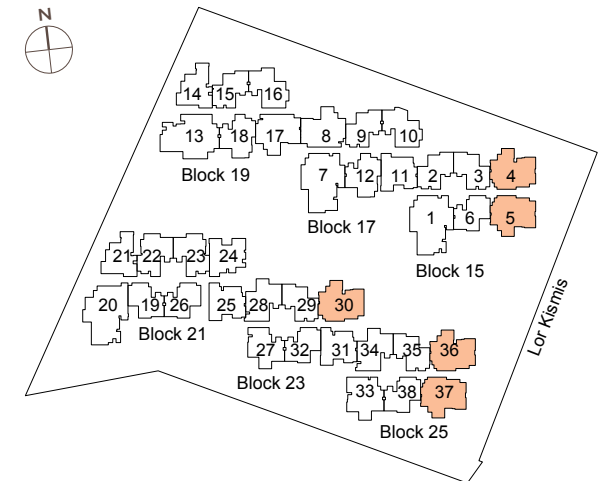
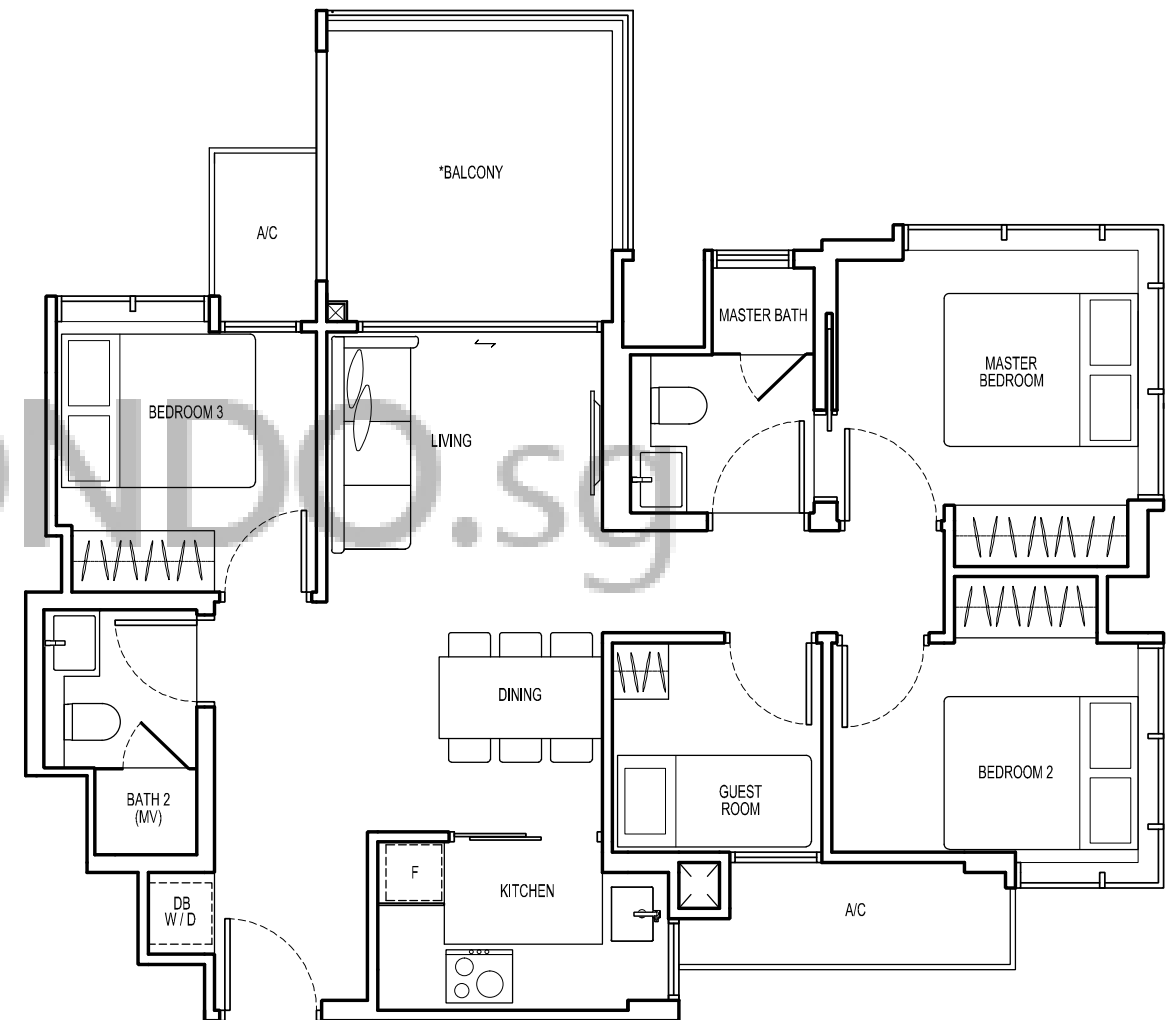
All floor areas indicated are inclusive of AC Ledge and PES/Balcony. All floor areas are estimates only and subject to final survey. All floor plans are subject to changes that may be required or approved by the relevant authorities. *The PES/balcony shall not be enclosed. Only approved PES/balcony screens are to be used. For an illustration of the approved PES/balcony screen, please refer to page 45 of this Brochure.

3-bedroom + guest



TYPE E2-G
83 sqm
Block 23 #01-30

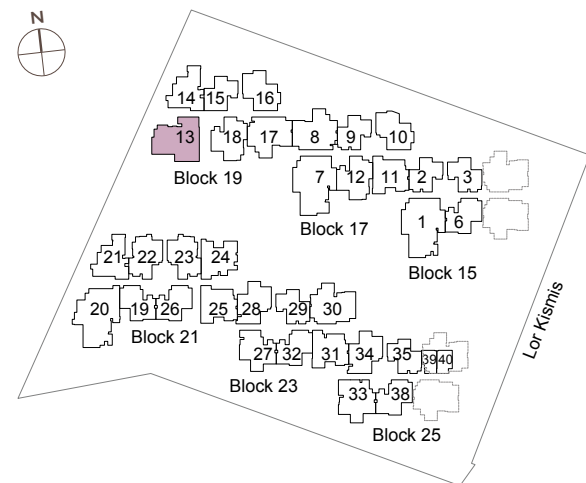
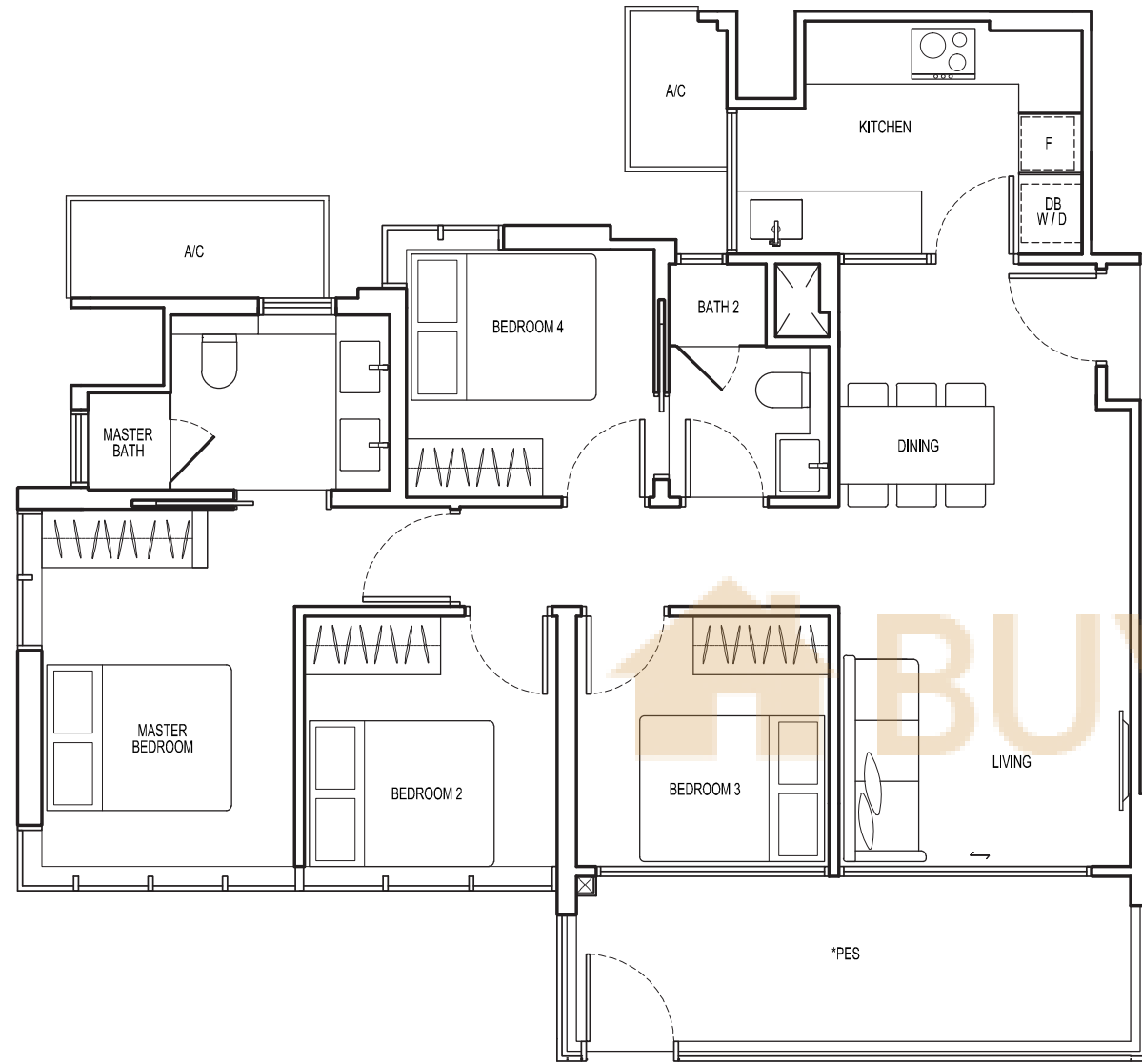
TYPE E2
83 sqm
Block 15 #02-04 to #05-04
#02-05 to #05-05 (Mirror)
Block 23 #02-30 to #05-30
Block 25 #02-36 to #05-36
#02-37 to #05-37 (Mirror)



All floor areas indicated are inclusive of AC Ledge and PES/Balcony. All floor areas are estimates only and subject to final survey. All floor plans are subject to changes that may be required or approved by the relevant authorities. *The PES/balcony shall not be enclosed. Only approved PES/balcony screens are to be used. For an illustration of the approved PES/balcony screen, please refer to page 45 of this Brochure.

4-bedroom

TYPE FI-G
 94 sqm
 Block 19 #01-13



All floor areas indicated are inclusive of AC Ledge and PES/Balcony. All floor areas are estimates only and subject to final survey. All floor plans are subject to changes that may be required or approved by the relevant authorities. *The PES/balcony shall not be enclosed. Only approved PES/balcony screens are to be used. For an illustration of the approved PES/balcony screen, please refer to page 45 of this Brochure.



Common Bathroom Impression Only



where there is ample space to unwind and enjoy the sunshine

5-bedroom

TYPE GI-G

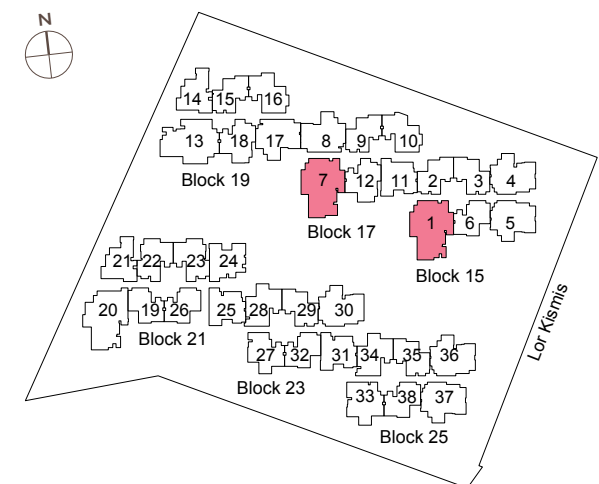
118 sqm

Block 17 #01-07

TYPE GI

118 sqm

Block 15 #01-01 to #05-01
Block 17 #02-07 to #05-07



All floor areas indicated are inclusive of AC Ledge and PES/Balcony. All floor areas are estimates only and subject to final survey. All floor plans are subject to changes that may be required or approved by the relevant authorities. *The PES/balcony shall not be enclosed. Only approved PES/balcony screens are to be used. For an illustration of the approved PES/balcony screen, please refer to page 45 of this Brochure.



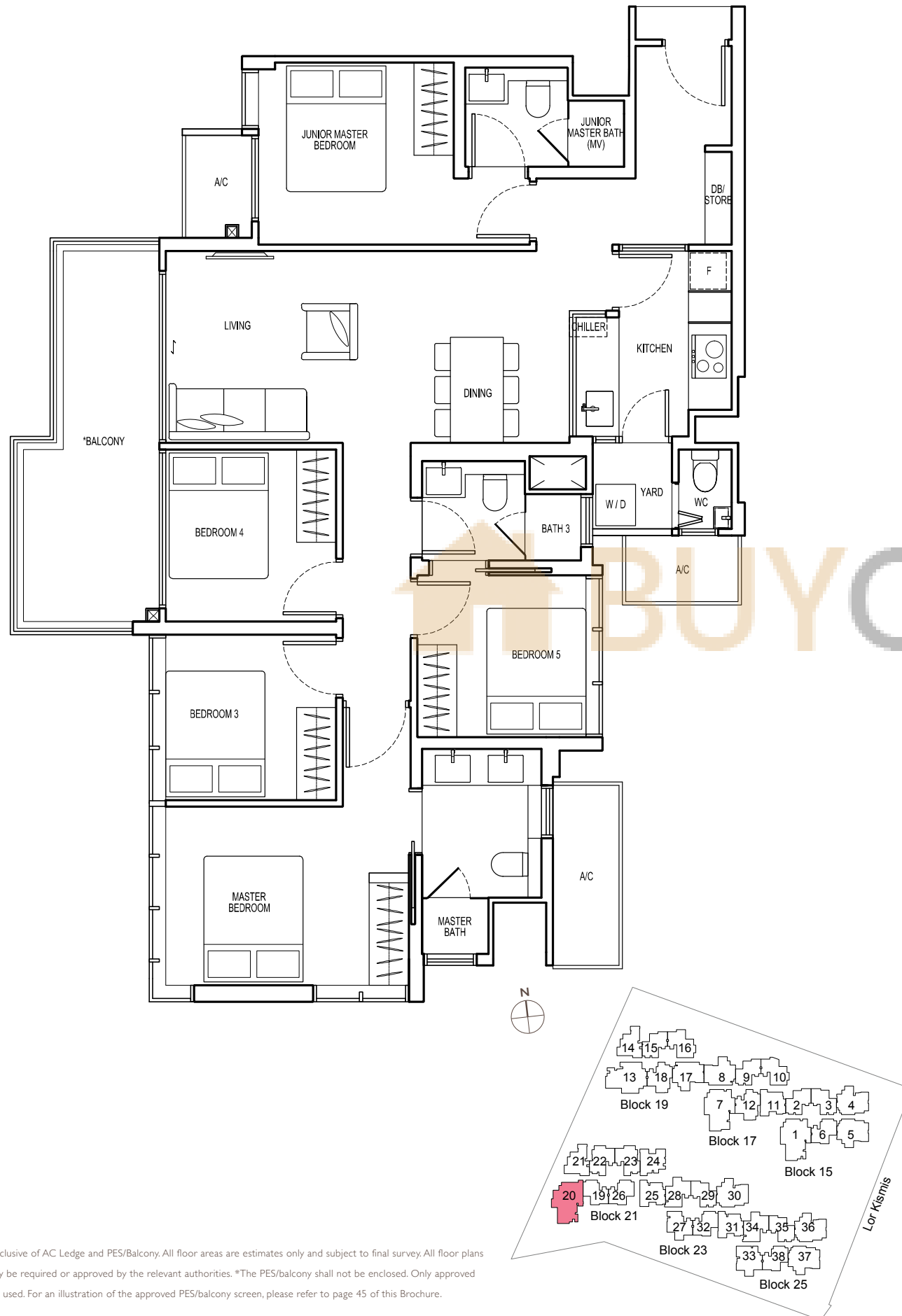
Type G1
Impression Only

5-bedroom

TYPE G2

119 sqm

Block 21 #02-20 to #05-20



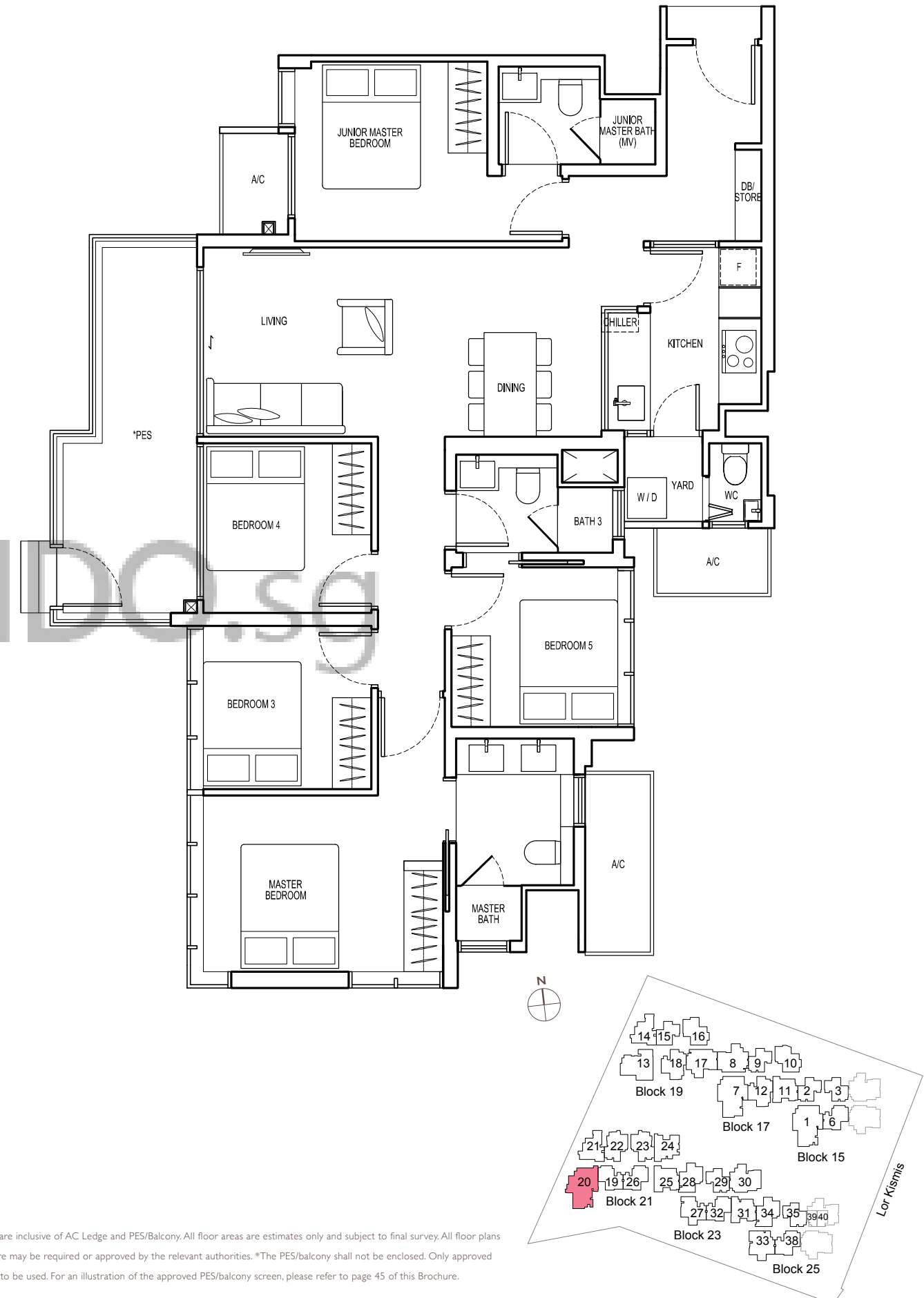
All floor areas indicated are inclusive of AC Ledge and PES/Balcony. All floor areas are estimates only and subject to final survey. All floor plans are subject to changes that may be required or approved by the relevant authorities. *The PES/balcony shall not be enclosed. Only approved PES/balcony screens are to be used. For an illustration of the approved PES/balcony screen, please refer to page 45 of this Brochure.

5-bedroom

TYPE G2-G

120 sqm

Block 21 #01-20



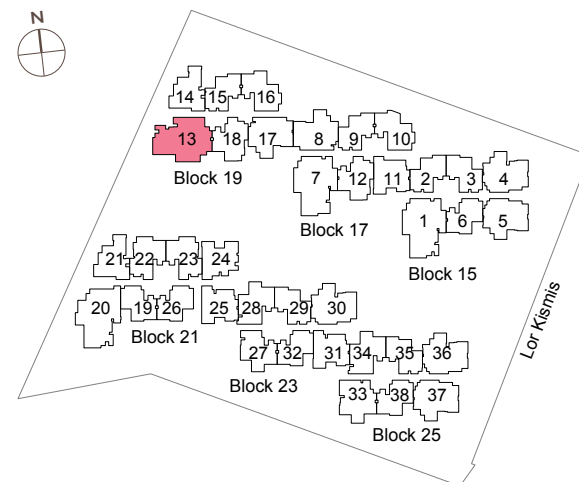
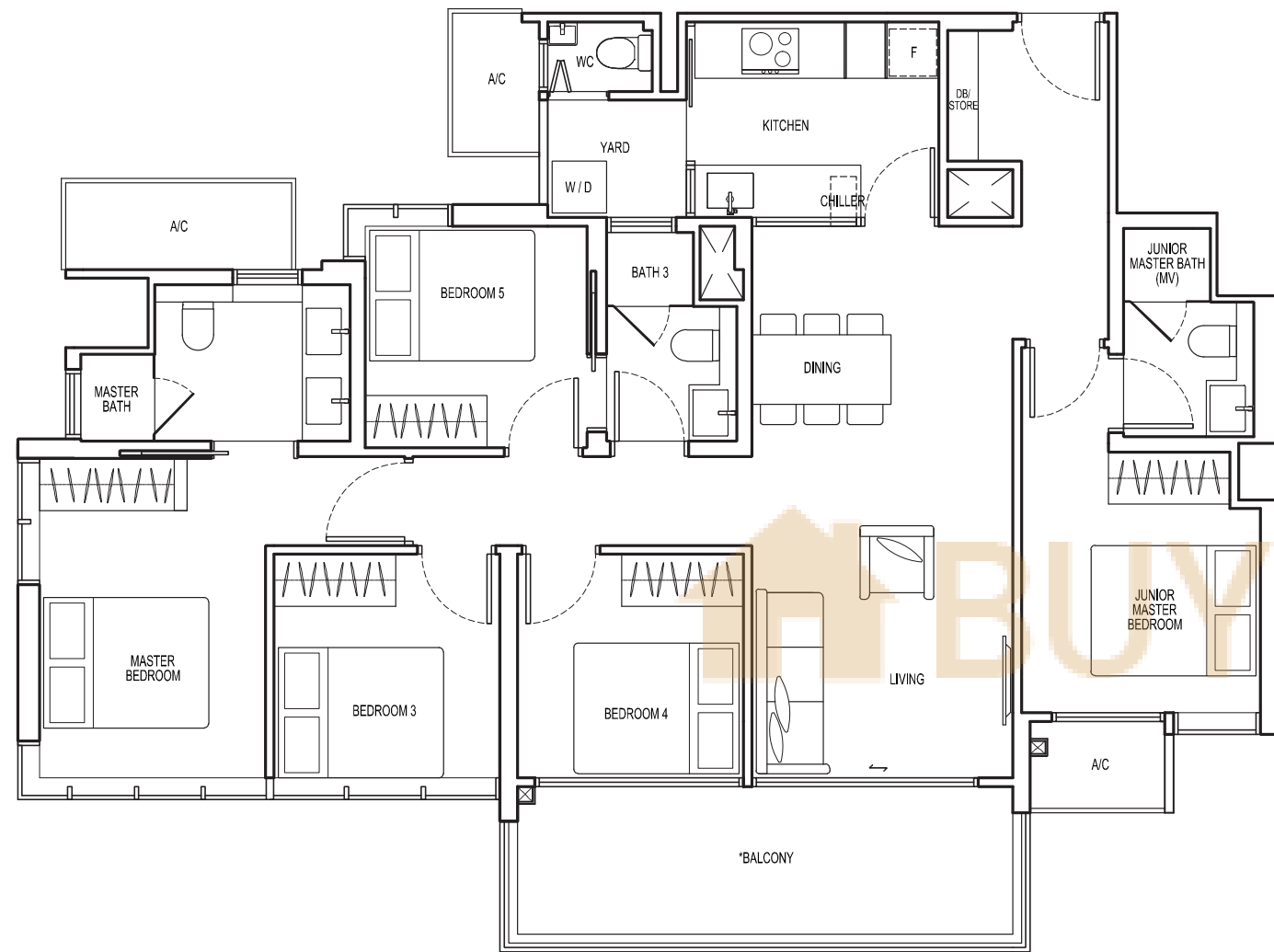
All floor areas indicated are inclusive of AC Ledge and PES/Balcony. All floor areas are estimates only and subject to final survey. All floor plans are subject to changes that may be required or approved by the relevant authorities. *The PES/balcony shall not be enclosed. Only approved PES/balcony screens are to be used. For an illustration of the approved PES/balcony screen, please refer to page 45 of this Brochure.

5-bedroom

TYPE G3

119 sqm

Block 19 #02-13 to #05-13



All floor areas indicated are inclusive of AC Ledge and PES/Balcony. All floor areas are estimates only and subject to final survey. All floor plans are subject to changes and may be required or approved by the relevant authorities. *The PES/balcony shall not be enclosed. Only approved PES/balcony screens are to be used. For an illustration of the approved PES/balcony screen, please refer to page 45 of this Brochure.



Type G1 Master Bathroom Impression Only