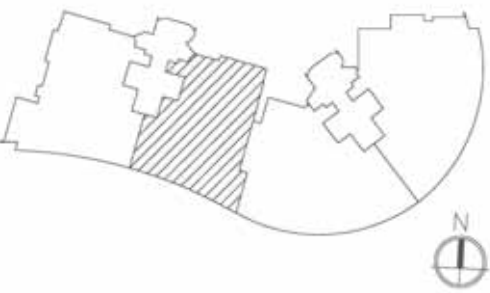
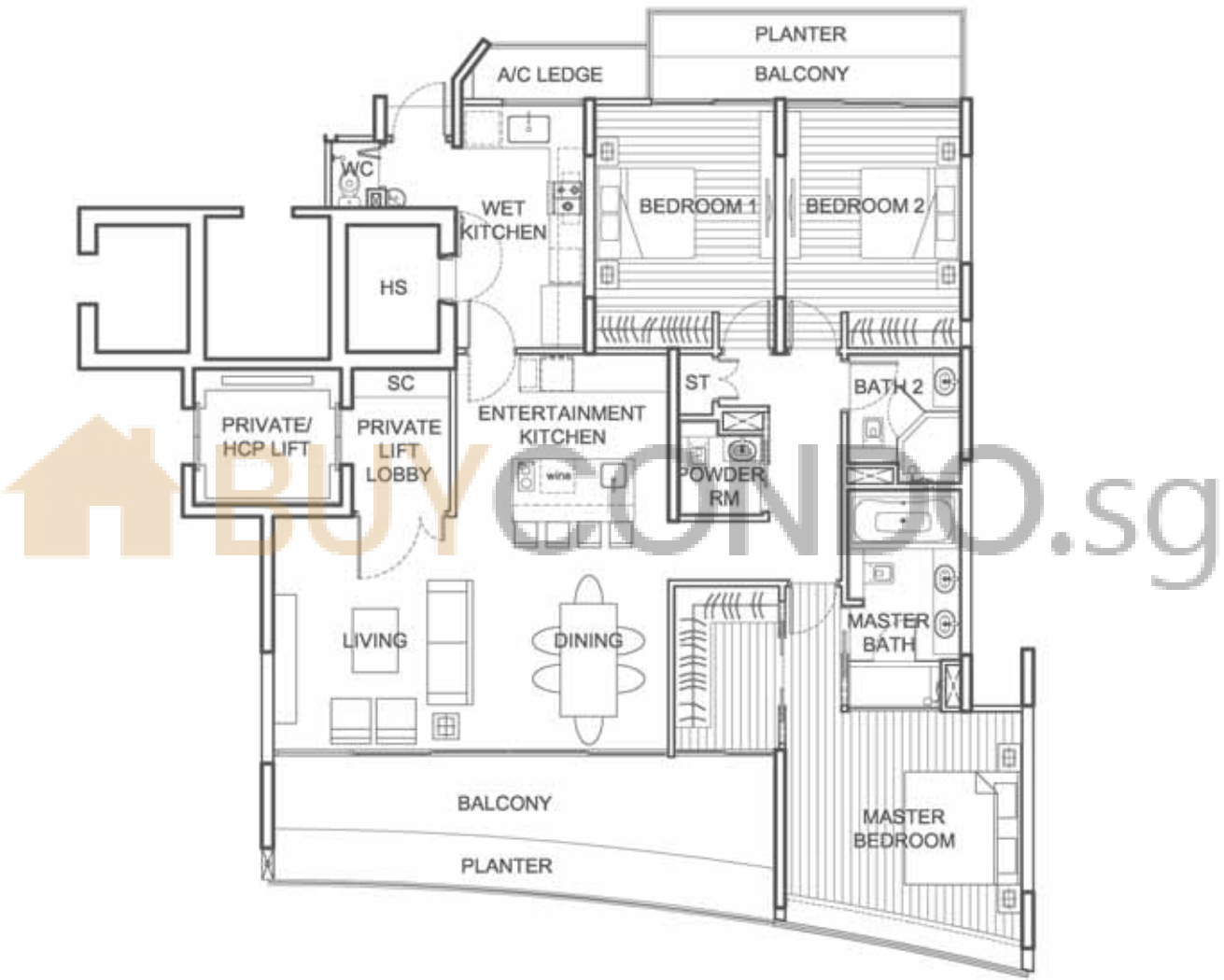


3 BEDROOM

TYPE D1

FLOOR AREA:
183 SQ.M.

- #03-03 #08-03
- #04-03 #09-03
- #05-03 #10-03
- #06-03 #11-03
- #07-03



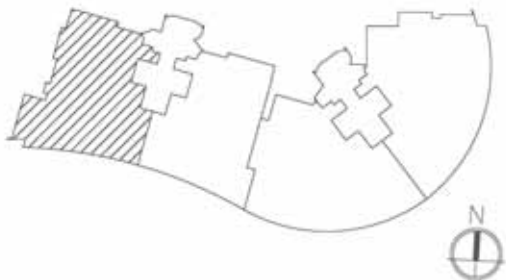
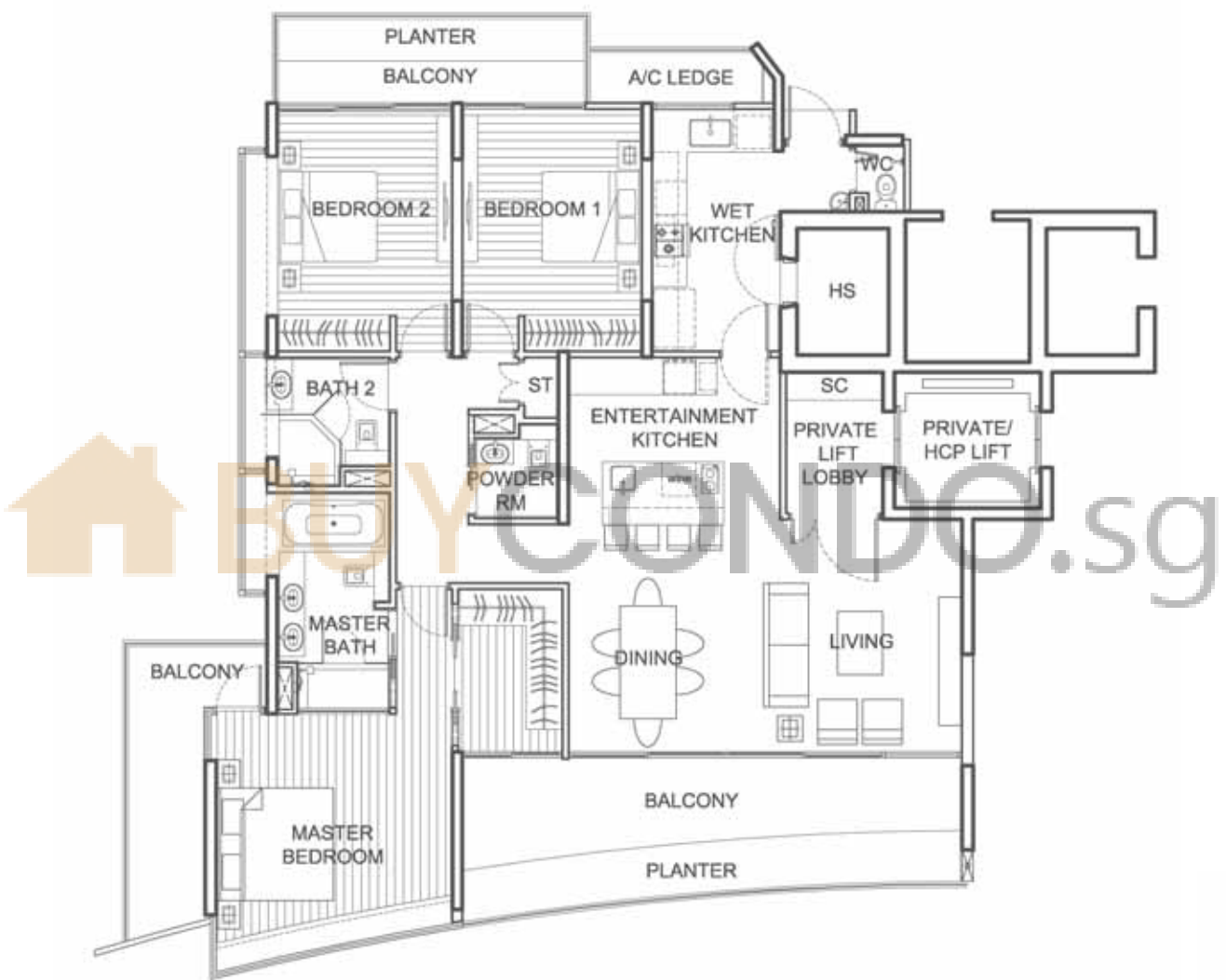
Subject to amendments as may be required or approved by the relevant authorities. Floor areas are approximate only and subject to final survey.

3 BEDROOM

TYPE D2

FLOOR AREA:
197 SQ.M.

- #03-04 #08-04
- #04-04 #09-04
- #05-04 #10-04
- #06-04 #11-04
- #07-04



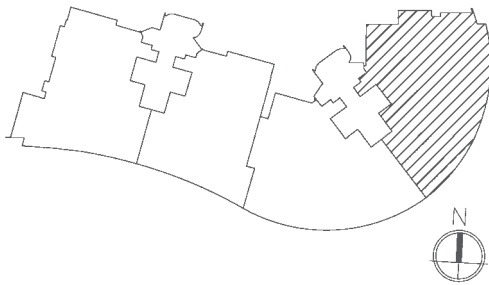
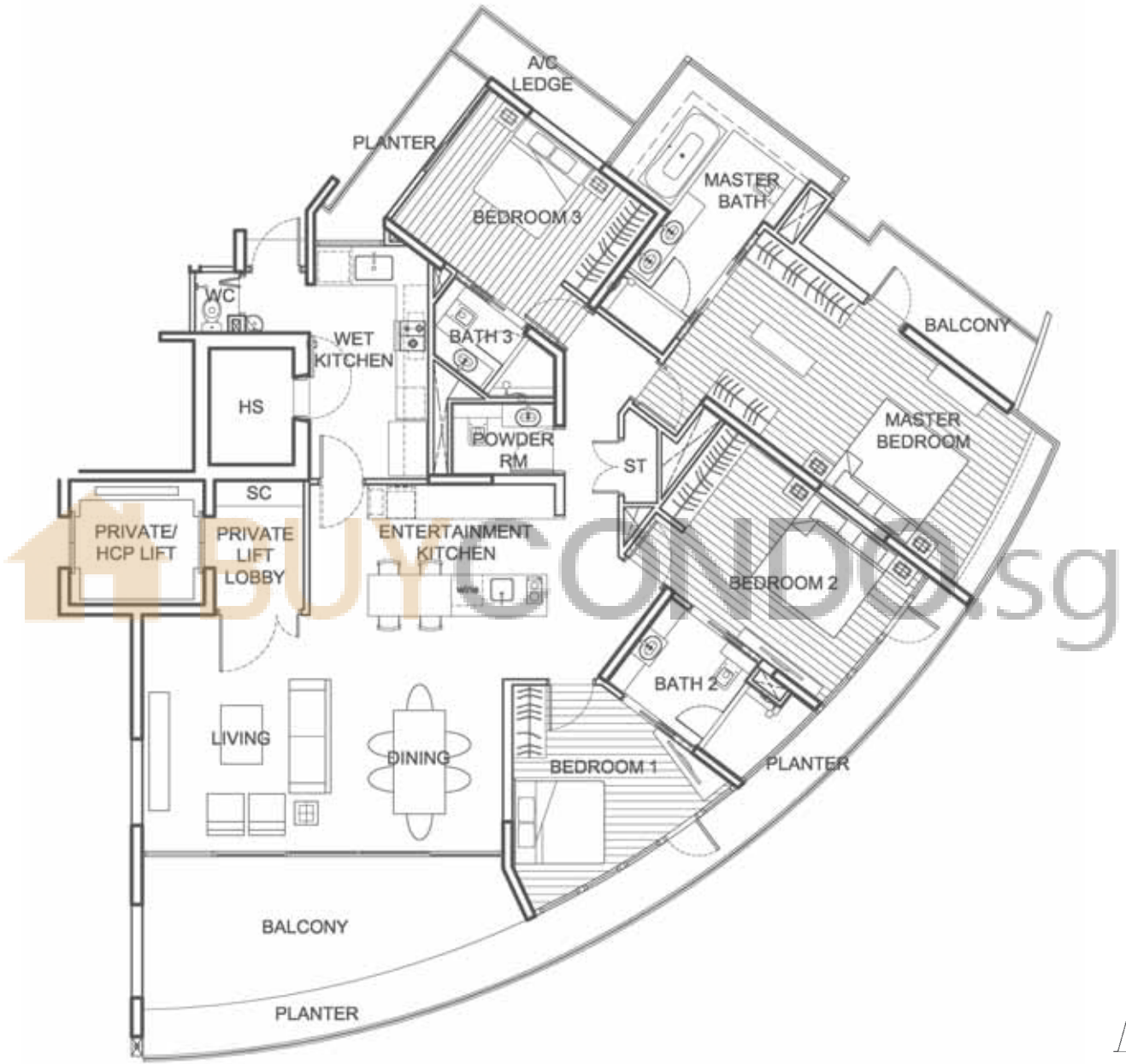
Subject to amendments as may be required or approved by the relevant authorities. Floor areas are approximate only and subject to final survey.

4 BEDROOM

TYPE C1

FLOOR AREA:
232 SQ.M.

- #03-01 #08-01
- #04-01 #09-01
- #05-01 #10-01
- #06-01 #11-01
- #07-01



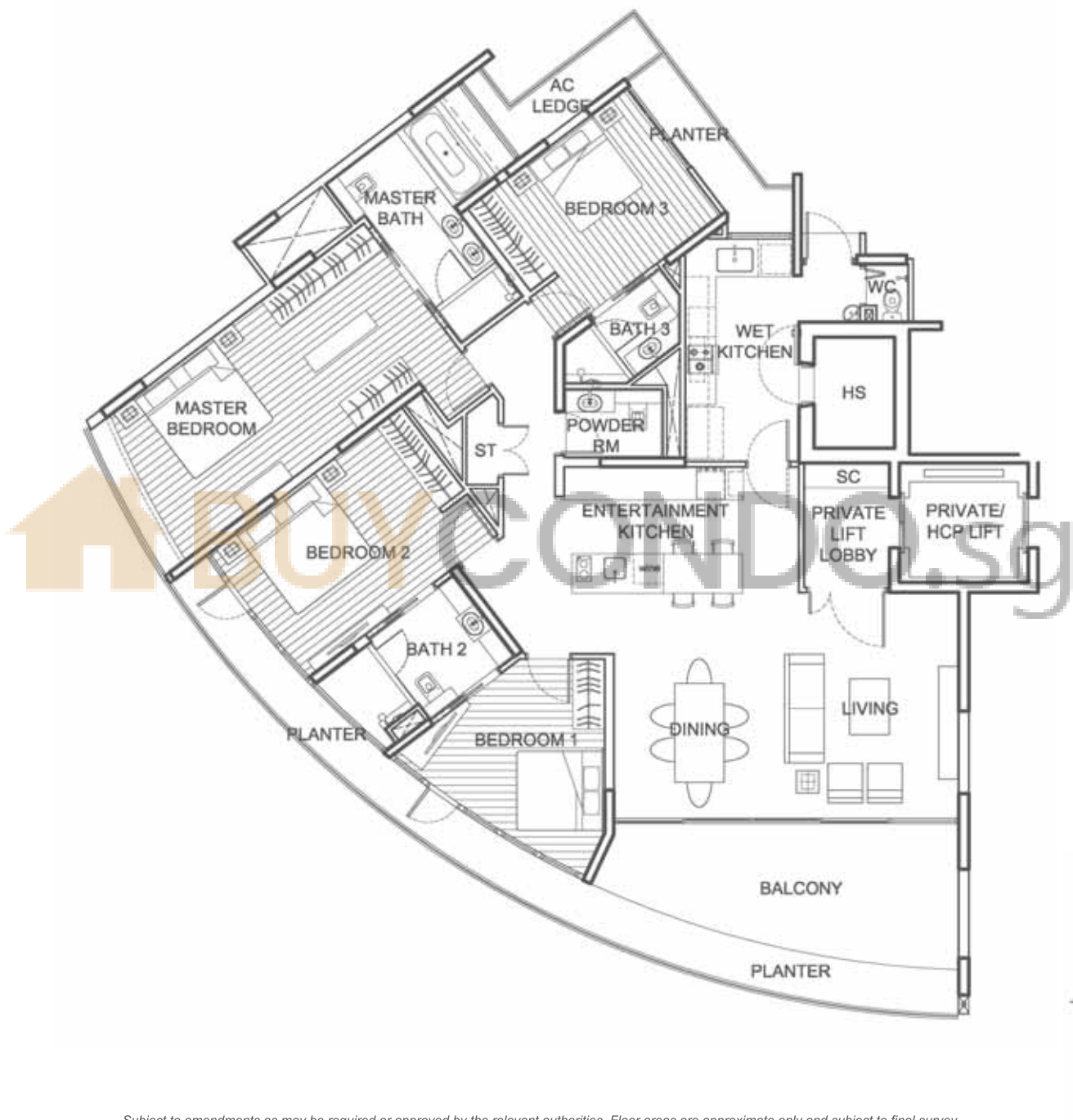
Subject to amendments as may be required or approved by the relevant authorities. Floor areas are approximate only and subject to final survey.

4 BEDROOM

TYPE C2

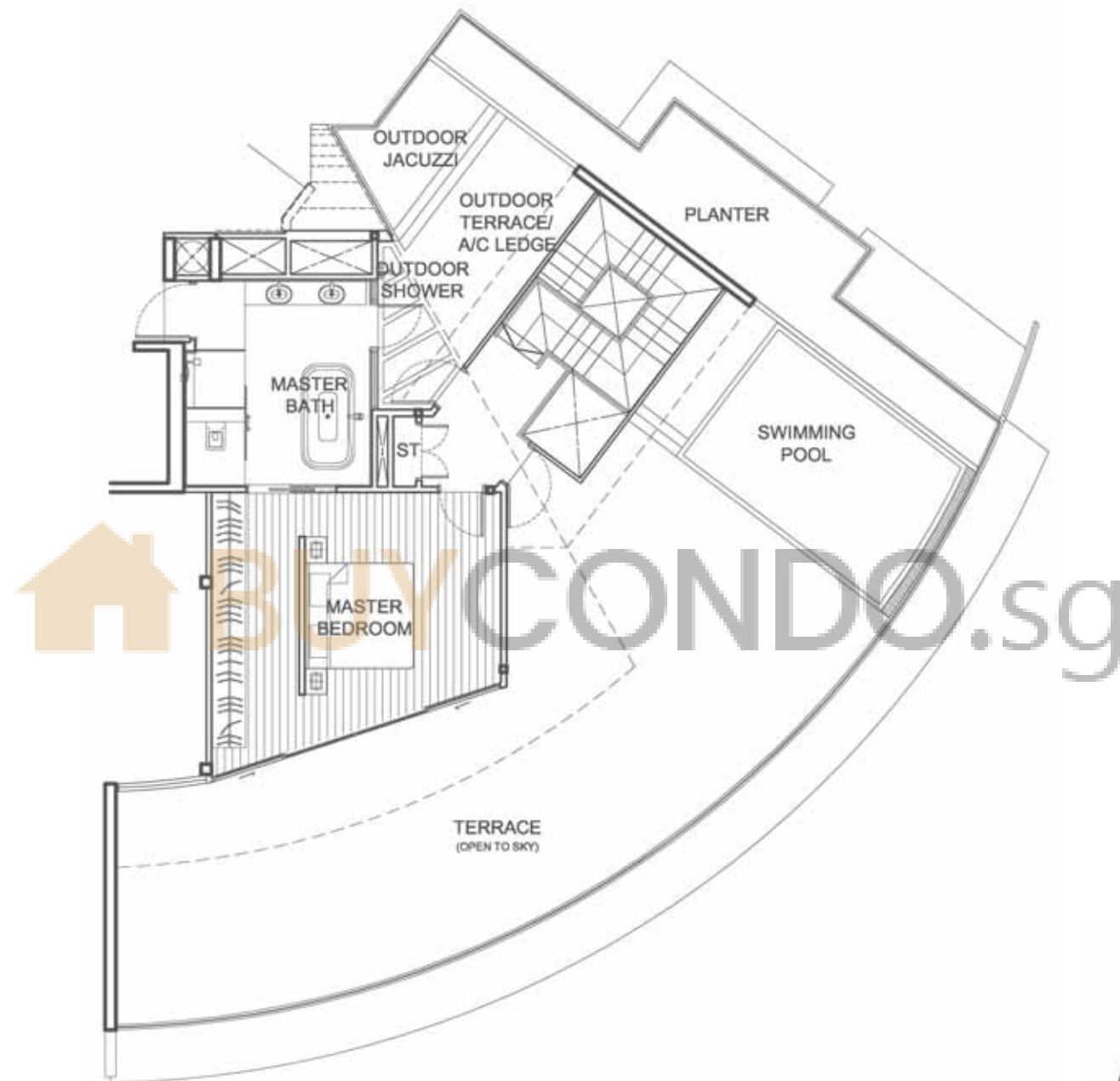
FLOOR AREA:
224 SQ.M.

- #03-02 #08-02
- #04-02 #09-02
- #05-02 #10-02
- #06-02 #11-02
- #07-02



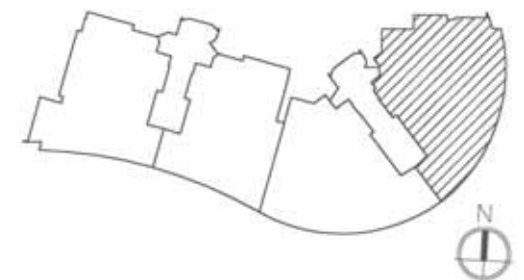
Subject to amendments as may be required or approved by the relevant authorities. Floor areas are approximate only and subject to final survey.

Subject to amendments as may be required or approved by the relevant authorities. Floor areas are approximate only and subject to final survey.



UPPER LEVEL

Subject to amendments as may be required or approved by the relevant authorities. Floor areas are approximate only and subject to final survey.

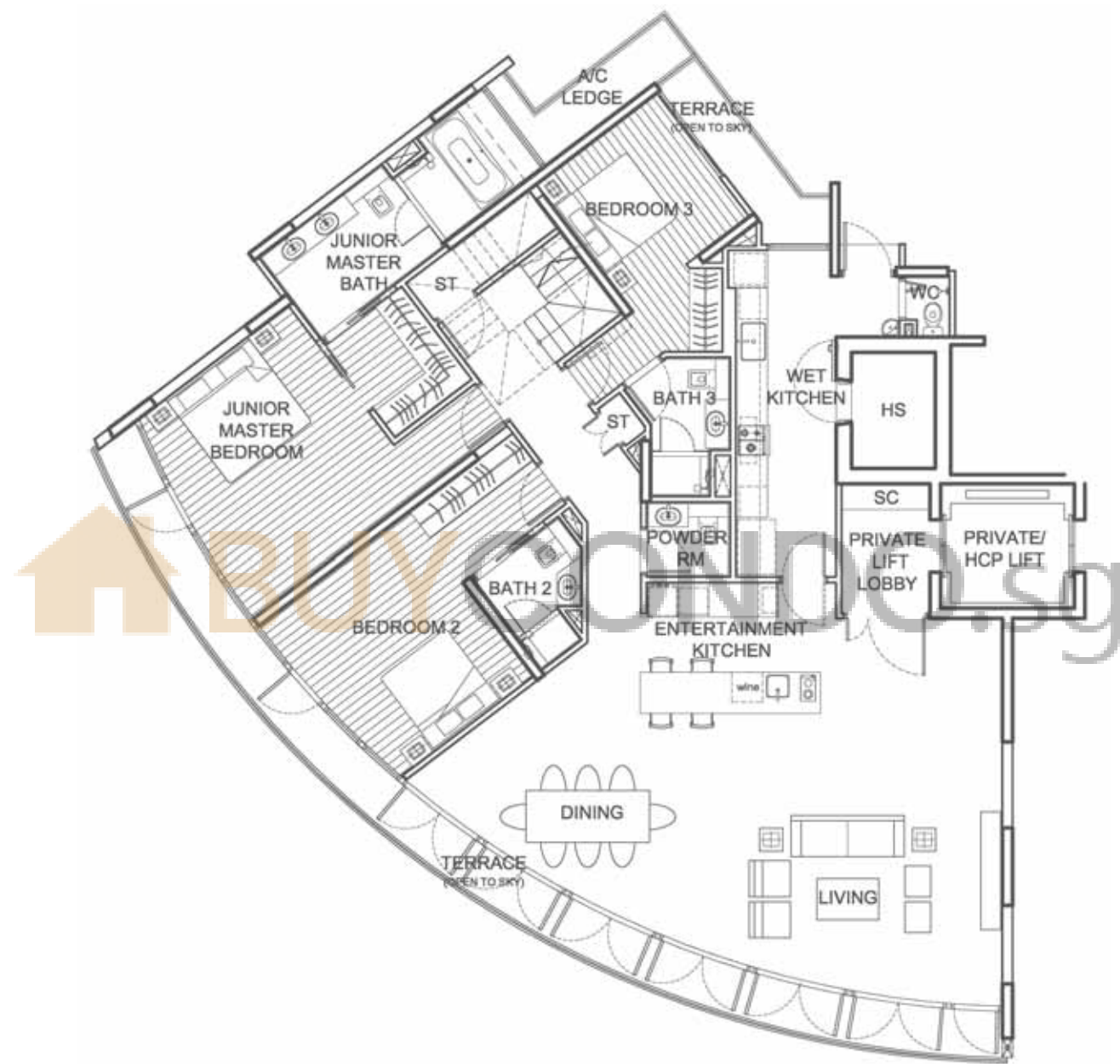


4 BEDROOM

TYPE A2

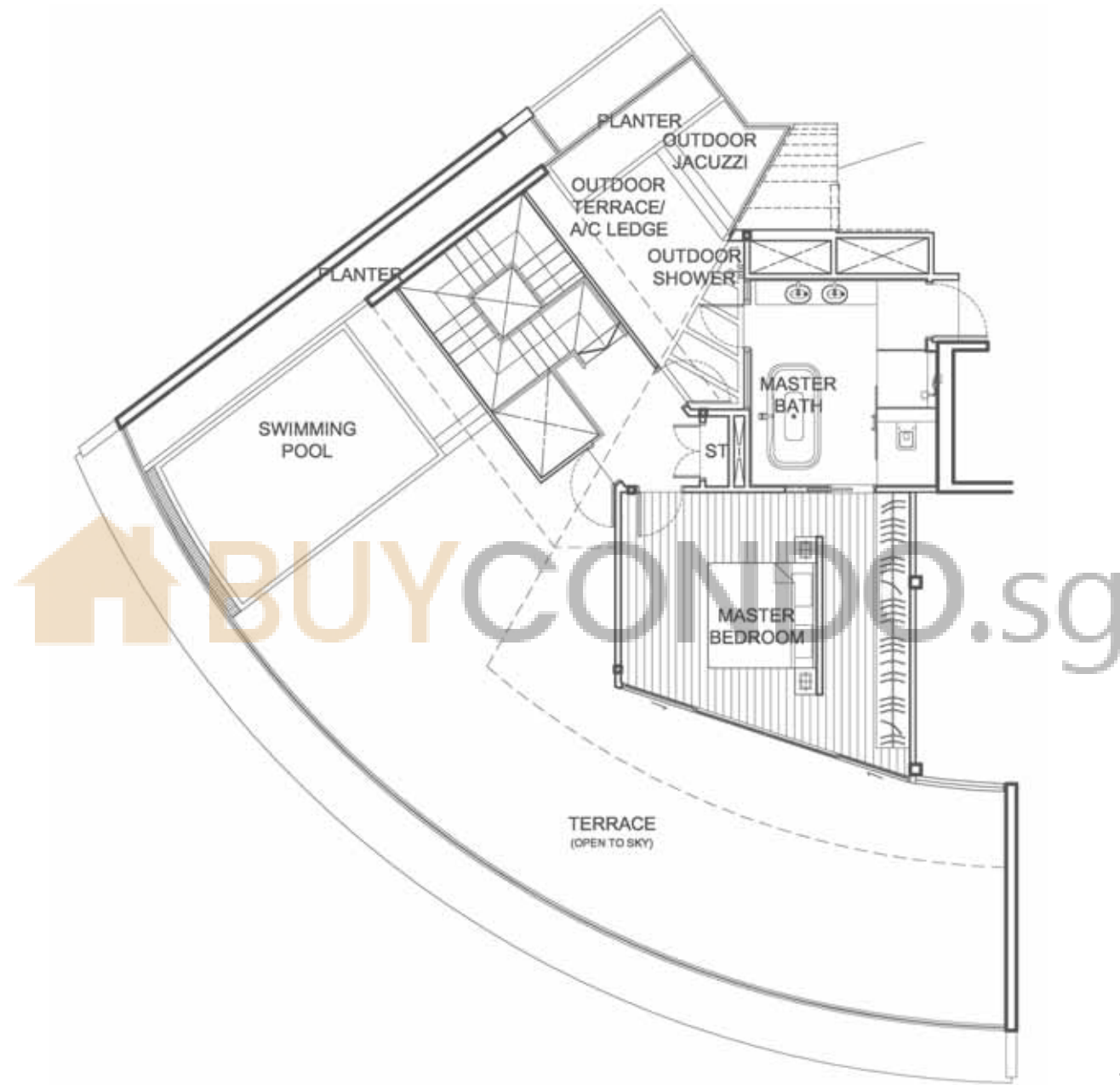
FLOOR AREA:
416 SQ.M.

#12-02

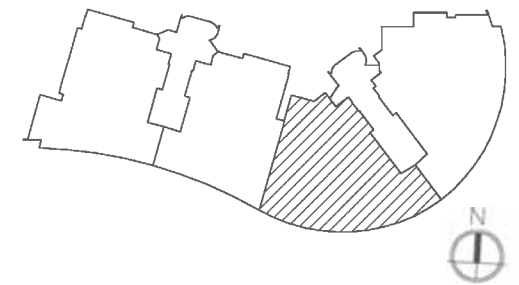


LOWER LEVEL

Subject to amendments as may be required or approved by the relevant authorities. Floor areas are approximate only and subject to final survey.



UPPER LEVEL



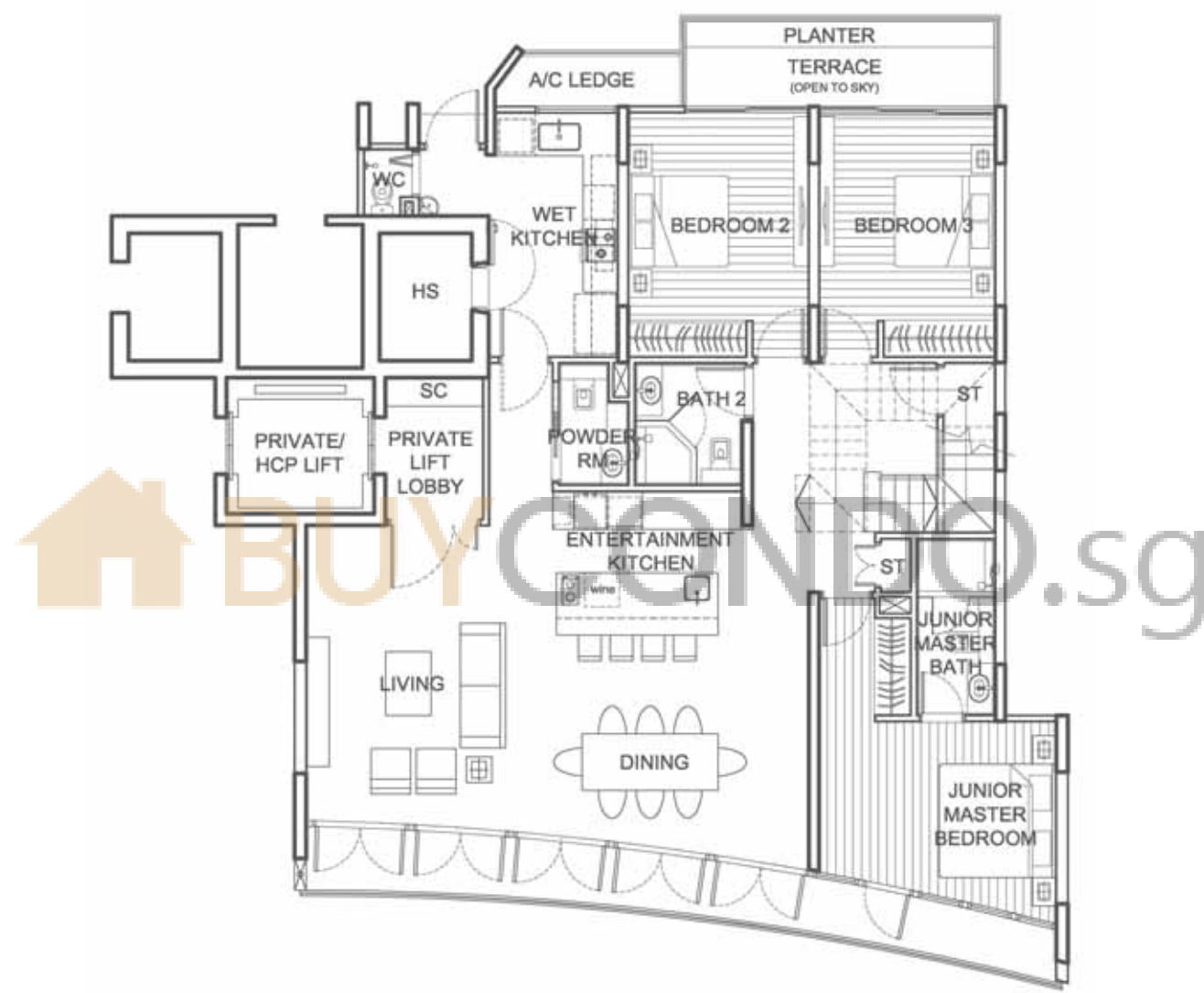
Subject to amendments as may be required or approved by the relevant authorities. Floor areas are approximate only and subject to final survey.

4 BEDROOM

TYPE B1

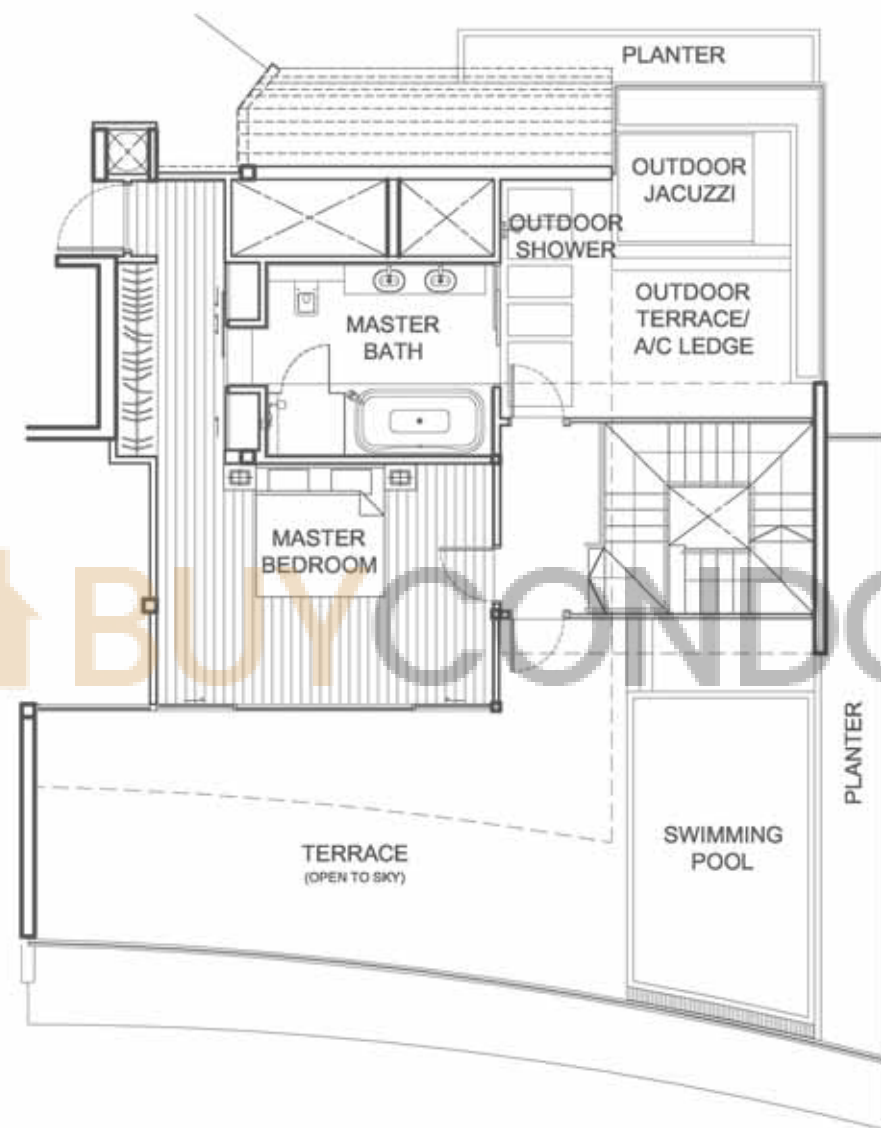
FLOOR AREA:
337 SQ.M.

#12-03



LOWER LEVEL

Subject to amendments as may be required or approved by the relevant authorities. Floor areas are approximate only and subject to final survey.



UPPER LEVEL

Subject to amendments as may be required or approved by the relevant authorities. Floor areas are approximate only and subject to final survey.

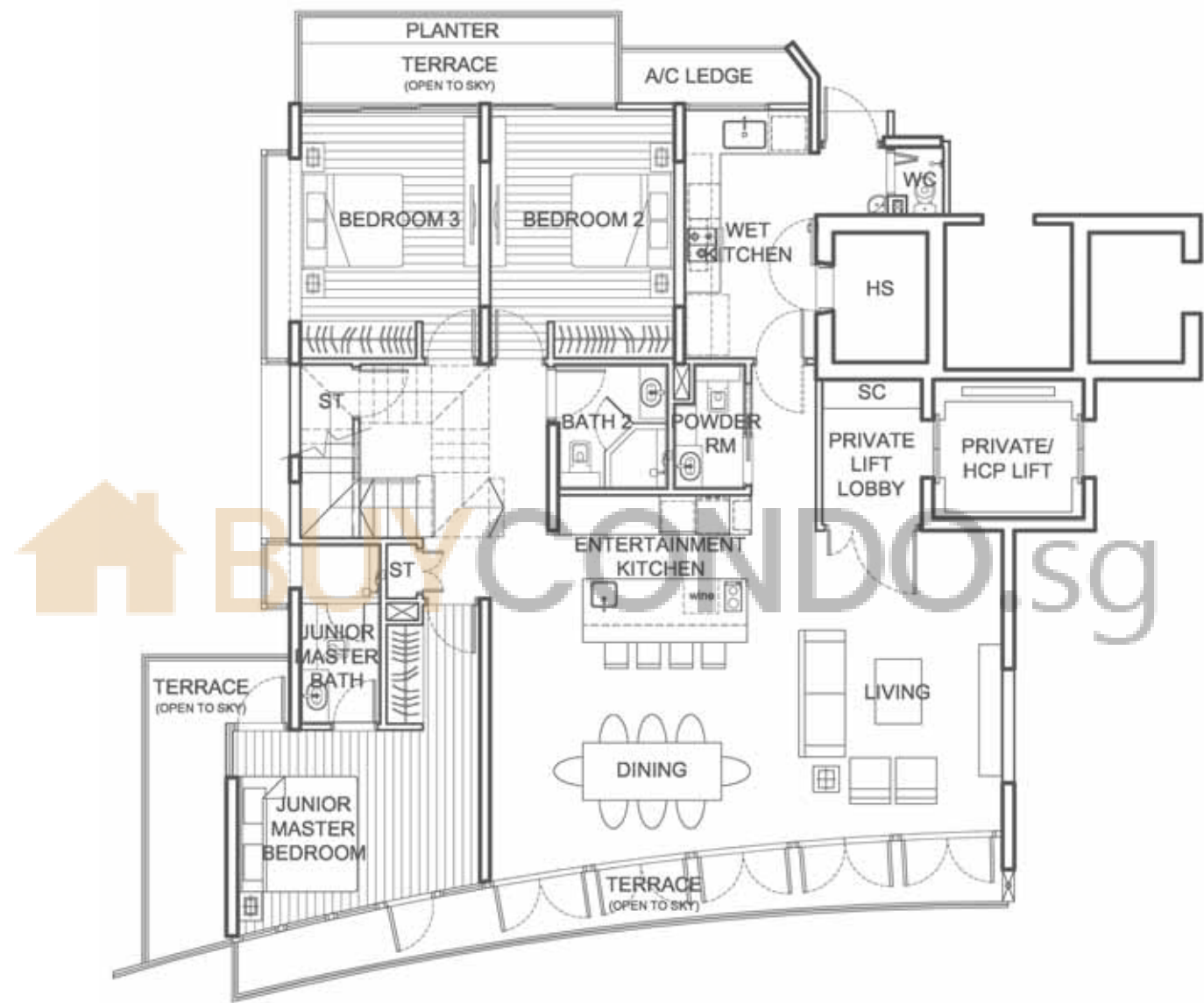


3 BEDROOM

TYPE B2

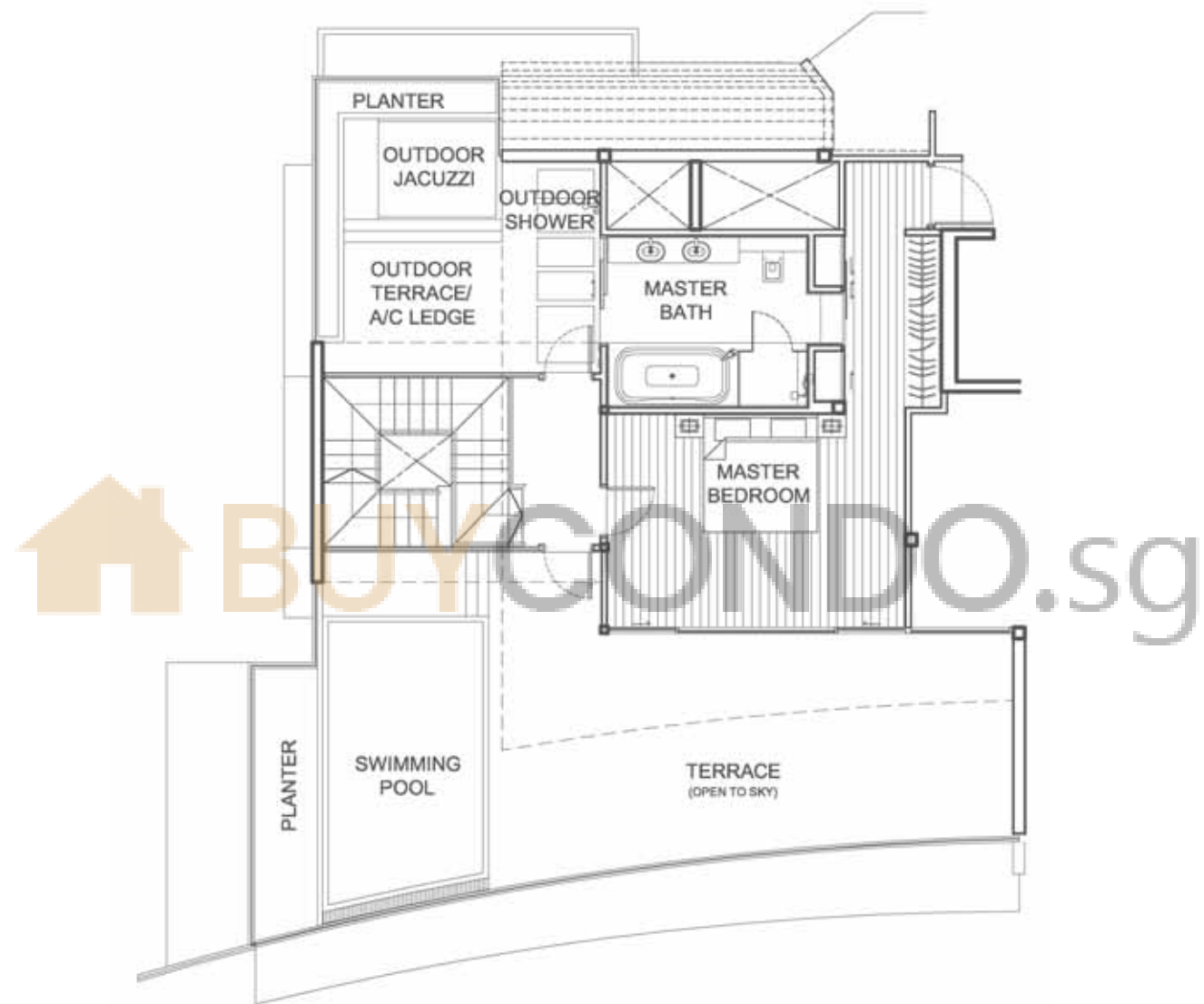
FLOOR AREA:
344 SQ.M.

#12-04

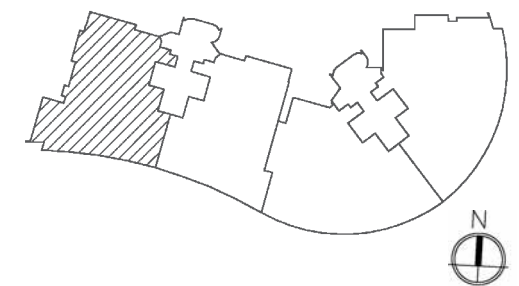


LOWER LEVEL

Subject to amendments as may be required or approved by the relevant authorities. Floor areas are approximate only and subject to final survey.



UPPER LEVEL



Subject to amendments as may be required or approved by the relevant authorities. Floor areas are approximate only and subject to final survey.