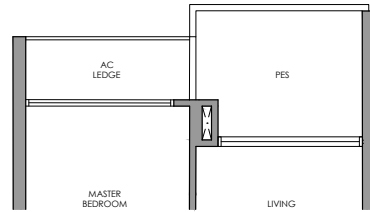
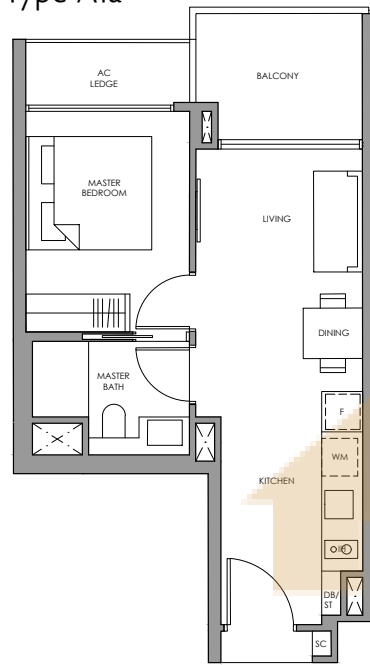


1-Bedroom

Type A1a(p)



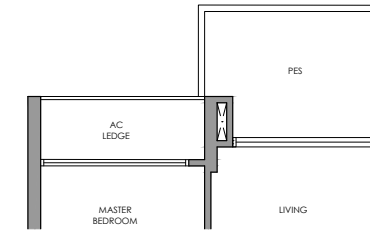
Type A1a



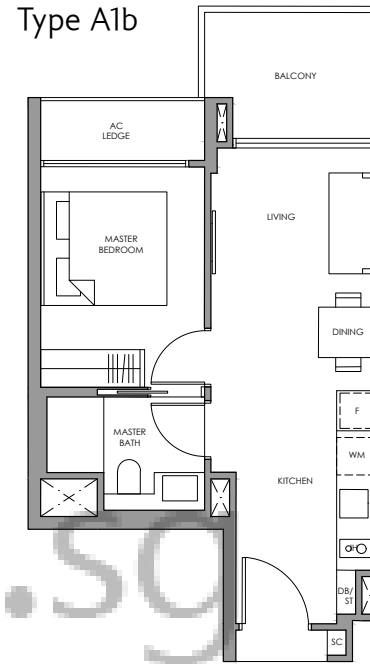
Fridge F
 Induction Hob IH
 Shoe Cabinet SC
 Washer cum Dryer WM
 Distribution Board / Store DB/ST

1-Bedroom

Type A1b(p)



Type A1b



Fridge F
 Induction Hob IH
 Shoe Cabinet SC
 Washer cum Dryer WM
 Distribution Board / Store DB/ST

✦ Type A1a(p)

45 sq m / 484 sq ft
 Inclusive of 6 sq m PES
 & 3 sq m AC Ledge

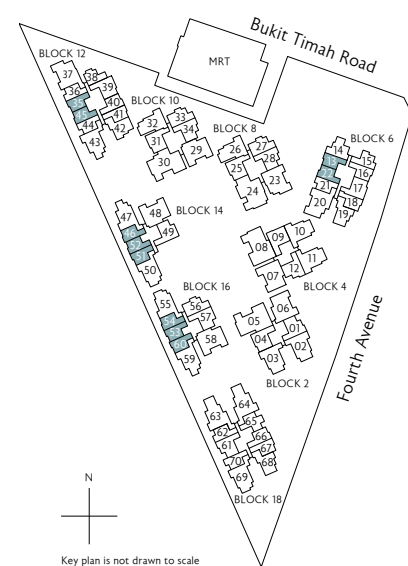
- | | |
|----------|----------|
| Block 6 | Block 14 |
| #01-13 | #01-46 * |
| #01-22 * | #01-51 |
| | #01-52 * |
| Block 12 | Block 16 |
| #01-35 | #01-53 |
| #01-45 * | #01-54 * |
| | #01-60 |

0 1 3 5M
 * Mirror Image ^ High Ceiling

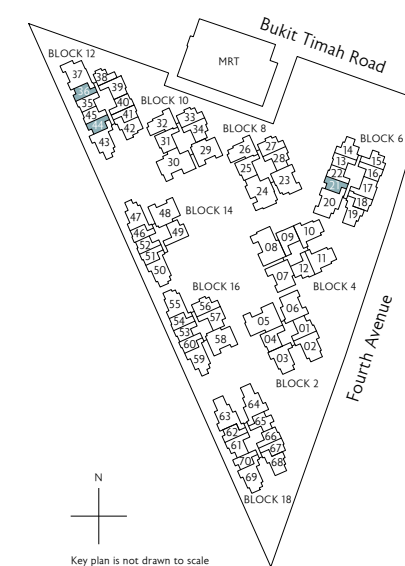
✦ Type A1a

45 sq m / 484 sq ft
 Inclusive of 6 sq m Balcony
 & 3 sq m AC Ledge

- | | |
|--------------------|------------|
| Block 6 | Block 14 |
| #02-13 to #10-13 | #02-46 * ^ |
| #02-22 to #10-22 * | #02-51 ^ |
| | #02-52 * ^ |
| Block 12 | Block 16 |
| #02-35 to #10-35 | #02-53 ^ |
| #02-45 to #10-45 * | #02-54 * ^ |
| | #02-60 ^ |



N
 Key plan is not drawn to scale



N
 Key plan is not drawn to scale

✦ Type A1b(p)

45 sq m / 484 sq ft
 Inclusive of 6 sq m PES
 & 3 sq m AC Ledge

- | |
|----------|
| Block 6 |
| #01-21 |
| Block 12 |
| #01-36 * |
| #01-44 |

0 1 3 5M
 * Mirror Image ^ High Ceiling

✦ Type A1b

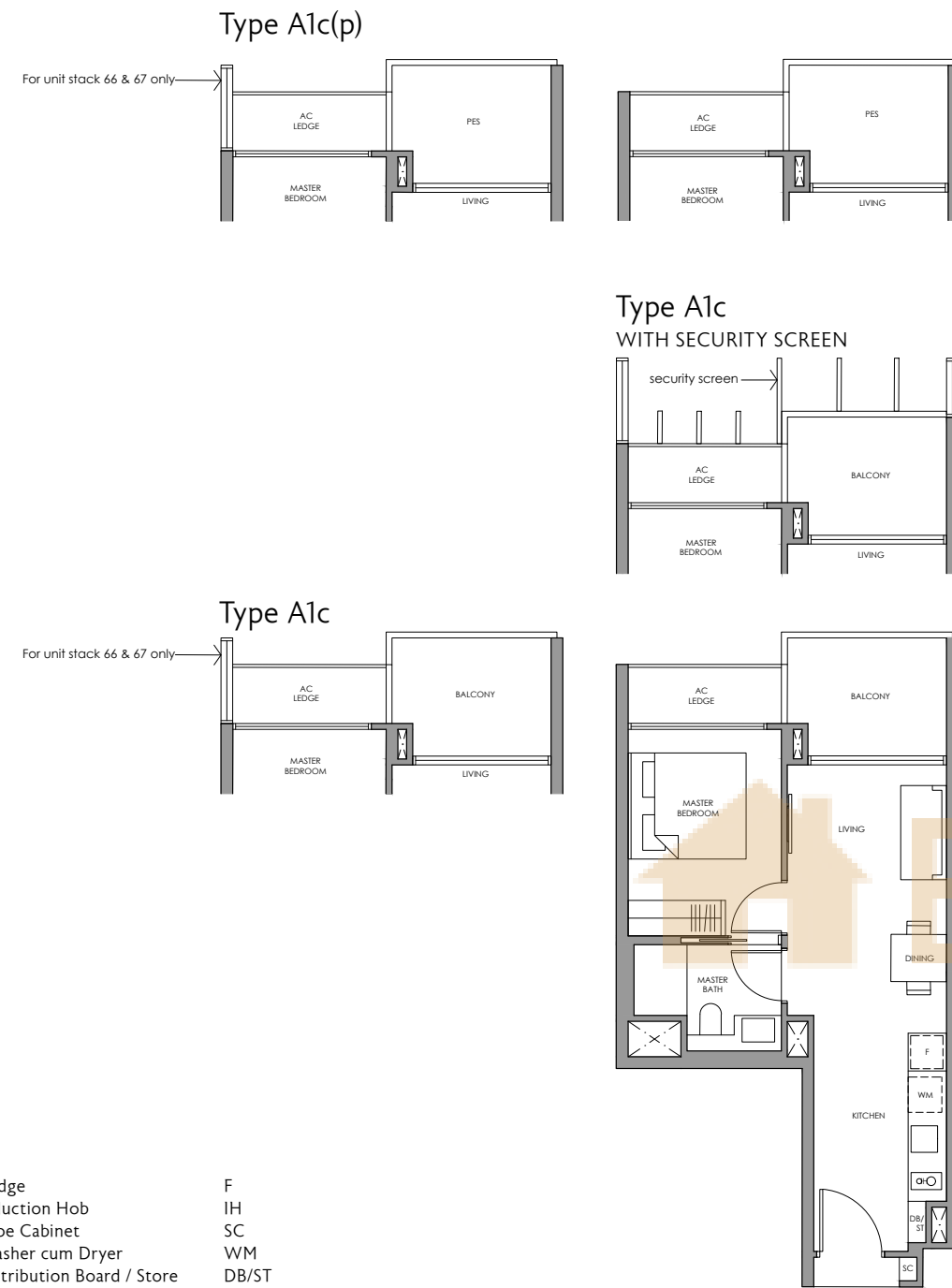
45 sq m / 484 sq ft
 Inclusive of 6 sq m Balcony
 & 3 sq m AC Ledge

- | |
|--------------------|
| Block 6 |
| #02-21 to #10-21 |
| Block 12 |
| #02-36 to #10-36 * |
| #02-44 to #10-44 |

All plans are subject to change as may be required or approved by the relevant authorities. All floor areas are approximate measurements only and are subject to final survey. The balcony shall not be enclosed except with the approved balcony screen. For an illustration of the approved balcony screen, please refer to the diagram annexed hereto as "Annexure 1"

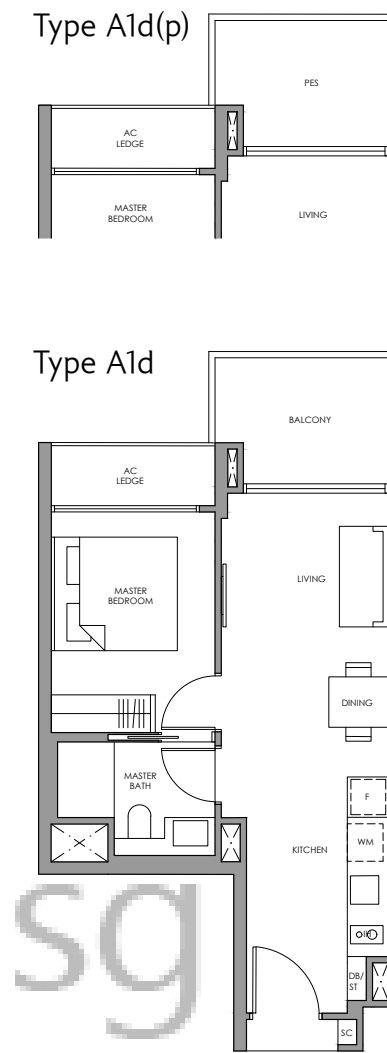
All plans are subject to change as may be required or approved by the relevant authorities. All floor areas are approximate measurements only and are subject to final survey. The balcony shall not be enclosed except with the approved balcony screen. For an illustration of the approved balcony screen, please refer to the diagram annexed hereto as "Annexure 1"

1-Bedroom



Fridge F
 Induction Hob IH
 Shoe Cabinet SC
 Washer cum Dryer WM
 Distribution Board / Store DB/ST

1-Bedroom



Fridge F
 Induction Hob IH
 Shoe Cabinet SC
 Washer cum Dryer WM
 Distribution Board / Store DB/ST

Type A1c(p)

47 sq m / 506 sq ft
 Inclusive of 6 sq m PES
 & 3 sq m AC Ledge

Block 12
 #01-41 *

Block 18
 #01-66
 #01-67 *



* Mirror Image ^ High Ceiling

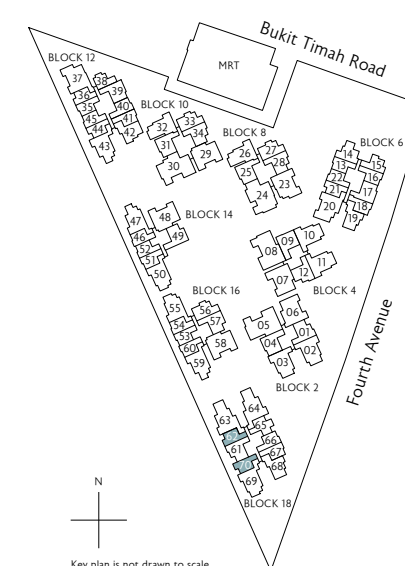
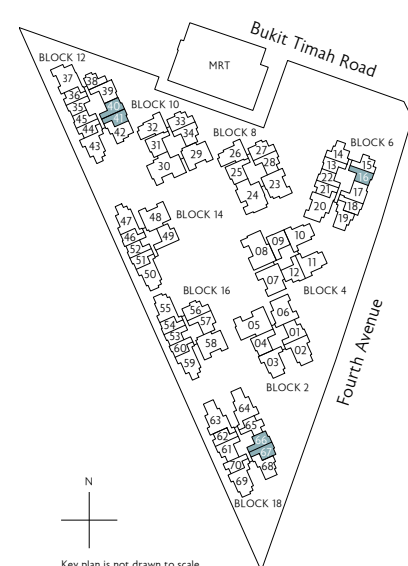
Type A1c

47 sq m / 506 sq ft
 Inclusive of 6 sq m Balcony
 & 3 sq m AC Ledge

Block 6
 #02-16 to #06-16 *
 #07-16 to #10-16 * (security screen)

Block 12
 #02-40 to #10-40
 #02-41 to #10-41 *

Block 18
 #02-66 to #06-66
 #02-67 to #06-67 *



Type A1d(p)

47 sq m / 506 sq ft
 Inclusive of 6 sq m PES
 & 3 sq m AC Ledge

Block 18
 #01-62 *
 #01-70

Type A1d

47 sq m / 506 sq ft
 Inclusive of 6 sq m Balcony
 & 3 sq m AC Ledge

Block 18
 #02-62 to #06-62 *
 #02-70 to #06-70



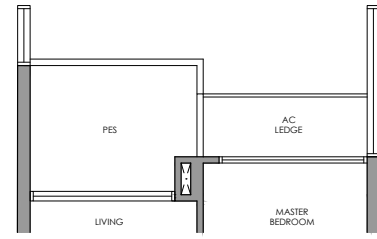
* Mirror Image ^ High Ceiling

All plans are subject to change as may be required or approved by the relevant authorities. All floor areas are approximate measurements only and are subject to final survey. The balcony shall not be enclosed except with the approved balcony screen. For an illustration of the approved balcony screen, please refer to the diagram annexed hereto as "Annexure 1"

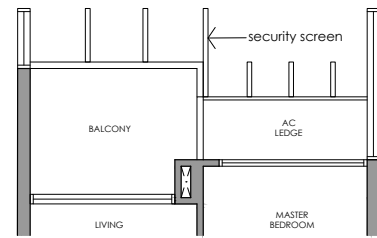
All plans are subject to change as may be required or approved by the relevant authorities. All floor areas are approximate measurements only and are subject to final survey. The balcony shall not be enclosed except with the approved balcony screen. For an illustration of the approved balcony screen, please refer to the diagram annexed hereto as "Annexure 1"

1-Bedroom

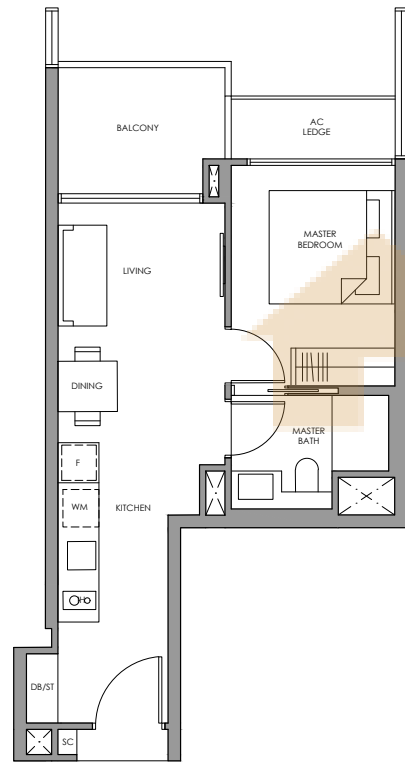
Type A2(p)



Type A2
WITH SECURITY SCREEN



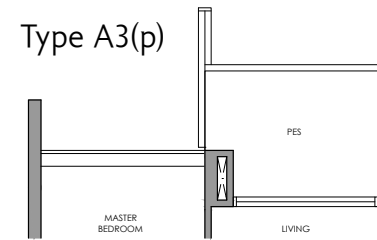
Type A2



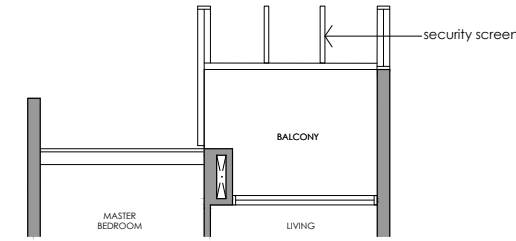
Fridge F
 Induction Hob IH
 Shoe Cabinet SC
 Washer cum Dryer WM
 Distribution Board / Store DB/ST

1-Bedroom

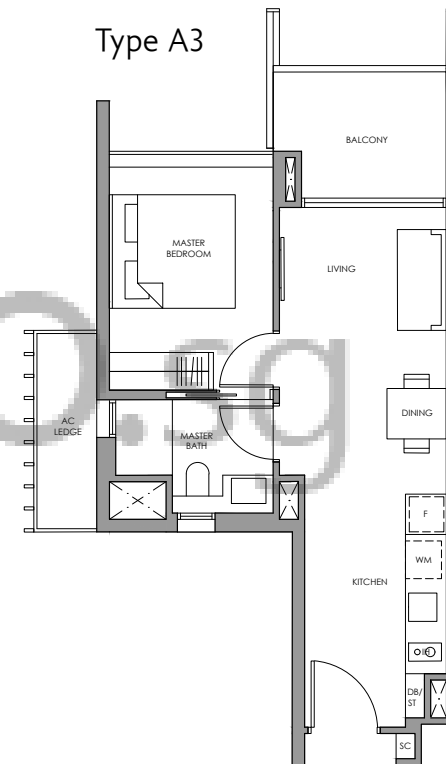
Type A3(p)



Type A3
WITH SECURITY SCREEN



Type A3



Fridge F
 Induction Hob IH
 Shoe Cabinet SC
 Washer cum Dryer WM
 Distribution Board / Store DB/ST

Type A2(p)

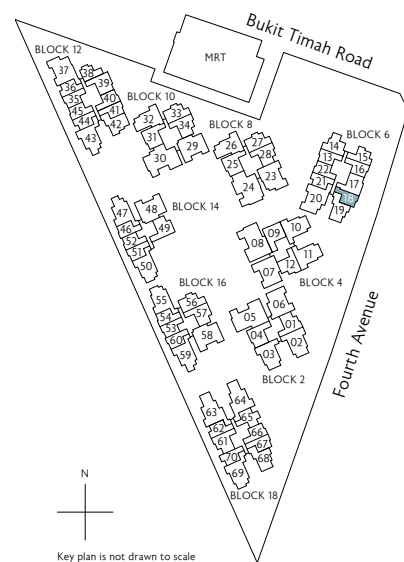
46 sq m / 495 sq ft
 Inclusive of 6 sq m PES
 & 3 sq m AC Ledge

Block 6
 #01-18

Type A2

46 sq m / 495 sq ft
 Inclusive of 6 sq m Balcony
 & 3 sq m AC Ledge

Block 6
 #02-18 to #06-18
 #07-18 to #10-18 (security screen)



N
 Key plan is not drawn to scale

0 1 3 5M
 * Mirror Image ^ High Ceiling

All plans are subject to change as may be required or approved by the relevant authorities. All floor areas are approximate measurements only and are subject to final survey. The balcony shall not be enclosed except with the approved balcony screen. For an illustration of the approved balcony screen, please refer to the diagram annexed hereto as "Annexure 1"

Type A3(p)

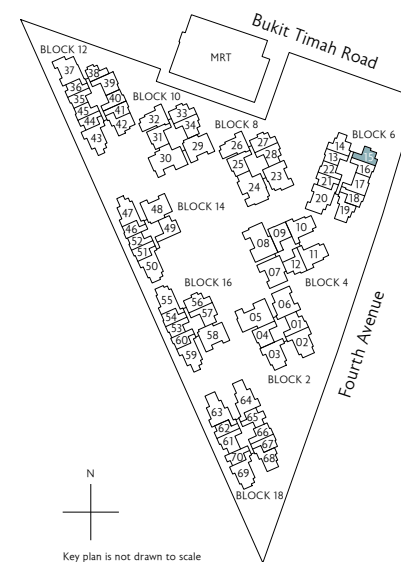
48 sq m / 517 sq ft
 Inclusive of 6 sq m PES
 & 4 sq m AC Ledge

Block 6
 #01-15

Type A3

48 sq m / 517 sq ft
 Inclusive of 6 sq m Balcony
 & 4 sq m AC Ledge

Block 6
 #02-15 to #06-15
 #07-15 to #10-15 (security screen)



N
 Key plan is not drawn to scale

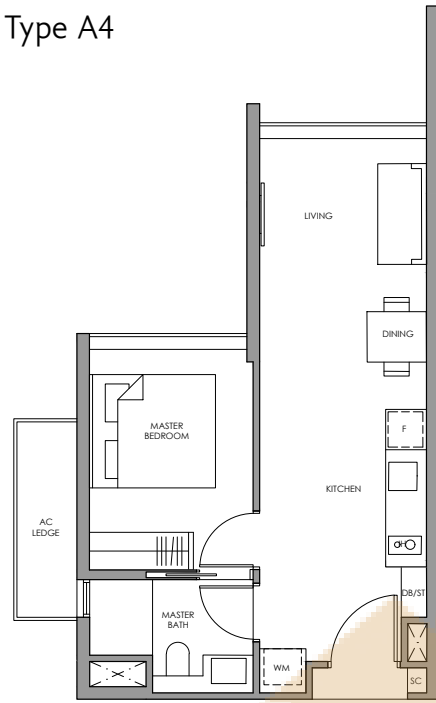
0 1 3 5M
 * Mirror Image ^ High Ceiling

All plans are subject to change as may be required or approved by the relevant authorities. All floor areas are approximate measurements only and are subject to final survey. The balcony shall not be enclosed except with the approved balcony screen. For an illustration of the approved balcony screen, please refer to the diagram annexed hereto as "Annexure 1"

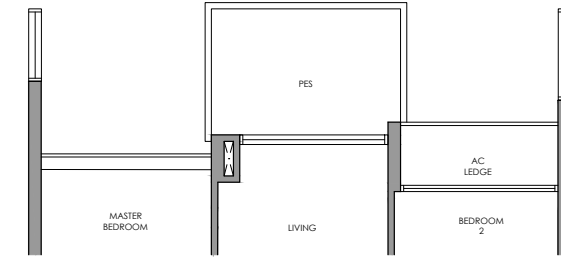
1-Bedroom

2-Bedroom

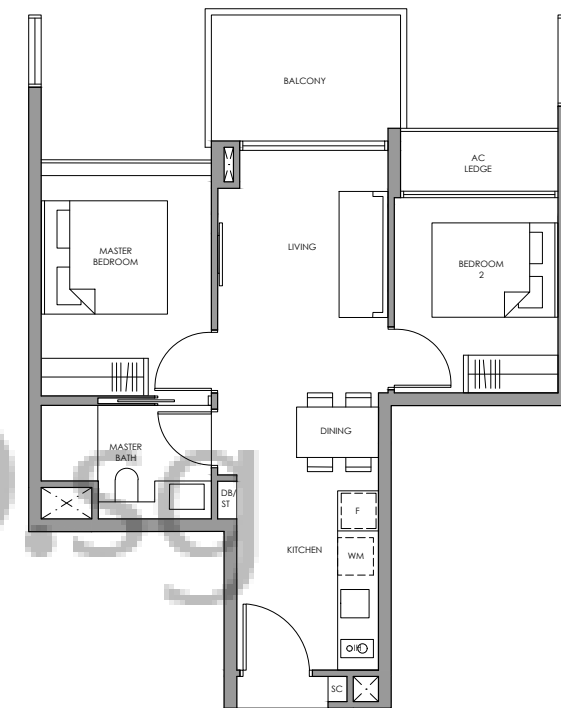
Type A4



Type B1(p)



Type B1



Fridge F
 Induction Hob IH
 Shoe Cabinet SC
 Washer cum Dryer WM
 Distribution Board / Store DB/ST

Fridge F
 Induction Hob IH
 Shoe Cabinet SC
 Washer cum Dryer WM
 Distribution Board / Store DB/ST



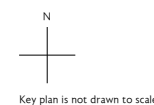
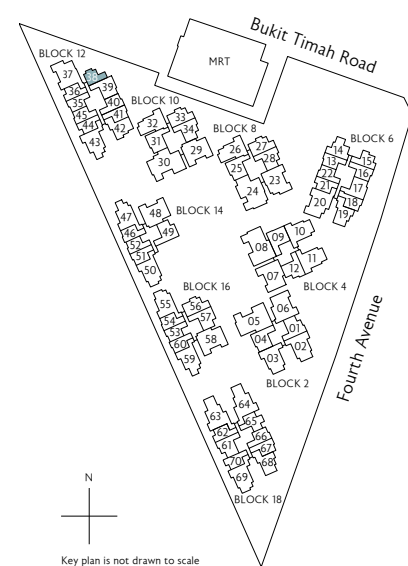
Type A4

44 sq m / 474 sq ft
 Inclusive of 4 sq m AC Ledge

Block 12
 #01-38 to #10-38



* Mirror Image ^ High Ceiling



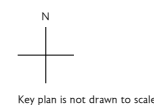
Key plan is not drawn to scale



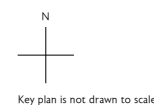
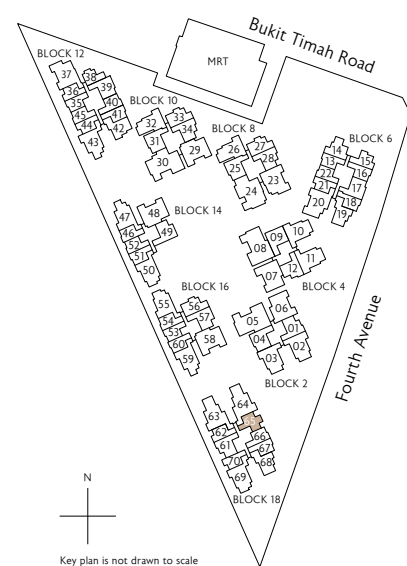
Type B1(p)

58 sq m / 624 sq ft
 Inclusive of 7 sq m PES
 & 3 sq m AC Ledge

Block 18
 #01-65



* Mirror Image ^ High Ceiling



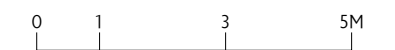
Key plan is not drawn to scale



Type B1

58 sq m / 624 sq ft
 Inclusive of 7 sq m Balcony
 & 3 sq m AC Ledge

Block 18
 #02-65 to #06-65



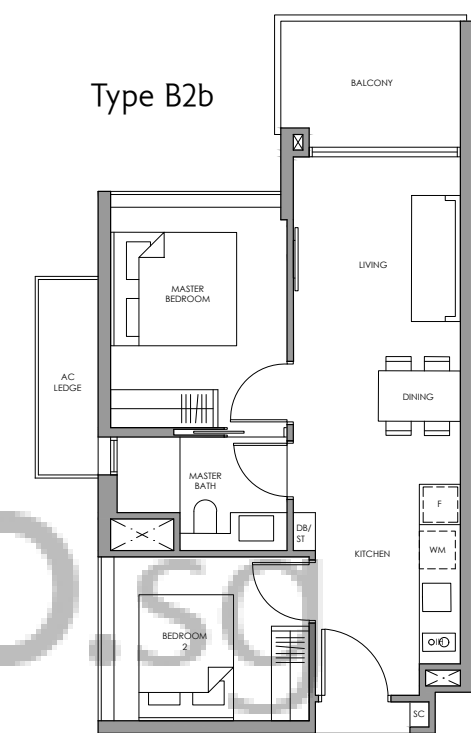
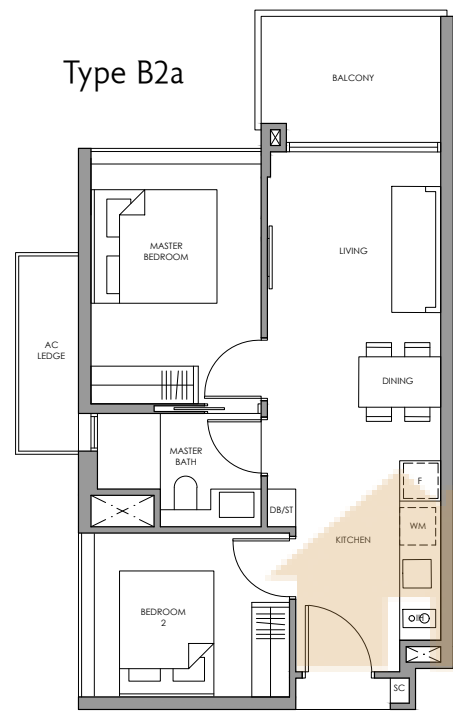
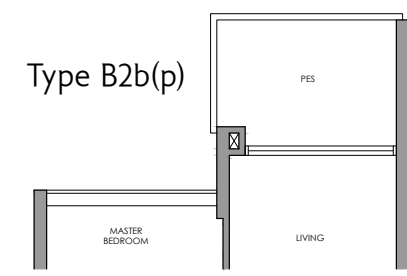
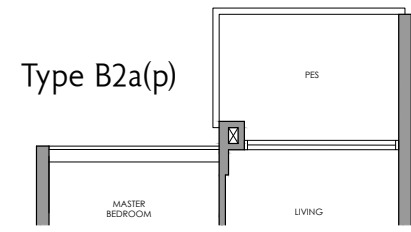
* Mirror Image ^ High Ceiling

All plans are subject to change as may be required or approved by the relevant authorities. All floor areas are approximate measurements only and are subject to final survey. The balcony shall not be enclosed except with the approved balcony screen. For an illustration of the approved balcony screen, please refer to the diagram annexed hereto as "Annexure 1"

All plans are subject to change as may be required or approved by the relevant authorities. All floor areas are approximate measurements only and are subject to final survey. The balcony shall not be enclosed except with the approved balcony screen. For an illustration of the approved balcony screen, please refer to the diagram annexed hereto as "Annexure 1"

2-Bedroom

2-Bedroom



BUYCONDO.SG

Fridge F
 Induction Hob IH
 Shoe Cabinet SC
 Washer cum Dryer WM
 Distribution Board / Store DB/ST

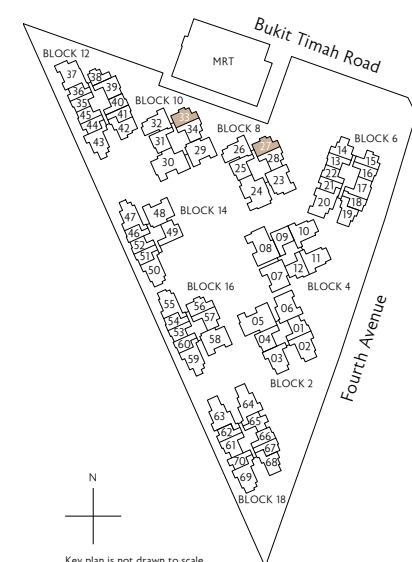
Fridge F
 Induction Hob IH
 Shoe Cabinet SC
 Washer cum Dryer WM
 Distribution Board / Store DB/ST

Type B2a(p)
 60 sq m / 646 sq ft
 Inclusive of 6 sq m PES
 & 4 sq m AC Ledge

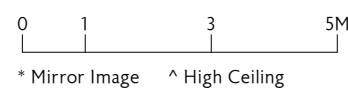
Type B2a
 60 sq m / 646 sq ft
 Inclusive of 6 sq m Balcony
 & 4 sq m AC Ledge

Block 8
 #01-27
 Block 10
 #01-33

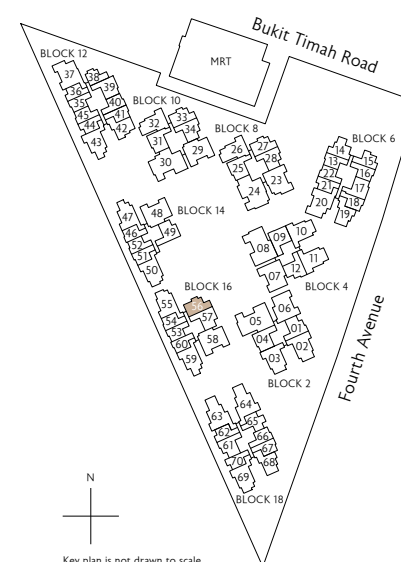
Block 8
 #02-27 to #10-27
 Block 10
 #02-33 to #10-33



N
 Key plan is not drawn to scale



* Mirror Image ^ High Ceiling



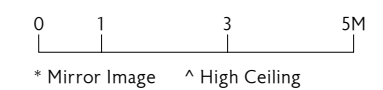
N
 Key plan is not drawn to scale

Type B2b(p)
 60 sq m / 646 sq ft
 Inclusive of 6 sq m PES
 & 4 sq m AC Ledge

Type B2b
 60 sq m / 646 sq ft
 Inclusive of 6 sq m Balcony
 & 4 sq m AC Ledge

Block 16
 #01-56

Block 16
 #02-56 ^



* Mirror Image ^ High Ceiling

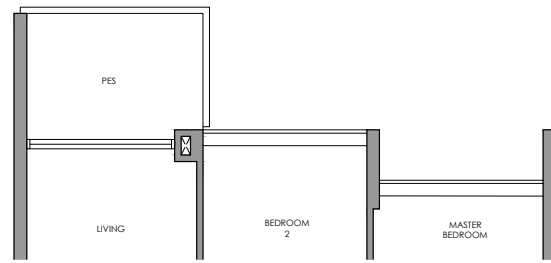
All plans are subject to change as may be required or approved by the relevant authorities. All floor areas are approximate measurements only and are subject to final survey. The balcony shall not be enclosed except with the approved balcony screen. For an illustration of the approved balcony screen, please refer to the diagram annexed hereto as "Annexure 1"

All plans are subject to change as may be required or approved by the relevant authorities. All floor areas are approximate measurements only and are subject to final survey. The balcony shall not be enclosed except with the approved balcony screen. For an illustration of the approved balcony screen, please refer to the diagram annexed hereto as "Annexure 1"

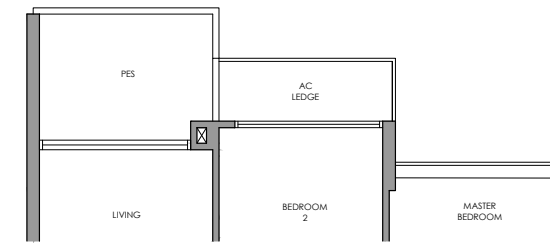
2-Bedroom

2-Bedroom Premium

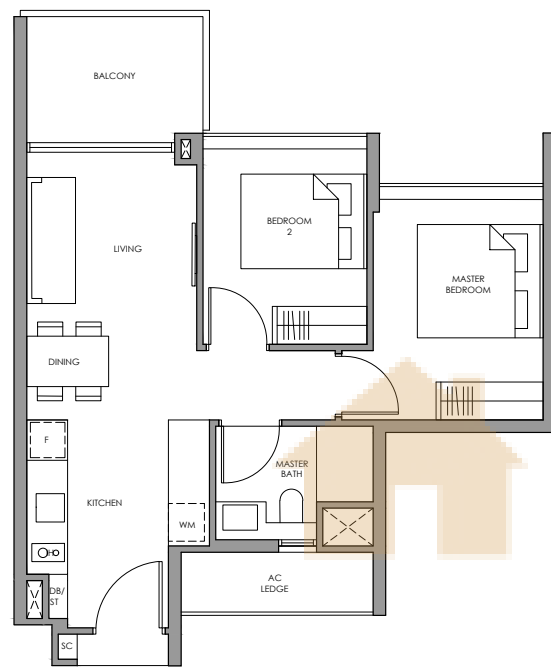
Type B3(p)



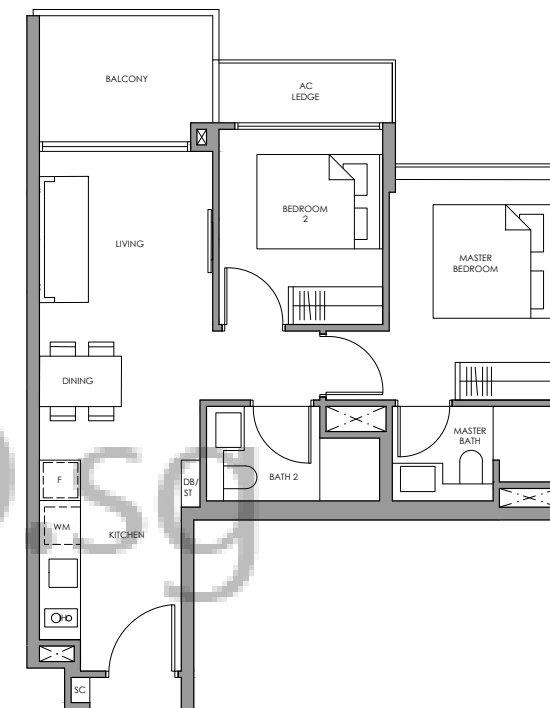
Type BP1a(p)



Type B3



Type BP1a

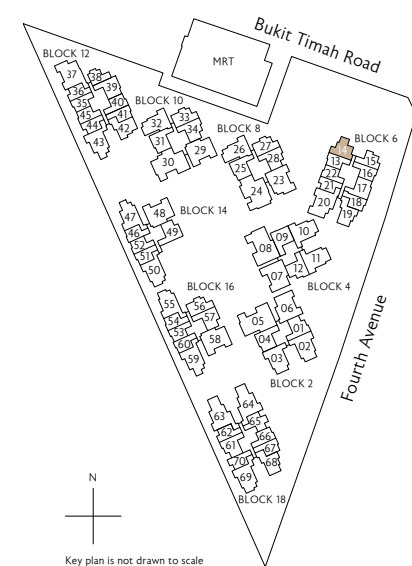


- Fridge F
- Induction Hob IH
- Shoe Cabinet SC
- Washer cum Dryer WM
- Distribution Board / Store DB/ST

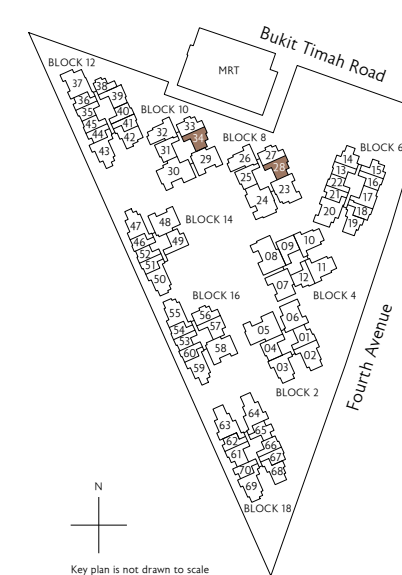
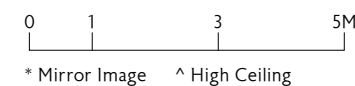
- Fridge F
- Induction Hob IH
- Shoe Cabinet SC
- Washer cum Dryer WM
- Distribution Board / Store DB/ST

Type B3(p)
 60 sq m / 646 sq ft
 Inclusive of 6 sq m PES
 & 4 sq m AC Ledge
 Block 6
 #01-14

Type B3
 60 sq m / 646 sq ft
 Inclusive of 6 sq m Balcony
 & 4 sq m AC Ledge
 Block 6
 #02-14 to #10-14



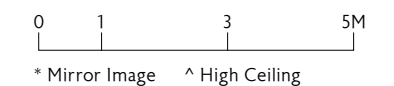
Key plan is not drawn to scale



Key plan is not drawn to scale

Type BP1a(p)
 64 sq m / 689 sq ft
 Inclusive of 6 sq m PES
 & 3 sq m AC Ledge
 Block 8
 #01-28
 Block 10
 #01-34

Type BP1a
 64 sq m / 689 sq ft
 Inclusive of 6 sq m Balcony
 & 3 sq m AC Ledge
 Block 8
 #02-28 to #10-28
 Block 10
 #02-34 to #10-34



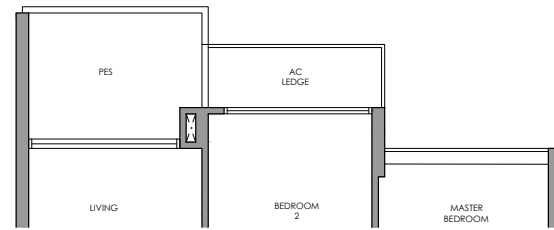
All plans are subject to change as may be required or approved by the relevant authorities. All floor areas are approximate measurements only and are subject to final survey. The balcony shall not be enclosed except with the approved balcony screen. For an illustration of the approved balcony screen, please refer to the diagram annexed hereto as "Annexure 1"

All plans are subject to change as may be required or approved by the relevant authorities. All floor areas are approximate measurements only and are subject to final survey. The balcony shall not be enclosed except with the approved balcony screen. For an illustration of the approved balcony screen, please refer to the diagram annexed hereto as "Annexure 1"

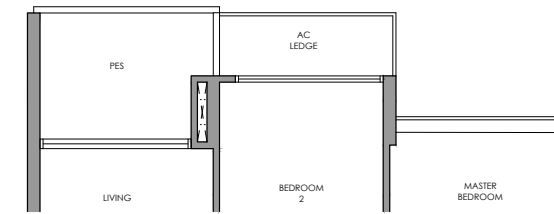
2-Bedroom Premium

2-Bedroom Premium

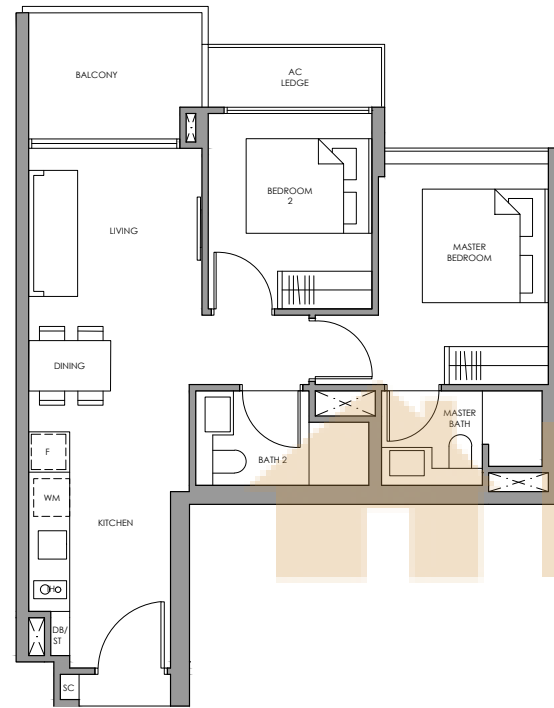
Type BP1b(p)



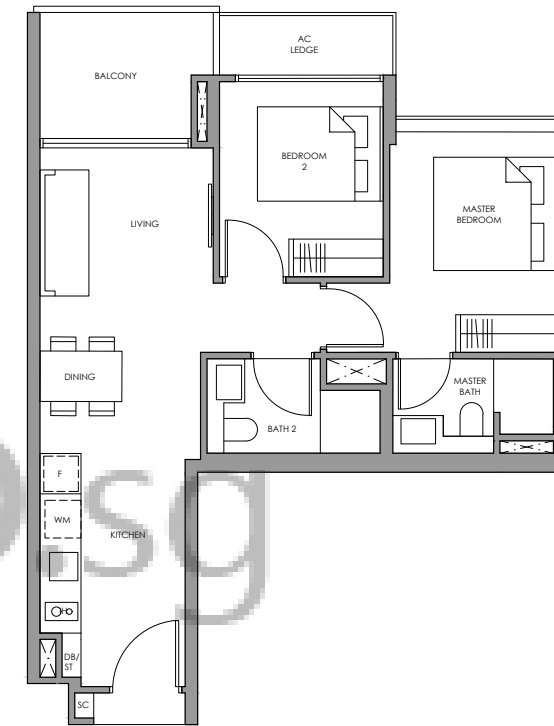
Type BP1c(p)



Type BP1b



Type BP1c



Fridge F
 Induction Hob IH
 Shoe Cabinet SC
 Washer cum Dryer WM
 Distribution Board / Store DB/ST

Fridge F
 Induction Hob IH
 Shoe Cabinet SC
 Washer cum Dryer WM
 Distribution Board / Store DB/ST

Type BP1b(p)

64 sq m / 689 sq ft
 Inclusive of 6 sq m PES
 & 3 sq m AC Ledge

Block 2
 #01-01 *

Block 4
 #01-12

Block 18
 #01-61 *

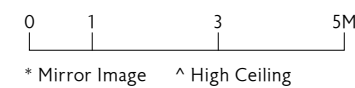
Type BP1b

64 sq m / 689 sq ft
 Inclusive of 6 sq m Balcony
 & 3 sq m AC Ledge

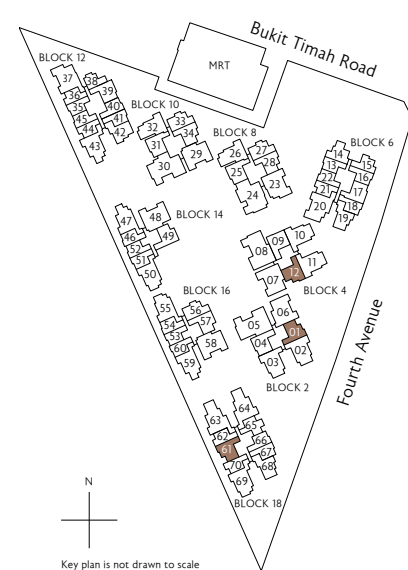
Block 2
 #02-01 to #06-01 *

Block 4
 #02-12 to #06-12

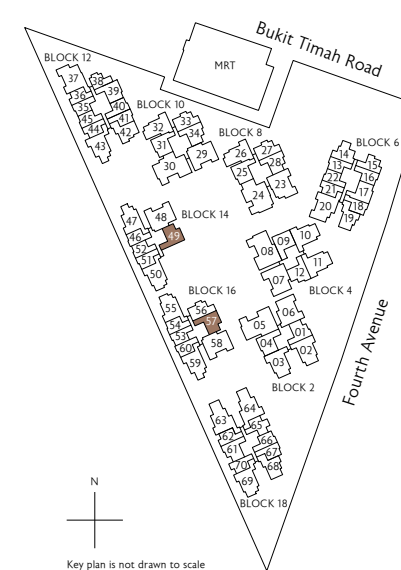
Block 18
 #02-61 to #06-61 *



* Mirror Image ^ High Ceiling



Key plan is not drawn to scale



Key plan is not drawn to scale

Type BP1c(p)

65 sq m / 700 sq ft
 Inclusive of 6 sq m PES
 & 3 sq m AC Ledge

Block 14
 #01-49 *

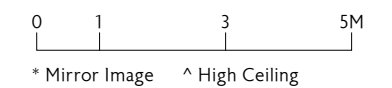
Block 16
 #01-57

Type BP1c

65 sq m / 700 sq ft
 Inclusive of 6 sq m Balcony
 & 3 sq m AC Ledge

Block 14
 #02-49 *^

Block 16
 #02-57 ^



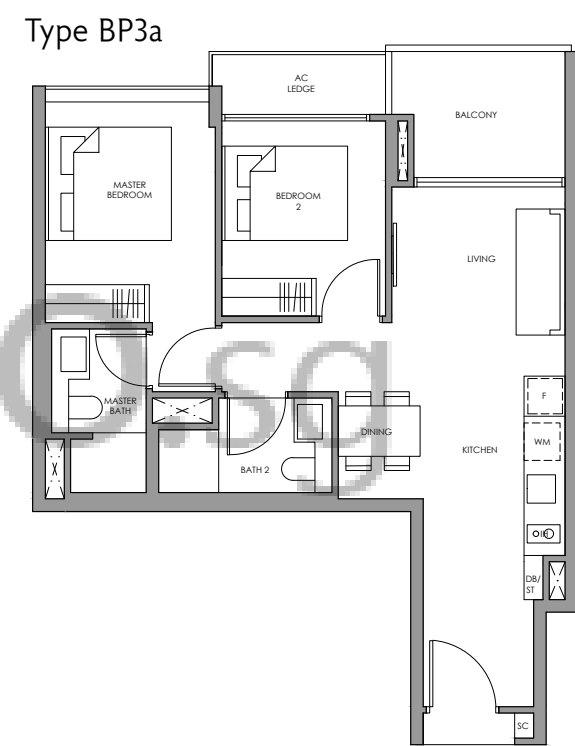
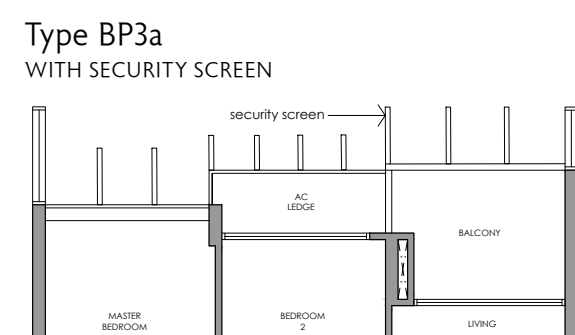
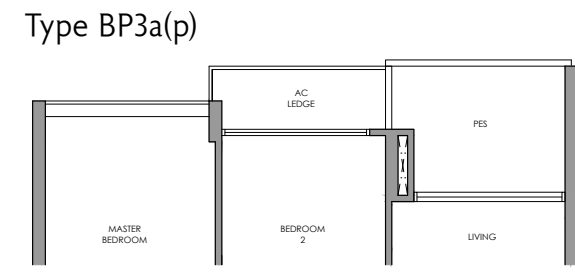
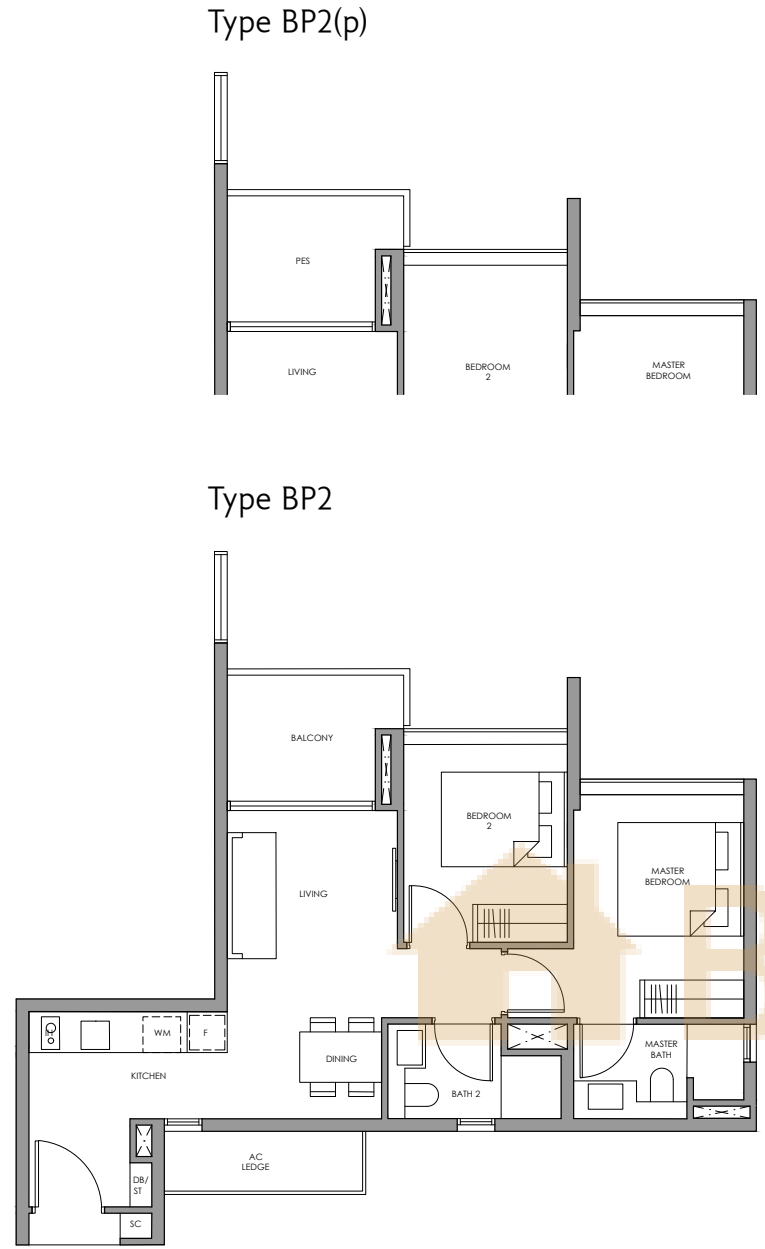
* Mirror Image ^ High Ceiling

All plans are subject to change as may be required or approved by the relevant authorities. All floor areas are approximate measurements only and are subject to final survey. The balcony shall not be enclosed except with the approved balcony screen. For an illustration of the approved balcony screen, please refer to the diagram annexed hereto as "Annexure 1"

All plans are subject to change as may be required or approved by the relevant authorities. All floor areas are approximate measurements only and are subject to final survey. The balcony shall not be enclosed except with the approved balcony screen. For an illustration of the approved balcony screen, please refer to the diagram annexed hereto as "Annexure 1"

2-Bedroom Premium

2-Bedroom Premium



Fridge
Induction Hob
Shoe Cabinet
Washer cum Dryer
Distribution Board / Store

F
IH
SC
WM
DB/ST

Fridge
Induction Hob
Shoe Cabinet
Washer cum Dryer
Distribution Board / Store

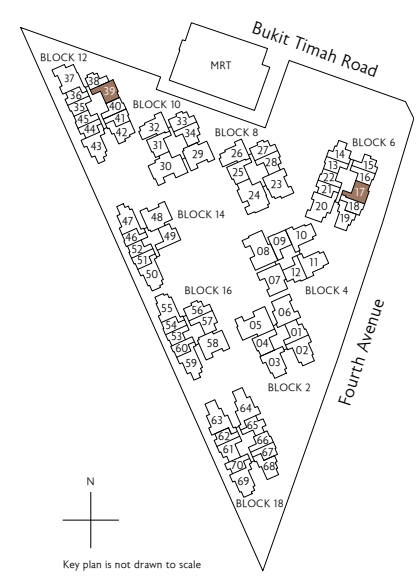
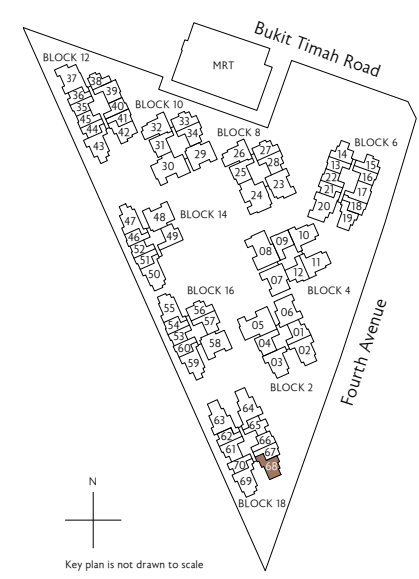
F
IH
SC
WM
DB/ST

✦
Type BP2(p)
66 sq m / 710 sq ft
Inclusive of 6 sq m PES
& 4 sq m AC Ledge

Block 18
#01-68

✦
Type BP2
66 sq m / 710 sq ft
Inclusive of 6 sq m Balcony
& 4 sq m AC Ledge

Block 18
#02-68 to #06-68



✦
Type BP3a(p)
66 sq m / 710 sq ft
Inclusive of 6 sq m PES
& 3 sq m AC Ledge

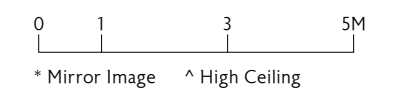
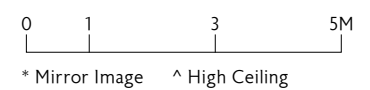
Block 6
#01-17

Block 12
#01-39 *

✦
Type BP3a
66 sq m / 710 sq ft
Inclusive of 6 sq m Balcony
& 3 sq m AC Ledge

Block 6
#02-17 to #06-17
#07-17 to #10-17 (security screen)

Block 12
#02-39 to #10-39 *



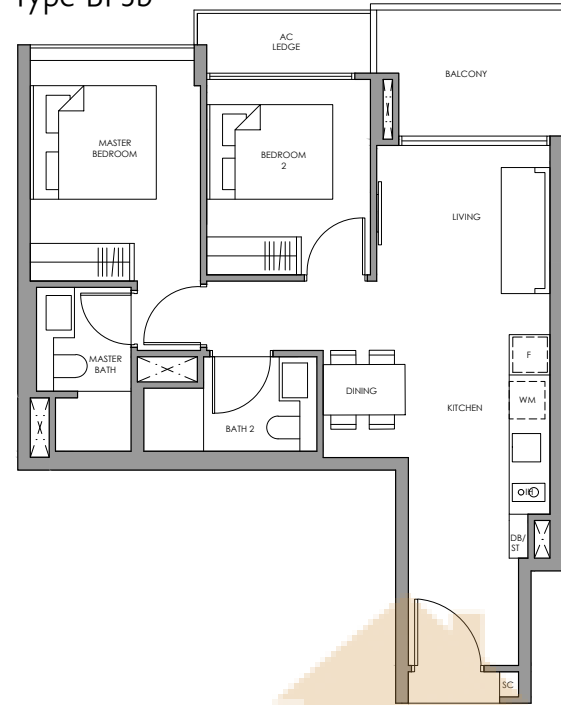
All plans are subject to change as may be required or approved by the relevant authorities. All floor areas are approximate measurements only and are subject to final survey. The balcony shall not be enclosed except with the approved balcony screen. For an illustration of the approved balcony screen, please refer to the diagram annexed hereto as "Annexure 1"

All plans are subject to change as may be required or approved by the relevant authorities. All floor areas are approximate measurements only and are subject to final survey. The balcony shall not be enclosed except with the approved balcony screen. For an illustration of the approved balcony screen, please refer to the diagram annexed hereto as "Annexure 1"

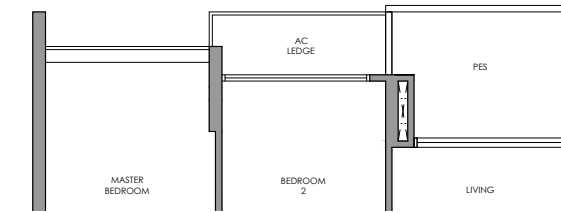
2-Bedroom Premium

2-Bedroom Premium

Type BP3b



Type BP4(p)



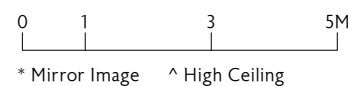
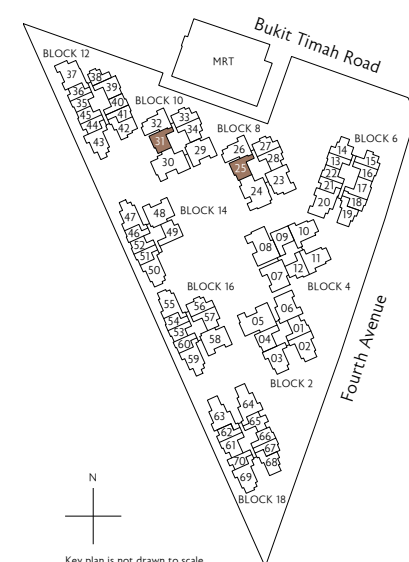
Type BP4



- Fridge F
- Induction Hob IH
- Shoe Cabinet SC
- Washer cum Dryer WM
- Distribution Board / Store DB/ST

- Fridge F
- Induction Hob IH
- Shoe Cabinet SC
- Washer cum Dryer WM
- Distribution Board / Store DB/ST

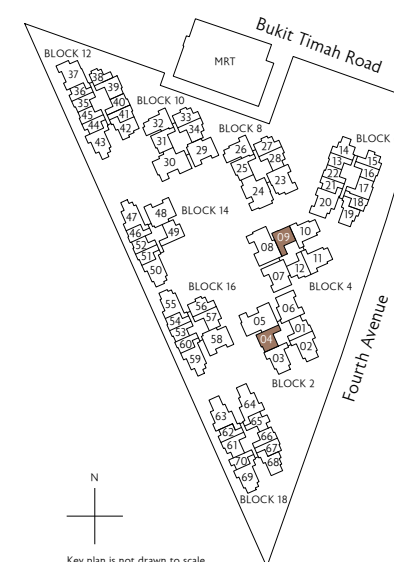
+
Type BP3b
 66 sq m / 710 sq ft
 Inclusive of 6 sq m Balcony & 3 sq m AC Ledge
 Block 8
 #02-25 to #10-25
 Block 10
 #02-31 to #10-31



* Mirror Image ^ High Ceiling

All plans are subject to change as may be required or approved by the relevant authorities. All floor areas are approximate measurements only and are subject to final survey. The balcony shall not be enclosed except with the approved balcony screen. For an illustration of the approved balcony screen, please refer to the diagram annexed hereto as "Annexure 1"

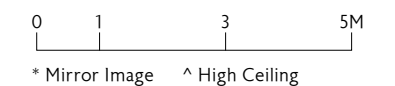
+
Type BP4(p)
 66 sq m / 710 sq ft
 Inclusive of 6 sq m PES & 3 sq m AC Ledge
 Block 2
 #01-04
 Block 4
 #01-09 *



* Mirror Image ^ High Ceiling

All plans are subject to change as may be required or approved by the relevant authorities. All floor areas are approximate measurements only and are subject to final survey. The balcony shall not be enclosed except with the approved balcony screen. For an illustration of the approved balcony screen, please refer to the diagram annexed hereto as "Annexure 1"

+
Type BP4
 66 sq m / 710 sq ft
 Inclusive of 6 sq m Balcony & 3 sq m AC Ledge
 Block 2
 #02-04 to #06-04
 Block 4
 #02-09 to #06-09 *

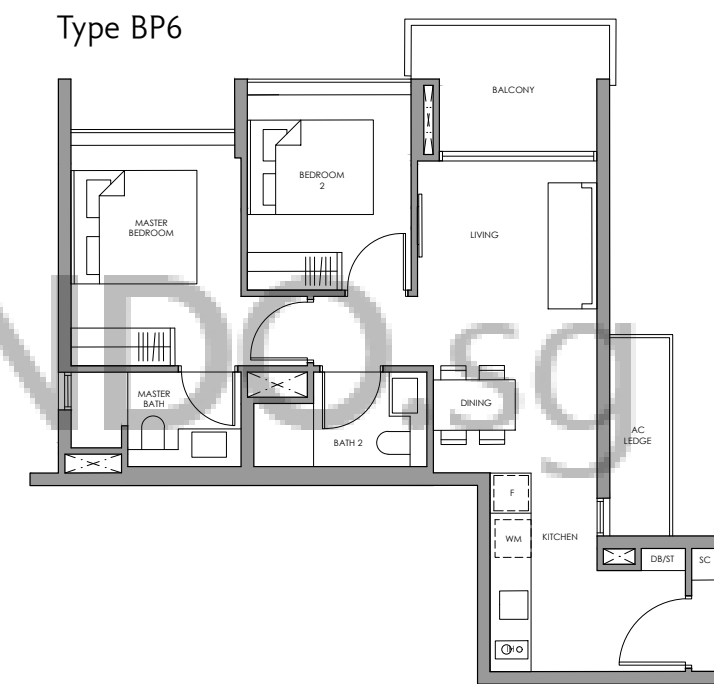
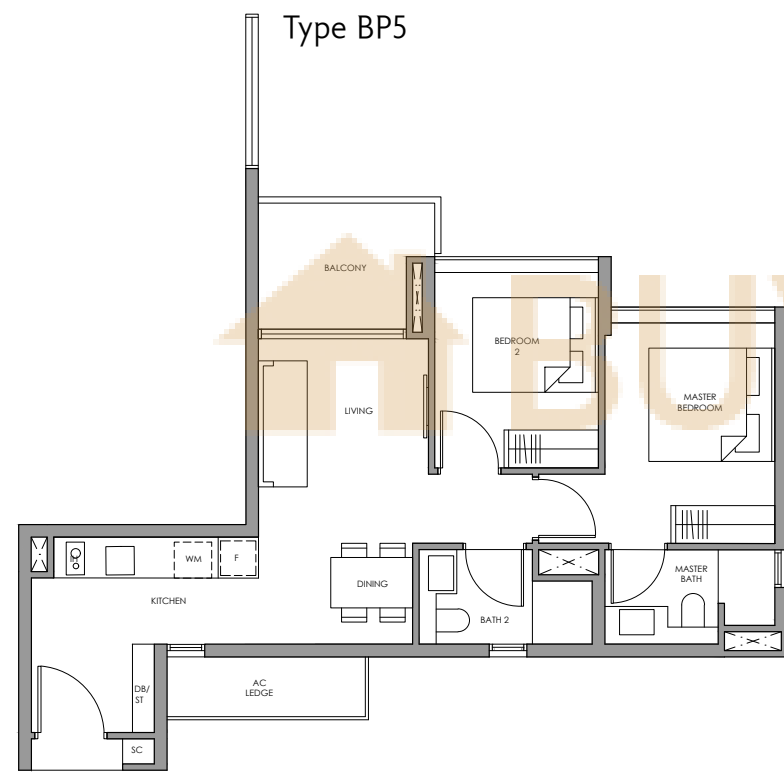
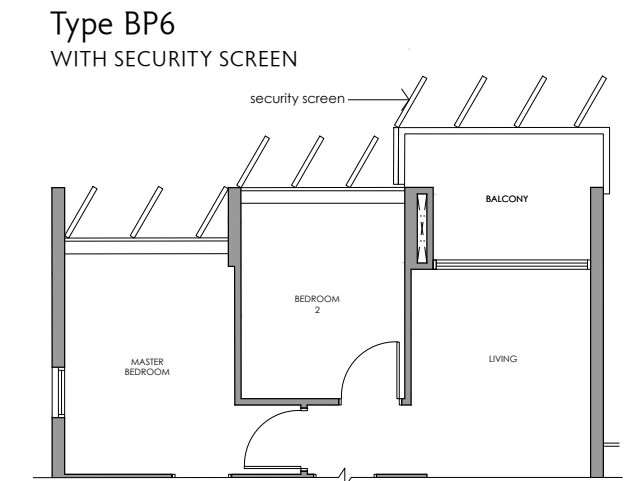
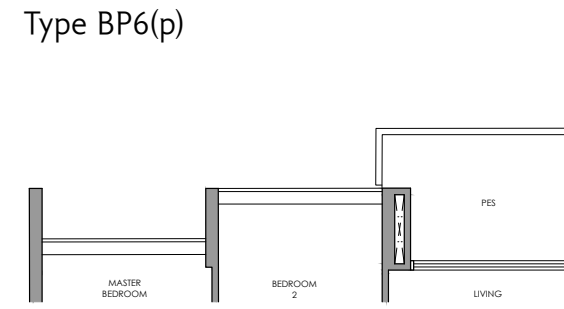
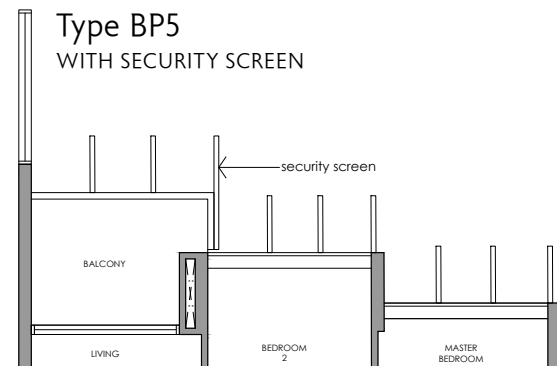
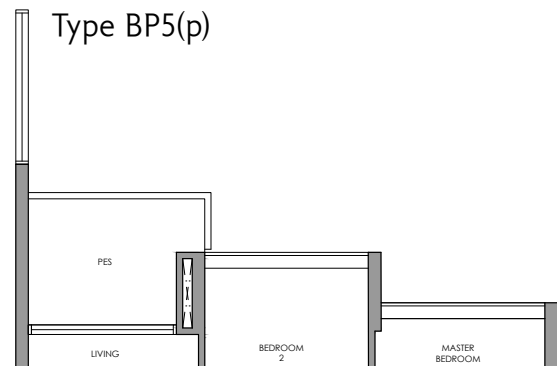


* Mirror Image ^ High Ceiling

All plans are subject to change as may be required or approved by the relevant authorities. All floor areas are approximate measurements only and are subject to final survey. The balcony shall not be enclosed except with the approved balcony screen. For an illustration of the approved balcony screen, please refer to the diagram annexed hereto as "Annexure 1"

2-Bedroom Premium

2-Bedroom Premium



Fridge
Induction Hob
Shoe Cabinet
Washer cum Dryer
Distribution Board / Store

F
IH
SC
WM
DB/ST

Fridge
Induction Hob
Shoe Cabinet
Washer cum Dryer
Distribution Board / Store

F
IH
SC
WM
DB/ST

Type BP5(p)

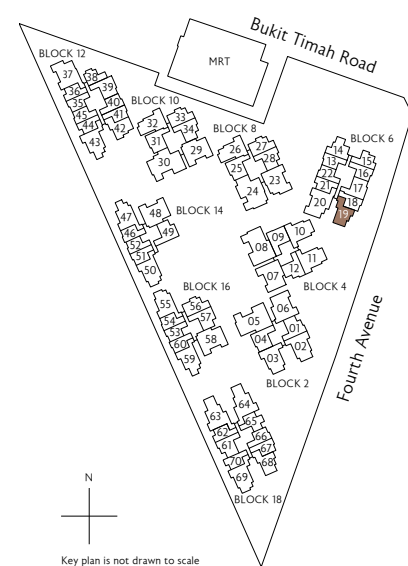
66 sq m / 710 sq ft
Inclusive of 6 sq m PES
& 4 sq m AC Ledge

Block 6
#01-19

Type BP5

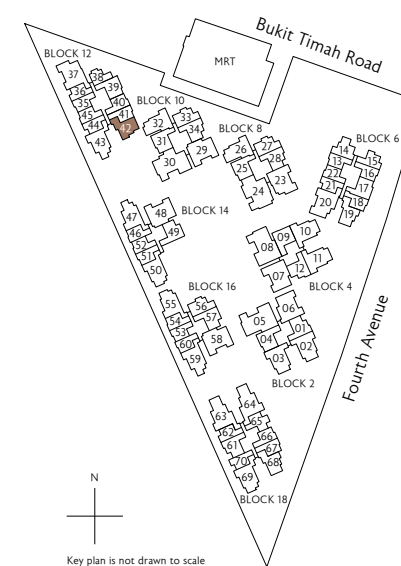
66 sq m / 710 sq ft
Inclusive of 6 sq m Balcony
& 4 sq m AC Ledge

Block 6
#02-19 to #06-19
#07-19 to #10-19 (security screen)



Key plan is not drawn to scale

0 1 3 5M
* Mirror Image ^ High Ceiling



Key plan is not drawn to scale

Type BP6(p)

67 sq m / 721 sq ft
Inclusive of 6 sq m PES
& 4 sq m AC Ledge

Block 12
#01-42

Type BP6

67 sq m / 721 sq ft
Inclusive of 6 sq m Balcony
& 4 sq m AC Ledge

Block 12
#02-42 to #07-42
#08-42 to #10-42 (security screen)

0 1 3 5M
* Mirror Image ^ High Ceiling

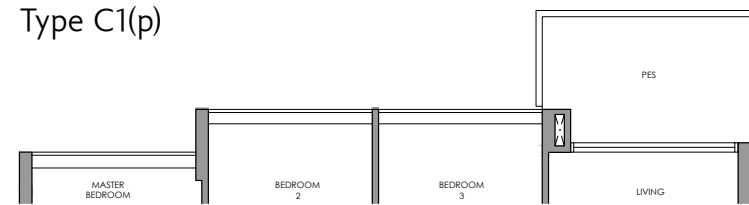
All plans are subject to change as may be required or approved by the relevant authorities. All floor areas are approximate measurements only and are subject to final survey. The balcony shall not be enclosed except with the approved balcony screen. For an illustration of the approved balcony screen, please refer to the diagram annexed hereto as "Annexure 1"

All plans are subject to change as may be required or approved by the relevant authorities. All floor areas are approximate measurements only and are subject to final survey. The balcony shall not be enclosed except with the approved balcony screen. For an illustration of the approved balcony screen, please refer to the diagram annexed hereto as "Annexure 1"

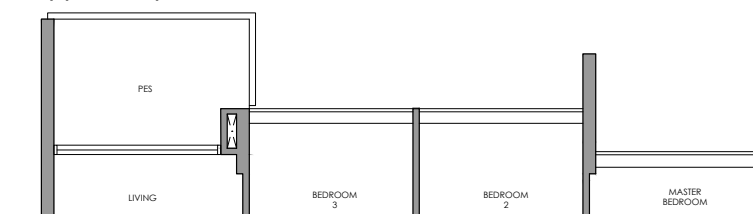
3-Bedroom

3-Bedroom

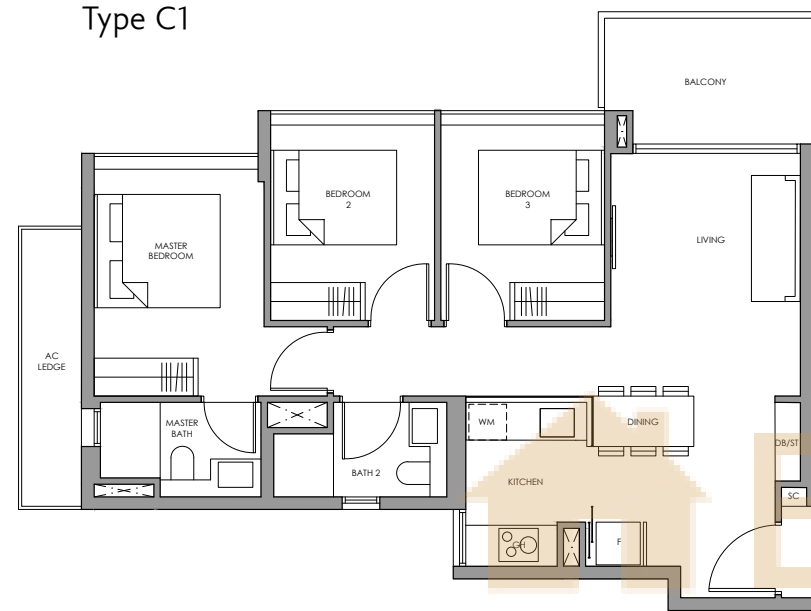
Type C1(p)



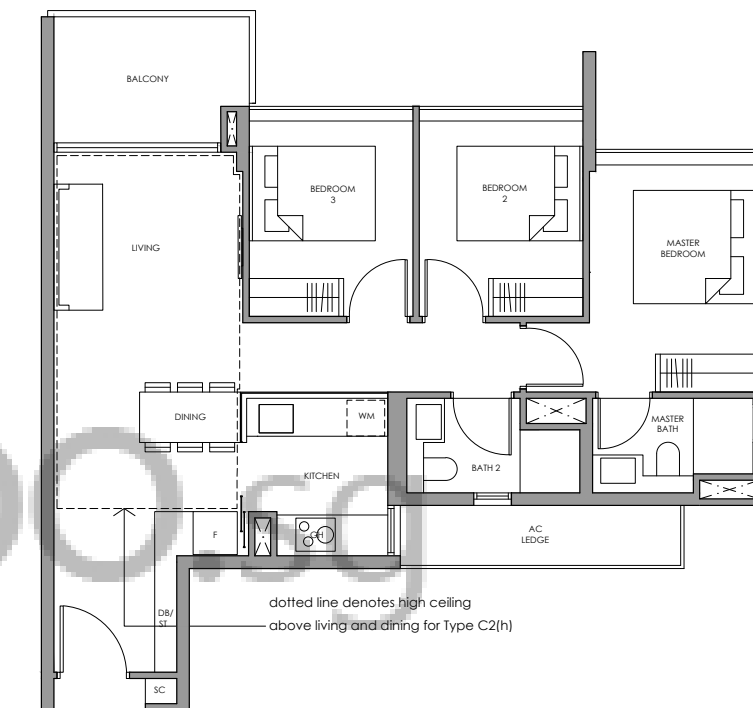
Type C2(p)



Type C1



Type C2
Type C2(h)

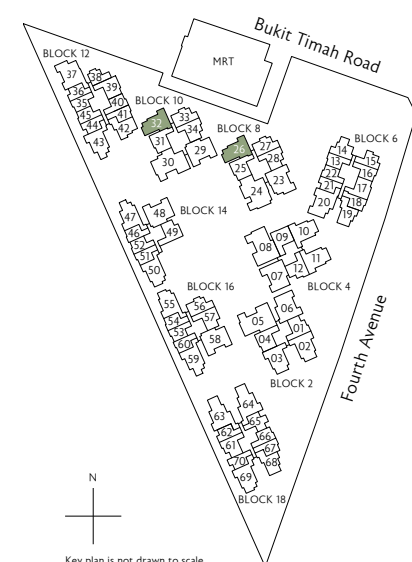


Fridge F
Gas Hob GH
Shoe Cabinet SC
Washer cum Dryer WM
Distribution Board / Store DB/ST

Fridge F
Gas Hob GH
Shoe Cabinet SC
Washer cum Dryer WM
Distribution Board / Store DB/ST

+
Type C1(p)
85 sq m / 915 sq ft
Inclusive of 7 sq m PES
& 5 sq m AC Ledge

+
Type C1
85 sq m / 915 sq ft
Inclusive of 7 sq m Balcony
& 5 sq m AC Ledge

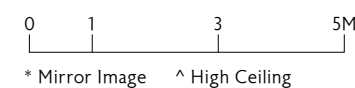


Block 8
#01-26

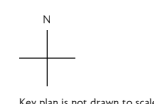
Block 8
#02-26 to #10-26

Block 10
#01-32

Block 10
#02-32 to #10-32



* Mirror Image ^ High Ceiling



+
Type C2(p)
88 sq m / 947 sq ft
Inclusive of 7 sq m PES
& 5 sq m AC Ledge

+
Type C2
88 sq m / 947 sq ft
Inclusive of 7 sq m Balcony
& 5 sq m AC Ledge

+
Type C2(h)
88 sq m / 947 sq ft
Inclusive of 7 sq m Balcony
& 5 sq m AC Ledge

Block 2
#01-02
#01-03 *

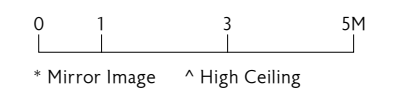
Block 2
#02-02 to #05-02
#02-03 to #05-03 *

Block 2
#06-02
#06-03 *

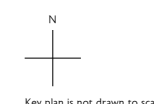
Block 4
#01-10
#01-11 *

Block 4
#02-10 to #05-10
#02-11 to #06-11 *

Block 4
#06-10



* Mirror Image ^ High Ceiling



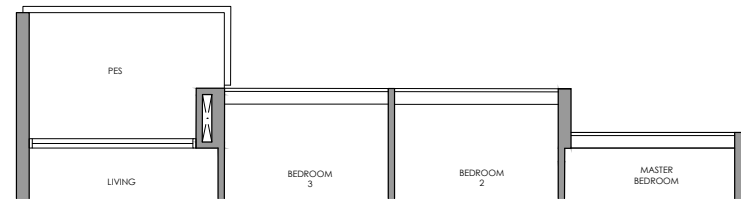
All plans are subject to change as may be required or approved by the relevant authorities. All floor areas are approximate measurements only and are subject to final survey. The balcony shall not be enclosed except with the approved balcony screen. For an illustration of the approved balcony screen, please refer to the diagram annexed hereto as "Annexure 1"

All plans are subject to change as may be required or approved by the relevant authorities. All floor areas are approximate measurements only and are subject to final survey. The balcony shall not be enclosed except with the approved balcony screen. For an illustration of the approved balcony screen, please refer to the diagram annexed hereto as "Annexure 1"

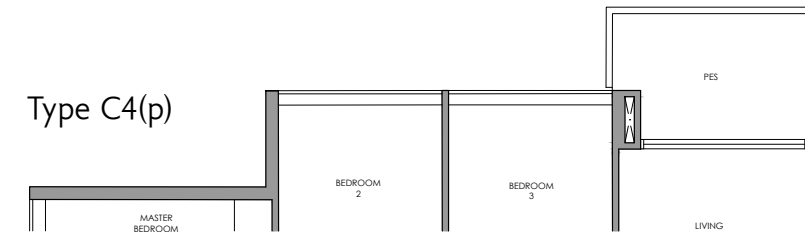
3-Bedroom

3-Bedroom

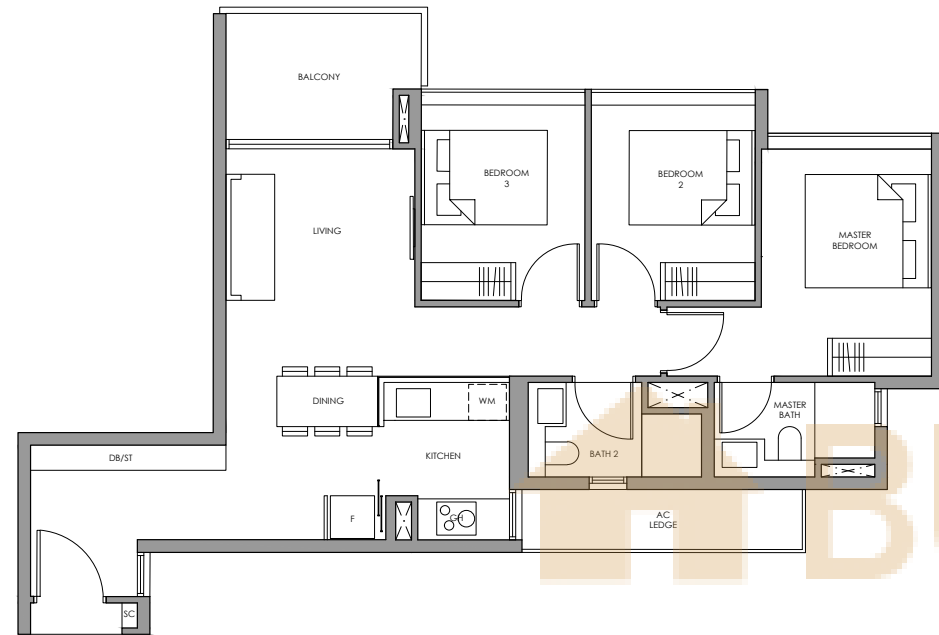
Type C3(p)



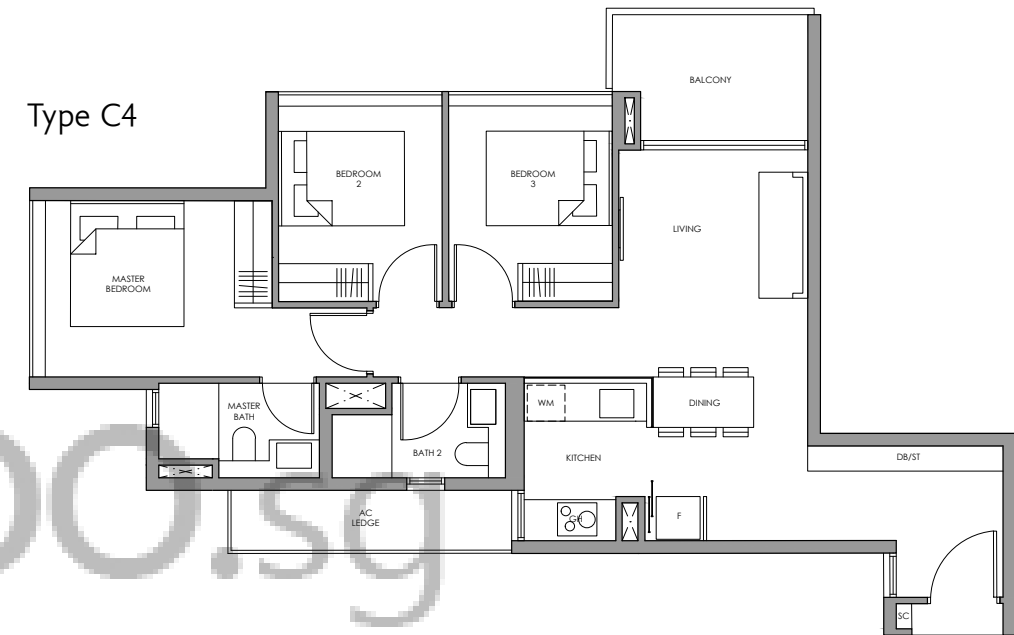
Type C4(p)



Type C3



Type C4



Fridge F
Gas Hob GH
Shoe Cabinet SC
Washer cum Dryer WM
Distribution Board / Store DB/ST

Fridge F
Gas Hob GH
Shoe Cabinet SC
Washer cum Dryer WM
Distribution Board / Store DB/ST

+
Type C3(p)
89 sq m / 958 sq ft
Inclusive of 7 sq m PES
& 5 sq m AC Ledge

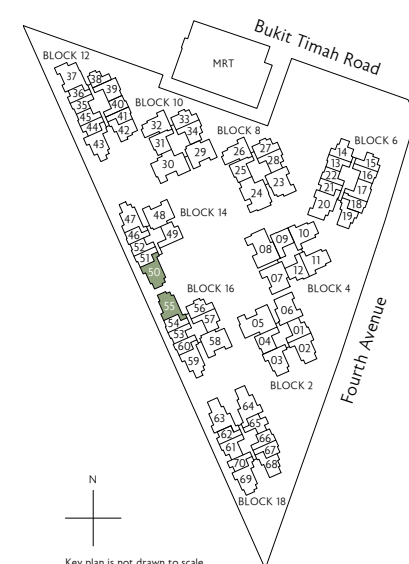
Block 14
#01-50 *

Block 16
#01-55

+
Type C3
89 sq m / 958 sq ft
Inclusive of 7 sq m Balcony
& 5 sq m AC Ledge

Block 14
#02-50 *^

Block 16
#02-55 ^



Key plan is not drawn to scale

0 1 3 5M
* Mirror Image ^ High Ceiling



Key plan is not drawn to scale

+
Type C4(p)
89 sq m / 958 sq ft
Inclusive of 7 sq m PES
& 5 sq m AC Ledge

Block 14
#01-47 *

Block 16
#01-59

+
Type C4
89 sq m / 958 sq ft
Inclusive of 7 sq m Balcony
& 5 sq m AC Ledge

Block 14
#02-47 *^

Block 16
#02-59 ^

0 1 3 5M
* Mirror Image ^ High Ceiling

All plans are subject to change as may be required or approved by the relevant authorities. All floor areas are approximate measurements only and are subject to final survey. The balcony shall not be enclosed except with the approved balcony screen. For an illustration of the approved balcony screen, please refer to the diagram annexed hereto as "Annexure 1"

All plans are subject to change as may be required or approved by the relevant authorities. All floor areas are approximate measurements only and are subject to final survey. The balcony shall not be enclosed except with the approved balcony screen. For an illustration of the approved balcony screen, please refer to the diagram annexed hereto as "Annexure 1"

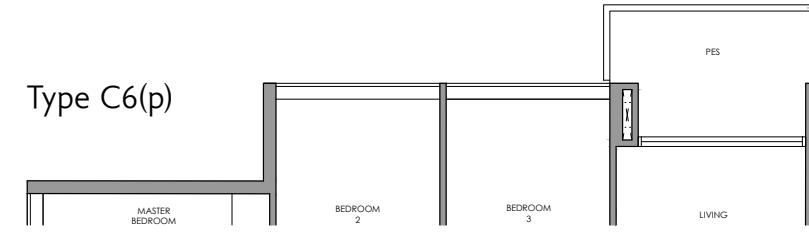
3-Bedroom

3-Bedroom

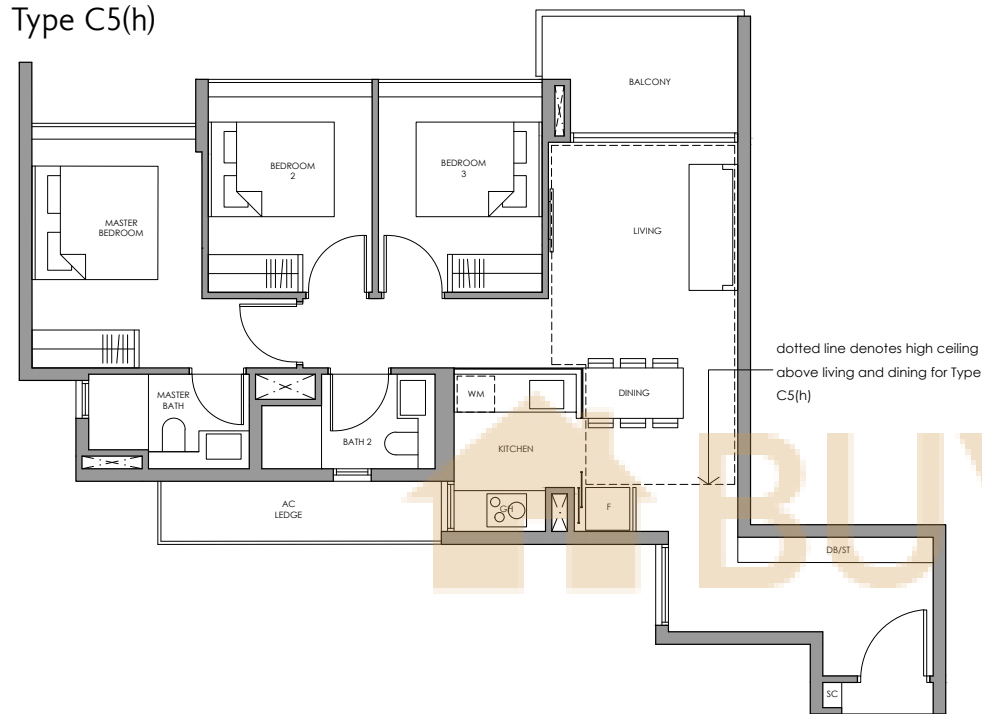
Type C5(p)



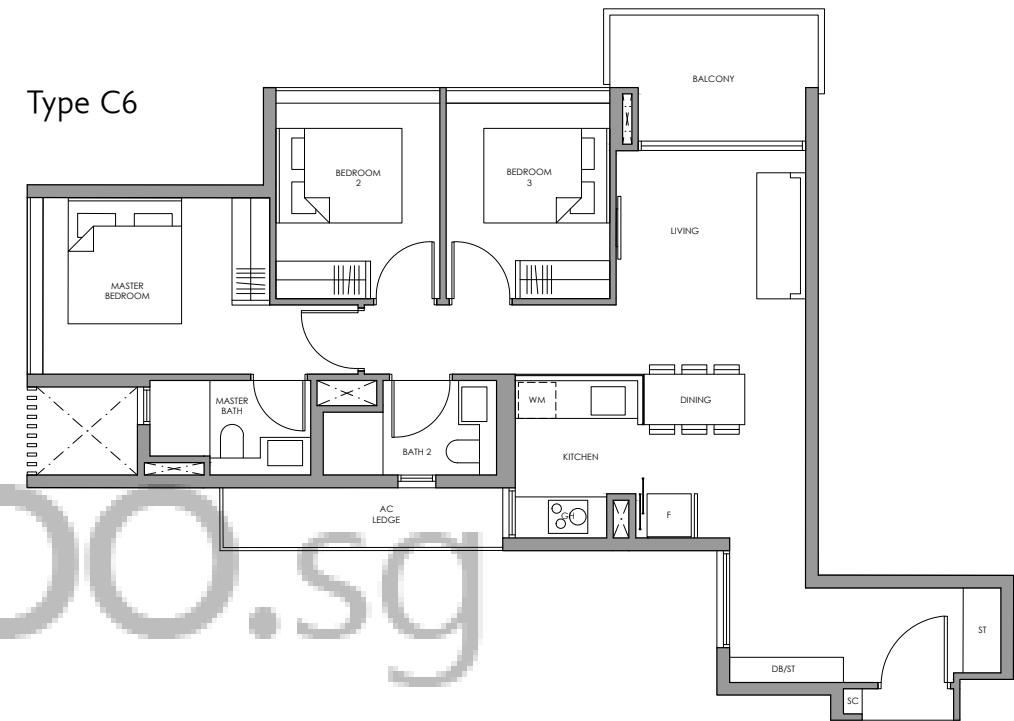
Type C6(p)



Type C5
Type C5(h)



Type C6



Fridge
Gas Hob
Shoe Cabinet
Washer cum Dryer
Distribution Board / Store

F
GH
SC
WM
DB/ST

Fridge
Gas Hob
Shoe Cabinet
Washer cum Dryer
Distribution Board / Store

F
GH
SC
WM
DB/ST

+
Type C5(p)
90 sq m / 969 sq ft
Inclusive of 6 sq m PES
& 5 sq m AC Ledge

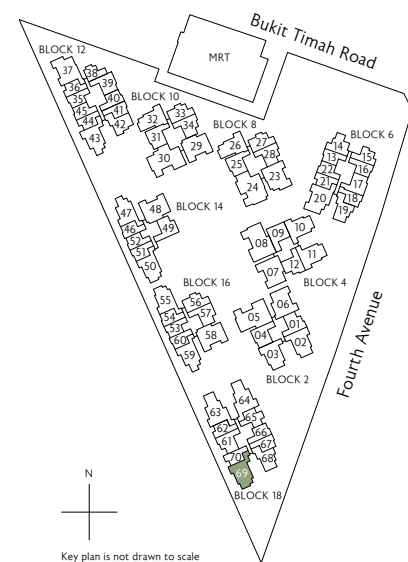
Block 18
#01-69

+
Type C5
90 sq m / 969 sq ft
Inclusive of 6 sq m Balcony
& 5 sq m AC Ledge

Block 18
#02-69 to #05-69

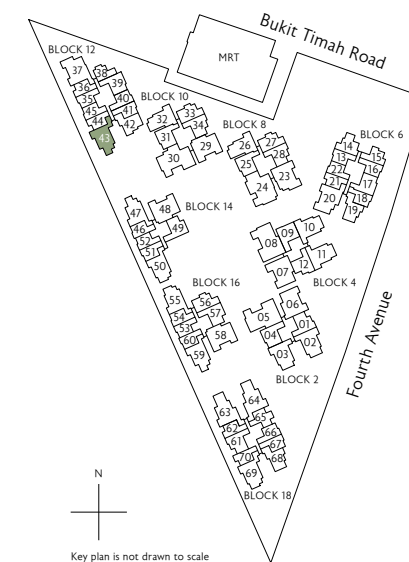
+
Type C5(h)
90 sq m / 969 sq ft
Inclusive of 6 sq m Balcony
& 5 sq m AC Ledge

Block 18
#06-69



N
Key plan is not drawn to scale

0 1 3 5M
* Mirror Image ^ High Ceiling



N
Key plan is not drawn to scale

+
Type C6(p)
90 sq m / 969 sq ft
Inclusive of 7 sq m PES
& 5 sq m AC Ledge

Block 12
#01-43

+
Type C6
90 sq m / 969 sq ft
Inclusive of 7 sq m Balcony
& 5 sq m AC Ledge

Block 12
#02-43 to #06-43

0 1 3 5M
* Mirror Image ^ High Ceiling

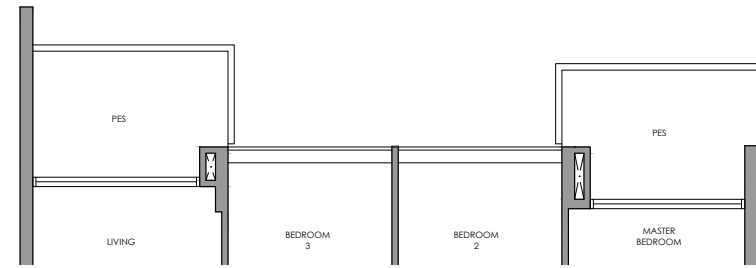
All plans are subject to change as may be required or approved by the relevant authorities. All floor areas are approximate measurements only and are subject to final survey. The balcony shall not be enclosed except with the approved balcony screen. For an illustration of the approved balcony screen, please refer to the diagram annexed hereto as "Annexure 1"

All plans are subject to change as may be required or approved by the relevant authorities. All floor areas are approximate measurements only and are subject to final survey. The balcony shall not be enclosed except with the approved balcony screen. For an illustration of the approved balcony screen, please refer to the diagram annexed hereto as "Annexure 1"

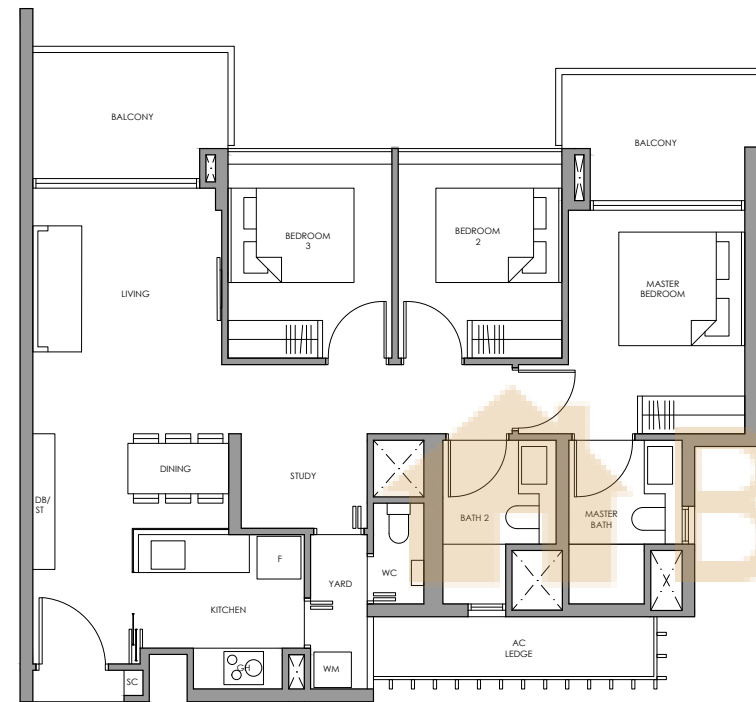
3-Bedroom + Study

3-Bedroom + Study

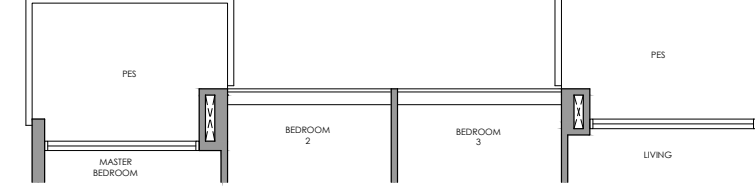
Type CS1(p)



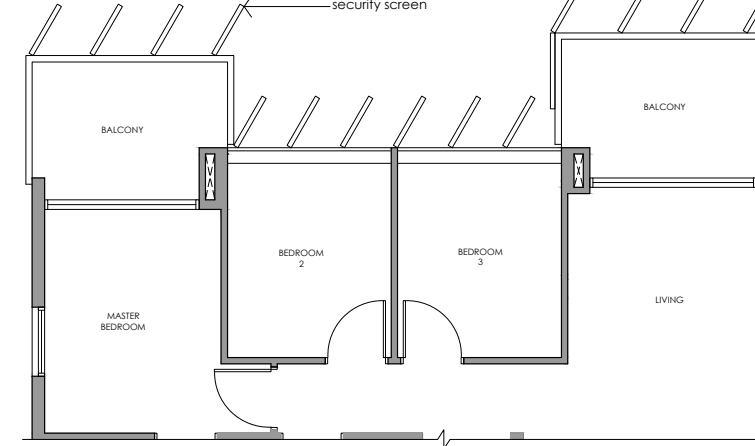
Type CS1



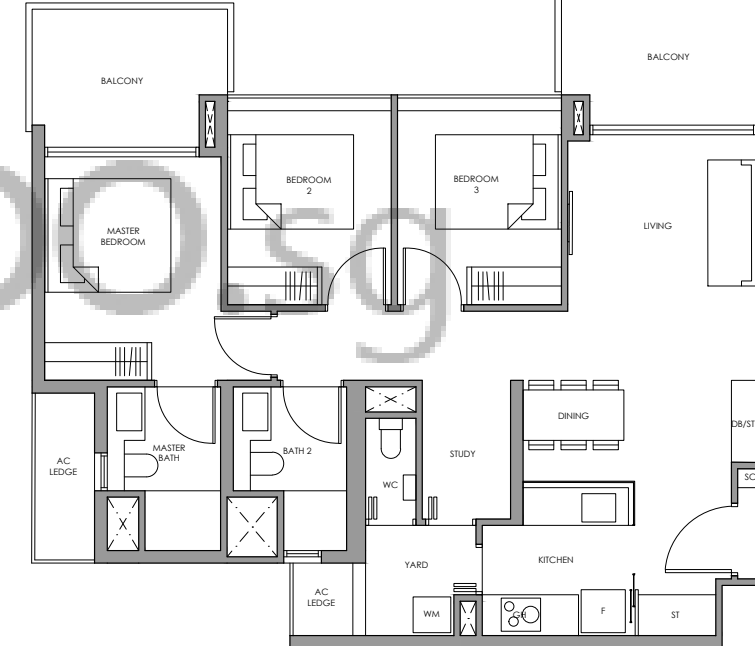
Type CS2(p)



Type CS2
WITH SECURITY SCREEN



Type CS2



Fridge
Gas Hob
Shoe Cabinet
Washer cum Dryer
Distribution Board / Store

F
GH
SC
WM
DB/ST

Fridge
Gas Hob
Shoe Cabinet
Washer cum Dryer
Distribution Board / Store

F
GH
SC
WM
DB/ST

+

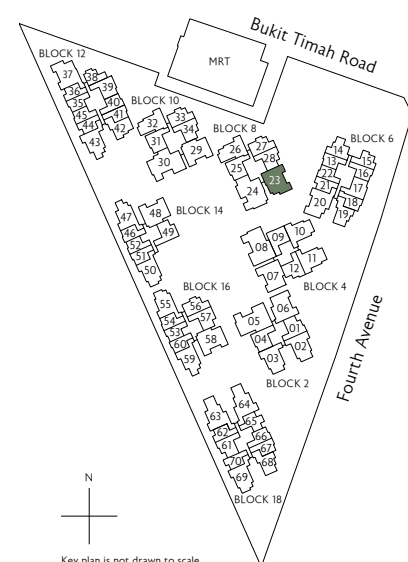
Type CS1(p)
100 sq m / 1076 sq ft
Inclusive of 13 sq m PES
& 5 sq m AC Ledge

Block 8
#01-23

+

Type CS1
100 sq m / 1076 sq ft
Inclusive of 13 sq m Balcony
& 5 sq m AC Ledge

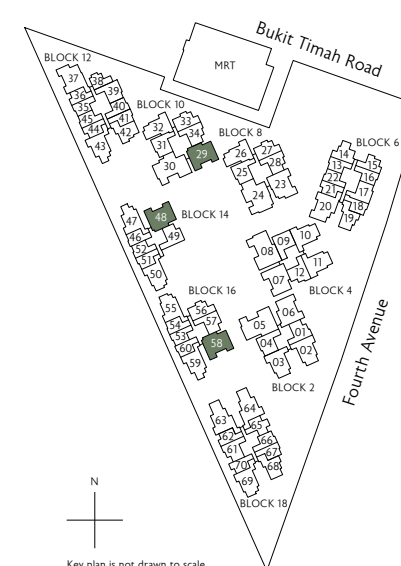
Block 8
#02-23 to #10-23



N
Key plan is not drawn to scale

0 1 3 5M
* Mirror Image ^ High Ceiling

All plans are subject to change as may be required or approved by the relevant authorities. All floor areas are approximate measurements only and are subject to final survey. The balcony shall not be enclosed except with the approved balcony screen. For an illustration of the approved balcony screen, please refer to the diagram annexed hereto as "Annexure 1"



N
Key plan is not drawn to scale

+

Type CS2(p)
103 sq m / 1109 sq ft
Inclusive of 15 sq m PES
& 5 sq m AC Ledge

Block 10
#01-29

Block 14
#01-48 *

Block 16
#01-58

+

Type CS2
103 sq m / 1109 sq ft
Inclusive of 15 sq m Balcony
& 5 sq m AC Ledge

Block 10
#02-29 to #07-29

#08-29 to #10-29 (security screen)

Block 14
#02-48 *^

Block 16
#02-58 ^

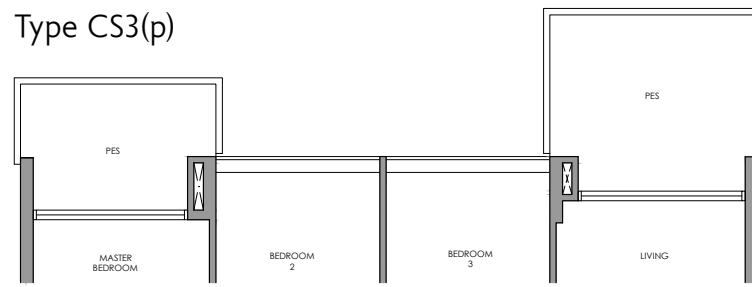
0 1 3 5M
* Mirror Image ^ High Ceiling

All plans are subject to change as may be required or approved by the relevant authorities. All floor areas are approximate measurements only and are subject to final survey. The balcony shall not be enclosed except with the approved balcony screen. For an illustration of the approved balcony screen, please refer to the diagram annexed hereto as "Annexure 1"

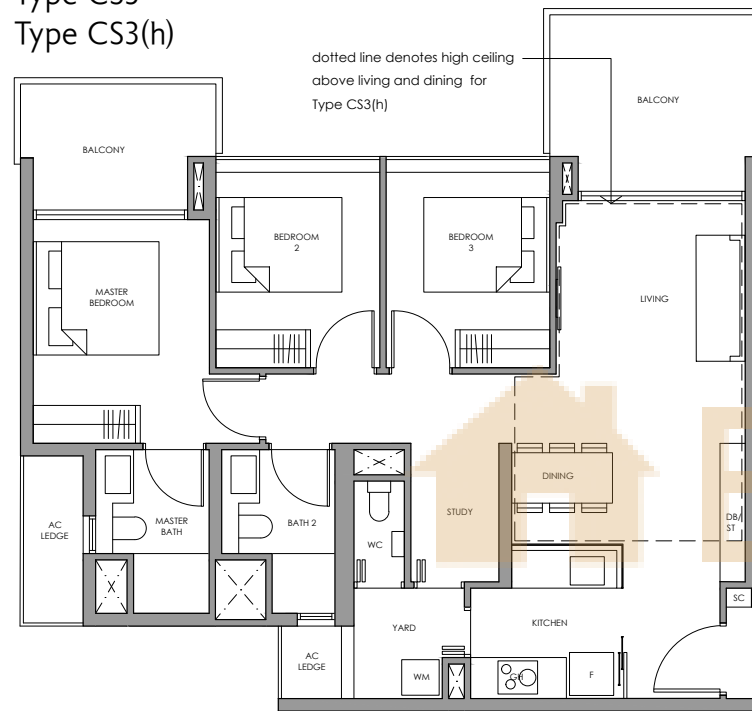
3-Bedroom + Study

3-Bedroom + Study

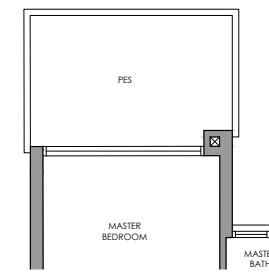
Type CS3(p)



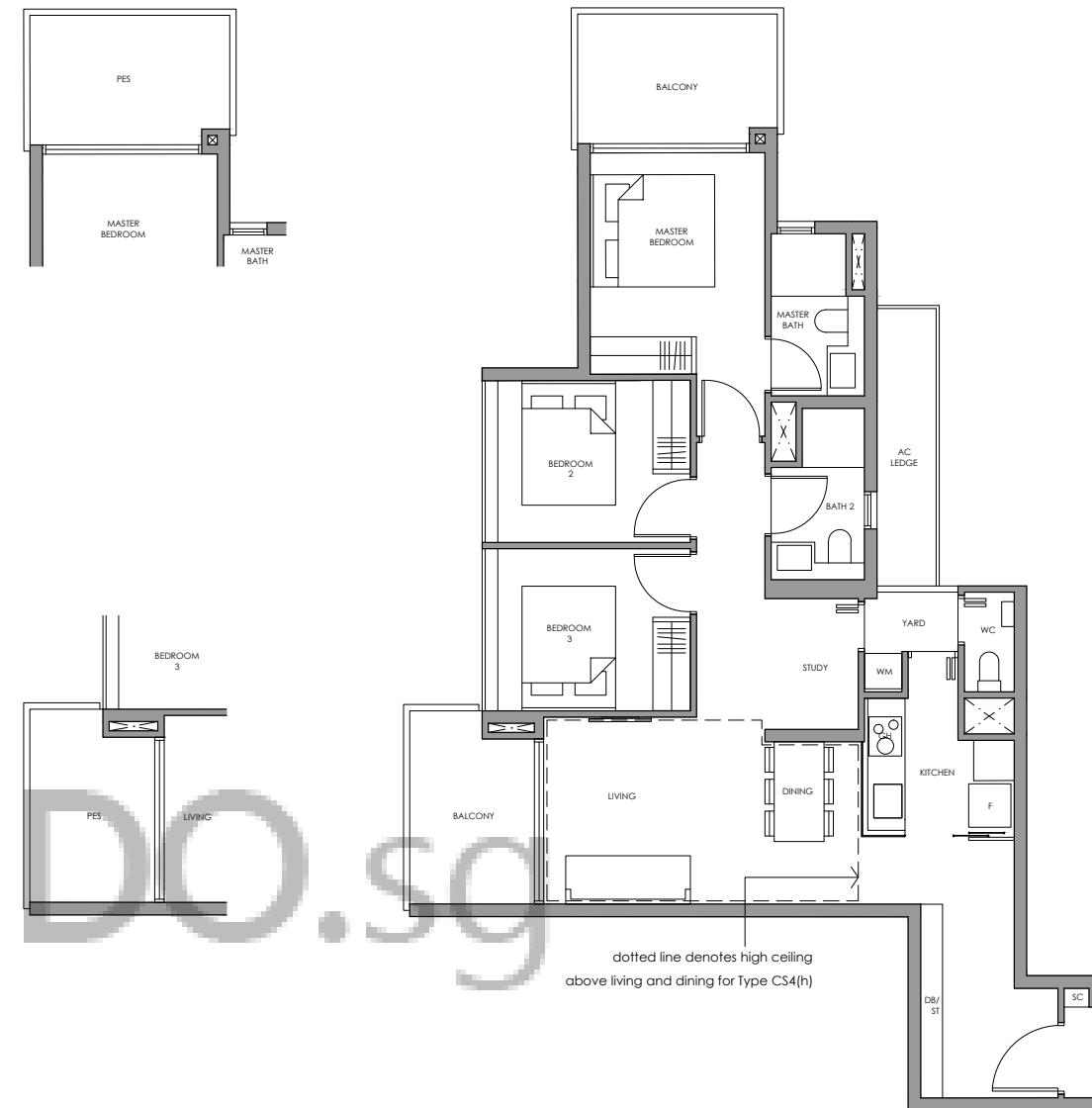
Type CS3
Type CS3(h)



Type CS4a(p)



Type CS4a
Type CS4a(h)



Fridge
Gas Hob
Shoe Cabinet
Washer cum Dryer
Distribution Board / Store

F
GH
SC
WM
DB/ST

Fridge
Gas Hob
Shoe Cabinet
Washer cum Dryer
Distribution Board / Store

F
GH
SC
WM
DB/ST

✦
Type CS3(p)

105 sq m / 1130 sq ft
Inclusive of 16 sq m PES
& 5 sq m AC Ledge

Block 4
#01-07

✦
Type CS3

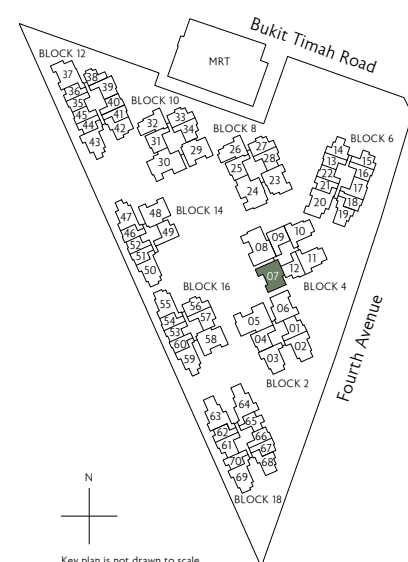
105 sq m / 1130 sq ft
Inclusive of 16 sq m Balcony
& 5 sq m AC Ledge

Block 4
#02-07 to #05-07

✦
Type CS3(h)

105 sq m / 1130 sq ft
Inclusive of 16 sq m Balcony
& 5 sq m AC Ledge

Block 4
#06-07



N
Key plan is not drawn to scale

0 1 3 5M
* Mirror Image ^ High Ceiling

All plans are subject to change as may be required or approved by the relevant authorities. All floor areas are approximate measurements only and are subject to final survey. The balcony shall not be enclosed except with the approved balcony screen. For an illustration of the approved balcony screen, please refer to the diagram annexed hereto as "Annexure 1"

✦
Type CS4a(p)

103 sq m / 1109 sq ft
Inclusive of 14 sq m PES
& 5 sq m AC Ledge

Block 18
#01-63

✦
Type CS4a

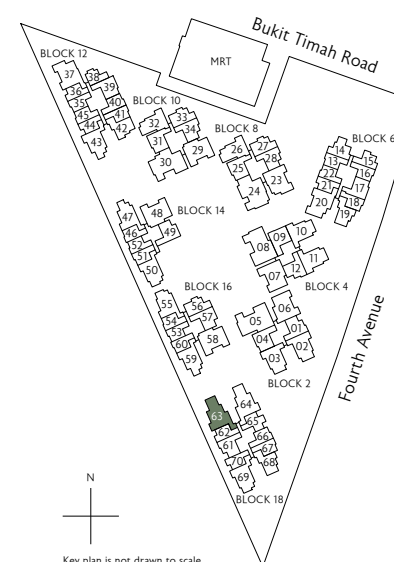
103 sq m / 1109 sq ft
Inclusive of 14 sq m Balcony
& 5 sq m AC Ledge

Block 18
#02-63 to #05-63

✦
Type CS4a(h)

103 sq m / 1109 sq ft
Inclusive of 14 sq m Balcony
& 5 sq m AC Ledge

Block 18
#06-63



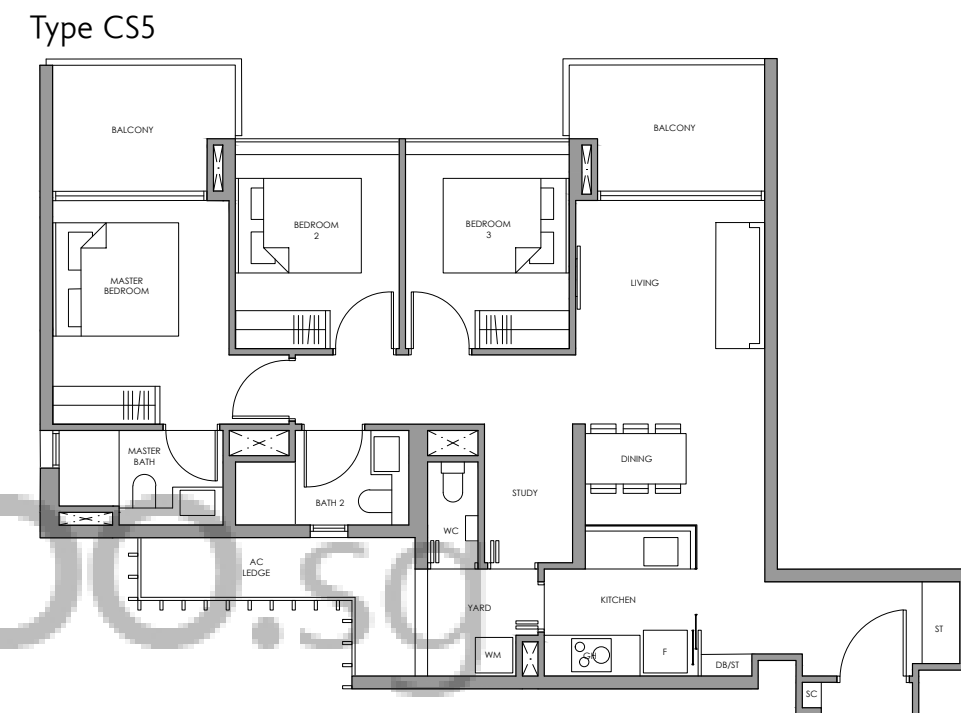
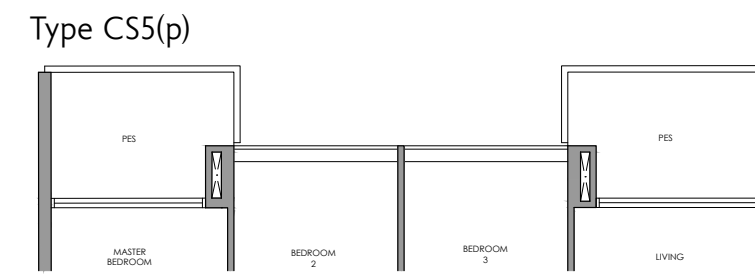
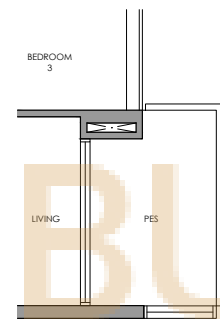
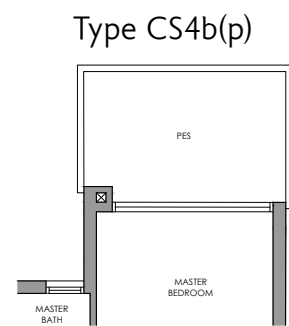
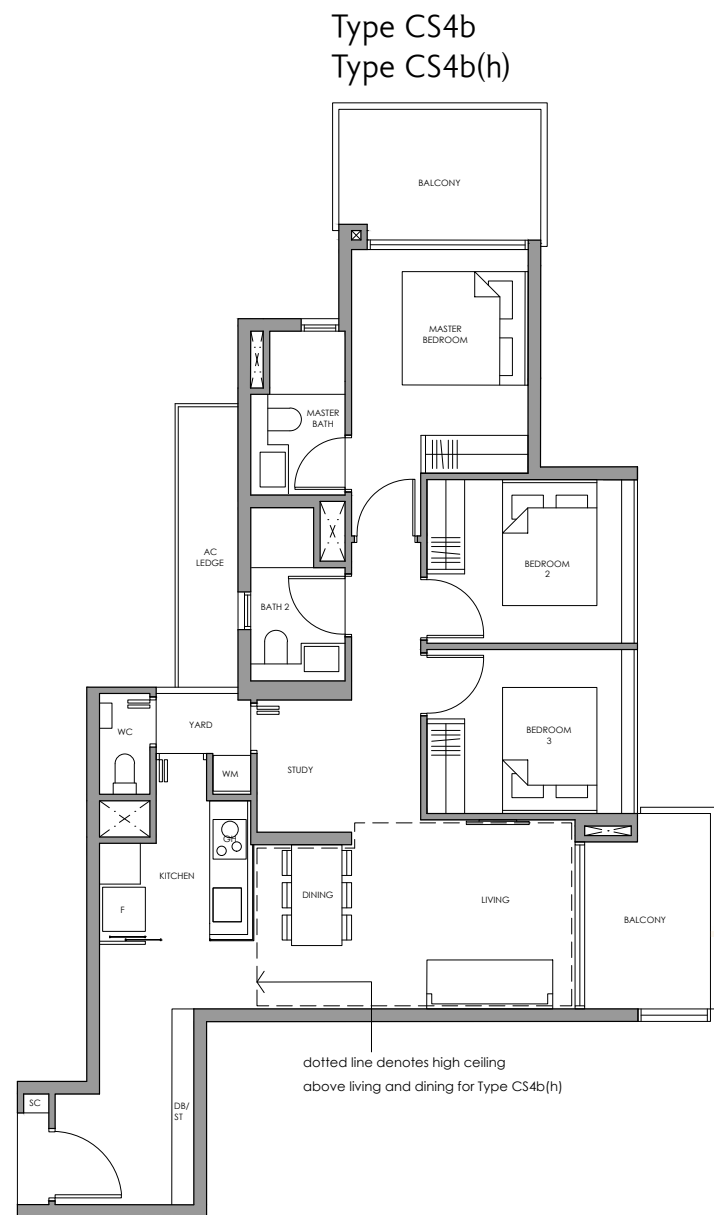
N
Key plan is not drawn to scale

0 1 3 5M
* Mirror Image ^ High Ceiling

All plans are subject to change as may be required or approved by the relevant authorities. All floor areas are approximate measurements only and are subject to final survey. The balcony shall not be enclosed except with the approved balcony screen. For an illustration of the approved balcony screen, please refer to the diagram annexed hereto as "Annexure 1"

3-Bedroom + Study

3-Bedroom + Study



Fridge
Gas Hob
Shoe Cabinet
Washer cum Dryer
Distribution Board / Store

F
GH
SC
WM
DB/ST

Fridge
Gas Hob
Shoe Cabinet
Washer cum Dryer
Distribution Board / Store

F
GH
SC
WM
DB/ST

Type CS4b(p)

103 sq m / 1109 sq ft
Inclusive of 14 sq m PES
& 5 sq m AC Ledge

Block 18
#01-64

Type CS4b

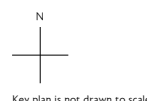
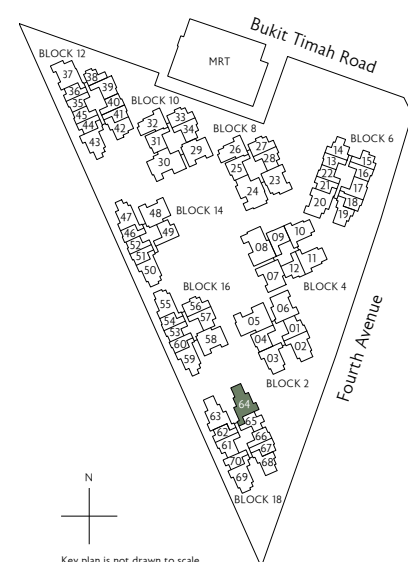
103 sq m / 1109 sq ft
Inclusive of 14 sq m Balcony
& 5 sq m AC Ledge

Block 18
#02-64 to #05-64

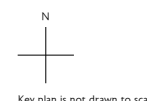
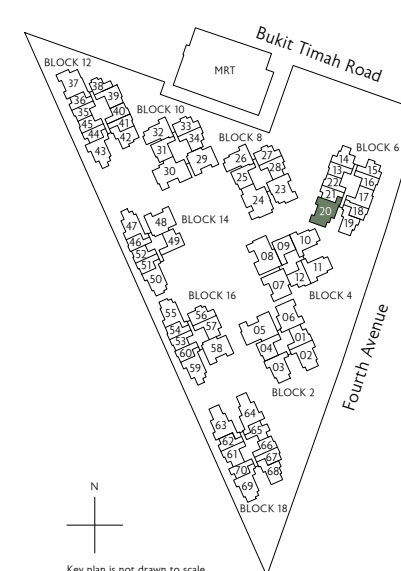
Type CS4b(h)

103 sq m / 1109 sq ft
Inclusive of 14 sq m Balcony
& 5 sq m AC Ledge

Block 18
#06-64



Key plan is not drawn to scale



Key plan is not drawn to scale

Type CS5(p)

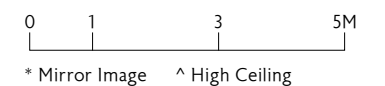
103 sq m / 1109 sq ft
Inclusive of 13 sq m PES
& 6 sq m AC Ledge

Block 6
#01-20

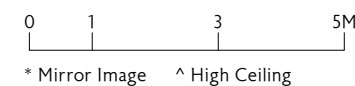
Type CS5

103 sq m / 1109 sq ft
Inclusive of 13 sq m Balcony
& 6 sq m AC Ledge

Block 6
#02-20 to #10-20



* Mirror Image ^ High Ceiling



* Mirror Image ^ High Ceiling

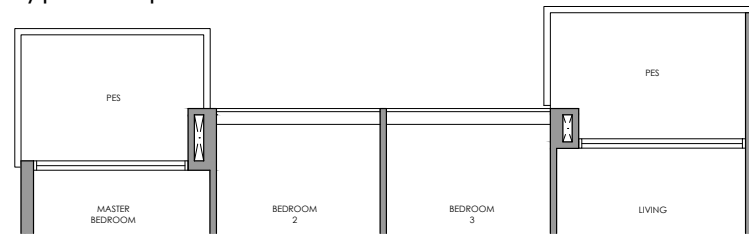
All plans are subject to change as may be required or approved by the relevant authorities. All floor areas are approximate measurements only and are subject to final survey. The balcony shall not be enclosed except with the approved balcony screen. For an illustration of the approved balcony screen, please refer to the diagram annexed hereto as "Annexure 1"

All plans are subject to change as may be required or approved by the relevant authorities. All floor areas are approximate measurements only and are subject to final survey. The balcony shall not be enclosed except with the approved balcony screen. For an illustration of the approved balcony screen, please refer to the diagram annexed hereto as "Annexure 1"

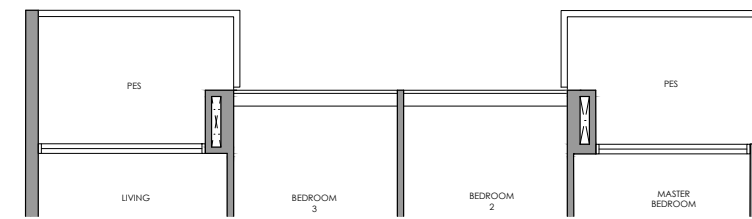
3-Bedroom + Study

3-Bedroom + Study

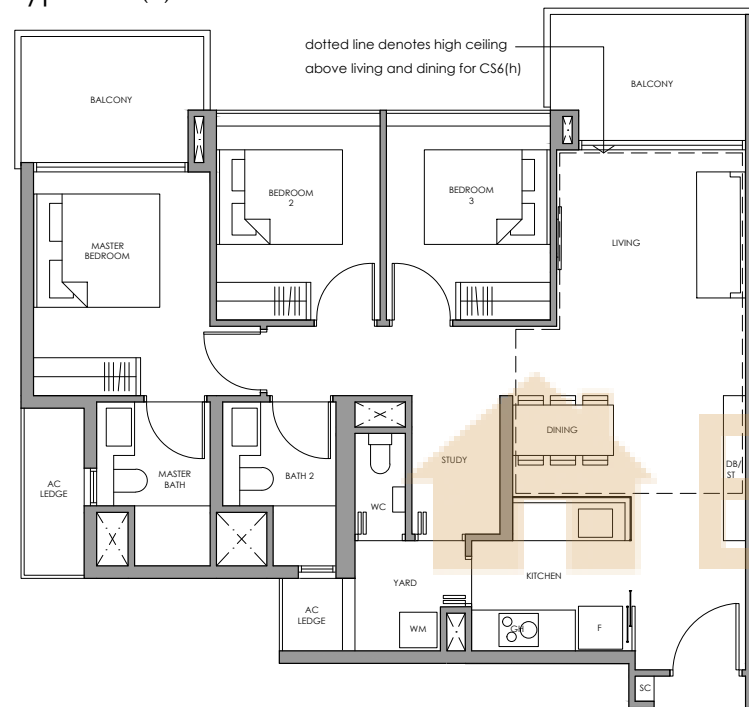
Type CS6(p)



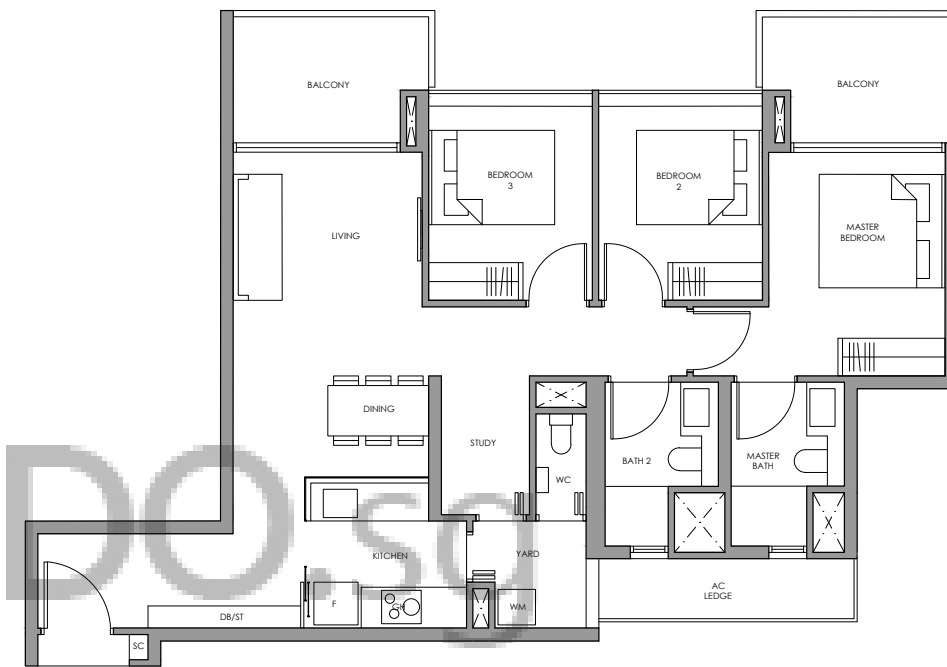
Type CS7(p)



Type CS6
Type CS6(h)



Type CS7



Fridge
Gas Hob
Shoe Cabinet
Washer cum Dryer
Distribution Board / Store

F
GH
SC
WM
DB/ST

Fridge
Gas Hob
Shoe Cabinet
Washer cum Dryer
Distribution Board / Store

F
GH
SC
WM
DB/ST

+
Type CS6(p)

103 sq m / 1109 sq ft
Inclusive of 13 sq m PES
& 5 sq m AC Ledge

Block 2
#01-06

+
Type CS6

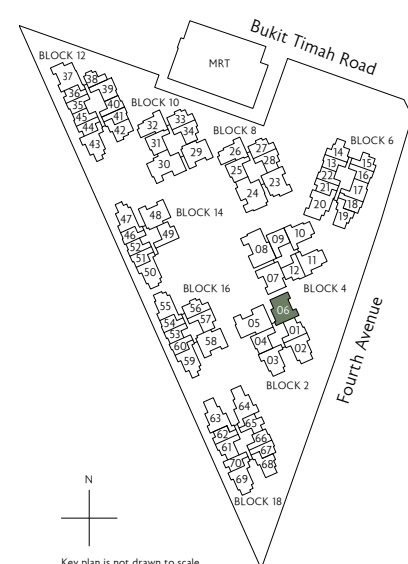
103 sq m / 1109 sq ft
Inclusive of 13 sq m Balcony
& 5 sq m AC Ledge

Block 2
#02-06 to #05-06

+
Type CS6(h)

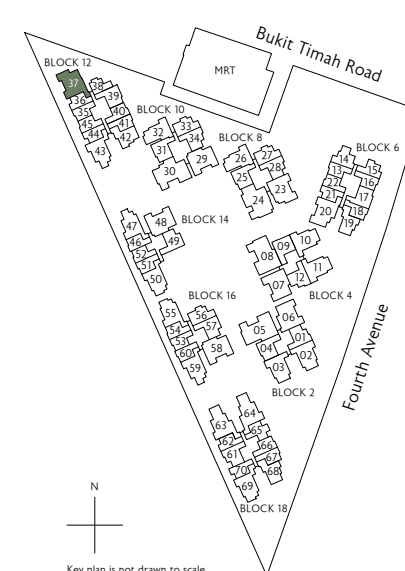
103 sq m / 1109 sq ft
Inclusive of 13 sq m Balcony
& 5 sq m AC Ledge

Block 2
#06-06



N
Key plan is not drawn to scale

0 1 3 5M
* Mirror Image ^ High Ceiling



N
Key plan is not drawn to scale

+
Type CS7(p)

104 sq m / 1119 sq ft
Inclusive of 13 sq m PES
& 5 sq m AC Ledge

Block 12
#01-37

+
Type CS7

104 sq m / 1119 sq ft
Inclusive of 13 sq m Balcony
& 5 sq m AC Ledge

Block 12
#02-37 to #10-37

0 1 3 5M
* Mirror Image ^ High Ceiling

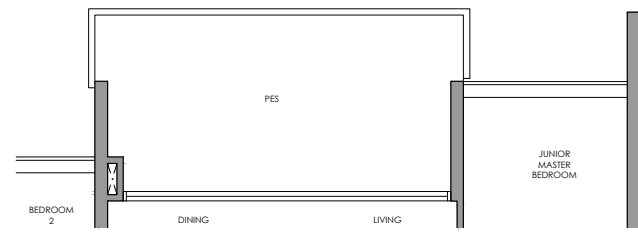
All plans are subject to change as may be required or approved by the relevant authorities. All floor areas are approximate measurements only and are subject to final survey. The balcony shall not be enclosed except with the approved balcony screen. For an illustration of the approved balcony screen, please refer to the diagram annexed hereto as "Annexure 1"

All plans are subject to change as may be required or approved by the relevant authorities. All floor areas are approximate measurements only and are subject to final survey. The balcony shall not be enclosed except with the approved balcony screen. For an illustration of the approved balcony screen, please refer to the diagram annexed hereto as "Annexure 1"

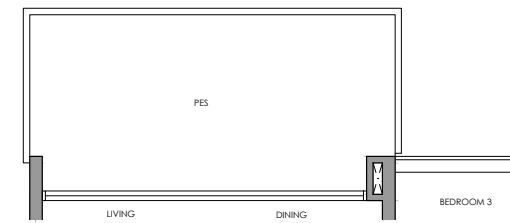
4-Bedroom + Study

4-Bedroom + Study

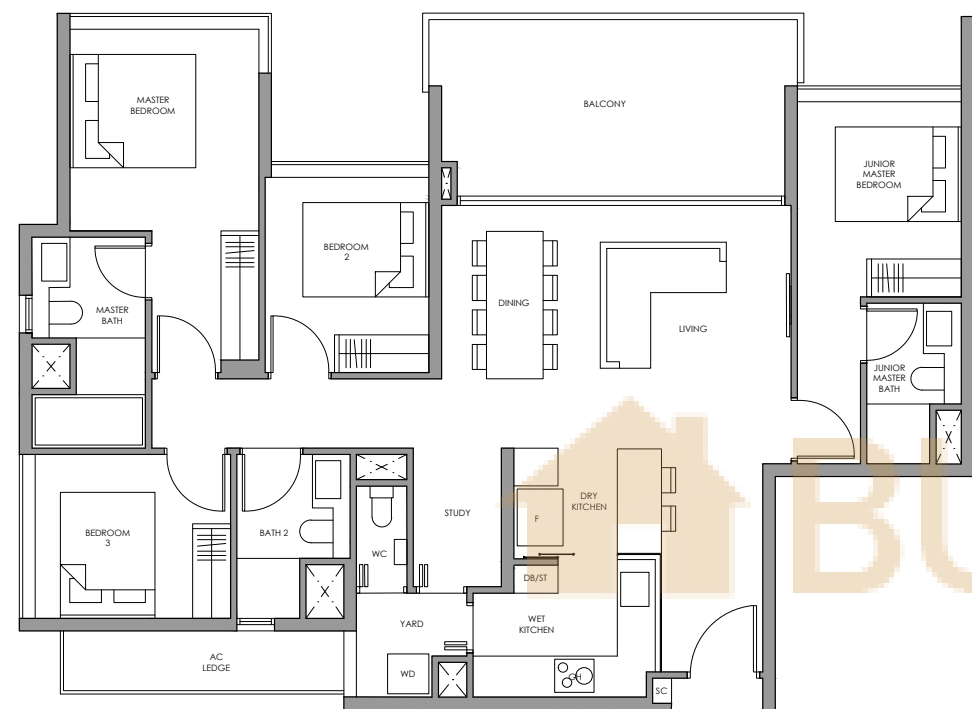
Type DS1(p)



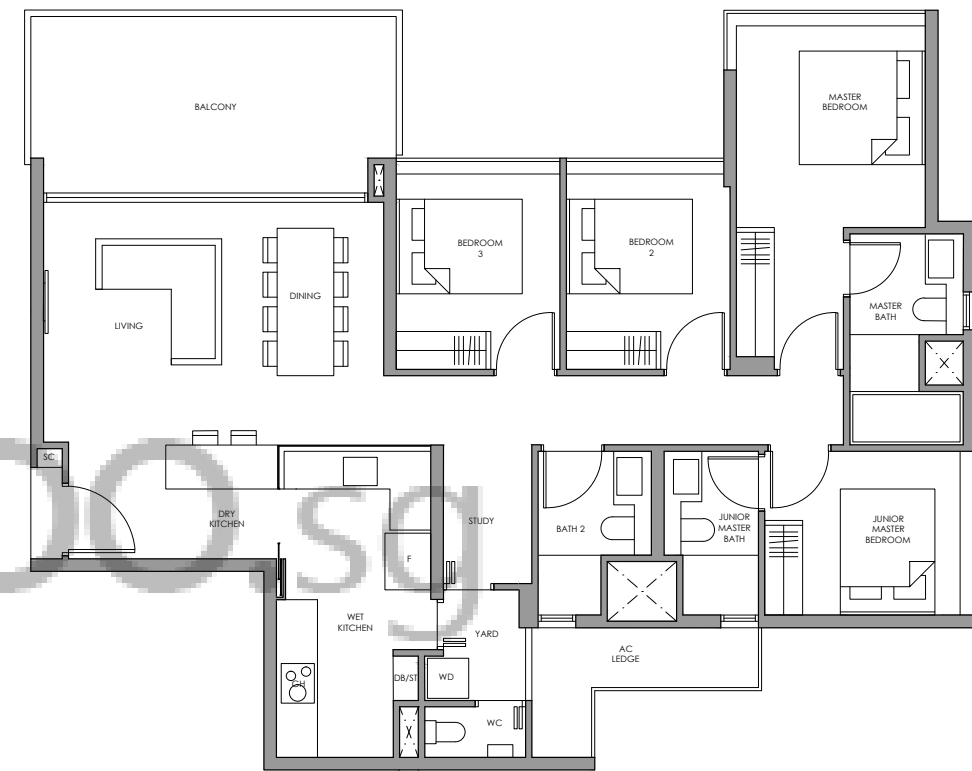
Type DS2(p)



Type DS1



Type DS2



Fridge F
Gas Hob GH
Shoe Cabinet SC
Washer and Dryer WD
Distribution Board / Store DB/ST

Fridge F
Gas Hob GH
Shoe Cabinet SC
Washer and Dryer WD
Distribution Board / Store DB/ST

✦
Type DS1(p)

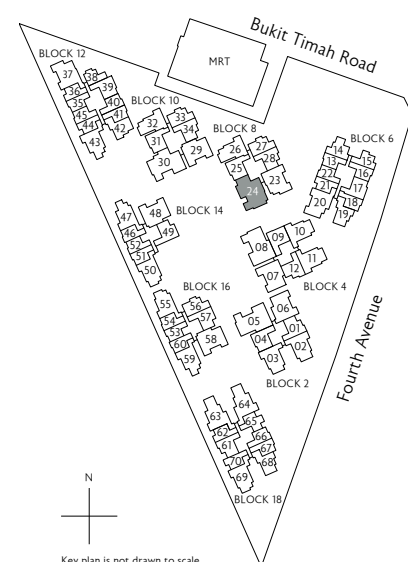
137 sq m / 1475 sq ft
Inclusive of 17 sq m PES
& 5 sq m AC Ledge

Block 8
#01-24

✦
Type DS1

137 sq m / 1475 sq ft
Inclusive of 17 sq m Balcony
& 5 sq m AC Ledge

Block 8
#02-24 to #06-24



N
Key plan is not drawn to scale

0 1 3 5M
* Mirror Image ^ High Ceiling

✦
Type DS2(p)

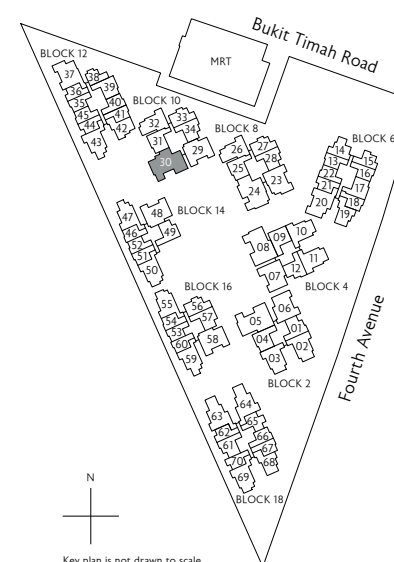
139 sq m / 1496 sq ft
Inclusive of 17 sq m PES
& 5 sq m AC Ledge

Block 10
#01-30

✦
Type DS2

139 sq m / 1496 sq ft
Inclusive of 17 sq m Balcony
& 5 sq m AC Ledge

Block 10
#02-30 to #06-30



N
Key plan is not drawn to scale

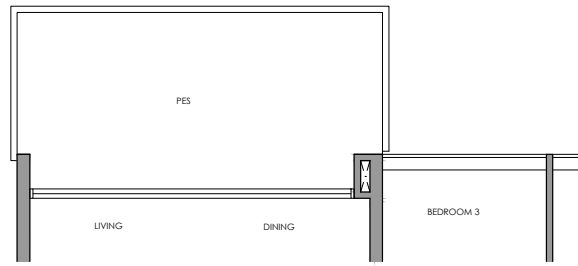
0 1 3 5M
* Mirror Image ^ High Ceiling

All plans are subject to change as may be required or approved by the relevant authorities. All floor areas are approximate measurements only and are subject to final survey. The balcony shall not be enclosed except with the approved balcony screen. For an illustration of the approved balcony screen, please refer to the diagram annexed hereto as "Annexure 1"

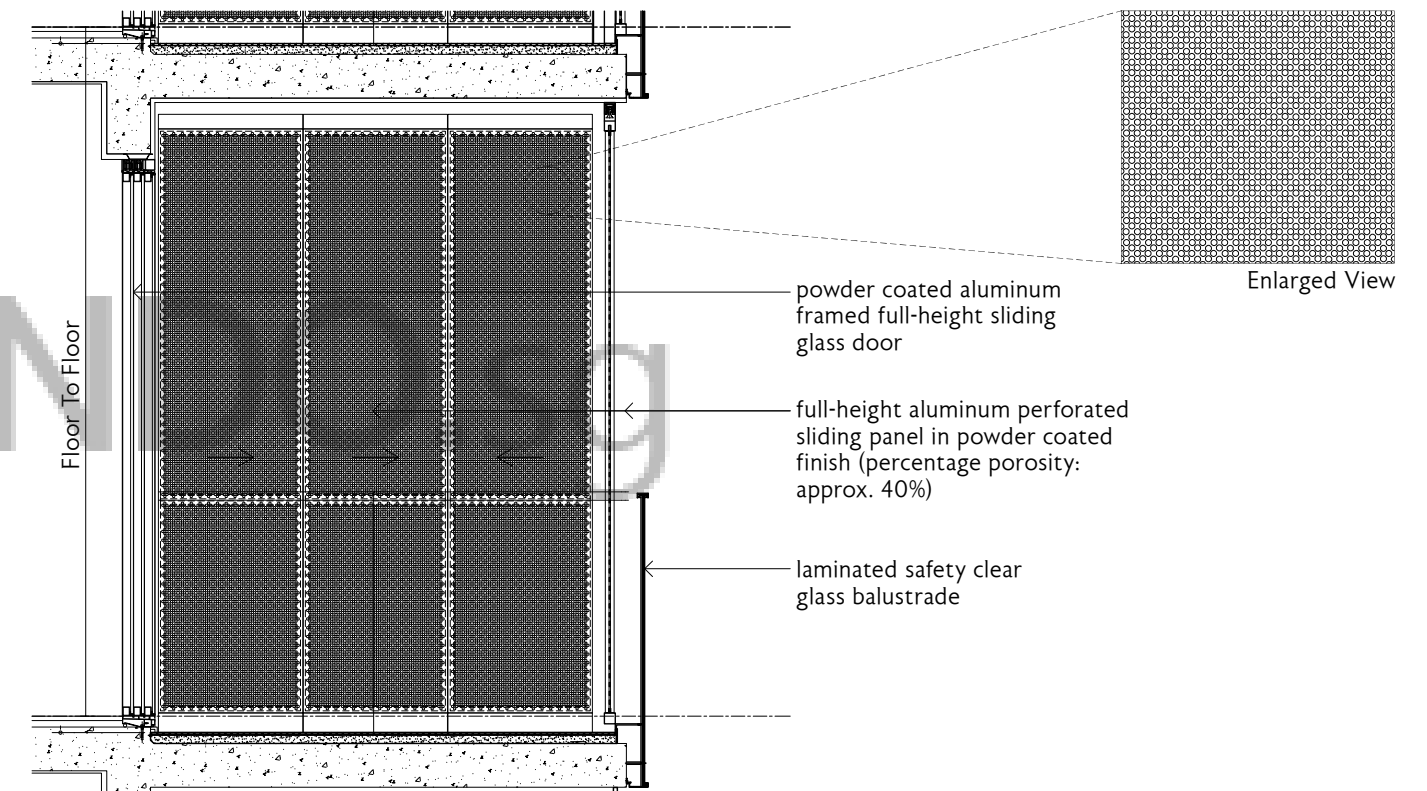
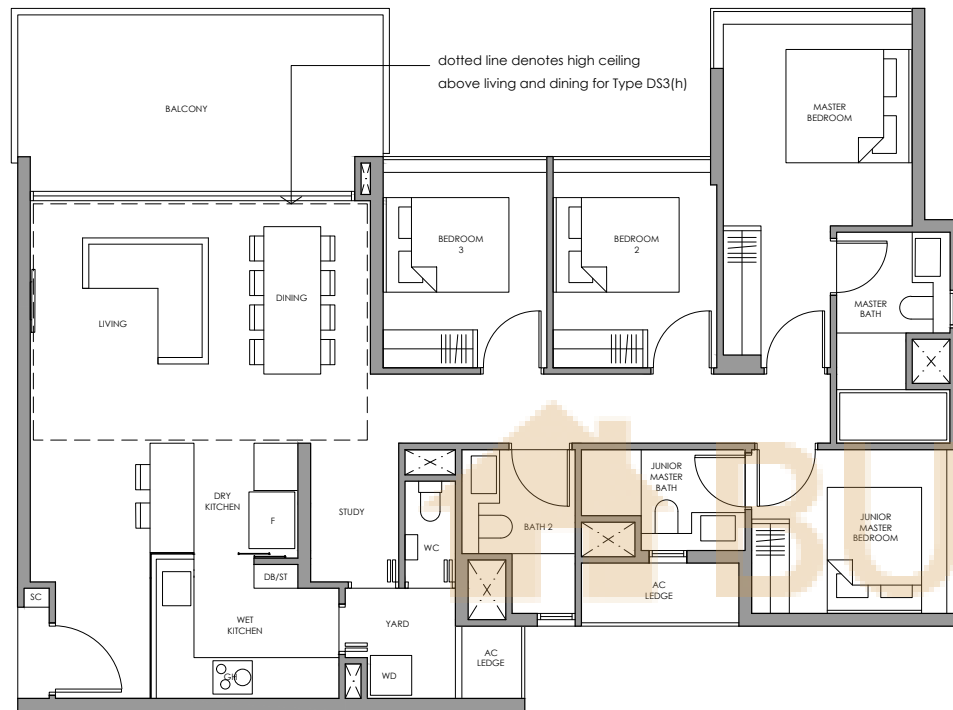
All plans are subject to change as may be required or approved by the relevant authorities. All floor areas are approximate measurements only and are subject to final survey. The balcony shall not be enclosed except with the approved balcony screen. For an illustration of the approved balcony screen, please refer to the diagram annexed hereto as "Annexure 1"

4-Bedroom + Study

Type DS3(p)



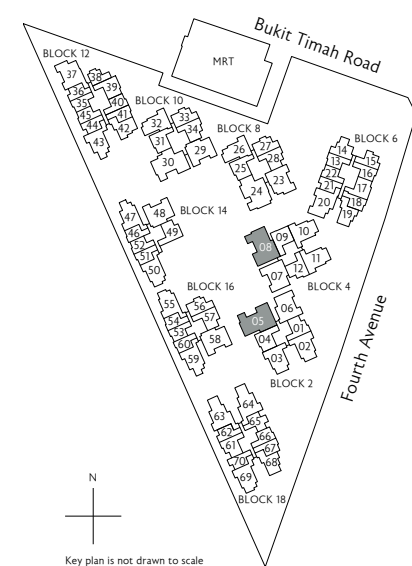
Type DS3
Type DS3(h)



- Fridge
- Gas Hob
- Shoe Cabinet
- Washer and Dryer
- Distribution Board / Store

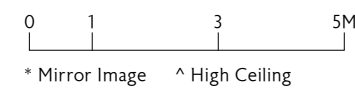
- F
- GH
- SC
- WD
- DB/ST

- | | | |
|--|---|--|
| <p>✦
Type DS3(p)
138 sq m / 1485 sq ft
Inclusive of 17 sq m PES
& 4 sq m AC Ledge</p> <p>Block 2
#01-05 *</p> <p>Block 4
#01-08</p> | <p>✦
Type DS3
138 sq m / 1485 sq ft
Inclusive of 17 sq m Balcony
& 4 sq m AC Ledge</p> <p>Block 2
#02-05 to #05-05 *</p> <p>Block 4
#02-08 to #05-08</p> | <p>✦
Type DS3(h)
138 sq m / 1485 sq ft
Inclusive of 17 sq m Balcony
& 4 sq m AC Ledge</p> <p>Block 2
#06-05 *</p> <p>Block 4
#06-08</p> |
|--|---|--|



Approved Balcony Screen

- Note:
- (i) The balcony shall not be enclosed unless with the approved balcony screen (as shown above)
 - (ii) The installation and cost of the screen shall be borne by the Purchaser



All plans are subject to change as may be required or approved by the relevant authorities. All floor areas are approximate measurements only and are subject to final survey. The balcony shall not be enclosed except with the approved balcony screen. For an illustration of the approved balcony screen, please refer to the diagram annexed hereto as "Annexure 1"