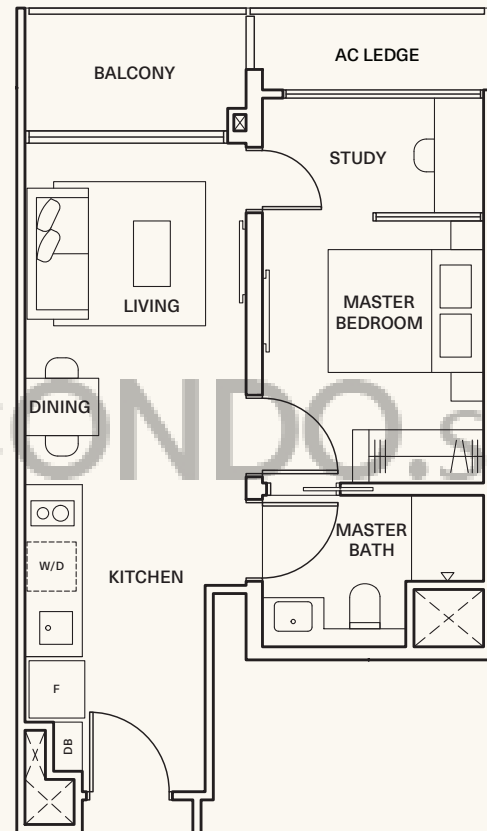
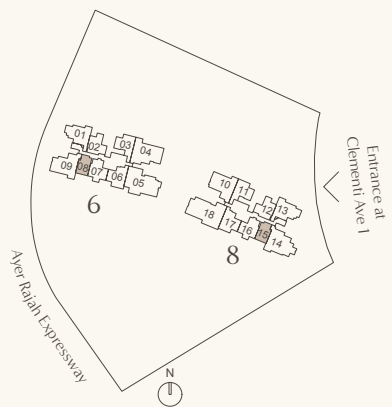


1 Bedroom + Study

● TYPE A1

49 sq m / 527 sq ft

#02-08 to #37-08
#02-15 to #37-15 Mirror



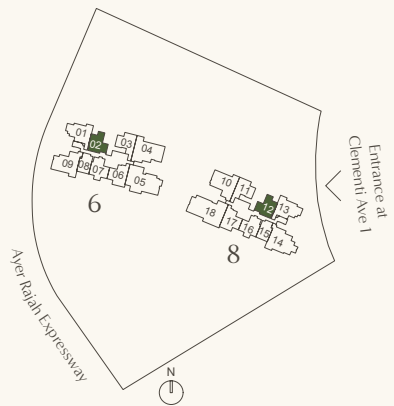
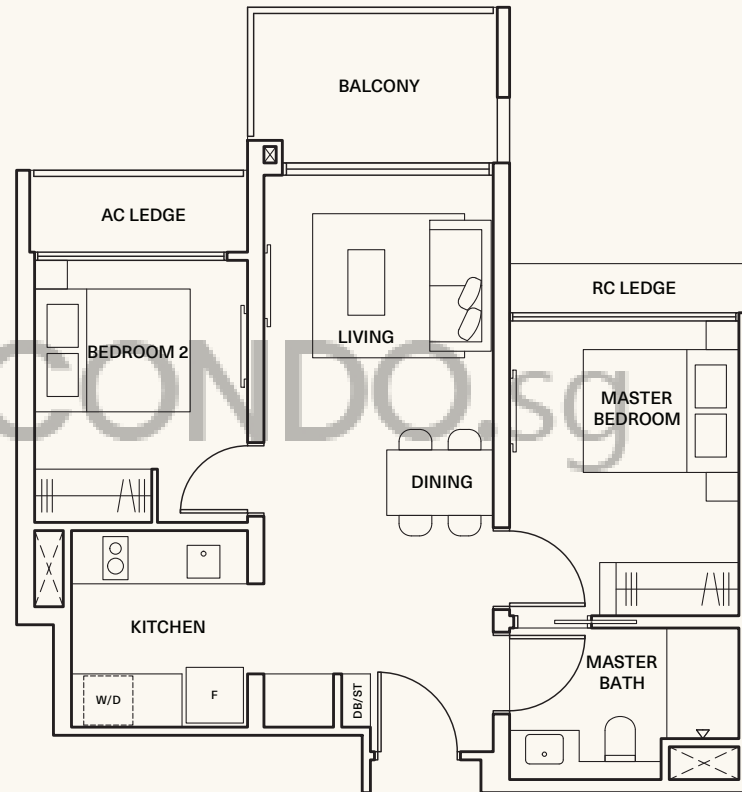
Areas include AC ledge and balcony, where applicable. The plans are subjected to change as may be required by relevant authorities. All areas and measurements stated herein as approximate and subject to final survey.

2 Bedroom

● TYPE B1

63 sq m / 678 sq ft

#02-02 to #36-02
#02-12 to #36-12 Mirror



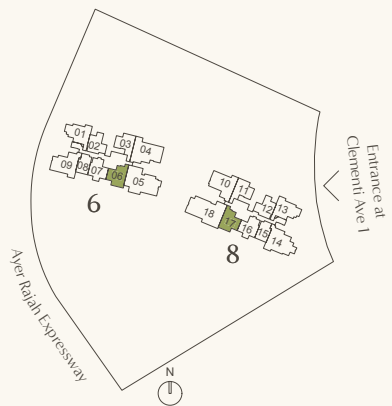
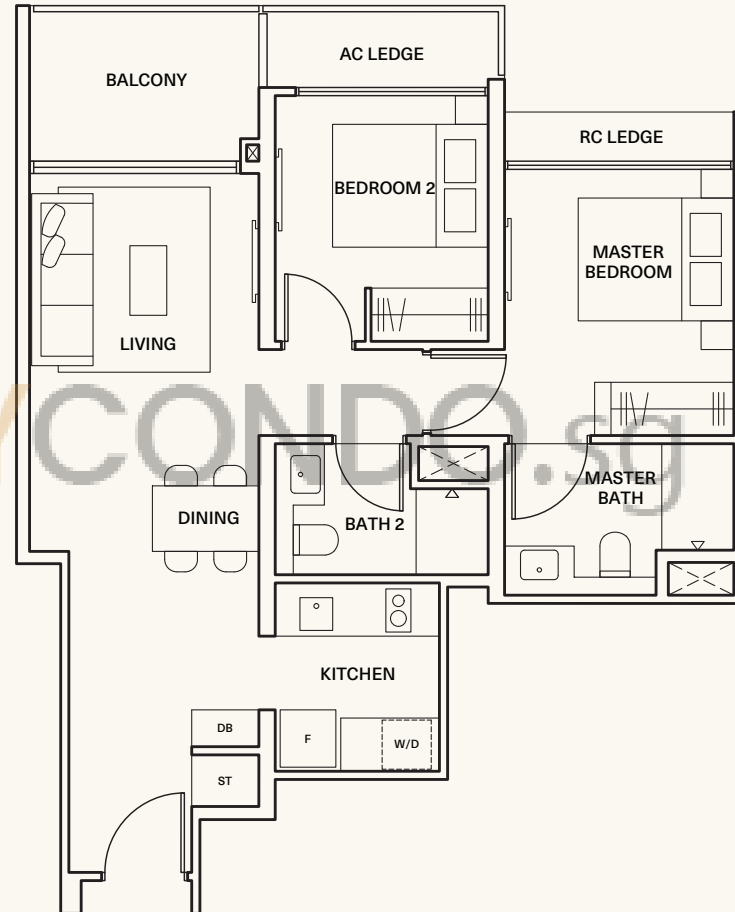
Areas include AC ledge and balcony, where applicable. The plans are subjected to change as may be required by relevant authorities. All areas and measurements stated herein as approximate and subject to final survey.

2 Bedroom Premium

● TYPE BP1

71 sq m / 764 sq ft

#02-06 to #37-06
#02-17 to #37-17 Mirror



Areas include AC ledge and balcony, where applicable. The plans are subjected to change as may be required by relevant authorities. All areas and measurements stated herein as approximate and subject to final survey.

Comfort | Interiors

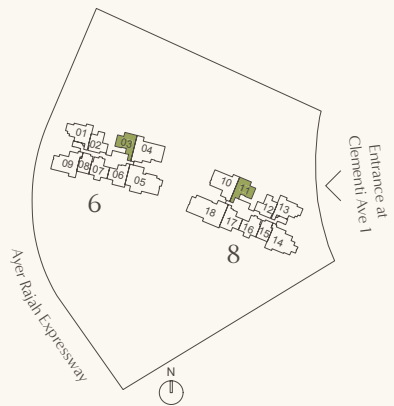
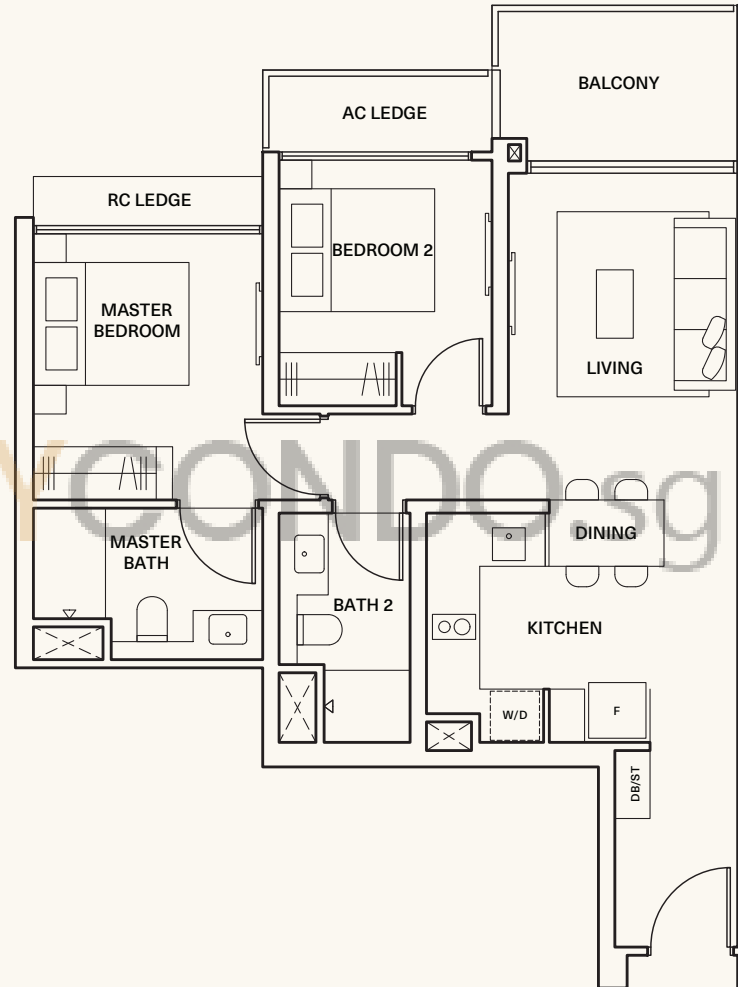
2 Bedroom Premium

● TYPE BP2

71 sq m / 764 sq ft

#02-03 to #36-03

#02-11 to #36-11 Mirror



Areas include AC ledge and balcony, where applicable. The plans are subjected to change as may be required by relevant authorities. All areas and measurements stated herein as approximate and subject to final survey.



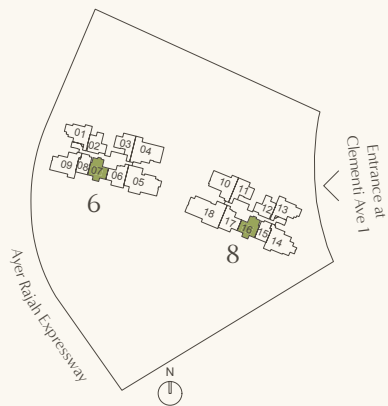
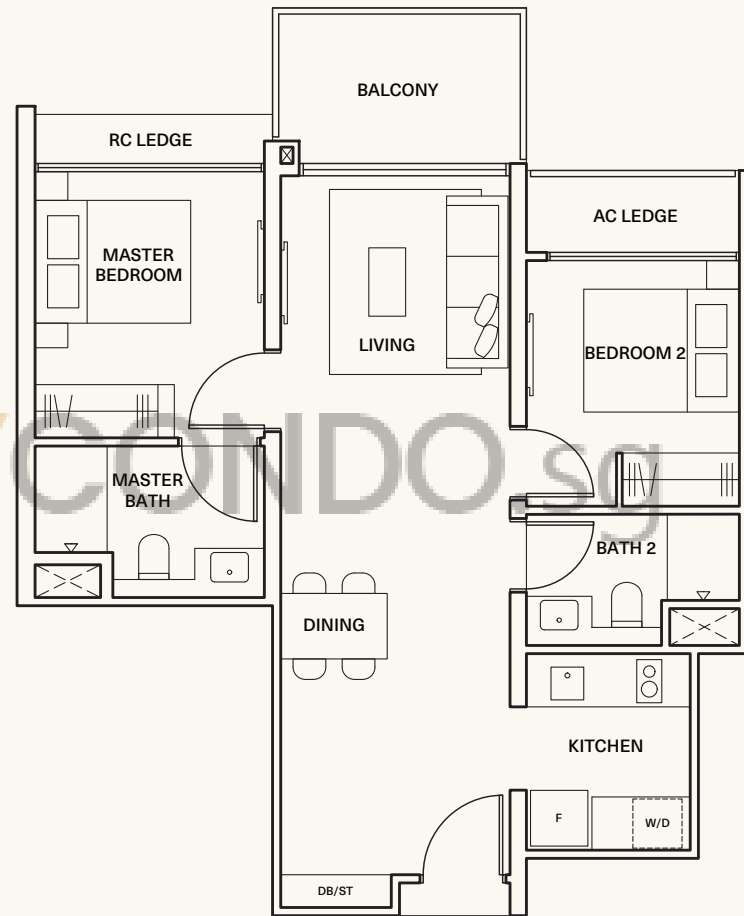
2 Bedroom Premium

● TYPE BP3

71 sq m / 764 sq ft

#02-07 to #37-07

#02-16 to #37-16 Mirror



Areas include AC ledge and balcony, where applicable. The plans are subjected to change as may be required by relevant authorities. All areas and measurements stated herein as approximate and subject to final survey.

Comfort | Interiors



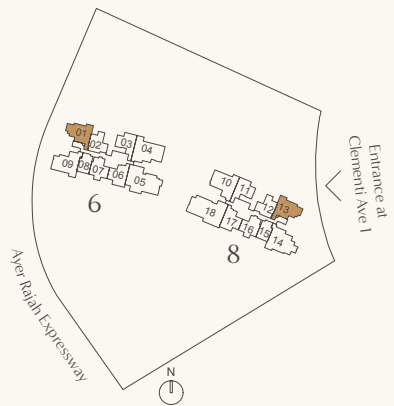
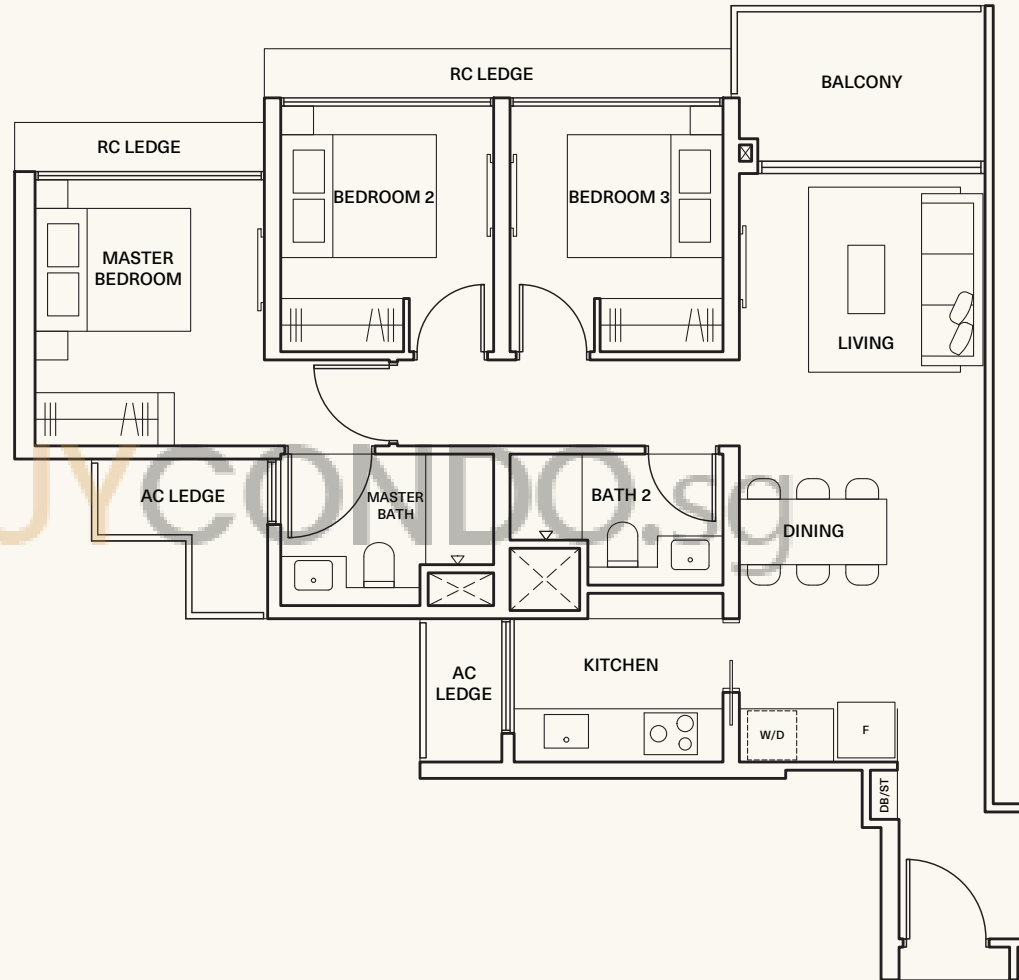
3 Bedroom

● TYPE C1

89 sq m / 958sq ft

#02-01 to #36-01

#02-13 to #36-13 Mirror



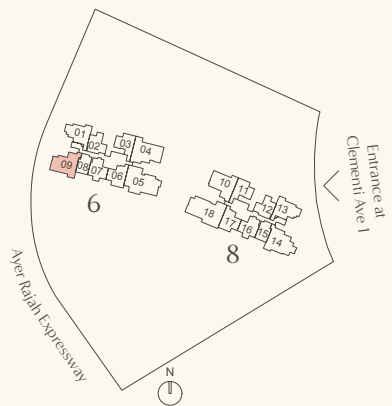
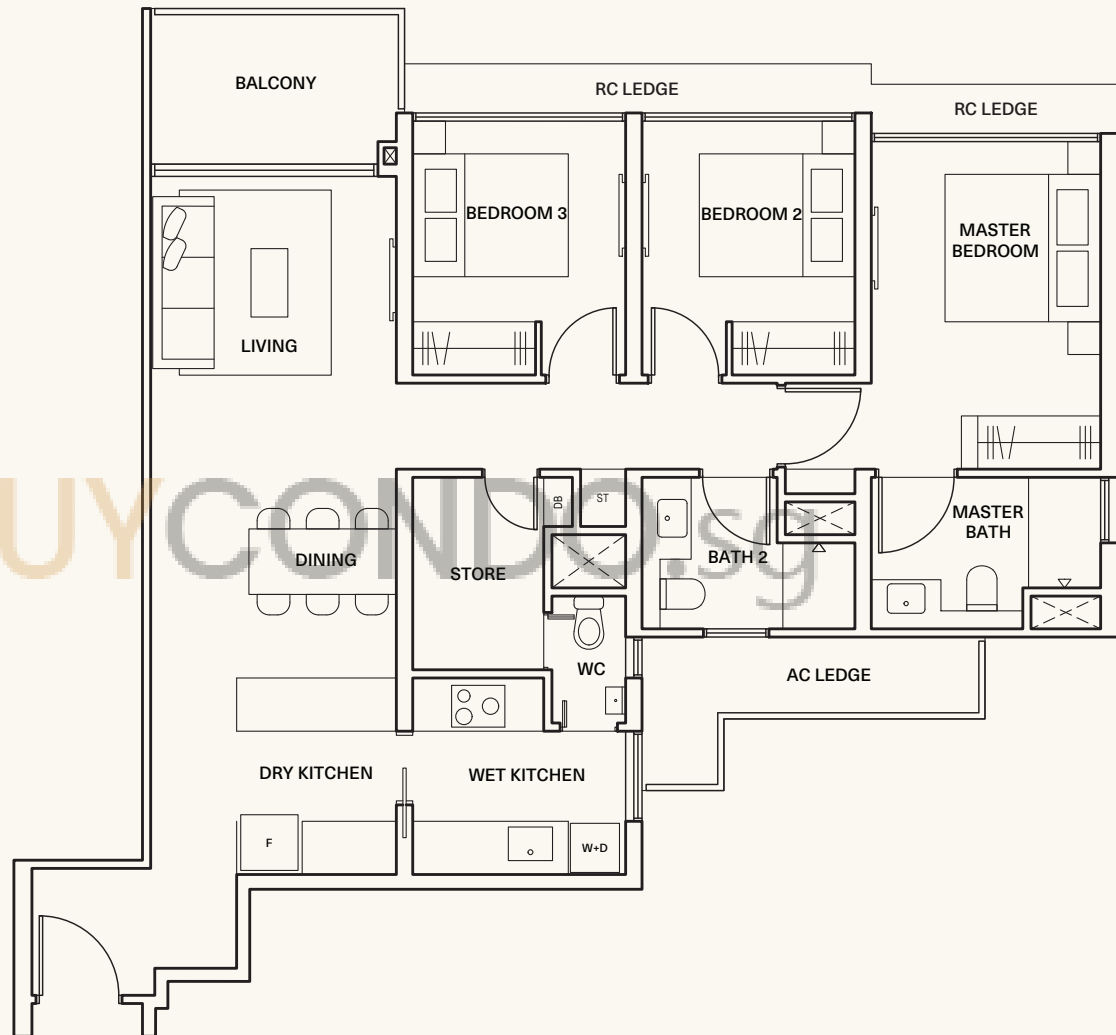
Areas include AC ledge and balcony, where applicable. The plans are subjected to change as may be required by relevant authorities. All areas and measurements stated herein as approximate and subject to final survey.

3 Bedroom Premium

● TYPE CP1

105 sq m / 1130sq ft

#02-09 to #37-09



Areas include AC ledge and balcony, where applicable. The plans are subjected to change as may be required by relevant authorities. All areas and measurements stated herein as approximate and subject to final survey.

Comfort | Interiors

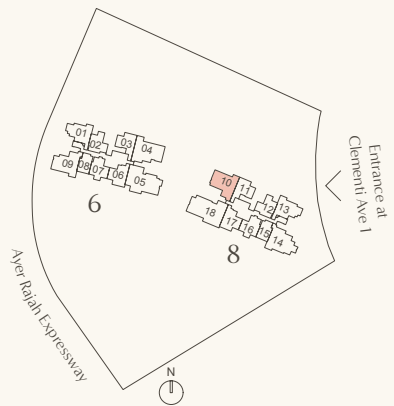
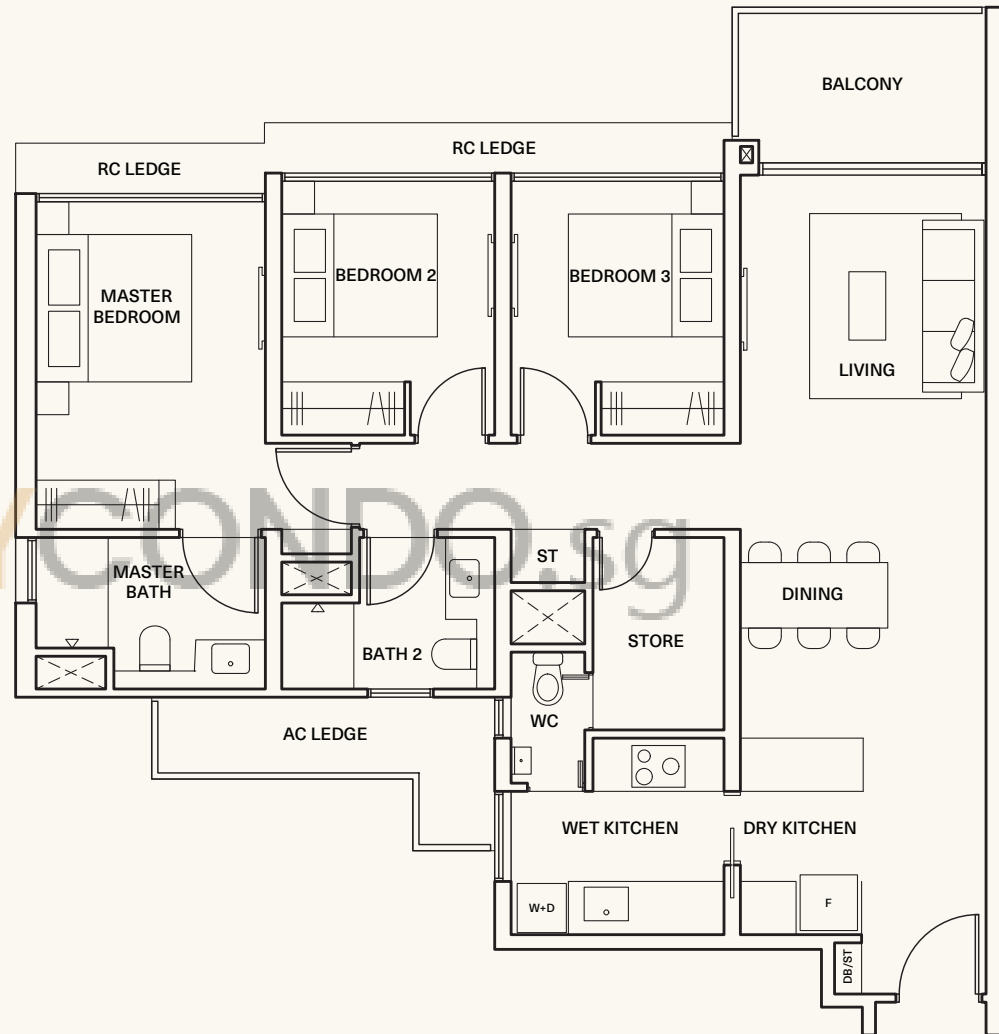


3 Bedroom Premium

TYPE CP2

105 sq m / 1130sq ft

#02-10 to #36-10



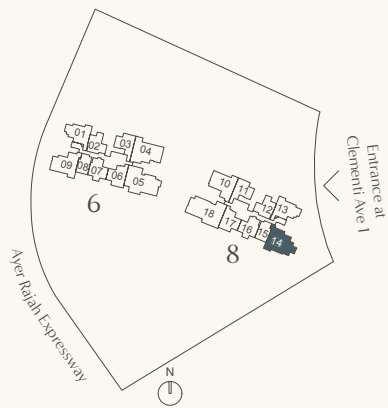
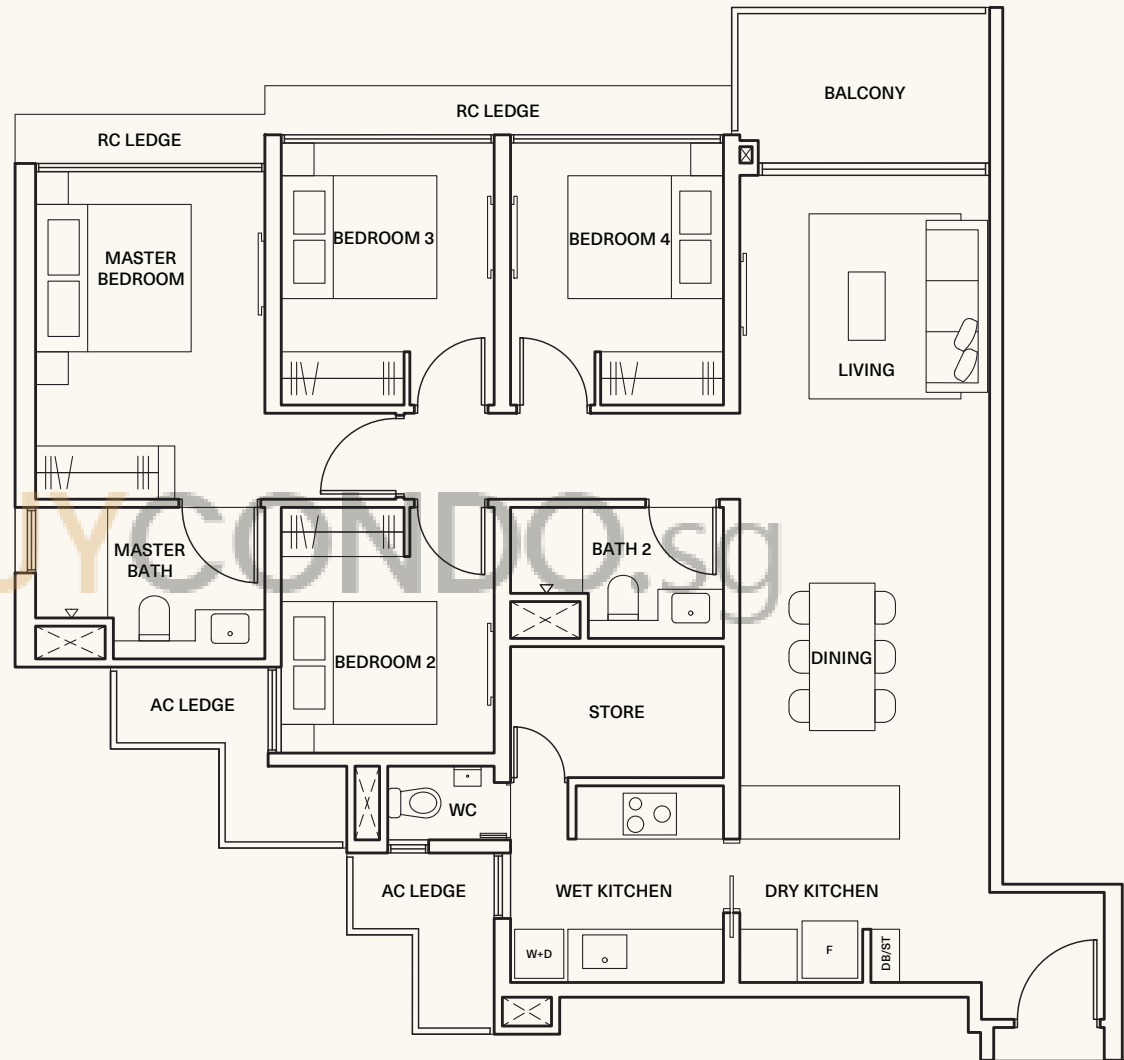
Areas include AC ledge and balcony, where applicable. The plans are subjected to change as may be required by relevant authorities. All areas and measurements stated herein as approximate and subject to final survey.

4 Bedroom

● TYPE D1

119 sq m / 1281sq ft

#02-14 to #37-14



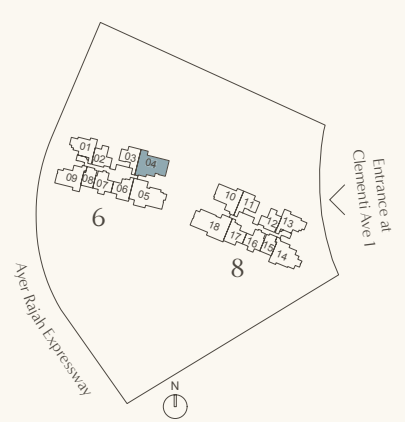
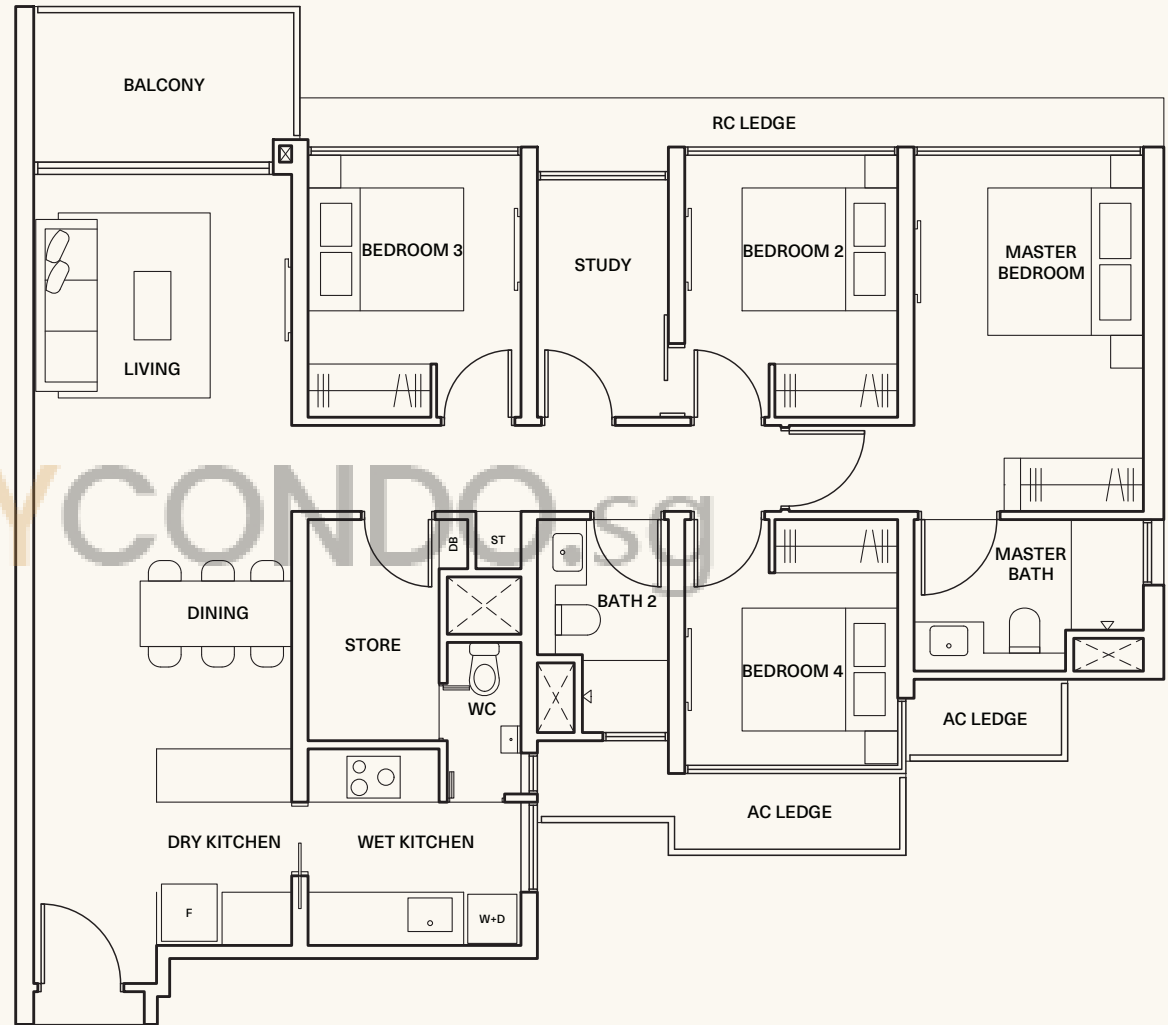
Areas include AC ledge and balcony, where applicable. The plans are subjected to change as may be required by relevant authorities. All areas and measurements stated herein as approximate and subject to final survey.

4 Bedroom + Study

● TYPE D2

126 sq m / 1356sq ft

#02-04 to #36-04



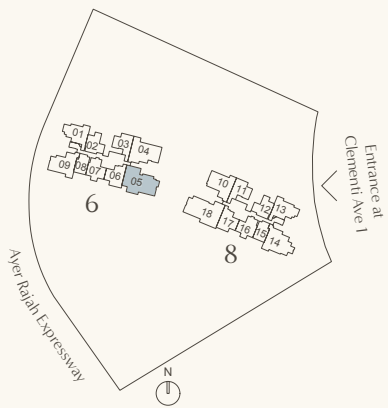
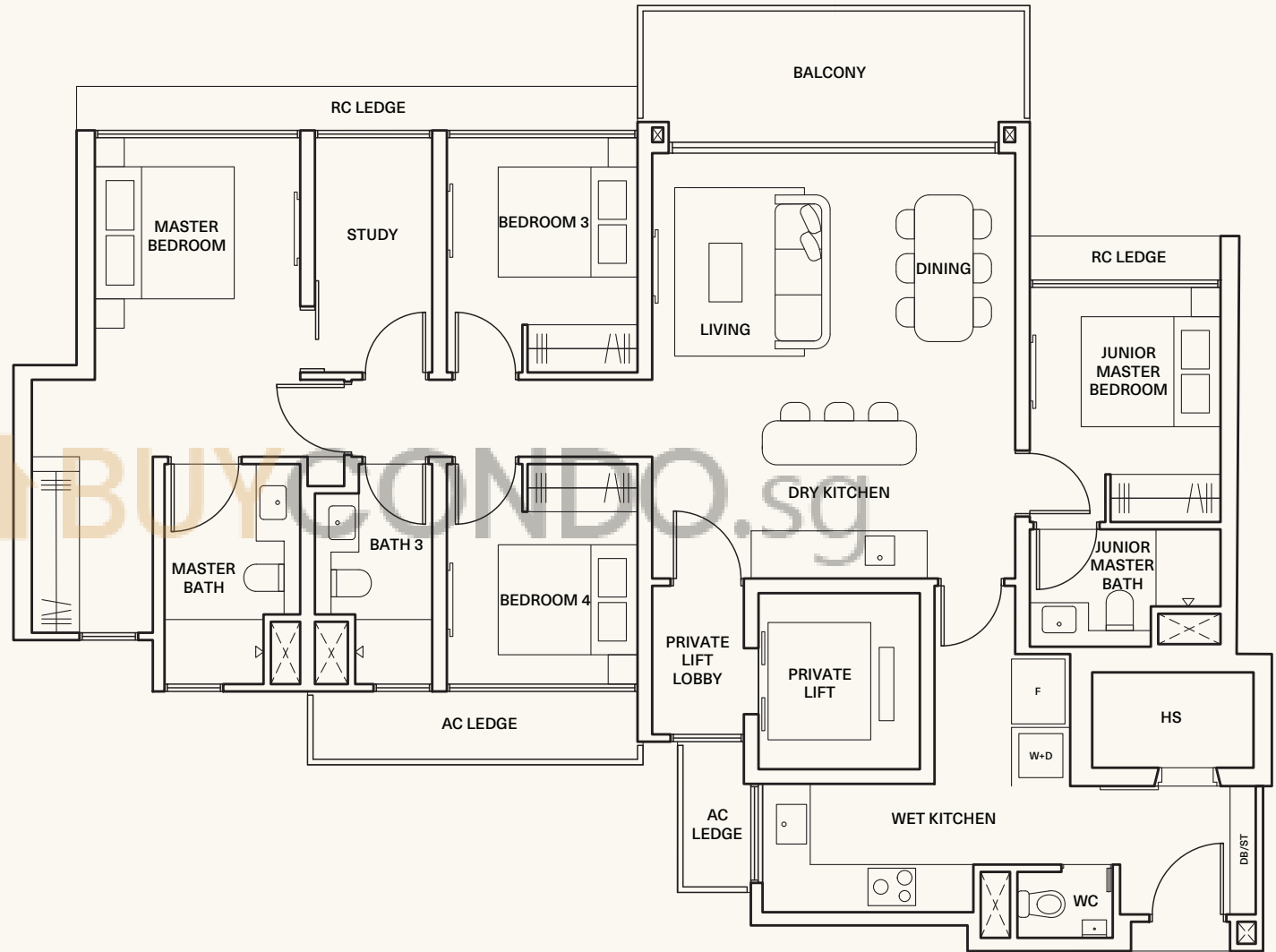
Areas include AC ledge and balcony, where applicable. The plans are subjected to change as may be required by relevant authorities. All areas and measurements stated herein as approximate and subject to final survey.

4 Bedroom Premium

● TYPE DP1

147 sq m / 1582sq ft

#02-05 to #37-05



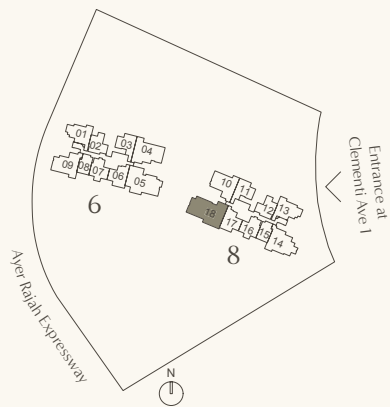
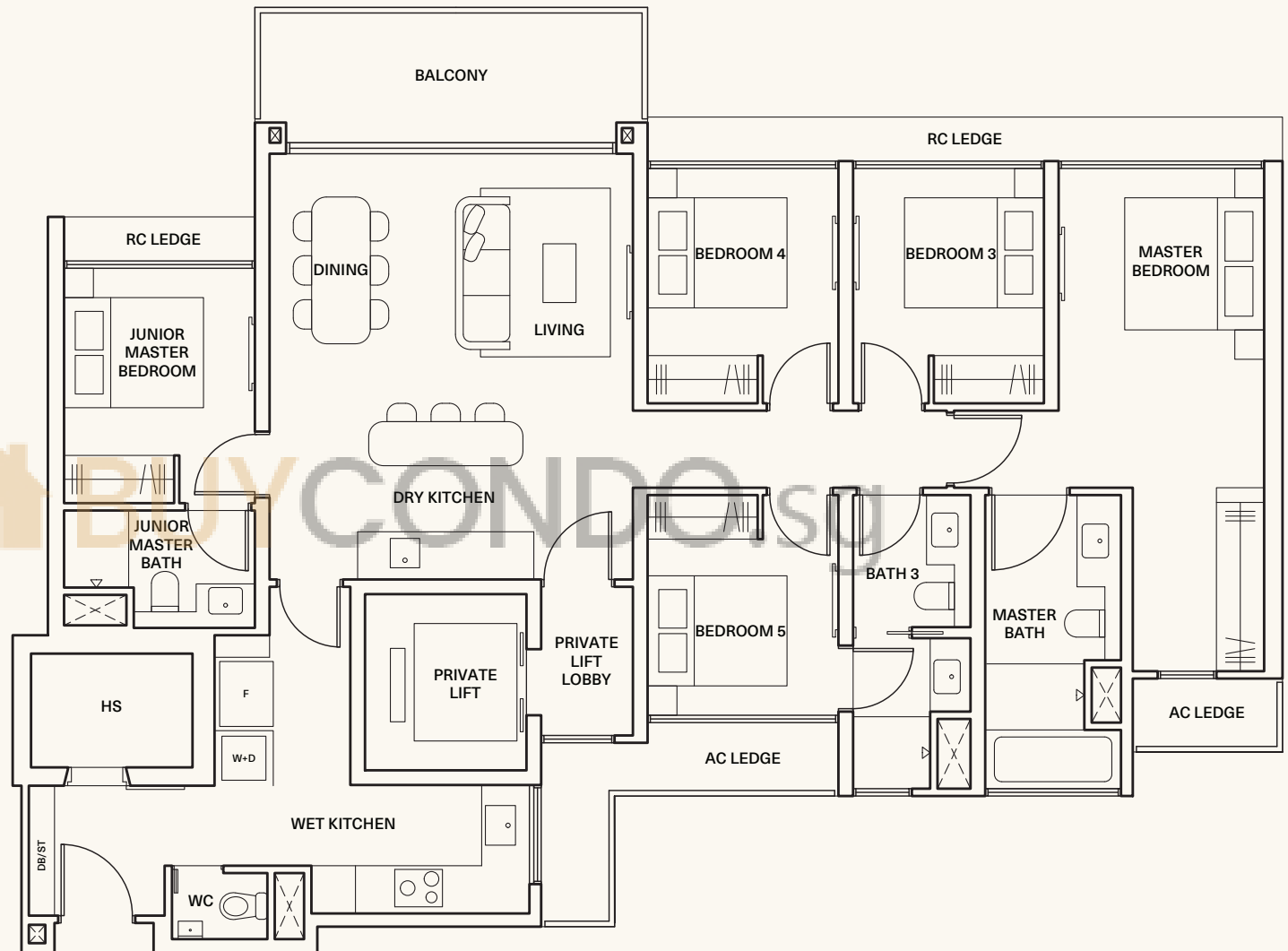
Areas include AC ledge and balcony, where applicable. The plans are subjected to change as may be required by relevant authorities. All areas and measurements stated herein as approximate and subject to final survey.

5 Bedroom Premium

● TYPE E1

157 sq m / 1690sq ft

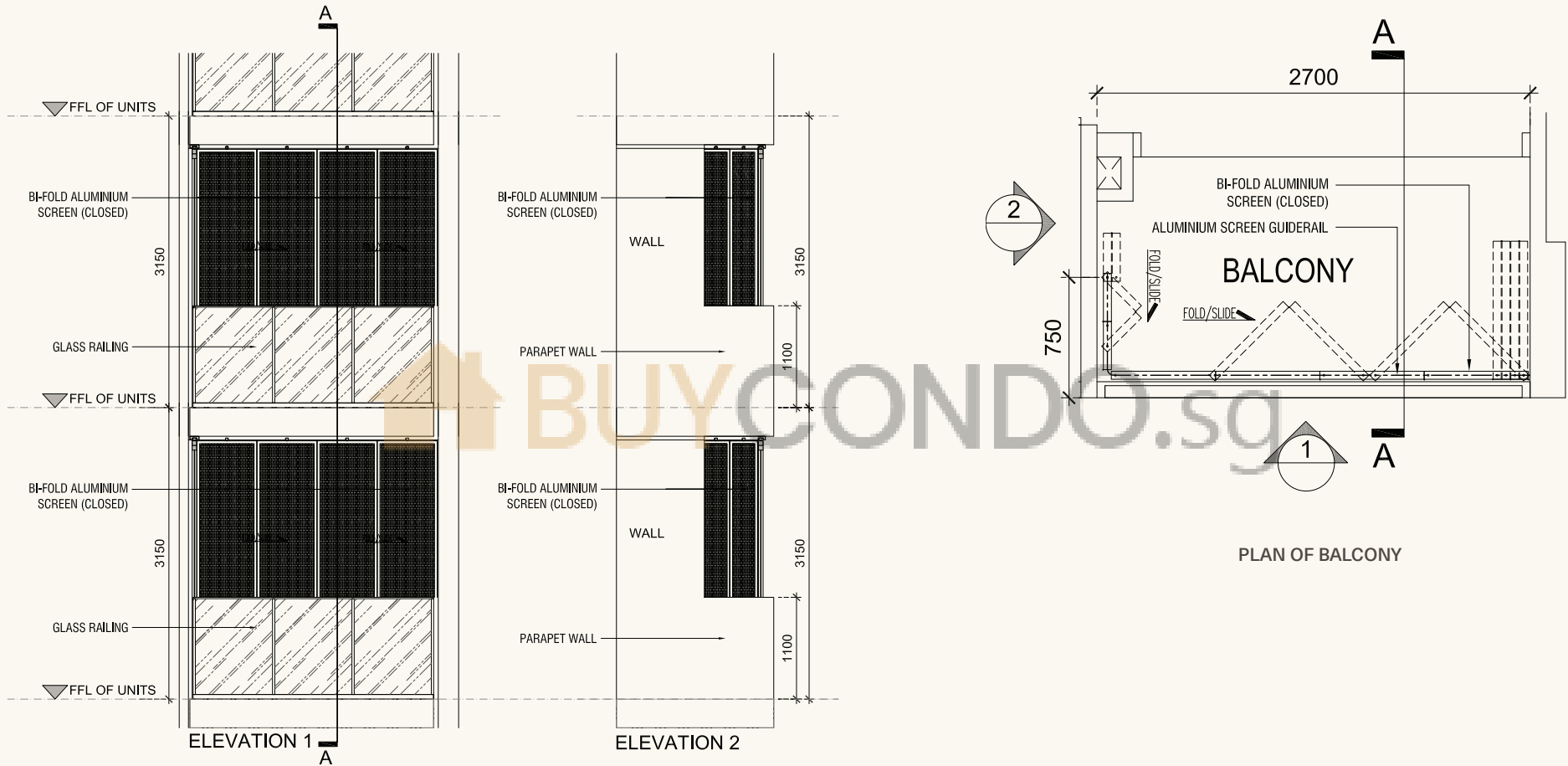
#02-18 to #37-18



Areas include AC ledge and balcony, where applicable. The plans are subjected to change as may be required by relevant authorities. All areas and measurements stated herein as approximate and subject to final survey.

Annexure -

Approved Screen for Balcony



TYPICAL ELEVATION OF BALCONY WITH SCREEN (CLOSE POSITION)