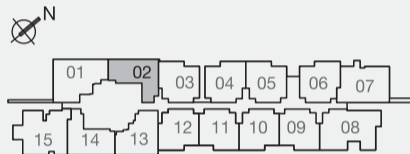
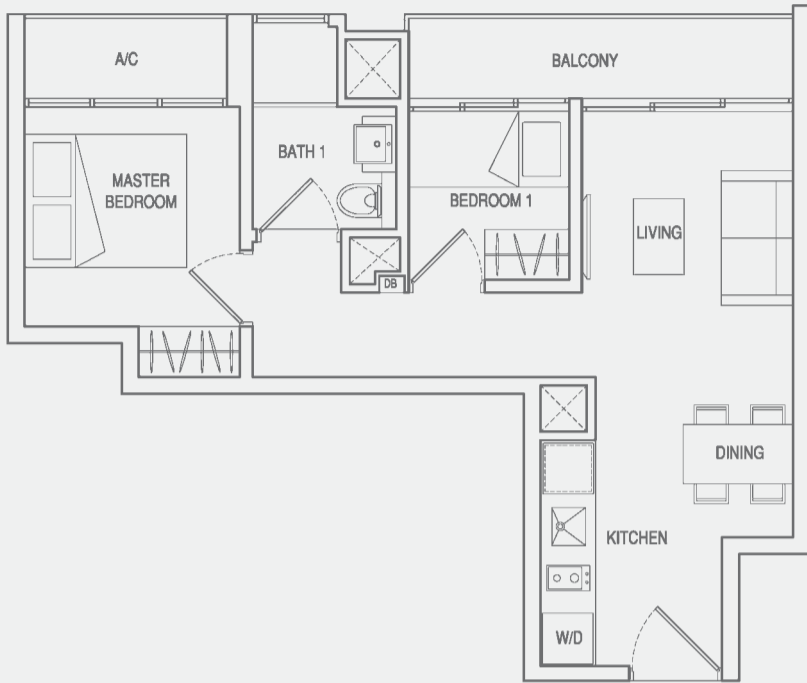


TYPE A1
2-BEDROOM

Unit #23-02 to #29-02
Area 49 Sqm / 527 Sqft



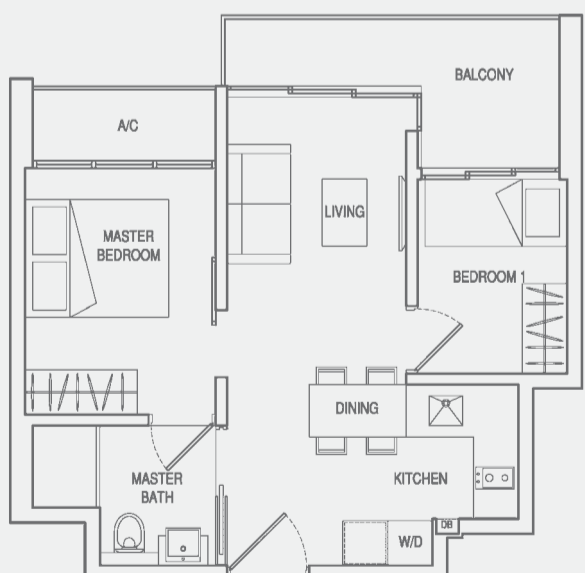
TYPE A2
2-BEDROOM

Unit #25-03 to #29-03
#25-05 to #29-05
Area 50 Sqm / 538 Sqft



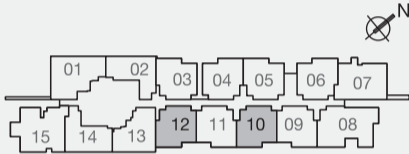
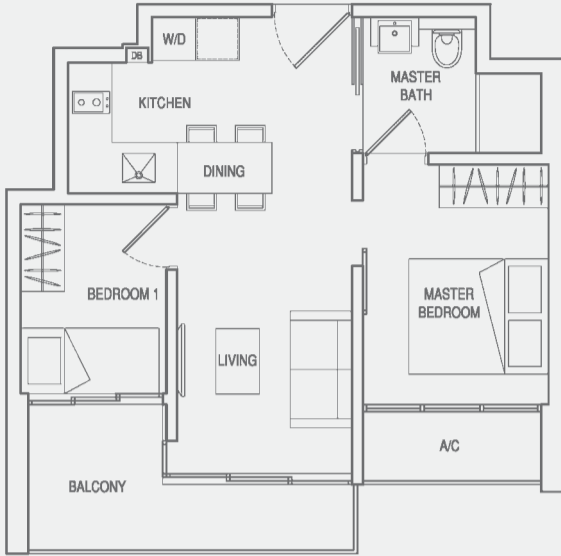
TYPE A2(m)
2-BEDROOM

Unit #25-04 to #29-04
#23-06 to #29-06
Area 50 Sqm / 538 Sqft



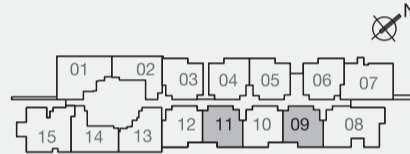
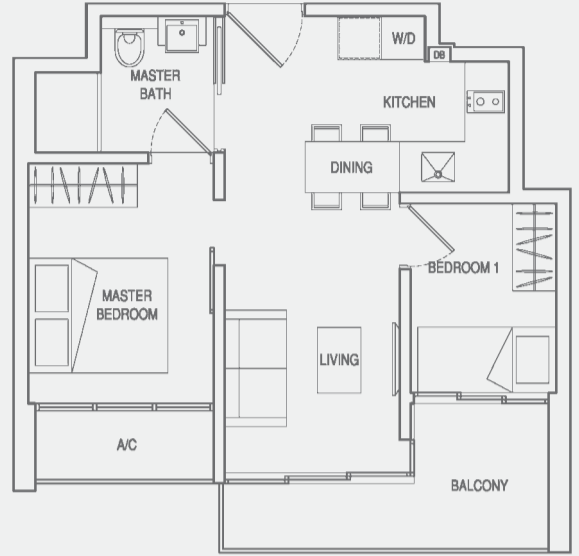
TYPE A3
2-BEDROOM

Unit #23-10 to #29-10
#23-12 to #29-12
Area 50 Sqm / 538 Sqft



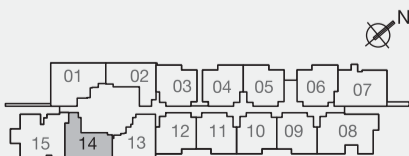
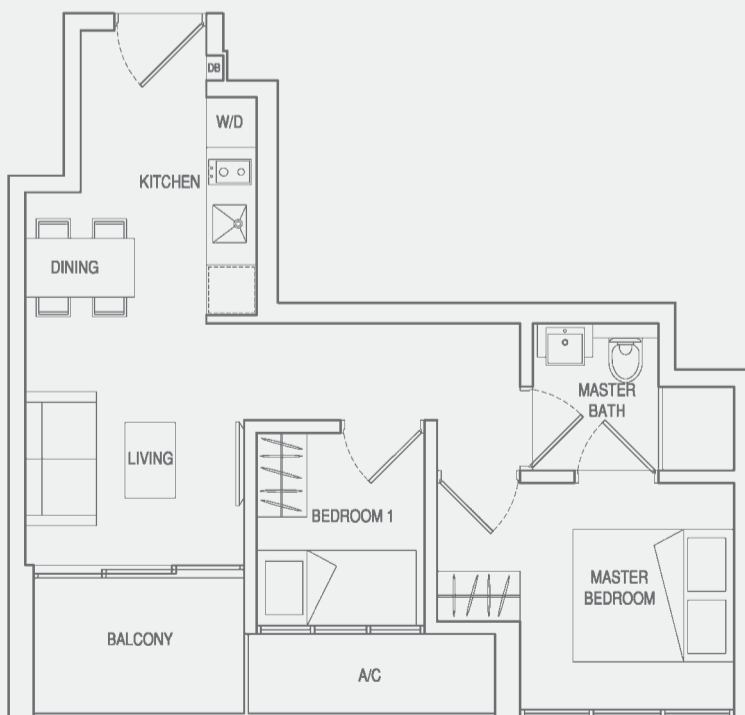
TYPE A3(m)
2-BEDROOM

Unit #23-09 to #29-09
#23-11 to #29-11
Area 50 Sqm / 538 Sqft



TYPE A4
2-BEDROOM

Unit #23-14 to #29-14
Area 50 Sqm / 538 Sqft

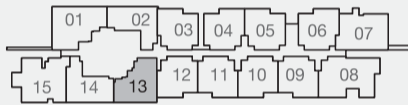
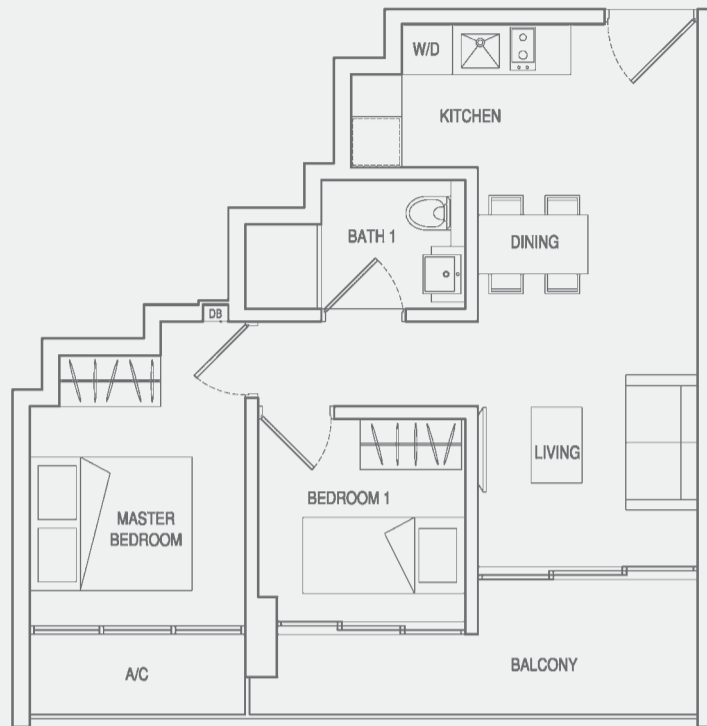


TYPE A5

2-BEDROOM

Unit #23-13 to #29-13

Area 54 Sqm / 581 Sqft



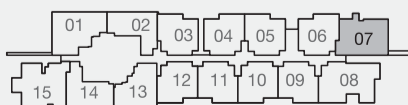
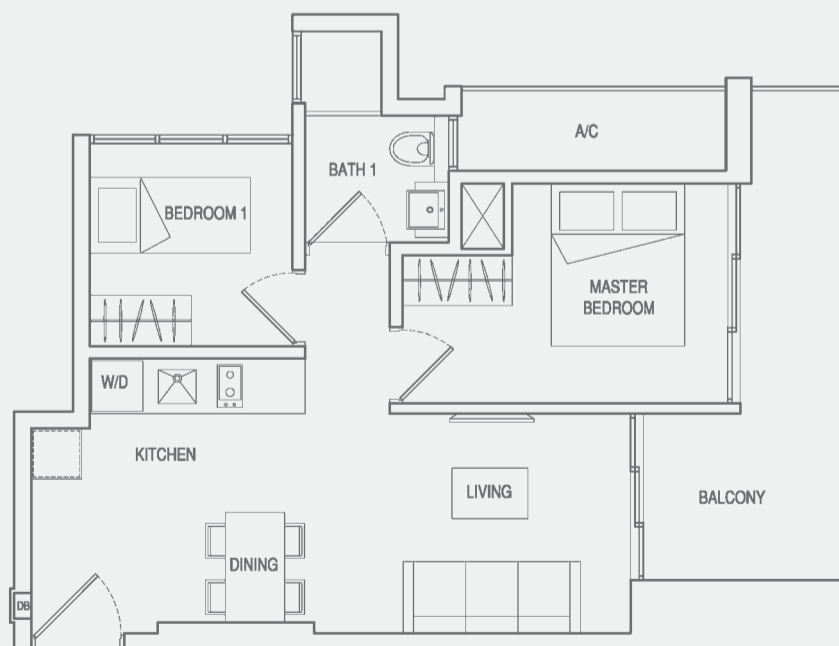
BUYCONDO.sg

TYPE A6

2-BEDROOM

Unit #23-07 to #29-07

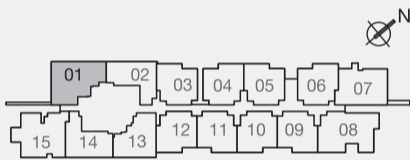
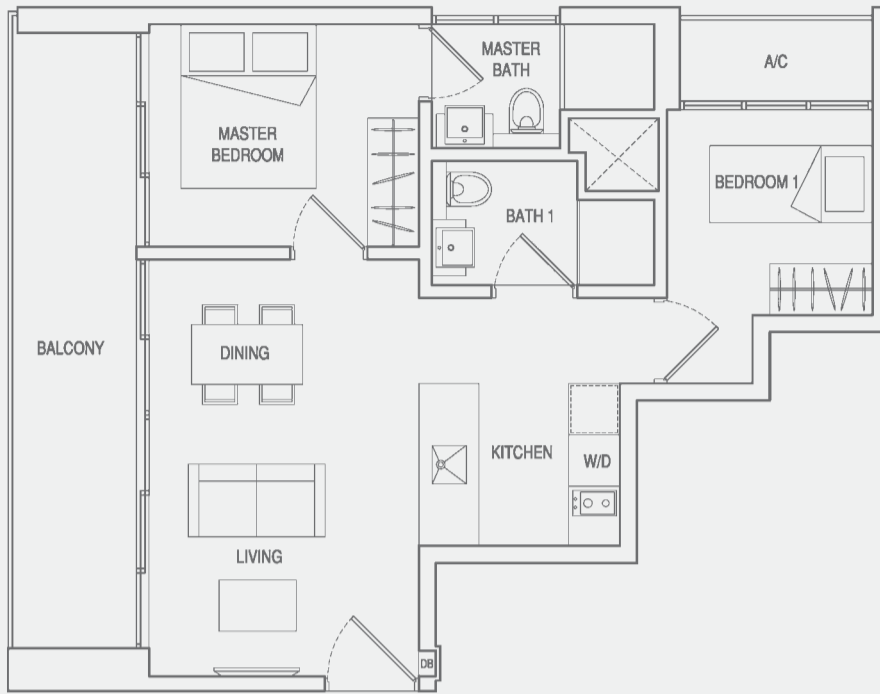
Area 60 Sqm / 646 Sqft



TYPE A7

2-BEDROOM

Unit #23-01, #24-01
#26-01 to #29-01
Area 64 Sqm / 689 Sqft

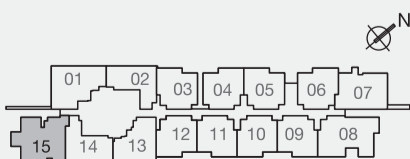


 BUYCONDO.sg

TYPE B1

3-BEDROOM

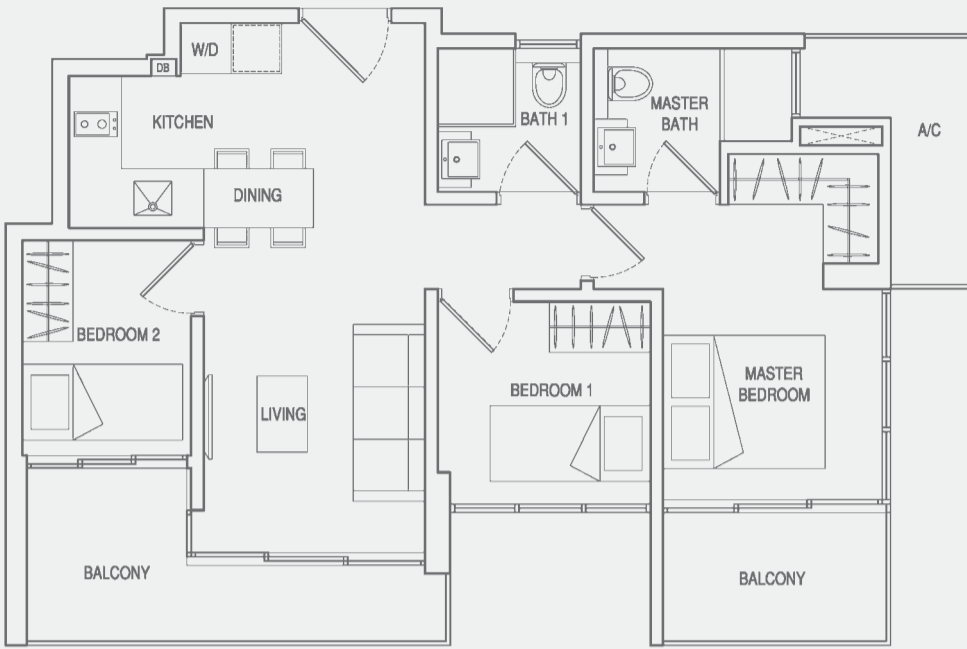
Unit #23-15 to #29-15
Area 70 Sqm / 754 Sqft



TYPE B2

3-BEDROOM

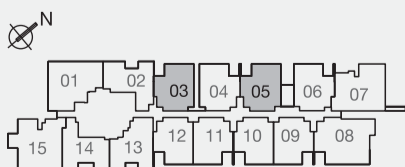
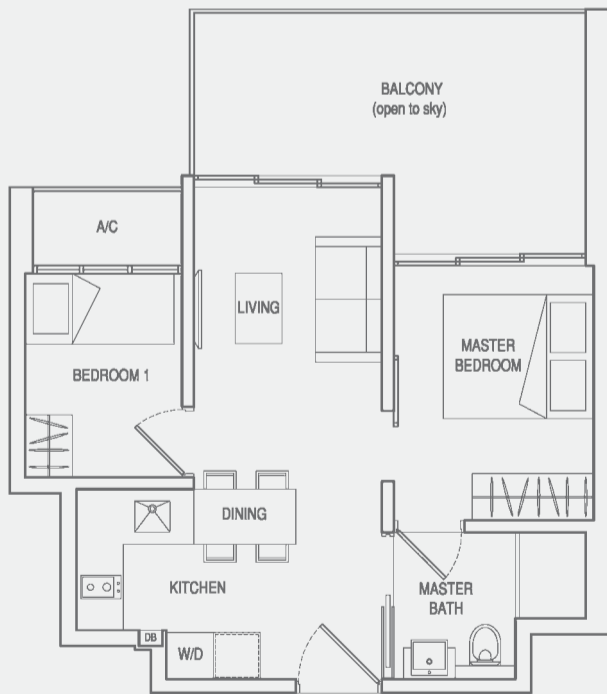
Unit #23-08 to #28-08
 Area 73 Sqm / 786 Sqft



TYPE C1

2-BEDROOM WITH BALCONY (OPEN TO SKY)

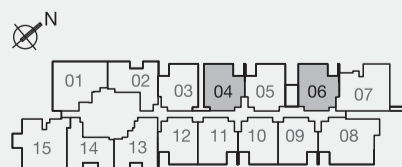
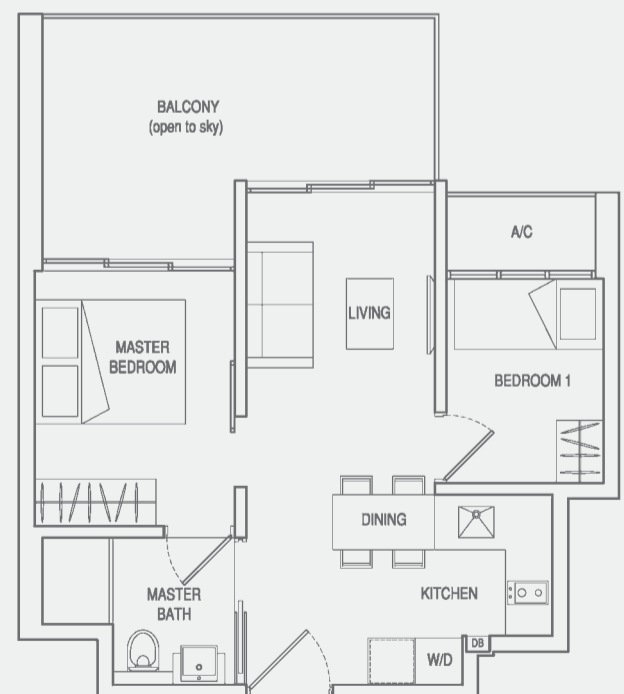
Unit #30-03, #30-05
 Area 56 Sqm / 603 Sqft



TYPE C1(m)

2-BEDROOM WITH BALCONY (OPEN TO SKY)

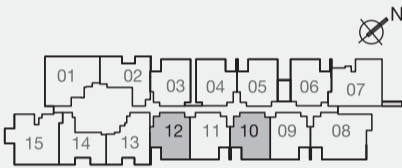
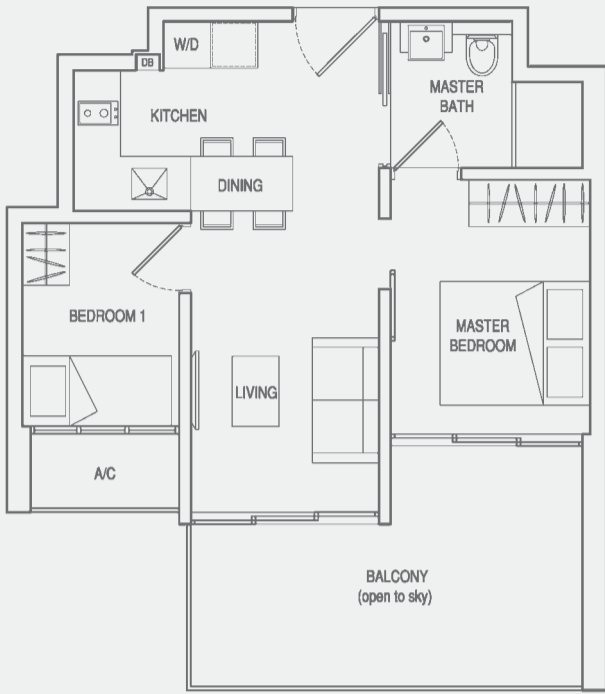
Unit #30-04, #30-06
 Area 56 Sqm / 603 Sqft



TYPE C2

2-BEDROOM WITH BALCONY (OPEN TO SKY)

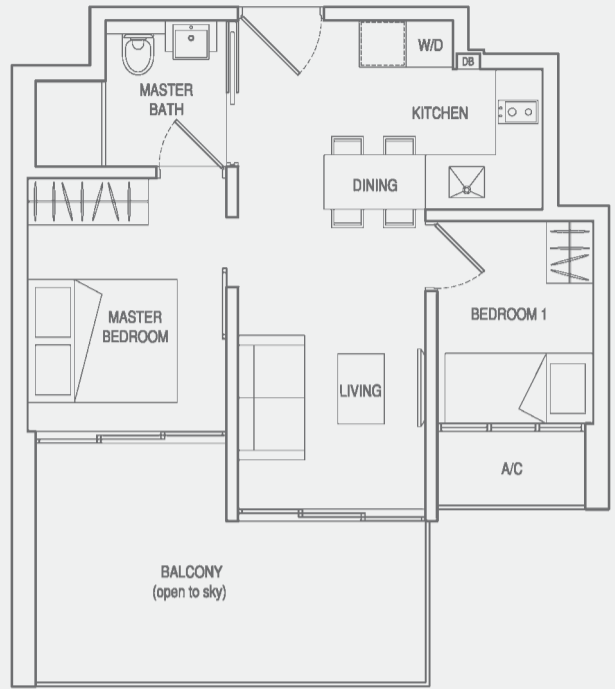
Unit #30-10, #30-12
Area 56 Sqm / 603 Sqft



TYPE C2(m)

2-BEDROOM WITH BALCONY (OPEN TO SKY)

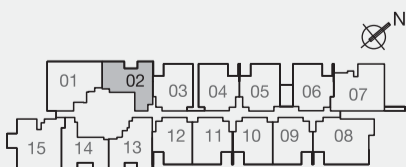
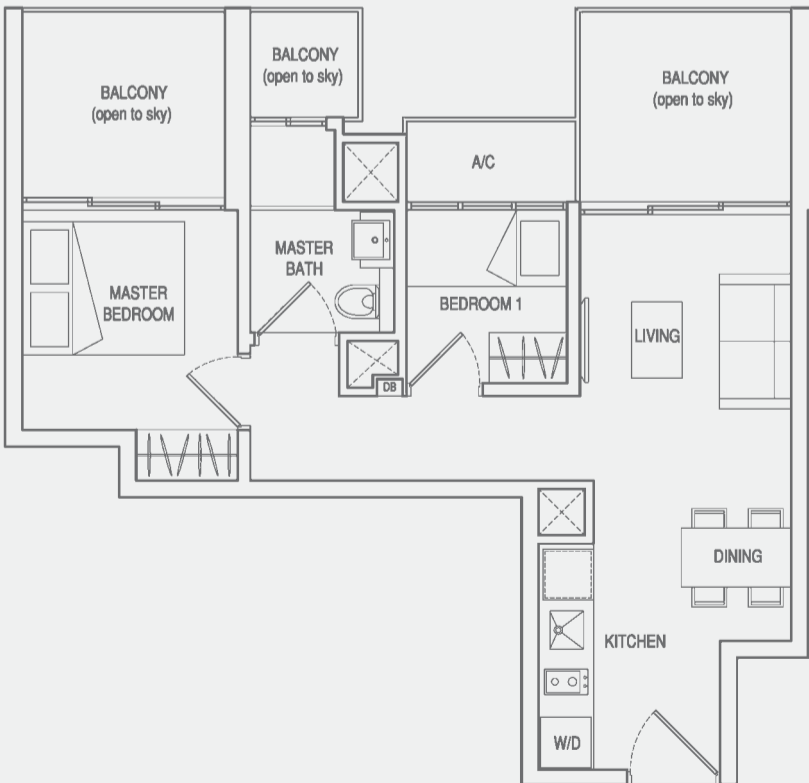
Unit #30-09, #30-11
Area 56 Sqm / 603 Sqft



TYPE C3

2-BEDROOM WITH BALCONY (OPEN TO SKY)

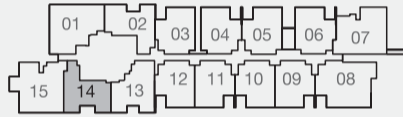
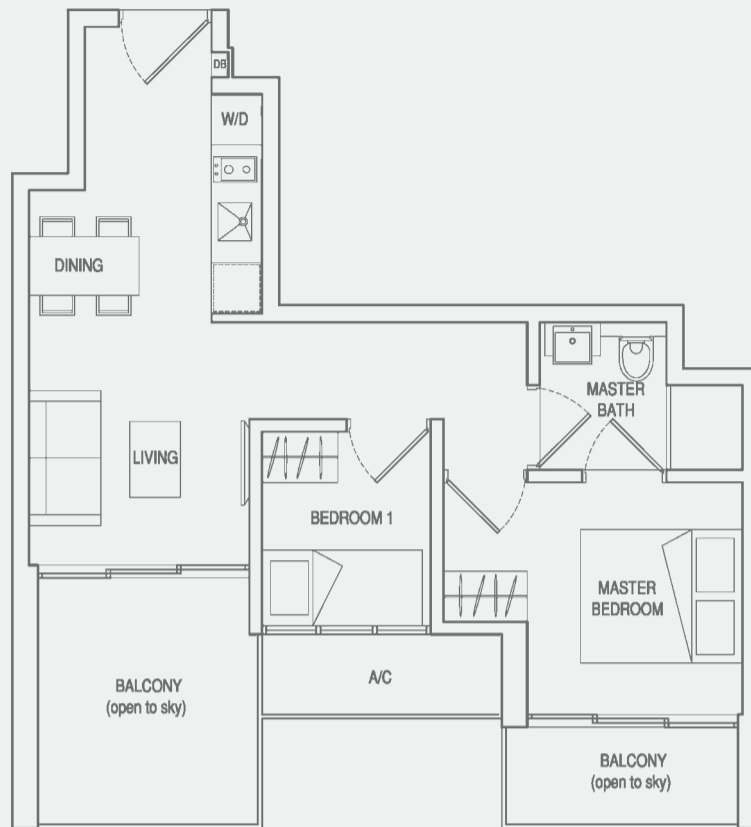
Unit #30-02
Area 58 Sqm / 624 Sqft



TYPE C4

2-BEDROOM WITH BALCONY (OPEN TO SKY)

Unit #30-14
Area 58 Sqm / 624 Sqft

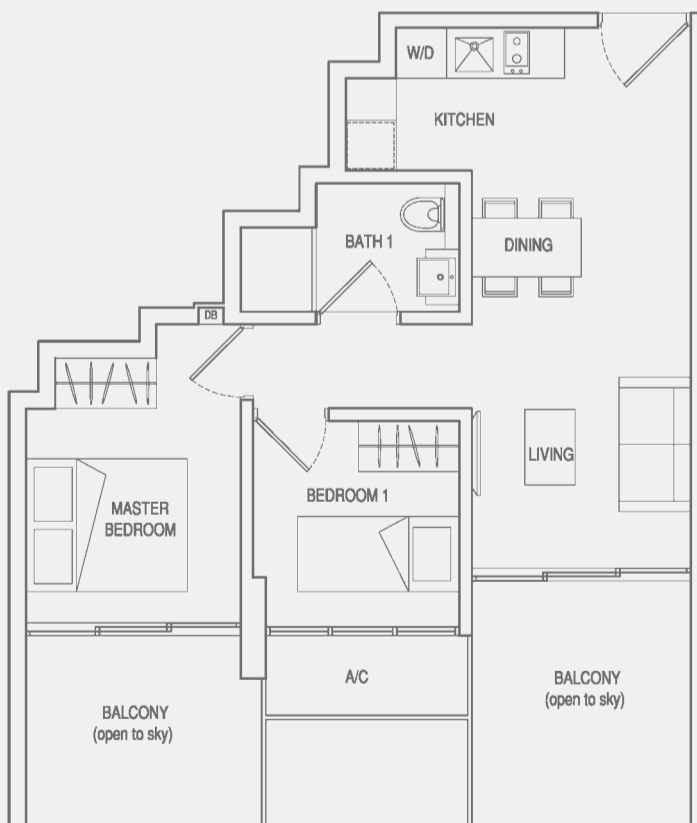


 BUYCONDO.sg

TYPE C5

2-BEDROOM WITH BALCONY (OPEN TO SKY)

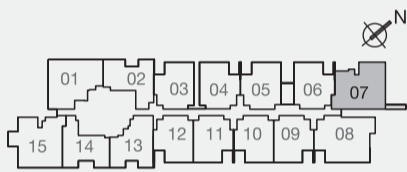
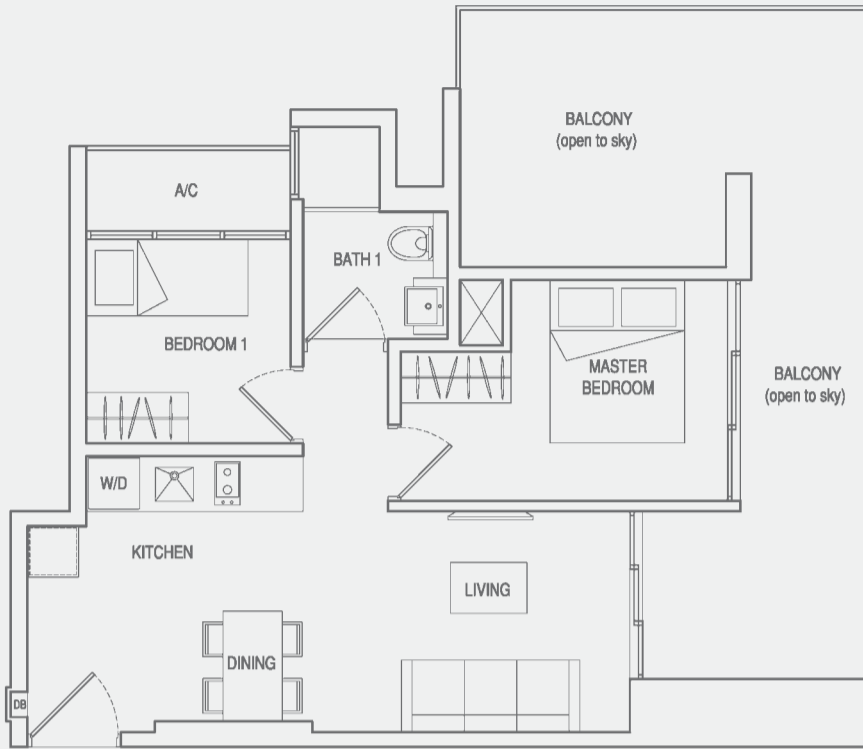
Unit #30-13
Area 62 Sqm / 667 Sqft



TYPE C6

2-BEDROOM WITH BALCONY (OPEN TO SKY)

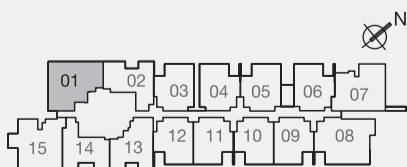
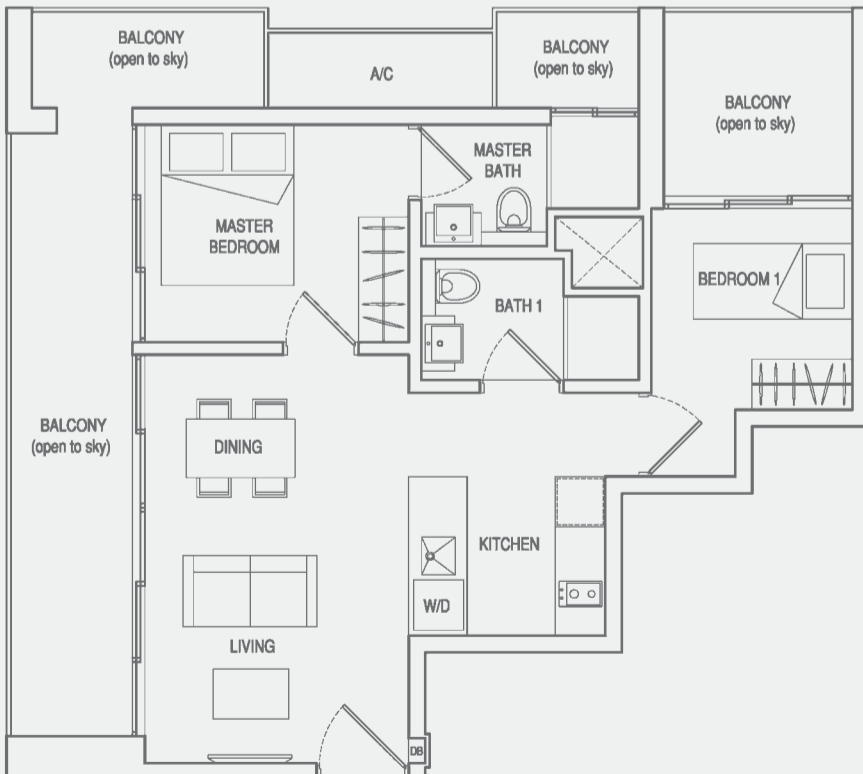
Unit #30-07
Area 74 Sqm / 797 Sqft



TYPE C7

2-BEDROOM WITH BALCONY (OPEN TO SKY)

Unit #30-01
Area 82 Sqm / 883 Sqft

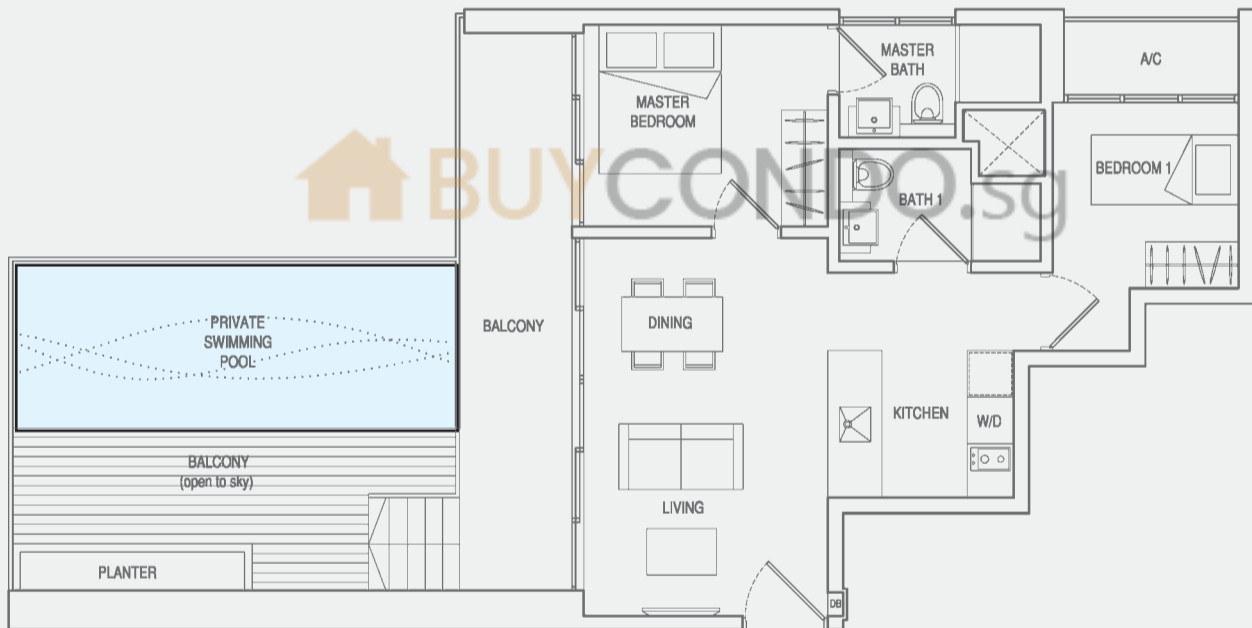


TYPE C8

2-BEDROOM WITH BALCONY (OPEN TO SKY)

Unit #25-01

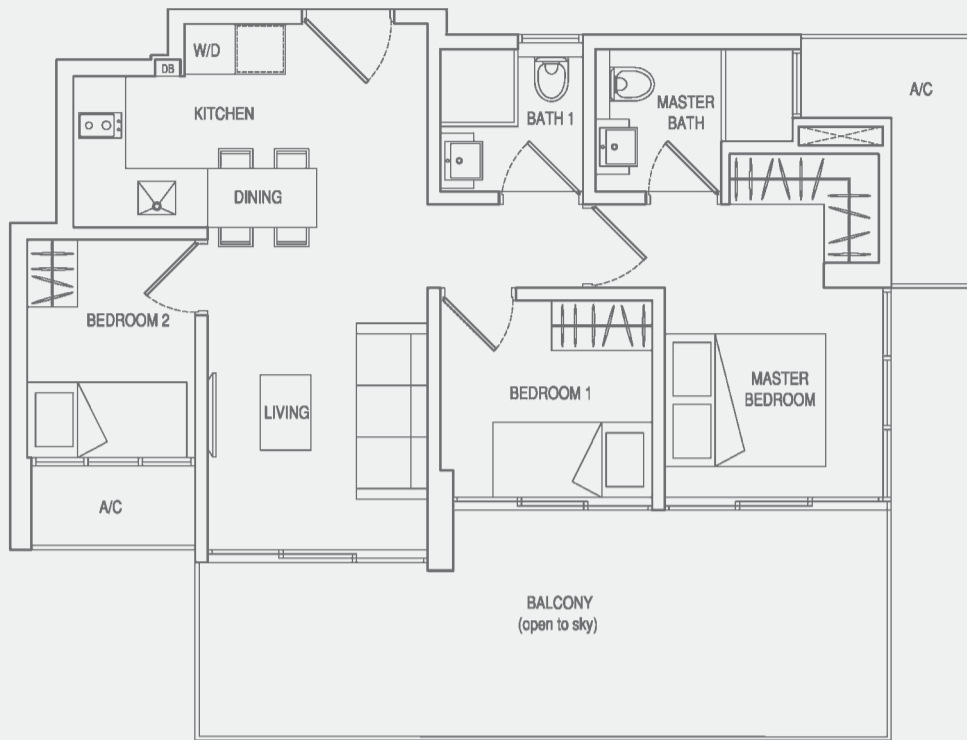
Area 90 Sqm / 969 Sqft



TYPE D1

3-BEDROOM WITH BALCONY (OPEN TO SKY)

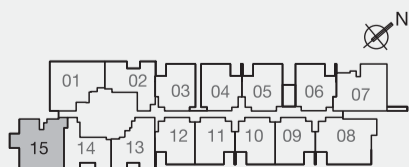
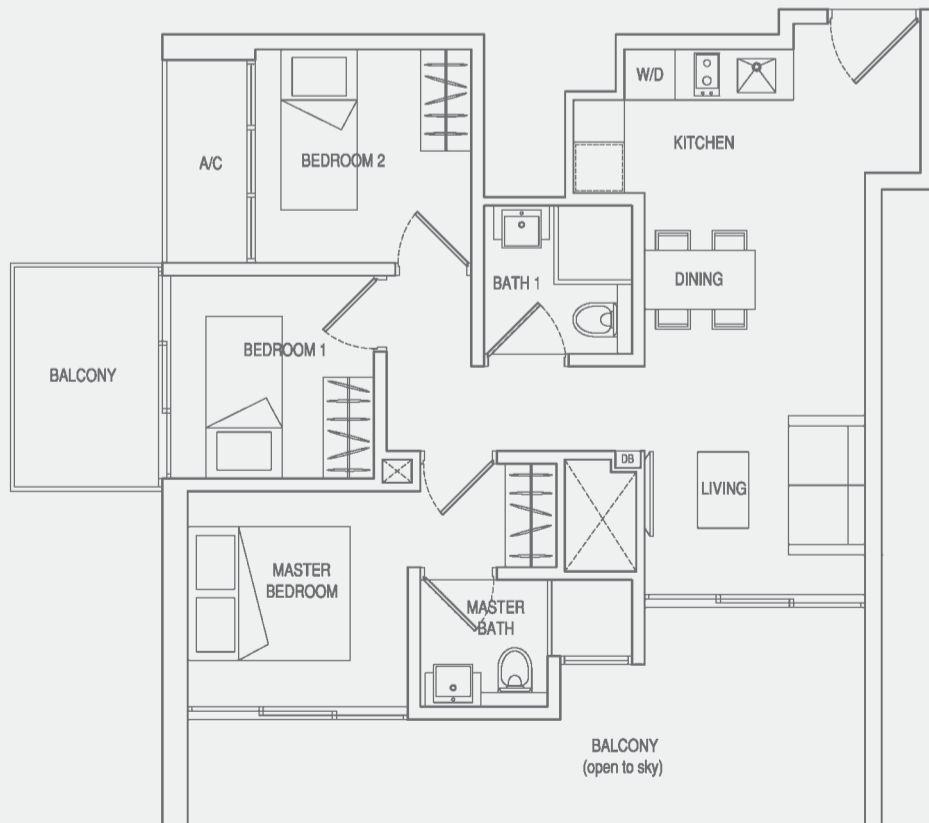
Unit #30-08
Area 91 Sqm / 980 Sqft



TYPE D2

3-BEDROOM WITH BALCONY (OPEN TO SKY)

Unit #30-15
Area 88 Sqm / 947 Sqft

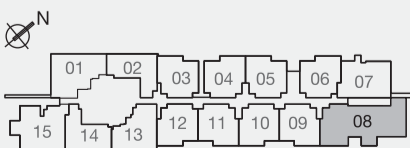
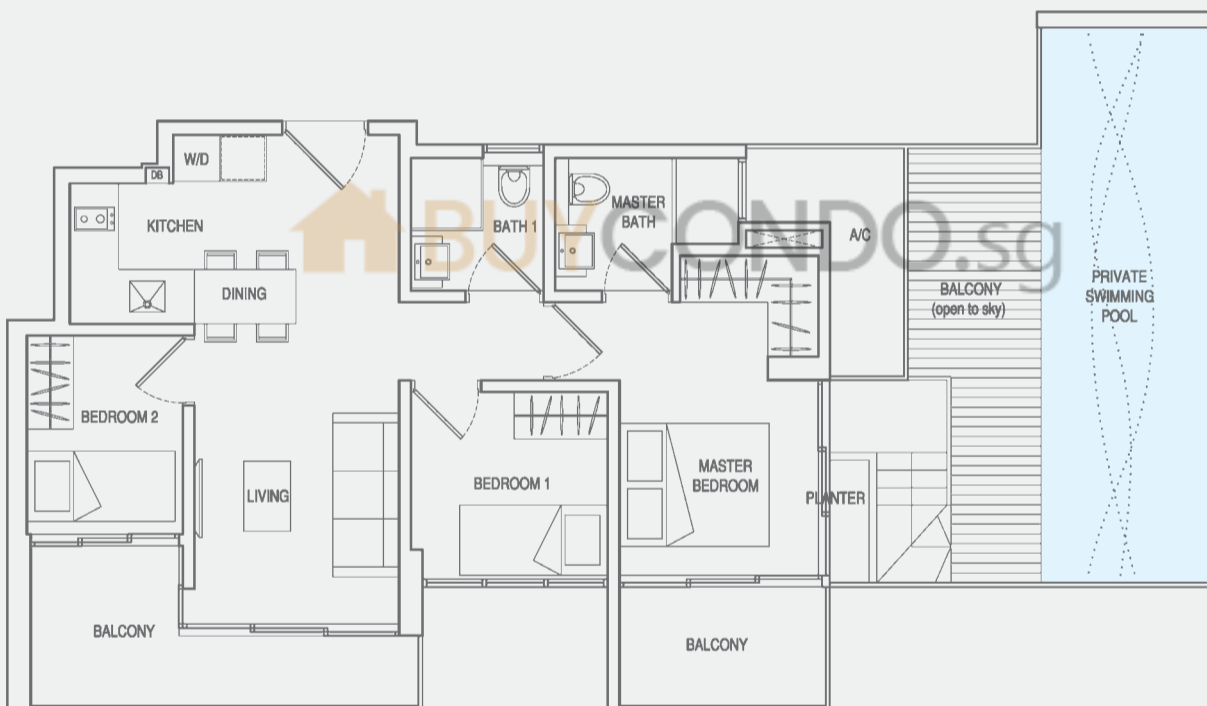


TYPE D3

3-BEDROOM WITH BALCONY (OPEN TO SKY)

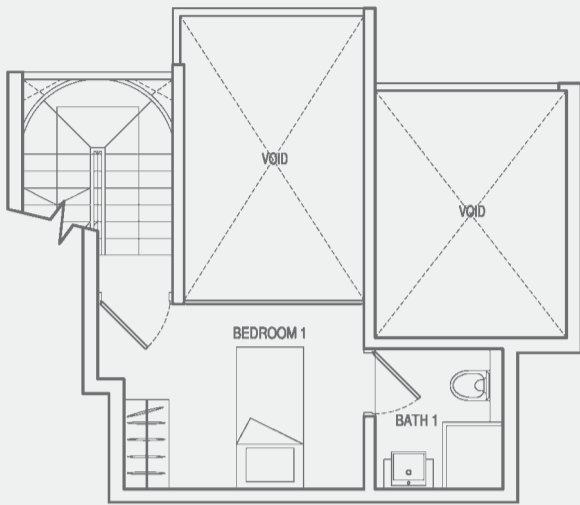
Unit #29-08

Area 101 Sqm / 1087 Sqft



TYPE DP
 DUPLEX 2-BEDROOM

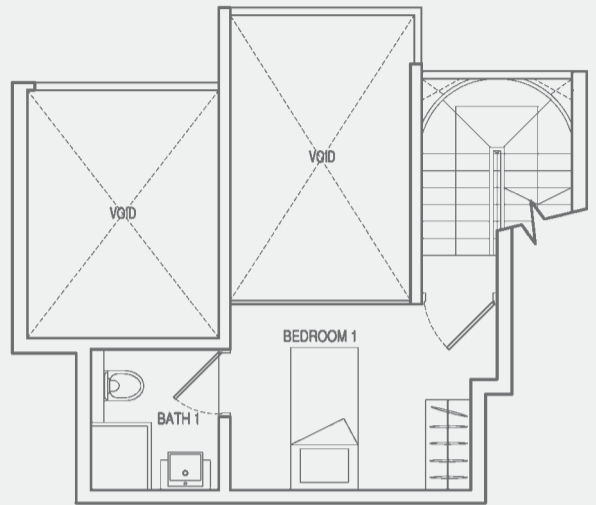
Unit #23-03, #23-05
 Area 88 Sqm / 947 Sqft



UPPER STOREY

TYPE DP(m)
 DUPLEX 2-BEDROOM

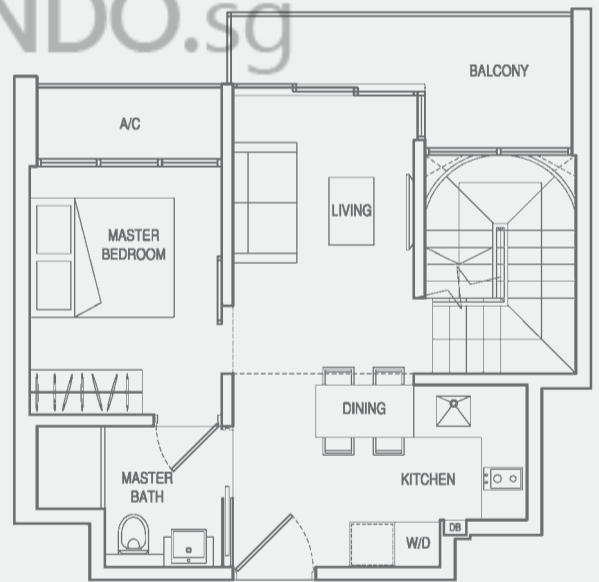
Unit #23-04
 Area 88 Sqm / 947 Sqft



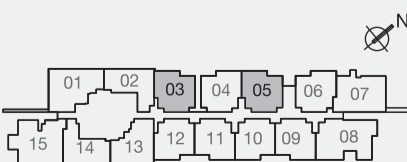
UPPER STOREY



LOWER STOREY



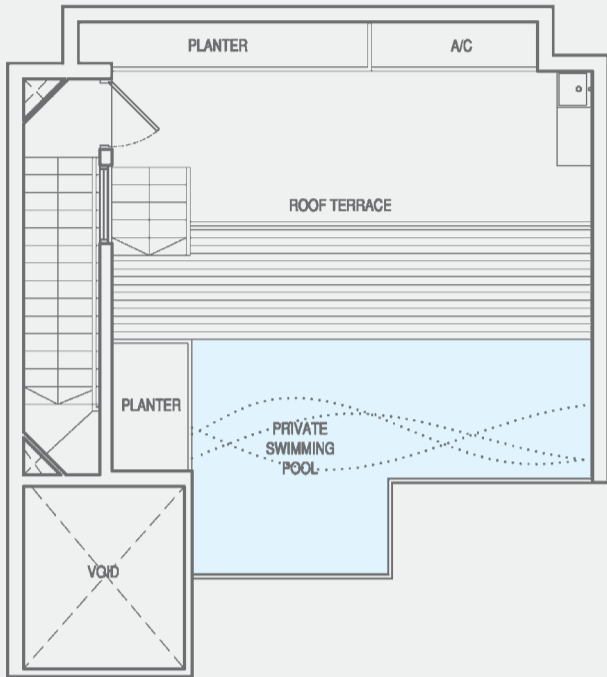
LOWER STOREY



All areas are inclusive of a/c ledge, if any. All plans are subject to amendments as approved by the relevant authorities. Floor areas are approximate measurements and subject to final survey.

TYPE PH1
2-BEDROOM PENTHOUSE

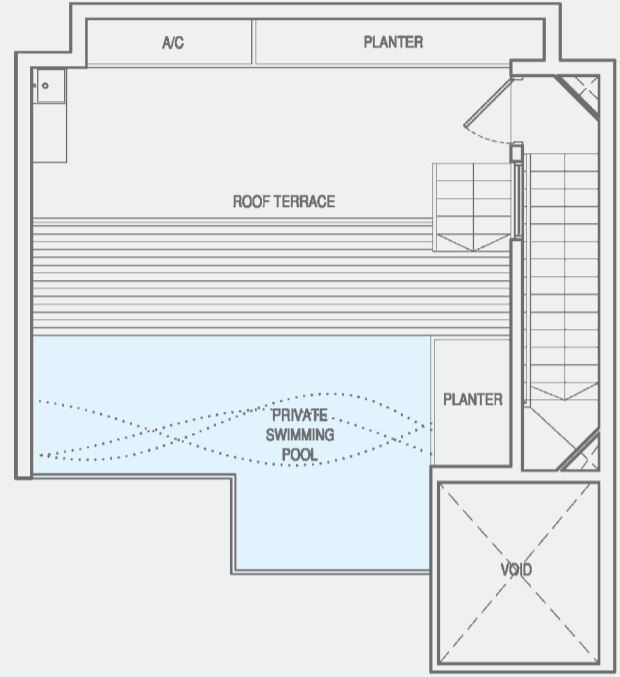
Unit #31-10, #31-12
Area 97 Sqm / 1044 Sqft



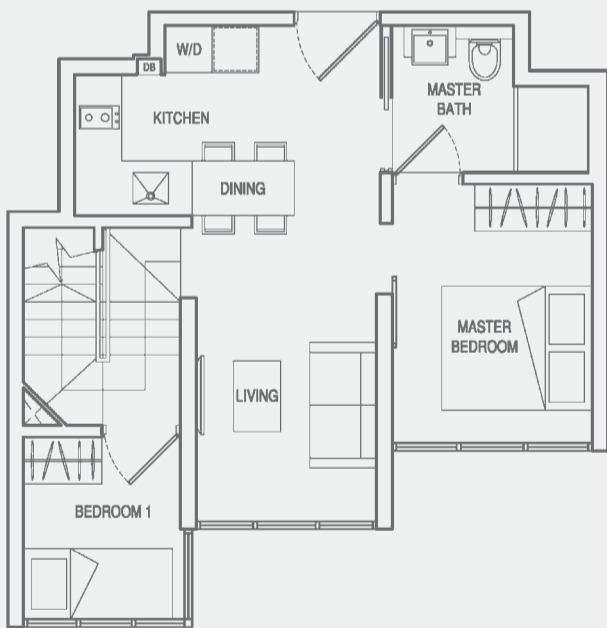
UPPER STOREY

TYPE PH1(m)
2-BEDROOM PENTHOUSE

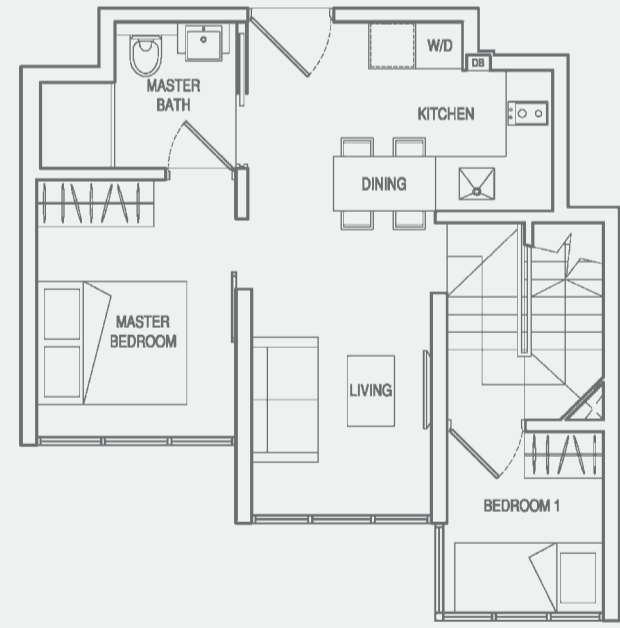
Unit #31-09, #31-11
Area 97 Sqm / 1044 Sqft



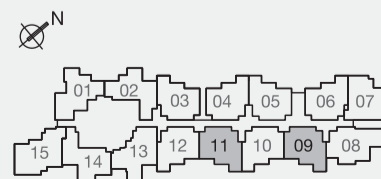
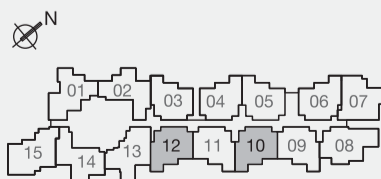
UPPER STOREY



LOWER STOREY



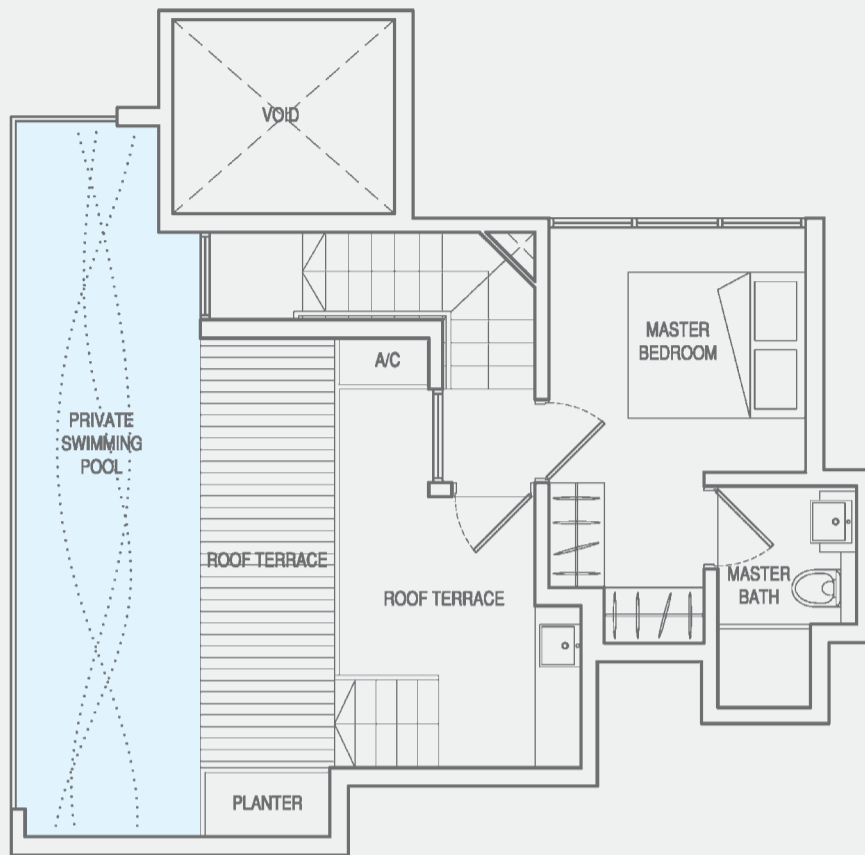
LOWER STOREY



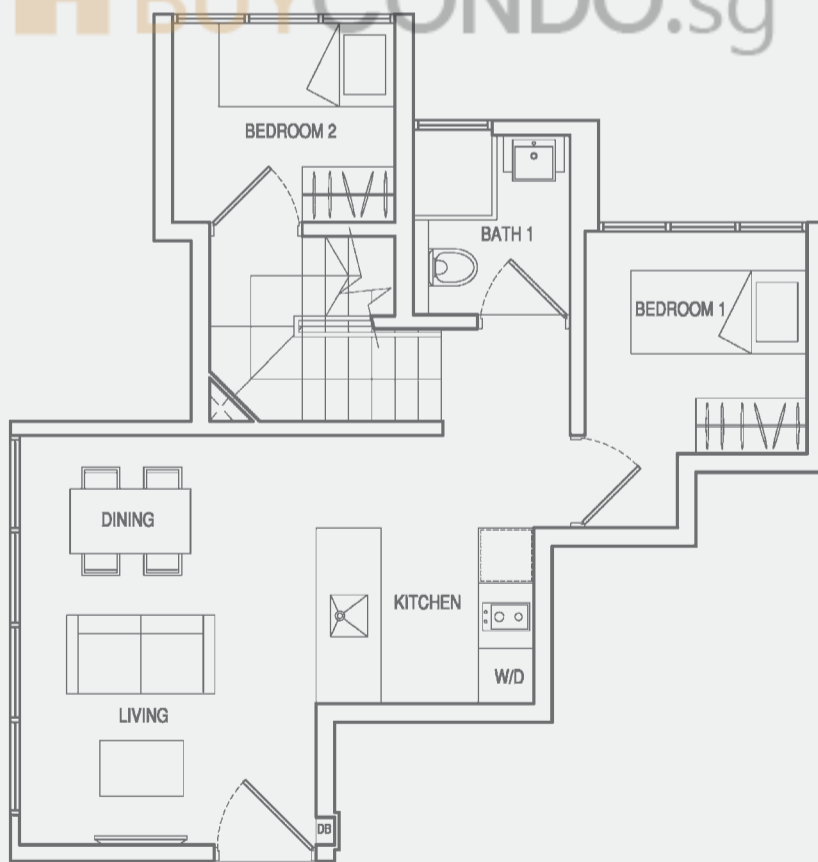
All areas are inclusive of a/c ledge, if any. All plans are subject to amendments as approved by the relevant authorities. Floor areas are approximate measurements and subject to final survey.

TYPE PH2
3-BEDROOM PENTHOUSE

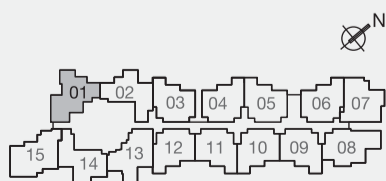
Unit #31-01
Area 107 Sqm / 1152 Sqft



UPPER STOREY

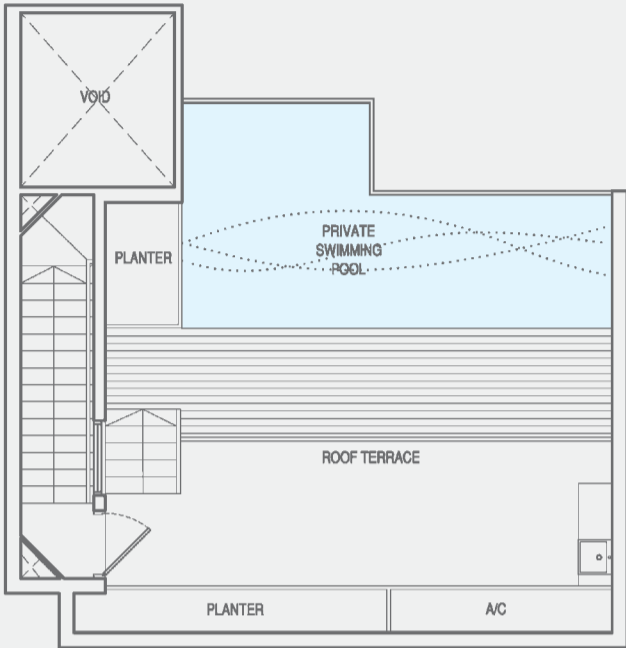


LOWER STOREY



TYPE PH3
2-BEDROOM PENTHOUSE

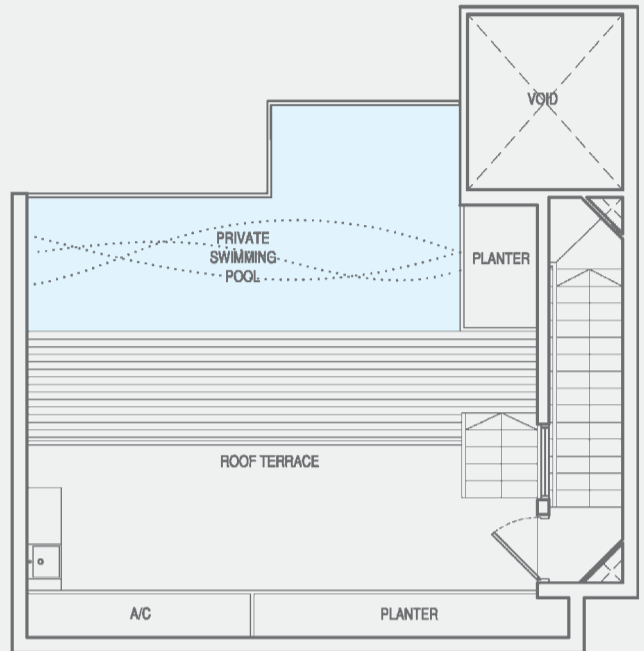
Unit #31-03
Area 101 Sqm / 1087 Sqft



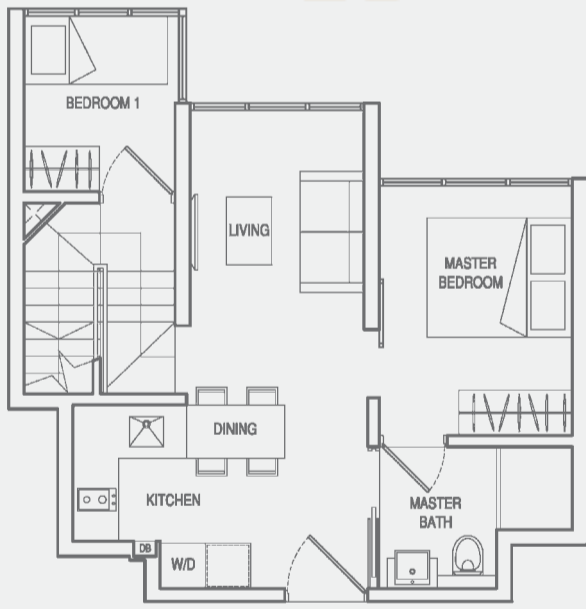
UPPER STOREY

TYPE PH3(m)
2-BEDROOM PENTHOUSE

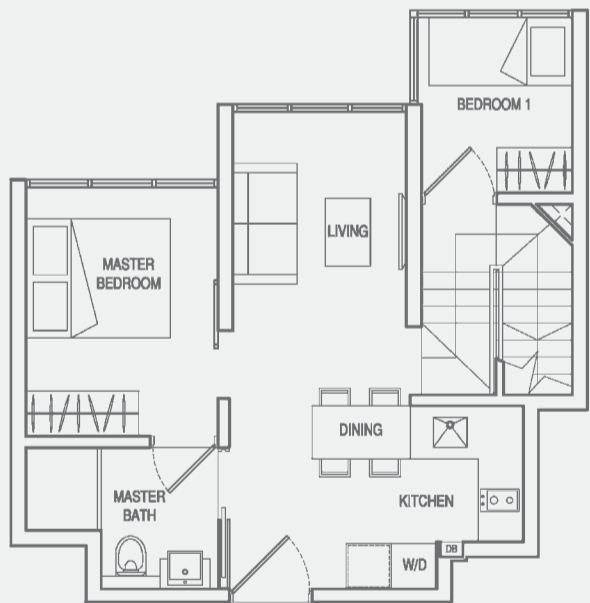
Unit #31-04
Area 101 Sqm / 1087 Sqft



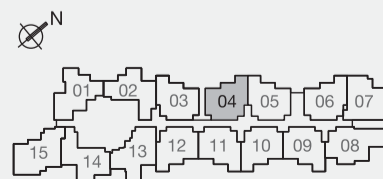
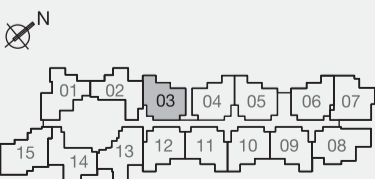
UPPER STOREY



LOWER STOREY



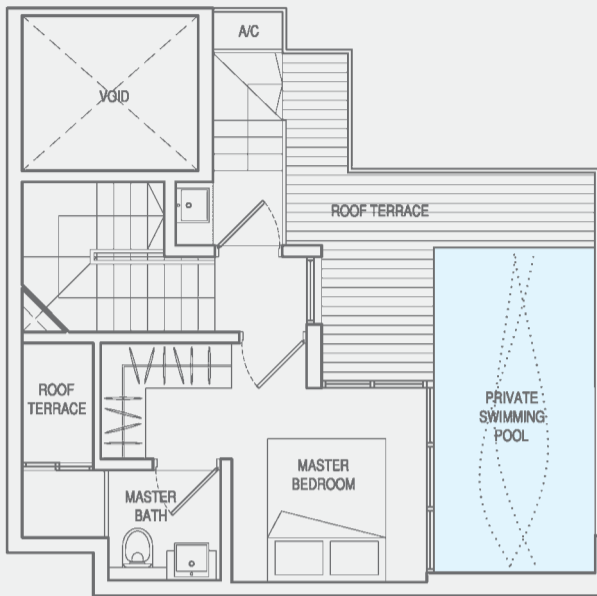
LOWER STOREY



TYPE PH4

3-BEDROOM PENTHOUSE

Unit #31-07
Area 99 Sqm / 1066 Sqft

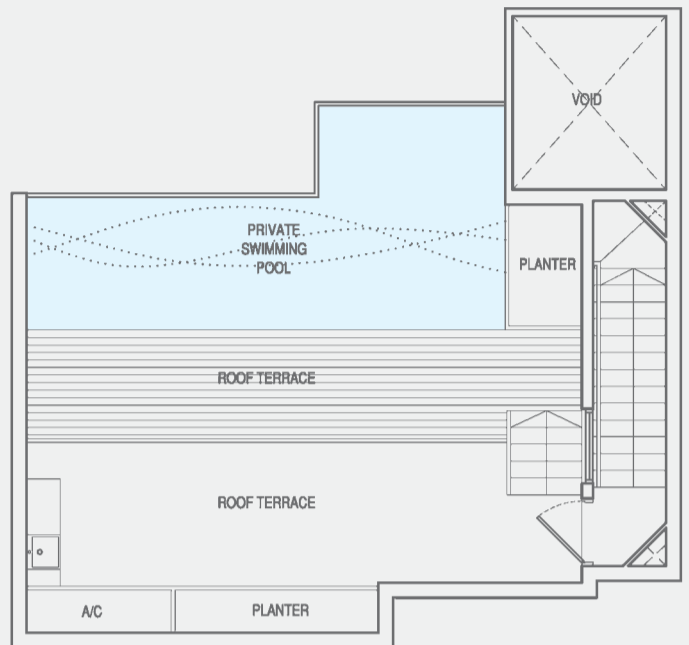


UPPER STOREY

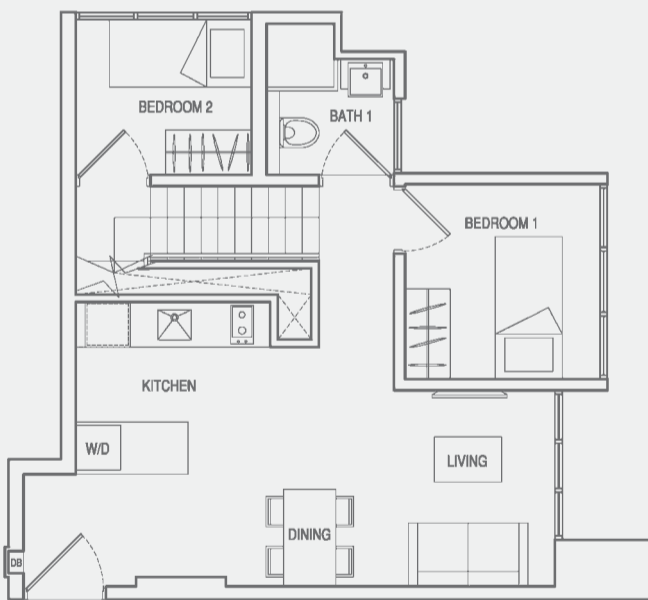
TYPE PH5

2-BEDROOM PENTHOUSE

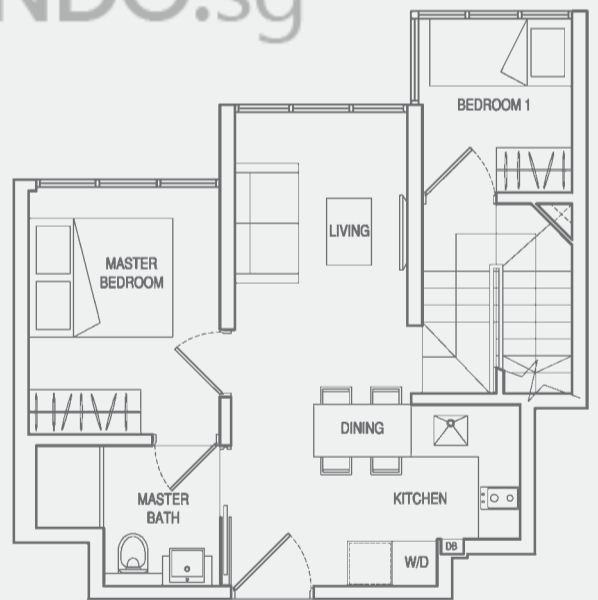
Unit #31-06
Area 103 Sqm / 1109 Sqft



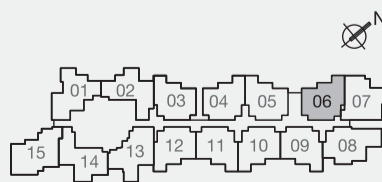
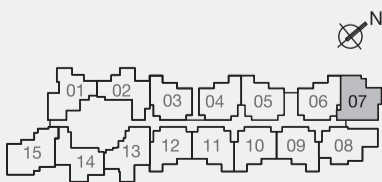
UPPER STOREY



LOWER STOREY

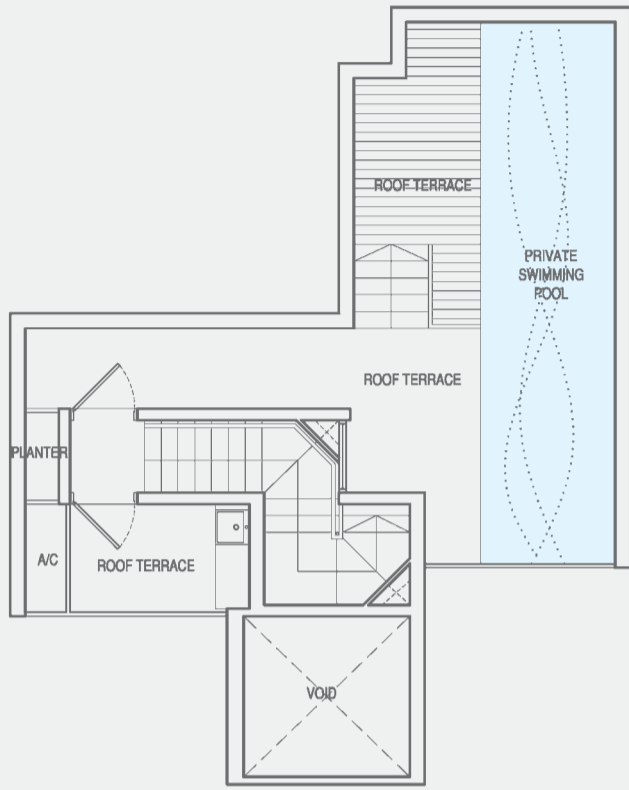


LOWER STOREY



TYPE PH6
2-BEDROOM PENTHOUSE

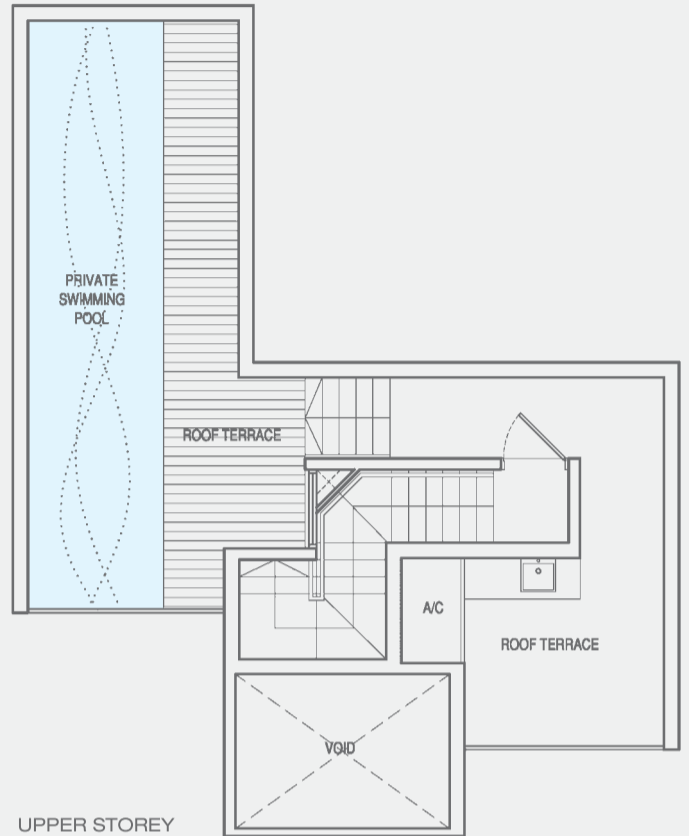
Unit #31-13
Area 98 Sqm / 1055 Sqft



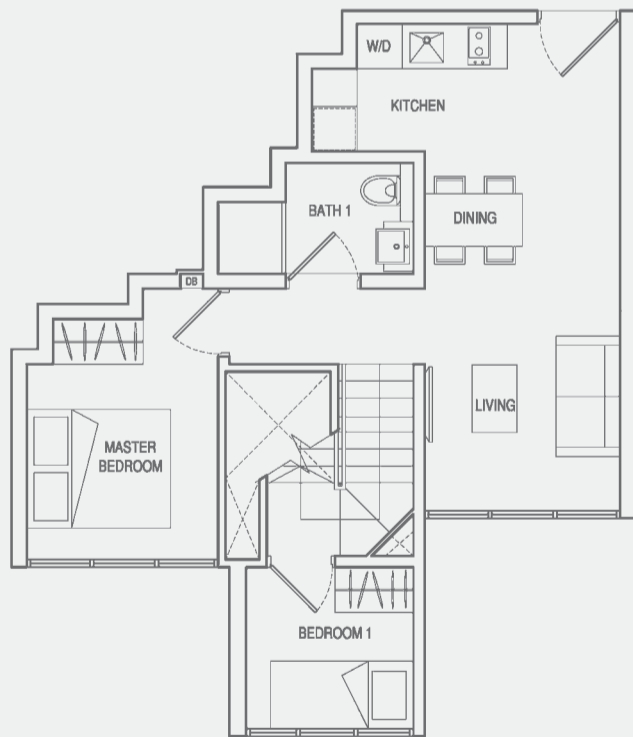
UPPER STOREY

TYPE PH7
2-BEDROOM PENTHOUSE

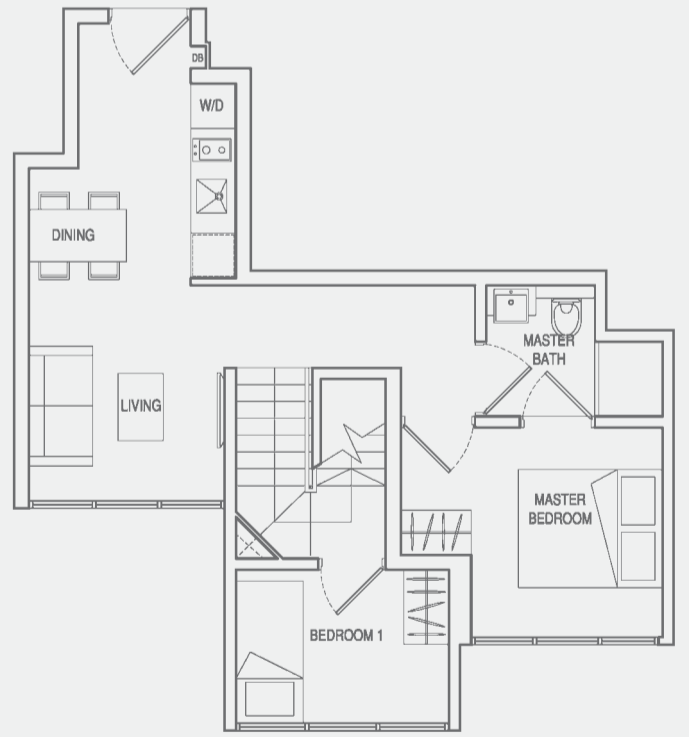
Unit #31-14
Area 105 Sqm / 1130 Sqft



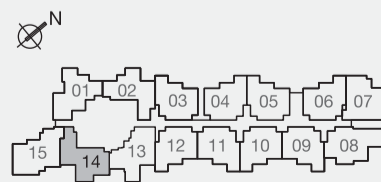
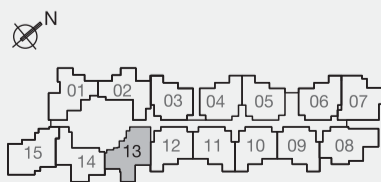
UPPER STOREY



LOWER STOREY



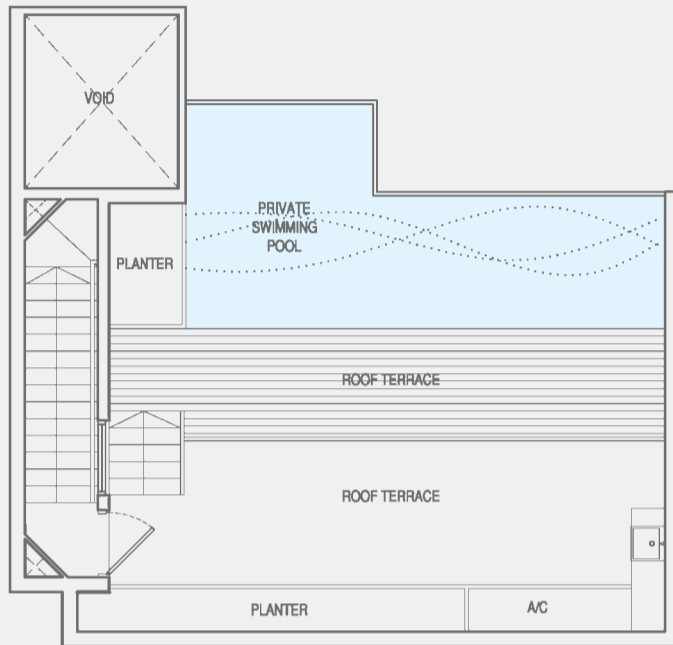
LOWER STOREY



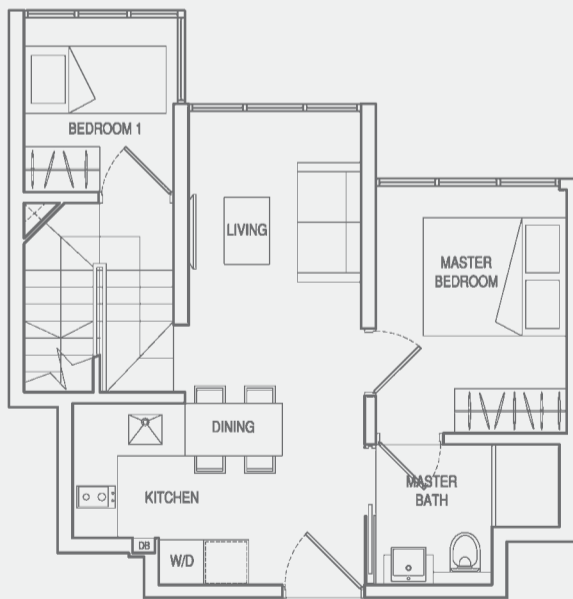
TYPE PH8

2-BEDROOM PENTHOUSE

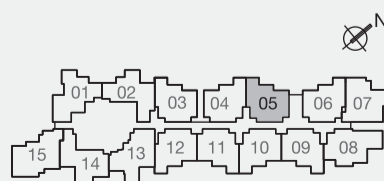
Unit #31-05
Area 105 Sqm / 1130 Sqft



UPPER STOREY



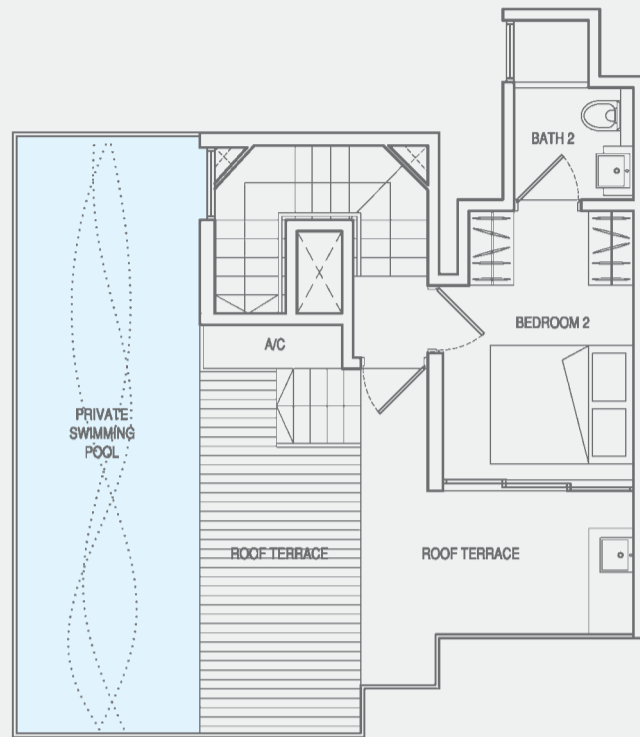
LOWER STOREY



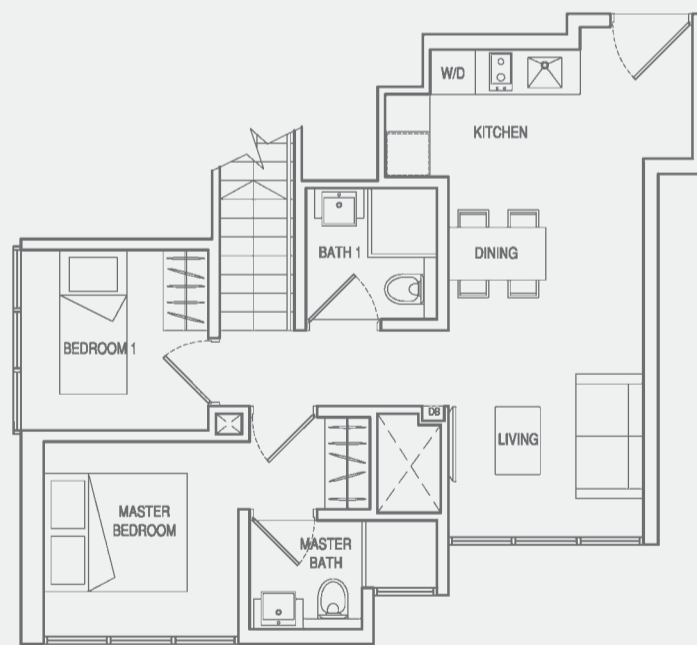
TYPE PH9

3-BEDROOM PENTHOUSE

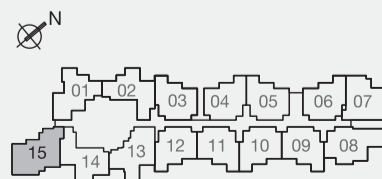
Unit #31-15
Area 114 Sqm / 1227 Sqft



UPPER STOREY



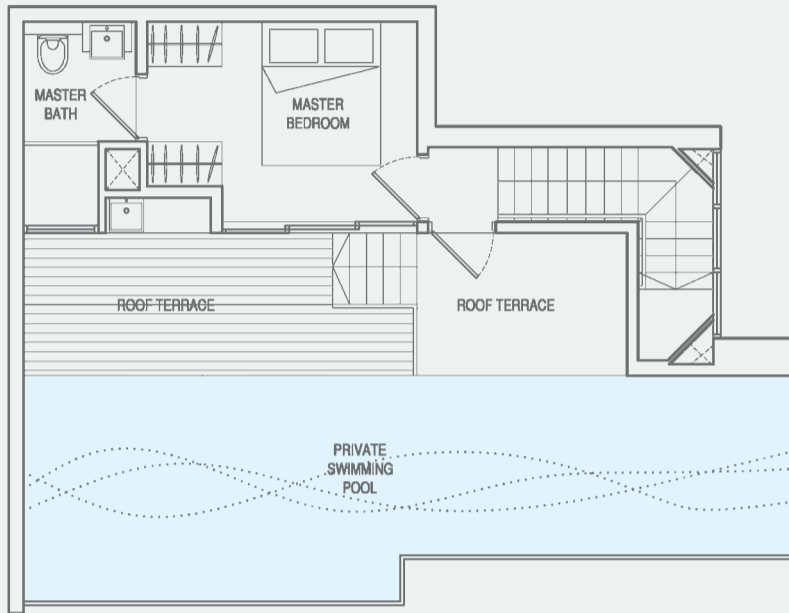
LOWER STOREY



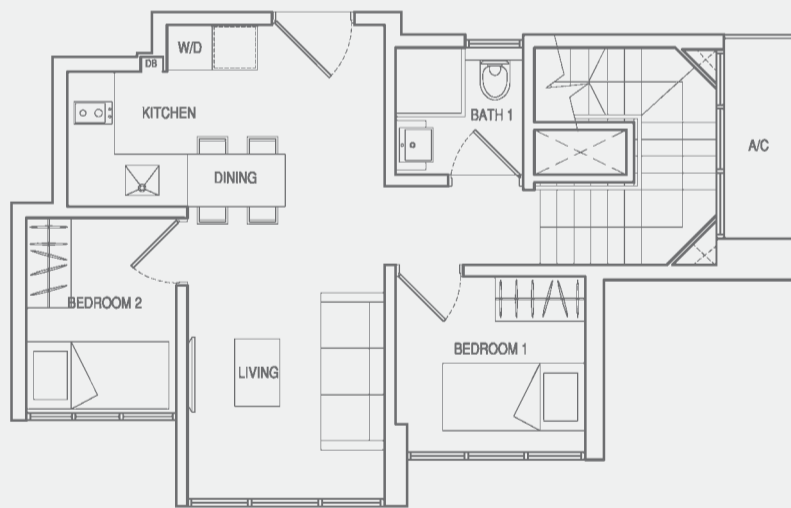
TYPE PH10

3-BEDROOM PENTHOUSE

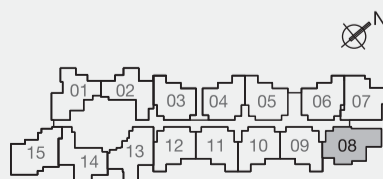
Unit #31-08
Area 116 Sqm / 1249 Sqft



UPPER STOREY



LOWER STOREY



TYPE PH11
2-BEDROOM PENTHOUSE

Unit #31-02
Area 111 Sqm / 1195 Sqft

