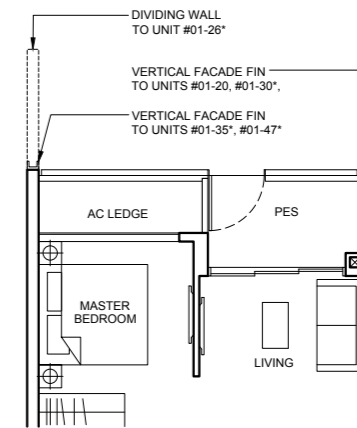


1 BEDROOM + STUDY

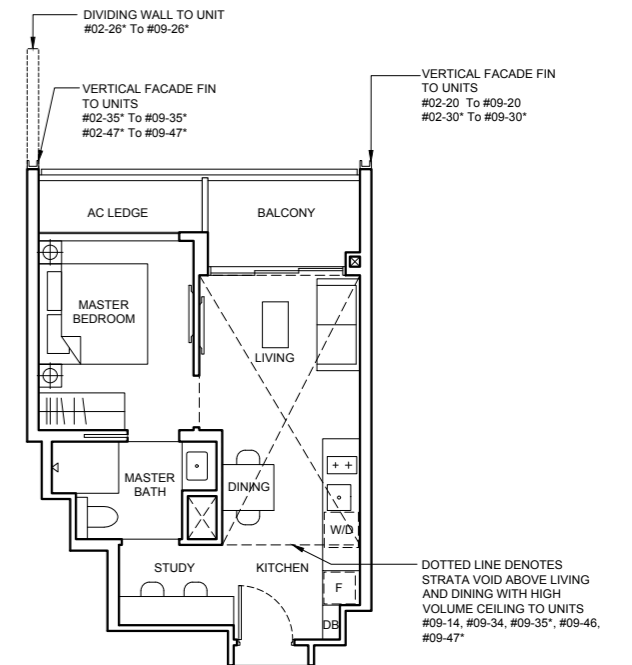
Type AS1a(p) 44 sqm (474 sqft)

Block 32B	MIRRORED
#01-14	Block 34
#01-20	#01-26*
Block 34A	#01-30*
#01-34	Block 34A
Block 34B	#01-35*
#01-46	Block 34B
	#01-47*



Type AS1a 44 sqm (474 sqft)

Block 32B	MIRRORED
#02-14 To #08-14	Block 34
#02-20 To #09-20	#02-26* To #09-26*
Block 34A	#02-30* To #09-30*
#02-34 To #08-34	Block 34A
Block 34B	#02-35* To #08-35*
#02-46 To #08-46	Block 34B
	#02-47* To #08-47*



Type AS1a(PH) 58 sqm (624 sqft)

Strata void area of 14 sqm / 150 sqft above living and dining with high volume ceiling of 4415mm H.

Balcony at top floor is provided with canopy.

Block 32B	MIRRORED
#09-14	Block 34A
Block 34A	#09-35*
#09-34	Block 34B
Block 34B	#09-47*
#09-46	

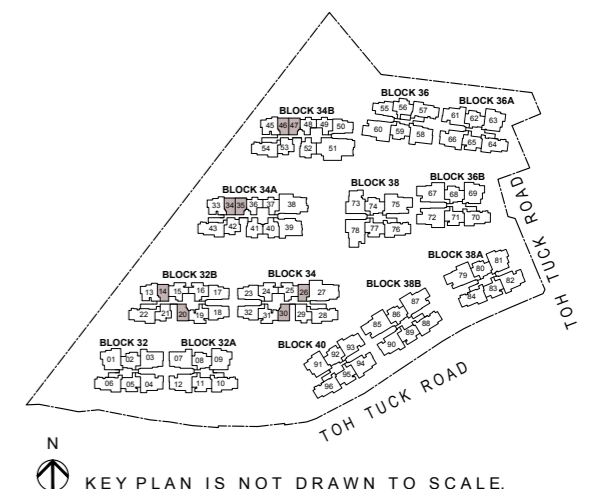
LEGEND

[W/D]	WASHER CUM DRYER	[F]	INTEGRATED FRIDGE
-------	------------------	-----	-------------------

Note

- Area includes AC ledge, balcony and private enclosed space (PES), strata void (where applicable).
- The above plans and illustrations are subject to change as maybe required or approved by the relevant authorities.
- All floor areas are approximate only and subject to final survey.
- Please refer to the key plan for orientation.
- High volume space in (pd) unit does not constitute strata area.
- Service voids are excluded from strata area.
- RC ledge and / or RC trellis are excluded from strata area.

0 1 2 3 5M



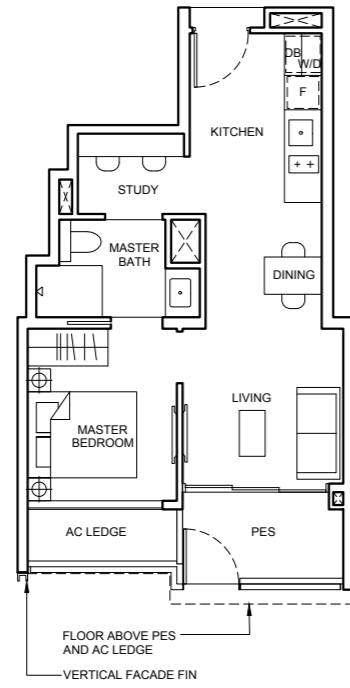
BUY CONDO.SG

1 BEDROOM + STUDY

Type AS1b (PES)

46 sqm (495 sqft)

Block 34A
#01-41
Block 34B
#01-52

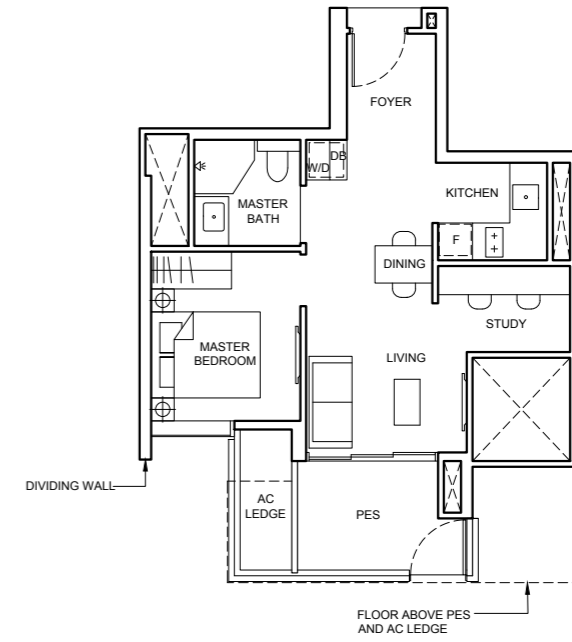


1 BEDROOM + STUDY

Type AS2b (PES)

47 sqm (506 sqft)

Block 34
#01-31



Type AS2a (PES)

45 sqm (484 sqft)

Block 32B
#01-16



BUYCONDO.sg

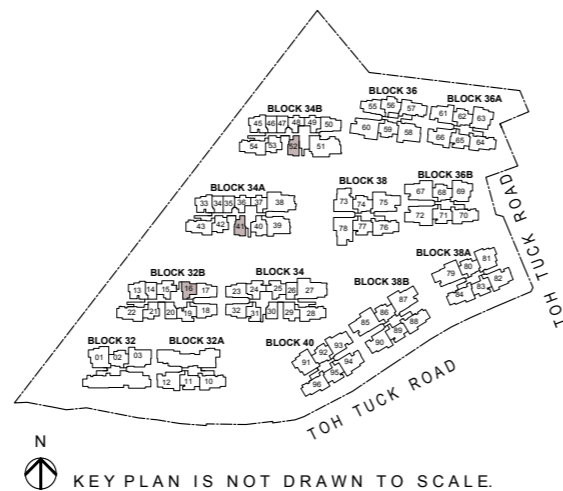
LEGEND

W/D WASHER CUM DRYER F INTEGRATED FRIDGE

Note

- Area includes AC ledge, balcony and private enclosed space (PES), strata void (where applicable).
- The above plans and illustrations are subject to change as maybe required or approved by the relevant authorities.
- All floor areas are approximate only and subject to final survey.
- Please refer to the key plan for orientation.
- High volume space in (pd) unit does not constitute strata area.
- Service voids are excluded from strata area.
- RC ledge and / or RC trellis are excluded from strata area.

0 1 2 3 5M



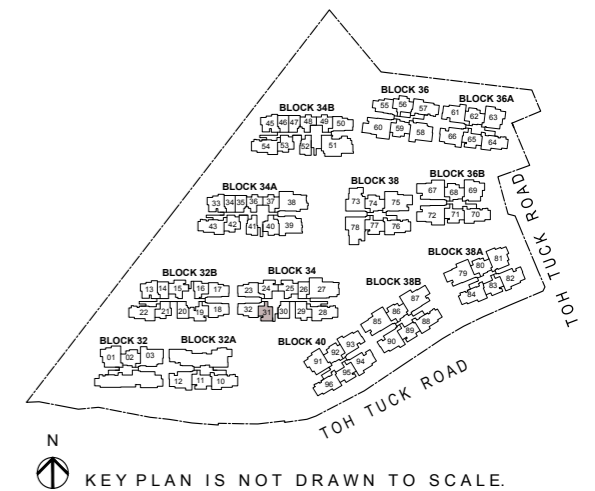
LEGEND

W/D WASHER CUM DRYER F INTEGRATED FRIDGE

Note

- Area includes AC ledge, balcony and private enclosed space (PES), strata void (where applicable).
- The above plans and illustrations are subject to change as maybe required or approved by the relevant authorities.
- All floor areas are approximate only and subject to final survey.
- Please refer to the key plan for orientation.
- High volume space in (pd) unit does not constitute strata area.
- Service voids are excluded from strata area.
- RC ledge and / or RC trellis are excluded from strata area.

0 1 2 3 5M

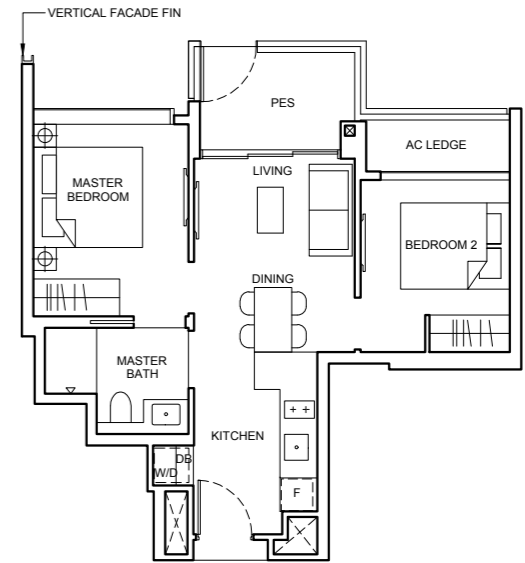




2 BEDROOM

Type B1(p)
51 sqm (549 sqft)

Block 34A
#01-36
Block 34B
#01-48



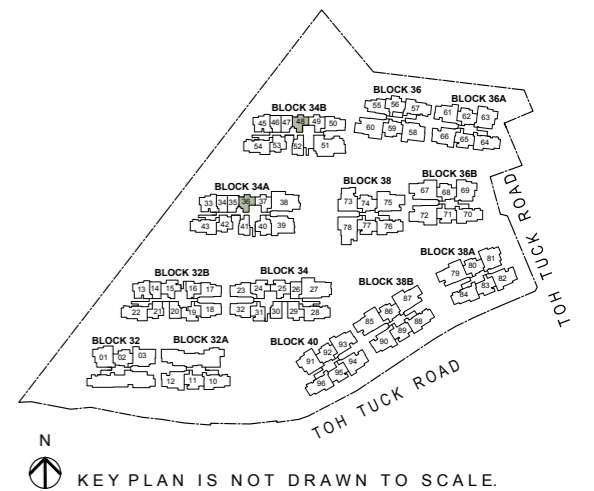
LEGEND

[W/D] WASHER CUM DRYER [F] INTEGRATED FRIDGE

Note

- Area includes AC ledge, balcony and private enclosed space (PES), strata void (where applicable).
- The above plans and illustrations are subject to change as maybe required or approved by the relevant authorities.
- All floor areas are approximate only and subject to final survey.
- Please refer to the key plan for orientation.
- High volume space in (pd) unit does not constitute strata area.
- Service voids are excluded from strata area.
- RC ledge and / or RC trellis are excluded from strata area.

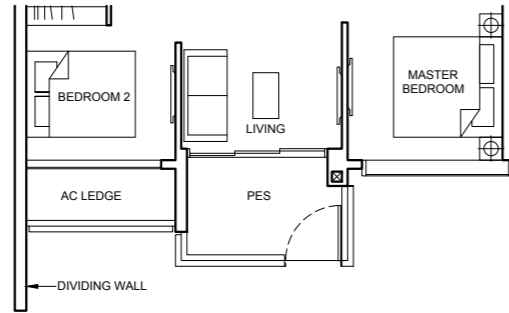
0 1 2 3 5M



2 BEDROOM

Type B2a(p) 53 sqm (570 sqft)

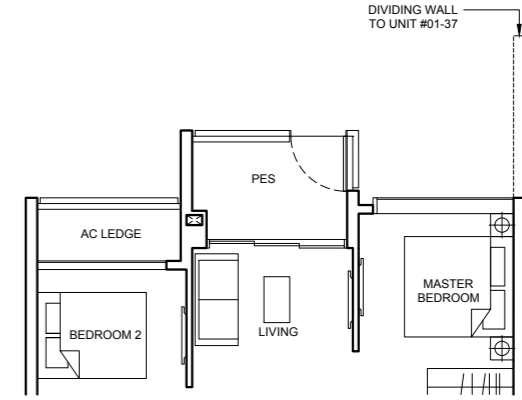
- Block 32B
#01-21
- Block 34A
#01-42
- Block 34B
#01-53



2 BEDROOM

Type B2b(p) 53 sqm (570 sqft)

- Block 34A
#01-37
- Block 34B
#01-49



Type B2a 53 sqm (570 sqft)

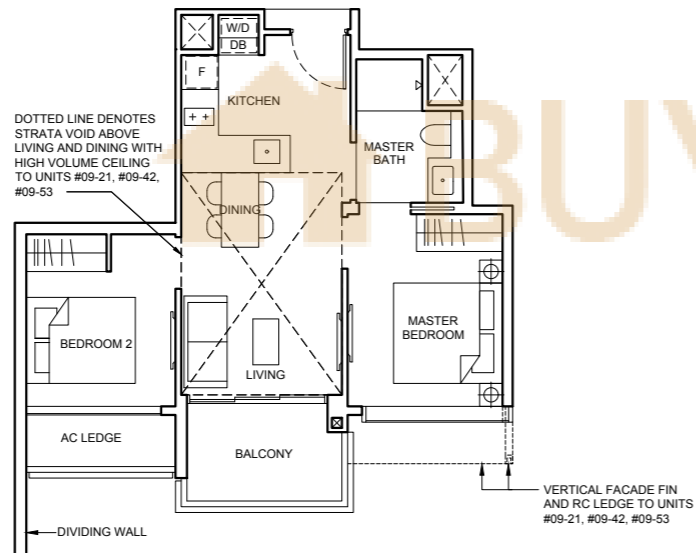
- Block 32B
#02-21 To #08-21
- Block 34A
#02-42 To #08-42
- Block 34B
#02-53 To #08-53

Type B2a(PH) 65 sqm (700 sqft)

Strata void area of 12 sqm / 130 sqft above living and dining with high volume ceiling of 4415mm H.

Balcony at top floor is provided with canopy.

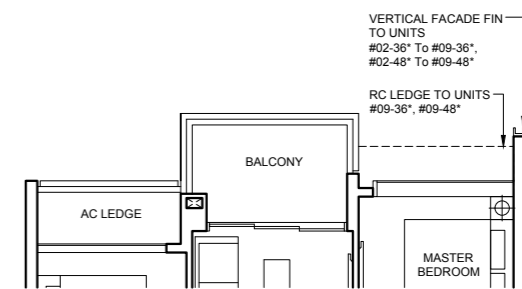
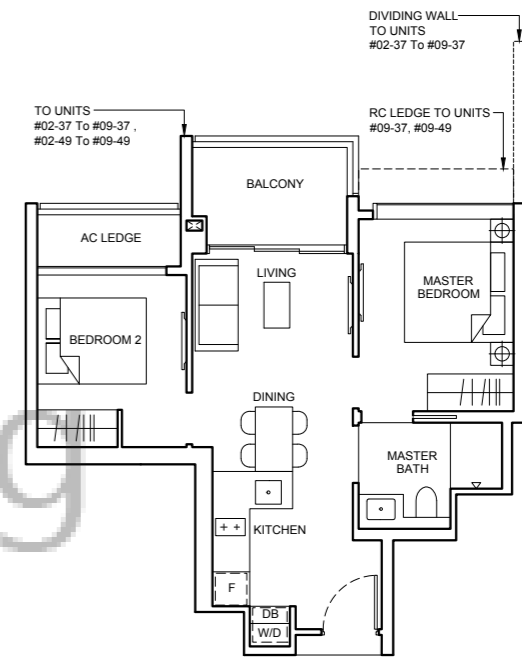
- Block 32B
#09-21
- Block 34A
#09-42
- Block 34B
#09-53



Type B2b 53 sqm (570 sqft)

Balcony at top floor is provided with canopy.

- Block 34A
#02-37 To #09-37
 - Block 34B
#02-49 To #09-49
- MIRRORED**
- Block 34A
#02-36* To #09-36*
 - Block 34B
#02-48* To #09-48*



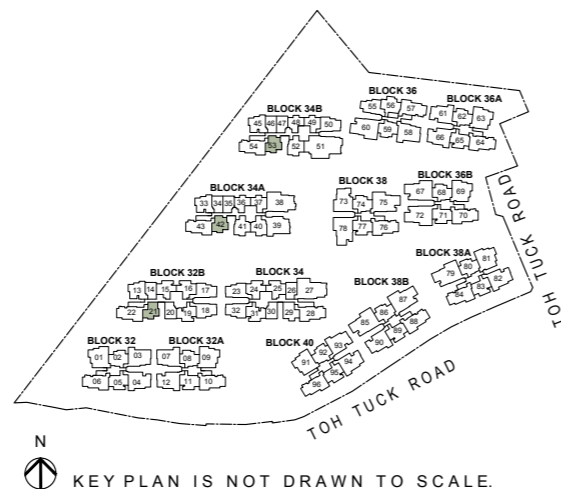
Applicable to units #02-36* To #09-36*
#02-48* To #09-48*

LEGEND

- [W/D] WASHER CUM DRYER
- [F] INTEGRATED FRIDGE

Note

- Area includes AC ledge, balcony and private enclosed space (PES), strata void (where applicable).
- The above plans and illustrations are subject to change as maybe required or approved by the relevant authorities.
- All floor areas are approximate only and subject to final survey.
- Please refer to the key plan for orientation.
- High volume space in (pd) unit does not constitute strata area.
- Service voids are excluded from strata area.
- RC ledge and / or RC trellis are excluded from strata area.

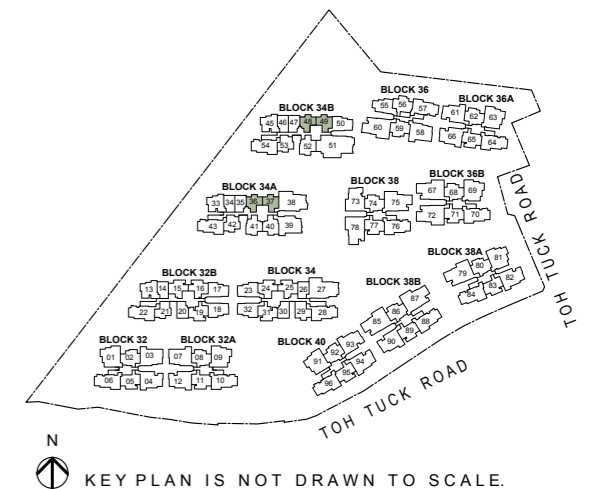


LEGEND

- [W/D] WASHER CUM DRYER
- [F] INTEGRATED FRIDGE

Note

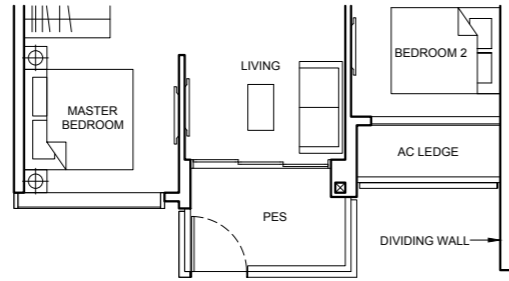
- Area includes AC ledge, balcony and private enclosed space (PES), strata void (where applicable).
- The above plans and illustrations are subject to change as maybe required or approved by the relevant authorities.
- All floor areas are approximate only and subject to final survey.
- Please refer to the key plan for orientation.
- High volume space in (pd) unit does not constitute strata area.
- Service voids are excluded from strata area.
- RC ledge and / or RC trellis are excluded from strata area.



2 BEDROOM

Type B2c(p) 56 sqm (603 sqft)

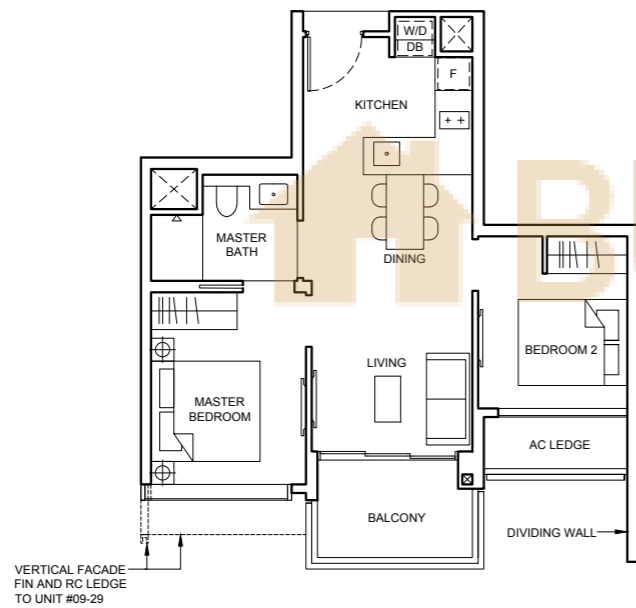
Block 34
#01-29



Type B2c 56 sqm (603 sqft)

Balcony at top floor is provided with canopy.

Block 34
#02-29 To #09-29



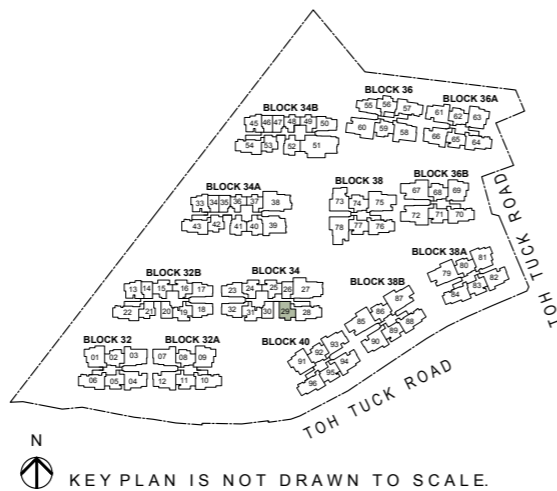
LEGEND

W/D WASHER CUM DRYER F INTEGRATED FRIDGE

Note

- Area includes AC ledge, balcony and private enclosed space (PES), strata void (where applicable).
- The above plans and illustrations are subject to change as maybe required or approved by the relevant authorities.
- All floor areas are approximate only and subject to final survey.
- Please refer to the key plan for orientation.
- High volume space in (pd) unit does not constitute strata area.
- Service voids are excluded from strata area.
- RC ledge and / or RC trellis are excluded from strata area.

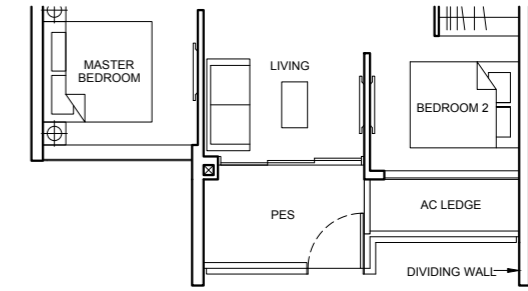
0 1 2 3 5M



2 BEDROOM + STUDY

Type BS4(p) 64 sqm (689 sqft)

Block 34A
#01-40

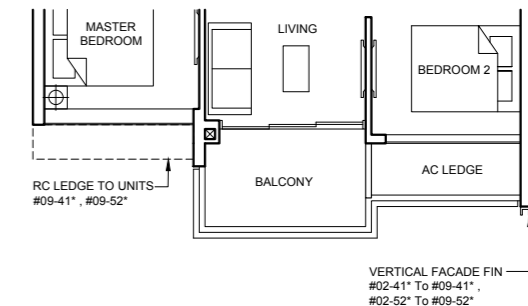
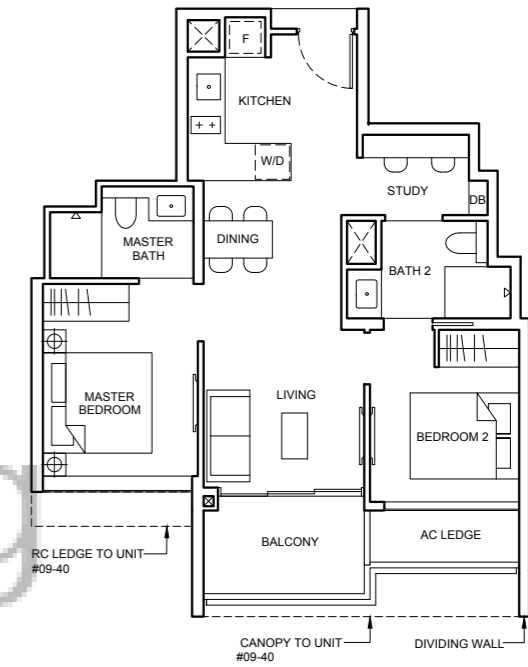


Type BS4 64 sqm (689 sqft)

Balcony at top floor is provided with canopy.

Block 34A
#02-40 To #09-40

MIRRORED
Block 34A
#02-41* To #09-41*
Block 34B
#02-52* To #09-52*



Applicable to units #02-41* To #09-41*
#02-52* To #09-52*

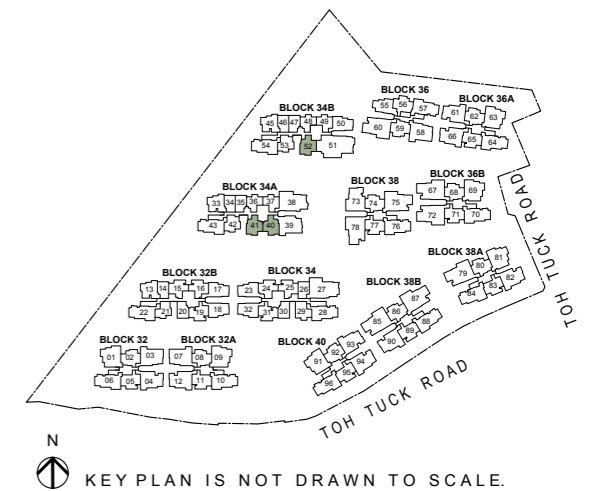
LEGEND

W/D WASHER CUM DRYER F INTEGRATED FRIDGE

Note

- Area includes AC ledge, balcony and private enclosed space (PES), strata void (where applicable).
- The above plans and illustrations are subject to change as maybe required or approved by the relevant authorities.
- All floor areas are approximate only and subject to final survey.
- Please refer to the key plan for orientation.
- High volume space in (pd) unit does not constitute strata area.
- Service voids are excluded from strata area.
- RC ledge and / or RC trellis are excluded from strata area.

0 1 2 3 5M

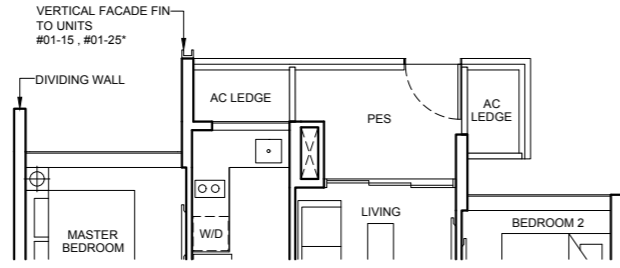


2 BEDROOM + STUDY

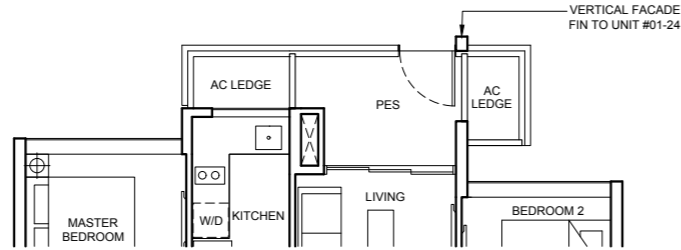
Type BS5a(p) 67 sqm (721 sqft)

Block 32B
#01-15
Block 34
#01-24

MIRRORED
Block 34
#01-25*



Applicable to units #01-15, #01-25*



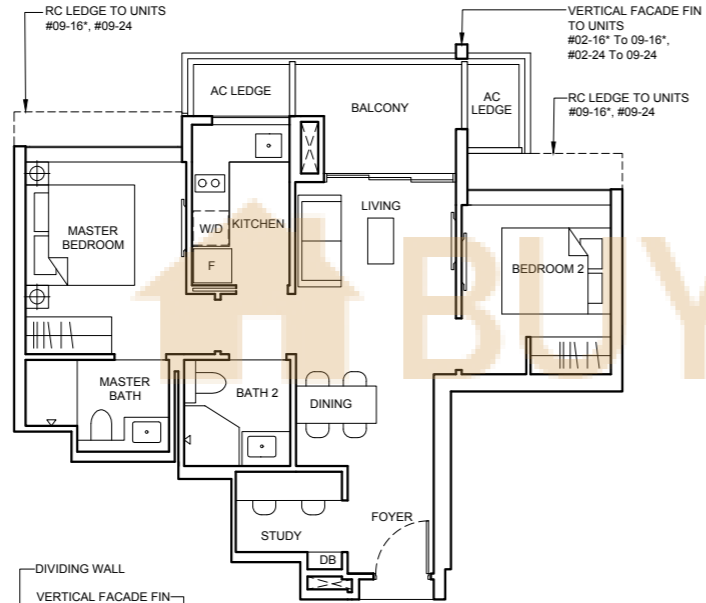
Applicable to unit #01-24

Type BS5a 67 sqm (721 sqft)

Balcony at top floor is provided with canopy.

Block 32B
#02-15 To #09-15
Block 34
#02-24 To #09-24

MIRRORED
Block 32B
#02-16* To #09-16*
Block 34
#02-25* To #09-25*



Applicable to units #02-15 To #09-15
#02-25* To #09-25*

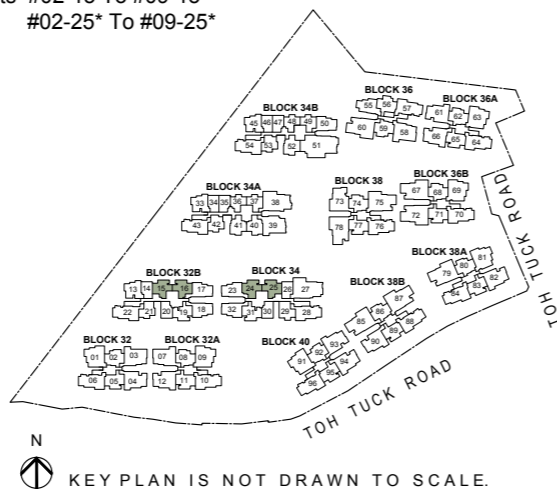
LEGEND

W/D WASHER CUM DRYER F FRIDGE

Note

- Area includes AC ledge, balcony and private enclosed space (PES), strata void (where applicable).
- The above plans and illustrations are subject to change as maybe required or approved by the relevant authorities.
- All floor areas are approximate only and subject to final survey.
- Please refer to the key plan for orientation.
- High volume space in (pd) unit does not constitute strata area.
- Service voids are excluded from strata area.
- RC ledge and / or RC trellis are excluded from strata area.

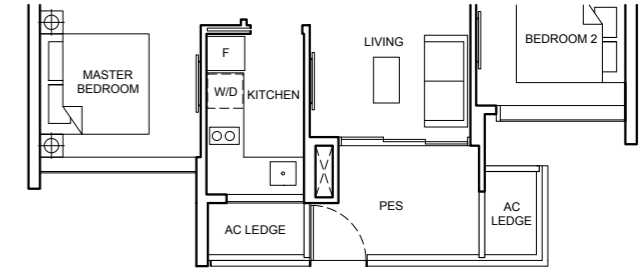
0 1 2 3 5M



2 BEDROOM + STUDY

Type BS5b(p) 67 sqm (721 sqft)

Block 32B
#01-19

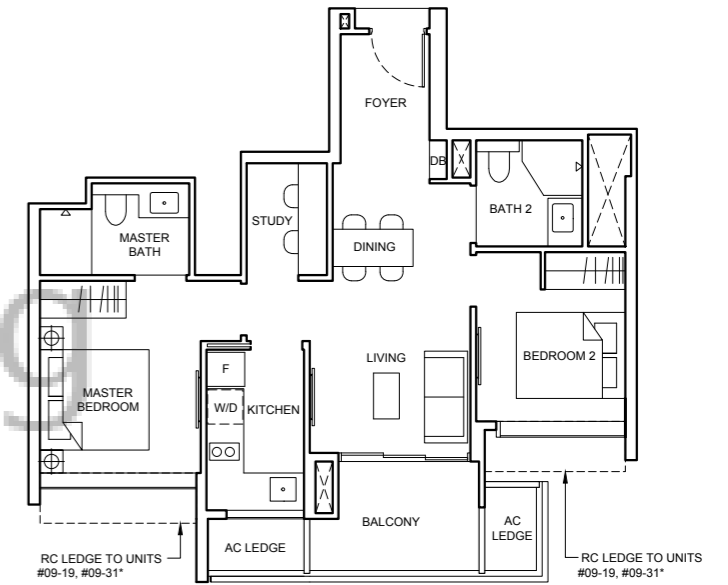


Type BS5b 67 sqm (721 sqft)

Balcony at top floor is provided with canopy.

Block 32B
#02-19 To #09-19

MIRRORED
Block 34
#02-31* To #09-31*



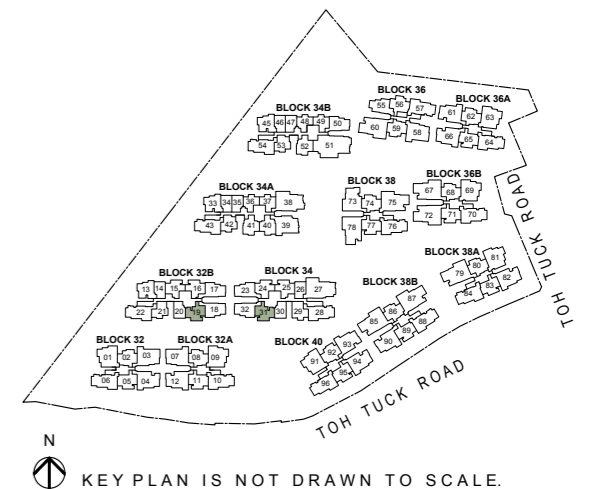
LEGEND

W/D WASHER CUM DRYER F FRIDGE

Note

- Area includes AC ledge, balcony and private enclosed space (PES), strata void (where applicable).
- The above plans and illustrations are subject to change as maybe required or approved by the relevant authorities.
- All floor areas are approximate only and subject to final survey.
- Please refer to the key plan for orientation.
- High volume space in (pd) unit does not constitute strata area.
- Service voids are excluded from strata area.
- RC ledge and / or RC trellis are excluded from strata area.

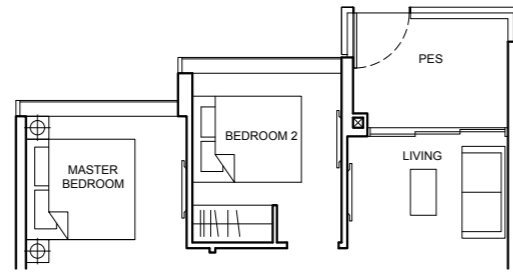
0 1 2 3 5M



2 BEDROOM + STUDY

Type BS6a(p) 67 sqm (721 sqft)

Block 32B
#01-13
Block 34A
#01-33
Block 34B
#01-45



Type BS6a 67 sqm (721 sqft)

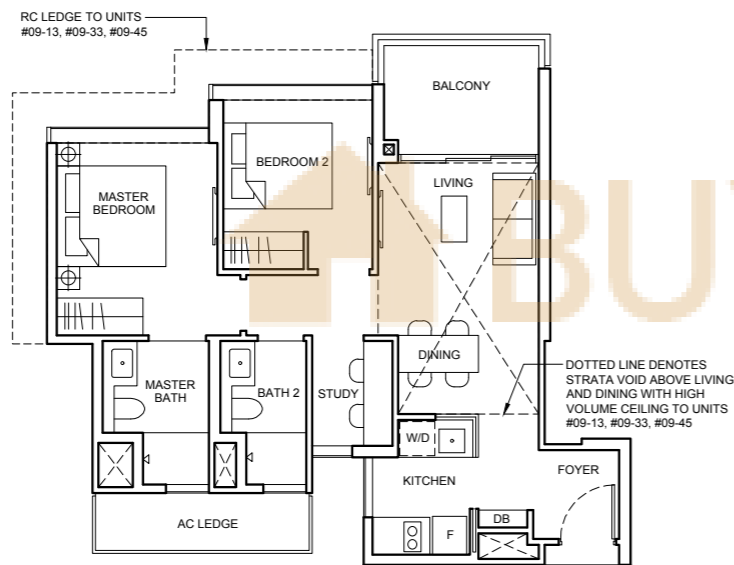
Block 32B
#02-13 To #08-13
Block 34A
#02-33 To #08-33
Block 34B
#02-45 To #08-45

Type BS6a(PH) 80 sqm (861 sqft)

Strata void area of 13 sqm / 140 sqft above living and dining with high volume ceiling of 4415mm H.

Balcony at top floor is provided with canopy.

Block 32B
#09-13
Block 34A
#09-33
Block 34B
#09-45



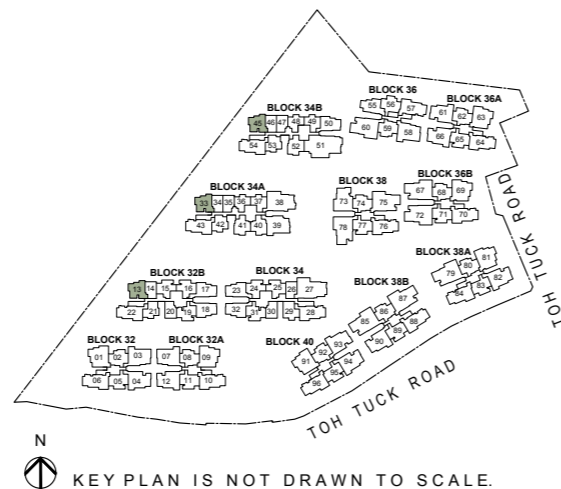
LEGEND

W/D | WASHER CUM DRYER F | FRIDGE

Note

- Area includes AC ledge, balcony and private enclosed space (PES), strata void (where applicable).
- The above plans and illustrations are subject to change as maybe required or approved by the relevant authorities.
- All floor areas are approximate only and subject to final survey.
- Please refer to the key plan for orientation.
- High volume space in (pd) unit does not constitute strata area.
- Service voids are excluded from strata area.
- RC ledge and / or RC trellis are excluded from strata area.

0 1 2 3 5M

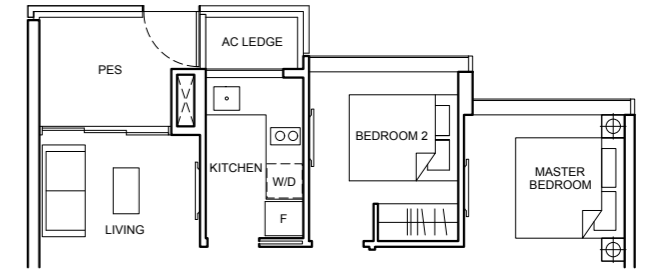


N
KEY PLAN IS NOT DRAWN TO SCALE.

2 BEDROOM + STUDY

Type BS6b(p) 70 sqm (753 sqft)

Block 34B
#01-50



Type BS6b 70 sqm (753 sqft)

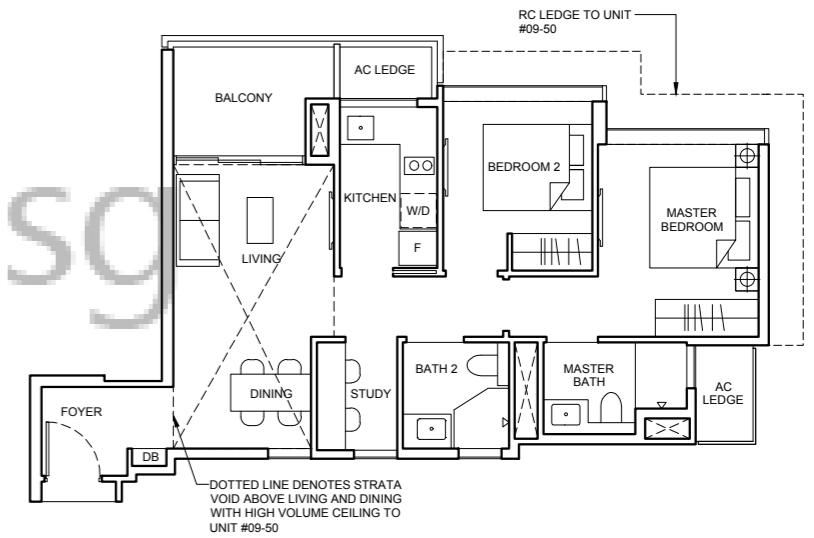
Block 34B
#02-50 To #08-50

Type BS6b(PH) 84 sqm (904 sqft)

Strata void area of 14 sqm / 151 sqft above living and dining with high volume ceiling of 4415mm H.

Balcony at top floor is provided with canopy.

Block 34B
#09-50



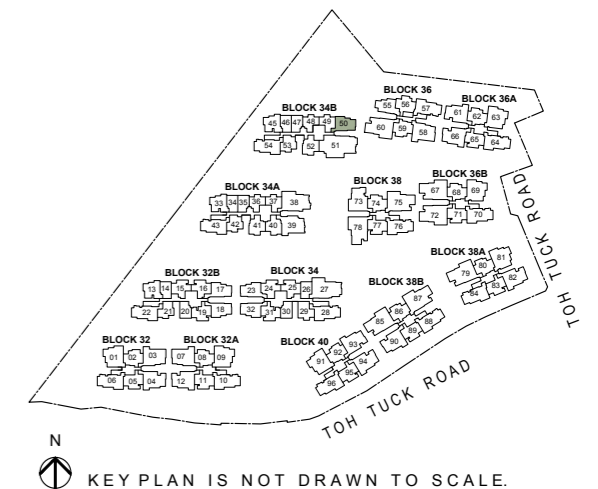
LEGEND

W/D | WASHER CUM DRYER F | FRIDGE

Note

- Area includes AC ledge, balcony and private enclosed space (PES), strata void (where applicable).
- The above plans and illustrations are subject to change as maybe required or approved by the relevant authorities.
- All floor areas are approximate only and subject to final survey.
- Please refer to the key plan for orientation.
- High volume space in (pd) unit does not constitute strata area.
- Service voids are excluded from strata area.
- RC ledge and / or RC trellis are excluded from strata area.

0 1 2 3 5M

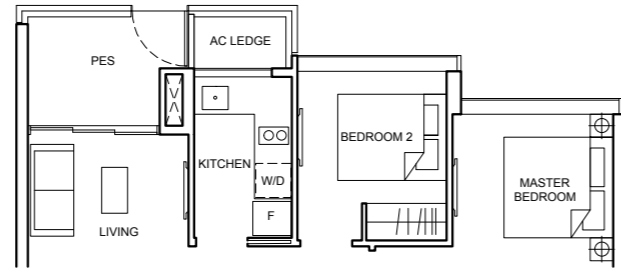


N
KEY PLAN IS NOT DRAWN TO SCALE.

2 BEDROOM + STUDY

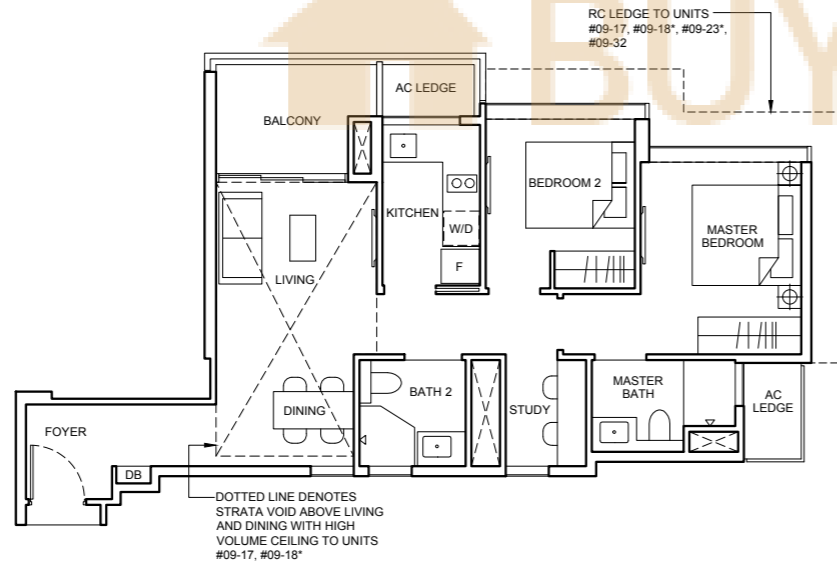
Type BS6c(p)

- 71 sqm (764 sqft)
- Block 32B**
#01-17
- Block 34**
#01-32
- MIRRORED**
- Block 32B**
#01-18*
- Block 34**
#01-23*



Type BS6c

- 71 sqm (764 sqft)
- Block 32B**
#02-17 To #08-17
- Block 34**
#02-32 To #09-32
- MIRRORED**
- Block 32B**
#02-18* To #08-18*
- Block 34**
#02-23* To #09-23*



Type BS6c(PH)

85 sqm (915 sqft)

Strata void area of 14 sqm / 151 sqft above living and dining with high volume ceiling of 4415mm H.

Balcony at top floor is provided with canopy.

- Block 32B**
#09-17
- MIRRORED**
- Block 32B**
#09-18*

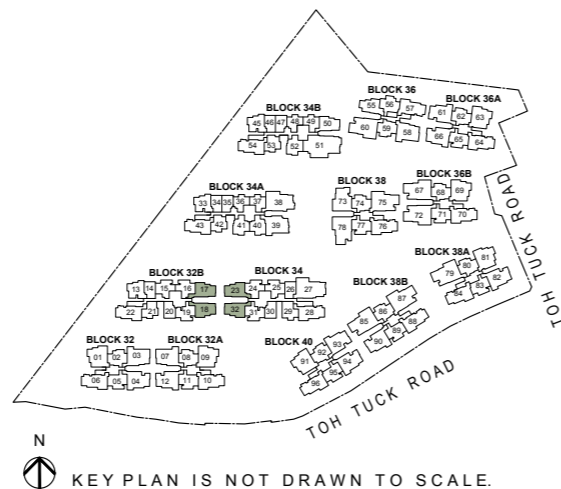
LEGEND

- W/D | WASHER CUM DRYER | F | FRIDGE

Note

- Area includes AC ledge, balcony and private enclosed space (PES), strata void (where applicable).
- The above plans and illustrations are subject to change as maybe required or approved by the relevant authorities.
- All floor areas are approximate only and subject to final survey.
- Please refer to the key plan for orientation.
- High volume space in (pd) unit does not constitute strata area.
- Service voids are excluded from strata area.
- RC ledge and / or RC trellis are excluded from strata area.

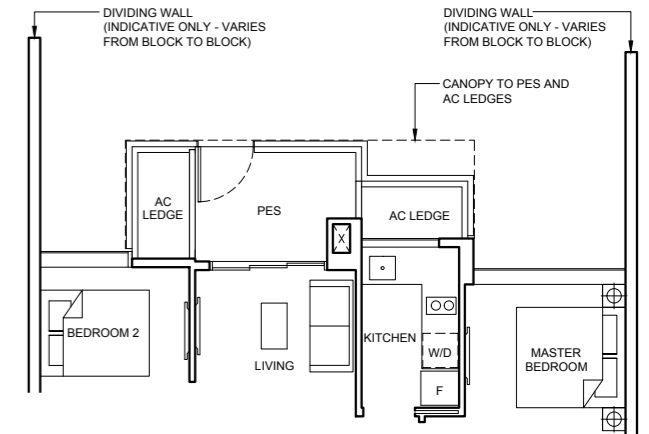
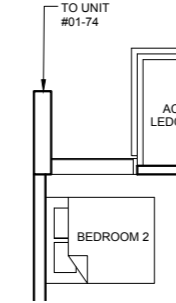
0 1 2 3 5M



2 BEDROOM DELUXE

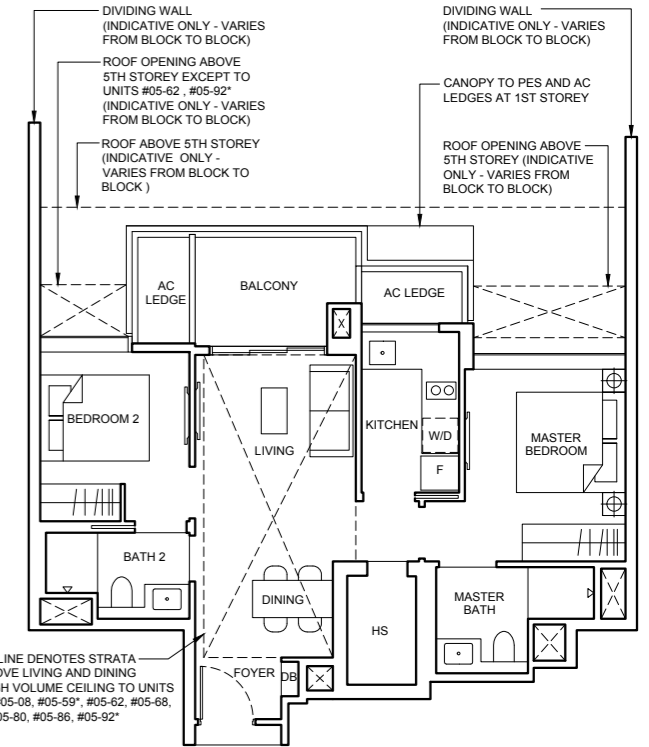
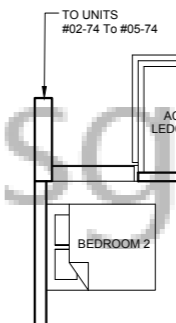
Type BHS1a(pd)

- 68 sqm (732 sqft)
- Block 36A**
#01-62
- Block 36B**
#01-68
- Block 38**
#01-74
- Block 38A**
#01-80
- Block 38B**
#01-86
- MIRRORED**
- Block 32**
#01-02*
- Block 36**
#01-59*
- Block 40**
#01-92*



Type BHS1a

- 68 sqm (732 sqft)
- Block 32A**
#02-08 To #04-08
- Block 36A**
#02-62 To #04-62
- Block 36B**
#02-68 To #04-68
- Block 38**
#02-74 To #04-74
- Block 38A**
#02-80 To #04-80
- Block 38B**
#02-86 To #04-86
- MIRRORED**
- Block 32**
#02-02* To #04-02*
- Block 36**
#02-59* To #04-59*
- Block 40**
#02-92* To #04-92*



Type BHS1a(PH)

84 sqm (904 sqft)

Strata void area of 16 sqm / 172 sqft above living and dining with high volume ceiling of 4590mm H.

- Block 32A**
#05-08
- Block 36A**
#05-62
- Block 36B**
#05-68
- Block 38**
#05-74
- Block 38A**
#05-80
- Block 38B**
#05-86
- MIRRORED**
- Block 32**
#05-02*
- Block 36**
#05-59*
- Block 40**
#05-92*

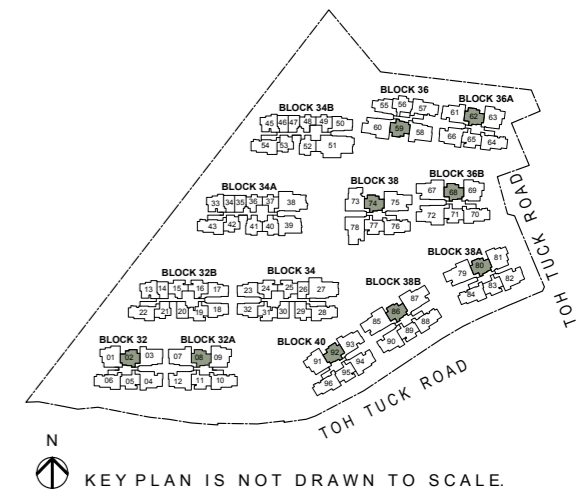
LEGEND

- W/D | WASHER CUM DRYER | F | FRIDGE

Note

- Area includes AC ledge, balcony and private enclosed space (PES), strata void (where applicable).
- The above plans and illustrations are subject to change as maybe required or approved by the relevant authorities.
- All floor areas are approximate only and subject to final survey.
- Please refer to the key plan for orientation.
- High volume space in (pd) unit does not constitute strata area.
- Service voids are excluded from strata area.
- RC ledge and / or RC trellis are excluded from strata area.

0 1 2 3 5M



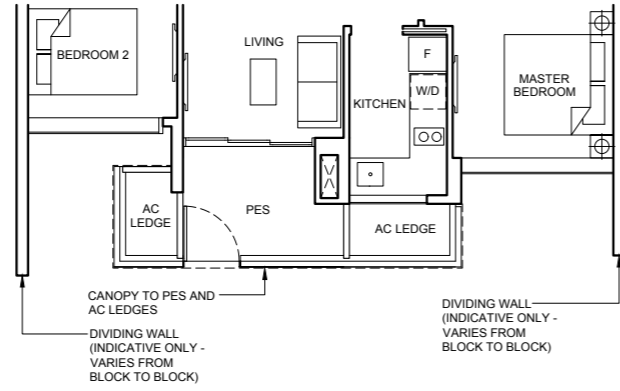
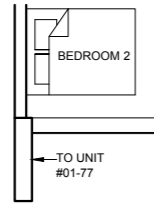
2 BEDROOM DELUXE

Type BHS1b(pd)

69 sqm (743 sqft)

- Block 32A**
#01-11
- Block 36A**
#01-65
- Block 36B**
#01-71
- Block 38**
#01-77
- Block 38B**
#01-89

- MIRRORED**
- Block 38A**
#01-83*
 - Block 40**
#01-95*

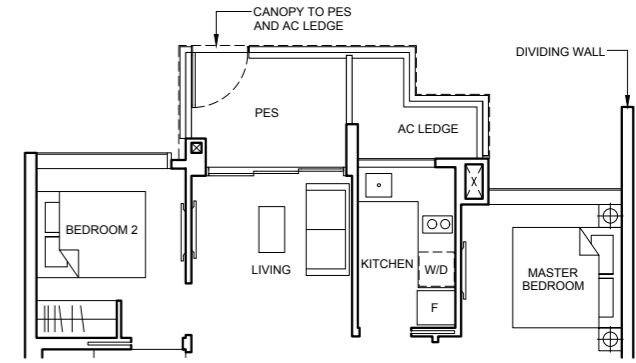


2 BEDROOM DELUXE

Type BHS1c(pd)

71 sqm (764 sqft)

- Block 36**
#01-56

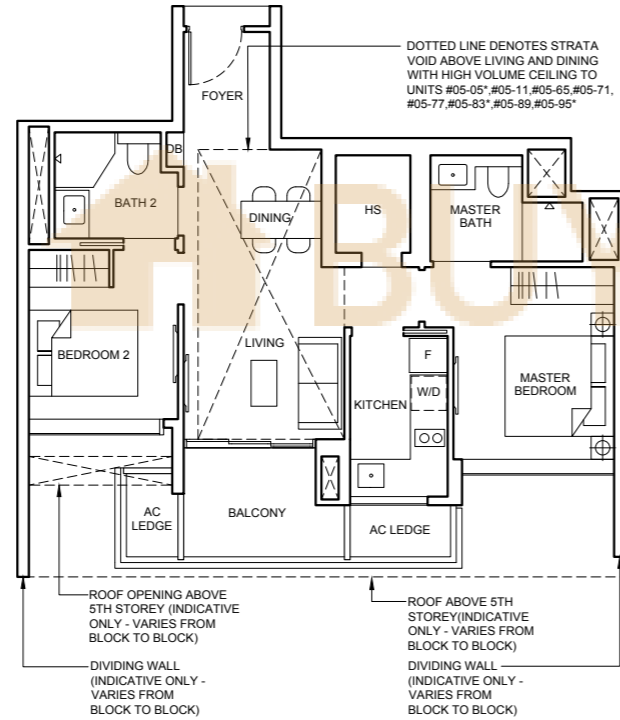


Type BHS1b

69 sqm (743 sqft)

- Block 32A**
#02-11 To #04-11
- Block 36A**
#02-65 To #04-65
- Block 36B**
#02-71 To #04-71
- Block 38**
#02-77 To #04-77
- Block 38B**
#02-89 To #04-89

- MIRRORED**
- Block 32**
#02-05* To #04-05*
 - Block 38A**
#02-83* To #04-83*
 - Block 40**
#02-95* To #04-95*



Type BHS1c

71 sqm (764 sqft)

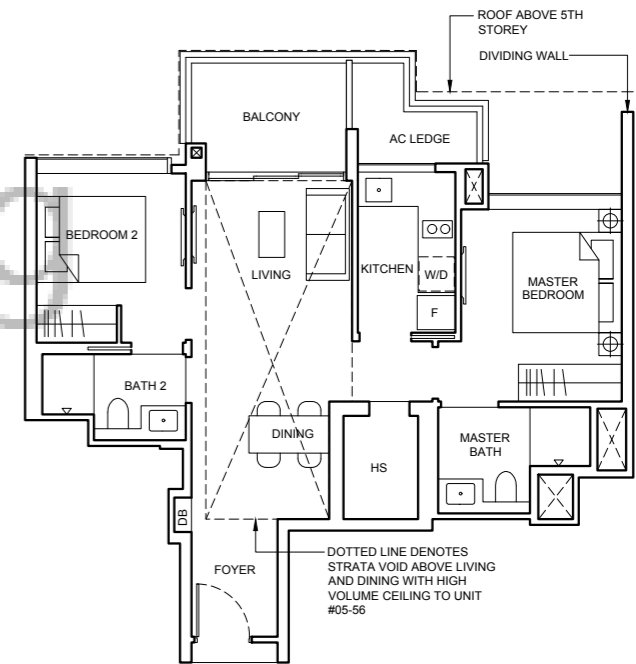
- Block 36**
#02-56 To #04-56

Type BHS1c(PH)

88 sqm (947 sqft)

Strata void area of 17 sqm / 183 sqft above living and dining with high volume ceiling of 4590mm H.

- Block 36**
#05-56



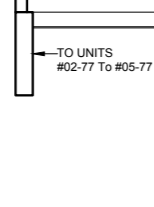
Type BHS1b(PH)

83 sqm (893 sqft)

strata void area of 14 sqm / 150 sqft above living and dining with high volume ceiling of 4590mm H.

- Block 32A**
#05-11
- Block 36A**
#05-65
- Block 36B**
#05-71
- Block 38**
#05-77
- Block 38B**
#05-89

- MIRRORED**
- Block 32**
#05-05*
 - Block 38A**
#05-83*
 - Block 40**
#05-95*

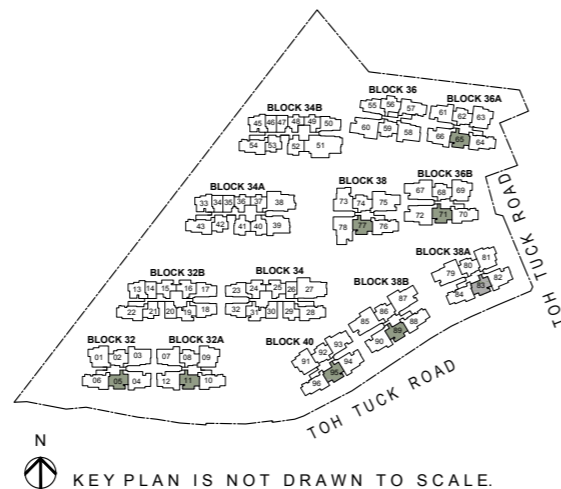


LEGEND

- [W/D] WASHER CUM DRYER
- [F] FRIDGE

Note

- Area includes AC ledge, balcony and private enclosed space (PES), strata void (where applicable).
- The above plans and illustrations are subject to change as maybe required or approved by the relevant authorities.
- All floor areas are approximate only and subject to final survey.
- Please refer to the key plan for orientation.
- High volume space in (pd) unit does not constitute strata area.
- Service voids are excluded from strata area.
- RC ledge and / or RC trellis are excluded from strata area.

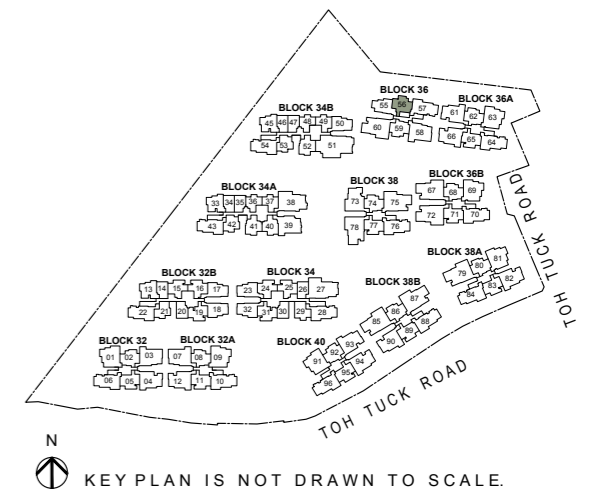


LEGEND

- [W/D] WASHER CUM DRYER
- [F] FRIDGE

Note

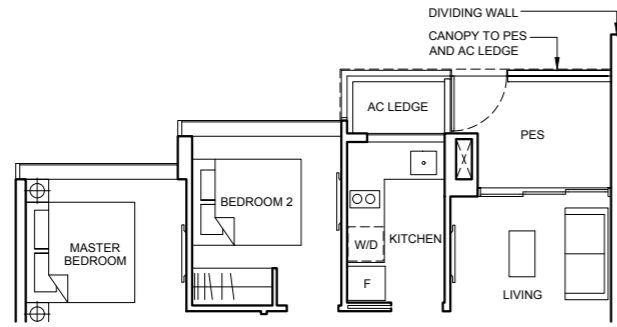
- Area includes AC ledge, balcony and private enclosed space (PES), strata void (where applicable).
- The above plans and illustrations are subject to change as maybe required or approved by the relevant authorities.
- All floor areas are approximate only and subject to final survey.
- Please refer to the key plan for orientation.
- High volume space in (pd) unit does not constitute strata area.
- Service voids are excluded from strata area.
- RC ledge and / or RC trellis are excluded from strata area.



2 BEDROOM DELUXE

Type BHS2(pd) 71 sqm (764 sqft)

Block 36
#01-55



Type BHS2 71 sqm (764 sqft)

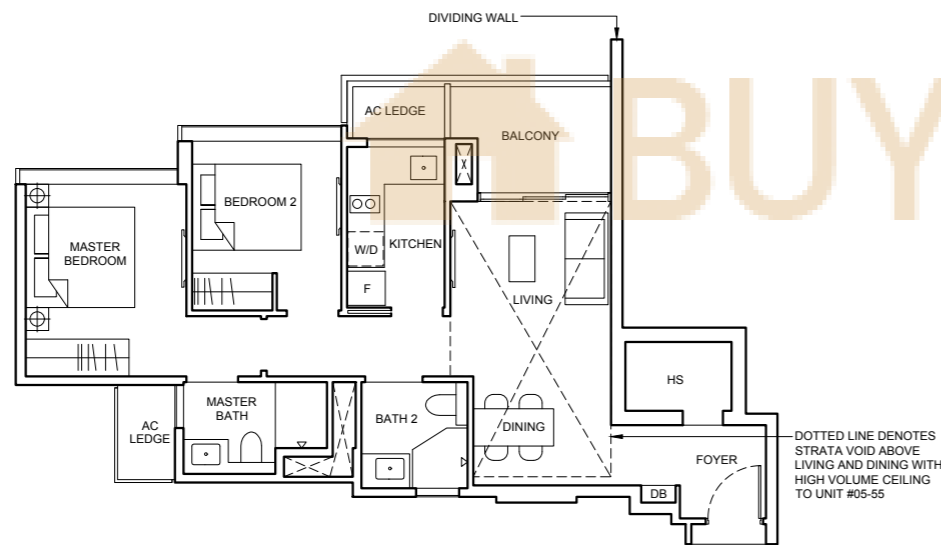
Block 36
#02-55 To #04-55

Type BHS2(PH) 86 sqm (926 sqft)

Strata void area of 15 sqm / 162 sqft above living and dining with high volume ceiling of 4590mm H.

Balcony at top floor is provided with canopy.

Block 36
#05-55



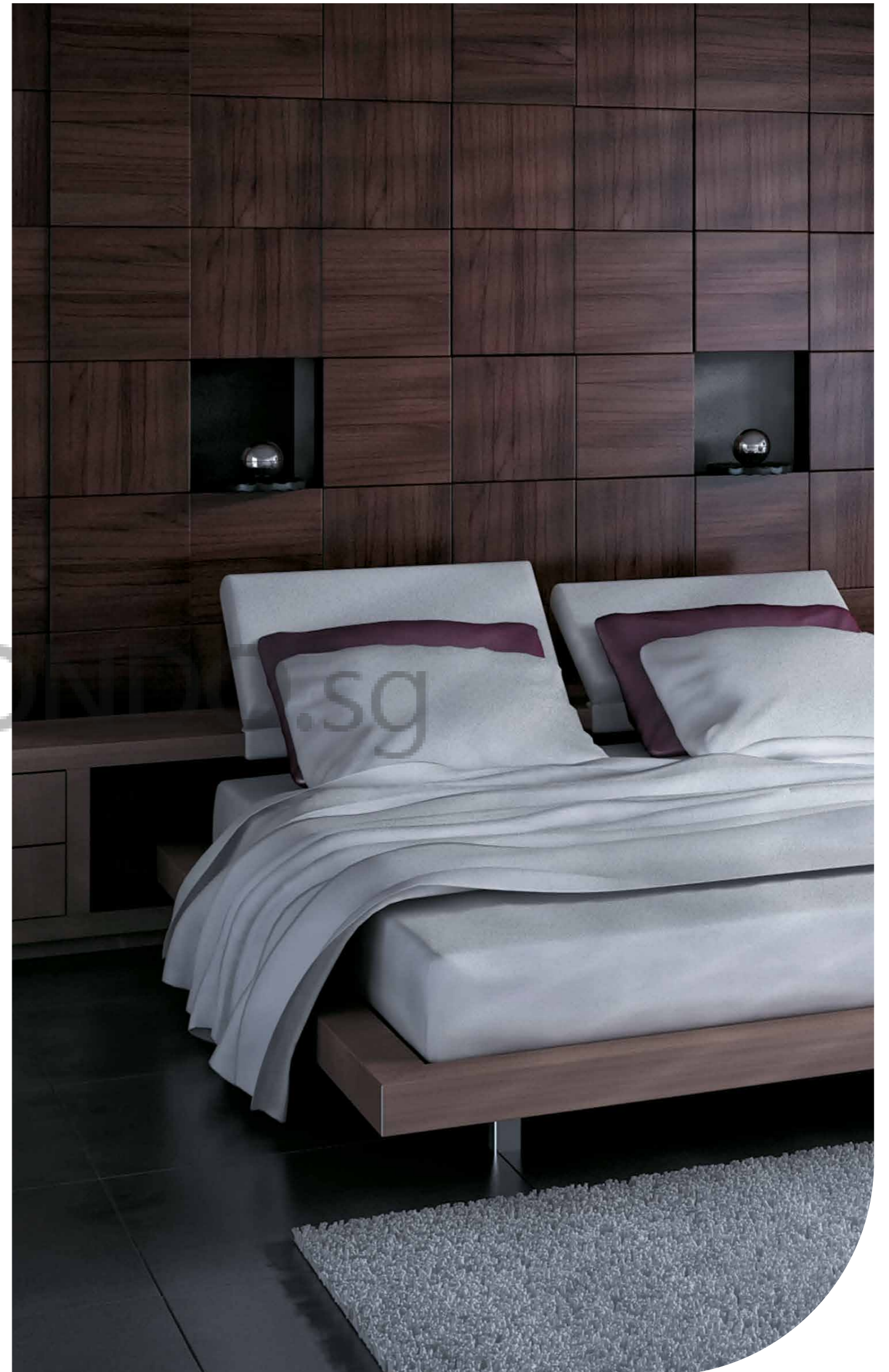
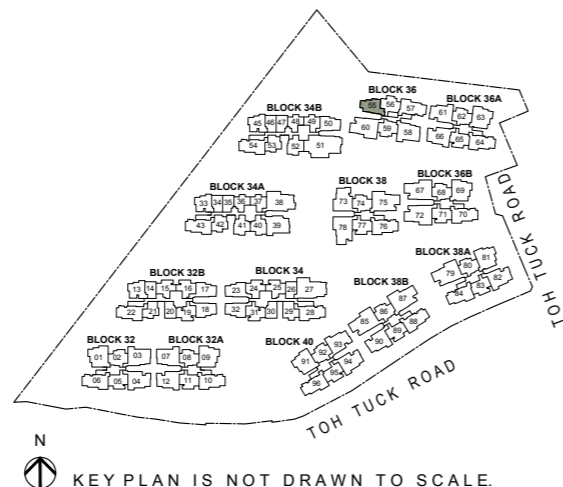
LEGEND

W/D WASHER CUM DRYER F FRIDGE

Note

- Area includes AC ledge, balcony and private enclosed space (PES), strata void (where applicable).
- The above plans and illustrations are subject to change as maybe required or approved by the relevant authorities.
- All floor areas are approximate only and subject to final survey.
- Please refer to the key plan for orientation.
- High volume space in (pd) unit does not constitute strata area.
- Service voids are excluded from strata area.
- RC ledge and / or RC trellis are excluded from strata area.

0 1 2 3 5M

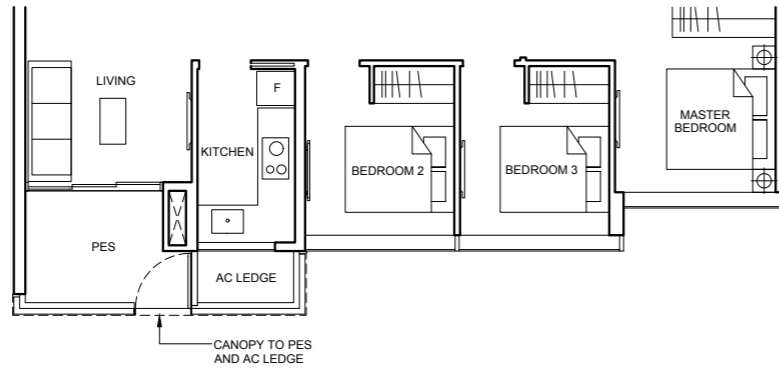


3 BEDROOM DELUXE

Type C1a1(pd)

88 sqm (947 sqft)

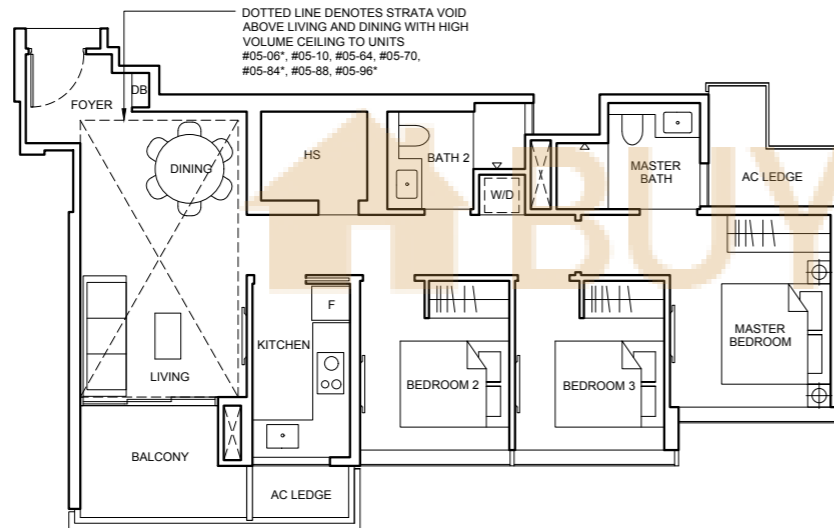
- | | |
|----------------------------|-----------------------------|
| Block 32A
#01-10 | MIRRORED |
| Block 36A
#01-64 | Block 38A
#01-84* |
| Block 36B
#01-70 | Block 40
#01-96* |
| Block 38B
#01-88 | |



Type C1a1

88 sqm (947 sqft)

- | | |
|--------------------------------------|--|
| Block 32A
#02-10 To #04-10 | MIRRORED |
| Block 36A
#02-64 To #04-64 | Block 32
#02-06* To #04-06* |
| Block 36B
#02-70 To #04-70 | Block 38A
#02-84* To #04-84* |
| Block 38B
#02-88 To #04-88 | Block 40
#02-96* To #04-96* |



Type C1a1(PH)

104 sqm (1119 sqft)

Strata void area of 16 sqm / 172 sqft above living and dining with high volume ceiling of 4590mm H.

Balcony at top floor is provided with canopy.

- | | |
|----------------------------|-----------------------------|
| Block 32A
#05-10 | MIRRORED |
| Block 36A
#05-64 | Block 32
#05-06* |
| Block 36B
#05-70 | Block 38A
#05-84* |
| Block 38B
#05-88 | Block 40
#05-96* |

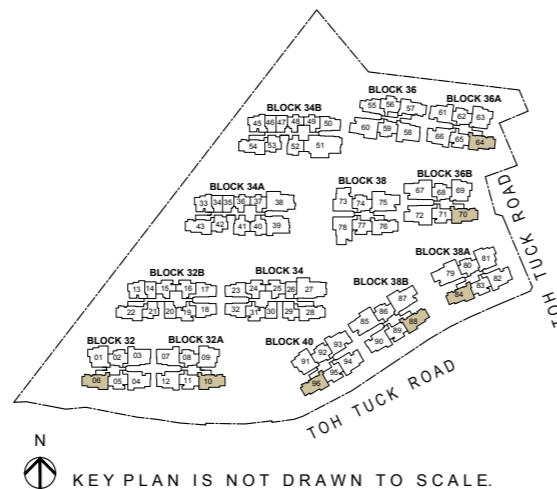
LEGEND

- W/D | WASHER CUM DRYER F | FRIDGE

Note

- Area includes AC ledge, balcony and private enclosed space (PES), strata void (where applicable).
- The above plans and illustrations are subject to change as maybe required or approved by the relevant authorities.
- All floor areas are approximate only and subject to final survey.
- Please refer to the key plan for orientation.
- High volume space in (pd) unit does not constitute strata area.
- Service voids are excluded from strata area.
- RC ledge and / or RC trellis are excluded from strata area.

0 1 2 3 5M

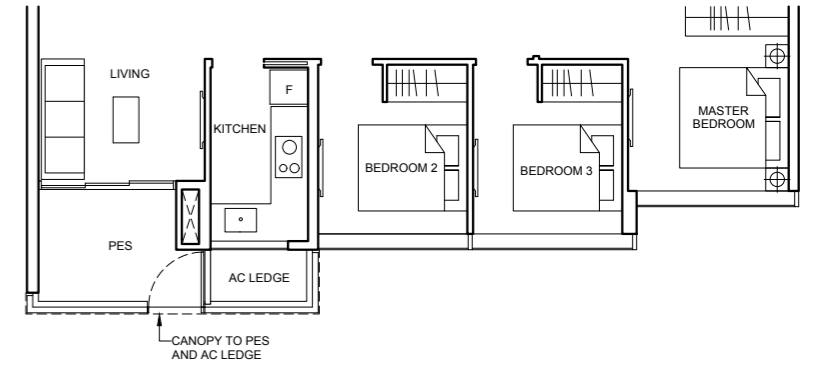


3 BEDROOM DELUXE

Type C1a2(pd)

88 sqm (947 sqft)

- | | |
|---------------------------|----------------------------|
| Block 38
#01-76 | MIRRORED |
| | Block 36
#01-57* |



Type C1a2

88 sqm (947 sqft)

- | | |
|-------------------------------------|---------------------------------------|
| Block 38
#02-76 To #04-76 | MIRRORED |
| | Block 36
#02-57* To #04-57* |

Type C1a2(PH)

104 sqm (1119 sqft)

Strata void area of 16 sqm / 172 sqft above living and dining with high volume ceiling of 4590mm H.

Balcony at top floor is provided with canopy.

- | | |
|---------------------------|----------------------------|
| Block 38
#05-76 | MIRRORED |
| | Block 36
#05-57* |

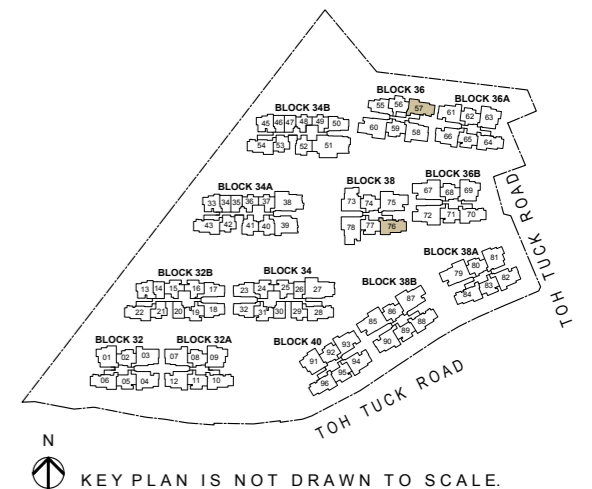
LEGEND

- W/D | WASHER CUM DRYER F | FRIDGE

Note

- Area includes AC ledge, balcony and private enclosed space (PES), strata void (where applicable).
- The above plans and illustrations are subject to change as maybe required or approved by the relevant authorities.
- All floor areas are approximate only and subject to final survey.
- Please refer to the key plan for orientation.
- High volume space in (pd) unit does not constitute strata area.
- Service voids are excluded from strata area.
- RC ledge and / or RC trellis are excluded from strata area.

0 1 2 3 5M

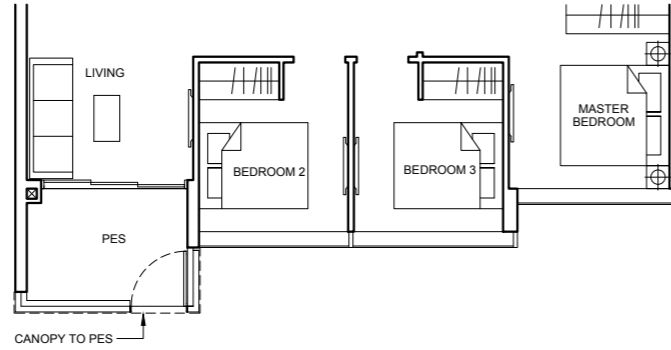


3 BEDROOM DELUXE

Type C1b(pd)

91 sqm (980 sqft)

- | | |
|------------------|------------------|
| Block 36A | MIRRORED |
| #01-61 | Block 32A |
| Block 38A | #01-12* |
| #01-82 | Block 36A |
| Block 40 | #01-66* |
| #01-94 | Block 38B |
| | #01-90* |
| | Block 40 |
| | #01-93* |



Type C1b

91 sqm (980 sqft)

- | | |
|------------------|--------------------|
| Block 32 | MIRRORED |
| #02-04 To #04-04 | Block 32A |
| Block 36A | #02-12* To #04-12* |
| #02-61 To #04-61 | Block 36A |
| Block 38A | #02-66* To #04-66* |
| #02-82 To #04-82 | Block 38B |
| Block 40 | #02-90* To #04-90* |
| #02-94 To #04-94 | Block 40 |
| | #02-93* To #04-93* |

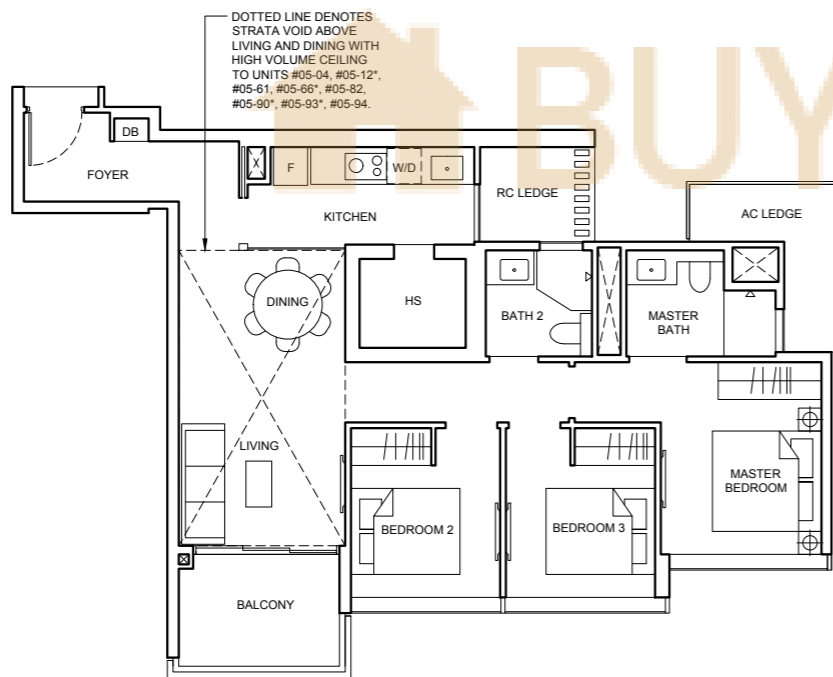
Type C1b(PH)

108 sqm (1163 sqft)

Strata void area of 17 sqm / 183 sqft above living and dining with high volume ceiling of 4590mm H.

Balcony at top floor is provided with canopy.

- | | |
|------------------|------------------|
| Block 32 | MIRRORED |
| #05-04 | Block 32A |
| Block 36A | #05-12* |
| #05-61 | Block 36A |
| Block 38A | #05-66* |
| #05-82 | Block 38B |
| Block 40 | #05-90* |
| #05-94 | Block 40 |
| | #05-93* |



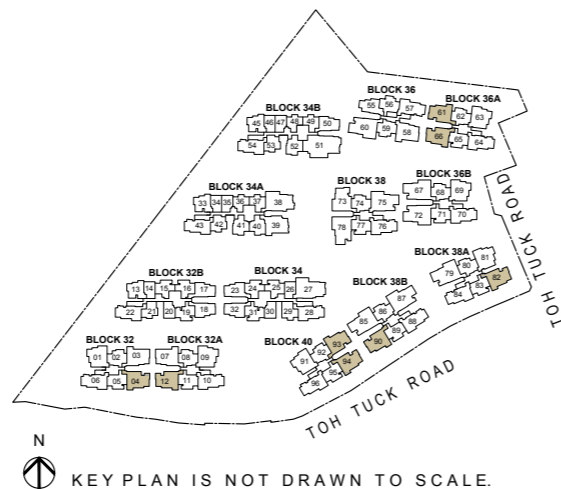
LEGEND

- [W/D] WASHER CUM DRYER [F] FRIDGE

Note

- Area includes AC ledge, balcony and private enclosed space (PES), strata void (where applicable).
- The above plans and illustrations are subject to change as maybe required or approved by the relevant authorities.
- All floor areas are approximate only and subject to final survey.
- Please refer to the key plan for orientation.
- High volume space in (pd) unit does not constitute strata area.
- Service voids are excluded from strata area.
- RC ledge and / or RC trellis are excluded from strata area.

0 1 2 3 5M

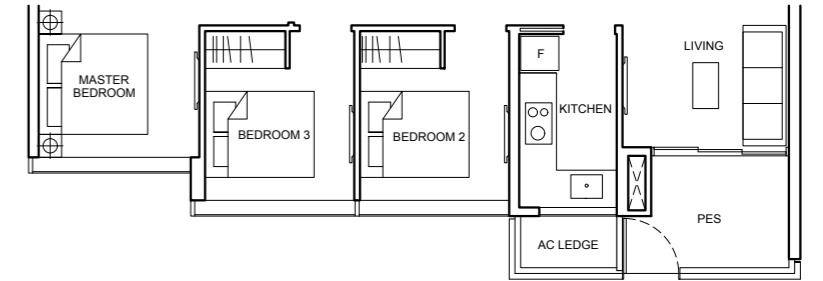


3 BEDROOM DELUXE

Type C1c(p)

90 sqm (969 sqft)

- Block 34A**
#01-43
Block 34B
#01-54



Type C1c

90 sqm (969 sqft)

- Block 34A**
#02-43 To #08-43
Block 34B
#02-54 To #08-54

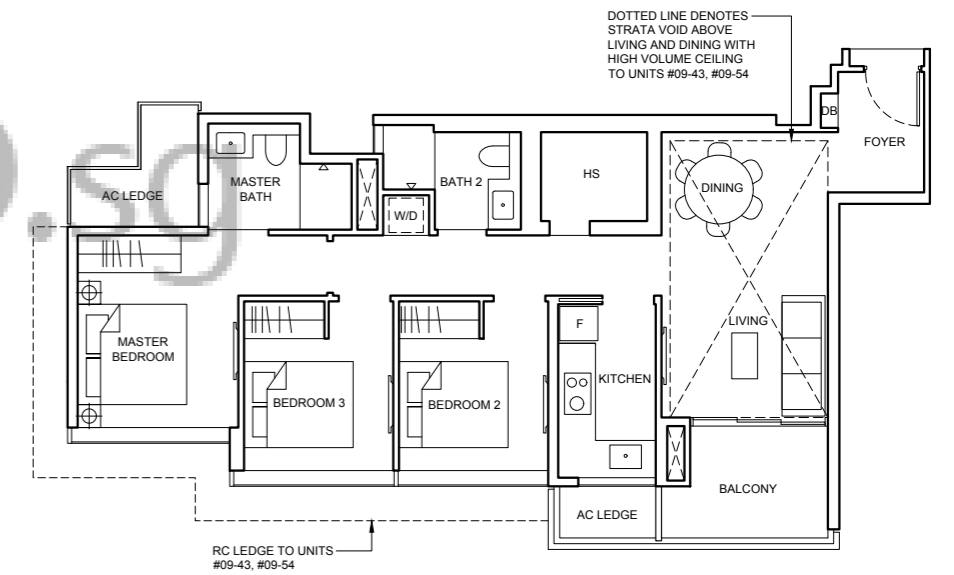
Type C1c(PH)

106 sqm (1141 sqft)

Strata void area of 16 sqm / 172 sqft above living and dining with high volume ceiling of 4415mm H.

Balcony at top floor is provided with canopy.

- Block 34A**
#09-43
Block 34B
#09-54



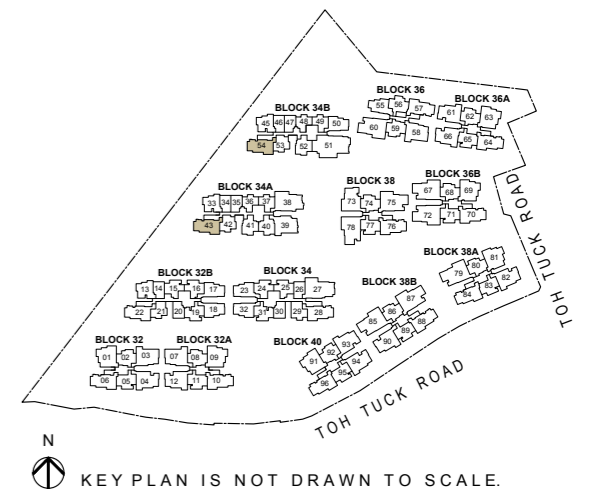
LEGEND

- [W/D] WASHER CUM DRYER [F] FRIDGE

Note

- Area includes AC ledge, balcony and private enclosed space (PES), strata void (where applicable).
- The above plans and illustrations are subject to change as maybe required or approved by the relevant authorities.
- All floor areas are approximate only and subject to final survey.
- Please refer to the key plan for orientation.
- High volume space in (pd) unit does not constitute strata area.
- Service voids are excluded from strata area.
- RC ledge and / or RC trellis are excluded from strata area.

0 1 2 3 5M

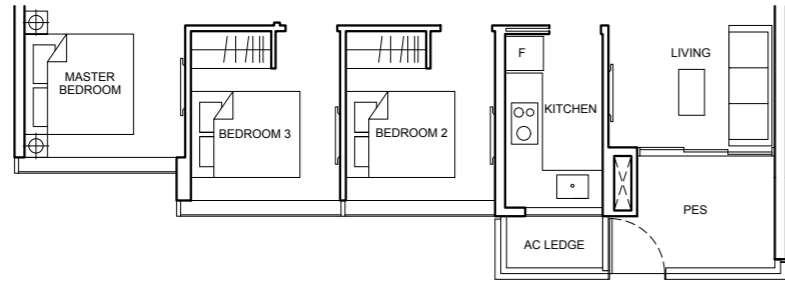


3 BEDROOM DELUXE

Type C1d(p) 91 sqm (980 sqft)

Block 32B
#01-22

MIRRORED
Block 34
#01-28*



Type C1d 91 sqm (980 sqft)

Block 32B
#02-22 To #08-22

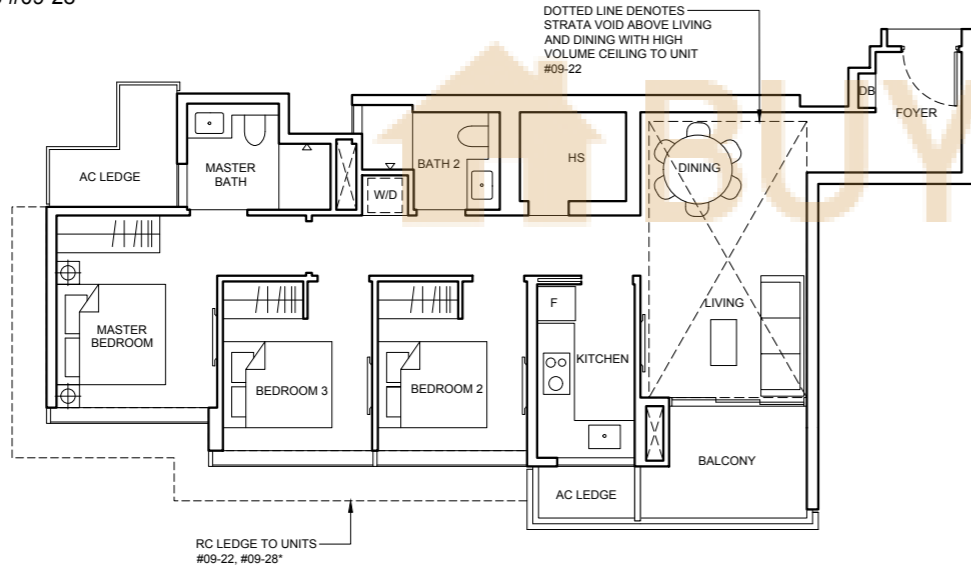
MIRRORED
Block 34
#02-28* To #09-28*

Type C1d(PH) 107 sqm (1152 sqft)

Strata void area of 16 sqm / 172 sqft above living and dining with high volume ceiling of 4415mm H.

Balcony at top floor is provided with canopy.

Block 32B
#09-22



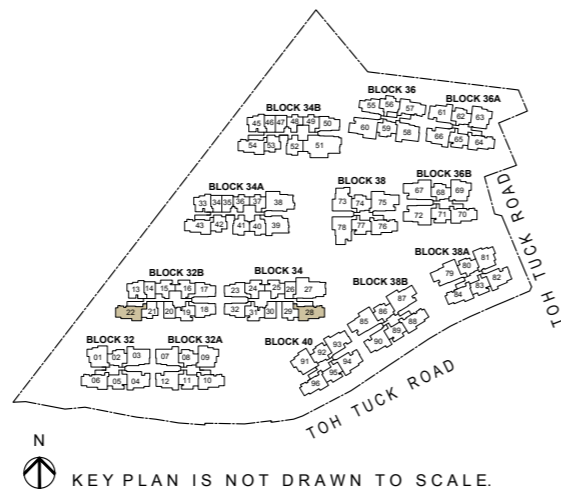
LEGEND

W/D WASHER CUM DRYER F FRIDGE

Note

- Area includes AC ledge, balcony and private enclosed space (PES), strata void (where applicable).
- The above plans and illustrations are subject to change as maybe required or approved by the relevant authorities.
- All floor areas are approximate only and subject to final survey.
- Please refer to the key plan for orientation.
- High volume space in (pd) unit does not constitute strata area.
- Service voids are excluded from strata area.
- RC ledge and / or RC trellis are excluded from strata area.

0 1 2 3 5M



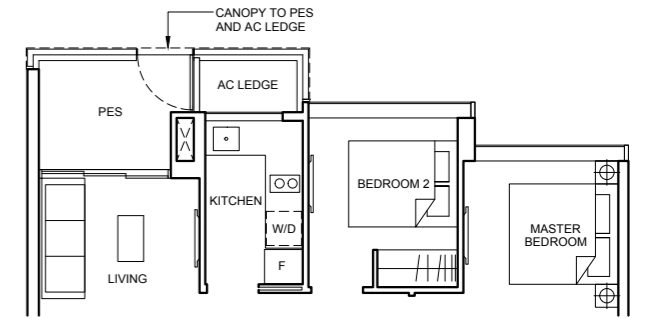
KEY PLAN IS NOT DRAWN TO SCALE.

3 BEDROOM DUAL KEY

Type C2(DK)(pd) 96 sqm (1033 sqft)

Block 36A
#01-63
Block 36B
#01-69
Block 38A
#01-81

MIRRORED
Block 32
#01-01*
Block 40
#01-91*



Type C2(DK) 96 sqm (1033 sqft)

Block 32A
#02-09 To #04-09
Block 36A
#02-63 To #04-63
Block 36B
#02-69 To #04-69
Block 38A
#02-81 To #04-81

MIRRORED
Block 32
#02-01* To #04-01*
Block 40
#02-91* To #04-91*

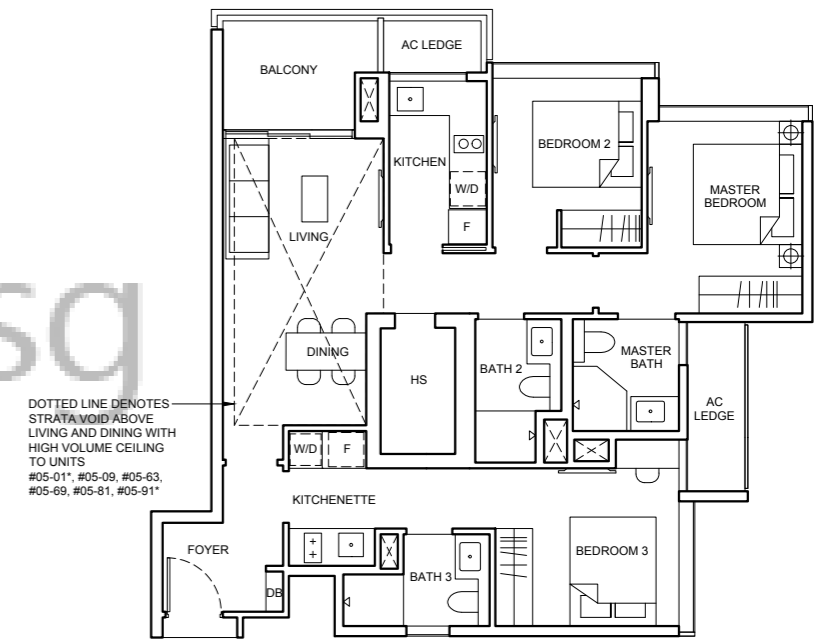
Type C2(DK)(PH) 111 sqm (1195 sqft)

Strata void area of 15 sqm / 162 sqft above living and dining with high volume ceiling of 4590mm H.

Balcony at top floor is provided with canopy.

Block 32A
#05-09
Block 36A
#05-63
Block 36B
#05-69
Block 38A
#05-81

MIRRORED
Block 32
#05-01*
Block 40
#05-91*



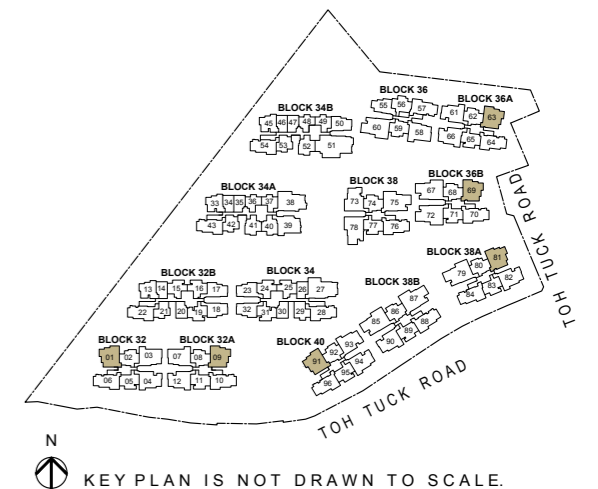
LEGEND

W/D WASHER CUM DRYER F INTEGRATED FRIDGE F FRIDGE

Note

- Area includes AC ledge, balcony and private enclosed space (PES), strata void (where applicable).
- The above plans and illustrations are subject to change as maybe required or approved by the relevant authorities.
- All floor areas are approximate only and subject to final survey.
- Please refer to the key plan for orientation.
- High volume space in (pd) unit does not constitute strata area.
- Service voids are excluded from strata area.
- RC ledge and / or RC trellis are excluded from strata area.

0 1 2 3 5M

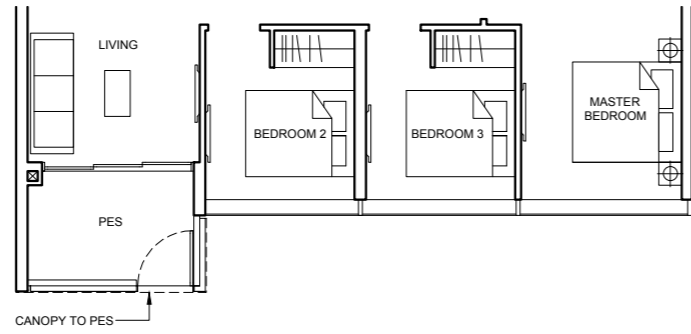


KEY PLAN IS NOT DRAWN TO SCALE.

3 BEDROOM PREMIUM

Type C3a(pd)
98 sqm (1055 sqft)

Block 36
#01-58



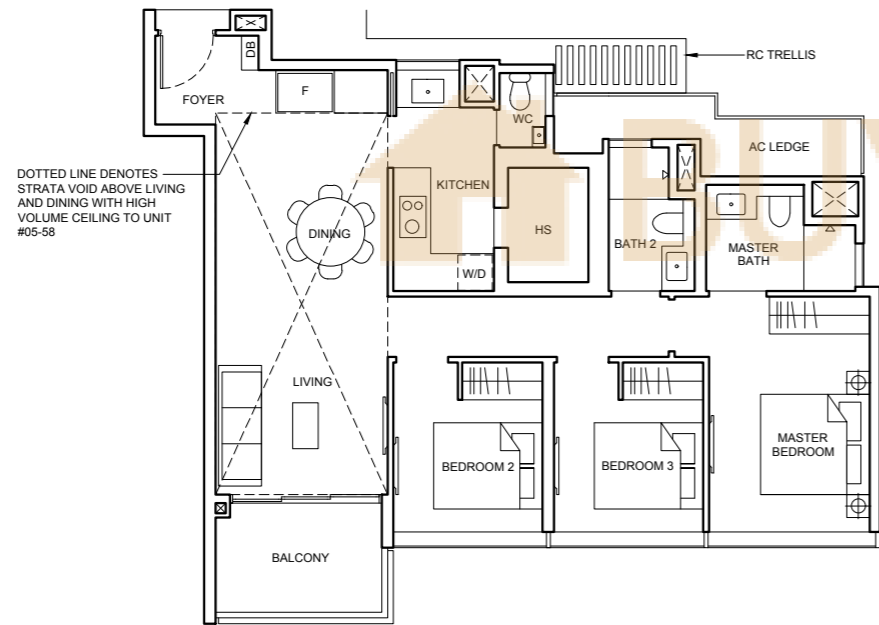
Type C3a
98 sqm (1055 sqft)

Block 36
#02-58 To #04-58

Type C3a(PH)
121 sqm (1302 sqft)
Strata void area of 23 sqm / 247 sqft above living and dining with high volume ceiling of 4590mm H.

Balcony at top floor is provided with canopy.

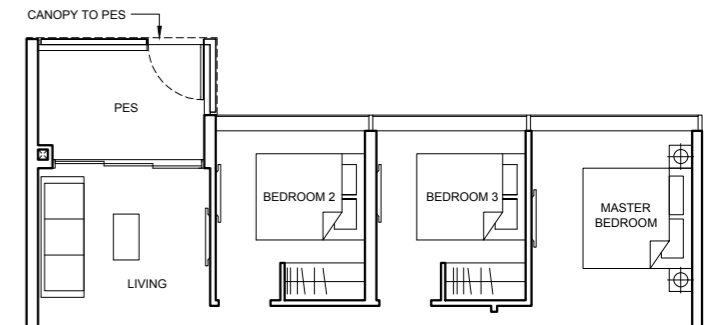
Block 36
#05-58



3 BEDROOM PREMIUM

Type C3b(pd)
100 sqm (1076 sqft)

Block 32
#01-03



Type C3b
100 sqm (1076 sqft)

Block 32
#02-03 To #04-03

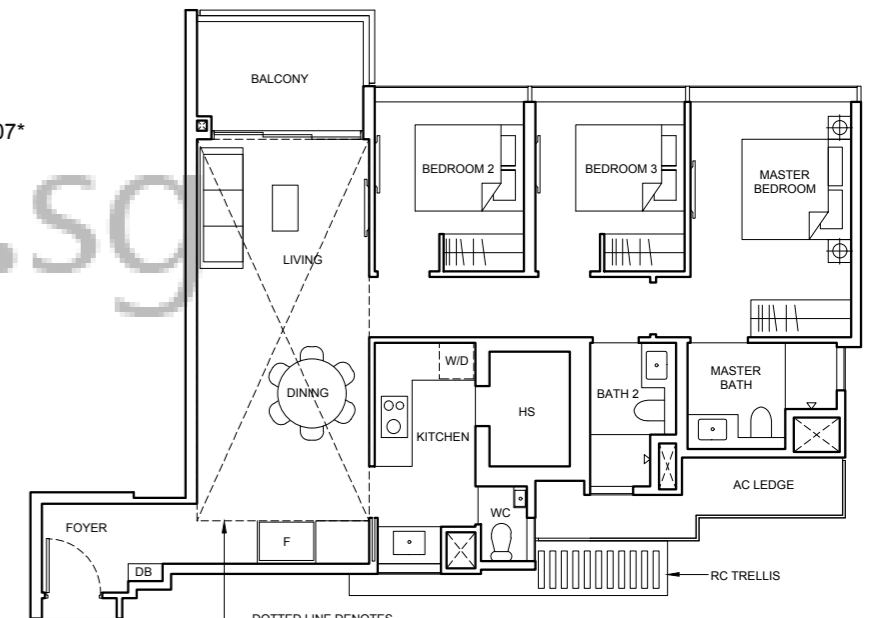
MIRRORED Block 32A
#02-07* To #04-07*

Type C3b(PH)
123 sqm (1324 sqft)
Strata void area of 23 sqm / 248 sqft above living and dining with high volume ceiling of 4590mm H.

Balcony at top floor is provided with canopy.

Block 32
#05-03

MIRRORED Block 32A
#05-07*



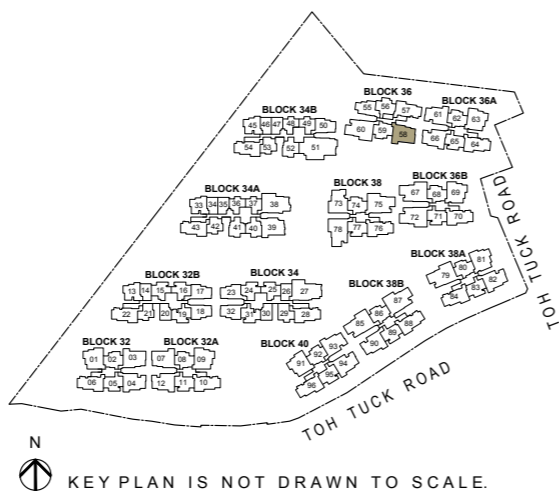
LEGEND

[W/D] WASHER CUM DRYER [F] FRIDGE

Note

- Area includes AC ledge, balcony and private enclosed space (PES), strata void (where applicable).
- The above plans and illustrations are subject to change as maybe required or approved by the relevant authorities.
- All floor areas are approximate only and subject to final survey.
- Please refer to the key plan for orientation.
- High volume space in (pd) unit does not constitute strata area.
- Service voids are excluded from strata area.
- RC ledge and / or RC trellis are excluded from strata area.

0 1 2 3 5M



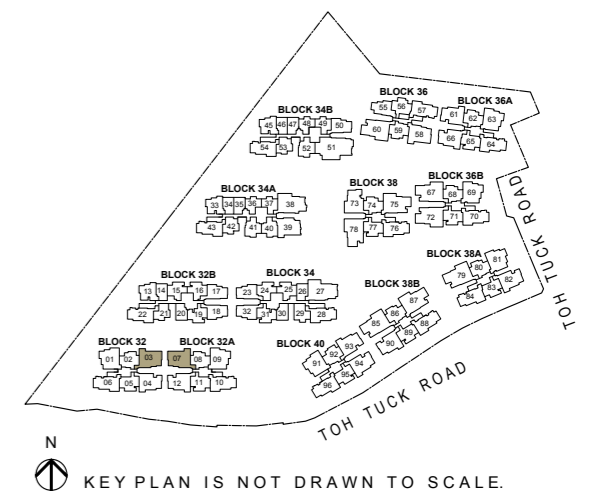
LEGEND

[W/D] WASHER CUM DRYER [F] FRIDGE

Note

- Area includes AC ledge, balcony and private enclosed space (PES), strata void (where applicable).
- The above plans and illustrations are subject to change as maybe required or approved by the relevant authorities.
- All floor areas are approximate only and subject to final survey.
- Please refer to the key plan for orientation.
- High volume space in (pd) unit does not constitute strata area.
- Service voids are excluded from strata area.
- RC ledge and / or RC trellis are excluded from strata area.

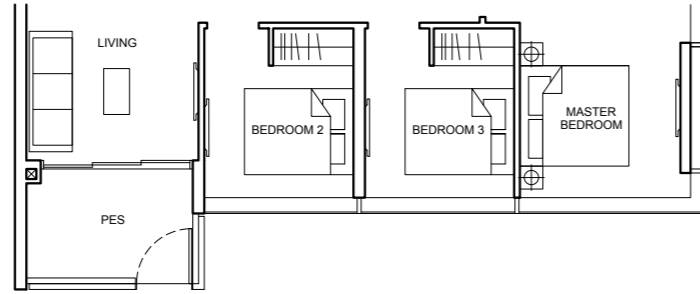
0 1 2 3 5M



3 BEDROOM PREMIUM

Type C3c(p) 101 sqm (1087 sqft)

Block 34A
#01-39



Type C3c 101 sqm (1087 sqft)

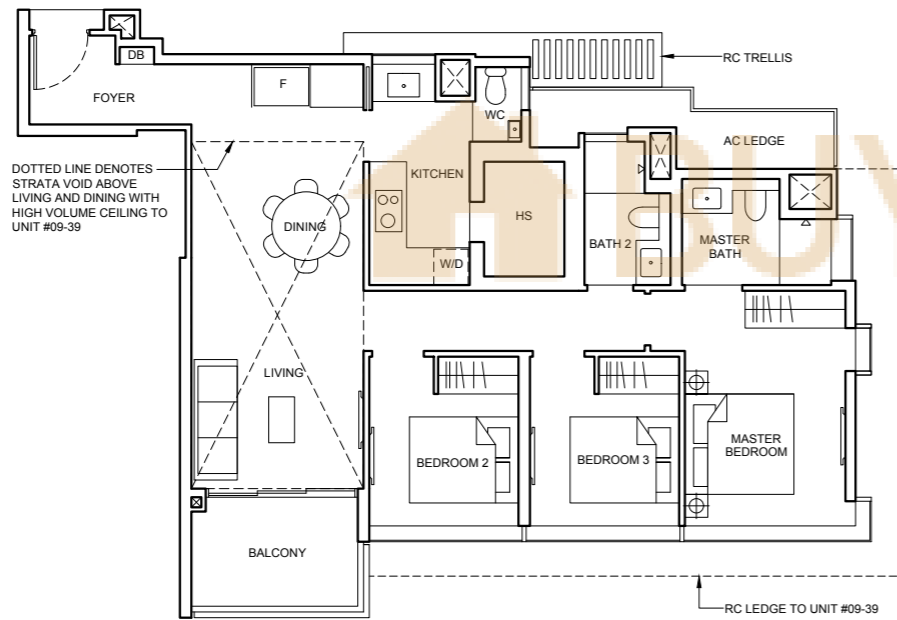
Block 34A
#02-39 To #08-39

Type C3c(PH) 122 sqm (1313 sqft)

Strata void area of 21 sqm / 226 sqft above living and dining with high volume ceiling of 4415mm H.

Balcony at top floor is provided with canopy.

Block 34A
#09-39



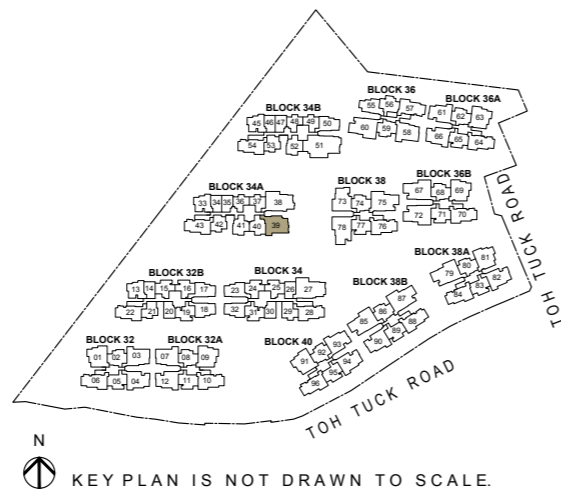
LEGEND

W/D | WASHER CUM DRYER F | FRIDGE

Note

- Area includes AC ledge, balcony and private enclosed space (PES), strata void (where applicable).
- The above plans and illustrations are subject to change as maybe required or approved by the relevant authorities.
- All floor areas are approximate only and subject to final survey.
- Please refer to the key plan for orientation.
- High volume space in (pd) unit does not constitute strata area.
- Service voids are excluded from strata area.
- RC ledge and / or RC trellis are excluded from strata area.

0 1 2 3 5M

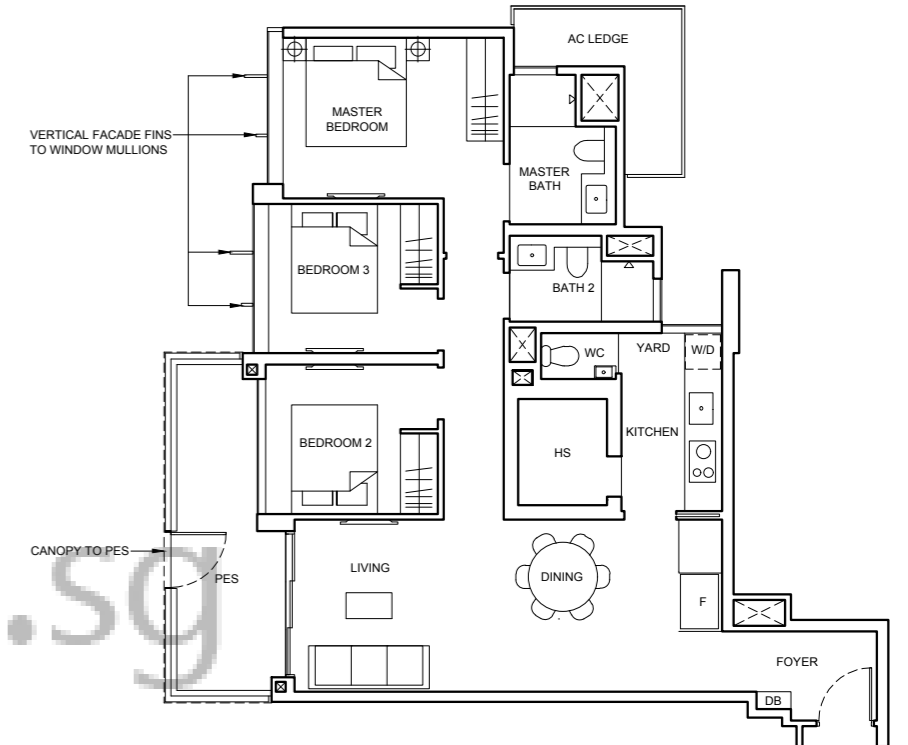


KEY PLAN IS NOT DRAWN TO SCALE.

3 BEDROOM PREMIUM

Type C4(pd) 103 sqm (1109 sqft)

Block 38
#01-73



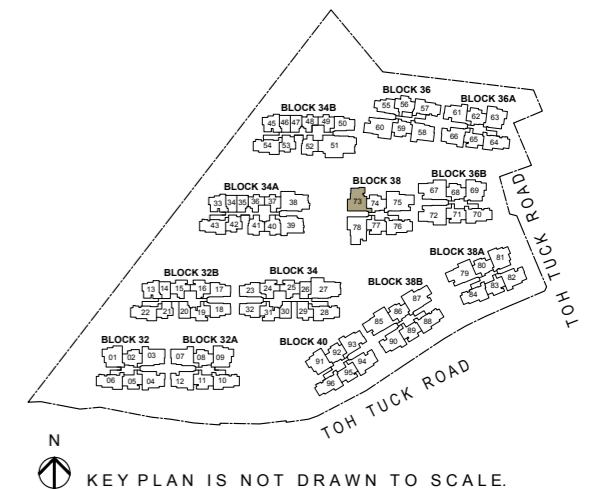
LEGEND

W/D | WASHER CUM DRYER F | FRIDGE

Note

- Area includes AC ledge, balcony and private enclosed space (PES), strata void (where applicable).
- The above plans and illustrations are subject to change as maybe required or approved by the relevant authorities.
- All floor areas are approximate only and subject to final survey.
- Please refer to the key plan for orientation.
- High volume space in (pd) unit does not constitute strata area.
- Service voids are excluded from strata area.
- RC ledge and / or RC trellis are excluded from strata area.

0 1 2 3 5M



KEY PLAN IS NOT DRAWN TO SCALE.

3 BEDROOM PREMIUM

Type C4

103 sqm (1109 sqft)

Block 38

#02-73 To #04-73

Type C4(PH)

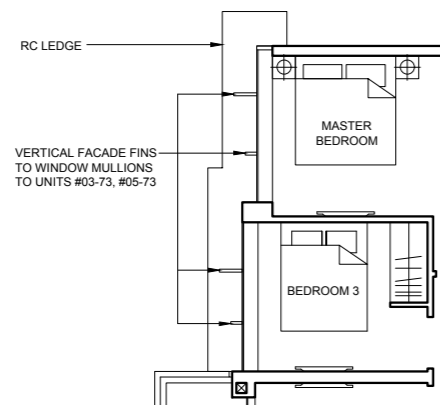
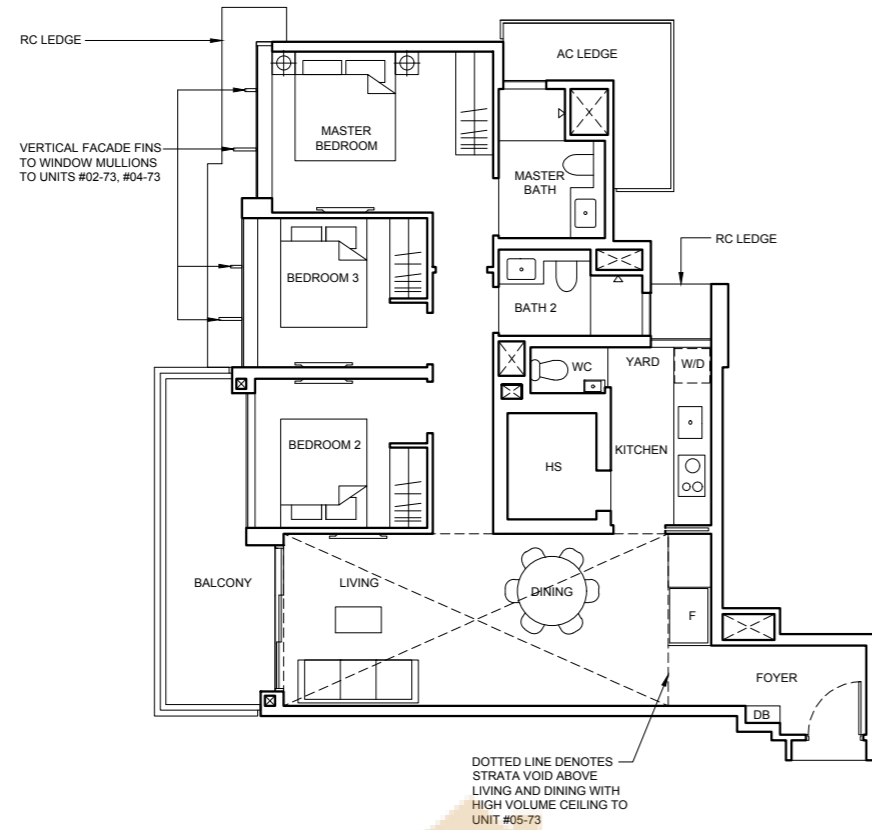
126 sqm (1356 sqft)

Strata void area of 23 sqm / 247 sqft above living and dining with high volume ceiling of 4590mm H.

Balcony at top floor is provided with canopy.

Block 38

#05-73



Applicable to units #03-73, #05-73

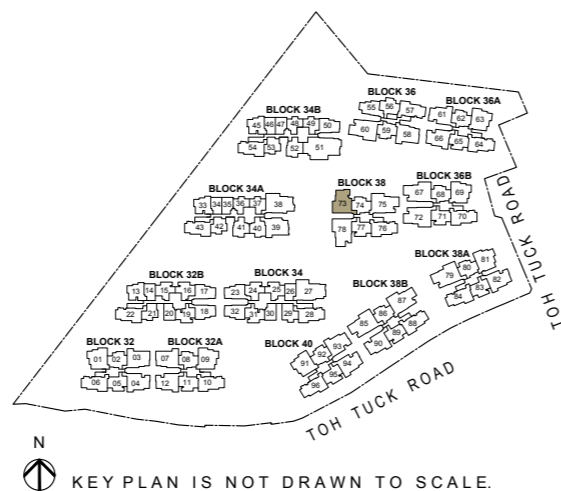
LEGEND

[W/D] WASHER CUM DRYER [F] FRIDGE

Note

- Area includes AC ledge, balcony and private enclosed space (PES), strata void (where applicable).
- The above plans and illustrations are subject to change as maybe required or approved by the relevant authorities.
- All floor areas are approximate only and subject to final survey.
- Please refer to the key plan for orientation.
- High volume space in (pd) unit does not constitute strata area.
- Service voids are excluded from strata area.
- RC ledge and / or RC trellis are excluded from strata area.

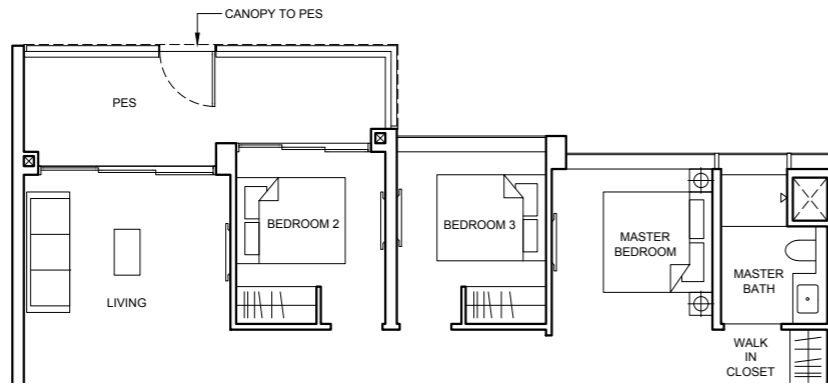
0 1 2 3 5M



4 BEDROOM PREMIUM

Type D1a(pd) 119 sqm (1281 sqft)

Block 38
#01-75
Block 38B
#01-87



Type D1a 119 sqm (1281 sqft)

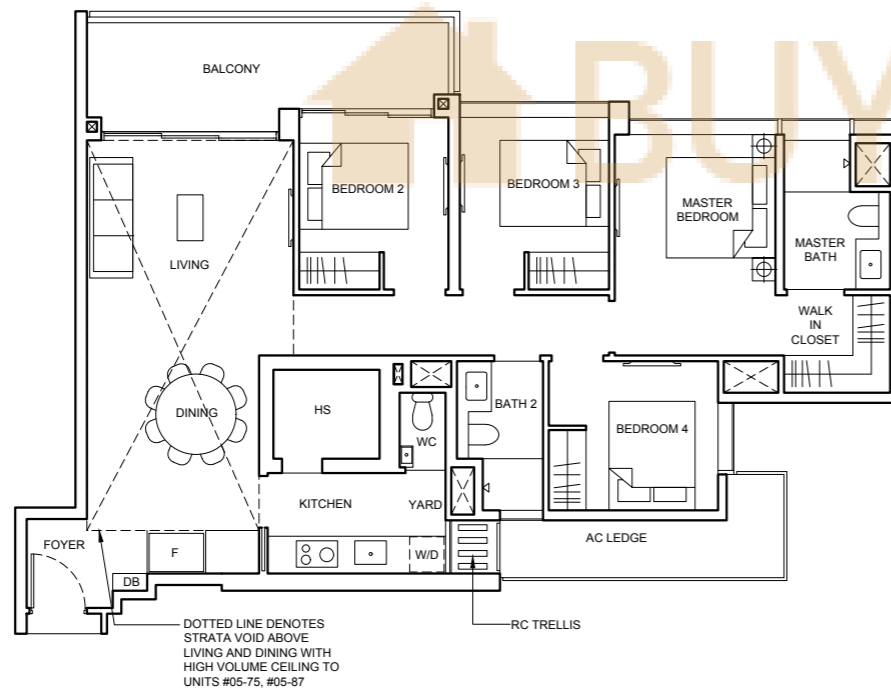
Block 38
#02-75 To #04-75
Block 38B
#02-87 To #04-87

Type D1a(PH) 145 sqm (1561 sqft)

Strata void area of 26 sqm / 280 sqft above living and dining with high volume ceiling of 4590mm H.

Balcony at top floor is provided with canopy.

Block 38
#05-75
Block 38B
#05-87



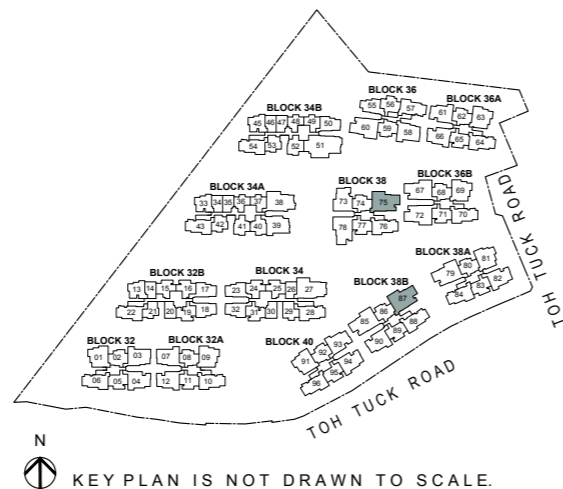
LEGEND

W/D | WASHER CUM DRYER F | FRIDGE

Note

- Area includes AC ledge, balcony and private enclosed space (PES), strata void (where applicable).
- The above plans and illustrations are subject to change as maybe required or approved by the relevant authorities.
- All floor areas are approximate only and subject to final survey.
- Please refer to the key plan for orientation.
- High volume space in (pd) unit does not constitute strata area.
- Service voids are excluded from strata area.
- RC ledge and / or RC trellis are excluded from strata area.

0 1 2 3 5M

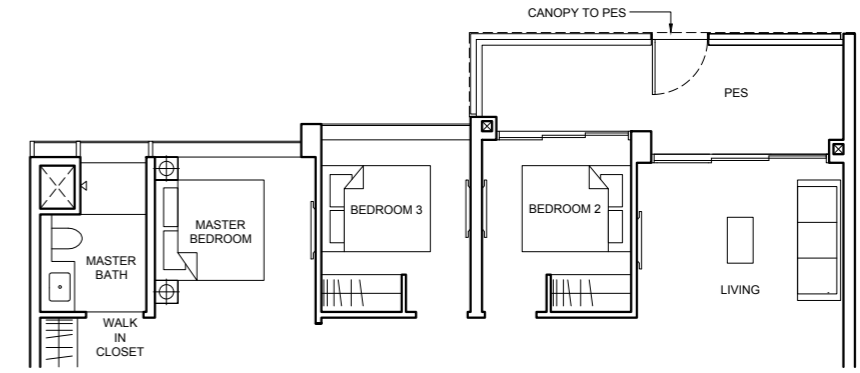


4 BEDROOM PREMIUM

Type D1b(pd) 121 sqm (1302 sqft)

Block 36B
#01-67
Block 38A
#01-79
Block 38B
#01-85

MIRRORED
Block 36
#01-60*
Block 36B
#01-72*



Type D1b 121 sqm (1302 sqft)

Block 36B
#02-67 To #04-67
Block 38A
#02-79 To #04-79
Block 38B
#02-85 To #04-85

MIRRORED
Block 36
#02-60* To #04-60*
Block 36B
#02-72* To #04-72*

Type D1b(PH) 147 sqm (1582 sqft)

Strata void area of 26 sqm / 280 sqft above living and dining with high volume ceiling of 4590mm H.

Balcony at top floor is provided with canopy.

Block 36B
#05-67
Block 38A
#05-79
Block 38B
#05-85

MIRRORED
Block 36
#05-60*
Block 36B
#05-72*

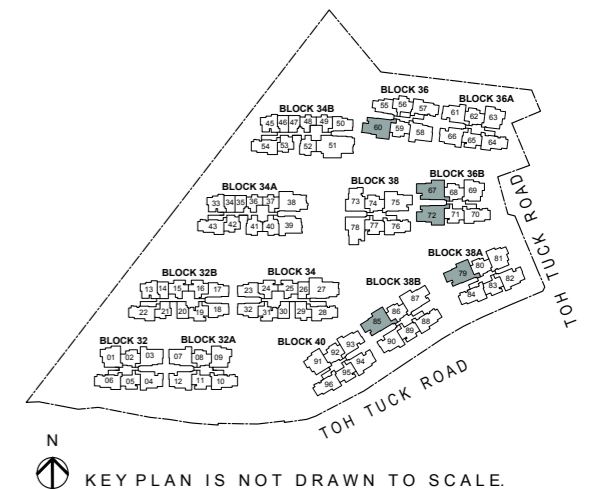
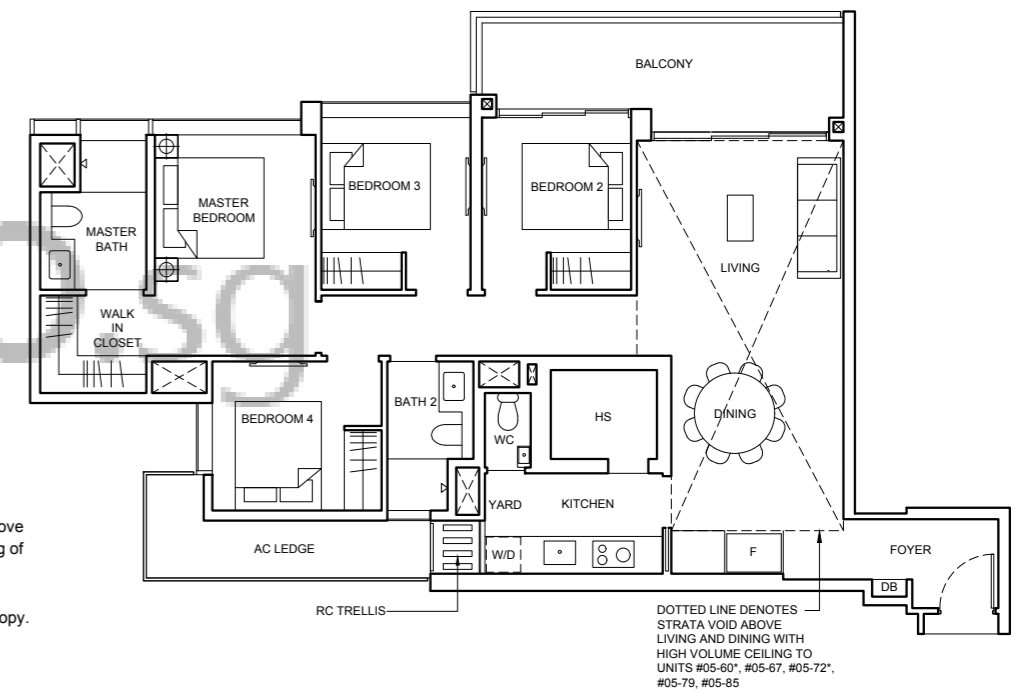
LEGEND

W/D | WASHER CUM DRYER F | FRIDGE

Note

- Area includes AC ledge, balcony and private enclosed space (PES), strata void (where applicable).
- The above plans and illustrations are subject to change as maybe required or approved by the relevant authorities.
- All floor areas are approximate only and subject to final survey.
- Please refer to the key plan for orientation.
- High volume space in (pd) unit does not constitute strata area.
- Service voids are excluded from strata area.
- RC ledge and / or RC trellis are excluded from strata area.

0 1 2 3 5M



4 BEDROOM PREMIUM

Type D1c(p) 126 sqm (1356 sqft)

Block 34A
#01-38



Type D1c 126 sqm (1356 sqft)

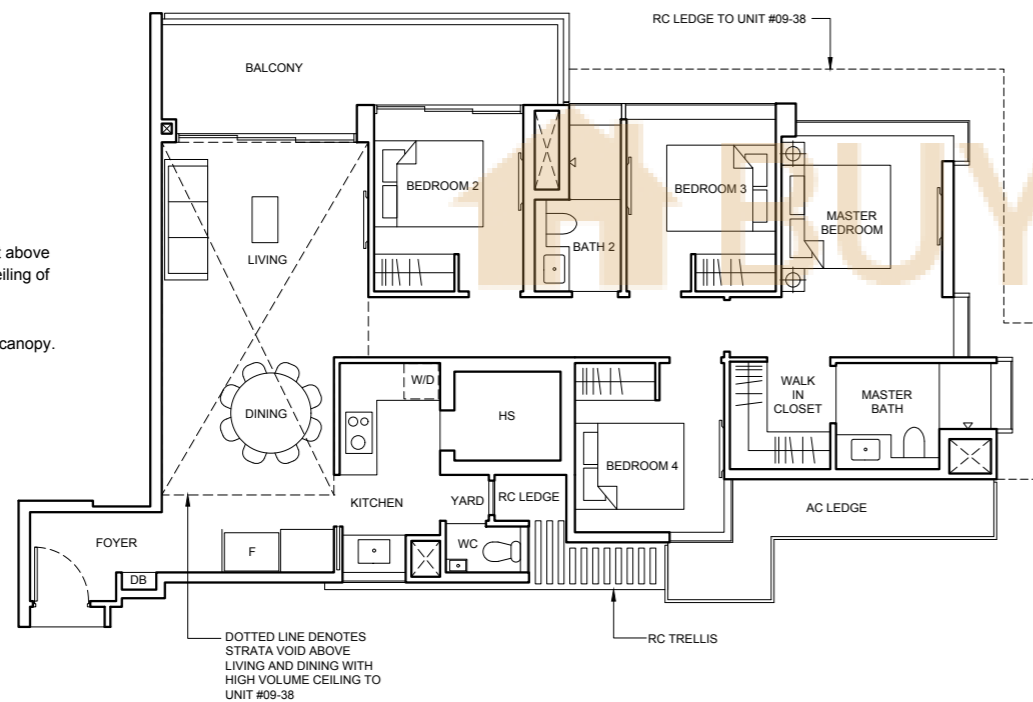
Block 34A
#02-38 To #08-38

Type D1c(PH) 150 sqm (1615 sqft)

Strata void area of 24 sqm / 259 sqft above living and dining with high volume ceiling of 4415mm H.

Balcony at top floor is provided with canopy.

Block 34A
#09-38



DOTTED LINE DENOTES STRATA VOID ABOVE LIVING AND DINING WITH HIGH VOLUME CEILING TO UNIT #09-38

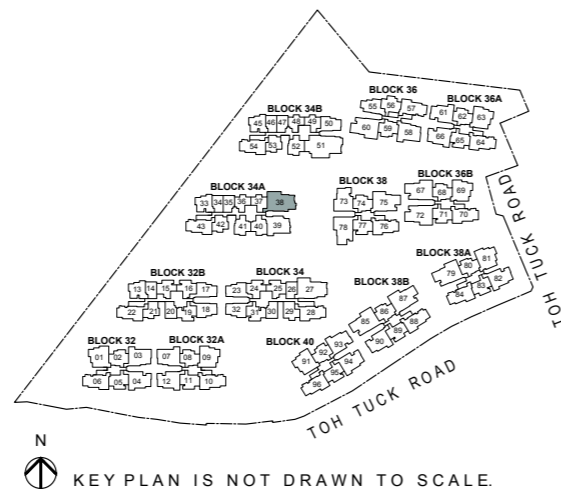
LEGEND

W/D WASHER CUM DRYER F FRIDGE

Note

- Area includes AC ledge, balcony and private enclosed space (PES), strata void (where applicable).
- The above plans and illustrations are subject to change as maybe required or approved by the relevant authorities.
- All floor areas are approximate only and subject to final survey.
- Please refer to the key plan for orientation.
- High volume space in (pd) unit does not constitute strata area.
- Service voids are excluded from strata area.
- RC ledge and / or RC trellis are excluded from strata area.

0 1 2 3 5M

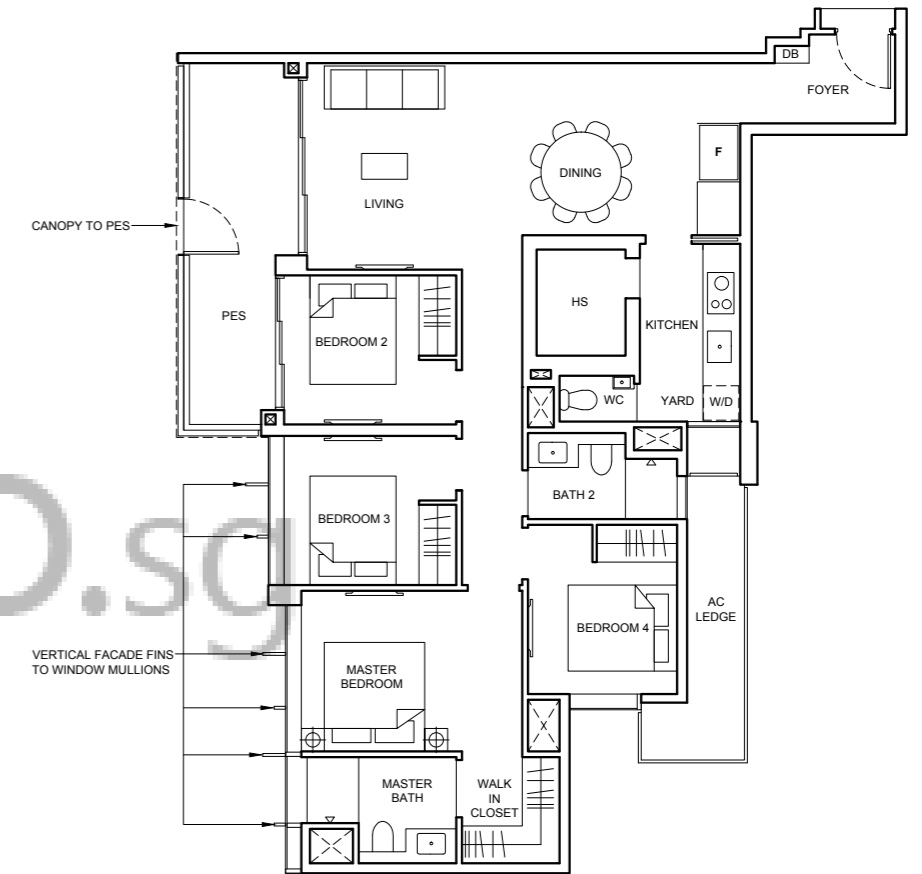


KEY PLAN IS NOT DRAWN TO SCALE.

4 BEDROOM PREMIUM

Type D2(pd) 121 sqm (1302 sqft)

Block 38
#01-78



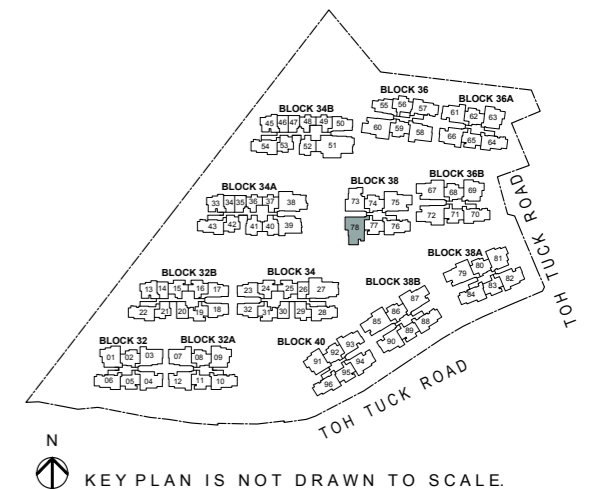
LEGEND

W/D WASHER CUM DRYER F FRIDGE

Note

- Area includes AC ledge, balcony and private enclosed space (PES), strata void (where applicable).
- The above plans and illustrations are subject to change as maybe required or approved by the relevant authorities.
- All floor areas are approximate only and subject to final survey.
- Please refer to the key plan for orientation.
- High volume space in (pd) unit does not constitute strata area.
- Service voids are excluded from strata area.
- RC ledge and / or RC trellis are excluded from strata area.

0 1 2 3 5M



KEY PLAN IS NOT DRAWN TO SCALE.

4 BEDROOM PREMIUM

Type D2

121 sqm (1302 sqft)

Block 38

#02-78 To #04-78

Type D2(PH)

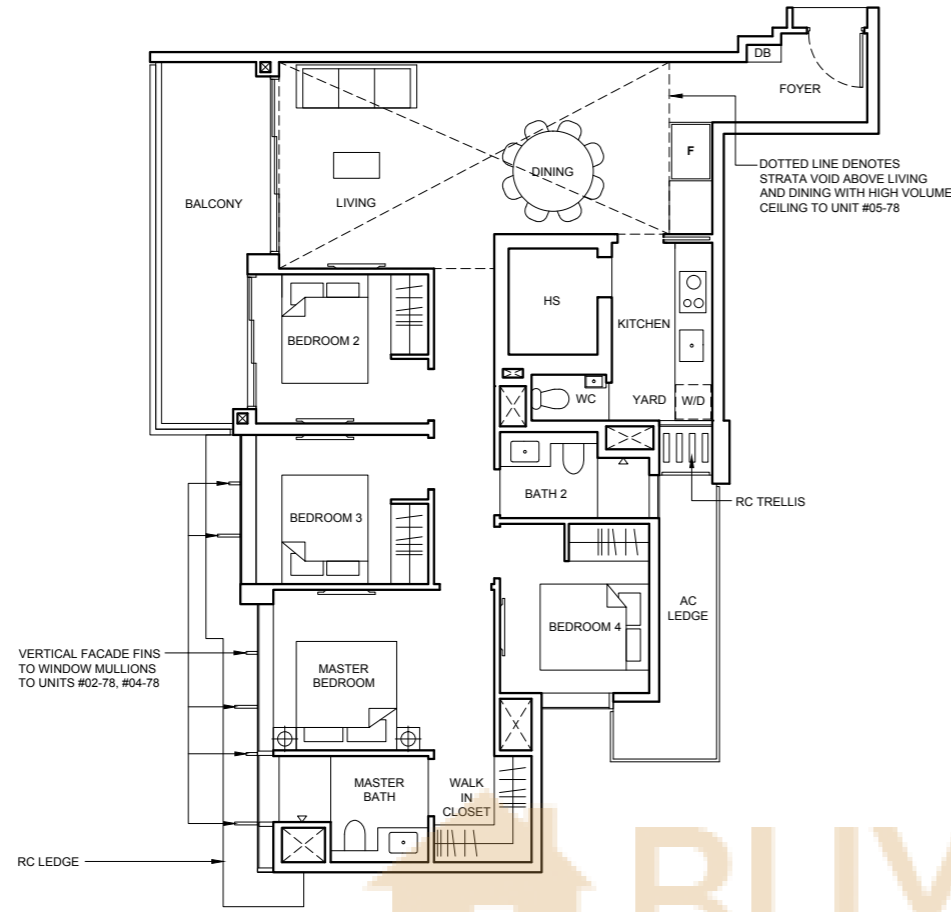
146 sqm (1572 sqft)

Strata void area of 25 sqm / 270 sqft above living and dining with high volume ceiling of 4590mm H.

Balcony at top floor is provided with canopy.

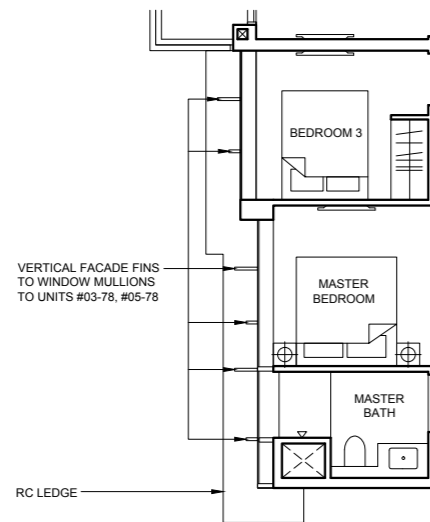
Block 38

#05-78



VERTICAL FACADE FINIS TO WINDOW MULLIONS TO UNITS #02-78, #04-78

RC LEDGE



VERTICAL FACADE FINIS TO WINDOW MULLIONS TO UNITS #03-78, #05-78

RC LEDGE

Applicable to units #03-78, #05-78

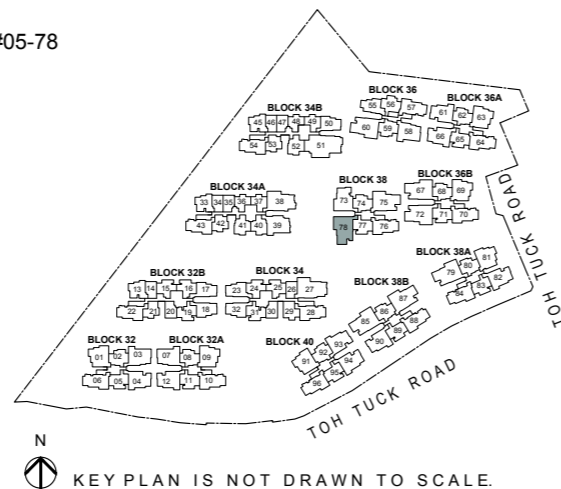
LEGEND

W/D WASHER CUM DRYER F FRIDGE

Note

- Area includes AC ledge, balcony and private enclosed space (PES), strata void (where applicable).
- The above plans and illustrations are subject to change as maybe required or approved by the relevant authorities.
- All floor areas are approximate only and subject to final survey.
- Please refer to the key plan for orientation.
- High volume space in (pd) unit does not constitute strata area.
- Service voids are excluded from strata area.
- RC ledge and / or RC trellis are excluded from strata area.

0 1 2 3 5M



KEY PLAN IS NOT DRAWN TO SCALE.

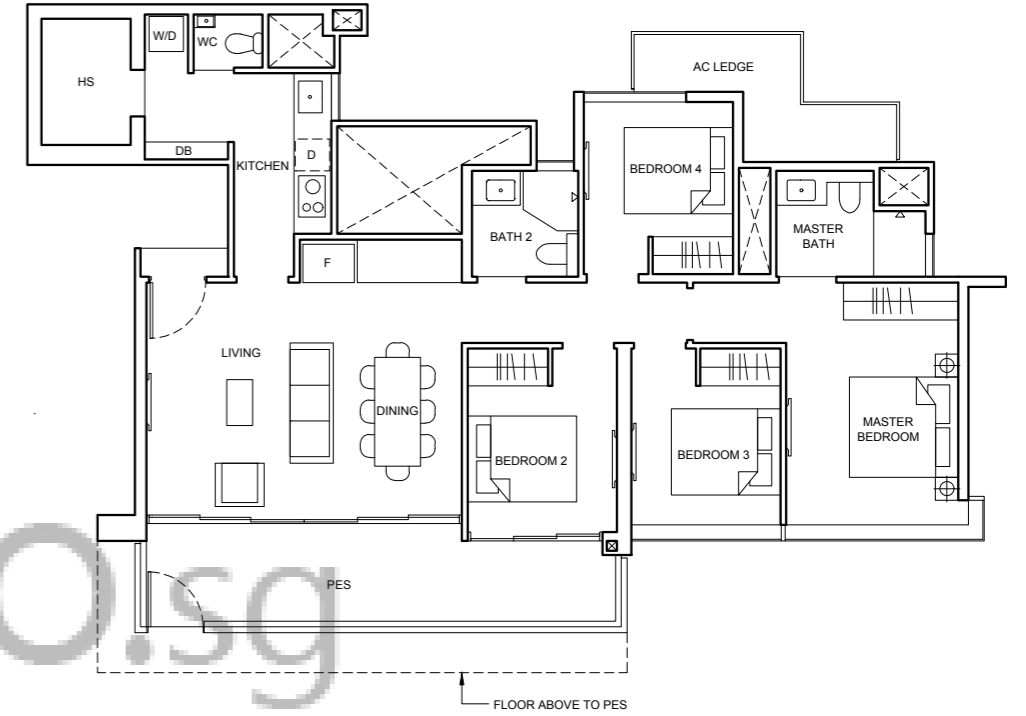
4 BEDROOM PREMIUM

Type D2(p)

122 sqm (1313 sqft)

Block 34B

#01-51



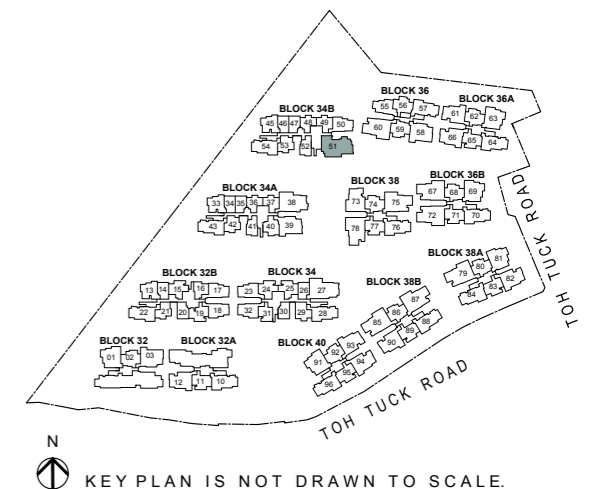
LEGEND

W/D WASHER CUM DRYER F FRIDGE D DISHWASHER

Note

- Area includes AC ledge, balcony and private enclosed space (PES), strata void (where applicable).
- The above plans and illustrations are subject to change as maybe required or approved by the relevant authorities.
- All floor areas are approximate only and subject to final survey.
- Please refer to the key plan for orientation.
- High volume space in (pd) unit does not constitute strata area.
- Service voids are excluded from strata area.
- RC ledge and / or RC trellis are excluded from strata area.

0 1 2 3 5M

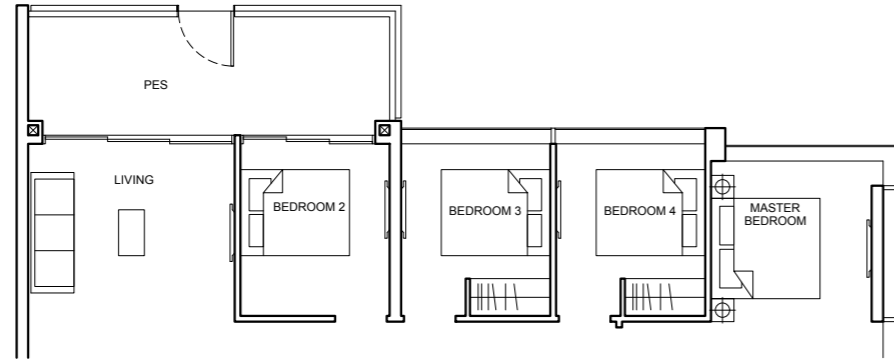


KEY PLAN IS NOT DRAWN TO SCALE.

4 BEDROOM SUITE

Type D3(p)
134 sqm (1442 sqft)

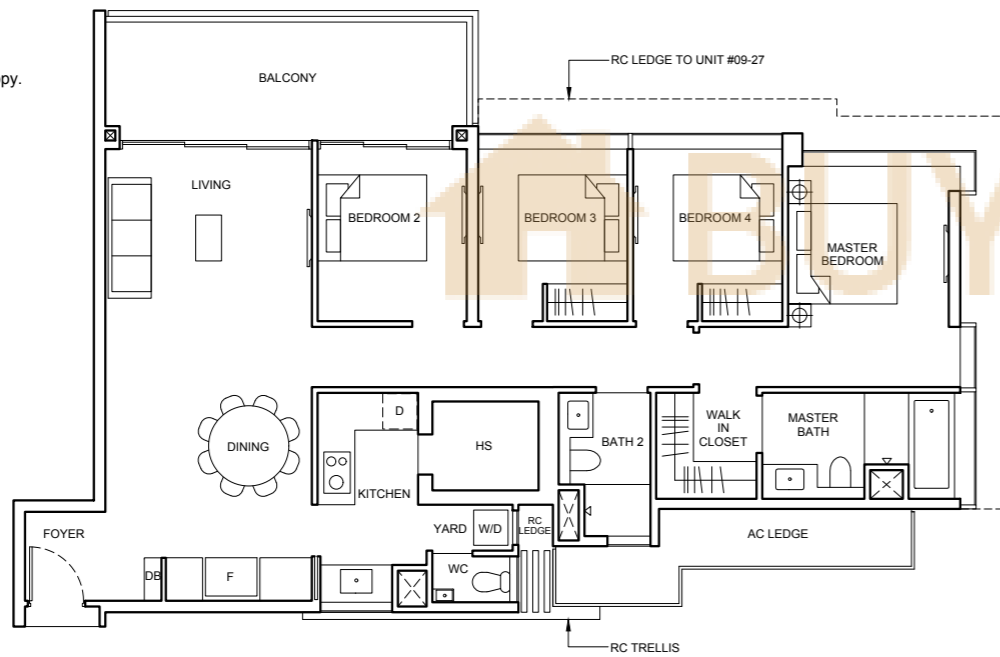
Block 34
#01-27



Type D3
134 sqm (1442 sqft)

Balcony at top floor is provided with canopy.

Block 34
#02-27 To #09-27

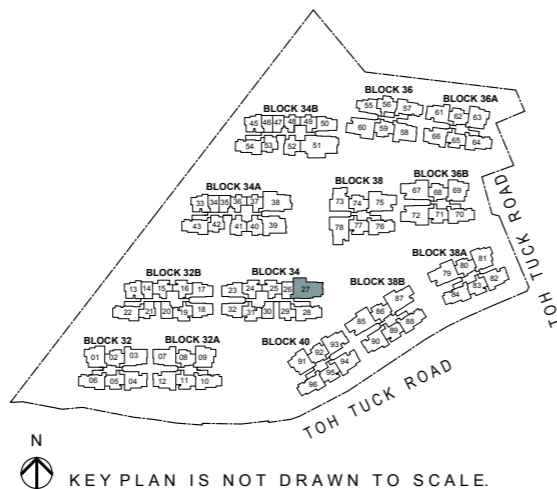


LEGEND

- W/D WASHER CUM DRYER
- F FRIDGE
- D DISHWASHER

Note

- Area includes AC ledge, balcony and private enclosed space (PES), strata void (where applicable).
- The above plans and illustrations are subject to change as maybe required or approved by the relevant authorities.
- All floor areas are approximate only and subject to final survey.
- Please refer to the key plan for orientation.
- High volume space in (pd) unit does not constitute strata area.
- Service voids are excluded from strata area.
- RC ledge and / or RC trellis are excluded from strata area.

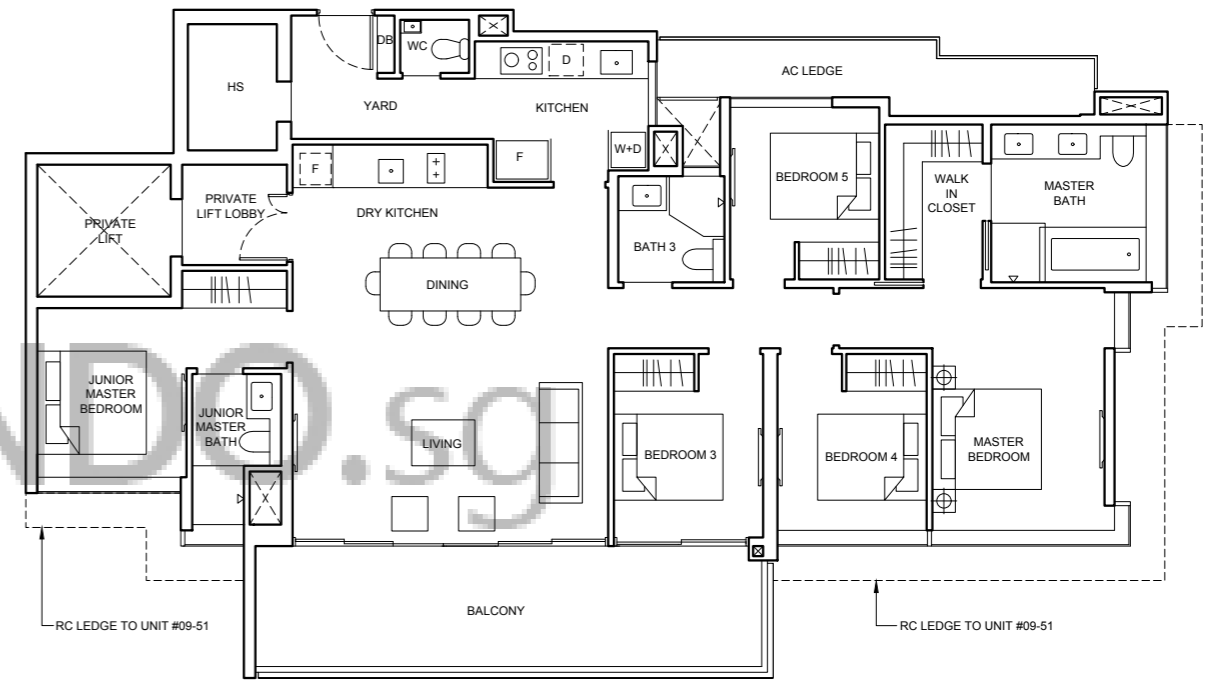


5 BEDROOM SUITE

Type E
175 sqm (1884 sqft)

Balcony at top floor is provided with canopy.

Block 34B
#02-51 To #09-51

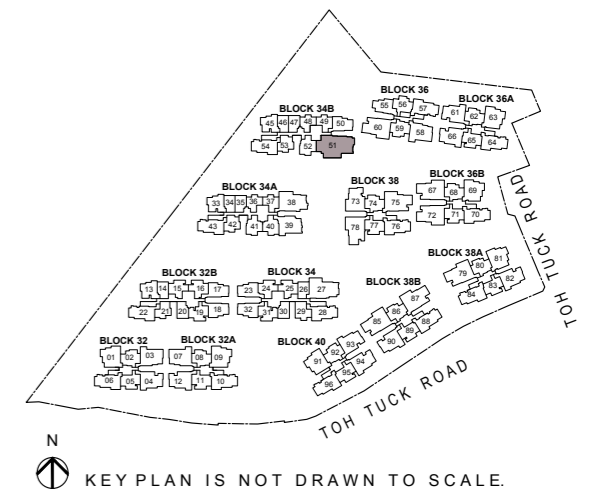


LEGEND

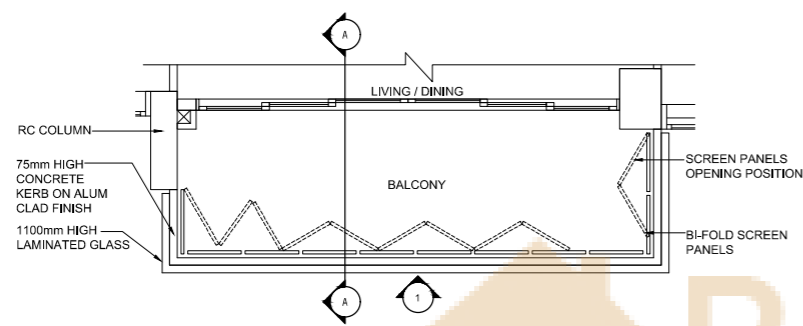
- W+D WASHER AND DRYER
- F INTEGRATED FRIDGE
- F FRIDGE
- D DISHWASHER

Note

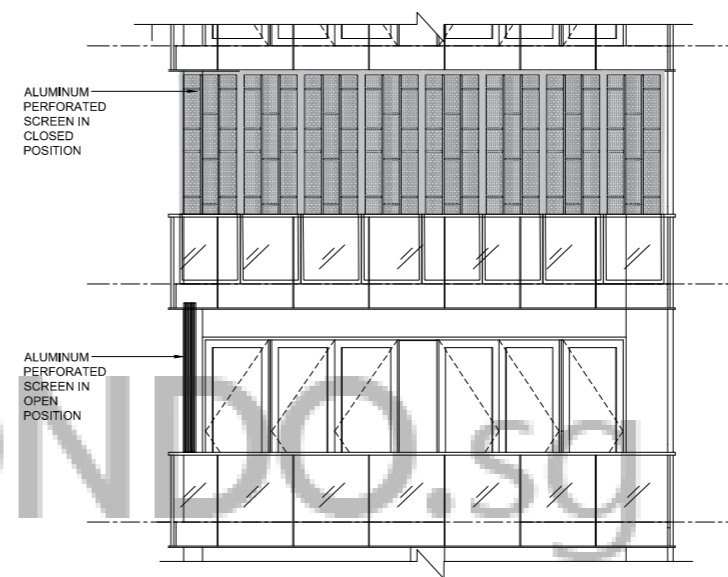
- Area includes AC ledge, balcony and private enclosed space (PES), strata void (where applicable).
- The above plans and illustrations are subject to change as maybe required or approved by the relevant authorities.
- All floor areas are approximate only and subject to final survey.
- Please refer to the key plan for orientation.
- High volume space in (pd) unit does not constitute strata area.
- Service voids are excluded from strata area.
- RC ledge and / or RC trellis are excluded from strata area.



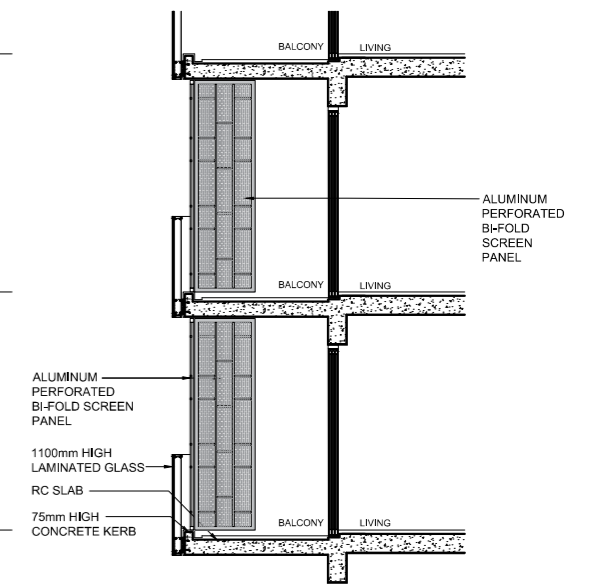
BALCONY SCREEN DESIGN



PLAN



ELEVATION



SECTION

BALCONY SCREEN NOTICE

1. THE BALCONY SHALL NOT BE ENCLOSED UNLESS WITH THE APPROVED BALCONY SCREEN.
2. THE PURCHASER WILL HAVE TO BEAR THE COST OF INSTALLING THE BALCONY SCREEN IF THEY WISH TO, AFTER TAKING OVER THE UNIT.

THE PROPOSED BALCONY SHALL BE POROUS ENOUGH TO ALLOW FOR NATURAL VENTILATION WITHIN THE BALCONY AT ALL TIMES EVEN WHEN THE SCREENS ARE FULLY DRAWN CLOSED. THE PROPOSED BALCONY SCREEN SHALL ALSO BE CAPABLE OF BEING DRAWN OPEN OR RETRACTED FULLY.

