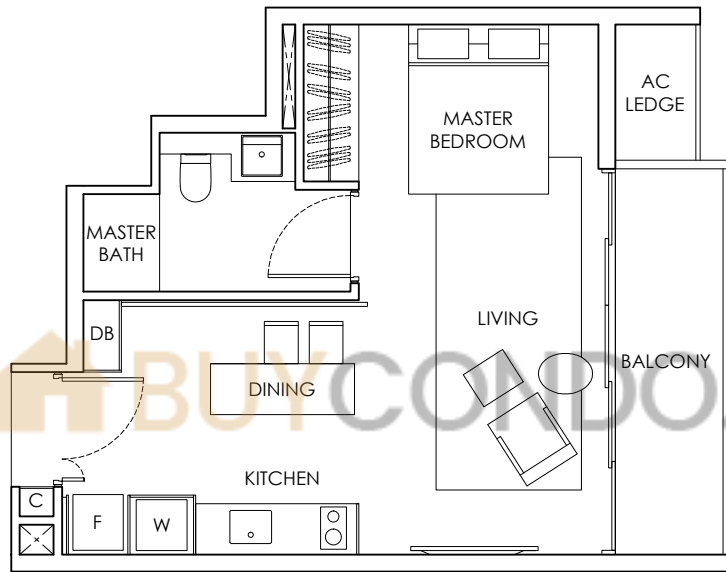
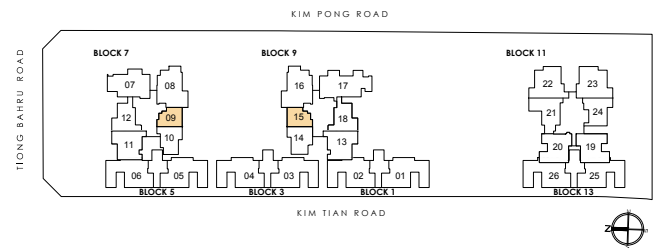


1-BEDROOM

TYPE A - A(m)



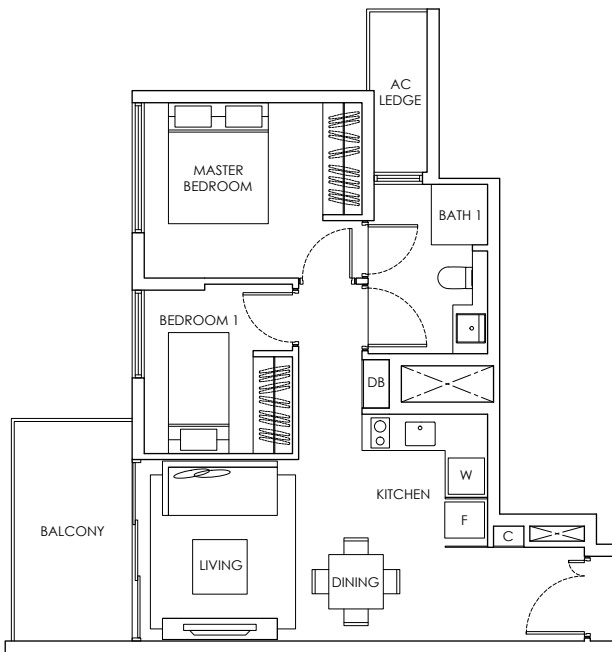
47 SQ.M / 506 SQ.FT
 #02-09 TO #34-09 / #02-15 TO #34-15



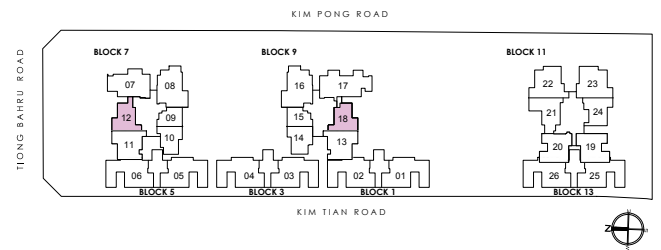
Balconies cannot be enclosed unless with the approved balcony screens. Area includes PES, A/C ledge, balcony and roof terrace, if any. Some units are mirror images of the apartment plans shown in the brochure. Please refer to the key plans for orientation. All plans are not drawn to scale and are subject to changes pending approval by relevant authorities. All floor area are approximate measurements only and are subject to final survey.

2-BEDROOM

TYPE Bc1 - Bc1(m)



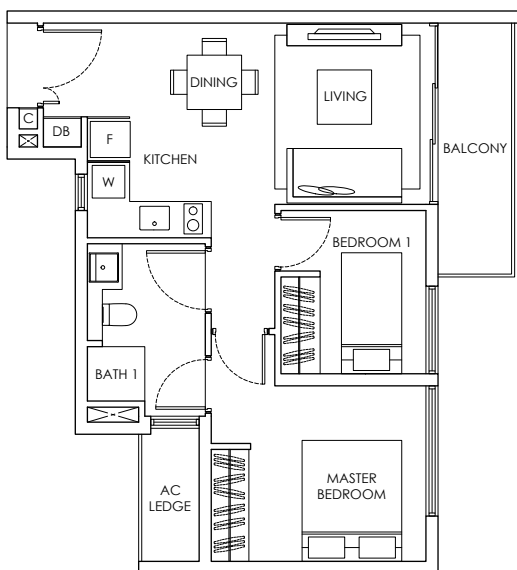
65 SQ.M / 700 SQ.FT
#02-12 TO #34-12 / #02-18 TO #34-18



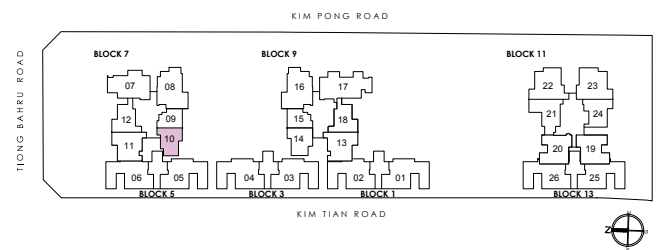


2-BEDROOM

TYPE Bc2



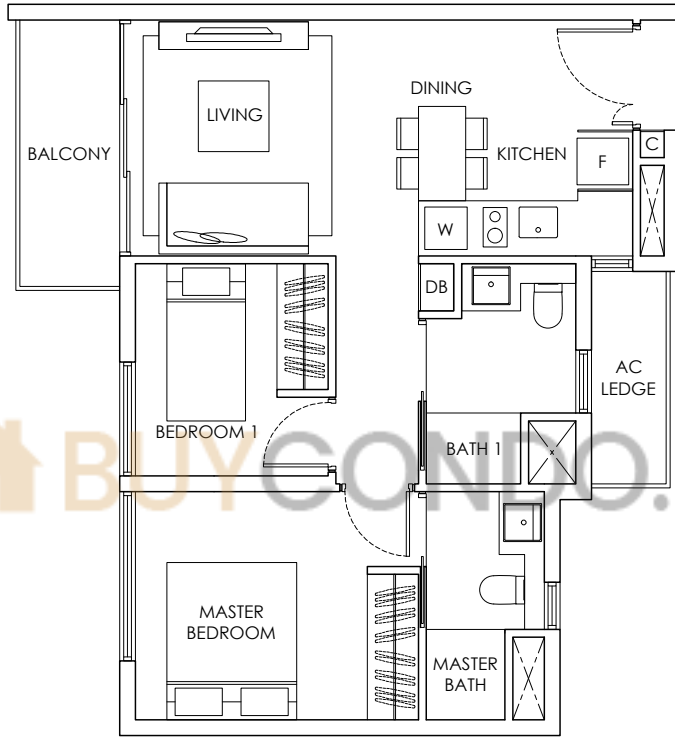
59 SQ.M / 635 SQ.FT
#06-10 TO #34-10



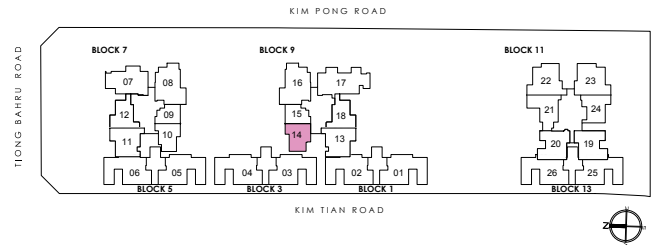
Balconies cannot be enclosed unless with the approved balcony screens. Area includes PES, A/C ledge, balcony and roof terrace, if any. Some units are mirror images of the apartment plans shown in the brochure. Please refer to the key plans for orientation. All plans are not drawn to scale and are subject to changes pending approval by relevant authorities. All floor area are approximate measurements only and are subject to final survey.

2-BEDROOM DELUXE

TYPE B1



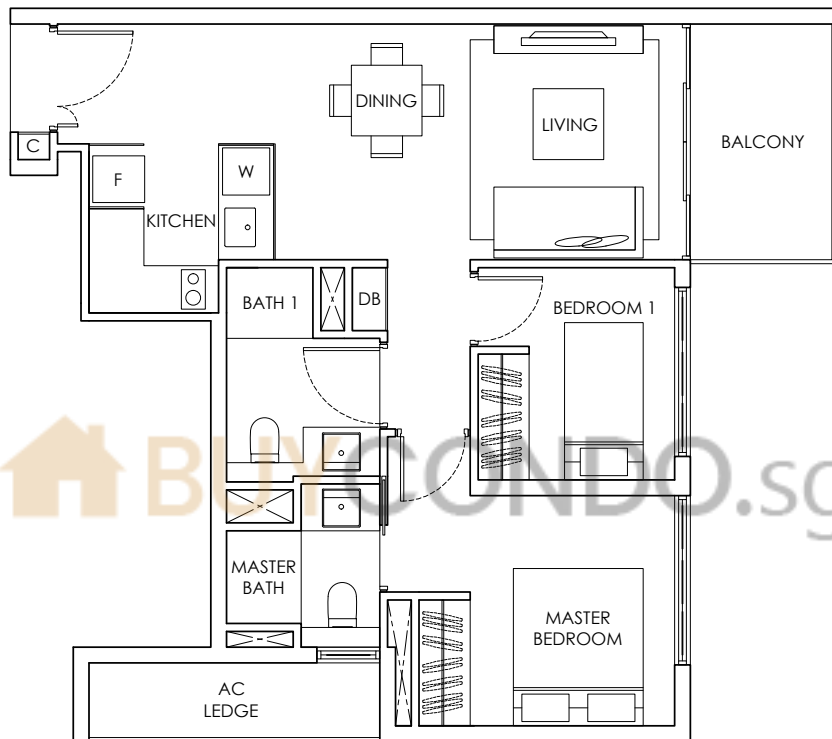
62 SQ.M / 667 SQ.FT
#06-14 TO #34-14



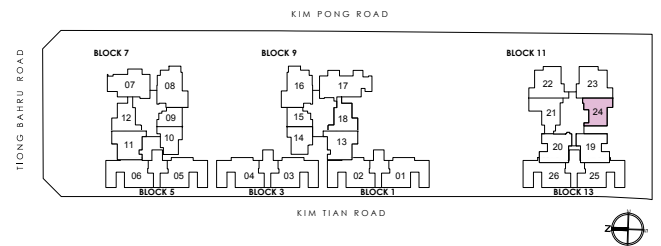
Balconies cannot be enclosed unless with the approved balcony screens. Area includes PES, A/C ledge, balcony and roof terrace, if any. Some units are mirror images of the apartment plans shown in the brochure. Please refer to the key plans for orientation. All plans are not drawn to scale and are subject to changes pending approval by relevant authorities. All floor area are approximate measurements only and are subject to final survey.

2-BEDROOM DELUXE

TYPE B2



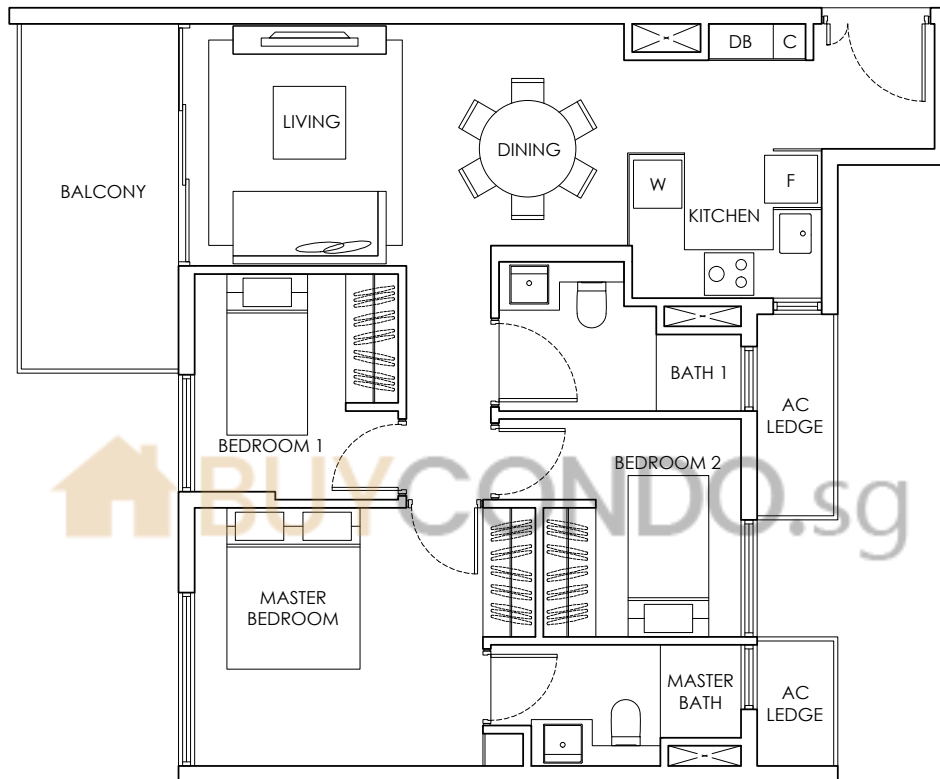
69 SQ.M / 743 SQ.FT
 #04-24 TO #12-24 / #16-24 TO #20-24



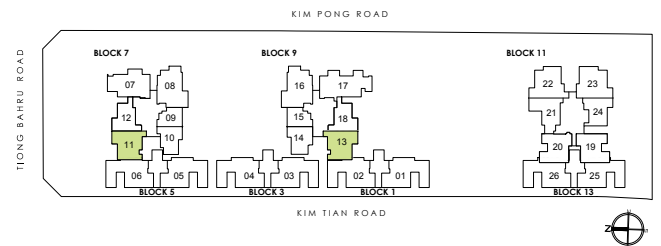
Balconies cannot be enclosed unless with the approved balcony screens. Area includes PES, A/C ledge, balcony and roof terrace, if any. Some units are mirror images of the apartment plans shown in the brochure. Please refer to the key plans for orientation. All plans are not drawn to scale and are subject to changes pending approval by relevant authorities. All floor area are approximate measurements only and are subject to final survey.

3-BEDROOM

TYPE Cc1 - Cc1(m)



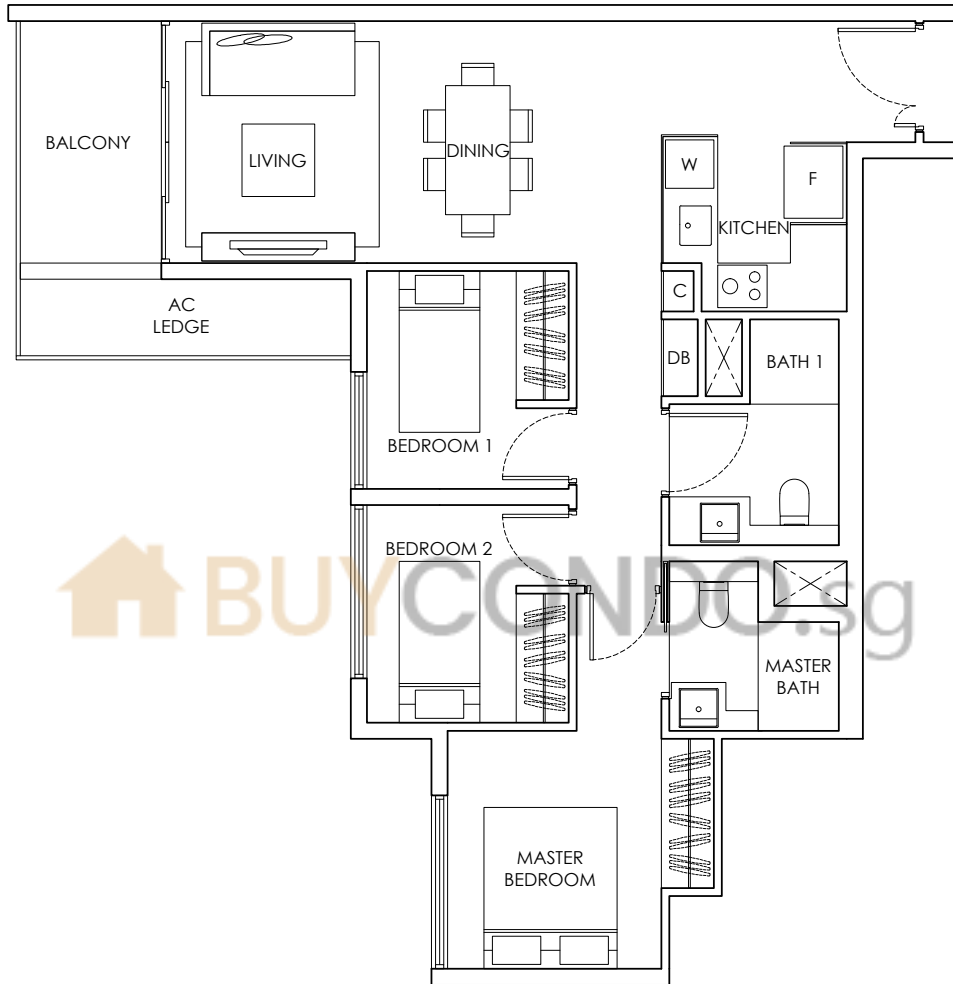
85 SQ.M / 915 SQ.FT
 #06-11 TO #34-11 / #06-13 TO #34-13



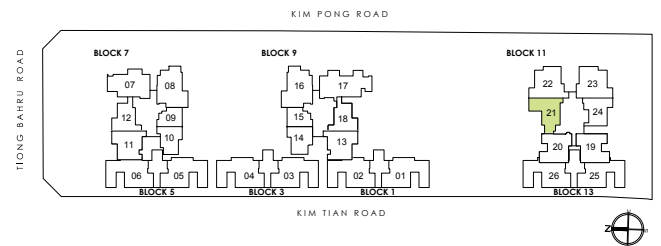
Balconies cannot be enclosed unless with the approved balcony screens. Area includes PES, A/C ledge, balcony and roof terrace, if any. Some units are mirror images of the apartment plans shown in the brochure. Please refer to the key plans for orientation. All plans are not drawn to scale and are subject to changes pending approval by relevant authorities. All floor area are approximate measurements only and are subject to final survey.

3-BEDROOM

TYPE Cc2



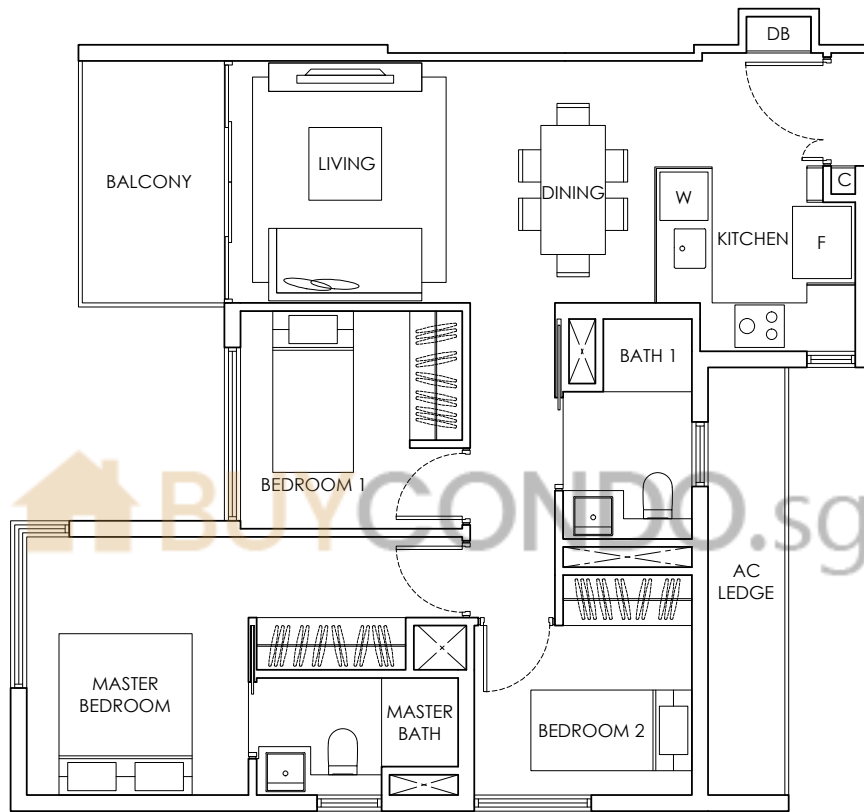
84 SQ.M / 904 SQ.FT
 #03-21 TO #12-21 / #17-21 TO #20-21



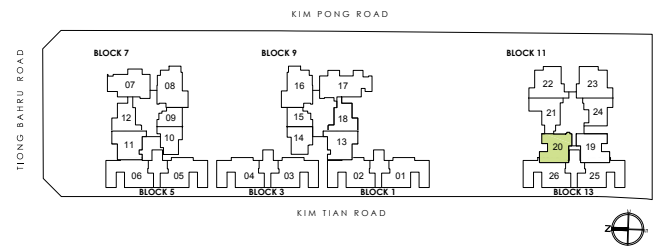
Balconies cannot be enclosed unless with the approved balcony screens. Area includes PES, A/C ledge, balcony and roof terrace, if any. Some units are mirror images of the apartment plans shown in the brochure. Please refer to the key plans for orientation. All plans are not drawn to scale and are subject to changes pending approval by relevant authorities. All floor area are approximate measurements only and are subject to final survey.

3-BEDROOM

TYPE Cc3



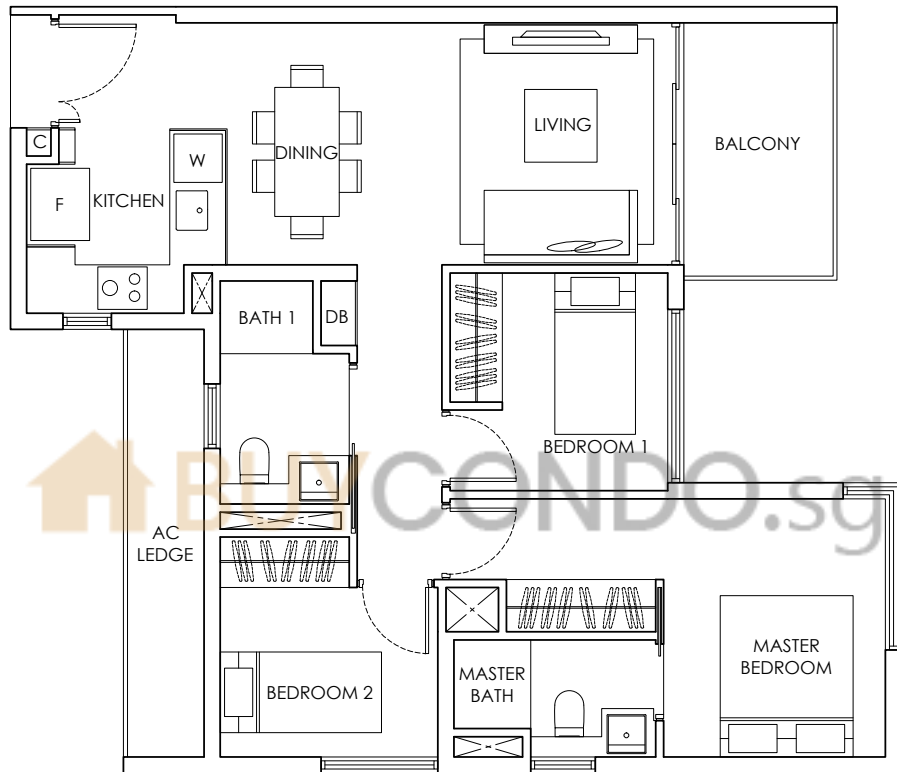
82 SQ.M / 883 SQ.FT
 #06-20 TO #11-20 / #15-20 TO #21-20



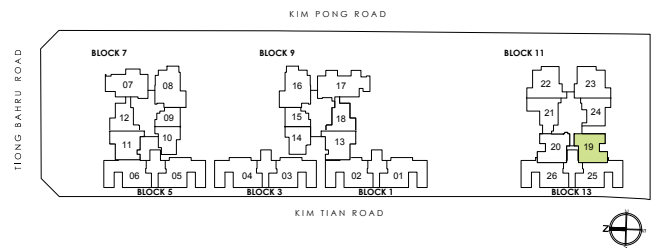
Balconies cannot be enclosed unless with the approved balcony screens. Area includes PES, A/C ledge, balcony and roof terrace, if any. Some units are mirror images of the apartment plans shown in the brochure. Please refer to the key plans for orientation. All plans are not drawn to scale and are subject to changes pending approval by relevant authorities. All floor area are approximate measurements only and are subject to final survey.

3-BEDROOM

TYPE Cc4



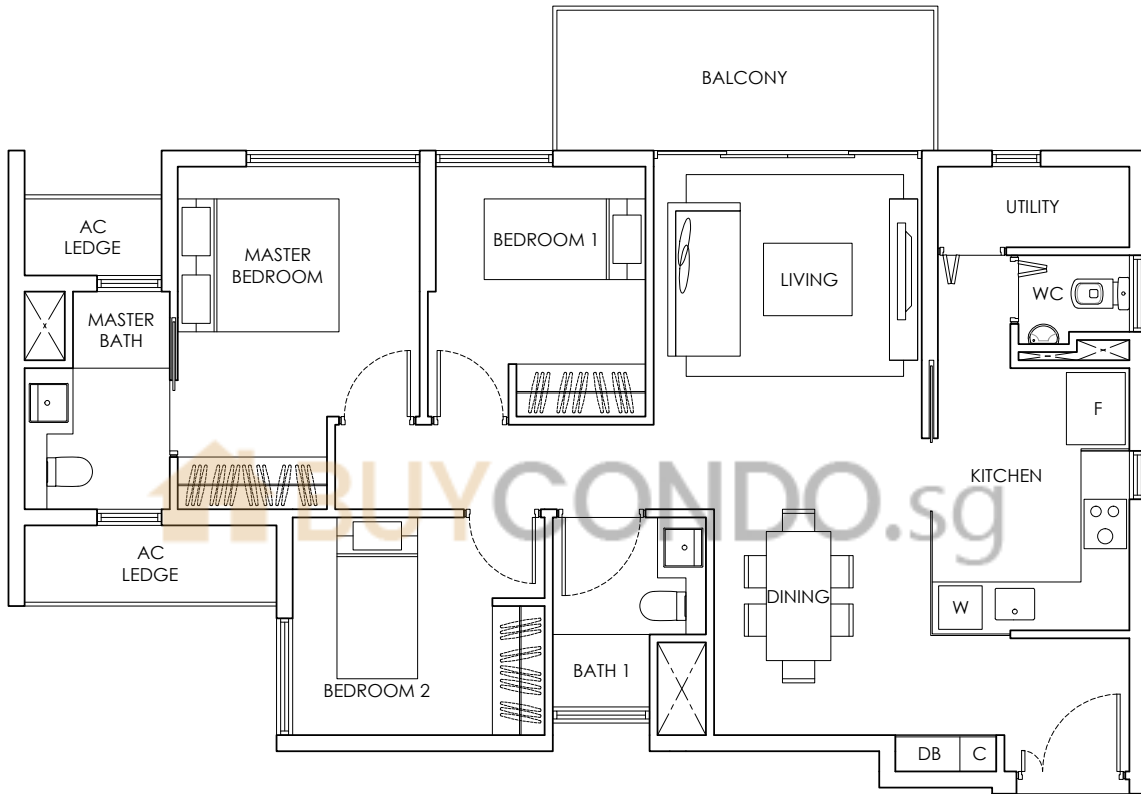
84 SQ.M / 904 SQ.FT
 #06-19 TO #11-19 / #15-19 TO #21-19



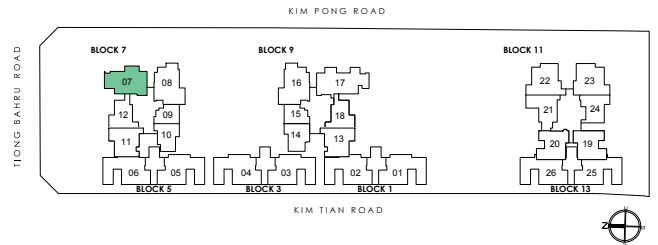
Balconies cannot be enclosed unless with the approved balcony screens. Area includes PES, A/C ledge, balcony and roof terrace, if any. Some units are mirror images of the apartment plans shown in the brochure. Please refer to the key plans for orientation. All plans are not drawn to scale and are subject to changes pending approval by relevant authorities. All floor area are approximate measurements only and are subject to final survey.

3-BEDROOM DELUXE

TYPE C1



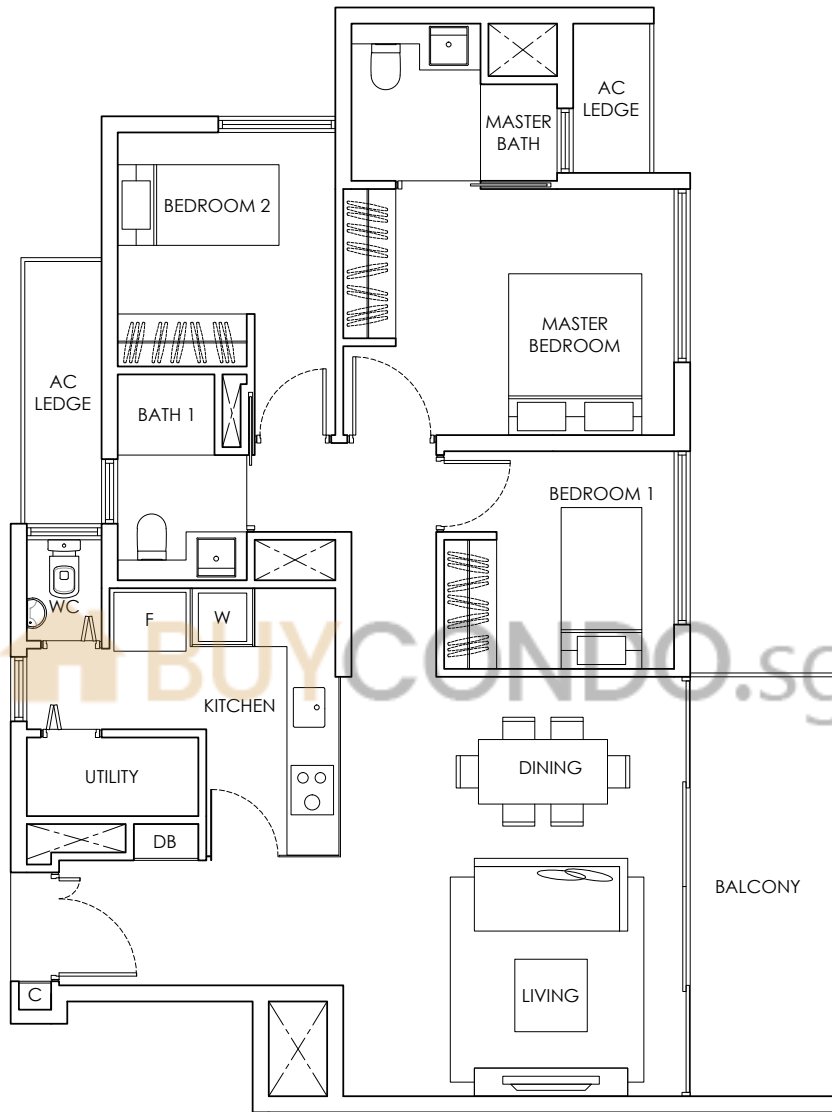
103 SQ.M / 1109 SQ.FT
 #02-07 TO #34-07



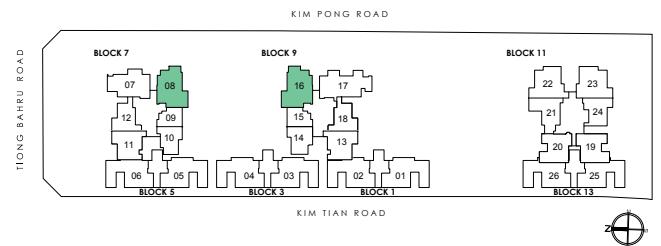
Balconies cannot be enclosed unless with the approved balcony screens. Area includes PES, A/C ledge, balcony and roof terrace, if any. Some units are mirror images of the apartment plans shown in the brochure. Please refer to the key plans for orientation. All plans are not drawn to scale and are subject to changes pending approval by relevant authorities. All floor area are approximate measurements only and are subject to final survey.

3-BEDROOM DELUXE

TYPE C2 - C2(m)



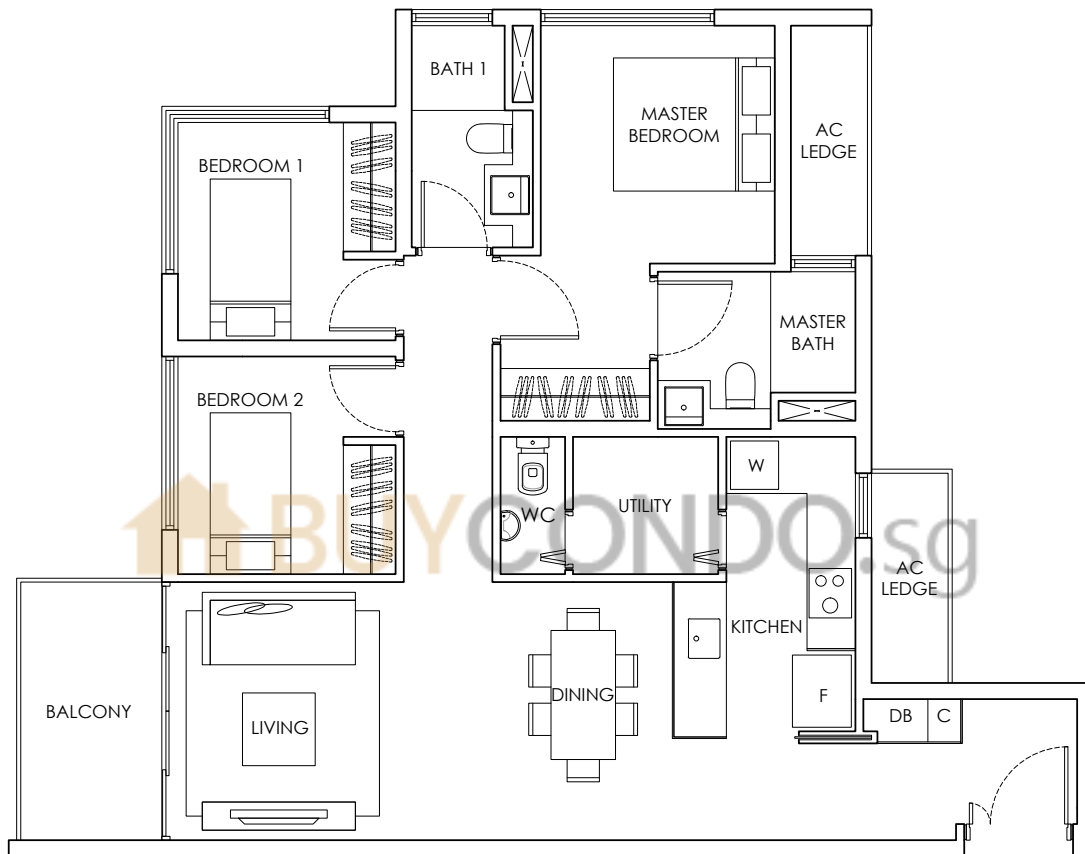
107 SQ.M / 1152 SQ.FT
 #02-08 TO #34-08 / #02-16 TO #34-16



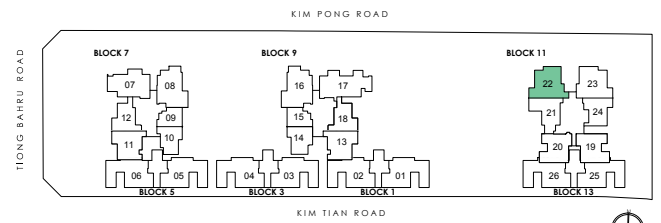
Balconies cannot be enclosed unless with the approved balcony screens. Area includes PES, A/C ledge, balcony and roof terrace, if any. Some units are mirror images of the apartment plans shown in the brochure. Please refer to the key plans for orientation. All plans are not drawn to scale and are subject to changes pending approval by relevant authorities. All floor area are approximate measurements only and are subject to final survey.

3-BEDROOM DELUXE

TYPE C3



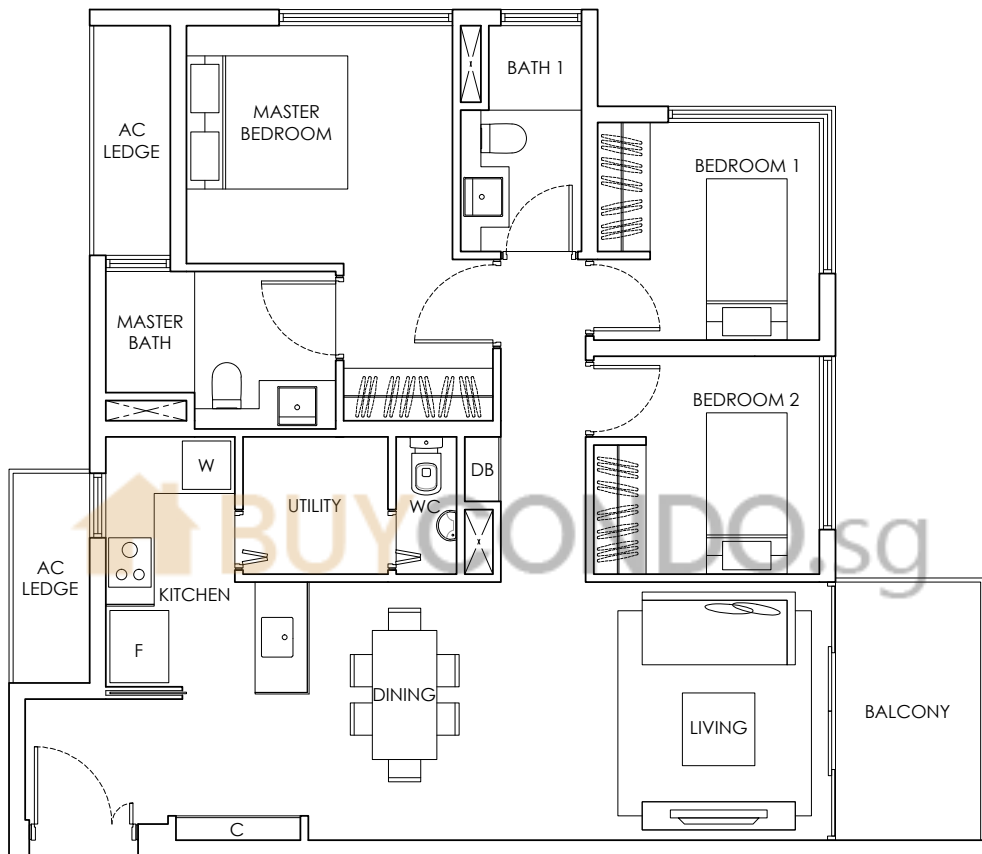
100 SQ.M / 1076 SQ.FT
 #03-22 TO #12-22 / #17-22 TO #20-22



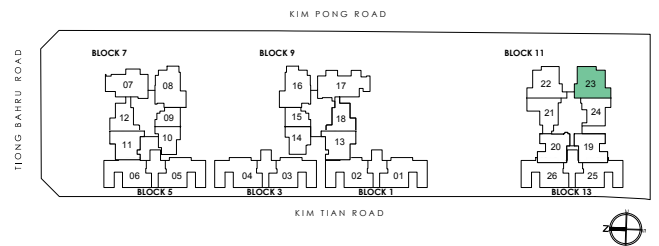
Balconies cannot be enclosed unless with the approved balcony screens. Area includes PES, A/C ledge, balcony and roof terrace, if any. Some units are mirror images of the apartment plans shown in the brochure. Please refer to the key plans for orientation. All plans are not drawn to scale and are subject to changes pending approval by relevant authorities. All floor area are approximate measurements only and are subject to final survey.

3-BEDROOM DELUXE

TYPE C4



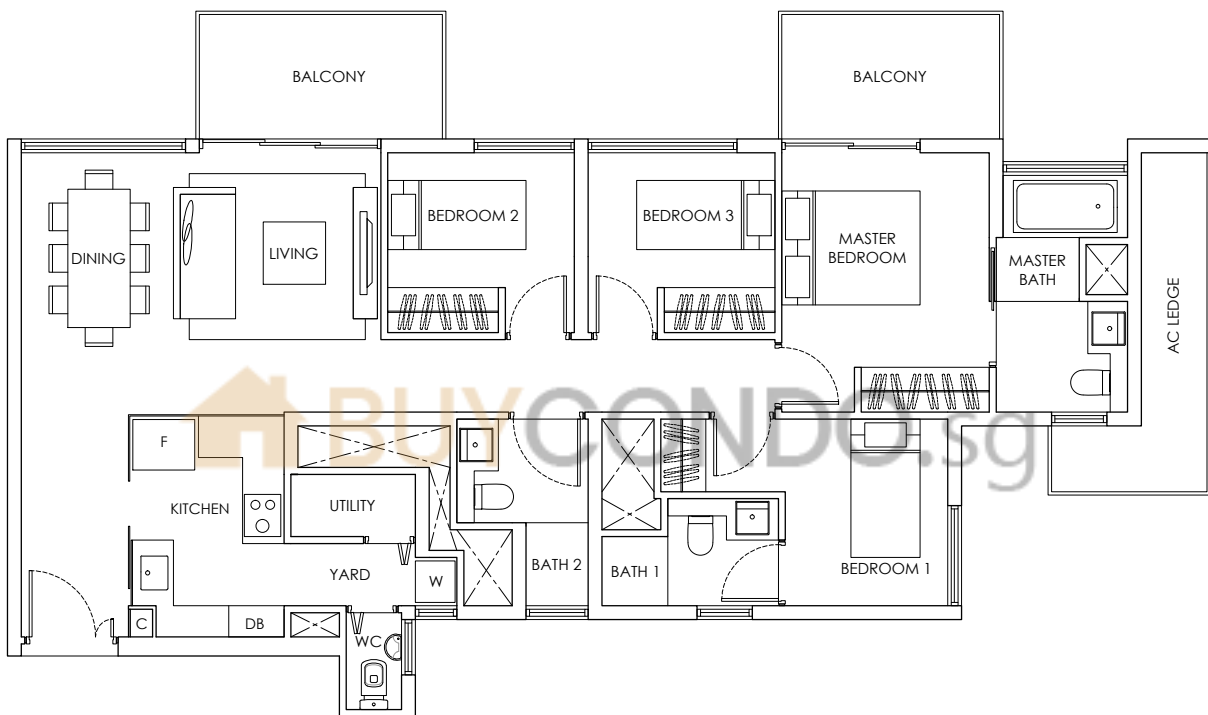
101 SQ.M / 1087 SQ.FT
 #04-23 TO #12-23 / #16-23 TO #20-23



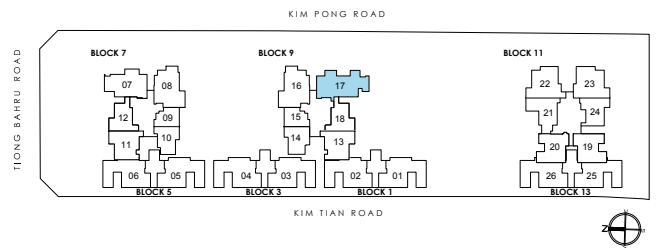
Balconies cannot be enclosed unless with the approved balcony screens. Area includes PES, A/C ledge, balcony and roof terrace, if any. Some units are mirror images of the apartment plans shown in the brochure. Please refer to the key plans for orientation. All plans are not drawn to scale and are subject to changes pending approval by relevant authorities. All floor area are approximate measurements only and are subject to final survey.

4-BEDROOM DELUXE

TYPE D



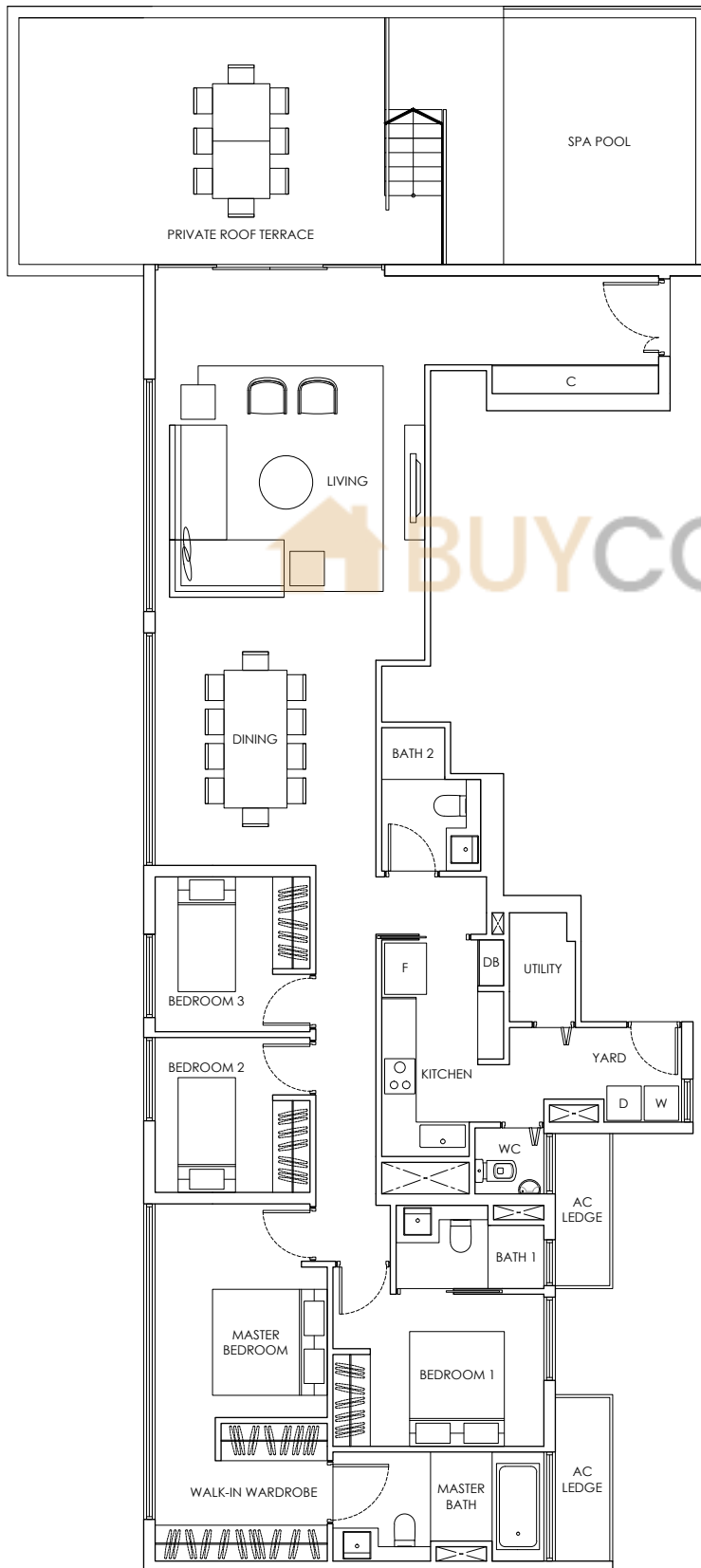
120 SQ.M / 1292 SQ.FT
 #02-17 TO #34-17



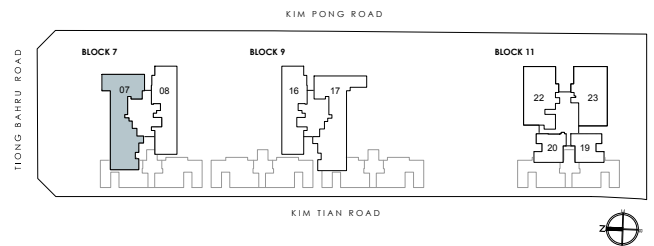
Balconies cannot be enclosed unless with the approved balcony screens. Area includes PES, A/C ledge, balcony and roof terrace, if any. Some units are mirror images of the apartment plans shown in the brochure. Please refer to the key plans for orientation. All plans are not drawn to scale and are subject to changes pending approval by relevant authorities. All floor area are approximate measurements only and are subject to final survey.

PENTHOUSE

TYPE PH1



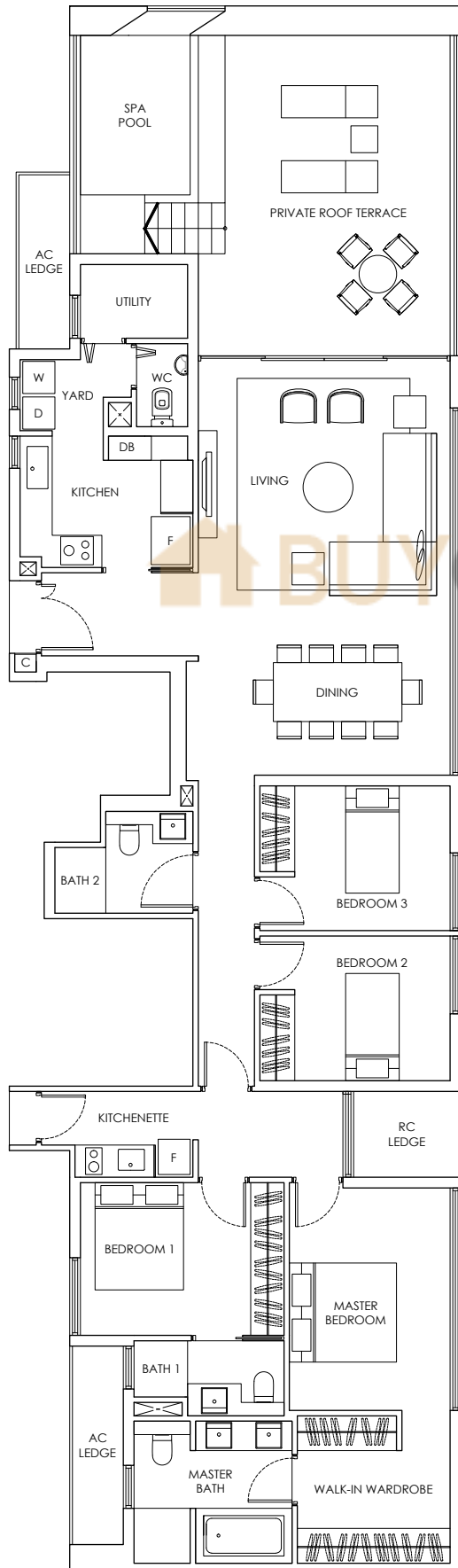
209 SQ.M / 2250 SQ.FT
#35-07



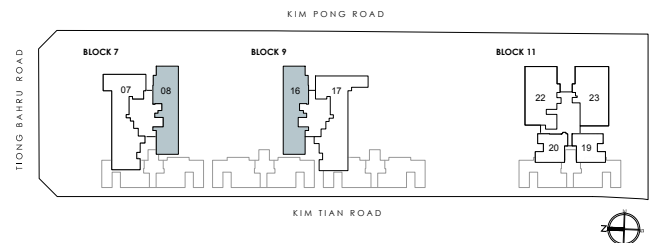
Balconies cannot be enclosed unless with the approved balcony screens. Area includes PES, A/C ledge, balcony and roof terrace, if any. Some units are mirror images of the apartment plans shown in the brochure. Please refer to the key plans for orientation. All plans are not drawn to scale and are subject to changes pending approval by relevant authorities. All floor area are approximate measurements only and are subject to final survey.

PENTHOUSE

TYPE PH2 - PH3



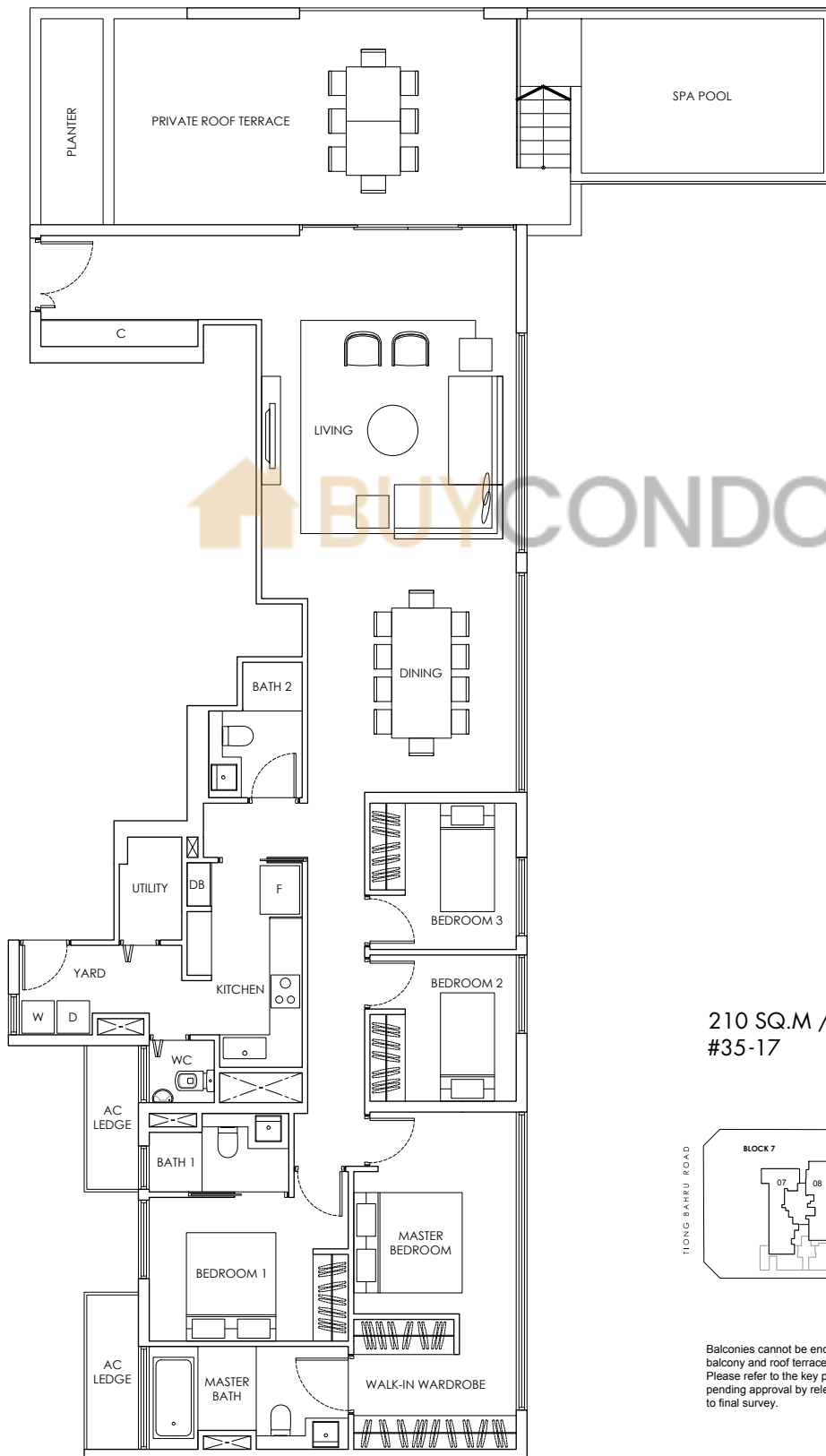
202 SQ.M / 2174 SQ.FT
 #35-08 / #35-16



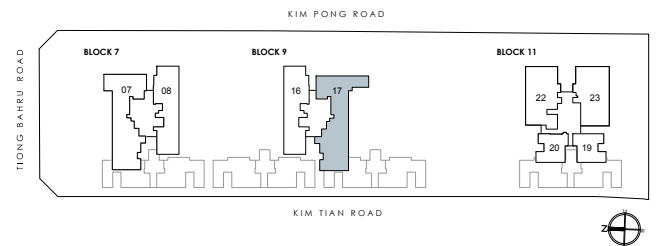
Balconies cannot be enclosed unless with the approved balcony screens. Area includes PES, A/C ledge, balcony and roof terrace, if any. Some units are mirror images of the apartment plans shown in the brochure. Please refer to the key plans for orientation. All plans are not drawn to scale and are subject to changes pending approval by relevant authorities. All floor area are approximate measurements only and are subject to final survey.

PENTHOUSE

TYPE PH4



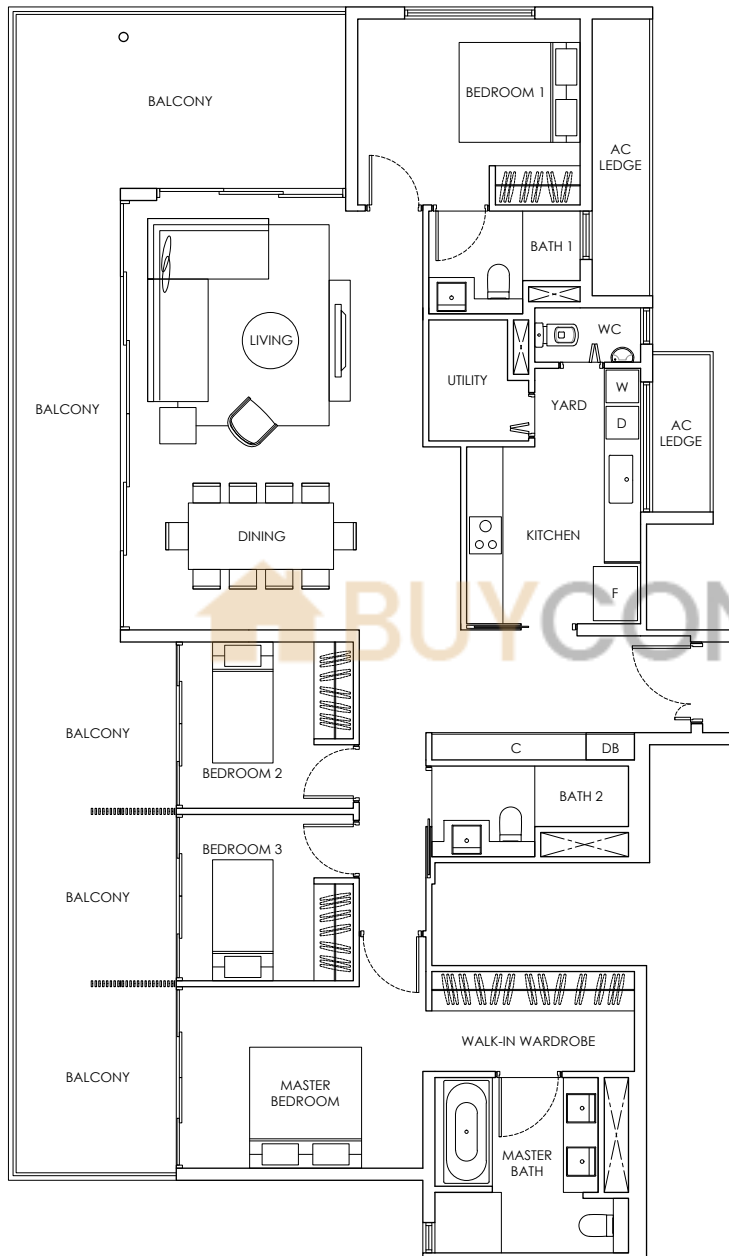
210 SQ.M / 2260 SQ.FT
#35-17



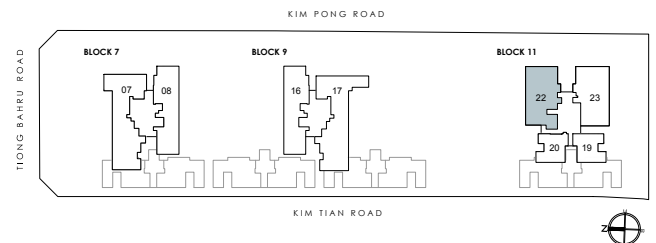
Balconies cannot be enclosed unless with the approved balcony screens. Area includes PES, A/C ledge, balcony and roof terrace, if any. Some units are mirror images of the apartment plans shown in the brochure. Please refer to the key plans for orientation. All plans are not drawn to scale and are subject to changes pending approval by relevant authorities. All floor area are approximate measurements only and are subject to final survey.

PENTHOUSE

TYPE PH5



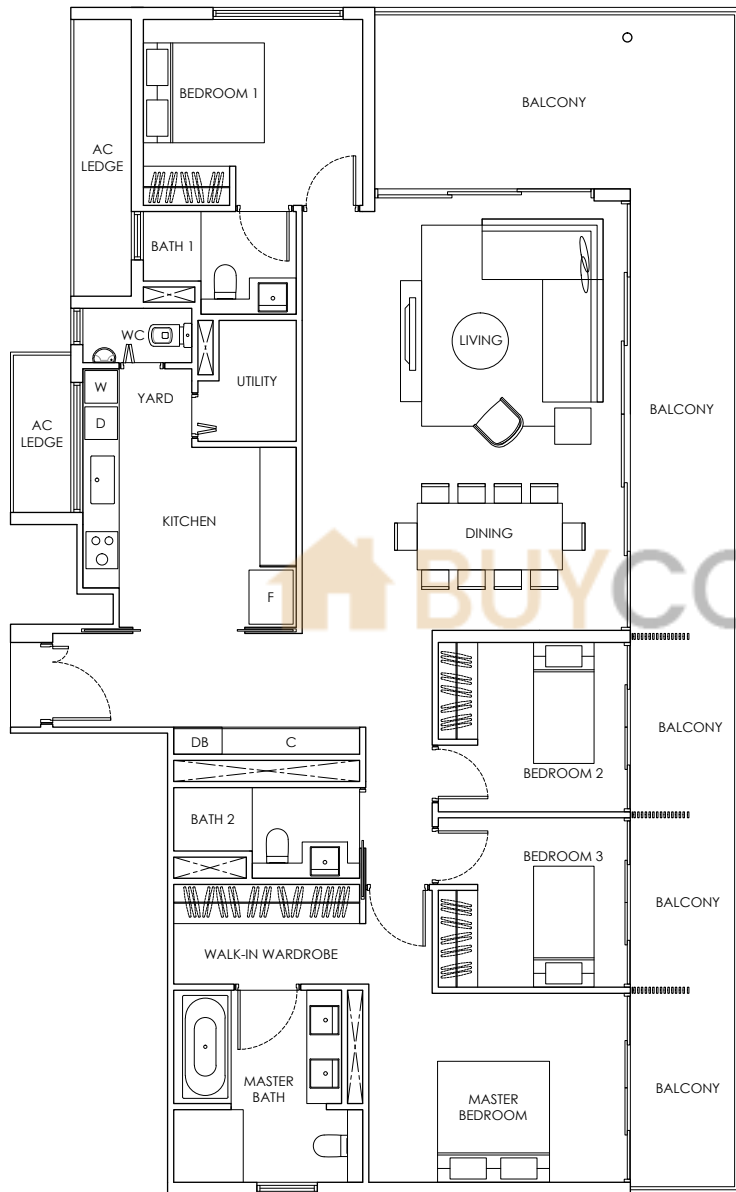
202 SQ.M / 2174 SQ.FT
#21-22



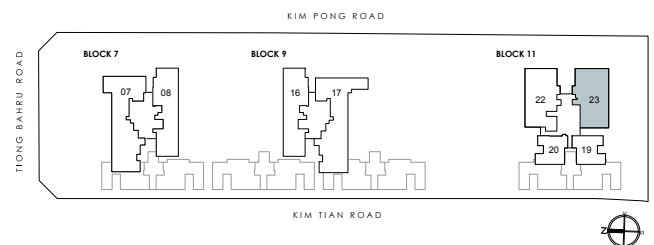
Balconies cannot be enclosed unless with the approved balcony screens. Area includes PES, A/C ledge, balcony and roof terrace, if any. Some units are mirror images of the apartment plans shown in the brochure. Please refer to the key plans for orientation. All plans are not drawn to scale and are subject to changes pending approval by relevant authorities. All floor area are approximate measurements only and are subject to final survey.

PENTHOUSE

TYPE PH6



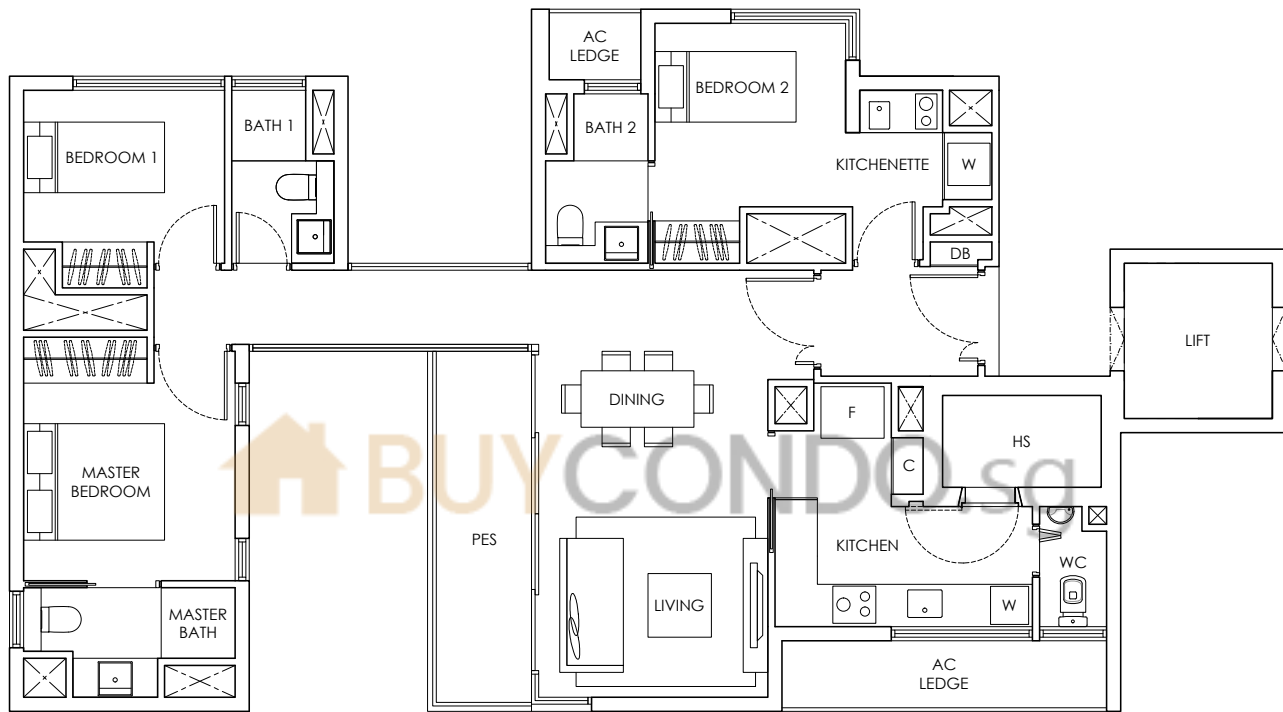
202 SQ.M / 2174 SQ.FT
#21-23



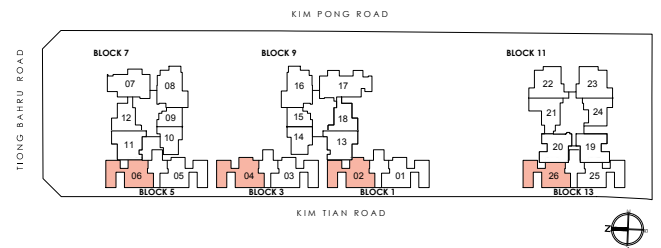
Balconies cannot be enclosed unless with the approved balcony screens. Area includes PES, A/C ledge, balcony and roof terrace, if any. Some units are mirror images of the apartment plans shown in the brochure. Please refer to the key plans for orientation. All plans are not drawn to scale and are subject to changes pending approval by relevant authorities. All floor area are approximate measurements only and are subject to final survey.

DUAL-KEY 3-BEDROOM

TYPE Cd1(p)



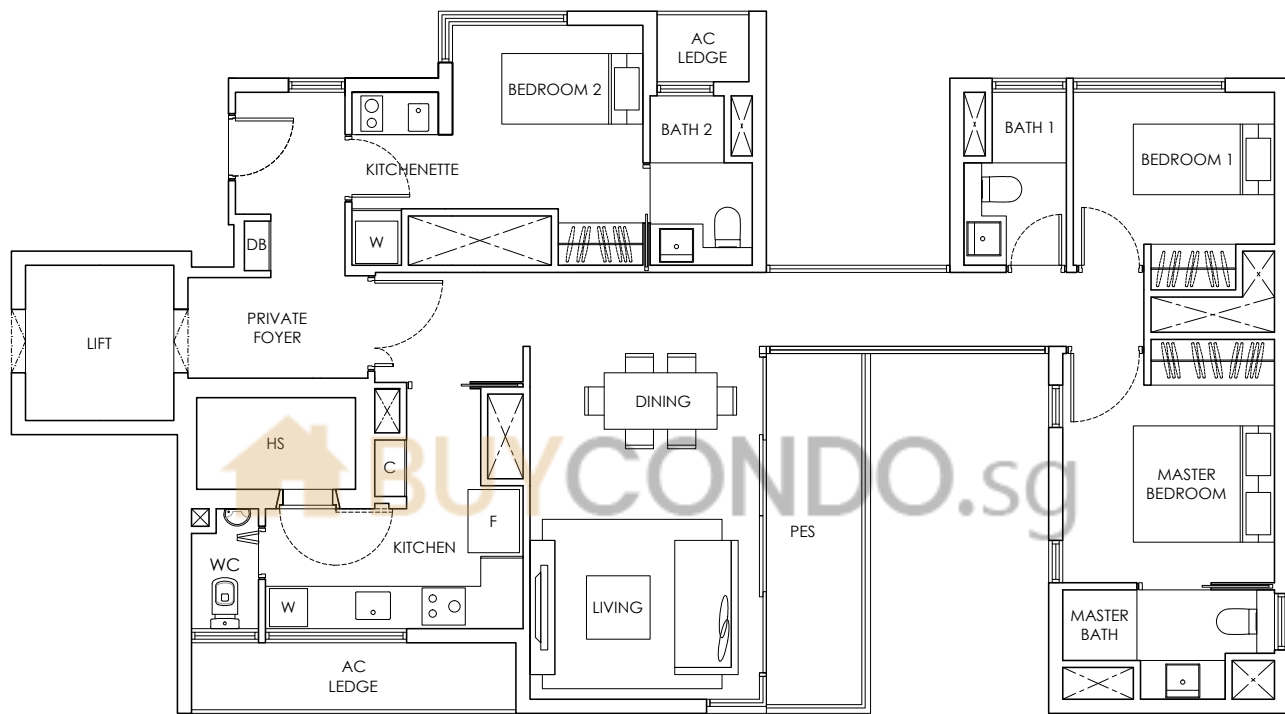
107 SQ.M / 1152 SQ.FT
 #01-02 / #01-04 / #01-06 / #01-26



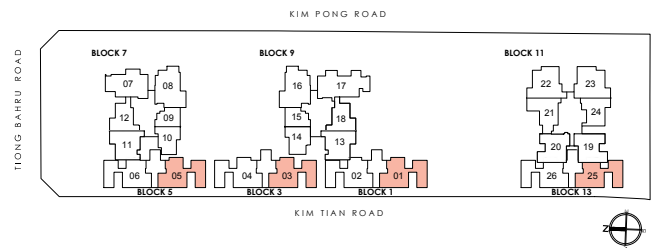
Balconies cannot be enclosed unless with the approved balcony screens. Area includes PES, A/C ledge, balcony and roof terrace, if any. Some units are mirror images of the apartment plans shown in the brochure. Please refer to the key plans for orientation. All plans are not drawn to scale and are subject to changes pending approval by relevant authorities. All floor area are approximate measurements only and are subject to final survey.

DUAL-KEY 3-BEDROOM

TYPE Cd2(p)



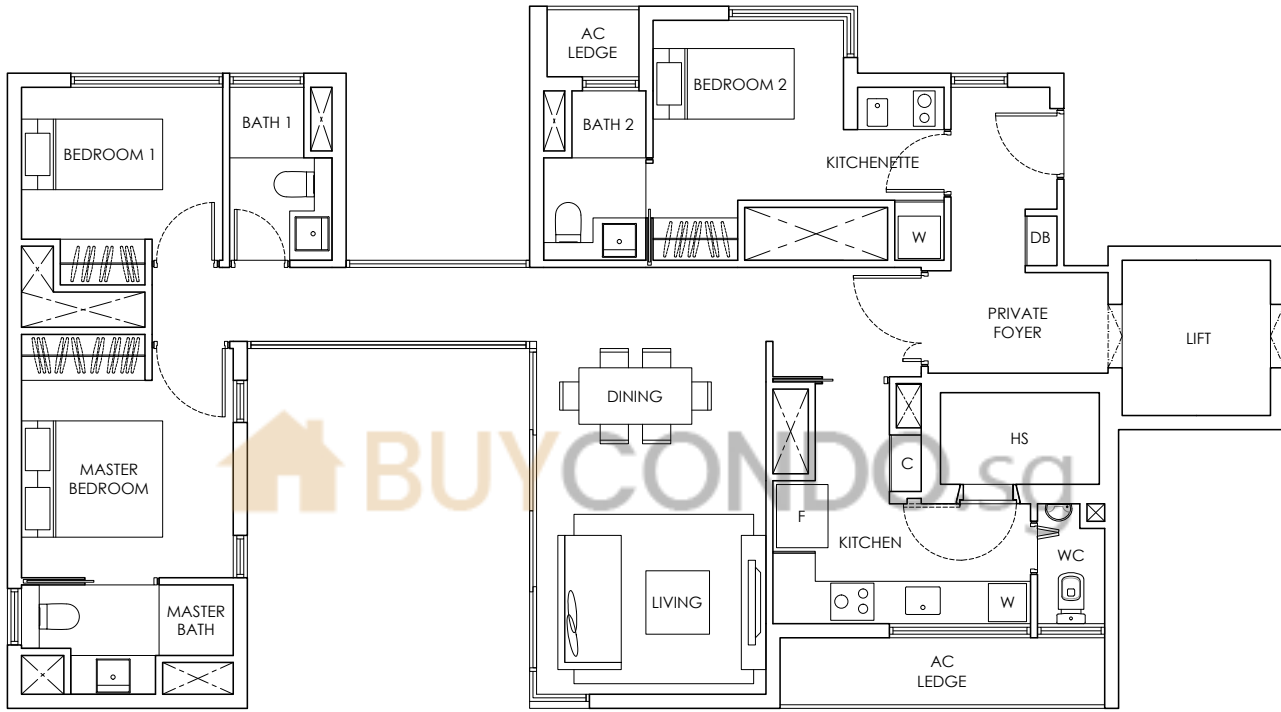
112 SQ.M / 1206 SQ.FT
 #01-01 / #01-03 / #01-05 / #01-25



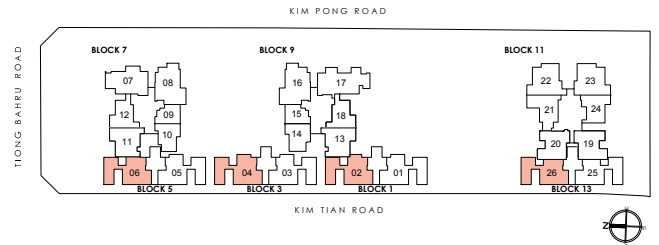
Balconies cannot be enclosed unless with the approved balcony screens. Area includes PES, A/C ledge, balcony and roof terrace, if any. Some units are mirror images of the apartment plans shown in the brochure. Please refer to the key plans for orientation. All plans are not drawn to scale and are subject to changes pending approval by relevant authorities. All floor area are approximate measurements only and are subject to final survey.

DUAL-KEY 3-BEDROOM

TYPE Cd3



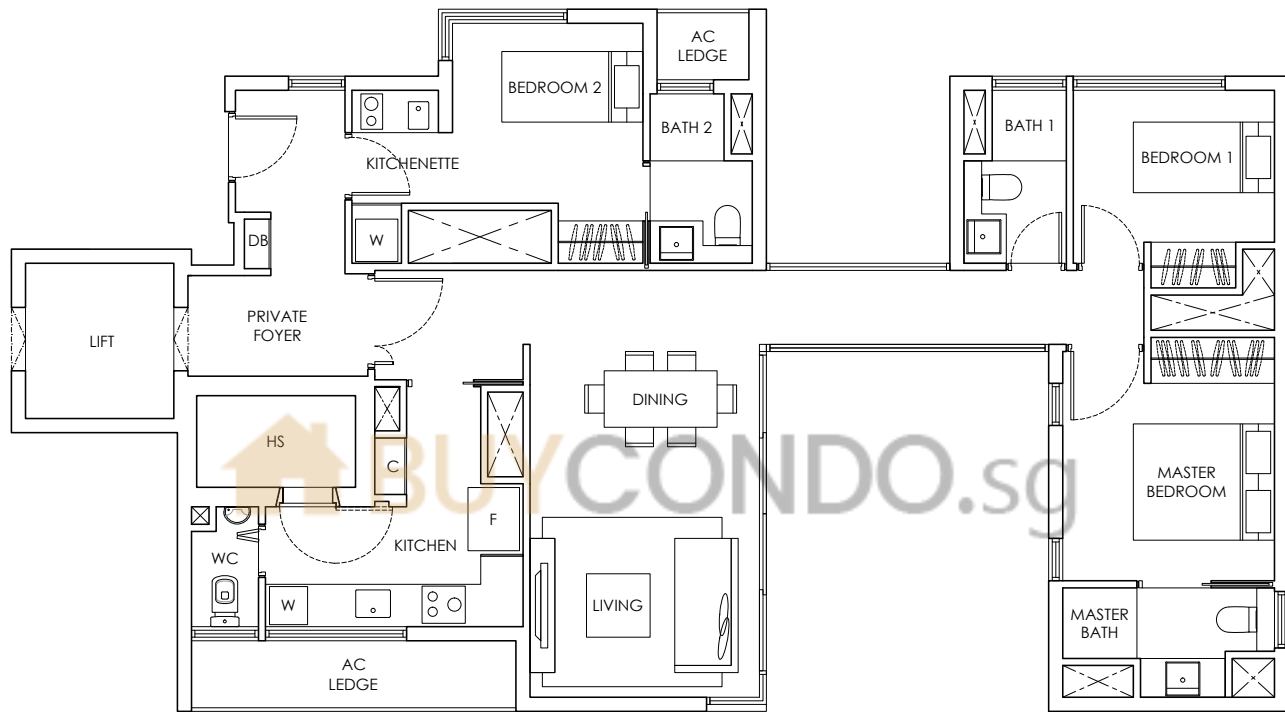
105 SQ.M / 1130 SQ.FT
 #02-02 / #02-04 / #02-06 / #02-26
 #03-02 / #03-04 / #03-06 / #03-26



Balconies cannot be enclosed unless with the approved balcony screens. Area includes PES, A/C ledge, balcony and roof terrace, if any. Some units are mirror images of the apartment plans shown in the brochure. Please refer to the key plans for orientation. All plans are not drawn to scale and are subject to changes pending approval by relevant authorities. All floor area are approximate measurements only and are subject to final survey.

DUAL-KEY 3-BEDROOM

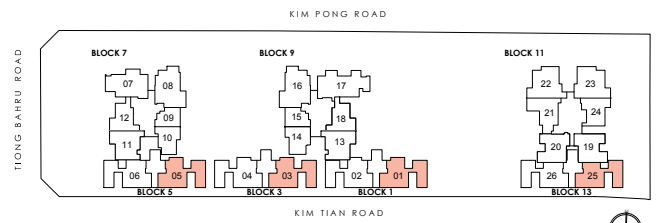
TYPE Cd3(m)



105 SQ.M / 1130 SQ.FT

#02-01 / #02-03 / #02-05 / #02-25

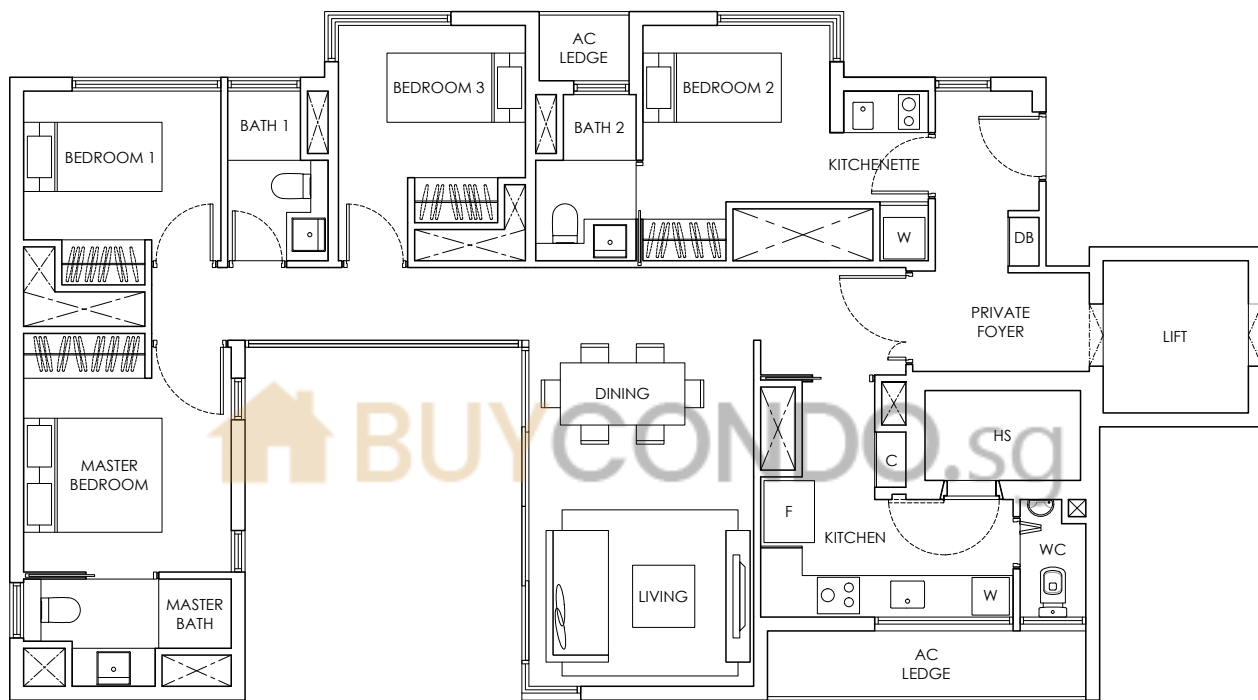
#03-01 / #03-03 / #03-05 / #03-25



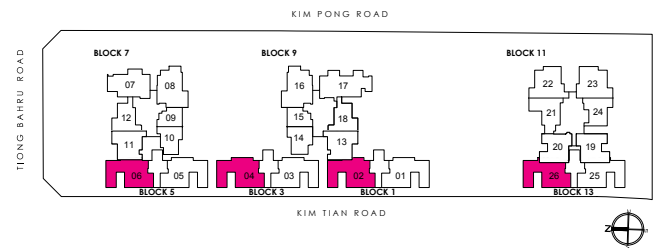
Balconies cannot be enclosed unless with the approved balcony screens. Area includes PES, A/C ledge, balcony and roof terrace, if any. Some units are mirror images of the apartment plans shown in the brochure. Please refer to the key plans for orientation. All plans are not drawn to scale and are subject to changes pending approval by relevant authorities. All floor area are approximate measurements only and are subject to final survey.

DUAL-KEY 4-BEDROOM

TYPE Dd



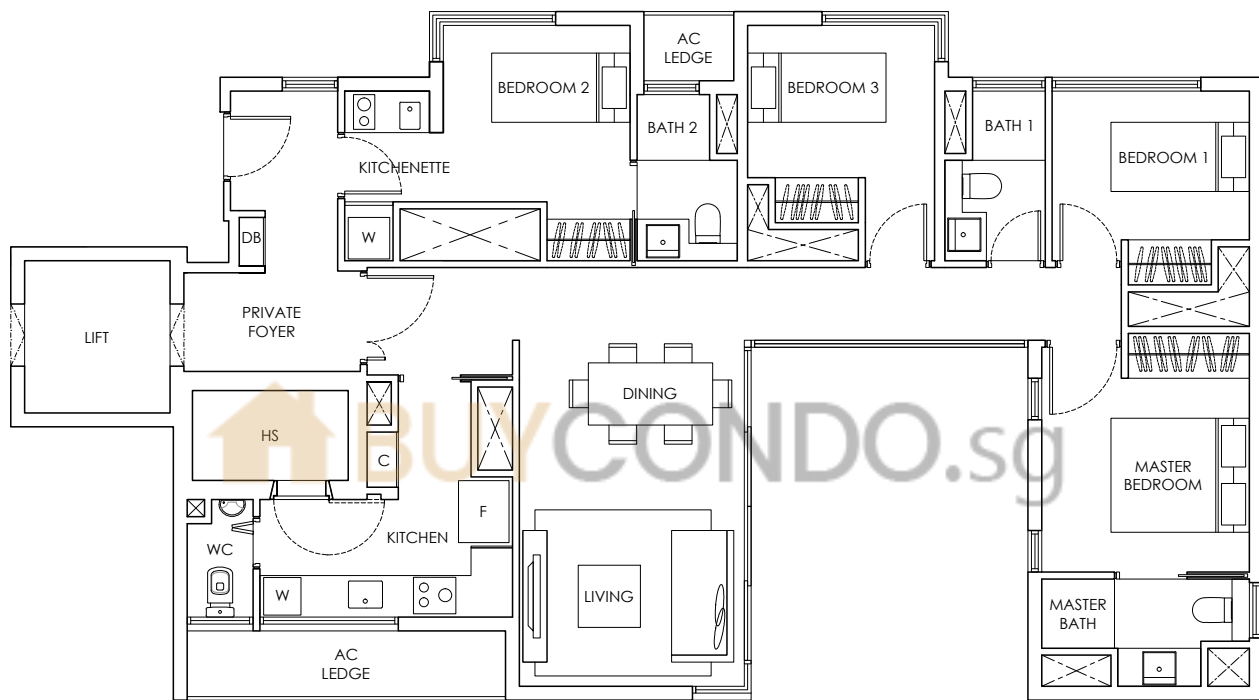
114 SQ.M / 1227 SQ.FT
 #04-02 / #04-04 / #04-06 / #04-26



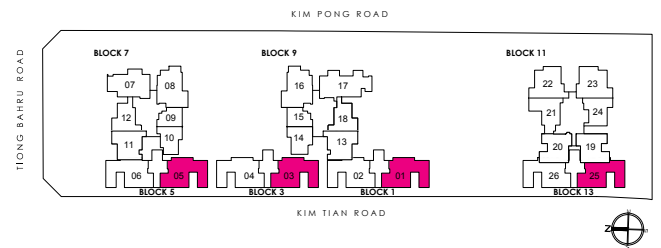
Balconies cannot be enclosed unless with the approved balcony screens. Area includes PES, A/C ledge, balcony and roof terrace, if any. Some units are mirror images of the apartment plans shown in the brochure. Please refer to the key plans for orientation. All plans are not drawn to scale and are subject to changes pending approval by relevant authorities. All floor area are approximate measurements only and are subject to final survey.

DUAL-KEY 4-BEDROOM

TYPE Dd(m)



114 SQ.M / 1227 SQ.FT
 #04-01 / #04-03 / #04-05 / #04-25



Balconies cannot be enclosed unless with the approved balcony screens. Area includes PES, A/C ledge, balcony and roof terrace, if any. Some units are mirror images of the apartment plans shown in the brochure. Please refer to the key plans for orientation. All plans are not drawn to scale and are subject to changes pending approval by relevant authorities. All floor area are approximate measurements only and are subject to final survey.