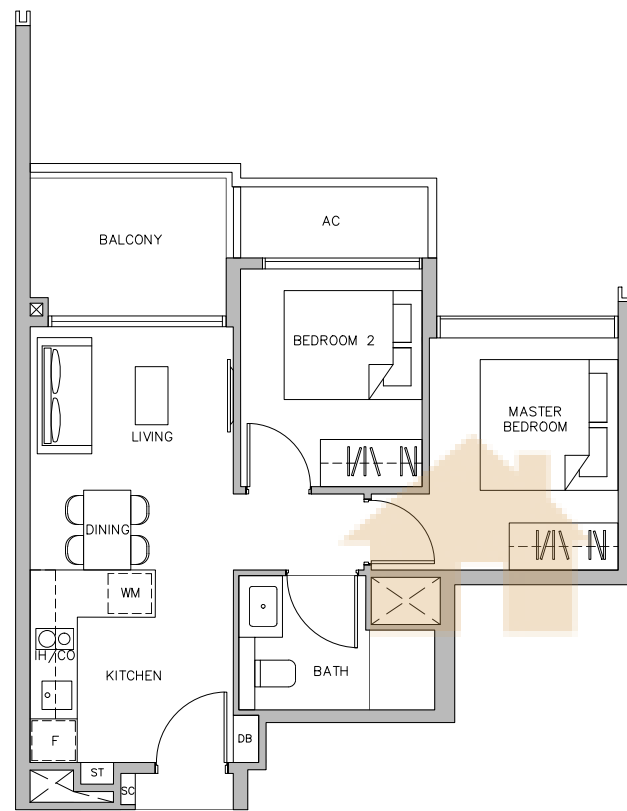


2-BEDROOM

TYPE B1a

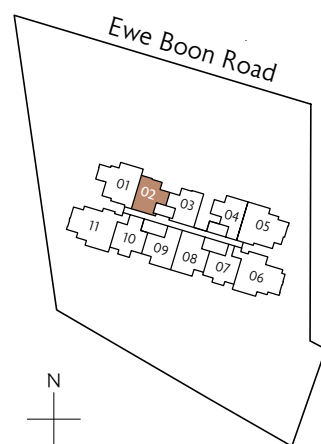
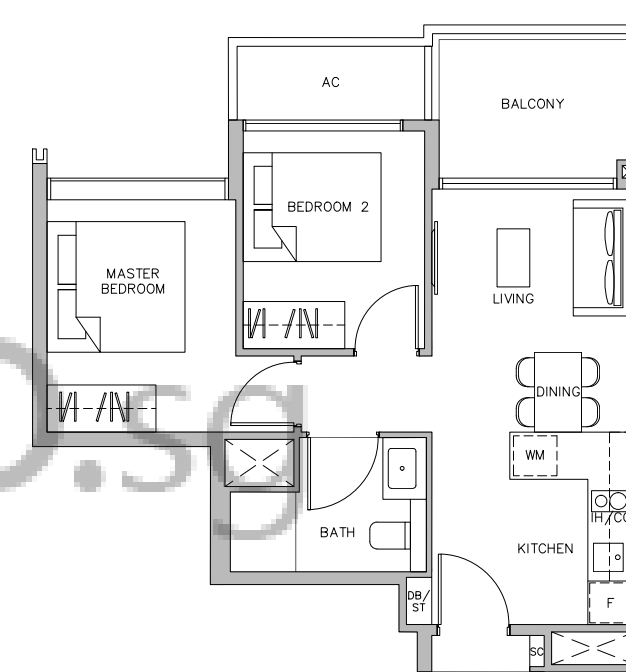
55 sq m / 592 sq ft
#02-02 to #11-02



2-BEDROOM

TYPE B1b

54 sq m / 581 sq ft
#02-03 to #11-03

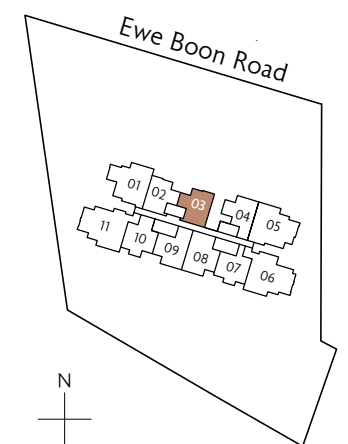


Key plan is not drawn to scale



- | | | | |
|----|-------------------|----|--------------------|
| F | Fridge | SC | Shoe Cabinet |
| CO | Conventional Oven | DB | Distribution Board |
| IH | Induction Hob | ST | Storage |
| WM | Washer cum Dryer | | |

Area includes air-con (A/C) ledge. Private enclosed space (PES), balcony and strata void area where applicable. Some units are mirror images of the apartment plans shown in the brochure. Please refer to the key plan for orientation. The plans are subject to change as may be approved by relevant authorities. All floor plans are approximate measurements only and are subject to government re-survey. The balcony shall not be enclosed unless with the approved balcony screen. Please refer to the diagram annexed hereto as "Approved Balcony Screen".



Key plan is not drawn to scale



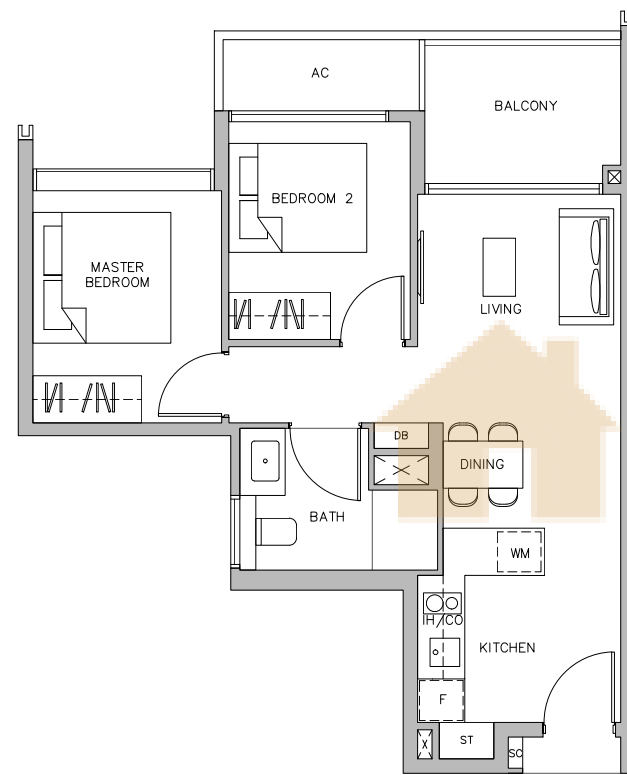
- | | | | |
|----|-------------------|----|--------------------|
| F | Fridge | SC | Shoe Cabinet |
| CO | Conventional Oven | DB | Distribution Board |
| IH | Induction Hob | ST | Storage |
| WM | Washer cum Dryer | | |

Area includes air-con (A/C) ledge. Private enclosed space (PES), balcony and strata void area where applicable. Some units are mirror images of the apartment plans shown in the brochure. Please refer to the key plan for orientation. The plans are subject to change as may be approved by relevant authorities. All floor plans are approximate measurements only and are subject to government re-survey. The balcony shall not be enclosed unless with the approved balcony screen. Please refer to the diagram annexed hereto as "Approved Balcony Screen".

2-BEDROOM

TYPE B2

59 sq m / 635 sq ft
#02-04 to #11-04

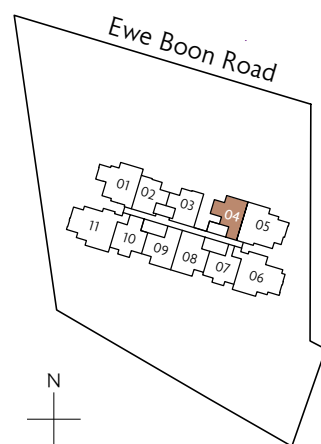
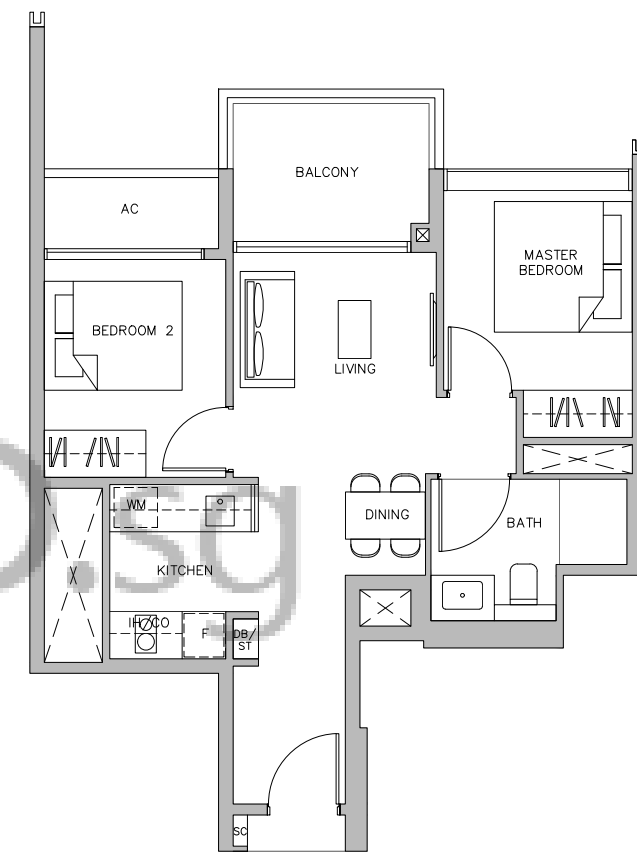


BUYCONDO.SG

2-BEDROOM

TYPE B3

58 sq m / 624 sq ft
#02-07 to #11-07



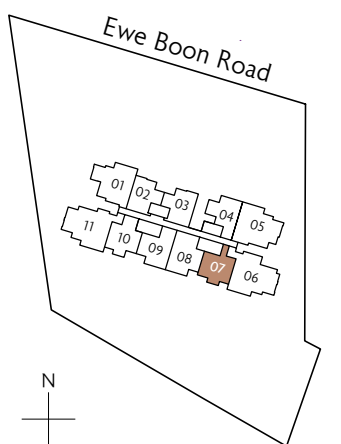
Key plan is not drawn to scale



- | | | | |
|----|-------------------|----|--------------------|
| F | Fridge | SC | Shoe Cabinet |
| CO | Conventional Oven | DB | Distribution Board |
| IH | Induction Hob | ST | Storage |
| WM | Washer cum Dryer | | |



- | | | | |
|----|-------------------|----|--------------------|
| F | Fridge | SC | Shoe Cabinet |
| CO | Conventional Oven | DB | Distribution Board |
| IH | Induction Hob | ST | Storage |
| WM | Washer cum Dryer | | |



Key plan is not drawn to scale

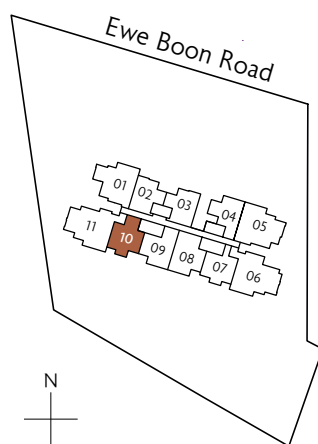
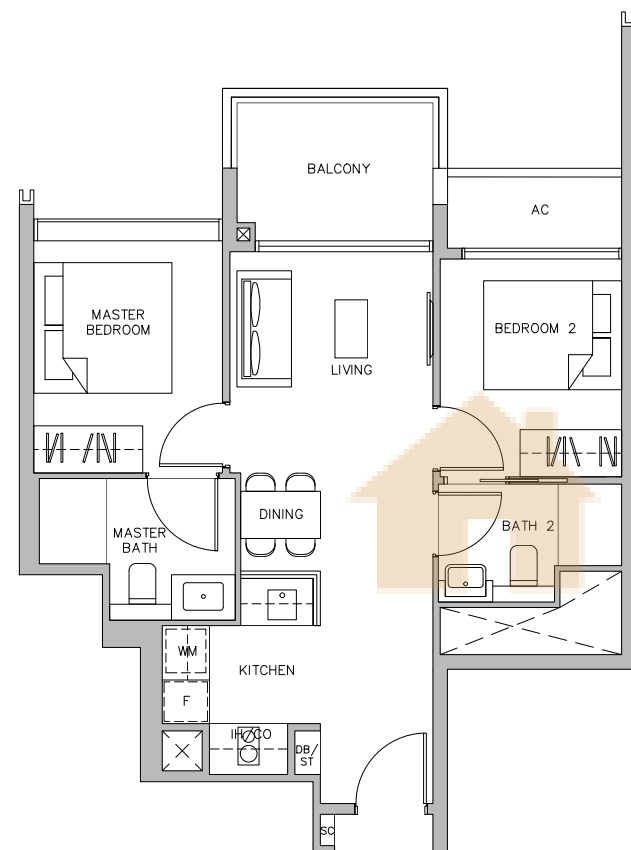
Area includes air-con (A/C) ledge. Private enclosed space (PES), balcony and strata void area where applicable. Some units are mirror images of the apartment plans shown in the brochure. Please refer to the key plan for orientation. The plans are subject to change as may be approved by relevant authorities. All floor plans are approximate measurements only and are subject to government re-survey. The balcony shall not be enclosed unless with the approved balcony screen. Please refer to the diagram annexed hereto as "Approved Balcony Screen".

Area includes air-con (A/C) ledge. Private enclosed space (PES), balcony and strata void area where applicable. Some units are mirror images of the apartment plans shown in the brochure. Please refer to the key plan for orientation. The plans are subject to change as may be approved by relevant authorities. All floor plans are approximate measurements only and are subject to government re-survey. The balcony shall not be enclosed unless with the approved balcony screen. Please refer to the diagram annexed hereto as "Approved Balcony Screen".

2-BEDROOM PREMIUM

TYPE B4P

61 sq m / 657 sq ft
#02-10 to #11-10



Key plan is not drawn to scale



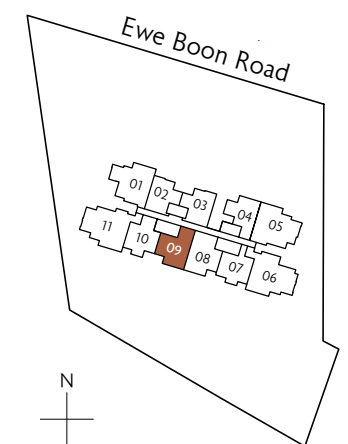
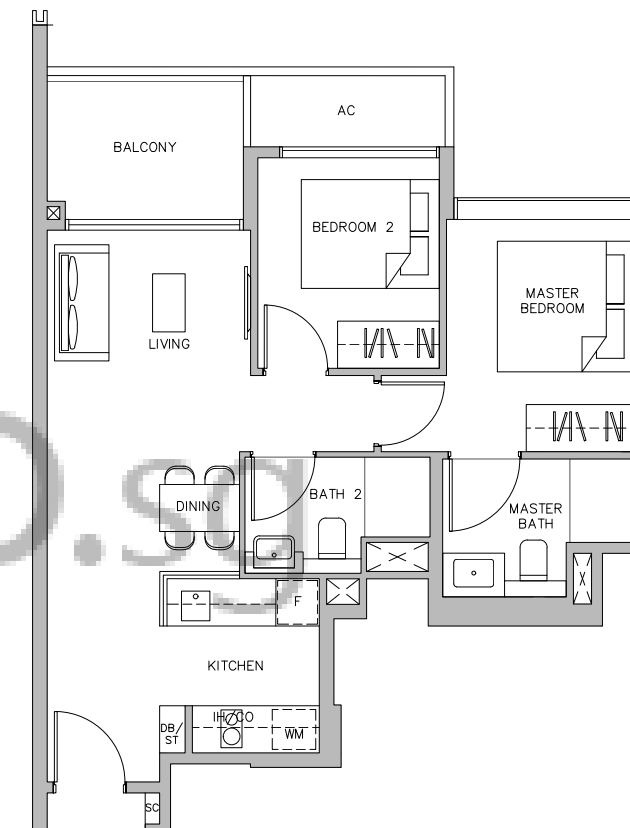
F	Fridge	SC	Shoe Cabinet
CO	Conventional Oven	DB	Distribution Board
IH	Induction Hob	ST	Storage
WM	Washer cum Dryer		

Area includes air-con (A/C) ledge. Private enclosed space (PES), balcony and strata void area where applicable. Some units are mirror images of the apartment plans shown in the brochure. Please refer to the key plan for orientation. The plans are subject to change as may be approved by relevant authorities. All floor plans are approximate measurements only and are subject to government re-survey. The balcony shall not be enclosed unless with the approved balcony screen. Please refer to the diagram annexed hereto as "Approved Balcony Screen".

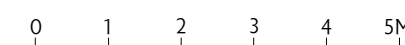
2-BEDROOM PREMIUM

TYPE B5P

65 sq m / 700 sq ft
#02-09 to #11-09



Key plan is not drawn to scale



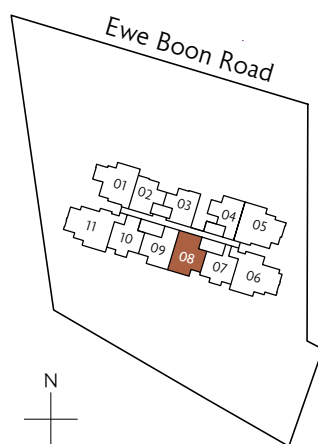
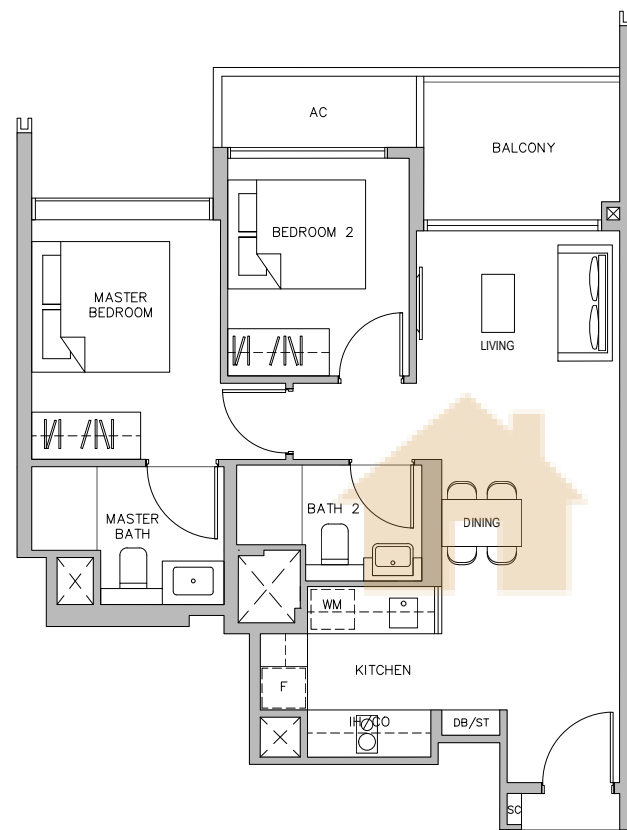
F	Fridge	SC	Shoe Cabinet
CO	Conventional Oven	DB	Distribution Board
IH	Induction Hob	ST	Storage
WM	Washer cum Dryer		

Area includes air-con (A/C) ledge. Private enclosed space (PES), balcony and strata void area where applicable. Some units are mirror images of the apartment plans shown in the brochure. Please refer to the key plan for orientation. The plans are subject to change as may be approved by relevant authorities. All floor plans are approximate measurements only and are subject to government re-survey. The balcony shall not be enclosed unless with the approved balcony screen. Please refer to the diagram annexed hereto as "Approved Balcony Screen".

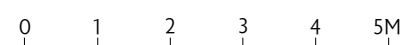
2-BEDROOM PREMIUM

TYPE B6P

67 sq m / 721 sq ft
#02-08 to #11-08



Key plan is not drawn to scale



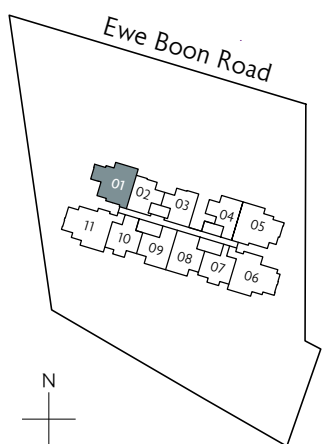
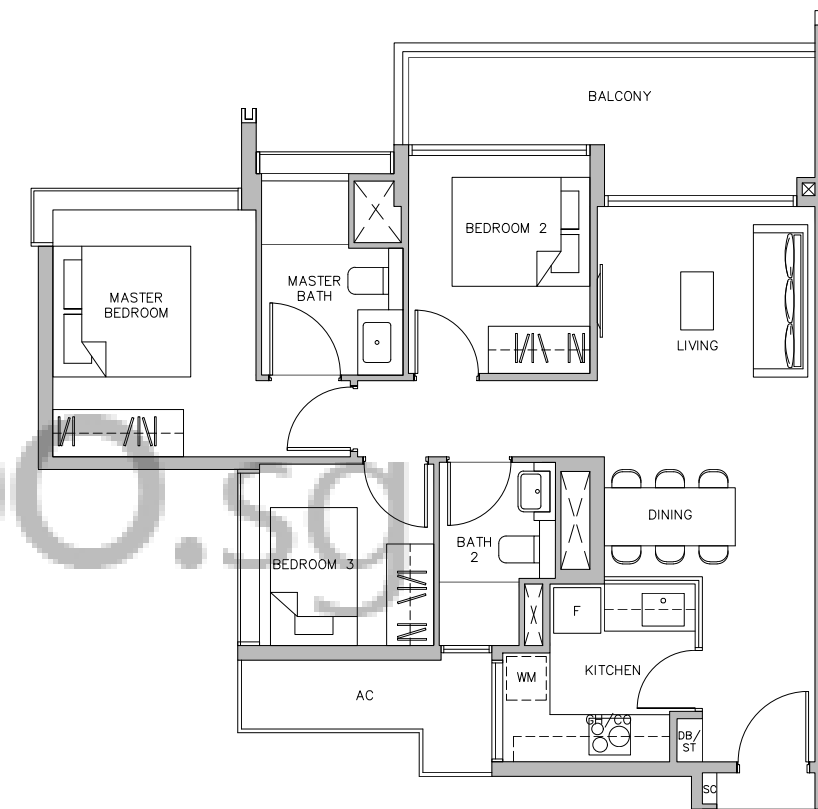
- | | | | |
|----|-------------------|----|--------------------|
| F | Fridge | SC | Shoe Cabinet |
| CO | Conventional Oven | DB | Distribution Board |
| IH | Induction Hob | ST | Storage |
| WM | Washer cum Dryer | | |

Area includes air-con (A/C) ledge. Private enclosed space (PES), balcony and strata void area where applicable. Some units are mirror images of the apartment plans shown in the brochure. Please refer to the key plan for orientation. The plans are subject to change as may be approved by relevant authorities. All floor plans are approximate measurements only and are subject to government re-survey. The balcony shall not be enclosed unless with the approved balcony screen. Please refer to the diagram annexed hereto as "Approved Balcony Screen".

3-BEDROOM

TYPE C1

85 sq m / 915 sq ft
#02-01 to #11-01



Key plan is not drawn to scale



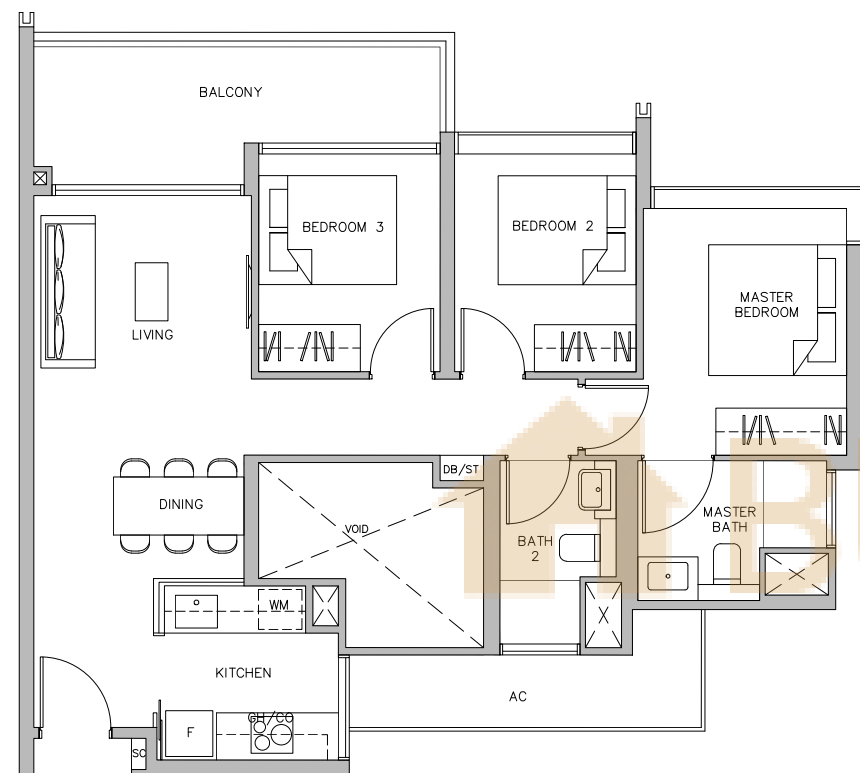
- | | | | |
|----|-------------------|----|--------------------|
| F | Fridge | SC | Shoe Cabinet |
| CO | Conventional Oven | DB | Distribution Board |
| GH | Gas Hob | ST | Storage |
| WM | Washer cum Dryer | | |

Area includes air-con (A/C) ledge. Private enclosed space (PES), balcony and strata void area where applicable. Some units are mirror images of the apartment plans shown in the brochure. Please refer to the key plan for orientation. The plans are subject to change as may be approved by relevant authorities. All floor plans are approximate measurements only and are subject to government re-survey. The balcony shall not be enclosed unless with the approved balcony screen. Please refer to the diagram annexed hereto as "Approved Balcony Screen".

3-BEDROOM

TYPE C2

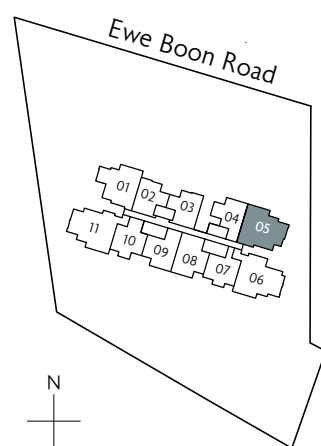
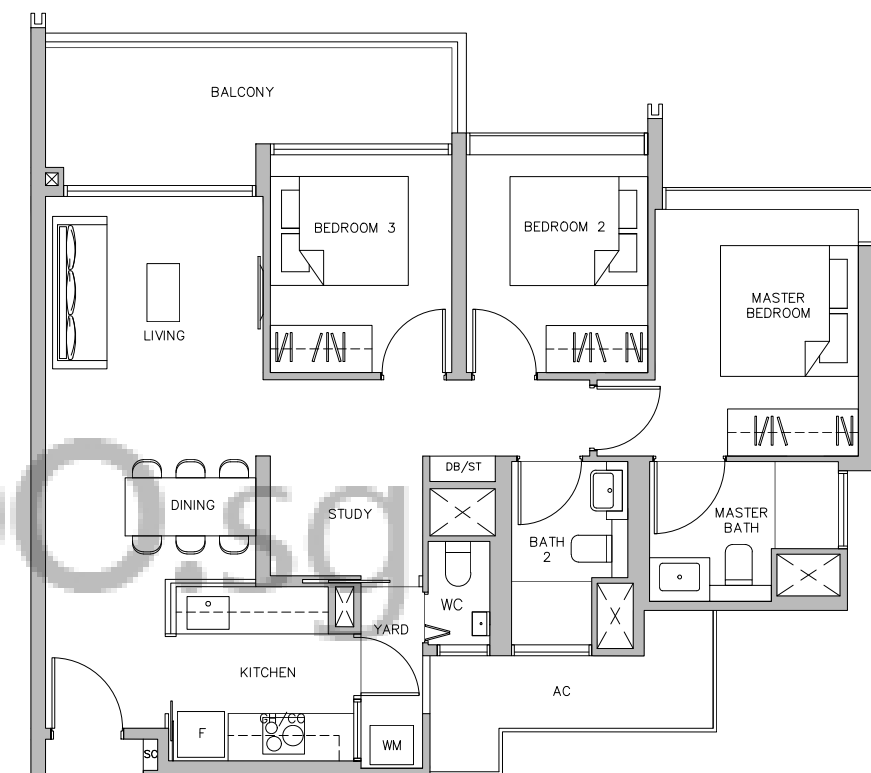
89 sq m / 958 sq ft
#02-05 to #07-05



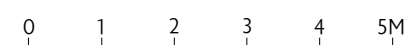
3-BEDROOM + STUDY

TYPE C3S

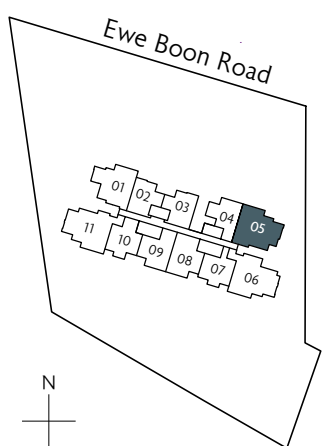
97 sq m / 1044 sq ft
#08-05 to #11-05



Key plan is not drawn to scale



F	Fridge	SC	Shoe Cabinet
CO	Conventional Oven	DB	Distribution Board
GH	Gas Hob	ST	Storage
WM	Washer cum Dryer		



Key plan is not drawn to scale



F	Fridge	SC	Shoe Cabinet
CO	Conventional Oven	DB	Distribution Board
GH	Gas Hob	ST	Storage
WM	Washer cum Dryer		

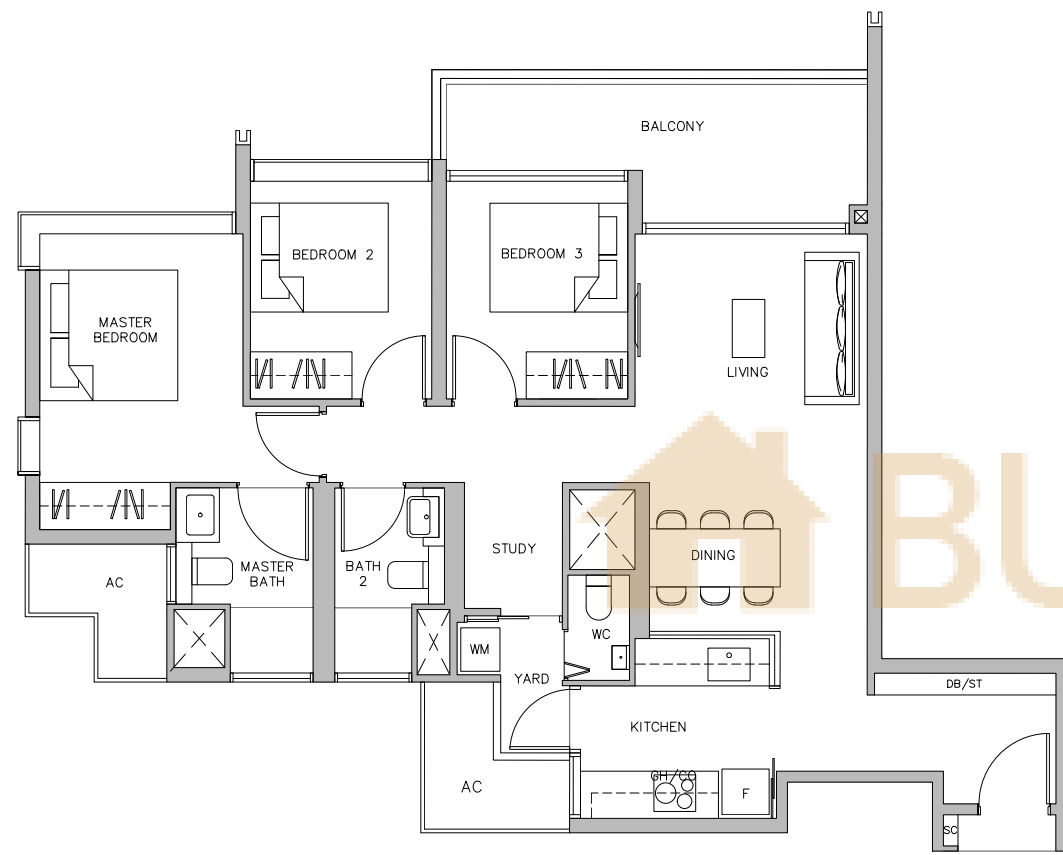
Area includes air-con (A/C) ledge. Private enclosed space (PES), balcony and strata void area where applicable. Some units are mirror images of the apartment plans shown in the brochure. Please refer to the key plan for orientation. The plans are subject to change as may be approved by relevant authorities. All floor plans are approximate measurements only and are subject to government re-survey. The balcony shall not be enclosed unless with the approved balcony screen. Please refer to the diagram annexed hereto as "Approved Balcony Screen".

Area includes air-con (A/C) ledge. Private enclosed space (PES), balcony and strata void area where applicable. Some units are mirror images of the apartment plans shown in the brochure. Please refer to the key plan for orientation. The plans are subject to change as may be approved by relevant authorities. All floor plans are approximate measurements only and are subject to government re-survey. The balcony shall not be enclosed unless with the approved balcony screen. Please refer to the diagram annexed hereto as "Approved Balcony Screen".

3-BEDROOM + STUDY

TYPE C4S

103 sq m / 1109 sq ft
#02-06 to #11-06



Key plan is not drawn to scale



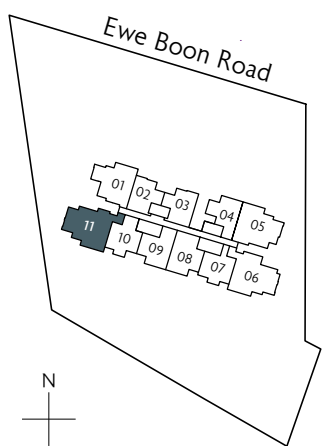
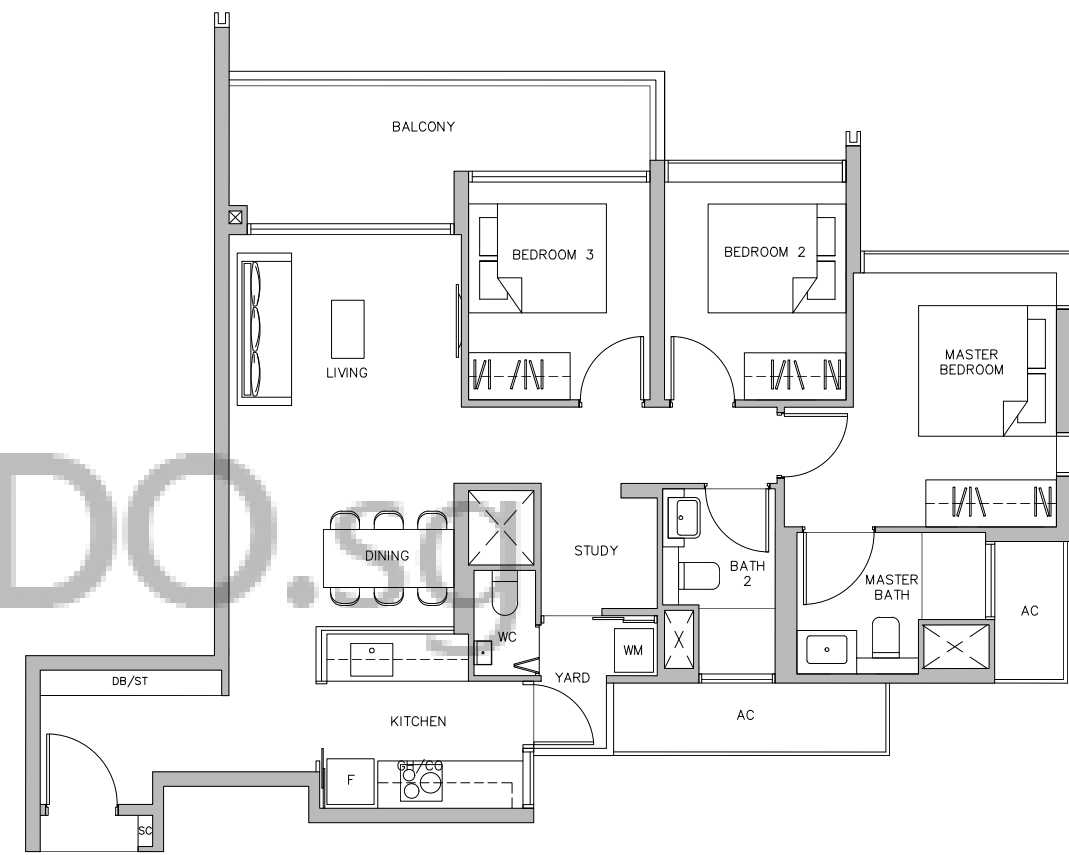
F Fridge
CO Conventional Oven
GH Gas Hob
WM Washer cum Dryer
SC Shoe Cabinet
DB Distribution Board
ST Storage

Area includes air-con (A/C) ledge. Private enclosed space (PES), balcony and strata void area where applicable. Some units are mirror images of the apartment plans shown in the brochure. Please refer to the key plan for orientation. The plans are subject to change as may be approved by relevant authorities. All floor plans are approximate measurements only and are subject to government re-survey. The balcony shall not be enclosed unless with the approved balcony screen. Please refer to the diagram annexed hereto as "Approved Balcony Screen".

3-BEDROOM + STUDY

TYPE C5S

103 sq m / 1109 sq ft
#02-11 to #11-11



Key plan is not drawn to scale



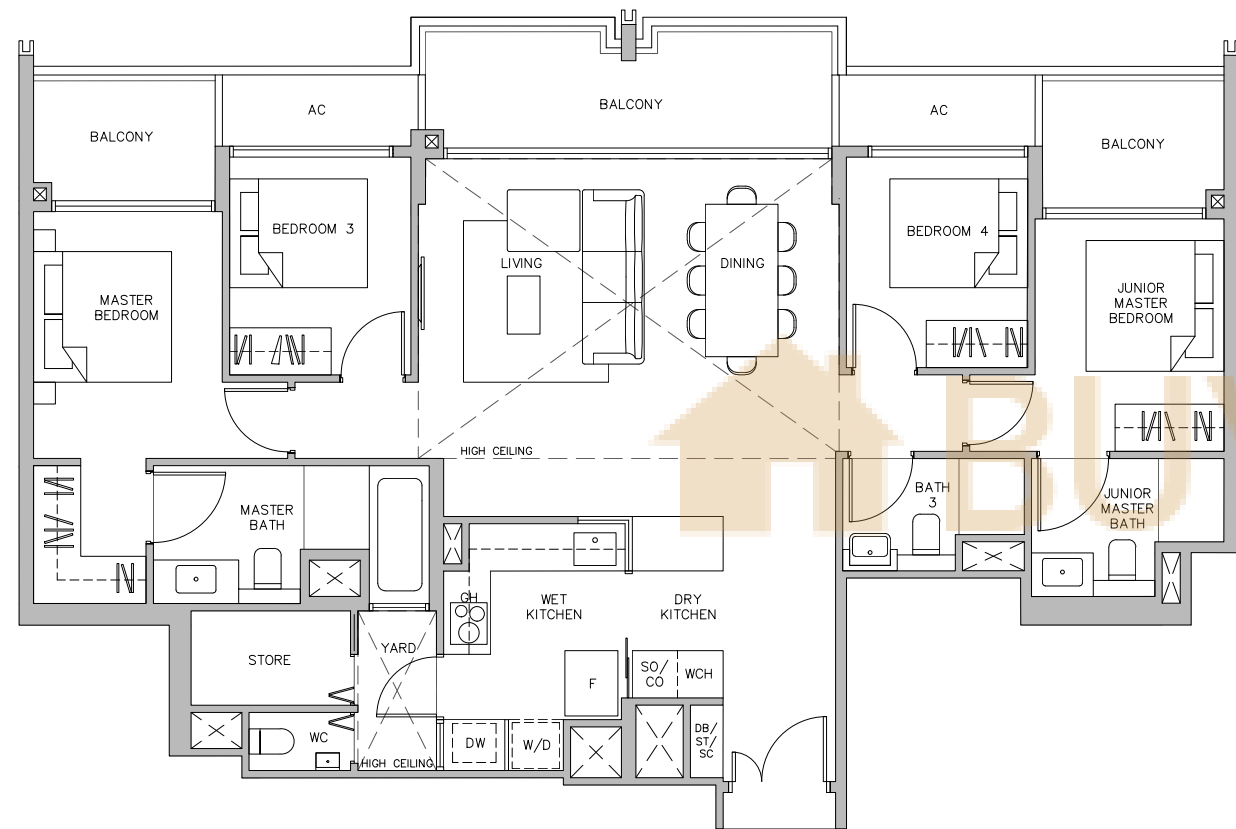
F Fridge
CO Conventional Oven
GH Gas Hob
WM Washer cum Dryer
SC Shoe Cabinet
DB Distribution Board
ST Storage

Area includes air-con (A/C) ledge. Private enclosed space (PES), balcony and strata void area where applicable. Some units are mirror images of the apartment plans shown in the brochure. Please refer to the key plan for orientation. The plans are subject to change as may be approved by relevant authorities. All floor plans are approximate measurements only and are subject to government re-survey. The balcony shall not be enclosed unless with the approved balcony screen. Please refer to the diagram annexed hereto as "Approved Balcony Screen".

4-BEDROOM

TYPE D1

169 sq m / 1819 sq ft
 INCLUSIVE OF 26 SQ M OF VOID AREA ABOVE LIVING AND DINING
 #12-08



Key plan is not drawn to scale

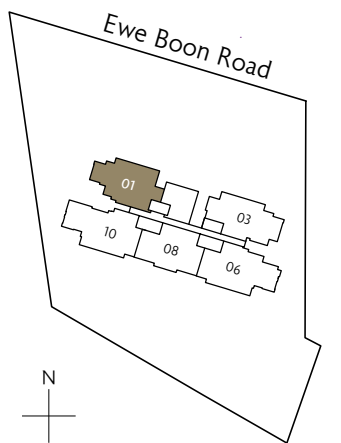
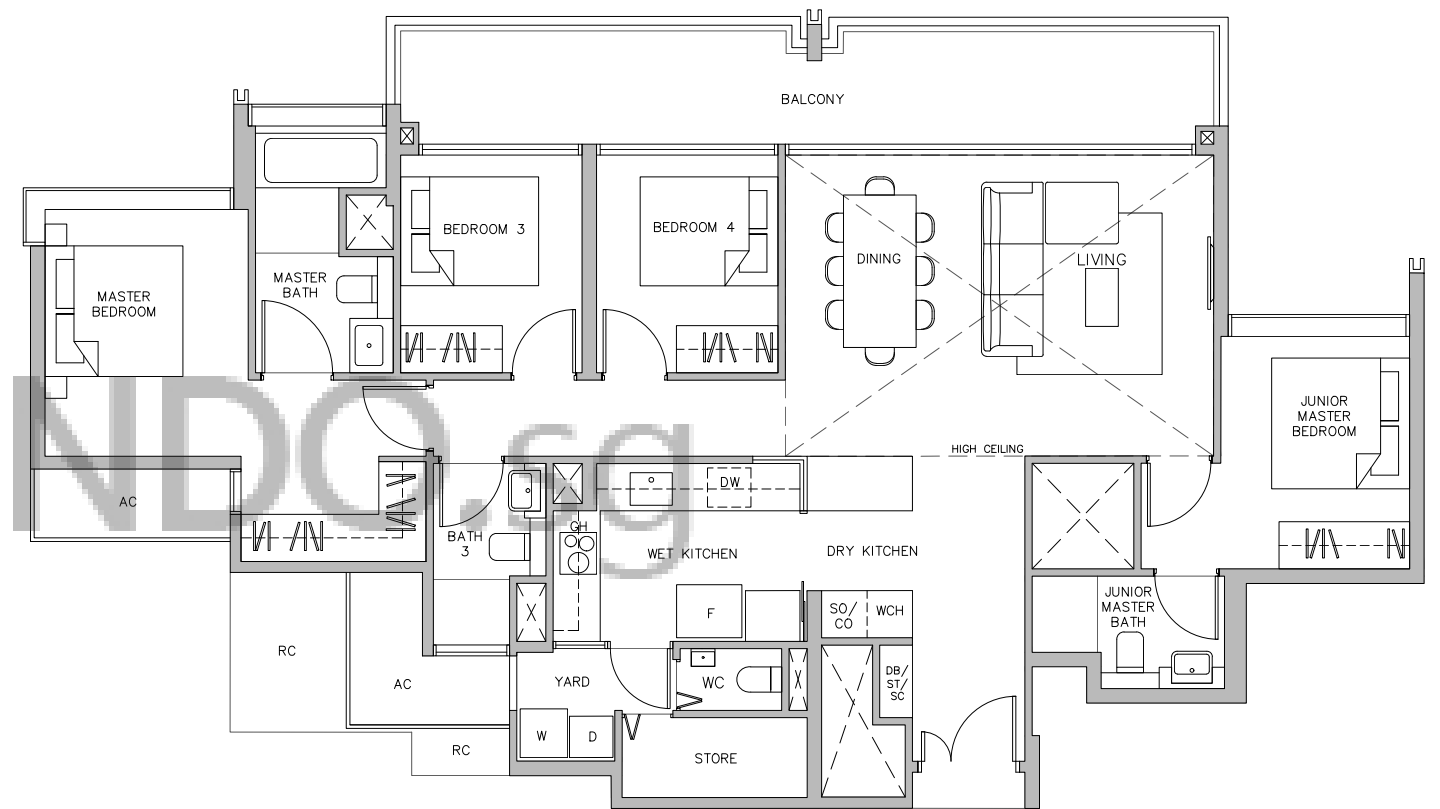
F	Fridge	SO	Steam Oven	D	Dryer	SC	Shoe Cabinet
DW	Dishwasher	WCH	Wine Chiller	W	Washer	DB	Distribution Board
GH	Gas Hob	CO	Conventional Oven			ST	Storage



4-BEDROOM

TYPE D2

175 sq m / 1884 sq ft
 INCLUSIVE OF 26 SQ M OF VOID AREA ABOVE LIVING AND DINING
 #12-01



Key plan is not drawn to scale

F	Fridge	SO	Steam Oven	D	Dryer	SC	Shoe Cabinet
DW	Dishwasher	WCH	Wine Chiller	W	Washer	DB	Distribution Board
GH	Gas Hob	CO	Conventional Oven			ST	Storage



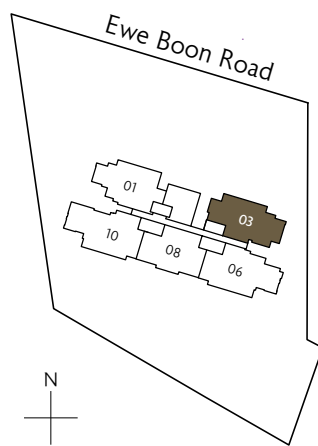
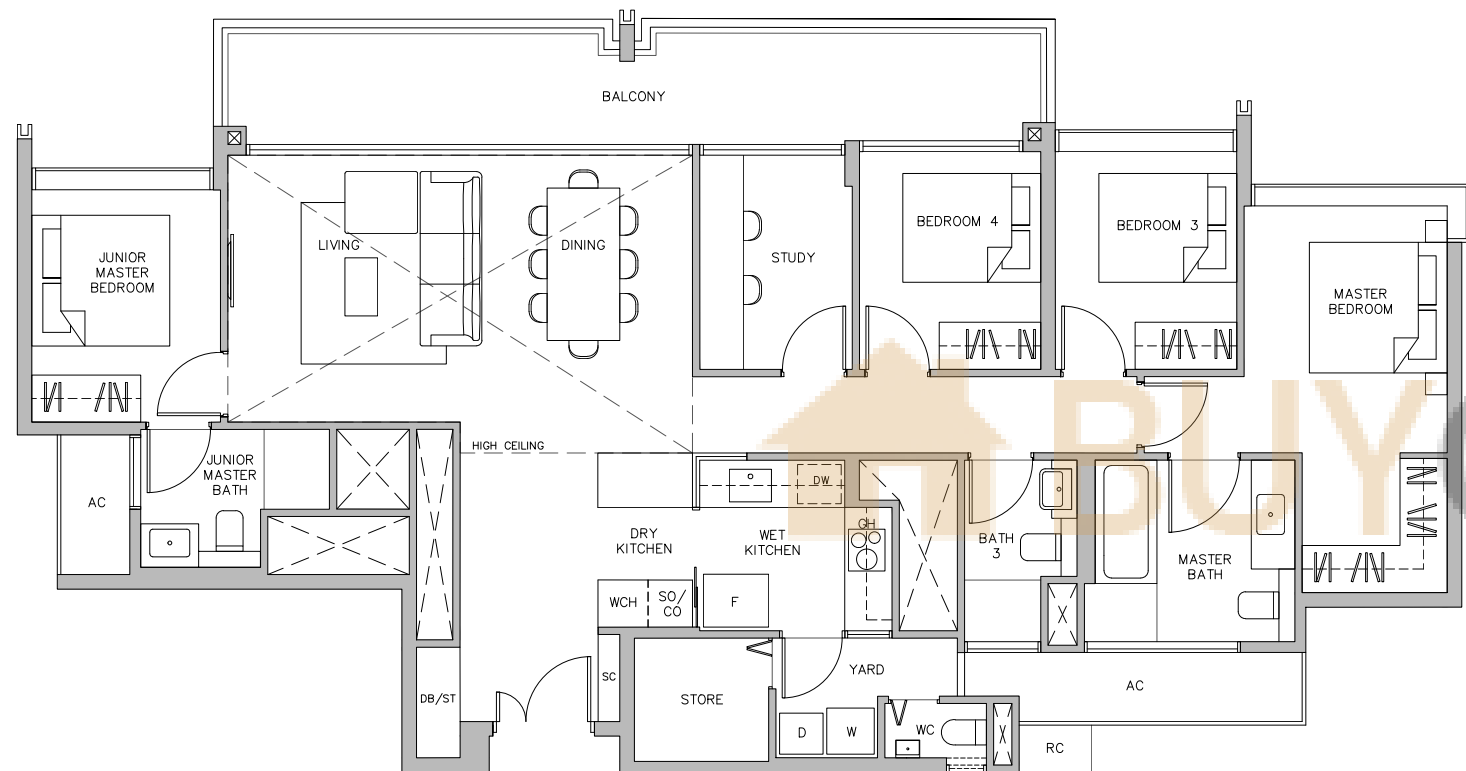
Area includes air-con (A/C) ledge. Private enclosed space (PES), balcony and strata void area where applicable. Some units are mirror images of the apartment plans shown in the brochure. Please refer to the key plan for orientation. The plans are subject to change as may be approved by relevant authorities. All floor plans are approximate measurements only and are subject to government re-survey. The balcony shall not be enclosed unless with the approved balcony screen. Please refer to the diagram annexed hereto as "Approved Balcony Screen".

Area includes air-con (A/C) ledge. Private enclosed space (PES), balcony and strata void area where applicable. Some units are mirror images of the apartment plans shown in the brochure. Please refer to the key plan for orientation. The plans are subject to change as may be approved by relevant authorities. All floor plans are approximate measurements only and are subject to government re-survey. The balcony shall not be enclosed unless with the approved balcony screen. Please refer to the diagram annexed hereto as "Approved Balcony Screen".

4-BEDROOM + STUDY

TYPE D3S

183 sq m / 1970 sq ft
 INCLUSIVE OF 27 SQ M OF VOID AREA ABOVE LIVING AND DINING
 #12-03



Key plan is not drawn to scale

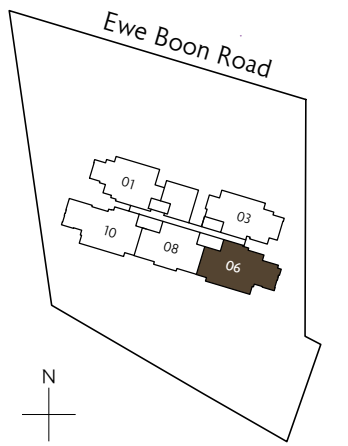
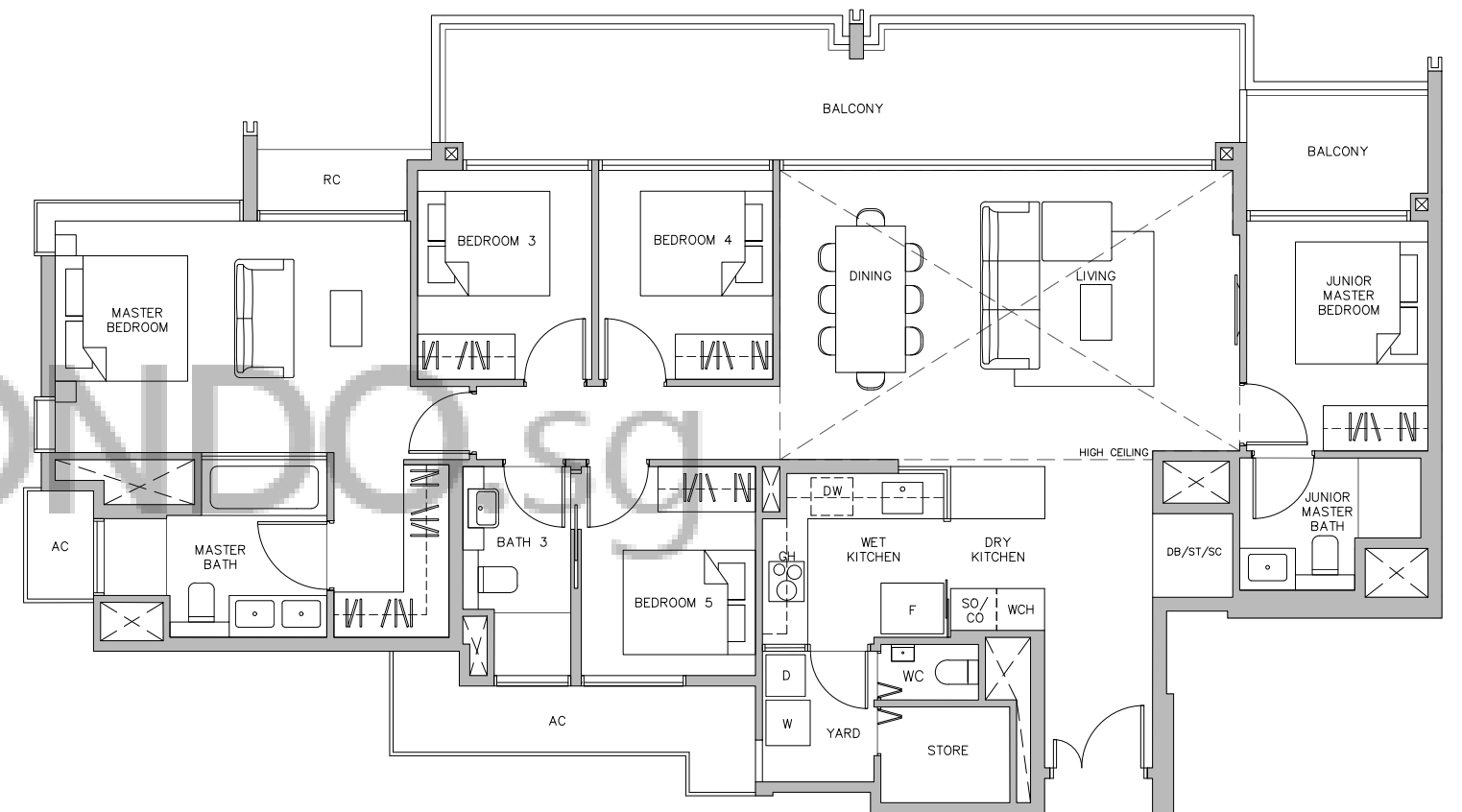
- | | | | | | | | |
|----|------------|-----|-------------------|----|---------|----|--------------------|
| F | Fridge | SO | Steam Oven | D | Dryer | SC | Shoe Cabinet |
| DW | Dishwasher | WCH | Wine Chiller | W | Washer | DB | Distribution Board |
| GH | Gas Hob | CO | Conventional Oven | ST | Storage | | |



5-BEDROOM

TYPE E1

206 sq m / 2217 sq ft
 INCLUSIVE OF 30 SQ M OF VOID AREA ABOVE LIVING AND DINING
 #12-06



Key plan is not drawn to scale

- | | | | | | | | |
|----|------------|-----|-------------------|----|---------|----|--------------------|
| F | Fridge | SO | Steam Oven | D | Dryer | SC | Shoe Cabinet |
| DW | Dishwasher | WCH | Wine Chiller | W | Washer | DB | Distribution Board |
| GH | Gas Hob | CO | Conventional Oven | ST | Storage | | |



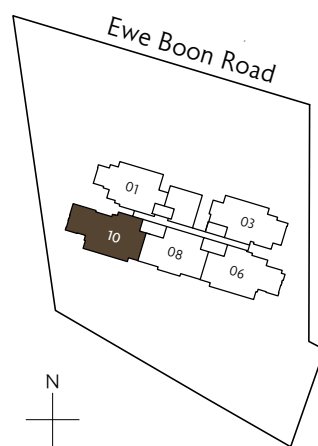
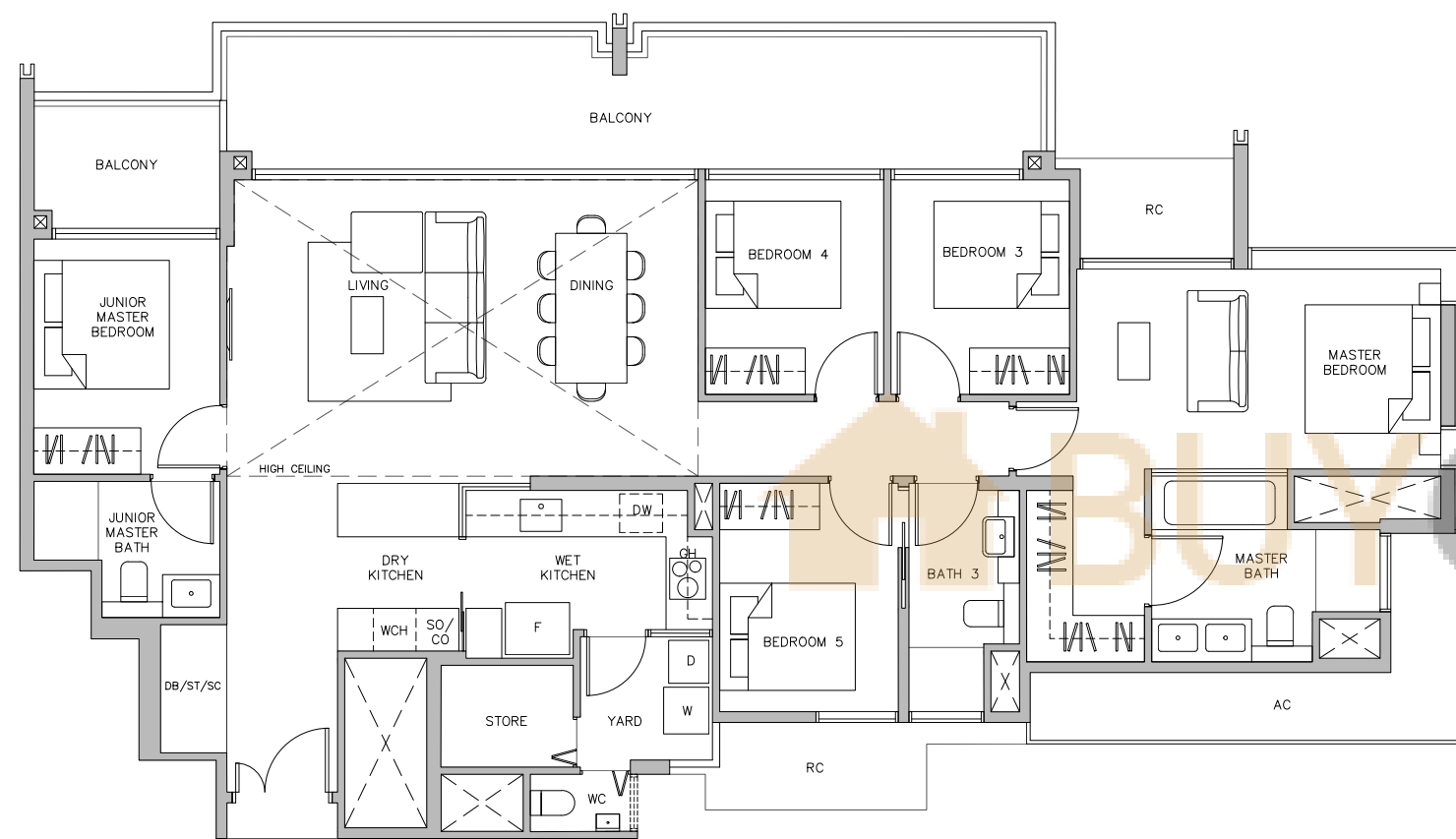
Area includes air-con (A/C) ledge. Private enclosed space (PES), balcony and strata void area where applicable. Some units are mirror images of the apartment plans shown in the brochure. Please refer to the key plan for orientation. The plans are subject to change as may be approved by relevant authorities. All floor plans are approximate measurements only and are subject to government re-survey. The balcony shall not be enclosed unless with the approved balcony screen. Please refer to the diagram annexed hereto as "Approved Balcony Screen".

Area includes air-con (A/C) ledge. Private enclosed space (PES), balcony and strata void area where applicable. Some units are mirror images of the apartment plans shown in the brochure. Please refer to the key plan for orientation. The plans are subject to change as may be approved by relevant authorities. All floor plans are approximate measurements only and are subject to government re-survey. The balcony shall not be enclosed unless with the approved balcony screen. Please refer to the diagram annexed hereto as "Approved Balcony Screen".

5-BEDROOM

TYPE E2

206 sq m / 2217 sq ft
 INCLUSIVE OF 30 SQ M OF VOID AREA ABOVE LIVING AND DINING
 #12-10

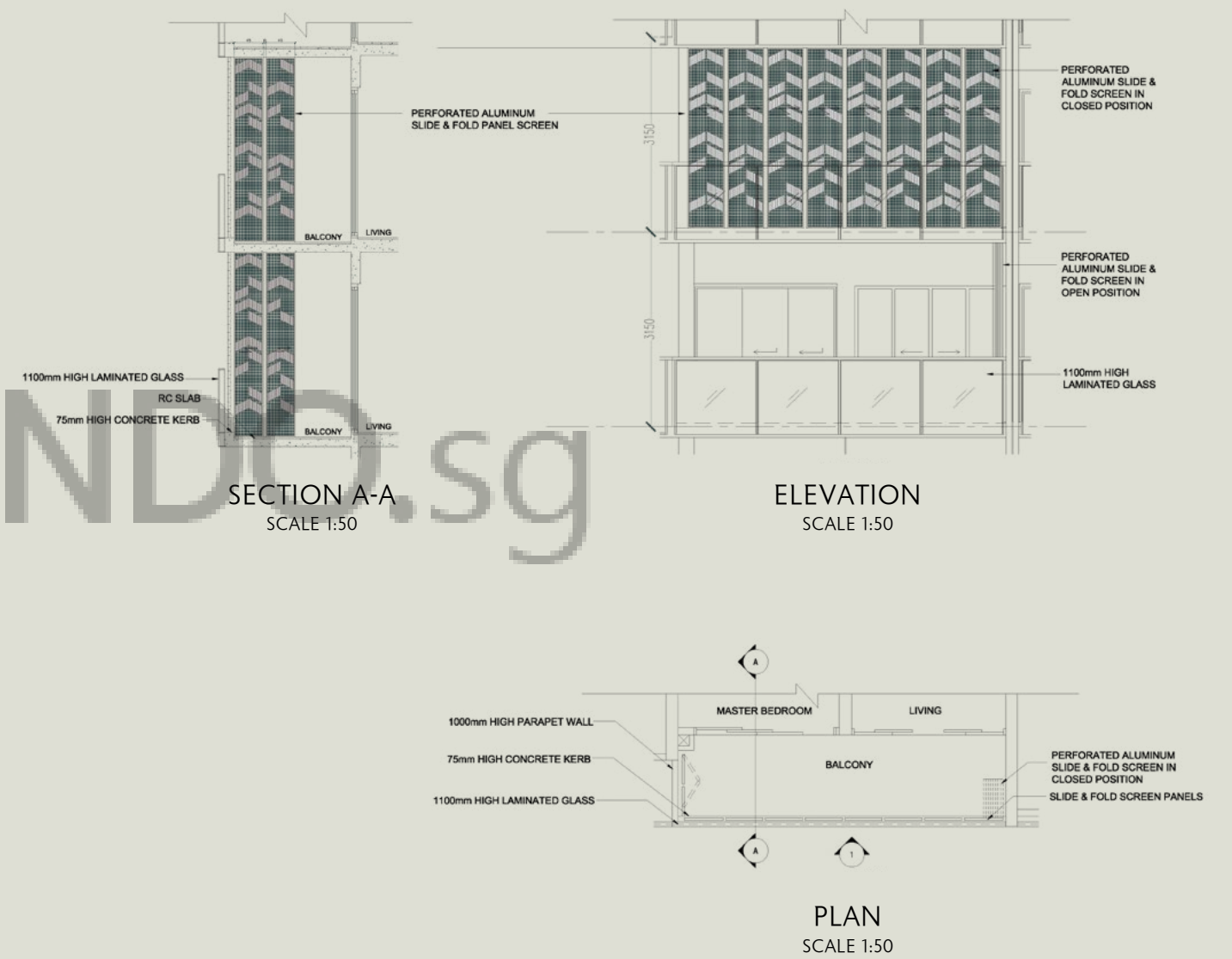


F	Fridge	SO	Steam Oven	D	Dryer	SC	Shoe Cabinet
DW	Dishwasher	WCH	Wine Chiller	W	Washer	DB	Distribution Board
GH	Gas Hob	CO	Conventional Oven			ST	Storage

Key plan is not drawn to scale

Area includes air-con (A/C) ledge. Private enclosed space (PES), balcony and strata void area where applicable. Some units are mirror images of the apartment plans shown in the brochure. Please refer to the key plan for orientation. The plans are subject to change as may be approved by relevant authorities. All floor plans are approximate measurements only and are subject to government re-survey. The balcony shall not be enclosed unless with the approved balcony screen. Please refer to the diagram annexed hereto as "Approved Balcony Screen".

APPROVED BALCONY SCREEN



Note:
 1. The balcony shall not be enclosed unless with the approved balcony screen (as shown above)
 2. The installation and cost of the screen shall be borne by the Purchaser