

TYPE A1
1-BEDROOM

Unit #02-05, #05-05 to #09-05
Area 56 Sqm / 603 Sqft



TYPE A1 - 1
1-BEDROOM (DOUBLE VOLUME)

Unit #03-05
Area 84 Sqm / 904 Sqft



TYPE A4
1-BEDROOM + STUDY

Unit #01-04
Area 84 Sqm / 904 Sqft
(including PES / Planter 27 Sqm / 291 Sqft)



TYPE A2
1-BEDROOM

Unit #02-04, #05-04 to #09-04
Area 55 Sqm / 592 Sqft



TYPE A2 - 1
1-BEDROOM (DOUBLE VOLUME)

Unit #03-04
Area 81 Sqm / 872 Sqft



TYPE A5
1-BEDROOM

Unit #01-05
Area 80 Sqm / 861 Sqft
(including PES / Planter 25 Sqm / 269 Sqft)



TYPE A3
1-BEDROOM + STUDY

Unit #02-03, #05-03 to #09-03
Area 66 Sqm / 710 Sqft



TYPE A3 - 1
1-BEDROOM + STUDY (DOUBLE VOLUME)

Unit #03-03
Area 98 Sqm / 1055 Sqft



TYPE A6
1-BEDROOM

Unit #01-06
Area 92 Sqm / 990 Sqft
(including PES / Planter 27 Sqm / 291 Sqft)



TYPE B1 - 01
2-BEDROOM + STUDY

Unit #02-09 to #08-09
Area 157 Sqm / 1690 Sqft



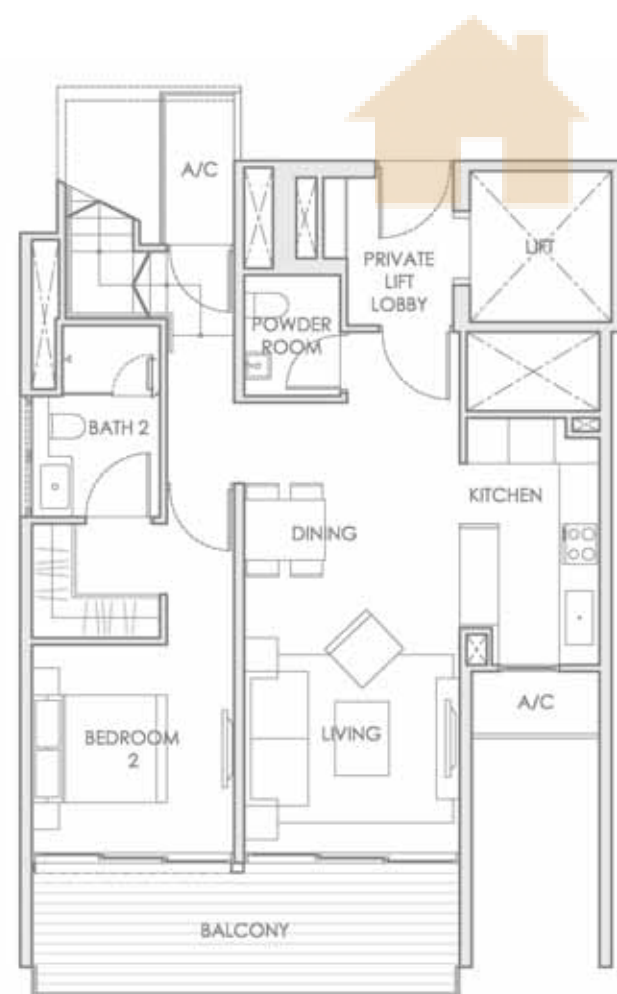
UPPER STOREY

TYPE B1 - 02
2-BEDROOM + STUDY

Unit #02-10 to #08-10
Area 158 Sqm / 1701 Sqft



UPPER STOREY



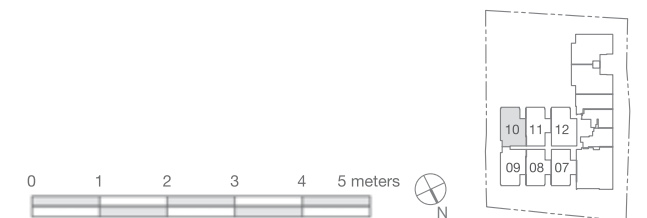
LOWER STOREY



LOWER STOREY



BUYCONDO.SG



TYPE B2 - 01
2-BEDROOM + STUDY

Unit #02-08 to #08-08
Area 155 Sqm / 1668 Sqft



UPPER STOREY

TYPE B2 - 02
2-BEDROOM + STUDY

Unit #02-11 to #08-11
Area 156 Sqm / 1679 Sqft



UPPER STOREY



LOWER STOREY



LOWER STOREY



The plans are for general guidance only and subject to changes as may be approved by the relevant authority. The floor plans are approximate measurements and subject to final survey.
BP Approval No.: A1002-00003-2011-BP01 Dated 30 April 2012

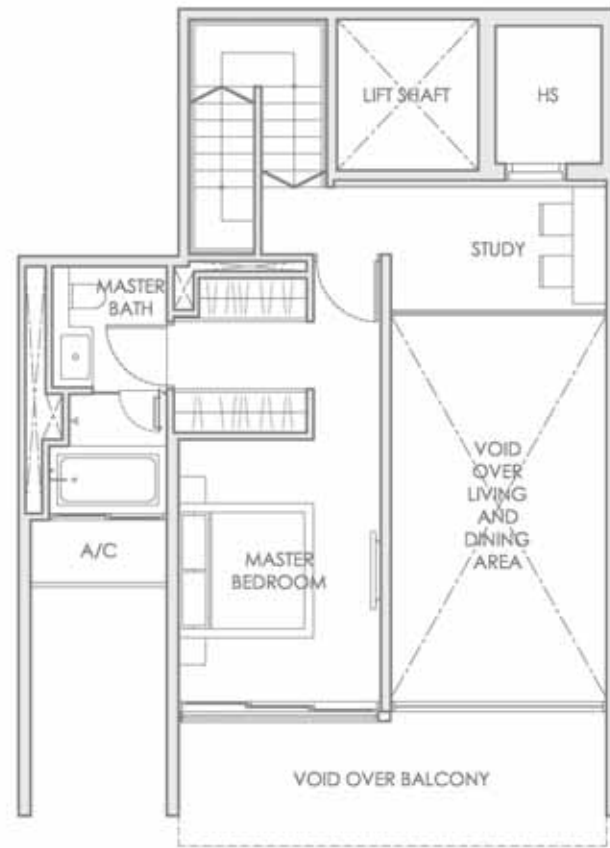
BUYCONDO.SG



The plans are for general guidance only and subject to changes as may be approved by the relevant authority. The floor plans are approximate measurements and subject to final survey.
BP Approval No.: A1002-00003-2011-BP01 Dated 30 April 2012

TYPE B3 - 01
2-BEDROOM + STUDY

Unit #02-07 to #08-07
Area 155 Sqm / 1668 Sqft



UPPER STOREY

TYPE B3 - 02
2-BEDROOM + STUDY

Unit #02-12 to #08-12
Area 156 Sqm / 1679 Sqft



UPPER STOREY



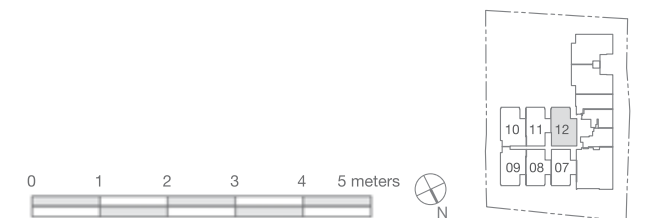
LOWER STOREY



LOWER STOREY



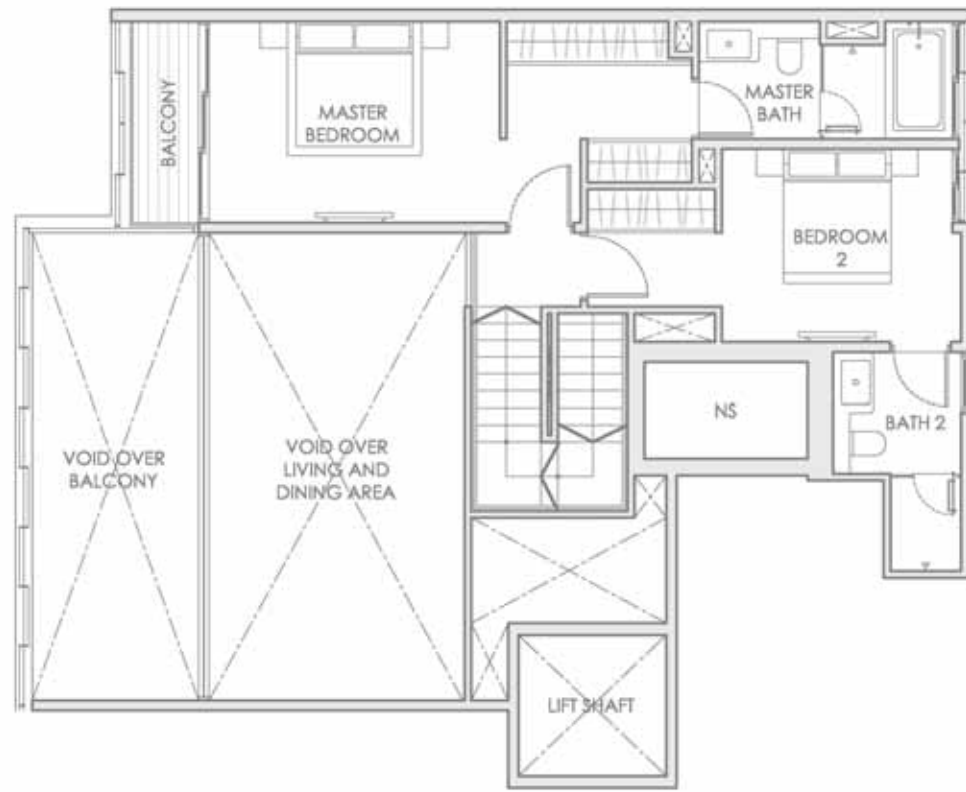
The plans are for general guidance only and subject to changes as may be approved by the relevant authority. The floor plans are approximate measurements and subject to final survey.
BP Approval No.: A1002-00003-2011-BP01 Dated 30 April 2012



The plans are for general guidance only and subject to changes as may be approved by the relevant authority. The floor plans are approximate measurements and subject to final survey.
BP Approval No.: A1002-00003-2011-BP01 Dated 30 April 2012

TYPE C1 - 01
3-BEDROOM

Unit #02-01 to #08-01
Area 225 Sqm / 2422 Sqft



UPPER STOREY

TYPE C1 - 02
3-BEDROOM

Unit #02-02 to #08-02
Area 225 Sqm / 2422 Sqft



UPPER STOREY



LOWER STOREY



LOWER STOREY



The plans are for general guidance only and subject to changes as may be approved by the relevant authority. The floor plans are approximate measurements and subject to final survey.
BP Approval No.: A1002-00003-2011-BP01 Dated 30 April 2012

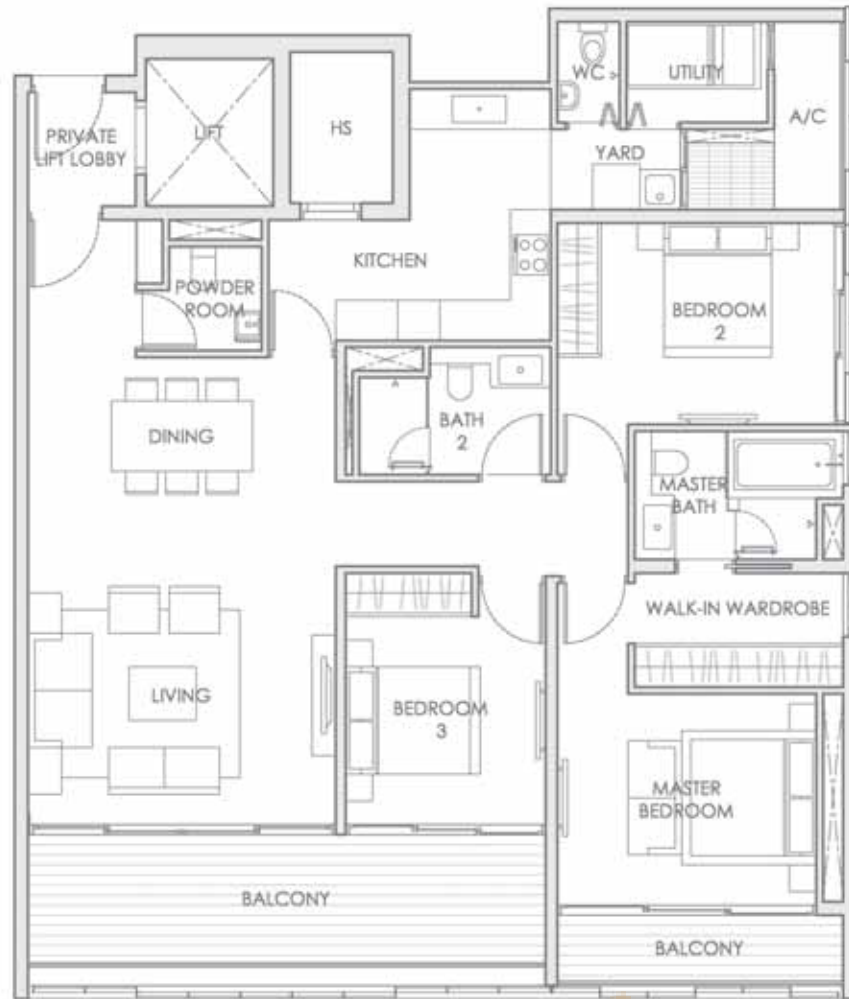
BUYCONDO.sg



The plans are for general guidance only and subject to changes as may be approved by the relevant authority. The floor plans are approximate measurements and subject to final survey.
BP Approval No.: A1002-00003-2011-BP01 Dated 30 April 2012

TYPE C2
3-BEDROOM

Unit #02-06 to #09-06
Area 161 Sqm / 1733 Sqft




TYPE C3
3-BEDROOM

Unit #10-06
Area 338 Sqm / 3638 Sqft



UPPER STOREY

 BUYCONDO.SG



LOWER STOREY



The plans are for general guidance only and subject to changes as may be approved by the relevant authority. The floor plans are approximate measurements and subject to final survey.
BP Approval No.: A1002-00003-2011-BP01 Dated 30 April 2012



The plans are for general guidance only and subject to changes as may be approved by the relevant authority. The floor plans are approximate measurements and subject to final survey.
BP Approval No.: A1002-00003-2011-BP01 Dated 30 April 2012