

SCHEMATIC DIAGRAM

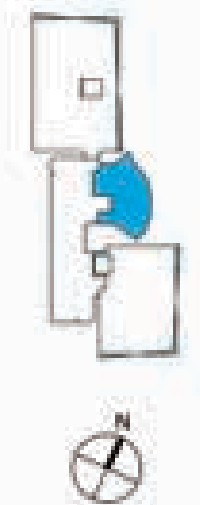
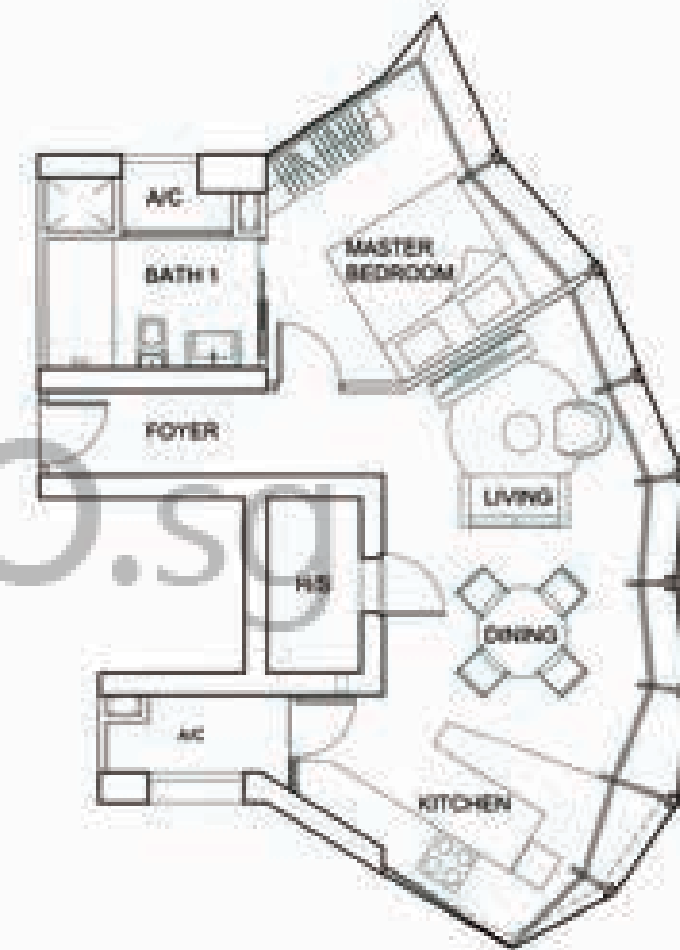
#35-01 Type H (Penthouse)		
#34-01 Type G (Penthouse)		
#32-01 Type E		#32-02 Type F
#30-01 Type E		#30-02 Type F
#28-01 Type E	#28-03 Type B	#28-02 Type F
#26-01 Type E		#26-02 Type F
#24-01 Type E		#24-02 Type F
#22-01 Type E	#22-03 Type B	#22-02 Type F
#20-01 Type E		#20-02 Type F
#18-01 Type E		#18-02 Type F
#16-01 Type E	#16-03 Type B	#16-02 Type F
#14-01 Type E		#14-02 Type F
#13-01 Type C		#13-02 Type D
#12-01 Type C		#12-02 Type D
#11-01 Type C	#11-03 Type A	#11-02 Type D
#10-01 Type C	#10-03 Type A	#10-02 Type D
#09-01 Type C		#09-02 Type D
#08-01 Type C		#08-02 Type D
#07-01 Type C		#07-02 Type D
#06-01 Type C		#06-02 Type D
#05-01 Type C	#05-03 Type A	#05-02 Type D
#04-01 Type C	#04-03 Type A	#04-02 Type D
#03-01 Type C		#03-02 Type D
#02-01 Type C		#02-02 Type D
LIFT LOBBY	LIFT LOBBY	LIFT LOBBY
BASEMENT CARPARK		

- Type A - 1 bedroom
- Type B - 2 bedroom duplex
- Type C - 3 bedroom
- Type D - 4 bedroom
- Type E - 3 bedroom duplex
- Type F - 4 bedroom duplex
- Type G - Penthouse with private pool
- Type H - Penthouse with private pool
- Sky garden

I Bedroom

Type A

#10-03, #11-03
65 sq m (699 sq ft)



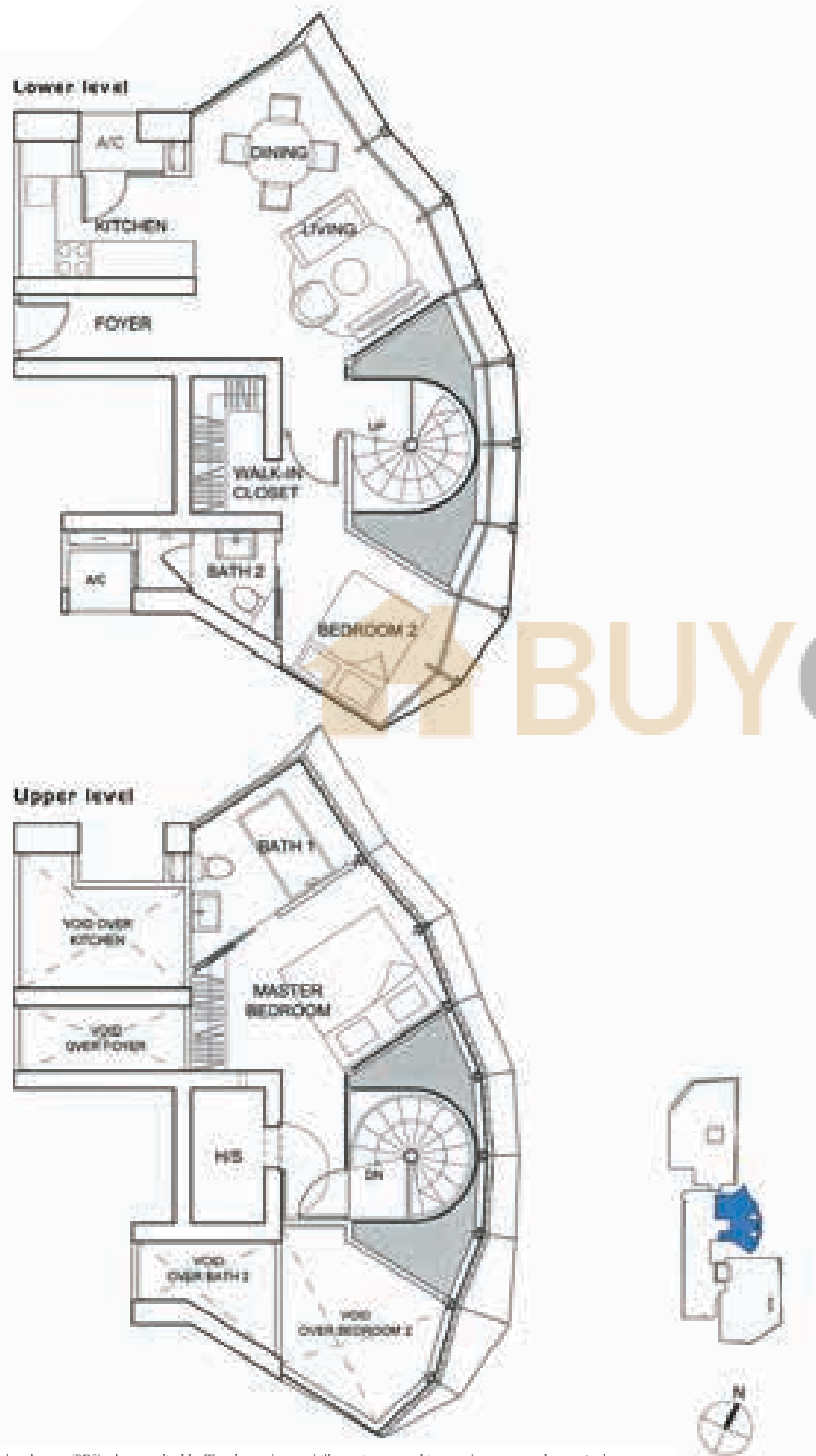
Area includes A/C ledge, Balcony and private enclosed space (PES) where applicable. The above plans and illustrations are subject to change as maybe required or approved by the relevant authorities. All floor areas are approximate only and subject to final survey. Please refer to the key plan for orientation.

面积包括适用的空调壁架、阳台及专属私人空间(PES)。上述平面图。与插图可能会根据相关机构的要求或批准进行修改。所有楼层面积仅为近似值，须经最后测量确定。有关公寓单位的方位，请参阅相关的主要平面图。

2 Bedroom Duplex

Type B

#22-03, #28-03
109 sq m (1,173 sq ft)



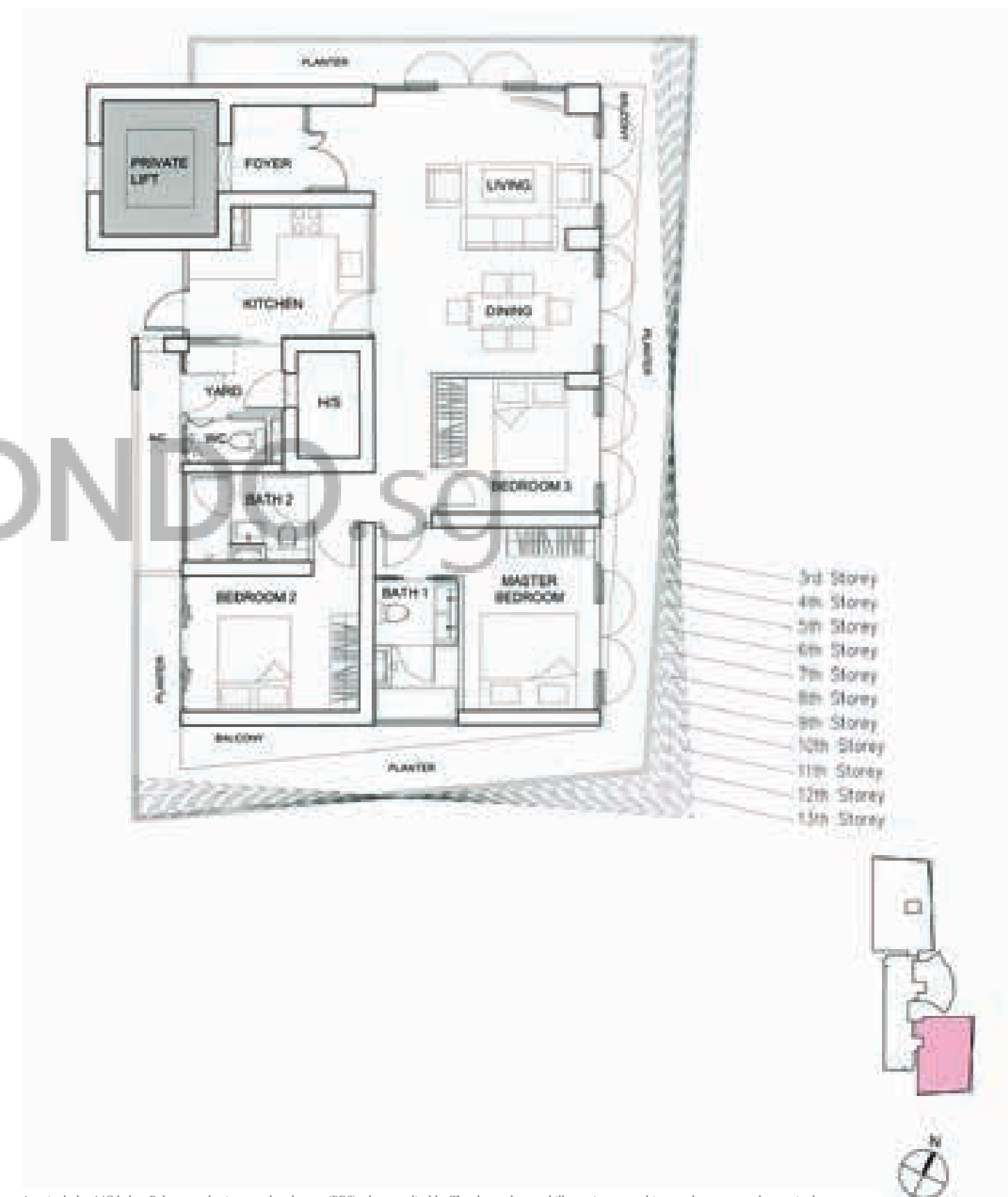
Area includes A/C ledge, Balcony and private enclosed space (PES) where applicable. The above plans and illustrations are subject to change as maybe required or approved by the relevant authorities. All floor areas are approximate only and subject to final survey. Please refer to the key plan for orientation.

面积包括适用的空调支架、阳台及专属私人空间(PES)。上述平面图。与插图可能会根据相关机构的要求或批准进行修改。所有楼层面积仅为近似值, 须经最后测量确定。有关公寓单位的方位, 请参阅相关的主要平面图。

3 Bedroom

Type C

#02-01, #04-01, #09-01, #10-01, #13-01
163 sq m (1,754 sq ft)



Area includes A/C ledge, Balcony and private enclosed space (PES) where applicable. The above plans and illustrations are subject to change as maybe required or approved by the relevant authorities. All floor areas are approximate only and subject to final survey. Please refer to the key plan for orientation.

面积包括适用的空调支架、阳台及专属私人空间(PES)。上述平面图。与插图可能会根据相关机构的要求或批准进行修改。所有楼层面积仅为近似值, 须经最后测量确定。有关公寓单位的方位, 请参阅相关的主要平面图。

4 Bedroom

Type D

#02-02, #03-02, #04-02, #05-02, #06-02, #08-02, #09-02
226 sq m (2,432 sq ft)



Area includes A/C ledge, Balcony and private enclosed space (PES) where applicable. The above plans and illustrations are subject to change as maybe required or approved by the relevant authorities. All floor areas are approximate only and subject to final survey. Please refer to the key plan for orientation.

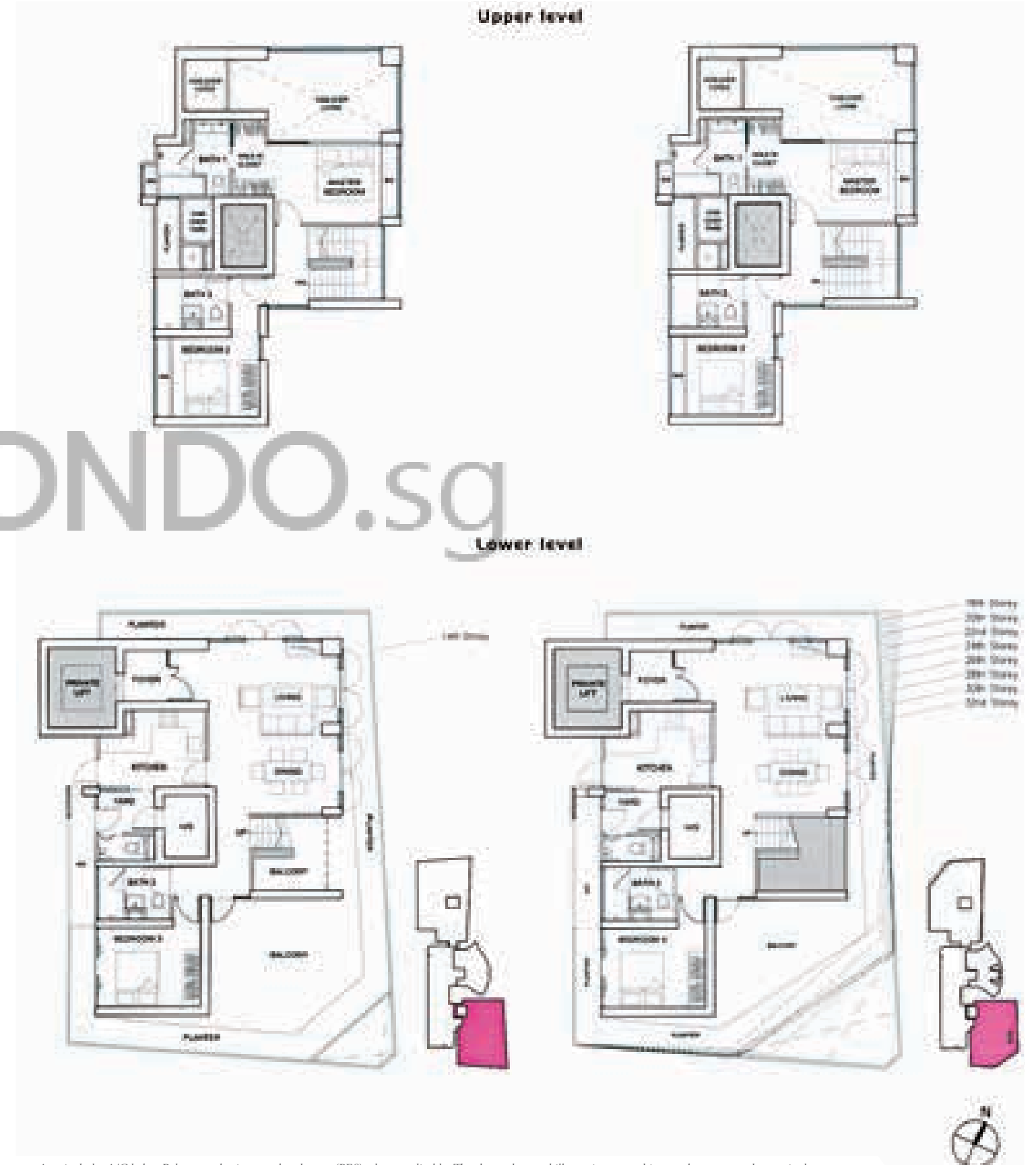
面积包括适用的空调壁架、阳台及专属私人空间(PES)。上述平面图。与插图可能会根据相关机构的要求或批准进行修改。所有楼层面积仅为近似值，须经最后测量确定。有关公寓单位的方位，请参阅相关的主要平面图。

3 Bedroom Duplex

Type E

#14-01 : 241 sq m (2,593 sq ft)

#16-01, #18-01 : 232 sq m (2,496 sq ft)
#20-01, #22-01, #24-01, #26-01 : 233 sq m (2,507 sq ft)
#28-01 : 234 sq m (2,518 sq ft)
#30-01 : 231 sq m (2,486 sq ft)
#32-01 : 227 sq m (2,443 sq ft)



Area includes A/C ledge, Balcony and private enclosed space (PES) where applicable. The above plans and illustrations are subject to change as maybe required or approved by the relevant authorities. All floor areas are approximate only and subject to final survey. Please refer to the key plan for orientation.

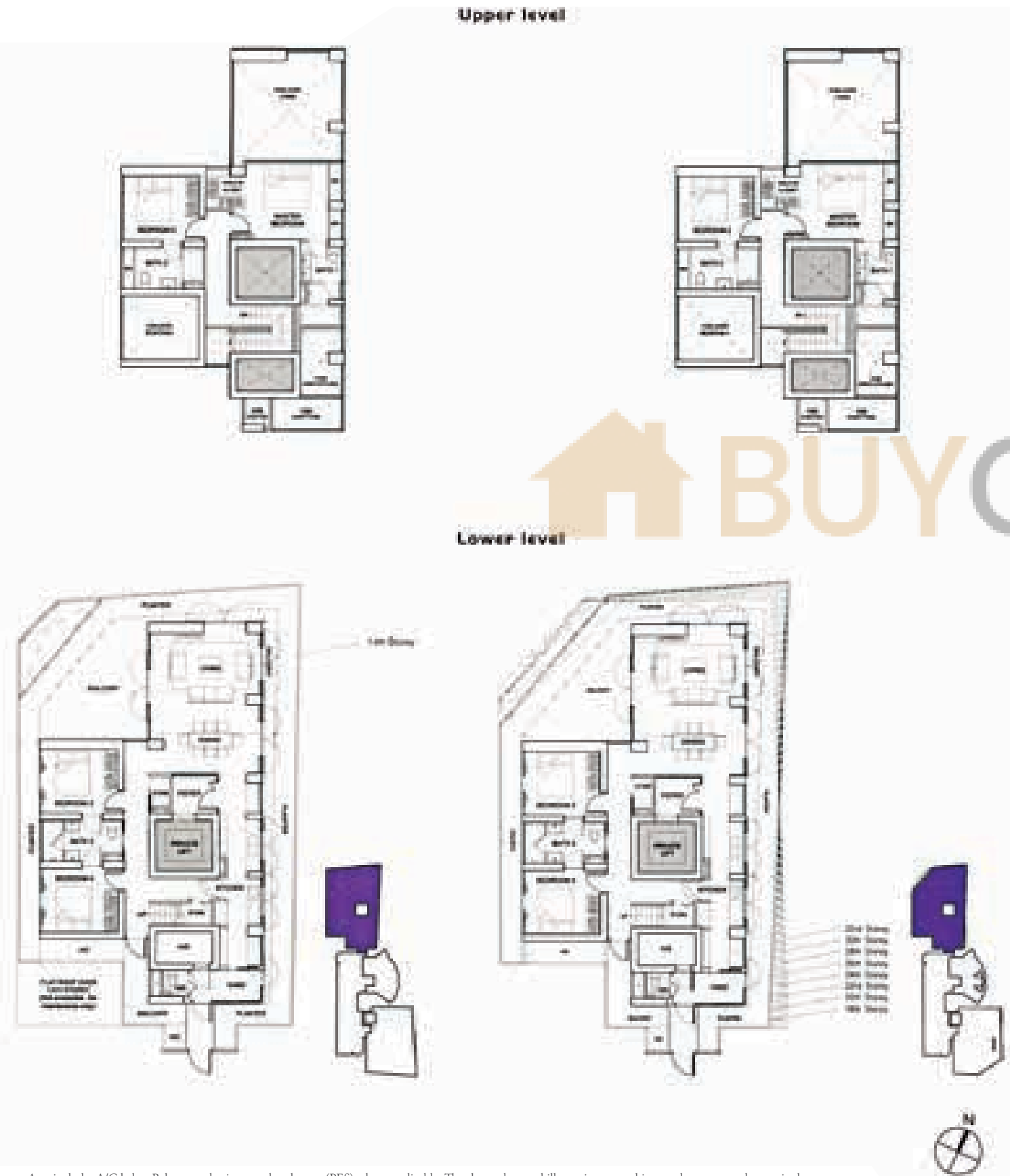
面积包括适用的空调壁架、阳台及专属私人空间(PES)。上述平面图。与插图可能会根据相关机构的要求或批准进行修改。所有楼层面积仅为近似值，须经最后测量确定。有关公寓单位的方位，请参阅相关的主要平面图。

4 Bedroom Duplex

Type F

#14-02 : 318 sq m (3,422 sq ft)

- #16-02 : 307 sq m (3,303 sq ft)
- #18-02, #20-02 : 310 sq m (3,336 sq ft)
- #24-02 : 309 sq m (3,325 sq ft)
- #26-02 : 310 sq m (3,336 sq ft)
- #30-02 : 304 sq m (3,271 sq ft)
- #32-02 : 300 sq m (3,228 sq ft)



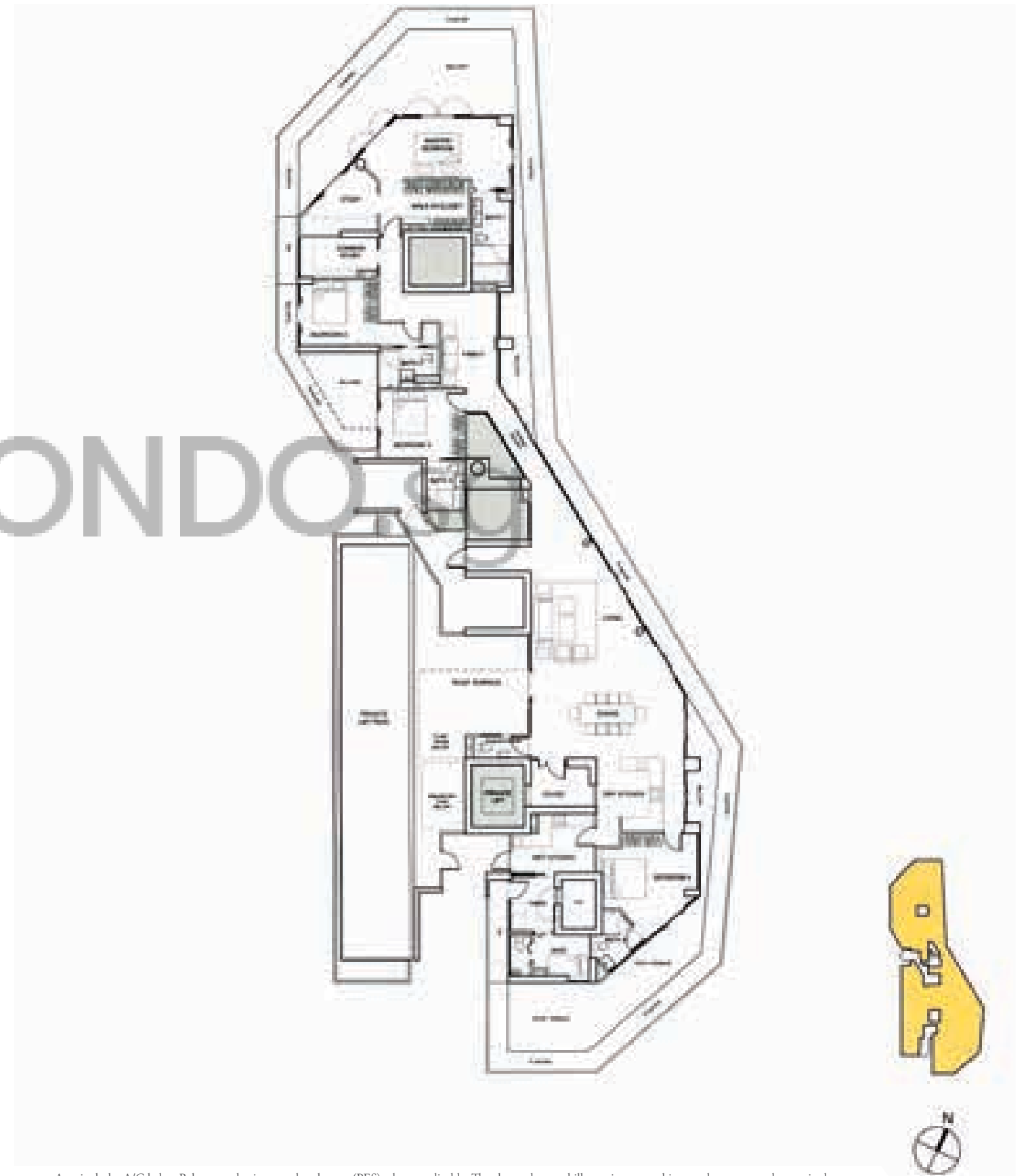
Area includes A/C ledge, Balcony and private enclosed space (PES) where applicable. The above plans and illustrations are subject to change as maybe required or approved by the relevant authorities. All floor areas are approximate only and subject to final survey. Please refer to the key plan for orientation.

面积包括适用的空调壁架、阳台及专属私人空间(PES)。上述平面图。与插图可能会根据相关机构的要求或批准进行修改。所有楼层面积仅为近似值，须经最后测量确定。有关公寓单位的方位，请参阅相关的主要平面图。

Penthouse with Private Pool

Type G

#34-01 : 551 sq m (5,929 sq ft)



Area includes A/C ledge, Balcony and private enclosed space (PES) where applicable. The above plans and illustrations are subject to change as maybe required or approved by the relevant authorities. All floor areas are approximate only and subject to final survey. Please refer to the key plan for orientation.

面积包括适用的空调壁架、阳台及专属私人空间(PES)。上述平面图。与插图可能会根据相关机构的要求或批准进行修改。所有楼层面积仅为近似值，须经最后测量确定。有关公寓单位的方位，请参阅相关的主要平面图。

Penthouse with Private Pool

Type H

#35-01 : 531 sq m (5,714 sq ft)



Area includes A/C ledge, Balcony and private enclosed space (PES) where applicable. The above plans and illustrations are subject to change as maybe required or approved by the relevant authorities. All floor areas are approximate only and subject to final survey. Please refer to the key plan for orientation.

面积包括适用的空调壁架、阳台及专属私人空间(PES)。上述平面图。与插图可能会根据相关机构的要求或批准进行修改。所有楼层面积仅为近似值，须经最后测量确定。有关公寓单位的方位，请参阅相关的主要平面图。

Disclaimer: Whilst every reasonable care has been taken in preparing this brochure, the developer and its agents cannot be held responsible for any inaccuracies. All statements are believed to be correct but not to be regarded as statement or representation of facts. Visual representations, illustrations, photographs and renderings are only intended for impressions of the development. All information and specifications are subject to change as may be required and cannot form any part of an offer or contract. All plans are subject to amendments approved by the relevant authorities. Floor areas are approximate measurements only and are subject to final survey.

免责声明：本册编写已尽可能采取合理的谨慎措施，若出现任何不准确之处，开发商及其代理人均不负责。所有陈述皆被认为正确无误的，但不可被视为事实的叙述及陈述。图像、插图、照片及效果图仅为建筑设计概念的表达。所有信息及规格可能会根据需要进行更改，并且不能构成要约或合同的任何部分。所有平面图日后或会修订，并须经有关当局批准。楼面面积仅为近似测量值，须经最终测量确定。