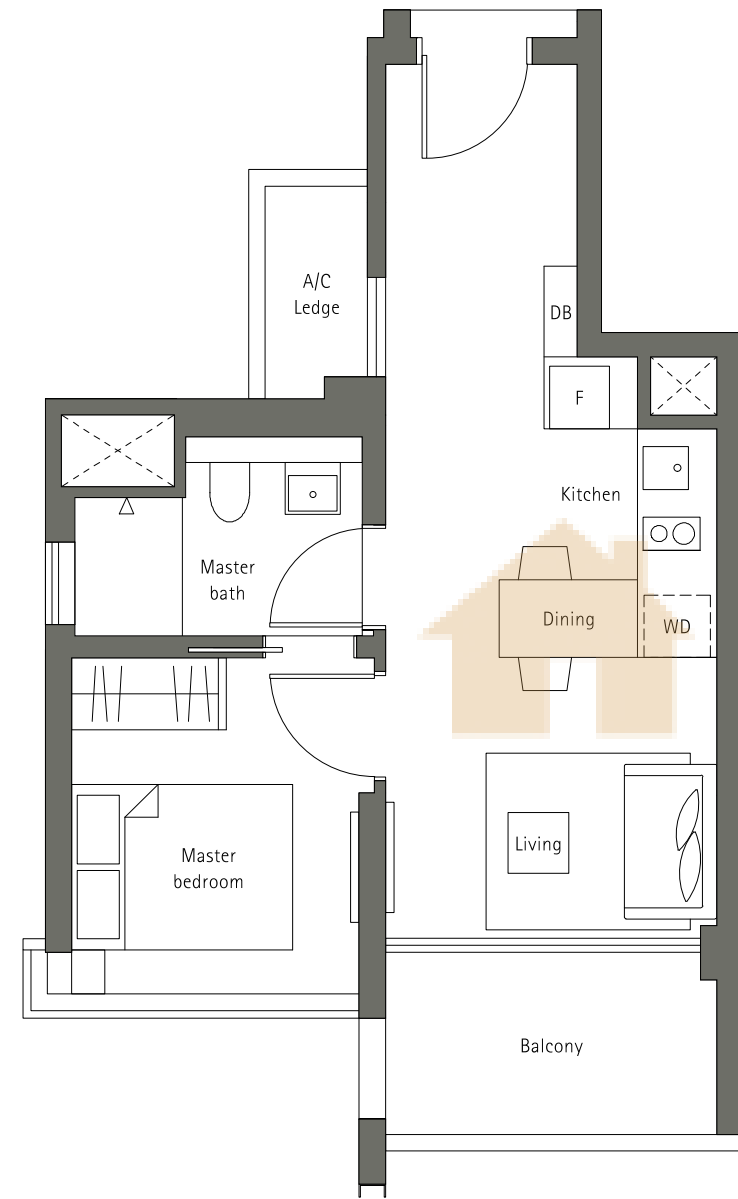


Type A1

1-Bedroom
47 sqm . 506 sqft

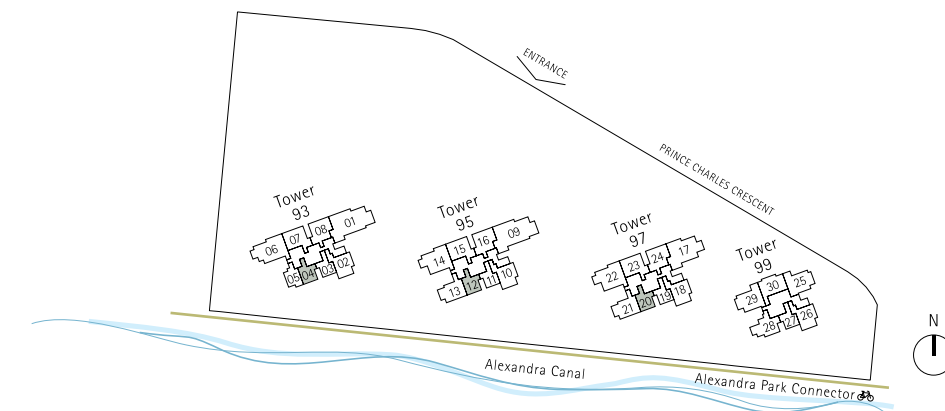
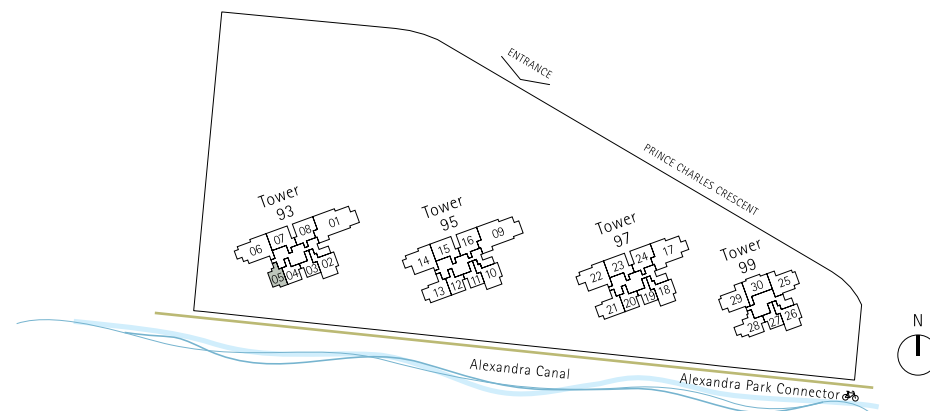
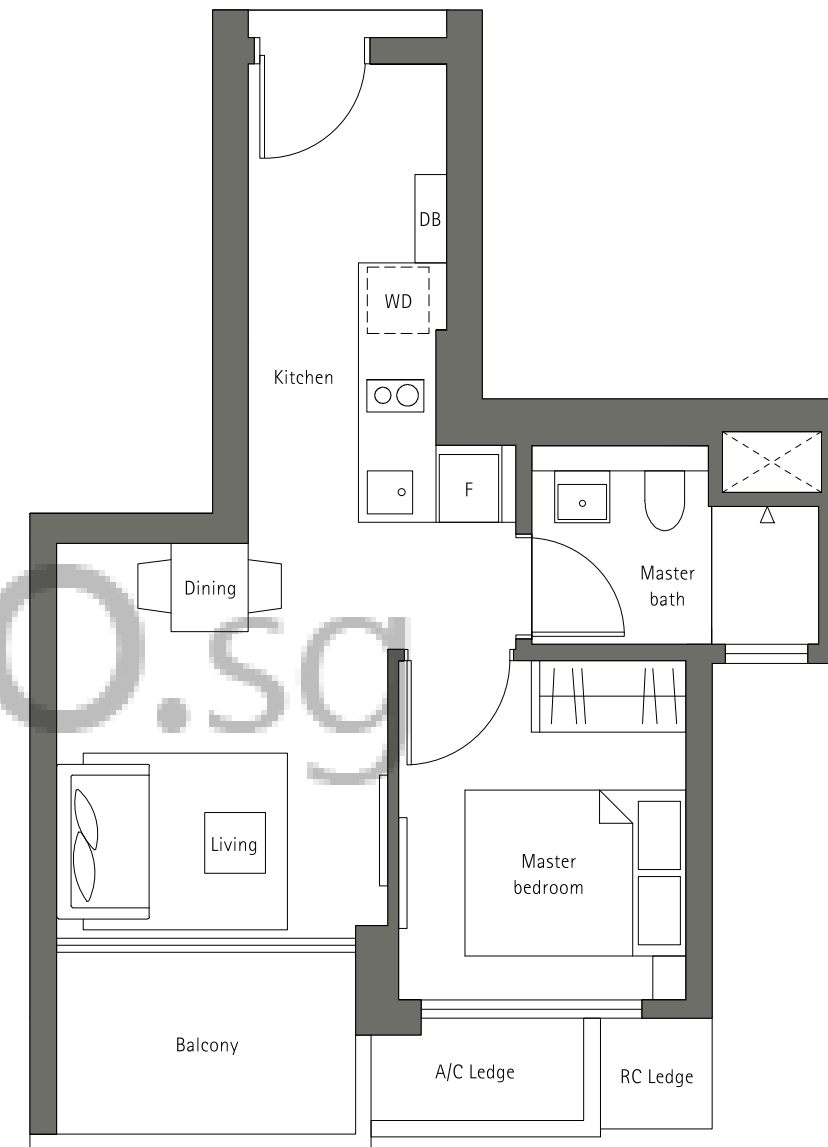
Tower 93 #02-05 to #24-05



Type A2a

1-Bedroom
46 sqm . 495 sqft

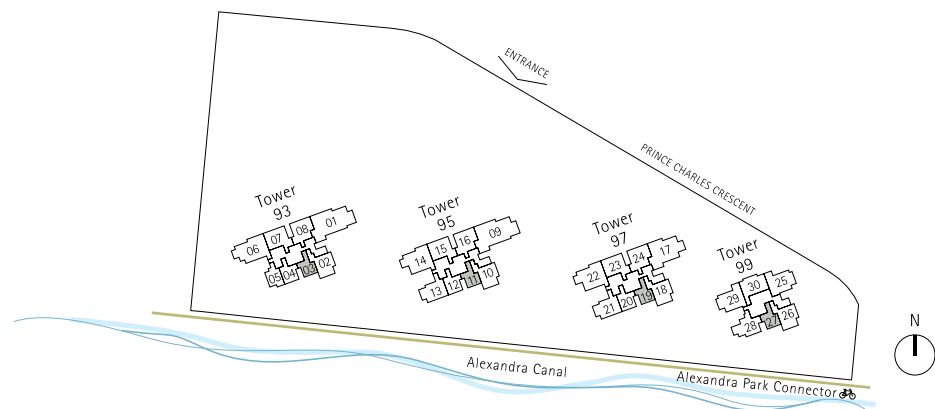
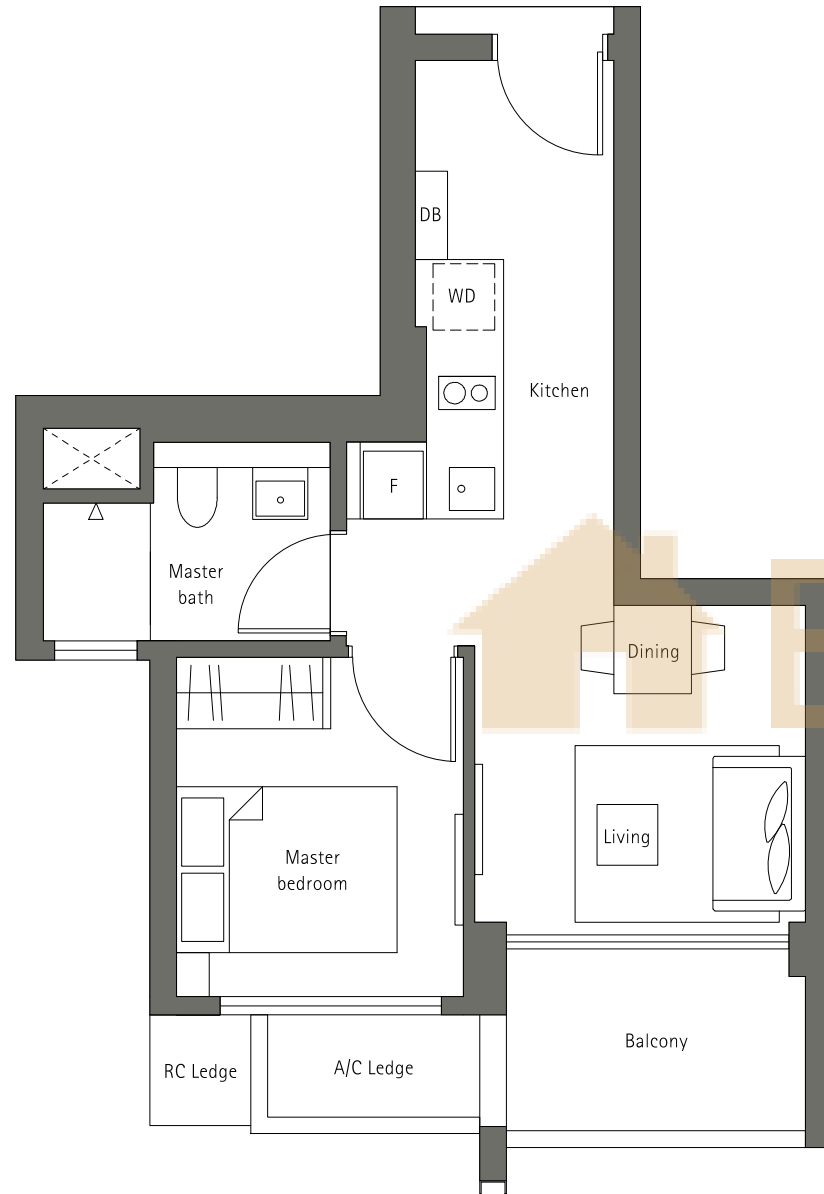
Tower 93 #02-04 to #24-04
Tower 95 #02-12 to #24-12
Tower 97 #02-20 to #24-20



Type A2b

1-Bedroom
45 sqm . 484 sqft

Tower 93 #02-03 to #24-03
Tower 95 #02-11 to #24-11
Tower 97 #02-19 to #24-19
Tower 99 #03-27 to #23-27

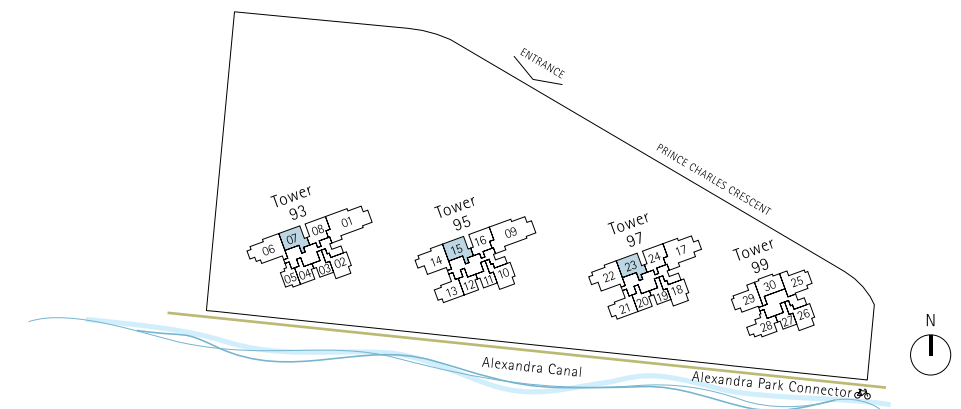
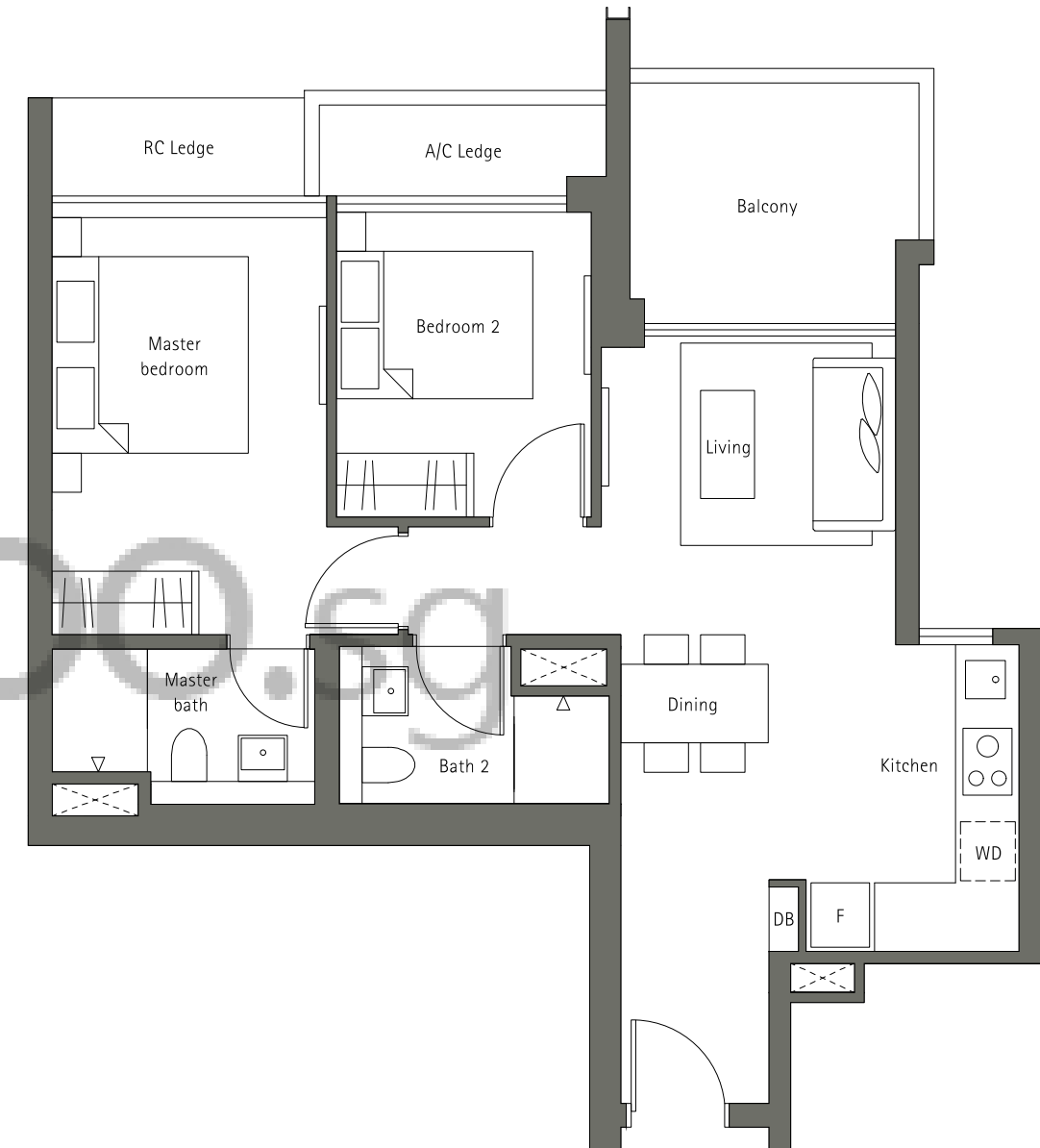


The plans are subject to change as may be required or approved by the relevant authorities. Areas are estimates only and subject to final survey. Plans are not drawn to scale and do not form part of the contract.

Type B1

2-Bedroom
75 sqm . 807 sqft

Tower 93 #02-07 to #24-07
Tower 95 #02-15 to #24-15
Tower 97 #02-23 to #24-23

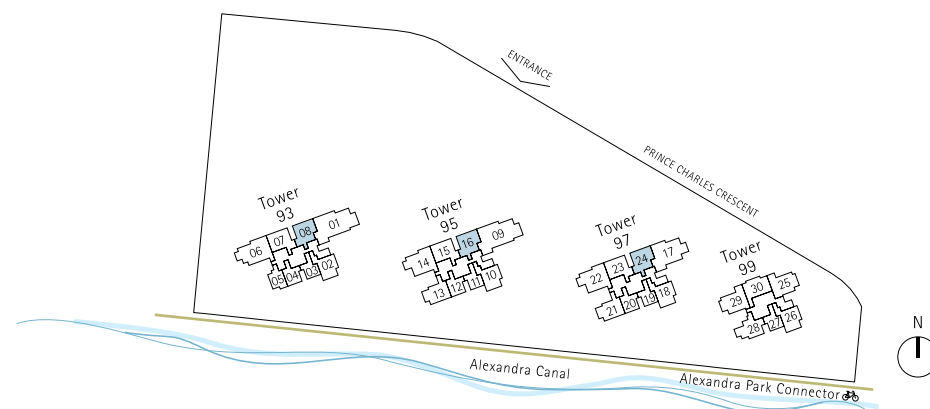
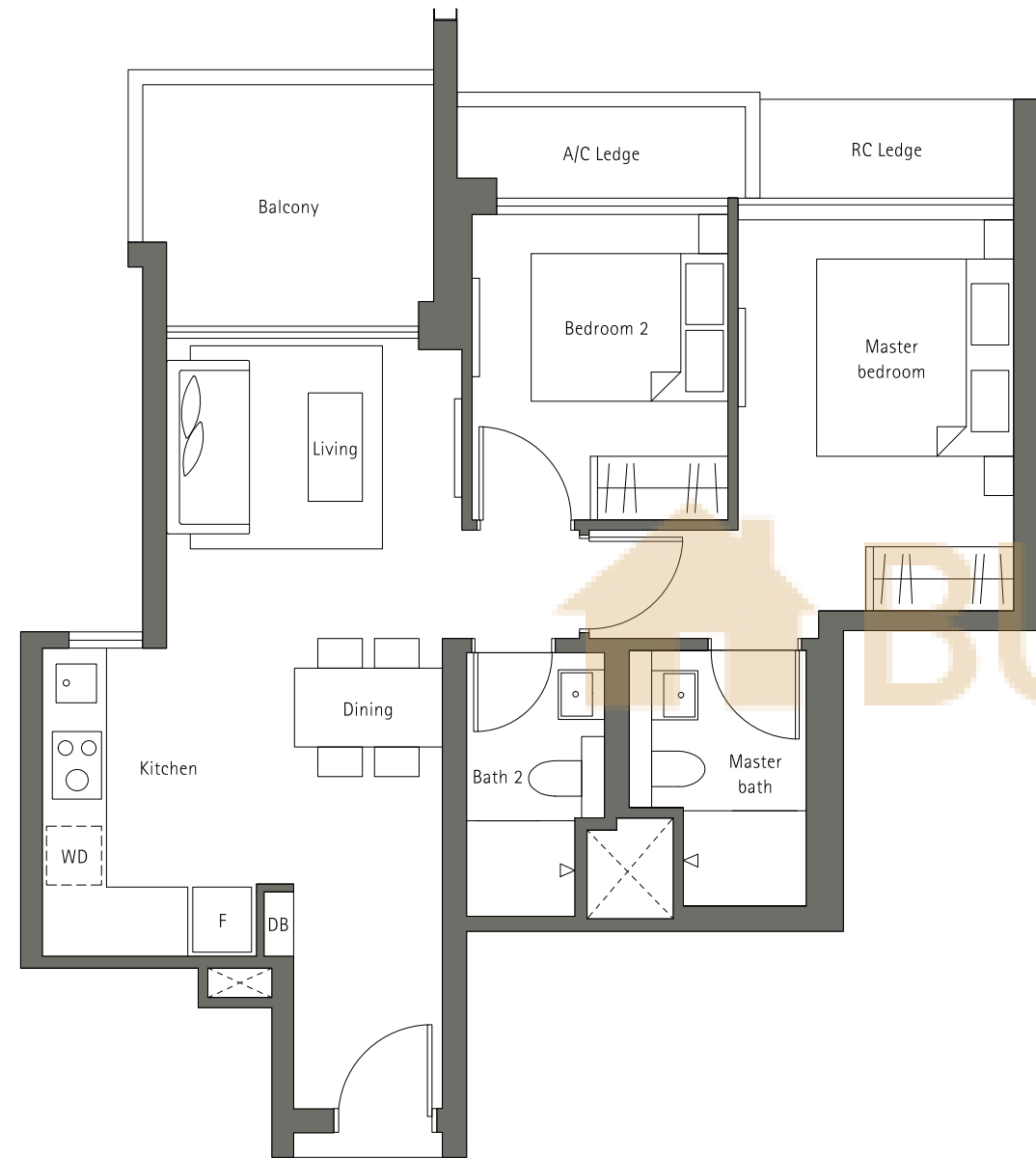


The plans are subject to change as may be required or approved by the relevant authorities. Areas are estimates only and subject to final survey. Plans are not drawn to scale and do not form part of the contract.

Type B2

2-Bedroom
74 sqm . 797 sqft

Tower 93 #03-08 to #21-08
Tower 95 #03-16 to #21-16
Tower 97 #03-24 to #21-24

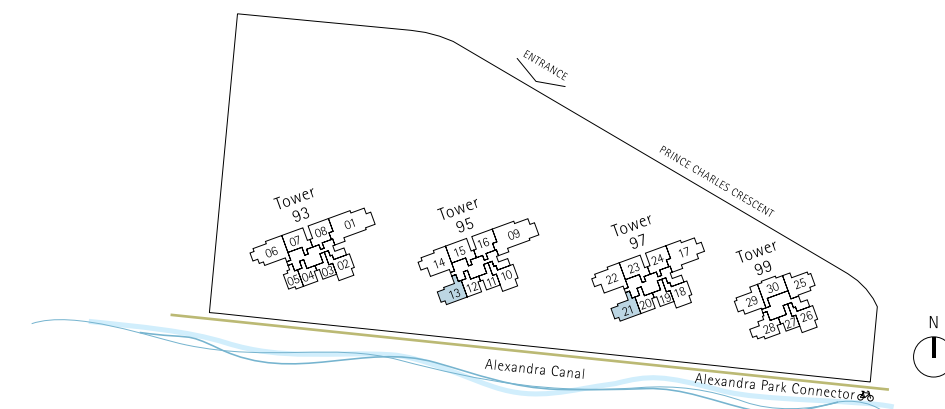
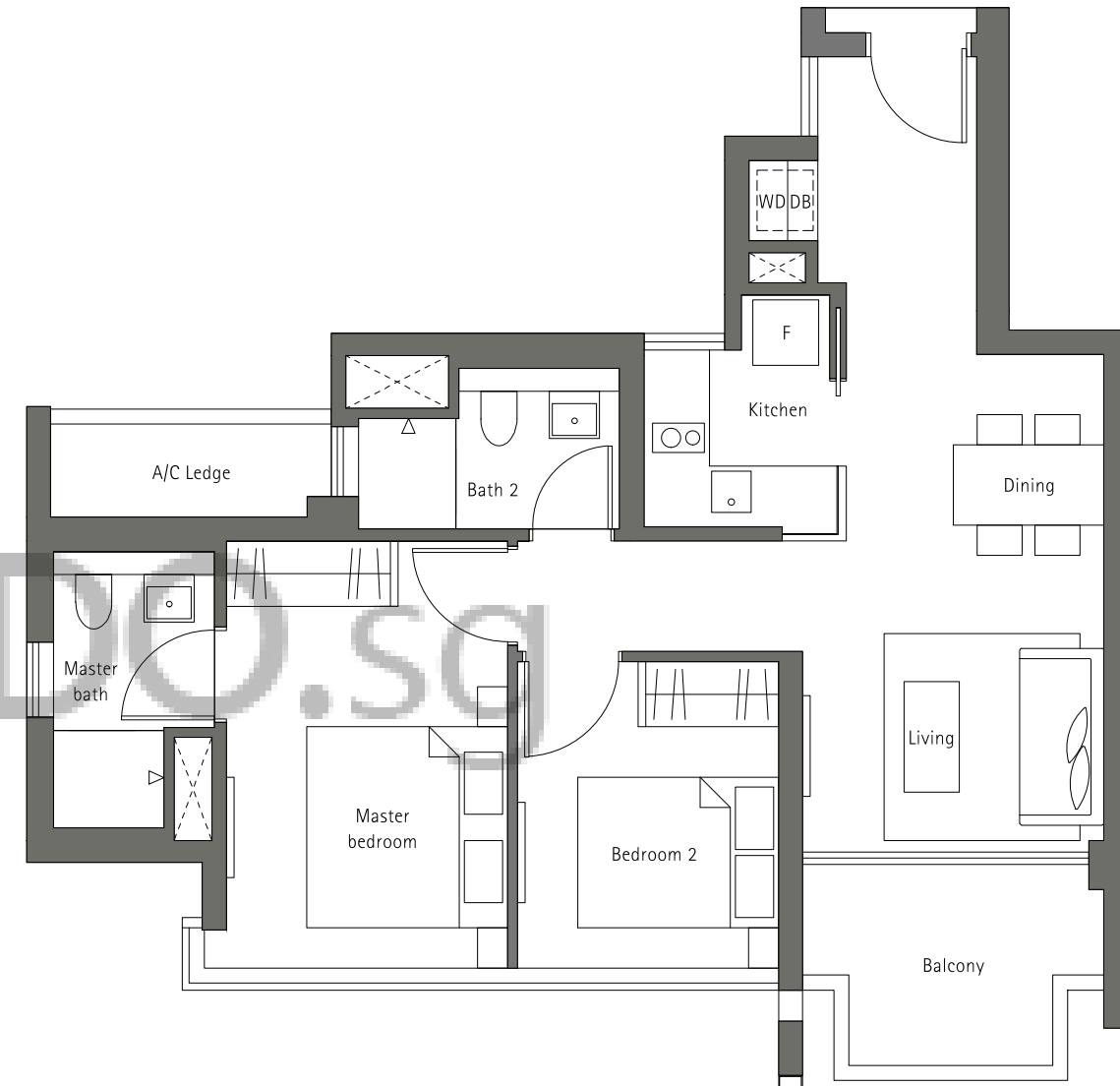


The plans are subject to change as may be required or approved by the relevant authorities. Areas are estimates only and subject to final survey. Plans are not drawn to scale and do not form part of the contract.

Type B3

2-Bedroom
73 sqm . 786 sqft

Tower 95 #02-13 to #24-13
Tower 97 #02-21 to #24-21



The plans are subject to change as may be required or approved by the relevant authorities. Areas are estimates only and subject to final survey. Plans are not drawn to scale and do not form part of the contract.

Type B4

2-Bedroom
75 sqm . 807 sqft

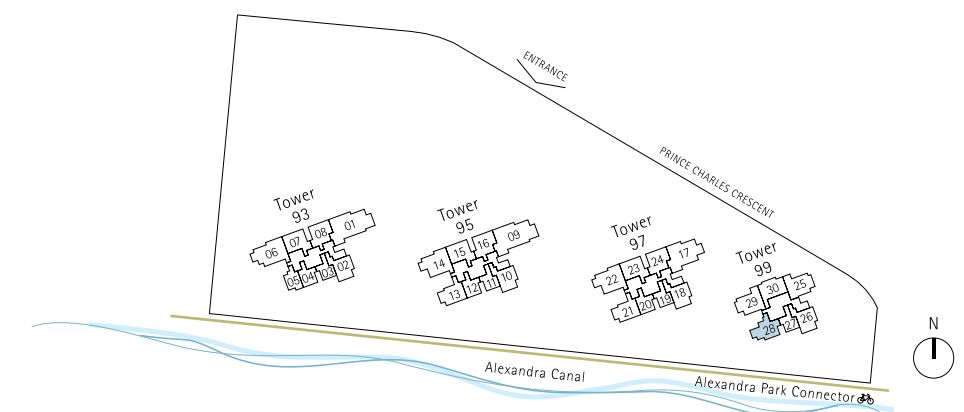
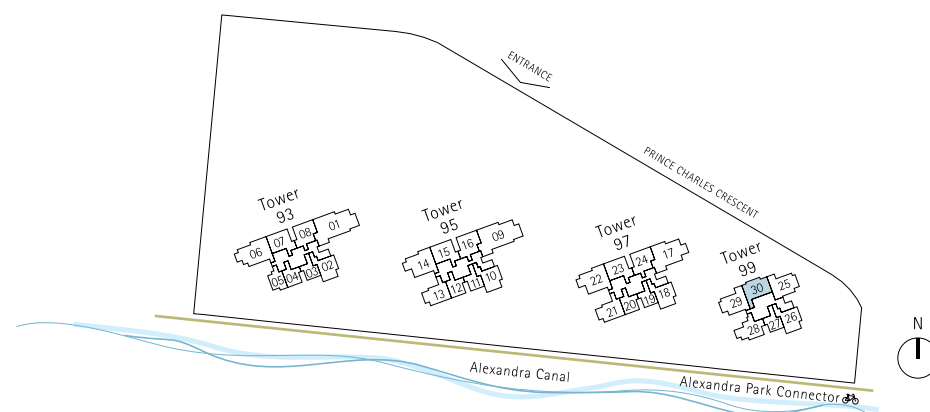
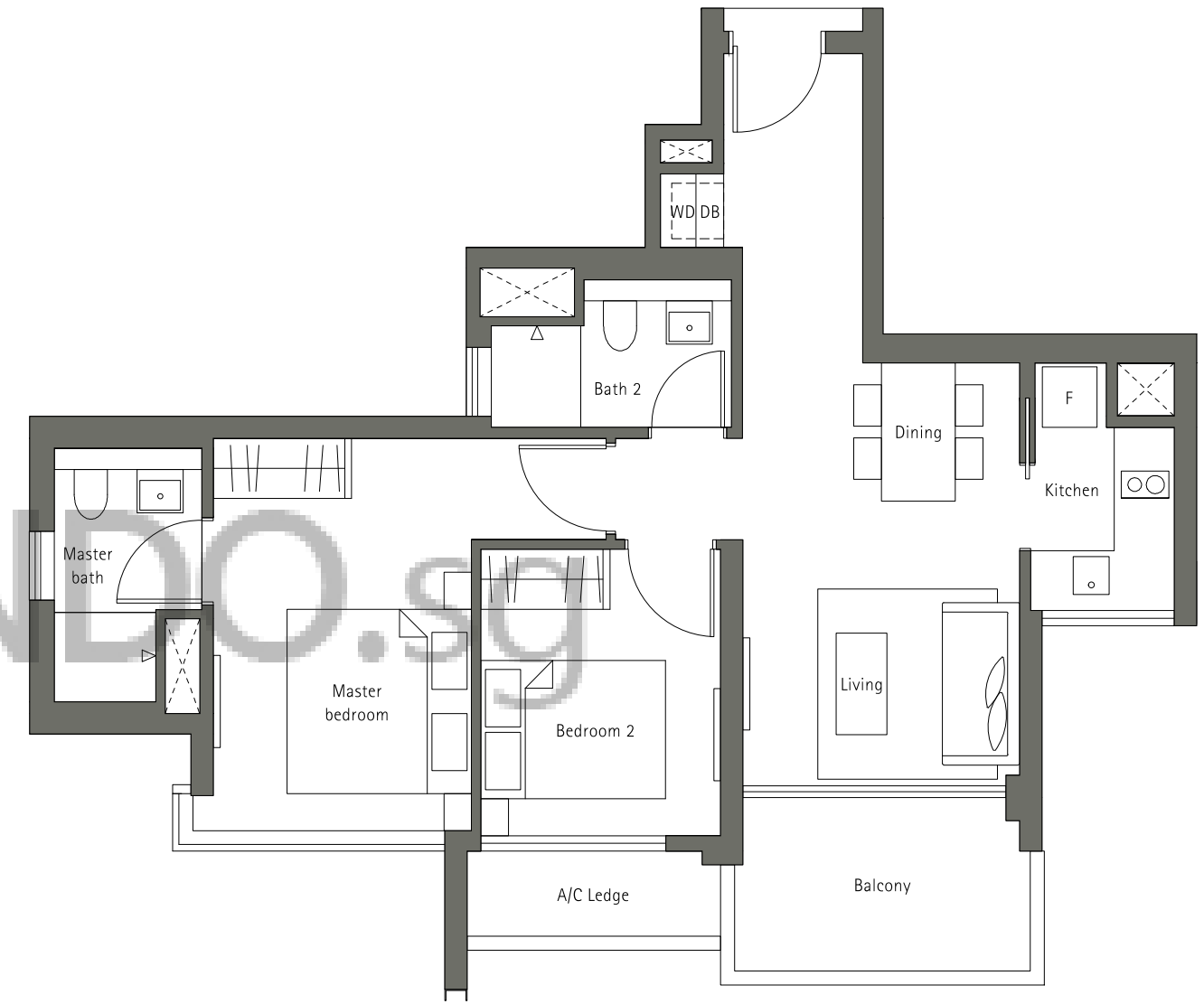
Tower 99 #03-30 to #23-30



Type B5

2-Bedroom
73 sqm . 786 sqft

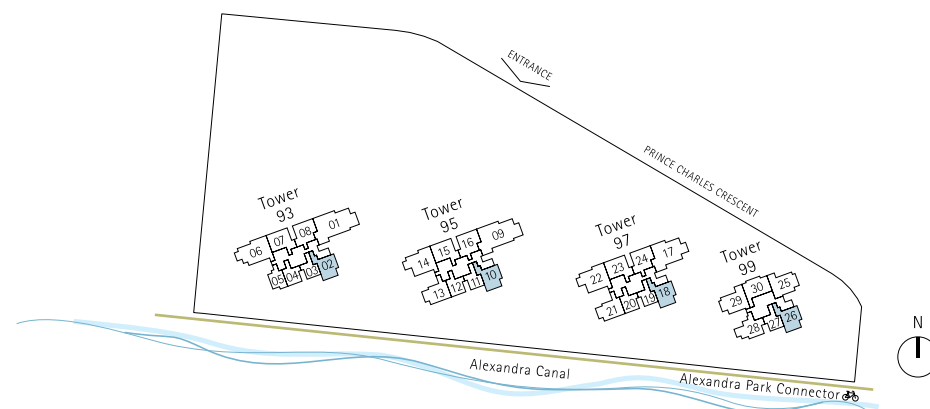
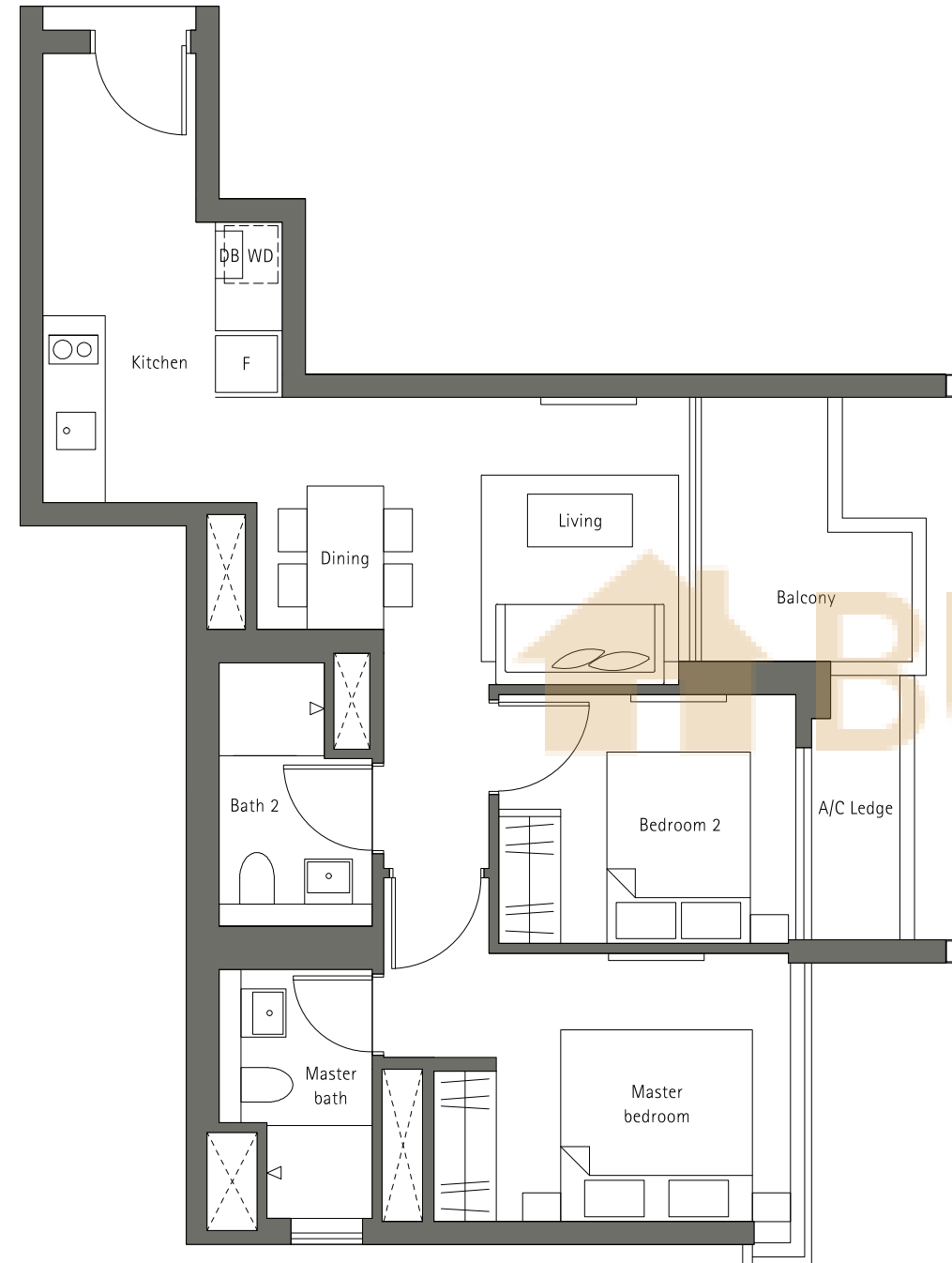
Tower 99 #03-28 to #23-28



Type B6

2-Bedroom
71 sqm . 764 sqft

Tower 93 #02-02 to #24-02
Tower 95 #02-10 to #24-10
Tower 97 #02-18 to #24-18
Tower 99 #03-26 to #23-26

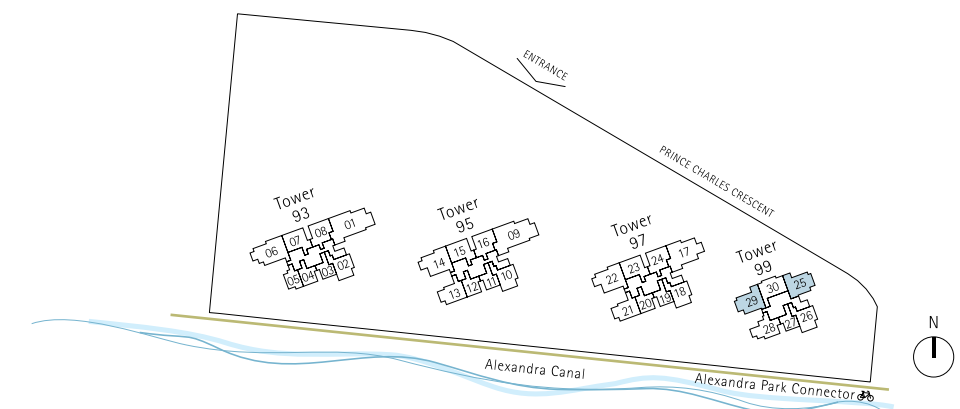
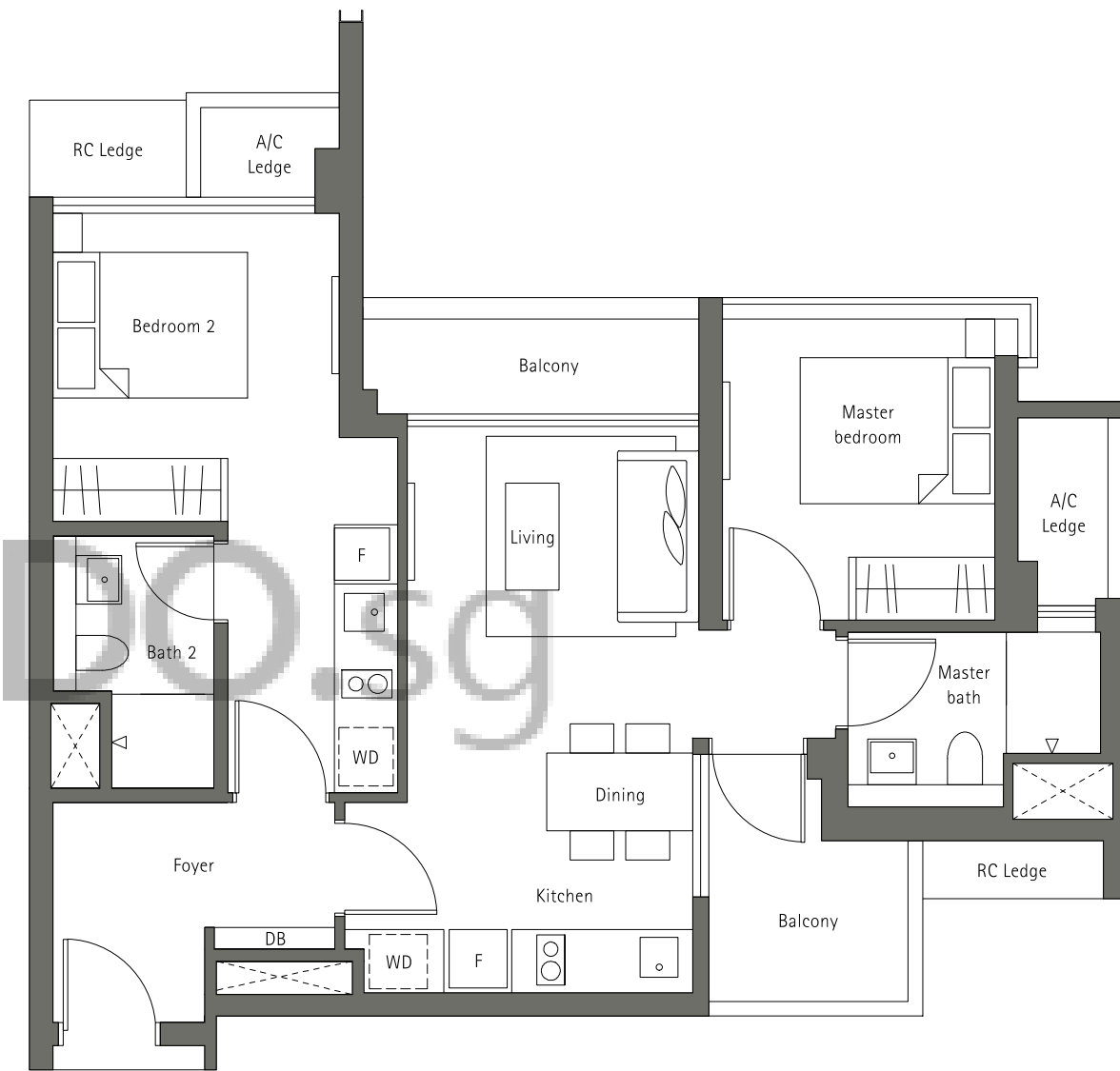


The plans are subject to change as may be required or approved by the relevant authorities. Areas are estimates only and subject to final survey. Plans are not drawn to scale and do not form part of the contract.

Type B-DK

2-Bedroom Dual-Key
80 sqm . 861 sqft

Tower 99 #03-25 to #23-25
Tower 99 #03-29 to #23-29 (Mirror)

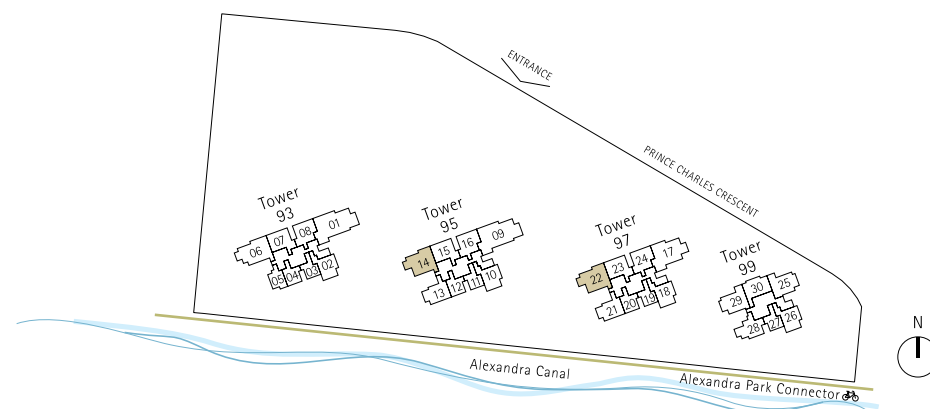
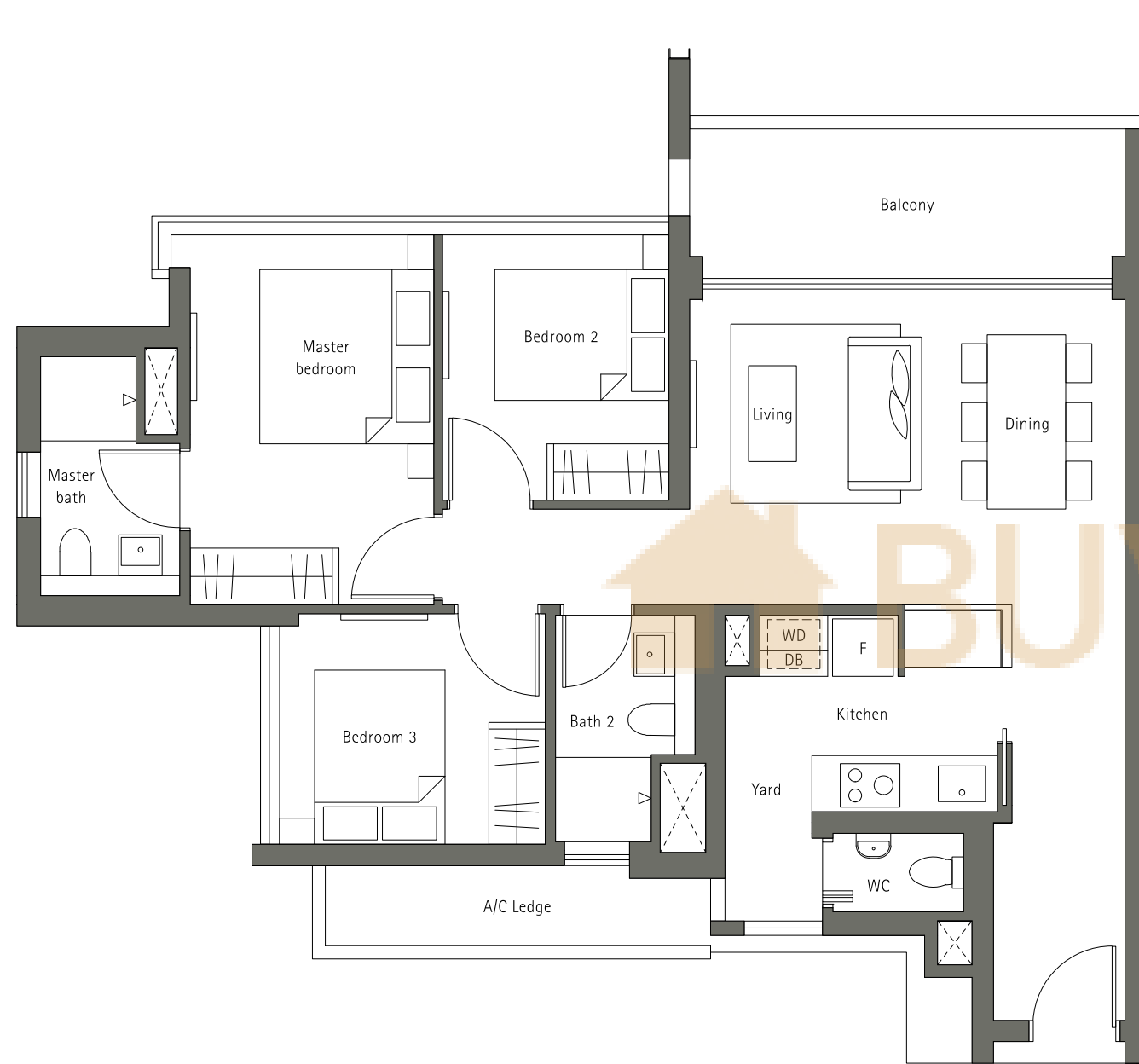


The plans are subject to change as may be required or approved by the relevant authorities. Areas are estimates only and subject to final survey. Plans are not drawn to scale and do not form part of the contract.

Type C1

3-Bedroom
100 sqm . 1076 sqft

Tower 95 #02-14 to #24-14
Tower 97 #02-22 to #24-22

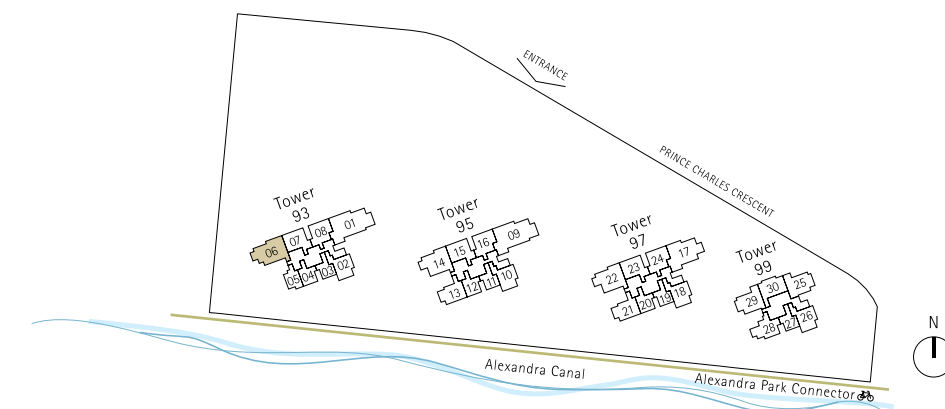
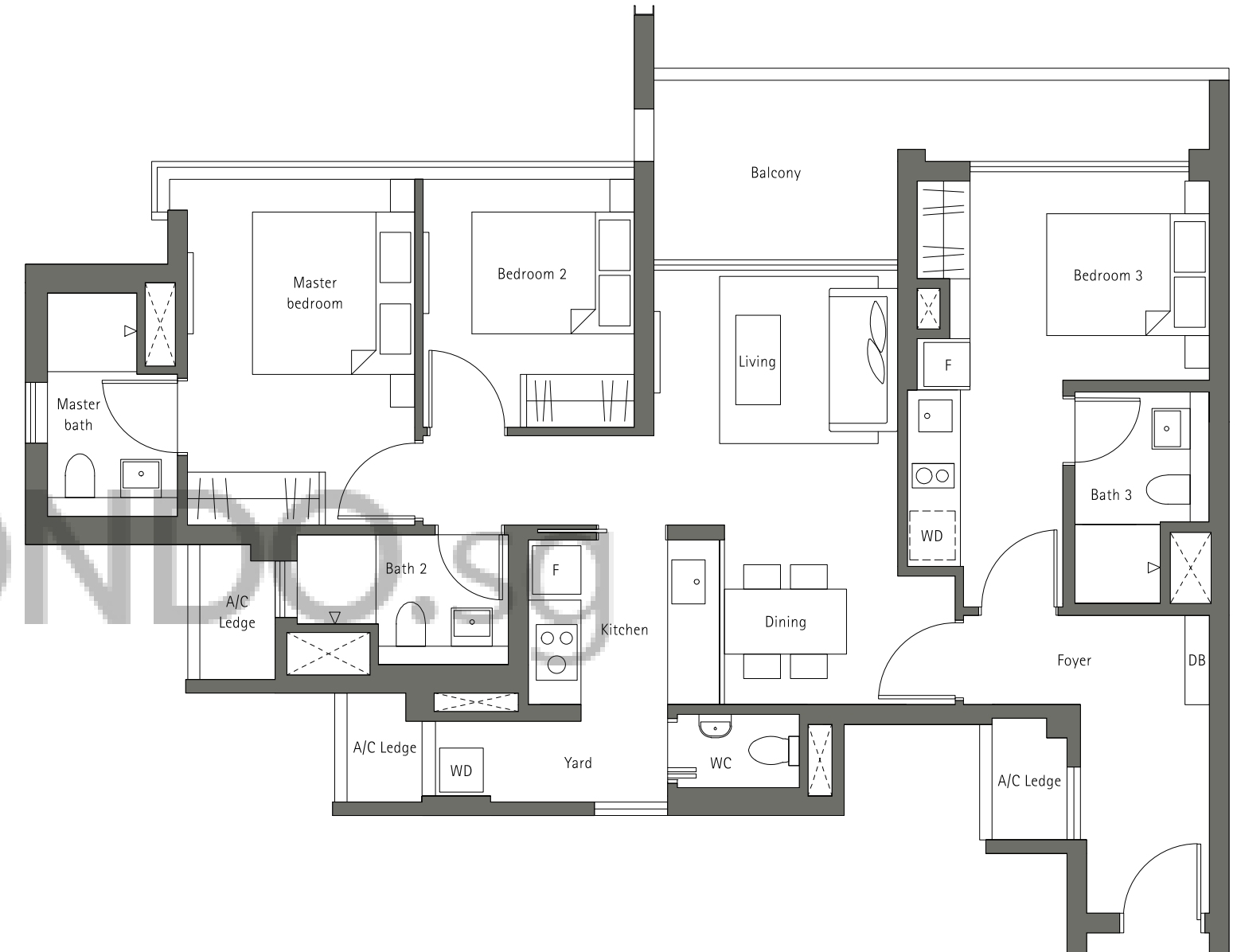


The plans are subject to change as may be required or approved by the relevant authorities. Areas are estimates only and subject to final survey. Plans are not drawn to scale and do not form part of the contract.

Type C-DK

3-Bedroom Dual-Key
111 sqm . 1195 sqft

Tower 93 #02-06 to #24-06

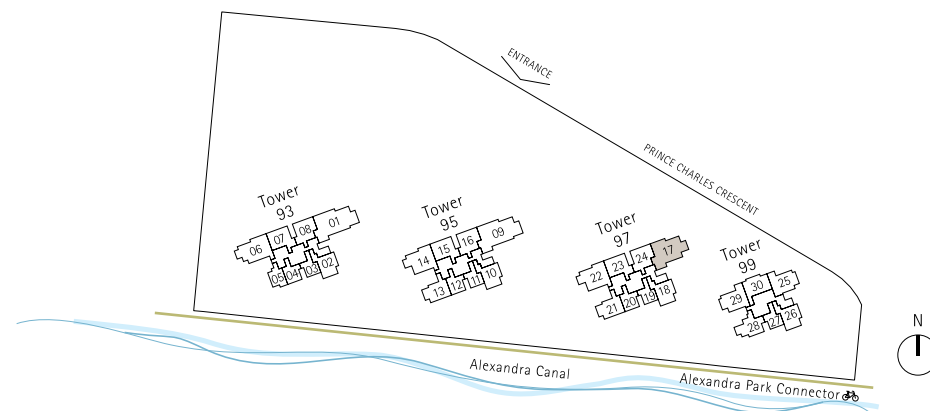
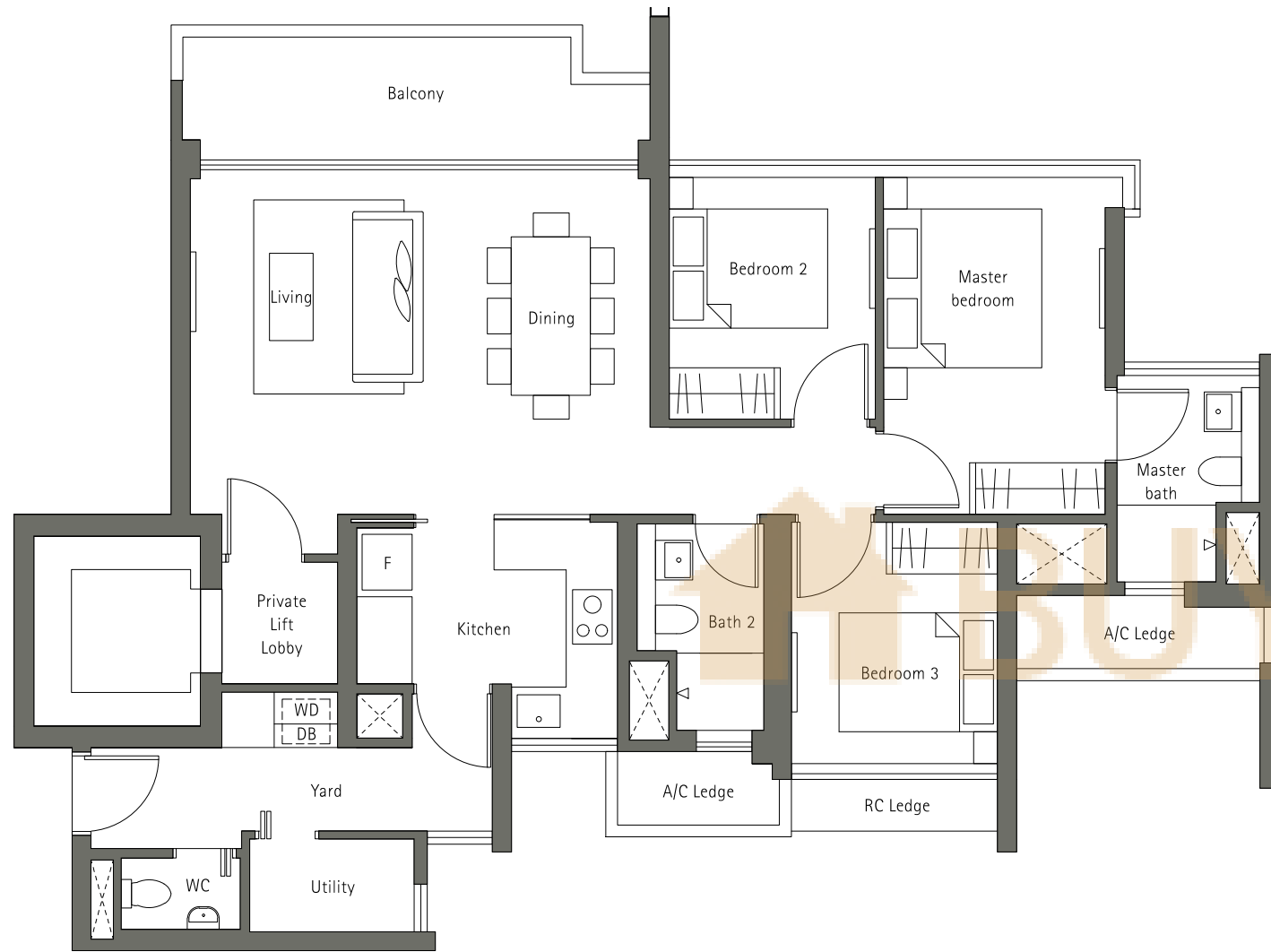


The plans are subject to change as may be required or approved by the relevant authorities. Areas are estimates only and subject to final survey. Plans are not drawn to scale and do not form part of the contract.

Type D

3-Bedroom Deluxe + Private Lift Lobby
115 sqm . 1238 sqft

Tower 97 #03-17 to #21-17

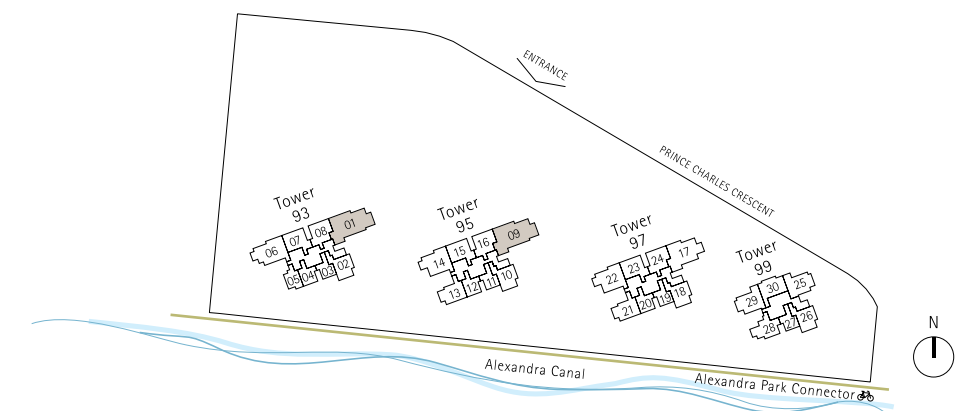
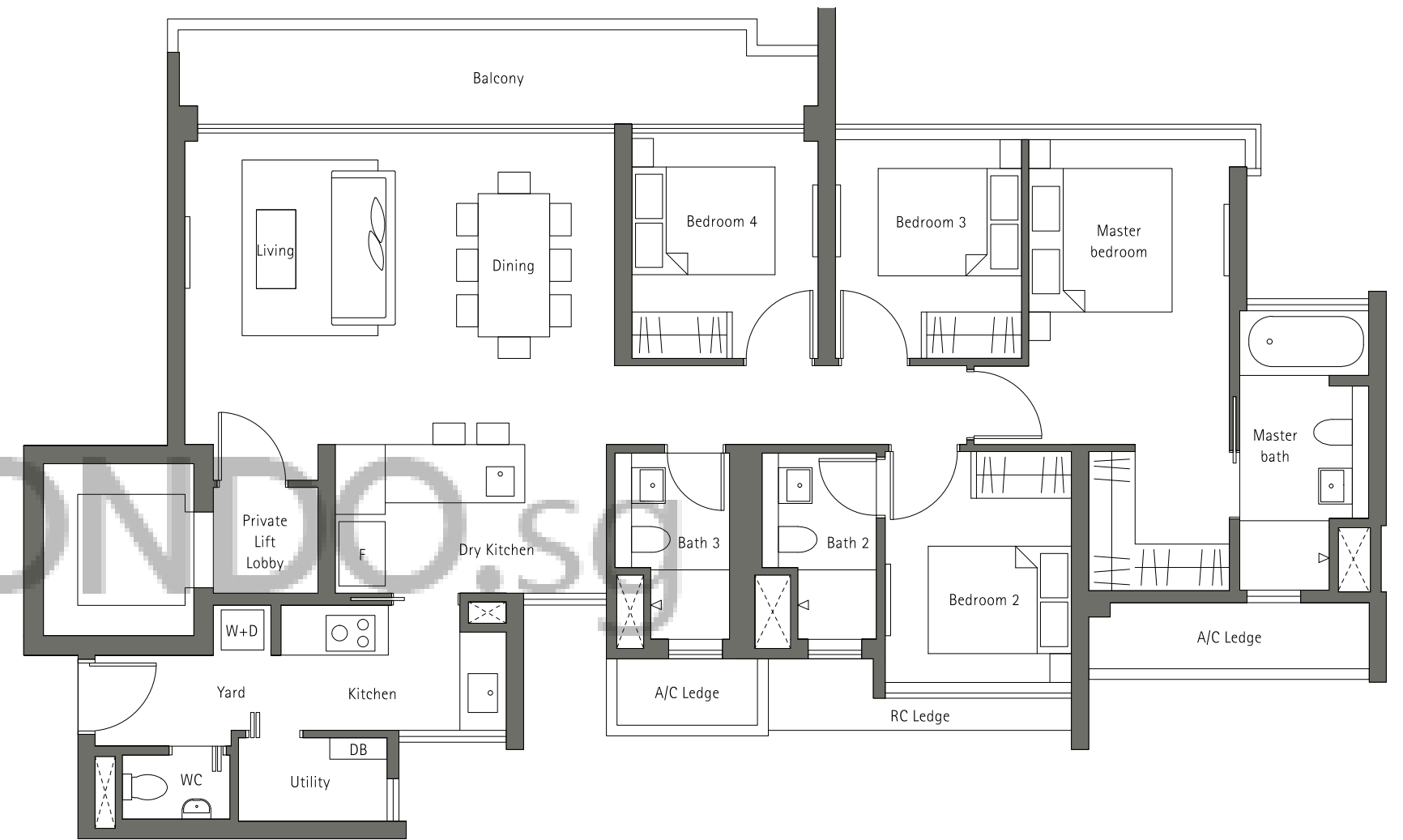


The plans are subject to change as may be required or approved by the relevant authorities. Areas are estimates only and subject to final survey. Plans are not drawn to scale and do not form part of the contract.

Type E

4-Bedroom + Private Lift Lobby
146 sqm . 1572 sqft

Tower 93 #03-01 to #21-01
Tower 95 #03-09 to #21-09



The plans are subject to change as may be required or approved by the relevant authorities. Areas are estimates only and subject to final survey. Plans are not drawn to scale and do not form part of the contract.