

# 1 - BEDROOM

## TYPE A1

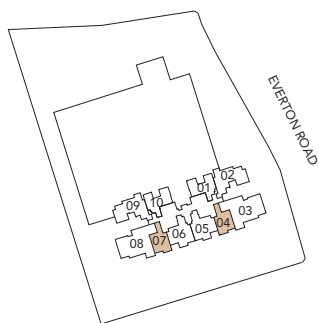
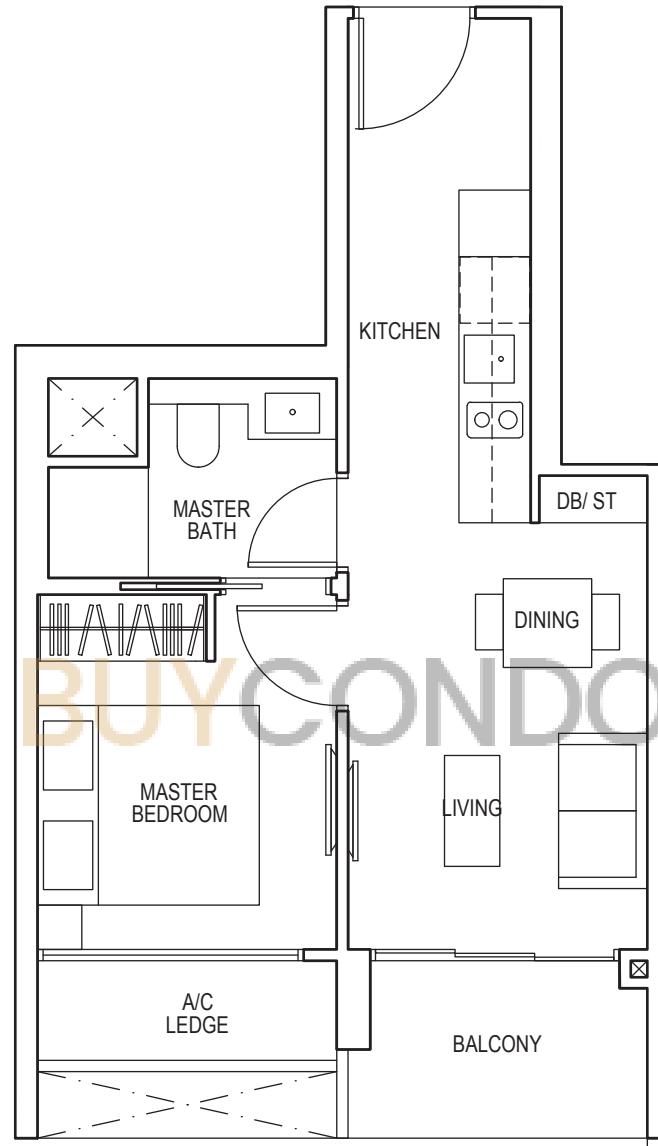
43 sq m / 463 sq ft

#06-04\* to #12-04\*

#06-07 to #12-07

#15-04\* to #22-04\*

#15-07 to #22-07



**KEY PLAN**  
Keyplan is not drawn to scale

\*Mirror Image



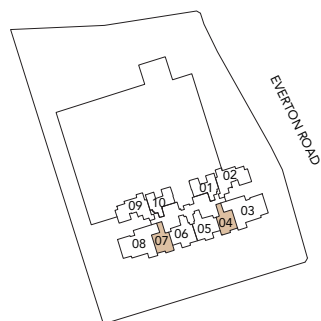
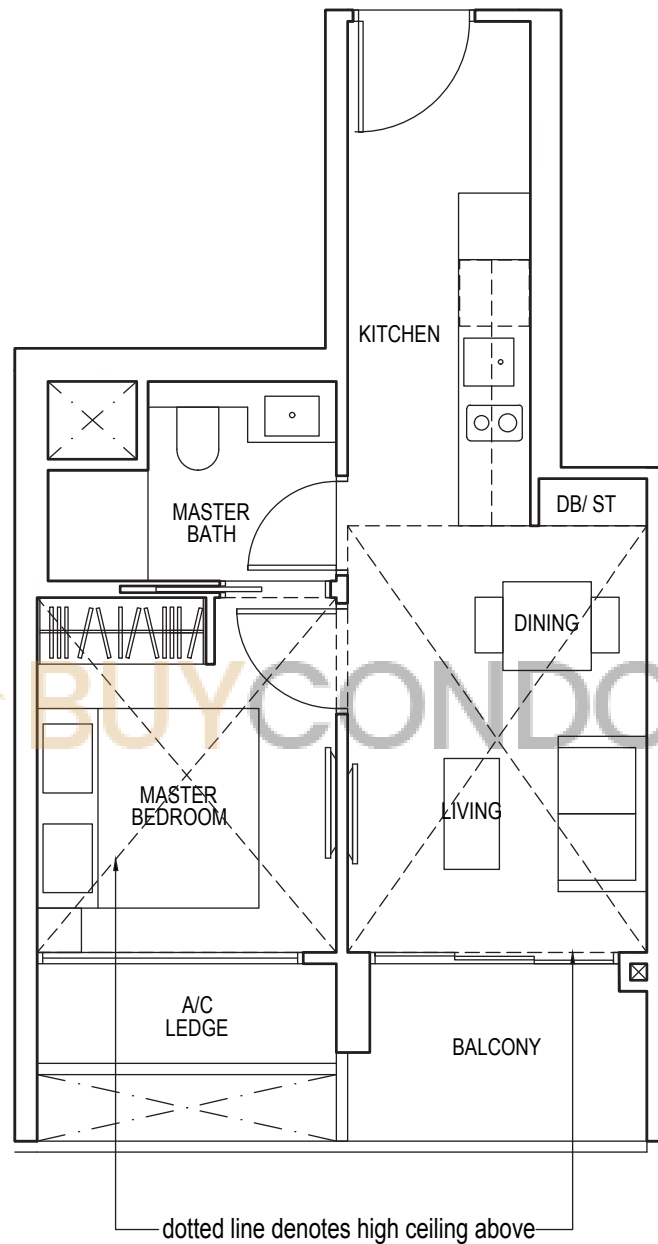
Area includes air-con (A/C) ledge, balcony and strata void area where applicable. Some units are mirror images of the apartment plans shown in the brochure. Please refer to the key plan for orientation. The plans are subject to change as may be approved by relevant authorities. All floor plans are approximate measurements only and are subject to government re-survey. The balcony shall not be enclosed unless with the approved balcony screen. For an illustration of the approved balcony screen, please refer to the diagram annexed hereto as "Annexure 1".

# 1 - BEDROOM

## TYPE A2

55 sq m / 592 sq ft

#13-04\*, #13-07, #23-04\*, #23-07



\*Mirror Image



Area includes air-con (A/C) ledge, balcony and strata void area where applicable. Some units are mirror images of the apartment plans shown in the brochure. Please refer to the key plan for orientation. The plans are subject to change as may be approved by relevant authorities. All floor plans are approximate measurements only and are subject to government re-survey. The balcony shall not be enclosed unless with the approved balcony screen. For an illustration of the approved balcony screen, please refer to the diagram annexed hereto as "Annexure 1".

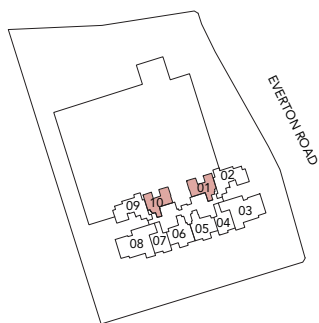
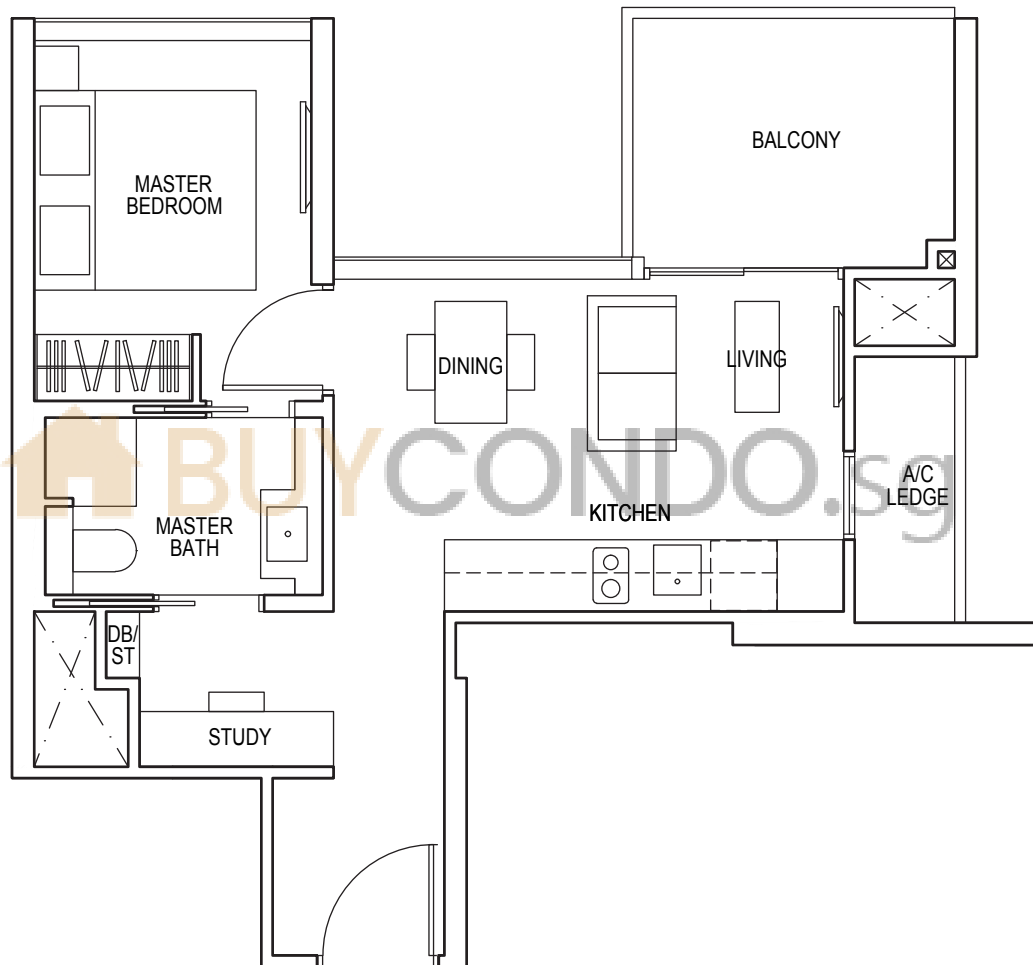
# 1 - BEDROOM + STUDY

## TYPE A3

47 sq m / 506 sq ft

#06-01\* to #12-01\*

#06-10 to #12-10



**KEY PLAN**  
Keyplan is not drawn to scale

\*Mirror Image



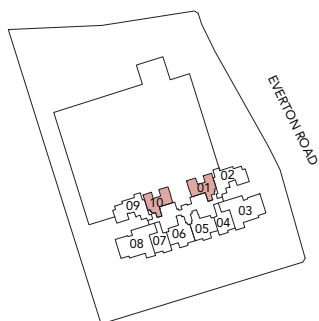
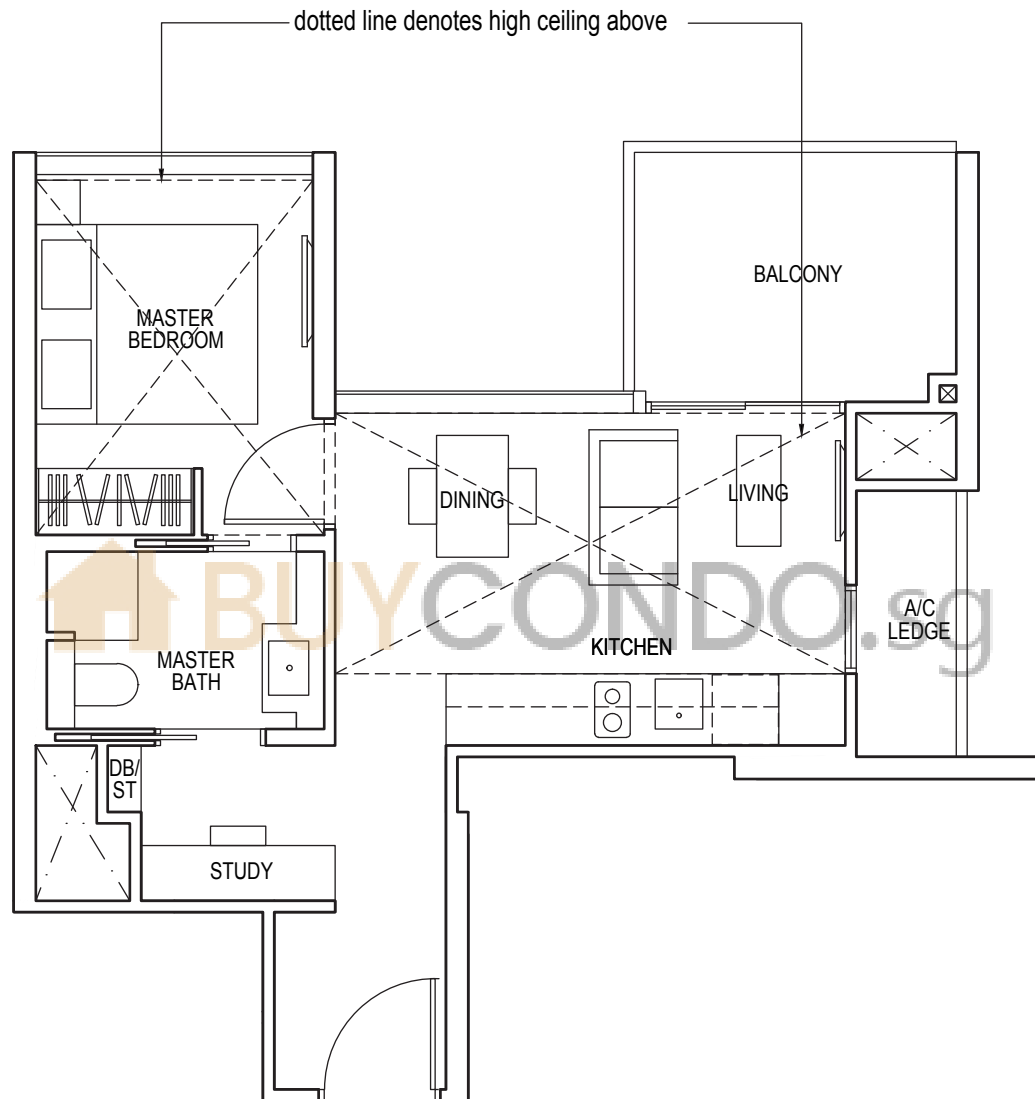
Area includes air-con (A/C) ledge, balcony and strata void area where applicable. Some units are mirror images of the apartment plans shown in the brochure. Please refer to the key plan for orientation. The plans are subject to change as may be approved by relevant authorities. All floor plans are approximate measurements only and are subject to government re-survey. The balcony shall not be enclosed unless with the approved balcony screen. For an illustration of the approved balcony screen, please refer to the diagram annexed hereto as "Annexure 1".

# 1 - BEDROOM + STUDY

## TYPE A4

59 sq m / 635 sq ft

#13-01\*, #13-10



N  
KEY PLAN  
Keyplan is not drawn to scale

\*Mirror Image



Area includes air-con (A/C) ledge, balcony and strata void area where applicable. Some units are mirror images of the apartment plans shown in the brochure. Please refer to the key plan for orientation. The plans are subject to change as may be approved by relevant authorities. All floor plans are approximate measurements only and are subject to government re-survey. The balcony shall not be enclosed unless with the approved balcony screen. For an illustration of the approved balcony screen, please refer to the diagram annexed hereto as "Annexure 1".

# 2 - BEDROOM

## TYPE B1

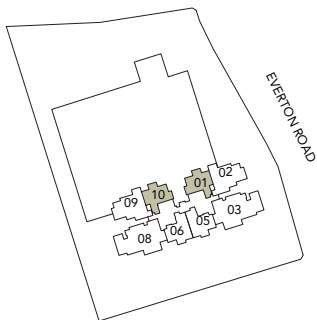
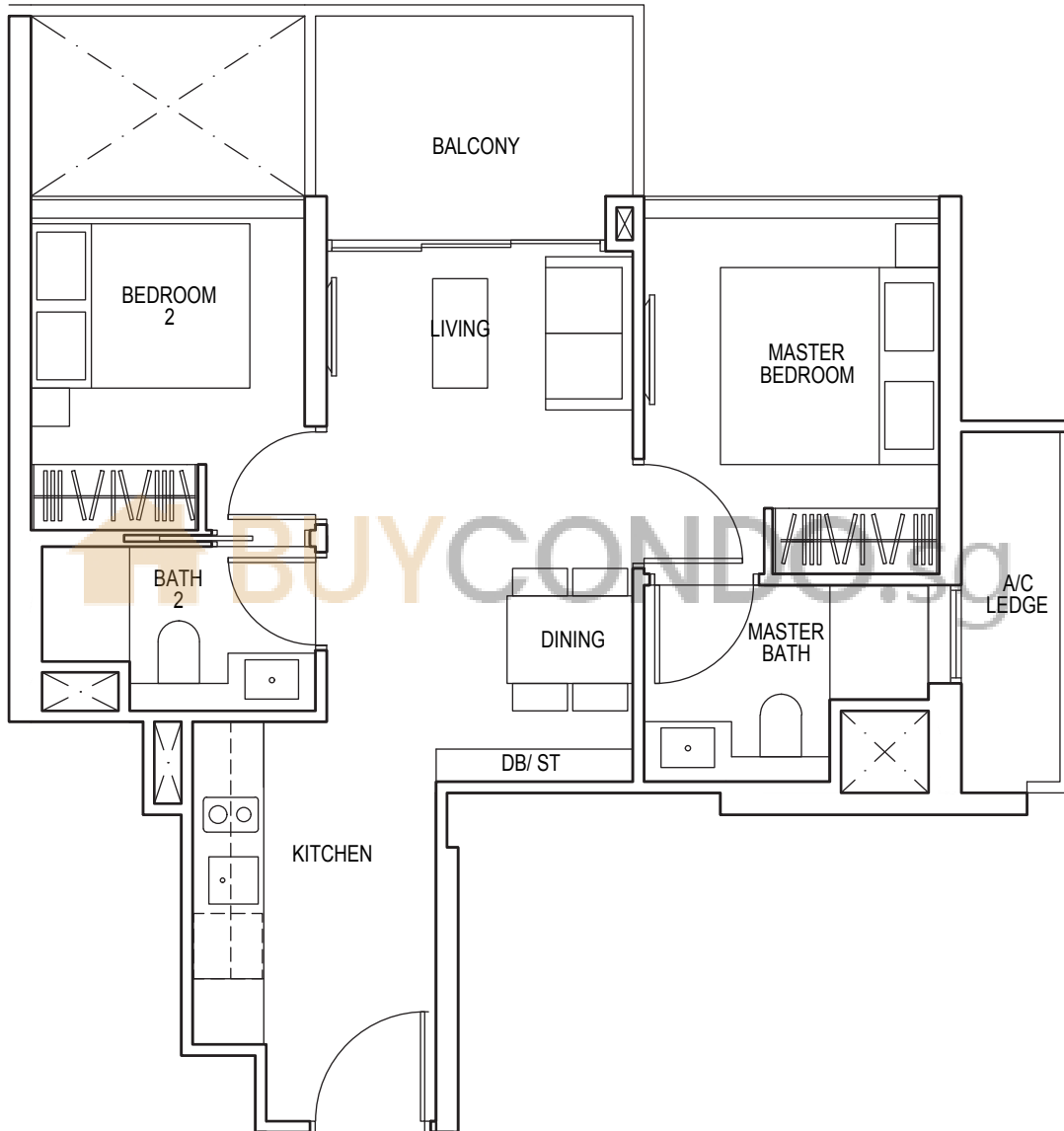
60 sq m / 646 sq ft

#15-01\* to #22-01\*

#15-10 to #22-10

#25-01\* to #35-01\*

#25-10 to #35-10



**KEY PLAN**  
Keyplan is not drawn to scale

\*Mirror Image



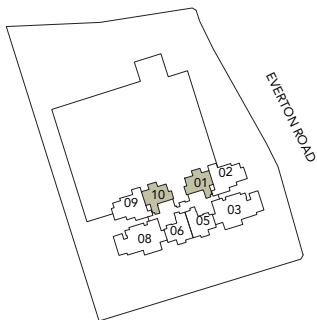
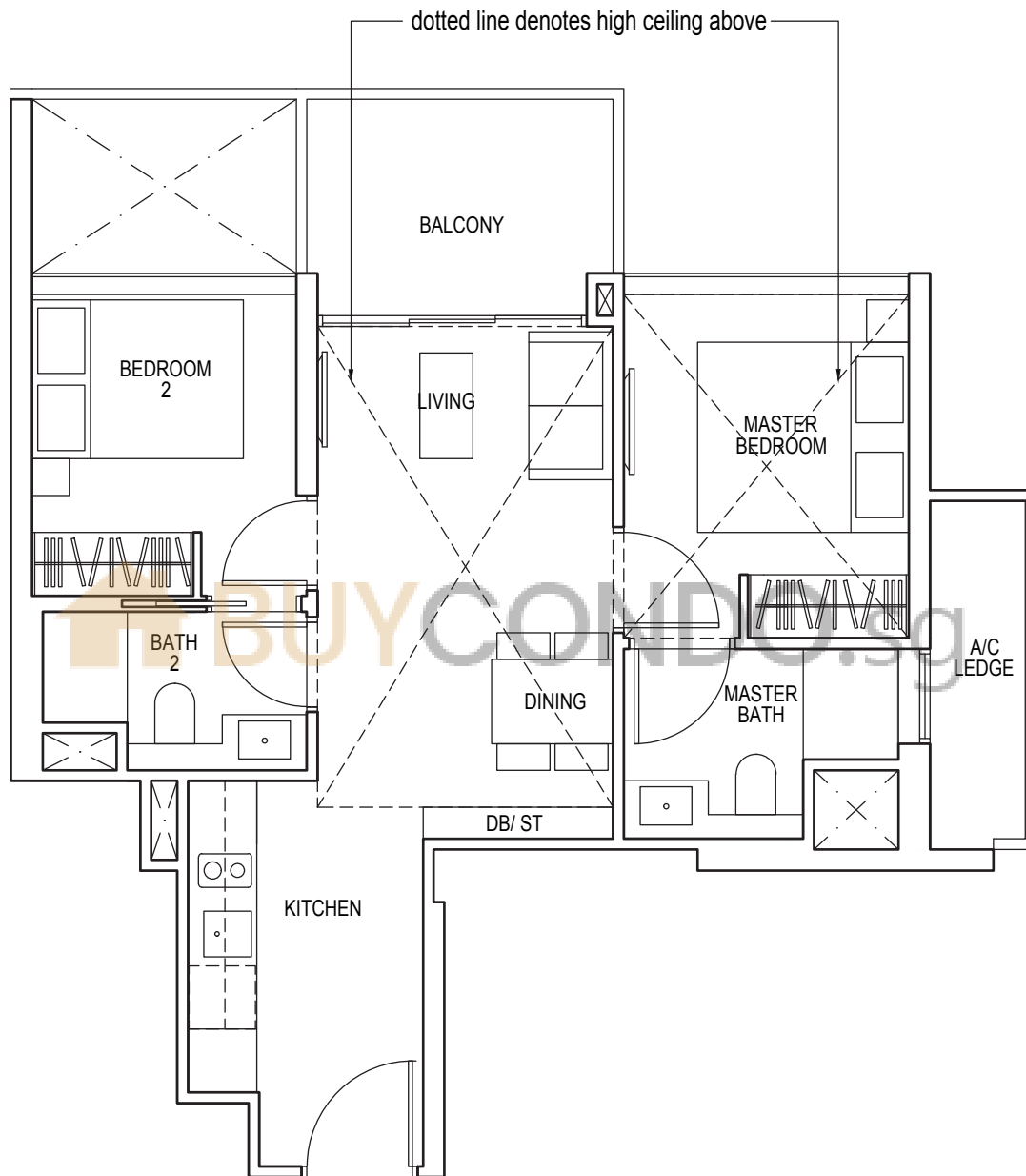
Area includes air-con (A/C) ledge, balcony and strata void area where applicable. Some units are mirror images of the apartment plans shown in the brochure. Please refer to the key plan for orientation. The plans are subject to change as may be approved by relevant authorities. All floor plans are approximate measurements only and are subject to government re-survey. The balcony shall not be enclosed unless with the approved balcony screen. For an illustration of the approved balcony screen, please refer to the diagram annexed hereto as "Annexure 1".

# 2 - BEDROOM

## TYPE B2

75 sq m / 807 sq ft

#23-01\*, #23-10



**KEY PLAN**  
Keyplan is not drawn to scale

\*Mirror Image



Area includes air-con (A/C) ledge, balcony and strata void area where applicable. Some units are mirror images of the apartment plans shown in the brochure. Please refer to the key plan for orientation. The plans are subject to change as may be approved by relevant authorities. All floor plans are approximate measurements only and are subject to government re-survey. The balcony shall not be enclosed unless with the approved balcony screen. For an illustration of the approved balcony screen, please refer to the diagram annexed hereto as "Annexure 1".

# 2 - BEDROOM

## TYPE B3

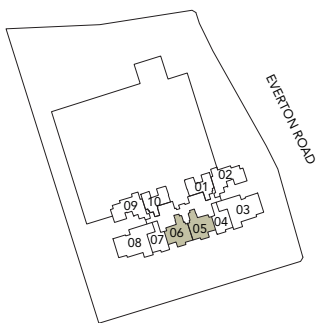
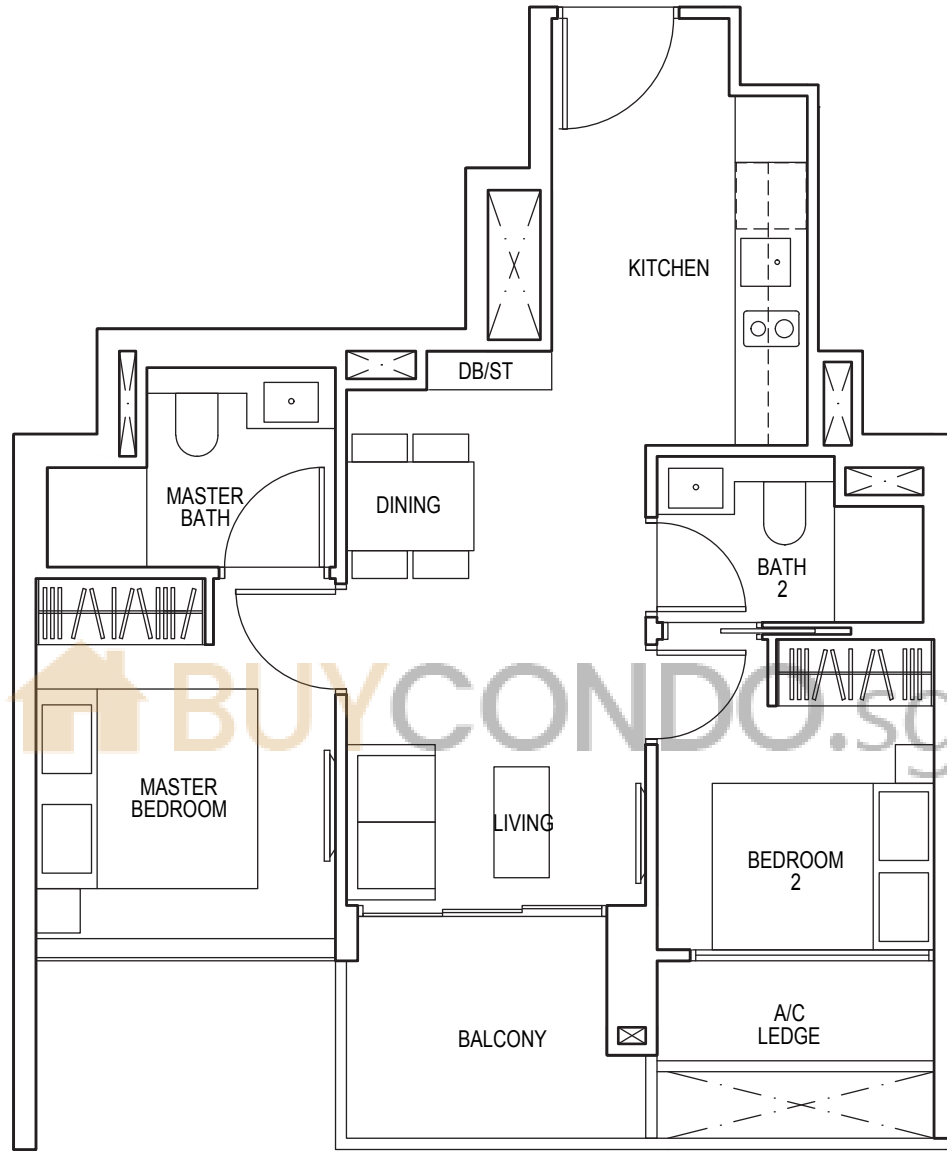
58 sq m / 624 sq ft

#06-05\* to #12-05\*

#06-06 to #12-06

#15-05\* to #22-05\*

#15-06 to #22-06



**KEY PLAN**  
Keyplan is not drawn to scale

\*Mirror Image



Area includes air-con (A/C) ledge, balcony and strata void area where applicable. Some units are mirror images of the apartment plans shown in the brochure. Please refer to the key plan for orientation. The plans are subject to change as may be approved by relevant authorities. All floor plans are approximate measurements only and are subject to government re-survey. The balcony shall not be enclosed unless with the approved balcony screen. For an illustration of the approved balcony screen, please refer to the diagram annexed hereto as "Annexure 1".

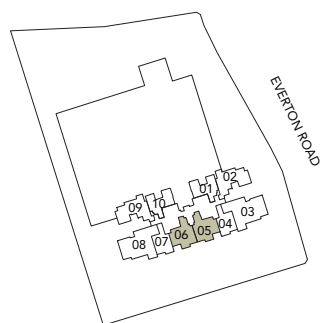
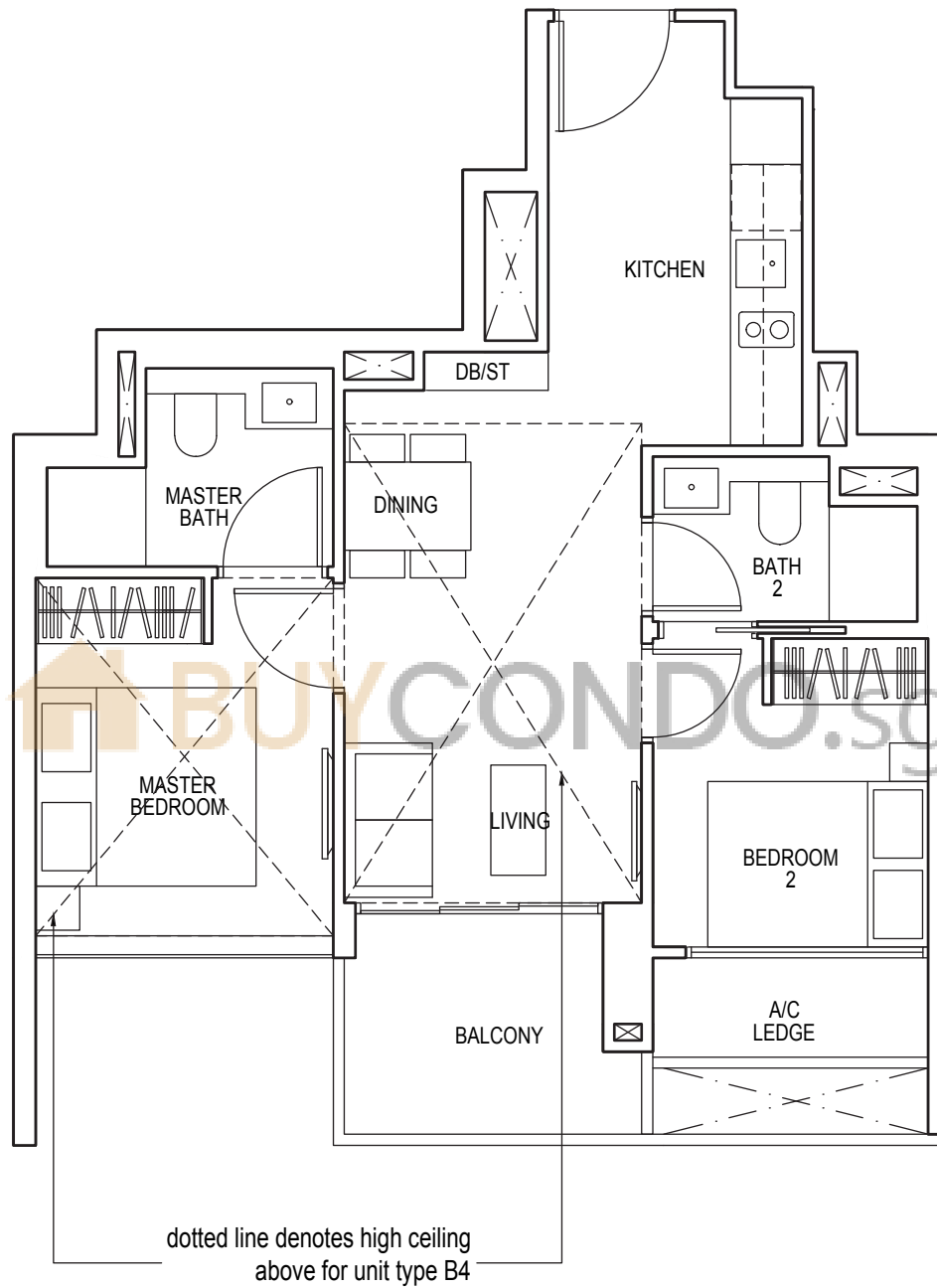
# 2 - BEDROOM

## TYPE B4

71 sq m / 764 sq ft

#13-05\*, #13-06

#23-05\*, #23-06



\*Mirror Image



Area includes air-con (A/C) ledge, balcony and strata void area where applicable. Some units are mirror images of the apartment plans shown in the brochure. Please refer to the key plan for orientation. The plans are subject to change as may be approved by relevant authorities. All floor plans are approximate measurements only and are subject to government re-survey. The balcony shall not be enclosed unless with the approved balcony screen. For an illustration of the approved balcony screen, please refer to the diagram annexed hereto as "Annexure 1".



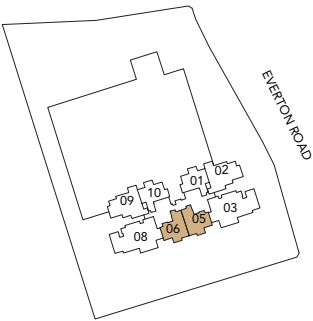
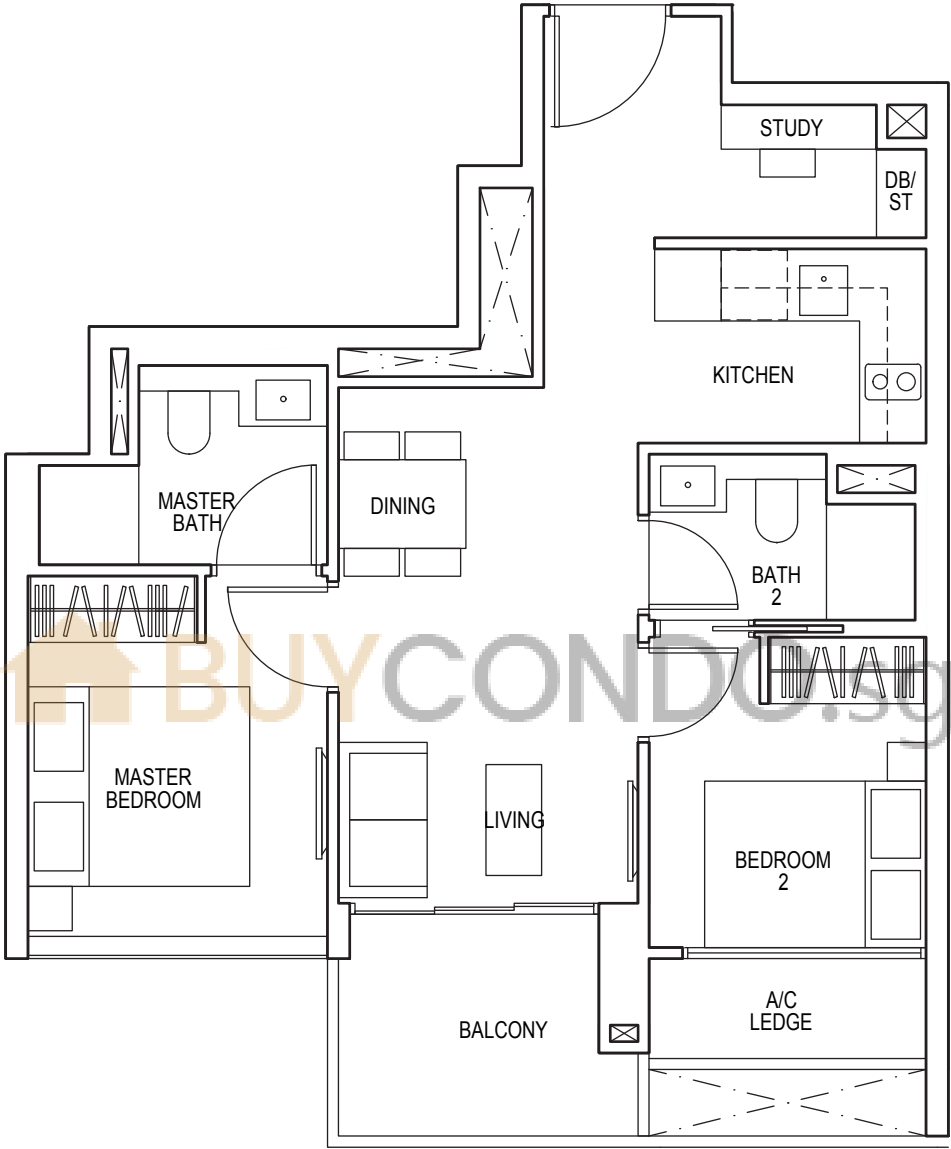
# 2 - BEDROOM + STUDY

## TYPE B5

61 sq m / 657 sq ft

#25-05\* to #35-05\*

#25-06 to #35-06



**KEY PLAN**  
Keyplan is not drawn to scale

\*Mirror Image



Area includes air-con (A/C) ledge, balcony and strata void area where applicable. Some units are mirror images of the apartment plans shown in the brochure. Please refer to the key plan for orientation. The plans are subject to change as may be approved by relevant authorities. All floor plans are approximate measurements only and are subject to government re-survey. The balcony shall not be enclosed unless with the approved balcony screen. For an illustration of the approved balcony screen, please refer to the diagram annexed hereto as "Annexure 1".

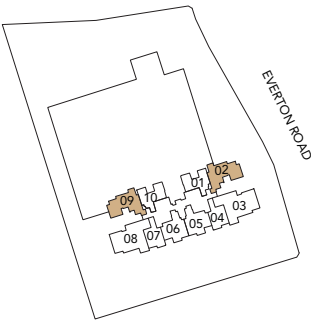
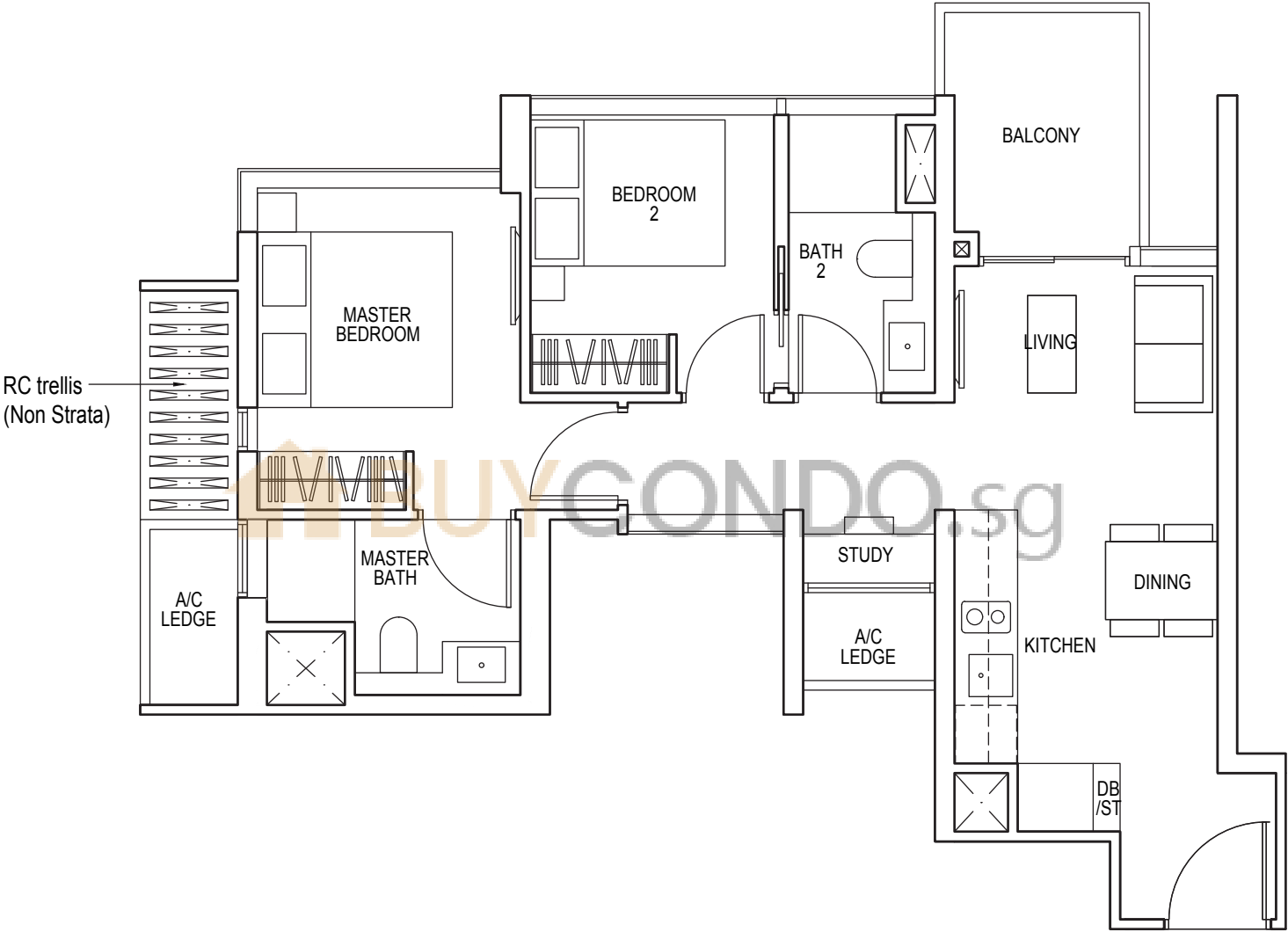
# 2 - BEDROOM + STUDY

## TYPE B6

63 sq m / 678 sq ft

#06-02\* to #12-02\*

#06-09 to #12-09



**KEY PLAN**  
Keyplan is not drawn to scale

\*Mirror Image



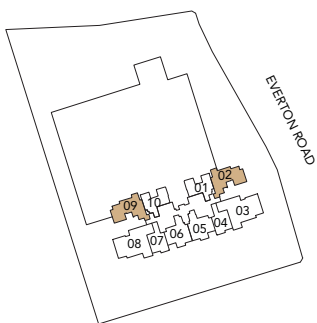
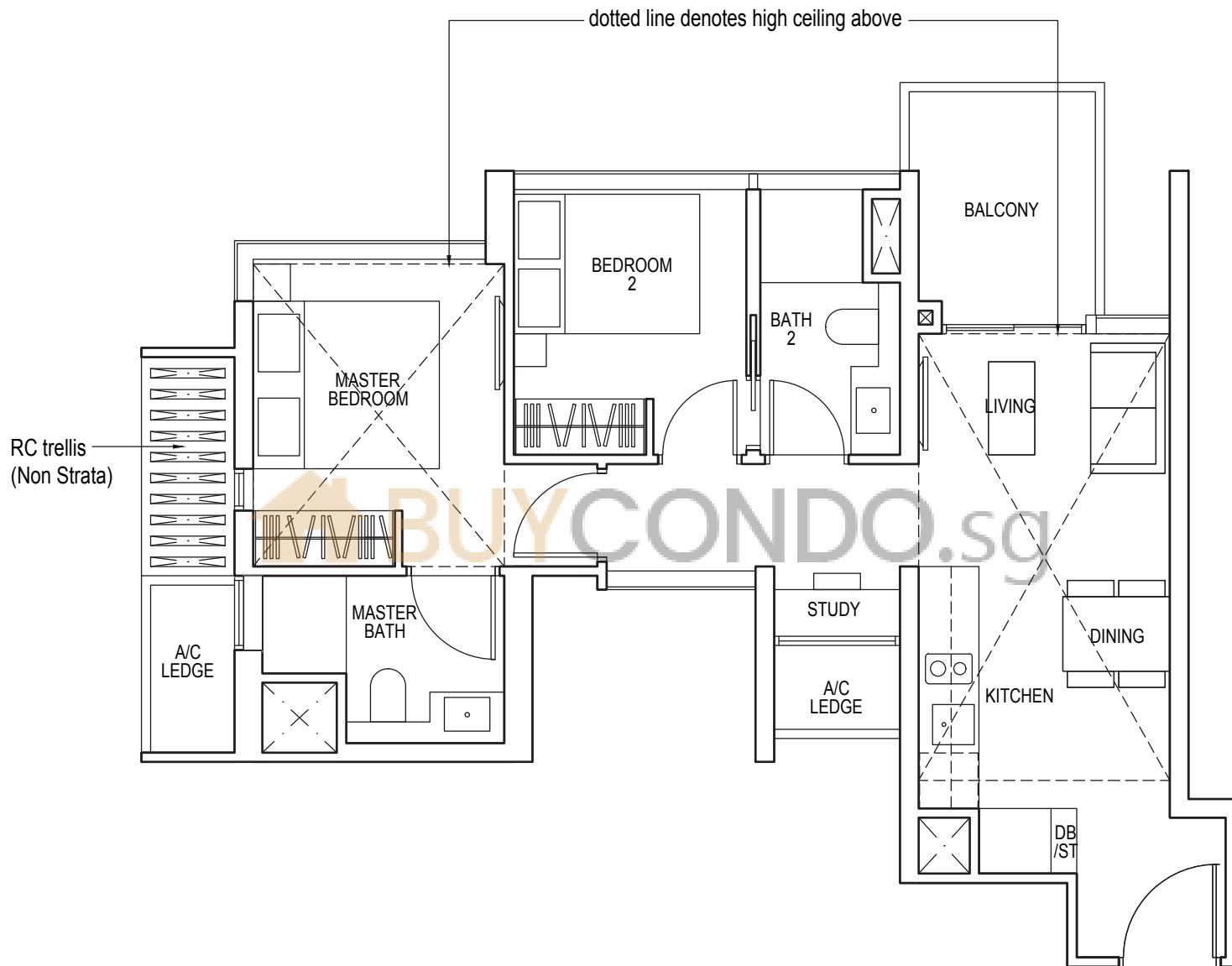
Area includes air-con (A/C) ledge, balcony and strata void area where applicable. Some units are mirror images of the apartment plans shown in the brochure. Please refer to the key plan for orientation. The plans are subject to change as may be approved by relevant authorities. All floor plans are approximate measurements only and are subject to government re-survey. The balcony shall not be enclosed unless with the approved balcony screen. For an illustration of the approved balcony screen, please refer to the diagram annexed hereto as "Annexure 1".

# 2 - BEDROOM + STUDY

## TYPE B7

78 sq m / 840 sq ft

#13-02\*, #13-09



**KEY PLAN**  
Keyplan is not drawn to scale

\*Mirror Image



Area includes air-con (A/C) ledge, balcony and strata void area where applicable. Some units are mirror images of the apartment plans shown in the brochure. Please refer to the key plan for orientation. The plans are subject to change as may be approved by relevant authorities. All floor plans are approximate measurements only and are subject to government re-survey. The balcony shall not be enclosed unless with the approved balcony screen. For an illustration of the approved balcony screen, please refer to the diagram annexed hereto as "Annexure 1".

# 3 - BEDROOM

## TYPE C1

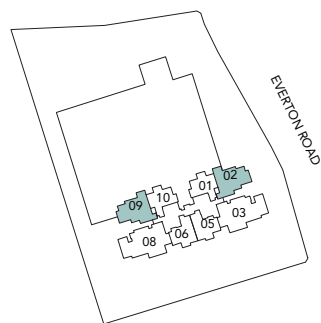
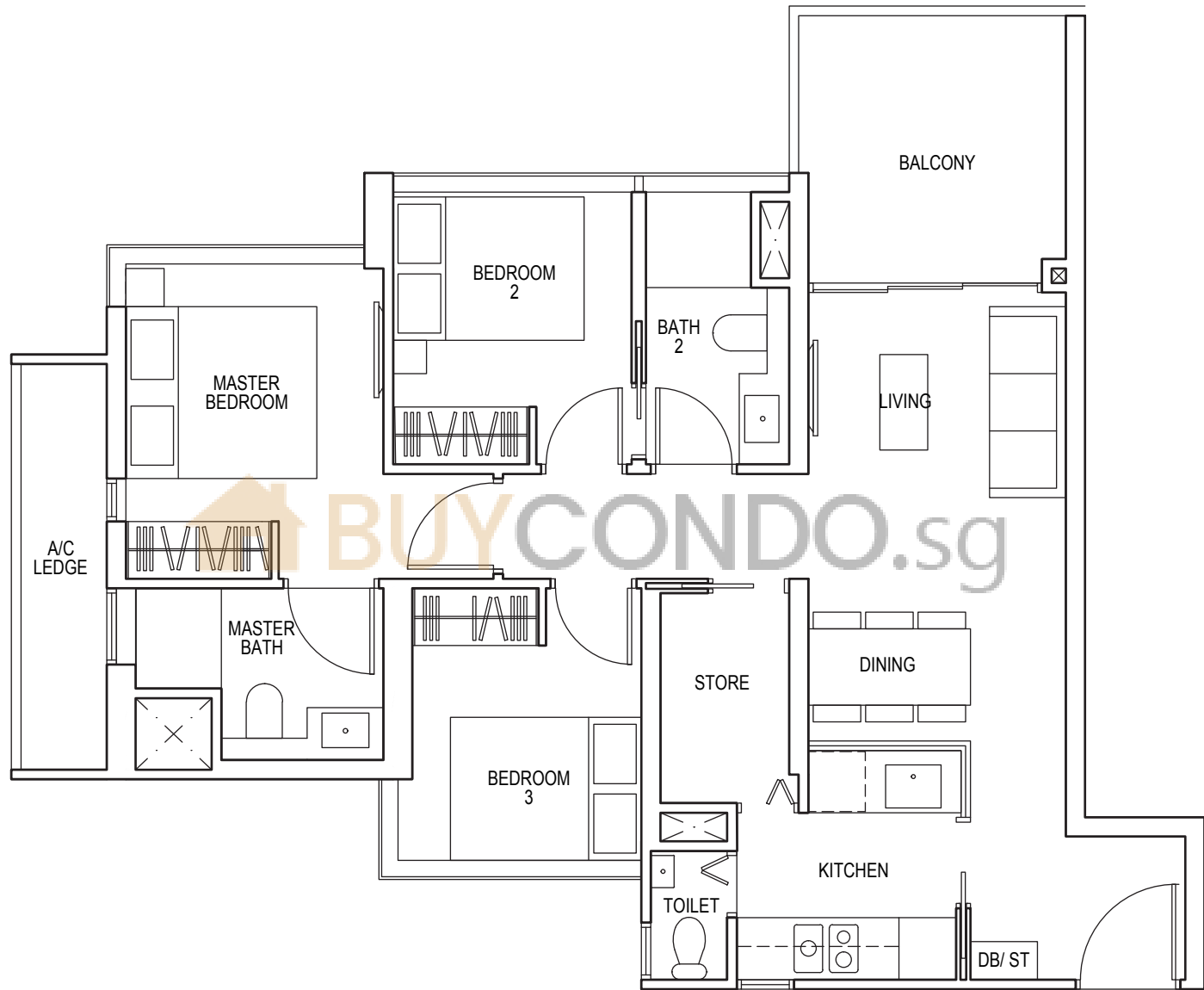
85 sq m / 915 sq ft

#15-02\* to #22-02\*

#15-09 to #22-09

#25-02\* to #35-02\*

#25-09 to #35-09



\*Mirror Image



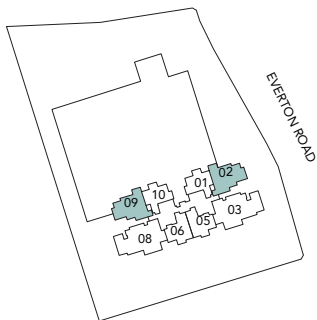
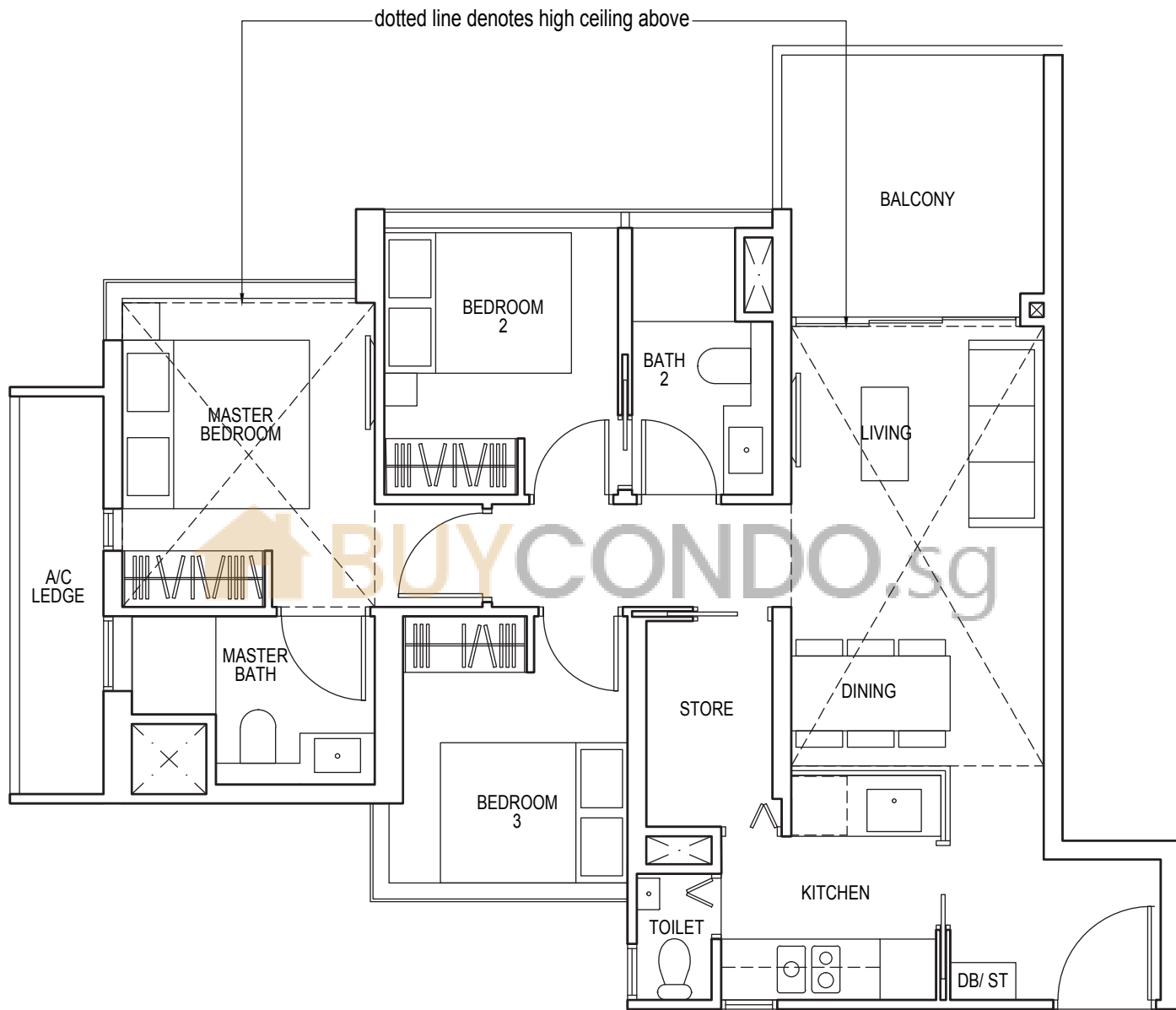
Area includes air-con (A/C) ledge, balcony and strata void area where applicable. Some units are mirror images of the apartment plans shown in the brochure. Please refer to the key plan for orientation. The plans are subject to change as may be approved by relevant authorities. All floor plans are approximate measurements only and are subject to government re-survey. The balcony shall not be enclosed unless with the approved balcony screen. For an illustration of the approved balcony screen, please refer to the diagram annexed hereto as "Annexure 1".

# 3 - BEDROOM

## TYPE C2

99 sq m / 1066 sq ft

#23-02\*, #23-09



\*Mirror Image



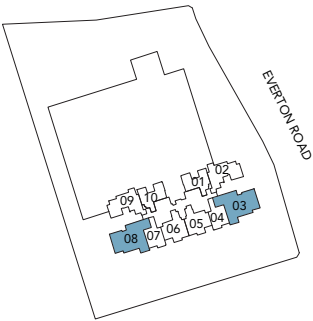
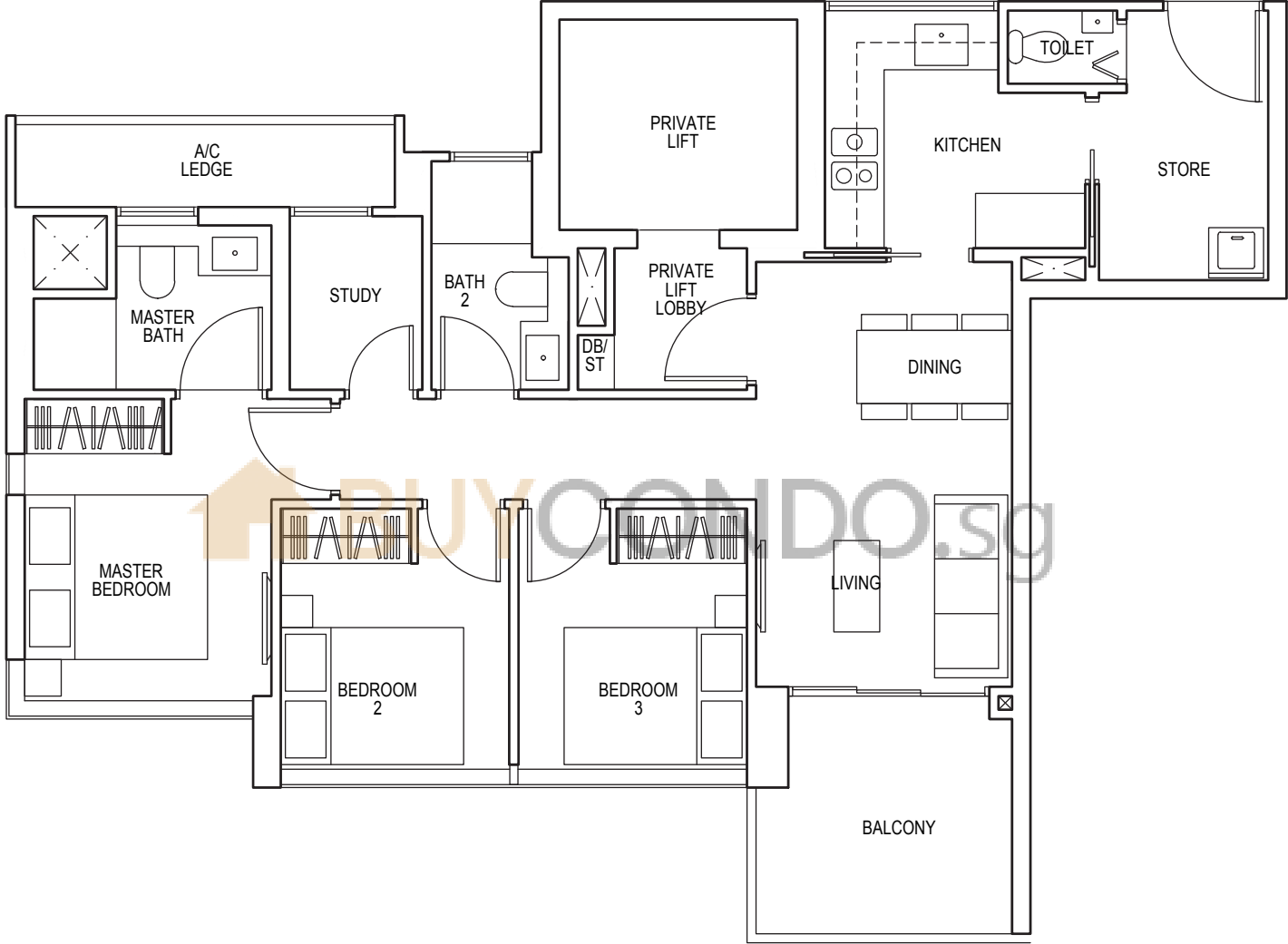
Area includes air-con (A/C) ledge, balcony and strata void area where applicable. Some units are mirror images of the apartment plans shown in the brochure. Please refer to the key plan for orientation. The plans are subject to change as may be approved by relevant authorities. All floor plans are approximate measurements only and are subject to government re-survey. The balcony shall not be enclosed unless with the approved balcony screen. For an illustration of the approved balcony screen, please refer to the diagram annexed hereto as "Annexure 1".

# 3 - BEDROOM + STUDY

## TYPE C3

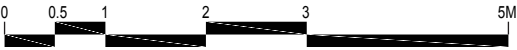
89 sq m / 958 sq ft

- #06-03\* to #12-03\*
- #06-08 to #12-08
- #15-03\* to #22-03\*
- #15-08 to #22-08



**KEY PLAN**  
Keyplan is not drawn to scale

\*Mirror Image



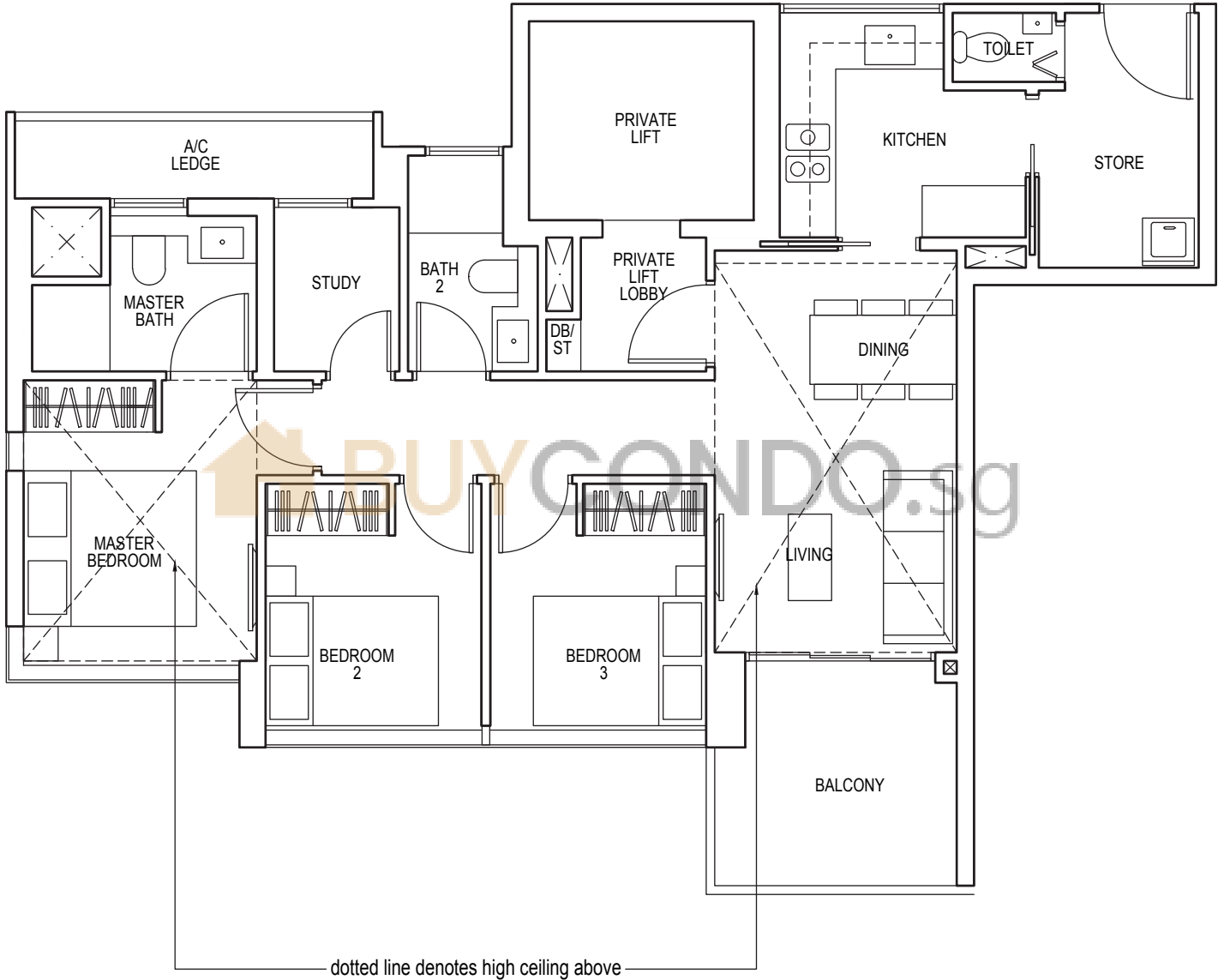
Area includes air-con (A/C) ledge, balcony and strata void area where applicable. Some units are mirror images of the apartment plans shown in the brochure. Please refer to the key plan for orientation. The plans are subject to change as may be approved by relevant authorities. All floor plans are approximate measurements only and are subject to government re-survey. The balcony shall not be enclosed unless with the approved balcony screen. For an illustration of the approved balcony screen, please refer to the diagram annexed hereto as "Annexure 1".

# 3 - BEDROOM + STUDY

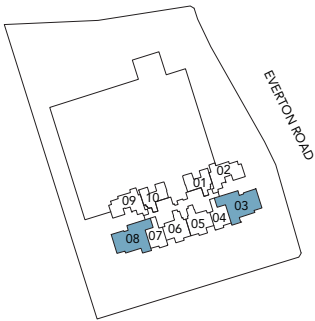
## TYPE C4

103 sq m / 1109 sq ft

#13-03\*, #13-08, #23-03\*, #23-08



dotted line denotes high ceiling above



**KEY PLAN**  
Keyplan is not drawn to scale

\*Mirror Image



Area includes air-con (A/C) ledge, balcony and strata void area where applicable. Some units are mirror images of the apartment plans shown in the brochure. Please refer to the key plan for orientation. The plans are subject to change as may be approved by relevant authorities. All floor plans are approximate measurements only and are subject to government re-survey. The balcony shall not be enclosed unless with the approved balcony screen. For an illustration of the approved balcony screen, please refer to the diagram annexed hereto as "Annexure 1".

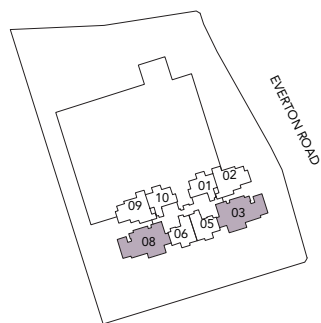
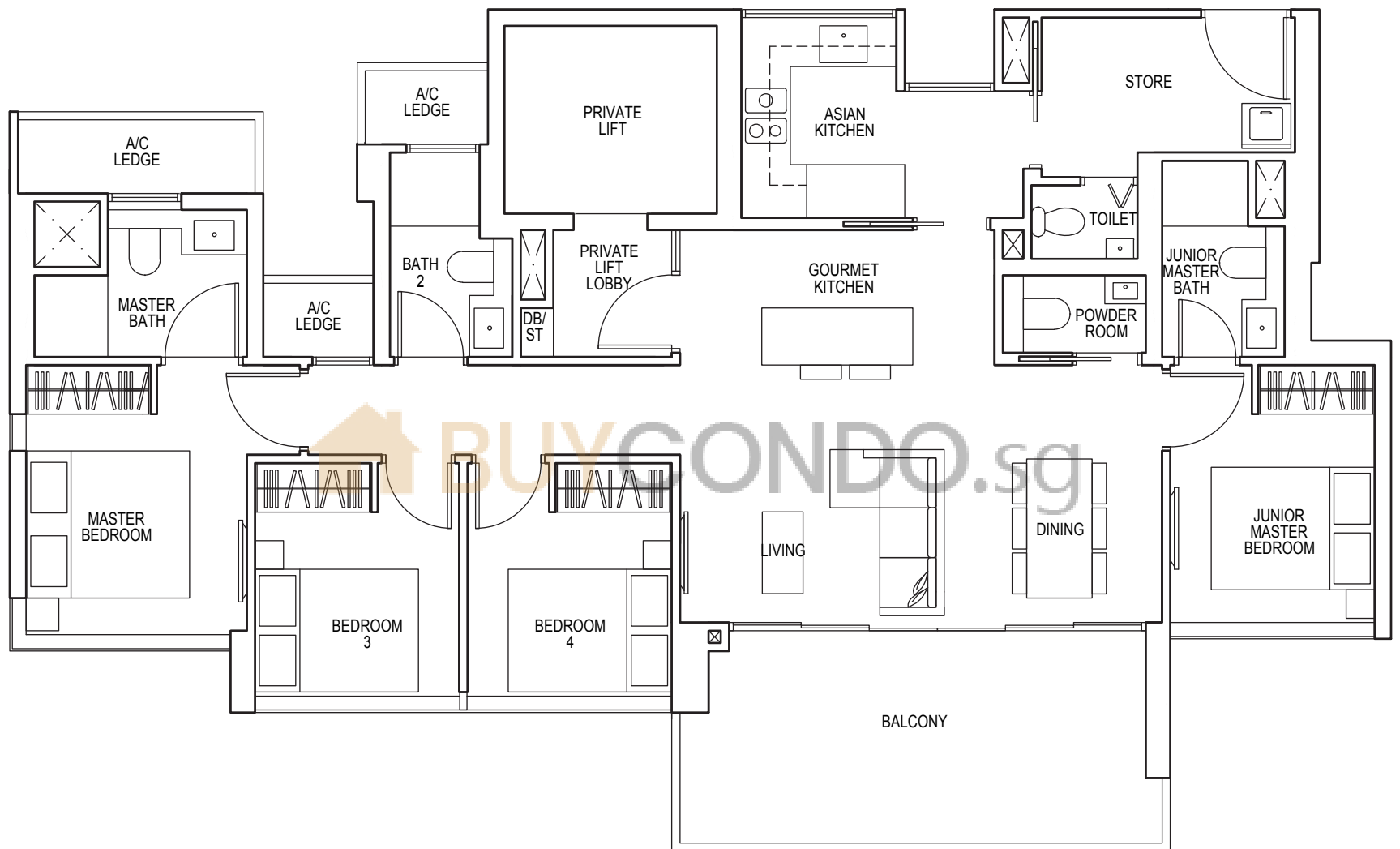
# 4 - BEDROOM

## TYPE D1

125 sq m / 1346 sq ft

#25-03\* to #35-03\*

#25-08 to #35-08



\*Mirror Image



Area includes air-con (A/C) ledge, balcony and strata void area where applicable. Some units are mirror images of the apartment plans shown in the brochure. Please refer to the key plan for orientation. The plans are subject to change as may be approved by relevant authorities. All floor plans are approximate measurements only and are subject to government re-survey. The balcony shall not be enclosed unless with the approved balcony screen. For an illustration of the approved balcony screen, please refer to the diagram annexed hereto as "Annexure 1".

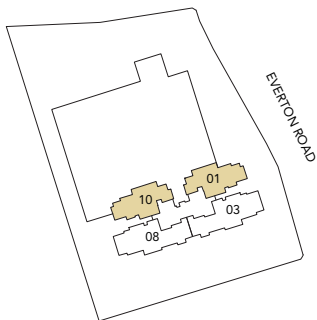
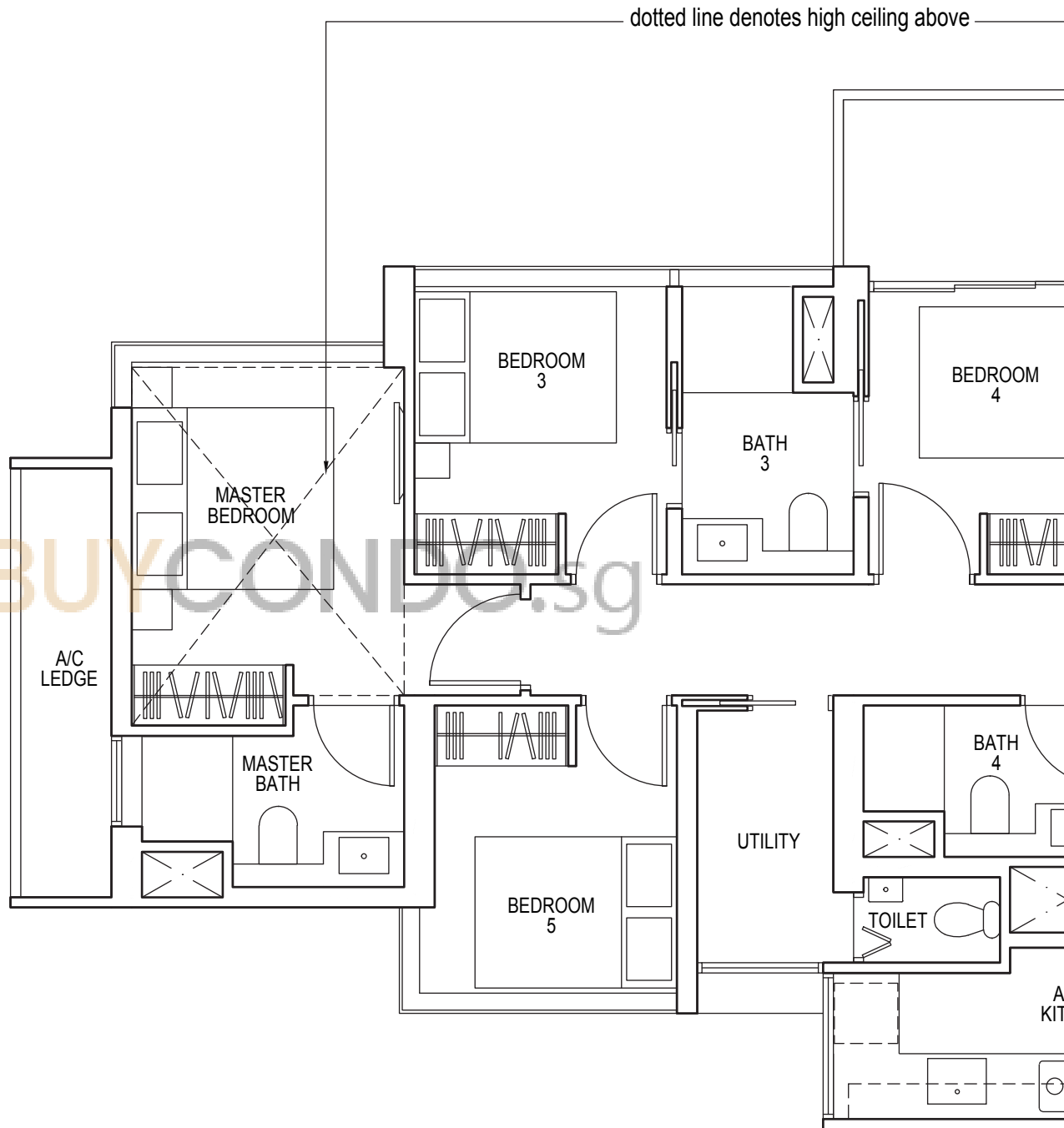


# 5 - BEDROOM

## TYPE PH1

169 sq m / 1819 sq ft

#36-01\*, #36-10



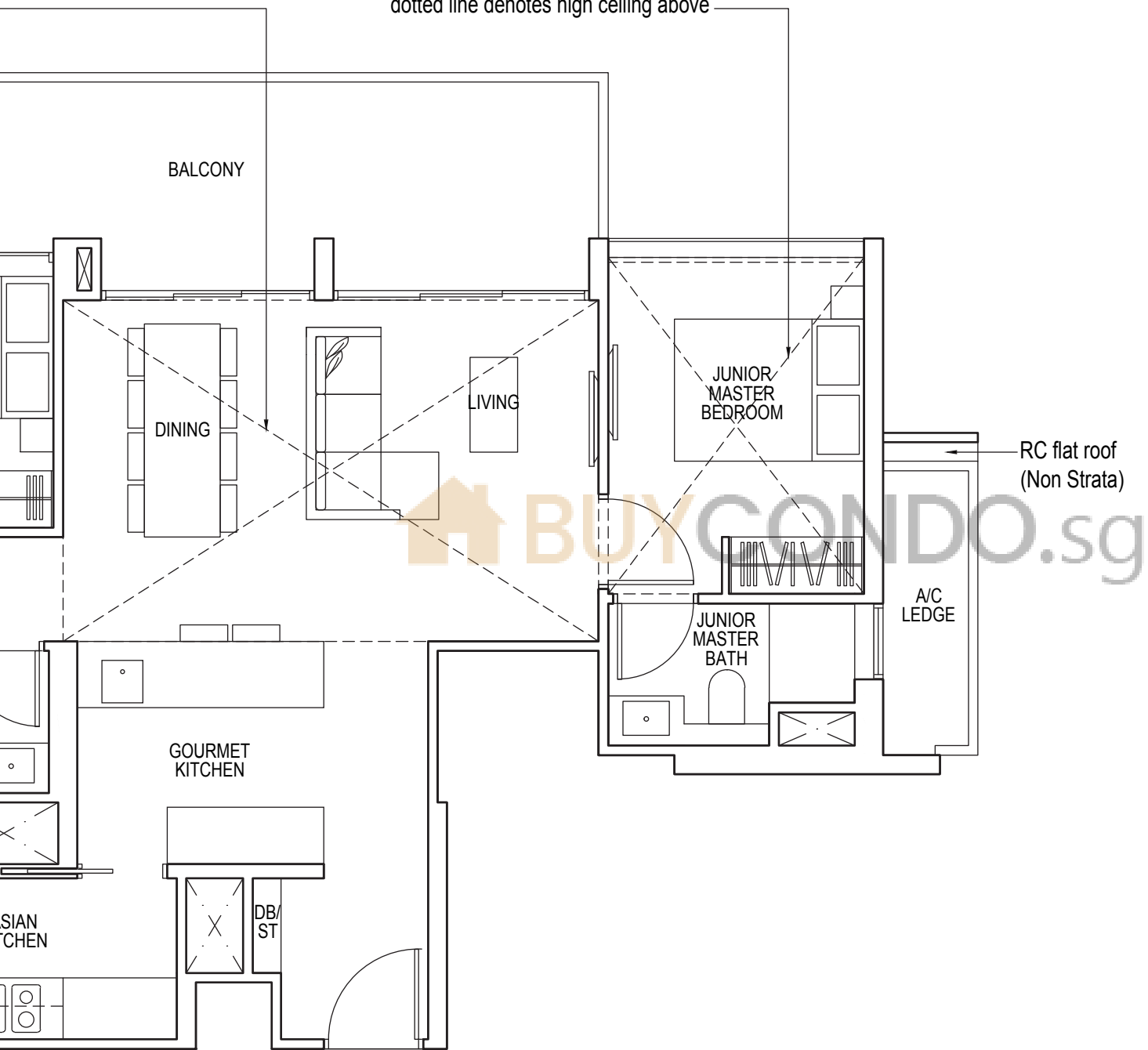
**KEY PLAN**  
Keyplan is not drawn to scale

\*Mirror Image



Area includes air-con (A/C) ledge, balcony and strata void area where applicable. Some units are mirror images of the apartment plans shown in the brochure. Please refer to the key plan for orientation. The plans are subject to change as may be approved by relevant authorities. All floor plans are approximate measurements only and are subject to government re-survey. The balcony shall not be enclosed unless with the approved balcony screen. For an illustration of the approved balcony screen, please refer to the diagram annexed hereto as "Annexure 1".

dotted line denotes high ceiling above



RC flat roof  
(Non Strata)

A/C  
LEDGE

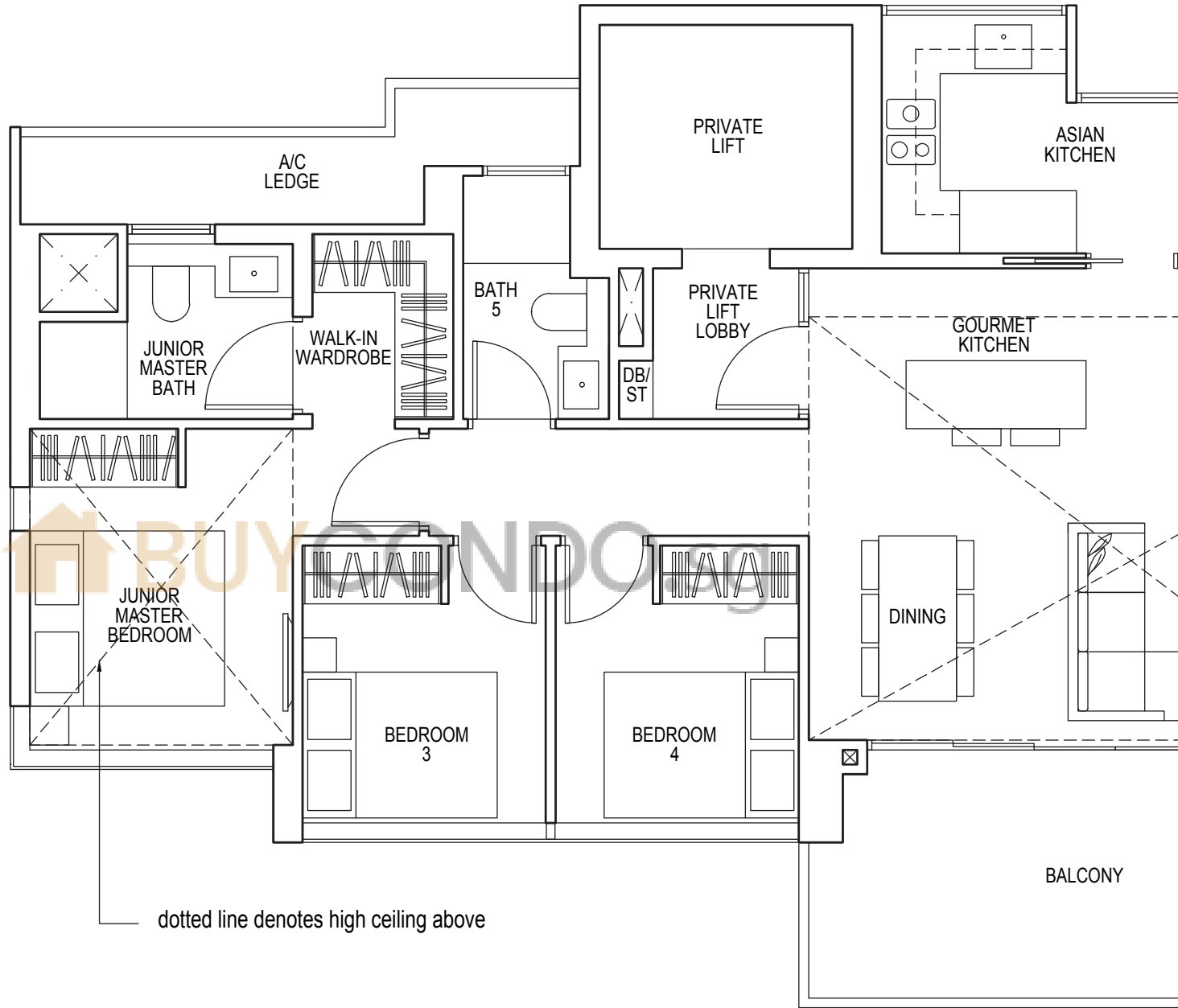
BUY CONDO.sg

# 6 - BEDROOM

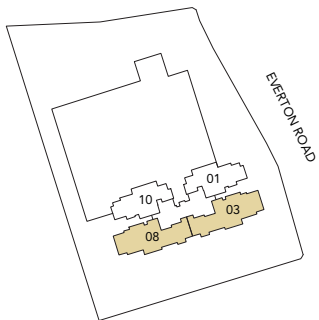
## TYPE PH2

207 sq m / 2228 sq ft

#36-03\*, #36-08



dotted line denotes high ceiling above



\*Mirror Image



Area includes air-con (A/C) ledge, balcony and strata void area where applicable. Some units are mirror images of the apartment plans shown in the brochure. Please refer to the key plan for orientation. The plans are subject to change as may be approved by relevant authorities. All floor plans are approximate measurements only and are subject to government re-survey. The balcony shall not be enclosed unless with the approved balcony screen. For an illustration of the approved balcony screen, please refer to the diagram annexed hereto as "Annexure 1".

