

PENTHOUSE - PLAN #33-01

Lower Storey



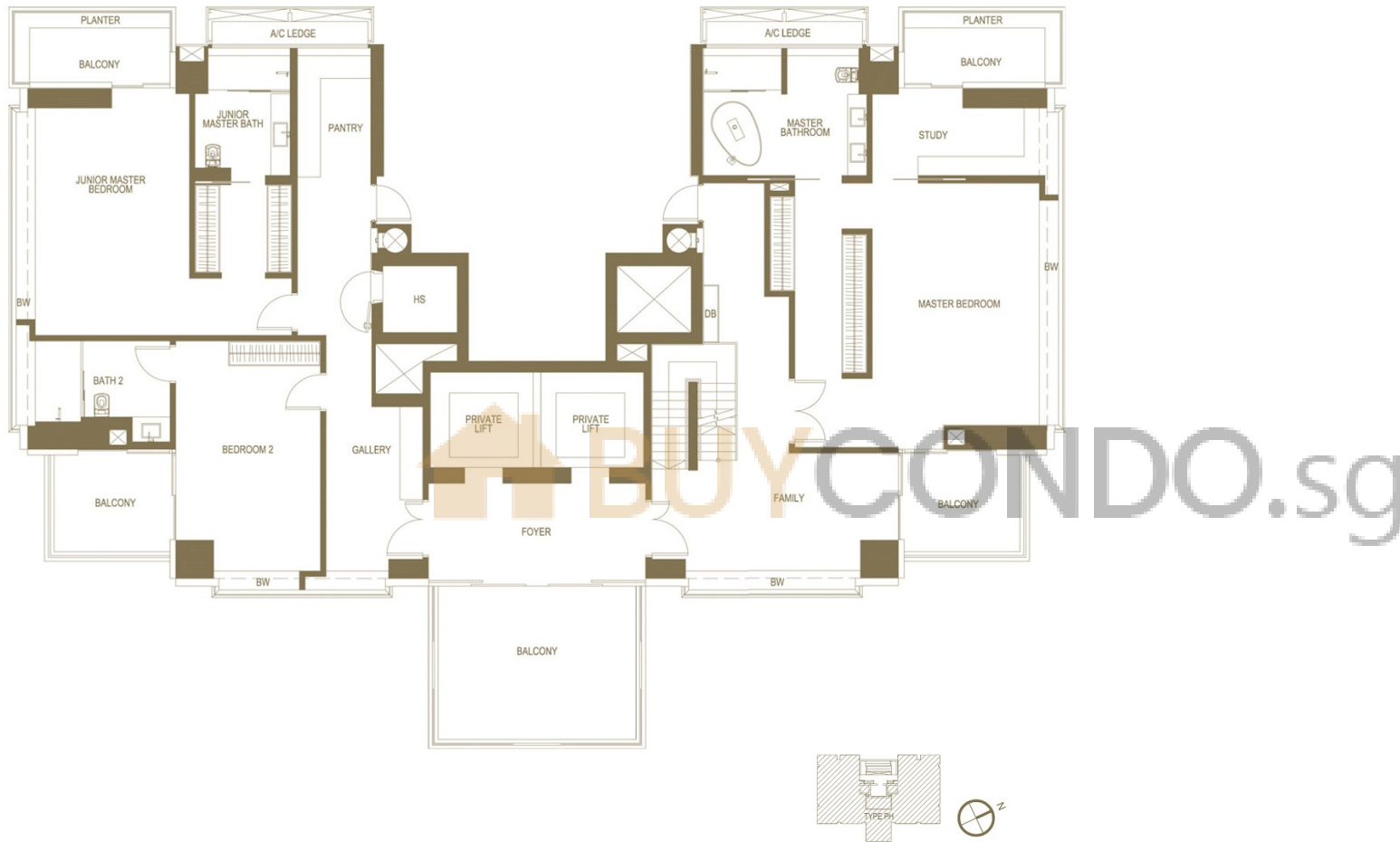
4-Bedroom (9,494 sq ft)



Disclaimer: The plan is solely for illustration of space only, as it is not reflected in BP approved plans. Plan is subject to any amendments as may be approved by the relevant authorities.

PENTHOUSE - PLAN #33-01

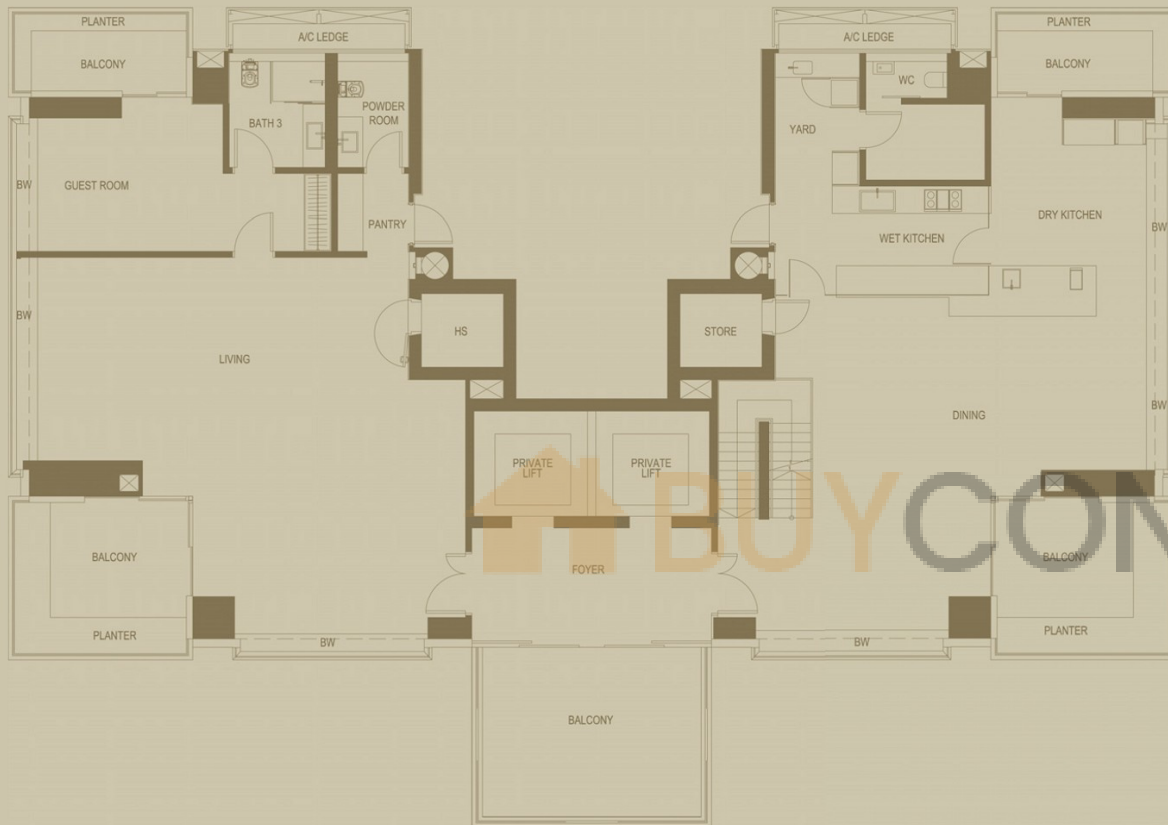
Upper Storey



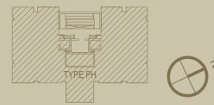
Disclaimer: The plan is solely for illustration of space only, as it is not reflected in BP approved plans. Plan is subject to any amendments as may be approved by the relevant authorities.

PENTHOUSE - PLAN #33-01

Lower Storey



4-Bedroom (9,494 sq ft)



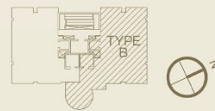
Disclaimer: The plan is solely for illustration of space only, as it is not reflected in BP approved plans. Plan is subject to any amendments as may be approved by the relevant authorities.

TYPE B - PLAN

#07-01



4-Bedroom (2,067 sq ft)



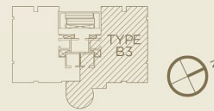
Disclaimer: The plan is solely for illustration of space only, as it is not reflected in BP approved plans. Plan is subject to any amendments as may be approved by the relevant authorities.

TYPE B3 - PLAN

#12-01



3-Bedroom (2,067 sq ft)



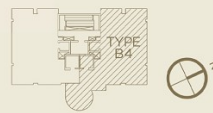
Disclaimer: The plan is solely for illustration of space only, as it is not reflected in BP approved plans. Plan is subject to any amendments as may be approved by the relevant authorities.

TYPE B4 - PLAN

#13-01



3-Bedroom (2,067 sq ft)

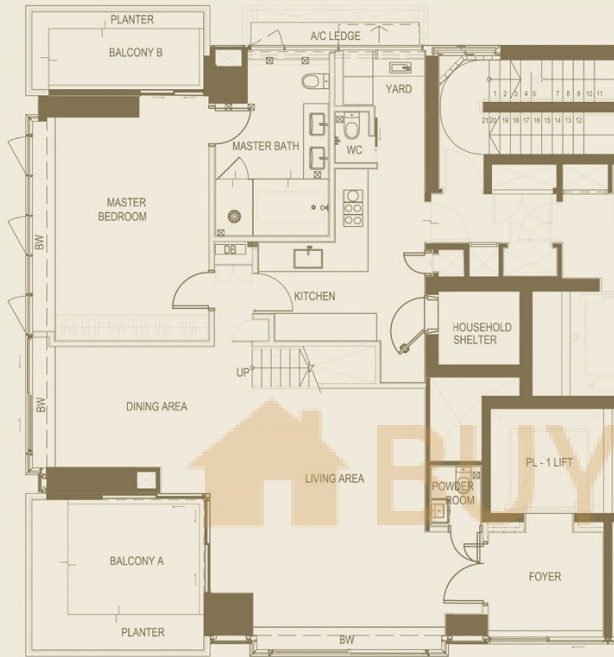


Disclaimer: The plan is solely for illustration of space only, as it is not reflected in BP approved plans. Plan is subject to any amendments as may be approved by the relevant authorities.

TYPE C - PLAN

#23, 25-02

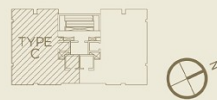
Lower Storey



4-Bedroom (3,100 sq ft)

Disclaimer: The plan is solely for illustration of space only, as it is not reflected in BP approved plans. Plan is subject to any amendments as may be approved by the relevant authorities.

Upper Storey



Disclaimer: The plan is solely for illustration of space only, as it is not reflected in BP approved plans. Plan is subject to any amendments as may be approved by the relevant authorities.

TYPE C2 - PLAN

#15, 23-01

Lower Storey



3-Bedroom + Study (3,100 sq ft)

Disclaimer: The plan is solely for illustration of space only, as it is not reflected in BP approved plans. Plan is subject to any amendments as may be approved by the relevant authorities.

Upper Storey



Disclaimer: The plan is solely for illustration of space only, as it is not reflected in BP approved plans. Plan is subject to any amendments as may be approved by the relevant authorities.

BUY CONDO.sg

TYPE C2 - PLAN

#17, 19, 21-01

Lower Storey



4-Bedroom (3,100 sq ft)

Disclaimer: The plan is solely for illustration of space only, as it is not reflected in BP approved plans. Plan is subject to any amendments as may be approved by the relevant authorities.

Upper Storey



BUY CONDO.sg



Disclaimer: The plan is solely for illustration of space only, as it is not reflected in BP approved plans. Plan is subject to any amendments as may be approved by the relevant authorities.

TYPE D2 - PLAN

#31-01



4-Bedroom (3,767 sq ft)



Disclaimer: The plan is solely for illustration of space only, as it is not reflected in BP approved plans. Plan is subject to any amendments as may be approved by the relevant authorities.