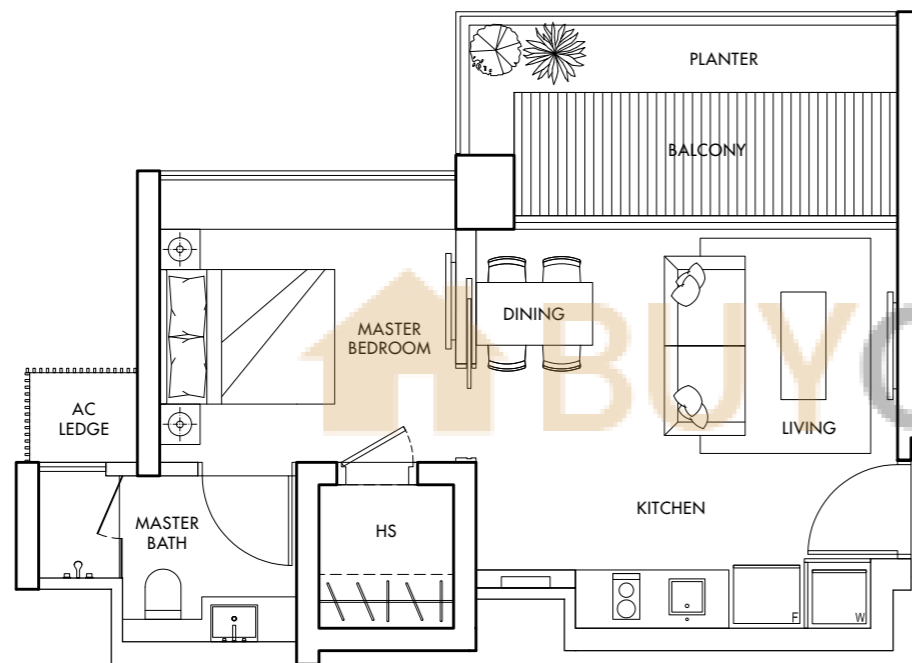


Type A1

56 sq m/603 sq ft

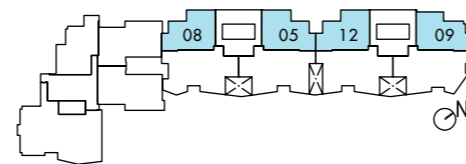
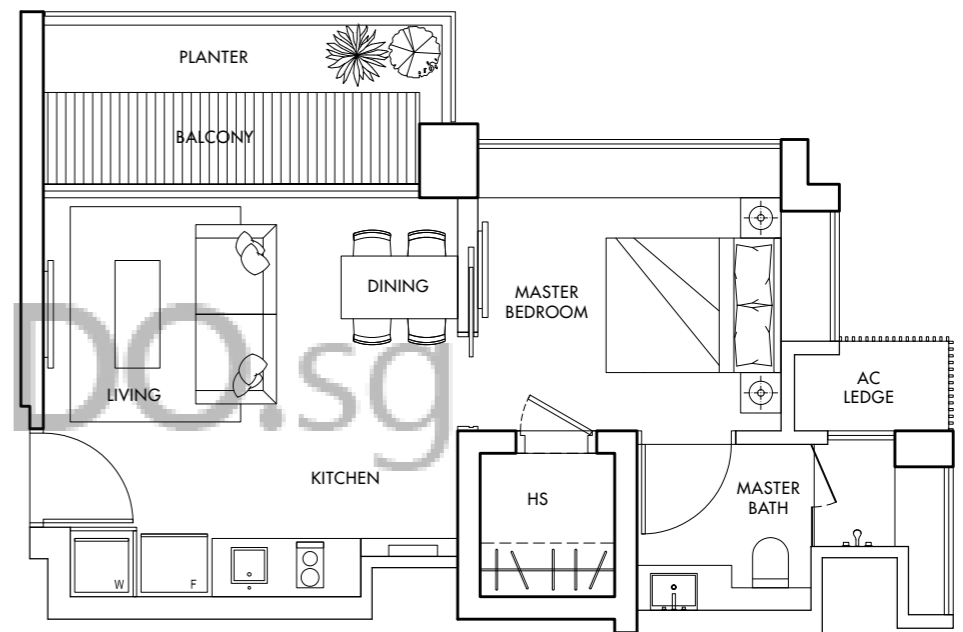
#03-05 to #35-05,
#03-08 to #35-08,
#03-12 to #21-12, #26-12 to #35-12



Type A2

55 sq m/592 sq ft

#05-09 to #21-09, #26-09 to #35-09

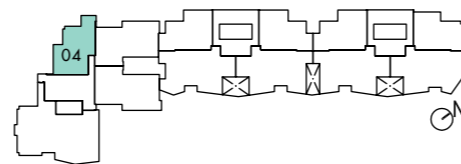
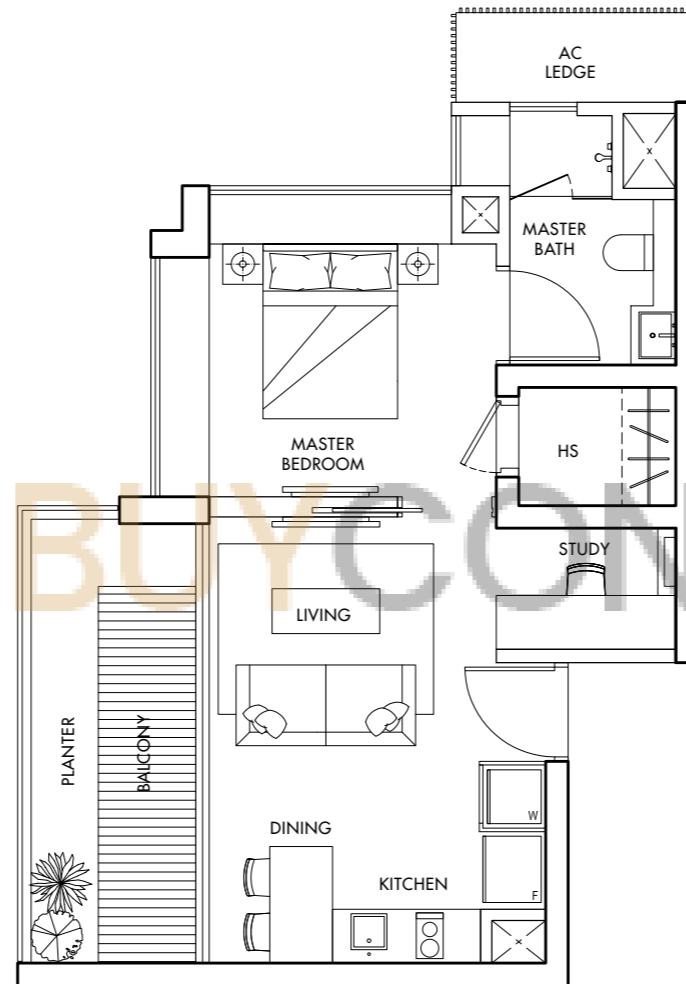


The plans are subject to change as may be required or approved by the relevant authorities.
Areas are estimates only and are subject to final survey. Plans are not drawn to scale.

Type A3

58 sq m/624 sq ft

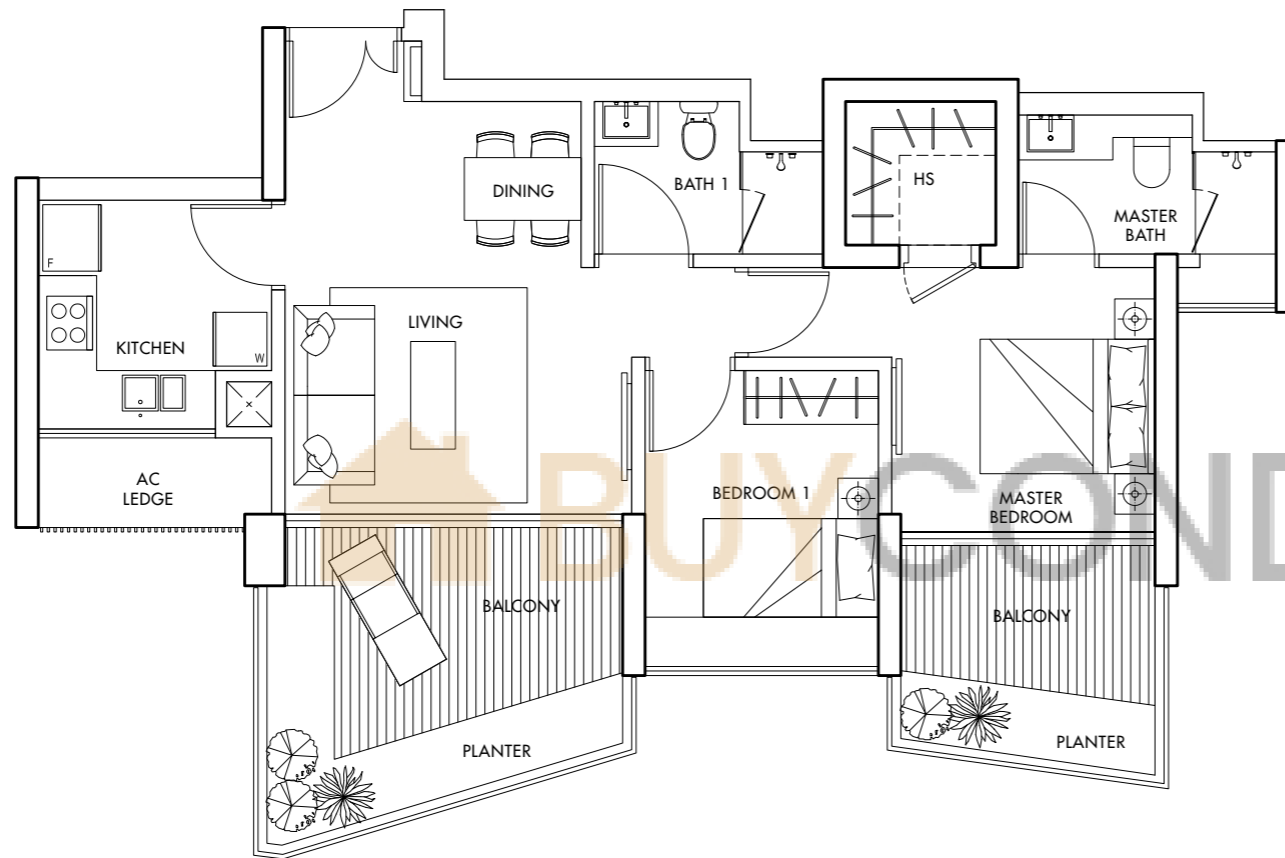
#06-04 to #09-04, #15-04 to #35-04



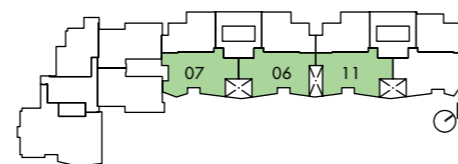
The plans are subject to change as may be required or approved by the relevant authorities. Areas are estimates only and are subject to final survey. Plans are not drawn to scale.

Type B1

85 – 89 sq m/
915 – 958 sq ft



FLOOR	AREA (Sq m)	AREA (Sq m)	AREA (Sq m)
	#07	#06	#11
35	89	87	88
34	89	87	87
33	89	86	87
32	88	86	86
31	88	86	86
30	88	86	85
29	88	85	85
28	88	85	85
27	88	85	84
26	88	85	85
25	88	85	SKY TERRACE 3
24	88	86	
23	88	86	
22	88	86	
21	89	86	87
20	89	87	87
19	89	87	88
18	89	87	87
17	89	86	87
16	88	86	86
15	88	86	86
14	88	86	85
13	88	85	85
12	88	85	85
11	88	85	84
10	88	85	85
9	88	85	85
8	88	86	85
7	88	86	86
6	88	86	86
5	89	86	87
4	89	87	87
3	89	87	88

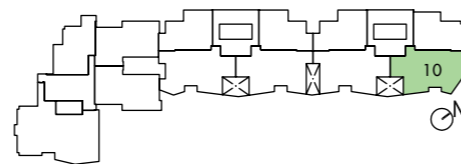
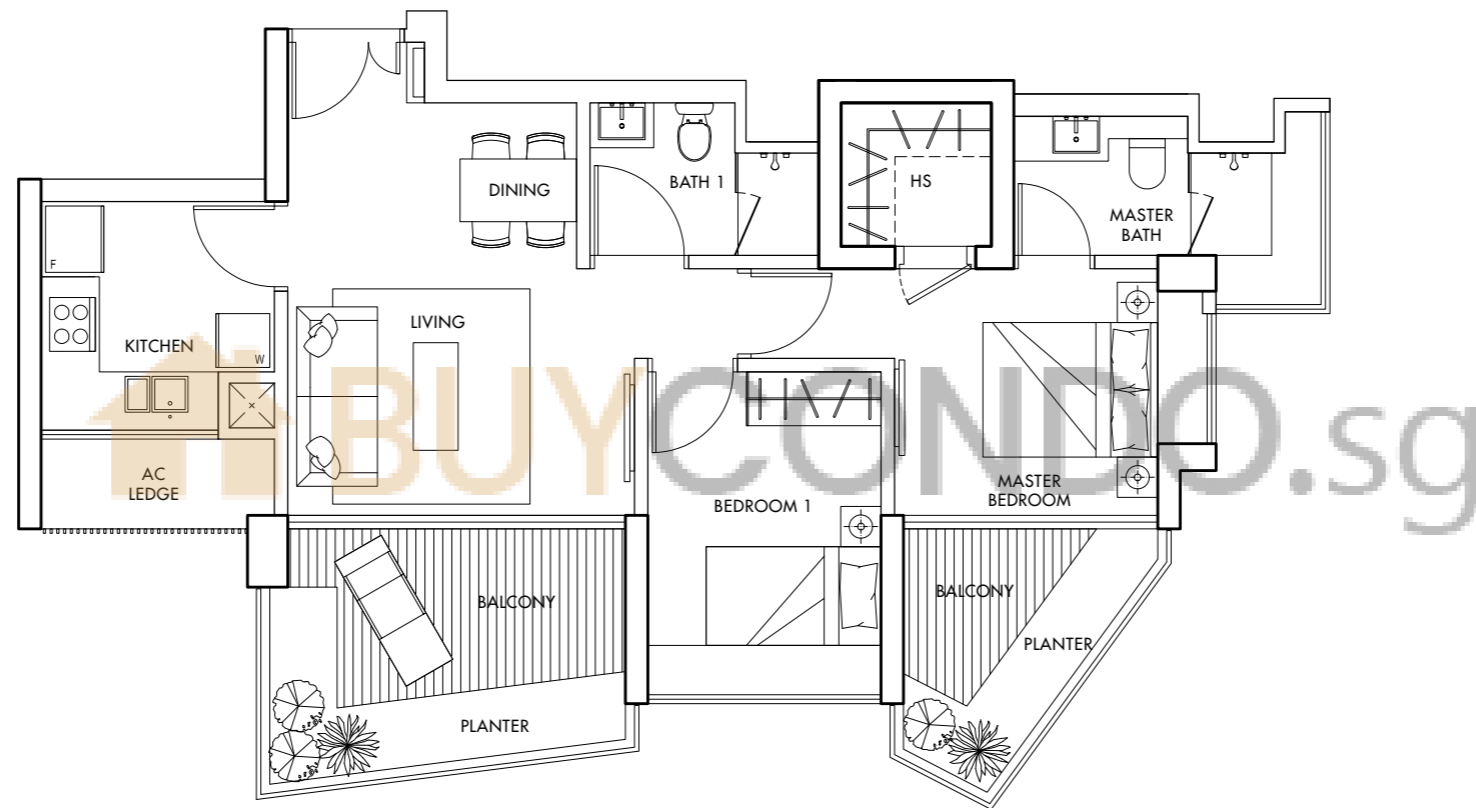


The plans are subject to change as may be required or approved by the relevant authorities.
Areas are estimates only and are subject to final survey. Plans are not drawn to scale.

Type B2

86 sq m/926 sq ft

#05-10 to #21-10, #26-10 to #35-10

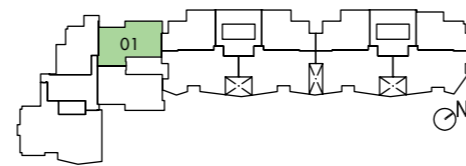
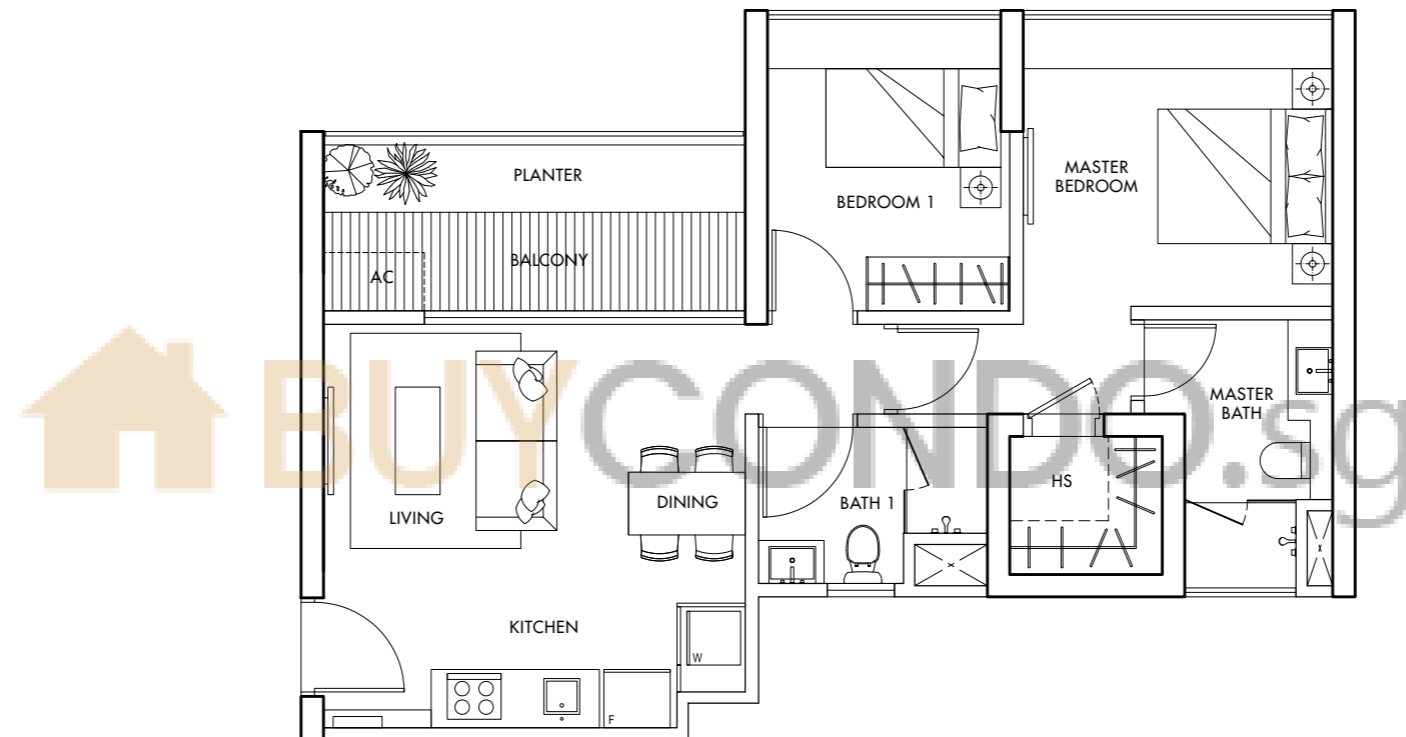


The plans are subject to change as may be required or approved by the relevant authorities. Areas are estimates only and are subject to final survey. Plans are not drawn to scale.

Type B3

74 sq m/797 sq ft

#06-01 to #09-01, #15-01 to #35-01

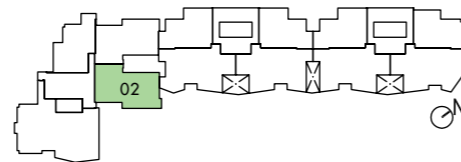
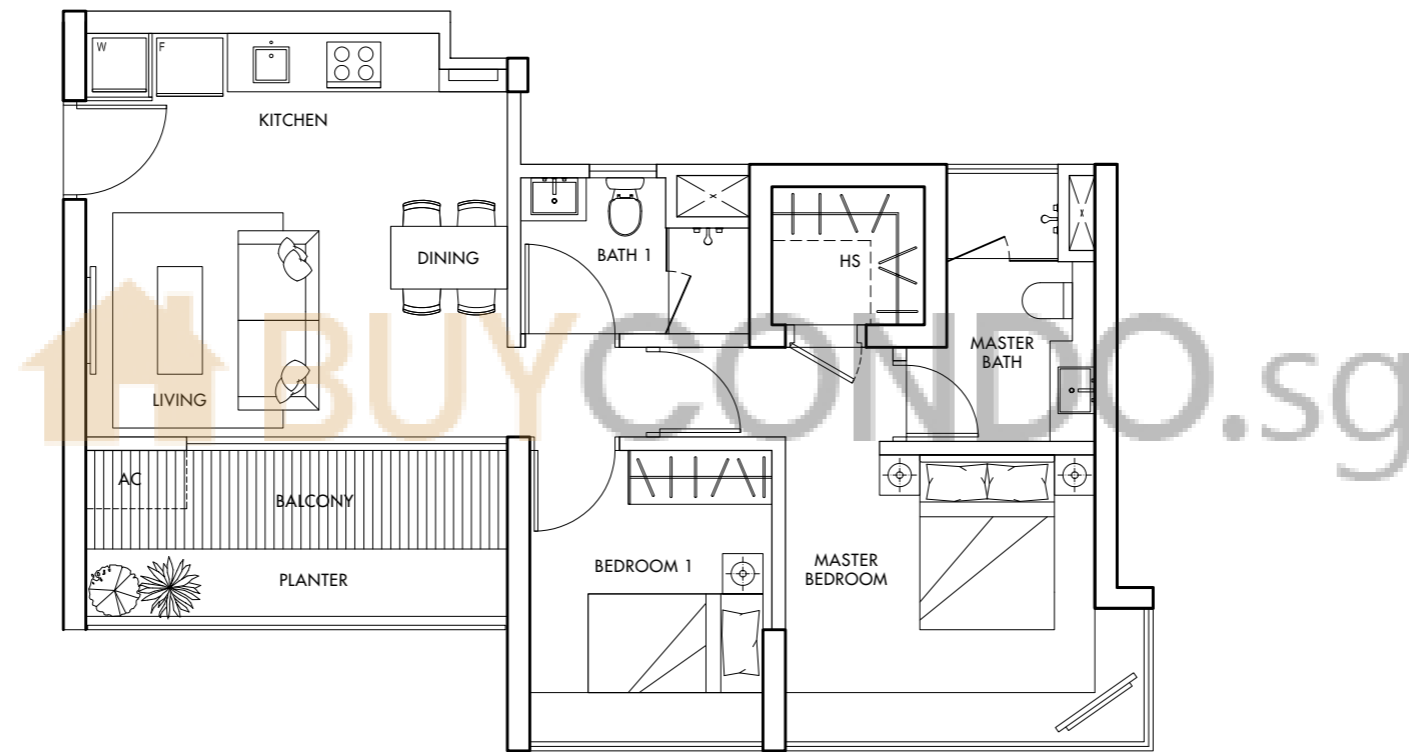


The plans are subject to change as may be required or approved by the relevant authorities.
Areas are estimates only and are subject to final survey. Plans are not drawn to scale.

Type B4

74 sq m/797 sq ft

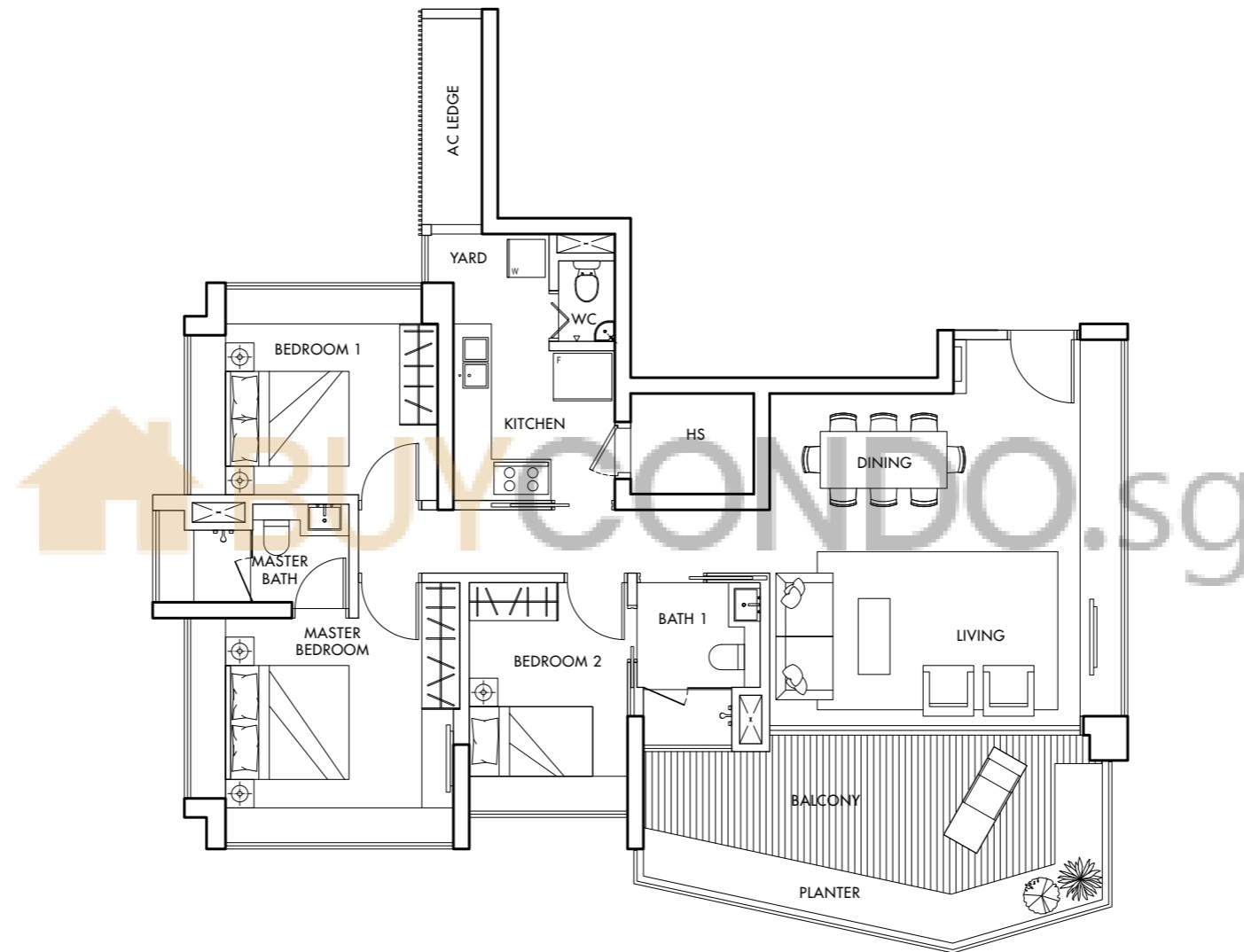
#06-02 to #09-02, #15-02 to #35-02



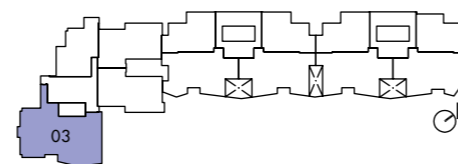
The plans are subject to change as may be required or approved by the relevant authorities.
Areas are estimates only and are subject to final survey. Plans are not drawn to scale.

Type C1

130 – 132 sq m/
1399 – 1421 sq ft



FLOOR	AREA (Sq m)
#03	
35	132
34	132
33	132
32	132
31	131
30	131
29	131
28	131
27	130
26	131
25	131
24	131
23	131
22	132
21	132
20	132
19	132
18	132
17	132
16	132
15	131
SKY TERRACE 2	
9	131
8	131
7	131
6	132

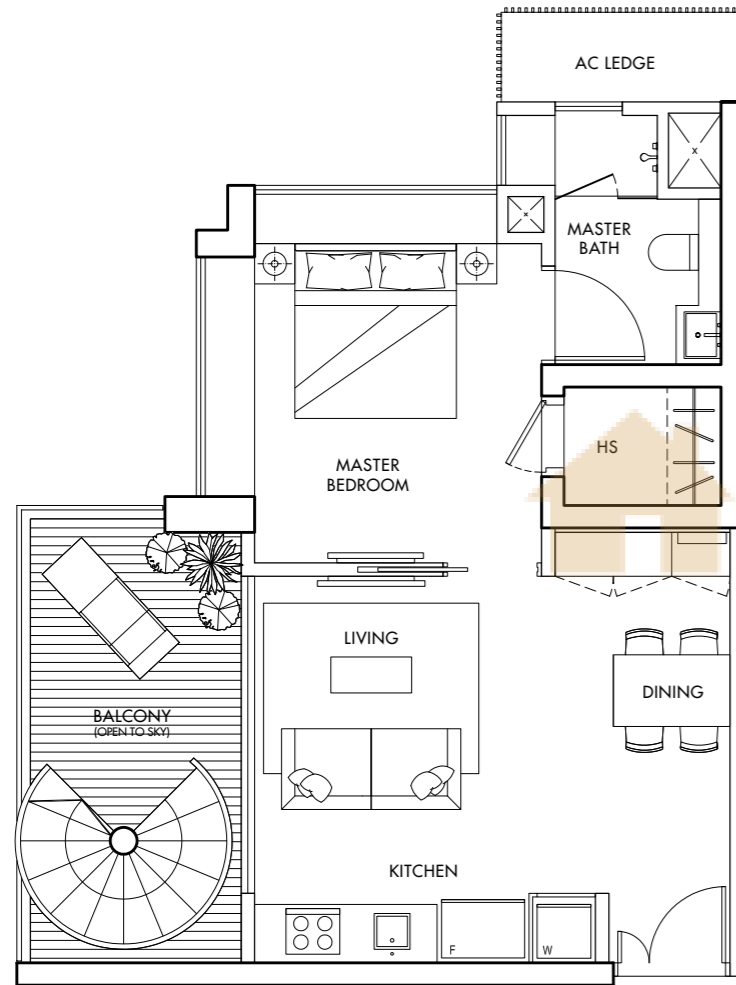


The plans are subject to change as may be required or approved by the relevant authorities.
Areas are estimates only and are subject to final survey. Plans are not drawn to scale.

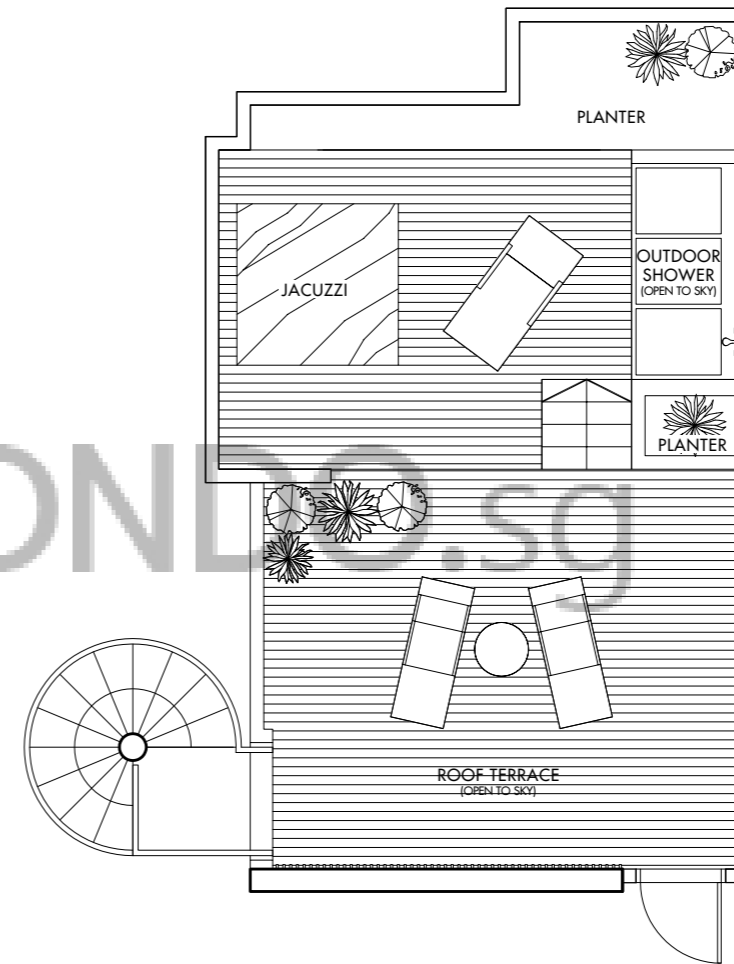
Type PH1 (Lower Level)

119 sq m/1281 sq ft

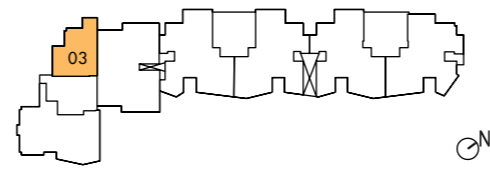
#36-03



Type PH1 (Upper Level)



BUYCONDO.SG



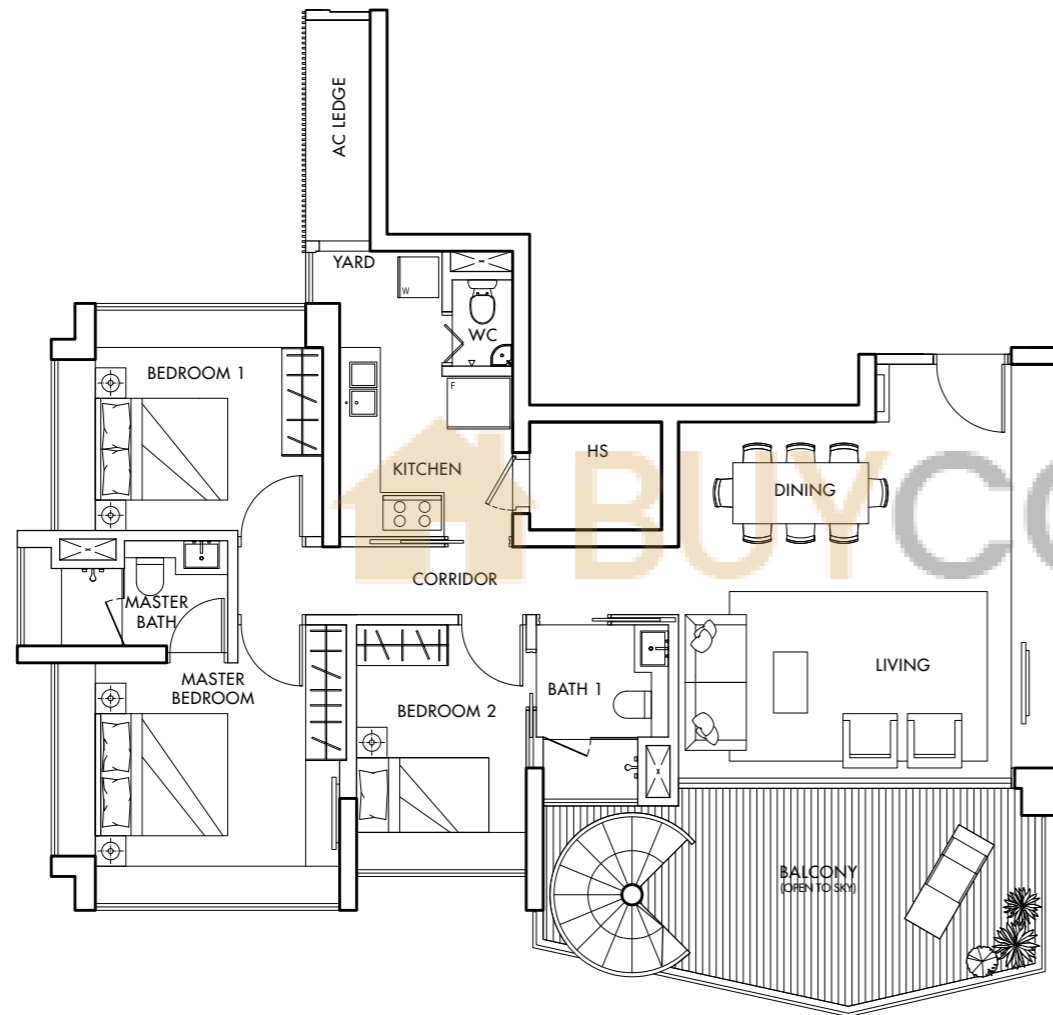
The plans are subject to change as may be required or approved by the relevant authorities. Areas are estimates only and are subject to final survey. Plans are not drawn to scale.



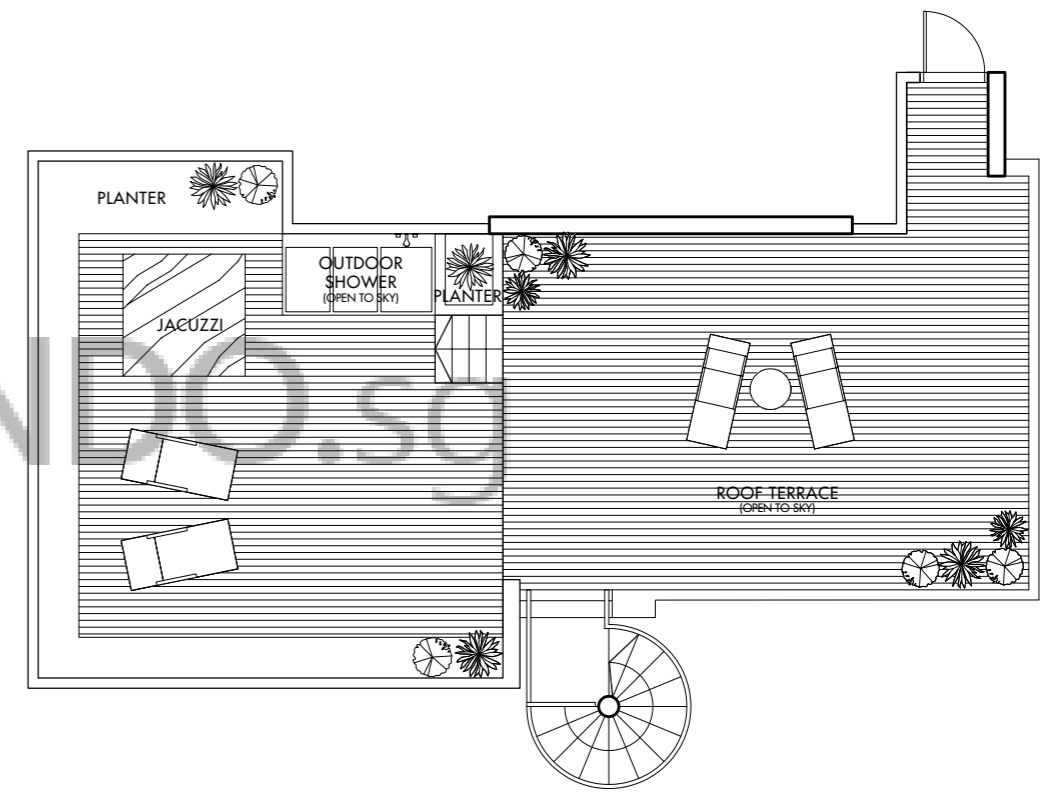
Type PH2 (Lower Level)

231 sq m/2486 sq ft

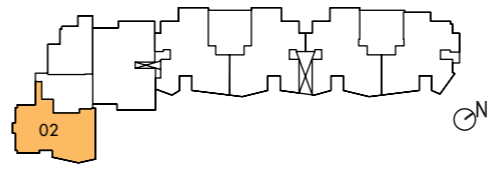
#36-02



Type PH2 (Upper Level)



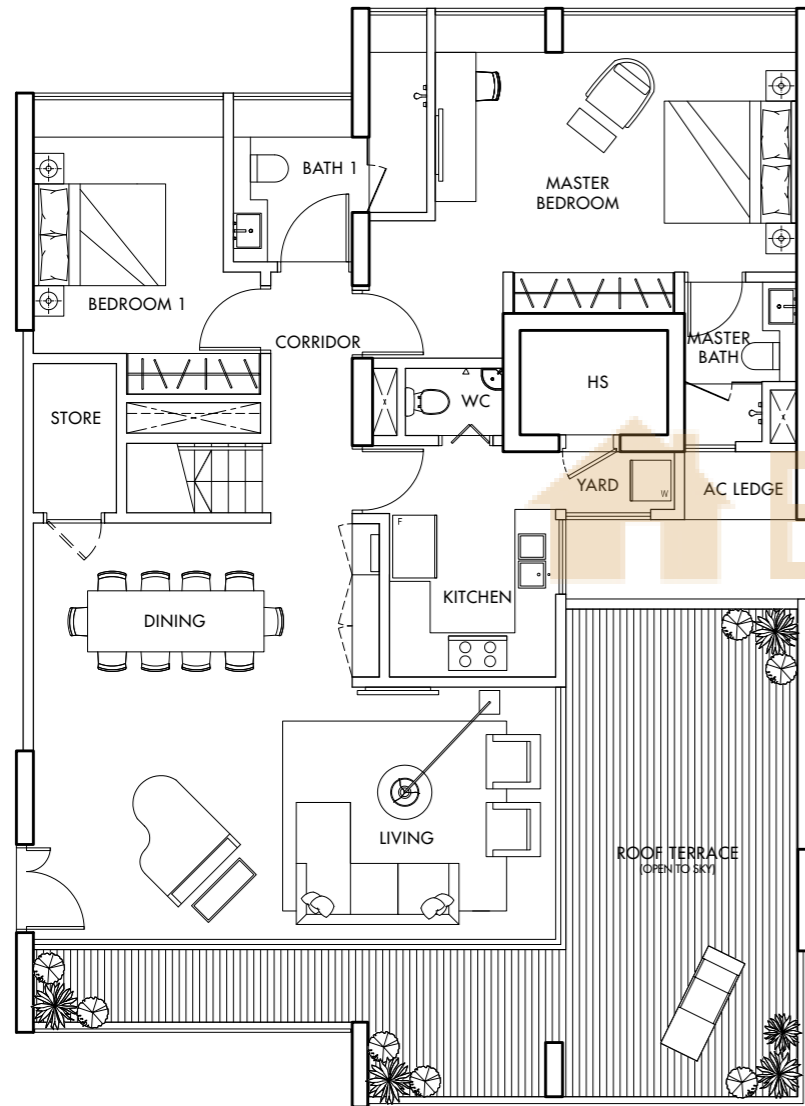
The plans are subject to change as may be required or approved by the relevant authorities. Areas are estimates only and are subject to final survey. Plans are not drawn to scale.



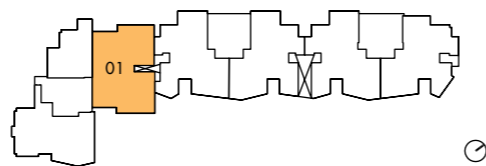
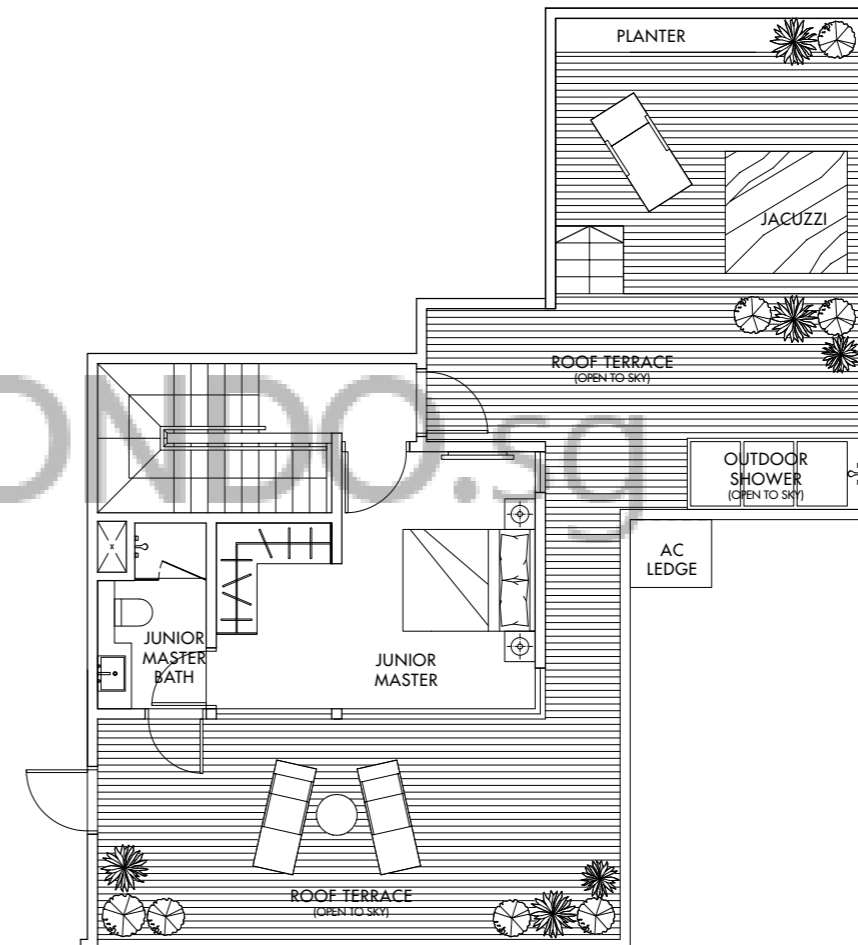
Type PH3 (Lower Level)

270 sq m/2906 sq ft

#36-01



Type PH3 (Upper Level)

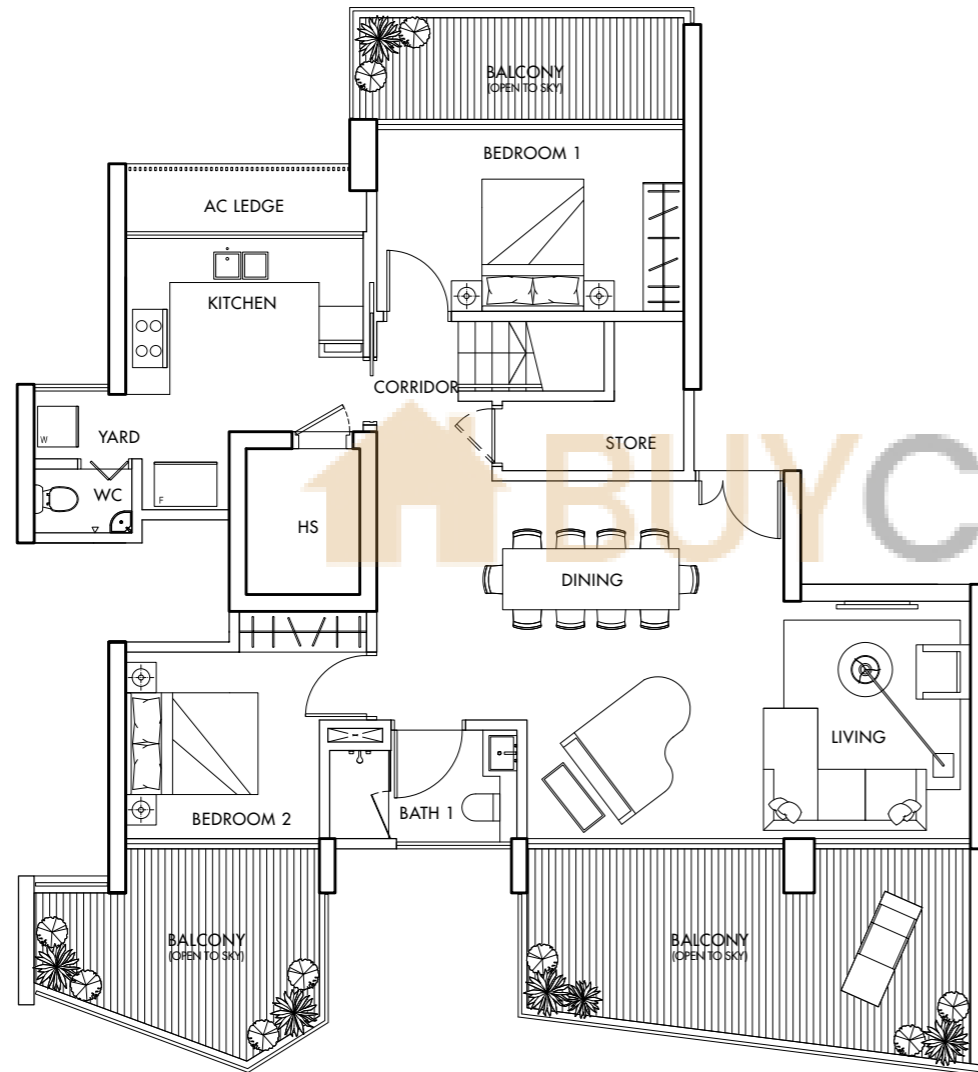


The plans are subject to change as may be required or approved by the relevant authorities. Areas are estimates only and are subject to final survey. Plans are not drawn to scale.

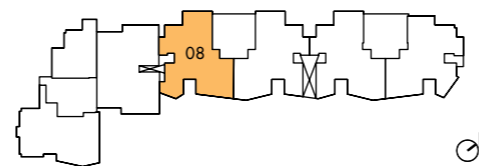
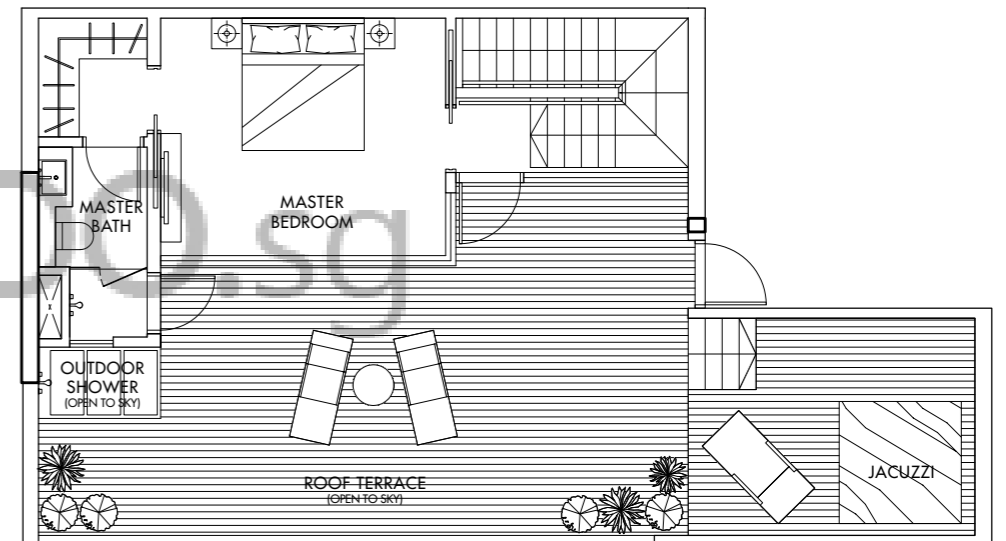
Type PH4 (Lower Level)

235 sq m/2530 sq ft

#36-08



Type PH4 (Upper Level)

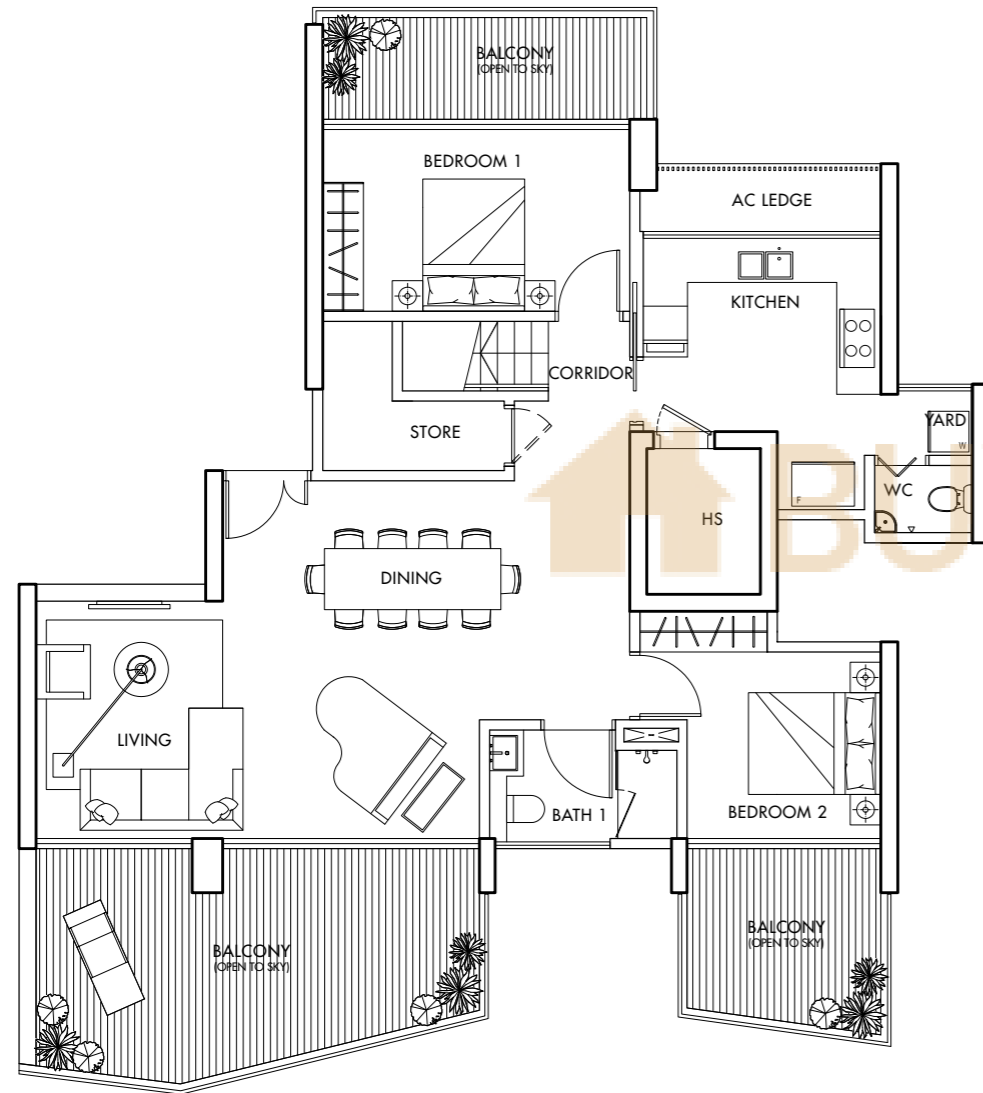


The plans are subject to change as may be required or approved by the relevant authorities. Areas are estimates only and are subject to final survey. Plans are not drawn to scale.

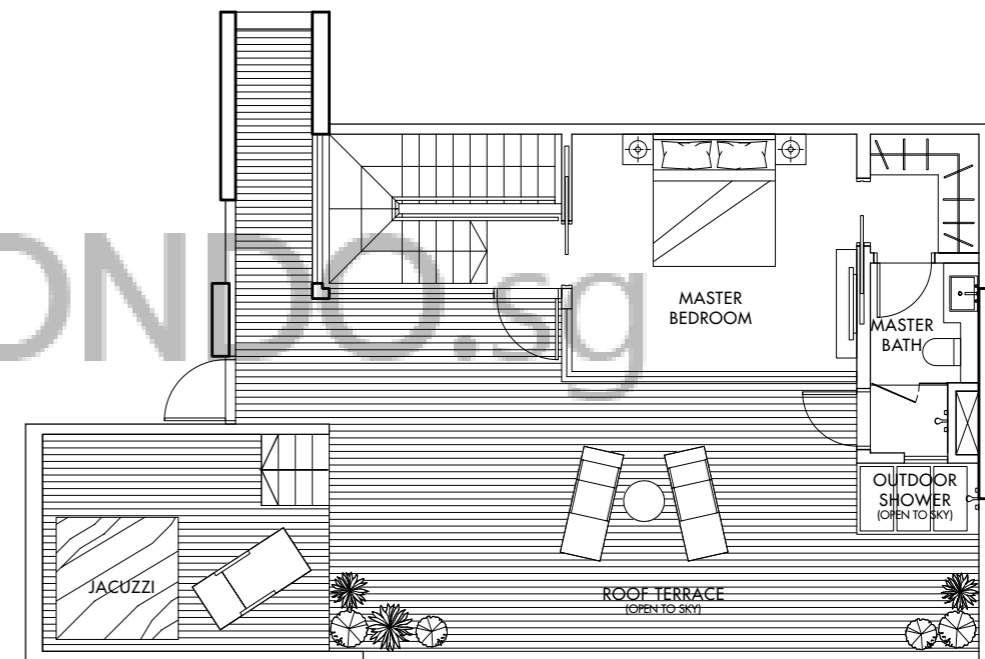
Type PH5 (Lower Level)

242 sq m/2605 sq ft

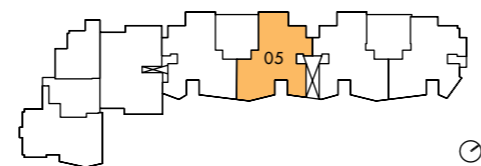
#36-05



Type PH5 (Upper Level)



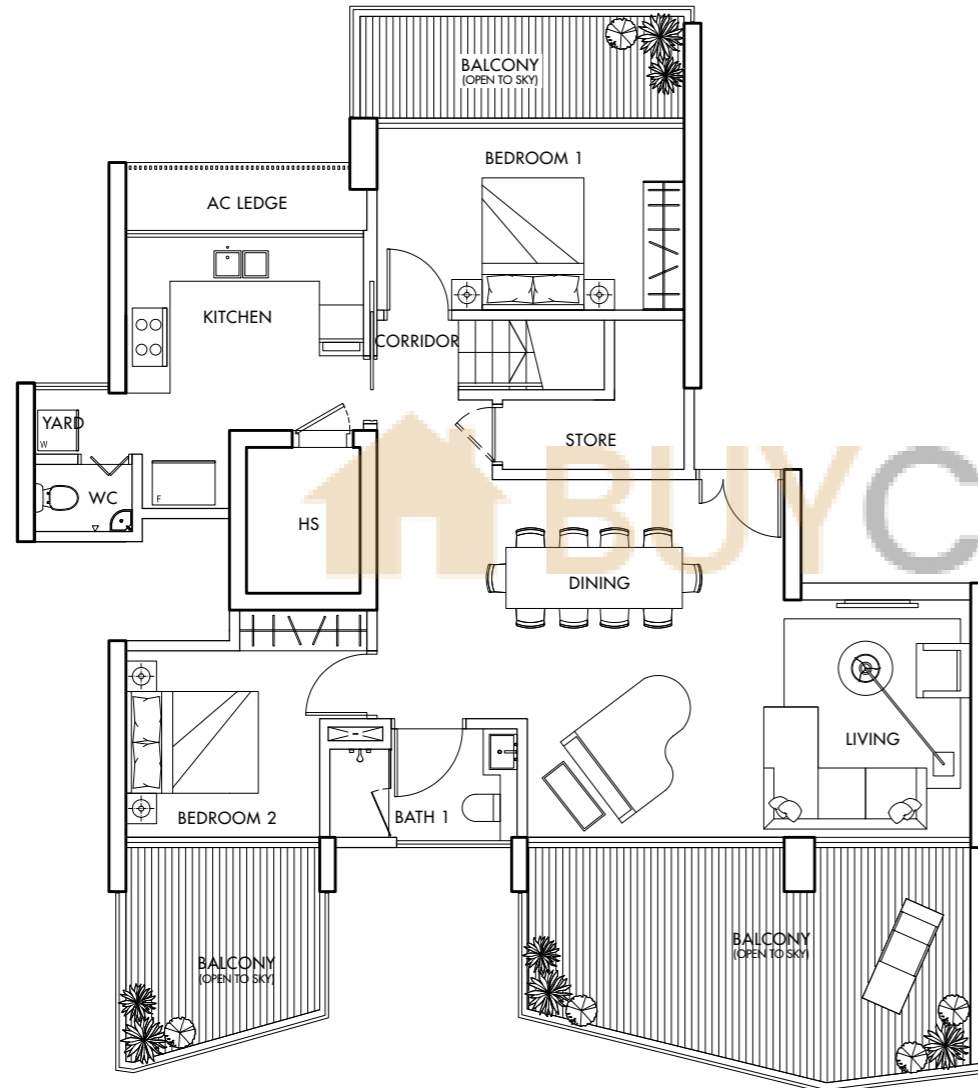
The plans are subject to change as may be required or approved by the relevant authorities. Areas are estimates only and are subject to final survey. Plans are not drawn to scale.



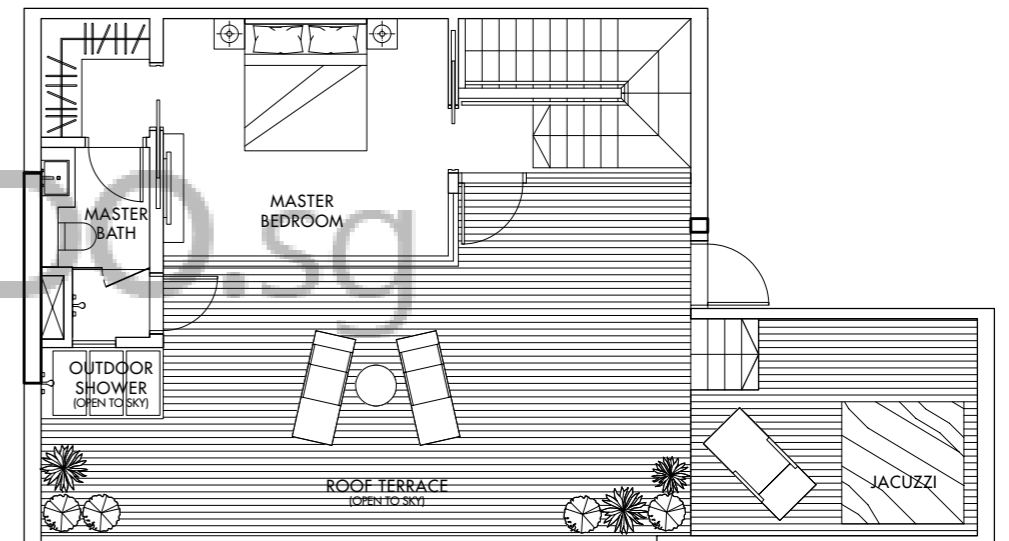
Type PH6 (Lower Level)

235 sq m/2530 sq ft

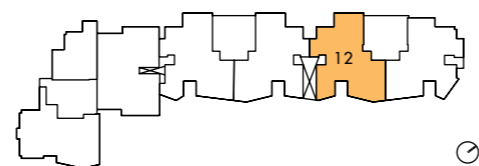
#36-12



Type PH6 (Upper Level)



The plans are subject to change as may be required or approved by the relevant authorities. Areas are estimates only and are subject to final survey. Plans are not drawn to scale.

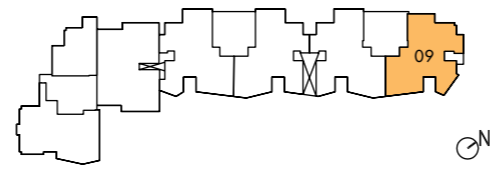
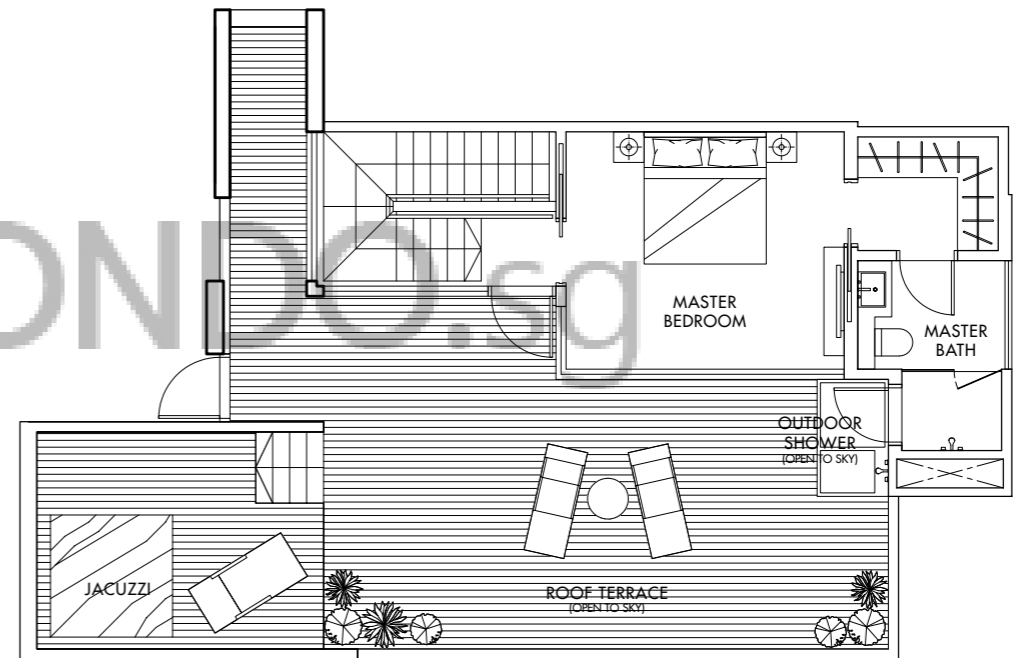
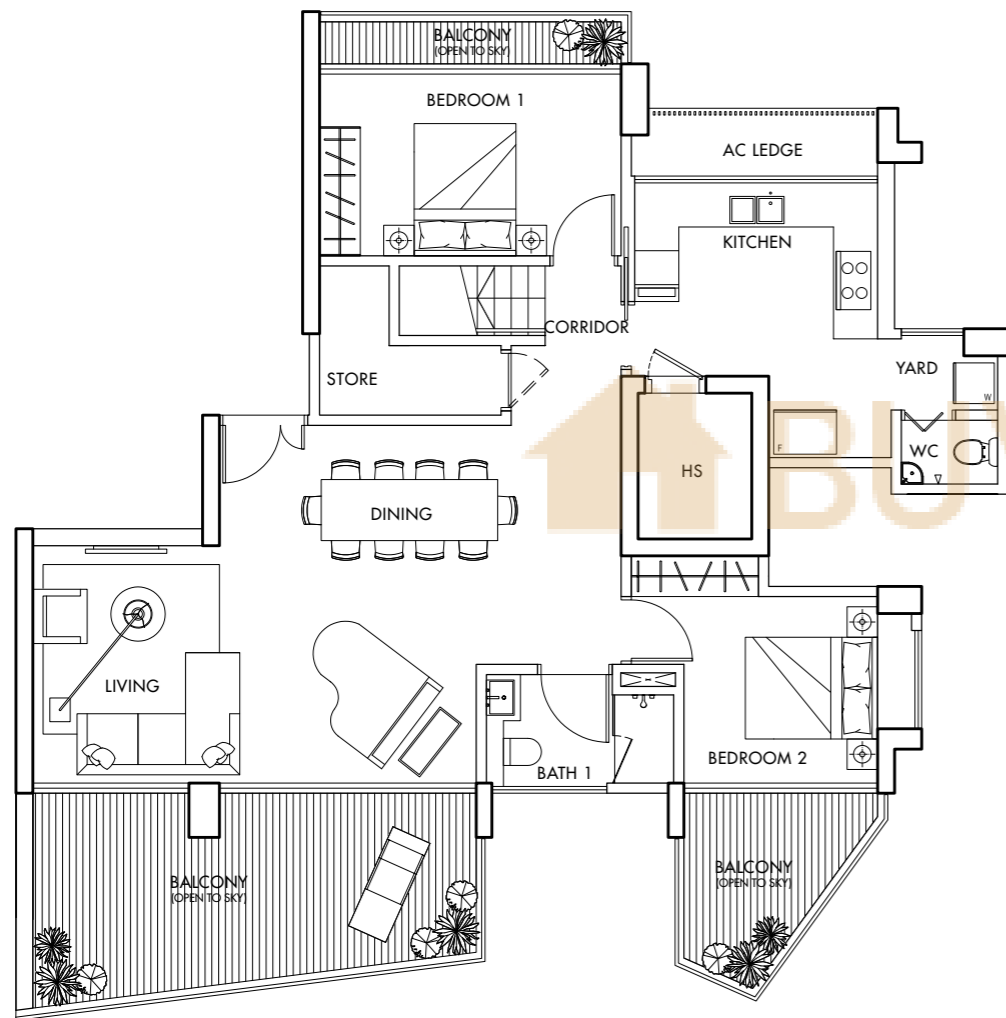


Type PH7 (Lower Level)

233 sq m/2508 sq ft

#36-09

Type PH7 (Upper Level)



The plans are subject to change as may be required or approved by the relevant authorities. Areas are estimates only and are subject to final survey. Plans are not drawn to scale.