

2-Bedroom

2-Bedroom



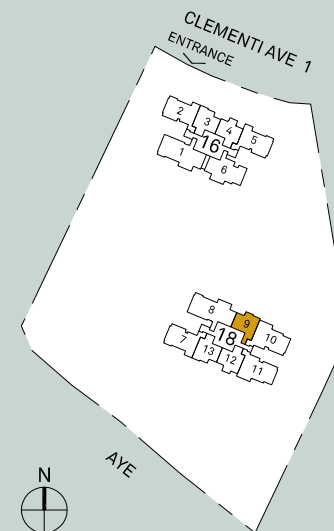
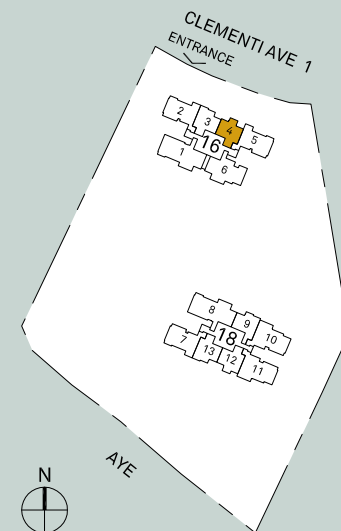
BUYCONDO.sg

● TYPE A1

TYPE A2 ●

TOWER 16
#02-04 TO #40-04

TOWER 18
#02-09 TO #40-09

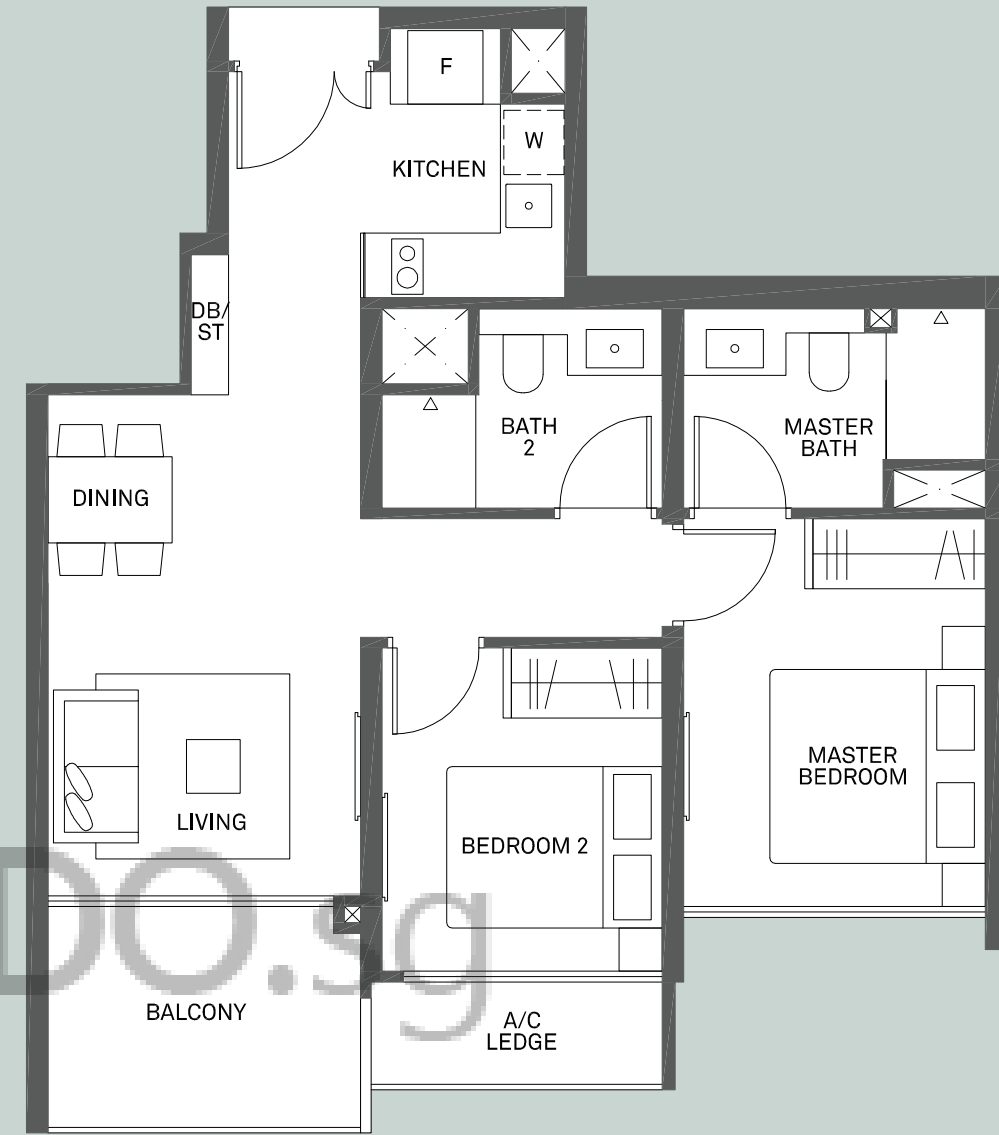
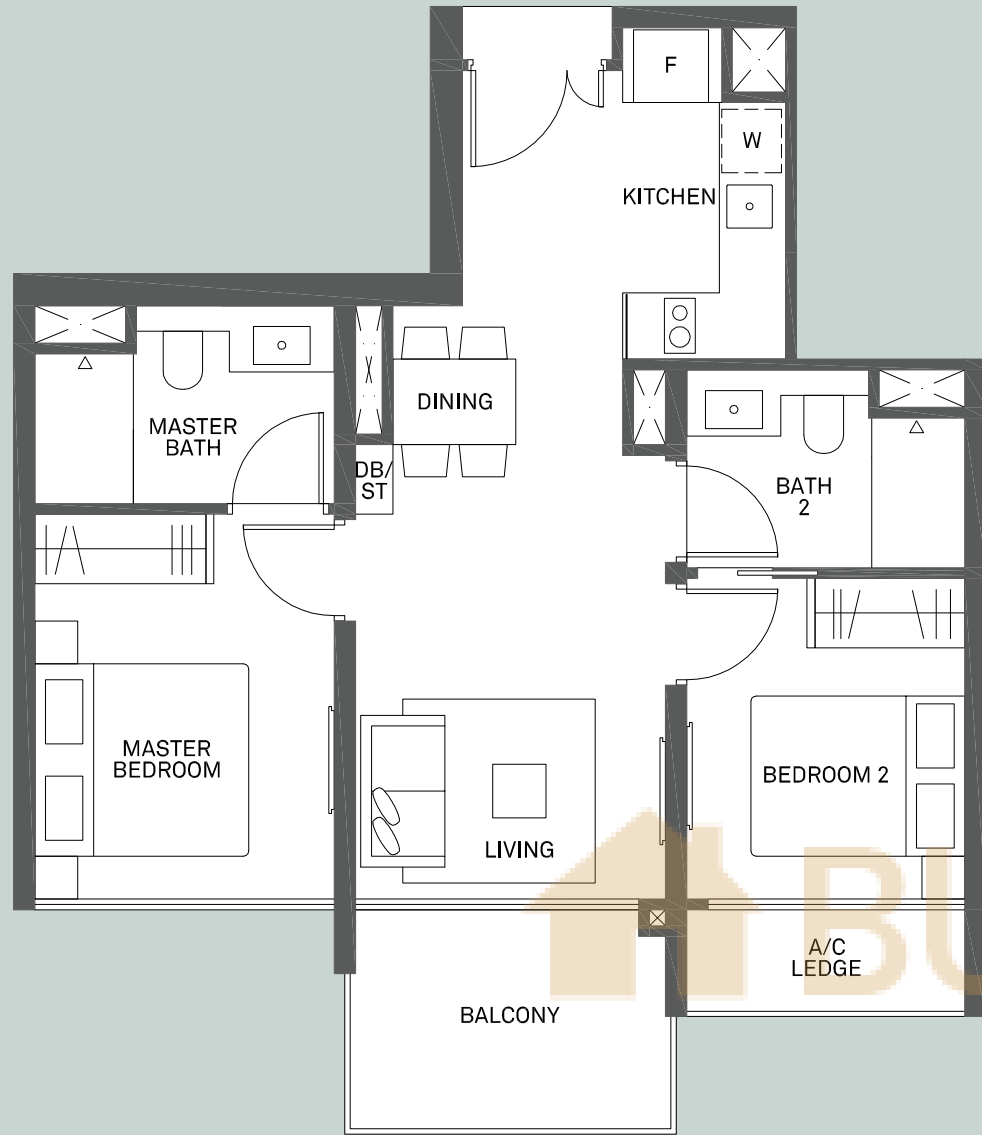


AREA
59 SQ.M (635 SQ.FT)

AREA
61 SQ.M (657 SQ.FT)

Area includes A/C ledge, balcony, pes, private roof terrace and void (where applicable). The above plans and illustrations are subject to changes as may be required by the relevant authorities. Areas are estimates only and are subject to final survey. The balcony, pes, and private roof terrace shall not be enclosed unless with the approved screen. For an illustration of the approved balcony screen, please refer to the diagram annexed hereto as "annexure 1".

Area includes A/C ledge, balcony, pes, private roof terrace and void (where applicable). The above plans and illustrations are subject to changes as may be required by the relevant authorities. Areas are estimates only and are subject to final survey. The balcony, pes, and private roof terrace shall not be enclosed unless with the approved screen. For an illustration of the approved balcony screen, please refer to the diagram annexed hereto as "annexure 1".



● TYPE B1

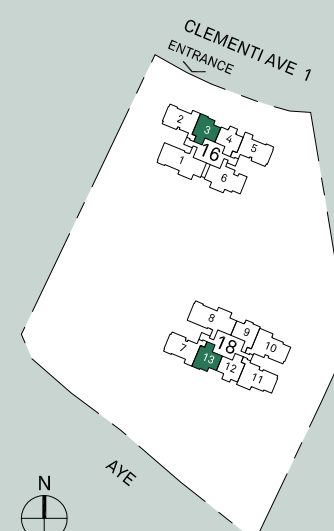
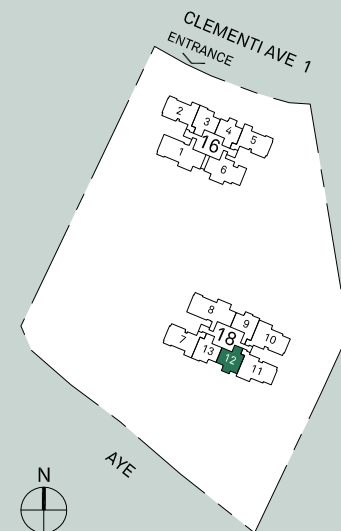
TYPE B2 ●

TOWER 18
#04-12 TO #40-12

TOWER 16
#02-03 TO #40-03 (Mirrored)

TOWER 18
#04-13 TO #40-13

AREA
66 SQ.M (710 SQ.FT)



AREA
68 SQ.M (732 SQ.FT)

Area includes A/C ledge, balcony, pes, private roof terrace and void (where applicable). The above plans and illustrations are subject to changes as may be required by the relevant authorities. Areas are estimates only and are subject to final survey. The balcony, pes, and private roof terrace shall not be enclosed unless with the approved screen. For an illustration of the approved balcony screen, please refer to the diagram annexed hereto as "annexure 1".

Area includes A/C ledge, balcony, pes, private roof terrace and void (where applicable). The above plans and illustrations are subject to changes as may be required by the relevant authorities. Areas are estimates only and are subject to final survey. The balcony, pes, and private roof terrace shall not be enclosed unless with the approved screen. For an illustration of the approved balcony screen, please refer to the diagram annexed hereto as "annexure 1".

3-Bedroom + Yard

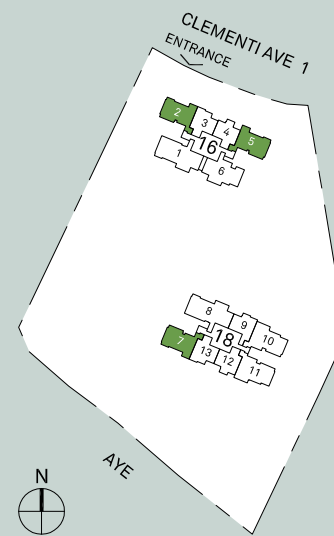


● TYPE C1

1
TOWER 16
#03-02 TO #39-02 (Mirrored)

2
TOWER 16 #02-05 TO #39-05
TOWER 18 #04-07 TO #39-07

AREA
92 SQ.M (990 SQ.FT)



Area includes A/C ledge, balcony, pes, private roof terrace and void (where applicable). The above plans and illustrations are subject to changes as maybe required by the relevant authorities. Areas are estimates only and are subject to final survey. The balcony, pes, and private roof terrace shall not be enclosed unless with the approved screen. For an illustration of the approved balcony screen, please refer to the diagram annexed hereto as "annexure 1".

3-Bedroom + Guest Room

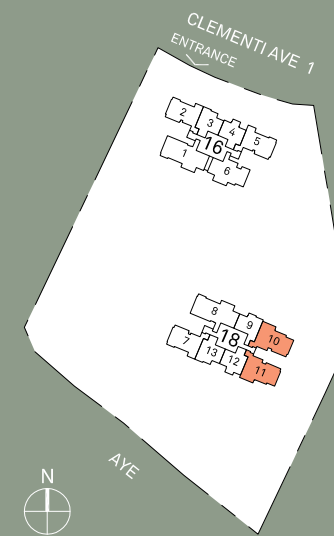


● TYPE D1

1
TOWER 18
#03-10 TO #39-10 (Mirrored)

2
TOWER 18
#04-11 TO #39-11

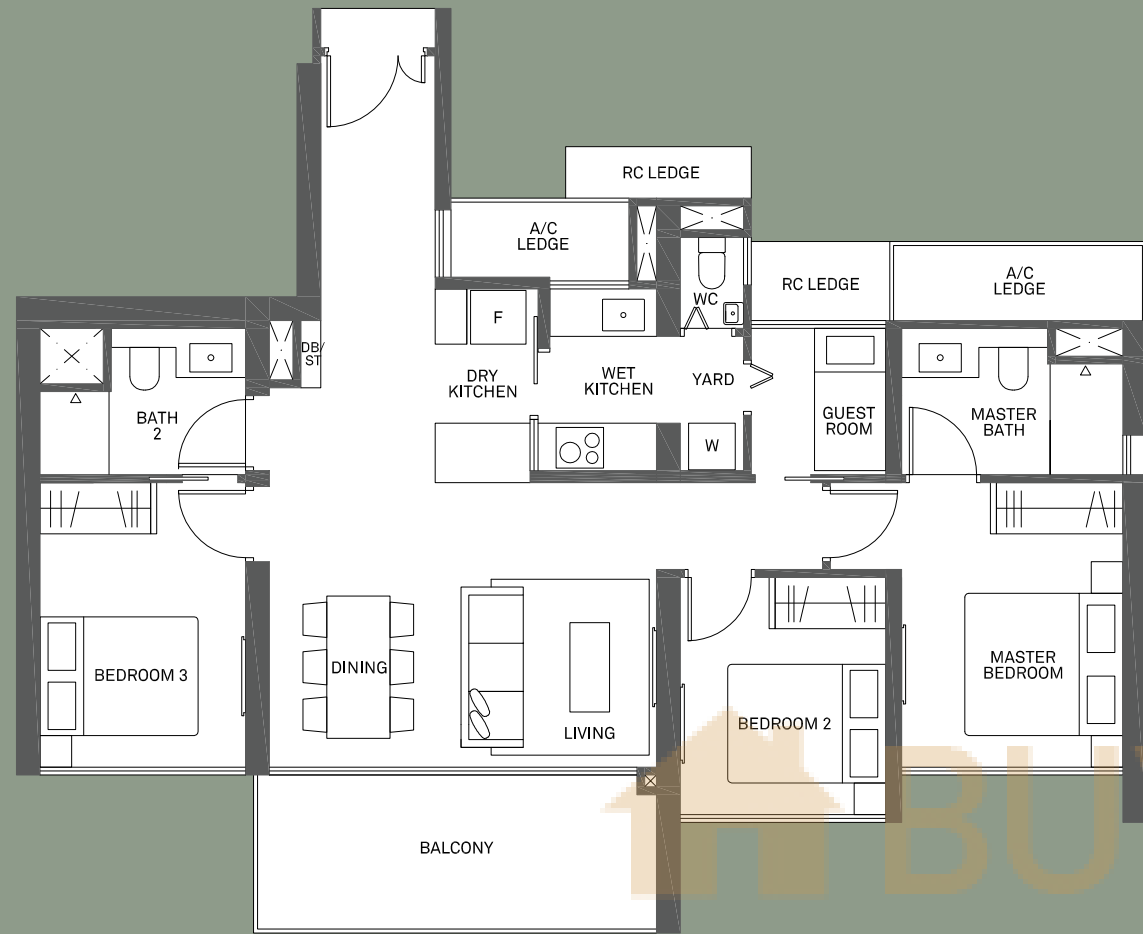
AREA
103 SQ.M (1109 SQ.FT)



Area includes A/C ledge, balcony, pes, private roof terrace and void (where applicable). The above plans and illustrations are subject to changes as maybe required by the relevant authorities. Areas are estimates only and are subject to final survey. The balcony, pes, and private roof terrace shall not be enclosed unless with the approved screen. For an illustration of the approved balcony screen, please refer to the diagram annexed hereto as "annexure 1".

3-Bedroom + Guest Room

4-Bedroom

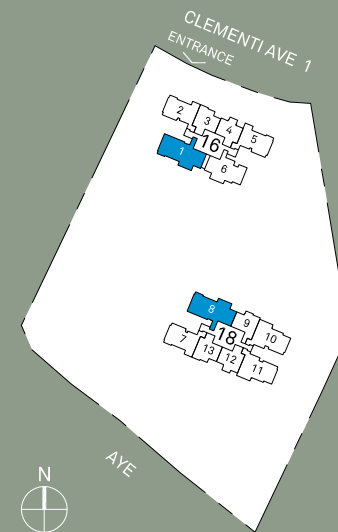
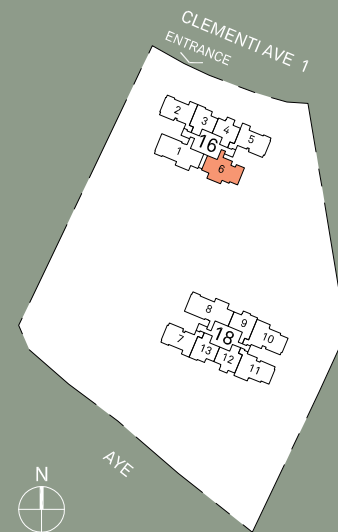


● TYPE D2

● TYPE E

TOWER 16
#02-06 TO #39-06

● 1
TOWER 16
#02-01 TO #39-01 (Mirrored)



● 2
TOWER 18
#02-08 TO #39-08

AREA
106 SQ.M (1141 SQ.FT)

AREA
125 SQ.M (1346 SQ.FT)

Area includes A/C ledge, balcony, pes, private roof terrace and void (where applicable). The above plans and illustrations are subject to changes as may be required by the relevant authorities. Areas are estimates only and are subject to final survey. The balcony, pes, and private roof terrace shall not be enclosed unless with the approved screen. For an illustration of the approved balcony screen, please refer to the diagram annexed hereto as "annexure 1".

Area includes A/C ledge, balcony, pes, private roof terrace and void (where applicable). The above plans and illustrations are subject to changes as may be required by the relevant authorities. Areas are estimates only and are subject to final survey. The balcony, pes, and private roof terrace shall not be enclosed unless with the approved screen. For an illustration of the approved balcony screen, please refer to the diagram annexed hereto as "annexure 1".